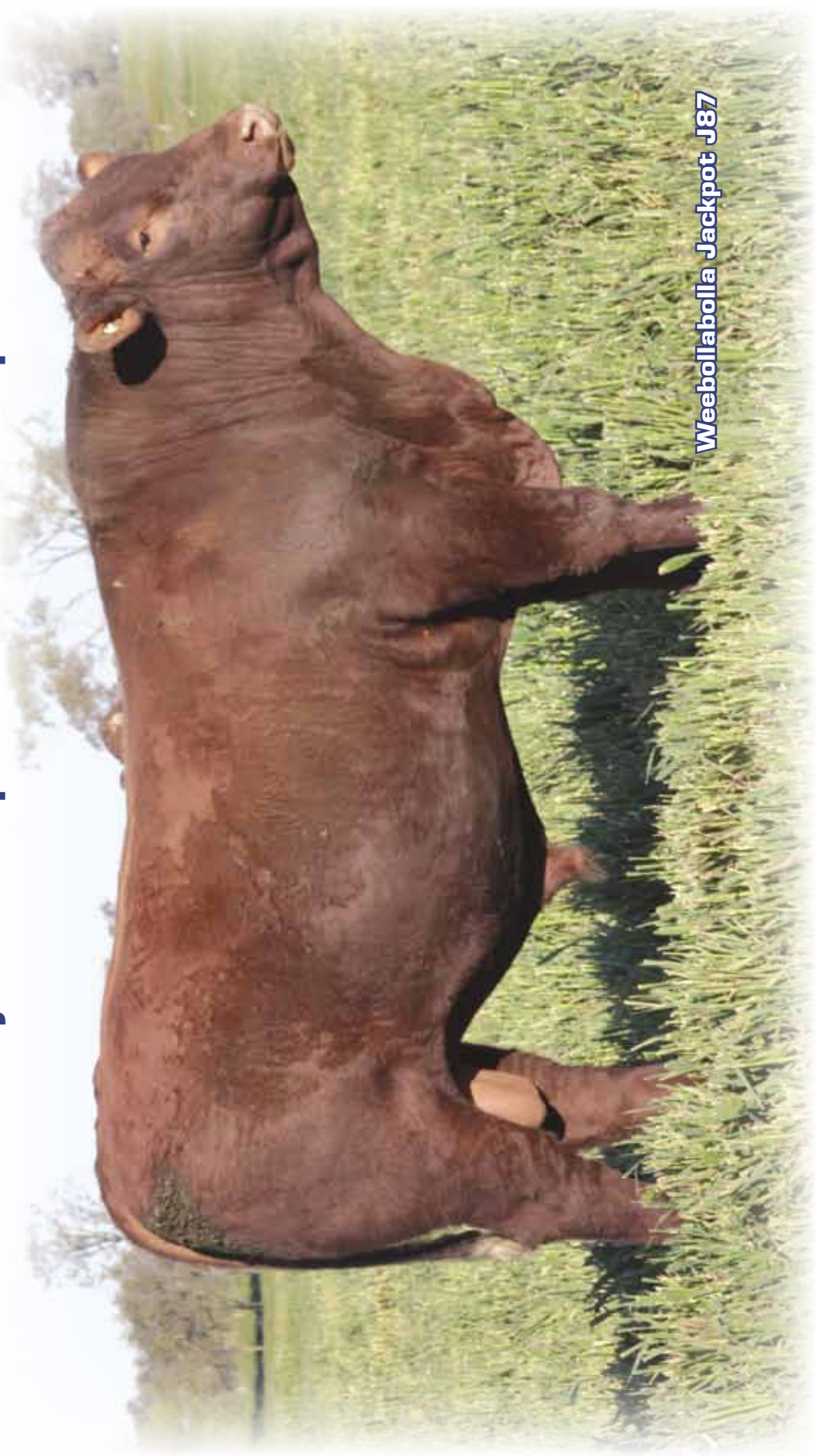


# WEEBOLLABOLLA SHORTHORNS

**48<sup>th</sup> Annual Bull Sale**  
**Friday 18th September 2015 @ 1pm**



Weebollabolla Jackpot J87

**[www.weebollabolla.com.au](http://www.weebollabolla.com.au)**



# 2014 WEEBOLLABOLLA BULL SALE



# WEEBOLLABOLLA SHORTHORNS

## 48th Annual Bull Sale



**Friday 18th September 2015 1pm**

*Bull sale interfaced with Auctions plus.*

*Individual photos and footage available week commencing 24 August 2015*



**auctionsplus**  
*agricultural auctions at a click*

**Weebollabolla Infused Restocker Sale**

**Friday 11th September 2015**

**AuctionsPlus 10am**

### CONTACT

**Sandy Munro**

Mobile: 0429 700 244

office@weebollabolla.com.au

**Jen Jeffreys**

Mobile: 0427 700 244

jen.munro@weebollabolla.com.au

**Office**

Phone: 02 6752 2319

Fax: 02 6752 4438

**www.weebollabolla.com.au**

### SELLING AGENTS



**Elders Limited  
B & W Rural**

**Andy McGeoch**  
0418 737 470

**Andrew Meara**  
0428 531 883

**Jeff Garland**  
0419 483 875

**Justin Higgins**  
0427 281 936



**Bob Jamieson**  
0428 669 313

**Keiran te Velde**  
0427 669 097

**Ben Hiscox**  
0429 669 313

**Mel Hewat (office)**  
(02) 6721 0477

# WELCOME TO WEEBOLLABOLLA

Dear fellow breeder,

What an exciting time to be involved in the beef industry- finally returns per hectare are starting to compete against other ag enterprises. With varying feed availability across the country we are extremely grateful for the incredible season we, at Weebollabolla, are now experiencing. This year's sale draft have been grazing on one of the best oat crops in years they are in extremely good working order and to quote a couple of agents "they look tremendous".



Our Bull Sale on Friday 18th September will be interfaced with Auctions Plus for the convenience of those unable to attend. Individual photos and footage of the bulls will be available on our website as well as Auctions Plus week commencing 24th August 2015.

Our Bull Sale date has moved back by one week this year to welcome Paul Dooley of Paul Dooley Pty Ltd to the Auctioneers rostrum alongside Andy McGeoch of Elders. A fortuitous move because we are able to offer our clients the opportunity to buy or sell Weebollabolla Infused cattle Friday 11th September on Auctions Plus at 10am.

The main benefit to selling on Auctions Plus is the exposure to a national market, with over 280,000hd of cattle (and over 2.1million sheep) this number continues to grow. The weight and accurate description of cattle plus video and photos allows restockers, lot feeders and processors confidence in their purchase removing all guess work. There are no additional freight costs, cattle performance in feedlots are better due to less stress from co-mingling in saleyards or bruising is minimized if going to slaughter.

Prominent new sires on offer in 2015 are descendants of Theodore T85 and Lockyer X857 a true testament to these sires' prepotency. Weebollabolla Finlay F120 with 12 sons, Yamburgan Ossie G10 with 8 sons, Marellan Nuclear with 8 sons and Weebollabolla Factor F254 with 5 sons in the sale. The difference between these sires' progeny is reflected in their respective dams attributes. Read sire comments to find out more on page 4 and 5.

We offer you genetics that have thrived for 145 years. Today our cattle still perform with the best of the breeds. From producer feedback in paddock performance to sale results in commercial steer competitions; we continue to prove the value in our genetics.

For those still grappling with drought but require some energetic sire power, we encourage you to cash in your old bulls at these prices and invest in some new. If you do not require bulls to join immediately we are happy to offer free agistment (within reason and at your risk) until they are required.

We look forward to seeing you Sale Day and encourage you to try a delicious steak.

Good luck and thank you for considering investing in Weebollabolla genetics for your future breeding program.

Sandy and Jen



# SALE INFORMATION

<b>DIRECTIONS</b>	<p>From Moree take the Gwydir Highway (Inverell road) and travel 3.2km after the 100km speed zone (next to Weebolla Bulls Rugby Fields). Turn right onto Terry Hie Hie road. Travel another 2km Weebollabolla sale complex is on your right.</p> <p>From Inverell heading West turn left at Terry Hie Hie sign and travel 2km the sale complex is on your right. If you hit the Weebolla Bulls Rugby Fields you missed the turn off.</p>
<b>INSPECTION</b>	<p>Cattle will be available for inspection from 9.30am on the morning of sale. Inspections are most welcome prior to the sale, please contact Sandy Munro 0429 700 244.</p>
<b>START TIME</b>	<p>1:00pm Sharp in conjunction with AuctionsPlus. Photos and footage available week commencing 28 August 2015 at <a href="http://www.weebollabolla.com.au">www.weebollabolla.com.au</a>.</p>
<b>HEALTH STATUS</b>	<p>The Weebollabolla herd has not completed the Johnes check test in 2015, however if interstate clients are interested in bull acquisitions we will consider testing.</p>
<b>BREEDING GUARANTEE</b>	<p>Our bulls have a breeding guarantee. Any issues please communicate with Jen or Sandy.</p>
<b>REBATE</b>	<p>4% rebate will be paid to outside agents.</p>
<b>BUYER INSTRUCTION SLIP</b>	<p>No Verbal Instructions will be accepted. In the interest of buyers all instructions concerning the delivery of stock purchased at this sale must be given in writing and signed by the buyer or their representative preferably the day before.</p>
<b>ACCOMMODATION</b>	<p>We recommend the Spa Village Travel Inn 02 6752 4033 or the Albert Motel 02 6751 1040.</p>
<b>INSURANCE</b>	<p>Representatives will be available. We do recommend insurance for at least the first joining ie 6 months particularly for expensive bulls in the case of an unforeseen accident.</p>
<b>FREIGHT</b>	<p>We use Dick Smith Transport to truck bulls the following week and will be at the purchaser's cost, unless over 5 bulls are purchased, we will deliver free. This can include neighbours and other buyers within a reasonable distance of each other.</p>
<b>REFRESHMENTS</b>	<p>Our famous Weebollabolla steak and drinks will be provided by from 11:00am.</p>
<b>MANAGEMENT</b>	<p>2015 Sale Draft were finished on oat crop.</p> <p>On the 9th September 2015 bulls were weighed, scrotal measured and scanned by Roger Evans, Bovine Scanning Services for EMA, Fat Depth and IMF%.</p> <p>We maintain the minimum circumference for Scrotal Measurement is 35cm.</p> <p>On 29th &amp; 30th July 2015 bulls were semen tested and examined for structure by Peter Brown, Bovine Breeders. Please note the ideal time to semen test is within 6 weeks of joining.</p> <p>In 2015 all bulls have been drenched with Eprinex, received 7 in 1 booster, and both Vibrio and Pestiguard shots.</p>
<b>Warning</b>	<p>All Sale Bulls have been assessed for temperament and are quiet to handle. However, they are used to being in a large contemporary group and we cannot predict nor guarantee their behaviour on Sale Day. They are not used to crowds of people, or being put through the sale ring by themselves. They become particularly oblivious to those around them if they start fighting. Please be aware and take care, we prefer children and injured people to avoid going into the bull pens. Enter pens with this information in mind.</p>
<b>Disclaimer</b>	<p>Whilst all care and attention to detail has been made in accurately compiling this catalogue, neither the vendor, selling agents or representatives will assume any responsibility for the correctness, use or interpretation of information included in this sale catalogue.</p>

# WEEBOLLABOLLA REFERENCE SIRES

## WEEBOLLABOLLA FINLAY F120 (SR) (SC)

IDENT: AGFF120

BORN: 21/06/2010

COLOUR: RED

THE GROVE LOCKYER X857 (SR) (P)  
**SIRE: YAMBURGAN LOCKYER C8 (SR) (P)**  
 YAMBURGAN VIOLA 8TH (SR) (H)

WEEBOLLABOLLA IMPACT Y156 (SR) (P)  
**DAM: WEEBOLLABOLLA CHEMISTRY C123 (SR) (P)**  
 WEEBOLLABOLLA SUCCESS Z58 (SR) (P)

*Notes: Finlay's performance comes as no surprise given the Impact Lockyer genetic combination. A trait leader for 600DW, scrotal, CWT and EMA, top 5% for 200DW, 400DW, MSA B2 index is nonetheless pleasing to see. Most of these traits are due to Finlay's extreme length and width. Both dam C123 (has ET sons for future sales) and maternal grand dam Z58 show longevity as both have featured heavily in numerous catalogues over the years. Other attributes are neat sheath, good feet and excellent temperament.*



Sire of Lots 5, 8, 9, 10, 21, 23, 25, 30, 31, 47, 76 & 77

JULY 2015 PERFORMANCE HERDS AUSTRALIA BREEDPLAN														INDEX
GL	Birth Wt	200 D	400 D	600 D	MCW	MILK	Scrotal	CWT	EMA	RIB	RUMP	RBV%	IMF%	MSA-B2
-1.2	+4.0	+34	+50	+74	+81	+4	+3.0	+52	+6.3	-1.8	-2.2	+2.5	+0.1	+57
64%	93%	91%	88%	88%	75%	54%	84%	77%	63%	73%	73%	71%	67%	

## WEEBOLLABOLLA ERUDITE E14 (SR) (P)

IDENT: AGFE14

BORN: 1/05/2009

COLOUR: RED

WEEBOLLABOLLA QUILPIE Q18 (SR) (P)  
**SIRE: WEEBOLLABOLLA THEODORE T85 (SR) (P)**  
 WEEBOLLABOLLA NINDETHANA (SR) (P)

WEEBOLLABOLLA WARRIOR W17 (SR) (P)  
**DAM: WEEBOLLABOLLA WEIGHTY Z99 (SR) (P)**  
 WEEBOLLABOLLA WEIGHTY W126 (SR) (P)

*Notes: Erudite stood out as a yearling bull and was used as a heifer bull. He will help breed fat cover back onto any lean cow and moderate birth weights. His dam Z99 is a moderate easy doing cow with loads of longevity. She has produced yet another excellent son in Lot 70 for 2015 as well as 2014, 2011 and 2010. E14 is in the top 5% for rib fat, top 1% for rump fat and top 10% for IMF.*



SIRE WEEBOLLABOLLA THEODORE T85

Sire of Lots 12, 13, 39, 41, 55, 65, 68, 71 & 84

JULY 2015 PERFORMANCE HERDS AUSTRALIA BREEDPLAN														INDEX
GL	Birth Wt	200 D	400 D	600 D	MCW	MILK	Scrotal	CWT	EMA	RIB	RUMP	RBV%	IMF%	MSA-B2
-0.3	+2.0	+24	+26	+19	-7	+3	+1.2	+19	+2.0	+0.9	+2.5	-1.1	+1.0	+\$29
71%	91%	91%	90%	90%	77%	63%	85%	79%	64%	74%	75%	71%	71%	

## MARELLAN NUCLEAR (SR) (S)

IDENT: JOBF215

BORN: 20/07/2010

COLOUR: ROAN

WEEBOLLABOLLA QUILPIE Q18 (SR) (P)  
**SIRE: WEEBOLLABOLLA THEODORE T85 (SR) (P)**  
 WEEBOLLABOLLA NINDETHANA (SR) (P)

INVERARY ROLEX Z100 (S)  
**DAM: MARELLAN SUSAN 8228L (SR) (S)**  
 MARELLAN SUSAN 96TH (S)

*Notes: The most balanced bull we have purchased from Marellan (Lincoln and Lisa Job) in 2012 for \$14,000. We have been really impressed with Nuclear's progeny performance on paper and in the paddock. Top 5% for rib fat, top 10% for 200DW, 400DW, rump fat, IMF and MSA B2 index and top 15% for 600DW.*



Sire of Lots 1, 6, 11, 29, 32, 33, 43 & 70

JULY 2015 PERFORMANCE HERDS AUSTRALIA BREEDPLAN														INDEX
GL	Birth Wt	200 D	400 D	600 D	MCW	MILK	Scrotal	CWT	EMA	RIB	RUMP	RBV%	IMF%	MSA-B2
-1.4	+3.3	+32	+45	+58	+49	+4	+1.3	+41	+4.4	+0.4	+0.4	+0.5	+1.0	+\$58
59%	91%	89%	84%	84%	67%	44%	76%	70%	54%	66%	66%	63%	61%	

# WEEBOLLABOLLA REFERENCE SIRES

## YAMBURGAN OSSIE G10 (SR) (S)

IDENT: YY G10

BORN: 12/02/2011

COLOUR: RED

THE GROVE LOCKYER X857 (SR) (P)  
**SIRE: THE GROVE OSCAR A748 (SR) (P)**  
 THE GROVE DALE 39TH (SR) (P)

WEEBOLLABOLLA QUILPIE Q18 (SR) (P)  
**DAM: YAMBURGAN CLOUDY 493RD (SR) (S)**  
 YAMBURGAN CLOUDY 441ST (SR) (S)

*Notes: Ossie G10 was purchased from Yamburgan (John & Liz Manchee) as a yearling bull in 2012 for \$12,000. An incredibly thick, deep, moderate bull. His butt shape and top line is exhibited well in his progeny. G10's do-ability is impressive too. Ideal for large framed cows that require some extra shape and depth. Top 5% for GL, top 10% for EMA and 20% for IMF and MSA B2 index.*

Sire of Lots 7, 42, 44, 45, 69, 72, 78 & 83



JULY 2015 PERFORMANCE HERDS AUSTRALIA BREEDPLAN														INDEX
GL	Birth Wt	200 D	400 D	600 D	MCW	MILK	Scrotal	CWT	EMA	RIB	RUMP	RBV%	IMF%	MSA-B2
-3.1	+2.6	+30	+38	+43	+49	+3	+1.4	+34	+5.2	-0.6	-0.8	+1.5	+0.8	+50
57%	85%	82%	80%	81%	67%	45%	74%	68%	56%	67%	67%	64%	63%	

## WEEBOLLABOLLA FACTOR F254 (SR) (P)

IDENT: AGFF254

BORN: 18/06/2010

COLOUR: RED

WEEBOLLABOLLA THEODORE T85 (SR) (P)  
**SIRE: WEEBOLLABOLLA CAMBRIDGE C3 (SR) (P)**  
 WEEBOLLABOLLA WILMA W93 (SR) (P)

WEEBOLLABOLLA ZACKER Z29 (SR) (P)  
**DAM: WEEBOLLABOLLA D230 (SR) (SC)**  
 WEEBOLLABOLLA FA13 (SR) (P)

*Notes: Factor has plenty of style and caught the attention of many as a young bull in the 2012 contemporary group. Another Sire with loads of length and excellent head carriage like his dam D230. F254's explosive growth from a low BW to 200DW and 400DW is impressive. He is in the top 5% for 200DW, 400DW and scrotal and MSA B2 index, top 10% for CWT and top 15% for GL.*

Sire of Lots 14, 15, 38, 50 & 75



SIRE: WEEBOLLABOLLA CAMBRIDGE C3

JULY 2015 PERFORMANCE HERDS AUSTRALIA BREEDPLAN														INDEX
GL	Birth Wt	200 D	400 D	600 D	MCW	MILK	Scrotal	CWT	EMA	RIB	RUMP	RBV%	IMF%	MSA-B2
-2.0	+2.6	+37	+50	+55	+49	+4	+2.5	+43	+2.3	-1.7	-2.1	+1.3	+0.2	+52
50%	82%	81%	80%	80%	69%	48%	77%	70%	54%	66%	66%	63%	58%	

## YAMBURGAN OSSIE E93 (SR) (S)

IDENT: YY E93

BORN: 11/07/2009

COLOUR: ROAN

THE GROVE LOCKYER X857 (SR) (P)  
**SIRE: THE GROVE OSCAR A748 (SR) (P)**  
 THE GROVE DALE 39TH (SR) (P)

YAMBURGAN MITTIEBAH 5TH (SR) (P)  
**DAM: YAMBURGAN MARGARET 32ND (SR) (S)**  
 YAMBURGAN MARGARET 28TH (S)

*Notes: Ossie E93 is well represented again in our 2015 sale draft a tribute to this sire. His growth and shape are standout traits in his sons. This can be attributed to being in the top 1% for EMA, 5% for milk, 10% for 200DW and 600DW and top 15% for GL.*

Sire of Lots 17, 18, 20, 26, 28, 56, 67 & 82



JULY 2015 PERFORMANCE HERDS AUSTRALIA BREEDPLAN														INDEX
GL	Birth Wt	200 D	400 D	600 D	MCW	MILK	Scrotal	CWT	EMA	RIB	RUMP	RBV%	IMF%	MSA-B2
-2.0	+4.8	+33	+40	+60	+74	+9	+1.0	+34	+6.7	-0.9	-1.9	+2.4	+0.3	+39
65%	93%	92%	90%	90%	81%	64%	85%	80%	68%	75%	76%	72%	74%	

# WEEBOLLABOLLA REFERENCE SIRE SUMMARY

Sire	Ident	DOB	Colour	GL	BW	200 Day	400 Day	600 Day	MCW	Milk	Scrotal	CWT	EMA	RIB	Rump	RBY	IMF	MSA-B2
WEEBOLLABOLLA EXCEPTIONAL E110 (SR) (P) Sire of lots 24, 37 & 74	AGFE110	7/07/2009	Roan	-1.8	+3.9	+38	+48	+67	+59	+3	+2.3	+51	+7.2	-2.3	-4.4	+3.2	-0.5	+\$62
BUNDALEER UNITED CHIEF U21 (SR) (P) Sire of lots 2, 27, 62, 81	GEAU21	5/04/1999	RLW	-0.6	+1.2	+32	+40	+48	+16	+10	+1.3	+44	+3.5	-1.1	-1.1	+2.1	+0.2	+\$56
WEEBOLLABOLLA F21 (SR) (P) Sire of lots 36, 40, 51 & 52	AGFF021	7/06/2010	Roan	-1.6	+2.7	+21	+26	+34	+35	-1	+1.8	+29	+5.0	-0.8	-0.7	+1.7	+0.5	+\$43
WEEBOLLABOLLA G147 (SR) (P) Sire of lots 57, 61, 63 & 66	AGFG147	25/07/2011	White	-1.8	+4.8	+26	+37	+50	+60	+5	+0.9	+28	+5.4	+0.4	-0.1	+0.4	+0.7	+\$32
THE GROVE OSCAR A748 (SR) (P) Sire of lot 22, 54, 85, 88 & 89	BDBA748	1/09/2005	Red	-3.6	+3.4	+23	+41	+53	+83	+4	+1.4	+33	+6.7	-0.9	-1.8	+2.1	+0.5	+\$35
WEEBOLLABOLLA THEODORE T85 (SR) (P) Sire of lots 4 & 46	98/03769	13/07/1998	Roan	-2.7	+1.2	+27	+35	+40	+29	+3	+1.8	+32	+4.3	+0.3	+0.2	+0.2	+0.8	+\$53
WEEBOLLABOLLA CAMBRIDGE C3 (SR) (P) Sire of lots 16, 60, 73 & 80	AGFC3	8/04/2007	Roan	-2.8	+1.8	+29	+30	+43	+26	+3	+1.8	+28	+2.0	-0.6	-1.3	+0.3	+0.5	+\$43
WEEBOLLABOLLA BRAVEHEART B121 (SR) (P) Sire of lot 87	AGFB121	10/07/2006	Red	-0.8	+3.6	+24	+38	+53	+54	+1	+3.5	+33	+6.1	-0.7	-1.8	+1.5	+0.4	+\$48
WEEBOLLABOLLA CENTURION C149 (SR) (P) Sire of lots 19, 53, 64 & 90	AGFC149	15/07/2007	Roan	+1.5	+4.2	+27	+33	+48	+52	+3	+1.5	+38	+6.7	-0.7	-0.4	+1.6	-0.1	+\$36
FUTURITY FLIRT F105 (SR) (S) Sire of lot 35	JJF105	12/08/2010	White	-1.3	+3.7	+29	+36	+41	+34	+6	+1.6	+31	+3.6	-1.6	-2.0	+1.5	+0.5	+\$36
THE GROVE HUMMER F1128 (SR) (P) Sire of lot 3	BDBF1128	12/12/2010	Red	-1.0	+3.4	+26	+24	+39	+31	+5	+0.9	+24	+2.7	-1.1	-1.5	+0.5	+0.9	+\$38
WEEBOLLABOLLA G125 (SR) (P) Sire of lot 34	AGFG125	21/07/2011	White	-1.7	+0.9	+26	+32	+36	+20	+9	+1.1	+34	+1.8	-1.6	-2.7	+1.8	-0.1	+\$41
WEEBOLLABOLLA F174 (SR) (P) Sire of lots 36 & 49	AGFF174	13/07/2010	RLW	-1.2	+3.7	+31	+43	+50	+58	+0	+2.3	+36	+3.1	-0.2	+0.4	+0.2	+0.7	+\$45
WEEBOLLABOLLA G152 (SR) (P) Sire of lots 58 & 79	AGFG152	26/07/2011	RLW	-0.7	+2.8	+36	+40	+50	+38	+9	+1.6	+42	+4.7	-1.5	-2.1	+2.0	+0.1	+\$40
BELMORE JACKAROO Z109 (SR) (P) Sire of lot 86	IAWZ109	06/06/2004	RLW	+0.3	+2.0	+25	+40	+46	+10	+4	+0.3	+41	+6.8	-0.1	+0.2	+1.6	+0.5	+\$55
THE GROVE D851 (SR) (P) Sire of lot 48	BDBD851	05/11/2008	Roan	+0.2	+5.2	+31	+39	+60	+72	+3	+1.5	+36	+5.8	+0.6	+0.8	0.0	+1.9	+\$58





**BOB JAMIESON** AGENCIES  
Stock & Station Agents



***Leading Stock & Station Agency in NSW with  
active markets in Inverell, Moree and the New England,  
North West & SE QLD regions.***

*\*Weekly Fat cattle & Bi monthly Store cattle sale*

*\*Fortnightly sheep sales*

*\* Private & paddock sales of cattle and sheep direct to feedlots & abattoirs*

*\*AuctionsPlus Level 1 Assessors*

*\*Rural property specialists*

Shop 2, 18 Sweaney Street  
Inverell NSW 2360  
Email: [admin@bobjamiesonagencies.com.au](mailto:admin@bobjamiesonagencies.com.au)  
Web: [www.bobjamiesonagencies.com.au](http://www.bobjamiesonagencies.com.au)

**Phone: 02 6721 0477**

**Agents**

Bob Jamieson: 0428 669 313

Ben Hiscox: 0429 669 313

Keiran te Velde: 0427 669 097



# We're here when you need us.

The business of farming is not for everyone. But like you that's the business we're in.

Our national network offers a range of products and services tailored to the needs of primary producers including:

- Cropping • Livestock & Wool • Dairy • Horticulture • Financial Services • Real Estate

Contact the livestock team who can help you access buyers across Australia.

#### Victoria

Ross Milne	0408 057 558
Jim Bruce	0419 600 355

#### New South Wales

Andy McGeoch	0418 737 470
Josh Crosby	0428 634 658
Brian Kennedy	0427 844 047

#### Queensland

Blake Munro	0428 862 469
Andrew Meara	0427 210 634

#### South Australia

Tom Penna	0428 854 708
-----------	--------------

#### Western Australia

Tim Spicer	0427 812 194
------------	--------------

[elders.com.au](http://elders.com.au)



MAKES MORE POSSIBLE

# WEEBOLLABOLLA SALE BULLS

## LOT 1 WEEBOLLABOLLA J83 (SR) (P)

BORN: 12/07/2013

COLOUR: ROAN

IDENT: AGFJ83

WEEBOLLABOLLA THEODORE T85 (SR) (P)

WEEBOLLABOLLA WARRIOR W17 (SR) (P)

SIRE: MARELLAN NUCLEAR (SR) (S)

DAM: WEEBOLLABOLLA AUDITION A13 (SR) (P)

MARELLAN SUSAN 8228L (SR) (S)

WEEBOLLABOLLA MARDI-GRAS (SR) (P)

JULY 2015 PERFORMANCE HERDS AUSTRALIA BREEDPLAN														INDEX
GL	Birth Wt	200 D	400 D	600 D	MCW	MILK	Scrotal	CWT	EMA	RIB	RUMP	RBY%	IMF%	MSA-B2
	<b>+2.2</b> 74%	<b>+28</b> 72%	<b>+38</b> 69%	<b>+53</b> 70%		<b>+6</b> 44%	<b>+1.3</b> 71%		<b>+4.3</b> 46%	<b>+0.3</b> 55%	<b>+0.5</b> 55%	<b>+0.8</b> 52%	<b>+0.8</b> 45%	<b>+\$59</b>

Traits Observed: BWT, 200DW, 400DWx2, 600DW, SS, FAT, EMA, IMF

RAW DATA - WILL BE SUPPLIED ON SALE DAY					
Scrotal Size	Weight	P8	Rib	EMA	IMF%

Purchaser: .....\$ .....

## LOT 2 WEEBOLLABOLLA J31 (SR) (P)

BORN: 28/05/2013

COLOUR: RLW

IDENT: AGFJ31

BROUGHTON PARK CANADIAN CHIEF (S)

BELMORE JACKAROO Z109 (SR) (P)

SIRE: BUNDALEER UNITED CHIEF U21 (SR) (P)

DAM: WEEBOLLABOLLA G121 (SR) (P)

BROUGHTON PARK ROSE 58 (S)

WEEBOLLABOLLA WANDELLA W84 (SR) (P)

JULY 2015 PERFORMANCE HERDS AUSTRALIA BREEDPLAN														INDEX
GL	Birth Wt	200 D	400 D	600 D	MCW	MILK	Scrotal	CWT	EMA	RIB	RUMP	RBY%	IMF%	MSA-B2
<b>-1.8</b> 64%	<b>+0.7</b> 73%	<b>+26</b> 73%	<b>+41</b> 70%	<b>+47</b> 71%	<b>+24</b> 61%	<b>+7</b> 47%	<b>+1.1</b> 72%	<b>+41</b> 60%	<b>+4.3</b> 47%	<b>-0.1</b> 57%	<b>+0.2</b> 57%	<b>+1.1</b> 55%	<b>+0.6</b> 48%	<b>+\$58</b>

Traits Observed: GL, 200DW, 400DWx2, 600DW, SS, FAT, EMA, IMF

RAW DATA - WILL BE SUPPLIED ON SALE DAY					
Scrotal Size	Weight	P8	Rib	EMA	IMF%

Purchaser: .....\$ .....

## LOT 3 WEEBOLLABOLLA J178 (SR) (P)

BORN: 2/08/2013

COLOUR: ROAN

IDENT: AGFJ178

MARELLAN HUM DINGER (SR) (P)

SPRYS PRESIDENT Z023 (SR) (P)

SIRE: THE GROVE HUMMER F1128 (SR) (P)

DAM: WEEBOLLABOLLA COMFORT C77 (SR) (P)

THE GROVE C.K. DALE W748 (SR) (P)

WEEBOLLABOLLA VEROCITY V182 (SR) (P)

JULY 2015 PERFORMANCE HERDS AUSTRALIA BREEDPLAN														INDEX
GL	Birth Wt	200 D	400 D	600 D	MCW	MILK	Scrotal	CWT	EMA	RIB	RUMP	RBY%	IMF%	MSA-B2
	<b>+5.0</b> 73%	<b>+28</b> 70%	<b>+38</b> 68%	<b>+51</b> 69%		<b>+5</b> 46%	<b>+1.5</b> 71%		<b>+3.0</b> 45%	<b>-1.6</b> 53%	<b>-2.0</b> 53%	<b>+1.3</b> 50%	<b>+0.5</b> 43%	<b>+\$41</b>

Traits Observed: BWT, 200DW, 400DWx2, 600DW, SS, FAT, EMA, IMF

RAW DATA - WILL BE SUPPLIED ON SALE DAY					
Scrotal Size	Weight	P8	Rib	EMA	IMF%

Purchaser: .....\$ .....



LOT 1 - WEEBOLLABOLLA J83 (SR) (P)



LOT 3 - WEEBOLLABOLLA J178 (SR) (P)



# WEEBOLLABOLLA SALE BULLS

## LOT 4 WEEBOLLABOLLA J39 (SR) (P)

BORN: 4/06/2013

COLOUR: RED

IDENT: AGFJ39

WEEBOLLABOLLA QUILPIE Q18 (SR) (P)

YAMBURGAN LOCKYER C8 (SR) (P)

SIRE: WEEBOLLABOLLA THEODORE T85 (SR) (P)

DAM: WEEBOLLABOLLA G46 (SR) (P)

WEEBOLLABOLLA NINDETHANA (SR) (P)

WEEBOLLABOLLA XTENDABLE X33 (SR) (P)

JULY 2015 PERFORMANCE HERDS AUSTRALIA BREEDPLAN														INDEX
GL	Birth Wt	200 D	400 D	600 D	MCW	MILK	Scrotal	CWT	EMA	RIB	RUMP	RBY%	IMF%	MSA-B2
-0.9	+5.8	+43	+52	+66		+2	+1.8		+4.5	-0.3	-0.2	+0.8	+0.6	+\$55
51%	69%	65%	65%	64%		53%	51%		45%	53%	53%	51%	49%	

Traits Observed: BWT, 400DW, 600DWx2, SS, FAT, EMA, IMF

RAW DATA - WILL BE SUPPLIED ON SALE DAY					
Scrotal Size	Weight	P8	Rib	EMA	IMF%

Purchaser: .....\$ .....

## LOT 5 WEEBOLLABOLLA J133 (SR) (H)

BORN: 23/07/2013

COLOUR: ROAN

IDENT: AGFJ133

YAMBURGAN LOCKYER C8 (SR) (P)

WEEBOLLABOLLA IMPACT Y156 (SR) (P)

SIRE: WEEBOLLABOLLA FINLAY F120 (SR) (SC)

DAM: WEEBOLLABOLLA BRITANNICA B139 (SR) (SC)

WEEBOLLABOLLA CHEMISTRY C123 (SR) (P)

WEEBOLLABOLLA XTROVERT X39 (SR) (P)

JULY 2015 PERFORMANCE HERDS AUSTRALIA BREEDPLAN														INDEX
GL	Birth Wt	200 D	400 D	600 D	MCW	MILK	Scrotal	CWT	EMA	RIB	RUMP	RBY%	IMF%	MSA-B2
	+5.5	+38	+55	+88	+97	+5	+1.5	+58	+6.8	-2.0	-2.7	+2.6	+0.1	+\$62
	75%	73%	71%	72%	62%	46%	73%	61%	49%	57%	57%	54%	47%	

Traits Observed: BWT, 200DW, 400DWx2, 600DW, SS, FAT, EMA, IMF

RAW DATA - WILL BE SUPPLIED ON SALE DAY					
Scrotal Size	Weight	P8	Rib	EMA	IMF%

Purchaser: .....\$ .....

## LOT 6 WEEBOLLABOLLA J138 (SR) (P)

BORN: 24/07/2013

COLOUR: RED

IDENT: AGFJ138

WEEBOLLABOLLA THEODORE T85 (SR) (P)

WEEBOLLABOLLA CENTURION C149 (SR) (P)

SIRE: MARELLAN NUCLEAR (SR) (S)

DAM: WEEBOLLABOLLA F147 (SR) (P)

MARELLAN SUSAN 8228L (SR) (S)

WEEBOLLABOLLA CALIPSO C53 (SR) (P)

JULY 2015 PERFORMANCE HERDS AUSTRALIA BREEDPLAN														INDEX
GL	Birth Wt	200 D	400 D	600 D	MCW	MILK	Scrotal	CWT	EMA	RIB	RUMP	RBY%	IMF%	MSA-B2
	+4.4	+35	+46	+59		+5	+1.8		+4.5	+0.1	+0.4	+0.5	+0.8	+\$53
	74%	71%	68%	70%		36%	70%		46%	55%	55%	52%	46%	

Traits Observed: BWT, 200DW, 400DWx2, 600DW, SS, FAT, EMA, IMF

RAW DATA - WILL BE SUPPLIED ON SALE DAY					
Scrotal Size	Weight	P8	Rib	EMA	IMF%

Purchaser: .....\$ .....



LOT 6 - WEEBOLLABOLLA J138 (SR) (P)



LOT 7 - WEEBOLLABOLLA J157 (SR) (P)



# WEEBOLLABOLLA SALE BULLS

## LOT 7 WEEBOLLABOLLA J157 (SR) (P)

**BORN:** 28/07/2013

**COLOUR:** RED

**IDENT:** AGFJ157

THE GROVE OSCAR A748 (SR) (P)

WEEBOLLABOLLA MAX 8TH Y167 (SR) (P)

**SIRE:** YAMBURGAN OSSIE G10 (SR) (S)

**DAM:** WEEBOLLABOLLA E115 (SR) (P)

YAMBURGAN CLOUDY 493RD (SR) (S)

WEEBOLLABOLLA WILLAURA W58 (SR) (P)

JULY 2015 PERFORMANCE HERDS AUSTRALIA BREEDPLAN														INDEX
GL	Birth Wt	200 D	400 D	600 D	MCW	MILK	Scrotal	CWT	EMA	RIB	RUMP	RBY%	IMF%	MSA-B2
	<b>+4.4</b> 72%	<b>+35</b> 70%	<b>+47</b> 68%	<b>+56</b> 69%		<b>+5</b> 40%	<b>+2.7</b> 70%		<b>+4.8</b> 46%	<b>-0.4</b> 56%	<b>-0.3</b> 56%	<b>+1.3</b> 52%	<b>+0.6</b> 46%	<b>+\$55</b>

*Traits Observed: BWT, 200DW, 400DWx2, 600DW, SS, FAT, EMA, IMF*

RAW DATA - WILL BE SUPPLIED ON SALE DAY					
Scrotal Size	Weight	P8	Rib	EMA	IMF%

Purchaser: .....\$ .....

## LOT 8 WEEBOLLABOLLA J95 (SR) (H)

**BORN:** 15/07/2013

**COLOUR:** RLW

**IDENT:** AGFJ95

YAMBURGAN LOCKYER C8 (SR) (P)

THE GROVE LAWMAN X264 (SR) (P)

**SIRE:** WEEBOLLABOLLA FINLAY F120 (SR) (SC)

**DAM:** WEEBOLLABOLLA BILLABONG B109 (SR) (P)

WEEBOLLABOLLA CHEMISTRY C123 (SR) (P)

WEEBOLLABOLLA WAFFLE W111 (SR) (P)

JULY 2015 PERFORMANCE HERDS AUSTRALIA BREEDPLAN														INDEX
GL	Birth Wt	200 D	400 D	600 D	MCW	MILK	Scrotal	CWT	EMA	RIB	RUMP	RBY%	IMF%	MSA-B2
	<b>+5.0</b> 74%	<b>+36</b> 72%	<b>+55</b> 69%	<b>+79</b> 70%	<b>+83</b> 60%	<b>+3</b> 44%	<b>+2.5</b> 72%	<b>+51</b> 60%	<b>+6.0</b> 48%	<b>-1.2</b> 55%	<b>-1.6</b> 55%	<b>+1.7</b> 52%	<b>+0.2</b> 45%	<b>+\$62</b>

*Traits Observed: BWT, 200DW, 400DWx2, 600DW, SS, FAT, EMA, IMF*

RAW DATA - WILL BE SUPPLIED ON SALE DAY					
Scrotal Size	Weight	P8	Rib	EMA	IMF%

Purchaser: .....\$ .....

## LOT 9 WEEBOLLABOLLA J103 (SR) (P)

**BORN:** 15/07/2013

**COLOUR:** RLW

**IDENT:** AGFJ103

YAMBURGAN LOCKYER C8 (SR) (P)

WEEBOLLABOLLA WARATAH W26 (SR) (P)

**SIRE:** WEEBOLLABOLLA FINLAY F120 (SR) (SC)

**DAM:** WEEBOLLABOLLA APPEASE A63 (SR) (P)

WEEBOLLABOLLA CHEMISTRY C123 (SR) (P)

WEEBOLLABOLLA VAL V34 (SR) (P)

JULY 2015 PERFORMANCE HERDS AUSTRALIA BREEDPLAN														INDEX
GL	Birth Wt	200 D	400 D	600 D	MCW	MILK	Scrotal	CWT	EMA	RIB	RUMP	RBY%	IMF%	MSA-B2
	<b>+3.5</b> 74%	<b>+31</b> 72%	<b>+44</b> 70%	<b>+68</b> 71%		<b>+5</b> 46%	<b>+2.7</b> 72%	<b>+46</b> 60%	<b>+4.7</b> 48%	<b>-1.5</b> 56%	<b>-1.6</b> 56%	<b>+1.7</b> 53%	<b>+0.5</b> 46%	<b>+\$63</b>

*Traits Observed: BWT, 200DW, 400DWx2, 600DW, SS, FAT, EMA, IMF*

RAW DATA - WILL BE SUPPLIED ON SALE DAY					
Scrotal Size	Weight	P8	Rib	EMA	IMF%

Purchaser: .....\$ .....

## LOT 10 WEEBOLLABOLLA J214 (SR) (P)

**BORN:** 19/08/2013

**COLOUR:** RED

**IDENT:** AGFJ214

YAMBURGAN LOCKYER C8 (SR) (P)

WEEBOLLABOLLA NEEWARRA N83 (SR) (P)

**SIRE:** WEEBOLLABOLLA FINLAY F120 (SR) (SC)

**DAM:** WEEBOLLABOLLA WIGGLE W103 (SR) (P)

WEEBOLLABOLLA CHEMISTRY C123 (SR) (P)

WEEBOLLABOLLA RAGTIME R64 (SR) (S)

JULY 2015 PERFORMANCE HERDS AUSTRALIA BREEDPLAN														INDEX
GL	Birth Wt	200 D	400 D	600 D	MCW	MILK	Scrotal	CWT	EMA	RIB	RUMP	RBY%	IMF%	MSA-B2
	<b>+5.3</b> 74%	<b>+35</b> 72%	<b>+45</b> 70%	<b>+74</b> 71%		<b>+5</b> 47%	<b>+1.9</b> 73%	<b>+43</b> 60%	<b>+5.4</b> 48%	<b>-1.0</b> 55%	<b>-1.2</b> 55%	<b>+1.2</b> 52%	<b>+0.5</b> 45%	<b>+\$56</b>

*Traits Observed: BWT, 200DW, 400DWx2, 600DW, SS, FAT, EMA, IMF*

RAW DATA - WILL BE SUPPLIED ON SALE DAY					
Scrotal Size	Weight	P8	Rib	EMA	IMF%

Purchaser: .....\$ .....

# WEEBOLLABOLLA SALE BULLS

## LOT 11 WEEBOLLABOLLA J122 (SR) (P)

BORN: 21/07/2013

COLOUR: ROAN

IDENT: AGFJ122

WEEBOLLABOLLA THEODORE T85 (SR) (P)

WEEBOLLABOLLA WARRIOR W17 (SR) (P)

SIRE: MARELLAN NUCLEAR (SR) (S)

DAM: WEEBOLLABOLLA ANGELICA A118 (SR) (P)

MARELLAN SUSAN 8228L (SR) (S)

WEEBOLLABOLLA WINDFALL W144 (SR) (P)

JULY 2015 PERFORMANCE HERDS AUSTRALIA BREEDPLAN														INDEX
GL	Birth Wt	200 D	400 D	600 D	MCW	MILK	Scrotal	CWT	EMA	RIB	RUMP	RBY%	IMF%	MSA-B2
	<b>+3.7</b> 74%	<b>+29</b> 72%	<b>+37</b> 69%	<b>+50</b> 69%		<b>+5</b> 42%	<b>+0.4</b> 71%		<b>+2.8</b> 46%	<b>+1.1</b> 54%	<b>+1.7</b> 54%	<b>-0.6</b> 51%	<b>+1.3</b> 44%	<b>+\$46</b>

Traits Observed: BWT, 200DW, 400DWx2, 600DW, SS, FAT, EMA, IMF

RAW DATA - WILL BE SUPPLIED ON SALE DAY					
Scrotal Size	Weight	P8	Rib	EMA	IMF%

Purchaser: .....\$ .....

## LOT 12 WEEBOLLABOLLA J449 (SR) (P)

BORN: 29/07/2013

COLOUR: RED

IDENT: AGFJ449

WEEBOLLABOLLA THEODORE T85 (SR) (P)

WOOLCOTT MONARO C237 (SR) (P)

SIRE: WEEBOLLABOLLA ERUDITE E14 (SR) (P)

DAM: WEEBOLLABOLLA F462 (SR) (P)

WEEBOLLABOLLA WEIGHTY Z99 (SR) (P)

WEEBOLLABOLLA Z418 (SR) (P)

JULY 2015 PERFORMANCE HERDS AUSTRALIA BREEDPLAN														INDEX
GL	Birth Wt	200 D	400 D	600 D	MCW	MILK	Scrotal	CWT	EMA	RIB	RUMP	RBY%	IMF%	MSA-B2
	<b>+3.7</b> 74%	<b>+38</b> 71%	<b>+44</b> 70%	<b>+53</b> 71%	<b>+44</b> 60%	<b>+9</b> 43%	<b>+1.8</b> 72%	<b>+38</b> 60%	<b>+3.3</b> 48%	<b>+0.5</b> 55%	<b>+1.6</b> 56%	<b>-0.1</b> 52%	<b>+1.3</b> 47%	<b>+\$58</b>

Traits Observed: BWT, 200DW, 400DWx2, 600DW, SS, FAT, EMA, IMF

RAW DATA - WILL BE SUPPLIED ON SALE DAY					
Scrotal Size	Weight	P8	Rib	EMA	IMF%

Purchaser: .....\$ .....

## LOT 13 WEEBOLLABOLLA J485 (SR) (P)

BORN: 15/08/2013

COLOUR: R&W

IDENT: AGFJ485

WEEBOLLABOLLA THEODORE T85 (SR) (P)

WEEBOLLABOLLA CANNON C1 (SR) (P)

SIRE: WEEBOLLABOLLA ERUDITE E14 (SR) (P)

DAM: WEEBOLLABOLLA F315 (SR) (P)

WEEBOLLABOLLA WEIGHTY Z99 (SR) (P)

WEEBOLLABOLLA D311 (SR) (P)

JULY 2015 PERFORMANCE HERDS AUSTRALIA BREEDPLAN														INDEX
GL	Birth Wt	200 D	400 D	600 D	MCW	MILK	Scrotal	CWT	EMA	RIB	RUMP	RBY%	IMF%	MSA-B2
	<b>+2.3</b> 73%	<b>+31</b> 70%	<b>+35</b> 64%	<b>+36</b> 64%		<b>+5</b> 42%	<b>+1.4</b> 48%		<b>+2.5</b> 39%	<b>-0.2</b> 48%	<b>+0.4</b> 48%	<b>+0.1</b> 46%	<b>+0.7</b> 44%	<b>+\$43</b>

Traits Observed: BWT, 200DW, 400DWx2, 600DW, SS, FAT, EMA, IMF

RAW DATA - WILL BE SUPPLIED ON SALE DAY					
Scrotal Size	Weight	P8	Rib	EMA	IMF%

Purchaser: .....\$ .....



LOT 12 - WEEBOLLABOLLA J449 (SR) (P)



LOT 13 - WEEBOLLABOLLA J485 (SR) (P)

# WEEBOLLABOLLA SALE BULLS

## LOT 14 WEEBOLLABOLLA J370 (SR) (P)

BORN: 8/07/2013

COLOUR: RED

IDENT: AGFJ370

WEEBOLLABOLLA CAMBRIDGE C3 (SR) (P)

WEEBOLLABOLLA ANCHOR A7 (SR) (P)

SIRE: WEEBOLLABOLLA FACTOR F254 (SR) (P)

DAM: WEEBOLLABOLLA F307A (SR) (P)

WEEBOLLABOLLA D230 (SR) (SC)

WEEBOLLABOLLA FZ133 (SR) (H)

JULY 2015 PERFORMANCE HERDS AUSTRALIA BREEDPLAN														INDEX
GL	Birth Wt	200 D	400 D	600 D	MCW	MILK	Scrotal	CWT	EMA	RIB	RUMP	RBY%	IMF%	MSA-B2
	<b>+3.8</b> 73%	<b>+38</b> 70%	<b>+50</b> 67%	<b>+60</b> 68%		<b>+5</b> 39%	<b>+1.7</b> 70%		<b>+3.3</b> 44%	<b>-0.4</b> 53%	<b>-0.4</b> 53%	<b>+0.8</b> 50%	<b>+0.4</b> 42%	<b>+\$54</b>

Traits Observed: BWT, 200DW, 400DWx2, 600DW, SS, FAT, EMA, IMF

RAW DATA - WILL BE SUPPLIED ON SALE DAY					
Scrotal Size	Weight	P8	Rib	EMA	IMF%

Purchaser: .....\$ .....

## LOT 15 WEEBOLLABOLLA J392 (SR) (P)

BORN: 11/07/2013

COLOUR: RED

IDENT: AGFJ392

WEEBOLLABOLLA CAMBRIDGE C3 (SR) (P)

WEEBOLLABOLLA ANCHOR A7 (SR) (P)

SIRE: WEEBOLLABOLLA FACTOR F254 (SR) (P)

DAM: WEEBOLLABOLLA F282 (SR) (P)

WEEBOLLABOLLA D230 (SR) (SC)

WEEBOLLABOLLA FZ155 (SR) (H)

JULY 2015 PERFORMANCE HERDS AUSTRALIA BREEDPLAN														INDEX
GL	Birth Wt	200 D	400 D	600 D	MCW	MILK	Scrotal	CWT	EMA	RIB	RUMP	RBY%	IMF%	MSA-B2
	<b>+2.1</b> 73%	<b>+34</b> 65%	<b>+49</b> 68%	<b>+59</b> 69%		<b>+7</b> 37%	<b>+2.3</b> 67%		<b>+3.3</b> 45%	<b>-0.8</b> 55%	<b>-1.0</b> 55%	<b>+0.9</b> 51%	<b>+0.4</b> 44%	<b>+\$61</b>

Traits Observed: BWT, 400DW, 600DWx2, SS, FAT, EMA, IMF

RAW DATA - WILL BE SUPPLIED ON SALE DAY					
Scrotal Size	Weight	P8	Rib	EMA	IMF%

Purchaser: .....\$ .....

## LOT 16 WEEBOLLABOLLA J393 (SR) (P)

BORN: 11/07/2013

COLOUR: ROAN

IDENT: AGFJ393

WEEBOLLABOLLA THEODORE T85 (SR) (P)

WOOLCOTT MONARO C237 (SR) (P)

SIRE: WEEBOLLABOLLA CAMBRIDGE C3 (SR) (P)

DAM: WEEBOLLABOLLA F466 (SR) (P)

WEEBOLLABOLLA WILMA W93 (SR) (P)

WEEBOLLABOLLA Z465 (SR) (P)

JULY 2015 PERFORMANCE HERDS AUSTRALIA BREEDPLAN														INDEX
GL	Birth Wt	200 D	400 D	600 D	MCW	MILK	Scrotal	CWT	EMA	RIB	RUMP	RBY%	IMF%	MSA-B2
	<b>+1.3</b> 74%	<b>+37</b> 71%	<b>+42</b> 69%	<b>+58</b> 70%	<b>+55</b> 61%	<b>+11</b> 46%	<b>+1.0</b> 71%	<b>+44</b> 60%	<b>+2.8</b> 49%	<b>-2.0</b> 58%	<b>-2.9</b> 58%	<b>+1.7</b> 55%	<b>+0.2</b> 49%	<b>+\$57</b>

Traits Observed: BWT, 200DW, 400DWx2, 600DW, SS, FAT, EMA, IMF

RAW DATA - WILL BE SUPPLIED ON SALE DAY					
Scrotal Size	Weight	P8	Rib	EMA	IMF%

Purchaser: .....\$ .....

## LOT 17 WEEBOLLABOLLA J110 (SR) (P)

BORN: 16/07/2013

COLOUR: RED

IDENT: AGFJ110

THE GROVE OSCAR A748 (SR) (P)

WEEBOLLABOLLA WARRIOR W17 (SR) (P)

SIRE: YAMBURGAN OSSIE E93 (SR) (S)

DAM: WEEBOLLABOLLA ACQUARIOUS A111 (SR) (P)

YAMBURGAN MARGARET 32ND (SR) (S)

WEEBOLLABOLLA ROSSI R97 (SR) (P)

JULY 2015 PERFORMANCE HERDS AUSTRALIA BREEDPLAN														INDEX
GL	Birth Wt	200 D	400 D	600 D	MCW	MILK	Scrotal	CWT	EMA	RIB	RUMP	RBY%	IMF%	MSA-B2
	<b>+3.5</b> 74%	<b>+27</b> 69%	<b>+35</b> 70%	<b>+49</b> 71%	<b>+47</b> 61%	<b>+7</b> 49%	<b>+0.9</b> 69%	<b>+32</b> 61%	<b>+4.4</b> 49%	<b>-1.7</b> 56%	<b>-2.2</b> 56%	<b>+2.1</b> 53%	<b>+0.3</b> 48%	<b>+\$42</b>

Traits Observed: BWT, 400DW, 600DWx2, SS, FAT, EMA, IMF

RAW DATA - WILL BE SUPPLIED ON SALE DAY					
Scrotal Size	Weight	P8	Rib	EMA	IMF%

Purchaser: .....\$ .....

# WEEBOLLABOLLA SALE BULLS

## LOT 18 WEEBOLLABOLLA J412 (SR) (H)

BORN: 17/07/2013

COLOUR: ROAN

IDENT: AGFJ412

THE GROVE OSCAR A748 (SR) (P)

WEEBOLLABOLLA ZEPPLIN Z130 (SR) (P)

SIRE: YAMBURGAN OSSIE E93 (SR) (S)

DAM: WEEBOLLABOLLA DEEVOTION D164 (SR) (P)

YAMBURGAN MARGARET 32ND (SR) (S)

WEEBOLLABOLLA QUEEN 2ND Y188 (SR) (P)

JULY 2015 PERFORMANCE HERDS AUSTRALIA BREEDPLAN														INDEX
GL	Birth Wt	200 D	400 D	600 D	MCW	MILK	Scrotal	CWT	EMA	RIB	RUMP	RBY%	IMF%	MSA-B2
	<b>+4.6</b>	<b>+27</b>	<b>+29</b>	<b>+45</b>	<b>+46</b>	<b>+10</b>	<b>+1.6</b>	<b>+25</b>	<b>+5.0</b>	<b>+0.7</b>	<b>+0.7</b>	<b>+0.8</b>	<b>+0.6</b>	<b>+\$38</b>
	74%	68%	70%	71%	61%	46%	70%	61%	48%	55%	56%	52%	47%	

Traits Observed: BWT, 400DW, 600DWx2, SS, FAT, EMA, IMF

RAW DATA - WILL BE SUPPLIED ON SALE DAY					
Scrotal Size	Weight	P8	Rib	EMA	IMF%

Purchaser: .....\$ .....

## LOT 19 WEEBOLLABOLLA J78 (SR) (P)

BORN: 11/07/2013

COLOUR: RED

IDENT: AGFJ78

WEEBOLLABOLLA IMPACT Y156 (SR) (P)

YAMBURGAN LOCKYER C8 (SR) (P)

SIRE: WEEBOLLABOLLA CENTURION C149 (SR) (P)

DAM: WEEBOLLABOLLA F024 (SR) (P)

WEEBOLLABOLLA STAIRCASE Z10 (SR) (P)

WEEBOLLABOLLA REDBANK Z105 (SR) (P)

JULY 2015 PERFORMANCE HERDS AUSTRALIA BREEDPLAN														INDEX
GL	Birth Wt	200 D	400 D	600 D	MCW	MILK	Scrotal	CWT	EMA	RIB	RUMP	RBY%	IMF%	MSA-B2
<b>-0.5</b>	<b>+1.3</b>	<b>+20</b>	<b>+28</b>	<b>+36</b>	<b>+49</b>	<b>+5</b>	<b>+1.1</b>	<b>+34</b>	<b>+5.4</b>	<b>-0.4</b>	<b>-0.1</b>	<b>+0.9</b>		<b>+\$38</b>
53%	74%	72%	71%	68%	60%	52%	73%	60%	46%	52%	53%	50%		

Traits Observed: BWT, 200DW, 400DWx2, SS

RAW DATA - WILL BE SUPPLIED ON SALE DAY					
Scrotal Size	Weight	P8	Rib	EMA	IMF%

Purchaser: .....\$ .....

## LOT 20 WEEBOLLABOLLA J72 (SR) (P)

BORN: 8/07/2013

COLOUR: ROAN

IDENT: AGFJ72

THE GROVE OSCAR A748 (SR) (P)

WEEBOLLABOLLA IMPACT Y156 (SR) (P)

SIRE: YAMBURGAN OSSIE E93 (SR) (S)

DAM: WEEBOLLABOLLA CARINDA C36 (SR) (P)

YAMBURGAN MARGARET 32ND (SR) (S)

WEEBOLLABOLLA MAJESTIC Z69 (P)

JULY 2015 PERFORMANCE HERDS AUSTRALIA BREEDPLAN														INDEX
GL	Birth Wt	200 D	400 D	600 D	MCW	MILK	Scrotal	CWT	EMA	RIB	RUMP	RBY%	IMF%	MSA-B2
	<b>+3.7</b>	<b>+31</b>	<b>+36</b>	<b>+51</b>	<b>+65</b>	<b>+9</b>	<b>+0.7</b>	<b>+35</b>	<b>+5.7</b>	<b>-0.8</b>	<b>-1.4</b>	<b>+1.7</b>	<b>+0.4</b>	<b>+\$39</b>
	74%	72%	70%	71%	62%	48%	73%	61%	50%	57%	57%	54%	49%	

Traits Observed: BWT, 200DW, 400DWx2, 600DW, SS, FAT, EMA, IMF

RAW DATA - WILL BE SUPPLIED ON SALE DAY					
Scrotal Size	Weight	P8	Rib	EMA	IMF%

Purchaser: .....\$ .....

## LOT 21 WEEBOLLABOLLA J165 (SR) (P)

BORN: 29/07/2013

COLOUR: RED

IDENT: AGFJ165

YAMBURGAN LOCKYER C8 (SR) (P)

SPRYS PRESIDENT Z023 (SR) (P)

SIRE: WEEBOLLABOLLA FINLAY F120 (SR) (SC)

DAM: WEEBOLLABOLLA DULULU D138 (SR) (P)

WEEBOLLABOLLA CHEMISTRY C123 (SR) (P)

WEEBOLLABOLLA VERONICA V67 (SR) (P)

JULY 2015 PERFORMANCE HERDS AUSTRALIA BREEDPLAN														INDEX
GL	Birth Wt	200 D	400 D	600 D	MCW	MILK	Scrotal	CWT	EMA	RIB	RUMP	RBY%	IMF%	MSA-B2
	<b>+4.0</b>	<b>+30</b>	<b>+39</b>	<b>+60</b>	<b>+64</b>	<b>+4</b>	<b>+3.0</b>	<b>+40</b>	<b>+4.3</b>	<b>-1.6</b>	<b>-1.9</b>	<b>+1.8</b>	<b>+0.2</b>	<b>+\$51</b>
	74%	72%	70%	71%	61%	44%	73%	60%	48%	56%	56%	53%	46%	

Traits Observed: BWT, 200DW, 400DWx2, 600DW, SS, FAT, EMA, IMF

RAW DATA - WILL BE SUPPLIED ON SALE DAY					
Scrotal Size	Weight	P8	Rib	EMA	IMF%

Purchaser: .....\$ .....



# WEEBOLLABOLLA SALE BULLS

## LOT 22 WEEBOLLABOLLA J6 (SR) (S)

BORN: 5/05/2013

COLOUR: RED

IDENT: AGFJ6

THE GROVE LOCKYER X857 (SR) (P)

WEEBOLLABOLLA WARATAH W26 (SR) (P)

SIRE: THE GROVE OSCAR A748 (SR) (P)

DAM: WEEBOLLABOLLA KYLIE Z2 (SR) (P)

THE GROVE DALE 39TH (SR) (P)

WEEBOLLABOLLA QUARTZ 2ND U77 (SR) (P)

JULY 2015 PERFORMANCE HERDS AUSTRALIA BREEDPLAN														INDEX
GL	Birth Wt	200 D	400 D	600 D	MCW	MILK	Scrotal	CWT	EMA	RIB	RUMP	RBY%	IMF%	MSA-B2
-2.0	+4.6	+29	+50	+63	+79	+4	+2.5	+40	+5.0	-1.2	-1.6	+1.7	+0.5	+\$50
50%	63%	71%	70%	69%	62%	57%	70%	63%	54%	59%	60%	58%	55%	

Traits Observed: BWT, 200DW, 400DW, 600DWx2, SS, FAT, EMA, IMF

RAW DATA - WILL BE SUPPLIED ON SALE DAY					
Scrotal Size	Weight	P8	Rib	EMA	IMF%

Purchaser: .....\$ .....

## LOT 23 WEEBOLLABOLLA J69 (SR) (P)

BORN: 6/07/2013

COLOUR: RED

IDENT: AGFJ69

YAMBURGAN LOCKYER C8 (SR) (P)

WEEBOLLABOLLA IMPACT Y156 (SR) (P)

SIRE: WEEBOLLABOLLA FINLAY F120 (SR) (SC)

DAM: WEEBOLLABOLLA F205 (SR) (P)

WEEBOLLABOLLA CHEMISTRY C123 (SR) (P)

WEEBOLLABOLLA VISTA V29 (SR) (P)

JULY 2015 PERFORMANCE HERDS AUSTRALIA BREEDPLAN														INDEX
GL	Birth Wt	200 D	400 D	600 D	MCW	MILK	Scrotal	CWT	EMA	RIB	RUMP	RBY%	IMF%	MSA-B2
	+4.2	+29	+33	+57	+55	+4	+1.6	+37	+6.0	-1.7	-2.5	+2.0	+0.1	+\$43
	75%	69%	71%	72%	60%	43%	70%	61%	50%	59%	59%	56%	50%	

Traits Observed: BWT, 400DW, 600DWx2, SS, FAT, EMA, IMF

RAW DATA - WILL BE SUPPLIED ON SALE DAY					
Scrotal Size	Weight	P8	Rib	EMA	IMF%

Purchaser: .....\$ .....

## LOT 24 WEEBOLLABOLLA J327 (SR) (P)

BORN: 1/07/2013

COLOUR: ROAN

IDENT: AGFJ327

WEEBOLLABOLLA IMPACT Y156 (SR) (P)

MARELLAN EMULATOR (SR) (P)

SIRE: WEEBOLLABOLLA EXCEPTIONAL E110 (SR) (P)

DAM: WEEBOLLABOLLA D515 (SR) (P)

WEEBOLLABOLLA DONNA Z48 (SR) (P)

WEEBOLLABOLLA A1305 (SR) (P)

JULY 2015 PERFORMANCE HERDS AUSTRALIA BREEDPLAN														INDEX
GL	Birth Wt	200 D	400 D	600 D	MCW	MILK	Scrotal	CWT	EMA	RIB	RUMP	RBY%	IMF%	MSA-B2
	+5.6	+35	+56	+69	+67	+1	+3.5	+47	+5.9	-2.4	-4.0	+2.8	-0.3	+\$55
	75%	72%	71%	71%	61%	47%	72%	61%	49%	56%	56%	52%	48%	

Traits Observed: BWT, 200DW, 400DWx2, 600DW, SS, FAT, EMA, IMF

RAW DATA - WILL BE SUPPLIED ON SALE DAY					
Scrotal Size	Weight	P8	Rib	EMA	IMF%

Purchaser: .....\$ .....

## LOT 25 WEEBOLLABOLLA J202 (SR) (P)

BORN: 12/08/2013

COLOUR: R&W

IDENT: AGFJ202

YAMBURGAN LOCKYER C8 (SR) (P)

WEEBOLLABOLLA SPOTLIGHT S1 (SR) (P)

SIRE: WEEBOLLABOLLA FINLAY F120 (SR) (SC)

DAM: WEEBOLLABOLLA VEROCITY V182 (SR) (P)

WEEBOLLABOLLA CHEMISTRY C123 (SR) (P)

WEEBOLLABOLLA LAURIETON (SR) (P)

JULY 2015 PERFORMANCE HERDS AUSTRALIA BREEDPLAN														INDEX
GL	Birth Wt	200 D	400 D	600 D	MCW	MILK	Scrotal	CWT	EMA	RIB	RUMP	RBY%	IMF%	MSA-B2
	+6.0	+32	+49	+72	+86	+3	+3.0	+43	+5.2	+0.2	+0.5	+0.8	+0.6	+\$49
	74%	72%	70%	71%	60%	48%	73%	60%	48%	56%	56%	53%	45%	

Traits Observed: BWT, 200DW, 400DWx2, 600DW, SS, FAT, EMA, IMF

RAW DATA - WILL BE SUPPLIED ON SALE DAY					
Scrotal Size	Weight	P8	Rib	EMA	IMF%

Purchaser: .....\$ .....

# WEEBOLLABOLLA SALE BULLS

## LOT 26 WEEBOLLABOLLA J85 (SR) (P)

BORN: 12/07/2013

COLOUR: RLW

IDENT: AGFJ85

THE GROVE OSCAR A748 (SR) (P)

THE GROVE LAWMAN X264 (SR) (P)

SIRE: YAMBURGAN OSSIE E93 (SR) (S)

DAM: WEEBOLLABOLLA BLESSED B98 (SR) (SC)

YAMBURGAN MARGARET 32ND (SR) (S)

WEEBOLLABOLLA XPLICATE X80 (SR) (P)

JULY 2015 PERFORMANCE HERDS AUSTRALIA BREEDPLAN														INDEX
GL	Birth Wt	200 D	400 D	600 D	MCW	MILK	Scrotal	CWT	EMA	RIB	RUMP	RBY%	IMF%	MSA-B2
	<b>+3.5</b>	<b>+25</b>	<b>+32</b>	<b>+53</b>	<b>+56</b>	<b>+8</b>	<b>+1.4</b>	<b>+29</b>	<b>+5.4</b>	<b>-0.6</b>	<b>-1.1</b>	<b>+1.5</b>	<b>+0.5</b>	<b>+\$50</b>
	74%	73%	71%	72%	62%	48%	74%	62%	50%	57%	57%	53%	48%	

Traits Observed: BWT, 200DW, 400DWx2, 600DW, SS, FAT, EMA, IMF

RAW DATA - WILL BE SUPPLIED ON SALE DAY					
Scrotal Size	Weight	P8	Rib	EMA	IMF%

Purchaser: .....\$ .....

## LOT 27 WEEBOLLABOLLA J41 (SR) (SC)

BORN: 5/06/2013

COLOUR: RLW

IDENT: AGFJ41

BROUGHTON PARK CANADIAN CHIEF (S)

YAMBURGAN LOCKYER C8 (SR) (P)

SIRE: BUNDALEER UNITED CHIEF U21 (SR) (P)

DAM: WEEBOLLABOLLA G6 (SR) (P)

BROUGHTON PARK ROSE 58 (S)

WEEBOLLABOLLA BEACON B7 (SR) (P)

JULY 2015 PERFORMANCE HERDS AUSTRALIA BREEDPLAN														INDEX
GL	Birth Wt	200 D	400 D	600 D	MCW	MILK	Scrotal	CWT	EMA	RIB	RUMP	RBY%	IMF%	MSA-B2
<b>-0.6</b>	<b>+2.4</b>	<b>+29</b>	<b>+38</b>	<b>+48</b>	<b>+33</b>	<b>+6</b>	<b>+1.8</b>	<b>+38</b>	<b>+3.1</b>	<b>-1.2</b>	<b>-1.0</b>	<b>+1.5</b>	<b>+0.3</b>	<b>+\$48</b>
62%	73%	73%	70%	71%	62%	47%	72%	60%	48%	58%	58%	55%	49%	

Traits Observed: GL, BWT, 200DW, 400DWx2, 600DW, SS, FAT, EMA, IMF

RAW DATA - WILL BE SUPPLIED ON SALE DAY					
Scrotal Size	Weight	P8	Rib	EMA	IMF%

Purchaser: .....\$ .....

## LOT 28 WEEBOLLABOLLA J211 (SR) (P)

BORN: 18/08/2013

COLOUR: RED

IDENT: AGFJ211

THE GROVE OSCAR A748 (SR) (P)

THE GROVE LANDLOCKED X292 (SR) (P)

SIRE: YAMBURGAN OSSIE E93 (SR) (S)

DAM: WEEBOLLABOLLA BREWERY B56 (SR) (P)

YAMBURGAN MARGARET 32ND (SR) (S)

WEEBOLLABOLLA RIVERDANCE U140 (SR) (S)

JULY 2015 PERFORMANCE HERDS AUSTRALIA BREEDPLAN														INDEX
GL	Birth Wt	200 D	400 D	600 D	MCW	MILK	Scrotal	CWT	EMA	RIB	RUMP	RBY%	IMF%	MSA-B2
	<b>+6.4</b>	<b>+42</b>	<b>+49</b>	<b>+72</b>	<b>+72</b>	<b>+8</b>	<b>+1.7</b>	<b>+44</b>	<b>+5.5</b>	<b>-2.1</b>	<b>-2.9</b>	<b>+3.0</b>	<b>-0.1</b>	<b>+\$52</b>
	74%	71%	70%	71%	61%	47%	73%	60%	48%	55%	55%	51%	46%	

Traits Observed: BWT, 200DW, 400DWx2, 600DW, SS, FAT, EMA, IMF

RAW DATA - WILL BE SUPPLIED ON SALE DAY					
Scrotal Size	Weight	P8	Rib	EMA	IMF%

Purchaser: .....\$ .....

## LOT 29 WEEBOLLABOLLA J120 (SR) (H)

BORN: 19/07/2013

COLOUR: RLW

IDENT: AGFJ120

WEEBOLLABOLLA THEODORE T85 (SR) (P)

WEEBOLLABOLLA IMPACT Y156 (SR) (P)

SIRE: MARELLAN NUCLEAR (SR) (S)

DAM: WEEBOLLABOLLA BUTTERCUP B110 (SR) (P)

MARELLAN SUSAN 8228L (SR) (S)

WEEBOLLABOLLA VIRGO 2ND Y10 (SR) (P)

JULY 2015 PERFORMANCE HERDS AUSTRALIA BREEDPLAN														INDEX
GL	Birth Wt	200 D	400 D	600 D	MCW	MILK	Scrotal	CWT	EMA	RIB	RUMP	RBY%	IMF%	MSA-B2
	<b>+4.0</b>	<b>+28</b>	<b>+36</b>	<b>+50</b>		<b>+5</b>	<b>+1.9</b>		<b>+4.8</b>	<b>-1.5</b>	<b>-2.3</b>	<b>+1.7</b>	<b>+0.2</b>	<b>+\$43</b>
	74%	72%	69%	70%		42%	71%		47%	55%	55%	52%	45%	

Traits Observed: BWT, 200DW, 400DWx2, 600DW, SS, FAT, EMA, IMF

RAW DATA - WILL BE SUPPLIED ON SALE DAY					
Scrotal Size	Weight	P8	Rib	EMA	IMF%

Purchaser: .....\$ .....

# WEEBOLLABOLLA SALE BULLS

## LOT 30 WEEBOLLABOLLA J114 (SR) (H)

BORN: 19/07/2013

COLOUR: RED

IDENT: AGFJ114

YAMBURGAN LOCKYER C8 (SR) (P)

ROYALLA KUDOS (SR) (P)

SIRE: WEEBOLLABOLLA FINLAY F120 (SR) (SC)

DAM: WEEBOLLABOLLA F219 (SR) (P)

WEEBOLLABOLLA CHEMISTRY C123 (SR) (P)

WEEBOLLABOLLA CAROL C69 (SR) (P)

JULY 2015 PERFORMANCE HERDS AUSTRALIA BREEDPLAN														INDEX
GL	Birth Wt	200 D	400 D	600 D	MCW	MILK	Scrotal	CWT	EMA	RIB	RUMP	RBY%	IMF%	MSA-B2
	<b>+4.4</b>	<b>+34</b>	<b>+45</b>	<b>+66</b>	<b>+64</b>	<b>+5</b>	<b>+0.9</b>	<b>+46</b>	<b>+5.4</b>	<b>-2.3</b>	<b>-2.5</b>	<b>+2.4</b>	<b>+0.0</b>	<b>+\$50</b>
	74%	71%	69%	70%	60%	41%	71%	60%	48%	57%	57%	54%	47%	

Traits Observed: BWT, 200DW, 400DWx2, 600DW, SS, FAT, EMA, IMF

RAW DATA - WILL BE SUPPLIED ON SALE DAY					
Scrotal Size	Weight	P8	Rib	EMA	IMF%

Purchaser: .....\$ .....

## LOT 31 WEEBOLLABOLLA J107 (SR) (P)

BORN: 16/07/2013

COLOUR: ROAN

IDENT: AGFJ107

YAMBURGAN LOCKYER C8 (SR) (P)

NARRALDA LEGEND W31 (SR) (P)

SIRE: WEEBOLLABOLLA FINLAY F120 (SR) (SC)

DAM: WEEBOLLABOLLA QUIVER Z7 (SR) (P)

WEEBOLLABOLLA CHEMISTRY C123 (SR) (P)

WEEBOLLABOLLA QUIVER Q76 (SR) (P)

JULY 2015 PERFORMANCE HERDS AUSTRALIA BREEDPLAN														INDEX
GL	Birth Wt	200 D	400 D	600 D	MCW	MILK	Scrotal	CWT	EMA	RIB	RUMP	RBY%	IMF%	MSA-B2
	<b>+2.9</b>	<b>+28</b>	<b>+38</b>	<b>+55</b>		<b>+4</b>	<b>+2.2</b>	<b>+39</b>	<b>+4.7</b>	<b>-0.6</b>	<b>-0.4</b>	<b>+1.1</b>	<b>+0.5</b>	<b>+\$50</b>
	74%	72%	70%	71%		47%	72%	60%	46%	55%	55%	52%	45%	

Traits Observed: BWT, 200DW, 400DWx2, 600DW, SS, FAT, EMA, IMF

RAW DATA - WILL BE SUPPLIED ON SALE DAY					
Scrotal Size	Weight	P8	Rib	EMA	IMF%

Purchaser: .....\$ .....

## LOT 32 WEEBOLLABOLLA J94 (SR) (P)

BORN: 15/07/2013

COLOUR: RLW

IDENT: AGFJ94

WEEBOLLABOLLA THEODORE T85 (SR) (P)

WEEBOLLABOLLA WARATAH W26 (SR) (P)

SIRE: MARELLAN NUCLEAR (SR) (S)

DAM: WEEBOLLABOLLA ADDITIVE A61 (SR) (P)

MARELLAN SUSAN 8228L (SR) (S)

WEEBOLLABOLLA WEALTH W105 (SR) (P)

JULY 2015 PERFORMANCE HERDS AUSTRALIA BREEDPLAN														INDEX
GL	Birth Wt	200 D	400 D	600 D	MCW	MILK	Scrotal	CWT	EMA	RIB	RUMP	RBY%	IMF%	MSA-B2
	<b>+4.3</b>	<b>+29</b>	<b>+38</b>	<b>+53</b>		<b>+2</b>	<b>+1.2</b>		<b>+3.8</b>	<b>+0.0</b>	<b>+0.2</b>	<b>+0.6</b>	<b>+0.8</b>	<b>+\$46</b>
	75%	72%	69%	71%		45%	71%		47%	55%	55%	52%	45%	

Traits Observed: BWT, 200DW, 400DWx2, 600DW, SS, FAT, EMA, IMF

RAW DATA - WILL BE SUPPLIED ON SALE DAY					
Scrotal Size	Weight	P8	Rib	EMA	IMF%

Purchaser: .....\$ .....



LOT 30 - WEEBOLLABOLLA J114 (SR) (P)



LOT 31 - WEEBOLLABOLLA J107 (SR) (P)

# WEEBOLLABOLLA SALE BULLS

## LOT 33 WEEBOLLABOLLA J171 (SR) (H)

**BORN:** 31/07/2013

**COLOUR:** ROAN

**IDENT:** AGFJ171

WEEBOLLABOLLA THEODORE T85 (SR) (P)

WEEBOLLABOLLA CENTURION C149 (SR) (P)

**SIRE:** MARELLAN NUCLEAR (SR) (S)

**DAM:** WEEBOLLABOLLA F162 (SR) (H)

MARELLAN SUSAN 8228L (SR) (S)

WEEBOLLABOLLA ULANDA U27 (SR) (P)

JULY 2015 PERFORMANCE HERDS AUSTRALIA BREEDPLAN														INDEX
GL	Birth Wt	200 D	400 D	600 D	MCW	MILK	Scrotal	CWT	EMA	RIB	RUMP	RBY%	IMF%	MSA-B2
	<b>+2.4</b> 75%	<b>+23</b> 71%	<b>+32</b> 69%	<b>+40</b> 70%		<b>+4</b> 39%	<b>+1.2</b> 71%		<b>+4.6</b> 47%	<b>+1.8</b> 56%	<b>+2.6</b> 56%	<b>-0.7</b> 53%	<b>+1.1</b> 46%	<b>+\$45</b>

*Traits Observed: BWT, 200DW, 400DWx2, 600DW, SS, FAT, EMA, IMF*

RAW DATA - WILL BE SUPPLIED ON SALE DAY					
Scrotal Size	Weight	P8	Rib	EMA	IMF%

Purchaser: .....\$ .....

## LOT 34 WEEBOLLABOLLA J51 (SR) (SC)

**BORN:** 22/06/2013

**COLOUR:** WHITE

**IDENT:** AGFJ51

BUNDALEER UNITED CHIEF U21 (SR) (P)

YAMBURGAN OSSIE D284 (SR) (P)

**SIRE:** WEEBOLLABOLLA G125 (SR) (P)

**DAM:** WEEBOLLABOLLA G75 (SR) (P)

WEEBOLLABOLLA E1140 (SR) (P)

WEEBOLLABOLLA PENNY Z89 (SR) (P)

JULY 2015 PERFORMANCE HERDS AUSTRALIA BREEDPLAN														INDEX
GL	Birth Wt	200 D	400 D	600 D	MCW	MILK	Scrotal	CWT	EMA	RIB	RUMP	RBY%	IMF%	MSA-B2
	<b>+2.1</b> 72%	<b>+23</b> 69%	<b>+33</b> 67%	<b>+42</b> 68%		<b>+6</b> 37%	<b>+1.0</b> 69%		<b>+1.9</b> 44%	<b>-2.7</b> 55%	<b>-3.8</b> 55%	<b>+2.4</b> 51%	<b>-0.1</b> 44%	<b>+\$40</b>

*Traits Observed: BWT, 200DW, 400DWx2, 600DW, SS, FAT, EMA, IMF*

RAW DATA - WILL BE SUPPLIED ON SALE DAY					
Scrotal Size	Weight	P8	Rib	EMA	IMF%

Purchaser: .....\$ .....

## LOT 35 WEEBOLLABOLLA J82 (SR) (P)

**BORN:** 12/07/2013

**COLOUR:** RED

**IDENT:** AGFJ82

THE GROVE KINGSWOOD W731 (SR) (P)

WEEBOLLABOLLA ZEPPLIN Z130 (SR) (P)

**SIRE:** FUTURITY FLIRT F105 (SR) (S)

**DAM:** WEEBOLLABOLLA CLASS C96 (SR) (P)

FUTURITY ULTIMATE RUBY B67 (SR) (S)

WEEBOLLABOLLA XTERNAL X51 (SR) (P)

JULY 2015 PERFORMANCE HERDS AUSTRALIA BREEDPLAN														INDEX
GL	Birth Wt	200 D	400 D	600 D	MCW	MILK	Scrotal	CWT	EMA	RIB	RUMP	RBY%	IMF%	MSA-B2
	<b>+0.7</b> 73%	<b>+20</b> 70%	<b>+27</b> 68%	<b>+35</b> 69%		<b>+9</b> 41%	<b>+1.4</b> 70%		<b>+3.1</b> 45%	<b>-0.9</b> 53%	<b>-1.0</b> 53%	<b>+1.0</b> 50%	<b>+0.6</b> 43%	<b>+\$45</b>

*Traits Observed: BWT, 200DW, 400DWx2, 600DW, SS, FAT, EMA, IMF*

RAW DATA - WILL BE SUPPLIED ON SALE DAY					
Scrotal Size	Weight	P8	Rib	EMA	IMF%

Purchaser: .....\$ .....

## LOT 36 WEEBOLLABOLLA J371 (SR) (H)

**BORN:** 8/07/2013

**COLOUR:** RED

**IDENT:** AGFJ371

WEEBOLLABOLLA WARATAH W26 (SR) (P)

WEEBOLLABOLLA MAX 8TH Y167 (SR) (P)

**SIRE:** WEEBOLLABOLLA F21 (SR) (P)

**DAM:** WEEBOLLABOLLA F761 (SR) (P)

WEEBOLLABOLLA RHYLL Z34 (SR) (P)

WEEBOLLABOLLA W237 (SR) (P)

JULY 2015 PERFORMANCE HERDS AUSTRALIA BREEDPLAN														INDEX
GL	Birth Wt	200 D	400 D	600 D	MCW	MILK	Scrotal	CWT	EMA	RIB	RUMP	RBY%	IMF%	MSA-B2
	<b>+3.1</b> 72%	<b>+31</b> 69%	<b>+39</b> 67%	<b>+50</b> 68%		<b>+5</b> 43%	<b>+2.6</b> 68%		<b>+4.0</b> 44%	<b>-0.4</b> 54%	<b>+0.0</b> 54%	<b>+1.3</b> 50%	<b>+0.6</b> 43%	<b>+\$58</b>

*Traits Observed: BWT, 200DW, 400DW, 600DWx2, SS, FAT, EMA, IMF*

RAW DATA - WILL BE SUPPLIED ON SALE DAY					
Scrotal Size	Weight	P8	Rib	EMA	IMF%

Purchaser: .....\$ .....



# Success at 2015 Royal Sydney Beef Challenge



- Weebollabolla Shorthorn Export Pen
- 1st in Overall individual weight gain
  - 2nd Overall weight gain Pen of 6

- Weebollabolla Shorthorn X Charolais Export Pen
- 1st, 2nd and 4th individual Assessment
  - 1st Live Assessment Pen of 6



*Above and below: Steers before entry into Wilga Feedlot*



Judge Jeff House from Jeff House Livestock:

*"I was very impressed with the ideal combination of yield and finish of the winning pen of shorthorn x charolais cattle. They displayed heavy muscle and ideal finish for the market, the best traits from both breeds. This should reflect in the carcass attributes when the results are announced in October 2015."*





# All clients invited to purchase or sell your progeny at our Weebollabolla Infused cattle Restocker Sale

## Friday 11th September 10am on Auctions Plus

Interested in Selling or Buying?

To sell -

- Contact your local agent to complete Auctions Plus assessment from August 28th to Sept 9th (at the latest!)
- Contact Jen Jeffreys to help with promotion on 0427 700 244 or email [jen.munro@weebollabolla.com.au](mailto:jen.munro@weebollabolla.com.au)
- All categories of cattle welcome and smaller lots too.
- More time to spread the word if details provided asap!

To purchase -

- Visit [www.auctionsplus.com.au](http://www.auctionsplus.com.au) to register so that you can bid or alternatively
- Contact your local agent to bid for you.
- We will assist with trucking where possible for smaller lots in conjunction with our bull sale (subject to vendor approval and truck availability)



Andrew Pitman 0427 668 377 has kindly offered to help coordinate/assist outside agents, processors, lot feeders with any further queries.



Weebollabolla empty J heifers sold in April \$4.65/kg on a domestic grid, avg \$1210/hd- all carcase data submitted to ABRI.

Grassfed heifers domestic prices now quoting \$5.95/kg and grainfed \$6.05/kg!

Chris and Pete Francis- CC Francis & Sons, Forbes NSW Agent- Randal Grayson, Forbes Livestock Mob 0428 287 020



**For sale:**

- **Min B-Double Shorthorn X Angus 2014 Drop**
- **Shorthorn No.2 Heifers 2014 Drop TBC**

Exceptional quality, genetics will suit any breeding or feeding program. Ultimate breeders for Wagyu market. Jack Woodburn Mob 0427 616 860 cattle selector also available re: queries.

Stephen and Jacqui Tinkler - Tinkler Pastoral, Bollon QLD Testimonial

*"The Weebollabolla Shorthorn sire has invigorated the progeny with the appealing traits of calm temperament, muscle, and a smooth crest enabling us to enter into the increased feedlot market"* Stephen Tinkler



Photo 1 Shorthorn sired Heifers born into drought conditions and sold in May 2015. Agent Jeff Garland B&W Rural Elders  
Photo 2 Ross Becker (Weebollabolla) inspects bulls with Stephen Tinkler on Cardiff 29/01/15  
Photo 3 Weebollabolla bulls servicing Brahmin cows with Shorthorn x Brahmin calves at foot on Cardiff Station

Ian and Janie Murray - Kindee Pastoral, Taroom QLD Testimonial

*"The best sale I've ever had. I am very pleased with the softness and the amount of weight the Shorthorn add to the progeny."* Ian Murray



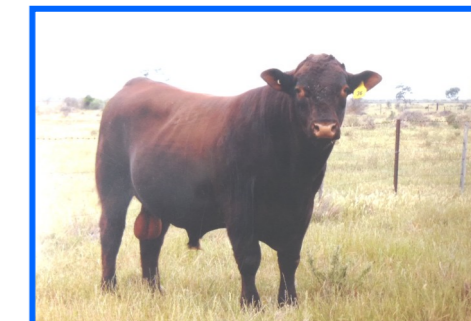
Top pen of Angus steers reached \$346c/kg to return a top of \$1077/hd. Shorthorn infused pen topped at 338c/kg avg 350kg to return \$1183/hd.

Above Kindee Pastoral purchased Weebollabolla Bulls. Photo taken 31/10/2013. Sires of progeny below sold in their incredible sale 07/07/2015 at Roma.



*"Last year those steers were making 240c/kg, to see another 100c/kg on top of that was pretty exciting"* Agent Brad Neven Watkins & Co Roma.

Helen and Owen Huggins- Woodpark Pastoral Co, Jerilderie NSW Agent- Peter Falls, Landmark Holbrook Mob 0429 420 040



2014 sale Centurion C149 son H112 in Dec '14

2011 sale Alcapone A96 son E39 in Dec '14

2014 sale Braveheart son H103 Dec in 14

*"Lot 45 (E39) displays all the traits that add toward a productive herd- he has great softness and thickness, is structurally excellent and consistently maintains condition score under all conditions with a very calm and trusting nature. His daughters selected for the herd display the same traits and are greatly valued. E39 has added to the succession of similarly adaptive and functional bulls we have sourced from Weebollabolla over the last nearly decade; their genetic influence has also greatly added to the longevity and maternal values of the herd".* Owen & Helen Huggins

**For sale:**

- **12 Cows 2008 Drop with calf at foot**
- **18 Cows 2009 drop with calf at foot**

Cows are in calf to both Weebollabolla H103 and H112. This is a wonderful opportunity to source proven and functional cows with young calves at foot by top bulls.

Stuckey Family - Stuckey Pastoral, Condobolin NSW Agent- Greg Moncrieff, Moncrieff Livestock & Prop Mob 0428 953 822



Photos taken 05/05/14, examples of quality Stuckey cattle on offer.

Stuckey steers sold 09/08/15 13mths avg over \$1450/hd. Another excellent sale.



**For sale:**

- **75 Shorthorn July/August 2014 Drop 380-400kg**
- **18 Sh X Angus July/Aug 2013 Drop with Ang calf at foot**
- **35 Sh X Ang (out of 1st calf heifers) 2014 Drop 380-450kg**
- **10 Shorthorn July/Aug 2013 Drop with Ang calf at foot**





Stephen's passion, enthusiasm and sense of humour will be sorely missed. To Maureen, Christopher, Gerard, Timothy and Monica—thank you for all your help and support over the years allowing Steve to do such a brilliant job. A true stockman who never forgets a beast, takes extreme pride in perfecting any task at hand from breeding cattle, horses, dogs to fencing and yard building. Steve has helped shape herds with sires such as Weebollabolla Theodore T85 and Waratah W26 used here and around the world. It was a big decision to leave and we wish Steve all the best after the 30 years worth of blood, sweat and effort put into Boonal. A property we know will always have a place in his heart.



## *Thank you Stephen and Maureen Kneipp*



# WEEBOLLABOLLA SALE BULLS

## LOT 37 WEEBOLLABOLLA J317 (SR) (P)

BORN: 1/07/2013

COLOUR: R&W

IDENT: AGFJ317

WEEBOLLABOLLA IMPACT Y156 (SR) (P)

MARELLAN FAIR GO (SR) (P)

SIRE: WEEBOLLABOLLA EXCEPTIONAL E110 (SR) (P)

DAM: WEEBOLLABOLLA F458 (SR) (P)

WEEBOLLABOLLA DONNA Z48 (SR) (P)

WEEBOLLABOLLA C0473 (SR) (P)

JULY 2015 PERFORMANCE HERDS AUSTRALIA BREEDPLAN														INDEX
GL	Birth Wt	200 D	400 D	600 D	MCW	MILK	Scrotal	CWT	EMA	RIB	RUMP	RBY%	IMF%	MSA-B2
	<b>+2.7</b> 74%	<b>+36</b> 71%	<b>+45</b> 69%	<b>+57</b> 70%		<b>+9</b> 43%	<b>+1.7</b> 69%		<b>+5.2</b> 47%	<b>-2.4</b> 56%	<b>-3.6</b> 56%	<b>+2.6</b> 52%	<b>-0.3</b> 47%	<b>+\$58</b>

Traits Observed: BWT, 200DW, 400DW, 600DWx2, SS, FAT, EMA, IMF

RAW DATA - WILL BE SUPPLIED ON SALE DAY					
Scrotal Size	Weight	P8	Rib	EMA	IMF%

Purchaser: .....\$ .....

## LOT 38 WEEBOLLABOLLA J418 (SR) (P)

BORN: 18/07/2013

COLOUR: RED

IDENT: AGFJ418

WEEBOLLABOLLA CAMBRIDGE C3 (SR) (P)

WEEBOLLABOLLA ANCHOR A7 (SR) (P)

SIRE: WEEBOLLABOLLA FACTOR F254 (SR) (P)

DAM: WEEBOLLABOLLA F267 (SR) (P)

WEEBOLLABOLLA D230 (SR) (SC)

WEEBOLLABOLLA FW055 (SR) (H)

JULY 2015 PERFORMANCE HERDS AUSTRALIA BREEDPLAN														INDEX
GL	Birth Wt	200 D	400 D	600 D	MCW	MILK	Scrotal	CWT	EMA	RIB	RUMP	RBY%	IMF%	MSA-B2
	<b>+4.5</b> 73%	<b>+38</b> 66%	<b>+47</b> 67%	<b>+55</b> 69%		<b>+7</b> 40%	<b>+2.1</b> 68%		<b>+2.7</b> 45%	<b>-1.6</b> 54%	<b>-2.0</b> 54%	<b>+1.5</b> 51%	<b>-0.1</b> 43%	<b>+\$43</b>

Traits Observed: BWT, 400DW, 600DWx2, SS, FAT, EMA, IMF

RAW DATA - WILL BE SUPPLIED ON SALE DAY					
Scrotal Size	Weight	P8	Rib	EMA	IMF%

Purchaser: .....\$ .....

## LOT 39 WEEBOLLABOLLA J42 (SR) (P)

BORN: 8/06/2013

COLOUR: ROAN

IDENT: AGFJ42

WEEBOLLABOLLA THEODORE T85 (SR) (P)

BUNDALEER UNITED CHIEF U21 (SR) (P)

SIRE: WEEBOLLABOLLA ERUDITE E14 (SR) (P)

DAM: WEEBOLLABOLLA G126 (SR) (P)

WEEBOLLABOLLA WEIGHTY Z99 (SR) (P)

WEEBOLLABOLLA E291 (SR) (P)

JULY 2015 PERFORMANCE HERDS AUSTRALIA BREEDPLAN														INDEX
GL	Birth Wt	200 D	400 D	600 D	MCW	MILK	Scrotal	CWT	EMA	RIB	RUMP	RBY%	IMF%	MSA-B2
<b>-1.5</b> 54%	<b>+0.6</b> 76%	<b>+26</b> 73%	<b>+30</b> 71%	<b>+32</b> 73%	<b>+5</b> 63%	<b>+5</b> 44%	<b>+1.1</b> 74%	<b>+28</b> 62%	<b>+2.5</b> 50%	<b>+0.9</b> 60%	<b>+2.1</b> 60%	<b>-0.6</b> 56%	<b>+0.9</b> 51%	<b>+\$46</b>

Traits Observed: BWT, 200DW, 400DWx2, 600DW, SS, FAT, EMA, IMF

RAW DATA - WILL BE SUPPLIED ON SALE DAY					
Scrotal Size	Weight	P8	Rib	EMA	IMF%

Purchaser: .....\$ .....

## LOT 40 WEEBOLLABOLLA J488 (SR) (P)

BORN: 16/08/2013

COLOUR: ROAN

IDENT: AGFJ488

WEEBOLLABOLLA WARATAH W26 (SR) (P)

BROOME KENNEDY A98 (SR) (P)

SIRE: WEEBOLLABOLLA F21 (SR) (P)

DAM: WEEBOLLABOLLA F514 (SR) (P)

WEEBOLLABOLLA RHYLL Z34 (SR) (P)

WEEBOLLABOLLA JULIE 2ND X116 (SR) (P)

JULY 2015 PERFORMANCE HERDS AUSTRALIA BREEDPLAN														INDEX
GL	Birth Wt	200 D	400 D	600 D	MCW	MILK	Scrotal	CWT	EMA	RIB	RUMP	RBY%	IMF%	MSA-B2
	<b>+4.9</b> 71%	<b>+34</b> 69%	<b>+37</b> 67%	<b>+54</b> 68%		<b>+4</b> 42%	<b>+0.6</b> 70%		<b>+3.8</b> 44%	<b>-1.6</b> 54%	<b>-1.7</b> 54%	<b>+2.0</b> 51%	<b>+0.3</b> 43%	<b>+\$46</b>

Traits Observed: BWT, 200DW, 400DWx2, 600DW, SS, FAT, EMA, IMF

RAW DATA - WILL BE SUPPLIED ON SALE DAY					
Scrotal Size	Weight	P8	Rib	EMA	IMF%

Purchaser: .....\$ .....

# WEEBOLLABOLLA SALE BULLS

## LOT 41 WEEBOLLABOLLA J43 (SR) (P)

BORN: 14/06/2013

COLOUR: RED

IDENT: AGFJ43

WEEBOLLABOLLA THEODORE T85 (SR) (P)

WEEBOLLABOLLA BREAKAWAY B95 (SR) (P)

SIRE: WEEBOLLABOLLA ERUDITE E14 (SR) (P)

DAM: WEEBOLLABOLLA G175 (SR) (P)

WEEBOLLABOLLA WEIGHTY Z99 (SR) (P)

WEEBOLLABOLLA ASPIRATION A108 (SR) (P)

JULY 2015 PERFORMANCE HERDS AUSTRALIA BREEDPLAN														INDEX
GL	Birth Wt	200 D	400 D	600 D	MCW	MILK	Scrotal	CWT	EMA	RIB	RUMP	RBY%	IMF%	MSA-B2
<b>+0.7</b>	<b>+3.1</b>	<b>+25</b>	<b>+36</b>	<b>+45</b>	<b>+29</b>	<b>+4</b>	<b>+1.6</b>	<b>+32</b>	<b>+3.8</b>	<b>-0.9</b>	<b>-0.8</b>	<b>+0.8</b>	<b>+0.4</b>	<b>+\$44</b>
60%	75%	74%	71%	72%	62%	45%	73%	61%	50%	59%	59%	55%	50%	

Traits Observed: GL, BWT, 200DW, 400DWx2, 600DW, SS, FAT, EMA, IMF

RAW DATA - WILL BE SUPPLIED ON SALE DAY					
Scrotal Size	Weight	P8	Rib	EMA	IMF%

Purchaser: .....\$ .....

## LOT 42 WEEBOLLABOLLA J116 (SR) (SC)

BORN: 19/07/2013

COLOUR: RED

IDENT: AGFJ116

THE GROVE OSCAR A748 (SR) (P)

SPRYS PRESIDENT Z023 (SR) (P)

SIRE: YAMBURGAN OSSIE G10 (SR) (S)

DAM: WEEBOLLABOLLA E0433 (SR) (H)

YAMBURGAN CLOUDY 493RD (SR) (S)

WEEBOLLABOLLA ULLMARA 2ND Y124 (SR) (P)

JULY 2015 PERFORMANCE HERDS AUSTRALIA BREEDPLAN														INDEX
GL	Birth Wt	200 D	400 D	600 D	MCW	MILK	Scrotal	CWT	EMA	RIB	RUMP	RBY%	IMF%	MSA-B2
	<b>+3.2</b>	<b>+26</b>	<b>+38</b>	<b>+44</b>		<b>+5</b>	<b>+2.4</b>		<b>+4.1</b>	<b>-1.8</b>	<b>-2.1</b>	<b>+2.1</b>	<b>+0.3</b>	<b>+\$47</b>
	73%	70%	68%	69%		40%	71%		47%	57%	57%	53%	47%	

Traits Observed: BWT, 200DW, 400DWx2, 600DW, SS, FAT, EMA, IMF

RAW DATA - WILL BE SUPPLIED ON SALE DAY					
Scrotal Size	Weight	P8	Rib	EMA	IMF%

Purchaser: .....\$ .....

## LOT 43 WEEBOLLABOLLA J160 (SR) (P)

BORN: 28/07/2013

COLOUR: RED

IDENT: AGFJ160

WEEBOLLABOLLA THEODORE T85 (SR) (P)

WEEBOLLABOLLA WARRIOR W17 (SR) (P)

SIRE: MARELLAN NUCLEAR (SR) (S)

DAM: WEEBOLLABOLLA VISA 2ND Y49 (SR) (P)

MARELLAN SUSAN 8228L (SR) (S)

WEEBOLLABOLLA VISA V59 (SR) (P)

JULY 2015 PERFORMANCE HERDS AUSTRALIA BREEDPLAN														INDEX
GL	Birth Wt	200 D	400 D	600 D	MCW	MILK	Scrotal	CWT	EMA	RIB	RUMP	RBY%	IMF%	MSA-B2
	<b>+2.5</b>	<b>+26</b>	<b>+37</b>	<b>+47</b>		<b>+5</b>	<b>+0.9</b>		<b>+3.3</b>	<b>-0.1</b>	<b>+0.0</b>	<b>+0.5</b>	<b>+0.9</b>	<b>+\$49</b>
	74%	72%	70%	71%		44%	72%		46%	54%	54%	51%	44%	

Traits Observed: BWT, 200DW, 400DWx2, 600DW, SS, FAT, EMA, IMF

RAW DATA - WILL BE SUPPLIED ON SALE DAY					
Scrotal Size	Weight	P8	Rib	EMA	IMF%

Purchaser: .....\$ .....



L-R Lot 12, Lot 42, Lot 44



# WEEBOLLABOLLA SALE BULLS

## LOT 44 WEEBOLLABOLLA J105 (SR) (H)

**BORN:** 16/07/2013

**COLOUR:** RED

**IDENT:** AGFJ105

THE GROVE OSCAR A748 (SR) (P)

SPRYS PRESIDENT Z023 (SR) (P)

**SIRE:** YAMBURGAN OSSIE G10 (SR) (S)

**DAM:** WEEBOLLABOLLA CLARE C62 (SR) (P)

YAMBURGAN CLOUDY 493RD (SR) (S)

WEEBOLLABOLLA ULANDA U27 (SR) (P)

JULY 2015 PERFORMANCE HERDS AUSTRALIA BREEDPLAN														INDEX
GL	Birth Wt	200 D	400 D	600 D	MCW	MILK	Scrotal	CWT	EMA	RIB	RUMP	RBY%	IMF%	MSA-B2
	<b>+2.5</b> 73%	<b>+30</b> 70%	<b>+39</b> 68%	<b>+40</b> 70%		<b>+4</b> 43%	<b>+1.8</b> 72%		<b>+4.1</b> 46%	<b>+0.4</b> 55%	<b>+0.8</b> 55%	<b>+0.6</b> 52%	<b>+0.8</b> 45%	<b>+\$50</b>

*Traits Observed: BWT, 200DW, 400DWx2, 600DW, SS, FAT, EMA, IMF*

RAW DATA - WILL BE SUPPLIED ON SALE DAY					
Scrotal Size	Weight	P8	Rib	EMA	IMF%

Purchaser: .....\$ .....

## LOT 45 WEEBOLLABOLLA J209 (SR) (P)

**BORN:** 18/08/2013

**COLOUR:** RLW

**IDENT:** AGFJ209

THE GROVE OSCAR A748 (SR) (P)

MARELLAN INSPECTOR (S)

**SIRE:** YAMBURGAN OSSIE G10 (SR) (S)

**DAM:** WEEBOLLABOLLA DELIGHT D26 (SR) (P)

YAMBURGAN CLOUDY 493RD (SR) (S)

WEEBOLLABOLLA AUBURN A137 (SR) (P)

JULY 2015 PERFORMANCE HERDS AUSTRALIA BREEDPLAN														INDEX
GL	Birth Wt	200 D	400 D	600 D	MCW	MILK	Scrotal	CWT	EMA	RIB	RUMP	RBY%	IMF%	MSA-B2
	<b>+4.2</b> 72%	<b>+28</b> 69%	<b>+36</b> 68%	<b>+48</b> 69%		<b>+0</b> 39%	<b>+2.4</b> 70%		<b>+3.8</b> 45%	<b>-1.0</b> 53%	<b>-1.2</b> 53%	<b>+1.3</b> 50%	<b>+0.6</b> 43%	<b>+\$47</b>

*Traits Observed: BWT, 200DW, 400DWx2, 600DW, SS, FAT, EMA, IMF*

RAW DATA - WILL BE SUPPLIED ON SALE DAY					
Scrotal Size	Weight	P8	Rib	EMA	IMF%

Purchaser: .....\$ .....

## LOT 46 WEEBOLLABOLLA J34 (SR) (H)

**BORN:** 2/06/2013

**COLOUR:** RED

**IDENT:** AGFJ34

WEEBOLLABOLLA QUILPIE Q18 (SR) (P)

THE GROVE OSCAR A748 (SR) (P)

**SIRE:** WEEBOLLABOLLA THEODORE T85 (SR) (P)

**DAM:** WEEBOLLABOLLA G149 (SR) (P)

WEEBOLLABOLLA NINDETHANA (SR) (P)

WEEBOLLABOLLA VIGILANCE V113 (SR) (P)

JULY 2015 PERFORMANCE HERDS AUSTRALIA BREEDPLAN														INDEX
GL	Birth Wt	200 D	400 D	600 D	MCW	MILK	Scrotal	CWT	EMA	RIB	RUMP	RBY%	IMF%	MSA-B2
<b>-2.5</b> 63%	<b>+1.9</b> 73%	<b>+22</b> 72%	<b>+33</b> 70%	<b>+40</b> 66%		<b>+4</b> 54%	<b>+1.5</b> 73%	<b>+29</b> 60%	<b>+4.9</b> 46%	<b>+0.0</b> 50%	<b>-0.4</b> 51%	<b>+0.6</b> 50%		<b>+\$45</b>

*Traits Observed: GL, BWT, 200DW, 400DWx2, SS*

RAW DATA - WILL BE SUPPLIED ON SALE DAY					
Scrotal Size	Weight	P8	Rib	EMA	IMF%

Purchaser: .....\$ .....

## LOT 47 WEEBOLLABOLLA J126 (SR) (P)

**BORN:** 21/07/2013

**COLOUR:** RED

**IDENT:** AGFJ126

YAMBURGAN LOCKYER C8 (SR) (P)

WEEBOLLABOLLA IMPACT Y156 (SR) (P)

**SIRE:** WEEBOLLABOLLA FINLAY F120 (SR) (SC)

**DAM:** WEEBOLLABOLLA COLLEEN C43 (SR) (P)

WEEBOLLABOLLA CHEMISTRY C123 (SR) (P)

WEEBOLLABOLLA SNEAKERS 2ND Y34 (SR) (P)

JULY 2015 PERFORMANCE HERDS AUSTRALIA BREEDPLAN														INDEX
GL	Birth Wt	200 D	400 D	600 D	MCW	MILK	Scrotal	CWT	EMA	RIB	RUMP	RBY%	IMF%	MSA-B2
	<b>+4.0</b> 75%	<b>+33</b> 73%	<b>+40</b> 71%	<b>+57</b> 72%	<b>+56</b> 62%	<b>+7</b> 47%	<b>+1.9</b> 73%	<b>+42</b> 61%	<b>+6.1</b> 49%	<b>-1.4</b> 57%	<b>-1.8</b> 57%	<b>+2.2</b> 54%	<b>+0.0</b> 48%	<b>+\$44</b>

*Traits Observed: BWT, 200DW, 400DWx2, 600DW, SS, FAT, EMA, IMF*

RAW DATA - WILL BE SUPPLIED ON SALE DAY					
Scrotal Size	Weight	P8	Rib	EMA	IMF%

Purchaser: .....\$ .....



# WEEBOLLABOLLA SALE BULLS

## LOT 48 WEEBOLLABOLLA J15 (SR) (P)

**BORN:** 2/05/2013

**COLOUR:** R&W

**IDENT:** AGFJ15

THE GROVE INFORMANT Y463 (SR) (P)

WEEBOLLABOLLA THEODORE T85 (SR) (P)

**SIRE:** THE GROVE D851 (SR) (P)

**DAM:** MARELLAN CHERIE 7347K (SR) (S)

THE GROVE X075 (SR) (P)

MARELLAN CHERIE 33RD (S)

JULY 2015 PERFORMANCE HERDS AUSTRALIA BREEDPLAN														INDEX
GL	Birth Wt	200 D	400 D	600 D	MCW	MILK	Scrotal	CWT	EMA	RIB	RUMP	RBY%	IMF%	MSA-B2
	<b>+3.6</b>	<b>+26</b>	<b>+34</b>	<b>+48</b>		<b>+3</b>	<b>+1.4</b>		<b>+4.8</b>	<b>+0.2</b>	<b>+0.3</b>	<b>+0.2</b>	<b>+1.3</b>	<b>+\$51</b>
	50%	55%	60%	55%		37%	47%		36%	42%	42%	39%	40%	

*Traits Observed: BWT, 400DW, 600DWx2, SS, FAT, EMA, IMF*

RAW DATA - WILL BE SUPPLIED ON SALE DAY					
Scrotal Size	Weight	P8	Rib	EMA	IMF%

Purchaser: .....\$ .....

## LOT 49 WEEBOLLABOLLA J459 (SR) (P)

**BORN:** 1/08/2013

**COLOUR:** RED

**IDENT:** AGFJ459

YAMBURGAN LOCKYER C8 (SR) (P)

WEEBOLLABOLLA INFIDEL 3RD Y25 (SR) (P)

**SIRE:** WEEBOLLABOLLA F174 (SR) (P)

**DAM:** WEEBOLLABOLLA E0441 (SR) (H)

WEEBOLLABOLLA CAMEMBERT C130 (SR) (P)

WEEBOLLABOLLA Z506 (SR) (P)

JULY 2015 PERFORMANCE HERDS AUSTRALIA BREEDPLAN														INDEX
GL	Birth Wt	200 D	400 D	600 D	MCW	MILK	Scrotal	CWT	EMA	RIB	RUMP	RBY%	IMF%	MSA-B2
	<b>+2.9</b>	<b>+30</b>	<b>+39</b>	<b>+48</b>		<b>+1</b>	<b>+2.1</b>		<b>+3.4</b>	<b>+0.3</b>	<b>+0.8</b>	<b>+0.1</b>	<b>+0.7</b>	<b>+\$47</b>
	73%	69%	67%	68%		41%	70%		45%	54%	54%	50%	43%	

*Traits Observed: BWT, 200DW, 400DWx2, 600DW, SS, FAT, EMA, IMF*

RAW DATA - WILL BE SUPPLIED ON SALE DAY					
Scrotal Size	Weight	P8	Rib	EMA	IMF%

Purchaser: .....\$ .....

## LOT 50 WEEBOLLABOLLA J390 (SR) (P)

**BORN:** 11/07/2013

**COLOUR:** RED

**IDENT:** AGFJ390

WEEBOLLABOLLA CAMBRIDGE C3 (SR) (P)

WEEBOLLABOLLA BREAKAWAY B95 (SR) (P)

**SIRE:** WEEBOLLABOLLA FACTOR F254 (SR) (P)

**DAM:** WEEBOLLABOLLA F553 (SR) (P)

WEEBOLLABOLLA D230 (SR) (SC)

WEEBOLLABOLLA A1086 (SR) (P)

JULY 2015 PERFORMANCE HERDS AUSTRALIA BREEDPLAN														INDEX
GL	Birth Wt	200 D	400 D	600 D	MCW	MILK	Scrotal	CWT	EMA	RIB	RUMP	RBY%	IMF%	MSA-B2
	<b>+2.7</b>	<b>+34</b>	<b>+50</b>	<b>+63</b>		<b>+6</b>	<b>+2.1</b>		<b>+4.2</b>	<b>-1.1</b>	<b>-1.7</b>	<b>+1.2</b>	<b>+0.4</b>	<b>+\$60</b>
	73%	70%	67%	68%		37%	70%		45%	55%	55%	51%	44%	

*Traits Observed: BWT, 200DW, 400DWx2, 600DW, SS, FAT, EMA, IMF*

RAW DATA - WILL BE SUPPLIED ON SALE DAY					
Scrotal Size	Weight	P8	Rib	EMA	IMF%

Purchaser: .....\$ .....



**LOT 50 - WEEBOLLABOLLA J390 (SR) (P)**

**LOT 52 - WEEBOLLABOLLA J355 (SR) (P)**

# WEEBOLLABOLLA SALE BULLS

## LOT 51 WEEBOLLABOLLA J409 (SR) (H)

**BORN:** 16/07/2013

**COLOUR:** WHITE

**IDENT:** AGFJ409

WEEBOLLABOLLA WARATAH W26 (SR) (P)

WEEBOLLABOLLA ZEPPLIN Z130 (SR) (P)

**SIRE:** WEEBOLLABOLLA F21 (SR) (P)

**DAM:** WEEBOLLABOLLA F579 (SR) (P)

WEEBOLLABOLLA RHYLL Z34 (SR) (P)

WEEBOLLABOLLA B901 (SR) (P)

JULY 2015 PERFORMANCE HERDS AUSTRALIA BREEDPLAN														INDEX
GL	Birth Wt	200 D	400 D	600 D	MCW	MILK	Scrotal	CWT	EMA	RIB	RUMP	RBY%	IMF%	MSA-B2
	<b>+4.5</b> 73%	<b>+30</b> 70%	<b>+34</b> 68%	<b>+46</b> 69%		<b>+5</b> 43%	<b>+2.9</b> 70%		<b>+2.6</b> 46%	<b>-1.4</b> 54%	<b>-1.6</b> 54%	<b>+1.7</b> 52%	<b>+0.0</b> 45%	<b>+\$43</b>

*Traits Observed: BWT, 200DW, 400DWx2, 600DW, SS, FAT, EMA, IMF*

RAW DATA - WILL BE SUPPLIED ON SALE DAY					
Scrotal Size	Weight	P8	Rib	EMA	IMF%

Purchaser: .....\$ .....

## LOT 52 WEEBOLLABOLLA J355 (SR) (P)

**BORN:** 6/07/2013

**COLOUR:** ROAN

**IDENT:** AGFJ355

WEEBOLLABOLLA WARATAH W26 (SR) (P)

WEEBOLLABOLLA MAX 8TH Y167 (SR) (P)

**SIRE:** WEEBOLLABOLLA F21 (SR) (P)

**DAM:** WEEBOLLABOLLA F826 (SR) (P)

WEEBOLLABOLLA RHYLL Z34 (SR) (P)

WEEBOLLABOLLA SHORTHORN UREG COW

JULY 2015 PERFORMANCE HERDS AUSTRALIA BREEDPLAN														INDEX
GL	Birth Wt	200 D	400 D	600 D	MCW	MILK	Scrotal	CWT	EMA	RIB	RUMP	RBY%	IMF%	MSA-B2
	<b>+2.6</b> 72%	<b>+29</b> 70%	<b>+36</b> 68%	<b>+45</b> 68%		<b>+7</b> 45%	<b>+1.1</b> 69%		<b>+3.9</b> 44%	<b>-1.2</b> 54%	<b>-1.3</b> 54%	<b>+1.6</b> 50%	<b>+0.3</b> 43%	<b>+\$49</b>

*Traits Observed: BWT, 200DW, 400DW, 600DWx2, SS, FAT, EMA, IMF*

RAW DATA - WILL BE SUPPLIED ON SALE DAY					
Scrotal Size	Weight	P8	Rib	EMA	IMF%

Purchaser: .....\$ .....

## LOT 53 WEEBOLLABOLLA J125 (SR) (P)

**BORN:** 21/07/2013

**COLOUR:** ROAN

**IDENT:** AGFJ125

WEEBOLLABOLLA IMPACT Y156 (SR) (P)

THE GROVE LAWMAN X264 (SR) (P)

**SIRE:** WEEBOLLABOLLA CENTURION C149 (SR) (P)

**DAM:** WEEBOLLABOLLA BOW B35 (SR) (P)

WEEBOLLABOLLA STAIRCASE Z10 (SR) (P)

WEEBOLLABOLLA VANITY V8 (SR) (P)

JULY 2015 PERFORMANCE HERDS AUSTRALIA BREEDPLAN														INDEX
GL	Birth Wt	200 D	400 D	600 D	MCW	MILK	Scrotal	CWT	EMA	RIB	RUMP	RBY%	IMF%	MSA-B2
<b>-0.6</b> 52%	<b>+4.1</b> 75%	<b>+33</b> 73%	<b>+41</b> 71%	<b>+46</b> 72%	<b>+36</b> 62%	<b>+6</b> 54%	<b>+2.2</b> 74%	<b>+38</b> 63%	<b>+5.7</b> 53%	<b>-1.3</b> 58%	<b>-1.7</b> 59%	<b>+1.8</b> 56%	<b>-0.2</b> 51%	<b>+\$39</b>

*Traits Observed: BWT, 200DW, 400DWx2, 600DW, SS, FAT, EMA, IMF*

RAW DATA - WILL BE SUPPLIED ON SALE DAY					
Scrotal Size	Weight	P8	Rib	EMA	IMF%

Purchaser: .....\$ .....

## LOT 54 WEEBOLLABOLLA J5 (SR) (P)

**BORN:** 5/05/2013

**COLOUR:** RED

**IDENT:** AGFJ5

THE GROVE LOCKYER X857 (SR) (P)

WEEBOLLABOLLA NEEWARRA N83 (SR) (P)

**SIRE:** THE GROVE OSCAR A748 (SR) (P)

**DAM:** WEEBOLLABOLLA NINDETHANA Z169 (SR) (P)

THE GROVE DALE 39TH (SR) (P)

WEEBOLLABOLLA NINDETHANA (SR) (P)

JULY 2015 PERFORMANCE HERDS AUSTRALIA BREEDPLAN														INDEX
GL	Birth Wt	200 D	400 D	600 D	MCW	MILK	Scrotal	CWT	EMA	RIB	RUMP	RBY%	IMF%	MSA-B2
<b>-2.6</b> 50%	<b>+3.3</b> 61%	<b>+25</b> 67%	<b>+34</b> 67%	<b>+50</b> 64%		<b>+4</b> 56%	<b>+1.3</b> 55%	<b>+31</b> 60%	<b>+5.2</b> 49%	<b>-0.6</b> 52%	<b>-1.2</b> 52%	<b>+1.3</b> 51%	<b>+0.5</b> 50%	<b>+\$42</b>

*Traits Observed: BWT, 200DW, 400DW, 600DWx2, SS, FAT, EMA, IMF*

RAW DATA - WILL BE SUPPLIED ON SALE DAY					
Scrotal Size	Weight	P8	Rib	EMA	IMF%

Purchaser: .....\$ .....

# WEEBOLLABOLLA SALE BULLS

## LOT 55 WEEBOLLABOLLA J37 (SR) (H)

**BORN:** 4/06/2013

**COLOUR:** ROAN

**IDENT:** AGFJ37

WEEBOLLABOLLA THEODORE T85 (SR) (P)

YAMBURGAN LOCKYER C8 (SR) (P)

**SIRE:** WEEBOLLABOLLA ERUDITE E14 (SR) (P)

**DAM:** WEEBOLLABOLLA G4 (SR) (P)

WEEBOLLABOLLA WEIGHTY Z99 (SR) (P)

WEEBOLLABOLLA FANCY Z125 (SR) (P)

JULY 2015 PERFORMANCE HERDS AUSTRALIA BREEDPLAN														INDEX
GL	Birth Wt	200 D	400 D	600 D	MCW	MILK	Scrotal	CWT	EMA	RIB	RUMP	RBY%	IMF%	MSA-B2
<b>-0.3</b>	<b>+3.0</b>	<b>+25</b>	<b>+30</b>	<b>+28</b>	<b>+18</b>	<b>+3</b>	<b>+1.6</b>	<b>+22</b>	<b>+2.9</b>	<b>+1.0</b>	<b>+2.2</b>	<b>-0.7</b>	<b>+1.0</b>	<b>+\$31</b>
60%	74%	73%	71%	72%	61%	43%	72%	61%	49%	58%	58%	55%	49%	

*Traits Observed: GL, BWT, 200DW, 400DWx2, 600DW, SS, FAT, EMA, IMF*

RAW DATA - WILL BE SUPPLIED ON SALE DAY					
Scrotal Size	Weight	P8	Rib	EMA	IMF%

Purchaser: .....\$ .....

## LOT 56 WEEBOLLABOLLA J170 (SR) (P)

**BORN:** 31/07/2013

**COLOUR:** ROAN

**IDENT:** AGFJ170

THE GROVE OSCAR A748 (SR) (P)

WEEBOLLABOLLA WARATAH W26 (SR) (P)

**SIRE:** YAMBURGAN OSSIE E93 (SR) (S)

**DAM:** WEEBOLLABOLLA DAINTY D98 (SR) (P)

YAMBURGAN MARGARET 32ND (SR) (S)

WEEBOLLABOLLA FANCY Z83 (SR) (P)

JULY 2015 PERFORMANCE HERDS AUSTRALIA BREEDPLAN														INDEX
GL	Birth Wt	200 D	400 D	600 D	MCW	MILK	Scrotal	CWT	EMA	RIB	RUMP	RBY%	IMF%	MSA-B2
	<b>+3.7</b>	<b>+24</b>	<b>+27</b>	<b>+39</b>	<b>+57</b>	<b>+5</b>	<b>+1.3</b>	<b>+24</b>	<b>+4.1</b>	<b>+0.0</b>	<b>+0.2</b>	<b>+1.0</b>	<b>+0.5</b>	<b>+\$31</b>
	74%	72%	70%	71%	62%	48%	73%	61%	49%	56%	56%	53%	48%	

*Traits Observed: BWT, 200DW, 400DWx2, 600DW, SS, FAT, EMA, IMF*

RAW DATA - WILL BE SUPPLIED ON SALE DAY					
Scrotal Size	Weight	P8	Rib	EMA	IMF%

Purchaser: .....\$ .....

## LOT 57 WEEBOLLABOLLA J463 (SR) (P)

**BORN:** 5/08/2013

**COLOUR:** ROAN

**IDENT:** AGFJ463

THE GROVE OSCAR A748 (SR) (P)

WOOLCOTT MONARO C237 (SR) (P)

**SIRE:** WEEBOLLABOLLA G147 (SR) (P)

**DAM:** WEEBOLLABOLLA F490 (SR) (H)

WEEBOLLABOLLA VIGILANCE V113 (SR) (P)

WEEBOLLABOLLA Z498 (SR) (P)

JULY 2015 PERFORMANCE HERDS AUSTRALIA BREEDPLAN														INDEX
GL	Birth Wt	200 D	400 D	600 D	MCW	MILK	Scrotal	CWT	EMA	RIB	RUMP	RBY%	IMF%	MSA-B2
	<b>+3.5</b>	<b>+25</b>	<b>+36</b>	<b>+47</b>		<b>+7</b>	<b>+0.3</b>		<b>+4.8</b>	<b>-0.6</b>	<b>-1.0</b>	<b>+1.2</b>	<b>+0.6</b>	<b>+\$40</b>
	73%	63%	66%	66%		40%	58%		42%	51%	51%	47%	43%	

*Traits Observed: BWT, 400DW, 600DWx2, SS, FAT, EMA, IMF*

RAW DATA - WILL BE SUPPLIED ON SALE DAY					
Scrotal Size	Weight	P8	Rib	EMA	IMF%

Purchaser: .....\$ .....

## LOT 58 WEEBOLLABOLLA J145 (SR) (P)

**BORN:** 24/07/2013

**COLOUR:** RED

**IDENT:** AGFJ145

BUNDALEER UNITED CHIEF U21 (SR) (P)

THE GROVE OSCAR A748 (SR) (P)

**SIRE:** WEEBOLLABOLLA G152 (SR) (P)

**DAM:** WEEBOLLABOLLA G158 (SR) (P)

WEEBOLLABOLLA E72 (SR) (P)

WEEBOLLABOLLA KYLIE Z2 (SR) (P)

JULY 2015 PERFORMANCE HERDS AUSTRALIA BREEDPLAN														INDEX
GL	Birth Wt	200 D	400 D	600 D	MCW	MILK	Scrotal	CWT	EMA	RIB	RUMP	RBY%	IMF%	MSA-B2
	<b>+5.1</b>	<b>+36</b>	<b>+45</b>	<b>+57</b>		<b>+6</b>	<b>+2.0</b>		<b>+4.8</b>	<b>-1.7</b>	<b>-2.3</b>	<b>+2.2</b>	<b>+0.1</b>	<b>+\$35</b>
	70%	69%	67%	69%		39%	71%		47%	56%	56%	53%	46%	

*Traits Observed: BWT, 200DW, 400DWx2, 600DW, SS, FAT, EMA, IMF*

RAW DATA - WILL BE SUPPLIED ON SALE DAY					
Scrotal Size	Weight	P8	Rib	EMA	IMF%

Purchaser: .....\$ .....

# WEEBOLLABOLLA SALE BULLS

## LOT 59 WEEBOLLABOLLA J434 (SR) (S)

BORN: 22/07/2013

COLOUR: RED

IDENT: AGFJ434

YAMBURGAN LOCKYER C8 (SR) (P)

WEEBOLLABOLLA BREAKAWAY B95 (SR) (P)

SIRE: WEEBOLLABOLLA F174 (SR) (P)

DAM: WEEBOLLABOLLA F582 (SR) (P)

WEEBOLLABOLLA CAMEMBERT C130 (SR) (P)

WEEBOLLABOLLA SHORTHORN UREG COW

JULY 2015 PERFORMANCE HERDS AUSTRALIA BREEDPLAN														INDEX
GL	Birth Wt	200 D	400 D	600 D	MCW	MILK	Scrotal	CWT	EMA	RIB	RUMP	RBY%	IMF%	MSA-B2
	<b>+3.9</b> 73%	<b>+36</b> 69%	<b>+53</b> 67%	<b>+61</b> 66%		<b>+7</b> 41%	<b>+1.8</b> 63%		<b>+4.4</b> 42%	<b>-0.2</b> 51%	<b>-0.2</b> 51%	<b>+0.3</b> 48%	<b>+0.6</b> 42%	<b>+\$54</b>

Traits Observed: BWT, 200DW, 400DW, 600DWx2, SS, FAT, EMA, IMF

RAW DATA - WILL BE SUPPLIED ON SALE DAY					
Scrotal Size	Weight	P8	Rib	EMA	IMF%

Purchaser: .....\$ .....

## LOT 60 WEEBOLLABOLLA J443 (SR) (P)

BORN: 25/07/2013

COLOUR: RED

IDENT: AGFJ443

WEEBOLLABOLLA THEODORE T85 (SR) (P)

WEEBOLLABOLLA BREAKAWAY B95 (SR) (P)

SIRE: WEEBOLLABOLLA CAMBRIDGE C3 (SR) (P)

DAM: WEEBOLLABOLLA F520 (SR) (P)

WEEBOLLABOLLA WILMA W93 (SR) (P)

WEEBOLLABOLLA A437 (SR) (P)

JULY 2015 PERFORMANCE HERDS AUSTRALIA BREEDPLAN														INDEX
GL	Birth Wt	200 D	400 D	600 D	MCW	MILK	Scrotal	CWT	EMA	RIB	RUMP	RBY%	IMF%	MSA-B2
	<b>+2.8</b> 75%	<b>+31</b> 72%	<b>+34</b> 70%	<b>+47</b> 71%	<b>+37</b> 62%	<b>+6</b> 47%	<b>+1.7</b> 71%	<b>+31</b> 61%	<b>+3.2</b> 50%	<b>-0.7</b> 59%	<b>-1.4</b> 59%	<b>+0.8</b> 56%	<b>+0.2</b> 50%	<b>+\$41</b>

Traits Observed: BWT, 200DW, 400DWx2, 600DW, SS, FAT, EMA, IMF

RAW DATA - WILL BE SUPPLIED ON SALE DAY					
Scrotal Size	Weight	P8	Rib	EMA	IMF%

Purchaser: .....\$ .....

## LOT 61 WEEBOLLABOLLA J343 (SR) (P)

BORN: 2/07/2013

COLOUR: ROAN

IDENT: AGFJ343

THE GROVE OSCAR A748 (SR) (P)

ROYALLA BUSINESSMAN (SR) (P)

SIRE: WEEBOLLABOLLA G147 (SR) (P)

DAM: WEEBOLLABOLLA ROSANNA 2ND X144 (SR) (P)

WEEBOLLABOLLA VIGILANCE V113 (SR) (P)

WEEBOLLABOLLA ROSANNA R55 (SR) (P)

JULY 2015 PERFORMANCE HERDS AUSTRALIA BREEDPLAN														INDEX
GL	Birth Wt	200 D	400 D	600 D	MCW	MILK	Scrotal	CWT	EMA	RIB	RUMP	RBY%	IMF%	MSA-B2
	<b>+2.9</b> 72%	<b>+21</b> 63%	<b>+33</b> 65%	<b>+40</b> 67%		<b>+4</b> 44%	<b>+1.2</b> 65%		<b>+4.7</b> 42%	<b>+0.9</b> 50%	<b>+1.1</b> 50%	<b>-0.2</b> 46%	<b>+0.8</b> 39%	<b>+\$36</b>

Traits Observed: BWT, 400DW, 600DWx2, SS, FAT, EMA, IMF

RAW DATA - WILL BE SUPPLIED ON SALE DAY					
Scrotal Size	Weight	P8	Rib	EMA	IMF%

Purchaser: .....\$ .....



# WEEBOLLABOLLA SALE BULLS

## LOT 62 WEEBOLLABOLLA J44 (SR) (H)

BORN: 15/06/2013

COLOUR: RED

IDENT: AGFJ44

BROUGHTON PARK CANADIAN CHIEF (S)

YAMBURGAN OSSIE D284 (SR) (P)

SIRE: BUNDALEER UNITED CHIEF U21 (SR) (P)

DAM: WEEBOLLABOLLA G87 (SR) (P)

BROUGHTON PARK ROSE 58 (S)

WEEBOLLABOLLA DELORIS D29 (SR) (P)

JULY 2015 PERFORMANCE HERDS AUSTRALIA BREEDPLAN														INDEX
GL	Birth Wt	200 D	400 D	600 D	MCW	MILK	Scrotal	CWT	EMA	RIB	RUMP	RBY%	IMF%	MSA-B2
<b>+0.0</b>	<b>-0.4</b>	<b>+16</b>	<b>+24</b>	<b>+21</b>	<b>-1</b>	<b>+10</b>	<b>+0.6</b>	<b>+29</b>	<b>+2.7</b>	<b>-0.2</b>	<b>+0.0</b>	<b>+0.9</b>	<b>+0.5</b>	<b>+\$34</b>
62%	74%	73%	70%	72%	62%	47%	72%	60%	47%	57%	58%	55%	48%	

Traits Observed: GL, GWT, 200DW, 400DWx2, 600DW, SS, FAT, EMA, IMF

RAW DATA - WILL BE SUPPLIED ON SALE DAY					
Scrotal Size	Weight	P8	Rib	EMA	IMF%

Purchaser: .....\$ .....

## LOT 63 WEEBOLLABOLLA J484 (SR) (P)

BORN: 13/08/2013

COLOUR: ROAN

IDENT: AGFJ484

THE GROVE OSCAR A748 (SR) (P)

MARELLAN EMULATOR (SR) (P)

SIRE: WEEBOLLABOLLA G147 (SR) (P)

DAM: WEEBOLLABOLLA D569 (SR) (P)

WEEBOLLABOLLA VIGILANCE V113 (SR) (P)

WEEBOLLABOLLA ULLMARA 2ND Y124 (SR) (P)

JULY 2015 PERFORMANCE HERDS AUSTRALIA BREEDPLAN														INDEX
GL	Birth Wt	200 D	400 D	600 D	MCW	MILK	Scrotal	CWT	EMA	RIB	RUMP	RBY%	IMF%	MSA-B2
	<b>+3.3</b>	<b>+22</b>	<b>+27</b>	<b>+37</b>		<b>+6</b>	<b>+1.7</b>		<b>+3.7</b>	<b>+0.1</b>	<b>-0.3</b>	<b>+0.3</b>	<b>+0.7</b>	<b>+\$31</b>
	73%	64%	67%	66%		44%	59%		42%	48%	48%	45%	41%	

Traits Observed: BWT, 400DW, 600DWx2, SS, FAT, EMA, IMF

RAW DATA - WILL BE SUPPLIED ON SALE DAY					
Scrotal Size	Weight	P8	Rib	EMA	IMF%

Purchaser: .....\$ .....

## LOT 64 WEEBOLLABOLLA J88 (SR) (P)

BORN: 14/07/2013

COLOUR: WHITE

IDENT: AGFJ88

WEEBOLLABOLLA IMPACT Y156 (SR) (P)

YAMBURGAN LOCKYER C8 (SR) (P)

SIRE: WEEBOLLABOLLA CENTURION C149 (SR) (P)

DAM: WEEBOLLABOLLA F053 (SR) (P)

WEEBOLLABOLLA STAIRCASE Z10 (SR) (P)

WEEBOLLABOLLA BETA B14 (SR) (P)

JULY 2015 PERFORMANCE HERDS AUSTRALIA BREEDPLAN														INDEX
GL	Birth Wt	200 D	400 D	600 D	MCW	MILK	Scrotal	CWT	EMA	RIB	RUMP	RBY%	IMF%	MSA-B2
	<b>+3.7</b>	<b>+28</b>	<b>+32</b>	<b>+46</b>	<b>+58</b>	<b>+0</b>	<b>+1.1</b>	<b>+36</b>	<b>+5.1</b>	<b>-1.0</b>	<b>-0.7</b>	<b>+1.5</b>	<b>+0.1</b>	<b>+\$36</b>
	65%	71%	70%	71%	63%	50%	72%	62%	52%	59%	59%	56%	52%	

Traits Observed: BWT, 200DW, 400DWx2, 600DW, SS, FAT, EMA, IMF

RAW DATA - WILL BE SUPPLIED ON SALE DAY					
Scrotal Size	Weight	P8	Rib	EMA	IMF%

Purchaser: .....\$ .....

## LOT 65 WEEBOLLABOLLA J372 (SR) (P)

BORN: 8/07/2013

COLOUR: RED

IDENT: AGFJ372

WEEBOLLABOLLA THEODORE T85 (SR) (P)

WEEBOLLABOLLA ANCHOR A7 (SR) (P)

SIRE: WEEBOLLABOLLA ERUDITE E14 (SR) (P)

DAM: WEEBOLLABOLLA F265 (SR) (P)

WEEBOLLABOLLA WEIGHTY Z99 (SR) (P)

WEEBOLLABOLLA FT013 (SR) (S)

JULY 2015 PERFORMANCE HERDS AUSTRALIA BREEDPLAN														INDEX
GL	Birth Wt	200 D	400 D	600 D	MCW	MILK	Scrotal	CWT	EMA	RIB	RUMP	RBY%	IMF%	MSA-B2
	<b>+2.0</b>	<b>+27</b>	<b>+34</b>	<b>+31</b>		<b>+6</b>	<b>+1.0</b>		<b>+2.5</b>	<b>+1.6</b>	<b>+2.8</b>	<b>-1.2</b>	<b>+1.0</b>	<b>+\$37</b>
	75%	71%	70%	70%		43%	70%		46%	54%	54%	51%	45%	

Traits Observed: BWT, 200DW, 400DW, 600DWx2, SS, FAT, EMA, IMF

RAW DATA - WILL BE SUPPLIED ON SALE DAY					
Scrotal Size	Weight	P8	Rib	EMA	IMF%

Purchaser: .....\$ .....

# WEEBOLLABOLLA SALE BULLS

## LOT 66 WEEBOLLABOLLA J400 (SR) (SC)

**BORN:** 12/07/2013

**COLOUR:** ROAN

**IDENT:** AGFJ400

THE GROVE OSCAR A748 (SR) (P)

WEEBOLLABOLLA WARATAH W26 (SR) (P)

**SIRE:** WEEBOLLABOLLA G147 (SR) (P)

**DAM:** WEEBOLLABOLLA E119 (SR) (P)

WEEBOLLABOLLA VIGILANCE V113 (SR) (P)

WEEBOLLABOLLA KRAFT 2ND X164 (SR) (P)

JULY 2015 PERFORMANCE HERDS AUSTRALIA BREEDPLAN														INDEX
GL	Birth Wt	200 D	400 D	600 D	MCW	MILK	Scrotal	CWT	EMA	RIB	RUMP	RBY%	IMF%	MSA-B2
	<b>+5.1</b> 72%	<b>+28</b> 63%	<b>+34</b> 66%	<b>+50</b> 67%		<b>+0</b> 43%	<b>+0.7</b> 66%		<b>+4.3</b> 46%	<b>+0.5</b> 55%	<b>+0.7</b> 55%	<b>+0.1</b> 51%	<b>+0.9</b> 45%	<b>+\$34</b>

*Traits Observed: BWT, 400DW, 600DWx2, SS, FAT, EMA, IMF*

RAW DATA - WILL BE SUPPLIED ON SALE DAY					
Scrotal Size	Weight	P8	Rib	EMA	IMF%

Purchaser: .....\$ .....

## LOT 67 WEEBOLLABOLLA J174 (SR) (P)

**BORN:** 31/07/2013

**COLOUR:** RLW

**IDENT:** AGFJ174

THE GROVE OSCAR A748 (SR) (P)

WEEBOLLABOLLA CENTURION C149 (SR) (P)

**SIRE:** YAMBURGAN OSSIE E93 (SR) (S)

**DAM:** WEEBOLLABOLLA F241 (SR) (P)

YAMBURGAN MARGARET 32ND (SR) (S)

WEEBOLLABOLLA BROADCAST B43 (SR) (P)

JULY 2015 PERFORMANCE HERDS AUSTRALIA BREEDPLAN														INDEX
GL	Birth Wt	200 D	400 D	600 D	MCW	MILK	Scrotal	CWT	EMA	RIB	RUMP	RBY%	IMF%	MSA-B2
	<b>+4.3</b> 75%	<b>+26</b> 72%	<b>+31</b> 70%	<b>+44</b> 71%	<b>+42</b> 62%	<b>+6</b> 45%	<b>+1.4</b> 72%	<b>+27</b> 61%	<b>+5.5</b> 50%	<b>-0.6</b> 58%	<b>-0.8</b> 58%	<b>+1.5</b> 55%	<b>+0.4</b> 50%	<b>+\$34</b>

*Traits Observed: BWT, 200DW, 400DWx2, 600DW, SS, FAT, EMA, IMF*

RAW DATA - WILL BE SUPPLIED ON SALE DAY					
Scrotal Size	Weight	P8	Rib	EMA	IMF%

Purchaser: .....\$ .....

## LOT 68 WEEBOLLABOLLA J30 (SR) (P)

**BORN:** 28/05/2013

**COLOUR:** R&W

**IDENT:** AGFJ30

WEEBOLLABOLLA THEODORE T85 (SR) (P)

YAMBURGAN LOCKYER C8 (SR) (P)

**SIRE:** WEEBOLLABOLLA ERUDITE E14 (SR) (P)

**DAM:** WEEBOLLABOLLA G39 (SR) (P)

WEEBOLLABOLLA WEIGHTY Z99 (SR) (P)

WEEBOLLABOLLA CHINCHILLA C114 (SR) (P)

JULY 2015 PERFORMANCE HERDS AUSTRALIA BREEDPLAN														INDEX
GL	Birth Wt	200 D	400 D	600 D	MCW	MILK	Scrotal	CWT	EMA	RIB	RUMP	RBY%	IMF%	MSA-B2
<b>-1.2</b> 59%	<b>+3.6</b> 74%	<b>+32</b> 72%	<b>+38</b> 70%	<b>+42</b> 67%		<b>+1</b> 42%	<b>+1.3</b> 50%		<b>+3.1</b> 40%	<b>-0.3</b> 49%	<b>+0.6</b> 49%	<b>+0.4</b> 46%	<b>+0.6</b> 45%	<b>+\$39</b>

*Traits Observed: GL, BWT, 200DW, 400DW, 600DWx2, SS, FAT, EMA, IMF*

RAW DATA - WILL BE SUPPLIED ON SALE DAY					
Scrotal Size	Weight	P8	Rib	EMA	IMF%

Purchaser: .....\$ .....

## LOT 69 WEEBOLLABOLLA J164 (SR) (H)

**BORN:** 29/07/2013

**COLOUR:** RED

**IDENT:** AGFJ164

THE GROVE OSCAR A748 (SR) (P)

THE GROVE INFIDEL U223 (SR) (P)

**SIRE:** YAMBURGAN OSSIE G10 (SR) (S)

**DAM:** WEEBOLLABOLLA ZIRCON Z88 (SR) (P)

YAMBURGAN CLOUDY 493RD (SR) (S)

WEEBOLLABOLLA UMPTEENE U23 (SR) (P)

JULY 2015 PERFORMANCE HERDS AUSTRALIA BREEDPLAN														INDEX
GL	Birth Wt	200 D	400 D	600 D	MCW	MILK	Scrotal	CWT	EMA	RIB	RUMP	RBY%	IMF%	MSA-B2
	<b>+3.4</b> 73%	<b>+30</b> 71%	<b>+43</b> 69%	<b>+52</b> 69%		<b>+1</b> 43%	<b>+1.1</b> 71%		<b>+5.9</b> 47%	<b>-1.2</b> 55%	<b>-1.5</b> 55%	<b>+2.1</b> 52%	<b>+0.6</b> 45%	<b>+\$55</b>

*Traits Observed: BWT, 200DW, 400DWx2, 600DW, SS, FAT, EMA, IMF*

RAW DATA - WILL BE SUPPLIED ON SALE DAY					
Scrotal Size	Weight	P8	Rib	EMA	IMF%

Purchaser: .....\$ .....



# WEEBOLLABOLLA SALE BULLS

## LOT 70 WEEBOLLABOLLA J196 (SR) (P)

BORN: 8/08/2013

COLOUR: RLW

IDENT: AGFJ196

WEEBOLLABOLLA THEODORE T85 (SR) (P)

WEEBOLLABOLLA WARRIOR W17 (SR) (P)

SIRE: MARELLAN NUCLEAR (SR) (S)

DAM: WEEBOLLABOLLA WEIGHTY Z99 (SR) (P)

MARELLAN SUSAN 8228L (SR) (S)

WEEBOLLABOLLA WEIGHTY W126 (SR) (P)

JULY 2015 PERFORMANCE HERDS AUSTRALIA BREEDPLAN														INDEX
GL	Birth Wt	200 D	400 D	600 D	MCW	MILK	Scrotal	CWT	EMA	RIB	RUMP	RBY%	IMF%	MSA-B2
	<b>+2.3</b> 74%	<b>+24</b> 72%	<b>+30</b> 70%	<b>+35</b> 70%		<b>+4</b> 44%	<b>+0.9</b> 72%		<b>+2.5</b> 47%	<b>+0.3</b> 55%	<b>+1.0</b> 55%	<b>-0.1</b> 52%	<b>+0.9</b> 46%	<b>+\$39</b>

Traits Observed: BWT, 200DW, 400DWx2, 600DW, SS, FAT, EMA, IMF

RAW DATA - WILL BE SUPPLIED ON SALE DAY					
Scrotal Size	Weight	P8	Rib	EMA	IMF%

Purchaser: .....\$ .....



LOT 70 - WEEBOLLABOLLA J196 (SR) (P)

## LOT 71 WEEBOLLABOLLA J507 (SR) (P)

BORN: 2/09/2013

COLOUR: RED

IDENT: AGFJ507

WEEBOLLABOLLA THEODORE T85 (SR) (P)

YAMBURGAN DIAMANTINA 14TH (SR) (P)

SIRE: WEEBOLLABOLLA ERUDITE E14 (SR) (P)

DAM: WEEBOLLABOLLA F622 (P)

WEEBOLLABOLLA WEIGHTY Z99 (SR) (P)

WEEBOLLABOLLA C790 (P)

JULY 2015 PERFORMANCE HERDS AUSTRALIA BREEDPLAN														INDEX
GL	Birth Wt	200 D	400 D	600 D	MCW	MILK	Scrotal	CWT	EMA	RIB	RUMP	RBY%	IMF%	MSA-B2
	<b>+3.1</b> 63%	<b>+29</b> 69%	<b>+41</b> 67%	<b>+46</b> 67%		<b>+3</b> 37%	<b>+2.0</b> 64%		<b>+3.3</b> 45%	<b>-0.6</b> 54%	<b>-0.1</b> 54%	<b>+0.6</b> 51%	<b>+0.9</b> 46%	<b>+\$55</b>

Traits Observed: BWT, 200DW, 400DWx2, 600DW, SS, FAT, EMA, IMF

RAW DATA - WILL BE SUPPLIED ON SALE DAY					
Scrotal Size	Weight	P8	Rib	EMA	IMF%

Purchaser: .....\$ .....

## LOT 72 WEEBOLLABOLLA J169 (SR) (P)

BORN: 31/07/2013

COLOUR: RLW

IDENT: AGFJ169

THE GROVE OSCAR A748 (SR) (P)

WEEBOLLABOLLA IMPACT Y156 (SR) (P)

SIRE: YAMBURGAN OSSIE G10 (SR) (S)

DAM: WEEBOLLABOLLA BUZZER B52 (SR) (P)

YAMBURGAN CLOUDY 493RD (SR) (S)

WEEBOLLABOLLA JOGGLE 2ND U120 (SR) (P)

JULY 2015 PERFORMANCE HERDS AUSTRALIA BREEDPLAN														INDEX
GL	Birth Wt	200 D	400 D	600 D	MCW	MILK	Scrotal	CWT	EMA	RIB	RUMP	RBY%	IMF%	MSA-B2
	<b>+1.7</b> 73%	<b>+28</b> 70%	<b>+33</b> 68%	<b>+33</b> 69%		<b>+3</b> 42%	<b>+0.4</b> 70%		<b>+4.9</b> 47%	<b>-1.2</b> 54%	<b>-1.8</b> 54%	<b>+1.6</b> 51%	<b>+0.3</b> 44%	<b>+\$37</b>

Traits Observed: BWT, 200DW, 400DWx2, 600DW, SS, FAT, EMA, IMF

RAW DATA - WILL BE SUPPLIED ON SALE DAY					
Scrotal Size	Weight	P8	Rib	EMA	IMF%

Purchaser: .....\$ .....

# WEEBOLLABOLLA SALE BULLS

## LOT 73 WEEBOLLABOLLA J345 (SR) (P)

BORN: 2/07/2013

COLOUR: RED

IDENT: AGFJ345

WEEBOLLABOLLA THEODORE T85 (SR) (P)

WOOLCOTT MONARO C237 (SR) (P)

SIRE: WEEBOLLABOLLA CAMBRIDGE C3 (SR) (P)

DAM: WEEBOLLABOLLA F468 (SR) (P)

WEEBOLLABOLLA WILMA W93 (SR) (P)

WEEBOLLABOLLA Z373 (SR) (P)

JULY 2015 PERFORMANCE HERDS AUSTRALIA BREEDPLAN														INDEX
GL	Birth Wt	200 D	400 D	600 D	MCW	MILK	Scrotal	CWT	EMA	RIB	RUMP	RBY%	IMF%	MSA-B2
	<b>+0.6</b> 74%	<b>+27</b> 71%	<b>+30</b> 69%	<b>+39</b> 69%		<b>+10</b> 48%	<b>+1.1</b> 64%		<b>+3.1</b> 46%	<b>+0.8</b> 56%	<b>+1.0</b> 56%	<b>-0.1</b> 52%	<b>+1.0</b> 49%	<b>+\$49</b>

Traits Observed: BWT, 200DW, 400DW, 600DWx2, SS, FAT, EMA, IMF

RAW DATA - WILL BE SUPPLIED ON SALE DAY					
Scrotal Size	Weight	P8	Rib	EMA	IMF%

Purchaser: .....\$ .....

## LOT 74 WEEBOLLABOLLA J391 (SR) (P)

BORN: 11/07/2013

COLOUR: ROAN

IDENT: AGFJ391

WEEBOLLABOLLA IMPACT Y156 (SR) (P)

WEEBOLLABOLLA CAMBRIDGE C3 (SR) (P)

SIRE: WEEBOLLABOLLA EXCEPTIONAL E110 (SR) (P)

DAM: WEEBOLLABOLLA F369 (SR) (P)

WEEBOLLABOLLA DONNA Z48 (SR) (P)

WEEBOLLABOLLA DAIRY D25 (SR) (P)

JULY 2015 PERFORMANCE HERDS AUSTRALIA BREEDPLAN														INDEX
GL	Birth Wt	200 D	400 D	600 D	MCW	MILK	Scrotal	CWT	EMA	RIB	RUMP	RBY%	IMF%	MSA-B2
	<b>+2.0</b> 75%	<b>+29</b> 68%	<b>+37</b> 70%	<b>+56</b> 71%	<b>+52</b> 60%	<b>+6</b> 45%	<b>+3.1</b> 70%	<b>+41</b> 62%	<b>+4.7</b> 50%	<b>-1.5</b> 59%	<b>-2.7</b> 59%	<b>+1.9</b> 55%	<b>-0.1</b> 51%	<b>+\$59</b>

Traits Observed: BWT, 400DW, 600DWx2, SS, FAT, EMA, IMF

RAW DATA - WILL BE SUPPLIED ON SALE DAY					
Scrotal Size	Weight	P8	Rib	EMA	IMF%

Purchaser: .....\$ .....

## LOT 75 WEEBOLLABOLLA J428 (SR) (P)

BORN: 21/07/2013

COLOUR: RED

IDENT: AGFJ428

WEEBOLLABOLLA CAMBRIDGE C3 (SR) (P)

WEEBOLLABOLLA CANNON C1 (SR) (P)

SIRE: WEEBOLLABOLLA FACTOR F254 (SR) (P)

DAM: WEEBOLLABOLLA F367 (SR) (P)

WEEBOLLABOLLA D230 (SR) (SC)

WEEBOLLABOLLA D489 (SR) (H)

JULY 2015 PERFORMANCE HERDS AUSTRALIA BREEDPLAN														INDEX
GL	Birth Wt	200 D	400 D	600 D	MCW	MILK	Scrotal	CWT	EMA	RIB	RUMP	RBY%	IMF%	MSA-B2
	<b>+3.6</b> 74%	<b>+38</b> 70%	<b>+44</b> 68%	<b>+52</b> 69%		<b>+4</b> 37%	<b>+2.5</b> 71%		<b>+3.3</b> 46%	<b>-0.7</b> 56%	<b>-1.0</b> 56%	<b>+0.7</b> 53%	<b>+0.5</b> 45%	<b>+\$51</b>

Traits Observed: BWT, 200DW, 400DWx2, 600DW, SS, FAT, EMA, IMF

RAW DATA - WILL BE SUPPLIED ON SALE DAY					
Scrotal Size	Weight	P8	Rib	EMA	IMF%

Purchaser: .....\$ .....

## LOT 76 WEEBOLLABOLLA J142 (SR) (P)

BORN: 24/07/2013

COLOUR: RED

IDENT: AGFJ142

YAMBURGAN LOCKYER C8 (SR) (P)

WEEBOLLABOLLA YOUNG GUN Y26 (SR) (P)

SIRE: WEEBOLLABOLLA FINLAY F120 (SR) (SC)

DAM: WEEBOLLABOLLA CALENDAR C168 (SR) (P)

WEEBOLLABOLLA CHEMISTRY C123 (SR) (P)

WEEBOLLABOLLA WARDROBE W23 (SR) (P)

JULY 2015 PERFORMANCE HERDS AUSTRALIA BREEDPLAN														INDEX
GL	Birth Wt	200 D	400 D	600 D	MCW	MILK	Scrotal	CWT	EMA	RIB	RUMP	RBY%	IMF%	MSA-B2
	<b>+4.2</b> 74%	<b>+25</b> 72%	<b>+32</b> 69%	<b>+47</b> 71%	<b>+51</b> 60%	<b>+6</b> 44%	<b>+2.8</b> 72%	<b>+29</b> 60%	<b>+3.9</b> 47%	<b>-0.2</b> 55%	<b>+0.0</b> 55%	<b>+0.4</b> 52%	<b>+0.6</b> 44%	<b>+\$34</b>

Traits Observed: BWT, 200DW, 400DWx2, 600DW, SS, FAT, EMA, IMF

RAW DATA - WILL BE SUPPLIED ON SALE DAY					
Scrotal Size	Weight	P8	Rib	EMA	IMF%

Purchaser: .....\$ .....

# WEEBOLLABOLLA SALE BULLS

## LOT 77 WEEBOLLABOLLA J168 (SR) (P)

BORN: 31/07/2013

COLOUR: RED

IDENT: AGFJ168

YAMBURGAN LOCKYER C8 (SR) (P)

ROYALLA KUDOS (SR) (P)

SIRE: WEEBOLLABOLLA FINLAY F120 (SR) (SC)

DAM: WEEBOLLABOLLA F212 (SR) (H)

WEEBOLLABOLLA CHEMISTRY C123 (SR) (P)

WEEBOLLABOLLA BALMORAL B105 (SR) (SC)

JULY 2015 PERFORMANCE HERDS AUSTRALIA BREEDPLAN														INDEX
GL	Birth Wt	200 D	400 D	600 D	MCW	MILK	Scrotal	CWT	EMA	RIB	RUMP	RBY%	IMF%	MSA-B2
	<b>+3.6</b> 75%	<b>+28</b> 72%	<b>+43</b> 70%	<b>+54</b> 71%	<b>+51</b> 61%	<b>+5</b> 41%	<b>+2.0</b> 73%	<b>+41</b> 60%	<b>+5.8</b> 49%	<b>-2.9</b> 58%	<b>-3.7</b> 58%	<b>+2.8</b> 55%	<b>-0.4</b> 48%	<b>+\$41</b>

Traits Observed: BWT, 200DW, 400DWx2, 600DW, SS, FAT, EMA, IMF

RAW DATA - WILL BE SUPPLIED ON SALE DAY					
Scrotal Size	Weight	P8	Rib	EMA	IMF%

Purchaser: .....\$ .....

## LOT 78 WEEBOLLABOLLA J185 (SR) (P)

BORN: 3/08/2013

COLOUR: RED

IDENT: AGFJ185

THE GROVE OSCAR A748 (SR) (P)

WEEBOLLABOLLA WARRIOR W17 (SR) (P)

SIRE: YAMBURGAN OSSIE G10 (SR) (S)

DAM: WEEBOLLABOLLA AVENUE A151 (SR) (P)

YAMBURGAN CLOUDY 493RD (SR) (S)

WEEBOLLABOLLA WILLANGIEW 112 (SR) (P)

JULY 2015 PERFORMANCE HERDS AUSTRALIA BREEDPLAN														INDEX
GL	Birth Wt	200 D	400 D	600 D	MCW	MILK	Scrotal	CWT	EMA	RIB	RUMP	RBY%	IMF%	MSA-B2
	<b>+2.2</b> 73%	<b>+25</b> 70%	<b>+28</b> 68%	<b>+30</b> 70%		<b>+5</b> 44%	<b>+0.6</b> 71%		<b>+2.9</b> 46%	<b>-0.8</b> 54%	<b>-0.6</b> 54%	<b>+1.2</b> 51%	<b>+0.7</b> 44%	<b>+\$37</b>

Traits Observed: BWT, 200DW, 400DWx2, 600DW, SS, FAT, EMA, IMF

RAW DATA - WILL BE SUPPLIED ON SALE DAY					
Scrotal Size	Weight	P8	Rib	EMA	IMF%

Purchaser: .....\$ .....

## LOT 79 WEEBOLLABOLLA J197 (SR) (SC)

BORN: 8/08/2013

COLOUR: ROAN

IDENT: AGFJ197

BUNDALEER UNITED CHIEF U21 (SR) (P)

WEEBOLLABOLLA ERUDITE E14 (SR) (P)

SIRE: WEEBOLLABOLLA G152 (SR) (P)

DAM: WEEBOLLABOLLA G174 (SR) (P)

WEEBOLLABOLLA E72 (SR) (P)

WEEBOLLABOLLA E1127 (SR) (H)

JULY 2015 PERFORMANCE HERDS AUSTRALIA BREEDPLAN														INDEX
GL	Birth Wt	200 D	400 D	600 D	MCW	MILK	Scrotal	CWT	EMA	RIB	RUMP	RBY%	IMF%	MSA-B2
	<b>+3.8</b> 71%	<b>+31</b> 69%	<b>+36</b> 66%	<b>+41</b> 68%		<b>+6</b> 35%	<b>+2.1</b> 71%		<b>+3.4</b> 45%	<b>-0.2</b> 54%	<b>+0.1</b> 54%	<b>+0.4</b> 51%	<b>+0.5</b> 43%	<b>+\$35</b>

Traits Observed: BWT, 200DW, 400DWx2, 600DW, SS, FAT, EMA, IMF

RAW DATA - WILL BE SUPPLIED ON SALE DAY					
Scrotal Size	Weight	P8	Rib	EMA	IMF%

Purchaser: .....\$ .....



# WEEBOLLABOLLA SALE BULLS

## LOT 80 WEEBOLLABOLLA J431 (SR) (P)

BORN: 21/07/2013

COLOUR: ROAN

IDENT: AGFJ431

WEEBOLLABOLLA THEODORE T85 (SR) (P)

MARELLAN FAIR GO (SR) (P)

SIRE: WEEBOLLABOLLA CAMBRIDGE C3 (SR) (P)

DAM: WEEBOLLABOLLA E0813 (SR) (P)

WEEBOLLABOLLA WILMA W93 (SR) (P)

WEEBOLLABOLLA A1302 (SR) (P)

JULY 2015 PERFORMANCE HERDS AUSTRALIA BREEDPLAN														INDEX
GL	Birth Wt	200 D	400 D	600 D	MCW	MILK	Scrotal	CWT	EMA	RIB	RUMP	RBY%	IMF%	MSA-B2
	<b>+3.4</b>	<b>+29</b>	<b>+34</b>	<b>+45</b>	<b>+31</b>	<b>+4</b>	<b>+1.5</b>		<b>+2.7</b>	<b>-1.1</b>	<b>-1.6</b>	<b>+1.0</b>	<b>+0.4</b>	<b>+\$42</b>
	73%	70%	69%	70%	61%	47%	70%		47%	55%	55%	52%	46%	

Traits Observed: BWT, 200DW, 400DWx2, 600DW, SS, FAT, EMA, IMF

RAW DATA - WILL BE SUPPLIED ON SALE DAY					
Scrotal Size	Weight	P8	Rib	EMA	IMF%

Purchaser: .....\$ .....

## LOT 81 WEEBOLLABOLLA J27 (SR) (P)

BORN: 27/05/2013

COLOUR: RED

IDENT: AGFJ27

BROUGHTON PARK CANADIAN CHIEF (S)

YAMBURGAN LOCKYER C8 (SR) (P)

SIRE: BUNDALEER UNITED CHIEF U21 (SR) (P)

DAM: WEEBOLLABOLLA G204 (SR) (P)

BROUGHTON PARK ROSE 58 (S)

WEEBOLLABOLLA CARDINAL C129 (SR) (P)

JULY 2015 PERFORMANCE HERDS AUSTRALIA BREEDPLAN														INDEX
GL	Birth Wt	200 D	400 D	600 D	MCW	MILK	Scrotal	CWT	EMA	RIB	RUMP	RBY%	IMF%	MSA-B2
<b>-1.0</b>	<b>+1.9</b>	<b>+30</b>	<b>+39</b>	<b>+45</b>		<b>+8</b>	<b>+1.6</b>		<b>+3.8</b>	<b>-0.6</b>	<b>-0.5</b>	<b>+1.2</b>	<b>+0.4</b>	<b>+\$49</b>
52%	70%	68%	66%	68%		47%	67%		45%	54%	54%	52%	47%	

Traits Observed: BWT, 200DW, 400DW, 600DWx2, SS, FAT, EMA, IMF

RAW DATA - WILL BE SUPPLIED ON SALE DAY					
Scrotal Size	Weight	P8	Rib	EMA	IMF%

Purchaser: .....\$ .....

## LOT 82 WEEBOLLABOLLA J234 (SR) (P)

BORN: 5/09/2013

COLOUR: RLW

IDENT: AGFJ234

THE GROVE OSCAR A748 (SR) (P)

WEEBOLLABOLLA ALCAPONE A96 (SR) (P)

SIRE: YAMBURGAN OSSIE E93 (SR) (S)

DAM: WEEBOLLABOLLA E224 (SR) (P)

YAMBURGAN MARGARET 32ND (SR) (S)

WEEBOLLABOLLA CARDINAL C129 (SR) (P)

JULY 2015 PERFORMANCE HERDS AUSTRALIA BREEDPLAN														INDEX
GL	Birth Wt	200 D	400 D	600 D	MCW	MILK	Scrotal	CWT	EMA	RIB	RUMP	RBY%	IMF%	MSA-B2
	<b>+4.2</b>	<b>+34</b>	<b>+37</b>	<b>+50</b>	<b>+38</b>	<b>+8</b>	<b>+0.8</b>	<b>+33</b>	<b>+5.4</b>	<b>-1.9</b>	<b>-2.9</b>	<b>+2.7</b>	<b>-0.1</b>	<b>+\$40</b>
	74%	71%	70%	71%	62%	46%	72%	61%	50%	58%	58%	55%	51%	

Traits Observed: BWT, 200DW, 400DWx2, 600DW, SS, FAT, EMA, IMF

RAW DATA - WILL BE SUPPLIED ON SALE DAY					
Scrotal Size	Weight	P8	Rib	EMA	IMF%

Purchaser: .....\$ .....

## LOT 83 WEEBOLLABOLLA J220 (SR) (H)

BORN: 26/08/2013

COLOUR: RED

IDENT: AGFJ220

THE GROVE OSCAR A748 (SR) (P)

WEEBOLLABOLLA CENTURION C149 (SR) (P)

SIRE: YAMBURGAN OSSIE G10 (SR) (S)

DAM: WEEBOLLABOLLA F142 (SR) (H)

YAMBURGAN CLOUDY 493RD (SR) (S)

WEEBOLLABOLLA CLARE C62 (SR) (P)

JULY 2015 PERFORMANCE HERDS AUSTRALIA BREEDPLAN														INDEX
GL	Birth Wt	200 D	400 D	600 D	MCW	MILK	Scrotal	CWT	EMA	RIB	RUMP	RBY%	IMF%	MSA-B2
	<b>+4.1</b>	<b>+32</b>	<b>+36</b>	<b>+45</b>		<b>+3</b>	<b>+0.7</b>		<b>+4.6</b>	<b>-0.7</b>	<b>-0.6</b>	<b>+1.2</b>	<b>+0.5</b>	<b>+\$42</b>
	73%	70%	68%	69%		38%	70%		47%	56%	56%	53%	47%	

Traits Observed: BWT, 200DW, 400DWx2, 600DW, SS, FAT, EMA, IMF

RAW DATA - WILL BE SUPPLIED ON SALE DAY					
Scrotal Size	Weight	P8	Rib	EMA	IMF%

Purchaser: .....\$ .....

# WEEBOLLABOLLA SALE BULLS

## LOT 84 WEEBOLLABOLLA J508 (SR) (P)

BORN: 2/09/2013

COLOUR: RED

IDENT: AGFJ508

WEEBOLLABOLLA THEODORE T85 (SR) (P)

WEEBOLLABOLLA ANCHOR A7 (SR) (P)

SIRE: WEEBOLLABOLLA ERUDITE E14 (SR) (P)

DAM: WEEBOLLABOLLA F266 (SR) (P)

WEEBOLLABOLLA WEIGHTY Z99 (SR) (P)

WEEBOLLABOLLA FZ140 (SR) (H)

JULY 2015 PERFORMANCE HERDS AUSTRALIA BREEDPLAN														INDEX
GL	Birth Wt	200 D	400 D	600 D	MCW	MILK	Scrotal	CWT	EMA	RIB	RUMP	RBY%	IMF%	MSA-B2
	<b>+3.1</b> 73%	<b>+28</b> 70%	<b>+32</b> 68%	<b>+36</b> 69%		<b>+4</b> 44%	<b>+1.3</b> 48%		<b>+3.0</b> 47%	<b>+0.7</b> 56%	<b>+1.8</b> 56%	<b>-0.5</b> 53%	<b>+0.7</b> 49%	<b>+\$39</b>

Traits Observed: BWT, 200DW, 400DWx2, 600DW, SS, FAT, EMA, IMF

RAW DATA - WILL BE SUPPLIED ON SALE DAY					
Scrotal Size	Weight	P8	Rib	EMA	IMF%

Purchaser: .....\$ .....

## LOT 85 WEEBOLLABOLLA J11 (SR) (P)

BORN: 7/05/2013

COLOUR: RED

IDENT: AGFJ11

THE GROVE LOCKYER X857 (SR) (P)

WEEBOLLABOLLA WARATAH W26 (SR) (P)

SIRE: THE GROVE OSCAR A748 (SR) (P)

DAM: WEEBOLLABOLLA KYLIE Z2 (SR) (P)

THE GROVE DALE 39TH (SR) (P)

WEEBOLLABOLLA QUARTZ 2ND U77 (SR) (P)

JULY 2015 PERFORMANCE HERDS AUSTRALIA BREEDPLAN														INDEX
GL	Birth Wt	200 D	400 D	600 D	MCW	MILK	Scrotal	CWT	EMA	RIB	RUMP	RBY%	IMF%	MSA-B2
<b>-2.0</b> 50%	<b>+4.2</b> 62%	<b>+26</b> 70%	<b>+42</b> 65%	<b>+54</b> 65%		<b>+4</b> 57%	<b>+1.7</b> 57%		<b>+4.8</b> 49%	<b>-0.9</b> 54%	<b>-1.3</b> 54%	<b>+1.5</b> 53%	<b>+0.5</b> 52%	<b>+\$41</b>

Traits Observed: 200DW, 400DW, 600DWx2, SS, FAT, EMA, IMF

RAW DATA - WILL BE SUPPLIED ON SALE DAY					
Scrotal Size	Weight	P8	Rib	EMA	IMF%

Purchaser: .....\$ .....

## LOT 86 WEEBOLLABOLLA J13 (SR) (P)

BORN: 8/05/2013

COLOUR: RED

IDENT: AGFJ13

SHADYBROOK SCOTTY 83K (S)

NERO Y2K XPOSE X096 (SR) (P)

SIRE: BELMORE JACKAROO Z109 (SR) (P)

DAM: WEEBOLLABOLLA APPEAL A27 (SR) (P)

TREVINO ACTRESS 104TH (SR) (S)

WEEBOLLABOLLA VANITY V8 (SR) (P)

JULY 2015 PERFORMANCE HERDS AUSTRALIA BREEDPLAN														INDEX
GL	Birth Wt	200 D	400 D	600 D	MCW	MILK	Scrotal	CWT	EMA	RIB	RUMP	RBY%	IMF%	MSA-B2
	<b>+2.7</b> 58%	<b>+28</b> 59%	<b>+38</b> 57%	<b>+48</b> 58%		<b>+2</b> 54%	<b>+0.4</b> 52%		<b>+5.1</b> 38%	<b>-0.7</b> 47%	<b>-0.8</b> 48%	<b>+1.6</b> 47%	<b>+0.3</b> 43%	<b>+\$52</b>

Traits Observed: 400DW, 600DWx2, SS, FAT, EMA, IMF

RAW DATA - WILL BE SUPPLIED ON SALE DAY					
Scrotal Size	Weight	P8	Rib	EMA	IMF%

Purchaser: .....\$ .....

## LOT 87 WEEBOLLABOLLA J313 (SR) (P)

BORN: 30/06/2013

COLOUR: R&W

IDENT: AGFJ313

WEEBOLLABOLLA IMPACT Y156 (SR) (P)

MARELLAN ELMO (SR) (P)

SIRE: WEEBOLLABOLLA BRAVEHEART B121 (SR) (P)

DAM: WEEBOLLABOLLA D511 (SR) (P)

WEEBOLLABOLLA DAZZLER U138 (SR) (P)

WEEBOLLABOLLA Z506 (SR) (P)

JULY 2015 PERFORMANCE HERDS AUSTRALIA BREEDPLAN														INDEX
GL	Birth Wt	200 D	400 D	600 D	MCW	MILK	Scrotal	CWT	EMA	RIB	RUMP	RBY%	IMF%	MSA-B2
	<b>+5.5</b> 75%	<b>+41</b> 72%	<b>+55</b> 69%	<b>+60</b> 70%		<b>+5</b> 46%	<b>+2.6</b> 72%		<b>+5.3</b> 47%	<b>-1.6</b> 54%	<b>-2.3</b> 55%	<b>+2.3</b> 51%	<b>+0.0</b> 44%	<b>+\$46</b>

Traits Observed: BWT, 200DW, 400DWx2, 600DW, SS, FAT, EMA, IMF

RAW DATA - WILL BE SUPPLIED ON SALE DAY					
Scrotal Size	Weight	P8	Rib	EMA	IMF%

Purchaser: .....\$ .....

# WEEBOLLABOLLA SALE BULLS

## LOT 88 WEEBOLLABOLLA J4 (SR) (P)

BORN: 5/05/2013

COLOUR: ROAN

IDENT: AGFJ4

THE GROVE LOCKYER X857 (SR) (P)

WEEBOLLABOLLA NEEWARRA N83 (SR) (P)

SIRE: THE GROVE OSCAR A748 (SR) (P)

DAM: WEEBOLLABOLLA NINDETHANA Z169 (SR) (P)

THE GROVE DALE 39TH (SR) (P)

WEEBOLLABOLLA NINDETHANA (SR) (P)

JULY 2015 PERFORMANCE HERDS AUSTRALIA BREEDPLAN														INDEX
GL	Birth Wt	200 D	400 D	600 D	MCW	MILK	Scrotal	CWT	EMA	RIB	RUMP	RBY%	IMF%	MSA-B2
-2.6	+2.9	+22	+30	+46	+55	+4	+0.7	+28	+5.2	-0.6	-1.2	+1.2	+0.5	+\$38
50%	62%	69%	67%	67%	60%	56%	69%	61%	54%	57%	58%	56%	53%	

Traits Observed: 200DW, 400DW, 600DWx2, SS, FAT, EMA, IMF

RAW DATA - WILL BE SUPPLIED ON SALE DAY					
Scrotal Size	Weight	P8	Rib	EMA	IMF%

Purchaser: .....\$ .....

## LOT 89 WEEBOLLABOLLA J8 (SR) (P)

BORN: 6/05/2013

COLOUR: RED

IDENT: AGFJ8

THE GROVE LOCKYER X857 (SR) (P)

WEEBOLLABOLLA WARATAH W26 (SR) (P)

SIRE: THE GROVE OSCAR A748 (SR) (P)

DAM: WEEBOLLABOLLA KYLIE Z2 (SR) (P)

THE GROVE DALE 39TH (SR) (P)

WEEBOLLABOLLA QUARTZ 2ND U77 (SR) (P)

JULY 2015 PERFORMANCE HERDS AUSTRALIA BREEDPLAN														INDEX
GL	Birth Wt	200 D	400 D	600 D	MCW	MILK	Scrotal	CWT	EMA	RIB	RUMP	RBY%	IMF%	MSA-B2
-2.1	+4.6	+31	+45	+56	+73	+4	+1.6	+37	+4.7	-0.7	-1.0	+1.5	+0.6	+\$43
50%	63%	71%	70%	69%	62%	57%	70%	63%	54%	59%	60%	58%	55%	

Traits Observed: 200DW, 400DW, 600DWx2, SS, FAT, EMA, IMF

RAW DATA - WILL BE SUPPLIED ON SALE DAY					
Scrotal Size	Weight	P8	Rib	EMA	IMF%

Purchaser: .....\$ .....

## LOT 90 WEEBOLLABOLLA J189 (SR) (P)

BORN: 7/08/2013

COLOUR: ROAN

IDENT: AGFJ189

WEEBOLLABOLLA IMPACT Y156 (SR) (P)

THE GROVE LAWMAN X264 (SR) (P)

SIRE: WEEBOLLABOLLA CENTURION C149 (SR) (P)

DAM: WEEBOLLABOLLA BRACELET B36 (SR) (P)

WEEBOLLABOLLA STAIRCASE Z10 (SR) (P)

WEEBOLLABOLLA UNDERNEATH U89 (SR) (P)

JULY 2015 PERFORMANCE HERDS AUSTRALIA BREEDPLAN														INDEX
GL	Birth Wt	200 D	400 D	600 D	MCW	MILK	Scrotal	CWT	EMA	RIB	RUMP	RBY%	IMF%	MSA-B2
+0.6	+3.6	+22	+29	+42	+42	+5	+1.1	+31	+5.2	-0.1	+0.4	+0.9	+0.4	+\$38
52%	74%	73%	71%	72%	63%	54%	73%	62%	52%	58%	59%	55%	51%	

Traits Observed: BWT, 200DW, 400DWx2, 600DW, SS, FAT, EMA, IMF

RAW DATA - WILL BE SUPPLIED ON SALE DAY					
Scrotal Size	Weight	P8	Rib	EMA	IMF%

Purchaser: .....\$ .....





# LOTS 91 - 100 WEEBOLLABOLLA COMMERCIAL BULLS



## PHA REGISTERS

PHA maintains two electronic registers to document the identity, heritage, pedigree and phenotype of each animal, a Shorthorn purebred register for animals with a verifiable four-generation pedigree of registered Shorthorn genetics and a Durham composite register for animals with a four-generation pedigree containing more than one breed.

Data submitted by PHA herds is verified, corrected and analysed in a single, comparative, monthly BREEDPLAN genetic evaluation to update Estimated Breeding Values for all animals recorded on the data base, irrespective of register or date of birth

Whilst a single analysis of ALL data is conducted, EBV's can only be compared if animals are of identical breed composition.

## PHA SUFFIXES

The *HORN STATUS* of an animal is denoted by one of the following suffixes:

- (P) for natural poll animals
- (H) for dehorned animals
- (S) for scurred animals.

The *REGISTER* assigned an animal is denoted by the following suffixes:

- (DR) the register assigned animals accepted as having more than one breed content in a four-generation pedigree.

Within the Shorthorn (SR) register a *GRADE* is assigned to animals with less than four generations of verifiable pedigree, e.g. Register: Shorthorn (Grade 2)

- (Gr5) Grade 5 ... Pure commercial Shorthorn
- (Gr4) Grade 4 ... Pure Shorthorn with ONE generation of (registered) verifiable pedigree
- (Gr3) Grade 3 ... Pure Shorthorn with TWO generations of (registered) verifiable pedigree.
- (Gr2) Grade 2 ... Pure Shorthorn with THREE generations of (registered) verifiable pedigree

**Animals backed by four generations of (registered) verifiable pedigree are not assigned a grade.**

Within the Durham (DR) register all animals are assigned a specific BREED CONTENT expressed as a percentage, e.g. Register: Durham: (Shorthorn 50% Senepol 25% Droughtmaster 25%)

Detailed Pedigree and Breeding Information is available at [www.performanceherds.com.au](http://www.performanceherds.com.au) or at the BREEPLAN search facility [www.breedplan.com.au](http://www.breedplan.com.au) (database search).

# PERFORMANCE HERDS AUSTRALIA BREEDPLAN

## UNDERSTANDING EBVS, ACCURACY & SELECTION INDEXES

The BREEDPLAN figures in this year's Weebollabolla sale catalogue have been collated under the Performance Herds Australia - PHA banner. These figures are sourced from a different data base than those used to collate Shorthorn Beef figures thus making it impossible to directly compare the two. However how you use either set of figures remains the same as you find the individual traits you wish to improve on or you can use the indexes to drive genetic gain within your herd.

PHA is a group of Shorthorn breeders who have the same mindset directed towards genetic gain. With all members within the group having worked very closely with the Durham R&D programme it became apparent that with integrity of data going in came a much more robust and predictable set of figures for a particular animal. In order to achieve such an outcome this group of breeders signed a Memorandum of Understanding which outlined how, when, where and why data was to be collected and recorded. This will ensure integrity of our data input across the group and together with a real emphasis on actual carcass data collection it will result in a really robust and repeatable set of figures for all to use.

### EBVs

An animal's breeding value is its genetic merit, half of which will be passed on to its progeny. While we will never know the exact breeding value, for performance traits it is possible to make good estimates. These estimates are called Estimated Breeding Values (EBVs).

In the calculation of EBVs, the performance of individual animals within a contemporary group is directly compared to the average of other animals in that group. A contemporary group consists of animals of the same sex and age class within a herd, run under the same management conditions and treated equally. Indirect comparisons are made between animals reared in different contemporary groups, through the use of pedigree links between the groups.

EBVs are expressed in the units of measurement for each particular trait. They are shown as +ive or -ive differences between an individual animal's genetics difference and the genetic base to which the animal is compared. For example, a bull with an EBV of +50 kg for 600-Day Weight is estimated to have genetic merit 50 kg above the breed base of 0 kg. Since the breed base is set to an historical benchmark, the average EBVs of animals in each year drop has changed over time as a result of genetic progress within the breed.

The absolute value of any EBV is not critical, but rather the differences in EBVs between animals. Particular animals should be viewed as being "above or below breed average" for a particular trait.

Whilst EBVs provide the best basis for the comparison of the genetic merit of animals reared in different environments and management conditions, they can only be used to compare animals analysed within the same analysis. Consequently, Performance Herds Australia BREEDPLAN EBVs cannot be validly compared with EBVs for any other breed.

Although EBVs provide an estimate of an animal's genetic merit for a range of production traits, they do not provide information for all of the traits that must be considered during selection of functional animals. In all situations, EBVs should be used in conjunction with visual assessment for other traits of importance (such as structural soundness, temperament, fertility etc). A recommended practice is to firstly select breeding stock based on EBVs and to then select from this group to ensure that the final selections are otherwise acceptable.

EBVs are published for a range of traits covering fertility, calving ease, milking ability, growth, carcass merit and docility. When using EBVs to assist in selection decisions it is important to achieve a balance between the different groups of traits and to place emphasis

on those traits that are important to the particular herd, markets and environment. One of the advantages of having a comprehensive range of EBVs is that it is possible to avoid extremes in particular traits and select for animals with balanced overall performance.

**Birth Weight EBV (kg)** is based on the measured birth weight of progeny, adjusted for dam age. The lower the value the lighter the calf at birth and the lower the likelihood of a difficult birth. This is particularly important when selecting sires for use over heifers.

**200-Day Growth EBV (kg)** is calculated from the weight of progeny taken between 80 and 300 days of age. Values are adjusted to 200 days and for age of dam. This EBV is the best single estimate of an animal's genetic merit for growth to early ages.

**400-Day Weight EBV (kg)** is calculated from the weight of progeny taken between 301 and 500 days of age, adjusted to 400 days and for age of dam. This EBV is the best single estimate of an animal's genetic merit for yearling weight.

**600-Day Weight EBV (kg)** is calculated from the weight of progeny taken between 501 and 900 days of age, adjusted to 600 days and for age of dam. This EBV is the best single estimate of an animal's genetic merit for growth beyond yearling age.

**Mature Cow Weight EBV (kg)** is based on the cow weight when the calf is weighed for weaning, adjusted to 5 years of age. This EBV is an estimate of the genetic difference in cow weight at 5 years of age and is an indicator of growth at later ages and potential feed maintenance requirements of the females in the breeding herd. Steer breeders wishing to grow animals out to a larger weight may also use the Mature Cow Weight EBV.

**Milk EBV (kg)** is an estimate of an animal's milking ability. For sires, this EBV indicates the effect of the daughter's milking ability, inherited from the sire, on the 200-day weights of her calves. For dams, it indicates her milking ability.

**Scrotal Size EBV (cm)** is calculated from the circumference of the scrotum taken between 300 and 700 days of age and adjusted to 400 days of age. This EBV is an estimate of an animal's genetic merit for scrotal size. There is also a small negative correlation with age of puberty in female progeny and therefore selection for increased scrotal size will result in reduced age at calving of female progeny.

**Carcass Weight EBV (kg)** is based on abattoir carcass records and is an indicator of the genetic differences in carcass weight at the standard age of 650 days.

**Eye Muscle Area EBV (sq cm)** is calculated from measurements from live animal ultrasound scans and from abattoir carcass data, adjusted to a standard 300 kg carcass. This EBV estimates genetic differences in eye muscle area at the 12/13th rib site of a 300 kg dressed carcass. More positive EBVs indicate better muscling on animals. Sires with relatively higher Eye Muscle Area EBVs are expected to produce better muscled and higher percentage yielding progeny at the same carcass weight than will sires with lower Eye Muscle Area EBVs.

**Rib Fat and Rump Fat EBVs (mm)** are calculated from measurements of subcutaneous fat depth at the 12/13 rib site and the P8 rump site (from live animal ultrasound scans and from abattoir carcasses) and are adjusted to a standard 300 kg carcass. These EBVs are indicators of the genetic differences in fat distribution on a standard 300 kg carcass. Sires with low, or negative, fat EBVs are expected to produce leaner progeny at any particular carcass weight than will sires with higher EBVs.

**Retail Beef Yield EBV (%)** indicates genetic differences between animals for retail yield percentage in a standard 300 kg carcass. Sires with larger EBVs are expected to produce progeny with higher yielding carcasses.

**Intramuscular Fat EBV (%)** is an estimate of the genetic difference in the percentage of intramuscular fat (marbling) at the 12/13th rib site in a 300 kg carcass. Depending on market targets, larger more positive values are generally more favourable.

## SELECTION INDEX

There is currently one standard selection index calculated for Performance Herds Australia animals. This is the MSA-B2 Index.

Index values are reported as EBVs, in units of relative earning capacity (\$'s) for a given market. They reflect both the short-term profit generated by a sire through the sale of his progeny, and the longer-term profit generated by his daughters in a self-replacing cow herd. A selection index combines the EBVs with economic information (costs and returns) for specific market and production systems to rank animals based on relative profit values. Note that different types of animals can give similar profit values, so consideration should be given to both the index and the component EBVs when selecting animals for a particular production system. More information is available on selecting animals using a selection index.

The Index values are derived using BreedObject technology. More information is available from the BreedObject web site.

**MSA-B2 Index (\$)** Estimates the genetic differences between animals in net profitability per cow joined for an example commercial herd in Cool Temperate/Mediterranean and Warm Temperate / Grassland environments (e.g. Shorthorn, Angus or Hereford cows)

targeting the production of steers for the heavy domestic MSA food service market and the Japanese B2 export market. Steers enter the feedlot at 425 kg and are subsequently feed for 450 days. Steers are pasture grown to feedlot entry at 460kgs lwt at 16 mths then grain finished for 120 days to be slaughtered at 20 mths weighing 675kgs lwt with a cwt of 360kgs. They are slaughtered at 750 kg live weight (450 kg HSCW) at 30 months of age. Select heifers are retained for breeding and the balance grass fattened to MSA slaughter at 540kgs lwt and 290kgs cwt.

Note that \$Index values for individual animals are sensitive to the assumptions used in the BreedObject analysis to calculate the selection index. More information is available on the weightings used in the Performance Herds Australia Index.

## ACCURACY

Accuracy (%) is based on the amount of performance information available on the animal and its close relatives - particularly the number of progeny analysed. Accuracy is also based on the heritability of the trait and the genetic correlations with other recorded traits. Hence accuracy indicates the "confidence level" of the EBV. The higher the accuracy value the lower the likelihood of change in the animal's EBV as more information is analysed for that animal or its relatives. Even though an EBV with a low accuracy may change in the future, it is still the best estimate of an animal's genetic merit for that trait. As more information becomes available, an EBV is just as likely to increase in value, as it is to decrease.

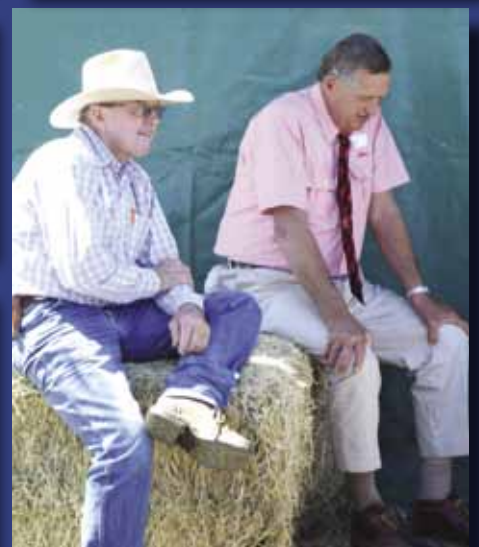
### AVERAGE EBVS FOR THE 2013 'J' CALVES ANALYSED IN THE JULY 2015 PERFORMANCE HERDS AUSTRALIA BREEDPLAN

	GL	Birth Weight	200D Weight	400 Weight	600 Day Weight	Mature Cow Wt	MILK	SS	Carcass Wt	EMA	RIB Fat	RUMP Fat	RBV %	IMF %	MSA B2 \$
<b>Average</b>	<b>-1.1</b>	<b>+2.8</b>	<b>+24</b>	<b>+33</b>	<b>+43</b>	<b>+40</b>	<b>+5</b>	<b>+1.4</b>	<b>+31</b>	<b>+3.8</b>	<b>-0.9</b>	<b>-1.0</b>	<b>+1.1</b>	<b>+0.5</b>	<b>+42</b>

### PERFORMANCE HERDS AUSTRALIA PERCENTILE BANDS FOR 2013 BORN CALVES

	GL	Birth Weight	200D Weight	400 Weight	600 Day Weight	Mature Cow Wt	MILK	SS	Carcass Wt	EMA	RIB Fat	RUMP Fat	RBV %	IMF %	MSA B2 \$
Top Value	-4.2	-3.6	+50	+68	+95	+97	+13	+3.5	+58	+7.2	+2.8	+6.4	+3.5	+1.9	+81
Top 1%	-3.2	-0.2	+40	+55	+74	+83	+10	+2.7	+51	+6.2	+1.3	+2.1	+2.9	+1.5	+66
Top 5%	-2.4	+0.9	+34	+48	+64	+70	+9	+2.2	+44	+5.5	+0.5	+0.9	+2.4	+1.1	+59
Top 10%	-2.1	+1.3	+32	+45	+59	+61	+9	+2.0	+42	+5.2	+0.1	+0.3	+2.1	+1.0	+55
Top 15%	-1.9	+1.7	+30	+43	+56	+58	+9	+1.9	+39	+4.9	-0.1	+0.1	+1.9	+0.9	+51
Top 20%	-1.8	+1.9	+29	+41	+53	+54	+8	+1.7	+38	+4.7	-0.2	-0.2	+1.7	+0.8	+50
Top 25%	-1.6	+2.1	+28	+39	+51	+51	+7	+1.7	+36	+4.5	-0.4	-0.3	+1.6	+0.8	+48
Top 30%	-1.5	+2.3	+27	+38	+49	+48	+7	+1.6	+35	+4.3	-0.5	-0.5	+1.5	+0.7	+47
Top 35%	-1.4	+2.4	+26	+37	+47	+46	+6	+1.6	+34	+4.2	-0.6	-0.6	+1.4	+0.6	+46
Top 40%	-1.3	+2.6	+26	+36	+45	+43	+6	+1.5	+33	+4.1	-0.7	-0.7	+1.3	+0.6	+44
Top 45%	-1.2	+2.7	+25	+34	+44	+41	+6	+1.5	+32	+3.9	-0.8	-0.9	+1.2	+0.6	+43
Top 50%	-1.1	+2.8	+24	+33	+42	+39	+5	+1.4	+31	+3.8	-0.9	-1.0	+1.0	+0.5	+42

# 2014 WEEBOLLABOLLA BULL SALE







**Weebollabolla Infused Restocker Sale**  
**Friday 11th September 2015 Auctions Plus 10am**