



SPRING INTO TE MANIA ANGUS **56 BULLS**

**TE MANIA ANGUS
SOUTHERN SPRING BULL SALE**
ON PROPERTY, MORTLAKE

FRIDAY 11 SEPTEMBER
SALE STARTS 12 NOON



TE MANIA ANGUS
BREEDING BETTER BEEF



Hamish & Amanda McFarlane

T: 03 5264 1606
F: 03 5264 1407
M: 0427 641 606
E: hamish@temania.com.au

Tom & Lucy Gubbins

T: 03 5599 7240
Tom: 0429 952 197
Lucy: 0409 952 197
E: tom@temania.com.au

Andrew & Mary Gubbins

T: 03 5254 2233
M: 0488 542 323
E: andrewmary@temania.com.au



TE MANIA ANGUS
BREEDING BETTER BEEF

The sale will be interfaced with AuctionsPlus and will be conducted live on line in real time. For those not able to attend the sale, you must register within 24 hours prior to the sale in order to bid. For further information contact: Peter Rollason on 0419 600 323 or peter.rollason@elders.com.au
www.auctionsplus.com.au



EU

www.temania.com.au



**You
Tube**

WELCOME TO OUR 2015 SOUTHERN SPRING BULL SALE

We are very excited to be able to offer our buyers access to these outstanding two year old bulls in this southern spring sale.

These bulls impress as a particularly even line-up of quiet, high growth, high quality carcass bulls, bred and reared in large mobs, in order to deliver profitability and efficiency to cattle breeders under diverse Australian conditions.

Bulls by some of our own nationally and internationally recognised sires such as Tuwharetoa Regent plus sons and grandsons of Te Mania Berkley B1.

New up and coming sires such as Te Mania Gaskin G555, Te Mania General G429, Te Mania Flame F565 and Te Mania Fitzpatrick F528 are also represented.

The influence of these cutting-edge genetics in our catalogue is reflected throughout all lots.

Temperament is integral to Te Mania Angus genetics and its management program.

We breed bulls with docility and handle all of them using Low Stress Stock Handling.

All staff have been extensively trained in its principles – which creates a quieter and happier animal (not to mention the handler).

At Te Mania Angus it is our aim to deliver seedstock breeders next-generation sires and commercial producers access to the country's leading genetics at commercially-affordable prices.

We look forward to seeing you on sale day and also remind you that the sale will be conducted live, online on AuctionsPlus, from 12 noon.

HOW SALE DAY WORKS

All the sale bulls will be penned and available for viewing from 8.30 am on sale day.

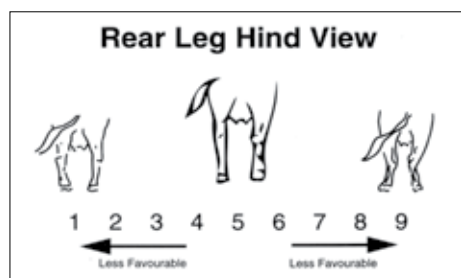
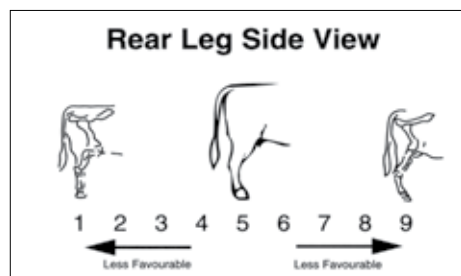
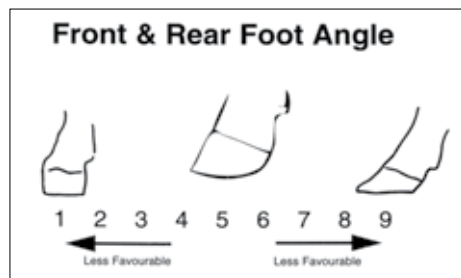
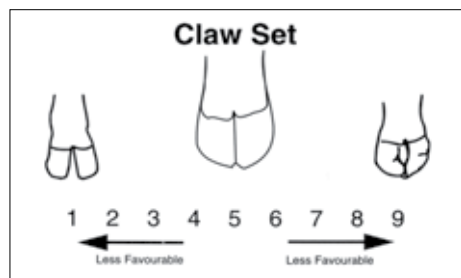
The bulls will be sold by open-cry auction, with video footage displayed on large, closed-circuit screens inside the woolshed.

Buyers have the option of bidding from the woolshed, from the bullpens or through AuctionsPlus.

BEEF CLASS STRUCTURAL ASSESSMENT SYSTEM

Structural problems in cattle have a substantial effect on both the reproductive and growth performance of a beef herd. It is widely recognized that structural problems in sires have detrimental effects on conception rates, calving patterns and thus profitability.

By Jim Green & Liam Cardile of BEEFXCEL



Similarly, females with inadequate structural characteristics are more prone to weaning lighter calves or conceiving later in the breeding season than their more functional counterparts. These structural problems are filtered through the supply chain resulting in reduced income for the producer, feedlot and thus reducing the overall productivity of the Australian Beef Industry.

The current trend for improving consistency and quality of product has shifted producers' focus, towards selecting seedstock on carcass and growth genetic traits (EBV's). Whilst, this selection has been, and will continue to be pivotal in developing the Australian beef industry, we must not forget the fundamentals of livestock breeding.

The Beef Class Structural Assessment System was designed by the MLA, the BIA and several breed societies to address structural problems in the beef industry. Detailed analysis of three thousand animals in genetically linked herds indicated that structural characteristics such as leg and foot structure were moderately to highly heritable. BEEFXCEL now services many seedstock operations in their selection and grading of stock using the Beef Class Structural Assessment System.

Te Mania Angus is continually expanding their structural assessment program in order to optimise soundness and performance in their stock. The program involves an independent assessor from BEEFXCEL analysing the structural composition of the herd on an individual basis. The program used at Te Mania comprises of:

- An annual assessment of all sale bulls;
- An annual assessment of all breeding females and donor cows
- All animals deemed inadequate are culled.

AN EXPLANATION OF THE BEEF CLASS STRUCTURAL ASSESSMENT SYSTEM

The Beef Class Structural Assessment System uses a 1-9 scoring system for feet and leg structure; • A score of 5 is ideal;

- A score of 4 or 6 shows slight variation from ideal, but this includes most sound animals. An animal scoring 4 or 6 would be acceptable in any breeding program;
- A score of 3 or 7 shows greater variation but would be acceptable in most commercial programs. However, seedstock producers should be vigilant and understand that this score indicates greater variation from ideal;
- A score of 2 or 8 are low scoring animals and should be looked at cautiously and inspected very closely before purchasing;
- A score of 1 or 9 should not be catalogued and are considered immediate culls.

**For more information please contact:
Jim Green 0402 003 137 or
Liam Cardile 0409 572 570**



Jim Green



Liam Cardile

SALE INFORMATION

THE TE MANIA ANGUS GUARANTEE

Any Te Mania Angus bull that proves to be structurally unsound, infertile or incapable of service is guaranteed for up to three years from date of sale.

Under these circumstances Te Mania Angus will:

- 1) Replace the bull with a satisfactory substitute if available, or
- 2) Issue a refund equal to the value remaining *see below, less the salvage value.

*The guarantee covers the purchase value of the bull, without interest, cost and damages. The guarantee shall apply providing the bull's incapacity is not caused by injury or disease contracted since leaving Te Mania, the value remaining is calculated on the basis that the guarantee is reduced by one third of the purchase price for each year of service from the sale date. A veterinary certificate must be supplied by the purchaser on request.

If any bull that is purchased does not possess a reasonable fertility, although not totally infertile, any dispute that may arise shall be settled by an arbitrator appointed by the auctioneers and must be lodged within 12 calendar months from date of sale.

We recommend that all purchasers discuss injury insurance of their bulls at the sale with Elders Ltd or their Agent. This guarantee is in addition to the normal terms and conditions governing auction sales.

HEALTH TREATMENTS

All the sale bulls are vaccinated for Vibriosis and Pestivirus (BVDV) prior to sale. We recommend annual boosters for both these diseases are given to all bulls.

All of our bulls receive 7 in 1 vaccinations at three-months of age, six weeks later and a booster as a yearling. They are drenched at weaning and periodically according to worm counts.

All Te Mania Angus bulls are examined by a veterinarian prior to sale day which includes palpation of the sexual anatomy and the circumference of the testicles. The jaw is checked for correct bite.

The Te Mania Angus herd is Monitored Negative Two (MN2) Status for Johnes Disease. Certificate Number is VC100.

GENETIC DISORDERS

ALL OUR SALE BULLS ARE TESTED FREE AND/OR PEDIGREE FREE OF:

Arthrogryposis Multiplex (AM), Neuropathic Hydrocephalus (NH) and Contractural Arachnodactyly (CA), formerly known as Fawn Calf Syndrome.

Some sale bulls carry the Developmental Duplications (DD) recessive gene, please refer to each lot for notification.

FREIGHT ASSISTANCE

Conditions apply, turn to page 4 for details.

56 BULLS SOUTHERN SPRING BULL SALE

Friday 11 September 2015
On-Property Mortlake 12 noon

CATERING

Morning tea and lunch will be provided at the sale.

PRE SALE INSPECTION

Bulls will be yarded by 7.30 am on the morning of the sale. Inspections are welcome any other time by arrangement.

REBATES

All purchasers will be asked to nominate a settling agent and a 3% rebate will be paid to all settling agents who settle within 7 days of the invoice being received.

GST

Bulls will be sold GST exclusive ie. If the bull is knocked down for \$4,000, you will be charged \$4,400.

AUCTIONSPLUS

The sale is interfaced with AuctionsPlus and will be conducted live on line in real time. For those not able to attend the sale, you must register within 24 hours prior to the sale in order to bid.

For further information contact:

Peter Rollason on 0419 600 323 or
peter.rollason@elders.com.au
www.auctionsplus.com.au



auctionsplus
agricultural auctions at a click.

SELLING AGENTS



Ross Milne: 0408 057 558
Clarke Roycroft: 0409 677 281
Elders Camperdown office: 03 5593 1822

Auctioneer: Ross Milne
www.temaniacom.au

GETTING THERE

Te Mania Angus is 10 minutes from Mortlake in Western Victoria (see the map on the inside back page)

Mortlake is on the Hamilton Highway, between Geelong and Hamilton.

Approximate travel times

From Melbourne	3 hours
From Geelong	2 hours
From Hamilton	1 hour
From Warrnambool	30 mins

Please note: sale day entrance from Reichmans Lane via rear entrance, please do not enter from Connewarren Lane

Charter flights and transfers

Please contact Te Mania Angus to arrange a group booking, or transfers to Te Mania Angus.

Charter flights are available through Sharp Airlines or Ph 1300 55 66 94 to Warrnambool and Mortlake

ACCOMMODATION

Mortlake

The Stables Motel, 128 Dunlop Street, Mortlake, Ph: 03 5599 2019

Ronolea Gardens Bed & Breakfast, 20 Hyland St, Mortlake, Ph: 0427 153 692

Camperdown

(Distance from Mortlake - 45 kms)

The Camperdown Mill, (4.5 star) 3 - 5 Curdie Street, Camperdown, Ph: 03 5593 2996

Manifold Motor Inn, 295 Manifold Street, Camperdown, Ph: 03 5593 2666

Cascade Motel (3.5 star), 311 Princes Highway, Camperdown, Ph: 03 5593 1144

Timboon House & Stables B&B, 320 Old Geelong Road, Camperdown, Ph: 03 5593 1003

Warrnambool

(Distance from Mortlake - 55kms)

Mantra Deep Blue, (4 star) 16 Pertobe Road, Warrnambool. Ph: 03 5559 2000

Comfort Inn On Raglan, (4 star), 349 Raglan Parade, Warrnambool, Ph: 03 5562 2755

Olde Maritime Motor Inn, (3.5 star), Cnr Banyan & Merri Street, Warrnambool, Ph: 03 5561 1415

Colonial Village Motel, 31 Mortlake Rd Hopkins Hwy Warrnambool, Ph: 03 5562 1455

Hopkins House Motel, Cnr Mortlake Rd & Whites Rd, Warrnambool, Ph: 03 5561 6630

Hotel Warrnambool, Cnr Koroit & Kepler Streets, Warrnambool, Ph 03 5562 2377

FREIGHT ASSISTANCE

Te Mania Angus will provide purchasers from:

VICTORIA

A freight free service direct to Sale and Mansfield, beyond these destinations will be the purchaser's responsibility.

SOUTH AUSTRALIA, WESTERN AUSTRALIA & NORTHERN TERRITORY

A freight free service to Lucindale, South Australia, via major towns on a direct route. All onward freight arrangements for state and interstate destinations from those mentioned above will be the responsibility of the purchaser.

NEW SOUTH WALES & QUEENSLAND

A freight free service between Mortlake, Victoria and Roma, Queensland and through Walgett, NSW, and en route via Dubbo. Onward freight arrangements from Dubbo or intermediate points will be the purchaser's responsibility.

TASMANIA, KING & FLINDERS ISLANDS

Freight assistance of \$200 per bull purchased.

CONDITIONS

To make use of this offer and service, it is essential purchasers notify Te Mania Angus if they wish to use this service before making any other freight arrangements.

This service cannot be made available to purchasers who have already contracted for freight before talking to Te Mania Angus. All other destinations are arranged at low cost to the purchaser.

CARRIERS

Dick Smith Transport of Dubbo have been invited to attend the sale to coordinate the delivery of stock with the assistance of our Colac based carriers, Kent's Transport.

They can be contacted on:
Dick Smith Transport
02 6882 2463 or 0428 636 236 or
Kent's Transport
03 5233 1306 or 0418 520 721.

**Please note freight of any females purchased will be at the cost of the purchaser.*

DICK SMITH TRANSPORT STUD STOCK TRANSPORT AUSTRALIA WIDE

Dick Smith Transport Pty Ltd Dubbo New South Wales
ABN: 12 003 932 358

Ph: 02 6882 2463

Fax: 02 6884 2246 Email: dst@hwy.com.au
Mobile: Stephen 0428 636236

www.dicksmithtransport.com.au





YOUR NEW BULL, HIS PAST AND FUTURE

The calves are weaned at four months of age. Early weaning was introduced a number of years ago to enhance rumen function and to allow the females a better run through the Autumn and winter.

At Te Mania Angus all calves are weighed and tagged with an NLIS tag and stud tag on the day they are born. They are weighed again at weaning and at 400 days, when they are ultrasound scanned for marbling, fat cover and eye muscle area. Testicle measurements are taken on the bull calves. Heifers are weighed again at 600 days and all this data is submitted to Breedplan.

Cows are weighed at weaning to contribute to the Mature Cow Weight EBV.

All the cowherd mating details are recorded with Group Breedplan, which calculates a gestation length EBV. Short gestation length is a crucial EBV to use along with Birth Weight when selecting young bulls to use over heifers.

All the bulls receive 7 in 1 vaccinations at three-months of age, six weeks later and a booster as a yearling. They are drenched at weaning and periodically according to worm counts. They will also receive a drench before leaving the property. All Te Mania Angus bulls are examined by a veterinarian immediately prior to sale day. This examination includes palpation of the sexual anatomy and measurements of the circumference of the testicles.

Pestivirus (also known as BVDV) is widespread in cattle herds worldwide. Te Mania Angus has taken three important steps to protect our clients:

- Cattle are all Ear notch tested before sale to make sure they are not PI

- A wide scale Ear notch testing/eradication program has been carried out – we believe Te Mania has no PI animals!

- Bulls are Vaccinated prior to sale so they are protected in the event they come in contact with the virus after leaving Te Mania.

For information on BVDV go to www.temaniacom.au

This is in line with world's best practice, and provides the highest level of protection possible against the terrible losses that Pestivirus can sometimes cause.

Structural assessments are carried out by Jim Green and are provided for each bull throughout the catalogue. This ensures that any bulls not meeting our uncompromising standards for structure are culled by an independent assessor.

When a bull leaves Te Mania Angus, he is leaving the security of a large mob and will arrive at unfamiliar territory at your property. If you can't put him into the bull mob straight away, unload him and make sure he has a steer or cow as a companion.

A young bull can move in with older bulls and settle in well, but remember, being the youngest he will get the last of the feed available because of the pecking order. The paddock needs to be reasonably large so he can keep away from the others and find adequate feed.

Young bulls are still growing fast and need enough feed to maintain their growth pattern and to be able to settle the cows quickly and efficiently.

Te Mania Angus bulls are accustomed to being handled by stockmen on motorbikes and with dogs. Most of the fences are electrified and the bulls treat them with respect. Always be considerate to your bull

and handle him with respect and kindness. You will find you will receive these acts of respect back from him.

7 IN 1 VACCINATION

We recommend bulls be given a 7 in 1 vaccination annually, 2 to 4 weeks prior to joining.

VIBRIOSIS VACCINATION

Vibriosis is a common cause of infertility and is transmitted by bulls from one female to another. It is easily prevented by vaccination. Te Mania sale bulls have been given their primer and booster shots. For future years we recommend your bull be given an annual booster 4 to 6 weeks prior to joining.

BULL:COW RATIO

Under reasonable paddock conditions, a rising 2 year old bull should handle 40 empty cows on his own. An older bull can probably handle slightly more.

A synchronized AI program can decrease the number of bulls needed, because cows become pregnant to AI, but be aware that if the returns are returning over one week rather than three, then this will increase your bull requirement. Please contact Te Mania Angus for further clarification if required.

BEFORE PUTTING THE BULL OUT

Before mating, cows should be seen cycling in groups with male calves also hanging around. The cows must be on a rising plane of nutrition, before you put the bull out, this ensures they have the optimum chance of cycling.

OBSERVING THE BULL

A bull is most likely to develop a condition or injury that causes infertility AFTER THE JOINING PERIOD HAS STARTED. It is vital that you monitor your bull at least twice weekly to ensure that he is able to mount cows and that he looks physically normal and is not lame.

Towards the end of the mating period, you should spend some time watching the cows to make sure that large numbers of cows are not cycling. Set aside half an hour one afternoon when the cows are at rest to make sure that most of the cycling activity has stopped, and give yourself some peace of mind! Writing down the cows number at service and observing them 21 days later is the most thorough infertility check.

AFTER MATING SEASON

When the season is finished, the bull should be drenched and put away on good feed. Adequate feed will help stop fighting and help the bulls settle into their groups.

PESTIVIRUS (BVDV)

The bulls were all given a vaccination prior to sale and we recommend annual boosters be given.

EBVS: WHAT, HOW AND WHY?

Angus GROUP BREEDPLAN is an advanced genetic evaluation system that provides a genetic description of Angus cattle for a large range of traits influencing fertility, growth and carcass performance. It provides predictions of the genetic merit of individual animals called Estimated Breeding Values (EBVs).

EBVs are based on all the available pedigree and performance records provided by breeders in Australia and New Zealand, along with available overseas genetic information.

EBVs are expressed in the units of measurement for each particular trait, and are shown as +ive or -ive values. The average EBV for different traits changes over time as the breed makes genetic progress. The averages for calves born in 2013 are shown at the bottom of each page. The averages are the easiest way to compare the merits of particular animals.

ACCURACY (%) Provides an indication of the reliability of an EBV. As more performance information becomes available on an animal, it's progeny and relatives, the accuracy of its EBVs for particular traits increases. The higher the accuracy, the less chance that the figure for each EBV will vary.

CALVING EASE DIRECT (%) CE (dir) tells us the amount of calving ease we can expect from a particular bull, relating directly to the females he is joined to. The calving ease figures will generally only appear on the chart of a sire, but can also appear on a younger bull's chart if there has been a lot of information gathered on his relatives. A positive value here is better.

CALVING EASE DAUGHTERS (%) CE (dtrs) tells us the amount of calving ease we can expect from a particular bull's daughters. A positive value here is better.

GESTATION LENGTH (DAYS) This figure gives us a value relating to the number of days from the date of conception to the calf birth date. A shorter gestation length is better as it gives more time for the cow to get back in calf and there is less chance of the calf getting too big in the uterus and increasing the chances of calving difficulties. A negative value here is better.

BIRTH WT (KG) Birth weight gives us an indication of how much the calves of a particular animal will weigh at birth. This figure should be monitored, but be careful not to go too low as this can cause problems with calf mortality and calving ease down the track. We must also remember that only a small percentage of calving ease is related to birth weight.

200-DAY WT (KG), 400-DAY WT (KG) AND 600-DAY WT (KG) Estimates the genetic differences between animals in liveweight at 200, 400 and 600 days of age. For example, if you have two bulls, one with a 600 day weight figure of +70 and the other with a figure of +80, you would expect the bull who is +80 to sire calves that would average 5kgs heavier at 600 days than the other (the sire provides 50% of the genes to the calf, 10kgs divided by 2). A positive value for these growth figures is better.

MATURE COW WEIGHT (KG) This figure provides an estimate of the genetic differences between animals in cow weight at 5 years of age. We try and keep this figure below the 600 Day Weight figure.

MILK (KG) The Milk figure provides an estimate of the genetic differences between animals in milk production, expressed as a variation in the 200-day weight of their daughter's calves. Angus cattle generally don't have a problem providing enough milk for their offspring, so we don't really need to worry too much about pushing this figure. Too much milk can lead to udder problems and difficulty in getting back in calf, so try to keep it positive, but remember the implications of too much milk.

SCROTAL SIZE (CM) This figure tells us about the scrotal circumference of an animal at 400 days of age. We measure scrotal size because there is a strong, positive correlation between scrotal size and fertility in the male and female offspring. The larger the testicles, the higher the likelihood of that bull siring more fertile daughters and getting more females in calf. A positive figure here is better.

DAYS TO CALVING DC tells us about female fertility, it is expressed as the number of days from the start of the joining period until subsequent calving. A more fertile cow, i.e. one that gets in calf earlier is obviously more beneficial in a breeding program. A negative value here is better.

CARCASS WEIGHT (KG) Carcass weight provides us with an estimate of the variation in carcass weight of a particular animal's progeny at slaughter (this figure is adjusted to 650 days of age), the higher the number the better.

EYE MUSCLE AREA (CM²) Results from ultrasound scanning of cattle at 15 – 18 months of age is used to calculate the expected genetic differences between animals in eye muscle area at the 12/13th rib site, in a 300kg carcass. This figure gives us a good idea of the muscling ability of the animal, the more muscling an animal possesses the better, so the higher the value here the better.

RIB AND RUMP FAT (MM) Ultrasound scanning is also used to calculate these figures which estimate the genetic differences between animals in fat depth at the 12/13th rib site (Rib Fat) and P8 rump site (Rump Fat), in a 300 kg carcass. Very fat cattle may produce less yield, however cattle that are too lean, may run into fertility problems, so these figures need to be monitored. The best way to monitor yield and fertility however, is by not necessarily concentrating on fat, but by keeping an eye on yield and fertility!

RETAIL BEEF YIELD % (RBY%) RBY% tells us the expected genetic differences between animals in percentage retail beef yield, in a 300kg carcass. A positive figure here is better.

Intra-Muscular Fat % (Imf%) ~ Marbling is very important for the premium markets. We can use ultrasound scanning (highly correlated to actual marbling score) to provide us with an EBV that estimates the genetic differences between animals in marbling at the 12/13th rib site, in a 300 kg carcass. A positive value here is better.

NET FEED INTAKE (NFI) Estimates of the genetic differences in the feed intake for animals adjusted to the same growth rate and weight base. Feed efficiency is one of the most economically important production traits. It particularly affects profitability of feedlots, but is also significant for grazing enterprises.

For three years now we have been taking blood samples of our herd for the purpose of testing Insulin-Like Growth Factor (IGF-1) which is moderately heritable (0.4) and correlated to NFI.

A negative value here is better

UNDERSTANDING SELECTION INDEXES

\$Index values were developed to make it easier to determine which animals are more suited to particular markets. Breedobject creates these indices, where it places relative emphasis on particular traits suited to each particular market. In this catalogue we have listed the new \$Index Values which replace the previous four \$Index Values. The new \$indexes are:

ANGUS BREEDING INDEX This is a general purpose selection index that is suitable for use in the majority of commercial beef operations. It estimates the genetic differences between animals in net profitability per cow joined in a typical commercial self replacing herd using Angus bulls. This index is not specific to a particular production system or market end-point, but identifies animals that will improve overall profitability in the majority of commercial grass and grain finishing beef production systems. It is particularly suited to producers who sell into a variety of different markets.

DOMESTIC INDEX Estimates the genetic differences between animals in net profitability per cow joined for a commercial self replacing Angus targeting the domestic supermarket trade. Steers are assumed to be finished using either grass, grass supplemented by grain or grain (eg 50 – 70 days) with steers slaughtered at 490 kg live weight (270 kgs carcass weight with 12 mm P8 fat depth) at 16 months of age. Daughters are retained for breeding and therefore maternal traits are of importance. Emphasis has been placed on eating quality and tenderness to favour animals that are suited to MSA requirements.

HEAVY GRAIN INDEX: Estimates the genetic differences between animals in net profitability per cow joined in a commercial self replacing herd targeting pasture finished steers with a 200 day feedlot finishing period for the grain fed high quality, highly marbled markets. Steers are assumed to be slaughtered at 760 kg live weight (420 kg carcass weight with 30 mm P8 fat depth) at 24 months of age. Daughters are retained for breeding and therefore maternal traits are of

importance. There is a significant premium for steers that exhibit superior marbling.

HEAVY GRASS INDEX Estimates the genetic differences between animals in net profitability per cow joined in a commercial self replacing herd targeting pasture finished steers. Steers are assumed to be slaughtered at 620 kg live weight (340 kg carcass weight with 12 mm P8 fat depth) at 22 months of age. Daughters are retained for breeding and therefore maternal traits are of importance. Emphasis has been placed on eating quality and tenderness to favour animals that are suited to MSA requirements.

Red Colour Gene (RC)

The red colour gene is a simple recessive gene. Red Angus animals have two copies of the red gene (remember all genes come in pairs). Animals with only a single copy of the red colour gene will be black in colour, but can have red progeny if joined to other animals carrying the red colour gene.

If a Red Angus male and Red Angus female are mated, then 100% of the resultant progeny are expected to be red in colour. If a Black hidden red gene carrier is mated to a Red Angus, then 50% of the progeny are expected to be Red and the remaining 50% are expected to be Black animals carrying a single copy of the Red gene (i.e Red gene carrier animals). If two Red gene carriers are mated, 25% of the progeny are expected to be Red in colour, 25% will be Black non-red carriers and 50% will be Black carrier animals.

At Te Mania Angus we DNA test animals we know could carry the Red Gene. The DNA results are available upon request.

TRIAL STRUCTURAL TRAIT EBVS

The Beef Class Structural data was re-analysed following submission of further records scored by accredited assessors. At present, there are five traits analysed for over 9000 animals which were scored before they were 750 days of age. The number of traits analysed is likely to be expanded as further research is conducted on the structural scores available.

The five traits analysed (and the flags associated with the EBV) are:

FA: Front Feet Angle (ST indicates steep angle, SH indicates shallow angle)

FC: Front Feet Claw Set (OD indicates open divergent claws, SC indicates scissor claws)

RA: Rear Feet Angle (ST indicates steep angle, SH indicates shallow angle)

RH: Rear Leg Hind View (BL indicates bow legged, CH indicates cow hocked)

RS: Rear Leg Side View (SR indicates straight rear legs, SI indicates sickle hocked)

More positive EBVs indicate a higher genetic potential for the desirable form of the structural trait compared to the average for the analysis.

The EBV flags only appear against animals that have more extreme, negative breeding values. The flags indicate the type of undesirable structural variation the animal tends to have. For example, a bull with a flag of 'ST' next to its FA EBV may produce about 35% or more progeny with steep feet angle; while a bull with a flag of 'SH' may produce 35% or more progeny with shallow feet angle. Therefore, using EBVs and flags in combination will assist breeders in making the right decision to improve the structural soundness of their herd. Sires with at least 40% accuracy for a Structural EBV are reported.

Further information on Structural Scoring and the analysis of the structural traits can be obtained from the Angus Australia web site.

TRIAL DOCILITY TRAIT EBVS

Docility EBVs are expressed as differences in the percentage of progeny that will be scored with acceptable temperament (i.e. either "docile" or "restless").

Higher, more positive, Docility EBVs are more favourable. For example, a bull with an EBV of +20 would be expected to on average produce 15% more progeny with acceptable temperament than a bull with an EBV of -10.

PERCENTILE BANDS FOR ANIMALS BORN IN 2013

Angus GROUP BREEDPLAN EBV percentile bands for animals born in 2013* Use this table as a guide to compare individual animals with the current genetic level of the Angus breed

	Calv.		200		400		600		Mature		Scrotal		Days to		Carcase		Eye		Rib		Rump		Retail		Intra-		Trial		Angus		Heavy				
	Ease	DIR	Day	Wt	Day	Wt	Day	Wt	Day	Wt	Milk	Size	Calv.	Wt	Area	Musc.	Area	Musc.	Fat	Fat	Fat	Fat	Yield	Yield	Fat	Fat	Docility	Breeding	Domestic	Grain	Grass				
(%)	(%)	(kg)	(kg)	(kg)	(kg)	(kg)	(kg)	(kg)	(kg)	(kg)	(kg)	(cm)	(days)	(kg)	(sq.cm)	(mm)	(mm)	(mm)	(mm)	(mm)	(mm)	(mm)	(%)	(%)	(%)	(%)	(%)	(%)	(%)	(%)	(%)	(%)	(%)		
High 1%	+5.1	+4.4	-8.6	+0.9	+55	+98	+133	+131	+23	+23	+3.3	-7.6	+79	+9.4	+2.6	+3.0	+2.1	+3.5	-0.41	-0.52	+31	+139	+122	+157	+130	+31	+139	+122	+157	+130	+31	+139	+122	+157	+130
High 5%	+3.9	+3.4	-6.7	+1.9	+51	+91	+122	+116	+20	+20	+2.8	-6.5	+72	+7.6	+1.7	+2.0	+1.5	+3.0	-0.25	-0.29	+22	+128	+116	+141	+121	+22	+128	+116	+141	+121	+22	+128	+116	+141	+121
High 10%	+3.2	+2.7	-5.8	+2.5	+48	+87	+116	+109	+19	+19	+2.5	-5.9	+68	+6.8	+1.2	+1.5	+1.2	+2.7	-0.18	-0.19	+18	+122	+112	+132	+117	+18	+122	+112	+132	+117	+18	+122	+112	+132	+117
High 15%	+2.6	+2.3	-5.2	+2.9	+47	+85	+113	+105	+18	+18	+2.3	-5.4	+66	+6.2	+1.0	+1.1	+1.0	+2.4	-0.13	-0.12	+14	+117	+110	+126	+114	+14	+117	+110	+126	+114	+14	+117	+110	+126	+114
High 20%	+2.2	+1.9	-4.8	+3.2	+46	+83	+110	+101	+17	+17	+2.2	-5.1	+63	+5.8	+0.7	+0.9	+0.9	+2.2	-0.09	-0.07	+12	+114	+108	+121	+111	+12	+114	+108	+121	+111	+12	+114	+108	+121	+111
High 25%	+1.8	+1.6	-4.5	+3.4	+45	+81	+107	+98	+16	+16	+2.1	-4.9	+62	+5.4	+0.6	+0.7	+0.8	+2.0	-0.06	-0.03	+10	+111	+106	+117	+109	+10	+111	+106	+117	+109	+10	+111	+106	+117	+109
High 30%	+1.4	+1.2	-4.2	+3.6	+44	+80	+105	+95	+16	+16	+1.9	-4.6	+60	+5.1	+0.4	+0.5	+0.7	+1.9	-0.03	+0.00	+8	+109	+105	+114	+107	+8	+109	+105	+114	+107	+8	+109	+105	+114	+107
High 35%	+1.1	+1.0	-3.9	+3.8	+43	+78	+103	+93	+15	+15	+1.9	-4.4	+59	+4.8	+0.3	+0.3	+0.6	+1.7	+0.00	+0.04	+6	+107	+103	+110	+105	+6	+107	+103	+110	+105	+6	+107	+103	+110	+105
High 40%	+0.7	+0.7	-3.7	+4.0	+42	+77	+101	+90	+15	+15	+1.8	-4.2	+57	+4.6	+0.1	+0.2	+0.5	+1.6	+0.02	+0.07	+5	+105	+102	+107	+104	+5	+105	+102	+107	+104	+5	+105	+102	+107	+104
High 45%	+0.4	+0.4	-3.5	+4.2	+42	+76	+99	+88	+14	+14	+1.7	-4.0	+56	+4.3	+0.0	+0.0	+0.4	+1.5	+0.05	+0.10	+3	+103	+101	+104	+102	+3	+103	+101	+104	+102	+3	+103	+101	+104	+102
50%	+0.0	+0.1	-3.2	+4.4	+41	+74	+97	+86	+14	+14	+1.6	-3.8	+54	+4.1	-0.1	-0.1	+0.3	+1.4	+0.07	+0.13	+2	+101	+99	+101	+100	+2	+101	+99	+101	+100	+2	+101	+99	+101	+100
Low 45%	-0.3	-0.1	-3.0	+4.5	+40	+73	+95	+84	+13	+13	+1.5	-3.5	+53	+3.8	-0.2	-0.3	+0.2	+1.3	+0.09	+0.16	+0	+98	+98	+98	+99	+0	+98	+98	+98	+99	+0	+98	+98	+98	+99
Low 40%	-0.7	-0.4	-2.8	+4.7	+39	+72	+93	+81	+13	+13	+1.4	-3.3	+52	+3.6	-0.4	-0.4	+0.1	+1.2	+0.12	+0.20	-1	+96	+97	+94	+97	-1	+96	+97	+94	+97	-1	+96	+97	+94	+97
Low 35%	-1.0	-0.7	-2.5	+4.9	+38	+70	+91	+79	+12	+12	+1.3	-3.0	+50	+3.3	-0.5	-0.6	+0.0	+1.1	+0.14	+0.23	-2	+94	+95	+91	+95	-2	+94	+95	+91	+95	-2	+94	+95	+91	+95
Low 30%	-1.5	-1.1	-2.3	+5.1	+37	+69	+89	+76	+12	+12	+1.2	-2.7	+48	+3.1	-0.6	-0.7	-0.1	+1.0	+0.17	+0.26	-4	+91	+94	+87	+93	-4	+91	+94	+87	+93	-4	+91	+94	+87	+93
Low 25%	-1.9	-1.4	-2.0	+5.3	+36	+67	+87	+74	+11	+11	+1.1	-2.4	+46	+2.8	-0.8	-0.9	-0.2	+0.8	+0.20	+0.30	-5	+88	+92	+83	+91	-5	+88	+92	+83	+91	-5	+88	+92	+83	+91
Low 20%	-2.5	-1.9	-1.7	+5.6	+35	+65	+84	+71	+11	+11	+1.0	-2.0	+44	+2.5	-1.0	-1.1	-0.3	+0.7	+0.23	+0.34	-7	+85	+90	+78	+88	-7	+85	+90	+78	+88	-7	+85	+90	+78	+88
Low 15%	-3.1	-2.4	-1.3	+5.8	+33	+63	+80	+67	+10	+10	+0.9	-1.5	+42	+2.1	-1.2	-1.3	-0.5	+0.6	+0.26	+0.40	-9	+80	+87	+72	+85	-9	+80	+87	+72	+85	-9	+80	+87	+72	+85
Low 10%	-4.0	-3.1	-0.8	+6.2	+31	+60	+76	+62	+9	+9	+0.7	-0.8	+38	+1.6	-1.5	-1.7	-0.7	+0.4	+0.31	+0.46	-11	+74	+84	+63	+80	-11	+74	+84	+63	+80	-11	+74	+84	+63	+80
Low 5%	-5.4	-4.2	+0.0	+6.7	+28	+55	+69	+55	+7	+7	+0.4	+0.3	+32	+0.9	-1.9	-2.1	-1.0	+0.1	+0.38	+0.56	-15	+63	+78	+47	+72	-15	+63	+78	+47	+72	-15	+63	+78	+47	+72
Low 1%	-8.5	-6.5	+1.8	+7.8	+21	+45	+52	+39	+4	+4	-0.2	+2.8	+22	-0.4	-2.7	-3.1	-1.6	-0.3	+0.50	+0.73	-21	+39	+65	+13	+53	-21	+39	+65	+13	+53	-21	+39	+65	+13	+53

▲ Negative (lower) values more favourable

▲ Negative (lower) values more favourable

▲ Negative (lower) values more favourable

* based on EBVs from the August 2015 Angus BREEDPLAN analysis.

2015 SPRING BULL SALE SUMMARY

August 2015 Angus Australia BREEDPLAN

Lot	Tag	DOB	Sire	Calving Ease			Growth & Maternal			Fertility			Carcass					\$INDEX							
				Dir	Dis	GL	B Wt	200	400	600	MWt	Milk	SS	DC	650d	CWT	EWA	Rib	Rump	RB%	IMF%	Doc	AB	D	HG
1	J0702	17/08/2013	L T 598 BANIDO 9074	+2.3	+1.8	-3.9	+3.6	+41	+76	+102	+95	+16	+1.5	-6.0	+54	+3.1	-0.1	+0.5	-0.7	+2.0	+17	\$109	\$101	\$114	\$106
2	J1207	05/09/2013	TE MANIA FORGO F893 (AI) (ET)	-2.5	+1.9	-6.7	+5.2	+41	+79	+106	+82	+20	-6.7	+45	+4.9	+0.8	+2.4	-0.8	+3.4	+16	\$127	\$108	\$145	\$117	
3	J0299	06/08/2013	AYRYALE BARTEL E7(AI)(ET)	+1.9	+2.3	-2.2	+3.7	+50	+90	+120	+111	+23	+2.8	-6.5	+77	+2.0	+0.4	-0.1	0.0	+2.8	-14	\$138	\$120	\$155	\$129
4	J0644	15/08/2013	L T 598 BANIDO 9074	-2.0	+1.1	-2.3	+5.5	+47	+83	+115	+104	+19	+2.8	-5.9	+51	+2.0	-0.6	-0.1	0.0	+2.2	+22	\$114	\$102	\$124	\$108
5	J0241	04/08/2013	AYRYALE BARTEL E7(AI)(ET)	+3.8	+3.7	-3.9	+1.9	+42	+75	+98	+76	+21	+1.7	-8.2	+63	+6.0	+0.5	-0.5	+2.8	-16	\$125	\$112	\$138	\$117	
6	J0909	22/08/2013	TE MANIA BERKLEY B1 (AI)	-0.7	-2.9	-2.4	+2.6	+37	+74	+94	+91	+17	+1.4	-8.2	+46	+5.5	-0.3	-0.1	-0.2	+3.3	+5	\$131	\$116	\$153	\$118
7	J1344	15/09/2013	TE MANIA GASCOYNE G333 (AI)	+0.6	0.0	-2.5	+5.7	+48	+87	+111	+91	+21	+3.3	-4.9	+61	+5.0	+0.3	+2.3	-1.3	+3.5	-7	\$120	\$109	\$135	\$112
8	J1028	02/09/2013	TE MANIA FITZPATRICK F528 (AI) (ET)	-1.7	+1.5	-3.5	+4.5	+48	+87	+118	+113	+20	+2.7	-3.9	+71	+5.8	-1.7	-1.0	+1.2	+1.7	+3	\$115	\$107	\$122	\$112
9	J0740	18/08/2013	TE MANIA BERKLEY B1 (AI)	+3.5	+3.9	-6.0	+3.4	+45	+79	+111	+102	+16	+3.0	-7.9	+54	+8.2	-0.2	-0.1	+0.8	+2.9	-3	\$147	\$123	\$169	\$134
10	J1292	11/09/2013	TE MANIA FITZPATRICK F528 (AI) (ET)	+2.6	+1.7	-2.1	+3.6	+43	+79	+103	+73	+25	+2.6	-4.1	+60	+3.0	+0.6	+0.2	-0.1	+2.7	-13	\$113	\$108	\$127	\$110
11	J0490	14/08/2013	TE MANIA GASCOYNE G333 (AI)	+3.3	+0.3	-5.7	+1.4	+32	+69	+83	+82	+21	+0.7	-3.9	+43	+5.5	+0.7	+2.0	-1.2	+3.4	+37	\$108	\$105	\$117	\$104
12	J1309	12/09/2013	TE MANIA DIPLOMAT D10 (AI)	+1.2	+2.3	-4.0	+3.2	+37	+78	+103	+91	+23	+2.8	-4.6	+45	+6.9	-0.4	+0.9	+0.6	+2.0	-4	\$118	\$109	\$126	\$114
13	J1165	03/08/2013	TE MANIA BERKLEY B1 (AI)	+4.2	+4.0	-9.0	+3.4	+49	+86	+117	+113	+15	+3.9	-8.4	+65	+6.3	-0.3	-0.1	+1.0	+2.2	+8	\$146	\$126	\$162	\$135
14	J1018	27/08/2013	TE MANIA FITZPATRICK F528 (AI) (ET)	+2.3	+1.6	+1.5	+3.7	+44	+81	+105	+78	+24	+2.3	-4.4	+66	+6.2	-0.8	-1.0	+0.2	+2.8	-7	\$116	\$109	\$128	\$111
15	J0604	16/08/2013	TUWHARETOA REGENT D145 (AI) (ET)	-1.9	-3.6	-4.2	+2.6	+39	+75	+100	+87	+16	+1.4	-4.1	+66	+2.9	+1.1	+1.2	-2.1	+4.1	-8	\$104	\$92	\$122	\$95
16	J0429	12/08/2013	TE MANIA GOODOOGA G843 (AI)	+4.1	+3.2	-8.6	+2.4	+46	+88	+113	+105	+19	+2.2	-6.4	+61	+5.4	+0.8	0.0	+0.3	+2.9	-1	\$128	\$114	\$143	\$119
17	J0365	10/08/2013	AYRYALE BARTEL E7(AI)(ET)	+5.5	+5.3	-10.2	+1.8	+41	+75	+96	+73	+19	+1.7	-6.5	+61	+5.4	+0.8	0.0	+0.3	+2.9	-1	\$124	\$115	\$137	\$117
18	J0319	07/08/2013	VERMONT DRAMBUIE D057(AI)(ET)	+0.4	+2.0	-3.3	+3.9	+46	+83	+103	+73	+15	+3.1	-6.9	+63	+3.8	+0.9	+1.7	-0.3	+2.1	+5	\$121	\$114	\$124	\$117
19	J1263	09/09/2013	TUWHARETOA REGENT D145 (AI) (ET)	+0.7	-2.6	-3.1	+3.7	+40	+68	+91	+65	+16	+1.1	-5.8	+62	+2.8	+0.6	-0.1	+0.9	+2.8	-13	\$101	\$95	\$108	\$97
20	J1259	08/09/2013	TE MANIA FORGO F893 (AI) (ET)	-0.4	+4.5	-7.5	+3.4	+40	+76	+98	+94	+17	+1.2	-3.5	+64	+1.9	-1.0	-0.5	-1.7	+3.6	+3	\$94	\$88	\$111	\$87
21	J0156	01/08/2013	WERNER WESTWARD 357	+2.6	+4.4	-4.0	+2.6	+46	+86	+113	+112	+22	+2.2	-6.5	+67	+6.4	-0.5	-0.1	+0.6	+2.6	-5	\$127	\$117	\$138	\$121
22	J0208	03/08/2013	WERNER WESTWARD 357	+4.6	+4.6	-4.0	+1.4	+39	+74	+95	+66	+18	+1.6	-5.4	+55	+5.0	+0.9	+0.8	-1.1	+3.3	-5	\$92	\$84	\$102	\$86
23	J0233	04/08/2013	WERNER WESTWARD 357	+2.9	+3.9	-2.8	+3.0	+40	+75	+99	+69	+21	+0.7	-5.1	+53	+4.5	+0.4	+0.5	+0.5	+2.5	-9	\$125	\$117	\$134	\$119
24	J0261	05/08/2013	G A R TWINHEARTS 8418	+1.0	+0.1	-3.9	+5.1	+48	+88	+113	+97	+14	+0.1	-4.3	+55	+7.1	-1.8	-1.6	+0.9	+2.6	+3	\$128	\$119	\$143	\$121
25	J0364	10/08/2013	WERNER WESTWARD 357	+2.6	+3.2	-7.5	+4.4	+47	+80	+107	+82	+15	+1.4	-4.3	+57	+5.1	-0.5	-0.1	+0.6	+2.6	-5	\$127	\$117	\$138	\$121
26	J0733	18/08/2013	AYRYALE BARTEL E7(AI)(ET)	+2.9	+4.4	-4.0	+2.6	+46	+86	+113	+112	+22	+2.2	-6.5	+67	+6.4	-0.5	-0.1	+0.6	+2.6	-5	\$131	\$117	\$149	\$122
27	J1048	28/08/2013	TE MANIA GENERAL G429 (AI)	-2.8	-2.6	-4.4	+5.1	+45	+74	+97	+86	+15	+1.6	-5.4	+55	+5.0	+0.9	+0.8	-1.1	+3.3	-5	\$92	\$84	\$102	\$86
28	J1389	19/09/2013	TUWHARETOA REGENT D145 (AI) (ET)	+7.6	-0.8	-4.8	+1.6	+37	+72	+96	+75	+22	+0.1	-3.6	+65	+6.7	+0.8	+0.9	-1.3	+3.2	+1	\$107	\$99	\$116	\$104
29	J0445	13/08/2013	TE MANIA GENERAL G429 (AI)	-3.6	-1.3	-6.1	+5.8	+42	+73	+102	+98	+12	+1.3	-4.5	+60	+5.5	0.0	-0.4	-0.3	+2.6	0	\$100	\$90	\$110	\$95
30	J0997	26/08/2013	TE MANIA GASKIN G555 (AI)	-1.4	-4.1	+1.0	+5.3	+40	+77	+101	+99	+17	+1.2	-3.5	+64	+1.9	-1.0	-0.5	-1.7	+3.6	+3	\$94	\$88	\$111	\$87
31	J1250	08/09/2013	TE MANIA GASKIN G555 (AI)	+1.2	+0.4	-3.4	+3.8	+38	+74	+94	+81	+16	+1.0	-2.7	+59	+4.9	-0.3	-0.4	-0.6	+2.8	+16	\$100	\$99	\$108	\$97
32	J1236	07/09/2013	WERNER WESTWARD 357	+4.9	+4.7	-4.8	+2.8	+42	+77	+103	+93	+17	+1.3	-5.7	+60	+5.0	0.0	+0.4	-0.2	+3.0	-12	\$128	\$114	\$144	\$119
33	J0341	09/08/2013	TE MANIA GENEVA G452 (AI)	+2.0	+2.8	-3.3	+3.9	+44	+79	+99	+87	+13	+0.7	-4.7	+62	+7.3	-0.2	-0.3	-0.1	+2.6	+16	\$117	\$112	\$126	\$112
34	J0187	02/08/2013	CIRCLE A INCENTIVE	-0.2	-0.3	-4.2	+3.9	+48	+74	+98	+97	+11	+0.6	-4.9	+61	+7.9	+0.3	+0.7	0.0	+2.1	-4	\$105	\$100	\$106	\$104
35	J1204	05/09/2013	AYRYALE BARTEL E7(AI)(ET)	+6.0	+4.9	-5.7	+0.7	+40	+73	+94	+80	+23	+1.8	-6.8	+64	+8.0	+1.0	+0.3	-0.6	+3.2	-10	\$127	\$115	\$139	\$119
36	J1380	19/09/2013	TUWHARETOA REGENT D145 (AI) (ET)	-2.5	-3.7	-4.0	+4.3	+42	+73	+94	+82	+19	+0.1	-3.9	+67	+3.6	+0.4	+0.9	-1.7	+3.3	+1	\$98	\$87	\$109	\$93
37	J1471	09/10/2013	TE MANIA DIPLOMAT D10 (AI)	-2.8	-1.0	-5.2	+6.2	+43	+81	+107	+84	+19	+2.7	-5.1	+45	+6.1	+0.1	+0.2	+0.8	+2.4	+24	\$119	\$108	\$130	\$113
38	J1461	05/10/2013	TE MANIA GENERAL G429 (AI)	-3.3	-1.4	-6.4	+5.3	+45	+82	+114	+109	+17	+2.4	-6.1	+60	+5.8	+0.6	+0.7	-0.3	+2.6	+20	\$116	\$99	\$130	\$108
39	J1399	21/09/2013	TUWHARETOA REGENT D145 (AI) (ET)	+0.1	-0.7	-4.1	+2.8	+42	+71	+98	+86	+17	+1.3	-4.0	+70	+4.7	+0.5	-0.4	-1.2	+3.0	+5	\$99	\$91	\$107	\$95
40	J0389	12/08/2013	TUWHARETOA REGENT D145 (AI) (ET)	-0.2	-0.9	-5.6	+2.2	+43	+78	+103	+79	+22	+0.8	-3.6	+75	+5.1	-0.2	-0.3	-1.4	+3.4	+4	\$107	\$99	\$118	\$102
41	J0679	17/08/2013	THOMAS GRADE UP 6849	+2.0	+3.4	-3.5	+4.5	+42	+74	+99	+87	+12	+2.3	-7.6	+55	+3.1	+0.9	+0.2	-1.2	+3.2	-8	\$125	\$108	\$140	\$115
42	J1136	05/09/2013	TE MANIA FITZPATRICK F528 (AI) (ET)	+0.6	+0.1	-2.5	+5.8	+48	+85	+109	+90	+21	+3.4	-4.9	+60	+8.5	+0.4	+0.1	+0.8	+1.5	-8	\$117	\$107	\$131	\$109
43	J1199	02/09/2013	CARBAR DOCKLANDS D62(AI)	+6.5	+4.2	-6.6	+1.5	+36	+75	+98	+59	+22	+2.2	-5.4	+47	+8.5	+0.4	+0.1	+0.8	+1.5	-8	\$121	\$114	\$121	\$120
44	J1343	14/09/2013	WERNER WESTWARD 357	+2.0	+1.6	+0.3	+4.2	+39	+71	+97	+75	+17	+1.7	-3.8	+49	+5.0	+0.2	+0.5	-0.1	+2.5	-10	\$110	\$103	\$117	\$107
45	J1384	17/09/2013	TUWHARETOA REGENT D145 (AI) (ET)	-0.1	-2.4	-4.1	+3.6	+39	+72	+99	+85	+20	-0.3	-3.6	+65	+5.0	+0.5	+0.8	-1.4	+3.1	+1	\$100	\$91	\$109	\$96
46	J1378	19/08/2013	TUWHARETOA REGENT D145 (AI) (ET)	-0.2	-1.9	-4.0	+3.8	+40	+76	+102	+95	+17	+2.8	-5.9	+67	+4.9	+0.6	+0.6	-1.3	+3.8	-4	\$117	\$101	\$138	\$106
47	J1065	29/08/2013	TE MANIA AFRICA A217 (AI)	+1.5	+2.1	-5.2	+3.1	+38	+72	+95	+70	+22	+2.2	-4.4	+44	+9.0	+0.2	+0.7	+0.4	+2.7	+25	\$119	\$110	\$128	\$115
48	J1431	25/09/2013	TUWHARETOA REGENT D145 (AI) (ET)	-1.9	-3.4	-3.8	+4.3	+42	+76	+106	+92	+20	+0.5	-4.0	+68	+4.9	+0.4	+0.8	-1.3	+3.2	+1	\$104	\$91	\$115	\$99
49	J1078	30/08/2013	THOMAS GRADE UP 6849	+3.9	+4.2	-3.7	+3.6	+40	+71	+94	+80	+13	+2.0	-7.3	+53	+3.7	+1.1	+2.0	-1.4	+3.2	-8	\$122	\$108	\$136	\$114
50	J1177	31/08/2013	CIRCLE A INCENTIVE	+0.4	+0.2	-0.5	+3.1	+46	+81	+105	+88	+19	+1.8	-4.0	+62	+5.9	-0.7	-0.7	+0.3	+3.0	+0	\$109	\$106	\$114	\$107
51	J1121	01/09/2013	TE MANIA BERKLEY B1 (AI)	+4.8	+4.2	-6.7	+2.7	+45	+75	+101	+109	+11	+2.0	-7.5	+47	+3.7	+0.2	+1.0	-0.7	+3.0	-8	\$126	\$110	\$141	\$116
52	J1222	06/09/2013	TE MANIA FORGO F893 (AI) (ET)	-1.4	+1.8	-6.5	+3.5	+40	+72	+95	+84	+17	+2.6	-3.9	+53	+3.5	+1.2	+2.9	-1.8	+3.7	-2	\$105	\$96	\$116	\$99
53	J1272	09/09/2013	TE MANIA GOODOOGA G843 (AI)	-2.7	-1.4	-3.8	+4.6	+45	+77	+100	+79	+19	+3.4	-6.0	+49	+3.2	+0.5	+1.3	-0.3	+2.7	+2	\$108	\$100	\$115	\$105
54	J1282	10/09/2013	THOMAS GRADE UP 6849	+3.0	+3.8	-3.7	+3.8	+39	+69	+92	+79	+12	+1.9	-7.5	+51	+3.4	+1.2	+2.2	-1.5	+3.1	-8	\$119	\$105	\$132	\$111
55																									

2015 SALE BULLS

Lot 1 **TE MANIA JAYASURI J702 (AI) (ET)** SB1
 Born: 17/08/2013 Society Id: VTMJ702 AMFU/NHFU/CAFU/DDFU Structure date scored 23/03/2015

Calving Ease Growth Marbling

Sire: **L T 598 BANDO 9074** (S A F 598 BANDO 5175, MILL COULEE BARBARA K323)
 Dam: **TE MANIA MITTAGONG A398 (AI)** (TE MANIA XPO X84 (AI) (ET), TE MANIA MITTAGONG V164 (AI) (ET), BIR NEW DESIGN 036, TE MANIA MITTAGONG R383 (AI) (ET))

INDEX				
AB	D	HG	G	
\$109	\$101	\$114	\$106	
6	6	6	5	5
Trial Structural EBVs				
FC	FA	RA	RH	RS
-27.0	-28.7	-19.0	+0.5	-1.8
63%	63%	57%	42%	48%

August 2015 Angus Australia BREEDPLAN																		
Calving Ease	Growth & Maternal				Fertility		CWT	Carcase										
	Dir	Dtrs	GL	B Wt	200	400	600	M Wt	Milk	SS	DC	650d	EMA	Rib	Rump	RBV%	IMF%	DOC
EBV	+2.3	+1.8	-3.9	+3.6	+41	+76	+102	+95	+16	+1.5	-6.0	+54	+3.1	-0.1	+0.5	-0.7	+2.0	+17
Acc	62%	57%	67%	76%	73%	74%	72%	70%	65%	76%	57%	67%	67%	68%	68%	65%	65%	65%

Traits Observed: BWT 200WT 400WT(x2) SS FAT EMA IMF DOC,

Stylish with length, frame and natural thickness. This is an ET conceived son, his dam contributing 45 progeny having run through our donor program in 2008, 2010 and 2012. We have sold nine sons of A398 through our various bulls sales to a top of \$18,000 and average of \$10,055. She remained active within the herd until nine years of age.

Lot 2 **TE MANIA JOELSON J1207** SB1
 Born: 05/09/2013 Society Id: VTMJ1207 AMFU/NHFU/CAFU/DDFU Structure date scored 23/03/2015

Growth Fertility Marbling Angus Breeding Heavy Grass Heavy Grain

Sire: **TE MANIA FORGO F893 (AI) (ET)** (TE MANIA DAIQIRI D19 (AI), TE MANIA DANDLOO C404 (AI) (ET))
 Dam: **TE MANIA MITTAGONG F119 (AI)** (TE MANIA DIPLOMAT D10 (AI), TE MANIA MITTAGONG D313 (AI), BONGONGO BULLETPROOF Z3, TE MANIA MITTAGONG Y1025 (AI) (ET))

INDEX				
AB	D	HG	G	
\$127	\$108	\$145	\$117	
6	6	6	5	5
Trial Structural EBVs				
FC	FA	RA	RH	RS
+3.2	+2.1	+1.7	+0.4	-1.3
54%	55%	50%	41%	44%

August 2015 Angus Australia BREEDPLAN																		
Calving Ease	Growth & Maternal				Fertility		CWT	Carcase										
	Dir	Dtrs	GL	B Wt	200	400	600	M Wt	Milk	SS	DC	650d	EMA	Rib	Rump	RBV%	IMF%	DOC
EBV	-2.5	+1.9	-6.7	+5.2	+41	+79	+106	+82	+20	+3.0	-6.7	+45	+4.9	+0.8	+2.4	-0.8	+3.4	+16
Acc	52%	43%	67%	74%	70%	71%	69%	65%	54%	73%	39%	61%	61%	62%	63%	57%	57%	57%

Traits Observed: BWT 200WT 400WT(x2) SS FAT EMA IMF DOC,

This bull ticks a lot of boxes. Stylish and balanced with good frame and body length.

Lot 3 **TE MANIA JALMAH J299 (AI)** SB1
 Born: 06/08/2013 Society Id: VTMJ299 AMFU/NHFU/CAFU/DDFU Structure date scored 23/03/2015

Calving Ease Growth Fertility Marbling Angus Breeding Heavy Grass Heavy Grain

Sire: **AYRVALE BARTEL E7(AI)(ET)** (TE MANIA BARTEL B219 (AI) (ET), EAGLEHAWK JEDDA B32(AI))
 Dam: **TE MANIA MOONGARA G1065** (BIR NEW DIMENSION 7127, TE MANIA JEDDA W85 (AI) (ET), TE MANIA CODRINGTON C737 (AI) (ET), BIR MIDLAND, TE MANIA LOWAN Y211 (ACR) (AI), TE MANIA MOONGARA D49 (AI), TE MANIA ULONG U41 (AI) (ET), TE MANIA MOONGARA B751 (AI))

INDEX				
AB	D	HG	G	
\$138	\$120	\$155	\$129	
6	5	5	5	5
Trial Structural EBVs				
FC	FA	RA	RH	RS
+5.0	+16.9	+13.5	NA	-0.2
52%	51%	42%		41%

August 2015 Angus Australia BREEDPLAN																		
Calving Ease	Growth & Maternal				Fertility		CWT	Carcase										
	Dir	Dtrs	GL	B Wt	200	400	600	M Wt	Milk	SS	DC	650d	EMA	Rib	Rump	RBV%	IMF%	DOC
EBV	+1.9	+2.3	-2.2	+3.7	+50	+90	+120	+111	+23	+2.8	-6.5	+77	+9.2	+0.4	-0.1	0.0	+2.8	-14
Acc	56%	47%	85%	75%	70%	71%	69%	67%	58%	73%	41%	62%	62%	61%	62%	58%	58%	57%

Traits Observed: GL CE BWT 200WT 400WT(x2) SS FAT EMA IMF DOC,

Good natural thickness, great body length and AI conceived. First calf out of a two year old heifer.

Lot 4 **TE MANIA JARBLA J544 (AI) (ET)** SB1
 Born: 15/08/2013 Society Id: VTMJ544 AMFU/NHFU/CAFU/DDFU Structure date scored 23/03/2015

Growth Fertility Marbling Angus Breeding Heavy Grain

Sire: **L T 598 BANDO 9074** (S A F 598 BANDO 5175, MILL COULEE BARBARA K323)
 Dam: **TE MANIA JEDDA D918** (BON VIEW BANDO 598, S A F ROYAL LASS 1002, TE MANIA AFRICA A217 (AI), TE MANIA JEDDA Y32 (AI) (ET), TE MANIA AFRICA A217 (AI), TE MANIA JEDDA B1030 (AI) (ET), TE MANIA YOU YANG Y838 (AI) (ET), TE MANIA JEDDA Y436 (AI) (ET))

INDEX				
AB	D	HG	G	
\$114	\$102	\$124	\$108	
7	6	6	6	5
Trial Structural EBVs				
FC	FA	RA	RH	RS
-34.1	-10.9	-8.2	0.0	+0.4
60%	59%	54%	44%	48%

August 2015 Angus Australia BREEDPLAN																		
Calving Ease	Growth & Maternal				Fertility		CWT	Carcase										
	Dir	Dtrs	GL	B Wt	200	400	600	M Wt	Milk	SS	DC	650d	EMA	Rib	Rump	RBV%	IMF%	DOC
EBV	-2.0	+1.1	-2.3	+5.5	+47	+83	+115	+104	+19	+2.8	-5.9	+51	+2.0	-0.6	-0.1	0.0	+2.2	+22
Acc	59%	55%	63%	75%	71%	72%	70%	68%	62%	74%	55%	65%	65%	65%	66%	63%	61%	61%

Traits Observed: BWT 200WT 400WT(x2) SS FAT EMA IMF DOC,

An embryo transfer son, he is stylish with good frame, natural thickness and body length. His dam remains active within the stud herd.

BREED AVERAGE EBVS FOR 2013 BORN CALVES																					
CALVING EASE			GROWTH & MATERNAL				FERTILITY		CWT	Carcase					INDEXES						
DIR	DTRS	GL	Bwt	200	400	600	Mwt	MILK	SS	D C	450d	EMA	RIB	RUMP	RBV%	IMF%	Doc	AB	D	HG	G
-0.3	-0.1	-3.3	+4.4	+40	+74	+96	+86	+14	+1.6	-3.5	+54	+4.1	-0.1	-0.1	+0.3	+1.5	+3	\$99	\$99	\$99	\$99
Animals with Indexes highlighted with shading are in the top 10% of the Angus breed.																					



Lot 5 **TE MANIA JAIN J241 (AI)** SB1
 Born: 04/08/2013 Society Id: VTMJ241 AMFU/NHFU/CAFU/DDF Structure date scored 23/03/2015

Calving Ease Marbling Angus Breeding Heavy Grass Heavy Grain

TE MANIA BARTEL B219 (AI) (ET) BIR NEW DIMENSION 7127 TE MANIA JEDDA W55 (AI) (ET) LAWSONS TANK B1155(AI) LAWSONS TANK X1235(AI) LAWSONS NEW DESIGN 1407 Z1393(AI)
Sire: AYRVALE BARTEL E7(AI)(ET) **Dam: TE MANIA JAPARA G596 (AI)**
 EAGLEHAWK JEDDA B32(AI) MYTTY IN FOCUS EAGLEHAWK JEDDA Z48(AI) TE MANIA JAPARA E335 (ACR) (AI) TE MANIA CHATSWOOD C424 (AI) TE MANIA JAPARA A1033

INDEX				
AB	D	HG	G	
\$125	\$112	\$138	\$117	
7	6	6	5	6
Trial Structural EBVs				
FC	FA	RA	RH	RS
-12.8	-3.7	-1.0	NA	NA
48%	47%	40%		

August 2015 Angus Australia BREEDPLAN																		
Calving Ease	Growth & Maternal				Fertility		CWT	Carcase										
	Dir	Dtrs	GL	B Wt	200	400	600	M Wt	Milk	SS	DC	650d	EMA	Rib	Rump	RBY%	IMF%	DOC
EBV	+3.8	+3.7	-3.9	+1.9	+42	+75	+98	+76	+21	+1.7	-8.2	+63	+6.0	+0.5	-0.5	-0.5	+2.8	-16
Acc	56%	47%	85%	74%	70%	70%	69%	67%	57%	73%	40%	62%	62%	61%	62%	58%	58%	56%

Traits Observed: GL CE BWT 200WT 400WT(x2) SS FAT EMA IMF DOC,

Lot 5 is so stylish with good body length and is well suited for use over heifers. First calf out of a two year old heifer.

Lot 6 **TE MANIA JENNEN J909 (AI)** SB1
 Born: 22/08/2013 Society Id: VTMJ909 AMFU/NHFU/CAFU/DDF Structure date scored 23/03/2015

Calving Ease Marbling Angus Breeding Heavy Grass Heavy Grain

TE MANIA YORKSHIRE Y437 (AI) S A F FOCUS OF ER TE MANIA LOWAN U275 (AI) (ET) TE MANIA AFRICA A217 (AI) TE MANIA ULONG U41 (AI) (ET) TE MANIA JEDDA Y32 (AI) (ET)
Sire: TE MANIA BERKLEY B1 (AI) **Dam: TE MANIA LOWAN D681**
 TE MANIA LOWAN Z53 (AI) (ET) KENNYS CREEK SANDY S15 (AI) TE MANIA LOWAN B594 (AI) TE MANIA YAKKA Y428 (AI) (ET) TE MANIA LOWAN Z592 (AI) (ET)

INDEX				
AB	D	HG	G	
\$131	\$116	\$153	\$118	
6	6	6	5	5
Trial Structural EBVs				
FC	FA	RA	RH	RS
NA	NA	NA	NA	NA

August 2015 Angus Australia BREEDPLAN																		
Calving Ease	Growth & Maternal				Fertility		CWT	Carcase										
	Dir	Dtrs	GL	B Wt	200	400	600	M Wt	Milk	SS	DC	650d	EMA	Rib	Rump	RBY%	IMF%	DOC
EBV	+3.9	+3.9	-3.0	+2.6	+37	+74	+94	+91	+17	+1.4	-8.2	+46	+5.5	-0.3	-0.1	-0.2	+3.3	+5
Acc	60%	56%	85%	76%	71%	72%	71%	69%	63%	75%	56%	66%	66%	66%	67%	64%	63%	59%

Traits Observed: GL CE BWT 200WT 400WT(x2) SS FAT EMA IMF DOC,

Good natural thickness and body length on display with this AI conceived son of Berkley B1. These Berkley B1 sons continue to appeal. Through our various sales we have sold 118 sons of Berkley for an average of \$9,712.

Lot 7 **TE MANIA JOWHAR J1344 (AI)** SB1
 Born: 15/09/2013 Society Id: VTMJ1344 AMFU/NHFU/CAFU/DDF Structure date scored 23/03/2015

Fertility Marbling Heavy Grain

LAWSONS INVINCIBLE C402(AI) G A R SOLUTION LAWSONS PREDESTINED A598(AI) TE MANIA YABULU Y35 (AI) KENNYS CREEK SANDY S15 (AI) TE MANIA MITTAGONG V57 (AI) (ET)
Sire: TE MANIA GASCOYNE G333 (AI) **Dam: TE MANIA MOONGARA A264**
 TE MANIA LOWAN D54 (AI) TE MANIA AFRICA A217 (AI) TE MANIA MOONGARA V423 (ACR) (AI) (ET) TE MANIA NITE CAP (NZ) (AI) TE MANIA MOONGARRA N69 (AI)

INDEX				
AB	D	HG	G	
\$106	\$99	\$120	\$99	
6	6	6	5	5
Trial Structural EBVs				
FC	FA	RA	RH	RS
+2.3	+11.8	NA	NA	NA
43%	43%			

August 2015 Angus Australia BREEDPLAN																		
Calving Ease	Growth & Maternal				Fertility		CWT	Carcase										
	Dir	Dtrs	GL	B Wt	200	400	600	M Wt	Milk	SS	DC	650d	EMA	Rib	Rump	RBY%	IMF%	DOC
EBV	-0.7	-2.7	-2.4	+4.1	+37	+71	+91	+75	+16	+2.2	-4.5	+47	+6.2	-0.2	0.0	-0.4	+3.3	+34
Acc	50%	40%	85%	75%	70%	70%	68%	64%	53%	71%	39%	59%	59%	60%	61%	56%	54%	54%

Traits Observed: GL BWT 200WT 400WT(x2) SS FAT EMA IMF DOC,

Good frame and body length on offer. In June 2014 we sold the sire of this bull to Dunoon Angus for \$35,000.

Lot 8 **TE MANIA JINGO J1160 (AI) (ET)** SB1
 Born: 02/09/2013 Society Id: VTMJ1160 AMFU/NHFU/CAFU/DDC Structure date scored 23/03/2015

Growth Fertility Marbling Angus Breeding Heavy Grass Heavy Grain

LAWSONS DINKY-DI Z191 BON VIEW DESIGN 1407 G A R PRECISION 1900 ARDCAIRNE MIDLAND Z57 (AI) BIR MIDLAND ARDCAIRNE GEORGINA V18 (AI)
Sire: TE MANIA FITZPATRICK F528 (AI) (ET) **Dam: TE MANIA DANDLOO C670 (AI) (ET)**
 TE MANIA MITTAGONG B112 (AI) TE MANIA ULONG Z773 (AI) TE MANIA DANDLOO Y711 (AI) VERMILLION YELLOWSTONE TE MANIA DANDLOO U159 (AI)

INDEX				
AB	D	HG	G	
\$120	\$109	\$135	\$112	
6	6	6	6	5
Trial Structural EBVs				
FC	FA	RA	RH	RS
-0.4	-4.5	-3.5	-1.1	+0.8
60%	59%	54%	44%	49%

August 2015 Angus Australia BREEDPLAN																		
Calving Ease	Growth & Maternal				Fertility		CWT	Carcase										
	Dir	Dtrs	GL	B Wt	200	400	600	M Wt	Milk	SS	DC	650d	EMA	Rib	Rump	RBY%	IMF%	DOC
EBV	+0.6	0.0	-2.5	+5.7	+48	+87	+111	+91	+21	+3.3	-4.9	+61	+0.5	+0.3	+2.3	-1.3	+3.5	-7
Acc	54%	45%	64%	75%	72%	72%	71%	66%	58%	75%	41%	62%	63%	63%	64%	59%	59%	61%

Traits Observed: BWT 200WT 400WT(x2) SS FAT EMA IMF DOC,

Stylish with good body length and frame in this ET conceived son of Te Mania Fitzpatrick F528, he is out of one of our more prominent donor cows. She has been a solid contributor with 31 progeny, we have sold sons to a high of \$19,000 out of her and in our 2015 Northern Spring Bull sale a full flush brother sold for \$12,000. Flush brother to lot 43.

BREED AVERAGE EBVS FOR 2013 BORN CALVES																					
CALVING EASE		GROWTH & MATERNAL					FERTILITY		CWT	Carcase					INDEXES						
DIR	DTRS	GL	Bwt	200	400	600	Mwt	MILK	SS	D C	450d	EMA	RIB	RUMP	RBY%	IMF%	Doc	AB	D	HG	G
-0.3	-0.1	-3.3	+4.4	+40	+74	+96	+86	+14	+1.6	-3.5	+54	+4.1	-0.1	-0.1	+0.3	+1.5	+3	\$99	\$99	\$99	\$99
Animals with Indexes highlighted with shading are in the top 10% of the Angus breed.																					



Lot 9 **TE MANIA JERULA J1028** SB1
 Born: 27/08/2013 Society Id: VTMJ1028 AMFU/NHFU/CAFU/DDC Structure date scored 23/03/2015

Growth Carcase Marbling Angus Breeding Heavy Grass Heavy Grain

TE MANIA CODRINGTON C737 (AI) (ET) BIR MIDLAND TE MANIA LOWAN Y211 (ACR) (AI) ARDROSSAN EQUATOR A241 (AI) (ET) PAPA EQUATOR 2528 ARDROSSAN PRINCESS W38
Sire: TE MANIA FAZE F193 (AI) **Dam: TE MANIA BEEAC G631 (AI)**
 TE MANIA LOWAN B18 (AI) TE MANIA YORKSHIRE Y437 (AI) TE MANIA LOWAN Z432 (AI) TE MANIA BEEAC E619 (AI) (REDF) TE MANIA NEW DESIGN Z496 (AI) TE MANIA BEEAC C480 (ACR) (AI)

INDEX			
AB	D	HG	G
\$115	\$107	\$122	\$112
6	6	6	5
Trial Structural EBVs			
FC	FA	RA	RH
-22.7	+9.4	+6.7	NA
51%	50%	43%	NA

August 2015 Angus Australia BREEDPLAN																		
EBV	Calving Ease				Growth & Maternal				Fertility		CWT	Carcase						
	Dir	Dtrs	GL	B Wt	200	400	600	M Wt	Milk	SS	DC	650d	EMA	Rib	Rump	RBY%	IMF%	DOC
-1.7	+1.5	-3.5	+4.5	+48	+87	+118	+113	+20	+2.7	-3.9	+71	+5.8	-1.7	-1.0	+1.2	+1.7	-3	
Acc	50%	41%	65%	73%	68%	69%	67%	63%	50%	71%	38%	59%	59%	60%	61%	56%	55%	54%

Traits Observed: CE BWT 200WT 400WT(x2) SS FAT EMA IMF DOC,

Stylish with good frame, thickness and body length. First calf out of a two year old heifer.

Lot 10 **TE MANIA JAZZAGE J740 (AI)** SB1
 Born: 18/08/2013 Society Id: VTMJ740 AMFU/NHFU/CAFU/DDC Structure date scored 23/03/2015

Calving Ease Growth Fertility Carcase Marbling Angus Breeding Heavy Grass Heavy Grain

TE MANIA YORKSHIRE Y437 (AI) S A F FOCUS OF ER TE MANIA LOWAN U275 (AI) (ET) TE MANIA DIPLOMAT D10 (AI) TE MANIA AFRICA A217 (AI) TE MANIA DANDLOO B76 (AI)
Sire: TE MANIA BERKLEY B1 (AI) **Dam: TE MANIA LOWAN F11 (AI)**
 TE MANIA LOWAN Z53 (AI) (ET) KENNYS CREEK SANDY S15 (AI) TE MANIA LOWAN D1210 (ACR) (AI) (ET) TE MANIA YELLAND Y578 (AI) TE MANIA LOWAN Y1034 (AI) (ET)

INDEX			
AB	D	HG	G
\$147	\$123	\$169	\$134
6	6	6	5
Trial Structural EBVs			
FC	FA	RA	RH
-10.5	-9.0	-6.3	+0.3
59%	59%	56%	50%

August 2015 Angus Australia BREEDPLAN																	
EBV	Calving Ease				Growth & Maternal				Fertility		CWT	Carcase					
	Dir	Dtrs	GL	B Wt	200	400	600	M Wt	Milk	SS	DC	650d	EMA	Rib	Rump	RBY%	IMF%
+3.5	+3.9	-6.0	+3.4	+45	+79	+111	+102	+16	+3.0	-7.9	+54	+8.2	-0.2	-0.1	+0.8	+2.9	+3
Acc	58%	54%	86%	75%	71%	71%	70%	68%	62%	74%	53%	65%	65%	66%	63%	62%	60%

Traits Observed: GL CE BWT 200WT 400WT(x2) SS FAT EMA IMF DOC,

Handsome with good natural thickness and frame. An AI conceived son of Berkley. They continue to appeal, these Berkley B1 sons, through our various sales we have sold 118 sons for an average of \$9,712.

Lot 11 **TE MANIA JORDAN J1292 (AI)** SB1
 Born: 11/09/2013 Society Id: VTMJ1292 AMFU/NHFU/CAFU/DDC Structure date scored 23/03/2015

Calving Ease Growth Fertility Marbling Angus Breeding Heavy Grass Heavy Grain

LAWSON'S DINKY-DI Z191 BON VIEW DESIGN 1407 G A R PRECISION 1900 ARDCAIRNIE MIDLAND Z57 (AI) BIR MIDLAND ARDCAIRNIE GEORGINA V18 (AI)
Sire: TE MANIA FITZPATRICK F528 (AI) (ET) **Dam: TE MANIA MOONGARA C820 (AI)**
 TE MANIA MITTAGONG B112 (AI) TE MANIA ULONG Z773 (AI) TE MANIA MOONGARA Y233 (AI) (ET) BIR NEW DESIGN 036 TE MANIA MOONGARA U480 (AI) (ET)

INDEX			
AB	D	HG	G
\$113	\$108	\$122	\$110
7	6	6	5
Trial Structural EBVs			
FC	FA	RA	RH
-9.2	-6.8	-4.8	-2.8
57%	57%	52%	43%

August 2015 Angus Australia BREEDPLAN																		
EBV	Calving Ease				Growth & Maternal				Fertility		CWT	Carcase						
	Dir	Dtrs	GL	B Wt	200	400	600	M Wt	Milk	SS	DC	650d	EMA	Rib	Rump	RBY%	IMF%	DOC
+2.3	+0.3	-2.1	+3.6	+43	+79	+103	+73	+25	+2.6	-4.1	+60	+3.7	-0.6	+0.2	-0.1	+2.7	-13	
Acc	53%	45%	86%	75%	70%	71%	69%	66%	58%	73%	42%	61%	62%	62%	64%	58%	57%	58%

Traits Observed: GL BWT 200WT 400WT(x2) SS FAT EMA IMF DOC,

Good body length and style with this son of Te Mania Fitzpatrick F528. He remains active within our progeny testing programme, at our recent Walgett bull sale we sold a son for \$12,000. The dam of this bull is a rising eight year old who still remains active within the stud herd.

Lot 12 **TE MANIA JANSSEN J490 (AI)** SB1
 Born: 14/08/2013 Society Id: VTMJ490 AMFU/NHFU/CAFU/DDFV Structure date scored 23/03/2015

Calving Ease Marbling

LAWSON'S INVINCIBLE C402(AI) G A R SOLUTION LAWSON'S PREDESTINED A598(AI) ARDCAIRNIE MIDLAND Z57 (AI) BIR MIDLAND ARDCAIRNIE GEORGINA V18 (AI)
Sire: TE MANIA GASCOYNE G333 (AI) **Dam: TE MANIA MITTAGONG C548 (AI)**
 TE MANIA LOWAN D54 (AI) TE MANIA AFRICA A217 (AI) TE MANIA LOWAN B417 (AI) TE MANIA MITTAGONG Z712 TE MANIA WIZARD W8 (AI) (ET) TE MANIA MITTAGONG V195 (AI) (ET) (REDC)

INDEX			
AB	D	HG	G
\$108	\$105	\$117	\$104
6	6	6	5
Trial Structural EBVs			
FC	FA	RA	RH
-4.3	-3.4	NA	NA
46%	46%		

August 2015 Angus Australia BREEDPLAN																		
EBV	Calving Ease				Growth & Maternal				Fertility		CWT	Carcase						
	Dir	Dtrs	GL	B Wt	200	400	600	M Wt	Milk	SS	DC	650d	EMA	Rib	Rump	RBY%	IMF%	DOC
+3.6	+1.7	-5.7	+1.4	+32	+69	+83	+52	+21	+0.7	-3.9	+43	+5.5	+0.7	+2.0	-1.2	+3.4	+37	
Acc	51%	41%	86%	75%	70%	70%	67%	64%	51%	71%	38%	59%	59%	60%	61%	56%	54%	55%

Traits Observed: GL CE BWT 200WT 400WT(x2) SS FAT EMA IMF DOC,

Stylish with frame, length and natural thickness. We have sold sons from the dam of this bull to a high of \$13,000 and she remains active within the stud herd as a rising eight year old cow.

BREED AVERAGE EBVS FOR 2013 BORN CALVES

CALVING EASE														GROWTH & MATERNAL				FERTILITY		CWT	CARCASE					INDEX\$			
DIR	DTRS	GL	BWT	200	400	600	MWT	MILK	SS	DC	450d	EMA	RIB	RUMP	RBY%	IMF%	Doc	AB	D	HG	G								
-0.3	-0.1	-3.3	+4.4	+40	+74	+96	+86	+14	+1.6	-3.5	+54	+4.1	-0.1	-0.1	+0.3	+1.5	+3	\$99	\$99	\$99	\$99								

Animals with Indexes highlighted with shading are in the top 10% of the Angus breed.



Lot 13 **TE MANIA JASSA J1309** SB1
 Born: 12/09/2013 Society Id: VTMJ1309 AMFU/NHFU/CAFU/DDC Structure date scored 23/03/2015

Growth Fertility Carcase Marbling Angus Breeding Heavy Grass Heavy Grain

Sire: **TE MANIA DIPLOMAT D10 (AI)** Dam: **TE MANIA MOONGARA D259 (AI)**
 TE MANIA AFRICA A217 (AI) TE MANIA ULONG U41 (AI) (ET) TE MANIA ALONZO A678 (AI) TE MANIA XAMINED X60 (AI) (ET)
 TE MANIA JEDDIA Y32 (AI) (ET) TE MANIA UNLIMITED U3271 (AI) (ET) TE MANIA MOONGARA A416 (ACR) (AI) ARDROSSAN CONNECTION X15
 TE MANIA DANDLOO B76 (AI) TE MANIA DANDLOO X330 (AI) TE MANIA MOONGARA Y302 (AI)

INDEX				
AB	D	HG	G	
\$118	\$109	\$126	\$114	
6	6	6	6	4
Trial Structural EBVs				
FC	FA	RA	RH	RS
+3.9	-7.6	-4.2	-2.1	+0.5
54%	54%	51%	46%	47%

August 2015 Angus Australia BREEDPLAN																		
EBV	Calving Ease				Growth & Maternal				Fertility		CWT	Carcase						
	Dir	Dtrs	GL	B Wt	200	400	600	M Wt	Milk	SS	DC	650d	EMA	Rib	Rump	RBV%	IMF%	DOC
+1.2	+2.3	-4.2	+4.2	+37	+78	+103	+91	+23	+2.8	-4.6	+45	+6.9	-0.4	+0.9	+0.6	+2.0	-4	
Acc	55%	49%	67%	75%	70%	70%	69%	68%	61%	72%	44%	63%	62%	63%	64%	59%	59%	56%

Traits Observed: BWT 200WT 400WT(x2) SS FAT EMA IMF DOC,

Stylish with frame, length and body type. The sire of this bull as a rising seven year old remains active within our progeny testing program. Some prominent and high performing cows and sires sit back in the pedigree of this bull, A217, U3271, Y32, R426 to name a few. The dam of this bulls sire we retained in the stud herd until last year at the age of eight years of age when she was sold for continuing stud duties for \$15,000.

Lot 14 **TE MANIA JINKANA J1165 (AI)** SB1
 Born: 03/09/2013 Society Id: VTMJ1165 AMFU/NHFU/CAFU/DDFU Structure date scored 23/03/2015

Calving Ease Growth Fertility Carcase Marbling Angus Breeding Heavy Grass Heavy Grain

Sire: **TE MANIA BERKLEY B1 (AI)** Dam: **TE MANIA MOONGARA E325 (AI)**
 TE MANIA YORKSHIRE Y437 (AI) S A F FOCUS OF ER TE MANIA CHELMSFORD C440 (AI) ARDROSSAN DIRECTION W109 (AI) (ET)
 TE MANIA LOWAN U275 (AI) (ET) TE MANIA MITTAGONG Z447 (AI) KENNY'S CREEK SANDY S15 (AI) TE MANIA MOONGARA A10 (AI) TE MANIA ULONG U41 (AI) (ET)
 TE MANIA LOWAN Z53 (AI) (ET) TE MANIA LOWAN V129 (AI) (ET) TE MANIA MOONGARA Y524 (AI) (ET)

INDEX				
AB	D	HG	G	
\$146	\$125	\$162	\$135	
6	6	6	5	5
Trial Structural EBVs				
FC	FA	RA	RH	RS
NA	NA	NA	NA	NA

August 2015 Angus Australia BREEDPLAN																		
EBV	Calving Ease				Growth & Maternal				Fertility		CWT	Carcase						
	Dir	Dtrs	GL	B Wt	200	400	600	M Wt	Milk	SS	DC	650d	EMA	Rib	Rump	RBV%	IMF%	DOC
+4.2	+4.0	-9.0	+3.4	+49	+86	+117	+113	+15	+3.9	-8.4	+65	+6.3	-0.3	-0.1	+1.0	+2.2	+8	
Acc	57%	52%	85%	75%	70%	71%	69%	68%	61%	73%	52%	64%	63%	64%	65%	62%	61%	59%

Traits Observed: GL BWT 200WT 400WT(x2) SS FAT EMA IMF DOC,

An AI conceived son of Berkley. He displays good body length and type. He has some white on his sheath.

Lot 15 **TE MANIA JEROBOAM J1018 (AI)** SB1
 Born: 27/08/2013 Society Id: VTMJ1018 AMFU/NHFU/CAFU/DDF Structure date scored 23/03/2015

Calving Ease Growth Fertility Marbling Angus Breeding Heavy Grass Heavy Grain

Sire: **TE MANIA FITZPATRICK F528 (AI) (ET)** Dam: **TE MANIA LOWAN E952**
 LAWSONS DINKY-DI Z191 BON VIEW DESIGN 1407 TE MANIA CHIEFTAIN C475 (AI) ARDROSSAN DIRECTION W109 (AI) (ET)
 G A R PRECISION 1900 TE MANIA MITTAGONG Z447 (AI) TE MANIA LOWAN B14 (AI) TE MANIA LOWAN Z142 (AI) (ET)
 TE MANIA FITZPATRICK F528 (AI) (ET) TE MANIA ULONG Z773 (AI) TE MANIA LOWAN B14 (AI) TE MANIA YAKKA Y428 (AI) (ET)
 TE MANIA MITTAGONG B112 (AI) TE MANIA MITTAGONG Z447 (AI)

INDEX				
AB	D	HG	G	
\$116	\$109	\$128	\$111	
6	5	5	5	5
Trial Structural EBVs				
FC	FA	RA	RH	RS
+0.9	+4.5	+3.9	NA	+0.7
51%	51%	46%		41%

August 2015 Angus Australia BREEDPLAN																		
EBV	Calving Ease				Growth & Maternal				Fertility		CWT	Carcase						
	Dir	Dtrs	GL	B Wt	200	400	600	M Wt	Milk	SS	DC	650d	EMA	Rib	Rump	RBV%	IMF%	DOC
+2.3	-1.6	+1.5	+3.7	+44	+81	+105	+78	+24	+2.9	-4.4	+62	+6.2	-0.8	-1.0	+0.2	+2.8	-7	
Acc	51%	42%	85%	75%	70%	70%	68%	66%	56%	73%	39%	60%	61%	62%	63%	57%	56%	57%

Traits Observed: GL CE BWT 200WT 400WT(x2) SS FAT EMA IMF DOC,

Stylish with good body length, frame and type. Has small amount of white on his sheath and in his groin.

Lot 16 **TE MANIA JARUGA J604 (AI) (ET)** SB2
 Born: 16/08/2013 Society Id: VTMJ604 AMFU/NHFU/CAFU/DDFU Structure date scored 23/03/2015

Growth Marbling Heavy Grain

Sire: **TUWHARETOA REGENT D145 (AI) (ET)** Dam: **TE MANIA BARUNAH E601 (AI)**
 TE MANIA AMBASSADOR A134 (AI) RENNILEA XPONENTIAL X555 (AI) (ET) BOOROOMOOKA UNDERTAKEN Y145 BOOROOMOOKA UNDERTAKEN U170 (AI)
 BOOROOMOOKA UAAISE U101 (AI) LAWSONS HENRY VIII Y5 (AI) YTHANBRAE HENRY VIII U8 (AI) (ET) TE MANIA BARUNAH C218 (AI) GARDENS HIGHMARK
 YTHANBRAE DIRECTION T270 (AI) TE MANIA BARUNAH A740 (AI) (ET)

INDEX				
AB	D	HG	G	
\$104	\$92	\$122	\$95	
6	6	6	6	6
Trial Structural EBVs				
FC	FA	RA	RH	RS
NA	NA	NA	NA	NA

August 2015 Angus Australia BREEDPLAN																		
EBV	Calving Ease				Growth & Maternal				Fertility		CWT	Carcase						
	Dir	Dtrs	GL	B Wt	200	400	600	M Wt	Milk	SS	DC	650d	EMA	Rib	Rump	RBV%	IMF%	DOC
-1.9	-3.6	-4.2	+3.6	+39	+75	+100	+87	+16	+1.4	-4.1	+66	+2.9	+1.1	+1.2	-2.1	+4.1	-8	
Acc	59%	54%	67%	76%	72%	73%	71%	68%	61%	76%	49%	66%	65%	66%	67%	63%	62%	62%

Traits Observed: BWT 200WT 400WT(x2) SS FAT EMA IMF DOC,

An ET conceived son of Regent who ticks a lot of boxes. His dam ran through our donor program in 2012 and again in 2014 and at our recent Walgett spring bull sale we sold a full flush brother to this bull for \$11,000. Sons of Regent have been in strong demand over the past couple of years. Has some white in his groin.

BREED AVERAGE EBVS FOR 2013 BORN CALVES																					
CALVING EASE				GROWTH & MATERNAL				FERTILITY		CWT	Carcase					INDEX\$					
DIR	DTRS	GL	BWT	200	400	600	MWT	MILK	SS	DC	450d	EMA	RIB	RUMP	RBV%	IMF%	Doc	AB	D	HG	G
-0.3	-0.1	-3.3	+4.4	+40	+74	+96	+86	+14	+1.6	-3.5	+54	+4.1	-0.1	-0.1	+0.3	+1.5	+3	\$99	\$99	\$99	\$99

Animals with Indexes highlighted with shading are in the top 10% of the Angus breed.



Lot 17 **TE MANIA JANESDELL J429 (AI)** SB2
 Born: 12/08/2013 Society Id: VTMJ429 AMFU/NHFU/CAFU/DDFU Structure date scored 23/03/2015

Calving Ease Growth Fertility Marbling Angus Breeding Heavy Grass Heavy Grain

Sire: **TE MANIA GOODOOGA G843 (AI)** Dam: **TE MANIA MITTAGONG F907 (AI) (ET)**
 TE MANIA MITTAGONG B112 (AI) TE MANIA ULONG Z773 (AI) TE MANIA MITTAGONG Z447 (AI) TE MANIA BERKLEY B1 (AI) TE MANIA YORKSHIRE Y437 (AI) TE MANIA LOWAN Z53 (AI) (ET) TE MANIA XPO X84 (AI) (ET) TE MANIA MITTAGONG V164 (AI) (ET)

\$INDEX			
AB	D	HG	G
\$128	\$114	\$143	\$119
6	5	5	5
Trial Structural EBVs			
FC	FA	RA	RH
-15.3	-3.9	-2.6	NA
47%	47%	42%	

August 2015 Angus Australia BREEDPLAN																		
EBV	Calving Ease				Growth & Maternal				Fertility		CWT	Carcase						
	Dir	Dtrs	GL	B Wt	200	400	600	M Wt	Milk	SS	DC	650d	EMA	Rib	Rump	RBV%	IMF%	DOC
+4.1	+3.2	-8.6	+2.4	+46	+88	+113	+105	+19	+2.3	-6.4	+63	+1.2	-0.1	+1.5	-1.2	+3.0	+1	
Acc	50%	42%	85%	74%	69%	69%	67%	63%	50%	71%	42%	59%	59%	60%	61%	56%	55%	57%

Traits Observed: GL CE BWT 200WT 400WT(x2) SS FAT EMA IMF DOC,

A powerful bull who displays type, frame and body length.

Lot 18 **TE MANIA JAMESTOWN J365 (AI)** SB2
 Born: 10/08/2013 Society Id: VTMJ365 AMFU/NHFU/CAFU/DDFU Structure date scored 23/03/2015

Calving Ease Marbling Angus Breeding Heavy Grass Heavy Grain

Sire: **AYRVALE BARTEL E7(AI)(ET)** Dam: **TE MANIA LOWAN F591 (AI)**
 EAGLEHAWK JEDDA B32(AI) MYTTY IN FOCUS EAGLEHAWK JEDDA Z48(AI) TE MANIA 07 436 AB TE MANIA LOWAN C588 BOOROOMOOKA UNDERTAKEN Y145 TE MANIA G5 165 AB TE MANIA YESHIVA Y490 (AI) TE MANIA LOWAN A277 (AI)

\$INDEX			
AB	D	HG	G
\$124	\$115	\$137	\$117
6	6	6	6
Trial Structural EBVs			
FC	FA	RA	RH
NA	NA	NA	NA

August 2015 Angus Australia BREEDPLAN																		
EBV	Calving Ease				Growth & Maternal				Fertility		CWT	Carcase						
	Dir	Dtrs	GL	B Wt	200	400	600	M Wt	Milk	SS	DC	650d	EMA	Rib	Rump	RBV%	IMF%	DOC
+5.5	+5.3	-10.2	+1.8	+41	+75	+96	+73	+19	+1.7	-6.5	+61	+5.4	+0.8	0.0	-0.3	+2.9	-1	
Acc	56%	46%	85%	75%	70%	71%	69%	67%	58%	74%	40%	62%	62%	62%	58%	58%	59%	

Traits Observed: GL CE BWT 200WT 400WT(x2) SS FAT EMA IMF DOC,

Stylish with frame and good body length on display with this AI conceived son of Bartel.

Lot 19 **TE MANIA JAMAICA J319 (AI)** SB2
 Born: 07/08/2013 Society Id: VTMJ319 AMFU/NHFU/CAFU/DD8% Structure date scored 23/03/2015

Growth Fertility Marbling Angus Breeding Heavy Grass Heavy Grain

Sire: **VERMONT DRAMBUIE D057(AI)(ET)** Dam: **TE MANIA LOWAN G864 (AI)**
 BT RIGHT TIME 24J LEACHMAN RIGHT TIME SITZ EVERELDA ENTENSE 1905 ARDROSSAN EQUATOR A241 (AI) (ET) PAPA EQUATOR 2928 ARDROSSAN PRINCESS W38 VERMONT WILCOOLA X55(AI)(ET) SUMMITCREST SCOTCH CAP OB45 ARDROSSAN WILCOOLA U26(AI)(ET) TE MANIA LOWAN D991 TE MANIA YORKSHIRE Y437 (AI) TE MANIA LOWAN Z887

\$INDEX			
AB	D	HG	G
\$121	\$114	\$124	\$117
6	6	6	6
Trial Structural EBVs			
FC	FA	RA	RH
NA	NA	NA	NA

August 2015 Angus Australia BREEDPLAN																		
EBV	Calving Ease				Growth & Maternal				Fertility		CWT	Carcase						
	Dir	Dtrs	GL	B Wt	200	400	600	M Wt	Milk	SS	DC	650d	EMA	Rib	Rump	RBV%	IMF%	DOC
+0.4	+2.0	-3.3	+3.9	+46	+83	+103	+73	+15	+3.1	-6.9	+63	+3.8	+0.9	+1.7	-0.3	+2.1	+5	
Acc	54%	47%	85%	74%	69%	70%	69%	66%	57%	72%	43%	61%	61%	62%	58%	57%	57%	

Traits Observed: GL CE BWT 200WT 400WT(x2) SS FAT EMA IMF DOC,

Frame and good body length with this first calf out of a two year old heifer.

Lot 20 **TE MANIA JOLTED J1263 (AI)** SB2
 Born: 09/09/2013 Society Id: VTMJ1263 AMFU/NHFU/CAFU/DDFU Structure date scored 23/03/2015

Calving Ease Marbling

Sire: **TUWHARETOA REGENT D145 (AI) (ET)** Dam: **TE MANIA MOONGARA E578 (AI)**
 TE MANIA AMBASSADOR A134 (AI) RENNILEA XPONENTIAL X555 (AI) (ET) TE MANIA LOWAN Y211 (ACR) (AI) LAWSONS DINKY-DI Z191 BON VIEW DESIGN 1407 G A R PRECISION 1900 LAWSONS HENRY VIII Y5 (AI) YTHANBRAE HENRY VIII U8 (AI) (ET) YTHANBRAE DIRECTION Y270 (AI) TE MANIA MOONGARA C626 (AI) (ET) BIR MIDLAND TE MANIA MOONGARA Y396 (AI) (ET)

\$INDEX			
AB	D	HG	G
\$101	\$95	\$108	\$97
6	6	6	5
Trial Structural EBVs			
FC	FA	RA	RH
NA	NA	NA	NA

August 2015 Angus Australia BREEDPLAN																		
EBV	Calving Ease				Growth & Maternal				Fertility		CWT	Carcase						
	Dir	Dtrs	GL	B Wt	200	400	600	M Wt	Milk	SS	DC	650d	EMA	Rib	Rump	RBV%	IMF%	DOC
+0.7	-2.6	-3.1	+3.7	+40	+68	+91	+65	+16	+1.1	-5.8	+62	+2.9	+0.6	+0.1	-0.9	+2.8	-13	
Acc	59%	54%	85%	75%	71%	71%	69%	68%	61%	74%	49%	64%	64%	65%	66%	62%	61%	60%

Traits Observed: GL BWT 200WT 400WT(x2) SS FAT EMA IMF DOC,

A well balanced son of Regent who displays good body length, frame and type.

BREED AVERAGE EBVS FOR 2013 BORN CALVES																					
CALVING EASE				GROWTH & MATERNAL				FERTILITY		CWT	CARCASS					INDEXES					
DIR	DTRS	GL	BWT	200	400	600	MWT	MILK	SS	DC	450d	EMA	RIB	RUMP	RBV%	IMF%	Doc	AB	D	HG	G
-0.3	-0.1	-3.3	+4.4	+40	+74	+96	+86	+14	+1.6	-3.5	+54	+4.1	-0.1	-0.1	+0.3	+1.5	+3	\$99	\$99	\$99	\$99
Animals with Indexes highlighted with shading are in the top 10% of the Angus breed.																					



Lot 21 SB2
TE MANIA JOUSTER J1259
 Born: 08/09/2013 Society Id: VTMJ1259 AMFU/NHFU/CAFU/DDC Structure date scored 23/03/2015

Fertility Marbling Angus Breeding Heavy Grain

TE MANIA DAIQUIRI D19 (AI) TE MANIA AFRICA A217 (AI) S A F FOCUS OF ER S A F FAME
 TE MANIA LOWAN B431 (AI) (ET) TE MANIA LOWAN U275 (AI) (ET) GDAR FOREVER LADY 246
Sire: TE MANIA FORGO F893 (AI) (ET) **Dam: TE MANIA LOWAN Y298 (AI) (ET)**
 TE MANIA DANDLOO C404 (AI) (ET) ARCAIRNIE MIDLAND Z57 (AI) BIR NEW DESIGN 036
 TE MANIA DANDLOO Y711 (AI) TE MANIA LOWAN U275 (AI) (ET) TE MANIA LOWAN Q303 (AI) (ET)

\$INDEX				
AB	D	HG	G	
\$119	\$107	\$136	\$109	
7	6	6	5	6
Trial Structural EBVs				
FC	FA	RA	RH	RS
NA	NA	NA	NA	NA

August 2015 Angus Australia BREEDPLAN																		
EBV	Calving Ease				Growth & Maternal					Fertility		CWT	Carcase					
	Dir	Dtrs	GL	B Wt	200	400	600	M Wt	Milk	SS	DC	650d	EMA	Rib	Rump	RBY%	IMF%	DOC
-0.4	+4.5	-7.5	+3.4	+40	+76	+98	+94	+17	+2.3	-7.6	+52	+1.1	-0.1	+1.1	-0.6	+3.0	+9	
Acc	57%	48%	65%	76%	72%	73%	71%	67%	60%	75%	44%	64%	64%	64%	66%	60%	60%	59%

Traits Observed: BWT 200WT 400WT(x2) SS FAT EMA IMF DOC,

Stylish with good body length, frame and type. His dam remained active within the stud herd until she was 11 years old.

Lot 22 SB2
TE MANIA JACUMBA J156 (AI)
 Born: 01/08/2013 Society Id: VTMJ156 AMFU/NHFU/CAFU/DDF Structure date scored 23/03/2015

Growth Carcase Marbling Angus Breeding Heavy Grass Heavy Grain

G A R PREDESTINED BIR NEW DESIGN 036 TE MANIA DIPLOMAT D10 (AI) TE MANIA AFRICA A217 (AI)
 G A R EXT 4206 G A R EXT 4206 TE MANIA DANDLOO B76 (AI)
Sire: WERNER WESTWARD 357 **Dam: TE MANIA LOWAN G469 (AI)**
 BFF EVERELDA ENTENSE 4015 C A FUTURE DIRECTION S321 TE MANIA LOWAN E331 (AI) LAWSONS PAYLOAD X951 (AI)
 THREE TREES EVERELDA C27F THREE TREES EVERELDA C27F TE MANIA LOWAN Z461 (AI) (ET)

\$INDEX				
AB	D	HG	G	
\$124	\$112	\$135	\$118	
6	6	6	6	6
Trial Structural EBVs				
FC	FA	RA	RH	RS
NA	NA	NA	NA	NA

August 2015 Angus Australia BREEDPLAN																		
EBV	Calving Ease				Growth & Maternal					Fertility		CWT	Carcase					
	Dir	Dtrs	GL	B Wt	200	400	600	M Wt	Milk	SS	DC	650d	EMA	Rib	Rump	RBY%	IMF%	DOC
+0.3	+1.3	-6.4	+5.2	+44	+79	+105	+74	+17	+1.4	-5.4	+51	+4.3	0.0	+0.6	+0.3	+2.6	-13	
Acc	53%	42%	85%	74%	69%	70%	69%	64%	52%	73%	39%	59%	61%	61%	61%	56%	56%	57%

Traits Observed: GL CE BWT 200WT 400WT(x2) SS FAT EMA IMF DOC,

Frame, length and type with this first calf out of a two year old heifer.

Lot 23 SB2
TE MANIA JAGUARUNDI J208 (AI)
 Born: 03/08/2013 Society Id: VTMJ208 AMFU/NHFU/CAFU/DDFU Structure date scored 23/03/2015

Calving Ease Carcase Marbling Angus Breeding Heavy Grass Heavy Grain

G A R PREDESTINED BIR NEW DESIGN 036 LAWSONS TANK B1155(AI) LAWSONS TANK Y1235(AI)
 G A R EXT 4206 G A R EXT 4206 MILL COULEE BARBARA K323
Sire: WERNER WESTWARD 357 **Dam: TE MANIA BARUNAH G94 (AI)**
 BFF EVERELDA ENTENSE 4015 C A FUTURE DIRECTION S321 TE MANIA BARUNAH E482 (AI) TE MANIA YORKSHIRE Y437 (AI)
 THREE TREES EVERELDA C27F THREE TREES EVERELDA C27F TE MANIA BARUNAH X617 (AI) (ET)

\$INDEX				
AB	D	HG	G	
\$125	\$117	\$134	\$119	
6	6	6	5	6
Trial Structural EBVs				
FC	FA	RA	RH	RS
NA	NA	NA	NA	NA

August 2015 Angus Australia BREEDPLAN																		
EBV	Calving Ease				Growth & Maternal					Fertility		CWT	Carcase					
	Dir	Dtrs	GL	B Wt	200	400	600	M Wt	Milk	SS	DC	650d	EMA	Rib	Rump	RBY%	IMF%	DOC
+4.6	+4.6	-4.0	+1.4	+39	+74	+95	+66	+18	+1.0	-5.8	+53	+6.1	-0.2	-0.5	+0.5	+2.5	-5	
Acc	53%	42%	85%	75%	70%	71%	69%	64%	53%	59%	38%	59%	55%	57%	55%	51%	53%	58%

Traits Observed: GL CE BWT 200WT 400WT DOC,

Good natural thickness with frame, length and body type on display in this first calf out of a two year old heifer.

Lot 24 SB2
TE MANIA JAIDEN J233 (AI)
 Born: 04/08/2013 Society Id: VTMJ233 AMFU/NHFU/CAFU/DDFU Structure date scored 23/03/2015

Calving Ease Marbling Angus Breeding Heavy Grass Heavy Grain

G A R PREDESTINED BIR NEW DESIGN 036 L T 598 BANDO 9074 S A F 598 BANDO 5175
 G A R EXT 4206 G A R EXT 4206 MILL COULEE BARBARA K323
Sire: WERNER WESTWARD 357 **Dam: TE MANIA WARGOONA G149 (AI)**
 BFF EVERELDA ENTENSE 4015 C A FUTURE DIRECTION S321 TE MANIA WARGOONA E170 (ACR) (AI) TE MANIA CALAMUS C46 (AI)
 THREE TREES EVERELDA C27F THREE TREES EVERELDA C27F TE MANIA WARGOONA CS32 (AI) (ET)

\$INDEX				
AB	D	HG	G	
\$117	\$110	\$119	\$115	
6	6	6	5	5
Trial Structural EBVs				
FC	FA	RA	RH	RS
NA	NA	NA	NA	NA

August 2015 Angus Australia BREEDPLAN																		
EBV	Calving Ease				Growth & Maternal					Fertility		CWT	Carcase					
	Dir	Dtrs	GL	B Wt	200	400	600	M Wt	Milk	SS	DC	650d	EMA	Rib	Rump	RBY%	IMF%	DOC
+2.9	+3.9	-2.8	+3.0	+40	+75	+99	+59	+21	+0.7	-5.1	+53	+4.5	+0.4	+0.5	0.0	+2.0	-9	
Acc	52%	43%	85%	74%	69%	70%	68%	63%	52%	71%	41%	59%	60%	60%	60%	56%	56%	56%

Traits Observed: GL CE BWT 200WT 400WT(x2) SS FAT EMA IMF DOC,

Good natural thickness with frame, length and body type on display in this first calf out of a two year old heifer.

BREED AVERAGE EBVS FOR 2013 BORN CALVES

CALVING EASE				GROWTH & MATERNAL					FERTILITY		CWT	CARCASS					INDEXES				
DIR	DTRS	GL	BWT	200	400	600	MWT	MILK	SS	DC	450d	EMA	RIB	RUMP	RBY%	IMF%	Doc	AB	D	HG	G
-0.3	-0.1	-3.3	+4.4	+40	+74	+96	+86	+14	+1.6	-3.5	+54	+4.1	-0.1	-0.1	+0.3	+1.5	+3	\$99	\$99	\$99	\$99

Animals with Indexes highlighted with shading are in the top 10% of the Angus breed.



Lot 25 **TE MANIA JAKEMAN J261 (AI)** SB2
 Born: 05/08/2013 Society Id: VTMJ261 AMFU/NHFU/CAFU/DDF Structure date scored 23/03/2015

Growth Carcase Marbling Angus Breeding Heavy Grass Heavy Grain

S S OBJECTIVE T510 T26 SS TRAVELER 6807 T510 TE MANIA DIPLOMAT D10 (AI) TE MANIA AFRICA A217 (AI)
 S S MISS RITA R011 T88 S S MISS RITA R011 T88 TE MANIA DANDLOO B76 (AI) TE MANIA DANDLOO B76 (AI)
Sire: G A R TWINHEARTS 8418 **Dam: TE MANIA LOWAN G472 (AI) (ET)**
 G A R YIELD GRADE 2015 G A R YIELD GRADE G A R 1470 NEW DESIGN 653 TE MANIA LOWAN Z237 (AI) (ET) BIR NEW DESIGN 036
 G A R 1470 NEW DESIGN 653 TE MANIA LOWAN Y104 (AI) (ET)

INDEX			
AB	D	HG	G
\$128	\$119	\$143	\$121
6	6	6	5
Trial Structural EBVs			
FC	FA	RA	RS
NA	NA	NA	NA

August 2015 Angus Australia BREEDPLAN																		
EBV	Calving Ease				Growth & Maternal				Fertility		CWT	Carcase						
	Dir	Dtrs	GL	B Wt	200	400	600	M Wt	Milk	SS	DC	650d	EMA	Rib	Rump	RBV%	IMF%	DOC
+1.0	+0.1	-3.9	+5.1	+48	+88	+113	+97	+14	+0.1	-4.3	+55	+7.1	-1.8	-1.6	+0.9	+2.6	+3	
Acc	49%	40%	84%	73%	68%	68%	67%	62%	51%	71%	37%	58%	58%	59%	59%	55%	54%	54%

Traits Observed: GL CE BWT 200WT 400WT(x2) SS FAT EMA IMF DOC,

Stylish and balanced throughout. In our recent Walgett sale we sold nine sons of Twinhearts for an average of \$7,389 and this is the only son of Twinhearts in the catalogue. First calf out of a two year old heifer.

Lot 26 **TE MANIA JAMESPORT J364 (AI)** SB2
 Born: 10/08/2013 Society Id: VTMJ364 AMFU/NHFU/CAFU/DDF Structure date scored 23/03/2015

Growth Carcase Marbling Angus Breeding Heavy Grass Heavy Grain

G A R PREDESTINED BIR NEW DESIGN 036 TE MANIA BADMINTON B41 (AI) GARDENS HIGHMARK
 G A R EXT 4206 G A R EXT 4206 TE MANIA LOWAN Y298 (AI) (ET) TE MANIA LOWAN Y298 (AI) (ET)
Sire: WERNER WESTWARD 357 **Dam: TE MANIA BARUNAH E399 (AI) (ET)**
 BFF EVERELDA ENTENSE 4015 C A FUTURE DIRECTION 5321 TE MANIA BARUNAH A96 (AI) (ET) TE MANIA ULONG U41 (AI) (ET)
 THREE TREES EVERELDA C27F TE MANIA BARUNAH X101 (AI) (ET)

INDEX			
AB	D	HG	G
\$127	\$117	\$138	\$121
6	6	5	5
Trial Structural EBVs			
FC	FA	RA	RS
NA	NA	NA	NA

August 2015 Angus Australia BREEDPLAN																		
EBV	Calving Ease				Growth & Maternal				Fertility		CWT	Carcase						
	Dir	Dtrs	GL	B Wt	200	400	600	M Wt	Milk	SS	DC	650d	EMA	Rib	Rump	RBV%	IMF%	DOC
+2.9	+3.2	-7.5	+4.4	+47	+80	+107	+82	+15	+1.4	-4.3	+57	+5.1	-0.5	-0.1	+0.6	+2.6	-5	
Acc	53%	43%	85%	75%	70%	71%	69%	64%	55%	74%	42%	60%	62%	62%	62%	57%	57%	59%

Traits Observed: GL CE BWT 200WT 400WT(x2) SS FAT EMA IMF DOC,

Good natural thickness and body length on display.

Lot 27 **TE MANIA JAZIRA J733 (AI) (TW)** SB2
 Born: 18/08/2013 Society Id: VTMJ733 AMFU/NHFU/CAFU/DDF Structure date scored 23/03/2015

Calving Ease Growth Fertility Marbling Angus Breeding Heavy Grass Heavy Grain

TE MANIA BARTEL B219 (AI) (ET) BIR NEW DIMENSION 7127 TE MANIA JEDDA W85 (AI) (ET) TE MANIA NEW DESIGN Z496 (AI) BON VIEW NEW DESIGN 208
 TE MANIA BARTEL B219 (AI) (ET) TE MANIA JEDDA W85 (AI) (ET) TE MANIA NEW DESIGN Z496 (AI) TE MANIA LOWAN X540 (AI) (ET)
Sire: AYRVALE BARTEL E7(AI)(ET) **Dam: TE MANIA WARGOONA E418 (AI)**
 EAGLEHAWK JEDDA B32(AI) MYTTY IN FOCUS EAGLEHAWK JEDDA Z48(AI) TE MANIA WARGOONA A18 (AI) TE MANIA YEARLING Y300 (AI) (ET)
 TE MANIA WARGOONA Y460 (AI)

INDEX			
AB	D	HG	G
\$131	\$117	\$149	\$122
7	6	6	5
Trial Structural EBVs			
FC	FA	RA	RS
NA	NA	NA	NA

August 2015 Angus Australia BREEDPLAN																		
EBV	Calving Ease				Growth & Maternal				Fertility		CWT	Carcase						
	Dir	Dtrs	GL	B Wt	200	400	600	M Wt	Milk	SS	DC	650d	EMA	Rib	Rump	RBV%	IMF%	DOC
+2.6	+4.4	-4.0	+2.6	+46	+86	+113	+112	+22	+2.4	-6.5	+67	+6.4	-0.5	-1.1	+0.2	+2.7	-16	
Acc	57%	47%	67%	73%	66%	65%	65%	66%	60%	59%	40%	59%	57%	57%	56%	54%	56%	58%

Traits Observed: BWT 200WT 400WT(x2) SS FAT EMA IMF DOC,

Stylish with frame and good body length on display with this AI conceived son of Bartel.

Lot 28 **TE MANIA JEST J1048 (AI)** SB2
 Born: 28/08/2013 Society Id: VTMJ1048 AMFU/NHFU/CAFU/DDF Structure date scored 23/03/2015

Marbling

TUWHARETOA REGENT D145 (AI) (ET) TE MANIA AMBASSADOR A134 (AI) LAWSON'S HENRY VIII Y5 (AI) G A R PREDESTINED BIR NEW DESIGN 036
 TUWHARETOA REGENT D145 (AI) (ET) TE MANIA AMBASSADOR A134 (AI) LAWSON'S HENRY VIII Y5 (AI) G A R PREDESTINED G A R EXT 4206
Sire: TE MANIA GENERAL G429 (AI) **Dam: TE MANIA LOWAN F1058 (AI) (ET)**
 TE MANIA DANDLOO Z811 (AI) TE MANIA ULONG U41 (AI) (ET) TE MANIA DANDLOO X812 TE MANIA LOWAN B120 (AI) (ET) BT ULTRAVOX 297E
 TE MANIA LOWAN W107 (AI)

INDEX			
AB	D	HG	G
\$92	\$84	\$102	\$86
7	6	6	5
Trial Structural EBVs			
FC	FA	RA	RS
NA	NA	NA	NA

August 2015 Angus Australia BREEDPLAN																		
EBV	Calving Ease				Growth & Maternal				Fertility		CWT	Carcase						
	Dir	Dtrs	GL	B Wt	200	400	600	M Wt	Milk	SS	DC	650d	EMA	Rib	Rump	RBV%	IMF%	DOC
-7.8	-2.6	+1.4	+5.1	+45	+74	+97	+86	+15	+1.6	-5.4	+55	+5.0	+0.9	+0.8	-1.1	+3.3	+5	
Acc	53%	42%	85%	74%	70%	69%	67%	63%	49%	71%	41%	58%	58%	59%	60%	55%	53%	59%

Traits Observed: GL CE BWT 200WT 400WT(x2) SS FAT EMA IMF DOC,

Type, frame and body length shown by this bull.

BREED AVERAGE EBVS FOR 2013 BORN CALVES																					
CALVING EASE				GROWTH & MATERNAL				FERTILITY		CWT	CARCASE					INDEXES					
DIR	DTRS	GL	BWT	200	400	600	MWT	MILK	SS	DC	450d	EMA	RIB	RUMP	RBV%	IMF%	DOC	AB	D	HG	G
-0.3	-0.1	-3.3	+4.4	+40	+74	+96	+86	+14	+1.6	-3.5	+54	+4.1	-0.1	-0.1	+0.3	+1.5	+3	\$99	\$99	\$99	\$99
Animals with Indexes highlighted with shading are in the top 10% of the Angus breed.																					



Lot 29 **TE MANIA JUGGERNAUT J1389 (AI) (ET)** SB2
 Born: 19/09/2013 Society Id: VTMJ1389 AMFU/NHFU/CAFU/DDFU Structure date scored 23/03/2015

Calving Ease Marbling

Sire: **TUWHARETOA REGENT D145 (AI) (ET)** Dam: **TE MANIA DANDLOO C91 (AI)**
 TE MANIA AMBASSADOR A134 (AI) RENNYLEA XPONENTIAL X555 (AI) (ET) ARDCAIRNIE MIDLAND Z57 (AI) B/R MIDLAND
 TE MANIA LOWAN Y211 (ACR) (AI) ARDCAIRNIE GEORGINA V18 (AI)
 LAWSONS HENRY VIII Y5 (AI) YTHANBRAE HENRY VIII U8 (AI) (ET) TE MANIA DANDLOO A437 (ACR) (AI) B/R NEW DESIGN 323-9150
 YTHANBRAE DIRECTION T270 (AI) TE MANIA DANDLOO Y628 (ACR) (AI) (ET)

\$INDEX				
AB	D	HG	G	
\$107	\$99	\$116	\$104	
7	6	5	5	5
Trial Structural EBVs				
FC	FA	RA	RH	RS
NA	NA	NA	NA	NA

August 2015 Angus Australia BREEDPLAN																		
Calving Ease	Growth & Maternal					Fertility		CWT	Carcase									
	Dir	Dtrs	GL	B Wt	200	400	600	M Wt	Milk	SS	DC	650d	EMA	Rib	Rump	RBV%	IMF%	DOC
EBV	+2.6	-0.8	-4.8	+1.6	+37	+72	+96	+75	+22	+0.1	-3.6	+65	+6.7	+0.8	+0.9	-1.3	+3.2	+1
Acc	59%	53%	67%	76%	72%	72%	71%	68%	62%	75%	47%	65%	64%	65%	66%	62%	61%	64%

Traits Observed: BWT 200WT 400WT(x2) SS FAT EMA IMF DOC,

An ET conceived son of Regent. Regent continues to be in strong demand and who we have sold sons to a high of \$24,000. The dam of this bull ran through our donor program in 2010 and 2013 and as a rising eight year old she remains active within the stud herd. Flush brother to lots 37, 46 and 49.

Lot 30 **TE MANIA JANGADA J445 (AI)** SB2
 Born: 13/08/2013 Society Id: VTMJ445 AMFU/NHFU/CAFU/DDFU Structure date scored 23/03/2015

Growth Marbling

Sire: **TE MANIA GENERAL G429 (AI)** Dam: **TE MANIA WARGOONA B192 (AI) (ET)**
 TUWHARETOA REGENT D145 (AI) (ET) TE MANIA AMBASSADOR A134 (AI) LAWSONS HENRY VIII Y5 (AI) B/R NEW DESIGN 036
 TE MANIA DANDLOO Z811 (AI) TE MANIA LOWAN U41 (AI) (ET) TE MANIA DANDLOO X812 TE MANIA WARGOONA X254 (AI) C A FUTURE DIRECTION 5321
 TE MANIA DANDLOO X812 TE MANIA WARGOONA Y351 (TW)

\$INDEX				
AB	D	HG	G	
\$100	\$90	\$110	\$95	
6	6	6	6	6
Trial Structural EBVs				
FC	FA	RA	RH	RS
NA	NA	NA	NA	NA

August 2015 Angus Australia BREEDPLAN																		
Calving Ease	Growth & Maternal					Fertility		CWT	Carcase									
	Dir	Dtrs	GL	B Wt	200	400	600	M Wt	Milk	SS	DC	650d	EMA	Rib	Rump	RBV%	IMF%	DOC
EBV	-3.6	-1.3	-6.1	+5.8	+42	+73	+102	+98	+12	+1.3	-4.5	+60	+5.5	0.0	-0.4	-0.3	+2.6	0
Acc	55%	45%	85%	75%	71%	70%	68%	64%	52%	72%	43%	60%	60%	60%	62%	57%	55%	59%

Traits Observed: GL CE BWT 200WT 400WT(x2) SS FAT EMA IMF DOC,

Good frame and body length with this AI conceived son of Te Mania General.

Lot 31 **TE MANIA JERK J997 (AI)** SB2
 Born: 26/08/2013 Society Id: VTMJ997 AMFU/NHFU/CAFU/DDFU Structure date scored 23/03/2015

Growth Marbling

Sire: **TE MANIA GASKIN G555 (AI)** Dam: **TE MANIA LOWAN C341 (AI) (ET)**
 TUWHARETOA REGENT D145 (AI) (ET) TE MANIA AMBASSADOR A134 (AI) LAWSONS HENRY VIII Y5 (AI) TE MANIA YAKKA Y428 (AI) (ET) B/R NEW DESIGN 036
 TE MANIA DANDLOO D66 (AI) TE MANIA YORKSHIRE Y437 (AI) TE MANIA LOWAN B860 (AI) TE MANIA LOWAN Y211 (ACR) (AI) C A FUTURE DIRECTION 5321
 TE MANIA DANDLOO X812 TE MANIA LOWAN B860 (AI) TE MANIA LOWAN Y211 (ACR) (AI) TE MANIA LOWAN Y58 (AI) (ET)

\$INDEX				
AB	D	HG	G	
\$94	\$88	\$111	\$87	
6	6	6	5	5
Trial Structural EBVs				
FC	FA	RA	RH	RS
NA	NA	NA	NA	NA

August 2015 Angus Australia BREEDPLAN																		
Calving Ease	Growth & Maternal					Fertility		CWT	Carcase									
	Dir	Dtrs	GL	B Wt	200	400	600	M Wt	Milk	SS	DC	650d	EMA	Rib	Rump	RBV%	IMF%	DOC
EBV	-1.4	-4.1	+1.0	+5.3	+40	+77	+101	+99	+17	+1.2	-3.5	+64	+1.9	-1.0	-0.5	-1.7	+3.6	+3
Acc	53%	43%	86%	76%	72%	71%	69%	65%	52%	72%	41%	60%	59%	61%	62%	57%	55%	57%

Traits Observed: GL CE BWT 200WT 400WT(x2) SS FAT EMA IMF DOC,

An AI conceived son of Gaskin who is one of our current and prominent AI sires. This bull displays good frame and body length and his dam as a rising eight year old remains active within the stud herd.

Lot 32 **TE MANIA JOKER J1250 (AI)** SB2
 Born: 08/09/2013 Society Id: VTMJ1250 AMFU/NHFU/CAFU/DDFU Structure date scored 23/03/2015

Calving Ease Marbling

Sire: **TE MANIA GASKIN G555 (AI)** Dam: **TE MANIA BARWON B777 (AI)**
 TUWHARETOA REGENT D145 (AI) (ET) TE MANIA AMBASSADOR A134 (AI) LAWSONS HENRY VIII Y5 (AI) TE MANIA YOU YANG Y838 (AI) (ET) C A FUTURE DIRECTION 5321
 TE MANIA DANDLOO D66 (AI) TE MANIA YORKSHIRE Y437 (AI) TE MANIA LOWAN B860 (AI) TE MANIA BARWON U229 (AI) (ET) B/R NEW DESIGN 036
 TE MANIA DANDLOO X812 TE MANIA LOWAN B860 (AI) TE MANIA BARWON P87 (AI) (ET)

\$INDEX				
AB	D	HG	G	
\$100	\$99	\$108	\$97	
6	6	6	5	5
Trial Structural EBVs				
FC	FA	RA	RH	RS
+8.6	+6.6	NA	NA	NA
46%	47%			

August 2015 Angus Australia BREEDPLAN																		
Calving Ease	Growth & Maternal					Fertility		CWT	Carcase									
	Dir	Dtrs	GL	B Wt	200	400	600	M Wt	Milk	SS	DC	650d	EMA	Rib	Rump	RBV%	IMF%	DOC
EBV	+1.2	+0.4	-3.4	+3.8	+38	+74	+94	+81	+16	+1.0	-2.7	+59	+4.9	-0.3	-0.4	-0.6	+2.8	+16
Acc	51%	41%	86%	76%	71%	70%	68%	64%	51%	73%	40%	59%	59%	60%	61%	56%	53%	56%

Traits Observed: GL BWT 200WT 400WT(x2) SS FAT EMA IMF DOC,

Stylish with good body length with this AI conceived son of Gaskin.

BREED AVERAGE EBVS FOR 2013 BORN CALVES																					
CALVING EASE			GROWTH & MATERNAL					FERTILITY		CWT	Carcase					INDEXES					
DIR	DTRS	GL	BWT	200	400	600	MWT	MILK	SS	DC	450d	EMA	RIB	RUMP	RBV%	IMF%	Doc	AB	D	HG	G
-0.3	-0.1	-3.3	+4.4	+40	+74	+96	+86	+14	+1.6	-3.5	+54	+4.1	-0.1	-0.1	+0.3	+1.5	+3	\$99	\$99	\$99	\$99
Animals with Indexes highlighted with shading are in the top 10% of the Angus breed.																					



Lot 33 **TE MANIA JOIN J1236 (AI)** SB2
 Born: 07/09/2013 Society Id: VTMJ1236 AMFU/NHFU/CAFU/DDC Structure date scored 23/03/2015

Calving Ease Growth Marbling Angus Breeding Heavy Grass Heavy Grain

G A R PREDESTINED BIR NEW DESIGN 036 TE MANIA BERKLEY B1 (AI) TE MANIA YORKSHIRE Y437 (AI)
 Sire: **WERNER WESTWARD 357** G A R EXT 4206 Dam: **TE MANIA BEEAC D178 (AI)** TE MANIA LOWAN Z53 (AI) (ET)
 BFF EVERELDA ENTENSE 4015 C A FUTURE DIRECTION 5321 TE MANIA BEEAC A502 (AI) (ET) TE MANIA XPO X84 (AI) (ET)
 THREE TREES EVERELDA C27F TE MANIA BEEAC W329 (AI) (ET)

INDEX			
AB	D	HG	G
\$128	\$114	\$144	\$119
6	6	6	5
Trial Structural EBVs			
FC	FA	RA	RH RS
NA	NA	NA	NA NA

August 2015 Angus Australia BREEDPLAN																		
EBV	Calving Ease				Growth & Maternal					Fertility		CWT	Carcase					
	Dir	Dtrs	GL	B Wt	200	400	600	M Wt	Milk	SS	DC	650d	EMA	Rib	Rump	RBV%	IMF%	DOC
+4.9	+4.7	-4.8	+2.8	+42	+77	+103	+93	+17	+1.3	-5.7	+60	+5.0	0.0	+0.4	-0.2	+3.0	-12	
Acc	53%	44%	86%	75%	71%	71%	70%	64%	56%	74%	42%	60%	62%	62%	63%	58%	58%	59%

Traits Observed: GL BWT 200WT 400WT(x2) SS FAT EMA IMF DOC,

Type, frame and body length on display.

Lot 34 **TE MANIA JAMBE J341 (AI)** SB2
 Born: 09/08/2013 Society Id: VTMJ341 AMFU/NHFU/CAFU/DDFV Structure date scored 23/03/2015

Calving Ease Marbling Angus Breeding Heavy Grass Heavy Grain

LAWSON'S INVINCIBLE C402(AI) G A R SOLUTION LAWSON'S PREDESTINED A598(AI) TE MANIA BERKLEY B1 (AI) TE MANIA YORKSHIRE Y437 (AI)
 Sire: **TE MANIA GENEVA G452 (AI)** Dam: **TE MANIA WARGOONA G164 (AI) (ET)** TE MANIA LOWAN Z53 (AI) (ET)
 TE MANIA BEEAC C238 (AI) (ET) C A FUTURE DIRECTION 5321 TE MANIA WARGOONA X254 (AI) C A FUTURE DIRECTION 5321
 TE MANIA BEEAC U343 (AI) (ET) TE MANIA WARGOONA V351 (TW)

INDEX			
AB	D	HG	G
\$117	\$112	\$126	\$112
7	7	6	5
Trial Structural EBVs			
FC	FA	RA	RH RS
NA	NA	NA	NA NA

August 2015 Angus Australia BREEDPLAN																		
EBV	Calving Ease				Growth & Maternal					Fertility		CWT	Carcase					
	Dir	Dtrs	GL	B Wt	200	400	600	M Wt	Milk	SS	DC	650d	EMA	Rib	Rump	RBV%	IMF%	DOC
+2.0	+2.8	-3.3	+3.9	+44	+79	+99	+87	+13	+0.7	-4.7	+62	+7.3	-0.2	-0.3	-0.1	+2.6	+16	
Acc	52%	43%	85%	74%	69%	70%	68%	64%	50%	72%	41%	59%	59%	60%	61%	56%	55%	56%

Traits Observed: GL CE BWT 200WT 400WT(x2) SS FAT EMA IMF DOC,

Frame and length on display in this first calf out of a two year old heifer. Both sides of this bulls pedigree are filled with prominent cows from within our herd.

Lot 35 **TE MANIA JAFFNA J187 (AI)** SB2
 Born: 02/08/2013 Society Id: VTMJ187 AMFU/NHFU/CAFU/DDF Structure date scored 23/03/2015

Marbling

S S OBJECTIVE T510 0T26 SS TRAVELER 6807 T510 BIR MIDLAND TE MANIA CODRINGTON C737 (AI) (ET) BIR MIDLAND
 Sire: **CIRCLE A INCENTIVE** S S MISS RITA R011 7R8 Dam: **TE MANIA LOWAN G300 (AI) (ET)** TE MANIA LOWAN Y211 (ACR) (AI)
 CIRCLE A BEAUTY 5566 C R A BEXTOR 872 5205 608 TE MANIA LOWAN Z237 (AI) (ET) BIR NEW DESIGN 036
 M G S A BEAUTY 4007 M G S A BEAUTY 4007 TE MANIA LOWAN Y104 (AI) (ET)

INDEX			
AB	D	HG	G
\$105	\$100	\$106	\$104
6	6	6	5
Trial Structural EBVs			
FC	FA	RA	RH RS
NA	NA	NA	NA NA

August 2015 Angus Australia BREEDPLAN																		
EBV	Calving Ease				Growth & Maternal					Fertility		CWT	Carcase					
	Dir	Dtrs	GL	B Wt	200	400	600	M Wt	Milk	SS	DC	650d	EMA	Rib	Rump	RBV%	IMF%	DOC
-0.2	-0.3	-4.2	+3.9	+48	+74	+98	+97	+11	+0.6	-4.9	+61	+7.9	+0.3	+0.7	0.0	+2.1	-4	
Acc	49%	40%	84%	73%	68%	69%	67%	63%	48%	72%	36%	57%	58%	59%	60%	54%	53%	56%

Traits Observed: GL CE BWT 200WT 400WT(x2) SS FAT EMA IMF DOC,

Good natural thickness and body length displayed in this first calf out of a two year old heifer.

Lot 36 **TE MANIA JODHPURS J1204 (AI)** SB2
 Born: 05/09/2013 Society Id: VTMJ1204 AMFU/NHFU/CAFU/DDF Structure date scored 23/03/2015

Calving Ease Fertility Marbling Angus Breeding Heavy Grass Heavy Grain

TE MANIA BARTEL B219 (AI) (ET) BIR NEW DESIGN 7127 TE MANIA JEDDA W85 (AI) (ET) LAWSON'S DINKY-DI Z191 BON VIEW DESIGN 1407
 Sire: **AYRVALE BARTEL E7(AI)(ET)** Dam: **TE MANIA BARUNAH E561 (AI)** G A R PRECISION 1900
 EAGLEHAWK JEDDA B32(AI) MYTTY IN FOCUS TE MANIA BARUNAH C794 (AI) ARDCAIRNIE MIDLAND Z57 (AI)
 EAGLEHAWK JEDDA Z48(AI) TE MANIA BARUNAH Y875

INDEX			
AB	D	HG	G
\$127	\$115	\$139	\$119
7	6	6	5
Trial Structural EBVs			
FC	FA	RA	RH RS
NA	NA	NA	NA NA

August 2015 Angus Australia BREEDPLAN																		
EBV	Calving Ease				Growth & Maternal					Fertility		CWT	Carcase					
	Dir	Dtrs	GL	B Wt	200	400	600	M Wt	Milk	SS	DC	650d	EMA	Rib	Rump	RBV%	IMF%	DOC
+6.0	+4.9	-5.7	+0.7	+40	+73	+94	+60	+23	+1.8	-6.8	+64	+8.0	+1.0	+0.3	-0.6	+3.2	-10	
Acc	57%	48%	85%	75%	70%	71%	69%	67%	59%	68%	43%	62%	60%	60%	60%	56%	58%	58%

Traits Observed: GL BWT 200WT 400WT(x2) SS FAT EMA IMF DOC,

Good natural thickness and body length on display.

BREED AVERAGE EBVS FOR 2013 BORN CALVES

CALVING EASE															GROWTH & MATERNAL					FERTILITY		CWT	CARCASS					INDEXES			
DIR	DTRS	GL	BWT	200	400	600	MWT	MILK	SS	DC	450d	EMA	RIB	RUMP	RBV%	IMF%	DOC	AB	D	HG	G										
-0.3	-0.1	-3.3	+4.4	+40	+74	+96	+86	+14	+1.6	-3.5	+54	+4.1	-0.1	-0.1	+0.3	+1.5	+3	\$99	\$99	\$99	\$99										

Animals with Indexes highlighted with shading are in the top 10% of the Angus breed.



“

LazaFX is the blackest, easiest to read marking and has provided Te Mania with proven results. I highly recommend it to any farmer.

”

*Tom Gubbins, Director,
Te Mania Angus*



Contact our friendly Customer Service Team

1300 138 247

www.allflex.com.au

Proven Products; Trusted People



Identify the Difference

HEALTHY HEIFERS. MATERIALISED INVESTMENT.

Heifers are the future of your herd. They hold the genetic potential of your operation. That's why it's important to protect them from Pestivirus. It's well known that Pestivirus can reduce your reproductive performance. Just a small drop in conception and calving rates can have a significant impact on your bottom line. That's why you should vaccinate all heifers with Pestigard. Vaccinate twice within 6 months, prior to joining, to get the best reproductive performance from your heifers.*

Protect your heifers potential. Vaccinate with Pestigard.





Lot 37 **TE MANIA JUDICIOUS J1380 (AI) (ET)** SBS
 Born: 19/09/2013 Society Id: VTMJ1380 AMFU/NHFU/CAFU/DDFU Structure date scored 23/03/2015

Growth Marbling

Sire: **TUWHARETOA REGENT D145 (AI) (ET)** Dam: **TE MANIA DANDLOO C91 (AI)**
 TE MANIA AMBASSADOR A134 (AI) RENNYLEA XPONENTIAL X555 (AI) (ET) ARDCARNIE MIDLAND Z57 (AI) B/R MIDLAND
 TE MANIA LOWAN Y211 (ACR) (AI) TE MANIA JEDDA Y32 (AI) (ET) ARDCARNIE GEORGINA V18 (AI) ARDCARNIE GEORGINA V18 (AI)
 LAWSONS HENRY VIII Y5 (AI) YTHANBRAE HENRY VIII U8 (AI) (ET) TE MANIA DANDLOO A437 (ACR) (AI) B/R NEW DESIGN 323-9150
 YTHANBRAE DIRECTION T270 (AI) YTHANBRAE DIRECTION T270 (AI) TE MANIA DANDLOO Y628 (ACR) (AI) (ET) TE MANIA DANDLOO Y628 (ACR) (AI) (ET)

INDEX			
AB	D	HG	G
\$98	\$87	\$109	\$93
6	6	6	5
Trial Structural EBVs			
FC	FA	RA	RS
NA	NA	NA	NA

August 2015 Angus Australia BREEDPLAN																		
EBV	Calving Ease				Growth & Maternal				Fertility		CWT	Carcase						
	Dir	Dtrs	GL	B Wt	200	400	600	M Wt	Milk	SS	DC	650d	EMA	Rib	Rump	RBV%	IMF%	DOC
-2.5	-3.7	-4.0	+4.3	+42	+75	+104	+92	+19	-0.1	-3.9	+67	+3.6	+0.4	+0.9	-1.7	+3.3	+1	
Acc	59%	53%	67%	76%	72%	72%	71%	68%	62%	75%	47%	65%	65%	65%	66%	62%	61%	64%

Traits Observed: BWT 200WT 400WT(x2) SS FAT EMA IMF DOC,

Frame and body length on display in this ET conceived son of Regent. His dam ran through our donor program in 2010 and 2013 and as a rising eight year old she remains active within the stud herd. Flush brother to lots 29, 46 and 49.

Lot 38 **TE MANIA JUXTAPOSE J1471** SBS
 Born: 09/10/2013 Society Id: VTMJ1471 AMFU/NHFU/CAFU/DDF Structure date scored 23/03/2015

Growth Fertility Carcase Marbling Angus Breeding Heavy Grass Heavy Grain

Sire: **TE MANIA DIPLOMAT D10 (AI)** Dam: **TE MANIA JEDDA E629 (AI)**
 TE MANIA AFRICA A217 (AI) TE MANIA ULONG U41 (AI) (ET) TE MANIA CHELMSFORD C440 (AI) ARDROSSAN DIRECTION W109 (AI) (ET)
 TE MANIA JEDDA Y32 (AI) (ET) TE MANIA JEDDA Y32 (AI) (ET) TE MANIA MTTAGONG Z447 (AI) TE MANIA MTTAGONG Z447 (AI)
 TE MANIA DANDLOO B76 (AI) TE MANIA UNLIMIT U3271 (AI) (ET) TE MANIA JEDDA Z426 (ACR) (AI) TE MANIA ULONG U41 (AI) (ET)
 TE MANIA DANDLOO X330 (AI) TE MANIA DANDLOO X330 (AI) TE MANIA JEDDA X763 (ACR) TE MANIA JEDDA X763 (ACR)

INDEX			
AB	D	HG	G
\$119	\$108	\$130	\$113
5	5	5	5
Trial Structural EBVs			
FC	FA	RA	RS
NA	NA	NA	NA

August 2015 Angus Australia BREEDPLAN																		
EBV	Calving Ease				Growth & Maternal				Fertility		CWT	Carcase						
	Dir	Dtrs	GL	B Wt	200	400	600	M Wt	Milk	SS	DC	650d	EMA	Rib	Rump	RBV%	IMF%	DOC
-2.8	-1.1	-5.2	+6.2	+43	+81	+107	+84	+19	+2.7	-5.1	+45	+6.7	+0.1	+0.7	+0.8	+2.4	+24	
Acc	55%	49%	67%	75%	69%	67%	67%	67%	61%	58%	44%	61%	56%	59%	59%	55%	57%	57%

Traits Observed: BWT 200WT 400WT(x2) SS FAT EMA IMF DOC,

The youngest bull in the catalogue. Good frame and balance on display. The sire of this bull remains active within our progeny testing program.

Lot 39 **TE MANIA JUSTIFY J1461** SBS
 Born: 05/10/2013 Society Id: VTMJ1461 AMFU/NHFU/CAFU/DDC Structure date scored 23/03/2015

Growth Fertility Marbling Angus Breeding Heavy Grain

Sire: **TE MANIA GENERAL G429 (AI)** Dam: **TE MANIA LOWAN F111 (AI)**
 TUWHARETOA REGENT D145 (AI) (ET) TE MANIA AMBASSADOR A134 (AI) TE MANIA DAIQUIRI D19 (AI) TE MANIA AFRICA A217 (AI)
 TE MANIA DANDLOO Z811 (AI) LAWSONS HENRY VIII Y5 (AI) TE MANIA DAIQUIRI D19 (AI) TE MANIA LOWAN B431 (AI) (ET)
 TE MANIA DANDLOO X812 TE MANIA ULONG U41 (AI) (ET) TE MANIA LOWAN C294 (AI) TE MANIA ADISON A257 (AI)
 TE MANIA DANDLOO X812 TE MANIA DANDLOO X812 TE MANIA LOWAN Y1019 (AI) (ET) TE MANIA LOWAN Y1019 (AI) (ET)

INDEX			
AB	D	HG	G
\$116	\$99	\$130	\$108
6	5	5	5
Trial Structural EBVs			
FC	FA	RA	RS
NA	NA	NA	NA

August 2015 Angus Australia BREEDPLAN																		
EBV	Calving Ease				Growth & Maternal				Fertility		CWT	Carcase						
	Dir	Dtrs	GL	B Wt	200	400	600	M Wt	Milk	SS	DC	650d	EMA	Rib	Rump	RBV%	IMF%	DOC
-3.3	-1.4	-6.4	+5.3	+45	+82	+114	+109	+17	+2.4	-6.1	+60	+5.8	+0.6	+0.2	-0.3	+2.6	+20	
Acc	52%	40%	67%	74%	68%	65%	65%	63%	49%	56%	35%	56%	51%	53%	53%	49%	49%	58%

Traits Observed: BWT 200WT 400WT(x2) SS FAT EMA IMF DOC,

Good frame and body length on display. A good blend of Regent and Africa bloodlines.

Lot 40 **TE MANIA JU-JITSU J1399 (AI) (ET)** SBS
 Born: 21/09/2013 Society Id: VTMJ1399 AMFU/NHFU/CAFU/DDFU Structure date scored 23/03/2015

Marbling

Sire: **TUWHARETOA REGENT D145 (AI) (ET)** Dam: **TE MANIA WARGOONA D604 (AI) (ET)**
 TE MANIA AMBASSADOR A134 (AI) RENNYLEA XPONENTIAL X555 (AI) (ET) TE MANIA YORKSHIRE Y437 (AI) S A F FOCUS OF ER
 TE MANIA LOWAN Y211 (ACR) (AI) TE MANIA LOWAN Y211 (ACR) (AI) TE MANIA WARGOONA D604 (AI) (ET) TE MANIA WARGOONA D604 (AI) (ET)
 LAWSONS HENRY VIII Y5 (AI) YTHANBRAE HENRY VIII U8 (AI) (ET) TE MANIA WARGOONA X254 (AI) C A FUTURE DIRECTION 5321
 YTHANBRAE DIRECTION T270 (AI) YTHANBRAE DIRECTION T270 (AI) TE MANIA WARGOONA Y351 (TW) TE MANIA WARGOONA Y351 (TW)

INDEX			
AB	D	HG	G
\$99	\$91	\$107	\$95
6	6	6	5
Trial Structural EBVs			
FC	FA	RA	RS
NA	NA	NA	NA

August 2015 Angus Australia BREEDPLAN																		
EBV	Calving Ease				Growth & Maternal				Fertility		CWT	Carcase						
	Dir	Dtrs	GL	B Wt	200	400	600	M Wt	Milk	SS	DC	650d	EMA	Rib	Rump	RBV%	IMF%	DOC
+0.1	-0.7	-4.1	+2.8	+42	+71	+98	+86	+17	+1.3	-4.0	+70	+4.7	+0.5	-0.4	-1.2	+3.0	+5	
Acc	61%	56%	65%	77%	73%	73%	71%	69%	63%	75%	50%	66%	65%	65%	66%	63%	62%	66%

Traits Observed: BWT 200WT 400WT(x2) SS FAT EMA IMF DOC,

An ET conceived son of Regent who ticks a lot of boxes for frame, body length and type. Through our various sales we have sold 117 sons of Regent for an average of \$7,343 and a high of \$24,000. The dam of this bull ran through our donor program in 2013 and currently sits in the program for 2015. We have 54 progeny recorded from her.

BREED AVERAGE EBVS FOR 2013 BORN CALVES

CALVING EASE				GROWTH & MATERNAL				FERTILITY		CWT	CARCASE					INDEXES					
DIR	DTRS	GL	BWT	200	400	600	MWT	MILK	SS	DC	450d	EMA	RIB	RUMP	RBV%	IMF%	Doc	AB	D	HG	G
-0.3	-0.1	-3.3	+4.4	+40	+74	+96	+86	+14	+1.6	-3.5	+54	+4.1	-0.1	-0.1	+0.3	+1.5	+3	\$99	\$99	\$99	\$99

Animals with Indexes highlighted with shading are in the top 10% of the Angus breed.



Lot 41 **TE MANIA JAMOND J389 (AI) (ET)** SB3
 Born: 12/08/2013 Society Id: VTMJ389 AMFU/NHFU/CAFU/DDFU Structure date scored 23/03/2015

Growth Marbling Heavy Grain

Sire: **TUWHARETOA REGENT D145 (AI) (ET)** Dam: **TE MANIA DANDLOO E95 (AI)**
 TE MANIA AMBASSADOR A134 (AI) RENNYLEA XPONENTIAL X555 (AI) (ET) TE MANIA BRADMAN B49 (AI) (ET) GARDENS HIGHMARK TE MANIA JEDDA W85 (AI) (ET)
 TE MANIA LOWAN Y211 (ACR) (AI) YTHANBRAE HENRY VIII U8 (AI) (ET) YTHANBRAE DIRECTION T270 (AI) TE MANIA DANDLOO C91 (AI) ARDCAIRNIE MIDLAND Z57 (AI) TE MANIA DANDLOO A437 (ACR) (AI)
 LAWSONS HENRY VIII Y5 (AI)

INDEX				
AB	D	HG	G	
\$107	\$99	\$118	\$102	
6	6	6	6	5
Trial Structural EBVs				
FC	FA	RA	RH	RS
NA	NA	NA	NA	NA

August 2015 Angus Australia BREEDPLAN																		
EBV	Calving Ease				Growth & Maternal					Fertility		CWT	Carcase					
	Dir	Dtrs	GL	B Wt	200	400	600	M Wt	Milk	SS	DC	650d	EMA	Rib	Rump	RBV%	IMF%	DOC
+0.2	-0.9	-5.6	+2.2	+43	+78	+103	+79	+22	+0.8	-3.6	+75	+5.1	-0.2	-0.3	-1.2	+3.4	+4	
Acc	60%	53%	67%	76%	72%	73%	71%	68%	61%	76%	47%	66%	66%	66%	67%	63%	62%	64%

Traits Observed: CE BWT 200WT 400WT(x2) SS FAT EMA IMF DOC,

Another ET conceived son of Regent who displays good frame and body length. His dam ran through our donor program in 2012 and from who we have 18 progeny recorded from. She remains active within the stud herd.

Lot 42 **TE MANIA JAVON J679 (AI) (ET)** SB3
 Born: 17/08/2013 Society Id: VTMJ679 AMFU/NHFU/CAFU/DDFU Structure date scored 23/03/2015

Fertility Marbling Angus Breeding Heavy Grass Heavy Grain

Sire: **THOMAS GRADE UP 6849** Dam: **TE MANIA BARUNAH D560 (AI) (ET)**
 G A R PREDESTINED BIR NEW DESIGN 036 G A R EXT 4206 TE MANIA BERKLEY B1 (AI) TE MANIA YORKSHIRE V437 (AI) TE MANIA LOWAN Z53 (AI) (ET)
 THOMAS MISS LUCY 4206 C A FUTURE DIRECTION 5321 THOMAS MISS LUCY 0671 TE MANIA BARUNAH X617 (AI) (ET) BIR NEW DESIGN 036 TE MANIA BARUNAH R312 (AI) (ET)

INDEX				
AB	D	HG	G	
\$125	\$108	\$140	\$115	
6	6	7	6	7
Trial Structural EBVs				
FC	FA	RA	RH	RS
NA	NA	NA	NA	NA

August 2015 Angus Australia BREEDPLAN																		
EBV	Calving Ease				Growth & Maternal					Fertility		CWT	Carcase					
	Dir	Dtrs	GL	B Wt	200	400	600	M Wt	Milk	SS	DC	650d	EMA	Rib	Rump	RBV%	IMF%	DOC
+2.0	+3.4	-3.5	+4.5	+42	+74	+99	+87	+12	+2.3	-7.6	+55	+3.1	+0.9	+2.0	-1.4	+3.2	-8	
Acc	56%	49%	65%	75%	72%	72%	71%	68%	62%	75%	46%	64%	64%	64%	65%	61%	60%	61%

Traits Observed: BWT 200WT 400WT(x2) SS FAT EMA IMF DOC,

Frame, length and good body type in this stylish and ET conceived son of Gradeup. His dam ran through our donor program in 2012 and from who we have 21 progeny recorded from. Flush brother to lots 50 and 55.

Lot 43 **TE MANIA JILT J1136 (AI) (ET)** SB3
 Born: 02/09/2013 Society Id: VTMJ1136 AMFU/NHFU/CAFU/DDFU Structure date scored 23/03/2015

Growth Fertility Marbling Angus Breeding Heavy Grain

Sire: **TE MANIA FITZPATRICK F528 (AI) (ET)** Dam: **TE MANIA DANDLOO C670 (AI) (ET)**
 LAWSONS DINKY-DI Z191 BON VIEW DESIGN 1407 G A R PRECISION 1900 ARDCAIRNIE MIDLAND Z57 (AI) BIR MIDLAND ARDCAIRNIE GEORGINA V18 (AI)
 TE MANIA MITTAGONG B112 (AI) TE MANIA ULONG Z773 (AI) TE MANIA MITTAGONG Z447 (AI) TE MANIA DANDLOO Y711 (AI) VERMILLION YELLOWSTONE TE MANIA DANDLOO U159 (AI)

INDEX				
AB	D	HG	G	
\$117	\$107	\$131	\$109	
7	6	5	5	5
Trial Structural EBVs				
FC	FA	RA	RH	RS
NA	NA	NA	NA	NA

August 2015 Angus Australia BREEDPLAN																		
EBV	Calving Ease				Growth & Maternal					Fertility		CWT	Carcase					
	Dir	Dtrs	GL	B Wt	200	400	600	M Wt	Milk	SS	DC	650d	EMA	Rib	Rump	RBV%	IMF%	DOC
+0.6	+0.1	-2.5	+5.8	+48	+85	+109	+90	+21	+3.4	-4.9	+60	+0.3	0.0	+2.0	-1.2	+3.4	-6	
Acc	54%	45%	64%	75%	71%	72%	70%	66%	58%	74%	41%	62%	63%	63%	64%	59%	59%	61%

Traits Observed: BWT 200WT 400WT(x2) SS FAT EMA IMF DOC,

Good frame and body length with this ET conceived son of Fitzpatrick. His dam ran through our donor program in 2009, 2012 and 2015. We have sold sons to a high of \$19,000 and currently have 31 progeny recorded from her. This bull has a small amount of white on his sheath. Flush brother to lot 8.

Lot 44 **TE MANIA JOCKEY J1199 (AI)** SB3
 Born: 05/09/2013 Society Id: VTMJ1199 AMFU/NHFU/CAFU/DDFU Structure date scored 23/03/2015

Calving Ease Fertility Carcase Marbling Angus Breeding Heavy Grass Heavy Grain

Sire: **CARABAR DOCKLANDS D62(AI)** Dam: **TE MANIA LOWAN C915 (AI)**
 KAROO W109 DIRECTION Z181 ARDROSSAN DIRECTION W109 (AI) (ET) KAROO FLATS MADONNA V56(AI) BONGONGO BULLETPROOF Z3 BON VIEW DESIGN 1407 BONGONGO NGXXX
 CARABAR BLACKCAP MARY B12(AI)(ET) BON VIEW DESIGN 1407 BOOROOMOOKA TRACY T4(AI)(ET) TE MANIA LOWAN V19 (AI) (ET) BIR NEW DESIGN 036 TE MANIA LOWAN R426 (AI) (ET)

INDEX				
AB	D	HG	G	
\$121	\$114	\$121	\$120	
6	6	6	6	5
Trial Structural EBVs				
FC	FA	RA	RH	RS
+20.8	+20.8	NA	NA	NA
50%	50%			

August 2015 Angus Australia BREEDPLAN																		
EBV	Calving Ease				Growth & Maternal					Fertility		CWT	Carcase					
	Dir	Dtrs	GL	B Wt	200	400	600	M Wt	Milk	SS	DC	650d	EMA	Rib	Rump	RBV%	IMF%	DOC
+6.5	+4.2	-6.6	+1.5	+36	+75	+98	+59	+22	+2.2	-5.4	+47	+8.5	+0.4	+0.1	+0.8	+1.5	-8	
Acc	57%	47%	86%	76%	72%	72%	70%	67%	60%	75%	45%	62%	64%	64%	65%	60%	60%	61%

Traits Observed: GL BWT 200WT 400WT(x2) SS FAT EMA IMF DOC,

Good natural thickness, frame and length on display. This bull is well suited for use over heifers.

BREED AVERAGE EBVS FOR 2013 BORN CALVES																					
CALVING EASE				GROWTH & MATERNAL					FERTILITY		CWT	CARCASE					INDEXES				
DIR	DTRS	GL	BWT	200	400	600	MWT	MILK	SS	DC	450d	EMA	RIB	RUMP	RBV%	IMF%	Doc	AB	D	HG	G
-0.3	-0.1	-3.3	+4.4	+40	+74	+96	+86	+14	+1.6	-3.5	+54	+4.1	-0.1	-0.1	+0.3	+1.5	+3	\$99	\$99	\$99	\$99
Animals with Indexes highlighted with shading are in the top 10% of the Angus breed.																					



Lot 45 **TE MANIA JOWETT J1343 (AI)** SBS
 Born: 14/09/2013 Society Id: VTMJ1343 AMFU/NH16%/CAFU/DDFU Structure date scored 23/03/2015

Marbling

G A R PREDESTINED B/R NEW DESIGN 036 TE MANIA UNLIMITED U3271 (AI) (ET) B/R NEW DESIGN 036
 G A R EXT 4206 TE MANIA LOWAN R426 (AI) (ET)
Sire: WERNER WESTWARD 357 **Dam: TE MANIA LOWAN Y391 (AI)**
 BFF EVERELDA ENTENSE 4015 C A FUTURE DIRECTION 5321 TE MANIA LOWAN V527 (AI) (ET) TEHAMA 5204 TRAV 641
 THREE TREES EVERELDA C27F TE MANIA LOWAN P6 (AI) (ET)

\$INDEX			
AB	D	HG	G
\$110	\$103	\$117	\$107
6	6	6	5
Trial Structural EBVs			
FC	FA	RA	RS
NA	NA	NA	NA

August 2015 Angus Australia BREEDPLAN																		
EBV	Calving Ease				Growth & Maternal				Fertility		CWT	Carcase						
	Dir	Dtrs	GL	B Wt	200	400	600	M Wt	Milk	SS	DC	650d	EMA	Rib	Rump	RBV%	IMF%	DOC
+2.0	+1.6	+0.3	+4.2	+39	+71	+97	+75	+17	+1.7	-3.8	+49	+5.0	+0.2	+0.5	-0.1	+2.5	-10	
Acc	55%	45%	85%	76%	71%	72%	70%	65%	57%	75%	43%	61%	63%	63%	63%	58%	58%	58%

Traits Observed: GL BWT 200WT 400WT(x2) SS FAT EMA IMF DOC.

Stylish and well put together. His dam as a rising 12 year old remains active within the stud herd.

Lot 46 **TE MANIA JUBILATE J1364 (AI) (ET)** SBS
 Born: 17/09/2013 Society Id: VTMJ1364 AMFU/NHFU/CAFU/DDFU Structure date scored 23/03/2015

Marbling

TE MANIA AMBASSADOR A134 (AI) RENNYLEA XPONENTIAL X555 (AI) (ET) ARDCAIRNE MIDLAND Z57 (AI) B/R MIDLAND
 TE MANIA LOWAN Y211 (ACR) (AI) TE MANIA LOWAN Y211 (ACR) (AI) ARDCAIRNE GEORGINA V18 (AI)
Sire: TUWHARETOA REGENT D145 (AI) (ET) **Dam: TE MANIA DANDLOO C91 (AI)**
 LAWSONS HENRY VIII Y5 (AI) YTHANBRAE HENRY VIII U8 (AI) (ET) TE MANIA DANDLOO A437 (ACR) (AI) B/R NEW DESIGN 323-9150
 YTHANBRAE DIRECTION T270 (AI) YTHANBRAE DIRECTION T270 (AI) TE MANIA DANDLOO Y628 (ACR) (AI) (ET)

\$INDEX			
AB	D	HG	G
\$100	\$91	\$109	\$96
6	6	6	6
Trial Structural EBVs			
FC	FA	RA	RS
NA	NA	NA	NA

August 2015 Angus Australia BREEDPLAN																		
EBV	Calving Ease				Growth & Maternal				Fertility		CWT	Carcase						
	Dir	Dtrs	GL	B Wt	200	400	600	M Wt	Milk	SS	DC	650d	EMA	Rib	Rump	RBV%	IMF%	DOC
-0.1	-2.4	-4.1	+3.6	+39	+72	+99	+85	+20	-0.3	-3.6	+65	+5.0	+0.5	+0.8	-1.4	+3.1	+1	
Acc	59%	53%	67%	76%	73%	72%	71%	68%	62%	75%	47%	65%	64%	65%	66%	62%	61%	64%

Traits Observed: BWT 200WT 400WT(x2) SS FAT EMA IMF DOC.

Frame and body length on display in this ET conceived son of Regent. His dam ran through our donor program in 2010 and 2013 and as a rising eight year old she remains active within the stud herd. Flush brother to lots 29, 37 and 49.

Lot 47 **TE MANIA JUDICIAL J1378 (AI) (ET)** SBS
 Born: 19/09/2013 Society Id: VTMJ1378 AMFU/NHF/CAFU/DDFU Structure date scored 23/03/2015

Growth Fertility Marbling Angus Breeding Heavy Grain

TE MANIA AMBASSADOR A134 (AI) RENNYLEA XPONENTIAL X555 (AI) (ET) TE MANIA BERKLEY B1 (AI) TE MANIA YORKSHIRE Y437 (AI)
 TE MANIA LOWAN Y211 (ACR) (AI) TE MANIA LOWAN Y211 (ACR) (AI) TE MANIA LOWAN Z53 (AI) (ET)
Sire: TUWHARETOA REGENT D145 (AI) (ET) **Dam: TE MANIA LOWAN D601 (AI)**
 LAWSONS HENRY VIII Y5 (AI) YTHANBRAE HENRY VIII U8 (AI) (ET) TE MANIA LOWAN Y391 (AI) TE MANIA UNLIMITED U3271 (AI) (ET)
 YTHANBRAE DIRECTION T270 (AI) YTHANBRAE DIRECTION T270 (AI) TE MANIA LOWAN V527 (AI) (ET)

\$INDEX			
AB	D	HG	G
\$117	\$101	\$138	\$106
6	6	6	5
Trial Structural EBVs			
FC	FA	RA	RS
NA	NA	NA	NA

August 2015 Angus Australia BREEDPLAN																		
EBV	Calving Ease				Growth & Maternal				Fertility		CWT	Carcase						
	Dir	Dtrs	GL	B Wt	200	400	600	M Wt	Milk	SS	DC	650d	EMA	Rib	Rump	RBV%	IMF%	DOC
-0.2	-1.9	-4.0	+3.8	+40	+76	+102	+95	+17	+2.8	-5.9	+67	+4.9	+0.6	+0.6	-1.3	+3.8	-4	
Acc	59%	54%	67%	76%	72%	72%	70%	68%	62%	74%	49%	65%	64%	64%	66%	62%	61%	62%

Traits Observed: BWT 200WT 400WT(x2) SS FAT EMA IMF DOC.

Good natural thickness and body length. These Regent sons have been sought after for their ability to enhance carcass traits. Through our various sales we have sold 117 sons of Regent for an average of \$7,343 and a high of \$24,000.

Lot 48 **TE MANIA JETSKE J1065 (AI) (ET)** SBS
 Born: 29/08/2013 Society Id: VTMJ1065 AMFU/NHFU/CAFU/DDC Structure date scored 23/03/2015

Calving Ease Fertility Carcass Marbling Angus Breeding Heavy Grass Heavy Grain

TE MANIA ULONG U41 (AI) (ET) TE MANIA KNIGHT K206 (AI) (ET) B/R MIDLAND TWIN VALLEY PRECISION
 TE MANIA LOWAN Q42 (AI) (ET) TE MANIA LOWAN Q42 (AI) (ET) B/R ROYAL LASS 7036-19
Sire: TE MANIA AFRICA A217 (AI) **Dam: TE MANIA JEDDA E333 (AI) (ET)**
 TE MANIA JEDDA Y32 (AI) (ET) B/R NEW DESIGN 036 TE MANIA JEDDA W85 (AI) (ET) C A FUTURE DIRECTION 5321
 TE MANIA JEDDA U355 (AI) (ET) TE MANIA JEDDA S241 (AI) (ET)

\$INDEX			
AB	D	HG	G
\$119	\$110	\$128	\$115
6	6	6	6
Trial Structural EBVs			
FC	FA	RA	RS
NA	NA	NA	NA

August 2015 Angus Australia BREEDPLAN																		
EBV	Calving Ease				Growth & Maternal				Fertility		CWT	Carcase						
	Dir	Dtrs	GL	B Wt	200	400	600	M Wt	Milk	SS	DC	650d	EMA	Rib	Rump	RBV%	IMF%	DOC
+1.5	+2.1	-5.2	+3.1	+38	+72	+95	+70	+22	+2.2	-4.4	+44	+9.0	+0.2	+0.7	+0.4	+2.7	+25	
Acc	61%	56%	63%	75%	72%	72%	70%	68%	62%	75%	55%	66%	66%	66%	67%	64%	63%	63%

Traits Observed: BWT 200WT 400WT(x2) SS FAT EMA IMF DOC.

Balanced with good body length. His dam ran through our donor program in 2012 and from who we have sold sons to a high of \$13,000.

BREED AVERAGE EBVS FOR 2013 BORN CALVES																					
CALVING EASE				GROWTH & MATERNAL				FERTILITY		CWT	CARCASS					INDEXES					
DIR	DTRS	GL	BWT	200	400	600	MWT	MILK	SS	DC	450d	EMA	RIB	RUMP	RBV%	IMF%	Doc	AB	D	HG	G
-0.3	-0.1	-3.3	+4.4	+40	+74	+96	+86	+14	+1.6	-3.5	+54	+4.1	-0.1	-0.1	+0.3	+1.5	+3	\$99	\$99	\$99	\$99
Animals with Indexes highlighted with shading are in the top 10% of the Angus breed.																					



Lot 49 **TE MANIA JUNIOR J1431 (AI) (ET)** SB3
 Born: 25/09/2013 Society Id: VTMJ1431 AMFU/NHFU/CAFU/DDFU Structure date scored 23/03/2015

Growth Marbling

TE MANIA AMBASSADOR A134 (AI) RENNYLEA XPONENTIAL X555 (AI) (ET) ARDCAIRNIE MIDLAND Z57 (AI) BIR MIDLAND
 TE MANIA LOWAN Y211 (ACR) (AI) ARDCAIRNIE GEORGINA V18 (AI) BIR NEW DESIGN 323-9150
Sire: TUWHARETOA REGENT D145 (AI) (ET) **Dam: TE MANIA DANDLOO C91 (AI)**
 LAWSONS HENRY VIII Y5 (AI) YTHANBRAE HENRY VIII U8 (AI) (ET) TE MANIA DANDLOO A437 (ACR) (AI) TE MANIA DANDLOO Y628 (ACR) (AI) (ET)
 YTHANBRAE DIRECTION T270 (AI)

INDEX			
AB	D	HG	G
\$104	\$91	\$115	\$99
6	6	6	5
Trial Structural EBVs			
FC	FA	RA	RS
NA	NA	NA	NA

August 2015 Angus Australia BREEDPLAN																		
EBV	Calving Ease				Growth & Maternal				Fertility		CWT	Carcase						
	Dir	Dtrs	GL	B Wt	200	400	600	M Wt	Milk	SS	DC	650d	EMA	Rib	Rump	RBV%	IMF%	DOC
+1.9	-3.4	-3.8	+4.3	+42	+76	+106	+92	+20	+0.5	-4.0	+68	+4.9	+0.4	+0.8	-1.3	+3.2	+1	
Acc	59%	53%	67%	76%	72%	72%	71%	68%	62%	75%	47%	65%	64%	65%	66%	62%	61%	64%

Traits Observed: BWT 200WT 400WT(x2) SS FAT EMA IMF DOC,

Balanced throughout for this ET conceived son of Regent. This bulls dam ran through our donor program in 2010 and 2013 and from who we 34 progeny recorded from. As a rising eight year old she remains active within the stud herd. Flush brother to lots 29, 37 and 46.

Lot 50 **TE MANIA JETWAY J1078 (AI) (ET)** SB3
 Born: 30/08/2013 Society Id: VTMJ1078 AMFU/NHFU/CAFU/DDFU Structure date scored 23/03/2015

Calving Ease Fertility Marbling Angus Breeding Heavy Grass Heavy Grain

G A R PREDESTINED BIR NEW DESIGN 036 G A R EXT 4206 TE MANIA BERKLEY B1 (AI) TE MANIA YORKSHIRE Y437 (AI) TE MANIA LOWAN Z53 (AI) (ET)
Sire: THOMAS GRACE UP 6849 **Dam: TE MANIA BARUNAH D560 (AI) (ET)**
 THOMAS MISS LUCY 4206 C A FUTURE DIRECTION 5321 TE MANIA BARUNAH X617 (AI) (ET) BIR NEW DESIGN 036 TE MANIA BARUNAH R312 (AI) (ET)
 THOMAS MISS LUCY 0671

INDEX			
AB	D	HG	G
\$122	\$108	\$136	\$114
6	6	6	6
Trial Structural EBVs			
FC	FA	RA	RS
NA	NA	NA	NA

August 2015 Angus Australia BREEDPLAN																		
EBV	Calving Ease				Growth & Maternal				Fertility		CWT	Carcase						
	Dir	Dtrs	GL	B Wt	200	400	600	M Wt	Milk	SS	DC	650d	EMA	Rib	Rump	RBV%	IMF%	DOC
+3.9	+4.2	-3.7	+3.6	+40	+71	+94	+80	+13	+2.0	-7.3	+53	+3.7	+1.1	+2.0	-1.4	+3.2	-8	
Acc	56%	49%	65%	75%	71%	71%	70%	68%	62%	64%	45%	63%	59%	60%	59%	57%	58%	61%

Traits Observed: BWT 200WT 400WT(x2) SS FAT EMA IMF DOC,

Balanced and well suited for use over heifers. His dam through ran through our donor program in 2012 and from who we have 21 progeny recorded from. Flush brother to lots 42 and 55.

Lot 51 **TE MANIA JIBBEN J1117 (AI)** SB3
 Born: 31/08/2013 Society Id: VTMJ1117 AMFU/NHFU/CAFU/DDFU Structure date scored 23/03/2015

Growth

S S OBJECTIVE T510 0T26 SS TRAVELER 6807 T510 S S MISS RITA R011 798 ARDROSSAN EQUATOR A241 (AI) (ET) PAPA EQUATOR 2928 ARDROSSAN PRINCESS W38
Sire: CIRCLE A INCENTIVE **Dam: TE MANIA LOWAN G953 (AI)**
 CIRCLE A BEAUTY 5566 C R A BEXTOR 872 5205 608 M G S A BEAUTY 4007 TE MANIA LOWAN B421 (AI) (ET) ARDROSSAN CONNECTION X15 TE MANIA LOWAN Z86 (ACR) (AI) (ET)

INDEX			
AB	D	HG	G
\$109	\$106	\$114	\$107
6	6	6	5
Trial Structural EBVs			
FC	FA	RA	RS
NA	NA	NA	NA

August 2015 Angus Australia BREEDPLAN																		
EBV	Calving Ease				Growth & Maternal				Fertility		CWT	Carcase						
	Dir	Dtrs	GL	B Wt	200	400	600	M Wt	Milk	SS	DC	650d	EMA	Rib	Rump	RBV%	IMF%	DOC
+0.4	+0.2	-0.5	+3.1	+46	+81	+105	+88	+19	+1.8	-4.0	+62	+5.9	-0.7	-0.7	+0.3		+10	
Acc	49%	40%	85%	73%	67%	64%	65%	62%	48%	55%	36%	54%	50%	53%	52%	48%	0%	55%

Traits Observed: GL CE BWT 200WT DOC,

Balanced with good body length on display. First calf out of a two year old heifer.

Lot 52 **TE MANIA JICKELL J1121 (AI) (ET)** SB3
 Born: 01/09/2013 Society Id: VTMJ1121 AMFU/NHFU/CAFU/DDFU Structure date scored 23/03/2015

Calving Ease Growth Fertility Marbling Angus Breeding Heavy Grass Heavy Grain

TE MANIA YORKSHIRE Y437 (AI) S A F FOCUS OF ER TE MANIA LOWAN U275 (AI) (ET) TE MANIA ULONG U41 (AI) (ET) TE MANIA KNIGHT K206 (AI) (ET) TE MANIA LOWAN Q42 (AI) (ET)
Sire: TE MANIA BERKLEY B1 (AI) **Dam: TE MANIA BARUNAH A96 (AI) (ET)**
 TE MANIA LOWAN Z53 (AI) (ET) KENNYS CREEK SANDY S15 (AI) TE MANIA BARUNAH X101 (AI) (ET) C A FUTURE DIRECTION 5321 TE MANIA BARUNAH R312 (AI) (ET)

INDEX			
AB	D	HG	G
\$126	\$110	\$141	\$116
6	6	6	5
Trial Structural EBVs			
FC	FA	RA	RS
NA	NA	NA	NA

August 2015 Angus Australia BREEDPLAN																		
EBV	Calving Ease				Growth & Maternal				Fertility		CWT	Carcase						
	Dir	Dtrs	GL	B Wt	200	400	600	M Wt	Milk	SS	DC	650d	EMA	Rib	Rump	RBV%	IMF%	DOC
+4.8	+4.2	-6.7	+2.7	+45	+75	+101	+109	+11	+2.0	-7.5	+47	+3.7	+0.2	+1.0	-0.7	+3.0	-8	
Acc	63%	58%	67%	77%	74%	74%	73%	71%	66%	77%	57%	69%	68%	69%	70%	66%	66%	67%

Traits Observed: BWT 200WT 400WT(x2) SS FAT EMA IMF DOC,

Good natural thickness and body length on display in this ET conceived son of Berkley. This bull has some prominent cow lines from our herd on both sides of his pedigree and his dam has been a prolific contributor to our herd with 83 progeny recorded. Small amount of white on this bulls sheath.

BREED AVERAGE EBVS FOR 2013 BORN CALVES

CALVING EASE				GROWTH & MATERNAL				FERTILITY		CWT	CARCASS					INDEXES					
DIR	DTRS	GL	BWT	200	400	600	MWT	MILK	SS	DC	450d	EMA	RIB	RUMP	RBV%	IMF%	Doc	AB	D	HG	G
-0.3	-0.1	-3.3	+4.4	+40	+74	+96	+86	+14	+1.6	-3.5	+54	+4.1	-0.1	-0.1	+0.3	+1.5	+3	\$99	\$99	\$99	\$99

Animals with Indexes highlighted with shading are in the top 10% of the Angus breed.



Lot 53 **TE MANIA JOHANSONS J1222** SB3
 Born: 06/09/2013 Society Id: VTMJ1222 AMFU/NHFU/CAFU/DDFU Structure date scored 23/03/2015

Marbling

Sire: **TE MANIA FORGO F893 (AI) (ET)** Dam: **TE MANIA BARUNAH F558 (AI) (ET)**
 TE MANIA DAIQUIRI D19 (AI) TE MANIA AFRICA A217 (AI) TE MANIA LOWAN B431 (AI) (ET) TE MANIA CODRINGTON C737 (AI) (ET) B/R MIDLAND TE MANIA LOWAN Y211 (ACR) (AI)
 TE MANIA DANDLOO C404 (AI) (ET) ARDCAIRNE MIDLAND Z57 (AI) TE MANIA DANDLOO Y711 (AI) TE MANIA BARUNAH A166 (AI) (ET) B/R NEW DESIGN 036 TE MANIA BARUNAH X17 (AI) (ET)

\$INDEX				
AB	D	HG	G	
\$105	\$96	\$116	\$99	
6	5	5	5	5
Trial Structural EBVs				
FC	FA	RA	RH	RS
NA	NA	NA	NA	NA

August 2015 Angus Australia BREEDPLAN																		
EBV	Calving Ease				Growth & Maternal					Fertility		CWT	Carcase					
	Dir	Dtrs	GL	B Wt	200	400	600	M Wt	Milk	SS	DC	650d	EMA	Rib	Rump	RBV%	IMF%	DOC
-1.4	+1.8	-6.5	+3.5	+40	+72	+95	+84	+17	+2.6	-3.9	+53	+3.5	+1.2	+2.9	-1.8	+3.7	-3	
Acc	52%	43%	60%	74%	70%	71%	69%	65%	55%	73%	39%	61%	61%	61%	63%	57%	57%	57%

Traits Observed: BWT 200WT 400WT(x2) SS FAT EMA IMF DOC,

Balanced with the dam of his sire being one of our more proven higher marbling cows within the herd.

Lot 54 **TE MANIA JONESBORO J1272** SB3
 Born: 09/09/2013 Society Id: VTMJ1272 AMFU/NHFU/CAFU/DDFU Structure date scored 23/03/2015

Growth Fertility Marbling

Sire: **TE MANIA GOODOOGA G843 (AI)** Dam: **TE MANIA MITTAGONG F359 (AI)**
 SITZ NEW DESIGN 458N BON VIEW DESIGN 1407 SITZ ELLUMAS ELITE 3308 TE MANIA DAIQUIRI D19 (AI) TE MANIA AFRICA A217 (AI) TE MANIA LOWAN B431 (AI) (ET)
 TE MANIA MITTAGONG B112 (AI) TE MANIA ULONG Z773 (AI) TE MANIA MITTAGONG X764 (ACR) EBONY HILLS VITAL V29 (AI) EBONY HILLS MITTAGONG U12 (AI)

\$INDEX				
AB	D	HG	G	
\$108	\$100	\$115	\$103	
6	6	6	5	5
Trial Structural EBVs				
FC	FA	RA	RH	RS
NA	NA	NA	NA	NA

August 2015 Angus Australia BREEDPLAN																		
EBV	Calving Ease				Growth & Maternal					Fertility		CWT	Carcase					
	Dir	Dtrs	GL	B Wt	200	400	600	M Wt	Milk	SS	DC	650d	EMA	Rib	Rump	RBV%	IMF%	DOC
-2.7	-1.4	-3.8	+4.6	+45	+77	+100	+79	+19	+3.4	-6.0	+49	+3.2	+0.5	+1.3	-0.3	+2.7	+2	
Acc	47%	39%	66%	73%	68%	69%	67%	63%	48%	71%	38%	58%	59%	59%	60%	55%	54%	54%

Traits Observed: BWT 200WT 400WT(x2) SS FAT EMA IMF DOC,

Balanced with good body length on display.

Lot 55 **TE MANIA JONGMAN J1282 (AI) (ET)** SB3
 Born: 10/09/2013 Society Id: VTMJ1282 AMFU/NHFU/CAFU/DDFU Structure date scored 23/03/2015

Calving Ease Fertility Marbling Angus Breeding Heavy Grass Heavy Grain

Sire: **THOMAS GRADE UP 6849** Dam: **TE MANIA BARUNAH D560 (AI) (ET)**
 G A R PREDESTINED B/R NEW DESIGN 036 G A R EXT 4206 TE MANIA BERKLEY B1 (AI) TE MANIA YORKSHIRE Y437 (AI) TE MANIA LOWAN Z53 (AI) (ET)
 THOMAS MISS LUCY 4206 C A FUTURE DIRECTION 5321 THOMAS MISS LUCY 0671 TE MANIA BARUNAH X617 (AI) (ET) B/R NEW DESIGN 036 TE MANIA BARUNAH R312 (AI) (ET)

\$INDEX				
AB	D	HG	G	
\$119	\$105	\$132	\$111	
6	6	6	6	5
Trial Structural EBVs				
FC	FA	RA	RH	RS
NA	NA	NA	NA	NA

August 2015 Angus Australia BREEDPLAN																		
EBV	Calving Ease				Growth & Maternal					Fertility		CWT	Carcase					
	Dir	Dtrs	GL	B Wt	200	400	600	M Wt	Milk	SS	DC	650d	EMA	Rib	Rump	RBV%	IMF%	DOC
+3.0	+3.8	-3.7	+3.8	+39	+69	+92	+79	+12	+1.9	-7.5	+51	+3.4	+1.2	+2.2	-1.5	+3.1	-8	
Acc	56%	49%	65%	75%	71%	72%	71%	68%	62%	75%	46%	64%	64%	64%	65%	61%	60%	61%

Traits Observed: BWT 200WT 400WT(x2) SS FAT EMA IMF DOC,

Balanced and well suited for use over heifers. His dam ran through our donor program in 2012 and from who we have 21 progeny recorded from. Flush brother to lots 42 and 50.

Lot 56 **TE MANIA JUGGLER J1396 (AI) (ET)** SB3
 Born: 21/09/2013 Society Id: VTMJ1396 AMFU/NHFU/CAFU/DDFU Structure date scored 23/03/2015

Marbling

Sire: **TUWHARETOA REGENT D145 (AI) (ET)** Dam: **TE MANIA LOWAN F77 (AI)**
 TE MANIA AMBASSADOR A134 (AI) RENNILEA XPONENTIAL X555 (AI) (ET) TE MANIA LOWAN Y211 (ACR) (AI) TE MANIA 07 436 AB BOOROOMOOKA UNDERTAKEN Y145 TE MANIA G5 185 AB
 LAWSONS HENRY VIII Y5 (AI) YTHANBRAE HENRY VIII U8 (AI) (ET) YTHANBRAE DIRECTION T270 (AI) TE MANIA LOWAN D466 (AI) TE MANIA BADMINTON B41 (AI) TE MANIA LOWAN B120 (AI) (ET)

\$INDEX				
AB	D	HG	G	
\$99	\$92	\$110	\$94	
6	6	6	5	5
Trial Structural EBVs				
FC	FA	RA	RH	RS
NA	NA	NA	NA	NA

August 2015 Angus Australia BREEDPLAN																		
EBV	Calving Ease				Growth & Maternal					Fertility		CWT	Carcase					
	Dir	Dtrs	GL	B Wt	200	400	600	M Wt	Milk	SS	DC	650d	EMA	Rib	Rump	RBV%	IMF%	DOC
-1.8	-2.7	-4.2	+3.7	+44	+72	+97	+86	+15	+0.6	-3.5	+66	+6.0	+0.4	-0.7	-0.7	+3.3	-5	
Acc	58%	51%	67%	75%	71%	71%	70%	67%	59%	73%	45%	64%	63%	64%	65%	61%	60%	62%

Traits Observed: BWT 200WT 400WT(x2) SS FAT EMA IMF DOC,

Another ET conceived Regent son with balance. Through our various sales we have sold 117 sons of Regent for an average of \$7,343 and a high of \$24,000.

BREED AVERAGE EBVS FOR 2013 BORN CALVES																					
CALVING EASE				GROWTH & MATERNAL					FERTILITY		CWT	CARCASS					INDEXES				
DIR	DTRS	GL	BWT	200	400	600	MWT	MILK	SS	DC	450d	EMA	RIB	RUMP	RBV%	IMF%	Doc	AB	D	HG	G
-0.3	-0.1	-3.3	+4.4	+40	+74	+96	+86	+14	+1.6	-3.5	+54	+4.1	-0.1	-0.1	+0.3	+1.5	+3	\$99	\$99	\$99	\$99

Animals with Indexes highlighted with shading are in the top 10% of the Angus breed.

REFERENCE SIREs

TE MANIA BERKLEY B1 (AI)

Born: 29/07/2006 Society Id: VTMB1 AMF/NHF/CAF/DDF Structure date scored 07/10/2009 MB1

Calving Ease Growth Fertility Marbling Angus Breeding Heavy Grass Heavy Grain

Sire: **TE MANIA YORKSHIRE Y437 (AI)** Dam: **TE MANIA LOWAN Z53 (AI) (ET)**

Sire: S A F FOCUS OF ER S A F FAME GDAR FOREVER LADY 246 KENNY'S CREEK SANDY S15 (AI) TE MANIA KNIGHT K206 (AI) (ET) KENNY'S CREEK Q140
 Sire: TE MANIA LOWAN U275 (AI) (ET) BIR NEW DESIGN 036 TE MANIA LOWAN Q303 (AI) (ET) KENNY'S CREEK Q140
 Dam: TE MANIA LOWAN V129 (AI) (ET) BIR NEW DESIGN 036 TE MANIA LOWAN M118 (AI) (ET)

INDEX				
AB	D	HG	G	
\$162	\$131	\$193	\$143	
Trial Structural EBVs				
FC	FA	RA	RH	RS
-36.1	-15.3	-13.7	+0.6	0.0
98%	98%	96%	89%	93%

August 2015 Angus Australia BREEDPLAN																	
EBV	Calving Ease				Growth & Maternal					Fertility		CWT	Carcase				
	Dir	Dtrs	GL	B Wt	200	400	600	M Wt	Milk	SS	DC	650d	EMA	Rib	Rump	RBV%	IMF%
+5.8	+6.1	-10.0	+3.2	+51	+93	+124	+146	+10	+2.5	-11.4	+74	+5.2	-0.1	+0.8	-0.5	+3.2	-9
Acc	97%	92%	99%	99%	99%	99%	99%	98%	99%	90%	98%	96%	97%	97%	96%	97%	99%

Traits Observed: GL CE BWT 200WT 400WT(x2) SS FAT EMA IMF Pfizer50K

Statistics: Number of Herds: 143 Progeny Analysed: 4951 Scan Progeny: 3083 Carc Progeny: 131 Number of Dtrs: 1093

Te Mania Berkley B1 has magnificent phenotype which breeds through into his progeny. He is very balanced with natural thickness and good length of body. He combines high growth and carcass weight with good calving ease.

Berkley is the highest ranking sire on Australian Breedplan for the Heavy Grain Index, and the 2nd highest for the Angus Breeding Index.

Te Mania Berkley has progeny throughout 140+ herds, and they stand out for muscle pattern and capacity, blending calving ease with high growth and carcass weight. He is the sire of Te Mania Emperor E343 who sold at auction in 2011 for \$91,000.

In November 2010, possession and 50% of semen marketing rights were purchased by Hazeldean Angus for \$65,000. Semen has been sold to Europe, the UK and Ireland and extending his global influence, he is now registered with the American Angus Association.



TUWHARETOA REGENT D145 (AI) (ET)

Born: 08/09/2008 Society Id: BNAD145 AMF/NHF/CAF/DDF Structure date scored 04/04/2013 MB2

Growth Marbling Heavy Grain

Sire: **TE MANIA AMBASSADOR A134 (AI)** Dam: **LAWSON'S HENRY VIII Y5 (AI)**

Sire: RENNYLEA XPONENTIAL X555 (AI) (ET) C A FUTURE DIRECTION S321 RENNYLEA U233 (AI) (ET) YTHANBRAE HENRY VIII U8 (AI) (ET) BIR NEW DESIGN 036 G A R MAX USA 678
 Sire: TE MANIA LOWAN Y211 (ACR) (AI) C A FUTURE DIRECTION S321 TE MANIA LOWAN V58 (AI) (ET) YTHANBRAE DIRECTION T270 (AI) C A FUTURE DIRECTION S321 YTHANBRAE Q256

INDEX				
AB	D	HG	G	
\$108	\$88	\$133	\$96	
Trial Structural EBVs				
FC	FA	RA	RH	RS
+9.2	+18.8	+17.0	+0.7	-0.3
96%	96%	92%	81%	86%

August 2015 Angus Australia BREEDPLAN																	
EBV	Calving Ease				Growth & Maternal					Fertility		CWT	Carcase				
	Dir	Dtrs	GL	B Wt	200	400	600	M Wt	Milk	SS	DC	650d	EMA	Rib	Rump	RBV%	IMF%
-7.7	-11.1	-2.2	+6.0	+51	+92	+125	+117	+17	+1.7	-4.5	+92	+5.6	+1.2	0.0	-2.0	+4.4	-3
Acc	96%	89%	99%	99%	99%	99%	98%	97%	99%	75%	97%	94%	94%	95%	92%	94%	99%

Traits Observed: BWT 400WT SS FAT EMA IMF Pfizer50K

Statistics: Number of Herds: 136 Progeny Analysed: 5946 Scan Progeny: 3263 Carc Progeny: 48 Number of Dtrs: 376

This true super sire is a large framed, athletic bull who provides a boost to growth and carcass quality, without sacrificing shape in his progeny. Ranked first in Australia for the most progeny performance recorded in the last two years, his balanced EBVs endorse his performance, as a trait leader for 400 and 600 day growth, plus carcass weight and IMF%.

Regent was selected by Andrew Gubbins for his carcass quality, fertility and very sound structure. Purchased in partnership with Te Mania NZ and Dunoon Angus in 2010 for \$50,000.

In 2013, he was sold to Peakes Angus with semen rights retained by the existing partnership.

Regent is in increasing demand internationally, with semen exported to NZ, The USA and UK.



BREED AVERAGE EBVs FOR 2013 BORN CALVES

CALVING EASE															GROWTH & MATERNAL					FERTILITY		CWT	CARCASS					INDEXES			
DIR	DTRS	GL	BWT	200	400	600	MWT	MILK	SS	DC	450d	EMA	RIB	RUMP	RBV%	IMF%	Doc	AB	D	HG	G										
-0.3	-0.1	-3.3	+4.4	+40	+74	+96	+86	+14	+1.6	-3.5	+54	+4.1	-0.1	-0.1	+0.3	+1.5	+3	\$99	\$99	\$99	\$99										

Animals with indexes highlighted with shading are in the top 10% of the Angus breed.



G A R TWINHEARTS 8418

Born: 13/09/2008 Society Id: USA16350631 AMF/NHF/CAF/DDF Structure date scored

Calving Ease Growth Carcase Marbling Angus Breeding Heavy Grass Heavy Grain

SS TRAVELER 6807 T510 DHD TRAVELER 6807 G A R YIELD GRADE G A R PRECISION 1680
 SS MISS HI SPADE A114 SS MISS HI SPADE A114 G A R EXT 4526
Sire: S S OBJECTIVE T510 0T26 **Dam: G A R YIELD GRADE 2015**
 S S MISS RITA R011 7R8 S S RITO RITO R76 R011 G A R 1470 NEW DESIGN 653 BON VIEW DESIGN 1407
 S S MISS ULTRESS U56 G A R FOCUS 771

\$INDEX				
AB	D	HG	G	
\$159	\$141	\$180	\$151	
Trial Structural EBVs				
FC	FA	RA	RH	RS
NA	NA	NA	NA	NA

August 2015 Angus Australia BREEDPLAN																		
	Calving Ease				Growth & Maternal					Fertility		CWT	Carcase					
	Dir	Dtrs	GL	B Wt	200	400	600	M Wt	Milk	SS	DC	650d	EMA	Rib	Rump	RBV%	IMF%	DOC
EBV	+4.3	+2.0	-7.1	+4.0	+62	+118	+158	+130	+18	+1.2	-2.4	+80	+6.4	-3.7	-3.8	+1.8	+2.2	-8
Acc	73%	56%	96%	94%	91%	91%	90%	80%	74%	89%	50%	78%	79%	81%	76%	74%	76%	85%

Traits Observed: .
 Statistics: Number of Herds: 4 Progeny Analysed: 93 Scan Progeny: 65 Number of Dtrs: 1

In our March 2015 bull sale, our first offering of GAR Twinhearts 8418 sons sold to \$21,000. This very exciting, handsome outcross sire was bred by Gardiners Angus Ranch, Kansas. He has \$Index values topping Australian Group Breedplan, with a good combination of calving ease, high growth, fertility and carcase qualities. We are one of the only herds in Australia where you can purchase one of his sons.



TE MANIA FITZPATRICK F528 (AI) (ET)

Born: 22/08/2010 Society Id: VTMF528 AMF/NHF/CAF/DDC Structure date scored 19/01/2012

Growth Fertility Marbling Angus Breeding Heavy Grass Heavy Grain

BON VIEW DESIGN 1407 B/R NEW DESIGN 036 TE MANIA ULONG Z773 (AI) TE MANIA ULONG L41 (AI) (ET)
 BON VIEW PRIDE 664 BON VIEW PRIDE 664 TE MANIA BARLUNAH X248 (AI)
Sire: LAWSONS DINKY-DI Z191 **Dam: TE MANIA MITTAGONG B112 (AI)**
 G A R PRECISION 1900 G A R PRECISION 1680 TE MANIA MITTAGONG Z447 (AI) ANDROSSAN MODEST W37 (AI)
 G A R 6807 TRAVELER 534 G A R 6807 TRAVELER 534 TE MANIA MITTAGONG X380 (ACR) (AI)

\$INDEX				
AB	D	HG	G	
\$130	\$118	\$146	\$122	
7	6	6	6	6
Trial Structural EBVs				
FC	FA	RA	RH	RS
-12.8	-3.7	+0.7	-0.2	+0.6
92%	92%	87%	71%	80%

August 2015 Angus Australia BREEDPLAN																		
	Calving Ease				Growth & Maternal					Fertility		CWT	Carcase					
	Dir	Dtrs	GL	B Wt	200	400	600	M Wt	Milk	SS	DC	650d	EMA	Rib	Rump	RBV%	IMF%	DOC
EBV	+1.5	-2.5	+0.9	+4.5	+53	+93	+121	+78	+30	+3.4	-4.1	+73	+4.6	-0.6	-0.4	0.0	+3.4	-11
Acc	84%	71%	98%	97%	96%	97%	96%	92%	86%	95%	59%	86%	86%	85%	86%	79%	83%	95%

Traits Observed: BWT 200WT 400WT SS FAT EMA IMF DOC Pfizer50K,
 Statistics: Number of Herds: 8 Progeny Analysed: 401 Scan Progeny: 291 Carc Progeny: 4 Number of Dtrs: 51

Te Mania Fitzpatrick F528 is ET conceived. He is a trait leader for six traits, 200 and 400 day weight, milk, scrotal size, carcase weight and IMF%. His dam, Te Mania Mittagong B112 has been through our donor program in 2009 and 2012 and 2014. He has been heavily used both by AI and naturally within the Te Mania Angus and Team Te Mania herds and currently has in excess of 400 progeny recorded on Breedplan. His progeny are soundly structured, moderately framed and express good natural thickness. Sire pictured.



BREED AVERAGE EBVS FOR 2013 BORN CALVES

BREED AVERAGE EBVS FOR 2013 BORN CALVES																					
CALVING EASE				GROWTH & MATERNAL					FERTILITY		CWT	Carcase					INDEXES				
DIR	DTRS	GL	Bwt	200	400	600	Mwt	MILK	SS	D C	450d	EMA	RIB	RUMP	RBV%	IMF%	Doc	AB	D	HG	G
-0.3	-0.1	-3.3	+4.4	+40	+74	+96	+86	+14	+1.6	-3.5	+54	+4.1	-0.1	-0.1	+0.3	+1.5	+3	\$99	\$99	\$99	\$99

Animals with Indexes highlighted with shading are in the top 10% of the Angus breed.



TE MANIA AFRICA A217 (AI)

MB2

Born: 22/08/2005Society Id: VTMA217AMF/NHF/CAF/DDCStructure date scored 08/04/2008

Calving Ease Growth Fertility Carcase Marbling Angus Breeding Heavy Grass Heavy Grain

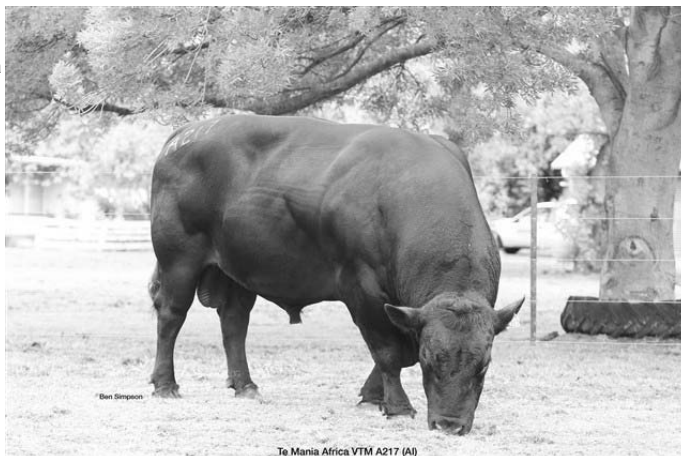
TE MANIA KNIGHT K206 (AI) (ET) SCOTCH CAP TE MANIA BARWON E102 B/R NEW DESIGN 036 VDAR NEW TREND 315 B/R BLACKCAP EMPRESS 76
Sire: TE MANIA ULONG U41 (AI) (ET) **Dam: TE MANIA JEDDA Y32 (AI) (ET)**
 TE MANIA LOWAN Q42 (AI) (ET) VDAR NEW TREND 315 TE MANIA LOWAN L53 (AI) (ET) TE MANIA JEDDA U355 (AI) (ET) TE MANIA NORMAN N48 (AI) (ET) TE MANIA JEDDA N160

\$INDEX				
AB	D	HG	G	
\$141	\$121	\$166	\$127	
6	6	6	6	5
Trial Structural EBVs				
FC	FA	RA	RH	RS
+6.2	-1.5	-1.5	-3.4	-0.1
97%	97%	95%	88%	91%

August 2015 Angus Australia BREEDPLAN																		
	Calving Ease				Growth & Maternal					Fertility		CWT	Carcase					
	Dir	Dtrs	GL	B Wt	200	400	600	M Wt	Milk	SS	DC	650d	EMA	Rib	Rump	RBY%	IMF%	DOC
EBV	+1.2	+1.2	-5.0	+3.6	+39	+79	+104	+74	+31	+3.4	-5.7	+30	+9.3	0.0	+0.6	+0.4	+4.0	+34
Acc	98%	94%	99%	99%	99%	99%	99%	99%	98%	99%	90%	98%	96%	97%	97%	96%	97%	99%

Traits Observed: GL CE BWT 200WT(x2) 400WT SS FAT EMA IMF Pfizer50K,
 Statistics: Number of Herds: 150 Progeny Analysed: 4679 Scan Progeny: 3273 Carc Progeny: 129 Number of Dtrs: 1086

Ranked in the top 1% for the Angus Breeding, Domestic, Heavy Grain and Heavy Grass Indexes. Trait leader four times. Africa has been extensively progeny tested through Team Te Mania and throughout the commercial and seedstock industry. His sons show lots of natural thickness with plenty of butt shape, style and structural soundness. He is an ideal seedstock and commercial heifer bull with calving ease and explosive growth. The temperament of his progeny are second to none. Te Mania Africa sons have dominated bull sales throughout Australia and New Zealand. We have sold 150 progeny since 2010 to a high of \$28,000.



TE MANIA GASKIN G555 (AI)

MB1

Born: 22/08/2011Society Id: VTMG555AMF/NHF/CAF/DDFStructure date scored 24/06/2013

Growth Marbling Angus Breeding Heavy Grain

TE MANIA AMBASSADOR A134 (AI) RENVYLEA X-ONENTIAL X555 (AI) (ET) TE MANIA LOWAN Y211 (ACR) (AI) TE MANIA YORKSHIRE Y437 (AI) S A F FOCUS OF ER TE MANIA LOWAN U275 (AI) (ET)
Sire: TUWHARETOA REGENT D145 (AI) (ET) **Dam: TE MANIA LOWAN D66 (AI)**
 LAWSONS HENRY VIII Y5 (AI) YTHANBRAE HENRY VIII U8 (AI) (ET) YTHANBRAE DIRECTION T270 (AI) TE MANIA LOWAN B860 (AI) TE MANIA YOU YANG Y838 (AI) (ET) TE MANIA LOWAN Y956

\$INDEX				
AB	D	HG	G	
\$120	\$107	\$148	\$108	
6	5	5	5	5
Trial Structural EBVs				
FC	FA	RA	RH	RS
+8.3	+4.8	+5.0	+1.3	-0.5
64%	65%	58%	47%	53%

August 2015 Angus Australia BREEDPLAN																		
	Calving Ease				Growth & Maternal					Fertility		CWT	Carcase					
	Dir	Dtrs	GL	B Wt	200	400	600	M Wt	Milk	SS	DC	650d	EMA	Rib	Rump	RBY%	IMF%	DOC
EBV	+0.4	-1.0	-3.4	+3.3	+43	+85	+107	+96	+20	+1.1	-3.5	+78	+5.5	+0.3	-0.3	-1.8	+4.8	+13
Acc	81%	60%	98%	98%	96%	90%	89%	83%	70%	85%	51%	78%	74%	77%	76%	70%	71%	94%

Traits Observed: GL CE BWT 200WT(x2) 400WT 600WT SS FAT EMA IMF DOC Pfizer50K,
 Statistics: Number of Herds: 18 Progeny Analysed: 535 Scan Progeny: 22

Te Mania Gaskin G555, son of Tuwharetoa Regent D145, is a stylish and balanced bull who possesses good body length with heaps of natural thickness. Gaskin has fantastic phenotype and placid temperament. He has very good EBVs and sound structure. Te Mania Gaskin's pedigree is packed with performance and includes some of the great donor cows of the Te Mania herd - Te Mania Barunah R312, Te Mania Beac R342 and Te Mania Beac U343.



BREED AVERAGE EBVS FOR 2013 BORN CALVES

CALVING EASE																	GROWTH & MATERNAL					FERTILITY		CWT	CARCASE					INDEXES			
DIR	DTRS	GL	BWT	200	400	600	MWT	MILK	SS	D C	450d	EMA	RIB	RUMP	RBY%	IMF%	Doc	AB	D	HG	G												
-0.3	-0.1	-3.3	+4.4	+40	+74	+96	+86	+14	+1.6	-3.5	+54	+4.1	-0.1	-0.1	+0.3	+1.5	+3	\$99	\$99	\$99	\$99												
Animals with Indexes highlighted with shading are in the top 10% of the Angus breed.																																	



VERMONT DRAMBUIE D057(AI)(ET)

Born: 20/03/2008 Society Id: CCVD057 AMFU/NHFU/CAF/DDF Structure date scored

Growth Fertility Carcase Marbling Angus Breeding Heavy Grass Heavy Grain

LEACHMAN RIGHT TIME N BAR EMULATION EXT SUMMITCREST SCOTCH CAP OB45 SCOTCH CAP
 LEACHMAN ERICA 0025 SUMMITCREST HEIRESS OT09

Sire: BT RIGHT TIME 24J **Dam: VERMONT WILCOOLA X55(AI)(ET)**

SITZ EVERELDA ENTENSE 1905 GDAR TRAVELER 124 ARDOSSAN WILCOOLA U26(AI)(ET) B/R NEW DESIGN 036
 SITZ EVERELDA ENTENSE 1791 ARDOSSAN WILCOOLA M30

\$INDEX				
AB	D	HG	G	
\$132	\$122	\$133	\$130	
Trial Structural EBVs				
FC	FA	RA	RH	RS
-10.1	-26.9	-20.7	+1.8	+0.2
81%	82%	73%	45%	54%

August 2015 Angus Australia BREEDPLAN																		
	Calving Ease				Growth & Maternal					Fertility		CWT		Carcase				
	Dir	Dtrs	GL	B Wt	200	400	600	M Wt	Milk	SS	DC	650d	EMA	Rib	Rump	RBV%	IMF%	DOC
EBV	+0.5	+1.3	-4.7	+4.8	+5.0	+8.6	+10.9	+8.5	+1.2	+3.4	-5.9	+6.6	+10.1	+1.9	+2.8	+0.6	+1.8	-6
Acc	88%	75%	98%	98%	97%	97%	97%	95%	93%	97%	64%	87%	89%	89%	88%	84%	86%	94%

Traits Observed: BWT 400WT SS FAT EMA IMF Pfizer50K,
 Statistics: Number of Herds: 54 Progeny Analysed: 672 Scan Progeny: 360 Number of Dtrs: 105

Vermont Drambuie D57 was introduced to the program as a total outcross sire. His sons are easy doing and have good eye appeal. His EBVs indicate great growth, with slightly more moderate maturity pattern than some of the high growth outcross sires we have used. We have sold sons to a high of \$17,000.



TE MANIA GASCOYNE G333 (AI)

Born: 14/08/2011 Society Id: VTMG333 AMF/NHF/CAF/DDF Structure date scored 22/05/2014

Calving Ease Marbling Angus Breeding Heavy Grass Heavy Grain

G A R SOLUTION SS TRAVELER 6807 T510 TE MANIA AFRICA A217 (AI) TE MANIA ULONG U41 (AI) (ET)
 G A R NEW DESIGN 50 G A R NEW DESIGN 50 TE MANIA JEDDA Y32 (AI) (ET)

Sire: LAWSONS INVINCIBLE C402(AI) **Dam: TE MANIA LOWAN D54 (AI)**

LAWSONS PREDESTINED A598(AI) G A R PREDESTINED TE MANIA LOWAN B417 (AI) MILWILLAH MIGHT AND POWER (AI)
 LAWSONS FUTURE DIRECTION X1114(AI) TE MANIA LOWAN X383 (AI) (ET)

\$INDEX				
AB	D	HG	G	
\$125	\$114	\$146	\$114	
Trial Structural EBVs				
FC	FA	RA	RH	RS
+0.5	+12.6	+10.2	-0.9	+0.7
66%	65%	57%	41%	51%

August 2015 Angus Australia BREEDPLAN																		
	Calving Ease				Growth & Maternal					Fertility		CWT		Carcase				
	Dir	Dtrs	GL	B Wt	200	400	600	M Wt	Milk	SS	DC	650d	EMA	Rib	Rump	RBV%	IMF%	DOC
EBV	+4.8	+2.0	-6.5	-0.3	+3.1	+6.5	+8.1	+5.1	+2.1	+1.7	-3.2	+3.9	+11.5	+0.3	+0.3	-0.1	+4.5	+4.0
Acc	79%	58%	97%	94%	93%	90%	89%	83%	71%	86%	50%	78%	75%	78%	77%	71%	73%	86%

Traits Observed: GL CE BWT 200WT(x2) 400WT 600WT SS FAT EMA IMF DOC Pfizer50K,
 Statistics: Number of Herds: 7 Progeny Analysed: 147 Scan Progeny: 28

Larger framed with good body length and exceptionally quiet temperament. Some great old donor cows of the Te Mania herd sit back in this sires pedigree, Y32, R411, R312 to name a few. G333 has very good calving ease attributes and high Index values with enormous EMA.



BREED AVERAGE EBVS FOR 2013 BORN CALVES

BREED AVERAGE EBVS FOR 2013 BORN CALVES																					
CALVING EASE				GROWTH & MATERNAL					FERTILITY		CWT		Carcase					INDEX\$			
DIR	DTRS	GL	Bwt	200	400	600	Mwt	MILK	SS	D C	450d	EMA	RIB	RUMP	RBV%	IMF%	Doc	AB	D	HG	G
-0.3	-0.1	-3.3	+4.4	+4.0	+7.4	+9.6	+8.6	+1.4	+1.6	-3.5	+5.4	+4.1	-0.1	-0.1	+0.3	+1.5	+3	\$99	\$99	\$99	\$99
Animals with Indexes highlighted with shading are in the top 10% of the Angus breed.																					



TE MANIA GENERAL G429 (AI)

MB1

Born: 18/08/2011

Society Id: VTMG429

AMF/NHF/CAF/DDF

Structure date scored 16/01/2013

Growth Fertility Marbling Angus Breeding Heavy Grain

TE MANIA AMBASSADOR A134 (AI) RENNYLEA XPONENTIAL X555 (AI) (ET) TE MANIA ULONG U41 (AI) (ET) TE MANIA KNIGHT K206 (AI) (ET)
 TE MANIA LOWAN Y211 (ACR) (AI) TE MANIA LOWAN G42 (AI) (ET)
Sire: TUWHARETOA REGENT D145 (AI) (ET) **Dam: TE MANIA DANDLOO Z811 (AI)**
 LAWSONS HENRY VIII Y5 (AI) YTHANBRAE HENRY VIII U8 (AI) (ET) TE MANIA DANDLOO X812 TE MANIA UNFREEZE U307 (AI) (ET)
 YTHANBRAE DIRECTION T270 (AI) TE MANIA DANDLOO U159 (AI)

\$INDEX				
AB	D	HG	G	
\$114	\$93	\$135	\$103	
 6	 6	 6	 6	 6
Trial Structural EBVs				
FC	FA	RA	RH	RS
+6.7	+14.0	+12.2	+0.4	-0.6
69%	68%	58%	41%	53%

August 2015 Angus Australia BREEDPLAN																		
	Calving Ease				Growth & Maternal					Fertility		CWT	Carcase					
	Dir	Dtrs	GL	B Wt	200	400	600	M Wt	Milk	SS	DC	650d	EMA	Rib	Rump	RBY%	IMF%	DOC
EBV	-9.0	-4.3	-4.0	+6.1	+53	+93	+127	+126	+13	+2.7	-5.8	+74	+4.8	+1.3	+0.9	-1.3	+3.6	+17
Acc	85%	61%	98%	97%	96%	91%	90%	84%	71%	89%	53%	78%	77%	78%	78%	72%	73%	94%

Traits Observed: GL CE BWT 200WT(x2) 400WT 600WT SS FAT EMA IMF DOC Pfizer50K,
 Statistics: Number of Herds: 7 Progeny Analysed: 348 Scan Progeny: 36

A moderately framed son of Regent. We have 481 progeny within the Te Mania Angus herd now by Regent. G429 displays good balance and body length. He has been further progeny tested through Team Te Mania.



TE MANIA GENEVA G452 (AI)

MB1

Born: 19/08/2011

Society Id: VTMG452

AMF/NHF/CAF/DDF

Structure date scored 16/01/2013

Calving Ease Marbling Angus Breeding Heavy Grass Heavy Grain

G A R SOLUTION SS TRAVELER 6807 TS10 C A FUTURE DIRECTION 5321 G A R PRECISION 1680
 G A R NEW DESIGN 50 G A R NEW DESIGN 50 C A MISS POWER FIX 308
Sire: LAWSONS INVINCIBLE C402(AI) **Dam: TE MANIA BEEAC C238 (AI) (ET)**
 LAWSONS PREDESTINED A598(AI) G A R PREDESTINED TE MANIA BEEAC U343 (AI) (ET) BIR NEW DESIGN 036
 LAWSONS FUTURE DIRECTION X1114(AI) TE MANIA BEEAC R342 (AI) (ET)

\$INDEX				
AB	D	HG	G	
\$115	\$112	\$123	\$110	
 7	 6	 6	 6	 6
Trial Structural EBVs				
FC	FA	RA	RH	RS
-12.1	+17.4	+14.8	+0.9	+0.1
67%	65%	58%	43%	52%

August 2015 Angus Australia BREEDPLAN																		
	Calving Ease				Growth & Maternal					Fertility		CWT	Carcase					
	Dir	Dtrs	GL	B Wt	200	400	600	M Wt	Milk	SS	DC	650d	EMA	Rib	Rump	RBY%	IMF%	DOC
EBV	+3.6	+2.8	-6.4	+1.6	+36	+64	+73	+39	+12	+0.7	-5.8	+45	+8.6	+2.2	+2.2	-0.9	+3.5	+17
Acc	79%	61%	97%	94%	93%	92%	89%	83%	72%	88%	53%	78%	77%	78%	78%	72%	74%	85%

Traits Observed: GL CE BWT 200WT(x2) 400WT 600WT SS FAT EMA IMF DOC Pfizer50K,
 Statistics: Number of Herds: 9 Progeny Analysed: 148 Scan Progeny: 34

Moderately framed with good body length. He has been used both within the Te Mania Angus herd and progeny tested through Team Te Mania.



BREED AVERAGE EBVS FOR 2013 BORN CALVES

CALVING EASE															GROWTH & MATERNAL					FERTILITY		CWT	CARCASS					INDEXES			
DIR	DTRS	GL	BWT	200	400	600	MWT	MILK	SS	DC	450d	EMA	RIB	RUMP	RBY%	IMF%	Doc	AB	D	HG	G										
-0.3	-0.1	-3.3	+4.4	+40	+74	+96	+86	+14	+1.6	-3.5	+54	+4.1	-0.1	-0.1	+0.3	+1.5	+3	\$99	\$99	\$99	\$99										

Animals with indexes highlighted with shading are in the top 10% of the Angus breed.



TE MANIA GOODOOGA G843 (AI)

MB1

Born: 09/09/2011

Society Id: VTMG843

AMF/NHF/CAF/DDF

Structure date scored 16/01/2013

Growth Fertility Marbling Angus Breeding Heavy Grass Heavy Grain

BON VIEW DESIGN 1407

B/R NEW DESIGN 036
BON VIEW PRIDE 664

TE MANIA ULONG Z773 (AI)

TE MANIA ULONG U41 (AI) (ET)
TE MANIA BARUNAH X248 (AI)

Sire: SITZ NEW DESIGN 458N

Dam: TE MANIA MITTAGONG B112 (AI)

SITZ ELLUNAS ELITE 3308

SITZ TRAVELER 9929
SITZ ELLUNAS ELITE 2872

TE MANIA MITTAGONG Z447 (AI)

ARDROSSAN MODEST W37 (AI)
TE MANIA MITTAGONG X380 (ACR) (AI)

\$INDEX				
AB	D	HG	G	
\$138	\$120	\$158	\$129	
6	6	6	6	6
Trial Structural EBVs				
FC	FA	RA	RH	RS
-6.0	+9.1	+7.3	NA	+0.8
68%	68%	57%	50%	50%

August 2015 Angus Australia BREEDPLAN																		
	Calving Ease				Growth & Maternal					Fertility		CWT	Carcase					
	Dir	Dtrs	GL	B Wt	200	400	600	M Wt	Milk	SS	DC	650d	EMA	Rib	Rump	RBV%	IMF%	DOC
EBV	-2.8	-1.0	-6.0	+4.9	+57	+107	+141	+104	+28	+5.1	-4.8	+75	+0.1	-0.7	+0.9	-0.4	+3.3	+13
Acc	77%	59%	97%	96%	94%	91%	89%	83%	72%	87%	56%	79%	79%	81%	80%	75%	77%	90%

Traits Observed: GL CE BWT 200WT(x2) 400WT 600WT SS FAT EMA IMF DOC Prifer50K,

Statistics: Number of Herds: 5 Progeny Analysed: 173 Scan Progeny: 46

Te Mania Goodooga G843 is moderately framed with good softness and body length. His dam is still active within the the stud and she is a previous donor cow, from who we have sold sons to a high of \$17,000.



THOMAS GRADE UP 6849

Born: 07/03/2006

Society Id: USA15356040

AMF/NHF/CAF/DDF

Structure date scored

Calving Ease Marbling Angus Breeding Heavy Grass Heavy Grain

B/R NEW DESIGN 036

VDAR NEW TREND 315
B/R BLACKCAP EMPRESS 76

C A FUTURE DIRECTION 5321

G A R PRECISION 1680
C A MISS POWER FIX 308

Sire: G A R PREDESTINED

Dam: THOMAS MISS LUCY 4206

G A R EXT 4206

N BAR EMULATION EXT
G A R 6807 TRAVELER 1432

THOMAS MISS LUCY 0671

C A LADY EIGHT 1015
THOMAS MISS LUCY 4253

\$INDEX				
AB	D	HG	G	
\$116	\$103	\$124	\$110	
6	6	6	6	6
Trial Structural EBVs				
FC	FA	RA	RH	RS
-30.5	-52.0	-45.3	-1.4	+0.7
84%	84%	76%	50%	56%

August 2015 Angus Australia BREEDPLAN																		
	Calving Ease				Growth & Maternal					Fertility		CWT	Carcase					
	Dir	Dtrs	GL	B Wt	200	400	600	M Wt	Milk	SS	DC	650d	EMA	Rib	Rump	RBV%	IMF%	DOC
EBV	+1.5	+4.0	-2.1	+2.6	+40	+72	+94	+64	+15	+1.7	-6.4	+55	+2.8	+2.6	+3.4	-2.5	+3.4	+5
Acc	86%	74%	98%	98%	97%	97%	97%	95%	94%	97%	64%	88%	89%	90%	88%	85%	87%	93%

Traits Observed: .

Statistics: Number of Herds: 35 Progeny Analysed: 485 Scan Progeny: 324 Number of Dtrs: 113

Thomas Grade Up 6849 was used for his high marbling and well balanced, moderate growth figures.



BREED AVERAGE EBVS FOR 2013 BORN CALVES

BREED AVERAGE EBVS FOR 2013 BORN CALVES																					
CALVING EASE				GROWTH & MATERNAL					FERTILITY		CWT	Carcase					INDEXES				
DIR	DTRS	GL	Bwt	200	400	600	Mwt	MILK	SS	D C	450d	EMA	RIB	RUMP	RBV%	IMF%	Doc	AB	D	HG	G
-0.3	-0.1	-3.3	+4.4	+40	+74	+96	+86	+14	+1.6	-3.5	+54	+4.1	-0.1	-0.1	+0.3	+1.5	+3	\$99	\$99	\$99	\$99
Animals with Indexes highlighted with shading are in the top 10% of the Angus breed.																					



L T 598 BANDO 9074

Born: Society Id: USA9074 AMF/NHF/CAF/DDF Structure date scored

Calving Ease Growth Fertility Angus Breeding Heavy Grass

BON VIEW BANDO 598
Sire: S A F 598 BANDO 5175
 S A F ROYAL LASS 1002

TEHAMA BANDO 155
 BON VIEW DORA 56
 VDAAR NEW TREND 315
 S A F ROYAL LASS 6089

MILL COULEE TIME TRAVELER 02
Dam: MILL COULEE BARBARA K323
 MILL COULEE BARBARA K018

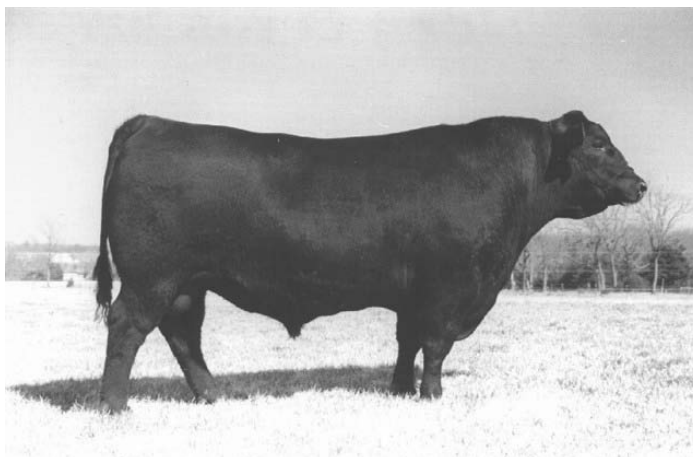
\$INDEX				
AB	D	HG	G	
\$115	\$110	\$113	\$115	
Trial Structural EBVs				
FC	FA	RA	RH	RS
-21.9	-12.7	-10.1	-0.2	-0.6
94%	93%	89%	72%	79%

August 2015 Angus Australia BREEDPLAN																		
	Calving Ease				Growth & Maternal					Fertility		CWT	Carcase					
	Dir	Dtrs	GL	B Wt	200	400	600	M Wt	Milk	SS	DC	650d	EMA	Rib	Rump	RBV%	IMF%	DOC
EBV	+1.2	+4.0	-3.7	+2.5	+46	+81	+108	+80	+20	+2.4	-7.7	+53	+1.1	-0.1	-0.2	+0.5	+0.9	+22
Acc	97%	92%	99%	99%	99%	99%	99%	98%	98%	98%	93%	97%	96%	97%	97%	96%	96%	97%

Traits Observed: Pfizer50K,

Statistics: Number of Herds: 162 Progeny Analysed: 2653 Scan Progeny: 1672 Carc Progeny: 2 Number of Dtrs: 727

Bando 9074 is a very high accuracy outcross sire. He maintains calving ease and growth. Bando 9074's progeny are soft, moderately framed and clean fronted.



TE MANIA DIPLOMAT D10 (AI)

Born: 27/07/2008 Society Id: VTMD10 AMF/NHF/CAF/DDC Structure date scored 27/05/2010

Calving Ease Fertility Carcase Marbling Angus Breeding Heavy Grass Heavy Grain

TE MANIA ULONG U41 (AI) (ET)
Sire: TE MANIA AFRICA A217 (AI)
 TE MANIA JEDDA Y32 (AI) (ET)

TE MANIA KNIGHT K206 (AI) (ET)
 TE MANIA LOWAN Q42 (AI) (ET)
 B/R NEW DESIGN 036
 TE MANIA JEDDA U355 (AI) (ET)

TE MANIA UNLIMITED U3271 (AI) (ET)
Dam: TE MANIA DANDLOO B76 (AI)
 TE MANIA DANDLOO X330 (AI)
 C A FUTURE DIRECTION 5321
 TE MANIA DANDLOO S54 (AI) (ET)

\$INDEX				
AB	D	HG	G	
\$141	\$124	\$159	\$130	
Trial Structural EBVs				
FC	FA	RA	RH	RS
+26.5	+13.8	+12.3	-2.0	+0.6
94%	94%	91%	83%	85%

August 2015 Angus Australia BREEDPLAN																		
	Calving Ease				Growth & Maternal					Fertility		CWT	Carcase					
	Dir	Dtrs	GL	B Wt	200	400	600	M Wt	Milk	SS	DC	650d	EMA	Rib	Rump	RBV%	IMF%	DOC
EBV	+0.9	+1.8	-3.7	+3.9	+35	+72	+93	+54	+25	+2.7	-5.7	+25	+13.0	+0.1	+0.9	+1.4	+3.3	+8
Acc	92%	82%	98%	98%	97%	98%	98%	97%	96%	96%	70%	94%	90%	91%	93%	87%	91%	96%

Traits Observed: GL CE BWT 200WT 400WT SS FAT EMA IMF Pfizer50K,

Statistics: Number of Herds: 15 Progeny Analysed: 565 Scan Progeny: 419 Carc Progeny: 33 Number of Dtrs: 183

Te Mania Diplomat D10 was selected for use as the most promising son of Te Mania Africa A217 in his drop. A big, long bull with exceptional structure and temperament. His dam, Te Mania Dandloo B76 by Unlimited, recently finished her second season in the donor herd. She is a moderately framed, well muscled female that still shows femininity.



BREED AVERAGE EBVS FOR 2013 BORN CALVES

BREED AVERAGE EBVS FOR 2013 BORN CALVES																					
CALVING EASE				GROWTH & MATERNAL					FERTILITY		CWT	Carcase					INDEXES				
DIR	DTRS	GL	Bwt	200	400	600	Mwt	MILK	SS	DC	450d	EMA	RIB	RUMP	RBV%	IMF%	Doc	AB	D	HG	G
-0.3	-0.1	-3.3	+4.4	+40	+74	+96	+86	+14	+1.6	-3.5	+54	+4.1	-0.1	-0.1	+0.3	+1.5	+3	\$99	\$99	\$99	\$99

Animals with Indexes highlighted with shading are in the top 10% of the Angus breed.



TE MANIA FAZE F193 (AI)

Born: 08/08/2010

Society Id: VTMF193

AMFU/NHFU/CAFU/DDC

Structure date scored 19/01/2012

Calving Ease Fertility Carcase Marbling

B/R MIDLAND

TWIN VALLEY PRECISION
B/R ROYAL LASS 7036-19

TE MANIA YORKSHIRE Y437 (AI)

S A F FOCUS OF ER
TE MANIA LOWAN U275 (AI) (ET)

Sire: TE MANIA CODRINGTON C737 (AI) (ET)

Dam: TE MANIA LOWAN B18 (AI)

TE MANIA LOWAN Y211 (ACR) (AI)

C A FUTURE DIRECTION S321
TE MANIA LOWAN V38 (AI) (ET)

TE MANIA LOWAN Z432 (AI)

TE MANIA ULONG U41 (AI) (ET)
TE MANIA LOWAN X289 (AI)

INDEX				
AB	D	HG	G	
\$110	\$111	\$113	\$108	
Figure 7	Figure 6	Figure 6	Figure 6	Figure 5
Trial Structural EBVs				
FC	FA	RA	RH	RS
-17.8	+11.5	+9.5	-3.9	-0.9
83%	81%	73%	61%	66%

August 2015 Angus Australia BREEDPLAN																		
ANGUS	Calving Ease				Growth & Maternal					Fertility		CWT	Carcase					
	Dir	Dtrs	GL	B Wt	200	400	600	M Wt	Milk	SS	DC	650d	EMA	Rib	Rump	RBV%	IMF%	DOC
EBV	+2.7	+3.8	-5.5	+0.4	+39	+69	+84	+60	+21	+2.7	-4.8	+58	+5.8	-0.5	+0.9	+0.4	+2.5	-3
Acc	81%	61%	97%	95%	94%	94%	91%	87%	80%	90%	51%	84%	81%	83%	83%	75%	81%	90%

Traits Observed: GL CE BWT 200WT 400WT SS FAT EMA IMF DOC Pfizer50K,

Statistics: Number of Herds: 9 Progeny Analysed: 200 Scan Progeny: 104 Carc Progeny: 6 Number of Dtrs: 14

Te Mania Faze F193 is a bull that we chose for his calving ease attributes that did not compromise on carcase quality traits. He shows good body length and butt shape. Faze is moderately framed and well muscled. He is currently out working within the Team Te Mania program.
Sire pictured



TE MANIA FORGO F893 (AI) (ET)

Born: 06/09/2010

Society Id: VTMF893

AMFU/NHFU/CAFU/DDF

Structure date scored 19/01/2012

Growth Fertility Marbling Angus Breeding Heavy Grass Heavy Grain

TE MANIA AFRICA A217 (AI)

TE MANIA ULONG U41 (AI) (ET)
TE MANIA JEDDA Y32 (AI) (ET)

ARDCAIRNIE MIDLAND Z57 (AI)

B/R MIDLAND
ARDCAIRNIE GEORGINA V18 (AI)

Sire: TE MANIA DAIQUIRI D19 (AI)

Dam: TE MANIA DANDLOO C404 (AI) (ET)

TE MANIA LOWAN B431 (AI) (ET)

TE MANIA XPO X84 (AI) (ET)
TE MANIA LOWAN X540 (AI) (ET)

TE MANIA DANDLOO Y711 (AI)

VERMILLION YELLOWSTONE
TE MANIA DANDLOO U159 (AI)

INDEX				
AB	D	HG	G	
\$129	\$108	\$151	\$117	
Figure 7	Figure 6	Figure 6	Figure 5	Figure 4
Trial Structural EBVs				
FC	FA	RA	RH	RS
-19.7	-25.1	-20.6	+0.8	-1.5
87%	88%	82%	66%	72%

August 2015 Angus Australia BREEDPLAN																		
ANGUS	Calving Ease				Growth & Maternal					Fertility		CWT	Carcase					
	Dir	Dtrs	GL	B Wt	200	400	600	M Wt	Milk	SS	DC	650d	EMA	Rib	Rump	RBV%	IMF%	DOC
EBV	-3.2	+3.8	-9.9	+3.8	+41	+82	+106	+92	+23	+4.6	-6.7	+51	+3.8	+2.6	+4.9	-2.0	+4.3	+10
Acc	84%	65%	97%	96%	95%	95%	94%	89%	82%	91%	51%	86%	83%	84%	86%	77%	81%	91%

Traits Observed: BWT 200WT 400WT SS FAT EMA IMF DOC Pfizer50K,

Statistics: Number of Herds: 9 Progeny Analysed: 228 Scan Progeny: 149 Carc Progeny: 5 Number of Dtrs: 20

Te Mania Forgo F893 is an ET conceived son out of one of our top donor cows, Te Mania Dandloo C404. C404 has been through the donor mob in 2010, 2012 and 2014. This sire has been heavily used and progeny tested through Te Mania Angus and Team Te Mania herds. Forgo is a stylish, balanced sire who has good body length. His progeny are moderately framed with good natural thickness and easy doing ability and very soundly structured. Tested red gene carrier.



BREED AVERAGE EBVS FOR 2013 BORN CALVES

BREED AVERAGE EBVS FOR 2013 BORN CALVES																					
CALVING EASE				GROWTH & MATERNAL					FERTILITY		CWT	CARCASE					INDEX\$				
DIR	DTRS	GL	Bwt	200	400	600	Mwt	MILK	SS	D C	450d	EMA	RIB	RUMP	RBV%	IMF%	Doc	AB	D	HG	G
-0.3	-0.1	-3.3	+4.4	+40	+74	+96	+86	+14	+1.6	-3.5	+54	+4.1	-0.1	-0.1	+0.3	+1.5	+3	\$99	\$99	\$99	\$99

Animals with Indexes highlighted with shading are in the top 10% of the Angus breed.

NOTES

BUYER'S INSTRUCTION SLIP

TE MANIA ANGUS SOUTHERN SPRING BULL SALE FRIDAY 11 SEPTEMBER



TE MANIA ANGUS
BREEDING BETTER BEEF

(To be handed to the settling office immediately after the sale)

PURCHASER DETAILS

Purchaser Name: _____

Trading Name: _____

Address: _____

Phone Numbers: (Business) _____

(After Hours) _____

(Mobile) _____

Email Address: _____

Property Manager or Stockman Phone No. _____

Property Identification Code (PIC, must be provided on day of sale) _____

DELIVERY DETAILS

Lots Purchased: _____

Insure for (period): _____

Insure for \$: _____

For transport purposes, is it necessary for the animals you have purchased to maintain their Johne's status. _____

YES

NO

ACCOUNT DETAILS

Signature: _____

If you elect to settle through an Agent who has nominated you, the Agent must sign below. (This applies to all Agents)

Agent: _____

Signature: _____

Date: FRIDAY 11 SEPTEMBER

STUD REGISTRATIONS

Do you wish to have the Angus Society of Australia's registration of your bull transferred into your name? _____

YES

NO

ACN 071 414 410 ABN 44 844 572 399

MORTLAKE 2015



The data in this catalogue was extracted directly from Sapiens Koolperform

Disclaimer: Every care has been taken to ensure the information provided in this catalogue is accurate at the time of printing. Te Mania Angus accepts no responsibility for the accuracy, reliability or interpretation of the information included in this catalogue.



Hamish & Amanda McFarlane

T: 03 5264 1606

F: 03 5264 1407

M: 0427 641 606

E: hamish@temania.com.au

Tom & Lucy Gubbins

T: 03 5599 7240

Tom: 0429 952 197

Lucy: 0409 952 197

E: tom@temania.com.au

Andrew & Mary Gubbins

T: 03 5254 2233

M: 0488 542 323

E: andrewmary@temania.com.au

www.temania.com.au

