



FARRER

WHITE SUFFOLKS
PRODUCT OF DISTINCTION

22nd Annual On–Property
RAM SALE

11.30am Wednesday, 7th September 2016

73 WHITE SUFFOLK
PERFORMANCE RAMS

FARRER MEMORIAL AGRICULTURAL HIGH SCHOOL
585 Calala Lane, Tamworth NSW 2340

Genetic Condition: Hypotrichosis

Hypotrichosis is not a new genetic condition in the Australian sheep flock and there are published scientific papers on this condition in the Poll Dorset flock in the 1960's.

Symptoms: Affected lambs are generally born with little or no hair on the head and legs and develop leathery skin.

The symptoms are a result of a recessive gene and both parents must carry that gene for a lamb to be born Hypotrichotic.

Fortunately, the South Australian Research and Development Institute (SARDI) has developed a DNA test for this genetic condition. Farrer has undertaken DNA testing of all females in April 2011. All ewes testing positive as carriers of Hypotrichosis have been culled. Farrer has retained ONLY those testing HrF negative or Hypotrichosis free. All sires used are HrF tested free. Thus, all resulting progeny in the future should be free of Hypotrichosis.

Some limited testing has occurred in 2016 with the results shown in the catalogue;

HrF (_ _ _ _ _) indicates a Negative DNA test for Hypotrichosis

What does this mean for individual purchasers of Farrer White Suffolk Rams?

Commercial producers:

As ALL retained Farrer females are free of Hypotrichosis and ALL sires are tested HrF negative The genetic condition has been eliminated from the Farrer White Suffolk Stud.

White Suffolks Studs:

To ensure that all rams used for stud purposes have a HrF(-----) reference number as suggested by the Australian White Suffolk Association, Farrer will take a nasal swab from rams to be used as White Suffolk stud sires on sale day and send it off to SADRI for testing at Farrer's expense. In the highly unlikely event of the rams not returning HrF, Farrer will immediately refund the cost of the ram.

Finally, remember if you are unsure **please don't hesitate to ask.**

FARRER

WHITE SUFFOLKS

PRODUCT OF DISTINCTION

22nd ANNUAL On-Property

WHITE SUFFOLK RAM SALE

(Est. 1984, Flock No. 139)

73 RAMS

Held undercover in the Trade Training Centre,
Farrer Memorial Agricultural High School
585 Calala Lane, Tamworth, NSW

Wednesday, 7th September 2016

Inspection 10.30am

Sale 11.30am

Superwhites
Member

Independently
Structurally Assessed

Gold Quality
Lambplan Data

Please bring this catalogue to the sale.

Inspection prior to sale is most welcome.

Website: www.farrer.nsw.edu.au/white-suffolk-stud

Phone: School (02) 6764 8600 Fax: (02) 6764 8669

After Hours Darren Smith (02) 6778 7402 Mobile 0413 911 182

SALE INFORMATION

PRE – SALE INSPECTIONS:

The rams will be penned and available for inspection by 10.30am on the morning of the sale. Inspection prior to the sale day is most welcome and can be arranged by contacting Darren Smith at school on 02 6764 8600 or 0413 911 182 the agent Andrew Warden 0467 662 901.

LOT ORDER:

Rams are catalogued **in order of birth**, except for Lots 1 & 2 which Farrer has previously used in the stud and / or wishes to retain a 100% of the semen marketing rights.

Star Lots are dispersed throughout the catalogue. These are selected by the students from a combination of performance and structural attributes. No more than two rams can be sired by the same ram.

RAM HEALTH:

Farrer's White Suffolk Stud (Flock No. 0139) is an:

Accredited Ovine Brucellosis Free (Cert. No. NW 82/40) Expiry: 28/02/2018

Accredited Ovine John's Disease MN3 NS160067 Expiry: 30/11/2016

A vendor declaration will be supplied for:- Footrot Status
Lice

Booster vaccination: 28th July 2016 (6 in 1 vaccine)

Shorn: 27th - 29th June 2016

Veterinarian Checked: General health within a week of the sale
(Piper Street Veterinary Clinic 02 6766 3088)

LUNCH:

Complimentary BBQ will be provided.

AGENTS:

Garvin & Cousens, Tamworth

Telephone: (02) 6766 2901 Fax: (02) 6762 8957

Email: sales@garvin.com.au

Andrew Warden 0467 662 901

Chris Gooch 0467 662 900

Please remember to bring your PIC number to the sale for ease of transfer.

PHONE BIDDING:

Phone bidding will be available on the day by contacting either Andrew Warden 0467 662 901, Chris Gooch 0467 662 900 or Phil Hetherington 0428 680 028

REBATE:

A rebate of 2% will be paid on any purchase influenced by a registered agent – provided they advise the agents in writing [Fax: (02) 6762 8957] prior to the sale **OR** accompany the purchaser to the sale.

Welcome to Farrer's Annual Ram Sale 2016

Welcome to the 22nd Annual Farrer White Suffolk Performance Ram Sale. Highlights since last year's Ram Sale include;

- Farrer has quickly embraced the new Lambplan LEQ index and will now be breeding and selecting animals focusing on both performance and Meat Eating Quality (MEQ). This new index incorporates all the attributes of LAMBS2020 index plus emphasis on Lean Meat Yield (LMY), intramuscular fat (IMF) and Shear Force (SHEARF5).
- Last year's sale topper Farrer 140188 (\$17000) will be the most used White Suffolk ram in Australia with 28 studs expecting progeny in 2016.
- Farrer hosted the Northern Schools Prime Lamb Competition at the Tamworth Showground in May. 12 schools competed with 150 students and 120 prime lambs.
- Previously selected Superwhite® rams Farrer 110155, 120026, and 140137 are all performing extremely well. These rams, along with Farrer 140019 and 140078 are all ranked in the top 20 White Suffolk Sires in Australia on the LEQ index.
- Farrer 150096 and Farrer 150194 were selected in the Series 21 Superwhite® team.
- Farrer again successfully exhibited at the Dubbo Show. Congratulations to Charlie Shadwell, Sam Hannan, Hugh Maxey, Cody Steven, Ashley Carter, Flynn Erich for a job well done. Farrer achieved Grand Champion White Suffolk ewe with Farrer 140107.
- Charlie Shadwell Year 10 made the final of the Lambex Young Guns Competition.
- MacArthur Anglian College achieved Grand Champion White Suffolk ewe using Farrer bloodlines at Royal Canberra Show.
- Farrer has currently sixteen male progeny, seventeen female progeny and six dams ranked in the Top 20 on the Lambplan's LEQ index in Australia.

This year's Annual Ram Sale features the first sons available of Farrer 140019. This ram sold to "Oakwood" South Australia for \$8000 at last year's sale. Farrer has used two terrific sons of his in 2016 - Farrer 150194 (Lot 2) and Farrer 1500196 (Lot 60). Farrer 140019 progeny are highly recommended as they have low birth weights, excellent growth and good muscle.

As usual, Farrer also has on offer rams by leading White Suffolk Lambplan® performance sires from across Australia. These include; Galaxy Park 110210 (APP), Farrer 140188, Farrer 120026, Farrer 110155, Farrer 140137, Pollambi 130052 (PD) and SuperWhites® rams Waratah 130597, Millswyn 130068 and Felix 130500.

Over 95% of the Farrer Sale Rams on offer are in the top 10% on Lambplan LEQ index.

Finally, thanks to the Year 10 Wool Science students who have been actively involved in the direction and management of the stud. Their contributions include; sire selection, DNA testing, crutching, shearing the sheep including sale rams, vaccinating, drenching, lambing supervision and helping conduct the annual ram sale. I thank the students for their commitment, effort and interest in striving to continually improve the Farrer White Suffolk sheep and stud.

Darren Smith
White Suffolk Stud Manager

FARRER'S BREEDING PROGRAM

Using LAMBPLAN to make consistent genetic improvement.

The Farrer breeding program is centered on a sound combination of genetic principles and practical experience with the aim of breeding modern, profit making sires for commercial lamb production.

Farrer uses LAMBPLAN to provide accurate information on the genetic merit of individuals in our flock. In LAMBPLAN, performance and pedigree information is combined to give Australian Sheep Breeding Values. ASBV's are calculated from systematic combinations of performance information on individuals plus their relatives. They are expressed as the difference between an individual's genetic merit and the genetic base to which the animal is compared.

Australian Sheep Breeding Values are provided in this catalogue for SIX main traits:

Birth weight (BWT): Estimates the genetic difference between animals in liveweight at birth. (Kgs)

Weaning weight (WWT): Estimates the genetic difference between in liveweight at 100 days of age.

Weight: (PWWT): Estimates the genetic difference between animals in liveweight at 225 days of age.

Fat: (PFAT): Estimates the genetic difference in GR fat depth at 45kg liveweight.

Eye Muscle Depth (PEMD): Estimates the genetic difference in eye muscle depth at the C site in a 45kg liveweight animal

Worm Egg Count: (PWEC): Estimates the genetic difference between animals in worm burden at 225 days of age.

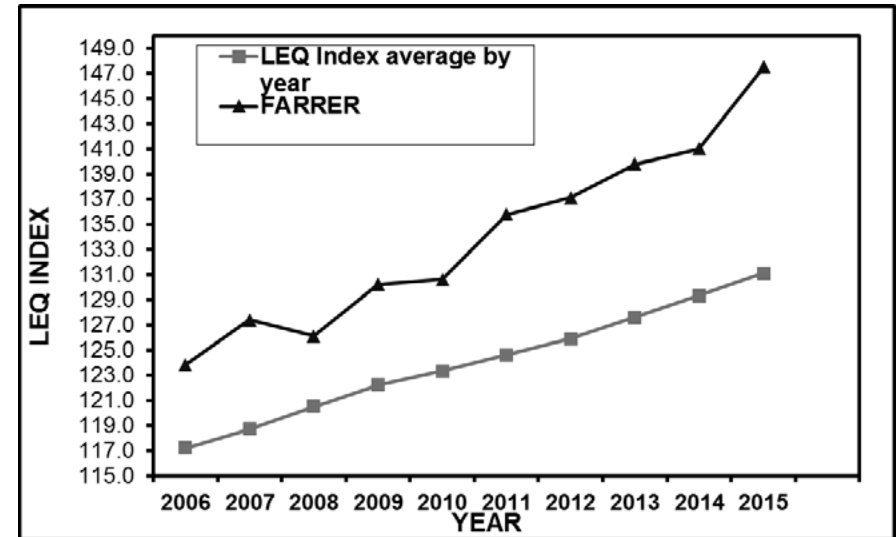
In addition the catalogue includes **15th July 2016** Lambplan index values: on Lambplan Lamb 2020 and Carcase Plus.

LAMBPLAN reports are prepared using data supplied by breeders and/or accredited operators. LAMBPLAN cannot guarantee the accuracy of this data. LAMBPLAN ASBV's are designed to estimate genetic merit of sheep from data supplied. LAMBPLAN reports are provided to assist breeders but no liability is accepted for any outcomes resulting from the use of this information.

Using LAMPLAN to monitor Farrer's genetic progress against the White Suffolk Breed

The graph below indicates Farrer's genetic progress compared to the White Suffolk breed average for all animals measured by Lambplan.

The Genetic Progress of Farrer White Suffolks Compared to the average of the White Suffolk breed



The table below gives a summary of the genetic merit of this years Farrer sale rams compared to the average of all terminal sire breeds (i.e. White Suffolk, Poll Dorsets, Texels, Suffolks etc.) measured by Lambplan in 2015.

Terminal Sires (15th July 2016) Australian Sheep Breeding Values										
DROP AVERAGE	BWT	WWT	PWWT	PFAT	PEMD	PWEC	C+	LAMB 2020	LEQ	
Farrer Sale Rams	0.24	9.8	15.6	-0.3	2.4	-37	206.3	115.8	147.3	
Terminal Sire	0.32	8.1	12.5	-0.6	1.4	-18	181.0	110.3	127.3	
Difference	-0.08	1.7	2.9	0.3	1.0	-19	25.3	4.9	20.0	

SELECTING AN INDIVIDUAL RAM USING ASBV'S FOR YOUR MARKET SPECIFICATIONS

Step 1. Understand your market requirements / specifications

Example:

Market Specifications: 20 - 24 Kg carcase and 2 fat score, positive muscling
 Marketing Option: Over the Hook on the Grid
 Dams: Medium Merino ewes

Step 2. Select the most appropriate ASBV's for your market requirements.

It's **extremely important** to check the individual ASBV's to select your ram(s):

* Birth Weight EBV (BWT)

This trait is becoming increasingly important as birth weight is positively correlated with post weaning weight. This means as post weaning weight ASBV's increase there tends to be a slight increase in birth weight ASBV's. To negate this phenomenon producer's should aim to select rams with lower birth weight ASBV's compared to the current years terminal sire average.

* Weaning Weight ASBV (WWT)

The higher the ASBV figure the better for superior earlier growth (100 days) of lambs.

* Post Weight ASBV (PWWT)

The higher the ASBV figure the better for superior later growth (225 days) of lambs.

* Post Weaning Fat ASBV (PFAT)

The higher growth rate lambs, a more moderate fat level is desired to meet the desired turnoff weight.

Factors where **increasingly positive ASBV's** for fat are possibly required;

- Extremely lean dams e.g. Finns and East Friesians.
- Lambs have trouble "finishing" at the desired market weight

Factors where **increasingly negative ASBV's** for fat are possibly required;

- Fatter type dams e.g. Crossbreeds
- Lambs are commonly marketed at 9 - 11 months of age
- Heavier carcase weights (28+ Kg DWT)
- Lambs often receive a discount due to excessive fat.

Note: Please ensure your selected ram(s) fit into your target market as each individual producer's requirements will be slightly different depending on their individual circumstances.

*Post Weaning Eye Muscle Depth (PEMD)

Lamb producers requiring good muscling in the carcasses will need to select animals with above average post weaning eye muscle depth ASBV's compared to the current years Terminal Sire average in an effort to help meet the market specifications.

*Post Weaning Worm Egg Counts (PWEC)

This trait is especially important for producers who wish to decrease their future reliance on chemicals. Select those animals with a more **negative** PWEC.

Step 3. Check if ONE of the Indexes is appropriate to your market requirements.

Lambplan indices are developed to meet the requirements of selecting animals for different production systems. You should use the index that best suits your production systems, environment and market requirements.

Four of the current terminal sire indices used by LAMBPLAN are shown in the table below. This table illustrates the expected response for traits influenced by each of these indexes over 10 years.

Trait	Carcase +	EQ	Lamb 2020	LEQ
BWT (Kg)	0.15	0.06	0.07	0.07
WWT (Kg)	2.85	1.55	1.85	1.28
PWT (Kg)	4.4	3.15	2.8	2.6
PEMD (mm)	1.46	1.07	1.44	1.17
PFAT (mm)	0.14	0.04	0.59	0.33
PWEC (%)	0.06	0.16	-52.24	-35.83
CEMD (mm)	1.5	1.15	1.42	1.25
CCFAT (mm)	-0.5	-0.4	0.07	-0.12
DRESS (%)	1.31	1.09	1.1	1.03
LMY (%)	1.66	0.91	1.14	0.87
SF5 (nM)	0.77	-2.41	0.62	-2.06
IMF (%)	-0.27	0.09	-0.14	0.1

* **LEQ index** is targeted at progressive terminal lamb producers interested in improving the meat eating quality of their prime lambs while continuing to improve production in a balanced way including Birth Weight (BWT) and Worm Egg Count (WEC). Farrer now selects and breeds using LEQ index as meat eating quality is becoming increasingly important to consumers.

- If one of the above indices is similar to your target market you can use this Index to help screen your previously selected rams. Select those with **higher** values.
- If your production system is **significantly different** (i.e. requires **positive** fat ASBV's, earlier or later turn off, lighter or heavier carcase weights) go to step 4.

Step 4: Final assessment

The ASBV figures are important and an index (LEQ or LAMB 2020) can be useful, but they are only a tool in helping you select the best ram(s) suited to your production system. You should always consider the individual breeding values in the index and also other traits of interest. Importantly, you should also check that the animal meets your requirements for maturity pattern, breed type, conformation and structural correctness.

Finally, remember if you are unsure **please don't hesitate to ask**.

Sheep Structural Assessment

Assessment Date: 19/7/2016

Since 2011 the Farrer Sale rams have been independently structurally assessed by Tim Lawrence of Advanced Livestock Services (02) 67755783 or 0419147419. The system uses the Visual Sheep Scores developed by Australian Wool Innovation Limited (AWI) and Meat and Livestock Australia (MLA). All females have been and will continue to be structurally assessed to ensure the Farrer flock maintains a structurally sound breeding base. Any animals deemed inadequate will be culled.

How to use The Visual Sheep Scores

The sheep Structural Assessment System uses a 1-5 scoring system.

- A score of 1 is **very good**.
- A score of 2 is **good** with animals showing slight variation from the ideal.
- A score of 3 is **average** with animals showing greater variation from the ideal.
- A score of 4 is **poor**. Farrer doesn't catalogue these animals.
- A score of 5 is **very poor**.

* EXCEPT Side view

- A score of 1 is **very straight**. Farrer doesn't catalogue these animals
- A score of 2 is animals showing slight variation from the ideal.
- A score of 3 is **ideal**
- A score of 4 is animals showing slight variation from the ideal
- A score of 5 is **very sickled**. Farrer doesn't catalogue these animals

			Front	Back	Front	Back	Front	Back	* Side
	ID	SIRE	Pastern	Pastern	Legs	Legs	Claw	Claw	View
1	150194	Farrer 140019	2	1	1	1	3	1	3
2	150096	Galaxy Park 110210	2	1	1	1	1	1	3
3	150003	Felix 130500	3	1	1	1	2	2	3
4	150004	Felix 130500	3	2	2	1	3	2	3
5	150011	Galaxy Park 110210	2	2	1	1	2	1	3
6	150016	Waratah 130597	2	2	2	1	2	3	3
7	150024	Galaxy Park 110210	3	3	2	1	2	3	2
8	150027	Langley Heights 090160	2	2	1	2	2	2	3
9	150028	Langley Heights 090160	1	1	1	2	1	1	3
10	150032	Farrer 120026	2	2	1	2	2	2	3
11	150036	Felix 130500	2	1	1	1	3	1	3
12	150040	Farrer 120026	2	1	1	1	2	2	3
13	150041	Farrer 120026	1	2	1	1	1	3	3
14	150044	Farrer 120026	2	2	2	2	2	2	3
15	150049	Galaxy Park 110210	3	2	1	1	2	2	3
16	150051	Galaxy Park 110210	3	2	1	1	3	3	3

			Front	Back	Front	Back	Front	Back	* Side
	ID	SIRE	Pastern	Pastern	Legs	Legs	Claw	Claw	View
17	150053	Langley Heights 090160	3	1	1	1	2	2	3
18	150054	Langley Heights 090160	1	2	1	3	1	1	3
19	150060	Waratah 130597	2	2	1	1	2	2	3
20	150062	Felix 130500	2	3	1	1	3	2	3
21	150069	Galaxy Park 110210	2	3	1	1	1	2	3
22	150075	Langley Heights 090160	1	2	1	2	1	2	3
23	150084	Langley Heights 090160	2	2	1	1	2	2	3
24	150085	Langley Heights 090160	1	2	1	1	1	1	3
25	150087	Langley Heights 090160	1	3	1	3	1	3	2
26	150088	Langley Heights 090160	2	2	1	1	1	3	3
27	150090	Langley Heights 090160	1	1	1	1	2	2	3
28	190092	Galaxy Park 110210	2	1	1	1	2	2	3
29	150099	Pollambi 130052	3	3	1	1	2	3	3
30	150103	Waratah 130597	2	3	1	2	1	1	3
31	150106	Waratah 130597	1	2	1	1	1	2	3
32	150108	Waratah 130597	2	2	1	1	3	3	3
33	150113	Felix 130500	3	2	2	1	3	3	3
34	150115	Felix 130500	3	2	2	1	3	2	3
35	150117	Felix 130500	2	1	1	1	1	2	3
36	150118	Felix 130500	2	2	1	2	2	2	3
37	150120	Farrer 120026	2	2	1	1	1	1	2
38	150121	Farrer 120026	2	2	1	1	1	2	3
39	150130	Waratah 130597	2	2	1	1	1	2	3
40	150132	Waratah 130597	2	1	1	1	2	1	3
41	150133	Pollambi 130052	2	3	1	1	2	2	3
42	150134	Pollambi 130052	2	2	1	1	2	2	3
43	150135	Pollambi 130052	1	2	1	2	1	2	3
44	150136	Pollambi 130052	2	2	2	1	1	1	3
45	150142	Langley Heights 090160	2	1	1	1	1	1	3
46	150144	Langley Heights 090160	1	2	1	1	1	1	3
47	150146	Langley Heights 090160	2	2	1	1	1	1	3
48	150150	Langley Heights 090160	2	3	1	1	1	3	3
49	150151	Langley Heights 090160	2	2	2	2	3	1	3
50	150153	Galaxy Park 110210	2	2	3	1	2	2	3
51	150163	Galaxy Park 110210	3	2	1	1	1	2	3
52	150166	Farrer 120026	3	3	1	2	2	2	3
53	150172	Waratah 130597	2	2	1	1	1	1	2
54	150180	Millswyn 130068	3	2	1	1	2	3	3
55	150181	Langley Heights 090160	2	2	1	1	1	2	3
56	150183	Pollambi 130052	2	2	1	1	1	2	3

			Front	Back	Front	Back	Front	Back	* Side
	ID	SIRE	Pastern	Pastern	Legs	Legs	Claw	Claw	View
57	150184	Farrer 110155	2	2	1	1	2	2	3
58	150187	Langley Heights 090160	1	1	1	3	1	1	3
59	150193	Farrer 140019	2	2	1	3	2	2	3
60	150196	Farrer 140019	1	1	1	1	2	2	3
61	150197	Farrer 140019	3	2	2	1	3	2	3
62	150201	Farrer 140137	2	1	1	1	1	2	3
63	150202	Farrer 140137	3	3	1	1	1	2	3
64	150203	Farrer 140137	3	3	1	1	2	2	3
65	150211	Farrer 140188	2	2	1	2	1	1	3
66	150217	Farrer 140137	1	1	1	2	1	1	3
67	150218	Farrer 140137	1	1	1	1	1	1	3
68	150226	Farrer 140019	2	2	2	1	2	1	3
69	150231	Farrer 140188	1	2	1	1	2	2	3
70	150239	Farrer 140137	1	2	1	1	1	1	3
71	150240	Farrer 140188	2	2	1	1	1	1	3
72	150242	Farrer 140188	3	3	2	2	3	2	3
73	150244	Farrer 140188	1	1	1	1	1	2	3



Farrer's Embryo Transfer Program 2016

Special thanks to "Ashmore" South Australia for their cooperation in relation to this teaching and learning initiative.

Australian Sheep Breeding Values for Lean Meat Yield and Meat Eating Quality

Australian Sheep Breeding Values are obtained by a DNA test using a small blood sample.

Lean Meat Yield (LMY %)

This trait is a measure of the commercial yield of lean meat as a percentage of hot carcass weight. Lean meat yield is estimated from a combination of weight, muscle and fat dimensions and has been validated by either CT scanning or through direct commercial bone-outs.

Select those animals with the most *positive* LMY

Intramuscular Fat (IMF %)

This trait is a measure of the chemical fat percentage in the loin muscle of a lamb, and is often referred to as marbling. IMF has been shown to have a significant impact on flavour, juiciness, tenderness and overall likeability of lamb.

Select those animals with the most *positive* IMF

Shear Force (SHEARF5 Kg)

This trait is a measure of the force or energy required to cut through the loin muscle of a lamb after 5 days of ageing, and is recorded in kilograms of force. The trait has moderate / high heritability, and a moderate correlation with tenderness in lamb. Thus, the most negative SHEARF5 figure indicates more tender lamb loin muscle.

Select those animals with the most *negative* SHEARF5

Using LAMBPLAN to compare individual animals on LMY & MEQ

The table below allows the comparison of individual rams against the performance of all other 2015 drop animals terminal sire animals measured on Lambplan irrespective of breed.

Percentile bands for all Terminal Sires animals born in 2015

	LMY	IMF	SHEARF5
Top Value	7.1	0.8	-5.0
Top 1%	4.7	0.1	-2.3
Top 5%	4.1	0.0	-1.2
Top 10%	3.8	-0.1	-0.5
Top 20%	3.4	-0.2	0.2
Top 30%	3.1	-0.3	0.8
Top 40%	2.8	-0.4	1.4
Top 50%	2.5	-0.4	2.0
Top 60%	2.3	-0.5	2.7
Top 70%	1.9	-0.6	3.5
Top 80%	1.5	-0.7	4.4
Top 90%	0.7	-0.8	5.5
Bottom Value	-2.9	-1.6	13.1

Reference Sires:

Langley Heights 090160 (AI)

Lots: 8, 9, 17, 18, 22, 23, 24, 25, 26, 27, 45, 46, 47, 48, 49, 55, 58

Lot	Ram ID	BWT	WWT	PWWT	PFAT	PEMD	PWEC	Carcase Plus	Lamb 2020
	090160	0.18	9.5	16.1	-0.1	2.0	-20	201.5	114.5
	Reference sire	98%	98%	98%	98%	98%	95%	98%	96%
	LMY	IMF		SHEARF5			EQ	LEQ	
	1.35	0.15		-4.9			151.4	153.4	
	96%	94%		92%			94%	94%	

Sire: Langley Heights 060073 Dam: Langley Heights 070292 Progeny: Flocks 1338:35

Comments: A widely used White Suffolk sire with low birth weight (lowest 20%), good growth (top 5%) and outstanding Meat Eating Qualities with IMF (top 1%) and very low shear force (top 1%). Some of his progeny have slight pigmentation. His progeny are versatile and can suit both trade and export lambs.

Waratah 130597 (AI)

Lots: 6, 19, 30, 31, 32, 39, 40, 53

Lot	Ram ID	BWT	WWT	PWWT	PFAT	PEMD	PWEC	Carcase Plus	Lamb 2020
	130597	0.48	9.9	16.5	-0.5	1.9	-53	204.0	116.1
	Reference sire	96%	96%	97%	96%	97%	93%	69%	95%
	LMY	IMF		SHEARF5			EQ	LEQ	
	3.13	-0.55		1.1			136.0	140.80	
	83%	64%		62%			67%	68%	

Sire: Middlemoor 099097 Dam: Waratah 110143 Progeny: Flocks 439:17

Comments: Waratah 130597 was the Superwhites Series 19 link sire. His progeny are consistent with thickness and muscle in the loin. Waratah 130597 has excellent growth (top 3%), muscle (top 30%) and worm resistance (top 2%). Farrer recommends using over mature ewes. Progeny are better suited to export lambs over 24 kilograms carcass weight.

Felix 130500 (AI)

Lots: 3, 4, 11, 20, 33, 34, 35, 36

Lot	Ram ID	BWT	WWT	PWWT	PFAT	PEMD	PWEC	Carcase Plus	Lamb 2020
	130500	0.14	11.0	17.8	-1.2	1.9	-48	214.1	117.3
	Reference sire	92%	93%	94%	93%	94%	84%	93%	89%
	LMY	IMF		SHEARF5			EQ	LEQ	
	3.39	-0.69		1.8			140.5	145.0	
	81%	64%		62%			66%	66%	

Sire: Pollambi 110451 Dam: Felix 100658 Progeny: Flocks 154:5

Comments: An excellent son of Pollambi 110451 who was in Superwhite program Series 19. A low birth weight (lowest 20%), excellent growth (top 1%), fat (leanest top 10%), muscle (top 30%) and worm resistance (top 5%) ram. Felix 130500 has consistently produced progeny with length and performance. Felix 130500 sons will produce progeny that are highly versatile and can suit both trade and export lambs.

Pollambi 130052 (PD) (AI)

Lots: 29, 41, 42, 43, 44, 56

Lot	Ram ID	BWT	WWT	PWWT	PFAT	PEMD	PWEC	Carcase Plus	Lamb 2020
	130052	0.35	12.6	19.6	0.3	3.0	-51	231.4	119.7
	Reference sire	95%	95%	96%	95%	96%	90%	96%	93%
	LMY	IMF		SHEARF5			EQ	LEQ	
	4.17	-0.63		4.9			145.1	149.4	
	82%	65%		63%			67%	69%	

Sire: Ivadene 100056 (PD) Dam: Pollambi 090001 (PD) Progeny: Flocks 333:7

Comments: This performance Poll Dorset ram used to increase genetic linkage across the Lambplan database and utilize more of Pollambi 090001 who is also the dam of Pollambi 110451. Pollambi 130052 has outstanding growth (top 1%), muscle (top 3%) and worm resistance (top 2%). His progeny are consistently long with depth and muscle in the carcass. Progeny are better suited to export lambs over 24 kilograms carcass weight.

Galaxy Park 110210 (APP) (AI)

Lots: 2, 5, 7, 15, 16, 21, 28, 50, 51

Lot	Ram ID	BWT	WWT	PWWT	PFAT	PEMD	PWEC	Carcase Plus	Lamb 2020
	110210	0.36	9.90	15.9	-0.5	3.0	-77	215	118.5
	Reference sire	94%	95%	96%	92%	95%	86%	95%	91%
	LMY	IMF		SHEARF5			EQ	LEQ	
	2.89	1.01		-3.1			173.9	180.5	
	86%	86%		81%			84%	84%	

Sire: Hillcroft Farms 071082 (PD) Dam: Galaxy Park 08B146 Progeny: Flocks 262:6

Comments: The highest White Suffolk performance ram in Australia in regards to the new LEQ index. Galaxy Park 110210 has good growth (top 10%), outstanding worm resistance (top 1%), IMF (top 1%) and Shear Force (top 1%). Farrer has used a brilliant son Farrer 150096 (Lot 2) and will have more Galaxy Park 110210 sons available in 2017 and 2018. Galaxy Park 110210 sons will produce progeny that are highly versatile and can suit both trade and export lambs.

Farrer 120026 (AI)

Lots: 12, 13, 14, 52,

Lot	Ram ID	BWT	WWT	PWWT	PFAT	PEMD	PWEC	Carcase Plus	Lamb 2020
	120026	0.22	9.4	14.6	0.3	2.7	-58	202	116.1
	Reference sire	95%	95%	96%	96%	96%	88%	96%	92%
	LMY	IMF		SHEARF5			EQ	LEQ	
	0.42	-0.02		-3.60			146.4	151.5	
	88%	84%		80%			83%	83%	

Sire: Ashmore 080179 Dam: Farrer 110204 Progeny: Flocks 240:13

Comments: A tremendous ram that has been used across Australia with excellent results. Farrer has retained plenty of females in the breeding flock. Farrer 120026 good growth (top 20%), extra fat (fattest 10%), muscle (top 5%) and worm resistance (top 1%), IMF (top 10%) and shear force (top 1%). Farrer 120026 sons will produce progeny that are highly versatile and can suit both trade and export lambs.

Farrer 110155 (AI)

Lots: 57

	Ram ID	BWT	WWT	PWWT	PFAT	PEMD	PWEC	Carcase Plus	Lamb 2020
	110155	0.15	10.1	14.9	-0.7	2.9	-38	212	116.6
Reference sire	96%	97%	97%	97%	97%	97%	93%	97%	95%
LMY	IMF		SHEARF5			EQ	LEQ		
2.92	0.16		0.3			152.0	155.4		
90%	81%		77%			81%	82%		

Sire: Farrer 100135 Dam: Farrer 070127 Progeny: Flocks 487:18

Comments: Repeat clients quickly snapped up all the remaining semen in this ram after viewing this progeny. Farrer 110155 has good growth (top 15%), muscle (top 3%) and worm resistance (top 10%), IMF(top 1%). Farrer 110155 sons will produce progeny that are highly versatile and can suit both trade and export lambs.

Millswyn 130068 (AI)

Lots: 54

	130068	0.21	10.0	16.3	-0.6	1.5	-39	200	115.0
Reference sire	88%	90%	91%	90%	91%	76%	90%	90%	90%
LMY	IMF		SHEARF5			EQ	LEQ		
2.21	-0.47		-0.1			139.6	143.2		
77%	63%		61%			64%	64%		

Sire: Farrer 100135 Dam: Millswyn 110142 Progeny: Flocks 82:5

Comments: Millswyn 130068 is a Farrer 100135 son who was the Superwhites Series 19. Unfortunately, only limited progeny was dropped in 2015. Millswyn 130068 has growth (top 4%), muscle (top 45%) and worm resistance (top 15%). His only progeny and can suit both trade and export lambs.

Farrer 140137 (Natural)

Lots: 62, 63, 64, 66, 67, 70

	140137	0.20	9.8	14.9	-0.7	3.4	-30	216	116.8
Reference sire	80%	80%	80%	80%	82%	75%	78%	77%	77%
LMY	IMF		SHEARF5			EQ	LEQ		
3.12	-0.08		-0.6			152.5	155.1		
69%	58%		55%			56%	57%		

Sire: Farrer 110155 Dam: Farrer 130218 Progeny: Flocks 38:3

Comments: This excellent son of Farrer 110155 was selected in the Superwhite Series 20 team. Farrer 140137 has low birth weight (lowest 25%), growth (top 15%), muscle (top 1%) and worm resistance (top 30%). Farrer 140137 progeny are smooth shouldered with muscle in the loin and hindquarters. His progeny are versatile and can suit both trade and export lambs.

Farrer 140019 (Natural)

Lots: 1, 59, 60, 61, 68

Lot	Ram ID	BWT	WWT	PWWT	PFAT	PEMD	PWEC	Carcase Plus	Lamb 2020
1	140019	0.03	12.8	19.4	-0.6	2.8	-60	232	120.2
Reference sire	86%	81%	81%	80%	82%	76%	79%	78%	78%
LMY	IMF		SHEARF5			EQ	LEQ		
3.61	-0.41		2.5			150.1	155.4		
70%	60%		58%			58%	59%		

Sire: Pollambi 110451 Dam: Farrer 120237 Progeny: Flocks 68:3

Comments: This outstanding son of Pollambi 110451 and will have progeny across Australia in 2016. Farrer 140019 has low birth weight (lowest 10%), brilliant growth (top 1%), muscle (top 5%) and worm resistance (top 1%). His progeny were standouts at lamb marking in 2015 and have continued to excel with added stretch and depth of body. Farrer has used two outstanding sons Farrer 150194 (Lot 1) and Farrer 150196 (Lot 60). Farrer 140019 sons will produce progeny that are highly versatile and can suit both trade and export lambs.



Farrer 140019 (Sold \$8000 to "Oakwood", South Australia)

Farrer 140188 (Natural)

Lots: 65, 69, 71, 72, 73

Lot	Ram ID	BWT	WWT	PWWT	PFAT	PEMD	PWEC	Carcase Plus	Lamb 2020
	140188	0.18	10.1	16.5	0.1	3.2	-27	217	116.9
Reference sire		91%	81%	82%	80%	82%	82%	79%	77%
LMY			IMF		SHEARF5		EQ	LEQ	
		2.45		-0.29		-1.1		145.2	147.7
		68%		52%		49%		51%	52%

Sire: Farrer 130254

Dam: Farrer 120140

Progeny: Flocks 223:5

Comments: Farrer 140188 sold for an equal on property record of \$17000 to “Oakwood” in South Australia. This ram will be the widely used White Suffolk Sire in Australia in 2016 as plenty of semen was sold to leading studs. His progeny are consistent with smooth shoulders, thickness and muscle in the loin and hindquarters. There are three excellent sons Farrer 150211 (Lot 65), 150240 (Lot 71) and 150244 (Lot 73) in this catalogue. Farrer 140188 has low birth weight (top 20%), growth (top 3%), muscle (top 2%) and shear force (top 10%). His progeny are highly versatile and can suit both trade and export lambs.



Farrer 140188 (Sold \$17000 to “Oakwood”, South Australia)



SUPERWHITES

“The highest performing White Suffolks in Australia”



About Superwhites:

- The Superwhites genetic improvement group was formed in 1995 and comprises 20 members across Australia
- The group has a strong commercial focus and is committed to producing the highest performing White Suffolk rams in Australia
- The group select rams that perform in the paddock under commercial conditions
- The group identify the best genetics in Australia each year and use these within member flocks
- Collectively the group represent 5,000 breeding ewes and produces around 15% of Australia's White Suffolk rams

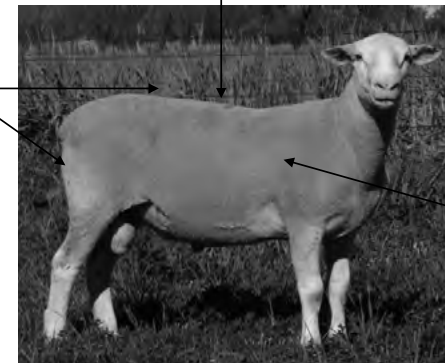
Contact your local Superwhites Breeder for the highest performing White Suffolk rams:



FARRER WHITE SUFFOLKS

Rams are bred for high growth. After all, weight is what you get paid for!

Rams are selected for muscling in the loin and leg. They are the most expensive cuts.



Rams are bred from the best genetics in Australia and then performance tested to identify the best

<http://www.whitesuffolk.org.au/superwhites/index.htm>



LOT 1: Farrer 150194



LOT 2: Farrer 150096

Lot	Ram ID	BWT	WWT	PWWT	PFAT	PEMD	PWEC	Carcase Plus	Lamb 2020
1	150194	0.19	11.6	18.3	-0.8	2.6	-49	224.0	118.69
STAR LOT		64%	66%	68%	67%	71%	61%	65%	63%
LMY		IMF		SHEARF5			EQ	LEQ	
3.00		-0.23		0.1			149.3	153.7	
55%		46%		43%			44%	45%	

DOB: 15/8/2015 Sire: Farrer 140019 Dam: Farrer 130120 HrF (94145)
 Purchaser: Price:

- Selected as a back-up ram for Farrer's 2016 artificial insemination program
- Selected in the Series 21 Superwhite Program
- Terrific growth (top 1%), muscle (top 10%), worm resistance (top 5%)
- IMF (top 30%) and SHEARF5 (20%)
- LEQ (top 1%), Lamb 2020 (top 1%) and Carcase Plus (top 1%)
- Farrer retains a 100% share of the semen marketing rights on this ram
- Intending purchasers should read the Semen Retention Rights Notice

Lot	Ram ID	BWT	WWT	PWWT	PFAT	PEMD	PWEC	Carcase Plus	Lamb 2020
2	150096	0.34	11.7	18.1	-0.8	2.9	-68	227.0	119.8
STAR LOT		66%	69%	72%	71%	74%	64%	69%	67%
LMY		IMF		SHEARF5			EQ	LEQ	
3.91		-0.17		0.6			155.7	161.7	
60%		57%		54%			54%	54%	

DOB: 1/8/2015 Sire: Galaxy Park 110210 Dam: Farrer 130037 HrF (94049)
 Purchaser: Price:

- Selected as a back-up ram for Farrer's 2016 artificial insemination program
- Selected in the Series 21 Superwhite Program
- Stylish ram with outstanding carcase attributes
- Tremendous growth (top 1%), muscle (top 4%), worm resistance (top 1%)
- LMY (top 10%), IMF (top 20%) and SHEARF5 (30%)
- LEQ (top 1%), Lamb 2020 (top 1%) and Carcase Plus (top 1%)
- Farrer retains a 100% share of the semen marketing rights on this ram
- Intending purchasers should read the Semen Retention Rights Notice

Lot	Ram ID	BWT	WWT	PWWT	PFAT	PEMD	PWEC	Carcase Plus	Lamb 2020
3	150003	0.19	10.2	16.7	-0.9	1.4	-34	202.0	115.1
Accuracies		65%	68%	69%	69%	71%	61%	66%	64%
LMY		IMF		SHEARF5			EQ	LEQ	
2.49		-0.35		1.0			139.4	142.7	
59%		46%		45%			45%	45%	

DOB: 28/7/2015 Sire: Felix 130500 Dam: Farrer 110201
 Purchaser: Price:

- Long bodied ram with excellent growth (top 3%)

Lot	Ram ID	BWT	WWT	PWWT	PFAT	PEMD	PWEC	Carcase Plus	Lamb 2020
4	150004	0.12	9.0	15.2	-0.7	1.6	-28	196.0	114.0
Accuracies		65%	68%	69%	69%	71%	61%	66%	64%
LMY		IMF		SHEARF5			EQ	LEQ	
2.04		-0.28		0.1			138.2	141.0	
59%		46%		45%			45%	45%	

DOB:28/7/2015 Sire: Felix 130500 Dam: Farrer 110201
Purchaser: Price:

5	150011	0.24	9.8	14.0	-0.8	1.6	-55	193.0	114.7
Accuracies		65%	68%	69%	69%	71%	62%	67%	65%
LMY		IMF		SHEARF5			EQ	LEQ	
2.43		0.35		0.3			146.9	151.7	
60%		53%		50%			49%	50%	

DOB: 29/7/2015 Sire: Galaxy Park 110210 Dam: Farrer 120197
Purchaser: Price:

- Outstanding IMF (top 1%) and worm resistance (top 2%)

6	150016	0.22	10.4	17.0	0.1	2.6	-35	231.0	116.7
Accuracies		66%	69%	69%	70%	71%	64%	67%	66%
LMY		IMF		SHEARF5			EQ	LEQ	
2.68		-0.50		1.7			138.2	141.4	
60%		45%		44%			44%	45%	

DOB:29/7/2015 Sire: Waratah 130597 Dam: Farrer 130011
Purchaser: Price:

- Exhibited at Dubbo Show
- Wide, thick ram with plenty of muscle in the loin and hindquarters
- Growth (top 2%), extra fat coverage (fattest 10%) and muscle (top 10%)

7	150024	0.28	9.5	15.3	-0.3	2.0	-62	199.0	115.8
Accuracies		66%	68%	69%	69%	71%	62%	67%	65%
LMY		IMF		SHEARF5			EQ	LEQ	
1.79		0.50		-2.5			153.8	159.3	
61%		55%		52%			51%	51%	

DOB: 29/7/2015 Sire: Galaxy Park 110210 Dam: Farrer 130017
Purchaser: Price:

- Tall stretchy ram with brilliant worm resistance (top 1%)
- Outstanding MEQ traits IMF (top 1%) and very low shear force (top 1%)



LOT 10: Farrer 150032



LOT 15: Farrer 150049

Lot	Ram ID	BWT	WWT	PWWT	PFAT	PEMD	PWEC	Carcase Plus	Lamb 2020
-----	--------	-----	-----	------	------	------	------	--------------	-----------

8	150027	0.28	9.0	14.8	0.0	2.1	28	197.0	111.9
Accuracies		66%	69%	70%	70%	72%	64%	68%	66%

LMY		IMF		SHEARF5		EQ	LEQ
1.32		-0.06		-2.7		143.1	140.9
63%		57%		56%		54%	54%

DOB: 29/7/2015 Sire: Langley Heights 090160 Dam: Farrer 130243
Purchaser: Price:

- A smooth shouldered ram with growth (top 20%) and positive fat (fattest 10%)
- MEQ traits IMF (top 10%) and very low shear force (top 1%)

9	150028	0.23	7.9	13.8	-0.2	1.3	28	182.0	109.9
Accuracies		66%	69%	70%	70%	72%	64%	68%	66%

LMY		IMF		SHEARF5		EQ	LEQ
0.68		0.04		-3.3		138.4	136.3
63%		57%		56%		54%	54%

DOB: 29/7/2015 Sire: Langley Heights 090160 Dam: Farrer 130243
Purchaser: Price:

10	150032	0.16	9.1	14.8	-0.1	2.6	-36	203.0	115.3
STAR LOT		68%	71%	72%	72%	74%	65%	70%	68%

LMY		IMF		SHEARF5		EQ	LEQ
1.60		-0.22		-1.51		143.8	147.0
64%		55%		53%		52%	53%

DOB: 29/7/2015 Sire: Farrer 120026 Dam: Farrer 100017
Purchaser: Price:

- Easy doing ram with thickness and volume
- Stacked with great maternal genetics on both sides of the pedigree
- Well balanced figures and a superb carcass
- Low birth weight (lowest 20%), growth (top 20%) and muscle (top 10%)
- LEQ (top 1%), Lamb 2020 (top 3%) and Carcase Plus (top 10%)

11	150036	0.02	8.4	14.2	-1.0	1.6	-47	191.0	114.2
Accuracies		65%	68%	69%	69%	71%	62%	67%	65%

LMY		IMF		SHEARF5		EQ	LEQ
2.02		-0.21		-0.3		138.5	142.8
59%		45%		44%		44%	45%

DOB: 30/7/2015 Sire: Felix 130500 Dam: Farrer 120236
Purchaser: Price:

- A smooth shouldered ram with excellent worm resistance (top 5%)
- Low birth weight (lowest 10%), fat (top 20%) and muscle (top 40%)

Lot	Ram ID	BWT	WWT	PWWT	PFAT	PEMD	PWEC	Carcase Plus	Lamb 2020
-----	--------	-----	-----	------	------	------	------	--------------	-----------

12	150040	0.08	8.3	13.6	0.6	3.6	-56	205.0	116.4
Accuracies		66%	68%	69%	70%	71%	62%	67%	65%

LMY		IMF		SHEARF5		EQ	LEQ
1.41		-0.23		-2.3		145.7	150.5
61%		51%		49%		48%	49%

DOB: 30/7/2015 Sire: Farrer 120026 Dam: Farrer 130245
Purchaser: Price:

- A solid, thick deep bodied ram with an excellent twist.
- Low birth weight (lowest 20%), muscle (top 1%) and worm resistance (top 2%)
- Extra Fat coverage (fattest 2%) and shear force (top 1%)

13	150041	0.11	8.1	13.7	0.5	3.3	-67	203.0	116.6
Accuracies		66%	68%	69%	70%	71%	62%	67%	65%

LMY		IMF		SHEARF5		EQ	LEQ
1.28		-0.20		-2.63		145.6	151.4
61%		51%		49%		48%	49%

DOB: 30/7/2015 Sire: Farrer 120026 Dam: Farrer 130245
Purchaser: Price:

- A solid, thick deep bodied ram with an excellent twist.
- Low birth weight (lowest 20%), muscle (top 2%) and worm resistance (top 1%)
- Extra Fat coverage (fattest 3%) and shear force (top 1%)

14	150044	0.13	9.0	13.9	0.2	2.6	-50	198.0	115.20
Accuracies		67%	69%	70%	70%	72%	64%	68%	66%

LMY		IMF		SHEARF5		EQ	LEQ
1.06		-0.04		-2.4		142.2	146.5
62%		54%		52%		51%	51%

DOB: 30/7/2015 Sire: Farrer 120026 Dam: Farrer 110099
Purchaser: Price:

- A smooth shouldered and a thick deep bodied ram.
- Low birth weight (lowest 20%), muscle (top 10%) and worm resistance (top 4%)
- Extra fat coverage (fattest 10%) and shear force (top 1%)

15	150049	0.25	9.0	14.9	0.3	2.8	-69	203.0	116.7
STAR LOT		66%	69%	69%	70%	71%	63%	67%	65%

LMY		IMF		SHEARF5		EQ	LEQ
1.66		0.46		-3.2		156.6	162.6
61%		55%		53%		51%	52%

DOB: 30/7/2015 Sire: Galaxy Park 110210 Dam: Farrer 120078
Purchaser: Price:

- Well balanced figures growth (20%), fat (fattest 10%) and muscle (top 5%)
- Outstanding worm resistance (top 1%)
- Superior MEQ traits IMF (top 1%) and very low shear force (top 1%)
- LEQ (top 1%), Lamb 2020 (top 1%) and Carcase Plus (top 10%)

Lot	Ram ID	BWT	WWT	PWWT	PFAT	PEMD	PWEC	Carcase Plus	Lamb 2020
16	150051	0.24	9.1	14.6	-0.8	1.5	-60	192.0	114.8
Accuracies		65%	68%	69%	69%	71%	62%	67%	65%
LMY		IMF		SHEARF5			EQ	LEQ	
2.09		0.35		-1.6			149.1	154.4	
60%		54%		52%			51%	51%	

DOB: 30/7/2015 Sire: Galaxy Park 110210 Dam: Farrer 120041
Purchaser: Price:

- Good growth (top 20%) with brilliant worm resistance (top 2%)
- Outstanding MEQ traits IMF (top 1%) and low shear force (top 4%)

Lot	Ram ID	BWT	WWT	PWWT	PFAT	PEMD	PWEC	Carcase Plus	Lamb 2020
17	150053	0.22	10.4	17.3	-0.1	2.4	-19	212.0	115.9
Accuracies		67%	69%	70%	70%	72%	65%	68%	67%
LMY		IMF		SHEARF5			EQ	LEQ	
2.43		-0.22		-1.5			148.1	149.9	
64%		58%		57%			55%	55%	

DOB: 30/7/2015 Sire: Langley Heights 090160 Dam: Farrer 130136
Purchaser: Price:

- A solid, thick deep bodied ram with an excellent twist.
- Low birth weight (lowest 30%), growth (top 2%) and muscle (top 20%)

Lot	Ram ID	BWT	WWT	PWWT	PFAT	PEMD	PWEC	Carcase Plus	Lamb 2020
18	150054	0.35	10.5	16.8	-0.6	1.3	-26	200.0	114.5
Accuracies		67%	69%	70%	70%	72%	65%	68%	67%
LMY		IMF		SHEARF5			EQ	LEQ	
2.25		-0.19		-0.8			142.0	144.5	
64%		58%		57%			55%	55%	

DOB: 30/7/2015 Sire: Langley Heights 090160 Dam: Farrer 130136
Purchaser: Price:

Lot	Ram ID	BWT	WWT	PWWT	PFAT	PEMD	PWEC	Carcase Plus	Lamb 2020
19	150060	0.30	11.2	18.1	-0.2	2.7	-51	221.0	118.3
Accuracies		68%	70%	72%	73%	75%	66%	70%	68%
LMY		IMF		SHEARF5			EQ	LEQ	
3.31		-0.69		2.8			139.4	143.9	
61%		50%		47%			48%	49%	

DOB: 30/7/2015 Sire: Waratah 130597 Dam: Farrer 130064
Purchaser: Price:

- A good smooth shouldered ram
- Superior growth (top 1%), muscle (top 10%) and worm resistance (top 4%)

Lot	Ram ID	BWT	WWT	PWWT	PFAT	PEMD	PWEC	Carcase Plus	Lamb 2020
20	150062	0.14	10.4	16.1	-1.0	1.8	-22	205.0	115.1
Accuracies		65%	68%	69%	69%	71%	62%	67%	65%
LMY		IMF		SHEARF5			EQ	LEQ	
3.01		-0.36		0.7			140.2	142.3	
59%		45%		43%			43%	44%	

DOB: 30/7/2015 Sire: Felix 130500 Dam: Farrer 120101
Purchaser: Price:

- Low birth weight (lowest 20%), growth (top 5%) and muscle (top 30%)

Lot	Ram ID	BWT	WWT	PWWT	PFAT	PEMD	PWEC	Carcase Plus	Lamb 2020
21	150069	0.16	9.4	14.8	-0.2	3.0	-58	209.0	117.0
Accuracies		65%	68%	69%	69%	71%	61%	67%	64%
LMY		IMF		SHEARF5			EQ	LEQ	
2.54		0.41		-1.5			158.2	163.2	
60%		52%		50%			49%	49%	

DOB: 31/7/2015 Sire: Galaxy Park 110210 Dam: Farrer 120199
Purchaser: Price:

- Low birth weight (lowest 20%), growth (top 20%) and muscle (top 3%)
- Excellent worm resistance (top 2%) and positive fat (fattest 30%)
- MEQ traits IMF (top 1%) and very low shear force (top 4%)

Lot	Ram ID	BWT	WWT	PWWT	PFAT	PEMD	PWEC	Carcase Plus	Lamb 2020
22	150075	0.19	9.9	16.1	-0.7	1.4	-44	198.0	115.0
Accuracies		66%	69%	69%	70%	72%	65%	68%	67%
LMY		IMF		SHEARF5			EQ	LEQ	
2.09		-0.20		-0.9			140.7	144.8	
63%		57%		56%			54%	54%	

DOB: 31/7/2015 Sire: Langley Heights 090160 Dam: Farrer 130095
Purchaser: Price:

Lot	Ram ID	BWT	WWT	PWWT	PFAT	PEMD	PWEC	Carcase Plus	Lamb 2020
23	150084	0.26	8.6	14.6	-0.1	2.7	-34	202.0	115.1
Accuracies		66%	68%	69%	70%	71%	64%	67%	66%
LMY		IMF		SHEARF5			EQ	LEQ	
1.92		-0.08		-2.8			146.1	149.1	
63%		56%		54%			52%	53%	

DOB: 1/8/2015 Sire: Langley Heights 090160 Dam: Farrer 130074
Purchaser: Price:

- A deep smooth shouldered ram with muscle (top 10%)
- MEQ traits IMF (top 10%) and very low shear force (top 1%)

Lot	Ram ID	BWT	WWT	PWWT	PFAT	PEMD	PWEC	Carcase Plus	Lamb 2020
24	150085	0.17	9.3	14.6	-0.2	3.0	-12	207.0	114.90
Accuracies		68%	70%	72%	72%	75%	67%	70%	69%
LMY		IMF		SHEARF5			EQ	LEQ	
2.46		-0.10		-1.3			146.2	147.3	
64%		60%		58%			56%	57%	

DOB: 1/8/2015 Sire: Langley Heights 090160 Dam: Farrer 120234
Purchaser: Price:

- An excellent Langley Heights 090160 son with thickness
- A solid, thick deep bodied ram with an outstanding twist.
- Low birth weight (lowest 20%), growth (top 20%) and muscle (top 3%)

Lot	Ram ID	BWT	WWT	PWWT	PFAT	PEMD	PWEC	Carcase Plus	Lamb 2020
25	150087	0.27	7.6	13.1	-0.4	1.9	-38	187.0	113.2
Accuracies		68%	70%	71%	71%	73%	66%	69%	68%
LMY		IMF		SHEARF5			EQ	LEQ	
1.70		-0.24		-2.3			137.3	140.6	
64%		58%		57%			55%	55%	

DOB: 1/8/2015 Sire: Langley Heights 090160 Dam: Farrer 090115
Purchaser: Price:

Lot	Ram ID	BWT	WWT	PWWT	PFAT	PEMD	PWEC	Carcase Plus	Lamb 2020
26	150088	0.40	9.4	15.2	-0.7	1.1	-32	191.0	113.5
Accuracies		68%	70%	71%	71%	73%	66%	69%	68%
LMY		IMF		SHEARF5			EQ	LEQ	
2.17		-0.31		-0.9			136.7	139.8	
64%		58%		57%			55%	55%	

DOB: 1/8/2015 Sire: Langley Heights 090160 Dam: Farrer 090115
Purchaser: Price:

Lot	Ram ID	BWT	WWT	PWWT	PFAT	PEMD	PWEC	Carcase Plus	Lamb 2020
27	150090	0.31	10.0	16.2	-0.3	1.9	-5	202.0	113.9
Accuracies		67%	69%	70%	71%	72%	65%	68%	67%
LMY		IMF		SHEARF5			EQ	LEQ	
1.84		-0.21		-2.5			143.7	144.3	
64%		58%		57%			55%	55%	

DOB: 1/8/2015 Sire: Langley Heights 090160 Dam: Farrer 130107
Purchaser: Price:

Lot	Ram ID	BWT	WWT	PWWT	PFAT	PEMD	PWEC	Carcase Plus	Lamb 2020
28	150092	0.36	10.3	16.8	0.3	3.4	-67	220.0	118.9
Accuracies		66%	69%	72%	71%	74%	63%	69%	66%
LMY		IMF		SHEARF5			EQ	LEQ	
2.11		0.53		-2.0			160.4	166.2	
60%		57%		54%			53%	54%	

DOB: 1/8/2015 Sire: Galaxy Park 110210 Dam: Farrer 130138
Purchaser: Price:

- A deep smooth shouldered ram with muscle (top 1%)
- MEQ traits IMF (top 1%) and very low shear force (top 2%)

Lot	Ram ID	BWT	WWT	PWWT	PFAT	PEMD	PWEC	Carcase Plus	Lamb 2020
29	150099	0.30	11.1	18.5	0.4	3.9	-51	233.0	120.0
Accuracies		67%	70%	72%	72%	75%	66%	70%	68%
LMY		IMF		SHEARF5			EQ	LEQ	
4.03		-0.69		3.4			148.0	152.3	
60%		47%		44%			45%	47%	

DOB: 1/8/2015 Sire: Pollambi 130052 Dam: Farrer 110219
Purchaser: Price:

- A solid, thick deep bodied ram with muscle through loin and hindquarters
- Excellent growth (top 1%), fat (fattest 10%) and muscle (top 1%)

Lot	Ram ID	BWT	WWT	PWWT	PFAT	PEMD	PWEC	Carcase Plus	Lamb 2020
30	150103	0.20	9.1	14.3	-0.7	2.6	-25	203.0	114.9
Accuracies		66%	69%	69%	70%	72%	65%	67%	66%
LMY		IMF		SHEARF5			EQ	LEQ	
3.09		-0.41		1.2			138.2	140.6	
60%		44%		43%			43%	44%	

DOB: 1/8/2015 Sire: Waratah 130597 Dam: Farrer 120202
Purchaser: Price:

- Low birth weight (lowest 30%), growth (top 30%) and muscle (top 10%)

Lot	Ram ID	BWT	WWT	PWWT	PFAT	PEMD	PWEC	Carcase Plus	Lamb 2020
31	150106	0.23	8.2	14.1	-0.4	2.8	-45	202.0	115.5
Accuracies		68%	70%	72%	73%	75%	67%	70%	68%
LMY		IMF		SHEARF5			EQ	LEQ	
2.74		-0.66		0.3			134.1	138.1	
61%		50%		47%			48%	49%	

DOB: 1/8/2015 Sire: Waratah 130597 Dam: Farrer 110056
Purchaser: Price:

- A thick deep ram with a good topline
- Low birth weight (lowest 30%), growth (top 30%) and muscle (top 5%)

Lot	Ram ID	BWT	WWT	PWWT	PFAT	PEMD	PWEC	Carcase Plus	Lamb 2020
32	150108	0.53	9.9	16.4	-0.9	1.4	-37	200.0	114.9
Accuracies		65%	68%	69%	69%	71%	63%	66%	65%
LMY		IMF		SHEARF5			EQ	LEQ	
3.22		-0.50		1.2			138.7	142.2	
58%		43%		41%			42%	43%	

DOB: 1/8/2015 Sire: Waratah 130597 Dam: Farrer 130232
Purchaser: Price:

- Exhibited at the Dubbo Show
- Well balanced ram with growth (top 4%) and worm resistance (top 20%)
- Birth weight (heaviest 5%) use over mature ewes

Lot	Ram ID	BWT	WWT	PWWT	PFAT	PEMD	PWEC	Carcase Plus	Lamb 2020
33	150113	0.12	9.8	16.0	-0.1	3.2	-42	216.0	117.4
Accuracies		66%	69%	70%	70%	72%	63%	68%	66%
LMY		IMF		SHEARF5			EQ	LEQ	
2.52		-0.49		-0.8			145.4	149.1	
60%		47%		46%			46%	47%	

DOB: 1/8/2015 Sire: Felix 130500 Dam: Farrer 120039
Purchaser: Price:

- A long, deep bodied ram with an muscle in loin and twist
- Low birth weight (lowest 20%), growth (top 5%) and muscle (top 2%)

Lot	Ram ID	BWT	WWT	PWWT	PFAT	PEMD	PWEC	Carcase Plus	Lamb 2020
34	150115	0.19	10.0	16.4	-0.5	2.2	-33	207.0	115.8
Accuracies		64%	67%	68%	69%	70%	61%	65%	64%
LMY		IMF		SHEARF5			EQ	LEQ	
2.86		-0.53		1.3			138.0	141.1	
59%		46%		44%			44%	45%	

DOB: 1/8/2015 Sire: Felix 130500 Dam: Farrer 130192
Purchaser: Price:

- A long smooth shouldered ram with well-balanced figures
- Low birth weight (lowest 30%), growth (top 4%) and muscle (top 20%)

Lot	Ram ID	BWT	WWT	PWWT	PFAT	PEMD	PWEC	Carcase Plus	Lamb 2020
35	150117	0.24	10.1	16.1	-0.8	1.6	-17	201.0	114.3
Accuracies		65%	68%	69%	69%	71%	61%	67%	64%
LMY		IMF		SHEARF5			EQ	LEQ	
2.68		-0.29		0.4			139.7	141.4	
59%		45%		44%			44%	45%	

DOB: 1/8/2015 Sire: Felix 130500 Dam: Farrer 120074
Purchaser: Price:

Lot	Ram ID	BWT	WWT	PWWT	PFAT	PEMD	PWEC	Carcase Plus	Lamb 2020
36	150118	0.18	9.9	16.0	-0.6	2.2	-19	207.0	115.1
Accuracies		65%	68%	69%	69%	71%	61%	67%	64%
LMY		IMF		SHEARF5			EQ	LEQ	
2.84		-0.33		0.1			142.3	144.2	
59%		45%		44%			44%	45%	

DOB: 1/8/2015 Sire: Felix 130500 Dam: Farrer 120074
Purchaser: Price:

Lot	Ram ID	BWT	WWT	PWWT	PFAT	PEMD	PWEC	Carcase Plus	Lamb 2020
37	150120	0.17	8.2	13.5	0.2	1.7	-55	184.0	113.6
Accuracies		66%	69%	69%	70%	72%	63%	67%	66%
LMY		IMF		SHEARF5			EQ	LEQ	
0.91		-0.18		-0.9			133.5	138.4	
61%		52%		50%			49%	50%	

DOB: 1/8/2015 Sire: Farrer 120026 Dam: Farrer 110079
Purchaser: Price:

- Early maturing deep thick ram with muscle in the twist.
- Low birth weight (lowest 20%), fat (fattest 10%) and worm resistance (top 2%)

Lot	Ram ID	BWT	WWT	PWWT	PFAT	PEMD	PWEC	Carcase Plus	Lamb 2020
38	150121	0.10	8.1	13.5	0.3	2.2	-63	189.0	114.6
Accuracies		66%	69%	69%	70%	72%	63%	67%	66%
LMY		IMF		SHEARF5			EQ	LEQ	
1.03		-0.21		-1.0			135.5	141.0	
61%		52%		50%			49%	50%	

DOB: 1/8/2015 Sire: Farrer 120026 Dam: Farrer 110079
Purchaser: Price:

- Early maturing deep thick ram with muscle in the twist.
- Low birth weight (lowest 20%), fat (fattest 10%) and worm resistance (top 1%)

Lot	Ram ID	BWT	WWT	PWWT	PFAT	PEMD	PWEC	Carcase Plus	Lamb 2020
39	150130	0.51	10.5	16.5	-0.8	1.7	-38	205.0	115.6
Accuracies		66%	69%	70%	70%	72%	65%	68%	66%
LMY		IMF		SHEARF5			EQ	LEQ	
3.02		-0.45		1.6			139.0	142.5	
60%		46%		44%			44%	45%	

DOB: 2/8/2015 Sire: Waratah 130597 Dam: Farrer 120131
Purchaser: Price:

- Exhibited at the Dubbo Show
- A long, thick deep bodied ram with an excellent volume
- Birth weight (heaviest 10%), growth (top 3%) and worm resistance (top 20%)

Lot	Ram ID	BWT	WWT	PWWT	PFAT	PEMD	PWEC	Carcase Plus	Lamb 2020
40	150132	0.40	9.8	15.7	-0.4	2.1	-50	204.0	115.9
Accuracies		66%	69%	70%	70%	72%	65%	68%	66%
LMY		IMF		SHEARF5			EQ	LEQ	
2.62		-0.38		0.9			139.0	143.5	
60%		46%		44%			44%	45%	

DOB: 2/8/2015 Sire: Waratah 130597 Dam: Farrer 120131
Purchaser: Price:

- Long bodied ram with growth (top 10%) and worm resistance (top 4%)

Lot	Ram ID	BWT	WWT	PWWT	PFAT	PEMD	PWEC	Carcase Plus	Lamb 2020
-----	--------	-----	-----	------	------	------	------	--------------	-----------

41	150133	0.13	11.2	17.5	0.0	4.4	-41	237.0	120.1
Accuracies		67%	69%	72%	72%	74%	66%	69%	68%

LMY		IMF		SHEARF5			EQ	LEQ
3.92		-0.68		3.6			148.2	151.6
60%		50%		47%			48%	49%

DOB: 2/8/2015 Sire: Pollambi 130052 Dam: Farrer 110139
Purchaser: Price:

- Thick, wide, deep bodied ram with an excellent loin and hindquarters
- Great spread from birth weight (lowest 20%) and tremendous growth (top 1%)
- Superb muscle (top 1%), worm resistance (top 20%) and LMY (top 10%)

42	150134	0.29	11.2	17.4	0.1	3.6	-31	228.0	118.5
Accuracies		66%	69%	72%	71%	74%	64%	69%	67%

LMY		IMF		SHEARF5			EQ	LEQ
3.68		-0.57		2.0			148.9	151.6
59%		47%		44%			45%	46%

DOB: 2/8/2015 Sire: Pollambi 130052 Dam: Farrer 130164
Purchaser: Price:

- Outstanding Pollambi 130052 son with real substance and presence
- Long deep bodied ram with an excellent muscle and topline
- Powerful growth (top 1%), Fat (Fattest 10%) and superb muscle (top 1%)

43	150135	0.25	12.0	18.2	0.5	3.2	-36	227.0	118.5
Accuracies		66%	69%	72%	71%	74%	66%	69%	68%

LMY		IMF		SHEARF5			EQ	LEQ
3.31		-0.36		1.6			151.1	154.2
59%		50%		47%			48%	49%

DOB: 2/8/2015 Sire: Pollambi 130052 Dam: Farrer 120015
Purchaser: Price:

- Smooth shouldered ram with terrific muscle in hindquarters
- Tremendous growth (top 1%), fat (fattest 3%), and muscle (top 2%)

44	150136	0.29	11.3	17.7	0.6	3.0	-32	220.0	117.5
Accuracies		67%	69%	72%	71%	74%	66%	69%	68%

LMY		IMF		SHEARF5			EQ	LEQ
2.70		-0.12		0.5			152.5	155.3
59%		49%		46%			47%	48%

DOB: 2/8/2015 Sire: Pollambi 130052 Dam: Farrer 130217
Purchaser: Price:

- Smooth shouldered ram with excellent muscle in loin and hindquarters
- Superb growth (top 1%), fat (fattest 2%), and muscle (top 3%)

Lot	Ram ID	BWT	WWT	PWWT	PFAT	PEMD	PWEC	Carcase Plus	Lamb 2020
-----	--------	-----	-----	------	------	------	------	--------------	-----------

45	150142	0.00	7.9	14.0	-0.5	1.6	-41	188.0	113.5
Accuracies		67%	69%	70%	70%	72%	65%	68%	67%

LMY		IMF		SHEARF5			EQ	LEQ
1.24		0.00		-2.9			140.9	144.6
64%		58%		56%			54%	55%

DOB: 2/8/2015 Sire: Langley Heights 090160 Dam: Farrer 130099
Purchaser: Price:

- Superior MEQ traits IMF (top 3%) and very low shear force (top 1%)

46	150144	0.20	9.4	14.5	-0.4	2.2	-21	200.0	114.3
Accuracies		65%	68%	69%	69%	71%	63%	67%	65%

LMY		IMF		SHEARF5			EQ	LEQ
2.23		-0.23		-2.8			114.9	146.8
62%		57%		55%			53%	54%

DOB: 2/8/2015 Sire: Langley Heights 090160 Dam: Farrer 130200
Purchaser: Price:

- Smooth shouldered ram with excellent muscle in loin and hindquarters

47	150146	0.22	9.3	14.8	-0.3	1.4	-29	191.0	113.4
Accuracies		67%	69%	70%	70%	72%	64%	68%	67%

LMY		IMF		SHEARF5			EQ	LEQ
1.35		-0.10		-2.3			138.7	141.4
64%		58%		57%			55%	55%

DOB: 2/8/2015 Sire: Langley Heights 090160 Dam: Farrer 130036
Purchaser: Price:

48	150150	0.30	10.1	15.2	-1.2	0.0	-32	182.0	112.2
Accuracies		66%	68%	69%	70%	71%	65%	67%	66%

LMY		IMF		SHEARF5			EQ	LEQ
1.82		-0.03		-0.2			135.3	138.4
62%		56%		54%			52%	53%

DOB: 2/8/2015 Sire: Langley Heights 090160 Dam: Farrer 120227
Purchaser: Price:

- Deep thick ram with a good topline
- Growth (top 20%), fat (leanest 10%) and IMF (top 10%)

49	150151	0.32	9.6	15.3	-0.4	1.8	-22	199.0	114.1
Accuracies		66%	69%	69%	70%	71%	64%	67%	66%

LMY		IMF		SHEARF5			EQ	LEQ
2.29		-0.24		-1.0			141.9	144.0
63%		56%		55%			53%	53%

DOB: 2/8/2015 Sire: Langley Heights 090160 Dam: Farrer 130069
Purchaser: Price:

Lot	Ram ID	BWT	WWT	PWWT	PFAT	PEMD	PWEC	Carcase Plus	Lamb 2020
50	150153	0.15	9.0	15.4	0.0	3.1	-57	211.0	117.2
Accuracies		66%	68%	69%	69%	71%	62%	67%	65%
LMY		IMF		SHEARF5			EQ	LEQ	
2.09		0.42		-3.3			161.2	166.1	
61%		54%		52%			51%	51%	

DOB: 2/8/2015 Sire: Galaxy Park 110210 Dam: Farrer 120016
Purchaser: Price:

- Well balanced figures growth (10%), fat (fattest 2%) and muscle (top 3%)
- Excellent worm resistance (top 2%)
- Superior MEQ traits IMF (top 1%) and very low shear force (top 1%)

Lot	Ram ID	BWT	WWT	PWWT	PFAT	PEMD	PWEC	Carcase Plus	Lamb 2020
51	150163	0.35	11.2	19.6	-0.2	4.0	-63	241.0	121.5
Accuracies		65%	68%	71%	70%	73%	63%	68%	66%
LMY		IMF		SHEARF5			EQ	LEQ	
3.31		0.25		-0.6			166.8	172.3	
59%		54%		51%			51%	51%	

DOB: 2/8/2015 Sire: Galaxy Park 110210 Dam: Farrer 130143
Purchaser: Price:

- Well balanced figures growth (1%), fat (fattest 30%) and muscle (top 1%)
- Outstanding worm resistance (top 1%)
- Great MEQ traits IMF (top 1%) and low shear force (top 10%)

Lot	Ram ID	BWT	WWT	PWWT	PFAT	PEMD	PWEC	Carcase Plus	Lamb 2020
52	150166	0.36	8.9	13.3	-0.2	2.4	-51	196.0	114.9
Accuracies		65%	68%	69%	70%	71%	62%	67%	65%
LMY		IMF		SHEARF5			EQ	LEQ	
1.73		-0.24		-1.2			141.5	146.0	
61%		51%		49%			48%	49%	

DOB: 2/8/2015 Sire: Farrer 120026 Dam: Farrer 130247
Purchaser: Price:

- Deep thick ram with an early maturity pattern
- Good muscle (top 20%), worm resistance (top 4%) and shear force (top 5%)

Lot	Ram ID	BWT	WWT	PWWT	PFAT	PEMD	PWEC	Carcase Plus	Lamb 2020
53	150172	0.56	10.6	16.8	-0.5	2.0	-31	208.0	115.7
Accuracies		66%	68%	69%	70%	71%	64%	66%	65%
LMY		IMF		SHEARF5			EQ	LEQ	
2.78		-0.48		1.2			139.6	142.5	
59%		54%		43%			43%	45%	

DOB: 3/8/2015 Sire: Waratah 130597 Dam: Farrer 130228
Purchaser: Price:

- Exhibited at the Dubbo Show
- Tall stretchy ram with a very large frame with tremendous growth (top 3%)
- Birth weight (heaviest 5%) use over mature ewes

Lot	Ram ID	BWT	WWT	PWWT	PFAT	PEMD	PWEC	Carcase Plus	Lamb 2020
54	150180	0.21	9.2	14.1	-0.5	2.0	-42	195.0	114.5
Accuracies		63%	67%	68%	68%	70%	60%	66%	63%
LMY		IMF		SHEARF5			EQ	LEQ	
2.17		-0.52		-0.2			135.6	139.4	
58%		45%		44%			44%	45%	

DOB: 4/8/2015 Sire: Millswyn 130068 Dam: Farrer 130131
Purchaser: Price:

- Only Millswyn 130068 son in sale.
- Smooth shouldered ram with excellent muscle in loin
- Growth (top 30%), muscle (top 30%) and worm resistance (top 10%)

Lot	Ram ID	BWT	WWT	PWWT	PFAT	PEMD	PWEC	Carcase Plus	Lamb 2020
55	150181	0.31	11.8	18.2	-0.2	1.8	-30	212.0	116.3
STAR LOT		68%	70%	72%	72%	75%	67%	70%	69%
LMY		IMF		SHEARF5			EQ	LEQ	
2.51		-0.12		-1.1			148.2	151.0	
64%		60%		58%			56%	57%	

DOB: 5/8/2015 Sire: Langley Heights 090160 Dam: Farrer 130175
Purchaser: Price:

- Later maturing ram with excellent growth (top 1%)
- Tremendous length of body
- IMF (top 20%) and low shear force (top 10%)
- LEQ (top 1%), Lamb 2020 (top 1%) and Carcase Plus (top 2%)

Lot	Ram ID	BWT	WWT	PWWT	PFAT	PEMD	PWEC	Carcase Plus	Lamb 2020
56	150183	0.40	12.0	18.8	0.3	4.3	-19	241.0	119.8
Accuracies		66%	68%	71%	71%	74%	65%	68%	67%
LMY		IMF		SHEARF5			EQ	LEQ	
3.98		-0.58		2.5			149.5	151.1	
58%		46%		43%			45%	46%	

DOB: 5/8/2015 Sire: Pollambi 130052 Dam: Farrer 130144
Purchaser: Price:

- Tremendous Pollambi 130052 son with growth (top 1%)
- Long deep bodied ram with an excellent muscle (top 1%) and topline
- Fat (Fattest 10%) and lean meat yield (top 10%)

Lot	Ram ID	BWT	WWT	PWWT	PFAT	PEMD	PWEC	Carcase Plus	Lamb 2020
57	150184	0.11	9.6	14.2	-1.1	3.0	-43	210.0	116.6
Accuracies		66%	69%	72%	71%	74%	66%	70%	68%
LMY		IMF		SHEARF5			EQ	LEQ	
2.95		-0.36		-2.0			147.9	151.6	
61%		55%		51%			51%	52%	

DOB: 4/8/2015 Sire: Farrer 110155 Dam: Farrer 140141
Purchaser: Price:



LOT 55: Farrer 150181



LOT 60: Farrer 150196

Lot	Ram ID	BWT	WWT	PWWT	PFAT	PEMD	PWEC	Carcase Plus	Lamb 2020
58	150187	0.21	8.7	14.2	0.3	3.0	-17	203.0	114.5
Accuracies		68%	71%	73%	73%	76%	68%	71%	70%
LMY		IMF			SHEARF5			EQ	LEQ
1.97		-0.31			-1.8			142.1	143.6
64%		59%			57%			56%	56%

DOB: 5/8/2015 Sire: Langley Heights 090160 Dam: Farrer 110225

Purchaser: Price:

- Smooth shouldered ram with terrific muscle in hindquarters
- Growth (top 30%), fat (Fattest 10%) and muscle (top 3%)

Lot	Ram ID	BWT	WWT	PWWT	PFAT	PEMD	PWEC	Carcase Plus	Lamb 2020
59	150193	0.23	11.3	16.7	-0.7	1.9	-27	210.0	115.8
Accuracies		63%	65%	65%	66%	68%	59%	63%	61%
LMY		IMF			SHEARF5			EQ	LEQ
3.07		-0.19			1.1			144.0	146.5
56%		43%			42%			41%	42%

DOB: 14/8/2015 Sire: Farrer 140019 Dam: Farrer 120050

Purchaser: Price:

- Deep barrel ram with excellent spring of rib and strong topline
- Low birth weight (lowest 30%), growth (top 3%) and muscle (top 30%)

Lot	Ram ID	BWT	WWT	PWWT	PFAT	PEMD	PWEC	Carcase Plus	Lamb 2020
60	150196	0.22	10.6	17.0	0.3	3.9	-65	228.0	119.8
STAR LOT		64%	66%	68%	67%	72%	61%	66%	64%
LMY		IMF			SHEARF5			EQ	LEQ
2.54		-0.33			0.41			147.3	152.9
55%		46%			43%			44%	45%

DOB: 16/8/2015 Sire: Farrer 140019 Dam: Farrer 130126 HrF (94197)

Purchaser: Price:

- Selected as a back-up ram for Farrer's 2016 artificial insemination program
- Excellent muscle in twist and hindquarters
- Low birth weight (lowest 30%) and extra fat (fattest 10%)
- Superb growth (top 2%), muscle (top 1%), worm resistance (top 1%)
- LEQ (top 1%), Lamb 2020 (top 1%) and Carcase Plus (top 1%)

Lot	Ram ID	BWT	WWT	PWWT	PFAT	PEMD	PWEC	Carcase Plus	Lamb 2020
61	150197	0.22	12.1	17.5	-1.1	2.0	-60	216.0	118.1
Accuracies		65%	67%	68%	68%	72%	63%	66%	65%
LMY		IMF			SHEARF5			EQ	LEQ
3.35		-0.58			3.3			139.8	145.1
56%		50%			48%			47%	48%

DOB: 17/8/2015 Sire: Farrer 140019 Dam: Farrer 120158

Purchaser: Price:

- Deep stretchy ram with muscle trough loin and hindquarters
- Excellent worm resistance (top 2%) and fat (leanest 10%)
- Low birth weight (lowest 30%), growth (top 1%) and muscle (top 30%)

Lot	Ram ID	BWT	WWT	PWWT	PFAT	PEMD	PWEC	Carcase Plus	Lamb 2020
62	150201	0.32	8.7	13.2	-0.8	2.0	-39	192.0	114.0
Accuracies		60%	63%	64%	64%	67%	58%	62%	60%
LMY		IMF		SHEARF5			EQ	LEQ	
2.64		-0.23		0.7			137.1	140.5	
54%		41%		40%			40%	41%	

DOB: 18/8/2015 Sire: Farrer 140137 Dam: Farrer 120184
Purchaser: Price:

Lot	Ram ID	BWT	WWT	PWWT	PFAT	PEMD	PWEC	Carcase Plus	Lamb 2020
63	150202	0.37	9.9	14.9	-0.5	2.9	0	211.0	114.9
Accuracies		60%	63%	64%	64%	67%	58%	62%	60%
LMY		IMF		SHEARF5			EQ	LEQ	
3.34		-0.35		1.0			144.4	144.4	
40%		41%		40%			54%	41%	

DOB: 18/8/2015 Sire: Farrer 140137 Dam: Farrer 120184
Purchaser: Price:

- Deep stretchy ram with muscle trough loin and hindquarters
- Growth (top 20%) and muscle (top 4%)

Lot	Ram ID	BWT	WWT	PWWT	PFAT	PEMD	PWEC	Carcase Plus	Lamb 2020
64	150203	0.22	9.8	14.9	-0.4	2.9	-33	210.0	116.2
Accuracies		63%	66%	68%	68%	72%	62%	66%	64%
LMY		IMF		SHEARF5			EQ	LEQ	
2.03		-0.15		-1.1			145.0	147.9	
56%		50%		47%			47%	48%	

DOB: 18/8/2015 Sire: Farrer 140137 Dam: Farrer 130078
Purchaser: Price:

- Well balanced ram with growth (top 20%) and muscle (top 4%)

Lot	Ram ID	BWT	WWT	PWWT	PFAT	PEMD	PWEC	Carcase Plus	Lamb 2020
65	150211	0.22	9.7	15.0	0.0	2.4	-48	202.0	115.7
Accuracies		64%	64%	65%	65%	68%	58%	62%	60%
LMY		IMF		SHEARF5			EQ	LEQ	
2.29		-0.18		0.3			140.4	144.7	
54%		40%		38%			39%	40%	

DOB: 18/8/2015 Sire: Farrer 140188 Dam: Farrer 140101
Purchaser: Price:

- Exhibited at the Dubbo Show, deep good volume through loin and twist
- Growth (top 20%), muscle (top 20%) and worm resistance (top 5%)

Lot	Ram ID	BWT	WWT	PWWT	PFAT	PEMD	PWEC	Carcase Plus	Lamb 2020
66	150217	0.27	8.5	13.1	-0.6	2.5	-1	196.0	113.0
Accuracies		60%	63%	64%	64%	67%	58%	62%	60%
LMY		IMF		SHEARF5			EQ	LEQ	
3.00		-0.28		0.6			139.5	139.7	
54%		42%		40%			40%	41%	

DOB: 18/8/2015 Sire: Farrer 140137 Dam: Farrer 120182
Purchaser: Price:

Lot	Ram ID	BWT	WWT	PWWT	PFAT	PEMD	PWEC	Carcase Plus	Lamb 2020
67	150218	0.30	9.1	14.2	-0.6	2.8	-24	205.0	115.1
Accuracies		60%	63%	64%	64%	67%	58%	62%	60%
LMY		IMF		SHEARF5			EQ	LEQ	
3.46		-0.36		0.7			143.3	145.4	
54%		42%		40%			40%	41%	

DOB: 21/8/2015 Sire: Farrer 140137 Dam: Farrer 120182
Purchaser: Price:

- Long bodied ram with depth and muscle (top 5%)

Lot	Ram ID	BWT	WWT	PWWT	PFAT	PEMD	PWEC	Carcase Plus	Lamb 2020
68	150226	0.17	11.3	17.7	-0.9	1.9	-33	213.0	116.6
Accuracies		65%	65%	66%	66%	69%	60%	64%	62%
LMY		IMF		SHEARF5			EQ	LEQ	
3.10		-0.35		2.0			144.9	148.1	
57%		42%		41%			41%	42%	

DOB: 30/8/2015 Sire: Farrer 140019 Dam: Farrer 090204
Purchaser: Price:

- Tall smooth shouldered with muscle in loin and twist
- Low birth weight (lowest 20%) and tremendous growth (top 1%)

Lot	Ram ID	BWT	WWT	PWWT	PFAT	PEMD	PWEC	Carcase Plus	Lamb 2020
69	150231	0.18	10.0	15.9	-0.1	2.7	-43	210.0	116.6
Accuracies		65%	66%	68%	67%	72%	61%	65%	63%
LMY		IMF		SHEARF5			EQ	LEQ	
2.28		-0.43		-0.2			140.8	144.6	
54%		44%		41%			42%	43%	

DOB: 1/9/2015 Sire: Farrer 140188 Dam: Farrer 140165
Purchaser: Price:

- Low birth weight (lowest 20%) and growth (top 10%)
- Good muscle (top 10%) and worm resistance (top 10%)

Lot	Ram ID	BWT	WWT	PWWT	PFAT	PEMD	PWEC	Carcase Plus	Lamb 2020
70	150239	0.30	9.6	14.3	-0.9	2.3	-36	203.0	115.3
Accuracies		60%	63%	64%	65%	67%	59%	61%	60%
LMY		IMF		SHEARF5			EQ	LEQ	
3.12		-0.27		0.6			142.6	145.9	
54%		41%		39%			39%	40%	

DOB: 5/9/2015 Sire: Farrer 140137 Dam: Farrer 120120
Purchaser: Price:

- Early maturing ram with volume and muscle in twist
- Growth (top 30%), muscle (top 20%) and worm resistance (top 20%)



LOT 71: Farrer 150240



LOT 73: Farrer 150244

Lot	Ram ID	BWT	WWT	PWWT	PFAT	PEMD	PWEC	Carcase Plus	Lamb 2020
71	150240	0.26	9.8	15.0	-0.5	2.2	-34	203.0	115.2
STAR LOT		65%	65%	66%	66%	68%	58%	63%	61%
LMY		IMF			SHEARF5			EQ	LEQ
2.38		-0.17			-0.6			143.0	146.1
55%		41%			39%			40%	41%

DOB: 5/9/2015 Sire: Farrer 140188 Dam: Farrer 140068

Purchaser: Price:

- Easy doing ram with thickness
- Well balanced figures with volume and growth (top 20%)
- Superb muscle in the loin and hindquarters
- Muscle (top 20%), worm resistance (top 20%) and shear force (top 10%)
- LEQ (top 1%), Lamb 2020 (top 3%) and Carcase Plus (top 10%)

72	150242	0.13	10.5	17.1	-0.7	2.8	-31	218.0	117.2
Accuracies		66%	67%	68%	68%	72%	61%	66%	64%
LMY		IMF			SHEARF5			EQ	LEQ
2.69		-0.23			0.0			147.3	150.1
55%		46%			42%			43%	44%

DOB: 5/9/2015 Sire: Farrer 140188 Dam: Farrer 140069

Purchaser: Price:

- Easy doing ram with depth and thickness
- Growth (top 2%), muscle (top 5%) and worm resistance (top 30%)

73	150244	0.12	10.2	16.9	-0.1	3.1	-48	218.0	117.9
STAR LOT		66%	66%	68%	68%	72%	61%	65%	43%
LMY		IMF			SHEARF5			EQ	LEQ
2.30		-0.24			0.7			142.8	147.0
55%		45%			42%			43%	44%

DOB: 5/9/2015 Sire: Farrer 140188 Dam: Farrer 140036 HrF(94858)

Purchaser: Price:

- Exhibited at Dubbo Show
- Outstanding individual with a superb carcase
- Easy doing ram with depth and thickness
- Excellent balanced figures growth (top 2%) and muscle (top 3%)
- Heaviest ram in the drop and the students favorite Farrer 140188 son
- LEQ (top 1%), Lamb 2020 (top 1%) and Carcase Plus (top 1%)


SEMEN RETENTION RIGHTS NOTICE

This Notice forms part of the Terms and Conditions of Sale of Angus bulls/White Suffolk rams at the Farrer Memorial Agricultural High School Annual On-Property Sale. A Purchaser who bids for any bull or ram at the sale agrees that, by bidding, the Purchaser is bound by the provisions of this Notice and, if the Purchaser is bidding for someone else, the principal is also bound.

1. The vendor of all livestock is the *State of New South Wales by its Department of Education* through Farrer Memorial Agricultural High School (**Farrer**).
2. Any rights that are preserved or created by this Notice in favour of Farrer are rights of the *State of New South Wales by its Department of Education through Farrer Memorial Agricultural High School*.
3. The auctioneer may declare that Semen Retention Rights apply to a particular animal. If no such declaration is made, or if the auctioneer declares **Outright Sale**, or words to that effect, then:
 - (a) The Purchaser may take immediate delivery of the animal;
 - (b) Farrer has no Semen Retention Rights; and
 - (c) The Purchaser buys the animal and all the semen rights of the animal outright.
4. If the auctioneer declares that **Semen Retention Rights - Delayed Delivery** applies to a particular animal then the Purchaser does not obtain immediate possession of the animal and the following provisions apply:
 - 4.1 Farrer will deliver the animal to a Semen Collection Centre determined by Farrer for extraction of semen;
 - 4.2 Not later than 8 weeks after the sale Farrer will deliver the animal from the Semen Collection Centre to the Purchaser at such address in Queensland, New South Wales, Victoria or South Australia as the Purchaser notifies to Farrer; and
 - 4.3 All of the rules in paragraph 6 apply.
5. If the auctioneer declares that **Semen Retention Rights - Immediate Delivery** applies to a particular animal then the Purchaser is entitled to immediate possession of the animal but the rules in paragraph 6 apply.
6. The rules for Semen Retention Rights are:
 - i. The commercial rights to the semen of the animal are forever owned by Farrer and the rights of the Purchaser as to semen of the animal are limited to use, naturally or by way of artificial insemination, on the Purchaser's own herd or flock. The Purchaser does not have any right to sell or otherwise commercially deal with the semen or semen rights of the animal.

- ii. The names of all members of any syndicate, partnership or some other joint arrangement of ownership of the animal must be listed on the bidder card at registration prior to the sale.
 - iii. The Purchaser (which includes all members of any syndicate, partnership or other joint arrangement) does not have the right or legal ability to sell, lease, transfer or otherwise deal with fractions or portions of the Purchaser's interest in the animal and can only sell, lease, transfer or otherwise deal with the whole of the interest in the animal.
 - iv. If the Purchaser transfers the animal whether by way of sale, gift or otherwise then the transferee is bound by these rules and the Purchaser agrees to obtain the agreement of the transferee to these rules and to guarantee the performance of the rules by the transferee to Farrer.
 - v. Farrer can, at any time during the life of the animal, by notice to the Purchaser or the person in possession of the animal, require the animal to be delivered, at the cost of Farrer, to a Semen Collection Centre for the purpose of extraction of semen and thereafter return, at the cost of Farrer, to the place from which the animal was collected. Any semen so extracted becomes and remains the property of Farrer.
 - vi. The decision as to when to call in an animal for semen extraction and where to take the animal is that of Farrer.
 - vii. Farrer has unrestricted rights to the use, which includes sale or breeding, of the semen of any animal to which Semen Retention Rights apply.
 - viii. The Purchaser has no right to clone the animal.
7. Any notification concerning Semen Retention Rights may be sent:
- In the case of Farrer to the School at Tamworth by mail or email to the address which the School will notify to the Purchaser upon request; or
 - In the case of the Purchaser to the name and address notified by the Purchaser at the time of sale or such other name and address as may be notified by the Purchaser to Farrer from time to time.
8. If an animal is purchased by a syndicate, partnership or some other joint arrangement then all members are taken, by authorising the bidder, to agree to be bound by the terms of this Notice.
 9. The risk of any animal while Farrer is exercising its rights pursuant to these rules is that of Farrer but any liability of Farrer only arises in the case of fault on the part of Farrer and damages are limited to the value of the animal as at the date of any injury to it or the amount paid at the sale for its purchase whichever is the lesser.
 10. Neither the auctioneer, Farrer nor the Purchaser are entitled to vary the terms of this Notice unless such variation is recorded in writing and agreed in writing by all parties.

Farrer Memorial Agricultural High School thanks Christopher Zucker from ZUCKER LEGAL, Tamworth for their assistance in complying this Semen Retention Rights Notice.



zuckerlegal

*SOLVING LEGAL ISSUES
ON THE LAND AND IN THE CITY*

LIVESTOCK & AGRICULTURE
LITIGATION & DISPUTE RESOLUTION
CONVEYANCING & PROPERTY TRANSFERS
INDUSTRY & SPORTING ORGANISATIONS
DECEASED ESTATES

Chris Zucker
czucker@zuckerlegal.com.au

WWW.ZUCKERLEGAL.COM.AU

BOURKE ST CHAMBERS
137 MARIUS ST TAMWORTH 2340
CNR MARIUS ST & BOURKE ST
PH 02 6761 2238 FAX 02 6761 2262



Cody Stevens, Hugh Maxey, Ashley Carter, Sam Hannan, Charlie Shadwell and Flynn Erich with the Grand Champion White Suffolk ewe Farrer 140107 at Dubbo Show 2016



Students competing in the Junior Judging at The Northern Schools Prime Lamb Competition held at Tamworth Showground hosted by Farrer Memorial Agricultural High School

MODE OF SALE:

Helmsman Buying System.

The first Helmsman sale was conducted in 1990 by its originator Mr. Bruce Milne of “Helm View” Hereford stud, Coleriene Vic and was voted an outstanding success by buyers, and has now spread to other states. This method of purchasing livestock has earned the name of the “Buyer Friendly” sale. Farrer White Suffolks have used the Helmsman system since 1997.

THE BENEFITS TO INTENDING PURCHASERS

1. You have more time to consider lodging a bid. You can place genuine bids on any sheep of your choice at any time during the sale period.
2. You have the opportunity to re-assess each lot during the sale period without any pressure to make an instant decision.
3. You take home ram/s you want, irrespective of the lot order.
4. You may use the buyers suggested price guide, which is based on measured production merit to give you a good estimate of each rams genetic worth in relation to other rams.
5. If you are considering buying a number of rams, “HELMSMAN” will give you a better chance to average your purchase costs in order to meet your total budget.

HOW “HELMSMAN” WORKS

*On arrival intending purchasers register at the bid table and receive a buying number

*All rams are displayed for your inspection as usual, with relevant information provided in the catalogue.

*When the sale commences all the ram lots are in the market simultaneously. You may bid on any ram lot/s, regardless of lot number, by filling in a card and handing it to the receptionist at the bid table, or to a “runner”

FARRER WHITE SUFFOLK BID CARD

Lot Number	
Bid Value	\$
Rams minimal bid increments of \$25	
Buyer Number	

*You may open bidding on any lot(s) and bids are in multiples of \$25

*Bids are recorded with the Buyer’s number on a large board (Helmsman sale board) adjacent to the sheep display area. You can bid on any number of rams / lots at once and see at glance whether your bid still stands or has been over bid.

Farrer White Suffolks SALE BOARD				
Lot Number	1	2	3	4
Bid Value				
Bidders Number				

*There is no pressure to commit your self to another bid, and if your “first” choice ram goes beyond your limit, you can still bid on another ram in the sale.

*A bid once submitted and recorded cannot be retracted, and a person submitting such bid will be responsible for it until it is overbid.

*The sale will remain open for a minimum of 30 minutes. A bid registered in the last 1 minute will result in a 1 minute extension of selling time. Any further bids trigger the same process until a full 1 minute “No bid” period concludes the sale.

NB: The approximate sale time is 60 minutes: i.e. 30 minute sale open and approximately 30 minutes in the last minute trigger section until 1 minute of “no bids”

DISCLAIMER: All the information contained in the catalogue is supplied in good faith. However, the correctness, reliability and usefulness cannot be fully guaranteed and therefore should only to be used as a guide.

ACKNOWLEDGMENTS: Thanks to the Year 10 Sheep Husbandry and Wool Science students for help in preparing and conducting the sale.

FARRER’S GOLD Quality Data

Lambplan’s Highest Standard of Data Quality
for more accurate ASBV’s

HOW TO MAXIMIZE THE POTENTIAL FROM YOUR FARRER WHITE SUFFOLK RAMS

These Farrer White Suffolk rams having been recently checked by a veterinarian are free of disease but are still actively growing. On arrival home we suggest they are kept away from older rams to avoid any risk of injury from fighting.

YEAR ROUND MANAGEMENT

- Maintain weight within + 10 Kilograms of the rams individual optimum weight (i.e. 100 Kilograms) and a fat score of 3 all year round. Thus this ram should stay between 90 – 110 Kilograms. Over fat rams are more prone to breakdown due to excessive weight on limbs and are less mobile around the paddock.
- Shearing rams 8 - 10 weeks prior to joining is recommended. Shearing too close to joining can be detrimental to semen quality in hot weather, as the fleece protects the animal against high radiant temperatures.
- Ringing around the pizzle is warranted especially if belly wool is burry.
- Ensure rams are drenched (with an effective drench) at strategic times along with the rest of the flock.
- Maintain an annual booster vaccination of 6 in 1.
- Keep rams feet trimmed if necessary to reduce the risk of lameness or foot abscess. A ram with feet problems will seek out and mount ewes less actively than normal.
- Jetting ram on the poll during fly season may help to avoid strike and losses.
- Avoid handling of rams in such a way they are “tonguing” within 6 weeks before mating as this may cause reduced fertility. These practices include; excessive speed in moving the rams or limited rest periods especially in hot weather, shearing, crutching and foot trimming

PRE-MATING MANAGEMENT

- Carry out a pre mating physical examination prior to mating to ensure there are no problems with feet, teeth, testicles, penis and scrotum
- Supplementary feeding of rams 6 - 8 weeks prior to joining can have a marked effect on the semen quality and volume. Feeding lupins approximately 0.5 - 1 Kg / head / day after an initial introduction program should be plenty to achieve a result.
- Ideally ram should be in condition score 3.5 - 4 prior to joining.
- If joining rams after a long dry spell without green feed. Supplementation with vitamin A may be necessary 8 weeks prior to joining and just before mating.
- Farrer White Suffolk rams can be safely joined at 1.5 - 2 % unless the geography, pasture availability, paddock size and high ambient temperatures require an increase in the ram percentage. The optimum joining period is for 2 cycles: that is five weeks. Longer joining period may be required for autumn drop lambs. e.g. 8 weeks
- If possible, do not mate old rams and young rams together because of domination. Also, mate older rams with maiden ewes and young rams to older ewes

We hope the above information helps you to get the best from your Farrer White Suffolk rams. For more detailed information please don't hesitate to ask.

Using LAMBPLAN to compare individual animals with ASBV'S

The table below allows the comparison of individual rams against the performance of all other 2015 drop terminal Sire animals measured on Lambplan irrespective of breed.

Percentile bands for all Terminal sires animals born in 2015

Percentile Band	BWT	WWT	PWWT	PFAT**	PEMD	PWEC*	Carcass Plus	LAMB 2020	LEQ
0	-0.83	15.5	22.3	-3.1	5.8	-84	242.6	121.5	172.3
1	-0.45	11.3	17.4	-1.6	3.4	-61	214.3	116.2	146.1
2	-0.40	10.9	16.9	-1.5	3.2	-55	211.1	115.6	143.7
3	-0.36	10.7	16.5	-1.4	3.0	-52	208.9	115.2	142.2
4	-0.32	10.5	16.2	-1.3	2.9	-49	207.3	114.9	141.2
5	-0.27	10.4	16.0	-1.3	2.8	-47	206.1	114.7	140.3
10	0.05	9.9	15.3	-1.1	2.5	-42	201.3	113.9	137.6
20	0.18	9.3	14.4	-0.9	2.1	-34	195.1	112.9	134.1
30	0.24	8.9	13.7	-0.8	1.8	-29	190.3	112.2	131.6
40	0.28	8.5	13.1	-0.7	1.6	-23	185.7	111.6	129.4
50	0.32	8.1	12.5	-0.6	1.4	-18	181.0	110.9	127.3
60	0.36	7.7	11.7	-0.4	1.2	-13	175.7	110.1	125.1
70	0.40	7.2	10.9	-0.3	1.0	-7	169.4	109.3	122.6
80	0.45	6.5	9.9	-0.1	0.7	0	162.0	108.4	119.6
90	0.51	5.5	8.5	0.1	0.4	12	153.2	107.2	115.9
100	0.95	-3.5	-4.4	2.3	-5.1	83	68.8	95.8	92.0



Shaded values are more favourable

* Lowest values more favourable

** Varies with the genetic potential of the dam, target market specifications and your properties production system.

For Example: Lot Number 60: FARRER 150196

Lambplan Characteristics	ASBV's	Percentile Band
Birth weight	0.22	Top 30%
Weaning Weight	10.6	Top 4%
Post Weaning Weight	17.0	Top 2%
Post weaning fat	0.30	Fattest 10%
Post Weaning Eye Muscle Depth	3.9	Top 1%
Post Weaning Worm Egg Count	-65	Top 1%
LMY	2.54	Top 50%
IMF	-033	Top 40%
SHEARF5	0.4	Top 30%
LAMB 2020	119.8	Top 1%
LEQ	152.9	Top 1%



FARRER ANGUS

PRODUCT OF DISTINCTION

15th ANNUAL ON – PROPERTY BULL SALE

Wednesday 21st June 2017
12.30pm, Trade Training Centre

Sires: **Dunoon Honeysuckle H240**
 Aryvale G5
 Aryvale G18
 PA Power Tool 9108
 Rennylea G317
 Connealy Consensus 7229
 Te Mania Elaboration E309
 Te Mania Hosken H681

Contact: Marty Peeters 0428 686 738



Preparation for the Annual Artificial Insemination Program



Preparation for the Annual Artificial Insemination Program

**Farrer's White Suffolk
- Buyer Instruction Slip**

This slip must be completed by the buyer, and handed to the auctioneers prior to leaving the sale. No verbal instructions can be accepted

Name

Address

..... Post code.....

Phone Fax.....

Agent PIC:

Lot Number	Tag Number

Stud Transfer Required No.... Yes.... Flock Number.....

Delivery Instruction

.....

.....

.....

Signature of Purchaser or Agent: Date.....

In the event of any stock remaining for late delivery, all care and no responsibility is taken by vendors.

**FARRER WHITE SUFFOLKS
PRODUCT OF DISTINCTION**

DIRECTIONS

Farrer Memorial Agricultural High School is located 5.85 kilometres from Tamworth on Calala Lane. It can also be reached from the north by turning off the highway at the Nemingha Hotel, crossing the bridge over the Cockburn River and turning right at the first roundabout onto O'Briens Lane. Farrer's back gate is the first turn right after crossing over the Peel River.



Map from Google Maps.

FARRER MEMORIAL AGRICULTURAL HIGH SCHOOL TAMWORTH

"Proudly committed to producing thinking, well-educated, skilled, flexible and caring people capable of confident and effective participation in society"



Year 7 to 12 Day and Boarding School for Boys

Join the Farrer Family! 2017 applications now available

Contact: The Enrolments Officer, FMAHS
585 Calala Lane, via Tamworth 2340

Telephone: (02) 6764 8611 • Fax: (02) 6760 9451

Website: www.farrer.nsw.edu.au

Email: farreragri-h.school@det.nsw.edu.au