

Coota Park Blue-E

The Best of

BOTH BREEDS

MUSCLE + MARBLING + GROWTH + FERTILITY.



The Home of Feed Conversion



Coota Park Blue-E Woodstock, near Cowra

ON PROPERTY BULL + E-FEMALE SALE

Tuesday 1st September 2015 2pm | [AuctionsPlus Interface sale](#)

DWJJ190
Lot 5



DWJJ399
Lot 8



DWJJ66
Lot 9



FURTHER INFORMATION - www.bluee.net.au

- * Photos of 2015 sale bulls & video
- * Information about Coota Park Blue-E
- * Information about Net Feed Efficiency
- * Coota Park Blue-E Breeding Principles
- * Genetics put into our programme.

www.angusaustralia.com.au:

- * Explanation of all EBV's
- * Explanation of Multi breed register
- * Article on buying bulls
- * Article on managing and using your bull.

* **Coota Park Blue-E**
Guarantee our bulls.
Please keep us informed on
how your bulls perform, as
we genuinely want to know.



WELCOME to our 2015 Coota Park Blue-E Bull and E-Female Sale catalogue.



Our Industry is experiencing some of the highest prices in its history, this makes for a time that we must enjoy and be grateful for. It appears these prices may be around for a while.

As beef produce's I hope this enables you do some of the things you may not have been able to do in the past. Maybe take a holiday, build some new fences or just pay off some debt, what ever it is, congratulations on being part of this great industry at this time.

The 40 grass fed bulls catalogued look incredibly well this year. We continue to breed feed conversion into our bulls whilst maintaining those other factors that influence our commercial producers' profitability.

**Fertility + Feed Conversion + Growth
+ Muscle + Marbling.**

We have catalogued 20 cows with calves this year that express everything we have been trying to achieve in our program. High production females that have been bred for feed conversion, selected from the most fertile cows in the herd with new calves at foot. We strongly recommend these cows to you.

As time goes on it becomes more and more clear to me that breeding cattle is not about "breed" but more about the "program" in which they are bred. In various steer trials we have been involved in, the same herds are performing at the top.

Our Program at Coota Park Blue-E is to concentrate on those factors that make commercial herds more profitable.

The team at Coota Park look forward to seeing you on sale day or prior inspection just give us a call!

Regards

WHY IS FEED EFFICIENCY IMPORTANT

- Feed cost are 65-70% of **ALL costs**
- 1% improvement in feed efficiency:
= **3% Improvement ADG**



Sale Day Services



• SALE DAY ADVISORS (SDA) •

Coota Park Blue-E will provide sale day advisors, these are industry leaders that we respect and we value their judgement. The independent advisers will be available throughout the day to answer any questions about the figures, about our program and in selecting the bulls and E-females for your herd.

The SDA's will be provided with all information available on the bulls and E-females. They will use the information along with **their** enormous experience to help you make the best decision for your business.

Please refer to the **Notes Page** at the back of the catalogue for space to record your comments and preferences for the sale.



DICK WHALE

**Independent
Breeding Services**

*One of Australia's
leading structural
soundness experts.*



GERALD SPRY

**Spry's
Shorthorns**

*One of Australia's
leading Shorthorn
breeders having just
celebrated 50 yrs in
the business.*



DAMIEN SOTTER

**Beef Genetics
Supplies and
Solutions**

*Previously Principal
of The Meadow
Angus.*

• CATERING •

Coota Park Blue-E will provide morning tea and lunch on the day of the sale. Cool drinks will be available throughout the day. (Beer and wine after the sale). Toilets are available at the site.

• OCCUPATIONAL HEALTH & SAFETY •

The bulls have been selected strongly for temperament – sometimes bulls fight and their movements can be unpredictable. We suggest children and those less able to move away from the bulls when needed – please stay out of the pens. Some wires surrounding the bulls are electrified – please take care around these fences. We ask you not to touch any of the young calves and to be aware of the maternal instincts of their mothers.

• SALE/REGISTRATION/AUCTIONS PLUS •

An open cry auction sale will be run in conjunction with AuctionsPlus.

If you can not attend sale day – prior inspections are welcomed and you may operate online.

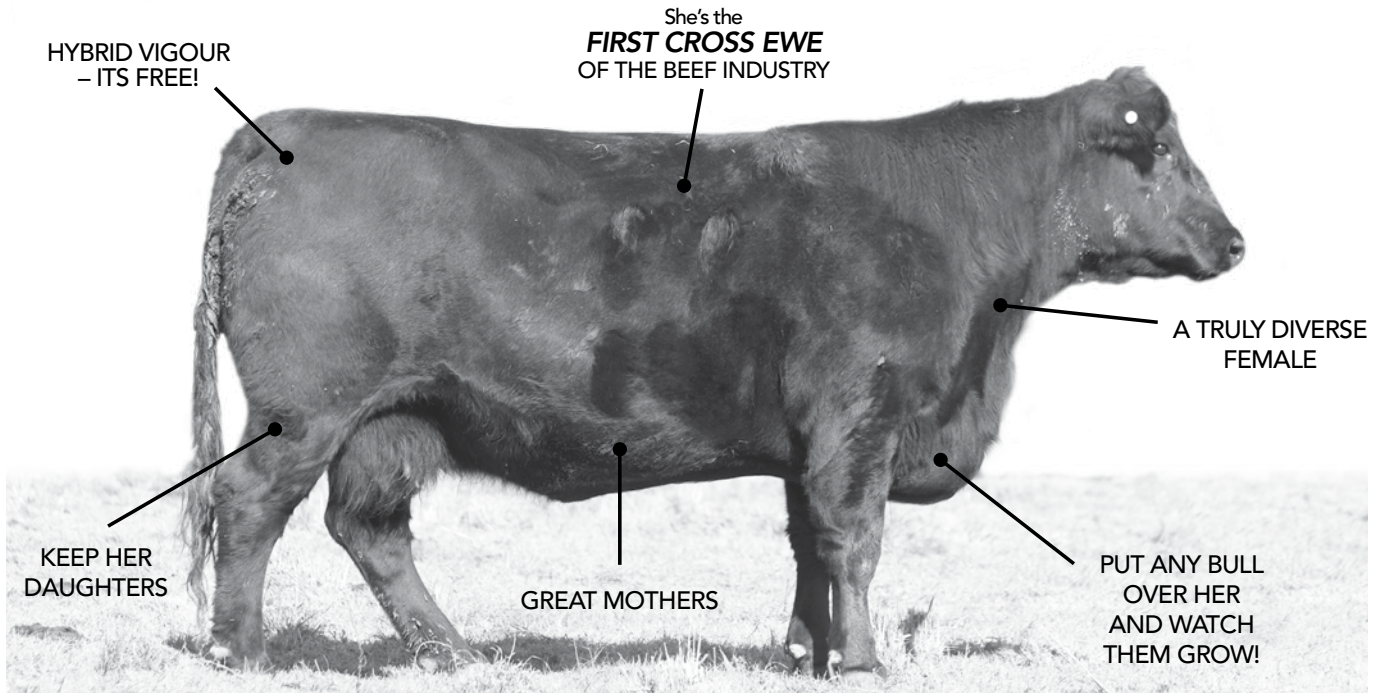
Delta Livestock and Chris Callow Cattle Services will be present on sale day. Delta Livestock will conduct the actual sale, registrations and will settle the sale. Chris Callow will be conducting all AuctionsPlus assessments.

Please feel free to inspect the bulls and E-females prior to sale day.

Visit our website for more sale information: www.bluee.net.au

E-female

(blue-E-females)



As cattle breeders, the greatest cost is feeding our cows throughout the year.
E-FEMALES WILL REDUCE THIS COST. INCREASED PRODUCTION WITH REDUCED INTAKES.

**SALE LOTS:
1 to 4**

E-females

NOTE: All sale cows come from the first cycle of joining. Coota Park Blue-E will have started calving on the 18/8/2015 i.e. these cows are selected from the most fertile cows in the herd.

All E-females are sired by high Efficiency Blue-E sires. Calves are all sired by high Efficiency Blue-E sires.

Lot No	
1	5 x Blue-E Cows (3 y/o) – with Blue-E calves at foot, unjoined. (Black and Blue). <i>Buyer</i> \$.....
2	5 x Blue-E Cows (3 y/o) – with Blue-E calves at foot, unjoined. (Black and Blue). <i>Buyer</i> \$.....
3	5 x Blue-E Heifers (4-5 y/o) – with Blue-E calves at foot, unjoined. (Black and Blue). <i>Buyer</i> \$.....
4	5 x Blue-E Cows (3 y/o) with Blue-E calves at foot, unjoined. (Red). <i>Buyer</i> \$.....

SIRE SUMMARY

Identification	Name	Sire	Dam	DOB	BW	200D	400D	600D	Milk	EMA	Rib	Rump	RBY	IMF	NFI
ANGUS				BREED AVG	4.4	40	74	96	14	4.2	-0.1	-0.1	0.3	1.5	0.07
USA14675445	B/R New Day	USA13050780	USA13879911	23/01/2004	3.9	43	81	105	17	7.9	-1.4	-1.5	1.3	1.9	0.11
NENE39	Karoo A241 Equator E39	NAQA241	NENY87	16/07/2009	4.2	47	94	131	23	0.8	1.3	2.1	-1.4	1.8	0.61
BLUE-E				BREED AVG	4.8	31	61	76	7.2	3.8	-0.4	0.1	0.4	0.3	-0.6
DWJG19	G19	DWJE62	DWJE86	9/08/2011	2.1	22	39	46	9	3.4	1.9	2.9	-0.9	0	-0.53
DWJG21	G21	DWJE62	E027	9/08/2011	2.8	24	49	58	7	4.9	1	1.6	-0.1	0.1	-0.91
DWJG45	G45	DWJE109	DWJB71	11/08/2011	6.6	44	82	101	2	5.4	-1.9	-1.7	1.3	-0.1	-0.73
DWJG59	G59	DWJE166	DWJE72	14/08/2011	3.8	30	67	79	14	1.8	-0.9	-0.7	0.4	0.5	-0.33
DWJG79	G79	DWJE109	DWJS343	15/08/2011	6.5	44	81	98	1	3.8	-2.4	-1.6	0.9	0.3	-0.87
DWJG101	G101	DWJE65	DWJB134	18/08/2011	6.7	31	55	70	2	3.4	-1.4	-1.4	1.5	-0.4	-1.24
DWJG119	G119	DWJE295	DWJE306	19/08/2011	2.2	20	44	48	7	2.3	0	0.1	-0.1	0.2	-0.76
DWJG174	G174	DWJE102	DWJA264	24/08/2011	5.3	33	62	77	4	3.8	-0.1	0.2	0.3	0	-0.91
DWJG214	G214	DWJE109	DWJD2	29/08/2011	5.4	40	66	87	3	6.2	-0.8	-0.8	1.2	0.1	-0.9
DWJG215	G215	DWJD89	DWJB97	29/08/2011	2.7	24	46	56	6	5.3	0.4	1.3	0.4	-0.3	-1.24
DWJG308	G308	USA15462648	DWJY42	4/09/2011	5.7	40	69	90	4	2.5	-2.3	-1.2	0.6	0.6	-0.89
DWJG312	G312	DWJE410	DWJY68	4/09/2011	5.4	38	66	83	5	6.1	-1.7	-2.1	1.5	-0.1	-1.01
DWJG414	G414	DWJE145	DWJB26	23/09/2011	7.3	41	69	89	4	4.1	-4.2	-5.2	2.7	-0.1	-1.21

Management of Bulls and Cows

• HOW DID WE PREPARE THE BULLS/ COWS FOR THE SALE •

- ▶ All calves are weighed at birth and recorded.
 - ▶ All calves are recorded with Angus Australia Multi Breed Register.
 - ▶ All calves are Early – Yard Weaned. (5mths)
 - ▶ All bulls are Feed Conversion Tested.
 - ▶ All bulls are scanned for Fat, EMA and Marbling.
 - ▶ Weights are taken for 200 and 400 days of age.
 - ▶ All bulls are grass fed for the 12mths leading up to the sale only supplemented with hay (after being tested.)
 - ▶ All bulls are independently assessed for structure.
 - ▶ All females are independently structurally assessed at 2y/o with calf at foot. Those that do not pass are removed from herd.
 - ▶ All bulls are treated for internal and external parasites.
 - ▶ All bulls are vaccinated for/with:
 1. Vibriosis
 2. 7 in 1
 3. Pestivirus - Ear notch test for reactors to Pestivirus.
 - ▶ All cows are vaccinated for/with:
 1. 7 in 1
 2. Pestivirus as young females coming into the herd.
 - ▶ No foot trimming or general *showy rubbish*.
 - ▶ All cows are joined for 9 weeks and all empties sold.
 - ▶ All cows run in large rotational grazing mobs without special treatment.
 - ▶ Strong emphasis is placed on selection for temperament.
 - ▶ Emphasis on multi-trait selection – slow and easy selection wins the race.
 - ▶ We select for those traits which affect our client's profitability.
- ▶ Blue-E bulls will be comfortable with vehicles, bikes and dogs but not horses as have not been exposed to them.
 - ▶ Don't fuss over him in the first couple days.
 - ▶ If you are going to multi-sire join – get the bulls that will be run together into a group in weeks leading up to joining.
 - ▶ Try to join with bulls of similar ages – older bulls can dominate over younger bulls. Just be aware that this may affect the proportion of calves you will get from each bull.
 - ▶ Always check bulls daily when first out with cows – stay and watch him serve properly just for your own peace of mind. Best time to observe is in mornings or evenings for most activity.
 - ▶ Observation of bulls requires you to see he is walking freely and his penis is in working order.
 - ▶ The earlier you detect a problem with a bull and remove him from work and replace with another bull – the less likely you will affect a successful joining. If the damaged bull is removed and allowed to recover, the more likely he will return to full strength.
 - ▶ All Blue-E bulls have had a breeding soundness check done prior to our sale; we recommend you do this each year prior to joining.
 - ▶ Fertility is No 1 and empty cows have already cost you a lot of money – get rid of them.
 - ▶ You should be getting at least 60% of your cows in calf in the first 3 weeks (1st cycle). This is a vital time to ensure everything is going smoothly and according to plan.
 - ▶ If you feel the first cycle has gone well – the number of bulls needed for the second and 3 cycles can be reduced.
 - ▶ If single sire joining you could box mobs after 1st cycle and remove a bull.

• TIPS FOR YOU - LOOKING AFTER YOUR BULL/S AT HOME •

- ▶ Your bulls are a big investment and their ability to join successfully will influence your dollar return enormously. This is why fertility is rated No 1 in relation to herd profitability.
 - ▶ Introduce your new bull to your property by giving him some company. It's all new, he will need something familiar. A few cows or steers will be best.
 - ▶ Do not put with other bulls on arrival.
 - ▶ If you have to introduce your new bull/s into a group – put in neighbouring paddocks for a few days first – ideally with power on the fence between.
 - ▶ Settle in with hay and good water.
 - ▶ **Always contact us if you are worried about anything.**
- ▶ Identifying which bull has sired which calf can be a bit more work, but ultimately can be very rewarding. Gives you a better understanding which bulls work in your herd under your conditions. If you would like some tips on how to achieve this please feel free to give us a call to discuss.
 - ▶ Remember the first 3 weeks of joining could be the most important 3 weeks of the year.
 - ▶ We have great faith in our Blue-E bulls and work hard to ensure your herd's joining is as rewarding as possible.
 - ▶ **Always contact us if you are worried about anything.**



LOT NUMBER INFORMATION

Please note that the EBVs you see in this catalogue are not comparable to Angus Group Breedplan figures - they are generated in the multi breed register by Angus Australia and only comparable to the Multi breed averages for that year of calves. These figures are accurate at the time of printing.

Lot No	Tag	Colour	DOB	Sire	BW	200D	400D	600D	Milk	EMA	Rib	Rump	RBV%	IMF%	NFI
				Blue-E Avg	4.8	31	61	76	7.2	3.8	-0.4	0.1	0.4	0.3	-0.6
5	DWJJ190	Black	4/09/2013	DWJG174	3.7	27	50	62	5	3.6	0.4	1	-0.1	0.1	-0.75
	<i>This bull was used in the Blue-E breeding program.</i>														
6	DWJJ155	Black/ White	1/09/2013	DWJG21	4.4	32	64	78		3.9	0.3	0.9			
	<i>This bull was used in the Blue-E breeding program.</i>														
7	DWJJ233	Black	6/09/2013	DWJG308	6.2	37	63	85	5	3	-1.3	-0.7	0.8	0.5	-0.71
	<i>This bull was used in the Blue-E breeding program.</i>														
8	DWJJ399	Black	19/09/2013	DWJG214	5.5	40	72	93		5.9	0	0.5	0.6	0.2	-0.73
	<i>This bull was used in the Blue-E breeding program.</i>														
9	DWJJ66	Blue	26/08/2013	DWJG312	4.9	34	65	81	8	6.2	-1.6	-1.1	1	0	-1.08
	<i>This bull was used in the Blue-E breeding program.</i>														
10	DWJJ272	Black/ White	10/09/2013	DWJG214	6.3	38	63	82	3	4.3	-1	-1.1	1.1	0	-0.82
	<i>This bull was used in the Blue-E breeding program.</i>														
11	DWJJ64	Black	26/08/2013	DWJG308	3.2	30	56	69	9	2.3	-1.7	-1.3	0.5	0.5	-0.83
	<i>This bull was used in the Blue-E breeding program.</i>														
12	DWJJ350	Red	16/09/2013	DWJG174	4.4	27	53	65		3.3	0.5	1.6	-0.2	-0.2	-0.63
	<i>This bull was used in the Blue-E breeding program.</i>														
13	DWJJ39	Red	23/08/2013	DWJG79	4.4	36	66	81	6	4.3	-2.1	-1.9	1	0.4	-0.7
	<i>This bull was used in the Blue-E breeding program.</i>														
14	DWJJ204	Red	4/09/2013	DWJG79	6.7	40	77	93	5	1.9	-2.7	-2.4	1.3	0.1	-1.23
	<i>This bull was used in the Blue-E breeding program.</i>														
15	DWJJ316	Red	12/09/2013	DWJG174	5.6	34	63	78	5						-0.81
	<i>This bull was used in the Blue-E breeding program.</i>														
16	DWJJ305	Red	10/09/2013	DWJG174	6	36	66	82	5	2	0.8	1.9	-0.3	-0.2	-1.01
	<i>This bull was used in the Blue-E breeding program.</i>														

Lot No	Tag	Colour	DOB	Sire	BW	200D	400D	600D	Milk	EMA	R _{ib}	R _{ump}	R _{BY} %	IMF%	NFI
				Blue-E Avg	4.8	31	61	76	7.2	3.8	-0.4	0.1	0.4	0.3	-0.6
17	DWJJ41	Black	23/08/2013	DWJG214	4.8	34	60	79	5	7.2	-1.3	-1.7	1.6	-0.1	-0.82
											Buyer				
18	DWJJ244	Black	6/09/2013	DWJG101	7.5	36	63	84	3	3.8	-0.8	-0.6	0.9	0.1	-0.74
											Buyer				
19	DWJJ382	Blue	18/09/2013	USA14675445	5	34	64	82	9	5.1	-0.9	-1	1	0.6	-0.37
											Buyer				
20	DWJJ191	Black	4/09/2013	DWJG308	6.1	39	66	84	2	2.4	-0.8	0	0.1	0.5	-0.57
											Buyer				
21	DWJJ133	Black	30/08/2013	DWJG174	4	30	56	68	5	2.6	0.8	1.6	-0.2	-0.2	-1.04
											Buyer				
22	DWJJ323	Blue	12/09/2013	DWJG196	5.6	32	63	77	6	2.8	-1.5	-1.5	0.9	0.2	-0.74
											Buyer				
23	DWJJ26	Black	19/08/2013	DWJG45	6.2	39	74	91		2.1	-1	-0.2	0.1	0.4	-0.5
											Buyer				
24	DWJJ226	Black	6/09/2013	USA14675445	1.7	31	63	76	12	6.3	0.2	0	1.1	1	-0.03
											Buyer				
25	DWJJ42	Black	23/08/2013	DWJG215	4.2	27	51	64		4.9	-2.1	-2.1	1.7	-0.4	-1.51
											Buyer				
26	DWJJ70	Black	26/08/2013	DWJG45	5.1	35	65	81		5.2	-1.3	-1.1	0.8	0.1	-0.65
											Buyer				
27	DWJJ218	Blue	5/09/2013	DWJG119	4.4	32	63	76		4.1	-1.6	-1.4	0.8	0	-0.85
											Buyer				
28	DWJJ201	Black	4/09/2013	DWJG414	5.4	32	55	71		3.6	-2.7	-3.8	1.8	0.1	-1.04
											Buyer				
29	DWJJ159	Black	1/09/2013	DWJG119	4.5	32	62	75		2.2	-0.5	-0.1	0.2	0.4	-0.97
											Buyer				

Lot No	Tag	Colour	DOB	Sire	BW	200D	400D	600D	Milk	EMA	R b	Rump	RBY%	IMF%	NFI
				Blue-E Avg	4.8	31	61	76	7.2	3.8	-0.4	0.1	0.4	0.3	-0.6
30	DWJJ177	Black	2/09/2013	DWJG214	4.5	37	69	84	7	5.9	-1.5	-1.4	1.2	0.3	-0.9
	<i>This bull was used in the Blue-E breeding program.</i>														
31	DWJJ15	Black	16/08/2013	DWJG45	6.4	38	68	86	2	4.9	-1	-0.5	0.8	-0.3	-0.74
	<i>Buyer</i>														
	<i>Buyer</i>														
32	DWJJ351	Black	16/09/13	USA14675445											
	<i>Buyer</i>														
33	DWJJ12	Black	16/08/2013	DWJG45	3.1	30	60	71	6	4.3	-1.3	-1.4	0.8	0.2	-0.41
	<i>Buyer</i>														
	<i>Buyer</i>														
34	DWJJ91	Black	27/08/2013	DWJG308	4.2	31	58	71	2.1	2.1	-0.5	0.2	0.1	0.3	-0.5
	<i>Buyer</i>														
35	DWJJ73	Black	26/08/2013	DWJG214	4.6	35	57	73	5	4.6	-0.4	-1.2	1	0.1	-0.11
	<i>Buyer</i>														
	<i>Buyer</i>														
36	DWJJ432	Blue	23/09/2013	NENE39	6.4	41	80	107	13	1	1.6	2.5	-1.1	1	0.52
	<i>Buyer</i>														
	<i>Buyer</i>														
37	DWJJ541	Black/	10/10/13	DWJG21											
	<i>Buyer</i>														
	<i>This bull was used over heifers in the Blue-E breeding program.</i>														
38	DWJJ54	Black	26/08/2013	DWJG59	3.9	28	61	71	2	2	-0.9	-1.1	0.4	0.5	0.05
	<i>Buyer</i>														
	<i>Buyer</i>														
39	DWJJ169	Black	1/09/2013	DWJG59	4.2	31	65	78	2.9	2.9	-1.4	-1.1	0.8	0.1	-0.74
	<i>Buyer</i>														
40	DWJJ287	Black	10/09/2013	DWJG119	2	22	47	50	2.7	2.7	0.8	1.5	-0.7	0.2	-0.29
	<i>Buyer</i>														
	<i>Buyer</i>														
41	DWJJ163	Black	1/09/2013	DWJG21	2	26	51	61	5	5	0.2	1.2	-0.1	0.2	-0.71
	<i>Buyer</i>														
	<i>Buyer</i>														
42	DWJJ529	Black	7/10/2013	DWJG19	3.6	28	55	68	3.7	3.7	0.4	1.2	-0.3	0.1	-0.53
	<i>Buyer</i>														
	<i>This bull was used over heifers in the Blue-E breeding program.</i>														

Lot No	Tag	Colour	DOB	Sire	BW	200D	400D	600D	Milk	EMA	Rjb	Rump	RBY%	IMF%	NFI	
				Blue-E Avg	4.8	31	61	76	7.2	3.8	-0.4	0.1	0.4	0.3	-0.6	
43	DWJJ32	Black	20/08/2013	DWJG312	3.8	34	64	79		5.6	-1.1	-0.9	0.9	-0.1	-0.89	
<i>This bull was used over heifers in the Blue-E breeding program.</i>																
44	DWJJ183	Black	4/09/13	DWJG21												
											Buyer					\$
											Buyer					\$

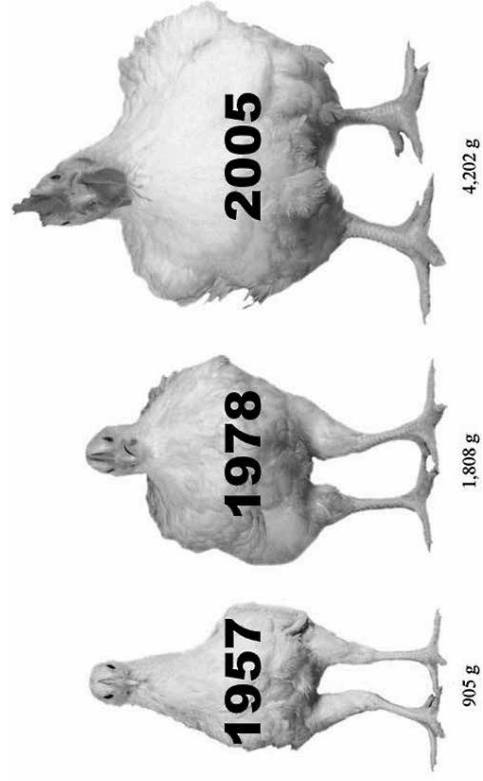
Selecting a bull suitable for heifers (It must be noted that giving advice on how to have a successful heifer calving is very difficult but the following points may help).

Great care needs to be taken when selecting these bulls, here are some tips we feel could help you in the process.

- Look at the Birth Weight (BW) EBV – it is hard to state a figure that is a limit but obviously the lower the figure the better.
- Look at the Sire of the bulls' EBV for Birth Weight – if it is low also, then the more likely you will get consistently smaller calves.
 - On sale day we will provide the Actual Birth Weight of each bull in the sale.
- Consider all 3 of these figures to help decide which bull you think might be best for your job.
- Ask one of the Sale Day Advisors (SDO) to help look at the shoulders and structure of the bulls. I am not sure they will thank me for this. It is hard.

It is important to remember that the above points cover about a third of the factors that may influence an event free calving of heifers.

- Remember the influence of the heifer herself can have on birth weight in relation to her own genetic birth weight potential.
- Consider the condition of the heifer at calving time – she needs to be healthy and strong but not fat.



Coota Park Blue E – On the road to making a difference!

RESULTS:

Australian National Field Day Steer Trial 2015

20 teams - 100 days on grass & 100 days on grain.

Coota Park Blue E DOES IT AGAIN!

Growth on grass, growth on grain finishing with a quality product.



• COOTA PARK BLUE-E ENTERED 2 TEAMS IN THE TRIAL •

Our teams were placed *1st and 2nd out of 20 teams* in the feedlot performance section.

We also where placed:

*1st in the MSA Eating quality section and
2nd and 4th in the Combined Grass and Grain section.*



MSA EATING QUALITY

Hard to get
fast growth &
marbling.

**COOTA PARK
BLUE-E DID IT!**



GAIN ON GRAIN

The cattle have
to perform in
the feedlot.

**COOTA PARK
BLUE-E DID IT!**



COMBINED GRASS & GRAIN

Difficult to
do both.

**COOTA PARK
BLUE-E DID IT!**



Photography Ben Simpson

COOTA PARK

BLUE-E

Proudly

Endorses

the Following

Businesses

Our friendly,
experienced vets
at the Cowra
Veterinary Centre:
Peter Launders
Kellie Seres
Emma Sutton

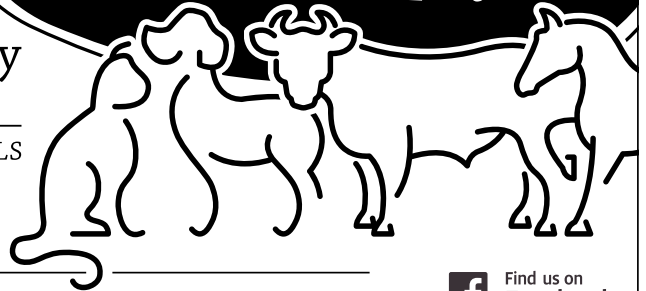
Problems with
your animals
- large or small?

**COWRA VETERINARY CENTRE
CAN HELP!**



CARING FOR YOUR ANIMALS
LARGE AND SMALL

www.cowravet.com.au



102 Darling Street, Cowra | **Phone:** (02) 6341 3113 | **Email:** cowravet@bigpond.com

 Find us on
Facebook

Steel Walsh & Murphy

YOUR FINANCIAL ONE-STOP SHOP !



Long established firm in Cowra. Steel Walsh & Murphy is your financial one-stop shop. Aside from the traditional accounting & business services we provide:

- Financial Planning
- Superannuation
- Investment Reviews
- Home & Investment Loans
- Personal Insurance
- Business Loans & Leasing

"Speak to one of our trained professionals!"

Phone: 6342 1311

Fax: 6342 4360

Calare Building - 103 Kendal Street Cowra

E: accountants@steelwal.com.au

W: calarefs.com.au

EnduroTAGS



...for Lifetime Traceability
Tag Them Once

99.8% retention in current NLIS trials with trial properties across Australia

- NLIS Cattle tags...tag at birth or at marking and expect them to be there when sold and after shipping.
- Unique anti snag design and electronics well protected.

Call **03 9735 2844** | sales@endurotags.com.au | www.endurotags.com.au

www.bluee.net.au

Marks PUMPS

- Household & Bore Pumps
- Stock watering systems
- Poly tanks and troughs
- Solar Pumps
- Pool & Spa Pumps
- Lawn Watering Systems



**LOT 2 LYALL ST
Ph: 6341 4200**

DIESEL TEC

- Specialises in the repair and service of all heavy vehicles.
- Approved heavy vehicle inspection station
- Wide range of spares parts
- 24yrs experience
- Friendly and professional service

Contact:

Jason: 0428429275

F: (02) 6341 3900 E: dieselttec007@bigpond.com

ABN 98 949 250 406

BEEF GENETICS SUPPLIES & SOLUTIONS

**Ultrasound pregnancy testing
& fetal ageing from 28 days**

Freezebranding

**Artificial insemination
including fixed time AI**

Custom semen collection

**Stock selection & breeding
advice**

Semen & embryo storage

**All semen & artificial
breeding supplies**

Semen dispatch & sales

**Donor management & recipient
programming on farm**

DAMIEN SOTTER M: 0490 067 968 E: DAMIENSOTTER@GMAIL.COM WWW.BEEFGENETICS.COM.AU

www.carruthersmachinery.com.au



Cowra, Young and surrounding districts



**YOUNG:
02 6382 7233**

**COWRA:
02 6342 4488**

Eighteen years Growth Yield Marbling Feed Efficiency

DELTA



LIVESTOCK & PROPERTY

Your Partner in Livestock

Dave Corcoran | 0400 382 388

Cameron Rosser | 0429 218 962

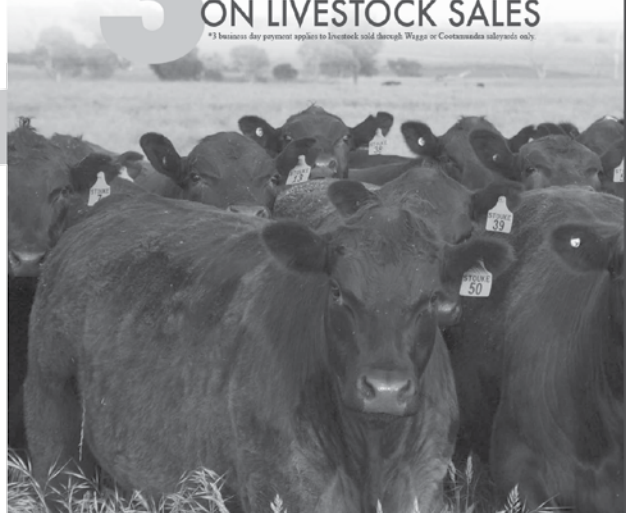
Aaron Mackay | 0427 693 696



Find us on facebook
www.facebook.com/DeltaAgribusiness

3 DAY PAYMENT*
ON LIVESTOCK SALES

*3 business day payment applies to livestock sold through Wags or Coonambidge markets only.



www.deltaag.com.au

SPECIALISING IN THE FABRICATION OF STRUCTURAL STEEL, MILD STEEL, STAINLESS STEEL AND ALUMINIUM.

WE ARE A FAMILY-OWNED BUSINESS OFFERING A WIDE RANGE OF SERVICES WHICH INCLUDES:

- Ute and Truck Trays
- Welding
- Cattle and Horse Floats
- Sandblasting
- Structural Steel
- Spray Painting
- Plasma Cutting
- Concrete Tilt Panels



No job is too big or too small

02 6332 2388

Lumax Engineering Pty Ltd – 27 Kirkcaldy Street,
Bathurst NSW 2795

Email: lumax@bigpond.com Website: lumaxengineering.com.au



FM2291242



ON PROPERTY BULL + E-FEMALE SALE • TUES 1 SEPT 2015

Market Report from CTLX

3rd August 2015 courtesy of JJ Dresser and Co Agency Woodstock.

Let's enjoy these wonderful times for the Beef Industry!

Category	Weight Range	Fat and Muscle	Head	Cents per Kilogram			Dollars per Head		
				Min.	Av.	Max.	Min.	Av.	Max
Steers	Up To 400		617	20.0	311.4	343.4	\$27.20	\$972.71	\$1,337.33
	401 To 500		353	220.0	329.1	359.6	\$984.50	\$1,475.60	\$1,767.18
	501 To 600		144	200.0	342.5	365.2	\$1,020.00	\$1,865.68	\$2,052.23
	601 To 750		8	307.6	318.2	350.0	\$1,857.90	\$1,957.90	\$2,223.84
	Over 750		1	230.0	230.0	230.0	\$1,805.50	\$1,805.50	\$1,805.50
Heifers	Up To 540		868	80.0	291.9	332.0	\$121.60	\$1,020.90	\$1,733.43
	Over 540		20	260.0	300.9	328.6	\$1,554.00	\$1,703.40	\$2,053.44
Cows	Up To 400		26	20.0	177.0	212.2	\$60.00	\$607.69	\$823.20
	400 To 520		161	100.0	219.6	263.2	\$456.00	\$1,030.64	\$1,333.55
	Over 520		198	100.0	255.2	272.0	\$544.00	\$1,583.40	\$2,167.20
Bulls	Up To 450		17	80.0	205.9	321.6	\$190.40	\$564.20	\$1,382.88
	450 To 600		4	80.0	203.6	280.0	\$468.00	\$1,081.38	\$1,442.00
	Over 600		45	80.0	269.0	293.2	\$644.00	\$2,147.24	\$3,225.20
Total Liveweight Yarding			2462						
Average C/KG			295.20						
Average \$ / Head			1,191.38						



DWJJ26
Lot 23



DWJJ191
Lot 20



DWJJ218
Lot 27

"How did the hair on your last steak taste?"

DIRECTIONS

From Cowra 8km towards Sydney, turn right Pine Mount Rd, 8km turn left Goodacre Drive, first entrance on left.

From Woodstock towards Wyangla Dam 2km turn right into Goodacre Drive, 7km turn right for continuation of Goodacre Drive, through creek, second entrance on right.

REBATE

A rebate of 5% will be available to outside agents attending the sale and introducing buyers.



Coota Park Blue-E sell under an Open Cry system in conjunction with AuctionsPlus.

CONTACT

Jon Wright 0429 450 326
Dick Whale 0427 697 968
Chris Callow 0429 497 166



David Corcoran 0400 382 388
Cameron Rosser 0429 218 962
Aaron Mackay 0427 693 696



DWJJ350
Lot 12



DWJHJ39
Lot 13



DWJJ204
Lot 14

SEE WEBSITE FOR IMAGES & VIDEOS WWW.BLUEE.NET.AU

Weights, Scrotals and Dick Whale's Structural Assessment on each bull all available on sale day.

Eighteen years Growth Yield Marbling Feed Efficiency