

BURENDA

Angus



BURENDA

Brangus



**ANNUAL ANGUS &
BRANGUS BULL SALE**
10am 6th October 2016
CLERMONT SALEYARDS

H&W

Livestock & Property

43 ANGUS BULLS | 25 BRANGUS BULLS



H&W

John Wilkinson 0429 832 797
Tony Hoch 0448 831 553
Jake Passfield 0488 588 044
Office Phone 07 4983 1555
www.hochandwilkinson.com

Hoch & Wilkinson is Clermont's Real Estate Agent of first choice and was formed by Tony Hoch & John Wilkinson in November 2006.

The company performs livestock sales, rural property sales, urban real estate sales, property management as well as commercial and clearing sales, primarily in the Clermont & surrounding districts.

The company is a member of the Real Estate Institute of Queensland & the Australian Livestock & Property Agents Association.

www.hochandwilkinson.com.au

www.facebook.com/weloveclermont

SAVE ON YOUR CATALOGUES

FREE SET-UP OF SALE CATALOGUES

- Competitive pricing
- **Free set-up** of catalogue*
- One company to deal with – from data file download, printing and delivery
- Local with The Angus Society Head Office
- **Free delivery** of catalogues to your office or the mail-house
- Mail-out service direct to your database
- Promotional products also available

*When catalogue is printed with us

**QUANTUM
MARKETING**
CREATIVE SOLUTIONS FROM EVERY PERSPECTIVE

call us now!

1800 288 092

www.qmk.com.au

**Quality Outdoor
Jackets**



Caps



Pens



Bags



Printed Catalogues

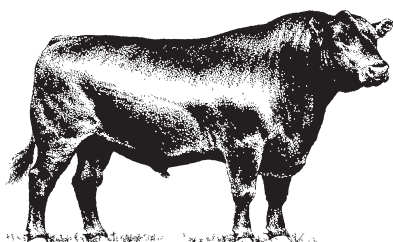


And much More...!

VENDOR DETAILS

BURENDA

Angus



BURENDA

Brangus



Manager - Jonathan Schmidt

Phone: 07 4663 4002

Mobile: 0429 067 313

Fax: 07 4663 4054

Email: schmidtjk@bigpond.com

Mailing Address: MS192 DALBY QLD 4405

Upcoming 2017 Bull Sales

Blackall Black Stump Bull sale March 2017

Burenda Angus Roma Bull Sale

30th August 2017 - 11am at Roma Sale yards

Burenda Clermont Angus and Brangus Bull sale

5th October 2017 - 10am at Clermont Sale Yards

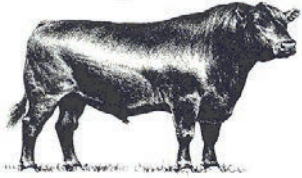
Inspect these bulls at our Open Day 1st August 2017 on property at Dalby Downs Kaimkillenbun Qld.

Visit www.burendaangus.com.au

to view videos, EBV's and full details of each lot

BURENDA

Angus



Welcome to the Annual Burenda Clermont Angus & Brangus Bull Sale

A spectacular offering of 69 well grown good Angus and Burenda Black bulls will be offered for our seventh Annual Clermont Sale. The presentation of these bulls comprise of 43 2 year old Angus and 25 2 year old Burenda Blacks. Genetically these bulls represent some of Queensland's best bulls on offer with progeny by some of Australia's best AI sires together with several outstanding Burenda sires. All 43 Angus bulls are breed average or better for Angus Breeding, Domestic, Heavy Grain and Heavy Grass Indices. A large number of the bulls are in the top 20% for each Market Index. For your convenience we have shaded the EBV's of each sale lot in the top **10% blue** and top **20% yellow**. These bulls are bred in Queensland conditions and come with a full 2 year fertility guarantee which is detailed in the sale information pages in this catalogue.

Like last year's sires we have been particularly impressed again with the improvements in the doing ability of the bulls. The bulls with the better rib and rump fat levels have performed the best and we feel this is important as feedback had indicated that in certain environmental conditions such as wetter than normal years and drier years that it was difficult to maintain good herd fertility and achieve the minimum fat specifications for grass fed product. Currently we are working on lifting our eye muscle area and intramuscular fat levels as these two carcass traits play a major role in the feedlot industry. We feel that a good run of these sale bulls possess this easier doing ability, improved carcass traits and quality calving genes that we have been working towards.

We are currently running around 800 registered Angus breeders, 70 commercial Angus cows and 140 registered Brangus females. Over the last 12 years we have made good gains on fertility and progeny performance by being tough on fertility and temperament. Both of these traits are directly related to performance in the herd and there is no doubt the Burenda herd has benefited by the high standards we set ourselves for these two traits. The Burenda females are AI'd once and have only 6 - 8 weeks joining followed by pregnancy testing 40 days after bull removal. Empty females are fattened and sold direct to works.

We have again included the actual calving interval or ACI in our catalogue comments for those that use this information. Most lots have good ACI's of around 365 days. There are also others marked as Donor

Spring born 2014 brangus heifers on cows early 2015 at Dalby Downs.



(AI ET) and 365/recipient. The recipient means his dam has had both natural and embryo calves. Around 80% of our females are 6 years and younger as we find these cows have the improvements of fertility, calving ease, growth, and carcass data that we are looking for. Our improvement in EBV's has been very noticeable in both our cows and the 2016 sale bulls. The combination of improvements in the fertility, EBV's and raw data performance within the Burenda herd has led to improved profitability through attention to these genetics. The Burenda females are run as if they were a commercial beef herd with around 8 months of the year spent on agistment country spread around the Darling Downs and Eastern Maranoa areas. The remainder of the time is spent at Dalby Downs for calving and the AI process.

In the last twelve months we have made a concerted effort to enter Burenda bred or sired progeny into various carcass and show sale competitions with the aim to see how the progeny perform. A pen of Burenda sired Brangus heifers took out first place in the Pen of Trade Grain/Crop Assist Heifers at the Clermont Beef Expo late last year. A pen of Burenda Angus and Brangus sired steers came first in their class at the Biggenden Show Steer Sale earlier this year. Currently we have a pen of Angus cross steers entered into the RNA Paddock to Palate competition and we have been very pleased with the results so far. For the first 50 days on feed the pen of steers managed a 2.73kg/day weight gain and for the 117 days a healthy 2.59kg/day overall which is up with some of Queensland's best other breeds. Other achievements include Queensland Top 100 MSA Producer of the 2014-2015 year and Burenda sired Angus progeny win 1st Milk Tooth Heifer, 1st Milk Tooth Steer, 1st Pen of Three Milk Tooth Heifers and a 3rd in the Pen of Three Replacement Heifers at the Eidsvold Show in May.

We were privileged to have visits from the Chinese and Indonesian delegations during the year to view our operations and inspect the herd. Both parties were very complimentary on the day.

Manager Jonathan Schmidt has the bulls in great shape and they are doing well on late oats. There are photos of many of the bulls on our website. Please contact Jonathan on 07 4663 4002 or 0429 067 313 for any further details. Auctions Plus will be active again this year with Live Streaming attached for those unable to make the sale and who would like to see the bulls go through the ring. Our insistence on breeding for fertility, growth and carcass quality is paying dividends. We believe buyers will be impressed when they assess this year's draft. The 2 year old bulls will average over 750kg and have plenty of length, strength and fleshing ability. The catalogue includes plenty of sires suitable for use on heifers. Please view full details of each bull on our website www.burendaangus.com.au and remember - you are always welcome at Burenda to check out our herd and operation.



SALE INFORMATION

Sale location and inspection times

The Burenda Angus & Brangus Bull Sale 2016 will be held at the Clermont saleyards. Sale time is 10:00am 6th October 2016 and inspections can be made from early on sale day.

Identification

All bulls have NLIS tags, lot numbers and freeze brands.
The Burenda PIC number is QAWB0619
All bulls are registered with the Angus Society of Australia

Safety Rules & Recommendations

We are confident all our bulls offered for sale are quiet and of sound temperament and are used to being handled in yards. However sale day brings a differing set of conditions and the bulls are subjected to unusual levels of noise and pressure with many people invading their space. Even the quietest bull is still an unpredictable animal who can misbehave. Visitors entering pens do so at their own risk and are subject to conditions set out by the Roma Saleyards.

Buyer Registration

A buyer registration system will apply. Please register with the selling agent well before the auction commences.
AuctionsPlus will be running in conjunction with this sale and registration must be completed within the conditions set out by AuctionsPlus. For these terms and conditions please visit www.auctionsplus.com.au

Sale Conditions

All lots will be sold subject to the usual conditions governing auction sales which will be displayed on the day and are detailed in the back of this catalogue. The auction price is **exclusive of GST**

Rebate

The vendor has agreed to allow 6% rebate to outside agents introducing the approved buyers no later than 24 hours prior to the sale, accompanying their buyer to the sale and settling on their behalf within 7 days of the sale. For outside agents introducing approved buyers within 24 hours prior to the sale **BUT NOT** attending the sale with their clients, a 3% rebate will be paid

Delivery and Transport

Free transport and delivery to selected Major centres is available by negotiation with Burenda Manager Jonathan Schmidt after the sale has concluded.

Volume Discounts

Buyers of 2 or more bulls purchased at this year's Roma Sale will qualify for discounts as follows:

For 2 bulls purchased = 2% discount on total purchase price
For 3 bulls purchased = 3% discount on total purchase price
For 4 bulls purchased = 4% discount on total purchase price
For 5 bulls purchased = 5% discount on total purchase price
For 6 bulls purchased = 6% discount on total purchase price
For 7 bulls purchased = 7% discount on total purchase price
For 8 bulls purchased = 8% discount on total purchase price
For 9 bulls purchased = 9% discount on total purchase price
For 10 or more bulls purchased = 10% discount on total purchase price

Health Treatments

All Burenda Angus Bulls presented at the sale have been treated for the following :

Pestiguard Vaccine, 7-in-1 Vaccine, Botulism Vaccine,
3 Day Sickness Vaccine, Vibrio Vaccine, Tickfever Blood,
and pre treated for lice

INSURANCE

Ownership passes at the fall of the hammer. Insurance can be arranged on the day through H & Wilkinson or your own agent

Breeding Soundness & Semen Test

All bulls have been semen & morphology tested and passed satisfactorily for soundness by John Chapman of South East Qld Genetics. Full details will be available on sale day

Raw Data

All bulls will be selling with full information on weights, scrotal measurements and ultrasound scanning details. Enquiries prior to the sale regarding raw data can be made by contacting Jonathan Schmidt on 0429 067 313 also raw data will be posted on our website prior to sale day at www.burendaangus.com.au

Semen Interest In Bulls

Burenda will retain a half interest in any semen sold from bulls in this sale. Because Burenda sells most of their top bulls it is possible they may wish to collect semen at some future date for their own use or for sale. This is a revenue sharing opportunity for buyers. We retain the right to access bulls at a negotiated time and place and at Burenda's cost. Owners have the right to use their half share in their own herds or revenue share with Burenda in semen sold to other users.

2 Year Guarantee

In addition to the standard warranties provided in stud stock auction terms, Burenda is proud to provide a 2 year guarantee for all bulls sold at this sale. We warrant that the bulls are fertile and capable of natural service at the time of the sale. Should a bull become infertile or break down within 2 years for reasons other than injury or misadventure from 6th October 2016 Burenda will:

1. Provide you with a satisfactory replacement

OR

2. Provide you with a credit equal to the purchase price of the bull less salvage value and less seasonal value. This credit may be used at any future Burenda Bull Sale.

Burenda WILL require you to provide a veterinary report.

IMPORTANT NOTICES FOR PURCHASERS

SALE CATALOGUE DISCLAIMER

All reasonable care has been taken by the vendor to ensure that the information provided in this catalogue is correct at the time of publication. However, neither the vendor nor the selling agents make any other representations about the accuracy, reliability or completeness of any information provided in this catalogue and do not assume any responsibility for the use or interpretation of the information included in this catalogue. You are encouraged to seek independent verification of any information contained in this catalogue before relying on such information.

DNA PATERNITY VERIFICATION

It is a requirement of Angus Australia that all bulls used to sire calves for registration in the Angus Australia Herd Book Register, Red Angus Register or Angus Performance Register must have been DNA paternity verified if they are born in or after the 'Y' year (2003). Buyers intending to use bulls listed in this catalogue to produce calves to be registered in these registers should obtain DNA paternity verification on those bulls before they are used for breeding.

PRIVACY INFORMATION

In order for Angus Australia to process the transfer of a registered animal in this catalogue, the vendor will need to provide certain information to Angus Australia and the buyer consents to the collection and disclosure of that information by Angus Australia in certain circumstances. If the buyer does not wish for his or her information to be stored and disclosed by Angus Australia, the buyer must complete the form included below and forward it to Angus Australia. If the form is not completed, the buyer will be taken to have consented to the disclosure of such information.



BUYER'S OPTION TO OPT OUT OF DISCLOSING PERSONAL INFORMATION TO THE ANGUS AUSTRALIA

If you do not complete this form, you will be taken to have consented to Angus Australia using your name, address and phone number for the purposes of effecting a change of registration of the animal(s) that you have purchased, maintaining its databases and disclosing that information to its members on its website.

I, the buyer of animals with the following registration numbers from member (name) do not consent to Angus Australia using my name, address and phone number for the purposes of effecting a change of registration of the following animal(s) that I have purchased, maintaining its databases and disclosing that information to its members on its website.

Signature:

Date:

Please forward this completed consent form to Angus Australia, Glen Innes Road, Locked Bag 11, Armidale NSW 2350. If you have any queries, please telephone 02 6772 3011 or e-mail office@angusaustralia.com.au.

UNDERSTANDING ANGUS BREEDPLAN EBVs

What is Angus BREEDPLAN?

Angus BREEDPLAN is the genetic evaluation program adopted by Angus Australia for Angus and Angus influenced beef cattle. Angus BREEDPLAN uses Best Linear Unbiased Prediction (BLUP) technology to produce Estimated Breeding Values (EBVs) of recorded cattle for a range of important production traits (e.g. weight, carcass, fertility).

Angus BREEDPLAN includes pedigree, performance and genomic information from the Angus Australia and New Zealand Angus Association databases to evaluate the genetics of animals across Australia and New Zealand.

Angus BREEDPLAN analyses are conducted by the Agricultural Business Research Institute (ABRI), using software developed by the Animal Genetics and Breeding Unit (AGBU), a joint institute of NSW Agriculture and the University of New England. Ongoing BREEDPLAN research and development is supported by Meat and Livestock Australia.

What is an EBV?

An animal's breeding value can be defined as its genetic merit for each trait. While it is not possible to determine an animal's true breeding value, it is possible to estimate it. These estimates of an animal's true breeding value are called EBVs (Estimated Breeding Values).

Using EBVs to Compare the Genetics of Two Animals

Angus BREEDPLAN EBVs can be used to estimate the expected difference in the genetics of two animals, with the expected difference equating to half the difference in the EBVs of the animals, all other things being equal (e.g. they are joined to the same animal/s).

For example, a bull with a 200 Day Growth EBV of +60 would be expected to produce progeny that are, on average, 10 kg heavier at 200 days of age than a bull with a 200 Day Growth EBV of +40 kg (i.e. 20 kg difference between the sire's EBVs, then halved as the sire only contributes half the genetics).

Or similarly, a bull with an IMF EBV of +3.0 would be expected to produce progeny with on average, 1% more intramuscular fat in a 400 kg carcass than a bull with a IMF EBV of +1.0 (i.e. 2% difference between the sire's EBVs, then halved as the sire only contributes half the genetics).

Using EBVs to Benchmark an Animal's Genetics with the Breed

EBVs can also be used to benchmark an animal's genetics relative to the genetics of other Angus or Angus infused animals in Australia and New Zealand.

To benchmark an animal's genetics relative to other Angus animals, an animal's EBV can be compared to:

- ◆ the breed average EBV
- ◆ the percentile table

The current breed average EBV and percentile table is provided in these explanatory notes.

Considering Accuracy

An accuracy value is published in association with each EBV, which is usually displayed as a percentage value immediately below the EBV.

The accuracy value provides an indication of the reliability of the EBV in estimating the animal's genetics (or true breeding value), and is an indication of the amount of information that has been used in the calculation of the EBV.

EBVs with accuracy values below 50% should be considered as preliminary or of low accuracy, 50- 74% as of medium accuracy, 75-90% of medium to high accuracy, and 90% or greater as high accuracy.

Description of Angus BREEDPLAN EBVs

EBVs are calculated for a range of traits within Angus BREEDPLAN, covering calving ease, growth, fertility, maternal performance, carcass merit, feed efficiency and structural soundness. A description of each EBV included in this sale catalogue is provided on the following pages.

BIRTH			
Calving Ease Direct	(%)	Genetic differences in the ability of a sire's calves to be born unassisted from 2 year old heifers.	Higher EBVs indicate fewer calving difficulties in 2 year old heifers.
Calving Ease Daughters	(%)	Genetic differences in the ability of a sire's daughters to calve unassisted at 2 years of age.	Higher EBVs indicate fewer calving difficulties in 2 year old heifers.
Gestation Length	days	Genetic differences between animals in the length of time from the date of conception to the birth of the calf.	Lower EBVs indicate shorter gestation length.
Birth Weight	kg	Genetic differences between animals in calf weight at birth.	Lower EBVs indicate lighter birth weight.
GROWTH			
200 Day Growth	kg	Genetic differences between animals in live weight at 200 days of age due to genetics for growth.	Higher EBVs indicate heavier live weight.
400 Day Weight	kg	Genetic differences between animals in live weight at 400 days of age.	Higher EBVs indicate heavier live weight.
600 Day Weight	kg	Genetic differences between animals in live weight at 600 days of age.	Higher EBVs indicate heavier live weight.
Mature Cow Weight	kg	Genetic differences between animals in live weight of cows at 5 years of age.	Higher EBVs indicate heavier mature weight.
Milk	kg	Genetic differences between animals in live weight at 200 days of age due to the maternal contribution of its dam.	Higher EBVs indicate heavier live weight.
FERTILITY			
Days to Calving	kg	Genetic differences between animals in the time from the start of the joining period (i.e. when the female is introduced to a bull) until subsequent calving.	Lower EBVs indicate shorter time to calving.
Scrotal Size	cm	Genetic differences between animals in scrotal circumference at 400 days of age.	Higher EBVs indicate larger scrotal circumference.
CARCASE			
Carcase Weight	kg	Genetic differences between animals in hot standard carcass weight at 750 days of age.	Higher EBVs indicate heavier carcass weight.
Eye Muscle Area	cm ²	Genetic differences between animals in eye muscle area at the 12/13th rib site in a 400 kg carcass.	Higher EBVs indicate larger eye muscle area.
Rib Fat	mm	Genetic differences between animals in fat depth at the 12/13th rib site in a 400 kg carcass.	Higher EBVs indicate more fat.
Rump Fat	mm	Genetic differences between animals in fat depth at the P8 rump site in a 400 kg carcass.	Higher EBVs indicate more fat.
Retail Beef Yield	%	Genetic differences between animals in boned out saleable meat from a 400 kg carcass.	Higher EBVs indicate higher yield.
Intramuscular Fat	%	Genetic differences between animals in intramuscular fat (marbling) at the 12/13th rib site in a 400 kg carcass.	Higher EBVs indicate more intramuscular fat.

FEED EFFICIENCY

Net Feed Intake (Post Weaning)	kg/day	Genetic differences between animals in feed intake at a standard weight and rate of weight gain when animals are in a growing phase.	Lower EBVs indicate more feed efficiency.
Net Feed Intake (Feedlot)	kg/day	Genetic differences between animals in feed intake at a standard weight and rate of weight gain when animals are in a feedlot finishing phase.	Lower EBVs indicate more feed efficiency.

TEMPERAMENT

Docity	%	Genetic differences between animals in temperament.	Higher EBVs indicate better temperament.
---------------	---	---	--

STRUCTURE

Front Feet Angle	%	Genetic differences between animals in desirable front feet angle (strength of pastern, depth of heel).	Higher EBVs indicate more desirable structure.
Front Feet Claw Set	%	Genetic differences between animals in desirable front feet claw set structure (shape and evenness of claw).	Higher EBVs indicate more desirable structure.
Rear Feet Angle	%	Genetic differences between animals in desirable rear feet angle (strength of pastern, depth of heel).	Higher EBVs indicate more desirable structure.
Rear Leg Hind View	%	Genetic differences between animals in desirable rear leg structure when viewed from behind.	Higher EBVs indicate more desirable structure.
Rear Leg Side View	%	Genetic differences between animals in desirable rear leg structure when viewed from the side.	Higher EBVs indicate more desirable structure.

SELECTION INDEXES

Angus Breeding Index	\$	Genetic differences between animals in net profitability per cow joined in a typical commercial self replacing herd using Angus bulls. This selection index is not specific to a particular production system or market end-point, but identifies animals that will improve overall profitability in the majority of commercial grass and grain finishing beef production systems.	Higher selection index values indicate greater profitability.
Domestic Index	\$	Genetic differences between animals in net profitability per cow joined in a commercial self replacing herd targeting the domestic supermarket trade.	Higher selection index values indicate greater profitability.
Heavy Grain Index	\$	Genetic differences between animals in net profitability per cow joined in a commercial self replacing herd targeting pasture grown steers with a 200 day feedlot finishing period for the grain fed high quality, highly marbled markets.	Higher selection index values indicate greater profitability.
Heavy Grass Index	\$	Genetic differences between animals in net profitability per cow joined in a commercial self replacing herd targeting pasture finished steers.	Higher selection index values indicate greater profitability.

BURENDA'S TOP REFERENCE SIRES

Reference Sire **BURENDA GO BETWEEN G23 (AI) (ET)** **Ident:** QBUG23
Verified to Mating
Calved: 03/03/2011 **Tattoo:** TP (CJ) DOT G23 **Genetic Status:** AMFU NHFU CAFU DDF

TE MANIA YORKSHIRE Y437 (AI)


ARDROSSAN EQUATOR A241 (AI) (ET)

SIRE:VTMB1 TE MANIA BERKLEY B1 (AI)

DAM: QBUE5 BURENDA BEEAC E5 (AI) (ET)

TE MANIA LOWAN Z53 (AI) (ET)

TE MANIA BEEAC U343 (AI) (ET)

July 2016 Angus Australia BREEDPLAN															
	Birth Weight (kg)	200 Day Weight (kg)	400 Day Weight (kg)	600 Day Weight (kg)	MCW (kg)	Milk (kg)	Scrotal Size (cm)	CWT (kg)	EMA (sq cm)	Rib Fat (mm)	Rump Fat (mm)	RBY %	IMF %	NFI-P	NFI-F
EBV	+3.5	+47	+84	+112	+109	+13	+1.9	+65	+9.5	+0.1	-0.6	+0.3	+2.8	+0.28	+0.56
ACC	96%	93%	94%	86%	81%	72%	92%	78%	81%	83%	81%	77%	79%	66%	66%

Traits Observed: BWT,200WT,400WT(x2),SS,FAT,EMA,IMF,Genomics

Possibly our most outstanding sire with 223 angus progeny on the ground. Excellent temperament, fertility, calving ease, and gestation length all coupled with growth, EMA, and IMF. A relentless worker who is easy to handle and easy doing. Eight progeny oozing in charm with length in the sale with last years twenty yearling sons averaging \$5237 and topping at \$8000. 8 Sons Lots 11, 15, 29, 33, 40, 47, 65 & 69.

BREEDOBJECT INDEX VALUES			
Angus Breeding	Domestic	Heavy Grain	Heavy Grass
+\$145	+\$124	+\$165	+\$133

Reference Sire **CARABAR DOCKLANDS D62 (AI)** **Ident:** QHED62
Verified to Mating
Calved: 28/08/2008 **Tattoo:** QHE D62 (T&F) **Genetic Status:** AMFU NHFU CAF DDF

ARDROSSAN DIRECTION W109 (AI) (ET)


BON VIEW NEW DESIGN 1407

SIRE:NENZ181 KAROO W109 DIRECTION Z181

DAM: QHEB12 CARABAR BLACKCAP MARY B12 (AI)(ET)

KAROO FLATS MADONNA V56 (AI)

BOOROOMOOKA TRACY T4 (AI) (ET)

July 2016 Angus Australia BREEDPLAN															
	Birth Weight (kg)	200 Day Weight (kg)	400 Day Weight (kg)	600 Day Weight (kg)	MCW (kg)	Milk (kg)	Scrotal Size (cm)	CWT (kg)	EMA (sq cm)	Rib Fat (mm)	Rump Fat (mm)	RBY %	IMF %	NFI-P	NFI-F
EBV	+4.0	+47	+90	+128	+106	+22	+3.4	+62	+7.4	+2.0	+2.7	+0.5	+1.2	+0.39	+0.67
ACC	99%	98%	98%	98%	96%	95%	98%	90%	89%	89%	88%	84%	87%	70%	73%

Traits Observed: GL,BWT,200WT,400WT,600WT,SS,FAT,EMA,IMF,Genomics

Docklands has been used in the Burenda herd to improve calving ease, fertility, all growth traits and particularly our rib and rump fat levels. With the injection of these higher fats his progeny have excelled in their ability to do well under all environmental conditions. 18 sons averaged \$7444 with a top of \$10500 twice at the Roma 2015 sale. 10 Sons Lots 1, 6, 7, 12, 16, 21, 26, 27, 32 & 42.

BREEDOBJECT INDEX VALUES			
Angus Breeding	Domestic	Heavy Grain	Heavy Grass
+\$137	+\$118	+\$139	+\$136

Reference Sire **BURENDA HAIKU H40 (AI)** **Ident:** QBUH40
Verified to Sire
Calved: 13/02/2012 **Tattoo:** TP (CJ) DOT H40 **Genetic Status:** AMFU NHFU CAFU DDF

TE MANIA YORKSHIRE Y437 (AI)


BURENDA ANTWERP A17

SIRE:VTMB1 TE MANIA BERKLEY B1 (AI)

DAM: QBUD537 BURENDA DUTSIE D537

TE MANIA LOWAN Z53 (AI) (ET)

BURENDA QUAIL Y45 (AI) (ET)

July 2016 Angus Australia BREEDPLAN															
	Birth Weight (kg)	200 Day Weight (kg)	400 Day Weight (kg)	600 Day Weight (kg)	MCW (kg)	Milk (kg)	Scrotal Size (cm)	CWT (kg)	EMA (sq cm)	Rib Fat (mm)	Rump Fat (mm)	RBY %	IMF %	NFI-P	NFI-F
EBV	+4.0	+53	+96	+122	+136	+8	+2.3	+76	+4.9	+1.0	+0.6	-1.4	+3.4	+0.26	+0.40
ACC	93%	89%	89%	84%	80%	69%	88%	76%	76%	78%	77%	72%	74%	60%	60%

Traits Observed: GL,BWT,200WT,400WT,SS,FAT,EMA,IMF,Genomics

Potential outstanding sire in Haiku with 101 recorded progeny in the Burenda herd in a short while. His sons offered as yearlings last year sold well to average \$5400 with a top of \$8000. The daughters have done extremely well with good results at the 400 day weights and scanning. 4 Sons Lots 23, 34, 45 & 46.

BREEDOBJECT INDEX VALUES			
Angus Breeding	Domestic	Heavy Grain	Heavy Grass
+\$142	+\$122	+\$166	+\$129

Reference Sire

TE MANIA EMPEROR E343 (AI)

Ident: VTME343
Verified to Mating

Calved: 09/08/2009

Tattoo: 5 POINT STAR

Genetic Status: AMF NHF CAF DDF

TE MANIA YORKSHIRE Y437 (AI)

B T ULTRAVOX 297E

SIRE:VTMB1 TE MANIA BERKLEY B1 (AI)

DAM: VTMZ74 TE MANIA LOWAN Z74 (AI) (ET)

TE MANIA LOWAN Z53 (AI) (ET)

TE MANIA LOWAN V201 (AI) (ET)

July 2016 Angus Australia BREEDPLAN															
Angus	Birth Weight (kg)	200 Day Weight (kg)	400 Day Weight (kg)	600 Day Weight (kg)	MCW (kg)	Milk (kg)	Scrotal Size (cm)	CWT (kg)	EMA (sq cm)	Rib Fat (mm)	Rump Fat (mm)	RBV %	IMF %	NFI-P	NFI-F
EBV	+4.9	+51	+95	+125	+126	+9	+2.1	+61	+4.3	+1.1	+1.0	-0.9	+3.4	+0.20	+0.32
ACC	99%	99%	99%	99%	98%	98%	98%	96%	93%	94%	95%	91%	93%	81%	83%

Traits Observed: GL,CE,BWT,200WT(x2),400WT,SS,FAT,EMA,IMF,Genomics

Emperor has over 4460 progeny and is the top selling son of Berkley for \$91000. His progeny stand out for muscle pattern and capacity, blending calving ease with high growth and carcass weight. The use of Emperor in the Burenda cow herd has produced thick meaty progeny with sire looks and exceptional doing ability. Nine sons averaged \$8555 with a top of \$13000 at Roma 2015. 4 Sons Lots 3, 4, 13 & 28.

BREEDOBJECT \$INDEX VALUES			
Angus Breeding	Domestic	Heavy Grain	Heavy Grass
+\$157	+\$129	+\$185	+\$140

Reference Sire

BURENDA GEIGER COUNTER G49 (AI)

Ident: QBUG49
Verified to Mating

Calved: 26/02/2011

Tattoo: TP (CJ) DOT G49

Genetic Status: AMFU NHFU CAFU DDF

TE MANIA YORKSHIRE Y437 (AI)

ARDROSSAN EQUATOR A241 (AI) (ET)

SIRE:VTMB1 TE MANIA BERKLEY B1 (AI)

DAM: QBUE5 BURENDA BEEAC E5 (AI) (ET)

TE MANIA LOWAN Z53 (AI) (ET)

TE MANIA BEEAC U343 (AI) (ET)

July 2016 Angus Australia BREEDPLAN															
Angus	Birth Weight (kg)	200 Day Weight (kg)	400 Day Weight (kg)	600 Day Weight (kg)	MCW (kg)	Milk (kg)	Scrotal Size (cm)	CWT (kg)	EMA (sq cm)	Rib Fat (mm)	Rump Fat (mm)	RBV %	IMF %	NFI-P	NFI-F
EBV	+2.8	+40	+78	+101	+96	+17	+1.5	+55	+3.7	-0.2	+0.0	-1.2	+3.6	+0.20	+0.28
ACC	96%	92%	93%	91%	84%	74%	90%	78%	81%	83%	81%	77%	80%	74%	81%

Traits Observed: 200WT,400WT(x2),SS,FAT,EMA,IMF,Genomics

Geiger Counter has over 200 registered Angus and Brangus progeny in our studs. They have all been early born small calves with performance EBVs to support fertility, growth and carcass qualities. Top 5% for Angus Breeding and Heavy Grain Indices. 6 Sons Lots 36, 38, 50, 54, 62 & 68.

BREEDOBJECT \$INDEX VALUES			
Angus Breeding	Domestic	Heavy Grain	Heavy Grass
+\$132	+\$114	+\$156	+\$118

Reference Sire

S A V THUNDERBIRD 9061

Ident: USA16396499
Verified to Sire

Calved: 26/02/2009

Tattoo:

Genetic Status: AMF NHF CAF DDF

SITZ TRAVELER 8180

S A V BISMARCK 5682

SIRE:USA0035 S A V FINAL ANSWER 0035

DAM: USA15688293 S A V EMBLYNETTE 7411

S A V EMULOUS 8145

S A V EMBLYNETTE 4408

July 2016 Angus Australia BREEDPLAN															
Angus	Birth Weight (kg)	200 Day Weight (kg)	400 Day Weight (kg)	600 Day Weight (kg)	MCW (kg)	Milk (kg)	Scrotal Size (cm)	CWT (kg)	EMA (sq cm)	Rib Fat (mm)	Rump Fat (mm)	RBV %	IMF %	NFI-P	NFI-F
EBV	+2.6	+58	+103	+130	+115	+17	+1.2	+78	+4.6	+1.4	-1.9	+0.7	+0.8	-0.05	+0.28
ACC	99%	98%	98%	98%	94%	91%	97%	88%	89%	90%	87%	84%	87%	67%	69%

Traits Observed: Genomics

Very safe calving ease, gestation length, and low birth weight combined with the top 1% for 200, 400 and 600 day weights and carcass weight are why we introduced Thunderbird into the herd. He has been very successful over our autumn calving heifers. 1 Son Lot 10

BREEDOBJECT \$INDEX VALUES			
Angus Breeding	Domestic	Heavy Grain	Heavy Grass
+\$117	+\$117	+\$114	+\$120

BURENDA SALE LOTS

Lot 1

BURENDA KINGCRAB K321 (APR) (AI)

Society Ident: **QBUK321**

Born: **24/07/2014** Animal Grade: **APR** Tattoo: **TP (CJ) DOT K321 (T&F)** Genetic Status: **AMFU NHFU CAFU DD19%**
 ARDROSSAN DIRECTION W109 (AI) (ET) TE MANIA UNLIMITED U3271 (AI) (ET)
 KAROO W109 DIRECTION Z181 RENNYLEA D295 (AI) (ET)
 KAROO FLATS MADONNA V56 (AI) BOORHAMAN Y55 (AI)
QHED62 CARABAR DOCKLANDS D62 (AI) **NORF529 RENNYLEA F529 (APR)**
 BON VIEW NEW DESIGN 1407 TE MANIA AFRICA A217 (AI)
 CARABAR BLACKCAP MARY B12 (AI) (ET) RENNYLEA D529 (APR) (AI)
 BOOROOMOOKA TRACY T4 (AI) (ET) RENNYLEA B782 (APR) (AI) (ET)

Angus	July 2016 Angus Australia BREEDPLAN								
	BIRTH				GROWTH				
	Direct	Dtrs	Gest Lgth	Bth Wt	200 Wt	400 Wt	600 Wt	MCW	Milk
EBV	+4.6	+1.4	-5.4	+2.0	+39	+77	+105	+78	+23
ACC	55%	49%	85%	75%	70%	71%	69%	67%	58%

FERTILITY			CARCASS				FEED		
D to Calv	Scrotal	Carc. Wt	EMA	Rib Fat	Rump Fat	RBV%	IMF%	NFI-P	NFI-F
-7.0	+3.8	+45	+4.7	+2.4	+3.4	-0.3	+1.7	+0.39	+0.65
41%	73%	61%	61%	62%	63%	58%	57%	46%	47%

Traits Observed: GL,BWT,200WT,400WT,SS,FAT,EMA,IMF,DOC
 An exceptional bull for use over heifers with top calving EBVs and Heavy Grass and Angus Breeding Indices in the top 10%. Small early born calves that will grow and are more likely to finish easier on native or improved pastures. Top 5% for Rib and Rump fat. ACI of 372 days. We used him over autumn heifers from the 1st June to 30th July.

INDEX VALUES			
Angus Breeding	Domestic	Heavy Grain	Heavy Grass
+\$124	+\$110	+\$125	+\$122

Purchaser: \$

Lot 1 K321



Lot 2 K310



Lot 2

BURENDA KINDRED K310 (AI)

Society Ident: **QBUK310**

Born: **24/07/2014** Animal Grade: **HBR** Tattoo: **TP (CJ) DOT K310 (T&F)** Genetic Status: **AMFU NHFU CAFU DD38%**
 PAPA EQUATOR 2928 ARDROSSAN ADMIRAL A2 (AI) (ET)
 BT EQUATOR 395M BURENDA EMBEZZLOR E130 (AI) (ET)
 RM BLACK MAGIC 7574 E A R TE MANIA BEEAC U343 (AI) (ET)
NMMD78 MILLAH MURRAH EQUATOR D78 (AI) **QBUG253 BURENDA FLORA G253**
 YTHANBRAE HENRY VIII U8 (AI) (ET) CAMPBELL FARMS YABBA Y035 (AI)
 MILLAH MURRAH RADO Y119 (AI) BURENDA DALMALLY D167 (AI)
 MILLAH MURRAH RADO V31 (AI) ABBOTSLEIGH JAPARA B18 (AI)

Angus	July 2016 Angus Australia BREEDPLAN								
	BIRTH				GROWTH				
	Direct	Dtrs	Gest Lgth	Bth Wt	200 Wt	400 Wt	600 Wt	MCW	Milk
EBV	-2.5	+0.9	-7.0	+6.5	+56	+104	+141	+129	+17
ACC	53%	45%	84%	74%	69%	70%	68%	66%	58%

FERTILITY			CARCASS				FEED		
D to Calv	Scrotal	Carc. Wt	EMA	Rib Fat	Rump Fat	RBV%	IMF%	NFI-P	NFI-F
-6.2	+2.4	+75	+4.4	+0.3	+0.1	+0.2	+1.3	+0.07	-0.23
43%	72%	61%	61%	62%	63%	58%	57%	49%	50%

Traits Observed: GL,BWT,200WT,400WT,SS,FAT,EMA,IMF,DOC
 A quality Milla Murrah Equator son that we also used over 2nd calf heifers. Good growth and carcass traits place Kindreds EBVs well up. Top 5% for Angus Breeding, Heavy Grass and top 10% for Domestic and Heavy Grain.

INDEX VALUES			
Angus Breeding	Domestic	Heavy Grain	Heavy Grass
+\$131	+\$114	+\$138	+\$127

Purchaser: \$

Lot 3

BURENDA KLEIN K377 (AI)

Society Ident: QBUK377

Born: 29/07/2014 Animal Grade: HBR Tattoo: TP (CJ) DOT K377 (T&F) Genetic Status: AMFU NHFU CAFU DDFU
 TE MANIA YORKSHIRE Y437 (AI) PAPA EQUATOR 2928
 TE MANIA BERKLEY B1 (AI) ARDROSSAN EQUATOR A241 (AI) (ET)
 TE MANIA LOWAN Z53 (AI) (ET) ARDROSSAN PRINCESS W38 (AI) (ET)
VTME343 TE MANIA EMPEROR E343 (AI) **QBUE119 BURENDA NEW DESIGN E119 (AI) (ET)**
 B T ULTRAVOX 297E BON VIEW NEW DESIGN 208
 TE MANIA LOWAN Z74 (AI) (ET) LAWSONS NEW DESIGN 208 Z355 (AI) (ET)
 TE MANIA LOWAN V201 (AI) (ET) LAWSONS PARAMOUNT X341 (AI) (ET)

Angus	July 2016 Angus Australia BREEDPLAN								
	BIRTH				GROWTH				
	Direct	Dtrs	Gest Lgth	Bth Wt	200 Wt	400 Wt	600 Wt	MCW	Milk
EBV	-0.1	+2.0	-6.0	+6.2	+53	+95	+131	+134	+13
ACC	59%	54%	85%	75%	71%	71%	70%	67%	62%

FERTILITY			CARCASS			FEED			
D to Calv	Scrotal	Carc. Wt	EMA	Rib Fat	Rump Fat	RBV%	IMF%	NFI-P	NFI-F
-6.2	+2.1	+69	+2.3	-0.2	+0.0	-0.2	+2.5	+0.07	+0.08
48%	74%	65%	64%	65%	66%	62%	61%	53%	53%

Traits Observed: GL, CE, BWT, 200WT, 400WT, SS, FAT, EMA, IMF, DOC
 Emperor has over 4600 progeny recorded Australia wide and his sons have done well for us.
 Fantastic EBVs again producing top 5% for Angus Breeding, Heavy Grain and Heavy Grass
 indices making him ideal for use over cows for any form of beef production. ACI Donor.

INDEX VALUES			
Angus Breeding	Domestic	Heavy Grain	Heavy Grass
+\$134	+\$114	+\$153	+\$125

Purchaser: \$

Lot 3 K377



Lot 4 K344



Lot 4

BURENDA KIP K344 (AI)

Society Ident: QBUK344

Born: 26/07/2014 Animal Grade: HBR Tattoo: TP (CJ) DOT K344 (T&F) Genetic Status: AMFU NH8% CAFU DDFU
 TE MANIA YORKSHIRE Y437 (AI) TE MANIA YESHIVA Y490 (AI)
 TE MANIA BERKLEY B1 (AI) TE MANIA BENHOPE B580 (AI)
 TE MANIA LOWAN Z53 (AI) (ET) TE MANIA JEDDA Y526 (ACR) (AI) (ET)
VTME343 TE MANIA EMPEROR E343 (AI) **QBUF213 BURENDA EVA F213**
 B T ULTRAVOX 297E GLENOCH ALPHA A66 (AI)
 TE MANIA LOWAN Z74 (AI) (ET) BURENDA DAUNTON D274
 TE MANIA LOWAN V201 (AI) (ET) OAK HILL EVA W300 (AI)

Angus	July 2016 Angus Australia BREEDPLAN								
	BIRTH				GROWTH				
	Direct	Dtrs	Gest Lgth	Bth Wt	200 Wt	400 Wt	600 Wt	MCW	Milk
EBV	+1.1	+3.1	-5.4	+4.5	+46	+84	+111	+102	+12
ACC	56%	51%	84%	74%	70%	71%	69%	67%	61%

FERTILITY			CARCASS			FEED			
D to Calv	Scrotal	Carc. Wt	EMA	Rib Fat	Rump Fat	RBV%	IMF%	NFI-P	NFI-F
-8.1	+1.6	+57	+3.1	+2.7	+2.8	-1.1	+2.3	+0.20	+0.42
44%	73%	63%	63%	63%	65%	60%	59%	50%	50%

Traits Observed: GL, BWT, 200WT, 400WT, SS, FAT, EMA, IMF, DOC
 A similar Emperor son as the previous lot with top EBVs. Top 10% for Angus Breeding,
 Heavy Grain and Heavy Grass. His dam has a good ACI of 370 days over four progeny so far.

INDEX VALUES			
Angus Breeding	Domestic	Heavy Grain	Heavy Grass
+\$129	+\$113	+\$139	+\$123

Purchaser: \$

Lot 5

BURENDA KAO K548 (AI) (ET)

Society Ident: **QBUK548**

Born: **16/08/2014** Animal Grade: **HBR** Tattoo: **TP (CJ) DOT K548 (T&F)** Genetic Status: **AMFU NHFU CAFU DDFU**
 PAPA EQUATOR 2928 PAPA EQUATOR 2928
 BT EQUATOR 395M ARDROSSAN EQUATOR A241 (AI) (ET)
 RM BLACK MAGIC 7574 E A R ARDROSSAN PRINCESS W38 (AI) (ET)
NMMD78 MILLAH MURRAH EQUATOR D78 (AI) **QBUE7 BURENDA BEEAC E7 (AI) (ET)**
 YTHANBRAE HENRY VIII U8 (AI) (ET) B/R NEW DESIGN 036
 MILLAH MURRAH RADO Y119 (AI) TE MANIA BEEAC U343 (AI) (ET)
 MILLAH MURRAH RADO V31 (AI) TE MANIA BEEAC R342 (AI) (ET)

Angus	July 2016 Angus Australia BREEDPLAN								
	BIRTH				GROWTH				
	Direct	Dtrs	Gest Lgth	Bth Wt	200 Wt	400 Wt	600 Wt	MCW	Milk
EBV	-2.1	+2.4	-5.9	+5.2	+53	+95	+131	+132	+19
ACC	59%	52%	64%	76%	70%	71%	70%	67%	62%

FERTILITY			CARCASE				FEED		
D to Calv	Scrotal	Carc. Wt	EMA	Rib Fat	Rump Fat	RBV%	IMF%	NFI-P	NFI-F
-5.0	+2.5	+72	+2.6	+0.0	-0.6	+0.1	+1.8	-0.01	-0.15
49%	71%	64%	63%	64%	64%	62%	61%	54%	55%

Traits Observed: BWT,200WT,400WT,SS,FAT,EMA,IMF,DOC
 An AI ET calf out of my favourite Beeac cow line. His dam E7 has been a quite fertile breeder with over 27 recorded progeny and is still going strong. Kao displays his sires growth but will have E7s docility and fertility. Near top 20% for all market indices. ACI Donor.

\$INDEX VALUES			
Angus Breeding	Domestic	Heavy Grain	Heavy Grass
+\$119	+\$106	+\$128	+\$115

Purchaser: \$

Lot 5 K548



Lot 6 K190



Lot 6

BURENDA KETTLE K190 (AI)

Society Ident: **QBUK190**

Born: **15/07/2014** Animal Grade: **HBR** Tattoo: **TP (CJ) DOT K190 (T&F)** Genetic Status: **AMFU NH4% CAFU DD25%**
 ARDROSSAN DIRECTION W109 (AI) (ET) TE MANIA ULONG U41 (AI) (ET)
 KAROO W109 DIRECTION Z181 TE MANIA AFRICA A217 (AI)
 KAROO FLATS MADONNA V56 (AI) TE MANIA JEDDA Y32 (AI) (ET)
QHED62 CARABAR DOCKLANDS D62 (AI) **QBUH115 BURENDA FLOWER H115 (AI)**
 BON VIEW NEW DESIGN 1407 TE MANIA BENHOPE B580 (AI)
 CARABAR BLACKCAP MARY B12 (AI) (ET) BURENDA FLOWER F268
 BOOROOMOOKA TRACY T4 (AI) (ET) BURENDA DALMA D543

Angus	July 2016 Angus Australia BREEDPLAN								
	BIRTH				GROWTH				
	Direct	Dtrs	Gest Lgth	Bth Wt	200 Wt	400 Wt	600 Wt	MCW	Milk
EBV	+3.3	+1.6	-7.8	+3.9	+43	+83	+111	+85	+21
ACC	55%	50%	85%	74%	69%	70%	68%	65%	58%

FERTILITY			CARCASE				FEED		
D to Calv	Scrotal	Carc. Wt	EMA	Rib Fat	Rump Fat	RBV%	IMF%	NFI-P	NFI-F
-6.1	+3.0	+50	+5.9	+1.5	+2.5	+0.0	+2.0	+0.37	+0.53
42%	72%	61%	61%	62%	62%	58%	57%	48%	48%

Traits Observed: GL,BWT,200WT,400WT,SS,FAT,EMA,IMF,DOC
 Exceptional good doing ability with top 10% Rib and Rump fats. Could use over heifers or cows to produce performing progeny in any market. Near top 10% for all market indices. ACI 365 days.

\$INDEX VALUES			
Angus Breeding	Domestic	Heavy Grain	Heavy Grass
+\$130	+\$116	+\$136	+\$126

Purchaser: \$

Lot 7

BURENDA KEYSTONE K210 (APR) (AI)

Society Ident: QBUK210

Born: 15/07/2014 Animal Grade: APR Tattoo: TP (CJ) DOT K210 (T&F) Genetic Status: AMFU NHFU CA50% DD28%

ARDROSSAN DIRECTION W109 (AI) (ET) TE MANIA ULONG U41 (AI) (ET)
 KAROO W109 DIRECTION Z181 TE MANIA AFRICA A217 (AI)
 KAROO FLATS MADONNA V56 (AI) TE MANIA JEDDA Y32 (AI) (ET)

QHED62 CARABAR DOCKLANDS D62 (AI) **QBUG110 BURENDA GENIE G110 (APR) (AI)**
 BON VIEW NEW DESIGN 1407 CONNEALY ALL AROUND
 CARABAR BLACKCAP MARY B12 (AI) (ET) TUWHARETOA E82 (APR) (AI)
 BOOROOMOOKA TRACY T4 (AI) (ET) TUWHARETOA X349 (APR)

Angus	July 2016 Angus Australia BREEDPLAN								
	BIRTH				GROWTH				
	Direct	Dtrs	Gest Lgth	Bth Wt	200 Wt	400 Wt	600 Wt	MCW	Milk
EBV	+4.2	+2.2	-10.6	+3.1	+42	+80	+108	+85	+21
ACC	56%	51%	85%	67%	68%	70%	67%	65%	58%

FERTILITY			CARCASE				FEED		
D to Calv	Scrotal	Carc. Wt	EMA	Rib Fat	Rump Fat	RBV%	IMF%	NFI-P	NFI-F
-5.1	+2.4	+48	+6.4	+1.4	+2.3	+0.2	+2.1	+0.30	+0.49
42%	73%	61%	62%	62%	63%	58%	58%	48%	48%

Traits Observed: GL,BWT,200WT,400WT,SS,FAT,EMA,IMF
 Another quality Docklands son, top 1% gestation length coupled with top fertility and carcass traits. Near top 10% for Angus Breeding, Domestic, Heavy Grain and Heavy Grass. ACI 377 days.

INDEX VALUES			
Angus Breeding	Domestic	Heavy Grain	Heavy Grass
+\$128	+\$115	+\$133	+\$124

Purchaser: \$

Lot 8

BURENDA KANPUR K542 (AI) (ET)

Society Ident: QBUK542

Born: 15/08/2014 Animal Grade: HBR Tattoo: TP (CJ) DOT K542 (T&F) Genetic Status: AMFU NHFU CAFU DDFU

VERMILION DATELINE 7078 PAPA EQUATOR 2928
 J & C APPEAL A10 (AI) ARDROSSAN EQUATOR A241 (AI) (ET)
 J & C MISS CHEYENNE W3 (AI) (ET) ARDROSSAN PRINCESS W38 (AI) (ET)

BCHE11 J & C EVIDENCE E11 **QBUE7 BURENDA BEEAC E7 (AI) (ET)**
 S A F 598 BANDO 5175 B/R NEW DESIGN 036
 J & C DAISY'S 5175 A2 (AI) TE MANIA BEEAC U343 (AI) (ET)
 LANCAMAREE DAISY T3 (AI) TE MANIA BEEAC R342 (AI) (ET)

Angus	July 2016 Angus Australia BREEDPLAN								
	BIRTH				GROWTH				
	Direct	Dtrs	Gest Lgth	Bth Wt	200 Wt	400 Wt	600 Wt	MCW	Milk
EBV	-4.8	-1.9	-4.2	+7.3	+53	+95	+119	+109	+13
ACC	50%	42%	62%	74%	69%	69%	68%	63%	52%

FERTILITY			CARCASE				FEED		
D to Calv	Scrotal	Carc. Wt	EMA	Rib Fat	Rump Fat	RBV%	IMF%	NFI-P	NFI-F
-3.7	+2.4	+79	+4.2	-1.4	-0.2	+0.8	+1.9	+0.22	+0.35
43%	69%	61%	61%	62%	62%	58%	58%	50%	52%

Traits Observed: BWT,200WT,400WT,SS,FAT,EMA,IMF,DOC
 A J & C Evidence son with style and growth. We used this sire as at that particular time we couldnt source Raff Empire semen so we thought as Evidence was also a son of J & C Appeal that it would be worth a try. Good growth and carcass weight in the top 5% and retail beef yield in the top 10%. ACI Donor.

INDEX VALUES			
Angus Breeding	Domestic	Heavy Grain	Heavy Grass
+\$109	+\$107	+\$115	+\$107

Purchaser: \$

Lot 9

BURENDA KIBOSH K230 (AI)

Society Ident: QBUK230

Born: 18/07/2014 Animal Grade: HBR Tattoo: TP (CJ) DOT K230 (T&F) Genetic Status: AMFU NHFU CAFU DD32%

PAPA EQUATOR 2928 ARDROSSAN EQUATOR A241 (AI) (ET)
 BT EQUATOR 395M BURENDA ECHO E4 (AI) (ET)
 RM BLACK MAGIC 7574 E A R TE MANIA BEEAC U343 (AI) (ET)

NMMD78 MILLAH MURRAH EQUATOR D78 (AI) **QBUG398 BURENDA LOLA G398**
 YTHANBRAE HENRY VIII U8 (AI) (ET) TULAGI DESIGN W01 (AI)
 MILLAH MURRAH RADO Y119 (AI) BURENDA CURLEY C334
 MILLAH MURRAH RADO V31 (AI) TULAGI LOLA Z125

Angus	July 2016 Angus Australia BREEDPLAN								
	BIRTH				GROWTH				
	Direct	Dtrs	Gest Lgth	Bth Wt	200 Wt	400 Wt	600 Wt	MCW	Milk
EBV	+1.1	+3.1	-8.9	+4.5	+50	+94	+130	+130	+20
ACC	53%	44%	84%	74%	69%	70%	68%	66%	58%

FERTILITY			CARCASE				FEED		
D to Calv	Scrotal	Carc. Wt	EMA	Rib Fat	Rump Fat	RBV%	IMF%	NFI-P	NFI-F
-4.2	+2.5	+70	+1.3	-0.4	-0.6	+0.4	+1.0	-0.15	-0.41
43%	72%	61%	61%	62%	63%	58%	57%	49%	50%

Traits Observed: GL,BWT,200WT,400WT,SS,FAT,EMA,IMF
 Milla Murrah at its best, top 1% for gestation length and top 5% for 200, 400 and 600 day growth. Should mature into a large framed bull. ACI 377 days.

INDEX VALUES			
Angus Breeding	Domestic	Heavy Grain	Heavy Grass
+\$116	+\$107	+\$119	+\$116

Purchaser: \$

Lot 10

BURENDA KIDNEY K264 (APR) (AI)

Society Ident: QBUK264

Born: 20/07/2014 Animal Grade: APR Tattoo: TP (CJ) DOT K264 (T&F) Genetic Status: AMFU NHFU CAFU DD25%

SITZ TRAVELER 8180 TE MANIA BARTEL B219 (AI) (ET)
 S A V FINAL ANSWER 0035 DUNOON EVIDENT E614 (AI) (ET)
 S A V EMULOUS 8145 DUNOON ELSA B681

USA16396499 S A V THUNDERBIRD 9061 **QBUH331 BURENDA NEW DESIGN H331 (APR) (AI) (ET)**
 S A V BISMARCK 5682 BON VIEW NEW DESIGN 1407
 S A V EMBLYNETTE 7411 LAWSONS NEW DESIGN 1407 Y1452 (APR) (AI)
 S A V EMBLYNETTE 4408 LAWSONS FUTURE DIR W1031 (APR) (AI)

Angus	July 2016 Angus Australia BREEDPLAN								
	BIRTH				GROWTH				
	Direct	Dtrs	Gest Lgth	Bth Wt	200 Wt	400 Wt	600 Wt	MCW	Milk
EBV	+0.9	-0.5	-2.7	+2.8	+50	+89	+113	+95	+16
ACC	56%	51%	84%	74%	69%	69%	67%	64%	58%

FERTILITY			CARCASE				FEED		
D to Calv	Scrotal	Carc. Wt	EMA	Rib Fat	Rump Fat	RBV%	IMF%	NFI-P	NFI-F
-5.1	+1.3	+65	+7.0	+1.0	-0.1	+0.4	+1.4	+0.13	+0.32
39%	73%	60%	61%	60%	61%	57%	56%	46%	47%

Traits Observed: GL,BWT,200WT,400WT,SS,FAT,EMA,IMF,DOC
 Kidney is well suited for use over heifers with his low birth weight and he doesn't compromise on growth, carcass weight and eye muscle area as they are all in the top 15% and better. ACI 376 days.

\$INDEX VALUES			
Angus Breeding	Domestic	Heavy Grain	Heavy Grass
+\$116	+\$112	+\$115	+\$116

Purchaser: \$

Lot 10 K264



Lot 11

BURENDA KOONALDA K689 (APR)

Society Ident: QBUK689

Born: 12/09/2014 Animal Grade: APR Tattoo: TP (CJ) DOT K689 (T&F) Genetic Status: AM3% NH3% CA3% DD3%

TE MANIA YORKSHIRE Y437 (AI) LAWSONS KING ISLAND BEEF Z1292 (AI)
 TE MANIA BERKLEY B1 (AI) LAWSONS KING ISLAND BEEF D17 D1759 (APR) (AI)
 TE MANIA LOWAN Z53 (AI) (ET) LAWSONS PINNACLE Y1498 (APR) (AI)

QBUG23 BURENDA GO BETWEEN G23 (AI) (ET) **QBUF366 BURENDA FANCY FREE F366 (APR)**
 ARDROSSAN EQUATOR A241 (AI) (ET)
 BURENDA BEEAC E5 (AI) (ET) BURENDA A411 (APR)
 TE MANIA BEEAC U343 (AI) (ET)

Angus	July 2016 Angus Australia BREEDPLAN								
	BIRTH				GROWTH				
	Direct	Dtrs	Gest Lgth	Bth Wt	200 Wt	400 Wt	600 Wt	MCW	Milk
EBV	-0.8	+1.2	-3.5	+6.4	+51	+93	+121	+113	+13
ACC	43%	36%	54%	71%	66%	65%	62%	60%	47%

FERTILITY			CARCASE				FEED		
D to Calv	Scrotal	Carc. Wt	EMA	Rib Fat	Rump Fat	RBV%	IMF%	NFI-P	NFI-F
-5.6	+1.9	+69	+4.6	-0.8	-0.9	+0.4	+2.3	+0.13	+0.03
34%	65%	54%	53%	55%	55%	50%	49%	39%	39%

Traits Observed: CE,BWT,200WT,400WT,SS,FAT,EMA,IMF,DOC
 A younger bull with Go Betweens qualities in growth top 5% and top 20% for IMF. Outstanding Market Indices in the top 10% and would suggest ideal use in any beef production system. ACI 370 days.

\$INDEX VALUES			
Angus Breeding	Domestic	Heavy Grain	Heavy Grass
+\$127	+\$115	+\$142	+\$119

Purchaser: \$

Lot 12

BURENDA KINSFOLK K341 (APR) (AI)

Society Ident: QBUK341

Born: 26/07/2014 Animal Grade: APR Tattoo: TP (CJ) DOT K341 (T&F) Genetic Status: AMFU NHFU CAFU DD18%
 ARDROSSAN DIRECTION W109 (AI) (ET) KENNY'S CREEK SANDY S15 (AI)
 KAROO W109 DIRECTION Z181 TE MANIA VISA V478
 KAROO FLATS MADONNA V56 (AI) TE MANIA MOONGARA R91 (AI) (ET)
QHED62 CARABAR DOCKLANDS D62 (AI) **NORA357 RENNYLEA A357 (APR) (AI) (ET)**
 BON VIEW NEW DESIGN 1407 B/R NEW DESIGN 036
 CARABAR BLACKCAP MARY B12 (AI) (ET) RENNYLEA V488 (APR) (AI) (ET)
 BOOROOMOOKA TRACY T4 (AI) (ET) RENNYLEA M42+92 (APR) (AI)

Angus	July 2016 Angus Australia BREEDPLAN								
	BIRTH				GROWTH				
	Direct	Dtrs	Gest Lgth	Bth Wt	200 Wt	400 Wt	600 Wt	MCW	Milk
EBV	+4.6	+2.5	-9.2	+3.6	+42	+79	+115	+104	+19
ACC	56%	51%	84%	75%	70%	71%	70%	67%	62%

FERTILITY			CARCASE				FEED		
D to Calv	Scrotal	Carc. Wt	EMA	Rib Fat	Rump Fat	RBV%	IMF%	NFI-P	NFI-F
-4.7	+2.0	+58	+5.0	+0.6	+0.7	+0.4	+1.1	+0.16	+0.21
44%	73%	62%	62%	63%	63%	59%	58%	47%	48%

Traits Observed: GL,BWT,200WT,400WT,SS,FAT,EMA,IMF,DOC
 A top ACI of 363 days over five progeny on his dams side and an ideal purchase for heifers with top 10% for calving ease and top 1% for gestation length. Would produce small early born calves that bounce away with growth and carcass qualities.

INDEX VALUES			
Angus Breeding	Domestic	Heavy Grain	Heavy Grass
+\$117	+\$104	+\$117	+\$117

Purchaser: \$

Lot 13

BURENDA KINKAJOU K337 (AI)

Society Ident: QBUK337

Born: 26/07/2014 Animal Grade: HBR Tattoo: TP (CJ) DOT K337 (T&F) Genetic Status: AMFU NHFU CAFU DD6%
 TE MANIA YORKSHIRE Y437 (AI) TE MANIA UNLIMITED U3271 (AI) (ET)
 TE MANIA BERKLEY B1 (AI) TE MANIA BEAMENT B473 (AI) (ET)
 TE MANIA LOWAN Z53 (AI) (ET) TE MANIA BARWON W120 (AI)
VTME343 TE MANIA EMPEROR E343 (AI) **QBUE203 BURENDA CELANDINE E203**
 B T ULTRAVOX 297E TULAGI POWER PACK V204
 TE MANIA LOWAN Z74 (AI) (ET) TULAGI CELANDINE A75
 TE MANIA LOWAN V201 (AI) (ET) TULAGI CELANDINE U57

Angus	July 2016 Angus Australia BREEDPLAN								
	BIRTH				GROWTH				
	Direct	Dtrs	Gest Lgth	Bth Wt	200 Wt	400 Wt	600 Wt	MCW	Milk
EBV	+0.2	+2.1	-6.4	+6.0	+44	+84	+109	+108	+9
ACC	55%	50%	84%	74%	70%	70%	69%	67%	60%

FERTILITY			CARCASE				FEED		
D to Calv	Scrotal	Carc. Wt	EMA	Rib Fat	Rump Fat	RBV%	IMF%	NFI-P	NFI-F
-6.6	+1.5	+53	+1.9	+1.1	+1.7	-1.1	+2.3	+0.20	+0.21
43%	73%	63%	62%	63%	64%	59%	58%	49%	49%

Traits Observed: GL,BWT,200WT,400WT,SS,FAT,EMA,IMF,DOC
 A more moderate bull with positive Rib, Rump and IMF fats. These Emperor sons have added thickness and improved our EBVs dramatically over the last few years. ACI 375 days over five recorded calves.

INDEX VALUES			
Angus Breeding	Domestic	Heavy Grain	Heavy Grass
+\$117	+\$106	+\$128	+\$111

Purchaser: \$

Lot 14 K347



Lot 14

BURENDA KIRK K347 (APR) (AI)

Society Ident: QBUK347

Born: 26/07/2014 Animal Grade: APR Tattoo: TP (CJ) DOT K347 (T&F) Genetic Status: AMFU NHFU CA2% DD38%

SITZ TRAVELER 8180 ARDROSSAN ADMIRAL A2 (AI) (ET)
 S A V FINAL ANSWER 0035 BURENDA EMBEZZLOR E130 (AI) (ET)
 S A V EMULOUS 8145 TE MANIA BEEAC U343 (AI) (ET)

USA15832579 CONNEALY ANSWER 71 QBUG354 BURENDA BURNETTE G354 (APR) (TW)
 RITO 112 OF 2536 RITO 616 BURENDA YELLOWSTONE Y4 (AI) (ET)
 EURO REEKA OF CONANGA 3539 BURENDA DALLY D18 (APR) (AI)
 EURO COPA OF CONANGA 869 RAFF BURNETTE B108 (APR)

Angus	July 2016 Angus Australia BREEDPLAN									
	BIRTH					GROWTH				
	Direct	Dtrs	Gest Lgth	Bth Wt	200 Wt	400 Wt	600 Wt	MCW	Milk	
EBV	+0.7	+0.7	-3.9	+4.5	+49	+86	+111	+82	+11	
ACC	43%	35%	84%	72%	66%	67%	65%	62%	53%	

FERTILITY			CARCASE				FEED		
D to Calv	Scrotal	Carc. Wt	EMA	Rib Fat	Rump Fat	RBV%	IMF%	NFI-P	NFI-F
-5.1	+1.5	+64	+6.6	+0.5	-1.2	+0.9	+1.3	+0.16	+0.29
34%	70%	56%	55%	56%	56%	51%	49%	39%	39%

Traits Observed: GL,BWT,200WT,400WT,SS,FAT,EMA,IMF
 A Connealy Answer offspring with most growth and carcase data well up in the top 20%. ACI 375 days.

INDEX VALUES			
Angus Breeding	Domestic	Heavy Grain	Heavy Grass
+\$118	+\$114	+\$119	+\$118

Purchaser: \$

Lot 15

BURENDA KORIGA K698

Society Ident: QBUK698

Born: 14/09/2014 Animal Grade: HBR Tattoo: TP (CJ) DOT K698 (T&F) Genetic Status: AMFU NH10% CAFU DD19%

TE MANIA YORKSHIRE Y437 (AI) BURENDA YELLOWSTONE Y4 (AI) (ET)
 TE MANIA BERKLEY B1 (AI) BURENDA BOUNCE B12
 TE MANIA LOWAN Z53 (AI) (ET) BUNYA CREEK UNDINE W10 (AI) (ET)

QBUG23 BURENDA GO BETWEEN G23 (AI) (ET) QBUD162 BURENDA DUNWICH D162
 ARDROSSAN EQUATOR A241 (AI) (ET) WALLANGRA VOWELS V24
 BURENDA BEEAC E5 (AI) (ET) WALLANGRA FLORA B94
 TE MANIA BEEAC U343 (AI) (ET) WALLANGRA FLORA Q94

Angus	July 2016 Angus Australia BREEDPLAN									
	BIRTH					GROWTH				
	Direct	Dtrs	Gest Lgth	Bth Wt	200 Wt	400 Wt	600 Wt	MCW	Milk	
EBV	+2.8	+2.5	-4.0	+3.2	+42	+75	+95	+86	+15	
ACC	45%	37%	61%	73%	68%	69%	65%	62%	51%	

FERTILITY			CARCASE				FEED		
D to Calv	Scrotal	Carc. Wt	EMA	Rib Fat	Rump Fat	RBV%	IMF%	NFI-P	NFI-F
-7.3	+2.7	+49	+7.8	+2.6	+2.2	+0.6	+1.6	+0.10	+0.53
37%	72%	57%	58%	59%	60%	54%	52%	42%	42%

Traits Observed: CE,BWT,200WT,400WT,SS,FAT,EMA,IMF,DOC
 A very likeable and consistent set of numbers right through in Koriga. You could use him over heifers or cows to produce progeny for any beef market. ACI 371 days over six progeny.

INDEX VALUES			
Angus Breeding	Domestic	Heavy Grain	Heavy Grass
+\$122	+\$115	+\$123	+\$119

Purchaser: \$

Lot 16

BURENDA KEYHOLE K204 (APR) (AI)

Society Ident: QBUK204

Born: 16/07/2014 Animal Grade: APR Tattoo: TP (CJ) DOT K204 (T&F) Genetic Status: AM2% NH2% CA2% DD9%

ARDROSSAN DIRECTION W109 (AI) (ET) TE MANIA INFINITY 04 379 AB
 KAROO W109 DIRECTION Z181 BURENDA FARRIER F109 (APR) (AI)
 KAROO FLATS MADONNA V56 (AI) BURENDA DRIUDII D239 (APR) (AI)

QHED62 CARABAR DOCKLANDS D62 (AI) QBUH491 BURENDA ELINDA H491 (APR)
 BON VIEW NEW DESIGN 1407 BURENDA ZAUL (AI)
 CARABAR BLACKCAP MARY B12 (AI) (ET) BURENDA ELINDA E294
 BOOROOMOOKA TRACY T4 (AI) (ET) BURENDA Y227 (APR)

Angus	July 2016 Angus Australia BREEDPLAN									
	BIRTH					GROWTH				
	Direct	Dtrs	Gest Lgth	Bth Wt	200 Wt	400 Wt	600 Wt	MCW	Milk	
EBV	+2.5	-0.2	-5.6	+4.2	+44	+83	+114	+98	+18	
ACC	51%	46%	84%	72%	68%	68%	66%	62%	55%	

FERTILITY			CARCASE				FEED		
D to Calv	Scrotal	Carc. Wt	EMA	Rib Fat	Rump Fat	RBV%	IMF%	NFI-P	NFI-F
-4.3	+2.6	+59	+5.4	+0.3	+0.7	+0.5	+1.3	+0.19	+0.36
37%	71%	59%	59%	60%	60%	55%	54%	43%	44%

Traits Observed: GL,BWT,200WT,400WT,SS,FAT,EMA,IMF,DOC
 Docklands has over 2600 recorded progeny and this is a typical Docklands son. No slouch on the figures and a run of 16 sons at our Roma 2015 sale averaged \$8500. ACI 382 days.

INDEX VALUES			
Angus Breeding	Domestic	Heavy Grain	Heavy Grass
+\$116	+\$107	+\$116	+\$116

Purchaser: \$

Lot 17

BURENDA KINGDOM COME K252 (AI)

Society Ident: QBUK252

Born: 19/07/2014 Animal Grade: HBR Tattoo: TP (CJ) DOT K252 (T&F) Genetic Status: AMFU NHFU CAFU DD13%

BOOROOMOOKA UNDERTAKEN Y145 TE MANIA YESHIVA Y490 (AI)
 RENNYLEA C277 (AI) (ET) TE MANIA BENHOPE B580 (AI)
 BOORHAMAN Y55 (AI) TE MANIA JEDDA Y526 (ACR) (AI) (ET)

VICF1 IRELANDS FLETCHER F1 **QBUF155 BURENDA FALCONESS F155**
 VERMILION YELLOWSTONE LAWSONS DINKY-DI Z191 (AI) (ET)
 TE MANIA WARGOONA Z31 (AI) BURENDA DELIGHT D66 (AI)
 TE MANIA WARGOONA T285 (ACR) VALORBROOK NEGRESS B24

Angus	July 2016 Angus Australia BREEDPLAN								
	BIRTH				GROWTH				
	Direct	Dtrs	Gest Lgth	Bth Wt	200 Wt	400 Wt	600 Wt	MCW	Milk
EBV	+2.4	+1.9	-7.6	+4.9	+46	+83	+116	+101	+15
ACC	49%	42%	84%	74%	69%	69%	67%	63%	53%

FERTILITY			CARCASE				FEED		
D to Calv	Scrotal	Carc. Wt	EMA	Rib Fat	Rump Fat	RBV%	IMF%	NFI-P	NFI-F
-3.8	+3.0	+58	+0.3	-0.7	-0.4	+0.3	+2.0	+0.02	+0.06
35%	72%	57%	59%	60%	60%	55%	54%	41%	42%

Traits Observed: GL,BWT,200WT,400WT,SS,FAT,EMA,IMF,DOC
 Top 20% for Angus Breeding, Heavy Grain and Heavy Grass. Reliable calving interval of 362 days.

INDEX VALUES			
Angus Breeding	Domestic	Heavy Grain	Heavy Grass
+\$117	+\$107	+\$126	+\$113

Purchaser: \$

Lot 18

BURENDA KABULI K481 (APR) (AI)

Society Ident: QBUK481

Born: 09/08/2014 Animal Grade: APR Tattoo: TP (CJ) DOT K481 (T&F) Genetic Status: AMFU NHFU CAFU DDFU

PAPA POWER 096 B/R NEW DESIGN 036
 PAPA EQUATOR 2928 TE MANIA UNLIMITED U3271 (AI) (ET)
 PAPA ENVIOUS BLACKBIRD 8849 TE MANIA LOWAN R426 (AI) (ET)

NAQA241 ARDROSSAN EQUATOR A241 (AI) (ET) **BNAC195 TUWHARETOA C195 (APR) (AI) (ET)**
 B/R NEW DIMENSION 7127 DUNOON TROOPER T010 (AI) (ET)
 ARDROSSAN PRINCESS W38 (AI) (ET) TUWHARETOA X208 (APR)
 ARDROSSAN PRINCESS U24 (AI) (ET) TUWHARETOA TUMATA (AI)

Angus	July 2016 Angus Australia BREEDPLAN								
	BIRTH				GROWTH				
	Direct	Dtrs	Gest Lgth	Bth Wt	200 Wt	400 Wt	600 Wt	MCW	Milk
EBV	+0.5	-1.3	-2.1	+3.4	+41	+78	+102	+95	+17
ACC	59%	56%	85%	75%	70%	71%	69%	67%	62%

FERTILITY			CARCASE				FEED		
D to Calv	Scrotal	Carc. Wt	EMA	Rib Fat	Rump Fat	RBV%	IMF%	NFI-P	NFI-F
-4.1	+2.0	+60	+2.4	+0.2	+0.9	-1.0	+2.6	+0.37	+0.48
55%	73%	65%	65%	65%	66%	63%	62%	57%	57%

Traits Observed: GL,CE,BWT,200WT,400WT,SS,FAT,EMA,IMF,DOC
 Plenty of good breeding depth in Kabuli with bloodlines from Ardrossan, Te Mania and Tuwharetoa Angus herds. ACI 367 days.

INDEX VALUES			
Angus Breeding	Domestic	Heavy Grain	Heavy Grass
+\$102	+\$97	+\$109	+\$99

Purchaser: \$

Lot 19

BURENDA KNIGHT K400 (AI)

Society Ident: QBUK400

Born: 29/07/2014 Animal Grade: HBR Tattoo: TP (CJ) DOT K400 (T&F) Genetic Status: AMFU NHFU CAFU DD20%

SITZ TRAVELER 8180 TE MANIA YESHIVA Y490 (AI)
 S A V FINAL ANSWER 0035 TE MANIA BENHOPE B580 (AI)
 S A V EMULOUS 8145 TE MANIA JEDDA Y526 (ACR) (AI) (ET)

USA15832579 CONNEALY ANSWER 71 **QBUE88 BURENDA ALICE E88 (AI)**
 RITO 112 OF 2536 RITO 616 ARDROSSAN ADMIRAL A2 (AI) (ET)
 EURO REEKA OF CONANGA 3539 BURENDA CHANTILLY C3 (AI)
 EURO COPA OF CONANGA 869 BURENDA ANCHORAGE A36

Angus	July 2016 Angus Australia BREEDPLAN								
	BIRTH				GROWTH				
	Direct	Dtrs	Gest Lgth	Bth Wt	200 Wt	400 Wt	600 Wt	MCW	Milk
EBV	-0.6	-0.7	-5.1	+5.2	+49	+87	+112	+86	+14
ACC	47%	39%	85%	74%	68%	68%	66%	62%	54%

FERTILITY			CARCASE				FEED		
D to Calv	Scrotal	Carc. Wt	EMA	Rib Fat	Rump Fat	RBV%	IMF%	NFI-P	NFI-F
-4.1	+0.2	+64	+4.7	+0.1	-1.5	+0.5	+1.7	+0.12	+0.20
35%	70%	58%	57%	59%	59%	54%	52%	41%	40%

Traits Observed: GL,CE,BWT,200WT,400WT,SS,FAT,EMA,IMF,DOC
 Knight had one of the highest daily weight gains in his group at time of printing. We entered a pen of steers into the 2016 RNA 100 day Paddock to Palate Feedlot Trial and we were very pleased with the results. Our pen averaged 2.59kg/day over the 117 days on feed. ACI 370 days.

INDEX VALUES			
Angus Breeding	Domestic	Heavy Grain	Heavy Grass
+\$110	+\$108	+\$113	+\$109

Purchaser: \$

Lot 20

BURENDA KIDNAPPER K263 (APR) (AI)

Society Ident: QBUK263

Born: 20/07/2014 Animal Grade: APR Tattoo: TP (CJ) DOT K263 (T&F) Genetic Status: AMFU NHFU CA8% DDFU
 SITZ TRAVELER 8180 BONGONGO BULLETPROOF Z3 (AI)
 S A V FINAL ANSWER 0035 TE MANIA DEEGAN D309 (AI)
 S A V EMULOUS 8145 TE MANIA MITTAGONG B112 (AI)
USA16397246 S A V MUSTANG 9134 QBUH227 BURENDA HOLLY H227 (APR) (AI)
 S A V NET WORTH 4200 CONNEALY ALL AROUND
 S A V EMBLYNETTE 7415 TUWHARETOA E124 (APR) (AI)
 S A V EMBLYNETTE 7260 TUWHARETOA A125 (APR) (AI)

Angus	July 2016 Angus Australia BREEDPLAN								
	BIRTH				GROWTH				
	Direct	Dtrs	Gest Lgth	Bth Wt	200 Wt	400 Wt	600 Wt	MCW	Milk
EBV	+0.4	+1.1	-3.0	+2.6	+46	+81	+99	+64	+23
ACC	49%	40%	85%	73%	68%	69%	66%	62%	54%

FERTILITY			CARCASE			FEED			
D to Calv	Scrotal	Carc. Wt	EMA	Rib Fat	Rump Fat	RBV%	IMF%	NFI-P	NFI-F
-5.4	+1.8	+58	+6.4	+1.0	+0.8	+0.3	+1.9	+0.14	+0.30
37%	71%	59%	59%	60%	61%	56%	55%	43%	44%

Traits Observed: GL,BWT,200WT,400WT,SS,FAT,EMA,IMF,DOC
 Great choice for a heifer joining with low birth weight yet maintaining carcass attributes. ACI 376 days.

INDEX VALUES			
Angus Breeding	Domestic	Heavy Grain	Heavy Grass
+\$112	+\$112	+\$111	+\$112

Purchaser: \$

Lot 21

BURENDA KERSEY K170 (APR) (AI)

Society Ident: QBUK170

Born: 10/07/2014 Animal Grade: APR Tattoo: TP (CJ) DOT K170 (T&F) Genetic Status: AMFU NHFU CAFU DDFU
 ARDROSSAN DIRECTION W109 (AI) (ET) ARDCAIRNIE MIDLAND Z57 (AI)
 KAROO W109 DIRECTION Z181 TE MANIA DISCREET D894
 KAROO FLATS MADONNA V56 (AI) TE MANIA QUEANBEYAN Z387 (AI)
QHED62 CARABAR DOCKLANDS D62 (AI) QBUH320 BURENDA HAILEY H320 (APR)
 BON VIEW NEW DESIGN 1407 BONGONGO BULLETPROOF Z3 (AI)
 CARABAR BLACKCAP MARY B12 (AI) (ET) TUWHARETOA E138 (APR) (AI) (ET)
 BOOROOMOOKA TRACY T4 (AI) (ET) TUWHARETOA X208 (APR)

Angus	July 2016 Angus Australia BREEDPLAN								
	BIRTH				GROWTH				
	Direct	Dtrs	Gest Lgth	Bth Wt	200 Wt	400 Wt	600 Wt	MCW	Milk
EBV	+4.2	+2.3	-9.6	+3.8	+45	+84	+118	+98	+19
ACC	54%	49%	84%	74%	69%	70%	68%	65%	58%

FERTILITY			CARCASE			FEED			
D to Calv	Scrotal	Carc. Wt	EMA	Rib Fat	Rump Fat	RBV%	IMF%	NFI-P	NFI-F
-5.4	+2.4	+57	+5.7	+0.8	+1.7	+0.6	+1.5	+0.13	+0.34
40%	72%	61%	61%	62%	62%	57%	57%	46%	46%

Traits Observed: GL,BWT,200WT,400WT,SS,FAT,EMA,IMF,DOC
 The perfect EBVs for any beef operation. Use with confidence over heifers and cows to improve fertility and carcass in the herd. Top 10% and better for all four Market Indices. ACI 423 days.

INDEX VALUES			
Angus Breeding	Domestic	Heavy Grain	Heavy Grass
+\$131	+\$115	+\$135	+\$129

Purchaser: \$

Lot 22

BURENDA KOBOLD K418 (AI)

Society Ident: QBUK418

Born: 02/08/2014 Animal Grade: HBR Tattoo: TP (CJ) DOT K418 (T&F) Genetic Status: AMFU NHFU CAFU DDFU
 B/R NEW DESIGN 036 TE MANIA YESHIVA Y490 (AI)
 G A R PREDESTINED TE MANIA BENHOPE B580 (AI)
 G A R EXT 4206 TE MANIA JEDDA Y526 (ACR) (AI) (ET)
USA15738589 WERNER WESTWARD 357 QBUE270 BURENDA YIELD GRADE E270
 C A FUTURE DIRECTION 5321 G A R YIELD GRADE
 BFF EVERELDA ENTENSE 4015 LAWSONS YIELD GRADE B369 (AI) (ET)
 THREE TREES EVERELDA C27F G A R 616 RITO A114 (ET)

Angus	July 2016 Angus Australia BREEDPLAN								
	BIRTH				GROWTH				
	Direct	Dtrs	Gest Lgth	Bth Wt	200 Wt	400 Wt	600 Wt	MCW	Milk
EBV	+1.4	+3.1	-3.8	+3.7	+43	+81	+107	+75	+17
ACC	55%	50%	85%	74%	70%	71%	69%	66%	59%

FERTILITY			CARCASE			FEED			
D to Calv	Scrotal	Carc. Wt	EMA	Rib Fat	Rump Fat	RBV%	IMF%	NFI-P	NFI-F
-4.7	+0.3	+61	+5.7	-0.9	-0.3	+0.7	+1.9	+0.07	+0.03
39%	73%	61%	62%	62%	62%	57%	57%	45%	45%

Traits Observed: GL,CE,BWT,200WT,400WT,SS,FAT,EMA,IMF,DOC
 Join as a choice over heifers or cows. Previously half brothers have sold at Roma 2015 for \$12000 and Blackall 2016 for \$7000. A multi functional bull for all markets. ACI 371 days.

INDEX VALUES			
Angus Breeding	Domestic	Heavy Grain	Heavy Grass
+\$123	+\$115	+\$129	+\$121

Purchaser: \$

EBV Quick Reference for Clermont Angus Bull Sale

		TOP 10%										TOP 20%													
Lot No.	Animal Ident	Calving Ease Dir	Calving Ease Dtrs	Gest Length	Birth Wt	200 Day Wt	400 Day Wt	600 Day Wt	Mat Cow Wt	Milk	Scrotal Size	Days to Calving	Carc. Wt	EMA	Rib Fat	Rump Fat	RBV %	IMF %	NFI - P	NFI - F	Docility	Angus Breeding	Domestic	Heavy Grain	Heavy Grass
1	QBUK321	+4.6	+1.4	-5.4	+2.0	+39	+77	+105	+78	+23	+3.8	-7.0	+45	+4.7	+2.4	+3.4	-0.3	+1.7	+0.39	+0.65	-1	+\$124	+\$110	+\$125	+\$122
2	QBUK310	-2.5	+0.9	-7.0	+6.5	+56	+104	+141	+129	+17	+2.4	-6.2	+75	+4.4	+0.3	+0.1	+0.2	+1.3	+0.07	-0.23	+27	+\$131	+\$114	+\$138	+\$127
3	QBUK377	-0.1	+2.0	-6.0	+6.2	+53	+95	+131	+134	+13	+2.1	-6.2	+69	+2.3	-0.2	+0.0	-0.2	+2.5	+0.07	+0.08	-8	+\$134	+\$114	+\$153	+\$125
4	QBUK344	+1.1	+3.1	-5.4	+4.5	+46	+84	+111	+102	+12	+1.6	-8.1	+57	+3.1	+2.7	+2.8	-1.1	+2.3	+0.20	+0.42	-3	+\$129	+\$113	+\$139	+\$123
5	QBUK548	-2.1	+2.4	-5.9	+5.2	+53	+95	+131	+132	+19	+2.5	-5.0	+72	+2.6	+0.0	-0.6	+0.1	+1.8	-0.01	-0.15	+8	+\$119	+\$106	+\$128	+\$115
6	QBUK190	+3.3	+1.6	-7.8	+3.9	+43	+83	+111	+85	+21	+3.0	-6.1	+50	+5.9	+1.5	+2.5	+0.0	+2.0	+0.37	+0.53	-2	+\$130	+\$116	+\$136	+\$126
7	QBUK210	+4.2	+2.2	-10.6	+3.1	+42	+80	+108	+85	+21	+2.4	-5.1	+48	+6.4	+1.4	+2.3	+0.2	+2.1	+0.30	+0.49	--	+\$128	+\$115	+\$133	+\$124
8	QBUK542	-4.8	-1.9	-4.2	+7.3	+53	+95	+119	+109	+13	+2.4	-3.7	+79	+4.2	-1.4	-0.2	+0.8	+1.9	+0.22	+0.35	+3	+\$109	+\$107	+\$115	+\$107
9	QBUK230	+1.1	+3.1	-8.9	+4.5	+50	+94	+130	+130	+20	+2.5	-4.2	+70	+1.3	-0.4	-0.6	+0.4	+1.0	-0.15	-0.41	--	+\$116	+\$107	+\$119	+\$116
10	QBUK264	+0.9	-0.5	-2.7	+2.8	+50	+89	+113	+95	+16	+1.3	-5.1	+65	+7.0	+1.0	-0.1	+0.4	+1.4	+0.13	+0.32	+2	+\$116	+\$112	+\$115	+\$116
11	QBUK689	-0.8	+1.2	-3.5	+6.4	+51	+93	+121	+113	+13	+1.9	-5.6	+69	+4.6	-0.8	-0.9	+0.4	+2.3	+0.13	+0.03	-1	+\$127	+\$115	+\$142	+\$119
12	QBUK341	+4.6	+2.5	-9.2	+3.6	+42	+79	+115	+104	+19	+2.0	-4.7	+58	+5.0	+0.6	+0.7	+0.4	+1.1	+0.16	+0.21	-12	+\$117	+\$104	+\$117	+\$117
13	QBUK337	+0.2	+2.1	-6.4	+6.0	+44	+84	+109	+108	+9	+1.5	-6.6	+53	+1.9	+1.1	+1.7	-1.1	+2.3	+0.20	+0.21	+14	+\$117	+\$106	+\$128	+\$111
14	QBUK347	+0.7	+0.7	-3.9	+4.5	+49	+86	+111	+82	+11	+1.5	-5.1	+64	+6.6	+0.5	-1.2	+0.9	+1.3	+0.16	+0.29	--	+\$118	+\$114	+\$119	+\$118
15	QBUK698	+2.8	+2.5	-4.0	+3.2	+42	+75	+95	+86	+15	+2.7	-7.3	+49	+7.8	+2.6	+2.2	+0.6	+1.6	+0.10	+0.53	+20	+\$122	+\$115	+\$123	+\$119
16	QBUK204	+2.5	-0.2	-5.6	+4.2	+44	+83	+114	+98	+18	+2.6	-4.3	+59	+5.4	+0.3	+0.7	+0.5	+1.3	+0.19	+0.36	+0	+\$116	+\$107	+\$116	+\$116
17	QBUK252	+2.4	+1.9	-7.6	+4.9	+46	+83	+116	+101	+15	+3.0	-3.8	+58	+0.3	-0.7	-0.4	+0.3	+2.0	+0.02	+0.06	+0	+\$117	+\$107	+\$126	+\$113
18	QBUK481	+0.5	-1.3	-2.1	+3.4	+41	+78	+102	+95	+17	+2.0	-4.1	+60	+2.4	+0.2	+0.9	-1.0	+2.6	+0.37	+0.48	+4	+\$102	+\$97	+\$109	+\$99
19	QBUK400	-0.6	-0.7	-5.1	+5.2	+49	+87	+112	+86	+14	+0.2	-4.1	+64	+4.7	+0.1	-1.5	+0.5	+1.7	+0.12	+0.20	+6	+\$110	+\$108	+\$113	+\$109
20	QBUK263	+0.4	+1.1	-3.0	+2.6	+46	+81	+99	+64	+23	+1.8	-5.4	+58	+6.4	+1.0	+0.8	+0.3	+1.9	+0.14	+0.30	-3	+\$112	+\$112	+\$111	+\$112
21	QBUK170	+4.2	+2.3	-9.6	+3.8	+45	+84	+118	+98	+19	+2.4	-5.4	+57	+5.7	+0.8	+1.7	+0.6	+1.5	+0.13	+0.34	-11	+\$131	+\$115	+\$135	+\$129
22	QBUK418	+1.4	+3.1	-3.8	+3.7	+43	+81	+107	+75	+17	+0.3	-4.7	+61	+5.7	-0.9	-0.3	+0.7	+1.9	+0.07	+0.03	-10	+\$123	+\$115	+\$129	+\$121
23	QBUK484	+2.3	+1.6	-5.1	+4.4	+47	+88	+113	+106	+14	+2.9	-5.7	+62	+3.4	+1.6	+2.1	-1.0	+2.0	+0.20	+0.31	--	+\$119	+\$110	+\$123	+\$116
24	QBUK353	+2.7	+2.8	-5.4	+3.6	+44	+83	+114	+96	+18	+1.3	-2.7	+59	+2.7	-0.6	-0.4	-0.3	+2.5	+0.07	-0.04	+16	+\$116	+\$107	+\$126	+\$113
25	QBUK557	+2.7	+4.2	-6.5	+4.2	+47	+83	+110	+112	+12	+3.0	-9.2	+63	+3.0	-0.5	-0.6	-0.8	+3.7	+0.27	+0.40	+0	+\$141	+\$118	+\$170	+\$124
26	QBUK370	+2.6	+0.1	-4.1	+3.3	+41	+80	+112	+91	+22	+3.1	-5.4	+55	+5.4	+0.8	+1.3	+0.3	+1.5	+0.22	+0.47	-11	+\$120	+\$108	+\$122	+\$119
27	QBUK425	+3.9	+2.2	-5.9	+3.2	+37	+79	+105	+89	+19	+3.2	-3.9	+51	+1.4	+0.5	+1.2	+0.0	+1.1	+0.12	+0.35	-10	+\$104	+\$102	+\$101	+\$106
28	QBUK565	+1.4	+3.6	-4.4	+4.1	+44	+82	+107	+98	+15	+2.0	-7.0	+55	+3.6	+0.4	+0.3	-0.2	+2.7	+0.10	+0.15	-1	+\$128	+\$115	+\$144	+\$119
29	QBUK521	+0.7	+1.5	-3.8	+5.4	+50	+85	+117	+117	+13	+2.3	-6.0	+62	+5.8	+0.0	-0.2	+0.4	+2.1	+0.16	+0.28	+8	+\$126	+\$111	+\$137	+\$120
30	QBUK544	-2.3	-1.0	-1.7	+4.5	+45	+87	+114	+86	+21	+3.2	-7.0	+55	+6.3	+1.3	+2.7	+0.0	+2.1	+0.13	+0.17	--	+\$128	+\$113	+\$134	+\$123
31	QBUK197	+4.5	+1.6	-7.5	+3.3	+45	+97	+126	+95	+24	+2.6	-5.3	+66	+5.0	+1.0	+1.6	+0.5	+1.4	+0.10	+0.35	-11	+\$137	+\$124	+\$141	+\$134
32	QBUK465	-0.4	+1.6	-3.1	+5.9	+48	+86	+113	+102	+12	+1.4	-5.8	+62	+6.2	+0.3	-0.1	+0.1	+2.4	+0.22	+0.42	+8	+\$125	+\$113	+\$138	+\$118
33	QBUK446	+2.3	+1.3	-4.1	+4.1	+49	+88	+115	+114	+13	+3.4	-7.2	+66	+6.9	+0.2	-0.3	+0.1	+2.6	+0.19	+0.25	+19	+\$135	+\$119	+\$152	+\$125
34	QBUK470	+3.2	+1.7	-3.8	+2.1	+37	+75	+98	+66	+21	+1.9	-7.5	+52	+4.8	+2.6	+3.9	-0.8	+1.9	+0.09	+0.22	-5	+\$123	+\$110	+\$123	+\$120
35	QBUK451	+4.1	+3.6	-5.4	+3.5	+41	+81	+109	+105	+19	+1.8	-7.4	+55	+1.3	-0.3	+0.3	-0.9	+3.3	+0.09	+0.00	+6	+\$131	+\$112	+\$154	+\$118
36	QBUK406	+2.3	+1.6	-2.2	+3.1	+41	+74	+90	+55	+13	+0.0	-4.9	+51	+5.8	+0.5	-1.1	+0.4	+1.8	+0.16	+0.28	+21	+\$107	+\$109	+\$107	+\$107
37	QBUK669	+4.2	+4.0	-7.3	+3.0	+42	+81	+106	+91	+19	+0.8	-6.3	+58	+1.7	+1.0	+1.4	-1.3	+2.9	+0.07	+0.10	+7	+\$123	+\$110	+\$135	+\$116
38	QBUK463	-1.0	-1.4	-2.7	+5.0	+48	+86	+112	+102	+17	+2.8	-3.5	+75	+7.4	-1.5	-1.4	+1.0	+2.0	+0.21	+0.20	+1	+\$112	+\$107	+\$119	+\$109
39	QBUK691	+2.1	+3.3	-5.8	+3.6	+43	+80	+105	+89	+17	+1.5	-6.2	+56	+8.5	+0.7	-0.1	+0.7	+2.3	+0.15	+0.34	-1	+\$131	+\$119	+\$143	+\$125

40	QBUK670	+0.1	--	-4.3	+5.9	+50	+92	+116	+101	+10	+1.5	-3.5	+69	+3.0	-1.9	-1.9	+0.8	+1.9	-0.03	-0.21	-3	+5115	+5113	+5124	+5112
41	QBUK245	+3.4	+1.2	-5.2	+3.6	+46	+84	+113	+91	+21	+2.5	-4.1	+63	+6.6	-0.3	-0.5	+0.9	+1.8	+0.25	+0.36	-6	+5122	+5114	+5127	+5120
42	QBUK541	-0.4	+2.8	-6.3	+5.8	+48	+85	+116	+115	+10	+1.3	-4.2	+65	+6.2	-1.9	-2.0	+1.2	+2.0	-0.12	-0.14	+0	+5122	+5112	+5135	+5116
43	QBUK537	-3.5	-1.4	-4.6	+6.4	+51	+92	+113	+102	+14	+2.5	-4.0	+75	+3.5	-0.8	+0.6	+0.3	+2.2	+0.30	+0.49	+14	+5109	+5107	+5115	+5106



EBV Quick Reference for Burenda Clermont Bull Sale

Lot	Name/ID	Calving Ease Dir	Calving Ease Dtrs	Gest Length	Birth Wt	200 Day Wt	400 Day Wt	600 Day Wt	Mat Cow Wt	Milk	Scrotal Size	Days to Calving	Carc. Wt	EMA	Rib Fat	Rump Fat	RBV %	IMF %	NFI - P	NFI - F	Docility	Angus Breeding	Domestic	Heavy Grain	Heavy Grass
					Birth Wt. (kg)	200 Day Wt. (kg)	400 Day Wt. (kg)	600 Day Wt. (kg)	Mat. Cow Wt. (kg)	Milk (kg)	Scrotal Size (cm)	600 Day Wt. (kg)	600 Day Wt. (kg)	Mat. Cow Wt. (kg)	Milk (kg)	Scrotal Size (cm)	Carcass Wt. (kg)	Eye Muscle Area	Rib Fat (mm)	Rump Fat (mm)	Retail Beef Yield (%)	IMF (%)	Export Steer Index (\$)	Domestic Steer Index (\$)	
45	BURENDA KILT K833 (P) (AI) 2TP14FK833				-1.2	-1.0	+28.0	+28.0	+39.0	+1.0	-0.9	+18.0	+1.2	+1.0	-0.9	-0.7	+1.2	-0.7	-1.0	-0.6	+0.6	0.0	\$25	\$23	
46	BURENDA KHIU K819 (P) 2TP14FK819				-1.3	-0.3	+32.0	+35.0	+32.0	-	+1.4	+19.0	+1.9	+32.0	-	+1.4	+19.0	+1.9	-0.8	-1.3	+1.0	+0.1	\$33	\$33	
47	BURENDA GO BETWEEN K844 (P) (AI) 2TP14FK844				-0.1	+1.1	+25.0	+29.0	+31.0	0.0	+0.4	+14.0	+1.0	+31.0	0.0	+0.4	+14.0	+1.0	+0.3	0.0	+0.1	+0.2	\$20	\$21	
48	BURENDA KILO METRIC K918 (P) (AI) 2TP14EK918				-2.2	+1.1	+34.0	+34.0	+28.0	-	+1.7	+17.0	+2.0	+28.0	-	+1.7	+17.0	+2.0	+1.1	+1.3	-0.1	+0.2	\$29	\$30	
49	BURENDA KIBBLE K923 (P) (AI) 2TP14EK923				-0.5	+1.2	+22.0	+29.0	+28.0	-	-0.3	+12.0	+0.5	+28.0	-	-0.3	+12.0	+0.5	+0.3	+0.1	-0.3	+0.8	\$15	\$17	
50	BURENDA GERGER K843 (P) (AI) 2TP14FK843				-0.5	0.0	+14.0	+11.0	+5.0	+1.0	+2.6	+3.0	-0.6	+5.0	+1.0	+2.6	+3.0	-0.6	-0.4	-0.7	-0.2	+0.2	\$13	\$14	
51	BURENDA KIBBUTZ K932 (P) 2TP14EK932				-0.3	+1.3	+23.0	+26.0	+14.0	-	0.0	+13.0	+2.6	+14.0	-	0.0	+13.0	+2.6	+1.3	+1.5	+0.2	+0.4	\$18	\$19	
52	BURENDA KOLSO K814 (S) (AI) 2TP14FK814				+0.5	-0.7	+7.0	+13.0	+12.0	+5.0	-0.4	+10.0	+1.7	+5.0	+2.0	-0.4	+10.0	+1.7	+0.5	+0.3	+0.4	+0.3	\$13	\$11	
53	BURENDA KIDNEY K813 (P) (AI) 2TP14FK813				+0.9	-0.4	+8.0	+19.0	+20.0	+1.0	-0.3	+13.0	+1.1	+20.0	+1.0	-0.3	+13.0	+1.1	-1.0	-1.5	+0.6	+0.5	\$17	\$15	
54	BURENDA KAMDIO K829 (S) (AI) 2TP14FK829				-1.1	-0.7	+12.0	+24.0	+22.0	0.0	-1.8	+15.0	+1.2	+22.0	0.0	-1.8	+15.0	+1.2	-1.3	-1.8	+0.9	0.0	\$18	\$14	
55	BURENDA KILTER K809 (P) (AI) 2TP14EK809				+1.4	+0.4	+22.0	+20.0	+20.0	-4.0	-0.7	+12.0	+0.1	+20.0	-4.0	-0.7	+12.0	+0.1	-0.8	-1.3	+0.2	+0.2	\$14	\$10	
56	BURENDA KLAM K815 (P) (AI) 2TP14EK815				+0.1	+0.7	+15.0	+15.0	+23.0	0.0	-0.8	+7.0	-0.2	+23.0	0.0	-0.8	+7.0	-0.2	+0.5	+0.4	-0.4	+0.2	\$8	\$7	
57	BURENDA KLEVER K824 (P) 2TP14EK824				-1.5	-1.9	+13.0	+9.0	+7.0	-	+0.6	+4.0	-1.2	+7.0	-	+0.6	+4.0	-1.2	+0.9	+1.0	-0.9	+0.5	\$10	\$15	
58	BURENDA KIRSH K863 (P) 2TP14EK863				+0.5	+1.4	+28.0	+28.0	+18.0	-6.0	0.0	+17.0	+2.8	+18.0	-6.0	0.0	+17.0	+2.8	-0.3	-0.5	+1.0	+0.1	\$23	\$18	
59	BURENDA KINO K876 (P) 2TP14EK876				+0.1	-0.1	+17.0	+16.0	+16.0	-3.0	-0.5	+9.0	+0.8	+16.0	-3.0	-0.5	+9.0	+0.8	+1.4	+1.5	-0.5	+0.4	+@614	+@614	
60	BURENDA KIOSK K816 (S) (AI) 2TP14FK816				+0.5	-0.2	+10.0	+13.0	+7.0	-1.0	-0.3	+8.0	-0.6	+7.0	-1.0	-0.3	+8.0	-0.6	+0.4	+0.3	-0.6	+0.5	+@614	+@614	
61	BURENDA KING K826 (P) 2TP14FK826				+0.4	+0.6	+17.0	+14.0	+10.0	+2.0	+1.8	+9.0	+0.6	+10.0	+2.0	+1.8	+9.0	+0.6	-0.5	-0.9	+0.4	+0.1	\$16	\$16	
62	BURENDA KEYHOLE K928 (S) 2TP14EK928				-0.7	-0.7	+14.0	+14.0	+10.0	-	-0.9	+8.0	+0.4	+10.0	-	-0.9	+8.0	+0.4	0.0	-0.2	-0.2	+0.6	\$11	\$8	
63	BURENDA KIRRI K944 (P) (AI) 2TP14EK944				+0.1	+0.5	+14.0	+13.0	+19.0	-1.0	-0.5	+4.0	-1.1	+19.0	-1.0	-0.5	+4.0	-1.1	+1.3	+1.4	-1.0	+0.2	\$6	\$7	
64	BURENDA YELLOWSTONE K834 (P) (AI) 2TP14EK834				-0.3	+1.0	+19.0	+21.0	+25.0	0.0	+0.4	+9.0	-0.4	+25.0	0.0	+0.4	+9.0	-0.4	+0.9	+0.9	-0.7	+0.6	\$12	\$14	
65	BURENDA GO BETWEEN K840 (P) (AI) 2TP14FK840				+0.4	-0.1	+20.0	+25.0	+28.0	0.0	+2.2	+13.0	+2.6	+28.0	0.0	+2.2	+13.0	+2.6	+1.6	+1.7	-0.1	+0.8	\$24	\$32	
66	BURENDA KLEBER K825 (P) 2TP14EK825				-0.1	+0.7	+10.0	+10.0	+7.0	-	+0.3	+7.0	-0.1	+7.0	-	+0.3	+7.0	-0.1	+0.2	+0.2	-0.2	+0.2	\$12	\$10	
67	BURENDA KILTO K853 (P) 2TP14EK853				+0.3	+0.2	+16.0	+16.0	-4.0	-8.0	-0.8	+8.0	+1.3	-4.0	-8.0	-0.8	+8.0	+1.3	-0.5	-0.7	+0.6	-0.1	\$10	\$4	
68	BURENDA GEIGER L900 (P) (AI) 2TP15EL900				+0.5	+1.0	+7.0	+10.0	+6.0	-	+0.1	+5.0	+0.8	+6.0	-	+0.1	+5.0	+0.8	+0.2	0.0	+0.1	+0.2	\$6	\$7	
69	BURENDA BETWEEN L911 (P) 2TP15EL911				-0.1	+1.4	+14.0	+29.0	+30.0	-2.0	+0.3	+16.0	+1.8	+22.0	-2.0	+0.3	+16.0	+1.8	+0.3	+0.2	+0.4	+0.1	\$22	\$20	
	Breed Avg. EBVs for 2014 Born Calves				-0.5	-0.1	10	19	21	19	0	0.4	12	19	0	0.4	12	1.1	0.2	0.1	0.3	0.2	\$18	\$19	

Lot 23

BURENDA KLIPPEN K484

Society Ident: QBUK484

Born: 09/08/2014 Animal Grade: HBR Tattoo: TP (CJ) DOT K484 (T&F) Genetic Status: AMFU NHFU CAFU DDFU

TE MANIA YORKSHIRE Y437 (AI) TE MANIA YESHIVA Y490 (AI)
 TE MANIA BERKLEY B1 (AI) TE MANIA BENHOPE B580 (AI)
 TE MANIA LOWAN Z53 (AI) (ET) TE MANIA JEDDA Y526 (ACR) (AI) (ET)

QBUH40 BURENDA HAIKU H40 (AI) **QBUG329 BURENDA USHERETTE G329**
 BURENDA ANTWERP A17 WALLANGRA STATESMAN S24
 BURENDA DUTSIE D537 WALLANGRA USHERETTE B96
 BURENDA QUAIL Y45 (AI) (ET) WALLANGRA USHERETTE U91

Angus	July 2016 Angus Australia BREEDPLAN								
	BIRTH				GROWTH				
	Direct	Dtrs	Gest Lgth	Bth Wt	200 Wt	400 Wt	600 Wt	MCW	Milk
EBV	+2.3	+1.6	-5.1	+4.4	+47	+88	+113	+106	+14
ACC	45%	36%	59%	73%	67%	67%	64%	61%	47%

FERTILITY			CARCASE				FEED		
D to Calv	Scrotal	Carc. Wt	EMA	Rib Fat	Rump Fat	RBV%	IMF%	NFI-P	NFI-F
-5.7	+2.9	+62	+3.4	+1.6	+2.1	-1.0	+2.0	+0.20	+0.31
36%	70%	56%	56%	58%	59%	53%	51%	41%	40%

Traits Observed: CE,BWT,200WT,400WT,SS,FAT,EMA,IMF
 An all rounder on paper and plenty of performance to back it up. His sire Haiku has over 100 progeny out of heifers in a short while and he is certainly a worker. ACI 370 days.

INDEX VALUES			
Angus Breeding	Domestic	Heavy Grain	Heavy Grass
+\$119	+\$110	+\$123	+\$116

Purchaser: \$

Lot 24

BURENDA KISWAHLI K353 (APR) (AI)

Society Ident: QBUK353

Born: 27/07/2014 Animal Grade: APR Tattoo: TP (CJ) DOT K353 (T&F) Genetic Status: AMFU NHFU CAFU DD25%

BOOROOMOOKA UNDERTAKEN Y145 BON VIEW NEW DESIGN 1407
 RENNYLEA C277 (AI) (ET) SITZ NEW DESIGN 458N
 BOORHAMAN Y55 (AI) SITZ ELLUNAS ELITE 3308

VICF1 IRELANDS FLETCHER F1 **VCCE566 COOLANA E566 (APR) (AI)**
 VERMILION YELLOWSTONE HYLINERIGHT TIME 338 (ET)
 TE MANIA WARGOONA Z31 (AI) COOLANA B393 (AI)
 TE MANIA WARGOONA T285 (ACR) COOLANA U36

Angus	July 2016 Angus Australia BREEDPLAN								
	BIRTH				GROWTH				
	Direct	Dtrs	Gest Lgth	Bth Wt	200 Wt	400 Wt	600 Wt	MCW	Milk
EBV	+2.7	+2.8	-5.4	+3.6	+44	+83	+114	+96	+18
ACC	50%	44%	85%	74%	69%	69%	68%	63%	53%

FERTILITY			CARCASE				FEED		
D to Calv	Scrotal	Carc. Wt	EMA	Rib Fat	Rump Fat	RBV%	IMF%	NFI-P	NFI-F
-2.7	+1.3	+59	+2.7	-0.6	-0.4	-0.3	+2.5	+0.07	-0.04
38%	71%	58%	59%	60%	60%	55%	54%	43%	43%

Traits Observed: GL,CE,BWT,200WT,400WT,SS,FAT,EMA,IMF,DOC
 Top 20% for calving ease, gestation length and IMF. Angus Breeding, Domestic, Heavy Grain and Heavy Grass indices are all in the top 25%. ACI 369 days.

INDEX VALUES			
Angus Breeding	Domestic	Heavy Grain	Heavy Grass
+\$116	+\$107	+\$126	+\$113

Purchaser: \$

Lot 25

BURENDA KATOOMBA K557 (AI) (ET)

Society Ident: QBUK557

Born: 17/08/2014 Animal Grade: HBR Tattoo: TP (CJ) DOT K557 (T&F) Genetic Status: AMFU NHFU CAFU DD50%

S A F FOCUS OF E R PAPA EQUATOR 2928
 TE MANIA YORKSHIRE Y437 (AI) ARDROSSAN EQUATOR A241 (AI) (ET)
 TE MANIA LOWAN U275 (AI) (ET) ARDROSSAN PRINCESS W38 (AI) (ET)

VTMB1 TE MANIA BERKLEY B1 (AI) **QBUE18 BURENDA BEEAC E18 (AI) (ET)**
 KENNY'S CREEK SANDY S15 (AI) B/R NEW DESIGN 036
 TE MANIA LOWAN Z53 (AI) (ET) TE MANIA BEEAC U343 (AI) (ET)
 TE MANIA LOWAN V129 (ACR) (AI) (ET) TE MANIA BEEAC R342 (AI) (ET)

Angus	July 2016 Angus Australia BREEDPLAN								
	BIRTH				GROWTH				
	Direct	Dtrs	Gest Lgth	Bth Wt	200 Wt	400 Wt	600 Wt	MCW	Milk
EBV	+2.7	+4.2	-6.5	+4.2	+47	+83	+110	+112	+12
ACC	61%	58%	64%	75%	70%	70%	70%	68%	63%

FERTILITY			CARCASE				FEED		
D to Calv	Scrotal	Carc. Wt	EMA	Rib Fat	Rump Fat	RBV%	IMF%	NFI-P	NFI-F
-9.2	+3.0	+63	+3.0	-0.5	-0.6	-0.8	+3.7	+0.27	+0.40
57%	72%	65%	65%	66%	66%	64%	63%	59%	58%

Traits Observed: BWT,200WT,400WT,SS,FAT,EMA,IMF,DOC
 By AI ET with Berkley and Beac bloodlines present which support the top 1% for Days to Calving and IMF. Incredible Indices, top 1% for Heavy Grain, top 5% for Angus Breeding, Domestic and Heavy Grass. Ideal for targeting long fed angus steers. ACI Donor.

INDEX VALUES			
Angus Breeding	Domestic	Heavy Grain	Heavy Grass
+\$141	+\$118	+\$170	+\$124

Purchaser: \$

Lot 26

BURENDA KILT K370 (AI)

Society Ident: **QBUK370**

Born: **28/07/2014** Animal Grade: **HBR** Tattoo: **TP (CJ) DOT K370 (T&F)** Genetic Status: **AMFU NHFU CAFU DD25%**
 ARDROSSAN DIRECTION W109 (AI) (ET) SITZ NEW DESIGN 458N
 KAROO W109 DIRECTION Z181 SITZ JACKSON 431T
 KAROO FLATS MADONNA V56 (AI) SITZ EPPIONIA 105P
QHED62 CARABAR DOCKLANDS D62 (AI) **QBUG135 BURENDA ERICA G135 (AI)**
 BON VIEW NEW DESIGN 1407 COOLANA RIGHT TIME C71 (AI) (ET)
 CARABAR BLACKCAP MARY B12 (AI) (ET) COOLANA ERICA E229
 BOOROOMOOKA TRACY T4 (AI) (ET) COOLANA JUANA ERICA A27 (ACR) (AI) (ET)

Angus	July 2016 Angus Australia BREEDPLAN								
	BIRTH				GROWTH				
	Direct	Dtrs	Gest Lgth	Bth Wt	200 Wt	400 Wt	600 Wt	MCW	Milk
EBV	+2.6	+0.1	-4.1	+3.3	+41	+80	+112	+91	+22
ACC	55%	49%	85%	72%	68%	65%	65%	63%	58%

FERTILITY			CARCASE				FEED		
D to Calv	Scrotal	Carc. Wt	EMA	Rib Fat	Rump Fat	RBV%	IMF%	NFI-P	NFI-F
-5.4	+3.1	+55	+5.4	+0.8	+1.3	+0.3	+1.5	+0.22	+0.47
37%	58%	58%	54%	56%	55%	52%	53%	42%	43%

Traits Observed: *GL, BWT, 200WT(x2), 400WT, SS, FAT, EMA, IMF, DOC*
 Very sound EBVs are supported by an impressive high daily weight gain on lueceana and grass over the summer. ACI 373 days.

\$INDEX VALUES			
Angus Breeding	Domestic	Heavy Grain	Heavy Grass
+\$120	+\$108	+\$122	+\$119

Purchaser: \$

Lot 26 K370



Lot 27

BURENDA KOODOO K425 (AI)

Society Ident: **QBUK425**

Born: **02/08/2014** Animal Grade: **HBR** Tattoo: **TP (CJ) DOT K425 (T&F)** Genetic Status: **AMFU NHFU CAFU DD26%**
 ARDROSSAN DIRECTION W109 (AI) (ET) P A R B DESIGN PLUS 97
 KAROO W109 DIRECTION Z181 TULAGI DESIGN W01 (AI)
 KAROO FLATS MADONNA V56 (AI) TULAGI Q176 T93
QHED62 CARABAR DOCKLANDS D62 (AI) **QBUC359 BURENDA CRACKER C359**
 BON VIEW NEW DESIGN 1407 TULAGI POWER PACK V204
 CARABAR BLACKCAP MARY B12 (AI) (ET) TULAGI CELANDINE Y94
 BOOROOMOOKA TRACY T4 (AI) (ET) TULAGI CELANDINE V32

Angus	July 2016 Angus Australia BREEDPLAN								
	BIRTH				GROWTH				
	Direct	Dtrs	Gest Lgth	Bth Wt	200 Wt	400 Wt	600 Wt	MCW	Milk
EBV	+3.9	+2.2	-5.9	+3.2	+37	+79	+105	+89	+19
ACC	54%	47%	84%	74%	70%	70%	69%	67%	60%

FERTILITY			CARCASE				FEED		
D to Calv	Scrotal	Carc. Wt	EMA	Rib Fat	Rump Fat	RBV%	IMF%	NFI-P	NFI-F
-3.9	+3.2	+51	+1.4	+0.5	+1.2	+0.0	+1.1	+0.12	+0.35
38%	72%	61%	60%	61%	62%	57%	56%	44%	45%

Traits Observed: *GL, CE, BWT, 200WT, 400WT, SS, FAT, EMA, IMF, DOC*
 An ACI of 370 days over several calves on his maternal side is exceptional considering the variation in environmental influences over that time. Perfect EBVs for heifers.

\$INDEX VALUES			
Angus Breeding	Domestic	Heavy Grain	Heavy Grass
+\$104	+\$102	+\$101	+\$106

Purchaser: \$

Lot 28

BURENDA KELANG K565 (AI) (ET)

Society Ident: QBUK565

Born: 18/08/2014 Animal Grade: HBR Tattoo: TP (CJ) DOT K565 (T&F) Genetic Status: AMFU NHFU CAFU DDFU
 TE MANIA YORKSHIRE Y437 (AI) PAPA EQUATOR 2928
 TE MANIA BERKLEY B1 (AI) ARDROSSAN EQUATOR A241 (AI) (ET)
 TE MANIA LOWAN Z53 (AI) (ET) ARDROSSAN PRINCESS W38 (AI) (ET)
VTME343 TE MANIA EMPEROR E343 (AI) **QBUE17 BURENDA BEEAC E17 (AI) (ET)**
 B T ULTRAVOX 297E B/R NEW DESIGN 036
 TE MANIA LOWAN Z74 (AI) (ET) TE MANIA BEEAC U343 (AI) (ET)
 TE MANIA LOWAN V201 (AI) (ET) TE MANIA BEEAC R342 (AI) (ET)

Angus	July 2016 Angus Australia BREEDPLAN								
	BIRTH			GROWTH					
	Direct	Dtrs	Gest Lgth	Bth Wt	200 Wt	400 Wt	600 Wt	MCW	Milk
EBV	+1.4	+3.6	-4.4	+4.1	+44	+82	+107	+98	+15
ACC	62%	57%	65%	76%	72%	72%	71%	69%	63%

FERTILITY		CARCASE				FEED			
D to Calv	Scrotal	Carc. Wt	EMA	Rib Fat	Rump Fat	RBV%	IMF%	NFI-P	NFI-F
-7.0	+2.0	+55	+3.6	+0.4	+0.3	-0.2	+2.7	+0.10	+0.15
50%	73%	66%	65%	66%	67%	63%	63%	55%	55%

Traits Observed: BWT,200WT,400WT,SS,FAT,EMA,IMF,DOC
 Top genetics on offer, a Te Mania and Burenda Beeac mating with great potential. Top 10% for Angus Breeding, Domestic, Heavy Grain and Heavy Grass. ACI Donor.

\$INDEX VALUES			
Angus Breeding	Domestic	Heavy Grain	Heavy Grass
+\$128	+\$115	+\$144	+\$119

Purchaser: \$

Lot 29

BURENDA KALAMATA K521

Society Ident: QBUK521

Born: 13/08/2014 Animal Grade: HBR Tattoo: TP (CJ) DOT K521 (T&F) Genetic Status: AMFU NHFU CA7% DD25%
 TE MANIA YORKSHIRE Y437 (AI) VERMILION YELLOWSTONE
 TE MANIA BERKLEY B1 (AI) BURENDA YELLOWSTONE Y4 (AI) (ET)
 TE MANIA LOWAN Z53 (AI) (ET) BUNYA CREEK RICHMOND U11 (AI)
QBUG23 BURENDA GO BETWEEN G23 (AI) (ET) **QBUA59 BURENDA AMBER A59**
 ARDROSSAN EQUATOR A241 (AI) (ET) S A F 598 BANDO 5175
 BURENDA BEEAC E5 (AI) (ET) BURENDA FLOWER Y60 (AI) (ET)
 TE MANIA BEEAC U343 (AI) (ET) GLENOCH FLOWER M5+92 (AI)

Angus	July 2016 Angus Australia BREEDPLAN								
	BIRTH			GROWTH					
	Direct	Dtrs	Gest Lgth	Bth Wt	200 Wt	400 Wt	600 Wt	MCW	Milk
EBV	+0.7	+1.5	-3.8	+5.4	+50	+85	+117	+117	+13
ACC	47%	41%	59%	73%	68%	68%	65%	61%	50%

FERTILITY		CARCASE				FEED			
D to Calv	Scrotal	Carc. Wt	EMA	Rib Fat	Rump Fat	RBV%	IMF%	NFI-P	NFI-F
-6.0	+2.3	+62	+5.8	+0.0	-0.2	+0.4	+2.1	+0.16	+0.28
40%	72%	57%	57%	57%	58%	53%	52%	43%	44%

Traits Observed: CE,BWT,200WT,400WT,SS,FAT,EMA,IMF,DOC
 Kalamata's dam has a reliable ACI record of 362 days over eight progeny in both the Burenda Angus and Brangus herds. Climbing 10% and better for Angus Breeding, Domestic, Heavy Grain and Heavy Grass markets.

\$INDEX VALUES			
Angus Breeding	Domestic	Heavy Grain	Heavy Grass
+\$126	+\$111	+\$137	+\$120

Purchaser: \$

Lot 30

BURENDA KLEBER K544 (AI)

Society Ident: QBUK544

Born: 15/08/2014 Animal Grade: HBR Tattoo: TP (CJ) DOT K544 (T&F) Genetic Status: AMFU NHFU CAFU DD28%
 N BAR EMULATION EXT TE MANIA ULONG U41 (AI) (ET)
 LEACHMAN RIGHT TIME TE MANIA AFRICA A217 (AI)
 LEACHMAN ERICA 0025 TE MANIA JEDDA Y32 (AI) (ET)
USA24J BT RIGHT TIME 24J **QBUG304 BURENDA BEEAC G304 (AI) (ET)**
 TRAVELER 124 G D A R ARDROSSAN EQUATOR A241 (AI) (ET)
 SITZ EVERELDA ENTENSE 1905 BURENDA BEEAC E13 (AI) (ET)
 SITZ EVERELDA ENTENSE 1791 TE MANIA BEEAC U343 (AI) (ET)

Angus	July 2016 Angus Australia BREEDPLAN								
	BIRTH			GROWTH					
	Direct	Dtrs	Gest Lgth	Bth Wt	200 Wt	400 Wt	600 Wt	MCW	Milk
EBV	-2.3	-1.0	-1.7	+4.5	+45	+87	+114	+86	+21
ACC	58%	56%	84%	73%	69%	69%	67%	65%	59%

FERTILITY		CARCASE				FEED			
D to Calv	Scrotal	Carc. Wt	EMA	Rib Fat	Rump Fat	RBV%	IMF%	NFI-P	NFI-F
-7.0	+3.2	+55	+6.3	+1.3	+2.7	+0.0	+2.1	+0.13	+0.17
54%	72%	63%	63%	64%	65%	62%	60%	56%	56%

Traits Observed: GL,CE,BWT,200WT,400WT,SS,FAT,EMA,IMF
 BT Right Time has contributed a lot to our herd in previous years. Growth, fertility and carcass qualities are what you would expect from Kleber's offspring. ACI 368 days.

\$INDEX VALUES			
Angus Breeding	Domestic	Heavy Grain	Heavy Grass
+\$128	+\$113	+\$134	+\$123

Purchaser: \$

Lot 31

BURENDA KEYBOARD K197 (APR) (AI)

Society Ident: QBUK197

Born: 15/07/2014 Animal Grade: APR Tattoo: TP (CJ) DOT K197 (T&F) Genetic Status: AMFU NHFU CAFU DD29%
 ARDROSSAN DIRECTION W109 (AI) (ET) BT RIGHT TIME 24J
 KAROO W109 DIRECTION Z181 RENNYLEA F64 (APR) (AI) (ET)
 KAROO FLATS MADONNA V56 (AI) RENNYLEA B36 (APR) (AI) (ET)
QHED62 CARABAR DOCKLANDS D62 (AI) **QBUH492 BURENDA FUR H492 (APR)**
 BON VIEW NEW DESIGN 1407 TE MANIA BENHOPE B580 (AI)
 CARABAR BLACKCAP MARY B12 (AI) (ET) BURENDA FUR F80 (APR) (AI)
 BOOROOMOOKA TRACY T4 (AI) (ET) BURENDA DIAMOND D82 (APR)

Angus	July 2016 Angus Australia BREEDPLAN								
	BIRTH				GROWTH				
	Direct	Dtrs	Gest Lgth	Bth Wt	200 Wt	400 Wt	600 Wt	MCW	Milk
EBV	+4.5	+1.6	-7.5	+3.3	+45	+97	+126	+95	+24
ACC	53%	47%	84%	74%	69%	69%	67%	63%	55%

FERTILITY		CARCASS				FEED			
D to Calv	Scrotal	Carc. Wt	EMA	Rib Fat	Rump Fat	RBV%	IMF%	NFI-P	NFI-F
-5.3	+2.6	+66	+5.0	+1.0	+1.6	+0.5	+1.4	+0.10	+0.35
38%	72%	60%	60%	61%	62%	57%	56%	45%	45%

Traits Observed: GL,BWT,200WT,400WT,SS,FAT,EMA,IMF,DOC
 Cracker jack EBVs, near top 5% for all four market indices, AB, D, HG and HG. ACI 395 days.

INDEX VALUES			
Angus Breeding	Domestic	Heavy Grain	Heavy Grass
+\$137	+\$124	+\$141	+\$134

Purchaser: \$

Lot 32

BURENDA KINGLEE K465 (AI)

Society Ident: QBUK465

Born: 08/08/2014 Animal Grade: HBR Tattoo: TP (CJ) DOT K465 (T&F) Genetic Status: AMFU NHFU CAFU DDFU
 TE MANIA YORKSHIRE Y437 (AI) VERMILION YELLOWSTONE
 TE MANIA BERKLEY B1 (AI) GLENOCH ZAMBANI Z163 (AI)
 TE MANIA LOWAN Z53 (AI) (ET) GLENOCH FLOWER T101 (AI) (ET)
QBUG23 BURENDA GO BETWEEN G23 (AI) (ET) **QBGB270 GLENOCH KARANDA B270**
 ARDROSSAN EQUATOR A241 (AI) (ET) HOFF GOLD LABEL S C 900 541
 BURENDA BEEAC E5 (AI) (ET) GLENOCH KARANDA Z102 (AI)
 TE MANIA BEEAC U343 (AI) (ET) GLENOCH KARANDA V86

Angus	July 2016 Angus Australia BREEDPLAN								
	BIRTH				GROWTH				
	Direct	Dtrs	Gest Lgth	Bth Wt	200 Wt	400 Wt	600 Wt	MCW	Milk
EBV	-0.4	+1.6	-3.1	+5.9	+48	+86	+113	+102	+12
ACC	47%	40%	84%	74%	68%	69%	65%	61%	53%

FERTILITY		CARCASS				FEED			
D to Calv	Scrotal	Carc. Wt	EMA	Rib Fat	Rump Fat	RBV%	IMF%	NFI-P	NFI-F
-5.8	+1.4	+62	+6.2	+0.3	-0.1	+0.1	+2.4	+0.22	+0.42
40%	72%	57%	59%	60%	61%	55%	54%	44%	43%

Traits Observed: GL,CE,BWT,200WT,400WT,SS,FAT,EMA,IMF,DOC
 ACI 356 days over eight progeny and well suited to breed over cows for Angus Breeding and Heavy Grain Markets topping in the top 10%.

INDEX VALUES			
Angus Breeding	Domestic	Heavy Grain	Heavy Grass
+\$125	+\$113	+\$138	+\$118

Purchaser: \$

Lot 33

BURENDA KUMMER K446 (AI)

Society Ident: QBUK446

Born: 06/08/2014 Animal Grade: HBR Tattoo: TP (CJ) DOT K446 (T&F) Genetic Status: AMFU NH1% CAFU DD13%
 TE MANIA YORKSHIRE Y437 (AI) PONO OF KAWATIRI AB
 TE MANIA BERKLEY B1 (AI) YTHANBRAE PONO V346 (AI)
 TE MANIA LOWAN Z53 (AI) (ET) YTHANBRAE NEW DESIGN 036 T266 (AI)
QBUH40 BURENDA HAIKU H40 (AI) **QBUD178 BURENDA DAINTREE D178 (AI)**
 BURENDA ANTWERP A17 YTHANBRAE HENRY VIII U8 (AI) (ET)
 BURENDA DUTSIE D537 LAWSONS GAR HENRY VIII Z961 (AI)
 BURENDA QUAIL Y45 (AI) (ET) LAWSONS GAR PRECISION W789 (AI) (ET) (TW)

Angus	July 2016 Angus Australia BREEDPLAN								
	BIRTH				GROWTH				
	Direct	Dtrs	Gest Lgth	Bth Wt	200 Wt	400 Wt	600 Wt	MCW	Milk
EBV	+2.3	+1.3	-4.1	+4.1	+49	+88	+115	+114	+13
ACC	48%	39%	85%	74%	68%	69%	65%	62%	51%

FERTILITY		CARCASS				FEED			
D to Calv	Scrotal	Carc. Wt	EMA	Rib Fat	Rump Fat	RBV%	IMF%	NFI-P	NFI-F
-7.2	+3.4	+66	+6.9	+0.2	-0.3	+0.1	+2.6	+0.19	+0.25
38%	71%	58%	58%	60%	61%	55%	54%	44%	44%

Traits Observed: GL,CE,BWT,200WT,400WT,SS,FAT,EMA,IMF,DOC
 These last few Angus lots have some crunching numbers. Target all Markets with top 5% and better across all four indices. ACI 367 days.

INDEX VALUES			
Angus Breeding	Domestic	Heavy Grain	Heavy Grass
+\$135	+\$119	+\$152	+\$125

Purchaser: \$

Lot 34

BURENDA KABAMAN K470 (APR)

Society Ident: QBUK470

Born: 08/08/2014 Animal Grade: APR Tattoo: TP (CJ) DOT K470 (T&F) Genetic Status: AMFU NHFU CAFU DD53%

LEACHMAN RIGHT TIME BURENDA DYNAMITE D44 (AI)
 BT RIGHT TIME 24J BURENDA FILIGREE F146
 SITZ EVERELDA ENTENSE 1905 BURENDA CALLISTAMON C10 (AI)
NORF64 RENNYLEA F64 (APR) (AI) (ET) **QBUH470 BURENDA LASSIE H470**
 TWYNAM YARRAMAN Y17 (AI) TE MANIA BENHOPE B580 (AI)
 RENNYLEA B36 (APR) (AI) (ET) BURENDA LASSIE E278
 RENNYLEA W449 (APR) (AI) WALLANGRA LASSIE B81

Angus	July 2016 Angus Australia BREEDPLAN								
	BIRTH				GROWTH				
	Direct	Dtrs	Gest Lgth	Bth Wt	200 Wt	400 Wt	600 Wt	MCW	Milk
EBV	+3.2	+1.7	-3.8	+2.1	+37	+75	+98	+66	+21
ACC	46%	39%	54%	72%	66%	67%	63%	58%	48%

FERTILITY			CARCASE				FEED		
D to Calv	Scrotal	Carc. Wt	EMA	Rib Fat	Rump Fat	RBV%	IMF%	NFI-P	NFI-F
-7.5	+1.9	+52	+4.8	+2.6	+3.9	-0.8	+1.9	+0.09	+0.22
36%	70%	55%	56%	57%	58%	53%	50%	41%	41%

Traits Observed: CE,BWT,200WT,400WT,SS,FAT,EMA,IMF,DOC
 Truck home to put with heifers as we had a good run with Kabaman's sire over our heifers for a number of years. Low birth weight-short gestation traits coupled with positive carcass qualities, particularly Rib and Rump Fats. ACI 374 days.

INDEX VALUES			
Angus Breeding	Domestic	Heavy Grain	Heavy Grass
+\$123	+\$110	+\$123	+\$120

Purchaser: \$

Lot 35

BURENDA KRAKEN K451 (APR) (AI)

Society Ident: QBUK451

Born: 05/08/2014 Animal Grade: APR Tattoo: TP (CJ) DOT K451 (T&F) Genetic Status: AMFU NHFU CAFU DD5%

TE MANIA YORKSHIRE Y437 (AI) BON VIEW NEW DESIGN 1407
 TE MANIA BERKLEY B1 (AI) LAWSONS GAR FAIR DINKUM Z197 (AI) (ET)
 TE MANIA LOWAN Z53 (AI) (ET) G A R PRECISION 1900 (ET)
QBUG49 BURENDA GEIGER COUNTER G49 (AI) (ET) **NORC81 RENNYLEA C81 (APR) (AI)**
 ARDROSSAN EQUATOR A241 (AI) (ET) TE MANIA ULONG U41 (AI) (ET)
 BURENDA BEEAC E5 (AI) (ET) RENNYLEA A4 (APR) (AI)
 TE MANIA BEEAC U343 (AI) (ET) RENNYLEA Y145 (APR)

Angus	July 2016 Angus Australia BREEDPLAN								
	BIRTH				GROWTH				
	Direct	Dtrs	Gest Lgth	Bth Wt	200 Wt	400 Wt	600 Wt	MCW	Milk
EBV	+4.1	+3.6	-5.4	+3.5	+41	+81	+109	+105	+19
ACC	51%	43%	85%	75%	69%	70%	67%	64%	53%

FERTILITY			CARCASE				FEED		
D to Calv	Scrotal	Carc. Wt	EMA	Rib Fat	Rump Fat	RBV%	IMF%	NFI-P	NFI-F
-7.4	+1.8	+55	+1.3	-0.3	+0.3	-0.9	+3.3	+0.09	+0.00
43%	72%	59%	60%	60%	61%	56%	55%	49%	52%

Traits Observed: GL,CE,BWT,200WT,400WT,SS,FAT,EMA,IMF,DOC
 Terrific EBVs and ACI of 361 days over eight progeny. Top 5% for Angus Breeding and Heavy Grain.

INDEX VALUES			
Angus Breeding	Domestic	Heavy Grain	Heavy Grass
+\$131	+\$112	+\$154	+\$118

Purchaser: \$

Lot 36

BURENDA KNOT K406 (APR) (AI)

Society Ident: QBUK406

Born: 30/07/2014 Animal Grade: APR Tattoo: TP (CJ) DOT K406 (T&F) Genetic Status: AMFU NHFU CAFU DD27%

SITZ TRAVELER 8180 ARDROSSAN ADMIRAL A2 (AI) (ET)
 S A V FINAL ANSWER 0035 BURENDA EMBEZZLOR E130 (AI) (ET)
 S A V EMULOUS 8145 TE MANIA BEEAC U343 (AI) (ET)
USA15832579 CONNEALY ANSWER 71 **QBUG379 BURENDA WILCOOLA G379 (APR)**
 RITO 112 OF 2536 RITO 616 BONGONGO BULLETPROOF Z3 (AI)
 EURO REEKA OF CONANGA 3539 BURENDA DARK ANGEL D56 (APR) (AI) (ET)
 EURO COPA OF CONANGA 869 ABBOTSLEIGH WILCOOLA Y14 (APR)

Angus	July 2016 Angus Australia BREEDPLAN								
	BIRTH				GROWTH				
	Direct	Dtrs	Gest Lgth	Bth Wt	200 Wt	400 Wt	600 Wt	MCW	Milk
EBV	+2.3	+1.6	-2.2	+3.1	+41	+74	+90	+55	+13
ACC	44%	36%	84%	73%	67%	67%	65%	62%	53%

FERTILITY			CARCASE				FEED		
D to Calv	Scrotal	Carc. Wt	EMA	Rib Fat	Rump Fat	RBV%	IMF%	NFI-P	NFI-F
-4.9	+0.0	+51	+5.8	+0.5	-1.1	+0.4	+1.8	+0.16	+0.28
34%	70%	57%	56%	57%	57%	53%	51%	40%	40%

Traits Observed: GL,CE,BWT,200WT,400WT,SS,FAT,EMA,IMF,DOC
 Positive calving ease, low birth weight and docility EBVs, use for heifers. ACI 393 days.

INDEX VALUES			
Angus Breeding	Domestic	Heavy Grain	Heavy Grass
+\$107	+\$109	+\$107	+\$107

Purchaser: \$

Lot 37

BURENDA KOTAH K669

Society Ident: **QBUK669**
Verified to Sire

Born: **21/09/2014** Animal Grade: **HBR** Tattoo: **TP (CJ) DOT K669 (T&F)** Genetic Status: **AMFU NHFU CAFU DDFU**
 TE MANIA YORKSHIRE Y437 (AI) TE MANIA YESHIVA Y490 (AI)
 TE MANIA BERKLEY B1 (AI) TE MANIA BENHOPE B580 (AI)
 TE MANIA LOWAN Z53 (AI) (ET) TE MANIA JEDDA Y526 (ACR) (AI) (ET)
QBUG49 BURENDA GEIGER COUNTER G49 (AI) (ET) **QBUE74 BURENDA DORIS E74 (AI)**
 ARDROSSAN EQUATOR A241 (AI) (ET) HYLINE RIGHT TIME 338 (ET)
 BURENDA BEEAC E5 (AI) (ET) BULLIAC DORIS C16 (AI)
 TE MANIA BEEAC U343 (AI) (ET) BULLIAC DORIS X5 (AI)

Angus	July 2016 Angus Australia BREEDPLAN								
	BIRTH				GROWTH				
	Direct	Dtrs	Gest Lgth	Bth Wt	200 Wt	400 Wt	600 Wt	MCW	Milk
EBV	+4.2	+4.0	-7.3	+3.0	+42	+81	+106	+91	+19
ACC	50%	42%	66%	74%	68%	69%	67%	63%	52%

FERTILITY			CARCASE				FEED		
D to Calv	Scrotal	Carc. Wt	EMA	Rib Fat	Rump Fat	RBV%	IMF%	NFI-P	NFI-F
-6.3	+0.8	+58	+1.7	+1.0	+1.4	-1.3	+2.9	+0.07	+0.10
39%	71%	58%	59%	60%	61%	56%	54%	48%	50%

Traits Observed: CE,BWT,200WT,400WT,SS,FAT,EMA,IMF,DOC
 Plenty of Lots in this sale that are ideal heifer bulls with weight gain potential, this fellow included. ACI 373 days.

INDEX VALUES			
Angus Breeding	Domestic	Heavy Grain	Heavy Grass
+\$123	+\$110	+\$135	+\$116

Purchaser: \$

Lot 38

BURENDA KALOSAL K463 (APR) (AI)

Society Ident: **QBUK463**

Born: **08/08/2014** Animal Grade: **APR** Tattoo: **TP (CJ) DOT K463 (T&F)** Genetic Status: **AMFU NHFU CAFU DD25%**
 PAPA POWER 096 BR MIDLAND
 PAPA EQUATOR 2928 DUNOON MIDLAND A017 (AI) (ET)
 PAPA ENVIOUS BLACKBIRD 8849 DUNOON DANDLOO W035 (AI) (ET)
NAQA241 ARDROSSAN EQUATOR A241 (AI) (ET) **BNAD137 TUWHARETOA D137 (APR) (AI)**
 B/R NEW DIMENSION 7127 TUWHARETOA X50 (APR) (AI)
 ARDROSSAN PRINCESS W38 (AI) (ET) TUWHARETOA Z251 (APR)
 ARDROSSAN PRINCESS U24 (AI) (ET) TUWHARETOA X101 (APR) (AI)

Angus	July 2016 Angus Australia BREEDPLAN								
	BIRTH				GROWTH				
	Direct	Dtrs	Gest Lgth	Bth Wt	200 Wt	400 Wt	600 Wt	MCW	Milk
EBV	-1.0	-1.4	-2.7	+5.0	+48	+86	+112	+102	+17
ACC	58%	54%	85%	75%	70%	71%	69%	67%	62%

FERTILITY			CARCASE				FEED		
D to Calv	Scrotal	Carc. Wt	EMA	Rib Fat	Rump Fat	RBV%	IMF%	NFI-P	NFI-F
-3.5	+2.8	+75	+7.4	-1.5	-1.4	+1.0	+2.0	+0.21	+0.20
52%	73%	64%	64%	65%	66%	62%	61%	55%	55%

Traits Observed: GL,CE,BWT,200WT,400WT,SS,FAT,EMA,IMF,DOC
 An old favourite in Kalosal's sire Equator with well over 6000 recorded progeny since 2005. ACI 368 days.

INDEX VALUES			
Angus Breeding	Domestic	Heavy Grain	Heavy Grass
+\$112	+\$107	+\$119	+\$109

Purchaser: \$

Lot 39

BURENDA KOONDROOK K691 (APR)

Society Ident: **QBUK691**

Born: **12/09/2014** Animal Grade: **APR** Tattoo: **TP (CJ) DOT K691 (T&F)** Genetic Status: **AMFU NHFU CA6% DD31%**
 TE MANIA YORKSHIRE Y437 (AI) G A R PREDESTINED
 TE MANIA BERKLEY B1 (AI) RENNYLEA C526 (APR) (AI) (ET)
 TE MANIA LOWAN Z53 (AI) (ET) RENNYLEA W449 (APR) (AI)
QBUG23 BURENDA GO BETWEEN G23 (AI) (ET) **NORF781 RENNYLEA F781 (APR)**
 ARDROSSAN EQUATOR A241 (AI) (ET) TE MANIA ULONG U41 (AI) (ET)
 BURENDA BEEAC E5 (AI) (ET) RENNYLEA C781 (APR) (AI) (ET)
 TE MANIA BEEAC U343 (AI) (ET) RENNYLEA S78 (APR) (AI)

Angus	July 2016 Angus Australia BREEDPLAN								
	BIRTH				GROWTH				
	Direct	Dtrs	Gest Lgth	Bth Wt	200 Wt	400 Wt	600 Wt	MCW	Milk
EBV	+2.1	+3.3	-5.8	+3.6	+43	+80	+105	+89	+17
ACC	47%	41%	60%	73%	68%	68%	65%	62%	51%

FERTILITY			CARCASE				FEED		
D to Calv	Scrotal	Carc. Wt	EMA	Rib Fat	Rump Fat	RBV%	IMF%	NFI-P	NFI-F
-6.2	+1.5	+56	+8.5	+0.7	-0.1	+0.7	+2.3	+0.15	+0.34
40%	71%	57%	58%	59%	60%	55%	54%	45%	44%

Traits Observed: CE,BWT,200WT,400WT,SS,FAT,EMA,IMF,DOC
 A smooth EBV bull to join over heifers. Small early born calves that grow explosively with promising carcass traits. Near top 5% for Angus Breeding, Domestic, Heavy Grain and Heavy Grass Markets. ACI 369 days.

INDEX VALUES			
Angus Breeding	Domestic	Heavy Grain	Heavy Grass
+\$131	+\$119	+\$143	+\$125

Purchaser: \$

Lot 40

BURENDA KODIAK K670 (APR)

Society Ident: QBUK670

Born: 06/09/2014 Animal Grade: APR Tattoo: TP (CJ) DOT K670 (T&F) Genetic Status: AM2% NH3% CA3% DD15%
 BURENDA DYNAMITE D44 (AI) YTHANBRAE GARDINER U3 (AI) (ET)
 BURENDA FILIGREE F146 RAFF GARDINER X6 (APR)
 BURENDA CALLISTAMON C10 (AI) RAFF DORIS V74 (APR)
QBUH424 BURENDA HIGHLANDER H424 **QBUA96 BURENDA A96 (APR)**
 TE MANIA BENHOPE B580 (AI)
 BURENDA FEDERATION E286
 VALORBROOK FEDERATION B3 (AI)

Angus	July 2016 Angus Australia BREEDPLAN								
	BIRTH				GROWTH				
	Direct	Dtrs	Gest Lgth	Bth Wt	200 Wt	400 Wt	600 Wt	MCW	Milk
EBV	+0.1	--	-4.3	+5.9	+50	+92	+116	+101	+10
ACC	29%		44%	66%	60%	61%	57%	52%	45%

FERTILITY			CARCASE				FEED			
D to Calv	Scrotal	Carc. Wt	EMA	Rib Fat	Rump Fat	RBV%	IMF%	NFI-P	NFI-F	
-3.5	+1.5	+69	+3.0	-1.9	-1.9	+0.8	+1.9	-0.03	-0.21	
26%	66%	48%	50%	50%	52%	46%	42%	32%	31%	

Traits Observed: BWT,200WT,400WT,SS,FAT,EMA,IMF,DOC
 A few generations of Burenda blood in this fellow and is up with his mates on daily weight gain. Excellent ACI over several calves of 368 days. Progeny would excel on grain.

\$INDEX VALUES			
Angus Breeding	Domestic	Heavy Grain	Heavy Grass
+\$115	+\$113	+\$124	+\$112

Purchaser: \$

Lot 41

BURENDA KICKER K245 (AI)

Society Ident: QBUK245

Born: 19/07/2014 Animal Grade: HBR Tattoo: TP (CJ) DOT K245 (T&F) Genetic Status: AMFU NHFU CAFU DD19%
 ARDROSSAN DIRECTION W109 (AI) (ET) ARDROSSAN EQUATOR A241 (AI) (ET)
 KAROO W109 DIRECTION Z181 BURENDA FICKLE F134 (AI) (ET)
 KAROO FLATS MADONNA V56 (AI) LAWSONS NEW DESIGN 1407 Z1362 (AI)
QHED62 CARABAR DOCKLANDS D62 (AI) **QBUH809 BURENDA DELIGHT H809**
 BON VIEW NEW DESIGN 1407 LAWSONS DINKY-DI Z191 (AI) (ET)
 CARABAR BLACKCAP MARY B12 (AI) (ET) BURENDA DELIGHT D66 (AI)
 BOOROOMOOKA TRACY T4 (AI) (ET) VALORBROOK NEGRESS B24

Angus	July 2016 Angus Australia BREEDPLAN								
	BIRTH				GROWTH				
	Direct	Dtrs	Gest Lgth	Bth Wt	200 Wt	400 Wt	600 Wt	MCW	Milk
EBV	+3.4	+1.2	-5.2	+3.6	+46	+84	+113	+91	+21
ACC	53%	48%	84%	74%	69%	70%	67%	64%	57%

FERTILITY			CARCASE				FEED			
D to Calv	Scrotal	Carc. Wt	EMA	Rib Fat	Rump Fat	RBV%	IMF%	NFI-P	NFI-F	
-4.1	+2.5	+63	+6.6	-0.3	-0.5	+0.9	+1.8	+0.25	+0.36	
39%	72%	60%	60%	61%	62%	57%	56%	45%	46%	

Traits Observed: GL,BWT,200WT,400WT,SS,FAT,EMA,IMF,DOC
 The last Docklands sired son with a use for heifers or cows and up high with all Market Indices. ACI 374 days.

\$INDEX VALUES			
Angus Breeding	Domestic	Heavy Grain	Heavy Grass
+\$122	+\$114	+\$127	+\$120

Purchaser: \$

Lot 42

BURENDA KANO K541

Society Ident: QBUK541

Born: 15/08/2014 Animal Grade: HBR Tattoo: TP (CJ) DOT K541 (T&F) Genetic Status: AMFU NH25% CAFU DD42%
 TE MANIA YORKSHIRE Y437 (AI) HYLIN RIGHT TIME 338 (ET)
 TE MANIA BERKLEY B1 (AI) BURENDA DYNAMITE D44 (AI)
 TE MANIA LOWAN Z53 (AI) (ET) LAWSONS NEW DESIGN 1407 Z1239 (AI)
QBUH294 BURENDA HEAVY METAL H294 (AI) (ET) **QBUF174 BURENDA SHIRLEY F174**
 BONGONGO BULLETPROOF Z3 (AI) TULAGI DESIGN W01 (AI)
 BURENDA DUCKIE D11 (AI) BURENDA CURVY C333
 BURENDA ZOLINDA Z26 (AI) TULAGI SHIRLEY X139

Angus	July 2016 Angus Australia BREEDPLAN								
	BIRTH				GROWTH				
	Direct	Dtrs	Gest Lgth	Bth Wt	200 Wt	400 Wt	600 Wt	MCW	Milk
EBV	-0.4	+2.8	-6.3	+5.8	+48	+85	+116	+115	+10
ACC	42%	35%	53%	70%	64%	65%	62%	59%	47%

FERTILITY			CARCASE				FEED			
D to Calv	Scrotal	Carc. Wt	EMA	Rib Fat	Rump Fat	RBV%	IMF%	NFI-P	NFI-F	
-4.2	+1.3	+65	+6.2	-1.9	-2.0	+1.2	+2.0	-0.12	-0.14	
36%	69%	54%	55%	56%	57%	52%	49%	41%	40%	

Traits Observed: CE,BWT,200WT,400WT,SS,FAT,EMA,IMF,DOC
 Nice numbers and by a bull I thought a lot of at the time. Top 15% for Angus Breeding, Domestic, Heavy Grain and Heavy Grass Markets. ACI 375 days.

\$INDEX VALUES			
Angus Breeding	Domestic	Heavy Grain	Heavy Grass
+\$122	+\$112	+\$135	+\$116

Purchaser: \$

Lot 43

BURENDA KANGSHAN K537 (AI) (ET)

Society Ident: **QBUK537**

Born: **14/08/2014** Animal Grade: **HBR** Tattoo: **TP (CJ) DOT K537 (T&F)** Genetic Status: **AMFU NHFU CAFU DDFU**
 VERMILION DATELINE 7078 PAPA EQUATOR 2928
 J & C APPEAL A10 (AI) ARDROSSAN EQUATOR A241 (AI) (ET)
 J & C MISS CHEYENNE W3 (AI) (ET) ARDROSSAN PRINCESS W38 (AI) (ET)
BCHE11 J & C EVIDENCE E11 **QBUE7 BURENDA BEEAC E7 (AI) (ET)**
 S A F 598 BANDO 5175 B/R NEW DESIGN 036
 J & C DAISY'S 5175 A2 (AI) TE MANIA BEEAC U343 (AI) (ET)
 LANCAMAREE DAISY T3 (AI) TE MANIA BEEAC R342 (AI) (ET)

Angus	July 2016 Angus Australia BREEDPLAN								
	BIRTH				GROWTH				
	Direct	Dtrs	Gest Lgth	Bth Wt	200 Wt	400 Wt	600 Wt	MCW	Milk
EBV	-3.5	-1.4	-4.6	+6.4	+51	+92	+113	+102	+14
ACC	50%	42%	62%	75%	70%	70%	68%	63%	52%

FERTILITY			CARCASE				FEED		
D to Calv	Scrotal	Carc. Wt	EMA	Rib Fat	Rump Fat	RBV%	IMF%	NFI-P	NFI-F
-4.0	+2.5	+75	+3.5	-0.8	+0.6	+0.3	+2.2	+0.30	+0.49
43%	71%	62%	62%	63%	63%	59%	58%	50%	52%

Traits Observed: **BWT,200WT,400WT,SS,FAT,EMA,IMF,DOC**
 Burenda Kangshan will mature into a fine young bull. His dam has been a favourite donor over the years with over 27 excellent sons and daughters. ACI Donor.

\$INDEX VALUES			
Angus Breeding	Domestic	Heavy Grain	Heavy Grass
+\$109	+\$107	+\$115	+\$106

Purchaser: \$

Ag Solutions AUSTRALIA

Burenda Angus and Brangus are proud users of MegaMin Livestock Supplements and NatraMin Mineral Fertiliser and Soil Conditioners.

MegaMin
Livestock Supplements

NatraMin
Mineral Fertiliser & Soil Conditioners

Products and services available:
 Livestock Supplements (including USDA/NOP Organic Blends), Feed Ration Testing, Feed Ration Formulations, Fertiliser and Soil Conditioners, Soil Testing, and Soil Management Programs.

Contact us today on 1800 81 57 57 and mention this ad to receive a

FREE feed ration formulation service valued at **\$150 inc gst**

*Offer expires 31/12/16. For more information contact us on 1800 81 57 57

Johnathan Schmidt, 'Dalby Downs'

Lot 45

BURENDA KILT K833 (P) (AI) 2TP14FK833

Society Ident: 2TP14FK833

Born: 26/08/2014

TE MANIA YORKSHIRE Y437 (P) PED03X5181
 TE MANIA BERKLEY B1 (P) PED06X5183
 TE MANIA LOWAN Z53 (P) PED04X5182
BURENDA HAIKU H40 (P) (AI) ANG12EH40
 BURENDA ANTWERP A17 (P) ANG05EA017
 BURENDA DUTSIE D537 (P) ANG08X5711
 BURNEDA QUAIL Y45 (P) ANG03EY45

MR. V8 777/2 (S) PEDBL0777
 MR V8 217/3 (P) IMUBP0217
 GRACEY OF SUGARLAND 118 (S) PEDBL0118
BURENDA KATHERINE (P) (AI) 2TP04EZ127
 ANGUS COW (P) 99914F



July 2016 Brangus GROUP BREEDPLAN							
Gest Lgth	Bth Wt	200 Wt	400 Wt	600 Wt	MCW	Milk	
-1.2	-1	12	28	28	39		
55%	72%	64%	61%	58%	45%		
Scrotal	EMA	Rib Fat	Rump Fat	RBV%	IMF%		
-0.9	1.2	-0.7	-1	0.6	0		
68%	40%	50%	50%	40%	38%		

75% Angus content and poll. Top 15% for gestation length and birth weight presenting Kilt as a heifer bull with good carcass traits. Top 15% for carcass weight and well above 30% for growth. His sire Haiku has been used with great success over our angus and Brangus heifers. ACI of 356 days over 9 calves.

Breed Object Index Values	
Domestic Steer Index	Export Steer Index
\$23	\$25

Purchaser..... \$.....

Lot 45 2TP14FK833



Lot 46 2TP14FK819



Lot 46

BURENDA KHIU K819 (P) 2TP14FK819

Society Ident: 2TP14FK819

Born: 22/08/2014

TE MANIA YORKSHIRE Y437 (P) PED03X5181
 TE MANIA BERKLEY B1 (P) PED06X5183
 TE MANIA LOWAN Z53 (P) PED04X5182
BURENDA HAIKU H40 (P) (AI) ANG12EH40
 BURENDA ANTWERP A17 (P) ANG05EA017
 BURENDA DUTSIE D537 (P) ANG08X5711
 BURNEDA QUAIL Y45 (P) ANG03EY45

ARDROSSAN ADMIRAL A2 (P) (AI) (ET) ANG05ENQA2
 BURENDA ELECTRIC E124 (P) ANG09EQBUE124
 TE MANIA BEEAC U280 (P) PED99X4710
BURENDA ELECTRIC G785 (P) 2TP11EG785
 EL JA HEADERLINER (H) PED04X4717
 DELTA GROVE DOREEN ESC HL MANSO (H) BRA09ELES5393
 DELTA GROVE DOREEN ESC MANSO (H) PED04X4771



July 2016 Brangus GROUP BREEDPLAN							
Gest Lgth	Bth Wt	200 Wt	400 Wt	600 Wt	MCW	Milk	
-1.3	-0.3	15	32	35	32		
36%	73%	55%	55%	52%	35%		
Scrotal	EMA	Rib Fat	Rump Fat	RBV%	IMF%		
1.4	1.9	-0.8	-1.3	1	0.1		
60%	33%	41%	41%	32%	30%		

75% Angus content and poll. Another quality Haiku son. Top 10% gestation, top 15% 400 and 600 day growth, top 10% scrotal, carcass weight, eye muscle area and retail beef yield. Excellent Export and Domestic indices in the top 5%. ACI 402 days.

Breed Object Index Values	
Domestic Steer Index	Export Steer Index
\$33	\$33

Purchaser..... \$.....

Lot 47

BURENDA GO BETWEEN K844 (P) (AI) 2TP14FK844

Society Ident: 2TP14FK844

Born: 29/08/2014

TE MANIA YORKSHIRE Y437 (P) PED03X5181
 TE MANIA BERKLEY B1 (P) PED06X5183
 TE MANIA LOWAN Z53 (P) PED04X5182
BURENDA GO BETWEEN G23 (P) (ET) ANG11EQBUG23
 ARDROSSAN EQUATOR A241 (P) (AI) (ET) ANG05EA241
 BURENDA BEEAC E5 (P) PED09X5179
 TE MANIA BEEAC U343 (P) (AI) (ET) PED99X5158

XS JOHNNY LEE 369H (S) PED98R369H
 GREENDALE Z383 (P) GRE04RZ383
 GREENDALE SPLENDENT (P) GRE99RS128
BURENDA BRAMLEIGH E519 (P) 2TP09FE519
 KJ JESS MANSO (S) PED96X3719
 BRAHMLEIGH KATIE J 1301 (H) BRA02E1301
 BUCKO DOWAGER (S) PED96X3734



July 2016 Brangus GROUP BREEDPLAN							
Gest Lgth	Bth Wt	200 Wt	400 Wt	600 Wt	MCW	Milk	
-0.1	1.1	14	25	29	31		
59%	73%	66%	63%	60%	44%		
Scrotal	EMA	Rib Fat	Rump Fat	RBV%	IMF%		
0.4	1	0.3	0	0.1	0.2		
69%	42%	52%	52%	43%	41%		

64% Angus content and poll. A little more tropical type sire with excellent breeding by Go Between who has well over 223 recorded progeny in the Burenda herd in a short while. Good growth EBVs. ACI 380 days.

Breed Object Index Values	
Domestic Steer Index	Export Steer Index
\$21	\$20

Purchaser..... \$.....

Lot 48

BURENDA KILO METRIC K918 (P) (AI) 2TP14EK918

Society Ident: 2TP14EK918

Born: 21/07/2014

SITZ TRAVELER 8180 (P) PED90X5578
 S A V FINAL ANSWER 0035 (P) PED00X5724
 S A V EMULOUS 8145 (P) PED96X5713
S A V MUSTANG 9134 (P) ANG09E9134
 S A V NET WORTH 4200 (S) (AI) PED04X4290
 S A V EMBLYNETTE 7415 (P) PED05X5716
 S A V EMBLYNETTE 7260 (P) PED98X5709

TE MANIA YESHIVA Y490 (P) (AI) PED03X5151
 TE MANIA BENHOPE B580 (P) (AI) ANG06EVTMB580
 TE MANIA JEDDA Y526 (P) (AI) (ET) PED03X5150
BURENDA DALLAS H528 (P) (AI) 2TP12FH528
 GREENDALE QANTAS (P) GRE97R1077
 BURENDA DALLAS F519 (P) (AI) 2TP10RF519
 BURENDA DALLAS (P) 2TP08FD359



July 2016 Brangus GROUP BREEDPLAN							
Gest Lgth	Bth Wt	200 Wt	400 Wt	600 Wt	MCW	Milk	
-2.2	1.1	21	34	34	28		
56%	71%	62%	59%	55%	37%		
Scrotal	EMA	Rib Fat	Rump Fat	RBV%	IMF%		
1.7	1.2	1.1	1.3	-0.1	0.2		
66%	38%	47%	47%	38%	35%		

86% Angus content and poll. A fertile heifers first calf with grunt. Near top 10% for all growth, Rib and Rump fats. Placing his indices in the top 5% for Domestic and Export markets. A bull well suited to cross breeding. ACI 390 days.

Breed Object Index Values	
Domestic Steer Index	Export Steer Index
\$30	\$29

Purchaser..... \$.....

Lot 49

BURENDA KIBBLE K923 (P) (AI) 2TP14EK923

Society Ident: 2TP14EK923

Born: 23/07/2014

TE MANIA YORKSHIRE Y437 (P) PED03X5181
 TE MANIA BERKLEY B1 (P) PED06X5183
 TE MANIA LOWAN Z53 (P) PED04X5182
BURENDA GOLDRUNNER G242 (P) (AI) (ET) ANG11EG242
 ARDROSSAN EQUATOR A241 (P) (AI) (ET) ANG05EA241
 BURENDA BEEAC E13 (P) (AI) (ET) PED09X5707
 TE MANIA BEEAC U343 (P) (AI) (ET) PED99X5158

ARDROSSAN ADMIRAL A2 (P) (AI) (ET) ANG05ENAQA2
 BURENDA ELECTRIC E124 (P) ANG09EQBUE124
 TE MANIA BEEAC U280 (P) PED99X4710
BURENDA ZAUL H549 (P) (AI) 2TP12FH549
 BURENDA ZAUL (P) (AI) ANG04EZ35
 BURENDA ZAUL E615 (S) 2TP09EE615
 BRAHMLEIGH MARIE (H) PED01X3922



July 2016 Brangus GROUP BREEDPLAN							
Gest Lgth	Bth Wt	200 Wt	400 Wt	600 Wt	MCW	Milk	
-0.5	1.2	16	22	29	28		
40%	72%	60%	58%	54%	37%		
Scrotal	EMA	Rib Fat	Rump Fat	RBV%	IMF%		
-0.3	0.5	0.3	0.1	-0.3	0.8		
66%	38%	47%	47%	38%	35%		

87% Angus content and poll. A moderate growth bull with excellent IMF EBV in the top 5%. An ACI of 383 days on his dams side over two calves.

Breed Object Index Values	
Domestic Steer Index	Export Steer Index
\$17	\$15

Purchaser..... \$.....

Lot 50

BURENDA GERGER K843 (P) (AI) 2TP14FK843

Society Ident: 2TP14FK843

Born: 29/08/2014

TE MANIA YORKSHIRE Y437 (P) PED03X5181
 TE MANIA BERKLEY B1 (P) PED06X5183
 TE MANIA LOWAN Z53 (P) PED04X5182
BURENDA GEIGER COUNTER G49 (P) ANG11EQBUG49
 ARDROSSAN EQUATOR A241 (P) (AI) (ET) ANG05EA241
 BURENDA BEEAC E5 (P) PED09X5179
 TE MANIA BEEAC U343 (P) (AI) (ET) PED99X5158

BRANGUS BULL (P) 99915M
 BURENDA EXOTIC (P) 2TP03EY117
 BURENDA SERENA 273 (P) 2TP01E273
BURENDA B570 (P) 2TP06FB570
 GLEN HEART 753 (P) 21099R753
 MUTDAWARRAH Z02 (P) ODU04RZ02
 MUTDAWARRAH V130 (P) ODU00RV130



July 2016 Brangus GROUP BREEDPLAN						
Gest Lgth	Bth Wt	200 Wt	400 Wt	600 Wt	MCW	Milk
-0.5	0	8	14	11	5	
60%	74%	66%	64%	60%	42%	
Scrotal	EMA	Rib Fat	Rump Fat	RBV%	IMF%	
2.6	-0.6	-0.4	-0.7	-0.2	0.2	
68%	42%	52%	52%	42%	41%	

73% Angus content and poll. His sire Geiger Counter has been instrumental in producing early born small calves that grow well over our angus and Brangus heifers each year. Fertility excellent with top 1% for scrotal. ACI 361 days on his dams side over 6 calves confirms his fertility and gestation length.

Breed Object Index Values	
Domestic Steer Index	Export Steer Index
\$14	\$13

Purchaser..... \$.....

Lot 50 2TP14FK843



Lot 51 2TP14EK932



Lot 51

BURENDA KIBBUTZ K932 (P) 2TP14EK932

Society Ident: 2TP14EK932

Born: 17/08/2014

S A V HEAVY HITTER 6347 (P) PED06X4881
BURENDA HARMLESS H197 (P) (AI) ANG12EH197
 TE MANIA BENHOPE B580 (P) (AI) ANG06EVTMB580
 BURENDA PRINCESS E83 (P) (AI) PED09X5718
 BURENDA CALLISTAMON C10 (P) (AI) PED07X5714

ARDCAIRNIE MIDLAND Z57 (P) (AI) PED04X5155
 TE MANIA DISCREET D894 (P) ANG08EVTMD894
 TE MANIA QUEANBEYAN Z387 (P) (AI) PED04X5156
BURENDA ROBYN H536 (P) (AI) 2TP12EH536
 GREENDALE Z383 (P) GRE04RZ383
 BURENDA ROBYN F537 (P) 2TP10RF537
 BURENDA ROBYN A140 (P) 2TP05FA140



July 2016 Brangus GROUP BREEDPLAN						
Gest Lgth	Bth Wt	200 Wt	400 Wt	600 Wt	MCW	Milk
-0.3	1.3	14	23	26	14	
40%	72%	60%	59%	54%	37%	
Scrotal	EMA	Rib Fat	Rump Fat	RBV%	IMF%	
0	2.6	1.3	1.5	0.2	0.4	
66%	39%	49%	49%	39%	37%	

88% Angus content and poll. Excellent growth and carcase traits displayed in Kibbutz. Top 5% for EMA, Rib and Rump fats and top 20% for IMF. ACI 388 days between the first and second calf on his dams side.

Breed Object Index Values	
Domestic Steer Index	Export Steer Index
\$19	\$18

Purchaser..... \$.....

Lot 52

BURENDA KOLSO K814 (P) (AI) 2TP14FK814

Society Ident: 2TP14FK814

Born: 19/08/2014

PAPA EQUATOR 2928 (S) PED92X4497
 ARDROSSAN EQUATOR A241 (P) (AI) (ET) ANG05EA241
 ARDROSSAN PRINCESS W38 (P) (AI) (ET) PED01X1517
BURENDA ECHO E4 (P) (AI) (ET) ANG09EQBUE4
 B/R NEW DESIGN 036 (S) PED01X1426
 TE MANIA BEEAC U343 (P) (AI) (ET) PED99X5158
 TE MANIA BEEAC R342 (P) PED96X4709

ANGUS BULL (S) 99913M
 BURENDA ANGUS 456 (P) PED04X3960
 ANGUS COW (P) 99914F
BURENDA D428 (P) 2TP08ED428
 FBC D SPRINGER GRAND MANSO (S) PED98X3726
 BRAHMLEIGH GRETTEL (H) BRA01EJJS1147
 BUCKO DEL E MANSO (H) PED97X3998



July 2016 Brangus GROUP BREEDPLAN							
Gest Lgth	Bth Wt	200 Wt	400 Wt	600 Wt	MCW	Milk	
0.5	-0.7	7	13	12	5		
56%	73%	64%	62%	59%	46%		
Scrotal	EMA	Rib Fat	Rump Fat	RBV%	IMF%		
-0.4	1.7	0.5	0.3	0.4	0.3		
68%	39%	49%	49%	39%	37%		

75% Angus content and scurred. Top 20% EMA with moderate growth and carcass data suggesting a use over heifers. ACI 364 days over 5 calves.

Breed Object Index Values	
Domestic Steer Index	Export Steer Index
\$11	\$13

Purchaser..... \$.....

Lot 53

BURENDA KIDNEY K813 (P) (AI) 2TP14FK813

Society Ident: 2TP14FK813

Born: 17/08/2014

VERMILION DATELINE 7078 (S) PED04X2214
 VERMILION YELLOWSTONE (S) PED04X2216
 VERMILION B JESTRESS 3912 (S) PED04X2215
BURENDA YELLOWSTONE Y4 (P) (AI) (ET) 2TP03EY4
 B/R NEW DESIGN 036 (S) PED01X1426
 BUNYA CREEK RICHMOND U11 (S) (AI) PED07X3223
 BOOROOMOOKA RICHMOND R238 (S) PED07X3222

MISTIVALE POWDERKEG (P) MV RH0114
 BURENDA ZORO (P) (AI) 2TP04EZ131
 BRANGUS COW B75A25 (P) 9329
BURENDA C274 (P) 2TP07EC274
 ELROSE PORTER (S) PED97X3724
 DELTA GROVE SUNGIFT ROSE (H) BRA00E3190
 DELTA GROVE SUNGIFT 20TH (S) PED97X3725



July 2016 Brangus GROUP BREEDPLAN							
Gest Lgth	Bth Wt	200 Wt	400 Wt	600 Wt	MCW	Milk	
0.9	-0.4	8	19	21	20		
55%	73%	65%	63%	61%	50%		
Scrotal	EMA	Rib Fat	Rump Fat	RBV%	IMF%		
-0.3	1.1	-1	-1.5	0.6	0.5		
68%	42%	53%	53%	43%	41%		

61% Angus content and poll. Fantastic ACI on his dams side of 365 days over seven progeny. Older genetics present through Yellowstone Y4 who was one of our angus sires earlier in the century.

Breed Object Index Values	
Domestic Steer Index	Export Steer Index
\$15	\$17

Purchaser..... \$.....

Lot 54

BURENDA KAMDO K829 (P) (AI) 2TP14FK829

Society Ident: 2TP14FK829

Born: 24/08/2014

TE MANIA YORKSHIRE Y437 (P) PED03X5181
 TE MANIA BERKLEY B1 (P) PED06X5183
 TE MANIA LOWAN Z53 (P) PED04X5182
BURENDA GEIGER COUNTER G49 (P) ANG11EQBUG49
 ARDROSSAN EQUATOR A241 (P) (AI) (ET) ANG05EA241
 BURENDA BEEAC E5 (P) PED09X5179
 TE MANIA BEEAC U343 (P) (AI) (ET) PED99X5158

XS JOHNNY LEE 369H (S) PED98R369H
 GREENDALE Z383 (P) GRE04RZ383
 GREENDALE SPLENDENT (P) GRE99RS128
BURENDA DELTA E531 (P) 2TP09FE531
 MR V8 77714 (IMP US) (S) (ET) PED07X3485
 DELTA GROVE MISS POWER STROKE 8TH (H) (AI) BRA99ELES2779
 DELTA GROVE BLOSSOM E MANSO (H) PED97X3976



July 2016 Brangus GROUP BREEDPLAN							
Gest Lgth	Bth Wt	200 Wt	400 Wt	600 Wt	MCW	Milk	
-1.1	-0.7	12	23	24	22		
61%	75%	68%	66%	62%	45%		
Scrotal	EMA	Rib Fat	Rump Fat	RBV%	IMF%		
-1.8	1.2	-1.3	-1.8	0.9	0		
70%	45%	55%	55%	46%	45%		

64% Angus content and scurred. Kamdo has the correct genetics and EBVs for heifers. ACI 373 days.

Breed Object Index Values	
Domestic Steer Index	Export Steer Index
\$14	\$18

Purchaser..... \$.....

Lot 55

BURENDA KILTER K809 (P) (AI) 2TP14EK809

Society Ident: 2TP14EK809

Born: 17/08/2014

VERMILION DATELINE 7078 (S) PED04X2214
 VERMILION YELLOWSTONE (S) PED04X2216
 VERMILION B JESTRESS 3912 (S) PED04X2215
BURENDA YELLOWSTONE Y4 (P) (AI) (ET) 2TP03EY4
 B/R NEW DESIGN 036 (S) PED01X1426
 BUNYA CREEK RICHMOND U11 (S) (AI) PED07X3223
 BOOROOMOOKA RICHMOND R238 (S) PED07X3222

XS JOHNNY LEE 369H (S) PED98R369H
 GREENDALE Z383 (P) GRE04RZ383
 GREENDALE SPLENDENT (P) GRE99RS128
BURENDA CHARM C193 (P) 2TP07FC193
 BRANGUS BULL (P) 99915M
 BURENDA LILLY (P) 2TP04EZ218
 BRANGUS COW (P) 99916F



July 2016 Brangus GROUP BREEDPLAN							
Gest Lgth	Bth Wt	200 Wt	400 Wt	600 Wt	MCW	Milk	
1.4	0.4	8	22	20	20		
57%	73%	65%	64%	61%	50%		
Scrotal	EMA	Rib Fat	Rump Fat	RBV%	IMF%		
-0.7	0.1	-0.8	-1.3	0.2	0.2		
69%	45%	54%	54%	45%	44%		

76% Angus content and poll. Suggest cross breeding over cows to improve thickness and softness inherited from his older sire Y4. Reliable ACI of 361 days over seven offspring.

Breed Object Index Values	
Domestic Steer Index	Export Steer Index
\$10	\$14

Purchaser..... \$.....

Lot 56

BURENDA KLAM K815 (P) (AI) 2TP14EK815

Society Ident: 2TP14EK815

Born: 13/08/2014

TE MANIA ULONG U41 (P) (AI) (ET) PED99X5154
 TE MANIA AFRICA A217 (P) (AI) PED05X5710
 TE MANIA JEDDA Y32 (P) (AI) (ET) PED03X5708
BURENDA GAPUWIYAK G491 (P) (AI) (ET) ANG11EG491
 ARDROSSAN EQUATOR A241 (P) (AI) (ET) ANG05EA241
 BURENDA BEEAC E13 (P) (AI) (ET) PED09X5707
 TE MANIA BEEAC U343 (P) (AI) (ET) PED99X5158

MACCABOYZ CURTIS (P) ONM04R52
 BURENDA CASSANOVA C261 (P) 2TP07FC261
 DIAMOND RIDGE QUIZICAL W15 (P) ANG01EW15
BURENDA SPLENDENT F582 (P) 2TP10FF582
 GREENDALE Z383 (P) GRE04RZ383
 BURENDA B619 (P) 2TP06EB619
 BRANGUS COW (P) 99916F



July 2016 Brangus GROUP BREEDPLAN							
Gest Lgth	Bth Wt	200 Wt	400 Wt	600 Wt	MCW	Milk	
0.1	0.7	9	15	15	23		
54%	72%	58%	58%	54%	38%		
Scrotal	EMA	Rib Fat	Rump Fat	RBV%	IMF%		
-0.8	-0.2	0.5	0.4	-0.4	0.2		
62%	36%	43%	43%	34%	33%		

82% Angus content and poll. His dam has an ACI of 373 days in four years including one set of twins. She has been a very good mother and a little over protective at weighing and tagging. His sire was one of our leading sale bulls at Roma 2013.

Breed Object Index Values	
Domestic Steer Index	Export Steer Index
\$7	\$8

Purchaser..... \$.....

Lot 57

BURENDA KLEVER K824 (P) 2TP14EK824

Society Ident: 2TP14EK824

Born: 23/08/2014

S A V HEAVY HITTER 6347 (P) PED06X4881
BURENDA HARMLESS H197 (P) (AI) ANG12EH197
 TE MANIA BENHOPE B580 (P) (AI) ANG06EVTMB580
 BURENDA PRINCESS E83 (P) (AI) PED09X5718
 BURENDA CALLISTAMON C10 (P) (AI) PED07X5714

TE MANIA BENHOPE B580 (P) (AI) ANG06EVTMB580
 BURENDA FERRIS F76 (P) (AI) ANG10EQBUF76
 BURENDA DARGO D159 (P) PED08X5162
BURENDA ZILLY H632 (P) 2TP12FH632
 GLENOYRA AXLE (P) JRB06R2
 BURENDA ZILLY E598 (P) 2TP09RE598
 BURENDA C236 (P) 2TP07FC236



July 2016 Brangus GROUP BREEDPLAN							
Gest Lgth	Bth Wt	200 Wt	400 Wt	600 Wt	MCW	Milk	
-1.5	-1.9	6	13	9	7		
34%	72%	59%	59%	54%	37%		
Scrotal	EMA	Rib Fat	Rump Fat	RBV%	IMF%		
0.6	-1.2	0.9	1	-0.9	0.5		
66%	39%	49%	49%	39%	37%		

87% Angus content and poll. Great choice for heifers, top 5% gestation length and birth weight whilst improving Rib and Rump and IMF fats. Top 15% and better. ACI 384 days between the first and second calves.

Breed Object Index Values	
Domestic Steer Index	Export Steer Index
\$15	\$10

Purchaser..... \$.....

Lot 58

BURENDA KIRSH K863 (P) 2TP14EK863

Society Ident: 2TP14EK863

Born: 25/09/2014

ANGUS BULL (S) 99913M

XS JOHNNY LEE 369H (S) PED98R369H
 GREENDALE Z383 (P) GRE04RZ383
 GREENDALE SPLENDENT (P) GRE99RS128
BURENDA CATHY E567 (P) 2TP09RE567
 BONOX BIG JOHN 160 (P) 35900F160
 BURENDA CATHY (P) (AI) 2TP04FZ132
 BURENDA ANASTACIA 456 (P) 2TP00E456



July 2016 Brangus GROUP BREEDPLAN							
Gest Lgth	Bth Wt	200 Wt	400 Wt	600 Wt	MCW	Milk	
0.5	1.4	11	28	28	18		
34%	69%	58%	58%	54%	40%		
Scrotal	EMA	Rib Fat	Rump Fat	RBV%	IMF%		
0	2.8	-0.3	-0.5	1	0.1		
67%	40%	48%	48%	39%	37%		

76% Angus content and poll. Kirsh is only just two and is certainly a very thick set quite doing bull. His sire is an unknown registered Angus Sire, but when he has EBVs of top 20% carcase weight, top 5% for EMA and top 10% for Retail Beef Yield then it isn't important. Fertile ACI 360 days over five progeny.

Breed Object Index Values	
Domestic Steer Index	Export Steer Index
\$18	\$23

Purchaser..... \$.....

Lot 58 2TP14EK863



Lot 58 2TP14EK876



Lot 59

BURENDA KINO K876 (P) 2TP14EK876

Society Ident: 2TP14EK876

Born: 22/09/2014

ARDROSSAN EQUATOR A241 (P) (AI) (ET) ANG05EA241
 BURENDA F111 (P) (AI) PED10X5725
 BURENDA CHAMPAGNE C31 (P) PED07X5720
BURENDA HOBGOBLIN H489 (P) ANG12EH489
 BON VIEW NEW DESIGN 1407 (S) PED97X4270
 BURENDA DIANE D39 (P) (AI) (ET) PED08X5722
 BURENDA ZIPPY Z8 (P) (AI) (ET) ANG04EZ8

XS JOHNNY LEE 369H (S) PED98R369H
 GREENDALE Z383 (P) GRE04RZ383
 GREENDALE SPLENDENT (P) GRE99RS128
BURENDA MEGAN G759 (P) 2TP11FG759
 BRANGUS BULL (P) 99915M
 BURENDA MEGAN (P) 2TP04EZ203
 BRANGUS COW (P) 99916F



July 2016 Brangus GROUP BREEDPLAN							
Gest Lgth	Bth Wt	200 Wt	400 Wt	600 Wt	MCW	Milk	
0.1	-0.1	8	17	16	16		
27%	44%	44%	50%	45%	34%		
Scrotal	EMA	Rib Fat	Rump Fat	RBV%	IMF%		
-0.5	0.8	1.4	1.5	-0.5	0.4		
55%	35%	44%	44%	36%	34%		

76% Angus content and poll. A stand out bull with eye appeal and excellent doing ability. He has consistently out performed his mates on daily weight gain regardless of the level of nutrition. ACI of 407 days which is unfair as his dam has had three progeny in two years.

Breed Object Index Values	
Domestic Steer Index	Export Steer Index
\$13	\$12

Purchaser..... \$.....

Lot 60

BURENDA KIOSK K816 (P) (AI) 2TP14FK816

Society Ident: 2TP14FK816

Born: 17/08/2014

VERMILION DATELINE 7078 (S) PED04X2214
 VERMILION YELLOWSTONE (S) PED04X2216
 VERMILION B JESTRESS 3912 (S) PED04X2215

BURENDA YELLOWSTONE Y4 (P) (AI) (ET) 2TP03EY4
 B/R NEW DESIGN 036 (S) PED01X1426

BUNYA CREEK RICHMOND U11 (S) (AI) PED07X3223
 BOOROOMOOKA RICHMOND R238 (S) PED07X3222

MINGO 3062 (S) PED07X3163
 WALUBIAL MM MR WATTLE MANSO 003/3 (H) BRA02E3003
 WALUBIAL JDH LADY WATTLE MANSO 7TH (S) PED07X3166

BURENDA C195 (S) 2TP07EC195

BURENDA X11 (P) ANG02EQBUX11



July 2016 Brangus GROUP BREEDPLAN							
Gest Lgth	Bth Wt	200 Wt	400 Wt	600 Wt	MCW	Milk	
0.5	-0.2	10	19	13	7		
54%	72%	64%	56%	58%	49%		
Scrotal	EMA	Rib Fat	Rump Fat	RBV%	IMF%		
-0.3	-0.6	0.4	0.3	-0.6	0.5		
38%	30%	41%	41%	34%	35%		

75% Angus content and scurred. ACI 364 days over seven progeny displays excellent fertility. Would use over cows.

Breed Object Index Values	
Domestic Steer Index	Export Steer Index
\$8	\$10

Purchaser..... \$.....

Lot 61

BURENDA KING K826 (P) 2TP14FK826

Society Ident: 2TP14FK826

Born: 24/08/2014

PAPA EQUATOR 2928 (S) PED92X4497
 ARDROSSAN EQUATOR A241 (P) (AI) (ET) ANG05EA241
 ARDROSSAN PRINCESS W38 (P) (AI) (ET) PED01X5157

BURENDA ECHO E4 (P) (AI) (ET) ANG09EQBUE4
 B/R NEW DESIGN 036 (S) PED01X1426

TE MANIA BEEAC U343 (P) (AI) (ET) PED99X5158
 TE MANIA BEEAC R342 (P) PED96X4709

MACCABOYZ CURTIS (P) ONM04R52
 BURENDA CASSANOVA C261 (P) 2TP07FC261
 DIAMOND RIDGE QUIZICAL W15 (P) ANG01EW15

BURENDA DELTA F587 (P) 2TP10FF587

BURENDA ZORO (P) (AI) 2TP04EZ131
 BURENDA C276 (S) 2TP07EC276
 DELTA GROVE NONA JESS MANSO (H) BRA01E3173



July 2016 Brangus GROUP BREEDPLAN							
Gest Lgth	Bth Wt	200 Wt	400 Wt	600 Wt	MCW	Milk	
0.4	0.6	7	15	18	20		
40%	73%	62%	60%	56%	40%		
Scrotal	EMA	Rib Fat	Rump Fat	RBV%	IMF%		
1.8	0.6	-0.5	-0.9	0.4	0.1		
67%	40%	49%	49%	39%	37%		

74% Angus content and poll. We still have Kings sire 'Echo' who has been a true gentleman. Excellent docility and doing ability. ACI 360 days is also tops on his dams side.

Breed Object Index Values	
Domestic Steer Index	Export Steer Index
\$16	\$16

Purchaser..... \$.....

Lot 62

BURENDA KEYHOLE K928 (P) 2TP14EK928

Society Ident: 2TP14EK928

Born: 28/07/2014

TE MANIA YORKSHIRE Y437 (P) PED03X5181
 TE MANIA BERKLEY B1 (P) PED06X5183
 TE MANIA LOWAN Z53 (P) PED04X5182

BURENDA GEIGER COUNTER G49 (P) ANG11EQBUG49

ARDROSSAN EQUATOR A241 (P) (AI) (ET) ANG05EA241
 BURENDA BEEAC E5 (P) PED09X5179
 TE MANIA BEEAC U343 (P) (AI) (ET) PED99X5158

MACCABOYZ CURTIS (P) ONM04R52
 BURENDA CASSANOVA C261 (P) 2TP07FC261
 DIAMOND RIDGE QUIZICAL W15 (P) ANG01EW15

BURENDA GEENIE G706 (P) 2TP11EG706

ANGUS COW (P) 99914F



July 2016 Brangus GROUP BREEDPLAN							
Gest Lgth	Bth Wt	200 Wt	400 Wt	600 Wt	MCW	Milk	
-0.7	-0.7	6	17	14	10		
41%	53%	52%	57%	50%	34%		
Scrotal	EMA	Rib Fat	Rump Fat	RBV%	IMF%		
-0.9	0.4	0	-0.2	-0.2	0.6		
63%	38%	47%	47%	38%	38%		

93% Angus content and scurred. We went too far with the angus content here but Keyhole will make an excellent bull for use over heifers in any cross breeding program. Top 25% in this area. ACI 377 days.

Breed Object Index Values	
Domestic Steer Index	Export Steer Index
\$8	\$11

Purchaser..... \$.....

Lot 63

BURENDA KIRRI K944 (P) (AI) 2TP14EK944

Society Ident: 2TP14EK944

Born: 13/08/2014

TE MANIA ULONG U41 (P) (AI) (ET) PED99X5154
 TE MANIA AFRICA A217 (P) (AI) PED05X5710
 TE MANIA JEDDA Y32 (P) (AI) (ET) PED03X5708
BURENDA GAPUWIYAK G491 (P) (AI) (ET) ANG11EG491
 ARDROSSAN EQUATOR A241 (P) (AI) (ET) ANG05EA241
 BURENDA BEEAC E13 (P) (AI) (ET) PED09X5707
 TE MANIA BEEAC U343 (P) (AI) (ET) PED99X5158

MACCABOYZ CURTIS (P) ONM04R52
 BURENDA CASSANOVA C261 (P) 2TP07FC261
 DIAMOND RIDGE QUIZICAL W15 (P) ANG01EW15
BURENDA SPLENDENT F567 (P) 2TP10FF567
 GREENDALE Z383 (P) GRE04RZ383
 BURENDA C240 (P) 2TP07EC240
 BRANGUS COW (P) 99916F



July 2016 Brangus GROUP BREEDPLAN							
Gest Lgth	Bth Wt	200 Wt	400 Wt	600 Wt	MCW	Milk	
0.1	0.5	8	14	13	19		
55%	72%	63%	61%	57%	39%		
Scrotal	EMA	Rib Fat	Rump Fat	RBV%	IMF%		
-0.5	-1.1	1.3	1.4	-1	0.2		
68%	40%	49%	49%	40%	38%		

82% Angus content and poll. ACI 370 days.

Breed Object Index Values	
Domestic Steer Index	Export Steer Index
\$7	\$6

Purchaser..... \$.....

Lot 64

BURENDA YELLOWSTONE K834 (P) (AI) 2TP14EK834

Society Ident: 2TP14EK834

Born: 24/08/2014

TE MANIA ULONG U41 (P) (AI) (ET) PED99X5154
 TE MANIA AFRICA A217 (P) (AI) PED05X5710
 TE MANIA JEDDA Y32 (P) (AI) (ET) PED03X5708
BURENDA GAPUWIYAK G491 (P) (AI) (ET) ANG11EG491
 ARDROSSAN EQUATOR A241 (P) (AI) (ET) ANG05EA241
 BURENDA BEEAC E13 (P) (AI) (ET) PED09X5707
 TE MANIA BEEAC U343 (P) (AI) (ET) PED99X5158

BURENDA YELLOWSTONE Y4 (P) (AI) (ET) 2TP03EY4
 BURENDA YELLOWSTONE (P) 2TP07EC198
 BRANGUS COW (P) 99916F
BURENDA YELLOWSTONE E584 (P) 2TP09FE584
 WALUBIAL MM MR WATTLE MANSO 003/3 (H) BRA02E3003
 BURENDA B584 (P) 2TP06EB584
 BURENDA JESSIE X1 (P) (AI) (ET) ANG02EQBUX1



July 2016 Brangus GROUP BREEDPLAN							
Gest Lgth	Bth Wt	200 Wt	400 Wt	600 Wt	MCW	Milk	
-0.3	1	12	19	21	25		
55%	72%	64%	61%	57%	40%		
Scrotal	EMA	Rib Fat	Rump Fat	RBV%	IMF%		
0.4	-0.4	0.9	0.9	-0.7	0.6		
68%	38%	47%	46%	37%	35%		

82% Angus content and poll. Ideal fertility with the ACI 359 days over 6 progeny. This could be attributed to better Rib and Rump and IMF fats which play a crucial role in female reproduction.

Breed Object Index Values	
Domestic Steer Index	Export Steer Index
\$14	\$12

Purchaser..... \$.....

Lot 65

BURENDA GO BETWEEN K840 (P) (AI) 2TP14FK840

Society Ident: 2TP14FK840

Born: 29/08/2014

TE MANIA YORKSHIRE Y437 (P) PED03X5181
 TE MANIA BERKLEY B1 (P) PED06X5183
 TE MANIA LOWAN Z53 (P) PED04X5182
BURENDA GO BETWEEN G23 (P) (ET) ANG11EQBUG23
 ARDROSSAN EQUATOR A241 (P) (AI) (ET) ANG05EA241
 BURENDA BEEAC E5 (P) PED09X5179
 TE MANIA BEEAC U343 (P) (AI) (ET) PED99X5158

BT RIGHT TIME 24J (P) ANG99EUSA24J
 BURENDA ZAUL (P) (AI) ANG04EZ35
 ARDROSSAN WILCOOLA U32 (P) (AI) (ET) ANG99EU32
BURENDA MEXICALI (S) 2TP09EE550
 DELTA GROVE MEXICALI ROSE 2ND (S) PED99X3731
 DELTA GROVE MEXICALI ROSE (S) PED95X3729



July 2016 Brangus GROUP BREEDPLAN							
Gest Lgth	Bth Wt	200 Wt	400 Wt	600 Wt	MCW	Milk	
0.4	-0.1	6	20	25	28		
58%	73%	66%	63%	60%	42%		
Scrotal	EMA	Rib Fat	Rump Fat	RBV%	IMF%		
2.2	2.6	1.6	1.7	-0.1	0.8		
69%	41%	51%	51%	41%	40%		

75% Angus content and poll. Purchase to produce cattle for the Domestic Market, top 10%. Top 1% EBVs for scrotal and top 5% for EMA, Rib, Rump and IMF fats support this. Excellent ACI of 363 days over five progeny.

Breed Object Index Values	
Domestic Steer Index	Export Steer Index
\$32	\$24

Purchaser..... \$.....

Lot 66

BURENDA KLEBER K825 (P) 2TP14EK825

Society Ident: 2TP14EK825

Born: 24/08/2014

S A V HEAVY HITTER 6347 (P) PED06X4881

BURENDA HARMLESS H197 (P) (AI) ANG12EH197
 TE MANIA BENHOPE B580 (P) (AI) ANG06EVTMB580
 BURENDA PRINCESS E83 (P) (AI) PED09X5718
 BURENDA CALLISTAMON C10 (P) (AI) PED07X5714

GREENDALE QANTAS (P) GRE97R1077
 BURENDA QANTAS F523 (P) (AI) 2TP10FF523
 BURENDA DULLIN D361 (P) 2TP08ED361
BURENDA CHARM H642 (P) 2TP12RH642
 GREENDALE Z383 (P) GRE04RZ383
 BURENDA CHARM C193 (P) 2TP07FC193
 BURENDA LILLY (P) 2TP04EZ218



July 2016 Brangus GROUP BREEDPLAN							
Gest Lgth	Bth Wt	200 Wt	400 Wt	600 Wt	MCW	Milk	
-0.1	0.7	10	20	16	7		
35%	69%	59%	59%	54%	38%		
Scrotal	EMA	Rib Fat	Rump Fat	RBV%	IMF%		
0.3	-0.1	0.2	0.2	-0.2	0.2		
66%	39%	49%	49%	39%	37%		

75% Angus content and poll. Moderate growth and carcass qualities. ACI 380 days on two calves.

Breed Object Index Values	
Domestic Steer Index	Export Steer Index
\$10	\$12

Purchaser..... \$.....

Lot 67

BURENDA KILTO K853 (P) 2TP14EK853

Society Ident: 2TP14EK853

Born: 3/09/2014

ANGUS BULL (S) 99913M

XS JOHNNY LEE 369H (S) PED98R369H
 GREENDALE Z383 (P) GRE04RZ383
 GREENDALE SPLENDENT (P) GRE99RS128
BURENDA LOLLY E569 (P) 2TP09FE569
 BRANGUS BULL (P) 99915M
 BURENDA LOLLY (P) 2TP04EZ209
 BRANGUS COW (P) 99916F



July 2016 Brangus GROUP BREEDPLAN							
Gest Lgth	Bth Wt	200 Wt	400 Wt	600 Wt	MCW	Milk	
0.3	0.2	6	16	10	-4		
36%	69%	59%	58%	54%	40%		
Scrotal	EMA	Rib Fat	Rump Fat	RBV%	IMF%		
-0.8	1.3	-0.5	-0.7	0.6	-0.1		
67%	40%	48%	48%	39%	37%		

76% Angus content and poll. The last two year old on offer and a half brother to K863 earlier. ACI 372 days over four progeny.

Breed Object Index Values	
Domestic Steer Index	Export Steer Index
\$4	\$10

Purchaser..... \$.....

Lot 68

BURENDA GEIGER L900 (P) (AI) 2TP15EL900

Society Ident: 2TP15EL900

Born: 12/02/2015

TE MANIA YORKSHIRE Y437 (P) PED03X5181
 TE MANIA BERKLEY B1 (P) PED06X5183
 TE MANIA LOWAN Z53 (P) PED04X5182
BURENDA GEIGER COUNTER G49 (P) ANG11EQBUG49
 ARDROSSAN EQUATOR A241 (P) (AI) (ET) ANG05EA241
 BURENDA BEEAC E5 (P) PED09X5179
 TE MANIA BEEAC U343 (P) (AI) (ET) PED99X5158

XS JOHNNY LEE 369H (S) PED98R369H
 GREENDALE Z383 (P) GRE04RZ383
 GREENDALE SPLENDENT (P) GRE99RS128
BURENDA OAK J906 (P) 2TP13EJ906
 ANGUS COW (P) 99914F



July 2016 Brangus GROUP BREEDPLAN							
Gest Lgth	Bth Wt	200 Wt	400 Wt	600 Wt	MCW	Milk	
0.5	1	7	10	12	6		
48%	69%	60%	59%	54%	39%		
Scrotal	EMA	Rib Fat	Rump Fat	RBV%	IMF%		
0.1	0.8	0.2	0	0.1	0.2		
61%	40%	50%	50%	41%	41%		

89% Angus content and poll. Sired by Geiger Counter and hence this fellow would be ideal for use over heifers. Only 18.5 months old with plenty to offer. ACI 365 days.

Breed Object Index Values	
Domestic Steer Index	Export Steer Index
\$7	\$6

Purchaser..... \$.....

Born: 20/04/2015

TE MANIA YORKSHIRE Y437 (P) PED03X5181
TE MANIA BERKLEY B1 (P) PED06X5183
TE MANIA LOWAN Z53 (P) PED04X5182
BURENDA GO BETWEEN G23 (P) (ET) ANG11EQBUG23
ARDROSSAN EQUATOR A241 (P) (AI) (ET) ANG05EA241
BURENDA BEEAC E5 (P) PED09X5179
TE MANIA BEEAC U343 (P) (AI) (ET) PED99X5158

XS JOHNNY LEE 369H (S) PED98R369H
GREENDALE Z383 (P) GRE04RZ383
GREENDALE SPLENDENT (P) GRE99RS128
BURENDA ZIGGY G610 (P) 2TP11EG610
ANGUS COW (P) 99914F



Table with columns: Gest Lgth, Bth Wt, 200 Wt, 400 Wt, 600 Wt, MCW, Milk. Values: Gest Lgth (-0.1, 39%), Bth Wt (1.4, 48%), 200 Wt (14, 46%), 400 Wt (29, 45%), 600 Wt (30, 43%), MCW (22, 37%). Second row: Scrotal (0.3, 41%), EMA (1.8, 30%), Rib Fat (0.3, 39%), Rump Fat (0.2, 39%), RBV% (0.4, 33%), IMF% (0.1, 33%).

89% Angus content and poll. Great growth and carcass data displayed in Between. He has the top daily weight gain in his group in most environments. Use to improve all forms of beef production. ACI 398 days.

Breed Object Index Values table with Domestic Steer Index (\$20) and Export Steer Index (\$22).

Purchaser..... \$.....

Notes

Horizontal lines for writing notes.

Burenda Angus Cross Steers Perform at RNA Paddock to Palate 2016

A pen of Burenda Angus sired steers performed admirably well in the Mort & Co Grassdale Feedlot at Dalby.

Entry Weight - 457kg.

First 50 Days daily weight gain was 2.73kg/day.

Final daily weight gain was 2.59kg/day.

Final Average Live weight was 699kg.

Final HSCW at JBS Swift Brisbane was 388.57kg.

Dressing percentage of 55.6%

Feed Conversion (100% Dry) 5.59

Fat - 13 to 29mm with an average of 21.7mm.

All milk tooth steers.

The Burenda steers performed exceptionally well and were up with some of Queensland's best Stud and Commercial breeders with all breeds of cattle entered. The top pen of steers averaged 2.95kg/day.



Proudly Supporting...

BURENDA ANGUS



ANDREW DOLJANIN
Key Business Account Manager
Phone: 0427 003 821



Contact our friendly
Customer Service Team
1300 138 247

www.allflex.com.au



Identify the Difference

**Visit us Online at
www.burendaangus.com.au**

to view videos and full information of sale bulls



Jonathan Schmidt 07 4663 4002 ~ 0429 067 313 schmidtjk@bigpond.com

www.burendaangus.com.au