

'Our clients' successes are our greatest reward'



Ladies Day @ mawarra

Monday
November 28, 2016.



mawarra
GENETICS

www.mawarraherefords.com.au



Trait Leader
Australia &
New Zealand
200D
400D
600D
IMF



Trait Leader
United Kingdom
200D
400D
600D
CWT
200D Milk

Mawarra Vice Admiral (H)

550+ registered progeny across 43 stud herds spanning 5 countries and 4 continents.
Consistent superior performance: weight-for-age, IMF, maternal prowess. Daughters pictured below.



Haven Herefords, U. K.



Haven Herefords, U. K.

“Vice Admiral has been a very successful sire for us at The Haven. His progeny have added great color, style and eye appeal along with top performance to our herd.”
Edward Lewis,
The Haven, Herefordshire.



Freetown Herefords, U. K.



Graham Herefords, N. Z.



Thornleigh Herefords, Aust.





mawarra
HEREFORDS

Passion, Performance and Profit.



Welcome to **Ladies Day @ Mawarra**,

Our females are the foundation of our herd, the future of our program, and the key to breeding a consistent, even line of bulls year after year. It is with pride we present a catalogue of elite Whiteface females, selected from the nucleus of our herd. This sale presents a genuinely unique opportunity to select daughters and grand daughters from some of our most successful breeders of recent time.

Our complete 2011 'G' drop will go under the hammer to your competition, along with a selection of proven donor cows, hand-selected elite females, and an exciting line of 2014 'K' drop joined heifers. As a perfect companion for young enthusiasts we have included five 2015 'L' drop heifers. They are halter broken and ready to begin their Hereford journey anew.

The reputation of Mawarra has been built on the long-standing strength of our maternal herd. We are dedicated to the continual development and improvement of the seed stock that we present to industry, and we are extremely proud of the success our bloodlines have earned as a result of that dedication. It is with pride and confidence that we invite your inspection of our **Ladies Day @ Mawarra** catalogue. Our family looks forward to welcoming you to Mawarra on Monday, November 28, 2016.

Peter & Deanne,

Brandon & Brittany,

Logan & Taylah Sykes

Ladies Day @ Mawarra

105 elite Whiteface females
Our complete 2011 drop - no exceptions!
Proven donor dams, 2014 drop joined heifers, & 2015 drop weaner heifers.

Videos
online

Monday November 28, 2016. Sale starts 11 a.m.
Inspections from 1 p.m. Sunday November 27.



Sale will be interfaced with AuctionsPlus!

Directions:

'Tanjil' is approximately 12 minutes drive from Sale. If travelling from Bairnsdale direction take the South Gippsland Highway to Yarram at Sale, turn right at Longford towards Rosedale on the Longford-Rosedale Rd. Kelly's Road is approximately 8km on the right and leads directly into our property. From Melbourne, via Princes Highway turn right at the roundabout in Rosedale take the first left towards Longford. Kelly's Rd is approximately 19kms on the left.

Accommodation:

Accommodation and transport can be arranged by contacting selling agents or vendors.
Local accommodation is featured on page 5.

Inspection:

All cattle can be inspected, by appointment, prior to the sale at 'Tanjil', Longford and also from 1 p.m. Sunday November 27. The Sykes family invite you to join them for dinner on Sunday evening, RSVP Deanne Nov. 13.

Delivery:

Delivery will be given at 'Tanjil' following the completion of the sale. Joe Wilton will be in attendance to co-ordinate deliveries. Stock awaiting delivery will be held free of charge for a period not exceeding one week, or in the case of interstate destinations, until regulation tests have been completed. Every care will be taken, but no responsibility accepted. Sale will be cancelled on any animal failing health tests.

Herd Health:

All females have been vaccinated with Ultravac 7in1 and Pestiguard according to Zeotis guidelines.
Mawarra has Beef Only status.

Airstrip:

Available at Sale airport. Planes will be met on request by agents or vendors.

No Verbal Instructions:

Please fill out the Buyers Instruction Form, available online at our website prior to Sale, or from the Office on Sale Day. Only agents introducing 24hrs prior to Sale or attending on the day will receive a Rebate.

Refreshments:

Light luncheon, morning and afternoon tea will be available at 'Tanjil' from 9.30 a.m. on Sale day thanks to the Longford Primary School Parents Club.

3% Agents Rebate

Payable **ONLY** to those agents who accompany their clients on Sale Day and co-sign the Buyers Instruction Form. **1%** Rebate is available to those agents who introduce their clients in writing by fax or email **at least 24hrs prior** to Sale.

Auctioneer

Tamworth

Paul Dooley

Mobile 0458 662 646



Bairnsdale
Bairnsdale
Hamilton

Office
Morgan Davies
Ross Milne

03 5152 3037

Mobile 0438 081 529
Mobile 0408 057 558



Bairnsdale
Bairnsdale
Bairnsdale
Melbourne
Albury

Office
Brad Obst
Geoff Nichols
Ray Atwell
Peter Godbolt

03 5153 1144

Mobile 0417 398 026
Mobile 0429 398 026
Mobile 0428 836 136
Mobile 0457 591 929

Peter, Deanne, Brandon, Logan & Taylah Sykes

103 Kelly's Road, Longford, Victoria, 3851

T: 03 5149 7036 **Peter:** 0427 497 036 **Deanne:** 0408 018 315

Brandon: 0407 619 412 **Logan:** 0433 625 925

E: admin@mawarraherefords.com.au



www.mawarraherefords.com.au



For all your accommodation requirements we recommend staying at.....



BON ACCORD
Bed & Breakfast

Bed & Breakfast
Self-Contained


10% Discount offered to people attending
Mawarra Hereford Auctions

Tim Dunnett
153-155 Dawson Street, Sale VIC 3850
Ph (03) 5144 5555 or M 0425 802 908

Email: info@bonaccordb-b.com.au
www.bonaccordb-b.com.au



Midtown Motor Inn
91 York Street, Sale, Vic, 3850
T: +61 3 5144 1444
E: midtownmotorinn@netspace.com.au



**Midtown
Motor Inn**

Best Western Aspen & Apartments
342 York Street, Sale, Vic, 3850
T: +61 3 5144 3888 | F: +61 3 5143 1530
www.bestwestern.com.au/aspen



Strzelecki Motor Lodge
54 Argyle Street, Traralgon, Vic, 3844
T: +61 3 5174 6322
E: motel@strz.com.au
www.strz.com.au



STRZELECKI
MOTOR LODGE
'Bed and breakfast
at a great price'
www.strz.com.au

Mention **Mawarra Herefords** and receive a 10% discount on the price of your room.



Noteworthy (P) - Son of Lot 2



Dominant (H) - Son of Lot 10



Defiance (H) - Son of Lot 12



Neon Glow (S) - Son of Lot 13



Nashville (P) - Son of Lot 14



North Star (P) - Son of Lot 20



No Surprise (S) - Son of Lot 26



**L-R: Now'n'Forever (P) - Son of Lot 48,
Number One (P) - Son of Lot 26**



Doc Holliday (H) - Son of Lot 39



Domino Effect (H) - Son of Lot 41



Drifter (H) - Son of Lot 43



Denver (H) - Son of Lot 54



Hereford Group Breedplan ... understanding the figures

Calving Ease EBVs (%) are based on calving difficulty scores, birth weights and gestation length information. More positive EBVs are more favourable and indicate easier calving.

Gestation Length EBV (days) is an estimate of the time from conception to the birth of the calf and is based on AI and hand mating records. Lower (negative) GL EBVs indicate shorter gestation length and therefore easier calving and increased growth after birth.

Birth Weight EBV (kg) is based on the measured birth weight of progeny, adjusted for dam age. The lower the value the lighter the calf at birth and the lower the likelihood of a difficult birth. This is particularly important when selecting sires for use over heifers.

200 Day Growth EBV (kg) is calculated from the weight of progeny taken between 80 and 300 days of age. Values are adjusted to 200 days and for age of dam. This EBV is the best single estimate of an animal's genetic merit for growth to early ages.

400 Day Weight EBV (kg) is calculated from the weight of progeny taken between 301 and 500 days of age, adjusted to 400 days and for age of dam. This EBV is the best single estimate of an animal's genetic merit for yearling weight.

600 Day Weight EBV (kg) is calculated from the weight of progeny taken between 501 and 900 days of age, adjusted to 600 days and for age of dam. This EBV is the best single estimate of an animal's genetic merit for growth beyond yearling age.

Mature Cow Weight EBV (kg) is based on the cow weight when the calf is weighed for weaning, adjusted to 5 years of age. This EBV is an estimate of the genetic difference in cow weight at 5 years of age and is an indicator of growth at later ages and potential feed maintenance requirements of the females in the breeding herd. Steer breeders wishing to grow animals out to a larger weight may also use the mature Cow Weight EBV.

Milk EBV gives an estimation of the animals milking ability. For sires this EBV indicates the effect of their daughter's milking ability, inherited from the sire, on the 200 day weight of her calves. For dams, it indicates her milking ability.

Scrotal Size EBV (cm) is calculated from the circumference of the scrotum taken between 300 and 700 days of age and adjusted to 400 days of age. This EBV is an estimate of an animal's genetic merit for scrotal size. There is also a small negative correlation with age of puberty in female progeny and therefore selection for increased scrotal size will result in reduced age at calving of female progeny.

Days to Calving EBV (days) indicates the fertility of the daughters of the sire. It is the time interval between the day when the female is first exposed to a bull in a paddock mating to the day when she subsequently calves. A negative EBV for days to calving indicates a shorter interval from bull-in date to calving and therefore higher fertility.

Carcase Weight EBV (kg) is based on abattoir carcass records and is an indicator of the genetic differences in carcass weight at the standard age of 650 days.

Eye Muscle Area EBV (sq cm) is calculated from measurements from live animal ultrasound scans and from abattoir carcass data, adjusted to a standard 300kg carcass. This EBV estimates genetic differences in eye muscle area at the 12/13th rib site of a 300kg dressed carcass. More positive EBVs indicate better muscling on animals. Sires with relatively higher EMA EBVs are expected to produce better-muscled and higher percentage yielding progeny at the same carcass weight than will sires with lower EMA EBVs.

Rib Fat and Rump Fat EBVs (mm) are calculated from measurements of subcutaneous fat depth at the 12/13th-rib site and the P8 rump site (from live animal ultrasound scans and from abattoir carcasses) and are adjusted to a standard 300 kg carcass. These EBVs are indicators of the genetic differences in fat distribution on a standard 300 kg carcass. Sires with low, or negative, fat EBVs are expected to produce leaner progeny at any particular carcass weight than will sires with higher EBVs.

Retail Beef Yield EBV (%) indicates genetic differences between animals for retail yield percentage in a standard 300 kg carcass. Sires with larger EBVs are expected to produce progeny with higher yielding carcasses.

Intramuscular Fat EBV (%) is an estimate of the genetic difference in the percentage of intramuscular fat at the 12/13th rib site in a 300kg carcass. Depending on market targets, larger more positive values are generally more favourable.

Hereford Group Breedplan September 2016 - Average EBVs for 2014 born calves

CEDir	CEDtrs	GL	Bwt	200	400	600	Mwt	Milk	SS	DC	Cwt	EMA	Rib	Rump	RBV	IMF
+0.0	+1.1	-0.2	+4.3	+29	+48	+68	+64	+13	+1.7	-2.3	+43	+2.8	+0.3	+0.4	+0.8	+0.2
SELECTION INDEX VALUES										SUPERMARKET +\$75		GRASS FED +\$70		GRAIN FED +\$78		EU +\$84

EXPLANATORY NOTES FOR SELECTION INDEXES

Hereford selection indices are calculated for four market specifications, namely, Supermarket, Grass Fed Steer, Grain Fed Steer and EU. These indices relate to typical self-replacing Hereford or Poll Hereford herds in temperate Australia targeting these specifications.

Index values are reported as EBVs, in units of relative earning capacity (\$'s) for a given market. They reflect both the short-term profit generated by a sire through the sale of his progeny, and the longer-term profit generated by his daughters in a self-replacing cow herd.

Supermarket Index (\$) Estimates the genetic differences between animals in net profitability per cow joined for an example commercial herd targeting the domestic supermarket trade. Steers are either finished on grass or grain (eg 50-70 days) Steers are assumed marketed at 450kg live weight (250kg HSCW and 12mm P8 fat depth) at 17 months of age. Daughters are retained for breeding. In response to industry feedback regarding eating quality and tenderness, a small premium has been placed on marbling.

Grass Fed Steer Index (\$) Estimates the genetic differences between animals in net profitability per cow joined for an example commercial herd targeting pasture finished steers. Steers are assumed marketed at 600kg live weight (330 kg HSCW and 8mm P8 fat depth) at 23 months of age. Daughters are retained for breeding. In response to industry feedback regarding eating quality and tenderness, a small premium has been placed on marbling.

Grain Fed Steer (\$) Estimates the genetic differences between animals in net profitability per cow joined for an example commercial herd targeting pasture grown steers with a 125 day feedlot finishing period for the grain fed markets. Steers are assumed marketed at 600kg live weight (330kg HSCW and 20mm P8 fat) at 20 months of age. Daughters are retained for breeding. There is a significant premium if steers reach a marbling score of 2 or greater.

EU Index (\$) Estimates the genetic differences between animals in net profitability per cow joined for an example commercial herd targeting pasture finished steers for the EU market. Steers are assumed marketed at 620 kg live weight (340 kg HSCW and 14 mm P8 fat depth) at 24 months of age. Daughters are retained for breeding. There is no marbling requirement.

- (H) - Horned
- (P) - Poll
- (S) - Scurred
- (H#) - Horned containing Poll genes within six generations.

Conditions of Sale

- 1 The highest bidder shall be the purchaser and in the event of any dispute arising it shall be settled by the Auctioneer unless one of the claimants will advance in which case the lots shall be put up again.
- 2 The purchaser shall deposit 25% or the whole of the amount of the purchase money (if required) at any time during the sale.
- 3 All stock shall be paid in cash immediately on conclusion of the sale, and prior to delivery, but, unless other arrangements are specifically agreed in the event of delivery being made or possession obtained by the purchaser or his representative prior to payment of the purchase money, then until payment in full of the purchase money, or any cheques given on account of same of the purchaser to hold the stock as trustee only for the vendor.
- 4 Each lot shall be at the risk and expense of the purchaser immediately upon the fall of the hammer.
- 5 Lots will not necessarily be offered in numerical order
- 6 All conditions and warranties which might but for this clause be implied by law are expressly negated and excluded. Lots are sold with all faults (if any) and with all faults and errors of misdescription in such particulars or pedigrees shall invalidate the sale or be made the subject of any claim for compensation.
- 7 The auctioneers or vendors shall not be responsible for any errors or omissions in any particulars appearing in the description of pedigree any lot offered for sale, and no error omission or misdescription in such particulars or shall invalidate the sale or be made the subject of any claim for compensation.
- 8 The purchaser authorises the auctioneer and/or the auctioneers clerk, to sign on his or her behalf the contract of sale.
- 9 Any statement in the catalogue in relation to a particular cow that has been pregnancy tested as being in calf or to the like effect shall not imply any warranty by the vendor that the cow is in fact pregnant and the purchaser is required to take the risk of the pregnancy or tests being wrong.
- 10 If the purchaser shall neglect or fail to comply with any of the above conditions, any stock purchased by him may be immediately resold by public auction or private contract with or without notice at the risk of the former purchaser, who will be held responsible for all loss and expenses arising out of such re sale, and shall no participate in any profit accruing therefrom.
- 11 GST: All payments to be made under this agreement are exclusive of GST as that term is used and defined in A New Tax System (Good and Services Tax) Act 1999 (as amended). The Purchaser acknowledges that in addition to all payments payable by the Purchaser for all supplies made under this agreement the Purchaser must pay all applicable GST on supplies made.

DISCLAIMER NOTICE

People entering upon this property for any purpose whatsoever, including attendance of cattle auctions, do so at their own risk. We are not liable to you for personal injury or death suffered by you and/or for the theft, loss of or damage to any personal property caused or contributed to by us or by any other person whether caused or contributed to by our or their negligence, deliberate act or unlawful conduct. "We", "Us" or "Our" refer to the owners, their employees, contractors and agents and each of them. Every care has been taken in compiling this catalogue to ensure accuracy of information supplied, but no responsibility is accepted for any errors which may have occurred.



Gibsons Groundspread is a local, family owned fertiliser spreading company, proud to have been servicing local farmers for over 60 years.

With locations in Rosedale, Trafalgar, Yarram, Bayles and Dutson, servicing from Bairnsdale to Pakenham and everywhere in between.

Gibsons are distributors of Darriman Lime, Maryvale Lime, Nhance fertiliser and Revive Recycled Compost.

- Fertiliser
- Darriman Lime
- Maryvale Lime
- Revive Compost
- Nhance
- Gypsum
- Burnt Lime



- Quality Spreading
- Logistic Services
- Soil Test
- Bin Delivery
- Farm Mapping
- Agronomy
- N-P-K-S

1800 GIBSONS
FREE CALL-1800 442 788

Rosedale: 2194 Princess Highway, Rosedale 3847

Yarram: 33 Pound Road West, Yarram 3971

Trafalgar: 87 Waterloo Road, Trafalgar 3824

Bayles: 100 School Road, Bayles 3981

Dutson: 980 Longford-Lochsport Rd, Dutson 3851

www.gibsonsgroundspread.com.au

Reference Sires

Mawarra Vice Admiral (H)

Born: 18/08/2008



COOTHARABA ELGIN (H)
COOTHARABA MAGNUM (H)
 COOTHARABA PAULINE 279 (H)

MAWARRA KAHLUA AI (H)
MAWARRA MINERVA 554 AI ET (H)
 MAWARRA MISS TITANIA 357 (H)

Trait Leader

The commercial viability of Vice Admiral has seen our clients return year after year to invest in his genetic footprint. The extra length, carcass and soundness of his progeny equate to profitability whether marketing weaners or finishing cattle. The consistency, milking and maternal traits of his daughters provide for perfect replacement females and this catalogue provides a rare opportunity to secure proven females boasting his sire line. Two Vice Admiral heifers were represented in a winning 'Pen of 3 Heifers' at the World Hereford Conference, Uruguay. Vice Admiral now has over 550 registered progeny across four continents. His sons have been retained as Stud sires in Australia, Canada, England and New Zealand. Progeny have won national titles in the U.K. and Australia. Vice Admiral's positive influence on the breed is undeniable.



GL	Bwt	200	400	600	Milk	SS	Cwt	EMA	Rib	Rump	RBV	IMF
+0.3 96%	+8.5 97%	+41 96%	+72 95%	+105 96%	+10 87%	+1.7 95%	+61 86%	+5.5 76%	-0.3 79%	-0.6 84%	+2.1 77%	+0.8 83%
EBVs SELECTION INDEX VALUES							SUPERMARKET +\$91		GRASS FED +\$82		GRAIN FED +\$106 EU +\$103	

Standard 68L Dom Lad 38T (IMP CAN) (H) Born: 31/03/2007



BAR-OM 656 STD COMM LAD 256B (H)
STR STANDARD 256B DOM LAD 68L (H)
 STR 27Z STANDARD DOMINO 46C (H)

STANDARD 16E RIBSTONE 64H (H)
K 64H RIBSTONE LADY 112N (H)
 K 45D SUPER LADY 19H (H)

Trait Leader

Outcross genetics, immense carcass, sound structure and maternal strength are what you can expect from 38T. His calves are small at birth and grow fast. BarPipe Ranch regard his daughters as, "...their best group of cows and the future of their Horned program. Impressive overall balance, depth of quarter and thickness, trait leader for Total Maternal & Stayability, and top sire group in feed efficiency trial." We are pleased with the influence his daughters are having in our breeding program and we currently have thirteen in herd. Their milking ability is a reflection of his trait leader status. 38T's fifteen sons at Mawarra have sold to \$14,000 with one being in our Herefords Australia National (Wodonga) team. A sire to breed excellent replacement females.



GL	Bwt	200	400	600	Milk	SS	Cwt	EMA	Rib	Rump	RBV	IMF
+2.3 91%	+5.2 93%	+27 89%	+43 88%	+68 89%	+24 82%	+2.4 88%	+36 73%	+1.6 65%	+0.8 68%	+0.3 70%	+0.9 60%	+0.6 70%
EBVs SELECTION INDEX VALUES							SUPERMARKET +\$81		GRASS FED +\$78		GRAIN FED +\$101 EU +\$93	

Truro Genghis Khan G028 (H)

Born: 04/07/2011



HUNDAY LANDMINE (H)
HUNDAY QUIVER (H)
 HUNDAY JULIET 95 (H)

COURALLIE V055 YOGI Y149 (AI) (H)
COURALLIE Y149 PR CHRISTIAN A216 (H)
 COURALLIE R747 PR CHRISTIAN X184 (H)

Truro Genghis Khan (aka Scotty) was the \$14,000 top price at the 2013 Truro Sale. He is one of the longest bulls we have seen with great weight for age, excellent temperament and softness. 'Scotty' is out of one of the best females in the Truro herd and the Hann family are very pleased with his daughters. A complete outcross pedigree with low birth weight and loads of potential. His first six sons sold at our 2016 sale to a top of \$8,000.



GL	Bwt	200	400	600	Milk	SS	Cwt	EMA	Rib	Rump	RBV	IMF
+1.0 49%	+4.4 91%	+36 86%	+60 84%	+90 86%	+19 44%	+1.5 83%	+59 71%	+3.1 56%	-1.1 61%	-1.7 67%	+2.0 59%	-0.3 63%
EBVs SELECTION INDEX VALUES							SUPERMARKET +\$85		GRASS FED +\$76		GRAIN FED +\$75 EU +\$92	

Reference Sires

Allendale Anzac E114 (P)

Born: 15/07/2009



ALLENDALE PUNTER 3 (AI) (P)
ALLENDALE YACKA (AI) (P)
 ALLENDALE FLORRIE Z33 (AI) (P)

ALLENDALE NATIONAL W168 (P)
ALLENDALE DAWN B22 (AI) (ET) (P)
 ALLENDALE DAWN T60 (AI) (P)

Trait Leader

Anzac ticks all the boxes: performance, phenotype and profitability. He is one of the most widely used and influential poll sires of recent time (his sons have sold to an incredible \$110,000). After inspection of this industry-leading sire, and his progeny, we were keen to secure him and he joined our sire battery in 2014. He is a trait leader for 200D, 400D, 600D, SS & IMF. He is in the top 1% of the breed for Cwt, Rib, Rump and all Indexes(\$). A combination of length and thickness with a real sire's outlook, Anzac delivers a phenotype in the same elite range as his EBVs. His dam is one of the most successful breeders in the renowned Allendale herd. The first Anzac progeny, from our stable, will be offered in this catalogue where he also features as a joining sire.

GL	Bwt	200	400	600	Milk	SS	Cwt	EMA	Rib	Rump	RBV	IMF
-0.6 97%	+5.9 98%	+47 96%	+76 96%	+101 93%	+19 79%	+4.9 96%	+75 83%	+5.7 74%	+2.0 77%	+3.4 83%	-0.8 75%	+2.7 82%
EBVs SELECTION INDEX VALUES						SUPERMARKET +\$137		GRASS FED +\$135		GRAIN FED +\$184		EU +\$150

Cootharaba Magnum (H)

Born: 27/11/2005



MONREID PRESIDENT (H)
COOTHARABA ELGIN 2 (H)
 COOTHARABA PAULINE 147 ET5 (ET) (H)

MONREID PRESIDENT (H)
COOTHARABA PAULINE 279 (H)
 COOTHARABA PAULINE 228 (H)

Trait Leader

Magnum has proven that he is one of the best Hereford bulls there has been and can be most accurately described as a breed improver. One of his first sons at Mawarra, Vice Admiral, epitomizes what we thought this powerful sire could achieve for us. Magnum sired the Grand Champions at the Hereford Australia National Show & Sale (Wodonga) in 2010 (Virginian) and 2011 (Westlife) and the Reserve Grand Champions in 2011 (West Coast) and in 2012 (Yesteryear). A grandson took out the top honour in 2013. Magnum's 68 sons, sold at Mawarra, have topped at \$40,000 to record an average of \$9,200. His daughters are equally impressive and they continue to make a valuable contribution to our breeding program, where we have thirty continuing his legacy in herd.

GL	Bwt	200	400	600	Milk	SS	Cwt	EMA	Rib	Rump	RBV	IMF
+2.7 97%	+6.4 98%	+33 97%	+52 97%	+74 97%	+14 96%	+1.8 97%	+43 94%	+6.4 89%	-0.6 91%	-1.3 93%	+3.1 90%	+0.6 92%
EBVs SELECTION INDEX VALUES						SUPERMARKET +\$79		GRASS FED +\$76		GRAIN FED +\$100		EU +\$97

Mawarra Air Marshall (H)

Born: 15/07/2011



FOXFORTH VALUABLE (H)
TALBALBA VALIANT (H)
 TALBALBA CHERRY RIPE 61 (H)

REEDY CREEK DEBONAIR 206 (H)
MAWARRA CHERRY RIPE 288 (H)
 MAWARRA CHERRY RIPE 206 (AI) (TW) (H)

This catalogue provides the first opportunity to secure Air Marshall progeny. His first full draft of sons will be offered at our 2017 sale and they include some of our best prospects. Talbalba Valiant has bred very well for us and we were keen to retain a son and continue his line. After a twenty year absence from the Melbourne Show ring we returned for the 2013 Hereford Feature, where Air Marshall carried the 'Mawarra' flag to Supreme Hereford and Interbreed Senior bull.

GL	Bwt	200	400	600	Milk	SS	Cwt	EMA	Rib	Rump	RBV	IMF
+0.0 53%	+6.7 88%	+34 82%	+50 80%	+67 79%	+13 56%	+2.5 81%	+35 66%	+2.4 51%	+0.0 57%	-0.1 61%	+0.7 54%	+0.6 55%
EBVs SELECTION INDEX VALUES						SUPERMARKET +\$65		GRASS FED +\$61		GRAIN FED +\$77		EU +\$78

Reference Sires

Pourakino Downs Jasper (IMP NZL) (H) Born: 19/09/2007

BEANBAH 01 263 (H)
WAIKAKA SID 0249 (H)
 WAIKAKA PEARL W14 (H)

WAIAU 32F UNITED (H)
POURAKINO DOWNS EBONY 02 85 (H)
 POURAKINO DOWNS URGENT U12 (H)



Jasper is regarded as one of the best horned bulls in New Zealand. Note his excellent carcass EBVs and (\$)Indexes. On inspection Jasper is a deep, easy-doing bull with excellent cosmetics. At Glacier Herefords, New Zealand, we saw a great line of his progeny displaying his softness, easy-doing ability and cosmetics. His daughters were lovely young females with great udder shape. We are very pleased with his progeny at Mawarra. Jasper's \$18,000 top-selling son at our 2016 Sale, Detour, was purchased by Arthur Trethowan, Woomargama. Three Jasper sons were part of our Hereford National Show & Sale (Wodonga) team with Daybreak selling for our top of \$20,000 to Ironbark Herefords, Barraba. In total, thirteen Jasper sons from the Mawarra stable have averaged \$8,700.



GL	Bwt	200	400	600	Milk	SS	Cwt	EMA	Rib	Rump	RBV	IMF
-0.5 92%	+5.0 96%	+27 93%	+55 93%	+79 94%	+18 83%	+0.5 92%	+51 83%	+4.7 71%	+2.3 76%	+3.6 81%	-0.3 73%	+1.6 79%
EBVs SELECTION INDEX VALUES						SUPERMARKET +\$105		GRASS FED +\$104		GRAIN FED +\$136		EU +\$115

Talbalba Valiant (H)

Born: 12/10/2006

COWBOY OUTLAW ET (ET) (H)
FOXFORTH VALUABLE (H)
 FOXFORTH CHIC 8 (H)

MOORLANDS GRAND NATIONAL V045 (AI) (H)
TALBALBA CHERRY RIPE 61 (H)
 TALBALBA CHERRY RIPE 46 (AI) (H)



We purchased Valiant for the top price of \$22,000 at the 2008 Southern Cross sale. He is a big, soft, easy-doing sire with impressive daily gain, sound structure and balance. His thirty-two sons, sold to date, have topped at \$24,000 recording an average of \$7,250. Three of his sons, including top-seller Youngster, were all class winners at the Herefords Australia National (Wodonga). Whistler was 2011 Reserve Junior Champion & Youngster was 2012 Reserve Intermediate Champion. We have retained a Valiant son, Air Marshall, and Valiant's daughters are proving to be good breeders with plenty of milk, softness, rich Hereford cosmetics.



GL	Bwt	200	400	600	Milk	SS	Cwt	EMA	Rib	Rump	RBV	IMF
+2.1 84%	+7.9 95%	+43 93%	+68 92%	+97 93%	+12 86%	+0.9 93%	+55 84%	+2.6 73%	-0.8 77%	-1.3 81%	+0.8 75%	+1.0 77%
EBVs SELECTION INDEX VALUES						SUPERMARKET +\$70		GRASS FED +\$61		GRAIN FED +\$78		EU +\$77

Mawarra Las Vegas (AI) (P)

Born: 28/03/2012

KARINA VEN LOMOND (AI) (P)
KARINA CHERRY Z8 (P)
 KARINA MARSALA S18 (P)

MAWARRA NOSTALGIA (H)
MAWARRA MINERVA 640 (H)
 MAWARRA MINERVA 437 (H)



We used Las Vegas over cows prior to his sale in 2014 to the Anderson family, St Katherines Darriman. Two of Minerva 640's seven sons have topped our on-property sales. They have sold to \$18,000 recording an average of \$9,900. The first seven Las Vegas sons sold to \$6,000 at our 2016 sale and his progeny have seen the St Katherines steers rise to the top pens at saleyards across Gippsland, most recently topping a market in Bairnsdale on a cents-per-kilo basis; 332kg at 431 c/kg. These results leave no doubt as to the profitability across both the stud and commercial industry of this genetic package.



GL	Bwt	200	400	600	Milk	SS	Cwt	EMA	Rib	Rump	RBV	IMF
+0.3 75%	+4.4 86%	+25 81%	+45 79%	+64 81%	+10 59%	+1.3 84%	+31 69%	+1.0 59%	-0.4 63%	-0.7 66%	+0.0 61%	+0.8 62%
EBVs SELECTION INDEX VALUES						SUPERMARKET +\$66		GRASS FED +\$62		GRAIN FED +\$80		EU +\$76

Reference Sires

Mawarra After Shock (H)

Born: 01/02/2011



GLENDAN PARK STORM W134 (H)
BOWMONT STORM C093 (H)
 BOWMONT MARITANA W168 (H)

MAWARRA SENTIMENTAL (ET) (H)
MAWARRA MINERVA 774 (AI) (H)
 MAWARRA MINERVA 458 (AI) (H)

Trait Leader

After Shock's tremendous length, topline, and hindquarter never fail to catch the eye of visitors to Mawarra. This easy-doing Storm C093 son has a lovely nature and boasts a superb maternal pedigree which combines two of our most successful families. Minerva 774 is an outstanding female with a perfect udder. Another of her sons, Class Act, has also been retained as sire. After Shock is breeding well over our Vice Admiral and Valiant cows. His daughter, Minerva 971, was Junior Champion at the 2015 Herefords Australia National Youth Heifer Show. She then went on to Junior Champion at the Adelaide Royal Hereford Feature where she was also in the winning Interbreed Junior Pair. After Shock has over thirty daughters retained at Mawarra. His first five sons sold this year to \$15,000 averaging \$9,500. After Shock semen has been exported to New Zealand and the EU, where semen rights have been purchased by The Haven & Dieuacresse Herefords, England.

GL	Bwt	200	400	600	Milk	SS	Cwt	EMA	Rib	Rump	RBV	IMF
+0.2 81%	+7.6 92%	+42 87%	+73 82%	+104 84%	+12 58%	+1.6 75%	+64 70%	+4.7 56%	+0.5 61%	+1.0 65%	+0.9 59%	+0.6 64%
EBVs SELECTION INDEX VALUES						SUPERMARKET +\$93		GRASS FED +\$85		GRAIN FED +\$100 EU +\$100		

Kidman Mercedes D39 (P)

Born: 29/06/2008



BRAXTON GIANT THUNDER S138 (IMP NZL) (P)
BOWEN TORNADO Z260 (AI) (ET) (P)
 BOWEN TRICEL P180 (P)

WIRANYA BATAVIA (AI) (P)
KIDMAN MARITANA LASS V129 (AI) (P)
 KIDMAN MARITANA LASS R91 (AI) (P)

We purchased Mercedes, son of renowned sire Bowen Tornado, for the \$15,000 top price at the 2010 Kidman sale. Appealing to the eye, he boasts impressive weight for age, growth, length and structural soundness. His sons have sold to \$5,500 and he has bred us an excellent line of females, with 18 of his daughters currently in herd.

GL	Bwt	200	400	600	Milk	SS	Cwt	EMA	Rib	Rump	RBV	IMF
+1.2 70%	+6.6 92%	+38 86%	+53 82%	+81 85%	+14 72%	+0.4 86%	+46 74%	+3.3 63%	+0.1 66%	-0.2 70%	+0.8 64%	+1.0 66%
EBVs SELECTION INDEX VALUES						SUPERMARKET +\$80		GRASS FED +\$75		GRAIN FED +\$97 EU +\$92		

GH Adams Twister 416T (IMP CAN) (H)

Born: 05/07/2007



GH MR DIFFERENCE 73J (H)
GH DIFFERENCE BRITISHER 45L (IMP CAN) (H)
 FA BRITISHER LADY 59F (H)

SMITHSTON TAM O'SHANTER ET2 (AI) (ET) (H)
GH SYDNEY 809 ET 59 M (IMP CAN) (H)
 JV PEARL 809 (IMP CAN) (H)

Trait Leader

On inspection, Twister's dam, her daughters and maternal sisters were all deep, feminine cows with excellent udders. This maternal strength is evident in the quality of the eleven Twister daughters we have retained in herd. His eight sons at Mawarra have sold to \$13,000. They include 2012 Herefords Australia National (Wodonga) team member Yippity-Do-Dah and 2013 entrant Armed and Dangerous. We have retained an outstanding son, Blizzard, as sire. His young calves are exceptional, continuing to prove the high value we place on this genetic line.

GL	Bwt	200	400	600	Milk	SS	Cwt	EMA	Rib	Rump	RBV	IMF
+0.1 91%	+8.0 90%	+42 92%	+69 90%	+105 92%	+13 82%	+3.0 84%	+67 78%	+5.8 72%	+0.1 74%	+0.7 76%	+2.2 67%	+0.3 73%
EBVs SELECTION INDEX VALUES						SUPERMARKET +\$112		GRASS FED +\$105		GRAIN FED +\$121 EU +\$126		

Reference Sires

Big-Gully 611 Bounty 517U (IMP CAN) (H#) Born: 05/03/2008



KJ BJ BOUNTY HUNTER 741P (H#)
KSU BOUNTY HUNTER 611 (H#)
 KSU MISS 6052F 311 (H)

C PURE GOLD 1117 (H)
BIG-GULLY GOLD DUST LASSY 217R (H)
 BIG-GULLY 5G DUSTER LASSY 217L (H)

Trait Leader

517U is breeding to type and his progeny all display the exceptional weight-for-age and muscle pattern that we admired in him. His sons are breeding to the specifications that our commercial industry is demanding; increased carcass and yield. 517U was Canadian 2010 Agribition RBC Supreme Challenge and 150th Anniversary National Hereford Show Champion. After visiting 23 herds in Canada during 2009 we thought 517U's sire, KSU Bounty Hunter 611, had the most promising progeny group. We are excited about the contribution 517U is making to our herd. Eight sons have been offered in our Herefords Australia National (Wodonga) teams to date including Blitz'em, \$13,000 Reserve Intermediate Champion 2014, and \$14,000 Senior and Reserve Grand Champion 2015, Calibre. At the conclusion of our 2016 selling season 517U's 30 sons had averaged \$6,350. We currently have 34 daughters retained in herd. His son, Class Act, recently joined our sire battery and his first progeny will be offered in this catalogue.

GL	Bwt	200	400	600	Milk	SS	Cwt	EMA	Rib	Rump	RBV	IMF	
+1.4 91%	+7.7 92%	+42 88%	+71 86%	+105 87%	+17 77%	+3.3 86%	+65 70%	+4.6 60%	-0.1 64%	-0.2 65%	+2.1 54%	-0.9 66%	
EBVs SELECTION INDEX VALUES							SUPERMARKET +\$92		GRASS FED +\$81		GRAIN FED +\$78		EU +\$99

Mawarra Mustang (P)

Born: 24/05/2013



KARINA CHERRY Z8 (P)
TYCOLAH JOVIAL F77 (P)
 TYCOLAH COUNTESS W48 (P)

BOWEN VINCENT V1 (S)
DEBARRY TABITHA Y177 (P)
 DEBARRY TABITHA T81 (P)

Mustang was our first Tycolah Jovial son and was always a 'keeper'! Mustang is homozygous poll and comes armed with an outstanding pedigree. Debarry Tabitha Y177 is our most successful Poll female. Her eleven sons, sold to date, have recorded an average of \$8,150 and we have eleven daughters in herd. Tycolah Jovial F77, \$80,000 Grand Champion at the Herefords Australia National (Dubbo) 2012, has bred consistently at Mawarra with his eight sons selling to \$12,000. Mustang has grown out into an impressive young sire with carcass, softness and all the length and carriage his pedigree suggests. His progeny have proved our expectations were not misplaced. His first calves are offered 'at foot' in this catalogue. We look forward to offering his first full draft of sons at our 2017 sale.

GL	Bwt	200	400	600	Milk	SS	Cwt	EMA	Rib	Rump	RBV	IMF	
+2.3 65%	+6.5 82%	+34 75%	+52 69%	+75 70%	+13 51%	+1.8 62%	+40 58%	+2.3 48%	+0.5 51%	+0.6 54%	+0.3 49%	+0.3 52%	
EBVs SELECTION INDEX VALUES							SUPERMARKET +\$72		GRASS FED +\$67		GRAIN FED +\$77		EU +\$80

Devon Court Advance F052 (H)

Born: 18/02/2010



INJEMIRA ADVANCE Z080 (AI) (H)
INJEMIRA ADVANCE C085 (H)
 INJEMIRA MARINDA Y142 (H)

GLENDAN PARK STORM W134 (H)
DEVON COURT LIONESS A207 (H)
 DEVON COURT LIONESS U376 (H)

Trait Leader

Advance is an upstanding, athletic sire selected for his moderate birth weight, tremendous carcass and sound structure. His Dam is a Glendana Park Storm W134 daughter, this line has bred very well across many herds. Injemira Advance C085 was the \$21,000 top price at the 2009 Injemira Bull Sale. Owned with Talbalba Herefords, we are pleased with his breeding across both herds. An Advance F052 son recently topped the Talbalba Herefords draft in the Southern Cross Sale at \$20,000. His five sons at Mawarra have sold to \$10,000 recording an average of \$5,900 and we have 30 young daughters in herd.

GL	Bwt	200	400	600	Milk	SS	Cwt	EMA	Rib	Rump	RBV	IMF	
-2.9 49%	+6.9 93%	+34 90%	+55 88%	+94 86%	+17 44%	+1.5 89%	+58 73%	+5.2 61%	+0.2 65%	-0.1 71%	+1.5 62%	+1.3 69%	
EBVs SELECTION INDEX VALUES							SUPERMARKET +\$93		GRASS FED +\$87		GRAIN FED +\$113		EU +\$102

Reference Sires

Mawarra Blizzard (H)

Sire: **GH Adams Twister 416T (H)** Dam: **Mawarra Miss Titania 414 (H)**

Born: 10/06/2012

Blizzard has tremendous topline, hindquarter, softness, carcass EBVs and (\$)Indexes; he is a complete beef-breeding package. Miss Titania 414 is a donor dam and one of our excellent Magnum daughters from the highly-productive and successful Miss Titania family. Her son, Calibre, sold to Tummel Herefords at the Herefords Australia National Show & Sale (Wodonga) 2015 for \$14,000 after being awarded Senior Champion. We have high expectations of Blizzard and his first calves show great promise. We look forward to offering his first full draft in 2017.



GL	Bwt	200	400	600	Milk	SS	Cwt	EMA	Rib	Rump	RBV	IMF				
+0.3 74%	+6.7 73%	+37 68%	+60 63%	+90 65%	+14 53%	+2.0 53%	+57 53%	+5.3 45%	-0.2 46%	-0.1 48%	+2.2 43%	+0.3 46%				
EBVs SELECTION INDEX VALUES									SUPERMARKET +\$97		GRASS FED +\$91		GRAIN FED +\$107		EU +\$110	

Days Enforcer J126 (S)

Sire: **Allendale Waterhouse D1(P)** Dam: **Days Sirikit F175 (P)**

Born: 15/06/2013

We purchased Enforcer J126 for \$27,000 at the 2015 Herefords Australia National Show & Sale (Dubbo) after he was awarded first place in the EU Performance Class and in the First Senior Bull Class. Low birth, high growth and excellent (\$)Indexes indicate his potential and his first calves have not disappointed. Enforcer ranks in the top 1% for CEDtrs, 5% SS, IMF & all (\$)Indexes, 10% 400, Milk & Cwt and 15% 200, 600, MCwt, DC & Rib.



GL	Bwt	200	400	600	Milk	SS	Cwt	EMA	Rib	Rump	RBV	IMF				
+0.2 58%	+4.2 75%	+37 70%	+59 70%	+86 71%	+18 58%	+3.3 76%	+55 62%	+3.6 56%	+0.9 58%	+1.2 62%	-0.2 56%	+1.4 58%				
EBVs SELECTION INDEX VALUES									SUPERMARKET +\$113		GRASS FED +\$108		GRAIN FED +\$136		EU +\$126	

Mawarra Daybreak (AI) (ET) (H)

Sire: **Pourakino Downs Jasper (H)** Dam: **Mawarra Doreen 225 (H)**

Born: 14/03/2014

Daybreak is one of the most complete sires we have bred; outcross genetics, sound structure, balance, softness and carcass combine with elite maternal genes. The value of his traits are reflected in his well-balanced EBVs and (\$)Indexes. Daybreak was purchased for \$20,000 by Ironbark H S, Barraba, at the 2016 Herefords Australia National Show & Sale (Wodonga).



GL	Bwt	200	400	600	Milk	SS	Cwt	EMA	Rib	Rump	RBV	IMF				
-1.5 54%	+5.5 65%	+30 64%	+55 66%	+80 68%	+13 54%	+0.5 71%	+52 58%	+5.6 49%	+1.7 52%	+2.8 56%	+0.5 51%	+1.5 51%				
EBVs SELECTION INDEX VALUES									SUPERMARKET +\$97		GRASS FED +\$95		GRAIN FED +\$126		EU +\$107	

Glentrevor Wallace H427 (AI) (P)

Sire: **South Bukalong Wallace 2 (P)** Dam: **Glentrevor Maritana F240 (P)**

Born: 08/08/2012

Following inspection at Centennial Herefords we selected Wallace H427 to use over heifers. A trait leader for GL and BW, with CEDir & CEDtrs in the top 1% and Milk in the top 5%, his suitability for this role is undeniable. Combine that with his excellent (\$)Indexes, EMA, IMF and sound structure and it is not surprising that he is being used in many herds nationwide.

Wallace was accepted as one of Herefords Australia's Black Baldy Trial sires - 1st cohort 2014 joinings.

Trait Leader



GL	Bwt	200	400	600	Milk	SS	Cwt	EMA	Rib	Rump	RBV	IMF				
-6.1 92%	-2.7 92%	+25 88%	+41 87%	+54 84%	+22 57%	+2.3 86%	+54 73%	+4.6 66%	+1.8 70%	+2.9 75%	+0.4 68%	+1.1 73%				
EBVs SELECTION INDEX VALUES									SUPERMARKET +\$114		GRASS FED +\$117		GRAIN FED +\$139		EU +\$125	

Koanui Techno 3062 (IMP NZL) (P)

Sire: **Koanui Unanimous 0408 (P)** Dam: **Koanui Blush 6455 (P)**

Born: 26/07/2013

Weighing in at over 1200 kilograms, Techno reigns from the Koanui herd in New Zealand. Renowned for their exceptional females, Techno's dam is equal to any in their herd. He is a complete outcross sire with excellent carcass, maternal and cosmetics (note his top 1% EBVs for Milk, IMF & (\$)Indexes). His first calves were born small and have grown quickly. They show much promise and we are confident that Techno's contribution to our herd will be significant.

Techno was accepted as one of Herefords Australia's BIN Progeny Test sires - 6th cohort 2016 joinings.



GL	Bwt	200	400	600	Milk	SS	Cwt	EMA	Rib	Rump	RBV	IMF				
+2.1 51%	+3.2 88%	+28 83%	+57 82%	+81 79%	+20 53%	+2.9 64%	+54 67%	+3.7 56%	+1.0 58%	+1.2 63%	+0.3 56%	+1.9 48%				
EBVs SELECTION INDEX VALUES									SUPERMARKET +\$111		GRASS FED +\$109		GRAIN FED +\$148		EU +\$125	

Reference Sires

Mawarra Magnificent J252 (P) Sire: Mawarra Vice Admiral (H) Dam: Merawah Shamrock A124 (AI) (ET) (P)
Born: 02/09/2013

Magnificent was Senior Champion at the 2015 Adelaide Royal Hereford Feature Show. He is a full brother to Little Rippla, Herefords Australia National (Dubbo) Senior Champion, 2014. Merawah Shamrock A124's five sons have all sold at either the Herefords Australia National Show & Sale in Wodonga, or Dubbo, recording a top of \$12,000 and an average of \$7,600. Aply named, his calves are 'Magnificent'! This catalogue presents the first opportunity to secure progeny, see calf-at-foot details on the Spring calving cows.



GL	Bwt	200	400	600	Milk	SS	Cwt	EMA	Rib	Rump	RBV	IMF
+2.7 59%	+7.6 73%	+39 69%	+69 68%	+96 69%	+13 57%	+2.2 72%	+56 59%	+3.9 51%	+0.3 54%	+0.1 57%	+1.3 52%	+0.5 53%
EBVs SELECTION INDEX VALUES												
SUPERMARKET +\$86						GRASS FED +\$78			GRAIN FED +\$95		EU +\$94	

Yallaroo Glasgow G14 (AI) (H) Sire: Yallaroo Titan T011 (AI) (H) Dam: Yallaroo Silver Queen E26 (H)
Born: 31/03/2011

Glasgow is a paternal brother to Yallaroo Titan X20, a low birth weight sire we used that bred us a lovely line of good milking, moderate framed females. Glasgow G14 is a thick, dark sire with well balanced EBVs. His first sons sold at our 2016 sale to \$9,000 recording an average of \$5,700.



GL	Bwt	200	400	600	Milk	SS	Cwt	EMA	Rib	Rump	RBV	IMF
+3.6 50%	+6.2 82%	+37 79%	+53 78%	+76 81%	+14 55%	+1.2 64%	+47 69%	+5.8 56%	+0.5 62%	+0.9 66%	+2.1 59%	+0.5 61%
EBVs SELECTION INDEX VALUES												
SUPERMARKET +\$80						GRASS FED +\$76			GRAIN FED +\$90		EU +\$89	

Mountain Valley Gambler G14 (P) Sire: Cannawigra Commander Z51 (P) Dam: Mountain Valley B44 (P)
Born: 14/06/2011

Gambler is an impressive sire. He is deep, long and well-muscled with softness and a strong, sires head. We hold Commander Z51 in high regard and Mountain Valley consider his maternal line, Glitter, the best in their herd. We own Gambler G14 in partnership with Tenaru Poll Herefords and Mountain Valley Poll Herefords. His sons, sold to date, topped at \$22,000 at Mountain Valley's 2016 sale.



GL	Bwt	200	400	600	Milk	SS	Cwt	EMA	Rib	Rump	RBV	IMF
+2.4 90%	+3.8 94%	+27 90%	+50 89%	+67 90%	+14 54%	+1.2 91%	+46 76%	+4.2 65%	+0.7 69%	+1.3 75%	+1.0 66%	-0.2 72%
EBVs SELECTION INDEX VALUES												
SUPERMARKET +\$73						GRASS FED +\$68			GRAIN FED +\$68		EU +\$81	

Mawarra Class Act (AI) (H#) Sire: Big-Gully 611 Bounty 517U (IMP CAN) (H#) Dam: Mawarra Minerva 774 (AI) (H)
Born: 02/03/2013

Class Act has been a stand out since the day he was born. Eye appeal and tremendous carcass combine with his elite maternal genetics. Minerva 774 is dam of our sire After Shock and some outstanding Anzac E114 ET sons that we look forward to offering in 2017. Class Act's first progeny are offered to you as young calves-at-foot in this catalogue. His first full draft of bulls will be presented at our next bull sale.



GL	Bwt	200	400	600	Milk	SS	Cwt	EMA	Rib	Rump	RBV	IMF
-0.7 77%	+6.5 80%	+35 74%	+58 70%	+84 73%	+16 51%	+2.6 75%	+50 57%	---	---	---	---	---
EBVs SELECTION INDEX VALUES												
SUPERMARKET +\$81						GRASS FED +\$74			GRAIN FED +\$73		EU +\$89	

Bowmont Storm C093 (H) Sire: Glendan Park Storm W134 (H) Dam: Bowmont Maritana W168 (AI) (H)
Born: 01/04/2007

Storm C093 has been used widely throughout Australia, his Sire has consistently bred commercially orientated cattle displaying tremendous carcass attributes. Dam, Bowmont Maritana W168, is one of the best females in the Bowmont Herd. Storm was represented by two sons in our Herefords Australia National (Wodonga) teams and sold eight, in total, to a top of \$16,000.



GL	Bwt	200	400	600	Milk	SS	Cwt	EMA	Rib	Rump	RBV	IMF
+3.8 96%	+8.8 97%	+44 96%	+78 96%	+118 97%	+9 93%	+2.0 96%	+70 89%	+5.2 80%	+0.5 84%	+1.1 88%	+0.7 82%	+1.0 87%
EBVs SELECTION INDEX VALUES												
SUPERMARKET +\$92						GRASS FED +\$82			GRAIN FED +\$102		EU +\$98	

Joining details Spring calving cows
Bulls will run with cows until Sale day.

Lot no.	I D	AI Date	AI Sire I D	Bull in date	Sire I D
1	HRPG128	07.10.2016	OSA1024070713JNZHB	21.10.2016	HRPH117
2	HRPG249	07.10.2016	AEDE114	21.10.2016	DAYJ126
3	HRPG243	07.10.2016	COOA013	21.10.2016	HRPH117
4	HRPG042	07.10.2016	COOA013	21.10.2016	HRPH117
5	HRPG124	07.10.2016	AEDE114	21.10.2016	DAYJ126
6	HRPG011		Due to calve prior to sale		
7	HRPG068		To be flushed prior to sale		
8	HRPG057		To be flushed prior to sale		
9	HRPG107		To be flushed prior to sale		
10	HRPG144	07.10.2016	OSA1024070713JNZHB	21.10.2016	HRPH117
11	HRPG300	07.10.2016	HRPG041	21.10.2016	HRPH117
12	HRPG053	07.10.2016	OSA1024070713JNZHB	21.10.2016	HRPH117
13	HRPG159	07.10.2016	AEDE114	21.10.2016	DAYJ126
14	HRPG252	07.10.2016	AEDE114	21.10.2016	DAYJ126
15	HRPG235	07.10.2016	OSA1024070713JNZHB	21.10.2016	HRPH117
16	HRPG233		To be flushed prior to sale		
17	HRPG246	07.10.2016	AEDE114	21.10.2016	DAYJ126
18	HRPG115	07.10.2016	AEDE114	21.10.2016	DAYJ126
19	HRPG250			01.10.2016	DAYJ126
20	HRPG172			01.10.2016	DAYJ126
21	HRPG244			10.10.2016	HRPH117
22	HRPG239			10.10.2016	HRPH117
23	HRPG264			10.10.2016	HRPH117
24	HRPF057		To be flushed prior to sale		
25	HRPE246	07.10.2016	OSA1024070713JNZHB	21.10.2016	HRPH117
26	DB A149			01.10.2016	DAYJ126
27	HRPA224		PTIC		
28	HRPH155	07.10.2016	AEDE114	21.10.2016	DAYJ126
29	HRPD176	07.10.2016	AEDE114	21.10.2016	DAYJ126
30	HRPH243	07.10.2016	AEDE114	21.10.2016	DAYJ126
31	HRPC092	07.10.2016	AEDE114	21.10.2016	DAYJ126
32	HRPD174			21.10.2016	DAYJ126
33	HRPH242	07.10.2016	AEDE114	21.10.2016	DAYJ126
34	HRPH182			01.10.2016	DAYJ126
35	HRPV006	07.10.2016	AEDE114	21.10.2016	DAYJ126

Sire ID
 AEDE114
 COOA013
 HRPG041

Sire name
 Allendale Anzac E114 (P)
 Cootharaba Magnum (H)
 Mawarra After Shock (H)

Sire ID
 HRPH117
 DAYJ126
 OSA1024070713JNZHB

Sire name
 Mawarra Blizzard (H)
 Days Enforcer J126 (S)
 Pourakino Downs Jasper (H)



"IT'S A LONG WAY TO THE TOP IF YOU ONLY USE COCK AND BULL!"

Mawarra use and recommend Dr Rob Pashen and the team at Australian Animal Genetics for all your embryo transfer requirements.

T: 03 5977 17770

F: 03 5975 9353

E: info@aagenetics.com.au



Your partner.

Next time you are thinking about a partner for your livestock business, think Elders. We know the market; we understand what clients need and what your clients will need too. We offer services tailored to the needs of primary producers and we also have a range of product solutions to support agribusiness.

Our aim is to help farmers like you make the most of their farming business by making more possible. That's why Elders is the right choice if you need expert help with the business of farming.

elders.com.au

For more information contact:
Elders Bairnsdale 03 5152 3037

Ross Milne 0408 057 558
Morgan Davies 0438 081 529



MAKES MORE POSSIBLE



You can count on us.

Across the country, our people work hard to know livestock best. We've been in the business for more than 150 years and we're committed to provide the best marketing options for every season. That's why you can rely on Landmark.

VICTORIA	Ray Attwell	0428 836 136
VICTORIA	Kevin Norris	0419 482 151
VICTORIA	Andrew Sloan	0428 522 204
VICTORIA	Peter Godbolt	0457 591 929

NEW SOUTH WALES	John Settree	0408 297 368
NEW SOUTH WALES	Andrew Wishart	0407 424 706
NEW SOUTH WALES	Joel Fleming	0467 725 195

QUEENSLAND	Mark Scholes	0409 229 651
QUEENSLAND	Colby Ede	0417 265 980
SOUTH AUSTRALIA	Gordon Wood	0408 813 215
SOUTH AUSTRALIA	Richard Miller	0428 849 327

landmark.com.au

LANDMARK



LOCAL KNOWLEDGE - NATIONAL NETWORK

2/77 MacLeod Street, Bairnsdale, 3875 Tel: 03 5153 1144 Fax: 03 5153 1149

Brad Obst Manager 0417 398 026

Rodney Perkins	Sale	0409 660 176	Ron Hammond	Orbost	0409 975 696
Neville Kelly	Heyfield	0417 359 637	Owen Waller	Dargo	0429 336 550
Geoff Nichols	Ensay	0429 398 026	Billy Trinder	Trainee	0448 930 053
Scott Mundy	Orbost	0428 326 737	Donald Rash	Wool	0418 900 693
Jake Fullgrave	Bairnsdale	0437 999 943	Peter Gannon	Real Estate	0418 514 537

BAIRNSDALE

ORBOST

AGENTS FOR WFI & CGU INSURANCE
 WEEKLY FAT SALES - BAIRNSDALE & SALE
 FORTNIGHTLY STORE SALES - BAIRNSDALE
 MONTHLY STORE SALES - SALE
 WEEKLY BOBBY CALF MARKET - SALE
 WEEKLY LIVEWEIGHT SCALES - HEYFIELD

SALE

HEYFIELD



Lot 1 - Minerva 862 (H)



Lot 2 - Miss Titania 036 (P)



Lot 3 - Impulse 63 (H)



Minerva 765 (H) with Lot 4 at foot



Dam of Lot 5 with son, Bushwacker (H)



Calf on Lot 5, Magnificent M310 (P)

1 MAWARRA MINERVA 862 (H) HRP128 Born: 12/07/2011 Pigment: 95 / 100

FOXFORTH VALUABLE (H)
TALBALBA VALIANT (H)
 TALBALBA CHERRY RIPE 61 (H)
 MAWARRA HERCULES (H)
MAWARRA MINERVA 473 (H)
 MAWARRA MINERVA 274 (H)

Our 'Ladies Day @ Mawarra' sale kicks off with an attractive Valiant female. She has a young bull calf at foot, the first Class Act son to be offered. Dam, Minerva 473, has sold 6 sons to \$8,000. Her top-selling son, Wideload, was purchased by the Turner family, Bindi. She sold a daughter for \$2,500 and has a full sister to Minerva 862 retained in herd.

Calf at Foot:
HRPM275 (H)
 Sex: **M**
 DOB
08.08.2016
 Sire:
 Mawarra Class Act (H#)

GL	Bwt	200	400	600	Milk	SS	Cwt	EMA	Rib	Rump	RBV	IMF
-2.1 58%	+5.6 76%	+33 71%	+51 67%	+74 69%	+13 61%	+0.3 59%	+44 58%	+2.2 47%	-0.5 52%	-0.6 56%	+0.8 50%	+0.3 51%
EBVs SELECTION INDEX VALUES												
SUPERMARKET +\$64						GRASS FED +\$58			GRAIN FED +\$65			EU +\$71

2 MAWARRA MISS TITANIA 036 (P) HRP249 Born: 13/09/2011 Pigment: 80 / 100

BOWEN TORNADO Z260 (AI) (ET) (P)
KIDMAN MERCEDES D39 (P)
 KIDMAN MARITANA LASS V129 (AI) (P)
 MINLACOWIE XCITEMENT (P)
MAWARRA MISS TITANIA 008 (AI) (P)
 MAWARRA MISS TITANIA 002 (AI) (P)

Miss Titania 036 has a Kanimbla Upfort daughter retained and her first son, Noteworthy (pictured on page 6), sold for \$4,500 to Jim Flannagan, Omeo. Dam, Miss Titania 008, has sold three sons to \$7,000. This Miss Titania line has a long history of producing sons in the top draft with Miss Titania 002 selling sons to \$10,000 and her maternal brothers selling to \$15,000.

Calf at Foot:
HRPM290 (P)
 Sex: **F**
 DOB
06.08.2016
 Sire:
M Magnificent (P)

GL	Bwt	200	400	600	Milk	SS	Cwt	EMA	Rib	Rump	RBV	IMF
-0.4 55%	+6.5 75%	+32 69%	+48 64%	+77 66%	+18 60%	+0.8 62%	+41 54%	+2.8 43%	-0.2 45%	-0.6 48%	+1.0 44%	+0.4 44%
EBVs SELECTION INDEX VALUES												
SUPERMARKET +\$67						GRASS FED +\$60			GRAIN FED +\$71			EU +\$76

3 MAWARRA IMPULSE 63 (H) HRP243 Born: 26/08/2011 Pigment: 100 / 100

GH NEON 17N (IMP CAN) (H)
MAWARRA VICE CHANCELLOR (AI) (ET) (H)
 YAMBRO SPOT W123 (P)
 MAWARRA MASTER BUILDER (AI) (H)
MAWARRA IMPULSE 59 (H)
 MAWARRA IMPULSE 39 (AI) (H)

Vice Chancellor is a full brother to Herefords Australia National (Wodonga) Grand Champions \$48,000 Trail Blazer (2008) and \$32,000 Unique (2009). They have both bred consistently well across many herds. Impulse 63 has a sister retained and her young son, Advance M285, is an exciting future-sire prospect.

Calf at Foot:
HRPM285 (H)
 Sex: **M**
 DOB
27.07.2016
 Sire:
D C Advance F052 (H)

GL	Bwt	200	400	600	Milk	SS	Cwt	EMA	Rib	Rump	RBV	IMF
-1.4 54%	+5.7 75%	+31 68%	+49 64%	+74 66%	+12 54%	+1.2 52%	+44 53%	+2.9 41%	+0.1 45%	+0.2 48%	+0.8 43%	0.0 45%
EBVs SELECTION INDEX VALUES												
SUPERMARKET +\$76						GRASS FED +\$71			GRAIN FED +\$78			EU +\$86

4 MAWARRA MINERVA 852 (AI) (H) HRP042 Born: 05/02/2011 Pigment: 80 / 50

STR STANDARD 256B DOM LAD 68L (H)
STANDARD 68L DOM LAD 38T (IMP CAN) (H)
 K 64H RIBSTONE LADY 112N (H)
 SMITHSTON MIGHTY MAC M033 (H)
MAWARRA MINERVA 765 (AI) (H)
 MAWARRA MINERVA 702 (H)

Minerva 765's first son sold for \$5,000 to Peter Faithfull, Omeo. She has a son in the top mob for 2017. Grand dam, Minerva 702, sold three sons to \$9,000. Minerva 852 has a daughter retained in herd and her bull calf, at foot, is the first Mustang son to be offered. His first full draft of bulls will be catalogued in our 2017 sale.

Calf at Foot:
HRPM273 (P)
 Sex: **M**
 DOB
12.07.2016
 Sire:
Mawarra Mustang (P)

GL	Bwt	200	400	600	Milk	SS	Cwt	EMA	Rib	Rump	RBV	IMF
+3.2 74%	+5.6 73%	+28 68%	+40 67%	+69 66%	+21 58%	+0.7 54%	+37 53%	---	---	---	---	---
EBVs SELECTION INDEX VALUES												
SUPERMARKET +\$63						GRASS FED +\$58			GRAIN FED +\$72			EU +\$71

5 MAWARRA MISS TITANIA 034 (P) HRP124 Born: 18/07/2011 Pigment: 100 / 100

VALMA LINCOLN A27 (P)
MAWARRA IDDY BITTY (AI) (P)
 HEATHERDALE HYACINTH Z39 (P)
 COOTHARABA MAGNUM (H)
MAWARRA MISS TITANIA 393 (AI) (H)
 MAWARRA MISS TITANIA 239 ET1 (AI) (ET) (H)

Miss Titania 034 is from one of our most successful Miss Titania lines. Miss Titania 393 is a full sister to \$26,000 Herefords Australia National (Wodonga) Reserve Senior Champion, Yours Truly. Her seven maternal brothers have recorded an impressive average of \$12,600. Her only son, pictured left, sold for \$6,500 to Mr D Ingram, Bonang. Miss Titania 034 has a daughter retained and an Upfort son for our 2017 Sale.

Calf at Foot:
HRPM310 (P)
 Sex: **M**
 DOB
18.08.2016
 Sire:
M Magnificent (P)

GL	Bwt	200	400	600	Milk	SS	Cwt	EMA	Rib	Rump	RBV	IMF
-0.5 54%	+6.0 70%	+29 66%	+46 61%	+70 61%	+19 51%	+1.9 52%	---	+4.3 37%	+0.4 41%	+0.3 44%	+1.4 39%	0.0 44%
EBVs SELECTION INDEX VALUES												
SUPERMARKET +\$80						GRASS FED +\$76			GRAIN FED +\$92			EU +\$92



DONOR DAM



Debarry Tabitha Y177 (P)



Mawarra INXS (P)
\$16,000 Sale top 2011

Lot 6 - Tabitha 005 (P)

Retaining the right to one flush (at vendor's expense)

6 MAWARRA TABITHA 005 (AI) (P) HRRPG011 Born: 12/02/2011 Pigment: 100 / 100

YAMBRO VELOCITY X78 (P)
YAMBRO CONRAD B88 (P)
YAMBRO SPOT W123 (P)

BOWEN VINCENT V1 (S)
DEBARRY TABITHA Y177 (P)
DEBARRY TABITHA T81 (P)

We can't speak highly enough of the value DB Tabitha Y177 has brought to our herd. Thirteen sons have twice sold to \$16,000 to record an average of \$8,200. We retain her son, Mustang, and her nine daughters. We believe Tabitha 005 is the best Poll cow we have bred. Ravensdale P H, purchased a 'Pick of the herd flush' for \$5,000 at the Beef 2015 Genomix auction and chose Tabitha 005. Her first sons will be offered in 2017, all four daughters are retained.

Due to calve prior to sale.

Sire:
Allendale Anzac E114 (P)



GL	Bwt	200	400	600	Milk	SS	Cwt	EMA	Rib	Rump	RBV	IMF	
-2.3 76%	+3.7 73%	+33 71%	+60 71%	+82 70%	+16 60%	+3.0 63%	+57 61%	+2.8 52%	+0.5 54%	+0.3 57%	+0.4 53%	+0.5 55%	
SELECTION INDEX VALUES					SUPERMARKET +\$102			GRASS FED +\$97		GRAIN FED +\$111			EU +\$113



DONOR DAM



Grenadine 006 (P)
Donor dam



Debarry Elliott (P)
\$50,000 Sire

Lot 7 - Grenadine 002 (P)

7 MAWARRA GRENADINE 002 (P) HRRPG068 Born: 20/02/2011 Pigment: 100 / 100

BOWEN VINCENT V1 (S)
DEBARRY ELLIOTT (P)
DEBARRY PUTIRY S67 (AI) (P)

MORGANVALE ARGO (P)
CHARNOCK GRENADINE D453 (P)
CHARNOCK GRENADINE Z034 (AI) (ET) (P)

Grenadine D453 was purchased as a calf-at-foot at the Charnock Dispersal and has one of our best Anzac E114 sons for 2017. Grenadine Z034's full brother sold for \$34,000 at the 2006 Herefords Australia National (Dubbo). Grenadine 002's Spark 3060 heifer, Grenadine 006, was the best of her drop and is also a donor dam. We regard Grenadine 002 highly and, with her outstanding Anzac E114 daughter-at-foot, believe she presents an exciting package for your consideration.

Calf at Foot:
HRPM319 (P)
Sex: **F**
DOB
16.06.2016
Sire:
Allendale Anzac E114 (P)



GL	Bwt	200	400	600	Milk	SS	Cwt	EMA	Rib	Rump	RBV	IMF	
-0.4 61%	+7.8 76%	+36 70%	+64 69%	+97 70%	+3 62%	+1.9 55%	+54 59	+2.3 47%	+0.1 50%	-0.1 53%	+0.7 49%	-0.2 50%	
SELECTION INDEX VALUES					SUPERMARKET +\$69			GRASS FED +\$59		GRAIN FED +\$57			EU +\$75



DONOR DAM



Minerva 549 (H)



\$16,500 Yogi Bear (H)
Dam: Minerva 549 (H)

Lot 8 - Minerva 855 (AI) (ET) (H)

8 MAWARRA MINERVA 855 (AI) (ET) (H) HRP057 Born: 08/03/2011 Pigment: 100 / 100

GH DIFFERENCE BRITISHER 45L (IMP CAN) (H)
GH ADAMS TWISTER 416T (IMP CAN) (H)
 GH SYDNEY 809 ET 59 M (IMP CAN) (H)

MAWARRA KAHLUA (AI) (H)
MAWARRA MINERVA 549 ET1 (AI) (ET) (H)
 MAWARRA MINERVA 259 (H)

An outstanding pedigree combining a matriach of our herd, Minerva 259, and \$16,000 sire, Kahlua. His daughters have been very influential in our program. GH Adams Twister is renowned for breeding excellent females, marrying both carcass and milk. Minerva 549 has sold seven sons to \$16,500 averaging \$8,650. Both Minerva 855's daughters are retained, one being a full sister to the impressive young Advance son at foot. A high value package with runs on the board.

Calf at Foot:
HRPM281 (H)
 Sex: **M**
 DOB
09.07.2016
 Sire:
D C Advance F052 (H)



GL	Bwt	200	400	600	Milk	SS	Cwt	EMA	Rib	Rump	RBV	IMF
+1.1 61%	+7.3 73%	+34 70%	+51 68%	+76 70%	+10 64%	+2.1 56%	+42 59%	+4.0 47%	+1.0 51%	+1.9 53%	+0.9 47%	+0.2 50%
EBVs SELECTION INDEX VALUES						SUPERMARKET +\$74		GRASS FED +\$70		GRAIN FED +\$82		EU +\$85



DONOR DAM



Miss Titania 382 (H)



Lot 76 - Miss Titania 525 (H)
Daughter of Lot 9

Lot 9 - Miss Titania 439 (AI) (H)

9 MAWARRA MISS TITANIA 439 (AI) (H) HRP0107 Born: 10/06/2011 Pigment: 100 / 100

GH DIFFERENCE BRITISHER 45L (IMP CAN) (H)
GH ADAMS TWISTER 416T (IMP CAN) (H)
 GH SYDNEY 809 ET 59 M (IMP CAN) (H)

COOTHARABA MAGNUM (H)
MAWARRA MISS TITANIA 382 (H)
 MAWARRA MISS TITANIA 311 (H)

Miss Titania 439 is another of our exceptional Twister daughters. The contribution of Magnum across our breed is well documented and nowhere more so than in the quality and performance of his females at Mawarra. Miss Titania 439 presents the first opportunity to secure a daughter of Miss Titania 382 as, to date, all five have remained in herd. Miss Titania 439 has a Glasgow daughter catalogued as Lot 76 and an After Shock heifer retained who is a full sister to the very promising young bull calf at foot. Note carcass EBVs are mid-parent values.

Calf at Foot:
HRPM309 (H)
 Sex: **M**
 DOB
16.08.2016
 Sire:
Mawarra After Shock (H)



GL	Bwt	200	400	600	Milk	SS	Cwt	EMA	Rib	Rump	RBV	IMF
+0.7 73%	+6.1 75%	+33 70%	+53 66%	+78 67%	+14 61%	+2.1 52%	+49 54%	+5.4 %	-0.2 %	0.0 %	+2.3 %	+0.3 %
EBVs SELECTION INDEX VALUES						SUPERMARKET +\$85		GRASS FED +\$80		GRAIN FED +\$92		EU +\$99

10 MAWARRA MINERVA 865 (H) HRPG144 Born: 12/07/2011 Pigment: 100 / 55

FOXFORTH VALUABLE (H)
TALBALBA VALIANT (H)
 TALBALBA CHERRY RIPE 61 (H)
 HAVEN WIZARD (DH) (IMP GBR) (H)
MAWARRA MINERVA 740 (AI) (H)
 MAWARRA MINERVA 454 (H)

The Sellers family purchased a full sister to Minerva 865 for \$3,500. Grand dam, Minerva 454, sold sons to \$8,000. Minerva 865's first son, Dominant, sold for \$5,000 and is pictured on page 6.

Calf at Foot:
HRPM282 (H)
 Sex: **M**
 DOB
22.07.2016
 Sire:
D C Advance F052 (H)



GL	Bwt	200	400	600	Milk	SS	Cwt	EMA	Rib	Rump	RBV	IMF	
-0.4 60%	+7.0 75%	+35 70%	+54 66%	+78 67%	+9 62%	+1.2 60%	+43 55%	---	---	---	---	---	
EBVs SELECTION INDEX VALUES				SUPERMARKET +\$65				GRASS FED +\$59			GRAIN FED +\$69		EU +\$75

11 MAWARRA CHERRY RIPE 326 (H) HRPG300 Born: 01/11/2011 Pigment: 100 / 100

GH NEON 17 N (IMP CAN) (H)
MAWARRA VICE CHANCELLOR (AI) (ET) (H)
 MAWARRA MINERVA 554 ET1 (AI) (ET) (H)
 MAWARRA TOSHIBA (H)
MAWARRA CHERRY RIPE 325 (H)
 DAROUMAR ENCHANTING (AI) (H)

Vice Chancellor is a full brother to Herefords Australia National (Wodonga) Grand Champions \$48,000 Trail Blazer (2008) and \$32,000 Unique (2009). They have both bred consistently well across many herds. Daroumar Enchanting was one of the best females in David Armour's herd. Cherry Ripe 325 has a 'As Good As It Gets' heifer retained in herd.

Calf at Foot:
HRPM280 (H)
 Sex: **F**
 DOB
29.07.2016
 Sire:
Mawarra After Shock (H)



GL	Bwt	200	400	600	Milk	SS	Cwt	EMA	Rib	Rump	RBV	IMF	
---	---	---	---	---	---	---	---	---	---	---	---	---	
EBVs SELECTION INDEX VALUES				SUPERMARKET +\$--				GRASS FED +\$--			GRAIN FED +\$--		EU +\$--

12 MAWARRA DOREEN 340 (AI) (ET) (H) HRPG053 Born: 08/03/2011 Pigment: 95 / 0

STR STANDARD 256B DOM LAD 68L (H)
STANDARD 68L DOM LAD 38T (IMP CAN) (H)
 K 64H RIBSTONE LADY 112N (H)
 COOTHARABA MAGNUM (H)
MAWARRA DOREEN 296 (AI) (H)
 MAWARRA DOREEN 138 (H)

Doreen 340 is one of two ET sisters being offered in this catalogue. Their full brother sold to Don & Kay Belcher, Woodside, for \$14,000. Dam, Doreen 296, has two other daughters retained in herd. Doreen 340's first son, Defiance, is pictured on page 6. He sold for \$9,000 at the 2016 Herefords Australia National Show & Sale (Wodonga) to Mr M Turra, Nungurner. Doreen 340's Jasper son at foot is an outstanding future sire.

Calf at Foot:
HRPM278 (H)
 Sex: **M**
 DOB
03.08.2016
 Sire:
Pourakino D Jasper (H)



GL	Bwt	200	400	600	Milk	SS	Cwt	EMA	Rib	Rump	RBV	IMF	
+0.5 63%	+6.5 72%	+32 67%	+51 66%	+78 68%	+16 61%	+1.9 55%	+42 56%	+3.0 43%	-0.1 46%	-0.7 48%	+1.6 42%	+0.5 45%	
EBVs SELECTION INDEX VALUES				SUPERMARKET +\$79				GRASS FED +\$74			GRAIN FED +\$96		EU +\$92

13 MAWARRA HYACINTH 002 (P) HRPG159 Born: 13/07/2011 Pigment: 100 / 100

COOTHARABA MAGNUM (H)
MAWARRA WAGON TRAIN (AI) (ET) (H)
 MAWARRA MISS TITANIA 123 ET6 (AI) (ET) (H)
 VALMA LINCOLN A27 (P)
HEATHERDALE HYACINTH D8 (P)
 HEATHERDALE HYACINTH Z39 (P)

We purchased Hyacinth Z39, with Hyacinth D8 at foot, for \$6,000 at the Heatherdale Dispersal. We retained Hyacinth D8's full brother, Iddy Bitty, as sire. Wagon Train is a full brother to \$20,000 Herefords Australia National Show & Sale (Wodonga) 2011 Grand Champion, Westlife, and the 2012 Junior & Reserve Grand Champion, \$30,000 Yesteryear. Hyacinth 002's first son, Neon Glow (see pg. 6), sold for \$8,000 to R & Y Connely, Omeo.

Calf at Foot:
HRPM287 (P)
 Sex: **M**
 DOB
04.08.2016
 Sire:
Mawarra Mustang (P)



GL	Bwt	200	400	600	Milk	SS	Cwt	EMA	Rib	Rump	RBV	IMF	
-1.1 50%	+6.1 71%	+28 66%	+42 60%	+62 61%	+17 56%	+1.4 54%	---	+1.9 38%	-0.7 40%	-1.2 42%	+1.4 39%	-0.7 38%	
EBVs SELECTION INDEX VALUES				SUPERMARKET +\$49				GRASS FED +\$42			GRAIN FED +\$38		EU +\$57

14 MAWARRA MINERVA 052 (P) HRPG252 Born: 06/09/2011 Pigment: 100 / 100

VALMA LINCOLN A27 (P)
MAWARRA IDDY BITTY (AI) (P)
 HEATHERDALE HYACINTH Z39 (P)
 MINLACOWIE XCITEMENT (P)
MAWARRA MINERVA 013 (AI) (ET) (P)
 MAWARRA MINERVA 259 (H)

Iddy Bitty's sons sold to \$8,250 and 3 of his daughters are catalogued in this sale, (see also Lots 5 & 20). Our herd matriarch, Minerva 259, needs no introduction. Her flush to Xcitement proved very successful and established her pedigree into the heart of our poll herd. Minerva 013's sons have sold to \$6,000. Minerva 052's first son, Nashville, (see pg. 6), sold for \$4,000. She has an Upfort daughter in herd and a very impressive son-at-foot.

Calf at Foot:
HRPM291 (P)
 Sex: **M**
 DOB
05.08.2017
 Sire:
M Magnificent (P)



GL	Bwt	200	400	600	Milk	SS	Cwt	EMA	Rib	Rump	RBV	IMF	
+0.7 52%	+4.4 74%	+19 68%	+30 63%	+46 64%	+13 58%	+0.8 59%	+22 51%	+2.2 37%	+0.3 40%	+0.1 43%	+1.0 38%	-0.5 37%	
EBVs SELECTION INDEX VALUES				SUPERMARKET +\$45				GRASS FED +\$42			GRAIN FED +\$39		EU +\$52



Lot 15 - Doreen 351 (H)



Doreen 386 (H#)

**Outback (P) - Sale 2017
Son of Doreen 351 (H)
Sire: Mustang (P)**



15

MAWARRA DOREEN 351 (H)

HRPG235

Born: **05/09/2011**

Pigment: **60 / 70**

COOTHARABA MAGNUM (H)
MAWARRA VICE ADMIRAL (H)
MAWARRA MINERVA 554 ET1 (AI) (ET) (H)

YALLAROO TORNADO T008 (AI) (H)
MAWARRA DOREEN 225 (H)
MAWARRA DOREEN 79 (H)

Doreen 351 is a full sister to two of our World Hereford Conference Pen Show class winning heifers. Doreen 225 (see pg. 42) has sold six sons to \$20,000 (Daybreak) and they have recorded an impressive average of \$11,350. Doreen 79's top-selling son was \$52,000 Sandstorm. Doreen 351 has an excellent Vendetta heifer in herd and a Mustang son (both pictured above). Her calf at foot is an exciting future sire prospect.

Calf at Foot:
HRPM289 (H)
Sex: **M**
DOB
13.08.2016
Sire:
D C Advance F052 (H)



GL	Bwt	200	400	600	Milk	SS	Cwt	EMA	Rib	Rump	RBV	IMF
-0.5 61%	+8.8 76%	+42 71%	+69 67%	+104 68%	+10 60%	+1.7 60%	+59 57%	+4.7 48%	0.0 51%	0.0 54%	+1.3 49%	+1.0 51%
EBVs SELECTION INDEX VALUES				SUPERMARKET +\$86			GRASS FED +\$78		GRAIN FED +\$104		EU +\$96	



Lot 16 - Doreen 350 (H)

DONOR DAM



Doreen 146 (H)

**De Niro (H) \$5,000
Son of Doreen 350 (H)**



16

MAWARRA DOREEN 350 (H)

HRPG233

Born: **07/08/2011**

Pigment: **100 / 100**

COOTHARABA MAGNUM (H)
MAWARRA VICE ADMIRAL (H)
MAWARRA MINERVA 554 ET1 (AI) (ET) (H)

MAWARRA HERCULES (H)
MAWARRA DOREEN 146 (H)
MAWARRA DOREEN 79 (H)

Hercules bred us a valuable line of females. Dam, Doreen 146, has sold seven sons to \$12,000. Doreen 350's first son sold for \$5,000, she has a Advance son for our 2017 sale. Our Doreen 79 line continues to impress with her daughters and grand daughters being amongst the best in our herd. Doreen 350's Yarram Unique F107 heifer, at foot, is well worth your inspection.

Calf at Foot:
HRPM276 (H)
Sex: **F**
DOB
19.07.2016
Sire:
Yarram Unique F107 (H)



GL	Bwt	200	400	600	Milk	SS	Cwt	EMA	Rib	Rump	RBV	IMF
-1.6 62%	+6.2 76%	+32 72%	+54 68%	+77 69%	+10 64%	+1.1 63%	+45 58%	+3.3 48%	+0.1 50%	+0.2 53%	+0.8 49%	+0.3 50%
EBVs SELECTION INDEX VALUES				SUPERMARKET +\$72			GRASS FED +\$66		GRAIN FED +\$78		EU +\$81	



17 MAWARRA MARITANA 183 (H) HRPG246 Born: 05/09/2011 Pigment: 100 / 100

COOTHARABA MAGNUM (H)
MAWARRA WAGON TRAIN (AI) (ET) (H)
 MAWARRA MISS TITANIA 123 ET6 (AI) (ET) (H)
 MAWARRA RIP SNORTA (H)
MAWARRA MARITANA 170 (H)
 MAWARRA MARITANA 107 (H)

Maritana 107 has many daughters and grand daughters continuing her legacy in our herd. Her own sons sold to \$15,000 and grandsons have sold to \$28,000. Unfortunately Maritana 170 was injured and had to be sold. Wagon Train is one of nine Miss Titania 123 / Magnum sons. They have sold to \$30,000 recording an average of \$13,600. Maritana 183 has an After Shock son to be offered in our 2017 sale.

Calf at Foot:
HRPM277 (H)
 Sex: **M**
 DOB
27.07.2016
 Sire:
D C Advance F052 (H)



GL	Bwt	200	400	600	Milk	SS	Cwt	EMA	Rib	Rump	RBV	IMF	
+0.5 43%	+6.3 72%	+28 67%	+40 61%	+60 62%	+12 57%	---	+26 50%	---	---	---	---	---	
EBVs SELECTION INDEX VALUES													
							SUPERMARKET +\$34		GRASS FED +\$27		GRAIN FED +\$30		EU +\$40

18 MAWARRA MINERVA 861 (AI) (H) HRPG115 Born: 01/06/2011 Pigment: 100 / 100

GH NEON 17N (IMP CAN) (H)
MAWARRA VICE REGAL (AI) (ET) (H)
 MAWARRA MINERVA 554 ET1 (AI) (ET) (H)
 COOTHARABA MAGNUM (H)
MAWARRA MINERVA 791 (H)
 MAWARRA MINERVA 574 ET1 (AI) (ET) (H)

Vice Regal was purchased by Franco H S for \$21,000 at the 2010 Herefords Australia National (Wodonga). He is a full brother to Herefords Australia National (Wodonga) Grand Champions \$48,000 Trail Blazer (2008) and \$32,000 Unique (2009). Minerva 861's boasts our most successful Minerva lines on both sides of her illustrious pedigree. Minerva 791 is a future donor dam. She has an outstanding Anzac E1 14 son for 2017 and another at foot.

Calf at Foot:
HRPM279 (H)
 Sex: **F**
 DOB
14.07.2016
 Sire:
D C Advance F052 (H)



GL	Bwt	200	400	600	Milk	SS	Cwt	EMA	Rib	Rump	RBV	IMF	
-1.2 73%	+5.1 74%	+31 69%	+53 65%	+70 66%	+12 59%	+1.2 54%	+44 55%	+4.6 45%	-0.2 48%	-0.3 51%	+1.9 47%	+0.1 48%	
EBVs SELECTION INDEX VALUES													
							SUPERMARKET +\$78		GRASS FED +\$74		GRAIN FED +\$87		EU +\$91

19 MAWARRA DAME MARLIN 002 (AI) (TW) (P) HRPG250 Born: 21/08/2011 Pigment: 100 / 100

GHR MILLIONAIRE 10E 25M (P)
MCCOY 25M RENAISSANCE 53W (IMP CAN) (P)
 MCCOY 47N CONNIE 72R (P)
 VALMA BEAUFORT Q31 (P)
BURANDO Q31 DAME MARLIN 41 (P)
 BURANDO PRICES DAME MARLIN 25 Q92 (P)

We purchasaed Burando Q31 Dame Marlin 41 as the top price joined heifer at the Burando Dispersal. McCoy 25M Renaissance 53W has bred excellent females. His daughters have won championships at both Brisbane and Adelaide Royal Shows. Our Renaissance females have bred well, with young grand daughters now in herd and his first grandsons to be offered in 2017.

Calf at Foot:
HRPM322 (P)
 Sex: **M**
 DOB
09.09.2016
 Sire:
Mawarra Magnificent (P)



GL	Bwt	200	400	600	Milk	SS	Cwt	EMA	Rib	Rump	RBV	IMF	
-1.5 59%	+4.9 73%	+32 68%	+53 65%	+70 66%	+17 57%	+2.1 61%	+42 54%	---	---	---	---	---	
EBVs SELECTION INDEX VALUES													
							SUPERMARKET +\$76		GRASS FED +\$70		GRAIN FED +\$71		EU +\$84

20 MAWARRA LAST DAY 004 (P) HRPG172 Born: 01/07/2011 Pigment: 100 / 100

VALMA LINCOLN A27 (P)
MAWARRA IDDY BITTY (AI) (P)
 HEATHERDALE HYACINTH Z39 (P)
 COOTHARABA MAGNUM (H)
MAWARRA LAST DAY 277 (H)
 MAWARRA LAST DAY 212 (AI) (H)

Last Day 004's first son sold for \$5,000 and she has a Mustang son to offer in our 2017 sale. Grand dam, Last Day 212, sold sons to \$10,000.

Calf at Foot:
HRPM321 (TW) (P)
 Sex: **F**
 DOB
06.09.2016
 Sire:
Mawarra Mustang (P)



GL	Bwt	200	400	600	Milk	SS	Cwt	EMA	Rib	Rump	RBV	IMF	
+0.6 49%	+6.1 73%	+28 66%	+41 61%	+65 62%	+13 55%	+1.2 56%	---	+2.8 36%	+0.2 39%	-0.1 41%	+1.2 37%	0.0 37%	
EBVs SELECTION INDEX VALUES													
							SUPERMARKET +\$61		GRASS FED +\$57		GRAIN FED +\$65		EU +\$70

21 MAWARRA MINERVA 873 (H) HRPG244 Born: 06/09/2011 Pigment: 100 / 100

COOTHARABA MAGNUM (H)
MAWARRA VICE ADMIRAL (H)
 MAWARRA MINERVA 554 ET1 (AI) (ET) (H)

K 45D SUPER LAD 106G (IMP CAN) (H)
MAWARRA MINERVA 626 ET1 (AI) (ET) (H)
 MAWARRA MINERVA 491 (H)

Minerva 491's \$11,000 top selling son, Valen, sold to Mr D Anderson, Yea at the 2010 Herefords Australia National Show & Sale (Wodonga). Minerva 626 has a Jasper daughter catalogued as Lot 73.

Calf at Foot:
HRPM323 (H)
 Sex: F
 DOB
17.09.2016
 Sire:
 Mawarra Class Act (H#)



GL	Bwt	200	400	600	Milk	SS	Cwt	EMA	Rib	Rump	RBV	IMF		
+0.2 61%	+7.5 76%	+36 71%	+60 67%	+89 68%	+13 61%	+1.4 56%	+51 57%	+3.8 46%	-0.5 50%	-0.9 53%	+1.9 48%	+0.2 50%		
EBVs SELECTION INDEX VALUES								SUPERMARKET +\$76		GRASS FED +\$68		GRAIN FED +\$82		EU +\$87

22 MAWARRA CHERRY RIPE 322 (H) HRPG239 Born: 31/08/2011 Pigment: 100 / 100

GH NEON 17N (IMP CAN) (H)
MAWARRA VICE CHANCELLOR (AI) (ET) (H)
 MAWARRA MINERVA 554 ET1 (AI) (ET) (H)

YALLAROO DUKE OF YORK (H)
MAWARRA CHERRY RIPE 294 (AI) (H)
 MAWARRA CHERRY RIPE 263 (H)

Grand dam, Cherry Ripe 263's \$40,000 top selling son, Virginian, was Grand Champion at the 2010 Herefords Australia National Show & Sale (Wodonga). Dam, Cherry Ripe 294, has two daughters retained in herd. Cherry Ripe 322 sold her first son at our 2016 Sale to G & S Moon, Black Mountain, for \$9,000. She has a young Advance heifer retained.

Calf at Foot:
HRPM325 (TW) (H)
 Sex: M
 DOB
12.09.2016
 Sire:
 Mawarra Class Act (H#)



GL	Bwt	200	400	600	Milk	SS	Cwt	EMA	Rib	Rump	RBV	IMF		
+0.6 54%	+7.5 74%	+38 68%	+66 64%	+99 65%	+10 53%	+1.6 58%	+59 52%	+4.2 41%	+0.2 43%	+0.4 46%	+1.1 42%	+0.6 43%		
EBVs SELECTION INDEX VALUES								SUPERMARKET +\$90		GRASS FED +\$83		GRAIN FED +\$101		EU +\$99

23 MAWARRA LASS 170 (AI) (ET) (H) HRPG264 Born: 13/08/2011 Pigment: 100 / 100

COOTHARABA ELGIN 2 (H)
COOTHARABA MAGNUM (H)
 COOTHARABA PAULINE 279 (H)

MAWARRA HERCULES (H)
MAWARRA LASS 101 (H)
 MAWARRA LASS 90 (AI) (H)

The Lass 101 / Magnum progeny have been very successful at Mawarra. Four full brothers to Lass 170 have sold to \$17,000 recording an average of \$9,750. A full sister sold for \$3,500 at our 2010 Feature Female Sale. Lass 101 has had four of her eight sons sell at the Herefords Australia National Show & Sale (Wodonga) including Oasis who sold to Ardn H S for \$16,000. He bred very well for them with sons topping their sale and one retained as sire.

Calf at Foot:
HRPM326 (H)
 Sex: M
 DOB
06.09.2016
 Sire:
 Mawarra Class Act (H#)



GL	Bwt	200	400	600	Milk	SS	Cwt	EMA	Rib	Rump	RBV	IMF		
+0.2 59%	+6.3 73%	+31 69%	+53 66%	+74 68%	+14 65%	+1.4 61%	+42 60%	+4.4 53%	+0.1 55%	+0.1 57%	+1.6 54%	+0.4 55%		
EBVs SELECTION INDEX VALUES								SUPERMARKET +\$72		GRASS FED +\$67		GRAIN FED +\$82		EU +\$83



BJS LIVESTOCK PHOTOGRAPHY
 Specialising in livestock photography and video production utilising drone technology.



Brandon Sykes: 0407 619 412 Email: bsykes.mawarrab@outlook.com
 Search us on You Tube or visit bjslivestockimagery.com





**DONOR
DAM**

Lot 24 - Minerva 843 (AI) (ET) (H)
Retaining the right to one flush (at vendor's expense)



Minerva 554 (H) - Dam



Minerva 842 (H) - Full sister



Minerva 816 (H) - Full sister



Winchester (H) - Full brother

24 MAWARRA MINERVA 843 (AI) (ET) (H) HRPF057 Born: 06/03/2010 Pigment: 100 / 100

COOTHARABA ELGIN 2 (H)
COOTHARABA MAGNUM (H)
COOTHARABA PAULINE 279 (H)

MAWARRA KAHLUA (AI) (H)
MAWARRA MINERVA 554 ET1 (AI) (ET) (H)
MAWARRA MINERVA 357 (H)

What an incredible opportunity to obtain an elite Hereford female! Minerva 843's illustrious pedigree combines two of our breeds most impressive individuals; Magnum and Minerva 554. Full brothers to Minerva 843 include renowned international sire Vice Admiral, \$26,000 Winchester and \$15,000 Young Gun. Full sisters Minerva 842 and Minerva 817 have both sold sons to \$17,000. This pre-eminent pedigree ensures performance and profitability. Can you afford **NOT** to have a Minerva 554 daughter in your breeding program?\$.....

Calf at Foot:
HRPM... (H)
Sex: **M**
DOB
02.10.2016
Sire:
Mawarra Class Act (H#)

GL	Bwt	200	400	600	Milk	SS	Cwt	EMA	Rib	Rump	RBV	IMF
+0.6 64%	+6.6 77%	+34 73%	+59 72%	+86 74%	+14 68%	+1.5 64%	+50 66%	+5.1 58%	-0.6 60%	-1.0 62%	+2.2 59%	+0.5 60%
EBVs SELECTION INDEX VALUES				SUPERMARKET +\$82			GRASS FED +\$76			GRAIN FED +\$95		EU +\$95



DONOR DAM

Lot 25 - Miss Titania 410 (H)



Miss Titania 265 (H)



**Miss Titania 535 (H)
Whisky River (H) daughter**

25 MAWARRA MISS TITANIA 410 (H) HRPE246 Born: 11/08/2009 Pigment: 100 / 100

FOXFORTH VALUABLE (H)
TALBALBA VALIANT (H)
 TALBALBA CHERRY RIPE 61 (H)
 MAWARRA MASTER BUILDER (AI) (H)
MAWARRA MISS TITANIA 265 (H)
 MAWARRA MISS TITANIA 131 (H)

Donor dam, Miss Titania 410, has a lovely temperament and has bred us an excellent line of young heifers. Her five daughters are retained in herd. Her first calf was a son and sold for \$3,000 to Dalounder Pastoral Co., Porepunka. In keeping with the quality of her daughters in herd, the lovely Class Act heifer-at-foot is one not to be missed.

Calf at Foot:
HRPM284
 Sex: **F**
 DOB
01.07.2016
 Sire:
Mawarra Class Act (H#)

GL	Bwt	200	400	600	Milk	SS	Cwt	EMA	Rib	Rump	RBY	IMF
-0.4 58%	+7.4 79%	+37 74%	+58 72%	+90 76%	+12 64%	+1.3 62%	+47 63%	+1.5 47%	-0.8 51%	-1.1 55%	+0.8 50%	-0.2 51%
EBVs SELECTION INDEX VALUES				SUPERMARKET +\$65			GRASS FED +\$55		GRAIN FED +\$55		EU +\$71	



DONOR DAM

Lot 26 - Debarry Tabitha A149 (P)



**Tabitha 018 (P)
Harvie High Roller ET 66X (P)**



**Lot 69 - Tabitha 019 (P)
Harvie High Roller ET 66X (P)**

26 DEBARRY TABITHA A149 (P) DB A149 Born: 22/05/2005 Pigment: 100 / 100

LJS 23C DEVIATE U101 (AI) (ET) (P)
YALGOO INTERROGATOR X093 (P)
 YALGOO IRISH MAID Q164 (P)
 WIRANYA TASMAN (AI) (P)
DEBARRY TABITHA T81 (P)
 DEBARRY TABITHA Q48 (P)

We purchased DB Tabitha A149 from the Braybook Dispersal in 2012 for \$8,500. She is a maternal sister to DB Tabitha Y177 who has been an outstanding breeder for us. Tabitha A149's three sons have sold to \$8,000 at Mawarra (two are pictured on page 7) and she has two daughters retained. Another daughter, Tabitha 019 (pictured above), is offered to you in this catalogue as Lot 69.

Ran with
Days Enforcer J126 (S)
 from 20.09.2016

GL	Bwt	200	400	600	Milk	SS	Cwt	EMA	Rib	Rump	RBY	IMF
+0.4 59%	+4.1 79%	+24 75%	+38 73%	+51 77%	+7 72%	+2.0 67%	+28 64%	+1.1 53%	-0.6 61%	-1.2 65%	+0.8 58%	-0.7 60%
EBVs SELECTION INDEX VALUES				SUPERMARKET +\$40			GRASS FED +\$35		GRAIN FED +\$26		EU +\$47	



Lot 27 - Miss Titania 330 ET1 (ET) (H)



Nostalgia (H) - Full brother



Sentimental (H) - Full brother



Solid Gold (H) - Full brother
\$18,000 Top price Mawarra sale 2007



Youngster (H) - Son

27 MAWARRA MISS TITANIA 330 ET1 (ET) (H) HRP224 Born: 28/10/2005 Pigment: 100 / 100

VENA PARK SHARKA (H)
YALLAROO TORNADO T008 (AI) (H)
YALLAROO AMAZE L048 (H)

DUNROBIN SUPER STAR ET 2A (IMP CAN) (ET) (H)
MAWARRA MISS TITANIA 123 ET6 (AI) (ET) (H)
MAWARRA MISS TITANIA 53 (H)

Miss Titania 330 is a full sister to \$60,000 Nostalgia. The eight sons of Tornado and Miss Titania 123 recorded an average of \$16,500. Miss Titania 330's top-selling son, \$24,000 Youngster, was Reserve Intermediate Champion at the 2012 Herefords Australia National Show & Sale (Wodonga) and sold to Glenellerslie H S and she has two young daughters retained in herd. Miss Titania 123 is our most successful breeder with her progeny amassing a gross in excess of \$360,000. Can you afford **NOT** to have a Miss Titania 123 daughter in your herd?

PTIC
Ran with
M. Class Act (H#)
02.05.2016 - 25.07.2016



GL	Bwt	200	400	600	Milk	SS	Cwt	EMA	Rib	Rump	RBV	IMF
+0.6 62%	+6.6 80%	+33 77%	+50 76%	+76 77%	+14 74%	+0.7 74%	+36 68%	+0.3 59%	-0.3 61%	-0.1 64%	-0.4 59%	+0.3 59%
EBVs SELECTION INDEX VALUES				SUPERMARKET +\$53			GRASS FED +\$46		GRAIN FED +\$55		EU +\$59	



28 MAWARRA MISS TITANIA 040 (AI) (P) HRPH155 Born: 13/06/2012 Pigment: 55 / 100

YAMBRO CONRAD B88 (P)
MAWARRA INXS (AI) (P)
 DEBARRY TABITHA Y177 (P)
 MERAWAH MADDUX A63 (AI) (P)
MAWARRA MISS TITANIA 019 (P)
 MAWARRA MISS TITANIA 349 (H)

INXS was the \$16,000 top-priced bull at our 2011 sale, where he was purchased by Tenaru Poll Herefords, Goondiwindi, NSW. Miss Titania 019 has two daughters retained in herd. Miss Titania 040 has a very promising Magnificent heifer-at-foot.

Calf at Foot:
HRPM283 (P)
 Sex: **F**
 DOB
30.06.2016
 Sire:
M Magnificent (P)



GL	Bwt	200	400	600	Milk	SS	Cwt	EMA	Rib	Rump	RBV	IMF
+0.5 72%	+3.8 73%	+25 67%	+45 65%	+60 69%	+14 54%	+2.2 51%	+37 55%	---	---	---	---	---
SELECTION INDEX VALUES				SUPERMARKET +\$72				GRASS FED +\$68		GRAIN FED +\$79		EU +\$82

29 MAWARRA MINERVA 020 (P) HRPD176 Born: 02/08/2008 Pigment: 80 / 85

FCC 60G MADDUX 4L (IMP CAN) (P)
MERAWAH MADDUX A63 (AI) (P)
 MERAWAH COLLEEN W70 (P)
 MAWARRA NOSTALGIA (H)
MAWARRA MINERVA 703 ET1 (AI) (ET) (H)
 MAWARRA MINERVA 259 (H)

Minerva 703 has sold three sons to \$13,000, has another to offer in our 2017 sale and two daughters retained. Minerva 703's full brothers sold to \$16,000. Minerva 020 has two daughters retained in herd.

Calf at Foot:
HRPM272 (P)
 Sex: **M**
 DOB
11.07.2016
 Sire:
Mawarra Mustang (P)



GL	Bwt	200	400	600	Milk	SS	Cwt	EMA	Rib	Rump	RBV	IMF
+0.9 50%	+4.5 73%	+29 64%	+39 59%	+53 61%	+13 50%	---	---	---	---	---	---	---
SELECTION INDEX VALUES				SUPERMARKET +\$54				GRASS FED +\$51		GRAIN FED +\$60		EU +\$62

30 MAWARRA MISS TITANIA 067 (P) HRPD243 Born: 14/07/2012 Pigment: 100 / 100

BOWEN TORNADO Z260 (AI) (ET) (P)
KIDMAN MERCEDES D39 (P)
 KIDMAN MARITANA LASS V129 (AI) (P)
 KAIRURU ABERDEEN 03 0047 (IMP NZL) (P)
MAWARRA MISS TITANIA 012 (AI) (P)
 MAWARRA MISS TITANIA 303 (H)

Miss Titania 012 is our best Aberdeen daughter. Her two sons have sold to \$9,000 and she has two daughters retained. Miss Titania 067 has an Upfort son to be offered in 2017 and an impressive Magnificent bull calf at foot.

Calf at Foot:
HRPM288 (P)
 Sex: **M**
 DOB
01.08.2016
 Sire:
Mawarra Magnificent (P)



GL	Bwt	200	400	600	Milk	SS	Cwt	EMA	Rib	Rump	RBV	IMF
+2.2 52%	+6.8 68%	+35 65%	+55 60%	+83 61%	+14 56%	+1.0 54%	+48 52%	---	---	---	---	---
SELECTION INDEX VALUES				SUPERMARKET +\$79				GRASS FED +\$73		GRAIN FED +\$88		EU +\$89

31 MAWARRA MINERVA 016 (AI) (P) HRPC092 Born: 11/06/2007 Pigment: 100 / 100

MINLACOWIE VALIANT NICK (AI) (ET) (P)
MINLACOWIE XCITEMENT (P)
 MINLACOWIE JOCELYN 202 (P)
 MAWARRA NIGHTLY CHARM (AI) (ET) (H)
MAWARRA MINERVA 644 (H)
 MAWARRA MINERVA 301 (H)

Minerva 016's two sons have sold to \$5,000, and she has another by Anzac E114 for our 2017 sale. Her daughter, Minerva 084, is offered to you as Lot 84 in this catalogue, and her full sister is retained.

Calf at Foot:
HRPM312 (P)
 Sex: **F**
 DOB
27.08.2016
 Sire:
Mawarra Mustang (P)



GL	Bwt	200	400	600	Milk	SS	Cwt	EMA	Rib	Rump	RBV	IMF
-0.1 78%	+6.1 79%	+23 73%	+34 73%	+53 74%	+14 69%	+1.3 67%	+21 62%	+1.4 46%	-0.6 51%	-1.1 54%	+1.1 48%	-0.5 52%
SELECTION INDEX VALUES				SUPERMARKET +\$37				GRASS FED +\$31		GRAIN FED +\$28		EU +\$46



32 MAWARRA VIRGINIA 002 (P) HRPD174 Born: 25/07/2008 Pigment: 95 / 95

FCC 60G MADDUX 4L (IMP CAN) (P)
MERAWAH MADDUX A63 (AI) (P)
 MERAWAH COLLEEN W70 (P)
 MAWARRA NOSTALGIA (H)
MAWARRA VIRGINIA 132 (H)
 MAWARRA VIRGINIA 96 (H)

Virginia 002 sold her first son for \$3,000, has two daughters retained and another catalogued as Lot 79 in this sale. Dam, Virginia 132, has a full sister to Virginia 002 in herd, and sold a Lismore More daughter for \$2,000.

Calf at Foot:
HRPM... (P)
 Sex: **F**
 DOB
26.07.2016
 Sire:
Mawarra Mustang (P)



GL	Bwt	200	400	600	Milk	SS	Cwt	EMA	Rib	Rump	RBV	IMF
+1.1 59%	+5.7 78%	+28 73%	+41 71%	+52 75%	+11 68%	-0.6 36%	+25 61%	+1.0 43%	+0.4 48%	+0.5 51%	-0.4 46%	+0.3 46%
EBVs SELECTION INDEX VALUES				SUPERMARKET +\$39			GRASS FED +\$34			GRAIN FED +\$40		EU +\$44

33 MAWARRA LASS 005 (P) HRPD242 Born: 22/07/2012 Pigment: 100 / 100

BOWEN TORNADO Z260 (AI) (ET) (P)
KIDMAN MERCEDES D39 (P)
 KIDMAN MARITANA LASS V129 (AI) (P)
 MERAWAH MADDUX A63 (AI) (P)
MAWARRA LASS 002 (P)
 MAWARRA LASS 137 (H)

Lass 005 is a good-milking Mercedes daughter. Her first calf, a son by PCL Zircon 719T 25Z, will be offered in our 2017 sale. A lovely Mustang heifer at foot holds much promise.

Calf at Foot:
HRPM274 (P)
 Sex: **F**
 DOB
26.07.2016
 Sire:
Mawarra Mustang (P)



GL	Bwt	200	400	600	Milk	SS	Cwt	EMA	Rib	Rump	RBV	IMF
+0.9 50%	+4.5 73%	+29 64%	+39 59%	+53 61%	+13 50%	---	---	---	---	---	---	---
EBVs SELECTION INDEX VALUES				SUPERMARKET +\$54			GRASS FED +\$51			GRAIN FED +\$60		EU +\$62

34 MAWARRA MINERVA 062 (P) HRPD182 Born: 11/07/2012 Pigment: 100 / 100

BOWEN TORNADO Z260 (AI) (ET) (P)
KIDMAN MERCEDES D39 (P)
 KIDMAN MARITANA LASS V129 (AI) (P)
 MERAWAH MADDUX A63 (AI) (P)
MAWARRA MINERVA 020 (P)
 MAWARRA MINERVA 703 (AI) (ET) (H)

Minerva 062's first son will be offered in our 2017 sale. Her maternal sister, by \$80,000 Tycolah Jovial, is retained in herd. Grand dam, Minerva 703, has sold three sons to \$13,000.

Calf at Foot:
HRPM324 (TW) (P)
 Sex: **M**
 DOB
13.09.2016
 Sire:
Allendale Anzac E114 (P)



GL	Bwt	200	400	600	Milk	SS	Cwt	EMA	Rib	Rump	RBV	IMF
+1.4 53%	+6.0 74%	+31 68%	+43 65%	+61 69%	+13 54%	+0.5 51%	+32 55%	---	---	---	---	---
EBVs SELECTION INDEX VALUES				SUPERMARKET +\$58			GRASS FED +\$55			GRAIN FED +\$71		EU +\$67

35 MAWARRA FIRST DAY 006 (AI) (TW) (P) HRPJ006 Born: 31/01/2013 Pigment: 100 / 100

KOANUI SAFETY 4353 (P)
KOANUI SAFETY 8557 (IMP NZL) (P)
 KOANUI LYDIA 3108 (P)
 MORGANVALE ARGO (P)
MAWARRA FIRST DAY 003 (AI) (S)
 MAWARRA FIRST DAY 001 (AI) (P)

Safety 8557's calves are small at birth and display their sire's true Hereford color and cosmetics. Presence, structural soundness, and docile temperament compliment his tremendous carcass. Nine Safety sons have sold at Mawarra. Top seller, Mid West, was purchased at the 2013 Herefords Australia National (Wodonga) by Mr N MacIntosh, Yackandandah. First Day 006 has a maternal sister by Gambler G14 retained in herd.

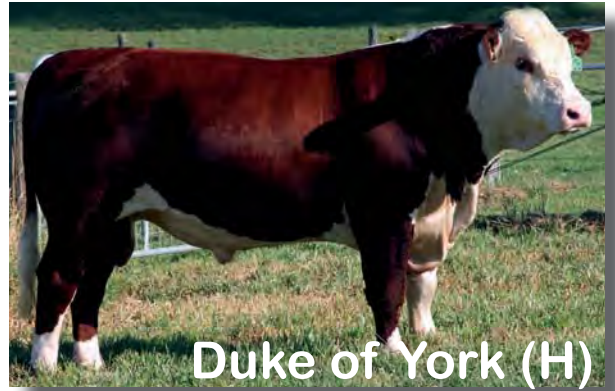
Calf at Foot:
HRPM286 (P)
 Sex: **F**
 DOB
10.08.2016
 Sire:
M Magnificent (P)



GL	Bwt	200	400	600	Milk	SS	Cwt	EMA	Rib	Rump	RBV	IMF
+0.5 59%	+5.1 69%	+32 63%	+51 60%	+78 62%	+12 48%	+1.2 52%	+43 51%	---	---	---	---	---
EBVs SELECTION INDEX VALUES				SUPERMARKET +\$78			GRASS FED +\$73			GRAIN FED +\$94		EU +\$86



Lot 36



Duke of York (H)

36 MAWARRA MARITANA 185 (AI) (ET) (H) HRP076 Born: 29/03/2011 Pigment: 100 / 100

YALLAROO TORNADO T008 (AI) (H)
MAWARRA SENTIMENTAL ET1 (ET) (H)
 MAWARRA MISS TITANIA 123 ET6 (ET) (AI) (H)
 CHARVEL LAWFUL (H)
MAWARRA MARITANA 107 (H)
 MAWARRA MARITANA 74 (H)

Maritana 185's full brother, \$15,000 Victorious, was purchased by the Lindsay family, Bracknell, at the 2010 Herefords Australia National Show & Sale (Wodonga). Her first son, Duke of York (pictured above), sold to Mr L Wheeler, Wallacedale, for \$10,000. Sentimental's sons sold to \$22,000 at South Boorook and he has been used extensively in Ireland. One of his daughters was in our winning 'Pen of Three' heifers at the World Hereford Conference in Uruguay. A proven, performance-driven pedigree.

Joining Details

Ran with
Mawarra Blizzard (H)
 18.05.2016 - 25.07.2016



GL	Bwt	200	400	600	Milk	SS	Cwt	EMA	Rib	Rump	RBV	IMF
-1.9 62%	+3.8 68%	+23 65%	+37 66%	+51 69%	+12 62%	+0.2 58%	+28 60%	+1.9 48%	+0.6 51%	+1.3 54%	+0.2 49%	0.0 51%

EBVs SELECTION INDEX VALUES

SUPERMARKET **+\$46** GRASS FED **+\$43** GRAIN FED **+\$44** EU **+\$50**



Lot 37



Maritana 107 (H)

37 MAWARRA MARITANA 186 (AI) (ET) (H) HRP0281 Born: 14/10/2011 Pigment: 85 / 85

COOTHARABA MAGNUM (H)
MAWARRA VICE ADMIRAL (H)
 MAWARRA MINERVA 554 ET1 (ET) (AI) (H)
 CHARVEL LAWFUL (H)
MAWARRA MARITANA 107 (H)
 MAWARRA MARITANA 74 (H)

Maritana 107 sold ten sons to \$15,000 recording an average of \$6,600. Her daughters have been excellent breeders for us with grandsons selling to \$28,000 and many grand daughters in herd. Lawful played a significant role in our herd, breeding us a functional line of highly-productive daughters. Vice Admiral has been equally successful, and the combination makes for a superb female. Consistency is the great strength of both these influential sires.

Joining Details

Ran with
Mawarra Blizzard (H)
 18.05.2016 - 25.07.2016



GL	Bwt	200	400	600	Milk	SS	Cwt	EMA	Rib	Rump	RBV	IMF
-1.6 59%	+4.3 65%	+26 63%	+44 62%	+63 63%	+10 61%	+0.4 59%	+38 56%	+4.2 48%	+0.1 50%	+0.3 53%	+1.3 49%	+0.6 51%

EBVs SELECTION INDEX VALUES

SUPERMARKET **+\$67** GRASS FED **+\$64** GRAIN FED **+\$77** EU **+\$76**

38 MAWARRA MISS TITANIA 032 (H#) HRP002 Born: 06/02/2011 Pigment: 100 / 100

BOWEN VINCENT V1 (S)
DEBARRY ELLIOTT (P)
 DEBARRY PURITY S67 (AI) (P)
 MAWARRA NOSTALGIA (H)
MAWARRA MISS TITANIA 342 (AI) (H)
 MAWARRA MISS TITANIA 201 (H)

Miss Titania 032 has two daughters retained. Her FCC Twenty X 20X heifer, recently weaned, has been a stand-out since birth. Both Miss Titania 342's sons sold for \$8,000, and she has three daughters in herd. Grand dam, Miss Titania 201, sold two sons to \$12,000.

Joining Details

AI Date 24.05.2016
FCC Twenty X 20X (P)

Ran with
Mawarra Mustang (P)
 18.06.2016 - 25.07.2016



GL	Bwt	200	400	600	Milk	SS	Cwt	EMA	Rib	Rump	RBV	IMF
+0.5 64%	+6.5 75%	+31 70%	+50 70%	+75 71%	+4 63%	+1.4 59%	+39 60%	+2.2 49%	+0.3 52%	+0.4 55%	0.0 51%	+0.7 53%

EBVs SELECTION INDEX VALUES

SUPERMARKET **+\$54** GRASS FED **+\$48** GRAIN FED **+\$58** EU **+\$61**



Lot 39 - Cherry Ripe 318 (H)



Lot 41 - Miss Titania 445 (H)



Lot 42 - Minerva 860 (H)



Lot 43 - Virginia 162 (H)



Lot 44 - Doreen 353 (H)



**Doreen 423 (H) - recently weaned
Dam: Lot 44 - Doreen 353 (H)**

39 MAWARRA CHERRY RIPE 318 (H) HRP021 Born: 05/03/2011 Pigment: 100 / 100

COOTHARABA MAGNUM (H)
MAWARRA VICE ADMIRAL (H)
 MAWARRA MINERVA 554 ET1 (ET) (AI) (H)

WAIU SW QUANTITY Q681 AI (IMP NZL) (H)
MAWARRA CHERRY RIPE 259 (AI) (H)
 MAWARRA CHERRY RIPE 141 ET6 (AI) (ET) (H)

Cherry Ripe 318 has two daughters retained. Her first son, Doc Holliday (pictured page 7), sold for \$5,000 to Mr B Fitzgerald, Casterton. Dam, Cherry Ripe 259, has sold two sons to \$8,000 and has two daughters in herd. Grand dam, Cherry Ripe 141, was Junior Champion at the Royal Melbourne Show in 1994.

Joining Details
 Ran with
Allendale Anzac E114 (P)
 18.05.2016 - 25.07.2016



GL	Bwt	200	400	600	Milk	SS	Cwt	EMA	Rib	Rump	RBY	IMF
-0.5 63%	+6.0 76%	+30 71%	+49 70%	+73 70%	+15 64%	+0.8 58%	+40 59	+2.5 46%	-0.4 48%	-0.7 51%	+1.1 47%	+0.1 49%
EBVs SELECTION INDEX VALUES			SUPERMARKET +\$61			GRASS FED +\$54			GRAIN FED +\$61			EU +\$69

40 MAWARRA MINERVA 870 (H) HRP021 Born: 15/07/2011 Pigment: 100 / 100

COOTHARABA MAGNUM (H)
MAWARRA VICE ADMIRAL (H)
 MAWARRA MINERVA 554 ET1 (ET) (AI) (H)

REEDY CREEK DEBONAIR 35 (H)
MAWARRA MINERVA 744 (H)
 MAWARRA MINERVA 544 (H)

Minerva 870 has a Blizzard heifer in herd and a full brother to her recently weaned. Minerva 744 has sold two sons to \$9,000 and has two other daughters retained. Grand dam, Minerva 544, sold her first son at the 2006 Herefords Australia National Show & Sale (Dubbo) for \$9,000 to Kalem Poll Herefords.

Joining Details
 AI Date 22.05.2016
Mawarra Daybreak (H)
 Ran with
Mawarra Class Act (H#)
 18.06.2016 - 25.07.2016



GL	Bwt	200	400	600	Milk	SS	Cwt	EMA	Rib	Rump	RBY	IMF
+0.8 63%	+7.7 75%	+36 70%	+62 66%	+89 67%	+10 56%	+1.5 57%	+51 56%	+4.9 45%	0.0 47%	0.0 50%	+2.0 46%	---
EBVs SELECTION INDEX VALUES			SUPERMARKET +\$82			GRASS FED +\$75			GRAIN FED +\$87			EU +\$94

41 MAWARRA MISS TITANIA 445 (H) HRP0177 Born: 25/07/2011 Pigment: 100 / 100

FOXFORTH VALUABLE (H)
TALBALBA VALIANT (H)
 TALBALBA CHERRY RIPE 61 (H)

MAWARRA KAHLUA (AI) (H)
MAWARRA MISS TITANIA 234 (H)
 MAWARRA MISS TITANIA 89 (HPR) (AI) (H)

Miss Titania 445's first son is pictured on page 7. He was purchased by Kent Park, Calulu, for \$5,000 at our 2016 sale. She has two Blizzard daughters retained in herd.

Joining Details
 AI Date 31.05.2016
Mawarra Calibre (H#)
 Ran with
Mawarra After Shock (H)
 18.06.2016 - 25.07.2016



GL	Bwt	200	400	600	Milk	SS	Cwt	EMA	Rib	Rump	RBY	IMF
-0.1 56%	+7.0 75%	+35 69%	+55 67%	+76 70%	+8 59%	+0.7 56%	+38 58	+1.1 46%	-1.0 49%	-1.5 52%	+0.5 47%	+0.3 47%
EBVs SELECTION INDEX VALUES			SUPERMARKET +\$38			GRASS FED +\$30			GRAIN FED +\$36			EU +\$44

42 MAWARRA MINERVA 860 (AI) (H) HRP0106 Born: 15/06/2011 Pigment: 40 / 100

GLENDAN PARK STORM W134 (H)
BOWMONT STORM C093 (H)
 BOWMONT MARITANA W168 (AI) (H)

MAWARRA TITANIC ET5 (AI) (ET) (H)
MAWARRA MINERVA 768 (H)
 MAWARRA MINERVA 787 (AI) (H)

Minerva 768 is a Titanic daughter. He was sired by Maverick and is a maternal brother to Kahlua (H). The Titanic sons have sold to \$15,000. Minerva 860 has two daughters retained and an excellent Blizzard son for our 2017 sale.

Joining Details
 AI Date 16.05.2016
Mawarra Daybreak (H)
 Ran with
Mawarra Blizzard (H)
 18.06.2016 - 25.07.2016



GL	Bwt	200	400	600	Milk	SS	Cwt	EMA	Rib	Rump	RBY	IMF
+1.8 75%	+6.9 75%	+36 69%	+59 67%	+86 69%	+8 59%	+1.2 55%	+50 58%	---	---	---	---	---
EBVs SELECTION INDEX VALUES			SUPERMARKET +\$69			GRASS FED +\$62			GRAIN FED +\$75			EU +\$75

43 MAWARRA VIRGINIA 162 (AI) (ET) (H) HRP0156 Born: 24/06/2011 Pigment: 60 / 100

GLENDAN PARK STORM W134 (H)
BOWMONT STORM C093 (H)
 BOWMONT MARITANA W168 (AI) (H)

CHARVEL LAWFUL (H)
MAWARRA VIRGINIA 93 (H)
 MAWARRA VIRGINIA 58 (H)

Storm C093 has bred commercially-orientated cattle displaying tremendous carcass attributes. Storm C093's sons have sold to \$16,000 at Mawarra and we retain a son, After Shock. Virginia 93's top selling son, Unequaled, was purchased for \$18,500 by the Lindsay family, Bracknell, at the 2013 Herefords Australia National Show & Sale (Wodonga). Virginia 162 sold her first son for \$5,000, he is pictured on page 7, and has a daughter retained.

Joining Details
 AI Date 31.05.2016
Mawarra Daybreak (H)
 Ran with
Mawarra Class Act (H#)
 18.06.2016 - 25.07.2016



GL	Bwt	200	400	600	Milk	SS	Cwt	EMA	Rib	Rump	RBY	IMF
+1.0 58%	+6.2 74%	+31 70%	+52 69%	+81 71%	+8 63%	+1.2 59%	+46 61%	+4.3 50%	0.0 53%	+0.3 55%	+1.1 51%	+0.5 52%
EBVs SELECTION INDEX VALUES			SUPERMARKET +\$68			GRASS FED +\$61			GRAIN FED +\$95			EU +\$75



Lot 46 - Cherry Ripe 320 (H)



Lot 47 - Miss Titania 438 (H)



Lot 48 - Miss Titania 035 (P)



Lot 50 - Doreen 346 (H)



Lot 51 - Minerva 867 (H)



Lot 53 - Gipsy 102 (H)

44 MAWARRA DOREEN 353 (H) HRPG236 Born: 11/09/2011 Pigment: 100 / 100

FOXFORTH VALUABLE (H)
TALBALBA VALIANT (H)
 TALBALBA CHERRY RIPE 61 (H)
 YALLAROO TITAN X20 (H)
MAWARRA DOREEN 263 (H)
 MAWARRA DOREEN 158 (H)

Doreen 353 and her recently-weaned Victory daughter are pictured on page 34. As you can see from the photograph, Doreen 423 is an exceptional young female. Doreen 353 sold her first son for \$5,000, he was purchased by Dr & Mrs G Brown of Kent Park (Calulu) at our 2016 sale.

Joining Details
 Ran with
Mawarra Blizzard (H)
 18.05.2016 - 25.07.2016

GL	Bwt	200	400	600	Milk	SS	Cwt	EMA	Rib	Rump	RBV	IMF	
-2.0 49%	+6.5 74%	+38 68%	+57 65%	+85 66%	+14 59%	0.0 60%	+51 55%	+3.9 44%	-0.5 46%	-0.8 49%	+1.3 45%	+1.0 45%	
EBVs SELECTION INDEX VALUES													
				SUPERMARKET +\$67				GRASS FED +\$60			GRAIN FED +\$78		EU +\$73

45 MAWARRA MINERVA 869 (AI) (H) HRPG193 Born: 20/07/2011 Pigment: 100 / 100

BUNDARRA ZAMBIA (H)
GLENWARRAH LISMORE MORE (H)
 GLENWARRAH LIONESSE 35 (H)
 GH MILLENNIUM ET 106G (IMP CAN) (H)
MAWARRA MINERVA 548 (AI) (H)
 MAWARRA MINERVA 455 (H)

Lismore More is a sire with excellent carcass and muscle down his top line while retaining true Hereford cosmetics and softness. His top-selling son at Mawarra, \$18,000 Black Heart, was purchased by Talbalba Herefords at the 2014 Herefords Australia National Show & Sale (Wodonga). Dam, Minerva 548, has sold sons to \$6,000 and grand dam, Minerva 455, sold sons to \$9,000.

Joining Details
 AI Date 17.05.2016
Mawarra Daybreak (H)
 Ran with
Mawarra Blizzard (H)
 18.06.2016 - 25.07.2016

GL	Bwt	200	400	600	Milk	SS	Cwt	EMA	Rib	Rump	RBV	IMF	
+1.7 72%	+8.1 76%	+32 70%	+50 66%	+77 69%	+7 61%	+2.0 57%	+42 56%	---	---	---	---	---	
EBVs SELECTION INDEX VALUES													
				SUPERMARKET +\$53				GRASS FED +\$45			GRAIN FED +\$48		EU +\$62

46 MAWARRA CHERRY RIPE 320 (AI) (H) HRPG117 Born: 18/06/2011 Pigment: 100 / 100

COOTHARABA ELGIN 2 (H)
COOTHARABA MAGNUM (H)
 COOTHARABA PAULINE 279 (H)
 GH NEON 17N (IMP CAN) (H)
MAWARRA CHERRY RIPE 299 (AI) (H)
 MAWARRA CHERRY RIPE 181 (AI) (H)

Cherry Ripe 320 is one of three Cherry Ripe 299 daughters we have in herd. Cherry Ripe 320 also has two daughters retained. Grand dam, Cherry Ripe 181, sold a daughter for \$3,000.

Joining Details
 Ran with
Mawarra After Shock (H)
 18.05.2016 - 25.07.2016

GL	Bwt	200	400	600	Milk	SS	Cwt	EMA	Rib	Rump	RBV	IMF	
+2.3 74%	+5.5 76%	+33 72%	+51 69%	+72 71%	+13 66%	+1.4 58%	+44 62%	+5.2 52%	0.0 55%	-0.2 57%	+2.2 54%	+0.4 55%	
EBVs SELECTION INDEX VALUES													
				SUPERMARKET +\$85				GRASS FED +\$82			GRAIN FED +\$102		EU +\$101

47 MAWARRA MISS TITANIA 438 (AI) (H) HRPG097 Born: 15/06/2011 Pigment: 100 / 100

COOTHARABA ELGIN 2 (H)
COOTHARABA MAGNUM (H)
 COOTHARABA PAULINE 279 (H)
 MONREID QUIRK (H)
MAWARRA MISS TITANIA 366 (AI) (H)
 MAWARRA MISS TITANIA 334 (ET) (H)

Miss Titania 366 sold a Genghis Khan son for \$8,000 to Mr G Moutray, Codrington. His full brother will be offered at our 2017 sale. Grand dam, Miss Titania 334, is a full sister to Nostalgia and Lot 27. Miss Titania 438 has a Victory heifer retained and will offer her first son next year.

Joining Details
 Ran with
Mawarra Blizzard (H)
 18.05.2016 - 25.07.2016

GL	Bwt	200	400	600	Milk	SS	Cwt	EMA	Rib	Rump	RBV	IMF	
+3.4 76%	+7.1 76%	+33 70%	+52 69%	+76 71%	+9 65%	+1.8 63%	+40 62%	+4.4 52%	-0.3 55%	-0.4 57%	+1.4 53%	+0.8 54%	
EBVs SELECTION INDEX VALUES													
				SUPERMARKET +\$66				GRASS FED +\$61			GRAIN FED +\$83		EU +\$78

48 MAWARRA MISS TITANIA 035 (P) HRPG187 Born: 16/07/2011 Pigment: 100 / 100

BOWEN TORNADO Z260 (AI) (ET) (P)
KIDMAN MERCEDES D39 (P)
 KIDMAN MARITANA LASS V129 (AI) (P)
 YALGOO BOULDER Z250 (P)
MAWARRA MISS TITANIA 010 (AI) (H#)
 MAWARRA MISS TITANIA 311 (H)

A consistent breeding Miss Titania line with grand dam, Miss Titania 311, selling two sons to \$8,000 and having three daughters retained. Miss Titania 010 sold two sons to \$5,000 and has two full sisters to Miss Titania 035 retained in herd. Miss Titania 035 sold her first son for \$4,500. AI sire CRR 719 Catapult 109 is widely regarded as one of the best breeding bulls in the U.S.

Joining Details
 AI Date 23.05.2016
CRR 719 Catapult 109 (P)
 Ran with
Days Enforcer J126 (S)
 18.06.2016 - 25.07.2016

GL	Bwt	200	400	600	Milk	SS	Cwt	EMA	Rib	Rump	RBV	IMF	
+1.4 62%	+5.5 76%	+32 69%	+47 66%	+69 69%	+16 60%	+1.1 54%	+42 56	+3.5 42%	+0.1 45%	-0.2 48%	+1.2 43%	+0.4 44%	
EBVs SELECTION INDEX VALUES													
				SUPERMARKET +\$74				GRASS FED +\$69			GRAIN FED +\$80		EU +\$86

49 MAWARRA DOREEN 011 (AI) (H#) HRP G112 Born: 22/06/2011 Pigment: 100 / 100

MAWARRA TRAIL BLAZER (AI) (H)
TENARU DETOUR D5 (AI) (P)
 TENARU CHERRY RIPE Z2 (AI) (P)

DEBARRY EDEN (P)
MAWARRA DOREEN 003 (AI) (P)
 MAWARRA DOREEN 241 (AI) (ET) (H)

Doreen 003 has sold sons to \$7,000 and has a daughter retained. Doreen 011 sold her first son, New Zealand, for \$5,000 to Michael Brown, Sale, and has a Gambler G14 daughter in herd. \$10,000 Tenaru Detour bred a line of quality daughters for Kalem Poll Herefords.

Joining Details
 Ran with
Days Enforcer J126 (S)
 18.05.2016 - 25.07.2016



GL	Bwt	200	400	600	Milk	SS	Cwt	EMA	Rib	Rump	RBY	IMF
+3.3 72%	+5.8 73%	+37 68%	+56 66%	+79 68%	+17 57%	+1.7 52%	+50 55	+3.1 42%	+1.0 45%	+1.2 48%	+0.6 43%	0.0 42%
EBVs SELECTION INDEX VALUES				SUPERMARKET +\$85				GRASS FED +\$80		GRAIN FED +\$89		EU +\$93

50 MAWARRA DOREEN 346 (AI) (ET) (H) HRP G151 Born: 24/06/2011 Pigment: 75 / 45

STANDARD 256B DOM LAD 68L (H)
STANDARD 68L DOM LAD 38T (IMP CAN) (H)
 K 64H RIBSTONE LADY 112N (H)

COOTHARABA MAGNUM (H)
MAWARRA DOREEN 296 (AI) (H)
 MAWARRA DOREEN 138 (H)

The Doreen 296 / 38T cross has proved most successful with two full sisters to Doreen 346 currently in herd. Don & Kay Belcher, Woodside, purchased their full brother, Amazon, for \$14,000. Doreen 346 has two young daughters retained and an Air Marshall son for our 2017 sale.

Joining Details
 AI Date 29.05.2016
Mawarra Daybreak (H)
 Ran with
Mawarra Mustang (P)
 18.06.2016 - 25.07.2016



GL	Bwt	200	400	600	Milk	SS	Cwt	EMA	Rib	Rump	RBY	IMF
+0.2 64%	+5.6 74%	+29 68%	+41 66%	+62 69%	+13 61%	+1.3 60%	+33 56%	+2.9 43%	+0.4 47%	-0.1 49%	+1.3 43%	+0.6 47%
EBVs SELECTION INDEX VALUES				SUPERMARKET +\$67				GRASS FED +\$65		GRAIN FED +\$86		EU +\$80

51 MAWARRA MINERVA 867 (AI) (ET) (H) HRP G152 Born: 21/06/2011 Pigment: 100 / 100

STANDARD 256B DOM LAD 68L (H)
STANDARD 68L DOM LAD 38T (IMP CAN) (H)
 K 64H RIBSTONE LADY 112N (H)

COOTHARABA MAGNUM (H)
MAWARRA MINERVA 773 (H)
 MAWARRA MINERVA 455 (H)

The consistency of the Minerva family is evident again in this pedigree. Grand dam, Minerva 455's top-selling son, \$9,000 Right Wing, bred a good line of females for Keith Davies, Gelantipy. He then purchased Minerva 773's son, \$12,000 Crusader. Minerva 867 has a daughter retained in herd and two maternal sisters.

Joining Details
 Ran with
Mawarra After Shock (H)
 18.05.2016 - 25.07.2016



GL	Bwt	200	400	600	Milk	SS	Cwt	EMA	Rib	Rump	RBY	IMF
+1.2 61%	+4.5 73%	+25 67%	+42 63%	+62 65%	+17 58%	+2.2 57%	+35 52%	---	---	---	---	---
EBVs SELECTION INDEX VALUES				SUPERMARKET +\$74				GRASS FED +\$71		GRAIN FED +\$90		EU +\$86

52 MAWARRA MISS TITANIA 437 (AI) (H) HRP G094 Born: 20/06/2011 Pigment: 100 / 100

GLENDAN PARK STORM W134 (H)
BOWMONT STORM C093 (H)
 BOWMONT MARITANA W168 (AI) (H)

COOTHARABA MAGNUM (H)
MAWARRA MISS TITANIA 380 (AI) (H)
 MAWARRA MISS TITANIA 140 (AI) (H)

Miss Titania 140's top-selling son was \$30,000 Herefords Australia National Show & Sale (Wodonga) Junior Champion 2008. He was purchased by Melrose Herefords, Noorimbee. Miss Titania 380 is one of four maternal sisters currently in herd and both her daughters are retained. Miss Titania 437's joining to Blizzard has been successful with a young heifer in herd and a full brother recently weaned.

Joining Details
 Ran with
Mawarra Blizzard (H)
 18.05.2016 - 25.07.2016



GL	Bwt	200	400	600	Milk	SS	Cwt	EMA	Rib	Rump	RBY	IMF
+3.4 77%	+6.3 75%	+35 70%	+59 66%	+88 67%	+11 59%	+1.3 58%	+53 57%	+4.8 48%	+0.1 50%	+0.2 52%	+1.4 49%	+0.6 51%
EBVs SELECTION INDEX VALUES				SUPERMARKET +\$83				GRASS FED +\$77		GRAIN FED +\$94		EU +\$92

53 MAWARRA GIPSY 102 (AI) (H) HRP G101 Born: 18/06/2011 Pigment: 100 / 100

GLENDAN PARK STORM W134 (H)
BOWMONT STORM C093 (H)
 BOWMONT MARITANA W168 (AI) (H)

COURALLIE V093 ADVANCE Z149 (AI) (ET) (H)
MAWARRA GIPSY 101 (H)
 MAWARRA GIPSY 54 (AI) (H)

Gipsy 101 is dam of \$7,000 Bullseye. He was purchased by Morfield Herefords. Gipsy 102 has a daughter retained and a son to be offered at our 2017 sale.

Joining Details
 AI Date 31.05.2016
Mawarra Daybreak (H)
 Ran with
M. Class Act (H#)
 18.06.2016 - 25.07.2016



GL	Bwt	200	400	600	Milk	SS	Cwt	EMA	Rib	Rump	RBY	IMF
+2.0 76%	+6.2 75%	+33 68%	+57 67%	+87 70%	+13 64%	+0.3 62%	+52 59%	+3.8 48%	+0.7 52%	+1.3 55%	+0.5 50%	+0.8 53%
EBVs SELECTION INDEX VALUES				SUPERMARKET +\$71				GRASS FED +\$64		GRAIN FED +\$78		EU +\$74



54 MAWARRA MISS TITANIA 440 (H) HRP136 Born: 15/06/2011 Pigment: 100 / 100

COOTHARABA MAGNUM (H)
MAWARRA VICE ADMIRAL (H)
 MAWARRA MINERVA 554 ET1 (AI) (ET) (H)
 MAWARRA NITRO (H)
MAWARRA MISS TITANIA 302 (H)
 MAWARRA MISS TITANIA 140 (AI) (H)

Miss Titania 440 boasts a powerful pedigree. Dam, Miss Titania 302, is a donor dam in our ET program. Her top-selling son, \$16,000 You Beaut, was sold at the Herefords Australia National Show & Sale (Wodonga) 2012. Grand dam, Miss Titania 140, sold sons to \$30,000. Miss Titania 440 is one of four maternal sisters in herd and sold her first son (pictured on page 7) to KLM Herefords, Yarragon, Vic for \$6,000.

Joining Details
 Ran with
D C Advance F052 (H)
 from 23.08.2016



GL	Bwt	200	400	600	Milk	SS	Cwt	EMA	Rib	Rump	RBV	IMF
-0.2 63%	+6.7 75%	+35 71%	+57 69%	+83 71%	+11 62%	+1.1 58%	+47 60	+3.4 47%	-1.2 50%	-1.7 53%	+1.8 48%	-0.1 50%
EBVs SELECTION INDEX VALUES			SUPERMARKET +\$65			GRASS FED +\$57			GRAIN FED +\$63			EU +\$75

55 MAWARRA MINERVA 045 (P) HRP012 Born: 01/03/2011 Pigment: 100 / 100

BOWEN VINCENT V1 (S)
DEBARRY ELLIOTT (P)
 DEBARRY PURITY S67 (AI) (P)
 WDR 107W ZACK 103Z (IMP CAN) (ET) (P)
MAWARRA MINERVA 010 (AI) (P)
 MAWARRA MINERVA 574 (AI) (ET) (H)

Minerva 010 is a donor dam and has two Anzac E114 sons to be offered in 2017. Her Cherry Z8 son, Limited Edition, topped our 2014 sale at \$11,000 to P & L Adams, Staghorn Flat, Vic. At our 2016 sale her Gambler G14 son, Nothin' But A Good Time, sold to Tummel Herefords for \$15,000. Minerva 045, one of four daughters currently retained, has two young heifers in herd.

Joining Details
 Ran with
Mawarra Magnificent (P)
 from 23.08.2016



GL	Bwt	200	400	600	Milk	SS	Cwt	EMA	Rib	Rump	RBV	IMF
+2.2 56%	+6.7 61%	+31 58%	+47 57%	+72 58%	+17 54%	+2.3 56%	---	+2.5 42%	+0.4 44%	+0.2 46%	+1.1 40%	0.0 44%
EBVs SELECTION INDEX VALUES			SUPERMARKET +\$66			GRASS FED +\$60			GRAIN FED +\$72			EU +\$75

56 MAWARRA MISS TITANIA 452 (AI) (ET) (H) HRP0276 Born: 16/11/2011 Pigment: 100 / 100

GH NEON 17N (IMP CAN) (H)
MAWARRA TRAIL BLAZER (AI) (ET) (H)
 MAWARRA MINERVA 554 (AI) (ET) (H)
 DUNROBIN SUPER STAR 2A SIC (IMP CAN) (ET) (H)
MAWARRA MISS TITANIA 123 (AI) (ET) (H)
 MAWARRA MISS TITANIA 53 (H)

The pedigree of Miss Titania 452 boasts our two most successful dams, Minerva 554 and Miss Titania 123, whose combined progeny sales have exceeded \$550,000. Miss Titania's 29 sons have averaged an outstanding \$12,000. 2008 Herefords Australia National Show & Sale (Wodonga) Grand Champion, Trail Blazer, has sold sons to \$16,000. Can you afford **NOT** to have a Miss Titania 123 daughter in your herd?

Joining Details
 Ran with
D C Advance F052 (H)
 from 23.08.2016



GL	Bwt	200	400	600	Milk	SS	Cwt	EMA	Rib	Rump	RBV	IMF
+2.2 56%	+6.7 61%	+31 58%	+47 57%	+72 58%	+17 54%	+2.3 56%	---	+2.5 42%	+0.4 44%	+0.2 46%	+1.1 40%	0.0 44%
EBVs SELECTION INDEX VALUES			SUPERMARKET +\$71			GRASS FED +\$64			GRAIN FED +\$65			EU +\$80

57 MAWARRA MINERVA 850 (AI) (H) HRP009 Born: 26/01/2011 Pigment: 80 / 50

STR STANDARD 256B DOM LAD 68L (H)
STANDARD 68L DOM LAD 38T (IMP CAN) (H)
 K 64H RIBSTONE LADY 112N (H)
 MAWARRA KAHLUA (AI) (H)
MAWARRA MINERVA 554 (AI) (ET) (H)
 MAWARRA MINERVA 357 (H)

Minerva 554 has an enviable progeny list including international sire Vice Admiral and two Herefords Australia National (Wodonga) Grand Champions. Her eleven sons sold to \$48,000 and recorded an impressive average of \$17,000. Minerva 850 has two young heifers retained. She is one of thirteen Minerva 554 daughters currently active in herd. Can you afford **NOT** to have a Minerva 554 daughter in your herd?

Joining Details
 Ran with
D C Advance F052 (H)
 from 23.08.2016



GL	Bwt	200	400	600	Milk	SS	Cwt	EMA	Rib	Rump	RBV	IMF
+2.2 56%	+6.7 61%	+31 58%	+47 57%	+72 58%	+17 54%	+2.3 56%	---	+2.5 42%	+0.4 44%	+0.2 46%	+1.1 40%	0.0 44%
EBVs SELECTION INDEX VALUES			SUPERMARKET +\$83			GRASS FED +\$79			GRAIN FED +\$95			EU +\$91

Mawarra Herefords
use and recommend



5174 1656

24 hour service



Large and small animals

58 MAWARRA DOREEN 341 (H) HRP061 Born: 28/02/2011 Pigment: 100 / 100

GH NEON 17N (IMP CAN) (H)
MAWARRA VICE CHANCELLOR (AI) (ET) (H)
 MAWARRA MINERVA 554 (AI) (ET) (H)
 MAWARRA SANDSTORM (AI) (ET) (H)
MAWARRA DOREEN 298 (AI) (H)
 MAWARRA DOREEN 164 (AI) (H)

Doreen 298 has three daughters retained, two being full sisters to Doreen 341. Grand dam, Doreen 164's top-selling son, \$15,000 Undeafated, was Reserve Senior Champion at the 2009 Herefords Australia National Show & Sale (Wodonga). Doreen 341 has a son for our 2017 sale and a young After Shock heifer recently weaned.

Joining Details
 Ran with
D C Advance F052 (H)
 from 23.08.2016

GL	Bwt	200	400	600	Milk	SS	Cwt	EMA	Rib	Rump	RBV	IMF
-2.8 55%	+6.2 72%	+37 66%	+62 61%	+91 62%	+14 49%	+1.5 53%	+57 50%	---	---	---	---	---
SELECTION INDEX VALUES				SUPERMARKET +\$91			GRASS FED +\$84		GRAIN FED +\$93		EU +\$101	

59 MAWARRA LAST DAY 003 (P) HRP086 Born: 11/04/2011 Pigment: 100 / 80

BOWEN VINCENT V1 (S)
DEBARRY ELLIOTT (P)
 DEBARRY PURITY S67 (AI) (P)
 COURALLIE WRANGLER (AI) (ET) (H)
MAWARRA LAST DAY 256 (H)
 MAWARRA LAST DAY 214 (H)

Last Day 256's top selling son, \$15,000 Walkabout, was purchased by The Ridge Pastoral, Rosedale, Vic.

Joining Details
 Ran with
Mawarra Magnificent (P)
 from 23.08.2016

GL	Bwt	200	400	600	Milk	SS	Cwt	EMA	Rib	Rump	RBV	IMF
+1.1 63%	+6.2 75%	+33 70%	+56 68%	+80 68%	+1 61%	+1.4 55%	+47 58%	---	---	---	---	---
SELECTION INDEX VALUES				SUPERMARKET +\$69			GRASS FED +\$63		GRAIN FED +\$71		EU +\$77	

60 MAWARRA LASS 166 (AI) (H) HRP121 Born: 09/06/2011 Pigment: 100 / 85

COOTHARABA ELGIN 2 (H)
COOTHARABA MAGNUM (H)
 COOTHARABA PAULINE 279 (H)
 MAWARRA RIP SNORTA (H)
MAWARRA LASS 155 (H)
 MAWARRA LASS 101 (H)

Lass 101 was a very successful donor dam with eight sons selling to \$17,000 recording an average of \$10,125. Lass 166 has three daughters retained in herd, one sired by Victory and two (twins) by Calibre. Her Victory son will be offered in 2017.

Joining Details
 Ran with
D C Advance F052 (H)
 from 23.08.2016

GL	Bwt	200	400	600	Milk	SS	Cwt	EMA	Rib	Rump	RBV	IMF
-0.4 75%	+6.4 76%	+30 71%	+47 69%	+66 71%	+16 64%	+0.9 63%	+35 61%	+4.4 51%	-0.3 54%	-0.6 56%	+1.9 52%	+0.4 53%
SELECTION INDEX VALUES				SUPERMARKET +\$60			GRASS FED +\$56		GRAIN FED +\$70		EU +\$71	





Doreen 225 (H)



Mawarra Vice Admiral (H)



Minerva 842 (H)



Mawarra Sentimental (H)

Embryo calves by M. Doreen 225 / M. Vice Admiral and M. Minerva 842 / M. Sentimental were shown in Uruguay, April 2016, at the World Hereford Conference Pen Show.

Doreen 225 progeny



Daybreak (H) - Sire: Pourakino Downs Jasper (H). Herefords Australia National Show & Sale (Wodonga) 2016. Purchased for \$20,000 by Ironbark Herefords, Barraba, NSW. Four full brothers sold in 2016 averaged \$11,750.

Minerva 842 progeny



Cowboy Deluxe (H#) - Sire: Big-Gully 611 Bounty 517U (H#). \$17,000 Herefords Australia National Show & Sale (Wodonga) 2015. Full brother to Minerva 933.



Doreen 351 (H)
Sire: Vice Admiral (H)

Full sister to our Uruguayan embryos.
Best heifer of our 2011 drop. Sells in this catalogue as Lot 15.

Minerva 933 (H#)
Sire: Big-Gully 611 Bounty 517U (H#)

Intermediate Champion Female Herefords Australia Youth National Heifer Show 2014. Full sister to \$17,000 Cowboy Deluxe.



Vulture (H) - Sire: Supreme (H)
\$13,500 Top-price horned bull Mawarra Sale 2010.



Yippity-Do-Dah (H) - Sire: GH Adams Twister 416T (H). \$7,500 Herefords Australia National Show & Sale (Wodonga) 2012.



Minerva 842 (H) / Sentimental (H) heifers at Graham Herefords, Waitoa, New Zealand. Flush siblings to our Uruguayan embryos.



Mawarra wins 1st in class at the 17th World Hereford Conference Pen Show





Lot 62 - Minerva 099 (P)



Lot 61 - Miss Titania 551 (H)



Lot 63 - Doreen 027 (P)



Lot 64 - Doreen 405 (H)



Lot 65 - Doreen 407 (H)

61 MAWARRA MISS TITANIA 551 (H) HRPL160 Born: 04/07/2015 Pigment: 100 / 100

HUNDAY QUIVER (H)
TRURO GENGHIS KHAN G028 (H)
 COURALLIE Y149 PR CHRISTIAN A216 (H)

Miss Titania 443's full brother sold for \$5,000. Miss Titania 340 sold sons to \$6,000 and a joined heifer for \$5,250 at our on-property sale in April. The Genghis Khan (aka Scotty) females are proving excellent milkers at Truro.

TALBALBA VALIANT (H)
MAWARRA MISS TITANIA 443 (H)
 MAWARRA MISS TITANIA 340 (H)

GL	Bwt	200	400	600	Milk	SS	Cwt	EMA	Rib	Rump	RBV	IMF
-0.6 38%	+5.4 71%	+33 65%	+54 59%	+78 60%	+12 38%	+1.3 50%	---	---	---	---	---	---
EBVs SELECTION INDEX VALUES				SUPERMARKET +\$69				GRASS FED +\$61		GRAIN FED +\$64		EU +\$77

62 MAWARRA MINERVA 099 (P) HRPL169 Born: 05/07/2015 Pigment: 100 / 100

ALLENDALE YACKA (AI) (P)
ALLENDALE ANZAC E114 (P)
 ALLENDALE DAWN B22 (AI) (ET) (P)

Minerva 040 sold her first son for \$7,000 to the Ah Sam family, Omeo. This Minerva line is highly renowned and with her sire, the much-in-demand Anzac E114, Minerva 099 is an exciting future breeder and potential show prospect.

MERAWAH MADDUX A63 (AI) (P)
MAWARRA MINERVA 040 (P)
 MAWARRA MINERVA 746 (H)

GL	Bwt	200	400	600	Milk	SS	Cwt	EMA	Rib	Rump	RBV	IMF
-0.1 55%	+4.5 72%	+34 68%	+56 64%	+73 64%	+17 50%	+2.6 57%	+52 53%	---	---	---	---	---
EBVs SELECTION INDEX VALUES				SUPERMARKET +\$95				GRASS FED +\$93		GRAIN FED +\$122		EU +\$105

63 MAWARRA DOREEN 027 (P) HRPL231 Born: 23/07/2015 Pigment: 100 / 100

ALLENDALE YACKA (AI) (P)
ALLENDALE ANZAC E114 (P)
 ALLENDALE DAWN B22 (AI) (ET) (P)

Grand dam, Doreen 241 is a full sister to \$52,000 Sandstorm and she sold two sons to \$10,500. Doreen 003 is dam of Lot 49 in this catalogue and has sold sons to \$7,000. Her Magnificent son, at foot, is an exceptional calf.

DEBARRY EDEN (P)
MAWARRA DOREEN 003 (AI) (P)
 MAWARRA DOREEN 241 (AI) (ET) (H)

GL	Bwt	200	400	600	Milk	SS	Cwt	EMA	Rib	Rump	RBV	IMF
-0.2 59%	+5.2 73%	+42 68%	+65 64%	+89 64%	+20 53%	+3.3 57%	+62 54%	+3.8 45%	+1.2 47%	+1.8 50%	-0.1 46%	---
EBVs SELECTION INDEX VALUES				SUPERMARKET +\$113				GRASS FED +\$109		GRAIN FED +\$137		EU +\$124

64 MAWARRA DOREEN 405 (P) HRPL242 Born: 14/08/2015 Pigment: 100 / 100

INJEMIRA ADVANCE C085 (H)
DEVON COURT ADVANCE F052 (H)
 DEVON COURT LIONESS A207 (H)

Doreen 254 is dam of \$10,000 Victory. Purchased by Peter Faithfull, Omeo, he has been used by AI at Mawarra with sons selling to \$14,000. Dam, Doreen 337, has a daughter retained and a very impressive full brother to Doreen 405 at-foot.

TALBALBAL VALIANT (H)
MAWARRA DOREEN 337 (H)
 MAWARRA DOREEN 254 (AI) (H)

GL	Bwt	200	400	600	Milk	SS	Cwt	EMA	Rib	Rump	RBV	IMF
-2.1 38%	+6.6 72%	+37 66%	+58 61%	+90 61%	+18 39%	+0.8 53%	---	---	---	---	---	---
EBVs SELECTION INDEX VALUES				SUPERMARKET +\$80				GRASS FED +\$73		GRAIN FED +\$91		EU +\$87

65 MAWARRA DOREEN 407 (H) HRPL300 Born: 01/09/2015 Pigment: 100 / 100

TALBALBA VALIANT (H)
MAWARRA AIR MARSHALL (H)
 MAWARRA CHERRY RIPE 288 (H)

Master Builder bred us a lovely line of feminine, good milking cows. The cross with Air Marshall promises a quality future breeder. Her natural style and eye appeal will make her a perfect companion for the show ring.

MAWARRA MASTER BUILDER (AI) (H)
MAWARRA DOREEN 283 (H)
 MAWARRA DOREEN 199 (AI) (H)

GL	Bwt	200	400	600	Milk	SS	Cwt	EMA	Rib	Rump	RBV	IMF
+0.7 41%	+6.6 72%	+33 65%	+45 60%	+66 60%	+10 46%	+1.2 52%	---	---	---	---	---	---
EBVs SELECTION INDEX VALUES				SUPERMARKET +\$49				GRASS FED +\$43		GRAIN FED +\$46		EU +\$58



Lot 66 - Minerva 976 (H)



Lot 67 - Miss Titania 536 (H)



Lot 68 - Tabitha 017 (P)



Lot 69 - Tabitha 019 (P)



Joining sire: Mawarra Evident (H) - HRPL063
Sire: Devon Court Advance F052 (H) Dam: Mawarra Doreen 327 (H)



GL	Bwt	200	400	600	Milk	SS	Cwt	EMA	Rib	Rump	RBV	IMF
-1.8 38%	+5.6 72%	+34 67%	+49 66%	+79 65%	+15 38%	0.0 76%	+48 53%	--- %	--- %	--- %	--- %	--- %

EBVs

SELECTION INDEX VALUES

SUPERMARKET +\$71

GRASS FED +\$65

GRAIN FED +\$85

EU +\$77

66

MAWARRA MINERVA 976 (H)

HRPK272

Born: 23/08/2014 Pigment: 100 / 100

TALBALBA VALIANT (H)
MAWARRA AIR MARSHALL (H)
 MAWARRA CHERRY RIPE 288 (H)

MAWARRA SANDSTORM (AI) (ET) (H)
MAWARRA MINERVA 778 (AI) (ET) (H)
 MAWARRA MINERVA 549 (AI) (ET) (H)

Minerva 549 has been an outstanding breeder for us. Minerva 778's three ET brothers sold to \$16,500 recording an average of \$11,700. Minerva 778 sold her first son for \$3,000 and she has a daughter retained. We believe Minerva 976 is our best Air Marshall daughter and a perfect choice to begin the joined heifer run in our catalogue.

Joining Details
 AI Date 07.09.2016
Pourakino Downs Jasper (H)
 Ran with
Mawarra Evident (H)
 from 24.09.2016



GL	Bwt	200	400	600	Milk	SS	Cwt	EMA	Rib	Rump	RBV	IMF
-0.2 44%	+6.4 72%	+33 66%	+50 66%	+71 69%	+11 45%	+2.2 52%	+39 55%	+3.3 42%	+0.2 52%	+0.2 57%	+1.1 48%	+0.4 49%
EBVs SELECTION INDEX VALUES			SUPERMARKET +\$74			GRASS FED +\$70			GRAIN FED +\$88			EU +\$87

67

MAWARRA MISS TITANIA 536 (H)

HRPK255

Born: 16/09/2014 Pigment: 100 / 100

BOWMONT STORM C093 (H)
MAWARRA AFTER SHOCK (AI) (H)
 MAWARRA MINERVA 774 (AI) (H)

TALBALBA VALIANT (H)
MAWARRA MISS TITANIA 409 (H)
 MAWARRA MISS TITANIA 299 (ET) (H)

Miss Titania 536 comes from a strong Miss Titania line. Miss Titania 299's four sons, sold to date, have recorded an average of \$13,250. Two have been in our Herefords Australia National (Wodonga) teams and another, Chicago, was the \$18,000 top price at our 2015 sale. Miss Titania 409's only son sold for \$10,000. She has two daughters retained, one being a full sister to Miss Titania 536.

Joining Details
 AI Date 08.09.2016
Mawarra Daybreak (H)
 Ran with
Mawarra Evident (H)
 from 24.09.2016



GL	Bwt	200	400	600	Milk	SS	Cwt	EMA	Rib	Rump	RBV	IMF
-0.2 51%	+7.3 74%	+38 68%	+61 67%	+89 71%	+13 45%	---	+51 57%	+3.5 43%	+0.1 53%	+0.4 58%	+0.7 49%	+0.7 51%
EBVs SELECTION INDEX VALUES			SUPERMARKET +\$72			GRASS FED +\$65			GRAIN FED +\$79			EU +\$79

68

MAWARRA TABITHA 017 (AI) (ET) (P)

HRPK244

Born: 29/08/2014 Pigment: 100 / 100

DRF JWR PRINCE VICTOR 711 (P)
TH 122 711 VICTOR 719T (IMP USA) (P)
 KBCR 19D DOMINETTE 122 (P)

BOWEN VINCENT V1 (S)
DEBARRY TABITHA Y177 (P)
 DEBARRY TABITHA T81 (P)

Tabitha 017 offers an exciting opportunity to secure a daughter from our elite poll matron, DB Tabitha Y177. She has proven to be a matriarch of our poll herd with her 13 sons, sold to date, selling to \$16,000 twice to record an average of \$8,200. We have two sons, Mustang and Outstanding, retained as sires. Her Little Ripa son, One & Only, is being used over heifers. 719T's daughters are excellent cows with perfect udders. The joining to \$95,000 Jubilant is an exciting prospect.

Joining Details
 AI Date 10.09.2016
Minalcovie Jubilant J123 (P)
 Ran with
Days Enforcer J126 (S)
 from 24.09.2016



GL	Bwt	200	400	600	Milk	SS	Cwt	EMA	Rib	Rump	RBV	IMF
0.0 60%	+2.5 71%	+31 67%	+49 66%	+66 66%	+19 49%	+2.0 59%	+51 56%	+3.7 48%	-0.1 55%	-0.7 58%	+1.5 51%	-0.2 54%
EBVs SELECTION INDEX VALUES			SUPERMARKET +\$83			GRASS FED +\$79			GRAIN FED +\$83			EU +\$94

69

MAWARRA TABITHA 019 (AI) (ET) (P)

HRPK425

Born: 18/06/2014 Pigment: 100 / 100

HARVIE TRAVELER 69T (IMP CAN) (P)
HARVIE HIGH ROLLER ET 66X (IMP CAN) (AI) (ET) (P)
 HARVIE DAN MS FIREFLY 69S (P)

YALGOO INTERROGATOR X093 (P)
DEBARRY TABITHA A149 (P)
 DEBARRY TABITHA T81 (P)

Harvie High Roller ET 66X was Junior Champion at the 2012 National Western Stock Show, Denver, USA and has bred well at Oakdowns Poll Herefords and around the globe. Tabitha 019's three maternal brothers have sold to \$8,000 and we have a full sister retained. Debarry Tabitha A149 is a donor dam and offered to you as Lot 26 in this catalogue.

Joining Details
 Ran with
Days Enforcer J126 (S)
 from 20.09.2016



GL	Bwt	200	400	600	Milk	SS	Cwt	EMA	Rib	Rump	RBV	IMF
+1.3 54%	+4.6 61%	+34 59%	+53 59%	+74 59%	+11 54%	+2.1 56%	---	+3.7 42%	0.0 45%	-0.1 48%	+1.3 42%	-0.4 46%
EBVs SELECTION INDEX VALUES			SUPERMARKET +\$80			GRASS FED +\$74			GRAIN FED +\$73			EU +\$88

70

MAWARRA LAST DAY 308 (AI) (H)

HRPK137

Born: 08/06/2014 Pigment: 100 / 100

WAIKAKA SID 0429 (H)
POURAKINO DOWNS JASPER (IMP NZL) (H)
 POURAKINO DOWNS EBONY 02 85 (H)

GLENWARRAH LISMORE MORE (H)
MAWARRA LAST DAY 291 (H)
 MAWARRA LAST DAY 278 (AI) (H)

Last Day 278 sold her only son for \$10,000 to Keith Davies, Gelantipy. Last Day 291 has an Advance son for 2017. Last Day 308 is the first Jasper heifer to be offered. Note her joining to \$18,000 Black Heart. He is breeding very well at Talbalba, WRL Herefords and Mawarra.

Joining Details
 AI Date 03.09.2016
Mawarra Black Heart (H)
 Ran with
Mawarra Evident (H)
 from 20.09.2016



GL	Bwt	200	400	600	Milk	SS	Cwt	EMA	Rib	Rump	RBV	IMF
-0.2 73%	+5.7 73%	+29 68%	+49 68%	+68 71%	+13 51%	+1.2 54%	+42 58%	+4.1 47%	+1.2 55%	+1.8 60%	+0.3 52%	+0.9 55%
EBVs SELECTION INDEX VALUES			SUPERMARKET +\$74			GRASS FED +\$72			GRAIN FED +\$92			EU +\$84



Lot 70 - Last Day 308 (H)



Lot 71 - Lass 181 (H)



Lot 72 - Miss Titania 524 (H)



Lot 73 - Minerva 959 (H)



Lot 74 - Doreen 391 (H#)



Lot 76 - Miss Titania 525 (H)

71 MAWARRA LASS 181 (AI) (H) HRPK146 Born: 12/06/2014 Pigment: 100 / 90

WAIKAKA SID 0429 (H)
POURAKINO DOWNS JAPSER (IMP NZL) (H)
 POURAKINO DOWNS EBONY 02 85 (H)

Lass 169's four ET brothers sold to \$17,000 recording an average of \$9,750. Lass 101's eleven daughters have bred in herd. One full sister to Lass 169 was chosen as the "Pick of Three Heifers" at our 2010 special female sale for \$3,500. Lass 169 has an Advance heifer retained.

Joining Details
 AI Date 09.09.2016
Koanui Techno 3062 (P)
 Ran with
Mawarra Evident (H)
 from 24.09.2016

COOTHARABA MAGNUM (H)
MAWARRA LASS 169 (AI) (ET) (H)
 MAWARRA LASS 101(H)



GL	Bwt	200	400	600	Milk	SS	Cwt	EMA	Rib	Rump	RBV	IMF
+0.2 74%	+5.9 73%	+30 68%	+56 68%	+81 71%	+16 53%	+1.0 55%	+50 59%	+4.9 49%	+1.2 57%	+1.9 62%	+0.8 54%	+1.2 57%
EBVs SELECTION INDEX VALUES								SUPERMARKET +\$95	GRASS FED +\$91	GRAIN FED +\$119	EU +\$105	

72 MAWARRA MISS TITANIA 524 (AI) (H) HRPK136 Born: 10/06/2014 Pigment: 80 / 95

COOTHARABA ELGIN 2 (H)
COOTHARABA MAGNUM (H)
 COOTHARABA PAULINE 279 (H)

Grand dam, Miss Titania 359, sold her only son for \$4,000 and she has one daughter retained. Miss Titania 524 presents a great opportunity to secure a Magnum daughter for your breeding program, AI'ed to \$20,000 Daybreak.

Joining Details
 AI Date 08.09.2016
Mawarra Daybreak (H)
 Ran with
Mawarra Evident (H)
 from 24.09.2016

TALBALBA VALIANT (H)
MAWARRA MISS TITANIA 442 (H)
 MAWARRA MISS TITANIA 359 (AI) (H)



GL	Bwt	200	400	600	Milk	SS	Cwt	EMA	Rib	Rump	RBV	IMF
+0.8 74%	+6.9 74%	+35 69%	+58 69%	+85 72%	+11 56%	+1.3 56%	+48 61%	+4.9 53%	-0.7 60%	-1.1 63%	+2.2 57%	+0.5 59%
EBVs SELECTION INDEX VALUES								SUPERMARKET +\$76	GRASS FED +\$70	GRAIN FED +\$87	EU +\$88	

73 MAWARRA MINERVA 959 (AI) (H) HRPK138 Born: 11/06/2014 Pigment: 100 / 100

WAIKAKA SID 0429 (H)
POURAKINO DOWNS JAPSER (IMP NZL) (H)
 POURAKINO DOWNS EBONY 02 85 (H)

Minerva 626's maternal brother, Valen, sold for \$10,000 at the Herefords Australia National Show & Sale (Wodonga) to David Anderson, Yea. He grew out into a powerful sire. Dam, Minerva 873, is catalogued as Lot 21 in this sale.

Joining Details
 Ran with
Mawarra Evident (H)
 from 20.09.2016

MAWARRA VICE ADMIRAL (H)
MAWARRA MINERVA 873 (H)
 MAWARRA MINERVA 626 (AI) (ET) (H)



GL	Bwt	200	400	600	Milk	SS	Cwt	EMA	Rib	Rump	RBV	IMF
-0.1 73%	+6.1 73%	+32 68%	+57 68%	+82 71%	+16 51%	+1.0 54%	+50 59	+4.1 47%	+0.8 56%	+1.2 61%	+0.8 52%	+1.0 55%
EBVs SELECTION INDEX VALUES								SUPERMARKET +\$89	GRASS FED +\$85	GRAIN FED +\$109	EU +\$100	

74 MAWARRA DOREEN 391 (AI) (H#) HRPK173 Born: 12/07/2014 Pigment: 100 / 100

KSU BOUNTY HUNTER 611 (H#)
BIG-GULLY 611 BOUNTY 517U (IMP CAN) (H#)
 BIG-GULLY GOLD DUST LASSY 217R (H)

Doreen 391 is the first Bounty 517U daughter we have offered. She is from a proven Doreen line with an exciting AI joining to New Zealand sire, Koanui Techno 3062. We have some excellent Bounty 517U daughters and we are confident they have a significant role to play in the future of our program.

Joining Details
 AI Date 07.09.2016
Koanui Techno 3062 (P)
 Ran with
Mawarra Evident (H)
 from 24.09.2016

TALBALBA VALIANT (H)
MAWARRA DOREEN 332 (TW) (H)
 MAWARRA DOREEN 270 (H)



GL	Bwt	200	400	600	Milk	SS	Cwt	EMA	Rib	Rump	RBV	IMF
-1.9 73%	+6.8 72%	+38 67%	+62 67%	+92 70%	+13 49%	+2.3 53%	+56 56%	+3.6 44%	-0.5 53%	-0.8 57%	+1.6 48%	-0.2 51%
EBVs SELECTION INDEX VALUES								SUPERMARKET +\$73	GRASS FED +\$63	GRAIN FED +\$68	EU +\$80	

75 MAWARRA MISS TITANIA 532 (AI) (H#) HRPK207 Born: 06/08/2014 Pigment: 100 / 100

KSU BOUNTY HUNTER 611 (H#)
BIG-GULLY 611 BOUNTY 517U (IMP CAN) (H#)
 BIG-GULLY GOLD DUST LASSY 217R (H)

Grand dam, Miss Titania 311, has three daughters retained in herd. Her two sons have sold to \$8,000. She has a grand daughter catalogued as Lot 9, a feature donor dam. Miss Titania 413 sold a daughter as a joined heifer at our 2015 sale for \$4,000 and she has a very good Blizzard son for 2017.

Joining Details
 AI Date 08.09.2016
Mawarra Daybreak (H)
 Ran with
Mawarra Evident (H)
 from 24.09.2016

MAWARRA TOSHIBA (AI) (H)
MAWARRA MISS TITANIA 413 (H)
 MAWARRA MISS TITANIA 311 (H)



GL	Bwt	200	400	600	Milk	SS	Cwt	EMA	Rib	Rump	RBV	IMF
+2.8 72%	+7.1 72%	+39 64%	+62 65%	+93 64%	+19 48%	+2.2 50%	+57 51%	+4.0 41%	-0.5 50%	-0.7 54%	+2.1 45%	-0.8 49%
EBVs SELECTION INDEX VALUES								SUPERMARKET +\$76	GRASS FED +\$66	GRAIN FED +\$22	EU +\$83	



Lot 79



Lot 80

76 MAWARRA MISS TITANIA 525 (HPR) (H) HRPK140 Born: 08/07/2014 Pigment: 100 / 65

YALLAROO TITAN T011 (AI) (H)
YALLAROO GLASGOW G14 (AI) (H)
 YALLAROO SILVER QUEEN E26 (H)
 GH ADAMS TWISTER 416T (IMP CAN) (H)
MAWARRA MISS TITANIA 439 (AI) (H)
 MAWARRA MISS TITANIA 382 (H)

Note Miss Titania 525 is unregistered. Miss Titania 439, catalogued in this sale as feature donor dam Lot 9, is one of five Miss Titania 382 daughters currently in herd. Miss Titania 439 has a heifer retained and an excellent son at foot, both sired by After Shock.

Joining Details
 AI Date 07.09.2016
Pourakino Downs Jasper (H)
 Ran with
Mawarra Evident (H)
 from 24.09.2016



GL	Bwt	200	400	600	Milk	SS	Cwt	EMA	Rib	Rump	RBV	IMF	
+1.5 45%	+6.4 70%	+37 64%	+56 63%	+81 62%	+14 41%	---	+51 50%	---	---	---	---	---	
SELECTION INDEX VALUES				SUPERMARKET +\$85				GRASS FED +\$80		GRAIN FED +\$93		EU +\$96	

77 MAWARRA L MINERVA 53 (TW) (H) HRPK270 Born: 09/09/2014 Pigment: 100 / 100

TALBALBA VALIANT (H)
MAWARRA AIR MARSHALL (H)
 MAWARRA CHERRY RIPE 288 (H)
 MAWARRA TRAIL BLAZER (AI) (H)
MAWARRA L MINERVA 49 (AI) (TW) (H)
 MAWARRA L MINERVA 45 (TW) (H)

L Minerva 45's son sold for \$3,500. The Trail Blazer daughters are moderate-framed, easy-doing, good-milking cows.

Joining Details
 Ran with
Mawarra Evident (H)
 from 20.09.2016



GL	Bwt	200	400	600	Milk	SS	Cwt	EMA	Rib	Rump	RBV	IMF	
+0.9 42%	+8.0 66%	+38 59%	+59 56%	+81 58%	+9 42%	+2.8 52%	---	+3.1 36%	+0.1 38%	+0.2 41%	+0.8 37%	+0.5 37%	
SELECTION INDEX VALUES				SUPERMARKET +\$77				GRASS FED +\$70		GRAIN FED +\$87		EU +\$90	

78 MAWARRA MINERVA 969 (AI) (H) HRPK223 Born: 09/08/2014 Pigment: 95 / 100

HUNDAY QUIVER (H)
TRURO GENGHIS KHAN G028 (H)
 COURALLIE Y149 PR CHRISTIAN A216 (H)
 GH NEON 17N (IMP CAN) (H)
MAWARRA MINERVA 758 (AI) (ET) (H)
 MAWARRA MINERVA 549 (AI) (ET) (H)

Minerva 758 is another of our excellent Minerva 549 daughters. She has sold two sons; \$12,000 James Bond to Mr McKenzie, Timboon, and \$8,000 Maestro to the Crisp family, Omeo.

Joining Details
 AI Date 08.09.2016
Pourakino Downs Jasper (H)
 Ran with
Mawarra Evident (H)
 from 24.09.2016



GL	Bwt	200	400	600	Milk	SS	Cwt	EMA	Rib	Rump	RBV	IMF	
+0.9 42%	+5.7 73%	+36 67%	+61 67%	+90 70%	+14 41%	+1.8 53%	+61 56%	+5.0 45%	-0.7 54%	-1.1 59%	+2.6 50%	-0.3 52%	
SELECTION INDEX VALUES				SUPERMARKET +\$92				GRASS FED +\$85		GRAIN FED +\$90		EU +\$104	

79 MAWARRA VIRGINIA 009 (AI) (P) HRPK203 Born: 29/07/2014 Pigment: 100 / 100

CANNAWIGRA BLACK HAWK (P)
CLOVERLEE HUNTER (P)
 HEATHERDALE ALMOND BLOSSOM C15 (AI) (P)
 MERAWAH MADDUX A63 (AI) (P)
MAWARRA VIRGINIA 002 (P)
 MAWARRA VIRGINIA 132 (H)

Our Hunter females have excellent udders and milk. Dam, Virginia 002, is catalogued as Lot 32 in this sale. She sold her first son for \$3,000, has a daughter retained and an Anzac E114 bull for 2017.

Joining Details
 AI Date 10.09.2016
Glentrevor Wallace H427 (P)
 Ran with
Days Enforcer J126 (S)
 from 24.09.2016



GL	Bwt	200	400	600	Milk	SS	Cwt	EMA	Rib	Rump	RBV	IMF	
-0.7 74%	+6.6 74%	+35 68%	+58 68%	+80 71%	+13 43%	+0.4 53%	+54 60%	+4.6 48%	+0.3 57%	+0.4 61%	+1.4 50%	+0.4 55%	
SELECTION INDEX VALUES				SUPERMARKET +\$70				GRASS FED +\$65		GRAIN FED +\$77		EU +\$78	



80 CANNAWIGRA F81 LASS K118 (P) WTAK118 Born: 30/07/2014 Pigment: 100 / 100

MOUNTAIN VALLEY ROCKYNED B1 (P)
CASCADE FAHEY F81 (P)
 CASCADE BERRIGIRL B260 (AI) (ET) (P)
 CANNAWIGRA S5 BATMAN X08 (AI) (ET) (S)
CANNAWIGRA X8 LASS A1120 (P)
 CANNAWIGRA LASS U21 (P)

Lass A1120 is a donor dam in our ET program. Her sons sold to \$14,000 at Cannawigra. We purchased her at their dispersal sale for \$5,000 with Lass K118 at foot. She had a Vice Admiral son in the Autumn and three Anzac E114 ET daughters were born this Spring.

Joining Details
 AI Date 08.09.2016
Koanui Techno 3062 (P)
 Ran with
Days Enforcer J126 (S)
 from 24.09.2016



GL	Bwt	200	400	600	Milk	SS	Cwt	EMA	Rib	Rump	RBV	IMF
+1.4 42%	+5.7 70%	+34 63%	+59 59%	+86 60%	+14 48%	+2.0 51%	---	+3.8 40%	-0.5 44%	-0.7 47%	+1.5 42%	+0.2 44%
SELECTION INDEX VALUES								SUPERMARKET +\$79	GRASS FED +\$72	GRAIN FED +\$80	EU +\$89	

81 MAWARRA MINERVA 960 (AI) (H) HRPK143 Born: 09/06/2014 Pigment: 80 / 90

MAWARRA TRAIL BLAZER (AI) (H)
MAWARRA VICTORY (AI) (H)
 MAWARRA DOREEN 254 (AI) (H)
 TALBALBA VALIANT (H)
MAWARRA MINERVA 866 (H)
 MAWARRA MINERVA 664 (H)

We purchased semen in Victory after seeing the magnificent line of heifers by him at Peter Faithfull's Omeo property. Grand dam, M. Minerva 664, has four daughters retained and sold two sons to \$5,000.

Joining Details
 AI Date 20.09.2016
Cootharaba Magnum (H)
 Ran with
Mawarra Evident (H)
 from 04.10.2016



GL	Bwt	200	400	600	Milk	SS	Cwt	EMA	Rib	Rump	RBV	IMF
-0.2 72%	+5.6 71%	+33 65%	+57 65%	+80 69%	+11 42%	---	+48 55%	+2.8 43%	0.0 53%	-0.1 58%	+0.1 49%	+1.2 51%
SELECTION INDEX VALUES								SUPERMARKET +\$75	GRASS FED +\$69	GRAIN FED +\$92	EU +\$83	

82 MAWARRA MINERVA 962 (AI) (H) HRPK148 Born: 10/06/2014 Pigment: 90 / 90

STR STANDARD 256B DOM LAD 68L (H)
STANDARD 68L DOM LAD 38T (IMP CAN) (H)
 K 64H RIBSTONE LADY 112N (H)
 TALBALBA VALIANT (H)
MAWARRA MINERVA 862 (H)
 MAWARRA MINERVA 473 (H)

Minerva 862 is catalogued as Lot 1 in our Ladies Day sale. Grand dam, Minerva 473, sold six sons to \$8,000 and has a full sister to Minerva 862 retained.

Joining Details
 AI Date 09.09.2016
Mountain Valley Gambler G14 (P)
 Ran with
Mawarra Evident (H)
 from 24.09.2016



GL	Bwt	200	400	600	Milk	SS	Cwt	EMA	Rib	Rump	RBV	IMF
-0.3 73%	+4.8 73%	+29 67%	+48 67%	+71 70%	+18 51%	+1.4 53%	+44 56%	+2.6 46%	-0.5 54%	-1.2 59%	+1.8 49%	0.0 53%
SELECTION INDEX VALUES								SUPERMARKET +\$73	GRASS FED +\$68	GRAIN FED +\$77	EU +\$84	

83 MAWARRA LASS 008 (P) HRPK190 Born: 06/08/2014 Pigment: 100 / 100

KARINA CHERRY Z8 (P)
MAWARRA LAS VEGAS (AI) (P)
 MAWARRA MINERVA 640 (H)
 YALGOO BOULDER Z250 (P)
MAWARRA LASS 001 (AI) (P)
 MAWARRA LASS 131 (H)

Lass 001 has sold two sons to \$4,000 and two daughters to \$4,200. She has an Anzac E114 son at foot. Las Vegas is breeding very well for St Katherines Darriman with progeny included in top-selling pens across Gippsland.

Joining Details
 AI Date 09.09.2016
Mountain Valley Gambler G14 (P)
 Ran with
Days Enforcer J126 (S)
 from 24.09.2016



GL	Bwt	200	400	600	Milk	SS	Cwt	EMA	Rib	Rump	RBV	IMF
+1.0 53%	+4.8 72%	+27 66%	+46 66%	+66 70%	+12 45%	+1.6 52%	+35 56%	+1.6 44%	0.0 53%	-0.2 58%	+0.3 50%	+0.7 51%
SELECTION INDEX VALUES								SUPERMARKET +\$74	GRASS FED +\$71	GRAIN FED +\$90	EU +\$86	

84 MAWARRA MINERVA 084 (AI) (P) HRPK200 Born: 01/08/2014 Pigment: 0 / 100

BOWEN UNIQUE U161 (AI) (P)
YALGOO BOULDER Z250 (P)
 YALGOO BETTE T185 (P)

MINLACOWIE XCITEMENT (P)
MAWARRA MINERVA 016 (AI) (P)
 MAWARRA MINERVA 644 (H)

Minerva 016 has sold two sons to \$5,000. She has two daughters retained in herd, one being a full sister to Minerva 084. Her Anzac son will be offered in 2017. Boulder Z250 bred excellent females with great udders. AI sire, Prospector 145Y, is a curve-bender that ranks in the top percentiles for growth and light birth weight EPDs in the U.S. He is a Homozygous Polled sire with deep red coat and pigment.

Joining Details
 AI Date 09.09.2016
FTF Prospector 145Y (P)
 Ran with
Days Enforcer J126 (S)
 from 24.09.2016



GL	Bwt	200	400	600	Milk	SS	Cwt	EMA	Rib	Rump	RBV	IMF
+1.6 76%	+4.2 74%	+24 70%	+37 70%	+54 72%	+16 58%	+1.6 58%	+30 62%	+1.9 51%	0.0 58%	-0.3 62%	+1.1 55%	-0.2 57%

EBVs SELECTION INDEX VALUES SUPERMARKET **+\$63** GRASS FED **+\$59** GRAIN FED **+\$63** EU **+\$75**

85 MAWARRA MISS TITANIA 528 (AI) (H) HRPK178 Born: 24/07/2014 Pigment: 100 / 100

GH ADAMS TWISTER 416T (IMP CAN) (H)
MAWARRA ARMED & DANGEROUS (AI) (H)
 MAWARRA MINERVA 693 (TW) (H)

MAWARRA VICE ADMIRAL (H)
MAWARRA MISS TITANIA 423 (AI) (H)
 MAWARRA MISS TITANIA 338 (AI) (ET) (H)

Miss Titania 423 sold her first son for \$5,000 to Mr & Mrs A Smith, Omeo, and she has a daughter retained. Grand dam, Miss Titania 338, is a full sister to \$26,000 Nightly Charm. Armed & Dangerous was sold at the Herefords Australia National Show & Sale (Wodonga) in 2013 for \$10,000 to the Lindsay family, Bracknell.

Joining Details
 AI Date 09.09.2016
Gientrevor Wallace H427 (P)
 Ran with
Mawarra Evident (H)
 from 24.09.2016



GL	Bwt	200	400	600	Milk	SS	Cwt	EMA	Rib	Rump	RBV	IMF
+1.6 73%	+7.6 71%	+34 64%	+55 65%	+79 69%	+12 42%	+1.8 50%	+46 55%	+4.8 43%	+0.2 52%	+0.4 57%	+1.7 48%	+0.3 50%

EBVs SELECTION INDEX VALUES SUPERMARKET **+\$72** GRASS FED **+\$67** GRAIN FED **+\$81** EU **+\$84**

86 MAWARRA MINERVA 964 (AI) (H) HRPK171 Born: 15/07/2014 Pigment: 85 / 85

STR STANDARD 256B DOM LAD 68L (H)
STANDARD 68L DOM LAD 38T (IMP CAN) (H)
 K 64H RIBSTONE LADY 112N (H)

BOWMONT STORM C093 (H)
MAWARRA MINERVA 846 (AI) (ET) (H)
 MAWARRA MINERVA 554 (AI) (ET) (H)

A grand daughter from our herd matriach, Minerva 554. Minerva 846's full brother sold for \$6,500 to the Walsh family, Granite Flat Pastoral, Mitta Mitta.

Joining Details
 AI Date 04.09.2016
Pourakino Downs Jasper (H)
 Ran with
Mawarra Evident (H)
 from 24.09.2016



GL	Bwt	200	400	600	Milk	SS	Cwt	EMA	Rib	Rump	RBV	IMF
0.0 74%	+6.3 71%	+33 65%	+58 66%	+86 65%	+18 52%	+2.1 56%	+47 54%	+2.1 47%	-0.1 55%	-0.5 58%	+1.0 50%	+0.2 54%

EBVs SELECTION INDEX VALUES SUPERMARKET **+\$78** GRASS FED **+\$70** GRAIN FED **+\$83** EU **+\$86**

87 MAWARRA LAST DAY 312 (H) HRPK300 Born: 29/09/2014 Pigment: 100 / 100

TALBALBA VALIANT (H)
MAWARRA AIR MARSHALL (H)
 MAWARRA CHERRY RIPE 288 (H)

COURALLIE V093 ADVANCE Z149 (AI) (ET) (H)
MAWARRA LAST DAY 269 (AI) (H)
 MAWARRA LAST DAY 243 (AI) (H)

Last Day 269 has sold three sons to \$10,000. Her top-selling son, Appaloosa, was in our 2013 Herefords Australia National (Wodonga) team.

Joining Details
 AI Date 02.09.2016
Pourakino Downs Jasper (H)
 Ran with
Mawarra Evident (H)
 from 24.09.2016



GL	Bwt	200	400	600	Milk	SS	Cwt	EMA	Rib	Rump	RBV	IMF
-1.5 47%	+6.7 72%	+35 64%	+53 65%	+77 64%	+18 43%	+0.8 53%	+43 52%	+2.0 42%	+0.3 51%	+0.5 56%	+0.2 47%	+0.6 49%

EBVs SELECTION INDEX VALUES SUPERMARKET **+\$67** GRASS FED **+\$60** GRAIN FED **+\$72** EU **+\$72**

88 MAWARRA MINERVA 968 (H) HRPK211 Born: 24/08/2014 Pigment: 100 / 100

COOTHARABA MAGNUM (H)
MAWARRA WHISKY RIVER (AI) (ET) (H)
 MAWARRA MINERVA 554 (AI) (ET) (H)

TALBALBA VALIANT (H)
MAWARRA MINERVA 845 (H)
 MAWARRA MINERVA 626 (AI) (ET) (H)

Minerva 626's daughter, Minerva 873, is cataloged as Lot 21. Whisky River, a full brother to Vice Admiral, sired our 2015 top-selling on-property sale bull, \$18,000 Chicago.

Joining Details
 AI Date 11.09.2016
Pourakino Downs Jasper (H)
 Ran with
Mawarra Evident (H)
 from 24.09.2016



GL	Bwt	200	400	600	Milk	SS	Cwt	EMA	Rib	Rump	RBV	IMF
-2.0 48%	+5.3 72%	+33 64%	+54 65%	+77 64%	+16 45%	+0.6 50%	+47 53%	+3.2 44%	-0.9 52%	-1.5 57%	+1.8 49%	+0.1 52%

EBVs SELECTION INDEX VALUES SUPERMARKET **+\$70** GRASS FED **+\$63** GRAIN FED **+\$72** EU **+\$79**



89 MAWARRA MINERVA 972 (H) HRPK246 Born: 13/09/2014 Pigment: 100 / 100

HUNDAY QUIVER (H)
TRURO GENGHIS KHAN G028 (H)
 COURALLIE Y149 PR CHRISTIAN A216 (H)
 GH ADAMS TWISTER 416T (IMP CAN) (H)
MAWARRA MINERVA 828 (AI) (H)
 MAWARRA MINERVA 751 (H)

Minerva 828 is one of our excellent GH Adams Twister 416T females. She has two daughters retained. Grand dam, Minerva 751, also has two daughters in herd.

Joining Details
 AI Date 04.09.2016
 Pourakino Downs Jasper (H)
 Ran with
Mawarra Evident (H)
 from 24.09.2016



GL	Bwt	200	400	600	Milk	SS	Cwt	EMA	Rib	Rump	RBV	IMF
+1.1 39%	+5.5 73%	+37 67%	+58 67%	+90 70%	+17 38%	+1.7 50%	+58 56%	+3.3 42%	-0.8 52%	-1.1 57%	+1.9 48%	-0.4 50%

EBVs SELECTION INDEX VALUES SUPERMARKET **+\$85** GRASS FED **+\$76** GRAIN FED **+\$76** EU **+\$94**

90 MAWARRA LAST DAY 310 (H) HRPK257 Born: 24/08/2014 Pigment: 100 / 40

COOTHARABA MAGNUM (H)
MAWARRA VICE ADMIRAL (H)
 MAWARRA MINERVA 554 (AI) (ET) (H)
 YALLAROO TORNADO T008 (AI) (H)
MAWARRA LAST DAY 214 (H)
 MAWARRA LAST DAY 153 (H)

Grand dam, Last Day 153, sold three sons to \$7,000. Last Day 214 has a Yesteryear daughter retained.

Joining Details
 AI Date 08.09.2016
 Pourakino Downs Jasper (H)
 Ran with
Mawarra Evident (H)
 from 24.09.2016



GL	Bwt	200	400	600	Milk	SS	Cwt	EMA	Rib	Rump	RBV	IMF
-0.4 56%	+8.3 74%	+39 68%	+61 68%	+90 67%	+11 57%	+1.2 56%	+51 58%	+4.4 49%	+0.3 56%	+0.6 61%	+0.9 54%	+1.2 56%

EBVs SELECTION INDEX VALUES SUPERMARKET **+\$78** GRASS FED **+\$72** GRAIN FED **+\$99** EU **+\$88**

91 MAWARRA CHERRY RIPE 021 (P) HRPK234 Born: 23/08/2014 Pigment: 100 / 100

KARINA CHERRY Z8 (P)
MAWARRA LAS VEGAS (AI) (P)
 MAWARRA MINERVA 640 (H)
 MERAWAH MADDUX A63 (AI) (P)
MAWARRA CHERRY RIPE 011 (P)
 MAWARRA CHERRY RIPE 292 (H)

Maddux A63 bred us a line of moderate-framed, good-milking females. The cross with Las Vegas ensures an easy-doing heifer. The AI joining sire, PCL Zircon 719T 25Z, is a low-birth-weight sire with tremendous carcass. We have some exciting sons to offer in 2017.

Joining Details
 AI Date 17.09.2016
 PCL Zircon 719T 25Z (P)
 Ran with
Days Enforcer J126 (S)
 from 04.10.2016



GL	Bwt	200	400	600	Milk	SS	Cwt	EMA	Rib	Rump	RBV	IMF
+0.6 46%	+6.0 71%	+28 65%	+41 65%	+58 69%	+11 42%	---	+24 55%	+0.2 42%	+0.3 51%	+0.2 56%	-0.6 48%	+0.4 49%

EBVs SELECTION INDEX VALUES SUPERMARKET **+\$46** GRASS FED **+\$41** GRAIN FED **+\$49** EU **+\$51**

92 MAWARRA CHERRY RIPE 346 (AI) (H) HRPK176 Born: 29/07/2014 Pigment: 75 / 70

GH ADAMS TWISTER 416T (IMP CAN) (H)
MAWARRA ARMED & DANGEROUS (AI) (H)
 MAWARRA MINERVA 693 (TW) (H)
 MONREID QUIRK (H)
MAWARRA CHERRY RIPE 304 (AI) (H)
 MAWARRA CHERRY RIPE 283 (H)

Cherry Ripe 304 sold sons to \$4,000. Jason Swayne, Weerite, purchased her in April for \$4,500. Cherry Ripe 283's son, Ameretto, was purchased by Injemira Beef Genetics.

Joining Details
 AI Date 16.09.2016
 Pourakino Downs Jasper (H)
 Ran with
Mawarra Evident (H)
 from 04.10.2016



GL	Bwt	200	400	600	Milk	SS	Cwt	EMA	Rib	Rump	RBV	IMF
+0.7 73%	+8.7 71%	+38 65%	+57 65%	+85 69%	+11 43%	---	+45 55%	+4.1 42%	+0.3 52%	+0.8 57%	+1.2 48%	+0.5 49%

EBVs SELECTION INDEX VALUES SUPERMARKET **+\$72** GRASS FED **+\$65** GRAIN FED **+\$81** EU **+\$82**



The Sykes Family at Mawarra Herefords

Use and recommend **VETMEC** products
for their Cattle Parasite control.



For veterinary advice or to order **VETMEC** products freight free at
direct to the farmer \$Prices

call **Chemvet Australia** today. 1800 243 683

Online: www.chemvet.com.au



Australian Made and Owned



Chemvet now supplies the
DATAMARS/Ztag range of NLIS Tags, Readers & Management
Tags.

Just call and place your order and leave the rest with us at
Chemvet.

Tags arrive in the post, ready to go, in just a few days!



AgriID
by DATAMARS



94 MAWARRA DOREEN 390 (AI) (H#) HRPK166 Born: 16/07/2014 Pigment: 25 / 90

KSY BOUNTY HUNTER 611 (H#)
BIG-GULLY 611 BOUNTY 517U (IMP CAN) (H#)
 BIG-GULLY GOLD DUST LASSY 217R (H)
 MAWARRA VICE ADMIRAL (H)
MAWARRA DOREEN 330 (AI) (H)
 MAWARRA DOREEN 261 (AI) (H)

Grand dam, Doreen 261, sold a son for \$5,000 to Ellerslie Park, Fish Creek. Doreen 330 was a very good Vice Admiral daughter who was, unfortunately, injured.

Joining Details
 AI Date 07.09.2016
Koanui Techno 3062 (P)
 Ran with
Mawarra Evident (H)
 from 24.09.2016



GL	Bwt	200	400	600	Milk	SS	Cwt	EMA	Rib	Rump	RBV	IMF
-0.2 75%	+6.7 73%	+36 67%	+58 68%	+85 71%	+13 50%	+2.1 54%	+50 56%	+3.9 45%	+0.3 53%	+0.4 58%	+1.1 48%	+0.2 52%
EBVs SELECTION INDEX VALUES			SUPERMARKET +\$77			GRASS FED +\$70			GRAIN FED +\$82			EU +\$86

95 MAWARRA MISS TITANIA 538 (H) HRPK265 Born: 05/09/2014 Pigment: 100 / 90

TALBALBA VALIANT (H)
MAWARRA AIR MARSHALL (H)
 MAWARRA CHERRY RIPE 288 (H)
 YALLAROO TORNADO T008 (AI) (H)
MAWARRA MISS TITANIA 289 (H)
 MAWARRA MISS TITANIA 132 (AI) (ET) (H)

Miss Titania 289's top selling son, Value Add, sold for \$8,000 to Greg O'Brien, Merryjig. Grand dam, Miss Titania 132, sold a son for \$4,000.

Joining Details
 Ran with
Mawarra Evident (H)
 from 20.09.2016



GL	Bwt	200	400	600	Milk	SS	Cwt	EMA	Rib	Rump	RBV	IMF
+0.7 42%	+8.7 72%	+39 66%	+56 64%	+81 63%	+12 48%	+2.1 53%	+39 51%	+2.0 36%	-0.2 39%	-0.3 41%	+0.4 37%	+0.6 38%
EBVs SELECTION INDEX VALUES			SUPERMARKET +\$59			GRASS FED +\$59			GRAIN FED +\$68			EU +\$69

96 MAWARRA FIRST DAY 143 (H) HRPK291 Born: 18/09/2014 Pigment: 50 / 100

TALBALBA VALIANT (H)
MAWARRA AIR MARSHALL (H)
 MAWARRA CHERRY RIPE 288 (H)
 COOTHARABA ITHACA (H)
MAWARRA FIRST DAY 122 (H)
 MAWARRA FIRST DAY 112 (H)

First Day 122 sold her only son for \$3,000 and has two daughters that have bred in herd.

Joining Details
 Ran with
Mawarra Evident (H)
 from 20.09.2016



GL	Bwt	200	400	600	Milk	SS	Cwt	EMA	Rib	Rump	RBV	IMF
+0.3 41%	+6.5 73%	+32 66%	+51 66%	+71 69%	+12 46%	---	+37 55%	+2.3 41%	-0.6 52%	-1.0 57%	+1.0 48%	+0.2 49%
EBVs SELECTION INDEX VALUES			SUPERMARKET +\$55			GRASS FED +\$49			GRAIN FED +\$58			EU +\$65

97 MAWARRA MISS TITANIA 063 (AI) (P) HRPK162 Born: 14/07/2014 Pigment: 100 / 100

DEBARRY ELLIOTT (P)
MAWARRA KAHLUA (S)
 MAWARRA MINERVA 640 (H)
 MORGANVALE ARGO (P)
MAWARRA MISS TITANIA 027 (AI) (P)
 MAWARRA MISS TITANIA 003 (AI) (H#)

Miss Titania 063 is the only Kahlua (S) daughter to be offered. He was the \$16,000 top-selling bull at our 2013 on-property sale. Graham Herefords exported him to New Zealand. They exhibited a daughter to Grand Champion Junior Hereford at the Canterbury Show, New Zealand. She was also awarded Junior Champion Female at the Royal Show, New Zealand 2015.

Joining Details
 Ran with
Days Enforcer J126 (S)
 from 20.09.2016



GL	Bwt	200	400	600	Milk	SS	Cwt	EMA	Rib	Rump	RBV	IMF
-1.7 74%	+5.8 70%	+28 64%	+45 65%	+67 63%	+6 40%	+1.7 52%	+33 52%	+0.6 43%	0.0 51%	-0.1 56%	+0.1 48%	-0.6 50%
EBVs SELECTION INDEX VALUES			SUPERMARKET +\$50			GRASS FED +\$43			GRAIN FED +\$36			EU +\$56

98 MAWARRA MINERVA 967 (H) HRPK208 Born: 08/08/2014 Pigment: 98 / 100

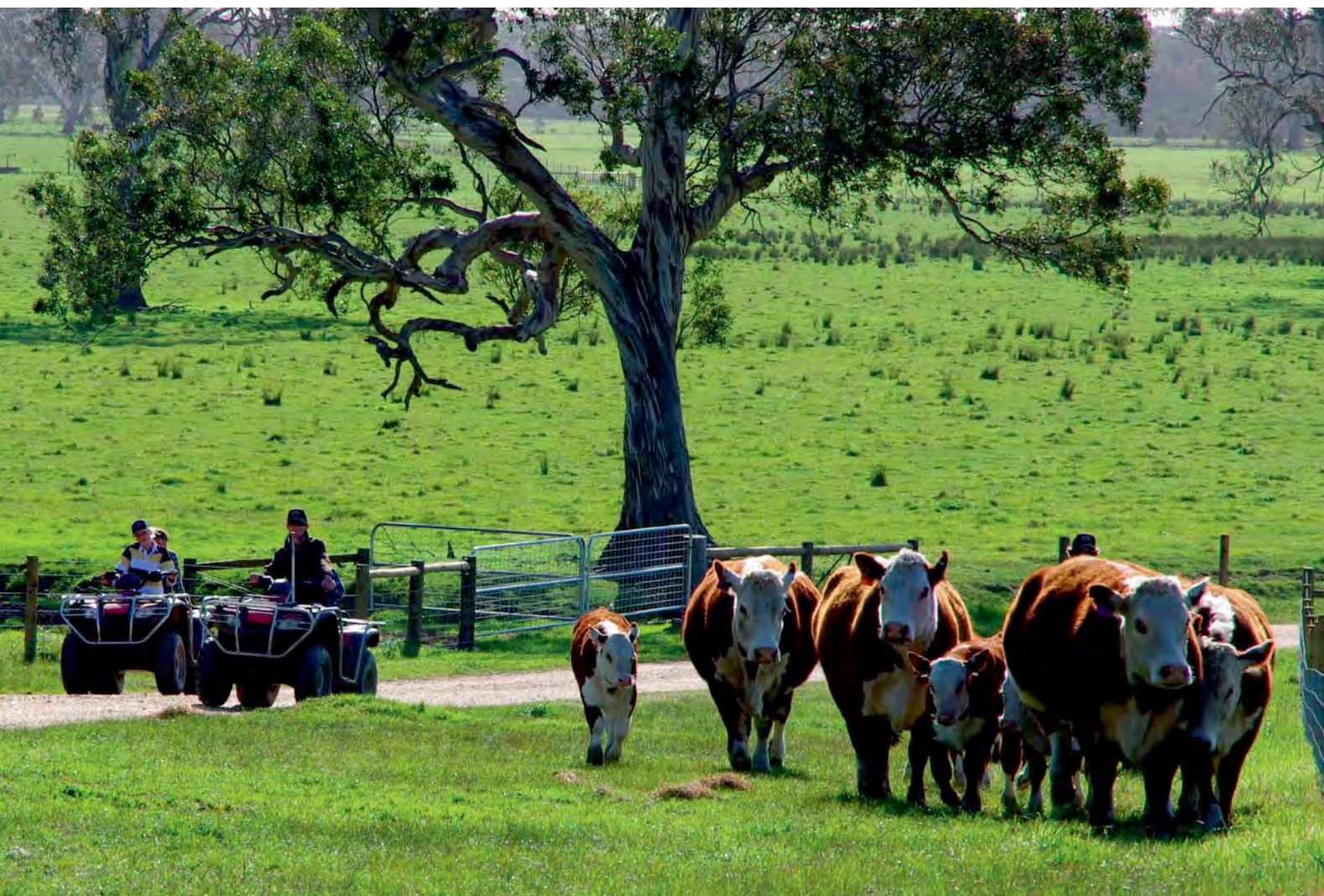
HUNDAY QUIVER (H)
TRURO GENGHIS KHAN G028 (H)
 COURALLIE Y149 PR CHRISTIAN A216 (H)
 GH NEON 17N (IMP CAN) (H)
MAWARRA MINERVA 757 (AI) (ET) (H)
 MAWARRA MINERVA 549 (AI) (ET) (H)

Minerva 757 sold her first son for \$4,000 and she has two daughters retained. Grand dam, Minerva 549, has a stellar record with sons selling to \$16,500.

Joining Details
 AI Date 09.09.2016
Pourakino Downs Jasper (H)
 Ran with
Mawarra Evident (H)
 from 24.09.2016



GL	Bwt	200	400	600	Milk	SS	Cwt	EMA	Rib	Rump	RBV	IMF
+0.7 40%	+4.4 73%	+32 67%	+55 67%	+74 71%	+14 42%	+1.6 53%	+46 57%	+2.5 45%	-0.4 54%	-0.6 59%	+1.1 50%	-0.4 52%
EBVs SELECTION INDEX VALUES			SUPERMARKET +\$72			GRASS FED +\$65			GRAIN FED +\$64			EU +\$81



The BrownWigg team congratulate **Mawarra Herefords** on their **Ladies day @ Mawarra Sale** and are pleased to supply them throughout the year with a full range of farming merchandise



BROWN|WIGG

www.brownwigg.com.au

Sale // 19 Dawson Street, Sale VIC 3850
Tel: (03) 5144 4441
Fax: (03) 5144 4806
Email: brownwigg@brownwigg.com.au
Website: www.brownwigg.com.au

Bairnsdale // **Tel:** (03) 5152 1313
Maffra // **Tel:** (03) 5141 1544
Meenyan // **Tel:** (03) 5664 0265
Warragul // **Tel:** (03) 5623 6911
Yarram // **Tel:** (03) 5182 5148
Fertiliser Division // **Tel:** 0439 293 378

99

MAWARRA FIRST DAY 142 (H)

HRPK260

Born: 09/09/2014 Pigment: 100 / 100

COOTHARABA MAGNUM (H)
MAWARRA VICE ADMIRAL (H)
 MAWARRA MINERVA 554 (AI) (ET) (H)

GLENWARRAH MEN AT WORK (H)
MAWARRA FIRST DAY 129 (AI) (H)
 MAWARRA FIRST DAY 122 (H)

First Day 129 has a Bounty 517U daughter retained and a Blizzard son for 2017.

Joining Details

Ran with
Mawarra Evident (H)
 from 20.09.2016



GL	Bwt	200	400	600	Milk	SS	Cwt	EMA	Rib	Rump	RBV	IMF
-0.6 59%	+6.6 74%	+34 68%	+59 69%	+90 68%	+11 55%	+1.1 57%	+54 59	+4.7 50%	-0.3 57%	-0.4 61%	+1.8 54%	+0.5 57%
SELECTION INDEX VALUES								SUPERMARKET +\$84	GRASS FED +\$77	GRAIN FED +\$91	EU +\$95	

100

MAWARRA CHERRY RIPE 348 (HPR) (TW) (H) HRPK250

Born: 17/07/2014 Pigment: 100 / 100

MAWARRA VICE ADMIRAL (H)
MAWARRA AS GOOD AS IT GETS (H)
 MAWARRA MISS TITANIA 239 (AI) (ET) (H)

GH ADAMS EVEREST ET 244U (H)
MAWARRA CHERRY RIPE 309 (AI) (H)
 MAWARRACHERRY RIPE 294 (H)

Cherry Ripe 348 is unregistered. Grand dam, Cherry Ripe 294, is a maternal sister to \$40,000 Herefords Australia National (Wodonga) Grand Champion 2010, Virginian. As Good As It Gets was sashed Senior Champion, and sold to Devon Court Herefords, at the 2013 Herefords Australia National (Wodonga) for \$17,000.

Joining Details

AI Date 08.09.2016
Glentrevor Wallace H427 (P)

Ran with
Mawarra Evident (H)
 from 24.09.2016



GL	Bwt	200	400	600	Milk	SS	Cwt	EMA	Rib	Rump	RBV	IMF
---	---	---	---	---	---	---	---	---	---	---	---	---
SELECTION INDEX VALUES								SUPERMARKET +\$--	GRASS FED +\$--	GRAIN FED +\$--	EU +\$--	

101

MAWARRA MINERVA 977 (H)

HRPK287

Born: 30/09/2014 Pigment: 100 / 100

HUNDAY QUIVER (H)
TRURO GENGHIS KHAN G028 (H)
 COURALLIE Y149 PR CHRISTIAN A216 (H)

MONREID PRESIDENT (H)
MAWARRA MINERVA 762 (H)
 MAWARRA MINERVA 665 (AI) (H)

Minerva 762's first son sold for \$6,500 to Tony Reardon, Mansfield. She has a son to be offered in 2017.

Joining Details

AI Date 09.09.2016
Cootharaba Magnum (H)

Ran with
Mawarra Evident (H)
 from 24.09.2016



GL	Bwt	200	400	600	Milk	SS	Cwt	EMA	Rib	Rump	RBV	IMF
+0.8 36%	+4.5 73%	+29 66%	+48 66%	+73 70%	+18 40%	+1.2 51%	+45 56%	+3.2 43%	-0.5 53%	-0.8 58%	+1.8 49%	-0.4 51%
SELECTION INDEX VALUES								SUPERMARKET +\$73	GRASS FED +\$66	GRAIN FED +\$65	EU +\$82	

102

MAWARRA MINERVA 966 (H)

HRPK193

Born: 27/07/2014 Pigment: 20 / 100

MAWARRA TRAIL BLAZER (AI) (H)
MAWARRA YOU BEAUT (AI) (H)
 MAWARRA MISS TITANIA 302 (H)

COOTHARABA MAGNUM (H)
MAWARRA MINERVA 827 (AI) (H)
 MAWARRA MINERVA 740 (AI) (H)

You Beaut was purchased by the Lindsay family, Bracknell, for \$16,000 at the Herefords Australia National (Wodonga) 2012. Minerva 827 has a full sister to Minerva 966 retained.

Joining Details

AI Date 03.09.2016
Pourakino Downs Jasper (H)

Ran with
Mawarra Evident (H)
 from 24.09.2016



GL	Bwt	200	400	600	Milk	SS	Cwt	EMA	Rib	Rump	RBV	IMF
+2.9 74%	+3.4 72%	+23 66%	+35 66%	+45 69%	+9 44%	---	+29 55%	+3.9 43%	-0.2 52%	-0.4 57%	+1.4 48%	+0.4 50%
SELECTION INDEX VALUES								SUPERMARKET +\$58	GRASS FED +\$57	GRAIN FED +\$71	EU +\$72	

103

MAWARRA DOREEN 387 (AI) (H)

HRPK141

Born: 15/06/2014 Pigment: 80 / 100

STR STANDARD 256B DOM LAD 68L (H)
STANDARD 68L DOM LAD 38T (IMP CAN) (H)
 K 64H RIBSTONE LADY 112N (H)

TALBALBA VALIANT (H)
MAWARRA DOREEN 344 (H)
 MAWARRA DOREEN 283 (H)

Doreen 387 is a heifer's first calf. Doreen 344's maternal sister is cataloged as Lot 65 in this sale.

Joining Details

AI Date 09.09.2016
Mountain Valley Gambler G14 (P)

Ran with
Mawarra Evident (H)
 from 24.09.2016



GL	Bwt	200	400	600	Milk	SS	Cwt	EMA	Rib	Rump	RBV	IMF
+2.4 73%	+6.9 72%	+31 67%	+50 67%	+76 70%	+16 50%	+1.5 53%	+37 56%	+1.5 45%	-0.1 53%	-0.6 58%	+0.9 49%	+0.3 52%
SELECTION INDEX VALUES								SUPERMARKET +\$62	GRASS FED +\$56	GRAIN FED +\$69	EU +\$71	

104 MAWARRA VIRGINIA 180 (HPR) (H) HRPK256 Born: 05/09/2014 Pigment: 100 / 45

YALLAROO TITAN T011 (AI) (H)
YALLAROO GLASGOW G14 (AI) (H)
 YALLAROO SILVER QUEEN E26 (H)

MAWARRA VICE ADMIRAL (H)
MAWARRA VIRGINIA 163 (TW) (H)
 MAWARRA VIRGINIA 127 (H)

Virginia 180 is unregistered, and she is a heifer's first calf. Grand dam, Virginia 127, was a full sister to retained sire, Rip Snorta. She sold sons to \$4,500 and two daughters to \$3,000. She has an Anzac E114 heifer retained in herd.

Joining Details
 AI Date 08.09.2016
Pourakino Downs Jasper (H)
 Ran with
Mawarra Evident (H)
 from 24.09.2016



GL	Bwt	200	400	600	Milk	SS	Cwt	EMA	Rib	Rump	RBY	IMF
+2.2 39%	+7.0 68%	+36 64%	+57 65%	+81 68%	+11 42%	---	+46 55%	+4.6 44%	-0.4 53%	-0.6 58%	+1.9 50%	+0.2 51%
SELECTION INDEX VALUES							SUPERMARKET +\$67	GRASS FED +\$60	GRAIN FED +\$70	EU +\$76		

105 MAWARRA LASS 184 (H) HRPK254 Born: 09/09/2014 Pigment: 100 / 100

TALBALBA VALIANT (H)
MAWARRA AIR MARSHALL (H)
 MAWARRA CHERRY RIPE 288 (H)

COOTHARABA MAGNUM (H)
MAWARRA LASS 151 (AI) (ET) (H)
 MAWARRA LASS 101 (H)

Lass 151 has two daughters retained. Lass 101 sold sons to \$17,000 and Lass 151 is one of ten daughters that have bred in herd.

Joining Details
 Ran with
Mawarra Evident (H)
 from 20.09.2016



GL	Bwt	200	400	600	Milk	SS	Cwt	EMA	Rib	Rump	RBY	IMF
-0.1 43%	+6.0 71%	+32 65%	+49 64%	+67 63%	+14 44%	+1.8 51%	+37 51%	---	---	---	---	---
SELECTION INDEX VALUES							SUPERMARKET +\$69	GRASS FED +\$65	GRAIN FED +\$81	EU +\$81		

Thank you for joining us to celebrate Ladies Day @ Mawarra.
We wish you a safe journey home and every success with your purchases.
We look forward to your feedback outlining the contribution that
#mawarragenetics have made to your program.



studstocksales.com



@struanp



studstocksales.com



Mawarra Outstanding L140 (P) - D.O.B: 04/04/2015
Sire: Allendale Anzac E114 (P) Dam: Debarry Tabitha Y177 (P)
Semen available in Australia. Export semen available late 2016.
Herefords Australia Young Sire Program.



GL	Bwt	200	400	600	Milk	SS	Cwt	EMA	Rib	Rump	RBV	IMF
+0.4 62%	+5.1 75%	+41 71%	+65 70%	+89 69%	+16 57%	+0.3 78%	+64 60%	+4.1 50%	+1.2 53%	+1.8 56%	0.0 52%	+1.4 54%
EBVs SELECTION INDEX VALUES						SUPERMARKET +\$112		GRASS FED +\$108		GRAIN FED +\$136		EU +\$123



HRPL336 Mawarra Emperor (AI) (ET) (H) - D.O.B: 16/09/2015
Sire: Churchill A1 ET (IMP USA) (H) Dam: Mawarra Minerva 816 (AI) (ET) (H)
EBVs available after the October Breedplan run. Semen available in Australia.
Herefords Australia Young Sire Program.



mawarra
GENETICS

Phone: +613 5149 7036
103 Kelly's Road, Longford Victoria Australia 3851
Email: admin@mawarraherefords.com.au
www.mawarraherefords.com.au