

KIDMAN

Poll Herefords

Looking to the future

FEMALE SALE

Tuesday 22nd November 2016, 1pm

@ 'Dulcidene' Dubbo

63 Cows & Calves

22 Joined K heifers

10 Joined L heifers

Contact: Nelson Carlow: 0427 823 832

email: kidmancattle1@bigpond.com

Agent Contacts



NSW Regional Office Dubbo02 6841 1000
John Settree Divisional Livestock Manager..... 0408 297 368
Peter Godbolt..... VIC0457 591 929
Colby Ede QLD0417 265 980
David East..... Dubbo..... 0400 056 184



PAUL DOOLEY 0458 662 646



www.auctionsplus.com.au(02) 9262 4222

Contents

Welcome	3
Sale Information.....	3
Joining reference sires.....	6
Lots - 63 Cows and Calves	8
22 Joined K Heifers	33
10 Joined L Heifers	40
Semen Packages	44
2012 Female Sale testimonials.....	47
Buyers instruction slip	48
Location Map.....	49



**catalogues • brochures • logo design
advertisements • signage • stationery**

Fast turnaround, friendly service, quality printing!

**M 0401327445 E info@croakmedia.com.au
www.croakmedia.com.au**

Welcome

Welcome to Dulcidene for the Kidman 'Looking to the Future' Female Sale.

Conditions don't get any better for beef producers than they are at the present time. Moisture levels are at their peak and pastures towering over fence lines. This great season spreads over a huge area of Australia and confidence in the beef industry is at an all-time high.

The Australian beef industry is in a situation where female numbers are suffering a shortage, which is being reflected in the current strong demand for females.

We named our sale the Looking to the Future Female Sale following on from the success that purchasers had with their females purchased from our Golden Opportunity Female Sale in 2012.

Some of that success includes a calf at foot selling for \$26,000 at the 2014 Dubbo National and another bull out of one of our joined females selling for \$44,000 at this year's Wodonga National.

Numerous other bull calves at foot in 2012 have gone on to become major lead sires in studs producing top priced bulls for their operation.

We believe that the quality of the offering in this sale

is equal to or better than that of our 2012 sale and anticipate that prospective buyers will be looking to the future as they inspect the catalogued females.

Our Looking to the Future offering includes an impressive line-up of females that we believe are all capable of going into stud herds and an elite selection entering embryo transfer programmes. These include quality daughters of Tycolah Goldrush, Allendale Timor, Nova Quasar, Kidman Legacy, Wirruna Elder and some very impressive younger heifers and bulls at foot by Markowen Federer, Kidman Package and new sire Kerlson Pines Jester.

The females have been rejoined to numerous top-line sires including the \$95,000 Minlacowie Jubilant, Kerlson Pines Jester, Kidman Advancer, Yavenvale King Pin, Yavenvale Kahuna and Wirruna Elder.

We would love to see you on sale day and are available for any inquiries or inspections beforehand.

Finally, we wish all purchasers every success with their Kidman females.

*Kindest regards,
The Carlow Family*

Sale Information

GST: Our Sale will be a GST Exclusive Sale, which means GST is to be added onto the purchase price at the fall of the Auctioneer's hammer.

REBATE: Poll Hereford Females; 2% Rebate will be offered to outside agents introducing successful buyers to the participating agents 24 hrs prior to the sale, this will be adhered to.

INSPECTION: Inspections can be made from 10.00am on the day of the sale or by contacting the Carlow's or the participating agents prior to the sale.

SALE LOCATION: Dulcidene Stud Selling Complex is situated 18kms from Dubbo City. Map on inside back cover and website www.kidmanstud.com.au

PHONE BIDDING: Contact Agents prior to sale.

ACCOMMODATION: Good accommodation is available in Dubbo.

HEALTH: All cattle are from a confirmed free or accredited free TB and Brucellosis herd, situated in protected areas for Bovine Johne's Disease, with no known incidence of Johne's Disease. All females have been drenched.

FERTILITY: All females offered for sale are sold as fertile and productive females and have had the opportunity with bulls.

FEET: All lots feet untouched.

INSURANCE: It is recommended insurance be effected at the fall of the hammer. Insurance representative will be in attendance.

DELIVERY: Delivery will be available on sale day, animals can remain at Kidman by arrangement and every assistance will be given to arrange delivery as requested. A delivery instruction slip must be filled in and handed to the selling agents.

SUPPLEMENTARY SHEETS: Will be available on Sale Day containing weights and scrotal measurements plus further information.

SELLING SYSTEM AND BUYER'S REGISTRATION: All lots will be sold subject to the usual terms and conditions governing auction sales. Intending purchasers should obtain a Buyer's Number and registration slip available from the selling agents prior to the sale.

REFRESHMENTS: Morning tea and lunch will be available.

DISCLAIMER: The vendors, family, sale staff and representatives accept no liability for accidents that may occur, although these are rare at cattle sales. Any person attending does so at their own risk. The vendors take no responsibility for personal valuables.

Please bring this Catalogue to the Sale

Every care has been taken in compiling this catalogue to ensure accuracy of information, but no responsibility is accepted.

Kidman recent highlights



Kidman Macumba K036 sold to Swanvale Herefords for \$24,000 at Dubbo National 2016



Kidman Advancement K037 sold to Warraba Park Poll Herefords for \$16,000 at Dubbo National 2016



Kidman Competition K223 selling for on property record \$35,000 to DJ Lyons partnership Melville Park Herefords Vasey Vic.



Kidman Governor K059 selling for \$15,000 to Cranbury Poll Herefords Cudal NSW.



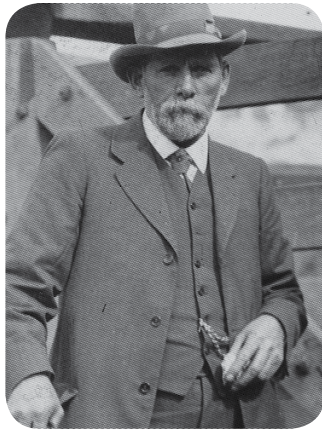
Kerlson Pines Jester J99 new sire purchased 2015 Dubbo Nationals for \$23,000.



Kidman Glengyle K237 sold to Yagaburne Poll Herefords for \$12,000 at Dubbo National 2016

Poll Hereford History

Kidman Poll Hereford Stud was founded in 1986 by Nelson and Randall Carlow. They named the stud after Sir Sidney Kidman, The Cattle King. The brothers were admirers of Kidman, who put an empire together from very humble beginnings, proving what can be achieved with the right mix of dedication and ambition.



The stud's foundation females were sourced from both local and interstate herds including Corrodgery, Cortina, Ardn, Yagaburne and Heatherdale studs. Honest value for money cattle were selected with a commercial outlook and hard working genetics that could withstand a testing environment at times.

The stud had great guidance from parents Neil and Jenny (now co-principals) whose valuable experience helped cut a few corners. Neil and Jenny previously ran the Dulcidene Poll Hereford Stud which was formed in 1982 with females centred around Sevenbardot bloodlines.

In 1992 a move was made by the Carlow family looking towards the future. The Dulcidene herd was combined with the Kidman herd to carry the Kidman prefix bigger and stronger.

The use of AI over the years has had a major impact with the Kidman breeding program, enabling them to infuse some of the best bulls worldwide into the herd, which is reflected in their success over recent years.

The Carlow family will strive to continue breeding top quality functional cattle into the future with the challenge ahead to advance the stud's breeding reputation within the beef industry.

Highlights in our history include:

Glen Innes Bull Sale

- 1988 Top & then Record Unled Price Bull selling for \$21,000

Dubbo National Show and Sale

- 1994 Junior Champion Bull selling for \$30,000
- 2002 Class Winner selling for \$25,000
- 2003 Reserve Intermediate Champion selling for \$28,000
- 2005 Junior & Grand Champion Bull
Top Priced Bull selling for \$60,000
Class Winner selling for \$26,000
President's Shield Winning Team
- 2006 Ribbon Winner selling for \$20,000
- 2008 Presidents Shield Winning Team
- 2010 2nd Presidents Shield
2nd top priced bull selling for \$22,000
- 2016 Class winner selling for \$24,000, team of 3 avg \$17,333

On Property Bull Sale

- 1993 Inaugural Sale
- 2002 Top Price Bull selling for \$20,000
- 2003 Top Price Bull selling for \$17,000
- 2004 Top Price Bull selling for \$19,000
- 2005 Record Top Price Bull selling for \$31,000
- 2007 Top Price Bull selling for \$15,000
- 2011 Record average 52 bulls avg. \$6,663
- 2011 Top Price Kidman Think Big E31 sold for \$27000
- 2012 Annual Bull Sale averaged \$5,800, Top price of \$11,500
- 2013 Annual sale top price bull \$11,000
- 2014 Top priced Bull Kidman Decker H273 selling for \$30,000.
- 2015 Top priced Bull Kidman Advancer J312 selling for \$20,000
- 2015 Record average 43 Bulls avg \$7,716
- 2016 Record top priced Bull selling for \$35,000
- 2016 Record average 35 bulls avg \$7,914



2005 Dubbo National Grand Champion with Randall and Nelson



Kidman The Don Y220
Top Priced bull 2005 Sale, Sold for \$31,000 to DJ Lyons Partnership

Joining Reference Sires

KERLSON PINES JESTER J99

BOWEN VINCENT V1 (S)
 DEBARRY ELLIOTT (P)
 DEBARRY PURITY S67 (AI) (P)
 Sire: MERAWAH ELLIOTT F115 (P)
 MERAWAH THUNDER W31 (P)
 MERAWAH SHAMROCK A4 (ET) (P)
 MERAWAH SHAMROCK N89 (P)
 Animal: KERLSON PINES JESTER J99 (P)
 BRT BLUEPRINT N1 (AI) (ET) (P)
 MINLACOWIE VALIANT NICK (AI) (ET) (P)
 NOROLLE FUCHSIA 2U NIKKI (AI) (ET) (P)
 Dam: KERLSON PINES U-BEAUTY C34 (P)
 HEATHERDALE ATHLETE V60 (AI) (P)
 KERLSON PINES U-BEAUTY Z9 (P)
 KERLSON PINES U-BEAUTY U53 (P)



Kerlson Pines Jester

MINLACOWIE JUBILANT J123

KIDMAN COL JOY T96 (AI) (TW) (P)
 ALLENDALE ROBIN HOOD Y169 (P)
 ALLENDALE FANCY U5 (AI) (P)
 Sire: ALLENDALE WATERLOO B50 (AI) (P)
 ALLENDALE NATIONAL W168 (P)
 ALLENDALE FANCY Z35 (AI) (P)
 ALLENDALE FANCY N40 (AI) (ET) (P)
 Animal: MINLACOWIE JUBILANT J123 (P)
 MINLACOWIE VALIANT NICK (AI) (ET) (P)
 MINLACOWIE XCITEMENT (P)
 MINLACOWIE JOCELYN 202 (P)
 Dam: MINLACOWIE NIKKIE C77 (AI) (P)
 PALLABAH TOPLINE P12 (P)
 MINLACOWIE NIKKI A08 (AI) (P)
 MINLACOWIE NIKKIE V109 (AI) (ET) (P)



MINLACOWIE JUBILANT J123

YAVENVALE KINGPIN K317

ALLENDALE ROBIN HOOD Y169 (P)
 ALLENDALE WATERLOO B50 (AI) (P)
 ALLENDALE FANCY Z35 (AI) (P)
 Sire: MINLACOWIE GRIFFIN (P)
 YALGOO BOULDER Z250 (P)
 MINLACOWIE SALLY D120 (AI) (P)
 MINLACOWIE SALLY X40 (AI) (ET) (P)
 Animal: YAVENVALE KINGPIN K317 (P)
 SOUTH BUKALONG WALKER 6 (AI) (P)
 SOUTH BUKALONG WALLACE 2 (P)
 SOUTH BUKALONG VICTORIA 152 (P)
 Dam: YAVENVALE TREASURE D403 (P)
 CHURCHILL SILVER V592 (AI) (H)
 YAVENVALE TREASURE B247 (H)
 YAVENVALE TREASURE U315 (H)



Yavenvale Kingpin

KIDMAN ADVANCER J312

BRAXTON GIANT THUNDER S138 (IMP NZL) (P)
 BOWEN TORNADO Z260 (AI) (ET) (P)
 BOWEN TRICEL P180 (P)
 Sire: KIDMAN DICTATOR F115 (P)
 BOWEN FINNIGAN Y38 (P)
 KIDMAN LIONESS B172 (P)
 KIDMAN LIONESS V211 (AI) (P)
 Animal: KIDMAN ADVANCER J312 (P)
 BOWEN VINCENT V1 (S)
 KIDMAN COSMO Y46 (AI) (P)
 KIDMAN VANITY T143 (P)
 Dam: KIDMAN ADVANCE B221 (AI) (P)
 KIDMAN LIMITED EDITION Q164 (P)
 KIDMAN ADVANCE S80 (P)
 KIDMAN ADVANCE P183 (P)



Kidman Advancer J312

KIDMAN EXCEPTIONAL K66

ALLENDALE VAGABOND A74 (AI) (P)
 ALLENDALE WATERHOUSE D1 (P)
 ALLENDALE MARLINE X185 (P)
 Sire: DAYS CALIBRE G74 (P)
 ALLENDALE ROBIN HOOD Z239 (P)
 ALLENDALE DAWN C62 (AI) (P)
 ALLENDALE DAWN A150 (AI) (ET) (P)
 Animal: KIDMAN EXCEPTIONAL K066 (AI) (P)
 DEBARRY EDEN (P)
 KIDMAN COSMO B25 (AI) (ET) (P)
 KIDMAN VANITY T143 (P)
 Dam: KIDMAN MARJORIE E106 (P)
 ALLENDALE ROBIN HOOD (AI) (P)
 KIDMAN MARJORIE A231 (AI) (P)
 KIDMAN MARJORIE Y60 (P)

CASCADE KNOX K122

KIDMAN WINCHESTER V2 (P)
KIDMAN WHISKY X247 (P)
KIDMAN MOONSHINE R248 (P)
Sire: CANNAWIGRA X247GLENFIDDICH F53 (P)
CANNAWIGRA S5 BATMAN X08 (AI) (ET) (S)
CANNAWIGRA X8 LASS A1120 (P)
CANNAWIGRA LASS U21 (P)
Animal: CASCADE KNOX K122 (P)
BOBANKEN X-MARK X157 (P)
MOUNTAIN VALLEY ROCKYNEED B1 (P)
MOUNTAIN VALLEY GLITTER V62 (P)
Dam: CASCADE PURITY F194 (AI) (ET) (P)
DEBARRY TWISTER 5 (P)
DEBARRY PURITY W61 (P)
DEBARRY PURITY R54 (P)

WIRRUNA ELDER E327

VALMA WALKER (P)
SOUTH BUKALONG WALKER 6 (AI) (P)
SOUTH BUKALONG CIRCE 73 (P)
Sire: SOUTH BUKALONG WALLACE 2 (P)
WIRRUNA SHAW (AI) (P)
SOUTH BUKALONG VICTORIA 152 (P)
SOUTH BUKALONG VICTORIA 109 (P)
Animal: WIRRUNA ELDER E327 (AI) (ET) (P)
JC CATALYST (IMP USA) (P)
ELITE J7C X54 (AI) (P)
ELITE RECOVERY N72 U24 (AI) (P)
Dam: WIRRUNA MADAM A10 (AI) (ET) (P)
BIDGEE TYSON (AI) (P)
WIRRUNA MADAM S207 (P)
WIRRUNA MADAM 91 (P)

KIDMAN CASINO L120

ALLENDALE YACKA (AI) (P)
ALLENDALE ANZAC E114 (P)
ALLENDALE DAWN B22 (AI) (ET) (P)
Sire: INJEMIRA ANZAC H002 (P)
RILO PARK G-FORCE B6 (AI) (ET) (P)
INJEMIRA BEGONIA E087 (TW) (P)
INJEMIRA BEGONIA W113 (AI) (H)
Animal: KIDMAN CASINO L120 (P)
BRAXTON GIANT THUNDER S138 (IMP NZL) (P)
BOWEN TORNADO Z260 (AI) (ET) (P)
BOWEN TRICEL P180 (P)
Dam: KIDMAN COUNTESS C181 (AI) (P)
DOONBIDDIE ROGER MOORE (AI) (ET) (P)
KIDMAN COUNTESS T55 (AI) (TW) (P)
KIDMAN COUNTESS Q5 (P)

INJEMIRA ANZAC H002

ALLENDALE PUNTER 3 (AI) (P)
ALLENDALE YACKA (AI) (P)
ALLENDALE FLORRIE Z33 (AI) (P)
Sire: ALLENDALE ANZAC E114 (P)
ALLENDALE NATIONAL W168 (P)
ALLENDALE DAWN B22 (AI) (ET) (P)
ALLENDALE DAWN T60 (AI) (P)
Animal: INJEMIRA ANZAC H002 (P)
STUDBROOK D'ARTAGNION V086 (AI) (ET) (S)
RILO PARK G-FORCE B6 (AI) (ET) (P)
BOWEN MATCHLESS L140 (AI) (P)
Dam: INJEMIRA BEGONIA E087 (TW) (P)
CL 1 DOMINO 888H 1ET (IMP USA) (ET) (H)
INJEMIRA BEGONIA W113 (AI) (H)
INJEMIRA BEGONIA T111 (H)

YAVENVALE KAHUNA K115

STAR BRIGHT FUTURE 533P ET (P)
RVP STAR CAN-AM ET 57U (P)
STAR BONNIE BETH 54N (P)
Sire: CB 57U CAN DOO 102Y (IMP CAN) (P)
STAR MKS LIMELIGHT 288G (P)
HF 74M LIMELIGHT LADY 42P (P)
HF 43K DUSTY LADY 74M (P)
Animal: YAVENVALE KAHUNA K115 (AI) (P)
PINE HILL ERIK Y601 (AI) (S)
WOLBULL FAME 3 B521 (AI) (S)
WOLBULL FLO U71 (P)
Dam: YAVENVALE LOCHIEL LADY D488 (P)
SOUTH BUKALONG WALLACE 2 (P)
YAVENVALE LOCHIEL LADY B404 (H#)
YAVENVALE LOCHIEL LADY U233 (H)

KIDMAN TREATY J094

SOUTH BUKALONG WALKER 6 (AI) (P)
SOUTH BUKALONG WALLACE 2 (P)
SOUTH BUKALONG VICTORIA 152 (P)
Sire: WIRRUNA ELDER E327 (AI) (ET) (P)
ELITE J7C X54 (AI) (P)
WIRRUNA MADAM A10 (AI) (ET) (P)
WIRRUNA MADAM S207 (P)
Animal: KIDMAN TREATY J094 (P)
ALLENDALE UNRIVALLED (TW) (P)
ALLENDALE TIMOR B120 (P)
ALLENDALE FANCY V206 (P)
Dam: KIDMAN MARITANA F138 (P)
TYCOLAH COBBADAH (P)
KIDMAN MARITANA C188 (P)
KIDMAN MARITANA LASS Y145 (AI) (P)



Cascade Knox K122



Wirruna Elder E327



Injemira Anzac H002



Kidman Treaty J094



KIDMAN VANITY G230 (P)

Tattoo: G230

Born: 19/07/2011

Rego No:KIDG230

LAMBERT MERWAH (P)
 TYCOLAH COBBADAH (P)
 TYCOLAH COUNTESS U72 (P)
 Sire: **KIDMAN LOTTO C21 (P)**
 KIDMAN BRADMAN W101 (AI) (P)
 KIDMAN LADY ECILPSE Y208 (P)
 KIDMAN LADY ECLIPSE V55 (AI) (P) BRT

BLUEPRINT N1 (AI) (ET) (P)
 KIDMAN MENINGA W94 (AI) (P)
 KIDMAN MISS GUNN N60 (P)
 Dam: **KIDMAN VANITY A196 (AI) (P)**
 WIRANYA BATAVIA (AI) (P)
 KIDMAN VANITY V92 (AI) (P)
 KIDMAN VANITY N118 (P)

October 2016 Hereford GROUP BREEDPLAN																
CE	CE DTR	GL	BW	200	400	600	MCW	Milk	SS	DC	Cwt	EMA	Rib	RUM	RBY	IMF%
		-0.4	+6.4	+30	+46	+69	+71	+9	+0.7		+35					
		48%	55%	63%	64%	62%	57%	50%	52%		54%					
\$ Index Values:		Supermarket: +\$55					Grass Fed Steer Index: +\$48			Grain Fed Steer Index: +\$52			EU Index: +\$60			

Traits Observed: 200WT,400WT

Kidman Lotto daughter offering length, depth, capacity and from a solid family line. Heifer calf at foot by Injemira Anzac H2 born 24/7/16. AI'ed to Minlacowie Jubilant J123 on 20/10/16.

Purchaser: Price \$



KIDMAN LADY ECLIPSE G118 (AI) (P)

Tattoo: G118

Born: 08/06/2011

Rego No:KIDG118

KARINA BEN LOMOND (AI) (P)
 KARINA CHERRY Z8 (P)
 KARINA MARSALA S18 (P)
 Sire: **TYCOLAH GOLD RUSH (S)**
 NOROLLE 124 U126 (H#)
 TYCOLAH COUNTESS Z04 (P)
 TYCOLAH COUNTESS W72 (P)

MARKOWEN CRUSADER (P)
 KIDMAN LIONHEART A93 (AI) (P)
 KIDMAN COUNTESS L114 F91 (P)
 Dam: **KIDMAN LADY ECLIPSE C11 (P)**
 ALLENDALE NATIONAL W168 (P)
 KIDMAN LADY ECLIPSE Z62 (AI) (P)
 KIDMAN LADY ECLIPSE V72 (AI) (P)

October 2016 Hereford GROUP BREEDPLAN																
CE	CE DTR	GL	BW	200	400	600	MCW	Milk	SS	DC	Cwt	EMA	Rib	RUM	RBY	IMF%
+1.2	+1.8	-0.7	+5.1	+33	+52	+74	+67	+13	+2.0		+43					
40%	35%	75%	58%	64%	65%	63%	56%	54%	53%		55%					
\$ Index Values:		Supermarket: +\$82					Grass Fed Steer Index: +\$77			Grain Fed Steer Index: +\$89			EU Index: +\$91			

Traits Observed: GL,200WT,400WT

Deep bodied Gold Rush daughter exhibiting length, thickness, fantastic head and muzzle along with structure. Nice heifer calf at foot by Kerlson Pines Jester born 10/6/16. AI'ed to Minlacowie Jubilant J123 on 26/8/16. Depastured with Kidman Casino L120 from the 6/10/16. Possibly the stand out Lot in the sale.

Purchaser: Price \$



KIDMAN IRISH GIRL G227 (AI) (P)

Tattoo: G227

Born: 21/10/2011

Rego No:KIDG227

KARINA BEN LOMOND (AI) (P)
 KARINA CHERRY Z8 (P)
 KARINA MARSALA S18 (P)
 Sire: **TYCOLAH GOLD RUSH (S)**
 NOROLLE 124 U126 (H#)
 TYCOLAH COUNTESS Z04 (P)
 TYCOLAH COUNTESS W72 (P)

ALLENDALE OCTAGONAL (AI) (P)
 KIDMAN BRADMAN X136 (AI) (P)
 KIDMAN CORAL R131 (P)
 Dam: **KIDMAN IRISH GIRL A52 (P)**
 BOWEN URIARRA U96 (AI) (ET) (P)
 KIDMAN IRISH GIRL X50 (AI) (P)
 KIDMAN IRISH GIRL T29 (AI) (P)

October 2016 Hereford GROUP BREEDPLAN																
CE	CE DTR	GL	BW	200	400	600	MCW	Milk	SS	DC	Cwt	EMA	Rib	RUM	RBY	IMF%
+0.2	+0.9	+0.2	+4.6	+28	+43	+63	+60	+13	+1.9		+33	+1.8	+0.1	-0.1	+0.6	+0.2
40%	35%	74%	57%	61%	64%	62%	55%	55%	55%		55%	44%	46%	49%	45%	47%
\$ Index Values:		Supermarket: +\$72					Grass Fed Steer Index: +\$67			Grain Fed Steer Index: +\$77			EU Index: +\$84			

Traits Observed: GL,200WT,400WT

Feminine Gold Rush daughter exhibiting a well structured udder. Heifer calf at foot by Injemira Anzac H2 born 12/8/16. AI'ed to Kerlson Pines Jester J99 on the 20/10/16.

Purchaser: Price \$



KIDMAN MINERVA QUEEN G213 (AI) (P)

Tattoo: G213

Born: 16/09/2011

Rego No:KIDG213

CMF GK LEXINGTON (P)
JR SOUTHERN CROSS Z17 (P)
GK BEAU MISS 344X (P)

BOWEN TORNADO Z260 (AI) (ET) (P)
KIDMAN THUNDERBOLT C16 (P)
KIDMAN SHAMROCK Y152 (AI) (P)

Sire: **NJW Z17 VAQUERO 25C (IMP USA) (P)**Dam: **KIDMAN MINERVA QUEEN E80 (P)**

CIRCLE-D WRANGLER 832W (IMP USA) (P)
CIRCLE-D 832W DUCHES 283Z (P)
CIRCLE D 452M DUCHESS 537T (P)

WIRANYA TABOR (AI) (P)
KIDMAN MINERVA QUEEN V161 (AI) (P)
KIDMAN MINERVA QUEEN Q64 (P)

October 2016 Hereford GROUP BREEDPLAN

CE	CE DTR	GL	BW	200	400	600	MCW	Milk	SS	DC	Cwt	EMA	Rib	RUM	RBY	IMF%
+2.8	+2.6	+0.6	+4.3	+28	+41	+59	+49	+9	+1.8	-2.7	+34	+2.0	+0.5	+0.1	+0.4	+0.1
50%	48%	68%	60%	65%	66%	65%	60%	56%	55%	48%	59%	52%	54%	55%	53%	53%
\$ Index Values:		Supermarket: +\$72				Grass Fed Steer Index: +\$69				Grain Fed Steer Index: +\$79				EU Index: +\$84		

Traits Observed: GL,200WT,400WT

Feminine Vacquero daughter with clean shoulders and nice udder. Bull calf at foot by Injemira Anzac H2 born on 20/7/16. Al'ed to Minlacowie Jubilant J123 on 20/10/16.

Purchaser: Price \$



KIDMAN MARITANA LASS G198 (AI) (P)

Tattoo: G198

Born: 18/09/2011

Rego No:KIDG198

KARINA BEN LOMOND (AI) (P)
KARINA CHERRY Z8 (P)
KARINA MARSALA S18 (P)

VALMA SOUTHERN STAR (AI) (ET) (P)
BOWEN VINCENT V1 (S)
BOWEN PRINCESS P146 (P)

Sire: **TYCOLAH GOLD RUSH (S)**Dam: **KIDMAN MARITANA LASS Y191 (AI) (P)**

NOROLLE 124 U126 (H#)
TYCOLAH COUNTESS Z04 (P)
TYCOLAH COUNTESS W72 (P)

WIRANYA BATAVIA (AI) (P)
KIDMAN MARITANA LASS V129 (AI) (P)
KIDMAN MARITANA LASS R91 (AI) (P)

October 2016 Hereford GROUP BREEDPLAN

CE	CE DTR	GL	BW	200	400	600	MCW	Milk	SS	DC	Cwt	EMA	Rib	RUM	RBY	IMF%
+1.3	+1.6	+0.3	+5.6	+36	+56	+83	+74	+15	+1.9	-2.8	+49	+2.3	+0.0	-0.3	+0.8	+0.2
44%	41%	76%	61%	65%	66%	64%	57%	56%	57%	36%	57%	47%	49%	52%	48%	51%
\$ Index Values:		Supermarket: +\$91				Grass Fed Steer Index: +\$85				Grain Fed Steer Index: +\$97				EU Index: +\$102		

Traits Observed: GL,200WT,400WT

Quality Gold Rush daughter with length depth and capacity throughout. Heifer calf at foot by Injemira Anzac H2 born 12/7/16. Al'ed to Minlacowie Jubilant J123 on 20/10/16. A bull out of V129 sold to Mawarra in 2010 for \$15,000. This unit will draw a lot of attention on sale day.

Purchaser: Price \$



KIDMAN COLLEEN G294 (AI) (P)

Tattoo: G294

Born: 23/09/2011

Rego No:KIDG294

CMF GK LEXINGTON (P)
JR SOUTHERN CROSS Z17 (P)
GK BEAU MISS 344X (P)

DEBARRY IMAGE (AI) (P)
COLUMBIAN X178 IMAGE A98 (P)
CASTLEREIGH LAST DAY W275 (P)

Sire: **NJW Z17 VAQUERO 25C (IMP USA) (P)**Dam: **KIDMAN COLLEEN E63 (P)**

CIRCLE-D WRANGLER 832W (IMP USA) (P)
CIRCLE-D 832W DUCHES 283Z (P)
CIRCLE D 452M DUCHESS 537T (P)

WIRANYA TABOR (AI) (P)
KIDMAN COLLEEN W6 (AI) (P)
KIDMAN COLLEEN S77 (AI) (P)

October 2016 Hereford GROUP BREEDPLAN

CE	CE DTR	GL	BW	200	400	600	MCW	Milk	SS	DC	Cwt	EMA	Rib	RUM	RBY	IMF%
+1.7	+1.6	+2.4	+4.6	+29	+43	+61	+48	+10	+1.9	-2.9	+37	+2.5	+1.1	+0.9	+0.3	+0.0
50%	48%	55%	58%	60%	61%	62%	59%	56%	55%	48%	58%	53%	56%	58%	54%	55%
\$ Index Values:		Supermarket: +\$75				Grass Fed Steer Index: +\$72				Grain Fed Steer Index: +\$79				EU Index: +\$85		

Traits Observed:

Terrific uddered, feminine Vacquero daughter with a magnificent heifer calf at foot by Kidman Package J305 born 28/6/16. Al'ed to Kerlson Pines Jester J99 on 20/10/16.

Purchaser: Price \$



KIDMAN TWIGHLIGHT G078 (P)

Tattoo: G78

Born: 07/03/2011

Rego No:KIDG78

DEBARRY EDEN (P)
 KIDMAN COSMO B25 (AI) (ET) (P)
 KIDMAN VANITY T143 (P)
 Sire: **KIDMAN LEGACY D155 (S)**
 VALMA SOUTHERN STAR (AI) (ET) (P)
 KIDMAN MINNY A173 (AI) (P)
 KIDMAN MINNY U212 (AI) (TW) (P)

KIDMAN BLUE CHIP Y221 (P)
 KIDMAN PORTFOLIO B186 (AI) (P)
 KIDMAN DAPHNE W107 (P)
 Dam: **KIDMAN TWIGHLIGHT D133 (P)**
 KIDMAN BRADMAN V90 (AI) (P)
 KIDMAN TWIGHLIGHT X239 (P)
 KIDMAN TWILIGHT V97 (P)

October 2016 Hereford GROUP BREEDPLAN																
CE	CE DTR	GL	BW	200	400	600	MCW	Milk	SS	DC	Cwt	EMA	Rib	RUM	RBY	IMF%
		-0.5	+5.5	+30	+47	+73	+74	+15	+1.7		+41	+2.0	+0.4	+0.4	+0.3	+0.0
		43%	60%	65%	67%	71%	61%	45%	53%		59%	43%	50%	54%	48%	51%
\$ Index Values:		Supermarket: +\$72					Grass Fed Steer Index: +\$65			Grain Fed Steer Index: +\$69			EU Index: +\$78			

Traits Observed: 200WT,600WT

Nice type of Legacy daughter with bull calf at foot by Injemira Anzac H2 born 22/7/16. AI'ed to Minlacowie Jubilant J123 on 20/10/16.

Purchaser: Price \$



KIDMAN VANITY H228 (P)

Tattoo: H228

Born: 18/05/2012

Rego No:KIDH228

FCC 60G MADDUX 4L (IMP CAN) (P)
 HF 4L BEYOND 36N (IMP CAN) (P)
 MISS 87D FORTUNE 707B 67J (P)
 Sire: **NOVA QUASAR (AI) (P)**
 DAVIS-BAR 75 FLAME ET 57X (IMP CAN) (P)
 NOVA FLAMES CORISANDE (AI) (P)
 VALMA MARSHALLS CORISANDE K28 (P)

KIDMAN PACEMAKER S151 (P)
 KIDMAN PATERSON V141 (P)
 KIDMAN DAPHNE N130 (P)
 Dam: **KIDMAN VANITY D188 (P)**
 KIDMAN ENTICER Y13 (AI) (P)
 KIDMAN VANITY A200 (P)
 KIDMAN VANITY T100 (AI) (P)

October 2016 Hereford GROUP BREEDPLAN																
CE	CE DTR	GL	BW	200	400	600	MCW	Milk	SS	DC	Cwt	EMA	Rib	RUM	RBY	IMF%
		+0.6	+6.5	+33	+49	+67	+62	+10			+40	+3.2	-0.4	-0.9	+1.7	-0.5
		36%	56%	61%	62%	66%	57%	41%			53%	36%	52%	57%	45%	50%
\$ Index Values:		Supermarket: +\$52					Grass Fed Steer Index: +\$46			Grain Fed Steer Index: +\$43			EU Index: +\$59			

Traits Observed: 200WT,600WT,FAT,IMF

Feminine Quaser matron displaying length, depth and great udder. Classy heifer calf at foot born 10/6/16 by Kerlson Pines Jester J99. AI'ed to Minlacowie Jubilant J123 on 26/8/16. Depastured with Kidman Casino L120 from the 6/10/16. A fantastic Cow and Calf unit.

Purchaser: Price \$



KIDMAN MOONSHINE H089 (P)

Tattoo: H089

Born: 12/06/2012

Rego No:KIDH089

FCC 60G MADDUX 4L (IMP CAN) (P)
 HF 4L BEYOND 36N (IMP CAN) (P)
 MISS 87D FORTUNE 707B 67J (P)
 Sire: **NOVA QUASAR (AI) (P)**
 DAVIS-BAR 75 FLAME ET 57X (IMP CAN) (P)
 NOVA FLAMES CORISANDE (AI) (P)
 VALMA MARSHALLS CORISANDE K28 (P)

LAMBERT MERWAH (P)
 TYCOLAH COBBADAH (P)
 TYCOLAH COUNTESS U72 (P)
 Dam: **KIDMAN MOONSHINE D59 (P)**
 ALLENDALE ROBIN HOOD (AI) (P)
 KIDMAN MOONSHINE A189 (AI) (P)
 KIDMAN MOONSHINE Y6 (AI) (P)

October 2016 Hereford GROUP BREEDPLAN																
CE	CE DTR	GL	BW	200	400	600	MCW	Milk	SS	DC	Cwt	EMA	Rib	RUM	RBY	IMF%
		+0.1	+6.3	+30	+43	+58	+61	+13			+30	+2.0	-0.5	-1.1	+1.4	-0.8
		41%	58%	62%	62%	67%	59%	44%			55%	44%	53%	58%	50%	52%
\$ Index Values:		Supermarket: +\$39					Grass Fed Steer Index: +\$32			Grain Fed Steer Index: +\$22			EU Index: +\$45			

Traits Observed: 200WT,600WT,FAT,EMA,IMF

Smooth shouldered feminine Quaser daughter who looks like she may be going to be a good breeder as her first bull calf last year is an exciting prospect and she has a very handy bull calf at foot by Kerlson Pines Jester J99 born 10/6/16. Depastured with Cascade Knox from the 8/8/16 to the 6/10/16.

Purchaser: Price \$



KIDMAN VANITY H107 (P)

Tattoo: H107

Born: 18/06/2012

Rego No:KIDH107

ALLENDALE SPOT ON (AI) (P)
 ALLENDALE UNRIVALLED (TW) (P)
 ALLENDALE GLADIOLA T169 (ET) (P)
 Sire: **ALLENDALE TIMOR B120 (P)**
 RUSSLYNN SUPERIOR (P)
 ALLENDALE FANCY V206 (P)
 ALLENDALE FANCY R32 (P)

BRT BLUEPRINT N1 (AI) (ET) (P)
 KIDMAN MENINGA W94 (AI) (P)
 KIDMAN MISS GUNN N60 (P)
 Dam: **KIDMAN VANITY A196 (AI) (P)**
 WIRANYA BATAVIA (AI) (P)
 KIDMAN VANITY V92 (AI) (P)
 KIDMAN VANITY N118 (P)

October 2016 Hereford GROUP BREEDPLAN																
CE	CE DTR	GL	BW	200	400	600	MCW	Milk	SS	DC	Cwt	EMA	Rib	RUM	RBY	IMF%
		+0.4	+5.8	+30	+46	+68	+67	+15	+0.6		+35	+1.8	+0.1	+0.2	+0.1	+0.3
		49%	59%	64%	65%	69%	62%	50%	53%		57%	47%	54%	59%	52%	54%
\$ Index Values:		Supermarket: +\$55					Grass Fed Steer Index: +\$49			Grain Fed Steer Index: +\$54			EU Index: +\$59			

Traits Observed: 200WT,600WT,FAT,EMA,IMF

Timor daughter with typical B120 attributes - feminine, length and udder shape. Bull calf with potential at foot by Kerlson Pines Jester J99 born 3/7/16. Depastured with Kidman Exceptional K66 from 8/8/16 to 11/10/16.

Purchaser:

Price \$



KIDMAN BELLONA H219 (AI) (P)

Tattoo: H219

Born: 18/07/2012

Rego No:KIDH219

BRAXTON GIANT THUNDER S138 (IMP)
 NZL) (P)
 BOWEN TORNADO Z260 (AI) (ET) (P)
 BOWEN TRICEL P180 (P)
 Sire: **KIDMAN FORMATION D142 (P)**
 ALLENDALE NATIONAL W168 (P)
 KIDMAN PURITY Z186 (AI) (P)
 KIDMAN PURITY U29 (P)

NJW Z17 VAQUERO 25C (IMP USA) (P)
 NOROLLE 25 UTTER MADNESS U137 (AI) (ET) (P)
 NOROLLE LADY BIRD H114 (AI) (P)
 Dam: **KIDMAN BELLONA Y147 (AI) (P)**
 KELLAWOOD CROWN PRINCE U3 (P)
 KIDMAN BELLONA W75 (P)
 KIDMAN BELLONA T22 (AI) (P)

October 2016 Hereford GROUP BREEDPLAN																
CE	CE DTR	GL	BW	200	400	600	MCW	Milk	SS	DC	Cwt	EMA	Rib	RUM	RBY	IMF%
-1.5	+1.2	+0.1	+5.3	+31	+45	+67	+61	+10	+1.9		+39	+3.5	+1.1	+1.3	+0.3	+0.7
40%	36%	74%	62%	65%	66%	69%	63%	55%	58%		59%	48%	55%	59%	52%	54%
\$ Index Values:		Supermarket: +\$80					Grass Fed Steer Index: +\$77			Grain Fed Steer Index: +\$94			EU Index: +\$92			

Traits Observed: GL,200WT,600WT,FAT,EMA,IMF

Daughter of the \$22,000 Kidman Formation offering depth, length and thickness with bull calf at foot by Kerlson Pines Jester J99 born 14/6/16. Depastured with Cascade Knox from 8/8/16 to 6/10/16.

Purchaser:

Price \$



KIDMAN ALMOND QUEEN H091 (P)

Tattoo: H091

Born: 20/07/2012

Rego No:KIDH091

ALLENDALE NATIONAL W168 (P)
 KIDMAN FORWARD Z69 (AI) (P)
 KIDMAN CONSTANCE V210 (AI) (P)
 Sire: **KIDMAN ESSENTIAL B9 (P)**
 BOWEN VINCENT V1 (S)
 KIDMAN ROYAL FAITH Y154 (AI) (P)
 KIDMAN ROYAL FAITH S23 (AI) (P)

BOWEN VINCENT V1 (S)
 KIDMAN COSMO Y46 (AI) (P)
 KIDMAN VANITY T143 (P)
 Dam: **KIDMAN ALMOND QUEEN B119 (AI) (P)**
 DALKEITH RADIUM (AI) (P)
 KIDMAN ALMOND QUEEN U38 (P)
 KIDMAN ALMOND QUEEN R5 (P)

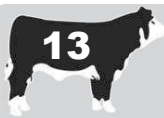
October 2016 Hereford GROUP BREEDPLAN																
CE	CE DTR	GL	BW	200	400	600	MCW	Milk	SS	DC	Cwt	EMA	Rib	RUM	RBY	IMF%
		-0.3	+5.3	+31	+55	+79	+81	+11	+1.8		+47	+2.5	+0.4	+0.6	+0.4	+0.1
		56%	59%	64%	65%	70%	62%	52%	53%		59%	48%	56%	61%	53%	55%
\$ Index Values:		Supermarket: +\$79					Grass Fed Steer Index: +\$73			Grain Fed Steer Index: +\$79			EU Index: +\$87			

Traits Observed: 200WT,600WT,FAT,EMA,IMF

Nice feminine daughter of the \$19,000 Kidman Essential who has done a great job at Devoncourt. Heifer calf at foot by Kerlson Pines Jester J99 born 1/6/16. All'ed to Minlacowie Jubilant J123 on 26/8/16. Depastured with Kidman Casino L120 from the 6/10/16.

Purchaser:

Price \$



KIDMAN SHAMROCK H167 (AI) (P)

Tattoo: H167

Born: 25/07/2012

Rego No:KIDH167

KARINA BEN LOMOND (AI) (P)
 KARINA CHERRY Z8 (P)
 KARINA MARSALA S18 (P)
 Sire: **TYCOLAH GOLD RUSH (S)**
 NOROLLE 124 U126 (H#)
 TYCOLAH COUNTESS Z04 (P)
 TYCOLAH COUNTESS W72 (P)

BRAXTON GIANT THUNDER S138 (IMP NZL) (P)
 BOWEN TORNADO Z260 (AI) (ET) (P)
 BOWEN TRICEL P180 (P)
 Dam: **KIDMAN SHAMROCK E257 (AI) (ET) (P)**
 BOWEN VINCENT V1 (S)
 KIDMAN SHAMROCK Y152 (AI) (P)
 KIDMAN SHAMROCK R101 (AI) (P)

October 2016 Hereford GROUP BREEDPLAN																
CE	CE DTR	GL	BW	200	400	600	MCW	Milk	SS	DC	Cwt	EMA	Rib	RUM	RBY	IMF%
+1.1	+1.5	+0.8	+4.4	+32	+52	+76	+52	+12	+1.9	-4.8	+44	+2.9	+1.7	+2.3	-0.4	+1.5
44%	39%	74%	63%	66%	67%	70%	64%	54%	57%	36%	61%	52%	59%	63%	56%	59%
\$ Index Values:		Supermarket: +\$106					Grass Fed Steer Index: +\$105				Grain Fed Steer Index: +\$138			EU Index: +\$120		

Traits Observed: GL,200WT,600WT,FAT,EMA,IMF

Long feminine Gold Rush daughter with smooth shoulders bull calf at foot by Kidman Package J305 born 24/6/16 Al'ed to Minlacowie Jubilant J123 on the 27/8/16 depastured with Kidman Casino L120 from the 6/10/16.

Purchaser:

Price \$



KIDMAN QUEEN VICTORIA H259 (P)

Tattoo: H259

Born: 20/08/2012

Rego No:KIDH259

SOUTH BUKALONG WALKER 6 (AI) (P)
 SOUTH BUKALONG WALLACE 2 (P)
 SOUTH BUKALONG VICTORIA 152 (P)
 Sire: **WIRRUNA ELDER E327 (AI) (ET) (P)**
 ELITE J7C X54 (AI) (P)
 WIRRUNA MADAM A10 (AI) (ET) (P)
 WIRRUNA MADAM S207 (P)

TYCOLAH COBBADAH (P)
 KIDMAN LOTTO C21 (P)
 KIDMAN LADY ECILPSE Y208 (P)
 Dam: **KIDMAN QUEEN VICTORIA F149 (TW) (P)**
 DOONBIDDIE HUSTLER (AI) (P)
 KIDMAN QUEEN VICTORIA Z21 (AI) (P)
 KIDMAN QUEEN VICTORIA U206 (P)

October 2016 Hereford GROUP BREEDPLAN																
CE	CE DTR	GL	BW	200	400	600	MCW	Milk	SS	DC	Cwt	EMA	Rib	RUM	RBY	IMF%
		-2.9	+2.7	+26	+40	+59	+47	+13	+1.9	-3.0	+38	+2.8	+1.3	+1.8	+0.1	+0.6
		41%	59%	63%	64%	69%	61%	43%	51%	35%	58%	47%	56%	61%	53%	56%
\$ Index Values:		Supermarket: +\$83					Grass Fed Steer Index: +\$82				Grain Fed Steer Index: +\$96			EU Index: +\$94		

Traits Observed: 200WT,600WT,FAT,EMA,IMF

Feminine Elder female with length and type. Heifer calf at foot by Kerlson Pines Jester J99 born 4/7/16. Depastured with Kidman Exceptional K66 from 8/8/16 to 11/10/16. A good unit.

Purchaser:

Price \$



KIDMAN VANITY H251 (P)

Tattoo: H251

Born: 25/08/2012

Rego No:KIDH251

SOUTH BUKALONG WALKER 6 (AI) (P)
 SOUTH BUKALONG WALLACE 2 (P)
 SOUTH BUKALONG VICTORIA 152 (P)
 Sire: **WIRRUNA ELDER E327 (AI) (ET) (P)**
 ELITE J7C X54 (AI) (P)
 WIRRUNA MADAM A10 (AI) (ET) (P)
 WIRRUNA MADAM S207 (P)

KARINA CHERRY Z8 (P)
 TYCOLAH GOLD RUSH (S)
 TYCOLAH COUNTESS Z04 (P)
 Dam: **KIDMAN VANITY F79 (P)**
 DOONBIDDIE HUSTLER (AI) (P)
 KIDMAN VANITY Z212 (AI) (P)
 KIDMAN VANITY U127 (AI) (P)

October 2016 Hereford GROUP BREEDPLAN																
CE	CE DTR	GL	BW	200	400	600	MCW	Milk	SS	DC	Cwt	EMA	Rib	RUM	RBY	IMF%
+2.9		-2.0	+1.7	+26	+41	+61	+35	+16	+2.2	-4.8	+45	+4.0	+2.2	+3.2	+0.0	+1.0
38%		45%	61%	64%	66%	70%	63%	44%	52%	36%	59%	49%	58%	62%	55%	57%
\$ Index Values:		Supermarket: +\$104					Grass Fed Steer Index: +\$105				Grain Fed Steer Index: +\$128			EU Index: +\$117		

Traits Observed: 200WT,600WT,FAT,EMA,IMF

Low birth weight, high milking Elder daughter with great figures. Heifer calf at foot by Kidman Package J305 born 20/7/16. Al'ed to Kerlson Pines Jester J99 on 20/10/16.

Purchaser:

Price \$



KIDMAN SHAMROCK H178 (AI) (P)

Tattoo: H178

Born: 03/09/2012

Rego No:KIDH178

KARINA BEN LOMOND (AI) (P)
 KARINA CHERRY Z8 (P)
 KARINA MARSALA S18 (P)

BRAXTON GIANT THUNDER S138 (IMP NZL) (P)
 BOWEN TORNADO Z260 (AI) (ET) (P)
 BOWEN TRICEL P180 (P)

Sire: TYCOLAH GOLD RUSH (S)

Dam: KIDMAN SHAMROCK E46 (AI) (ET) (P)

NOROLLE 124 U126 (H#)
 TYCOLAH COUNTESS Z04 (P)
 TYCOLAH COUNTESS W72 (P)

BOWEN VINCENT V1 (S)
 KIDMAN SHAMROCK Y152 (AI) (P)
 KIDMAN SHAMROCK R101 (AI) (P)

October 2016 Hereford GROUP BREEDPLAN																
CE	CE DTR	GL	BW	200	400	600	MCW	Milk	SS	DC	Cwt	EMA	Rib	RUM	RBY	IMF%
+0.8	+1.4	+1.5	+4.9	+32	+52	+76	+61	+12	+2.0	-3.7	+43	+2.6	+0.5	+0.4	+0.4	+0.6
44%	39%	74%	62%	65%	66%	69%	63%	54%	57%	35%	60%	51%	57%	61%	55%	57%
\$ Index Values:			Supermarket: +\$92				Grass Fed Steer Index: +\$88				Grain Fed Steer Index: +\$108			EU Index: +\$105		

Traits Observed: GL,200WT,600WT,FAT,EMA,IMF

Typical Gold Rush daughter - feminine, nice udder, good head, clean shouldered and good lines. Out of ET sister to the mother of \$26,000 Kidman Biography. Heifer calf at foot by Kerlson Pines Jester J99 born 16/7/16. AI'ed to Kerlson Pines J99 on 20/10/16.

Purchaser:

Price \$



KIDMAN MISS GUNN H129 (P)

Tattoo: H129

Born: 15/09/2012

Rego No:KIDH129

KARINA BEN LOMOND (AI) (P)
 KARINA CHERRY Z8 (P)
 KARINA MARSALA S18 (P)

BOWEN TORNADO Z260 (AI) (ET) (P)
 KIDMAN THUNDERBOLT C16 (P)
 KIDMAN SHAMROCK Y152 (AI) (P)

Sire: TYCOLAH GOLD RUSH (S)

Dam: KIDMAN MISS GUNN E67 (P)

NOROLLE 124 U126 (H#)
 TYCOLAH COUNTESS Z04 (P)
 TYCOLAH COUNTESS W72 (P)

BOWEN URIARRA U96 (AI) (ET) (P)
 KIDMAN MISS GUNN X91 (AI) (P)
 KIDMAN MISS GUNN T118 (AI) (H#)

October 2016 Hereford GROUP BREEDPLAN																
CE	CE DTR	GL	BW	200	400	600	MCW	Milk	SS	DC	Cwt	EMA	Rib	RUM	RBY	IMF%
+0.8	+1.5	+1.9	+6.0	+34	+55	+82	+79	+12	+1.8		+43	+1.9	-1.2	-2.3	+1.4	+0.0
39%	35%	54%	62%	66%	66%	69%	62%	52%	54%		59%	49%	56%	61%	54%	56%
\$ Index Values:			Supermarket: +\$78				Grass Fed Steer Index: +\$70				Grain Fed Steer Index: +\$80			EU Index: +\$90		

Traits Observed: 200WT,600WT,FAT,EMA,IMF

Gold Rush female heifer calf at foot by Kerlson Pines Jester J99. AI'ed to Minlacowie Jubilant J123 on 26/10/16. Depastured with Kidman Casino L120 from the 6/10/16.

Purchaser:

Price \$



KIDMAN MARITANA LASS H296 (P)

Tattoo: H296

Born: 10/10/2012

Rego No:KIDH296

WIRANYA TABOR (AI) (P)
 KIDMAN BRADMAN W101 (AI) (P)
 KIDMAN CORAL R131 (P)

BOWEN VINCENT V1 (S)
 DEBARRY EDEN (P)
 DEBARRY PURITY V50 (AI) (ET) (P)

Sire: KIDMAN MERCEDES C38 (P)

Dam: KIDMAN MARITANA LASS C141 (AI) (P)

WIRANYA BATAVIA (AI) (P)
 KIDMAN MARITANA LASS V129 (AI) (P)
 KIDMAN MARITANA LASS R91 (AI) (P)

WOLBULL INDIANA 2 X928 (AI) (ET) (P)
 KIDMAN MARITANA LASS A79 (P)
 KIDMAN MARITANA LASS T165 (P)

October 2016 Hereford GROUP BREEDPLAN																
CE	CE DTR	GL	BW	200	400	600	MCW	Milk	SS	DC	Cwt	EMA	Rib	RUM	RBY	IMF%
		+1.3	+5.4	+33	+47	+68	+67	+11	+1.3		+39	+1.8	-0.4	-0.8	+1.0	-0.1
		48%	56%	63%	63%	66%	57%	43%	52%		55%	45%	52%	57%	49%	51%
\$ Index Values:			Supermarket: +\$64				Grass Fed Steer Index: +\$58				Grain Fed Steer Index: +\$61			EU Index: +\$73		

Traits Observed: 200WT,600WT,FAT,EMA,IMF

Dark coloured Mercedes female offering tremendous length and depth with a great functional udder. Heifer calf at foot by Kerlson Pines Jester J99 born 23/6/16. AI'ed to Kidman Advancer J312 on 26/8/16. Depastured with Kidman Casino L120 from the 6/10/16.

Purchaser:

Price \$



KIDMAN KERRY MAID H299 (P)

Tattoo: H299

Born: 18/10/2012

Rego No:KIDH299

ALLENDALE NATIONAL W168 (P)
 ALLENDALE VENGEANCE A49 (AI) (P)
 ALLENDALE DAISY Y17 (AI) (P)
 Sire: **ALLENDALE ROSEMOUNT E7 (AI) (ET) (P)**
 DAVIS 80U FACSIMILE 14X (IMP CAN) (P)
 ALLENDALE FANCY S19 (AI) (P)
 ALLENDALE FANCY N71 (P)

BOWEN VINCENT V1 (S)
 DEBARRY EDEN (P)
 DEBARRY PURITY V50 (AI) (ET) (P)
 Dam: **KIDMAN KERRY MAID B27 (AI) (P)**
 MERAWAH RAIDER R15 (AI) (P)
 KIDMAN KERRY MAID T152 (P)
 KIDMAN KERRY MAID Q189 (P)

October 2016 Hereford GROUP BREEDPLAN																
CE	CE DTR	GL	BW	200	400	600	MCW	Milk	SS	DC	Cwt	EMA	Rib	RUM	RBY	IMF%
-0.3		+0.4	+4.1	+32	+46	+63	+56	+14	+1.8	-1.3	+37	+1.7	+0.9	+1.3	-0.5	+0.5
38%		52%	61%	65%	66%	70%	62%	47%	53%	36%	59%	48%	57%	62%	54%	56%
\$ Index Values:		Supermarket: +\$68					Grass Fed Steer Index: +\$64			Grain Fed Steer Index: +\$72			EU Index: +\$73			

Traits Observed: 200WT,600WT,FAT,EMA,IMF

Structurally correct smooth Rosemount daughter with nice udder with heifer calf at foot by Kerlson Pines Jester J99 born 23/6/16. AI'ed to Minlacowie Jubilant J123 on 29/9/16.

Purchaser: Price \$



KIDMAN SHAMROCK H305 (P)

Tattoo: H305

Born: 23/10/2012

Rego No:KIDH305

WIRANYA TABOR (AI) (P)
 KIDMAN BRADMAN W101 (AI) (P)
 KIDMAN CORAL R131 (P)
 Sire: **KIDMAN MERCEDES C38 (P)**
 WIRANYA BATAVIA (AI) (P)
 KIDMAN MARITANA LASS V129 (AI) (P)
 KIDMAN MARITANA LASS R91 (AI) (P)

BOWEN VINCENT V1 (S)
 DEBARRY EDEN (P)
 DEBARRY PURITY V50 (AI) (ET) (P)
 Dam: **KIDMAN SHAMROCK B121 (AI) (P)**
 GK SPECTRUM 823B (IMP CAN) (P)
 KIDMAN SHAMROCK R101 (AI) (P)
 DULCIDENE SHAMROCK F11 (P)

October 2016 Hereford GROUP BREEDPLAN																
CE	CE DTR	GL	BW	200	400	600	MCW	Milk	SS	DC	Cwt	EMA	Rib	RUM	RBY	IMF%
		+1.0	+5.1	+31	+44	+65	+68	+9	+0.7		+35	+0.8	-0.6	-1.2	+0.9	-0.4
		49%	57%	64%	64%	68%	59%	43%	53%		57%	46%	54%	59%	51%	53%
\$ Index Values:		Supermarket: +\$55					Grass Fed Steer Index: +\$49			Grain Fed Steer Index: +\$46			EU Index: +\$63			

Traits Observed: 200WT,600WT,FAT,EMA,IMF

Feminine Mercedes daughter out of a good Eden female in B121. Eden has worked very well for us. Bull calf at foot by Kerlson Pines Jester J99 born 10/6/16. Rejoined to Kidman Exceptional K66 from 8/8/16 to 11/10/16.

Purchaser: Price \$



KIDMAN SERENADE J086 (P)

Tattoo: J086

Born: 10/04/2013

Rego No:KIDJ086

KARINA CHERRY Z8 (P)
 TYCOLAH GOLD RUSH (S)
 TYCOLAH COUNTESS Z04 (P)
 Sire: **KIDMAN DRAGSTER G12 (AI) (P)**
 FCC 60G MADDUX 4L (IMP CAN) (P)
 KIDMAN FLORENCE Z146 (AI) (P)
 KIDMAN FLORENCE U177 (AI) (P)

KIDMAN COSMO B25 (AI) (ET) (P)
 KIDMAN LEGACY D155 (S)
 KIDMAN MINNY A173 (AI) (P)
 Dam: **KIDMAN SERENADE F231 (P)**
 TYCOLAH COBBADAH (P)
 KIDMAN SERENADE B55 (P)
 KIDMAN SERENADE V201 (AI) (P)

October 2016 Hereford GROUP BREEDPLAN																
CE	CE DTR	GL	BW	200	400	600	MCW	Milk	SS	DC	Cwt	EMA	Rib	RUM	RBY	IMF%
		-0.3	+4.7					+11								
		44%	42%					34%								
\$ Index Values:		Supermarket:					Grass Fed Steer Index:			Grain Fed Steer Index:			EU Index:			

Traits Observed:

Feminine Dragster daughter with well laid in shoulder with bull calf at foot born 13/4/16 by Kidman Highspeed J077. Remated to Cascade Knox from 8/8/16 to 6/10/16.

Purchaser: Price \$



KIDMAN SHAMROCK J200 (P)

Tattoo: J200

Born: 18/04/2013

Rego No:KIDJ200

SOUTH BUKALONG WALKER 6 (AI) (P)
SOUTH BUKALONG WALLACE 2 (P)
SOUTH BUKALONG VICTORIA 152 (P)

Sire: **WIRRUNA ELDER E327 (AI) (ET) (P)**

ELITE J7C X54 (AI) (P)
WIRRUNA MADAM A10 (AI) (ET) (P)
WIRRUNA MADAM S207 (P)

DEBARRY EDEN (P)
KIDMAN BORDER B80 (AI) (P)
KIDMAN MOONBEAM X261 (P)

Dam: **KIDMAN SHAMROCK F6 (P)**

BOWEN TORNADO Z260 (AI) (ET) (P)
KIDMAN SHAMROCK D121 (TW) (P)
KIDMAN SHAMROCK Y152 (AI) (P)

October 2016 Hereford GROUP BREEDPLAN																
CE	CE DTR	GL	BW	200	400	600	MCW	Milk	SS	DC	Cwt	EMA	Rib	RUM	RBY	IMF%
+2.9		-1.3	+2.8	+31	+44	+64	+46	+17			+39	+1.7	+0.8	+1.0	+0.0	+0.5
35%		41%	52%	55%	61%	59%	53%	39%			52%	45%	53%	58%	50%	52%
\$ Index Values:		Supermarket: +\$91					Grass Fed Steer Index: +\$89			Grain Fed Steer Index: +\$104			EU Index: +\$103			

Traits Observed: 400WT,FAT,EMA,IMF

Elder daughter offering length, a great udder and out of a very nice easy doing dam in F6. Bull calf at foot born 3/8/16 by Kerlson Pines Jester J99. Depastured with Kidman Exceptional K66 from 8/8/16 to 11/10/16.

Purchaser:

Price \$



KIDMAN ROYAL FAITH J205 (P)

Tattoo: J205

Born: 19/04/2013

Rego No:KIDJ205

KARINA CHERRY Z8 (P)
TYCOLAH GOLD RUSH (S)
TYCOLAH COUNTESS Z04 (P)

Sire: **KIDMAN DRAGSTER G12 (AI) (P)**

FCC 60G MADDUX 4L (IMP CAN) (P)
KIDMAN FLORENCE Z146 (AI) (P)
KIDMAN FLORENCE U177 (AI) (P)

TYCOLAH COBBADAH (P)
KIDMAN LOTTO C21 (P)
KIDMAN LADY ECILPSE Y208 (P)

Dam: **KIDMAN ROYAL FAITH F80 (P)**

BOWEN VINCENT V1 (S)
KIDMAN ROYAL FAITH Y154 (AI) (P)
KIDMAN ROYAL FAITH S23 (AI) (P)

October 2016 Hereford GROUP BREEDPLAN																
CE	CE DTR	GL	BW	200	400	600	MCW	Milk	SS	DC	Cwt	EMA	Rib	RUM	RBY	IMF%
		+0.0	+5.8	+32	+53	+80	+77	+10			+42	+1.1	+0.5	+0.5	-0.1	+0.2
		45%	51%	55%	61%	64%	56%	37%			53%	43%	52%	57%	49%	50%
\$ Index Values:		Supermarket: +\$77					Grass Fed Steer Index: +\$70			Grain Fed Steer Index: +\$78			EU Index: +\$83			

Traits Observed: 400WT,600WT,FAT,EMA,IMF

J205 exhibits depth and capacity from one of our better family lines in Royal Faith Y154. She is still going strong defying her age and is the dam of the \$19,000 Kidman Essential B9. It is with reluctance that we sell J205, outstanding bull calf at foot by WIRRUNA ELDER E327 born 7/5/16. Depastured with Kidman Exceptional K66 from 8/8/16 to 11/10/16.

Purchaser:

Price \$



KIDMAN FLORENCE J088 (P)

Tattoo: J088

Born: 23/04/2013

Rego No:KIDJ088

KARINA CHERRY Z8 (P)
TYCOLAH GOLD RUSH (S)
TYCOLAH COUNTESS Z04 (P)

Sire: **KIDMAN DRAGSTER G12 (AI) (P)**

FCC 60G MADDUX 4L (IMP CAN) (P)
KIDMAN FLORENCE Z146 (AI) (P)
KIDMAN FLORENCE U177 (AI) (P)

ALLENDALE UNRIVALLED (TW) (P)
ALLENDALE TIMOR B120 (P)
ALLENDALE FANCY V206 (P)

Dam: **KIDMAN FLORENCE F194 (P)**

TYCOLAH COBBADAH (P)
KIDMAN FLORENCE C64 (P)
KIDMAN FLORENCE Z121 (AI) (P)

October 2016 Hereford GROUP BREEDPLAN																
CE	CE DTR	GL	BW	200	400	600	MCW	Milk	SS	DC	Cwt	EMA	Rib	RUM	RBY	IMF%
		-0.1	+5.2	+29	+45	+65	+63	+11			+32	+1.0	+0.4	+0.5	-0.2	+0.3
		44%	49%	54%	60%	58%	52%	36%			50%	42%	51%	56%	48%	50%
\$ Index Values:		Supermarket: +\$61					Grass Fed Steer Index: +\$56			Grain Fed Steer Index: +\$62			EU Index: +\$66			

Traits Observed: 400WT,FAT,EMA,IMF

Gold Rush grand daughter offering depth thickness and overall capacity. Heifer calf at foot by WIRRUNA ELDER E327 born 3/7/16. AI'd to Kerlson Pines Jester J99 on 29/9/16.

Purchaser:

Price \$



KIDMAN LORNA J188 (P)

Tattoo: J188

Born: 04/07/2013

Rego No:KIDJ188

ALLENDALE SPOT ON (AI) (P)
 ALLENDALE UNRIVALLED (TW) (P)
 ALLENDALE GLADIOLA T169 (ET) (P)
 Sire: **ALLENDALE TIMOR B120 (P)**
 RUSSLYNN SUPERIOR (P)
 ALLENDALE FANCY V206 (P)
 ALLENDALE FANCY R32 (P)

BOWEN VINCENT V1 (S)
 DEBARRY EDEN (P)
 DEBARRY PURITY V50 (AI) (ET) (P)
 Dam: **KIDMAN LORNA B17 (AI) (P)**
 BAROONA JACOBITE J60 (P)
 KIDMAN LORNA R200 (P)
 DULCIDENE LORNA L15 (P)

October 2016 Hereford GROUP BREEDPLAN																
CE	CE DTR	GL	BW	200	400	600	MCW	Milk	SS	DC	Cwt	EMA	Rib	RUM	RBY	IMF%
-0.4		+0.8	+4.4	+28	+39	+57	+51	+16	+1.1		+30	+1.1	+0.2	+0.2	-0.1	+0.1
35%		50%	58%	61%	64%	69%	61%	48%	55%		58%	48%	55%	60%	53%	55%
\$ Index Values:		Supermarket: +\$54					Grass Fed Steer Index: +\$50				Grain Fed Steer Index: +\$53			EU Index: +\$60		

Traits Observed: 600WT,FAT,EMA,IMF

Another typical functional young Timor daughter with the Eden cross combining two super maternal sires. Bull calf at foot by Markowen Federer F6 born 5/4/16. Remated to Cascade Knox from 8/8/16 to 6/10/16.

Purchaser: Price \$



KIDMAN DELUSION J181 (P)

Tattoo: J181

Born: 07/07/2013

Rego No:KIDJ181

BRAXTON GIANT THUNDER S138 (IMP NZL) (P)
 BOWEN TORNADO Z260 (AI) (ET) (P)
 BOWEN TRICEL P180 (P)
 Sire: **KIDMAN DICTATOR F115 (P)**
 BOWEN FINNIGAN Y38 (P)
 KIDMAN LIONESS B172 (P)
 KIDMAN LIONESS V211 (AI) (P)

BRAXTON GIANT THUNDER S138 (IMP NZL) (P)
 BOWEN TORNADO Z260 (AI) (ET) (P)
 BOWEN TRICEL P180 (P)
 Dam: **KIDMAN DELUSION C93 (AI) (P)**
 KIDMAN MENINGA V79 (AI) (S)
 KIDMAN DELUSION Y34 (AI) (P)
 KIDMAN DELUSION U142 (P)

October 2016 Hereford GROUP BREEDPLAN																
CE	CE DTR	GL	BW	200	400	600	MCW	Milk	SS	DC	Cwt	EMA	Rib	RUM	RBY	IMF%
-1.7		+0.5	+6.7	+38	+60	+89	+80	+9	+1.5		+50	+4.0	+0.3	+0.2	+1.0	+1.0
35%		50%	56%	59%	64%	69%	61%	43%	52%		58%	47%	55%	60%	53%	54%
\$ Index Values:		Supermarket: +\$100					Grass Fed Steer Index: +\$95				Grain Fed Steer Index: +\$120			EU Index: +\$114		

Traits Observed: 600WT,FAT,EMA,IMF

Delusion J181 has a double cross of Tornado and therefore offers muscle and length. She has a heifer calf at foot born 26/3/16 by Markowen Federer F6. Rejoined to Kidman Exceptional K66 from 8/8/16 to 11/10/16.

Purchaser: Price \$



KIDMAN VANITY J143 (P)

Tattoo: J143

Born: 12/07/2013

Rego No:KIDJ143

ALLENDALE SPOT ON (AI) (P)
 ALLENDALE UNRIVALLED (TW) (P)
 ALLENDALE GLADIOLA T169 (ET) (P)
 Sire: **ALLENDALE TIMOR B120 (P)**
 RUSSLYNN SUPERIOR (P)
 ALLENDALE FANCY V206 (P)
 ALLENDALE FANCY R32 (P)

BOWEN VINCENT V1 (S)
 KIDMAN COSMO Y46 (AI) (P)
 KIDMAN VANITY T143 (P)
 Dam: **KIDMAN VANITY A131 (AI) (P)**
 PRINCESS PARK INSPIRATION S200 (AI) (ET) (P)
 KIDMAN VANITY W152 (P)
 KIDMAN VANITY P234 (P)

October 2016 Hereford GROUP BREEDPLAN																
CE	CE DTR	GL	BW	200	400	600	MCW	Milk	SS	DC	Cwt	EMA	Rib	RUM	RBY	IMF%
		+0.8	+5.6	+31	+49	+72		+13	+1.9			+2.5	+0.5	+0.7	+0.3	+0.3
		49%	50%	54%	53%	55%		49%	54%			41%	43%	46%	42%	45%
\$ Index Values:		Supermarket: +\$70					Grass Fed Steer Index: +\$65				Grain Fed Steer Index: +\$73			EU Index: +\$77		

Traits Observed: 600WT,FAT,EMA,IMF

Typical Timor daughter - the value of Timor's influence in our herd has really been appreciated in the last few years, his consistency in type, structure, fertility, udder placement and longevity is incredible. J143 has a nice heifer calf at foot by Markowen Federer F6 born 29/3/16. Depastured with Kidman Exceptional K66 from 8/8/16 to 11/10/16.

Purchaser: Price \$



KIDMAN MINNY J175 (P)

Tattoo: J175

Born: 20/07/2013

Rego No:KIDJ175

Sire: **ALLENDALE TIMOR B120 (P)**
 ALLENDALE SPOT ON (AI) (P)
 ALLENDALE UNRIVALLED (TW) (P)
 ALLENDALE GLADIOLA T169 (ET) (P)
 RUSSLYNN SUPERIOR (P)
 ALLENDALE FANCY V206 (P)
 ALLENDALE FANCY R32 (P)

Dam: **KIDMAN MINNY C140 (AI) (P)**
 BOWEN VINCENT V1 (S)
 DEBARRY EDEN (P)
 DEBARRY PURITY V50 (AI) (ET) (P)
 NOROLLE 25 UTTER MADNESS U137 (AI) (ET)
 KIDMAN MINNY A51 (AI) (P)
 KIDMAN MINNY X133 (AI) (P)

October 2016 Hereford GROUP BREEDPLAN

CE	CE DTR	GL	BW	200	400	600	MCW	Milk	SS	DC	Cwt	EMA	Rib	RUM	RBY	IMF%
-0.4		+1.2	+5.6	+35	+54	+79	+64	+17	+1.4		+47	+2.8	+0.8	+1.0	+0.5	+0.4
35%		50%	57%	61%	63%	67%	59%	50%	53%		57%	48%	47%	49%	49%	54%
\$ Index Values:		Supermarket: +\$86			Grass Fed Steer Index: +\$81				Grain Fed Steer Index: +\$92			EU Index: +\$93				

Traits Observed: 600WT,EMA,IMF

Timor daughter displaying softness depth of body and udder cleanliness due to the Timor Eden cross. Bull calf at foot born 12/6/16 by Wirruna Elder E327. Depastured with Cascade Knox from 8/8/16 to 6/10/16. Dam sells as Lot 49.

Purchaser:

Price \$



KIDMAN LADY TIGRESS J167 (P)

Tattoo: J167

Born: 29/07/2013

Rego No:KIDJ167

Sire: **KIDMAN DICTATOR F115 (P)**
 NZL (P)
 BOWEN TORNADO Z260 (AI) (ET) (P)
 BOWEN TRICEL P180 (P)
 BOWEN FINNIGAN Y38 (P)
 KIDMAN LIONESS B172 (P)
 KIDMAN LIONESS V211 (AI) (P)

Dam: **KIDMAN LADY TIGRESS D136 (P)**
 KIDMAN FORWARD Z69 (AI) (P)
 KIDMAN ESSENTIAL B9 (P)
 KIDMAN ROYAL FAITH Y154 (AI) (P)
 PINE HILL ATHERTON U223 (AI) (P)
 KIDMAN LADY TIGRESS X94 (P)
 KIDMAN LADY TIGRESS U215 (AI) (P)

October 2016 Hereford GROUP BREEDPLAN

CE	CE DTR	GL	BW	200	400	600	MCW	Milk	SS	DC	Cwt	EMA	Rib	RUM	RBY	IMF%
		-0.5	+6.9	+36	+57	+82	+95	+7			+41	+1.6	-0.8	-1.6	+1.0	-0.2
		41%	54%	58%	62%	67%	59%	41%			55%	44%	54%	58%	50%	52%
\$ Index Values:		Supermarket: +\$69			Grass Fed Steer Index: +\$61				Grain Fed Steer Index: +\$64			EU Index: +\$80				

Traits Observed: 600WT,FAT,EMA,IMF

Lady Tigress J167 is a Dictator F115 daughter who offers length. F115 sired our top priced bull at last years bull sale selling to Cascade for \$20,000. Bull calf at foot by Markowen Federer F6 born 15/4/16. Depastured with Kidman Exceptional k66 from 8/8/16 to 11/10/16.

Purchaser:

Price \$



KIDMAN FAVOURITE J065 (AI) (P)

Tattoo: J065

Born: 10/08/2013

Rego No:KIDJ065

Sire: **TYCOLAH GOLD RUSH (S)**
 KARINA BEN LOMOND (AI) (P)
 KARINA CHERRY Z8 (P)
 KARINA MARSALA S18 (P)
 NOROLLE 124 U126 (H#)
 TYCOLAH COUNTESS Z04 (P)
 TYCOLAH COUNTESS W72 (P)

Dam: **KIDMAN FAVOURITE B246 (AI) (P)**
 JSF 23 NIBBS 60G (IMP CAN) (P)
 KIDMAN TURBO Z11 (AI) (P)
 KIDMAN SHAMROCK N80 (P)
 PRINCESS PARK INSPIRATION S200 (AI) (ET) (P)
 KIDMAN FAVOURITE W249 (P)
 WHIM PARK FAVOURITE N25 (P)

October 2016 Hereford GROUP BREEDPLAN

CE	CE DTR	GL	BW	200	400	600	MCW	Milk	SS	DC	Cwt	EMA	Rib	RUM	RBY	IMF%
-2.1	+1.8	+0.6	+4.2	+26	+41	+57	+56	+12	+1.6		+33	+1.7	+0.5	+0.5	+0.1	-0.1
40%	36%	75%	61%	62%	65%	69%	62%	54%	57%		59%	49%	56%	61%	54%	56%
\$ Index Values:		Supermarket: +\$54			Grass Fed Steer Index: +\$49				Grain Fed Steer Index: +\$50			EU Index: +\$60				

Traits Observed: GL,600WT,FAT,EMA,IMF

Impressive young Gold Rush daughter featuring balance, type and that familiar beautiful laid in shoulder. Eye catching heifer calf at foot born 7/5/16 sired by Wirruna Elder E327. Remated to Kidman Exceptional K66 from 8/8/16 to 11/10/16. A good unit.

Purchaser:

Price \$



KIDMAN LADY TIGRESS J147 (P)

Tattoo: J147

Born: 23/08/2013

Rego No:KIDJ147

ALLENDALE UNRIVALLED (TW) (P)
 ALLENDALE TIMOR B120 (P)
 ALLENDALE FANCY V206 (P)
 Sire: **KIDMAN OXFORD G085 (P)**
 KIDMAN COSMO B25 (AI) (ET) (P)
 KIDMAN CORAL D70 (P)
 KIDMAN CORAL A212 (AI) (P)

DEBARRY EDEN (P)
 KIDMAN COSMO B25 (AI) (ET) (P)
 KIDMAN VANITY T143 (P)
 Dam: **KIDMAN LADY TIGRESS D95 (P)**
 KIDMAN MENINGA W94 (AI) (P)
 KIDMAN LADY TIGRESS A199 (AI) (P)
 KIDMAN LADY TIGRESS U215 (AI) (P)

October 2016 Hereford GROUP BREEDPLAN																
CE	CE DTR	GL	BW	200	400	600	MCW	Milk	SS	DC	Cwt	EMA	Rib	RUM	RBY	IMF%
		+0.6	+5.5	+32	+48	+69	+63	+13	+0.7		+38	+2.0	+0.4	+0.4	+0.2	+0.4
		37%	53%	57%	62%	67%	58%	39%	50%		55%	44%	53%	58%	50%	51%
\$ Index Values:		Supermarket: +\$65					Grass Fed Steer Index: +\$60					Grain Fed Steer Index: +\$69			EU Index: +\$71	

Traits Observed: 600WT,FAT,EMA,IMF

Smooth shouldered Oxford daughter. Oxford has bred sons selling to \$14,000 at last years bull sale. Bull calf at foot by Wirruna Elder E327 born 2/5/16. Depastured with Kidman Exceptional K66 from 8/8/16 to 11/10/16.

Purchaser: Price \$



KIDMAN COUNTESS J036 (P)

Tattoo: J036

Born: 01/09/2013

Rego No:KIDJ036

COOTHARABA MAGNUM (H)
 MAWARRA VIRGINIAN (H)
 MAWARRA CHERRY RIPE 263 (H)
 Sire: **KIDMAN FRIGATE G314 (AI) (P)**
 MOUNT DIFFICULT FELLIS Y12 (AI) (P)
 MOUNT DIFFICULT GLYNIS D61 (AI) (P)
 MOUNT DIFFICULT GLYNIS U3 (P)

TYCOLAH COBBADAH (P)
 KIDMAN LOTTO C21 (P)
 KIDMAN LADY ECILPSE Y208 (P)
 Dam: **KIDMAN COUNTESS G142 (P)**
 KIDMAN MENINGA W94 (AI) (P)
 KIDMAN COUNTESS Y165 (P)
 KIDMAN COUNTESS U96 (AI) (P)

October 2016 Hereford GROUP BREEDPLAN																
CE	CE DTR	GL	BW	200	400	600	MCW	Milk	SS	DC	Cwt	EMA	Rib	RUM	RBY	IMF%
		+0.4	+6.5	+34	+54	+82	+79	+10			+46	+3.0	+0.3	+0.3	+0.8	+0.2
		38%	53%	56%	61%	66%	57%	38%			54%	42%	51%	56%	48%	50%
\$ Index Values:		Supermarket: +\$85					Grass Fed Steer Index: +\$78					Grain Fed Steer Index: +\$90			EU Index: +\$96	

Traits Observed: 600WT,FAT,EMA,IMF

Countess J36 is a classy young female and goes back to one of our great old cows in Y165. She offers femininity, clean lines and nice udder with a nice heifer calf at foot by Markowen Federer F6 born 2/5/16. AI'ed to Kidman Advancer J312 on 26/8/16. Depastured with Kidman Casino L120 from 6/10/16.

Purchaser: Price \$



KIDMAN MARITANA LASS J197 (AI) (P)

Tattoo: J197

Born: 01/09/2013

Rego No:KIDJ197

KARINA BEN LOMOND (AI) (P)
 KARINA CHERRY Z8 (P)
 KARINA MARSALA S18 (P)
 Sire: **TYCOLAH GOLD RUSH (S)**
 NOROLLE 124 U126 (H#)
 TYCOLAH COUNTESS Z04 (P)
 TYCOLAH COUNTESS W72 (P)

BRAXTON GIANT THUNDER S138 (IMP NZL) (P)
 BOWEN TORNADO Z260 (AI) (ET) (P)
 BOWEN TRICEL P180 (P)
 Dam: **KIDMAN MARITANA LASS E129 (P)**
 BOWEN VINCENT V1 (S)
 KIDMAN MARITANA LASS Y191 (AI) (P)
 KIDMAN MARITANA LASS V129 (AI) (P)

October 2016 Hereford GROUP BREEDPLAN																
CE	CE DTR	GL	BW	200	400	600	MCW	Milk	SS	DC	Cwt	EMA	Rib	RUM	RBY	IMF%
+0.5	+1.4	+1.3	+5.3	+33	+54	+80	+70	+13	+2.0	-3.3	+45	+2.7	-0.1	-0.5	+0.8	+0.5
44%	40%	73%	62%	64%	67%	71%	64%	54%	56%	36%	61%	51%	59%	63%	56%	58%
\$ Index Values:		Supermarket: +\$91					Grass Fed Steer Index: +\$86					Grain Fed Steer Index: +\$104			EU Index: +\$104	

Traits Observed: GL,600WT,FAT,EMA,IMF

Another outstanding Gold Rush daughter offering tremendous balance and type from a solid family line with handy numbers to boot. Nice heifer calf at foot born 1/5/16 by Markowen Federer F6. Depastured with Cascade Knox from 8/8/16 to 6/10/16.

Purchaser: Price \$



KIDMAN MINERVA QUEEN J079 (P)

Tattoo: J079

Born: 03/09/2013

Rego No:KIDJ079

COOTHARABA MAGNUM (H)
 MAWARRA VIRGINIAN (H)
 MAWARRA CHERRY RIPE 263 (H)
 Sire: **KIDMAN FRIGATE G314 (AI) (P)**
 MOUNT DIFFICULT FELLIS Y12 (AI) (P)
 MOUNT DIFFICULT GLYNIS D61 (AI) (P)
 MOUNT DIFFICULT GLYNIS U3 (P)

KIDMAN COSMO B25 (AI) (ET) (P)
 KIDMAN LEGACY D155 (S)
 KIDMAN MINNY A173 (AI) (P)
 Dam: **KIDMAN MINERVA QUEEN G063 (P)**
 TYCOLAH COBBADAH (P)
 KIDMAN MINERVA QUEEN D19 (P)
 KIDMAN MINERVA QUEEN V196 (P)

CE	CE DTR	GL	BW	200	400	600	MCW	Milk	SS	DC	Cwt	EMA	Rib	RUM	RBY	IMF%
\$ Index Values:				Supermarket:			Grass Fed Steer Index:			Grain Fed Steer Index:			EU Index:			

Traits Observed:

J079 offers smoothness with length out of an impressive Legacy daughter. Nice bull calf at foot by Kidman Highspeed J077 born 25/4/16. Depastured with Cascade Knox from 8/8/16 to 6/10/16.

Purchaser: Price \$



KIDMAN COUNTESS J169 (AI) (P)

Tattoo: J169

Born: 05/09/2013

Rego No:KIDJ169

KARINA BEN LOMOND (AI) (P)
 KARINA CHERRY Z8 (P)
 KARINA MARSALA S18 (P)
 Sire: **TYCOLAH GOLD RUSH (S)**
 NOROLLE 124 U126 (H#)
 TYCOLAH COUNTESS Z04 (P)
 TYCOLAH COUNTESS W72 (P)

LAMBERT MERWAH (P)
 TYCOLAH COBBADAH (P)
 TYCOLAH COUNTESS U72 (P)
 Dam: **KIDMAN COUNTESS B192 (P)**
 KOANUI REBEL Q81 (IMP NZL) (P)
 KIDMAN COUNTESS W108 (AI) (P)
 KIDMAN COUNTESS U96 (AI) (P)

October 2016 Hereford GROUP BREEDPLAN																
CE	CE DTR	GL	BW	200	400	600	MCW	Milk	SS	DC	Cwt	EMA	Rib	RUM	RBY	IMF%
-0.6	+0.6	+1.2	+3.9	+22	+34	+47	+51	+14	+1.7		+23	+1.1	-0.5	-1.0	+0.7	-0.5
40%	36%	73%	60%	62%	65%	69%	62%	53%	55%		59%	49%	55%	59%	54%	56%
\$ Index Values:				Supermarket:+\$42			Grass Fed Steer Index: +\$37			Grain Fed Steer Index: +\$33			EU Index: +\$51			

Traits Observed: GL,600WT,FAT,EMA,IMF

Feminine Gold Rush daughter exhibiting a well structured udder heifer calf at foot by Markowen Federer F6 born 3/6/16. Rejoined to Kidman Exceptional K66 from 8/8/16 to 11/10/16.

Purchaser: Price \$



KIDMAN IRISH ROSE J217 (P)

Tattoo: J217

Born: 08/09/2013

Rego No:KIDJ217

ALLENDALE UNRIVALLED (TW) (P)
 ALLENDALE TIMOR B120 (P)
 ALLENDALE FANCY V206 (P)
 Sire: **KIDMAN OXFORD G085 (P)**
 KIDMAN COSMO B25 (AI) (ET) (P)
 KIDMAN CORAL D70 (P)
 KIDMAN CORAL A212 (AI) (P)

BRAXTON GIANT THUNDER S138 (IMP NZL) (P)
 BOWEN TORNADO Z260 (AI) (ET) (P)
 BOWEN TRICEL P180 (P)
 Dam: **KIDMAN IRISH ROSE D193 (AI) (P)**
 BOWEN VINCENT V1 (S)
 KIDMAN IRISH ROSE Y11 (AI) (P)
 KIDMAN IRISH ROSE T61 (AI) (P)

CE	CE DTR	GL	BW	200	400	600	MCW	Milk	SS	DC	Cwt	EMA	Rib	RUM	RBY	IMF%
\$ Index Values:				Supermarket:			Grass Fed Steer Index:			Grain Fed Steer Index:			EU Index:			

Traits Observed:

Attractive well bred Oxford daughter on her first calf doing a great job on her very nice heifer calf sired by Markowen Federer F6 born 22/4/16. Remated to Cascade Knox from 8/8/16 to 6/10/16.

Purchaser: Price \$



KIDMAN MINNY J004 (P)

Tattoo: J004

Born: 10/09/2013

Rego No:KIDJ004

COOTHARABA MAGNUM (H)
MAWARRA VIRGINIAN (H)
MAWARRA CHERRY RIPE 263 (H)

KARINA CHERRY Z8 (P)
TYCOLAH GOLD RUSH (S)
TYCOLAH COUNTESS Z04 (P)

Sire: **KIDMAN MINTO G176 (AI) (P)**Dam: **KIDMAN MINNY G156 (AI) (P)**

MOUNT DIFFICULT JUMBO Y74 (AI) (P)
MOUNT DIFFICULT NOBLESSE C195 (P)
MOUNT DIFFICULT NOBLESSE W391 (P)

DEBARRY EDEN (P)
KIDMAN MINNY C140 (AI) (P)
KIDMAN MINNY A51 (AI) (P)

October 2016 Hereford GROUP BREEDPLAN																
CE	CE DTR	GL	BW	200	400	600	MCW	Milk	SS	DC	Cwt	EMA	Rib	RUM	RBY	IMF%
		-0.2	+4.4	+34	+57	+82	+61	+16			+57	+4.3	+0.6	+0.6	+1.2	+0.8
		53%	52%	55%	59%	64%	55%	39%			53%	42%	40%	42%	43%	48%
\$ Index Values:		Supermarket:+\$103					Grass Fed Steer Index: +\$100					Grain Fed Steer Index: +\$122			EU Index: +\$116	

Traits Observed: 600WT,EMA,IMF

Very good package - easy doing young heifer on her first calf offering plenty. Heifer calf at foot born 26/3/16 by Markowen Federer F6. We are finding that the Federers are getting better and better as they mature with his first major run of sale bulls due next year. Rejoined to Kidman Exceptional K66 from 8/8/16 to 11/10/16.

Purchaser:

Price \$



KIDMAN VANITY J049 (P)

Tattoo: J049

Born: 15/09/2013

Rego No:KIDJ049

DEBARRY EDEN (P)
KIDMAN COSMO B25 (AI) (ET) (P)
KIDMAN VANITY T143 (P)

BRAXTON GIANT THUNDER S138 (IMP NZL) (P)
BOWEN TORNADO Z260 (AI) (ET) (P)
BOWEN TRICEL P180 (P)

Sire: **KIDMAN LEGACY D155 (S)**Dam: **KIDMAN VANITY E94 (P)**

VALMA SOUTHERN STAR (AI) (ET) (P)
KIDMAN MINNY A173 (AI) (P)
KIDMAN MINNY U212 (AI) (TW) (P)

PINE HILL ATHERTON U223 (AI) (P)
KIDMAN VANITY X173 (P)
KIDMAN VANITY T100 (AI) (P)

October 2016 Hereford GROUP BREEDPLAN																
CE	CE DTR	GL	BW	200	400	600	MCW	Milk	SS	DC	Cwt	EMA	Rib	RUM	RBY	IMF%
-0.6		+0.1	+4.4	+26	+45	+68	+65	+11	+1.1		+38	+3.3	+0.2	-0.2	+0.9	+0.5
36%		46%	60%	62%	66%	70%	62%	46%	55%		58%	43%	55%	60%	50%	56%
\$ Index Values:		Supermarket:+\$72					Grass Fed Steer Index: +\$68					Grain Fed Steer Index: +\$81			EU Index: +\$83	

Traits Observed: 600WT,FAT,IMF

A Legacy daughter displaying femininity, good udder structure, as well as doing a great job on her excellent heifer calf by her side by Markowen Federer F6 born 22/3/16. Depastured with Kidman Exceptional K66 from 8/8/16 to 11/10/16. Dam sells as Lot 51.

Purchaser:

Price \$



KIDMAN IRISH ROSE J018 (P)

Tattoo: J018

Born: 15/09/2013

Rego No:KIDJ018

COOTHARABA MAGNUM (H)
MAWARRA VIRGINIAN (H)
MAWARRA CHERRY RIPE 263 (H)

KIDMAN COSMO B25 (AI) (ET) (P)
KIDMAN LEGACY D155 (S)
KIDMAN MINNY A173 (AI) (P)

Sire: **KIDMAN MINTO G176 (AI) (P)**Dam: **KIDMAN IRISH ROSE G059 (P)**

MOUNT DIFFICULT JUMBO Y74 (AI) (P)
MOUNT DIFFICULT NOBLESSE C195 (P)
MOUNT DIFFICULT NOBLESSE W391 (P)

BOWEN TORNADO Z260 (AI) (ET) (P)
KIDMAN IRISH ROSE D193 (AI) (P)
KIDMAN IRISH ROSE Y11 (AI) (P)

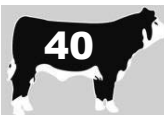
October 2016 Hereford GROUP BREEDPLAN																
CE	CE DTR	GL	BW	200	400	600	MCW	Milk	SS	DC	Cwt	EMA	Rib	RUM	RBY	IMF%
		+0.2	+4.8	+33	+56	+81	+72	+14			+56	+4.9	-0.6	-1.5	+2.3	+0.3
		45%	53%	55%	60%	66%	57%	36%			54%	41%	51%	56%	48%	49%
\$ Index Values:		Supermarket:+\$87					Grass Fed Steer Index: +\$82					Grain Fed Steer Index: +\$95			EU Index: +\$101	

Traits Observed: 600WT,FAT,EMA,IMF

Nice young Minto female with balance and structure. Minto's dam C195 bred the \$24,000 class winner Kidman Macumba at this year's Dubbo National. Bull calf at foot sired by Markowen Federer F6 Born 1/5/16. Depastured with Kidman Exceptional K66 from 8/8/16 to 11/10/16.

Purchaser:

Price \$



KIDMAN CORAL J037 (P)

Tattoo: J037

Born: 16/09/2013

Rego No:KIDJ037

COOTHARABA MAGNUM (H)
 MAWARRA VIRGINIAN (H)
 MAWARRA CHERRY RIPE 263 (H)
 Sire: **KIDMAN FRIGATE G314 (AI) (P)**
 MOUNT DIFFICULT FELLIS Y12 (AI) (P)
 MOUNT DIFFICULT GLYNIS D61 (AI) (P)
 MOUNT DIFFICULT GLYNIS U3 (P)

ALLENDALE NATIONAL W168 (P)
 BOWEN DIAMANTINA D203 (AI) (P)
 BOWEN MATCHLESS Z152 (AI) (P)
 Dam: **KIDMAN CORAL G130 (AI) (P)**
 KIDMAN ARISTOCRAT Z176 (P)
 KIDMAN CORAL C182 (P)
 KIDMAN CORAL Z219 (P)

October 2016 Hereford GROUP BREEDPLAN

CE	CE DTR	GL	BW	200	400	600	MCW	Milk	SS	DC	Cwt	EMA	Rib	RUM	RBY	IMF%
		+0.8	+5.9	+37	+61	+86	+71	+12			+58	+4.7	+1.3	+1.9	+1.1	+0.7
		47%	53%	56%	61%	65%	57%	37%			54%	42%	51%	56%	48%	50%
\$ Index Values:		Supermarket: +\$103					Grass Fed Steer Index: +\$99			Grain Fed Steer Index: +\$119			EU Index: +\$117			

Traits Observed: 600WT,FAT,EMA,IMF

Coral J37 offers depth of body and overall capacity. Heifer calf by her side born 10/6/16 by Wirruna Elder E327. Remated to Kidman Exceptional K66 from 8/8/16 to 11/10/16.

Purchaser:

Price \$



KIDMAN QUEEN VICTORIA J171 (P)

Tattoo: J171

Born: 18/09/2013

Rego No:KIDJ171

DEBARRY EDEN (P)
 KIDMAN COSMO B25 (AI) (ET) (P)
 KIDMAN VANITY T143 (P)
 Sire: **KIDMAN LEGACY D155 (S)**
 VALMA SOUTHERN STAR (AI) (ET) (P)
 KIDMAN MINNY A173 (AI) (P)
 KIDMAN MINNY U212 (AI) (TW) (P)

BOWEN VINCENT V1 (S)
 KIDMAN COSMO Y46 (AI) (P)
 KIDMAN VANITY T143 (P)
 Dam: **KIDMAN QUEEN VICTORIA B124 (AI) (P)**
 KIDMAN MENINGA V79 (AI) (S)
 KIDMAN QUEEN VICTORIA Y26 (AI) (P)
 KIDMAN QUEEN VICTORIA U206 (P)

October 2016 Hereford GROUP BREEDPLAN

CE	CE DTR	GL	BW	200	400	600	MCW	Milk	SS	DC	Cwt	EMA	Rib	RUM	RBY	IMF%
		-0.8	+4.6	+28	+45	+68	+70	+16	+1.4		+43	+3.0	-0.4	-0.9	+1.1	-0.1
		52%	60%	63%	66%	71%	63%	47%	56%		59%	48%	57%	62%	54%	56%
\$ Index Values:		Supermarket: +\$65					Grass Fed Steer Index: +\$59			Grain Fed Steer Index: +\$60			EU Index: +\$72			

Traits Observed: 600WT,FAT,EMA,IMF

Good type of Legacy Female out of a good family line with a heifer calf at foot born 28/5/16 By Markowen Federer F6. Depastured with Kidman Exceptional K66 from 8/8/16 to 11/10/16. Dam sells as Lot 47.

Purchaser:

Price \$



KIDMAN MINERVA J020 (P)

Tattoo: J020

Born: 29/09/2013

Rego No:KIDJ020

COOTHARABA MAGNUM (H)
 MAWARRA VIRGINIAN (H)
 MAWARRA CHERRY RIPE 263 (H)
 Sire: **KIDMAN FRIGATE G314 (AI) (P)**
 MOUNT DIFFICULT FELLIS Y12 (AI) (P)
 MOUNT DIFFICULT GLYNIS D61 (AI) (P)
 MOUNT DIFFICULT GLYNIS U3 (P)

BRAXTON GIANT THUNDER S138 (IMP NZL) (P)
 BOWEN TORNADO Z260 (AI) (ET) (P)
 BOWEN TRICEL P180 (P)
 Dam: **KIDMAN MINERVA G125 (AI) (P)**
 DEBARRY EDEN (P)
 KIDMAN MINERVA QUEEN B114 (AI) (P)
 KIDMAN MINERVA QUEEN U92 (AI) (P)

October 2016 Hereford GROUP BREEDPLAN

CE	CE DTR	GL	BW	200	400	600	MCW	Milk	SS	DC	Cwt	EMA	Rib	RUM	RBY	IMF%
		+2.1	+5.9	+37	+60	+90	+70	+11			+54	+4.2	+1.0	+1.2	+0.8	+0.9
		49%	54%	57%	61%	66%	58%	41%			55%	44%	52%	57%	50%	51%
\$ Index Values:		Supermarket: +\$112					Grass Fed Steer Index: +\$108			Grain Fed Steer Index: +\$136			EU Index: +\$128			

Traits Observed: 600WT,FAT,EMA,IMF

A Frigate G314 female offering quality attributes along with very handy figures. Tidy heifer calf at foot by Markowen Federer F6 born 25/4/16. Rejoined to Kidman Exceptional K66 from 8/8/16 to 11/10/16. A nice unit.

Purchaser:

Price \$



KIDMAN EMPRESS J216 (P)

Tattoo: J216

Born: 30/09/2013

Rego No:KIDJ216

ALLENDALE SPOT ON (AI) (P)
 ALLENDALE UNRIVALLED (TW) (P)
 ALLENDALE GLADIOLA T169 (ET) (P)
 Sire: **ALLENDALE TIMOR B120 (P)**
 RUSSLYNN SUPERIOR (P)
 ALLENDALE FANCY V206 (P)
 ALLENDALE FANCY R32 (P)

BRAXTON GIANT THUNDER S138 (IMP NZL) (P)
 BOWEN TORNADO Z260 (AI) (ET) (P)
 BOWEN TRICEL P180 (P)
 Dam: **KIDMAN EMPRESS C66 (P)**
 PRINCESS PARK INSPIRATION S200 (AI) (ET) (P)
 KIDMAN EMPRESS X123 (AI) (P)
 KIDMAN EMPRESS R134 (P)

CE	CE DTR	GL	BW	200	400	600	MCW	Milk	SS	DC	Cwt	EMA	Rib	RUM	RBY	IMF%
\$ Index Values:				Supermarket:			Grass Fed Steer Index:			Grain Fed Steer Index:			EU Index:			

Traits Observed:

Dark coloured smooth Timor female has a handy bull calf at foot born 8/5/16 By Kidman Highspeed J77. Depastured with Kidman Exceptional K66 from 8/8/16 to 11/10/16.

Purchaser: Price \$



KIDMAN MINERVA QUEEN J103 (P)

Tattoo: J103

Born: 10/10/2013

Rego No:KIDJ103

ALLENDALE UNRIVALLED (TW) (P)
 ALLENDALE TIMOR B120 (P)
 ALLENDALE FANCY V206 (P)
 Sire: **KIDMAN OXFORD G085 (P)**
 KIDMAN COSMO B25 (AI) (ET) (P)
 KIDMAN CORAL D70 (P)
 KIDMAN CORAL A212 (AI) (P)

BRAXTON GIANT THUNDER S138 (IMP NZL) (P)
 BOWEN TORNADO Z260 (AI) (ET) (P)
 BOWEN TRICEL P180 (P)
 Dam: **KIDMAN MINERVA QUEEN D64 (P)**
 KIDMAN MENINGA V79 (AI) (S)
 KIDMAN MINERVA QUEEN Y103 (AI) (P)
 KIDMAN MINERVA QUEEN U92 (AI) (P)

CE	CE DTR	GL	BW	200	400	600	MCW	Milk	SS	DC	Cwt	EMA	Rib	RUM	RBY	IMF%
\$ Index Values:				Supermarket:			Grass Fed Steer Index:			Grain Fed Steer Index:			EU Index:			

Traits Observed:

The Oxford - Tornado cross has been successful with Tornado adding that extra carcass and in this case Oxford has added that extra milk, and in turn J103 is doing a great job on her bull calf sired by Kidman Highspeed born 1/6/16. Remated to Cascade Knox from 8/8/16 to 6/10/16.

Purchaser: Price \$



KIDMAN LADY ECLIPSE J220 (P)

Tattoo: J220

Born: 14/10/2013

Rego No:KIDJ220

ALLENDALE UNRIVALLED (TW) (P)
 ALLENDALE TIMOR B120 (P)
 ALLENDALE FANCY V206 (P)
 Sire: **KIDMAN OXFORD G085 (P)**
 KIDMAN COSMO B25 (AI) (ET) (P)
 KIDMAN CORAL D70 (P)
 KIDMAN CORAL A212 (AI) (P)

TYCOLAH ZORRO (P)
 BOWEN FINNIGAN Y38 (P)
 BOWEN ROLLINA U34 (P)
 Dam: **KIDMAN LADY ECLIPSE B205 (P)**
 DALKEITH RADIUM (AI) (P)
 KIDMAN LADY ECLIPSE T162 (H#)
 KIDMAN LADY ECLIPSE Q200 (TW) (P)

October 2016 Hereford GROUP BREEDPLAN																
CE	CE DTR	GL	BW	200	400	600	MCW	Milk	SS	DC	Cwt	EMA	Rib	RUM	RBY	IMF%
		+0.4	+6.4	+32	+50	+71	+70	+12			+39	+2.6	+0.0	-0.1	+0.8	+0.1
		35%	50%	54%	59%	64%	55%	37%			52%	40%	50%	55%	46%	48%
\$ Index Values:				Supermarket:+\$61			Grass Fed Steer Index: +\$55			Grain Fed Steer Index: +\$60			EU Index: +\$68			

Traits Observed: 600WT,FAT,EMA,IMF

A heifer with length on her first calf doing a great job on her bull calf at foot born 8/5/16 by Wurruna Elder E327. Depastured with Kidman Exceptional K66 from 8/8/16 to 11/10/16.

Purchaser: Price \$



Lot 1



Lot 4



Lot 5



Lot 6



Lot 8



Lot 11



Lot 12



Lot 13



Lot 15



Lot 16



Lot 17



Lot 18



Lot 20



Lot 26



Lot 28



Lot 30





Lot 49



Lot 50



Lot 53



Lot 55



Lot 57



Lot 60



Lot 61



Lot 70



KIDMAN ALMOND JOY J023 (P)

Tattoo: J023

Born: 26/11/2013

Rego No:KIDJ023

Sire: **WIRRUNA ELDER E327 (AI) (ET) (P)**
 SOUTH BUKALONG WALKER 6 (AI) (P)
 SOUTH BUKALONG WALLACE 2 (P)
 SOUTH BUKALONG VICTORIA 152 (P)
 ELITE J7C X54 (AI) (P)
 WIRRUNA MADAM A10 (AI) (ET) (P)
 WIRRUNA MADAM S207 (P)

Dam: **KIDMAN ALMOND JOY G108 (AI) (P)**
 KARINA CHERRY Z8 (P)
 TYCOLAH GOLD RUSH (S)
 TYCOLAH COUNTESS Z04 (P)
 KIDMAN LIONHEART A93 (AI) (P)
 KIDMAN ALMOND JOY C229 (P)
 KIDMAN ALMOND JOY A17 (AI) (P)

CE	CE DTR	GL	BW	200	400	600	MCW	Milk	SS	DC	Cwt	EMA	Rib	RUM	RBY	IMF%
\$ Index Values:				Supermarket:			Grass Fed Steer Index:			Grain Fed Steer Index:			EU Index:			

Traits Observed:

Low birth weight Elder female displaying length and feminine lines, very nice heifer calf at foot by Kidman Highspeed J077 born 2/4/16. Rejoined to Cascade Knox from 8/8/16 to 6/10/16.

Purchaser:

Price \$



KIDMAN QUEEN VICTORIA B124 (AI) (P)

Tattoo: B124

Born: 08/08/2006

Rego No:KIDB124

Sire: **KIDMAN COSMO Y46 (AI) (P)**
 VALMA SOUTHERN STAR (AI) (ET) (P)
 BOWEN VINCENT V1 (S)
 BOWEN PRINCESS P146 (P)
 MERAWAH RAIDER R15 (AI) (P)
 KIDMAN VANITY T143 (P)
 KIDMAN VANITY Q44 (P)

Dam: **KIDMAN QUEEN VICTORIA Y26 (AI) (P)**
 WIRANYA BATAVIA (AI) (P)
 KIDMAN MENINGA V79 (AI) (S)
 KIDMAN MISS GUNN N60 (P)
 KIDMAN ANCHORMAN S15 (AI) (P)
 KIDMAN QUEEN VICTORIA U206 (P)
 BRIGENDOONE QUEEN VICTORIA 36 (P)

October 2016 Hereford GROUP BREEDPLAN																
CE	CE DTR	GL	BW	200	400	600	MCW	Milk	SS	DC	Cwt	EMA	Rib	RUM	RBY	IMF%
		-1.3	+5.0	+31	+49	+73	+72	+17	+2.0	-1.1	+45	+3.0	+0.1	+0.1	+0.6	+0.4
		74%	60%	63%	67%	71%	63%	62%	62%	35%	60%	49%	57%	61%	54%	55%
\$ Index Values:		Supermarket: +\$77			Grass Fed Steer Index: +\$71			Grain Fed Steer Index: +\$81			EU Index: +\$85					

Traits Observed: GL,600WT,FAT,EMA,IMF

Good solid cow displaying depth, capacity and a true spine with a solid bull calf at foot born 10/10/16 by Kidman Volunteer K051. Daughter sells as Lot 41.

Purchaser:

Price \$



KIDMAN MINNY B116 (AI) (P)

Tattoo: B116

Born: 14/07/2006

Rego No:KIDB116

Sire: **DEBARRY EDEN (P)**
 VALMA SOUTHERN STAR (AI) (ET) (P)
 BOWEN VINCENT V1 (S)
 BOWEN PRINCESS P146 (P)
 NJW Z17 VAQUERO 25C (IMP USA) (P)
 DEBARRY PURITY V50 (AI) (ET) (P)
 DEBARRY PURITY Q36 (P)

Dam: **KIDMAN MINNY W5 (AI) (P)**
 VALMA PRIDE (P)
 WIRANYA TABOR (AI) (P)
 WIRANYA RHODA K20 (AI) (P)
 GK SPECTRUM 823B (IMP CAN) (P)
 KIDMAN MINNY S45 (AI) (P)
 KIDMAN MINNY M44 (P)

October 2016 Hereford GROUP BREEDPLAN																
CE	CE DTR	GL	BW	200	400	600	MCW	Milk	SS	DC	Cwt	EMA	Rib	RUM	RBY	IMF%
+3.9	+4.6	-0.7	+4.2	+31	+49	+71	+62	+15	+1.3	-1.8	+44	+1.5	+0.3	+0.0	+0.5	+0.0
51%	47%	80%	62%	64%	65%	66%	62%	65%	63%	48%	60%	55%	57%	60%	56%	57%
\$ Index Values:		Supermarket: +\$82			Grass Fed Steer Index: +\$77			Grain Fed Steer Index: +\$83			EU Index: +\$90					

Traits Observed: GL

An Eden daughter offering length depth and real eye appeal. B116 has sold sons to \$10,000. Heifer calf at foot by Kidman Package born 14/10/16.

Purchaser:

Price \$



KIDMAN MINNY C140 (AI) (P)

Tattoo: C140

Born: 12/08/2007

Rego No:KIDC140

VALMA SOUTHERN STAR (AI) (ET) (P)
BOWEN VINCENT V1 (S)
BOWEN PRINCESS P146 (P)

NJW Z17 VAQUERO 25C (IMP USA) (P)
NOROLLE 25 UTTER MADNESS U137 (AI) (ET) (P)
NOROLLE LADY BIRD H114 (AI) (P)

Sire: **DEBARRY EDEN (P)**Dam: **KIDMAN MINNY A51 (AI) (P)**

NJW Z17 VAQUERO 25C (IMP USA) (P)
DEBARRY PURITY V50 (AI) (ET) (P)
DEBARRY PURITY Q36 (P)

WIRANYA TABOR (AI) (P)
KIDMAN MINNY X133 (AI) (P)
KIDMAN MINNY R97 (P)

October 2016 Hereford GROUP BREEDPLAN																
CE	CE DTR	GL	BW	200	400	600	MCW	Milk	SS	DC	Cwt	EMA	Rib	RUM	RBY	IMF%
+2.4	+4.4	+1.4	+4.6	+35	+52	+76	+58	+16	+1.7	-2.8	+48	+1.9	+0.6	+0.4	+0.4	+0.1
50%	45%	78%	62%	64%	65%	66%	61%	68%	58%	47%	60%	53%	56%	58%	55%	57%
\$ Index Values:			Supermarket:+\$91				Grass Fed Steer Index: +\$86				Grain Fed Steer Index: +\$96			EU Index: +\$100		

Traits Observed: GL

Eden female presenting how a female should, feminine and extremely functional the Edens have done a fantastic job for us. Bull calf at foot born 8/10/16 by Kidman Volunteer K051. Daughter sells as Lot 28.

Purchaser:

Price \$



KIDMAN LADY ECLIPSE D247 (AI) (P)

Tattoo: D247

Born: 19/09/2008

Rego No:KIDD247

LEELANDS QUINN Q24 (P)
LEELANDS UNANIMOUS 9927 (P)
LEELANDS PRINCESS P56 (P)

WIRANYA BATAVIA (AI) (P)
KIDMAN PURPLE PATCH Y148 (AI) (P)
KIDMAN COLLEEN S70 (AI) (P)

Sire: **KOANUI UNION 2568 (IMP NZL) (P)**Dam: **KIDMAN LADY ECLIPSE B160 (P)**

BRAXTON GIANT (IMP NZL) (P)
KOANUI BLUSH 9 (P)
KOANUI BLUSH 2 (P)

BRADGARRY BOND (AI) (ET) (P)
KIDMAN LADY ECLIPSE S104 (P)
KIDMAN LADY ECLIPSE N184 (TW) (P)

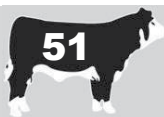
October 2016 Hereford GROUP BREEDPLAN																
CE	CE DTR	GL	BW	200	400	600	MCW	Milk	SS	DC	Cwt	EMA	Rib	RUM	RBY	IMF%
-4.1	+2.1	+2.1	+4.8	+25	+40	+64	+68	+10	+2.4	-0.7	+35	+2.3	-0.3	-0.7	+1.2	+0.1
45%	43%	72%	60%	63%	67%	66%	60%	62%	54%	40%	59%	50%	57%	61%	54%	55%
\$ Index Values:			Supermarket:+\$58				Grass Fed Steer Index: +\$52				Grain Fed Steer Index: +\$58			EU Index: +\$68		

Traits Observed: GL,400WT(x2),FAT,EMA,IMF

Koanui Union daughter displaying length, femininity with good udder shape. Heifer calf at foot by Injemira Anzac H2 born 16/9/16.

Purchaser:

Price \$



KIDMAN VANITY E94 (P)

Tattoo: E94

Born: 07/06/2009

Rego No:KIDE94

(P) BRAXTON THUNDERBOLT M113 (IMP NZL)
BRAXTON GIANT THUNDER S138 (IMP NZL) (P)
BRAXTON GIRLIE J118 (P)

GERBER WATCHFIRE 117F (IMP USA) (P)
PINE HILL ATHERTON U223 (AI) (P)
PINE HILL MINERVA Q140 (AI) (P)

Sire: **BOWEN TORNADO Z260 (AI) (ET) (P)**Dam: **KIDMAN VANITY X173 (P)**

BOWEN KILDONAN K208 (AI) (ET) (P)
BOWEN TRICEL P180 (P)
BOWEN TRICEL K199 (AI) (P)

DOONBIDDIE ROGER MOORE (AI) (ET) (P)
KIDMAN VANITY T100 (AI) (P)
BRIGENDOONE VANITY 38 (P)

October 2016 Hereford GROUP BREEDPLAN																
CE	CE DTR	GL	BW	200	400	600	MCW	Milk	SS	DC	Cwt	EMA	Rib	RUM	RBY	IMF%
-2.8	+1.5	+0.7	+5.2	+29	+50	+75	+69	+6	+1.7	-3.0	+39	+3.3	+0.5	+0.1	+0.6	+1.0
49%	44%	59%	65%	68%	70%	73%	65%	63%	60%	40%	64%	52%	55%	57%	54%	56%
\$ Index Values:			Supermarket:+\$84				Grass Fed Steer Index: +\$80				Grain Fed Steer Index: +\$104			EU Index: +\$98		

Traits Observed: 200WT(x2),400WT,600WT

Tornado female with added depth and thickness out of a solid old cow in X173 who is still active in the herd. Heifer calf at foot born 5/10/16 by KidmanExceptional K066. Daughter sells at Lot 38.

Purchaser:

Price \$



KIDMAN LADY ECLIPSE E252 (P)

Tattoo: E252

Born: 12/07/2009

Rego No:KIDE252

(P)

BRAXTON THUNDERBOLT M113 (IMP NZL)

WIDGIEWA GOVERNOR 2138 (AI) (H)

BRAXTON GIANT THUNDER S138 (IMP NZL) (P)

KALUDAH MACKA (H)

BRAXTON GIRLIE J118 (P)

KALUDAH LINNET 156 (H)

Sire: **BOWEN TORNADO Z260 (AI) (ET) (P)**Dam: **KIDMAN LADY ECLIPSE Y106 (AI) (P)**

BOWEN KILDONAN K208 (AI) (ET) (P)

THE BRAES VALKING (AI) (P)

BOWEN TRICEL P180 (P)

KIDMAN LADY ECLIPSE Q8 (P)

BOWEN TRICEL K199 (AI) (P)

KIDMAN LADY ECLIPSE K46 (TW) (P)

October 2016 Hereford GROUP BREEDPLAN

CE	CE DTR	GL	BW	200	400	600	MCW	Milk	SS	DC	Cwt	EMA	Rib	RUM	RBY	IMF%	
+0.8	-0.9	-0.6	+4.7	+29	+44	+68	+64	+6	+1.9	-2.9	+39	+3.9	+0.4	+0.3	+0.9	+0.8	
50%	45%	65%	61%	64%	67%	66%	62%	62%	57%	40%	60%	51%	52%	54%	51%	53%	
\$ Index Values:			Supermarket: +\$83				Grass Fed Steer Index: +\$80				Grain Fed Steer Index: +\$99			EU Index: +\$97			

Traits Observed: 400WT

Tornado daughter combining structure and balance with some very desirable figures. Heifer calf at foot born 7/10/16 by Kidman Exceptional K66.

Purchaser:

Price \$



KIDMAN TWIGHLIGHT E91 (P)

Tattoo: E91

Born: 05/09/2009

Rego No:KIDE91

LAMBERT MERWAH (P)

ALLENDALE KENWORTH 2 (P)

TYCOLAH COBBADAH (P)

ALLENDALE OCTAGONAL (AI) (P)

TYCOLAH COUNTESS U72 (P)

ALLENDALE MARLINE R71 (P)

Sire: **KIDMAN LOTTO C21 (P)**Dam: **KIDMAN TWIGHLIGHT X140 (AI) (P)**

KIDMAN BRADMAN W101 (AI) (P)

THE BRAES VALKING (AI) (P)

KIDMAN LADY ECILPSE Y208 (P)

KIDMAN TWIGHLIGHT Q192 (P)

KIDMAN LADY ECLIPSE V55 (AI) (P)

KIDMAN TWIGHLIGHT L51 (P)

October 2016 Hereford GROUP BREEDPLAN

CE	CE DTR	GL	BW	200	400	600	MCW	Milk	SS	DC	Cwt	EMA	Rib	RUM	RBY	IMF%	
		-1.1	+5.7	+25	+40	+62	+70	+6	+1.5		+27	+1.5	+0.3	+0.4	+0.1	+0.2	
		49%	56%	65%	66%	64%	56%	56%	57%		56%	44%	46%	49%	45%	46%	
\$ Index Values:			Supermarket: +\$52				Grass Fed Steer Index: +\$47				Grain Fed Steer Index: +\$52			EU Index: +\$59			

Traits Observed: 200WT(x2),400WT

Long deep Lotto female with type. Bull calf at foot by Kidman Exceptional K066 born 28/9/16.

Purchaser:

Price \$



KIDMAN LADY ECLIPSE E219 (AI) (P)

Tattoo: E219

Born: 25/10/2009

Rego No:KIDE219

ALLENDALE NATIONAL W168 (P)

TYCOLAH ZORRO (P)

KIDMAN FORWARD Z69 (AI) (P)

BOWEN FINNIGAN Y38 (P)

KIDMAN CONSTANCE V210 (AI) (P)

BOWEN ROLLINA U34 (P)

Sire: **KIDMAN ESSENTIAL B9 (P)**Dam: **KIDMAN LADY ECLIPSE B205 (P)**

BOWEN VINCENT V1 (S)

DALKEITH RADIUM (AI) (P)

KIDMAN ROYAL FAITH Y154 (AI) (P)

KIDMAN LADY ECLIPSE T162 (H#)

KIDMAN ROYAL FAITH S23 (AI) (P)

KIDMAN LADY ECLIPSE Q200 (TW) (P)

October 2016 Hereford GROUP BREEDPLAN

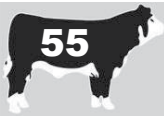
CE	CE DTR	GL	BW	200	400	600	MCW	Milk	SS	DC	Cwt	EMA	Rib	RUM	RBY	IMF%	
		-0.4	+6.1	+33	+57	+80	+86	+9	+1.9		+46						
		70%	53%	59%	62%	60%	53%	54%	52%		52%						
\$ Index Values:			Supermarket: +\$74				Grass Fed Steer Index: +\$66				Grain Fed Steer Index: +\$69			EU Index: +\$81			

Traits Observed: GL,400WT

A female offering a huge amount of capacity including depth and length. Will calve prior to the sale to Kidman Volunteer K051.

Purchaser:

Price \$



KIDMAN MINERVA QUEEN F226 (P)

Tattoo: F226

Born: 26/07/2010

Rego No:KIDF226

ALLENDALE SPOT ON (AI) (P)
 ALLENDALE UNRIVALLED (TW) (P)
 ALLENDALE GLADIOLA T169 (ET) (P)
 Sire: **ALLENDALE TIMOR B120 (P)**
 RUSSLYNN SUPERIOR (P)
 ALLENDALE FANCY V206 (P)
 ALLENDALE FANCY R32 (P)

JSF 23 NIBBS 60G (IMP CAN) (P)
 FCC 60G MADDUX 4L (IMP CAN) (P)
 SVR 15D JADE 554G (P)
 Dam: **KIDMAN MINERVA QUEEN Z115 (AI) (P)**
 4K SURVIVOR (IMP USA) (S)
 KIDMAN MINERVA QUEEN U92 (AI) (P)
 KIDMAN MINERVA QUEEN Q88 (P)

October 2016 Hereford GROUP BREEDPLAN																
CE	CE DTR	GL	BW	200	400	600	MCW	Milk	SS	DC	Cwt	EMA	Rib	RUM	RBY	IMF%
-4.1		+1.1	+6.0	+34	+52	+73	+64	+13	+1.3		+42	+2.5	+1.3	+1.9	-0.2	+0.5
35%		49%	57%	61%	62%	66%	60%	55%	53%		56%	46%	52%	56%	50%	52%
\$ Index Values:		Supermarket: +\$67					Grass Fed Steer Index: +\$62					Grain Fed Steer Index: +\$70			EU Index: +\$70	

Traits Observed: 600WT,FAT,EMA,IMF

F226 possesses balance, structure and very good udder placement. Bull calf at foot sired by Kidman Volunteer K051 born 1/10/16.

Purchaser:

Price \$



KIDMAN KERRYMAID F65 (P)

Tattoo: F65

Born: 07/07/2010

Rego No:KIDF65

KARINA BEN LOMOND (AI) (P)
 KARINA CHERRY Z8 (P)
 KARINA MARSALA S18 (P)
 Sire: **TYCOLAH GOLD RUSH (S)**
 NOROLLE 124 U126 (H#)
 TYCOLAH COUNTESS Z04 (P)
 TYCOLAH COUNTESS W72 (P)

KIDMAN SPINOFF W35 (AI) (P)
 KIDMAN WESTERNER Y58 (P)
 KIDMAN LADY ECLIPSE V200 (AI) (P)
 Dam: **KIDMAN KERRYMAID A217 (AI) (P)**
 KIDMAN MENINGA V79 (AI) (S)
 KIDMAN KERRYMAID Y32 (AI) (P)
 KIDMAN KERRYMAID S118 (AI) (P)

October 2016 Hereford GROUP BREEDPLAN																
CE	CE DTR	GL	BW	200	400	600	MCW	Milk	SS	DC	Cwt	EMA	Rib	RUM	RBY	IMF%
+2.0		+0.0	+4.0	+26	+47	+68	+64	+11	+1.5		+46	+4.1	+0.2	-0.1	+1.3	+0.4
38%		59%	61%	65%	66%	70%	64%	55%	54%		59%	48%	56%	61%	53%	55%
\$ Index Values:		Supermarket: +\$81					Grass Fed Steer Index: +\$78					Grain Fed Steer Index: +\$90			EU Index: +\$94	

Traits Observed: 200WT,600WT,FAT,EMA,IMF

Huge volumed Gold Rush daughter with a heifer calf at foot by Kidman Package J305 born 26/8/16.

Purchaser:

Price \$



KIDMAN COUNTESS F169 (AI) (P)

Tattoo: F169

Born: 20/09/2010

Rego No:KIDF169

KARINA BEN LOMOND (AI) (P)
 KARINA CHERRY Z8 (P)
 KARINA MARSALA S18 (P)
 Sire: **TYCOLAH GOLD RUSH (S)**
 NOROLLE 124 U126 (H#)
 TYCOLAH COUNTESS Z04 (P)
 TYCOLAH COUNTESS W72 (P)

MOUNTAIN VALLEY LOFTY R21 (P)
 MOUNTAIN VALLEY JACKAROO T43 (P)
 MOUNTAIN VALLEY SHAMROCK 10 (P)
 Dam: **KIDMAN COUNTESS A117 (AI) (P)**
 BRT BLUEPRINT N1 (AI) (ET) (P)
 KIDMAN COUNTESS W141 (AI) (P)
 KIDMAN COUNTESS R54 (P)

October 2016 Hereford GROUP BREEDPLAN																
CE	CE DTR	GL	BW	200	400	600	MCW	Milk	SS	DC	Cwt	EMA	Rib	RUM	RBY	IMF%
-0.5	+1.4	+0.4	+4.5	+27	+47	+68	+58	+10	+2.0		+42	+3.1	+0.9	+1.3	+0.1	+0.7
41%	36%	76%	62%	66%	67%	70%	63%	55%	55%		60%	50%	58%	63%	55%	57%
\$ Index Values:		Supermarket: +\$82					Grass Fed Steer Index: +\$79					Grain Fed Steer Index: +\$97			EU Index: +\$93	

Traits Observed: GL,200WT,600WT,FAT,EMA,IMF

Well balanced Gold Rush female who had a son sell for \$9,000 at this years bull sale. Bull calf at foot by Kidman Exceptional K066 born 26/9/16.

Purchaser:

Price \$



KIDMAN CORAL G096 (P)

Tattoo: G96

Born: 17/03/2011

Rego No:KIDG96

ALLENDALE SPOT ON (AI) (P)
 ALLENDALE UNRIVALLED (TW) (P)
 ALLENDALE GLADIOLA T169 (ET) (P)
 Sire: **ALLENDALE TIMOR B120 (P)**
 RUSSLYNN SUPERIOR (P)
 ALLENDALE FANCY V206 (P)
 ALLENDALE FANCY R32 (P)

DEBARRY IMAGE (AI) (P)
 COLUMBIAN X178 IMAGE A98 (P)
 CASTLEREIGH LAST DAY W275 (P)
 Dam: **KIDMAN CORAL D84 (P)**
 KOANUI REBEL Q81 (IMP NZL) (P)
 KIDMAN CORAL A26 (AI) (P)
 KIDMAN CORAL X138 (AI) (P)

October 2016 Hereford GROUP BREEDPLAN																
CE	CE DTR	GL	BW	200	400	600	MCW	Milk	SS	DC	Cwt	EMA	Rib	RUM	RBY	IMF%
		+0.9	+4.7	+28	+46	+67	+60	+13	+1.6		+38					
		40%	56%	62%	63%	68%	57%	46%	52%		56%					
\$ Index Values:		Supermarket: +\$68					Grass Fed Steer Index: +\$64					Grain Fed Steer Index: +\$72			EU Index: +\$74	

Traits Observed: 200WT,600WT

Female with type and functionality. Heifer calf at foot born 29/8/16 by Kidman Treaty J094.

Purchaser: Price \$



KIDMAN MINERVA G125 (AI) (P)

Tattoo: G125

Born: 15/06/2011

Rego No:KIDG125

BRAXTON THUNDERBOLT M113 (IMP NZL)
 (P)
 BRAXTON GIANT THUNDER S138 (IMP NZL) (P)
 BRAXTON GIRLIE J118 (P)
 Sire: **BOWEN TORNADO Z260 (AI) (ET) (P)**
 BOWEN KILDONAN K208 (AI) (ET) (P)
 BOWEN TRICEL P180 (P)
 BOWEN TRICEL K199 (AI) (P)

BOWEN VINCENT V1 (S)
 DEBARRY EDEN (P)
 DEBARRY PURITY V50 (AI) (ET) (P)
 Dam: **KIDMAN MINERVA QUEEN B114 (AI) (P)**
 4K SURVIVOR (IMP USA) (S)
 KIDMAN MINERVA QUEEN U92 (AI) (P)
 KIDMAN MINERVA QUEEN Q88 (P)

October 2016 Hereford GROUP BREEDPLAN																
CE	CE DTR	GL	BW	200	400	600	MCW	Milk	SS	DC	Cwt	EMA	Rib	RUM	RBY	IMF%
-1.7	+1.2	+2.7	+6.1	+40	+63	+96	+79	+12	+1.9	-4.7	+54	+2.7	+0.4	+0.1	+0.5	+0.8
50%	46%	76%	63%	66%	68%	67%	62%	59%	58%	43%	61%	53%	56%	58%	54%	56%
\$ Index Values:		Supermarket: +\$109					Grass Fed Steer Index: +\$103					Grain Fed Steer Index: +\$128			EU Index: +\$122	

Traits Observed: GL,200WT,400WT

A Tornado with capacity and length. Heifer calf at foot born 22/9/16 by Kidman Treaty J094.

Purchaser: Price \$



KIDMAN SATIN G103 (TW) (P)

Tattoo: G103

Born: 02/07/2011

Rego No:KIDG103

WIRANYA TABOR (AI) (P)
 KIDMAN BRADMAN W101 (AI) (P)
 KIDMAN CORAL R131 (P)
 Sire: **KIDMAN MERCEDES C38 (P)**
 WIRANYA BATAVIA (AI) (P)
 KIDMAN MARITANA LASS V129 (AI) (P)
 KIDMAN MARITANA LASS R91 (AI) (P)

LAMBERT MERWAH (P)
 TYCOLAH COBBADAH (P)
 TYCOLAH COUNTESS U72 (P)
 Dam: **KIDMAN SATIN C152 (P)**
 DALKEITH TRADER (AI) (P)
 KIDMAN SATIN W204 (P)
 DIMBY SATIN 29 (P)

October 2016 Hereford GROUP BREEDPLAN																
CE	CE DTR	GL	BW	200	400	600	MCW	Milk	SS	DC	Cwt	EMA	Rib	RUM	RBY	IMF%
		-0.8	+5.0	+24	+32	+46		+8	+0.4							
		47%	45%	51%	50%	51%		39%	52%							
\$ Index Values:		Supermarket: +\$29					Grass Fed Steer Index: +\$24					Grain Fed Steer Index: +\$19			EU Index: +\$36	

Traits Observed:

Quality soft easy doing Mercedes daughter with a heifer calf at foot by Kidman Exceptional K066 born 20/9/16.

Purchaser: Price \$



KIDMAN DUCHESS G238 (AI) (P)

Tattoo: G238

Born: 07/07/2011

Rego No:KIDG238

ALLENDALE KING KONG 2 (S)
ALLENDALE NATIONAL W168 (P)
ALLENDALE CORA R22 (P)

WIDGIEWA GOVERNOR 2138 (AI) (H)
KALUDAH MACKA (H)
KALUDAH LINNET 156 (H)

Sire: **BOWEN DIAMANTINA D203 (AI) (P)**
DR TRANSCENDENT (IMP USA) (IMP USA)

Dam: **KIDMAN DUCHESS Y107 (AI) (P)**
BAROONA JACOBITE J60 (P)
KIDMAN DUCHESS R105 (P)

(P)
BOWEN MATCHLESS Z152 (AI) (P)
BOWEN MATCHLESS W406 (AI) (ET) (P)

KIDMAN DUCHESS L120 (AI) (P)

October 2016 Hereford GROUP BREEDPLAN																
CE	CE DTR	GL	BW	200	400	600	MCW	Milk	SS	DC	Cwt	EMA	Rib	RUM	RBY	IMF%
-0.4	-6.2	-0.8	+5.1	+33	+58	+79	+76	+9	+2.2	-0.8	+57	+3.8	+0.3	+0.5	+1.2	
44%	41%	75%	61%	65%	66%	64%	59%	50%	57%	35%	57%	47%	47%	51%	46%	
\$ Index Values:			Supermarket: +\$79				Grass Fed Steer Index: +\$73				Grain Fed Steer Index: +\$83			EU Index: +\$87		

Traits Observed: GL,200WT,400WT

Well structured Bowen Diamantina daughter offering feminine lines. Heifer calf at foot born 15/10/16 by Kidman Volunteer K051.

Purchaser: Price \$



KIDMAN MINNY G156 (AI) (P)

Tattoo: G156

Born: 16/07/2011

Rego No:KIDG156

KARINA BEN LOMOND (AI) (P)
KARINA CHERRY Z8 (P)
KARINA MARSALA S18 (P)

BOWEN VINCENT V1 (S)
DEBARRY EDEN (P)
DEBARRY PURITY V50 (AI) (ET) (P)

Sire: **TYCOLAH GOLD RUSH (S)**
NOROLLE 124 U126 (H#)
TYCOLAH COUNTESS Z04 (P)
TYCOLAH COUNTESS W72 (P)

Dam: **KIDMAN MINNY C140 (AI) (P)**
NOROLLE 25 UTTER MADNESS U137 (AI) (ET)
(P)

KIDMAN MINNY A51 (AI) (P)
KIDMAN MINNY X133 (AI) (P)

October 2016 Hereford GROUP BREEDPLAN																
CE	CE DTR	GL	BW	200	400	600	MCW	Milk	SS	DC	Cwt	EMA	Rib	RUM	RBY	IMF%
+2.7	+3.7	+0.8	+5.0	+35	+56	+83	+67	+15	+2.0	-2.8	+51	+2.4	+0.3	+0.1	+0.7	+0.3
43%	39%	76%	62%	66%	68%	67%	60%	55%	60%	35%	59%	48%	49%	52%	49%	53%
\$ Index Values:			Supermarket: +\$99				Grass Fed Steer Index: +\$93				Grain Fed Steer Index: +\$107			EU Index: +\$109		

Traits Observed: GL,200WT,400WT

Gold Rush displaying a well laid in shoulder, true spine and balance. Heifer calf at foot born 16/10/16 by Kidman Exceptional K066.

Purchaser: Price \$



KIDMAN VANITY G300 (AI) (P)

Tattoo: G300

Born: 29/09/2011

Rego No:KIDG300

GK SPECTRUM 823B (IMP CAN) (P)
MERAHAH MISSOURI (AI) (P)
MERAHAH IRISH MAID H88 (AI) (P)
Sire: **MERAHAH WIDELoad Y112 (AI) (ET) (P)**
WDR 107W ZACK 103Z (IMP CAN) (ET) (P)
MERAHAH SHAMROCK M60 (P)
MERAHAH SHAMROCK G10 (AI) (P)

ALLENDALE UNRIVALLED (TW) (P)
ALLENDALE TIMOR B120 (P)
ALLENDALE FANCY V206 (P)
Dam: **KIDMAN VANITY E132 (P)**
KIDMAN COSMO Y46 (AI) (P)
KIDMAN VANITY B227 (AI) (P)
KIDMAN VANITY Y83 (P)

CE	CE DTR	GL	BW	200	400	600	MCW	Milk	SS	DC	Cwt	EMA	Rib	RUM	RBY	IMF%
\$ Index Values:			Supermarket:				Grass Fed Steer Index:				Grain Fed Steer Index:			EU Index:		

Traits Observed:

Well balanced Merawah Wideload female who is out of a maternal half sister to the top priced bull from our 2015 bull sale. Bull calf at foot by Kidman Exceptional K066 born 7/10/16.

Purchaser: Price \$

Joined K Heifers



KIDMAN LIONESS K110 (P)

Tattoo: K110

Born: 06/06/2014

Rego No:KIDK110

SOUTH BUKALONG WALKER 6 (AI) (P)
SOUTH BUKALONG WALLACE 2 (P)
SOUTH BUKALONG VICTORIA 152 (P)

KIDMAN BRADMAN W101 (AI) (P)
KIDMAN MERCEDES C38 (P)
KIDMAN MARITANA LASS V129 (AI) (P)

Sire: **WIRRUNA ELDER E327 (AI) (ET) (P)**

Dam: **KIDMAN LIONESS G267 (P)**

ELITE J7C X54 (AI) (P)
WIRRUNA MADAM A10 (AI) (ET) (P)
WIRRUNA MADAM S207 (P)

TYCOLAH COBBADAH (P)
KIDMAN LIONESS B259 (P)
KIDMAN LIONESS V39 (P)

October 2016 Hereford GROUP BREEDPLAN																
CE	CE DTR	GL	BW	200	400	600	MCW	Milk	SS	DC	Cwt	EMA	Rib	RUM	RBY	IMF%
		-1.9	+3.1	+29	+40	+58	+44	+15	+1.5		+35					
		39%	54%	58%	61%	66%	55%	39%	50%		54%					
\$ Index Values:		Supermarket: +\$78					Grass Fed Steer Index: +\$76			Grain Fed Steer Index: +\$91			EU Index: +\$88			

Traits Observed: 600WT

Depastured with Kidman Treaty J094 from 24/6/16 to 29/8/16.

Purchaser:

Price \$



KIDMAN LADY TIGRESS K046 (AI) (P)

Tattoo: K046

Born: 15/08/2014

Rego No:KIDK046

ALLENDALE VAGABOND A74 (AI) (P)
ALLENDALE WATERHOUSE D1 (P)
ALLENDALE MARLINE X185 (P)

KIDMAN FORWARD Z69 (AI) (P)
KIDMAN ESSENTIAL B9 (P)
KIDMAN ROYAL FAITH Y154 (AI) (P)

Sire: **DAYS CALIBRE G74 (P)**

Dam: **KIDMAN LADY TIGRESS D136 (P)**

ALLENDALE ROBIN HOOD Z239 (P)
ALLENDALE DAWN C62 (AI) (P)
ALLENDALE DAWN A150 (AI) (ET) (P)

PINE HILL ATHERTON U223 (AI) (P)
KIDMAN LADY TIGRESS X94 (P)
KIDMAN LADY TIGRESS U215 (AI) (P)

October 2016 Hereford GROUP BREEDPLAN																
CE	CE DTR	GL	BW	200	400	600	MCW	Milk	SS	DC	Cwt	EMA	Rib	RUM	RBY	IMF%
-1.3		-1.0	+6.5	+36	+63	+86	+103	+9	+3.4		+51	+4.3	-0.8	-1.4	+1.7	+0.2
		74%	63%	64%	67%	70%	62%	46%	56%		59%	49%	57%	62%	54%	58%
\$ Index Values:		Supermarket: +\$85					Grass Fed Steer Index: +\$77			Grain Fed Steer Index: +\$87			EU Index: +\$99			

Traits Observed: GL,600WT,FAT,EMA,IMF

All'd to Yavenvale King Pin on the 4/7/16. Depastured with Wirruna Elder E327 from 2/8/16 to 24/9/16.

Purchaser:

Price \$



KIDMAN LADY ECLIPSE K015 (P)

Tattoo: K015

Born: 17/08/2014

Rego No:KIDK015

KIDMAN BRADMAN X136 (AI) (P)
KIDMAN ARCHIBALD B198 (P)
KIDMAN AMETHYST Y196 (AI) (TW) (P)

KIDMAN COSMO B25 (AI) (ET) (P)
KIDMAN LEGACY D155 (S)
KIDMAN MINNY A173 (AI) (P)

Sire: **KIDMAN BLOCKADE G128 (AI) (P)**

Dam: **KIDMAN LADY ECLIPSE F196 (P)**

BOWEN TORNADO Z260 (AI) (ET) (P)
KIDMAN VANITY C36 (P)
KIDMAN VANITY X26 (P)

TYCOLAH COBBADAH (P)
KIDMAN LADY ECLIPSE C13 (P)
KIDMAN LADY ECLIPSE Z88 (AI) (P)

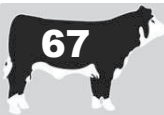
October 2016 Hereford GROUP BREEDPLAN																
CE	CE DTR	GL	BW	200	400	600	MCW	Milk	SS	DC	Cwt	EMA	Rib	RUM	RBY	IMF%
		+1.5	+5.7	+32	+53	+79	+69	+12			+46	+3.8	+0.7	+0.8	+1.1	+0.5
		43%	54%	58%	62%	68%	59%	34%			56%	44%	54%	59%	50%	53%
\$ Index Values:		Supermarket: +\$88					Grass Fed Steer Index: +\$83			Grain Fed Steer Index: +\$99			EU Index: +\$99			

Traits Observed: 600WT,FAT,EMA,IMF

All'd to Yavenvale Kahuna K115 on the 4/7/16. Depastured with Wirruna Elder E327 from 2/8/16 to 24/9/16.

Purchaser:

Price \$



KIDMAN VANITY K167 (AI) (P)

Tattoo: K167

Born: 28/08/2014

Rego No:KIDK167

ALLENDALE VAGABOND A74 (AI) (P)
 ALLENDALE WATERHOUSE D1 (P)
 ALLENDALE MARLINE X185 (P)
 Sire: **DAYS CALIBRE G74 (P)**
 ALLENDALE ROBIN HOOD Z239 (P)
 ALLENDALE DAWN C62 (AI) (P)
 ALLENDALE DAWN A150 (AI) (ET) (P)

TYCOLAH COBBADAH (P)
 KIDMAN LOTTO C21 (P)
 KIDMAN LADY ECILPSE Y208 (P)
 Dam: **KIDMAN VANITY F83 (P)**
 BOWEN TORNADO Z260 (AI) (ET) (P)
 KIDMAN VANITY C36 (P)
 KIDMAN VANITY X26 (P)

October 2016 Hereford GROUP BREEDPLAN																
CE	CE DTR	GL	BW	200	400	600	MCW	Milk	SS	DC	Cwt	EMA	Rib	RUM	RBY	IMF%
-1.9		+1.1	+6.5	+36	+62	+87	+83	+9	+3.3		+53	+5.8	+0.3	+0.3	+1.3	+1.4
39%		73%	63%	64%	67%	71%	62%	43%	56%		59%	49%	57%	62%	54%	58%
\$ Index Values:		Supermarket:+\$103					Grass Fed Steer Index: +\$99			Grain Fed Steer Index: +\$129			EU Index: +\$119			

Traits Observed: GL,600WT,FAT,EMA,IMF

All'ed to Yavenvale Kahuna K115 on 4/7/16. Depastured with Wurruna Elder E327 from 2/8/16 to 24/9/16.

Purchaser: Price \$



KIDMAN MISS GUNN K063 (AI) (P)

Tattoo: K063

Born: 31/08/2014

Rego No:KIDK063

ALLENDALE VAGABOND A74 (AI) (P)
 ALLENDALE WATERHOUSE D1 (P)
 ALLENDALE MARLINE X185 (P)
 Sire: **DAYS CALIBRE G74 (P)**
 ALLENDALE ROBIN HOOD Z239 (P)
 ALLENDALE DAWN C62 (AI) (P)
 ALLENDALE DAWN A150 (AI) (ET) (P)

DEBARRY IMAGE (AI) (P)
 COLUMBIAN X178 IMAGE A98 (P)
 CASTLEREIGH LAST DAY W275 (P)
 Dam: **KIDMAN MISS GUNN E90 (P)**
 DOONBIDDIE HUSTLER (AI) (P)
 KIDMAN MISS GUNN Z203 (AI) (P)
 KIDMAN MISS GUNN N60 (P)

October 2016 Hereford GROUP BREEDPLAN																
CE	CE DTR	GL	BW	200	400	600	MCW	Milk	SS	DC	Cwt	EMA	Rib	RUM	RBY	IMF%
-0.7		+1.6	+5.8	+35	+61	+85	+83	+13	+3.0		+58	+6.5	+0.5	+0.7	+1.8	+1.0
40%		73%	62%	64%	67%	70%	62%	45%	57%		59%	49%	56%	61%	53%	57%
\$ Index Values:		Supermarket:+\$105					Grass Fed Steer Index: +\$101			Grain Fed Steer Index: +\$124			EU Index: +\$121			

Traits Observed: GL,600WT,FAT,EMA,IMF

All'ed to Yavenvale King Pin on 4/7/16. Depastured with Wurruna Elder E327 from 2/8/16 to 24/9/16.

Purchaser: Price \$



KIDMAN MINERVA K226 (TW) (P)

Tattoo: K226

Born: 01/09/2014

Rego No:KIDK226

DEBARRY EDEN (P)
 KIDMAN COSMO B25 (AI) (ET) (P)
 KIDMAN VANITY T143 (P)
 Sire: **KIDMAN LEGACY D155 (S)**
 VALMA SOUTHERN STAR (AI) (ET) (P)
 KIDMAN MINNY A173 (AI) (P)
 KIDMAN MINNY U212 (AI) (TW) (P)

MARKOWEN CRUSADER (P)
 KIDMAN LIONHEART A93 (AI) (P)
 KIDMAN COUNTESS L114 F91 (P)
 Dam: **KIDMAN MINERVA C18 (P)**
 DOONBIDDIE HUSTLER (AI) (P)
 KIDMAN MINERVA Z113 (AI) (P)
 KIDMAN MINERVA U41 (P)

October 2016 Hereford GROUP BREEDPLAN																
CE	CE DTR	GL	BW	200	400	600	MCW	Milk	SS	DC	Cwt	EMA	Rib	RUM	RBY	IMF%
		-0.4	+5.1	+30	+49	+74	+77	+15	+1.2			+3.2	+0.3	+0.2	+0.8	+0.1
		45%	51%	54%	55%	56%	50%	46%	53%			39%	42%	45%	41%	44%
\$ Index Values:		Supermarket:+\$74					Grass Fed Steer Index: +\$68			Grain Fed Steer Index: +\$72			EU Index: +\$81			

Traits Observed: 600WT,FAT,EMA,IMF

Depastured with Wurruna Elder E327 from 2/8/16 to 24/9/16. Depastured with Wurruna Elder E327 from 2/8/16 to 24/9/16.

Purchaser: Price \$



KIDMAN DUCHESS K080 (AI) (P)

Tattoo: K080

Born: 03/09/2014

Rego No:KIDK080

Sire: **DAYS CALIBRE G74 (P)**
 ALLENDALE VAGABOND A74 (AI) (P)
 ALLENDALE WATERHOUSE D1 (P)
 ALLENDALE MARLINE X185 (P)
 ALLENDALE ROBIN HOOD Z239 (P)
 ALLENDALE DAWN C62 (AI) (P)
 ALLENDALE DAWN A150 (AI) (ET) (P)

Dam: **KIDMAN DUCHESS E124 (P)**
 BRAXTON GIANT THUNDER S138 (IMP NZL) (P)
 BOWEN TORNADO Z260 (AI) (ET) (P)
 BOWEN TRICEL P180 (P)
 WIRANYA TABOR (AI) (P)
 KIDMAN DUCHESS A210 (AI) (P)
 KIDMAN DUCHESS W128 (AI) (P)

October 2016 Hereford GROUP BREEDPLAN																
CE	CE DTR	GL	BW	200	400	600	MCW	Milk	SS	DC	Cwt	EMA	Rib	RUM	RBY	IMF%
-0.8	+1.6	+2.0	+5.8	+35	+60	+83	+79	+9	+3.2	-3.4	+50	+5.3	+0.5	+0.6	+1.1	+1.2
44%	38%	75%	64%	64%	68%	71%	63%	46%	56%	35%	60%	51%	58%	63%	55%	59%
\$ Index Values:		Supermarket: +\$103					Grass Fed Steer Index: +\$99			Grain Fed Steer Index: +\$127			EU Index: +\$119			

Traits Observed: GL,600WT,FAT,EMA,IMF

Depastured with Kidman Treaty J094 from 24/6/16 to 29/8/16.

Purchaser: Price \$



KIDMAN PEARL K045 (P)

Tattoo: K045

Born: 04/09/2014

Rego No:KIDK045

Sire: **ALLENDALE TIMOR B120 (P)**
 ALLENDALE SPOT ON (AI) (P)
 ALLENDALE UNRIVALLED (TW) (P)
 ALLENDALE GLADIOLA T169 (ET) (P)
 RUSSLYNN SUPERIOR (P)
 ALLENDALE FANCY V206 (P)
 ALLENDALE FANCY R32 (P)

Dam: **KIDMAN PEARL B132 (P)**
 MT. RAVEN HIJACKER (AI) (P)
 KIDMAN COMPLETE Z42 (AI) (P)
 KIDMAN LADY ECLIPSE W175 (AI) (P)
 KIDMAN WINCHESTER V2 (P)
 KIDMAN PEARL X248 (P)
 KIDMAN PEARL R251 (P)

October 2016 Hereford GROUP BREEDPLAN																
CE	CE DTR	GL	BW	200	400	600	MCW	Milk	SS	DC	Cwt	EMA	Rib	RUM	RBY	IMF%
		+1.0	+4.8	+28	+43	+62	+66	+13	+1.2		+32	+1.5	+0.8	+1.3	-0.2	+0.1
		41%	57%	61%	65%	70%	61%	46%	52%		58%	46%	55%	61%	52%	55%
\$ Index Values:		Supermarket: +\$58					Grass Fed Steer Index: +\$53			Grain Fed Steer Index: +\$54			EU Index: +\$62			

Traits Observed: 600WT,FAT,EMA,IMF

Al'ed to Yavenvale King Pin on 4/7/16. Depastured with Wirruna Elder E327 from 2/8/16 to 24/9/16.

Purchaser: Price \$



KIDMAN VANITY K157 (P)

Tattoo: K157

Born: 04/09/2014

Rego No:KIDK157

Sire: **KIDMAN DICTATOR F115 (P)**
 BRAXTON GIANT THUNDER S138 (IMP NZL) (P)
 BOWEN TORNADO Z260 (AI) (ET) (P)
 BOWEN TRICEL P180 (P)
 BOWEN FINNIGAN Y38 (P)
 KIDMAN LIONESS B172 (P)
 KIDMAN LIONESS V211 (AI) (P)

Dam: **KIDMAN VANITY D188 (P)**
 KIDMAN PACEMAKER S151 (P)
 KIDMAN PATERSON V141 (P)
 KIDMAN DAPHNE N130 (P)
 KIDMAN ENTICER Y13 (AI) (P)
 KIDMAN VANITY A200 (P)
 KIDMAN VANITY T100 (AI) (P)

October 2016 Hereford GROUP BREEDPLAN																
CE	CE DTR	GL	BW	200	400	600	MCW	Milk	SS	DC	Cwt	EMA	Rib	RUM	RBY	IMF%
			+6.9	+36	+55	+82	+86	+9			+41	+2.3	-1.0	-1.7	+1.2	+0.1
			52%	57%	61%	67%	58%	39%			55%	43%	53%	58%	50%	51%
\$ Index Values:		Supermarket: +\$69					Grass Fed Steer Index: +\$61			Grain Fed Steer Index: +\$69			EU Index: +\$79			

Traits Observed: 600WT,FAT,EMA,IMF

Al'ed to Yavenvale King Pin on 4/7/16. Depastured with Wirruna Elder E327 from 2/8/16 to 24/9/16.

Purchaser: Price \$



KIDMAN MINERVA QUEEN K076 (P)

Tattoo: K076

Born: 10/09/2014

Rego No:KIDK076

ALLENDALE SPOT ON (AI) (P)
 ALLENDALE UNRIVALLED (TW) (P)
 ALLENDALE GLADIOLA T169 (ET) (P)
 Sire: **ALLENDALE TIMOR B120 (P)**
 RUSSLYNN SUPERIOR (P)
 ALLENDALE FANCY V206 (P)
 ALLENDALE FANCY R32 (P)

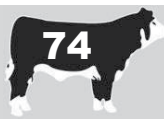
BOWEN VINCENT V1 (S)
 DEBARRY EDEN (P)
 DEBARRY PURITY V50 (AI) (ET) (P)
 Dam: **KIDMAN MINERVA QUEEN B114 (AI) (P)**
 4K SURVIVOR (IMP USA) (S)
 KIDMAN MINERVA QUEEN U92 (AI) (P)
 KIDMAN MINERVA QUEEN Q88 (P)

October 2016 Hereford GROUP BREEDPLAN																
CE	CE DTR	GL	BW	200	400	600	MCW	Milk	SS	DC	Cwt	EMA	Rib	RUM	RBY	IMF%
-1.5		+1.2	+5.4	+34	+53	+78	+71	+17	+1.3	-2.0	+42	+1.1	+0.6	+0.9	-0.2	+0.2
36%		50%	59%	62%	65%	70%	62%	50%	55%	35%	59%	49%	56%	61%	54%	56%
\$ Index Values:			Supermarket: +\$77				Grass Fed Steer Index: +\$71				Grain Fed Steer Index: +\$78			EU Index: +\$82		

Traits Observed: 600WT,FAT,EMA,IMF

All'ed to Yavenvale Kahuna K115 on 5/7/16. Depastured with Wirruna Elder from 2/8/16 to 24/9/16.

Purchaser: Price \$



KIDMAN MISS GUNN K210 (P)

Tattoo: K210

Born: 11/09/2014

Rego No:KIDK210

KIDMAN BRADMAN X136 (AI) (P)
 KIDMAN ARCHIBALD B198 (P)
 KIDMAN AMETHYST Y196 (AI) (TW) (P)
 Sire: **KIDMAN BLOCKADE G128 (AI) (P)**
 BOWEN TORNADO Z260 (AI) (ET) (P)
 KIDMAN VANITY C36 (P)
 KIDMAN VANITY X26 (P)

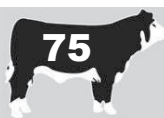
ALLENDALE UNRIVALLED (TW) (P)
 ALLENDALE TIMOR B120 (P)
 ALLENDALE FANCY V206 (P)
 Dam: **KIDMAN MISS GUNN G075 (S)**
 TYCOLAH COBBADAH (P)
 KIDMAN MISS GUNN D20 (P)
 KIDMAN MISS GUNN X91 (AI) (P)

October 2016 Hereford GROUP BREEDPLAN																
CE	CE DTR	GL	BW	200	400	600	MCW	Milk	SS	DC	Cwt	EMA	Rib	RUM	RBY	IMF%
		+2.1	+6.4	+34	+52	+77	+65	+12			+40	+2.8	+1.2	+1.7	+0.0	+0.8
		42%	53%	57%	62%	68%	58%	34%			55%	43%	52%	57%	49%	51%
\$ Index Values:			Supermarket: +\$82				Grass Fed Steer Index: +\$77				Grain Fed Steer Index: +\$96			EU Index: +\$90		

Traits Observed: 600WT,FAT,EMA,IMF

Depastured with Kidman Treaty J094 from 24/6/16 to 29/8/16.

Purchaser: Price \$



KIDMAN CORA K236 (P)

Tattoo: K236

Born: 17/09/2014

Rego No:KIDK236

KIDMAN BRADMAN X136 (AI) (P)
 KIDMAN ARCHIBALD B198 (P)
 KIDMAN AMETHYST Y196 (AI) (TW) (P)
 Sire: **KIDMAN BLOCKADE G128 (AI) (P)**
 BOWEN TORNADO Z260 (AI) (ET) (P)
 KIDMAN VANITY C36 (P)
 KIDMAN VANITY X26 (P)

KARINA CHERRY Z8 (P)
 TYCOLAH GOLD RUSH (S)
 TYCOLAH COUNTESS Z04 (P)
 Dam: **KIDMAN CORA F184 (AI) (P)**
 KIDMAN BLUE CHIP Y221 (P)
 KIDMAN CORA B135 (AI) (P)
 KIDMAN CORA W24 (AI) (P)

October 2016 Hereford GROUP BREEDPLAN																
CE	CE DTR	GL	BW	200	400	600	MCW	Milk	SS	DC	Cwt	EMA	Rib	RUM	RBY	IMF%
		+1.2	+4.8	+30	+49	+69	+51	+10			+42	+3.7	+1.8	+2.5	-0.1	+1.1
		53%	54%	57%	62%	67%	58%	36%			55%	44%	53%	58%	50%	52%
\$ Index Values:			Supermarket: +\$95				Grass Fed Steer Index: +\$93				Grain Fed Steer Index: +\$119			EU Index: +\$107		

Traits Observed: 600WT,FAT,EMA,IMF

All'ed to Yavenvale King Pin on 4/7/16. Depastured with Wirruna Elder E327 from 2/8/16 to 24/9/16.

Purchaser: Price \$



KIDMAN MISS GUNN K201 (P)

Tattoo: K201

Born: 23/09/2014

Rego No:KIDK201

Sire: **KIDMAN BLOCKADE G128 (AI) (P)**
 KIDMAN BRADMAN X136 (AI) (P)
 KIDMAN ARCHIBALD B198 (P)
 KIDMAN AMETHYST Y196 (AI) (TW) (P)
 BOWEN TORNADO Z260 (AI) (ET) (P)
 KIDMAN VANITY C36 (P)
 KIDMAN VANITY X26 (P)

Dam: **KIDMAN MISS GUNN G107 (AI) (P)**
 BOBANKEN SOUTHERN CROSS S48 (P)
 GUILFORD ZEUS Z1 (AI) (S)
 GUILFORD QUEENIE V4 (AI) (P)
 KIDMAN FORWARD Z69 (AI) (P)
 KIDMAN MISS GUNN B229 (P)
 KIDMAN MISS GUNN W99 (P)

October 2016 Hereford GROUP BREEDPLAN																
CE	CE DTR	GL	BW	200	400	600	MCW	Milk	SS	DC	Cwt	EMA	Rib	RUM	RBY	IMF%
		+0.1	+7.0	+40	+66	+95	+83	+11			+60	+4.8	+1.0	+1.2	+1.2	+0.4
		46%	52%	56%	61%	66%	55%	37%			54%	43%	41%	44%	44%	49%
\$ Index Values:		Supermarket:+\$98					Grass Fed Steer Index: +\$92			Grain Fed Steer Index: +\$107			EU Index: +\$109			

Traits Observed: 600WT,EMA,IMF

All'ed to Yavenvale King Pin on 4/7/16. Depastured with Wirruna Elder E327 from 2/8/16 to 24/9/16.

Purchaser:

Price \$



KIDMAN MINNY K188 (P)

Tattoo: K188

Born: 01/10/2014

Rego No:KIDK188

Sire: **KIDMAN BLOCKADE G128 (AI) (P)**
 KIDMAN BRADMAN X136 (AI) (P)
 KIDMAN ARCHIBALD B198 (P)
 KIDMAN AMETHYST Y196 (AI) (TW) (P)
 BOWEN TORNADO Z260 (AI) (ET) (P)
 KIDMAN VANITY C36 (P)
 KIDMAN VANITY X26 (P)

Dam: **KIDMAN MINNY G120 (AI) (P)**
 COOTHARABA MAGNUM (H)
 MAWARRA VIRGINIAN (H)
 MAWARRA CHERRY RIPE 263 (H)
 ALLENDALE NATIONAL W168 (P)
 KIDMAN MINNY A190 (AI) (P)
 KIDMAN MINNY W5 (AI) (P)

October 2016 Hereford GROUP BREEDPLAN																
CE	CE DTR	GL	BW	200	400	600	MCW	Milk	SS	DC	Cwt	EMA	Rib	RUM	RBY	IMF%
		+1.7	+7.4	+42	+71	+104	+85	+11			+66	+5.7	+0.7	+1.0	+1.7	+1.0
		52%	53%	56%	61%	66%	56%	37%			54%	44%	41%	44%	44%	50%
\$ Index Values:		Supermarket:+\$116					Grass Fed Steer Index: +\$110			Grain Fed Steer Index: +\$137			EU Index: +\$130			

Traits Observed: 600WT,EMA,IMF

Depastured with Kidman Treaty J094 from 18/7/16 to 29/8/16.

Purchaser:

Price \$



KIDMAN TWIGHLIGHT K205 (P)

Tattoo: K205

Born: 03/10/2014

Rego No:KIDK205

Sire: **KIDMAN BLOCKADE G128 (AI) (P)**
 KIDMAN BRADMAN X136 (AI) (P)
 KIDMAN ARCHIBALD B198 (P)
 KIDMAN AMETHYST Y196 (AI) (TW) (P)
 BOWEN TORNADO Z260 (AI) (ET) (P)
 KIDMAN VANITY C36 (P)
 KIDMAN VANITY X26 (P)

Dam: **KIDMAN TWIGHLIGHT G078 (P)**
 KIDMAN COSMO B25 (AI) (ET) (P)
 KIDMAN LEGACY D155 (S)
 KIDMAN MINNY A173 (AI) (P)
 KIDMAN PORTFOLIO B186 (AI) (P)
 KIDMAN TWIGHLIGHT D133 (P)
 KIDMAN TWIGHLIGHT X239 (P)

October 2016 Hereford GROUP BREEDPLAN																
CE	CE DTR	GL	BW	200	400	600	MCW	Milk	SS	DC	Cwt	EMA	Rib	RUM	RBY	IMF%
		+1.2	+5.7	+33	+52	+77	+64	+13			+46	+3.4	+1.2	+1.6	+0.3	+0.6
		43%	54%	57%	62%	68%	58%	33%			55%	43%	52%	57%	49%	51%
\$ Index Values:		Supermarket:+\$89					Grass Fed Steer Index: +\$85			Grain Fed Steer Index: +\$102			EU Index: +\$99			

Traits Observed: 600WT,FAT,EMA,IMF

Depastured with Kidman Treaty J094 from 24/7/16 to 29/8/16.

Purchaser:

Price \$



KIDMAN BELLONA K116 (P)

Tattoo: K116

Born: 16/10/2014

Rego No:KIDK116

ALLENDALE SPOT ON (AI) (P)
 ALLENDALE UNRIVALLED (TW) (P)
 ALLENDALE GLADIOLA T169 (ET) (P)
 Sire: **ALLENDALE TIMOR B120 (P)**
 RUSSLYNN SUPERIOR (P)
 ALLENDALE FANCY V206 (P)
 ALLENDALE FANCY R32 (P)

BOWEN VINCENT V1 (S)
 DEBARRY EDEN (P)
 DEBARRY PURITY V50 (AI) (ET) (P)
 Dam: **KIDMAN BELLONA B111 (AI) (P)**
 DALKEITH TRADER (AI) (P)
 KIDMAN BELLONA W184 (P)
 KIDMAN BELLONA P074 (P)

October 2016 Hereford GROUP BREEDPLAN																
CE	CE DTR	GL	BW	200	400	600	MCW	Milk	SS	DC	Cwt	EMA	Rib	RUM	RBY	IMF%
-2.5		+1.3	+4.9	+31	+49	+70	+57	+17	+1.6		+43	+3.2	+0.5	+0.7	+0.8	+0.3
35%		49%	59%	62%	65%	70%	62%	49%	54%		59%	48%	56%	61%	54%	56%
\$ Index Values:		Supermarket:+\$73					Grass Fed Steer Index: +\$69					Grain Fed Steer Index: +\$78			EU Index: +\$80	

Traits Observed: 600WT,FAT,EMA,IMF

All'ed to Yavenvale Kahuna K115 on 4/7/16. Depastured with Wirruna Elder E327 from 2/8/16 to 24/9/16.

Purchaser: Price \$



KIDMAN MISS GUNN K122 (P)

Tattoo: K122

Born: 24/10/2014

Rego No:KIDK122

ALLENDALE SPOT ON (AI) (P)
 ALLENDALE UNRIVALLED (TW) (P)
 ALLENDALE GLADIOLA T169 (ET) (P)
 Sire: **ALLENDALE TIMOR B120 (P)**
 RUSSLYNN SUPERIOR (P)
 ALLENDALE FANCY V206 (P)
 ALLENDALE FANCY R32 (P)

LAMBERT MERWAH (P)
 TYCOLAH COBBADAH (P)
 TYCOLAH COUNTESS U72 (P)
 Dam: **KIDMAN MISS GUNN D98 (P)**
 WOLBULL INDIANA 2 X928 (AI) (ET) (P)
 KIDMAN MISS GUNN A274 (P)
 KIDMAN MISS GUNN Q110 (P)

October 2016 Hereford GROUP BREEDPLAN																
CE	CE DTR	GL	BW	200	400	600	MCW	Milk	SS	DC	Cwt	EMA	Rib	RUM	RBY	IMF%
		+0.7	+6.2	+28	+42	+60	+65	+15	+0.9		+26	+1.2	+0.0	+0.1	+0.0	+0.2
		39%	57%	61%	64%	69%	61%	46%	52%		58%	46%	55%	60%	52%	55%
\$ Index Values:		Supermarket:+\$42					Grass Fed Steer Index: +\$36					Grain Fed Steer Index: +\$38			EU Index: +\$45	

Traits Observed: 600WT,FAT,EMA,IMF

All'ed to Yavenvale Kahuna K115 on 4/7/16. Depastured with Wirruna Elder E327 from 2/8/16 to 24/9/16.

Purchaser: Price \$



KIDMAN ADVANCE K176 (P)

Tattoo: K176

Born: 01/11/2014

Rego No:KIDK176

KIDMAN BRADMAN X136 (AI) (P)
 KIDMAN ARCHIBALD B198 (P)
 KIDMAN AMETHYST Y196 (AI) (TW) (P)
 Sire: **KIDMAN BLOCKADE G128 (AI) (P)**
 BOWEN TORNADO Z260 (AI) (ET) (P)
 KIDMAN VANITY C36 (P)
 KIDMAN VANITY X26 (P)

ALLENDALE UNRIVALLED (TW) (P)
 ALLENDALE TIMOR B120 (P)
 ALLENDALE FANCY V206 (P)
 Dam: **KIDMAN ADVANCE G101 (P)**
 TYCOLAH COBBADAH (P)
 KIDMAN ADVANCE D25 (P)
 KIDMAN ADVANCE X180 (AI) (P)

October 2016 Hereford GROUP BREEDPLAN																
CE	CE DTR	GL	BW	200	400	600	MCW	Milk	SS	DC	Cwt	EMA	Rib	RUM	RBY	IMF%
		+1.8	+6.2	+34	+53	+75	+60	+12			+44	+3.9	+0.9	+1.1	+0.7	+0.9
		42%	53%	57%	61%	67%	58%	34%			55%	42%	51%	56%	48%	50%
\$ Index Values:		Supermarket:+\$81					Grass Fed Steer Index: +\$77					Grain Fed Steer Index: +\$97			EU Index: +\$91	

Traits Observed: 600WT,FAT,EMA,IMF

Depastured with Kidman Treaty J094 from 24/6/16 to 29/8/16.

Purchaser: Price \$



KIDMAN LADY ECLIPSE K180 (P)

Tattoo: K180

Born: 01/11/2014

Rego No:KIDK180

Sire: **KIDMAN BLOCKADE G128 (AI) (P)**
 KIDMAN BRADMAN X136 (AI) (P)
 KIDMAN ARCHIBALD B198 (P)
 KIDMAN AMETHYST Y196 (AI) (TW) (P)
 BOWEN TORNADO Z260 (AI) (ET) (P)
 KIDMAN VANITY C36 (P)
 KIDMAN VANITY X26 (P)

Dam: **KIDMAN LADY ECLIPSE C151 (AI) (P)**
 BOWEN VINCENT V1 (S)
 DEBARRY EDEN (P)
 DEBARRY PURITY V50 (AI) (ET) (P)
 NOROLLE 25 UTTER MADNESS U137 (AI) (ET)
 KIDMAN LADY ECLIPSE A22 (AI) (P)
 KIDMAN LADY ECLIPSE X255 (P)

October 2016 Hereford GROUP BREEDPLAN																
CE	CE DTR	GL	BW	200	400	600	MCW	Milk	SS	DC	Cwt	EMA	Rib	RUM	RBY	IMF%
		+1.5	+5.9	+38	+58	+85	+70	+15			+51	+2.8	+0.4	+0.3	+0.9	+0.1
		53%	54%	56%	61%	67%	58%	40%			55%	45%	53%	58%	50%	52%
\$ Index Values:		Supermarket: +\$95					Grass Fed Steer Index: +\$89				Grain Fed Steer Index: +\$100			EU Index: +\$106		

Traits Observed: 600WT,FAT,EMA,IMF

Depastured with Kidman Treaty J094 from 24/6/16 to 29/8/16.

Purchaser:

Price \$



KIDMAN MISS GUNN K173 (P)

Tattoo: K173

Born: 02/11/2014

Rego No:KIDK173

Sire: **KIDMAN LEGACY D155 (S)**
 DEBARRY EDEN (P)
 KIDMAN COSMO B25 (AI) (ET) (P)
 KIDMAN VANITY T143 (P)
 VALMA SOUTHERN STAR (AI) (ET) (P)
 KIDMAN MINNY A173 (AI) (P)
 KIDMAN MINNY U212 (AI) (TW) (P)

Dam: **KIDMAN MISS GUNN E244 (AI) (ET) (P)**
 BRAXTON GIANT THUNDER S138 (IMP NZL) (P)
 BOWEN TORNADO Z260 (AI) (ET) (P)
 BOWEN TRICEL P180 (P)
 JSF 23 NIBBS 60G (IMP CAN) (P)
 KIDMAN MISS GUNN Z111 (AI) (P)
 KIDMAN MISS GUNN S55 (AI) (P)

October 2016 Hereford GROUP BREEDPLAN																
CE	CE DTR	GL	BW	200	400	600	MCW	Milk	SS	DC	Cwt	EMA	Rib	RUM	RBY	IMF%
-1.3		+0.6	+5.3	+31	+52	+79	+71	+12	+1.2		+44	+2.8	+0.7	+0.7	+0.5	+0.4
		47%	59%	61%	65%	69%	61%	44%	54%		58%	48%	55%	60%	52%	55%
\$ Index Values:		Supermarket: +\$80					Grass Fed Steer Index: +\$75				Grain Fed Steer Index: +\$86			EU Index: +\$87		

Traits Observed: 600WT,FAT,EMA,IMF

Depastured with Kidman Treaty J094 from 24/6/16 to 29/8/16.

Purchaser:

Price \$



KIDMAN VANITY K264 (AI) (P)

Tattoo: K264

Born: 06/11/2014

Rego No:KIDK264

Sire: **TYCOLAH GOLD RUSH (S)**
 KARINA BEN LOMOND (AI) (P)
 KARINA CHERRY Z8 (P)
 KARINA MARSALA S18 (P)
 NOROLLE 124 U126 (H#)
 TYCOLAH COUNTESS Z04 (P)
 TYCOLAH COUNTESS W72 (P)

Dam: **KIDMAN VANITY C36 (P)**
 BRAXTON GIANT THUNDER S138 (IMP NZL) (P)
 BOWEN TORNADO Z260 (AI) (ET) (P)
 BOWEN TRICEL P180 (P)
 PINE HILL ATHERTON U223 (AI) (P)
 KIDMAN VANITY X26 (P)
 KIDMAN VANITY U127 (AI) (P)

October 2016 Hereford GROUP BREEDPLAN																		
CE	CE DTR	GL	BW	200	400	600	MCW	Milk	SS	DC	Cwt	EMA	Rib	RUM	RBY	IMF%		
+0.8	+2.4	-0.5	+5.5	+34	+57	+85	+74	+11	+2.4	-3.6	+49	+3.3	+0.4	+0.1	+0.7	+0.6		
		43%	38%	74%	62%	64%	67%	71%	64%	54%	57%	35%	61%	51%	58%	62%	55%	58%
\$ Index Values:		Supermarket: +\$101					Grass Fed Steer Index: +\$95				Grain Fed Steer Index: +\$116			EU Index: +\$114				

Traits Observed: GL,600WT,FAT,EMA,IMF

Depastured with Kidman Treaty J094 from 24/6/16 to 29/8/16.

Purchaser:

Price \$



KIDMAN FAVOURITE K269 (AI) (P)

Tattoo: K269

Born: 13/11/2014

Rego No:KIDK269

KARINA BEN LOMOND (AI) (P)
 KARINA CHERRY Z8 (P)
 KARINA MARSALA S18 (P)
 Sire: **TYCOLAH GOLD RUSH (S)**
 NOROLLE 124 U126 (H#)
 TYCOLAH COUNTESS Z04 (P)
 TYCOLAH COUNTESS W72 (P)

DEBARRY EDEN (P)
 KIDMAN COSMO B25 (AI) (ET) (P)
 KIDMAN VANITY T143 (P)
 Dam: **KIDMAN FAVOURITE D260 (P)**
 KIDMAN TURBO Z11 (AI) (P)
 KIDMAN FAVOURITE B246 (AI) (P)
 KIDMAN FAVOURITE W249 (P)

October 2016 Hereford GROUP BREEDPLAN																
CE	CE DTR	GL	BW	200	400	600	MCW	Milk	SS	DC	Cwt	EMA	Rib	RUM	RBY	IMF%
+0.4	+2.4	+1.1	+5.6	+33	+55	+80	+77	+14	+1.7		+46	+2.2	-0.9	-1.8	+1.3	-0.3
39%	35%	73%	61%	63%	66%	70%	62%	54%	57%		60%	50%	58%	62%	55%	57%
\$ Index Values:		Supermarket:+\$72					Grass Fed Steer Index: +\$64			Grain Fed Steer Index: +\$67			EU Index: +\$80			

Traits Observed: GL,600WT,FAT,EMA,IMF

All'ed to Yavenvale Kahuna K115 on 4/7/16. Depastured with Wurruna Elder E327 from 2/8/16 to 24/9/16.

Purchaser: Price \$

10 Joined L Heifers



KIDMAN MINERVA QUEEN L007 (P)

Tattoo: L007

Born: 15/03/2015

Rego No:KIDL007

KOANUI ROCKET Q334 (P)
 KOANUI ROCKET 0219 (IMP NZL) (P)
 KOANUI ANGEL R187 (P)
 Sire: **MARKOWEN FEDERER (AI) (P)**
 MARKOWEN EXECUTIVE (AI) (P)
 MARKOWEN DIANA D19 (AI) (P)
 MARKOWEN DIANA (P)

KIDMAN LOTTO C21 (P)
 KIDMAN OUTLOOK F54 (P)
 KIDMAN IRISH GIRL B50 (AI) (P)
 Dam: **KIDMAN MINERVA QUEEN H253 (P)**
 DEBARRY EDEN (P)
 KIDMAN MINERVA QUEEN B114 (AI) (P)
 KIDMAN MINERVA QUEEN U92 (AI) (P)

October 2016 Hereford GROUP BREEDPLAN																
CE	CE DTR	GL	BW	200	400	600	MCW	Milk	SS	DC	Cwt	EMA	Rib	RUM	RBY	IMF%
+1.1		+1.0	+4.9	+37	+62	+90	+78	+15	+2.9		+57	+2.4	+1.2	+1.7	-0.2	+0.7
35%		50%	58%	60%	63%	68%	60%	38%	50%		56%	45%	54%	59%	51%	53%
\$ Index Values:		Supermarket:+\$106					Grass Fed Steer Index: +\$101			Grain Fed Steer Index: +\$118			EU Index: +\$114			

Traits Observed: 600WT,FAT,EMA,IMF

Depastured with Wurruna Elder E327 from 11/10/16

Purchaser: Price \$



KIDMAN LADY ECLIPSE L061 (P)

Tattoo: L061

Born: 23/03/2015

Rego No:KIDL061

KOANUI ROCKET Q334 (P)
 KOANUI ROCKET 0219 (IMP NZL) (P)
 KOANUI ANGEL R187 (P)
 Sire: **MARKOWEN FEDERER (AI) (P)**
 MARKOWEN EXECUTIVE (AI) (P)
 MARKOWEN DIANA D19 (AI) (P)
 MARKOWEN DIANA (P)

KARINA CHERRY Z8 (P)
 TYCOLAH GOLD RUSH (S)
 TYCOLAH COUNTESS Z04 (P)
 Dam: **KIDMAN HLADY ECLIPSE 234 (AI) (P)**
 BOWEN FINNIGAN Y38 (P)
 KIDMAN LADY ECLIPSE B205 (P)
 KIDMAN LADY ECLIPSE T162 (H#)

October 2016 Hereford GROUP BREEDPLAN																
CE	CE DTR	GL	BW	200	400	600	MCW	Milk	SS	DC	Cwt	EMA	Rib	RUM	RBY	IMF%
+1.5		+0.7	+4.2	+34	+59	+85	+67	+14	+2.9		+57	+3.6	+2.0	+3.0	-0.4	+1.3
37%		52%	59%	60%	64%	69%	60%	41%	50%		57%	46%	55%	59%	52%	54%
\$ Index Values:		Supermarket:+\$114					Grass Fed Steer Index: +\$111			Grain Fed Steer Index: +\$138			EU Index: +\$124			

Traits Observed: 600WT,FAT,EMA,IMF

Depastured with Wurruna Elder E327 from 11/10/17

Purchaser: Price \$



KIDMAN LADY ECLIPSE L015 (P)

Tattoo: L015

Born: 27/03/2015

Rego No:KIDL015

Sire: **MARKOWEN FEDERER (AI) (P)**
 MARKOWEN EXECUTIVE (AI) (P)
 MARKOWEN DIANA D19 (AI) (P)
 MARKOWEN DIANA (P)

Dam: **KIDMAN LADY ECLIPSE H252 (AI) (P)**
 COOTHARABA MAGNUM (H)
 MAWARRA VIRGINIAN (H)
 MAWARRA CHERRY RIPE 263 (H)
 BOWEN TORNADO Z260 (AI) (ET) (P)
 KIDMAN LADY ECLIPSE E114 (P)
 KIDMAN LADY ECILPSE Y208 (P)

October 2016 Hereford GROUP BREEDPLAN																
CE	CE DTR	GL	BW	200	400	600	MCW	Milk	SS	DC	Cwt	EMA	Rib	RUM	RBY	IMF%
-1.7		+2.7	+6.0	+40	+68	+100	+84	+14	+3.0	-3.2	+62	+3.5	+0.9	+1.3	+0.3	+1.1
39%		58%	60%	61%	64%	69%	61%	42%	51%	35%	57%	47%	55%	60%	52%	54%
\$ Index Values:		Supermarket: +\$115					Grass Fed Steer Index: +\$109					Grain Fed Steer Index: +\$135		EU Index: +\$125		

Traits Observed: 600WT,FAT,EMA,IMF

Depastured with Wirruna Elder E327 from 11/10/18

Purchaser: Price \$



KIDMAN LORNA L080 (P)

Tattoo: L080

Born: 28/03/2015

Rego No:KIDL080

Sire: **MARKOWEN FEDERER (AI) (P)**
 MARKOWEN EXECUTIVE (AI) (P)
 MARKOWEN DIANA D19 (AI) (P)
 MARKOWEN DIANA (P)

Dam: **KIDMAN LORNA H104 (P)**
 KARINA CHERRY Z8 (P)
 TYCOLAH GOLD RUSH (S)
 TYCOLAH COUNTESS Z04 (P)
 DEBARRY EDEN (P)
 KIDMAN LORNA B17 (AI) (P)
 KIDMAN LORNA R200 (P)

October 2016 Hereford GROUP BREEDPLAN																
CE	CE DTR	GL	BW	200	400	600	MCW	Milk	SS	DC	Cwt	EMA	Rib	RUM	RBY	IMF%
+3.0		+0.7	+3.1	+30	+49	+69	+60	+15	+2.8	-2.7	+42	+1.3	+1.0	+1.3	-0.5	+0.6
38%		54%	59%	60%	64%	68%	60%	41%	51%	35%	57%	46%	55%	59%	52%	54%
\$ Index Values:		Supermarket: +\$88					Grass Fed Steer Index: +\$84					Grain Fed Steer Index: +\$98		EU Index: +\$96		

Traits Observed: 600WT,FAT,EMA,IMF

Depastured with Wirruna Elder E327 from 11/10/19

Purchaser: Price \$



KIDMAN MISS GUNN L057 (P)

Tattoo: L057

Born: 29/03/2015

Rego No:KIDL057

Sire: **MARKOWEN FEDERER (AI) (P)**
 MARKOWEN EXECUTIVE (AI) (P)
 MARKOWEN DIANA D19 (AI) (P)
 MARKOWEN DIANA (P)

Dam: **KIDMAN MISS GUNN H192 (P)**
 SOUTH BUKALONG WALLACE 2 (P)
 WIRRUNA ELDER E327 (AI) (ET) (P)
 WIRRUNA MADAM A10 (AI) (ET) (P)
 KIDMAN LOTTO C21 (P)
 KIDMAN MISS GUNN F61 (P)
 KIDMAN MISS GUNN B229 (P)

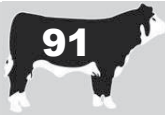
October 2016 Hereford GROUP BREEDPLAN																
CE	CE DTR	GL	BW	200	400	600	MCW	Milk	SS	DC	Cwt	EMA	Rib	RUM	RBY	IMF%
+2.5		-0.8	+3.8	+35	+58	+82	+66	+15	+3.0		+57	+3.2	+1.2	+1.7	+0.0	+1.1
36%		49%	59%	60%	64%	69%	60%	37%	50%		57%	46%	55%	59%	52%	53%
\$ Index Values:		Supermarket: +\$107					Grass Fed Steer Index: +\$104					Grain Fed Steer Index: +\$127		EU Index: +\$117		

Traits Observed: 600WT,FAT,EMA,IMF

Depastured with Wirruna Elder E327 from 11/10/20

Purchaser: Price \$

Joined L Heifers



KIDMAN TYSON L023 (P)

Tattoo: L023

Born: 29/03/2015

Rego No:KIDL023

Sire: **MARKOWEN FEDERER (AI) (P)**
 KOANUI ROCKET Q334 (P)
 KOANUI ROCKET 0219 (IMP NZL) (P)
 KOANUI ANGEL R187 (P)
 MARKOWEN EXECUTIVE (AI) (P)
 MARKOWEN DIANA D19 (AI) (P)
 MARKOWEN DIANA (P)

Dam: **KIDMAN ROYAL FAITH H241 (AI) (P)**
 KARINA CHERRY Z8 (P)
 TYCOLAH GOLD RUSH (S)
 TYCOLAH COUNTESS Z04 (P)
 BOWEN TORNADO Z260 (AI) (ET) (P)
 KIDMAN ROYAL FAITH D33 (P)
 KIDMAN ROYAL FAITH Y154 (AI) (P)

October 2016 Hereford GROUP BREEDPLAN																
CE	CE DTR	GL	BW	200	400	600	MCW	Milk	SS	DC	Cwt	EMA	Rib	RUM	RBY	IMF%
+2.2		+0.7	+3.6	+32	+57	+82	+65	+14	+2.9		+52	+3.1	+1.7	+2.4	-0.2	+1.2
39%		53%	57%	59%	61%	64%	57%	42%	51%		54%	46%	50%	53%	48%	49%
\$ Index Values:		Supermarket:+\$112					Grass Fed Steer Index: +\$110				Grain Fed Steer Index: +\$135			EU Index: +\$123		

Traits Observed: 600WT,FAT,EMA,IMF

Depastured with Wirruna Elder E327 from 11/10/21

Purchaser: Price \$



KIDMAN FLORENCE L050 (P)

Tattoo: L050

Born: 18/04/2015

Rego No:KIDL050

Sire: **MARKOWEN FEDERER (AI) (P)**
 KOANUI ROCKET Q334 (P)
 KOANUI ROCKET 0219 (IMP NZL) (P)
 KOANUI ANGEL R187 (P)
 MARKOWEN EXECUTIVE (AI) (P)
 MARKOWEN DIANA D19 (AI) (P)
 MARKOWEN DIANA (P)

Dam: **KIDMAN FLORENCE H126 (P)**
 CANNAWIGRA BLACK HAWK (P)
 CLOVERLEE HUNTER (P)
 HEATHERDALE ALMOND BLOSSOM C15 (AI) (P)
 TYCOLAH COBBADAH (P)
 KIDMAN FLORENCE C64 (P)
 KIDMAN FLORENCE Z121 (AI) (P)

October 2016 Hereford GROUP BREEDPLAN																
CE	CE DTR	GL	BW	200	400	600	MCW	Milk	SS	DC	Cwt	EMA	Rib	RUM	RBY	IMF%
-0.9		-0.3	+4.7	+33	+55	+75	+67	+14	+2.2		+54	+3.9	+0.3	+0.4	+1.1	+0.4
36%		52%	60%	61%	64%	69%	60%	38%	50%		57%	46%	55%	59%	51%	54%
\$ Index Values:		Supermarket:+\$83					Grass Fed Steer Index: +\$78				Grain Fed Steer Index: +\$89			EU Index: +\$92		

Traits Observed: 600WT,FAT,EMA,IMF

Depastured with Wirruna Elder E327 from 11/10/22

Purchaser: Price \$



KIDMAN COLLEEN L052 (P)

Tattoo: L052

Born: 23/04/2015

Rego No:KIDL052

Sire: **MARKOWEN FEDERER (AI) (P)**
 KOANUI ROCKET Q334 (P)
 KOANUI ROCKET 0219 (IMP NZL) (P)
 KOANUI ANGEL R187 (P)
 MARKOWEN EXECUTIVE (AI) (P)
 MARKOWEN DIANA D19 (AI) (P)
 MARKOWEN DIANA (P)

Dam: **KIDMAN COLLEEN G294 (AI) (P)**
 JR SOUTHERN CROSS Z17 (P)
 NJW Z17 VAQUERO 25C (IMP USA) (P)
 CIRCLE-D 832W DUCHES 283Z (P)
 COLUMBIAN X178 IMAGE A98 (P)
 KIDMAN COLLEEN E63 (P)
 KIDMAN COLLEEN W6 (AI) (P)

October 2016 Hereford GROUP BREEDPLAN																
CE	CE DTR	GL	BW	200	400	600	MCW	Milk	SS	DC	Cwt	EMA	Rib	RUM	RBY	IMF%
+2.5	+4.4	+1.7	+4.0	+33	+55	+76	+60	+13	+3.0	-2.9	+52	+3.1	+1.6	+2.0	-0.2	+0.8
40%	37%	52%	59%	59%	63%	68%	59%	42%	50%	38%	57%	47%	54%	59%	52%	53%
\$ Index Values:		Supermarket:+\$100					Grass Fed Steer Index: +\$97				Grain Fed Steer Index: +\$116			EU Index: +\$110		

Traits Observed: 600WT,FAT,EMA,IMF

Depastured with Wirruna Elder E327 from 11/10/23

Purchaser: Price \$

Joined L Heifers



KIDMAN ASTER GIRL L062 (P)

Tattoo: L062

Born: 28/04/2015

Rego No:KIDL062

KOANUI ROCKET Q334 (P)
KOANUI ROCKET 0219 (IMP NZL) (P)
KOANUI ANGEL R187 (P)

HF 4L BEYOND 36N (IMP CAN) (P)
NOVA QUASAR (AI) (P)
NOVA FLAMES CORISANDE (AI) (P)

Sire: **MARKOWEN FEDERER (AI) (P)**

Dam: **KIDMAN ASTER GIRL H122 (P)**

MARKOWEN EXECUTIVE (AI) (P)
MARKOWEN DIANA D19 (AI) (P)
MARKOWEN DIANA (P)

KIDMAN PATERSON V141 (P)
KIDMAN ASTER GIRL D187 (P)
KIDMAN ASTER GIRL A176 (P)

CE	CE DTR	GL	BW	200	400	600	MCW	Milk	SS	DC	Cwt	EMA	Rib	RUM	RBY	IMF%
\$ Index Values:				Supermarket:			Grass Fed Steer Index:				Grain Fed Steer Index:			EU Index:		

Traits Observed:

Depastured with Wirruna Elder E327 from 11/10/24

Purchaser: Price \$



KIDMAN MARINDA L131 (P)

Tattoo: L131

Born: 26/08/2015

Rego No:KIDL131

KIDMAN BRADMAN X136 (AI) (P)
KIDMAN ARCHIBALD B198 (P)
KIDMAN AMETHYST Y196 (AI) (TW) (P)

KIDMAN COSMO B25 (AI) (ET) (P)
KIDMAN LEGACY D155 (S)
KIDMAN MINNY A173 (AI) (P)

Sire: **KIDMAN BLOCKADE G128 (AI) (P)**

Dam: **KIDMAN MARINDA F206 (P)**

BOWEN TORNADO Z260 (AI) (ET) (P)
KIDMAN VANITY C36 (P)
KIDMAN VANITY X26 (P)

KIDMAN LIONHEART A93 (AI) (P)
KIDMAN MARINDA C165 (P)
KIDMAN MARINDA Z122 (AI) (P)

CE	CE DTR	GL	BW	200	400	600	MCW	Milk	SS	DC	Cwt	EMA	Rib	RUM	RBY	IMF%
\$ Index Values:				Supermarket:			Grass Fed Steer Index:				Grain Fed Steer Index:			EU Index:		

Traits Observed:

Depastured with Wirruna Elder E327 from 11/10/25

Purchaser: Price \$

Joined L Heifers

Semen Packages



TYCOLAH GOLD RUSH (S)

Tattoo: C61

Born: 08/08/2007

Rego No:TPCC61

Sire: **KARINA CHERRY Z8 (P)**
 KOANUI SPY T15 (IMP NZL) (P)
 KARINA BEN LOMOND (AI) (P)
 YALGOO CHERRYRIPE R43 (P)
 LLANDILLO NASHVILLE (P)
 KARINA MARSALA S18 (P)
 KARINA MARSALA P61 (AI) (P)

Dam: **TYCOLAH COUNTESS Z04 (P)**
 NOROLLE 22Z REACTOR R124 (AI) (ET) (P)
 NOROLLE 124 U126 (H#)
 NOROLLE 46 ISABEL S98 (AI) (P)
 KIDMAN COL JOY T96 (AI) (TW) (P)
 TYCOLAH COUNTESS W72 (P)
 TYCOLAH COUNTESS R135 (AI) (P)

October 2016 Hereford GROUP BREEDPLAN																
CE	CE DTR	GL	BW	200	400	600	MCW	Milk	SS	DC	Cwt	EMA	Rib	RUM	RBY	IMF%
+2.7	+2.9	+0.4	+4.3	+29	+50	+73	+62	+14	+2.3	-3.0	+43	+2.4	+0.0	-0.3	+0.7	+0.2
71%	64%	96%	94%	95%	95%	96%	88%	88%	95%	52%	86%	76%	80%	85%	78%	84%
\$ Index Values:		Supermarket: +\$88			Grass Fed Steer Index: +\$83				Grain Fed Steer Index: +\$96				EU Index: +\$100			

Traits Observed: CE,BWT,200WT,400WT,600WT,SS,FAT,EMA,IMF

Semen package 20 straws in Tycolah Gold Rush. Gold Rush was purchased for \$38,000 at the 2009 Dubbo National where he was Reserve Intermediate Champion. He has bred some magnificent females that are on display here today, adding great structure, light birthweight, plenty of milk with well structured udders, fantastic wedge shape body with well laid in shoulders and a fantastic head and eye. His sons have been the background of our Bull sales over the past four or so years with a minimal cull rate, C61 has had a huge impact here at Kidman.

Purchaser: Price \$



TYCOLAH GOLD RUSH (S)

Tattoo: C61

Born: 08/08/2007

Rego No:TPCC61

20 STRAWS

Purchaser: Price \$



TYCOLAH GOLD RUSH (S)

Tattoo: C61

Born: 08/08/2007

Rego No:TPCC61

10 STRAWS

Purchaser: Price \$



KERLSON PINES JESTER J99 (P)

Tattoo: J99

Born: 18/06/2013

Rego No:CJKJ99

Sire: **MERAWAH ELLIOTT F115 (P)**
 BOWEN VINCENT V1 (S)
 DEBARRY ELLIOTT (P)
 DEBARRY PURITY S67 (AI) (P)
 MERAWAH THUNDER W31 (P)
 MERAWAH SHAMROCK A4 (ET) (P)
 MERAWAH SHAMROCK N89 (P)

Dam: **KERLSON PINES U-BEAUTY C34 (P)**
 BRT BLUEPRINT N1 (AI) (ET) (P)
 MINLACOWIE VALIANT NICK (AI) (ET) (P)
 NOROLLE FUCHSIA 2U NIKKI (AI) (ET) (P)
 HEATHERDALE ATHLETE V60 (AI) (P)
 KERLSON PINES U-BEAUTY Z9 (P)
 KERLSON PINES U-BEAUTY U53 (P)

October 2016 Hereford GROUP BREEDPLAN																
CE	CE DTR	GL	BW	200	400	600	MCW	Milk	SS	DC	Cwt	EMA	Rib	RUM	RBY	IMF%
-2.8	+2.3	+0.2	+4.7	+29	+55	+77	+71	+7	+2.7		+52	+4.6	+2.0	+2.6	+0.2	+0.9
41%	36%	42%	72%	66%	66%	65%	57%	46%	76%		54%	49%	53%	57%	51%	51%
\$ Index Values:		Supermarket: +\$94			Grass Fed Steer Index: +\$91				Grain Fed Steer Index: +\$109				EU Index: +\$104			

Traits Observed: CE,BWT,200WT,400WT,SS,FAT,EMA,IMF

Semen package 20 straws in Kerlson Pines Jester. Jester was purchased at the 2015 Dubbo National for \$23,000 he was purchased for his carcass attributes and the skin and hair he possessed along with some solid figures. His first calves have dropped this year and they are as exciting a drop of calves as we have experienced here at Kidman, easy born, nice cosmetics and very appealing phenotype.

Purchaser: Price \$



KERLSON PINES JESTER J99 (P)

Tattoo: J99

Born: 18/06/2013

Rego No:CJKJ99

20 STRAWS

Purchaser: Price \$



KERLSON PINES JESTER J99 (P)

Tattoo: J99

Born: 18/06/2013

Rego No:CJKJ99

10 STRAWS

Purchaser: Price \$



WIRRUNA ELDER E327 (AI) (ET) (P)

Tattoo: E327

Born: 07/09/2009

Rego No:WNAE327

Sire: **SOUTH BUKALONG WALLACE 2 (P)**
 SOUTH BUKALONG WALKER 6 (AI) (P)
 SOUTH BUKALONG CIRCE 73 (P)
 WIRRUNA SHAW (AI) (P)
 SOUTH BUKALONG VICTORIA 152 (P)
 SOUTH BUKALONG VICTORIA 109 (P)

Dam: **WIRRUNA MADAM A10 (AI) (ET) (P)**
 JC CATALYST (IMP USA) (P)
 ELITE J7C X54 (AI) (P)
 ELITE RECOVERY N72 U24 (AI) (P)
 BIDGEE TYSON (AI) (P)
 WIRRUNA MADAM S207 (P)
 WIRRUNA MADAM 91 (P)

October 2016 Hereford GROUP BREEDPLAN																
CE	CE DTR	GL	BW	200	400	600	MCW	Milk	SS	DC	Cwt	EMA	Rib	RUM	RBY	IMF%
+5.3	+6.5	-3.7	+1.0	+34	+46	+66	+22	+23	+2.5	-5.6	+48	+3.1	+2.5	+3.8	-0.8	+1.7
61%	54%	66%	84%	84%	84%	88%	80%	65%	85%	57%	77%	69%	73%	77%	72%	75%
\$ Index Values:		Supermarket: +\$123					Grass Fed Steer Index: +\$125					Grain Fed Steer Index: +\$160		EU Index: +\$135		

Traits Observed: BWT,200WT,400WT,600WT,SS,FAT,EMA,IMF,DOC

Semen package 20 STRAWS Wirruna Elder. Elder was purchased as a heifer Bull in 2011 and has been excellent as he has offered us easy to no care during our heifer calving, also he has enabled us to promote heifer joining bulls that have sold to \$30,000 dollars and a female line that are feminine with outstanding udder and teat shape.

Purchaser: Price \$



WIRRUNA ELDER E327 (AI) (ET) (P)

Tattoo: E327

Born: 07/09/2009

Rego No:WNAE327

10 STRAWS

Purchaser: Price \$



BOWEN TORNADO Z260 (AI) (ET) (P)

Tattoo: Z260

Born: 08/09/2004

Rego No:BWNZ260

Sire: **BRAXTON GIANT THUNDER S138 (IMP NZL) (P)**
 BRAXTON DYNASTY K243 (IMP NZL) (P)
 BRAXTON THUNDERBOLT M113 (IMP NZL) (P)
 BRAXTON MOONBEAM J214 (P)
 BRAXTON GIANT 1 (IMP NZ) (IMP NZL) (P)
 BRAXTON GIRLIE J118 (P)
 BRAXTON GIRLIE 257 (P)

Dam: **BOWEN TRICEL P180 (P)**
 WOOLFORD P183 TOP GUN 81W (IMP CAN) (P)
 BOWEN KILDONAN K208 (AI) (ET) (P)
 SEVENBARDOT IRISH GIRL 59 (P)
 CLEARFIELD SIR JOHN (IMP NZ) (IMP NZL) (P)
 BOWEN TRICEL K199 (AI) (P)
 BOWEN TRICEL G9 (P)

October 2016 Hereford GROUP BREEDPLAN																
CE	CE DTR	GL	BW	200	400	600	MCW	Milk	SS	DC	Cwt	EMA	Rib	RUM	RBY	IMF%
-1.8	-0.4	+1.1	+6.2	+39	+63	+94	+73	+6	+2.1	-5.6	+50	+4.3	+0.7	+0.4	+0.6	+1.8
87%	79%	97%	98%	97%	97%	97%	95%	96%	96%	70%	94%	88%	89%	92%	88%	92%
\$ Index Values:		Supermarket: +\$119					Grass Fed Steer Index: +\$115					Grain Fed Steer Index: +\$158		EU Index: +\$138		

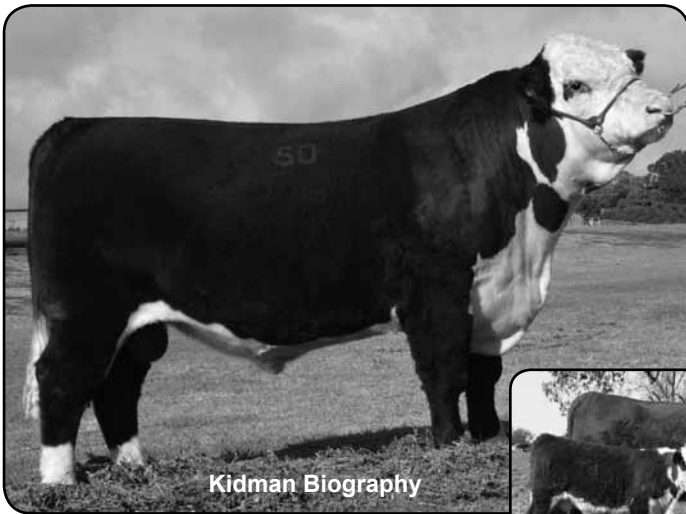
Traits Observed: BWT,200WT,400WT,600WT,SS,FAT,EMA,IMF

Semen Package 20 straws Bowen Tornado. A half share in Tornado was purchased at Bowen in 2006, when we first laid eyes on him we were amazed with the carcass he possessed. It was one of those occasions we knew we had to buy him, he has offered us carcass, phenotype and fantastic feet his females consistently pass on those carcass attributes. His figures are well worth having a look at.

Purchaser: Price \$

2012 Golden Opportunity Female Sale

Highlights and Results



Kidman Biography



“ ◀ We purchased 2 cows from the Kidman Golden Opportunity Female Sale in 2012. We were looking for structurally sound, functional females and we knew that we would find those females at Kidman. We had great success with Kidman Biography H008 who was the bull calf at foot of one of the females we purchased Kidman Shamrock E254. Biography was sold for 2nd top price of \$26,000 at the 2014 Herefords Australia National Show and Sale in Dubbo. Shamrock has since gone onto being one of our main donor cows. We believe that anyone will certainly find a female to suit their program at Kidman. ”

Tim & Jemma Reid - JTR Cattle Company

“ ▶ We couldn't be happier with the purchase. Calculate has gone on to sire our top priced bull last year and continues to give us superb calves. We will definitely be back. ”

Graham and Felicity
Reeves - Reevesdale Poll Herefords



▲ Andtravern Brigadeir K039 selling for \$44,000 at the 2016 Wodonga Hereford National out of Kidman Lorna F076 purchased at our 2012 Golden opportunity sale in 2012.

“ ◀ We wanted to get a new female line at your sale and we have certainly done that. We now have three females that we have kept out of Minnie and a good bull for our 2017 sale. Hamlet was a bonus... When we saw the amount of meat and great hindquarter on him we knew we had to use him. We have not been disappointed with our purchase. ”

Phil Glover - Weetaliba Poll Herefords



BUYER'S INSTRUCTION SLIP

To be handed to the settling agent immediately after the sale (by all purchasers)

PURCHASER DETAILS

Name/trading as:

Address:

.....

Tel/Mobile: Email:

P.I.C.:

Signature: Date:

DELIVERY DETAILS

Lots purchased:

Insure for: (period) Amount (\$)

Transport arrangements: *(please provide a mud map)*

.....

.....

STUD TRANSFER (POLL HEREFORDS)

Transfer registration to Herefords Australia Limited? *(Please Circle)* Y / N

If yes, please provide stud number:

AGENT TO INVOICE

BUYER'S INSTRUCTION SLIP - Mud Map