

**WAGYU FULLBLOOD 100%
INTERNATIONAL SALE**

ONLINE SALE

SATURDAY 9 MAY 2015



A SPECIAL OFFERING OF **ELITE WAGYU BULLS FEMALES, SEMEN AND EMBRYOS**

Conducted by the Australian Wagyu Association in association with Landmark and auctions**plus**. A live auction sale plus online bidding through auctions**plus**.

BIDDING OPENING

1.15pm AEST Saturday 9 May

Mercure Capricorn Resort
Yeppoon Queensland AUSTRALIA

SALE INLCUDES

- 32 Live Wagyu fullbloods**
 - 7 Semen packages**
 - 2 Embryo packages**
 - 3 Elite female embryo flushes**
-





WELCOME TO OUR SECOND WAGYU FULLBLOOD 100% INTERNATIONAL SALE

We are delighted to present the Australian Wagyu Association's second Wagyu Fullblood 100% International Sale. With a broad range of world's best Wagyu genetics on offer we are confident this sale offers something for everyone. Live bulls and females, semen, embryos and embryo flushes are all on offer providing a remarkable opportunity for those just entering the Wagyu industry through to experienced operators looking to expand with elite genetics.

Conducted during the World Wagyu Conference, this sale provides our many members in Australia and Wagyu breeders across the world with a unique opportunity. Many of the genetics on offer may be exported. Overseas buyers may also choose to retain the live animals in one of the range of artificial breeding centres located throughout Australia. This sale is an international event not to be missed.

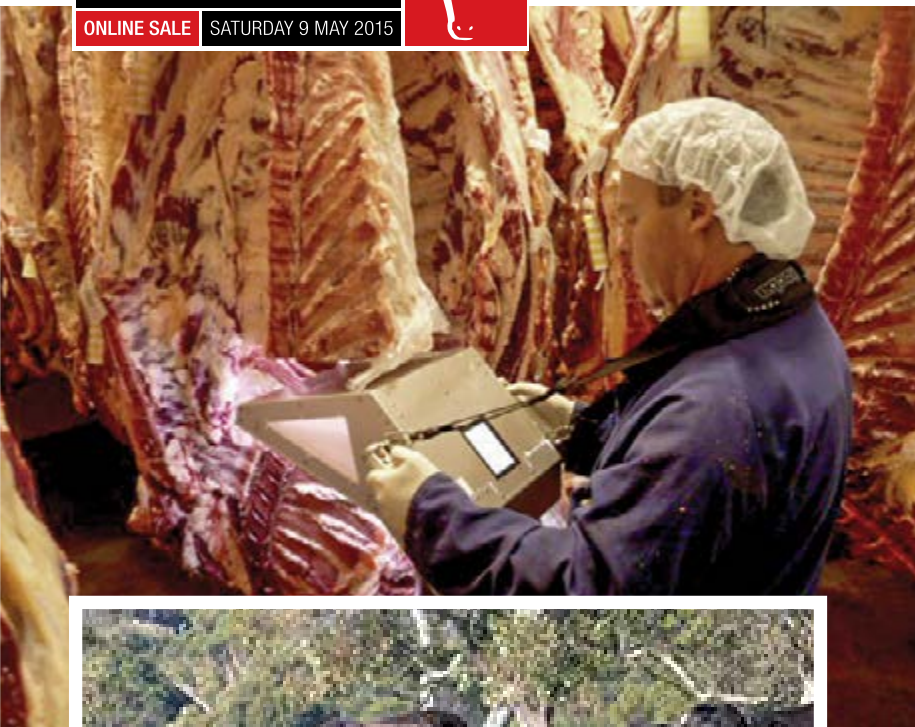
Good luck in purchasing these Wagyu Fullblood 100% genetics to add real value to your Wagyu beef business.

Warmest regards

A handwritten signature in black ink, appearing to read 'Scott de Bruin', with a long horizontal flourish extending to the right.

Scott de Bruin

President
Australian Wagyu Association



WAGYU IN AUSTRALIA

The Australian Wagyu industry has rapidly emerged over the past 25 years to be a very significant component of the Australian beef industry.

High marbling (AUS-MEAT marble score 6 through to 9+) has differentiated Wagyu from all other breeds, creating very significant domestic and international demand in retail sectors where highest quality is the hallmark. Wagyu fullblood 100%, purebred Wagyu F4 93+% and Crossbred Wagyu produce boxed beef product from vertically integrated enterprises, steers for live export to Japan and heifers for export internationally.

Very high meat premiums are accelerating both Wagyu fullblood and crossbred Wagyu production. As a result Australian Wagyu seedstock sires, dams and embryos are in high demand domestically and internationally.

CONTENTS

PAGE 4	Advances in Wagyu breeding technology
PAGE 5	Sale management of the 2015 Wagyu Fullblood 100% sale
PAGE 6	Genetic conditions in Wagyu cattle + code explanation
PAGE 8	Wagyu BREEDPLAN EBVs explained
PAGE 9	Traditional Japanese origins
PAGE 10	Percentile bands and breed average for 2013 born Wagyu calves
PAGE 11	Conditions of sale
PAGE 12	2015 Vendors list
PAGE 14	Online & searchable sale catalogue
PAGE 16	Reference sires
PAGE 17	2015 Sale lot summary

LOTS FOR SALE

PAGE 20	LOT 1 - 7 Bulls for sale
PAGE 23	LOT 8 - 14 Wagyu fullblood 100% semen packages of straws
PAGE 27	LOT 15 - 19 Mature females
PAGE 29	LOT 20 - 29 K drop heifers
PAGE 34	LOT 30 - 39 J drop heifers
PAGE 39	LOT 40 - 42 Embryo flushes from Wagyu fullblood 100% females
PAGE 35	LOT 43 - 44 Wagyu fullblood 100% embryo packages of 6 embryos
PAGE 42	Membership delivers real value
PAGE 43	Smartrec, jobs done

While care has been taken to ensure that information contained in the AWA 2015 Wagyu Fullblood 100% International Sale catalogue is true and correct at the time of publication, changes in circumstances after the time of publication may impact on the accuracy of this information.

ADVANCES IN WAGYU BREEDING TECHNOLOGY

With the rapid growth in demand for elite Wagyu beef in Australia and globally, production throughout the value chain is expanding. Well described, high performing Wagyu genetics are called for in both the fullblood and crossbred Wagyu supply chains. In response, Wagyu Australia seedstock registrations doubled in 2013 and increased a further 14% last year to 6764; all DNA parent verified to ensure accurate pedigree.

Wagyu Australia has used the world renowned BREEDPLAN genetic analysis technology since 1992, producing Estimated Breeding Values (EBVs) to describe the economically important traits in Wagyu production, including fertility, maternal, growth and carcass (see Wagyu BREEDPLAN EBVs Explained on page 8).

Further improvement in the Wagyu BREEDPLAN technology has been undertaken over the past two years through a Wagyu Collaborative Genetics Research Project. In Stage 1 of this unique and innovative project, over 3000 Wagyu Fullblood and crossbred Wagyu carcasses were analysed using the Japanese digital image camera and AUS-MEAT data. Accurate heritabilities and trait correlations were determined for Wagyu traits. New carcass EBVs were developed for marbling score and marbling fineness; carcass weight and eye muscle area were improved with the addition of carcass data.

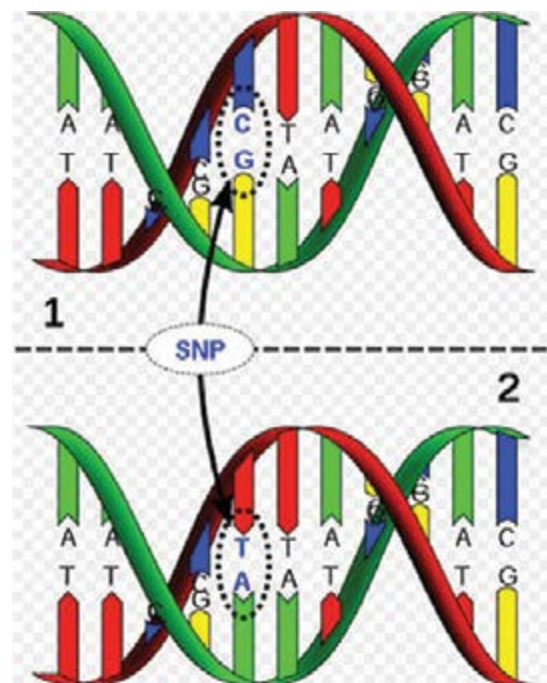
Stage 1 also involved genomic analysis. Genotypes for 2147 animals were generated by University of Queensland Genotyping Laboratory: 1547 using the Illumina Bovine LD(10/20K) SNP chip for the slaughter progeny, 50K and 80K SNP for their sires and the HD 800K SNP for 146 originally imported and highly used AI sires and ET dams. These genotypes and their related performance data were utilised in the first “single step BREEDPLAN” analysis to produce genomically enhanced EBVs.

The Collaborative Genetics Research Project – Stage 2 has produced a new Wagyu Genetic Analysis fully customised to the Wagyu breed using the genetic parameters and new EBVs developed in Stage 1. A new fullblood terminal index utilising the marbling score and carcass weight EBVs has produced sire rankings for 310 fullblood sires and dam rankings for over 2000 fullblood females. These new EBVs and Index were launched into production in March 2015 enabling accurate identification,



selection and use of high performance Wagyu genetics, and enabling rapid genetic gain. New genomic tests will now be developed to predict very young sire and heifer seedstock performance based purely on DNA samples. Also, this same technology will be used in tests to predict commercial feedlot profitability of commercial Wagyu animals, increasing the efficiency of feeding regimes.

Such powerful genetic tools will accurately predict performance and drive genetic improvement. Wagyu sires and dams demonstrating high performance will rapidly increase in value as a direct result of their proven value to the supply chain.



DNA strings containing Single Nucleotide Polymorphisms or SNP



SALE MANAGEMENT OF THE 2015 WAGYU FULLBLOOD 100% INTERNATIONAL SALE

The second Wagyu Fullblood 100% International Sale is being conducted by the Australian Wagyu Association. The sale will be conducted as a physical (live) auction at 1.15 pm (AEST) on Saturday May 9 2015 at the World Wagyu Conference, Mercure Capricorn Resort, Yeppoon Queensland, Australia.

A real-time interface with **auctionsplus** will enable bids to be received online simultaneously with the auction. **auctionsplus** is an online auction platform that will provide exposure to a national and international pool of potential buyers.

HOW TO BID WITHIN AUSTRALIA

An **auctionsplus** Interfaced sale is run in conjunction with a physical auction that is being controlled by an auctioneer. **auctionsplus** allows purchasers to bid online without attending the sale, or provides an opportunity for those bidders at the sale who wish to maintain discretion in their bidding activity. Online buyers can log in via the **auctionsplus** website and observe the auction in real time, and place bids via the online auction. These bids are immediately transferred to a representative on site, who will raise their bid with the auctioneer.

Online bidding is available only to registered users. Registration is free - visit www.auctionsplus.com.au to register. Please register at least 48 hours prior to the sale. Microsoft Silverlight is required to connect to **auctionsplus** sales; first time users are advised to visit the Help section of the **auctionsplus** website and do a Software Check to ensure Silverlight is installed. Demonstration Auctions may also be viewed in order for new users to become familiar with the system. Bidding through iPads is possible but requires a special temporary setup. Contact Landmark for details.

BID ONLINE FROM ANYWHERE IN THE WORLD

Prospective international purchasers wishing to operate at this Wagyu sale can do so through their computers. However, they must contact Landmark to pre-register and receive trading approval.

A Landmark temporary buyer number will be set up, with a username and password, to enable the purchaser to log in anywhere in the world and bid. This account will be terminated upon settlement post sale.



MORE INFORMATION

LANDMARK

BRENDAN WADE phone 0439 663 060
from overseas + 61 439 663 060
email brendan.wade@landmark.com.au

COLIN CAMPBELL
Landmark **auctionsplus** Queensland Coordinator
phone 0429 068 810

COLBY EDE
Landmark Senior Account Manager Stud Stock
phone 0417 265 980
email colby.ede@landmark.com.au



phone 02 9262 4222

web www.auctionsplus.com.au

GENETIC CONDITIONS IN WAGYU CATTLE

All breeds of cattle, in fact all mammals including humans, have undesirable genetic conditions. Fortunately, advances in molecular genetics have facilitated the development of DNA tests for their management. Breed societies are at the forefront of development of strategies to manage undesirable genetic conditions and seedstock members are leading the industry with their uptake of this technology. The known genetic conditions of Wagyu are as follows:

Spherozystosis (B3) - This is a disorder of the surface membrane of the erythrocyte (red blood cells). The protein from the B3 gene makes up the basic structure of the erythrocyte. Cattle that are homozygous (have two copies of the recessive allele) have pernicious anaemia (bleeding caused by the abnormal red blood cells). Death normally occurs within the first 7 days after birth. Some cases live to adulthood but there is a severe retardation in growth.

Chediak Higashi Syndrome (CHS) - CHS is a macrophage disorder (a white blood cell that has an important role in the immune response to disease). If cattle have a malfunctioning immune system, this makes them unable to resist bacterial challenge. Blood is slow to coagulate so often the first indicator is unusual umbilical cord haemorrhage at parturition (calving). Cattle with this syndrome often have an unusually pale coat colour.

Claudin 16 Deficiency (CL16) - CL16 (also known as RTD or Renal tubular dysplasia) is a gene disorder on chromosome 1 and causes kidney failure (chronic interstitial nephritis often with zonal fibrosis or excess of fibrous connective tissue). This disorder results in terminal kidney failure and the onset can occur any time from late adolescence. Cattle are unlikely to live more than 6 years.

Factor XI deficiency (F11) - F11 is a plasma protein that participates in the formation of blood clots. Factor XI deficiency is an autosomal disorder that is associated with mild bleeding in Wagyu. Affected animals show prolonged bleeding time and abnormal plasma coagulation after trauma or surgical procedures such as castration or dehorning. It is also possible that Carrier x Carrier matings have increased difficulty producing viable fertilized embryos or full-term pregnancies and are may be repeat (return to cycle)breeders. Note – this is generally a non-lethal recessive condition with affected animals being able to live and breed as normal.

NOTE - There are other recessive genetic conditions known to exist in Wagyu cattle (e.g. F13) however they have not been identified in the Australia Wagyu population.

HOW ARE THE CONDITIONS INHERITED?

Research from Japan indicates that B3, CHS, CL16 and F11 are simply inherited recessive conditions. This means that a single pair of genes controls each condition. For this mode of inheritance two copies of the undesirable gene need to be present before the condition is seen; in which case you may get a calf with the symptoms of B3, CHS, CL16 and F11. Animals with only one copy of the undesirable gene (and one copy of the normal form of the gene), that appear normal (i.e. no symptoms), are known as “carriers”.

WHAT HAPPENS WHEN CARRIERS ARE MATED?

A carrier will, on average, pass the undesirable gene form to a random half (50 %) of their progeny. When a carrier bull and carrier cow are mated:

- > There is a 25% chance that the progeny produced will have two normal genes and so will never pass on the undesirable gene.
- > There is a 50% chance that the mating will produce a carrier.
- > There is a 25% chance that the progeny will inherit two copies of the undesirable gene and be affected by the genetic condition.

When a carrier animal is mated to an animal tested free of the genetic condition:

- > All progeny will appear normal and unaffected by the condition.
- > There is a 50% chance that the mating will produce a carrier.
- > There is a 50% chance that the progeny produced will have two normal genes and so will never pass on the undesirable gene.

NOTE - that an animal that is tested free by DNA test of the genetic condition will not pass the genetic condition to its descendants, even if it has carriers in its own ancestry. Therefore, DNA-tested free animals can be used in your breeding program with confidence that they are not transmitting the unfavourable gene to subsequent generations.



USING GENEPROB FOR GENETIC CONDITIONS


The GeneProb analysis interrogates the pedigree of each animal and calculates the probability that the animal is a carrier for each genetic condition from the known DNA information of their relatives. For example, if an animal's dam had been tested free of the genetic condition but the sire was a tested carrier, the animal would be reported as having a 50% chance of being a carrier. The gene probability analysis includes all known DNA information for animals recorded on the Australian Wagyu Association (AWA) database. Genetic test results are based on samples provided by breeders.

DISCLAIMER - *The AWA makes no statements, representations or warranties about the accuracy or completeness of any information relating to the status of a particular animal: and disclaims all responsibility for information and all liability (including without limitation, liability in negligence) for all expenses, losses, damages, and costs you may incur as a result of information being inaccurate or incomplete in any way for any reason.*

It is important to note that the GeneProb results are only current at the date of publishing and are limited by the DNA test result and pedigree information available. The results may change as further DNA testing is performed, particularly when the level of testing that has been conducted is relatively low. The AWA Animal Search facility will consequently become the best source of data on an animal's status, with the GeneProb results being routinely updated in the future.

HOW SHOULD GENETIC CONDITIONS BE MANAGED?

An informative presentation on the management of genetic conditions was delivered as part of the "Know Your Genes" webinar course conducted by Southern Beef Technology Services (SBTS).

This presentation can be viewed from the following SBTS [website](http://sbts.une.edu.au/Webinars/webinars.html)  sbts.une.edu.au/Webinars/webinars.html

CODE EXPLANATION

The first two, three or four characters vary with the genetic condition – ie. B3, CHS, CL16 or F11

- — F** Indicates that the sample submitted for this animal **has been tested** and found to be **FREE** of the causative mutation responsible for the indicated genetic condition. This animal is homozygous free, meaning that it has two copies of the normal variant (or allele) of the gene. **Shown in green in the lot listing within the catalogue.**
- — C** Indicates that the sample submitted for this animal **has been tested** and found to be a **CARRIER** of the causative mutation responsible for the indicated genetic condition. This animal is heterozygous for the mutation, meaning that it has one mutant allele and one normal allele. This animal could pass the mutation to approximately half of its progeny.
- — — %** Indicates that, based on pedigree information supplied by the breeder of the animal, the animal **has a chance to be a carrier** of the mutation responsible for the indicated genetic condition but **HAS NOT BEEN TESTED**. The higher the indicated percentage, the larger the chance the animal may be a carrier
- — FU** Indicates that, based on pedigree information supplied by the breeder of the animal, the animal is **expected to be free** of the mutation responsible for the indicated genetic condition. However, this animal **HAS NOT BEEN TESTED** for the causative mutation and the AWA gives no guarantee as to the animal's "free" status.
- — A** Indicates that the sample submitted for this animal **has been tested** and found to be **AFFECTED** by the genetic condition. This animal is homozygous for the mutation responsible for the genetic condition and has two copies of the mutant variant of the gene.

WAGYU BREEDPLAN EBVs AND INDEXES EXPLAINED

AUSTRALIAN WAGYU GENETIC ANALYSIS

The Australian Wagyu BREEDPLAN analysis provides the most thorough and accurate assessment of the Wagyu genetics available outside Japan. The analysis includes over 19,200 calves that have at least a weaning (200 day) weight recorded. This represents 42,306 dams and 4,177 sires. In addition, there are over 15,300 animals with birth weights and 15,800 with 400 day weights. Carcase data includes 3213 carcase weights, 1908 carcase EMA, 2791 carcase AUS-MEAT marble scores, 1872 camera marbling percent measures and 1756 camera fineness index measures.

ESTIMATED BREEDING VALUES (EBVs)

An animal's breeding value is its genetic merit, half of which will be passed on to its progeny. While we will never know the exact breeding value, for performance traits it is possible to make good estimates. These are called Estimated Breeding Values (EBVs). The EBV is therefore the best estimate of an animal's genetic merit for that trait. EBVs are expressed as the difference between an individual animal's genetics and the genetic base to which the animal is compared.

ACCURACY

An accuracy value is presented with every EBV and gives an indication of the amount of information that has been used in the calculation of that EBV. The higher the accuracy, the lower the likelihood of change in the animal's EBV as more information is analysed for that animal or its relatives.

ACCURACY RANGE INTERPRETATION

LESS THAN 50% = Low accuracy and should be considered a preliminary estimate. The EBV could change substantially as more performance information becomes available.

50 - 74% = Medium accuracy, usually based on the animal's own records and pedigree.

75 - 90% = Medium-high accuracy and usually includes some progeny information. Becoming a more reliable indicator of the animal's value as a parent.

90% AND ABOVE = High accuracy. It is unlikely that the EBV will change much with the addition of more progeny data.

FERTILITY AND BIRTH EBVS

Scrotal Size EBV (cm) is an indicator of male fertility due to semen quality and quantity. Higher (positive) EBVs indicate higher fertility. There is also a small negative correlation with age of puberty in female progeny.

Gestation Length EBV (days) is based on AI records. Lower (negative) GL EBVs indicate shorter gestation lengths which generally relate to easier calving and increased growth after birth.

Birth Weight EBV (kg) is based on the measured birth weight of animals, adjusted for dam age. The lower the value the lighter the calf at birth and the lower the likelihood of a difficult birth. This is particularly important when selecting sires for use over heifers.

GROWTH EBVS

200-Day Milk EBV (kg) is an estimate of an animal's milking ability. For sires, this EBV is indicative of their daughter's milking ability as it affects the 200-day weight of their calves.

200-Day Growth EBV (kg) is calculated from the weight of animals taken between 80 and 300 days of age. Values are adjusted to 200 days and for dam age. This EBV is the best single estimate of an animal's genetic merit for growth to early ages.

400-Day Weight EBV (kg) is calculated from the weight of progeny taken between 301 and 500 days of age, adjusted to 400 days and for dam age. This EBV is the best single estimate of an animal's genetic merit for yearling weight.

600-Day Weight EBV (kg) is calculated from the weight of progeny taken between 501 and 900 days of age, adjusted to 600 days and for dam age. This EBV is the best single estimate of an animal's genetic merit for growth beyond yearling age.

CARCASE EBVS

Carcase Weight EBV (kg) estimates the genetic difference in carcase weight at a standard age of 750 days. AUS-MEAT measured carcase weights from slaughter animals contribute to this EBV

Eye Muscle Area EBV (cm²) estimates genetic differences in eye muscle area at the 12/13th rib site of a 400kg dressed carcase. More positive EBVs indicate larger eye muscle area and therefore higher retail beef yields. AUS-MEAT and Japanese digital image camera measured eye muscle areas from slaughter animals contribute to this EBV.

TRADITIONAL JAPANESE ORIGINS

There is some evidence of genetic separation into the Wagyu genetic strain as much as 35000 years ago. Modern Wagyu cattle are the result of crossing of the native cattle in Japan with imported breeds. Crossing began in 1868 after the Meiji restoration in that year. The government wanted to introduce Western food habits and culture. Brown Swiss, Devon, Shorthorn, Simmental, Ayrshire, and Korean cattle were imported during this period. The infusions of these British, European and Asian breeds were closed to outside genetic infusions in 1910.

The variation of conformation within the Wagyu breed is greater than the variation across British and European breeds. The three major black strains – Tajiri or Tajima, Fujiyoshi (Shimane) and Kedaka (Tottori) evolved due to regional geographic isolation in Japan. These breeding differences have produced a Japanese national herd that comprises 90% black cattle with the remainder being of the red strains (Akaushi) Kochi and Kumamoto, which have been strongly influenced



by Korean and European breeds, particularly Simmental. In Japan there are four breeds that are considered Wagyu and those are the Japanese Black (the predominant Wagyu exported through the USA to Australia), Japanese Brown (Referred to as Red Wagyu in Australia), Japanese Polled and Japanese Shorthorn. There are no Japanese Polled or Shorthorns being bred outside Japan. Wagyu strains were isolated according to prefecture (state) and other breeds imported for crossing were not the same in each prefecture.

Wagyu beef production in Japan is highly regulated and progeny testing is mandatory. Only the very best proven genetics are kept for breeding. Realising the value of their unique product, the Japanese Government banned the export of Wagyu in the late 1990's and declared them a national living treasure. Zenwa is the government held entity in Japan that oversees the WAGYU registry for Japanese Black, Brown, Polled and Shorthorn.

Rib Fat EBV (mm) estimates the genetic differences in fat depth at the 12/13th rib in a 400kg dressed carcass. More positive EBVs indicate more subcutaneous fat and earlier maturity. AUS-MEAT Rib Fat measurements from slaughter animals contribute to this EBV.

Rump Fat EBV (mm) estimates the genetic differences in fat depth at the P8 site of a 400kg dressed carcass. More positive EBVs indicate more subcutaneous fat and earlier maturity.

Retail Beef Yield Percent EBV (%) represents total (boned out) meat yield as a percentage of a 400kg dressed carcass. A more positive EBV indicates higher percentage yield of retail beef.

NEW CARCASS EBVS

Marble Score (AUS-MEAT marble score) is an estimate of the genetic difference in the AUS-MEAT marble score in a 400kg carcass. A higher more positive value indicates that the animal has genes which produce more marbling (intramuscular) fat. AUS-MEAT measured marble score and Japanese digital image camera measured marbling percent and marbling fineness index from slaughter animals contribute to this EBV.

Marble Fineness (Marbling Fineness Index) is an estimate of the genetic difference in the Marbling Fineness Index (degree of fineness of marbling fat) as measured by the Japanese Digital Image Camera. Sires with higher EBVs are expected to produce progeny with higher levels of marbling fineness.

FULLBLOOD TERMINAL INDEX

The fullblood terminal index utilises the carcass weight EBV and the marble score EBV because these are the traits which determine the price of Wagyu carcasses.

The assumptions used to calculate the Index are a 420kg carcass, a base price of \$8.50/kg carcass weight and an increase/decrease in value of the carcass of \$1kg per marbling score. It is assumed that only half of the difference in EBVs will be passed on to the progeny because only half the genes come from the sire.

If a sire has a carcass weight EBV of 0 and a marble score EBV of +0.0 it will have an Index of zero.

If a sire has a carcass weight EBV of +20kg and a marble score EBV of +2.0 the value of the additional 10kg of carcass weight is \$85 (10kg @ \$8.50) and the value of one additional marble score is \$430 (430kg @ \$1). The sire will have an Index of +\$515 (\$85 + \$430). This sire will on average add \$515 to the value of its progeny compared to a sire with a zero Index.

If a sire has a carcass weight EBV of -20kg and a marble score EBV of -2.0 the reduction in value due to the reduced carcass weight will be -\$85 (-10kg @ \$8.50) and the reduction in value to the one less marble score will be -\$410 (410kg @ \$1). It will have an Index of -\$495 (-\$85 -\$410). The value of the progeny of this sire will on average be \$495 less than a sire with an Index of zero. **See next page for percentile bands and breed averages.**

WAGYU BREEDPLAN EBVs AND INDEXES EXPLAINED

BREED AVERAGE

For benchmarking, the average Wagyu BREEDPLAN EBVs for 2013 born calves are tabled below. The breed average table may be used to determine if an animal's EBVs and fullblood terminal index are above or below the average of all animals in the Wagyu Genetic Analysis.

PERCENTILE BANDS

The percentile band table may be used to determine where an animal's EBVs and fullblood terminal index rank compared to all others in the Wagyu Genetic Analysis.

gestation length (days)	birth weight (kg)	200-day weight (kg)	400-day weight (kg)	600-day weight (kg)	mature cow weight (kg)	milk (kg)	scrotal size (cm)	carcase weight (kg)	eye muscle area (sq.cm)	rib fat (mm)	rump fat (mm)	retail beef yield (%)	marble score	marbling fineness	fullblood terminal index (\$)
-------------------------	-------------------	---------------------	---------------------	---------------------	------------------------	-----------	-------------------	---------------------	-------------------------	--------------	---------------	-----------------------	--------------	-------------------	-------------------------------

PERCENTILE BANDS FOR 2013 BORN WAGYU CALVES

Top 1%	-1.8	-2.5	+23	+37	+50	+56	+9	+2.8	+33	+4.9	+1.8	+2.3	+1.1	+2.0	+0.49	+483
Top 5%	-1.2	-1.5	+18	+29	+38	+41	+7	+1.7	+25	+4.7	+1.3	+1.6	+0.8	+1.4	+0.33	+355
Top 10%	-0.9	-0.8	+16	+25	+33	+35	+5	+1.2	+22	+4.3	+1.1	+1.3	+0.6	+1.2	+0.25	+302
Top 15%	-0.7	-0.4	+14	+23	+30	+32	+5	+0.9	+20	+3.2	+0.9	+1.0	+0.5	+1.0	0.20	+264
Top 20%	-0.5	-0.1	+13	+21	+27	+29	+4	+0.7	+18	+2.8	+0.8	+0.9	+0.4	+0.8	+0.17	+232
Top 25%	-0.4	+0.1	+12	+19	+25	+26	+3	+0.5	+17	+2.4	+0.8	+0.8	+0.4	+0.7	+0.14	+205
Top 30%	-0.3	+0.3	+11	+18	+23	+24	+3	+0.4	+16	+2.2	+0.7	+0.8	+0.3	+0.6	+0.11	+183
Top 35%	-0.2	+0.4	+11	+17	+21	+22	+2	+0.3	+14	+1.9	+0.6	+0.7	+0.2	+0.5	+0.08	+164
Top 40%	-0.1	+0.6	+10	+15	+20	+20	+2	+0.1	+13	+1.7	+0.5	+0.7	+0.2	+0.4	+0.06	+144
Top 45%	+0.0	+0.8	+9	+14	+19	+18	+2	+0.0	+12	+1.5	+0.4	+0.6	+0.1	+0.3	+0.04	+123
Top 50%	+0.1	+0.9	+9	+13	+17	+16	+1	-0.1	+11	+1.4	+0.4	+0.5	+0.0	+0.2	+0.02	+104
Top 55%	+0.2	+1.1	+9	+12	+16	+16	+1	-0.2	+10	+1.2	+0.3	+0.4	+0.0	+0.1	0.00	+88
Top 60%	+0.3	+1.2	+8	+11	+15	+16	+0	-0.3	+8	+1.0	+0.2	+0.3	-0.1	+0.1	-0.02	+72
Top 65%	+0.5	+1.2	+8	+11	+15	+14	+0	-0.4	+7	+0.8	+0.1	+0.2	-0.2	0.0	-0.04	+56
Top 70%	+0.6	+1.4	+7	+10	+13	+12	-1	-0.5	+6	+0.6	+0.0	+0.1	-0.3	-0.1	-0.06	+37
Top 75%	+0.8	+1.6	+6	+9	+12	+10	-2	-0.6	+5	+0.4	-0.1	+0.0	-0.3	-0.2	-0.09	+14
Top 80%	+0.9	+1.9	+5	+8	+10	+8	-3	-0.8	+5	+0.2	-0.2	-0.1	-0.5	-0.3	-0.11	-10
Top 85%	+1.0	+2.2	+4	+6	+7	+5	-3	-0.9	+4	-0.2	-0.3	-0.3	-0.6	-0.4	-0.15	-41
Top 90%	+1.0	+2.6	+3	+4	+4	+1	-3	-0.9	+1	-0.6	-0.4	-0.5	-0.7	-0.6	-0.19	-81
Top 95%	+1.4	+3.3	+1	+0	+0	-5	-5	-1.2	-2	-1.2	-0.6	-0.8	-1.0	-0.8	-0.26	-140
Top 99%	+2.1	+4.4	-4	-7	-9	-16	-8	-1.7	-8	-2.7	-1.0	-1.3	-1.5	-1.4	-0.41	-264

AVERAGE EBVs FOR 2013 BORN WAGYU CALVES

EBVs	+0.1	+0.9	+9	+14	+18	+18	+1	+0.0	+11	+1.5	+0.3	+0.4	+0.0
------	------	------	----	-----	-----	-----	----	------	-----	------	------	------	------

AVERAGE EBVs FOR ANIMALS BORN 1990 - 2011

	+0.2	+0.02	+104
--	------	-------	------

DISCLAIMER

The Standard Estimated Breeding Values (EBVs) contained in this Sale Catalogue were compiled by the Agricultural Business Research Institute (ABRI) from data supplied by the breeders and the Wagyu Collaborative Genetics Research Project. Neither the society nor the ABRI oversee or audit the collection of the breeder data.

The new Estimated Breeding Values for Marble Score, and Marble Fineness were calculated by the Animal Genetics and Breeding Unit (AGBU) from measurements taken on carcasses in the Wagyu Genetics Collaboration Research Project by staff skilled in the use of the Japanese digital camera.

The carcass data analysed by AGBU was predominately from fullblood animals but included some purebred and crossbred Wagyu animals. Some of the animals on which carcass data was measured had unknown sires and/or dams. Where the parents were unknown, the carcass data from that animal did not contribute to the carcass EBVs of the animals listed.

NOTE

This percentile table for the new marble score and marbling fineness EBVs and fullblood terminal index is for the 5715 animals which were genetically analysed for these traits. Animals were born between 1990 and 2011.

CONDITIONS OF SALE

The sale will be conducted under the usual 'Conditions of Sale' as applied by Landmark and auctions**plus** and these are available in their websites. The following are special conditions applied by the Australian Wagyu Association (AWA) to generate a high level of quality assurance.

The AWA is facilitating the second WAGYU FULLBLOOD 100% INTERNATIONAL SALE to make available high performing Wagyu genetics to the Australian and international beef cattle industries.

SALE REGULATIONS

Vendors have agreed to offer lots under the following conditions unless specifically stated otherwise.

1. Vendors must be AWA full members and all live lots and donor dams and sires must be AWA registered.
2. All lots are Wagyu Fullblood 100% genetics.
3. **EMBRYOS** - lots to comprise of 6 A grade embryos from the same joining. Purchaser responsible for freight.
4. **FLUSHES** - from a named female, two straws of semen to be supplied by purchaser. While the purchaser owns the complete flush regardless of results, 4 A grade embryos are guaranteed but with no pregnancy guarantees. Flush to be at purchaser's cost. All claims to be made within 12 months of sale date.
5. If available BREEDPLAN figures are published in the sale catalogues and mid-parent BREEDPLAN figures for embryos or where specified.
6. **LICENCED SEMEN** - lots of around 10 straws. Purchaser responsible for freight.
7. **BULLS & FEMALES** - fertility and soundness guarantees apply from vendors. All live lots to be independently evaluated pre-sale by a qualified veterinarian for structural soundness and fertility with semen tests for bulls and pregnancy tests for females at vendor's expense. Bulls guaranteed to produce viable semen within six months of sale. Any claim against the breeding ability or structural breakdown must be made in writing and accompanied by a Veterinary Certificate within 12 months of the sale date. Any animal failing to breed will be replaced with an animal of similar value. Purchaser responsible for freight.
8. **RECESSIVE GENES** - All lots to have the genetic test status published in the catalogue.
9. **auctionsplus** - the sale will be a live auction with an online interface through auctions**plus** allowing appropriately registered potential buyers world-wide to bid. All lots will appear on a large screen at the sale venue and bids can be made online, by telephone direct to the agents or at the venue. Potential buyers from Australia should register on auctions**plus**.com.au while special arrangements must be made by potential overseas buyers.
10. **INSURANCE** - risk changes to purchaser at the fall of the hammer. Insurance is recommended and will be available at the sale.
11. **EXPORT PROTOCOL** - availability of lots to overseas countries is indicated and overseas buyers should check with authorities to ensure access to their purchases.

2015 VENDORS LIST

ACADEMY CATTLE COMPANY HERD ID ARW

Academy started breeding Red Wagyu's in 2003 and has been performance recording with BREEDPLAN since that time. There are now three breeding arms to the herd. Firstly, fullblood Japanese Red Wagyu of which Recital J34 is the upcoming young sire. Secondly, high Tajima Purebred Red Wagyu's 99+% for the purpose of breeding high marbling into Red Wagyu's. Thirdly, Academy is starting to breed Poll Wagyu's using Senepol as the base.

Bull production, semen and embryo sales are the business and fertility, marbling, structural correctness, growth, milk and quiet cattle are the chief goals of the herd. All available tools including embryo transplanting are used in the pursuit of excellence in breeding.



CONTACT BARBARA ROBERTS-THOMSON
TEL 02 6772 1856
EMAIL acadcattle@tpg.com.au
ADDRESS 80 Roseneath Lane
 ARMIDALE NSW 2350
WEB www.academyredwagyu.com

AUSTRALIAN AGRICULTURAL COMPANY (AACo) HERD ID AAC

The AAcO Westholme owned Wagyu herd contains the most highly credentialed fullblood Japanese Black Wagyu sires and breeding females to ever leave Japan. In 1997 and 1998 Westholme Wagyu imported 84 Japanese born Black-haired Wagyu females from Hokkaido in northern Japan, to USA. The Westholme import of females is believed to represent 46 per cent of all fullblood Japanese Black Wagyu females (184) imported to USA from Japan. The Westholme imports are significant because of the value and diversity of the genetic lines imported. These include 11 Hongen-registered (the highest Japanese ranking for cattle) Kedaka females of 28 total Kedaka, 12 Tajiri females & 44 Fujiyoshi females. These females are amongst the biggest to ever leave Japan and many of them excel in milking and thus have become important to develop heavy, well-marbled fullblood carcasses at low cost.



CONTACT FERGUS JOB (Wylarah Station Manager)
TEL 07 4626 5276
MOBILE 0427 735 911
EMAIL fjob@aaco.com.au
ADDRESS Wylarah Station 22441, Carnarvon Highway
 SURAT QLD 4417
WEB www.aaco.com.au

BALD RIDGE WAGYU HERD ID CCC

Bald Ridge Wagyu and Genetic Edge Australia carry out semen collection and embryo flushing programs to supply elite genetics to domestic and international markets. Their donor herd is 100% fullblood Japanese Wagyu and free of recessive genetic defects. Located on 'Kaludabah', in Mudgee NSW, Genetic Edge Australia is approved by the Australian Department of Agriculture as an embryo and semen export facility.

Bald Ridge Wagyu is a prominent supplier of black and red Wagyu bulls to the domestic market. Their aim is to produce exceptional quality, large framed Wagyu, which are fertile, high marbling and with excellent temperament.



CONTACT RICK and DAWN HUNTER
TEL 02 6768 0108
MOBILE 0418 483 836
EMAIL baldridgecattle@bigpond.com
ADDRESS 428 Kaludabah Road
 MUDGEE NSW 2850
WEB www.baldridgecattle.com.au

GOORAMBAT WAGYU HERD ID GRS

Goorambat Wagyu runs over 250 fullblood females at Benalla in northern Victoria. They supply fullblood steers to a number of feedlots as well as having their own Wagyu beef brand: Goorambat 100/100.

The stud is active in BREEDPLAN and involved in the Australian Wagyu Association Collaborative Genetics Research Project.



CONTACT DOM and JO BAYARD
TEL 03 5764 1224
MOBILE 0427 732 538
EMAIL dombayard@bigpond.com
ADDRESS 256 Peck Road
 GOORAMBAT VIC 3725
WEB www.goorambatwagyu.com.au

IRONGATE WAGYU HERD ID IGW

Irongate Wagyu's property is in the lush Kalgan River region located near Albany in WA, with an abundant water supply and excellent grazing land.

The cattle operation comprises a Wagyu fullblood seedstock herd and crossbred Wagyu/Angus F1 50%'s for feeder and ET recipients. The herd is managed by Stud Manager Mark James, a 30 year beef cattle veteran who has a special interest in the husbandry and technical aspects of improving the genetic quality of the herd. Irongate Wagyu have seen some excellent carcasses results from the two semen sires on offer.



CONTACT MARK JAMES (Manager)
TEL 08 9846 4217
MOBILE 0429 444 799
EMAIL irongatenominees@bigpond.com.au
ADDRESS 1157 Dempster Road, Kalgan River
 ALBANY WA 6330
WEB www.irongatewagyu.com



KURO KIN WAGYU HERD ID KKW

Kuro Kin Wagyu was founded in 1997, starting with genetics from Takeda Farms, Sumo Wagyu and Hammond Farms. Sires added include Michifuku, Terutani, Fukutsuru 068, ET003, Kikuyasu 400, Kandagene DM 100, Overflow Katsumi and Overflow Kaneyama, Itoshigenami, Goshu Michitaro, Goshu Michishige, Bar R 4P Sanjiro and Itozurudoi. The stud also focused on superior females such as Suzutani, Rikitani and Okutani. Their aim is to produce the best Wagyu genetics in large framed functional cattle able to survive on natural pastures under Australian conditions. This year all their fullblood Wagyu cows have raised their own calves without supplementation.

Kuro Kin Wagyu has selected high Tajima bloodlines with enough infusions of the Shimane and Kedaka lines to capture size, balance and maternal qualities, while never losing sight of good temperament.

KURO KIN WAGYU



黒金

CONTACT PETER BISHOP JNR
TEL 02 6545 4189
MOBILE 0429 454 189
EMAIL kurokin@bigpond.com
ADDRESS Wootton 3962 Bunnan Road
SCONE NSW 2337
WEB www.kurokinwagyu.com.au

MOYHU WAGYU HERD ID MOY

Moyhu Wagyu commenced breeding fullblood Wagyu in 2000 after breeding crossbred Wagyu F1 50%'s for the previous three years.

With around 350 fullblood Wagyu breeders and 150 Angus breeders for crossbred Wagyu F1 production, Moyhu Wagyu has and always will be focused on producing breeding bulls for sale to other breeders for crossbreeding and fullblood production.

With a long term commitment to the Wagyu industry they retain ownership of most of our Wagyu cattle for custom feeding. Bulls and heifers are available for sale throughout the year.



CONTACT WAYNE GRIMSHAW (Manager)
TEL 03 5729 5539
MOBILE 0428 234 616
EMAIL w.grimshaw@bigpond.com
ADDRESS 1570 Meadow Creek Road
MEADOW CREEK, VIC 3678
WEB www.moyhuwagyu.com.au

THE WRIGHT WAGYU (HUGHES PASTORAL COMPANY) HERD ID HPC

Hughes Pastoral is Australia's largest privately owned Wagyu operation having a commercial herd of approximately 20,000 cows which run on various properties in Northern Australia. Their home base is "Tierawoomba" near Nebo south west of Mackay in Queensland.

The stud herd, The Wright Wagyu, comprising approximately 600 cows, runs mainly on Colomendy Station near Armidale in the New England region of NSW and supplies bulls for their northern properties. At Colomendy the elite herd has been fully performance tested for 15 years and every available tool is used in the pursuit of excellence. Embryo transplanting of their top performing cows has been carried out and they are happy to share some of their very best genetics in the form of semen and embryos.



HUGHES PASTORAL

CONTACT BARBARA ROBERTS-THOMSON
TEL 02 6772 1856
EMAIL acadcattle@tpg.com.au
ADDRESS Hughes Pastoral Company Colomendy Station
ARMIDALE NSW 2350
WEB www.wrightwagyu.com.au

HAMBLIN PTY LTD HERD ID SDL

Hamblin Pty Ltd runs a Wagyu crossbreeding operation in Queensland producing carcasses for the international market.



CONTACT DARREN HAMBLIN
TEL 07 4950 4203
MOBILE 0419 638 710
EMAIL Strathdale@hamblin.com.au
ADDRESS "Strathdale" 690 Blue Mountains Road
SARINA QLD 4737

SUMO CATTLE COMPANY HERD ID SMO

Sumo Wagyu has been providing foundation genetics to the majority of Wagyu fullblood operations in Australia since 1997.

Their philosophy is to breed genetically superior large framed females which milk well, enabling the calves to thrive in typical Australian grazing conditions.

Their aim is to produce stock with the correct balance of Tajima, Shimane, and Tottori genetics ensuring offspring have considerable frame size and excellent marbling characteristics.

They are pleased to present these eight elite fullblood heifers for sale. They are fully vaccinated and come with a breeding guarantee.



CONTACT SIMON COATES
MOBILE 0438 200 294
EMAIL sumo@gil.com.au
ADDRESS 117 McMullen Road
BROOKFIELD QLD 4069

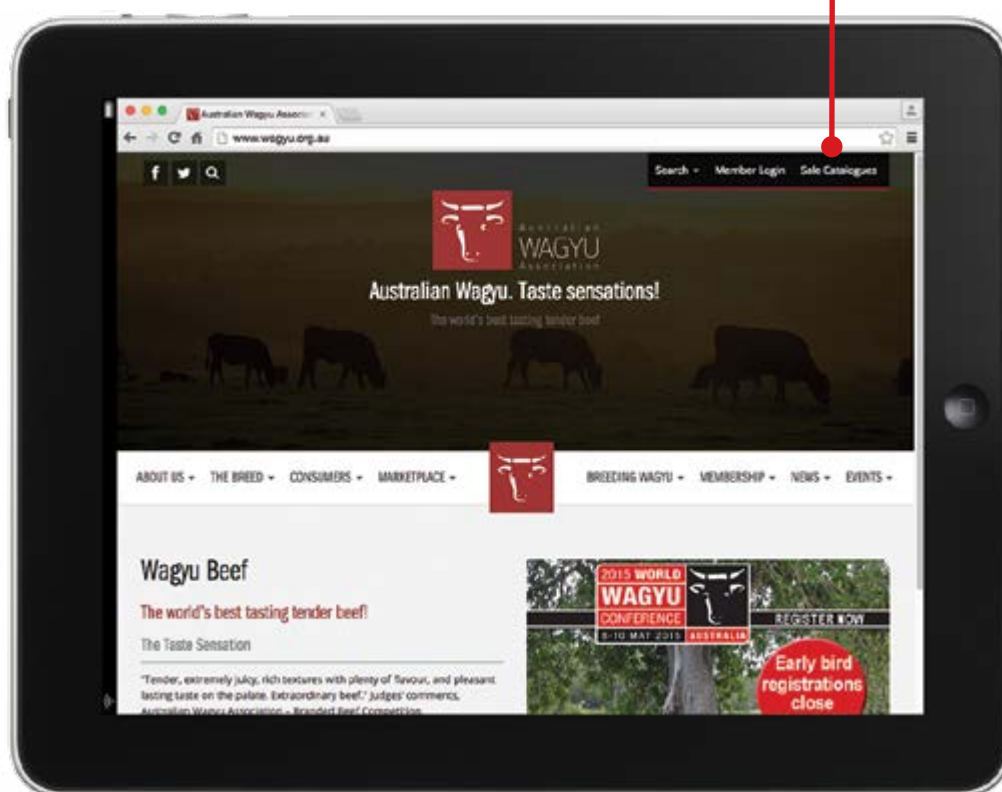
ONLINE & SEARCHABLE SALE CATALOGUE

An online version of this sale catalogue is available on the Australian Wagyu Association website. Each animal for sale may be selected and interactively searched for pedigree and performance details.

An electronic version of this extended sale catalogue is also available of the Australian Wagyu Association website.

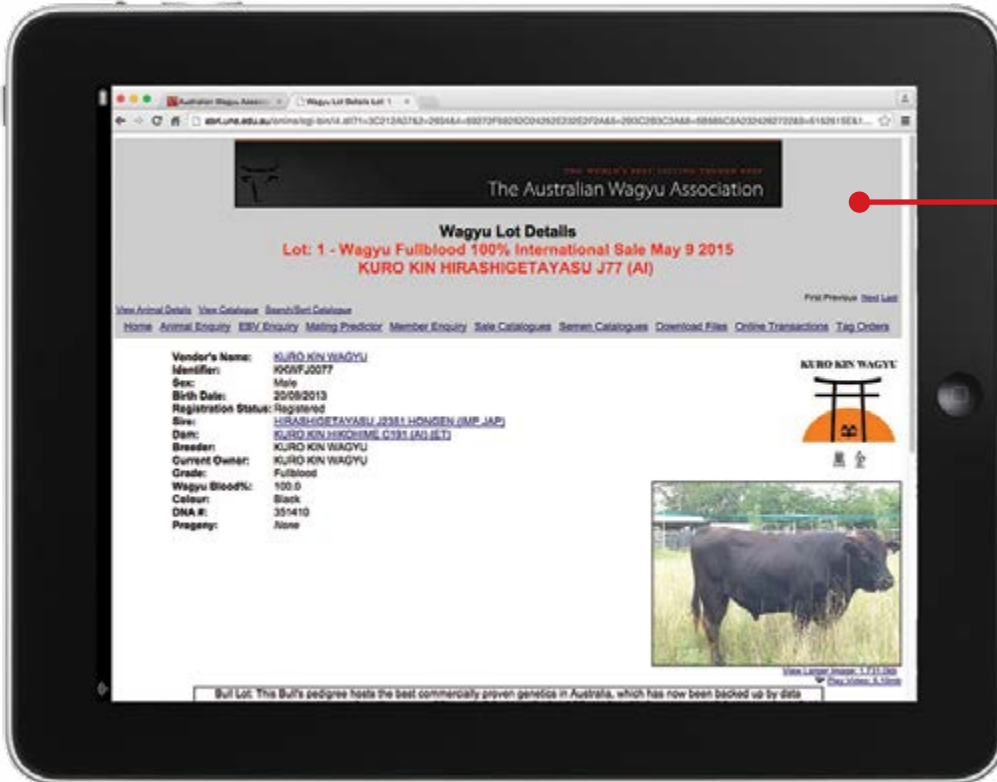
HOW TO FIND THE CATALOGUE?

To interactively view and search the lots listed for sale at the 2015 Wagyu Fullblood 100% International, visit www.wagyu.org.au and select the **sale catalogues tab**, then select the **Wagyu Fullblood 100% International Sale**



FIND MORE DETAIL ABOUT AN INDIVIDUAL LOT

When viewing the sale catalogue electronically, it is now possible to access and search in more detail an individual sale lot directly from the lot listing by clicking on the 'view online sale catalogue' button as pictured below.



Once selected, this button will redirect you to the respective lot as listed in the online 2015 Wagyu Fullblood 100% International Sale to enable further pedigree and performance searches for the animal.

REFERENCE SIRES

The following Wagyu fullblood 100% sires have been used throughout the pedigrees of the animals offered for sale in this catalogue. In almost all cases they have been analysed with a large number of progeny in the Wagyu genetic analysis and so have high accuracy EBVs.

They are provided as reference sires to enable benchmarking against the animals listed in the sale lots.

ANIMAL Id	REGO No	HIRASHIGETAYASU J2351 HONGEN (IMP JAP)	ITOMORITAKA J2703 HONGEN (IMP JAP)	ITOSHIGEFUJI (IMP USA)	ITOSHIGENAMI (IMP USA)	ITOZURUDOI TF151 (IMP USA)	KITATERUYASUDOI J2810 HONGEN (IMP JAP)	KIKUTSURUDOI TF146 (IMP USA)	TERUTANI J2494 TF40 (IMP JAP)	TWAFR0003 TWA ICHIRYUNO (IMP USA) (ET)	TWAFR0007 TWA SHIKIKAN (IMP USA) (ET)	WKSFM0139 WORLD K'S HARUKI-2	WKSFP0001 WORLD K'S KITAGUNI JR	WKSFM0164 WORLD K'S MICHIFUKU	WKSFP0100 WORLD K'S SANJIROU (AI) (ET)	IMUFQ2599 TF YUKIHARUNAMI 4 (IMP USA)			
GL	BW	200	400	600	MCW	MILK	SS	CWT	EMA	RIB	RUMP	RBY	MS	MF	FTI	EBV	ACC		
IMJFAJ2351	IMJFAJ2351	+4.8	+5.5	+27	+40	+49	+50	+7	+2.0	+24	-0.4	+0.4	-0.3	+1.0	+0.2	-2.60	\$144	-	ACC
IMJFAJ2703	IMJFAJ2703	-0.9	+3.8	+21	+35	+47	+28	+15	+4.1	+24	+1.8	+1.1	+0.9	+1.6	-0.4	-3.50	\$16	-	ACC
IMUFQTF147	IMUFQTF147	+0.0	+3.1	+18	+33	+45	+65	+8	+0.4	+36	-7.7	-0.8	+1.3	-1.9	-0.4	-2.00	\$65	-	ACC
IMUFQTF148	IMUFQTF148	+0.1	-1.5	+2	-1	-7	-23	-6	-1.4	+2	+1.5	+1.9	+1.6	-0.9	+2.0	+1.30	\$430	-	ACC
IMUFLTF151	IMUFLTF151	-0.7	+1.1	+12	+19	+29	+26	+6	+0.5	+18	+1.6	-0.5	+0.4	+0.2	+0.3	+2.80	\$143	-	ACC
IMJFAJ2810	IMJFAJ2810	-2.6	-1.3	-1	-2	-3	-7	-1	-1.1	-10	+0.9	-1.0	-2.2	+0.4	+1.0	+1.00	\$166	-	ACC
IMUFRTF146	IMUFRTF146	-0.2	-1.7	-2	-1	-5	-8	+0	-	+1	-0.2	+0.5	+1.9	-1.3	+0.3	+0.80	\$69	-	ACC
IMUFJTF40	IMUFJTF40	-1.1	-1.9	-2	-11	-10	-23	-1	-0.9	-11	+1.1	-1.4	-0.8	+0.1	-0.4	+1.60	\$131	-	ACC
TWAFR0003	TWAFR0003	-0.5	+1.2	+17	+23	+32	+32	+3	-0.5	+11	+3.8	-0.6	+0.1	+0.8	-0.6	-3.00	\$80	-	ACC
TWAFR0007	TWAFR0007	+0.5	+0.4	+1	+0	+3	+19	-5	+0.4	-22	+2.0	-1.2	-1.5	+0.9	+1.2	+2.00	\$151	-	ACC
WKSFM0139	WKSFM0139	-2.7	+0.1	+16	+29	+37	+37	+1	+0.9	+30	+3.6	+1.1	+2.1	-0.4	-0.2	-1.20	\$84	-	ACC
WKSFP0001	WKSFP0001	-1.0	-3.3	-12	-18	-27	-27	-6	+0.2	-18	-2.6	+1.1	+0.8	-2.0	+1.2	+1.20	\$169	-	ACC
WKSFM0164	WKSFM0164	+1.8	+0.3	+4	+3	+1	+2	-13	-2.6	-3	+9.1	+1.0	+0.8	+1.0	+1.1	+3.80	\$216	-	ACC
WKSFP0100	WKSFP0100	+2.1	+0.4	+1	+3	+3	+3	-14	-1.7	-3	+9.6	-2.0	-3.0	+3.2	+0.8	+0.60	\$156	-	ACC
IMUFQ2599	IMUFQ2599	+0.3	+3.8	+13	+24	+30	+37	+7	+0.1	+13	+1.6	-0.5	+0.2	+1.1	-1.0	-2.70	\$157	-	ACC

2015 SALE LOT SUMMARY

Use the percentile band table on page 10 to determine where an animal's EBVs or Fullblood Terminal Index rank compared to all others in the Wagyu genetic analysis

LOT No	VENDOR	TYPE	REGO No	GL	BW	200	400	600	MCW	MILK	SS	CWT	EMA	RIB	RUMP	RBY	MS	MF	FTI	EBV	ACC
1	KURO KIN WAGYU	BULL	KKWFJ0077	+3.3	+2.8	+15	+21	+26	+28	-1	+0.1	+14	+2.5	+0.8	+0.3	+0.6	-	-	-		
				57%	62%	67%	69%	66%	63%	59%	56%	63%	56%	57%	57%	55%	-	-	-		
2	WESTHOLME WAGYU	BULL	AACFG0101	+0.8	+2.5	+6	+19	+26	+38	-	+0.8	-	+0.7	+0.8	+0.6	-0.3	-	-	-		
				61%	81%	77%	73%	68%	55%	-	71%	-	47%	54%	56%	46%	-	-	-		
3	WESTHOLME WAGYU	BULL	AACFG0206	-	+3.9	+11	+20	+23	+29	-2	+0.5	+10	+0.5	-0.3	-1.2	+0.0	-	-	-		
				-	80%	86%	76%	77%	64%	50%	73%	65%	51%	58%	60%	51%	-	-	-		
4	WESTHOLME WAGYU	BULL	AACFG0897	+0.4	+0.4	+7	+14	+14	+8	+4	+0.8	+4	+3.7	+2.2	+2.3	-0.4	-	-	-		
				52%	80%	79%	76%	72%	62%	54%	76%	65%	55%	60%	62%	54%	-	-	-		
5	WESTHOLME WAGYU	BULL	AACFE1069	+0.6	+1.4	+8	+16	+21	+22	+1	+3.2	+15	-0.9	+1.4	+1.4	-1.4	-	-	-		
				57%	79%	73%	73%	70%	63%	61%	76%	66%	61%	65%	66%	60%	-	-	-		
6	HAMBLIN PTY LTD	BULL	KYOFE16589	-	-	-	-	-	-	-	-	-	-	-	-	-	-	-	-		
				-	-	-	-	-	-	-	-	-	-	-	-	-	-	-	-		
7	MOYHU WAGYU	BULL	MOYFJ0182	+2.4	+3.7	+19	+29	+37	+38	+6	+0.9	-	+0.7	-0.1	-0.2	+0.9	-	-	-		
				53%	56%	56%	56%	55%	54%	54%	53%	-	53%	53%	54%	52%	-	-	-		
8	WESTHOLME WAGYU	SEMEN	AACFF0758	+2.0	+5.1	+20	+44	+50	+51	+4	+1.8	+27	+2.3	+1.5	+1.0	-0.3	-	-	-		
				58%	94%	92%	90%	80%	65%	53%	89%	75%	66%	75%	76%	66%	-	-	-		
9	WESTHOLME WAGYU	SEMEN	AACFF0758	+2.0	+5.1	+20	+44	+50	+51	+4	+1.8	+27	+2.3	+1.5	+1.0	-0.3	-	-	-		
				58%	94%	92%	90%	80%	65%	53%	89%	75%	66%	75%	76%	66%	-	-	-		
10	ACADEMY RED WAGYU	SEMEN	WESFZ0278	+2.6	+4.9	+23	+38	+46	+42	+8	+2.0	+34	+0.1	-1.9	-2.3	+1.2	+0.6	-1.60	+\$277		
				75%	96%	96%	96%	95%	94%	94%	87%	90%	81%	87%	88%	80%	73%	68%	-		
11	ACADEMY RED WAGYU	SEMEN	ARWFJ0034	-	+3.7	+22	+33	+53	-	-	-	-	-0.6	+0.4	+0.4	-0.3	-	-	-		
				-	50%	61%	56%	56%	-	-	-	-	34%	44%	44%	36%	-	-	-		
12	IRONGATE WAGYU	SEMEN	IGWFB0006	-	+1.2	+12	+13	+25	+26	-2	-	+13	+1.8	+0.1	+0.3	-0.2	-	-	-		
				-	64%	77%	81%	84%	69%	60%	-	68%	42%	42%	42%	39%	-	-	-		
13	IRONGATE WAGYU	SEMEN	IGWFC0016	-	+3.1	+19	+31	+46	+54	-1	+0.4	+30	+1.5	-2.2	-1.9	+0.9	-	-	-		
				-	67%	81%	84%	85%	72%	52%	68%	73%	51%	54%	56%	47%	-	-	-		
14	THE WRIGHT WAGYU	SEMEN	LFDFY0004	-1.2	-1.2	-1	+0	-1	-2	-5	-1.1	-8	+4.0	+0.4	+0.2	+0.3	+2.0	+3.7	+\$382		
				63%	86%	88%	83%	80%	69%	60%	59%	82%	59%	63%	64%	59%	84%	72%	-		
15	WESTHOLME WAGYU	MATURE FEMALES	BYWFA0121	-0.5	+1.4	+11	+19	+24	+24	+3	+0.2	-	-0.1	+0.2	+0.9	-0.5	-	-	-		
				54%	64%	63%	62%	61%	57%	65%	54%	-	54%	54%	55%	52%	-	-	-		

AVERAGE EBVs

2013 BORN WAGYU CALVES


gestation length (days)	birth weight (kg)	200-day weight (kg)	400-day weight (kg)	600-day weight (kg)	mature cow weight (kg)	milk (kg)	scrotal size (cm)	carcase weight (kg)	eye muscle area (sq.cm)	rib fat (mm)	rump fat (mm)	retail beef yield (%)
+0.1	+0.9	+9	+14	+18	+18	+1	+0.0	+11	+1.5	+0.3	+0.4	+0.0

1991 - 2011 BORN

marble score	marbling fineness	fullblood terminal index (\$)
+0.2	+0.02	+104

2015 SALE LOT SUMMARY

Use the percentile band table on page 10 to determine where an animal's EBVs or Fullblood Terminal Index rank compared to all others in the Wagyu genetic analysis

LOT No	TYPE	REGO No	GL	BW	200	400	600	MCW	MILK	SS	CWT	EMA	RIB	RUMP	RBY	MS	MF	FTI	EBV	ACC
LOT No 16	MATURE FEMALES	AACFC0012	-1.3	+0.5	+12	+17	+18	-8	+4	+0.9	+15	+3.8	+1.0	+0.7	+0.9	-	-	-		
VENDOR WESTHOLME WAGYU			63%	81%	75%	74%	76%	69%	65%	64%	68%	62%	71%	72%	64%	-	-	-		
LOT No 17	MATURE FEMALES	AACFD0245	-1.8	+2.0	+10	+22	+28	+24	+0	+1.3	+9	+1.9	+0.0	-1.0	+0.8	-	-	-		
VENDOR WESTHOLME WAGYU			71%	82%	77%	77%	73%	67%	69%	66%	68%	60%	62%	63%	59%	-	-	-		
LOT No 18	MATURE FEMALES	AACFD0432	-	+4.1	+26	+39	+57	+65	+9	-	+38	+0.7	+0.5	-0.1	+0.0	-	-	-		
VENDOR WESTHOLME WAGYU			-	77%	71%	71%	67%	57%	62%	-	60%	49%	64%	64%	53%	-	-	-		
LOT No 19	MATURE FEMALES	AACFD0831	+2.8	+5.7	+26	+36	+45	+37	+7	+0.9	+22	+2.1	-1.1	-2.4	+2.0	-	-	-		
VENDOR WESTHOLME WAGYU			61%	79%	75%	75%	72%	66%	70%	58%	67%	60%	68%	69%	62%	-	-	-		
LOT No 20	K DROP HEIFER	AACFK5189	-	+2.4	+14	+22	+30	-	-	-	-	-	-	-	-	-	-	-		
VENDOR WESTHOLME WAGYU			-	57%	53%	51%	52%	-	-	-	-	-	-	-	-	-	-	-		
LOT No 21	K DROP HEIFER	AACFK5118	-	+3.6	+18	+28	+42	-	-	-	-	-	-	-	-	-	-	-		
VENDOR WESTHOLME WAGYU			-	55%	54%	53%	51%	-	-	-	-	-	-	-	-	-	-	-		
LOT No 22	K DROP HEIFER	AACFK5236	-	+3.5	+16	+28	+33	-	-	+1.1	-	-	-	-	-	-	-	-		
VENDOR WESTHOLME WAGYU			-	59%	57%	57%	52%	-	-	52%	-	-	-	-	-	-	-	-		
LOT No 23	K DROP HEIFER	AACFK5155	-	+2.5	+11	+24	+25	-	-	+0.8	-	+0.5	+0.6	+0.0	-0.1	-	-	-		
VENDOR WESTHOLME WAGYU			-	62%	60%	59%	54%	-	-	52%	-	43%	51%	51%	44%	-	-	-		
LOT No 24	K DROP HEIFER	AACFK5035	-	+2.9	+19	+27	+33	+28	+1	-	-	+0.6	+0.0	-0.6	+0.4	-	-	-		
VENDOR WESTHOLME WAGYU			-	61%	59%	59%	56%	50%	52%	-	-	47%	50%	50%	46%	-	-	-		
LOT No 25	K DROP HEIFER	AACFK5105	-	+2.5	+16	+25	+28	-	-	-	-	-	-	-	-	-	-	-		
VENDOR WESTHOLME 			-	56%	54%	53%	50%	-	-	-	-	-	-	-	-	-	-	-		
LOT No 26	K DROP HEIFER	AACFK5149	-	+3.5	+17	+27	+38	-	-	+0.2	-	-	-	-	-	-	-	-		
VENDOR WESTHOLME WAGYU			-	58%	55%	53%	54%	-	-	50%	-	-	-	-	-	-	-	-		
LOT No 27	K DROP HEIFER	AACFK5095	-	+4.0	+20	+35	+46	-	-	-	-	-	-	-	-	-	-	-		
VENDOR WESTHOLME WAGYU			-	56%	54%	52%	53%	-	-	-	-	-	-	-	-	-	-	-		
LOT No 28	K DROP HEIFER	AACFK5241	-	+4.2	+21	+40	+48	-	-	+1.9	-	+1.9	+0.8	+0.2	+0.6	-	-	-		
VENDOR WESTHOLME WAGYU			-	64%	61%	60%	56%	-	-	54%	-	47%	53%	54%	48%	-	-	-		
LOT No 29	K DROP HEIFER	AACFK5231	-	+2.9	+15	+28	+33	-	-	+0.9	-	+2.3	+1.5	+1.3	-0.2	-	-	-		
VENDOR WESTHOLME WAGYU			-	63%	61%	60%	55%	-	-	55%	-	44%	51%	52%	45%	-	-	-		
LOT No 30	J DROP HEIFER	MOYFJ0186	-	-	-	-	-	-	-	-	-	-	-	-	-	-	-	-		
VENDOR MOYHU WAGYU			-	-	-	-	-	-	-	-	-	-	-	-	-	-	-	-		

AVERAGE EBVs

2013 BORN WAGYU CALVES

gestation length (days)	birth weight (kg)	200-day weight (kg)	400-day weight (kg)	600-day weight (kg)	mature cow weight (kg)	milk (kg)	scrotal size (cm)	carcass weight (kg)	eye muscle area (sq.cm)	rib fat (mm)	rump fat (mm)	retail beef yield (%)
+0.1	+0.9	+9	+14	+18	+18	+1	+0.0	+11	+1.5	+0.3	+0.4	+0.0

1991 - 2011 BORN

marble score	marbling fineness	fullblood terminal index (\$)
+0.2	+0.02	+104



2015 SALE LOT SUMMARY

Use the percentile band table on page 10 to determine where an animal's EBVs or Fullblood Terminal Index rank compared to all others in the Wagyu genetic analysis

LOT No 31 TYPE J DROP HEIFER
VENDOR MOYHU WAGYU **REGO No** MOYFJ0221

GL	BW	200	400	600	MCW	MILK	SS	CWT	EMA	RIB	RUMP	RBY	MS	MF	FTI	EBV	ACC
-	-	-	-	-	-	-	-	-	-	-	-	-	-	-	-	-	-
-	-	-	-	-	-	-	-	-	-	-	-	-	-	-	-	-	-

LOT No 32 TYPE J DROP HEIFER
VENDOR SUMO CATTLE COMPANY **REGO No** SMOFJ0024

GL	BW	200	400	600	MCW	MILK	SS	CWT	EMA	RIB	RUMP	RBY	MS	MF	FTI	EBV	ACC
-	-	-	-	-	-	-	-	-	-	-	-	-	-	-	-	-	-
-	-	-	-	-	-	-	-	-	-	-	-	-	-	-	-	-	-

LOT No 33 TYPE J DROP HEIFER
VENDOR SUMO CATTLE COMPANY **REGO No** SMOFJ0030

GL	BW	200	400	600	MCW	MILK	SS	CWT	EMA	RIB	RUMP	RBY	MS	MF	FTI	EBV	ACC
+0.9	+0.3	+7	+9	+10	+8	-7	-1.4	-	+5.4	+1.2	+1.2	+0.2	-	-	-	-	-
55%	57%	57%	57%	57%	56%	57%	56%	-	55%	55%	56%	54%	-	-	-	-	-

LOT No 34 TYPE J DROP HEIFER
VENDOR SUMO CATTLE COMPANY **REGO No** SMOFJ0034

GL	BW	200	400	600	MCW	MILK	SS	CWT	EMA	RIB	RUMP	RBY	MS	MF	FTI	EBV	ACC
-	+0.3	+11	+19	+24	+28	+5	-	-	-	-	-	-	-	-	-	-	-
-	52%	52%	52%	52%	50%	51%	-	-	-	-	-	-	-	-	-	-	-

LOT No 35 TYPE J DROP HEIFER
VENDOR SUMO CATTLE COMPANY **REGO No** SMOFJ0039

GL	BW	200	400	600	MCW	MILK	SS	CWT	EMA	RIB	RUMP	RBY	MS	MF	FTI	EBV	ACC
-	-	-	-	-	-	-	-	-	-	-	-	-	-	-	-	-	-
-	-	-	-	-	-	-	-	-	-	-	-	-	-	-	-	-	-

LOT No 36 TYPE J DROP HEIFER
VENDOR SUMO CATTLE COMPANY **REGO No** SMOFJ0701

GL	BW	200	400	600	MCW	MILK	SS	CWT	EMA	RIB	RUMP	RBY	MS	MF	FTI	EBV	ACC
-	-	-	-	-	-	-	-	-	-	-	-	-	-	-	-	-	-
-	-	-	-	-	-	-	-	-	-	-	-	-	-	-	-	-	-

LOT No 37 TYPE J DROP HEIFER
VENDOR SUMO CATTLE COMPANY **REGO No** SMOFJ0707

GL	BW	200	400	600	MCW	MILK	SS	CWT	EMA	RIB	RUMP	RBY	MS	MF	FTI	EBV	ACC
-	-	-	-	-	-	-	-	-	-	-	-	-	-	-	-	-	-
-	-	-	-	-	-	-	-	-	-	-	-	-	-	-	-	-	-

LOT No 38 TYPE J DROP HEIFER
VENDOR SUMO CATTLE COMPANY **REGO No** SMOFJ0218

GL	BW	200	400	600	MCW	MILK	SS	CWT	EMA	RIB	RUMP	RBY	MS	MF	FTI	EBV	ACC
-	-	-	-	-	-	-	-	-	-	-	-	-	-	-	-	-	-
-	-	-	-	-	-	-	-	-	-	-	-	-	-	-	-	-	-

LOT No 39 TYPE J DROP HEIFER
VENDOR SUMO CATTLE COMPANY **REGO No** SMOFJ0314

GL	BW	200	400	600	MCW	MILK	SS	CWT	EMA	RIB	RUMP	RBY	MS	MF	FTI	EBV	ACC
-	-	-	-	-	-	-	-	-	-	-	-	-	-	-	-	-	-
-	-	-	-	-	-	-	-	-	-	-	-	-	-	-	-	-	-

LOT No 40 TYPE EMBRYO
VENDOR THE WRIGHT WAGYU **REGO No** HPCFG02

GL	BW	200	400	600	MCW	MILK	SS	CWT	EMA	RIB	RUMP	RBY	MS	MF	FTI	EBV	ACC
-	+3.1	+20	+32	+41	+42	+5	+1.0	+32	+0.6	-0.1	-0.4	+0.2	-	-	-	-	-
-	66%	69%	67%	69%	73%	61%	53%	62%	50%	53%	53%	49%	-	-	-	-	-

LOT No 41 TYPE EMBRYO
VENDOR WESTHOLME WAGYU **REGO No** WESFA0180

GL	BW	200	400	600	MCW	MILK	SS	CWT	EMA	RIB	RUMP	RBY	MS	MF	FTI	EBV	ACC
+1.1	+3.6	+22	+33	+45	+45	+7	+3.3	+21	+1.1	+1.4	+1.3	+0.8	-	-	-	-	-
70%	84%	77%	79%	76%	70%	73%	72%	71%	64%	71%	72%	65%	-	-	-	-	-

LOT No 42 TYPE EMBRYO
VENDOR WESTHOLME WAGYU **REGO No** WESFA0321

GL	BW	200	400	600	MCW	MILK	SS	CWT	EMA	RIB	RUMP	RBY	MS	MF	FTI	EBV	ACC
-1.4	-0.1	+9	+22	+23	+10	+2	+1.1	+19	+3.4	+0.7	+0.5	+1.0	-	-	-	-	-
57%	83%	76%	75%	72%	63%	61%	60%	63%	51%	65%	66%	55%	-	-	-	-	-

LOT No 43 TYPE FLUSH
VENDOR GOORAMBAT WAGYU **REGO No** SALELOT043

GL	BW	200	400	600	MCW	MILK	SS	CWT	EMA	RIB	RUMP	RBY	MS	MF	FTI	SIRE	DAM	MP*
0.8	0.9	7	9	12	13	-3	-1.2	-	3.9	0.8	1.1	0.1	-	-	-	-	-	-
0.8	1.2	11	13	14	2	3	0.4	12	0.3	-0.5	-1.1	0.4	-	-	-	-	-	-
0.8	1.1	9	11	13	8	0	-0.4	-	2.1	0.2	0	0.3	-	-	-	-	-	-

Inbreeding Coefficient: 4%. Min./(Avg.) generation: 5/(7.5) * MP = Mating predictor

LOT No 44 TYPE FLUSH
VENDOR BALD RIDGE WAGYU **REGO No** SALELOT044

GL	BW	200	400	600	MCW	MILK	SS	CWT	EMA	RIB	RUMP	RBY	MS	MF	FTI	SIRE	DAM	MP*
-	3.5	21	31	50	-	-	-	-	-	-	-	-	-	-	-	-	-	-
-	3.6	-	-	-	-	-	-	-	-	-	-	-	-	-	-	-	-	-
-	3.6	-	-	-	-	-	-	-	-	-	-	-	-	-	-	-	-	-

Inbreeding Coefficient: 4%. Min./(Avg.) generation: 5/(7.5) * MP = Mating predictor

AVERAGE EBVs

2013 BORN WAGYU CALVES

gestation length (days)	birth weight (kg)	200-day weight (kg)	400-day weight (kg)	600-day weight (kg)	mature cow weight (kg)	milk (kg)	scrotal size (cm)	carcase weight (kg)	eye muscle area (sq.cm)	rib fat (mm)	rump fat (mm)	retail beef yield (%)
+0.1	+0.9	+9	+14	+18	+18	+1	+0.0	+11	+1.5	+0.3	+0.4	+0.0

1991 - 2011 BORN

marble score	marbling fineness	fullblood terminal index (\$)
+0.2	+0.02	+104

LOT 1



**KKWFJ0077 KURO KIN
HIRASHIGETAYASU J77 (AI)**

VENDOR KURO KIN WAGYU

REGO No KKWFJ0077 DNA No 351410
SEX MALE GRADE FULLBLOOD
DOB 20/09/2013 BLOOD 100%
COLOUR BLACK GENETIC STATUS B3FU,
CHSFU, CL16FU, F1113%

LOT NOTES

This bull's pedigree hosts the best commercially proven genetics in Australia, which has now been backed up by data revealed through the new Wagyu specific carcass EBV's. KURO KIN HIRASHIGETAYASU J77 grand dam KURO KIN HIKOHIME 13 (KKWFW0744) is currently a leading dam in Australia for marble score EBV of +1.8 and a fullblood terminal index (FTI) of +\$467 which is 3rd in the breed for females. HIRASHIGE TAYASU is currently a trait leader for 200, 400, 600 and milk EBV's. Feedback kindly supplied from key feedlots and processors including AACo and Stanbroke Beef over the last 13 years has helped accurately identify genetics for Kuro Kin crossbred Wagyu F1 50%'s that consistently achieve:
- AUS-MEAT marble scores averaging 5.65
- carcass weights averaging 421kg
Bulls that Kuro Kin Wagyu offers at international sales have been classed to be used in our own breeding programs and are usually not offered for sale.

PURCHASER

PRICE \$

	GL	BW	200	400	600	MCW	MILK	SS	CWt	EMA	RIB	RUMP	RBY	MS	MF	FTI
EBV	+3.3	+2.8	+15	+21	+26	+28	-1	+0.1	+14	+2.5	+0.8	+0.3	+0.6	-	-	-
ACC	57%	62%	67%	69%	66%	63%	59%	56%	63%	56%	57%	55%	-	-	-	-

SIRE IMJFAJ2351 HIRASHIGETAYASU J2351 HONGEN (IMP JAP)
 PEDFAJ287 DAI 20 HIRASHIGE J287 - KURO IKU
 PEDFAJ1137022 DAI 13 HIRASHIGE J1137022 - KURO KOH
 PEDFAJ187250 DAI 5 YURUHIME J187250 - KURO KOH
 PEDFAJ157 TAYASUFUKU J157 - KURO IKU
 PEDFAJ28677 YURIKO J28677 - KURO KOH
 WKSFM0164 WORLD K'S MICHIFUKU
 PEDFA201 MONJIRO J11550
 PEDFA215 MICHIKO J655635 (AI)
 IMUFQTF148 ITOSHIGENAMI (IMP USA)
 KKWFC0191 KURO KIN HIKOHIME C191 (AI) (ET)
 KKWFW0744 KURO KIN HIKOHIME 13 (AI) (ET)
 IMJFAJ2810 KITATERUYASUDOJ J2810 HONGEN (IMP JAP)
 KKWFT0011 KURO KIN HIKOHIME 4 (AI) (ET)

LOT 2



AACFG0101 WESTHOLME KIMIFUKU 1 (AI)

VENDOR WESTHOLME WAGYU (AACo)

REGO No AACFG0101 DNA No 228751
SEX MALE GRADE FULLBLOOD
DOB 29/04/2011 BLOOD 100%
COLOUR BLACK GENETIC STATUS B3FU,
CHS9%, CL16FU, F1120%

LOT NOTES

"Outcross genetics", this bull is direct from the elite Westholme sires. Kimifuku 1 has a balanced pedigree for marbling and growth and we are reluctantly putting him up for sale.

This young bull sits well above the average in the Westholme sire battery. In the top 10% for mature cow weight, top 20% for scrotal and sired by TF727, this bull gives buyers an opportunity to increase performance without sacrificing marbling to keep your calves in the top 20% of the breed.

Video will be supplied, inspections welcome.

PURCHASER

PRICE \$

	GL	BW	200	400	600	MCW	MILK	SS	CWt	EMA	RIB	RUMP	RBY	MS	MF	FTI
EBV	+0.8	+2.5	+6	+19	+26	+38	-	+0.8	-	+0.7	+0.8	+0.6	-0.3	-	-	-
ACC	61%	81%	77%	73%	68%	55%	-	71%	-	47%	54%	56%	46%	-	-	-

SIRE IMUFQTF148 ITOSHIGENAMI (IMP USA)
 PEDFA009 MIYAKO
 IMUFQTF148 ITOSHIGENAMI (IMP USA)
 PEDFA254 HIKOKURA 1/10
 PEDFAJ287 DAI 20 HIRASHIGE J287 - KURO IKU
 PEDFAJ141042 MORIKITA J141042
 IMJFAJ2810 KITATERUYASUDOJ J2810 HONGEN (IMP JAP)
 WESFX0203 WESTHOLME EJIMA (IMP USA)
 PEDFAW47 SEKIOKURA J764481 - W47



ONLINE SALE SATURDAY 9 MAY 2015

AACFG0206 WESTHOLME FUJITERUYASU

VENDOR WESTHOLME WAGYU (AACo)

REGO No AACFG0206 DNA No 228856
 SEX MALE GRADE FULLBLOOD
 DOB 07/05/2011 BLOOD 100%
 COLOUR BLACK GENETIC STATUS B3FU, CHSFU, CL16FU, F1142%

LOT NOTES

Fujiteruyasu is a sire that will maintain growth and increase marbling. Top 30% for 200, 400 and 600 day weight, top 20% for mature cow weight. Paternal grand sire Kitaguni JR is proven for marbling and a trait leader for birth weight. This sire has been included in recent progeny testing.

Photo and video available on request, bull is currently working. Inspections welcome.

PURCHASER

PRICE \$

AACFG0897 WESTHOLME ASAICHI 1

VENDOR WESTHOLME WAGYU (AACo)

REGO No AACFG0897 DNA No 247585
 SEX MALE GRADE FULLBLOOD
 DOB 10/10/2011 BLOOD 100%
 COLOUR BLACK GENETIC STATUS B3FU, CHSFU, CL16FU, F1138%

LOT NOTES

Westholme Asaichi 1 ranks in the top 1% for rib and rump fat and the top 15% for eye muscle area. His dam has combination for two great bulls Kitaguni 7-8 and Michifuku to give a balance pedigree to increase marbling while maintaining growth.

Asaichi has been performance tested in the Westholme herd as well as the commercial herd in Central Queensland, bull is currently working, photo and video available on request. Inspections welcome.

PURCHASER

PRICE \$

LOT 3

— IMAGE NOT AVAILABLE AT THE TIME OF PUBLICATION —

GL	BW	200	400	600	MCW	MILK	SS	CWT	EMA	RIB	RUMP	RBY	MS	MF	FTI	EBV
-	+3.9	+11	+20	+23	+29	-2	+0.5	+10	+0.5	-0.3	-1.2	+0.0	-	-	-	ACC
-	80%	86%	76%	77%	64%	50%	73%	65%	51%	58%	60%	51%	-	-	-	ACC

.....o WKSFP0001 WORLD K'S KITAGUNI JR

SIRE AACFB0582 WESTHOLME FUJITERU 3 (AI) (ET)

.....o GOSFU0074 GOSHU KITAE (AI) (ET)

.....o WESFZ0169 WESTHOLME KAIHOU (AI) (ET)

DAM AACFC0114 WESTHOLME YASUHARUKA

.....o WESFU0095 WESTHOLME YASURYOU U95 (IMP USA) (AI) (ET)

.....o PEDFAJ1530 KITAGUNI 7-8 J1530

.....o WKSFM2893 WORLD K'S NAKAYUKI J13943

.....o IMJFAJ2810 KITATERUYASUDOJ1 J2810 HONGEN (IMP JAP)

.....o TWAFS0146 TWA SENSU (IMP USA) (AI) (ET)

.....o IMJFP2947 DAI 6 SEIZAN (IMP JAP)

.....o PEDFAW168 KIKUITO J W168

.....o IMJFAJ2810 KITATERUYASUDOJ1 J2810 HONGEN (IMP JAP)

.....o PEDFJN1946247 YOSHIE J1946247 - W82

LOT 4

— IMAGE NOT AVAILABLE AT THE TIME OF PUBLICATION —

GL	BW	200	400	600	MCW	MILK	SS	CWT	EMA	RIB	RUMP	RBY	MS	MF	FTI	EBV
+0.4	+0.4	+7	+14	+14	+8	+4	+0.8	+4	+3.7	+2.2	+2.3	-0.4	-	-	-	ACC
52%	80%	79%	76%	72%	62%	54%	76%	65%	55%	60%	62%	54%	-	-	-	ACC

.....o TWAFR0003 TWA ICHIRYUNO (IMP USA) (ET)

SIRE AACFB0308 WESTHOLME ASAICHI (AI)

.....o WESFX0286 WESTHOLME ASAE (AI) (ET)

.....o WKSFM0164 WORLD K'S MICHIFUKU

DAM WESFY0129 WESTHOLME KOHNNAN Y0129 (IMP USA) (AI) (ET)

.....o PEDFAW172 SHIROMITSU J W172

.....o WKSFN2892 WORLD K'S TAKAZAKURA

.....o WKSFM14091 WORLD K'S OKAHANA J1409

.....o IMJFAJ2810 KITATERUYASUDOJ1 J2810 HONGEN (IMP JAP)

.....o WESFTH029 WESTHOLME TAYASUHANA 98/5 (IMP USA) (AI) (ET)

.....o PEDFA201 MONJIRO J11550

.....o PEDFA215 MICHIKO J655635 (AI)

.....o PEDFAJ1530 KITAGUNI 7-8 J1530

.....o PEDFAJ556526 SHIROMASU J556526

LOT 5

IMAGE NOT AVAILABLE AT THE TIME OF PUBLICATION

	GL	BW	200	400	600	MCW	MILK	SS	CWt	EMA	RIB	RUMP	RBY	MS	MF	FTI
EBV	+0.6	+1.4	+8	+16	+21	+22	+1	+3.2	+15	-0.9	+1.4	+1.4	-1.4	-	-	-
ACC	57%	79%	73%	73%	70%	63%	61%	76%	66%	61%	65%	66%	60%	-	-	-

- PEDFA10632 SHIGESHIGENAMI J10632
- SIRE** IMUFQTF148 ITOSHIGENAMI (IMP USA)
- PEDFA661 FUKUYUKI
- IMUFQ0502 HB BIG AL Q502 FB2998
- DAM** HS FW0003 ASHWOOD F W003 (AI) (ET)
- HS FU011F ASHWOOD HSU11F (IMP USA) (ET)
- PEDFA6109 SHIGEKANANAMI J6109
- PEDFAJ774695 SHIGEMITSU J774695
- PEDFAJ10756 FUKUMASA J10756
- PEDFAJ456691 YUKIZAKURA J456691
- PEDPAMITSU DAI 10 MITSUMAU 76 FB424
- PEDFA2120 MTA AKIKO FB2120
- IMUFN2124 SHIGEMARU (IMP USA)
- PEDFAJ238128 JVP 27 HOMARE J238128R (IMP JAP)

AACFE1069 WESTHOLME SHIGENAMI ASH 8 (AI) (ET) [CC]

VENDOR WESTHOLME WAGYU (AACo)

REGO No AACFE1069 DNA No 219519
 SEX MALE GRADE FULLBLOOD
 DOB 03/11/2009 BLOOD 100%
 COLOUR N/A GENETIC STATUS B3FU, CHSFU, CL16FU, F1159%

LOT NOTES

Westholme E1069 ranks in the top 1% for scrotal circumference, top 5% for rib and top 10% for rump fat. This composite (back X red) bull is out of one of our highest marbling red cows. He has added carcass yield with HB Big AI as the paternal grand sire, with balanced growth while increasing marbling. Composite bulls have been used as part of the Westholme program for several years now to increase carcass yield and selectively maintain marbling through bulls like TF 148.

Photo and video available on request, bull is currently working. E1069 has been performance tested in the Westholme herd as well as the commercial herd in Central Queensland.

PURCHASER
 PRICE \$

LOT 6



KYOFE16589 KYOTO YASUHIKO (AI) (ET)

VENDOR HAMBLIN PTY LTD

REGO No KYOFE16589 DNA No 177270
 SEX MALE GRADE FULLBLOOD
 DOB 29/09/2009 BLOOD 100%
 COLOUR BLACK GENETIC STATUS B3FU, CHSFU, CL16FU, F1157%

LOT NOTES

This bull is one of only 12 bulls by KIKUTSURUDOI TF146 (IMP USA) registered in Australia. The vendor has collected semen from this bull and his full brother and retains legal ownership of these straws. Hiko is a very active bull who has easily covered 60 cows in a 2000 acre paddock in dry conditions over 2 month joining period.

The bull is located in Allora, South Queensland.

- PEDFAJ1606 TANIFUKU DOI J1606
- SIRE** IMUFRTF146 KIKUTSURUDOI TF146 (IMP USA)
- PEDFAJ509605 YASUTSUKU J509605
- WKSFP0100 WORLD K'S SANJIROU (AI) (ET)
- DAM** GOSFX0212 GOSHU SANINDO (AI) (ET)
- GOSFV0107 GOSHU ITOSHIRO (AI) (ET)
- PEDFAJ472 YASUTANI DOI J472 - KURO IKU
- PEDFAJ978542 KIKUTSURU J978542
- PEDFAJ472 YASUTANI DOI J472 - KURO IKU
- PEDFAJ311980 KIKUTURU 8 J311980
- WKSFM0164 WORLD K'S MICHIFUKU
- WKSFL0976 WORLD K'S SUZUTANI 976
- IMUFQTF148 ITOSHIGENAMI (IMP USA)
- PEDFP130 TF HIKOKURA 3/16

PURCHASER
 PRICE \$



ONLINE SALE SUNDAY 12 OCTOBER 2014

MOYFJ0182 MOYHU J182 (AI)

VENDOR MOYHU WAGYU

REGO No MOYFJ0182 DNA No 367062
 SEX MALE GRADE FULLBLOOD
 DOB 13/09/2013 BLOOD 100%
 COLOUR BLACK GENETIC STATUS B3FU, CHSFU, CL16FU, F1144%

LOT NOTES

This bull is sired by Hirashigetayasu with TF Yukiharunami 4 and TWA Ichiryuno on the dam side. With this breeding J0182 has the potential to grow into a large frame with good muscle suitable for producing Wagyu females. By pedigree this bull is free from all genetic disorders B3, CHS, CL16 and has a 44% probability of being a carrier for F11.

PURCHASER

PRICE \$

AACFF0758 WESTHOLME HIRAMICHI TSURU

VENDOR WESTHOLME WAGYU (AACo)

LOTS 8-14

WAGYU FULLBLOOD
 100% SEMEN
 PACKAGES OF
 STRAWS

REGO No AACFF0758 DNA No 203164
 SEX MALE GRADE FULLBLOOD
 DOB 14/09/2010 BLOOD 100%
 COLOUR BLACK GENETIC STATUS B3FU, CHS13%, CL16FU, F1130%

LOT NOTES

Semen lot - 10 straws are offered in this lot. Westholme Hiramichi Tsuru F0758 has already had significant impact on the Westholme herd, with 109 registered calves. He is a trait leader in 200, 400 and 600 day growth as well as scrotal circumference. His sire Westholme Namiyoshi 4 - B0545 is proven in the stud herd and the feedlot with carcasses grading for the AA Company Master Kobe Brand (9+). Paternal grandsire - TF148 is in the top 1% of the breed for marble score and marble fineness and top 5% for full blood terminal index.

The mother of this bull Westholme Hira Z0048 is in the top 10 cows for growth in the breed. This is a once in a decade opportunity to breed from one of Westholmes leading young sires. Several daughters of this bull feature in the heifer live lots in this sale. Photo and video is available on request, bull is currently working.

PURCHASER

PRICE \$



LOT 7

GL	BW	200	400	600	MCW	MILK	SS	CWT	EMA	RIB	RUMP	RBY	MS	MF	FTI	EBV
+2.4	+3.7	+19	+29	+37	+38	+6	+0.9	-	+0.7	-0.1	-0.2	+0.9	-	-	-	ACC
53%	56%	56%	56%	55%	54%	54%	53%	-	53%	53%	54%	52%	-	-	-	ACC

..... PEDFAJ287 DAI 20 HIRASHIGE J287
 - KURO IKU

SIRE IMJFAJ2351 HIRASHIGETAYASU J2351 HONGEN (IMP JAP)

..... PEDFAJ187250 DAI 5 YURUHIME J187250
 - KURO KOH

..... PEDFAJ7212 KEDAKA J7212 - KURO IKU
 PEDFAJ1137022 DAI 13 HIRASHIGE J1137022
 - KURO KOH

..... PEDFAJ157 TAYASUFUKU J157 - KURO IKU

..... PEDFAJ28677 YURIKO J28677 - KURO KOH

..... IMUFQ2599 TF YUKIHARUNAMI 4 (IMP USA)

..... PEDFAYUKI YUKIHARUNAMI

..... PEDFN13364 TF CHIYOTAKE 8/1

DAM MOYFA0257 MOYHU F A257 (AI) (ET)

..... MOYFW0031 MOYHU F W031 (ET)

..... TWAFR0003 TWA ICHIRYUNO (IMP USA) (ET)

..... TWAFU0643 TWA F U643 (AI) (ET)

IMAGE NOT AVAILABLE AT THE TIME OF PUBLICATION

LOT 8

GL	BW	200	400	600	MCW	MILK	SS	CWT	EMA	RIB	RUMP	RBY	MS	MF	FTI	EBV
+2.0	+5.1	+20	+44	+50	+51	+4	+1.8	+27	+2.3	+1.5	+1.0	-0.3	-	-	-	ACC
58%	94%	92%	90%	80%	65%	53%	89%	75%	66%	75%	76%	66%	-	-	-	ACC

..... IMUFQTF148 ITOSHIGENAMI (IMP USA)

SIRE AACFB0545 WESTHOLME NAMİYOSHI 4 (AI) (ET)

..... CCCFZ0119 BALD RIDGE HAYAFUKU Z119 (AI) (ET)

..... PEDFA10632 SHIGESHIGENAMI J10632

..... PEDFA661 FUKUYUKI

..... IMUFR3258 TF TERUTANI 40/1 (IMP USA) (AI) (ET)

..... CCCFW0004 BALD RIDGE HAYAFUKU W04 (AI) (ET)

..... IMJFAJ2351 HIRASHIGETAYASU J2351 HONGEN (IMP JAP)

..... PEDFAJ287 DAI 20 HIRASHIGE J287 - KURO IKU

..... PEDFAJ187250 DAI 5 YURUHIME J187250 - KURO KOH

DAM WESFZ0084 WESTHOLME HIRA Z0084 (AI)

..... WESFV0136 WESTHOLME HATSU V136 (AI) (ET)

..... IMJFAJ2703 ITOMORITAKA J2703 HONGEN (IMP JAP)

..... WESFU0013 WESTHOLME HATSUTERU U13 (IMP USA) (AI) (ET)

LOT 9

IMAGE NOT AVAILABLE AT THE TIME OF PUBLICATION

	GL	BW	200	400	600	MCW	MILK	SS	CWt	EMA	RIB	RUMP	RBY	MS	MF	FTI
EBV	+2.0	+5.1	+20	+44	+50	+51	+4	+1.8	+27	+2.3	+1.5	+1.0	-0.3	-	-	-
ACC	58%	94%	92%	90%	80%	65%	53%	89%	75%	66%	75%	76%	66%	-	-	-

-o IMUFQTF148 ITOSHIGENAMI (IMP USA)
-o PEDFA10632 SHIGESHIGENAMI J10632
-o PEDFA661 FUKUYUKI
- SIRE** AACFB0545 WESTHOLME NAMİYOSHI 4 (AI) (ET)
-o CCCFZ0119 BALD RIDGE HAYAFUKU Z119 (AI) (ET)
-o IMUFR3258 TF TERUTANI 40/1 (IMP USA) (AI) (ET)
-o CCCFW0004 BALD RIDGE HAYAFUKU W04 (AI) (ET)
-o IMJFAJ2351 HIRASHIGETAYASU J2351 HONGEN (IMP JAP)
-o PEDFAJ287 DAI 20 HIRASHIGE J287 - KURO IKU
-o PEDFAJ187250 DAI 5 YURUHIME J187250 - KURO KOH
- DAM** WESFZ0084 WESTHOLME HIRA Z0084 (AI)
-o WESFV0136 WESTHOLME HATSU V136 (AI) (ET)
-o IMJFAJ2703 ITOMORITAKA J2703 HONGEN (IMP JAP)
-o WESFU0013 WESTHOLME HATSUTERU U13 (IMP USA) (AI) (ET)

AACFF0758 WESTHOLME HIRAMICHI TSURU

VENDOR WESTHOLME WAGYU (AACo)

REGO No AACFF0758 DNA No 203164
 SEX MALE GRADE FULLBLOOD
 DOB 14/09/2010 BLOOD 100%
 COLOUR BLACK GENETIC STATUS B3FU, CHS13%, CL16FU, F1130%

LOT NOTES

Semen lot - 10 straws are offered in this lot. Westholme Hiramichi Tsuru F0758 has already had significant impact on the Westholme herd, with 109 registered calves. He is a trait leader in 200, 400 & 600 day growth as well as scrotal circumference. His sire Westholme Namiyoshi 4 – B0545 is proven in the stud herd and the feedlot with carcasses grading for the AA Company Master Kobe Brand (9+). Paternal grandsire - TF148 is in the top 1% of the breed for marble score and marble fineness and top 5% for fullblood terminal index. The mother of this bull Westholme Hira Z0048 is in the top 10 cows for growth in the breed. This is a once in a decade opportunity to breed from one of Westholmes leading young sires. Several daughters of this bull feature in the heifer live lots in this sale.

Photo and video is available on request, bull is currently working. Inspections welcome.

PURCHASER
 PRICE \$

LOT 10



	GL	BW	200	400	600	MCW	MILK	SS	CWt	EMA	RIB	RUMP	RBY	MS	MF	FTI
EBV	+2.6	+4.9	+23	+38	+46	+42	+8	+2.0	+34	+0.1	-1.9	-2.3	+1.2	+0.6	-1.60	+\$277
ACC	75%	96%	96%	96%	95%	94%	94%	87%	90%	81%	87%	88%	80%	73%	68%	-

-o PEDFAJ287 DAI 20 HIRASHIGE J287 - KURO IKU
-o PEDFAJ7212 KEDAKA J7212 - KURO IKU
-o PEDFAJ1137022 DAI 13 HIRASHIGE J1137022 - KURO KOH
- SIRE** IMJFAJ2351 HIRASHIGETAYASU J2351 HONGEN (IMP JAP)
-o PEDFAJ187250 DAI 5 YURUHIME J187250 - KURO KOH
-o PEDFAJ157 TAYASUFUKU J157 - KURO IKU
-o PEDFAJ28677 YURIKO J28677 - KURO KOH
-o IMJFAJ2810 KITATERUYASUDOJ J2810 HONGEN (IMP JAP)
-o PEDFAJ1742 TERUNAGAD01 1742
-o PEDFAJ601124 YOSHIMI 3 601124
- DAM** WESFX0106 WESTHOLME OHYURIHIME (AI) (ET)
-o WESFU0038 WESTHOLME MORITAKE U38 (IMP USA) (AI) (ET)
-o IMJFAJ2703 ITOMORITAKA J2703 HONGEN (IMP JAP)
-o PEDFPJ4347 TAKEHARU J4347 - W277

WESFZ0278 WESTHOLME HIRASHIGETAYASU Z278 (AI)

VENDOR ACADEMY RED WAGYU

REGO No WESFZ0278 DNA No 227671
 SEX MALE GRADE FULLBLOOD
 DOB 05/10/2004 BLOOD 100%
 COLOUR BLACK GENETIC STATUS B3F, CHSF, CL16F, F11F

LOT NOTES

Semen lot – selling 20 doses of semen. Westholme Hirashigetayasu Z278 has come up with an excellent set of figures in 2015 production EBV's. He is in the top 5% of sires for growth, milk and scrotal size and in the top 1% for carcass weight. He is positive for marbling and has the very high fullblood terminal index of +\$277. (His input into the value of any carcass he sires). Z278 has an SCD test of AA for the best fat that melts at a lower temperature and he is free of all genetic disorders. Top quality semen has been collected for Australia, Canada, South Africa, New Zealand and most Asian countries with the exception of China and the EU and we have run out of semen in USA. A278 is the sire of the winning carcass – Pasture-fed class (AWA 2014 Branded Beef Competition).

PURCHASER
 PRICE \$



LOT 11

GL	BW	200	400	600	MCW	MILK	SS	CWT	EMA	RIB	RUMP	RBY	MS	MF	FTI	EBV
-	+3.7	+22	+33	+53	-	-	-	-	-0.6	+0.4	+0.4	-0.3	-	-	-	ACC
-	50%	61%	56%	56%	-	-	-	-	34%	44%	44%	36%	-	-	-	ACC

SIRE SMOFE0211 SUMO CATTLE CO BIG AL E211 (AI) (ET)
o IMUFQ0502 HB BIG AL Q502 FB2998
o TWAFS0376 TWA MUSUME (ET)
o PEDPAMITSU DAI 10 MITSUMAU 76 FB424
o PEDFA2120 MTA AKIKO FB2120
o IMUFQ0502 HB BIG AL Q502 FB2998
o PEDFKU2454 DAI 8 MARUNAMI FB2454
o PEDFKU2454 DAI 8 MARUNAMI FB2454
o HBCFV2139 HEART BRAND RED EMPEROR (IMP USA) (ET)
o IMUFQ0502 HB BIG AL Q502 FB2998
o PEDFKU2454 DAI 8 MARUNAMI FB2454
 DAM ARWFF0010 ACADEMY RED WAGYUS REIKO F10 (ET)
o KALFB0234 KALANGA SHIGEHOMARE B234 (AI) (ET)
o IMUFN2124 SHIGEMARU (IMP USA)
o KALFU0036 KALANGA HIKAHOMARE VW36 (AI) (ET)

IGWFB0006 IRONGATE WAGYU ITOSHIGENAMI B0006 (AI)

VENDOR IRONGATE WAGYU

REGO No IGWFB0006 DNA No 99454
 SEX MALE GRADE FULLBLOOD
 DOB 18/01/2006 BLOOD 100%
 COLOUR BLACK GENETIC STATUS B3F, CHSF, CL16F, F11F

LOT NOTES

Semen lot - 20 straws offered in this lot. IRONGATE WAGYU ITOSHIGENAMI B6 (AI) is producing Wagyu fullblood 100% and crossbred Wagyu F1 50% feeder steers and breeders. His progeny are consistently high marbling. He has great depth of pedigree on both sire and dam. The virility of this stud sire is outstanding and he has a great placid temperament. Many fullblood females have been retained in the Irongate herd from this bull as we see him have a great future in our herd. His large frame produces excellent sized carcasses whilst maintaining marbling.

Feedback supplied from key feedlots and processors including Mayura, Macquarie Downs and AACo over the last few years has identified B06 as an outstanding Wagyu sire. On an average 310 days feed ration beef marble scores averaging 7.8. Carcass weights averaging 431kg.

PURCHASER
 PRICE \$



LOT 12

GL	BW	200	400	600	MCW	MILK	SS	CWT	EMA	RIB	RUMP	RBY	MS	MF	FTI	EBV
-	+1.2	+12	+13	+25	+26	-2	-	+13	+1.8	+0.1	+0.3	-0.2	-	-	-	ACC
-	64%	77%	81%	84%	69%	60%	-	68%	42%	42%	42%	39%	-	-	-	ACC

SIRE SUMFX0081 SUMO ITOSHIGENAMI X0081 (AI) (ET)
o IMUFQTF148 ITOSHIGENAMI (IMP USA)
o SUMFT0250 SUMO FUKU T250 (AI) (ET)
o TWAFR0003 TWA ICHIRYUNO (IMP USA) (ET)
 DAM SUMFW1838 SUMO RUNO W1838 (AI) (ET)
o TWAFS0193 TWA CHOKKAKU (IMP USA) (AI) (ET)
o PEDFA10632 SHIGESHIGENAMI J10632
o PEDFA661 FUKUYUKI
o WKSFM0164 WORLD K'S MICHIFUKU
o IMUFR3254 TF CHIYOTAKE 22/4 (IMP USA) (ET)
o WKSFN2892 WORLD K'S TAKAZAKURA
o WKSFM14091 WORLD K'S OKAHANA J1409
o IMUJTF40 TERUTANI J2494 TF40 (IMP JAP)
o PEDFA2453 TF DAI 2 KINNTOU 3

LOT 13



**IGWFC0016 IRONGATE WAGYU
NOMBY ICHIRYUNO C016**

VENDOR IRONGATE WAGYU

REGO No IGWFC0016 DNA No 121939
SEX MALE GRADE FULLBLOOD
DOB 09/06/2007 BLOOD 100%
COLOUR BLACK GENETIC STATUS B3F, CHSF,
CL16F, F11F

LOT NOTES

Semen lot - 20 straws offered in this lot. IRONGATE WAGYU NOMBY ICHIRYUNO C016 is suited to producing large frame replacement females. A trait leader in top 1% for 200, 600 day and mature cow weight, top 5% for 400 day growth. This is the bull you want producing replacement females in your herd today to be later crossed with a high marbling sire. We have found his progeny are fast growing and need to enter the feedlot at a higher induction weight (same age as cohort), as they still need normal time on feed to build their frame. From this feeding you will see some high BMS and 500kg+ carcass results.

This EBV trait leader should be used within the Takeda breeding rotation as a Group C male mated to a Group B female.

PURCHASER
PRICE \$

	GL	BW	200	400	600	MCW	MILK	SS	CWt	EMA	RIB	RUMP	RBY	MS	MF	FTI
EBV	-	+3.1	+19	+31	+46	+54	-1	+0.4	+30	+1.5	-2.2	-1.9	+0.9	-	-	-
ACC	-	67%	81%	84%	85%	72%	52%	68%	73%	51%	54%	56%	47%	-	-	-

-o DSSFU0029 DATA U29 (AI) (ET)
-o WKSFPC100 WORLD K'S KANADAGENE 100 (AI) (ET)
- SIRE GYFFZ0022 NOMBY 22 (ET)
-o TWAFS0275 TWA AMARU (IMP USA) (ET)
-o DSSFU0010 DATA U10 (AI) (ET)
-o IMUFRTF168 TF TERUTANI 40/4 (IMP USA)
-o TWAFS0275 TWA AMARU (IMP USA) (ET)
-o TWAFR0003 TWA ICHIRYUNO (IMP USA) (ET)
-o WKSFN2892 WORLD K'S TAKAZAKURA
- DAM SUMFW1838 SUMO RUNO W1838 (AI) (ET)
-o TWAFS0193 TWA CHOKKAKU (IMP USA) (AI) (ET)
-o WKSFM14091 WORLD K'S OKAHANA J1409
-o IMUFJTF40 TERUTANI J2494 TF40 (IMP JAP)
-o PEDFA2453 TF DAI 2 KINNTOU 3

LOT 14



**LDFY0004 LONGFORD 004
(AI) (ET)**

VENDOR THE WRIGHT WAGYU (HUGHES PASTORAL)

REGO No LDFY0004 DNA No 49645
SEX MALE GRADE FULLBLOOD
DOB 02/03/2003 BLOOD 100%
COLOUR BLACK GENETIC STATUS B3FU,
CHSFU, CL16FU, F1150%

LOT NOTES

Semen lot - 20 doses of semen offered in this lot. Longford 004 is an exceptional bull as a stud sire and for F1 production. He has an extremely powerful pedigree and comes from the great Suzutani cow family, his mother being a Michifuku daughter out of a Haruki 11 daughter out the great cow herself. Shigeshigetani, Kanadagene 100, Sanjiro and Overflow Keneyama are all very closely related. The sire of Y004 is ETJ003 who has bred so well and is the sire of the dam in many very good pedigrees. Added to the outstanding production EBV's - 7th in the breed for marble score, 18th for fineness of marbling and 15th for fullblood terminal index Y4 comes with outstanding marbling results from carcasses that Longford sent to Japan. Y4 is now 11 years of age and has been in natural service all his life. He is a very well balanced, thick bull, strongly and soundly built and he still moves freely with a very fine hair coat and is extremely quiet.

PURCHASER
PRICE \$

	GL	BW	200	400	600	MCW	MILK	SS	CWt	EMA	RIB	RUMP	RBY	MS	MF	FTI
EBV	-1.2	-1.2	-1	+0	-1	-2	-5	-1.1	-8	+4.0	+0.4	+0.2	+0.3	+2.0	+3.7	+\$382
ACC	63%	86%	88%	83%	80%	69%	60%	59%	82%	59%	63%	64%	59%	84%	72%	-

-o PEDFAJ1742 TERUNAGADOI 1742
-o PEDFAJ10787 KIKUTERU DOI J10787 - KURO IKU
- SIRE IMJFAJ2810 KITATERUYASUDOJ J2810 HONGEN (IMP JAP)
-o PEDFAJ240580 TERUNAOH J240580
-o PEDFAJ601124 YOSHIMI 3 601124
-o PEDFAJ472 YASUTANI DOI J472 - KURO IKU
-o PEDFAJ206526 YOSHIMI J206526 - KURO IKU
-o WKSFM0164 WORLD K'S MICHIFUKU
-o PEDFA201 MONJIRO J11550
- DAM LDFDT0480 LONGFORD MUTSU (AI) (ET)
-o IMUFPO102 KANADAGENE 102D (IMP USA) (AI) (ET)
-o PEDFA215 MICHIKO J655635 (AI)
-o WKSFM0139 WORLD K'S HARUKI-2
-o WKSFL0976 WORLD K'S SUZUTANI 976



ONLINE SALE SATURDAY 9 MAY 2015

LOTS 15-19

MATURE FEMALES

BYWFA0121 BLACKMORE CHIYOTAKE A121 (AI) (ET)

VENDOR WESTHOLME WAGYU (AACo)

REGO No BYWFA0121 DNA No 77226
 SEX FEMALE GRADE FULLBLOOD
 DOB 07/06/2005 BLOOD 100%
 COLOUR BLACK GENETIC STATUS B3FU, CHS6%, CL16FU, F1167%

LOT NOTES

This mature cow is being offered from the top 30% of production and genetic value in the Westholme elite herd. Blackmore Chiyotake was purchased with the 4JS herd from the Atherton Tablelands. Moved into the stud herd in 2010, she has produced two excellent daughters. An autumn calving cow PTIC to elite Westholme sires, parent verification will be guaranteed with resulting calves.

Cows due to calve between 10 April and 15 June 2015. Inspections welcome.

PURCHASER

PRICE \$

AACFC0012 WESTHOLME NAMISAKURA (AI)

VENDOR WESTHOLME WAGYU (AACo)

REGO No AACFC0012 DNA No C084974471
 SEX FEMALE GRADE FULLBLOOD
 DOB 28/03/2007 BLOOD 100%
 COLOUR BLACK GENETIC STATUS B3FU, CHS25%, CL16FU, F1157%

LOT NOTES

This mature cow is being offered from the top 30% of production and genetic value in the Westholme herd. This daughter of TF148 has a nice balanced pedigree of the mainstay marbling sires for the Westholme herd. Top 15% for EMA, top 15% for rib fat, top 30% for rump fat and top 5% for retail beef yield. Below average for birth weight while maintaining her place among the top 30% for growth. An autumn calving cow PTIC to elite Westholme sires, parent verification will be guaranteed with resulting calves.

Cows due to calve between 10 April and 15 June 2015. Inspections welcome.

PURCHASER

PRICE \$



LOT 15

GL	BW	200	400	600	MCW	MILK	SS	CWT	EMA	RIB	RUMP	RBY	MS	MF	FTI	EBV
-0.5	+1.4	+11	+19	+24	+24	+3	+0.2	-	-0.1	+0.2	+0.9	-0.5	-	-	-	ACC
54%	64%	63%	62%	61%	57%	65%	54%	-	54%	54%	55%	52%	-	-	-	ACC

..... PEDFAJ1081 ITOKITATSURU J1081 - KURO IKU

SIRE IMUFLT151 ITOZURUDOI TF151 (IMP USA)

..... PEDFAJ43313 YASUHIME J43313

..... IMUFQTF148 ITOSHIGENAMI (IMP USA)

DAM BYWFW0034 BLACKMORE CHIYOTAKE W034 (AI) (ET)

..... TWAFU0542 TWA F U542 (AI) (ET)

..... PEDFAJ65 DAI 7 ITOZAKURA J65 - KURO IKU

..... PEDFAJ101266 NISHIZURU J101266 - KURO KOH

..... PEDFAJ10328 YASUMI DOI J10328 - KURO IKU

..... PEDFAJ311983 FUJIHIME J311983

..... PEDFA10632 SHIGESHIGENAMI J10632

..... PEDFA661 FUKUYUKI

..... IMUFQTF147 ITOSHIGEFUJI (IMP USA)

..... TWAFS0170 TWA KOSEI (IMP USA) (ET)



LOT 16

GL	BW	200	400	600	MCW	MILK	SS	CWT	EMA	RIB	RUMP	RBY	MS	MF	FTI	EBV
-1.3	+0.5	+12	+17	+18	-8	+4	+0.9	+15	+3.8	+1.0	+0.7	+0.9	-	-	-	ACC
63%	81%	75%	74%	76%	69%	65%	64%	68%	62%	71%	72%	64%	-	-	-	ACC

..... PEDFA10632 SHIGESHIGENAMI J10632

SIRE IMUFQTF148 ITOSHIGENAMI (IMP USA)

..... PEDFA661 FUKUYUKI

..... IMJFAJ2703 ITOMORITAKA J2703 HONGEN (IMP JAP)

DAM WESFX0524 WESTHOLME ITOIKU (AI)

..... WESFV0014 WESTHOLME HARUKA V14 (IMP USA) (ET)

..... PEDFA6109 SHIGEKANANAMI J6109

..... PEDFAJ774695 SHIGEMITSU J774695

..... PEDFAJ10756 FUKUMASA J10756

..... PEDFAJ456691 YUKIZAKURA J456691

..... PEDFAJ1555 ITOHIRASHIGE J1555

..... PEDFAJ565554 DAI 6 OEFUJII J565554 - KURO KOH

..... IMJFAJ2810 KITATERUYASUDOI J2810 HONGEN (IMP JAP)

..... IMJFRW171 TAKAKUNI J965809 W171 (IMP JAP)

LOT 17



AACFD0245 WESTHOLME TERUITO 1/5 (AI)

VENDOR WESTHOLME WAGYU (AACo)

REGO No AACFD0245 DNA No 223822
 SEX FEMALE GRADE FULLBLOOD
 DOB 11/08/2008 BLOOD 100%
 COLOUR BLACK GENETIC STATUS B3FU, CHS25%, CL16FU, F1152%

LOT NOTES

Westholme Teruito 1/5 is being offered from the top 30% of production and genetic value in the Westholme herd. Increase your carcase weight and retail beef yield to the top 5% of the breed. Scrotal circumference to top 10% and top 20% for 600 day weight. Teruito has produced four great calves already, and we consider her a great platform to breed into the future. Mated to elite Westholme sires. An autumn calving cow PTIC to elite Westholme sires, parent verification will be guaranteed with resulting calves.

Cows due to calve between 10 April and 15 June 2015. Inspections welcome.

PURCHASER

PRICE \$

	GL	BW	200	400	600	MCW	MILK	SS	CWt	EMA	RIB	RUMP	RBY	MS	MF	FTI
EBV	-1.8	+2.0	+10	+22	+28	+24	+0	+1.3	+9	+1.9	+0.0	-1.0	+0.8	-	-	-
ACC	71%	82%	77%	77%	73%	67%	69%	66%	68%	60%	62%	63%	59%	-	-	-

SIRE IMJFAJ2810 KITATERUYASUDO J2810 HONGEN (IMP JAP)
 PEDFAJ1742 TERUNAGADOI 1742
 PEDFAJ240580 TERUNAOH J240580
 PEDFAJ472 YASUTANI DOI J472 - KURO IKU
 PEDFAJ206526 YOSHIMI J206526 - KURO IKU

DAM WESFZ0006 WESTHOLME ITO Z0006 (AI)
 IMJFAJ2703 ITOMORITAKA J2703 HONGEN (IMP JAP)
 PEDFAJ1555 ITOHIRASHIGE J1555
 PEDFAJ565554 DAI 6 OEFUJII J565554 - KURO KOH
 WESFX0024 WESTHOLME AIKA (AI) (ET)
 IMJFAJ2351 HIRASHIGETAYASU J2351 HONGEN (IMP JAP)
 WESFTH019 WESTHOLME YOSHIDOI 98/1 (IMP USA) (AI) (ET)

LOT 18



AACFD0432 WESTHOLME ASH AMI [CC]

VENDOR WESTHOLME WAGYU (AACo)

REGO No AACFD0432 DNA No 223909
 SEX FEMALE GRADE FULLBLOOD
 DOB 10/09/2008 BLOOD 100%
 COLOUR BLACK GENETIC STATUS B3FU, CHSFU, CL16FU, F1132%

LOT NOTES

Westholme Ash Ami AACFD0432 is being offered from the top 30% of production and genetic value in the Westholme herd. The dam of this great young cow is one of Gibbo's favourites, AMI V6. Maternal grandsire 003 is in the top 1% for marble fineness and top 15% for marbling. An opportunity to secure a cow that can deliver significant increases in growth and marbling. We would mate to a bull like Lot 8/9, WESTHOLME HIRAMICHI TSURU AACFF0758 featured in the semen lots of this catalogue. Top 1% of breed for growth traits and milk traits. D0432 is an autumn calving cow PTIC to elite Westholme sires, parent verification will be guaranteed with resulting calves.

Cows due to calve between 10 April and 15 June 2015. Inspections welcome.

PURCHASER

PRICE \$

	GL	BW	200	400	600	MCW	MILK	SS	CWt	EMA	RIB	RUMP	RBY	MS	MF	FTI
EBV	-	+4.1	+26	+39	+57	+65	+9	-	+38	+0.7	+0.5	-0.1	+0.0	-	-	-
ACC	-	77%	71%	71%	67%	57%	62%	-	60%	49%	64%	64%	53%	-	-	-

SIRE HS FX0003 ASHWOOD F X003 (AI) (ET)
 IMUFQ0502 HB BIG AL Q502 FB2998
 PEDPAMITSU DAI 10 MITSUMAU 76 FB424
 PEDFA2120 MTA AKIKO FB2120

DAM WESFV0006 WESTHOLME AMI V6 (IMP USA) (ET)
 TWAFS0341 TWA MEKATA (AI) (ET)
 IMJFAJ2810 KITATERUYASUDO J2810 HONGEN (IMP JAP)
 PEDFAJ1742 TERUNAGADOI 1742
 PEDFAJ601124 YOSHIMI 3 601124
 IMJFNW015 MASAKO J1933479 W15 (IMP JAP)
 PEDFAJ11681 ITOYOSHIHIRO J11681
 PEDFAJ245150 TAKATOMI J245150



ONLINE SALE SATURDAY 9 MAY 2015

AACFD0831 WESTHOLME SHIGETAKA 2/3 (AI) (ET)

VENDOR WESTHOLME WAGYU (AACo)

REGO No AACFD0831 DNA No C447061
 SEX FEMALE GRADE FULLBLOOD
 DOB 09/05/2008 BLOOD 100%
 COLOUR BLACK GENETIC STATUS B3FU, CHSFU, CL16FU, F1125%

LOT NOTES

This cow is being offered from the top 30% of production and genetic value in the Westholme herd. We thought so much of this young cow that we moved her out of the main herd into the Westholme elite bull breeding unit for her last calf. Calves that have been fed to date have yielded and graded well. Lots of horse power with growth. The sire of this cow 001 is a trait leader for 200, 400, 600 day weight, milk and scrotal circumference. Mated to elite Westholme bulls for the calf at foot. Top 1% for growth traits, EMA and retail beef yield. An autumn calving cow PTIC to elite Westholme sires, parent verification will be guaranteed with resulting calves. Cows due to calve between 10 April and 15 June 2015. Inspections welcome.

PURCHASER
 PRICE \$



LOT 19

GL	BW	200	400	600	MCW	MILK	SS	CWT	EMA	RIB	RUMP	RBY	MS	MF	FTI	EBV
+2.8	+5.7	+26	+36	+45	+37	+7	+0.9	+22	+2.1	-1.1	-2.4	+2.0	-	-	-	ACC
61%	79%	75%	75%	72%	66%	70%	58%	67%	60%	68%	69%	62%	-	-	-	ACC

SIRE IMJFAJ2351 HIRASHIGETAYASU J2351 HONGEN (IMP JAP)
 PEDFAJ287 DAI 20 HIRASHIGE J287 - KURO IKU
 PEDFAJ7212 KEDAKA J7212 - KURO IKU
 PEDFAJ1137022 DAI 13 HIRASHIGE J1137022 - KURO KOH
 PEDFAJ157 TAYASUFUKU J157 - KURO IKU
 PEDFAJ28677 YURIKO J28677 - KURO KOH
 IMJFAJ2810 KITATERUYASUDO J2810 HONGEN (IMP JAP)
 PEDFAJ1742 TERUNAGADOI 1742
 PEDFAJ601124 YOSHIMI 3 601124
 DAM IMJFRY055 TAKASHIGEDOI J9612215 Y55 (IMP JAP)
 PEDFAJ710557 SEKIYOSHIHIDE 2 J710557
 PEDFAJ331 TAKASHIGE J331 - KURO IKU
 PEDFAJ561007 SEKIYOSHIHIDE J561007

AACFK5189 WESTHOLME K5189

LOTS 20-29
 K DROP HEIFERS

VENDOR WESTHOLME WAGYU (AACo)

REGO No AACFK5189 DNA No 396504
 SEX FEMALE GRADE FULLBLOOD
 DOB 04/05/2014 BLOOD 100%
 COLOUR BLACK GENETIC STATUS B31%, CHS13%, CL161%, F1125%

LOT NOTES

This heifer has been made available from the elite portion of our autumn joiner heifers. She sells open with a breeding guarantee. Westholme K5189 is in the top 15% for 200 and 600 day weight, top 20% for 400 day weight. The sire of this lot is Westholme Itokikuhira 8 G0413 a trait leader for 200 day growth and in the top 5% for growth in the breed. Inspections welcome.

PURCHASER
 PRICE \$



LOT 20

GL	BW	200	400	600	MCW	MILK	SS	CWT	EMA	RIB	RUMP	RBY	MS	MF	FTI	EBV
-	+2.4	+14	+22	+30	-	-	-	-	-	-	-	-	-	-	-	ACC
-	57%	53%	51%	52%	-	-	-	-	-	-	-	-	-	-	-	ACC

SIRE AACFG0413 WESTHOLME ITOKIKUHIRA 8
 AACFB0454 WESTHOLME ITOKIKUNAMI 1/3 (AI) (ET)
 IMUQTF148 ITOSHIGENAMI (IMP USA)
 HWDFT0005 HARWOOD HIKOHIME - 2 (AI) (ET)
 WESFZ0135 WESTHOLME HIRA Z0135 (AI) (ET)
 IMJFAJ2351 HIRASHIGETAYASU J2351 HONGEN (IMP JAP)
 EXLFLV1086 EXCEL AYAKA (IMP USA) (AI) (ET)
 KT4FA0232 TAMARIND T4 ITOSHIGEFUJI 05/1 (AI) (ET)
 IMUQTF147 ITOSHIGEFUJI (IMP USA)
 HWDFT0003 HARWOOD HIKOKURA (AI) (ET)
 DAM AACFF0231 WESTHOLME TAMA FUKUHANA
 AACFC0663 WESTHOLME FUKUHANA 1 (AI) (ET)
 WKSFM0164 WORLD K'S MICHIFUKU
 WESFW0177 WESTHOLME MINAYO (AI) (ET)

LOT 21



AACFK5118 WESTHOLME K5118

VENDOR WESTHOLME WAGYU (AACo)

REGO No AACFK5118 DNA No 396433
 SEX FEMALE GRADE FULLBLOOD
 DOB 25/08/2014 BLOOD 100%
 COLOUR BLACK GENETIC STATUS B31%,
 CHS31%, CL161%, F1116%

LOT NOTES

Westholme K5118 is in the top 5% for 200 and 600 day weight, and top 10% for 400 day weight. K5118 sells open ready to join with a breeding guarantee out of the elite portion of the autumn joiner heifers. The sire of this lot is Westholme Itokikuhira 8 G0413 a trait leader for 200 day growth and in the top 5% for growth in the breed.

Inspections welcome.

PURCHASER
 PRICE \$

	GL	BW	200	400	600	MCW	MILK	SS	CWt	EMA	RIB	RUMP	RBY	MS	MF	FTI
EBV	-	+3.6	+18	+28	+42	-	-	-	-	-	-	-	-	-	-	-
ACC	-	55%	54%	53%	51%	-	-	-	-	-	-	-	-	-	-	-

SIRE AACFG0413 WESTHOLME ITOKIKUHIRA 8
 AACFB0454 WESTHOLME ITOKIKUNAMI 1/3 (AI) (ET)
 WESFZ0135 WESTHOLME HIRA Z0135 (AI) (ET)
 IMJFAJ2351 HIRASHIGETAYASU J2351 HONGEN (IMP JAP)
 EXLFV1086 EXCEL AYAKA (IMP USA) (AI) (ET)

DAM AACFD0824 WESTHOLME ITOFUJIMIYA 3/4 (AI) (ET)
 IMUFQTF148 ITOSHIGENAMI (IMP USA)
 HWDFT0005 HARWOOD HIKOHIME - 2 (AI) (ET)
 IMUFQTF147 ITOSHIGEFUJI (IMP USA)
 PEDFAJ483 ITOFUJI J483 - KURO IKU
 PEDFAJ920752 DAI 30 NOBORU J920752
 WKSFM0164 WORLD K'S MICHIFUKU
 WESFU0009 WESTHOLME MORIFUJI U9 (IMP USA) (AI) (ET)

LOT 22



AACFK5236 WESTHOLME K5236

VENDOR WESTHOLME WAGYU (AACo)

REGO No AACFK5236 DNA No 396551
 SEX FEMALE GRADE FULLBLOOD
 DOB 04/05/2014 BLOOD 100%
 COLOUR BLACK GENETIC STATUS B3FU,
 CHS10%, CL16FU, F1127%

LOT NOTES

Westholme K5236 has been selected from the lead of our autumn joiner heifers. She sells open ready to join with a breeding guarantee. Westholme K5236 is in the top 10% for 200, 400 and 600 day weight, top 15% for scrotal circumference. This lot is sired by Westholme Hiramiche Tsuru F0758, a trait leader for growth and scrotal circumference and featured in the semen lots (lot 8) of this catalogue. This heifer sells open with a breeding guarantee.

Inspections welcome.

PURCHASER
 PRICE \$

	GL	BW	200	400	600	MCW	MILK	SS	CWt	EMA	RIB	RUMP	RBY	MS	MF	FTI
EBV	-	+3.5	+16	+28	+33	-	-	+1.1	-	-	-	-	-	-	-	-
ACC	-	59%	57%	57%	52%	-	-	52%	-	-	-	-	-	-	-	-

SIRE AACFF0758 WESTHOLME HIRAMICHI TSURU
 AACFB0545 WESTHOLME NAMIYOSHI 4 (AI) (ET)
 WESFZ0084 WESTHOLME HIRA Z0084 (AI)
 IMUFQTF148 ITOSHIGENAMI (IMP USA)
 CCCCFZ0119 BALD RIDGE HAYAFUKU Z119 (AI) (ET)
 IMJFAJ2351 HIRASHIGETAYASU J2351 HONGEN (IMP JAP)
 WESFV0136 WESTHOLME HATSU V136 (AI) (ET)

DAM AACFD1203 WESTHOLME MIYANISHIKI 2/2 (AI) (ET)
 TWAFR0007 TWA SHIKIKAN (IMP USA) (ET)
 WKSFN2892 WORLD K'S TAKAZAKURA
 WKSFL0976 WORLD K'S SUZUTANI 976
 IMJFAJ2810 KITATERUYASUDOJ J2810 HONGEN (IMP JAP)
 WESFTH048 WESTHOLME MORIHATSUHI 98/1 (IMP USA) (AI) (ET)



ONLINE SALE SATURDAY 9 MAY 2015

AACFK5155 WESTHOLME K5155

VENDOR WESTHOLME WAGYU (AACo)

REGO No AACFK5155 DNA No 396470
 SEX FEMALE GRADE FULLBLOOD
 DOB 08/06/2014 BLOOD 100%
 COLOUR BLACK GENETIC STATUS B3FU, CHS8%, CL16FU, F1134%

LOT NOTES

An early maturing heifer, Westholme K5155 is in the top 15% for 400 day weight. We are so impressed with her dam that we moved her to the Westholme bull breeding unit. This heifer is sired by Westholme Hiramiche Tsuru F0758, a trait leader for growth and scrotal circumference and featured in the semen lots (lot 8) of this catalogue. This heifer sells open with a breeding guarantee.

Inspection welcome.

PURCHASER

PRICE \$

AACFK5035 WESTHOLME K5035

VENDOR WESTHOLME WAGYU (AACo)

REGO No AACFK5035 DNA No 396350
 SEX FEMALE GRADE FULLBLOOD
 DOB 04/05/2014 BLOOD 100%
 COLOUR BLACK GENETIC STATUS B3FU, CHSFU, CL16FU, F1153%

LOT NOTES

Westholme K5035 is in the top 5% for 200 day weight and the top 10% for 400 and 600 day weights. Her sire Westholme B0039 was sold to the "The Wright Wagyu" stud in October 2013 after serving as a leading sire in the Westholme herd for 5 years. Like all the heifer lots from Westholme she is from the elite portion of the autumn joiner heifers. This heifer sells open with a breeding guarantee.

Inspections welcome.

PURCHASER

PRICE \$



LOT 23

GL	BW	200	400	600	MCW	MILK	SS	CWT	EMA	RIB	RUMP	RBY	MS	MF	FTI	EBV
-	+2.5	+11	+24	+25	-	-	+0.8	-	+0.5	+0.6	+0.0	-0.1	-	-	-	ACC
-	62%	60%	59%	54%	-	-	52%	-	43%	51%	51%	44%	-	-	-	ACC

-o AACFB0545 WESTHOLME NAMIIYOSHI 4 (AI) (ET)
-o IMUFQTF148 ITOSHIGENAMI (IMP USA)
-o CCCFZ0119 BALD RIDGE HAYAFUKU Z119 (AI) (ET)
- SIRE AACFF0758 WESTHOLME HIRAMICHI TSURU**
-o IMJFAJ2351 HIRASHIGETAYASU J2351 HONGEN (IMP JAP)
-o WESFZ0084 WESTHOLME HIRA Z0084 (AI)
-o WESFV0136 WESTHOLME HATSU V136 (AI) (ET)
-o WESFZ0104 WESTHOLME TERUKATSURIKIDOI (AI) (ET)
-o IMJFAJ2810 KITATERUYASUDOJ J2810 HONGEN (IMP JAP)
- DAM AACFD0202 WESTHOLME TERUHIRASHIGE (AI)**
-o MANFV2027 MANSEI KIKUITOFUKU (IMP USA) (AI) (ET)
-o WESFY0107 WESTHOLME HIRASHIGE-TOMI (AI) (ET)
-o WESFA0331 WESTHOLME A0331
-o WESFX0484 WESTHOLME TERUMIYA (AI) (ET)



LOT 24

GL	BW	200	400	600	MCW	MILK	SS	CWT	EMA	RIB	RUMP	RBY	MS	MF	FTI	EBV
-	+2.9	+19	+27	+33	+28	+1	-	-	+0.6	+0.0	-0.6	+0.4	-	-	-	ACC
-	61%	59%	59%	56%	50%	52%	-	-	47%	50%	50%	46%	-	-	-	ACC

-o IMUFQTF148 ITOSHIGENAMI (IMP USA)
-o PEDFA10632 SHIGESHIGENAMI J10632
- SIRE WESFB0039 WESTHOLME B0039 (AI) (ET)**
-o PEDFA661 FUKUYUKI
-o WESFW0222 WESTHOLME TOMIE (AI) (ET)
-o IMJFAJ2810 KITATERUYASUDOJ J2810 HONGEN (IMP JAP)
-o IMJFRY046 SEKIYOSHIKO 4 J9610201 Y46 (IMP JAP)
-o IMJFAJ2351 HIRASHIGETAYASU J2351 HONGEN (IMP JAP)
-o PEDFAJ287 DAI 20 HIRASHIGE J287 - KURO IKU
- DAM WESFZ0358 WESTHOLME HIRA Z0358 (AI) (ET)**
-o MANFV2180 MANSEI KITAKATSUAKI 6 (IMP USA) (AI) (ET)
-o PEDFAJ187250 DAI 5 YURUHIME J187250 - KURO KOH
-o IMJFAJ2810 KITATERUYASUDOJ J2810 HONGEN (IMP JAP)
-o PEDFAY10 KITAKATSUKO Y10 J1975528

LOT 25

WITHDRAWN
FROM SALE

	GL	BW	200	400	600	MCW	MILK	SS	CWt	EMA	RIB	RUMP	RBY	MS	MF	FTI
EBV	-	+2.5	+16	+25	+28	-	-	-	-	-	-	-	-	-	-	-
ACC	-	56%	54%	53%	50%	-	-	-	-	-	-	-	-	-	-	-

SIRE AACFG0985 WESTHOLME ITOKITANAMI
 AACFB0576 WESTHOLME ITOKITATERU (AI) (ET)
 AACFB0477 WESTHOLME ITOKIKUHIME 2/5 (AI) (ET)
 IMUFN2294 TF ITOHANA 2 (IMP USA)
 GOSFU0074 GOSHU KITAE (AI) (ET)
 IMUFQTF148 ITOSHIGENAMI (IMP USA)
 HWDFT0005 HARWOOD HIKOHIME - 2 (AI) (ET)
DAM AACFD0157 WESTHOLME HIRAYUKI
 WESFA0107 WESTHOLME HIRASHIGETAMANA (AI)
 WESFY0123 WESTHOLME TERUKOYUKI Y0123 (IMP USA) (AI) (ET)
 IMJFAJ2351 HIRASHIGETAYASU J2351 HONGEN (IMP JAP)
 WESFX0170 WESTHOLME SAWAYURI (IMP USA) (AI) (ET)
 IMJFAJ2810 KITATERUYASUDOJ J2810 HONGEN (IMP JAP)
 PEDFAW172 SHIROMITSU J W172

AACFK5105 WESTHOLME
K5105

VENDOR WESTHOLME WAGYU (AACo)

REGO No AACFK5105 DNA No 396420
 SEX FEMALE GRADE FULLBLOOD
 DOB 04/05/2014 BLOOD 100%
 COLOUR BLACK GENETIC STATUS B3FU, CHSFU, CL16FU, F1149%

LOT NOTES

Westholme K5105 is in the top 10% for 200 and 400 Day weight. The sire of this heifer, Westholme Itokitanami G0985, is a trait leader for 200 and 400 Day weight. This heifer sells open with a breeding guarantee.

PURCHASER
 PRICE \$

LOT 26



	GL	BW	200	400	600	MCW	MILK	SS	CWt	EMA	RIB	RUMP	RBY	MS	MF	FTI
EBV	-	+3.5	+17	+27	+38	-	-	+0.2	-	-	-	-	-	-	-	-
ACC	-	58%	55%	53%	54%	-	-	50%	-	-	-	-	-	-	-	-

SIRE AACFG0413 WESTHOLME ITOKIKUHIRA 8
 AACFB0454 WESTHOLME ITOKIKUNAMI 1/3 (AI) (ET)
 WESFZ0135 WESTHOLME HIRA Z0135 (AI) (ET)
 IMUFQTF148 ITOSHIGENAMI (IMP USA)
 HWDFT0005 HARWOOD HIKOHIME - 2 (AI) (ET)
 IMJFAJ2351 HIRASHIGETAYASU J2351 HONGEN (IMP JAP)
 EXLFV1086 EXCEL AYAKA (IMP USA) (AI) (ET)
DAM AACFC0007 WESTHOLME DAI 2 ITOYASU (AI)
 IMJFAJ2810 KITATERUYASUDOJ J2810 HONGEN (IMP JAP)
 WESFZ0146 WESTHOLME ITO Z0146 (AI) (ET)
 PEDFAJ1742 TERUNAGAD01 1742
 PEDFAJ601124 YOSHIMI 3 601124
 IMJFAJ2703 ITOMORITAKA J2703 HONGEN (IMP JAP)
 WESFW0023 WESTHOLME KAZUE W23 (AI) (ET)

AACFK5149 WESTHOLME
K5149

VENDOR WESTHOLME WAGYU (AACo)

REGO No AACFK5149 DNA No 396464
 SEX FEMALE GRADE FULLBLOOD
 DOB 04/05/2014 BLOOD 100%
 COLOUR BLACK GENETIC STATUS B31%, CHS13%, CL161%, F1139%

LOT NOTES

Westholme K5149 is in the top 10% for 200 and 400, and the top 5% for 600 day weights. In cataloguing this heifer we have made available a selection from the elite portion of the autumn herd. K5149 sells open with a breeding guarantee. The sire of this heifer is Westholme Itokikuhira 8, a trait leader for 200 day weight and in the top 5% of the breed for growth.

Inspections welcome.

PURCHASER
 PRICE \$



ONLINE SALE SATURDAY 9 MAY 2015

AACFK5095 WESTHOLME K5095

VENDOR WESTHOLME WAGYU (AACo)

REGO No AACFK5095 DNA No 396410
 SEX FEMALE GRADE FULLBLOOD
 DOB 25/08/2014 BLOOD 100%
 COLOUR BLACK GENETIC STATUS B31%,
 CHS25%, CL161%, F1121%

LOT NOTES

Westholme K5095 is in the top 5% for growth in her age group. The sire of this heifer is Westholme Itokikuhira 8 a trait leader for 200 day weight and in the top 5% of the breed for growth. Heifer sells open with a breeding guarantee, ready to join.

Inspections welcome.

PURCHASER

PRICE \$

AACFK5241 WESTHOLME K5241

VENDOR WESTHOLME WAGYU (AACo)

REGO No AACFK5241 DNA No 396556
 SEX FEMALE GRADE FULLBLOOD
 DOB 18/05/2014 BLOOD 100%
 COLOUR BLACK GENETIC STATUS B3FU,
 CHS18%, CL16FU, F1121%

LOT NOTES

K5241 is from the elite group of our autumn joiner heifers. She sells open with a breeding guarantee. Westholme K5241 is in the top 5% for 200, 400 and 600 day growth and the top 10% for retail beef yield. Her sire AACFF0758 is featured in the semen lots (lot 8) of this catalogue.

PURCHASER

PRICE \$



LOT 27

GL	BW	200	400	600	MCW	MILK	SS	CWT	EMA	RIB	RUMP	RBY	MS	MF	FTI	EBV
-	+4.0	+20	+35	+46	-	-	-	-	-	-	-	-	-	-	-	-
-	56%	54%	52%	53%	-	-	-	-	-	-	-	-	-	-	-	ACC

SIRE AACFG0413 WESTHOLME ITOKIKUHIRA 8
 AACFB0454 WESTHOLME ITOKIKUNAMI 1/3 (AI) (ET)
 IMJFQTF148 ITOSHIGENAMI (IMP USA)
 HWDF0005 HARWOOD HIKOHIME - 2 (AI) (ET)
 WESFZ0135 WESTHOLME HIRA Z0135 (AI) (ET)
 IMJFAJ2351 HIRASHIGETAYASU J2351 HONGEN (IMP JAP)
 EXLFV1086 EXCEL AYAKA (IMP USA) (AI) (ET)
 IMJFQTF147 ITOSHIGEFUJI (IMP USA)
 PEDFAJ483 ITOFUJI J483 - KURO IKU
 PEDFAJ920752 DAI 30 NOBORU J920752
 DAM AACFD0803 WESTHOLME ITOFUJIYASU 2/3 (AI) (ET)
 WESFX0414 WESTHOLME SHIRAKI (AI) (ET)
 IMJFAJ2351 HIRASHIGETAYASU J2351 HONGEN (IMP JAP)
 WESFTH066 WESTHOLME SEKIDOI T66 (IMP USA) (AI) (ET)

IMAGE NOT AVAILABLE AT THE TIME OF PUBLICATION

LOT 28

GL	BW	200	400	600	MCW	MILK	SS	CWT	EMA	RIB	RUMP	RBY	MS	MF	FTI	EBV
-	+4.2	+21	+40	+48	-	-	+1.9	-	+1.9	+0.8	+0.2	+0.6	-	-	-	-
-	64%	61%	60%	56%	-	-	54%	-	47%	53%	54%	48%	-	-	-	ACC

SIRE AACFF0758 WESTHOLME HIRAMICHI TSURU
 AACFB0545 WESTHOLME NAMİYOSHI 4 (AI) (ET)
 IMJFQTF148 ITOSHIGENAMI (IMP USA)
 CCCFZ0119 BALD RIDGE HAYAFUKU Z119 (AI) (ET)
 WESFZ0084 WESTHOLME HIRA Z0084 (AI)
 IMJFAJ2351 HIRASHIGETAYASU J2351 HONGEN (IMP JAP)
 WESFV0136 WESTHOLME HATSU V136 (AI) (ET)
 IMJFAJ2351 HIRASHIGETAYASU J2351 HONGEN (IMP JAP)
 PEDFAJ287 DAI 20 HIRASHIGE J287 - KURO IKU
 PEDFAJ187250 DAI 5 YURUHIME J187250 - KURO KOH
 DAM AACFB0280 WESTHOLME MORIFUJI (AI)
 WESFY0222 WESTHOLME SHIGESHIGEMUSUME Y0222 (AI) (ET)
 IMJFAJ2703 ITOMORITAKA J2703 HONGEN (IMP JAP)
 WESFU0069 WESTHOLME KAZUKO U69 (IMP USA) (AI) (ET)

LOT 29



	GL	BW	200	400	600	MCW	MILK	SS	CWt	EMA	RIB	RUMP	RBY	MS	MF	FTI
EBV	-	+2.9	+15	+28	+33	-	-	+0.9	-	+2.3	+1.5	+1.3	-0.2	-	-	-
ACC	-	63%	61%	60%	55%	-	-	55%	-	44%	51%	52%	45%	-	-	-

SIRE AACFF0758 WESTHOLME HIRAMICHI TSURU
 AACFB0545 WESTHOLME NAMİYOSHI 4 (AI) (ET)
 IMUFQTF148 ITOSHIGENAMI (IMP USA)
 CCCFZ0119 BALD RIDGE HAYAFUKU Z119 (AI) (ET)
 IMJFAJ2351 HIRASHIGETAYASU J2351 HONGEN (IMP JAP)
 WESFZ0084 WESTHOLME HIRA Z0084 (AI)
 WESFV0136 WESTHOLME HATSU V136 (AI) (ET)

DAM AACFD0446 WESTHOLME ITOSHIGEHIRA 3/4
 AACFB0462 WESTHOLME ITOSHIGEFUKU (AI) (ET)
 IMUFQTF148 ITOSHIGENAMI (IMP USA)
 KCCFU0016 KCC WAGYU NAGASAKI (AI) (ET)
 IMJFAJ2351 HIRASHIGETAYASU J2351 HONGEN (IMP JAP)
 WESFX0318 WESTHOLME TERUHARUKO (AI) (ET)

AACFK5231 WESTHOLME K5231

VENDOR WESTHOLME WAGYU (AACo)

REGO No AACFK5231 DNA No 396546
 SEX FEMALE GRADE FULLBLOOD
 DOB 11/05/2014 BLOOD 100%
 COLOUR BLACK GENETIC STATUS B3FU, CHS9%, CL16FU, F1128%

LOT NOTES

Westholme K5213 is in the top 10% for growth, EMA and rib and rump fat. The sire of this heifer, Westholme Hiramichi Tsuru F0758 is in the top 5% for IMF and a trait leader for growth and scrotal circumference, and top 5% for rib fat, featured semen lots (lot 8) offering from Westholme in this catalogue. This elite joiner Heifer sells open with a breeding guarantee.

Inspections welcome.

PURCHASER
 PRICE \$

LOT 30



SIRE MOYFB0498 MOYHU F B498
 MOYFY0102 MOYHU F Y102 (AI) (ET)
 TWAFR0003 TWA ICHIRYUNO (IMP USA) (ET)
 MOYFW0010 MOYHU F W010 (AI) (ET)
 IMUFP0036 TF ITOMICHI 1/2 (IMP USA)
 TWAFU0640 TWA F U640 (AI) (ET)

DAM MOYFB0429 MOYHU 429 (AI) (ET)
 TWAFR0007 TWA SHIKIKAN (IMP USA) (ET)
 WKSFN2892 WORLD K'S TAKAZAKURA
 WKSFL0976 WORLD K'S SUZUTANI 976
 IMJFAJ2351 HIRASHIGETAYASU J2351 HONGEN (IMP JAP)
 WESFY0168 WESTHOLME SHIGEKINU (IMP USA) (AI) (ET)
 PEDFAW173 KIKUSHIGE J W173

MOYFJ0186 MOYHU J186

VENDOR MOYHU WAGYU

REGO No MOYFJ0186 DNA No 424205
 SEX FEMALE GRADE FULLBLOOD
 DOB 13/09/2013 BLOOD 100%
 COLOUR BLACK GENETIC STATUS B3FU, CHSFU, CL16FU, F1128%

LOT NOTES

The sire of this heifer is 1000kgs which relates back to his sire line. With TWA Shikikan and Hirashigetaysu on his dam side, this heifer on pedigree is free from the genetic conditions B3, CHS, CL16 with only a 28% chance of being a carrier for F11.

PURCHASER
 PRICE \$

LOTS 30-39
 J DROP HEIFERS



ONLINE SALE SATURDAY 9 MAY 2015

MOYFJ0221 MOYHU J221

VENDOR MOYHU WAGYU

REGO No MOYFJ0221 DNA No 424217
 SEX FEMALE GRADE FULLBLOOD
 DOB 25/09/2013 BLOOD 100%
 COLOUR BLACK GENETIC STATUS B3FU, CHSFU, CL16FU, F1146%

LOT NOTES

This heifer has great potential with a double cross of Takazakura with TF148 Itoshigenami and TF150 Kikutershige also in the pedigree. On pedigree this heifer is free from all genetic conditions B3, CHS, CL16 with a 46% chance of being a carrier for F11.

PURCHASER
 PRICE \$

SMOFJ0024 SUMO CATTLE CO NAMI J24

VENDOR SUMO CATTLE COMPANY

REGO No SMOFJ0024 DNA No 377411
 SEX FEMALE GRADE FULLBLOOD
 DOB 01/08/2013 BLOOD 100%
 COLOUR BLACK GENETIC STATUS B3FU, CHS1%, CL16FU, F116%

LOT NOTES

This heifer has a perfectly balanced genetic profile. The grandsire Itoshigenami X81 is the best bull SUMO has ever produced. 80% of his progeny grade marble score 8, 9 and 9+ with average carcass weight of 420kg. The dam Yasu 225 is sired by Westholme Hirashigetayasu and the granddam is a good combination of Shikikan and Haruki 2 genetics. She is ready to join and has a breeding guarantee.

PURCHASER
 PRICE \$



LOT 31

..... TWAFR0003 TWA ICHIRYUNO (IMP USA) (ET) WKSFN2892 WORLD K'S TAKAZAKURA
 MOYFB0501 MOYHU F B0501 (AI) WKSFM14091 WORLD K'S OKAHANA J1409
 MOYFY0135 MOYHU F Y135 (AI) IMUFMTF150 KIKUTERUSHIGE (IMP USA)
 TWAFR0007 TWA SHIKIKAN (IMP USA) (ET) MOYFW0013 MOYHU F W013 (AI) (ET)
 TWAFR0007 TWA SHIKIKAN (IMP USA) (ET) WKSFN2892 WORLD K'S TAKAZAKURA
 MOYFD0540 MOYHU F D540 (AI) WKSFL0976 WORLD K'S SUZUTANI 976
 MOYFA0237 MOYHU F A0237 (AI) (ET) IMUFQTF148 ITOSHIGENAMI (IMP USA)
 GOSFT0043 GOSHU DAI-ICHI (AI) (ET)



LOT 32

..... SUMFX0081 SUMO ITOSHIGENAMI X0081 (AI) (ET) IMUFQTF148 ITOSHIGENAMI (IMP USA)
 SMOFF0278 SUMO CATTLE CO ITOSHIGENAMI F278 SUMFT0250 SUMO FUKU T250 (AI) (ET)
 CCOFC0418 COATES TANI C418 (AI) (ET) IMUFR3258 TF TERUTANI 40/1 (IMP USA) (AI) (ET)
 IMJFAJ2351 HIRASHIGETAYASU J2351 HONGEN (IMP JAP) SUMFU2179 SUMO YASU U2179 (AI) (ET)
 PEDFAJ287 DAI 20 HIRASHIGE J287 - KURO IKU
 SMOFD0225 SUMO CATTLE CO YASU D225 (AI) (ET) PEDFAJ187250 DAI 5 YURUHIME J187250 - KURO KOH
 SUMFW1216 SUMO KAN W1216 (AI) (ET) TWAFR0007 TWA SHIKIKAN (IMP USA) (ET)
 SUMFT0913 SUMO RUKI T0913 (AI) (ET)

LOT 33



SMOFJ0030 SUMO CATTLE CO FUKU J30 (AI)

VENDOR SUMO CATTLE COMPANY

REGO No SMOFJ0030 DNA No 377416
 SEX FEMALE GRADE FULLBLOOD
 DOB 20/11/2013 BLOOD 100%
 COLOUR BLACK GENETIC STATUS B3FU, CHS2%, CL16FU, F1125%

LOT NOTES

Sumo Fuku J30's dam W1433 is sired by T.F Itoshigenami one of the most influential bulls outside of Japan. The granddam Ruki T0913 had great frame size being sired by Haruki 2 out of a dam Sumo imported from Takeda farm, Hikohime 12/2 a 700kg Shimane cow. Sumo Fuku J30 is sired by Michifuku. This heifer has a balanced genetic profile. She is ready to join and has a breeding guarantee.

	GL	BW	200	400	600	MCW	MILK	SS	CWt	EMA	RIB	RUMP	RBY	MS	MF	FTI
EBV	+0.9	+0.3	+7	+9	+10	+8	-7	-1.4	-	+5.4	+1.2	+1.2	+0.2	-	-	-
ACC	55%	57%	57%	57%	57%	56%	57%	56%	-	55%	55%	56%	54%	-	-	-

- o PEDFA201 MONJIRO J11550
- o PEDFAJ10328 YASUMI DOI J10328 - KURO IKU
- SIRE WKSFM0164 WORLD K'S MICHIFUKU
- o PEDFA203 HARUMI J1086409
- o PEDFA215 MICHIKO J655635 (AI)
- o PEDFA211 TANISHIGE 1526 - KURO KOH
- o PEDFA216 MICHIFUKU J4944290
- o IMUFQTF148 ITOSHIGENAMI (IMP USA)
- o PEDFA10632 SHIGESHIGENAMI J10632
- DAM SUMFW1433 SUMO NAMI W1433 (AI) (ET)
- o PEDFA661 FUKUYUKI
- o SUMFT0913 SUMO RUKI T0913 (AI) (ET)
- o WKSFM0139 WORLD K'S HARUKI-2
- o IMUFR3246 TF HIKOHIME 12/2 (IMP USA) (ET)

PURCHASER
 PRICE \$

LOT 34



SMOFJ0034 SUMO CATTLE CO TANI J34 (AI)

VENDOR SUMO CATTLE COMPANY

REGO No SMOFJ0034 DNA No 377420
 SEX FEMALE GRADE FULLBLOOD
 DOB 01/09/2013 BLOOD 100%
 COLOUR BLACK GENETIC STATUS B3FU, CHSFU, CL16FU, F1126%

LOT NOTES

Sumo Tani J34 is sired by Takeda Farm Terutani 40/1, one of the most important bulls imported into Australia by SUMO. Terutani 40/1 sires large framed offspring as his dam Takeda Farm Dai 2Kinntou 3 was a 750kg Shimane cow. The dam G124 is a good combination of Itoshigenami, Michifuku, Haruki 2 & Fukukane genetics. Sumo Tani J34 has the potential to produce offspring with large size and excellent marbling characteristics. She is ready to join and has a breeding guarantee.

	GL	BW	200	400	600	MCW	MILK	SS	CWt	EMA	RIB	RUMP	RBY	MS	MF	FTI
EBV	-	+0.3	+11	+19	+24	+28	+5	-	-	-	-	-	-	-	-	-
ACC	-	52%	52%	52%	52%	50%	51%	-	-	-	-	-	-	-	-	-

- o IMUFJTF40 TERUTANI J2494 TF40 (IMP USA)
- o PEDFAJ10787 KIKUTERU DOI J10787 - KURO IKU
- SIRE IMUFR3258 TF TERUTANI 40/1 (IMP USA) (AI) (ET)
- o PEDFA538 TANIFUKU 2 J601115
- o PEDFA2453 TF DAI 2 KINNTOU 3
- o PEDFA500 ITOMICHI J1158
- o PEDFA464 DAI 2 KINTOU J337756
- o SMOFC0158 SUMO CATTLE CO ITOSHIGENAMI C0158 (AI) (ET)
- o IMUFQTF148 ITOSHIGENAMI (IMP USA)
- DAM SMOFG0124 SUMO CATTLE CO F G124
- o SUMFU2208 SUMO MICHIFUKU U2208 (AI) (ET)
- o SMOFC0053 SUMO CATTLE CO RUKI C053 (AI) (ET)
- o WKSFM0139 WORLD K'S HARUKI-2
- o SUMFU2184 SUMO KANE U2184 (AI) (ET)

PURCHASER
 PRICE \$



ONLINE SALE SATURDAY 9 MAY 2015

SMOFJ0039 SUMO CATTLE CO NAMI J39

VENDOR SUMO CATTLE COMPANY

REGO No SMOFJ0039 DNA No 377425
 SEX FEMALE GRADE FULLBLOOD
 DOB 02/08/2013 BLOOD 100%
 COLOUR BLACK GENETIC STATUS B3FU, CHSFU, CL16FU, F112%

LOT NOTES

Sumo Nami J039 is sired by Sumo Itoshigenami F278 a great genetic combination of our two champion bulls Sumo Itoshiganami X81 and T.F Terutani 40/1. The dam D255 is sired by Westholme Hirashigetayasu out of a Haruki 2 dam. This heifer has size and genetic balance. She is ready to join and has a breeding guarantee.

PURCHASER

PRICE \$

SMOFJ0701 SUMO CATTLE CO TAKA J701

VENDOR SUMO CATTLE COMPANY

REGO No SMOFJ0701 DNA No 377426
 SEX FEMALE GRADE FULLBLOOD
 DOB 08/12/2013 BLOOD 100%
 COLOUR BLACK GENETIC STATUS B3FU, CHS27%, CL16FU, F116%

LOT NOTES

The dam of this heifer is sired by Sumo Itoshigenami X81 our best ever bull who sires 80% AUS-MEAT marble score 8,9,9+ progeny out of Sumo Tani B31, one of our best cows. Sumo Tani B31 produced 40 grade one embryos on her first E.T flush (a record for Sumo Wagyu).

Sumo Tani J701 is sired by Itomoritaka F282 a good combination of Westholme Itomoritaka, Shikikan and Haruki 2. Sumo Taka J701 has a great combination of outstanding genetics. She is ready to join and has a breeding guarantee.

PURCHASER

PRICE \$



.....o SUMFX0081 SUMO ITOSHIGENAMI X0081 (AI) (ET)o IMUFQTF148 ITOSHIGENAMI (IMP USA)
o SUMFT0250 SUMO FUKU T250 (AI) (ET)
SIRE SMOFF0278 SUMO CATTLE CO ITOSHIGENAMI F278
o IMUFR3258 TF TERUTANI 40/1 (IMP USA) (AI) (ET)
o CCOFC0418 COATES TANI C418 (AI) (ET)o SUMFU2179 SUMO YASU U2179 (AI) (ET)
o IMJFAJ2351 HIRASHIGETAYASU J2351 HONGEN (IMP JAP)o PEDFAJ287 DAI 20 HIRASHIGE J287 - KURO IKU
o PEDFAJ187250 DAI 5 YURUHIME J187250 - KURO KOH
DAM CCOFD0255 COATES YASU D255 (AI) (ET)
o WKSFM0139 WORLD K'S HARUKI-2
o CCOFC0430 COATES RUKI C430 (AI) (ET)o SUMFV2358 SUMO TANI V2358 (AI) (ET)



LOT 36

.....o IMJFAJ2703 ITOMORITAKA J2703 HONGEN (IMP JAP)o PEDFAJ1555 ITOHIRASHIGE J1555
o PEDFAJ565554 DAI 6 OEFUJII J565554 - KURO KOH
SIRE SMOFF0282 SUMO CATTLE CO ITOMORITAKA F282 (AI) (ET)
o TWAFR0007 TWA SHIKIKAN (IMP USA) (ET)
o SUMFW1216 SUMO KAN W1216 (AI) (ET)o SUMFT0913 SUMO RUKI T0913 (AI) (ET)
o SUMFX0081 SUMO ITOSHIGENAMI X0081 (AI) (ET)o IMUFQTF148 ITOSHIGENAMI (IMP USA)
o SUMFT0250 SUMO FUKU T250 (AI) (ET)
DAM SMOFF0340 SUMO CATTLE CO NAMI F340 (ET)
o SMOFB0031 SUMO CATTLE CO TANI B031 (AI) (ET)o IMUFR3258 TF TERUTANI 40/1 (IMP USA) (AI) (ET)
o SUMFU2149 SUMO RUKI U2149 (AI) (ET)

LOT 37



SMOFJ0707 SUMO CATTLE CO TAKA J707

VENDOR SUMO CATTLE COMPANY

REGO No SMOFJ0707 DNA No 377432
 SEX FEMALE GRADE FULLBLOOD
 DOB 30/11/2013 BLOOD 100%
 COLOUR BLACK GENETIC STATUS B3FU, CHS26%, CL16FU, F115%

LOT NOTES

The dam of this heifer Sumo Fuku F235 is out of a cow sired by T.F Terutani 40/1 a bull SUMO imported into Australia in 1997 from Shogo Takeda. Since importation we have sold 4,000 straws of his semen to Australian breeders. He is considered to be an outstanding sire in terms of carcass size and marbling. Michifuku is the sire of F235. Michifuku is sired by Monjiro one of the most influential Tajima bulls ever in Japan. The sire of Sumo Taka J707 is an excellent balance of genetics between Westholme Itomoritaka, Shikikan and Haruki 2. She is ready to join and has a breeding guarantee.

SIRE SMOFF0282 SUMO CATTLE CO ITOMORITAKA F282 (AI) (ET)
 IMFAJ2703 ITOMORITAKA J2703 HONGEN (IMP JAP)
 PEDFAJ1555 ITOHIRASHIGE J1555
 PEDFAJ565554 DAI 6 OEFUJII J565554 - KURO KOH
 TWAFR0007 TWA SHIKIKAN (IMP USA) (ET)
 SUMFW1216 SUMO KAN W1216 (AI) (ET)
 SUMFT0913 SUMO RUKI T0913 (AI) (ET)

DAM SMOFF0235 SUMO CATTLE CO FUKU F235 (AI) (ET)
 WKSFM0164 WORLD K'S MICHIFUKU
 PEDFA201 MONJIRO J11550
 PEDFA215 MICHIKO J655635 (AI)
 SMOFD0006 SUMO CATTLE CO TANI D006 (AI) (ET)
 IMUFR3258 TF TERUTANI 40/1 (IMP USA) (AI) (ET)
 SUMFW1742 SUMO HANA W1742 (AI) (ET)

PURCHASER
 PRICE \$

LOT 38



SMOFJ0218 SUMO CATTLE CO FUKU J218

VENDOR SUMO CATTLE COMPANY

REGO No SMOFJ0218 DNA No 377882
 SEX FEMALE GRADE FULLBLOOD
 DOB 01/120/2013 BLOOD 100%
 COLOUR BLACK GENETIC STATUS B3FU, CHS4%, CL16FU, F1151%

LOT NOTES

This heifer is a powerful combination of Shimane and Tajima genetics.

The dam Sumo Kane C137 is sired by the Tajima bull Fukukane 402 (a son of high marbling Fukutsura J068) out of a Shimane dam. The sire of Fuku J218 is Sumo Michifuku F154. His dam is sired by Terutani 40/1. The granddam is one of our original imported Shimane dams TF Hihohime 34/3. Expect offspring with excellent marbling and large frame size. She is ready to join and has a breeding guarantee.

SIRE SMOFF0154 SUMO CATTLE CO MICHIFUKU F154 (AI) (ET)
 WKSFM0164 WORLD K'S MICHIFUKU
 PEDFA201 MONJIRO J11550
 PEDFA215 MICHIKO J655635 (AI)
 SMOFC0016 SUMO CATTLE CO TANI C016 (AI) (ET)
 IMUFR3258 TF TERUTANI 40/1 (IMP USA) (AI) (ET)
 IMUFR3256 TF HIKOHIME 34/3 (IMP USA) (ET)

DAM SMOFC0137 SUMO CATTLE CO KANE C137 (AI) (ET)
 IMUFQ0402 JVP FUKUKANE 402E (IMP USA) (ET)
 IMJFMJ068 FUKUTSURU J068 (IMP JAP)
 PEDFB2108 CHISAHIME 662 FB2108 (IMP JAP)
 TWAFS0321 TWA SHIMATSU (AI) (ET)
 IMUFN2127 TF KIKUHANA (IMP USA)
 PEDFL554 TF CHIYOTAKE 8 J847346

PURCHASER
 PRICE \$



ONLINE SALE SATURDAY 9 MAY 2015

SMOFJ0314 SUMO CATTLE CO YASU J314

VENDOR SUMO CATTLE COMPANY

REGO No SMOFJ0314 DNA No 377914
 SEX FEMALE GRADE FULLBLOOD
 DOB 30/11/2013 BLOOD 100%
 COLOUR BLACK GENETIC STATUS B3FU, CHS2%, CL16FU, F1124%

LOT NOTES

The dam of Sumo Yasu J314 is sired by Haruki 2. We consider Haruki 2 to be an important foundation sire. His female offspring milk well and have a large body size. Haruki 2 is a combination of Tajima and Tottori genetics. The Tajima sire is Monjiro. Monjiro is one of the most outstanding Japanese Tajima bulls ever. The dam of J314 is out of an Itoshigenami cow Y036. The sire of Yasu J314 is Hirashigetayasu D201 a balanced combination of Tottori, Tajima and Shimane genetics. She is ready to join and has a breeding guarantee.

PURCHASER

PRICE \$

HPCFG0208 THE WRIGHT WAGYU HAYAFUKU G208

VENDOR THE WRIGHT WAGYU

LOTS 40-42

EMBRYO FLUSHES FROM WAGYU FULLBLOOD 100% FEMALES

REGO No HPCFG02 DNA No 227151
 SEX FEMALE GRADE FULLBLOOD
 DOB 20/07/2011 BLOOD 100%
 COLOUR BLACK GENETIC STATUS B3FU, CHSFU, CL16FU, F1126%

LOT NOTES

Female flush lot. A very high performing young cow with a beautiful pedigree, great performance and conformation, extremely productive and quiet. Sired by Westholme Hirashigetayasu Z278 - top carcass weight bull and a trait leader for milk and growth. G208 is a lovely, big, long, smooth cow with a near perfect udder, lovely head and a very big and good bull calf at foot. Her dam is ACCFC0010, a high marbling daughter of TF148 Itoshigenami and a very productive cow with good growth who carries two great sires on her dam side in Itomichi 1-2 and Michifuku. TF148 is the no 7 bull in the breed for marble score EBV and sire of the top marble score bull Mayura Itoshigenami Junior. G208 has excellent figures, high growth, high milk and high eye muscle area and is an ideal cow to breed to one of the top marbling bulls available. She has had two calves and been flushed once producing 10 embryos.

PURCHASER

PRICE \$



LOT 39

.....o IMJFAJ2351 HIRASHIGETAYASU J2351 HONGEN (IMP JAP)o PEDFAJ287 DAI 20 HIRASHIGE J287 - KURO IKU
o PEDFAJ187250 DAI 5 YURUHIME J187250 - KURO KOH
SIRE SMOFD0201 SUMO CATTLE CO HIRASHIGETAYASU D201 (AI) (ET)
o IMUFMTF150 KIKUTERUSHIGE (IMP USA)
o SUMFW1113 SUMO SHIGE W1113 (AI) (ET)
o SUMFU2210 SUMO MICHIFUKU U2210 (AI) (ET)
o WKSFM0139 WORLD K'S HARUKI-2o PEDFA201 MONJIRO J11550
o PEDFA206 SAKURA 2 J741638
DAM SMOFE0063 SUMO CATTLE CO RUKI E063 (AI) (ET)
o CCOFY0036 COATES PRINDA NAMI Y0036 (AI)o IMUQTF148 ITOSHIGENAMI (IMP USA)
o TWAFS0321 TWA SHIMATSU (AI) (ET)



LOT 40

GL	BW	200	400	600	MCW	MILK	SS	CWT	EMA	RIB	RUMP	RBY	MS	MF	FTI	EBV
-	+3.1	+20	+32	+41	+42	+5	+1.0	+32	+0.6	-0.1	-0.4	+0.2	-	-	-	
-	66%	69%	67%	69%	73%	61%	53%	62%	50%	53%	53%	49%	-	-	-	ACC

.....o IMJFAJ2351 HIRASHIGETAYASU J2351 HONGEN (IMP JAP)o PEDFAJ287 DAI 20 HIRASHIGE J287 - KURO IKU
o PEDFAJ187250 DAI 5 YURUHIME J187250 - KURO KOH
SIRE WESFZ0278 WESTHOLME HIRASHIGETAYASU Z278 (AI)
o WESFX0106 WESTHOLME OHYURIHIME (AI) (ET)o IMJFAJ2810 KITATERUYASUDOJ1 J2810 HONGEN (IMP JAP)
o WESFU0038 WESTHOLME MORITAKE U38 (IMP USA) (AI) (ET)
o IMUQTF148 ITOSHIGENAMI (IMP USA)o PEDFA10632 SHIGESHIGENAMI J10632
o PEDFA661 FUKUYUKI
DAM ACCFC0010 THE WRIGHT WAGYU HAYAFUKU C0010 (AI) (ET)
o CCCFW0002 BALD RIDGE HAYAFUKU W02 (AI) (ET)o IMUFP0036 TF ITOMICHI 1/2 (IMP USA)
o TWAF0467 TWA HAYAFUKU (AI) (ET)

LOT 41



WESFA0180 WESTHOLME HIRA A0180 (AI)

VENDOR WESTHOLME WAGYU (AACo)

REGO No WESFA0180 DNA No 83450
 SEX FEMALE GRADE FULLBLOOD
 DOB 11/09/2005 BLOOD 100%
 COLOUR BLACK GENETIC STATUS B3FU, CHS25%, CL16FU, F1111%

LOT NOTES

Flush female lot: one of the best cows in the herd, a balanced pedigree that shows the heart of the Westholme herd. 001, 002 and 003 provide an excellent platform to combine with a high marbling bull to breed the next stud sire. In the top 5% of the breed for growth (200, 400 and 600 day weight), top 10% for rib and rump fat, this cow has produced six sons and one daughter that have been retained for breeding. Male calves have all made the Westholme terminal breeding program. Hira A0180 will be open in the spring for flushing.

Inspections welcome.

PURCHASER
 PRICE \$

	GL	BW	200	400	600	MCW	MILK	SS	CWt	EMA	RIB	RUMP	RBY	MS	MF	FTI
EBV	+1.1	+3.6	+22	+33	+45	+45	+7	+3.3	+21	+1.1	+1.4	+1.3	+0.8	-	-	-
ACC	70%	84%	77%	79%	76%	70%	73%	72%	71%	64%	71%	72%	65%	-	-	-

SIRE IMJFAJ2351 HIRASHIGETAYASU J2351 HONGEN (IMP JAP)
 PEDFAJ287 DAI 20 HIRASHIGE J287 - KURO IKU
 PEDFAJ1137022 DAI 13 HIRASHIGE J1137022 - KURO KOH
 PEDFAJ157 TAYASUFUKU J157 - KURO IKU
 PEDFAJ28677 YURIKO J28677 - KURO KOH

DAM WESFX0077 WESTHOLME CHIHORO (AI)
 IMJFAJ2703 ITOMORITAKA J2703 HONGEN (IMP JAP)
 PEDFAJ1555 ITOHIRASHIGE J1555
 PEDFAJ565554 DAI 6 OEFUJII J565554 - KURO KOH
 WESFU0002 WESTHOLME TERUYOSHI U2 (IMP USA) (AI) (ET)
 IMJFAJ2810 KITATERUYASUDO J2810 HONGEN (IMP JAP)
 PEDFNU1946247 YOSHIE J1946247 - W82

LOT 42

IMAGE NOT AVAILABLE AT THE TIME OF PUBLICATION

WESFA0321 WESTHOLME A0321

VENDOR WESTHOLME WAGYU (AACo)

REGO No WESFA0321 DNA No 83513
 SEX FEMALE GRADE FULLBLOOD
 DOB 17/10/2005 BLOOD 100%
 COLOUR BLACK GENETIC STATUS B3FU, CHS10%, CL16FU, F1128%

LOT NOTES

Flush female lot: the only remaining daughter of Fujiito Y54 alive in the country, with good growth and balanced with marbling. A unique pedigree that gives you the chance to buy into the elite of the Westholme herd. This dam has produced two very good young cows and is the mother of Westholme Kitaitoturu AACFF0123, an elite high marbling bull in the Westholme sire battery who is having a large impact on our herd.

A0321 is open and ready to flush. Photo and video available on request. Inspections welcome.

PURCHASER
 PRICE \$

	GL	BW	200	400	600	MCW	MILK	SS	CWt	EMA	RIB	RUMP	RBY	MS	MF	FTI
EBV	-1.4	-0.1	+9	+22	+23	+10	+2	+1.1	+19	+3.4	+0.7	+0.5	+1.0	-	-	-
ACC	57%	83%	76%	75%	72%	63%	61%	60%	63%	51%	65%	66%	55%	-	-	-

SIRE WESFY0071 WESTHOLME TERUTAMA-DOI (AI) (ET)
 IMJFAJ2810 KITATERUYASUDO J2810 HONGEN (IMP JAP)
 PEDFAJ1742 TERUNAGADOI 1742
 PEDFAJ601124 YOSHIMI 3 601124

DAM IMJFRY054 FUJIITO J9611024 Y54 (IMP JAP)
 WESFU0035 WESTHOLME MAYU V35 (IMP USA) (ET)
 PEDFJ700212 SEKITORIYAHANA 5 J700212 - W4
 PEDFAJ1555 ITOHIRASHIGE J1555
 PEDFAJ1081 ITOKITATSURU J1081 - KURO IKU
 PEDFAJ112938 HIRASHIGEKIYOSHI J112938 - KURO KOH
 PEDFAJ1655 FUJIEIKOU J1655
 PEDFAJ501304 FUKUHIME 3 J501304

LOTS 43-44

WAGYU FULLBLOOD
100% EMBRYO
PACKAGES OF
6 EMBRYOS

**SALELOT043 SALE LOT 43
EMBRYO PARENTS**

VENDOR GOORAMBAT WAGYU

REGO No SALELOT043 SIRE GENETIC TEST STATUS
SEX FEMALE N/A
DOB 01/03/2015 DAM GENETIC TEST STATUS
EMBRYO 100% N/A
GRADE FULLBLOOD
COLOUR BLACK

LOT NOTES

Embryo lot - 6 embryos. The EBVs are mid-parent values for this joining from the Mating Predictor. GRSFF0184 is sired by Westholme Hirashigetayasu Z278 who has a CWT EBV of +35.6 and a FTI of +\$283. She is a full sister to nine brothers with carcass data, 3 with AUS-MEAT marbling score 9+, 3 with marbling score 9, 1 with marbling score 8, 1 with marbling score 7 and 1 with marbling score 6 and an average carcass weight of 448kgs. GRSFF0184 is a full sister to the gold medal Pasture-Fed class winner - 2014 AWA Wagyu Branded Beef Competition. The only gold medal ever awarded in the Pastured-fed class of this competition. 29% marbling off grass! GRSFF0184s dam, GRSFY0061 is sired by Itoshigenami TF 148, the sire of Mayura Itoshigenami Jnr, No 1 ranked sire for marbling score EBV and FTI. Embryo sire KJDFC0087 Lake Wagyu C087 (free of all 5 recessive genes) is a sire combining all the great bulls in the breed. Embryos qualify for export including the USA and China.

PURCHASER

PRICE \$



IMAGE NOT AVAILABLE AT THE TIME OF PUBLICATION

LOT 43

GL	BW	200	400	600	MCW	MILK	SS	CWT	EMA	RIB	RUMP	RBY	MS	MF	FTI	
0.8	0.9	7	9	12	13	-3	-1.2	-	3.9	0.8	1.1	0.1	-	-	-	SIRE
0.8	1.2	11	13	14	2	3	0.4	12	0.3	-0.5	-1.1	0.4	-	-	-	DAM
0.8	1.1	9	11	13	8	0	-0.4	-	2.1	0.2	0	0.3	-	-	-	MP*

Inbreeding Coefficient: 4%. Min./(Avg.) generation: 5/(7.5)

* MP = Mating predictor

-o WKSFM0164 WORLD K'S MICHIFUKU
-o PEDFA201 MONJIRO J11550
-o PEDFA215 MICHIKO J655635 (AI)
- SIRE KJDFC0087 LAKE WAGYU C087 (AI) (ET)
-o IMUFLT151 ITOZURUDO I TF151 (IMP USA)
-o KJDFY0034 LAKE WAGYU Y034 (AI)
-o BYWFW0078 BLACKMORE CHIYOTAKE W078 (AI) (ET)
-o WESFZ0278 WESTHOLME HIRASHIGETAYASU Z278 (AI)
-o IMJFAJ2351 HIRASHIGETAYASU J2351 HONGEN (IMP JAP)
- DAM GRSFF0184 GOORAMBAT F0184 (ET)
-o WESFX0106 WESTHOLME OHYURIHIME (AI) (ET)
-o GRSFY0061 GOORAMBAT F Y061 (AI)
-o IMUFQTF148 ITOSHIGENAMI (IMP USA)
-o BYWFW0035 BLACKMORE CHIYOTAKE W035 (AI) (ET)

**SALELOT044 SALE LOT 44
EMBRYO PARENTS**

VENDOR BALD RIDGE WAGYU

REGO No SALELOT044 SIRE GENETIC TEST STATUS
SEX FEMALE N/A
DOB 01/03/2015 DAM GENETIC TEST STATUS
EMBRYO 100% N/A
GRADE FULLBLOOD
COLOUR RED

LOT NOTES

Embryo lot - 6 embryos. The EBVs are mid-parent values for this joining from the Mating Predictor.

They are eligible for export to most countries excluding USA, China and EU. Please note, the embryos are sexed female.

Bald Ridge Henshin(CCCFH0037) x Tamahomare(KALFG0003). Sexed Female embryos. Tamahomare is an easy doing, deep bodied and well fleshed daughter of the great Red Star C402. She has a very nice temperament and flushes well consistently. She is a favourite at Bald Ridge. Henshin is a great young bull, a sire of the future for Red Wagyu. He is by a son of Kajikari with excellent BREEDPLAN figures. Henshin is large framed, easy doing with an excellent temperament.

PURCHASER

PRICE \$



LOT 44

GL	BW	200	400	600	MCW	MILK	SS	CWT	EMA	RIB	RUMP	RBY	MS	MF	FTI	
-	3.5	21	31	50	-	-	-	-	-	-	-	-	-	-	-	SIRE
-	3.6	-	-	-	-	-	-	-	-	-	-	-	-	-	-	DAM
-	3.6	-	-	-	-	-	-	-	-	-	-	-	-	-	-	MP*

Inbreeding Coefficient: 10%. Min./(Avg.) generation: 5/(6.6)

* MP = Mating predictor

-o KALFB0125 KALANGA KAJIKARI B0125 (AI) (ET)
-o TWAFS0363 TWA KAJIKARI (AI) (ET)
- SIRE CCCFH0037 BALD RIDGE HENSHIN
-o KALFB0218 KALANGA STARMIKO B218
-o KALFV2277 KALANGA ALMIKO V2277 (AI) (ET)
-o KALFC0402 KALANGA RED STAR C402 (AI) (ET)
-o HBCFV2141 HEART BRAND RED STAR (IMP USA) (ET)
-o KALFU0036 KALANGA HIKAHOMARE VW36 (AI) (ET)
- DAM KALFG0003 KALANGA TAMAHOMARE G0003
-o KALFU0095 KALANGA TAMAHOMARE VW95 (AI) (ET)
-o IMUFN2125 TAMAMARU (IMP USA)
-o RWAFS0038 RWA HOMARE BLUE 38 (IMP USA) (AI) (ET)

MEMBERSHIP DELIVERS REAL VALUE

FULL MEMBERSHIP

Designed to be the highest membership category, offering all benefits provided by the association. These members are focused on highest quality seedstock cattle breeding and commercial beef production. They register their Wagyu Fullblood and Purebred cattle in the Wagyu Herdbook.

They may also register Wagyu related cattle in the Wagyu Crossbred Register for grading up purposes or live export; and the Wagyu Commercial Register for slaughter cattle.

Registration of Wagyu cattle is not mandatory but adds very considerable value to those cattle.

COST: \$275 pa (inc GST) or A\$400 for overseas members.

FULL MEMBER BENEFITS INCLUDE...

Genetic improvement

- > Participation in Wagyu BREEDPLAN (no additional cost for BREEDPLAN enrollment and performance data input)
- > Discounted fees for DNA typing, parent verification, and genetic condition testing at the University of Queensland Animal Genetics Laboratory
- > Participation in GenProb recessive genetic analysis
- > Specialised reports through the members' only area on the AWA website
- > Participation in research and development projects.

Marketing

- > Recording Wagyu and Crossbred Wagyu cattle and their performance data in the Herd Book. Crossbred and Wagyu Commercial Registers maintained by the association provide very significant commercial value.
- > Export certification of semen and embryos (service fee of \$75/animal)
- > Minimum 20% discounted member rates for advertising in The Australian Wagyu Update. Assuming a full page advertisement at a member rate of \$665 saves \$242
- > Advertising in the AWA website with a link from the AWA website to a member's website. Assuming a one year advertisement at a member rate of \$730 saves \$146
- > Advertising through the AWA member email network. Assuming one

advertisement per year at a member rate of \$165 saves \$33

- > Advertising in the AWA Wagyu eNews. Assuming a one year advertisement at a member rate of \$1100 saves \$220

Herdbook registration (parent verified)

- > The Herdbook is recognised internationally, enabling both domestic and export marketing of Herdbook registered livestock and their semen and embryos
- > Herdbook dam premium (300+%). Estimated by the commercial value of Wagyu females being in the order of \$1000. Their Herdbook value is in the order of \$3000+
- > Herdbook bull premium (190+%). Estimated by non-registered Wagyu bulls at 12 months of age valued in the order of \$1750 (meat value: \$5.00 * 350kg = \$1750), while their Herdbook bull value is in the order of \$5000+

Wagyu commercial registered (non parent verified)

- > Commercially registered steer or female premium (10%). Estimated by non-registered Wagyu steers 12 months of age being valued at \$1575 (meat value \$4.50* 350kg live = \$1575, while Commercial Registered value is in the order of \$1750 (\$5.00* 350kg live = \$1750)
- > Export certification of live animals through ILRIC/ACGEA (service fee of \$25/head applies). 50% premium for Crossbred Wagyu (estimated by Angus heifers 300kg \$600 each, Crossbred Wagyu F1 50% 300kg \$950), 130% premium for Fullblood/Purebred (estimated by Angus heifers 300kg \$600 each, Wagyu Fullblood 100% 300kg \$1400+)

Information

- > The AWA's official publication The Australian Wagyu Update distributed three times per year. Value: total \$45 ie \$15 per issue including postage *3 issues pa

Education

- > Minimum 20% discounted member rates to events hosted by association.
- > National conference early bird \$627 for members, \$792 for non-members. Value \$165



Total estimated value of Full Membership (estimated minimum)

Advertising value (one full page advertisement)	\$242
Information (Wagyu Update)	\$45
Education (Wagyu Conference attendance)	\$165
Education (Wagyu Performance Field Day attendance)	\$20

	\$472

Benefit: Cost

For a cost of \$275 Full Membership delivers a minimum of \$472, or a benefit to cost ratio of 1.7 : 1. However, the real value of full membership is derived from utilising the cattle registration services:

- > Animal value (assuming ownership and registration of one Herdbook registered cow and bull pa each registered at \$28.60) \$1175

So, for a cost of \$275 full membership with cattle registration delivers a minimum of \$1600, or a benefit to cost ratio of 6.4 : 1.

Full membership of the Australian Wagyu Association pays for itself at least six times over!

SMARTREC JOBS DONE

Don't put up with sore fingers, mixed up hair samples and those hard to find UQ case numbers any longer. Register your Wagyu calves through the Smart Recording System (SMARTREC). Fully integrated with Allflex tag identification, UQ DNA Parent Verification and AWA registration, SMARTREC will save hours of your valuable time. SMARTREC is now operational through the member's only Restricted Login section of the AWA website. A complete set of guidelines are available from the Members page of the website, or through the AWA office. Use the on-line SMARTREC system to:

- > Order Allflex tag bundles with matching NLIS, eartag and Tissue Sampling Unit or TSU (with matching number and barcode on the DNA sample tube) for approximately \$9.40 per matched set (varies with eartag size and state) plus postage and handling. The tagging units are supplied to members directly from Allflex and invoiced by AWA. A "bucket file" of the tag data including TSU barcodes is loaded from Allflex to AWA.
- > Studies show the time saved by taking DNA samples using the TSU more than cover the cost of the TSU compared to taking hair samples and provide greater accuracy with much lower risk of sample contamination.
- > Tag the calves. In the paddock or yards at animal birth, weaning or

ASSOCIATE MEMBERSHIP

Associate Membership is designed to attract those interested in the Australian Wagyu industry from all sectors of the value chain but who do not breed cattle. Marketing opportunities, information and education are provided for the Wagyu industry to enhance their businesses.

COST: \$66 pa (inc GST) or A\$60 for overseas members.

BENEFITS INCLUDE...

- > All marketing and information benefits provided to full members are available to associate members.

Associate membership of the Australian Wagyu Association pays for itself at least five times over!



Order your Allflex tag bundles through SMARTREC and make your life easier! The Allflex integrated tagging unit includes matching NLIS, eartag and Tissue Sampling Unit (TSU).

another convenient time, apply the NLIS and eartag to the calf and use the TSU to take a tissue sample from the ear. Do not freeze the filled TSUs as that will destroy the DNA.

- > Create multiple sire and/or multiple dam groups. Where multiple sires or multiple dams were used in the mating, create multiple group IDs by visiting the AWA website restricted login area and select live multi sire groups.
- > Register the calves. In the office, visit the AWA website Restricted Login area, click On-line Transactions and begin registering the tagged calves. A drop-down list the Allflex supplied tags is available to choose from. Select the DNA test order required for parent verification and any genetic condition tests you need.
- > Send the filled TSUs to the University of Queensland Animal Genetics Laboratory (UQ).

AWA will receive your registration request and send and receive all DNA information to and from UQ on your behalf. All registered animal details are on the AWA database including their DNA case numbers so you don't have to worry about those details anymore. If there are any problems with DNA testing UQ will contact you directly to resolve them. When the DNA Parent Verification is successfully completed AWA will register your animals and invoice you for the DNA testing and registration fees.

Landmark Livestock. Working with you.



At Landmark, you can rely on a vast network of committed livestock operators, who have the resources and the expertise for all your livestock needs.

Our combined experience and our knowledge of the livestock industry, means we can add real value to your business and help you make the most of every opportunity.

We understand the marketing of livestock, and with access to more domestic markets and international partnerships, we can secure better prices for you.

That's why more people want Landmark involved in their business.