



ROSEDALE CHAROLAIS

27th Annual Bull Sale

Thursday 19TH May 2016 - 12pm



**62 Polled Charolais Bulls (21 Homozygous) 10 Charolais Females (PTIC)
30 Composite Bulls (20 Charolais/Angus & 10 Charolais/Shorthorn)**

LEADING from the front FOR OVER 45 YEARS

Rosedale Charolais are your proven source of top quality polled Charolais genetics.

Rosedale continues to lead the way in Australia's carcass competitions with unrivalled success in recent times. This is a true reflection that our breeding program is on the right track and that our genetics are out performing in a commercial situation.

The 2016 Sale drop of bulls represents the largest line-up of polled Charolais bulls ever to go under the Hammer. These bulls are top of the drop and all have been evaluated for soundness, fertility and performance. Our bulls are an easy doing group showing plenty of muscle with leading growth for age. This year we welcome new walking sires Rosedale Harry & Ascot Grand Redemption who bring some fantastic progeny to the mix.

We have a wide range of bulls to cover all Australian domestic & export markets including stud sire duties. We welcome your inspection and stand 100% behind the bulls we put on offer.

Our cattle are specifically bred for profitable cross-breeding under Australian conditions.

ROSEDALE'S PROVEN COMMERCIAL PERFORMANCE IN AUSTRALIA'S BIGGEST INDEPENDENT FEEDLOT TRIALS.

NSW BEEF SPECTACULAR FEED LOT TRIAL

- 2013** Grand Champion Team, Most Profitable Team Reserve Champion Weight Gain
- 2014** 3 Teams in the Top 10 (out of 120 entered) 2nd Most Profitable Team
- 2015** Riverine Tendercut Champions 10th overall
- 2016** Champion Weight Gain, Most Profitable Team 5th & 6th Overall (76 Teams)

AUSTRALIAN NATIONAL FIELD DAYS TRIAL

- 2012** Grand Champion Team, 1st Carcass Yield
- 2013** 1st Carcass Yield, 2nd Carcass Points 4th overall
- 2014** Champion Individual Steer 2nd Saleable Meat Yield
- 2015** Highest Carcass Points, 2nd Saleable Meat Yield, 3rd gain on Grass, 3rd/20 overall

ROYAL AGRICULTURAL SOCIETY BEEF CHALLENGE

- 2012** Grand Champion Domestic Team Reserve Champion Single Steer 2nd Most Profitable Team
- 2013** Grand Champion Export Team Most Profitable Team, 2nd Carcass Yield
- 2015** Grand Champion Domestic Team, 1st Carcass yield, Most Profitable Team (34 teams)

RNA FEEDLOT CHALLENGE

- 2013** 1st Place MSA Meat Quality 6th overall (74 teams entered)

(Competitions entered recently)



1st cross heifers at "Murrumbidgee" via Dubbo for direct consignment to Coles supermarkets



ROSEDALE CHAROLAIS 27th ANNUAL SALE

Thursday, 19th May, 2016 at 12.00 noon
on property at "Rosedale" Blayney

92 BULLS

- 62 Purebred Charolais (62 Polled)
- 30 F1 Bulls - 14 Rosedale Blacks (Cha/Ang)
 - 6 Charolais/Angus (Grey)
 - 10 Charolais/Shorthorn
- 10 Purebred Females (PTIC)

James and Sarah Millner

Ph: (02) 6368 2735 Fax: (02) 6368 2339
Mobile: 0425 341 341
millner@rosedalecharolais.com.au
www.rosedalecharolais.com.au

Michael and Jenny Millner

Ph:(02) 6368 7195
Mobile: 0409 682 339



auctionsplus
agricultural auctions at a click



Todd Clements - 0429 070 225



Paul Dooley - 0458 662 646



BATHURST - (02) 6331 7788
Andy McGeoch - 0418 737 470
Andrew Bickford - 0427 943 781
Josh Crosby - 0428 634 658

Welcome

Welcome to our 27th Annual Bull Sale. We believe this years lineup of bulls to be our best yet. This year 100% of our Charolais offering are polled which is a first for us here at Rosedale. This is something we are very proud of as we feel we have been able to achieve this without compromising any of the growth and carcass traits that our herd has built a reputation on. This is also the first year we have DNA tested all our sale bulls for the Homozygous polled Gene and we are proud to announce that we will catalogue 21 Homozygous polled charolais bulls who can really add a lot of value to the Industry. With over 25 years of polled breeding behind us we are reaping the rewards today with the proven growth and quality available in our genetics. The 30 composite bulls we have catalogued are an impressive bunch combining yield and growth for age to really drive profitability.

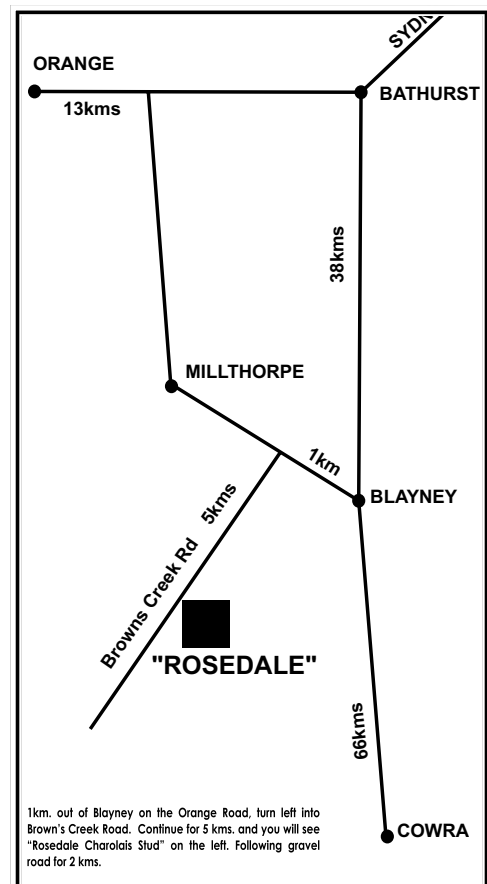
So far 2016 has been a very strong year for beef producers with record prices achieved in a number of categories around the sales. We are optimistic about beef's future and whilst this Autumn has been quite disappointing for most in terms of rainfall, the resilience of the cattle market has been strong. If the season is to turn around we expect to see a kick in prices towards the second half of the year provided the Australian Dollar does not creep too far above current levels. MLA projections have indicated that the "herd building" phase in Australia will continue on for the next few years as farmers look to recover from the long periods of dry. This, in combination with our strong export markets puts Australian cattle producers in favourable position over the mid - long term.

It is interesting to compare current market prices to the same time last year. In April 2015 weaner and feeder steers were making \$2.60 which compared very well to 2014 (\$1.90). Current prices today have weaner steers making around \$3.20 and feeder steers yielding slightly lower returns, not far off a couple of months ago where some weaner steers were making over \$3.50 (nearly double 2014). It is great to see cattle producers being rewarded with decent farm gate prices and getting a fairer slice of the profit in the big beef industry pie.

The Rosedale Breeding program is focused on the future and we want all clients to drive profitability through increased production/ha as well as increased prices by way of breeding superior quality animals. We feel the bulls in this draft are able to achieve industry leading growth, whilst maintaining strong carcass qualities which is what the processors want.

Proof that our bloodlines are performing where it counts can be backed up with years of data at top level feedlot trials. 2015/16 was another strong year for us winning the Weight gain section in the NSW Beef Spec Trial. In the RAS Beef challenge we claimed the Grand Champion Domestic Team and won both the yield sections with charolais x angus cattle. We expect yield to play an important part in beef production going forward and think that Rosedale clients are well situated to take advantage of any moves made by any major processors. We also feel it is worth noting that in 2015 we sent 500 Char X grassfed steers and heifers from our Dubbo property direct to coles with 100% grid compliance.

Sale bulls are available for viewing at any time leading up to the sale so please call us to arrange an inspection or to answer any queries you may have. Supplementary information and pictures of all lots will be available on our web site, rosedalecharolais.com.au. Thank you for taking time to read this and we look forward to seeing you on sale day.



Sale Information

ROSEDALE SALE BULL EBV'S

Rosedale has been a member of breedplan for over 27 years. This has helped assist us to consistently retain and source external genetics that have enabled us to produce the types of cattle you see in our paddocks today.

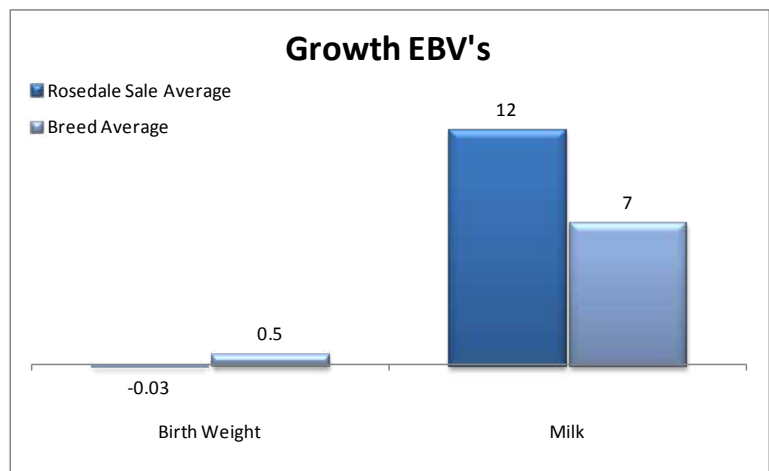
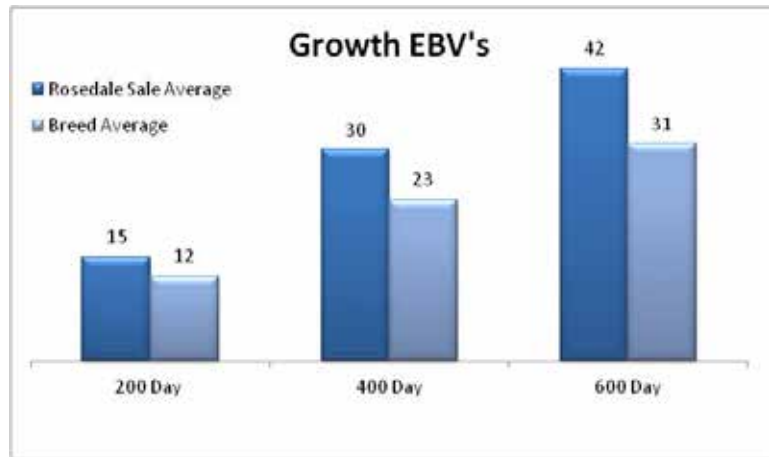
Genetic gain in growth rates has always been a priority of ours, but we understand sensible calving ease and birthweights need to be maintained. With our own commercial herd of 800 British bred cows, we are very familiar with the benefits our charolais bulls are delivering in a crossbreeding situation.

The graphs shown are a good 'measuring stick' as to where our sale bulls are compared to the Australian Charolais breed average.

Although we understand that EBV's are not everything we believe they do help to illustrate the types of bulls we are aiming to produce. We submit large amounts of meaningful data each year to breedplan to help ensure the information is as accurate as it can be.

At Rosedale we are always looking to improve our genetic pool in an effort to further satisfy our clients.

We welcome all feedback you may have on our breeding program and objectives.



VISUAL ASSESSMENT

When choosing bulls we recommend using a combination of EBVs, Raw Data and visual assessment. Visual assessment is essential to assess physical and structural soundness and is a reasonable indicator of health and temperament.

EBV's are a tool that will help you to make more "educated" decisions when you are choosing breeding stock. Do your homework well before the sale when you have plenty of time and set some parameters for your EBVs that fall within your market requirements, to narrow down potential purchases.

Use this "suitable list" of bulls and spend time looking and assessing the physical characteristics that you require.

CARING FOR YOUR NEW BULL

Always be considerate to your bulls and handle them with respect and kindness. Handle them quietly, walk them rather than rushing them, treat them with care and in a gentle manner and they will do likewise.

A bull leaving ROSEDALE is leaving the security of a large mob and will arrive in a strange environment at the purchaser's property. Unload him and make sure he has a steer or cow as a companion straight away if you can't put him out into your bull mob immediately.

A young bull can move in with older bulls and settle well, but remember, being the youngest he will get the last of any feed available because of the pecking order. The paddock needs to be reasonably large so he can keep away from the others and find adequate feed. Young bulls are still growing fast and need enough feed to maintain their growth pattern and be able to settle the cows quickly and efficiently.

ROSEDALE bulls are used to being handled by stockmen on motor bikes. Most of the fences are electrified and the bulls treat them with respect.

Sale Information

INSPECTION: cattle inspections are welcome at any time prior to the sale by arrangement with the Vendor. Cattle will be yarded into pens by 9am sale day.

MORNING TEA & LUNCH: Will be available, provided by the Blayney Show Society.

HEALTH: All bulls catalogued have been semen tested and examined by Peter Brown of Bovine Breeders for structural soundness. All of our cattle receive 7 in 1 vaccinations at 4 months of age, then 6 weeks later and an annual booster. They were drenched at weaning and periodically according to worm counts. Cattle were last drenched with Flukozole C together with a 5in1 in March. The sale bulls have been vaccinated for Pestivirus (BVDV).

All sale bulls have been DNA tested for Pestivirus and are all PI negative.

RAW DATA: All bulls will be scanned prior to the Sale for eye muscle area (EMA), rump and rib fat, marbling (IMF%) as well as sale weight and scrotal measurements. Supplementary sheet available on the day and on the rosedale website, along with photos of all the lots.

ROSEDALE'S 12 MONTH GUARANTEE: All stock have been evaluated for structural soundness and fertility. To the best of our knowledge the bulls are in sound working order at the time of the sale. Any claim against the breeding ability or a structural breakdown of any animal must be made in writing and accompanied by a Veterinary Certificate within 12 months of the sale date. Any animal failing to breed may be either replaced with an animal of similar value or credit made available to the value of the purchase price, minus salvage value, for use at a future Rosedale sale. The Purchaser will be responsible for any costs incurred.

DELIVERY: A delivery instruction slip must be completed and signed. Stock awaiting delivery will be held free of charge - all care will be taken, but absolutely no responsibility will be accepted for any injury or loss occasioned during, as a consequence of, or in relation to any holding. Rosedale offers a free delivery service locally and to Dubbo. We are more than happy to assist with all deliveries, please speak to us as we will go out of our way to help you get your purchases home safely and economically. We also can deliver cattle to CTLX, which is a transport hub for most major carriers.

INSURANCE: Ownership passes at the fall of the hammer. An insurance representative will be in attendance on Sale day.

TELEPHONE LINK-UP: Mobile telephones will be available. Please arrange with the Vendor or Agent to ensure a line.

AUCTIONS PLUS: Our sale is conducted live on line in real time and will be interfaced on Auctions Plus with the physical auction that is being conducted. A computer is used to bring the on-site bid price to the internet screen for remote bidders to observe. Bidders can bid on computers at their location and the bid is immediately transferred to the auction barn and relayed to the auctioneer. Bidding is only available if registered with Auctions Plus. You must register on-line to their website www.auctionsplus.com.au - at least 24 hours prior to the sale. For first time users of Auctions Plus we recommend you register as soon as possible and become familiar with the site. The staff in Sydney are very helpful and happy to guide you through it.

For more information contact:- Auctions Plus - (02)9262 4222

4% REBATE: The rebate will be offered to outside agents on the condition that a written introduction is received 48 hours prior to the sale and/or the agent accompanies the purchaser to the sale and settles on their behalf within 7 days. (This clause will be strictly adhered to.)

TERMS AND CONDITIONS: Terms of the sale are as per Conditions of Sale NSW Stud Stock.

PLEASE NOTE: It is unethical for anyone to promote, advertise or arrange the sale of any cattle, other than those in this sale on this sale premises.

SALE DAY SAFETY: All sale bulls have been screened for temperament and are quiet to handle under normal circumstances. However, there are risks associated with cattle handling. **Visitors enter the cattle pens at their own risk. Children must not enter pens.** People entering the yards are at risk of injury. Be especially alert for bulls fighting, and please be aware that the unfamiliar crowds of people seen at sale day places extraordinary pressure on them.

DISCLAIMER: People entering upon this property for any purpose whatsoever including attendance at cattle auctions do so at their own risk. We are not liable to you for any personal injury or death suffered by you and for theft loss or damage to any property caused or contributed to by us or by any other person whether caused or contributed to by or by negligence deliberate act or unlawful conduct. "We" or "us" or "our" refer to the owners their employees contractors and agents and each of them. While every care has been taken in compiling this catalogue to ensure accuracy of information supplied no responsibility is accepted for any errors which may have occurred.

Sale Information

Managing Yearling Bulls

Yearling Bulls are a great way to introduce new genetics into a breeding operation at a faster pace. If managed properly yearling bulls can also potentially be used for an extra joining year than an older bull. Yearling bulls are still growing strongly and tend to be leaner than older bulls carrying less fat reserves. It is important they are managed correctly as they are far more sensitive to poor nutrition, internal and external parasites than older bulls. Much of this management is more about common sense than anything else.

Our yearling bulls have all passed semen tests in April before most of them were even 12 months old. Good nutrition has sped up their sexual maturity and as can be seen many of the yearlings' scrotals have developed very well. For Charolais Bulls 12-14 months Dr Glen Coulter from the Agriculture Canada Research station in Alberta has documented a minimum scrotal circumference of 32cm based on large amounts of research. This figure is used as a minimum benchmark in the selection process for the yearling bulls we allow into this sale.

Key management steps to Ensuring Success using Yearling Bulls.

- While they are young use them in single joinings or with bulls the same age. This is a far more efficient way to use them and protects them from injury by larger dominant bulls.
- Take a conservative approach in their first year, a maximum of 30 females is a commonly recommended number.
- In their first joining don't use them for too long if conditions get tough. A maximum 8 week joining period is recommended in most conditions, it is important young bulls keep their condition so they continue to develop.
- When spelling them give them high quality feed, this will ensure their recovery and continued development.
- Just remember you are buying them for their genetic merit, their calves will be just as good as any older bull you use.



MULTIMIN[®]
Injection

Performance Recording - Breedplan EBV's - How to use them

All bulls in this sale have been managed under identical conditions from the point of weaning, therefore comparisons can be made between animals of similar age. Weights, scans of EMA and IMF% and scrotal measurements will be available on the day of sale to further aid your visual assessment.

Charolais Group Breedplan is an advanced genetic evaluation system that provides a genetic description of Charolais cattle for a range of traits influencing fertility, growth and carcase performance. It provides predictions of the genetic merit of individual animals called Estimated Breeding Values (EBVs). EBVs are based on all the available pedigree and performance records provided by breeders in Australia and New Zealand, along with available overseas genetic information. EBVs are expressed in the units of measurement for each particular trait and are shown as +ive or -ive values. The Charolais breed average EBV for different traits changes over time as the breed makes genetic progress. The absolute value of any EBV is not critical, but rather the differences in EBVs between animals. Particular animals should be viewed as being "above or below breed average" for a particular trait. The averages for calves born in 2014 are shown below and at the bottom of the Performance Data Summary. Please note that each breed has their own EBV and cannot be compared across breeds. **All EBVs quoted in this catalogue are Charolais Group Breedplan EBVs and are directly comparable with the EBVs from other Charolais Group Breedplan herds.**

How to use EBVs

To use these figures successfully you must first determine which characteristics you desire to breed for and then select the EBV which best supports these qualities. It is important to note that in a successful breeding programme it is advisable to maintain balance and not to direct effort toward gaining a single, higher EBV for one particular trait.

Birth Weight is a major factor in calving difficulty. Use this EBV to select against birth weight if calving is a problem. The lower the EBV the lighter the calves are expected to be at birth.

200 Day Growth and Milk is of particular interest to those targeting high weight gains at an early age to supply to the Domestic and Restaurant trade. Milk should be emphasized if the bull is being used to breed replacement progeny.

400 and 600 Day Growth indicates animals with superior weight gains from 12 months to 2 years of age, which would optimize profits in the domestic to Jap Ox markets.

Accuracy (Acc.%) provides an indication of the reliability of an EBV. As more performance information becomes available on an animal, it's progeny and relatives, the accuracy of it's EBVs for particular traits increases. The higher the accuracy the less chance the figure for each EBV will vary.

Index Values are reported as EBVs, in units of relative earning capacity (\$'s) for a given market. They reflect both the short-term profit generated by a sire through the sale of his progeny, and the longer-term profit generated by his daughters in a self-replacing cow herd. A selection index combines the EBVs with economic information (costs and returns) for specific market and production systems to rank animals based on relative profit values. Note that different types of animals can give similar profit values, so consideration should be given to both the index and the component EBVs when selecting animals for a particular production system.

Domestic Index(\$) Estimates the genetic differences between animals in net profitability per cow joined for an example commercial herd with a British cow base targeting grass-finished production for the domestic trade. This Index assumes pasture grown & finished steers weighing 430kgs (240kg HSCW and 6mm P8 fat) at 12 months. Daughters are retained or sold for breeding therefore maternal traits are of importance. In response to industry feedback, positive emphasis has been placed on finishing ability.

Export Index(\$) Estimates the genetic differences between animals in net profitability per cow joined for an example commercial herd with a British cow base targeting the production of steers for export markets. This Index assumes pasture grown & finished steers weighing 700kg (380kg HSCW and 9mm P8 fat) at 29 months. Daughters are retained or sold for breeding therefore maternal traits are of importance. In response to industry feedback, positive emphasis has been placed on finishing ability.

Scrotal Size is a good indicator of the bull's ability to produce sperm. A 2 year old bull with a testicle size of 34cm or more is regarded as satisfactory. Measurements will be available sale day.

Average Group Breedplan EBV's for 2014 born calves - March 2016 data.																	
Charolais	Calve ease direct (%)	Calve ease dtrs (%)	Gest length (days)	Birth Wt (kg)	200 Day Wt (kg)	400 Day Wt (kg)	600 Day Wt (kg)	Mat Cow Wt (kg)	Milk	Mat Value (kg)	Scr Size (cm)	Carc Wt (kg)	Eye mscl area (cm ²)	Rib fat (mm)	Rump fat (mm)	Retail beef yield (%)	IMF (%)
EBV	+1.4	+1.0	-2.4	+0.5	+12	+23	+31	+33	+7	+1.0	+1.0	+19	+1.5	+1.3	+1.8	-0.7	+0.8
Represents top 20% or better of Charolais Breed												\$ Index Value		+\$ 23		+\$ 32	

Sire ROSEDALE HARRY (P)

Born: 30/03/2012
Society ID: MRH16E

LT RIO BLANCO 1234 P (P)
 SVY PIONEER 402P (D)
 SVY JINGLES 153L
Sire: SVY PILGRIM PLD 655S (P)
 RGP EUREKA 17E (P)
 HFCC FRENCHKISS 919J
 QCR FRENCHKISS 33F P

LT WYOMING WIND LD (P)
 DSK WW YABBA DABBA DO Y4 (AI)
 PALGROVE ESTELLA 31 (AI) (ET) (H)
Dam: ROSEDALE CANDY C36 (P)
 MINNIE-VALE DEPUTY (P)
 ROSEDALE CANDY Z34 (P)
 ROSEDALE CANDY U109 (P)



XXXX

Charolais Group Breedplan EBV's - March, 2016

	DIR	DTRS	GL	BWT	200	400	600	MWT
	-0.8	-11.4	-3.7	+0.1	+17	+33	+41	+33
	62%	48%	74%	91%	76%	78%	76%	70%
MILK	SS	CWT	EMA	RIB	RMP	RBV	IMF	
	+7	+2.4	+23	+1.1	+0.7	+1.0	-0.5	+0.3
	58%	76%	65%	53%	60%	59%	57%	53%
Index \$ Value	Domestic (\$)				Export (\$)			
	+\$ 20				+\$ 28			

Sire ROSEDALE DARWIN (P)

Born: 02/10/2008
Society ID: MRD122E

FERNVALE NERO FENN4E (H)
 FERNVALE RIPPER FENRIE (H)
 BOTTLETREE CYNTHIA SPAC2D
Sire: FERNVALE TRAPPER (H)
 FLEETS RASCAL
 FERNVALE PRIMADONNA (AI) (ET) (D)
 FERNVALE JA-CIE (AI) (ET) (H)

BR DUKE 261 M (P)
 WCR SIR DUKE 835 M 286251 (P)
 WCR MISS MAC 600 (P)
Dam: ROSEDALE GRACE A97 (AI) (ET) (P)
 ZUP THE VEGEMITE KID (AI) (P)
 ROSEDALE GRACE T9 (P)
 ROSEDALE GRACE 3 (P)



A homebred sire by the record breaking Fernvale Trapper. Darwin had a short stint on the show circuit winning Championships at the NSW Beef Spectacular, the Melbourne Royal and a class of 33 bulls at the 2010 Sydney Royal when showing was in. We retained Darwin for his structural correctness, fast growth and fattening ability. Top 20% Rib & Rump Fat, Milk

Charolais Group Breedplan EBV's - March, 2016

	DIR	DTRS	GL	BWT	200	400	600	MWT
	+9.7	-0.1	-0.6	+0.4	+11	+22	+31	+32
	69%	59%	66%	95%	88%	89%	86%	79%
MILK	SS	CWT	EMA	RIB	RMP	RBV	IMF	
	+9	+0.9	+16	+0.4	+0.7	+0.9	-0.6	+0.3
	74%	80%	77%	65%	77%	77%	70%	65%
Index \$ Value	Domestic (\$)				Export (\$)			
	+\$ 35				+\$ 50			

Sire ASCOT GRAND REDEMPTION (P)

Born: 08/09/2011
Society ID: JAJG52E

SCHURRTOP 5627 (H)
 LT WYOMING WIND 4020 PLD (P)
 LT CHAP'S LADY 217 OP (H)
Sire: HARVIE REDEMPTION 36P (P) (R/F)
 HARVIE JAGER 65J (P)
 HARVIE MS MOLSON 53M (P)
 HARVIE MISS FIREFLY 31F (P)

LT UNLIMITED EASE 9108 (H)
 BALDRIDGE FASTTRACK 82E M447863 (P)
 BALDRIDGE SWEETHEART 53D (P)
Dam: GOBONGO JULIETTE B43E (AI) (P)
 GOBONGO VILLEROY V80E
 GOBONGO JULIETTE 215E (D)
 GOBONGO JULIETTE (D)



We purchased the Walking Rights to this bull in a partnership with Australian Livestock Genetics. A top class performer and we are very impressed by the progeny we have so far. First sons sell in this sale. [Trait Leader for 200, 400, 600 Day growth and Scrotal.](#)

Charolais Group Breedplan EBV's - March, 2016

	DIR	DTRS	GL	BWT	200	400	600	MWT
	-0.3	-1.0	-2.6	+0.4	+25	+46	+61	+48
	66%	51%	82%	88%	79%	81%	81%	74%
MILK	SS	CWT	EMA	RIB	RMP	RBV	IMF	
	+9	+3.6	+33	+0.1	+1.4	+2.1	-1.2	+0.3
	59%	83%	70%	61%	69%	68%	65%	61%
Index \$ Value	Domestic (\$)				Export (\$)			
	+\$ 42				+\$ 61			

Sire ROSEDALE FIRST CLASS (P)

Born: 08/10/2010
Society ID: MRF26E

BCR POLLED UNLIMITED 003 (P)
 LT UNLIMITED EASE 9108
 PP MISS SHANDY 214
Sire: LT EASY BLEND 5125 PLD (P)
 WCR PRIME CUT 764 (P)
 LT BRENDA 1014
 LT BRENDA'S BREEZE 9207
 MINNIE-VALE DEPUTY (P)
 ROSEDALE ZINGER (P)
 ROSEDALE NICKY X7 (AI) (P)
Dam: ROSEDALE CINDERELLA D6 (P)
 FERVALE TRAPPER
 ROSEDALE CINDERELLA W165 (P)
 ROSEDALE CINDERELLA T3 (P) (TW)



A thick bodied, soft coated and early maturing bull we bred by the renowned Lt Easy Blend. The first class sons are softer made, easy doing bulls with big potential. First Class is a bull that holds his condition very well through all parts of the year and we expect the same from his sons. Trait leader for birthweight and 400 day weight growth. Top 5% Marbling

Charolais Group Breedplan EBV's - March, 2016								
DIR	DTRS	GL	BWT	200	400	600	MWT	
+12.3	+5.6	-3.9	-2.8	+6	+26	+27	+17	
66%	51%	74%	94%	87%	86%	83%	76%	
MILK	SS	CWT	EMA	RIB	RMP	RBV	IMF	
+15	+0.1	+20	-0.8	+1.1	+1.7	-2.0	+1.0	
62%	76%	73%	59%	68%	68%	62%	59%	
Index \$ Value	Domestic (\$)				Export (\$)			
	+\$ 54				+\$ 67			

Sire PALGROVE EXPO (P)

Born: 03/05/2009
Society ID: PKE132E

BLASON
 IMPAIR OFFICINE
Sire: PINAY
 MARY HOMERE
 JACINTHE
 PALGROVE QUINTERO (AI) (ET)
 PALGROVE OUTBACK (P)
 IDLEWILD PALGROVE FESTOON P47E (P)
Dam: PALGROVE ESTELLA 130 (AI) (P)
 PALGROVE RASTUS (AI) (P)
 PALGROVE ESTELLA 95
 PALGROVE ESTELLA 48 (AI) (ET)



A top notch polled son of the renowned french bull "Pinay". Expo's calves are everything we hoped for, with tremendous carcass attributes and fast growth combined with sensible calving. He is stamping himself as one of the leading performance sires in the breed. Trait leader 200, 400 and 600 Day Growth.

Charolais Group Breedplan EBV's - March, 2016								
DIR	DTRS	GL	BWT	200	400	600	MWT	
-15.0	-6.5	-4.8	+2.8	+22	+47	+67	+82	
71%	62%	71%	95%	90%	91%	87%	81%	
MILK	SS	CWT	EMA	RIB	RMP	RBV	IMF	
+13	+1.3	+38	+3.7	-0.4	-0.9	+1.7	0.0	
77%	83%	78%	67%	79%	78%	71%	67%	
Index \$ Value	Domestic (\$)				Export (\$)			
	+\$ 4				+\$ 4			

Sire ROSEDALE FAIRLANE (P)

Born: 02/04/2010
Society ID: MRF8E

HASTING F
 NOVOTEL F
 DATCHA
Sire: PARINGA NOVOTEL A100 (AI) (ET) (P)
 BALDRIDGE FASTTRACK 82E (P)
 PARINGA FASTTRACK Y654 (AI) (ET) (P)
 PALGROVE IDEAL 43 (AI) (P)
 SILVERSTREAM JONAH F (H)
 COBRABALD WINSTON (AI) (P)
 COBRABALD LINETTE (AI) (P/S)
Dam: ROSEDALE HONOR A118
 DE CRESPIGNY SULTAN
 ROSEDALE HONOR V11 (AI)
 ROSEDALE HONOR 18 (AI) (ET)



A powerhouse Paringa Novotel son we have retained in the herd. He is breeding very consistently just like his father. His progeny are growthy soft and naturally thick with outstanding temperaments.

Charolais Group Breedplan EBV's - March, 2016								
DIR	DTRS	GL	BWT	200	400	600	MWT	
+7.0	+0.5	+3.5	+0.4	+18	+34	+47	+62	
64%	48%	61%	92%	84%	84%	82%	75%	
MILK	SS	CWT	EMA	RIB	RMP	RBV	IMF	
+16	+1.1	+28	+1.3	+0.6	+0.7	-0.3	+0.2	
63%	78%	71%	60%	67%	66%	63%	59%	
Index \$ Value	Domestic (\$)				Export (\$)			
	+\$ 41				+\$ 56			

Sire LT LONG DISTANCE (P)

Born: 09/02/2009
Society ID: OAU143E

\$\$ MONTANA SILVER M454024 (P)
 LT SILVER YIELD 3196 (P)
 LT CAROL 8131
Sire: LT SILVER DISTANCE 5342 (P)
 BBCR SIR MAC 112 P/S (H)
 LT MATTIE 9026 (P)
 LT UNLTD WILLOW 7090 PLD (P)
 LT UNLIMITED EASE 9108 (H)
 LT EASY PRO 1158 PLD (P)
 LT LADY MACBETH 8413 ETP
Dam: LT BELLE 7026 (P)
 LT UNLIMITED EASE 9108 (H)
 LT BELLE 5110 (P)
 LT BELLE 3076 PED-9435E



Long Distance is a High Calving Ease bull that we have used on heifers to calve down as 2 year olds. Has some smart looking progeny in the sale with steady growth and excellent carcass quality traits.

Charolais Group Breedplan EBV's								
	DIR	DTRS	GL	BWT	200	400	600	MWT
	+17.6	+5.1	-9.1	-4.3	+3	+3	+7	-31
	71%	41%	93%	92%	86%	88%	83%	72%
MILK	SS	CWT	EMA	RIB	RMP	RBV	IMF	
	+6	+1.1	+3	+0.1	+2.0	+2.5	-1.6	+0.9
	48%	86%	71%	59%	74%	74%	64%	58%
Index \$ Value	Domestic (\$)				Export (\$)			
	+\$ 44				+\$ 63			

Sire LT Ledger (P)

Born: 13/01/2008
Society ID: OAU3168E

EATONS ASSERT 9171
 LT ASSERTION 1277
 LT ALLIS CLASS 9140
Sire: LT BLUEGRASS 4017P M686569 (P)
 LT WYOMING WIND 4020 PLD (P)
 LT PEARLS BREEZE 2236
 LT UNLIMITED PEARL
 LT RIO BLANCO 1234 P (P)
 LT RIO BRAVO 3181 P (P)
 LT 7N OF DUKE 9083 PLD (P)
Dam: LT BRENDA 6120 PLD
 LT UNLIMITED EASE 9108
 LT BRENDA'S EASE 3055 PLD
 LT BRENDA 1014 PLD



Ledger...the record-selling bull at \$105,000 in the 2011 Lindskov-Thiel Ranch Bull Sale in America. He combines an impressive data set and extraordinary gentleness with even more impressive progeny. Noted for his calving ease, growth and carcass quality. Trait leader *Birthweight and Scrotal*

Charolais Group Breedplan EBV's								
	DIR	DTRS	GL	BWT	200	400	600	MWT
	+13.9	-1.6	-5.8	-2.8	+9	+20	+20	-1
	74%	58%	94%	93%	89%	88%	85%	77%
MILK	SS	CWT	EMA	RIB	RMP	RBV	IMF	
	+10	+2.4	+13	+1.0	+1.6	+3.0	-1.7	+1.5
	64%	85%	74%	65%	73%	72%	67%	64%
Index \$ Value	Domestic (\$)				Export (\$)			
	+ \$67				+ \$82			



New home bred homozygous polled sire H168. Progeny available next year.

Performance Data Summary


Lot	Birth Weight	200 Day Growth	400 Day Growth	600 Day Growth	Milk
1	+0.6	+16	+30	+38	+12
2	+0.3	+19	+33	+45	+7
3	+1.8	+19	+35	+48	+7
4	+3	+19	+47	+67	+13
5	+1	+19	+42	+59	+16
6	+1.1	+19	+41	+53	+9
7	+1.0	+22	+37	+51	+12
8	+1.8	+24	+57	+72	+17
9	+1.3	+19	+39	+56	+11
10	+2.8	+22	+47	+67	+13
11	+0.4	+14	+27	+38	+10
12	-2.4	+10	+19	+28	+9
13	+0.2	+19	+34	+49	+10
14	0.0	+16	+29	+37	+11
15	+0.6	+18	+36	+49	+14
16	-1.4	+9	+17	+29	+11
17	+0.1	+17	+28	+40	+10
18	+1.0	+18	+39	+56	+11
19	+1.0	+16	+27	+43	+9
20	0.0	+17	+29	+42	+11
21	-0.7	+13	+24	+34	+13
22	+0.5	+10	+19	+26	+8
23	+0.4	+21	+45	+62	+14
24	+1.5	+20	+37	+57	+13
25	+2.5	+19	+39	+56	+9
26	-0.5	+12	+19	+27	+6
27	+1.3	+16	+29	+40	+11
28	0.0	+8	+26	+35	+11
29	-1.6	+11	+25	+30	+12
30	+2.4	+20	+44	+63	+12
31	+0.5	+14	+35	+48	+15
32	+0.2	+21	+39	+53	+10
33	+0.1	+10	+25	+34	+10
34	-3.5	+6	+10	+6	+10
35	-0.7	+15	+28	+38	+12
36	-1.1	+15	+28	+42	+11
37	-2.5	+5	+14	+20	+14
38	-0.3	+16	+33	+47	+12
39	-0.1	+16	+31	+42	+11
40	-1.5	+14	+28	+35	+15

Lot	Birth Weight	200 Day Growth	400 Day Growth	600 Day Growth	Milk
41	-0.3	+9	+17	+22	+9
42	-1.1	+11	+29	+34	+12
43	+0.7	+18	+29	+43	+10
44	-1.5	+14	+22	+31	+14
45	-1.0	+15	+34	+43	+15
46	+1.8	+18	+30	+49	+12
47	-2.0	+11	+29	+37	+16
48	-0.7	+9	+26	+32	+12
49	-1.1	+10	+26	+32	+11
50	0.0	+10	+19	+28	+10
51	-0.3	+14	+26	+40	+13
52	-1.7	+10	+28	+38	+17
53	-0.7	+12	+34	+40	+15
54	-0.6	+18	+35	+47	+12
55	+0.5	+17	+30	+42	+9
56	-0.5	+8	+25	+36	+11
57	-0.2	+17	+36	+51	+9
58	+0.1	+15	+26	+38	+13
59	-0.4	+17	+34	+49	+10
60	-2.6	+8	+11	+21	+9
61	-1.7	+7	+17	+26	+13
62	+0.1	+17	+35	+49	+13
63					
64					

**For more photos go to
www.rosedalecharolais.com.au**

Breed average EBV's for 2014 born calves					
	Birth Wt	200 Day	400 Day	600 Day	Milk
EBV	+0.5	+12	+23	+31	+7

Represents top 20% or better of Charolais Breed



1	ROSEDALE KENT (P/S)	Born:	17/08/2014 (21 months)
		Society ID:	MRK189E

NOVOTEL (H)
 PARINGA NOVOTEL A100 (AI) (ET) (P)
 PARINGA FASTRACK Y654 (AI) (ET) (P)
Sire: ROSEDALE FAIRLANE (P)
 COBRABALD WINSTON (AI) (P)
 ROSEDALE HONOR A118 (H)
 ROSEDALE HONOR V11 (AI) (H)

LT WYOMING WIND 4020 PLD (P)
 DSK WW YABBA DABBA DO Y4 (AI)
 PALGROVE ESTELLA 31 (AI) (ET) (H)
Dam: ROSEDALE HONOR F80 (P)
 ROSEDALE ZINGER (P)
 ROSEDALE HONOR C124 (P)
 ROSEDALE HONOR V129 (H)

Cross into profit

Comments					
<p style="color: #0070C0; font-weight: bold;">Top 10% Domestic & Export \$Indexes & Milk</p> <p style="color: #0070C0; font-weight: bold;">Top 20% 200 & 400 Day Growth</p> <p>A quality Fairlane bull with even muscling, even fat cover and great 200 and 400 Day weights. Excellent temperament and terrific commercial traits. A fantastic Industry focussed bull to start this years draft.</p>					
Purchaser					
		\$			

Index \$ Value					
Domestic (\$)			Export (\$)		
+\$42			+\$56		
Charolais Group Breedplan EBV's					
	Birth Weight	200 day growth	400 day growth	600 day growth	Milk
EBV	+0.6	+16	+30	+38	+12
ACC	72%	61%	65%	61%	57%
Raw Data					
Weight	P8	Rib	EMA	IMF %	Scrotal

2	ROSEDALE KEV (P)	Born:	02/06/2014 (23 months)
		Society ID:	MRK188E

LT WYOMING WIND 4020 PLD (P)
 HARVIE REDEMPTION 36P MC286641 (P) (R/F)
 HARVIE MS MOLSON 53M (P)
Sire: ASCOT GRAND REDEMPTION G52E (AI) (P)
 BALDRIDGE FASTTRACK 82E (P)
 GOBONGO JULIETTE B43E (AI) (P)
 GOBONGO JULIETTE Z15E GOZ15E (D)

LT SILVER BAR 4216 P (P) (R/F)
 PALGROVE COACH (AI) (ET) (P)
 PALGROVE FRIESIA 19 (P)
Dam: ROSEDALE GERTY F178 (P)
 GUNNADOO YUPPY (P)
 ROSEDALE GERTY B163 (P)
 ROSEDALE GERTY W83 (H)

Cross into profit

Comments					
<p style="color: #0070C0; font-weight: bold;">Top 5% 200 Day Growth</p> <p style="color: #0070C0; font-weight: bold;">Top 15% 400 & 600 Day Growth</p> <p style="color: #0070C0; font-weight: bold;">Top 20% Domestic & Export \$Indexes</p> <p>KeV is an impressive long bull with softness, depth and a strong polled head. Great combination of doing ability and raw power combined with a bullet-proof nature.</p>					
Purchaser					
		\$			

Index \$ Value					
Domestic (\$)			Export (\$)		
+\$36			+\$52		
Charolais Group Breedplan EBV's					
	Birth Weight	200 day growth	400 day growth	600 day growth	Milk
EBV	+0.3	+19	+33	+45	+7
ACC	69%	54%	54%	55%	41%
Raw Data					
Weight	P8	Rib	EMA	IMF %	Scrotal



3 ROSEDALE KOWAN (P)

Born: 03/09/2014 (20 months)
Society ID: MRK292E

SVY PIONEER 402P (D)
 SVY PILGRIM PLD 655S (P)
 HFCC FRENCHKISS 919J
Sire: ROSEDALE HARRY (AI) (P)
 DSK WW YABBA DABBA DO Y4 (AI)
 ROSEDALE CANDY C36 (P)
 ROSEDALE CANDY Z34 (P)

LT SILVER BAR 4216 P M686621 (P) (R/F)
 PALGROVE COACH (AI) (ET) (P)
 PALGROVE FRIESIA 19 (P) P
Dam: ROSEDALE EMPRESS F33 (P)
 FERNVALE TRAPPER FENT50E (H)
 ROSEDALE EMPRESS B188 (P)
 ROSEDALE EMPRESS S66 (P)



Comments

Top 5% 200 Day Growth
Top 10% 400 & 600 Day Growth

Kowan is a top class bull that we think very highly of and the first bull through the ring by new herdsire Rosedale Harry. He combines thickness, length of body with a terrific temperament and strong polled sirey outlook. This bull has class written all over him. Tested **Homozygous Polled**, semen retained.

Purchaser \$

Index \$ Value					
Domestic (\$)			Export (\$)		
+\$15			+\$22		
Charolais Group Breedplan EBV's					
	Birth Weight	200 day growth	400 day growth	600 day growth	Milk
EBV	+1.8	+19	+35	+48	+7
ACC	71%	61%	58%	54%	43%
Raw Data					
Weight	P8	Rib	EMA	IMF %	Scrotal

4 ROSEDALE KASEY (P)

Born: 15/09/2014 (20 months)
Society ID: MRK139E

IMPAIR OAFN189F
 PINAY 8552394134 (H)
 MARY OAFR8596F (H)
Sire: PALGROVE EXPO (AI) (ET) (P)
 PALGROVE OUTBACK (P)
 PALGROVE ESTELLA 130 (AI) (P)
 PALGROVE ESTELLA 95 (H)

PALGROVE STAND OUT (AI) (H)
 GUNNADOO YUPPY (P)
 GUNNADOO CINDY R34E (AI) (P)
Dam: ROSEDALE GERTY B123 (P)
 PALGROVE JACKPOT (AI) (ET) (P)
 ROSEDALE GERTY Q83 (H)
 JOANAMA GERTY JYG50D (H)



Comments

Top 1% 400 & 600 Day Growth
Top 5% 200 Day Growth & Milk

A fantastic smooth Polled Bull with plenty of muscle and natural thickness. Kasey is a terrific cleanly made bull would not be out of place in a top class stud or commercial herd. A growthy sire with breed leading milk and performance EBV's.

Purchaser \$

Index \$ Value					
Domestic (\$)			Export (\$)		
+\$ 13			+\$ 18		
Charolais Group Breedplan EBV's					
	Birth Weight	200 day growth	400 day growth	600 day growth	Milk
EBV	+3.0	+19	+47	+67	+13
ACC	74%	66%	68%	64%	54%
Raw Data					
Weight	P8	Rib	EMA	IMF %	Scrotal

3



4



5	ROSEDALE KAYDEN (P)	Born:	02/09/2014 (20 months)
		Society ID:	MRK140E

IMPAIR OAFN189F
PINAY 8552394134 (H)
MARY OAFR8596F (H)
Sire: PALGROVE EXPO (AI) (ET) (P)
PALGROVE OUTBACK (P)
PALGROVE ESTELLA 130 (AI) (P)
PALGROVE ESTELLA 95 (H)

FERNVALE RIPPER FENRIE (H)
FERNVALE TRAPPER FENT50E (H)
FERNVALE PRIMADONNA (AI) (ET) (D)
Dam: ROSEDALE EMPRESS B188 (P)
ROSEDALE NAVIGATOR (AI) (ET) (P)
ROSEDALE EMPRESS S66 (P)
ROSEDALE EMPRESS 3 (AI) (P)

Cross into profit

Comments					
Top 5% 200, 400 & 600 Day Growth and Milk					
Kayden is a magnificent bull with a huge amount of sire potential. He is wonderfully balanced and combines muscle and growth with the ability to lay down fat cover. A well natured bull with that bit of extra style about him. You don't find many Homozygous Polled bulls with this much horsepower. Semen retained					
Purchaser					

Index \$ Value					
Domestic (\$)			Export (\$)		
+\$30			+\$40		
Charolais Group Breedplan EBV's					
	Birth Weight	200 day growth	400 day growth	600 day growth	Milk
EBV	+1.0	+19	+42	+59	+16
ACC	73%	66%	68%	64%	55%
Raw Data					
Weight	P8	Rib	EMA	IMF %	Scrotal

6	ROSEDALE KREZJA (P)	Born:	06/09/2014 (20months)
		Society ID:	MRK289E

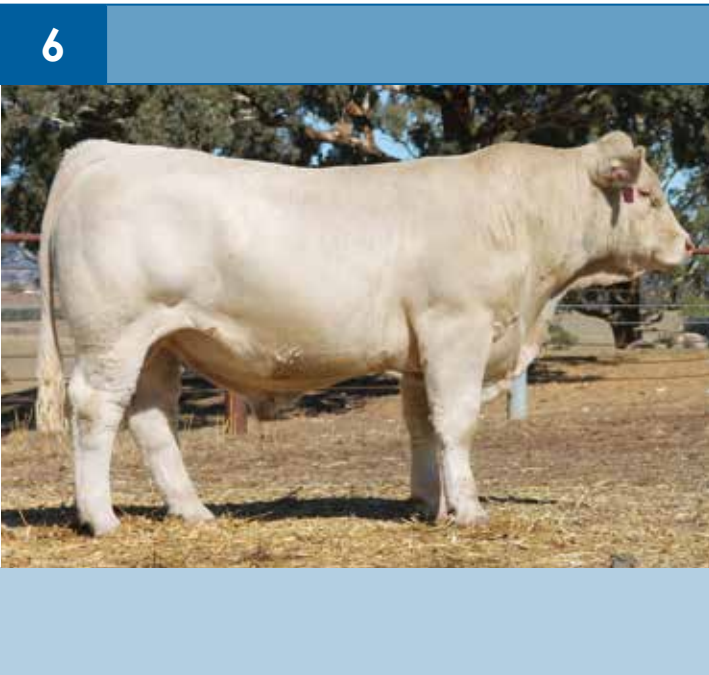
SVY PIONEER 402P (D)
SVY PILGRIM PLD 655S (P)
HFCC FRENCHKISS 919J
Sire: ROSEDALE HARRY (AI) (P)
DSK WW YABBA DABBA DO Y4 (AI)
ROSEDALE CANDY C36 (P)
ROSEDALE CANDY Z34 (P)

ROSEDALE NAVIGATOR (AI) (ET) (P)
ROSEDALE WILLIE (P)
ROSEDALE LUCY R214 (P)
Dam: ROSEDALE GEORGETTE B196 (P)
WCR SIR FA MAC 2244 M (P)
ROSEDALE S71E (AI) (P)
ROSEDALE GEORGETTE Q8 (AI) (P)

Cross into profit

Comments					
Top Top 5% 200, 400 & 600 Day Growth Top 25% Milk					
A very quiet well put together bull packed with meat and growth for age. Typical of the Harry sired bulls in this draft he is extremely well balanced and covers a lot of bases in terms of carcass and sire appeal.					
Purchaser					

Index \$ Value					
Domestic (\$)			Export (\$)		
+\$26			+\$35		
Charolais Group Breedplan EBV's					
	Birth Weight	200 day growth	400 day growth	600 day growth	Milk
EBV	+1.1	+19	+41	+53	+9
ACC	72%	63%	65%	61%	47%
Raw Data					
Weight	P8	Rib	EMA	IMF %	Scrotal



7 ROSEDALE LEADER (P) Born: 20/04/2015 (12 months)
Society ID: MRL14E

NOVOTEL (H)
PARINGA NOVOTEL A100 (AI) (ET) (P)
PARINGA FASTRACK Y654 (AI) (ET) (P)
Sire: ROSEDALE FAIRLANE (P)
COBRABALD WINSTON (AI) (P)
ROSEDALE HONOR A118 (H)
ROSEDALE HONOR V11 (AI) (H)

MINNIE-VALE DEPUTY (P)
ROSEDALE ZINGER (P)
ROSEDALE NICKY X7 (AI) (P)
Dam: ROSEDALE RUBY C30 (P)
EC NEW TREND 6G M 498475 (P)
ROSEDALE RUBY Z57 (AI) (P)
ROSEDALE RUBY W154 (P)



Comments

Top 5% 200 & 400 Day Growth, Top 10% 600 Day Growth and Milk Top 15% Domestic & Export \$indexes

This is a young bull we are very excited about, at just over 12 months of age his raw data statistics are incredible. He is an outlier for growth with the ability to lay down fat cover as well as a big eye muscle. Combine that with a fantastic nature, phenotype and strong sirey outlook. 25% semen share retained, was a tough decision to catalogue.

Purchaser

\$

Index \$ Value

Domestic (\$)	Export (\$)
+\$ 40	+\$ 56

Charolais Group Breedplan EBV's

	Birth Weight	200 day growth	400 day growth	600 day growth	Milk
EBV	+0.1	+22	+37	+51	+12
ACC	71%	64%	61%	60%	48%

Raw Data

Weight	P8	Rib	EMA	IMF %	Scrotal

8 ROSEDALE LUMP SUM (P) Born: 11/04/2015 (13 months)
Society ID: MRL8E

NOVOTEL (H)
PARINGA NOVOTEL A100 (AI) (ET) (P)
PARINGA FASTRACK Y654 (AI) (ET) (P)
Sire: ROSEDALE FAIRLANE (P)
COBRABALD WINSTON (AI) (P)
ROSEDALE HONOR A118 (H)
ROSEDALE HONOR V11 (AI) (H)

PINAY 8552394134 (H)
PALGROVE EXPO (AI) (ET) (P)
PALGROVE ESTELLA 130 (AI) (P)
Dam: ROSEDALE BEATRIX G231 (P)
GUNNADOO YUPPY (P)
ROSEDALE BEATRIX B108 (P)
ROSEDALE BEATRIX W87 (P)



Comments

Top 1% 200, 400 & 600 Day Growth and Milk Top 20% Domestic & Export Indexes

Another standout young bull with big potential. Thick and meaty together with class and style. A really quiet bull with growth for age, soft skin combined with extra bone and muscle. Some of the best growth numbers in the catalogue with the added bonus of testing **Homozygous Polled**.

Purchaser

\$

Index \$ Value

Domestic (\$)	Export (\$)
+\$37	+\$51

Charolais Group Breedplan EBV's

	Birth Weight	200 day growth	400 day growth	600 day growth	Milk
EBV	+1.8	+24	+51	+72	+17
ACC	70%	63%	65%	61%	44%

Raw Data

Weight	P8	Rib	EMA	IMF %	Scrotal

7



8



9 ROSEDALE KARMICHAEL (P)

Born: 08/09/2014 (20 months)
Society ID: MRK153E

IMPAIR OAFN189F
 PINAY 8552394134 (H)
 MARY OAFR8596F (H)
Sire: PALGROVE EXPO (AI) (ET) (P)
 PALGROVE OUTBACK (P)
 PALGROVE ESTELLA 130 (AI) (P)
 PALGROVE ESTELLA 95 (H)

PLATINUM YU-BET Y124E (P)
 REIDS ASSASIN (P)
 PLATINUM QUARTZ 3RD (AI) (ET) (P)
Dam: ROSEDALE HONOR D76 (P)
 MINNIE-VALE DEPUTY (P)
 ROSEDALE HONOR Z180 (P)
 ROSEDALE HONOR W98 (AI) (ET) (H)



Comments

Top 5% 200, 400 & 600 Day Growth
Top 15% Milk

Karmichael is an impressive bull whose progeny will really pack on the kilo's. Typical of the Expo progeny this bull is tremendously thick and deep and is the ideal sire to positively influence kilo's per hectare gained. Excellent growth numbers and skin type.

Purchaser \$

Index \$ Value					
Domestic (\$)			Export (\$)		
+\$20			+\$27		
Charolais Group Breedplan EBV's					
	Birth Weight	200 day growth	400 day growth	600 day growth	Milk
EBV	+1.3	+19	+39	+56	+11
ACC	73%	65%	67%	63%	51%
Raw Data					
Weight	P8	Rib	EMA	IMF %	Scrotal

10 ROSEDALE KEITHY (P)

Born: 02/09/2014 (20 months)
Society ID: MRK152E

IMPAIR OAFN189F
 PINAY 8552394134 (H)
 MARY OAFR8596F (H)
Sire: PALGROVE EXPO (AI) (ET) (P)
 PALGROVE OUTBACK (P)
 PALGROVE ESTELLA 130 (AI) (P)
 PALGROVE ESTELLA 95 (H)

PLATINUM YU-BET Y124E (P)
 REIDS ASSASIN (P)
 PLATINUM QUARTZ 3RD (AI) (ET) (P)
Dam: ROSEDALE KRISTINA D74 (P)
 MINNIE-VALE DEPUTY (P)
 ROSEDALE KRISTINA Z44 (P)
 ROSEDALE KRISTINA S3 (P)



Comments

Top 1% 400 & 600 Day Growth
Top 5 % 200 Day Growth & Milk

Keithy is a very similar bull to the previous lot. Muscle, fat cover and performance. A great bull for those looking to push for extra weight for age in their breeding program. Huge 400 Day growth figure.

Purchaser \$

Index \$ Value					
Domestic (\$)			Export (\$)		
+\$4			+\$4		
Charolais Group Breedplan EBV's					
	Birth Weight	200 day growth	400 day growth	600 day growth	Milk
EBV	+2.8	+22	+47	+67	+13
ACC	95%	90%	91%	87%	77%
Raw Data					
Weight	P8	Rib	EMA	IMF %	Scrotal

9



10



11 ROSEDALE KANE (P)

Born: 27/09/2014 (19 months)

Society ID: MRK124E

FERNVALE RIPPER (H)
 FERNVALE TRAPPER (H)
 FERNVALE PRIMADONNA (AI) (ET) (D)
Sire: ROSEDALE DARWIN (P)
 WCR SIR DUKE 835 M 286251 (P)
 ROSEDALE GRACE A97 (AI) (ET) (P)
 ROSEDALE GRACE T9 (P)

PINAY 8552394134 (H)
 PALGROVE EXPO (AI) (ET) (P)
 PALGROVE ESTELLA 130 (AI) (P)
Dam: ROSEDALE HIGHNESS G114E (P)
 EC NEW TREND 6G M 498475 (P)
 ROSEDALE HIGHNESS X27 (AI) (P)
 ROSEDALE HIGHNESS U134 (P) (TW)



Comments

Top 20% Milk
Top 25% Domestic & Export \$Indexes

A quality moderate sized and well put together bull out of a young cow that we have flushed here Rosedale. Impeccable temperament in combination with softness, great length of body and natural performance. A great all-round bull that will be sure to breed on.

Purchaser

\$

Index \$ Value

Domestic (\$)	Export (\$)
+\$32	+\$44

Charolais Group Breedplan EBV's

	Birth Weight	200 day growth	400 day growth	600 day growth	Milk
EBV	+0.4	+14	+27	+38	+10
ACC	72%	58%	58%	55%	48%

Raw Data

Weight	P8	Rib	EMA	IMF %	Scrotal

12 ROSEDALE KLIM (AI) (P)

Born: 08/08/2014 (21 months)

Society ID: MRK80E

LT SILVER YIELD 3196 (P)
 LT SILVER DISTANCE 5342 (P)
 LT MATTIE 9026 (P)
Sire: LT LONG DISTANCE 9001 (P)
 LT EASY PRO 1158 PLD (P)
 LT BELLE 7026 (P)
 LT BELLE 5110 (P)

PALGROVE WISDOM (AI) (ET) (P)
 CANOONA CAVALERO (P)
 PALGROVE ESTELLA 174 (AI) (P)
Dam: ROSEDALE RUBY H54 (P)
 EC NEW TREND 6G M 498475 (P)
 ROSEDALE RUBY A46 (AI) (P)
 ROSEDALE RUBY X159 (P)



Comments

Top 5% Birth Weight
Top 10% Domestic & Export \$Indexes
Top 25% Milk

The first LT Long Distance Bull into the ring and a very suitable sire to be used on heifers with his low birthweight figure. Klim still contains more than enough raw performance with excellent carcass traits. A 2 y.o heifers first calf.

Purchaser

\$

Index \$ Value

Domestic (\$)	Export (\$)
+\$46	+\$65

Charolais Group Breedplan EBV's

	Birth Weight	200 day growth	400 day growth	600 day growth	Milk
EBV	-2.4	+10	+19	+28	+9
ACC	72%	62%	66%	61%	31%

Raw Data

Weight	P8	Rib	EMA	IMF %	Scrotal

11



12



13 ROSEDALE KRUSER (P)

Born: 06/09/2014 (20 months)

Society ID: MRK285E

SVY PIONEER 402P (D)
SVY PILGRIM PLD 655S (P)
HFCC FRENCHKISS 919J
Sire: ROSEDALE HARRY (AI) (P)
DSK WW YABBA DABBA DO Y4 (AI)
ROSEDALE CANDY C36 (P)
ROSEDALE CANDY Z34 (P)

NOVOTEL 5897127519 (H)
PARINGA NOVOTEL A100 (AI) (ET) (P)
PARINGA FASTRACK Y654 (AI) (ET) (P)
Dam: ROSEDALE BEATRIX G173 (P)
ROSEDALE (AI) (P)
ROSEDALE BEATRIX A209 (P)
ROSEDALE BEATRIX W119 (H)



Comments

Top 5% 200 Day Weight
Top 10% 400 & 600 Day Weight
Top 20% Export \$Index and Milk
Top 25% Domestic \$Index

Kruser is a high quality bull with natural length and thickness. Smooth skinned and big performance EBV's and raw stats. A quality option.

Purchaser

\$

Index \$ Value

Domestic (\$)	Export (\$)
+\$ 34	+\$ 50

Charolais Group Breedplan EBV's

	Birth Weight	200 day growth	400 day growth	600 day growth	Milk
EBV	+0.2	+19	+34	+49	+10
ACC	71%	61%	64%	60%	43%

Raw Data

Weight	P8	Rib	EMA	IMF %	Scrotal

14 ROSEDALE KNIGHTLY (P)

Born: 19/08/2014 (18 months)

Society ID: MRK296E

SVY PIONEER 402P (D)
SVY PILGRIM PLD 655S (P)
HFCC FRENCHKISS 919J
Sire: ROSEDALE HARRY (AI) (P)
DSK WW YABBA DABBA DO Y4 (AI)
ROSEDALE CANDY C36 (P)
ROSEDALE CANDY Z34 (P)

LHD CIGAR E46 (P)
ASHWOOD PARK BACARDI (AI) (ET) (P)
ASHWOOD PARK MISS UNIVERSE (AI) (P)
Dam: ROSEDALE RUBY E40 (P)
ROSEDALE NAVIGATOR (AI) (ET) (P)
ROSEDALE RUBY U81 (P)
ROSEDALE RUBY Q79 (P)



Comments

Top 20% 200 Day Weight
Top 25% 400 Day Weight
Top 15% Milk

Knightly is a squarely made **Homozygous Polled** sire by the very consistent Rosedale Harry Sire. Wonderfull width, depth of body and smooth skinned.

Purchaser

\$

Index \$ Value

Domestic (\$)	Export (\$)
+\$ 26	+\$ 35

Charolais Group Breedplan EBV's

	Birth Weight	200 day growth	400 day growth	600 day growth	Milk
EBV	0.0	+16	+29	+37	+11
ACC	72%	62%	65%	61%	45%

Raw Data

Weight	P8	Rib	EMA	IMF %	Scrotal

13



14



15 ROSEDALE KANNY (P) (RF)

Born: 28/08/2014(20 months)

Society ID: MRK180E

NOVOTEL (H)
 PARINGA NOVOTEL A100 (AI) (ET) (P)
 PARINGA FASTRACK Y654 (AI) (ET) (P)
Sire: ROSEDALE FAIRLANE (P)
 COBRABALD WINSTON (AI) (P)
 ROSEDALE HONOR A118 (H)
 ROSEDALE HONOR V11 (AI) (H)

PALGROVE WISDOM (AI) (ET) (P)
 CANOONA CAVALERO (P)
 PALGROVE ESTELLA 174 (AI) (P)
Dam: ROSEDALE NELLE F107 (P)
 EC NEW TREND 6G M 498475 (P)
 ROSEDALE NELLE Z52 (AI) (P)
 ROSEDALE NELLE W152 (P)



Comments

Top 5% Milk
Top 10% Domestic & Export \$Indexes and 200, 400 & 600 Day Growth

An Eye Appealing Red factor sire by the highly acclaimed Rose-dale Fairlane sire. Ample thickness, length and class, has always looked the part and will go on to breed extremely well.

Purchaser

\$

Index \$ Value

Domestic (\$)	Export (\$)
+\$ 43	+\$ 59

Charolais Group Breedplan EBV's

	Birth Weight	200 day growth	400 day growth	600 day growth	Milk
EBV	+0.6	+18	+36	+49	+14
ACC	72%	63%	64%	61%	44%

Raw Data

Weight	P8	Rib	EMA	IMF %	Scrotal

16 ROSEDALE KERRY (AI) (P)

Born: 13/08/2014 (20months)

Society ID: MRK88E

LT SILVER YIELD 3196 (P)
 LT SILVER DISTANCE 5342 (P)
 LT MATTIE 9026 (P)
Sire: LT LONG DISTANCE 9001 (P)
 LT EASY PRO 1158 PLD (P)
 LT BELLE 7026 (P)
 LT BELLE 5110 (P)

PARINGA NOVOTEL A100 (AI) (ET) (P)
 ROSEDALE DONOTELLO (P)
 ROSEDALE REBECCA A38 (P)
Dam: ROSEDALE GERTY H88 (AI) (P)
 DSK WW YABBA DABBA DO Y4 (AI)
 ROSEDALE GERTY E184 (H)
 ROSEDALE GERTY B123 (P)



Comments

Top 10% Borth Weight
Top 15% Domestic & Export \$Indexes and Milk

Kerry is an eye catching lower birthweight bull possessing soft skin and great allround carcasse qualties. Wonderful nature and smoothly made.

Purchaser

\$

Index \$ Value

Domestic (\$)	Export (\$)
+\$ 39	+\$ 57

Charolais Group Breedplan EBV's

	Birth Weight	200 day growth	400 day growth	600 day growth	Milk
EBV	-1.4	+9	+17	+29	+11
ACC	71%	61%	66%	61%	34%

Raw Data

Weight	P8	Rib	EMA	IMF %	Scrotal

15



16



17 ROSEDALE KLUEGER (P)

Born: (20 months)

Society ID: MRK268E

SVY PIONEER 402P (D)
SVY PILGRIM PLD 655S (P)
HFCC FRENCHKISS 919J
Sire: ROSEDALE HARRY (AI) (P)
DSK WW YABBA DABBA DO Y4 (AI)
ROSEDALE CANDY C36 (P)
ROSEDALE CANDY Z34 (P)

NOVOTEL 5897127519 (H)
PARINGA NOVOTEL A100 (AI) (ET) (P)
PARINGA FASTRACK Y654 (AI) (ET) (P)
Dam: ROSEDALE EMPRESS D99 (P)
SEAWELL OFFSHORE 0084446 (H)
ROSEDALE EMPRESS W36 (AI) (P) (TW)
ROSEDALE EMPRESS S66 (P)



Comments

Top 15% 200 Day Growth and Milk
Top 25% 400 & 600 Day Growth

This is another quality Harry son with a lot to like about him. Excellent weight for age with a below breed average birthweight figure. Yet again thick and deep, this sire will breed terrific calves with plenty of shape. **Homozygous Polled**

Purchaser

\$

Index \$ Value

Domestic (\$)	Export (\$)
+\$ 17	+\$ 24

Charolais Group Breedplan EBV's

	Birth Weight	200 day growth	400 day growth	600 day growth	Milk
EBV	+0.1	+17	+28	+40	+10
ACC	71%	59%	28%	56%	45%

Raw Data

Weight	P8	Rib	EMA	IMF %	Scrotal

18 ROSEDALE KHAKI (P)

Born: 05/09/2014 (20 months)

Society ID: MRK271E

SVY PIONEER 402P (D)
SVY PILGRIM PLD 655S (P)
HFCC FRENCHKISS 919J
Sire: ROSEDALE HARRY (AI) (P)
DSK WW YABBA DABBA DO Y4 (AI)
ROSEDALE CANDY C36 (P)
ROSEDALE CANDY Z34 (P)

NOVOTEL 5897127519 (H)
PARINGA NOVOTEL A100 (AI) (ET) (P)
PARINGA FASTRACK Y654 (AI) (ET) (P)
Dam: ROSEDALE KRISTINA G64E MRG64E
FERNVALE TRAPPER FENT50E (H)
ROSEDALE KRISTINA A168 (P) M
ROSEDALE KRISTINA U40 (AI) (P)



Comments

Top 5% 400 & 600 Day Growth
Top 10% 200 Day Growth
Top 15% Milk

A bull that looks and is bred very similar to the previous lot. Terrific growth and maturity pattern to produce quality calves with weight for age and width of body.

Purchaser

\$

Index \$ Value

Domestic (\$)	Export (\$)
+\$ 27	+\$ 40

Charolais Group Breedplan EBV's

	Birth Weight	200 day growth	400 day growth	600 day growth	Milk
EBV	+1.0	+18	+39	+56	+11
ACC	70%	62%	64%	60%	43%

Raw Data

Weight	P8	Rib	EMA	IMF %	Scrotal

17



18



19 ROSEDALE KLYDE (P)

Born: 10/09/2014 (20 months)
Society ID: MRK278E

SVY PIONEER 402P (D)
 SVY PILGRIM PLD 655S (P)
 HFCC FRENCHKISS 919J
Sire: ROSEDALE HARRY (AI) (P)
 DSK WW YABBA DABBA DO Y4 (AI)
 ROSEDALE CANDY C36 (P)
 ROSEDALE CANDY Z34 (P)

NOVOTEL 5897127519 (H)
 PARINGA NOVOTEL A100 (AI) (ET) (P)
 PARINGA FASTRACK Y654 (AI) (ET) (P)
Dam: ROSEDALE BEATRIX G14 MRG14E (P)
 NELSON 397108304 (H)
 ROSEDALE BEATRIX A75 (AI) (P)
 ROSEDALE BEATRIX R147 (AI) (ET) (P)



Comments

Top 20% 200 & 600 Day Growth
Top 25% Milk

Rosedale Harry has worked extremely well on the P. Novotel daughters, this bull ticks nearly every box, moderate birthweight and top class growth with even carcass attributes. A great all round packer who has tested **Homozygous polled**.

Purchaser \$

Index \$ Value					
Domestic (\$)			Export (\$)		
+\$7			+\$13		
Charolais Group Breedplan EBV's					
	Birth Weight	200 day growth	400 day growth	600 day growth	Milk
EBV	+1.0	+16	+27	+43	+9
ACC	71%	61%	63%	60%	43%
Raw Data					
Weight	P8	Rib	EMA	IMF %	Scrotal

20 ROSEDALE KOURIOS (P)

Born: 26/08/2014 (20 months)
Society ID: MRK280E

SVY PIONEER 402P (D)
 SVY PILGRIM PLD 655S (P)
 HFCC FRENCHKISS 919J
Sire: ROSEDALE HARRY (AI) (P)
 DSK WW YABBA DABBA DO Y4 (AI)
 ROSEDALE CANDY C36 (P)
 ROSEDALE CANDY Z34 (P)

NOVOTEL 5897127519 (H)
 PARINGA NOVOTEL A100 (AI) (ET) (P) (P)
 PARINGA FASTRACK Y654 (AI) (ET) (P)
Dam: ROSEDALE CONFIDENCE G23 (P)
 ROSEDALE WILLIE (P)
 ROSEDALE CONFIDENCE B10 (P) M
 ROSEDALE CONFIDENCE W166 (P)



Comments

Top 15% 200 Day Growth & Milk
Top 20% 600 Day Growth
Top 25% 400 Day Growth

Kourios is a cleanly made bull with smooth shoulders and plenty of natural width. Wonderfully balanced EBV's combined with a great structure and scrotal.

Purchaser \$

Index \$ Value					
Domestic (\$)			Export (\$)		
+\$25			+\$36		
Charolais Group Breedplan EBV's					
	Birth Weight	200 day growth	400 day growth	600 day growth	Milk
EBV	0.0	+17	+29	+42	+11
ACC	71%	61%	64%	60%	43%
Raw Data					
Weight	P8	Rib	EMA	IMF %	Scrotal

19



20



21 ROSEDALE KEVON (P)

Born: 02/09/2014 (20 months)

Society ID: MRK203E

NOVOTEL (H)
 PARINGA NOVOTEL A100 (AI) (ET) (P)
 PARINGA FASTRACK Y654 (AI) (ET) (P)
Sire: ROSEDALE FAIRLANE (P)
 COBRABALD WINSTON (AI) (P)
 ROSEDALE HONOR A118 (H)
 ROSEDALE HONOR V11 (AI) (H)

PALGROVE WISDOM (AI) (ET) (P)
 CANOONA CAVALERO (P)
 PALGROVE ESTELLA 174 (AI) (P)
Dam: ROSEDALE GAIETY G219 (P)
 EC NEW TREND 6G M 498475 (P)
 ROSEDALE GAIETY X32 (AI) (H)
 ROSEDALE GAIETY U123 (P) (P)



Comments

Top 5% Milk
Top 20% Birth Weight
Top 25% Domestic \$Index

A **Homozygous polled** sire that we have a lot of time for. Top 20% of the breed for birthweight yet still lots of growth and muscle. A great bull.

Purchaser

\$

Index \$ Value

Domestic (\$)	Export (\$)
+\$ 32	+\$ 43

Charolais Group Breedplan EBV's

	Birth Weight	200 day growth	400 day growth	600 day growth	Milk
EBV	-0.7	+13	+24	+34	+13
ACC	71%	61%	66%	62%	43%

Raw Data

Weight	P8	Rib	EMA	IMF %	Scrotal

22 ROSEDALE KADEN (P)

Born: 10/08/2014 (21 months)

Society ID: MRK96E

FERNVALE RIPPER (H)
 FERNVALE TRAPPER (H)
 FERNVALE PRIMADONNA (AI) (ET) (D)
Sire: ROSEDALE DARWIN (P)
 WCR SIR DUKE 835 M 286251 (P)
 ROSEDALE GRACE A97 (AI) (ET) (P)
 ROSEDALE GRACE T9 (P)

MINNIE-VALE DEPUTY (P)
 ROSEDALE ZINGER (P)
 ROSEDALE NICKY X7 (AI) (P)
Dam: ROSEDALE LUCY C22 (P)
 SEAWELL OFFSHORE 0084446 (H)
 ROSEDALE LUCY Z89 (AI) (ET) (P)
 ROSEDALE LUCY U75 (P)



Comments

A great allround Bull by Rosedale dam
 great nature.

Purchaser

\$

Domestic (\$)	Export (\$)
	+\$ 24

Charolais Group Breedplan EBV's

	Birth Weight	200 day growth	400 day growth	600 day growth	Milk
EBV	+0.5	+10	+19	+26	+8
ACC	73%	65%	67%	63%	52%

Raw Data

Weight	P8	Rib	EMA	IMF %	Scrotal

21



2016 NSW Beef Spectacular Weight Gain Champions (Char x Steers)



23 ROSEDALE KIRK K315 (P)

Born: 27/10/2014 (18 months)
Society ID: MRK315E

LT WYOMING WIND 4020 PLD (P)
 HARVIE REDEMPTION 36P MC286641 (P) (R/F)
 HARVIE MS MOLSON 53M (P)
Sire: ASCOT GRAND REDEMPTION G52E (AI) (P)
 BALDRIDGE FASTTRACK 82E (P)
 GOBONGO JULIETTE B43E (AI) (P)
 GOBONGO JULIETTE Z15E GOZ15E (D)

FERNVALE RIPPER FENRIE (H)
 FERNVALE TRAPPER FENT50E (H)
 FERNVALE PRIMADONNA (AI) (ET) (D)
Dam: ROSEDALE REBECCA A38 (P)
 ROSEDALE SNAG (AI) (P)
 ROSEDALE REBECCA V56 (P)
 ROSEDALE REBECCA S141E (AI) (ET) (H)



Comments

Top 1% 400 % 600 Day Growth
Top 5% 200 Day Growth an Milk
Top 10% Domestic & Export \$Indexes

A lengthy yet thick young bull by the High Selling Ascot bull and out of Rebecca A38, one of the best cows we have bred who is still going around today. (Dam of Rosedale Donotello). This extremely well bred bull is guaranteed to breed on in any scenario. **Homozygous polled** and leading growth for age.

Purchaser _____ \$ _____

Index \$ Value					
Domestic (\$)			Export (\$)		
+\$ 43			+\$ 61		
Charolais Group Breedplan EBV's					
	Birth Weight	200 day growth	400 day growth	600 day growth	Milk
EBV	+0.4	+21	+45	+62	+14
ACC	72%	62%	66%	63%	47%
Raw Data					
Weight	P8	Rib	EMA	IMF %	Scrotal

24 ROSEDALE KELVIN (P/S)

Born: 10/09/2014 (19months)
Society ID: MRK164E

IMPAIR OAFN189F
 PINAY 8552394134 (H)
 MARY OAFR8596F (H)
Sire: PALGROVE EXPO (AI) (ET) (P)
 PALGROVE OUTBACK (P)
 PALGROVE ESTELLA 130 (AI) (P)
 PALGROVE ESTELLA 95 (H)

NOVOTEL 5897127519 (H)
 PARINGA NOVOTEL A100 (AI) (ET) (P)
 PARINGA FASTRACK Y654 (AI) (ET) (P)
Dam: ROSEDALE ESTRA G133 (P)
 MINNIE-VALE DEPUTY (P)
 ROSEDALE ESTRA Z77 (P)
 ROSEDALE ESTRA V53 (P)



Comments

Top 5% 200, 400 & 600 Day Growth and Milk

A deep and fleshy bull with plenty of grunt. Big growth in a more moderate package. Excellent milk figure to boot if looking to keep any daughters.

Purchaser _____ \$ _____

Index \$ Value					
Domestic (\$)			Export (\$)		
+\$ 15			+\$ 23		
Charolais Group Breedplan EBV's					
	Birth Weight	200 day growth	400 day growth	600 day growth	Milk
EBV	+1.5	+20	+37	+57	+13
ACC	73%	65%	67%	59%	50%
Raw Data					
Weight	P8	Rib	EMA	IMF %	Scrotal

23



24



25 ROSEDALE KENNETH (P)

Born: 02/09/2014 (20 months)

Society ID: MRK170E

IMPAIR OAFN189F
PINAY 8552394134 (H)
MARY OAFR8596F (H)
Sire: PALGROVE EXPO (AI) (ET) (P)
PALGROVE OUTBACK (P)
PALGROVE ESTELLA 130 (AI) (P)
PALGROVE ESTELLA 95 (H)

FERNVALE TRAPPER FENT50E (H)
ROSEDALE DARWIN (P)
ROSEDALE GRACE A97 (AI) (ET) (P)
Dam: ROSEDALE CANDY G213 (P)
EC NEW TREND 6G M 498475 (P)
ROSEDALE CANDY Z60 (AI)
ROSEDALE CANDY W23 MRW23E (H)



Comments

Top 5% 200, 400 & 600 Day Growth
Top 25% Milk

A growthy Expo son with Extra length of body, once again excellent 200,400 and 600 day numbers.

Purchaser

\$

Index \$ Value

Domestic (\$)	Export (\$)
+\$ 15	+\$ 21

Charolais Group Breedplan EBV's

	Birth Weight	200 day growth	400 day growth	600 day growth	Milk
EBV	+2.5	+19	+39	+56	+9
ACC	72%	64%	61%	60%	49%

Raw Data

Weight	P8	Rib	EMA	IMF %	Scrotal

26 ROSEDALE KATTICH (P)

Born: 17/08/2014 (20 months)

Society ID: MRK264E

SVY PIONEER 402P (D)
SVY PILGRIM PLD 655S (P)
HFCC FRENCHKISS 919J
Sire: ROSEDALE HARRY (AI) (P)
DSK WW YABBA DABBA DO Y4 (AI)
ROSEDALE CANDY C36 (P)
ROSEDALE CANDY Z34 (P)

MINNIE-VALE DEPUTY (P)
ROSEDALE ZINGER (P)
ROSEDALE NICKY X7 (AI) (P)
Dam: ROSEDALE HONOR D227 (P)
ROSEDALE NAVIGATOR (AI) (ET) (P)
ROSEDALE HONOR R157 (P)
ROSEDALE HONOR 18 (AI) (ET)



Comments

Top 20% Birth Weight

Another clean coated thick and meaty Harry son with a lot to offer. Great body type, good scrotal, with nice sirey outlook. **Homozygous Polled**

Purchaser

\$

Index \$ Value

Domestic (\$)	Export (\$)
+\$ 15	+\$ 22

Charolais Group Breedplan EBV's

	Birth Weight	200 day growth	400 day growth	600 day growth	Milk
EBV	-0.5	+12	+19	+27	+6
ACC	71%	62%	64%	60%	44%

Raw Data

Weight	P8	Rib	EMA	IMF %	Scrotal

25



26



27 ROSEDALE KENNEDY (P)

Born: 23/09/2014 (19 months)
Society ID: MRK169E

IMPAIR OAFNI89F
 PINAY 8552394134 (H)
 MARY OAFR8596F (H)
Sire: PALGROVE EXPO (AI) (ET) (P)
 PALGROVE OUTBACK (P)
 PALGROVE ESTELLA 130 (AI) (P)
 PALGROVE ESTELLA 95 (H)

LHD CIGAR E46 (P)
 ASHWOOD PARK BACARDI (AI) (ET) (P)
 ASHWOOD PARK MISS UNIVERSE (AI) (P)
Dam: ROSEDALE HONOUR G83 (P/S)
 ROSEDALE SNAG (AI) (P)
 ROSEDALE HONOR V51 (P)
 ROSEDALE HONOR S75 (P)



Comments

Top 15% Milk
Top 20% 200 Day Growth
Top 25% 400 & 600 Day Growth

Kennedy is a more moderate sized Expo son but still packs a lot of thickness and performance.

Purchaser _____ \$ _____

Index \$ Value					
Domestic (\$)			Export (\$)		
+\$ 12			+\$ 15		
Charolais Group Breedplan EBV's					
	Birth Weight	200 day growth	400 day growth	600 day growth	Milk
EBV	+1.3	+16	+29	+40	+11
ACC	69%	64%	66%	62%	49%
Raw Data					
Weight	P8	Rib	EMA	IMF %	Scrotal

28 ROSEDALE KINGHAM (P)

Born: 28/08/2014 (20 months)
Society ID: MRK299E

SVY PIONEER 402P (D)
 SVY PILGRIM PLD 655S (P)
 HFCC FRENCHKISS 919J
Sire: ROSEDALE HARRY (AI) (P)
 DSK WW YABBA DABBA DO Y4 (AI)
 ROSEDALE CANDY C36 (P)
 ROSEDALE CANDY Z34 (P)

FERNVALE RIPPER FENRIE (H)
 FERNVALE TRAPPER FENT50E (H)
 FERNVALE PRIMADONNA (AI) (ET) (D)
Dam: ROSEDALE ZIG Z43 (P)
 WCR SIR FA MAC 2244 (P)
 2UP ZIG 3 (AI) (ET) (P)
 PALGROVE DIGNA 9 (AI) (ET) (P)



Comments

Top 15% Milk

A soft coated bull with even muscling and a strong topline. We really like the strong polled heads Harry is leaving on his progeny.

Purchaser _____ \$ _____

Index \$ Value					
Domestic (\$)			Export (\$)		
+\$ 28			+\$ 38		
Charolais Group Breedplan EBV's					
	Birth Weight	200 day growth	400 day growth	600 day growth	Milk
EBV	0.0	+8	+26	+35	+11
ACC	72%	63%	65%	61%	48%
Raw Data					
Weight	P8	Rib	EMA	IMF %	Scrotal

27



28



29 ROSEDALE KRUMBLE (AI) (P)

Born: 11/08/2014 (21 months)
Society ID: MRK76E

LT ASSERTION 1277 (H)
 LT BLUEGRASS 4017P M68&569 (P)
 LT PEARLS BREEZE 2236 (H)
Sire: LT LEDGER 0332 (P)
 LT RIO BRAVO 3181 P M665507 (P)
 LT BRENDA 6120 PLD
 LT BRENDA'S EASE 3055 PLD

PINAY 8552394134 (H)
 PALGROVE EXPO (AI) (ET) (P)
 PALGROVE ESTELLA 130 (AI) (P)
Dam: ROSEDALE EMPRESS H203 (P)
 ROSEDALE WILLIE (P)
 ROSEDALE GEORGETTE B196 (P)
 ROSEDALE S71E (AI) (P)



Comments

Top 10% Birth Weight and Domestic & Export \$Indexes and Milk

A soft and deep young by the record breaking AI sire LT Ledger. A lower birthweight option with ample growth and doing ability. Great breed Index values and **Homozygous Polled**.

Purchaser _____ \$ _____

Index \$ Value					
Domestic (\$)			Export (\$)		
+\$ 45			+\$ 58		
Charolais Group Breedplan EBV's					
	Birth Weight	200 day growth	400 day growth	600 day growth	Milk
EBV	-1.6	+11	+25	+30	+12
ACC	72%	62%	67%	62%	42%
Raw Data					
Weight	P8	Rib	EMA	IMF %	Scrotal

30 ROSEDALE KEANU (P)

Born: 03/09/2014 (20 months)
Society ID: MRK143E

IMPAIR OAFN189F
 PINAY 8552394134 (H)
 MARY OAFR8596F (H)
Sire: PALGROVE EXPO (AI) (ET) (P)
 PALGROVE OUTBACK (P)
 PALGROVE ESTELLA 130 (AI) (P)
 PALGROVE ESTELLA 95 (H)

FERNVALE RIPPER (H)
 FERNVALE TRAPPER (H)
 FERNVALE PRIMADONNA (AI) (ET) (D)
Dam: ROSEDALE BUTTERSCOTCH D123 (P)
 ROSEDALE WILLIE (P)
 ROSEDALE BUTTERSCOTCH A22 (P)
 ROSEDALE BUTTERSCOTCH R48 (P)



Comments

Top 1% 400 & 600 Day Growth
Top 5% 200 Day Growth
Top 10% Milk

A typical big and growthy bull worthy of such excellent growth EBV's. His Dam is a proven matron and always has a good one. **Homozygous Polled**

Purchaser _____ \$ _____

Index \$ Value					
Domestic (\$)			Export (\$)		
+\$ 18			+\$ 24		
Charolais Group Breedplan EBV's					
	Birth Weight	200 day growth	400 day growth	600 day growth	Milk
EBV	+2.4	+20	+44	+63	+12
ACC	72%	65%	67%	63%	52%
Raw Data					
Weight	P8	Rib	EMA	IMF %	Scrotal

29



30



31 Name

Born: 18/09/2014 (20 months)
Society ID: MRK250E

LT UNLIMITED EASE 9108 (H)
 LT EASY BLEND 5125 PLD (P)
 LT BRENDA 1014 PLD PED-4572E
Sire: ROSEDALE FIRST CLASS (AI) (P)
 ROSEDALE ZINGER (P)
 ROSEDALE CINDERELLA D6 (P)
 ROSEDALE CINDERELLA W165 (P)

NOVOTEL 5897127519 (H)
 PARINGA NOVOTEL A100 (AI) (ET) (P)
 PARINGA FASTRACK Y654 (AI) (ET) (P)
Dam: ROSEDALE KRISTINA E70 (P)
 MINNIE-VALE DEPUTY (P)
 ROSEDALE KRISTINA Z44 (P)
 ROSEDALE KRISTINA S3 (P)



Comments

**Top 5% Milk Top 10% 400 & 600 Day Growth
 Top 15% Domestic & Export \$Indexes
 Top 20% Birth Weight**

A very useful bull by the homebred sire Rosedale First Class. Lower birth weight with well above average growth. Bulls like this don't come around everyday.

Purchaser _____ \$ _____

Index \$ Value					
Domestic (\$)			Export (\$)		
+\$ 41			+\$ 55		
Charolais Group Breedplan EBV's					
	Birth Weight	200 day growth	400 day growth	600 day growth	Milk
EBV	-0.5	+14	+35	+48	+15
ACC	73%	65%	66%	59%	46%
Raw Data					
Weight	P8	Rib	EMA	IMF %	Scrotal

32 ROSEDALE K306 (P)

Born: 10/10/2014 (19 months)
Society ID: MRK306E

LT WYOMING WIND 4020 PLD (P)
 HARVIE REDEMPTION 36P MC286641 (P) (R/F)
 HARVIE MS MOLSON 53M (P)
Sire: ASCOT GRAND REDEMPTION G52E (AI) (P)
 BALDRIDGE FASTTRACK 82E (P)
 GOBONGO JULIETTE B43E (AI) (P)
 GOBONGO JULIETTE Z15E GOZ15E (D)

NOVOTEL 5897127519 (H)
 PARINGA NOVOTEL A100 (AI) (ET) (P)
 PARINGA FASTRACK Y654 (AI) (ET) (P)
Dam: ROSEDALE NELLE E171 (P)
 EC NEW TREND 6G M 498475 (P)
 ROSEDALE NELLE Z52 (AI) (P)
 ROSEDALE NELLE W152 (P)



Comments

**Top 5% 200, 400 & 600 Day Growth
 Top 15% Export \$Index
 Top 20% Domestic \$Index and Milk**

One of the standouts in his group we like this bull a lot. Thick and muscly with a terrific nature. Worthy of a tick next to his name.

Purchaser _____ \$ _____

Index \$ Value					
Domestic (\$)			Export (\$)		
+\$ 37			+\$ 54		
Charolais Group Breedplan EBV's					
	Birth Weight	200 day growth	400 day growth	600 day growth	Milk
EBV	+0.2	+21	+39	+53	+10
ACC	71%	60%	65%	62%	43%
Raw Data					
Weight	P8	Rib	EMA	IMF %	Scrotal

31



32



33 ROSEDALE KOOK (P)

Born: 27/09/2014 (19 months)

Society ID: MRK90E

FERNVALE RIPPER (H)
 FERNVALE TRAPPER (H)
 FERNVALE PRIMADONNA (AI) (ET) (D)
Sire: ROSEDALE DARWIN (P)
 WCR SIR DUKE 835 M 286251 (P)
 ROSEDALE GRACE A97 (AI) (ET) (P)
 ROSEDALE GRACE T9 (P)

COBRABALD PICASSO (AI) (P)
 MINNIE-VALE DEPUTY (P)
 MINNIE VALE PEANUT SGSP25E (D)
Dam: ROSEDALE RUBY A218 (P)
 ROSEDALE NAVIGATOR (AI) (ET) (P)
 ROSEDALE RUBY V120 MRV120E (H)
 ROSEDALE RUBY R7 MRR7E (H)



Comments

Top 20% Milk
Top 25% Domestic and Export \$Indexes

A well made bull showing the extra softness inherited by a lot of the Darwin progeny. A quality carcass bull with that bit extra doing ability.

Purchaser

\$

Index \$ Value

Domestic (\$)	Export (\$)
+\$ 33	+\$ 46

Charolais Group Breedplan EBV's

	Birth Weight	200 day growth	400 day growth	600 day growth	Milk
EBV	+0.1	+10	+25	+34	+10
ACC	73%	65%	67%	63%	53%

Raw Data

Weight	P8	Rib	EMA	IMF %	Scrotal

34 ROSEDALE KLIMMY (AI) (P)

Born: 06/08/2014 (21 months)

Society ID: MRK81E

LT SILVER YIELD 3196 (P)
 LT SILVER DISTANCE 5342 (P)
 LT MATTIE 9026 (P) OAUU2542E (P)
Sire: LT LONG DISTANCE 9001 (P)
 LT EASY PRO 1158 PLD (P)
 LT BELLE 7026 (P)
 LT BELLE 5110 (P)

PALGROVE WISDOM (AI) (ET) (P)
 CANOONA CAVALERO (P)
 PALGROVE ESTELLA 174 (AI) (P)
Dam: ROSEDALE ESTRA H55 (P)
 FERNVALE TRAPPER FENT50E (H)
 ROSEDALE ESTRA A92 (P)
 ROSEDALE ESTRA V53 (P)



Comments

Top 5% Birth Weight
Top 10% Domestic & Export \$Indexes
Top 20% Milk

A heifers first calf that has come a long way since weaning. The lowest birthweight bull in the sale yet has still grown out nicely. A good bull that could be used on heifers. **Homozygous Polled**

Purchaser

\$

Index \$ Value

Domestic (\$)	Export (\$)
+\$ 45	+\$ 63

Charolais Group Breedplan EBV's

	Birth Weight	200 day growth	400 day growth	600 day growth	Milk
EBV	-3.5	+6	+10	+16	+10
ACC	72%	62%	66%	62%	36%

Raw Data

Weight	P8	Rib	EMA	IMF %	Scrotal

33



34



35 ROSEDALE KEYON (P)

Born: 19/10/2014 (19 months)
Society ID: MRK265E

SVY PIONEER 402P (D)
 SVY PILGRIM PLD 655S (P)
 HFCC FRENCHKISS 919J
Sire: ROSEDALE HARRY (AI) (P)
 DSK WW YABBA DABBA DO Y4 (AI)
 ROSEDALE CANDY C36 (P)
 ROSEDALE CANDY Z34 (P)

NOVOTEL 5897127519 (H)
 PARINGA NOVOTEL A100 (AI) (ET) (P)
 PARINGA FASTRACK Y654 (AI) (ET) (P)
Dam: ROSEDALE HUSSY G65E (P)
 ROSEDALE WILLIE (P)
 ROSEDALE HUSSY B105 (P)
 ROSEDALE HUSSY X21 (P)



Comments

Top 10% Milk
Top 20% Birth Weight
Top 25% 200 & 400 Day Growth

Another squarely made Rosedale Harry son who is deep and thick. A great set of numbers and good body type. Once again the Rosedale Harry on the P. Novotel daughters working a treat.

Purchaser

\$

Index \$ Value

Domestic (\$)	Export (\$)
+\$ 30	+\$ 41

Charolais Group Breedplan EBV's

	Birth Weight	200 day growth	400 day growth	600 day growth	Milk
EBV	-0.7	+15	+28	+38	+12
ACC	68%	54%	54%	53%	41%

Raw Data

Weight	P8	Rib	EMA	IMF %	Scrotal

36 ROSEDALE KELVIN (AI) (P)

Born: 29/07/2014 (21 months)
Society ID: MRK69E

S\$ MONTANA SILVER M454024 (P)
 NWMSU DOC SILVER 362 PLD M669488 (P)
 NWMSU DOLORES ET 0035 (H)
Sire: ASCOT DOC SILVER G100E (AI) (ET) (P/S)
 LT RIO BRAVO 3181 (P)
 PARINGA RIO BRAVO E310 (AI) (ET) (P)
 PALGROVE CARIN 21 (AI) (H)

NOVOTEL 5897127519 (H)
 PARINGA NOVOTEL A100 (AI) (ET) (P)
 PARINGA FASTRACK Y654 (AI) (ET) (P)
Dam: ROSEDALE RUBY H26 (P)
 ROSEDALE ZINGER (P)
 ROSEDALE RUBY E170 (P)
 ROSEDALE RUBY Z98 (P)



Comments

Top 10% Export \$Indexes
Top 15% Birth Weight, Domestic \$Indexes and Milk
Top 20% 600 Day Growth
Top 25% 200 & 400 Day Growth

A great option here by the \$20,000 Ascot Doc Silver Sire. Below average birth EBV's with Above average growth, DNA tested **Ho-mozygous Polled**

Purchaser

\$

Index \$ Value

Domestic (\$)	Export (\$)
+\$ 41	+\$ 59

Charolais Group Breedplan EBV's

	Birth Weight	200 day growth	400 day growth	600 day growth	Milk
EBV	-1.1	+15	+28	+42	+11
ACC	71%	61%	65%	61%	42%

Raw Data

Weight	P8	Rib	EMA	IMF %	Scrotal

37 ROSEDALE K316 (P/S)

Born: 15/08/2014 (21 months)
Society ID: MRK316E

LT UNLIMITED EASE 9108 (H)
 LT EASY BLEND 5125 PLD (P)
 LT BRENDA 1014 PLD PED-4572E
Sire: ROSEDALE FIRST CLASS (AI) (P)
 ROSEDALE ZINGER (P)
 ROSEDALE CINDERELLA D6 (P)
 ROSEDALE CINDERELLA W165 (P)

NOVOTEL 5897127519 (H)
 PARINGA NOVOTEL A100 (AI) (ET) (P) T
 PARINGA FASTRACK Y654 (AI) (ET) (P)
Dam: ROSEDALE LUCY F200
 MINNIE-VALE DEPUTY (P)
 ROSEDALE LUCY Z79 (P)
 ROSEDALE LUCY V69 (P)



Comments

Top 5% Birth Weight and Milk
Top 20% Domestic & Export \$Indexes

A soft and stylish Rosedale First Class son who is in the top 5% for birthweight. A safe bull to be used in most situations, Excellent milk.

Purchaser

\$

Index \$ Value

Domestic (\$)	Export (\$)
+\$ 38	+\$ 51

Charolais Group Breedplan EBV's

	Birth Weight	200 day growth	400 day growth	600 day growth	Milk
EBV	-2.5	+5	+14	+20	+14
ACC	73%	62%	66%	62%	43%

Raw Data

Weight	P8	Rib	EMA	IMF %	Scrotal

38 ROSEDALE KADBURY (P)

Born: 01/11/2014 (18 months)
Society ID: MRK258E

SVY PIONEER 402P (D)
 SVY PILGRIM PLD 655S (P)
 HFCC FRENCHKISS 919J
Sire: ROSEDALE HARRY (AI) (P)
 DSK WW YABBA DABBA DO Y4 (AI)
 ROSEDALE CANDY C36 (P)
 ROSEDALE CANDY Z34 (P)

NOVOTEL 5897127519 (H)
 PARINGA NOVOTEL A100 (AI) (ET) (P)
 PARINGA FASTERACK Y654 (AI) (ET) (P)
Dam: ROSEDALE GOLDEN GIRL E48 (TW) (H)
 MINNIE-VALE DEPUTY (P)
 ROSEDALE GOLDEN GIRL Z39 (P)
 ROSEDALE GOLDEN GIRL 2 (H)



Comments

Top 10% 600 Day Growth and Milk
Top 15% 400 Day Growth
Top 20% 200 Day Growth
Top 25% Birth Weight

A terrific bull with a bit of extra bone and thickness. Great carcase qualities and top class growth EBV'S, combined with a lower bithweight figure.

Purchaser _____ \$ _____

Index \$ Value					
Domestic (\$)			Export (\$)		
+\$ 30			+\$ 42		
Charolais Group Breedplan EBV's					
	Birth Weight	200 day growth	400 day growth	600 day growth	Milk
EBV	-0.3	+16	+33	+47	+12
ACC	71%	59%	64%	60%	44%
Raw Data					
Weight	P8	Rib	EMA	IMF %	Scrotal

39 ROSEDALE KURLY (P)

Born: 28/08/2014 (18 months)
Society ID: MRK276E

SVY PIONEER 402P (D)
 SVY PILGRIM PLD 655S (P)
 HFCC FRENCHKISS 919J
Sire: ROSEDALE HARRY (AI) (P)
 DSK WW YABBA DABBA DO Y4 (AI)
 ROSEDALE CANDY C36 (P)
 ROSEDALE CANDY Z34 (P)

NOVOTEL 5897127519 (H)
 PARINGA NOVOTEL A100 (AI) (ET) (P)
 PARINGA FASTERACK Y654 (AI) (ET) (P)
Dam: ROSEDALE NET G89E (P)
 EC NEW TREND 6G M 498475 (P)
 ROSEDALE NET Y16 (AI) (P)
 ROSEDALE NET V59 (P)



Comments

Top 15% Milk
Top 20% 200, 400 & 600 Day Growth

A smooth, wide and long bodied bull that will deliver on the growth front. Great structure and Skin. **Homozygous Polled**

Purchaser _____ \$ _____

Index \$ Value					
Domestic (\$)			Export (\$)		
+\$ 28			+\$ 39		
Charolais Group Breedplan EBV's					
	Birth Weight	200 day growth	400 day growth	600 day growth	Milk
EBV	-0.1	+16	+31	+42	+11
ACC	69%	52%	53%	52%	42%
Raw Data					
Weight	P8	Rib	EMA	IMF %	Scrotal

37



35



40 ROSEDALE KEYSHAWN (P)

Born: 10/09/2014 (20 months)

Society ID: MRK208E

NOVOTEL (H)
 PARINGA NOVOTEL A100 (AI) (ET) (P)
 PARINGA FASTRACK Y654 (AI) (ET) (P)
Sire: ROSEDALE FAIRLANE (P)
 COBRABALD WINSTON (AI) (P)
 ROSEDALE HONOR A118 (H)
 ROSEDALE HONOR V11 (AI) (H)

HFCC PLD EVOLUTION 5L PED-6316E (H)
 SVY FREEDOM PLD 307N (P)
 SVY PURRFECT 184L PED-3051E (H)
Dam: ROSEDALE HUSSY G85 (AI) (P)
 PARINGA NOVOTEL A100 (AI) (ET) (P)
 ROSEDALE HUSSY D243 (P)
 ROSEDALE HUSSY Z179 (P)



Comments

Top 5% Milk
Top 10% Domestic & Export \$Indexes

Great bull with a bit of extra power coming from a lower birth-weight EBV figure. **Homozygous Polled** as well.

Purchaser

\$

Index \$ Value

Domestic (\$)	Export (\$)
+\$ 43	+\$ 58

Charolais Group Breedplan EBV's

	Birth Weight	200 day growth	400 day growth	600 day growth	Milk
EBV	-1.5	+14	+28	+35	+15
ACC	72%	61%	66%	62%	42%

Raw Data

Weight	P8	Rib	EMA	IMF %	Scrotal

41 ROSEDALE KEEM (P)

Born: 05/09/2014 (20 months)

Society ID: MRK93E

FERNVALE RIPPER (H)
 FERNVALE TRAPPER (H)
 FERNVALE PRIMADONNA (AI) (ET) (D)
Sire: ROSEDALE DARWIN (P)
 WCR SIR DUKE 835 M 286251 (P)
 ROSEDALE GRACE A97 (AI) (ET) (P)
 ROSEDALE GRACE T9 (P)

ROSEDALE NAVIGATOR (AI) (ET) (P)
 ROSEDALE WILLIE (P)
 ROSEDALE LUCY R214 (P)
Dam: ROSEDALE AMOUR B11 (P) (R/F)
 LHD MR PERFECT Y416 (P)
 ROSEDALE AMOUR W43 R/F (AI) (P)
 ROSEDALE AMOUR U28 (P)



Comments

Top 25% Birth Weight & Milk

A muscly and thick carcass bull. Keem's Dam has been a very consistent producer for us over the years. He will breed on nicely.

Purchaser

\$

Index \$ Value

Domestic (\$)	Export (\$)
+\$ 31	+\$ 41

Charolais Group Breedplan EBV's

	Birth Weight	200 day growth	400 day growth	600 day growth	Milk
EBV	-0.3	+9	+17	+22	+9
ACC	73%	66%	67%	64%	53%

Raw Data

Weight	P8	Rib	EMA	IMF %	Scrotal

42 ROSEDALE KRONK (P)

Born: 01/09/2014 (20 months)

Society ID: MRK257E

LT UNLIMITED EASE 9108 (H)
 LT EASY BLEND 5125 PLD (P)
 LT BRENDA 1014 PLD PED-4572E
Sire: ROSEDALE FIRST CLASS (AI) (P)
 ROSEDALE ZINGER (P)
 ROSEDALE CINDERELLA D6 (P)
 ROSEDALE CINDERELLA W165 (P)

HFCC PLD EVOLUTION 5L PED-6316E (H)
 SVY FREEDOM PLD 307N (P)
 SVY PURRFECT 184L PED-3051E (H)
Dam: ROSEDALE AMOUR G43 (AI) (P)
 GUNNADOO YUPPY (P)
 ROSEDALE AMOUR D220 (P)
 ROSEDALE AMOUR W43 R/F (AI) (P)



Comments

Top 10% Domestic & Export \$Indexes and Milk
Top 15% Birth Weight
Top 25% 400 Day Growth

Kronk is a smooth and soft young bull who is clean through the shoulders and **Homozygous polled**. Low birthweight figure with a great set of growth numbers.

Purchaser

\$

Index \$ Value

Domestic (\$)	Export (\$)
+\$ 45	+\$ 58

Charolais Group Breedplan EBV's

	Birth Weight	200 day growth	400 day growth	600 day growth	Milk
EBV	-1.1	+11	+29	+34	+12
ACC	71%	64%	66%	61%	42%

Raw Data

Weight	P8	Rib	EMA	IMF %	Scrotal

43 ROSEDALE KOOL K312 (P)

Born: 11/10/2014 (19 months)
Society ID: MRK312E

LT WYOMING WIND 4020 PLD (P)
 HARVIE REDEMPTION 36P MC286641 (P) (R/F)
 HARVIE MS MOLSON 53M (P)
Sire: ASCOT GRAND REDEMPTION G52E (AI) (P)
 BALDRIDGE FASTTRACK 82E (P)
 GOBONGO JULIETTE B43E (AI) (P)
 GOBONGO JULIETTE Z15E GOZ15E (D)

PALGROVE UPTURN (H)
 ADVANCE XR8 (R/F) (H)
 ADVANCE GINA R/F (H)
Dam: GOBONGO ELODIE E15E (AI) (ET) (P) (R/F)
 ROSEWOOD SHOW BOY (AI) (P)
 GOBONGO ELODIE (P)
 GUNNADOO ELODIE H92E (AI)



Comments

Top 10% 200 Day Growth
Top 20% 600 Day Growth and Milk
Top 25% 400 Day Growth

A long bodied and great arlound bull by Grand Redmepion. Wonderful arlound growth EBV's , this is a bull whose progeny will grow out to fit a wide range of markets.

Purchaser _____ \$ _____

Index \$ Value					
Domestic (\$)			Export (\$)		
+\$ 23			+\$ 35		
Charolais Group Breedplan EBV's					
	Birth Weight	200 day growth	400 day growth	600 day growth	Milk
EBV	+0.7	+18	+29	+43	+10
ACC	70%	58%	64%	61%	42%
Raw Data					
Weight	P8	Rib	EMA	IMF %	Scrotal

44 ROSEDALE KENNY (P/S)

Born: 24/08/2014 (20 months)
Society ID: MRK179E

NOVOTEL (H)
 PARINGA NOVOTEL A100 (AI) (ET) (P)
 PARINGA FASTRACK Y654 (AI) (ET) (P)
Sire: ROSEDALE FAIRLANE (P)
 COBRABALD WINSTON (AI) (P)
 ROSEDALE HONOR A118 (H)
 ROSEDALE HONOR V11 (AI) (H)

MINNIE-VALE DEPUTY (P)
 ROSEDALE ZINGER (P)
 ROSEDALE NICKY X7 (AI) (P)
Dam: ROSEDALE GAIETY C71 (P)
 FERNVALE TRAPPER FENT50E (H)
 ROSEDALE GAIETY Z151 (P)
 ROSEDALE GAIETY U123 (P)



Comments

Top 5% Milk
Top 10% Birth Weight
Top 15% Domestic & Export \$Indexes

Kenny is a fantastic arlound bull with desirable commercial attributes. Once again thickness, depth of body in combination with the ability to lay down the fat. Top 10% for low bithweight as well.

Purchaser _____ \$ _____

Index \$ Value					
Domestic (\$)			Export (\$)		
+\$ 39			+\$ 53		
Charolais Group Breedplan EBV's					
	Birth Weight	200 day growth	400 day growth	600 day growth	Milk
EBV	-1.5	+14	+22	+31	+14
ACC	72%	63%	65%	62%	47%
Raw Data					
Weight	P8	Rib	EMA	IMF %	Scrotal

40



41



45 ROSEDALE KIEREN (P)

Born: 23/08/2014 (20 months)
Society ID: MRK213E

NOVOTEL (H)
 PARINGA NOVOTEL A100 (AI) (ET) (P)
 PARINGA FASTRACK Y654 (AI) (ET) (P)
Sire: ROSEDALE FAIRLANE (P)
 COBRABALD WINSTON (AI) (P)
 ROSEDALE HONOR A118 (H)
 ROSEDALE HONOR V11 (AI) (H)

COBRABALD PICASSO (AI) (P)
 MINNIE-VALE DEPUTY (P)
 MINNIE VALE PEANUT SGSP25E (D)
Dam: ROSEDALE CANDY Z74 (P)
 LHD MR PERFECT Y416 (P)
 ROSEDALE CANDY V143 (AI) (P)
 ROSEDALE CANDY T27 (AI) (P)



Comments

Top 5% Milk
Top 10% Domestic & Export \$Indexes, 400 Day Growth
Top 15% Birth Weight
Top 20% 600 Day Growth
Top 25% 200 Day Growth

One of the best bulls in his mob, Kieren is well muscled and smooth backed up by outstanding EBV's, a terrific birth - 600 Day spread. Out of one of our best old cows.

Purchaser _____ \$ _____

Index \$ Value					
Domestic (\$)			Export (\$)		
+\$ 45			+\$ 59		
Charolais Group Breedplan EBV's					
	Birth Weight	200 day growth	400 day growth	600 day growth	Milk
EBV	-1.0	+15	+34	+43	+15
ACC	73%	65%	66%	62%	58%
Raw Data					
Weight	P8	Rib	EMA	IMF %	Scrotal

46 ROSEDALE KENDRICK (P)

Born: 27/09/09 (20 months)
Society ID: MRK168E

IMPAIR OAFN189F
 PINAY 8552394134 (H)
 MARY OAFR8596F (H)
Sire: PALGROVE EXPO (AI) (ET) (P)
 PALGROVE OUTBACK (P)
 PALGROVE ESTELLA 130 (AI) (P)
 PALGROVE ESTELLA 95 (H)

NOVOTEL 5897127519 (H)
 PARINGA NOVOTEL A100 (AI) (ET) (P)
 PARINGA FASTRACK Y654 (AI) (ET) (P)
Dam: ROSEDALE G30 (P)
 DSK WW YABBA DABBA DO Y4 (AI)
 ROSEDALE NET B43 (P)
 ROSEDALE NET W130 (P) (TW)



Comments

Top 10% 200 & 600 Day Growth and Milk
Top 20% 400 Day Growth

Typical of the Expo progeny this bull has that extra lift and muscle. Wonderful growth EBV's and weight for age.

Purchaser _____ \$ _____

Index \$ Value					
Domestic (\$)			Export (\$)		
+\$ 8			+\$ 13		
Charolais Group Breedplan EBV's					
	Birth Weight	200 day growth	400 day growth	600 day growth	Milk
EBV	+1.8	+18	+30	+49	+12
ACC	72%	64%	66%	62%	49%
Raw Data					
Weight	P8	Rib	EMA	IMF %	Scrotal

47 ROSEDALE KURTLEY (P)

Born: 22/10/2014 (18 months)
Society ID: MRK255E

LT UNLIMITED EASE 9108 (H)
 LT EASY BLEND 5125 PLD (P)
 LT BRENDA 1014 PLD PED-4572E
Sire: ROSEDALE FIRST CLASS (AI) (P)
 ROSEDALE ZINGER (P)
 ROSEDALE CINDERELLA D6 (P)
 ROSEDALE CINDERELLA W165 (P)

NOVOTEL 5897127519 (H)
 PARINGA NOVOTEL A100 (AI) (ET) (P)
 PARINGA FASTRACK Y654 (AI) (ET) (P)
Dam: ROSEDALE CANDY F191 (P)
 MINNIE-VALE DEPUTY (P)
 ROSEDALE CANDY Z74 (P)
 ROSEDALE CANDY V143 (AI) (P)



Comments

Top 5% Domestic & Export \$Indexes
Top 10% Birth Weight and Milk
Top 25% 400 Day Growth

A stylish, smooth and thickly made First Class son with lots to like about him. **Homozygous polled**, Low birthweight and excellent growth figures.

Purchaser _____ \$ _____

Index \$ Value					
Domestic (\$)			Export (\$)		
+\$ 50			+\$ 66		
Charolais Group Breedplan EBV's					
	Birth Weight	200 day growth	400 day growth	600 day growth	Milk
EBV	-2.0	+11	+29	+37	+16
ACC	73%	64%	66%	62%	45%
Raw Data					
Weight	P8	Rib	EMA	IMF %	Scrotal

48 ROSEDALE KIAMA (P)

Born: 03/09/2014 (20 months)
Society ID: MRK245E

LT UNLIMITED EASE 9108 (H)
 LT EASY BLEND 5125 PLD (P)
 LT BRENDA 1014 PLD PED-4572E
Sire: ROSEDALE FIRST CLASS (AI) (P)
 ROSEDALE ZINGER (P)
 ROSEDALE CINDERELLA D6 (P)
 ROSEDALE CINDERELLA W165 (P)

MINNIE-VALE DEPUTY (P)
 ROSEDALE ZINGER (P)
 ROSEDALE NICKY X7 (AI) (P)
Dam: ROSEDALE GEORGETTE E46 (P)
 ROSEDALE SELECTOR (AI) (P)
 ROSEDALE GEORGETTE V65 (P)
 ROSEDALE GEOGETTE 2 (AI)



Comments

Top 10% Milk
Top 20% Birth Weight
Top 25% Domestic \$Index

Kiama is one the most eye catching bulls in the paddock. A great low birthweight option with thickness and fat cover complimented by good strong growth. **Homozygous Polled**

Purchaser

\$

Index \$ Value

Domestic (\$)	Export (\$)
+\$ 33	+\$ 41

Charolais Group Breedplan EBV's

	Birth Weight	200 day growth	400 day growth	600 day growth	Milk
EBV	-0.7	+9	+26	+32	+12
ACC	74%	66%	67%	64%	48%

Raw Data

Weight	P8	Rib	EMA	IMF %	Scrotal

49 ROSEDALE KOBBI (P/S)

Born: 03/09/2014 (20months)
Society ID: MRK228E

LT UNLIMITED EASE 9108 (H)
 LT EASY BLEND 5125 PLD (P)
 LT BRENDA 1014 PLD PED-4572E
Sire: ROSEDALE FIRST CLASS (AI) (P)
 ROSEDALE ZINGER (P)
 ROSEDALE CINDERELLA D6 (P)
 ROSEDALE CINDERELLA W165 (P)

MINNIE-VALE DEPUTY (P)
 ROSEDALE ZINGER (P)
 ROSEDALE NICKY X7 (AI) (P)
Dam: ROSEDALE ROSE E159 (P) (TW)
 ROSEDALE WILLIE (P)
 ROSEDALE ROSE A48 (P)
 ROSEDALE ROSE S127 (P)



Comments

Top 15% Birth Weight and Milk
Top 20% Domestic \$Index
Top 25% Export \$Index

A stouly made bull sired by Rosedale First Class. Plenty of class and carcase in this bull, great low birthweight figure.

Purchaser

\$

Index \$ Value

Domestic (\$)	Export (\$)
+\$ 36	+\$ 46

Charolais Group Breedplan EBV's

	Birth Weight	200 day growth	400 day growth	600 day growth	Milk
EBV	-1.1	+10	+26	+32	+11
ACC	73%	65%	67%	63%	47%

Raw Data

Weight	P8	Rib	EMA	IMF %	Scrotal

47



48



50 ROSEDALE SPECIAL K (P)

Born: 16/09/2014 (20 months)
Society ID: MRK300E

SVY PIONEER 402P (D)
 SVY PILGRIM PLD 655S (P)
 HFCC FRENCHKISS 919J
Sire: ROSEDALE HARRY (AI) (P)
 DSK WW YABBA DABBA DO Y4 (AI)
 ROSEDALE CANDY C36 (P)
 ROSEDALE CANDY Z34 (P)

FERNVALE RIPPER FENRIE (H)
 FERNVALE TRAPPER (H)
 FERNVALE PRIMADONNA (AI) (ET) (D)
Dam: ROSEDALE VIOLET Z136 (P)
 PALGROVE JACKPOT (AI) (ET) (P)
 ROSEDALE VIOLET 17 (P)
 SUGARLOAF VIOLET 10 (H)



Comments

Top 20% Milk

A very well muscled and deep sided Harry son out of a good Trapper cow. Special K will certainly stamp some shape and growth into his progeny.

Purchaser

\$

Index \$ Value

Domestic (\$)	Export (\$)
+\$ 21	+\$ 30

Charolais Group Breedplan EBV's

	Birth Weight	200 day growth	400 day growth	600 day growth	Milk
EBV	0.0	+10	+19	+28	+10
ACC	72%	63%	65%	61%	48%

Raw Data

Weight	P8	Rib	EMA	IMF %	Scrotal

51 ROSEDALE KEEPER (P)

Born: 27/09/09 (20 months)
Society ID: MRK269E

SVY PIONEER 402P (D)
 SVY PILGRIM PLD 655S (P)
 HFCC FRENCHKISS 919J
Sire: ROSEDALE HARRY (AI) (P)
 DSK WW YABBA DABBA DO Y4 (AI)
 ROSEDALE CANDY C36 (P)
 ROSEDALE CANDY Z34 (P)

NOVOTEL 5897127519 (H)
 PARINGA NOVOTEL A100 (AI) (ET) (P)
 PARINGA FASTRACK Y654 (AI) (ET) (P)
Dam: ROSEDALE BEATRIX G59 (P)
 FERNVALE TRAPPER (H)
 ROSEDALE BEATRIX X51 (P)
 ROSEDALE BEATRIX R147 (AI) (ET) (P)



Comments

Top 5% Milk

Top 25% Birth Weight & 600 Day Growth

Keeper is a thick and long young bull just starting to hit his straps. A great birth to 600 Day spread, these Harry bulls are so consistent.

Purchaser

\$

Index \$ Value

Domestic (\$)	Export (\$)
+\$ 25	+\$ 38

Charolais Group Breedplan EBV's

	Birth Weight	200 day growth	400 day growth	600 day growth	Milk
EBV	-0.3	+14	+26	+40	+13
ACC	70%	59%	64%	60%	43%

Raw Data

Weight	P8	Rib	EMA	IMF %	Scrotal

52 ROSEDALE KOOEE (P)

Born: 18/10/2014 (18 months)
Society ID: MRK236E

LT UNLIMITED EASE 9108 (H)
 LT EASY BLEND 5125 PLD (P)
 LT BRENDA 1014 PLD PED-4572E
Sire: ROSEDALE FIRST CLASS (AI) (P)
 ROSEDALE ZINGER (P)
 ROSEDALE CINDERELLA D6 (P)
 ROSEDALE CINDERELLA W165 (P)

NOVOTEL 5897127519 (H)
 PARINGA NOVOTEL A100 (AI) (ET) (P)
 PARINGA FASTRACK Y654 (AI) (ET) (P)
Dam: ROSEDALE EXTRA E195 (P)
 MINNIE-VALE DEPUTY (P)
 ROSEDALE HUSSY Z179 (P)
 ROSEDALE HUSSY X9 (TW)



Comments

Top 1% Milk

Top 10% Birth Weight, Domestic & Export \$Indexes

Kooee is a neat, soft skinned and smoothly muscled bull by First Class out of a terrific P.Novotel cow. Once again a good low birth-weight safe bull to use with strong growth figures. Fantastic milk figure if you where looking to keep any daughters.

Purchaser

\$

Index \$ Value

Domestic (\$)	Export (\$)
+\$ 45	+\$ 61

Charolais Group Breedplan EBV's

	Birth Weight	200 day growth	400 day growth	600 day growth	Milk
EBV	-1.7	+10	+28	+38	+17
ACC	72%	63%	66%	62%	46%

Raw Data

Weight	P8	Rib	EMA	IMF %	Scrotal

53 ROSEDALE KEVIN K247 (P)

Born: 06/09/2014 (20 months)
Society ID: MRK247E

LT UNLIMITED EASE 9108 (H)
 LT EASY BLEND 5125 PLD (P)
 LT BRENDA 1014 PLD PED-4572E
Sire: ROSEDALE FIRST CLASS (AI) (P)
 ROSEDALE ZINGER (P)
 ROSEDALE CINDERELLA D6 (P)
 ROSEDALE CINDERELLA W165 (P)

LHD CIGAR E46 (P)
 JDJ SMOKESTER J1377 P ET M509419 (P)
 JD MS COMMANDER B309 (H)
Dam: ROSEDALE GEORGETTE E60 (AI) (P)
 ROSEDALE WILLIE (P)
 ROSEDALE GEORGETTE B196 (P)
 ROSEDALE S71E (AI) (P)



Comments

Top 5% Milk
Top 10% Domestic & Export \$Indexes, 400 Day Growth
Top 20% Birth Weight
Top 25% 600 Day Growth

A sleek skinned and stretchy First Class bull that has the natural thickness and performance to go with him. A great set of EBV's backed by raw performance.

Purchaser

\$

Index \$ Value

Domestic (\$)	Export (\$)
+\$ 46	+\$ 58

Charolais Group Breedplan EBV's

	Birth Weight	200 day growth	400 day growth	600 day growth	Milk
EBV	-0.7	+12	+34	+40	+15
ACC	72%	64%	65%	62%	43%

Raw Data

Weight	P8	Rib	EMA	IMF %	Scrotal

54 ROSEDALE KASH (P)

Born: 20/09/2014(19 months)
Society ID: MRK283E

SVY PIONEER 402P (D)
 SVY PILGRIM PLD 655S (P)
 HFCC FRENCHKISS 919J
Sire: ROSEDALE HARRY (AI) (P)
 DSK WW YABBA DABBA DO Y4 (AI)
 ROSEDALE CANDY C36 (P)
 ROSEDALE CANDY Z34 (P)

NOVOTEL 5897127519 (H)
 PARINGA NOVOTEL A100 (AI) (ET) (P))
 PARINGA FASTRACK Y654 (AI) (ET) (P)
Dam: ROSEDALE CANDY G80E
 MINNIE-VALE DEPUTY (P)
 ROSEDALE CANDY Z74 (P)
 ROSEDALE CANDY V143 (AI) (P)



Comments

Top 10% 200, 400 & 600 Day Growth and Milk
Top 20% Birth Weight, Domestic & Export \$Indexes

Kash is another smooth long bodied bull yet is still plenty wide enough from behind. Fantastic carcass qualities in combination with curve bending EBV's. **Homozygous Polled**

Purchaser

\$

Index \$ Value

Domestic (\$)	Export (\$)
+\$ 36	+\$ 50

Charolais Group Breedplan EBV's

	Birth Weight	200 day growth	400 day growth	600 day growth	Milk
EBV	-0.6	+18	+35	+47	+12
ACC	71%	62%	65%	61%	44%

Raw Data

Weight	P8	Rib	EMA	IMF %	Scrotal

50



54



55 ROSEDALE KALE (P)

Born: 14/10/2014 (19 months)
Society ID: MRK109E

FERNVALE RIPPER (H)
 FERNVALE TRAPPER (H)
 FERNVALE PRIMADONNA (AI) (ET) (D)
Sire: ROSEDALE DARWIN (P)
 WCR SIR DUKE 835 M 286251 (P)
 ROSEDALE GRACE A97 (AI) (ET) (P)
 ROSEDALE GRACE T9 (P)

MINNIE-VALE DEPUTY (P)
 ROSEDALE ZINGER (P)
 ROSEDALE NICKY X7 (AI) (P)
Dam: ROSEDALE BEATRIX E83 (P)
 LHD MR PERFECT Y416 (P)
 ROSEDALE BEATRIX U38 (AI) (P)
 ROSEDALE BEATRIX R136E (AI) (ET) (H)



Comments

Top 15% 200 Day Growth
Top 20% Domestic & Export \$Indexes, 400 & 600 Day Growth
Top 25% Milk

A top class Darwin Bull with growth and softness. Kale has solid growth EBV values which all fall in the top 20% of the breed. A versatile bull whose progeny will suit a variety of markets. **Homozygous Polled**

Purchaser _____ \$ _____

Index \$ Value					
Domestic (\$)			Export (\$)		
+\$ 35			+\$ 50		
Charolais Group Breedplan EBV's					
	Birth Weight	200 day growth	400 day growth	600 day growth	Milk
EBV	+0.5	+17	+30	+42	+9
ACC	72%	64%	64%	61%	49%
Raw Data					
Weight	P8	Rib	EMA	IMF %	Scrotal

56 ROSEDALE KIRK (P)

Born: 22/09/2014 (19 months)
Society ID: MRK220E

LT UNLIMITED EASE 9108 (H)
 LT EASY BLEND 5125 PLD (P)
 LT BRENDA 1014 PLD PED-4572E
Sire: ROSEDALE FIRST CLASS (AI) (P)
 ROSEDALE ZINGER (P)
 ROSEDALE CINDERELLA D6 (P)
 ROSEDALE CINDERELLA W165 (P)

PALGROVE STAND OUT (AI) (H)
 GUNNADOO YUPPY (P)
 GUNNADOO CINDY R34E (AI) (P)
Dam: ROSEDALE BEATRIX D48 (P)
 ROSEDALE SELECTOR (AI) (P)
 ROSEDALE BEATRIX X99 (P)
 ROSEDALE BEATRIX 6



Comments

Top 15% Export \$Index and Milk
Top 20% Birth Weight and Domestic \$Index

Great young bull out of a good milking Yuppy Dam and sired by the Easy Doing Rosedale First Class. A safe birthweight yet still plenty of growth with easy fleshing ability.

Purchaser _____ \$ _____

Index \$ Value					
Domestic (\$)			Export (\$)		
+\$ 38			+\$ 53		
Charolais Group Breedplan EBV's					
	Birth Weight	200 day growth	400 day growth	600 day growth	Milk
EBV	-0.5	+8	+25	+36	+11
ACC	72%	64%	65%	62%	46%
Raw Data					
Weight	P8	Rib	EMA	IMF %	Scrotal



57 ROSEDALE LOCHIE (AI) (P)

Born: 16/03/15 (14 months)

Society ID: MRL43E

S\$ MONTANA SILVER M454024 (P)
NWMSU DOC SILVER 362 PLD M669488 (P)
NWMSU DOLORES ET 0035 (H)

Sire: **ASCOT DOC SILVER G100E (AI) (ET) (P/S)**

LT RIO BRAVO 3181 (P)
PARINGA RIO BRAVO E310 (AI) (ET) (P)
PALGROVE CARIN 21 (AI) (H)

VMX COUGARHILL HANK
PCC SUDDEN IMPACT (P)
SPARROWS TEMPEST 174K (P)

Dam: **ROSEDALE GOLDEN GIRL H412(P/S)**

MINNIE-VALE DEPUTY (P)
ROSEDALE GOLDEN GIRL A34 (P)
ROSEDALE GOLDEN GIRL 2



Comments

- Top 10% 400 & 600 Day Weight
- Top 15% 200 Day Weight
- Top 20% Domestic & Export \$Indexes
- Top 25% Birth Weight and Milk

A well put together yearling sired by Ascot Doc Silver. A Strong Polled head and even fat cover. Great thickness and growth for age backed by some really impressive growth EBV's starting from a low birthweight figure. **Homozygous Polled** is a bonus.

Purchaser

\$

Index \$ Value

Domestic (\$)	Export (\$)
+\$ 35	+\$ 51

Charolais Group Breedplan EBV's

	Birth Weight	200 day growth	400 day growth	600 day growth	Milk
EBV	-0.2	+17	+36	+51	+9
ACC	69%	61%	57%	56%	40%

Raw Data

Weight	P8	Rib	EMA	IMF %	Scrotal

58 ROSEDALE LLEYTON (P)

Born: 09/04/15 (13 months)

Society ID: MRL18E

NOVOTEL (H)
PARINGA NOVOTEL A100 (AI) (ET) (P)
PARINGA FASTRACK Y654 (AI) (ET) (P)

Sire: **ROSEDALE FAIRLANE (P)**

COBRABALD WINSTON (AI) (P)
ROSEDALE HONOR A118 (H)
ROSEDALE HONOR V11 (AI) (H)

LT WYOMING WIND 4020 (P)
DSK YABBA DABBA DO Y4
PALGROVE ESTELLA 31

Dam: **ROSEDALE DAFFODIL E255(P)**

FERNVALE TRAPPER
ROSEDALE DAFFODIL X76 (P)
ROSEDALE BEATRIX R37(P)



Comments

- Top 5% Milk
- Top 15% Export \$Index
- Top 20% Domestic \$Index
- Top 25% 200 Day Growth

A stoutly made young sire of the future by Fairlane. This bull is very cleanly made and stands very square. **Homozygous Polled**.

Purchaser

\$

Index \$ Value

Domestic (\$)	Export (\$)
+\$ 38	+\$ 54

Charolais Group Breedplan EBV's

	Birth Weight	200 day growth	400 day growth	600 day growth	Milk
EBV	+0.1	+15	+26	+38	+13
ACC	71%	63%	65%	62%	48%

Raw Data

Weight	P8	Rib	EMA	IMF %	Scrotal

57



58



59 ROSEDALE LUST (P/S)

Born: 01/03/15 (14 months)
Society ID: MRL21E

SCHURRTOP V351
 LCOC TOP GRADE (P)
 M6 927 COMMANDER ET
Sire: PARINGA TOP GRADE
 LT EASY BLEND 5125 (P)
 PARINGA EASY BLEND F286 (P)
 PARINGA RIO BRAVO D208 (P)

PARINGA NOVOTEL (P)
 ROSEDALE DONATELLO (P)
 ROSEDALE REBECCA A38 (P)
Dam: ROSEDALE RUBY H8 (P)
 MINNIE-VALE DEPUTY (P)
 ROSEDALE RUBY A218 (P)
 ROSEDALE RUBY V120



Comments

Top 10% 400 & 600 Day Growth
Top 15% Export \$Index and 200 Day Growth
Top 20% Domestic \$Index and Milk
Top 25% Birth Weight

This is a very handy yearling with exceptional growth, even cover and marbling ability. Ruby H8 is one of our best young cows and she is breeding on nicely. Great EBV's to boot.

Purchaser _____ \$ _____

Index \$ Value					
Domestic (\$)			Export (\$)		
+\$ 38			+\$ 54		
Charolais Group Breedplan EBV's					
	Birth Weight	200 day growth	400 day growth	600 day growth	Milk
EBV	-0.4	+17	+34	+49	+10
ACC	68%	59%	61%	56%	37%
Raw Data					
Weight	P8	Rib	EMA	IMF %	Scrotal

60 ROSEDALE LEONARDO (P)

Born: 7/04/15 (13 months)
Society ID: MRL5E

NOVOTEL (H)
 PARINGA NOVOTEL A100 (AI) (ET) (P)
 PARINGA FASTRACK Y654 (AI) (ET) (P)
Sire: ROSEDALE FAIRLANE (P)
 COBRABALD WINSTON (AI) (P)
 ROSEDALE HONOR A118 (H)
 ROSEDALE HONOR V11 (AI) (H)

LT WYOMING WIND 4020 PLD (P)
 DSK WW YABBA DABBA DO Y4 (AI) DSKY4E
 PALGROVE ESTELLA 31 (AI) (ET)
Dam: ROSEDALE NET F106 (P) MRF106E (P)
 MINNIE-VALE DEPUTY (P) SGSV78E (P)
 ROSEDALE NET C112 (P) MRC112E (P)
 ROSEDALE NET U12 (P) (TW) MRU12E (P)



Comments

Top 25% 200,400 & 600 Day Growth
Top 15% Domestic & Export \$Indexes
Top 10% Milk

A great soft and compact young bull that still brings some punch to the table. Exceptional Temperament and structure, out of a top young cow with loads of milk.

Purchaser _____ \$ _____

Index \$ Value					
Domestic (\$)			Export (\$)		
+\$ 41			+\$ 55		
Charolais Group Breedplan EBV's					
	Birth Weight	200 day growth	400 day growth	600 day growth	Milk
EBV	0.2	+15	+29	+39	+12
ACC	72%	64%	66%	63%	40%
Raw Data					
Weight	P8	Rib	EMA	IMF %	Scrotal

59



60



61 ROSEDALE LONE RANGER (AI) (P)

Born: 16/03/15 (14 months)
Society ID: MRL30E

RAINBOW MR CYRANO 32D
 MVX COUGARHILL HANK 720G
 MVX EDITH X
Sire: HIGH BLUFF HANK 41R (P)
 DCR MR TOM TERRIFIC J996
 HOLMSYDE HOT-ON-TOP 212M
 HOLMSYDE HOT VISION 17K

NOVOTEL
 PARINGA NOVOTEL A100 (P)
 PARINGA FASTRACK Y654 (P)
Dam: ROSEDALE NICKY G185 (P)
 EC NEW TREND M (P)
 ROSEDALE NICKY X7 (P)
 ROSEDALE NICKY U98 (P)



Comments

Top 5% Milk
Top 10% Birth Weight
Top 25% Domestic & Export \$Indexes

A very neat and tidy young bull by the Candian AI Sire High Bluff Hank. This is a well balanced young bull whose progeny would suit a range of markets.

Purchaser \$

Index \$ Value					
Domestic (\$)			Export (\$)		
+\$ 33			+\$ 46		
Charolais Group Breedplan EBV's					
	Birth Weight	200 day growth	400 day growth	600 day growth	Milk
EBV	-1.7	+7	+17	+26	+13
ACC	72%	65%	67%	64%	52%
Raw Data					
Weight	P8	Rib	EMA	IMF %	Scrotal

62 ROSEDALE LEROY (P)

Born: 27/09/09 (18 months)
Society ID: MRL6E

NOVOTEL (H)
 PARINGA NOVOTEL A100 (AI) (ET) (P)
 PARINGA FASTRACK Y654 (AI) (ET) (P)
Sire: ROSEDALE FAIRLANE (P)
 COBRABALD WINSTON (AI) (P)
 ROSEDALE HONOR A118 (H)
 ROSEDALE HONOR V11 (AI) (H)

LT WYOMING WIND 4020 (P)
 DSK WW YABBA DABBA DO Y4
 PALGROVE ESTELLA 31
Dam: ROSEDALE BEATRIX E10 (P)
 WCR SIR FA 2244 M (P)
 ROSEDALE BEATRIX R147 (P)
 ROSEDALE BEATRIX



Comments

Top 5% Milk
Top 10% Domestic & Export \$Indexes
Top 15% 200, 400 & 600 Day Growth

A great young bull to finish on out of a very consistant producing cow. Leroy is just how we like to breed them, soft yet still has plenty of substance. Top notch growth EBV's and very well bred.

Purchaser \$

Index \$ Value					
Domestic (\$)			Export (\$)		
+\$ 43			+\$ 60		
Charolais Group Breedplan EBV's					
	Birth Weight	200 day growth	400 day growth	600 day growth	Milk
EBV	+0.1	+17	+35	+49	+13
ACC	70%	63%	65%	62%	47%
Raw Data					
Weight	P8	Rib	EMA	IMF %	Scrotal

61



62



SIRE HARVIE CRYSTAL D TRIGGER (R/F)(P)

Born: 5/02/2007
Society ID: n/a

LABRAMOR HALLMARK H55E
 BULLS M07
 BULLS 129

Sire: MAUNGAHINA TOWKAY (P)
 BALDRIDGE FASTTRACK 82E (P)
 MAUNGAHINA PRINCESS (P)
 PALGROVE IDEAL 43 (AI) (P)

LANGS ERIC THE RED (P)
 HARVIE JAGER (P)

Dam: HARVIE MS MOLSON 53M (P)
 HARVIE MISS FRANCIS (P)
 KJP SKY FIRE 51T)
 HARVIE MISS FIREFLY 31F (P)
 PAR MISS CANDY



A herd sire in the Harvie Family's Canadian operation. A rarely found high quality Dark polled Red Charolais sire that we purchased the semen to in 2011. Half brother to the widely used Harvie Redemption. Has done a fantastic job on his calves.

Canadian Charolais EPD's

DIR	DTRS	GL	BWT	200	400	600	MWT
+7.9	+2.2	-2.8	-0.9	+16	+33	+39	+39
50%	43%	53%	71%	66%	66%	64%	60%
MILK	SS	CWT	EMA	RIB	RMP	RBY	IMF
+13	+1.2	-	+0.5	-0.2	-0.2	-0.1	+0.3
56%	71%	-	49%	53%	52%	52%	49%
Index \$ Value	Domestic (\$)				Export (\$)		
	+\$43				+\$54		

SIRE WAKEFIELD GUNSMOKE (R/F) (P) (AI)

Born: 19/08/2011
Society ID: BISG30E

BLASON 4286100325 PEDX286F (H)
 IMPAIR OAFN189F
 OFFICINE PED-945F (H)
Sire: PINAY 8552394134 OAFU4134F (H)
 HOMERE PED-7561F (H)
 MARY OAFR8596F (H)
 JACINTHE PED-4550F (H)

ACQUIT A27 71416 A27 (AI) IAF6020F
 WAKEFIELD ACQUIT (AI) BISW195E (H)
 WAKEFIELD POPPY (AI) BISP718E (H)
Dam: WAKEFIELD BLUSH (P) (R/F) (TW) BISB938D (P)
 BR DUKE 261 M 246564 (P) OAUC261E (P)
 WAKEFIELD YASMINE (AI) (P) BISY500C (P)
 WAKEFIELD VICTORIA (AI) (P) BISV223B (P)



A Polled Red Factor Sire by the Reknowned French Sire Pinay. Has put some great shape and length into his Progeny.

Charolais Group Breedplan EBV's

DIR	DTRS	GL	BWT	200	400	600	MWT
+1.7	+2.8	-1.4	+0.1	+12	+27	+39	+45
54%	45%	57%	72%	64%	60%	60%	-
MILK	SS	CWT	EMA	RIB	RMP	RBY	IMF
+8	+0.3	-	-	-	-	-	-
55%	52%	-	-	-	-	-	-
Index \$ Value	Domestic (\$)				Export (\$)		
	+\$35				+\$46		



Lot 68 & 65

63 ROSEDALE K93 (P)
Born: 10/08/13 (21 months) **Tag:** MR C/A K93

PINAY
Sire: WAKEFIELD GUNSMOKE (AI) (P) (R/F)
 WAKEFIELD BLUSH (P) (R/F) (TW)
Dam: SELECTED ANGUS COW

Raw Data					
Weight	P8	Rib	EMA	IMF %	Scrotal
Purchaser				\$	

64 ROSEDALE K215 (P)
Born: 1/09/13 (21 months) **Tag:** MR C/A K215

PINAY
Sire: WAKEFIELD GUNSMOKE (AI) (P) (R/F)
 WAKEFIELD BLUSH (P) (R/F) (TW)
Dam: SELECTED ANGUS COW

Raw Data					
Weight	P8	Rib	EMA	IMF %	Scrotal
Purchaser				\$	

65 ROSEDALE K56 (AI) (P)
Born: 6/09/13 (20 months) **Tag:** MR C/A K56

MAUNGAHINA TOWKAY (P)
Sire: HARVIE CRYSTAL D TRIGGER (R/F) (P)
 HARVIE MS MOLSON 53M (P)
Dam: SELECTED ANGUS COW

Raw Data					
Weight	P8	Rib	EMA	IMF %	Scrotal
Purchaser				\$	

66 ROSDALE K240 (P)
Born: 4/10/13 (19 months) **Tag:** MR C/AK240

PINAY
Sire: WAKEFIELD GUNSMOKE (AI) (P) (R/F)
 WAKEFIELD BLUSH (P) (R/F) (TW)
Dam: SELECTED ANGUS COW

Raw Data					
Weight	P8	Rib	EMA	IMF %	Scrotal
Purchaser				\$	

67 ROSEDALE K31 (AI) (P)
Born: 10/09/13 (20 months) **Tag:** MR C/A K31

MAUNGAHINA TOWKAY (P)
Sire: HARVIE CRYSTAL D TRIGGER (R/F) (P)
 HARVIE MS MOLSON 53M (P)
Dam: SELECTED ANGUS COW

Raw Data					
Weight	P8	Rib	EMA	IMF %	Scrotal
Purchaser				\$	

68 ROSEDALE K239 (P)
Born: 2/09/13 (20 months) **Tag:** MR C/A K239

PINAY
Sire: WAKEFIELD GUNSMOKE (AI) (P) (R/F)
 WAKEFIELD BLUSH (P) (R/F) (TW)
Dam: SELECTED ANGUS COW

Raw Data					
Weight	P8	Rib	EMA	IMF %	Scrotal
Purchaser				\$	

69 ROSEDALE K208 (P)
Born: 11/09/13 (20 months) **Tag:** MRC/A k208

PINAY
Sire: WAKEFIELD GUNSMOKE (AI) (P) (R/F)
 WAKEFIELD BLUSH (P) (R/F) (TW)
Dam: SELECTED ANGUS COW

Raw Data					
Weight	P8	Rib	EMA	IMF %	Scrotal
Purchaser				\$	

70 ROSEDALE K243 (P)
Born: 8/09/13 (20 months) **Tag:** MR C/A K46

PINAY
Sire: WAKEFIELD GUNSMOKE (AI) (P) (R/F)
 WAKEFIELD BLUSH (P) (R/F) (TW)
Dam: SELECTED ANGUS COW

Raw Data					
Weight	P8	Rib	EMA	IMF %	Scrotal
Purchaser				\$	

71 **ROSEDALE K94 (P)**
Born: 9/09/13 (20 months) **Tag:** MR C/A K94

PINAY
Sire: WAKEFIELD GUNSMOKE (AI) (P) (R/F)
 WAKEFIELD BLUSH (P) (R/F) (TW)
Dam: SELECTED ANGUS COW

Raw Data					
Weight	P8	Rib	EMA	IMF %	Scrotal
Purchaser				\$	

72 **ROSEDALE K207 (P)**
Born: 12/09/13 (18 months) **Tag:** MRC/A K207

PINAY
Sire: WAKEFIELD GUNSMOKE (AI) (P) (R/F)
 WAKEFIELD BLUSH (P) (R/F) (TW)
Dam: SELECTED ANGUS COW

Raw Data					
Weight	P8	Rib	EMA	IMF %	Scrotal
Purchaser				\$	

73 **ROSEDALE K49 (P) (AI)**
Born: 3/09/13 (18 months) **Tag:** MR C/A K49

MAUNGAHINA TOWKAY (P)
Sire: HARVIE CRYSTAL D TRIGGER (R/F) (P)
 HARVIE MS MOLSON 53M (P)
Dam: SELECTED ANGUS COW

Raw Data					
Weight	P8	Rib	EMA	IMF %	Scrotal
Purchaser				\$	

74 **ROSEDALE K253 (P)**
Born: 5/10/13 (19 months) **Tag:** MRC/A g253

PINAY
Sire: WAKEFIELD GUNSMOKE (AI) (P) (R/F)
 WAKEFIELD BLUSH (P) (R/F) (TW)
Dam: SELECTED ANGUS COW

Raw Data					
Weight	P8	Rib	EMA	IMF %	Scrotal
Purchaser				\$	

75 **ROSEDALE K28 (P) (AI)**
Born: 7/09/13 (18 months) **Tag:** MR C/A K28

MAUNGAHINA TOWKAY (P)
Sire: HARVIE CRYSTAL D TRIGGER (R/F) (P)
 HARVIE MS MOLSON 53M (P)
Dam: SELECTED ANGUS COW

Raw Data					
Weight	P8	Rib	EMA	IMF %	Scrotal
Purchaser				\$	

76 **ROSEDALE K22 (P)**
Born: 27/08/13 (20 months) **Tag:** MR C/A K22

PINAY
Sire: WAKEFIELD GUNSMOKE (AI) (P) (R/F)
 WAKEFIELD BLUSH (P) (R/F) (TW)
Dam: SELECTED ANGUS COW

Raw Data					
Weight	P8	Rib	EMA	IMF %	Scrotal
Purchaser				\$	

77 **ROSEDALE K287**
Born: 4/08/14 (21 months) **Tag:** MR C/A 287

PALGROVE COACH (P)
Sire: ROSEDALE F48E (P)
 ROSEDALE LUCY A181 (P)
Dam: SELECTED ANGUS COW

Raw Data					
Weight	P8	Rib	EMA	IMF %	Scrotal
Purchaser				\$	

78 **ROSEDALE K3**
Born: 2/08/14 (21 months) **Tag:** MR C/A K3

PALGROVE COACH (P)
Sire: ROSEDALE F48E (P)
 ROSEDALE LUCY A181 (P)
Dam: SELECTED ANGUS COW

Raw Data					
Weight	P8	Rib	EMA	IMF %	Scrotal
Purchaser				\$	

79 **ROSEDALE K17**
Born: 2/09/14(18 months) **Tag:** MR CA K17

PALGROVE COACH (P)
Sire: ROSEDALE F48E (P)
 ROSEDALE LUCY A181 (P)
Dam: SELECTED ANGUS COW

Raw Data					
Weight	P8	Rib	EMA	IMF %	Scrotal
Purchaser				\$	

80 **ROSEDALE K437**
Born: 27/08/14 (18 months) **Tag:** MRCA 437

PALGROVE COACH (P)
Sire: ROSEDALE F48E (P)
 ROSEDALE LUCY A181 (P)
Dam: SELECTED ANGUS COW

Raw Data					
Weight	P8	Rib	EMA	IMF %	Scrotal
Purchaser				\$	

81 **ROSEDALE K288**
Born: 12/09/14 (18 months) **Tag:** MRCA K288

REIDS ASSASSIN
Sire: ROSEDALE DASHER (P)
 ROSEDALE VIOLET
Dam: SELECTED ANGUS COW

Raw Data					
Weight	P8	Rib	EMA	IMF %	Scrotal
Purchaser				\$	

82 **ROSEDALE K503**
Born: 29/07/14 (18 months) **Tag:** CS K503

DSK YABBA DO Y4 (p)
Sire: ROSEDALE DOMINO (P)
 Rosedale Lucy A226 (P)
Dam: SELECTED SHORTHORN COW

Raw Data					
Weight	P8	Rib	EMA	IMF %	Scrotal
Purchaser				\$	

83 **ROSEDALE K232**
Born: 7/08/14(19 months) **Tag:** CS K232

DSK YABBA
Sire: ROSEDALE ELI (P)
 ROSEDALE BOBBIN W62
Dam: SELECTED SHORTHORN COW

Raw Data					
Weight	P8	Rib	EMA	IMF %	Scrotal
Purchaser				\$	

84 **ROSEDALE K514**
Born: 27/07/14 (20 months) **Tag:** cs K514

DSK YABBA DO Y4 (p)
Sire: ROSEDALE DOMINO (P)
 Rosedale Lucy A226 (P)
Dam: SELECTED SHORTHORN COW

Raw Data					
Weight	P8	Rib	EMA	IMF %	Scrotal
Purchaser				\$	

85 **ROSEDALE K235**
Born: 27/09/14(18 months) **Tag:** CS K235

CANOONA CAVALERO
Sire: ROSEDALE GUS (P)
 ROSEDALE DAFFODIL X68
Dam: SELECTED SHORTHORN COW

Raw Data					
Weight	P8	Rib	EMA	IMF %	Scrotal
Purchaser				\$	

86 **ROSEDALE K325**
Born: 27/09/14 (18 months) **Tag:** CS K325

CANOONA CAVALERO
Sire: ROSEDALE GUS (P)
 ROSEDALE DAFFODIL X68
Dam: SELECTED SHORTHORN COW

Raw Data					
Weight	P8	Rib	EMA	IMF %	Scrotal
Purchaser				\$	

87 **ROSEDALE K 593**

Born: 27/09/14 (18 months) **Tag:** CS K593

REIDS ASSASSIN
Sire: ROSEDALE DASHER (P)
 ROSEDALE VIOLET
Dam: SELECTED SHORTHORN COW

Raw Data					
Weight	P8	Rib	EMA	IMF %	Scrotal
Purchaser				\$	

88 **ROSEDALE K226**

Born: 27/09/14 (18 months) **Tag:** CS K226

CANOONA CAVALERO
Sire: ROSEDALE GUS (P)
 ROSEDALE DAFFODIL X68
Dam: SELECTED SHORTHORN COW

Raw Data					
Weight	P8	Rib	EMA	IMF %	Scrotal
Purchaser				\$	

89 **ROSEDALE K220**

Born: 27/09/14(18 months) **Tag:** XCS K220

DSK YABBA DO Y4 (p)
Sire: ROSEDALE DOMINO (P)
 Rosedale Lucy A226 (P)
Dam: SELECTED SHORTHORN COW

Raw Data					
Weight	P8	Rib	EMA	IMF %	Scrotal
Purchaser				\$	

90 **ROSEDALE K230**

Born: 27/09/14 (18 months) **Tag:** CS K230

DSK YABBA DO Y4 (p)
Sire: ROSEDALE DOMINO (P)
 Rosedale Lucy A226 (P)
Dam: SELECTED SHORTHORN COW

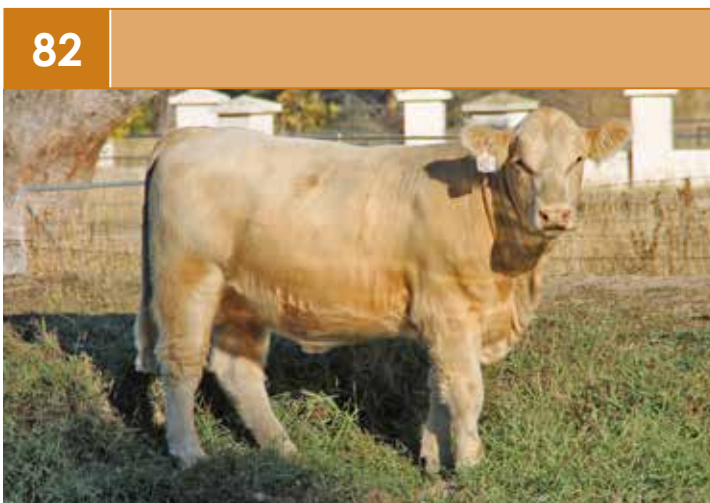
Raw Data					
Weight	P8	Rib	EMA	IMF %	Scrotal
Purchaser				\$	

91 **ROSEDALE K599**

Born: 27/09/14 (18 months) **Tag:** CS K599

REIDS ASSASSIN
Sire: ROSEDALE DASHER (P)
 ROSEDALE VIOLET
Dam: SELECTED SHORTHORN COW

Raw Data					
Weight	P8	Rib	EMA	IMF %	Scrotal
Purchaser				\$	



92 ROSEDALE LUCY K85 (AI) (P)

Born: 04/08/2014 (21 months)
Society ID: MRK85E

LT SILVER YIELD 3196 (P)
 LT SILVER DISTANCE 5342 (P)
 LT MATTIE 9026 (P)
Sire: LT LONG DISTANCE 9001 (P)
 LT EASY PRO 1158 PLD (P)
 LT BELLE 7026 (P)
 LT BELLE 5110 (P)

CANOONA PALGROVE WISDOM (AI) (ET) (P)
 CAVALERO (P)
 PALGROVE ESTELLA 174 (AI) (P)
Dam: ROSEDALE LUCY H77 (P)
 SEAWELL OFFSHORE (H)
 ROSEDALE LUCY X41 (AI) (P)
 ROSEDALE LUCY 4 (P)



Comments

Top 25% Birth Weight, Export \$Index, 600 Day Growth

PTIC to Calve from Aug 2015, Joining Detail in supplementary Information, Photo will be available online prior to sale.

Purchaser _____ **\$** _____

Index \$ Value

Domestic (\$)	Export (\$)
+\$ 29	+\$ 46

Charolais Group Breedplan EBV's

	Birth Weight	200 day growth	400 day growth	600 day growth	Milk
EBV	-0.4	+14	+23	+41	+7
ACC	73%	63%	68%	69%	36%

Raw Data

Weight	P8	Rib	EMA	IMF %

93 ROSEDALE GEORGETTE K295 (P)

Born: (21 months)
Society ID: MRK295E

SVY PIONEER 402P (D)
 SVY PILGRIM OLD 655S (P)
 HFCC FRENCHKISS 919J
Sire: ROSEDALE HARRY (AI) (P)
 DSK WW YABBA DABBA DO Y4 (AI)
 ROSEDALE CANDY C36 (P)
 ROSEDALE CANDY Z34 (P)

LHD CIGAR (P)
 ASHWOOD PARK BACARDI(P)
 ASHWOOD PARK MISS UNIVERSE (P)
Dam: ROSEDALE GEORGETTE E9 (P)
 FERHVALE TRAPPER
 ROSEDALE GEORGETTE A74E (P)
 ROSEDALE S13E



Comments

Top 10% 200 Day Growth, TOP15% 400 & 600Day Growth

PTIC to Calve from Aug 2015, Joining Detail in supplementary Information, Photo will be available online prior to sale.

Purchaser _____ **\$** _____

Index \$ Value

Domestic (\$)	Export (\$)
\$27	\$39

Charolais Group Breedplan EBV's

	Birth Weight	200 day growth	400 day growth	600 day growth	Milk
EBV	+0.8	+18	+32	+44	+7
ACC	71%	62%	64%	61%	43%

Raw Data

Weight	P8	Rib	EMA	IMF %

94 ROSEDALE BUTTERSCOTCH K126 (P)

Born: 02/10/2014 (19 months)
Society ID: MRK126E

FERNVALE RIPPER H)
 FERNVALE TRAPPER (H)
 FERNVALE PRIMADONNA (AI) (ET) (D)
Sire: ROSEDALE DARWIN (P)
 WCR SIR DUKE 835 M 286251 (P)
 ROSEDALE GRACE A97 (AI) (ET) (P)
 ROSEDALE GRACE T9 (P)

PINAY 8552394134 (H)
 PALGROVE EXPO (AI) (ET) (P)
 PALGROVE ESTELLA 130 (AI) (P)
Dam: ROSEDALE BUTTERSCOTCH G160 (P)
 GUNNADOO YUPPY (P) GN1Y131E (P)
 ROSEDALE BUTTERSCOTCH B199 (P)
 ROSEDALE BUTTERSCOTCH X141 (P)



Comments

Top 5% 200, 400 & 600 Day Growth and Milk Top 15% Domestic & Export \$Indexes

PTIC to Calve from Aug 2015, Joining Detail in supplementary Information, Photo will be available online prior to sale.

Purchaser _____ **\$** _____

Index \$ Value

Domestic (\$)	Export (\$)
+\$ 40	+\$ 57

Charolais Group Breedplan EBV's

	Birth Weight	200 day growth	400 day growth	600 day growth	Milk
EBV	+0.8	+19	+39	+56	+13
ACC	73%	65%	66%	63%	49%

Raw Data

Weight	P8	Rib	EMA	IMF %

95 ROSEDALE KELLY K202 (P)

Born: 24/08/2014 (20 months)
Society ID: MRK202E

NOVOTEL (H)
 PARINGA NOVOTEL A100 (AI) (ET) (P)
 PARINGA FASTRACK Y654 (AI) (ET) (P)
Sire: ROSEDALE FAIRLANE (P)
 COBRABALD WINSTON (AI) (P)
 ROSEDALE HONOR A118 (H)
 ROSEDALE HONOR V11 (AI) (H)

PALGROVE WISDOM (AI) (ET) (P)
 CANOONA CAVALERO (P)
 PALGROVE ESTELLA 174 (AI) (P)
Dam: ROSEDALE KELLY G188 (P)
 ROSEDALE SELECTOR (AI) (P)
 ROSEDALE KELLY U108 (P)
 ROSEDALE KELLY 2 (H)



Comments

Top 5% Milk
Top 15% Birth Weight, Domestic & Export \$Indexes
Top 25% 200 Day Growth

PTIC to Calve from Aug 2015, Joining Detail in supplementary Information, Photo will be available online prior to sale.

Purchaser _____ \$ _____

Index \$ Value

Domestic (\$)		Export (\$)	
+\$ 39		+\$ 53	

Charolais Group Breedplan EBV's

	Birth Weight	200 day growth	400 day growth	600 day growth	Milk
EBV	-1.1	+15	+27	+39	+15
ACC	73%	63%	67%	69%	42%

Raw Data

Weight	P8	Rib	EMA	IMF %	Scrotal

96 ROSEDALE KRISTINA K215 (P)

Born: 01/09/2014 (20 months)
Society ID: MRK215E

NOVOTEL (H)
 PARINGA NOVOTEL A100 (AI) (ET) (P)
 PARINGA FASTRACK Y654 (AI) (ET) (P)
Sire: ROSEDALE FAIRLANE (P)
 COBRABALD WINSTON (AI) (P)
 ROSEDALE HONOR A118 (H)
 ROSEDALE HONOR V11 (AI) (H)

FERNVALE RIPPER FENRIE (H)
 FERNVALE TRAPPER FENT50E (H)
 FERNVALE PRIMADONNA (AI) (ET) (D)
Dam: ROSEDALE KRISTINA A168 (P)
 DC MR ELIMINATOR 2210 (H)
 ROSEDALE KRISTINA U40 (AI) (P)
 ROSEDALE KRISTINA R62 (AI) (ET) (P) (P)



Comments

Top 5% 200, 400 & 600 Day Growth & Milk
Top 10% Domestic & Export \$Indexes

PTIC to Calve from Aug 2015, Joining Detail in supplementary Information, Photo will be available online prior to sale.

Purchaser _____ \$ _____

Index \$ Value

Domestic (\$)		Export (\$)	
+\$ 43		+\$ 61	

Charolais Group Breedplan EBV's

	Birth Weight	200 day growth	400 day growth	600 day growth	Milk
EBV	+0.2	+19	+37	+54	+16
ACC	74%	64%	68%	70%	49%

Raw Data

Weight	P8	Rib	EMA	IMF %	Scrotal

97 ROSEDALE GERTY K216 (P)

Born: 23/09/2014 (19 months)
Society ID: MRK216E

NOVOTEL (H)
 PARINGA NOVOTEL A100 (AI) (ET) (P)
 PARINGA FASTRACK Y654 (AI) (ET) (P)
Sire: ROSEDALE FAIRLANE (P)
 COBRABALD WINSTON (AI) (P)
 ROSEDALE HONOR A118 (H)
 ROSEDALE HONOR V11 (AI) (H)

LHD CIGAR E46 (P)
 ASHWOOD PARK BACARDI (AI) (ET) (P)
 ASHWOOD PARK MISS UNIVERSE (AI) (P)
Dam: ROSEDALE GERTY G96E (P)
 MINNIE-VALE DEPUTY (P)
 ROSEDALE GERTY A149 (P)
 ROSEDALE GERTY W83 (H)



Comments

Top 1% Milk
Top 5% 200 & 400 Day Growth
Top 10% 600 Day Growth
Top 25% Domestic \$Index

PTIC to Calve from Aug 2015, Joining Detail in supplementary Information, Photo will be available online prior to sale.

Purchaser _____ \$ _____

Index \$ Value

Domestic (\$)		Export (\$)	
+\$ 34		+\$ 42	

Charolais Group Breedplan EBV's

	Birth Weight	200 day growth	400 day growth	600 day growth	Milk
EBV	+0.4	+19	+38	+47	+17
ACC	72%	63%	38%	69%	17%

Raw Data

Weight	P8	Rib	EMA	IMF %	Scrotal

98 ROSEDALE BOBBIN K275 (P)

Born: 24/08/2014 (19 months)
Society ID: MRK275E

SVY PIONEER 402P (D)
 SVY PILGRIM OLD 655S (P)
 HFCC FRENCHKISS 919J
Sire: ROSEDALE HARRY (AI) (P)
 DSK WW YABBA DABBA DO Y4 (AI)
 ROSEDALE CANDY C36 (P)
 ROSEDALE CANDY Z34 (P)

NOVOTEL 5897127519 (H)
 PARINGA NOVOTEL A100 (AI) (ET) (P)
 PARINGA FASTERACK Y654 (AI) (ET) (P)
Dam: ROSEDALE BOBBIN G3 (P)
 FERNVALE TRAPPER FENT50E (H)
 ROSEDALE BOBBIN A190 (P)
 ROSEDALE BOBBIN U97 (P)



Comments	
<p>Top 5% Milk Top 20% 600 Day Growth Top 25% 400 Day Growth</p> <p>PTIC to Calve from Aug 2015. Joining Detail in supplementary Information, Photo will be available online prior to sale.</p>	
Purchaser	\$

Index \$ Value					
Domestic (\$)			Export (\$)		
+\$ 19			+\$ 29		
Charolais Group Breedplan EBV's					
	Birth Weight	200 day growth	400 day growth	600 day growth	Milk
EBV	+0.2	+14	+28	+42	+13
ACC	72%	62%	63%	60%	43%
Raw Data					
Weight	P8	Rib	EMA	IMF %	

99 ROSEDALE HONOR K284 (P)

Born: 29/08/2014 (20 months)
Society ID: MRK284E

SVY PIONEER 402P (D)
 SVY PILGRIM PLD 655S (P)
 HFCC FRENCHKISS 919J
Sire: ROSEDALE HARRY (AI) (P)
 DSK WW YABBA DABBA DO Y4 (AI)
 ROSEDALE CANDY C36 (P)
 ROSEDALE CANDY Z34 (P)

NOVOTEL 5897127519 (H)
 PARINGA NOVOTEL A100 (AI) (ET) (P)
 PARINGA FASTERACK Y654 (AI) (ET) (P)
Dam: ROSEDALE HONOR G16 MRG16E (H)
 COBRABALD WINSTON (AI) (P)
 ROSEDALE HONOR A118 (H)
 ROSEDALE HONOR V11 (AI)



Comments	
<p>Top 10% 200, 400 & 600 Day Growth Top 15% Milk</p> <p>PTIC to Calve from Aug 2015. Joining Detail in supplementary Information, Photo will be available online prior to sale.</p>	
Purchaser	\$

Index \$ Value					
Domestic (\$)			Export (\$)		
+\$ 18			+\$ 27		
Charolais Group Breedplan EBV's					
	Birth Weight	200 day growth	400 day growth	600 day growth	Milk
EBV	+0.8	+18	+35	+49	+11
ACC	72%	62%	63%	60%	43%
Raw Data					
Weight	P8	Rib	EMA	IMF %	

100 ROSEDALE DAINTE K101 (P)

Born: 16/09/2014 (20 months)
Society ID: MRK101E

FERNVALE RIPPER H)
 FERNVALE TRAPPER (H)
 FERNVALE PRIMADONNA (AI) (ET) (D)
Sire: ROSEDALE DARWIN (P)
 WCR SIR DUKE 835 M 286251 (P)
 ROSEDALE GRACE A97 (AI) (ET) (P)
 ROSEDALE GRACE T9 (P)

NOVOTEL
 PARINGA NOVOTEL A100 (AI) (ET) (P) TO
 PARINGA FASTERACK (AI) (ET) (P)
Dam: ROSEDALE DAINTE D26 (P/S) MRD26E (S)
 MINNIE-VALE DEPUTY (P)
 ROSEDALE DAINTE A187 (P) (TW)
 ROSEDALE DAINTE V99



Comments	
<p>Top 20% Both Domestic and Export Index's</p> <p>PTIC to Calve from Aug 2015. Joining Detail in supplementary Information, Photo will be available online prior to sale.</p>	
Purchaser	\$

Index \$ Value					
Domestic (\$)			Export (\$)		
\$39			\$55		
Charolais Group Breedplan EBV's					
	Birth Weight	200 day growth	400 day growth	600 day growth	Milk
EBV	+0.8	+11	+23	+33	+10
ACC					
Raw Data					
Weight	P8	Rib	EMA	IMF %	

101 ROSEDALE KELLY K302 (P)

Born: 03/09/2014 (20 months)
Society ID: MRK302E

SVY PIONEER 402P (D)
 SVY PILGRIM PLD 655S (P)
 HFCC FRENCHKISS 919J
Sire: ROSEDALE HARRY (AI) (P)
 DSK WW YABBA DABBA DO Y4 (AI)
 ROSEDALE CANDY C36 (P)
 ROSEDALE CANDY Z34 (P)

FERNVALE TRAPPER FENT50E (H)
 ROSEDALE XPAT (P)
 ROSEDALE DAFFODIL 5 (AI) (P)
Dam: ROSEDALE KELLY A231 MRA231E (H)
 FERNVALE TRAPPER FENT50E (H)
 ROSEDALE KELLY X17 (H)
 ROSEDALE KELLY U108 (P)



Comments

Top 25% 200, 400 & 600 Day Growth

PTIC to Calve from Aug 2015, Joining Detail in supplementary Information, Photo will be available online prior to sale.

Purchaser \$

Index \$ Value

Domestic (\$)	Export (\$)
+\$ 16	+\$ 24

Charolais Group Breedplan EBV's

	Birth Weight	200 day growth	400 day growth	600 day growth	Milk
EBV	+1.1	+16	+28	+41	+8
+	72%	59%	63%	60%	45%

Raw Data

Weight	P8	Rib	EMA	IMF %	



Rosedale News and Events

Beef Week Open Day - Friday the 6th May

Rosedale will be holding an open day on Friday the 6th May a part of the Central West Beef Week Program. This is an informal day where it is a great opportunity for us to spend some one on one time with visitors. We will have on display our entire sale draft and have the BBQ running as well as a range of refreshments. We welcome all to join us if available.(9am -4pm)

Berrico Dispersal - The End of an Era

In April 2016 Geoff and Lynn Slack of "Berrico" said a sad goodbye to the beef Industry with the dispersal of their entire herd at the Annual Berrico Production sale. After 29 years of running "Berrico" Geoff and Lynn felt it was time to retire marking the end of a very successful crossbreeding story. Geoff and Lynn joined their Brahman/Angus and Brahman/Hereford cows to early maturing Rosedale Charolais bulls to produce magnificent high quality calves that were highly sought after. Their annual weaner sale drew buyers from near and far with premiums being paid for calves that had plenty of meat on the bone and a great reputation for quality.

Geoff and Lynn have been a large part of Rosedale's history and have forged strong friendships along the way. Since 1993 the Slacks have purchased a total of 117 charolais bulls from Rosedale, (with free bulls being given away on their 50th and 100th bull to mark the milestone). From behalf of us all at Rosedale we would like to wish Geoff and Lynn all the best for the next chapter of their lives.

Purchase of "Glenulla" Coonamble District

Last year we acquired the property "Glenulla" in the Coonamble district as part of a strategy to help with the wintering of our cattle, especially our weaners. This also gives us a base in the North Western districts to help better service some of our clients in the area.

MSA NSW Beef Award Dubbo - April 2016

In April 2016 Robbie, Michael and James attended the MSA beef Awards and Information Day at Dubbo. It was a very informative afternoon with various MLA representatives conducting presentations and insights into the direction of MSA in Australia as well as new technologies and trends that will shape our industry going forward. Whilst some of the new technologies available that may come into play down the track were quite mind blowing it really hit home to us the momentum that the MSA grading system is gaining in both Australian and overseas markets. There are a range of key factors impacting eating quality that are influenced by the producer and we as stud producers need to make sure our breeding decisions are made with these in mind to ensure our clients stay ahead of the game. We believe a lot of the sires we have been using in recent times are well situated within the charolais breed to satisfy such requirements.

studstocksales.com



@struanp



studstocksales.com



'Rosedale Charolais' 126 Rosedale Road, Browns Creek via Blayney NSW 2799

James & Sarah Millner m: 0425 341 341 p: (02) 6368 2735 e: millner@rosedalecharolais.com.au

Michael & Jenny Millner m: 0409 682 339 p: (02) 6368 7195

www.rosedalecharolais.com.au