



ROSEDALE CHAROLAIS

26th Annual Bull Sale

Thursday 21st May 2015 - 12pm



**64 Charolais Bulls (Over 90% Polled) 10 Charolais Females (PTIC)
27 Composite Bulls (18 Charolais/Angus & 9 Charolais/Shorthorn)**

LEADING from the front FOR OVER 40 YEARS

Rosedale Charolais are your proven source of top quality polled Charolais genetics.

Rosedale continues to lead the way in Australia's carcass competitions with unrivalled success in recent times. This is a true reflection that our breeding program is on the right track and that our genetics are out performing in a commercial situation.

The 2015 Sale drop of bulls represents the largest line-up of polled Charolais bulls ever to go under the Hammer. These bulls are top of the drop and all have been evaluated for soundness, fertility and performance. Our bulls are easy doing group showing plenty of muscle with leading growth for age. We have a wide range of bulls to cover all Australian domestic & export markets including stud sire duties.

We welcome your inspection and stand 100% behind the bulls we put on offer.

Our cattle are specifically bred for profitable cross-breeding under Australian conditions.

ROSEDALE'S PROVEN COMMERCIAL PERFORMANCE IN AUSTRALIA'S BIGGEST INDEPENDENT FEEDLOT TRIALS.

NSW BEEF SPECTACULAR FEED LOT TRIAL

- 2013** Grand Champion Team, Most Profitable Team Reserve Champion Weight Gain
- 2014** 3 Teams in the Top 10 (out of 120 entered) 2nd Most Profitable Team
- 2015** Riverine Tendercut Champions 10th overall

AUSTRALIAN NATIONAL FIELD DAYS TRIAL

- 2012** Grand Champion Team, 1st Carcass Yield
- 2013** 1st Carcass Yield, 2nd Carcass Points 4th overall
- 2014** Champion Individual Steer 2nd Saleable Meat Yield
- 2015** Highest Weight Gain on Grass (competition still in progress)

ROYAL AGRICULTURAL SOCIETY BEEF CHALLENGE

- 2012** Grand Champion Domestic Team Reserve Champion Single Steer 2nd Most Profitable Team
- 2013** Grand Champion Export Team Most Profitable Team, 2nd Carcass Yield

RNA FEEDLOT CHALLENGE

- 2013** 1st Place MSA Meat Quality 6th overall (74 teams entered)

(Competitions entered recently)



1st cross heifers at "Murrumbidgee" via Dubbo for direct consignment to Coles supermarkets

www.rosedalecharolais.com.au



ROSEDALE CHAROLAIS 26th ANNUAL SALE

Thursday, 21st May, 2015 at 12.00 noon
on property at "Rosedale" Blayney

91 BULLS

- 64 Purebred Charolais (62 Polled)
- 27 F1 Bulls
 - 12 Rosedale Blacks
 - 6 Charolais/Angus (1 red)
 - 9 Charolais/Shorthorn
- 10 Purebred Females (PTIC)

James and Sarah Millner

Ph: (02) 6368 2735 Fax: (02) 6368 2339
Mobile: 0425 341 341
millner@rosedalecharolais.com.au
www.rosedalecharolais.com.au

Michael and Jenny Millner

Ph:(02) 6368 7195
Mobile: 0409 682 339



auctionsplus
agricultural auctions at a click



Todd Clements - 0429 070 225



Paul Dooley - 0458 662 646



BATHURST - (02) 6331 7788
Andy McGeoch - 0418 737 470
Andrew Bickford - 0427 943 781
Josh Crosby - 0428 634 658

Welcome

Welcome to our 26th Annual Bull Sale. We are delighted by the bulls and females we have put together in this offering and think they will stand a very strong inspection on sale day. We are excited by the progeny of our new sires (both walking and AI) who bring a new mix into our offering.

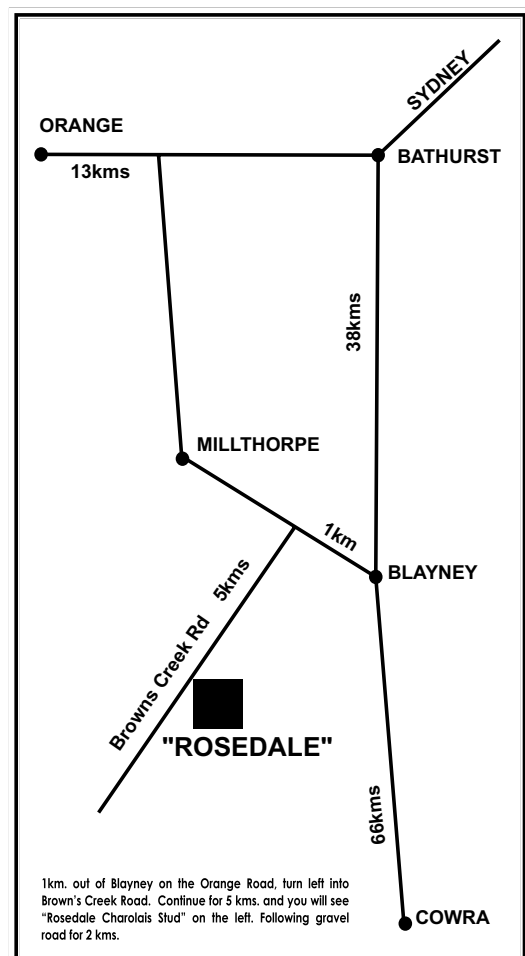
2015 is shaping up to be a cornerstone year for beef producers in terms of a shift in pricing received for cattle at the farm gate. This price rise, or as we see it "price correction" appears to be underpinned by a strong demand for beef from not only our domestic markets in Australia but also our ever increasing export markets which sets Australian cattle farmers up for a promising future. Both the long term and short term forward indicators for beef pricing appear to be strong and we among many other farmers hope these improved pricing levels improve further or at least hold firm, as these are the levels that need to be maintained to enable sustainable and viable beef production.

This time last year we saw good feeder and weaner steers making \$1.90/kg, whereas this year those same cattle have been making in the vicinity of \$2.60/kg, which on a 350kg weaner steer equates to a 36% increase in price received or an extra \$245 per head. These improved returns are a massive boost for producers as the last few years have been tough with the drought conditions combined with opportunistic pricing levels taken advantage of by the processors. It goes to show that beef, like all facets of agriculture is a long term game and if you can get through the tough times there are periods of good times ahead. We are very much focussed on the future here at Rosedale and we believe the bulls we have for offer in this draft combine top of the breed weight for age combined with good allround carcass traits. We believe our bulls can deliver not only on growth but also carcass quality and we think these bulls are well placed to deliver high returns to breeders down the track.

Proof of the Rosedale bloodlines ability to achieve Top of Industry growth whilst maintaining carcass quality can be demonstrated in the Major Independent Beef Production trials entered by the Rosedale Cattle every year. Our record in the Major trials is proof that our genetics when used in a cross-breeding scenario are getting up to 20% extra gain in growth rates whilst still delivering on carcass points which means maintaining EMA, fat cover and marbling. In the recent 2015 Beef Spectacular trial (the largest independent trial in the country) the Rosedale Charolais/Angus Team finished a respectable 10th overall and won the Riverina Tender Cut Champion team for carcass points. We are also currently involved in the ANFD Grass and Grain trial and whilst the cattle are now currently in the feedlot it was pleasing to see a Rosedale Charolais/Angus steer top the weight gain for the grass performance section of the competition.

All sale bulls are available for viewing at any time leading up to the sale so please call us to arrange an inspection. If we can help with any other enquiries please contact us and we will do our best. Supplementary information and pictures of all lots are available on our web site, www.rosedalecharolais.com.au. Thank you for taking time to read this and we look forward to seeing you on sale day.

Regards, Michael & Jenny, James & Sarah.



Sale Information

ROSEDALE SALE BULL EBV'S

Rosedale has been a member of breedplan for over 25 years. This has helped assist us to consistently retain and source external genetics that have enabled us to produce the types of cattle you see in our paddocks today.

Genetic gain in growth rates has always been a priority of ours, but we understand sensible calving ease and birthweights need to be maintained. With our own commercial herd of 800 British bred cows, we are very familiar with the benefits our charolais bulls are delivering in a crossbreeding situation.

The graphs shown are a good 'measuring stick' as to where our sale bulls are compared to the Australian Charolais breed average.

Although we understand that EBV's are not everything we believe they do help to illustrate the types of bulls we are aiming to produce. We submit large amounts of meaningful data each year to breedplan to help ensure the information is as accurate as it can be.

At Rosedale we are always looking to improve our genetic pool in an effort to further satisfy our clients. We welcome all feedback you may have on our breeding program and objectives.

VISUAL ASSESSMENT

When choosing bulls we recommend using a combination of EBVs, Raw Data and visual assessment. Visual assessment is essential to assess physical and structural soundness and is a reasonable indicator of health and temperament.

EBV's are a tool that will help you to make more "educated" decisions when you are choosing breeding stock. Do your homework well before the sale when you have plenty of time and set some parameters for your EBVs that fall within your market requirements, to narrow down potential purchases.

Use this "suitable list" of bulls and spend time looking and assessing the physical characteristics that you require.

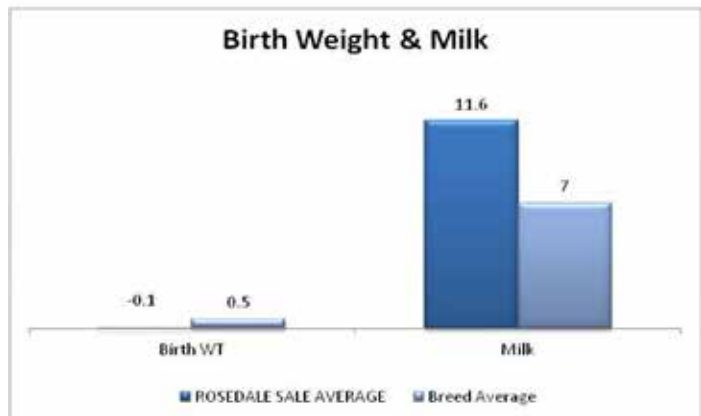
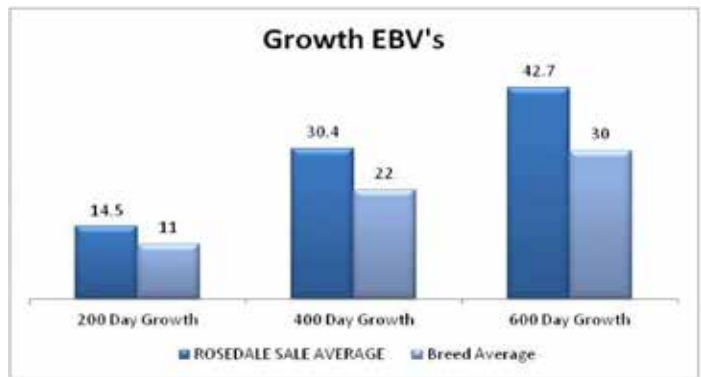
CARING FOR YOUR NEW BULL

Always be considerate to your bulls and handle them with respect and kindness. Handle them quietly, walk them rather than rushing them, treat them with care and in a gentle manner and they will do likewise.

A bull leaving ROSEDALE is leaving the security of a large mob and will arrive in a strange environment at the purchaser's property. Unload him and make sure he has a steer or cow as a companion straight away if you can't put him out into your bull mob immediately.

A young bull can move in with older bulls and settle well, but remember, being the youngest he will get the last of any feed available because of the pecking order. The paddock needs to be reasonably large so he can keep away from the others and find adequate feed. Young bulls are still growing fast and need enough feed to maintain their growth pattern and be able to settle the cows quickly and efficiently.

ROSEDALE bulls are used to being handled by stockmen on motor bikes. Most of the fences are electrified and the bulls treat them with respect.



Sale Information

INSPECTION: cattle inspections are welcome at any time prior to the sale by arrangement with the Vendor. Cattle will be yarded into pens by 9am sale day.

MORNING TEA & LUNCH: Will be available, provided by the Blayney Show Society.

HEALTH: All bulls catalogued have been semen tested and examined by Peter Brown of Bovine Breeders for structural soundness. All of our cattle receive 7 in 1 vaccinations at 4 months of age, then 6 weeks later and an annual booster. They were drenched at weaning and periodically according to worm counts. Cattle were last drenched with Flukozole C together with a 5in1 in March. The sale bulls have been vaccinated for Pestivirus (BVDV).

All sale bulls have been DNA tested for Pestivirus and are all PI negative.

RAW DATA: All bulls will be scanned prior to the Sale for eye muscle area (EMA), rump and rib fat, marbling (IMF%) as well as sale weight and scrotal measurements. Supplementary sheet available on the day and on the rosedale website, along with photos of all the lots.

ROSEDALE GUARANTEE: All stock have been evaluated for structural soundness and fertility. To the best of our knowledge the bulls are in sound working order at the time of the sale. Any claim against the breeding ability or a structural breakdown of any animal must be made in writing and accompanied by a Veterinary Certificate within 12 months of the sale date. Any animal failing to breed may be either replaced with an animal of similar value or credit made available to the value of the purchase price, minus salvage value, for use at a future Rosedale sale. The Purchaser will be responsible for any costs incurred.

DELIVERY: A delivery instruction slip must be completed and signed. Stock awaiting delivery will be held free of charge - all care will be taken, but absolutely no responsibility will be accepted for any injury or loss occasioned during, as a consequence of, or in relation to any holding. Rosedale offers a free delivery service locally and to Dubbo. We are more than happy to assist with all deliveries, please speak to us as we will go out of our way to help you get your purchases home safely and economically. We also can deliver cattle to CTLX, which is a transport hub for most major carriers.

INSURANCE: Ownership passes at the fall of the hammer. An insurance representative will be in attendance on Sale day.

TELEPHONE LINK-UP: Mobile telephones will be available. Please arrange with the Vendor or Agent to ensure a line.

AUCTIONS PLUS: Our sale is conducted live on line in real time and will be interfaced on Auctions Plus with the physical auction that is being conducted. A computer is used to bring the on-site bid price to the internet screen for remote bidders to observe. Bidders can bid on computers at their location and the bid is immediately transferred to the auction barn and relayed to the auctioneer. Bidding is only available if registered with Auctions Plus. You must register on-line to their website www.auctionsplus.com.au - at least 24 hours prior to the sale. For first time users of Auctions Plus we recommend you register as soon as possible and become familiar with the site. The staff in Sydney are very helpful and happy to guide you through it.

For more information contact:- Auctions Plus - (02)9262 4222

4% REBATE: The rebate will be offered to outside agents on the condition that a written introduction is received 48 hours prior to the sale and/or the agent accompanies the purchaser to the sale and settles on their behalf within 7 days. (This clause will be strictly adhered to.)

TERMS AND CONDITIONS: Terms of the sale are as per Conditions of Sale NSW Stud Stock.

PLEASE NOTE: It is unethical for anyone to promote, advertise or arrange the sale of any cattle, other than those in this sale on this sale premises.

SALE DAY SAFETY: All sale bulls have been screened for temperament and are quiet to handle under normal circumstances. However, there are risks associated with cattle handling. **Visitors enter the cattle pens at their own risk. Children must not enter pens.** People entering the yards are at risk of injury. Be especially alert for bulls fighting, and please be aware that the unfamiliar crowds of people seen at sale day places extraordinary pressure on them.

DISCLAIMER: People entering upon this property for any purpose whatsoever including attendance at cattle auctions do so at their own risk. We are not liable to you for any personal injury or death suffered by you and for theft loss or damage to any property caused or contributed to by us or by any other person whether caused or contributed to by or by negligence deliberate act or unlawful conduct. "We" or "us" or "our" refer to the owners their employees contractors and agents and each of them. While every care has been taken in compiling this catalogue to ensure accuracy of information supplied no responsibility is accepted for any errors which may have occurred.

Sale Information

Managing Yearling Bulls

Yearling Bulls are a great way to introduce new genetics into a breeding operation at a faster pace. If managed properly yearling bulls can also potentially be used for an extra joining year than an older bull. Yearling bulls are still growing strongly and tend to be leaner than older bulls carrying less fat reserves. It is important they are managed correctly as they are far more sensitive to poor nutrition, internal and external parasites than older bulls. Much of this management is more about common sense than anything else.

Our yearling bulls have all passed semen tests in April before most of them were even 12 months old. Good nutrition has sped up their sexual maturity and as can be seen many of the yearlings' scrotals have developed very well. For Charolais Bulls 12-14 months Dr Glen Coulter from the Agriculture Canada Research station in Alberta has documented a minimum scrotal circumference of 32cm based on large amounts of research. This figure is used as a minimum benchmark in the selection process for the yearling bulls we allow into this sale.

Key management steps to Ensuring Success using Yearling Bulls.

- While they are young use them in single joinings or with bulls the same age. This is a far more efficient way to use them and protects them from injury by larger dominant bulls.
- Take a conservative approach in their first year, a maximum of 30 females is a commonly recommended number.
- In their first joining don't use them for too long if conditions get tough. A maximum 8 week joining period is recommended in most conditions, it is important young bulls keep their condition so they continue to develop.
- When spelling them give them high quality feed, this will ensure their recovery and continued development.
- Just remember you are buying them for their genetic merit, their calves will be just as good as any older bull you use.



MULTIMIN[®]
Injection

Performance Recording - Breedplan EBV's - How to use them

All bulls in this sale have been managed under identical conditions from the point of weaning, therefore comparisons can be made between animals of similar age. Weights, scans of EMA and IMF% and scrotal measurements will be available on the day of sale to further aid your visual assessment.

Charolais Group Breedplan is an advanced genetic evaluation system that provides a genetic description of Charolais cattle for a range of traits influencing fertility, growth and carcass performance. It provides predictions of the genetic merit of individual animals called Estimated Breeding Values (EBVs). EBVs are based on all the available pedigree and performance records provided by breeders in Australia and New Zealand, along with available overseas genetic information. EBVs are expressed in the units of measurement for each particular trait and are shown as +ive or -ive values. The Charolais breed average EBV for different traits changes over time as the breed makes genetic progress. The absolute value of any EBV is not critical, but rather the differences in EBVs between animals. Particular animals should be viewed as being "above or below breed average" for a particular trait. The averages for calves born in 2009 are shown below and at the bottom of the Performance Data Summary. Please note that each breed has their own EBV and cannot be compared across breeds. **All EBVs quoted in this catalogue are Charolais Group Breedplan EBVs and are directly comparable with the EBVs from other Charolais Group Breedplan herds.**

How to use EBVs

To use these figures successfully you must first determine which characteristics you desire to breed for and then select the EBV which best supports these qualities. It is important to note that in a successful breeding programme it is advisable to maintain balance and not to direct effort toward gaining a single, higher EBV for one particular trait.

Birth Weight is a major factor in calving difficulty. Use this EBV to select against birth weight if calving is a problem. The lower the EBV the lighter the calves are expected to be at birth.

200 Day Growth and Milk is of particular interest to those targeting high weight gains at an early age to supply to the Domestic and Restaurant trade. Milk should be emphasized if the bull is being used to breed replacement progeny.

400 and 600 Day Growth indicates animals with superior weight gains from 12 months to 2 years of age, which would optimize profits in the domestic to Jap Ox markets.

Accuracy (Acc.%) provides an indication of the reliability of an EBV. As more performance information becomes available on an animal, its progeny and relatives, the accuracy of its EBVs for particular traits increases. The higher the accuracy the less chance the figure for each EBV will vary.

Index Values are reported as EBVs, in units of relative earning capacity (\$'s) for a given market. They reflect both the short-term profit generated by a sire through the sale of his progeny, and the longer-term profit generated by his daughters in a self-replacing cow herd. A selection index combines the EBVs with economic information (costs and returns) for specific market and production systems to rank animals based on relative profit values. Note that different types of animals can give similar profit values, so consideration should be given to both the index and the component EBVs when selecting animals for a particular production system.

Domestic Index(\$) Estimates the genetic differences between animals in net profitability per cow joined for an example commercial herd with a British cow base targeting grass-finished production for the domestic trade. This Index assumes pasture grown & finished steers weighing 430kgs (240kg HSCW and 6mm P8 fat) at 12 months. Daughters are retained or sold for breeding therefore maternal traits are of importance. In response to industry feedback, positive emphasis has been placed on finishing ability.

Export Index(\$) Estimates the genetic differences between animals in net profitability per cow joined for an example commercial herd with a British cow base targeting the production of steers for export markets. This Index assumes pasture grown & finished steers weighing 700kg (380kg HSCW and 9mm P8 fat) at 29 months. Daughters are retained or sold for breeding therefore maternal traits are of importance. In response to industry feedback, positive emphasis has been placed on finishing ability.

Scrotal Size is a good indicator of the bull's ability to produce sperm. A 2 year old bull with a testicle size of 34cm or more is regarded as satisfactory. Measurements will be available sale day.

Average Group Breedplan EBV's for 2013 born calves - March 2015 data.																	
Charolais GROUP BREEDPLAN	Calve ease direct (%)	Calve ease dtrs (%)	Gest length (days)	Birth Wt (kg)	200 Day Wt (kg)	400 Day Wt (kg)	600 Day Wt (kg)	Mat Cow Wt (kg)	Milk	Mat Value (kg)	Scr Size (cm)	Carc Wt (kg)	Eye mscl area (cm ²)	Rib fat (mm)	Rump fat (mm)	Retail beef yield (%)	IMF (%)
EBV	+1.1	+0.9	-2.3	+0.5	+11	+22	+30	+33	+7	N/A	+1.0	+18	+1.5	+0.2	+0.3	+0.2	+0.2
Represents top 20% or better of Charolais Breed											\$ Index Value		Domestic +\$22		Export +\$30		

Sire ROSEDALE FRONTIER (P)

Born: 02/09/2010
Society ID: MRF56E

NOVOTEL HASTING
 NOVOTEL DATCHA

Sire: PARINGA NOVOTEL A100 (AI) (ET) (P)
 BALDRIDGE FASTTRACK 82E
 PARINGA FASTTRACK Y654 (AI) (ET) (P)
 PALGROVE IDEAL 43 (AI) (P)

RC BUDSMYDAD 225 POLLED 225 P (P)
 EC NEW TREND 6G M 498475 (P)
 MISS EC DUKE 452-D (D)

Dam: ROSEDALE NICKY X7 (AI) (P)
 ROSEDALE SELECTOR (AI) (P)
 ROSEDALE NICKY U98 (P)
 ROSEDALE NICKY 12



A son we of novotel we have used with thickness and style. He has some excellent progeny in this sale that combine both growth with even cover with excellent disposition.

Charolais Group Breedplan EBV's - March, 2012

	DIR	DTRS	GL	BWT	200	400	600	MWT
	+13.4	+6.1	-4.5	-2.3	+11	+17	+28	+18
	63%	48%	60%	89%	78%	79%	78%	73%
MILK	SS	CWT	EMA	RIB	RMP	RBV	IMF	
	+17	+0.9	+16	+0.9	+0.1	-0.1	+0.3	
	63%	74%	68%	57%	65%	65%	62%	57%
Index \$ Value	Domestic (\$)				Export (\$)			
	+ \$43				+ \$58			

Sire ROSEDALE DARWIN (P)

Born: 02/10/2008
Society ID: MRD122E

FERNVALE NERO
 FERNVALE RIPPER
 BOTTLETREE CYNTHIA SPAC2D

Sire: FERNVALE TRAPPER

FLEETS RASCAL
 FERNVALE PRIMADONNA (AI) (ET) (D)
 FERNVALE JA-CIE (AI) (ET)

BR DUKE 261 M 246564 (P)
 WCR SIR DUKE 835 M 286251 (P)
 WCR MISS MAC 600 (P)

Dam: ROSEDALE GRACE A97 (AI) (ET) (P)
 2UP THE VEGEMITE KID (AI) (P)
 ROSEDALE GRACE T9 (P)
 ROSEDALE GRACE 3 (P)



A homebred sire by the record breaking Fernvale Trapper. Darwin had a short stint on the show circuit winning Championships at the NSW Beef Spectacular, the Melbourne Royal and most memorably won a class of 33 bulls at the 2010 Sydney Royal. We retained Darwin for his structural correctness, fast growth and fattening ability.

Charolais Group Breedplan EBV's - March, 2012

	DIR	DTRS	GL	BWT	200	400	600	MWT
	+10.3	-1.3	-0.6	+0.2	+13	+24	+31	+33
	67%	55%	64%	93%	86%	88%	84%	77%
MILK	SS	CWT	EMA	RIB	RMP	RBV	IMF	
	+11	+1.0	+17	+0.9	+0.6	+0.9	-0.4	+0.4
	64%	74%	73%	63%	76%	76%	68%	63%
Index \$ Value	Domestic (\$)				Export (\$)			
	+ \$37				+ \$51			

Sire CANOONA CAVALERO (P)

Born: 07/03/2007
Society ID: IGVC4E

WCR SIR FAB MAC 809 (P)
 WCR SIR FA MAC 2244 (P)
 WCR MISS CENTURY 920 TWN (P)

Sire: PALGROVE WISDOM (P)

FERNVALE PRIME MOVER
 PALGROVE REFINE 32
 BELL BROOK REFINE 3

PALGROVE SUPADOOPA (P)
 PLATINUM ULTRA (P)

Dam: PALGROVE ESTELLA 174 (P)
 PLATINUM QUALITY 2ND
 PALGROVE OUTBACK (P)
 PALGROVE ESTELLE 131
 PALGROVE ESTELLA 38



Cavalero has had the desired impact in our herd leaving calves which are soft, easy doing with style, extra length with plenty of performance, just as his EBV's suggest. The Cavalero daughters are turning into excellent neat young cows with great milk.

Charolais Group Breedplan EBV's - March, 2012

	DIR	DTRS	GL	BWT	200	400	600	MWT
	-0.1	-3.4	-4.9	-0.5	+13	+26	+37	+33
	69%	56%	62%	93%	89%	90%	87%	80%
MILK	SS	CWT	EMA	RIB	RMP	RBV	IMF	
	+14	+2.0	+20	+1.7	+0.3	+0.9	-0.1	+1.1
	64%	83%	76%	64%	78%	76%	68%	64%
Index \$ Value	Domestic (\$)				Export (\$)			
	+ \$25				+ \$30			

Sire ROSEDALE FIRST CLASS (P)

Born: 08/10/2010
Society ID: MRF26E

BCR POLLED UNLIMITED 003 (P)
 LT UNLIMITED EASE 9108
 PP MISS SHANDY 214
Sire: LT EASY BLEND 5125 PLD (P)
 WCR PRIME CUT 764 (P)
 LT BRENDA 1014
 LT BRENDA'S BREEZE 9207
 MINNIE-VALE DEPUTY (P)
 ROSEDALE ZINGER (P)
 ROSEDALE NICKY X7 (AI) (P)
Dam: ROSEDALE CINDERELLA D6 (P)
 FERVALE TRAPPER
 ROSEDALE CINDERELLA W165 (P)
 ROSEDALE CINDERELLA T3 (P) (TW)



A thick bodied, soft coated and early maturing bull we bred by the renowned Lt Easy Blend. The first class sons are softer made, easy doing bulls with big potential. First Class is a bull that holds his condition very well through all parts of the year and we expect the same from his sons. Trait leader for birthweight and 400 day weight growth.

Charolais Group Breedplan EBV's - March, 2012								
DIR	DTRS	GL	BWT	200	400	600	MWT	
+14.0	+5.5	-4.1	-2.7	+11	+35	+40	+27	
64%	49%	74%	91%	77%	83%	80%	74%	
MILK	SS	CWT	EMA	RIB	RMP	RBV	IMF	
+15	+0.7	+27	-0.3	+0.8	+1.3	-1.4	+0.8	
56%	69%	70%	48%	66%	67%	60%	58%	
Index \$ Value	Domestic (\$)				Export (\$)			
	+ \$63				+ \$80			

Sire PALGROVE EXPO (P)

Born: 03/05/2009
Society ID: PKE132E

BLASON
 IMPAIR
 OFFICINE
Sire: PINAY 8552394134
 HOMERE
 MARY
 JACINTHE
 PALGROVE QUINTERO (AI) (ET)
 PALGROVE OUTBACK (P)
 IDLEWILD PALGROVE FESTOON P47E (P)
Dam: PALGROVE ESTELLA 130 (AI) (P)
 PALGROVE RASTUS (AI) (P)
 PALGROVE ESTELLA 95
 PALGROVE ESTELLA 48 (AI) (ET)



A top notch polled son of the renowned french bull "Pinay". Expo's calves are everything we hoped for, with tremendous carcass attributes and fast growth combined with sensible calving. He is stamping himself as one of the leading performance sires in the breed. Trait leader 200, 400 and 600 Day Growth.

Charolais Group Breedplan EBV's - March, 2012								
DIR	DTRS	GL	BWT	200	400	600	MWT	
-10.0	-1.6	-5.8	+2.2	+22	+47	+64	+82	
69%	57%	69%	94%	90%	90%	86%	79%	
MILK	SS	CWT	EMA	RIB	RMP	RBV	IMF	
+13	+1.3	+38	+3.7	-0.5	-1.0	+1.6	+0.2	
71%	80%	77%	65%	78%	77%	69%	65%	
Index \$ Value	Domestic (\$)				Export (\$)			
	+ \$29				+ \$32			

Sire ROSEDALE FAIRLANE (P)

Born: 02/04/2010
Society ID: MRF8E

HASTING F
 NOVOTEL F
 DATCHA
Sire: PARINGA NOVOTEL A100 (AI) (ET) (P)
 BALDRIDGE FASTTRACK 82E (P)
 PARINGA FASTTRACK Y654 (AI) (ET) (P)
 PALGROVE IDEAL 43 (AI) (P)
 SILVERSTREAM JONAH F (H)
 COBRABALD WINSTON (AI) (P)
 COBRABALD LINETTE (AI) (P/S)
Dam: ROSEDALE HONOR A118
 DE CRESPIGNY SULTAN
 ROSEDALE HONOR V11 (AI)
 ROSEDALE HONOR 18 (AI) (ET)



A powerhouse Paringa Novotel son we have retained in the herd. He is breeding very consistently just like his father. His progeny are growthy soft and naturally thick with outstanding temperament.

Charolais Group Breedplan EBV's - March, 2012								
DIR	DTRS	GL	BWT	200	400	600	MWT	
+1.5	-2.2	-2.2	+0.2	+15	+25	+41	+50	
57%	45%	56%	81%	73%	74%	71%	71%	
MILK	SS	CWT	EMA	RIB	RMP	RBV	IMF	
+16	+0.7	-	+1.1	+0.4	+0.4	-0.2	+0.4	
59%	71%	-	53%	55%	55%	55%	52%	
Index \$ Value	Domestic (\$)				Export (\$)			
	+ \$23				+ \$34			

Sire WINN MANS LANZA (P)

Born: 09/10/2006
Society ID: OACB7395E

ABC EDMUND LATIN
 ABC LATORO 263G
 ABC CHAR CHISPA
Sire: SPARROWS DURANGO 585P
 MNE EXCLUSIVE 17E (P)
 SPARROWS BLANCHE 585G
 SPARROW'S BLANCHE 85E

HTA WHITEHOT 105A
 MERIT 5133E
 WHITE CAP BECKY 8B
Dam: WINN MAN MERIT 036K
 PRAIRIEWIND MAVERICK 10E
 MERIT SMOOTHIE 8073H
 MERIT SMOOTH N HOT 56



We rate Lanza as Probably the best AI sire we have used in recent times and have some excellent progeny in this sale. Renowned for his feet, testicles and growth attributes. He is a resident sire in the World renowned LT herd. .

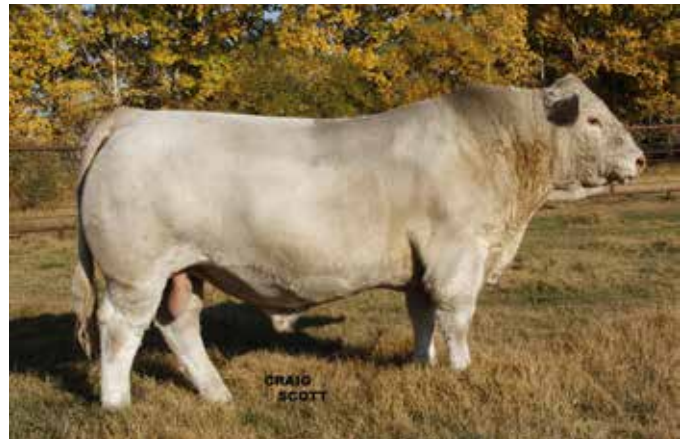
Charolais Group Breedplan EBV's								
	DIR	DTRS	GL	BWT	200	400	600	MWT
	+3.1	+3.1	-6.9	-0.3	+11	+30	+39	-
	55%	32%	87%	84%	68%	65%	63%	-
MILK	SS	CWT	EMA	RIB	RMP	RBV	IMF	
+5	+1.2	-	+2.0	+0.5	-0.1	+0.3	-0.1	
32%	28%	-	22%	29%	30%	26%	21%	
Index \$ Value	Domestic (\$)				Export (\$)			
	+ \$35				+ \$48			

Sire SVY PILGRIM PLD 655S (P)

Born: 24/01/2006
Society ID: OACB3031E

WCR PRIME CUT 764 PLD (P)
 LT RIO BLANCO 1234 P (P)
 LT PRAIRIE MAID 4054
Sire: SVY PIONEER 402P
 SKYMONT EASE 2078
 SVY JINGLES 153L
 WINDYVIEW JIGGLES 2J

E-CEE KATMANDU 200B
 RGP EUREKA 17E PMC179283 (P)
 AGV MASTERLADY 17Y
Dam: HFCC FRENCHKISS 919J
 SIR QCR HIGHGEAR 2P
 QCR FRENCHKISS 33F
 QCR DIMPLES 39D



A Canadian Sire we have used over the last couple of years with great success. He is consistently stamping his calves with length, thickness, muscle, and performance. One of the top Ranking Canadian Sires for weaning and yearling weights as well as marbling and carcass weight.

Charolais Group Breedplan EBV's								
	DIR	DTRS	GL	BWT	200	400	600	MWT
	-6.9	-23.0	-4.6	+0.9	+16	+36	+47	+38
	75%	67%	96%	95%	92%	91%	91%	79%
MILK	SS	CWT	EMA	RIB	RMP	RBV	IMF	
-8	+2.9	+27	+2.6	+1.9	+2.8	-0.6	+0.4	
74%	90%	76%	62%	77%	76%	66%	63%	
Index \$ Value	Domestic (\$)				Export (\$)			
	+ \$10				+ \$15			

Sire LT Ledger (P)

Born: 13/01/2008
Society ID: OAU3168E

EATONS ASSERT 9171
 LT ASSERTION 1277
 LT ALLIS CLASS 9140
Sire: LT BLUEGRASS 4017P M686569 (P)
 LT WYOMING WIND 4020 PLD (P)
 LT PEARLS BREEZE 2236
 LT UNLIMITED PEARL

LT RIO BLANCO 1234 P (P)
 LT RIO BRAVO 3181 P (P)
 LT 7N OF DUKE 9083 PLD (P)
Dam: LT BRENDA 6120 PLD
 LT UNLIMITED EASE 9108
 LT BRENDA'S EASE 3055 PLD
 LT BRENDA 1014 PLD



Ledger...the record-selling bull at \$105,000 in the 2011 Lindskov-Thiel Ranch Bull Sale in America. He combines an impressive data set and extraordinary gentleness with even more impressive progeny. These bulls in this sale are some of the first sons to be sold in Australia. Noted for his calving ease, growth and carcass.

Charolais Group Breedplan EBV's								
	DIR	DTRS	GL	BWT	200	400	600	MWT
	+18.8	-0.5	-6.5	-3.7	+10	+28	+21	0
	66%	55%	88%	87%	82%	82%	77%	72%
MILK	SS	CWT	EMA	RIB	RMP	RBV	IMF	
+12	+2.3	+17	+1.1	+1.7	+3.2	-1.9	+1.8	
61%	72%	69%	58%	66%	66%	62%	58%	
Index \$ Value	Domestic (\$)				Export (\$)			
	+ \$67				+ \$82			

Performance Data Summary


Lot	Birth Weight	200 Day Growth	400 Day Growth	600 Day Growth	Milk
1	-0.8	+16	+21	+36	+15
2	+0.4	+16	+38	+55	+11
3	+0.7	+17	+39	+56	+10
4	-0.2	+16	+30	+40	+9
5	+0.5	+15	+34	+48	+8
6	+2.3	+11	+24	+39	+3
7	+0.7	+16	+34	+49	+10
8	+0.7	+17	+30	+44	+11
9	-0.5	+11	+20	+30	+10
10	-0.3	+16	+33	+50	+15
11	-0.2	+21	+46	+61	+9
12	+0.9	+19	+39	+56	+8
13	+0.1	+17	+40	+49	+12
14	-2.2	+15	+33	+35	+11
15	+0.8	+16	+34	+49	+7
16	+0.8	+16	+38	+53	+13
17	+0.2	+18	+38	+54	+9
18	-1.0	+13	+28	+39	+8
19	-0.4	+12	+28	+41	+16
20	+1.4	+15	+40	+54	+13
21	+1.3	+14	+34	+49	+12
22	+0.8	+16	+27	+37	+8
23	-0.2	+15	+27	+38	+14
24	-1.9	+10	+24	+28	+13
25	-1.5	+13	+35	+41	+14
26	+1.6	+13	+25	+34	+13
27	+0.8	+19	+38	+61	+14
28	+1.7	+19	+43	+58	+13
29	+0.1	+13	+29	+39	+13
30	-0.5	+8	+22	+31	+13
31	-0.9	+17	+38	+51	+13
32	0.2	+15	+34	+48	+11
33	-0.6	+14	+24	+28	+11
34	-1.2	+13	+39	+48	+15
35	-0.4	+14	+28	+37	+14
36	+0.3	+16	+32	+42	+9
37	-0.3	+13	+23	+35	+13
38	-0.2	+14	+23	+36	+13
39	-0.7	+17	+41	+52	+11
40	+0.0	+13	+16	+29	+9

Lot	Birth Weight	200 Day Growth	400 Day Growth	600 Day Growth	Milk
41	+2.6	+17	+37	+57	+11
42	-1.2	+14	+29	+41	+12
43	-2.1	+7	+16	+23	+17
44	-0.5	+10	+33	+43	+13
45	-1.8	+12	+26	+32	+13
46	+0.6	+13	+17	+27	+9
47	+0.6	+12	+17	+25	+9
48	-0.9	+22	+43	+59	+13
49	-1.5	+14	+27	+34	+15
50	+0.1	+9	+20	+28	+10
51	+0.5	+18	+32	+47	+14
52	-0.4	+16	+29	+42	+13
53	-0.1	+10	+28	+39	+10
54	+0.4	+18	+41	+56	+12
55	+0.6	+17	+40	+54	+12
56	-0.8	+15	+31	+45	+11
57	-0.3	+20	+42	+58	+12
58	-0.1	+12	+24	+38	+14
59	-0.2	+12	+21	+33	+14
60	+1.6	+9	+22	+35	+4
61	-0.2	+13	+32	+51	+16
62	-1.0	+18	+35	+48	+11
63	+0.7	+14	+28	+46	+14
64	+0.3	+12	+28	+34	+11

**For more photos see
www.rosedalecharolais.com.au**

	Breed average EBV's for 2013 born calves				
	Birth Wt	200 Day	400 Day	600 Day	Milk
EBV	0.5	11	22	30	7

Represents top 20% or better of Charolais Breed



1	ROSEDALE JACQUES (P/S)	Born:	02/09/2013 (20 Months)
		Society ID:	MRJ194E

NOVOTEL
PARINGA NOVOTEL A100 (AI) (ET) (P)
PARINGA FASTRACK Y654 (AI) (ET) (P)

Sire: ROSEDALE FRONTIER (P)
EC NEW TREND 6G (P)
ROSEDALE NICKY X7 (AI) (P)
ROSEDALE NICKY U98 (P)

COBRABALD PICASSO (AI) (P)
MINNIE-VALE DEPUTY (P)
MINNIE VALE PEANUT

Dam: ROSEDALE BEATRIX A122 (P)
SEAWELL OFFSHORE
ROSEDALE BEATRIX W88 (AI)
ROSEDALE BEATRIX T28 (AI) (P)

Cross into profit

Comments					
Top 5% Milk; Top 15% Birth Wt and 200 Day Wt					
A terrific Bull to lead off this years sale. Jacques is a thick and long bodied bull with ample depth and class. These traits combined with an exceptional temperament and top quality raw carcass scans make this bull fit for any stud or top class commercial operation.					
Purchaser					\$

Index \$ Value					
Domestic (\$)			Export (\$)		
+\$23			+\$34		
Charolais Group Breedplan EBV's					
	Birth Weight	200 day growth	400 day growth	600 day growth	Milk
EBV	-0.8	+16	+21	+36	+15
ACC	72%	63%	62%	60%	48%
Raw Data					
Weight	P8	Rib	EMA	IMF %	Scrotal

2	ROSEDALE JUKE (AI) (ET) (P)	Born:	23/07/2013 (21 months)
		Society ID:	MRJ297E

ABC LATORO 263G
SPARROWS DURANGO 585P
SPARROWS BLANCHE 585G

Sire: WINN MANS LANZA 610S (P)
MERIT 5133E
WINN MAN MERIT 036K
MERIT SMOOTHIE 8073H

FERNVALE RIPPER
FERNVALE TRAPPER
FERNVALE PRIMADONNA (AI) (ET)

Dam: ROSEDALE REBECCA A38 (P)
ROSEDALE SNAG (AI) (P)
ROSEDALE REBECCA V56 (P)
ROSEDALE REBECCA S141E (AI) (ET)

Cross into profit

Comments					
Top 5% 400 Day Wt; Top 10% 600 Day Wt; Top 15% Export and Milk; Top 20% Domestic and 200 Day Wt					
The first of two very impressive full brothers out of a flush from Super Cow A38 (mother of Rosedale Donotello & Rosedale Fanfair) to Winn Mans Lanza. Juke is a Powerhouse polled bull with depth and style with a great sirey outlook. With a great nature and strong polled head we believe this bull has what it takes to be a great stud sire. 25% Semen Share Retained.					
Purchaser					\$

Index \$ Value					
Domestic (\$)			Export (\$)		
+\$35			+\$51		
Charolais Group Breedplan EBV's					
	Birth Weight	200 day growth	400 day growth	600 day growth	Milk
EBV	+0.4	+16	+38	+55	+11
ACC	68%	59%	56%	56%	43%
Raw Data					
Weight	P8	Rib	EMA	IMF %	Scrotal

3	ROSEDALE JUDD (AI) (ET) (P)	Born:	29/07/2013 (21 months)
		Society ID:	MRJ287E

ABC LATORO 263G
SPARROWS DURANGO 585P
SPARROWS BLANCHE 585G

Sire: WINN MANS LANZA 610S (P)
MERIT 5133E
WINN MAN MERIT 036K
MERIT SMOOTHIE 8073H

FERNVALE RIPPER
FERNVALE TRAPPER
FERNVALE PRIMADONNA (AI) (ET)

Dam: ROSEDALE REBECCA A38 (P)
ROSEDALE SNAG (AI) (P)
ROSEDALE REBECCA V56 (P)
ROSEDALE REBECCA S141E (AI) (ET)

Cross into profit

Comments					
Top 5% 400 and 600 Day Wt; Top 10% 200 Day Wt; Top 20% Export & Milk					
A bull almost identical to his full brother (lot 2). Judd combines length of body, style and growth for age with the ability to lay down cover. This is a great bull that will leave a positive impact on any herd and is worthy of your consideration.					
Purchaser					\$

Index \$ Value					
Domestic (\$)			Export (\$)		
+\$31			+\$46		
Charolais Group Breedplan EBV's					
	Birth Weight	200 day growth	400 day growth	600 day growth	Milk
EBV	+0.7	+17	+39	+56	+10
ACC	68%	59%	56%	56%	43%
Raw Data					
Weight	P8	Rib	EMA	IMF %	Scrotal

4 ROSEDALE JIMOEN (P) Born: 28/10/2013 (19 months)
Society ID: MRJ305E

S\$ MONTANA SILVER M454024 (P)
NWMSU DOC SILVER 362 PLD M669488 (P)
NWMSU DOLORES ET 0035

Sire: ASCOT DOC SILVER G100E (AI) (ET) (P/S)

LT RIO BRAVO 3181 (P)
PARINGA RIO BRAVO E310 (AI) (ET) (P)
PALGROVE CARIN 21 (AI)

FERNVALE RIPPER FENRIE (H)
FERNVALE TRAPPER FENT50E (H)
FERNVALE PRIMADONNA (AI) (ET)

Dam: ROSEDALE RUBY Z115 (P)

ROSEDALE QUADRELLA (AI) (ET) (P)
ROSEDALE RUBY U4
ROSEDALE RUBY Q22 (P)



Comments

Top 10 % Domestic & Export Indexes; Top 15% 200 Day Wt; Top 20% 400 Day Wt

A soft son out of the \$20,000 Ascot Yearling DOC Silver G100. A lovely balanced bull with terrific EBV's. Below average birthweight with breed leading 200 and 400 day growth. Note the real softness of this bull.

Purchaser

\$

Index \$ Value

Domestic (\$)	Export (\$)
+\$41	+\$59

Charolais Group Breedplan EBV's

	Birth Weight	200 day growth	400 day growth	600 day growth	Milk
EBV	-0.2	+16	+30	+40	+9
ACC	71%	62%	59%	58%	46%

Raw Data

Weight	P8	Rib	EMA	IMF %	Scrotal

5 ROSEDALE JANZA J289 (AI) (ET) (P) (R/F) Born: 27/09/2013 (20 months)
Society ID: MRJ289E

ABC LATORO 263G
SPARROWS DURANGO 585P
SPARROWS BLANCHE 585G

Sire: WINN MANS LANZA 610S (P)

MERIT 5133E
WINN MAN MERIT 036K
MERIT SMOOTHIE 8073H

COBRABALD PICASSO (AI) (P)
MINNIE-VALE DEPUTY (P)
MINNIE VALE PEANUT

Dam: ROSEDALE BUTTERSCOTCH Y47 (P) (R/F)

2UP THE VEGEMITE KID (AI) (P)
ROSEDALE BUTTERSCOTCH V150 (P)
ROSEDALE BUTTERSCOTCH Q142



Comments

Top 10% 400 and 600 Day Wt; Top 20% 200 Day Wt;

An appealing Red Factor Lanza son who ticks a lot of boxes. By Lanza out of Rosedale Butterscotch Y47 who is the Dam of Rosedale Dealer (2nd top price bull 2011 Sale sold to Weebollah Shorthorns). If you're after an out-cross Stylish polled Red Factor sire Janza could be the one.

Purchaser

\$

Index \$ Value

Domestic (\$)	Export (\$)
+\$29	+\$42

Charolais Group Breedplan EBV's

	Birth Weight	200 day growth	400 day growth	600 day growth	Milk
EBV	+0.5	+15	+34	+48	+8
ACC	70%	63%	62%	59%	43%

Raw Data

Weight	P8	Rib	EMA	IMF %	Scrotal

6 ROSEDALE KICKSTART (AI) (ET) (P) Born: 07/02/2014 (15 months)
Society ID: MRK3E

HFCC PLD EVOLUTION 5L
SVY FREEDOM PLD 307N
SVY PURRFECT 184L

Sire: GERRARD MONTEZUMA 6T (P)

RPJ IMPRESSED 121L
GERRARD ROXANNE 18P
GERRARD ROXANNE 27M

COBRABALD PICASSO (AI) (P)
MINNIE-VALE DEPUTY (P)
MINNIE VALE PEANUT

Dam: ROSEDALE GOLDEN GIRL A34 (P)

MANDALONG LUST (P)
ROSEDALE GOLDEN GIRL 2
JOANAMA GOLDEN GIRL (P)



Comments

Top 25% 600 Day growth

An extremely eye catching youngtser with ample growth and softness. By AI sire Gerrard Montezuma who has some great Industry focussed progeny and out of Golden Girl A34, one of our best performance breeding matrons. Stood 2nd in a strong 12-14 month class at the Sydney Show. This bull has terrific Raw data scans and is a great performer with the ability to finish.

Purchaser

\$

Index \$ Value

Domestic (\$)	Export (\$)
+\$1	+\$4

Charolais Group Breedplan EBV's

	Birth Weight	200 day growth	400 day growth	600 day growth	Milk
EBV	+2.3	+11	+24	+39	+3
ACC	68%	58%	57%	59%	46%

Raw Data

Weight	P8	Rib	EMA	IMF %	Scrotal

7 ROSEDALE JASPA (AI) (ET) (P) Born: 21/09/2013 (20 months)
Society ID: MRJ290E

LT RIO BLANCO (P)
SVY PIONEER 402P
SVY JINGLES 153L
Sire: SVY PILGRIM PLD 655S (P)
RGP EUREKA 17E
HFCC FRENCHKISS 919J
QCR FRENCHKISS 33F

M6 GRID MAKER 104 PET(P)
EC NO DOUBT 2022 (P)
EC LADY DUKE (P)
Dam: ROSEDALE NET E58 (AI) (P)
GUNNADOO YUPPY (P)
ROSEDALE NET B195 (P)
ROSEDALE NET V59 (P)



Comments

Top 10% 400 & 600 Day Wt, top 15% for 200 Day Wt, top 20% milk

Jaspa is an ET calve by the Impressive SVY Pilgrim and out of one of the most consistent producing Dams at Rosedale. He combines even musing with terrific thickness and growth for age. This is a smooth and well bred polled bull who we think is very worthy of inspection. Well supported by top growth EBV's.

Purchaser \$

Index \$ Value

Domestic (\$)	Export (\$)
+\$21	+\$31

Charolais Group Breedplan EBV's

	Birth Weight	200 day growth	400 day growth	600 day growth	Milk
EBV	+0.7	+16	+34	+49	+10
ACC	71%	64%	64%	63%	48%

Raw Data

Weight	P8	Rib	EMA	IMF %	Scrotal

8 ROSEDALE JOSS (P) Born: 05/09/2013 (20 months)
Society ID: MRJ223E

FERNVALE RIPPER
FERNVALE TRAPPER
FERNVALE PRIMADONNA (AI) (ET)
Sire: ROSEDALE DARWIN (P)
WCR SIR DUKE (P)
ROSEDALE GRACE A97 (AI) (ET) (P)
ROSEDALE GRACE T9 (P)

COBRABALD PICASSO (AI) (P)
MINNIE-VALE DEPUTY (P)
MINNIE VALE PEANUT
Dam: ROSEDALE GERTY A149 (P)
ROSEDALE NAVIGATOR (AI) (ET) (P)
ROSEDALE GERTY W83
ROSEDALE GERTY Q83



Comments

Top 10% 200 Day Wt; Top 15% 600 Day Wt, Milk; Top 20% 400 Day Wt;

A very soft and stylish son of the Rosedale Darwin who has had a big impact on the Rosedale Herd. Joss ticks a lot of boxes in regards to both growth for age and the ability to lay down some fat cover. A high quality sire not to be missed.

Purchaser \$

Index \$ Value

Domestic (\$)	Export (\$)
+\$29	+\$41

Charolais Group Breedplan EBV's

	Birth Weight	200 day growth	400 day growth	600 day growth	Milk
EBV	+0.7	+17	+30	+44	+11
ACC	72%	64%	61%	60%	49%

Raw Data

Weight	P8	Rib	EMA	IMF %	Scrotal

9 ROSEDALE JUGGLER (P) Born: 27/08/2013 (21 months)
Society ID: MRJ159E

WCR SIR FA MAC 2244(P)
PALGROVE WISDOM (AI) (ET) (P)
PALGROVE REFINE 32
Sire: CANOONA CAVALERO (P)
PLATINUM ULTRA (P)
PALGROVE ESTELLA 174 (AI) (P)
PALGROVE ESTELLE 131

COBRABALD PICASSO (AI) (P)
MINNIE-VALE DEPUTY (P)
MINNIE VALE PEANUT
Dam: ROSEDALE BEATRIX Z72 (P)
ROSEDALE SNAG (AI) (P)
ROSEDALE BEATRIX V60
ROSEDALE BEATRIX S68



Comments

Top 20% Birth Wt, Milk

An eye catching moderate sized bull with terrific carcass qualities. Juggler has an Ideal combination of muscle and softness with an early maturity pattern. A bull whose progeny will contain early growth and finish making them ideal for all domestic markets.

Purchaser \$

Index \$ Value

Domestic (\$)	Export (\$)
+\$22	+\$32

Charolais Group Breedplan EBV's

	Birth Weight	200 day growth	400 day growth	600 day growth	Milk
EBV	-0.5	+11	+20	+30	+10
ACC	73%	65%	62%	61%	51%

Raw Data

Weight	P8	Rib	EMA	IMF %	Scrotal

10 ROSEDALE JAMES (P)

Born: 12/09/2013 (20 months)
Society ID: MRJ196E

NOVOTEL
 PARINGA NOVOTEL A100 (AI) (ET) (P)
 PARINGA FASTRACK Y654 (AI) (ET) (P)
Sire: ROSEDALE FRONTIER (P)
 EC NEW TREND 6G M (P)
 ROSEDALE NICKY X7 (AI) (P)
 ROSEDALE NICKY U98 (P)

FERNVALE RIPPER
 FERNVALE TRAPPER
 FERNVALE PRIMADONNA (AI) (ET)
Dam: ROSEDALE KRISTINA A168 (P)
 DC MR ELIMINATOR 2210
 ROSEDALE KRISTINA U40 (AI) (P)
 ROSEDALE KRISTINA R62 (AI) (ET) (P)



Comments

Top 10% Domestic, Export, 400 Day Wt. 600 Day Wt; Top 15% 200 Day Wt

James is a big strapping bull demonstrating exceptional weight for age and length of body. This bull has not stopped growing since weaning and you can expect his progeny to keep adding on the kilo's and the dollars.

Purchaser

\$

Index \$ Value

Domestic (\$)	Export (\$)
+\$44	+\$61

Charolais Group Breedplan EBV's

	Birth Weight	200 day growth	400 day growth	600 day growth	Milk
EBV	-0.3	+16	+33	+50	+15
ACC	72%	59%	62%	60%	48%

Raw Data

Weight	P8	Rib	EMA	IMF %	Scrotal

11 ROSEDALE JANZ (AI) (P/S)

Born: 31/07/2013 (22 months)
Society ID: MRJ68E

ABC LATORO 263G
 SPARROWS DURANGO 585P
 SPARROWS BLANCHE 585G
Sire: WINN MANS LANZA 610S (P)
 MERIT 5133E
 WINN MAN MERIT 036K
 MERIT SMOOTHIE 8073H

NOVOTEL
 PARINGA NOVOTEL A100 (AI) (ET) (P)
 PARINGA FASTRACK Y654 (AI) (ET) (P)
Dam: ROSEDALE RUBY G4 (P)
 MINNIE-VALE DEPUTY (P)
 ROSEDALE RUBY A218 (P)
 ROSEDALE RUBY V120



Comments

Top 1% 400 Day Wt, 600 Day Wt; Top 5% Export, 200 Day Wt; Top 10% Domestic

Make sure you stop and take a look at this bull. He is deep bodied with exceptional weight for age yet extremely sound. He blew us away in February when we put him on the scales to find him 50 kilo's ahead of the nearest peer in his mob of 80 bulls entirely off grass. A true performer with a modest birthweight who will be a prized asset in any herd. A heifer's first calf to boot.

Purchaser

\$

Index \$ Value

Domestic (\$)	Export (\$)
+\$ 44	+\$ 61

Charolais Group Breedplan EBV's

	Birth Weight	200 day growth	400 day growth	600 day growth	Milk
EBV	-0.2	+21	+46	+61	+9
ACC	70%	63%	64%	60%	38%

Raw Data

Weight	P8	Rib	EMA	IMF %	Scrotal

12 ROSEDALE JENZ (P)

Born: 10/08/2013 (21 months)
Society ID: MRJ70E

ABC LATORO 263G
 SPARROWS DURANGO 585P
 SPARROWS BLANCHE 585G
Sire: WINN MANS LANZA 610S (P)
 MERIT 5133E
 WINN MAN MERIT 036K
 MERIT SMOOTHIE 8073H

NOVOTEL
 PARINGA NOVOTEL A100 (AI) (ET) (P)
 PARINGA FASTRACK Y654 (AI) (ET) (P)
Dam: ROSEDALE BEATRIX G14
 NELSON 397108304
 ROSEDALE BEATRIX A75 (AI) (P)
 ROSEDALE BEATRIX R147 (AI) (ET) (P)



Comments

Top 5% 200, 400 & 600 Day Growth

This is a really eye catching polled bull with top growth and style. One of the best performers in his group with terrific structure and sire appeal. Another quality bull by Lanza.

Purchaser

\$

Index \$ Value

Domestic (\$)	Export (\$)
\$24	\$36

Charolais Group Breedplan EBV's

	Birth Weight	200 day growth	400 day growth	600 day growth	Milk
EBV	+0.9	+19	+39	+56	+8
ACC					

Raw Data

Weight	P8	Rib	EMA	IMF %	Scrotal

13 ROSEDALE JONO (AI) (P)

Born: 04/09/2013 (20 months)
Society ID: MRJ78E

LT ASSERTION 1277
 LT BLUEGRASS 4017P (P)
 LT PEARLS BREEZE 2236
Sire: LT LEDGER 0332 (P)
 LT RIO BRAVO 3181 P (P)
 LT BRENDA 6120 PLD
 LT BRENDA'S EASE 3055 (P)

PINAY
 PALGROVE EXPO (AI) (ET) (P)
 PALGROVE ESTELLA 130 (AI) (P)
Dam: ROSEDALE GOLDEN GIRL G60 (P)
 MINNIE-VALE DEPUTY (P)
 ROSEDALE GOLDEN GIRL A34 (P)
 ROSEDALE GOLDEN GIRL 2



Comments

Top 10% Domestic and Export, 200 and 600 Day Wt, Milk; Top 15% 400 Day Wt;

The first of the Ledger sons to be sold at Rosedale and this is an absolute ripper. A powerful thick and meaty bull with plenty of softness. The combination of Ledger with the Expo daughters has worked really well. The softness of ledger compliments the extra muscle and bone from the Expo Line.

Purchaser _____ \$ _____

Index \$ Value					
Domestic (\$)			Export (\$)		
+\$ 45			+\$ 57		
Charolais Group Breedplan EBV's					
	Birth Weight	200 day growth	400 day growth	600 day growth	Milk
EBV	+0.1	+17	+40	+49	+12
ACC	69%	62%	65%	60%	41%
Raw Data					
Weight	P8	Rib	EMA	IMF %	Scrotal

14 ROSEDALE JUDGE (AI) (P)

Born: 25/08/2013 (21 months)
Society ID: MRJ84E

LT ASSERTION 1277
 LT BLUEGRASS 4017P (P)
 LT PEARLS BREEZE 2236 (H)
Sire: LT LEDGER 0332 (P)
 LT RIO BRAVO 3181 (P)
 LT BRENDA 6120 PLD
 LT BRENDA'S EASE 3055 PLD

PINAY
 PALGROVE EXPO (AI) (ET) (P)
 PALGROVE ESTELLA 130 (AI) (P)
Dam: ROSEDALE HIGHNESS G114E (P)
 EC NEW TREND 6G M (P)
 ROSEDALE HIGHNESS X27 (AI) (P)
 ROSEDALE HIGHNESS U134 (P) (TW) (P)



Comments

Top 5 Domestic, Export, Birth Weight; Top 10% 400 Day Wt; Top 15% Milk; Top 20% 200 Day Wt;

Another Expo/Ledger combination which has resulted in another extremely high quality soft skinned young sire of the highest quality. This bull is the real package, low birthweight with exceptional growth and carcass qualities.

Purchaser _____ \$ _____

Index \$ Value					
Domestic (\$)			Export (\$)		
+\$59			+\$76		
Charolais Group Breedplan EBV's					
	Birth Weight	200 day growth	400 day growth	600 day growth	Milk
EBV	-2.2	+15	+33	+35	+11
ACC	71%	63%	65%	60%	43%
Raw Data					
Weight	P8	Rib	EMA	IMF %	Scrotal

15 ROSEDALE JANZA J224 (AI) (ET) (P) (R/F)

Born: 27/09/2013 (20 months)
Society ID: MRJ224E

ABC LATORO 263G
 SPARROWS DURANGO 585P
 SPARROWS BLANCHE 585G
Sire: WINN MANS LANZA 610S (P)
 MERIT 5133E
 WINN MAN MERIT 036K
 MERIT SMOOTHIE 8073H

COBRABALD PICASSO (AI) (P)
 MINNIE-VALE DEPUTY (P)
 MINNIE VALE PEANUT
Dam: ROSEDALE BUTTERSCOTCH Y47 (P) (R/F)
 2UP THE VEGEMITE KID (AI) (P)
 ROSEDALE BUTTERSCOTCH V150 (P)
 ROSEDALE BUTTERSCOTCH Q142



Comments

Top 10% 400 Day Wt, 600 Day Wt ; Top 15% 200 Day Wt;

Another quality Red Factor bull by Lanza out of a terrific cow. Janza is true to the Lanza types characterised by great growth for age, length of body and fat cover. This is a very versatile bull who would suit a lot of breeding programs.

Purchaser _____ \$ _____

Index \$ Value					
Domestic (\$)			Export (\$)		
+\$23			+\$35		
Charolais Group Breedplan EBV's					
	Birth Weight	200 day growth	400 day growth	600 day growth	Milk
EBV	+0.8	+16	+34	+49	+7
ACC	71%	58%	55%	55%	43%
Raw Data					
Weight	P8	Rib	EMA	IMF %	Scrotal

16 ROSEDALE JACKPOT (P)

Born: 08/09/2013 (20 months)

Society ID: MRJ155E

WCR SIR FA MAC 2244 (P)
PALGROVE WISDOM (AI) (ET) (P)
PALGROVE REFINE 32
Sire: CANOONA CAVALERO (P)
PLATINUM ULTRA (P)
PALGROVE ESTELLA 174 (AI) (P)
PALGROVE ESTELLE 131

PARINGA NOVOTEL A100 (AI) (ET) (P)
ROSEDALE DONOTELLO (P)
ROSEDALE REBECCA A38 (P)
Dam: ROSEDALE ROSE F38 (AI) (P)
ROSEDALE WILLIE (P)
ROSEDALE ROSE A48 (P)
ROSEDALE ROSE S127 (P)



Comments

Top 5% 400 & 600 Day Wt and Milk; Top 15% 200 Day Wt;

Jonty is a classy and eye appealing Cavalero son out of a lovely Donotello Daughter. He is a very correct and even balanced bull with a great polled head. Terrific growth for age backed by solid EBV's and a great pedigree.

Purchaser

\$

Index \$ Value

Domestic (\$)	Export (\$)
\$29	\$40

Charolais Group Breedplan EBV's

	Birth Weight	200 day growth	400 day growth	600 day growth	Milk
EBV	+0.8	+16	+38	+53	+13
ACC	72%	64%	66%	62%	46%

Raw Data

Weight	P8	Rib	EMA	IMF %	Scrotal

17 ROSEDALE JIMMY (AI) (P)

Born: 16/08/2013 (21 months)

Society ID: MRJ281E

ABC LATORO 263G
SPARROWS DURANGO 585P
SPARROWS BLANCHE 585G
Sire: WINN MANS LANZA 610S (P)
MERIT 5133E
WINN MAN MERIT 036K
MERIT SMOOTHIE 8073H

NOVOTEL
PARINGA NOVOTEL A100 (AI) (ET) (P)
PARINGA FASTRACK Y654 (AI) (ET) (P)
Dam: ROSEDALE KRISTINA G24 (P)
FERNVALE TRAPPER
ROSEDALE KRISTINA X135 (P)
ROSEDALE KRISTINA U40 (AI) (P)



Comments

Top 5% 200 Day Wt, 400 Day Wt, 600 Day Wt; Top 15% Export; Top 20% Domestic;

Jimmy is a great around bull with high growth and natural thickness. He is a bull with the flexibility to suit a number of programs. Excellent performance EBV's with a modest birth weight.

Purchaser

\$

Index \$ Value

Domestic (\$)	Export (\$)
\$34	\$51

Charolais Group Breedplan EBV's

	Birth Weight	200 day growth	400 day growth	600 day growth	Milk
EBV	+0.2	+18	+38	+54	+9
ACC	71%	64%	64%	60%	39%

Raw Data

Weight	P8	Rib	EMA	IMF %	Scrotal

18 ROSEDALE JOEL (P)

Born: 1/09/2013 (20 months)

Society ID: MRJ102E

\$\$ MONTANA SILVER M454024 (P)
NWMSU DOC SILVER 362 PLD M669488 (P)
NWMSU DOLORES ET 0035
Sire: ASCOT DOC SILVER G100E (AI) (ET) (P/S)
LT RIO BRAVO 3181 (P)
PARINGA RIO BRAVO E310 (AI) (ET) (P)
PALGROVE CARIN 21 (AI)

PLATINUM YU-BET Y124E (P)
REIDS ASSASIN (P)
PLATINUM QUARTZ 3RD (AI) (ET) (P)
Dam: ROSEDALE BOBBIN G106 (P)
DSK WW YABBA DABBA DO Y4 (AI)
ROSEDALE BOBBIN D239 (P)
ROSEDALE BOBBIN Z154 (P)



Comments

Top 5% Export Index, Top 10% Domestic Index,

A squarely made and easy fleshing son of Doc with a strong polled head. Excellent soft skin and Good Index Values.

Purchaser

\$

Index \$ Value

Domestic (\$)	Export (\$)
\$48	\$68

Charolais Group Breedplan EBV's

	Birth Weight	200 day growth	400 day growth	600 day growth	Milk
EBV	-1.0	+13	+28	+39	+9
ACC					

Raw Data

Weight	P8	Rib	EMA	IMF %	Scrotal

19 ROSEDALE JOEY (P)

Born: 16/09/2013 (20 months)

Society ID: MRJ213E

NOVOTEL
 PARINGA NOVOTEL A100 (AI) (ET) (P)
 PARINGA FASTRACK Y654 (AI) (ET) (P)
Sire: ROSEDALE FRONTIER (P)
 EC NEW TREND 6G M (P)
 ROSEDALE NICKY X7 (AI) (P)
 ROSEDALE NICKY U98 (P)

PALGROVE WISDOM (AI) (ET) (P)
 CANOONA CAVALERO (P)
 PALGROVE ESTELLA 174 (AI) (P)
Dam: ROSEDALE CANDY F71 (P)
 ROSEDALE SELECTOR (AI) (P)
 ROSEDALE GAIIETY W73 (P)
 ROSEDALE GAIIETY R40 (P)



Comments

Top 1% Milk; Top 15% Domestic & Export Indexes;

A lovely soft young sire with terrific skin and softness. Joey is a cleanly made bull great EBV's and a strong outlook and constitution. Top 20% for both breed Indexes.

Purchaser

\$

Index \$ Value

Domestic (\$)	Export (\$)
\$+38	\$+51

Charolais Group Breedplan EBV's

	Birth Weight	200 day growth	400 day growth	600 day growth	Milk
EBV	-0.4	+12	+28	+40	+16
ACC	71%	62%	64%	60%	43%

Raw Data

Weight	P8	Rib	EMA	IMF %	Scrotal

20 ROSEDALE JACK HAMMER (P)

Born: 26/08/2013 (21 months)

Society ID: MRJ171E

PINAY
 IMPAIR
 MARY
Sire: PALGROVE EXPO (AI) (ET) (P)
 PALGROVE OUTBACK (P)
 PALGROVE ESTELLA 130 (AI) (P)
 PALGROVE ESTELLA 95

ROSEDALE NAVIGATOR (AI) (ET) (P)
 ROSEDALE WILLIE (P)
 ROSEDALE LUCY R214 (P)
Dam: ROSEDALE REBECCA C13
 FERNVALE TRAPPER
 ROSEDALE REBECCA Z40 (P)
 ROSEDALE REBECCA S141E (AI) (ET)



Comments

Top 5% 400 Day Wt, 600 Day Wt, Milk; Top 20% 200 Day Wt

Purchaser

\$

Index \$ Value

Domestic (\$)	Export (\$)
\$+25	\$+22

Charolais Group Breedplan EBV's

	Birth Weight	200 day growth	400 day growth	600 day growth	Milk
EBV	+1.4	+15	+40	+54	+13
ACC	72%	65%	67%	63%	50%

Raw Data

Weight	P8	Rib	EMA	IMF %	Scrotal

21 ROSEDALE JUMBUCK J162E (P)

Born: 25/08/2013 (21 months)

Society ID: MRJ162E

PINAY
 IMPAIR
 MARY
Sire: PALGROVE EXPO (AI) (ET) (P)
 PALGROVE OUTBACK (P)
 PALGROVE ESTELLA 130 (AI) (P)
 PALGROVE ESTELLA 95

COBRABALD PICASSO (AI) (P)
 MINNIE-VALE DEPUTY (P)
 MINNIE VALE PEANUT
Dam: ROSEDALE ESTRA A189 (P)
 ROSEDALE SELECTOR (AI) (P)
 ROSEDALE ESTRA X112
 ROSEDALE S104E



Comments

Top 10% 400 Day Wt, 600 Day Wt, Milk

A powerful yet smooth Expo son with extra bone and muscle. Terrific width from behind and excellent growth EBV's. This is a quality polled performance bull.

Purchaser

\$

Index \$ Value

Domestic (\$)	Export (\$)
+\$18	+\$24

Charolais Group Breedplan EBV's

	Birth Weight	200 day growth	400 day growth	600 day growth	Milk
EBV	+1.3	+14	+34	+49	+12
ACC	73%	66%	67%	63%	51%

Raw Data

Weight	P8	Rib	EMA	IMF %	Scrotal

22 ROSEDALE JEDI MASTER (P) (R/F)

Born: 05/09/2013 (20 months)
Society ID: MRJ280E

FERNVALE RIPPER
 FERNVALE TRAPPER
 FERNVALE PRIMADONNA (AI) (ET)
Sire: ROSEDALE DARWIN (P)
 WCR SIR DUKE 835 (P)
 ROSEDALE GRACE A97 (AI) (ET) (P)
 ROSEDALE GRACE T9 (P)

ROSEDALE NAVIGATOR (AI) (ET) (P)
 ROSEDALE WILLIE (P)
 ROSEDALE LUCY R214 (P)
Dam: ROSEDALE AMOUR B11 (P) (R/F)
 LHD MR PERFECT Y416 (P)
 ROSEDALE AMOUR W43 R/F (AI) (P)
 ROSEDALE AMOUR U28 (P)



Comments

Top 15% 200 Day Wt

Jedi Master is a soft skinned son of Darwin with terrific length of body and smooth muscling. Another great middle of the road bull whose progeny will fit comfortably into a range of markets.

Purchaser

\$

Index \$ Value

Domestic (\$)	Export (\$)
+\$ 30	+\$ 43

Charolais Group Breedplan EBV's

	Birth Weight	200 day growth	400 day growth	600 day growth	Milk
EBV	+0.8	+16	+27	+37	+8
ACC	73%	65%	67%	63%	51%

Raw Data

Weight	P8	Rib	EMA	IMF %	Scrotal

23 ROSEDALE JAMAINE (P)

Born: 11/10/2013 (19 months)
Society ID: MRJ236E

FERNVALE RIPPER
 FERNVALE TRAPPER
 FERNVALE PRIMADONNA (AI) (ET)
Sire: ROSEDALE DARWIN (P)
 WCR SIR DUKE 835 (P)
 ROSEDALE GRACE A97 (AI) (ET) (P)
 ROSEDALE GRACE T9 (P)

NOVOTEL
 PARINGA NOVOTEL A100 (AI) (ET) (P)
 PARINGA FASTRACK Y654 (AI) (ET) (P)
Dam: ROSEDALE HUSSY D243 (P)
 MINNIE-VALE DEPUTY (P)
 ROSEDALE HUSSY Z179 (P)
 ROSEDALE HUSSY X9 (TW)



Comments

Top 5% Milk; Top 20% Domestic, Export, 200 Day Wt

This is a super soft bull with excellent evenness and depth of body. An eye catching bull with great carcass qualities and performance with the ability to lay down the cover.

Purchaser

\$

Index \$ Value

Domestic (\$)	Export (\$)
+\$ 34	+\$ 48

Charolais Group Breedplan EBV's

	Birth Weight	200 day growth	400 day growth	600 day growth	Milk
EBV	-0.2	+15	+27	+38	+14
ACC	71%	62%	66%	62%	46%

Raw Data

Weight	P8	Rib	EMA	IMF %	Scrotal

24 ROSEDALE JETSTAR (P)

Born: 23/08/2013 (21 months)
Society ID: MRJ67E

LT UNLIMITED EASE 9108
 LT EASY BLEND 5125 PLD (P)
 LT BRENDA
Sire: ROSEDALE FIRST CLASS (AI) (P)
 ROSEDALE ZINGER (P)
 ROSEDALE CINDERELLA D6 (P)
 ROSEDALE CINDERELLA W165 (P)

HFCC PLD EVOLUTION 5L
 SVY FREEDOM PLD 307N P
 SVY PURRFECT 184L
Dam: ROSEDALE HUSSY G85 (AI) (P)
 PARINGA NOVOTEL A100 (AI) (ET) (P)
 ROSEDALE HUSSY D243 (P)
 ROSEDALE HUSSY Z179 (P)



Comments

Top 10% Birthweight, Milk, Domestic & Export \$Indexes

A bull that will catch your eye and has thickness, softness and style to boot. A prime example of the quality of the calves by Rosedale Firstclass. A 2 yo hfr's first calf.

Purchaser

\$

Index \$ Value

Domestic (\$)	Export (\$)
\$42	\$55

Charolais Group Breedplan EBV's

	Birth Weight	200 day growth	400 day growth	600 day growth	Milk
EBV	-1.9	+10	+24	+28	+13
ACC					

Raw Data

Weight	P8	Rib	EMA	IMF %	Scrotal

25 ROSEDALE JAY ZEE (P)

Born: 08/09/2013 (20 months)
Society ID: MRJ131E

LT UNLIMITED EASE 9108
 LT EASY BLEND 5125 PLD (P)
 LT BRENDA
Sire: ROSEDALE FIRST CLASS (AI) (P)
 ROSEDALE ZINGER (P)
 ROSEDALE CINDERELLA D6 (P)
 ROSEDALE CINDERELLA W165 (P)

LT WYOMING WIND 4020 PLD (P)
 DSK WW YABBA DABBA DO Y4 (AI)
 PALGROVE ESTELLA 31 (AI) (ET)
Dam: ROSEDALE NELLE E61 (P)
 ROSEDALE WILLIE (P)
 ROSEDALE NELLE B114 (P)
 ROSEDALE NELLE W152 (P)



Comments

Top 5% Domestic, Export and Milk; Top 10% Birth Wt, 200 Day Wt; Top 20% 600 Day Wt;

Another smooth polled First Class son with excellent smooth skin and depth of body. He will breed some very appealing weaners with growth, softness and style.

Purchaser

\$

Index \$ Value

Domestic (\$)	Export (\$)
+\$57	+\$74

Charolais Group Breedplan EBV's

	Birth Weight	200 day growth	400 day growth	600 day growth	Milk
EBV	-1.5	+13	+35	+41	+14
ACC	72%	64%	65%	62%	45%

Raw Data

Weight	P8	Rib	EMA	IMF %	Scrotal

26 ROSEDALE JAZZY JEFF (P)

Born: 09/09/2013 (20 months)
Society ID: MRJ112E

LT UNLIMITED EASE 9108
 LT EASY BLEND 5125 PLD (P)
 LT BRENDA 1014 (P)
Sire: ROSEDALE FIRST CLASS (AI) (P)
 ROSEDALE ZINGER (P)
 ROSEDALE CINDERELLA D6 (P)
 ROSEDALE CINDERELLA W165 (P)

LT WYOMING WIND 4020 PLD (P)
 DSK WW YABBA DABBA DO Y4 (AI)
 PALGROVE ESTELLA 31 (AI) (ET)
Dam: ROSEDALE HUSSY E167 (P)
 MINNIE-VALE DEPUTY (P)
 ROSEDALE HUSSY B126 (P)
 ROSEDALE HUSSY X10 (TW)



Comments

Top 5% Milk; Top 10% Domestic and Export

A lovely son of Rosedale First class with a little extra grunt. Terrific smooth muscling pattern and extremley well put together with a great temperament. This bull will realy hits the mark.

Purchaser

\$

Index \$ Value

Domestic (\$)	Export (\$)
+\$45	+\$63

Charolais Group Breedplan EBV's

	Birth Weight	200 day growth	400 day growth	600 day growth	Milk
EBV	+1.6	+13	+25	+34	+13
ACC	72%	64%	65%	61%	43%

Raw Data

Weight	P8	Rib	EMA	IMF %	Scrotal

27 ROSEDALE JUNE (P)

Born: 12/10/2013 (19 months)
Society ID: MRJ189E

IMPAIR
 PINAY
 MARY
Sire: PALGROVE EXPO (AI) (ET) (P)
 PALGROVE OUTBACK (P)
 PALGROVE ESTELLA 130 (AI) (P)
 PALGROVE ESTELLA 95

ALGROVE WISDOM (AI) (ET) (P)
 CANOONA CAVALERO (P)
 PALGROVE ESTELLA 174 (AI) (P)
Dam: ROSEDALE GOLDEN GIRL F148 (P)
 ROSEDALE NAVIGATOR (AI) (ET) (P)
 ROSEDALE GOLDEN GIRL V105 (P)
 ROSEDALE GOLDEN GIRL 2



Comments

Top 1% 400 Day Wt ; Top 5% 200 and 600 Day Wt, Milk

A growthy, deep, well muscled Expo son complemented by a strong and correct structure. This is smooth polled performance bull with style. Fantastic growth EBV's.

Purchaser

\$

Index \$ Value

Domestic (\$)	Export (\$)
+\$32	+\$41

Charolais Group Breedplan EBV's

	Birth Weight	200 day growth	400 day growth	600 day growth	Milk
EBV	+0.8	+19	+43	+58	+13
ACC	72%	64%	66%	62%	45%

Raw Data

Weight	P8	Rib	EMA	IMF %	Scrotal

28 ROSEDALE JACOB (P)

Born: 30/08/2013 (21 months)
Society ID: MRJ170E

IMPAIR
 PINAY
 MARY
Sire: PALGROVE EXPO (AI) (ET) (P)
 PALGROVE OUTBACK (P)
 PALGROVE ESTELLA 130 (AI) (P)
 PALGROVE ESTELLA 95 PKT307E (H)

PALGROVE STAND OUT (AI)
 GUNNADOO YUPPY (P)
 GUNNADOO CINDY R34E (AI) (P)
Dam: ROSEDALE BUTTERSCOTCH B199 (P)
 FERNVALE TRAPPER
 ROSEDALE BUTTERSCOTCH X141 (P)
 ROSEDALE BUTTERSCOTCH U119 R/F (P)



Comments

Top 5% 200, 400 and 600 Day Wt, Milk

Another great Expo son displaying terrific muscle and growth for age. Polled with performance, thats how we like to breed them.

Purchaser _____ \$ _____

Index \$ Value					
Domestic (\$)			Export (\$)		
+22			+33		
Charolais Group Breedplan EBV's					
	Birth Weight	200 day growth	400 day growth	600 day growth	Milk
EBV	+1.7	+19	+38	+61	+14
ACC	73%	66%	67%	63%	50%
Raw Data					
Weight	P8	Rib	EMA	IMF %	Scrotal

29 ROSEDALE JEZABEEL

Born: 30/09/2013 (20 months)
Society ID: MRJ145E

WCR SIR FA MAC 2244(P)
 PALGROVE WISDOM (AI) (ET) (P)
 PALGROVE REFINE 32
Sire: CANOONA CAVALERO (P)
 PLATINUM ULTRA (P)
 PALGROVE ESTELLA 174 (AI) (P)
 PALGROVE ESTELLE 131

LT WYOMING WIND 4020 PLD (P)
 DSK WW YABBA DABBA DO Y4 (AI)
 PALGROVE ESTELLA 31 (AI) (ET)
Dam: ROSEDALE EMPRESS E196
 ROSEDALE WILLIE (P)
 ROSEDALE EMPRESS B164 (P)
 ROSEDALE EMPRESS W169 (P)



Comments

Top 5% Milk; Top 20% 400 Day Wt

An outstanding bull with great commercial attributes. This bull ticks the thickness, length and softness boxes and is one of the best performers within his own management group. A quality bull not to be missed.

Purchaser _____ \$ _____

Index \$ Value					
Domestic (\$)			Export (\$)		
+32			+44		
Charolais Group Breedplan EBV's					
	Birth Weight	200 day growth	400 day growth	600 day growth	Milk
EBV	+0.1	+13	+29	+39	+13
ACC	72%	65%	67%	63%	48%
Raw Data					
Weight	P8	Rib	EMA	IMF %	Scrotal

30 ROSEDALE JAX (P)

Born: 08/08/2013 (21 months)
Society ID: MRJ201E

NOVOTEL
 PARINGA NOVOTEL A100 (AI) (ET) (P)
 PARINGA FASTRACK Y654 (AI) (ET) (P)
Sire: ROSEDALE FRONTIER (P)
 EC NEW TREND 6G M (P)
 ROSEDALE NICKY X7 (AI) (P)
 ROSEDALE NICKY U98 (P)

ROSEDALE NAVIGATOR (AI) (ET) (P)
 ROSEDALE WILLIE (P)
 ROSEDALE LUCY R214 (P)
Dam: ROSEDALE ROSE A48 (P)
 ROSEDALE NAVIGATOR (AI) (ET) (P)
 ROSEDALE ROSE S127 (P)
 ROSEDALE ROSE 6TH (P)



Comments

Top 5% Milk ; Top 20% Birth Wt

A smooth and long bodied Frontier son still with plenty of natural thickness. A great bull to use over Angus cows.

Purchaser _____ \$ _____

Index \$ Value					
Domestic (\$)			Export (\$)		
+29			+38		
Charolais Group Breedplan EBV's					
	Birth Weight	200 day growth	400 day growth	600 day growth	Milk
EBV	-0.5	+8	+22	+31	+13
ACC	72%	62%	63%	60%	49%
Raw Data					
Weight	P8	Rib	EMA	IMF %	Scrotal

31 ROSEDALE JERONIMO (P)

Born: 07/10/2013 (19 months)
Society ID: MRJ116E

LT UNLIMITED EASE 9108
 LT EASY BLEND 5125 PLD (P)
 LT BRENDA 1014 (P)
Sire: ROSEDALE FIRST CLASS (AI) (P)
 ROSEDALE ZINGER (P)
 ROSEDALE CINDERELLA D6 (P)
 ROSEDALE CINDERELLA W165 (P)

NOVOTEL 5897127519
 PARINGA NOVOTEL A100 (AI) (ET) (P)
 PARINGA FASTRACK Y654 (AI) (ET) (P)
Dam: ROSEDALE REBECCA E178 (P)
 COBRABALD WINSTON (AI) (P)
 ROSEDALE REBECCA A100 (P)
 ROSEDALE REBECCA W50 (AI) (ET) (P)



Comments

Top 5 % Domestic, Export, 400 Day Wt, 600 Day Wt, Milk; Top 10% 200 Day Wt ; Top 15% Birth Wt

This a fantastic eye appealing bull with terrific EBV's to boot. A quality young sire with thickness and style and strong outlook. We like this bull a lot.

Purchaser _____ \$ _____

Index \$ Value					
Domestic (\$)			Export (\$)		
+\$50			+\$67		
Charolais Group Breedplan EBV's					
	Birth Weight	200 day growth	400 day growth	600 day growth	Milk
EBV	-0.9	+17	+38	+51	+13
ACC	72%	64%	65%	61%	44%
Raw Data					
Weight	P8	Rib	EMA	IMF %	Scrotal

32 ROSEDALE JACK IN THE BOX (AI) (ET) (P)

Born: 21/09/2013 (20 months)
Society ID: MRJ292E

LT RIO BLANCO (P)
 SVY PIONEER 402P
 SVY JINGLES 153L
Sire: SVY PILGRIM PLD 655S (P)
 RGP EUREKA 17E
 HFCC FRENCHKISS 919J
 QCR FRENCHKISS 33F

M6 GRID MAKER 104 PET(P)
 EC NO DOUBT 2022 (P)
 EC LADY DUKE (P)
Dam: ROSEDALE NET E58 (AI) (P)
 GUNNADOO YUPPY (P)
 ROSEDALE NET B195 (P)
 ROSEDALE NET V59 (P)



Comments

Top 10% Milk, 400 & 600 Day weight, Top 20% 200 Day Wt

Terrific smoothly made Pilgrim calf, Full brother to lot 7. Lots of carcass and growth in this bull. Strong performance EBV's and sound as a button.

Purchaser _____ \$ _____

Index \$ Value					
Domestic (\$)			Export (\$)		
+\$29			+\$41		
Charolais Group Breedplan EBV's					
	Birth Weight	200 day growth	400 day growth	600 day growth	Milk
EBV	0.2	+15	+34	+48	+11
ACC	71%	63%	64%	60%	44%
Raw Data					
Weight	P8	Rib	EMA	IMF %	Scrotal

33 ROSEDALE JINDY (AI) (P)

Born: 06/08/2013 (21months)
Society ID: MRJ63E

WCR SIR DUKE 783
 SCHURRTOP 5627
 MISS SUGAR VALLEY 908
Sire: LT WYOMING WIND 4020 PLD (P)
 LT UNLIMITED CHAPS 109 M (P)
 LT CHAP'S LADY 217
 LT PRAIRIE MAIDEN 8095

NOVOTEL
 PARINGA NOVOTEL A100 (AI) (ET) (P)
 PARINGA FASTRACK Y654 (AI) (ET) (P)
Dam: ROSEDALE EMPRESS G27 (P)
 SEAWELL OFFSHORE
 ROSEDALE EMPRESS W85 (AI) (ET) (P)
 ROSEDALE EMPRESS S66 (P)



Comments

Top 15% Milk ; Top 20% Birth Wt

A rare chance to purchase a terrific polled LT Wyoming Wind son whose semen is no longer available on the market. This is a quiet bull with terrific thickness, evenness and softness. A good calving ease bull with performance.

Purchaser _____ \$ _____

Index \$ Value					
Domestic (\$)			Export (\$)		
+32			+44		
Charolais Group Breedplan EBV's					
	Birth Weight	200 day growth	400 day growth	600 day growth	Milk
EBV	-0.6	+14	+24	+28	+11
ACC	73%	66%	68%	65%	62%
Raw Data					
Weight	P8	Rib	EMA	IMF %	Scrotal

34 ROSEDALE JARRA (P)

Born: 07/09/2013 (20 months)

Society ID: MRJ106E

LT UNLIMITED EASE 9108
LT EASY BLEND 5125 PLD (P)
LT BRENDA
Sire: ROSEDALE FIRST CLASS (AI) (P)
ROSEDALE ZINGER (P)
ROSEDALE CINDERELLA D6 (P)
ROSEDALE CINDERELLA W165 (P)

ROSEDALE WILLIE (P)
ROSEDALE ARCHIE (P)
ROSEDALE CANDY T27 (AI) (P)
Dam: ROSEDALE HONOR E120 (P)
FERNVALE TRAPPER
ROSEDALE HONOR B170 (P)
ROSEDALE HONOR S75 (P)



Comments

**Top 5% Domestic, Export, 400 Day Wt, Milk;
Top 10% Birth Wt, 600 Day Wt**

A very put together soft bull, with excellent structure and carcass qualities. Sired by our heifer Bull Rosedale First Class, you can use this bull with confidence and get great results. A great Birth to 400 day spread showcasing the class of this bull.

Purchaser

\$

Index \$ Value

Domestic (\$)	Export (\$)
+\$55	+71

Charolais Group Breedplan EBV's

	Birth Weight	200 day growth	400 day growth	600 day growth	Milk
EBV	-1.2	+13	+39	+48	+15
ACC	72%	64%	65%	62%	44%

Raw Data

Weight	P8	Rib	EMA	IMF %	Scrotal

35 ROSEDALE JANDO (P)

Born: 28/09/2013 (20 months)

Society ID: MRJ242E

FERNVALE RIPPER
FERNVALE TRAPPER
FERNVALE PRIMADONNA (AI) (ET)
Sire: ROSEDALE DARWIN (P)
WCR SIR DUKE (P)
ROSEDALE GRACE A97 (AI) (ET) (P)
ROSEDALE GRACE T9 (P)

NOVOTEL
PARINGA NOVOTEL A100 (AI) (ET) (P)
PARINGA FASTRACK Y654 (AI) (ET) (P)
Dam: ROSEDALE DAFFODIL E45
ROSEDALE SELECTOR (AI) (P)
ROSEDALE DAFFODIL Z36 (P)
ROSEDALE DAFFODIL 5 (AI) (P)



Comments

Top 5% Milk ; Top 15% Domestic & Export

A quality thick bull by Rosedale Darwin who combines muscle with fat cover. Excellent depth of body, temperament and breed Index's.

Purchaser

\$

Index \$ Value

Domestic (\$)	Export (\$)
+40	+\$53

Charolais Group Breedplan EBV's

	Birth Weight	200 day growth	400 day growth	600 day growth	Milk
EBV	-0.4	+14	+28	+37	+14
ACC	72%	64%	66%	62%	47%

Raw Data

Weight	P8	Rib	EMA	IMF %	Scrotal

36 ROSEDALE JENSEN (P)

Born: 20/09/2013 (20 months)

Society ID: MRJ255E

FERNVALE RIPPER
FERNVALE TRAPPER
FERNVALE PRIMADONNA (AI) (ET)
Sire: ROSEDALE DARWIN (P)
WCR SIR DUKE (P)
ROSEDALE GRACE A97 (AI) (ET) (P)
ROSEDALE GRACE T9 (P)

RC BUDSMYDAD 225 POLLED 225 P (P)
EC NEW TREND 6G M 498475 (P)
MISS EC DUKE 452-D
Dam: ROSEDALE CANDY Z60 (AI)
ROSEDALE SELECTOR (AI) (P)
ROSEDALE CANDY W23
ROSEDALE CANDY 13



Comments

**Top 10% Export; Top 15% Domestic, 200 Day Wt, 400 Day Wt;
Top 20% 600 Day Wt**

Another smoothly made Rosedale Darwin son with great growth for age with that extra bit of softness. A quality bull who will do a great job in most commercial operations.

Purchaser

\$

Index \$ Value

Domestic (\$)	Export (\$)
+\$40	+\$55

Charolais Group Breedplan EBV's

	Birth Weight	200 day growth	400 day growth	600 day growth	Milk
EBV	+0.3	+16	+32	+42	+9
ACC	72%	65%	66%	63%	50%

Raw Data

Weight	P8	Rib	EMA	IMF %	Scrotal

37 ROSEDALE JOVIAL (P/S)

Born: 26/08/2013 (21 months)

Society ID: MRJ195E

NOVOTEL
 PARINGA NOVOTEL A100 (AI) (ET) (P)
 PARINGA FASTRACK Y654 (AI) (ET) (P)
Sire: ROSEDALE FRONTIER (P)
 EC NEW TREND 6G (P)
 ROSEDALE NICKY X7 (AI) (P)
 ROSEDALE NICKY U98 (P)

FERNVALE RIPPER FENRIE (H)
 FERNVALE TRAPPER
 FERNVALE PRIMADONNA (AI) (ET)
Dam: ROSEDALE REBECCA A143 (P)
 LHD MR PERFECT Y416 (P)
 ROSEDALE REBECCA R137 (AI) (ET) (P)
 ROSEDALE REBECCA (P)



Comments

Top 5% Milk; Top 20% Export

A smooth skin bull with natural thickness and good length of body. This is a bull with a moderate birth weight that will put some extra growth into his calves.

Purchaser

\$

Index \$ Value

Domestic (\$)	Export (\$)
+\$32	+\$45

Charolais Group Breedplan EBV's

	Birth Weight	200 day growth	400 day growth	600 day growth	Milk
EBV	-0.3	+13	+23	+35	+13
ACC	71%	63%	64%	61%	48%

Raw Data

Weight	P8	Rib	EMA	IMF %	Scrotal

38 ROSEDALE J200

Born: 28/08/2013 (21 months)

Society ID: MRJ200E

NOVOTEL
 PARINGA NOVOTEL A100 (AI) (ET) (P)
 PARINGA FASTRACK Y654 (AI) (ET) (P)
Sire: ROSEDALE FRONTIER (P)
 EC NEW TREND 6G (P)
 ROSEDALE NICKY X7 (AI) (P)
 ROSEDALE NICKY U98 (P)

FERNVALE TRAPPER
 ROSEDALE XPAT (P)
 ROSEDALE DAFFODIL 5 (AI) (P)
Dam: ROSEDALE KELLY A231
 FERNVALE TRAPPER
 ROSEDALE KELLY X17
 ROSEDALE KELLY U108 (P) (P)



Comments

Top 5% Milk; Top 20% Export, Domestic

Another great Rosedale Frontier son who really has done a terrific job in our herd. This bull is not extreme in any way, just a good neat doer with terrific growth EBV's and Indexes showing his performance.

Purchaser

\$

Index \$ Value

Domestic (\$)	Export (\$)
+33	+47

Charolais Group Breedplan EBV's

	Birth Weight	200 day growth	400 day growth	600 day growth	Milk
EBV	-0.2	+14	+23	+36	+13
ACC	72%	62%	64%	60%	46%

Raw Data

Weight	P8	Rib	EMA	IMF %	Scrotal

39 ROSEDALE JUM J90 (AI) (P)

Born: 26/09/2013 (20 months)

Society ID: MRJ90E

S\$ MONTANA SILVER M454024 (P)
 NWMSU DOC SILVER 362 PLD M669488 (P)
 NWMSU DOLORES ET 0035
Sire: ASCOT DOC SILVER G100E (AI) (ET) (P/S)
 LT RIO BRAVO 3181 (P)
 PARINGA RIO BRAVO E310 (AI) (ET) (P)
 PALGROVE CARIN 21 (AI)

PALGROVE WISDOM (AI) (ET) (P)
 CANOONA CAVALERO (P)
 PALGROVE ESTELLA 174 (AI) (P)
Dam: ROSEDALE GAIETY G219 (P) MRG219E (P)
 EC NEW TREND 6G M 498475 (P)
 ROSEDALE GAIETY X32 (AI)
 ROSEDALE GAIETY U123 (P)



Comments

Top 5% 400 & 600 Day Wt, Export, Domestic \$Index; Top 10% 200 Day Wt; Top 20% Birth

A top class young bull here with growth and terrific carcass. This is a real curve bender with below average birthweight and top growth rate. A bull that ticks all the right boxes, Jum is quality plus.

Purchaser

\$

Index \$ Value

Domestic (\$)	Export (\$)
+\$50	+\$68

Charolais Group Breedplan EBV's

	Birth Weight	200 day growth	400 day growth	600 day growth	Milk
EBV	-0.7	+17	+41	+52	+11
ACC	71%	63%	63%	60%	43%

Raw Data

Weight	P8	Rib	EMA	IMF %	Scrotal

40 ROSEDALE JINGLE

Born: 30/08/13 (21 months)
Society ID: MRJ203E

NOVOTEL
 PARINGA NOVOTEL A100 (AI) (ET) (P)
 PARINGA FASTRACK Y654 (AI) (ET) (P)
Sire: ROSEDALE FRONTIER (P)
 EC NEW TREND 6G (P)
 ROSEDALE NICKY X7 (AI) (P)
 ROSEDALE NICKY U98 (P)

MINNIE-VALE DEPUTY (P)
 ROSEDALE ZINGER (P) MR218E (P)
 ROSEDALE NICKY X7 (AI) (P)
Dam: ROSEDALE DAINTE C144 (P)
 2UP THE VEGEMITE KID (AI) (P)
 ROSEDALE DAINTE S62
 ROSEDALE DAINTE 2



Comments

A nice bull very consistent with the other Rosedale Frontier bulls offered in this draft. We expect this consistency to flow through to their offspring delivering smoothly made calves with natural thickness and growth for age.

Purchaser _____ \$ _____

Index \$ Value					
Domestic (\$)			Export (\$)		
+\$21			+\$33		
Charolais Group Breedplan EBV's					
	Birth Weight	200 day growth	400 day growth	600 day growth	Milk
EBV	0.0	+13	+16	+29	+9
ACC	72%	63%	65%	62%	47%
Raw Data					
Weight	P8	Rib	EMA	IMF %	Scrotal

41 ROSEDALE JACK SPARROW (P)

Born: 23/09/2013 (20 months)
Society ID: MRJ164E

IMPAIR
 PINAY
 MARY
Sire: PALGROVE EXPO (AI) (ET) (P)
 PALGROVE OUTBACK (P)
 PALGROVE ESTELLA 130 (AI) (P)
 PALGROVE ESTELLA 95

PALGROVE STAND OUT (AI)
 GUNNADOO YUPPY (P)
 GUNNADOO CINDY R34E (AI) (P)
Dam: ROSEDALE GERTY B123 (P)
 PALGROVE JACKPOT (AI) (ET) (P)
 ROSEDALE GERTY Q83
 JOANAMA GERTY



Comments

Top 5% 400 Day Wt, 600 Day Wt, Top 10% 200 Day Wt; Top 15% Milk

Sparrow is a very nice Smoothly made polled bull carrying extra bone complemented by extra muscle and weight for age. A great bull to use if looking to grow out the progeny as they will maintain there shape yet keep adding on the kilo's. Top 5% of the breed for 400 and 600 day weight.

Purchaser _____ \$ _____

Index \$ Value					
Domestic (\$)			Export (\$)		
+\$11			+\$16		
Charolais Group Breedplan EBV's					
	Birth Weight	200 day growth	400 day growth	600 day growth	Milk
EBV	+2.6	+17	+37	+57	+11
ACC	73%	66%	67%	63%	51%
Raw Data					
Weight	P8	Rib	EMA	IMF %	Scrotal

42 ROSEDALE JAF A (P) (R/F)

Born: 17/09/2013 (20 months)
Society ID: MRJ107E

LT UNLIMITED EASE 9108
 LT EASY BLEND 5125 PLD (P)
 LT BRENDA
Sire: ROSEDALE FIRST CLASS (AI) (P)
 ROSEDALE ZINGER (P)
 ROSEDALE CINDERELLA D6 (P)
 ROSEDALE CINDERELLA W165 (P)

PALGROVE STAND OUT (AI)
 GUNNADOO YUPPY (P)
 GUNNADOO CINDY R34E (AI) (P)
Dam: ROSEDALE AMOUR E131 (P)
 LHD MR PERFECT Y416 (P)
 ROSEDALE AMOUR W43 R/F (AI) (P)
 ROSEDALE AMOUR U28 (P)



Comments

Top 10% Domestic, Export and Milk; Top 15% Birth Wt; Top 20% 400 & 600 Day Wt

Jafa is a quality bull by Rosedale First Class who always grabs your eye in the paddock and just keeps on improving. He has a lovely soft skin and a strong sirey outlook and we believe would not be out of place performing stud sire duties. A Classy bull with terrific raw data scans and EBV's to boot.

Purchaser _____ \$ _____

Index \$ Value					
Domestic (\$)			Export (\$)		
+\$45			+\$62		
Charolais Group Breedplan EBV's					
	Birth Weight	200 day growth	400 day growth	600 day growth	Milk
EBV	-1.2	+14	+29	+41	+12
ACC	72%	64%	65%	61%	45%
Raw Data					
Weight	P8	Rib	EMA	IMF %	Scrotal

43 ROSEDALE JONAS (P)

Born: 24/08/2013 (21 months)

Society ID: MRJ206E

NOVOTEL
PARINGA NOVOTEL A100 (AI) (ET) (P)
PARINGA FASTRACK Y654 (AI) (ET) (P)
Sire: ROSEDALE FRONTIER (P)
EC NEW TREND 6G (P)
ROSEDALE NICKY X7 (AI) (P)
ROSEDALE NICKY U98 (P)

NOVOTEL
PARINGA NOVOTEL A100 (AI) (ET) (P)
PARINGA FASTRACK Y654 (AI) (ET) (P)
Dam: ROSEDALE REBECCA F118 (P)
COBRABALD WINSTON (AI) (P)
ROSEDALE REBECCA Z195 (P)
ROSEDALE REBECCA S21 (AI) (ET) (P)



Comments

Top 1% Milk; Top 5% Birth Wt

Jonas is a cleanly made smooth polled bull with natural thickness and length of body. This bull is worthy of strong inspection. Fantastic milk figure if looking to keep any daughters.

Purchaser

\$

Index \$ Value

Domestic (\$)	Export (\$)
\$38	\$49

Charolais Group Breedplan EBV's

	Birth Weight	200 day growth	400 day growth	600 day growth	Milk
EBV	-2.1	+7	+16	+23	+17
ACC	73%	64%	66%	62%	46%

Raw Data

Weight	P8	Rib	EMA	IMF %	Scrotal

44 ROSEDALE JENNINGS J135 (P)

Born: 23/09/2013 (20 months)

Society ID: MRJ135E

LT UNLIMITED EASE 9108
LT EASY BLEND 5125 PLD (P)
LT BRENDA
Sire: ROSEDALE FIRST CLASS (AI) (P)
ROSEDALE ZINGER (P)
ROSEDALE CINDERELLA D6 (P)
ROSEDALE CINDERELLA W165 (P)

PALGROVE STAND OUT (AI)
GUNNADOO YUPPY (P)
GUNNADOO CINDY R34E (AI) (P)
Dam: ROSEDALE VIOLET E96 (P)
ROSEDALE SNAG (AI) (P)
ROSEDALE VIOLET V38 (P)
ROSEDALE VIOLET S149 (P)



Comments

Top 5% Milk Top 10% Domestic, Export, 400 Day Wt; Top 15% 600 Day Wt; Top 20% Birth Wt

A neat, soft and deep Soft skinned bull by Rosedale First Class out of a neat strong Yuppy cow. This bull will stamp thickness and style into his progeny. Once again a good low birthweight safe bull to use with good strong growth figures, as to be expected from the first class progeny.

Purchaser

\$

Index \$ Value

Domestic (\$)	Export (\$)
+\$47	+\$62

Charolais Group Breedplan EBV's

	Birth Weight	200 day growth	400 day growth	600 day growth	Milk
EBV	-0.5	+10	+33	+43	+13
ACC	72%	64%	65%	61%	45%

Raw Data

Weight	P8	Rib	EMA	IMF %	Scrotal

45 ROSEDALE JATZ (P)

Born: 11/09/2013 (20 months)

Society ID: MRJ125E

LT UNLIMITED EASE 9108
LT EASY BLEND 5125 PLD (P)
LT BRENDA
Sire: ROSEDALE FIRST CLASS (AI) (P)
ROSEDALE ZINGER (P)
ROSEDALE CINDERELLA D6 (P)
ROSEDALE CINDERELLA W165 (P)

LHD CIGAR E46 (P)
ASHWOOD PARK BACARDI (AI) (ET) (P)
ASHWOOD PARK MISS UNIVERSE (AI) (P)
Dam: ROSEDALE HONOR E213
FERNVALE TRAPPER
ROSEDALE HONOR W39 (P)
ROSEDALE HONOR R157 (P)



Comments

Top 5% Domestic, Export, Milk; Top 10% Birth Weight;

A sleek skinned easy keeping bull with a tidy clean polled head and ideal temperament. Another safe bull to use in number of scenario's. Excellent Index numbers. If you are after a good around heifer bull Jatz could be the one.

Purchaser

\$

Index \$ Value

Domestic (\$)	Export (\$)
+\$49	+\$65

Charolais Group Breedplan EBV's

	Birth Weight	200 day growth	400 day growth	600 day growth	Milk
EBV	-1.8	+12	+26	+32	+13
ACC	72%	64%	65%	62%	44%

Raw Data

Weight	P8	Rib	EMA	IMF %	Scrotal

49 ROSEDALE JUGGA (AI) (P)

Born: 09/09/2013 (20 months)
Society ID: MRJ80E

LT ASSERTION 1277
 LT BLUEGRASS 4017P (P)
 LT PEARLS BREEZE 2236
Sire: LT LEDGER 0332 (P)
 LT RIO BRAVO 3181 P (P)
 LT BRENDA 6120 PLD
 LT BRENDA'S EASE 3055 (P)

NOVOTEL
 PARINGA NOVOTEL A100 (AI) (ET) (P)
 PARINGA FASTRACK Y654 (AI) (ET) (P)
Dam: ROSEDALE BEATRIX G109 (P)
 MINNIE-VALE DEPUTY (P)
 ROSEDALE BEATRIX A122 (P)
 ROSEDALE BEATRIX W88 (AI)



Comments

Top 5 % Milk; Top 10% Domestic, Birth Wt; Top 15% Export

A great young bull that was calved down very safely from 2 year old heifer. Jugga would be a great heifer bull with good low birth genetics on both sides of his pedigree. Excellent growth figures and index Values.

Purchaser

\$

Index \$ Value

Domestic (\$)	Export (\$)
+\$41	+\$54

Charolais Group Breedplan EBV's

	Birth Weight	200 day growth	400 day growth	600 day growth	Milk
EBV	-1.5	+14	+27	+34	+15
ACC	71%	63%	65%	61%	43%

Raw Data

Weight	P8	Rib	EMA	IMF %	Scrotal

50 ROSEDALE JARETH (P)

Born: 25/09/2013 (20 months)
Society ID: MRJ247E

FERNVALE RIPPER
 FERNVALE TRAPPER
 FERNVALE PRIMADONNA (AI) (ET)
Sire: ROSEDALE DARWIN (P)
 WCR SIR DUKE (P)
 ROSEDALE GRACE A97 (AI) (ET) (P)
 ROSEDALE GRACE T9 (P)

PALGROVE WISDOM (AI) (ET) (P)
 CANOONA CAVALERO (P)
 PALGROVE ESTELLA 174 (AI) (P)
Dam: ROSEDALE RUBY F151 (P)
 FERNVALE TRAPPER
 ROSEDALE RUBY W46 (P)
 ROSEDALE RUBY Q22 (P)



Comments

Top 20% Domestic, Export & Milk

A neat well muscled moderate sized bull with all important flehing ability which is evident in all the Darwin progeny. Well balanced EBV's and great Index numbers.

Purchaser

\$

Index \$ Value

Domestic (\$)	Export (\$)
+\$33	+\$45

Charolais Group Breedplan EBV's

	Birth Weight	200 day growth	400 day growth	600 day growth	Milk
EBV	+0.1	+9	+20	+28	+10
ACC	73%	65%	67%	63%	46%

Raw Data

Weight	P8	Rib	EMA	IMF %	Scrotal

51 ROSEDALE JAMESON (P)

Born: 23/09/2013 (20 months)
Society ID: MRJ241E

FERNVALE RIPPER
 FERNVALE TRAPPER
 FERNVALE PRIMADONNA (AI) (ET)
Sire: ROSEDALE DARWIN (P)
 WCR SIR DUKE (P)
 ROSEDALE GRACE A97 (AI) (ET) (P)
 ROSEDALE GRACE T9 (P)

NOVOTEL
 PARINGA NOVOTEL A100 (AI) (ET) (P)
 PARINGA FASTRACK Y654 (AI) (ET) (P)
Dam: ROSEDALE BEATRIX E37 (P)
 ROSEDALE WILLIE (P)
 ROSEDALE BEATRIX Z185 (P)
 ROSEDALE BEATRIX W119



Comments

Top 5 % 200 Day Wt; Top 10% 600 Day Wt; Top 15% Export & 400 Day Wt; Top 20% Domestic

Jameson is another smooth bodied bull by Rosedale Darwin with a strong polled head. This bull has solid growth EBv's which are all in the top 20% of the breed. He is a versatile sire whose progeny would fit the specs for a number of markets.

Purchaser

\$

Index \$ Value

Domestic (\$)	Export (\$)
+\$36	+\$52

Charolais Group Breedplan EBV's

	Birth Weight	200 day growth	400 day growth	600 day growth	Milk
EBV	+0.5	+18	+32	+47	+14
ACC	73%	65%	67%	63%	48%

Raw Data

Weight	P8	Rib	EMA	IMF %	Scrotal

52 ROSEDALE JEBEDIAH (P/S)

Born: 07/09/2013 (20 months)
Society ID: MRJ235E

FERNVALE RIPPER
 FERNVALE TRAPPER
 FERNVALE PRIMADONNA (AI) (ET)
Sire: ROSEDALE DARWIN (P)
 WCR SIR DUKE (P)
 ROSEDALE GRACE A97 (AI) (ET) (P)
 ROSEDALE GRACE T9 (P)

NOVOTEL
 PARINGA NOVOTEL A100 (AI) (ET) (P)
 PARINGA FASTRACK Y654 (AI) (ET) (P)
Dam: ROSEDALE KRISTINA F85
 FERNVALE TRAPPER
 ROSEDALE KRISTINA Z110 (P)
 ROSEDALE KRISTINA U40 (AI) (P)



Comments

Top 5% Milk; Top 10% Domestic & Export; Top 15% 200 Day Wt; Top 20% 400 & 600 Day Wt

Purchaser

\$

Index \$ Value

Domestic (\$)	Export (\$)
+44	+62

Charolais Group Breedplan EBV's

	Birth Weight	200 day growth	400 day growth	600 day growth	Milk
EBV	-0.4	+16	+29	+42	+13
ACC	72%	64%	61%	60%	47%

Raw Data

Weight	P8	Rib	EMA	IMF %	Scrotal

53 ROSEDALE JANZA J293 (AI) (ET) (P)

Born: 23/09/2013 (20 months)
Society ID: MRJ293E

ABC LATORO 263G
 SPARROWS DURANGO 585P
 SPARROWS BLANCHE 585G
Sire: WINN MANS LANZA 610S (P)
 MERIT 5133E
 WINN MAN MERIT 036K
 MERIT SMOOTHIE 8073H

COBRABALD PICASSO (AI) (P)
 MINNIE-VALE DEPUTY (P)
 MINNIE VALE PEANUT
Dam: ROSEDALE BUTTERSCOTCH Y47 (P) (R/F)
 2UP THE VEGEMITE KID (AI) (P)
 ROSEDALE BUTTERSCOTCH V150 (P)
 ROSEDALE BUTTERSCOTCH Q142



Comments

Top 20% Milk

Purchaser

\$

Index \$ Value

Domestic (\$)	Export (\$)
+\$29	+\$42

Charolais Group Breedplan EBV's

	Birth Weight	200 day growth	400 day growth	600 day growth	Milk
EBV	-0.1	+10	+28	+39	+10
ACC	71%	63%	63%	60%	43%

Raw Data

Weight	P8	Rib	EMA	IMF %	Scrotal

54 ROSEDALE JURY J307 (P)

Born: 22/11/2013 (18 months)
Society ID: MRJ307E

S\$ MONTANA SILVER M454024 (P)
 NWMSU DOC SILVER 362 PLD M669488 (P)
 NWMSU DOLORES ET 0035
Sire: ASCOT DOC SILVER G100E (AI) (ET) (P/S)
 LT RIO BRAVO 3181 (P)
 PARINGA RIO BRAVO E310 (AI) (ET) (P)
 PALGROVE CARIN 21 (AI)

PARINGA NOVOTEL A100 (AI) (ET) (P)
 ROSEDALE DONOTELLO (P)
 ROSEDALE REBECCA A38 (P)
Dam: ROSEDALE CANDY F312 (AI) (ET) (P)
 DC MR ELIMINATOR 2210
 ROSEDALE CANDY T27 (AI) (P)
 ROSEDALE CANDY Q140 (P)



Comments

Top 5% Domestic and Export; 200, 400 and 600 Day Wt; Top 10% Milk

A thickset and appealing younger bull by Ascot Doc Silver out of a lovely Rosedale Donotello young cow. This bloke is a real nugget with great growth figures.

Purchaser

\$

Index \$ Value

Domestic (\$)	Export (\$)
+\$50	+\$70

Charolais Group Breedplan EBV's

	Birth Weight	200 day growth	400 day growth	600 day growth	Milk
EBV	+0.4	+18	+41	+56	+12
ACC	58%	59%	60%	56%	40%

Raw Data

Weight	P8	Rib	EMA	IMF %	Scrotal

55 ROSEDALE JACKPOT J308 (P/S)

Born: 24/11/2013 (18 months)
Society ID: MRJ308E

S\$ MONTANA SILVER M454024 (P)
 NWMSU DOC SILVER 362 PLD M669488 (P)
 NWMSU DOLORES ET 0035
Sire: ASCOT DOC SILVER G100E (AI) (ET) (P/S)
 LT RIO BRAVO 3181 (P)
 PARINGA RIO BRAVO E310 (AI) (ET) (P)
 PALGROVE CARIN 21 (AI)

COBRABALD PICASSO (AI) (P)
 MINNIE-VALE DEPUTY (P)
 MINNIE VALE PEANUT
Dam: ROSEDALE NICKY B41 (P)
 EC NEW TREND 6G M 498475 (P)
 ROSEDALE NICKY X7 (AI) (P)
 ROSEDALE NICKY U98 (P)



Comments

Top 5% Export and 200, 400 and 600 Day Wt; Top 10% Domestic and Milk

Another great young bull by Doc Silver. Smoothly made with plenty of lift. Will grow out into a big strong sire. Fantastic growth EBV's.

Purchaser _____ \$ _____

Index \$ Value					
Domestic (\$)			Export (\$)		
+\$48			+\$66		
Charolais Group Breedplan EBV's					
	Birth Weight	200 day growth	400 day growth	600 day growth	Milk
EBV	+0.6	+17	+40	+54	+12
ACC	69%	62%	63%	59%	45%
Raw Data					
Weight	P8	Rib	EMA	IMF %	Scrotal

56 ROSEDALE JOSS J312 (P)

Born: 18/11/2013 (18 months)
Society ID: MRJ312E

S\$ MONTANA SILVER M454024 (P)
 NWMSU DOC SILVER 362 PLD M669488 (P)
 NWMSU DOLORES ET 0035
Sire: ASCOT DOC SILVER G100E (AI) (ET) (P/S)
 LT RIO BRAVO 3181 (P)
 PARINGA RIO BRAVO E310 (AI) (ET) (P)
 PALGROVE CARIN 21 (AI)

COBRABALD PICASSO (AI) (P)
 MINNIE-VALE DEPUTY (P)
 MINNIE VALE PEANUT
Dam: ROSEDALE BEATRIX Z26 (P)
 ERNMORE ULYSEES 21U
 ROSEDALE BEATRIX 8 (AI)
 ROSEDALE BEATRIX



Comments

Top 10% Domestic and Export; Top 15% 400 and 600 Day Wt, Birth Wt and Milk; Top 20% 200 Day Wt

A great bull here with length of body and smoothness with a terrific soft skin type. This bull could be used successfully in a number of scenarios and deliver fantastic results. Very impressive growth EBV's.

Purchaser _____ \$ _____

Index \$ Value					
Domestic (\$)			Export (\$)		
+\$42			+\$60		
Charolais Group Breedplan EBV's					
	Birth Weight	200 day growth	400 day growth	600 day growth	Milk
EBV	-0.8	+15	+31	+45	+11
ACC	69%	62%	63%	59%	46%
Raw Data					
Weight	P8	Rib	EMA	IMF %	Scrotal

57 ROSEDALE KEYNOTE (P)

Born: 07/05/2014 (12 months)
Society ID: MRK21E

S\$ MONTANA SILVER M454024 (P)
 NWMSU DOC SILVER 362 PLD M669488 (P)
 NWMSU DOLORES ET 0035
Sire: ASCOT DOC SILVER G100E (AI) (ET) (P/S)
 LT RIO BRAVO 3181 (P)
 PARINGA RIO BRAVO E310 (AI) (ET) (P)
 PALGROVE CARIN 21 (AI)

NOVOTEL
 PARINGA NOVOTEL A100 (AI) (ET) (P)
 PARINGA FASTRACK Y654 (AI) (ET) (P)
Dam: ROSEDALE CINDERELLA F12 (P)
 FERNVALE TRAPPER
 ROSEDALE CINDERELLA Z31 (P)
 ROSEDALE CINDERELLA T2 (P) (TW)



Comments

Top 5% Domestic and Export, 200, 400 and 600 Day Wt, Top 10% Milk

A very growthy calf out of one of our best young cows. A lovely polled head and smoothness through the topline. Finished 2nd in her under 12months class at the Sydney Royal Show. Outstanding EBV's, a real quality package.

Purchaser _____ \$ _____

Index \$ Value					
Domestic (\$)			Export (\$)		
+\$49			+\$70		
Charolais Group Breedplan EBV's					
	Birth Weight	200 day growth	400 day growth	600 day growth	Milk
EBV	-0.3	+20	+42	+58	+12
ACC	66%	54%	53%	52%	42%
Raw Data					
Weight	P8	Rib	EMA	IMF %	Scrotal

58 ROSEDALE KENRICK (P)

Born: 19/03/2014 (14 months)
Society ID: MRK24E

NOVOTEL
 PARINGA NOVOTEL A100 (AI) (ET) (P)
 PARINGA FASTRACK Y654 (AI) (ET) (P)
Sire: ROSEDALE FAIRLANE (P)
 COBRABALD WINSTON (AI) (P)
 ROSEDALE HONOR A118
 ROSEDALE HONOR V11 (AI)

LT WYOMING WIND 4020 PLD (P)
 DSK WW YABBA DABBA DO Y4 (AI)
 PALGROVE ESTELLA 31 (AI) (ET) P
Dam: ROSEDALE BEATRIX E10 (P)
 WCR SIR FA MAC 2244 M
 ROSEDALE BEATRIX R147 (AI) (ET) (P)
 ROSEDALE BEATRIX MRB14D



Comments

A lovely clean coated bull with terrific skin and shape. Rosedale Fairlane has left behind some terrific calves which are very industry focussed with plenty of natural thickness. Get behind this young bull to appreciate his carcass qualities. His dam is another very consistent producing quality unit.

Purchaser _____ \$ _____

Index \$ Value					
Domestic (\$)			Export (\$)		
\$31			\$46		
Charolais Group Breedplan EBV's					
	Birth Weight	200 day growth	400 day growth	600 day growth	Milk
EBV	-0.1	+12	+24	+38	+14
ACC					
Raw Data					
Weight	P8	Rib	EMA	IMF %	Scrotal

59 ROSEDALE KORKER K37 (P)

Born: 03/04/2014 (13 months)
Society ID: MRK37E

NOVOTEL
 PARINGA NOVOTEL A100 (AI) (ET) (P)
 PARINGA FASTRACK Y654 (AI) (ET) (P)
Sire: ROSEDALE FAIRLANE (P)
 COBRABALD WINSTON (AI) (P)
 ROSEDALE HONOR A118
 ROSEDALE HONOR V11 (AI)

LT WYOMING WIND 4020 PLD (P)
 DSK WW YABBA DABBA DO Y4 (AI)
 PALGROVE ESTELLA 31 (AI) (ET)
Dam: ROSEDALE CANDY C36 (P)
 MINNIE-VALE DEPUTY (P)
 ROSEDALE CANDY Z34 (P)
 ROSEDALE CANDY U109 (P)



Comments

A terrific future prospect here and could easily be the pick of these yearling bulls. Great growth, length and muscle with a tidy structure and great topline. His dam is a great cow who never misses the mark. She is dam of Rosedale Harry MRH16E who is a stud sire we retained by SVY Pilgrim with some fantastic calves coming along. This bull deserves a big tick.

Purchaser _____ \$ _____

Index \$ Value					
Domestic (\$)			Export (\$)		
\$26			\$37		
Charolais Group Breedplan EBV's					
	Birth Weight	200 day growth	400 day growth	600 day growth	Milk
EBV	-0.2	+12	+21	+33	+14
ACC					
Raw Data					
Weight	P8	Rib	EMA	IMF %	Scrotal

60 ROSEDALE KRANK (AI) (ET) (P)

Born: 17/02/2014 (15 months)
Society ID: MRK8E

HFCC PLD EVOLUTION 5L
 SVY FREEDOM PLD 307N (P)
 SVY PURRFECT 184L
Sire: GERRARD MONTEZUMA 6T (P)
 RPJ IMPRESSED 121L
 GERRARD ROXANNE 18P
 GERRARD ROXANNE 27M

COBRABALD PICASSO (AI) (P)
 MINNIE-VALE DEPUTY (P)
 MINNIE VALE PEANUT
Dam: ROSEDALE GOLDEN GIRL A34 (P)
 MANDALONG LUST (P)
 ROSEDALE GOLDEN GIRL 2
 JOANAMA GOLDEN GIRL (P)



Comments

A super stylish Montezuma son out of one of our top Donor cows. Beautiful length and softness yet still has more than enough horsepower. Full brother to lot 6. This bull has a big future ahead of him.

Purchaser _____ \$ _____

Index \$ Value					
Domestic (\$)			Export (\$)		
\$7			\$41		
Charolais Group Breedplan EBV's					
	Birth Weight	200 day growth	400 day growth	600 day growth	Milk
EBV	+1.6	+9	+22	+35	+4
ACC	61%	57%	55%	56%	46%
Raw Data					
Weight	P8	Rib	EMA	IMF %	Scrotal

61 ROSEDALE KRONK (AI) (ET) (P)

Born: 17/02/2014 (15 months)

Society ID: MRK7E

NOVOTEL
PARINGA NOVOTEL A100 (AI) (ET) (P)
PARINGA FASTRACK Y654 (AI) (ET) (P)
Sire: ROSEDALE DONOTELLO (P)
FERNVALE TRAPPER
ROSEDALE REBECCA A38 (P)
ROSEDALE REBECCA V56 (P)

COBRABALD PICASSO (AI) (P)
MINNIE-VALE DEPUTY (P)
MINNIE VALE PEANUT
Dam: ROSEDALE GOLDEN GIRL A34 (P)
MANDALONG LUST (P)
ROSEDALE GOLDEN GIRL 2
JOANAMA GOLDEN GIRL (P)



Comments

Top 1% Milk; Top 5% 600 Day Wt; Top 15% Export, 400 Day Wt; Top 20% Domestic;

A quality Rosedale Donotello son in a similar mould to Rosedale Donotello himself. Lovely length of body, and natural thickness. Once again out of Golden Girl A34 who is very consistent with her progeny.

Purchaser

\$

Index \$ Value

Domestic (\$)	Export (\$)
+\$36	+\$52

Charolais Group Breedplan EBV's

	Birth Weight	200 day growth	400 day growth	600 day growth	Milk
EBV	-0.2	+13	+32	+51	+16
ACC	67%	55%	55%	55%	49%

Raw Data

Weight	P8	Rib	EMA	IMF %	Scrotal

62 ROSEDALE KEANU

Born: 6/04/2014 (13 months)

Society ID: MRK42E

S\$ MONTANA SILVER M454024 (P)
NWMSU DOC SILVER 362 PLD M669488 (P)
NWMSU DOLORES ET 0035
Sire: ASCOT DOC SILVER G100E (AI) (ET) (P/S)
LT RIO BRAVO 3181 (P)
PARINGA RIO BRAVO E310 (AI) (ET) (P)
PALGROVE CARIN 21 (AI)

NOVOTEL
PARINGA NOVOTEL A100 (AI) (ET) (P)
PARINGA FASTRACK Y654 (AI) (ET) (P)
Dam: ROSEDALE EMPRESS F13 (P)
SEAWELL OFFSHORE
ROSEDALE EMPRESS W85 (AI) (ET) (P)
ROSEDALE EMPRESS S66 (P)



Comments

Top 1% Domestic and Export; Top 5% 200 Day Wt; Top 10% 400 and 600 Day Wt; Top 15% Birth Wt and Milk;

A top quality soft and thickset young sire by Doc Silver who has worked well with the Paringa Novotel Daughters. This is bull that looks the part in both the paddock and on paper. The highest Indexing bull in the sale.

Purchaser

\$

Index \$ Value

Domestic (\$)	Export (\$)
\$62	\$86

Charolais Group Breedplan EBV's

	Birth Weight	200 day growth	400 day growth	600 day growth	Milk
EBV	-1.0	+18	+35	+48	+11
ACC					

Raw Data

Weight	P8	Rib	EMA	IMF %	Scrotal

63 ROSEDALE KUDRANI (P) (R/F)

Born: 03/04/2014 (13 months)

Society ID: MRK38E

NOVOTEL
PARINGA NOVOTEL A100 (AI) (ET) (P)
PARINGA FASTRACK Y654 (AI) (ET) (P)
Sire: ROSEDALE FAIRLANE (P)
COBRABALD WINSTON (AI) (P)
ROSEDALE HONOR A118
ROSEDALE HONOR V11 (AI)

PALGROVE STAND OUT (AI)
GUNNADOO YUPPY (P)
GUNNADOO CINDY R34E (AI) (P)
Dam: ROSEDALE BUTTERSCOTCH F68 (P) (R/F)
MINNIE-VALE DEPUTY (P)
ROSEDALE BUTTERSCOTCH Y47 (P) (R/F)
ROSEDALE BUTTERSCOTCH V150 (P)



Comments

Top 5% Milk; Top 25% 600 Day Wt;

A long and growthy fed factor bull by fairlane out of a one of our finest young cows, Butterscotch F68 who is a full sibling to Rosedale Dealer. This bull has all the extra length and thickness needed and will add value to any crossbreeding operation.

Purchaser

\$

Index \$ Value

Domestic (\$)	Export (\$)
\$27	\$40

Charolais Group Breedplan EBV's

	Birth Weight	200 day growth	400 day growth	600 day growth	Milk
EBV	+0.7	+14	+28	+46	+14
ACC					

Raw Data

Weight	P8	Rib	EMA	IMF %	Scrotal

64 ROSEDALE KEV (P)

Born: 14/03/2014 (14 months)
Society ID: MRK26E

NOVOTEL
 PARINGA NOVOTEL A100 (AI) (ET) (P)
 PARINGA FASTRACK Y654 (AI) (ET) (P)
Sire: ROSEDALE FAIRLANE (P)
 COBRABALD WINSTON (AI) (P)
 ROSEDALE HONOR A118
 ROSEDALE HONOR V11 (AI)

MINNIE-VALE DEPUTY (P)
 ROSEDALE ZINGER (P)
 ROSEDALE NICKY X7 (AI) (P)
Dam: ROSEDALE RUBY E170 (P)
 FERNVALE TRAPPER
 ROSEDALE RUBY Z98 (P)
 ROSEDALE RUBY Q22 (P) MRQ22E (P)



Comments

Top 15% Milk

A very neat soft and square Fairlane yearling to round out the Charolais draft. Even carcass scans and terrific growth for age.

Purchaser

\$

Index \$ Value

Domestic (\$)	Export (\$)
\$21	\$32

Charolais Group Breedplan EBV's

	Birth Weight	200 day growth	400 day growth	600 day growth	Milk
EBV	0.3	+12	+21	+34	+11
ACC					

Raw Data

Weight	P8	Rib	EMA	IMF %	Scrotal



Lot 58



Lot 60



Lot 62



Lot 64

SIRE HARVIE CRYSTAL D TRIGGER (R/F)(P)

Born: 5/02/2007
Society ID: n/a

LABRAMOR HALLMARK H55E
BULLS M07
BULLS 129

Sire: MAUNGAHINA TOWKAY (P)
BALDRIDGE FASTTRACK 82E (P)
MAUNGAHINA PRINCESS (P)
PALGROVE IDEAL 43 (AI) (P)

LANGS ERIC THE RED (P)
HARVIE JAGER (P)

Dam: HARVIE MS MOLSON 53M (P)
KJP SKY FIRE 51T)
HARVIE MISS FIREFLY 31F (P)
PAR MISS CANDY



Canadian Charolais EPD's								
DIR	DTRS	GL	BWT	200	400	600	MWT	
+7.9	+2.2	-2.8	-0.9	+16	+33	+39	+39	
50%	43%	53%	71%	66%	66%	64%	60%	
MILK	SS	CWT	EMA	RIB	RMP	RBY	IMF	
+13	+1.2	-	+0.5	-0.2	-0.2	-0.1	+0.3	
56%	71%	-	49%	53%	52%	52%	49%	
Index \$ Value	Domestic (\$)				Export (\$)			
	+\$43				+\$54			

A herd sire in the Harvie Family's Canadian operation. A rarely found high quality DarK polled Red Charolais sire that we purchased the semen to in 2011. Half brother to the widely used Harvie Redemption. Has done a fantastic job on his calves.

SIRE ASH-LIN DARE DEVIL(AI)(ET)(R/F)(P)

Born: 21/10/2008
Society ID: ACWD15E

SCHURRTOP 5627
LT WYOMING WIND 4020 (P)
LT CHAP'S LADY 217

Sire: HARVIE REDEMPTION 36P (R/F) (P)
HARVIE JAGER 65J (P)
HARVIE MS MOLSON 53M (P)
HARVIE MISS FIREFLY 31F (P)

NEWTHRUMS SOLAR
GLENLEA MASTERPIECE (AI) (ET)
GLENLEA JANET K9D (AI)

Dam: GLENLEA ELSA S1E (R/F) (AI)
HOPE CHAROLAIS STUD NEPTUNE
ASKRIGG TUNE LSA
ASKRIGG ELSA



Charolais Group Breedplan EBV's								
DIR	DTRS	GL	BWT	200	400	600	MWT	
+1.7	+2.8	-1.4	+0.6	+12	+25	+29	-	
54%	45%	57%	72%	64%	60%	60%	-	
MILK	SS	CWT	EMA	RIB	RMP	RBY	IMF	
+2	+1.6	-	-	-	-	-	-	
55%	52%	-	-	-	-	-	-	
Index \$ Value	Domestic (\$)				Export (\$)			
	+\$29				+\$39			

A Dark Red Charolais bull, with tremendous width of body and depth. Has done a great job in our composite program and is well represented in our draft of blacks.



65 **ROSEDALE J1 (P)**
Born: 10/08/13 (21 months) **Tag:** MR C/A G1

ROSEDALE ZINGER
Sire: ROSEDALE DAPPER (P) (R/F)
 BUNYA VALE YOU TURN ON (R/F) (P)
Dam: SELECTED ANGUS COW

Raw Data					
Weight	P8	Rib	EMA	IMF %	Scrotal
Purchaser				\$	

66 **ROSEDALE J60 (AI) (P)**
Born: 1/09/13 (21 months) **Tag:** MR C/A J60

MAUNGAHINA TOWKAY (P)
Sire: HARVIE CRYSTAL D TRIGGER
 HARVIE MS MOLSON 53M (P)
Dam: SELECTED ANGUS COW

Raw Data					
Weight	P8	Rib	EMA	IMF %	Scrotal
Purchaser				\$	

67 **ROSEDALE J56 (AI) (P)**
Born: 6/09/13 (20 months) **Tag:** MR C/A J56

MAUNGAHINA TOWKAY (P)
Sire: HARVIE CRYSTAL D TRIGGER
 HARVIE MS MOLSON 53M (P)
Dam: SELECTED ANGUS COW

Raw Data					
Weight	P8	Rib	EMA	IMF %	Scrotal
Purchaser				\$	

68 **ROSDALE J54 (P)**
Born: 4/10/13 (19 months) **Tag:** MR C/A J54

HARVIE REDEMPTION (R/F) (P)
Sire: ASH LIN DARE DEVIL (P)
 GLEN LEA ELSA (R/F) (P)
Dam: SELECTED ANGUS COW

Raw Data					
Weight	P8	Rib	EMA	IMF %	Scrotal
Purchaser				\$	

69 **ROSEDALE J131 (AI) (P)**
Born: 10/09/13 (20 months) **Tag:** MR C/A J31

MAUNGAHINA TOWKAY (P)
Sire: HARVIE CRYSTAL D TRIGGER
 HARVIE MS MOLSON 53M (P)
Dam: SELECTED ANGUS COW

Raw Data					
Weight	P8	Rib	EMA	IMF %	Scrotal
Purchaser				\$	

70 **ROSEDALE J75 (AI) (P)**
Born: 2/09/13 (20 months) **Tag:** MR C/A J75

MAUNGAHINA TOWKAY (P)
Sire: HARVIE CRYSTAL D TRIGGER
 HARVIE MS MOLSON 53M (P)
Dam: SELECTED ANGUS COW

Raw Data					
Weight	P8	Rib	EMA	IMF %	Scrotal
Purchaser				\$	

71 **ROSEDALE J71 (AI) (P)**
Born: 11/09/13 (20 months) **Tag:** MR C/A J72

MAUNGAHINA TOWKAY (P)
Sire: HARVIE CRYSTAL D TRIGGER
 HARVIE MS MOLSON 53M (P)
Dam: SELECTED ANGUS COW

Raw Data					
Weight	P8	Rib	EMA	IMF %	Scrotal
Purchaser				\$	

72 **ROSEDALE J46 (AI) (P)**
Born: 8/09/13 (20 months) **Tag:** MR C/A J46

MAUNGAHINA TOWKAY (P)
Sire: HARVIE CRYSTAL D TRIGGER
 HARVIE MS MOLSON 53M (P)
Dam: SELECTED ANGUS COW

Raw Data					
Weight	P8	Rib	EMA	IMF %	Scrotal
Purchaser				\$	

73 **ROSEDALE J36 (AI) (P)**
 Born: 9/09/13 (20 months) Tag: MR C/A J36
 MAUNGAHINA TOWKAY (P)
Sire: HARVIE CRYSTAL D TRIGGER
 HARVIE MS MOLSON 53M (P)
Dam: SELECTED ANGUS COW

Raw Data					
Weight	P8	Rib	EMA	IMF %	Scrotal
Purchaser				\$	

74 **ROSEDALE J109 (AI) (P)**
 Born: 12/09/13 (18 months) Tag: MR C/A J109
 MAUNGAHINA TOWKAY (P)
Sire: HARVIE CRYSTAL D TRIGGER
 HARVIE MS MOLSON 53M (P)
Dam: SELECTED ANGUS COW

Raw Data					
Weight	P8	Rib	EMA	IMF %	Scrotal
Purchaser				\$	

75 **ROSEDALE J49 (P)**
 Born: 3/09/13 (18 months) Tag: MR C/A J49
 HARVIE REDEMPTION (R/F) (P)
Sire: ASH LIN DARE DEVIL (P)
 GLEN LEA ELSA (R/F) (P)
Dam: SELECTED ANGUS COW

Raw Data					
Weight	P8	Rib	EMA	IMF %	Scrotal
Purchaser				\$	

76 **ROSEDALE J82 (P)**
 Born: 5/10/13 (19 months) Tag: MR C/A J82
 ROSEDALE ZINGER
Sire: ROSEDALE DAPPER (P) (R/F)
 BUNYA VALE YOU TURN ON (R/F) (P)
Dam: SELECTED ANGUS COW

Raw Data					
Weight	P8	Rib	EMA	IMF %	Scrotal
Purchaser				\$	

77 **ROSEDALE J28 (P)**
 Born: 7/08/13 (21 months) Tag: MR C/A J28
 CANOONA CAVALERO (P)
Sire: ROSEDALE GUS (P)
 ROSEDALE DAFFODIL X68 (P)
Dam: SELECTED ANGUS COW

Raw Data					
Weight	P8	Rib	EMA	IMF %	Scrotal
Purchaser				\$	

78 **ROSEDALE J22 (P)**
 Born: 27/08/13 (20 months) Tag: MR C/A J22
 DSK YABBA DABBA DO (P)
Sire: ROSEDALE ELI (P)
 ROSEDALE BOBBIN W62 (AI) (ET) (P)
Dam: SELECTED ANGUS COW

Raw Data					
Weight	P8	Rib	EMA	IMF %	Scrotal
Purchaser				\$	

79 **ROSEDALE J5 (P)**
 Born: 4/09/13 (20 months) Tag: MR C/A J5
 DSK YABBA DABBA DO (P)
Sire: ROSEDALE ELI (P)
 ROSEDALE BOBBIN W62 (AI) (ET) (P)
Dam: SELECTED ANGUS COW

Raw Data					
Weight	P8	Rib	EMA	IMF %	Scrotal
Purchaser				\$	

80 **ROSEDALE J35 (P)**
 Born: 23/09/13 (20 months) Tag: MR C/A J35
 DSK YABBA DABBA DO (P)
Sire: ROSEDALE ELI (P)
 ROSEDALE BOBBIN W62 (AI) (ET) (P)
Dam: SELECTED ANGUS COW

Raw Data					
Weight	P8	Rib	EMA	IMF %	Scrotal
Purchaser				\$	

81 **ROSEDALE J37 (P)**
Born: 17/10/13 (19 months) **Tag:** MR C/A J37

REID'S ASSASSIN
Sire: ROSEDALE DASHER (P)
 ROSEDALE VIOLET Z188 (P)
Dam: SELECTED ANGUS COW

Raw Data					
Weight	P8	Rib	EMA	IMF %	Scrotal
Purchaser				\$	

82 **ROSEDALE J41 (AI) (P)**
Born: 9/09/13 (20 months) **Tag:** MR C/A J41

MAUNGAHINA TOWKAY (P)
Sire: HARVIE CRYSTAL D TRIGGER
 HARVIE MS MOLSON 53M (P)
Dam: SELECTED ANGUS COW

Raw Data					
Weight	P8	Rib	EMA	IMF %	Scrotal
Purchaser				\$	

83 **ROSEDALE J19 (P)**
Born: 2/08/13 (21 months) **Tag:** MR C/S J19

PALGROVE COACH (P)
Sire: ROSEDALE F48 (P)
 ROSEDALE LUCY A181 (P)
Dam: SELECTED SHORTHORN COW

Raw Data					
Weight	P8	Rib	EMA	IMF %	Scrotal
Purchaser				\$	

84 **ROSEDALE J23 (P)**
Born: 12/08/13 (21 months) **Tag:** MR C/S J23

PALGROVE COACH (P)
Sire: ROSEDALE F48 (P)
 ROSEDALE LUCY A181 (P)
Dam: SELECTED SHORTHORN COW

Raw Data					
Weight	P8	Rib	EMA	IMF %	Scrotal
Purchaser				\$	

85 **ROSEDALE J24 (P)**
Born: 14/09/13 (20 months) **Tag:** MR C/S J24

PALGROVE COACH (P)
Sire: ROSEDALE F48 (P)
 ROSEDALE LUCY A181 (P)
Dam: SELECTED SHORTHORN COW

Raw Data					
Weight	P8	Rib	EMA	IMF %	Scrotal
Purchaser				\$	

86 **ROSEDALE J12 (P)**
Born: 19/08/13 (21 months) **Tag:** MR C/S J12

PALGROVE COACH (P)
Sire: ROSEDALE F48 (P)
 ROSEDALE LUCY A181 (P)
Dam: SELECTED SHORTHORN COW

Raw Data					
Weight	P8	Rib	EMA	IMF %	Scrotal
Purchaser				\$	

87 **ROSEDALE J21 (P)**
Born: 27/09/13 (18 months) **Tag:** MR C/S J21

FERNVALE RIPPER FENR1E (H)
Sire: FERNVALE TRAPPER FENT50E (H)
 FERNVALE PRIMADONNA (AI) (ET) FENP28E (D)
Dam: SELECTED SHORTHORN COW

Raw Data					
Weight	P8	Rib	EMA	IMF %	Scrotal
Purchaser				\$	

88 **ROSEDALE J2 (P)**
Born: 17/09/13 (20 months) **Tag:** MR C/S J2

PALGROVE COACH (P)
Sire: ROSEDALE F48 (P)
 ROSEDALE LUCY A181 (P)
Dam: SELECTED SHORTHORN COW

Raw Data					
Weight	P8	Rib	EMA	IMF %	Scrotal
Purchaser				\$	

89

ROSEDALE J11 (P)

Born: 7/10/13 (20 months)

Tag: MR C/S J11

REID'S ASSASSIN

Sire: **ROSEDALE DASHER (P)**
ROSEDALE VIOLET Z188 (P)Dam: **SELECTED SHORTHORN COW**

Raw Data

Weight	P8	Rib	EMA	IMF %	Scrotal
Purchaser				\$	

90

ROSEDALE J4 (P)

Born: 23/08/13 (21 months)

Tag: MR C/S J4

FERNVALE RIPPER FENRIE (H)

Sire: **FERNVALE TRAPPER FENT50E (H)**
FERNVALE PRIMADONNA (AI) (ET) FENP28E (D)Dam: **SELECTED SHORTHORN COW**

Raw Data

Weight	P8	Rib	EMA	IMF %	Scrotal
Purchaser				\$	

91

ROSEDALE J18 (P)

Born: 26/09/13 (20 months)

Tag: MR C/S J18

DSK YABBA DO Y4 (P)

Sire: **ROSEDALE DOMINO (P)**
ROSEDALE LUCY α 226 (P)Dam: **SELECTED SHORTHORN COW**

Raw Data

Weight	P8	Rib	EMA	IMF %	Scrotal
Purchaser				\$	



Lot A

92 ROSEDALE CANDY J220 (P)

Born: 08/09/2013 (20 months)
Society ID: MRJ220E

NOVOTEL
 PARINGA NOVOTEL A100 (AI) (ET) (P)
 PARINGA FASTRACK Y654 (AI) (ET) (P)
Sire: ROSEDALE FRONTIER (P)
 EC NEW TREND 6G (P)
 ROSEDALE NICKY X7 (AI) (P)
 ROSEDALE NICKY U98 (P)

COBRABALD PICASSO (AI) (P)
 MINNIE-VALE DEPUTY (P)
 MINNIE VALE PEANUT
Dam: ROSEDALE CANDY Z74 (P)
 LHD MR PERFECT Y416 (P)
 ROSEDALE CANDY V143 (AI) (P)
 ROSEDALE CANDY T27 (AI) (P)



Comments	
Top 5% Birth Wt; Top 10% Domestic, Export; Top 15% Milk	
PTIC to calve from Aug 2015, Joining details in Supplementary Information.	
Purchaser	\$

Index \$ Value					
Domestic (\$)			Export (\$)		
+\$43			+\$60		
Charolais Group Breedplan EBV's					
	Birth Weight	200 day growth	400 day growth	600 day growth	Milk
EBV	-2.1	+13	+22	+33	+11
ACC	72%	63%	65%	61%	49%
Raw Data					
Weight	P8	Rib	EMA	IMF %	Scrotal

93 ROSEDALE BEATRIX J218 (P)

Born: 30/08/2013 (21 months)
Society ID: MRJ218E

NOVOTEL
 PARINGA NOVOTEL A100 (AI) (ET) (P)
 PARINGA FASTRACK Y654 (AI) (ET) (P)
Sire: ROSEDALE FRONTIER (P)
 EC NEW TREND 6G (P)
 ROSEDALE NICKY X7 (AI) (P)
 ROSEDALE NICKY U98 (P)

FERNVALE RIPPER
 FERNVALE TRAPPER
 FERNVALE PRIMADONNA (AI) (ET)
Dam: ROSEDALE BEATRIX X51 (P)
 WCR SIR FA MAC 2244 M (P)
 ROSEDALE BEATRIX R147 (AI) (ET) (P)
 ROSEDALE BEATRIX



Comments	
Top 5% Milk; Top 10% Domestic, Export; Top 15% Birth Wt, 200 & 600 Day Wt;	
PTIC to calve from Aug 2015, Joining details in Supplementary Information.	
Purchaser	\$

Index \$ Value					
Domestic (\$)			Export (\$)		
+\$45			+\$62		
Charolais Group Breedplan EBV's					
	Birth Weight	200 day growth	400 day growth	600 day growth	Milk
EBV	-1.1	+16	+27	+42	+15
ACC	72%	64%	65%	62%	51%
Raw Data					
Weight	P8	Rib	EMA	IMF %	Scrotal

94 ROSEDALE RUBY J168 (P)

Born: 11/09/2013 (20 months)
Society ID: MRJ168E

PINAY
 IMPAIR
 MARY
Sire: PALGROVE EXPO (AI) (ET) (P)
 PALGROVE OUTBACK (P)
 PALGROVE ESTELLA 130 (AI) (P)
 PALGROVE ESTELLA 95

PALGROVE STAND OUT (AI)
 GUNNADOO YUPPY (P)
 GUNNADOO CINDY R34E (AI) (P)
Dam: ROSEDALE RUBY B189 (P)
 ROSEDALE NAVIGATOR (AI) (ET) (P)
 ROSEDALE RUBY U81 (P)
 ROSEDALE RUBY Q79 (P)



Comments	
Top 1% 400 & 600 Day Gt; Top 5% 200 Day Gt & Milk;	
PTIC to calve from Aug 2015, Joining details in Supplementary Information.	
Purchaser	\$

Index \$ Value					
Domestic (\$)			Export (\$)		
+17			+25		
Charolais Group Breedplan EBV's					
	Birth Weight	200 day growth	400 day growth	600 day growth	Milk
EBV	+2.8	+19	+45	+66	+14
ACC	73%	66%	67%	64%	51%
Raw Data					
Weight	P8	Rib	EMA	IMF %	Scrotal

95 ROSEDALE RUBY J219 (P)

Born: 08/09/2013 (20months)
Society ID: MRJ219E

NOVOTEL
 PARINGA NOVOTEL A100 (AI) (ET) (P)
 PARINGA FASTRACK Y654 (AI) (ET) (P)
Sire: ROSEDALE FRONTIER (P)
 EC NEW TREND 6G (P)
 ROSEDALE NICKY X7 (AI) (P)
 ROSEDALE NICKY U98 (P)

RC BUDSMYDAD 225 POLLED 225 P (P)
 EC NEW TREND 6G M 498475 (P)
 MISS EC DUKE 452-D 452-D D
Dam: ROSEDALE RUBY Z57 (AI) (P)
 FERVALE TRAPPER
 ROSEDALE RUBY W154 (P)
 ROSEDALE RUBY S31 (P)



Comments

Top 5% Milk; Top 10% Domestic, Export, Birth Weight;

PTIC to calve from Aug 2015, Joining details in Supplementary Information.

Purchaser _____ \$ _____

Index \$ Value					
Domestic (\$)			Export (\$)		
+\$45			+\$60		
Charolais Group Breedplan EBV's					
	Birth Weight	200 day growth	400 day growth	600 day growth	Milk
EBV	-1.9	+11	+21	+28	+14
ACC	73%	64%	66%	63%	51%
Raw Data					
Weight	P8	Rib	EMA	IMF %	Scrotal

96 ROSEDALE NELLE J275 (P)

Born: 01/09/2013 (20 months)
Society ID: MRJ275E

NOVOTEL
 PARINGA NOVOTEL A100 (AI) (ET) (P)
 PARINGA FASTRACK Y654 (AI) (ET) (P)
Sire: ROSEDALE FRONTIER (P)
 EC NEW TREND 6G (P)
 ROSEDALE NICKY X7 (AI) (P)
 ROSEDALE NICKY U98 (P)

BCR POLLED UNLIMITED 003 (P)
 ROSEDALE NAVIGATOR (AI) (ET) (P)
 ROSEDALE REBECCA (P)
Dam: ROSEDALE NELLE W152 (P)
 ROSEDALE KNOCKOUT (AI) (ET) (P)
 ROSEDALE NELLE
 JOANAMA J42D (AI)



Comments

Top 5% Milk; Top 15% Domestic, Export, Birth weight,

PTIC to calve from Aug 2015, Joining details in Supplementary Information.

Purchaser _____ \$ _____

Index \$ Value					
Domestic (\$)			Export (\$)		
+\$37			+\$50		
Charolais Group Breedplan EBV's					
	Birth Weight	200 day growth	400 day growth	600 day growth	Milk
EBV	-0.8	+14	+27	+38	+13
ACC	72%	60%	62%	60%	51%
Raw Data					
Weight	P8	Rib	EMA	IMF %	Scrotal

97 ROSEDALE LUCY J119 (P)

Born: 18/10/2009 (19 months)
Society ID: MRJ119E

NOVOTEL
 PARINGA NOVOTEL A100 (AI) (ET) (P)
 PARINGA FASTRACK Y654 (AI) (ET) (P)
Sire: ROSEDALE FRONTIER (P)
 EC NEW TREND 6G M (P)
 ROSEDALE NICKY X7 (AI) (P)
 ROSEDALE NICKY U98 (P)

FERVALE RIPPER
 FERVALE TRAPPER
 FERVALE PRIMADONNA (AI) (ET)
Dam: ROSEDALE LUCY Z38
 2UP THE VEGEMITE KID (AI) (P)
 ROSEDALE LUCY R214 (P)
 ROSEDALE LUCY 3 (AI)



Comments

Top 1% Milk; Top 5% Domestic, Export; Top 15% Birth Wt; Top 20% 600 Day Wt

PTIC to calve from Aug 2015, Joining details in Supplementary Information.

Purchaser _____ \$ _____

Index \$ Value					
Domestic (\$)			Export (\$)		
+\$53			+\$69		
Charolais Group Breedplan EBV's					
	Birth Weight	200 day growth	400 day growth	600 day growth	Milk
EBV	-1.2	+14	+28	+41	+16
ACC	75%	69%	67%	66%	65%
Raw Data					
Weight	P8	Rib	EMA	IMF %	Scrotal

98 ROSEDALE CANDY J86 (AI) (P)

Born: 29/08/2013 (18 months)
Society ID: MRJ86E

LT ASSERTION 1277
 LT BLUEGRASS 4017P (P)
 LT PEARLS BREEZE 2236
Sire: LT LEDGER 0332 (P)
 LT RIO BRAVO 3181 P (P)
 LT BRENDA 6120 PLD
 LT BRENDA'S EASE 3055 (P)

FERNVALE TRAPPER
 ROSEDALE DARWIN (P)
 ROSEDALE GRACE A97 (AI) (ET) (P)
Dam: ROSEDALE CANDY G213 (P)
 EC NEW TREND 6G M 498475 (P)
 ROSEDALE CANDY Z60 (AI)
 ROSEDALE CANDY W23



Comments

Top 5% Domestic, Export, Birth Weight; Top 15% Milk

PTIC to calve from Aug 2015, Joining details in Supplementary Information.

Purchaser \$

Index \$ Value					
Domestic (\$)			Export (\$)		
+\$57			+\$72		
Charolais Group Breedplan EBV's					
	Birth Weight	200 day growth	400 day growth	600 day growth	Milk
EBV	-2.2	+11	+27	+27	+11
ACC	61%	60%	62%	56%	41%
Raw Data					
Weight	P8	Rib	EMA	IMF %	Scrotal

99 ROSEDALE BOBBIN J141 (P)

Born: 27/08/2013 (21 months)
Society ID: MRJ141E

WCR SIR FA MAC 2244(P)
 PALGROVE WISDOM (AI) (ET) (P)
 PALGROVE REFINE 32
Sire: CANOONA CAVALERO (P)
 PLATINUM ULTRA (P)
 PALGROVE ESTELLA 174 (AI) (P)
 PALGROVE ESTELLE 131

LT WYOMING WIND 4020 PLD (P)
 DSK WW YABBA DABBA DO Y4 (AI)
 PALGROVE ESTELLA 31 (AI) (ET)
Dam: ROSEDALE BOBBIN D239 (P)
 FERNVALE TRAPPER
 ROSEDALE BOBBIN Z154 (P)
 ROSEDALE BOBBIN U97 (P)



Comments

Top 10% Milk; Top 20% Birth Wt

PTIC to calve from Aug 2015, Joining details in Supplementary Information.

Purchaser \$

Index \$ Value					
Domestic (\$)			Export (\$)		
+\$29			+\$39		
Charolais Group Breedplan EBV's					
	Birth Weight	200 day growth	400 day growth	600 day growth	Milk
EBV	-0.6	+9	+17	+24	+12
ACC	72%	65%	67%	63%	49%
Raw Data					
Weight	P8	Rib	EMA	IMF %	Scrotal

100 ROSEDALE DAFFODIL J98 (P)

Born: 17/09/2013 (20 months)
Society ID: MRJ98E

S\$ MONTANA SILVER M454024 (P)
 NWMSU DOC SILVER 362 PLD M669488 (P)
 NWMSU DOLORES ET 0035 PED-8646E (H)
Sire: ASCOT DOC SILVER G100E (AI) (ET) (P/S)
 LT RIO BRAVO 3181 P M665507 (P)
 PARINGA RIO BRAVO E310 (AI) (ET) (P)
 PALGROVE CARIN 21

HFCC PLD EVOLUTION
 SVY FREEDOM PLD
 SVY PURRFECT
Dam: ROSEDALE DAFFODIL G35 (AI) (P)
 DSK YABBA D4
 ROSEDALE DAFFODIL E5 (P)
 ROSEDALE DAFFODIL 5 (AI) (P)



Comments

Top 15% Domestic & Export Index, Top 10% 200, 400 & 600 Day Growth

PTIC to calve from Aug 2015, Joining details in Supplementary Information.

Purchaser \$

Index \$ Value					
Domestic (\$)			Export (\$)		
\$39			\$50		
Charolais Group Breedplan EBV's					
	Birth Weight	200 day growth	400 day growth	600 day growth	Milk
EBV	+0.3	+16	+38	+44	+9
ACC	71%	62%	64%	60%	40%
Raw Data					
Weight	P8	Rib	EMA	IMF %	Scrotal

101

ROSEDALE BUTTERSCOTCH J299 (ET) (P)

Born:	22/09/13 (20 months)
Society ID:	MRJ299E

ABC LATORO 263G
 SPARROWS DURANGO 585P
 SPARROWS BLANCHE 585G
Sire: WINN MANS LANZA 610S (P)
 MERIT 5133E
 WINN MAN MERIT 036K
 MERIT SMOOTHIE 8073H

COBRABALD PICASSO (AI) (P)
 MINNIE-VALE DEPUTY (P)
 MINNIE VALE PEANUT
Dam: ROSEDALE BUTTERSCOTCH Y47 (P) (R/F)
 2UP THE VEGETITE KID (AI) (P)
 ROSEDALE BUTTERSCOTCH V150 (P)
 ROSEDALE BUTTERSCOTCH Q142



Comments

Top 20% 200, 400 & 600 Day growth

PTIC to calve from Aug 2015, Joining details in Supplementary Information.

Purchaser \$

Index \$ Value

Domestic (\$)	Export (\$)
\$28	\$41

Charolais Group Breedplan EBV's

	Birth Weight	200 day growth	400 day growth	600 day growth	Milk
EBV	0.3	+15	+32	+45	+8
ACC	60%	56%	52%	52%	43%

Raw Data

Weight	P8	Rib	EMA	IMF %	Scrotal
<input type="text"/>	<input type="text"/>	<input type="text"/>	<input type="text"/>	<input type="text"/>	<input type="text"/>





Lot 1



Lot 2



Lot 3



Lot 4



Lot 7



Lot 8



Lot 11



Lot 16



Lot 19



Lot 20



Lot 21



Lot 22



Lot 49



Lot 24



Lot 26



Lot 27



Lot 29



Lot 39



Lot 43



Lot 32



Lot 33



Lot 34



Lot 35



Lot 44

Tribute to Robert Millner 1927-2014

Our fond tribute to Robert (Rob) Millner (6th July 1927-6th June 2014) by Michael.

The following is our personal recognition and tribute to a man we all loved and respected. We acknowledge his achievements and dedication to the Charolais breed and the Beef Industry.

Dad, with Mum, commenced the Rosedale Charolais Stud in 1970 after reading many articles on this 'new French breed' and using them for crossbreeding in the late 60's. Dad was an enthusiastic prime lamb producer then and he fully embraced the crossbreeding theory for beef. In 1969 he purchased semen from the French bulls Sucre and Salon to AI their Shorthorn cows. In 1970 he imported 20 PTIC Charolais/Angus heifers from Roger Alexander, Hawkes Bay, New Zealand. In another trip to New Zealand in 1972 he purchased the full French Carabinier female Sundowner Ranches Honor. Her second calf, born in 1975 by Apollon, Rosedale KB had a profound influence on Rosedale and the Charolais breed. We were hooked! The more we saw of the capabilities of this breed the more we knew we were on the right track. The Stud had a strong foundations, I had completed school and was home working with Dad, doing what we loved, together, with passion and enthusiasm.

Dad was always very keen to promote the carcass attributes of Charolais and was a leading competitor in steer competitions from as early as 1973, amassing an incredible number of 'hoof and hook' championships, including the top awards at both Sydney and Melbourne Shows. His strong advocacy for trials and carcass competitions continues today at Rosedale in order to 'evaluate' our breeding programme and genetics in current markets. Dad was very proud in 2013 when Rosedale won the 'trifecta'- Beef Spectacular, RAS Beef Challenge and the Orange National Field days Trial with 3 different teams of Charolais X steers. He was very chuffed when James, the 3rd generation Millner, took an active roll in advancing Rosedale Charolais into the future.

He was a member of Federal Council from 1975-1983 and served on the NSW Committee from 1975-1983. Dad relocated to Western Australia in 1983, gave me custody of the Stud and subsequently co-founded the Downunder Charolais Stud in 1986 with his wife Lesley. He served on the WA Committee from 1989-95. Proudly he accepted Honorary Life Membership from the Charolais Society of Australia in 1999.

"Rosedale could well be a blueprint for the establishment of a stud from grading-up project. Culling has been particularly severe. Credibility has been maintained from the beginning by exhibition in all major carcass competitions and winning with 3/8 to 7/8 blood.

In my opinion, this is one of the best beef herds I have seen and I am reasonably confident that it will be one of our leading Charolais Studs in the future."

Extract, written by Frank Hodder,
CEO Charolais Society, 1978



The first purebred Charolais calf born west of the mountains (1974)



Rob, Michael & Jenny with the Grand Champion Carcass (R.E.S. 1981)



'Rosedale Charolais' 126 Rosedale Road, Browns Creek via Blayney NSW 2799

James & Sarah Millner m: 0425 341 341 p: (02) 6368 2735 e: millner@rosedalecharolais.com.au

Michael & Jenny Millner m: 0409 682 339 p: (02) 6368 7195

www.rosedalecharolais.com.au