



webb

BLACK SIMMENTALS & SIM ANGUS

ANNUAL BULL AND FEMALE VIDEO SALE



Friday 6th March, 2015

Open 9 am

Video Auction 12 noon

40 Bulls / 20 Females

Sale Gallery



Lot 2 | **WEBB TANK J0842**



Lot 3 | **WEBB UPGRADE J0873**



Lot 6 | **WEBB TANK J0815**



Lot 8 | **WEBB TANKER J0837**



Lot 9 | **WEBB TANK J0887**



Lot 10 | **WEBB TANK J0864**



January 2015 Weaner Results
\$910 for Webb Black Simmental X Angus Steers 10 mths old

webb

Webb Black Simmentals

Annual Bull and Female Video Sale

12 noon Friday 6th March 2015

On property at 580 Break O Day Road, Glenburn VIC 3717

Offering

40 Bulls

5 Cow and Calf units

10 Joined Heifers

5 Led Yearling Heifers

View videos online at webbblacksimmentals.com.au

Inspections from 5pm Thursday 5th March and 9am Sale day

BBQ dinner available Thursday evening - RSVP appreciated

Contact: **Office**
03 5797 8173
e: info@webbblacksimmentals.com.au

Ben Coad
0428 248 076

Duncan Newcomen
0418 873 765

Rodwells: Adam Mountjoy 0428 926 610





Welcome

On behalf of Jane and myself, I welcome you to Webb Pastoral for our Annual sale. 2014 has seen a great change for the Webb team and I am excited with the direction in which we are heading. I would like to introduce to you Ben Coad, our new Farm Manager and his wife Cindy who works alongside Ben and also in our office. We also welcome to the team Duncan Newcomen, as our Stud Manager, who has over 50 years behind him in the stud and commercial cattle game.

Along with the new faces in our team our farm business has been restructured which has seen our commercial numbers increase and a more rigid selection of our stud cattle so that at all times we are presenting to you only the best cattle, whether stud or commercial. It is our intention to continue to offer, annually, the best stud bulls and elite females that is possible.



Throughout this transformation of the business, Webb Black Simmentals have continued to perform exceptionally well, with bulls being sold in a drought effected market in Northern Queensland at the Australian Topstock Barcaldine Bull sale with a 90% clearance and achieving the equal top price of the sale. It is fantastic to hear that our clients in the far north are now getting some of the much needed rains.

We are proud to be able to offer you a line-up of bulls that we believe will suit from the astute stud cattleman to the commercial breeder. These bulls have had to perform on their own and have only been supplementary fed for the last 8 weeks before the sale. This year we are also excited to showcase females from the heart of our herd in our sale.

Jane and I would like to thank our entire team for all the work that is put in behind the scenes to get us to this day each year. We are very fortunate to have such passionate people to work with.

Should you wish to view our cattle prior to the sale, please call Ben or Duncan. We look forward to seeing you at the sale on Friday, March 6th.

Kind regards,

Philip Webb



Ben Coad, Farm Manager



Ben with wife Cindy and their children

From the Farm Manager

I would like to welcome you to the Webb Black Simmental Annual on property sale. It has been an exciting time for our family to take over the management of Webb Black Simmentals for Philip and Jane Webb. We have also been fortunate enough to have Duncan Newcomen on board for guidance over this time.

Webb Black Simmentals have taken on a new direction and this has seen the female herd strictly classed with only the best 150 females being selected to carry the stud into the new season while our remaining cows will be doing the hard yards in our commercial herd to prove our programs relevance. We are selecting bulls that will produce heavier weaners that will fatten off grass, have an optimum amount of muscle and are structurally correct. Temperament is also very important in the selection process as is fertility.

The cattle that we have selected for this sale are the best bulls and females of the drop. Bulls were selected on muscling, conformation, temperament and softness. The sires of these bulls include TNT Tanker, a bull that has put a lot of muscling and softness into his calves, MR NLC Upgrade, another bull that puts a lot of red meat into his progeny, high EMA as well as length and extra frame, and Welshs Dew it Right, a low birth weight bull that did the job getting good calves on the ground from our heifers. An important measure of our bulls selection was scanning for fat cover which was done in early December straight off grass so to evaluate the genetic potential for this trait. We were very happy with the results and found that our sires are giving us the fat cover desired as can be seen in the raw data.

This year we have decided to sell a top group of females that have been selected on structure, thickness and femininity. Due to the enquiry's we have had for our females we have catalogued some excellent 3 in 1 packages, a great line of joined heifers and also 5 outstanding show prospect heifers.

An exciting change to this year's sale format is the introduction of a video sale. All sale lots have been videoed and are able to be viewed on our website at your convenience. Auctionsplus will also operate with our sale giving interstate buyers more opportunity to purchase.

Please do not hesitate to make contact with any enquiries and visits are most welcome prior to sale day. I look forward to seeing you at our sale.

Kind regards,

Ben Coad

Sale Information

INSPECTIONS & SALE TIME Sale animals will be yarded and available for inspection from 5pm Thursday the 5th March and we invite you to join us for a BBQ dinner afterwards. RSVP for dinner to Cindy on 57978173 would be appreciated.

On sale day, Friday 6 March 2015 inspection is from 9am. Selling will commence at 12noon.

Private inspection prior to sale day is welcome and may be arranged by contacting Duncan Newcomen on 0418873765 or Ben Coad on 0428248076. Quoted times are Victorian daylight savings time.

HEALTH Webb Black Simmental sale cattle have been ear notch tested free of Pestivirus.

All cattle have been vaccinated with both shots of 7 in 1, Pestiguard, had Selpour applied and drenched with Genesis pour on prior to sale. Bulls have been vaccinated for Vibrosis. Females will be pregnancy tested prior to Sale.

Webb Black Simmentals are Beef Only.

COAT COLOR Sale Bulls will have DNA results for coat colour, Homozygous or Heterozygous Black available on sale day.

TRANSPORT Cattle will be available for delivery immediately after the sale. Transport representatives will be available on sale day.

TRANSFERS Cattle are registered with the Australian Simmental Breeders Association and are eligible for transfer. Please indicate on the buyer's instruction sheet if you would like your purchases transferred. Please note there are a select number of bulls in the catalogue that will be sold as commercial bulls only and are not registered.

AUCTIONS PLUS AuctionsPlus will be operating at the sale. Please register 24 hours prior to the sale.

BUYER REGISTRATION Buyers are requested to register with the selling agent prior to commencement of the sale and to display their registration number at the fall of the hammer.

PHONE BIDDING Please contact the selling agent to arrange phone bidding.

GST All lots are sold GST exclusive.

REBATE A rebate of 3% is available to outside agents introducing buyers in writing to the selling agent prior to the sale and settling within 7 days of invoice.

GUARANTEE All cattle are fertile and structurally sound to the best of our knowledge.

If during the next 12 months, an animal breaks down due to reasons other illness, injury or disease contracted after leaving Webb's we will:

1. Provide you with a satisfactory replacement as quickly as is practical so as to minimise the disruption to your program or
2. If a replacement is not available, issue you with a full credit (minus salvage value) for the purchase of any one animal at the next Webb sale. In some cases buyers may be requested to supply a veterinary certificate.

INSURANCE Webb Black Simmentals recommends insuring all purchases at the fall of the hammer. An insurance representative will be in attendance at the sale.

SALE DAY CATERING Morning tea and lunch will be available on sale day with the compliments of the Webb family.

ACCOMMODATION OPTIONS

Royal Mail Hotel	88 High Street, Yea	57972515
Yea Peppercorn Hotel	21 Station Street, Yea	57972000
Yea Motel	8 Miller Street, Yea	57972660
Tartan Motel	17 High Street, Yea	57972972

DISCLAIMER Whilst all due care and attention has been paid to the accuracy of information in the preparation of this catalogue the vendors and their agents do not accept any responsibility for errors or omissions. Prospective purchasers should satisfy themselves by inspection or otherwise as to the accuracy of the particulars.

Please Note: People entering upon this property for any purpose what so ever including the attendance at cattle auctions do so at their own risk. We are not liable to you for any personal injury or death suffered by you and for the theft, loss or damage to any property caused or contributed to by us or by negligence deliberate act or unlawful conduct. "We" or "Us" or "Our" refer to the owners, their employees, contractors and agents and each of them.



Bringing Your New Bull Home

The purchase of a new bull is a significant investment. The greatest risk to this investment is in the first six months. Webb Black Simmentals recommends you insure your new bull for six months minimum from the purchase date. The following factors should also be considered to reduce any risk.

There will always be bulls from all breeds who will find the sale and delivery process stressful. They are subjected to unknown yards, separation from their mates, trucking, different handlers, paddocks and different feeding.

UPON ARRIVAL When your new bull/s is delivered ensure he socializes with a small group of animals (definitely not other bulls) in the yards. Have hay and water available and leave him overnight to settle in. Do not unload him directly into a paddock, this is when injuries may occur with break out attempts.

PRE JOINING Ideally a breeding soundness examination which includes structural assessment and a service ability test are recommended particularly for second joining and on older bulls annually. This will give you the opportunity to remove any non working bulls thus increasing the fertility performance of the herd.

JOINING Do not mix your young bull in with older bulls at mating. Preferably your new bull should be mated with a herd (maximum of 40 females) as a single sire or with bulls of similar age. Allowing your bull to run with younger bulls a few weeks before mating will let them sort out their pecking order. They will then be able to concentrate on work. Keep a close watch on your bulls during mating as the majority of bull fertility issues develop during the joining period, rather than being pre existing problems. Also keep a watch for lameness or injuries around the sheath. Early detection and examination by a qualified veterinarian gives a bull a better chance of full recovery. Replace any suspect bull within the herd as soon as possible to avoid a low conception rate.

POST JOINING Your herd depends on the good management practice of bulls. This is a year round procedure. Bulls need to be moved to a paddock preferably separating the young bulls from the older bulls this will minimize injury between joining. The older bulls need to have restricted feed whilst the young bulls will continue to develop with access to nutrition of a higher level.



COAT VARIATIONS

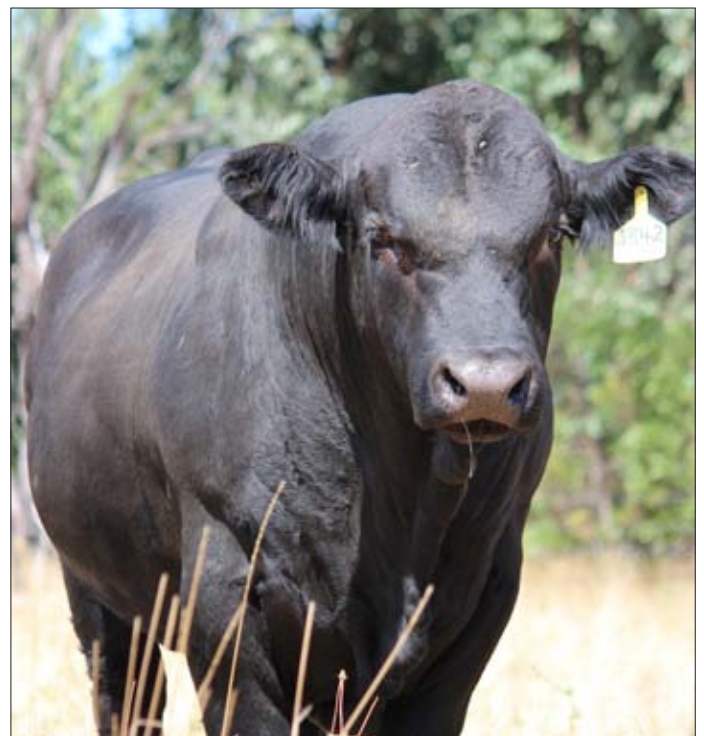
The coat colour of animals is playing a role in marketing in our beef industry currently. Colour is not associated to the primary sale

product – meat. Webb Black Simmentals are well aware of these industry drivers and ask that you consider the following options when selecting a bull.

- **Homozygous Black Bulls, with a black coat**
These bulls have two black genes, in general and discounting other genetic complications such as the diluter gene, all the calves of a homozygous black bull will be predominantly black, regardless of the colour of your cows. This is because the black gene is dominant. If you insist on black calves with no exceptions, a homozygous black bull would be your choice.
- **Heterozygous Black Bulls, with a black coat**
These bulls have one black gene and one red gene. A large proportion of their calves will be black. As the red gene is recessive, his calves cannot be red unless the mother also carries a red gene.

Generally, if you cross your heterozygous black bull with:

- Homozygous black cows then 100% of calves will be black.
- Heterozygous black cows on average 75% will be black.
- Homozygous red cows – on average 50% of these calves will be black, and 50% will be red. This is because approximately 50% will receive his black gene, and calves that receive the black gene must be black.
- Black cows that are a mixture of homozygous and heterozygous – the calves will average between 75% and 100% black.



EBV Percentile Bands

January 2015 SIMMENTAL TRANS TASMAN GROUP BREEDPLAN - Percentile Bands for all 2013 born animals

Use this table as a guide to compare individual animals with the current genetic level of the breed

	Calv-Ease		Birth		Growth					Fert		Carcase				Indexes				Extra		
	Dir	Dtrs	GL	Bwt	200	400	600	Mwt	Milk	SS	DC	Cwt	EMA	Rib	P8	RBV	IMF	DM	EM	NT	VT	Doc
	%		days		kg					cm	days	kg	sq.cm	mm		%	\$				%	
High 1%	+8.8	+4.7	-5.6	-4.7	+35	+61	+70	+73	+17	+1.9	-8.4	+46	+5.6	+2.9	+2.6	+1.6	+1.9	+61	+82	+30	+55	+30
High 5%	+6.4	+3.5	-3.8	-3.0	+30	+53	+59	+60	+14	+1.2	-4.8	+40	+4.6	+2.0	+1.7	+1.3	+1.3	+52	+66	+25	+48	+22
High 10%	+5.2	+2.9	-3.2	-2.0	+28	+49	+53	+53	+13	+1.0	-4.1	+37	+4.1	+1.3	+0.9	+1.2	+0.9	+48	+59	+23	+43	+17
High 15%	+4.3	+2.4	-2.7	-1.2	+26	+46	+49	+48	+12	+0.8	-3.7	+34	+3.7	+0.9	+0.6	+1.1	+0.6	+45	+55	+21	+40	+14
High 20%	+3.6	+2.1	-2.3	-0.6	+25	+43	+45	+44	+12	+0.7	-3.4	+31	+3.4	+0.6	+0.4	+1.0	+0.5	+42	+51	+20	+38	+11
High 25%	+3.0	+1.8	-2.0	-0.1	+23	+40	+41	+40	+11	+0.6	-3.1	+29	+3.1	+0.5	+0.2	+0.9	+0.4	+40	+49	+19	+35	+9
High 30%	+2.5	+1.5	-1.7	+0.3	+22	+38	+38	+37	+11	+0.5	-2.8	+27	+2.8	+0.3	+0.1	+0.8	+0.3	+38	+46	+18	+34	+8
High 35%	+2.1	+1.3	-1.5	+0.6	+21	+36	+36	+34	+10	+0.5	-2.6	+25	+2.6	+0.2	+0.0	+0.8	+0.3	+36	+44	+17	+32	+6
High 40%	+1.6	+1.0	-1.3	+0.9	+20	+34	+34	+31	+10	+0.4	-2.4	+23	+2.4	+0.1	-0.1	+0.7	+0.2	+35	+42	+17	+30	+5
High 45%	+1.2	+0.7	-1.1	+1.2	+19	+32	+31	+28	+9	+0.4	-2.2	+22	+2.2	+0.0	-0.1	+0.6	+0.2	+33	+39	+16	+28	+4
50%	+0.8	+0.4	-0.9	+1.5	+18	+30	+28	+26	+9	+0.3	-1.9	+20	+2.0	+0.0	-0.2	+0.6	+0.1	+31	+37	+15	+27	+2
Low 45%	+0.4	+0.0	-0.7	+1.7	+17	+29	+26	+23	+8	+0.2	-1.7	+19	+1.9	-0.1	-0.3	+0.5	+0.1	+30	+35	+14	+26	+1
Low 40%	-0.1	-0.3	-0.5	+1.9	+16	+27	+24	+21	+7	+0.2	-1.5	+18	+1.7	-0.2	-0.3	+0.5	+0.1	+28	+32	+13	+24	+0
Low 35%	-0.5	-0.6	-0.4	+2.1	+15	+25	+21	+18	+7	+0.1	-1.2	+16	+1.6	-0.2	-0.4	+0.4	+0.0	+27	+29	+12	+23	-1
Low 30%	-0.9	-1.0	-0.2	+2.3	+14	+23	+19	+16	+6	+0.1	-0.9	+15	+1.4	-0.3	-0.5	+0.4	+0.0	+25	+27	+12	+21	-2
Low 25%	-1.4	-1.3	-0.1	+2.5	+13	+22	+16	+13	+5	+0.0	-0.6	+13	+1.2	-0.4	-0.6	+0.3	+0.0	+23	+24	+11	+20	-3
Low 20%	-2.0	-1.7	+0.1	+2.8	+12	+20	+13	+10	+5	-0.1	-0.3	+12	+1.1	-0.5	-0.7	+0.2	+0.0	+20	+21	+10	+18	-5
Low 15%	-2.6	-2.1	+0.3	+3.1	+10	+17	+9	+6	+4	-0.2	+0.0	+10	+0.9	-0.6	-0.8	+0.1	-0.1	+18	+17	+8	+16	-6
Low 10%	-3.5	-2.7	+0.6	+3.5	+8	+15	+6	+2	+3	-0.4	+0.3	+8	+0.7	-0.8	-1.0	-0.1	-0.1	+15	+13	+7	+14	-8
Low 5%	-5.0	-3.6	+0.9	+4.1	+4	+11	-1	-4	+2	-0.7	+0.8	+5	+0.3	-1.0	-1.2	-0.6	-0.2	+11	+7	+5	+11	-10
Low 1%	-8.0	-5.3	+1.7	+5.2	-3	+2	-10	-14	+0	-1.3	+1.8	+0	-0.6	-1.4	-1.7	-1.2	-0.4	+5	-2	+2	+4	-13



EBV Trait Explanation

ESTIMATED BREEDING VALUES (EBVS)

The EBV is the best estimate of an animal's genetic merit for that trait.

ACCURACY

An accuracy is presented with every EBV and gives an indication of the amount of information that has been used in the calculation of that EBV. The higher the accuracy the lower the likelihood of change in the animal's EBV as more information is analysed for that animal or its relatives. Accuracy below 75% should be considered low.

CALVING EASE

EBVs are based on calving ease (CE) scores, birth weights and gestation length information. More positive EBVs are favourable and indicate easier calving.

DIR: Direct calving ease indicates how this animal influences the birth of its progeny.

DTRS: Daughter's calving ease indicates how well the animal produces daughters that have easier calving.

BIRTH

GL: Gestation Length EBV (days) is based on AI records. Lower (negative) GL EBVs indicate easier calving and increased growth after birth.

BWT: Birth Weight EBV (kg) is based on the measured birth weight of animals, adjusted for dam age. The lower the value the lighter the calf at birth and the lower the likelihood of a difficult birth. This is particularly important when selecting sires for use over heifers.

GROWTH

200: 200-Day Growth EBV (kg) is calculated from the weight of animals taken between 80 and 300 days of age. Values are adjusted to 200 days and for age of dam. This EBV is the best single estimate of an animal's genetic merit for growth to early ages.

400: 400-Day Weight EBV (kg) is calculated from the weight of progeny taken between 301 and 500 days of age, adjusted to 400 days and for age of dam. This EBV is the best single estimate of an animal's genetic merit for yearling weight.

600: 600-Day Weight EBV (kg) is calculated from the weight of progeny taken between 501 and 900 days of age, adjusted to 600 days and for age of dam. This EBV is the best single estimate of an animal's genetic merit for growth beyond yearling age.

MWT: Mature Cow Weight EBV (kg) is an estimate of the genetic difference in cow weight at 5 years of age.

MILK: 200-Day Milk EBV (kg) is an estimate of an animal's milking ability. For sires, this EBV is indicative of their daughter's milking ability as it affects the 200 and 400 day weight of their calves.

FERTILITY

SS: Scrotal Size EBV (cm) is an indicator of male fertility in regards to semen quality and quantity. Higher (positive) EBVs indicate higher fertility. SS is also positively associated with female fertility.

DC: Days to Calving EBV (days) is an indicator of genetic differences in female fertility, expressed as the number of days from the start of the joining period until subsequent calving. Lower (negative) EBVs indicate more favourable female fertility.

CARCASE

CWT: Carcase Weight EBV (kg) estimates the genetic difference in carcase weight at a standard age of 650 days.

EMA: Eye Muscle Area EBV (cm²) estimates genetic differences in eye muscle area at the 12/13th rib site of a 300kg dressed carcase. More positive EBVs indicate better muscling on animals.

RIB: Rib Fat EBV (mm) estimates the genetic differences in fat depth at the 12/13th rib in a 300kg dressed carcase. More positive EBVs indicate more subcutaneous fat and earlier maturity.

RUMP: Rump Fat EBV (mm) estimates the genetic differences in fat depth at the P8 site of a 300kg dressed carcase. More positive EBVs indicate more subcutaneous fat and earlier maturity.

RBV%: Retail Beef Yield Percent EBV (%) represents total (boned out) meat yield as a percentage of a 300kg dressed carcase. A more positive EBV indicates higher percentage yield for the 300kg carcase size.

IMF%: Intra-muscular Fat Percent EBV (%) is an estimate of the genetic difference in the percentage of intra-muscular fat at the 12/13th rib site in a 300kg carcase. Depending on market targets, larger more positive values are generally more favourable.

The Simmental Trans Tasman GROUP BREEDPLAN Estimated Breeding Values contained in this Sale Catalogue were compiled by the Agricultural Business Research Institute (ABRI) from data supplied by the breeders. Neither Simmental Australia, Simmental New Zealand nor the ABRI oversee or audit the collection of this data.



SIMMENTAL
AUSTRALIA



Reference Sires

TNT TANKER U263 (P) (BL)



SOCIETY ID: IMUPD263 SEX: M DOB: 29/02/2008

NICHOLS LEGACY G151(P) (BL) TNT FORTUNE BUILDER H122
 ELLINGSON LEGACY M229 (P) TNT FIVE STAR P275
 ELLINGSON MS PSTOCK K58 (P) TNT MISS ALMA J83
Sire: MR NLC SUPERIOR S6018 (P) (BL) **Dam: TNS MISS S17**
 PVF-BF BF26 BLACK JOKER (P) JF EW DIMENSION 903J
 EBS JOKERS CAREN (P) TNT MISS HONEY L9
 PVF BEEFCAKES 0713K (P) TNT MISS ALLIE J1

SIMMENTAL GROUP BREEDPLAN EBVs January 2015											
	CED	CEM	GL	BW	200	400	600	MCW	MILK	SS	DC
EBV	-0.9	2.1	-4.2	1.8	34	63	50		4	0	
<i>Acc</i>	52	40	84	95	91	90	84		38	73	
	CWT	EMA	RIB	RUMP	RBY	IMF	INDEXES				
EBV	42	3.4	-0.7	-1.5	1.3	0.1		Dom: 55	Export: 55		
<i>Acc</i>	74	55	69	70	55	54		Nth Term: 25	Vealer: 52		

MR NLC UPGRADE U8676 (P) (BL)



SOCIETY ID: IMUPD8676 SEX: M DOB: 05/03/2008

NICHOLS BLK DESTINY D12 TNT CRUZER K265
 NICHOLS LEGACY G151(P) (BL) GLS MOJO M38 (P)
 NICHOLS DEBRA D81 GLS HOSTESS H16 (P)
Sire: ELLINGSON LEGACY M229 (P) **Dam: MS NLC MOJO S6119 B (P)**
 LRS PREFERRED STOCK 370C (P) (BL) HS-GFI STOCK MARKET G33 (P)
 ELLINGSON MS PSTOCK K58 (P) GFI DARLA M410 (P)
 ELLINGSON BL CLOUYD D458 (P) SCC DARLA 419J (P)

SIMMENTAL GROUP BREEDPLAN EBVs January 2015											
	CED	CEM	GL	BW	200	400	600	MCW	MILK	SS	DC
EBV	1.3		-2.9	0.2	32	57	42			-0.5	
<i>Acc</i>	45		83	94	88	89	82			84	
	CWT	EMA	RIB	RUMP	RBY	IMF	INDEXES				
EBV	47	6.5	-1.1	-2.2	2.5	0.5		Dom: 55	Export: 58		
<i>Acc</i>	72	57	71	72	58	57		Nth Term: 24	Vealer: 58		

WELSHS DEW IT RIGHT 067T



SOCIETY ID: IMUPC067 SEX: M DOB: 02/10/2007

NICHOLS LEGACY G151(P) (BL) SRS FORTUNE 500
 CNS DREAM ON L186 (P) (BL) (ET) STF MR MOMENTUM H508
 CNS SHEEZA DREAM K107W LRS MS ZINGER 508C
Sire: HTP SVF IN DEW TIME IMU P A 094 (P) (BL) **Dam: SVF/NJC SENERITA N29**
 GW LUCKY DICE 187H (P) (BL) BLACK IRISH KANSAS (BL)
 HTP SVF HONEYDEW NJC EBONY ANTOINETTE
 HC HONEYSUCKLE ROSE NJC BETSY ROSS

SIMMENTAL GROUP BREEDPLAN EBVs January 2015											
	CED	CEM	GL	BW	200	400	600	MCW	MILK	SS	DC
EBV	8.4	3.2	-2.6	-3.5	18	28	4		3	-0.1	
<i>Acc</i>	45	36	78	80	79	82	72		42	61	
	CWT	EMA	RIB	RUMP	RBY	IMF	INDEXES				
EBV	20	3.3	0.6	0	1.1	0.3		Dom: 47	Export: 44		
<i>Acc</i>	66	52	65	66	54	53		Nth Term: 16	Vealer: 49		

BONNYDALE INDIAN RIVER E209



SOCIETY ID: MBBPE209 SEX: M DOB: 14/02/2009

BURNS BULL X339U HC POWERR DRIVE 88H
 WLE POWER STROKE KENCO/MF POWERLINE 204L
 NICHOLS JOLIETTE C75 SAFN GLAMOUR 11J
Sire: HC HUMMER 12M (P) (BL) **Dam: BONNYDALE GEORGIA C219 (P) (BL) (ET)**
 NICHOLS BLK DESTINY D12 ASR LITTLE BEAR L126
 LBR DESTINY'S DREAM K830 ASR LITTLE DESSI P420 (P)
 LBR RIGHT DREAM H830 MLC DESSY K53

SIMMENTAL GROUP BREEDPLAN EBVs January 2015											
	CED	CEM	GL	BW	200	400	600	MCW	MILK	SS	DC
EBV	4.4	4.4	-3.6	-1.9	16	33	14		1	0.3	
<i>Acc</i>	61	61	78	94	89	90	84		67	88	
	CWT	EMA	RIB	RUMP	RBY	IMF	INDEXES				
EBV	21	5.5	1.4	1	0.9	0.6		Dom: 53	Export: 57		
<i>Acc</i>	78	69	78	79	69	67		Nth Term: 24	Vealer: 46		

Future Reference Sires

ASR AUGUSTUS Z2165

SOCIETY ID: IMUPH2165 SEX: M DOB: 12/03/2012



SRS J914 PURE BEEF
ESNK31
ESK31
Sire: RCR AUGUSTUS R54
KS BAXTER L791
RCR NICOLE N32
RCR MISS HA L335

NICHOLS LEGACY G151(P) (BL)
HOOK'S SHEAR FORCE 38K
C&D TRACY
Dam: ASR MS JORDAN W916
ASR LITTLE BEAR L126
ASR MS JORDAN T734
ASR MS JORDAN R540

CCR COWBOY CUT

SOCIETY ID: IMUPH5048 SEX: M DOB: 20/02/2012



NICHOLS LEGACY G151(P) (BL)
HOOK'S SHEAR FORCE 38K
C&D TRACY
Sire: TRIPLE C SINGLETARY S3H (P)
ELLINGSON BLACKPERFECTOR
LUCAS JOSIE 19K (P)
RIVER BLACK JOSIE 43B 755G

CNS DREAM ON L186 (P) (BL) (ET)
HTP SVF IN DEW TIME IMU P A 094 (P) (BL)
HTP SVF HONEYDEW
Dam: CCR NS 4045 TIME 7322T
CCR AMERITRADE 155J
CCR MS PRETY 4045P
CCR MS W80 DESPERADO

WEBB ENIGMA E323 (P) (BL) (ET)

SOCIETY ID: WEBPE323 SEX: M DOB: 28/08/2009



BURNS BULL X339U
WLE POWER STROKE
NICHOLS JOLIETTE C75
Sire: HC HUMMER 12M (P) (BL)
NICHOLS BLK DESTINY D12
LBR DESTINY'S DREAM K830
LBR RIGHT DREAM H830

LRS PREFERRED STOCK 370C (P) (BL)
SRS J914 PREFERRED BEEF (P) (BL)
SRS G733 GLIMMER
Dam: CO OP PREFERRED BEEF C602
PPSR MONTANA IRISH 107D
MIISS PRICKLY PEAR 615F
MIISS PRICKLY PEAR 318C

SIMMENTAL GROUP BREEDPLAN EBVs January 2015											
	CED	CEM	GL	BW	200	400	600	MCW	MILK	SS	DC
EBV	2.6	4		0.3	22	43	30		7	0.7	
<i>Acc</i>	53	57		80	74	74	70		57	76	
	CWT	EMA	RIB	RUMP	RBY	IMF	INDEXES				
EBV	29	5.3	1.5	1.4	0.7	0.8	Dom: 64	Export: 76			
<i>Acc</i>	65	59	63	64	57	54	Nth Term: 31	Vealer: 53			

Please Note: ASR Augustus is the AI Joining Sire for sale J Heifers and TNT Tanker is the AI Joining Sire for sale cows.

Quick Reference Guide - 2015 Sale Bulls

LOT	ID	DOB	Sire	Dam	Grade	CED	CEM	GL	BW	200D	400D	600D	MILK	SS
1	J0884	2/8/2013	Tanker	F513	Purebred	-3.1		-1.4	-0.7	26	43	28		0.6
2	J0842	8/8/2013	Tanker	E001	Grade 2	-0.7	1.6	-3.7	0.6	22	42	26		
3	J0873	29/9/2013	Upgrade	C602	Purebred	2.6	2.1		-0.3	26	52	36		0.2
4	J0812	3/8/2013	Tanker	F239	Purebred			-4.0	1.9	32	55	43		
5	J0811	4/8/2013	Tanker	D017	Purebred	4.7		-4.1	-1.8	19	37	21		-1.2
6	J0815	16/8/2013	Tanker	E026	Purebred	-4.3		-1.5	2.8	28	51	36		
7	J0821	14/9/2013	Tanker	E227	Purebred	-2.4	2.4		3.2	37	72	59		
8	J0837	13/8/2013	Tanker	F555	Purebred			-3.3	0.7	29	53	38		
9	J0887	30/8/2013	Tanker	E231	Purebred	0.5	2.9		1.3	28	54	40		-0.3
10	J0864	31/7/2013	Tanker	F269	Purebred			-4.8	-1.2	24	44	30		
11	J0824	18/8/2013	I River	E035	Purebred	5.8	3.2		-3.0	13	27	4	4.0	0.8
12	J0858	6/8/2013	Tanker	C056	Grade 2	5		-4.0	-1.9	17	35	19		
13	J0838	27/8/2013	Dream On	G639	Purebred	1.7	2.5	-2.3	0.0	23	32	22	2.0	0.2
14	J0807	8/9/2013	Dominator	C601	Purebred	0.4	2.2		1.5	27	48	34		
15	J0847	28/8/2013	Upgrade	F419	Purebred			-1.9	-0.2	20	33	14		0.2
16	J0881	7/8/2013	Tanker	E063	Grade 3			-2.4	1.7	22	46	32		
17	J0851	18/9/2013	Upgrade	G775	Purebred				-0.4	25	47	33		
18	J0818	1/9/2013	Dominator	C601	Purebred	1.7	2.4		0.9	25	47	32		
19	J0836	6/8/2013	Dew it right	G645	Purebred									
20	J0831	25/9/2013	Upgrade	G775	Purebred				0.7	31	54	41		
21	J0017	7/3/2013	Upgrade	F265	Purebred			-1.4	0.4	23	43	29		-0.3
22	J0025	2/3/2013	Upgrade	Z1392L	Grade 1			-5.0	-1.8	18	37	30		-1.8
23	J0020	22/2/2013	Upgrade	A1010L	Grade 1			-6.3	-4.5	12	33	17		-1.1
24	J0029	1/3/2013	Tanker	D1736AH	Grade 1			-4.0	-1.8	12	23	12		
25	J0816	15/8/2013	I River	A086AH	Grade 1				-3.4	8	34	16	5.0	0.0
26	J0550		Tanker		Grade 1									
27	J0867		Tanker		Grade 1									
28	J0853	10/8/2013	Tanker	A176AH	Grade 1			-5.8	-1.9	13	31	21		
29	J0898	31/7/2013	Tanker	A1788L	Grade 1			-6.1	-1.6	19	40	28		
30	J0814	12/8/2013	I River	C1761AH	Grade 1				-3.0	6	29	12		
31	J0822	10/8/2013	Tanker	E048	Purebred			-1.4	0.1	21	42	27		
32	J0825	7/8/2013	Dew it right	G634	Grade 2									
33	J0823	28/8/2013	I River	C062	Grade 3	3.5	3.6		-1.9	9	19	2	1.0	
34	J0843	6/8/2013	Dew it right	G764	Purebred			-1.5	-1.6	15	30	11		
35	J0866	28/8/2013	Everready	G652	Grade 2			-3.5	-3.6	5	9	-9		
36	J0863	6/9/2013	Tanker	E213	Purebred	EBVs AVAILABLE SALE DAY								
37	J0885	28/9/2013	Upgrade	G758	Purebred					24	43	28		-0.3
38	J0876	2/9/2013	Tanker	E213	Purebred	2.2	3.3		-0.6	23	42	29		
39	J0839	9/8/2013	Dew it right	G776	Purebred			-1.6	-2.6	13	24	5		
40	J0835	3/8/2013	Dew it right	G787	Purebred			-2.1	-3.4	17	22	4		
Webb Black Simmentals Average						1.6	2.6	-3.3	-0.7	20	39	24		
Breed Avg. EBVs for 2013 Born Calves						0.8	0.2	-1.1	1.1	18	31	29	8	0.3

EMA	Rib	Rmp	RBY	IMF	CWT	Dom.	Exp.	Nthn	Vealer	Actual Scan Data - Dec 3, 2014				
										EMA	RIB	Rump	IMF	WT
						\$49	\$49	\$20	\$49	103	6	7	2.9	612
1.3	0.5	0.0	-0.1	0.8	22	\$41	\$42	\$16	\$33	93	6	6	2.7	648
6.1	0.2	-0.4	1.6	0.8	41	\$63	\$71	\$29	\$56	102	4	5	3.7	572
3.8	-0.2	-0.5	1.2	0.1	34	\$55	\$56	\$26	\$53	103	4	5	3.2	628
5.2	-0.4		1.6	0.4		\$47	\$48	\$19	\$45	97	5	5	2.9	610
4.2	0.2	-0.6	1.3	0.2	30	\$42	\$37	\$18	\$40	101	5	5	2.7	592
4.9	-0.2	-0.9	1.4	0.3	48	\$66	\$70	\$32	\$58	109	5	5	2.5	662
5.0	0.2	-0.7	1.4	0.4	36	\$56	\$59	\$26	\$54	112	6	6	3.5	638
3.6	-0.4	-1.4	1.2	0.2	36	\$51	\$50	\$21	\$45	95	5	5	3.4	606
1.9	0.6	-0.3	0.2	0.3	27	\$52	\$57	\$23	\$45	94	6	6	3.1	602
4.1	1.0	0.3	0.7	0.4	14	\$45	\$41	\$15	\$38	94	5	5	2.3	586
4.0	0.3	-0.3	1.0	0.5	25	\$48	\$51	\$20	\$42	102	6	6	2.9	586
3.7	1.0	0.2	1.0	0.2	20	\$41	\$44	\$20	\$46	99	5	6	3.1	576
4.5	0.6	-0.3	1.2	0.3		\$51	\$52	\$23	\$49	102	5	5	3.2	580
4.3	0.9	0.3	0.8	1.1	21	\$45	\$46	\$16	\$42	95	5	5	2.8	548
2.5	-0.2	-1.2	0.7	0.4	26	\$36	\$32	\$13	\$29	91	4	4	2.5	576
6.0	-0.6	-1.5	2.2	0.2		\$52	\$53	\$23	\$51	101	4	4	3.1	514
4.3	0.3	-0.2	1.2	0.3		\$52	\$55	\$24	\$49	98	3	4	2.7	546
								\$25	\$49	98	4	5	2.3	538
6.0	-0.6	-1.6	2.2	0.2		\$54	\$56	\$25	\$57	91	4	4	1.9	574
5.4	1.0	0.1	1.1	1.0	32	\$52	\$61	\$25	\$49					
2.7	0.5	-0.3	0.1	1.5	30	\$48	\$69	\$24	\$39					
4.1	1.2	0.3	0.1	1.9		\$58	\$73	\$25	\$42					
						\$39	\$54	\$17	\$30					
3.9	1.7	1.8	-0.5	1.7		\$61	\$79	\$28	\$36	102	5	7	3.7	668
										98	5	5	3.4	600
										105	5	7	3.6	660
1.7	1.0	0.3	-0.4	1.2		\$42	\$56	\$18	\$27	98	5	5	3.2	592
3.0	1.2	0.9	-0.2	1.5		\$57	\$75	\$28	\$44	110	5	6	3.1	646
4.0	2.5	2.4	-0.7	1.8		\$57	\$75	\$27	\$34	100	5	7	3.5	588
5.5	0.1		1.8	0.1	31	\$47	\$46	\$19	\$43	107	5	5	2.8	582
										97	5	5	2.7	562
3.8	2.3	1.4	0.1	1.0	8	\$40	\$45	\$15	\$31	95	6	6	3.1	534
3.3	0.5	-0.1	0.8	0.4		\$42	\$41	\$15	\$38	94	6	7	3.1	566
2.8	1.5	1.8	-0.2	1.2	4	\$38	\$45	\$13	\$30	100	4	5	2.7	540
										90	4	5	2.3	495
4.9	0.3	-0.5	1.3	0.5	33	\$51	\$55	\$23	\$50	90	4	4	2.7	528
4.2	0.3	0.5	0.9	0.4	30	\$55	\$61	\$27	\$50	101	4	6	3.4	524
3.0	-0.3	-0.6	1.2	0.1		\$36	\$30	\$11	\$35	93	3	4	2.1	538
3.8	0.9	0.2	1.2	0.2	19	\$43	\$42	\$17	\$47	100	5	5	3.1	530
4.0	0.5	-0.1	0.8	0.6	27	\$49	\$54	\$21	\$43					
2.2	0.1	-0.1	0.5	0.3	21	\$31	\$37	\$15	\$28					

Top 1% Top 5%

2015 Sale Lots - Bulls

LOT 1 WEBB TANK J0884 (P) (AI)



What a bull to start the sale. High EMA and fat scans add to this attractive package. A bull with an extra rib and plenty of muscle.

SOCIETY ID: WEBPJ884 GRADE: **Purebred**
DOB: 2/08/2013 SEX: M

ELLINGSON LEGACY M229 (P)
MR NLC SUPERIOR S6018 (P) (BL)
EBS JOKERS CAREN (P)
Sire: TNT TANKER U263 (P) (BL)
TNT FIVE STAR P275
TNS MISS S17
TNT MISS HONEY L9

HOOK'S SHEAR FORCE 38K
TRIPLE C BETTIS S72J B072 (P) (BL)
LUCAS JOSIE 19K (P)
Dam: WEBB BETTIS F513
HC HUMMER 12M (P) (BL)
BONNYDALE GINGER (P) (BL) (ET)
ASR BLACK WHISPER L130

SIMMENTAL GROUP BREEDPLAN EBVs January 2015											
	CED	CEM	GL	BW	200	400	600	MCW	MILK	SS	DC
EBV	3.1		-1.4	-0.7	26	43	28			0.6	
<i>Acc</i>	36		63	77	66	64	63			52	
	CWT	EMA	RIB	RUMP	RBV	IMF	INDEXES				
EBV							Dom: 49	Export: 49			
<i>Acc</i>							Nth Term: 20	Vealer: 49			

Purchaser:

Price: \$

LOT 2 WEBB TANK J0842 (2) (BL) (AI)



A weight gain specialist. Ideal bull for getting those extra cents per kilogram return. Looking for a carcass bull, this is the bloke!

SOCIETY ID: WEB2J842 GRADE: **Grade 2**
DOB: 8/08/2013 SEX: M

ELLINGSON LEGACY M229 (P)
MR NLC SUPERIOR S6018 (P) (BL)
EBS JOKERS CAREN (P)
Sire: TNT TANKER U263 (P) (BL)
TNT FIVE STAR P275
TNS MISS S17
TNT MISS HONEY L9

GW LUCKY ONE 686K (P)
LANCASTER BRIGADIER B385 (P) (BL) (ET)
GW MISS CHOICE 717F
Dam: WEBB BLACK NORA E001
SIMMGENE FRONTIER Z480
SIMMGENE BLACK NORA B519
SIMMGENE BLACK NORA Y456 (P) (BL)

SIMMENTAL GROUP BREEDPLAN EBVs January 2015											
	CED	CEM	GL	BW	200	400	600	MCW	MILK	SS	DC
EBV	-0.7	1.6	-3.7	0.6	22	42	26				
<i>Acc</i>	36	36	63	78	72	72	66				
	CWT	EMA	RIB	RUMP	RBV	IMF	INDEXES				
EBV	22	1.3	0.5	0	-0.1	0.8	Dom: 41	Export: 42			
<i>Acc</i>	57	47	55	57	46	42	Nth Term: 16	Vealer: 33			

Purchaser:

Price: \$

LOT 3 WEBB UPGRADE J0873 (P) (BL) (ET)



The youngest bull of the draft, this Upgrade calf scanned very well and has weighed at the top of the drop from birth. From a cow that has had many sons sell at the top end of our previous sales. Top 1% for EMA and Retail Beef Yield (RBY)

SOCIETY ID: WEBPJ873 GRADE: **Purebred**
DOB: 29/09/2013 SEX: M

NICHOLS LEGACY G151(P) (BL)
ELLINGSON LEGACY M229 (P)
ELLINGSON MS PSTOCK K58 (P)
Sire: MR NLC UPGRADE U8676 (P) (BL)
GLS MOJO M38 (P)
MS NLC MOJO S6119 B (P)
GFI DARLA M410 (P)

LRS PREFERRED STOCK 370C (P) (BL)
SRS J914 PREFERRED BEEF (P) (BL)
SRS G733 GLIMMER
Dam: CO OP PREFERRED BEEF C602
PPSR MONTANA IRISH 107D
MISS PRICKLY PEAR 615F
MISS PRICKLY PEAR 318C

SIMMENTAL GROUP BREEDPLAN EBVs January 2015											
	CED	CEM	GL	BW	200	400	600	MCW	MILK	SS	DC
EBV	2.6	2.1		-0.3	26	52	36			0.2	
<i>Acc</i>	38	40		78	71	71	66			57	
	CWT	EMA	RIB	RUMP	RBY	IMF	INDEXES				
EBV	41	6.1	0.2	-0.4	1.6	0.8	Dom: 63	Export: 71			
<i>Acc</i>	59	50	57	58	49	46	Nth Term: 29	Vealer: 56			

Purchaser:

Price: \$

LOT 4 WEBB TANK J0812 (P) (BL) (AI)



Looking for that extra cents per kilo in your calves? This is the bull, highest 400 day weight and ranks in top 5% for 400D and Gestation Length (GL)

SOCIETY ID: WEBPJ812 GRADE: **Purebred**
DOB: 03/08/2013 SEX: M

ELLINGSON LEGACY M229 (P)
MR NLC SUPERIOR S6018 (P) (BL)
EBS JOKERS CAREN (P)
Sire: TNT TANKER U263 (P) (BL)
TNT FIVE STAR P275
TNS MISS S17
TNT MISS HONEY L9

RW BOMBER 8H
TNT DYNAMITE BLACK L137 (P) (BL)
OPPS WIS GM2
Dam: WEBB DB DICE F239
GW LUCKY DICE 187H (P) (BL)
MISS LUCKY DICE 006K (P)
WS MS LITE H338

SIMMENTAL GROUP BREEDPLAN EBVs January 2015											
	CED	CEM	GL	BW	200	400	600	MCW	MILK	SS	DC
EBV			-4	1.9	32	55	43				
<i>Acc</i>			63	77	70	70	66				
	CWT	EMA	RIB	RUMP	RBY	IMF	INDEXES				
EBV	34	3.8	-0.2	-0.5	1.2	0.1	Dom: 55	Export: 56			
<i>Acc</i>	57	47	55	56	46	41	Nth Term: 26	Vealer: 53			

Purchaser:

Price: \$

LOT 5

WEBB TANK J0811(3) (BL) (AI)



A type of bull the industry needs. This bulls scan data and EBVs speak for themselves. Ranking high in his EBVs being in the Top 1% for Retail Beef Yield (RBY), Top 5% GL and EMA.

SOCIETY ID: WEB3J811 GRADE: **Purebred** DOB: 4/08/2013 SEX: M

ELLINGSON LEGACY M229 (P) MR NLC SUPERIOR S6018 (P) (BL) EBS JOKERS CAREN (P)
Sire: TNT TANKER U263 (P) (BL)
 TNT FIVE STAR P275
 TNS MISS S17
 TNT MISS HONEY L9

LCHMAN LUCKY BUCK 7049C (BL)
 GW LUCKY CHARM 665K
 GW MISS 600U 508C
Dam: WEBB D017 (H/ET)
 LCHMAN LUCKY BUCK 7049C (BL)
 GW MISS LUCKY BUCK 906J
 GW MISS WALLY 854G

SIMMENTAL GROUP BREEDPLAN EBVs January 2015											
	CED	CEM	GL	BW	200	400	600	MCW	MILK	SS	DC
EBV	4.7		-4.1	-1.8	19	37	21			-1.2	
<i>Acc</i>	39		64	78	71	66	64			50	
	CWT	EMA	RIB	RUMP	RBY	IMF	INDEXES				
EBV		5.2	-0.4	-1	1.6	0.4	Dom: 47	Export: 48			
<i>Acc</i>		41	46	46	39	38	Nth Term: 19	Vealer: 45			

Purchaser: Price: \$

LOT 6

WEBB TANK J0815 (P) (BL) (AI)



A bull showing good depth of body rolled into a great package with high 400D growth, EMA and in the top 5% for IMF

SOCIETY ID: WEBPJ815 GRADE: **Purebred** DOB: 16/08/2013 SEX: M

ELLINGSON LEGACY M229 (P) MR NLC SUPERIOR S6018 (P) (BL) EBS JOKERS CAREN (P)
Sire: TNT TANKER U263 (P) (BL)
 TNT FIVE STAR P275
 TNS MISS S17
 TNT MISS HONEY L9

SS GOLDMINE L42 (P) (BL)
 ACCI HUSTLER 2N IMC P Y 666 (P) (BL)
 CPS KORONA
Dam: WEBB HUSTLER E026
 SRS J914 PREFERRED BEEF (P) (BL)
 CO OP PB 615 F PEAR C249 (P) (ET) (AI)
 MIISS PRICKLY PEAR 615F

SIMMENTAL GROUP BREEDPLAN EBVs January 2015											
	CED	CEM	GL	BW	200	400	600	MCW	MILK	SS	DC
EBV	-4.3		-1.5	2.8	28	51	36				
<i>Acc</i>	36		65	77	70	70	65				
	CWT	EMA	RIB	RUMP	RBY	IMF	INDEXES				
EBV	30	4.2	0.2	-0.6	1.3	0.2	Dom: 42	Export: 37			
<i>Acc</i>	56	46	52	54	44	39	Nth Term: 18	Vealer: 40			

Purchaser: Price: \$

LOT 7

WEBB TANK J0821 (P0 (BL) (ET)



A bull with length and a heap of muscle yet still retaining plenty of softness. Check out this bulls EBVs and raw data. A real package! Top 1% of the breed for a number of traits.

SOCIETY ID: WEBPJ821 GRADE: **Purebred** DOB: 14/09/2013 SEX: M

ELLINGSON LEGACY M229 (P) MR NLC SUPERIOR S6018 (P) (BL) EBS JOKERS CAREN (P)
Sire: TNT TANKER U263 (P) (BL)
 TNT FIVE STAR P275
 TNS MISS S17
 TNT MISS HONEY L9

WLE POWER STROKE
 HC HUMMER 12M (P) (BL)
 LBR DESTINY'S DREAM K830
Dam: WEBB PEAR 12M E227
 SRS J914 PREFERRED BEEF (P) (BL)
 CO OP PB 615 F PEAR C266 (P) (BL) (ET)
 MIISS PRICKLY PEAR 615F

SIMMENTAL GROUP BREEDPLAN EBVs January 2015											
	CED	CEM	GL	BW	200	400	600	MCW	MILK	SS	DC
EBV	-2.4	2.4		3.2	37	72	59				
<i>Acc</i>	39	37		77	70	70	65				
	CWT	EMA	RIB	RUMP	RBY	IMF	INDEXES				
EBV	48	4.9	-0.2	-0.9	1.4	0.3	Dom: 66	Export: 70			
<i>Acc</i>	58	48	54	56	46	42	Nth Term: 32	Vealer: 58			

Purchaser: Price: \$

LOT 8 WEBB TANKER J0837 (P) (BL) (AI)



Highest EMA scan. A calf carrying his sires name, a real Tank. Any thicker he'd bust. Top 5% for 400D and RBY.

SOCIETY ID: WEBPJ837 GRADE: **Purebred** DOB: 13/08/2013 SEX: M

ELLINGSON LEGACY M229 (P)
MR NLC SUPERIOR S6018 (P) (BL)
EBS JOKERS CAREN (P)
Sire: TNT TANKER U263 (P) (BL)
TNT FIVE STAR P275
TNS MISS S17
TNT MISS HONEY L9

WLE POWER STROKE
GWS EBONY'S TRADEMARK 6N (P) (BL)
NJC EBONY ANTOINETTE
Dam: WEBB GWEN F555
CNS DREAM ON L186 (P) (BL) (ET)
SYLVANDALE GWEN C065
BREWERS GWEN Y445

SIMMENTAL GROUP BREEDPLAN EBVs January 2015											
	CED	CEM	GL	BW	200	400	600	MCW	MILK	SS	DC
EBV			-3.3	0.7	29	53	38				
<i>Acc</i>			62	64	67	68	62				
	CWT	EMA	RIB	RUMP	RBY	IMF	INDEXES				
EBV	36	5	0.2	-0.7	1.4	0.4	Dom: 56	Export: 59			
<i>Acc</i>	56	46	54	56	45	41	Nth Term: 26	Vealer: 54			

Purchaser:

Price: \$

LOT 9 WEBB TANK J0887 (P) (BL) (ET)



If you are looking for a bull to put extra length and muscling into you calves then this is the bull for you. Top 5% for 400D.

SOCIETY ID: WEBPJ887 GRADE: **Purebred** DOB: 30/08/2013 SEX: M

ELLINGSON LEGACY M229 (P)
MR NLC SUPERIOR S6018 (P) (BL)
EBS JOKERS CAREN (P)
Sire: TNT TANKER U263 (P) (BL)
TNT FIVE STAR P275
TNS MISS S17
TNT MISS HONEY L9

WLE POWER STROKE
HC HUMMER 12M (P) (BL)
LBR DESTINY'S DREAM K830
Dam: WEBB PEAR E231
SRS J914 PREFERRED BEEF (P) (BL)
CO OP PB 615 F PEAR C703 (P) (BL) (ET)
MIISS PRICKLY PEAR 615F

SIMMENTAL GROUP BREEDPLAN EBVs January 2015											
	CED	CEM	GL	BW	200	400	600	MCW	MILK	SS	DC
EBV	0.5	2.9		1.3	28	54	40			-0.3	
<i>Acc</i>	40	39		78	71	71	66			52	
	CWT	EMA	RIB	RUMP	RBY	IMF	INDEXES				
EBV	36	3.6	-0.4	-1.4	1.2	0.2	Dom: 51	Export: 50			
<i>Acc</i>	59	49	56	57	48	44	Nth Term: 21	Vealer: 45			

Purchaser:

Price: \$

LOT 10 WEBB TANK J0864 (P) (BL) (AI)



Low Birth weight (LBW) bull with excellent fat distribution.

SOCIETY ID: WEBPJ864 GRADE: **Purebred** DOB: 31/07/2013 SEX: M

ELLINGSON LEGACY M229 (P)
MR NLC SUPERIOR S6018 (P) (BL)
EBS JOKERS CAREN (P)
Sire: TNT TANKER U263 (P) (BL)
TNT FIVE STAR P275
TNS MISS S17
TNT MISS HONEY L9

PVF-BF BF26 BLACK JOKER (P)
LITTLE CREEK JOKER A101
GW MISS LUCKY DICE 006K (P)
Dam: WEBB HEIDI F269
DAUME LEGEND M081
BREWERS HEIDI B960
BREWERS RED HEIDI W020

SIMMENTAL GROUP BREEDPLAN EBVs January 2015											
	CED	CEM	GL	BW	200	400	600	MCW	MILK	SS	DC
EBV			-4.8	-1.2	24	44	30				
<i>Acc</i>			63	76	70	70	65				
	CWT	EMA	RIB	RUMP	RBY	IMF	INDEXES				
EBV	27	1.9	0.6	-0.3	0.2	0.3	Dom: 52	Export: 57			
<i>Acc</i>	56	45	52	54	43	38	Nth Term: 23	Vealer: 45			

Purchaser:

Price: \$

LOT 11 **WEBB INDIAN RIVER J0824 (P) (BL)**



SOCIETY ID: WEBPJ824 GRADE: **Purebred** DOB: 18/08/2013 SEX: M

WLE POWER STROKE PVF-BF BF26 BLACK JOKER (P)
 HC HUMMER 12M (P) (BL) LITTLE CREEK JOKER A101
 LBR DESTINY'S DREAM K830 GW MISS LUCKY DICE 006K (P)
Sire: BONNYDALE INDIAN RIVER E209 **Dam: WEBB MISS LUCKY ONE E035**
 KENCO/MF POWERLINE 204L GW LUCKY ONE 686K (P)
 BONNYDALE GEORGIA C219 (P) (BL) (ET) LITTLE CREEK MISS LUCKY ONE A104 (P) (BL) (ET)
 ASR LITTLE DESSI P420 (P) MISS LUCKY DICE 006K (P)

SIMMENTAL GROUP BREEDPLAN EBVs January 2015											
	CED	CEM	GL	BW	200	400	600	MCW	MILK	SS	DC
EBV	5.8	3.2		-3	13	27	4		4	0.8	
<i>Acc</i>	38	38		77	69	69	64		44	50	
	CWT	EMA	RIB	RUMP	RBV	IMF	INDEXES				
EBV	14	4.1	1	0.3	0.7	0.4	Dom: 45	Export: 41			
<i>Acc</i>	58	51	57	59	50	46	Nth Term: 15	Vealer: 38			

A bull showing tremendous length and muscle, with a real sires outlook.

Purchaser: Price: \$

LOT 12 **WEBB TANK J0858 (2) (BL) (AI)**



SOCIETY ID: WEB2J858 GRADE: **Grade 2** DOB: 6/08/2013 SEX: M

ELLINGSON LEGACY M229 (P) LCHMAN LUCKY BUCK 7049C (BL)
 MR NLC SUPERIOR S6018 (P) (BL) GW LUCKY CHARM 665K
 EBS JOKERS CAREN (P) GW MISS 600U 508C
Sire: TNT TANKER U263 (P) (BL) **Dam: BREWER KAREN C056**
 TNT FIVE STAR P275 GW MICK 838B
 TNS MISS S17 BREWERS KAREN X374 (P) (BL)
 TNT MISS HONEY L9 BREWERS KAREN S114

SIMMENTAL GROUP BREEDPLAN EBVs January 2015											
	CED	CEM	GL	BW	200	400	600	MCW	MILK	SS	DC
EBV	5		-4	-1.9	17	35	19				
<i>Acc</i>	37		65	78	71	71	66				
	CWT	EMA	RIB	RUMP	RBV	IMF	INDEXES				
EBV	25	4	0.3	-0.3	1	0.5	Dom: 48	Export: 51			
<i>Acc</i>	57	47	53	55	45	40	Nth Term: 20	Vealer: 42			

A Grade 2 Tank son. LBW bull with good Fat and EMA, go well over an Angus herd.

Purchaser: Price: \$

LOT 13 **WEBB DREAM ON J0838 (P) (BL) (AI)**



SOCIETY ID: WEBPJ838 GRADE: **Purebred** DOB: 27/08/2013 SEX: M

NICHOLS BLK DESTINY D12 REMINGTON ON TARGET 2S
 NICHOLS LEGACY G151(P) (BL) WEBB ELECTRIC E224 (P) (BL) (ET)
 NICHOLS DEBRA D81 WFL BLACK LADY 505H
Sire: CNS DREAM ON L186 (P) (BL) (ET) **Dam: WEBB ELECTRIC G639 (P) (BL) (AI)**
 SRS FRANCHISE F601 WHEATLAND 131L TEDDY
 CNS SHEEZA DREAM K107W WEBB KATARINA E236
 NICHOLS JOLIETTE 107W LFE KATARINA 604N

SIMMENTAL GROUP BREEDPLAN EBVs January 2015											
	CED	CEM	GL	BW	200	400	600	MCW	MILK	SS	DC
EBV	1.7	2.5	-2.3	0	23	32	22		2	0.2	
<i>Acc</i>	47	45	65	78	72	72	68		52	53	
	CWT	EMA	RIB	RUMP	RBV	IMF	INDEXES				
EBV	20	3.7	1	0.2	1	0.2	Dom: 41	Export: 44			
<i>Acc</i>	62	57	62	63	55	52	Nth Term: 20	Vealer: 46			

Have a good look at this bull for his depth of body. A complete outcross sire.

Purchaser: Price: \$

LOT 14 **WEBB DOMINATOR J0807 (P) (BL) (ET)**



An eyecatching young bull that is very smooth in the shoulder.

SOCIETY ID: WEBPJ807 GRADE: **Purebred** DOB: 8/09/2013 SEX: M

NICHOLS LEGACY G151(P) (BL) LRS PREFERRED STOCK 370C (P) (BL)
 ELLINGSON LEGACY M229 (P) SRS J914 PREFERRED BEEF (P) (BL)
 ELLINGSON MS PSTOCK K58 (P) SRS G733 GLIMMER

Sire: ELLINGSON DOMINATOR W905 **Dam: CO OP C601**
 HC HUMMER 12M (P) (BL) PPSR MONTANA IRISH 107D
 ELLINGSON HUMMER T713 MISS PRICKLY PEAR 615F
 ELLINGSON MS 600U J941 MISS PRICKLY PEAR 318C

SIMMENTAL GROUP BREEDPLAN EBVs January 2015											
	CED	CEM	GL	BW	200	400	600	MCW	MILK	SS	DC
EBV	0.4	2.2		1.5	27	48	34				
<i>Acc</i>	37	38		76	66	67	62				
	CWT	EMA	RIB	RUMP	RBY	IMF	INDEXES				
EBV		4.5	0.6	-0.3	1.2	0.3	Dom: 51	Export: 52			
<i>Acc</i>		47	52	53	45	40	Nth Term: 23	Vealer: 49			

Purchaser: \$

Price: \$

LOT 15 **WEBB UPGRADE J0847 (P) (BL) (AI)**



Another of our Upgrade bulls that are full of meat. Plenty of length and thickness.

SOCIETY ID: WEBPJ847 GRADE: **Purebred** DOB: 28/08/2013 SEX: M

NICHOLS LEGACY G151(P) (BL) GW LUCKY ONE 686K (P)
 ELLINGSON LEGACY M229 (P) LANCASTER BRIGADIER B385 (P) (BL) (ET)
 ELLINGSON MS PSTOCK K58 (P) GW MISS CHOICE 717F

Sire: MR NLC UPGRADE U8676 (P) (BL) **Dam: WEBB MISS LEGACY F419**
 GLS MOJO M38 (P) NICHOLS LEGACY G151(P) (BL)
 MS NLC MOJO S6119 B (P) SAROKOS PARK MISS LEGACY A100
 GFI DARLA M410 (P) MISS LUCKY DICE 006K (P)

SIMMENTAL GROUP BREEDPLAN EBVs January 2015											
	CED	CEM	GL	BW	200	400	600	MCW	MILK	SS	DC
EBV			-1.9	-0.2	20	33	14			0.2	
<i>Acc</i>			64	78	71	71	67			52	
	CWT	EMA	RIB	RUMP	RBY	IMF	INDEXES				
EBV	21	4.3	0.9	0.3	0.8	1.1	Dom: 45	Export: 46			
<i>Acc</i>	58	49	57	59	48	44	Nth Term: 16	Vealer: 42			

Purchaser: \$

Price: \$

LOT 16 **WEBB TANK J0881 (3) (BL) (AI)**



This bull will put extra butt shape and depth of body into your calves.

SOCIETY ID: WEB3J881 GRADE: **Grade 3** DOB: 7/08/2013 SEX: M

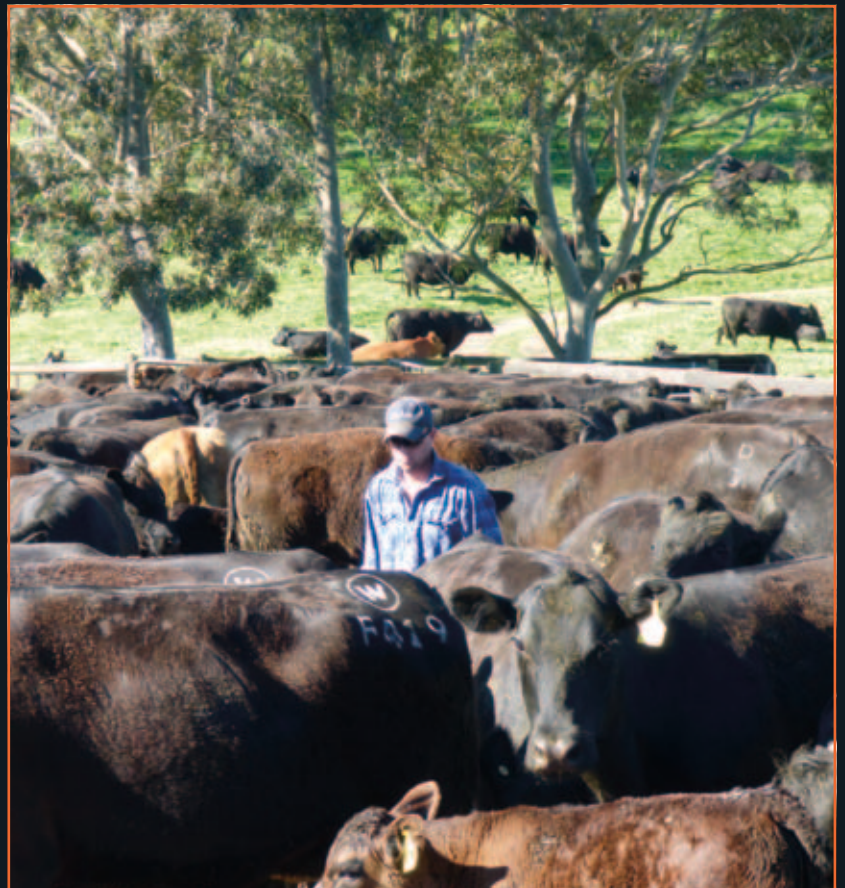
ELLINGSON LEGACY M229 (P) GW LUCKY ONE 686K (P)
 MR NLC SUPERIOR S6018 (P) (BL) LANCASTER BRIGADIER B385 (P) (BL) (ET)
 EBS JOKERS CAREN (P) GW MISS CHOICE 717F

Sire: TNT TANKER U263 (P) (BL) **Dam: WEBB KAREN E063**
 TNT FIVE STAR P275 DAUME LEGEND M081
 TNS MISS S17 BREWERS KAREN B910 (P) (BL)
 TNT MISS HONEY L9 BREWERS KAREN X336

SIMMENTAL GROUP BREEDPLAN EBVs January 2015											
	CED	CEM	GL	BW	200	400	600	MCW	MILK	SS	DC
EBV			-2.4	1.7	22	46	32				
<i>Acc</i>			62	77	70	70	65				
	CWT	EMA	RIB	RUMP	RBY	IMF	INDEXES				
EBV	26	2.5	-0.2	-1.2	0.7	0.4	Dom: 36	Export: 32			
<i>Acc</i>	56	43	52	53	43	39	Nth Term: 13	Vealer: 29			

Purchaser: \$

Price: \$



webb

BLACK SIMMENTALS & SIM ANGUS



LOT 17 **WEBB UPGRADE J0851 (P) (BL) (ET)**



SOCIETY ID: WEBPJ851 GRADE: **Purebred** DOB: 18/09/2013 SEX: M

NICHOLS LEGACY G151(P) (BL) REMINGTON ON TARGET 2S
 ELLINGSON LEGACY M229 (P) WEBB ELECTRIC E224 (P) (BL) (ET)
 ELLINGSON MS PSTOCK K58 (P) WFL BLACK LADY 505H

Sire: MR NLC UPGRADE U8676 (P) (BL) **Dam: WEBB ELECTRIC G775 (P) (BL) (AI) (ET)**
 GLS MOJO M38 (P) HC HUMMER 12M (P) (BL)
 MS NLC MOJO S6119 B (P) WEBB PEAR E231
 GFI DARLA M410 (P) CO OP PB 615 F PEAR C703 (P) (BL) (ET)

SIMMENTAL GROUP BREEDPLAN EBVs January 2015											
	CED	CEM	GL	BW	200	400	600	MCW	MILK	SS	DC
EBV				-0.4	25	47	33				
<i>Acc</i>				77	64	62	59				
	CWT	EMA	RIB	RUMP	RBY	IMF	INDEXES				
EBV		6	-0.6	-1.5	2.2	0.2	Dom: 52	Export: 53			
<i>Acc</i>		37	47	47	38	37	Nth Term: 23	Vealer: 51			

A young bull showing great muscling with good fat cover and exceptional EMA.
 Top 1% for EMA and RBY

Purchaser: Price: \$

LOT 18 **WEBB DOMINATOR J0818 (P) (BL) (ET)**



SOCIETY ID: WEBPJ818 GRADE: **Purebred** DOB: 1/09/2013 SEX: M

NICHOLS LEGACY G151(P) (BL) LRS PREFERRED STOCK 370C (P) (BL)
 ELLINGSON LEGACY M229 (P) SRS J914 PREFERRED BEEF (P) (BL)
 ELLINGSON MS PSTOCK K58 (P) SRS G733 GLIMMER

Sire: ELLINGSON DOMINATOR W905 **Dam: CO OP C601**
 HC HUMMER 12M (P) (BL) PPSR MONTANA IRISH 107D
 ELLINGSON HUMMER T713 MIISS PRICKLY PEAR 615F
 ELLINGSON MS 600U J941 MISS PRICKLY PEAR 318C

SIMMENTAL GROUP BREEDPLAN EBVs January 2015											
	CED	CEM	GL	BW	200	400	600	MCW	MILK	SS	DC
EBV	1.7	2.4		0.9	25	47	32				
<i>Acc</i>	37	38		76	66	67	62				
	CWT	EMA	RIB	RUMP	RBY	IMF	INDEXES				
EBV		4.3	0.3	-0.2	1.2	0.3	Dom: 52	Export: 55			
<i>Acc</i>		44	49	50	42	39	Nth Term: 24	Vealer: 49			

Ideal vealer bull, early maturing and full of meat.

Purchaser: Price: \$

LOT 19 **WEBB DEW IT RIGHT J0836**



PRIMARY ID: J0836 GRADE: **Purebred** DOB: 6/08/2013 SEX: M

CNS DREAM ON L186 (P) (BL) (ET) REMINGTON ON TARGET 2S
 HTP SVF IN DEW TIME IMU P A 094 (P) (BL) WEBB ELECTRIC E224 (P) (BL) (ET)
 HTP SVF HONEYDEW WFL BLACK LADY 505H

Sire: WELSHS DEW IT RIGHT 067T **Dam: WEBB ELECTRIC G645**
 STF MR MOMENTUM H508 LITTLE CREEK JOKER A101
 SVF/NJC SENERITA N29 WEBB LC JOKER E031
 NJC EBONY ANTOINETTE LANCASTER Y102

Scan Data - December 2014				
EMA	RIB	RUMP	IMF	WT
98	4	5	2.3	538

Heifers first calf, well balanced correct young bull.
 Commercial bull only.

Purchaser: Price: \$

LOT 20 WEBB UPGRADE J0831 (P) (BL) (ET)



SOCIETY ID: WEBPJ831 GRADE: **Purebred** DOB: 25/09/2013 SEX: M

NICHOLS LEGACY G151(P) (BL) REMINGTON ON TARGET 2S
 ELLINGSON LEGACY M229 (P) WEBB ELECTRIC E224 (P) (BL) (ET)
 ELLINGSON MS PSTOCK K58 (P) WFL BLACK LADY 505H
Sire: MR NLC UPGRADE U8676 (P) (BL) **Dam: WEBB ELECTRIC G775 (P) (BL) (AI) (ET)**
 GLS MOJO M38 (P) HC HUMMER 12M (P) (BL)
 MS NLC MOJO S6119 B (P) WEBB PEAR E231
 GFI DARLA M410 (P) CO OP PB 615 F PEAR C703 (P) (BL) (ET)

SIMMENTAL GROUP BREEDPLAN EBVs January 2015											
	CED	CEM	GL	BW	200	400	600	MCW	MILK	SS	DC
EBV				0.7	31	54	41				
<i>Acc</i>				74	66	63	60				
	CWT	EMA	RIB	RUMP	RBY	IMF	INDEXES				
EBV		6	-0.6	-1.6	2.2	0.2	Dom: 54	Export: 56			
<i>Acc</i>	37	47	47	38	37		Nth Term: 25	Vealer: 57			

One of the youngest bulls in the line up. A very neat, well muscled Upgrade calf that is in the top 5% for 200D and 400D growth and in the top 1% EMA and RBY. Worth a second look.

Purchaser:

Price: \$

LOT 21 WEBB UPGRADE J0017 (P) (BL) (AI)

2 Year Old Bull



SOCIETY ID: WEBPJ017 GRADE: **Purebred** DOB: 7/03/2013 SEX: M

NICHOLS LEGACY G151(P) (BL) SRS J914 PREFERRED BEEF (P) (BL)
 ELLINGSON LEGACY M229 (P) SRS RIGHT ON 22R (P) (BL)
 ELLINGSON MS PSTOCK K58 (P) SRS G720 GILLIAN
Sire: MR NLC UPGRADE U8676 (P) (BL) **Dam: WEBB AMBER F265**
 GLS MOJO M38 (P) DAUME LEGEND M081
 MS NLC MOJO S6119 B (P) BREWERS AMBER B956
 GFI DARLA M410 (P) BREWERS RED AMBER X021

SIMMENTAL GROUP BREEDPLAN EBVs January 2015											
	CED	CEM	GL	BW	200	400	600	MCW	MILK	SS	DC
EBV			-1.4	0.4	23	43	29			-0.3	
<i>Acc</i>			63	76	67	67	70			70	
	CWT	EMA	RIB	RUMP	RBY	IMF	INDEXES				
EBV	32	5.4	1	0.1	1.1	1	Dom: 52	Export: 61			
<i>Acc</i>	57	47	56	57	46	42	Nth Term: 25	Vealer: 49			

Has it all in the right places, don't miss him, this Upgrade Bull is in the top 5% for EMA

Purchaser:

Price: \$

LOT 22 WEBB UPGRADE J0025 (1) (AI)

2 Year Old Bull



SOCIETY ID: WEB1J025 GRADE: **Grade 1** DOB: 2/03/2013 SEX: M

NICHOLS LEGACY G151(P) (BL) B/R NEW DESIGN 036
 ELLINGSON LEGACY M229 (P) BON VIEW NEW DESIGN 1407
 ELLINGSON MS PSTOCK K58 (P) BON VIEW PRIDE 664
Sire: MR NLC UPGRADE U8676 (P) (BL) **Dam: LAWSONS NEW DESIGN 1407 Z1392**
 GLS MOJO M38 (P) G A R PARAMOUNT
 MS NLC MOJO S6119 B (P) LAWSONS PARAMOUNT W831(AI) VLYW831
 GFI DARLA M410 (P) YTHANBRAE PRIME S305(AI) VLYS305

SIMMENTAL GROUP BREEDPLAN EBVs January 2015											
	CED	CEM	GL	BW	200	400	600	MCW	MILK	SS	DC
EBV			-5	-1.8	18	37	30			-1.8	
<i>Acc</i>			60	75	65	68	67			69	
	CWT	EMA	RIB	RUMP	RBY	IMF	INDEXES				
EBV	30	2.7	0.5	-0.3	0.1	1.5	Dom: 48	Export: 69			
<i>Acc</i>	55	43	51	54	42	37	Nth Term: 24	Vealer: 39			

Bull with tremendous length and muscle, Top 5% for gestation length and IMF

Purchaser:

Price: \$

LOT 23

WEBB UPGRADE J0020 (BL)

2 Year Old Bull



SOCIETY ID: WEBDJ020 GRADE: **Grade 1** DOB: 22/02/2013 SEX: M

NICHOLS LEGACY G151(P) (BL) G A R PRECISION 1680
 ELLINGSON LEGACY M229 (P) G A R YIELD GRADE USA13724351
 ELLINGSON MS PSTOCK K58 (P) G A R EXT 4526

Sire: MR NLC UPGRADE U8676 (P) (BL) **Dam: LAWSONS GAR YIELD GRADE A1010**
 GLS MOJO M38 (P) BON VIEW NEW DESIGN 1407
 MS NLC MOJO S6119 B (P) LAWSONS GAR NEW DESIGN 1407 Y1612(AI)
 GFI DARLA M410 (P) YTHANBRAE PRECISION V448(AI)(ET)

SIMMENTAL GROUP BREEDPLAN EBVs January 2015											
	CED	CEM	GL	BW	200	400	600	MCW	MILK	SS	DC
EBV			-6.3	-4.5	12	33	17			-1.1	
<i>Acc</i>			58	74	60	60	57			69	
	CWT	EMA	RIB	RUMP	RBY	IMF	INDEXES				
EBV		4.1	1.2	0.3	0.1	1.9	Dom: 58	Export: 78			
<i>Acc</i>		43	48	50	42	36	Nth Term: 25	Vealer: 42			

Ideal for any british bred herd, Top 1% for gestation length and IMF and Top 5% for BW.

Purchaser: Price: \$

LOT 24

WEBB TANKER J0029 (1) (BL)

2 Year Old Bull



SOCIETY ID: WEB1J029 GRADE: **Grade 1** DOB: 1/03/2013 SEX: M

ELLINGSON LEGACY M229 (P) G A R PINNACLE USA7708
 MR NLC SUPERIOR S6018 (P) (BL) LAWSONS TANK X1235(AI) VLYX1235
 EBS JOKERS CAREN (P) YTHANBRAE NEW DESIGN 036 U89 (AI)

Sire: TNT TANKER U263 (P) (BL) **Dam: LAWSONS TANK D1736**
 TNT FIVE STAR P275 BON VIEW NEW DESIGN 1407
 TNS MISS S17 LAWSONS NEW DESIGN 1407 A1812
 TNT MISS HONEY L9 YTHANBRAE TRUE BLUE N33 T31(AI)(ET)

SIMMENTAL GROUP BREEDPLAN EBVs January 2015											
	CED	CEM	GL	BW	200	400	600	MCW	MILK	SS	DC
EBV			-4	-1.8	12	23	12				
<i>Acc</i>			58	74	61	62	58				
	CWT	EMA	RIB	RUMP	RBY	IMF	INDEXES				
EBV							Dom: 39	Export: 54			
<i>Acc</i>							Nth Term: 17	Vealer: 30			

Long, smooth, soft muscle, showing good fat cover.

Purchaser: Price: \$

LOT 25

WEBB INDIAN RIVER J0816 (1) (BL)



SOCIETY ID: WEB1J816 GRADE: **Grade 1** DOB: 15/08/2013 SEX: M

WLE POWER STROKE G A R PRECISION 1680
 HC HUMMER 12M (P) (BL) G A R EVEREST 9409 USA9409
 LBR DESTINY'S DREAM K830 G A R EXT 2114

Sire: BONNYDALE INDIAN RIVER E209 **Dam: LAWSONS EVEREST A86**
 KENCO/MF POWERLINE 204L YTHANBRAE HENRY VIII U8
 BONNYDALE GEORGIA C219 (P) (BL) (ET) LAWSONS HENRY VIII Y72(AI)
 ASR LITTLE DESSI P420 (P) YTHANBRAE SCOTCH CAP K46 T78(AI)(ET)

SIMMENTAL GROUP BREEDPLAN EBVs January 2015											
	CED	CEM	GL	BW	200	400	600	MCW	MILK	SS	DC
EBV				-3.4	8	34	16		5	0	
<i>Acc</i>				75	66	67	61		42	50	
	CWT	EMA	RIB	RUMP	RBY	IMF	INDEXES				
EBV		3.9	1.7	1.8	-0.5	1.7	Dom: 61	Export: 79			
<i>Acc</i>		47	52	54	45	40	Nth Term: 28	Vealer: 36			

A good Simm Angus bull that would look good in any commercial herd. Ranking in the top 5% for BW and and IMF this bull will add muscle to your calves as well as softness. Excellent raw data and one of the heaviest bulls of the drop.

Purchaser: Price: \$

LOT 26 **WEBB J0550**

PRIMARY ID: J0550 GRADE: **Grade 1** DOB: SEX: M

ELLINGSON LEGACY M229 (P)
MR NLC SUPERIOR S6018 (P) (BL)
EBS JOKERS CAREN (P)

Sire: TNT TANKER U263 (P) (BL)
TNT FIVE STAR P275
TNS MISS S17
TNT MISS HONEY L9

Dam:



Scan Data - December 2014				
EMA	RIB	RUMP	IMF	WT
98	5	5	3.4	600

Simm Angus bull. Good fat cover, EMA and IMF scans.
Commercial bull only.

Purchaser:

Price: \$

LOT 27 **WEBB J0867**



PRIMARY ID: J0867 GRADE: **Grade 1** DOB: SEX: M

ELLINGSON LEGACY M229 (P)
MR NLC SUPERIOR S6018 (P) (BL)
EBS JOKERS CAREN (P)

Sire: TNT TANKER U263 (P) (BL)
TNT FIVE STAR P275
TNS MISS S17
TNT MISS HONEY L9

Dam:

Scan Data - December 2014				
EMA	RIB	RUMP	IMF	WT
105	5	7	3.6	660

Simm Angus bull. A soft, smooth skinned Tanker son with excellent fat scans. Commercial bull only.

Purchaser:

Price: \$

LOT 28 **WEBB TANKER J0853 (1) (BL) (AI)**

SOCIETY ID: WEB1J853 GRADE: **Grade 1** DOB: 10/08/2013 SEX: M

ELLINGSON LEGACY M229 (P)
MR NLC SUPERIOR S6018 (P) (BL)
EBS JOKERS CAREN (P)

Sire: TNT TANKER U263 (P) (BL)
TNT FIVE STAR P275
TNS MISS S17
TNT MISS HONEY L9

PARAMONT AMBUSH 2172
B C C BUSHWACKER 41-93
R C ANITA T BANDO 918903

Dam: LAWSONS BUSHWACKER A176
G A R MAXIMUM PAYLOAD 3674
LAWSONS PAYLOAD W447(AI)
YTHANBRAE N67(AI) VLYN67



SIMMENTAL GROUP BREEDPLAN EBVs January 2015											
	CED	CEM	GL	BW	200	400	600	MCW	MILK	SS	DC
EBV			-5.8	-1.9	13	31	21				
<i>Acc</i>			60	74	67	67	61				
	CWT	EMA	RIB	RUMP	RBY	IMF	INDEXES				
EBV		1.7	1	0.3	-0.4	1.2	Dom: 42	Export: 56			
<i>Acc</i>		42	49	51	40	34	Nth Term: 18		Vealer: 27		

Simm Angus bull with Hybrid Vigour to pass onto his calves.

Purchaser:

Price: \$

LOT 29 **WEBB TANK J0898 (1) (BL) (AI)**



SOCIETY ID: WEBDJ898 GRADE: **Grade 1** DOB: 31/07/2013 SEX: M

ELLINGSON LEGACY M229 (P) B/R NEW DESIGN 036
 MR NLC SUPERIOR S6018 (P) (BL) G A R PREDESTINED
 EBS JOKERS CAREN (P) G A R EXT 4206 USA12716727

Sire: TNT TANKER U263 (P) (BL) **Dam: LAWSONS PREDESTINED A1788**
 TNT FIVE STAR P275 G A R PARAMOUNT
 TNS MISS S17 LAWSONS PARAMOUNT W1167(APR)(AI)
 TNT MISS HONEY L9 YTHANBRAE TRAVELER 1489 T168(AI)

SIMMENTAL GROUP BREEDPLAN EBVs January 2015											
	CED	CEM	GL	BW	200	400	600	MCW	MILK	SS	DC
EBV			-6.1	-1.6	19	40	28				
<i>Acc</i>			61	75	68	68	63				
	CWT	EMA	RIB	RUMP	RBY	IMF	INDEXES				
EBV		3	1.2	0.9	-0.2	1.5	Dom: 57	Export: 75			
<i>Acc</i>	43	50	52	41	36		Nth Term: 28	Vealer: 44			

This Simm Angus bull scanned and weighed at the top of our line up. A bull with excellent mobility put together with high fat, EMA and ranking in top 5% for IMF.

Purchaser: Price: \$

LOT 30 **WEBB INDIAN RIVER J0814 (1) (BL)**



SOCIETY ID: WEB1J814 GRADE: **Grade 1** DOB: 12/08/2013 SEX: M

WLE POWER STROKE BON VIEW NEW DESIGN 1407
 HC HUMMER 12M (P) (BL) LAWSONS GAR FAIR DINKUM Z197(AI)(ET)
 LBR DESTINY'S DREAM K830 G A R PRECISION 1900 (ET)

Sire: BONNYDALE INDIAN RIVER E209 **Dam: LAWSONS FAIR DINKUM C1761**
 KENCO/MF POWERLINE 204L G A R YIELD GRADE
 BONNYDALE GEORGIA C219 (P) (BL) (ET) LAWSONS YIELD GRADE A122
 ASR LITTLE DESSI P420 (P) LAWSONS ROCKN D AMBUSH X27

SIMMENTAL GROUP BREEDPLAN EBVs January 2015											
	CED	CEM	GL	BW	200	400	600	MCW	MILK	SS	DC
EBV				-3	6	29	12				
<i>Acc</i>				74	64	65	60				
	CWT	EMA	RIB	RUMP	RBY	IMF	INDEXES				
EBV		4	2.5	2.4	-0.7	1.8	Dom: 57	Export: 75			
<i>Acc</i>	42	47	49	41	37		Nth Term: 27	Vealer: 34			

The last of the Simm Angus lineup, this bull is freemoving with an excellent fat, EMA and IMF raw data. A real hybrid package with BW, Rib Fat and IMF in the top 5%.

Purchaser: Price: \$

LOT 31 **WEBB TANK J0822 (P) (BL) (AI)**



SOCIETY ID: WEBPJ822 GRADE: **Purebred** DOB: 10/08/2013 SEX: M

ELLINGSON LEGACY M229 (P) CNS DREAM ON L186 (P) (BL) (ET)
 MR NLC SUPERIOR S6018 (P) (BL) HTP SVF IN DEW TIME IMU P A 094 (P) (BL)
 EBS JOKERS CAREN (P) HTP SVF HONEYDEW

Sire: TNT TANKER U263 (P) (BL) **Dam: WEBB CULLARA E048**
 TNT FIVE STAR P275 TNT DYNAMITE BLACK L137 (P) (BL)
 TNS MISS S17 SIMMGENE CULLARA C534
 TNT MISS HONEY L9 SIMMGENE BLACK ULLARA U354

SIMMENTAL GROUP BREEDPLAN EBVs January 2015											
	CED	CEM	GL	BW	200	400	600	MCW	MILK	SS	DC
EBV			-1.4	0.1	21	42	27				
<i>Acc</i>			65	77	71	71	66				
	CWT	EMA	RIB	RUMP	RBY	IMF	INDEXES				
EBV	31	5.5	0.1	-1	1.8	0.1	Dom: 47	Export: 46			
<i>Acc</i>	57	47	55	57	46	41	Nth Term: 19	Vealer: 43			

Look good in a paddock full of Hereford cows. This bull scanned very well, top 5% for EMA and top 1% for RBY EBVs.

Purchaser: Price: \$

LOT 32 WEBB DEW IT RIGHT J0825 (2) (BL) (AI)

PRIMARY ID: J0825 GRADE: **Grade 2** DOB: 7/08/2013 SEX: M

CNS DREAM ON L186 (P) (BL) (ET) GW LUCKY ONE 686K (P)
 HTP SVF IN DEW TIME IMU P A 094 (P) (BL) LANCASTER BRIGADIER B385 (P) (BL) (ET)
 HTP SVF HONEYDEW GW MISS CHOICE 717F

Sire: WELSHS DEW IT RIGHT 067T Dam: WEBB BRIGADIER G634

STF MR MOMENTUM H508
 SVF/NJC SENERITA N29
 NJC EBONY ANTOINETTE



Scan Data - December 2014				
EMA	RIB	RUMP	IMF	WT
97	5	5	2.7	562

Structurally correct with smooth shoulders, all the traits to suit the commercial market. Commercial bull only.

Purchaser: Price: \$

LOT 33 WEBB INDIAN RIVER J0823 (3) (BL)

SOCIETY ID: WEB3J823 GRADE: **Grade 3** DOB: 28/08/2013 SEX: M

WLE POWER STROKE GW LUCKY DICE 187H (P) (BL)
 HC HUMMER 12M (P) (BL) CO-OP Z0422 (P) (BL) (ET)
 LBR DESTINY'S DREAM K830 GW MISS WALLY 854G (BL)

Sire: BONNYDALE INDIAN RIVER E209 Dam: SYLVAN DALE RACHEAL C062

KENCO/MF POWERLINE 204L ER MACKFRID 550B
 BONNYDALE GEORGIA C219 (P) (BL) (ET) BREWER RACHEAL U001
 ASR LITTLE DESSI P420 (P) BREWERS N0083



SIMMENTAL GROUP BREEDPLAN EBVs January 2015											
	CED	CEM	GL	BW	200	400	600	MCW	MILK	SS	DC
EBV	3.5	3.6		-1.9	9	19	2		1		
<i>Acc</i>	38	37		77	68	69	64		45		
	CWT	EMA	RIB	RUMP	RBY	IMF	INDEXES				
EBV	8	3.8	2.3	1.4	0.1	1	Dom: 40	Export: 45			
<i>Acc</i>	56	49	55	56	48	43	Nth Term: 15	Vealer: 31			

A bull with ideal fat distribution out of a productive sound cow.

Purchaser: Price: \$

LOT 34 WEBB DEW IT RIGHT J0843 (P) (BL) (AI)

SOCIETY ID: WEBPJ843 GRADE: **Purebred** DOB: 6/08/2013 SEX: M

CNS DREAM ON L186 (P) (BL) (ET) LAZY S RED SHOCKER 226L
 HTP SVF IN DEW TIME IMU P A 094 (P) (BL) DRS J91 OUTBACK 604S (P) (BL)
 HTP SVF HONEYDEW DRS MICKS BLK SABEL J91

Sire: WELSHS DEW IT RIGHT 067T Dam: WEBB OUTBACK G764 (P) (BL) (AI) (ET)

STF MR MOMENTUM H508 HC HUMMER 12M (P) (BL)
 SVF/NJC SENERITA N29 WEBB PEAR E231
 NJC EBONY ANTOINETTE CO OP PB 615 F PEAR C703 (P) (BL) (ET)



SIMMENTAL GROUP BREEDPLAN EBVs January 2015											
	CED	CEM	GL	BW	200	400	600	MCW	MILK	SS	DC
EBV			-1.5	-1.6	15	30	11				
<i>Acc</i>			60	75	68	68	62				
	CWT	EMA	RIB	RUMP	RBY	IMF	INDEXES				
EBV		3.3	0.5	-0.1	0.8	0.4	Dom: 42	Export: 41			
<i>Acc</i>		46	53	55	45	40	Nth Term: 15	Vealer: 38			

LBW bull with high fats and adequate muscling. Heifers first calf.

Purchaser: Price: \$

LOT 35 **WEBB EVERREADY J0866 (2) (BL) (AI)**



SOCIETY ID: WEBB2J866 GRADE: **Grade 2** DOB: 28/08/2013 SEX: M

WLE POWER STROKE
 HC HUMMER 12M (P) (BL)
 LBR DESTINY'S DREAM K830
Sire: TNT EVER READY R232
 NICHOLS LEGACY G151(P) (BL)
 RC MISS LEGACY 058N
 RC MISS DESPERADO 049K

GW LUCKY ONE 686K (P)
 LANCASTER BRIGADIER B385 (P) (BL) (ET)
 GW MISS CHOICE 717F
Dam: WEBB BRIGADIER G652
 G A R 1407 NEW DESIGN 5752
 LAWSONS CASPER A1751
 LAWSONS EXPECTATION Y1836(AI)

SIMMENTAL GROUP BREEDPLAN EBVs January 2015											
	CED	CEM	GL	BW	200	400	600	MCW	MILK	SS	DC
EBV			-3.5	-3.6	5	9	-9				
<i>Acc</i>			61	75	68	69	63				
	CWT	EMA	RIB	RUMP	RBV	IMF	INDEXES				
EBV	4	2.8	1.5	1.8	-0.2	1.2	Dom: 38	Export: 45			
<i>Acc</i>	55	48	55	57	47	43	Nth Term: 13	Vealer: 30			

A bull with that extra length to add to your herd. Positive fats and LBW. Great scrotal development.

Purchaser: Price: \$

LOT 36 **WEBB TANK J0863 (P) (BL) (ET)**



SOCIETY ID: WEBPJ863 GRADE: **Purebred** DOB: 6/09/2013 SEX: M

ELLINGSON LEGACY M229 (P)
 MR NLC SUPERIOR S6018 (P) (BL)
 EBS JOKERS CAREN (P)
Sire: TNT TANKER U263 (P) (BL)
 TNT FIVE STAR P275
 TNS MISS S17
 TNT MISS HONEY L9

WLE POWER STROKE
 HC HUMMER 12M (P) (BL)
 LBR DESTINY'S DREAM K830
Dam: WEBB PEAR E213
 SRS J914 PREFERRED BEEF (P) (BL)
 CO OP PB 615 F PEAR C703 (P) (BL) (ET)
 MIISS PRICKLY PEAR 615F

SIMMENTAL GROUP BREEDPLAN EBVs January 2015											
	CED	CEM	GL	BW	200	400	600	MCW	MILK	SS	DC
EBV											
<i>Acc</i>											
EBVs available Sale Day.											
	CWT	EMA	RIB	RUMP	RBV	IMF	INDEXES				
EBV							Dom:	Export:			
<i>Acc</i>							Nth Term:	Vealer:			

Young ET bull out of an excellent cow showing the attributes needed in our industry. This bull is early maturing with a great muscle pattern and good fat cover. EBVs available Sale Day.

Purchaser: Price: \$

LOT 37 **WEBB UPGRADE J0885 (P) (BL) (ET)**



SOCIETY ID: WEBPJ885 GRADE: **Purebred** DOB: 28/09/2013 SEX: M

NICHOLS LEGACY G151(P) (BL)
 ELLINGSON LEGACY M229 (P)
 ELLINGSON MS PSTOCK K58 (P)
Sire: MR NLC UPGRADE U8676 (P) (BL)
 GLS MOJO M38 (P)
 MS NLC MOJO S6119 B (P)
 GFI DARLA M410 (P)

SRS J914 PREFERRED BEEF (P) (BL)
 ST PAULS PB 615F CAPTAIN C607 (P) (BL) (ET)
 MISS PRICKLY PEAR 615F
Dam: WEBB CAPTAIN G758 (P) (BL) (AI) (ET)
 TNT HUMMER H3
 WEBB GEORGIA E201
 BONNYDALE GEORGIA C219 (P) (BL) (ET)

SIMMENTAL GROUP BREEDPLAN EBVs January 2015											
	CED	CEM	GL	BW	200	400	600	MCW	MILK	SS	DC
EBV				-1	24	43	28			-0.3	
<i>Acc</i>				77	68	69	64			51	
	CWT	EMA	RIB	RUMP	RBV	IMF	INDEXES				
EBV	33	4.9	0.3	-0.5	1.3	0.5	Dom: 51	Export: 55			
<i>Acc</i>	56	47	55	56	46	42	Nth Term: 23	Vealer: 50			

One of the youngest bulls of the drop with adequate eye muscle and good fat cover. Top 5% for EMA and IMF

Purchaser: Price: \$

LOT 38 WEBB TANKER J0876 (P) (BL) (ET)

SOCIETY ID: WEBPJ876 GRADE: **Purebred** DOB: 2/09/2013 SEX: M

ELLINGSON LEGACY M229 (P)
MR NLC SUPERIOR S6018 (P) (BL)
EBS JOKERS CAREN (P)

WLE POWER STROKE
HC HUMMER 12M (P) (BL)
LBR DESTINY'S DREAM K830

Sire: TNT TANKER U263 (P) (BL)

Dam: WEBB PEAR E213

TNT FIVE STAR P275
TNS MISS S17
TNT MISS HONEY L9

SRS J914 PREFERRED BEEF (P) (BL)
CO OP PB 615 F PEAR C703 (P) (BL) (ET)
MIISS PRICKLY PEAR 615F



SIMMENTAL GROUP BREEDPLAN EBVs January 2015											
	CED	CEM	GL	BW	200	400	600	MCW	MILK	SS	DC
EBV	2.2	3.3		-0.6	23	42	29				
<i>Acc</i>	39	37		77	70	71	66				
	CWT	EMA	RIB	RUMP	RBV	IMF	INDEXES				
EBV	30	4.2	0.3	0.5	0.9	0.4	Dom: 55	Export: 61			
<i>Acc</i>	58	48	55	57	47	43	Nth Term: 27 Vealer: 50				

If your looking for a vealer bull check this bull out.

Purchaser:

Price: \$

LOT 39 WEBB DEW IT RIGHT J0839 (P) (BL) (AI)

SOCIETY ID: WEBPJ839 GRADE: **Purebred** DOB: 9/08/2013 SEX: M

CNS DREAM ON L186 (P) (BL) (ET)
HTP SVF IN DEW TIME IMU P A 094 (P) (BL)
HTP SVF HONEYDEW

LAZY S RED SHOCKER 226L
DRS J91 OUTBACK 604S (P) (BL)
DRS MICKS BLK SABEL J91

Sire: WELSHS DEW IT RIGHT 067T

Dam: WEBB OUTBACK G776 (P) (BL) (AI) (ET)

STF MR MOMENTUM H508
SVF/NJC SENERITA N29
NJC EBONY ANTOINETTE

SRS J914 PREFERRED BEEF (P) (BL)
CO OP PB MISS JOSIE C505 (P) (BL) (ET)
RIVER BLACK JOSIE 43B 755G



SIMMENTAL GROUP BREEDPLAN EBVs January 2015											
	CED	CEM	GL	BW	200	400	600	MCW	MILK	SS	DC
EBV			-1.6	-2.6	13	24	5				
<i>Acc</i>			60	75	68	68	62				
	CWT	EMA	RIB	RUMP	RBV	IMF	INDEXES				
EBV		3	-0.3	-0.6	1.2	0.1	Dom: 36	Export: 30			
<i>Acc</i>		46	53	55	45	40	Nth Term: 11 Vealer: 35				

A heifers first calf with a low EBV birth weight.

Purchaser:

Price: \$

LOT 40 WEBB DEW IT RIGHT J0835 (P) (BL) (AI)

SOCIETY ID: WEBPJ835 GRADE: **Purebred** DOB: 3/08/2013 SEX: M

CNS DREAM ON L186 (P) (BL) (ET)
HTP SVF IN DEW TIME IMU P A 094 (P) (BL)
HTP SVF HONEYDEW

HOO'S SHEAR FORCE 38K
TRIPLE C BETTIS S72J B072 (P) (BL)
LUCAS JOSIE 19K (P)

Sire: WELSHS DEW IT RIGHT 067T

Dam: WEBB BETTIS G787 (P) (BL) (AI) (ET)

STF MR MOMENTUM H508
SVF/NJC SENERITA N29
NJC EBONY ANTOINETTE

SRS J914 PREFERRED BEEF (P) (BL)
CO OP PB MISS JOSIE C505 (P) (BL) (ET)
RIVER BLACK JOSIE 43B 755G



SIMMENTAL GROUP BREEDPLAN EBVs January 2015											
	CED	CEM	GL	BW	200	400	600	MCW	MILK	SS	DC
EBV			-2.1	-3.4	17	22	4				
<i>Acc</i>			61	61	65	67	60				
	CWT	EMA	RIB	RUMP	RBV	IMF	INDEXES				
EBV	19	3.8	0.9	0.2	1.2	0.2	Dom: 43	Export: 42			
<i>Acc</i>	55	47	55	56	47	42	Nth Term: 17 Vealer: 47				

A soft skinned functional LBW bull, with all of the commercial traits.

Purchaser:

Price: \$

2015 Sale Lots - Cows

LOT 41 WEBB CAPTAIN G647 (P) (BL) (AI)



Outstanding outfit, lovely feminine cow with a future stud sire at foot. K129, Born 6/8/14 by Webb Uppercut. Her daughter sells at Lot 46, the first of our joined heifers. AI'd 19/11/14 TNT Tanker. Depastured Webb Indian River J892 19/12/14 - 20/1/15

SOCIETY ID: WEBPG647 GRADE: **Purebred** DOB: 31/08/2011 SEX: F

LRS PREFERRED STOCK 370C (P) (BL) RW BOMBER 8H
 SRS J914 PREFERRED BEEF (P) (BL) TNT DYNAMITE BLACK L137 (P) (BL)
 SRS G733 GLIMMER OPPTS WIS GM2

Sire: ST PAULS PB 615F CAPTAIN C607 (P) (BL) (ET) **Dam: SIMMGENE CULLARA C534**
 PPSR MONTANA IRISH 107D ER MACKFRID 550B
 MISS PRICKLY PEAR 615F SIMMGENE BLACK ULLARA U354
 MISS PRICKLY PEAR 318C ULTRA BLACK QUINIE Q010

SIMMENTAL GROUP BREEDPLAN EBVs January 2015											
	CED	CEM	GL	BW	200	400	600	MCW	MILK	SS	DC
EBV	-1	2	-1.2	1.8	18	37	28		4	0.3	
<i>Acc</i>	39	37	57	78	70	71	66		52	52	
	CWT	EMA	RIB	RUMP	RBY	IMF	INDEXES				
EBV	25	4.6	0.4	-0.6	1.5	-0.2		Dom: 37	Export: 34		
<i>Acc</i>	59	49	64	65	53	51		Nth Term: 17	Vealer: 32		

Purchaser:

Price: \$

LOT 42 WEBB MISS HIGH DENSITY D033 (P) (ET) (AI)



If your looking for an outstanding package, this is the one. Great cow with a bull calf at foot. This calf shows the quality needed in our beef industry. K154, Born 2/8/14 by TNT Tanker. AI'd 12/12/14 TNT Tanker. Depastured Webb Indian River J892 19/12/14 - 20/1/15

SOCIETY ID: WEBPD033 GRADE: **Purebred** DOB: 25/04/2008 SEX: F

CIRCLE S LEACHMAN 600U 3C WALLY C240 BLK
 NICHOLS BLK DESTINY D12 GW HIGH DENSITY 022E
 NICHOLS KELLY 75U GW MISS 600U 307C

Sire: NICHOLS LEGACY G151(P) (BL) **Dam: GW MISS HIGH DENSITY 035J**
 BURNS BULL X339U LCHMAN LUCKY BUCK 7049C
 NICHOLS DEBRA D81 GW MISS LUCKY BUCK 516F
 NICHOLS KELLY B81 X809X

SIMMENTAL GROUP BREEDPLAN EBVs January 2015											
	CED	CEM	GL	BW	200	400	600	MCW	MILK	SS	DC
EBV	5.7	2.9	-2.5	-3.4	6	14	-6		-5	0	
<i>Acc</i>	49	49	55	80	70	69	67		64	56	
	CWT	EMA	RIB	RUMP	RBY	IMF	INDEXES				
EBV	8	4.9	1.1	0.4	0.9	0.8		Dom: 34	Export: 35		
<i>Acc</i>	59	54	55	52	47	47		Nth Term: 11	Vealer: 31		

Purchaser:

Price: \$

LOT 43 WEBB GLITTER E202 (P) (ET) (AI)



Big long feminine cow with a magnificent heifer calf at foot. K123, Born 29/7/14 by TNT Tanker. AI'd 10/12/14 TNT Tanker. Depastured Webb Indian River J892 19/12/14 - 20/1/15

SOCIETY ID: WEBPE202 GRADE: **Purebred** DOB: 7/08/2009 SEX: F

BURNS BULL X339U WLE POWER STROKE
 WLE POWER STROKE HC HUMMER 12M (P) (BL)
 NICHOLS JOLIETTE C75 LBR DESTINY'S DREAM K830

Sire: GWS EBONY'S TRADEMARK 6N (P) (BL) **Dam: BONNYDALE GLITTER C220**
 BLACK IRISH KANSAS (BL) WHF DESPERADO 212G
 NJC EBONY ANTOINETTE MLC DESSY K53
 NJC BETSY ROSS MISS BR B DAKOTA B51

SIMMENTAL GROUP BREEDPLAN EBVs January 2015											
	CED	CEM	GL	BW	200	400	600	MCW	MILK	SS	DC
EBV	4.5	3.7	-1.9	-1.9	14	23	5		-1	-0.4	
<i>Acc</i>	45	43	56	81	74	74	70		60	52	
	CWT	EMA	RIB	RUMP	RBY	IMF	INDEXES				
EBV	16	4.7	0.5	0.4	1.4	0		Dom: 39	Export: 35		
<i>Acc</i>	62	49	65	65	53	51		Nth Term: 15	Vealer: 41		

Purchaser:

Price: \$

LOT 44 WEBB DOUBLE AGENT G39 (3) (BL)



Young cow with her whole future ahead of her. Check out her heifer calf. K143, Born 2/8/14 by Webb Uppercut. AI'd 10/12/14 TNT Tanker
Depastured Webb Indian River J892 19/12/14 - 20/1/15

SOCIETY ID: WEB3G039 GRADE: **Grade 3** DOB:17/03/2011 SEX: F

WLE POWER STROKE
HC HUMMER 12M (P) (BL)
LBR DESTINY'S DREAM K830
Sire: WEBB DOUBLE AGENT D090
DAUME LEGEND M081
BREWERS KAREN B910 (P) (BL)
BREWERS KAREN X336

LRS PREFERRED STOCK 370C (P) (BL)
SRS J914 PREFERRED BEEF (P) (BL)
SRS G733 GLIMMER
Dam: CO OP PB 615 F PEAR C709 (P) (BL) (ET)
PPSR MONTANA IRISH 107D
MIISS PRICKLY PEAR 615F
MIISS PRICKLY PEAR 318C

SIMMENTAL GROUP BREEDPLAN EBVs January 2015											
	CED	CEM	GL	BW	200	400	600	MCW	MILK	SS	DC
EBV	1.5	2.4	-2.8	-0.1	17	33	30		3		
<i>Acc</i>	39	40	49	75	66	67	67		48		
	CWT	EMA	RIB	RUMP	RBY	IMF	INDEXES				
EBV	22	1.8	0.7	0.6	0	0.2		Dom: 41	Export: 52		
<i>Acc</i>	56	44	57	57	46	44		Nth Term: 24	Vealer: 34		

Purchaser:

Price: \$

LOT 45 WEBB OUTBACK G772 (P) (BL) (AI) (ET)



A cow that would suit most stud herds. A real package with a heifer calf at foot. K118, Born 5/8/14 by TNT Tanker. AI'd 10/12/14 TNT Tanker
Depastured Webb Indian River J892 19/12/14 - 20/1/15

SOCIETY ID: WEBPG772 GRADE: **Purebred** DOB:25/08/2011 SEX: F

TNT SHOCKER J46
LAZY S RED SHOCKER 226L
MS LAZY S BLACK P 217J
Sire: DRS J91 OUTBACK 604S (P) (BL)
BLACK MICK X33 (BL)
DRS MICKS BLK SABEL J91
MLC MISS G106

WLE POWER STROKE
HC HUMMER 12M (P) (BL)
LBR DESTINY'S DREAM K830
Dam: WEBB PEAR E231
SRS J914 PREFERRED BEEF (P) (BL)
CO OP PB 615 F PEAR C703 (P) (BL) (ET)
MIISS PRICKLY PEAR 615F

SIMMENTAL GROUP BREEDPLAN EBVs January 2015											
	CED	CEM	GL	BW	200	400	600	MCW	MILK	SS	DC
EBV	3.2	3	-1	-0.5	12	38	23		5	-0.7	
<i>Acc</i>	38	37	50	78	69	65	63		48	50	
	CWT	EMA	RIB	RUMP	RBY	IMF	INDEXES				
EBV		5.1	-1.2	-2.2	2	0		Dom: 38	Export: 33		
<i>Acc</i>		47	59	60	49	46		Nth Term: 12	Vealer: 28		

Purchaser:

Price: \$

2015 Sale Lots - Heifers

An outstanding line of J heifers, selected for their structural soundness, femininity and temperament. A one off opportunity to purchase heifers of this quality. You be the judge. AI'd to a new Low Birth Weight outcross bull ASR AUGUSTUS Z2165

LOT 46 WEBB DEW IT RIGHT J0620 (P) (BL) (AI)



AI'd 17/11/14 ASR Augustus Z2165
Depastured Webb Indian River J892 19/12/14 - 20/1/15

SOCIETY ID: WEBPJ620 DOB:1/08/2013 SEX: F

CNS DREAM ON L186 (P) (BL) (ET) SRS J914 PREFERRED BEEF (P) (BL)
HTP SVF IN DEW TIME IMU P A 094 (P) (BL) ST PAULS PB 615F CAPTAIN C607 (P) (BL) (ET)
HTP SVF HONEYDEW MISS PRICKLY PEAR 615F
Sire: WELSHS DEW IT RIGHT 067T **Dam: WEBB CAPTAIN G647 (P) (BL) (AI)**
STF MR MOMENTUM H508 TNT DYNAMITE BLACK L137 (P) (BL)
SVF/NJC SENERITA N29 SIMMGENE CULLARA C534
NJC EBONY ANTOINETTE SIMMGENE BLACK ULLARA U354

SIMMENTAL GROUP BREEDPLAN EBVs January 2015											
	CED	CEM	GL	BW	200	400	600	MCW	MILK	SS	DC
EBV			-2.5	-1.9	17	30	12				
<i>Acc</i>			61	75	68	69	63				
	CWT	EMA	RIB	RUMP	RBY	IMF	INDEXES				
EBV		4	0.6	0.2	1.1	0.2	Dom: 46	Export: 45			
<i>Acc</i>		43	60	61	48	46	Nth Term: 19 Vealer: 44				

Purchaser:

Price: \$

LOT 47 WEBB CAPTAIN J0650 (P) (ET) (AI)



AI'd 10/12/14 ASR Augustus Z2165
Depastured Webb Indian River J892 19/12/14 - 20/1/15

SOCIETY ID: WEBPJ650 DOB:31/08/2013 SEX: F

LRS PREFERRED STOCK 370C (P) (BL) WLE POWER STROKE
SRS J914 PREFERRED BEEF (P) (BL) HC HUMMER 12M (P) (BL)
SRS G733 GLIMMER LBR DESTINY'S DREAM K830
Sire: ST PAULS PB 615F CAPTAIN C607 (P)(BL)(ET) **Dam: WEBB HUMMER F516**
PPSR MONTANA IRISH 107D ES KILOWAT KH19
MISS PRICKLY PEAR 615F BONNYDALE GLENDIVE MBB PC200 (P)(BL)(ET)
MISS PRICKLY PEAR 318C ASR LITTLE DESSI P420

SIMMENTAL GROUP BREEDPLAN EBVs January 2015											
	CED	CEM	GL	BW	200	400	600	MCW	MILK	SS	DC
EBV	2.1	3.1		0.4	24	45	33		5	0.0	
<i>Acc</i>	40	42		62	59	59	57		44	55	
	CWT	EMA	RIB	RUMP	RBY	IMF	INDEXES				
EBV		3.5	0.7	-0.1	0.8	0.3	Dom: 52	Export: 57			
<i>Acc</i>							Nth Term: 25 Vealer: 46				

Purchaser:

Price: \$

LOT 48 WEBB TANK J0612 (P) (BL) (ET)



AI'd 18/11/14 ASR Augustus Z2165
Depastured Webb Indian River J892 19/12/14 - 20/1/15

SOCIETY ID: WEBPJ612 DOB:4/09/2013 SEX: F

ELLINGSON LEGACY M229 (P) WLE POWER STROKE
MR NLC SUPERIOR S6018 (P) (BL) HC HUMMER 12M (P) (BL)
EBS JOKERS CAREN (P) LBR DESTINY'S DREAM K830
Sire: TNT TANKER U263 (P) (BL) **Dam: WEBB PEAR 12M E227**
TNT FIVE STAR P275 SRS J914 PREFERRED BEEF (P) (BL)
TNS MISS S17 CO OP PB 615 F PEAR C266 (P) (BL) (ET)
TNT MISS HONEY L9 MIISS PRICKLY PEAR 615F

SIMMENTAL GROUP BREEDPLAN EBVs January 2015											
	CED	CEM	GL	BW	200	400	600	MCW	MILK	SS	DC
EBV	3.5	3.2		0.2	28	57	42				
<i>Acc</i>	39	37		78	70	71	66				
	CWT	EMA	RIB	RUMP	RBY	IMF	INDEXES				
EBV	41	4.3	-0.2	-0.5	1	0.6	Dom: 65	Export: 74			
<i>Acc</i>	58	46	61	62	49	47	Nth Term: 30 Vealer: 56				

Purchaser:

Price: \$

LOT 49 WEBB TANK J0625 (P) (BL) (ET)



AI'd 10/12/14 ASR Augustus Z2165
Depastured Webb Indian River J892 19/12/14 - 20/1/15

SOCIETY ID: WEBPJ625 DOB:3/09/2013 SEX: F

ELLINGSON LEGACY M229 (P) GATEWAY LUCKY STRIKE 147G
MR NLC SUPERIOR S6018 (P) (BL) GW LUCKY ONE 686K (P)
EBS JOKERS CAREN (P) GS MISS EL WALLY
Sire: TNT TANKER U263 (P) (BL) **Dam: SAROKOS PARK MISS LUCKY ONE A101(P) (BL) (ET)**
TNT FIVE STAR P275 GW LUCKY DICE 187H (P) (BL)
TNS MISS S17 MISS LUCKY DICE 006K (P)
TNT MISS HONEY L9 WS MS LITE H338

SIMMENTAL GROUP BREEDPLAN EBVs January 2015											
	CED	CEM	GL	BW	200	400	600	MCW	MILK	SS	DC
EBV	0.8	1.3		1.8	28	52	34		5	1	
<i>Acc</i>	41	42		78	71	71	67		40	53	
	CWT	EMA	RIB	RUMP	RBV	IMF	INDEXES				
EBV	30	4.4	-0.2	-0.9	1.2	0.5	Dom: 52	Export: 51			
<i>Acc</i>	60	48	63	64	52	50	Nth Term: 20	Vealer: 48			

Purchaser:

Price: \$

LOT 50 WEBB DOMINATOR J0644 (P) (BL) (ET)



AI'd 17/11/14 ASR Augustus Z2165
Depastured Webb Indian River J892 19/12/14 - 20/1/15

SOCIETY ID: WEBPJ644 DOB:6/09/2013 SEX: F

NICHOLS LEGACY G151(P) (BL) LRS PREFERRED STOCK 370C (P) (BL)
ELLINGSON LEGACY M229 (P) SRS J914 PREFERRED BEEF (P) (BL)
ELLINGSON MS PSTOCK K58 (P) SRS G733 GLIMMER
Sire: ELLINGSON DOMINATOR W905 **Dam: CO OP C601**
HC HUMMER 12M (P) (BL) PPSR MONTANA IRISH 107D
ELLINGSON HUMMER T713 MIISS PRICKLY PEAR 615F
ELLINGSON MS 600U J941 MISS PRICKLY PEAR 318C

SIMMENTAL GROUP BREEDPLAN EBVs January 2015											
	CED	CEM	GL	BW	200	400	600	MCW	MILK	SS	DC
EBV	-1.6	1.9		2.6	29	49	37				
<i>Acc</i>	37	38		75	66	67	62				
	CWT	EMA	RIB	RUMP	RBV	IMF	INDEXES				
EBV		4.5	0.8	0.1	1.2	0.3	Dom: 50	Export: 52			
<i>Acc</i>		44	59	60	48	46	Nth Term: 24	Vealer: 49			

Purchaser:

Price: \$

LOT 51 WEBB TANK J0636 (P) (BL) (ET)



AI'd 18/11/14 ASR Augustus Z2165
Depastured Webb Indian River J892 19/12/14 - 20/1/15

SOCIETY ID: WEBPJ636 DOB:22/09/2013 SEX: F

ELLINGSON LEGACY M229 (P) LAZY S RED SHOCKER 226L
MR NLC SUPERIOR S6018 (P) (BL) DRS J91 OUTBACK 604S (P) (BL)
EBS JOKERS CAREN (P) DRS MICKS BLK SABEL J91
Sire: TNT TANKER U263 (P) (BL) **Dam: WEBB OUTBACK G751(P) (BL) (AI) (ET)**
TNT FIVE STAR P275 HC HUMMER 12M (P) (BL)
TNS MISS S17 WEBB PEAR E213
TNT MISS HONEY L9 CO OP PB 615 F PEAR C703 (P) (BL) (ET)

SIMMENTAL GROUP BREEDPLAN EBVs January 2015											
	CED	CEM	GL	BW	200	400	600	MCW	MILK	SS	DC
EBV				-0.2	22	45	30				
<i>Acc</i>				77	68	69	64				
	CWT	EMA	RIB	RUMP	RBV	IMF	INDEXES				
EBV	30	3.2	0.2	-0.4	0.8	0.1	Dom: 48	Export: 46			
<i>Acc</i>	55	43	60	61	48	45	Nth Term: 21	Vealer: 40			

Purchaser:

Price: \$

LOT 52 **WEBB TANK J0690 (P) (BL) (ET)**



AI'd 17/11/14 ASR Augustus Z2165
Depastured Webb Indian River J892 19/12/14 - 20/1/15

SOCIETY ID: WEBPJ690 DOB:18/09/2013 SEX: F

ELLINGSON LEGACY M229 (P) SRS J914 PREFERRED BEEF (P) (BL)
MR NLC SUPERIOR S6018 (P) (BL) ST PAULS PB 615F CAPTAIN C607 (P) (BL) (ET)
EBS JOKERS CAREN (P) MISS PRICKLY PEAR 615F

Sire: TNT TANKER U263 (P) (BL) **Dam: WEBB CAPTAIN G765 (P) (BL) (AI) (ET)**
TNT FIVE STAR P275 GWS EBONYS TRADEMARK 6N (P) (BL)
TNS MISS S17 WEBB GALAXY E212
TNT MISS HONEY L9 BONNYDALE GALAXY C213

SIMMENTAL GROUP BREEDPLAN EBVs January 2015											
	CED	CEM	GL	BW	200	400	600	MCW	MILK	SS	DC
EBV	1.1			-0.4	20	43	28				
<i>Acc</i>	35			77	68	69	64				
	CWT	EMA	RIB	RUMP	RBV	IMF	INDEXES				
EBV	29	4.2	0.9	0.3	0.8	0.5	Dom: 51	Export: 55			
<i>Acc</i>	56	44	61	62	49	46	Nth Term: 24	Vealer: 42			

Purchaser:

Price: \$

LOT 53 **WEBB TANK J0665 (P) (BL) (ET)**



AI'd 10/12/14 ASR Augustus Z2165
Depastured Webb Indian River J892 19/12/14 - 20/1/15

SOCIETY ID: WEBPJ665 DOB:29/09/2013 SEX: F

ELLINGSON LEGACY M229 (P) LAZY S RED SHOCKER 226L
MR NLC SUPERIOR S6018 (P) (BL) DRS J91 OUTBACK 604S (P) (BL)
EBS JOKERS CAREN (P) DRS MICKS BLK SABEL J91

Sire: TNT TANKER U263 (P) (BL) **Dam: WEBB OUTBACK G751(P) (BL) (AI) (ET)**
TNT FIVE STAR P275 HC HUMMER 12M (P) (BL)
TNS MISS S17 WEBB PEAR E213
TNT MISS HONEY L9 CO OP PB 615 F PEAR C703 (P) (BL) (ET)

SIMMENTAL GROUP BREEDPLAN EBVs January 2015											
	CED	CEM	GL	BW	200	400	600	MCW	MILK	SS	DC
EBV				-0.9	21	46	30				
<i>Acc</i>				77	68	69	64				
	CWT	EMA	RIB	RUMP	RBV	IMF	INDEXES				
EBV	33	3.5	-0.3	-0.9	1	0.3	Dom: 51	Export: 52			
<i>Acc</i>	55	43	60	61	48	45	Nth Term: 21	Vealer: 42			

Purchaser:

Price: \$

LOT 54 **WEBB TANK J0649 (P) (BL) (ET)**



AI'd 17/11/14 ASR Augustus Z2165
Depastured Webb Indian River J892 19/12/14 - 20/1/15

SOCIETY ID: WEBPJ649 DOB:2/09/2013 SEX: F

ELLINGSON LEGACY M229 (P) WLE POWER STROKE
MR NLC SUPERIOR S6018 (P) (BL) HC HUMMER 12M (P) (BL)
EBS JOKERS CAREN (P) LBR DESTINY'S DREAM K830

Sire: TNT TANKER U263 (P) (BL) **Dam: WEBB PEAR 12M E227**
TNT FIVE STAR P275 SRS J914 PREFERRED BEEF (P) (BL)
TNS MISS S17 CO OP PB 615 F PEAR C266 (P) (BL) (ET)
TNT MISS HONEY L9 MISS PRICKLY PEAR 615F

SIMMENTAL GROUP BREEDPLAN EBVs January 2015											
	CED	CEM	GL	BW	200	400	600	MCW	MILK	SS	DC
EBV	4.9	3.4		-1	23	51	34				
<i>Acc</i>	39	37		77	69	69	65				
	CWT	EMA	RIB	RUMP	RBV	IMF	INDEXES				
EBV	37	4.1	-0.1	-0.5	1	0.4	Dom: 61	Export: 67			
<i>Acc</i>	55	40	46	47	39	38	Nth Term: 27	Vealer: 50			

Purchaser:

Price: \$

LOT 55 WEBB EVER READY J0804 (P) (BL) (AI)



AI'd 18/11/14 ASR Augustus Z2165
Depastured Webb Indian River J892 19/12/14 - 20/1/15

SOCIETY ID: WEBPJ804 DOB:19/08/2013 SEX: F

WLE POWER STROKE
HC HUMMER 12M (P) (BL)
LBR DESTINY'S DREAM K830
Sire: TNT EVER READY R232
NICHOLS LEGACY G151(P) (BL)
RC MISS LEGACY 058N
RC MISS DESPERADO 049K

WLE POWER STROKE
GWS EBONY'S TRADEMARK 6N (P) (BL)
NJC EBONY ANTOINETTE
Dam: WEBB TRADEMARK G755 (P) (BL) (AI) (ET)
ES KILOWAT KH19
BONNYDALE GLENDIVE MBB PC200 (P) (BL) (ET)
ASR LITTLE DESSI P420

SIMMENTAL GROUP BREEDPLAN EBVs January 2015											
	CED	CEM	GL	BW	200	400	600	MCW	MILK	SS	DC
EBV	4.7		-4.8	-1.8	21	30	16				
<i>Acc</i>	35		62	76	69	70	65				
	CWT	EMA	RIB	RUMP	RBV	IMF	INDEXES				
EBV	21	4.2	0.7	0.7	1.2	0.2	Dom: 50	Export: 53			
<i>Acc</i>	56	46	62	63	51	49	Nth Term: 23	Vealer: 52			

Purchaser:

Price: \$

2015 Sale Lots - Led Heifers (Unjoined)

LOT 56 WEBB KRYSTAL K019 (P) (AI)



The first of our led heifers and what a powerhouse, she has tremendous length and depth of body. K19 is out of an older donor cow who has produced many top calves.

SOCIETY ID: WEBPK019 DOB:21/02/2014 SEX: F

ELLINGSON LEGACY M229 (P)
MR NLC SUPERIOR S6018 (P) (BL)
EBS JOKERS CAREN (P)
Sire: TNT TANKER U263 (P) (BL)
TNT FIVE STAR P275
TNS MISS S17
TNT MISS HONEY L9

NICHOLS BLK DESTINY D12
NICHOLS LEGACY G151(P) (BL)
NICHOLS DEBRA D81
Dam: SAROKOS PARK B101(P) (ET)
GW LUCKY DICE 187H (P) (BL)
MISS LUCKY DICE 006K (P)
WS MS LITE H338

SIMMENTAL GROUP BREEDPLAN EBVs January 2015											
	CED	CEM	GL	BW	200	400	600	MCW	MILK	SS	DC
EBV	1.9		-3.3	-0.1	21	41	23			0.6	
<i>Acc</i>	39		62	76	66	65	62			56	
	CWT	EMA	RIB	RUMP	RBV	IMF	INDEXES				
EBV							Dom: 46	Export: 44			
<i>Acc</i>							Nth Term: 18	Vealer: 40			

Purchaser:

Price: \$

LOT 57 WEBB KISS N' TELL K053 (P) (AI)



K53 is a very neat package with a great outlook. She is feminine whilst still carrying plenty of muscle.

SOCIETY ID: WEBPK053 DOB:23/02/2014 SEX: F

ELLINGSON LEGACY M229 (P)
MR NLC SUPERIOR S6018 (P) (BL)
EBS JOKERS CAREN (P)
Sire: TNT TANKER U263 (P) (BL)
TNT FIVE STAR P275
TNS MISS S17
TNT MISS HONEY L9

WLE POWER STROKE
GWS EBONY'S TRADEMARK 6N (P) (BL)
NJC EBONY ANTOINETTE
Dam: WEBB GALAXY E212
HC HUMMER 12M (P) (BL)
BONNYDALE GALAXY C213
ASR BLACK WHISPER L130

SIMMENTAL GROUP BREEDPLAN EBVs January 2015											
	CED	CEM	GL	BW	200	400	600	MCW	MILK	SS	DC
EBV	1.0		-3.1	0.3	27	50	34				
<i>Acc</i>	36		60	76	65	64	61				
	CWT	EMA	RIB	RUMP	RBV	IMF	INDEXES				
EBV							Dom: 52	Export: 52			
<i>Acc</i>							Nth Term: 23	Vealer: 48			

Purchaser:

Price: \$

LOT 58

WEBB KARMA K064 (P)



Packed with meat from head to toe this heifer has a huge capacity in a very attractive package.

SOCIETY ID: WEBPK064 DOB:24/03/2014 SEX: F

WLE POWER STROKE
 HC HUMMER 12M (P) (BL)
 LBR DESTINY'S DREAM K830
Sire: BONNYDALE INDIAN RIVER E209
 KENCO/MF POWERLINE 204L
 BONNYDALE GEORGIA C219 (P) (BL) (ET)
 ASR LITTLE DESSI P420 (P)

SS GOLDMINE L42 (P) (BL)
 ACCI HUSTLER 2N IMC P Y 666 (P) (BL)
 CPS KORONA
Dam: WEBB PEAR E245
 SRS J914 PREFERRED BEEF (P) (BL)
 CO OP C501
 MIISS PRICKLY PEAR 615F

SIMMENTAL GROUP BREEDPLAN EBVs January 2015											
	CED	CEM	GL	BW	200	400	600	MCW	MILK	SS	DC
EBV	4.9	4.3		-3.0					0.0	0.3	
<i>Acc</i>	40	38		62					43	53	
	CWT	EMA	RIB	RUMP	RBY	IMF	INDEXES				
EBV							Dom:	Export:			
<i>Acc</i>							Nth Term:	Vealer:			

Purchaser:

Price: \$

LOT 59

WEBB KAHLUA K050 (P) (AI)



This sweet heifer has good depth of body and length.

SOCIETY ID: WEBPK050 DOB:21/02/2014 SEX: F

ELLINGSON LEGACY M229 (P)
 MR NLC SUPERIOR S6018 (P) (BL)
 EBS JOKERS CAREN (P)
Sire: TNT TANKER U263 (P) (BL)
 TNT FIVE STAR P275
 TNS MISS S17
 TNT MISS HONEY L9

SRS J914 PREFERRED BEEF (P) (BL)
 ES DAKOTA NK68
 ESK68
Dam: WEBB GALAXY E200
 HC HUMMER 12M (P) (BL)
 BONNYDALE GALAXY C213
 ASR BLACK WHISPER L130

SIMMENTAL GROUP BREEDPLAN EBVs January 2015											
	CED	CEM	GL	BW	200	400	600	MCW	MILK	SS	DC
EBV	1.3		-4.0	1.1	30	52	41			0.6	
<i>Acc</i>	37		61	74	64	63	61			50	
	CWT	EMA	RIB	RUMP	RBY	IMF	INDEXES				
EBV							Dom: 54	Export: 59			
<i>Acc</i>							Nth Term: 26	Vealer: 52			

Purchaser:

Price: \$

LOT 60

WEBB KATHERINE K012 (P) (AI)



Out of a heifer who was flushed, K12 is a different style of female being sired by Sure Bet. Showing good length and growth, she is a stylish heifer.

SOCIETY ID: WEBPK012 DOB:26/02/2014 SEX: F

HARTS BLACK CASINO B408
 TJ 573 THE GAMBLER
 TH NELLIE 56C
Sire: DIKEMANS SURE BET
 GW LUCKY DICE 187H (P) (BL)
 MEGAN 9M
 BLACK KALLI

SRS J914 PREFERRED BEEF (P) (BL)
 ST PAULS PB 615F CAPTAIN C607 (P) (BL) (ET)
 MISS PRICKLY PEAR 615F
Dam: WEBB CAPTAIN G758 (P) (BL) (AI) (ET)
 TNT HUMMER H3
 WEBB GEORGIA E201
 BONNYDALE GEORGIA C219 (P) (BL) (ET)

SIMMENTAL GROUP BREEDPLAN EBVs January 2015											
	CED	CEM	GL	BW	200	400	600	MCW	MILK	SS	DC
EBV	2.2			-1.5							
<i>Acc</i>	37			77							
	CWT	EMA	RIB	RUMP	RBY	IMF	INDEXES				
EBV							Dom: 53	Export: 60			
<i>Acc</i>							Nth Term: 25	Vealer: 47			

Purchaser:

Price: \$

2015 Buyers Instruction Slip

Name

Phone

Email

Address

Lots Purchased

PIC Number

Stud Name

Stud Ident.

Carrier's Name

Directions

Society Transfer Required

Yes

No

Insurance Req.

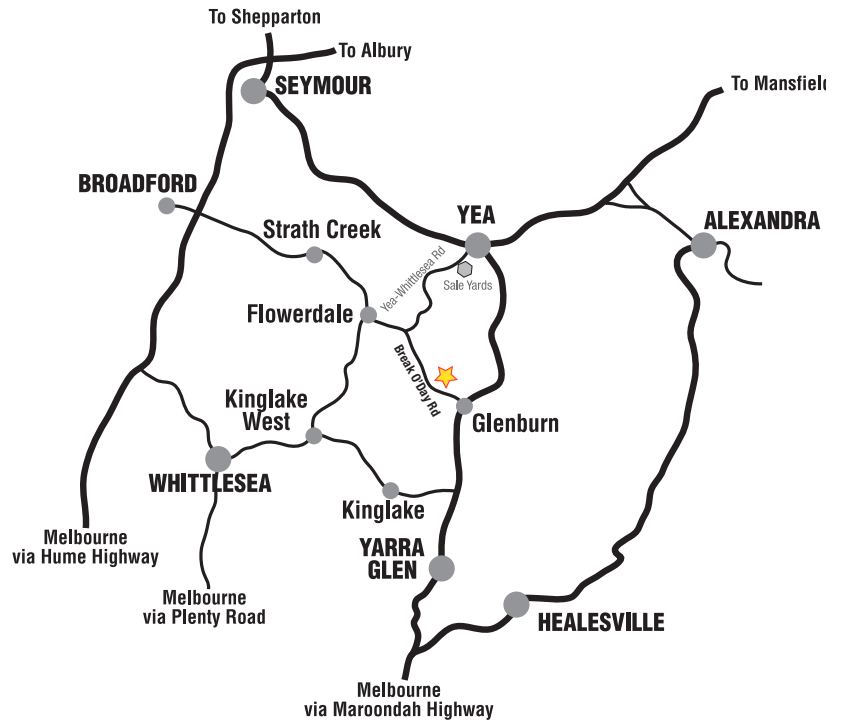
Account To

Signature of Buyer

Extra Information / Delivery Map

Directions

The Webb Black Simmental Sale Complex is situated at 580 Break O'Day Road, Glenburn.



To ensure you have a copy of the Catalogue on Sale Day, please bring this one with you

Notes



Only our national network gives access to more potential buyers... no bull.

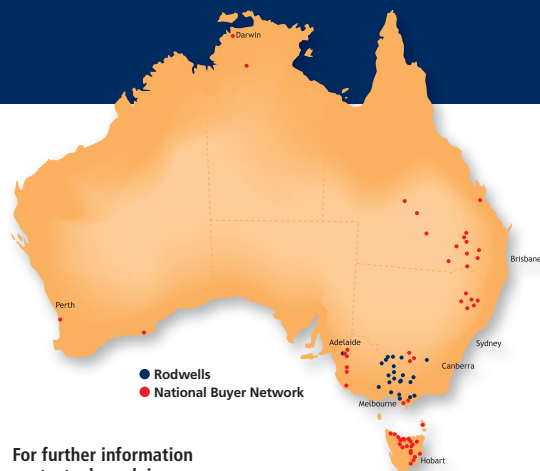
Rodwells, backed by the national strength of Ruralco, gives you access to more potential buyers than any other company. Rodwells is ready to look after your livestock sales, woolbroking,



merchandise, finance and real estate needs. With a reputation built on exceptional personal service throughout Victoria, New South Wales and

South Australia, Rodwells local team of specialists are ready to look after you personally with truly independent, expert advice and services.

- LIVESTOCK
- REAL ESTATE
- MERCHANDISE
- FINANCIAL SERVICES
- WATER BROKERS
- WOOL



For further information contact a branch in your area:

VICTORIA

Alexandra 03 5772 2444
 Benalla 03 5762 7855
 Bendigo 03 5442 5211
 Boort 03 5455 2002
 Cohuna 03 5456 2927
 Edenhope 03 5585 1411
 Hamilton 03 5571 1477
 Horsham 03 5381 0022
 Kerang 03 5452 1166
 Kilmore 03 5782 1266
 Kyneton 03 5422 1980
 Laverton North 03 9240 4700
 Leongatha 03 5662 4388

Mansfield 03 5775 1588
 Pakenham 03 5941 5396
 Rochester 03 5484 1766
 Sale 03 5144 2988
 Shepparton 03 5829 9245
 Stawell 03 5358 1068
 Yea 03 5797 2086

NEW SOUTH WALES

Deniliquin 03 5881 8744
 Finley 03 5883 1777
 Wagga Wagga 02 6921 1700

SOUTH AUSTRALIA

Keith 08 8755 3435

RODWELLS YEA
 Adam Mountjoy 0428 926 610
 Rick Wills 0437 469 079

RODWELLS ALEXANDRA
 Andrew Allen 0428 410 341

24/02/2011

Rodwells - Keeping competition in the industry since 1981
www.rodwells.com.au





Inspections welcome

580 Break O Day Road,
Glenburn, VIC 3717
03 5797 8173

For further information, please contact:
Ben Coad 0428 248 076
Duncan Newcomen 0418 873 765
info@webbblacksimmentals.com.au

www.webbblacksimmentals.com.au