

Lot Number	PTIC/ Empty	Approx Scanning details		NOTES
1	EMPTY			
2	EMPTY			
3	EMPTY			
4	PTIC	4	MONTHS	
5	EMPTY			
6	PTIC	10	WEEKS	
7	PTIC	11	WEEKS	NO CAF
8	PTIC	10	WEEKS	
9	PTIC	12	WEEKS	
10	PTIC	10	WEEKS	
11	PTIC	4	MONTHS	
12	PTIC	8	WEEKS	
13	PTIC	10	WEEKS	
14	PTIC	10	WEEKS	
15	PTIC	5	WEEKS	
16	EMPTY			HEIFER CAF
17	EMPTY			
18	PTIC	4	WEEKS	
19	PTIC	14	WEEKS	
20	PTIC	9	WEEKS	
21	EMPTY			
22	PTIC	4	WEEKS	
23	PTIC	12	WEEKS	HEIFER CAF
24	PTIC	11	WEEKS	
25	PTIC	5	WEEKS	
26	PTIC	5	WEEKS	
27	PTIC	6	WEEKS	
28	PTIC	6	WEEKS	HEIFER CAF
29	PTIC	9	WEEKS	
30	PTIC	10	WEEKS	HEIFER CAF
31	PTIC	11	WEEKS	NO CAF
32	PTIC	3	WEEKS	
33	PTIC	6	WEEKS	HEIFER CAF
34	PTIC	12	WEEKS	
35	PTIC	8	WEEKS	NO CAF
36	PTIC	11	WEEKS	
37	PTIC	4	WEEKS	
38	PTIC	8	WEEKS	
39	PTIC	8	WEEKS	HEIFER CAF
40	EMPTY			
41	PTIC	6	WEEKS	
42	PTIC	6	WEEKS	
42a	PTIC	6	WEEKS	
43	PTIC	13	WEEKS	
44	PTIC	13	WEEKS	
45	PTIC	4	WEEKS	
46	PTIC	5	WEEKS	
47	PTIC	5	WEEKS	
48	PTIC	11	WEEKS	

49	PTIC	4	WEEKS	
50	PTIC	4	WEEKS	
51	PTIC	13	WEEKS	
52	PTIC	12	WEEKS	
53	PTIC	11	WEEKS	
54	PTIC	6	WEEKS	
55	PTIC	4.5	MONTHS	
56	EMPTY			
57	PTIC	10	WEEKS	
58	PTIC	4	MONTHS	CAF
59	PTIC	11	WEEKS	
60	PTIC	10	WEEKS	
61	PTIC	6	WEEKS	
62	PTIC	5	WEEKS	
63	PTIC	8	WEEKS	
64	DUPLICATE LOT WITH LOT 80			
65	WITHDRAWN			
66	WITHDRAWN			
67	WITHDRAWN			
68	PTIC	14	WEEKS	
69	PTIC	14	WEEKS	
70	PTIC	10	WEEKS	
71	PTIC	10	WEEKS	
72	PTIC	7	WEEKS	
73	WITHDRAWN			
74	PTIC	4	WEEKS	
75	EMPTY			
76	EMPTY			
77	PTIC			RED TAG
78	PTIC			RED TAG
79	PTIC			RED TAG
80				CAF
81				CAF
82	PTIC			RED TAG
83	PTIC			BLUE TAG
84				CAF
85				HEIFER CAF
86				CAF
87	PTIC			BLUE TAG
88	PTIC			RED TAG
89				CAF
90	PTIC			RED TAG
91	PTIC			RED TAG
92	PTIC			RED TAG
93	PTIC	4	WEEKS	
94	PTIC	14	WEEKS	
95	PTIC	13	WEEKS	
96	PTIC	13	WEEKS	
97	PTIC	11	WEEKS	
98	PTIC	12	WEEKS	

99	PTIC	11	WEEKS	
100	PTIC	8	WEEKS	NO CALF
101	EMPTY			
102	PTIC	8	WEEKS	
103	PTIC	8	WEEKS	
104	PTIC	10		
105	PTIC	10		
106	EMPTY			
107	PTIC	6		
108	PTIC	5	MONTHS	
109	PTIC	7		
110	WITHDRAWN			
111	PTIC	4.5	MONTHS	
112	PTIC	12	WEEKS	
113	PTIC	12	WEEKS	
114	PTIC	4	MONTHS	
115	PTIC	4.5	MONTHS	
116	PTIC	10	WEEKS	
117	PTIC	4	MONTHS	
118	PTIC	4	MONTHS	
119	EMPTY			
120	PTIC	10	WEEKS	
121	WITHDRAWN			
122	PTIC	5	WEEKS	
123	PTIC	4	MONTHS	
124	PTIC	5	WEEKS	
125	PTIC	12	WEEKS	
128	WITHDRAWN			
140a	PTIC			BLUE TAG
140b				8 HEIFERS PTIC
140c				5 HEIFERS PTIC
140d				3 COWS PTIC
145	WITHDRAWN			



Angus Animal Pedigree MILWILLAH GATSBY G279(AI)

[Angus Homepage](#)
[Animal Search](#)
[EBV Search](#)
[Mating Predictor](#)
[Member Search](#)
[Sire Benchmarking](#)
[Sale Catalogues](#)
[Semen & Embryos](#)
[Files to Download](#)
[Online Transactions](#)
[Disclaimer](#)

Animal ID: NJWG279
Sex: Male
Birth Date: 01/08/2011
Register: HBR
Genetic Status: AMF, NHF, CAF, RDF, MAF, DDF
 (Click for explanation)
Breeder: MILWILLAH ANGUS
Curr. Owner: ABS AUSTRALIA



View Larger Image: 106.4kb

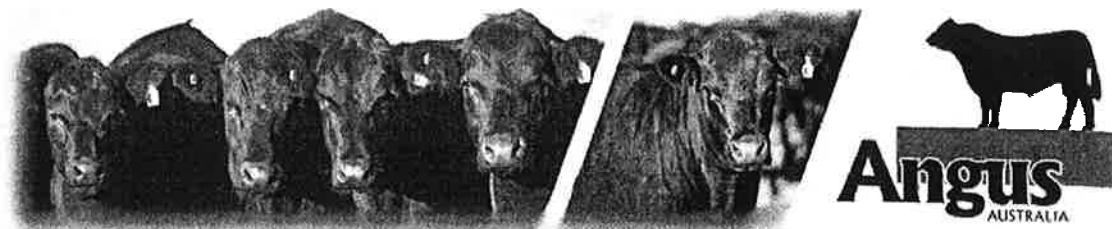
* Semen Available *

ABS Australia 2014-15 Beef Sire Directory - Black Sires Australian

— RENNYLEA XPONENTIAL X555(AI)(ET) NORX555
 — TE MANIA AMBASSADOR A134(AI) VTMA134
 — TE MANIA LOWAN Y211(ACR)(AI) VTMY211
Sire: TUWHARETOA REGENT D145(AI)(ET) BNAD145
 — YTHANBRAE HENRY VIII U8(AI)(ET) VLYU8
 — LAWSONS HENRY VIII Y5(AI) VLYY5
 — YTHANBRAE DIRECTION T270(AI) VLYT270
Animal: MILWILLAH GATSBY G279(AI) NJWG279
 — B/R NEW DESIGN 036 USA036
 — TE MANIA UNLIMITED U3271(AI)(ET) VTMU3271
 — TE MANIA LOWAN R426(AI)(ET) VTMR426
Dam: MILWILLAH LOWAN D112(AI) NJWD112
 — GARDENS HIGHMARK USA13047487
 — MILWILLAH LOWAN B83(AI) NJWB83
 — TE MANIA LOWAN X118(AI)(ET) VTMX118

March 2015 Angus Australia BREEDPLAN																		
	Calving Ease Dir (%)	Calving Ease Dtrs (%)	Gestation Length (days)	Birth Wt. (kg)	200 Day Wt. (kg)	400 Day Wt. (kg)	600 Day Wt. (kg)	Mat. Cow Wt. (kg)	Milk (kg)	Scrotal Size (cm)	Days to Calving (days)	Carcase Wt. (kg)	Eye Muscle Area (sq.cm)	Rib Fat (mm)	Rump Fat (mm)	Retail Beef Yield (%)	IMF (%)	NFI-P (kg/day)
EBV	-4.3	-5.9	-2.8	+5.4	+49	+92	+121	+107	+19	+3.5	-6.3	+78	+6.5	+3.3	+3.6	-1.9	+4.2	+0.80
Acc	76%	58%	97%	96%	80%	79%	82%	80%	68%	72%	47%	71%	64%	67%	66%	59%	61%	51%

Breed Avg. EBVs for 2013 Born Calves [Click for Percentiles](#)



Angus Animal Pedigree RENNYLEA H106(ET)

[Angus Homepage](#)
[Animal Search](#)
[EBV Search](#)
[Mating Predictor](#)
[Member Search](#)
[Sire Benchmarking](#)
[Sale Catalogues](#)
[Semen & Embryos](#)
[Files to Download](#)
[Online Transactions](#)
[Disclaimer](#)

Animal ID: NORH106
Sex: Male
Birth Date: 11/03/2012
Register: HBR
Genetic Status: AMFU, NHFU, CAFU, DDF
 (Click for explanation)
Breeder: [RENNYLEA PASTORAL CO](#)
Curr. Owner: [RENNYLEA PASTORAL CO](#)



— [RENNYLEA XPONENTIAL X555\(AI\)\(ET\) NORX555](#)
 — [TE MANIA AMBASSADOR A134\(AI\) VTMA134](#)
 — [TE MANIA LOWAN Y211\(ACR\)\(AI\) VTMY211](#)
Sire: [TUWHARETOA REGENT D145\(AI\)\(ET\) BNAD145](#)
 — [YTHANBRAE HENRY VIII U8\(AI\)\(ET\) VLYU8](#)
 — [LAWSONS HENRY VIII Y5\(AI\) VLYY5](#)
 — [YTHANBRAE DIRECTION T270\(AI\) VLYT270](#)

Animal: [RENNYLEA H106\(ET\) NORH106](#)

— [G A R PINNACLE USA7708](#)
 — [LAWSONS TANK X1235\(AI\) VLYX1235](#)
 — [YTHANBRAE NEW DESIGN 036 U89\(AI\) VLYU89](#)

Dam: [RENNYLEA D316\(AI\) NORD316](#)

— [BON VIEW NEW DESIGN 1407 USA1407](#)
 — [LAWSONS NEW DESIGN 1407 Z1393\(AI\) VLYZ1393](#)
 — [LAWSONS FUTURE DIRECTION W75\(AI\) VLYW757](#)

March 2015 Angus Australia BREEDPLAN																			
	Calving Ease Dir (%)	Calving Ease Dtrs (%)	Gestation Length (days)	Birth Wt. (kg)	200 Day Wt. (kg)	400 Day Wt. (kg)	600 Day Wt. (kg)	Mat. Cow Wt. (kg)	Milk (kg)	Scrotal Size (cm)	Days to Calving (days)	Carcase Wt. (kg)	Eye Muscle Area (sq.cm)	Rib Fat (mm)	Rump Fat (mm)	Retail Beef Yield (%)	IMF (%)	NFI-P (kg/day)	t
EBV	-0.9	-1.7	-1.7	+1.6	+39	+79	+102	+77	+19	+0.1	-5.3	+69	+8.4	+1.5	+0.1	-0.8	+4.2	+0.43	-
Acc	78%	60%	97%	96%	93%	85%	84%	81%	70%	80%	47%	77%	67%	70%	69%	63%	64%	53%	-
Breed Avg. EBVs for 2013 Born Calves Click for Percentiles																			
EBV	-0.2	+0.0	-3.3	+4.4	+40	+74	+96	+86	+14	+1.6	-3.4	+53	+4.3	-0.1	-0.1	+0.4	+1.4	+0.08	-

Traits Observed: BWT,200WT,400WT,SS,FAT,EMA,IMF,DOC, Docility Progeny: 153
Statistics: Number of Herds: 5, Progeny Analysed: 203, Show Index Values

Your complete Angus information source



Online Contact [Office](#)

4 March 2015 The Angus Society of Australia



Angus Animal Pedigree KO A241 EQUATOR F22(AI)

[Angus Homepage](#)
[Animal Search](#)
[EBV Search](#)
[Mating Predictor](#)
[Member Search](#)
[Sire Benchmarking](#)
[Sale Catalogues](#)
[Semen & Embryos](#)
[Files to Download](#)
[Online Transactions](#)
[Disclaimer](#)


Animal ID: NZCF22
Sex: Male
Birth Date: 14/03/2010
Register: HBR
Genetic Status: AMFU, NHFU, CAFU, DDFU
(Click for explanation)
Breeder: K O ANGUS STUD
Curr. Owner: EASTMARK HOLDINGS PTY LTD



[View Larger Image: 155.1kb](#)

— PAPA POWER 096 USA096
 — PAPA EQUATOR 2928 USA2928
 — PAPA ENVIOUS BLACKBIRD 8849 USA8849
Sire: ARDROSSAN EQUATOR A241(AI)(ET) NAQA241
 — B/R NEW DIMENSION 7127 USA7127
 — ARDROSSAN PRINCESS W38(AI)(ET) NAQW38
 — ARDROSSAN PRINCESS U24(AI)(ET) NAQU24
Animal: KO A241 EQUATOR F22(AI) NZCF22
 — BON VIEW NEW DESIGN 1407 USA1407
 — RITO 2V1 OF 2536 1407 USA14088249
 — G A R PRECISION 2536 USA12716656
Dam: KOA PRINCESS B124(AI)(ET) NZCB124
 — R R TRAVELER 5204 USA5204
 — KOA PRINCESS T85(AI) NZCT85
 — KOA PRINCESS R188(AI)(ET) NZCR188

March 2015 Angus Australia BREEDPLAN																		
	Calving Ease Dir (%)	Calving Ease Dtrs (%)	Gestation Length (days)	Birth Wt. (kg)	200 Day Wt. (kg)	400 Day Wt. (kg)	600 Day Wt. (kg)	Mat. Cow Wt. (kg)	Milk (kg)	Scrotal Size (cm)	Days to Calving (days)	Carcase Wt. (kg)	Eye Muscle Area (sq. cm)	Rib Fat (mm)	Rump Fat (mm)	Retail Beef Yield (%)	IMF (%)	NFI-P (kg/day)
EBV	-6.6	-2.2	-3.9	+6.0	+50	+92	+118	+112	+16	+2.9	-2.7	+76	+6.6	-1.2	-1.3	+1.0	+2.0	+0.33
Acc	67%	55%	85%	83%	77%	77%	79%	77%	68%	72%	52%	70%	68%	70%	70%	64%	63%	55%
Breed Avg. EBVs for 2013 Born Calves Click for Percentiles																		
EBV	-0.2	+0.0	-3.3	+4.4	+40	+74	+96	+86	+14	+1.6	-3.4	+53	+4.3	-0.1	-0.1	+0.4	+1.4	+0.08

Traits Observed: GL,BWT,200WT,400WT(x2),FAT,EMA,IMF, 
Statistics: Number of Herds: 3, Progeny Analysed: 34, Scan Progeny: 6,
[Show Index Values](#)

LOT 190 FLAG CROSS COUNTRY 90052 x KENNY'S CREEK BARA U44 (AI)(ET)

5 embryos

Genetic Status: AMFU NHFU CAFU DDFU

CA FUTURE DIRECTION 5321
BT CROSSOVER 758N
BT ROYAL PRIDE 237G

TC STOCKMAN
USA365 TC STOCKMAN 365
TC PRIDE 0014

Sire: USA16349775 FLAG CROSS COUNTRY 90052

Dam: KENNY'S CREEK BARA U44 (AI) (ET)

TRIPLE E SPECIAL EDITION
SCR QUEEN IDELETTE 50596
SCR QUEEN IDELETTE

PARAMONT AMBUSH 2172
NDIQ8 KENNY'S CREEK BARA Q8 (AI)
KENNY'S CREEK N66

March 2015 Angus Australia MATING PREDICTOR

	CED	CEM	GL	BW	200D	400D	600D	MCW	MILK	SS	
EBV	+3.4	+3.3	-4.8	+2.0	+7	+63	+75	+54	+20	+0.6	
	DTC	CWT	EMA	RIB	RUMP	RBV	IMF	AB	DOM	HGRN	HGRS
	-3.4	+48	+5.6	-0.8	-0.2	+0.2	+1.8	+\$86	+\$97	+\$78	+\$90

Expected average progeny values are provided to assist breeders estimate the outcome of particular mating combinations. These values are NOT GROUP BREEDPLAN EBVs. The actual EBVs for any individual progeny resulting from a particular mating are likely to vary from the expected average values.

Purchaser:..... \$.....

LOT 191 FLAG CROSS COUNTRY 90052 x KENNY'S CREEK BARA U44 (AI)(ET)

4 embryos

Genetic Status: AMFU NHFU CAFU DDFU

CA FUTURE DIRECTION 5321
BT CROSSOVER 758N
BT ROYAL PRIDE 237G

TC STOCKMAN
USA365 TC STOCKMAN 365
TC PRIDE 0014

Sire: USA16349775 FLAG CROSS COUNTRY 90052

Dam: KENNY'S CREEK BARA U44 (AI) (ET)

TRIPLE E SPECIAL EDITION
SCR QUEEN IDELETTE 50596
SCR QUEEN IDELETTE

PARAMONT AMBUSH 2172
NDIQ8 KENNY'S CREEK BARA Q8 (AI)
KENNY'S CREEK N66

March 2015 Angus Australia MATING PREDICTOR

	CED	CEM	GL	BW	200D	400D	600D	MCW	MILK	SS	
EBV	+3.4	+3.3	-4.8	+2.0	+7	+63	+75	+54	+20	+0.6	
	DTC	CWT	EMA	RIB	RUMP	RBV	IMF	AB	DOM	HGRN	HGRS
	-3.4	+48	+5.6	-0.8	-0.2	+0.2	+1.8	+\$86	+\$97	+\$78	+\$90

Expected average progeny values are provided to assist breeders estimate the outcome of particular mating combinations. These values are NOT GROUP BREEDPLAN EBVs. The actual EBVs for any individual progeny resulting from a particular mating are likely to vary from the expected average values.

Purchaser:..... \$.....

LOT 192 SYDGEN C C & 7 x KENNY'S CREEK BARA U44 (AI) (ET)

2 embryos

Genetic Status: AMFU NHFU CAFU DDFU

SVF GDAR 216 LTD
S A F CONNECTION
S A F ROYAL QUEEN 5084

TC STOCKMAN
USA365 TC STOCKMAN 365
TC PRIDE 0014

Sire: USA15330743 SYDGEN C C & 7

Dam: KENNY'S CREEK BARA U44 (AI) (ET)

SYDGEN 1407 CORONA 2016
SYDGEN FOREVER LADY 4087
S A F FOREVER LADY 8292

PARAMONT AMBUSH 2172
NDIQ8 KENNY'S CREEK BARA Q8 (AI)
KENNY'S CREEK N66

March 2015 Angus Australia MATING PREDICTOR

	CED	CEM	GL	BW	200D	400D	600D	MCW	MILK	SS	
EBV	+3.3	+2.0	-4.3	+2.2	+36	+68	+87	+71	+27	+1.4	
	DTC	CWT	EMA	RIB	RUMP	RBV	IMF	AB	DOM	HGRN	HGRS
	-3.3	+54	+4.4	-2.3	-2.5	+1.2	+1.5	+\$90	+\$98	+\$87	+\$91

Expected average progeny values are provided to assist breeders estimate the outcome of particular mating combinations. These values are NOT GROUP BREEDPLAN EBVs. The actual EBVs for any individual progeny resulting from a particular mating are likely to vary from the expected average values.

Purchaser:..... \$.....

LOT 193

HF TIGER 5T x KENNY'S CREEK BARA U44 (AI) (ET)

3 embryos

Genetic Status: AMFU NHFU CAFU DDFU

SANDY BAR ADVANTAGE 43M
 HF KODIAK 5R
 WILBAR RUBY 955N
Sire: CAN1402252 HF TIGER 5T
 TC FREEDOM 104
 HF ECHO 84R
 HFDF ECHO 6N

TC STOCKMAN
 USA365 TC STOCKMAN 365
 TC PRIDE 0014
Dam: KENNY'S CREEK BARA U44 (AI) (ET)
 PARAMONT AMBUSH 2172
 NDIQ8 KENNY'S CREEK BARA Q8 (AI)
 KENNY'S CREEK N66

March 2015 Angus Australia MATING PREDICTOR

	CED	CEM	GL	BW	200D	400D	600D	MCW	MILK	SS	
EBV	+1.3	+3.1	-7.8	+2.4	+39	+73	+88	+81	+23	+1.5	
	DTC	CWT	EMA	RIB	RUMP	RBV	IMF	AB	DOM	HGRN	HGRS
	-4.7	+55	+2.0	-1.8	-0.9	+0.8	+0.8	+\$85	+\$97	+\$76	+\$89

Expected average progeny values are provided to assist breeders estimate the outcome of particular mating combinations. These values are NOT GROUP BREEDPLAN EBVs. The actual EBVs for any individual progeny resulting from a particular mating are likely to vary from the expected average values.

Purchaser:..... \$.....

LOT 194

TE MANIA EPISTLE E852 x KENNY'S CREEK BARA U44 (AI) (ET)

4 embryos

Genetic Status: AMFU NHFU CAFU DDFU

B/R NEW DIMENSION 7127
 TE MANIA BARTEL B219 (AI) (ET)
 TE MANIA JEDDA W85 (AI) (ET)
Sire: VTME852 TE MANIA EPISTLE E852
 TE MANIA YAKKA Y428 (AI) (ET)
 TE MANIA MITTAGONG B562
 TE MANIA MITTAGONG Y361 (AI)

TC STOCKMAN
 USA365 TC STOCKMAN 365
 TC PRIDE 0014
Dam: KENNY'S CREEK BARA U44 (AI) (ET)
 PARAMONT AMBUSH 2172
 NDIQ8 KENNY'S CREEK BARA Q8 (AI)
 KENNY'S CREEK N66

March 2015 Angus Australia MATING PREDICTOR

	CED	CEM	GL	BW	200D	400D	600D	MCW	MILK	SS	
EBV	+1.5	+1.3	-6.1	+3.3	+37	+69	+86	+71	+22	+1.7	
	DTC	CWT	EMA	RIB	RUMP	RBV	IMF	AB	DOM	HGRN	HGRS
	-3.8	+53	+5.7	-1.5	-2.0	+0.6	+2.5	+\$97	+\$100	+\$103	+\$94

Expected average progeny values are provided to assist breeders estimate the outcome of particular mating combinations. These values are NOT GROUP BREEDPLAN EBVs. The actual EBVs for any individual progeny resulting from a particular mating are likely to vary from the expected average values.

Purchaser:..... \$.....

LOT 195

TE MANIA EPISTLE E852 x KENNY'S CREEK BARA U44 (AI) (ET)

4 embryos

Genetic Status: AMFU NHFU CAFU DDFU

B/R NEW DIMENSION 7127
 TE MANIA BARTEL B219 (AI) (ET)
 TE MANIA JEDDA W85 (AI) (ET)
Sire: VTME852 TE MANIA EPISTLE E852
 TE MANIA YAKKA Y428 (AI) (ET)
 TE MANIA MITTAGONG B562
 TE MANIA MITTAGONG Y361 (AI)

TC STOCKMAN
 USA365 TC STOCKMAN 365
 TC PRIDE 0014
Dam: KENNY'S CREEK BARA U44 (AI) (ET)
 PARAMONT AMBUSH 2172
 NDIQ8 KENNY'S CREEK BARA Q8 (AI)
 KENNY'S CREEK N66

March 2015 Angus Australia MATING PREDICTOR

	CED	CEM	GL	BW	200D	400D	600D	MCW	MILK	SS	
EBV	+1.5	+1.3	-6.1	+3.3	+37	+69	+86	+71	+22	+1.7	
	DTC	CWT	EMA	RIB	RUMP	RBV	IMF	AB	DOM	HGRN	HGRS
	-3.8	+53	+5.7	-1.5	-2.0	+0.6	+2.5	+\$97	+\$100	+\$103	+\$94

Expected average progeny values are provided to assist breeders estimate the outcome of particular mating combinations. These values are NOT GROUP BREEDPLAN EBVs. The actual EBVs for any individual progeny resulting from a particular mating are likely to vary from the expected average values.

Purchaser:..... \$.....

LOT 196

A A R TEN X 7008 S A (ET) x N BAR 765JH CHAMPANGE E43 (AI)

2 embryos

Genetic Status: AMFU NHFU CAFU DDFU

S A F FOCUS OF ER
MYTTY IN FOCUS

S A V FINAL ANSWER 0035
USA15313140 HARB PENDLETON 765 J H
H A R B BLACK LADY 375 J H

MYTTY COUNTESS 906

Dam: N BAR 765JH CHAMPANGE E43 (AI)

Sire: USA15719841 A A R TEN X 7008 S A (ET)

CA FUTURE DIRECTION 5321

S A V ADAPTOR 2213

BBBX84 CIRCLE 8 5321 CHAMPANGE X84 (AI) (ET)

A A R LADY KELTON 5551

CIRCLE 8 CHAMPAGNE T42 (AI) (ET)

H S A F LADY KELTON 504B

March 2015 Angus Australia MATING PREDICTOR

	CED	CEM	GL	BW	200D	400D	600D	MCW	MILK	SS	
EBV	+1.7	+2.5	-3.0	+4.2	+54	+96	+120	+95	+19	+2.0	
	DTC	CWT	EMA	RIB	RUMP	RBV	IMF	AB	DOM	HGRN	HGRS
	-3.8	+77	+5.2	-0.1	-1.3	+0.6	+1.8	+\$116	+\$115	+\$119	+\$116

Expected average progeny values are provided to assist breeders estimate the outcome of particular mating combinations. These values are NOT GROUP BREEDPLAN EBVs. The actual EBVs for any individual progeny resulting from a particular mating are likely to vary from the expected average values.

Purchaser:..... \$.....

LOT 197

FLAG CROSS COUNTRY 90052 x N BAR 765JH CHAMPANGE E43 (AI)

1 embryo

Genetic Status: AMFU NHFU CAFU DDFU

CA FUTURE DIRECTION 5321
BT CROSSOVER 758N

S A V FINAL ANSWER 0035
USA15313140 HARB PENDLETON 765 J H
H A R B BLACK LADY 375 J H

BT ROYAL PRIDE 237G

Dam: N BAR 765JH CHAMPANGE E43 (AI)

Sire: USA16349775 FLAG CROSS COUNTRY 90052

TRIPLE E SPECIAL EDITION

CA FUTURE DIRECTION 5321

SCR QUEEN IDELETTE 50596

BBBX84 CIRCLE 8 5321 CHAMPANGE X84 (AI) (ET)

SCR QUEEN IDELETTE

CIRCLE 8 CHAMPAGNE T42 (AI) (ET)

March 2015 Angus Australia MATING PREDICTOR

	CED	CEM	GL	BW	200D	400D	600D	MCW	MILK	SS	
EBV	-0.2	+1.6	-2.2	+4.5	+47	+79	+101	+74	+17	+0.7	
	DTC	CWT	EMA	RIB	RUMP	RBV	IMF	AB	DOM	HGRN	HGRS
	-4.0	+61	+6.4	+1.2	+1.5	-0.3	+1.6	+\$103	+\$102	+\$96	+\$106

Expected average progeny values are provided to assist breeders estimate the outcome of particular mating combinations. These values are NOT GROUP BREEDPLAN EBVs. The actual EBVs for any individual progeny resulting from a particular mating are likely to vary from the expected average values.

Purchaser:..... \$.....

LOT 198

DMM SHIFT 78S x ST PAULS IRIS DIVINE W44 (AI)

5 embryos

Genetic Status: AMFU NHFU CAFU DDFU

HIGH VALLEY 4C6 AMBUSH
DMM AMBUSH 03M

TC DIVIDEND 963
USA9321 W P R 3J DIVIDEND 9321
J A S MISS LUCY J928

DMM MISS ESSENCE 108J

Dam: ST PAULS IRIS DIVINE W44 (AI)

Sire: CAN1351558 DMM SHIFT 78S

ANGUS ACRES BANDY 96X

PAPA EQUATOR 2928

DMM MISS ESSENCE 90K

NSTT23 ST PAULS IRIS PAPA T23 (AI) (ET)

JRM MISS ESSENCE 8U

ST. PAULS IRIS TREND P24 (AI) (ET)

March 2015 Angus Australia MATING PREDICTOR

	CED	CEM	GL	BW	200D	400D	600D	MCW	MILK	SS	
EBV	-4.8	-2.9	+2.9	+7.1	+45	+78	+107	+103	+10	+1.5	
	DTC	CWT	EMA	RIB	RUMP	RBV	IMF	AB	DOM	HGRN	HGRS
	-0.1	+60	-1.5	-3.5	-3.0	+0.6	+0.7	+\$63	+\$75	+\$55	+\$70

Expected average progeny values are provided to assist breeders estimate the outcome of particular mating combinations. These values are NOT GROUP BREEDPLAN EBVs. The actual EBVs for any individual progeny resulting from a particular mating are likely to vary from the expected average values.

Purchaser:..... \$.....

LOT 199

DMM SHIFT 78S x ST PAULS IRIS DIVINE W44 (AI)

4 embryos

Genetic Status: AMFU NHFU CAFU DDFU

HIGH VALLEY 4C6 AMBUSH
 DMM AMBUSH 03M
 DMM MISS ESSENCE 108J
Sire: CAN1351558 DMM SHIFT 78S
 ANGUS ACRES BANDY 96X
 DMM MISS ESSENCE 90K
 JRM MISS ESSENCE 8U

TC DIVIDEND 963
 USA9321 W P R 3J DIVIDEND 9321
 J A S MISS LUCY J928
Dam: ST PAULS IRIS DIVINE W44 (AI)
 PAPA EQUATOR 2928
 NSTT23 ST PAULS IRIS PAPA T23 (AI) (ET)
 ST. PAULS IRIS TREND P24 (AI) (ET)

March 2015 Angus Australia MATING PREDICTOR

	CED	CEM	GL	BW	200D	400D	600D	MCW	MILK	SS
EBV	-4.8	-2.9	+2.9	+7.1	+45	+78	+107	+103	+10	+1.5
	CWT	EMA	RIB	RUMP	RBV	IMF	AB	DOM	HGRN	HGRS
-0.1	+60	-1.5	-3.5	-3.0	+0.6	+0.7	+\$63	+\$75	+\$55	+\$70

Expected average progeny values are provided to assist breeders estimate the outcome of particular mating combinations. These values are NOT GROUP BREEDPLAN EBVs. The actual EBVs for any individual progeny resulting from a particular mating are likely to vary from the expected average values.

Purchaser:..... \$.....

LOT 200

DMM SHIFT 78S x ST PAULS IRIS DIVINE W44 (AI)

4 embryos

Genetic Status: AMFU NHFU CAFU DDFU

HIGH VALLEY 4C6 AMBUSH
 DMM AMBUSH 03M
 DMM MISS ESSENCE 108J
Sire: CAN1351558 DMM SHIFT 78S
 ANGUS ACRES BANDY 96X
 DMM MISS ESSENCE 90K
 JRM MISS ESSENCE 8U

TC DIVIDEND 963
 USA9321 W P R 3J DIVIDEND 9321
 J A S MISS LUCY J928
Dam: ST PAULS IRIS DIVINE W44 (AI)
 PAPA EQUATOR 2928
 NSTT23 ST PAULS IRIS PAPA T23 (AI) (ET)
 ST. PAULS IRIS TREND P24 (AI) (ET)

March 2015 Angus Australia MATING PREDICTOR

	CED	CEM	GL	BW	200D	400D	600D	MCW	MILK	SS
EBV	-4.8	-2.9	+2.9	+7.1	+45	+78	+107	+103	+10	+1.5
	CWT	EMA	RIB	RUMP	RBV	IMF	AB	DOM	HGRN	HGRS
-0.1	+60	-1.5	-3.5	-3.0	+0.6	+0.7	+\$63	+\$75	+\$55	+\$70

Expected average progeny values are provided to assist breeders estimate the outcome of particular mating combinations. These values are NOT GROUP BREEDPLAN EBVs. The actual EBVs for any individual progeny resulting from a particular mating are likely to vary from the expected average values.

Purchaser:..... \$.....

LOT 201

RENNYLEA H106 (AI) (ET) x N BAR 901 LAURA E10 (AI) (ET)

5 embryos

Genetic Status: AMFU NHFU CAFU DDFU

TE MANIA AMBASSADOR A134 (AI)
 TUWHARETOA REGENT D145 (AI) (ET)
 LAWSONS HENRY VIII Y5 (AI)
Sire: NORH106 RENNYLEA H106 (AI) (ET)
 LAWSONS TANK X1235 (AI)
 RENNYLEA D316 (AI)
 LAWSONS NEW DESIGN 1407 Z1393 (AI)

S A F FOCUS OF E R
 USA13412671 BALDRIDGE NEBRASKA 901
 BALDRIDGE FLOSSIE 367
Dam: N BAR 901 LAURA E10 (AI) (ET)
 PAPA EQUATOR 2928
 NSTT7 ST PAULS LAURA T7 (AI) (ET)
 ST. PAULS JET'S PAGENT P14 (AI) (ET)

March 2015 Angus Australia MATING PREDICTOR

	CED	CEM	GL	BW	200D	400D	600D	MCW	MILK	SS
EBV	-1.0	0.0	-3.1	+2.3	+40	+78	+100	+88	+15	0.0
	CWT	EMA	RIB	RUMP	RBV	IMF	AB	DOM	HGRN	HGRS
-4.1	+63	+5.3	+0.7	-0.5	-0.3	+2.7	+\$107	+\$102	+\$117	+\$103

Expected average progeny values are provided to assist breeders estimate the outcome of particular mating combinations. These values are NOT GROUP BREEDPLAN EBVs. The actual EBVs for any individual progeny resulting from a particular mating are likely to vary from the expected average values.

Purchaser:..... \$.....

LOT 202

RENNYLEA H106 (AI) (ET) x N BAR 901 LAURA E10 (AI) (ET)

5 embryos

Genetic Status: AMFU NHFU CAFU DDFU

TE MANIA AMBASSADOR A134 (AI)
 TUWHARETOA REGENT D145 (AI) (ET)
 LAWSONS HENRY VIII Y5 (AI)
Sire: NORH106 RENNYLEA H106 (AI) (ET)
 LAWSONS TANK X1235 (AI)
 RENNYLEA D316 (AI)
 LAWSONS NEW DESIGN 1407 Z1393 (AI)

S A F FOCUS OF E R
 USA13412671 BALDRIDGE NEBRASKA 901
 BALDRIDGE FLOSSIE 367
Dam: N BAR 901 LAURA E10 (AI) (ET)
 PAPA EQUATOR 2928
 NSTT7 ST PAULS LAURA T7 (AI) (ET)
 ST. PAULS JET'S PAGENT P14 (AI) (ET)

March 2015 Angus Australia MATING PREDICTOR

	CED	CEM	GL	BW	200D	400D	600D	MCW	MILK	SS	
EBV	-1.0	0.0	-3.1	+2.3	+40	+78	+100	+88	+15	0.0	
	DTC	CWT	EMA	RIB	RUMP	RBV	IMF	AB	DOM	HGRN	HGRS
	-4.1	+63	+5.3	+0.7	-0.5	-0.3	+2.7	+\$107	+\$102	+\$117	+\$103

Expected average progeny values are provided to assist breeders estimate the outcome of particular mating combinations. These values are NOT GROUP BREEDPLAN EBVs. The actual EBVs for any individual progeny resulting from a particular mating are likely to vary from the expected average values.

Purchaser:..... \$.....

LOT 203

RENNYLEA H106 (AI) (ET) x N BAR 901 LAURA E10 (AI) (ET)

4 embryos

Genetic Status: AMFU NHFU CAFU DDFU

TE MANIA AMBASSADOR A134 (AI)
 TUWHARETOA REGENT D145 (AI) (ET)
 LAWSONS HENRY VIII Y5 (AI)
Sire: NORH106 RENNYLEA H106 (AI) (ET)
 LAWSONS TANK X1235 (AI)
 RENNYLEA D316 (AI)
 LAWSONS NEW DESIGN 1407 Z1393 (AI)

S A F FOCUS OF E R
 USA13412671 BALDRIDGE NEBRASKA 901
 BALDRIDGE FLOSSIE 367
Dam: N BAR 901 LAURA E10 (AI) (ET)
 PAPA EQUATOR 2928
 NSTT7 ST PAULS LAURA T7 (AI) (ET)
 ST. PAULS JET'S PAGENT P14 (AI) (ET)

March 2015 Angus Australia MATING PREDICTOR

	CED	CEM	GL	BW	200D	400D	600D	MCW	MILK	SS	
EBV	-1.0	0.0	-3.1	+2.3	+40	+78	+100	+88	+15	0.0	
	DTC	CWT	EMA	RIB	RUMP	RBV	IMF	AB	DOM	HGRN	HGRS
	-4.1	+63	+5.3	+0.7	-0.5	-0.3	+2.7	+\$107	+\$102	+\$117	+\$103

Expected average progeny values are provided to assist breeders estimate the outcome of particular mating combinations. These values are NOT GROUP BREEDPLAN EBVs. The actual EBVs for any individual progeny resulting from a particular mating are likely to vary from the expected average values.

Purchaser:..... \$.....

LOT 204

RENNYLEA H106 (AI) (ET) x N BAR 901 LAURA E10 (AI) (ET)

4 embryos

Genetic Status: AMFU NHFU CAFU DDFU

TE MANIA AMBASSADOR A134 (AI)
 TUWHARETOA REGENT D145 (AI) (ET)
 LAWSONS HENRY VIII Y5 (AI)
Sire: NORH106 RENNYLEA H106 (AI) (ET)
 LAWSONS TANK X1235 (AI)
 RENNYLEA D316 (AI)
 LAWSONS NEW DESIGN 1407 Z1393 (AI)

S A F FOCUS OF E R
 USA13412671 BALDRIDGE NEBRASKA 901
 BALDRIDGE FLOSSIE 367
Dam: N BAR 901 LAURA E10 (AI) (ET)
 PAPA EQUATOR 2928
 NSTT7 ST PAULS LAURA T7 (AI) (ET)
 ST. PAULS JET'S PAGENT P14 (AI) (ET)

March 2015 Angus Australia MATING PREDICTOR

	CED	CEM	GL	BW	200D	400D	600D	MCW	MILK	SS	
EBV	-1.0	0.0	-3.1	+2.3	+40	+78	+100	+88	+15	0.0	
	DTC	CWT	EMA	RIB	RUMP	RBV	IMF	AB	DOM	HGRN	HGRS
	-4.1	+63	+5.3	+0.7	-0.5	-0.3	+2.7	+\$107	+\$102	+\$117	+\$103

Expected average progeny values are provided to assist breeders estimate the outcome of particular mating combinations. These values are NOT GROUP BREEDPLAN EBVs. The actual EBVs for any individual progeny resulting from a particular mating are likely to vary from the expected average values.

Purchaser:..... \$.....

LOT 205

DMM SHIFT 788 x KENNY'S CREEK SATURN B191

3 embryos

Genetic Status: AMFU NHFU CAFU DDFU

HIGH VALLEY 4C6 AMBUSH
 DMM AMBUSH 03M
 DMM MISS ESSENCE 108J
 Sire: **CAN1351558 DMM SHIFT 785**
 ANGUS ACRES BANDY 96X
 DMM MISS ESSENCE 90K
 JRM MISS ESSENCE 8U

C A FUTURE DIRECTION 5321
 NDIW134 KENNY'S CREEK WHITWORTH W134 (AI) (ET)
 TE MANIA MOONGARA Q9 (AI)
 Dam: **KENNY'S CREEK SATURN B191**
 KENNY'S CREEK TONKIN T25 (AI) (ET)
 NDI275 KENNY'S CREEK SATURN 275 (AI) (ET)
 ARDROSSAN SATURN (AI) (TW)

March 2015 Angus Australia MATING PREDICTOR

	CED	CEM	GL	BW	200D	400D	600D	MCW	MILK	SS	
EBV	-3.2	-1.1	-2.0	+5.3	+40	+67	+96	+78	+11	+1.0	
	DTC	CWT	EMA	RIB	RUMP	RBV	IMF	AB	DOM	HGRN	HGRS
-2.0	+52	-2.3	-1.0	-0.4	-0.5	+0.9	+\$66	+\$73	+\$54	+\$74	

Expected average progeny values are provided to assist breeders estimate the outcome of particular mating combinations. These values are NOT GROUP BREEDPLAN EBVs.
 The actual EBVs for any individual progeny resulting from a particular mating are likely to vary from the expected average values.

Purchaser:..... \$.....

LOT 206

21AR ROUNDUP 7005 x KENNY'S CREEK FEDERATION Z603 (AI)(ET)

5 embryos

Genetic Status: AMFU NHFU CA17% DDFU

S A V FINAL ANSWER 0035
 USA15313140 HARB PENDLETON 765 J H
 H A R B BLACK LADY 375 J H
 Sire: **USA15883460 21AR ROUNDUP 7005**
 B C C BUSHWACKER 41-93
 21AR BLACKBIRD LADY F465
 21AR BLACKBIRD LADY C645

BON VIEW BANDO 598
 USA5175 S A F 598 BANDO 5175
 S A F ROYAL LASS 1002
 Dam: **KENNY'S CREEK FEDERATION Z603 (AI) (ET)**
 TE MANIA KNIGHT K206+90 (AI) (ET)
 NDIW22 KENNY'S CREEK FEDERATION W22 (AI) (ET)
 KENNY'S CREEK FEDERATION Q140

March 2015 Angus Australia MATING PREDICTOR

	CED	CEM	GL	BW	200D	400D	600D	MCW	MILK	SS	
EBV	+3.8	+3.4	-5.8	+3.4	+42	+70	+83	+57	+10	+0.6	
	DTC	CWT	EMA	RIB	RUMP	RBV	IMF	AB	DOM	HGRN	HGRS
-4.2	+52	+4.3	+0.9	-0.4	+0.8	+1.1	+\$95	+\$106	+\$85	+\$99	

Expected average progeny values are provided to assist breeders estimate the outcome of particular mating combinations. These values are NOT GROUP BREEDPLAN EBVs.
 The actual EBVs for any individual progeny resulting from a particular mating are likely to vary from the expected average values.

Purchaser:..... \$.....

LOT 207

TC STOCKMAN 2164 x CIRCLE 8 5321 CHAMPANGE X84 (AI) (ET)

4 embryos

Genetic Status: AMFU NH50% CAFU DDFU

LEACHMAN PROMPTER
 TC STOCKMAN
 T C JESTRESS 6004
 Sire: **USA2164 TC STOCKMAN 2164**
 PREMIER INDEPENDENCE K N
 TC RUBY 5087
 T C RUBY 1010

G A R PRECISION 1680
 USA5321 C A FUTURE DIRECTION 5321
 C A MISS POWER FIX 308
 Dam: **CIRCLE 8 5321 CHAMPANGE X84 (AI) (ET)**
 PAPA EQUATOR 2928
 BBBT42 CIRCLE 8 CHAMPAGNE T42 (AI) (ET)
 BLACK GOLD CHAMPAGNE J031+89 (AI) (ET)

March 2015 Angus Australia MATING PREDICTOR

	CED	CEM	GL	BW	200D	400D	600D	MCW	MILK	SS	
EBV	-6.4	-3.4	0.0	+6.6	+46	+79	+103	+96	+15	+1.5	
	DTC	CWT	EMA	RIB	RUMP	RBV	IMF	AB	DOM	HGRN	HGRS
-1.1	+63	+5.1	-1.0	+0.8	+0.2	+1.0	+\$70	+\$79	+\$57	+\$78	

Expected average progeny values are provided to assist breeders estimate the outcome of particular mating combinations. These values are NOT GROUP BREEDPLAN EBVs.
 The actual EBVs for any individual progeny resulting from a particular mating are likely to vary from the expected average values.

Purchaser:..... \$.....

LOT 208 SAV 8180 TRAVELER 004 x CIRCLE 8 5321 CHAMPANGE X84 (AI)(ET)

5 embryos

Genetic Status: AMFU NH50% CAFU DDFU

G D A R TRAVELER 71
 S A V TRAVELER 8180
 SITZ EVERELDA ENTENSE 1137
 Sire: USA13512009 S A V 8180 TRAVELER 004
 A A R NEW TREND
 BOYD FOREVER LADY 8003
 COYD FOREVER LADY 57D

G A R PRECISION 1680
 USA5321 C A FUTURE DIRECTION 5321
 C A MISS POWER FIX 308
 Dam: CIRCLE 8 5321 CHAMPANGE X84 (AI) (ET)
 PAPA EQUATOR 2928
 BBBT42 CIRCLE 8 CHAMPAGNE T42 (AI) (ET)
 BLACK GOLD CHAMPAGNE J031+89 (AI) (ET)

March 2015 Angus Australia MATING PREDICTOR

	CED	CEM	GL	BW	200D	400D	600D	MCW	MILK	SS	
EBV	-0.3	-0.5	-2.0	+5.3	+44	+81	+106	+91	+18	+1.2	
	DTC	CWT	EMA	RIB	RUMP	RBV	IMF	AB	DOM	HGRN	HGRS
	-3.8	+67	+4.5	0.0	-0.6	+0.3	+1.3	+\$97	+\$97	+\$94	+\$99

Expected average progeny values are provided to assist breeders estimate the outcome of particular mating combinations. These values are NOT GROUP BREEDPLAN EBVs. The actual EBVs for any individual progeny resulting from a particular mating are likely to vary from the expected average values.

Purchaser:..... \$.....

LOT 209 SAV 8180 TRAVELER 004 x CIRCLE 8 5321 CHAMPANGE X84 (AI)(ET)

4 embryos

Genetic Status: AMFU NH50% CAFU DDFU

G D A R TRAVELER 71
 S A V TRAVELER 8180
 SITZ EVERELDA ENTENSE 1137
 Sire : USA13512009 S A V 8180 TRAVELER 004
 A A R NEW TREND
 BOYD FOREVER LADY 8003
 COYD FOREVER LADY 57D

G A R PRECISION 1680
 USA5321 C A FUTURE DIRECTION 5321
 C A MISS POWER FIX 308
 Dam: CIRCLE 8 5321 CHAMPANGE X84 (AI) (ET)
 PAPA EQUATOR 2928
 BBBT42 CIRCLE 8 CHAMPAGNE T42 (AI) (ET)
 BLACK GOLD CHAMPAGNE J031+89 (AI) (ET)

March 2015 Angus Australia MATING PREDICTOR

	CED	CEM	GL	BW	200D	400D	600D	MCW	MILK	SS	
EBV	-0.3	-0.5	-2.0	+5.3	+44	+81	+106	+91	+18	+1.2	
	DTC	CWT	EMA	RIB	RUMP	RBV	IMF	AB	DOM	HGRN	HGRS
	-3.8	+67	+4.5	0.0	-0.6	+0.3	+1.3	+\$97	+\$97	+\$94	+\$99

Expected average progeny values are provided to assist breeders estimate the outcome of particular mating combinations. These values are NOT GROUP BREEDPLAN EBVs. The actual EBVs for any individual progeny resulting from a particular mating are likely to vary from the expected average values.

Purchaser:..... \$.....

LOT 210 TC STOCKMAN 2164 x CIRCLE 8 5321 MILDRED X93 (AI) (ET)

3 embryos

Genetic Status: AM50% NH6% CAFU DDFU

LEACHMAN PROMPTER
 TC STOCKMAN
 T C JESTRESS 6004
 Sire: USA2164 TC STOCKMAN 2164
 PREMIER INDEPENDENCE K N
 TC RUBY 5087
 T C RUBY 1010

G A R PRECISION 1680
 USA5321 C A FUTURE DIRECTION 5321
 C A MISS POWER FIX 308
 Dam: CIRCLE 8 5321 MILDRED X93 (AI) (ET)
 RITO 9M9 OF 2036 SCOTCH CAP (AI) (ET)
 BBBT47 CIRCLE 8 9M9 RITO MILDRED T47 (AI) (ET)
 MERRIGRANGE MILDRED J11+89 (AI) (ET)

March 2015 Angus Australia MATING PREDICTOR

	CED	CEM	GL	BW	200D	400D	600D	MCW	MILK	SS	
EBV	-6.1	-2.8	-0.7	+6.2	+43	+73	+95	+98	+15	+1.5	
	DTC	CWT	EMA	RIB	RUMP	RBV	IMF	AB	DOM	HGRN	HGRS
	-2.7	+58	+4.8	-0.5	+1.1	+0.5	+1.1	+\$65	+\$76	+\$47	+\$74

Expected average progeny values are provided to assist breeders estimate the outcome of particular mating combinations. These values are NOT GROUP BREEDPLAN EBVs. The actual EBVs for any individual progeny resulting from a particular mating are likely to vary from the expected average values.

Purchaser:..... \$.....

LOT 211

DUNOON EVIDENT E614 x N BAR 2V1 BLKCAP MARY B160 (AI)

5 embryos

Genetic Status: AMFU NHFU CAFU DD75%

B/R NEW DIMENSION 7127
TE MANIA BARTEL B219 (AI) (ET)
TE MANIA JEDDA W85 (AI) (ET)
Sire: BHRE614 DUNOON EVIDENT E614 (AI) (ET)
DUNOON HIGHMARK Y262 (AI) (ET)
DUNOON ELSA B681
DUNOON ELSA X602 (AI) (ET)

BON VIEW NEW DESIGN 1407
USA14088249 RITO 2V1 OF 2536 1407
G A R PRECISION 2536
Dam: N BAR 2V1 BLKCAP MARY B160 (AI)
S A NEUTRON 377
CDSX10 RAKEN MARY X10 (AI)
AMAROO STOCKMAN MARY T61 (AI) (ET)

March 2015 Angus Australia MATING PREDICTOR

	CED	CEM	GL	BW	200D	400D	600D	MCW	MILK	SS	
EBV	-7.5	-3.1	-2.0	+5.8	+50	+87	+112	+102	+15	+2.8	
	DTC	CWT	EMA	RIB	RUMP	RBV	IMF	AB	DOM	HGRN	HGRS
	-4.2	+68	+10.3	-1.4	-1.8	+2.2	+1.3	+\$103	+\$101	+\$104	+\$102

Expected average progeny values are provided to assist breeders estimate the outcome of particular mating combinations. These values are NOT GROUP BREEDPLAN EBVs. The actual EBVs for any individual progeny resulting from a particular mating are likely to vary from the expected average values.

Purchaser:..... **\$**.....

LOT 212

DUNOON EVIDENT E614 x N BAR 2V1 BLKCAP MARY B160 (AI)

4 embryos

Genetic Status: AMFU NHFU CAFU DD75%

B/R NEW DIMENSION 7127
TE MANIA BARTEL B219 (AI) (ET)
TE MANIA JEDDA W85 (AI) (ET)
Sire: BHRE614 DUNOON EVIDENT E614 (AI) (ET)
DUNOON HIGHMARK Y262 (AI) (ET)
DUNOON ELSA B681
DUNOON ELSA X602 (AI) (ET)

BON VIEW NEW DESIGN 1407
USA14088249 RITO 2V1 OF 2536 1407
G A R PRECISION 2536
Dam: N BAR 2V1 BLKCAP MARY B160 (AI)
S A NEUTRON 377
CDSX10 RAKEN MARY X10 (AI)
AMAROO STOCKMAN MARY T61 (AI) (ET)

March 2015 Angus Australia MATING PREDICTOR

	CED	CEM	GL	BW	200D	400D	600D	MCW	MILK	SS	
EBV	-7.5	-3.1	-2.0	+5.8	+50	+87	+112	+102	+15	+2.8	
	DTC	CWT	EMA	RIB	RUMP	RBV	IMF	AB	DOM	HGRN	HGRS
	-4.2	+68	+10.3	-1.4	-1.8	+2.2	+1.3	+\$103	+\$101	+\$104	+\$102

Expected average progeny values are provided to assist breeders estimate the outcome of particular mating combinations. These values are NOT GROUP BREEDPLAN EBVs. The actual EBVs for any individual progeny resulting from a particular mating are likely to vary from the expected average values.

Purchaser:..... **\$**.....

LOT 213

CONNELLY UNITED 1116

9 units

Society Ident: USA17031441

Genetic Status: AMFU NHFU CAFU DDF

Reg'n: HBR

Calved: 18/01/2011

KMK ALLIANCE 6595 I87
CONNELLY CONSENSUS
BLINDA OF CONANGA 004

B/R NEW DESIGN 036
G A R NEW DESIGN 5050 (ET)
G A R PRECISION 706

Sire: USA16447771 CONNELLY CONSENSUS 7229

Dam: USA16468615 BREETA OF CONANGA 5403 985L

WOODHILL ADMIRAL 77K
BLUE LILLY OF CONANGA 16
BLUE CASH OF CONANGA 6020

C A FUTURE DIRECTION 5321
BREELA OF CONANGA 3991
BREESHA OF CONANGA 1251

Angus Breeding	+\$114
Domestic	+\$113
Heavy Grain	+\$121
Heavy Grain	+\$110

March 2015 Angus Australia BREEDPLAN

	Calving Ease Direct	Calving Ease Dtrs	Gest Lgth (Days)	Birth Weight (kg)	200 Day Wt (kg)	400 Day Wt (kg)	600 Day Wt (kg)	Mature Cow Wt (kg)	Milk (kg)	Scrotal Size (cm)	Days to Calving (Days)	Carcase Weight (kg)	EMA (sq cm)	Rib Fat (mm)	Rump Fat (mm)	Retail Beef Yield (%)	IMF (%)
EBV	-4.2	-0.1	-0.5	+5.1	+50	+88	+106	+87	+18	+1.2	--	+68	+9.8	-0.4	-1.4	+1.5	+2.1
ACC	57%	36%	86%	83%	75%	74%	70%	66%	67%	68%		66%	61%	64%	54%	57%	57%

Traits Observed:

Purchaser: \$.....

LOT 214

SYDGEN C C & 7

10 units

Society Ident: USA15330743

Genetic Status: AMF NHF CAF DDF

Reg'n: HBR

Calved: 13/01/2006

TRAVELER 124 G D A R
SVF GDAR 216 LTD
G D A R FOREVER LADY 718

BON VIEW NEW DESIGN 1407
SYDGEN 1407 CORONA 2016
V N A R PERFECTION 142F 180K

Sire: USA13544928 S A F CONNECTION

Dam: USA14664721 SYDGEN FOREVER LADY 4087

BON VIEW BANDO 598
S A F ROYAL QUEEN 5084 (ET)
S A F ROYAL QUEEN 9022

S A F NEUTRON
S A F FOREVER LADY 8292
S A F FOREVER LADY 5138

Angus Breeding	+\$111
Domestic	+\$109
Heavy Grain	+\$111
Heavy Grain	+\$111

March 2015 Angus Australia BREEDPLAN

	Calving Ease Direct	Calving Ease Dtrs	Gest Lgth (Days)	Birth Weight (kg)	200 Day Wt (kg)	400 Day Wt (kg)	600 Day Wt (kg)	Mature Cow Wt (kg)	Milk (kg)	Scrotal Size (cm)	Days to Calving (Days)	Carcase Weight (kg)	EMA (sq cm)	Rib Fat (mm)	Rump Fat (mm)	Retail Beef Yield (%)	IMF (%)
EBV	+2.2	-0.5	-2.9	+3.3	+44	+82	+110	+89	+29	+1.6	-3.8	+64	+6.8	-1.9	-2.3	+1.9	+1.1
ACC	81%	59%	98%	97%	96%	96%	96%	90%	87%	95%	46%	84%	85%	86%	81%	78%	81%

Traits Observed: HD50K

Purchaser: \$.....

LOT 215

KM BROKEN BOW 002

7 units

Society Ident: USA16764044

Genetic Status: AMF NHF CAF DDF

Reg'n: HBR

Calved: 14/01/2010

BON VIEW NEW DESIGN 1407
C F RIGHT DESIGN 1802
VISION HF BLACKCAP 0015

ROCKN D AMBUSH 1531
BASIN AMBUSH 8161
BASIN CHLOE 181H

Sire: USA14850409 SUMMITCREST COMPLETE 1P55

Dam: USA14786779 SUMMITCREST PRINCESS 0P12

VERMILION DATELINE 7078
SUMMITCREST ELBA 1M17
SUMMITCREST ELBA 1F43

S A F FAME
SUMMITCREST PRINCESS 2J10
SUMMITCREST PRINCESS 2E38

Angus Breeding	+\$109
Domestic	+\$111
Heavy Grain	+\$104
Heavy Grain	+\$111

March 2015 Angus Australia BREEDPLAN

	Calving Ease Direct	Calving Ease Dtrs	Gest Lgth (Days)	Birth Weight (kg)	200 Day Wt (kg)	400 Day Wt (kg)	600 Day Wt (kg)	Mature Cow Wt (kg)	Milk (kg)	Scrotal Size (cm)	Days to Calving (Days)	Carcase Weight (kg)	EMA (sq cm)	Rib Fat (mm)	Rump Fat (mm)	Retail Beef Yield (%)	IMF (%)
EBV	+3.6	+4.2	-5.4	+0.5	+50	+81	+101	+90	+20	+1.8	-5.1	+64	+7.6	+0.5	-0.8	+0.6	+1.4
ACC	74%	43%	98%	98%	96%	96%	92%	82%	74%	94%	39%	78%	82%	84%	79%	73%	78%

Traits Observed: HD50K

Purchaser: \$.....

LOT 216

S A V BRAVE 8320

7 units

Society Ident: USA16107533

Genetic Status: AMF NHF CAF DDF

Reg'n: HBR

Calved: 03/04/2008

SITZ TRAVELER 8180
S A V 8180 TRAVELER 004
BOYD FOREVER LADY 8003

BON VIEW BANDO 598
S A F 598 BANDO 5175
S A F ROYAL LASS 1002

Sire: USA15107825 S A V MANDAN 5664

Dam: USA14140872 S A V MAY 2397

SCHOENES FIX IT 826
S A V ABIGALE 0451
S A V ABIGALE 6062

LEACHMAN RIGHT TIME
S A V MAY 7238
S A R PROSPECTOR MAY 9124

Angus Breeding	+\$102
Domestic	+\$102
Heavy Grain	+\$94
Heavy Grain	+\$105

March 2015 Angus Australia BREEDPLAN

	Calving Ease Direct	Calving Ease Dtrs	Gest Lgth (Days)	Birth Weight (kg)	200 Day Wt (kg)	400 Day Wt (kg)	600 Day Wt (kg)	Mature Cow Wt (kg)	Milk (kg)	Scrotal Size (cm)	Days to Calving (Days)	Carcase Weight (kg)	EMA (sq cm)	Rib Fat (mm)	Rump Fat (mm)	Retail Beef Yield (%)	IMF (%)
EBV	-4.1	-2.4	-2.6	+6.5	+53	+89	+112	+94	+18	+1.7	-4.8	+70	+8.6	+1.5	+0.6	+0.8	+0.9
ACC	57%	41%	92%	89%	78%	78%	73%	68%	69%	67%	37%	68%	62%	67%	58%	60%	60%

Traits Observed:

Purchaser: \$.....

LOT 217

TE MANIA EPISTLE E852

8 units

Society Ident: VTME852 Genetic Status: AMFU NHF CAF DDF Reg'n: HBR Calved: 02/09/2009

B/R NEW DESIGN 036 B/R NEW DESIGN 036
 B/R NEW DIMENSION 7127 TE MANIA YAKKA Y428 (AI) (ET)
 B/R RUBY OF TIFFANY 4117 TE MANIA BARUNAH R312 (AI) (ET)

Sire: VTMB219 TE MANIA BARTEL B219 (AI) (ET) Dam: VTMB562 TE MANIA MITTAGONG B562
 C A FUTURE DIRECTION 5321 TE MANIA VICEROY V342
 TE MANIA JEDDA W85 (AI) (ET) TE MANIA MITTAGONG Y361 (AI)
 TE MANIA JEDDA S241 (AI) (ET) EBONY HILLS MITTAGONG U33 (AI)

Angus Breeding	+\$125
Domestic	+\$113
Heavy Grain	+\$143
Heavy Grain	+\$116

March 2015 Angus Australia BREEDPLAN

	Calving Ease Direct	Calving Ease Dtrs	Gest Lgth (Days)	Birth Weight (kg)	200 Day Wt (kg)	400 Day Wt (kg)	600 Day Wt (kg)	Mature Cow Wt (kg)	Milk (kg)	Scrotal Size (cm)	Days to Calving (Days)	Carcase Weight (kg)	EMA (sq cm)	Rib Fat (mm)	Rump Fat (mm)	Retail Beef Yield (%)	IMF (%)
EBV	-1.3	-2.0	-6.3	+5.6	+46	+84	+109	+88	+18	+2.2	-4.8	+62	+9.3	-0.3	-1.5	+0.7	+3.1
ACC	68%	54%	96%	95%	88%	91%	90%	81%	68%	87%	54%	76%	79%	78%	79%	73%	73%

Traits Observed: CE,BWT,200WT(x2),400WT,600WT,SS,FAT,EMA,IMF

Purchaser: \$.....

LOT 218

RAFF EXPLOSIVE E108 (AI) (ET)

5 units

Society Ident: QRFE108 Genetic Status: AMFU NHFU CAFU DDFU Reg'n: HBR Calved: 21/04/2009

CONNEALY DATELINE BON VIEW BANDO 598
 CONNEALY TIMELINE S V F BANDOLIER
 ENCHANTS FORTUNE CONANGA 6127 S V F PRIMROSE LADY 9446

Sire: USA13966936 CONNEALY DANNY BOY Dam: USA15141036 HOFF BLACKBIRD 594 5217 (ET)
 HOFF HEARTLAND S C 456 HOFF TRAIL BOSS S C 929
 ENERGY OF CONANGA 4851 HOFF BOSS LADY S C 3V9
 DIVIDENDS ENVY OF CONANGA HOFF STARLETTE SC 441

Angus Breeding	+\$124
Domestic	+\$116
Heavy Grain	+\$124
Heavy Grain	+\$125

March 2015 Angus Australia BREEDPLAN

	Calving Ease Direct	Calving Ease Dtrs	Gest Lgth (Days)	Birth Weight (kg)	200 Day Wt (kg)	400 Day Wt (kg)	600 Day Wt (kg)	Mature Cow Wt (kg)	Milk (kg)	Scrotal Size (cm)	Days to Calving (Days)	Carcase Weight (kg)	EMA (sq cm)	Rib Fat (mm)	Rump Fat (mm)	Retail Beef Yield (%)	IMF (%)
EBV	+0.5	+2.5	-9.1	+3.7	+52	+98	+134	+149	+11	+3.8	-3.1	+81	+7.4	-0.1	-1.1	+2.0	+0.3
ACC	76%	54%	96%	96%	92%	93%	93%	87%	76%	92%	44%	78%	79%	80%	80%	72%	74%

Traits Observed: BWT,200WT(x2),400WT(x2),600WT(x2),SS,FAT,EMA,IMF,HD50K

Purchaser: \$.....

LOT 219

EXAR UPSHOT 0562B

8 units

Society Ident: USA16541214 Genetic Status: AMF NHF CAF DDF Reg'n: HBR Calved: 22/01/2010

CONNEALY LEAD ON G T EXPO
 CONNEALY ONWARD ISU IMAGING Q 9111 (ET)
 ALTUNE OF CONANGA 6104 SUMMITCREST PRIDE 351F

Sire: USA14963730 SITZ UPWARD 307R Dam: USA15932534 EXAR BARBARA T020
 SITZ VALUE 7097 BON VIEW NEW DESIGN 1407
 SITZ HENRIETTA PRIDE 81M LCC MC HENRY BARBAR MG382
 SITZ HENRIETTA PRIDE 1370 LEACHMAN B C 4410

Angus Breeding	+\$127
Domestic	+\$125
Heavy Grain	+\$125
Heavy Grain	+\$125

March 2015 Angus Australia BREEDPLAN

	Calving Ease Direct	Calving Ease Dtrs	Gest Lgth (Days)	Birth Weight (kg)	200 Day Wt (kg)	400 Day Wt (kg)	600 Day Wt (kg)	Mature Cow Wt (kg)	Milk (kg)	Scrotal Size (cm)	Days to Calving (Days)	Carcase Weight (kg)	EMA (sq cm)	Rib Fat (mm)	Rump Fat (mm)	Retail Beef Yield (%)	IMF (%)
EBV	+2.7	+1.3	-4.3	+4.3	+49	+90	+107	+86	+25	+1.7	-6.7	+70	+10.1	+0.3	-0.1	+1.8	+1.0
ACC	83%	60%	98%	98%	97%	97%	96%	86%	78%	96%	43%	82%	85%	85%	80%	76%	82%

Traits Observed: HD50K

Purchaser: \$.....

LOT 220

MOHNEN DYNAMITE 1356

6 units

Society Ident: USA15585939 Genetic Status: AMF NHF CAF DDF Reg'n: HBR Calved: 23/01/2006

JAUER 7111 TRAVELER 353 719 SITZ TRAVELER 043
 JAUER 353 TRAVELER 589 27 CLEARWATER PAF SEVILLE 1977
 JAUER 6807 TRAVELER 27 085 CIRCLE S PRIDE 284

Sire: USA13987017 BALDRIDGE KABOOM K243 Dam: USA13620692 MOHNEN JILT 910
 KCF MOHNEN JILT 143
 G T MAXIMUM BON VIEW TRAVELER 181
 PLEASANTA OF CONANGA 736 MOHNEN JILT 143
 PLEASANT PILL OF CONANGA BON VIEW JILT 858

Angus Breeding	+\$92
Domestic	+\$97
Heavy Grain	+\$84
Heavy Grain	+\$99

March 2015 Angus Australia BREEDPLAN

	Calving Ease Direct	Calving Ease Dtrs	Gest Lgth (Days)	Birth Weight (kg)	200 Day Wt (kg)	400 Day Wt (kg)	600 Day Wt (kg)	Mature Cow Wt (kg)	Milk (kg)	Scrotal Size (cm)	Days to Calving (Days)	Carcase Weight (kg)	EMA (sq cm)	Rib Fat (mm)	Rump Fat (mm)	Retail Beef Yield (%)	IMF (%)
EBV	-1.7	-1.7	-6.3	+4.4	+49	+91	+120	+122	+6	+1.9	-0.1	+69	+2.9	+0.7	-0.1	+0.6	+0.7
ACC	93%	84%	99%	99%	98%	98%	98%	97%	97%	98%	73%	94%	93%	93%	93%	90%	91%

Traits Observed: HD50K

Purchaser: \$.....

LOT 221

BT EQUATOR 395M

9 units

Society Ident: USA14237157 Genetic Status: AMF NHF CAF DDF Reg'n: HBR Calved: 11/02/2002
 COTTONTAIL MATERNAL POWER 464 LOVANA
 PAPA POWER 096 G D A R RAINMAKER 340
 BLACKBIRD D H D 2816 LADY BLACKBIRD 987 G D A R
 Sire: USA2928 PAPA EQUATOR 2928 Dam: USA11279411 RM BLACK MAGIC 7574 E A R
 PAPA RITO TRAVELER 4807 TRAVELER 1148 G D A R
 PAPA ENVIOUS BLACKBIRD 8849 1148'S MAGIC MISS 574
 ENVIOUS BLACKBIRD D H D 5848 HEADLINERS MAGIC MISS 74

Angus Breeding	+\$99
Domestic	+\$93
Heavy Grain	+\$98
Heavy Grain	+\$99

March 2015 Angus Australia BREEDPLAN

Calving Ease Direct	Calving Ease Dtrs	Gest Lgth (Days)	Birth Weight (kg)	200 Day Wt (kg)	400 Day Wt (kg)	600 Day Wt (kg)	Mature Cow Wt (kg)	Milk (kg)	Scrotal Size (cm)	Days to Calving (Days)	Carcase Weight (kg)	EMA (sq cm)	Rib Fat (mm)	Rump Fat (mm)	Retail Beef Yield (%)	IMF (%)	
EBV	-6.0	+2.9	-5.3	+5.0	+51	+96	+130	+141	+18	+1.6	-5.2	+76	+1.3	-0.6	-0.9	+0.2	+0.7
ACC	96%	89%	99%	99%	98%	98%	98%	98%	98%	84%	96%	95%	95%	95%	94%	94%	

Traits Observed: HD50K

Purchaser: \$.....

LOT 222

DUNOON EVIDENT E614 (AI) (ET)

17 units

Society Ident: BHRE614 Genetic Status: AMF NHF CAF DDC Reg'n: HBR Calved: 03/04/2009
 B/R NEW DESIGN 036 GARDENS HIGHMARK
 B/R NEW DIMENSION 7127 DUNOON HIGHMARK Y262 (AI) (ET)
 B/R RUBY OF TIFFANY 4117 DUNOON BEEAC T015 (AI) (ET)
 Sire: VTMB219 TE MANIA BARTEL B219 (AI) (ET) Dam: BHRB681 DUNOON ELSA B681
 C A FUTURE DIRECTION 5321 C A FUTURE DIRECTION 5321
 TE MANIA JEDDA W85 (AI) (ET) DUNOON ELSA X602 (AI) (ET)
 TE MANIA JEDDA S241 (AI) (ET) LANDFALL ELSA M83 (AI) (ET)

Angus Breeding	+\$104
Domestic	+\$98
Heavy Grain	+\$110
Heavy Grain	+\$101

March 2015 Angus Australia BREEDPLAN

Calving Ease Direct	Calving Ease Dtrs	Gest Lgth (Days)	Birth Weight (kg)	200 Day Wt (kg)	400 Day Wt (kg)	600 Day Wt (kg)	Mature Cow Wt (kg)	Milk (kg)	Scrotal Size (cm)	Days to Calving (Days)	Carcase Weight (kg)	EMA (sq cm)	Rib Fat (mm)	Rump Fat (mm)	Retail Beef Yield (%)	IMF (%)	
EBV	-11.8	-8.6	-0.1	+5.9	+52	+91	+119	+104	+17	+3.8	-4.0	+76	+14.5	-1.4	-2.8	+2.9	+1.6
ACC	90%	74%	99%	99%	98%	98%	93%	88%	98%	55%	84%	87%	86%	85%	79%	85%	

Traits Observed: BWT,200WT,400WT,600WT,SS,FAT,EMA,IMF,HD50K

Purchaser: \$.....

LOT 223

N BAR BANDO 5175 Y54 (AI)

9 units

Society Ident: DDSY54 Genetic Status: AMFU NHFU CAF DDF Reg'n: HBR Calved: 01/08/2003
 TEHAMA BANDO 155 TC STOCKMAN
 BON VIEW BANDO 598 TC STOCKMAN 365
 BON VIEW DORA 56 TC PRIDE 0014
 Sire: USA5175 S A F 598 BANDO 5175 Dam: NDIU44 KENNY'S CREEK BARA U44 (AI) (ET)
 V D A R NEW TREND 315 PARAMONT AMBUSH 2172
 S A F ROYAL LASS 1002 KENNY'S CREEK BARA Q8 (AI)
 S A F ROYAL LASS 6089 KENNY'S CREEK N66

Angus Breeding	+\$95
Domestic	+\$98
Heavy Grain	+\$99
Heavy Grain	+\$94

March 2015 Angus Australia BREEDPLAN

Calving Ease Direct	Calving Ease Dtrs	Gest Lgth (Days)	Birth Weight (kg)	200 Day Wt (kg)	400 Day Wt (kg)	600 Day Wt (kg)	Mature Cow Wt (kg)	Milk (kg)	Scrotal Size (cm)	Days to Calving (Days)	Carcase Weight (kg)	EMA (sq cm)	Rib Fat (mm)	Rump Fat (mm)	Retail Beef Yield (%)	IMF (%)	
EBV	-1.4	+1.6	-4.0	+5.9	+46	+80	+105	+105	+19	+2.0	-4.2	+66	+2.7	-2.4	-2.9	+1.2	+1.4
ACC	84%	72%	97%	96%	95%	95%	93%	93%	93%	76%	86%	86%	87%	86%	82%	83%	

Traits Observed: CE,BWT,200WT,400WT(x2),600WT,SS,FAT,EMA,IMF

Purchaser: \$.....

LOT 224

TE MANIA EMPEROR E343 (AI)

3 units

Society Ident: VTME343 Genetic Status: AMF NHF CAF DDF Reg'n: HBR Calved: 09/08/2009
 S A F FOCUS OF E R O S U 6T6 ULTRA
 TE MANIA YORKSHIRE Y437 (AI) B T ULTRAVOX 297E
 TE MANIA LOWAN U275 (AI) (ET) FINKS VIXON 788
 Sire: VTMB1 TE MANIA BERKLEY B1 (AI) Dam: VTMZ74 TE MANIA LOWAN Z74 (AI) (ET)
 KENNY'S CREEK SANDY S15 (AI) B/R NEW DESIGN 036
 TE MANIA LOWAN Z53 (AI) (ET) TE MANIA LOWAN V201 (AI) (ET)
 TE MANIA LOWAN V129 (ACR) (AI) (ET) TE MANIA LOWAN R426 (AI) (ET)

Angus Breeding	+\$148
Domestic	+\$127
Heavy Grain	+\$170
Heavy Grain	+\$136

March 2015 Angus Australia BREEDPLAN

Calving Ease Direct	Calving Ease Dtrs	Gest Lgth (Days)	Birth Weight (kg)	200 Day Wt (kg)	400 Day Wt (kg)	600 Day Wt (kg)	Mature Cow Wt (kg)	Milk (kg)	Scrotal Size (cm)	Days to Calving (Days)	Carcase Weight (kg)	EMA (sq cm)	Rib Fat (mm)	Rump Fat (mm)	Retail Beef Yield (%)	IMF (%)	
EBV	+3.6	+5.9	-6.1	+4.8	+52	+95	+125	+132	+10	+2.1	-7.7	+68	+4.5	+0.3	+0.5	-0.3	+2.8
ACC	92%	81%	99%	99%	98%	99%	98%	97%	94%	98%	63%	92%	89%	88%	90%	83%	89%

Traits Observed: GL,CE,BWT,200WT(x2),400WT,SS,FAT,EMA,IMF,HD50K

Purchaser: \$.....

LOT 225

TE MANIA UNLIMITED U3271 (AI) (ET)

2 units

Society Ident: VTMU3271 Genetic Status: AMF NHF CAF DDF Reg'n: HBR Calved: 14/09/1999

A A R NEW TREND SCOTCH CAP
 V D A R NEW TREND 315 TE MANIA NORMAN N48 (AI) (ET)
 V D A R LUCY 704 TE MANIA BEEAC J118+89 (AI) (ET)

Sire: USA036 B/R NEW DESIGN 036 Dam: VTMR426 TE MANIA LOWAN R426 (AI) (ET)
 K&K TOP GUN TE MANIA KELP K207+90 (AI)
 B/R BLACKCAP EMPRESS 76 TE MANIA LOWAN
 QLC A70 BLKCP EMPRESS E43T TE MANIA LOWAN J127+89 (AI) (ET)

Angus Breeding	+\$107
Domestic	+\$98
Heavy Grain	+\$120
Heavy Grain	+\$100

March 2015 Angus Australia BREEDPLAN

	Calving Ease Direct	Calving Ease Dtrs	Gest Lgth (Days)	Birth Weight (kg)	200 Day Wt (kg)	400 Day Wt (kg)	600 Day Wt (kg)	Mature Cow Wt (kg)	Milk (kg)	Scrotal Size (cm)	Days to Calving (Days)	Carcase Weight (kg)	EMA (sq cm)	Rib Fat (mm)	Rump Fat (mm)	Retail Beef Yield (%)	IMF (%)
EBV	+0.8	-2.0	-0.3	+3.0	+29	+63	+82	+59	+18	+2.9	-5.0	+27	+4.1	+1.5	+2.1	-0.8	+3.4
ACC	98%	96%	99%	99%	99%	99%	99%	99%	99%	99%	96%	98%	98%	98%	98%	98%	98%

Traits Observed: BWT,200WT,400WT,600WT,SS,FAT,EMA,IMF,NFI-P,HD50K

Purchaser:..... \$.....

LOT 226

CONNEALY CONSENSUS 7229

2 units

Society Ident: USA16447771 Genetic Status: AMF NHF CAF DDF Reg'n: HBR Calved: 15/01/2009

SITZ ALLIANCE 6595 S A F FOCUS OF E R
 KMK ALLIANCE 6595 I87 WOODHILL ADMIRAL 77K
 G A R EXT 916 WOODHILL LASS 344-1178 (ET)

Sire: USA15513367 CONNEALY CONSENSUS Dam: USA15804270 BLUE LILLY OF CONANGA 16
 RITO 616 OF 4B20 6807 CONNEALY TIMELINE
 BLINDA OF CONANGA 004 BLUE CASH OF CONANGA 6020
 BLENDA OF CONANGA 129 BLUE TIME OF CONANGA

Angus Breeding	+\$113
Domestic	+\$119
Heavy Grain	+\$113
Heavy Grain	+\$111

March 2015 Angus Australia BREEDPLAN

	Calving Ease Direct	Calving Ease Dtrs	Gest Lgth (Days)	Birth Weight (kg)	200 Day Wt (kg)	400 Day Wt (kg)	600 Day Wt (kg)	Mature Cow Wt (kg)	Milk (kg)	Scrotal Size (cm)	Days to Calving (Days)	Carcase Weight (kg)	EMA (sq cm)	Rib Fat (mm)	Rump Fat (mm)	Retail Beef Yield (%)	IMF (%)
EBV	+1.1	+2.3	-4.4	+4.2	+49	+81	+91	+77	+17	+0.9	-6.0	+62	+8.3	+0.1	-0.5	+1.4	+1.7
ACC	69%	42%	98%	97%	93%	93%	90%	81%	78%	87%	40%	80%	77%	80%	74%	72%	74%

Traits Observed:

Purchaser:..... \$.....

LOT 227

S A V PIONEER 7301

1 unit

Society Ident: USA15688392 Genetic Status: AMF NHF CAF DDF Reg'n: HBR Calved: 27/02/2007

G D A R TRAVELER 71 A A R NEW TREND
 SITZ TRAVELER 8180 BOYD NEW DAY 8005

Sire: USA0035 S A V FINAL ANSWER 0035 Dam: USA15108071 S A V BLACKBIRD 5297
 BON VIEW BANDO 598 S A F 598 BANDO 5175
 S A V EMULOUS 8145 S A V BLACKBIRD 1082
 S A V SKY EMULOUS 2124 S A V BLACKBIRD 4036

Angus Breeding	+\$124
Domestic	+\$124
Heavy Grain	+\$118
Heavy Grain	+\$126

March 2015 Angus Australia BREEDPLAN

	Calving Ease Direct	Calving Ease Dtrs	Gest Lgth (Days)	Birth Weight (kg)	200 Day Wt (kg)	400 Day Wt (kg)	600 Day Wt (kg)	Mature Cow Wt (kg)	Milk (kg)	Scrotal Size (cm)	Days to Calving (Days)	Carcase Weight (kg)	EMA (sq cm)	Rib Fat (mm)	Rump Fat (mm)	Retail Beef Yield (%)	IMF (%)
EBV	+1.1	+3.2	-7.4	+3.7	+51	+82	+100	+71	+13	+2.4	-6.0	+58	+10.7	+2.3	+0.6	+2.0	+0.9
ACC	78%	63%	98%	97%	95%	96%	95%	87%	84%	94%	52%	84%	86%	86%	83%	80%	83%

Traits Observed: HD50K

Purchaser:..... \$.....

LOT 228

RENNYLEA H106 (ET)

1 unit

Society Ident: NORH106 Genetic Status: AMFU NHFU CAFU DDF Reg'n: HBR Calved: 11/03/2012

RENNYLEA XPONENTIAL X555 (AI) (ET) G A R PINNACLE
 TE MANIA AMBASSADOR A134 (AI) LAWSONS TANK X1235 (AI)
 TE MANIA LOWAN Y211 (ACR) (AI) YTHANBRAE NEW DESIGN 036 U89 (AI)

Sire: BNAD145 TUWHARETOA REGENT D145 (AI) (ET) Dam: NORD316 RENNYLEA D316 (AI)
 YTHANBRAE HENRY VIII U8 (AI) (ET) BON VIEW NEW DESIGN 1407
 LAWSONS HENRY VIII Y5 (AI) LAWSONS NEW DESIGN 1407 Z1393 (AI)
 YTHANBRAE DIRECTION T270 (AI) LAWSONS FUTURE DIRECTION W75 (AI)

Angus Breeding	+\$128
Domestic	+\$111
Heavy Grain	+\$152
Heavy Grain	+\$116

March 2015 Angus Australia BREEDPLAN

	Calving Ease Direct	Calving Ease Dtrs	Gest Lgth (Days)	Birth Weight (kg)	200 Day Wt (kg)	400 Day Wt (kg)	600 Day Wt (kg)	Mature Cow Wt (kg)	Milk (kg)	Scrotal Size (cm)	Days to Calving (Days)	Carcase Weight (kg)	EMA (sq cm)	Rib Fat (mm)	Rump Fat (mm)	Retail Beef Yield (%)	IMF (%)
EBV	-0.9	-1.7	-1.7	+1.6	+39	+79	+102	+77	+19	+0.2	-5.3	+69	+8.4	+1.6	+0.1	-0.8	+4.2
ACC	78%	60%	97%	96%	93%	85%	84%	81%	70%	80%	47%	77%	67%	70%	69%	63%	64%

Traits Observed: BWT,200WT,400WT,SS,FAT,EMA,IMF,DOC,HD50K

Purchaser:..... \$.....

LOT 229

RENNYLEA D372 (AI) (ET)

1 unit

Society Ident: NORD372

Genetic Status: AMF NHF CAFU DDF

Reg'n: HBR

Calved: 03/09/2008

C A FUTURE DIRECTION 5321
RENNYLEA XPONENTIAL X555 (AI) (ET)
RENNYLEA EISA ERICA U233 (AI) (ET)

B/R NEW DESIGN 036
YTHANBRAE HENRY VIII U8 (AI) (ET)
G A R MAX 678

Sire: VTMA134 TE MANIA AMBASSADOR A134 (AI)

Dam: VLYYS LAWSONS HENRY VIII Y5 (AI)

C A FUTURE DIRECTION 5321

C A FUTURE DIRECTION 5321

TE MANIA LOWAN Y211 (ACR) (AI)

YTHANBRAE DIRECTION T270 (AI)

TE MANIA LOWAN V58 (ACR) (AI) (ET)

YTHANBRAE Q256 (ACR)

Angus Breeding	+\$81
Domestic	+\$64
Heavy Grain	+\$104
Heavy Grain	+\$68

March 2015 Angus Australia BREEDPLAN

Angus	Calving Ease Direct	Calving Ease Dtrs	Gest Lgth (Days)	Birth Weight (kg)	200 Day Wt (kg)	400 Day Wt (kg)	600 Day Wt (kg)	Mature Cow Wt (kg)	Milk (kg)	Scrotal Size (cm)	Days to Calving (Days)	Carcase Weight (kg)	EMA (sq cm)	Rib Fat (mm)	Rump Fat (mm)	Retail Beef Yield (%)	IMF (%)
EBV	-20.3	-14.9	-0.8	+10.2	+54	+90	+120	+122	+13	+2.5	-6.7	+77	+6.0	-0.1	+0.2	-1.0	+4.1
ACC	83%	78%	96%	97%	95%	95%	95%	94%	92%	94%	65%	85%	86%	87%	86%	83%	84%

Traits Observed: BWT,200WT,400WT,600WT,SS,FAT,EMA,IMF,HD50K

Purchaser:.....

\$.....

LOT 230

DMM SHIFT 78S

1 unit

Society Ident: CAN1351558

Genetic Status: AMF NHFU CAFU DDFU

Reg'n: HBR

Calved: 22/03/2006

PARAMONT AMBUSH 2172
HIGH VALLEY 4C6 AMBUSH
HIGH VALLEY GLORIA 1Q2

ANGUS ACRES BANDOLIER 75T
ANGUS ACRES BANDY 96X
ANGUS ACRES LADY 90R

Sire: CAN1134412 DMM AMBUSH 03M

Dam: CAN1073582 DMM MISS ESSENCE 90K

TC STOCKMAN 365

DMM ESSOTERIC 67R

DMM MISSESSENCE 108J

JRM MISS ESSENCE 8U

DMM MISS ESSENCE 22B

JRM DYNA LASS 44N

Angus Breeding	+\$45
Domestic	+\$59
Heavy Grain	+\$38
Heavy Grain	+\$54

March 2015 Angus Australia BREEDPLAN

Angus	Calving Ease Direct	Calving Ease Dtrs	Gest Lgth (Days)	Birth Weight (kg)	200 Day Wt (kg)	400 Day Wt (kg)	600 Day Wt (kg)	Mature Cow Wt (kg)	Milk (kg)	Scrotal Size (cm)	Days to Calving (Days)	Carcase Weight (kg)	EMA (sq cm)	Rib Fat (mm)	Rump Fat (mm)	Retail Beef Yield (%)	IMF (%)
EBV	-4.2	-2.2	+3.5	+7.1	+41	+72	+104	+103	+5	+0.3	+0.9	+57	-9.5	-4.4	-2.7	-1.2	+1.1
ACC	79%	61%	96%	96%	93%	93%	94%	92%	89%	90%	39%	80%	78%	80%	78%	71%	74%

Traits Observed: HD50K

Purchaser:.....

\$.....

LOT 231

FLAG CROSS COUNTRY 90052

1 units

Society Ident: USA16349775

Genetic Status: AMF NHF CAF DDF

Reg'n: HBR

Calved: 12/01/2009

G A R PRECISION 1680
C A FUTURE DIRECTION 5321
C A MISS POWER FIX 308

J R SOMETHING SPECIAL (ET)
TRIPLE E SPECIAL ADDITION
JAYNBEE LUCY 731B

Sire: USA758N BT CROSSOVER 758N

Dam: USA15164090 SCR QUEEN IDELETTE 50596

O S U 6T6 ULTRA

BON VIEW NEW DESIGN 878

BT ROYAL PRIDE 237G

SCR QUEEN IDELETTE 702

BT ROYAL PRIDE 326A

S A QUEEN IDELETTE 1646

Angus Breeding	+\$104
Domestic	+\$107
Heavy Grain	+\$93
Heavy Grain	+\$108

March 2015 Angus Australia BREEDPLAN

Angus	Calving Ease Direct	Calving Ease Dtrs	Gest Lgth (Days)	Birth Weight (kg)	200 Day Wt (kg)	400 Day Wt (kg)	600 Day Wt (kg)	Mature Cow Wt (kg)	Milk (kg)	Scrotal Size (cm)	Days to Calving (Days)	Carcase Weight (kg)	EMA (sq cm)	Rib Fat (mm)	Rump Fat (mm)	Retail Beef Yield (%)	IMF (%)
EBV	+2.5	+2.0	-3.7	+3.0	+45	+72	+87	+55	+17	+0.0	-4.1	+52	+9.1	+1.2	+2.3	-0.1	+1.7
ACC	59%	38%	95%	94%	89%	89%	83%	77%	72%	87%	36%	75%	73%	77%	71%	66%	70%

Traits Observed: HD50K

Purchaser:.....

\$.....

LOT 232

N BAR EVIDENT H18 (AI) (ET)

90 units

Society Ident: DDSH18

Genetic Status: AMFU NHFU CAFU DDF

Reg'n: HBR

Calved: 03/04/2012

B/R NEW DIMENSION 7127
TE MANIA BARTEL B219 (AI) (ET)
TE MANIA JEDDA W85 (AI) (ET)

TC DIVIDEND 963
W P R 3J DIVIDEND 9321
J A S MISS LUCY J928

Sire: BHRE614 DUNOON EVIDENT E614 (AI) (ET)

Dam: NSTW44 ST PAULS IRIS DIVINE W44 (AI)

DUNOON HIGHMARK Y262 (AI) (ET)

PAPA EQUATOR 2928

DUNOON ELSA B681

ST PAULS IRIS PAPA T23 (AI) (ET)

DUNOON ELSA X602 (AI) (ET)

ST. PAULS IRIS TREND P24 (AI) (ET)

Angus Breeding	+\$96
Domestic	+\$94
Heavy Grain	+\$98
Heavy Grain	+\$96

March 2015 Angus Australia BREEDPLAN

Angus	Calving Ease Direct	Calving Ease Dtrs	Gest Lgth (Days)	Birth Weight (kg)	200 Day Wt (kg)	400 Day Wt (kg)	600 Day Wt (kg)	Mature Cow Wt (kg)	Milk (kg)	Scrotal Size (cm)	Days to Calving (Days)	Carcase Weight (kg)	EMA (sq cm)	Rib Fat (mm)	Rump Fat (mm)	Retail Beef Yield (%)	IMF (%)
EBV	-8.9	-6.2	+2.1	+7.3	+53	+94	+127	+132	+15	+4.7	--	+77	+12.4	-2.9	-4.0	+2.6	+0.8
ACC	64%	47%	77%	76%	70%	71%	72%	72%	64%	71%	--	62%	57%	62%	58%	50%	55%

Traits Observed: BWT,400WT,600WT,FAT,EMA,IMF,HD50K

Purchaser:.....

\$.....

LOT 233

N BAR PIONEER PERFECT F65 (AI)

20 units

Society Ident: DDSF65

Genetic Status: AMFU NHFU CAFU DDF

Reg'n: HBR

Calved: 24/08/2010

SITZ TRAVELER 8180
S A V FINAL ANSWER 0035
S A V EMULOUS 8145

V D A R NEW TREND 315
B/R NEW DESIGN 036

Sire: **USA15688392 S A V PIONEER 7301**
BOYD NEW DAY 8005
S A V BLACKBIRD 5297
S A V BLACKBIRD 1082

B/R BLACKCAP EMPRESS 76
Dam: **BBBX65 CIRCLE 8 036 PERFECTION X65 (AI) (ET)**
BURTHLENE PATRIOT 47M
SANDON PERFECTION P13 (AI)
SANDON PERFECTION E38. (AI)

Angus Breeding	+\$102
Domestic	+\$104
Heavy Grain	+\$100
Heavy Grain	+\$102

March 2015 Angus Australia BREEDPLAN

	Calving Ease Direct	Calving Ease Dtrs	Gest Lgth (Days)	Birth Weight (kg)	200 Day Wt (kg)	400 Day Wt (kg)	600 Day Wt (kg)	Mature Cow Wt (kg)	Milk (kg)	Scrotal Size (cm)	Days to Calving (Days)	Carcase Weight (kg)	EMA (sq cm)	Rib Fat (mm)	Rump Fat (mm)	Retail Beef Yield (%)	IMF (%)
EBV	-0.1	+0.7	-2.0	+5.3	+44	+71	+91	+90	+11	+1.7	-4.9	+51	+8.4	+0.3	-1.2	+1.9	+1.1
ACC	64%	47%	88%	81%	72%	72%	74%	74%	65%	72%	40%	64%	59%	64%	60%	53%	57%

Traits Observed: GL,CE,BWT,HD50K

Purchaser:.....

\$.....