

Charnelle Charolais

6th Annual

Invitation Female Sale



Toowoomba Showgrounds (undercover)
Saturday 5th March 2016, 12 noon QLD time



The Best Value for Money Charolais Female Sale in Australia!!



Charnelle Charolais

Proven Cow Families and Top Class Sires

Poll Full French Bull

GALLWAY



Black Out
Sire: Emile – RS
South West

Okapi
Dam: Demler – RS
Audi

- ✓ Polled
- ✓ Full French
- ✓ Easy Calving
- ✓ Outcross Pedigree
- ✓ Maternal Strength
- ✓ Very Good Temperament



Photo is of Charnelle Lauren (P)(ET)(IMP) L5F, by Gallway. Dam is **Ulla** (D'Angely's dam). We selected Gallway mainly because of the line of wonderful females in his pedigree, easy calving, and good temperament. Semen available from UCBS Allora
John Atkinson 07 4666 3376, Graham Blanch 0427622410

Welcome

We take this opportunity to welcome you to the 6th Annual Charnelle Invitation Charolais Female sale. This year we have put together another exciting catalogue of 64 females, 8 bulls, 18 embryos, 291 straws of semen and a flush in an exceptional cow.

Cows & Calves: We have 18 cows and calves on offer this year and with cull cow prices very high you can be assured the quality of this year's line-up is exceptionally high. There is a number of Full French cows and a number of ex show cows on offer. Also on offer in this section is lot 15, Palgrove Estella 214, a tried and tested Donor Cow by Duke 261. She is being offered by Valley View Charolais.

Select Heifers: We have been offering quality females in Toowoomba every year since the first Y2K sale in 2000 and this standard continues. One of the features in this year's sale is the seven classy D'Angely (Don- jar- ly) daughters selling from lot 20 through to lot 26. Three of these heifers are from our embryo program – the very top end of our herd. Also in the select section you will find daughters of well-known Poll Bulls LT Ledger, LT Bluegrass, Thin Red Line and the first daughters of new Poll Full French sire Gallway and of Ascot Gunn.

Joined Females: A great line up of joined females including a few autumn calving cows and heifers by Pinay, Mac 2244, Pilgrim, Palgrove Freedom, Repair, No Doubt as well as a wonderful selection of Sedalia Beaumont daughters from Kandanga Valley Charolais.

Unjoined Heifers: A small number of unjoined heifers, with sires represented include Thin Red line, Charnelle Frankie and a very tidy group of the first daughters of Ayr Star's Orient from Kandanga Valley Charolais.

Young Bulls: 8 young bulls will be offered with the feature being two sons of TR Mr Fire Water. If you are looking for a bull that is Homozygous Polled, then look up lot 70 JT Kryptonite (P) (TR Mr Fire Water). First time vendor Mitchell Lollback has three special show bulls in the sale from lot 71 – 73 including a Mr Fire Water son.

As I write this welcome, the weather has been patchy, so I hope that wherever you are the season continues to improve so that profitably increases. Remember; "The good ones are never dear".

The sale will again be interfaced on Auctions Plus.
Short term agistment is available to coordinate with other sales.
Transport to most places will be available.
A canteen will be operating on sale day.

On behalf of the vendors and selling agents we invite, and again welcome you to our sale and look forward to seeing you on Saturday 5th. March 2016. We wish you all the best with your purchases.

Warm Regards,
Graham Blanch.

PS. Please bring your catalogue to the sale.

Vendor Listing

Graham & Katrina Blanch Ph. 07 5462 7705, 0427 622410, charnellecharolais@bigpond.com Lots 1 - 3, 12, 13, 19 – 23, 29 – 35, 38, 48 – 51, 63 – 65, 78 – 80.

Judith Turner Ph. 07 5579 9818, 0409 479653, admin@turnerseng.com.au Lots 4 – 6, 44, 66 – 70.

Ian & Katrina Bebbington Ph. 07 4630 9347, 0427 583 412, bebbo61@bigpond.com Lots 7, 8, 39, 40.

David & Christine Blake Ph. 07 46959002, 0418 878028, Shiiloh@bigpond.com Lots 9 - 11, 24 & 45, 85 – 88.

Stephen, Annette, Rachael, & Lauren Platzer Ph. 07 5460 9407 saplatzer@aapt.net.au Lot 14

Ashley & Rick Casten Ph. 0409 448080, Michelle.Casten@goondiwindimedicalcentre.com.au Lots 25 – 28.

Len, Pat, & Tania Haynes Ph. 07 5424 7188, 0428 256558 linville50@hotmail.com Lots 36, 41 – 43, 81 - 84.

Richard & Karsta Harms Ph. 02 6663 3177 rkharms@activ8.net.au Lots 15 – 18, 46, 47, 74 – 77.

John & Roz Mercer Ph.07 5484 3359, 0427 448 668, info@kandanga-valley.com Lots 52 – 62

Mitchell Lollback Ph. 07 4666 2255, 0459 594180. mitchellollback@live.com.au Lots 71 – 73.

Connie Brazel Ph. 02 6769 1489, 0427 776 416 Lots 89 - 106

Order of sale

Lots 1 – 9 Cows and calves
Lots 10 – 18 Select Cows and Calves
Lots 19 – 36 Select Heifers
Lots 38 – 39 Joined Females (Cows)
Lots 40 – 57 Joined Females (Heifers)
Lots 58 – 65 Unjoined Heifers
Lots 66 – 73 Young Bulls
Lots 74 – 80 Embryo Packages
Lots 76 – 106 Semen Lots

Elders Toowoomba 07 4690 7777
Michael Smith 0428 541 711
Blake Munro 0428 862469
Auctions Plus
Bob Jakins 0419 788 366



The Vendors offer a 4% rebate to outside agents introducing buyers in writing 24 hours prior to Sale and conducting settlement on their behalf within 7 days of Sale.

Lot: 1 CHARNELLE DIGNA 84 (AI)



Comments: Wonderful Pinay Daughter to begin our sale this year. She has had all bull calves to date including her polled bull calf at foot "Lava" L57E by D'Angely born 05/11/2015. Terrific milk, udder, feet, legs & temperament. Check out the French bulls in her pedigree, Impair, Exclusif & Fleets Rascal. Running with C. Kentucky (D'Angely) K19E from 15/01/2016, details sale day.

Vaccinations: 7 in 1, pestigard, 3 germ blood,

Cows & Calves

Vendor: G.K & K.A BLANCH **Animal ID:** GKA D40E **DOB:** 16/09/2008

BLASON 4286100325 286100325 (PED X286F)
 IMPAIR 1893102983 (OAF N189F)
 OFFICINE (PED -945F)
Sire: PINAY 8552394134 (OAF U4134F)
 HOMERE 5892107561 (PED -7561F)
 MARY 8596100049 (OAF R8596F)
 JACINTHE 8594104550 (PED -4550F)
 TILL FMC6073 (OAF B816F)
 EXCLUSIF 8589103317 (OAF J858F)
 REINETTE 85 80108477 (PED X8580F)
Dam: CHARNELLE DIGNA 32 (GKA X93E)
 SPARROWS SHERIFF 315W MC 82309 (OAC G315E)
 CHARNELLE DIGNA 6 (GKA S70E)
 PALGROVE DIGNA 33 (PK N92E)

December 2015 Australasian Charolais GROUP BREEDPLAN

Charolais GROUP BREEDPLAN	GL	BW	200	400	600	Milk	\$Dom	\$Exp
EBV	-4.0	+0.7	+14	+27	+39	+8	+\$40	+\$52
Acc	78%	75%	70%	68%	69%	69%		

Buyer _____ \$ _____

Lot: 2 CHARNELLE DIGNA 126 (P)



Comments: Another Wonderful Digna female who was shown successfully as a heifer. Terrific milk and udder. Check out the big names in her pedigree, Exclusif, Gauguin, Wyoming Wind, Quintero – to name a few. Her dam Digna 99 is one of our best. Bull calf at foot "Lychee" L74E born 28/12/2015 by C. Jumbo (P) (R/F) J17E. Running with C. Ketch Up K42E (Thin Red Line) from 15/01/2016.

Vaccinations: 7 in 1, pestigard, 3 germ blood,

Vendor: GK & KA BLANCH **Animal ID:** GKA H73E **DOB:** 29/12/2012

TILL FMC6073 (OAF B816F)
 EXCLUSIF 8589103317 (OAF J858F)
 REINETTE 85 80108477 (PED X8580F)
Sire: CHARNELLE E-BAY (GKA E54E) (P)
 LT WYOMING WIND 4020 PLD M411450 (OAU P4020E) (P)
 CHARNELLE DIGNA 18 (GKA V28E) (P)
 CHARNELLE DIGNA M.A.2 (GKA R44E) (P)
 PALGROVE QUINTERO (PK Q228E)
 PALGROVE OUTBACK (PK T165E) (P)
 IDLEWILD PALGROVE FESTOON P47E (1JJ P47E) (P)
Dam: CHARNELLE DIGNA 99 (GKA E63E) (P)
 GAUGUIN 8591105891 (OAF L859F)
 CHARNELLE DIGNA 25 (GKA W56E) (P)
 CHARNELLE DIGNA 7 (GKA S72E) (P)

December 2015 Australasian Charolais GROUP BREEDPLAN

Charolais GROUP BREEDPLAN	GL	BW	200	400	600	Milk	\$Dom	\$Exp
EBV	-1.5	+1.2	+12	+25	+36	+7	+\$14	+\$20
Acc	50%	49%	46%	46%	46%	45%		

Buyer _____ \$ _____

Lot: 3 CHARNELLE JA-CIE 4 (AI)



Comments: A cow that is very hard to part with. She has good milk, and a tidy udder, and her dam is a half-sister to the great Fernvale Primemover. Her sire Archie sold to Moongool Charolais for \$7500. She has had a number of top draw bull calves including her current red factor bull calf at foot "Mighty" M1E by C. Frankie (P) born 10/01/2016. Running with C. Kentucky K19E from 26/01/2016.

Vaccinations: 7 in 1, pestigard, 3 germ blood

Vendor: G.K & K.A BLANCH **Animal ID:** GKA E42E **DOB:** 14/08/2009

EXCLUSIF 8589103317 (OAF J858F)
 PALGROVE VENTURE (PK V187F)
 PALGROVE DESIRE 21 (PK R229F)
Sire: CHARNELLE ARCHIE (GKA A15E)
 TEMANA KNOCKOUT (TJ K37E)
 CHARNELLE DIGNA M.A.2 (GKA R44E) (P)
 PALGROVE DIGNA 36 (PK N168E) (P)
 ARAGON A20 58112 A20 (ZZF X1232F)
 CARABINIER 71357 C33 (IAF C6041F)
 TERPSICHORE T22 71357 T22 (ZZF X825F)
Dam: UPS N DOWNS YELLOW (SS1 Y6E)
 BCJ PETER PATRIATION 5P MC 41899 (IAC B6077E)
 FERVALE JA-CIE EH88 (FEN J15E)
 AIRLIE ELSBETH (A1S E31E)

December 2015 Australasian Charolais GROUP BREEDPLAN

Charolais GROUP BREEDPLAN	GL	BW	200	400	600	Milk	\$Dom	\$Exp
EBV	+1.2	+0.9	+6	+9	+15	+1	+\$0	+\$1
Acc	77%	74%	64%	66%	64%	66%		

Buyer _____ \$ _____

Lot: 4 JAY TEES JINJER BEER (R/F)



Comments: Very correct young red factor female with lovely registered white heifer calf JT's Lemonade (AI) at foot by FF bull Amtois born 11/06/2015. Both led. Calved unaided at just 24 months. Excellent milker & mother. Should be PTIC by sale day. Great 3 in 1 package. Both PV'd & DNA recorded
Vaccinations: 7 in 1, pestigard, 3 germ blood, 3 day sickness
 Calf vaccinated with all four vaccines as well.

Vendor: JUDITH TURNER **Animal ID:** JT J7D **DOB:** 03/06/2013

PINNAROO IMPOSER (BAA R18F)
 PINNAROO FASHION (BAA T108F) (P)
 PINNAROO LULUBELLE 4 FL167 (BAA P104F) (P)
Sire: JAY TEES BILLET-DOUX (JT B8F) (P)
 MARTEL 9596012540 (OAF R9596F) (P)
 JAY TEES Z'AMORE (JT Z14F)
 PALGROVE DESIRE 23 (PK S14F)
 BR DUKE 261 M 246564 (OAU C261E) (P)
 WCR SIR DUKE 835 M 286251 (OAU H835E) (P)
 WCR MISS MAC 600 F 474765 (OAU -62) (P)
Dam: JAY TEES VAURIENNE R/F (JT V1C) (P)
 PALGROVE MAGNUM (PK M156E) (P)
 JAY TEES REGAL AMBER R/F (JT R2B)
 JAY TEES NIPPY STARDUST (JT N1A)

December 2015 Australasian Charolais GROUP BREEDPLAN

Charolais GROUP BREEDPLAN	GL	BW	200	400	600	Milk	\$Dom	\$Exp
EBV			+7	+12	+25	+5	+\$12	+\$22
Acc			48%	50%	56%	38%		

Buyer _____ \$ _____

Lot: 5 JAY TEES JOLI JEAPÉAU (AI) (P)



Comments: Beautiful soft fine coated moderate framed led polled heifer. Due to calve 02/02/2016. Expect calf to be polled. Sire JT's Jensens Web (P) by Bluegrass. Exclusif (FF) is the only horned one on dam's side. She is PV'd & DNA recorded. Whole herd tested Pestivirus free.

Vendor: JUDITH TURNER **Animal ID:** JT J15E **DOB:** 03/08/2013

LT UNLIMITED EASE 9108 M 301930 (OAU J9108E)
 LT EASY BLEND 5125 PLD M705113 (OAU A5113E) (P)
 LT BRENDA 1014 PLD F924572 (PED -4572E)
Sire: LT CHEYENNE BLEND 7142 P M742067 (OAU C2067E) (P)
 EATONS ASSERT 9171 M514354 (PED U9171F)
 LT ALLI 3221 PLD F979387 (PED -9387E)
 LT ALLI 0287 PLD F872882 (OAU V2882E) (P)
 PINNAROO FASHION (BAA T108F) (P)
 JAY TEES BILLET-DOUX (JT B8F) (P)
 JAY TEES Z'AMORE (JT Z14F)
Dam: JAY TEES FASCINATION (JT F12E) (P)
 LT WYOMING WIND 4020 PLD M411450 (OAU P4020E) (P)
 JAY TEES CHENILLE (JT C9E) (P)
 JAY TEES VELOUTE (JT V8E) (P)

December 2015 Australasian Charolais GROUP BREEDPLAN

Charolais GROUP BREEDPLAN	GL	BW	200	400	600	Milk	\$Dom	\$Exp
EBV	-2.8	-0.9	+11	+21	+26	+5	+\$37	+\$53
Acc	52%	53%	56%	60%	62%	38%		

Buyer _____ \$ _____

Lot: 6 JAY TEES JACONET (P)



Comments: Well grown led female, calved unaided. White polled heifer by JT's Jensen's Web (P) (Bluegrass) born 14/12/2016. Plenty of polls on both sides including FF. She's PV'd & DNA recorded. Calf will be also plus registered. Very handy package.
Vaccinations: 7 in 1, pestigard, 3 germ blood, 3 day sickness

Vendor: JUDITH TURNER **Animal ID:** JT J18E **DOB:** 14/08/2013

M6 GRID MAKER 104 PET M633377 (OAU W3377E) (P)
 EC NO DOUBT 2022 P M685500 (OAU Z2022E) (P)
 EC LADY DUKE 2022 P F956614 (PED -2022E) (P)
Sire: JAY TEES GALAXY (JT G2E) (P)
 FERVALE MONTY (FEN M30D)
 FERVALE STAR (FEN S44E)
 FERVALE Q-TEE (FEN Q34E)
 PINNAROO FASHION (BAA T108F) (P)
 JAY TEES BILLET-DOUX (JT B8F) (P)
 JAY TEES Z'AMORE (JT Z14F)
Dam: JAY TEES FABRICIA (JT F2E) (P)
 PALGROVE MAGNUM (PK M156E) (P)
 JAY TEES TAFFETA (JT T4E) (P)
 PALGROVE ESTELLA 54 (PK R53E)

December 2015 Australasian Charolais GROUP BREEDPLAN

Charolais GROUP BREEDPLAN	GL	BW	200	400	600	Milk	\$Dom	\$Exp
EBV			+10	+20	+31	+6	+\$17	+\$25
Acc			48%	54%	56%	36%		

Buyer _____ \$ _____

Lot: 7 MOUNTVIEW SHOW GIRL H34E (AI) (P)




Comments: A beautiful soft cow with her first calf at foot. Wyoming Wind on both sides of Pedigree. Will not disappoint
Heifer calf at foot by Merit Roundup (P) calved on the 18/12/2015.
View Online at www.mountviewcharolais.com.au
Vaccinations: 7 in 1, 3 germ blood

Vendor: ID & KM BEBBINGTON **Animal ID:** IJB H34E **DOB:** 21/12/2012

LT WYOMING WIND 4020 PLD M411450 (OAU P4020E) (P)
LINKLETTER A11E (LJA A11E) (P)
PALGROVE ESTELLA 73 (PK S201E)
Sire: ADVANCE DOMINO D36 (ADV D36E) (P)
BIG SNOW GOLD BULLION R/F (KRL V80F)
ADVANCE GOLDSTAR Y46 (ADV Y46E)
ADVANCE GOLDSTAR R/F (ADV V5E)

SCHURRTOP 5627 M 300802 (PED -5627E)
LT WYOMING WIND 4020 PLD M411450 (OAU P4020E) (P)
LT CHAP'S LADY 217 OP F 634394 (PED -2170E)
Dam: MOUNTVIEW SHOW GIRL 7 (IJB B7E) (P)
SILVER CREEK HIGH ROLLER 34X M 280138 (OAU H1E) (P)
MOUNTVIEW SHOW GIRL (IJB S9E) (P)
MOUNTVIEW COVER GIRL 3 (IJB P9E) (P)

December 2015 Australasian Charolais GROUP BREEDPLAN								
 Charolais	GL	BW	200	400	600	Milk	\$Dom	\$Exp
EBV	-0.9	+2.0	+13	+19	+23	+0	+\$5	+\$10
Acc	73%	58%	54%	54%	56%	45%		

Buyer _____ \$ _____

Lot: 8 MOUNTVIEW ESTER (P)




Comments: A lengthy well-structured polled cow. Consistent breeder. Daughter (IJB J24E) sells at Lot No.40.
Will have a calf at foot by Ascot Eldorado. Details Sale day
View Online at www.mountviewcharolais.com.au
Vaccinations: 7 in 1, 3 germ blood

Vendor: ID & KM BEBBINGTON **Animal ID:** IJB E12E **DOB:** 16/04/2009

SCHURRTOP 5627 M 300802 (PED -5627E)
LT WYOMING WIND 4020 PLD M411450 (OAU P4020E) (P)
LT CHAP'S LADY 217 OP F 634394 (PED -2170E)
Sire: MOUNTVIEW BIG BEN (IJB B8E) (P)
SILVER CREEK HIGH ROLLER 34X M 280138 (OAU H1E) (P)
MOUNTVIEW SHOW GIRL (IJB S9E) (P)
MOUNTVIEW COVER GIRL 3 (IJB P9E) (P)

AYR REGATTA (AYR M194F)
AYR REGATTA'S HABIT (AYR R240F)
AIRLIE HABITUE (A1S H68F)
Dam: NORFOLK PARK HABIT'S NATALIE (CGE W119E) (P)
HHP MONTE CARLO 1ST PMC 72689 (IAC D4001E) (P)
NORFOLK PARK NATALIE (CGE N312E)
PALGROVE CARIN 6 (PK K65D)

December 2015 Australasian Charolais GROUP BREEDPLAN								
 Charolais	GL	BW	200	400	600	Milk	\$Dom	\$Exp
EBV	-1.7		+11	+20	+26	+3	+\$16	+\$24
Acc	64%		47%	45%	43%	55%		

Buyer _____ \$ _____

Lot: 9 SHILOH HOT SHOT (AI) (P)




Comments: Red and polled heifer. Heifer calf at foot by Charnelle Jaguar, "Shiloh Laura" born 13/10/2015. This No Doubt heifer is top shelf with a big breeding future ahead. Al'ed to D'Angely (Polled Full French) on 06/01/2016. Pregnancy test sale day.
Vaccinations: 7 in 1, 3 day sickness

Vendor: DAVID & CHRISTINE BLAKE **Animal ID:** SCB H24E **DOB:** 02/12/2012

WCR SIR TRADITION 066 M318119 (PED -66E)
M6 GRID MAKER 104 PET M633377 (OAU W3377E) (P)
VCR MISS MAC IV 317 F666163 (PED -317E)
Sire: EC NO DOUBT 2022 P M685500 (OAU Z2022E) (P)
VCR SIR DUKE 914 PLD M297007 (PED -914E)
EC LADY DUKE 2022 P F956614 (PED -2022E) (P)
JES MS ADVANTAGE C74 F668991 (PED -74E) (P)

LT WYOMING WIND 4020 PLD M411450 (OAU P4020E) (P)
DSK ALIBI (DSK A26E) (P)
PALGROVE ESTELLA 31 (PK N230E)
Dam: SHILOH EVER-RED-E (SCB E30E) (P)
PALGROVE UPGRADE (PK U265D)
SHILOH POPPY (SCB Z14E)
PALGROVE POPPY 12 (PK V34E)

December 2015 Australasian Charolais GROUP BREEDPLAN								
 Charolais	GL	BW	200	400	600	Milk	\$Dom	\$Exp
EBV	-4.3	-0.2	+11	+27	+41	+12	+\$36	+\$50
Acc	71%	55%	52%	52%	52%	49%		

Buyer _____ \$ _____

Select Females

Lot: 10 SHILOH DANIELLE (P/S)

Vendor: DAVID & CHRISTINE BLAKE Animal ID: SCB D25E DOB: 04/06/2008



SCHURRTOP 5627 M 300802 (PED -5627E)
 LT WYOMING WIND 4020 PLD M411450 (OAU P4020E) (P)
 LT CHAP'S LADY 217 OP F 634394 (PED -2170E)
Sire: DSK ALIBI (DSK A26E) (P)
 BCJ PETER PATRIATION 5P MC 41899 (IAC B6077E)
 PALGROVE ESTELLA 31 (PK N230E)
 PALGROVE ESTELLA 7 (PK E101D)
 GUNNADOO QANTAS Q73E (GN1 Q73E)
 GUNNADOO SUGAR RAY (GN1 S202E)
 GUNNADOO HERO M57E (GN1 M57E) (P)
Dam: GUNNADOO IRENE Y112E (GN1 Y112E)
 GUNNADOO QUALIFY Q164E (GN1 Q164E)
 GUNNADOO IRENE T101E (GN1 T101E) (P)
 GUNNADOO IRENE N146E (GN1 N146E) (P)

December 2015 Australasian Charolais GROUP BREEDPLAN

Charolais GROUP BREEDPLAN	GL	BW	200	400	600	Milk	\$Dom	\$Exp
EBV	-0.3					+9	+\$20	+\$28
Acc	55%					44%		

Comments: Ex show cow. Beautifully natured grand matron. Passes on her docility to her offspring. Stylish bull calf at foot "Shiloh Lots of Bull" born 02/09/2015 by Charnelle Jaguar (THW D V8 x LT Wyoming Wind) GKA J18E. Calf is white and polled. Re-joined to Charnelle Jaguar.

Vaccinations: 7 in 1, 3 day sickness

Buyer _____ \$ _____

Lot: 11 SHILOH DESIRE WINNY (AI)

Vendor: DAVID & CHRISTINE BLAKE Animal ID: SCB H23F DOB: 14/11/2012



TILL FMC6073 (OAF B816F)
 ABOUKIR 71 85 119662 (OAF E662F)
 ROTONDE 71 80 115943 (PED R943F)
Sire: GAUGUIN 8591105891 (OAF L859F)
 MARABOUT 8576100902 (OAF -8576F)
 TOMBOLA 8582108915 (OAF -8582F)
 NAGEUSE 8577109574 (OAF -8577F)
 EXCLUSIF 8589103317 (OAF J858F)
 SILVERSTREAM PERFORMER P38EF 083990038F (83 U38F)
 SILVERSTREAM HOUGHTY H83E 83/FF9026/92 (83 M83F)
Dam: PALGROVE DESIRE 105 (PK B263F)
 TATTENHALL HUBLLOT H15 MF0000922 (OAE H2439F)
 PALGROVE DESIRE 24 (PK S19F)
 CHARMHAVEN D41F (WHY D41F)

December 2015 Australasian Charolais GROUP BREEDPLAN

Charolais GROUP BREEDPLAN	GL	BW	200	400	600	Milk	\$Dom	\$Exp
EBV	-0.2	+1.6	+14	+26	+30	+1	+\$14	+\$15
Acc	59%	57%	58%	57%	57%	57%		

Comments: Big volume Full French heifer, Red Polled heifer calf at foot, "Shiloh Lauren" born 27/10/2015 by Charnelle Jaguar. This is the material to start a top French stud with!!
 AI'd to D'Angely on 03/01/2016, pregnancy test sale day.

Vaccinations: 7 in 1, 3 day sickness

Buyer _____ \$ _____


Lot: 12 CHARNELLE DESIRE (AI) (ET)



Vendor: G.K & K.A BLANCH **Animal ID:** GKA C15F **DOB:** 21/03/2007

ARTISTE 5885107719 5885107719 (OAF -7719F)
 DIEGO RR3 1888102991 (PED X2991F)
 BIENVENUE 1886106552 (PED -6552F)
Sire: IJOUFFLU 6327351004 (OAF N6327F)
 DARTAGNAN 6388100758 (PED -758F)
 GIROLLE 6391101387 (PED -1387F)
 BLONDE (PED -3861F)

FLEETS RASCAL (IAE F6170F)
 PALGROVE NAPOLEON (PK N114F)
 SUNDOWNER RANCHES N076F (SR N76F)
Dam: PALGROVE DESIRE 74 (PK Y166F)
 APOLLON 58020 A14 (IAF A6009F)
 PALGROVE DESIRE 20 (PK R228F)
 CHARMHAVEN D41F (WHY D41F)

December 2015 Australasian Charolais GROUP BREEDPLAN								
	GL	BW	200	400	600	Milk	\$Dom	\$Exp
EBV	+1.3	+1.3	+8	+9	+12	+4	+\$1	-\$2
Acc	72%	72%	66%	67%	66%	68%		

Comments: A terrific Full French cow who was shown successfully as a heifer. Good udder, great milker and very sound feet & legs. A handy Poll Full French bull calf at foot "Lariat" L30F born 17/08/2015 by D'Angely. AI' ed to Gallway (P) (FF) on 14/12/2015, paddocked with C. Creamer (P) (FF) GKA K59F from 14/01/2016. Details sale day. First small photo is of her Pinay son C. Fortress (sire of lot 28), the second photo is of her first calf, C. Elite.

Vaccinations: 7 in 1, pestigard, 3 germ blood

Buyer _____ \$ _____


Lot: 13 CHARNELLE JODY (AI) (ET)



Vendor: G.K & K.A BLANCH **Animal ID:** GKA J2F **DOB:** 26/01/2013

CHAROGAL ECOSSAIS BR.HB.126 (IAE E6105F)
 TATTENHALL IMPECCABLE I26 BR.HB.1382 (IAE I6190F)
 TATTENHALL ECLIPSE E25 79002 E25 (ZZF E25F)
Sire: FLEETS VIBRANT PM 21557 (IAE D6720F)
 FAIRTHWAITE JASON (ZZE X2476F)
 FLEETS NOISETTE (ZZE X2483F)
 FLEETS IMOGEN (ZZE X2477F)

IMPAIR 1893102983 (OAF N189F)
 AYR IMPAIR'S FLAMBEAU (AYR U274F)
 AYR MAN FRANCIS 2ND (AYR L102F)
Dam: KILKENNY B0143 (LAW B143F)
 EVORA RUPERT FP124 (LAW R12F)
 KILKENNY WYALONG (LAW W5F)
 TIRRIKE PIXIE (RES P28F)

December 2015 Australasian Charolais GROUP BREEDPLAN								
	GL	BW	200	400	600	Milk	\$Dom	\$Exp
EBV	-0.9	+1.0	+10	+16	+26	+8	+\$27	+\$41
Acc	52%	50%	50%	50%	50%	51%		

Comments: A stylish Full French heifer by Fleets Vibrant. Great milk & tidy udder. Pedigree full of some of the best Full French names such as Impair & Tattenhall Impeccable. Heifer calf at foot "Jody 2" L25E by C. Jaguar (P) (R/F) J18E born 29/07/2016. AI'ed to D'Angely 14/01/2016. Paddocked with C. Creamer GKA K59F (D'Angely x Exclusif) from 30/01/2016.

Vaccinations: 7 in 1, pestigard, 3 germ blood

Buyer _____ \$ _____



OWNER: SEMEX ALLIANCE

REG. #	BORN	FRAME	BW	WW	YW	SCROTAL
200949	01/07/14	6.5 yrl	N/A lbs.	N/A lbs.	N/A lbs.	N/A cm yrl

CSA-F15	CE	BW	WW	YW	SC	MILK	TMAT	CWT	MARB	REA	FAT	LY
EPD	72	1.8	47	91	N/A	27.5	51	22	-0.10	0.42	0.70	0.49
ACC	0.19	0.3	0.16	0.11	-	0.08	0.11	0.07	0.05	0.05	0.05	0.00
RANK	55	50	30	25	-	10	5	70	25	50	85	85

HRJ BULLETPROOF 411B BULLETPROOF

WINN MANS LANZA 6105
SPARROWS KINGSTON 139Y
SPARROWS DELIGHT 374P

HRJ MR RED TAZ 23P
HRJ MISS PARIS 7S
HRJ MISS PARIS 40P

- Outcross red genetics sired by the high selling and proven Sparrows Kingston
- Bulletproof is an exceptionally sound structured individual with an abundance of natural muscle shape and body mass
- Increased performance in a phenotypically appealing package
- POLLED
- Well balanced EPD profile
- Full brother was crowned Grand Champion bull 2015 Legends of the Fall All Breed Bull Show



OWNER: JOE AND CATHY CAMPBELL & SEMEX ALLIANCE

REG. #	BORN	FRAME	BW	WW	YW	SCROTAL
856892	02/24/14	6.3 yrl	100 lbs.	732 lbs.	1,387 lbs.	41 cm yrl

CSA-F15	CE	BW	WW	YW	SC	MILK	MCE	MTL	CWT	MARB	REA	FAT
EPD	0.3	3.7	36	79	0.8	12	0.6	30	19	-0.10	0.29	-0.012
ACC	BK	BK	BK	BK	BK	BK	BK	BK	PE	PE	PE	PE
RANK	75	100	9	2	25	30	85	10	35	90	55	15

CJC SYMBOL B1067P SYMBOL

CJC TRADEMARK H45
CJC SYMBOL Y771 P
CJC MS SILVER LITE S121

BHD COBALT S553
CJC MS COBALT X282
CJC MS TRADITION S1527

- POLLED
- One of the most sought after bulls in Debruycker 2015 bull sale due to his exceptional thickness, body mass, haircoat and ruggedness
- Brings an outcross pedigree that is still proven and predictable in a ranch raised environment
- Use to produce bulls that will have thickness, body mass, great haircoats and power that will be sought after by your bull customers as well as easy fleshing and productive females for your cowherd.

Semex Beef
Building Better Beef

Jim Conroy M: 0418 107 863 • E: jimconroy@semex.com.au
PO Box 509, Melton Vic. 3337
Office & Warehouse 10 - 12 Coburns Rd
T: 03 9743 0344 • F: 03 9743 0355
E: semex@semex.com.au • W: www.semex.com.au



Lot: 14 CHARNELLE DIGNA 117 (AI) (P) (R/F)

Vendor: STEPHEN, ANNETTE, RACHAEL & LAUREN PLATZER **Animal ID:** GKA G43E **DOB:** 05/12/2011



Charnelle. Digna 117 with her 1st calf at foot Toogoolawah Show 2014

➤ **Current calf**

BXB DATELINE SON 65R PMC303803 (PED -3803E)
 JMB DATELINE 754T PMC310942 (PED -3109E)
 JMB MARTHA 234M PFC316449 (PED -6449E)
Sire: G. BROS THIN RED LINE 527W MC326475 (OAC E6475E) (P)
 SVS MASTERCARD 2M QPMC269158 (PED -9158E)
 G BROS TULIP 101T PFC359984 (PED -9984E)
 POOLEDALE MISS CHAMA 62G PFC240875 (PED -2408E)
 LT WYOMING WIND 4020 PLD M411450 (OAU P4020E) (P)
 HARVIE REDEMPTION 36P MC286641 (OAC Z6641E) (P)
 HARVIE MS MOLSON 53M QPFC316280 (PED -6280E) (P)
Dam: CHARNELLE DIGNA74 (GKA D5E) (P)
 EXCLUSIF 8589103317 (OAF J858F)
 CHARNELLE DIGNA 40 (GKA Z52E) (P)
 PALGROVE DIGNA 36 (PK N168E) (P)

December 2015 Australasian Charolais GROUP BREEDPLAN

Charolais GROUP BREEDPLAN	GL	BW	200	400	600	Milk	\$Dom	\$Exp
EBV	-4.3	-0.4	+9	+25	+25	+6	+\$33	+\$43
Acc	73%	67%	58%	60%	58%	39%		

Comments: Digna 117 is an exceptional breeder, having had three calves in the last two years, all of which have been bulls. She is a good mother with a lovely udder conformation and incredible milking ability. Her bloodlines include an exceptional mixture of Harvie Redemption, Exclusif, and LT Wyoming Wind. Her current calf is a red, polled bull born 13/12/2015, by our homebred sire, Sanlara Park Jasper, who was purchased by Graham and Katrina Blanch in 2015. Served by Charnelle Creamer (P) (D'Angely) GKA K59F on 22/01/2016. Pregnancy details will be available on the day of the sale. Digna 117 has had two calves in the last calendar year. PS. See another photo on inside back cover.
Vaccinations: 7 in 1, pestigard, 3 germ blood

Buyer _____ \$



Joining Sire for Valley View Lots 18,46 & 47.
VLW J2E A LT Rio Bravo x Gobongo Reby GO D213E.
Red Factor Polled 98% Homozygous.

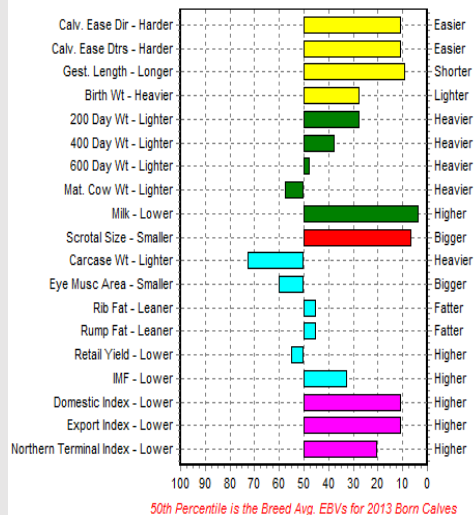
Lot: 15 PALGROVE ESTELLA 214 (AI) (ET) (P) (R/F) (TW)

Vendor: VALLEY VIEW CHAROLAIS **Animal ID:** PK A416E **DOB:** 25/09/2005



SPAINS QUALITY POLL 781 M 150836 (ZZC X2383C)
 BR DUKE 295 M 216200 (OAU -47) (P)
 BR DOT 75 F 244822 (OAU -43)
Sire: BR DUKE 261 M 246564 (OAU C261E) (P)
 MR AAA HALL OF FAME 921 M 78157 (OAU -44)
 BR ANN 14 F 281867 (OAU -46)
 B R MISS ABBEY 54 F 68447 (OAU -45)
 ORGANDI 16867 M 16867 (ZZF X2116F)
 AGA KHAN 58693 A38 (IAF A6019F)
 PERLE F 68788 (ZZF X757F)
Dam: PALGROVE ESTELLA 73 (PK S201E)
 TALLOW WOOD SUPERSTITION (DRJ C61E)
 PALGROVE ESTELLA 7 (PK E101D)
 PALGROVE ESTELLA 4 (PK B51C)

EBV Percentiles for PALGROVE ESTELLA 214 (AI) (ET) (P) (R/F) (TW)



Comments: Large volume donor cow, an ET daughter of the legendary curve bending sire BR Duke 261, from another legend in Viagra's mother PK Estella 73. Foolproof genetics that is now unprocurable. Has crossed well & polled most with French genetics including a Novotel daughter & grandson VLW J9E as in Lot 18 in this sale. Flushed successfully to Impair, Novotel, Tattenhall Impeccable & Triple J Packman. Polled bull calf at foot VLW L23 born 21/11/2015. The sire of her calf is currently being determined by Sire Trace. Details sale day. This cow will be left open to join to a bull of your choosing.

Vaccinations: 7 in 1, pestigard, 3 germ blood, botulism, Multimin, Vet A, D, & E, Dectomax

Buyer _____ \$



➤ **HRJ Bulletproof** new AI Sire at Valley View & Charnelle Charolais Joining sire Lot 16



Lot: 16 VALLEY VIEW GINA ECND (AI) (ET) (P)

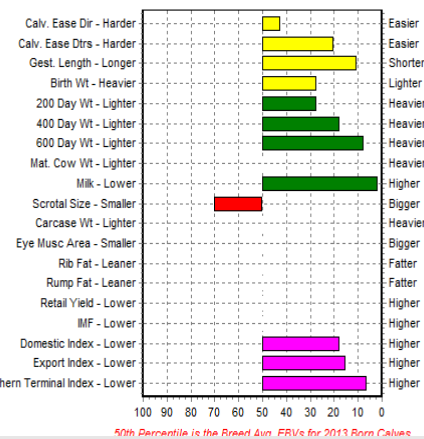
Vendor: VALLEY VIEW CHAROLAIS **Animal ID:** VLW H56E **DOB:** 20/12/2012



WCR SIR TRADITION 066 M318119 (PED -66E)
 M6 GRID MAKER 104 PET M633377 (OAU W3377E) (P)
 VCR MISS MAC IV 317 F666163 (PED -317E)
Sire: EC NO DOUBT 2022 P M685500 (OAU Z2022E) (P)
 VCR SIR DUKE 914 PLD M297007 (PED -914E)
 EC LADY DUKE 2022 P F956614 (PED -2022E) (P)
 JES MS ADVANTAGE C74 F668991 (PED -74E) (P)

PALGROVE QUINTERO (PK Q228E)
 PALGROVE UPTURN (PK U353E)
 PALGROVE FELICITY 27 (PK P111E)
Dam: ADVANCE GINA A124 (ADV A124E)
 AYR DUNEARN (AYR P210E)
 ADVANCE GINA R/F (ADV T3E)
 YARRIBIN 1222 (YAR L1222D)

EBV Percentiles for VALLEY VIEW GINA ECND (AI) (ET) (P)



Comments: Daughter of Dubbo beef champion, Advance Gina by the very successful imported sire E C No Doubt. Strong growth & carcass qualities with low bwt & heaps of milk. Very quiet & reliable, a trait that her son VLW Landmark has inherited. Bull calf at foot, VLW L19E (P/S) born 22/08/2015 by LT Bridger. AI'd to HRJ Bulletproof (see Semex ad) on 15/12/2016 and is PTIC. Three in one package.

Vaccinations: 7 in 1, pestigard, 3 germ blood, Botulism, Multimin, Vet A,D & E, Dectomax

Buyer _____ \$ _____

Lot: 17 VALLEY VIEW OPALE O4 (AI) (ET)

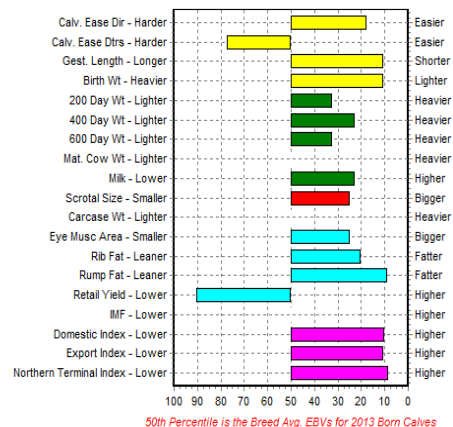
Vendor: VALLEY VIEW CHAROLAIS **Animal ID:** VLW H4E **DOB:** 20/04/2012



WCR PRIME CUT 764 PLD PMC223447 (OAC S764E) (P)
 LT RIO BLANCO 1234 P M620591 (OAU W591E) (P)
 LT PRAIRIE MAID 4054 F704694 (PED -4694E)
Sire: LT RIO BRAVO 3181 P M665507 (OAU Y5507E) (P)
 WCR SIR DUKE 611 M 263002 (PED -611E)
 LT 7N OF DUKE 9083 PLD F852553 (OAU U2553E) (P)
 LT UNLIMITED PRO 1128 F602370 (PED -2370E) (P)

OBJECTEUR M 15314 (ZZF X1105F)
 SALOPIAU 71161 S02 (IAF A6056F)
 ECLIPSE F 97773 (ZZF X885F)
Dam: UPS N DOWNS BLONDIE (SS1 B4F)
 MELPLASH GASTRONOME (4HH G2F)
 UPS N DOWNS SHERRIE (SS1 S1F)
 TREV LAC OPALE (WF7 D72F)

EBV Percentiles for VALLEY VIEW OPALE O4 (AI) (ET) (P/S)



Comments: ET daughter of leading U.S. sire LT Rio Bravo out of a top producing Full French ET female, SS1 B4F purchased from this sale in 2007. Dam's progeny have sold to \$7000 and a maternal sister sells as lot 46 in this sale. A breed leader in nearly all traits including genetics. PTIC & close to calving. AI'd to Rangan Park Rio Bravo on 10/06/2015, paddocked with GLE H52E from 24/06/2015.

Vaccinations: 7 in 1, 3 germ blood, pestigard, Botulism, Multimin, Vet ADE, Dectomax

Buyer _____ \$ _____



Lot: 18 VALLEY VIEW ESTELLA C14 9E (AI) (ET) (P/S)

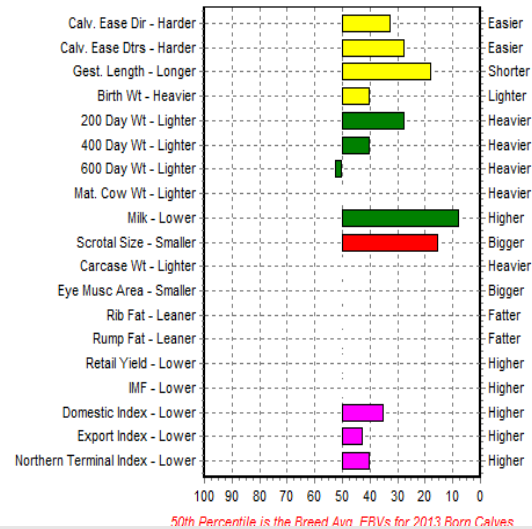
Vendor: VALLEY VIEW CHAROLAIS **Animal ID:** VLW J9E **DOB:** 02/03/2013



TREPIDENT 8582101412 (OAF X8582F)
 HASTING 1492102626 (OAF M149F)
 RANGE 5880126543 (OAF X5880F)
Sire: NOVOTEL 5897127519 (OAF S7519F)
 RIVOIRE 4280104708 (PED X428F)
 DATCHA 5888121456 (PED -1456F)
 BAGATELLE 5886685517 (PED -5517F)

BR DUKE 295 M 216200 (OAU -47) (P)
 BR DUKE 261 M 246564 (OAU C261E) (P)
 BR ANN 14 F 281867 (OAU -46)
Dam: PALGROVE ESTELLA 214 (PK A416E) (P)
 AGA KHAN 58693 A38 (IAF A6019F)
 PALGROVE ESTELLA 73 (PK S201E)
 PALGROVE ESTELLA 7 (PK E101D)

EBV Percentiles for VALLEY VIEW ESTELLA C14 9E (AI) (ET) (P/S)



Comments: A quality Novotel daughter from a quality Breedplan & genetically friendly donor cow, Palgrove Estella 214, lot 15 in this sale. A very smart polled LT Western Edge bull calf at foot "L Paso" VLW L33E, born 14/12/2015. A very good unit with all her breeding life in front of her. Estella J9E has been running with VLW J2E (LT Rio Bravo x Gobongo Rebby D213E) from 06/01/2016.

Vaccinations: 7 in 1, pestigard, 3 germ blood, Botulism, Multimin, Vet ADE, Dectomax.

Buyer _____ \$ _____

Lot: 19 CHARNELLE DREAMGIRL 6 (AI) (ET)

Vendor: G.K & K.A BLANCH **Animal ID:** GKA J1F **DOB:** 22/01/2013



KENTUCKY M 96401 (ZZF X1441F)
 ORGANDI 16867 M 16867 (ZZF X2116F)
 EMMA F 98629 (ZZF X886F)
Sire: AGA KHAN 58693 A38 (IAF A6019F)
 NARCISSE M 09544 (ZZF X1070F)
 PERLE F 68788 (ZZF X757F)
 MARQUISE F 46180 (ZZF X469F)

IMPAIR 1893102983 (OAF N189F)
 LAVERA ETERNITY (LAV X20F)
 PALGROVE DESIRE 34 (PK T270F)
Dam: RIVERVIEW ANGEL (RIV A16F)
 SEAWELL OFFSHORE 0084446 (OAE T5813F)
 PALGROVE DREAM GIRL 13 (PK W374F)
 PALGROVE DREAMGIRL 7 (PK S98F)

Comments: A wonderful, medium frame, low maintenance, very long, Full French heifer who is only in this sale because of restriction of numbers in our herd. She had her first calf as a two old and reared a terrific bull calf. She has a perfect udder and loads of milk. AI'ed to D'Angely on 20/06/2015 and is PTIC, and due to calve on 02/04/2016. Ron Johnstone, Milford Charolais bought a full flush sister to J1F last year and is very impressed with her D'Angely bull calf.

Vaccinations: 7 in 1, pestigard, 3 germ blood

December 2015 Australasian Charolais GROUP BREEDPLAN								
Charolais	GL	BW	200	400	600	Milk	\$Dom	\$Exp
EBV	+1.6	+0.9	+7	+11	+15	+9	-\$2	-\$5
Acc	60%	69%	63%	64%	63%	60%		

Buyer _____ \$ _____

The D'ANGELY influence!

Semen \$99/straw
 10+ \$88
 UCBS Allora
 07 4666 3376

Look out for these D'Angely youngsters in 2016 !!



C. Logan (P) L31F Future herd sire. C. Kentucky (P)(R/F) K19E Lot 2 Coolabunia Classic 12/08/2016. C. Dreamgirl 12 (P/S) K27F retained

Lot: 20 CHARNELLE DREAMGIRL 11 (AI) (ET) (P/S)

Vendor: G.K & K.A BLANCH Animal ID: GKA K25F DOB: 04/08/2014



DURANDAL (PAUPINAT GILLES) RR2 5888117903 (OAF X5888F)
 VULCAINDEL FR 3615064046 (OAF -4046F)
 ONCTUEUSE FR 3698001706 (OAF -1706F)
Sire: D ANGELY R FR 8900458116 (OAF D8116F) (P)
 RAMSESDERA 001235000713 (PED -713F)
 ULLA 01235000870 01235000870 (OAF -870F)
 MILICE 8996101424 8996101424 (OAF -1424A)

IMPAIR 1893102983 (OAF N189F)
 LAVERA ETERNITY (LAV X20F)
 PALGROVE DESIRE 34 (PK T270F)
Dam: RIVERVIEW ANGEL (RIV A16F)
 SEAWELL OFFSHORE 0084446 (OAE T5813F)
 PALGROVE DREAM GIRL 13 (PK W374F)
 PALGROVE DREAMGIRL 7 (PK S98F)

December 2015 Australasian Charolais GROUP BREEDPLAN

Charolais GROUP BREEDPLAN	GL	BW	200	400	600	Milk	\$Dom	\$Exp
EBV	+0.2	+2.1	+14	+30	+42	+8	+\$8	+\$10
Acc	57%	57%	51%	50%	50%	39%		

Comments: A stylish Full French Heifer to begin this feature of our sale of seven special D'Angely daughters. This heifer is a real front paddock female which oozes femininity, has good bone and length, softness and a pedigree and EBV's to rank her highly in growth & milk. A full ET sister is being retained in our herd. Al'ed to Galloway (P)(FF) on 18/01/2015. Pregnancy details sale day.

Vaccinations: 7 in 1, pestigard, 3 germ blood, 3 day sickness

Buyer _____ \$ _____

Lot: 21 CHARNELLE DIGNA 140 (AI) (ET) (P)




Vendor: G.K & K.A BLANCH **Animal ID:** GKA K53E **DOB:** 13/10/2014

DURANDAL (PAUPINAT GILLES) RR2 5888117903 (OAF X5888F)
 VULCAINDEL FR 3615064046 (OAF -4046F)
 ONCTUEUSE FR 3698001706 (OAF -1706F)
Sire: D ANGELY R FR 8900458116 (OAF D8116F) (P)
 RAMSESDERA 001235000713 (PED -713F)
 ULLA 01235000870 01235000870 (OAF -870F)
 MILICE 8996101424 8996101424 (OAF -1424A)

TILL FMC6073 (OAF B816F)
 EXCLUSIF 8589103317 (OAF J858F)
 REINETTE 85 80108477 (PED X8580F)
Dam: CHARNELLE DIGNA 40 (GKA Z52E) (P)
 WCR SIR FA MAC 2244 M 234430 (OAU B2244E) (P)
 PALGROVE DIGNA 36 (PK N168E) (P)
 PALGROVE DIGNA 6 (PK G105E) (P)

Comments: This heifer could well be the pick of the D'Angely daughters. Out of a very special donor cow who was the last daughter in our herd from the outstanding foundation cow Palgrove Digna 36 (P). Digna 140 is polled, has terrific length, with outstanding thickness and softness. She is very quiet and has been halter broken. Joining details sale day

Vaccinations: 7 in 1, pestigard, 3 germ blood, 3 day sickness

December 2015 Australasian Charolais GROUP BREEDPLAN								
 Charolais GROUP BREEDPLAN	GL	BW	200	400	600	Milk	\$Dom	\$Exp
EBV	-1.4	+1.3	+11	+28	+39	+9	+\$22	+\$30
Acc	59%	57%	52%	51%	51%	42%		

Buyer _____ \$ _____

Lot: 22 CHARNELLE DIGNA 141 (AI) (ET) (P)




Vendor: G.K & K.A BLANCH **Animal ID:** GKA K54E **DOB:** 14/10/2014

DURANDAL (PAUPINAT GILLES) RR2 5888117903 (OAF X5888F)
 VULCAINDEL FR 3615064046 (OAF -4046F)
 ONCTUEUSE FR 3698001706 (OAF -1706F)
Sire: D ANGELY R FR 8900458116 (OAF D8116F) (P)
 RAMSESDERA 001235000713 (PED -713F)
 ULLA 01235000870 01235000870 (OAF -870F)
 MILICE 8996101424 8996101424 (OAF -1424A)

TILL FMC6073 (OAF B816F)
 EXCLUSIF 8589103317 (OAF J858F)
 REINETTE 85 80108477 (PED X8580F)
Dam: CHARNELLE DIGNA 40 (GKA Z52E) (P)
 WCR SIR FA MAC 2244 M 234430 (OAU B2244E) (P)
 PALGROVE DIGNA 36 (PK N168E) (P)
 PALGROVE DIGNA 6 (PK G105E) (P)

Comments: A full sister to the previous lot with all the same attributes, but could be a little bit more refined. Great temperament, and is halter broken. She has the same good EBV's for growth, milk & calving ease as her full sister. Check out the pedigree of D'Angely, Exclusif & Mac 2244, and a couple of great females, and you have all you need for today's beef industry. Joining details sale day.

Vaccinations: 7 in 1, pestigard, 3 germ blood, 3 day sickness

December 2015 Australasian Charolais GROUP BREEDPLAN								
 Charolais GROUP BREEDPLAN	GL	BW	200	400	600	Milk	\$Dom	\$Exp
EBV	-1.4	+1.3	+11	+28	+39	+9	+\$22	+\$30
Acc	59%	57%	52%	51%	51%	42%		

Buyer _____ \$ _____

“ Be a yardstick of quality. Some people aren't used to an environment where excellence is expected. ”
Steve Jobs

Lot: 23 CHARNELLE DIGNA 142 (AI) (P)

Vendor: G.K & K.A BLANCH **Animal ID:** GKA K57E **DOB:** 15/10/2014



DURANDAL (PAUPINAT GILLES) RR2 5888117903 (OAF X5888F)
 VULCAINDEL FR 3615064046 (OAF -4046F)
 ONCTUEUSE FR 3698001706 (OAF -1706F)
Sire: D ANGELY R FR 8900458116 (OAF D8116F) (P)
 RAMSESDERA 001235000713 (PED -713F)
 ULLA 01235000870 01235000870 (OAF -870F)
 MILICE 8996101424 8996101424 (OAF -1424A)

PALGROVE QUINTERO (PK Q228E)
 PALGROVE OUTBACK (PK T165E) (P)
 IDLEWILD PALGROVE FESTOON P47E (1JJ P47E) (P)
Dam: CHARNELLE DIGNA 99 (GKA E63E) (P)
 GAUGUIN 8591105891 (OAF L859F)
 CHARNELLE DIGNA 25 (GKA W56E) (P)
 CHARNELLE DIGNA 7 (GKA S72E) (P)

Comments: Another special polled heifer by D'Angely. Check out the who's who of Palgrove genetics in her dam's pedigree. Then you throw in Gauguin as well, who I believe is one of the most under rated French bulls around. Terrific growth and softness in this quiet heifer. Running with C. Ketch Up K42E from 15/ 01/2016. Pregnancy details sale day.

December 2015 Australasian Charolais GROUP BREEDPLAN								
Charolais GROUP BREEDPLAN	GL	BW	200	400	600	Milk	\$Dom	\$Exp
EBV	-1.1	+1.8	+15	+31	+39	+2	+\$13	+\$15
Acc	74%	69%	60%	57%	57%	37%		

Vaccinations: 7 in 1, pestigard, 3 germ blood

Buyer _____ \$ _____

“The ultimate measure of a man is not where he stands in moments of comfort and convenience, but where he stands in times of challenge.” Martin Luther King Jr

Lot: 24 SHILOH K'ANGEL (AI) (P)

Vendor: DAVID & CHRISTINE BLAKE **Animal ID:** SCB K10F **DOB:** 26/05/2014



DURANDAL (PAUPINAT GILLES) RR2 5888117903 (OAF X5888F)
 VULCAINDEL FR 3615064046 (OAF -4046F)
 ONCTUEUSE FR 3698001706 (OAF -1706F)
Sire: D ANGELY R FR 8900458116 (OAF D8116F) (P)
 RAMSESDERA 001235000713 (PED -713F)
 ULLA 01235000870 01235000870 (OAF -870F)
 MILICE 8996101424 8996101424 (OAF -1424A)

ABOUKIR 71 85 119662 (OAF E662F)
 GAUGUIN 8591105891 (OAF L859F)
 TOMBOLA 8582108915 (OAF -8582F)
Dam: SHILOH FORTUNATE (SCB F17F)
 MOYNESS MARS MF0073779 (OAF R3779F)
 PALGROVE DESIRE 96 (PK A478F)
 PALGROVE DESIRE 68 (PK X464F)

Comments: Big volume, Full French D'Angely heifer, big ears and big future ahead. Ready to fill your front paddock. Would make a great show heifer, judge for yourself. AI'ed to Gauguin on 14/12/2015. Pregnancy test sale day.

Charolais GROUP BREEDPLAN	GL	BW	200	400	600	Milk	\$Dom	\$Exp
EBV								
Acc								

Vaccinations: 7 in 1, 3 day sickness

Buyer _____ \$ _____

Lot: 25 CHEYENNE DREAM ANGEL (AI) (P) (TW)

Vendor: CHEYENNE CHAROLAIS **Animal ID:** CCQ K22F **DOB:** 01/11/2014



DURANDAL (PAUPINAT GILLES) RR2 5888117903 (OAF X5888F)
 VULCAINDEL FR 3615064046 (OAF -4046F)
 ONCTUEUSE FR 3698001706 (OAF -1706F)
Sire: D ANGELY R FR 8900458116 (OAF D8116F) (P)
 RAMSESDERA 001235000713 (PED -713F)
 ULLA 01235000870 01235000870 (OAF -870F)
 MILICE 8996101424 8996101424 (OAF -1424A)

TILL FMC6073 (OAF B816F)
 EXCLUSIF 8589103317 (OAF J858F)
 REINETTE 85 80108477 (PED X8580F)
Dam: CHARNELLE DREAMGIRL 3 (GKA F43F)
 LAVERA ETERNITY (LAV X20F)
 RIVERVIEW ANGEL (RIV A16F)
 PALGROVE DREAM GIRL 13 (PK W374F)

Comments: Here are two sweet, polled, heifers. Note the class in breeding. On the sire's side D'Angely, and on the dam's side Exclusif, over Riverview Angel. These Full French heifers have the D'Angely softness and eye appeal. How could they miss. Unjoined.

Vaccinations: 7 in 1, 3 germ blood, 3 day sickness

December 2015 Australasian Charolais GROUP BREEDPLAN

Charolais GROUP BREEDPLAN	GL	BW	200	400	600	Milk	\$Dom	\$Exp
EBV	-0.2	+2.1	+14	+30	+40	+5	+\$14	+\$17
Acc	56%	64%	56%	53%	53%	37%		

Buyer _____ \$ _____

Lot: 26 CHEYENNE DREAM VIEW (AI) (P) (TW)

Vendor: CHEYENNE CHAROLAIS **Animal ID:** CCQ K23F **DOB:** 01/11/2014



DURANDAL (PAUPINAT GILLES) RR2 5888117903 (OAF X5888F)
 VULCAINDEL FR 3615064046 (OAF -4046F)
 ONCTUEUSE FR 3698001706 (OAF -1706F)
Sire: D ANGELY R FR 8900458116 (OAF D8116F) (P)
 RAMSESDERA 001235000713 (PED -713F)
 ULLA 01235000870 01235000870 (OAF -870F)
 MILICE 8996101424 8996101424 (OAF -1424A)

TILL FMC6073 (OAF B816F)
 EXCLUSIF 8589103317 (OAF J858F)
 REINETTE 85 80108477 (PED X8580F)
Dam: CHARNELLE DREAMGIRL 3 (GKA F43F)
 LAVERA ETERNITY (LAV X20F)
 RIVERVIEW ANGEL (RIV A16F)
 PALGROVE DREAM GIRL 13 (PK W374F)

Comments: Here are two sweet, polled, heifers. Note the class in breeding. On the sire's side D'Angely, and on the dam's side Exclusif, over Riverview Angel. These Full French heifers have the D'Angely softness and eye appeal. How could they miss. Unjoined.

Vaccinations: 7 in 1, 3 germ blood, 3 day sickness

December 2015 Australasian Charolais GROUP BREEDPLAN

Charolais GROUP BREEDPLAN	GL	BW	200	400	600	Milk	\$Dom	\$Exp
EBV	-0.2	+1.8	+13	+28	+36	+6	+\$14	+\$17
Acc	56%	64%	56%	53%	53%	37%		

Buyer _____ \$ _____

Lot: 27 CHEYENNE WHITE RAIN 2

Vendor: CHEYENNE CHAROLAIS **Animal ID:** CCQ L1F **DOB:** 11/02/2015



IDEALISTE 1893105537 (OAF N5537F)
 SUEDOIS 5811102125 (OAF W5811F)
 PLUIE 5813099561 (PED -9561F)
Sire: CHARNELLE ENTERPRISE (GKA E44F)
 LAVERA ETERNITY (LAV X20F)
 RIVERVIEW ANGEL (RIV A16F)
 PALGROVE DREAM GIRL 13 (PK W374F)

JUMPER RR5 8894104162 (OAF P8894F)
 REPAIR RJR 5811001744 (OAF V1744F)
 ILE 5893110589 (PED -589F)
Dam: CHARNELLE SHELLEY 18 (GKA C28F)
 FLEETS VIBRANT PM 21557 (IAE D6720F)
 CHARNELLE SHELLEY 14 (GKA Y22F)
 CHARNELLE SHELLEY 6 FV46 (GKA V23F)

Comments: At just over 12 months of age, this strong, young, Full French heifer has lots of growing left to do. For her age, weight gain is up there with the best of them. She will grow into a magnificent Full French cow.

Vaccinations: 7 in 1, pestigard, 3 germ blood, 3 day sickness

December 2015 Australasian Charolais GROUP BREEDPLAN

Charolais GROUP BREEDPLAN	GL	BW	200	400	600	Milk	\$Dom	\$Exp
EBV	+1.2	+2.9	+19	+36	+51	+8	-\$3	-\$3
Acc	52%	53%	44%	45%	45%	39%		

Buyer _____ \$ _____

Lot: 28 CHARNELLE ELEGANCE 6

Vendor: CHEYENNE CHAROLAIS **Animal ID:** GKA H45E **DOB:** 18/09/2012



IMPAIR 1893102983 (OAF N189F)
 PINAY 8552394134 (OAF U4134F)
 MARY 8596100049 (OAF R8596F)
Sire: CHARNELLE FORTRESS (GKA F36F)
 IJOUFFLU 6327351004 (OAF N6327F)
 CHARNELLE DESIRE (GKA C15F)
 PALGROVE DESIRE 74 (PK Y166F)

IMPAIR 1893102983 (OAF N189F)
 PINAY 8552394134 (OAF U4134F)
 MARY 8596100049 (OAF R8596F)
Dam: CHARNELLE ELEGANCE 3 (GKA C34E)
 WCR SIR FA MAC 2244 M 234430 (OAU B2244E) (P)
 ROSCOE JESSICA (RBR P3E) (P)
 PALGROVE ELEGANCE 16 (PK G12E) (P)

Comments: Her name says it all, Elegance- that she is. In calf to Cheyenne Kakadu Red (P) (R/F) (Thin Red Line x Red Smoke). This will be her second calf. Elegance has a very good nature, great length, and depth with an excellent udder. She will be an asset to any stud. Elegance 6's sire Fortress, is a Pinay son of Lot 12. Pregnancy details sale day.

Vaccinations: 7 in 1, pestigard, 3 germ blood, 3 day sickness

December 2015 Australasian Charolais GROUP BREEDPLAN

Charolais GROUP BREEDPLAN	GL	BW	200	400	600	Milk	\$Dom	\$Exp
EBV	-4.9	+0.6	+13	+28	+38	+10	+\$30	+\$35
Acc	57%	70%	62%	65%	61%	48%		

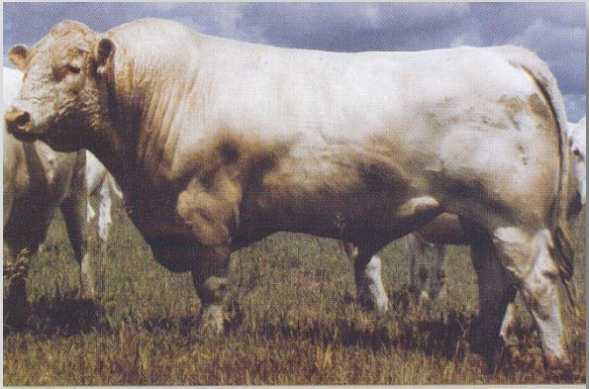
Buyer _____ \$ _____

“ Effort and courage are not enough without purpose and direction. ”
 ~John F. Kennedy

Reference Sires



Pinay Sire of Lots 1, 39, 47 & 67



Mac 2244 Sire of Lot 38



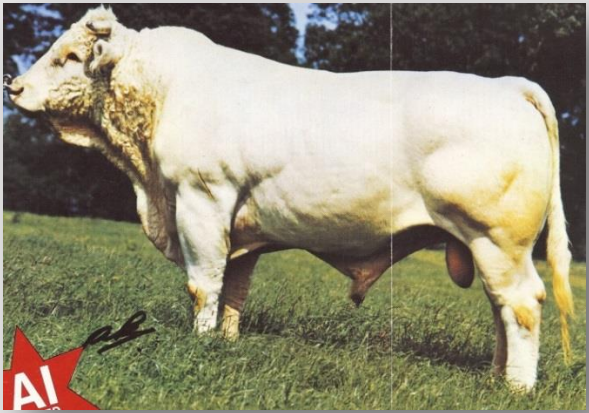
LT Ledger Sire of Lot 29



Fleets Vibrant Sire of Lot 13



EC No Doubt Sire of Lots 9, 16 & 45



Aga Khan Sire of Lot 19



Ijoufflu Sire of Lot 12



Gauguin Sire of Lot 11



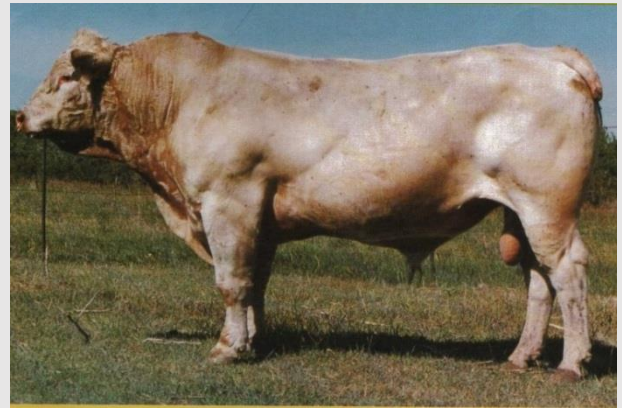
SVY Pilgrim Sire of Lots 40, 49 & 77



Novotel Sire of Lot 18



LT Cheyenne Blend Sire of Lot 5



BR Duke 261 Sire of Donor Cow Lot 15



Sedalia Beaumont Sire of Kandanga Valley Lots 53 - 57



LT Bluegrass Sire of Lot 32



LT Rio Bravo Sire of Lot 17



TR Mr Fire Water Sire of Bull Lots 70 & 73

Lot: 29 CHARNELLE JA-CIE 9 (AI) (P)

Vendor: G.K & K.A BLANCH **Animal ID:** GKA J39E **DOB:** 08/09/2013



LT ASSERTION 1277 M620193 (PED W1277F)
 LT BLUEGRASS 4017P M686569 (OAU Z4017E) (P)
 LT PEARLS BREEZE 2236 F956080 (PED X2236F)
Sire: LT LEDGER 0332 M791626 (OAU F3168E) (P)
 LT RIO BRAVO 3181 P M665507 (OAU Y5507E) (P)
 LT BRENDA 6120 PLD F1046992 (PED -6992E)
 LT BRENDA'S EASE 3055 PLD F979389 (PED -9389E)
 WCR SIR TRADITION 066 M318119 (PED -66E)
 M6 GRID MAKER 104 PET M633377 (OAU W3377E) (P)
 VCR MISS MAC IV 317 F666163 (PED -317E)
Dam: CHARNELLE JA-CIE 8 (GKA G18E) (P)
 CHARNELLE ARCHIE (GKA A15E)
 CHARNELLE JA-CIE 4 (GKA E42E)
 UPS N DOWNS YELLOW (SS1 Y6E)

Comments: An awesome low maintenance, feminine heifer from the renowned Ja-Cie family. Check out her EBV's where she is ranked in the top 5% for calving ease, gestation length, low birthweight, fertility, Domestic, export \$ indexes. Also the top 18% for milk. LT Ledger x M6 Gridmaker - "Blue Ribbon Genetics Indeed". Granddaughter of lot 3. AI 'ed to Galloway (P) (FF) on 25/10/2015, PTIC to calve 07/08/2016.

December 2015 Australasian Charolais GROUP BREEDPLAN								
Charolais GROUP BREEDPLAN	GL	BW	200	400	600	Milk	\$Dom	\$Exp
EBV	-6.8	-2.1	+10	+23	+29	+10	+\$49	+\$66
Acc	74%	69%	56%	56%	57%	42%		

Vaccinations: 7 in 1, pestigard, 3 germ blood, 3 day sickness

Buyer _____ \$ _____

Lot: 30 CHARNELLE PRINCESS 9 (P/S)

Vendor: G.K & K.A BLANCH **Animal ID:** GKA K20E **DOB:** 14/07/2014



IDEALISTE 1893105537 (OAF N5537F)
 SUEDOIS 5811102125 (OAF W5811F)
 PLUIE 5813099561 (PED -9561F)
Sire: CHARNELLE ENTERPRISE (GKA E44F)
 LAVERA ETERNITY (LAV X20F)
 RIVERVIEW ANGEL (RIV A16F)
 PALGROVE DREAM GIRL 13 (PK W374F)
 2UP LIMITED EDITION (2UP L147E) (P)
 2UP PEUGEOT (2UP P46E) (P)
 PALGROVE ESTELLA 14 (PK J124E)
Dam: SUNNYGROVE SHELLYS PRINCESS X19E (LFS X19E) (P)
 MELPLASH GASTRONOME (4HH G2F)
 CHARNELLE SHELLEY 2 (GKA S65F)
 TREVLAO OPALE (WF7 D72F)

Comments: Pretty as a "Princess" best describes this magnificent heifer. She would have stayed in our herd, except her mum had a truly special D'Angely daughter this year which will be retained. A lot of French breeding in her pedigree, including the wonderful Trevlac Opale. AI'ed to Thin Red Line on 25/10/2015, PTIC to calve 07/08/2016.

December 2015 Australasian Charolais GROUP BREEDPLAN								
Charolais GROUP BREEDPLAN	GL	BW	200	400	600	Milk	\$Dom	\$Exp
EBV	+1.5	+2.6	+13	+29	+37	+6	-\$2	-\$4
Acc	54%	67%	57%	54%	54%	42%		

Vaccinations: 7 in 1, pestigard, 3 germ blood, 3 day sickness

Buyer _____ \$ _____

Lot: 31 CHARNELLE ELEGANCE 9 (P)

Vendor: G.K & K.A BLANCH **Animal ID:** GKA K40E **DOB:** 08/09/2014



PALGROVE UPTURN (PK U353E)
 ADVANCE XR8 (ADV X50E)
 ADVANCE GINA R/F (ADV T3E)
Sire: CHARNELLE FRANKIE (GKA F73E) (P)
 LT WYOMING WIND 4020 PLD M411450 (OAU P4020E) (P)
 PALGROVE PANACHE 139 (PK A396E) (P)
 PALGROVE PANACHE 72 R/F (PK T86E)

 2UP LIMITED EDITION (2UP L147E) (P)
 2UP PEUGEOT (2UP P46E) (P)
 PALGROVE ESTELLA 14 (PK J124E)
Dam: CHARNELLE ELEGANCE 2 (GKA B50E)
 WCR SIR FA MAC 2244 M 234430 (OAU B2244E) (P)
 ROSCOE JESSICA (RBR P3E) (P)
 PALGROVE ELEGANCE 16 (PK G12E) (P)

December 2015 Australasian Charolais GROUP BREEDPLAN

Charolais GROUP BREEDPLAN	GL	BW	200	400	600	Milk	\$Dom	\$Exp
EBV	-3.2	+1.6	+12	+24	+31	+5	+\$17	+\$22
Acc	50%	54%	56%	52%	51%	46%		

Comments: A soft, low maintenance, polled heifer with a pedigree loaded with highly rated, Palgrove cow family names such as Panache, Estella & Elegance. When you read under the "Charnelle Charolais" logo "Proven Cow Families" – we mean it. Elegance 9 was AI'ed to JWX Silver Bullet on 09/11/2015, PTIC to calve 22/08/2016.

Vaccinations: 7 in 1, pestigard, 3 germ blood, 3 day sickness

Buyer _____ \$ _____

Lot: 32 CHARNELLE FRIESIA 8 (AI) (P)

Vendor: G.K & K.A BLANCH **Animal ID:** GKA K41E **DOB:** 11/09/2014



EATONS ASSERT 9171 M514354 (PED U9171F)
 LT ASSERTION 1277 M620193 (PED W1277F)
 LT ALLIS CLASS 9140 F852572 (PED U9140F)
Sire: LT BLUEGRASS 4017P M686569 (OAU Z4017E) (P)
 LT WYOMING WIND 4020 PLD M411450 (OAU P4020E) (P)
 LT PEARLS BREEZE 2236 F956080 (PED X2236F)
 LT UNLIMITED PEARL F792980 (PED S7053F)

 WCR SIR FAB MAC 809 M 202427 (OAU -57E) (P)
 WCR SIR FA MAC 2244 M 234430 (OAU B2244E) (P)
 WCR MISS CENTURY 920 TWN F 354249 (OAU -58) (P)
Dam: CHARNELLE FRIESIA 5 (GKA H41E) (P)
 PALGROVE VERTICO (PK V325E)
 PALGROVE FRIESIA 19 (PK Y224E) (P)
 PALGROVE FRIESIA 10 (PK T113E) (P)

December 2015 Australasian Charolais GROUP BREEDPLAN

Charolais GROUP BREEDPLAN	GL	BW	200	400	600	Milk	\$Dom	\$Exp
EBV	-6.3	-1.0	+12	+21	+27	+8	+\$51	+\$70
Acc	73%	61%	64%	61%	60%	58%		

Comments: Another early maturing heifer with genetics that have those predicable EBV's, including top 5% for calving ease, Gestation length, rib & rump fat, and both domestic & export \$ indexes. Also top 10% for low birthweight & EMA similar to the last lot with both Mac 2244 & LT Wyoming Wind featuring in her pedigree. AI'ed to JWX Silver Bullet on 26/11/2016. Pregnancy details sale day.

Vaccinations: 7 in 1, pestigard, 3 germ blood

Buyer _____ \$ _____

Lot: 33 CHARNELLE JA - CIE 10 (AI) (P)

Vendor: G.K & K.A BLANCH **Animal ID:** GKA K48E **DOB:** 02/10/2014



LT WYOMING WIND 4020 PLD M411450 (OAU P4020E) (P)
 HARVIE REDEMPTION 36P MC286641 (OAC Z6641E) (P)
 HARVIE MS MOLSON 53M QPFC316280 (PED -6280E) (P)
Sire: CHARNELLE FEDERATION (GKA F29E) (P)
 CHARNELLE WIZ BANG (GKA W67E)
 CHARNELLE DANIELLE 3 (GKA B65E)
 CHARNELLE DANIELLE (GKA X77E) (P)
 WCR SIR TRADITION 066 M318119 (PED -66E)
 M6 GRID MAKER 104 PET M633377 (OAU W3377E) (P)
 VCR MISS MAC IV 317 F666163 (PED -317E)
Dam: CHARNELLE JA-CIE 8 (GKA G18E) (P)
 CHARNELLE ARCHIE (GKA A15E)
 CHARNELLE JA-CIE 4 (GKA E42E)
 UPS N DOWNS YELLOW (SS1 Y6E)

Comments: A young heifer with a little extra grunt to put substance into her progeny. Great EBV's of top 10% for milk, and top 20% for Low birthweight, gestation length , domestic & export \$ indexes. Unjoined.

December 2015 Australasian Charolais GROUP BREEDPLAN

Charolais GROUP BREEDPLAN	GL	BW	200	400	600	Milk	\$Dom	\$Exp
EBV	-3.2	-0.7	+9	+22	+30	+11	+\$32	+\$43
Acc	73%	68%	59%	56%	56%	40%		

Vaccinations: 7 in 1, pestigard, 3 germ blood, 3 day sickness

Buyer _____ \$ _____

Lot: 34 CHARNELLE PANACHE 14 (AI) (P)

Vendor: G.K & K.A BLANCH **Animal ID:** GKA L3E **DOB:** 15/01/2015



BXB DATELINE SON 65R PMC303803 (PED -3803E)
 JMB DATELINE 754T PMC310942 (PED -3109E)
 JMB MARTHA 234M PFC316449 (PED -6449E)
Sire: G. BROS THIN RED LINE 527W MC326475 (OAC E6475E) (P)
 SVS MASTERCARD 2M QPMC269158 (PED -9158E)
 G BROS TULIP 101T PFC359984 (PED -9984E)
 POOLEDALE MISS CHAMA 62G PFC240875 (PED -2408E)
 IMPAIR 1893102983 (OAF N189F)
 PINAY 8552394134 (OAF U4134F)
 MARY 8596100049 (OAF R8596F)
Dam: CHARNELLE PANACHE 8 (GKA H67E) (P/S)
 LT WYOMING WIND 4020 PLD M411450 (OAU P4020E) (P)
 PALGROVE PANACHE 139 (PK A396E) (P)
 PALGROVE PANACHE 72 R/F (PK T86E)

December 2015 Australasian Charolais GROUP BREEDPLAN

Charolais GROUP BREEDPLAN	GL	BW	200	400	600	Milk	\$Dom	\$Exp
EBV	-6.7	+0.0	+16	+30	+28	+3	+\$35	+\$43
Acc	55%	55%	58%	53%	53%	37%		

Comments: Panache 14 is quite a thick set polled heifer, which I believe has terrific potential as a breeder. The word from Canada is that the best thing about the progeny of Thin Red Line, are his daughters, and after his first two daughters calving at Charnelle proving to have exceptional milk, it will only be a matter of time in which we will see his milk EBV's increase dramatically. She is a first calf out of a fantastic Pinay daughter. Unjoined

Vaccinations: 7 in 1, pestigard, 3 germ blood, 3 day sickness

Buyer _____ \$ _____


Lot: 35 CHARNELLE DIGNA 145 (AI) (P)

Vendor: G.K & K.A BLANCH **Animal ID:** GKA L6E **DOB:** 02/02/2015



BLACK OUT 5812506224 (PED -6224F)
 EMILE - RS 8900459227 (PED -9227F)
 SOUTH WEST 8900451609 (PED -1609F)
Sire: GALLWAY - RS 8900451063 (OAF G1063F) (P)
 OKAPI - 0398119910 0398119910 (PED -9910F)
 DEMLER - RS 8900457103 (PED -7103F)
 AUDI 8900454090 (PED -4090F)

SCHURRTOP 5627 M 300802 (PED -5627E)
 LT WYOMING WIND 4020 PLD M411450 (OAU P4020E) (P)
 LT CHAP'S LADY 217 OP F 634394 (PED -2170E)
Dam: CHARNELLE DIGNA 108 (GKA F33E) (P)
 TEMANA KNOCKOUT (TJ K37E)
 CHARNELLE DIGNA M.A.2 (GKA R44E) (P)
 PALGROVE DIGNA 36 (PK N168E) (P)

December 2015 Australasian Charolais GROUP BREEDPLAN								
 Charolais GROUP BREEDPLAN	GL	BW	200	400	600	Milk	\$Dom	\$Exp
EBV	-2.8	+1.8	+13	+27	+36	+4	+\$9	+\$14
Acc	69%	64%	52%	47%	47%	35%		

Comments: Digna 145 (P) is the very first Gallway (inside front cover) daughter to sell in Australia. Typical "Charnelle Blend" of French and Poll genetics. Her dam is one of our standout cows, and is a full sister to one of our best ever bred cows Charnelle Digna 18 (P) GKA V28E. Gallway was mainly selected on the strength of his maternal traits, temperament and overall correctness. Sells unjoined.

Vaccinations: 7 in 1, pestigard, 3 germ blood, 3 day sickness

Buyer _____ \$ _____


Lot: 36 RIVER RUN KANDY KANE (P/S)

Vendor: LEN, PAT & TANIA HAYNES **Animal ID:** PLT K18E **DOB:** 20/08/2014



LT WESTERN SPUR 2061 PLD M645785 (OAU X2061E) (P)
 LT WESTERN EDGE 4057 PLD M686616 (OAU Z6616E) (P)
 LT DUCHESS OF MAC 7076 P F792993 (PED -2993E)
Sire: ASCOT GUNN G144E (JAJ G144E) (P)
 FERNVALE TRAPPER (FEN T50E)
 ROSDALE BOBBIN Y74 (MR Y74E) (P)
 ROSDALE BOBBIN U97 (MR U97E) (P)

GUNNADOO QUEST Q82E (GN1 Q82E) (P)
 GUNNADOO WATCHMAN (GN1 W18E)
 GUNNADOO RENALDA Q71D (GN1 Q71E)
Dam: LEEGRO CANDY (SGL C54E) (P)
 GREENWOOD UN-STOP-A-BULL (TSP U1E) (P)
 GREENWOOD XTRA SPECIAL (TSP X30E) (P)
 GREENWOOD MISS UNIVERSE (TSP U2E) (P)

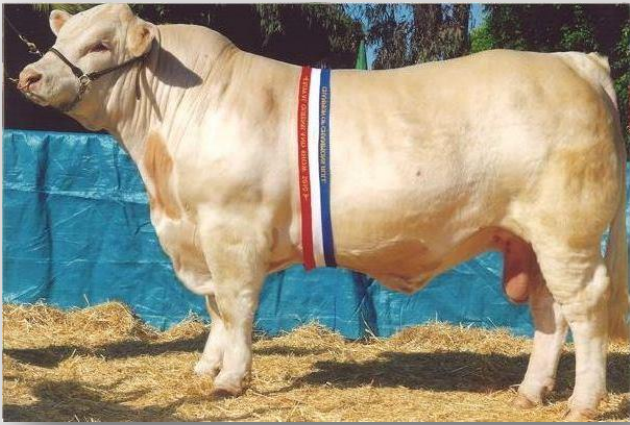
December 2015 Australasian Charolais GROUP BREEDPLAN								
 Charolais GROUP BREEDPLAN	GL	BW	200	400	600	Milk	\$Dom	\$Exp
EBV		+0.8	+18	+42	+55	+12	+\$34	+\$46
Acc		68%	61%	62%	61%	48%		

Comments: Kandy Kane is a very quiet, polled scurred heifer with great length and tremendous thickness. She has been broken in by a 12 year old girl and was shown at a Junior Camp in October 2015. She is out of a very impressive cow with tremendous volume in Leegro Candy. She is sired by Ascot Gunn (LT Western Edge) who is a trait leader in 400 & 600 day growth and scrotal size. Bulls sired by Ascot Gunn sold for an average of \$7000 with a top of \$17000 at the 2015 Ascot Sale. She is in the top 5% for 400 and 600 day growth, Top 10% for 200 day growth and Milk and Top 20% for Domestic, Export and Northern Indexes. It is very hard to part with this heifer as she has become a favourite in the family. Unjoined

Vaccinations: 7 in 1, 3 germ blood

Buyer _____ \$ _____

Lot: 37 No Lot



Advance Domino Sire of Lot 7



Charnelle Frankie Sire of Lots 31, 50, & 63

Joined Cows & Heifers

Lot: 38 CHARNELLE FRIESIA 3 (AI) (ET) (P)

Vendor: G.K & K.A BLANCH Animal ID: GKA H19E DOB: 16/06/2012



Comments: Wow!! What a pedigree we have here. A typical Mac 2244 daughter with top of the range growth & milk figures. In her extended EBV's you will find top 5% for EMA, and top 10% for fat. As a rule you sacrifice fat for muscle, or sacrifice muscle for fat, but this cow's breeding has it all. Her dam P. Friesia 19 is the dam of P.

Casino – herd sire at Palgrove, and P. Coach – past herd sire at Rosedale. Friesia 3 has had one outstanding bull calf, and was AI'ed to D'Angely on 29/07/2015, and then paddocked with Sanlara Park Jasper (JWX Silver Bullet) from 23/09/2015. Pregnancy details sale day.

Vaccinations: 7 in 1, pestigard, 3 germ blood

FRISBIE MAC POLLED 257 M 185428 (OAU -53) (P)
WCR SIR FAB MAC 809 M 202427 (OAU -57E) (P)
MISS LW FA BINGO 229 F 159732 (OAU -54)
Sire: WCR SIR FA MAC 2244 M 234430 (OAU B2244E) (P)
XXI CENTURY M 169294 (OAU -55) (P)
WCR MISS CENTURY 920 TWN F 354249 (OAU -58) (P)
MISS KENO 333 RF 565074 (OAU -56)

PALGROVE QUINTERO (PK Q228E)
PALGROVE VERTICO (PK V325E)
IDLEWILD APPEAL 2 (1JJ R62E)
Dam: PALGROVE FRIESIA 19 (PK Y224E) (P)
MELPLASH GASTRONOME (4HH G2F)
PALGROVE FRIESIA 10 (PK T113E) (P)
MANDALONG FRIESIA L83E (RP L83E) (P)

December 2015 Australasian Charolais GROUP BREEDPLAN

Charolais GROUP BREEDPLAN	GL	BW	200	400	600	Milk	\$Dom	\$Exp
EBV	-3.3	+1.6	+15	+31	+53	+10	+\$29	+\$45
Acc	62%	65%	64%	63%	63%	65%		

Buyer _____ \$ _____

Lot: 39 MOUNTVIEW PIXIE (AI) (P)

Vendor: ID & KM BEBBINGTON Animal ID: IJB C35E DOB: 16/10/2007



BLASON 4286100325 286100325 (PED X286F)
IMPAIR 1893102983 (OAF N189F)
OFFICINE (PED -945F)
Sire: PINAY 8552394134 (OAF U4134F)
HOMERE 5892107561 (PED -7561F)
MARY 8596100049 (OAF R8596F)
JACINTHE 8594104550 (PED -4550F)

AYR REGATTA (AYR M194F)
AYR REGATTA'S HABIT (AYR R240F)
AIRLIE HABITUE (A1S H68F)
Dam: NORFOLK PARK HABIT'S NATALIE (CGE W119E) (P)
HHP MONTE CARLO 1ST PMC 72689 (IAC D4001E) (P)
NORFOLK PARK NATALIE (CGE N312E)
PALGROVE CARIN 6 (PK K65D)

December 2015 Australasian Charolais GROUP BREEDPLAN

Charolais GROUP BREEDPLAN	GL	BW	200	400	600	Milk	\$Dom	\$Exp
EBV	-5.6	+0.4	+14	+24	+32	+5	+\$29	+\$35
Acc	77%	60%	63%	61%	59%	62%		

Comments: A lovely polled Pinay daughter with good length, easy doing ability and calving ease. Pixie puts everything into her progeny. Running with Canoona Flame Proof from the 15/06/2015, PTIC.

View Online at www.mountviewcharolais.com.au

Vaccinations: 7 in 1, 3 germ blood

Buyer _____ \$ _____

Lot: 40 MOUNTVIEW JUSTICE (AI) (P)



Vendor: ID & KM BEBBINGTON **Animal ID:** IJB J24E **DOB:** 05/11/2013

LT RIO BLANCO 1234 P M620591 (OAU W591E) (P)
 SVY PIONEER 402P MC288416 (PED -8416E)
 SVY JINGLES 153L FC303049 (PED -3049E)
Sire: SVY PILGRIM PLD 655S MC303031 (OAC B3031E) (P)
 RGP EUREKA 17E PMC179283 (OAC Q17E) (P)
 HFCC FRENCHKISS 919J PFC269584 (PED -9584E)
 QCR FRENCHKISS 33F FC238979 (PED -8979E)

LT WYOMING WIND 4020 PLD M411450 (OAU P4020E) (P)
 MOUNTVIEW BIG BEN (IJB B8E) (P)
 MOUNTVIEW SHOW GIRL (IJB S9E) (P)
Dam: MOUNTVIEW ESTER (IJB E12E) (P)
 AYR REGATTA'S HABIT (AYR R240F)
 NORFOLK PARK HABIT'S NATALIE (CGE W119E) (P)
 NORFOLK PARK NATALIE (CGE N312E)

December 2015 Australasian Charolais GROUP BREEDPLAN								
Charolais GROUP BREEDPLAN	GL	BW	200	400	600	Milk	\$Dom	\$Exp
EBV	-3.3	+1.0	+15	+31	+39	+4	+\$14	+\$19
Acc	73%	56%	59%	55%	55%	48%		

Comments: A lovely polled heifer with good udder placement. Shows easy doing ability. Dam (IJB E12E) sells at Lot 8. Running with Canoona Frame Proof from 29/08/2015, PTIC.

View Online at www.mountviewcharolais.com.au

Vaccinations: 7 in 1, 3 germ blood

Buyer _____ \$ _____

Lot: 41 RIVER RUN JEMIMA



Vendor: LEN, PAT & TANIA HAYNES **Animal ID:** PLT J15E **DOB:** 14/09/2013

HFCC PLD EVOLUTION 5L PMC256316 (PED -6316E)
 SVY FREEDOM PLD 307N PMC280878 (OAC Y2808E) (P)
 SVY PURRFECT 184L PFC303051 (PED -3051E)
Sire: PALGROVE FREEDOM (PK F1072E) (P)
 PALGROVE QUINTERO (PK Q228E)
 PALGROVE ALETTA 14 (PK X440E)
 PALGROVE ALETTA 8 (PK Q49E) (P)

PONDAOVA XTRA (G8B X17E) (P)
 PONDAOVA ZODIAC (G8B Z26E) (P)
 PONDAOVA XENIA (G8B X14E) (P)
Dam: PONDAOVA BUTTERCUP (G8B B39E) (P)
 PONDAOVA XTRA (G8B X17E) (P)
 PONDAOVA ANNE (G8B A29E) (P)
 MIXHILL V30E R/F (MIX V30E)

December 2015 Australasian Charolais GROUP BREEDPLAN								
Charolais GROUP BREEDPLAN	GL	BW	200	400	600	Milk	\$Dom	\$Exp
EBV		+0.8	+8	+16	+24	+9	+\$17	+\$24
Acc		67%	61%	63%	66%	45%		

Comments: Jemima is a long stretchy female out of a very fertile dam. She is the first Palgrove Freedom (SVY Freedom) heifer we have sold. His sons at our 2015 sale averaged \$6000. Top 25% for Milk. She should go on to be a very reliable breeder. PTIC details on sale day.

Vaccinations: 7 in 1, pestigard, 3 germ blood

Buyer _____ \$ _____

Lot: 42 RIVER RUN JESS



Vendor: LEN, PAT & TANIA HAYNES **Animal ID:** PLT J23E **DOB:** 02/11/2013

M6 GRID MAKER 104 PET M633377 (OAU W3377E) (P)
 EC NO DOUBT 2022 P M685500 (OAU Z2022E) (P)
 EC LADY DUKE 2022 P F956614 (PED -2022E) (P)
Sire: RIVER RUN FOSTER'S LITE (PLT F3E) (P)
 RIVER RUN ZOOM (PLT Z5E)
 RIVER RUN CARAMEL (PLT C8E)
 RIVER RUN ZENA (PLT Z3E) (P)

MOONGOOL ULICK (DP2 U3E)
 BANDON XQUISITE (4AR X38E) (P)
 GUNNADOO MATCH MAKER M64E (GN1 M64E) (P)
Dam: RIVER RUN BRANDY (PLT B5E)
 TEMANA FERNANDO (TJ E29D)
 MARLEGOO DIGNA 2 (LGM W87E)
 MARLEGOO DIGNA (LGM U44E)

December 2015 Australasian Charolais GROUP BREEDPLAN								
Charolais GROUP BREEDPLAN	GL	BW	200	400	600	Milk	\$Dom	\$Exp
EBV		-0.8	+9	+27	+30	+12	+\$30	+\$34
Acc		67%	60%	63%	67%	45%		

Comments: Jess is a quiet, growthy heifer with strong maternal traits. She ranks in the top 10% for Milk, top 15% for Birth Weight and top 30% for 400 day growth. Out if a great maternal line, she is a no nonsense female that should develop into a good breeding unit. PTIC details on sale day.

Vaccinations: 7 in 1, pestigard, 3 germ blood

Buyer _____ \$ _____

Lot: 43 RIVER RUN JITTERBUG (P)

Vendor: LEN, PAT & TANIA HAYNES **Animal ID:** PLT J36E **DOB:** 29/12/2013



MOONGOOL WINCHESTER (DP2 W300E)
 MOONGOOL BAREFOOT RADLER (DP2 B352E) (P)
 WAROCAL V18E (RNP V18E) (P)
Sire: 4 WAYS FOUR-X (4WC F56E) (P)
 PALGROVE VIAGRA (PK V92E) (P)
 PALGROVE REFINE 94 (PK Z69E)
 PALGROVE REFINE 66 (PK W423E) (P)

SUCRE 03163 S96 (IAF A6004F)
 MARLEGOO UNREAL (LGM U7E) (P)
 MARLEGOO ANGIE (LGM R8E) (P)
Dam: MARLEGOO NARA W93E (LGM W93E) (P)
 CLOVIS 18021 C04 (IAF C6022F)
 HARLEYWOOD T24E (WEA T24E)
 HARLEYWOOD NARA (WEA N43E)

Comments: Jitterbug is a very quiet polled heifer with tremendous depth and volume. A great pedigree behind her - on the sire side Palgrove Viagra and Moongool Winchester and some great French genetics on the dam's side with Sucre and Clovis. She is top 10% for 600 day growth and top 30% for 200 and 400 day growth. We are only selling this heifer because we have kept a brother as a stud sire. PTIC details on sale day.

Vaccinations: 7 in 1, pestigard, 3 germ blood

December 2015 Australasian Charolais GROUP BREEDPLAN								
Charolais GROUP BREEDPLAN	GL	BW	200	400	600	Milk	\$Dom	\$Exp
EBV		+2.7	+14	+27	+44	+8	+\$5	+\$11
Acc		64%	57%	60%	62%	44%		

Buyer _____ \$ _____

Lot: 44 JAY TEES KONTENTMENT (AI)

Vendor: JUDITH TURNER **Animal ID:** JT K12F **DOB:** 22/10/2014



COOPER AA5 7187110011 (PED X5F)
 JUMPER RR5 8894104162 (OAF P8894F)
 RITOURNELLE 4580102372 (PED X45F)
Sire: REPAIR RJR 5811001744 (OAF V1744F)
 CARDINAL 1887105008 (PED -5008F)
 ILE 5893110589 (PED -589F)
 FUTE 5890120163 (PED -163F)

ROOSVELT 8541876919 (PED -6919F)
 UFANO 5454635328 (IAF Y5328F) (P)
 ROSIE 5703377641 (PED -7641F)
Dam: JAY TEES EMOTION (JT E2F)
 TATTENHALL HUBLOT H15 MF0000922 (OAE H2439F)
 PALGROVE DESIRE 23 (PK S14F)
 CHARMHAVEN D41F (WHY D41F)

Comments: Very well bred led, Full French heifer going back to Jumper. Ufano, Tattenhall Hublot & Palgrove's Desire line. Only young but could be just PTIC by sale day. She should grow into an outstanding female if her dam & siblings are any guide. PV'ed & DNA recorded. Pregnancy details sale day.

Vaccinations: 7 in 1, pestigard, 3 germ blood, 3 day sickness

December 2015 Australasian Charolais GROUP BREEDPLAN									
Charolais GROUP BREEDPLAN	GL	BW	200	400	600	Milk	\$Dom	\$Exp	
EBV		+2.9	+3.5	+17	+29	+41	+3	-\$19	-\$26
Acc		70%	52%	49%	46%	46%	38%		

Buyer _____ \$ _____

Lot: 45 SHILOH LITTLE DOUBT (AI) (P)

Vendor: DAVID & CHRISTINE BLAKE **Animal ID:** SCB J19E **DOB:** 01/11/2013



WCR SIR TRADITION 066 M318119 (PED -66E)
 M6 GRID MAKER 104 PET M633377 (OAU W3377E) (P)
 VCR MISS MAC IV 317 F666163 (PED -317E)
Sire: EC NO DOUBT 2022 P M685500 (OAU Z2022E) (P)
 VCR SIR DUKE 914 PLD M297007 (PED -914E)
 EC LADY DUKE 2022 P F956614 (PED -2022E) (P)
 JES MS ADVANTAGE C74 F668991 (PED -74E) (P)

PALGROVE UPTURN (PK U353E)
 ADVANCE XR8 (ADV X50E)
 ADVANCE GINA R/F (ADV T3E)
Dam: GOBONGO BARONIA E249E (GO E249E)
 FERNVALE TOLEDO (FEN T12E)
 GOBONGO BARONIA W47E (TW) (GO W47E)
 FREDERIC BARONIA M1E (PBS M1E) (P)

Comments: White, polled No Doubt heifer. What a Gem!! Comes from a line of easy doing milky females. Joined to Shiloh K Hank. Pregnancy details sale day.

Vaccinations: 7 in 1, 3 day sickness

December 2015 Australasian Charolais GROUP BREEDPLAN									
Charolais GROUP BREEDPLAN	GL	BW	200	400	600	Milk	\$Dom	\$Exp	
EBV		-2.5	+0.8	+15	+32	+52	+12	+\$29	+\$43
Acc		71%	57%	54%	54%	54%	52%		

Buyer _____ \$ _____

Lot: 46 PIORA OPALE 18 (AI) (P)

Vendor: DR G.J & M.A CRUICKSHANK Animal ID: PCK K18E DOB: 01/11/2014



LT UNLIMITED EASE 9108 M 301930 (OAU J9108E)
 LT EASY PRO 1158 PLD M620348 (OAU W6203E) (P)
 LT LADY MACBETH 8413 ETP F832754 (PED -2754E)
Sire: WELCOME SWALLOW EASY GAIN F508 (CMA F508E) (P)
 NWMSU DOC SILVER 362 PLD M669488 (OAU Y9488E) (P)
 BJR SILVER MAID 717 ET EF1068469 (OAU C8469E) (P)
 LT UNLIMITED MAID 7184 P F793032 (PED -7184E) (P)

OBJECTEUR M 15314 (ZZF X1105F)
 SALOPIAU 71161 S02 (IAF A6056F)
 ECLIPSE F 97773 (ZZF X885F)
Dam: UPS N DOWNS BLONDIE (SS1 B4F)
 MELPLASH GASTRONOME (4HH G2F)
 UPS N DOWNS SHERRIE (SS1 S1F)
 TREV LAC OPALE (WF7 D72F)

Comments: Sired by imported embryo sire from a strong local French cow line. Maternal siblings have sold to \$7000, maternal sister, also in this sale as lot 17. Good Breedplan figures with birthweight & milk a feature. Paddocked with VLW J2E (Rio Bravo x Gobongo Rebby) from 06/01/2016. Pregnancy details sale day.
Vaccinations: 7 in 1, pestigard, 3 germ blood, Botulism, Multimin, Vet ADE, Dectomax.

December 2015 Australasian Charolais GROUP BREEDPLAN								
Charolais GROUP BREEDPLAN	GL	BW	200	400	600	Milk	\$Dom	\$Exp
EBV	-3.7	-2.2	+11	+27	+30	+12	+\$50	+\$62
Acc	66%	64%	56%	58%	56%	40%		

Buyer _____ \$ _____

Lot: 47 PIORA AROHA 19 (AI) (P)

Vendor: DR G.J & M.A CRUICKSHANK Animal ID: PCK K19E DOB: 16/11/2014



BLASON 4286100325 286100325 (PED X286F)
 IMPAIR 1893102983 (OAF N189F)
 OFFICINE (PED -945F)
Sire: PINAY 8552394134 (OAF U4134F)
 HOMERE 5892107561 (PED -7561F)
 MARY 8596100049 (OAF R8596F)
 JACINTHE 8594104550 (PED -4550F)

FZ MIGHTY MAC POLLED 828 M 171312 (PED F4) (P)
 BCR POLLED UNLIMITED 003 M225504 (OAU R3E) (P)
 MISS CAMELOT 503 POLLED F 320701 (OAU -98) (P)
Dam: THW AROHA 9 POLLED (THW E21E) (P)
 TATTENHALL IMPECCABLE I26 BR.HB.1382 (IAE I6190F)
 COORANGA AROHA 9 (MLB X26E) (P)
 PALGROVE AROHA 11 (PK T17E) (P)

Comments: Derived from a rare BCR Polled Unlimited female line joined with the popular French sire Pinay. Mac 2244 & Impeccable also feature in her dam's pedigree, assisting in polling of this very smart unit. Paddocked with VLW J2E (LT Rio Bravo x Gobongo Rebby) from 06/01/2016. Pregnancy details sale day.
Vaccinations: 7 in 1, pestigard, 3 germ blood, Botulism, Multimin, Vet ADE, Dectomax.

December 2015 Australasian Charolais GROUP BREEDPLAN								
Charolais GROUP BREEDPLAN	GL	BW	200	400	600	Milk	\$Dom	\$Exp
EBV	-5.6	+0.0	+14	+33	+46	+14	+\$43	+\$56
Acc	68%	66%	62%	63%	61%	56%		

Buyer _____ \$ _____

Lot: 48 CHARNELLE DESIRE 15 (AI) (P/S)

Vendor: G.K & K.A BLANCH Animal ID: GKA J57F DOB: 29/10/2013



DURANDAL (PAUPINAT GILLES) RR2 5888117903 (OAF X5888F)
 VULCAINDEL FR 3615064046 (OAF -4046F)
 ONCTUEUSE FR 3698001706 (OAF -1706F)
Sire: D ANGELY R FR 8900458116 (OAF D8116F) (P)
 RAMSESDERA 001235000713 (PED -713F)
 ULLA 01235000870 01235000870 (OAF -870F)
 MILICE 8996101424 8996101424 (OAF -1424A)

TILL FMC6073 (OAF B816F)
 EXCLUSIF 8589103317 (OAF J858F)
 REINETTE 85 80108477 (PED X8580F)
Dam: CHARNELLE DESIRE 3 (GKA E1F)
 PALGROVE NAPOLEON (PK N114F)
 PALGROVE DESIRE 74 (PK Y166F)
 PALGROVE DESIRE 20 (PK R228F)

Comments: A stylish Full French D'Angely daughter out of one of our best Exclusif, French females. C. Desire 15 J57F has exactly the same pedigree as our sale topper last year C Desire 13, that was bought by Eboni Boyd Victoria, for \$5000. Served by Sanlara Park Jasper on 21/12/2015. Pregnancy details sale day.
Vaccinations: 7 in 1, pestigard, 3 germ blood, 3 day sickness

December 2015 Australasian Charolais GROUP BREEDPLAN								
Charolais GROUP BREEDPLAN	GL	BW	200	400	600	Milk	\$Dom	\$Exp
EBV	+2.4	+2.4	+13	+24	+31	+3	+\$9	+\$11
Acc	74%	69%	61%	61%	58%	38%		

Buyer _____ \$ _____

Lot: 49 CHARNELLE DIGNA131 (AI) (P)



Comments: A classy heifer by Pilgrim with that classic "Charnelle Blend" of French & poll genetics. AI'ed to JWX Silver Bullet on 11/10/2015 and is PTIC. Expect a bull calf due on 24/07/2016.

Vaccinations: 7 in 1, pestigard, 3 germ blood, 3 day sickness

Vendor: G.K & K.A BLANCH **Animal ID:** GKA K4E **DOB:** 12/01/2014

LT RIO BLANCO 1234 P M620591 (OAU W591E) (P)
 SVY PIONEER 402P MC288416 (PED -8416E)
 SVY JINGLES 153L FC303049 (PED -3049E)
Sire: SVY PILGRIM PLD 655S MC303031 (OAC B3031E) (P)
 RGP EUREKA 17E PMC179283 (OAC Q17E) (P)
 HFCC FRENCHKISS 919J PFC269584 (PED -9584E)
 QCR FRENCHKISS 33F FC238979 (PED -8979E)
 DIEGO RR3 1888102991 (PED X2991F)
 IJOUFFLU 6327351004 (OAF N6327F)
 GIROLLE 6391101387 (PED -1387F)
Dam: CHARNELLE DIGNA 66 (GKA C7E) (P)
 LT WYOMING WIND 4020 PLD M411450 (OAU P4020E) (P)
 CHARNELLE DIGNA 18 (GKA V28E) (P)
 CHARNELLE DIGNA M.A.2 (GKA R44E) (P)

December 2015 Australasian Charolais GROUP BREEDPLAN

Charolais GROUP BREEDPLAN	GL	BW	200	400	600	Milk	\$Dom	\$Exp
EBV	-3.4	+0.9	+13	+31	+37	+6	+\$8	+\$7
Acc	60%	70%	64%	65%	63%	52%		

Buyer _____ \$ _____

Lot: 50 CHARNELLE PRINCESS 8 (P)



Comments: This heifer's grand dam, X19E is the oldest cow in our herd and has a wonderful D'Angely heifer calf again this year. Princess 8 (P) was AI'ed to JWX Silver Bullet on 04/11/2015 and is PTIC. Due to calve 17/08/2016.

Vaccinations: 7 in 1, pestigard, 3 germ blood, 3 day sickness

Vendor: G.K & K.A BLANCH **Animal ID:** GKA K12E **DOB:** 04/03/2014

PALGROVE UPTURN (PK U353E)
 ADVANCE XR8 (ADV X50E)
 ADVANCE GINA R/F (ADV T3E)
Sire: CHARNELLE FRANKIE (GKA F73E) (P)
 LT WYOMING WIND 4020 PLD M411450 (OAU P4020E) (P)
 PALGROVE PANACHE 139 (PK A396E) (P)
 PALGROVE PANACHE 72 R/F (PK T86E)
 SCHURRTOP 5627 M 300802 (PED -5627E)
 LT WYOMING WIND 4020 PLD M411450 (OAU P4020E) (P)
 LT CHAP'S LADY 217 OP F 634394 (PED -2170E)
Dam: CHARNELLE PRINCESS 4 (GKA A26E) (P)
 2UP PEUGEOT (2UP P46E) (P)
 SUNNYGROVE SHELLYS PRINCESS X19E (LFS X19E) (P)
 CHARNELLE SHELLEY 2 (GKA S65F)

December 2015 Australasian Charolais GROUP BREEDPLAN

Charolais GROUP BREEDPLAN	GL	BW	200	400	600	Milk	\$Dom	\$Exp
EBV	+0.1	+1.8	+13	+23	+27	+6	+\$6	+\$7
Acc	50%	55%	49%	48%	48%	44%		

Buyer _____ \$ _____

Lot: 51 CHARNELLE DIGNA 136 (AI) (P) (R/F)



Comments: A lovely soft, big volume, red heifer out of one of our best cows D5E, who was selected for an embryo program last year. Full sister to lot 14. This heifer would have been in the select section except for a little bit of broken colour. Served by Sanlara Park Jasper On 20/12/2015 & paddocked with C. Kreamer K59F from 17/01/2016. Pregnancy details sale day.

Vaccinations: 7 in 1, pestigard, 3 germ blood, 3 day sickness

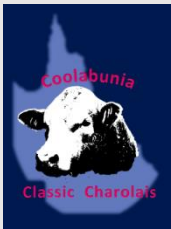
Vendor: G.K & K.A BLANCH **Animal ID:** GKA K22E **DOB:** 15/07/2014

BXB DATELINE SON 65R PMC303803 (PED -3803E)
 JMB DATELINE 754T PMC310942 (PED -3109E)
 JMB MARTHA 234M PFC316449 (PED -6449E)
Sire: G. BROS THIN RED LINE 527W MC326475 (OAC E6475E) (P)
 SVS MASTERCARD 2M QPMC269158 (PED -9158E)
 G BROS TULIP 101T PFC359984 (PED -9984E)
 POOLEDALE MISS CHAMA 62G PFC240875 (PED -2408E)
 LT WYOMING WIND 4020 PLD M411450 (OAU P4020E) (P)
 HARVIE REDEMPTION 36P MC286641 (OAC Z6641E) (P)
 HARVIE MS MOLSON 53M QPFC316280 (PED -6280E) (P)
Dam: CHARNELLE DIGNA74 (GKA D5E) (P)
 EXCLUSIF 8589103317 (OAF J858F)
 CHARNELLE DIGNA 40 (GKA Z52E) (P)
 PALGROVE DIGNA 36 (PK N168E) (P)

December 2015 Australasian Charolais GROUP BREEDPLAN

Charolais GROUP BREEDPLAN	GL	BW	200	400	600	Milk	\$Dom	\$Exp
EBV	-4.3	+0.2	+15	+32	+34	+4	+\$32	+\$43
Acc	74%	69%	60%	58%	57%	39%		

Buyer _____ \$ _____



Looking for a new Stud Sire?

Check out some of the bulls on offer at this year's **Coolabunia Classic** to be held at the Coolabunia sale yards on **12/08/2016**



Charnelle Kentucky (P)(R/F) GKA K19E
D'Angely x Harvie High Times



Charnelle Kan Do (P) GKA K38E
Thin Red Line x SVY Pilgrim



Charnelle Kruz GKA K58E
SVY Pilgrim x Lunaparc



Silverwood Konrad (P) 5EB K15E
by Charnelle Harris (P) (Mac 2244)



River Run Kilkeny (P) PLT K11E by Palgrove Freedom **River Run Kaddilac (P) K22E by Palgrove Freedom**
All Sale Bulls will be Scanned and Semen & Morphology Tested



Kandanga Valley Charolais & Charbray Stud



Ayr Star's Orient
Sire of Lots 58 - 62



Kandanga Valley Sale Heifers

JR.



www.kandanga-valley.com

Lot: 52 KANDANGA VALLEY JENTLE (P)



Comments: A polled heifer by a Full French sire who himself was from our number 1 ranked cow. Her dam bred sons selling to \$6500 and was retired at 12 ½ years after rearing 10 calves. This heifer comes with very solid EBV figures. Running with Kandanga Valley Jumbuck (P) (D'Angely) from 09/11/2015 to 21/12/2015.

Vaccinations: 7 in 1

Vendor: JD & RJ MERCER **Animal ID:** KAV J3E **DOB:** 11/01/2013

NOVOTEL 5897127519 (OAF S7519F)
SEDALIA BEAUMONT (DEG B27F)
SEDALIA ULTIMATE FT27 (DEG U3F)
Sire: KANDANGA VALLEY FRANCO F66F (KAV F66F)
IMPAIR 1893102983 (OAF N189F)
KANDANGA VALLEY VERONICA (KAV V47F)
KANDANGA VALLEY SASHA (KAV S1F)

GENK 1891101481 (OAF L481F)
KANDANGA VALLEY TENDER LOIN (KAV T52E)
ARROWFIELD FREDIA (AV F4D)
Dam: KANDANGA VALLEY (KAV W108E) (P)
PALGROVE HEADLINER (PK H40E) (P)
PALGROVE DALLY 10 (PK L122D) (P)
PALGROVE DALLY 3 (PK C63C) (P)

December 2015 Australasian Charolais GROUP BREEDPLAN

Charolais	GL	BW	200	400	600	Milk	\$Dom	\$Exp
EBV			+11	+23	+32	+6		
Acc			44%	43%	45%	44%		

Buyer _____ \$ _____

Lot: 53 KANDANGA VALLEY JOLLIET



Comments: A **Full French** heifer with some quality breeding. If you know anything about the history of Charolais genetics in Australia, you'll see the grandparents and great grandparents of this heifer are some of the very best Charolais cattle that have had a major influence over the Australian French herd. Very good EBV's. Running with Kandanga Valley Jumbuck (P) (D'Angely) from 09/11/2015 to 21/12/2015

Vaccinations: 7 in 1,

Vendor: JD & RJ MERCER **Animal ID:** KAV J48F **DOB:** 11/06/2013

HASTING 1492102626 (OAF M149F)
NOVOTEL 5897127519 (OAF S7519F)
DATCHA 5888121456 (PED -1456F)
Sire: SEDALIA BEAUMONT (DEG B27F)
EXCLUSIF 8589103317 (OAF J858F)
SEDALIA ULTIMATE FT27 (DEG U3F)
SEDALIA QUEEN ANNE (DEG Q3F)

NELSON 397108304 (OAF S8304F)
TREV LAC ZAMBIA (WF7 Z4F)
TREV LAC SELENA (WF7 X1F)
Dam: KANDANGA VALLEY CATARINA (KAV C110F)
PINNAROO IKON (BAA P78F)
FERNVALE U-KRISTINA (FEN U10F)
ROSDALE KRISTINA 2ND (MR G42F)

December 2015 Australasian Charolais GROUP BREEDPLAN

Charolais	GL	BW	200	400	600	Milk	\$Dom	\$Exp
EBV			+17	+32	+38	+4	+\$13	+\$14
Acc			53%	49%	51%	45%		

Buyer _____ \$ _____

Lot: 54 KANDANGA VALLEY JENNAH



Comments: Have a look at the breeding of this quality heifer. They don't come much better. Her sire "Beaumont" is our leading sire and a full brother to the 2009 "Beef" Supreme Champion and goes back to the magnificent "Queen Anne" (Impair). On her dam's side, her grand sire Voodoo was an EKKA Junior Champion and his sire is the famous Minnie-Vale Sundance. Kandanga Valley Steamed-Up is by the great Coat Lezard. Very good EBV's and her dam has had 7 calves – calving interval of 364 days. Running with Kandanga Valley Jumbuck (P) (D'Angely) 09/11/2015 to 21/12/2015.
Vaccinations: 7 in 1

Vendor: JD & RJ MERCER **Animal ID:** KAV J119E **DOB:** 07/09/2013

HASTING 1492102626 (OAF M149F)
 NOVOTEL 5897127519 (OAF S7519F)
 DATCHA 5888121456 (PED -1456F)
Sire: SEDALIA BEAUMONT (DEG B27F)
 EXCLUSIF 8589103317 (OAF J858F)
 SEDALIA ULTIMATE FT27 (DEG U3F)
 SEDALIA QUEEN ANNE (DEG Q3F)

MINNIE VALE SUNDANCE (SGS S31E)
 MOONGOOL VOODOO (DP2 V207E)
 GUNNADOO QUICK SET Q91E (GN1 Q91E)
Dam: KANDANGA VALLEY ZERAH (KAV Z83E)
 KANDANGA VALLEY STEAMED UP (KAV S14E)
 KANDANGA VALLEY V62E (KAV V62E)
 KANDANGA VALLEY CHERRY (KAV Q11E)

December 2015 Australasian Charolais GROUP BREEDPLAN

Charolais GROUP BREEDPLAN	GL	BW	200	400	600	Milk	\$Dom	\$Exp
EBV			+13	+24	+28	+7	+\$17	+\$19
Acc			53%	50%	52%	46%		

Buyer _____ \$ _____

Lot: 55 KANDANGA VALLEY JEMMA



Comments: A young heifer once again chock full of French bloodlines. Her dam is a magnificent big roomy, clean coated cow who has bred a full brother selling for \$10,500. Comes with top shelf growth EBV's. Running with Kandanga Valley Jumbuck (P) (D'Angely) 09/11/2015 to 21/12/2015.
Vaccinations: 7 in 1

Vendor: JD & RJ MERCER **Animal ID:** KAV J225E **DOB:** 14/12/2013

HASTING 1492102626 (OAF M149F)
 NOVOTEL 5897127519 (OAF S7519F)
 DATCHA 5888121456 (PED -1456F)
Sire: SEDALIA BEAUMONT (DEG B27F)
 EXCLUSIF 8589103317 (OAF J858F)
 SEDALIA ULTIMATE FT27 (DEG U3F)
 SEDALIA QUEEN ANNE (DEG Q3F)

SALOPIAU 71161 S02 (IAF A6056F)
 EVORA ROYAL FP119 (LAW R7F)
 BALLENGARA SHIRLEY 1 (CJP K110F)
Dam: BARAMBAH-DALE EMILY (DAV U27E)
 AYR SHAMROCK (AYR F97F)
 BARAMBAH-DALE SNOW WHITE (DAV S1E)
 BARAMBAH-DALE PATRICIA (DAV P10E)

December 2015 Australasian Charolais GROUP BREEDPLAN

Charolais GROUP BREEDPLAN	GL	BW	200	400	600	Milk	\$Dom	\$Exp
EBV		+1.9	+19	+34	+39	+4	+\$24	+\$28
Acc		52%	60%	61%	61%	51%		

Buyer _____ \$ _____

Lot: 56 KANDANGA VALLEY JO-KANN



Comments: Once again full of French bloodlines for that consistency of progeny. Running with Kandanga Valley Jumbuck (P) (D'Angely) 09/11/ 2015 to 21/12/2015.
Vaccinations: 7 in 1

Vendor: JD & RJ MERCER **Animal ID:** KAV J262E **DOB:** 27/12/2013

HASTING 1492102626 (OAF M149F)
 NOVOTEL 5897127519 (OAF S7519F)
 DATCHA 5888121456 (PED -1456F)
Sire: SEDALIA BEAUMONT (DEG B27F)
 EXCLUSIF 8589103317 (OAF J858F)
 SEDALIA ULTIMATE FT27 (DEG U3F)
 SEDALIA QUEEN ANNE (DEG Q3F)

MORGIANA HOUSE WEST AVEYRON (CAC W6F)
 KANDANGA VALLEY ZERGO (KAV Z49E) (P)
 KANDANGA VALLEY LADY LUCK (KAV V65E) (P)
Dam: KANDANGA VALLEY E-KAN E221E (KAV E221E)
 FERNVALE ROADSTER (FEN R37E)
 FERNVALE UKAN (FEN U32E)
 FERNVALE KAN KAN (FEN K23E)

December 2015 Australasian Charolais GROUP BREEDPLAN

Charolais GROUP BREEDPLAN	GL	BW	200	400	600	Milk	\$Dom	\$Exp
EBV			+14	+18	+22	+1	+\$12	+\$14
Acc			57%	58%	56%	42%		

Buyer _____ \$ _____

Lot: 57 KANDANGA VALLEY KIFLER



Comments: A Full French heifer that should command some attention. From our leading sire who has earned the stud over \$250,000 through bull sales, with an average over \$5000, and from a dam carrying some of the very best old French genetics. Good solid EBV's. Running with Kandanga Valley Jumbuck (P) (D'Angely) 09/11/2015 to 21/12/2015.

Vaccinations: 7 in 1

Unjoined Heifers

Lot: 58 KANDANGA VALLEY KATHIA



Comments: Chock full with French breeding. Her Full French dam has bred sons selling to \$11,000. Her dam is a quality cow with an excellent udder. EBV's available sale day. Unjoined.

Vaccinations: 7 in 1

Lot: 59 KANDANGA VALLEY KROME



Comments: Chock full of Full French bloodlines. Her Full French dam has some big milking bloodlines. Her sire "Orient" breeds powerful cattle with sleek coats. EBV's available sale day. Unjoined.

Vaccinations: 7 in 1

Vendor: JD & RJ MERCER **Animal ID:** KAV K1F **DOB:** 02/01/2014

HASTING 1492102626 (OAF M149F)
 NOVOTEL 5897127519 (OAF S7519F)
 DATCHA 5888121456 (PED -1456F)
Sire: SEDALIA BEAUMONT (DEG B27F)
 EXCLUSIF 8589103317 (OAF J858F)
 SEDALIA ULTIMATE FT27 (DEG U3F)
 SEDALIA QUEEN ANNE (DEG Q3F)
 SALOPIAU 71161 S02 (IAF A6056F)
 EVORA ROYAL FP119 (LAW R7F)
 BALLENGARA SHIRLEY 1 (CJP K110F)
Dam: BARAMBAH-DALE ROYAL'S SIERRA 3 (DAV Z76F) (P/S)
 SUJET 58018 S31 (IAF A6050F)
 BARAMBAH-DALE SIERRA (DAV S42F)
 NARGOON NELLY (J5Y N38F)

December 2015 Australasian Charolais GROUP BREEDPLAN								
Charolais GROUP BREEDPLAN	GL	BW	200	400	600	Milk	\$Dom	\$Exp
EBV		+1.0	+18	+29	+32	+4	+\$28	+\$35
Acc		51%	59%	55%	56%	48%		

Buyer _____ \$ _____

Vendor: JD & RJ MERCER **Animal ID:** KAV K77E **DOB:** 08/09/2014

AYR IMPAIR'S FUGI (AYR V305F)
 AYR FUGI'S STAR (AYR C1309F)
 AYR ELVIS'S ISABEAU (AYR V102F)
Sire: AYR STAR'S ORIENT (AYR F310E)
 AYR BOBBY F970732 (AYR T294F)
 AYR BOBBY'S ORCHID (AYR X94E)
 AYR FIGARO'S ORCHID (AYR P66D)
 COAT EVEREST BR.HB.140 (IAE E6113F)
 FERVALE WING COMMANDER (FEN W64F)
 FERVALE QUAIN'T ONE (FEN Q3F)
Dam: FERVALE AGATHIA (FEN A54F)
 OAKTREE ERIS BR.HB.177 (IAE E6141F)
 FERVALE UMBRELLA (FEN U56F)
 FERVALE QUAIN'T ONE (FEN Q3F)

December 2015 Australasian Charolais GROUP BREEDPLAN								
Charolais GROUP BREEDPLAN	GL	BW	200	400	600	Milk	\$Dom	\$Exp
EBV						+6		
Acc						39%		

Buyer _____ \$ _____

Vendor: JD & RJ MERCER **Animal ID:** KAV K76E **DOB:** 08/09/2014

AYR IMPAIR'S FUGI (AYR V305F)
 AYR FUGI'S STAR (AYR C1309F)
 AYR ELVIS'S ISABEAU (AYR V102F)
Sire: AYR STAR'S ORIENT (AYR F310E)
 AYR BOBBY F970732 (AYR T294F)
 AYR BOBBY'S ORCHID (AYR X94E)
 AYR FIGARO'S ORCHID (AYR P66D)
 ODYSSEUS DE MOLHOLM 46487-0045 (OAD X45F)
 MORGIANA HOUSE COUNT DE DENMARK (CAC X23F)
 209 OFELLIA 38681 (OAS C1720F)
Dam: KANDANGA VALLEY CERUSE (KAV C50F)
 HANNIBAL FMC 1315 FMC 1315 (IAF H6173F)
 KANDANGA VALLEY WONDERMENT (KAV W16F)
 SEDALIA PRISCILLA (DEG P16F)

December 2015 Australasian Charolais GROUP BREEDPLAN								
Charolais GROUP BREEDPLAN	GL	BW	200	400	600	Milk	\$Dom	\$Exp
EBV						+8		
Acc						36%		

Buyer _____ \$ _____

Lot: 60 KANDANGA VALLEY KUCHIN



Comments: Once again from a Full French dam and by the powerful **Ayr Star's Orient**. Her maternal grandsire has been our leading sire in the stud for many years and her maternal grand dam, we rank as our number one cow in the herd with sons selling to \$18,000. Comes with outstanding EBV's.
Vaccinations: 7 in 1

Vendor: JD & RJ MERCER **Animal ID:** KAV K176E **DOB:** 24/09/2014

AYR IMPAIR'S FUGI (AYR V305F)
 AYR FUGI'S STAR (AYR C1309F)
 AYR ELVIS'S ISABEAU (AYR V102F)
Sire: AYR STAR'S ORIENT (AYR F310E)
 AYR BOBBY F970732 (AYR T294F)
 AYR BOBBY'S ORCHID (AYR X94E)
 AYR FIGARO'S ORCHID (AYR P66D)
 NOVOTEL 5897127519 (OAF S7519F)
 SEDALIA BEAUMONT (DEG B27F)
 SEDALIA ULTIMATE FT27 (DEG U3F)
Dam: KANDANGA VALLEY GUDA (KAV G157F)
 IMPAIR 1893102983 (OAF N189F)
 KANDANGA VALLEY VERONICA (KAV V47F)
 KANDANGA VALLEY SASHA (KAV S1F)

December 2015 Australasian Charolais GROUP BREEDPLAN

Charolais GROUP BREEDPLAN	GL	BW	200	400	600	Milk	\$Dom	\$Exp
EBV			+11	+28	+35	+8		
Acc			55%	49%	49%	33%		

Buyer _____ \$ _____

Lot: 61 KANDANGA VALLEY KENILY



Comments: From a first calf heifer and by "Orient". This heifer inherits a line of big milking genetics on the dam's side and great carcass traits from her sire. Good growth and milk EBV's.
Vaccinations: 7 in 1

Vendor: JD & RJ MERCER **Animal ID:** KAV K119E **DOB:** 15/10/2014

AYR IMPAIR'S FUGI (AYR V305F)
 AYR FUGI'S STAR (AYR C1309F)
 AYR ELVIS'S ISABEAU (AYR V102F)
Sire: AYR STAR'S ORIENT (AYR F310E)
 AYR BOBBY F970732 (AYR T294F)
 AYR BOBBY'S ORCHID (AYR X94E)
 AYR FIGARO'S ORCHID (AYR P66D)
 KANDANGA VALLEY VOODOO ALMIGHTY (KAV Z58E)
 KANDANGA VALLEY CERULEAN (KAV C24E)
 FERNVALE SKYBLUE (FEN S49E)
Dam: KANDANGA VALLEY GENERA (KAV G59E)
 COOMINYA UNREAL FS39 (L6L U6E)
 KANDANGA VALLEY (KAV Y67E)
 KANDANGA VALLEY THEODORA (KAV T19E) (P)

December 2015 Australasian Charolais GROUP BREEDPLAN

Charolais GROUP BREEDPLAN	GL	BW	200	400	600	Milk	\$Dom	\$Exp
EBV			+9	+21	+28	+6		
Acc			54%	48%	48%	32%		

Buyer _____ \$ _____

Lot: 62 KANDANGA VALLEY KORSICA



Comments: From a **Full French** first calf heifer. Her maternal grandsire, Beaumont has been our leading sire for many years now. He has earned the stud over ¼ million dollars from bull sales. Comes with good EBV's for growth & milk.
Vaccinations: 7 in 1

Vendor: JD & RJ MERCER **Animal ID:** KAV K178E **DOB:** 03/11/2014

AYR IMPAIR'S FUGI (AYR V305F)
 AYR FUGI'S STAR (AYR C1309F)
 AYR ELVIS'S ISABEAU (AYR V102F)
Sire: AYR STAR'S ORIENT (AYR F310E)
 AYR BOBBY F970732 (AYR T294F)
 AYR BOBBY'S ORCHID (AYR X94E)
 AYR FIGARO'S ORCHID (AYR P66D)
 NOVOTEL 5897127519 (OAF S7519F)
 SEDALIA BEAUMONT (DEG B27F)
 SEDALIA ULTIMATE FT27 (DEG U3F)
Dam: KANDANGA VALLEY GEMINI (KAV G43F)
 SAUMON (IAF A6021F)
 FERNVALE VALOTTA (FEN V79F)
 FERNVALE QUAINST STUFF (FEN Q4F)

December 2015 Australasian Charolais GROUP BREEDPLAN

Charolais GROUP BREEDPLAN	GL	BW	200	400	600	Milk	\$Dom	\$Exp
EBV			+11	+22	+25	+6		
Acc			54%	48%	48%	32%		

Buyer _____ \$ _____

Lot: 63 CHARNELLE FRIESIA 9 (P)



Comments: Soft heifer with those never miss Palgrove bloodlines. Unjoined.

Vaccinations: 7 in 1, pestigard, 3 germ blood

Vendor: G.K & K.A BLANCH **Animal ID:** GKA K44E **DOB:** 17/09/2014

PALGROVE UPTURN (PK U353E)
 ADVANCE XR8 (ADV X50E)
 ADVANCE GINA R/F (ADV T3E)
Sire: CHARNELLE FRANKIE (GKA F73E) (P)
 LT WYOMING WIND 4020 PLD M411450 (OAU P4020E) (P)
 PALGROVE PANACHE 139 (PK A396E) (P)
 PALGROVE PANACHE 72 R/F (PK T86E)

 SVY PIONEER 402P MC288416 (PED -8416E)
 SVY PILGRIM PLD 655S MC303031 (OAC B3031E) (P)
 HFCC FRENCHKISS 919J PFC269584 (PED -9584E)
Dam: CHARNELLE FRIESIA 2 (GKA F76E) (P)
 PALGROVE VERTICO (PK V325E)
 PALGROVE FRIESIA 19 (PK Y224E) (P)
 PALGROVE FRIESIA 10 (PK T113E) (P)

December 2015 Australasian Charolais GROUP BREEDPLAN

Charolais GROUP BREEDPLAN	GL	BW	200	400	600	Milk	\$Dom	\$Exp
EBV		+2.9	+17	+30	+43	+4	+\$0	+\$1
Acc		65%	57%	53%	53%	42%		

Buyer _____ \$ _____

Lot: 64 CHARNELLE DIGNA 138 (AI) (P)



Comments: A lovely, super soft, polled easy maintenance heifer. The one to put dollars in your pocket. Check out her \$ indexes where she is ranked in the top 5% for both the Domestic & Export markets.

Vaccinations: 7 in 1, pestigard, 3 germ blood

Vendor: G.K & K.A BLANCH **Animal ID:** GKA K47E **DOB:** 24/09/2014

BXB DATELINE SON 65R PMC303803 (PED -3803E)
 JMB DATELINE 754T PMC310942 (PED -3109E)
 JMB MARTHA 234M PFC316449 (PED -6449E)
Sire: G. BROS THIN RED LINE 527W MC326475 (OAC E6475E) (P)
 SVS MASTERCARD 2M QPMC269158 (PED -9158E)
 G BROS TULIP 101T PFC359984 (PED -9984E)
 POOLEDALE MISS CHAMA 62G PFC240875 (PED -2408E)

 LT ASSERTION 1277 M620193 (PED W1277F)
 LT BLUEGRASS 4017P M686569 (OAU Z4017E) (P)
 LT PEARLS BREEZE 2236 F956080 (PED X2236F)
Dam: CHARNELLE DIGNA 120 (GKA H25E) (P/S)
 EXCLUSIF 8589103317 (OAF J858F)
 CHARNELLE DIGNA 97 (GKA E55E) (P)
 CHARNELLE DIGNA 18 (GKA V28E) (P)

December 2015 Australasian Charolais GROUP BREEDPLAN

Charolais GROUP BREEDPLAN	GL	BW	200	400	600	Milk	\$Dom	\$Exp
EBV		-8.9	-2.6	+8	+16	+7	+\$49	+\$63
Acc		73%	68%	54%	54%	55%	35%	

Buyer _____ \$ _____

Lot: 65 CHARNELLE FRIESIA 10 (AI) (P)



Comments: Another polled Thin Red Line special! Again check out those top 5% \$ indexes of the Domestic & Export markets. Also the low birthweight & short gestation length figures.

Vaccinations: 7 in 1, pestigard, 3 germ blood

Vendor: G.K & K.A BLANCH **Animal ID:** GKA K50E **DOB:** 05/10/2014

BXB DATELINE SON 65R PMC303803 (PED -3803E)
 JMB DATELINE 754T PMC310942 (PED -3109E)
 JMB MARTHA 234M PFC316449 (PED -6449E)
Sire: G. BROS THIN RED LINE 527W MC326475 (OAC E6475E) (P)
 SVS MASTERCARD 2M QPMC269158 (PED -9158E)
 G BROS TULIP 101T PFC359984 (PED -9984E)
 POOLEDALE MISS CHAMA 62G PFC240875 (PED -2408E)

 WCR SIR FAB MAC 809 M 202427 (OAU -57E) (P)
 WCR SIR FA MAC 2244 M 234430 (OAU B2244E) (P)
 WCR MISS CENTURY 920 TWN F 354249 (OAU -58) (P)
Dam: CHARNELLE FRIESIA 4 (GKA H34E) (P)
 PALGROVE VERTICO (PK V325E)
 PALGROVE FRIESIA 19 (PK Y224E) (P)
 PALGROVE FRIESIA 10 (PK T113E) (P)

December 2015 Australasian Charolais GROUP BREEDPLAN

Charolais GROUP BREEDPLAN	GL	BW	200	400	600	Milk	\$Dom	\$Exp
EBV		-7.6	-1.3	+11	+23	+25	+\$45	+\$62
Acc		72%	68%	60%	56%	57%	38%	

Buyer _____ \$ _____



Andrew Meara **0427 210 634**
Michael Smith **0428 541 711**
Lisa Hedges **0427 891 367**
Blake Munro **0428 862 469**

*"Your Breed,
Our Team...
You Succeed"*

www.elders.com.au

Elders

Young Bulls



Lot: 66 JAY TEES JOURNALIST (AI) (P)


Vendor: JUDITH TURNER Animal ID: JT J17E DOB: 04/08/2013



HFCC PLD EVOLUTION 5L PMC256316 (PED -6316E)
 SVY FREEDOM PLD 307N PMC280878 (OAC Y2808E) (P)
 SVY PURRFECT 184L PFC303051 (PED -3051E)
Sire: GERRARD MONTEZUMA 6T MC310671 (OAC C3106E) (P)
 RPJ IMPRESSED 121L PMC261923 (PED -1923E)
 GERRARD ROXANNE 18P PFC344620 (PED -4620E)
 GERRARD ROXANNE 27M PEFC322435 (PED -2435E)

PALGROVE PATRIOT (PK P20E)
 JAY TEES YACKADOO (JT Y1E)
 PALGROVE ESTELLA 54 (PK R53E)
Dam: JAY TEES APPELLATION (JT A16E)
 FERVALE MONTY (FEN M30D)
 FERVALE STAR (FEN S44E)
 FERVALE Q-TEE (FEN Q34E)

Comments: Moderate framed, quiet led polled bull. Very complete package. Good top line, tidy sheath & plenty of soft red meat. Good polled head. Has top polled calf on the ground at JT's. (Photo available). He is PV'd & DNA recorded. Won't disappoint.

December 2015 Australasian Charolais GROUP BREEDPLAN								
 Charolais	GL	BW	200	400	600	Milk	\$Dom	\$Exp
EBV	-5.0	+1.6	+10	+21	+29	+4	+\$4	+\$9
Acc	72%	56%	53%	52%	53%	42%		

Vaccinations: 7 in 1, pestigard, 3 germ blood, 3 day sickness

Buyer _____ \$ _____

Lot: 67 JAY TEES JAMBOREE JACK (AI) (P) (TW)


Vendor: JUDITH TURNER Animal ID: JT J28E DOB: 01/11/2013



BLASON 4286100325 286100325 (PED X286F)
 IMPAIR 1893102983 (OAF N189F)
 OFFICINE (PED -945F)
Sire: PINAY 8552394134 (OAF U4134F)
 HOMERE 5892107561 (PED -7561F)
 MARY 8596100049 (OAF R8596F)
 JACINTHE 8594104550 (PED -4550F)

HCR EXODUS 9033 POLLED PMC 48566 (PED -9033E) (P)
 HCR FLASH 5074 POLLED M 252884 (OAU E5074E) (P)
 MISS HCR MAC 2015 POLLED F 415010 (OAU -36) (P)
Dam: JAY TEES ANTIPODES (JT A15E) (P)
 PALGROVE MAGNUM (PK M156E) (P)
 JAY TEES UGENICIST (JT U8E) (P)
 PALGROVE ESTELLA 54 (PK R53E)

Comments: This quiet led bull is upstanding and will cover the ground well. Good size for age and will only improve in the future. Used lightly by JT's due to his figures, pedigree and strong polled female line. Has a lot to offer. Top 30% FE, Bwt -0.3, milk + 16, Dom +38, Exp +46, NT+24. PV'ed and DNA recorded. Do not miss out.

December 2015 Australasian Charolais GROUP BREEDPLAN								
 Charolais	GL	BW	200	400	600	Milk	\$Dom	\$Exp
EBV	-5.3	-0.3	+10	+24	+32	+16	+\$38	+\$46
Acc	61%	57%	57%	56%	56%	55%		

Vaccinations: 7 in 1, pestigard, 3 germ blood, 3 day sickness

Buyer _____ \$ _____

Lot: 68 JAY TEES KONDIMENT (TW)



Vendor: JUDITH TURNER **Animal ID:** JT K5E **DOB:** 25/06/2014

IMPAIR 1893102983 (OAF N189F)
 PINAY 8552394134 (OAF U4134F)
 MARY 8596100049 (OAF R8596F)
Sire: JAY TEES HYDRANT (JT H6F)
 BIG SNOW GOLD BULLION R/F (KRL V80F)
 BALERE STATION ERIN E2 (RFS E2F)
 AIRLIE REBECCA B22F (A1S B22F)
 PALGROVE PATRIOT (PK P20E)
 JAY TEES YACKADOO (JT Y1E)
 PALGROVE ESTELLA 54 (PK R53E)
Dam: JAY TEES APPELLATION (JT A16E)
 FERVALE MONTY (FEN M30D)
 FERVALE STAR (FEN S44E)
 FERVALE Q-TEE (FEN Q34E)

Comments: Led bull with red factor Full French sire & red factor twin brother. Moderate framed good confirmation & coverage. Excellent figures bwt +1.6, 200 day +17, 400 day +32, 600 day +45, milk +9, dom +25, exp +30, nt +23. Top pedigree including Impair, Pinay, Big Snow Gold Bullion, Airlie Rebecca, Palgrove Patriot & Estella, and Fernvale Monty – RNA winner. PV'ed & DNA recorded. Should be excellent!!

Vaccinations: 7 in 1, pestigard, 3 germ blood, 3 day sickness

December 2015 Australasian Charolais GROUP BREEDPLAN								
Charolais GROUP BREEDPLAN	GL	BW	200	400	600	Milk	\$Dom	\$Exp
EBV		+1.6	+17	+32	+45	+9	+\$23	+\$30
Acc		57%	46%	45%	45%	38%		

Buyer _____ \$ _____

Lot: 69 JAY TEES KAISER (AI)



Vendor: JUDITH TURNER **Animal ID:** JT K9F **DOB:** 07/09/2014

HARNOIS 7192124090 7192124090 (OAF M7192F)
 ROOSVELT 8541876919 (PED -6919F)
 NATTY 8597104805 (PED -4805F)
Sire: UFANO 5454635328 (IAF Y5328F) (P)
 HELSINKI 2392101366 (OAF M239F)
 ROSIE 5703377641 (PED -7641F)
 MERVEILLE 4297105855 (PED -5855F)
 IMPAIR 1893102983 (OAF N189F)
 FERVALE ZAMBO (FEN Z73F)
 FERVALE ULVERA (FEN U61F)
Dam: JAY TEES EMPRESS OF OZ (JT E13F)
 PALADIN 4240299352 (OAF U9352F) (P)
 JAY TEES ARISTOCRACY POLLED 1 (JT A13F) (P)
 PINNAROO NOBILITY 1 (BAA N44F) (P)

Comments: Now here's a special one!! Led Full French with quite a few polls in his pedigree. Great growth for age. Not quite 18 months. Ready to work if used sensibly while young. Figures excellent, bwt +1.5, 200 day +17, 400 day +28, 600 day +41, milk +5, dom +21, exp +29, nt +25. Hard for JT's to sell this one. Whole herd tested Pestivirus free.

Vaccinations: 7 in 1, pestigard, 3 germ blood, 3 day sickness

December 2015 Australasian Charolais GROUP BREEDPLAN								
Charolais GROUP BREEDPLAN	GL	BW	200	400	600	Milk	\$Dom	\$Exp
EBV	-1.8	+1.5	+17	+28	+41	+5	+\$21	+\$29
Acc	69%	49%	46%	42%	42%	32%		

Buyer _____ \$ _____

Did you know!!!

That "Anna Creek Station" in South Australia is the largest working cattle property in the world. It is 24,000 square kilometres in size, about 6,000,000 acres. It is 1,977,000 acres larger than its nearest rival, "Alexandria Station", Northern Territory. Anna Creek Station is more than seven times the size of "King Ranch", Texas USA, which is 825,000 acres, about 3,340 square kilometres. It is larger in size than countries like Israel and Belgium.

Lot: 70 JAY TEES KRYPTONITE (AI) (P) (R/F)

Tested Homozygous Polled



Vendor: JUDITH TURNER **Animal ID:** JT K11E **DOB:** 21/10/2014

LT WYOMING WIND 4020 PLD M411450 (OAU P4020E) (P)
 THOMAS OAHE WIND 0722ET P PMC262717 (PED -2717E)
 THOMAS MS CAMELOT 5646 F740225 (PED -5646E)
Sire: TR MR FIRE WATER 5792RET M704588 (OAU A4588E) (P)
 LHD CIGAR E46 M 434790 (OAU Q46E) (P)
 THOMASSWISSERSWEET1764ET F919932 (PED -9932E)
 THOMAS MS BONANZA 8698 F819402 (PED -9402E) (P)

 HCR EXODUS 9033 POLLED PMC 48566 (PED -9033E) (P)
 HCR FLASH 5074 POLLED M 252884 (OAU E5074E) (P)
 MISS HCR MAC 2015 POLLED F 415010 (OAU -36) (P)
Dam: JAY TEES ALUMINA (JT A18E) (P)
 LAUREL 7195122401 (OAF Q7195F)
 JAY TEES YUROPA (JT Y12E)
 PALGROVE ESTELLA 33 (PK N246E)

Comments: Tested Homozygous polled quiet led bull with excellent growth for age. Only 17 months with very sound figures, good soft coverage with a fine coat. Ready to work if used lightly while young, giving extra season. PV'ed & DNA recorded. Whole herd Pestivirus free. You won't be disappointed.

December 2015 Australasian Charolais GROUP BREEDPLAN								
Charolais GROUP BREEDPLAN	GL	BW	200	400	600	Milk	\$Dom	\$Exp
EBV	-0.1	+1.0	+7	+18	+22	+13	+\$14	+\$16
Acc	69%	51%	52%	47%	46%	37%		

Vaccinations: 7 in 1, pestigard, 3 germ blood, 3 day sickness

Buyer _____ \$ _____

Lot: 71 YURANGA PARK KURRAJONG (P)

Vendor: MITCHELL LOLLBACK **Animal ID:** M4L K6E **DOB:** 01/10/2014



LINKLETTER A11E (LJA A11E) (P)
 TLD FREDERICK (TLD F1E) (P)
 ADVANCE LIBERTY Y73 (ADV Y73E)
Sire: TLD HUGE HARRY (TLD H2E) (P)
 CHAROSE (XB DUKE) (C2R X8E) (P)
 SONREAP REGENCY 1 (REA Z2E) (P)
 MIXHILL REGENCY (MIX R18E)

 LT UNLIMITED EASE 9108 M 301930 (OAU J9108E)
 BALDRIDGE FASTTRACK 82E M447863 (OAU R82E) (P)
 BALDRIDGE SWEETHEART 53D F711331 (PED -1331E) (P)
Dam: MOUNTVIEW CHAMPAGNE (IJB C36E) (P)
 CCR SURESHOT 1107F7 ET 456598 (OAU R1107E) (P)
 MOUNTVIEW LOLA (IJB A29E) (P)
 NORFOLK PARK KINSMAN'S PANDORA (CGE W101E)

Comments: There is a lot to like about this young potential sire. Kurrajong has always been a standout since a calf and has been shown successfully. He is a growthy young bull that at just 17 months carries that extra softness and fleshiness while still being very correct on those feet and legs. You can't dismiss Kurrajong's pedigree with lines of both the legendary low birthweight bull in Baldrige Fasttrack and also the well-known champion cow in Advance Liberty Y73. A young bull that shouldn't be dismissed lightly.

Stop press 30/01/2016: Kurrajong (P) has won Supreme Champion Bull (all breeds) at the Stanthorpe Show. A show of about 90 head.

December 2015 Australasian Charolais GROUP BREEDPLAN								
Charolais GROUP BREEDPLAN	GL	BW	200	400	600	Milk	\$Dom	\$Exp
EBV						+8		
Acc						31%		

Vaccinations: 7 in 1, pestigard, 3 germ blood, 3 day sickness

Buyer _____ \$ _____

**“ The farmer is the only man in the economy who buys everything at retail, sells everything at wholesale, and pays the freight both ways”
 John F. Kennedy**

Lot: 72 YURANGA PARK JERICO (AI) (P/S)

Vendor: MITCHELL LOLLBACK **Animal ID:** M4L J2E **DOB:** 14/11/2013



LT WESTERN SPUR 2061 PLD M645785 (OAU X2061E) (P)
 LT WESTERN EDGE 4057 PLD M686616 (OAU Z6616E) (P)
 LT DUCHESS OF MAC 7076 P F792993 (PED -2993E)
Sire: LT STAGECOACH 8068 PLD M760644 (OAU D7606E) (P)
 LT WYOMING WIND 4020 PLD M411450 (OAU P4020E) (P)
 LT LADY MACBETH 2131 PLD F956197 (PED -6197E)
 LT LADY MACBETH 8413 ETP F832754 (PED -2754E)

FERNVALE TRAPPER (FEN T50E)
 ROSEDALE ZAMBI (MR Z166E)
 ROSEDALE CONFIDENCE S106 (MR S106E) (P)
Dam: BAROOLA BRONWYN F363E (NCF F363E)
 PINNAROO FREEDOM (BAA T50E)
 BAROOLA BRONWYN 2 (NCF V332E)
 BAROOLA BRONWYN (NCF T76E)

Comments: A moderate framed bull that is structurally correct while still having that softness and do ability. Jericho is by American sire in LT Stagecoach, a bull that is underrated but his calves are always standouts. A 28 month old sire that stood third in his class at the EKKA in 2015. Another outstanding calf that will do the job desired.

Vaccinations: 7 in 1, pestigard, 3 germ blood, 3 day sickness

December 2015 Australasian Charolais GROUP BREEDPLAN								
Charolais GROUP BREEDPLAN	GL	BW	200	400	600	Milk	\$Dom	\$Exp
EBV						+15	+\$49	+\$67
Acc						38%		

Buyer _____ \$

Lot: 73 YURANGA PARK KRACK'A'JACK (AI) (P)

Vendor: MITCHELL LOLLBACK **Animal ID:** M4L K5E **DOB:** 20/09/2014



LT WYOMING WIND 4020 PLD M411450 (OAU P4020E) (P)
 THOMAS OAHE WIND 0722ET P PMC262717 (PED -2717E)
 THOMAS MS CAMELOT 5646 F740225 (PED -5646E)
Sire: TR MR FIRE WATER 5792RET M704588 (OAU A4588E) (P)
 LHD CIGAR E46 M 434790 (OAU Q46E) (P)
 THOMASSWISSERSWEET1764ET F919932 (PED -9932E)
 THOMAS MS BONANZA 8698 F819402 (PED -9402E) (P)

M6 GRID MAKER 104 PET M633377 (OAU W3377E) (P)
 EC NO DOUBT 2022 P M685500 (OAU Z2022E) (P)
 EC LADY DUKE 2022 P F956614 (PED -2022E) (P)
Dam: JAY TEES GISELLE (JT G6E) (P)
 NOLLER BONZER B16E (JLN B16E)
 CRATHES CLASSIC 6 (KRG D24E)
 CRATHES CLASSIC 3 (KRG A22F)

Comments: One of the first ever bulls to be sold in Australia by the 2007 American National Champion Charolais Bull, TR Mr Fire Water 5792. At only 17 months this young bull has been shown successfully on his mother, a very impressive EC No Doubt daughter. While having a significant North American influence in his pedigree this bull still has the structural correctness and good feet and legs. A young bull with sire appeal and a low birth weight that will go on and serve heifers or cows with ease

December 2015 Australasian Charolais GROUP BREEDPLAN								
Charolais GROUP BREEDPLAN	GL	BW	200	400	600	Milk	\$Dom	\$Exp
EBV	-2.9					+11	+\$13	+\$18
Acc	51%					33%		

Vaccinations: 7 in 1, pestigard, 3 germ blood, 3 day sickness

Buyer _____ \$

United Cattle Breeding Service

P.O. Box 43, 71 Haigs Rd , ALLORA, QLD. 4362
PH: 07 4666 3376 Fax: 07 4666 3334
Email: ucbsone@gmail.com

Contact: John Atkinson or Johnny Osborne
FOR

AUSTRALIAN & IMPORTED SEMEN SUPPLIES

AI EQUIPMENT

TANK AND SEMEN STORAGE

LIQUID NITROGEN SALES
& ON FARM DELIVERY



Contact: Peter Atkinson BVSc

Mob: 0428 721 300 Email: pcatkinson@bigpond.com

FOR

Embryo Transfer and AI programs

Custom Semen Collection

Reproductive Ultrasonography

- ✓ Early pregnancy diagnosis
- ✓ Foetal sexing



Ultrasound and Embryo Transfer

There have been many improvements in equipment and techniques for cattle embryo transfer over the last 20 years. Principal amongst these has been the transition to non-surgical embryo transfer and the consistent availability of quality follicle stimulating hormone (FSH).

However I believe one of the most significant advances has been the availability of “portable” high resolution ultrasound machines.

We now use trans-rectal ultrasound images to determine the follicular size and number to ensure insemination is correctly timed.

Recipients are routinely scanned before embryo transfer to ensure there is a suitable corpus luteum (CL) and a visibly clean uterine lumen.

Pregnancy testing can be performed at 4 weeks to ensure the empty recipients can be quickly reprogrammed.

Ultrasound foetal sexing between 8 and 10 weeks has been very useful for forward planning in the dairy industry, but is now becoming common place in beef AI and ET programs.

The diagnosis of uterine infections and foetal mummies and the aspiration of cystic ovarian structures have been very useful applications for a crush side ultrasound machine.

Ultrasound imaging does not replace the need for developing good manual skills when examining the reproductive tract of a cow. But in our hands this technology provides detail and understanding that have improved conception rates and the efficiency of our embryo transfer and AI programs.

Peter Atkinson BVSc



It has taken time and effort to acquire a top quality female herd to form the backbone of the stud operations. We now have a mix of Red Factor, Polled, Soft, Maternal and Full French females with great genetics. Aided by a battery of breed leading AI sires, we are now able to create industry focused white or red factor progeny with acceptable breed plan figures concentrating on poll, birthweight, milk, along with good temperament and feet.

We rely on an extensive embryo transfer program to realise our ambitions and goals using our donors and our large selection of old, rare and new AI bull to create a “smorgasbord” of frozen embryos for use and sale.

Embryo Packages



"There is a female at the beginning of all great things" (Alphonse de Lamartine)

Lot 74 Flush in GOBONGO REBBY (AI)(ET)(P)(R/F) GO D213E Comprising of 6 "A" Grade Embryos Account: Valley View Charolais

Conditions of sale: Flush in GOBONGO REBBY GO D213E (ET)(AI)(P)(R/F) with two semen straws of your choice. Guarantee minimum of 6 "A" Grade Embryos. All procedures, including existing flushes, from planning through to recovery & freezing of embryos will be performed by Embryo Technician Peter Atkinson BVSC, including the assessment of semen quality before A.I. of the donor.

Purchaser responsible for all semen costs, (two semen straws), embryo delivery costs to and from UCBS. All flushing and freezing costs in purchase price, with a 50% guarantee on "A" Grade Embryos if implant work is completed by an approved Embryo Technician.



DEER CREEKS ROMERO 5C
LANG'S ERIC THE RED 3E (P/S)
CHARLANG DUCHESS 272 (P/S)
Sire: HARVIE JAGER 65J PMC 228759 (P) OACU8759E (P)
HARVIE DOMINATION 83 D
HARVIE MISS FRANCIS 47F FC 234929
PAR MISS 13B

PALGROVE Q.C.L. (AI)(ET) (P) PK Q59E
PALGROVE TRADER PKT128E (H)
PALGROVE FELICITY 24 (AI) PK N84E
Dam: GOBONGO REBBY W100E GOW100E (D)
PALGROVE ROMEO (AI)(ET) PKR211E
GOBONGO REBBIE GOU44E (D)
REBBEN REBBY Q1E (P) RBN Q1E

Buyer _____ \$ _____

Comments: From the award winning genetic female line in all Eastern Royal Shows. A very unique pedigree from proven Gobongo Rebbly W100 and the high performance female producing sire Harvie Jager, passing on all his weight gain power. All excess embryos were sought after and have been sold. Successfully flushed to Cigar, LT Wyoming Wind, LT Rio Bravo & Golden Eagle. All progeny are "Quality Animals". Please refer to the "Valley View Charolais" Website for more details and photos of all their Donor Cows.

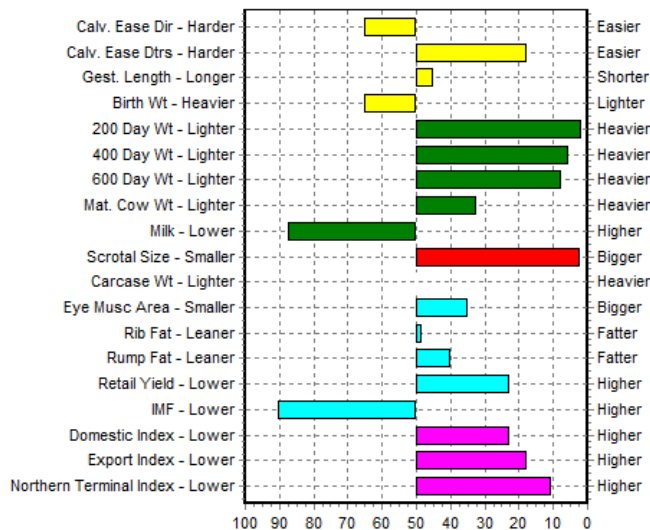


Gobongo Rebbly D213E natural son PCK K15E



GO D199E – Gobongo Rebbly sister

EBV Percentiles for GOBONGO REBBY D213E (AI) (ET) (P) (R/F)



50th Percentile is the Breed Avg. EBVs for 2013 Born Calves

Lot: 75 - 4 A Grade Embryos – Fernvale Chiffon FEN C22E x \$ Montana Silver (P)



Vendor: Valley View Charolais
Pedigree of resultant calves

\$ SILVRROE (P)
\$CECILE COBB (P)
H & S MISS 04080 (P)
Sire: **OAU4024E \$ MONTANA SILVER M454024 (P)**
\$ STAGECOACH (P)
\$ STAGE'S MISS DC BAR (P)
\$ RESOURCE'S DC BAR (P)

FERNVALE NERO
FERNVALE RIPPER
BOTTLETREE CYNTHIA SPAC2D
Dam: **FEN C22E FERNVALE CHIFFON (AI)(ET) FEN C22E**
FLEETS RASCAL IAEF6170F
FERNVALE PRIMADONNA (AI)(ET)
FERNVALE JA-CIE

Comments: Legend is not used lightly when two of the breed's greats come together in a breed leading package. The "Primadonna" daughter Chiffon, and the sire of sires \$Montana Silver. We knew we had a winner from a prior A.I. that produced a cracking polled heifer VLW J6E. Chiffon is a full sibling to the \$35,000 Trapper, \$24,000 Vienta, \$14,250 Yellow Gold & the list goes on. These are top shelf genetics with top shelf Breedplan expected in this great package. We guarantee 50% conception if transferred by an approved ET Technician.

Lot 75 x 4 A Grade Embryos /Price per Embryo.

Buyer _____ \$ _____

Lot: 76 - 4 A Grade Embryos – Valley View Chiffon Silver VLWJ6E x LHD Cigar (P)



Vendor: Valley View Charolais
Pedigree of resultant calves

WCR SIR PERFECTION 734
LHD MR PERFECT Y416
LHD MS SHOWME OFF W159
Sire: **OAUQ46E LHD CIGAR E46 (P)**
LHD MR BELLMARK R213
LHD MS CLASSIC BELL X613
OCR CLASSIC QUEEN 46N

\$ CECILE COBB (P)
\$ MONTANA SILVER M454024 (P)
\$ STAGE'S MISS DC BAR (P)
Dam: **VLW J6E VALLEY VIEW CHIFFON SILVER (AI)(P) VLW J6E**
FERNVALE RIPPER
FERNVALE CHIFFON (AI)(ET)
FERNVALE PRIMADONNA (AI)(ET)

Comments: You expect something very special combining superior genetics of breed leaders "Primadonna" & Montana Silver on the dam side with the legend LHD Cigar on the sire side. These embryos tick all the boxes. The dam VLW J6 was such an extraordinary A.I. calf; we repeated the process and flushed her mother to secure 12 A grade embryos, some of in which are catalogued. . We guarantee 50% conception if transferred by an approved ET Technician.

Lot 76 x 4 A Grade Embryos /Price per Embryo.

Buyer _____ \$ _____

Lot: 77 - 4 A Grade Embryos – Valley View Friesia Z22 (P) VLW H22E x SVY Pilgrim (P)



Vendor: Valley View Charolais
Pedigree of resultant calves

LT RIO BLANCO 1234 P M620591 (OAU W591E) (P)
 SVY PIONEER 402P MC288416 (PED -8416E)
 SVY JINGLES 153L FC303049 (PED -3049E)
Sire: SVY PILGRIM PLD 655S MC303031 (OAC B3031E) (P)
 RGP EUREKA 17E PMC179283 (OAC Q17E) (P)
 HFCC FRENCHKISS 919J PFC269584 (PED -9584E)
 QCR FRENCHKISS 33F FC238979 (PED -8979E)

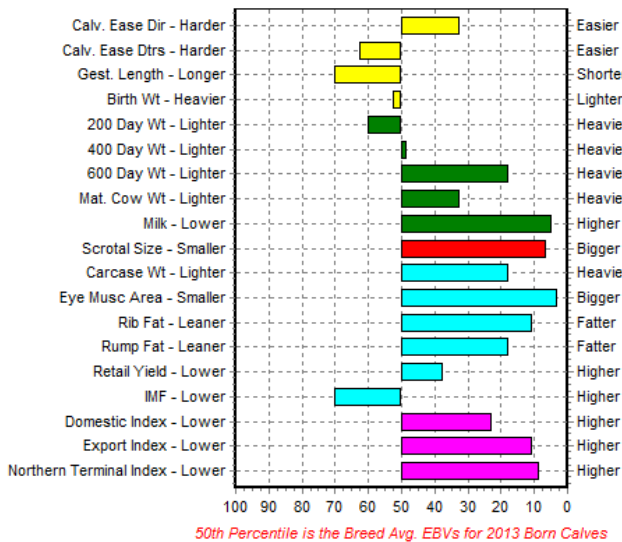
LT RIO BLANCO 1234(P)
 LT RIO BRAVO 3181 (P) OAU5507E
 LT 7N OF DUKE 9083 (P)
Dam: VLWH22E VALLEY VIEW FRIESIA Z 22 (AI)(ET)(P) VLWH22E
 TALIS UNCLE VINCE TALU220E
 ADVANCE FRIESIA Z 56 (P)(R/F) ADVZ56E
 MIXHILL T216E (P) MIXT216E

Comments: ET daughter of RNA Sydney Royal Interbreed Champion Heifer, & maternal sister to THW D V8, Interbreed, Junior & Grand Champion bull Sydney. By the breed leading U.S. bull LT Rio Bravo in producing this awesome cow. Crossed with SVY Pilgrim, these embryos will produce the complete package – polled, birthweight, milk, great growth, scrotal, EMA & fat. A pedigree stacked with proven genetics. We guarantee 50% conception if transferred by an approved ET Technician.

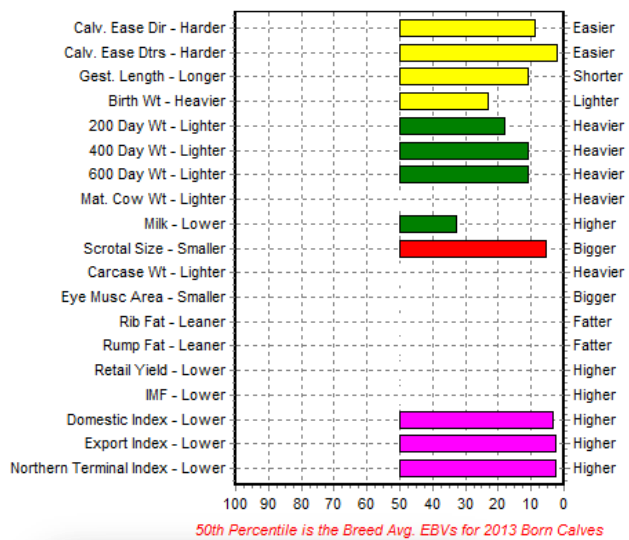
Lot 77 x 4 A Grade Embryos /Price per Embryo.

Buyer _____ \$ _____

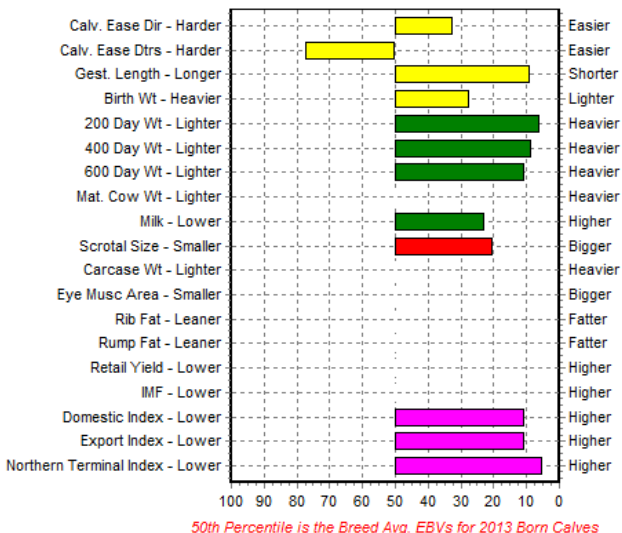
EBV Percentiles for FERNVALE CHIFFON (AI) (ET)



EBV Percentiles for VALLEY VIEW CHIFFON SILVER (AI) (P)



EBV Percentiles for VALLEY VIEW FRIESIA Z22 (AI) (ET) (P)



THW DEE V8

➤ Advance
 ➤ Friesia Z56



Lot: 78 - 2 A Grade Embryos – Charnelle Digna 40 (P)(ET) GKA Z52E x D'Angely (P)(FF)



Vendor: G & K Blanch
Pedigree of resultant calves

DURANDAL (PAUPINAT GILLES) RR2 5888117903 (OAF X5888F)
 VULCAINDEL FR 3615064046 (OAF -4046F)
 ONCTUEUSE FR 3698001706 (OAF -1706F)
Sire: D ANGELY R FR 8900458116 (OAF D8116F) (P)
 RAMSESDERA 001235000713 (PED -713F)
 ULLA 01235000870 01235000870 (OAF -870F)
 MILICE 8996101424 8996101424 (OAF -1424A)
 TILL FMC6073 (OAF B816F)
 EXCLUSIF 8589103317 (OAF J858F)
 REINETTE 85 80108477 (PED X8580F)
Dam: CHARNELLE DIGNA 40 (GKA Z52E) (P)
 WCR SIR FA MAC 2244 M 234430 (OAU B2244E) (P)
 PALGROVE DIGNA 36 (PK N168E) (P)
 PALGROVE DIGNA 6 (PK G105E) (P)

Comments: This mating of D'Angely (Don ga lea) and Digna Z52E is consistency and predictability at its best. Check out the heifers as lots 21 & 22, and you will see the type and quality you will get. Digna 40 has been an exceptional cow for us with one of sons C. Empire, (photo next page) selling for \$8750, and a daughter C. Digna 74 D5E, one of our best cows. Typical "Charnelle Blend" of French, (Exclusif & D'Angely) and poll (Mac 2244) genetics. We guarantee 50% conception if transferred by an approved ET Technician. Embryos dispatched from UCBS Allora.

Lot 78 x 2A Grade Embryos /Price per Embryo.

Buyer _____ \$ _____



➤ **R C Charlie**, Sire of Donor Dam Lot 79



Lot: 79 - 2A Grade Embryos – Charnelle Elle (P)(ET)(IMP) GKA E10E x Harvie Redemption



Vendor: G & K Blanch
Pedigree of resultant calves

SCHURRTOP 5627 M 300802
 LT WYOMING WIND 4020 PLD M411450 (P)
 LT CHAPS LADY 217 OP F 634394
Sire: OACZ6641E HARVIE REDEMPTION 36P MC286641 (P)
 HARVIE JAGER 65J PMC228759 (P)
 HARVIE MS MOLSON 53M QPFC316280 (P)
 HARVIE MISS FIREFLY 31FPFC234926 (P)
 SCRSUPERCHARLIE0767PLD F610325 (PED -325E)
 RC CHARLIE 0327 M672200 (OAU Y2200E) (P)
 RC NICHOLE 9821 F826248 (PED -6248E)
Dam: GKA E10E CHARNELLE ELLE (GKA E10E) (P)
 CCR JACKPOT 1410K5 PET M613330 (PED -3330E)
 MS CC JACKPOT 1107M55 F970558 (OAU X558E)
 MS CCR TRADIT 1107K5 PET F916637 (OAU V6637E) (P)

Comments: Charnelle Elle is the result of an imported embryo from the Camp Cooley Ranch USA, by RC Charlie. She is very typical of the US Charolais type with top of the range low birthweight, growth, milk & softness. Check out her graph on the next page. C. Elle E10E has been tested Homozygous Polled. When you mate all that with one of the most influential red sires in recent times, you are bound to get something special. We have just had two bull, ET calves on the ground from Elle, by Galway which are very smart indeed. We guarantee 50% conception if transferred by an approved ET Technician. Embryos dispatched from UCBS Allora.

Lot 79 x 2 A Grade Embryos /Price per Embryo.

Buyer _____ \$ _____



Lot: 80 - 2 A Grade Embryos – Palgrove Appeal 30 (ET) PK B814E x Harvie Redemption

Vendor: G & K Blanch
Pediaree of resultant calves

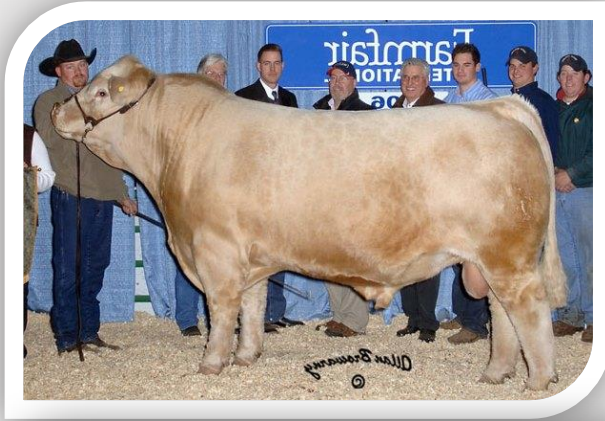
SCHURRTOP 5627 M 300802
 LT WYOMING WIND 4020 PLD M411450 (P)
 LT CHAPS LADY 217 OP F 634394
Sire: OACZ6641E HARVIE REDEMPTION 36P MC286641 (P)
 HARVIE JAGER 65J PMC228759 (P)
 HARVIE MS MOLSON 53M QPFC316280 (P)
 HARVIE MISS FIREFLY 31FPFC234926 (P)

BLELACK RUSTIC
 GOLDIES UNBEATABLE MBM0012710
 BLELACK RIPPLE
Dam: PK B814E PALGROVE APPEAL 30 PK B814E
 MNE GOLDEN EAGLE 25W
 IDELWILD APPEAL 2 1JJ R62E
 IDELWILD NEWMOON 1JJ N33E

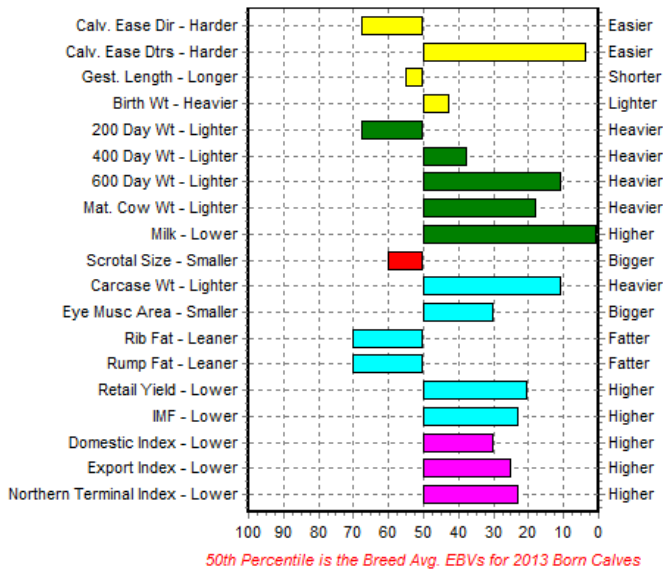
Comments: The combination of Harvie Redemption and Palgrove Appeal 30 will result in the best of structural correctness, length, growth, muscle & eye appeal. P. Appeal 30 was the dam of our best-selling bull in 2014, C. Honda, who was by a H. Redemption son C. Federation. Another son, Charnelle Freedom (P) sold to Cobblestone Charolais, WA in 2011, as a yearling. We guarantee 50% conception if transferred by an approved ET Technician. Embryo dispatched from UCBS Allora.

Lot 80 x 2 A Grade Embryos /Price per Embryo.

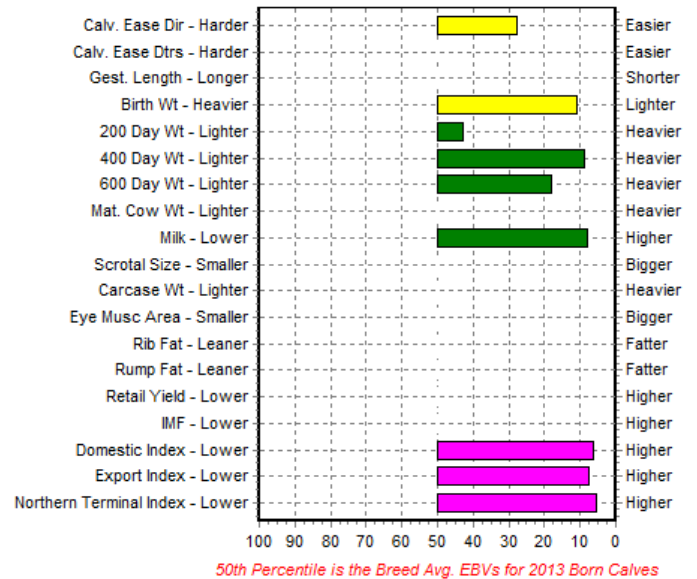
Buyer _____ \$ _____



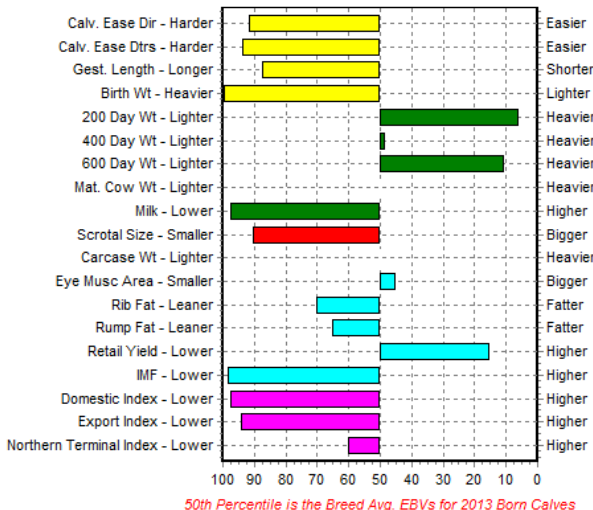
EBV Percentiles for CHARNELLE DIGNA 40 (AI) (ET) (P)



EBV Percentiles for CHARNELLE ELLE (AI) (ET) (P)



EBV Percentiles for PALGROVE APPEAL 30 (AI) (ET)



➤ C. Empire son of
 ➤ Charnelle Digna 40 Z52E

➤ C. Honda son of
 ➤ Palgrove Appeal 30 PK
 B814E



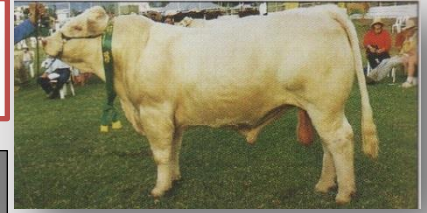
SEMEN

4 Straws of Semen account River Run Charolais
Semen sold as price per Straw. Semen dispatched from UCBS Allora.

Lot 81 – 1 Straw Fernvale Primemover

Price per straw

Purchaser/ Buyer _____ \$ _____



Fernvale Primemover

Lot 82 – 1 Straw Gobongo Villeroy

Price per straw

Purchaser/ Buyer _____ \$ _____



Gobongo Villeroy

Lot 83 – 1 Straw GCR Mighty Adonis

Price per straw

Purchaser/ Buyer _____ \$ _____



GCR Mighty Adonis

Lot 84 – 1 Straw LT Thundering Wind

Price per straw

Purchaser/ Buyer _____ \$ _____

9 Straws of Semen account David & Christine Blake
Semen sold as price per Straw. Semen dispatched from UCBS Allora.

Lot 85 – 4 Straws Impair OAFN189F

Price per straw

Purchaser/ Buyer _____ \$ _____



LT Thundering Wind

Lot 86 – 3 Straws Exclusif

Price per straw

Purchaser/ Buyer _____ \$ _____



Impair

Lot 87 – 1 Straw WCR FA Mac 2244

Price per straw

Purchaser/ Buyer _____ \$ _____

Lot 88 – 1 Straw Tattenhall Impeccable

Price per straw

Purchaser/ Buyer _____ \$ _____

278 Straws of Semen account Connie Brazel
(Glen Eagle) Original Charolais Breeders – semen stored Vix Stock Breeding Tamworth. All semen has been checked to be in good condition. Semen sold as price per straw.

Lot 89 – 10 Straws Sucre

Price per straw

Purchaser/ Buyer _____ \$ _____



Exclusif

Lot 90 – 9 Straws Sucre

Price per straw

Purchaser/ Buyer _____ \$ _____



Mac 2244

Lot 91 – 20 Straws Apollon

Price per straw

Purchaser/ Buyer _____ \$ _____

Lot 92 – 25 Straws Apollon

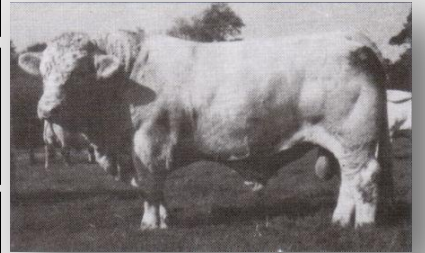
Price per straw

Purchaser/ Buyer _____ \$ _____

Lot 93 – 20 Straws Excalibur

Price per straw

Purchaser/ Buyer _____ \$ _____



Tattenhall Impeccable

Lot 94 – 27 Straws Excalibur

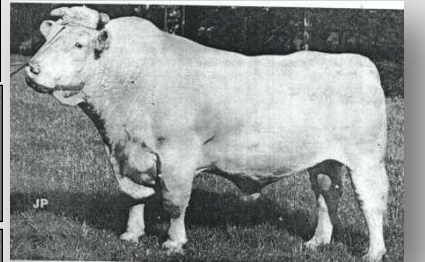
Price per straw

Purchaser/ Buyer _____ \$ _____

Lot 95 – 10 Straws Mr Palmer

Price per straw

Purchaser/ Buyer _____ \$ _____



Sucre

Lot 96 – 10 Straws Mr Palmer

Price per straw

Purchaser/ Buyer _____ \$ _____

Lot 97 – 16 Straws MMB Gladiator

Price per straw

Purchaser/ Buyer _____ \$ _____

Lot 98 – 16 Straws MMB Gladiator

Price per straw

Purchaser/ Buyer _____ \$ _____



Apollon

Lot 99 – 20 Straws Crown (P)

Price per straw

Purchaser/ Buyer _____ \$ _____

Lot 100 – 25 Straws Crown (P)

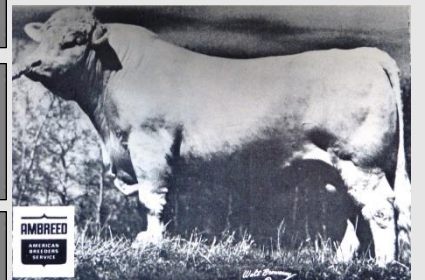
Price per straw

Purchaser/ Buyer _____ \$ _____

Lot 101 – 20 Straws WBF Power (P)

Price per straw

Purchaser/ Buyer _____ \$ _____



Excalibur

Lot 102 – 14 Straws WBF Power (P)

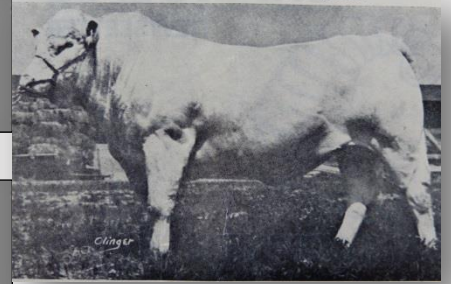
Price per straw

Purchaser/ Buyer _____ \$ _____

Lot 103– 7 Straws Canadian Meridian (P)

Price per straw

Purchaser/ Buyer _____ \$ _____



Canadian Meridian

Lot 104 – 7 Straws Canadian Meridian (P)

Price per straw

Purchaser/ Buyer _____ \$ _____

Lot 105 –16 Straws Lazy JR Cadet

Price per straw

Purchaser/ Buyer _____ \$ _____



Lazy JR Cadet 5C

Lot 106 – 16 Straws Lazy JR Cadet

Price per straw

Purchaser/ Buyer _____ \$ _____

Notes

"To breed Charolais is good; to breed good Charolais is better; to breed better Charolais is an achievement! It is an endeavour which lasts a lifetime; which tests the resourcefulness, intelligence and judgement of a breeder. It is a labour that never ends, but never tires". MANUEL ELIZONDO 1922 - 2008. Note: Manuel was very instrumental in Charolais development in North America. (Charolais Banner Feb. 2009.)

QUEENSLAND LIVESTOCK AGENTS ASSN LTD

STANDARD STUD STOCK - AUCTION TERMS AND CONDITIONS OF SALE

CONDITIONS

IMPORTANT NOTICE

All bids shall be treated as offers made upon

1. The highest bidder shall, subject to Conditions 2, be the purchaser provided that the vendor reserves the right to bid either by himself or through his agent or auctioneer and should any dispute arise among the bidders for any lot, during or immediately after sale of the lot, it shall be settled at the auctioneer's absolute discretion who may, should one of the disputants advance, put the lot or lots up again. The bidding from time to time shall be regulated by the auctioneer and no bid shall be retracted.
2. The sale will be conducted on a "Sale" or "No Sale" basis, whereby the lot for sale shall be knocked down to the highest bidder, but the sale will be subject to the acceptance of the highest bidder such bidder will have the right of first refusal of the lot at the vendor's nominated price for one hour after the lot has been passed out of the ring on the Terms and Conditions herein set forth in so far as they shall apply.
3. The details of the purchaser, the purchase price and the lot sold as recorded by the Sale Clerk for and on behalf of the auctioneer shall be equally binding on both purchaser and vendor.
4. The auctioneer expressly reserves the right, without giving any reason therefore to:-
 - (a) Refuse to acknowledge any bid;
 - (b) Withdraw any lot or lots before or during the sale;
 - (c) Exclude any person from the auction venue should it think fit.
5. Each lot in all cases shall be at the risk and expense of the purchaser, upon acceptance of his bid by the vendor or upon acceptance of the highest bidder's offer by the vendor whichever shall be the earlier.
6. Except as expressly provided in these Terms and Conditions of Sale no guarantee or warranty shall be given in respect of any lot sold under these conditions as made before or at the time of the sale, or from any circumstances of the sale, but in all cases where a guarantee is intended the same shall attach and be enforceable only if reduced to writing before delivery of the lot and signed by the vendor or by the auctioneer acting as agent for the vendor, and the absence of such writing shall be conclusive evidence in case of dispute that no guarantee, warranty or condition whatsoever was given or implied.
7. In the event of any dispute in respect to the sale of any lot:-
 - (i) The purchaser shall nevertheless be obliged to pay to the auctioneer the full purchase price and any other moneys or interest payable by the purchaser in accordance with these Terms and Conditions;
 - (ii) The vendor and the purchaser shall resolve the dispute between themselves;
 - (iii) The auctioneer shall have no liability or responsibility in regard to the dispute; and
 - (iv) No lot shall be returned to the auctioneer and the purchaser shall indemnify the auctioneer for all costs, expenses and damages which the auctioneer is put to or incurs by reason of the purchaser so doing.
8. The name of the vendor for whom the auctioneer acts is acknowledged to have been furnished to purchasers prior to sale and further particulars will in all cases be furnished to a purchaser if required. In the case of any dispute the remedy of the purchaser shall be against the vendor only and in no case or under any circumstances against the auctioneer who is to be regarded for all intents and purposes as agent for a disclosed principal.
9. (a) PAYMENT - Unless prior credit arrangements have been made in writing with the auctioneer the full purchase price for each lot shall be due and payable to the auctioneer in cash upon acceptance of the highest bid or the highest bidders' offer by the vendor and prior to delivery. Notwithstanding that delivery is given to or possession obtained by the purchaser or his representative prior to the payment of the purchase money in full the property in any lot which is sold shall not pass to the purchaser until the full purchase price and cheques, promissory notes, bills of exchange, acceptance orders or drafts given in connection with such payment have been paid and liquidated and until property shall pass, the purchaser shall hold such lot as Bailee, provided that in all cases should such payment not have been made and liquidated within 14 days of the date of the sale the auctioneer reserves the right to:
 - (i) Rescind the contract on behalf of the vendor and repossess and resell any lot;
 - (ii) Recover from the purchaser interest upon the purchase price at a rate per annum which aggregates the AMBA Bill Rate and two per centum. For the purposes of this condition, the expression "The AMBA Bill Rate" is the rate published by the Australian Merchant Banker's Association in good faith as at the date of the sale as its Bill Rate for 180 day Bills of Exchange expressed as a percentage per annum. If at any time the AMBA Bill Rate becomes unavailable for any reason, the auctioneer shall determine and advise the purchaser for the interest rate to apply for the purpose of this condition.
9. (b) The auctioneer is selling as the del credere agent of the vendor and the full purchase price of any lot sold shall be payable by the purchaser to the auctioneer and be fully recoverable by the auctioneer in its own name.
10. If the purchaser shall neglect or fail to comply with any of the within conditions any lot purchased by him may be immediately resold by Public Auction or Private Contract, with or without notice, at the risk of the former purchaser, who will be held responsible for all loss and without notice, at the risk of the former purchaser, who will be held responsible for all loss and expenses arising out of such resale, and shall not participate in any profit accruing therefrom.
11. Any vendor or purchaser removing the Sale Number from any lot after it has been sold will fully indemnify all affected parties for any loss, costs or damages should the lot be wrongly delivered.
12. The purchasers, if more than one, shall be jointly and severally bound by these Terms and Conditions and shall jointly and severally carry out and perform sale.
13. Any person who advances a bid on a lot shall do so on the expressed condition and understanding that should that person's bid be the highest bid and such bid is accepted by the vendor, then that person will be held personally liable for the price so agreed upon, regardless of the fact that that person may be acting on behalf of another party, either disclosed or undisclosed to the vendor or the auctioneer, provided however that this condition shall not in any way negate the vendor's right to claim against any principal and in such case the bidder's liability shall be construed to be by way of guarantee.
14. The auctioneer may, should it think fit, make arrangements on a purchaser's behalf, for the feeding, watering, trucking, shipping of and general attendance to any lot after sale but no responsibility will be accepted by the auctioneer and all such service will be at the purchaser's risk and expense.
15. No lot will be delivered until the sales invoice has been checked and signed by the purchaser or his duly authorised representative.
16. (a) Each lot in all cases shall be sold with all faults, if any, and excepting those conditions and warranties implied by the Trades Practices Act or any applicable State legislation which cannot be contractually these Terms and Conditions of Sale, any express or implied condition, statement or warranty, statutory or otherwise, is hereby executed. The auctioneer is not liable in respect of any error, misdescription or omission shall entitle the purchaser to annul the sale or reject the lot or claim any compensation, damage or abatement in price.
16. (b) Each lot will be sold subject to passing all veterinary tests required by the law of the State or country to which the purchaser intends to transport that particular lot such tests to be undertaken at the purchaser's expense and concluded immediately following the sale. In the event of a lot failing to pass these tests, the sale shall be null and void, any purchase moneys paid by the purchaser shall be refunded and property in the lot shall revert to remain with the vendor.
17. In the event of a dispute as to whether a lot is a breeder, such dispute shall be resolved by the vendor and the purchaser, and the auctioneer, while he shall use his best endeavours to assist, shall have no liability or responsibility in that regard. In the event that a lot is alleged or proved not to be a breeder, the purchaser shall nevertheless be obliged to pay the auctioneer the full purchase price and any other moneys or interest payable by the purchaser in accordance with these Terms and Conditions.
- 18 (a) Each lot shall be at the risk of the vendor in respect of any damage or injury, whether by disease, accident or otherwise, for the period that the lot be in the custody of the auctioneer, PROVIDED THAT the auctioneer, its servants, agents and employees shall use all reasonable care to protect and control the lot while it is in the auctioneer's custody AND PROVIDED THAT when a lot has been sold, it shall be at the risk of the purchaser in all respects.
- 18 (b) If any vendor brings to the premises any lot which is dangerous, or infected with any disease, that vendor shall be liable for all injury, damages, costs, losses or expenses which the auctioneer may sustain, incur or be put to either directly or indirectly as a result of the vendor so doing. The auctioneer reserves the right in its absolute discretion, to exclude from the sale venue or dispose of any lot which in its opinion shows signs of any disease, whether infectious, contagious or not, or of any serious fault or of being dangerous.

JWX SILVER BULLET 524 W (P)



Australian rights owned by Moombra Charolais & Charnelle Charolais



Son – Moongool J187 (P)



Daughter – Charnelle Elegance 8 (P) J38E

G. BROS THIN RED LINE 527W (P) (R/F)



Son – Charnelle Generator (P) GKA G44E



Daughter – Charnelle Digna 117 (P)(R/F)
GKA G43E Lot 14 in this sale.



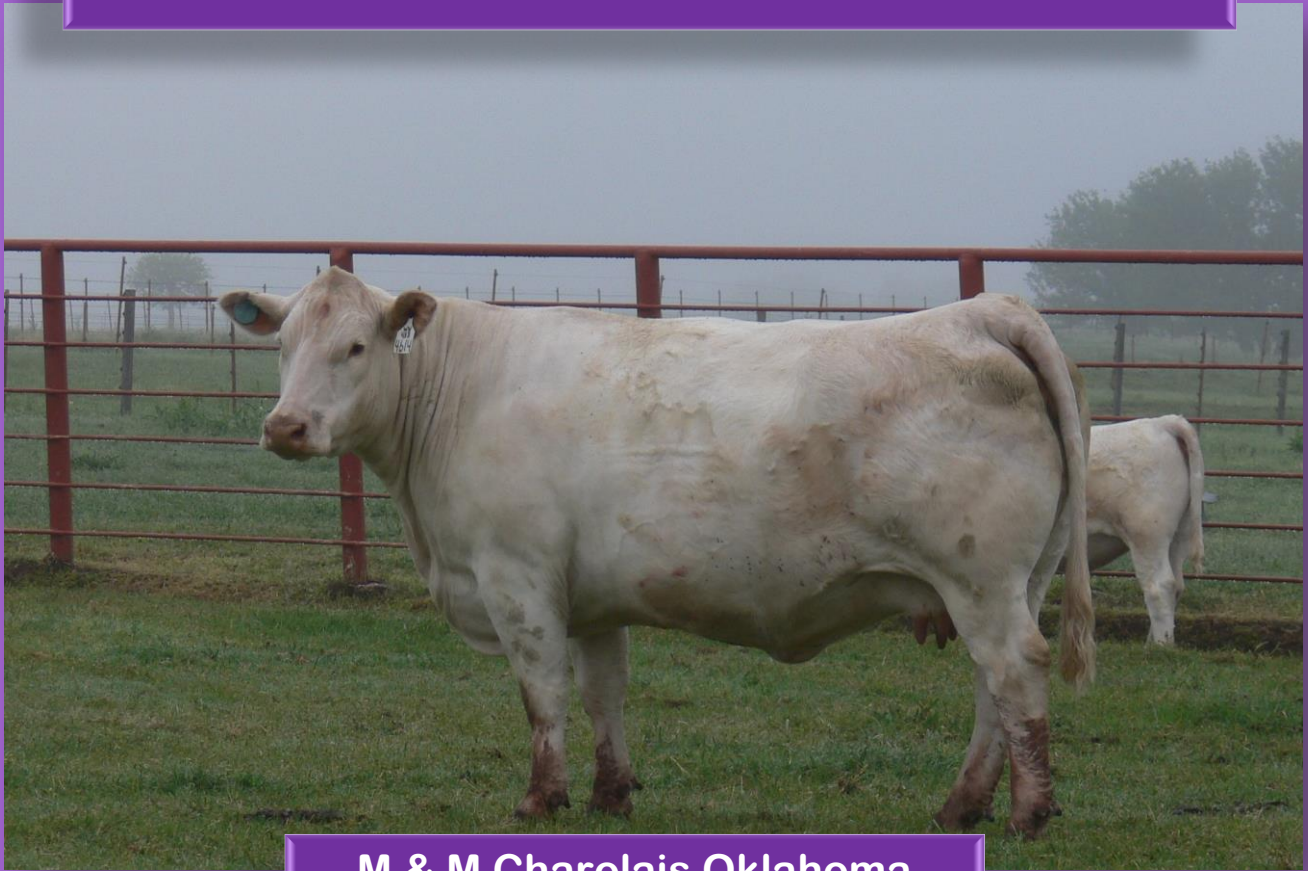
Australian Rights owned by United Cattle Breeding Service & Charnelle Charolais

These Two Sires Tick All the Boxes!!

- ✓ Performance
- ✓ Out Cross Pedigree
- ✓ Good Temperament
- ✓ Calving Ease
- ✓ Both Bulls Homozygous Polled
- ✓ Good Length
- ✓ Structural Soundness

Semen available from
United Cattle Breeding Service
Ph. 07 4666 3376 or
Graham 0427 622 410

Charolais Females in the USA



M & M Charolais Oklahoma



Thomas Ranch, Kingsville Texas