



A/C DARLEY STUD (Australia) PTY LTD

Landmark Dubbo - John Setttee – 0408297368



Delivery Contact - David Bellamy - 0422 646 758

Ex Agri Gene 123-125 Tone Road Wangaratta 3677 VIC

Lot 1



SIRE and DAM PEDIGREE

3 EMBRYO'S



WORLD K'S MICHIFUKU X BLACKMORE CHIYOTAKE A059

Sire of Lot 1 Embryos

WORLD K's MICHIFUKU



Embryo Sire; World K's Michifuku is thought to be the best carcass bull ever to leave Japan and is regarded as the benchmark for carcass marbling sire in Australia, formerly the number one marbling bull in the USA.

Embryo Dam; BLACKMORE CHIYOTAKE A059 Comes from the famous herd of BLACKMORE Wagyu, and from one of the best marbling families in the Wagyu breed.



AUSTRALIA

SIRE and DAM PEDIGREE

3 EMBRYO's



WORLD K'S MICHIFUKU X BLACKMORE CHIYOTAKE A059



— [PEDFA7208 TAYASU DOI US7208 J7208 -KUR IKU](#)

— [PEDFAJ10328 YASUMI DOI J10328 - KURO IKU](#)

— [PEDFA203 HARUMI J1086409](#)

— Sire: [PEDFA201 MONJIRO J11550](#)

— [PEDFAJ7663 TAMORIDOI J7663](#)

— [PEDFA203 HARUMI J1086409](#)

— [PEDFA](#)

Animal: [WKSFM0164 WORLD K'S MICHIFUKU](#)

— [PEDFAJ472 YASUTANI DOI J472 - KURO IKU](#)

— [PEDFA211 TANISHIGE 1526 - KURO KOH](#)

— [PEDFA213 TETSUSHIGE 5J101117](#)

— Dam: [PEDFA215 MICHIKO J655635 \(AI\)](#)

— [PEDFA217 DAI 13 KAMINAKA KURO 10804](#)

— [PEDFA216 MICHIFUKU J4944290](#)

— [PEDFA](#)

— [PEDFAJ65 DAI 7 ITOZAKURA J65 - KURO IKU](#)

— [PEDFAJ483 ITOFUJI J483 - KURO IKU](#)

— [PEDFAJ803296 HIROTA - 1 J803296](#)

— Sire: [IMUFQTF147 ITO SHIGEFUJI \(IMP USA\)](#)

— [PEDFA500 ITOMICHI J1158](#)

— [PEDFAJ920752 DAI 30 NOBORU J920752](#)

— [PEDFAJ840221 DAI 10 NOBORU 3](#)

Animal: [BYWFA0059 BLACKMORE CHIYOTAKE A059 \(AI\) \(ET\)](#)

— [PEDFAYUKI YUKIHARUNAMI](#)

— [IMUFQ2599 TF YUKIHARUNAMI 4 \(IMP USA\)](#)

— [PEDFN13364 TF CHIYOTAKE 8/1](#)

— Dam: [BYWFW0026 BLACKMORE CHIYOTAKE W026 \(AI\) \(ET\)](#)

— [IMUFN2294 TF ITOHANA 2 \(IMP USA\)](#)

— [TWAFR0040 TWA RIEKI \(IMP USA\) \(ET\)](#)

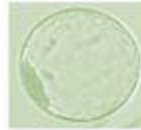
— [PEDFL554 TF CHIYOTAKE 8 J847346](#)

Lot 2



SIRE and DAM PEDIGREE

6 EMBRYO's



TF YUKIHARUNAMI 4 (IMP USA) X BLACKMORE CHIYOTAKE Y339

Embryo Sire; TF YUKIHARUNAMI 4 (IMP USA) is a sire that brings great growth in his stock plus he is the sire of the dam that has left Australia with the No2 ranked Terminal Index sire MACQUARIE WAGYU Y408, posting a whopping +589 FTI, EBV.

Embryo Dam BLACKMORE CHIYOTAKE Y339 is a daughter of BLACKMORE CHIYOTAKE W034 who produced the top priced female at \$8,500 at the 1st AWA International sale. What's more is this is the female family that produced the No 2 ranked Australian Wagyu sire, MACQUARIE WAGYU Y408.

High quality marbling genetics being offered here.



AUSTRALIA

SIRE and DAM PEDIGREE

6 EMBRYO's



TF YUKIHARUNAMI 4 (IMP USA) X BLACKMORE CHIYOTAKE Y339

— [PEDFAJ65 DAI 7 ITOZAKURA J65 - KURO IKU](#) —

— [PEDFA505 ITOHARUNAMI J766](#)

— [PEDFA477 HARA HIME 2 J105035](#)

— Sire: [PEDFAYUKI YUKIHARUNAMI](#)

— [PEDFA209 KENSEI J108](#)

— [PEDFAHIEYUK HIEYUKIFUJI J618874](#)

— [PEDFAHIEMAT HIEMATSUYUKI 1](#)

Animal: [IMUFQ2599 TF YUKIHARUNAMI 4 \(IMP USA\)](#)

— [PEDFAJ65 DAI 7 ITOZAKURA J65 - KURO IKU](#)

— [PEDFA500 ITOMICHI J1158](#)

— [PEDFA545 TOMISAKAE 2/1 J116450](#)

— Dam: [PEDFN13364 TF CHIYOTAKE 8/1](#)

— [PEDFA500 ITOMICHI J1158](#)

— [PEDFL549 TF CHIYOTAKE 8A J847344](#)

— [PEDFA460 CHIYOTAKE 5 J434867](#)

— [PEDFAJ10787 KIKUTERU DOI J10787 - KURO IKU](#)

— [PEDFAJ1742 TERUNAGADOI 1742](#)

— [PEDFAJ240580 TERUNAH0 J240580](#)

— Sire: [IMJFAJ2810 KITATERUYA SUDO J2810 HONGEN \(IMP JAP\)](#)

— [PEDFAJ472 YASUTANI DOI J472 - KURO IKU](#)

— [PEDFAJ601124 YOSHIMI 3 601124](#)

— [PEDFAJ206526 YOSHIMI J206526 - KURO IKU](#)

Animal: [BYWfy0339 BLACKMORE CHIYOTAKE Y339 \(AI\) \(ET\)](#)

— [PEDFA10632 SHIGESHIGENAMI J10632](#)

— [IMUFQTF148 ITOSHIGENAMI \(IMP USA\)](#)

— [PEDFA661 FUKUYUKI](#)

— Dam: [BYWFW0034 BLACKMORE CHIYOTAKE W034 \(AI\) \(ET\)](#)

— [IMUFQTF147 ITOSHIGEFUJI \(IMP USA\)](#)

— [TWAFU0542 TWA F U542 \(AI\) \(ET\)](#)

— [TWAFS0170 TWA KOSEI \(IMP USA\) \(ET\)](#)

Lot 3



SIRE and DAM PEDIGREE

5 EMBRYO's



**TF YUKIHARUNAMI 4 (IMP USA) X BLACKMORE CHIYOTAKE Y326**

**Embryo Sire; TF YUKIHARUNAMI 4 (IMP USA) is a sire that brings great growth in his stock plus he is the sire of the dam that has left Australia with the No2 ranked Terminal Index sire MACQUARIE WAGYU Y408, posting a whopping +589 FTI, EBV.**

**Embryo Dam, posting a maternal sire stack of KITATERUYASU DOI, ITOSHIGENAMI TF148 and TF 147 ITOSHIGEFUJI.**

**BLACKMORE CHIYOTAKE Y326 is also a daughter of BLACKMORE CHIYOTAKE W034 whose daughter topped the 1<sup>st</sup> AWA International sale at \$8,500.**

**Again this is the female family that produced the No 2 ranked Australian Wagyu sire, MACQUARIE WAGYU Y408.**

**High quality marbling genetics being offered here.**



AUSTRALIA

SIRE and DAM PEDIGREE

5 EMBRYO'S



TF YUKIHARUNAMI 4 (IMP USA) X BLACKMORE CHIYOTAKE Y326

\_\_\_\_\_ [PEDFAJ65 DAI 7 ITOZAKURA J65 - KURO IKU](#)  
 \_\_\_\_\_ [PEDFA505 ITOHARUNAMI J766](#)  
 \_\_\_\_\_ [PEDFA477 HARAHIIME 2 J105035](#)  
**Sire:** [PEDFAYUKIYUKIHARUNAMI](#)  
 \_\_\_\_\_ [PEDFA209 KENSEI J108](#)  
 \_\_\_\_\_ [PEDFAHIEYUKHIEYUKIFUJI J618874](#)  
 \_\_\_\_\_ [PEDFAHIEMAT HIEMATSUYUKI 1](#)

Animal: [IMUFQ2599 TF YUKIHARUNAMI 4 \(IMP USA\)](#)

\_\_\_\_\_ [PEDFAJ65 DAI 7 ITOZAKURA J65 - KURO IKU](#)  
 \_\_\_\_\_ [PEDFA500 ITOMICHI J1158](#)  
 \_\_\_\_\_ [PEDFA645 TOMISAKAE 2/1 J116450](#)  
**Dam:** [PEDFN13364 TF CHIYOTAKE 8/1](#)  
 \_\_\_\_\_ [PEDFA500 ITOMICHI J1158](#)  
 \_\_\_\_\_ [PEDFL549 TF CHIYOTAKE 8A J847344](#)  
 \_\_\_\_\_ [PEDFA460 CHIYOTAKE 5 J434867](#)  
 \_\_\_\_\_ [PEDFAJ10787 KIKUTERU DOI J10787 - KURO IKU](#)

\_\_\_\_\_ [PEDFAJ10787 KIKUTERU DOI J10787 - KURO IKU](#)  
 \_\_\_\_\_ [PEDFAJ1742 TERUNAGADOI 1742](#)  
 \_\_\_\_\_ [PEDFAJ240580 TERUNAH0 J240580](#)  
**Sire:** [IMJFAJ2810 KITATERUYA SUDO J2810 HONGEN \(IMP JAP\)](#)  
 \_\_\_\_\_ [PEDFAJ472 YASUTANI DOI J472 - KURO IKU](#)  
 \_\_\_\_\_ [PEDFAJ601124 YOSHIMI 3 601124](#)  
 \_\_\_\_\_ [PEDFAJ206526 YOSHIMI J206526 - KURO IKU](#)

Animal: [BYWFW0326 BLACKMORE CHIYOTAKE Y326 \(AI\) \(ET\)](#)

\_\_\_\_\_ [PEDFA10632 SHIGESHIGENAMI J10632](#)  
 \_\_\_\_\_ [IMUFQTF148 ITOSHIGENAMI \(IMP USA\)](#)  
 \_\_\_\_\_ [PEDFA661 FUKUYUKI](#)  
**Dam:** [BYWFW0034 BLACKMORE CHIYOTAKE W034 \(AI\) \(ET\)](#)  
 \_\_\_\_\_ [IMUFQTF147 ITOSHIGEFUJI \(IMP USA\)](#)  
 \_\_\_\_\_ [TWAFU0542 TWA F U542 \(AI\) \(ET\)](#)  
 \_\_\_\_\_ [TWAFS0170 TWA KOSEI \(IMP USA\) \(ET\)](#)

Name	Gestation Length (days)	Birth Wt. (kg)	200 Day Wt. (kg)	400 Day Wt. (kg)	600 Day Wt. (kg)	Mat. Cow Wt. (kg)	Milk (kg)	Scrotal Size (cm)	Carcase Wt. (kg)	Eye Muscle Area (sq.cm)	Rib Fat (mm)	Rump Fat (mm)	Retail Beef Yield (%)	Marble Score	Marble Fineness (%)	Fullblood Terminal Index
SIRE: <a href="#">TF YUKIHARUNAMI 4 (IMP USA) - IMUFQ2599</a>	+0.3	+4.0	+15	+29	+41	+54	+3	+0.2	+23	-1.1	-1.2	-1.2	+0.8	-1.4	-0.36	-\$ 205
DAM: <a href="#">BLACKMORE CHIYOTAKE Y326 (AI) (ET) - BYWFW0326</a>	-	-	-	-	-	-	-	-	-	-	-	-	-	-	-	-
<b>Inbreeding Coefficient: 4%. Min./(Avg.) generation: 4/(6.3) <a href="#">Pedigree display of this mating</a></b>																
<b>Breed Avg. EBVs for 2013 Born Calves</b>	+0.1	+0.9	+9	+14	+18	+18	+1	+0.0	+11	+1.1	+0.3	+0.5	-0.1	+0.0	+0.00	+22

Lot 4



AUSTRALIA

SIRE and DAM PEDIGREE

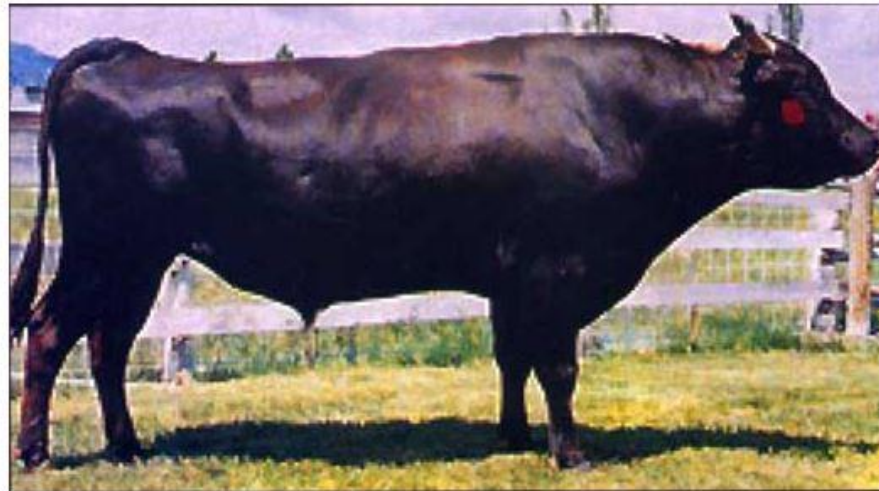
4 EMBRYO's



FUKUTSURU J068 (IMP JAP) X BLACKMORE CHIYOTAKE A039

Embryo Sire

FUKUTSURU J068 (IMP JAP)



Embryo Sire; **FUKUTSURU J068 (IMP JAP)** is the leading marbling sire in the USA for the last 12 years, his semen is quoted for sale at US \$300 per straw in 2016, This bull is one of the few Wagyu sires that have a milk EBV in the to 1%.

Embryo Dam; **BLACKMORE CHIYOTAKE A039** hails from the **BLACKMORE** foundation donor herd, and descends from one of the best 5 females in the **BLACKMORE** herd in **CHIYOTAKE T116 (IMP USA)**





AUSTRALIA

SIRE and DAM PEDIGREE

4 EMBRYO's



FUKUTSURU J068 (IMP JAP) X BLACKMORE CHIYOTAKE A039

— PEDFA7208 TAYASU DOI US7208 J7208 -KURO IKU

— PEDFA6109 SHIGEKANANAMI J6109

— PEDFAJ10328 YASUMI DOI J10328 - KURO IKU

— PEDFA10632 SHIGESHIGENAMI J10632

— PEDFA203 HARUMI J1086409

— PEDFAJ774695 SHIGEMITSU J774695

— Sire: PEDFAJ774 DAI 2 YA SUT SURU DOI J774

— Sire: IMUFQTF148 ITO SHIGENAMI (IMP U SA)

— PEDFA511 KIKUMIDOI J5367

— PEDFAJ10756 FUKUMASA J10756

— PEDFAJ978542 KIKUTSURU J978542

— PEDFA661 FUKUYUKI

— PEDFAJSYOFUKU SYOFUKU 3

— PEDFAJ456691 YUKIZAKURA J456691

Animal: IMJFMJ068 FUKUT SURU J068 (IMP JAP)

Animal: BYWFA0039 BLACKMORE CHIYOTAKE A039 (AI) (ET)

— PEDFAJ9285 KIKUNORI DOI J9285 - KURO IKU

— PEDFAJ483 ITOFUJI J483 - KURO IKU

— PEDFAJ10787 KIKUTERU DOI J10787 - KURO IKU

— IMUFQTF147 ITOSHIGEFUJI (IMP USA)

— PEDFA544 TOKUKANE J707034

— PEDFAJ920752 DAI 30 NOBORU J920752

— Dam: PEDFAJ649663 TERUYASU J649663

— Dam: BYWFX0171 BLACKMORE CHIYOTAKE X171 (AI) (ET)

— PEDFAJ472 YASUTANI DOI J472 - KURO IKU

— IMUFM2100 KIKUYASU 400 (IMP JAP)

— PEDFAJ509605 YASUTSURU J509605

— BYWFT0116 BLACKMORE CHIYOTAKE T116 (IMP USA) (AI) (ET)

— PEDFAJ311980 KIKIJURU 8.J311980

— PEDFQTF55 TF CHIYOTAKE 14/1

Results for Sire: FUKUTSURU J068 (IMP JAP) with 1 Dam

Name	Gestation Length (days)	Birth Wt. (kg)	200 Day Wt. (kg)	400 Day Wt. (kg)	600 Day Wt. (kg)	Mat. Cow Wt. (kg)	Milk (kg)	Scrotal Size (cm)	Carcass Wt. (kg)	Eye Muscle Area (sq.cm)	Rib Fat (mm)	Rump Fat (mm)	Retail Beef Yield (%)	Marble Score	Marble Fineness (%)	Fullblood Terminal Index
SIRE: FUKUTSURU J068 (IMP JAP) - IMJFMJ068	-0.9	<b>-3.1</b>	-8	-13	-24	-49	<b>+12</b>	-2.8	-10	-0.3	+2.0	<b>+6.2</b>	-2.7	+0.2	+0.18	-\$ 1
DAM: BLACKMORE CHIYOTAKE A039 (AI) (ET) - BYWFA0039	-	-	-	-	-	-	-	-	-	-	-	-	-	-	-	-
Inbreeding Coefficient: <b>3%</b> . Min./ (Avg.) generation: <b>4/(6.4)</b> <a href="#">Pedigree display of this mating</a>																
Breed Avg. EBVs for 2013 Born Calves	+0.1	+0.9	+9	+14	+18	+18	+1	+0.0	+11	+1.1	+0.3	+0.5	-0.1	+0.0	+0.00	+22

Lot 5



AUSTRALIA

SIRE and DAM PEDIGREE

2 EMBRYO's



ITOSHIGENAMI (IMP USA) X BLACKMORE CHIYOTAKE A059

Sire of Embryos

ITOSHIGENAMI TF 148 (IMP JAP)



SHIGESHIGENAMI (JAP) – FUKUYUKI (JAP)

Sire of Embryos; ITOSHIGENAMI TF 148 (IMP JAP) is regarded as one of the Australian Wagyu breeds best ever marbling sires, and his stock are now commanding high prices. Embryos have recently sold for \$1,100 each and his daughters sold for up to \$11,000, a top marbling sire that is in demand.

Dam of Embryos BLACKMORE CHIYOTAKE A059 is by ITOSHIGEFUJITF 147 (IMP JAP) from the TWA RIEKI (IMP USA) strain of the CHIYOTAKE bloodline. Embryos don't come much better than this.



SIRE and DAM PEDIGREE

2 EMBRYO'S



ITOSHIGENAMI (IMP USA) X BLACKMORE CHIYOTAKE A059

— PEDFAJ2569 SHIGEFUKU J2569  
 — PEDFA6109 SHIGEKANANAMI J6109  
 — PEDFA0003 TATSUMI  
 Sire: PEDFA10632 SHIGESHIGENAMI J10632  
 — PEDFA6109 SHIGEKANANAMI J6109  
 — PEDFAJ774695 SHIGEMITSU J774695  
 — PEDFA0004 MITSUKO  
 Animal: IMUFQTF148 ITOSHIGENAMI (IMP USA)  
 — PEDFA6109 SHIGEKANANAMI J6109  
 — PEDFAJ10756 FUKUMASA J10756  
 — PEDFAJFUKUKONO FUKUKONO 8  
 Dam: PEDFA661 FUKUYUKI  
 — PEDFAJ65 DAI 7 ITOZAKURAJ65 - KURO IKU  
 — PEDFAJ456691 YUKIZAKURAJ456691

— PEDFAJ85 DAI 7 ITOZAKURAJ65 - KURO IKU  
 — PEDFAJ483 ITOFUJI J483 - KURO IKU  
 — PEDFAJ803296 HIROTA - 1 J803296  
 Sire: IMUFQTF147 ITOSHIGEFUJI (IMP USA)  
 — PEDFA500 ITOMICHI J1158  
 — PEDFAJ920752 DAI 30 NOBORU J920752  
 — PEDFAJ840221 DAI 10 NOBORU 3  
 Animal: BYWFA0059 BLACKMORE CHIYOTAKE A059 (AI) (ET)  
 — PEDFAYUKI YUKIHARUNAMI  
 — IMUFQ2599 TF YUKIHARUNAMI 4 (IMP USA)  
 — PEDFN13364 TF CHIYOTAKE 8/1  
 Dam: BYWFW0026 BLACKMORE CHIYOTAKE W026 (AI) (ET)  
 — IMUFN2294 TF ITOHANA 2 (IMP USA)  
 — TWAFR0040 TWA RIEKI (IMP USA) (ET)  
 — PEDFL554 TF CHIYOTAKE 8 J847346

Results for Sire: [ITOSHIGENAMI \(IMP USA\)](#) with 1 Dam

Name	Gestation Length (days)	Birth Wt. (kg)	200 Day Wt. (kg)	400 Day Wt. (kg)	600 Day Wt. (kg)	Mat. Cow Wt. (kg)	Milk (kg)	Scrotal Size (cm)	Carcass Wt. (kg)	Eye Muscle Area (sq.cm)	Rib Fat (mm)	Rump Fat (mm)	Retail Beef Yield (%)	Marble Score	Marble Fineness (%)	Fullblood Terminal Index
SIRE: <a href="#">ITOSHIGENAMI (IMP USA)</a> - <a href="#">IMUFQTF148</a>	0.0	-1.5	+1	-2	-8	-26	-5	-1.4	-1	0.0	+1.9	+1.8	-1.1	+1.9	+0.26	+\$ 395
DAM: <a href="#">BLACKMORE CHIYOTAKE A059 (AI) (ET)</a> - <a href="#">BYWFA0059</a>	-	-	-	-	-	-	-	-	-	-	-	-	-	-	-	-
<b>Inbreeding Coefficient: 3%</b> . Min./(Avg.) generation: <b>4/(5.4)</b> <a href="#">Pedigree display of this mating</a>																
<a href="#">Breed Avg. EBVs for 2013 Born Calves</a>	+0.1	+0.9	+9	+14	+18	+18	+1	+0.0	+11	+1.1	+0.3	+0.5	-0.1	+0.0	+0.00	+22

Lot 6



AUSTRALIA

SIRE and DAM PEDIGREE

5 EMBRYO'S



ITOSHIGENAMI (IMP USA) X BLACKMORE CHIYOTAKE A083

Sire of Embryos

ITOSHIGENAMI TF 148 (IMP JAP)



SHIGESHIGENAMI (JAP) – FUKUYUKI (JAP)

Sire of Embryos; ITOSHIGENAMI TF 148 (IMP JAP) is regarded as one of the Australian Wagyu breeds best ever marbling sires, and his stock are now commanding high prices. Embryos have recently sold for \$1,100 each and his daughters sold for up to \$11,000, a top marbling sire that is in demand.

Dam of Embryos BLACKMORE CHIYOTAKE A083 is by ITOSHIGEFUJI TF 147 (IMP JAP) from the TWA RIEKI (IMP USA) strain of the CHIYOTAKE bloodline. Embryos don't come much better than this. Foundation blood on offer here.



AUSTRALIA

SIRE and DAM PEDIGREE

5 EMBRYO'S



ITOSHIGENAMI (IMP USA) X BLACKMORE CHIYOTAKE A083

— PEDFAJ2559 SHIGEFUKU J2559  
 — PEDFA6109 SHIGEKANANAMI J6109  
 — PEDFA0003 TATSUMI  
**Sire: PEDFA10632 SHIGESHIGENAMI J10632**  
 — PEDFA6109 SHIGEKANANAMI J6109  
 — PEDFAJ774695 SHIGEMITSU J774695  
 — PEDFA0004 MITSUKO  
**Animal: IMUFQTF148 ITO SHIGENAMI (IMP USA)**  
 — PEDFA6109 SHIGEKANANAMI J6109  
 — PEDFAJ10756 FUKUMASA J10756  
 — PEDFAJFUKUKONO FUKUKONO 8  
**Dam: PEDFA661 FUKUYUKI**  
 — PEDFAJ65 DAI 7 ITOZAKURA J65 - KURO IKU  
 — PEDFAJ456691 YUKIZAKURA J456691  
 — PEDFA0002 MITSU HARU

— PEDFAJ65 DAI 7 ITOZAKURA J65 - KURO IKU  
 — PEDFAJ483 ITOFUJI J483 - KURO IKU  
 — PEDFAJ803296 HIROTA - 1 J803296  
**Sire: IMUFQTF147 ITO SHIGEFUJI (IMP USA)**  
 — PEDFA500 ITOMICHI J1158  
 — PEDFAJ920752 DAI 30 NOBORU J920752  
 — PEDFAJ840221 DAI 10 NOBORU 3  
**Animal: BYWFA0083 BLACKMORE CHIYOTAKE A083 (AI) (ET)**  
 — PEDFAYUKI YUKIHARUNAMI  
 — IMUFQ2599 TF YUKIHARUNAMI 4 (IMP USA)  
 — PEDFN13364 TF CHIYOTAKE 8/1  
**Dam: BYWFW0011 BLACKMORE CHIYOTAKE W011 (AI) (ET)**  
 — IMUFN2294 TF ITOHANA 2 (IMP USA)  
 — TWAFR0040 TWA RIEKI (IMP USA) (ET)  
 — PEDFL554 TF CHIYOTAKE 8 J847346

Results for Sire: [ITOSHIGENAMI \(IMP USA\)](#) with 1 Dam

Name	Gestation Length (days)	Birth Wt. (kg)	200 Day Wt. (kg)	400 Day Wt. (kg)	600 Day Wt. (kg)	Met. Cow Wt. (kg)	Milk (kg)	Scrotal Size (cm)	Carcase Wt. (kg)	Eye Muscle Area (sq.cm)	Rib Fat (mm)	Rump Fat (mm)	Retail Beef Yield (%)	Marble Score	Marble Fineness (%)	Fullblood Terminal Index
SIRE: <a href="#">ITOSHIGENAMI (IMP USA)</a> - <a href="#">IMUFQTF148</a>	0.0	-1.5	+1	-2	-8	-26	-5	-1.4	-1	0.0	+1.9	+1.8	-1.1	+1.9	+0.26	+\$ 395
DAM: <a href="#">BLACKMORE CHIYOTAKE A083 (AI) (ET)</a> - <a href="#">BYWFA0083</a>	-	-	-	-	-	-	-	-	-	-	-	-	-	-	-	-
<b>Inbreeding Coefficient: 3%. Min./(Avg.) generation: 4/(5.4) <a href="#">Pedigree display of this mating</a></b>																
<b>Breed Avg. EBVs for 2013 Born Calves</b>																
	+0.1	+0.9	+9	+14	+18	+18	+1	+0.0	+11	+1.1	+0.3	+0.5	-0.1	+0.0	+0.00	+22

Lot 7



SIRE and DAM PEDIGREE

6 EMBRYO's



**TF TERUTANI 40/1 (IMP USA) X SAMURAI FARMS YUKI 31/10287**

**Sire of Embryos; TF TERUTANI 40/1 is a sire bred in the purple and his progeny are renowned for having great phenotypes, along with good size. Semen is hard to obtain and tightly held.**

**Dam of embryos; SAMURAI FARMS YUKI 31/10287 comes a top marbling bloodline donor from the top stud herd at SAMURAI FARMS now sold out to the famous MAYURA Wagyu.**

**Quality embryos from a top female bloodline. Embryos should deliver large stock, that marble.**

**Those that understand Wagyu blood will be served here.**



AUSTRALIA

SIRE and DAM PEDIGREE

6 EMBRYO's



TF TERUTANI 40/1 (IMP USA) X SAMURAI FARMS

[PEDFAJ9285 KIKUNORI DOI J9285 - KURO IKU](#)  
[PEDFAJ10787 KIKUTERU DOI J10787 - KURO IKU](#)  
[PEDFA544 TOKUKANE J707034](#)  
 Sire: [IMUFJTF40 TERUTANI J2494 TF40 \(IMP JAP\)](#)  
[PEDFAJ472 YASUTANI DOI J472 - KURO IKU](#)  
[PEDFA538 TANIFUKU 2 J601115](#)  
[PEDFA550 YUKIFUKU J417832](#)  
 Animal: [IMUFR3258 TF TERUTANI 40/1 \(IMP USA\) \(AI\) \(ET\)](#)  
[PEDFAJ65 DAI 7 ITOZAKURA J65 - KURO IKU](#)  
[PEDFA500 ITOMICHI J1158](#)  
[PEDFA545 TOMISAKAE 2/1 J116450](#)  
 Dam: [PEDFA2453 TF DAI 2 KINNTOU 3](#)  
[PEDFA468 DAI 3 KIYOHIME J632](#)  
[PEDFA464 DAI 2 KINTOU J337756](#)  
[PEDFA475 EZOKINTOU 1A](#)

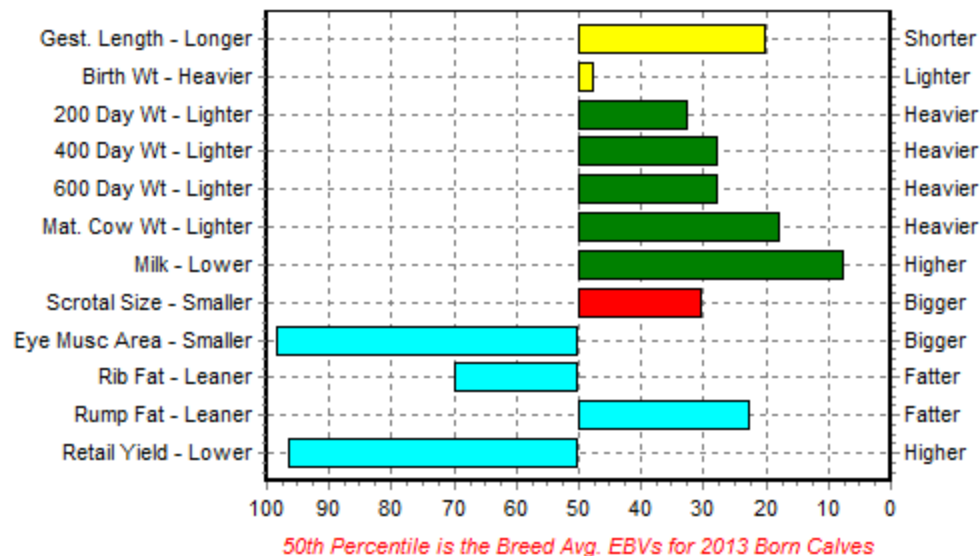
[PEDFA475 EZOKINTOU 1A](#)  
[PEDFAJ65 DAI 7 ITOZAKURA J65 - KURO IKU](#)  
[PEDFAJ483 ITOFUJI J483 - KURO IKU](#)  
[PEDFAJ803296 HIROTA - 1 J803296](#)  
 Sire: [IMUFQTF147 ITO SHIGEFUJI \(IMP USA\)](#)  
[PEDFA500 ITOMICHI J1158](#)  
[PEDFAJ920752 DAI 30 NOBORU J920752](#)  
[PEDFAJ840221 DAI 10 NOBORU 3](#)  
 Animal: [SF FX10287 SAMURAI FARMS YUKI 31/10287 \(AI\) \(ET\)](#)  
[PEDFAJ10787 KIKUTERU DOI J10787 - KURO IKU](#)  
[IMUFJTF40 TERUTANI J2494 TF40 \(IMP JAP\)](#)  
[PEDFA538 TANIFUKU 2 J601115](#)  
 Dam: [TWAFFV0002 TWA E02 \(AI\) \(ET\)](#)  
[WKSFM0164 WORLD K'S MICHIFUKU](#)  
[TWAFT0462 TWA SATUKU \(AI\) \(ET\)](#)

Results for Sire: [TF TERUTANI 40/1 \(IMP USA\) \(AI\) \(ET\)](#) with 1 Dam

Name	Gestation Length (days)	Birth Wt. (kg)	200 Day Wt. (kg)	400 Day Wt. (kg)	600 Day Wt. (kg)	Mat. Cow Wt. (kg)	Milk (kg)	Scrotal Size (cm)	Carcass Wt. (kg)	Eye Muscle Area (sq.cm)	Rib Fat (mm)	Rump Fat (mm)	Retail Beef Yield (%)	Marble Score	Marble Fineness (%)	Fullblood Terminal Index
SIRE: <a href="#">TF TERUTANI 40/1 (IMP USA) (AI) (ET) - IMUFR3258</a>	-1.1	+0.1	+11	+20	+26	+35	+8	+1.1	+28	-2.4	+0.2	+1.0	-1.5	+0.2	+0.26	+\$163
DAM: <a href="#">SAMURAI FARMS YUKI 31/10287 (AI) (ET) - SF FX10287</a>	+0.1	+1.4	+10	+16	+21	+28	+4	-0.3	-	-3.5	-0.2	+1.0	-1.2	-	-	-
	-0.5	+0.8	+11	+18	+24	+32	+6	+0.4	-	-3.0	0.0	+1.0	-1.4	-	-	-
<b>Inbreeding Coefficient: 11%. Min./(Avg.) generation: 5/(6.6) <a href="#">Pedigree display of this mating</a></b>																
<b>Breed Avg. EBVs for 2013 Born Calves</b>	+0.1	+0.9	+9	+14	+18	+18	+1	+0.0	+11	+1.1	+0.3	+0.5	-0.1	+0.0	+0.00	+22

### EBV Percentiles for

Sire: TF TERUTANI 40/1 (IMP USA) (AI) (ET) x Dam: SAMURAI FARMS YUKI 31/10287 (AI) (ET)



### Results for Sire: [TF TERUTANI 40/1 \(IMP USA\) \(AI\) \(ET\)](#) with 1 Dam

Name	Gestation Length (days)	Birth Wt. (kg)	200 Day Wt. (kg)	400 Day Wt. (kg)	600 Day Wt. (kg)	Mat. Cow Wt. (kg)	Milk (kg)	Scrotal Size (cm)	Carcass Wt. (kg)	Eye Muscle Area (sq.cm)	Rib Fat (mm)	Rump Fat (mm)	Retail Beef Yield (%)	Marble Score	Marble Fineness (%)	Fullblood Terminal Index
<b>SIRE:</b> <a href="#">TF TERUTANI 40/1 (IMP USA) (AI) (ET)</a> - <a href="#">IMUFR3258</a>	-1.1	+0.1	+11	+20	+26	+35	<b>+8</b>	+1.1	+28	-2.4	+0.2	+1.0	-1.5	+0.2	+0.26	+\$163
<b>DAM:</b> <a href="#">SAMURAI FARMS YUKI 31/10287 (AI) (ET)</a> - <a href="#">SF FX10287</a>	+0.1	+1.4	+10	+16	+21	+28	+4	-0.3	-	-3.5	-0.2	+1.0	-1.2	-	-	-
	-0.5	+0.8	+11	+18	+24	+32	+6	+0.4	-	-3.0	0.0	+1.0	-1.4	-	-	-
<b>Inbreeding Coefficient: 11%. Min./(Avg.) generation: 5/(6.6) <a href="#">Pedigree display of this mating</a></b>																
<b>Breed Avg. EBVs for 2013 Born Calves</b>	+0.1	+0.9	+9	+14	+18	+18	+1	+0.0	+11	+1.1	+0.3	+0.5	-0.1	+0.0	+0.00	+22



Lot 8



AUSTRALIA

SIRE and DAM PEDIGREE

1 EMBRYO'S



ITOZURUDOI TF151 (IMP USA) X BLACKMORE HIKOHIME Z227

Sire of Embryo

ITOZURUDOI TF151 (IMP USA)



Sire of Embryo ITOZURUDOI TF151 (IMP USA) the Wagyu sire that has been cloned,

ITOZURUDOI TF151 semen is in hot demand if you can get it. It is rare that you will ever see an ITOZURUDOI TF151 embryo offered for sale.

Embryo dam; BLACKMORE HIKOHIME Z227 hails from the outstanding Wagyu bloodline of HIKOHIME T044 (IMP USA.) This is foundation blood on offer and commands a good look from serious breeders.



AUSTRALIA

SIRE and DAM PEDIGREE

1 EMBRYO's



ITOURUDOI TF151 (IMP USA) X BLACKMORE HIKOHIME Z227

[PEDFA347 DAI 14 SHIGERU J8994 - KURO KOH](#)

[PEDFAJ65 DAI 7 ITOZAKURA J65 - KURO IKU](#)

[PEDFA395 DAI 9 ITOZAKURA J668635](#)

Sire: [PEDFAJ1081 ITOKITAT SURU J1081 - KURO IKU](#)

[PEDFAJ1 KITAKEDAKA J1 - KURO KOH](#)

[PEDFAJ101266 NISHIZURU J101266 - KURO KOH](#)

[PEDFAJ HIGASHIZURU](#)

Animal: [IMUFLTF151 ITOZURUDOI TF151 \(IMP USA\)](#)

[PEDFA7208 TAYASU DOI US7208 J7208 -KURO IKU](#)

[PEDFAJ10328 YASUMI DOI J10328 - KURO IKU](#)

[PEDFA203 HARUMI J1086409](#)

Dam: [PEDFAJ433313 YASUHIME J433313](#)

[PEDFAJ10787 KIKUTERU DOI J10787 - KURO IKU](#)

[PEDFAJ774 DAI 2 YASUTSURU DOI J774](#)

[IMJFMJ068 FUKUTSURU J068 \(IMP JAP\)](#)

[PEDFAJ649663 TERUYASU J649663](#)

Sire: [PRMFW0640 \\*BLACKMORE TANIT SURUDOI W640 \(AI\) \(ET\)](#)

[IMUFRTF146 KIKUTSURUDOI TF146 \(IMP USA\)](#)

[TFWUFU0177 TAKEDA FARM ITOCHIYU U177 \(IMP USA\) \(AI\) \(ET\)](#)

[PEDFQ214 ITOCHIYO 5](#)

Animal: [BYWFZ0227 BLACKMORE HIKOHIME Z227 \(ET\)](#)

[PEDFAJ10787 KIKUTERU DOI J10787 - KURO IKU](#)

[IMUFMTF150 KIKUTERUSHIGE \(IMP USA\)](#)

[PEDFAJ649744 KIKUNAKA 6 J649744](#)

Dam: [BYWVF0050 BLACKMORE HIKOHIME V050 \(AI\)](#)

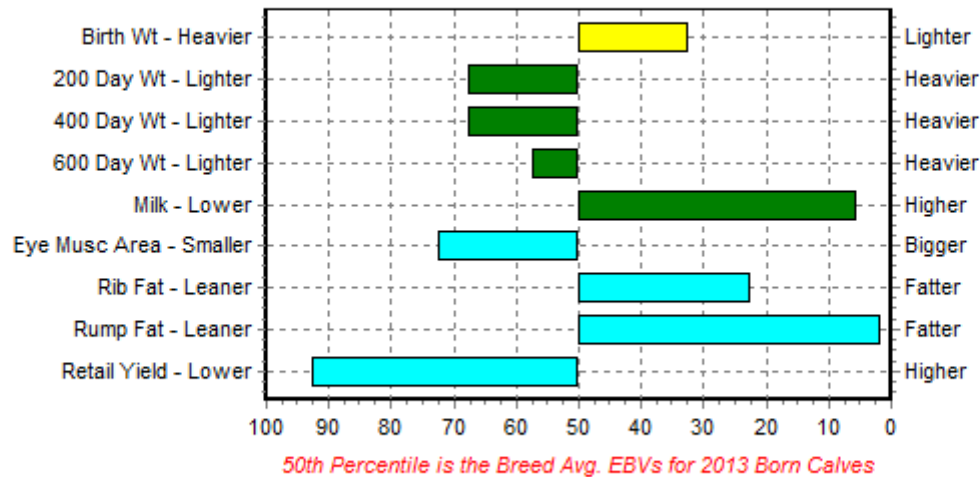
[IMUFN2294 TF ITOHANA 2 \(IMP USA\)](#)

[BYWFT0044 BLACKMORE HIKOHIME T044 \(IMP USA\) \(AI\) \(ET\)](#)

Results for Sire: [ITOURUDOI TF151 \(IMP USA\)](#) with 1 Dam

Name	Gestation Length (days)	Birth Wt. (kg)	200 Day Wt. (kg)	400 Day Wt. (kg)	600 Day Wt. (kg)	Mat. Cow Wt. (kg)	Milk (kg)	Scrotal Size (cm)	Carcass Wt. (kg)	Eye Muscle Area (sq. cm)	Rib Fat (mm)	Rump Fat (mm)	Retail Beef Yield (%)	Marble Score	Marble Fineness (%)	Fulblood Terminal Index
SIRE: <a href="#">ITOURUDOI TF151 (IMP USA)</a> - <a href="#">IMUFLTF151</a>	-0.9	+1.0	+11	+18	+28	+26	+6	+0.5	+14	+2.5	-0.2	+1.6	0.0	+0.6	+0.36	+\$188
DAM: <a href="#">BLACKMORE HIKOHIME Z227 (ET)</a> - <a href="#">BYWFZ0227</a>	-	-0.4	+3	+3	+2	-	+7	-	-	-2.0	+1.5	+3.3	-2.2	-	-	-
	-	+0.3	+7	+11	+15	-	+7	-	-	+0.3	+0.7	+2.5	-1.1	-	-	-
Inbreeding Coefficient: 6%. Min./(Avg.) generation: 4/(6.6) <a href="#">Pedigree display of this mating</a>																
Breed Avg. EBVs for 2013 Born Calves																
	+0.1	+0.9	+9	+14	+18	+18	+1	+0.0	+11	+1.1	+0.3	+0.5	-0.1	+0.0	+0.00	+22

**EBV Percentiles for**  
**Sire: ITOZURUDOI TF151 (IMP USA) x Dam: BLACKMORE HIKOHIME Z227 (ET)**



**Results for Sire: [ITOZURUDOI TF151 \(IMP USA\)](#) with 1 Dam**



Name	Gestation Length (days)	Birth Wt. (kg)	200 Day Wt. (kg)	400 Day Wt. (kg)	600 Day Wt. (kg)	Mat. Cow Wt. (kg)	Milk (kg)	Scrotal Size (cm)	Carcass Wt. (kg)	Eye Muscle Area (sq.cm)	Rib Fat (mm)	Rump Fat (mm)	Retail Beef Yield (%)	Marble Score	Marble Fineness (%)	Fullblood Terminal Index
<b>SIRE:</b> <a href="#">ITOZURUDOI TF151 (IMP USA)</a> - <a href="#">IMUFLTF151</a>	-0.9	+1.0	+11	+18	+28	+26	+6	+0.5	+14	+2.5	-0.2	+1.6	0.0	+0.6	+0.36	+\$188
<b>DAM:</b> <a href="#">BLACKMORE HIKOHIME Z227 (ET)</a> - <a href="#">BYWFZ0227</a>	-	-0.4	+3	+3	+2	-	+7	-	-	-2.0	+1.5	+3.3	-2.2	-	-	-
	-	+0.3	+7	+11	+15	-	+7	-	-	+0.3	+0.7	+2.5	-1.1	-	-	-
<b>Inbreeding Coefficient: 6%. Min./ (Avg.) generation: 4/(6.6) <a href="#">Pedigree display of this mating</a></b>																
<b>Breed Avg. EBVs for 2013 Born Calves</b>	+0.1	+0.9	+9	+14	+18	+18	+1	+0.0	+11	+1.1	+0.3	+0.5	-0.1	+0.0	+0.00	+22

