

Lot 1



AUSTRALIA

SIRE and DAM PEDIGREE

3 EMBRYO's



WORLD K'S MICHIFUKU X BLACKMORE CHIYOTAKE A059

Sire of Lot 1 Embryos

WORLD K's MICHIFUKU



Embryo Sire; World K's Michifuku is thought to be the best carcass bull ever to leave Japan and is regarded as the benchmark for a carcass marbling sire in Australia, formerly the number one marbling bull in the USA.



AUSTRALIA

SIRE and DAM PEDIGREE

5 EMBRYO's



TF YUKIHARUNAMI 4 (IMP USA) X BLACKMORE CHIYOTAKE Y326

Embryo Sire; TF YUKIHARUNAMI 4 (IMP USA) is a sire that brings great growth in his stock plus he is the sire of the dam that has left Australia with the No2 ranked Terminal Index sire MACQUARIE WAGYU Y408, posting a whopping +589 FTI, EBV.

Embryo Dam, posting a maternal sire stack of KITATERUYASU DOI, ITOSHIGENAMI TF148 and TF 147 ITOSHIGEFUJI.

BLACKMORE CHIYOTAKE Y326 is also a daughter of BLACKMORE CHIYOTAKE W034 whose daughter topped the 1st AWA International sale at \$8,500.

Again this is the female family that produced the No 2 ranked Australian Wagyu sire, MACQUARIE WAGYU Y408.

High quality marbling genetics being offered here.

Lot 2

AGENT – LANDMARK DUBBO

Vendor is DARLEY STUD (AUSTRALIA) PTY LTD.

Delivery – ex AGRI-GENE 123-125 TONE ROAD

WANGARATTA VIC 3677

CONTACT JOHN SETTREE 0408297368

Lot 3



AUSTRALIA

SIRE and DAM PEDIGREE

5 EMBRYO's



TF YUKIHARUNAMI 4 (IMP USA) X BLACKMORE CHIYOTAKE Y326

Embryo Sire; TF YUKIHARUNAMI 4 (IMP USA) is a sire that brings great growth in his stock plus he is the sire of the dam that has left Australia with the No2 ranked Terminal Index sire MACQUARIE WAGYU Y408, posting a whopping +589 FTI, EBV.

Embryo Dam, posting a maternal sire stack of KITATERUYASU DOI, ITOSHIGENAMI TF148 and TF 147 ITOSHIGEFUJI.

BLACKMORE CHIYOTAKE Y326 is also a daughter of BLACKMORE CHIYOTAKE W034 whose daughter topped the 1st AWA International sale at \$8,500.

Again this is the female family that produced the No 2 ranked Australian Wagyu sire, MACQUARIE WAGYU Y408.

High quality marbling genetics being offered here.

Lot 4



AUSTRALIA

SIRE and DAM PEDIGREE

4 EMBRYO's



FUKUTSURU J068 (IMP JAP) X BLACKMORE CHIYOTAKE A039

Embryo Sire

FUKUTSURU J068 (IMP JAP)



Embryo Sire; **FUKUTSURU J068 (IMP JAP)** is the leading marbling sire in the USA for the last 12 years, his semen is quoted for sale at US \$300 per straw in 2016, This bull is one of the few Wagyu sires that have a milk EBV in the to 1%.

Embryo Dam; **BLACKMORE CHIYOTAKE A039** hails from the **BLACKMORE** foundation donor herd, and descends from one of the best 5 females in the **BLACKMORE** herd in **CHIYOTAKE T116 (IMP USA)**

Lot 5

2 EMBRYO's



ITOSHIGENAMI (IMP USA) X BLACKMORE CHIYOTAKE A059

Sire of Embryos

ITOSHIGENAMI TF 148 (IMP JAP)



SHIGESHIGENAMI (JAP) – FUKUYUKI (JAP)

Sire of Embryos; ITOSHIGENAMI TF 148 (IMP JAP) is regarded as one of the Australian Wagyu breeds best ever marbling sires, and his stock are now commanding high prices. Embryos have recently sold for \$1,100 each and his daughters sold for up to \$11,000, a top marbling sire that is in demand.

Dam of Embryos BLACKMORE CHIYOTAKE A059 is by ITOSHIGEFUJI TF 147 (IMP JAP) from the TWA RIEKI (IMP USA) strain of the CHIYOTAKE bloodline. Embryos don't come much better than this.

Lot 6



SIRE and DAM PEDIGREE

5 EMBRYO's



ITOSHIGENAMI (IMP USA) X BLACKMORE CHIYOTAKE A083

Sire of Embryos

ITOSHIGENAMI TF 148 (IMP JAP)



SHIGESHIGENAMI (JAP) – FUKUYUKI (JAP)

Sire of Embryos; ITOSHIGENAMI TF 148 (IMP JAP) is regarded as one of the Australian Wagyu breeds best ever marbling sires, and his stock are now commanding high prices. Embryos have recently sold for \$1,100 each and his daughters sold for up to \$11,000, a top marbling sire that is in demand.

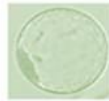
Dam of Embryos BLACKMORE CHIYOTAKE A083 is by ITOSHIGEFUJI TF 147 (IMP JAP) from the TWA RIEKI (IMP USA) strain of the CHIYOTAKE bloodline. Embryos don't come much better than this. Foundation blood on offer here.



AUSTRALIA

SIRE and DAM PEDIGREE

6 EMBRYO's



TF YUKIHARUNAMI 4 (IMP USA) X BLACKMORE CHIYOTAKE Y339

Embryo Sire; TF YUKIHARUNAMI 4 (IMP USA) is a sire that brings great growth in his stock plus he is the sire of the dam that has left Australia with the No2 ranked Terminal Index sire MACQUARIE WAGYU Y408, posting a whopping +589 FTI, EBV.

Embryo Dam BLACKMORE CHIYOTAKE Y339 is a daughter of BLACKMORE CHIYOTAKE W034 who produced the top priced female at \$8,500 at the 1st AWA International sale. What's more is this is the female family that produced the No 2 ranked Australian Wagyu sire, MACQUARIE WAGYU Y408.

High quality marbling genetics being offered here.

Lot 7



AUSTRALIA

SIRE and DAM PEDIGREE

6 EMBRYO's



TF TERUTANI 40/1 (IMP USA) X SAMURAI FARMS YUKI 31/10287

Sire of Embryos; TF TERUTANI 40/1 is a sire bred in the purple and his progeny are renowned for having great phenotypes, along with good size. Semen is hard to obtain and tightly held.

Dam of embryos; SAMURAI FARMS YUKI 31/10287 comes a top marbling bloodline donor from the top stud herd at SAMURAI FARMS now sold out to the famous MAYURA Wagyu.

Quality embryos from a top female bloodline. Embryos should deliver large stock, that marble.

Those that understand Wagyu blood will be served here.

Lot 8



SIRE and DAM PEDIGREE

1 EMBRYO's



ITOZURUDOI TF151 (IMP USA) X BLACKMORE HIKOHIME Z227

Sire of Embryo

ITOZURUDOI TF151 (IMP USA)



Sire of Embryo ITOZURUDOI TF151 (IMP USA) the Wagyu sire that has been cloned,

ITOZURUDOI TF151 semen is in hot demand if you can get it. It is rare that you will ever see an ITOZURUDOI TF151 embryo offered for sale.

Embryo dam; BLACKMORE HIKOHIME Z227 hails from the outstanding Wagyu bloodline of HIKOHIME T044 (IMP USA.) This is foundation blood on offer and commands a good look from serious breeders.

Contact John Settree 0408 297 368, Landmark Dubbo

