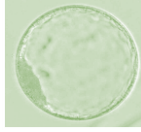




2 EMBRYO's



Embryo Sire

WORLD K's MICHIFUKU



Pedigree of Embryos Dam

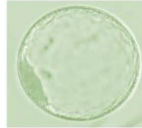
BLACKMORE CHIYOTAKE A0039

_____ PEDFA10632 SHIGESHIGENAMI J10632
_____ **Sire: IMUFQTF148 ITOSHIGENAMI (IMP USA)**
_____ PEDFAJ10756 FUKUMASA J10756
_____ PEDFA661 FUKUYUKI
_____ PEDFAJ456691 YUKIZAKURA J456691
Animal: BYWFA0039 BLACKMORE CHIYOTAKE A039 (AI) (ET)
_____ PEDFAJ483 ITOFUJI J483 - KURO IKU
_____ IMUFQTF147 ITOSHIGEFUJI (IMP USA)
_____ PEDFAJ920752 DAI 30 NOBORU J920752
_____ **Dam: BYWFX0171 BLACKMORE CHIYOTAKE X171 (AI) (ET)**
_____ IMUFM2100 KIKUYASU 400 (IMP JAP)
_____ BYWFT0116 BLACKMORE CHIYOTAKE T116 (IMP USA) (AI) (ET)
_____ PEDFQTF55 TF CHIYOTAKE 14/1



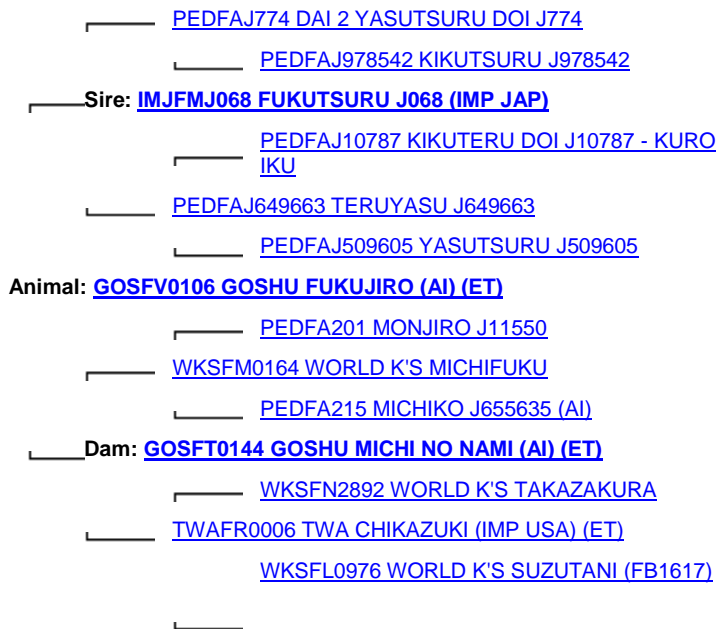
AUSTRALIA

2 EMBRYO's



Embryo's Sires Pedigree

GOSHU FUKUJIRO



July 2016 Wagyu GROUP BREEDPLAN															
	Gestation Length (days)	Birth Wt (kg)	200 Day Wt (kg)	400 Day Wt (kg)	600 Day Wt (kg)	Mat Cow Wt (kg)	Milk (kg)	Scrotal Size (cm)	Carcass Wt (kg)	Eye Muscle Area (sq cm)	Rib Fat (mm)	Rump Fat (mm)	Retail Beef Yield (%)	Marble Score	Marble Fineness (%)
EBV	-0.3	-1.0	+2	+5	+4	-6	+2	-2.3	+1	+3.1	-0.6	+1.7	-0.3	+0.6	+0.29

GOSHU FUKUJIRO

SELECTION INDEX VALUES		
Market Target	Index Value	Breed Average
Fullblood Terminal Index	+\$ 132	+\$ 116

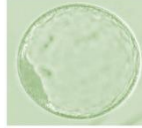
A sire with excellent marbling and Marbling fineness plus above average Full blood terminal index EBV's

From one of the best Marbling female families in the Wagyu breed the SUZUTANI family



AUSTRALIA

2 EMBRYO's



Embryo's Dam Pedigree

SAMURAI FARMS HIRADAIRA Z227

_____ [PEDFAJ65 DAI 7 ITOZAKURA J65 - KURO IKU](#)

_____ [PEDFAJ1530 KITAGUNI 7-8 J1530](#)

_____ [PEDFAJ81009 KITAGUNI 7 J81009](#)

_____ **Sire:** [WKSFP0001 WORLD K'S KITAGUNI JR](#)

_____ [PEDFAKOUFUKU KOUFUKU J2132](#)

_____ [WKSFM2893 WORLD K'S NAKAYUKI J13943](#)

_____ [PEDFANAKHANA3 NAKHANA 3 J1792470](#)

Animal: [SF FZ0227 SAMURAI FARMS HIRADAIRA Z227 \(AI\) \(ET\)](#)

_____ [PEDFAJ287 DAI 20 HIRASHIGE J287 - KURO IKU](#)

_____ [IMJFAJ2351 HIRASHIGETAYASU J2351 HONGEN \(IMP JAP\)](#)

_____ [PEDFAJ187250 DAI 5 YURUHIME J187250 - KURO KOH](#)

_____ **Dam:** [GOSFX0160 GOSHU HIRADAIRA \(AI\) \(ET\)](#)

_____ [WKSFM0164 WORLD K'S MICHIFUKU](#)

_____ [GOSFU0067 GOSHU MICHIO \(AI\) \(ET\)](#)

_____ [TWAFR0006 TWA CHIKAZUKI \(IMP USA\) \(ET\)](#)

July 2016 Wagyu GROUP BREEDPLAN																
	Gestation Length (days)	Birth Wt (kg)	200 Day Wt (kg)	400 Day Wt (kg)	600 Day Wt (kg)	Mat Cow Wt (kg)	Milk (kg)	Scrotal Size (cm)	Carcase Wt (kg)	Eye Muscle Area (sq cm)	Rib Fat (mm)	Rump Fat (mm)	Retail Beef Yield (%)	Marble Score	Marble Fineness (%)	
EBV	+1.1	-0.7	0	0	-2	-2	-5	+0.2	-5	+0.2	+0.3	-0.1	-0.2	+0.7	+0.09	

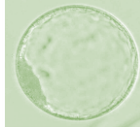
SELECTION INDEX VALUES		
Market Target	Index Value	Breed Average
Fullblood Terminal Index	+\$ 127	+\$ 116

The dam of these 2 embryos **SAMURAI FARMS HIRADAIRA Z227** has marbling genetics that would grace any top Wagyu stud in the world Embryos offered have Marbling , Growth and Milk, both sire and dam of embryos are above the breed average for FTI



SIRE and DAM PEDIGREE

2 EMBRYO's



TF YUKIHARUNAMI 4 (IMP USA) X BLACKMORE CHIYOTAKE Y339

Embryo Sire; **TF YUKIHARUNAMI 4 (IMP USA)** is a sire that brings great growth in his stock plus he is the sire of the dam that has left Australia with the **No2** ranked Terminal Index sire **MACQUARIE WAGYU Y408**, posting a whopping **+589 FT I, EBV**.

The dam of **TF YUKIHARUNAMI 4 (IMP USA)** 4 belongs to the **Hikoemonzuru** line which in turn traces to **Chiyokura** who was champion bull at the first Japanese Bull Production Ability Competition.

Embryo Dam **BLACKMORE CHIYOTAKE Y339** is a daughter of **BLACKMORE CHIYOTAKE W034** who produced the top priced female at **\$8,500** at the 1st AWA International sale **2015**

High quality marbling genetics being offered here.

BYWfy0339 BLACKMORE CHIYOTAKE Y339 (AI) (ET)

_____ PEDFAJ10787 KIKUTERU DOI J10787 - KURO IKU

_____ PEDFAJ1742 TERUNAGADOI 1742

_____ PEDFAJ240580 TERUNAH0 J240580

_____ Sire: **IMJFAJ2810 KITATERUYASUDOI J2810 HONGEN (IMP JAP)**

_____ PEDFAJ472 YASUTANI DOI J472 - KURO IKU

_____ PEDFAJ601124 YOSHIMI 3 601124

_____ PEDFAJ206526 YOSHIMI J206526 - KURO IKU

Animal: BYWfy0339 BLACKMORE CHIYOTAKE Y339 (AI) (ET)

_____ PEDFA10632 SHIGESHIGENAMI J10632

_____ IMUFQTF148 ITOSHIGENAMI (IMP USA)

_____ PEDFA661 FUKUYUKI

_____ Dam: **BYWfw0034 BLACKMORE CHIYOTAKE W034 (AI) (ET)**

_____ IMUFQTF147 ITOSHIGEFUJI (IMP USA)

_____ TWAFU0542 TWA F U542 (AI) (ET)

_____ TWAFS0170 TWA KOSEI (IMP USA) (ET)

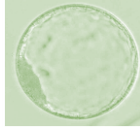
EVB's for this female are not available as the Blackmore herd does not allow its data made public

But as one can see **BLACKMORE CHIYOTAKE Y339** pedigree contains great Marbling sires with **KITATERUYASUDOI** and **TF148 ITOSHIGENAMI (IMP USA)** plus one of the best milk and growth Wagyu sires in **TF147 ITOSHIGEFUJI (IMP USA)** all in the embryo donor's bloodline.



SIRE and DAM PEDIGREE

2 EMBRYO's



TF YUKIHARUNAMI 4 (IMP USA) X BLACKMORE CHIYOTAKE Y326

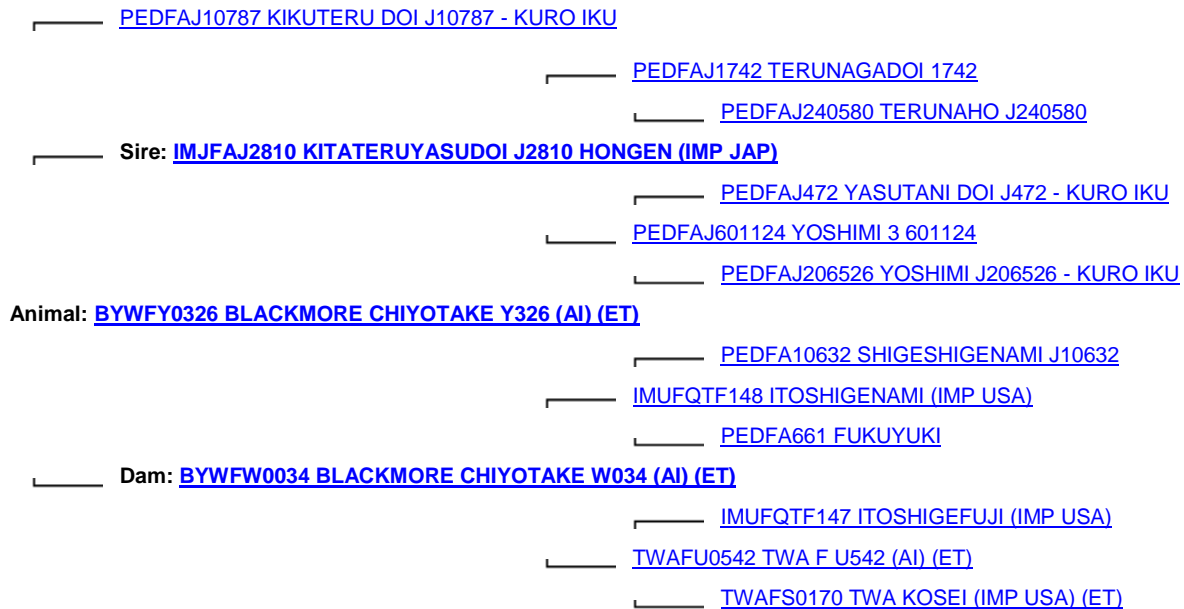
Embryo Sire; **TF YUKIHARUNAMI 4 (IMP USA)** is a sire that brings great growth in his stock plus he is the sire of the dam that has left Australia with the **No2** ranked Terminal Index sire **MACQUARIE WAGYU Y408**, posting a whopping **+589 FT I, EBV**.

The dam of **TF YUKIHARUNAMI 4 (IMP USA)** 4 belongs to the **Hikoemonzuru** line which in turn traces to **Chiyokura** who was champion bull at the first Japanese Bull Production Ability Competition.

Pedigree

Of Donor

BLACKMORE CHIYOTAKE Y326



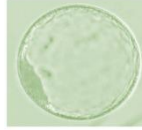
High marbling and growth genetics in this pedigree.

EBV's for this female are not available as the Blackmore herd does not allow its data made public

But as one can see BLACKMORE **CHIYOTAKE Y339** pedigree contains great Marbling sires with **KITATERUYASUDOI** and **TF148 ITOSHIGENAMI (IMP USA)** plus one of the best milk and growth Wagyu sires in **TF147 ITOSHIGEFUJI (IMP USA)** all in the embryo donor's bloodline.

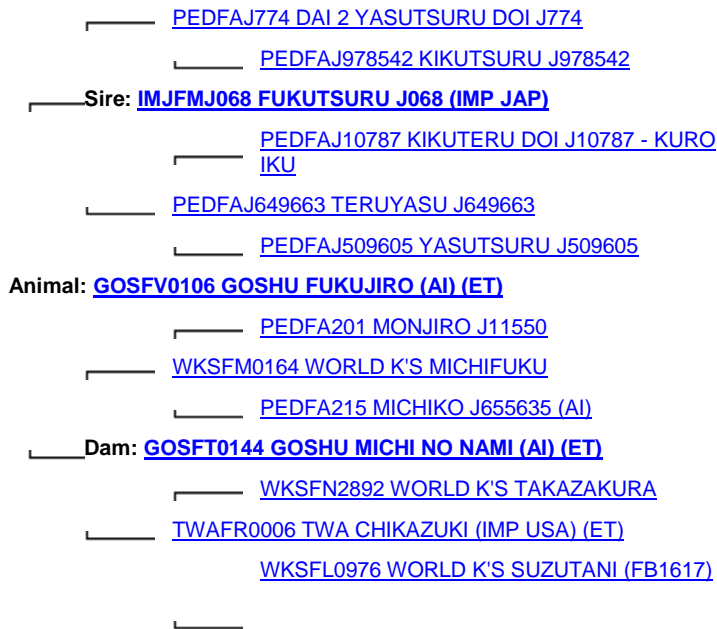


2 EMBRYO's



Embryo's Sires Pedigree

GOSHU FUKUJIRO



July 2016 Wagyu GROUP BREEDPLAN															
	Gestation Length (days)	Birth Wt (kg)	200 Day Wt (kg)	400 Day Wt (kg)	600 Day Wt (kg)	Mat Cow Wt (kg)	Milk (kg)	Scrotal Size (cm)	Carcase Wt (kg)	Eye Muscle Area (sq cm)	Rib Fat (mm)	Rump Fat (mm)	Retail Beef Yield (%)	Marble Score	Marble Fineness (%)
EBV	-0.3	-1.0	+2	+5	+4	-6	+2	-2.3	+1	+3.1	-0.6	+1.7	-0.3	+0.6	+0.29

GOSHU FUKUJIRO

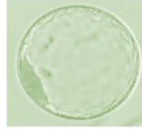
SELECTION INDEX VALUES		
Market Target	Index Value	Breed Average
Fullblood Terminal Index	+\$ 132	+\$ 116

A sire with excellent marbling and Marbling fineness plus above average Full blood terminal index EBV's

From one of the best Marbling female families in the Wagyu breed the **SUZUTANI** family



2 EMBRYO's



Embryo's Dam Pedigree

SAMURAI FARMS HIRADAIRA Z207

_____ [PEDFAJ65 DAI 7 ITOZAKURA J65 - KURO IKU](#)

_____ [PEDFAJ1530 KITAGUNI 7-8 J1530](#)

_____ [PEDFAJ81009 KITAGUNI 7 J81009](#)

_____ Sire: [WKSFP0001 WORLD K'S KITAGUNI JR](#)

_____ [PEDFAKOUFUKU KOUFUKU J2132](#)

_____ [WKSFM2893 WORLD K'S NAKAYUKI J13943](#)

_____ [PEDFANAKHANA3 NAKHANA 3 J1792470](#)

Animal: [SF FZ0207 SAMURAI FARMS HIRADAIRA Z207 \(AI\) \(ET\)](#)

_____ [PEDFAJ287 DAI 20 HIRASHIGE J287 - KURO IKU](#)

_____ [IMJFAJ2351 HIRASHIGETAYASU J2351 HONGEN \(IMP JAP\)](#)

_____ [PEDFAJ187250 DAI 5 YURUHIME J187250 - KURO KOH](#)

_____ Dam: [GOSFX0160 GOSHU HIRADAIRA \(AI\) \(ET\)](#)

_____ [WKSFM0164 WORLD K'S MICHIFUKU](#)

_____ [GOSFU0067 GOSHU MICHIO \(AI\) \(ET\)](#)

_____ [TWAFR0006 TWA CHIKAZUKI \(IMP USA\) \(ET\)](#)

July 2016 Wagyu GROUP BREEDPLAN															
	Gestation Length (days)	Birth Wt (kg)	200 Day Wt (kg)	400 Day Wt (kg)	600 Day Wt (kg)	Mat Cow Wt (kg)	Milk (kg)	Scrotal Size (cm)	Carcase Wt (kg)	Eye Muscle Area (sq cm)	Rib Fat (mm)	Rump Fat (mm)	Retail Beef Yield (%)	Marble Score	Marble Fineness (%)
EBV	+1.1	-0.8	0	-1	-4	-3	-5	+0.2	-6	+0.2	+0.3	0.0	-0.2	+0.6	+0.09

SELECTION INDEX VALUES		
Market Target	Index Value	Breed Average
Fullblood Terminal Index	+\$ 100	+\$ 116

The dam of these 2 embryos **SAMURAI FARMS HIRADAIRA Z207** has marbling genetics that would grace any top Wagyu stud in the world

Embryos offered have Marbling, Growth and Milk, with the sire of the embryos having above the breed average for **FTI EBV's**

The buyer gets the opportunity to get into one of the breeds best ever female bloodlines here, **TWA CHIKAZUKI** is a full sister to top Wagyu sire **TWA SHIKIKAN**



SIRE and DAM PEDIGREE

2 EMBRYO'S



TF TERUTANI 40/1 (IMP USA) X SAMURAI FARMS YUKI 31/10287

Sire of Embryos; TF TERUTANI 40/1 is a sire bred in the purple and his progeny are renowned for having great phenotypes, along with good size. Semen is hard to obtain and tightly held. Top growth sire, from one of Australia's best ever bull producing females.

Dam of embryos; SAMURAI FARMS YUKI 31/10287 comes a top marbling bloodline donor from the top stud herd at **SAMURAI FARMS** now sold out to the famous **MAYURA** Wagyu.

Quality embryos from a top female bloodline. Embryos should deliver large stock, that marble.

Sire of embryos **TF TERUTANI 40/1 (IMP USA)** has a carcass weight EBV of +31

Dam of embryos **SAMURAI FARMS YUKI 31/10287** has a carcass weight EBV of +16

_____ [PEDFAJ65 DAI 7 ITOZAKURA J65 - KURO IKU](#)

_____ [PEDFAJ483 ITOFUJI J483 - KURO IKU](#)

_____ [PEDFAJ803296 HIROTA - 1 J803296](#)

_____ **Sire: [IMUFQTF147 ITOSHIGEFUJI \(IMP USA\)](#)**

_____ [PEDFA500 ITOMICHI J1158](#)

_____ [PEDFAJ920752 DAI 30 NOBORU J920752](#)

_____ [PEDFAJ840221 DAI 10 NOBORU 3](#)

Animal: [SF FX10287 SAMURAI FARMS YUKI 31/10287 \(AI\) \(ET\)](#)

_____ [PEDFAJ10787 KIKUTERU DOI J10787 - KURO IKU](#)

_____ [IMUFJTF40 TERUTANI J2494 TF40 \(IMP JAP\)](#)

_____ [PEDFA538 TANIFUKU 2 J601115](#)

_____ **Dam: [TWAFFV0002 TWA E02 \(AI\) \(ET\)](#)**

_____ [WKSFM0164 WORLD K'S MICHIFUKU](#)

_____ [TWAFT0462 TWA SATUKU \(AI\) \(ET\)](#)

_____ [RDWFR0037 RIVERSDALE HANSEI \(AI\) \(ET\)](#)

July 2016 Wagyu GROUP BREEDPLAN															
	Gestation Length (days)	Birth Wt (kg)	200 Day Wt (kg)	400 Day Wt (kg)	600 Day Wt (kg)	Mat Cow Wt (kg)	Milk (kg)	Scrotal Size (cm)	Carcase Wt (kg)	Eye Muscle Area (sq cm)	Rib Fat (mm)	Rump Fat (mm)	Retail Beef Yield (%)	Marble Score	Marble Fineness (%)
EBV	-0.1	+1.5	+11	+18	+25	+33	+4	-0.2	+16	-2.6	0.0	+1.4	-1.2	-0.3	-0.17



SIRE and DAM PEDIGREE

2 EMBRYO's

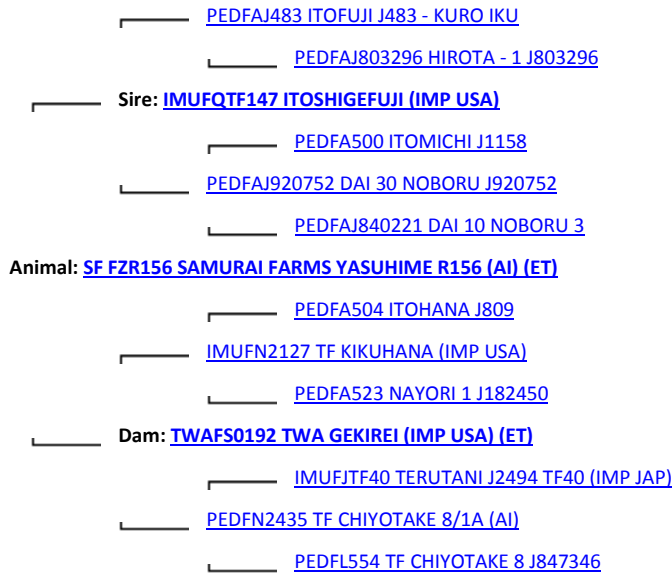


EMBRYO SIRE

TF 148 ITOSHIGENAMI



PEDIGREE of EMBRYO's dam SAMURAI FARMS YASUHIME R156



July 2016 Wagyu GROUP BREEDPLAN															
	Gestation Length (days)	Birth Wt (kg)	200 Day Wt (kg)	400 Day Wt (kg)	600 Day Wt (kg)	Mat Cow Wt (kg)	Milk (kg)	Scrotal Size (cm)	Carcass Wt (kg)	Eye Muscle Area (sq cm)	Rib Fat (mm)	Rump Fat (mm)	Retail Beef Yield (%)	Marble Score	Marble Fineness (%)
EBV	0.0	+2.7	+16	+27	+37	+46	+8	+0.6	+21	-2.8	+0.3	+1.4	-1.1	-0.3	-0.26

An Embryo donor female with massive growth EBV traits and top Carcass EBV's by one of Australia's best ever Marbling sires **TF 148**



SIRE and DAM PEDIGREE

2 EMBRYO's

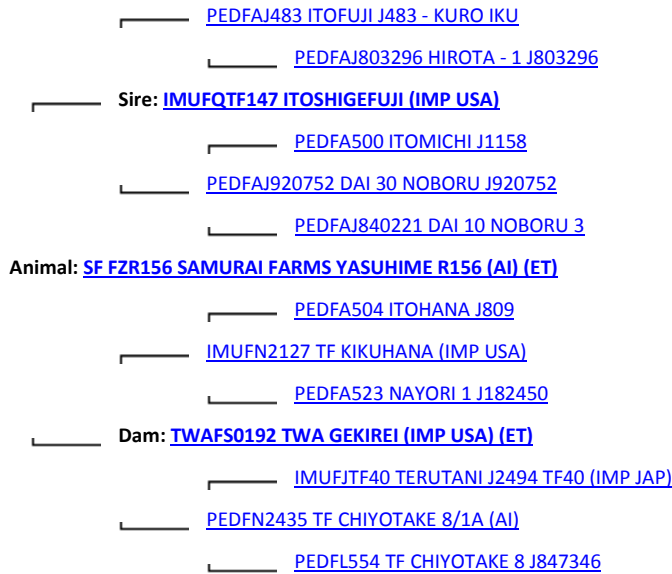


EMBRYO SIRE

TF 148 ITOSHIGENAMI



PEDIGREE of EMBRYO's dam SAMURAI FARMS YASUHIME R156



July 2016 Wagyu GROUP BREEDPLAN															
	Gestation Length (days)	Birth Wt (kg)	200 Day Wt (kg)	400 Day Wt (kg)	600 Day Wt (kg)	Mat Cow Wt (kg)	Milk (kg)	Scrotal Size (cm)	Carcass Wt (kg)	Eye Muscle Area (sq cm)	Rib Fat (mm)	Rump Fat (mm)	Retail Beef Yield (%)	Marble Score	Marble Fineness (%)
EBV	0.0	+2.7	+16	+27	+37	+46	+8	+0.6	+21	-2.8	+0.3	+1.4	-1.1	-0.3	-0.26

An Embryo donor female with massive growth EBV traits and top Carcass EBV's by one of Australia's best ever Marbling sires **TF 148**



SIRE and DAM PEDIGREE

2 EMBRYO's



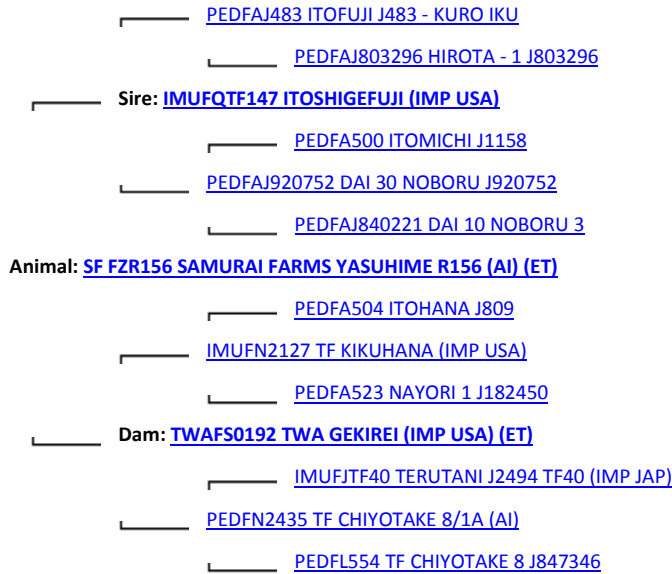
EMBRYO SIRE

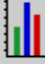
TWA SHIKIKAN

A proven feedlot sire and a son of the best ever imported bull producing female in **SUZUTANI (IMP JAP)**

A Half -brother to the top Australian Wagyu sires **WORLD K's SANJIROU** and **WORLD K's SHIGESHIGETANI**

PEDIGREE of EMBRYO's dam SAMURAI FARMS YASUHIME R156



July 2016 Wagyu GROUP BREEDPLAN															
	Gestation Length (days)	Birth Wt (kg)	200 Day Wt (kg)	400 Day Wt (kg)	600 Day Wt (kg)	Mat Cow Wt (kg)	Milk (kg)	Scrotal Size (cm)	Carcass Wt (kg)	Eye Muscle Area (sq cm)	Rib Fat (mm)	Rump Fat (mm)	Retail Beef Yield (%)	Marble Score	Marble Fineness (%)
EBV	0.0	+2.7	+16	+27	+37	+46	+8	+0.6	+21	-2.8	+0.3	+1.4	-1.1	-0.3	-0.26

An Embryo donor female with massive growth EBV traits and top Carcass EBV's by one of Australia's best ever Marbling sires **TWA SHIKIKAN**

These embryos on offer are a rare genetic commodity as they are a fusion of two of the best proven marbling female families in AUST.



SIRE and DAM PEDIGREE

2 EMBRYO's

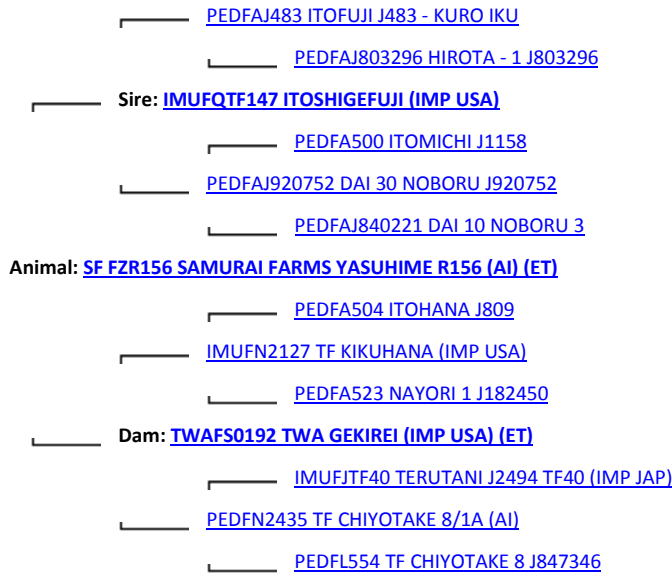


EMBRYO SIRE

TF 148 ITOSHIGENAMI



PEDIGREE of EMBRYO's dam SAMURAI FARMS YASUHIME R156



July 2016 Wagyu GROUP BREEDPLAN															
	Gestation Length (days)	Birth Wt (kg)	200 Day Wt (kg)	400 Day Wt (kg)	600 Day Wt (kg)	Mat Cow Wt (kg)	Milk (kg)	Scrotal Size (cm)	Carcass Wt (kg)	Eye Muscle Area (sq cm)	Rib Fat (mm)	Rump Fat (mm)	Retail Beef Yield (%)	Marble Score	Marble Fineness (%)
EBV	0.0	+2.7	+16	+27	+37	+46	+8	+0.6	+21	-2.8	+0.3	+1.4	-1.1	-0.3	-0.26

An Embryo donor female with massive growth EBV traits and top Carcass EBV's by one of Australia's best ever Marbling sires **TF 148**

1 X LOT OF 10 STRAWS Longford 004 Reg. LDFY0004

Armidale, NSW

A/C HUGHES PASTORAL. One of the highest marbling bulls on the semen market in Australia with a huge eye muscle and very fine marbling as well. He has an outstanding pedigree being by ETJ003 out of a Michifuku daughter who was a full sister to the great bull Shigeshigetani whose dam is the most famous Suzatani. Y4 is an exceptional bull for the Fullblood Wagyu breed and the F1 Angus x Wagyu market. Ideal for heifers. Angus Laurie Landmark 0418 587 643

1 X LOT OF 10 STRAWS Longford 004 Reg. LDFY0004

Armidale, NSW

A/C HUGHES PASTORAL. One of the highest marbling bulls on the semen market in Australia with a huge eye muscle and very fine marbling as well. He has an outstanding pedigree being by ETJ003 out of a Michifuku daughter who was a full sister to the great bull Shigeshigetani whose dam is the most famous Suzatani. Y4 is an exceptional bull for the Fullblood Wagyu breed and the F1 Angus x Wagyu market. Ideal for heifers. Angus Laurie Landmark 0418 587 643

1 X LOT OF 10 STRAWS Academy Red Wagyu Recital ARWFJ0034

Armidale, NSW

A/C ACADEMY WAGYU. ARWFJ0034 Recital J34 is another up and coming young sire in the Red Wagyu breed. He comes from an excellent cow family, his dam being one of the beautiful females in the breed. The sire of Recital - Sumo Bib AI E211 was 1010 kgs at 4 years old and has left some beautiful progeny, his first daughters are starting to calve now, they are big heifers with beautiful udders and lots of milk. Recital being a double bred Big AI should throw progeny who marble well, grow well and milk well. Angus Laurie Landmark 0418 587 643

1 X LOT OF 10 STRAWS Academy Red Wagyu Recital ARWFJ0034

Armidale, NSW

A/C ACADEMY WAGYU. ARWFJ0034 Recital J34 is another up and coming young sire in the Red Wagyu breed. He comes from an excellent cow family, his dam being one of the beautiful females in the breed. The sire of Recital - Sumo Bib AI E211 was 1010 kgs at 4 years old and has left some beautiful progeny, his first daughters are starting to calve now, they are big heifers with beautiful udders and lots of milk. Recital being a double bred Big AI should throw progeny who marble well, grow well and milk well. Angus Laurie Landmark 0418 587 643

1 X LOT OF 10 STRAWS Westholme Hirashigetayasu WESFZ0278

Armidale, NSW

A/C ACADEMY WAGYU. Westholme Z278 is one of the highest bulls on Breedplan for Growth, Milk, Scrotal Size and Retail Beef Yield. He is a big bull, nearly 1 ton and still moves beautifully on near perfect feet at 12 years of age. He is extremely correct in his structure and is the bull to use if you are wanting to build a cow herd of big, functional, high milking, quiet cows Angus Laurie Landmark 0418 587 643

1 X LOT OF 10 STRAWS Westholme Hirashigetayasu WESFZ0278

Armidale, NSW

A/C ACADEMY WAGYU. Westholme Z278 is one of the highest bulls on Breedplan for Growth, Milk, Scrotal Size and Retail Beef Yield. He is a big bull, nearly 1 ton and still moves beautifully on near perfect feet at 12 years of age. He is extremely correct in his structure and is the bull to use if you are wanting to build a cow herd of big, functional, high milking, quiet cows Angus Laurie Landmark 0418 587 643

1 X LOT OF 10 STRAWS ACADEMY RED WAGYUS TAMBO ARWFH0018

Armidale, NSW

A/C ACADEMY WAGYU. Tambo H18 is a very exciting young sire in the Red Wagyu breed as his calves stand out in their groups for their size, length, beautiful heads, structural correctness and lovely fine coats.. Tambo comes from the Tamamaru line on the sires side which is lesser known but still very good and on the dam side Sumo Big AI E424 who is perhaps the largest framed Red Wagyu cow that I have owned. She is extremely long, very feminine, good milking and a real asset to the breed where the females are generally not large framed. The Big AI line is known to be the top marbling line in the Red Wagyu breed. Angus Laurie Landmark 0418 587 643

1 X LOT OF 10 STRAWS ACADEMY RED WAGYUS TAMBO ARWFH0018

Armidale, NSW

A/C ACADEMY WAGYU. Tambo H18 is a very exciting young sire in the Red Wagyu breed as his calves stand out in their groups for their size, length, beautiful heads, structural correctness and lovely fine coats.. Tambo comes from the Tamamaru line on the sires side which is lesser known but still very good and on the dam side Sumo Big AI E424 who is perhaps the largest framed Red Wagyu cow that I have owned. She is extremely long, very feminine, good milking and a real asset to the breed where the females are generally not large framed. The Big AI line is known to be the top marbling line in the Red Wagyu breed. Angus Laurie Landmark 0418 587 643