

BAHUT



SIRE: URAGUAY

DAM: NORVEGIENN



Bahut is an extremely wide, heavily muscled bull with great legs, locomotion and breed character. He was bred in the famous herd of GAEC Robert in France and subsequently purchased by a syndicate of UK breeders including Jim Bloom's famous Scorbore herd, Tom Cheshire (Parkhouse herd) and Elite Beef Semen - UK.

Bahut was 2010 Espoir Champion at the French National Show & Muscle Champion at Brive Show.

Feedback from France, the UK and Ireland continues to be extremely positive with good calving ease and strong maternal ability combined with the obvious muscle and growth.

Feedback on temperament is excellent and Bahut is currently the No. 1 AI sire in Ireland for docility. This ranking confirms the feedback from France and the UK as well as the performance of his first progeny in Australia.

Tim & Melissa Keys
Ph/Fax: (03) 5726 5058 | Mob: 0413 485 098
keystim@hotmail.com

www.keystonegenetics.com
260 Springhurst Rd
Springhurst Victoria 3682



Muscle Sale VII

80 Lots

Friday 4th March 2016, 12noon

Auctions Plus



For Sale Information Contact:

Keystone Genetics
Tim Keys 03 5726 5058 / 0418 689 146

Sale Agents SEJ
Paul Phillips 0418 553 123
Neil Park 0408 515 117

Dear Limousin Enthusiasts,

It is with great pleasure that we present to you our seventh Muscle Sale and we continue to be excited by the ongoing opportunity to present a line of cattle and quality genetics that continue to represent the leading "Muscle" bloodlines in the breed. Represented in the sale are a range of bulls, females and genetics that we believe will continue to move the breed forward and build on the "carcase, yield and efficiency" characteristics that true Muscle Limousins derive.

With the record breaking beef market and positive long term future for beef and particularly high yield beef animals, we believe Muscle Sale VII presents breeders with the opportunity to access leading "Muscle" genetics and bloodlines that will place their program at the top end of the buoyant beef market.

Muscle Sale VII will again be held on Auctions Plus. This format continues to provide a range of low stress advantages for both vendors, purchasers and animals. If you haven't used Auctions Plus before or would like some tips please feel free to contact us or our sale Agents.

Regards
Tim Keys
Keystone Genetics

WILODGE GOLDCARD

SIRE: WILODGE CERBERUS

DAM: SARKELY BELLOLA (Cloughhead Lord)



| Calving Value | 200D Growth | 400D Growth | Muscle | UK Beef Value |
|---------------|-------------|-------------|--------|---------------|
| 111 | 114 | 118 | 127 | 125 |

Wilodge Goldcard is a son of breed leading Wilodge Cerberus (50,000gns) and out of Sarkely Bellola a Cloughhead Lord who was purchased by Wilodge for 24,000gns as a heifer. Bellola has developed into one of the elite donor females at Wilodge and has produced outstanding progeny from a range of sires who along with Goldcard have sold to a top of 30,000gns. Wilodge Goldcard provides Australian breeders with access to the Cerberus line with improved birth weight and calving ease, whilst retaining high growth, muscle and docility (index 122).

Boomer Birch, beef specialist with Cogent who acquired the bull for the Cogent stud, says he was attracted by Goldcard's "great breed character and unbelievable conformation," which is evidently being passed on to the next generation. "With a succession of high performing and high priced ancestors in his pedigree, Goldcard can be confidently expected to continue the family tradition, by raising quality and revenue in any beef herd," he says.

Tim & Melissa Keys
Ph/Fax: (03) 5726 5058 | Mob: 0413 485 098
keystim@hotmail.com

www.keystonegenetics.com
260 Springhurst Rd
Springhurst Victoria 3682

NETHERHALL GALLANT



| Calving Value | 200D Growth | 400D Growth | Muscle | UK Beef Value |
|---------------|-------------|-------------|--------|---------------|
| 97 | 123 | 132 | 119 | 139 |

SIRE: HALTCLIFFE DJ

DAM: MONTGOMERY VIXON (LASSO)

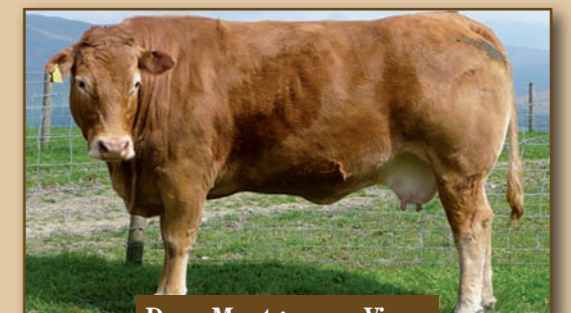
Netherhall Gallant is an outcross son of the 72,000gns Haltcliffe DJ who in turn is a son of the 42,000gns Cloughhead Umpire (Haltcliffes follow on sire to Sympa) and Radio, one of Haltcliffes elite donor females. His dam is a highly proven female who has also bred well with another son (Netherhall Epic) being used very widely in Ireland as an AI sire.

Gallant is a very square sire with exceptional width at the plates. His progeny will have a lot of growth and power, yet still be above average for calving ease. Gallant's performance figures are unparalleled with a superb calving to growth spread with strong muscle and breed leading Beef Value, combined with his exceptional phenotype and pedigree background, this bull is a standout sire of the future.

"Gallant offers the works. Exceptional pedigree with outstanding figures. His father is the famous Haltcliffe DJ who was a much admired bull when he sold for 72,000gns. Gallant has a beef value in the top 1% of the breed with an exceptional calving value of +2, which really complements his outstanding growth. Gallant is exceptionally thick and he carries this throughout his body, having an unbelievable width to his loin and squareness to his plates. He will be no doubt a bull to produce quality". Boomer Birch, COGENT BEEF SPECIALIST.



Sire: Haltcliffe DJ



Dam: Montgomery Vixon



KEYSTONE GENETICS
Tim & Melissa Keys
www.keystonegenetics.com

Ph (03) 5726 5058
Mob 0413 485 098
keystim@hotmail.com