

WAKEFIELD

www.wakefieldcharolais.com.au



Lot 6
Wakefield Juggler J580



Interfaced with
AuctionsPlus

10TH ANNUAL CHAROLAIS & ANGUS BULL SALE

Friday 14th August 2015 at 1pm
"Wakefield", Wollomombi, NSW

**Reserve
Junior
Champion**
Sydney 2015



Lot 3
Wakefield Jack Flash J635



Lot 42
Wakefield Equator J471





10TH ANNUAL CHAROLAIS & ANGUS BULL SALE

Friday 14th August 2015 at 1pm
"Wakefield", Wollomombi, NSW

Approximately 55km east of Armidale on the Waterfall Way
141kms south west of Grafton 35km west of Ebor

39 CHAROLAIS BULLS
14 ANGUS BULLS
10 CHAROLAIS SHORTHORN COMPOSITE BULLS
1 CHAROLAIS ANGUS BULL

Greg & Jenny Frizell "Wakefield" Wollomombi via Armidale
phone 02 6778 1346 fax 02 6778 1205 email wakefieldstud@bigpond.com
website www.wakefieldcharolais.com.au



auctionsplus

agricultural auctioneers at a club

INTERFACED FOR THE
2015 BULL SALE

**FOR DETAILS, SEE THE
"SALE INFORMATION" PAGE**



SELLING AGENTS



MIDCOAST
RURAL • AGENCIES
Stock & Station and Real Estate Agents

Mark Haywood - Midcoast Rural Agencies
phone 0437 286 494 office 02 6562 5131

RAY DONOVAN
STOCK & STATION AGENTS Pty Ltd

Ray Donovan Stock & Station
phone 0428 918 971 office 02 6643 4411

We are pleased to welcome you to the tenth annual Wakefield sale.

What a change a year can make! At the time of writing this Sale Foreword every sale report is posting new highs and there seems to be no apparent top yet. With feeder steers in the US reaching \$8.00/kg it appears the Australian market has a lot of room to move and considering drought is still affecting large parts of Eastern Australia it will be interesting to see how far the prices will go. The consensus amongst everybody we have talked to is that we are only seeing the start of market rises at the moment. At a recent Breed society meeting with Chinese Ministry of Agriculture and live export company Austrex the numbers of live feeder cattle needed to supply the Chinese market is mind boggling and far beyond the capability of Australia to supply. The good thing is that this will bring a very large player into the market to compete for cattle against the major beef processing companies in Australia. Despite the price rises, we are still only catching up in real terms to where we were many years ago and much of the extra income will be needed to be used on infrastructure, fertiliser, loan reductions, restocking and genetic improvement. Almost certainly further down the track we should see an increase in the prices paid for land suitable for cattle production.

On the family front, our eldest daughter Lucy has come back to help us on the farm and with our purchase of "Ridgemount" late last year. Her input has been invaluable and she is a great asset to our business. Lucy has also started a farm stay business and has agreed to provide accommodation free of charge for the sale on a first in, first served basis. Our youngest daughter Claire is completing 4th year Vet Science in Wagga and is hoping to be able to come home for our sale. Jenny and I have enjoyed the opportunity to see quite a lot of baby calves and weaners

sired by Wakefield bulls lately and are very proud of what is happening over a wide range of environments and cow breeds. Over the last 12 months there have been many outstanding results in feedlots, sales, abattoirs and stud bull auctions from stock sired by Wakefield bulls. The overwhelming comments have been how well the bulls are performing under tough conditions and the great growth and softness of their progeny.

We would like to thank our bull buyers for their loyalty and persistence under very difficult weather and market conditions and hope their perseverance will be rewarded over the next number of years.

The Wakefield bull breeding program is tailored to produce calves which will fit the specifications of a wide range of markets and remember we are a commercial operation as well and have a good understanding of what is required. We appreciate feedback from our clients on how our bulls are performing as it helps us to make more informed breeding decisions.

Once again, 2015 will see the majority of our purebred calves born by AI and embryo transfer with the emphasis on breeding tough cattle that are at the top of the breed for dollars earned. The bulls have been prepared on a mainly silage ration with a light grain supplementation and will be in a forward but not fat condition. We do not aim to present 1000kg bulls for sale but prefer to produce bulls that can be put straight to work. Quite a few of our bulls are jumped directly off the truck straight into client's cow herds!

We look forward to seeing you on Friday the 14th of August at our "all weather" sale complex. Complimentary lunch will be available prior to the sale, which commences at 1pm. Remember if you would like any more information we are only a phone call away and on the day, pack a jumper!





STUD HISTORY

This year we celebrate 155 years of continuous cattle breeding and Wakefield has been held in the same family since 1860. Wakefield began breeding Charolais in 1970 when the breed was first introduced into Australia and used most of the early French bulls in grading up programs until currently a herd of 450 Charolais, Charolais composite and Angus females are maintained. Through the years there have been selected introductions of stud Charolais females, purchase of embryos, regular artificial insemination and embryo transfer programs. We have been breeding Angus for our composite program for many years and made the decision to join our grandparent lines to Angus to produce purebred. In combination with upgrading these cows to APR status and introduction of industry leading embryos the Angus herd is growing rapidly. Our emphasis is to produce bulls to increase profit in our client's herds and the calves born over the next few years will be sired by a smaller number of select sires.

This year our emphasis is leaning towards a small number of Canadian, French and Australian Charolais sires that have the balance of growth and carcass characteristics we require. Less reliance will be placed on American Charolais sires, which in general are lacking top end growth and uniformity. Wakefield was amongst the pioneers in the use of Charolais Composite bulls and it is pleasing to see Charolais being recognised as the "breed of choice" in crossbreeding programs. We are finding that many purebred herds are using composite bulls to produce a three-way cross and cross-bred herds are coming back to purebred Charolais bulls to stabilise their genetics. A lot of

herds are using composite bulls as a stepping stone into the Charolais breed and quickly realise the financial benefits of crossbreeding.

Our aim is to breed moderate birth weight Charolais while maintaining good growth and carcass characteristics. Wakefield is a Group Breedplan member so EBVs are available on all purebred bulls and our herd is based around selecting for commercially important traits, we are bull breeders not bull feeders. Structural correctness is very important to us and we like to have feedback from our clients to make sure the bulls are performing well under all conditions. We are proud of our sale bulls and can recommend them to you as herd improvers and they can be purchased in the knowledge that they will perform well under commercial conditions.



From left: Claire, Greg, Lucy and Jenny Frizell



SALE INFORMATION



REFRESHMENTS

Complimentary lunch and refreshments will be provided by Wakefield.

INSPECTION

Inspection can be made prior to sale day by appointment with the agents or the vendors. Bulls will be available for inspection on sale day from 10am.

TREATMENT SCHEDULE BULLS

16/4/2015 – Dectomax pour on
Exifluke drench
Multimin injection
20/6/2015 – Lepto vaccination
Pestivirus vaccination
Vibriosis vaccination
Three-day sickness vaccination
Arrest easy dose
20/7/2015 – 8 in 1 booster (booster required yearly)
Lepto booster (booster required yearly)
Pestivirus booster (booster required yearly)
Vibriosis vaccination (booster required yearly)
Three-day sickness booster (booster required yearly)
Note all pastures have been treated with *Selcote Ultra*

QUALITY CONTROL

Pestivirus tested negative (hair sample)
Semen tested
Johnes Status - Protected Zone
EU Accredited herd
Tested by Bovine Scanning Services for
- Eye muscle area
- Rib fat
- Rump fat
- IMF
- Scrotal circumference
Angus bulls tested for genetic conditions AM, NH, CA and DD

GUARANTEE

In the unlikely event of infertility, provided it is not caused by injury, stress or disease contracted post sale, we will endeavour to supply a satisfactory replacement if available or issue a credit to equal the purchase price minus the salvage value to be used at future Wakefield sales. The purchaser will provide a veterinarian's certificate within six months of the purchase date.

TRANSPORT

Carriers will be attendance at the sale. We take a keen interest in arranging the most favourable transport for your purchases. This year we are offering free freight from Wakefield to Inverell, Grafton and Kempsey, with carrier of our choice. Delivery arrangements are to be made in writing on the buyers instruction form provided in the back of this catalogue.

STUD TRANSFERS

All registered animals are eligible for transfer. For transfer of animals purchasers must be members of the relevant breed society.

REBATE

2% rebate available to outside agents accompanying potential purchasers and settling for purchases within 7 days of receipt of invoice.

NOTICE TO BUYERS

All lots will be sold subject to the usual terms and conditions governing auction sales. Phone service is available at sale complex. Please contact the vendors or your preferred agent on sale day to arrange phone hook-up. This year's sale is also interfaced with Auctionsplus.

CARING FOR YOUR BULL

This year's sale bulls range from 16 - 26 months of age and will need to be managed accordingly. There are many advantages in buying younger bulls. You see the bull closer to the weights you are likely to be marketing your cattle at. You will get an extra year of use from your bull and most importantly you are getting the 'pick of the crop'. In our experience the best bulls will be good at all stages of growth and not only when they are mature. You can be confident that a young bull with eye appeal will only get better! But younger bulls are still growing quickly and need enough feed to maintain their growth pattern while settling your cows. Younger bulls can be introduced into paddocks with older bulls but remember he will be on the bottom of the pecking order and will need room to avoid the others. His nutritional requirements will be greater than a mature bull so make sure he has adequate feed.

Our bulls are used to running in a mob and will arrive in a strange environment at the purchaser's property. Unload him and if possible make sure he has a steer or cow as a companion straight away. Our cattle are mustered on motorbikes and are handled gently but firmly. The bulls have been trained to respect electric fencing.



This year's WAKEFIELD BULL SALE will be interfaced with AuctionsPlus.

This sale is live online in real time, but will be interfaced with a physical auction that is being controlled by an auctioneer. A hand-held wireless connected computer is used to bring the onsite prices to the internet, for the remotely connected bidders to observe. These bidders can place a bid on their computer and the result is immediately transferred to the person onsite, who the wireless device with will raise that bid with the auctioneer.

Important information

Bidding is only available to registered AuctionsPlus users. You must register **at least 24 hrs prior to the sale** with AuctionsPlus Sydney on their website www.auctionsplus.com.au

For further information about AuctionsPlus, please contact Mark Haywood on 0437 286 494 or email mark.haywood@midcoastruralagencies.com.au



GETTING RESULTS



2014 Wakefield Sale



F1 heifer with Wakefield Charolais calf at foot



2014 Wakefield Sale



Crossbred heifers with Wakefield Charolais calves at foot in the Upper Clarence Valley



2014 Wakefield Sale



Wakefield calves in the Macleay Valley

UNDERSTANDING ESTIMATED BREEDING VALUES (EBVs)



Charolais BREEDPLAN EBV Explanations

EBVs

An animal's breeding value is its genetic merit, half of which will be passed on to its progeny. While we will never know the exact breeding value, for performance traits it is possible to make good estimates. These estimates are called Estimated Breeding Values (EBVs).

In the calculation of EBVs, the performance of individual animals within a contemporary group is directly compared to the average of other animals in that group. A contemporary group consists of animals of the same sex and age class within a herd, run under the same management conditions and treated equally. Indirect comparisons are made between animals reared in different contemporary groups, through the use of pedigree links between the groups.

EBVs are expressed in the units of measurement for each particular trait. They are shown as +ive or -ive differences between an individual animal's genetics difference and the genetic base to which the animal is compared. For example, a bull with an EBV of +50 kg for 600-Day Weight is estimated to have genetic merit 50kg above the breed base of 0kg. Since the breed base is set to an historical benchmark, the average EBVs of animals in each year drop has changed over time as a result of genetic progress within the breed.

The absolute value of any EBV is not critical, but rather the differences in EBVs between animals. Particular animals should be viewed as being "above or below breed average" for a particular trait.

Whilst EBVs provide the best basis for the comparison of the genetic merit of animals reared in different environments and management conditions, they can only be used to compare animals analysed within the same analysis. Consequently, Charolais BREEDPLAN EBVs cannot be validly compared with EBVs for any other breed.

Although EBVs provide an estimate of an animal's genetic merit for a range of production traits, they do not provide information for all of the traits that must be considered during selection of functional animals. In all situations, EBVs should be used in conjunction with visual assessment for other traits of importance (such as structural soundness, temperament, fertility etc). A recommended practice is to firstly select breeding stock based on EBVs and to then select from this group to ensure that the final selections are otherwise acceptable.

EBVs are published for a range of traits covering fertility, calving ease, milking ability, growth, carcass merit and docility. When using EBVs to assist in selection decisions it is important to achieve a balance between the different groups of traits and to place emphasis on those traits that are important to the particular herd, markets and environment. One of the advantages of having a comprehensive range of EBVs is that it is possible to avoid extremes in particular traits and select for animals with balanced overall performance.

Calving Ease EBVs (%) are based on calving difficulty scores, birth weights and gestation length information. More positive EBVs

are favourable and indicate easier calving.

CE % Dir = Direct Calving Ease - The EBV for direct calving ease indicates the influence of the sire on calving ease in purebred females calving at two years of age.

CE % Daughters = Daughters' Calving Ease - The EBV for daughters' calving ease indicates how easily that sire's daughters will calve at two years of age.

Gestation Length EBV (days) is an estimate of the time from conception to the birth of the calf and is based on Artificial Insemination and hand mating records. Lower (negative) Gestation Length EBVs indicate shorter gestation length and therefore easier calving and increased growth after birth.

Birth Weight EBV (kg) is based on the measured birth weight of progeny, adjusted for dam age. The lower the value the lighter the calf at birth and the lower the likelihood of a difficult birth. This is particularly important when selecting sires for use over heifers.

200-Day Growth EBV (kg) is calculated from the weight of progeny taken between 80 and 300 days of age. Values are adjusted to 200 days and for age of dam. This EBV is the best single estimate of an animal's genetic merit for growth to early ages.

400-Day Weight EBV (kg) is calculated from the weight of progeny taken between 301 and 500 days of age, adjusted to 400 days and for age of dam. This EBV is the best single estimate of an animal's genetic merit for yearling weight.

600-Day Weight EBV (kg) is calculated from the weight of progeny taken between 501 and 900 days of age, adjusted to 600 days and for age of dam. This EBV is the best single estimate of an animal's genetic merit for growth beyond yearling age.

Mature Cow Weight EBV (kg) is based on the cow weight when the calf is weighed for weaning, adjusted to 5 years of age. This EBV is an estimate of the genetic difference in cow weight at 5 years of age and is an indicator of growth at later ages and potential feed maintenance requirements of the females in the breeding herd. Steer breeders wishing to grow animals out to a larger weight may also use the Mature Cow Weight EBV.

Milk EBV (kg) is an estimate of an animal's milking ability. For sires, this EBV indicates the effect of the daughter's milking ability, inherited from the sire, on the 200-day weights of her calves. For dams, it indicates her milking ability.

Scrotal Size EBV (cm) is calculated from the circumference of the scrotum taken between 300 and 700 days of age and adjusted to 400 days of age. This EBV is an estimate of an animal's genetic merit for scrotal size. There is also a small negative correlation with age of puberty in female progeny and therefore selection for increased scrotal size will result in reduced age at calving of female progeny.

Carcass Weight EBV (kg) is based on abattoir carcass records and is an indicator of the genetic differences in carcass weight at the standard age of 650 days.



UNDERSTANDING ESTIMATED BREEDING VALUES (EBVs)

Eye Muscle Area EBV (sq cm) is calculated from measurements from live animal ultrasound scans and from abattoir carcass data, adjusted to a standard 300 kg carcass. This EBV estimates genetic differences in eye muscle area at the 12/13th rib site of a 300 kg dressed carcass. More positive EBVs indicate better muscling on animals. Sires with relatively higher Eye Muscle Area EBVs are expected to produce better muscled and higher percentage yielding progeny at the same carcass weight than will sires with lower Eye Muscle Area EBVs.

Rib Fat and Rump Fat EBVs (mm) are calculated from measurements of subcutaneous fat depth at the 12/13 rib site and the P8 rump site (from live animal ultrasound scans and from abattoir carcasses) and are adjusted to a standard 300 kg carcass. These EBVs are indicators of the genetic differences in fat distribution on a standard 300 kg carcass. Sires with low, or negative, fat EBVs are expected to produce leaner progeny at any particular carcass weight than will sires with higher EBVs.

Retail Beef Yield EBV (%) indicates genetic differences between animals for retail yield percentage in a standard 300 kg carcass. Sires with larger EBVs are expected to produce progeny with higher yielding carcasses.

Intramuscular Fat EBV (%) is an estimate of the genetic difference in the percentage of intramuscular fat (marbling) at the 12/13th rib site in a 300 kg carcass. Depending on market targets, larger more positive values are generally more favourable.

Selection Indices

Charolais selection indices are calculated for three market specifications, namely, Domestic, Export and Northern Terminal. Index values are reported as EBVs, in units of relative earning capacity (\$'s) for a given market. They reflect both the short-term profit generated by a sire through the sale of his progeny, and the longer-term profit generated by his daughters in a self-replacing cow herd. A selection index combines the EBVs with economic information (costs and returns) for specific market and production systems to rank animals based on relative profit values. Note that different types of animals can give similar profit values, so consideration should be given to both the index and the component EBVs when selecting animals for a particular production system. More information is available on selecting animals using a selection index. The Index values are derived using BreedObject technology. More information is available from the BreedObject web site.

Domestic Index (\$) - Estimates the genetic differences between animals in net profitability per cow joined for an example commercial herd with a British cow base (eg Angus) targeting grass-finished production for the domestic trade. This Index assumes pasture grown & finished steers weighing 430 kg (240 kg HSCW and 6 mm P8 fat depth) at 12 months. Daughters are retained or sold for breeding therefore maternal traits are of importance. In response to industry feedback, positive emphasis has been placed on finishing ability.

Export Index (\$) - Estimates the genetic differences between animals in net profitability per cow joined for an example commercial herd with a British cow base (eg Angus) targeting the production of steers for export markets. This Index assumes pasture

grown & finished steers weighing 700 kg (380 kg HSCW and 9 mm P8 fat depth) at 29 months. Daughters are retained or sold for breeding therefore maternal traits are of importance. In response to industry feedback, positive emphasis has been placed on finishing ability.

Northern Terminal Index (\$) - Estimates the genetic differences between animals in net profitability per cow joined for an example commercial herd in Northern Australia (ie Brahman cows) targeting the production of grass finished steers for the Jap Ox market. Steers are sold direct to slaughter at 630 kg (345 kg HSCW and 5 mm P8 fat depth) at 28 months. All progeny are slaughtered. In response to industry feedback positive emphasis has been placed on finishing ability.

Accuracy

Accuracy (%) is based on the amount of performance information available on the animal and its close relatives - particularly the number of progeny analysed. Accuracy is also based on the heritability of the trait and the genetic correlations with other recorded traits. Hence accuracy indicates the "confidence level" of the EBV. The higher the accuracy value the lower the likelihood of change in the animal's EBV as more information is analysed for that animal or its relatives. Even though an EBV with a low accuracy may change in the future, it is still the best estimate of an animal's genetic merit for that trait. As more information becomes available, an EBV is just as likely to increase in value, as it is to decrease. Accuracy values range from 0-99%. The following guide is given for interpreting accuracy:

Accuracy range Interpretation less than 50%

Low accuracy. EBVs are preliminary and could change substantially as more performance information becomes available.

50-74%

Medium accuracy, usually based on the animal's own records and pedigree.

75-90%

Medium-high accuracy. Some progeny information included. EBVs may change with addition of more progeny data.

more than 90%

High accuracy estimate of the animal's true breeding value. As a rule, animals should be compared on EBVs regardless of accuracy. However, where two animals have similar EBVs the one with higher accuracy could be the safer choice, assuming other factors are equal.

For further information, contact the

Charolais Society (02 6771 1666) or
Charolais BREEDPLAN (02 6773 3059).



CHAROLAIS REFERENCE SIRES



Harvie Mojo

A Canadian red factor sire that is producing progeny with style and structure. He provides positive carcass traits with extraordinary growth and positive calving ease. We have used Mojo extensively and he is throwing uniform progeny with great phenotype. Four sons sell today.



Rangan Park Redemption

Rangan Park Redemption is a powerful polled red factor sire by renowned Canadian sire Harvie Redemption. The progeny by this bull are very correct on a substantial frame with exceptional eye appeal. They are exhibiting tremendous growth with wonderful temperaments. The Showgirl maternal line is well known throughout the Charolais breed. We would recommend that he be used on mature cows only. Five sons to sell.



Pinay

Pinay has been used extensively in the Wakefield herd for his calving ease, growth and breed leading eye muscle area. His daughters have tremendous calving ease and are proving very valuable in our herd. Six sons sell today.



Advance Domino

Advance Domino has been used for his softness, growth and finishing ability and tremendous phenotype. The progeny have good temperaments, are deep flanked with capacity and are exhibiting all the characteristics of this sire. Domino was Interbreed Champion at the Ekka in 2010. One son sells.





CHAROLAIS REFERENCE SIRES

Wakefield Goldmine G47E (AI)(P/S)(RF)

Goldmine was used on our heifers as he displayed good neck extension, smooth shoulders and good length of body all suiting a great calving ease sire. This red factor, scurred bull was a moderate framed bull with a good finishing ability. Six sons to sell.



Ascot Eldorado

Eldorado is an Australian bred homozygous polled red factor bull that is breeding consistent progeny with excellent growth, scrotal and eye muscle area. His dam Gobongo Isabella was a leading matron in the Gobongo herd. Two sons to sell.



G.Bros Thin Red Line

This red factor Canadian bull has been used because he is homozygous polled and has good muscling and finishing ability. The bull is an out cross sire for the Charolais breed. The progeny are soft, easy fleshing with eye appeal. Four sons sell today.



Charolais Society of Australia
www.charolais.com.au



ANGUS REFERENCE SIRES



Millah Murrah Equator D78

Millah Murrah Equator D78 has been used in our herd as he is a trait leader for 200, 400 and 600 day growth, docility, retail beef yield and more importantly gestation length. The sons of D78 are pleasing to the eye, soft easy doing bulls with excellent frames and are exhibiting the growth and capacity of their father. Five sons sell today.



**MILLAR
MURRAH
EQUATOR D78**

Ardrossan Equator A241

A241 is the number one AI sire in Australia and we think he'll be around for a long time yet. The progeny from A241 are muscular and correct while maintaining a natural finishing ability. Females are breeding well in our herd and the bulls have great phenotypes with good temperaments. Four sons to sell.



**ARDROSSAN
EQUATOR
A241**

SAV Thunderbird

SAV Thunderbird is a 'curve bender' in the Angus breed. We've used him in the herd on heifers very successfully as his calving ease is exceptional. The progeny are very stylish with plenty of 'punch' and growth. Docility is very good. One son sells.



**SAV
THUNDERBIRD**

Raff Explosive

Raff Explosive has been used for his incredible growth, length and overall eye appeal. We've been very happy with the short gestation and calving ease and think that Explosive is a true 'curve bending' bull. We also thought that the Blackbird line being so well recognised in the Angus breed was worth using. One son sells.



RAFF EXPLOSIVE



RAY DONOVAN

STOCK & STATION AGENTS Pty Limited

**Are your 100% locally owned family
business in Grafton**

We conduct

- Live weight cattle sales every Tuesday
- Store cattle sales third Thursday of every month
- Annual Stud sales
- Paddock sales, over the hook & direct to feedlot sales
- Regular horse sales
- Clearing and general auction sales
- Rural property and Real Estate sales

*Sell with the progressive local team who strive to keep
competition alive*

Offering maximum returns on all your Livestock sales

For friendly competent service and advice
see Ray, Helen, Mitch and their staff at

50 Armidale Street, SOUTH GRAFTON

or by telephoning

02 66434411

Ray: 0428 918 971 Mitch: 0428 470 132

www.raydonovan.com.au

1

WAKEFIELD JUPITER (AI) (ET) (P)

BORN: 11/07/2013 IDENT: BIS J543E COLOUR: White

HARVIE JAGER 65J PMC228759 (OAC U8759E) (P)

LANG'S ERIC THE RED 3E MC178117 (PED -8117E) (P/S)
HARVIE MISS FRANCIS 47F FC234929 (OAC R4929E)

SIRE: HARVIE MOJO 115M QSMC272453 (OAC X2453E) (P/S)

HARVIE MISS GELLIA 35G PFC250803 (OAC S2508E) (P)

A-JAY'S PLD DIMENSION69E PMC200006 (PED -6E) (P)
PAR MISS 50B PFC191500 (PED -1500E) (P)
GUNNADOO RED BARON R/F (GN1 Q31D)
PALGROVE DIGNA 36 (PK N168E) (P)

CHARNELLE TANNESSEE R/F (GKA T83E) (P)

DAM: WAKEFIELD ALANNA (BIS A803E) (P)

MOUNT WILLIAM V92E (BS V92E)

TALGOONA QANTAS (CG Q4E)
MOUNT WILLIAM SYBIL (BS S72E)

Index	\$Value
Domestic	+\$40
Export	+\$54
Terminal	+\$30

June 2015 Australasian Charolais GROUP BREEDPLAN

	CE Dir	CE Dtr	GL	BW	200	400	600	MCW	MILK	SS	CWT	EMA	RIB	Rump	RBY	IMF
EBV	+4.6	+2.4	-2.8	+1.3	+14	+38	+50		+5	+2.1		+1.8	-0.3	-0.2	+0.8	-0.2
Acc	47%	43%	59%	69%	56%	56%	57%		50%	50%		37%	44%	44%	41%	36%

Notes: An eye catching young polled, Harvie Mojo son to start the sale off this year. A bull that could be used in any commercial or stud operation. Above average growth, a smooth muscle pattern and an excellent temperament and top line make this young sire hard to overlook. His dam Alanna has been a very successful donor and produced excellent lines consistently in the Wakefield herd. Well worth your consideration. **Top 5% for 400 day growth and Top 10 % for 600 day growth and scrotal circumference.**

Purchaser.....Price \$.....

2

WAKEFIELD JALOPY (AI)

BORN: 25/09/2013 IDENT: BIS J578E COLOUR: White

IMPAIR 1893102983 (OAF N189F)

BLASON 4286100325 286100325 (PED X286F)
OFFICINE (PED -945F)

SIRE: PINAY 8552394134 (OAF U4134F)

MARY 8596100049 (OAF R8596F)

HOMERE 5892107561 (PED -7561F)
JACINTHE 8594104550 (PED -4550F)
MD SENTINAL RULER G1520 M509416 (OAU S9416E) (P/S)
PARINGA DUKE Z1808 (TOL Z1808E)

PARINGA SENTINAL RULER C93E (TOL C93E) (P)

DAM: WAKEFIELD EDEN (BIS E414E) (P)

WAKEFIELD CLOVER (BIS C104D) (P)

SHAMROCK AMBASSADEUR 03179 A02 (IAE E6159F)
WAKEFIELD YASMINE (BIS Y500C) (P)

Index	\$Value
Domestic	+\$24
Export	+\$28
Terminal	+\$20

June 2015 Australasian Charolais GROUP BREEDPLAN

	CE Dir	CE Dtr	GL	BW	200	400	600	MCW	MILK	SS	CWT	EMA	RIB	Rump	RBY	IMF
EBV	+1.0	+3.0	-4.2	+0.6	+13	+27	+38	+51	+14	-0.5	+23	+2.3	-0.9	-1.5	+1.0	+0.7
Acc	52%	49%	76%	74%	65%	67%	71%	64%	54%	74%	60%	54%	59%	58%	56%	53%

Notes: 13 Jalopy is a son of AI sire Pinay out of a very stylish Paringa Sentinel Ruler Dam. He exhibits wonderful muscle, with a tremendous top line and a good temperament. Jalopy has a softness which suggests he'd be an ideal herd improver for all carcase traits especially the muscle component. **Top 10% for IMF and top 15% for EMA and Retail beef yield.**

Purchaser.....Price \$.....

3

WAKEFIELD JACK FLASH (AI) (P)

BORN: 04/11/2013 IDENT: BIS J635E COLOUR: White

HARVIE REDEMPTION 36P MC286641 (OAC Z6641E) (P)

LT WYOMING WIND 4020 PLD M411450 (OAU P4020E) (P)
HARVIE MS MOLSON 53M QPFC316280 (PED -6280E) (P)

SIRE: RANGAN PARK REDEMPTION E42 (RAN E42E) (P)

RANGAN PARK SHOWGIRL C7 (RAN C7E)

GAUGUIN 8591105891 (OAF L859F)
PALGROVE SHOW GIRL 6 (PK P82E) (P)

SILVERSTREAM JONAH J91F 83/FF12682/94 (83 J91F)

CRANEBROOK STUART S1 BR.HB.12942 (IAE A6197F)
BROOKFIELD OCELOT O17 253/FF1713/78 (253 O17F)

DAM: WAKEFIELD ACE (BIS A862E)

MOUNT WILLIAM V92E (BS V92E)

TALGOONA QANTAS (CG Q4E)
MOUNT WILLIAM SYBIL (BS S72E)

Index	\$Value
Domestic	+\$16
Export	+\$22
Terminal	+\$16

June 2015 Australasian Charolais GROUP BREEDPLAN

	CE Dir	CE Dtr	GL	BW	200	400	600	MCW	MILK	SS	CWT	EMA	RIB	Rump	RBY	IMF
EBV	-7.6	+0.7	-0.5	+2.3	+15	+33	+46		+6	+0.5		+1.7	+0.6	+0.8	+0.1	
Acc	49%	44%	75%	72%	60%	62%	62%		49%	54%		48%	51%	50%	50%	

Notes: This young polled bull won the 16 – 18 mth old class at the Sydney Royal 2015 and then went on to be sashed Reserve Junior Champion Bull. He exudes a real presence. Jack Flash has enormous potential to make a stud sire with his outstanding phenotype, smooth muscle pattern and excellent conformation. His dam Ace A862E is a donor dam giving us exceptional animals every time. **Top 10% for 400 and 600 day growth.**

Purchaser.....Price \$.....

4

WAKEFIELD JACK HAMMER (AI) (R/F)

BORN: 04/08/2013 IDENT: BIS J559E COLOUR: Red factor

HARVIE REDEMPTION 36P MC286641 (OAC Z6641E) (P)

LT WYOMING WIND 4020 PLD M411450 (OAU P4020E) (P)
HARVIE MS MOLSON 53M QPFC316280 (PED -6280E) (P)

SIRE: RANGAN PARK REDEMPTION E42 (RAN E42E) (P)

RANGAN PARK SHOWGIRL C7 (RAN C7E)

GAUGUIN 8591105891 (OAF L859F)
PALGROVE SHOW GIRL 6 (PK P82E) (P)
RC BUDSMYDAD 225 POLLED 225 P M 355527 (PED -5527E) (P)
MISS EC DUKE 452-D 452-D D F 603972 (PED -3972E)

EC NEW TREND 6G M 498475 (OAU U6E) (P)

DAM: WAKEFIELD ASTRA (BIS A831E)

DURSLEY RIDDLE (BK R4E)

CHARMANT (IAF C6025F)
BALLENGARA NITA (CJP N28E)

Index	\$Value
Domestic	+\$12
Export	+\$15
Terminal	+\$18

June 2015 Australasian Charolais GROUP BREEDPLAN

	CE Dir	CE Dtr	GL	BW	200	400	600	MCW	MILK	SS	CWT	EMA	RIB	Rump	RBV	IMF
EBV	-8.2	-6.4	-1.7	+2.3	+18	+40	+53	+49	+6	+1.3		+1.7	-0.5	-0.6	+1.0	+0.0
Acc	46%	41%	75%	72%	62%	63%	69%	61%	49%	72%		47%	51%	50%	50%	46%

Notes: Jackhammer is a soft muscled bull with a good top line and tremendous length. He is sired by Rangan Park Redemption who has been used in the Wakefield herd for his tremendous growth, muscle and natural finishing ability. This bull will do the job for any cross breeder or stud operation. **Top 5% for 200, 400 and 600 day growth.**

Purchaser.....Price \$.....

5

WAKEFIELD JUMBUCK (AI) (ET)

BORN: 11/07/2013 IDENT: BIS J542E COLOUR: White

HARVIE JAGER 65J PMC228759 (OAC U8759E) (P)

LANG'S ERIC THE RED 3E MC178117 (PED -8117E) (P/S)
HARVIE MISS FRANCIS 47F FC234929 (OAC R4929E)

SIRE: HARVIE MOJO 115M QSMC272453 (OAC X2453E) (P/S)

HARVIE MISS GELLIA 35G PFC250803 (OAC S2508E) (P)

A-JAY'S PLD DIMENSION69E PMC200006 (PED -6E) (P)
PAR MISS 50B PFC191500 (PED -1500E) (P)
GUNNADOO RED BARON R/F (GN1 Q31D)
PALGROVE DIGNA 36 (PK N168E) (P)

CHARNELLE TANNESSEE R/F (GKA T83E) (P)

DAM: WAKEFIELD ALANNA (BIS A803E) (P)

MOUNT WILLIAM V92E (BS V92E)

TALGOONA QANTAS (CG Q4E)
MOUNT WILLIAM SYBIL (BS S72E)

Index	\$Value
Domestic	+\$39
Export	+\$52
Terminal	+\$29

June 2015 Australasian Charolais GROUP BREEDPLAN

	CE Dir	CE Dtr	GL	BW	200	400	600	MCW	MILK	SS	CWT	EMA	RIB	Rump	RBV	IMF
EBV	+4.9	+2.5	-2.9	+1.2	+13	+36	+46		+5	+2.1		+1.9	-0.2	-0.1	+0.9	-0.4
Acc	47%	43%	60%	70%	60%	61%	65%		50%	66%		44%	50%	49%	47%	43%

Notes: Jumbuck is another ET calf by the Harvie Mojo sire. He is a soft yet muscular bull who has a great top line and tremendous length. His dam is a donor dam in the Wakefield herd who just keeps on producing year after year. Wonderful temperament, don't overlook him! **Top 10% for 400 and 600 day growth.**

Purchaser.....Price \$.....

6

WAKEFIELD JUGGLER (AI) (ET)

BORN: 25/09/2013 IDENT: BIS J580E COLOUR: White

VAINQUEUR V03 71105 V03 (ZZF V3F)

TAUPIN M 58270 (ZZF X1293F)
MEGERE F 45917 (ZZF X463F)

SIRE: EXCALIBUR FMC423 M64617 (IAC E6084F)

URSULE 5869351 (ZZF X677F)

PHARE M 24167 (ZZF X1183F)
OEILLADE F 59917 (ZZF X704F)

BEKKA-DEE ZULU (BEC Z1E)

MNE GOLDEN EAGLE 25W PMC 85384 (OAC G25E) (P/S)
PALGROVE MAXINE 26 (PK T92E) (P)

DAM: WAKEFIELD MAXINE 2 (BIS C175E)

DURSLEY RIDDLE (BK R4E)

CHARMANT (IAF C6025F)
BALLENGARA NITA (CJP N28E)

Index	\$Value
Domestic	+\$14
Export	+\$19
Terminal	+\$15

June 2015 Australasian Charolais GROUP BREEDPLAN

	CE Dir	CE Dtr	GL	BW	200	400	600	MCW	MILK	SS	CWT	EMA	RIB	Rump	RBV	IMF
EBV	+3.2	-3.3	-0.8	+0.9	+9	+19	+27	+32	+1	-0.4		+1.5	-1.0	-1.4	+0.8	+0.2
Acc	53%	52%	60%	69%	60%	60%	61%	61%	58%	52%		46%	50%	50%	48%	43%

Notes: Juggler is a smooth coated son of Full French sire Excalibur (semen is extremely rare). He has an overall eye appeal; a naturally thick bull who has a great combination of birth weight, growth and carcass. Excalibur progeny are renowned for their milking ability and muscularity. He would suit many enterprises from vealer to export steers. **Top 20% for retail beef yield.**

Purchaser.....Price \$.....

7

WAKEFIELD JAZZMAN (AI)

BORN: 25/09/2013 IDENT: BIS J577E COLOUR: White

IMPAIR 1893102983 (OAF N189F)

BLASON 4286100325 286100325 (PED X286F)
OFFICINE (PED -945F)

SIRE: PINAY 8552394134 (OAF U4134F)

MARY 8596100049 (OAF R8596F)

HOMERE 5892107561 (PED -7561F)
JACINTHE 8594104550 (PED -4550F)

GOBONGO VILLEROY V80E (GO V80E)

FERNVALE ROADSTER (FEN R37E)
GUNNADOO IRENE M103D (GN1 M103D) (P)

DAM: WAKEFIELD AMAZE 11 (BIS E484E) (P)

WAKEFIELD AMAZE 2 (BIS C129E) (P)

LHD MR PERFECT Y416 M 314744 (OAC J416E) (P)
WAKEFIELD AMAZE (BIS A820E)

Index	\$Value
Domestic	+\$28
Export	+\$36
Terminal	+\$25

June 2015 Australasian Charolais GROUP BREEDPLAN

	CE Dir	CE Dtr	GL	BW	200	400	600	MCW	MILK	SS	CWT	EMA	RIB	Rump	RBV	IMF
EBV	-0.6	+5.8	-3.3	+1.3	+18	+35	+51	+60	+11	+0.3	+33	+3.0	-1.5	-2.1	+1.8	+0.3
Acc	53%	51%	75%	73%	64%	66%	71%	64%	56%	74%	60%	54%	58%	57%	56%	53%

Notes: This bull has a true to type Charolais pattern with length, muscle, smooth coat and clean shoulders. He is a son of Full French sire Pinay used for calving ease, gestation length and growth. An ideal 'curve bending' bull for any cattle operation. Pinay semen is very rare now in Australia. **Top 5% for 200 day growth, 600 day growth and EMA and retail beef yield, top 10% for 400 day growth.**

Purchaser.....Price \$.....

8

WAKEFIELD JACK BE NIMBLE (AI) (P) (R/F)

BORN: 26/12/2013 IDENT: BIS J622E COLOUR: Red factor

LINKLETTER A11E (LJA A11E) (P)

LT WYOMING WIND 4020 PLD M411450 (OAU P4020E) (P)
PALGROVE ESTELLA 73 (PK S201E)

SIRE: ADVANCE DOMINO D36 (ADV D36E) (P)

ADVANCE GOLDSTAR Y46 (ADV Y46E)

BIG SNOW GOLD BULLION R/F (KRL V80F)
ADVANCE GOLDSTAR R/F (ADV V5E)

ADVANCE XR8 (ADV X50E)

PALGROVE UPTURN (PK U353E)
ADVANCE GINA R/F (ADV T3E)

DAM: WAKEFIELD APHRODITE 6 (BIS F766E)

WAKEFIELD APHRODITE (BIS A806E)

WCR PRIME CUT 764 PLD PMC223447 (OAC S764E) (P)
DURSLEY RIDDLE (BK R4E)

Index	\$Value
Domestic	+\$0
Export	+\$4
Terminal	+\$11

June 2015 Australasian Charolais GROUP BREEDPLAN

	CE Dir	CE Dtr	GL	BW	200	400	600	MCW	MILK	SS	CWT	EMA	RIB	Rump	RBV	IMF
EBV	-6.3	-5.5	-0.6	+2.8	+18	+28	+42		+3			-0.3	-0.7	-1.0	+0.1	
Acc	43%	36%	75%	62%	58%	61%	60%		42%			49%	51%	51%	50%	

Notes: Jackbenimble is a smooth coated, deep flanked, polled red factor bull that has tremendous muscularity and a natural softness. He is phenotypically correct, has a great top line and oozes eye appeal. Jackbenimble came second in the 15-16mth old class at the Sydney Royal 2015. Well worth a look! **Top 5% for 200 day growth and top 20% for 600 day growth.**

Purchaser.....Price \$.....

9

WAKEFIELD JACK BE QUICK (AI) (P)

BORN: 27/10/2013 IDENT: BIS J626E COLOUR: White

HARVIE REDEMPTION 36P MC286641 (OAC Z6641E) (P)

LT WYOMING WIND 4020 PLD M411450 (OAU P4020E) (P)
HARVIE MS MOLSON 53M QPFC316280 (PED -6280E) (P)

SIRE: RANGAN PARK REDEMPTION E42 (RAN E42E) (P)

RANGAN PARK SHOWGIRL C7 (RAN C7E)

GAUGUIN 8591105891 (OAF L859F)
PALGROVE SHOW GIRL 6 (PK P82E) (P)

EATONS LEADER 2233 P M652217 (OAU X2217E) (P)

EATONS CANDIDATE 9177 M613098 (PED -3098E)
EATONS RHODORA 9506 F868346 (PED -8346E)

DAM: WAKEFIELD ALANNA 21 (BIS F703E)

WAKEFIELD ALANNA 8 (BIS C141E)

BURRADON TALISMAN MBM0004745 (IAE X4745F)
WAKEFIELD ALANNA (BIS A803E) (P)

Index	\$Value
Domestic	+\$9
Export	+\$9
Terminal	+\$16

June 2015 Australasian Charolais GROUP BREEDPLAN

	CE Dir	CE Dtr	GL	BW	200	400	600	MCW	MILK	SS	CWT	EMA	RIB	Rump	RBV	IMF
EBV	-10.7	-3.8	-0.4	+3.1	+20	+39	+49		+3	+0.1		+3.3	+0.4	+0.6	+1.3	-0.3
Acc	45%	39%	74%	72%	61%	63%	69%		44%	73%		48%	53%	52%	51%	47%

Notes: Jackbequick is a bull with tremendous body length and a smooth muscle pattern that makes him an outstanding package for any beef enterprise. His sire Rangan Park Redemption continues to impress us with five good sons in this catalogue and plenty of daughters in the Wakefield herd. **Top 5% for 200 and 400 day growth and EMA and top 10% for retail beef yield and 600 day growth.**

Purchaser.....Price \$.....

10

WAKEFIELD JARRAH (AI) (P) (R/F)

BORN: 11/07/2013 IDENT: BIS J545E COLOUR: Red factor

JMB DATELINE 754T PMC310942 (PED -3109E)

BXB DATELINE SON 65R PMC303803 (PED -3803E)
JMB MARTHA 234M PFC316449 (PED -6449E)

SIRE: G. BROS THIN RED LINE 527W MC326475 (OAC E6475E) (P)

G BROS TULIP 101T PFC359984 (PED -9984E)

SVS MASTERCARD 2M QPMC269158 (PED -9158E)
POOLEDALE MISS CHAMA 62G PFC240875 (PED -2408E)
TR SMOKEONTHEWATER ET M690545 (PED -545E)
THOMAS MS ADVANTAGE 2621 F959316 (PED -9316E)

TR RED SMOKE PMC316641 (OAU B6641E) (P)

DAM: WAKEFIELD ALANNA 20 (BIS E493E)

WAKEFIELD ALANNA 9 (BIS C142E)

BURRADON TALISMAN MBM0004745 (IAE X4745F)
WAKEFIELD ALANNA (BIS A803E) (P)

Index	\$Value
Domestic	+\$32
Export	+\$42
Terminal	+\$17

June 2015 Australasian Charolais GROUP BREEDPLAN

	CE Dir	CE Dtr	GL	BW	200	400	600	MCW	MILK	SS	CWT	EMA	RIB	Rump	RBV	IMF
EBV	+4.3	+3.7	-4.8	-0.2	+13	+24	+23		+1	+2.3		+0.7	+1.1	+1.4	-0.3	-0.5
Acc	38%	25%	75%	70%	59%	60%	66%		32%	70%		42%	44%	43%	43%	41%

Notes: Jarrah is a polled/scurred red factor son of Canadian bull G.Bros Thin Red Line. He is developing into a thick, easy doing young bull with a solid top line. **Top 15% for rib and rump fat.**

Purchaser.....Price \$.....

11

WAKEFIELD JUDGE (AI)

BORN: 09/07/2013 IDENT: BIS J541E COLOUR: White

IMPAIR 1893102983 (OAF N189F)

BLASON 4286100325 286100325 (PED X286F)
OFFICINE (PED -945F)

SIRE: PINAY 8552394134 (OAF U4134F)

MARY 8596100049 (OAF R8596F)

HOMERE 5892107561 (PED -7561F)
JACINTHE 8594104550 (PED -4550F)

VIOLET HILLS ZACHARIAH (VHV Z80E) (P)

VIOLET HILLS V.H. VINCENT (VHV V47E)
VIOLET HILLS TRINKET (VHV T58E) (P)

DAM: WAKEFIELD EMERALD (BIS E427E) (P)

WAKEFIELD BLUSH (BIS B938D) (P)

WAKEFIELD ACQUIT (BIS W195E)
WAKEFIELD YASMINE (BIS Y500C) (P)

Index	\$Value
Domestic	+\$26
Export	+\$31
Terminal	+\$21

June 2015 Australasian Charolais GROUP BREEDPLAN

	CE Dir	CE Dtr	GL	BW	200	400	600	MCW	MILK	SS	CWT	EMA	RIB	Rump	RBV	IMF
EBV	+2.2	+4.5	-5.5	+0.4	+15	+27	+37	+51	+6	-0.2	+26	+3.0	-0.9	-1.5	+1.3	+0.4
Acc	53%	50%	77%	74%	66%	67%	71%	65%	55%	73%	61%	54%	59%	58%	57%	53%

Notes: Judge is a stylish young bull with good muscularity and body length. The combination of Wakefield bred dam Emerald on his dams side and French sire Pinay on the sires side give him a good blend of calving ease, growth and carcass EBV's. **Top 5% for EMA, top 10% for retail beef yield and gestation length and top 20% for 200 day growth.**

Purchaser.....Price \$.....

12

WAKEFIELD JAG (AI) (R/F)

BORN: 12/11/2013 IDENT: BIS J642E COLOUR: Red factor

CAVALIER C27 71226 C27 (ZZF C27F)

AMIRAL (ZZF X1241F)
VENUS (ZZF X616F)

SIRE: ESPION (IAF E6034F)

SABINE (ZZF X291F)

QUIBERON (ZZF X1225F)
MASCOTTE (ZZF X445F)

GOBONGO VILLEROY V80E (GO V80E)

FERNVALE ROADSTER (FEN R37E)
GUNNADOO IRENE M103D (GN1 M103D) (P)

DAM: WAKEFIELD FANCY FACE (BIS F722E)

MOUNT WILLIAM V92E (BS V92E)

TALGOONA QANTAS (CG Q4E)
MOUNT WILLIAM SYBIL (BS S72E)

Index	\$Value
Domestic	+\$24
Export	+\$33
Terminal	+\$17

June 2015 Australasian Charolais GROUP BREEDPLAN

	CE Dir	CE Dtr	GL	BW	200	400	600	MCW	MILK	SS	CWT	EMA	RIB	Rump	RBV	IMF
EBV	+0.9	+4.7	-1.0	+1.2	+12	+23	+29		+0	+1.4		+3.0	-0.5	-0.6	+1.4	-0.2
Acc	40%	36%	73%	70%	57%	59%	65%		44%	66%		41%	45%	44%	44%	40%

Notes: This smooth coated, soft, red factor bull with plenty of muscle and body length has a great top line and a good temperament. One of the youngest bulls in the catalogue he should grow into a super bull. **Top 5% for EMA and retail beef yield.**

Purchaser.....Price \$.....

13

WAKEFIELD JASON (P) (R/F)

BORN: 15/10/2013 IDENT: BIS J606E COLOUR: Red factor

TR RED SMOKE PMC316641 (OAU B6641E) (P)

TR SMOKEONTHEWATER ET M690545 (PED -545E)
THOMAS MS ADVANTAGE 2621 F959316 (PED -9316E)

SIRE: WAKEFIELD GOLDMINE (BIS G47E) (P)

WAKEFIELD EMILY (BIS E438E)

PINAY 8552394134 (OAF U4134F)
WAKEFIELD BENITA (BIS B904E)
RDGC KALAMAZOO 387F PMC191257 (PED -1257E) (P)
CS EXCLUSIVE'S GUEST 5G EFC242100 (PED -2100E)

CS PLD JUNCTION 4J MC228742 (OAC U8742E) (P)

DAM: WAKEFIELD ASCOT 19 (BIS G61E) (P)

WAKEFIELD ASCOT 3 (BIS C124E)

SEAWELL OFFSHORE 0084446 (OAE T5813F)
WAKEFIELD ASCOT (BIS A854D) (P)

Index	\$Value
Domestic	+\$29
Export	+\$40
Terminal	+\$21

June 2015 Australasian Charolais GROUP BREEDPLAN

	CE Dir	CE Dtr	GL	BW	200	400	600	MCW	MILK	SS	CWT	EMA	RIB	Rump	RBY	IMF
EBV	-1.2	+5.6	-2.8	-0.1	+16	+27	+39		+10	+0.4		+1.3	+0.6	+0.9	+0.0	+0.4
Acc	38%	31%	56%	69%	58%	61%	68%		36%	71%		46%	50%	49%	49%	45%

Notes: A slick coated red factor bull that has good length, softness and muscle pattern. His sire Goldmine was by TR Red Smoke and with a combination of Pinay on the dam's side makes the ease of calving and growth as well as EMA shine in this young bull. **Top 15 % for 200 day growth.**

Purchaser.....Price \$.....

14

WAKEFIELD JUST RIGHT (AI) (P)

BORN: 24/09/2013 IDENT: BIS J575E COLOUR: White

IMPAIR 1893102983 (OAF N189F)

BLASON 4286100325 286100325 (PED X286F)
OFFICINE (PED -945F)

SIRE: PINAY 8552394134 (OAF U4134F)

MARY 8596100049 (OAF R8596F)

HOMERE 5892107561 (PED -7561F)
JACINTHE 8594104550 (PED -4550F)
LANG'S ERIC THE RED 3E MC178117 (PED -8117E) (P/S)
HARVIE MISS FRANCIS 47F FC234929 (OAC R4929E)

HARVIE JAGER 65J PMC228759 (OAC U8759E) (P)

DAM: WAKEFIELD ABRACADABRA 10 (BIS F760E) (P)

WAKEFIELD ABRACADABRA (BIS A821E)

EXCALIBUR FMC423 M64617 (IAC E6084F)
MOUNT WILLIAM V92E (BS V92E)

Index	\$Value
Domestic	+\$36
Export	+\$40
Terminal	+\$25

June 2015 Australasian Charolais GROUP BREEDPLAN

	CE Dir	CE Dtr	GL	BW	200	400	600	MCW	MILK	SS	CWT	EMA	RIB	Rump	RBY	IMF
EBV	+1.8	+5.3	-3.8	+0.7	+16	+36	+41	+48	+9	-0.3	+34	+4.7	-0.9	-1.3	+1.9	+0.5
Acc	54%	51%	76%	74%	66%	67%	72%	65%	56%	74%	61%	55%	59%	59%	57%	54%

Notes: Another polled scurred, free moving Pinay son who has plenty of muscle and a natural doing ability. The combination of his pedigree with Harvie Jager and Excalibur on the dams side mixed with Pinay make him very true to type. He will suit many enterprises. **Top 1% for EMA and retail beef yield and top 15% for 200 and 400 day growth and domestic index and IMF.**

Purchaser.....Price \$.....

15

WAKEFIELD JOHN WAYNE (AI) (P)

BORN: 16/09/2013 IDENT: BIS J570E COLOUR: White

WESC HICKS REVOLVER 14R PMC295963 (PED -5963E)

BRIDOR MONTY 29M PMC263827 (PED -2638E)
WESC EAGLE'S PRIDE 9N PFC325544 (PED -5544E)

SIRE: HICKS REMINGTON 31U PMC321438 (OAC D1438E) (P)

JWK RUBY K003 PFC332642 (PED -2642E)

BALDRIDGE FASTTRACK 82E M447863 (OAU R82E) (P)
JWK RUBY H026 F817395 (PED -7395E)
VAINQUEUR V03 71105 V03 (ZZF V3F)
URSULE 5869351 (ZZF X677F)

EXCALIBUR FMC423 M64617 (IAC E6084F)

DAM: WAKEFIELD EMPRESS (BIS E406E)

WAKEFIELD BLONDIE (BIS B903D) (P)

GENK 1891101481 (OAF L481F)
WAKEFIELD ZINGER (BIS Z699C) (P)

Index	\$Value
Domestic	+\$39
Export	+\$54
Terminal	+\$30

June 2015 Australasian Charolais GROUP BREEDPLAN

	CE Dir	CE Dtr	GL	BW	200	400	600	MCW	MILK	SS	CWT	EMA	RIB	Rump	RBY	IMF
EBV	+7.6	-3.6	-2.7	-0.3	+19	+34	+43		+7	+2.2		+2.1	+0.1	+0.2	+0.7	-0.2
Acc	45%	37%	75%	73%	61%	63%	69%		41%	72%		45%	49%	48%	47%	44%

Notes: A Hicks Remington son who is thick set and exudes eye appeal. John Wayne has tremendous muscling and is deep flanked with a natural finishing ability. He is polled and has a strong frame and would suit many programs from vealers to export steers. Well worth your consideration! **Top 5% for 200 day growth and scrotal circumference and top 10% for 400 day growth, top 15% for calving ease direct and domestic and export indexes.**

Purchaser.....Price \$.....

16

WAKEFIELD JIMBO (P)

BORN: 27/09/2013 IDENT: BIS J592E COLOUR: White

TR RED SMOKE PMC316641 (OAU B6641E) (P)

TR SMOKEONTHEWATER ET M690545 (PED -545E)
THOMAS MS ADVANTAGE 2621 F959316 (PED -9316E)

SIRE: WAKEFIELD GOLDMINE (BIS G47E) (P)

WAKEFIELD EMILY (BIS E438E)

PINAY 8552394134 (OAF U4134F)
WAKEFIELD BENITA (BIS B904E)
HARVIE JAGER 65J PMC228759 (OAC U8759E) (P)
HARVIE MISS GELLIA 35G PFC250803 (OAC S2508E) (P)

HARVIE MOJO 115M QSMC272453 (OAC X2453E) (P/S)

DAM: WAKEFIELD BEAUTY 3 (BIS G50E) (P)

WAKEFIELD DESDEMONA (BIS D328E) (P)

GAUGUIN 8591105891 (OAF L859F)
WAKEFIELD BEAUTY (BIS B909D) (P)

Index	\$Value
Domestic	+\$16
Export	+\$18
Terminal	+\$17

June 2015 Australasian Charolais GROUP BREEDPLAN

	CE Dir	CE Dtr	GL	BW	200	400	600	MCW	MILK	SS	CWT	EMA	RIB	Rump	RBY	IMF
EBV	-8.7	-4.1	-1.8	+2.0	+20	+41	+48		+7	+1.7		+2.8	+0.1	+0.4	+0.9	+0.0
Acc	38%	29%	55%	68%	57%	60%	67%		32%	70%		45%	49%	48%	48%	44%

Notes: A powerful polled bull that really would suit the F1 coastal cattle operation. He is a very muscular bull with plenty of length and meat. **Top 5% for 200 and 400 day growth and top 10% for 600 day growth and EMA and top 15% for scrotal circumference.**

Purchaser.....Price \$.....

17

WAKEFIELD JAUNTY (AI) (P)

BORN: 20/10/2013 IDENT: BIS J617E COLOUR: White

ORDINAIRE M 16215 (ZZF X1111F)

KLEPTOMANE M 96084 (ZZF X1440F)
HASARDEUSE F 11817 (ZZF X270F)

SIRE: SUCRE 03163 S96 (IAF A6004F)

NAVETTE F 53485 (ZZF X527F)

LOULOU M 02735 (ZZF X1001F)
KYRIELLE F 30296 (ZZF X358F)
MVX COUGARHILL HANK 720G MC200052 (PED -52E)
HOLMSYDE HOT-ON-TOP 212M PFC317940 (PED -7940E)

HIGH BLUFF HANK 41R MC297682 (OAC A7682E) (P)

DAM: WAKEFIELD ASCOT 13 (BIS F709E) (P)

WAKEFIELD ASCOT 7 (BIS D346E) (P)

NELSON 397108304 (OAF S8304F)
WAKEFIELD ASCOT (BIS A854D) (P)

Index	\$Value
Domestic	+\$21
Export	+\$27
Terminal	+\$15

June 2015 Australasian Charolais GROUP BREEDPLAN

	CE Dir	CE Dtr	GL	BW	200	400	600	MCW	MILK	SS	CWT	EMA	RIB	Rump	RBY	IMF
EBV	+1.5	+3.1	-1.4	+0.3	+8	+18	+24	+24	+6	+1.0	+16	+2.0	-0.2	-0.2	+0.8	-0.1
Acc	51%	49%	76%	74%	65%	67%	72%	65%	56%	73%	62%	50%	54%	53%	52%	47%

Notes: This bull will produce progeny with a great combination of calving ease and eye appeal. Jaunty is a solid compact polled bull with a well-defined hind quarters and a square top. The combinations of Sucre from the sire and High Bluff Hank on the dam's side make this a pretty special package. Don't overlook this one! **Top 20% for retail beef yield.**

Purchaser.....Price \$.....

18

WAKEFIELD JASPER (AI) (TW)

BORN: 10/09/2013 IDENT: BIS J567E COLOUR: White

HARVIE REDEMPTION 36P MC286641 (OAC Z6641E) (P)

LT WYOMING WIND 4020 PLD M411450 (OAU P4020E) (P)
HARVIE MS MOLSON 53M QPFC316280 (PED -6280E) (P)

SIRE: RANGAN PARK REDEMPTION E42 (RAN E42E) (P)

RANGAN PARK SHOWGIRL C7 (RAN C7E)

GAUGUIN 8591105891 (OAF L859F)
PALGROVE SHOW GIRL 6 (PK P82E) (P)
DIEGO RR3 1888102991 (PED X2991F)
GIROLLE 6391101387 (PED -1387F)

IJOUFFLU 6327351004 (OAF N6327F)

DAM: WAKEFIELD AMAZE 10 (BIS E445E)

WAKEFIELD AMAZE 2 (BIS C129E) (P)

LHD MR PERFECT Y416 M 314744 (OAC J416E) (P)
WAKEFIELD AMAZE (BIS A820E)

Index	\$Value
Domestic	+\$9
Export	+\$7
Terminal	+\$14

June 2015 Australasian Charolais GROUP BREEDPLAN

	CE Dir	CE Dtr	GL	BW	200	400	600	MCW	MILK	SS	CWT	EMA	RIB	Rump	RBY	IMF
EBV	-9.0	-3.5	-0.5	+2.1	+19	+37	+45		+6	+0.2		+2.3	-0.5	-0.7	+1.1	+0.0
Acc	46%	42%	56%	58%	52%	52%	53%		46%	51%		40%	44%	44%	42%	38%

Notes: This thickset young bull has good length of body with an excellent top line. The combination of Australian genetics with the French sire Ijoufflu on the dam's side has made this bull a well-balanced bull suiting any commercial operation. **Top 5% for 200 and 400 day growth, top 15% for 600 day growth, EMA and retail beef yield.**

Purchaser.....Price \$.....

19

WAKEFIELD JIM BEAM (P) (R/F)

BORN: 30/09/2013 IDENT: BIS J589E COLOUR: Red factor

TR RED SMOKE PMC316641 (OAU B6641E) (P)

TR SMOKEONTHEWATER ET M690545 (PED -545E)
THOMAS MS ADVANTAGE 2621 F959316 (PED -9316E)

SIRE: WAKEFIELD GOLDMINE (BIS G47E) (P)

WAKEFIELD EMILY (BIS E438E)

PINAY 8552394134 (OAF U4134F)
WAKEFIELD BENITA (BIS B904E)
IMPAIR 1893102983 (OAF N189F)
MARY 8596100049 (OAF R8596F)

PINAY 8552394134 (OAF U4134F)

DAM: WAKEFIELD BOLERO 3 (BIS G83E) (P)

WAKEFIELD BOLERO 2 (BIS E478E) (P)

WAKEFIELD CORLEONE (BIS C183E) (P)
WAKEFIELD BOLERO (BIS B947D) (P)

Index	\$Value
Domestic	+\$42
Export	+\$50
Terminal	+\$21

June 2015 Australasian Charolais GROUP BREEDPLAN

	CE Dir	CE Dtr	GL	BW	200	400	600	MCW	MILK	SS	CWT	EMA	RIB	Rump	RBV	IMF
EBV	+8.6	+5.8	-4.5	-1.9	+9	+19	+18		+11	+0.3		+3.5	+0.3	+0.5	+0.8	+0.5
Acc	40%	34%	56%	70%	59%	62%	69%		37%	72%		47%	51%	50%	50%	47%

Notes: A stylish polled red factor bull from home bred sire Wakefield Goldmine . Goldmine was used in our herd for his calving ease, birth weight and extraordinary growth and phenotype. Jim Beam has positive ebvs for all carcass traits and is out of a moderate framed cow that keeps giving us progeny with a natural thickness and great dispositions. Well worth a look. **Top 1% for EMA, top 10% for calving ease direct and birth weight and domestic index, top 20% for export index and calving ease on daughters.**

Purchaser.....Price \$.....

20

WAKEFIELD JOE (P) (R/F)

BORN: 20/10/2013 IDENT: BIS J618E COLOUR: Red factor

TR RED SMOKE PMC316641 (OAU B6641E) (P)

TR SMOKEONTHEWATER ET M690545 (PED -545E)
THOMAS MS ADVANTAGE 2621 F959316 (PED -9316E)

SIRE: WAKEFIELD GOLDMINE (BIS G47E) (P)

WAKEFIELD EMILY (BIS E438E)

PINAY 8552394134 (OAF U4134F)
WAKEFIELD BENITA (BIS B904E)

LT THUNDERING WIND 5200P M705186 (OAU A5186E) (P)

LT WYOMING WIND 4020 PLD M411450 (OAU P4020E) (P)
LT EASE'S PEARL 9034 PLD F852547 (PED -2547E)

DAM: WAKEFIELD BLOSSOM 11 (BIS G27E) (P)

WAKEFIELD BLOSSOM 4 (BIS D385E)

SALOPIAU 71161 S02 (IAF A6056F)
WAKEFIELD BLOSSOM (BIS B936E)

Index	\$Value
Domestic	+\$38
Export	+\$50
Terminal	+\$20

June 2015 Australasian Charolais GROUP BREEDPLAN

	CE Dir	CE Dtr	GL	BW	200	400	600	MCW	MILK	SS	CWT	EMA	RIB	Rump	RBV	IMF
EBV	+5.0	+6.1	-2.7	-0.5	+12	+25	+30		+10	+1.4		+0.0	+0.4	+0.6	-0.4	+0.2
Acc	38%	31%	55%	69%	58%	61%	68%		34%	71%		46%	50%	49%	49%	46%

Notes: Another red factor, polled scurred Goldmine son with great body length, muscularity and growth. **Top 15% for domestic and export indexes and top 20% for birth weight.**

Purchaser.....Price \$.....

21

WAKEFIELD JACKAL (AI)

BORN: 29/07/2013 IDENT: BIS J557E COLOUR: White

NWMSU DOC SILVER 362 PLD M669488 (OAU Y9488E) (P)

S\$ MONTANA SILVER M454024 (OAU R4024E) (P)
NWMSU DOLORES ET 0035 F908646 (PED -8646E)

SIRE: LEACHMAN WHITE GOLD P002X M796550 (OAU F6550E) (P)

LCOC MS AMERICA UP045 F1129774 (PED -9774E)

LT RIO BRAVO 3181 P M665507 (OAU Y5507E) (P)
LCOC MS AMERICA RP005 EF1055660 (PED -5660E)

PINAY 8552394134 (OAF U4134F)

IMPAIR 1893102983 (OAF N189F)
MARY 8596100049 (OAF R8596F)

DAM: WAKEFIELD BLOSSOM 10 (BIS G8E)

WAKEFIELD BLOSSOM (BIS B936E)

PALGROVE MURDOCK R/F (PK M109E)
AIRLIE MAHLAN (A1S M81E)

Index	\$Value
Domestic	+\$58
Export	+\$76
Terminal	+\$37

June 2015 Australasian Charolais GROUP BREEDPLAN

	CE Dir	CE Dtr	GL	BW	200	400	600	MCW	MILK	SS	CWT	EMA	RIB	Rump	RBV	IMF
EBV	+5.2	+5.1	-5.8	-0.4	+18	+42	+54	+50	+11	+1.6	+38	+4.1	+0.9	+1.5	+0.5	+0.7
Acc	47%	38%	75%	72%	64%	65%	70%	61%	46%	73%	60%	54%	57%	57%	54%	54%

Notes: A smooth coated, muscular Leachman White Gold son to sell. Jackal has impressed us with his free moving style, his smooth muscle pattern and his extraordinary growth. The combinations of French genetics from Pinay on his dam's side and Canadian from the sire White Gold have really clicked. This bull has loads of potential and would suit many enterprises. **Top 1% for EMA and top 5% for 200, 400 and 600 day growth and gestation length and domestic and export indexes, top 10% for IMF and top 15% for rib and rump fat.**

Purchaser.....Price \$.....

22

WAKEFIELD JIMINY CRICKET (AI)

BORN: 23/10/2013 IDENT: BIS J621E COLOUR: White

HARVIE REDEMPTION 36P MC286641 (OAC Z6641E) (P)
SIRE: RANGAN PARK REDEMPTION E42 (RAN E42E) (P)
 RANGAN PARK SHOWGIRL C7 (RAN C7E)
 GOBONGO VILLEROY V80E (GO V80E)
DAM: WAKEFIELD EXQUISITE (BIS E417E)
 MOUNT WILLIAM V92E (BS V92E)

LT WYOMING WIND 4020 PLD M411450 (OAU P4020E) (P)
 HARVIE MS MOLSON 53M QPFC316280 (PED -6280E) (P)
 GAUGUIN 8591105891 (OAF L859F)
 PALGROVE SHOW GIRL 6 (PK P82E) (P)
 FERNVALE ROADSTER (FEN R37E)
 GUNNADOO IRENE M103D (GN1 M103D) (P)
 TALGOONA QANTAS (CG Q4E)
 MOUNT WILLIAM SYBIL (BS S72E)

Index	\$Value
Domestic	+\$28
Export	+\$38
Terminal	+\$27

June 2015 Australasian Charolais GROUP BREEDPLAN

	CE Dir	CE Dtr	GL	BW	200	400	600	MCW	MILK	SS	CWT	EMA	RIB	Rump	RBY	IMF
EBV	-4.5	+0.8	-2.1	+2.5	+21	+44	+60	+61	+7	-0.3		+2.6	+0.5	+0.5	+0.5	+0.4
Acc	46%	41%	75%	73%	63%	65%	70%	61%	47%	74%		50%	55%	54%	53%	49%

Notes: The combination of Canadian genetics from his Grand sire Harvie Redemption and Gobongo Villeroy on the dams side has produced another naturally thick, stylish young sire. He has a great top line with good muscularity and tremendous length. **Top 1% for 200, 400 and 600 day growth and top 10% for EMA**

Purchaser.....Price \$.....

23

WAKEFIELD JUSTIFY (AI) (P)

BORN: 28/10/2013 IDENT: BIS J628E COLOUR: White

JMB DATELINE 754T PMC310942 (PED -3109E)
SIRE: G. BROS THIN RED LINE 527W MC326475 (OAC E6475E) (P)
 G BROS TULIP 101T PFC359984 (PED -9984E)
 HARVIE JAGER 65J PMC228759 (OAC U8759E) (P)
DAM: WAKEFIELD FIDDLEWOOD (BIS F752E)
 WAKEFIELD ALANNA 5 (BIS C136E)

BXB DATELINE SON 65R PMC303803 (PED -3803E)
 JMB MARTHA 234M PFC316449 (PED -6449E)
 SVS MASTERCARD 2M QPMC269158 (PED -9158E)
 POOLEDALE MISS CHAMA 62G PFC240875 (PED -2408E)
 LANG'S ERIC THE RED 3E MC178117 (PED -8117E) (P/S)
 HARVIE MISS FRANCIS 47F FC234929 (OAC R4929E)
 ABSALON 58164 A47 (IAF A6015F)
 WAKEFIELD ALANNA (BIS A803E) (P)

Index	\$Value
Domestic	+\$34
Export	+\$51
Terminal	+\$21

June 2015 Australasian Charolais GROUP BREEDPLAN

	CE Dir	CE Dtr	GL	BW	200	400	600	MCW	MILK	SS	CWT	EMA	RIB	Rump	RBY	IMF
EBV	+3.9	+2.1	-4.0	+0.1	+14	+29	+35		+0	+4.2		+0.4	+0.5	+0.7	-0.3	-0.3
Acc	39%	28%	75%	72%	61%	63%	69%		34%	72%		45%	49%	47%	47%	44%

Notes: Justify is a well-balanced bull with a natural softness while still maintaining a soft muscle pattern. A combination of Canadian sire G. Bros Thin Red Line and the finishing ability on his dam's side make this young polled scurred bull well worth your consideration. **Top 1% for scrotal circumference and top 20% for domestic and export indexes and 400 day growth.**

Purchaser.....Price \$.....

24

WAKEFIELD JAKE (R/F)

BORN: 21/10/2013 IDENT: BIS J619E COLOUR: Red factor

TR RED SMOKE PMC316641 (OAU B6641E) (P)
SIRE: WAKEFIELD GOLDMINE (BIS G47E) (P)
 WAKEFIELD EMILY (BIS E438E)
 TR RED SMOKE PMC316641 (OAU B6641E) (P)
DAM: WAKEFIELD AMAZE 15 (BIS G71E)
 WAKEFIELD AMAZE 10 (BIS E445E)

TR SMOKEONTHEWATER ET M690545 (PED -545E)
 THOMAS MS ADVANTAGE 2621 F959316 (PED -9316E)
 PINAY 8552394134 (OAF U4134F)
 WAKEFIELD BENITA (BIS B904E)
 TR SMOKEONTHEWATER ET M690545 (PED -545E)
 THOMAS MS ADVANTAGE 2621 F959316 (PED -9316E)
 IUOFFLU 6327351004 (OAF N6327F)
 WAKEFIELD AMAZE 2 (BIS C129E) (P)

Index	\$Value
Domestic	+\$26
Export	+\$29
Terminal	+\$12

June 2015 Australasian Charolais GROUP BREEDPLAN

	CE Dir	CE Dtr	GL	BW	200	400	600	MCW	MILK	SS	CWT	EMA	RIB	Rump	RBY	IMF
EBV	+0.2	+3.1	-2.0	-0.7	+12	+20	+17		+7	+0.8		+1.0	+1.1	+1.8	-0.8	+0.5
Acc	40%	32%	58%	71%	59%	63%	70%		34%	72%		47%	52%	50%	50%	46%

Notes: A young red factor bull with loads of potential by homebred sire Goldmine. Jake has tremendous body length and muscle pattern that is typical of Charolais. He has a natural doing ability with a good top line. **Top 15% for domestic and export indexes and top 10% for calving ease daughters.**

Purchaser.....Price \$.....

25

WAKEFIELD JOKER (AI)

BORN: 01/07/2013 IDENT: BIS J533E COLOUR: White

NWMSU DOC SILVER 362 PLD M669488 (OAU Y9488E) (P)

SS MONTANA SILVER M454024 (OAU R4024E) (P)
NWMSU DOLORES ET 0035 F908646 (PED -8646E)

SIRE: LEACHMAN WHITE GOLD P002X M796550 (OAU F6550E) (P)

LCOC MS AMERICA UP045 F1129774 (PED -9774E)

LT RIO BRAVO 3181 P M665507 (OAU Y5507E) (P)
LCOC MS AMERICA RP005 EF1055660 (PED -5660E)
RDGC KALAMAZOO 387F PMC191257 (PED -1257E) (P)
CS EXCLUSIVE'S GUEST 5G EFC242100 (PED -2100E)

CS PLD JUNCTION 4J MC228742 (OAC U8742E) (P)

DAM: WAKEFIELD GYPSY (BIS G21E)

WAKEFIELD BONFIRE (BIS B963D) (P)

PLATINUM ULTRA (AJ1 U37E) (P)
WAKEFIELD ZOE (BIS Z739C) (P)

Index	\$Value
Domestic	+\$60
Export	+\$79
Terminal	+\$38

June 2015 Australasian Charolais GROUP BREEDPLAN

	CE Dir	CE Dtr	GL	BW	200	400	600	MCW	MILK	SS	CWT	EMA	RIB	Rump	RBV	IMF
EBV	+9.4	+1.6	-7.5	-1.8	+17	+39	+49		+14	+2.4		+2.6	+1.2	+1.9	-0.2	+0.5
Acc	46%	35%	75%	70%	58%	58%	58%		44%	53%		43%	47%	46%	43%	44%

Notes: Joker is the highest indexing Charolais bull at the sale this year. This deep bodied, moderately framed bull has a great birth weight with curve bending growth. He is displaying the early maturity patterns so sort after in the cross breeding operations. **Top 1% for gestation length, top 5% for domestic and export indexes and top 10% for calving ease direct, birth weight and 200, 400 and 600 day growth, EMA, scrotal, rib and rump fat**

Purchaser.....Price \$.....

26

WAKEFIELD JUSTICE (AI) (P)

BORN: 11/07/2013 IDENT: BIS J544E COLOUR: White

BAR J SILVERADO 14S PMC306605 (PED -6605E)

ROSSO NEW HORIZON 8L PMC258716 (PED -5716F)
BAR J LOLLYPOP 8L PFC306861 (PED -6861F)

SIRE: JWX SILVER BULLET 524W PMC325757 (OAC E5757E) (P)

KMAC MISS MARMALADE 31R PFC343445 (PED -3445E)

SS MONTANA SILVER M454024 (OAU R4024E) (P)
SOS LADY MARMALADE 47L PFC303459 (PED -3459E)
GAUGUIN 8591105891 (OAF L859F)
WAKEFIELD APHRDITE (BIS A806E)

WAKEFIELD CHES (BIS C148E)

DAM: WAKEFIELD MAXINE 6 (BIS E481E)

WAKEFIELD MAXINE (BIS C110E)

BEKKA-DEE ZULU (BEC Z1E)
MOUNT WILLIAM V92E (BS V92E)

Index	\$Value
Domestic	+\$31
Export	+\$40
Terminal	+\$16

June 2015 Australasian Charolais GROUP BREEDPLAN

	CE Dir	CE Dtr	GL	BW	200	400	600	MCW	MILK	SS	CWT	EMA	RIB	Rump	RBV	IMF
EBV	+6.7	+5.5	-2.9	-0.5	+7	+18	+20		+5	+1.1		+0.5	-0.2	-0.3	+0.1	+0.0
Acc	37%	27%	73%	70%	57%	59%	66%		34%	69%		41%	44%	42%	43%	40%

Notes: Plenty of meat on this young bull. Tremendous growth figures with good birth weight and calving ease make this polled scurred bull well worth a look! His dam is a moderate framed cow with a good udder, fertility and milk. Wonderful temperament. **Top 15% for calving ease direct and calving ease daughters and top 20% for birth weight.**

Purchaser.....Price \$.....

27

WAKEFIELD JACKIE HOWE (AI) (P)

BORN: 24/09/2013 IDENT: BIS J574E COLOUR: White

CS PLD JUNCTION 4J MC228742 (OAC U8742E) (P)

RDGC KALAMAZOO 387F PMC191257 (PED -1257E) (P)
CS EXCLUSIVE'S GUEST 5G EFC242100 (PED -2100E)

SIRE: ASCOT ELDORADO (JAJ E14E) (P)

GOBONGO ISABELLA D10E (GO D10E) (P)

HARVIE REDEMPTION 36P MC286641 (OAC Z6641E) (P)
GOBONGO ISABELLA (GO T48E)

PARINGA SENTINAL RULER C93E (TOL C93E) (P)

MD SENTINAL RULER G1520 M509416 (OAU S9416E) (P/S)
PARINGA DUKE Z1808 (TOL Z1808E)

DAM: WAKEFIELD ABRACADABRA 7 (BIS E449E)

WAKEFIELD ABRACADABRA 3 (BIS C133E) (P)

WAKEFIELD ATTACK (BIS A814E) (P)
WAKEFIELD ABRACADABRA (BIS A821E)

Index	\$Value
Domestic	+\$15
Export	+\$16
Terminal	+\$14

June 2015 Australasian Charolais GROUP BREEDPLAN

	CE Dir	CE Dtr	GL	BW	200	400	600	MCW	MILK	SS	CWT	EMA	RIB	Rump	RBV	IMF
EBV	-4.5	-3.1	-3.5	+0.7	+13	+26	+34		+9	-0.7		+1.5	+0.5	+0.7	-0.1	+0.8
Acc	44%	34%	75%	73%	62%	64%	69%		41%	71%		46%	53%	52%	50%	46%

Notes: A young polled bull that has great length of body and a good top line. **Top 5% for IMF.**

Purchaser.....Price \$.....



Lot 1
Wakefield
Jupiter J543



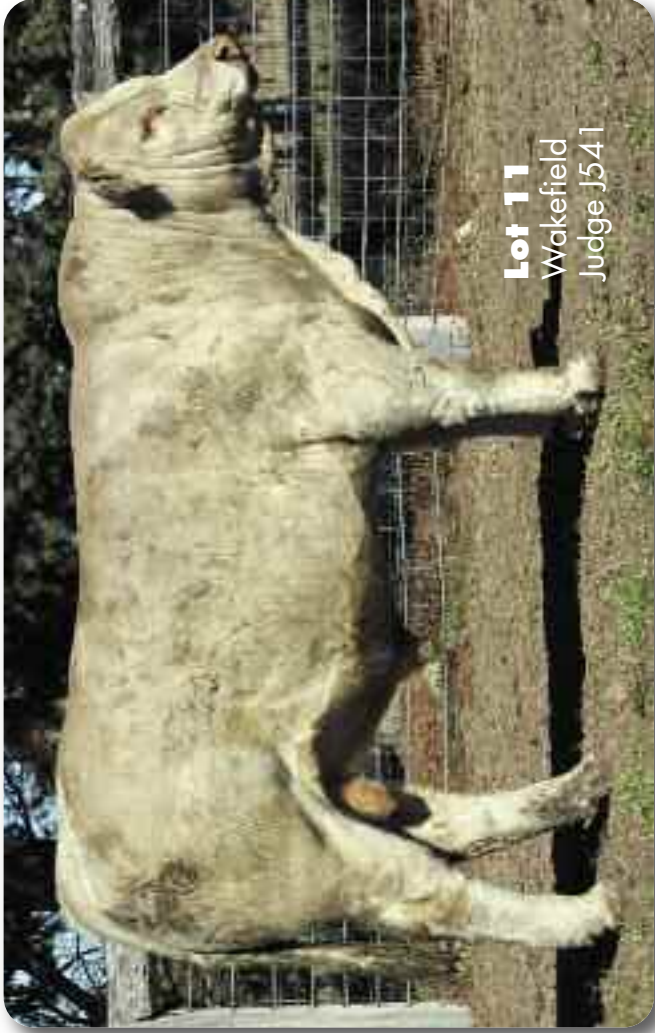
Lot 6
Wakefield
Juggler J580



Lot 7
Wakefield
Jazzman J577



Lot 9
Wakefield
Jackbequick J626



Lot 11
Wakefield
Judge J541



Lot 16
Wakefield
Jimbo J592



Lot 17
Wakefield
Jaunty J617



Lot 19
Wakefield
Jim Beam J589



Lot 22
Wakefield
Jimmy Cricket J621



Lot 23
Wakefield
Justify J628



Lot 25
Wakefield
Joker J533



Lot 35
Wakefield
Jeopardy J573



Lot 40
Wakefield
Thunderbird J438



Lot 41
Wakefield
Infinity J493



Lot 43
Wakefield
Equator J484



Lot 60
Wakefield
1755

28

WAKEFIELD JIVE (AI) (P)

BORN: 13/11/2013 IDENT: BIS J645E COLOUR: White

IMPAIR 1893102983 (OAF N189F)
SIRE: PINAY 8552394134 (OAF U4134F)
 MARY 8596100049 (OAF R8596F)
 WAKEFIELD CORLEONE (BIS C183E) (P)
DAM: WAKEFIELD ELSPETH (BIS E475E) (P)
 WAKEFIELD AMITY (BIS A805E)

BLASON 4286100325 286100325 (PED X286F)
 OFFICINE (PED -945F)
 HOMERE 5892107561 (PED -7561F)
 JACINTHE 8594104550 (PED -4550F)
 ESPION (IAF E6034F)
 WAKEFIELD ACTRESS (BIS A855D) (P)
 CHARNELLE TENNESSEE R/F (GKA T83E) (P)
 MOUNT WILLIAM V92E (BS V92E)

Index	\$Value
Domestic	+\$33
Export	+\$41
Terminal	+\$25

June 2015 Australasian Charolais GROUP BREEDPLAN

	CE Dtr	CF Dtr	GL	BW	200	400	600	MCW	MILK	SS	CWT	EMA	RIB	Rump	RBV	IMF
EBV	+2.7	+5.9	-3.6	+0.7	+13	+29	+40	+48	+10	+0.0		+3.9	-0.5	-0.9	+1.7	+0.1
Acc.	52%	50%	75%	73%	63%	64%	67%	62%	56%	68%		50%	54%	53%	52%	50%

Notes: Another powerful son of French sire Pinay. Pinay will continue to be used at Wakefield for his calving ease, gestation length, muscularity and carcass attributes. Jive has a wonderful phenotype and exceptional growth. His Dam Elspeth produces progeny with good temperament and a smooth muscle pattern true to the Charolais breed. She produced the top priced bull last year selling to Kilkenny Charolais for \$6000. **Top 1% for EMA and top 5% for retail beef yield, top 20% for 400 day growth and domestic index.**

Purchaser.....Price \$.....

29

WAKEFIELD JED (P) (R/F)

BORN: 13/10/2013 IDENT: BIS J601E COLOUR: Red factor

TR RED SMOKE PMC316641 (OAU B6641E) (P)
SIRE: WAKEFIELD GOLDMINE (BIS G47E) (P)
 WAKEFIELD EMILY (BIS E438E)
 WINN MANS LANZA 610S PMC307395 (OAC B7395E) (P)
DAM: WAKEFIELD ALANNA 26 (BIS G72E) (P)
 WAKEFIELD ALANNA 2 (BIS C123E) (P)

TR SMOKEONTHWATER ET M690545 (PED -545E)
 THOMAS MS ADVANTAGE 2621 F959316 (PED -9316E)
 PINAY 8552394134 (OAF U4134F)
 WAKEFIELD BENITA (BIS B904E)
 SPARROWS DURANGO 585P PMC289528 (PED -9528E)
 WINN MAN MERIT 036K PFC317547 (PED -7547E)
 NELSON 397108304 (OAF S8304F)
 WAKEFIELD ALANNA (BIS A803E) (P)

Index	\$Value
Domestic	+\$32
Export	+\$39
Terminal	+\$19

June 2015 Australasian Charolais GROUP BREEDPLAN

	CE Dtr	CF Dtr	GL	BW	200	400	600	MCW	MILK	SS	CWT	EMA	RIB	Rump	RBV	IMF
EBV	+3.6	+4.4	-4.6	-0.5	+11	+25	+28		+6	+1.1		+1.5	+0.1	+0.0	+0.4	+0.0
Acc.	37%	23%	55%	69%	56%	58%	64%		31%	64%		42%	47%	46%	46%	42%

Notes: This red factor, polled scurred bull is a moderate framed bull with plenty of length and depth of body. He has a smooth muscle pattern and has well laid in shoulders. Ease of calving, great temperament don't overlook this one! **Top 15% for gestation length and top 20% for birth weight.**

Purchaser.....Price \$.....

30

WAKEFIELD JERICHO (AI) (P)

BORN: 17/10/2013 IDENT: BIS J609E COLOUR: White

CS PLD JUNCTION 4J MC228742 (OAC U8742E) (P)
SIRE: ASCOT ELDORADO (JAJ E14E) (P)
 GOBONGO ISABELLA D10E (GO D10E) (P)
 WCR PRIME CUT 764 PLD PMC223447 (OAC S764E) (P)
DAM: WAKEFIELD APHRODITE (BIS A806E)
 DURSLEY RIDDLE (BK R4E)

RDGC KALAMAZOO 387F PMC191257 (PED -1257E) (P)
 CS EXCLUSIVE'S GUEST 5G EFC242100 (PED -2100E)
 HARVIE REDEMPTION 36P MC286641 (OAC Z6641E) (P)
 GOBONGO ISABELLA (GO T48E)
 JWK IMPRESSIVE D040 ET PEMC202971 (PED -3653E) (P)
 WCR MISS EASE 4314 SO F704053 (PED O4093E)
 CHARMANT (IAF C6025F)
 BALLENGARA NITA (CJP N28E)

Index	\$Value
Domestic	+\$12
Export	+\$15
Terminal	+\$16

June 2015 Australasian Charolais GROUP BREEDPLAN

	CE Dtr	CF Dtr	GL	BW	200	400	600	MCW	MILK	SS	CWT	EMA	RIB	Rump	RBV	IMF
EBV	-1.4	-12.0	-4.5	-0.9	+12	+26	+32	+24	+7	+3.0		+0.7	-0.9	-0.9	+0.8	-0.3
Acc.	48%	42%	76%	74%	64%	65%	70%	61%	47%	73%		48%	54%	54%	52%	48%

Notes: This stylish young polled bull is from a fertile Prime Cut dam by Ascot Eldorado (sire of the Beef 2015 Champion) a homozygous red factor sire. He is a thickset bull, a real nugget. **Top 1% for scrotal circumference and top 15% for low birth weight.**

Purchaser.....Price \$.....

31

WAKEFIELD JIMBOB (AI) (P)

BORN: 10/10/2013 IDENT: BIS J599E COLOUR: White

WESC HICKS REVOLVER 14R PMC295963 (PED -5963E)

BRIDOR MONTY 29M PMC263827 (PED -2638E)
WESC EAGLE'S PRIDE 9N PFC325544 (PED -5544E)

SIRE: HICKS REMINGTON 31U PMC321438 (OAC D1438E) (P)

JWK RUBY K003 PFC332642 (PED -2642E)

BALDRIDGE FASTTRACK 82E M447863 (OAU R82E) (P)
JWK RUBY H026 F817395 (PED -7395E)

NELSON 397108304 (OAF S8304F)

INDICE 5893113049 (PED -3049F)
ETOILE 389109544 (PED -9544F)

DAM: WAKEFIELD DEMETER (BIS D377E)

WAKEFIELD BECOOL (BIS B948E) (P)

WCR SIR IMPRESSIVE 8191P M477998 (OAU T7998E) (P)
MOUNT WILLIAM V92E (BS V92E)

Index	\$Value
Domestic	+\$33
Export	+\$44
Terminal	+\$22

June 2015 Australasian Charolais GROUP BREEDPLAN

	CE Dir	CE Dtr	GL	BW	200	400	600	MCW	MILK	SS	CWT	EMA	RIB	Rump	RBV	IMF
EBV	+5.6	+1.7	-4.0	+0.0	+16	+27	+33		+4	+1.7		+0.6	+0.2	+0.4	+0.0	+0.0
Acc	44%	33%	75%	73%	61%	63%	69%		40%	73%		44%	48%	47%	47%	43%

Notes: Another polled bull from calving ease specialist Hicks Remington. This young bull has great length of body and stands on good bone. He is a curve bending bull with positive fats and excellent calving ease. **Top 15% for 200 day growth and scrotal circumference and top 20% for gestation length, calving ease direct and domestic index.**

Purchaser.....Price \$.....

32

WAKEFIELD JETSON (AI) (P)

BORN: 18/10/2013 IDENT: BIS J611E COLOUR: White

JMB DATELINE 754T PMC310942 (PED -3109E)

BXB DATELINE SON 65R PMC303803 (PED -3803E)
JMB MARTHA 234M PFC316449 (PED -6449E)

SIRE: G. BROS THIN RED LINE 527W MC326475 (OAC E6475E) (P)

G BROS TULIP 101T PFC359984 (PED -9984E)

SVS MASTERCARD 2M QPMC269158 (PED -9158E)
POOLEDALE MISS CHAMA 62G PFC240875 (PED -2408E)

JDJ SMOKESTER J1377 P ET M509419 (OAU U9419E) (P)

LHD CIGAR E46 M 434790 (OAU Q46E) (P)
JD MS COMMANDER B309 F658745 (PED -8745E)

DAM: WAKEFIELD FELICITY (BIS F778D)

WAKEFIELD ZETA (BIS Z700C)

COBRABALD WALDO (ASH W32E)
WAKEFIELD WENDY (BIS W231B) (P)

Index	\$Value
Domestic	+\$22
Export	+\$30
Terminal	+\$12

June 2015 Australasian Charolais GROUP BREEDPLAN

	CE Dir	CE Dtr	GL	BW	200	400	600	MCW	MILK	SS	CWT	EMA	RIB	Rump	RBV	IMF
EBV	+3.2	+0.0	-4.5	-0.1	+10	+19	+19		+5	+2.7		-0.3	+0.5	+0.6	-0.4	-0.3
Acc	38%	27%	75%	72%	60%	62%	68%		33%	72%		43%	45%	44%	45%	42%

Notes: The Thin Red Line progeny have a natural doing ability while still being 'punchy' polled animals. Jetson has positive calving ease and good rib and rump fats. **Top 1% for scrotal circumference and top 15% for gestation length.**

Purchaser.....Price \$.....

33

WAKEFIELD JULIAN (AI) (P)

BORN: 18/10/2013 IDENT: BIS J612E COLOUR: White

JMB DATELINE 754T PMC310942 (PED -3109E)

BXB DATELINE SON 65R PMC303803 (PED -3803E)
JMB MARTHA 234M PFC316449 (PED -6449E)

SIRE: G. BROS THIN RED LINE 527W MC326475 (OAC E6475E) (P)

G BROS TULIP 101T PFC359984 (PED -9984E)

SVS MASTERCARD 2M QPMC269158 (PED -9158E)
POOLEDALE MISS CHAMA 62G PFC240875 (PED -2408E)

TR RED SMOKE PMC316641 (OAU B6641E) (P)

TR SMOKEONTHWATER ET M690545 (PED -545E)
THOMAS MS ADVANTAGE 2621 F959316 (PED -9316E)

DAM: WAKEFIELD ESTELLA 2 (BIS F771E)

WAKEFIELD ESTELLA (BIS E407E)

GOBONGO VILLEROY V80E (GO V80E)
PALGROVE ESTELLA 31 (PK N230E)

Index	\$Value
Domestic	+\$26
Export	+\$29
Terminal	+\$8

June 2015 Australasian Charolais GROUP BREEDPLAN

	CE Dir	CE Dtr	GL	BW	200	400	600	MCW	MILK	SS	CWT	EMA	RIB	Rump	RBV	IMF
EBV	+3.0	+4.6	-4.9	-0.4	+8	+15	+4		+1	+1.9		+0.7	+1.8	+2.2	-0.8	-0.2
Acc	39%	26%	75%	72%	61%	62%	69%		30%	72%		44%	49%	47%	47%	44%

Notes: Another polled Thin Red Line son used for his muscle and type. Once again positive fats and excellent calving ease that we've come to expect from this Canadian sire. **Top 5 % for rib fat, rump fat and top 10% for gestation length and scrotal circumference.**

Purchaser.....Price \$.....

34

WAKEFIELD JAY WALKER (AI)

BORN: 03/10/2013 IDENT: BIS J593E COLOUR: White

HARVIE JAGER 65J PMC228759 (OAC U8759E) (P)

LANG'S ERIC THE RED 3E MC178117 (PED -8117E) (P/S)
HARVIE MISS FRANCIS 47F FC234929 (OAC R4929E)

SIRE: HARVIE MOJO 115M QSMC272453 (OAC X2453E) (P/S)

HARVIE MISS GELLIA 35G PFC250803 (OAC S2508E) (P)

A-JAY'S PLD DIMENSION69E PMC200006 (PED -6E) (P)
PAR MISS 50B PFC191500 (PED -1500E) (P)
LT RIO BLANCO 1234 P M620591 (OAU W591E) (P)
LT 7N OF DUKE 9083 PLD F852553 (OAU U2553E) (P)

LT RIO BRAVO 3181 P M665507 (OAU Y5507E) (P)

DAM: WAKEFIELD ASCOT 11 (BIS E426E) (P)

WAKEFIELD ASCOT 3 (BIS C124E)

SEAWELL OFFSHORE 0084446 (OAE T5813F)
WAKEFIELD ASCOT (BIS A854D) (P)

Index	\$Value
Domestic	+\$47
Export	+\$60
Terminal	+\$32

June 2015 Australasian Charolais GROUP BREEDPLAN

	CE Dir	CE Dtr	GL	BW	200	400	600	MCW	MILK	SS	CWT	EMA	RIB	Rump	RBV	IMF
EBV	+6.5	-1.0	-5.1	-0.5	+18	+39	+47	+33	+10	+1.9		+1.7	+0.3	+1.1	-0.2	+0.8
Acc	44%	38%	75%	72%	61%	64%	69%	60%	44%	73%		48%	53%	52%	51%	47%

Notes: This son of Canadian sire Harvie Mojo is a slick coated young sire bringing together some of the best genetics in the Charolais breed. Great length of body and a good top line. Outstanding set of figures putting him amongst the top indexing bulls on offer today. **Top 5% for 200 and 400 day growth and IMF, top 10% for 600 day growth, scrotal circumference and domestic and export index, top 20% for calving ease direct, low birth weight and rump fat.**

Purchaser.....Price \$.....

35

WAKEFIELD JEOPARDY (AI)

BORN: 22/09/2013 IDENT: BIS J573E COLOUR: White

IMPAIR 1893102983 (OAF N189F)

BLASON 4286100325 286100325 (PED X286F)
OFFICINE (PED -945F)

SIRE: PINAY 8552394134 (OAF U4134F)

MARY 8596100049 (OAF R8596F)

HOMERE 5892107561 (PED -7561F)
JACINTHE 8594104550 (PED -4550F)
URBAIN U21 42028 U21 (ZZF X1192F)
SILENE S22 03179 S22 (ZZF X236F)

SHAMROCK AMBASSADEUR 03179 A02 (IAE E6159F)

DAM: WAKEFIELD CLOVER (BIS C104D) (P)

WAKEFIELD YASMINE (BIS Y500C) (P)

BR DUKE 261 M 246564 (OAU C261E) (P)
WAKEFIELD VICTORIA (BIS V223B) (P)

Index	\$Value
Domestic	+\$31
Export	+\$37
Terminal	+\$20

June 2015 Australasian Charolais GROUP BREEDPLAN

	CE Dir	CE Dtr	GL	BW	200	400	600	MCW	MILK	SS	CWT	EMA	RIB	Rump	RBV	IMF
EBV	+4.8	+3.9	-5.2	-0.8	+10	+20	+25	+35	+13	+0.4	+21	+3.9	-0.5	-0.8	+1.4	+0.4
Acc	54%	52%	76%	74%	66%	68%	72%	67%	58%	75%	62%	54%	58%	57%	56%	53%

Notes: A smooth coated beautifully muscled Pinay son with all the attributes we expect from this champion French sire. Last of the Pinay sons on offer today. **Top 1% for EMA, top 5% for RBV and top 15% for gestation length and low birth weight.**

Purchaser.....Price \$.....

36

WAKEFIELD JOLLIFFE (AI)

BORN: 14/10/2013 IDENT: BIS J605E COLOUR: White

SVY PIONEER 402P MC288416 (PED -8416E)

LT RIO BLANCO 1234 P M620591 (OAU W591E) (P)
SVY JINGLES 153L FC303049 (PED -3049E)

SIRE: SVY PILGRIM PLD 655S MC303031 (OAC B3031E) (P)

HFCC FRENCHKISS 919J PFC269584 (PED -9584E)

RGP EUREKA 17E PMC179283 (OAC Q17E) (P)
QCR FRENCHKISS 33F FC238979 (PED -8979E)
GUNNADOO RED BARON R/F (GN1 Q31D)
PALGROVE DIGNA 36 (PK N168E) (P)

CHARNELLE TANNESSEE R/F (GKA T83E) (P)

DAM: WAKEFIELD AMBER (BIS A804E)

MOUNT WILLIAM V92E (BS V92E)

TALGOONA QANTAS (CG Q4E)
MOUNT WILLIAM SYBIL (BS S72E)

Index	\$Value
Domestic	+\$28
Export	+\$41
Terminal	+\$23

June 2015 Australasian Charolais GROUP BREEDPLAN

	CE Dir	CE Dtr	GL	BW	200	400	600	MCW	MILK	SS	CWT	EMA	RIB	Rump	RBV	IMF
EBV	+1.8	-0.7	-4.6	+0.6	+11	+27	+38	+28	+3	+1.6		+2.2	+1.2	+1.5	+0.0	-0.2
Acc	49%	44%	76%	74%	66%	67%	72%	62%	53%	75%		50%	57%	56%	53%	50%

Notes: A complete powerful young sire by the Canadian sire SVY Pilgrim. He has tremendous length of body with thickness across the top and exceptional carcass attributes. **Top 10% for rib fat and gestation length, top 15% for rump fat, top 20% for EMA and scrotal circumference.**

Purchaser.....Price \$.....

37

WAKEFIELD JUGGERNAUT (AI) (P)

BORN: 02/11/2013 IDENT: BIS J631E COLOUR: White

SVY FREEDOM PLD 307N PMC280878 (OAC Y2808E) (P)

HFCC PLD EVOLUTION 5L PMC256316 (PED -6316E)
SVY PURRFECT 184L PFC303051 (PED -3051E)

SIRE: GERRARD MONTEZUMA 6T MC310671 (OAC C3106E) (P)

GERRARD ROXANNE 18P PFC344620 (PED -4620E)

RPJ IMPRESSED 121L PMC261923 (PED -1923E)
GERRARD ROXANNE 27M PEFC322435 (PED -2435E)
LANG'S ERIC THE RED 3E MC178117 (PED -8117E) (P/S)
HARVIE MISS FRANCIS 47F FC234929 (OAC R4929E)

HARVIE JAGER 65J PMC228759 (OAC U8759E) (P)

DAM: WAKEFIELD FOXY LADY (BIS F748E) (P)

WAKEFIELD ANNA (BIS A802E) (P)

CHARNELLE TANNESSEE R/F (GKA T83E) (P)
MOUNT WILLIAM V92E (BS V92E)

Index	\$Value
Domestic	+\$18
Export	+\$32
Terminal	+\$17

June 2015 Australasian Charolais GROUP BREEDPLAN

	CE Dir	CE Dtr	GL	BW	200	400	600	MCW	MILK	SS	CWT	EMA	RIB	Rump	RBY	IMF
EBV	-6.6	+1.9	-6.1	+2.3	+16	+31	+45	+44	-4	+3.1		+1.4	+1.0	+1.5	-0.1	+0.1
Acc	46%	36%	76%	73%	63%	64%	70%	60%	42%	73%		49%	52%	51%	50%	51%

Notes: An outstanding thickset polled young bull by homozygous Canadian sire Montezuma. His dam is producing consistent progeny exhibiting tremendous top lines and depth of body. Ideal for use in an F1 Bos Indicus cow herd. **Top 1% for nuts, top 5% for gestation length and top 15% for 200, 400 and 600 day growth and rib and rump fat.**

Purchaser.....Price \$.....

38

WAKEFIELD JOBS RIGHT (P)

BORN: 18/10/2013 IDENT: BIS J613E COLOUR: White

PINAY 8552394134 (OAF U4134F)

IMPAIR 1893102983 (OAF N189F)
MARY 8596100049 (OAF R8596F)

SIRE: WAKEFIELD GAUCHO (BIS G7E) (P/S)

WAKEFIELD DREAMTIME (BIS D362E) (P)

WAKEFIELD AMEN (BIS A816E) (P)
WAKEFIELD BISCUIT (BIS B929E)
OBJECTEUR M 15314 (ZZF X1105F)
ECLIPSE F 97773 (ZZF X885F)

SALOPIAU 71161 S02 (IAF A6056F)

DAM: WAKEFIELD BLOSSOM 6 (BIS E456E)

WAKEFIELD BLOSSOM (BIS B936E)

PALGROVE MURDOCK R/F (PK M109E)
AIRLIE MAHLAN (A1S M81E)

Index	\$Value
Domestic	+\$25
Export	+\$30
Terminal	+\$18

June 2015 Australasian Charolais GROUP BREEDPLAN

	CE Dir	CE Dtr	GL	BW	200	400	600	MCW	MILK	SS	CWT	EMA	RIB	Rump	RBY	IMF
EBV	-1.3	+6.2	-1.4	+0.8	+13	+28	+39		+11	-0.7		+2.8	-0.8	-1.4	+1.1	+0.7
Acc	41%	37%	53%	71%	59%	61%	68%		43%	73%		47%	49%	47%	48%	46%

Notes: He has the unusual combination of a high IMF with an outstanding eye muscle area. Combined with very good growth this polled bull will add value to any beef enterprise. **Top 10% for EMA and IMF, retail beef yield and calving ease on daughters.**

Purchaser.....Price \$.....

39

WAKEFIELD JUST YOU WAIT (AI) (ET) (P) (R/F)

BORN: 05/11/2013 IDENT: BIS J636E COLOUR: Red factor

HARVIE JAGER 65J PMC228759 (OAC U8759E) (P)

LANG'S ERIC THE RED 3E MC178117 (PED -8117E) (P/S)
HARVIE MISS FRANCIS 47F FC234929 (OAC R4929E)

SIRE: HARVIE MOJO 115M QSMC272453 (OAC X2453E) (P/S)

HARVIE MISS GELLIA 35G PFC250803 (OAC S2508E) (P)

A-JAY'S PLD DIMENSION69E PMC200006 (PED -6E) (P)
PAR MISS 50B PFC191500 (PED -1500E) (P)
GUNNADOO RED BARON R/F (GN1 Q31D)
PALGROVE DIGNA 36 (PK N168E) (P)

CHARNELLE TANNESSEE R/F (GKA T83E) (P)

DAM: WAKEFIELD ALANNA (BIS A803E) (P)

MOUNT WILLIAM V92E (BS V92E)

TALGOONA QANTAS (CG Q4E)
MOUNT WILLIAM SYBIL (BS S72E)

Index	\$Value
Domestic	+\$35
Export	+\$49
Terminal	+\$29

June 2015 Australasian Charolais GROUP BREEDPLAN

	CE Dir	CE Dtr	GL	BW	200	400	600	MCW	MILK	SS	CWT	EMA	RIB	Rump	RBY	IMF
EBV	+2.2	+1.7	-2.5	+2.0	+15	+41	+55		+4	+1.9		+1.2	-0.3	-0.3	+0.6	-0.2
Acc	47%	43%	60%	70%	60%	61%	65%		50%	66%		44%	50%	49%	47%	43%

Notes: 13 This outstanding polled red factor son of Harvie Mojo out of donor dam Alanna has been used in the Wakefield commercial herd and is under condition for sale due to this fact. He is very young but we think a lot of this bull and can recommend him to you. Outstanding growth figures coupled with positive calving ease would make him a useful addition to any herd. **Top 5% for 400 and 600 day growth, top 10% for scrotal circumference and top 20% for 200 day growth and domestic and export indexes.**

Purchaser.....Price \$.....

40

WAKEFIELD THUNDERBIRD J438 (APR) (AI)

BORN: 22/07/2013 IDENT: ANNJ438 HERDBOOK: APR

S A V FINAL ANSWER 0035

SIRE: USA16396499 S A V THUNDERBIRD 9061

S A V EMBLYNETTE 7411

WAKEFIELD DIRECTION D511 (APR)

DAM: ANNG979 WAKEFIELD G979 (APR)

WAKEFIELD W334 (APR)

SITZ TRAVELER 8180
S A V EMULOUS 8145

S A V BISMARCK 5682
S A V EMBLYNETTE 4408
KAROO W109 DIRECTION Z181
WAKEFIELD B1098 (APR)

Index	\$Value
Breeding	+\$111
Domestic	+\$107
Heavy Grain	+\$109
Heavy Grass	+\$114

Genetic Status: AMF NHF CAF DDF

July 2015 Angus Australia BREEDPLAN

	CE Dir	CE Dtr	GL	BW	200	400	600	MCW	MILK	SS	CWT	EMA	RIB	Rump	RBV	IMF
EBV	+2.3	+0.7	-4.4	+4.1	+51	+91	+125	+115	+14	+2.0	+67	+2.4	+0.0	-0.7	+0.6	+0.8
Acc	49%	38%	81%	71%	65%	65%	70%	63%	47%	67%	55%	55%	56%	57%	51%	50%

Notes: J438 is an outstanding young curve-bending son of SAV Thunderbird that will add eye appeal, natural muscle pattern and a great topline to his progeny. He has a bombproof temperament with a natural finishing ability and depth of body. He has been used with heifers here at Wakefield. J438 is the highest growth bull in the Angus line up. **Top 5% for 200, 400 and 600 day growth, top 20% for calving ease direct.**

Purchaser.....Price \$.....

41

WAKEFIELD INFINITY J493 (APR)

BORN: 26/09/2013 IDENT: ANNJ493 HERDBOOK: APR

TE MANIA INFINITY 04 379 AB

SIRE: ANNG953 WAKEFIELD INFINITY 953 G953 (APR) (AI)

WAKEFIELD D616 (APR)

DAM: ANND520 WAKEFIELD D520 (APR)

TE MANIA UNLIMITED U3271 (AI) (ET)
TE MANIA 95102

ALBERDA TRAVELER 416

Index	\$Value
Breeding	+\$90
Domestic	+\$91
Heavy Grain	+\$88
Heavy Grass	+\$93

Genetic Status: AMF NHF CAF DDF

July 2015 Angus Australia BREEDPLAN

	CE Dir	CE Dtr	GL	BW	200	400	600	MCW	MILK	SS	CWT	EMA	RIB	Rump	RBV	IMF
EBV	--	--	--	+5.0	+40	+78	+108	--	--	+1.7	--	+2.8	-1.2	-0.6	+0.6	+1.2
Acc				64%	55%	54%	62%			62%		43%	43%	46%	39%	35%

Notes: A good young bull going back to Te mania Infinity, who is renowned for his finishing ability and calving ease. This bull has a tremendous top line and muscularity as well as being a free moving sire with presence. **Top 25% for 600 day growth.**

Purchaser.....Price \$.....

42

WAKEFIELD EQUATOR J471 (APR) (AI)

BORN: 28/08/2013 IDENT: ANNJ471 HERDBOOK: APR

BT EQUATOR 395M

SIRE: NMMD78 MILLAH MURRAH EQUATOR D78 (AI)

MILLAH MURRAH RADO Y119 (AI)

WAKEFIELD DIRECTION D511 (APR)

DAM: ANNF885 WAKEFIELD F885 (APR)

WAKEFIELD W342 (APR)

PAPA EQUATOR 2928
RM BLACK MAGIC 7574 E A R

YTHANBRAE HENRY VIII U8 (AI) (ET)
MILLAH MURRAH RADO V31 (AI)
KAROO W109 DIRECTION Z181
WAKEFIELD B1098 (APR)

Index	\$Value
Breeding	+\$115
Domestic	+\$108
Heavy Grain	+\$110
Heavy Grass	+\$117

Genetic Status: AMFU NHFU CAFU DDFU

July 2015 Angus Australia BREEDPLAN

	CE Dir	CE Dtr	GL	BW	200	400	600	MCW	MILK	SS	CWT	EMA	RIB	Rump	RBV	IMF
EBV	+0.1	+1.6	-6.9	+4.7	+48	+90	+121	+122	+14	+2.1	+65	+4.5	+1.0	+1.4	+0.6	+0.5
Acc	49%	39%	81%	72%	65%	64%	69%	64%	52%	68%	57%	56%	55%	57%	52%	50%

Notes: The first Millah Murrah Equator D78 son on offer and what a good one! A smooth coated, growthy young bull with a load of potential. A complete bull with good muscularity, depth of body and style. Don't overlook this young bull. **Top 5% for gestation length, top 10% for 400 and 600 day growth, top 20% for 200 day growth, Angus breeding index, domestic index and carcase weight.**

43

WAKEFIELD EQUATOR J484 (APR) (AI)

BORN: 21/09/2013 IDENT: ANNJ484 HERDBOOK: APR

BT EQUATOR 395M
SIRE: NMMD78 MILLAH MURRAH EQUATOR D78 (AI)
 MILLAH MURRAH RADO Y119 (AI)
 BT RIGHT TIME 24J
DAM: ANNF866 WAKEFIELD FINE TIME F866 (APR) (AI)
 WAKEFIELD B1089 (APR)

PAPA EQUATOR 2928
 RM BLACK MAGIC 7574 E A R
 YTHANBRAE HENRY VIII U8 (AI) (ET)
 MILLAH MURRAH RADO V31 (AI)
 LEACHMAN RIGHT TIME
 SITZ EVERELDA ENTENSE 1905
 ALBERDA TRAVELER 416

Index	\$Value
Breeding	+\$103
Domestic	+\$98
Heavy Grain	+\$100
Heavy Grass	+\$105

Genetic Status: AMFU NHFU CAFU DDFU

July 2015 Angus Australia BREEDPLAN

	CE Dir	CE Dtr	GL	BW	200	400	600	MCW	MILK	SS	CWT	EMA	RIB	Rump	RBY	IMF
EBV	-1.2	+0.0	-2.9	+4.5	+45	+85	+117	+119	+17	+1.5	+62	+3.2	-0.5	+0.0	+0.6	+0.7
Acc	52%	45%	83%	72%	67%	67%	72%	66%	56%	71%	60%	60%	61%	62%	57%	56%

Notes: Another Millah Murrah Equator D78 son who has good growth, muscle pattern and capacity. D78 has been used at Wakefield for his short gestation length, depth and capacity, temperament and muscle pattern. J484 has a strong frame, a very masculine bull. Out of a BT Right Time 24J daughter with tremendous milk, udder and fertility. **Top 10% for 600 day growth, top 15% for 400 day growth and top 20% for milk.**

Purchaser.....Price \$.....

44

WAKEFIELD EQUATOR J456 (AI) (ET)

BORN: 15/08/2013 IDENT: ANNJ456 HERDBOOK: HBR

PAPA EQUATOR 2928
SIRE: NAQA241 ARDROSSAN EQUATOR A241 (AI) (ET)
 ARDROSSAN PRINCESS W38 (AI) (ET)
 MOHNEN DYNAMITE 1356
DAM: ANNG957 WAKEFIELD CLASSIC 4 G957 (AI)
 WAKEFIELD CLASSIC C1099 (AI) (ET)

PAPA POWER 096
 PAPA ENVIOUS BLACKBIRD 8849
 B/R NEW DIMENSION 7127
 ARDROSSAN PRINCESS U24 (AI) (ET)
 BALDRIDGE KABOOM K243 KCF
 MOHNEN JILT 910
 ALBERDA TRAVELER 416
 TE MANIA JEDDA P123

Index	\$Value
Breeding	+\$103
Domestic	+\$101
Heavy Grain	+\$99
Heavy Grass	+\$106

Genetic Status: AMFU NHFU CAFU DDFU

July 2015 Angus Australia BREEDPLAN

	CE Dir	CE Dtr	GL	BW	200	400	600	MCW	MILK	SS	CWT	EMA	RIB	Rump	RBY	IMF
EBV	+0.4	-0.3	-5.1	+3.5	+45	+83	+110	+97	+15	+2.3	+68	+4.7	+0.6	+0.7	+0.0	+1.4
Acc	57%	53%	66%	74%	68%	68%	72%	68%	58%	71%	63%	62%	63%	64%	60%	59%

Notes: This Ardrossan Equator A241 son has tremendous length, shoulder set and neck extension for calving ease with a smooth muscle pattern and natural finishing ability that we have come to expect from the combined A241 and Dynamite progeny. Overall eye appeal well worth a look! **Top 10 % for carcase weight and top 20% for gestation length and 400 and 600 day growth.**

Purchaser.....Price \$.....

45

WAKEFIELD EQUATOR J488 (APR) (AI)

BORN: 25/09/2013 IDENT: ANNJ488 HERDBOOK: APR

BT EQUATOR 395M
SIRE: NMMD78 MILLAH MURRAH EQUATOR D78 (AI)
 MILLAH MURRAH RADO Y119 (AI)
 SITZ ALLIANCE 6595
DAM: ANNB1088 WAKEFIELD B1088 (APR)

PAPA EQUATOR 2928
 RM BLACK MAGIC 7574 E A R
 YTHANBRAE HENRY VIII U8 (AI) (ET)
 MILLAH MURRAH RADO V31 (AI)
 SITZ TRAVELER 8180
 SITZ BARBARAMERE JET 2698

Index	\$Value
Breeding	+\$104
Domestic	+\$105
Heavy Grain	+\$98
Heavy Grass	+\$107

Genetic Status: AM2% NH2% CA2% DD2%

July 2015 Angus Australia BREEDPLAN

	CE Dir	CE Dtr	GL	BW	200	400	600	MCW	MILK	SS	CWT	EMA	RIB	Rump	RBY	IMF
EBV	+1.5	+1.8	-6.7	+3.6	+44	+84	+108	+101	+16	+2.4	+64	+3.2	+0.2	+0.1	+0.5	+0.7
Acc	51%	42%	82%	72%	67%	66%	71%	67%	56%	71%	59%	58%	58%	60%	55%	54%

Notes: This Millah Murrah Equator D78 son is a 'curve bender' who has calving ease, tremendous growth, muscle and a good top line. He has a good temperament with positive carcase ebvs across the board, a great do-ability. His dam B1088 with Sitz Alliance 6595 on her side has been a very fertile, easy doing cow with great milk and longevity. **Top 20% for 400 day growth and carcase weight.**

46

WAKEFIELD EQUATOR J479 (APR) (AI) (ET)

BORN: 18/09/2013 IDENT: ANNJ479 HERDBOOK: APR

BT EQUATOR 395M

PAPA EQUATOR 2928
RM BLACK MAGIC 7574 E A R

SIRE: NMMD78 MILLAH MURRAH EQUATOR D78 (AI)

MILLAH MURRAH RADO Y119 (AI)

YTHANBRAE HENRY VIII U8 (AI) (ET)
MILLAH MURRAH RADO V31 (AI)

WAKEFIELD DIRECTION D511 (APR)

KAROO W109 DIRECTION Z181
WAKEFIELD B1098 (APR)

DAM: ANNF885 WAKEFIELD F885 (APR)

WAKEFIELD W342 (APR)

Index	\$Value
Breeding	+\$110
Domestic	+\$104
Heavy Grain	+\$106
Heavy Grass	+\$112

Genetic Status: AMFU NHFU CAFU DDFU

July 2015 Angus Australia BREEDPLAN

	CE Dir	CE Dtr	GL	BW	200	400	600	MCW	MILK	SS	CWT	EMA	RIB	Rump	RBY	IMF
EBV	+0.9	+2.0	-6.2	+4.2	+45	+86	+117	+119	+15	+2.2	+62	+3.0	+0.6	+1.2	+0.4	+0.6
Acc	49%	39%	58%	72%	66%	65%	70%	64%	52%	69%	57%	56%	55%	57%	52%	51%

Notes: A stylish son of D78 exhibiting muscle and finishing ability. D78 is an all-rounder in the Angus breed the bulls are 'punchy' yet have a natural doing ability with exceptional growth on a big frame. J479 is another 'curve bender' with great calving ease, growth and positive carcase ebvs. **Top 10% for gestation length and 600 day growth and top 20% for calving ease daughters, 400 day growth and scrotal circumference.**

Purchaser.....Price \$.....

47

WAKEFIELD EQUATOR J491 (APR) (AI) (ET)

BORN: 26/09/2013 IDENT: ANNJ491 HERDBOOK: APR

BT EQUATOR 395M

PAPA EQUATOR 2928
RM BLACK MAGIC 7574 E A R

SIRE: NMMD78 MILLAH MURRAH EQUATOR D78 (AI)

MILLAH MURRAH RADO Y119 (AI)

YTHANBRAE HENRY VIII U8 (AI) (ET)
MILLAH MURRAH RADO V31 (AI)

WAKEFIELD DIRECTION D511 (APR)

KAROO W109 DIRECTION Z181
WAKEFIELD B1098 (APR)

DAM: ANNF885 WAKEFIELD F885 (APR)

WAKEFIELD W342 (APR)

Index	\$Value
Breeding	+\$110
Domestic	+\$103
Heavy Grain	+\$107
Heavy Grass	+\$111

Genetic Status: AMFU NHFU CAFU DDFU

July 2015 Angus Australia BREEDPLAN

	CE Dir	CE Dtr	GL	BW	200	400	600	MCW	MILK	SS	CWT	EMA	RIB	Rump	RBY	IMF
EBV	-0.3	+1.5	-5.8	+4.8	+46	+87	+119	+122	+14	+2.2	+63	+3.0	+0.4	+0.9	+0.6	+0.6
Acc	49%	39%	58%	72%	66%	65%	70%	64%	52%	69%	57%	56%	55%	57%	52%	51%

Notes: Another Millah Murrah Equator D78 son who has great depth, growth and a smooth muscle pattern with a natural finishing ability. He has full set of positive carcase ebvs. The last D78 son on offer today. He will suit a range of enterprises. **Top 10% for gestation length, 400 and 600 day growth, top 20% for 200 day growth, scrotal circumference and rump fat.**

Purchaser.....Price \$.....

48

WAKEFIELD EQUATOR J492 (APR) (AI) (ET)

BORN: 26/09/2013 IDENT: ANNJ492 HERDBOOK: APR

PAPA EQUATOR 2928

PAPA POWER 096
PAPA ENVIOUS BLACKBIRD 8849

SIRE: NAQA241 ARDROSSAN EQUATOR A241 (AI) (ET)

ARDROSSAN PRINCESS W38 (AI) (ET)

B/R NEW DIMENSION 7127
ARDROSSAN PRINCESS U24 (AI) (ET)

L T 598 BANDO 9074

S A F 598 BANDO 5175
MILL COULEE BARBARA K323

DAM: ANNF851 WAKEFIELD FANCY PANTS F851 (APR) (AI)

WAKEFIELD D502 (APR)

ALBERDA TRAVELER 416

Index	\$Value
Breeding	+\$115
Domestic	+\$109
Heavy Grain	+\$120
Heavy Grass	+\$113

Genetic Status: AMFU NHFU CAFU DDFU

July 2015 Angus Australia BREEDPLAN

	CE Dir	CE Dtr	GL	BW	200	400	600	MCW	MILK	SS	CWT	EMA	RIB	Rump	RBY	IMF
EBV	+0.7	+0.5	-5.7	+4.1	+47	+87	+115	+102	+18	+3.3	+71	+3.1	-0.7	-0.6	+0.6	+1.6
Acc	58%	53%	65%	73%	68%	68%	72%	68%	58%	71%	63%	62%	63%	64%	61%	59%

Notes: A son of Equator A241 who has produced sons with a smooth coat and an easy fleshing ability on a big frame. The combination of LT Bando on his dam's side and A241 makes for a true to type Angus. J492 is our second highest indexing bull with good calving ease and growth. A good all-round bull with a great scrotum. **Top 1% for scrotal circumference, top 10% for 400 day growth and carcase weight and top 15% gestation length and 200, 600 day growth and milk.**

49

WAKEFIELD EQUATOR J459 (APR) (AI) (ET)

BORN: 16/08/2013 IDENT: ANNJ459 HERDBOOK: APR

PAPA EQUATOR 2928

PAPA POWER 096
PAPA ENVIOUS BLACKBIRD 8849

SIRE: NAQA241 ARDROSSAN EQUATOR A241 (AI) (ET)

ARDROSSAN PRINCESS W38 (AI) (ET)

B/R NEW DIMENSION 7127
ARDROSSAN PRINCESS U24 (AI) (ET)

L T 598 BANDO 9074

S A F 598 BANDO 5175
MILL COULEE BARBARA K323

DAM: ANNF851 WAKEFIELD FANCY PANTS F851 (APR) (AI)

WAKEFIELD D502 (APR)

ALBERDA TRAVELER 416

Index	\$Value
Breeding	+\$110
Domestic	+\$106
Heavy Grain	+\$112
Heavy Grass	+\$110

Genetic Status: AMFU NHFU CAFU DDFU

July 2015 Angus Australia BREEDPLAN

	CE Dir	CE Dtr	GL	BW	200	400	600	MCW	MILK	SS	CWT	EMA	RIB	Rump	RBV	IMF
EBV	+1.1	+0.7	-5.9	+3.9	+46	+85	+113	+99	+18	+2.2	+70	+3.0	-0.6	-0.5	+0.4	+1.4
Acc	58%	53%	65%	74%	68%	68%	72%	68%	58%	71%	63%	62%	63%	64%	61%	59%

Notes: Another A241 son who is exhibiting the trade mark growth that we've come to expect from this sire. Good depth, capacity, tremendous muscling and a natural finishing ability. This bull is another 'curve bender' with great eye appeal and would suit a range of beef operations from vealers to heavy export steers. **Top 10% for gestation length and carcase weight, top 15% for 400 and 600 day growth and top 20% for 200 day growth and scrotal circumference.**

Purchaser.....Price \$.....

50

WAKEFIELD EXPLOSIVE J506 (APR) (AI) (ET)

BORN: 25/10/2013 IDENT: ANNJ506 HERDBOOK: APR

CONNEALY DANNY BOY

CONNEALY TIMELINE
ENERGY OF CONANGA 4851

SIRE: QRFE108 RAFF EXPLOSIVE E108 (AI) (ET)

HOFF BLACKBIRD 594 5217 (ET)

S V F BANDOLIER
HOFF BOSS LADY S C 3V9

B/R NEW DESIGN 036

V D A R NEW TREND 315
B/R BLACKCAP EMPRESS 76

DAM: ANNV251 WAKEFIELD V251 (APR)

Index	\$Value
Breeding	+\$117
Domestic	+\$111
Heavy Grain	+\$119
Heavy Grass	+\$116

Genetic Status: AMFU NHFU CAFU DDF

July 2015 Angus Australia BREEDPLAN

	CE Dir	CE Dtr	GL	BW	200	400	600	MCW	MILK	SS	CWT	EMA	RIB	Rump	RBV	IMF
EBV	+1.1	+1.6	-5.8	+3.7	+44	+83	+112	+107	+9	+3.0	+62	+5.7	-0.2	-0.7	+1.4	+1.1
Acc	47%	37%	60%	70%	63%	63%	66%	61%	49%	65%	53%	53%	53%	54%	49%	48%

Notes: Our only bull by Raff Explosive E108 with wonderful calving ease, tremendous length of body and a smooth muscle pattern on a bigger frame. J506 is a free moving bull he is our top indexing Angus bull today, well worth your consideration. **Top 5% for nuts, top 10% for gestation length, top 20% for 400 and 600 day growth.**

Purchaser.....Price \$.....

51

WAKEFIELD EQUATOR J495 (APR) (AI)

BORN: 11/10/2013 IDENT: ANNJ495 HERDBOOK: APR

PAPA EQUATOR 2928

PAPA POWER 096
PAPA ENVIOUS BLACKBIRD 8849

SIRE: NAQA241 ARDROSSAN EQUATOR A241 (AI) (ET)

ARDROSSAN PRINCESS W38 (AI) (ET)

B/R NEW DIMENSION 7127
ARDROSSAN PRINCESS U24 (AI) (ET)

ALBERDA TRAVELER 416

D H D TRAVELER 6807
ALBERDA QUEEN KIMBERLY 222

DAM: ANNB1089 WAKEFIELD B1089 (APR)

Index	\$Value
Breeding	+\$77
Domestic	+\$86
Heavy Grain	+\$72
Heavy Grass	+\$80

Genetic Status: AMFU NHFU CAFU DDFU

July 2015 Angus Australia BREEDPLAN

	CE Dir	CE Dtr	GL	BW	200	400	600	MCW	MILK	SS	CWT	EMA	RIB	Rump	RBV	IMF
EBV	-1.4	-3.2	-1.1	+4.3	+37	+69	+87	+82	+16	+1.5	+56	+2.7	-0.8	-0.3	+0.3	+1.4
Acc	56%	52%	82%	72%	67%	67%	72%	68%	58%	71%	62%	60%	61%	62%	58%	57%

Notes: The last A241 son on offer today exhibiting plenty of muscle and a good top line. He is well worth a look!

Purchaser.....Price \$.....

52

WAKEFIELD JACKSON J450 (AI) (ET)

BORN: 11/08/2013 IDENT: ANNJ450 HERDBOOK: HBR

SITZ NEW DESIGN 458N
SIRE: USA15637146 SITZ JACKSON 431T
 SITZ EPPIONIA 105P

MOHNEN DYNAMITE 1356
DAM: ANNF853 WAKEFIELD CLASSIC F853 (AI)
 WAKEFIELD CLASSIC C1099 (AI) (ET)

BON VIEW NEW DESIGN 1407
 SITZ ELLUNAS ELITE 3308
 CONNEALY FREIGHTLINER
 SITZ EPPIONIA 120
 BALDRIDGE KABOOM K243 KCF
 MOHNEN JILT 910
 ALBERDA TRAVELER 416
 TE MANIA JEDDA P123

Index	\$Value
Breeding	+\$102
Domestic	+\$97
Heavy Grain	+\$100
Heavy Grass	+\$104

Genetic Status: AMFU NHFU CAFU DDF

July 2015 Angus Australia BREEDPLAN

	CE Dir	CE Dtr	GL	BW	200	400	600	MCW	MILK	SS	CWT	EMA	RIB	Rump	RBV	IMF
EBV	+0.1	-0.4	-3.5	+3.4	+43	+82	+112	+105	+14	+2.0	+57	+2.9	+1.2	+1.6	-0.6	+1.6
Acc	53%	45%	65%	74%	68%	68%	72%	67%	55%	71%	59%	59%	60%	60%	56%	55%

Notes: Our only Sitz Jackson son on offer today. J450 has tremendous growth, finishing ability and positive calving ease. He has been used on heifers in the Wakefield herd. His dam is a big framed Mohnen Dynamite daughter with plenty of milk and length of body. **Top 10% for rib and rump fat and top 20% for 600 day growth.**

Purchaser.....Price \$.....

53

WAKEFIELD INGENUITY J465 (APR) (AI) (ET)

BORN: 20/08/2013 IDENT: ANNJ465 HERDBOOK: APR

G A R NEW DESIGN 5050 (ET)
SIRE: USA16497066 G A R INGENUITY
 G A R OBJECTIVE 1067

WAKEFIELD DIRECTION D511 (APR)
DAM: ANNG973 WAKEFIELD G973 (APR)
 WAKEFIELD A893 (APR)

B/R NEW DESIGN 036
 G A R PRECISION 706
 S S OBJECTIVE T510 0T26
 G A R RETAIL PRODUCT 2195
 KAROO W109 DIRECTION Z181
 WAKEFIELD B1098 (APR)
 TINAMBA NUMBERS N62 (AI)

Index	\$Value
Breeding	+\$104
Domestic	+\$105
Heavy Grain	+\$106
Heavy Grass	+\$103

Genetic Status: AMFU NHFU CAFU DDF

July 2015 Angus Australia BREEDPLAN

	CE Dir	CE Dtr	GL	BW	200	400	600	MCW	MILK	SS	CWT	EMA	RIB	Rump	RBV	IMF
EBV	-1.5	--	-3.1	+4.8	+43	+81	+102	+89	+15	+1.2	+60	+6.5	-0.7	-0.6	+1.1	+1.7
Acc	42%		54%	72%	65%	65%	71%	63%	45%	69%	55%	55%	56%	56%	51%	48%

Notes: A son of GAR Ingenuity exhibiting the unusual combination of high eye muscle area and excellent IMF. He has the highest IMF ebv on offer today, will suit a range of enterprises. **Top 15% for EMA and Retail beef yield**

Purchaser.....Price \$.....

54

WAKEFIELD K782 (P)

BORN: 26/04/14 75% ANGUS 25% CHAROLAIS COLOUR: Black

Sire: Wakefield Infinity F856 (AI)(ET)(HBR) (Angus)
 Dam: Wakefield 798 (Charolais x Angus)

Scrotal 35cm RUMP 4mm RIB 3mm EMA 69 IMF 3.5

Notes: A very punchy polled yearling bull with exceptional growth and a good top line. This bull has a very bright future.

Purchaser..... Price \$.....

55

WAKEFIELD 1807 (P)

BORN: 02/08/13 75% CHAROLAIS 25% SHORTHORN COLOUR: Red/Roan

Sire: Ascot Eldorado (Charolais)

Scrotal 41cm RUMP 3mm RIB 3mm EMA 113 IMF 3.1

Notes: A very thick bull with a natural finishing ability and good depth of body.

Purchaser..... Price \$.....

56

WAKEFIELD 1794 (P)

BORN: 31/07/13 75% CHAROLAIS 25% SHORTHORN COLOUR: Red

Sire: Ascot Eldorado (Charolais)

Scrotal 40cm RUMP 4mm RIB 3mm EMA 95 IMF 3.9

Notes: A very solid bull with good growth and muscle and a softness from his dam's Shorthorn side.

Purchaser..... Price \$.....

57

WAKEFIELD 1795 (P)

BORN: 16/07/13 50% CHAROLAIS 50% SHORTHORN COLOUR: Straw

Sire: Wakefield 1339 (Charolais x Shorthorn)

Scrotal 32.5cm RUMP 4mm RIB 3mm EMA 98 IMF 3.2

Notes: A bull with good length of body and plenty of capacity.

Purchaser..... Price \$.....

58

WAKEFIELD 1804 (P)

BORN: 26/07/13 75% CHAROLAIS 25% SHORTHORN COLOUR: Red

Sire: G.Bros Thin Red Line (Charolais)

Scrotal 41cm RUMP 4mm RIB 3mm EMA 100 IMF 3.6

Notes: A powerful young bull with a natural finishing ability and good scrotal, well worth a look!

Purchaser..... Price \$.....

59

WAKEFIELD 1802 (P)

BORN: 22/07/13 75% CHAROLAIS 25% SHORTHORN COLOUR: Straw

Sire: G.Bros Thin Red Line (Charolais)

Scrotal 37.5cm RUMP 6mm RIB 4mm EMA 84 IMF 5.5

Notes: A bull with a natural finishing ability, good IMF and plenty of capacity.

Purchaser..... Price \$.....

60**WAKEFIELD 1755 (P)**

BORN: 07/08/13 75% CHAROLAIS 25% SHORTHORN COLOUR: Red

Sire: Rangan Park Redemption (Charolais)

Scrotal 37cm

RUMP 7mm

RIB 5mm

EMA 92

IMF 4.1

Notes: A very stylish young polled bull with tremendous length of body and finishing ability with the explosive growth of his father. He would suit an F1 Bos Indicus female.

Purchaser..... Price \$.....

61**WAKEFIELD 1796 (P)**

BORN: 19/07/13 50% CHAROLAIS 50% SHORTHORN COLOUR: Straw

Sire: Wakefield 1339 (Charolais x Shorthorn)

Scrotal 38cm

RUMP 4mm

RIB 3mm

EMA 105

IMF 4.2

Notes: A solid young bull that would suit many cattle operations.

Purchaser..... Price \$.....

62**WAKEFIELD 1797 (P)**

BORN: 19/07/13 50% CHAROLAIS 50% SHORTHORN COLOUR: Straw

Sire: Wakefield 770 (Charolais x Shorthorn)

Scrotal 38cm

RUMP 5mm

RIB 4mm

EMA 89

IMF 4.0

Notes: Great weight for age with finishing ability.

Purchaser..... Price \$.....

63**WAKEFIELD 1803 (P)**

BORN: 22/07/13 75% CHAROLAIS 25% SHORTHORN COLOUR: White

Sire: G. Bros Thin Red Line (Charolais)

Scrotal 36cm

RUMP 4mm

RIB 3mm

EMA 87

IMF 3.1

Notes: An ideal bull for a cross breeding enterprise.

Purchaser..... Price \$.....

64**WAKEFIELD 1799 (P)**

BORN: 17/08/13 50% CHAROLAIS 50% SHORTHORN COLOUR: Red

Sire: Wakefield 770 (Charolais x Shorthorn)

Scrotal 37cm

RUMP 5mm

RIB 4mm

EMA 100

IMF 4.4

Notes: A soft young bull to finish the line-up today with a good blend of IMF and EMA.

Purchaser..... Price \$.....

Congratulations to Ken Kable, a long time purchaser of Wakefield Charolais Cross Shorthorn bulls for once again topping the Cooma weaner sales.

Congratulations to Dean Mitchell on winning the top pen of Euro weaners at the Kempsey weaner sale earlier this year. Dean has been a repeat buyer at Wakefield since our second sale.

Congratulations to Mike Lawlor from Kilkenny Charolais for topping the All-breed bull sale at Blackall with a bull sired by Wakefield Dumbledore. Mike has been buying Charolais stud sires for years from Wakefield.

Well done to Peter and Shelley Morris at Comboyne for extraordinary MSA grading results at Wingham abattoirs. The steers were sired by a Wakefield Charolais bull.





grain & trade

Grain, fodder and fertiliser
Sales and marketing
Personalised service
Competitive pricing
Freight and logistics made easy
Fully independent
Large and small tonnages
Contactable all hours

Contact:
Keith Moen
0477 000 737

keith@grainandtrade.com.au
www.grainandtrade.com.au

Midcoast Rural Agencies are
your only accredited **Auctionsplus**
assessors on the Mid North Coast.



MIDCOAST
RURAL • AGENCIES
Stock & Station and Real Estate Agents

Shop 1/52 Elbow Street West Kempsey
PO BOX 224 KEMPSEY NSW 2440
Phone 02 6562 5131 Fax 02 6562 5150
www.midcoastruralagencies.com.au



T.J. & J.L. Foley

Livestock, Wool & General Carriers

“Dallyn”

ARMIDALE NSW 2350

Fully insured

Telephone/Fax (02) 6772 3456

Mobiles 0428 659 072 / 0428 961 014

Email tjfoley@northnet.com.au

Transporting in New England since 1972

CASTLEREAGH ARTIFICIAL BREEDERS

“Advancing Livestock Genetics in Northern NSW”

Artificial Insemination Programs & Equipment

Liquid Nitrogen Sales & Delivery

Bull Semen Collection, Sales & Storage

Contact Margaret Shedden

Phone 0408 498 922

info@castlereaghab.com.au

www.castlereaghab.com.au

GRAZAG

GRAZING AND AGRICULTURAL PRODUCTION SOLUTIONS

SPECIALISING IN;

Animal Health, Animal Nutrition, Agronomy Services, Fertiliser, Pasture Seed, Agricultural Chemicals and Rural Fencing Supplies.

FULL DRIVE THROUGH SERVICE

GrazAg Pty Ltd
12 Ampol Street
PO Box 4439
Armidale NSW 2350

Phone 02 6770 3400
Fax 02 6770 3440
admin@grazag.com.au

GrazAg Pty Ltd
159-161 Bradley Street
Guyra NSW 2359

Phone 02 6770 3420
Fax 02 6779 1171

Administration

Kellie Litchfield	Administration	0427 711 595 - 6770 3401	kellie@grazag.com.au
Kate Saunders	Administration	0412 124 110 - 6770 3409	kate@grazag.com.au
Heather Cartledge	Administration	6770 3400	info@grazag.com.au

Armidale Branch

12 Ampol Street, Armidale NSW 2350

Jason Litchfield	Manager	0488 711 599 - 6770 3402	jason@grazag.com.au
Matt Foster	Agronomist	0488 720 989 - 6770 3404	matt@grazag.com.au
Ben Foster	Animal Health	0488 753 724 - 6770 3405	ben@grazag.com.au
Philip Radburn	Animal Health	0488 725 385 - 6770 3403	philip@grazag.com.au
Chris Heywood	Animal Health	0411 104 065 - 6770 3410	chris@grazag.com.au
Michael Ward	Produce	0402 433 787 - 6770 3406	mick@grazag.com.au
Toby Pearson	Produce	0437 466 927 - 6770 3400	toby@grazag.com.au

Guyra Branch

159-161 Bradley Street, Guyra NSW 2365

Julian Percy	Merchandise	0488 720 123 - 6770 3420	julian@grazag.com.au
Jake Obrien	Agronomist	0488 711 133 - 6770 3420	jacob@grazag.com.au

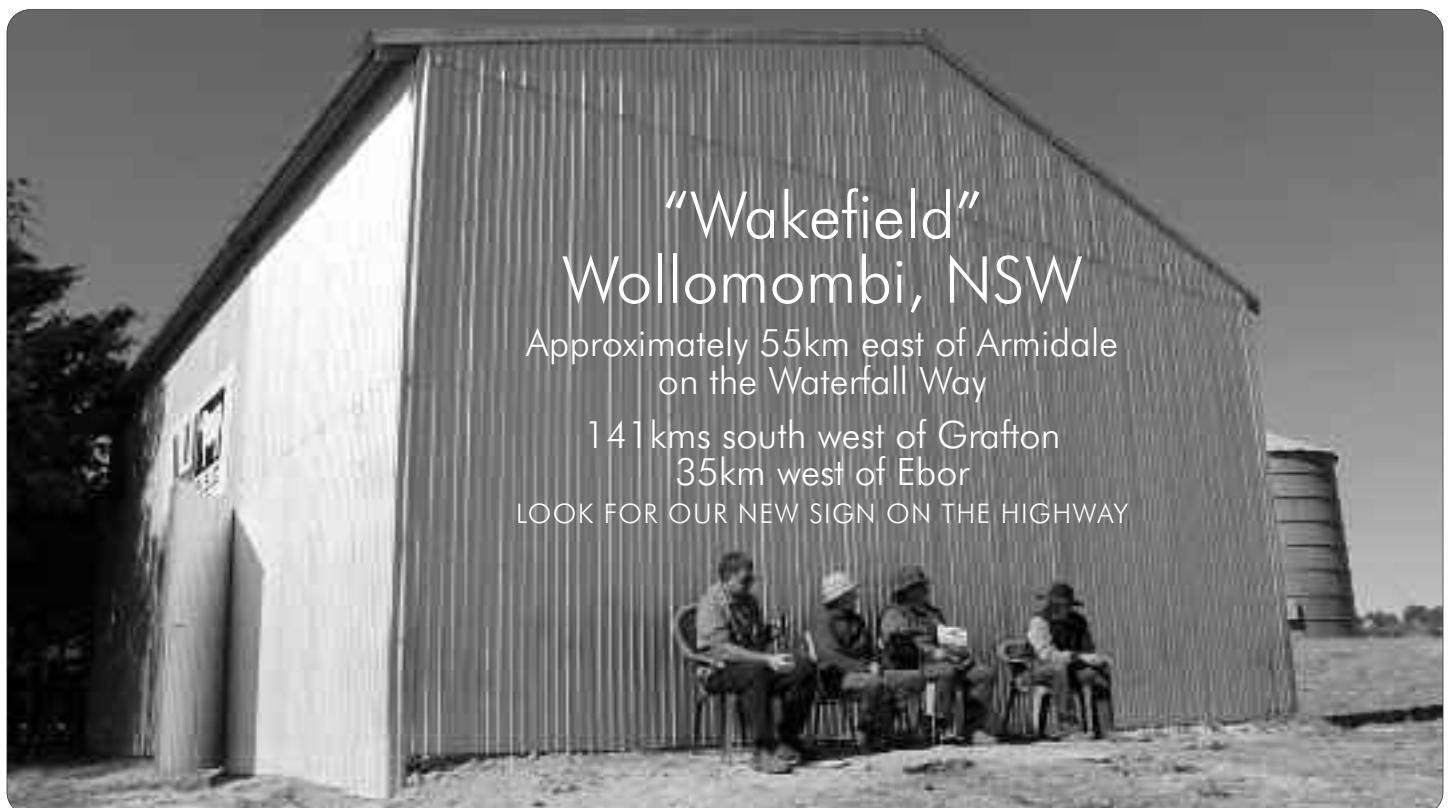
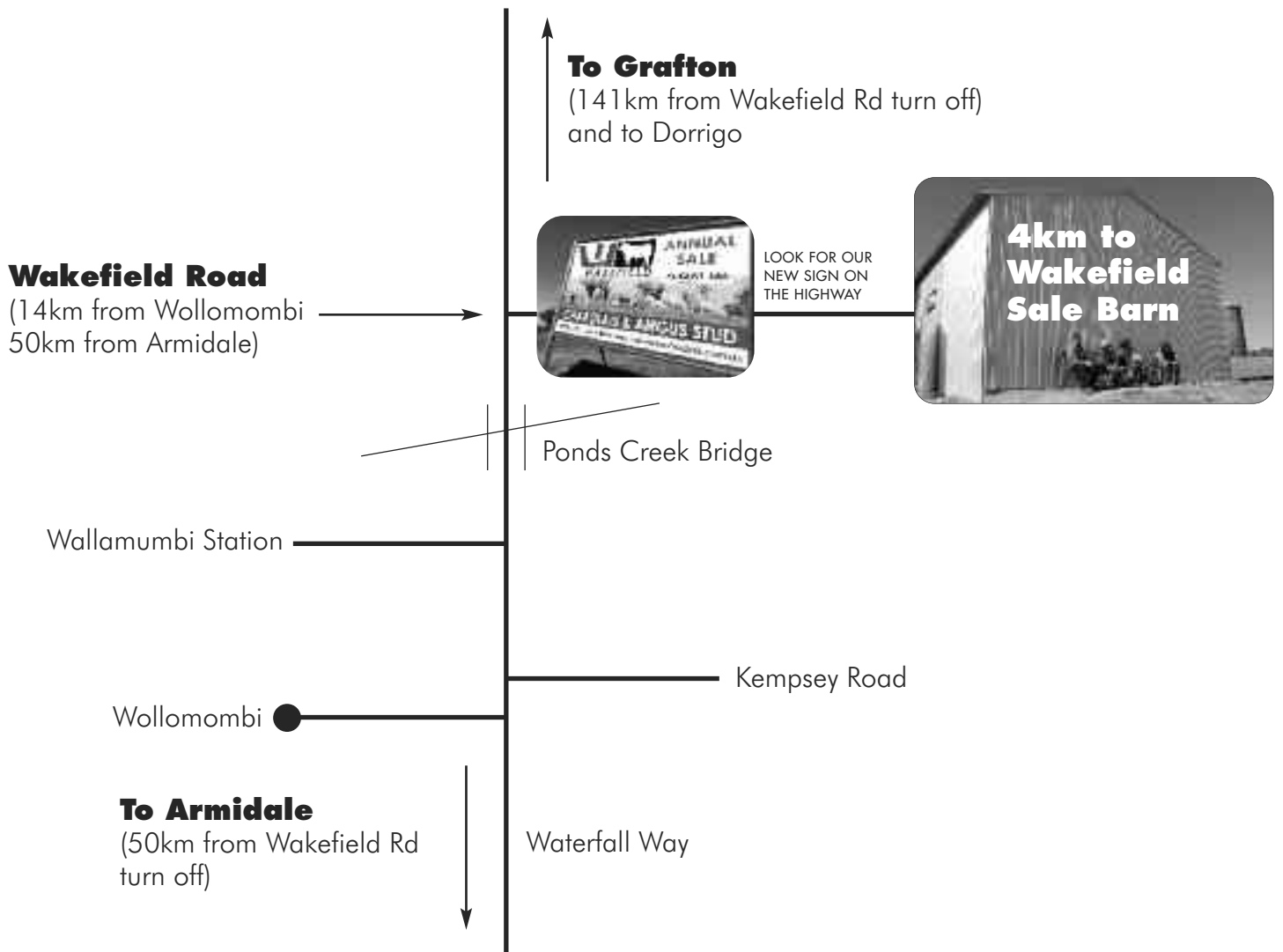
Glen Innes Branch

4-6 Wullamulla Street, Glen Innes NSW 2370

Bruce Smith	Merchandise	0419 394 823 - 6770 3430	bruce@grazag.com.au
Paul Tudor	Agronomist	0499 703 436 - 6770 3430	paul@grazag.com.au



DIRECTIONS



BUYERS INSTRUCTIONS



Name

Address

Phone

Fax

Email

Bid Card Number

Lots Purchased

Total Purchased

Destination PIC

Destination Address

Trucking Details

Are you EU Accredited?

Do you require insurance?

YES

NO

Do you require stud transfer of lots?

YES

NO

Stud Name

Other instructions

Buyer signature

Date



Lot 2 Wakefield Jalopy J578



Lot 36 Wakefield Jolliffe J605



Lot 28 Wakefield Jive J645



Lot 18 Wakefield Jasper J567



Lot 5 Wakefield Jumbuck J542



Lot 14 Wakefield Just Right J575



Lot 8
Wakefield
Jackbenimble J622



Lot 30
Wakefield
Jericho J609



Lot 15
Wakefield
John Wayne J570



10TH ANNUAL CHAROLAIS & ANGUS BULL SALE
Friday 14th August 2015 at 1pm "Wakefield", Wollomombi, NSW

Greg & Jenny Frizell Phone 02 6778 1346
email wakefieldcharolais@bigpond.com