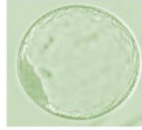


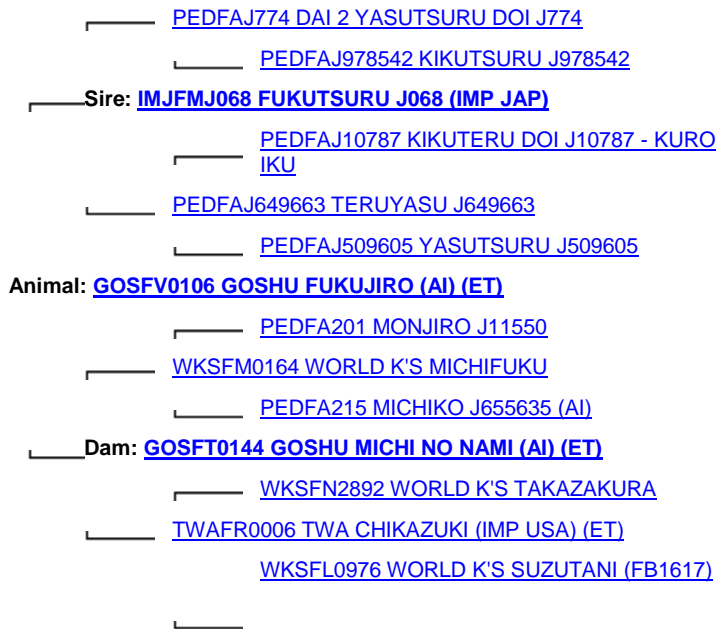


2 EMBRYO's



Embryo's Sires Pedigree

GOSHU FUKUJIRO



July 2016 Wagyu GROUP BREEDPLAN															
	Gestation Length (days)	Birth Wt (kg)	200 Day Wt (kg)	400 Day Wt (kg)	600 Day Wt (kg)	Mat Cow Wt (kg)	Milk (kg)	Scrotal Size (cm)	Carcase Wt (kg)	Eye Muscle Area (sq cm)	Rib Fat (mm)	Rump Fat (mm)	Retail Beef Yield (%)	Marble Score	Marble Fineness (%)
EBV	-0.3	-1.0	+2	+5	+4	-6	+2	-2.3	+1	+3.1	-0.6	+1.7	-0.3	+0.6	+0.29

GOSHU FUKUJIRO

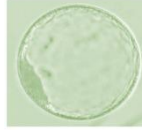
SELECTION INDEX VALUES		
Market Target	Index Value	Breed Average
Fullblood Terminal Index	+\$ 132	+\$ 116

A sire with excellent marbling and Marbling fineness plus above average Full blood terminal index EBV's

From one of the best Marbling female families in the Wagyu breed the **SUZUTANI** family



2 EMBRYO's



Embryo's Dam Pedigree

SAMURAI FARMS HIRADAIRA Z207

_____ [PEDFAJ65 DAI 7 ITOZAKURA J65 - KURO IKU](#)

_____ [PEDFAJ1530 KITAGUNI 7-8 J1530](#)

_____ [PEDFAJ81009 KITAGUNI 7 J81009](#)

_____ Sire: [WKSFP0001 WORLD K'S KITAGUNI JR](#)

_____ [PEDFAKOUFUKU KOUFUKU J2132](#)

_____ [WKSFM2893 WORLD K'S NAKAYUKI J13943](#)

_____ [PEDFANAKHANA3 NAKHANA 3 J1792470](#)

Animal: [SF FZ0207 SAMURAI FARMS HIRADAIRA Z207 \(AI\) \(ET\)](#)

_____ [PEDFAJ287 DAI 20 HIRASHIGE J287 - KURO IKU](#)

_____ [IMJFAJ2351 HIRASHIGETAYASU J2351 HONGEN \(IMP JAP\)](#)

_____ [PEDFAJ187250 DAI 5 YURUHIME J187250 - KURO KOH](#)

_____ Dam: [GOSFX0160 GOSHU HIRADAIRA \(AI\) \(ET\)](#)

_____ [WKSFM0164 WORLD K'S MICHIFUKU](#)

_____ [GOSFU0067 GOSHU MICHIO \(AI\) \(ET\)](#)

_____ [TWAFR0006 TWA CHIKAZUKI \(IMP USA\) \(ET\)](#)

July 2016 Wagyu GROUP BREEDPLAN															
	Gestation Length (days)	Birth Wt (kg)	200 Day Wt (kg)	400 Day Wt (kg)	600 Day Wt (kg)	Mat Cow Wt (kg)	Milk (kg)	Scrotal Size (cm)	Carcase Wt (kg)	Eye Muscle Area (sq cm)	Rib Fat (mm)	Rump Fat (mm)	Retail Beef Yield (%)	Marble Score	Marble Fineness (%)
EBV	+1.1	-0.8	0	-1	-4	-3	-5	+0.2	-6	+0.2	+0.3	0.0	-0.2	+0.6	+0.09

SELECTION INDEX VALUES		
Market Target	Index Value	Breed Average
Fullblood Terminal Index	+\$ 100	+\$ 116

The dam of these 2 embryos **SAMURAI FARMS HIRADAIRA Z207** has marbling genetics that would grace any top Wagyu stud in the world

Embryos offered have Marbling, Growth and Milk, with the sire of the embryos having above the breed average for **FTI EBV's**

The buyer gets the opportunity to get into one of the breeds best ever female bloodlines here, **TWA CHIKAZUKI** is a full sister to top Wagyu sire **TWA SHIKIKAN**