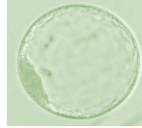




AUSTRALIA

2 EMBRYO's



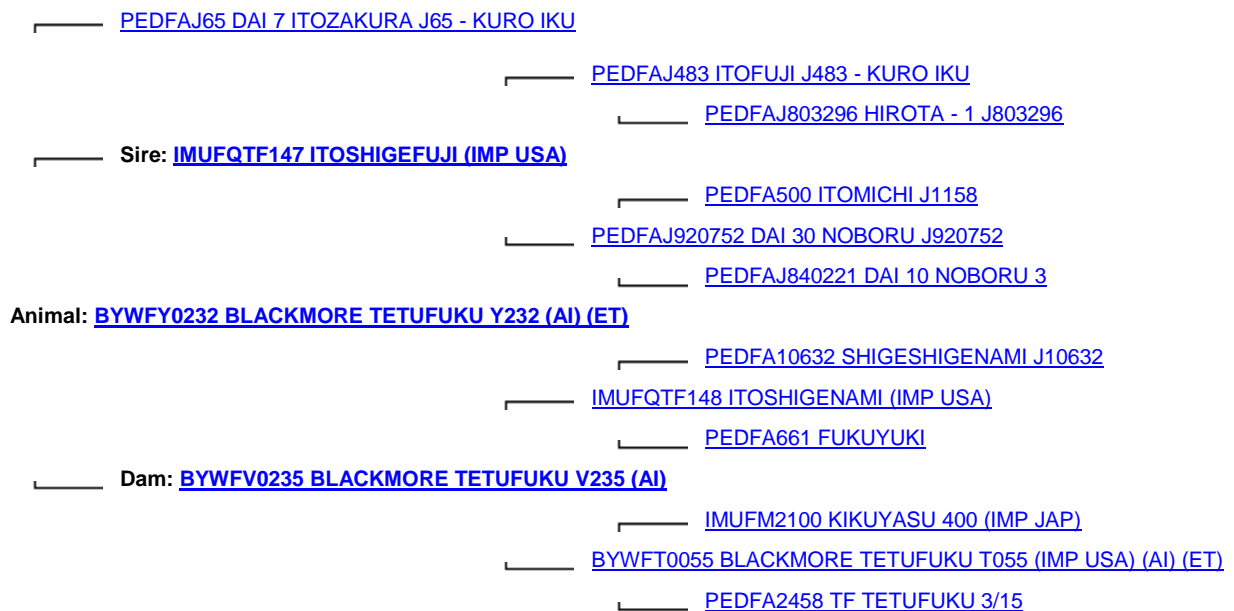
Embryo Sire

WORLD K's MICHIFUKU



Pedigree of Embryos Dam

BLACKMORE TETUFUKU Y232



MARBLING, GROWTH ,and MARBLING GENETICS

Genetics containing an outstanding sire stack from a rare **TAKEDA** female bloodline

WORLD K's MICHIFUKU; BLACKMORE TETUFUKU Y232; ITOSHIGEFUJI TF147 BLACKMORETETUFUKU V235; ITOSHIGENAMI TF148