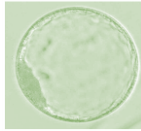




SIRE and DAM PEDIGREE

2 EMBRYO's



TF YUKIHARUNAMI 4 (IMP USA) X BLACKMORE CHIYOTAKE Y326

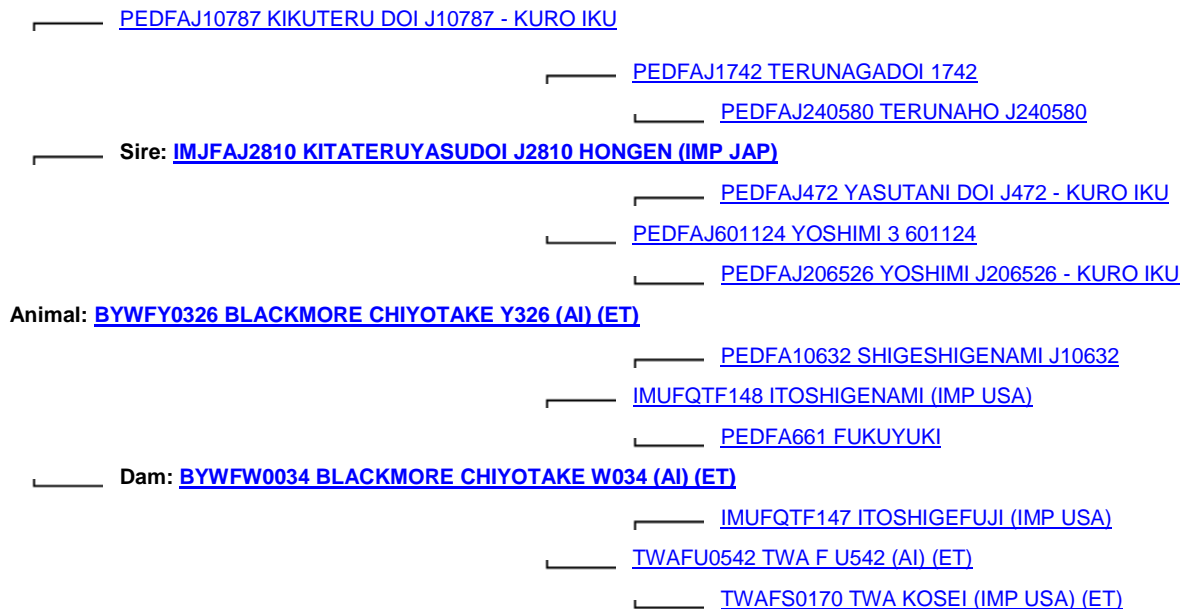
Embryo Sire; **TF YUKIHARUNAMI 4 (IMP USA)** is a sire that brings great growth in his stock plus he is the sire of the dam that has left Australia with the **No2** ranked Terminal Index sire **MACQUARIE WAGYU Y408**, posting a whopping **+589 FT I, EBV**.

The dam of **TF YUKIHARUNAMI 4 (IMP USA)** 4 belongs to the **Hikoemonzuru** line which in turn traces to **Chiyokura** who was champion bull at the first Japanese Bull Production Ability Competition.

Pedigree

Of Donor

BLACKMORE CHIYOTAKE Y326



High marbling and growth genetics in this pedigree.

EVB's for this female are not available as the Blackmore herd does not allow its data made public

But as one can see BLACKMORE **CHIYOTAKE Y339** pedigree contains great Marbling sires with **KITATERUYASUDOI** and **TF148 ITOSHIGENAMI (IMP USA)** plus one of the best milk and growth Wagyu sires in **TF147 ITOSHIGEFUJI (IMP USA)** all in the embryo donor's bloodline.