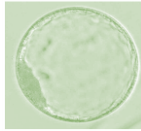




SIRE and DAM PEDIGREE

2 EMBRYO's



TF YUKIHARUNAMI 4 (IMP USA) X BLACKMORE CHIYOTAKE Y339

Embryo Sire; **TF YUKIHARUNAMI 4 (IMP USA)** is a sire that brings great growth in his stock plus he is the sire of the dam that has left Australia with the **No2** ranked Terminal Index sire **MACQUARIE WAGYU Y408**, posting a whopping **+589 FT I, EBV**.

The dam of **TF YUKIHARUNAMI 4 (IMP USA)** 4 belongs to the **Hikoemonzuru** line which in turn traces to **Chiyokura** who was champion bull at the first Japanese Bull Production Ability Competition.

Embryo Dam **BLACKMORE CHIYOTAKE Y339** is a daughter of **BLACKMORE CHIYOTAKE W034** who produced the top priced female at **\$8,500** at the 1st AWA International sale **2015**

High quality marbling genetics being offered here.

BYWfy0339 BLACKMORE CHIYOTAKE Y339 (AI) (ET)

_____ PEDFAJ10787 KIKUTERU DOI J10787 - KURO IKU

_____ PEDFAJ1742 TERUNAGADOI 1742

_____ PEDFAJ240580 TERUNAH0 J240580

_____ **Sire: IMJFAJ2810 KITATERUYASUDOI J2810 HONGEN (IMP JAP)**

_____ PEDFAJ472 YASUTANI DOI J472 - KURO IKU

_____ PEDFAJ601124 YOSHIMI 3 601124

_____ PEDFAJ206526 YOSHIMI J206526 - KURO IKU

Animal: BYWfy0339 BLACKMORE CHIYOTAKE Y339 (AI) (ET)

_____ PEDFA10632 SHIGESHIGENAMI J10632

_____ IMUFQTF148 ITOSHIGENAMI (IMP USA)

_____ PEDFA661 FUKUYUKI

_____ **Dam: BYWfw0034 BLACKMORE CHIYOTAKE W034 (AI) (ET)**

_____ IMUFQTF147 ITOSHIGEFUJI (IMP USA)

_____ TWAFU0542 TWA F U542 (AI) (ET)

_____ TWAFS0170 TWA KOSEI (IMP USA) (ET)

EVB's for this female are not available as the Blackmore herd does not allow its data made public

But as one can see **BLACKMORE CHIYOTAKE Y339** pedigree contains great Marbling sires with **KITATERUYASUDOI** and **TF148 ITOSHIGENAMI (IMP USA)** plus one of the best milk and growth Wagyu sires in **TF147 ITOSHIGEFUJI (IMP USA)** all in the embryo donor's bloodline.