

McLachlan Group Bull Sale

Wednesday 10th August 2016 , 1pm



**35 Angus Bulls * 20 Charolais Bulls
* 2 Poll Hereford Bulls**

'North Logan', North Logan Rd, Cowra NSW

We would like to invite new and returning customers to join us for our fifth consecutive on-farm sale. This year's draft of bulls are looking good and promising to be even better than last year's offer.

We have had a very challenging autumn this year with extreme heat and very dry conditions. As a consequence of these conditions feed availability has been limited, but we are confident, after heavy late rainfalls, of a very good spring.

Once again, this year's sale bulls are grass reared. They have never been fed grain, EVER. The only supplementary feed has been a provision of hay to cover the deficit of grass in autumn, and to assist with binding them on green feed with a high moisture content.

It has been pleasing to hear feedback about our past sale bulls, so far the responses have all been very positive. It is even more pleasing to hear stories of our clients showing their neighbors and friends their purchased bulls with such positive reactions.

It is tragic to hear of bulls breaking down after purchase, or melting away before they even go out to do the job they were purchased for. Our bulls have been selected for structural correctness and have never been pushed on feed, giving us great confidence they will retain their quality in the months to come. Our grass fed bulls may give a little on weight at sale time, compared to bulls that have been fed on grain, but that gives us optimism that they will continue to go forward in growth and mobility.

The last 12 months have been a challenging time for cattle producers, which have seen cattle numbers in Australia drop to the lowest national numbers in 24 years. In real terms, slaughter numbers are also expected to decrease significantly, with predictions of a return to normal numbers by 2020. It is certainly a time to focus on the rebuilding or marketing of females in the next few years.

We look forward to catching up with you over the next month, either at the Beef Week Open Day, or on the day of our sale.



McLachlan Group Bull Sale

Wednesday 10th August 2016

'North Logan', North Logan Rd Cowra NSW

35 Angus Bulls
20 Charolais Bulls
2 Poll Hereford Bulls

For more information contact:



Warren Miller Ph: 0423 396 014 or E: warren.miller@mclachlan.com.au
Michael Bond Ph: 0419 482 754 or E: michael@mclachlan.com.au



Sam Hunter: 0429 020 141
Sam Sutton: 0448 080 607
Peter Godbolt: 0457591929



AuctionsPlus

Sale will be interfaced with
AuctionsPlus.
Visit www.auctionsplus.com.au
or contact 02 9262 4222.

www.mclachlan.com.au

Sale Information:

SALE LOCATION: 'North Logan', North Logan Rd, Cowra NSW

INSPECTIONS: All bulls will be penned at 'North Logan' by 9 am on sale day. Private inspections can be arranged prior to the sale. This can be done by contacting Warren Miller on 0423 396 014.

REFRESHMENTS: Canteen will be in operation

INSURANCE: Ownership passes at the fall of the hammer. An insurance representative will be in attendance on sale day.

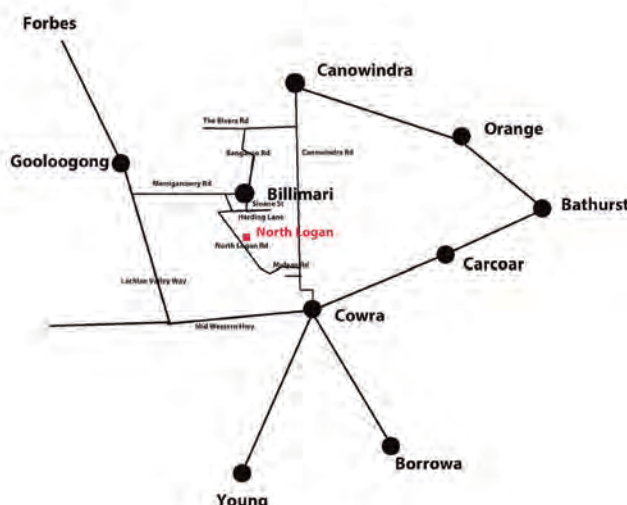
BID CARD SYSTEM: The sale will be conducted under the bid card auction system with all standard terms and conditions of sale as stated by NSW Livestock Agents Association, and all poten with the selling agents prior to purchase and a delivery and instruction sheet upon completion of the sale for all purchasers. No verbal delivery instructions can be accepted.

REBATE: 6 % rebate will be allowed to all agents introducing approved purchasers 12 hrs prior to commencement of sale. These are to be in writing to landmark Yass Samuel.hunter@landmark.com.au or to warren.miller@mclachlan.com.au. Settlement to be within 7 days.

PHONE BIDDING: Most phones work on site. Any hassle an agent will be able to assist.

GUARANTEE: All bulls have been soundness evaluated. To the best of our knowledge bulls are in sound working order at time of sale. Any claim against the breeding ability or a structural breakdown of any animal must be made in writing and accompanied by a veterinary Certificate within 12 months of the sale date. Any animal failing to breed may be either replaced with an animal of similar value or a credit made available to the value of the purchase price, minus salvage value, for use at future McLachlan Group sales. The purchaser will be responsible for any costs incurred.

Disclaimer: Whilst all due care and attention has been paid to accuracy in the compilation of this catalogue, neither the vendors nor the selling agents or representatives thereof assume any responsibility whatsoever for the correctness, use or interpretation of the information on animals included in this sale catalogue.



Charolais Breed Average for 2014 Drop Calves

	CED	CEDT	GL	BW	200	400	600	MCW	MK	SS	CW	EMA	RIB	RMP	RBY	IMF
EBV	+1.2	+0.8	-2.4	+0.5	+12	+23	+31	+33	+7	+1.0	+19	+1.5	+0.2	+0.3	+0.2	+0.2

Angus Breed Average for 2014 Drop Calves

Selection Indexes	Angus Breeding: +\$102				Domestic: +\$101				Heavy Grain: +\$104				Heavy Grass: +\$102				
	CED	CEDT	GL	BW	200	400	600	MCW	MK	SS	DC	CWT	EMA	RIB	RMP	RBY	IMF
EBV	-0.2	-0.1	-3.5	+4.3	+41	+75	+98	+86	+14	+1.6	-3.6	+54	+4.4	+0.0	+0.0	+0.3	+1.5

*It is important to note that EBV's for Charolais cannot be compared with EBV's for Angus

Brief Description of EBV's:

Estimated Breeding Values (EBVs) are predictions of an animal's genetic merit, based on available performance data on the individual and its relatives.

EBVs are expressed in the units of measurement for each particular trait. They are shown as +ive or -ive differences from the breed base. As the breed base is set to a historical benchmark, the average EBVs of animals in each year drop has changed over time as a result of genetic change within the breed. The current breed averages are shown below. These averages provide a useful benchmark for comparing EBVs for animals.

CALVING EASE TRAITS

Calving Ease (DIR): estimate of genetic differences among animals in the ability of their calves from 2 year old heifers to be born unassisted. Higher, more +ive, Calving Ease (DIR) EBVs are more favourable.

Calving Ease (DTRS): estimates of genetic differences among animals in the ability of their 2 year old daughters to calve without assistance. Higher, more +ive, Calving Ease (DTRS) EBVs are more favourable.

Gestation Length: estimate of genetic differences among animals in the number of days from the date of conception until the calf birth date. Lower, or more -ive, Gestation Length EBVs are generally more favourable.

Birth Wt: estimate of genetic differences between animals in kg of calf birth weight. Calf birth weight is the biggest contributing factor causing calving difficulty in heifers. While low Birth Wt EBVs are favoured for calving ease they are also often associated with lower growth potential. Small, or moderate, Birth Wt EBVs are more favourable.

FERTILITY TRAITS

Days to Calving (DC): estimate of genetic differences among in female fertility, expressed as the number of days from the start of the joining period until subsequent calving. Females with shorter DC EBVs tend to commence cycling earlier after calving and conceive earlier in the joining period. They also tend to attain puberty at a younger age as heifers. Lower, or more -ive, Days to Calving EBVs are more favourable.

Scrotal Size: estimate of the genetic differences among animals in scrotal circumference at 400 days of age. Increased scrotal size is associated with increased semen production in bulls, and earlier age at puberty of bull and heifer progeny. Larger, or more +ive, Scrotal Size EBVs are more favourable.

GROWTH TRAITS

200-Day Wt: estimate of the genetic differences among animals in weight at 200 days of age. This is a measure of an animal's early growth to weaning. It is an important trait for breeders turning off animals as vealers or weaners.

400-Day Wt: estimate of the genetic differences among animals in weight at 400 days of age. This is an important trait for breeders turning off animals as yearlings.

600-Day Wt: estimate of the genetic differences among animals in live-weight at 600 days of age. This is an important trait for breeders targeting the production of animals suited for heavy weight grass finished or grain fed market

MATERNAL TRAITS

Milk: estimate of the genetic differences among animals in milk production potential, expressed through variation in calf growth performance. Larger, more +ive, or moderate, Milk EBVs can be more favourable, depending on the environment.

Mature Cow Wt: estimate of the genetic differences among animals in cow weight at 5 years of age.

CARCASE TRAITS

Carcase Wt: estimate of the genetic differences among animals in hot standard carcass weight at 750 days of age. Larger, more +ive, Carcass Weight EBVs are more favourable.

EMA: estimate of the genetic differences among animals in eye muscle area (cm²) at the 12/13th rib site on a 400kg carcass. Larger, more +ive, EMA EBVs are generally more favourable.

Rib Fat: estimate of the genetic differences among animals in fat depth (mm) at the 12/13th rib site, measures on a 400kg carcass. More positive (+ive), or more negative (-ive), Rib Fat EBVs may be more favourable, depending on your breeding goals.

Rump Fat: estimate of genetic differences among animals in fat depth at the P8 rump site on a standard 400kg carcass. More positive (+ive), or more negative (-ive), Rib Fat EBVs may be more favourable, depending on your breeding goals.

IMF%: estimate of genetic differences among animals in percentage intra-muscular fat (marbling) in a 400kg carcass.

INDEX VALUES

Angus Breeding: estimates the genetic differences between animals in net profitability per cow, joined in a typical commercial self-replacing herd using Angus bulls. This selection index is not specific to a particular production system or market end-point, but identifies animals that will improve overall profitability in the majority of commercial grass and grain finishing beef production systems. The index is particularly suited to commercial producers who sell progeny into different markets, or to seedstock producers supplying bulls to commercial clients who produce for a range of different production systems and market end points.

Domestic: estimates the genetic differences between animals in net profitability per cow joined in a commercial self-replacing herd targeting the domestic supermarket trade, with progeny finished using either grass, grass supplemented by grain or grain finishing systems.

Heavy Grain: estimates the genetic differences between animals in net profitability per cow joined in a commercial self-replacing herd targeting pasture grown steers with a 200 day feedlot finishing period for the grain fed high quality, highly marbled markets.

Heavy Grass: estimates the genetic differences between animals in net profitability per cow joined in a commercial self-replacing herd targeting pasture finished heavy steers.

UNDERSTANDING ACCURACIES

The accuracy associated with an EBV gives an indication of its reliability, and the likely extent of its possible change as more information becomes available. As more data becomes available on animals (or its progeny, or relatives) then the accuracy of its EBVs for particular traits will increase.

Accuracies are influenced by the heritability of traits and the genetic associations existing between them. For lowly heritable traits, more information is required to achieve a similar accuracy to that of highly heritable traits.

Accuracies are expressed as percentages. The higher the percentage, the greater the chance that the EBV is a close estimate of the animal's true genetic merit, and the less likelihood that the EBV will change as more information becomes available.

For more information please contact
Angus Australia:
PH: (02) 6772 3011 Fax: (02) 6772 3095
Email: regos@angusaustralia.com.au
Web: www.angusaustralia.com.au

Charolais Society of Australia:
PH: (02) 6771 1666
Email: office@charolais.com.au
Web: www.charolais.com.au

JINDRA DOUBLE VISION

Born: 08/02/2010

Ident: USA16748826

Reg: HBR

Genetic Status:
AMF NHF CAF DDF

BON VIEW NEW DESIGN 878

B/R NEW DESIGN 036
BON VIEW GAMMER 85

SIRE: USA14528330 CONNEALY REFLECTION

HAPPY GRILL OF CONANGA

N BAR EMULATION EXT
HAPPY DATE OF CONANGA

HOFF LIMITED EDITION S C 594

HOFF CHARGER S C 242
HOFF BOSS LADY S C 3V9

DAM: USA14806260 HOFF RACHEL 8312 405

HOFF MISS EXPO S C 4223

SUMMITCREST EXPO 0E27
G D A R RACHEL 4223



July 2016 Angus Australia BREEDPLAN

Selection Indexes	Angus Breeding: +\$97				Domestic: +\$112			Heavy Grain: +\$88			Heavy Grass: +\$104						
	CED	CEDT	GL	BW	200	400	600	MCW	MLK	SS	DC	CWT	EMA	RIB	RMP	RBY	IMF
EBV	-0.7	+1.4	-3.1	+5.1	+52	+101	+118	+98	+16	+0.0	-0.7	+80	+6.2	-1.5	-2.7	+1.2	+0.5
Acc	73%	55%	98%	98%	95%	94%	91%	82%	77%	89%	44%	79%	79%	81%	77%	72%	75%

KANSAS FATHOM F167 (AI)

Born: 11/08/2010

Ident: NKLF167

Reg: HBR

Genetic Status:
AMF NHF CAF DDF

CONNEALY WHITMAN

BON VIEW NEW DESIGN 208
ELLA TINA OF CONANGA 989

SIRE: USA15490811 CONNEALY ALL AROUND

ENTRUST OF CONANGA 894

C R A BEXTOR 872 5205 608
ENDALLA OF CONANGA 4860

ARDROSSAN DIRECTION W109 (AI) (ET)

C A FUTURE DIRECTION 5321
ARDROSSAN WILCOOLA Q71 (AI) (ET)

DAM: NKLB170 KANSAS ANNIE B170 (AI) (ET)

KANSAS ANNIE Y18 (AI) (ET)

BON VIEW NEW DESIGN 1407
AMAROO EXPO ANNIE U020 (AI) (ET)



July 2016 Angus Australia BREEDPLAN

Selection Indexes	Angus Breeding: +\$106				Domestic: +\$101			Heavy Grain: +\$113			Heavy Grass: +\$103						
	CED	CEDT	GL	BW	200	400	600	MCW	MLK	SS	DC	CWT	EMA	RIB	RMP	RBY	IMF
EBV	-2.4	+0.7	-4.0	+5.4	+45	+78	+102	+87	+17	+0.5	-3.3	+57	+5.1	+0.0	+1.0	-0.1	+2.7
Acc	72%	51%	89%	94%	90%	90%	89%	82%	71%	84%	47%	77%	75%	78%	76%	70%	73%

CONNEALY UNITED 1116

Born: 18/01/2011

Ident: USA17031441

Reg: HBR

Genetic Status:
AMFU NHFU CAFU DDF

CONNEALY CONSENSUS

KMK ALLIANCE 6595 I87
BLINDA OF CONANGA 004

SIRE: USA16447771 CONNEALY CONSENSUS 7229

BLUE LILLY OF CONANGA 16

WOODHILL ADMIRAL 77K
BLUE CASH OF CONANGA 6020

G A R NEW DESIGN 5050 (ET)

B/R NEW DESIGN 036
G A R PRECISION 706

DAM: USA16468615 BREETA OF CONANGA 5403 985L

BREELA OF CONANGA 3991

C A FUTURE DIRECTION 5321
BREESHA OF CONANGA 1251



July 2016 Angus Australia BREEDPLAN

Selection Indexes	Angus Breeding: +\$102				Domestic: +\$105			Heavy Grain: +\$105			Heavy Grass: +\$99						
	CED	CEDT	GL	BW	200	400	600	MCW	MLK	SS	DC	CWT	EMA	RIB	RMP	RBY	IMF
EBV	-1.8	-1.5	-1.4	+3.5	+42	+71	+80	+52	+20	+0.7	-5.4	+53	+10.1	+2.4	+0.7	+0.0	+2.9
Acc	67%	52%	92%	90%	85%	86%	82%	77%	74%	85%	36%	75%	72%	76%	70%	67%	69%

Lot 1

TALIS KEW K384 (AI)

Born: 02/09/2014 Ident: BMLK384 Reg: HBR

Genetic Status:
AM11% NHFU CAFU DDFU

CONNEALY REFLECTION
SIRE: USA16748826 JINDRA DOUBLE VISION
HOFF RACHEL 8312 405

BON VIEW NEW DESIGN 878
HAPPY GRILL OF CONANGA
HOFF LIMITED EDITION S C 594
HOFF MISS EXPO S C 4223

TALIS B600 (AI)
DAM: BMLF576 TALIS TIARA F576
TALIS TIARA D591

SCHURRTOP SUPREME
TALIS ADVENTURE Z530
TALIS BUSTLE B522 (AI)
TALIS TIARA X596 (AI)



Talis Kew is a great all-round bull that displays good thickness. A bull with below average birth weight EBVs. By A.I sire Double Vision. A bull that has a growth pattern showing an earlier maturity pattern.

July 2016 Angus Australia BREEDPLAN

Selection Indexes	Angus Breeding: +\$76				Domestic: +\$95				Heavy Grain: +\$60				Heavy Grass: +\$86				
	CED	CEDT	GL	BW	200	400	600	MCW	MLK	SS	DC	CWT	EMA	RIB	RMP	RBV	IMF
EBV	+0.1	+0.6	-1.3	+4.1	+42	+78	+93	+75	+15	+0.1	-0.7	+58	+5.0	-0.3	-1.4	+0.8	+0.5
Acc	40%	28%	83%	70%	64%	64%	61%	54%	45%	69%	29%	52%	53%	53%	54%	48%	46%

Purchaser: Price:

Lot 2

TALIS KACY K816 (AI)

Born: 29/08/2014 Ident: BMLK816 Reg: HBR

Genetic Status:
AMFU NHFU CAFU DDFU

CONNEALY ALL AROUND
SIRE: NKL167 KANSAS FATHOM F167 (AI)
KANSAS ANNIE B170 (AI) (ET)

CONNEALY WHITMAN
ENTRUST OF CONANGA 894
ARDROSSAN DIRECTION W109 (AI) (ET)
KANSAS ANNIE Y18 (AI) (ET)

TALIS Z540 (AI)
DAM: BMLD822 TALIS MILICENT D822
TALIS MILLICENT B821

B T ULTRAVOX 297E
COMFORT HILL R135 (AI)
TALIS XILE X550 (AI)
TALIS MILLICENT Y585



Wow, what a sire Talis Kacy is, a super complete bull and a bull with a strong sirey head. A bull that comes with great milk EBVs. By A.I sire Kansas Fathom.

July 2016 Angus Australia BREEDPLAN

Selection Indexes	Angus Breeding: +\$87				Domestic: +\$92				Heavy Grain: +\$85				Heavy Grass: +\$89				
	CED	CEDT	GL	BW	200	400	600	MCW	MLK	SS	DC	CWT	EMA	RIB	RMP	RBV	IMF
EBV	-1.7	-0.5	-3.4	+4.9	+41	+72	+94	+83	+17	+1.0	-2.4	+52	+4.2	-0.4	-0.5	+0.6	+1.7
Acc	41%	31%	83%	70%	64%	64%	62%	55%	44%	69%	31%	52%	53%	53%	55%	49%	46%

Purchaser: Price:

Lot 3

TALIS KEENAN K404 (AI)

Born: 25/09/2014 Ident: BMLK404 Reg: HBR

Genetic Status:
AMFU NHFU CA6% DDFU

CONNEALY CONSENSUS 7229
SIRE: USA17031441 CONNEALY UNITED 1116
BREETA OF CONANGA 5403 985L

CONNEALY CONSENSUS
BLUE LILLY OF CONANGA 16
G A R NEW DESIGN 5050 (ET)
BREELA OF CONANGA 3991

TALIS WOOMERA W554 (AI)
DAM: BMLA546 TALIS BURNETTE A546
TALIS BURNETTE S515

SHADY BROOK EXPLORER 015E
TALIS TIARA U503 (AI)
TE MANIA MAGNA M144+92
NUAGE BURNETTE J23+89 (AI)



Talis Keenan is a thick bull with good growth. A bull that is the complete sire and by A.I sire Connealy United. Typical of United calves displaying easy doing, easy finishing.

July 2016 Angus Australia BREEDPLAN

Selection Indexes	Angus Breeding: +\$81				Domestic: +\$90				Heavy Grain: +\$74				Heavy Grass: +\$85				
	CED	CEDT	GL	BW	200	400	600	MCW	MLK	SS	DC	CWT	EMA	RIB	RMP	RBV	IMF
EBV	-2.1	-1.3	+0.6	+4.5	+38	+68	+82	+67	+15	+1.4	-3.4	+47	+6.4	+1.9	+1.3	-0.2	+1.7
Acc	38%	27%	83%	70%	63%	64%	60%	54%	46%	69%	28%	52%	51%	51%	52%	47%	44%

Purchaser: Price:

Lot 4

TALIS KRAM K823 (AI)

Born: 01/09/2014 Ident: BMLK823 Reg: HBR

Genetic Status:
AM6% NHFU CA2% DDFU

CONNELY CONSENSUS 7229

CONNELY CONSENSUS
BLUE LILLY OF CONANGA 16

SIRE: USA17031441 CONNEALY UNITED 1116

BREETA OF CONANGA 5403 985L

G A R NEW DESIGN 5050 (ET)
BREELA OF CONANGA 3991

TALIS VERACIOUS V572 (AI)

STEVENSON ROYCE 741C
MERRIGRANGE MILLICENT M120+92

DAM: BMLA821 TALIS PRIDE A821

TALIS PRIDE Y548

TALIS VILLIAN V562 (AI) (ET)
WILLSBRO HI PRIDE Q47

Talis Kram is a very complete bull by A.I sire Connealy United, and displays thickness while maintaining that important softness. A bull below breed average for birth weight and good fat and EMA figures.



July 2016 Angus Australia BREEDPLAN

Selection Indexes	Angus Breeding: +\$76				Domestic: +\$89			Heavy Grain: +\$68			Heavy Grass: +\$80						
	CED	CEDT	GL	BW	200	400	600	MCW	MLK	SS	DC	CWT	EMA	RIB	RMP	RBV	IMF
EBV	-0.8	-1.0	-1.6	+4.2	+34	+60	+70	+58	+14	+2.0	-3.9	+42	+5.2	+1.1	+0.4	+0.5	+1.5
Acc	39%	28%	83%	70%	64%	64%	61%	55%	48%	69%	27%	52%	52%	52%	53%	47%	44%

Purchaser:

Price:

Lot 5

TALIS KENNARD K406

Born: 26/09/2014 Ident: BMLK406 Reg: HBR

Genetic Status:
AM2% NHFU CA3% DDFU

TALIS BUDDHA B591

TALIS ZEUS Z542 (AI) (ET)
TALIS MILICENT S501 (AI) (ET)

SIRE: BMLF357 TALIS FALKEN F357

TALIS HIGH JINX A557 (AI)

S A V 5175 BANDO 0699
TALIS HIGH JINX T504

TALIS B600 (AI)

SCHURRTOP SUPREME
TALIS ADVENTURE Z530

DAM: BMLF380 TALIS PRINCESS F380

TALIS PRINCESS D573

TALIS A589 (AI)
TALIS PRINCESS A591 (AI) (ET)

Talis Kennard is a "What a bull". Good growth, looking for that extra punch he has it. He is a very soft bull even with those growth EBVs. A very complete bull.



July 2016 Angus Australia BREEDPLAN

Selection Indexes	Angus Breeding: +\$80				Domestic: +\$81			Heavy Grain: +\$71			Heavy Grass: +\$85						
	CED	CEDT	GL	BW	200	400	600	MCW	MLK	SS	DC	CWT	EMA	RIB	RMP	RBV	IMF
EBV	-5.6	--	-1.9	+7.3	+46	+84	+113	+109	+14	+1.0	-3.1	+59	+1.2	+0.7	+1.2	-0.3	+0.8
Acc	28%		42%	65%	57%	58%	55%	49%	36%	65%	26%	45%	46%	45%	48%	41%	36%

Purchaser:

Price:

Lot 6

TALIS KNOXVILLE K833 (AI)

Born: 03/09/2014 Ident: BMLK833 Reg: HBR

Genetic Status:
AMFU NHFU CAFU DDFU

CONNELY CONSENSUS 7229

CONNELY CONSENSUS
BLUE LILLY OF CONANGA 16

SIRE: USA17031441 CONNEALY UNITED 1116

BREETA OF CONANGA 5403 985L

G A R NEW DESIGN 5050 (ET)
BREELA OF CONANGA 3991

TALIS VERACIOUS V572 (AI)

STEVENSON ROYCE 741C
MERRIGRANGE MILLICENT M120+92

DAM: BMLZ810 TALIS LILAC Z810

TALIS LILAC T522 (AI)

REMINGTON'S MONEYSWORTH 59C (IMP)
SPARTA LILAC M162+92

Talis Knoxville is bull that has the growth and the power. Importantly a good clean shouldered bull. A bull that has rib and rump fat EBVs that put him in the top 5% and 10% of the breed. Typical Connealy United A.I calf.



July 2016 Angus Australia BREEDPLAN

Selection Indexes	Angus Breeding: +\$67				Domestic: +\$79			Heavy Grain: +\$52			Heavy Grass: +\$74						
	CED	CEDT	GL	BW	200	400	600	MCW	MLK	SS	DC	CWT	EMA	RIB	RMP	RBV	IMF
EBV	-3.2	-1.5	-0.7	+4.9	+36	+61	+74	+63	+12	+0.3	-3.4	+40	+4.6	+2.3	+1.9	-0.5	+1.3
Acc	40%	28%	83%	71%	65%	65%	61%	56%	47%	69%	27%	53%	52%	52%	53%	47%	44%

Purchaser:

Price:

Lot 7

TALIS KIRK K367 (AI)

Born: 28/08/2014

Ident: BMLK367

Reg: HBR

Genetic Status:
AMFU NHFU CAFU DDFU

CONNEALY REFLECTION

BON VIEW NEW DESIGN 878
HAPPY GRILL OF CONANGA

SIRE: USA16748826 JINDRA DOUBLE VISION

HOFF RACHEL 8312 405

HOFF LIMITED EDITION S C 594
HOFF MISS EXPO S C 4223

SCHURRTOP SUPREME

V D A R NEW TREND 315
SCHURRTOP PAM 3449

DAM: BMLW534 TALIS NEROLIE W534 (AI)

FELLWOOD NEROLIE R54

BON VIEW EMULATION EXT 473
FELLWOOD NEROLIE N50 (AI)

Talis Kirk is a stretchy bull that is clean fronted and a complete bull. A bull with good feed efficiency EBVs. A good all-round bull by A.I sire Double Vision.



July 2016 Angus Australia BREEDPLAN

Selection Indexes	Angus Breeding: +\$82				Domestic: +\$97			Heavy Grain: +\$70			Heavy Grass: +\$90						
	CED	CEDT	GL	BW	200	400	600	MCW	MLK	SS	DC	CWT	EMA	RIB	RMP	RBV	IMF
EBV	-0.7	+0.4	-3.3	+5.3	+43	+80	+95	+81	+11	+0.9	-1.7	+59	+3.7	-0.3	-0.6	+0.7	+0.7
Acc	46%	35%	85%	73%	64%	62%	62%	57%	52%	55%	34%	52%	49%	50%	48%	46%	46%

Purchaser:

Price:

Lot 8

TALIS KILNER K840

Born: 21/09/2014

Ident: BMLK840

Reg: HBR

Genetic Status:
AMFU NH25% CA25% DDFU

TALIS CHAPERONE C529

TALIS ZEUS Z542 (AI) (ET)
TALIS ADVENTURE S523 (AI)

SIRE: BMLG532 TALIS GS1200 G532

TALIS MILICENT E522 (AI)

S A V NET WORTH 4200
TALIS MILICENT B547

TALIS XILE X550 (AI)

V D A R NEW TREND 315
TALIS HIGH JINX T504

DAM: BMLA800 TALIS LILAC A800

TALIS LILAC Y700

TALIS VERACIOUS V572 (AI)
TALIS LILAC V563 (AI) (ET)

Talis Kilner is a thick moderate bull that carries softness.



July 2016 Angus Australia BREEDPLAN

Selection Indexes	Angus Breeding: +\$73				Domestic: +\$82			Heavy Grain: +\$64			Heavy Grass: +\$79						
	CED	CEDT	GL	BW	200	400	600	MCW	MLK	SS	DC	CWT	EMA	RIB	RMP	RBV	IMF
EBV	-1.1	-2.7	-1.8	+6.3	+41	+72	+96	+94	+13	+1.2	-1.6	+52	+2.1	-1.0	-1.0	+0.4	+0.9
Acc	32%	26%	42%	65%	58%	59%	55%	50%	41%	65%	27%	46%	47%	45%	49%	42%	37%

Purchaser:

Price:

Lot 9

TALIS KNOTT K365 (AI)

Born: 28/08/2014

Ident: BMLK365

Reg: HBR

Genetic Status:
AMFU NHFU CA26% DDFU

CONNEALY CONSENSUS 7229

CONNEALY CONSENSUS
BLUE LILLY OF CONANGA 16

SIRE: USA17031441 CONNEALY UNITED 1116

BREETA OF CONANGA 5403 985L

G A R NEW DESIGN 5050 (ET)
BREELA OF CONANGA 3991

TALIS B600 (AI)

SCHURRTOP SUPREME
TALIS ADVENTURE Z530

DAM: BMLF588 TALIS KANANGAS F588

TALIS KANANGAS D637 (AI)

TALIS BUSTLE B522 (AI)
COMFORT HILL KANANGAS X311

What a powerful bull all the way through. Talis Knott is another Connealy United calf with great fat and EMA EBVs typical of Uniteds progeny.



July 2016 Angus Australia BREEDPLAN

Selection Indexes	Angus Breeding: +\$86				Domestic: +\$92			Heavy Grain: +\$81			Heavy Grass: +\$87						
	CED	CEDT	GL	BW	200	400	600	MCW	MLK	SS	DC	CWT	EMA	RIB	RMP	RBV	IMF
EBV	-2.6	-0.4	-2.2	+5.0	+40	+66	+81	+69	+13	+1.8	-4.4	+48	+6.4	+1.3	+0.7	+0.4	+1.7
Acc	37%	26%	83%	69%	61%	61%	57%	52%	43%	65%	26%	50%	49%	49%	49%	45%	42%

Purchaser:

Price:

Lot 10 TALIS KERR K379 (AI)

Born: 02/09/2014 Ident: BMLK379 Reg: HBR

Genetic Status:
AMFU NHFU CA6% DDFU

CONNEALY CONSENSUS 7229

CONNEALY CONSENSUS
BLUE LILLY OF CONANGA 16

SIRE: USA17031441 CONNEALY UNITED 1116

BREETA OF CONANGA 5403 985L

G A R NEW DESIGN 5050 (ET)
BREELA OF CONANGA 3991

TALIS WOOMERA W554 (AI)

SHADY BROOK EXPLORER 015E
TALIS TIARA U503 (AI)

DAM: BMLA587 TALIS ADVENTURE A587

TALIS ADVENTURE V504 (AI)

ALBERDA TRAVELER 416
TALIS ADVENTURE S523 (AI)

Talis Kerr is a super complete bull that is soft, but thick and displays that extra growth. Again his EBVs have him pushing the top 10% of the breed for fat and EMA.



July 2016 Angus Australia BREEDPLAN

Selection Indexes	Angus Breeding: +\$84		Domestic: +\$90		Heavy Grain: +\$78			Heavy Grass: +\$87									
	CED	CEDT	GL	BW	200	400	600	MCW	MLK	SS	DC	CWT	EMA	RIB	RMP	RBY	IMF
EBV	-2.0	-1.8	-1.0	+4.8	+36	+64	+79	+66	+14	+2.1	-4.2	+43	+6.7	+1.5	+1.3	+0.3	+1.6
Acc	39%	29%	83%	71%	64%	64%	60%	54%	47%	69%	29%	53%	52%	52%	53%	48%	45%

Purchaser: Price:

Lot 11 TALIS LAIRD L308 (AI) (ET)

Born: 19/03/2015 Ident: BMLL308 Reg: HBR

Genetic Status:
AMFU NHFU CAFU DDFU

BT CROSSOVER 758N

C A FUTURE DIRECTION 5321
BT ROYAL PRIDE 237G

SIRE: USA16349775 FLAG CROSS COUNTRY 90052

SCR QUEEN IDELETTE 50596

TRIPLE E SPECIAL ADDITION
SCR QUEEN IDELETTE 702

TALIS BUSTLE B522 (AI)

S A V 5175 BANDO 0699
TALIS GRETEL T509 (AI)

DAM: BMLE576 TALIS HIGH JINX E576

TALIS HIGH JINX AISX554 (AI)

SITZ ALLIANCE 6595
WILLSBRO K48+90 (AI) (ET)

Talis Laird is a younger bull to the previous 10 lots. He is a Sire prospect that is long and thick with good growth. By A.I sire Flag Cross Country. Another Talis bull with good fat and EMA EBVs.



July 2016 Angus Australia BREEDPLAN

Selection Indexes	Angus Breeding: +\$97		Domestic: +\$100		Heavy Grain: +\$90			Heavy Grass: +\$101									
	CED	CEDT	GL	BW	200	400	600	MCW	MLK	SS	DC	CWT	EMA	RIB	RMP	RBY	IMF
EBV	-0.3	-1.7	-3.0	+4.6	+45	+77	+98	+79	+13	+1.3	-3.3	+58	+7.2	+0.9	+1.0	+0.2	+1.4
Acc	40%	31%	59%	65%	57%	56%	56%	53%	45%	53%	27%	46%	45%	46%	43%	41%	42%

Purchaser: Price:

Lot 12 TALIS LEGENDARY L300

Born: 02/01/2015 Ident: BMLL300 Reg: HBR

Genetic Status:
AM50% NH50% CAFU DDFU

DSK HLE ATOMIC BIG EARS A99 (AI) (ET)

HOFF LIMITED EDITION S C 594
DSK PM PANDA R3

SIRE: BMLH306 TALIS HECKEL H306 (AI)

TALIS GRETEL Y593 (AI)

C A FUTURE DIRECTION 5321
FELLWOOD GRETEL U28

LANDFALL COMMANDER C47 (AI)

ARDROSSAN ADMIRAL A2 (AI) (ET)
LANDFALL ARCHER X9 (AI) (ET)

DAM: BMLH352 TALIS MILICENT H352 (AI)

TALIS MILICENT B531

TALIS WOOMERA W554 (AI)
TALIS MILICENT T511 (AI)

Looking for that complete bull, you found him right here. Legendary is the package. He is in the top 5% for retail beef yield.



July 2016 Angus Australia BREEDPLAN

Selection Indexes	Angus Breeding: +\$75		Domestic: +\$87		Heavy Grain: +\$65			Heavy Grass: +\$82									
	CED	CEDT	GL	BW	200	400	600	MCW	MLK	SS	DC	CWT	EMA	RIB	RMP	RBY	IMF
EBV	-1.6	-1.6	-4.5	+5.5	+39	+68	+90	+81	+11	+1.0	+0.0	+53	+6.3	-1.7	-2.0	+1.5	+0.9
Acc	34%	31%	57%	43%	43%	44%	42%	40%	38%	41%	28%	38%	37%	39%	39%	36%	35%

Purchaser: Price:

Lot 13 TALIS LACHLAN L309 (AI) (ET)

Born: 21/03/2015 Ident: BMLL309 Reg: HBR

Genetic Status:
AMFU NHFU CAFU DDFU

BT CROSSOVER 758N

C A FUTURE DIRECTION 5321
BT ROYAL PRIDE 237G

SIRE: USA16349775 FLAG CROSS COUNTRY 90052

SCR QUEEN IDELETTE 50596

TRIPLE E SPECIAL ADDITION
SCR QUEEN IDELETTE 702

TALIS BUSTLE B522 (AI)

S A V 5175 BANDO 0699
TALIS GRETEL T509 (AI)

DAM: BMLE576 TALIS HIGH JINX E576

TALIS HIGH JINX AISX554 (AI)

SITZ ALLIANCE 6595
WILLSBRO K48+90 (AI) (ET)

Talis Lachlan is a really powerful bull with that important softness. Another bull with good EBVs for EMA and fat.



July 2016 Angus Australia BREEDPLAN

Selection Indexes	Angus Breeding: +\$97				Domestic: +\$99				Heavy Grain: +\$90			Heavy Grass: +\$101					
	CED	CEDT	GL	BW	200	400	600	MCW	MLK	SS	DC	CWT	EMA	RIB	RMP	RBY	IMF
EBV	-0.7	-1.9	-2.9	+4.8	+45	+78	+99	+81	+13	+1.3	-3.3	+59	+7.2	+0.9	+1.0	+0.2	+1.4
Acc	40%	31%	59%	65%	57%	56%	56%	53%	45%	53%	27%	46%	45%	46%	43%	41%	42%

Purchaser: Price:

Lot 14 TALIS LADDY L310

Born: 22/03/2015 Ident: BMLL310 Reg: HBR

Genetic Status:
AMFU NHFU CAFU DDFU

F A R KRUGERRAND 410H

KRUGERRAND OF DONAMERE 490
F A R ERIANNA 286F

SIRE: BMLJ334 TALIS JAKE J334 (AI) (ET)

COMFORT HILL KANANGAS T171 (AI)
(ET)

R R SCOTCHCAP 9440
KANANGAS WILCOOLA M35+92 (AI) (ET)

DSK HLE ATOMIC BIG EARS A99 (AI) (ET)

HOFF LIMITED EDITION S C 594
DSK PM PANDA R3

DAM: BMLH780 TALIS SNIPPET H780 (AI)

TALIS SNIPPET B808

TALIS XILE X550 (AI)
TALIS SNIPPET Y590

Talis Laddy is a bull that is thick and clean made with that important softness. Laddy falls in the top 5% for feed efficiency EBVs and good retail yield figures.

July 2016 Angus Australia BREEDPLAN

Selection Indexes	Angus Breeding: +\$71				Domestic: +\$83				Heavy Grain: +\$60			Heavy Grass: +\$78					
	CED	CEDT	GL	BW	200	400	600	MCW	MLK	SS	DC	CWT	EMA	RIB	RMP	RBY	IMF
EBV	-3.9	-2.6	-1.1	+6.1	+42	+79	+103	+105	+14	+1.3	-1.8	+59	+2.0	-1.5	-1.7	+1.0	+0.3
Acc	36%	31%	52%	50%	52%	49%	48%	45%	41%	39%	30%	42%	37%	40%	39%	37%	36%

Purchaser: Price:

Lot 15 TALIS KHAN K355 (AI) (ET)

Born: 02/08/2014 Ident: BMLK355 Reg: HBR

Genetic Status:
AM1% NHFU CAFU DDFU

CONNELLY REFLECTION

BON VIEW NEW DESIGN 878
HAPPY GRILL OF CONANGA

SIRE: USA16748826 JINDRA DOUBLE VISION

HOFF RACHEL 8312 405

HOFF LIMITED EDITION S C 594
HOFF MISS EXPO S C 4223

TALIS WOOMERA W554 (AI)

SHADY BROOK EXPLORER 015E
TALIS TIARA U503 (AI)

DAM: BMLB531 TALIS MILICENT B531

TALIS MILICENT T511 (AI)

TC STOCKMAN 2164
MERRIGRANGE MILICENT G110

Talis Khan is a big stretchy powerful bull. By A.I sire Double Vision he comes packed with strong growth EBVs



July 2016 Angus Australia BREEDPLAN

Selection Indexes	Angus Breeding: +\$81				Domestic: +\$95				Heavy Grain: +\$68			Heavy Grass: +\$91					
	CED	CEDT	GL	BW	200	400	600	MCW	MLK	SS	DC	CWT	EMA	RIB	RMP	RBY	IMF
EBV	-1.8	-0.7	-1.6	+5.8	+46	+84	+106	+94	+15	+1.3	-0.5	+61	+5.1	-0.8	-1.3	+1.3	+0.3
Acc	41%	30%	57%	59%	56%	55%	53%	48%	48%	50%	29%	46%	45%	46%	44%	42%	42%

Purchaser: Price:

Lot 16 TALIS K433 (AI)

Born: 29/8/2014

Reg: Commercial

CONNEALY REFLECTION

BON VIEW NEW DESIGN 878
HAPPY GRILL OF CONANGA

SIRE: USA16748826 JINDRA DOUBLE VISION

HOFF RACHEL 8312 405

HOFF LIMITED EDITION S C 594
HOFF MISS EXPO S C 4223

DAM: TALIS ANGUS COW

Talis K433 is an A.I calf by Double Vision. A long stretchy, clean, powerful bull that has exceptional balance.



Purchaser: Price:

Lot 17 TALIS APR K410 (APR) (AI)

Born: 01/10/2014

Ident: BMLK410

Reg: APR

Genetic Status:
AM3% NH3% CA3% DD3%

CONNEALY REFLECTION

BON VIEW NEW DESIGN 878
HAPPY GRILL OF CONANGA

SIRE: USA16748826 JINDRA DOUBLE VISION

HOFF RACHEL 8312 405

HOFF LIMITED EDITION S C 594
HOFF MISS EXPO S C 4223

DAM: BMLF330 TALIS PRINCESS F330 (APR)

TALIS PRINCESS A591 (AI) (ET)

VERMILION YELLOWSTONE
ARDROSSAN PRINCESS L26+91 (AI) (ET)

Talis K410 is another Double Vision calf that is a real power house. Strong EBVs for growth paint the picture of this bull.



July 2016 Angus Australia BREEDPLAN

Selection Indexes	Angus Breeding: +\$81		Domestic: +\$95				Heavy Grain: +\$72			Heavy Grass: +\$88							
	CED	CEDT	GL	BW	200	400	600	MCW	MLK	SS	DC	CWT	EMA	RIB	RMP	RBV	IMF
EBV	-3.2	-1.6	+3.9	+5.5	+45	+88	+106	+90	+16	+1.2	-1.1	+62	+3.8	-1.3	-1.6	+0.9	+0.7
Acc	39%	28%	83%	69%	62%	62%	59%	53%	43%	64%	28%	50%	50%	50%	51%	46%	44%

Purchaser: Price:

Lot 18 TALIS APR K397 (APR) (AI)

Born: 21/09/2014

Ident: BMLK397

Reg: APR

Genetic Status:
AM3% NH3% CA3% DD3%

S A V PROVIDENCE 6922

S A V 004 PREDOMINANT 4438
S A V MAY 7238

SIRE: USA17029162 MOHNEN PROVIDENCE 2281

MOHNEN RUTH 1718

MOHNEN DYNAMITE 1356
MOHNEN RUTH 1485

DAM: BMLD510 TALIS CRISTY D510 (APR)

TALIS CRISTY A555 (AI)

RAFF ULTIMATE U27 (AI) (ET)
ROSELEIGH SPRING S25

Talis K397 is a big powerful bull with that extra bit of stretch. A bull that has good EBVs for growth, carcass traits and feed efficiency.



July 2016 Angus Australia BREEDPLAN

Selection Indexes	Angus Breeding: +\$79		Domestic: +\$86				Heavy Grain: +\$66			Heavy Grass: +\$86							
	CED	CEDT	GL	BW	200	400	600	MCW	MLK	SS	DC	CWT	EMA	RIB	RMP	RBV	IMF
EBV	-5.7	--	-1.3	+6.5	+45	+81	+106	+102	+12	+0.9	--	+59	+4.6	+0.0	+0.4	+0.9	+0.5
Acc	29%		82%	65%	56%	57%	53%	48%	39%	61%		46%	44%	44%	44%	40%	37%

Purchaser: Price:

Lot 19 TALIS KNOX K832 (AI)

Born: 02/09/2014 Ident: BMLK832 Reg: HBR

Genetic Status:
AM1% NHFU CAFU DDFU

CONNELLY ALL AROUND

CONNELLY WHITMAN
ENTRUST OF CONANGA 894

SIRE: NKLF167 KANSAS FATHOM F167 (AI)

KANSAS ANNIE B170 (AI) (ET)

ARDROSSAN DIRECTION W109 (AI) (ET)
KANSAS ANNIE Y18 (AI) (ET)

TALIS XILE X550 (AI)

V D A R NEW TREND 315
TALIS HIGH JINX T504

DAM: BMLB821 TALIS MILLICENT B821

TALIS MILLICENT Y585

TALIS VANCOUVER V516 (AI)
TALIS MILLICENT V550 (AI)

Talis Knox is a bull with stretch, good skin and a sires outlook. By A.I sire Kansas Fathom.



July 2016 Angus Australia BREEDPLAN

Selection Indexes	Angus Breeding: +\$87				Domestic: +\$89				Heavy Grain: +\$85				Heavy Grass: +\$88				
	CED	CEDT	GL	BW	200	400	600	MCW	MLK	SS	DC	CWT	EMA	RIB	RMP	RBY	IMF
EBV	-3.8	-1.6	-2.0	+6.1	+42	+78	+100	+86	+17	+2.0	-3.4	+56	+2.5	+0.1	+1.0	-0.4	+1.8
Acc	41%	31%	83%	71%	65%	66%	63%	57%	47%	69%	32%	53%	54%	54%	56%	49%	47%

Purchaser: Price:

Lot 20 TALIS KARL K313 (AI) (ET)

Born: 17/03/2014 Ident: BMLK313 Reg: HBR

Genetic Status:
AM4% NHFU CA3% DDFU

BT CROSSOVER 758N

C A FUTURE DIRECTION 5321
BT ROYAL PRIDE 237G

SIRE: USA16349775 FLAG CROSS COUNTRY 90052

SCR QUEEN IDELETTE 50596

TRIPLE E SPECIAL ADDITION
SCR QUEEN IDELETTE 702

S A V 5175 BANDO 0699

S A F 598 BANDO 5175
L L A GEORGINA 419

DAM: BMLA557 TALIS HIGH JINX A557 (AI)

TALIS HIGH JINX T504

WILLSBRO REFLEX R3 (AI)
WILLSBRO HI JINX Q39

Talis Karl is a bull with great balance, a little extra stretch, and presence. By A.I sire Flag Cross Country.

July 2016 Angus Australia BREEDPLAN

Selection Indexes	Angus Breeding: +\$99				Domestic: +\$99				Heavy Grain: +\$97				Heavy Grass: +\$101				
	CED	CEDT	GL	BW	200	400	600	MCW	MLK	SS	DC	CWT	EMA	RIB	RMP	RBY	IMF
EBV	-2.8	-3.0	-2.2	+5.9	+47	+84	+110	+94	+15	+1.2	-2.4	+61	+6.6	-0.4	-0.3	+0.7	+1.5
Acc	44%	34%	65%	72%	66%	67%	65%	59%	50%	70%	33%	55%	56%	56%	51%	50%	

Purchaser: Price:

Lot 21 TALIS KYLE K417 (AI) (ET)

Born: 13/10/2014 Ident: BMLK417 Reg: HBR

Genetic Status:
AM4% NHFU CA3% DDFU

CONNELLY REFLECTION

BON VIEW NEW DESIGN 878
HAPPY GRILL OF CONANGA

SIRE: USA16748826 JINDRA DOUBLE VISION

HOFF RACHEL 8312 405

HOFF LIMITED EDITION S C 594
HOFF MISS EXPO S C 4223

S A V 5175 BANDO 0699

S A F 598 BANDO 5175
L L A GEORGINA 419

DAM: BMLA557 TALIS HIGH JINX A557 (AI)

TALIS HIGH JINX T504

WILLSBRO REFLEX R3 (AI)
WILLSBRO HI JINX Q39

Talis Kyle is another Double Vision calf that is big and stretchy. His full brother made our show team and won at Sydney Royal. Looking for growth EBVs, he falls in the top 10% for 2,4 & 6 days growth and carcass weight. An exceptional maternal line with his dam producing some stand out progeny in the Talis herd.



July 2016 Angus Australia BREEDPLAN

Selection Indexes	Angus Breeding: +\$92				Domestic: +\$101				Heavy Grain: +\$86				Heavy Grass: +\$97				
	CED	CEDT	GL	BW	200	400	600	MCW	MLK	SS	DC	CWT	EMA	RIB	RMP	RBY	IMF
EBV	-2.7	-1.9	-2.2	+6.1	+50	+94	+118	+99	+18	+0.7	-0.6	+71	+4.4	-1.6	-2.2	+1.2	+0.9
Acc	46%	34%	65%	72%	67%	67%	64%	58%	49%	69%	34%	56%	56%	55%	56%	51%	49%

Purchaser: Price:

Lot 22 TALIS KENILWORTH K843

Born: 23/09/2014

Ident: BMLK843

Reg: HBR

Genetic Status:
AM24% NH38% CA25% DDFU

TALIS CHAPERONE C529

TALIS ZEUS Z542 (AI) (ET)
TALIS ADVENTURE S523 (AI)

SIRE: BMLG532 TALIS GS1200 G532

TALIS MILICENT E522 (AI)

S A V NET WORTH 4200
TALIS MILICENT B547

TALIS XCITING X534 (AI)

C A FUTURE DIRECTION 5321
TALIS GRETTEL T509 (AI)

DAM: BMLD836 TALIS LILAC D836

TALIS LILAC Z808

TALIS VERACIOUS V572 (AI)
TALIS LILAC V563 (AI) (ET)

Talis Kenilworth is the second sale calf by GS1200, just a huge powerhouse.



July 2016 Angus Australia BREEDPLAN

Selection Indexes	Angus Breeding: +\$77				Domestic: +\$88				Heavy Grain: +\$66				Heavy Grass: +\$84				
	CED	CEDT	GL	BW	200	400	600	MCW	MLK	SS	DC	CWT	EMA	RIB	RMP	RBY	IMF
EBV	-0.1	-1.2	-2.0	+5.2	+42	+72	+94	+89	+14	+1.2	-1.6	+55	+3.6	-1.1	-1.0	+0.7	+0.8
Acc	32%	26%	41%	65%	57%	58%	54%	49%	39%	65%	27%	45%	46%	45%	48%	42%	37%

Purchaser:

Price:

Lot 23 TALIS KIRKMAN K420 (AI) (ET)

Born: 15/10/2014

Ident: BMLK420

Reg: HBR

Genetic Status:
AM4% NHFU CA3% DDFU

CONNELLY REFLECTION

BON VIEW NEW DESIGN 878
HAPPY GRILL OF CONANGA

SIRE: USA16748826 JINDRA DOUBLE VISION

HOFF RACHEL 8312 405

HOFF LIMITED EDITION S C 594
HOFF MISS EXPO S C 4223

S A V 5175 BANDO 0699

S A F 598 BANDO 5175
L L A GEORGINA 419

DAM: BMLA557 TALIS HIGH JINX A557 (AI)

TALIS HIGH JINX T504

WILLSBRO REFLEX R3 (AI)
WILLSBRO HI JINX Q39

Talis Kirkman is another of the Double Vision calves in the sale. A long, thick muscled bull while maintaining softness. Another bull pushing the top 10% for growth EBVs.



July 2016 Angus Australia BREEDPLAN

Selection Indexes	Angus Breeding: +\$87				Domestic: +\$96				Heavy Grain: +\$79				Heavy Grass: +\$93				
	CED	CEDT	GL	BW	200	400	600	MCW	MLK	SS	DC	CWT	EMA	RIB	RMP	RBY	IMF
EBV	-3.5	-2.2	-2.1	+6.1	+48	+90	+114	+96	+17	+0.4	-0.8	+68	+4.5	-1.0	-1.6	+1.0	+0.8
Acc	46%	34%	65%	72%	67%	67%	64%	58%	49%	69%	34%	56%	56%	55%	56%	51%	49%

Purchaser:

Price:

Lot 24 TALIS KADEL K829 (APR) (AI)

Born: 02/09/2014

Ident: BMLK829

Reg: APR

Genetic Status:
AM2% NH2% CA2% DD2%

CONNELLY ALL AROUND

CONNELLY WHITMAN
ENTRUST OF CONANGA 894

SIRE: NKLF167 KANSAS FATHOM F167 (AI)

KANSAS ANNIE B170 (AI) (ET)

ARDROSSAN DIRECTION W109 (AI) (ET)
KANSAS ANNIE Y18 (AI) (ET)

TALIS BUSHWACKER B518 (AI)

TE MANIA XPO X84 (AI) (ET)
TALIS GRETTEL W518

DAM: BMLF816 TALIS APR F816 (APR)

TALIS B865 (APR)

TALIS VERACIOUS V572 (AI)

Talis Kadel is a big stretchy bull with power to boot. By A.I sire Kansas Fathom.



July 2016 Angus Australia BREEDPLAN

Selection Indexes	Angus Breeding: +\$77				Domestic: +\$84				Heavy Grain: +\$71				Heavy Grass: +\$81				
	CED	CEDT	GL	BW	200	400	600	MCW	MLK	SS	DC	CWT	EMA	RIB	RMP	RBY	IMF
EBV	-3.0	-1.9	-0.3	+5.4	+39	+69	+89	+82	+15	+1.0	-2.3	+51	+4.0	-0.2	+0.7	+0.0	+1.6
Acc	39%	30%	83%	57%	59%	56%	55%	49%	41%	47%	28%	47%	42%	43%	43%	39%	39%

Purchaser:

Price:

Lot 25 TALIS KITTLE K356 (AI)

Born: 14/08/2014 Ident: BMLK356 Reg: HBR

Genetic Status:
AMFU NHFU CA28% DDFU

S A V FINAL ANSWER 0035

SITZ TRAVELER 8180
S A V EMULOUS 8145

SIRE: USA16396499 S A V THUNDERBIRD 9061

S A V EMBLYNETTE 7411

S A V BISMARCK 5682
S A V EMBLYNETTE 4408

TALIS CHAPERONE C529

TALIS ZEUS Z542 (AI) (ET)
TALIS ADVENTURE S523 (AI)

DAM: BMLH310 TALIS GRETEL H310

TALIS GRETEL B594 (AI)

S A V SUCCESSOR 1175
TALIS GRETEL Z578 (AI)

Talis Kittle is the first Thunder Bird calf in the sale. If you are keen on figures this bull should suit. Low Birth, and high growth with carcass weight. Top 5% for 200 day weight and top 20% for birth weight.



July 2016 Angus Australia BREEDPLAN

Selection Indexes	Angus Breeding: +\$105				Domestic: +\$109			Heavy Grain: +\$99			Heavy Grass: +\$109						
	CED	CEDT	GL	BW	200	400	600	MCW	MLK	SS	DC	CWT	EMA	RIB	RMP	RBY	IMF
EBV	+2.3	+0.5	-6.6	+3.1	+52	+90	+115	+105	+16	+1.6	-3.4	+67	+3.9	+0.6	-1.0	+0.8	+0.8
Acc	50%	46%	80%	68%	65%	66%	63%	59%	52%	70%	34%	56%	57%	56%	57%	52%	51%

Purchaser: Price:

Lot 26 TALIS KENNY K383 (AI)

Born: 02/09/2014 Ident: BMLK383 Reg: HBR

Genetic Status:
AMFU NHFU CA3% DDFU

S A V PROVIDENCE 6922

S A V 004 PREDOMINANT 4438
S A V MAY 7238

SIRE: USA17029162 MOHNEN PROVIDENCE 2281

MOHNEN RUTH 1718

MOHNEN DYNAMITE 1356
MOHNEN RUTH 1485

TALIS BUDDHA B591

TALIS ZEUS Z542 (AI) (ET)
TALIS MILICENT S501 (AI) (ET)

DAM: BMLE630 TALIS ADVENTURE E630

TALIS ADVENTURE A587

TALIS WOOMERA W554 (AI)
TALIS ADVENTURE V504 (AI)

Talis Kenny is a thick moderate bull that is a powerhouse. The second sale calf by A.I sire Mohnen Providence. A bull with good growth figures and carcass. A bull that hits the top 10% for scrotal size.



July 2016 Angus Australia BREEDPLAN

Selection Indexes	Angus Breeding: +\$97				Domestic: +\$98			Heavy Grain: +\$91			Heavy Grass: +\$100						
	CED	CEDT	GL	BW	200	400	600	MCW	MLK	SS	DC	CWT	EMA	RIB	RMP	RBY	IMF
EBV	-2.6	--	-1.6	+5.8	+47	+84	+110	+103	+13	+2.7	-3.8	+60	+4.7	+0.2	+0.4	+1.0	+0.8
Acc	32%		82%	67%	60%	60%	56%	50%	44%	67%	25%	49%	49%	49%	49%	44%	40%

Purchaser: Price:

Lot 27 TALIS KOBAN K827 (AI)

Born: 01/09/2014 Ident: BMLK827 Reg: HBR

Genetic Status:
AMFU NHFU CAFU DDFU

CONNEALY CONSENSUS 7229

CONNEALY CONSENSUS
BLUE LILLY OF CONANGA 16

SIRE: USA17031441 CONNEALY UNITED 1116

BREETA OF CONANGA 5403 985L

G A R NEW DESIGN 5050 (ET)
BREELA OF CONANGA 3991

TALIS VERACIOUS V572 (AI)

STEVENSON ROYCE 741C
MERRIGRANGE MILLICENT M120+92

DAM: BMLZ808 TALIS LILAC Z808

TALIS LILAC V563 (AI) (ET)

SCHURRTOP SUPREME
SPARTA FLOWER J24+89 (AI)

Talis Koban is the last of the Connealy United calves in the sale. Consistent to the end, well finish cattle and this one has the added benefit of sire appeal. Typical of the United calves a bull with high figures for EMA and fat.



July 2016 Angus Australia BREEDPLAN

Selection Indexes	Angus Breeding: +\$88				Domestic: +\$91			Heavy Grain: +\$83			Heavy Grass: +\$91						
	CED	CEDT	GL	BW	200	400	600	MCW	MLK	SS	DC	CWT	EMA	RIB	RMP	RBY	IMF
EBV	-4.6	-1.9	-2.4	+6.5	+43	+74	+94	+81	+11	+1.9	-3.9	+51	+5.7	+1.8	+1.3	+0.3	+1.5
Acc	40%	29%	83%	71%	65%	65%	62%	56%	49%	69%	29%	54%	52%	53%	53%	48%	45%

Purchaser: Price:

Lot 28 TALIS KNAPP K362 (AI)

Born: 04/08/2014 Ident: BMLK362 Reg: HBR

Genetic Status:
AMFU NHFU CAFU DDFU

S A V FINAL ANSWER 0035
SIRE: USA16396499 S A V THUNDERBIRD 9061
S A V EMBLYNETTE 7411

SITZ TRAVELER 8180
S A V EMULOUS 8145
S A V BISMARCK 5682
S A V EMBLYNETTE 4408

TE MANIA EPISTLE E852
DAM: BMLH783 TALIS CRISTY H783 (AI)
TALIS CRISTY Z805

TE MANIA BARTEL B219 (AI) (ET)
TE MANIA MITTAGONG B562
TALIS VERACIOUS V572 (AI)
TALIS CRISTY V551

Talis Knapp is the second Thunderbird calf offered and like his half brother a well figured bull. Falls into the top 5% for 200 and 400 day EBVs. He is also one of our highest indexing bulls. He is an absolute meat machine but still manages to carry softness.

July 2016 Angus Australia BREEDPLAN



Selection Indexes	Angus Breeding: +\$109				Domestic: +\$109			Heavy Grain: +\$108			Heavy Grass: +\$110						
	CED	CEDT	GL	BW	200	400	600	MCW	MLK	SS	DC	CWT	EMA	RIB	RMP	RBY	IMF
EBV	+0.0	-1.7	-5.4	+4.7	+52	+92	+116	+98	+15	+0.9	-3.8	+66	+5.5	+0.4	-1.1	+0.5	+1.4
Acc	51%	46%	81%	69%	66%	67%	64%	60%	53%	71%	35%	57%	58%	57%	58%	53%	52%

Purchaser:

Price:

Lot 29 TALIS KEITH K427 (AI) (ET)

Born: 20/10/2014 Ident: BMLK427 Reg: HBR

Genetic Status:
AMFU NHFU CAFU DDFU

CONNELLY CONSENSUS 7229
SIRE: USA17031441 CONNEALY UNITED 1116
BREETA OF CONANGA 5403 985L

CONNELLY CONSENSUS
BLUE LILLY OF CONANGA 16
G A R NEW DESIGN 5050 (ET)
BREELA OF CONANGA 3991

TALIS BUSTLE B522 (AI)
DAM: BMLE576 TALIS HIGH JINX E576
TALIS HIGH JINX AISX554 (AI)

S A V 5175 BANDO 0699
TALIS GRETTEL T509 (AI)
SITZ ALLIANCE 6595
WILLSBRO K48+90 (AI) (ET)

Talis Keith is the last of the Connealy United calves for sale. You have seen the others, what else can be said that you havent already seen.

July 2016 Angus Australia BREEDPLAN



Selection Indexes	Angus Breeding: +\$86				Domestic: +\$93			Heavy Grain: +\$82			Heavy Grass: +\$87						
	CED	CEDT	GL	BW	200	400	600	MCW	MLK	SS	DC	CWT	EMA	RIB	RMP	RBY	IMF
EBV	-3.8	-2.7	-1.2	+5.4	+42	+73	+88	+70	+15	+1.3	-3.6	+55	+6.6	+1.0	+0.1	+0.3	+1.9
Acc	39%	29%	58%	68%	56%	54%	53%	50%	43%	49%	26%	46%	42%	43%	40%	40%	39%

Purchaser:

Price:

Lot 30 TALIS KNOWLES K374 (AI)

Born: 31/08/2014 Ident: BMLK374 Reg: HBR

Genetic Status:
AM3% NHFU CAFU DDFU

CONNELLY REFLECTION
SIRE: USA16748826 JINDRA DOUBLE VISION
HOFF RACHEL 8312 405

BON VIEW NEW DESIGN 878
HAPPY GRILL OF CONANGA
HOFF LIMITED EDITION S C 594
HOFF MISS EXPO S C 4223

MATAURI STOCKMAN 526 AB
DAM: BMLC517 TALIS GRETTEL C517 (AI)
TALIS GRETTEL W518

TC STOCKMAN 2164
MATAURI I831
FELLWOOD UNDERWORLD U45 (AI)
TALIS GRETTEL T509 (AI)

Talis Knowles is a long clean made bull. The last of the Double Vision calves offered.

July 2016 Angus Australia BREEDPLAN

Selection Indexes	Angus Breeding: +\$71				Domestic: +\$92			Heavy Grain: +\$55			Heavy Grass: +\$80						
	CED	CEDT	GL	BW	200	400	600	MCW	MLK	SS	DC	CWT	EMA	RIB	RMP	RBY	IMF
EBV	-1.1	-0.7	-2.0	+5.0	+42	+78	+91	+85	+14	+0.7	-1.5	+57	+3.9	-1.7	-2.0	+1.3	+0.2
Acc	45%	34%	84%	72%	67%	67%	64%	58%	51%	70%	35%	56%	56%	56%	57%	52%	50%

Purchaser:

Price:

Lot 31 TALIS K806 (AI)

Born: 24/8/2014

Reg: Commercial

CONNELY ALL AROUND

CONNELY WHITMAN
ENTRUST OF CONANGA 894

SIRE: NKLF167 KANSAS FATHOM F167 (AI)

KANSAS ANNIE B170 (AI) (ET)

ARDROSSAN DIRECTION W109 (AI) (ET)
KANSAS ANNIE Y18 (AI) (ET)

TALIS ANGUS COW

DAM: TALIS F834

TALIS CLAIR Y560

TALIS WOOMERA AISW554
TALIS CLAIR U541

*Talis King Kong is the only Landfall Commander offered at this years sale.
Another stretchy, long bull.*



Purchaser: Price:

Lot 32 TALIS KING KONG K342 (AI)

Born: 10/04/2014

Ident: BMLK342

Reg: HBR

ARDROSSAN ADMIRAL A2 (AI) (ET)

ARDROSSAN DIRECTION W109 (AI) (ET)
KENNY'S CREEK ROSEBUD W171 (AI) (ET)

SIRE: TFAC47 LANDFALL COMMANDER C47 (AI)

LANDFALL ARCHER X9 (AI) (ET)

DUNOON REAGAN R093 (AI) (ET)
LANDFALL ARCHER T74 (AI) (ET)

C A FUTURE DIRECTION 5321

DAM: BMLY593 TALIS GRETIE Y593 (AI)

FELLWOOD GRETIE U28

G A R PRECISION 1680
C A MISS POWER FIX 308

ST. PAULS QUANTUM TRAVEL Q28 (AI) (ET)
WILLSBRO GRETIE M1+92 (AI) (ET)

*Talis King Kong is the only Landfall Commander offered at this years sale.
Another stretchy, long bull.*

Genetic Status:
AM50% NH50% CAFU DDFU

July 2016 Angus Australia BREEDPLAN

Selection Indexes	Angus Breeding: +\$86		Domestic: +\$94				Heavy Grain: +\$82				Heavy Grass: +\$89						
	CED	CEDT	GL	BW	200	400	600	MCW	MLK	SS	DC	CWT	EMA	RIB	RMP	RBY	IMF
EBV	-2.2	-1.8	-1.5	+4.6	+39	+69	+86	+67	+13	+0.7	-2.5	+56	+8.8	-1.2	-1.8	+1.2	+1.5
Acc	54%	51%	79%	61%	59%	59%	59%	57%	57%	57%	43%	54%	53%	54%	53%	51%	52%

Purchaser: Price:

Lot 33 TALIS KENDALL K361 (AI)

Born: 19/08/2014

Ident: BMLK361

Reg: HBR

S A V FINAL ANSWER 0035

SITZ TRAVELER 8180
S A V EMULOUS 8145

SIRE: USA16396499 S A V THUNDERBIRD 9061

S A V EMBLYNETTE 7411

S A V BISMARCK 5682
S A V EMBLYNETTE 4408

DSK HLE ATOMIC BIG EARS A99 (AI) (ET)

HOFF LIMITED EDITION S C 594
DSK PM PANDA R3

DAM: BMLH754 TALIS LILAC H754 (AI)

TALIS LILAC D802 (AI)

SHADY BROOK EXPLORER 015E
TALIS LILAC A818

Talis Kendall by A.I sire Thunderbird. A moderate bull that has a heap of thickness with positive growth EBVs



Genetic Status:
AMFU NHFU CAFU DDFU

July 2016 Angus Australia BREEDPLAN

Selection Indexes	Angus Breeding: +\$88		Domestic: +\$96				Heavy Grain: +\$81				Heavy Grass: +\$93						
	CED	CEDT	GL	BW	200	400	600	MCW	MLK	SS	DC	CWT	EMA	RIB	RMP	RBY	IMF
EBV	+0.3	-1.0	-6.4	+4.8	+45	+80	+105	+98	+11	+0.7	-1.3	+59	+3.3	-0.2	-1.8	+1.0	+0.8
Acc	51%	47%	81%	69%	65%	66%	64%	59%	53%	71%	36%	56%	57%	57%	58%	53%	52%

Purchaser: Price:

Lot 34 TALIS KANE K401 (AI)

Born: 23/09/2014

Ident: BMLK401

Reg: HBR

Genetic Status:
AMFU NHFU CAFU DDFU

CONNEALY ONWARD

CONNEALY LEAD ON
ALTUNE OF CONANGA 6104

SIRE: USA14963730 SITZ UPWARD 307R

SITZ HENRIETTA PRIDE 81M

SITZ VALUE 7097
SITZ HENRIETTA PRIDE 1370

TC STOCKMAN 2164

TC STOCKMAN
TC RUBY 5087

DAM: BMLZ564 TALIS SUNNY Z564 (AI)

ROSELEIGH SUNNY S43

ST. PAULS OSCAR N40 (AI) (ET)
ROSELEIGH KYLIE K017+90

Talis Kane the only Sitz Upward calf to be offered. A thick moderate bull that has an all-round appeal to him.



July 2016 Angus Australia BREEDPLAN

Selection Indexes	Angus Breeding: +\$97		Domestic: +\$105		Heavy Grain: +\$85		Heavy Grass: +\$103										
	CED	CEDT	GL	BW	200	400	600	MCW	MLK	SS	DC	CWT	EMA	RIB	RMP	RBV	IMF
EBV	-1.2	-2.4	-2.0	+4.7	+47	+86	+104	+78	+19	+1.5	-3.9	+63	+5.7	-0.3	-0.2	+1.3	+0.5
Acc	55%	48%	84%	73%	68%	69%	67%	64%	59%	72%	44%	61%	61%	61%	62%	58%	56%

Purchaser:

Price:

Lot 35 TALIS KIMBLE K811 (AI)

Born: 29/08/2014

Ident: BMLK811

Reg: HBR

Genetic Status:
AMFU NHFU CAFU DDFU

CONNEALY ALL AROUND

CONNEALY WHITMAN
ENTRUST OF CONANGA 894

SIRE: NKLF167 KANSAS FATHOM F167 (AI)

KANSAS ANNIE B170 (AI) (ET)

ARDROSSAN DIRECTION W109 (AI) (ET)
KANSAS ANNIE Y18 (AI) (ET)

TALIS Z540 (AI)

B T ULTRAVOX 297E
COMFORT HILL R135 (AI)

DAM: BMLC823 TALIS MILLICENT C823

TALIS MILLICENT Y573

TALIS VANCOUVER V516 (AI)
TALIS MILLICENT V508 (AI)

Talis Kimble is a good thick bull that is thick and long. By A.I sire Kansas Fathom.



July 2016 Angus Australia BREEDPLAN

Selection Indexes	Angus Breeding: +\$79		Domestic: +\$85		Heavy Grain: +\$76		Heavy Grass: +\$81										
	CED	CEDT	GL	BW	200	400	600	MCW	MLK	SS	DC	CWT	EMA	RIB	RMP	RBV	IMF
EBV	-3.2	-0.8	-2.0	+5.4	+40	+69	+91	+87	+14	+1.0	-2.2	+50	+3.6	-0.7	-0.9	+0.6	+1.6
Acc	40%	31%	83%	71%	64%	64%	61%	56%	42%	68%	31%	52%	52%	52%	54%	48%	45%

Purchaser:

Price:



LT LEDGER 0332 (P)

Born: 03/04/2010

Ident: OAU F3168E Grade: Aust. Purebred

Colour: White

LT ASSERTION 1277 M620193 (PED W1277F)

EATONS ASSERT 9171 M514354
LT ALLIS CLASS 9140 F852572 (PED U9140F)

SIRE: LT BLUEGRASS 4017P M686569 (P)

LT PEARLS BREEZE 2236 F956080

LT WYOMING WIND 4020 PLD M411450 (P)
LT UNLIMITED PEARL F792980 (PED S7053F)

LT RIO BRAVO 3181 P M665507 (P)

LT RIO BLANCO 1234 P M620591 (P)
LT 7N OF DUKE 9083 PLD F852553 (P)

DAM: LT BRENDA 6120 PLD F1046992

LT BRENDA'S EASE 3055 PLD F979389

LT UNLIMITED EASE 9108 M 301930
LT BRENDA 1014 PLD F924572 (PED -4572E)



June 2016 Australasian Charolais GROUP BREEDPLAN

	CED	CEDT	GL	BW	200	400	600	MCW	MK	SS	CW	EMA	RIB	RMP	RBV	IMF
EBV	+15.8	-0.8	-6.3	-3.7	+10	+20	+15	-5	+9	+2.6	+11	+0.8	+1.7	+3.5	-1.9	+1.5
Acc	75%	60%	94%	94%	90%	89%	86%	78%	67%	86%	75%	66%	74%	73%	68%	65%

SVY PILGRIM PLD 655S (P)

Born: 24/01/2006

Ident: OAC B3031E Grade: Aust. Purebred

Colour: White

LT RIO BLANCO 1234 P M620591 (P)

WCR PRIME CUT 764 PLD PMC223447 (P)
LT PRAIRIE MAID 4054 F704694

SIRE: SVY PIONEER 402P MC288416

SVY JINGLES 153L FC303049 (PED -3049E)

SKYMONT EASE 2078 M360699
WINDYVIEW JIGGLES 2J PFC269651 (

RGP EUREKA 17E PMC179283 (OAC Q17E) (P)

E-CEE KATMANDU 200B (PED -502E)
AGV MASTERLADY 17Y (PED -788E)

DAM: HFCC FRENCHKISS 919J PFC269584

QCR FRENCHKISS 33F FC238979

SIR QCR HIGHGEAR 2P M 40492 (OAC -74E)
QCR DIMPLES 39D FC210939 (PED -939E)



June 2016 Australasian Charolais GROUP BREEDPLAN

	CED	CEDT	GL	BW	200	400	600	MCW	MK	SS	CW	EMA	RIB	RMP	RBV	IMF
EBV	-7.7	-22.5	-4.7	+0.7	+21	+40	+57	+45	+6	+2.7	+31	+2.1	+1.6	+2.3	-0.6	+0.4
Acc	79%	75%	97%	96%	94%	93%	93%	84%	85%	92%	80%	68%	80%	79%	71%	68%

KEYS ALL STATE 149X (P)

Born: 02/04/2010

Ident: OAU F2787E Grade: Aust. Purebred

Colour: White

KEYS TEN-ACIOUS 166S M724532 (P)

KEYS MCTENDER 279P M686129 (P)
MISS KEY MAYBELL 73N F998740 (P)

SIRE: KEYS SPECIALIST 18U M761126 (P)

MISS KEY KRISTEN 63K F874318 (P)

2UP PEUGEOT (2UP P46E) (P)
MISS KEY AUGUSTA 216E F744437

KEYS CHUMLEY 8R M711391 (PED -11391E) (P)

CARDINAL WESTERN MAVERICK M668173 (P)
MISS KEY KODEE 1K F874456 (PED -4456E) (P)

DAM: MISS KEY MEG 2T F1079615 (P)

MISS KEY MEG 4R F1027839 (PED -7839E) (P)

KEYS MCHENRY 24M M645472 (PED -5472E) (P)
MISS KEY MEG 123L F925545 (PED -5545E) (P)



June 2016 Australasian Charolais GROUP BREEDPLAN

	CED	CEDT	GL	BW	200	400	600	MCW	MK	SS	CW	EMA	RIB	RMP	RBV	IMF
EBV	+2.5	+3.1	-8.9	-0.7	+8	+22	+20	+4	+1	+1.5	+25	+2.6	+1.1	+0.2	+0.6	-0.5
Acc	59%	31%	86%	84%	75%	74%	70%	61%	36%	70%	56%	38%	48%	48%	43%	37%

Lot 36 AIRLIE KIMONO (AI) (P) (TW)

Born: 06/09/2014 Ident: A1S K108E Grade: Aust. Purebred Colour: White

LT BLUEGRASS 4017P M686569 (OAU Z4017E) (P)

LT ASSERTION 1277 M620193
LT PEARLS BREEZE 2236 F956080

SIRE: LT LEDGER 0332 M791626 (OAU F3168E) (P)

LT BRENDA 6120 PLD F1046992 (PED -6992E)

LT RIO BRAVO 3181 P M665507
LT BRENDA'S EASE 3055 PLD F979389

GOBONGO VILLEROY V80E (GO V80E)

FERNVALE ROADSTER (FEN R37E)
GUNNADOO IRENE M103D

DAM: DAMONA YOLANDE E6 (WDM E6E) (P)

GLENDYR YOLANDE (APH Y1E)

SILVERSTREAM JONAH J91F 83/FF12682/94
GLENDYR TRISHA (CV T5E) (P)

Airlie Kimono is a polled bull by LT Ledger. A bull with good growth and is one of our bigger Ledger calves that is also long, thick and soft. If you like your figures he is a very balanced bull on all accounts. Hits the top 10% for IMF and scrotal size.



June 2016 Australasian Charolais GROUP BREEDPLAN

	CED	CEDT	GL	BW	200	400	600	MCW	MK	SS	CW	EMA	RIB	RMP	RBY	IMF
EBV	+5.7	-1.3	-2.8	-0.1	+16	+28	+38	+34	+9	+2.1	+20	+1.0	+0.4	+1.1	-0.5	+0.7
Acc	44%	37%	54%	56%	53%	52%	51%	47%	42%	50%	44%	39%	43%	43%	40%	38%

Purchaser: Price:

Lot 37 AIRLIE KIT K14E (AI) (P)

Born: 04/10/2014 Ident: A1S K127E Grade: Aust. Purebred Colour: Red Factor

LT BLUEGRASS 4017P M686569 (OAU Z4017E) (P)

LT ASSERTION 1277 M620193
LT PEARLS BREEZE 2236 F956080

SIRE: LT LEDGER 0332 M791626 (OAU F3168E) (P)

LT BRENDA 6120 PLD F1046992 (PED -6992E)

LT RIO BRAVO 3181 P M665507 (P)
LT BRENDA'S EASE 3055 PLD F979389

AIRLIE VERSION (A1S V251E)

PINNAROO RED RULER FM178 (BAA P89F)
AIRLIE PETROUS (A1S P183E)

DAM: AIRLIE IONA Z608E Z608E (A1S Z608E) (P)

AIRLIE IONA W209E (A1S W209E) (P)

BROOKFIELD REAGEN R16 253/FF3442/80
AIRLIE IONA T176E (A1S T176E) (P)

Airlie Kit is a polled Red Factor calf by LT Ledger. Another well figured bull that smashes the index's. A brother to last years top priced bull. A complete bull with that very important softness.



June 2016 Australasian Charolais GROUP BREEDPLAN

	CED	CEDT	GL	BW	200	400	600	MCW	MK	SS	CW	EMA	RIB	RMP	RBY	IMF
EBV	+10.5	-1.6	-3.4	-1.4	+18	+25	+35	+38	+8	+2.4	+19	+1.1	+1.0	+1.7	-0.6	+0.4
Acc	46%	38%	74%	71%	64%	65%	62%	57%	45%	74%	53%	48%	50%	49%	50%	47%

Purchaser: Price:

Lot 38 AIRLIE KAGIMOTO (AI) (P)

Born: 04/09/2014 Ident: A1S K100E Grade: Aust. Purebred Colour: White

LT BLUEGRASS 4017P M686569 (OAU Z4017E) (P)

LT ASSERTION 1277 M620193
LT PEARLS BREEZE 2236 F956080

SIRE: LT LEDGER 0332 M791626 (OAU F3168E) (P)

LT BRENDA 6120 PLD F1046992 (PED -6992E)

LT RIO BRAVO 3181 P M665507
LT BRENDA'S EASE 3055 PLD F979389

AIRLIE CARADOC (A1S C144E) (P)

AIRLIE XYLEM (A1S X104E)
AIRLIE DIGNA W36E (A1S W36E) (P)

DAM: AIRLIE CANDY F126E (A1S F126E) (P)

AIRLIE CANDY D719E (A1S D719E) (P)

AIRLIE Z123E (A1S Z123E) (P)
AIRLIE CANDY B731E (A1S B731E) (P)

Airlie Kagimoto is a polled calf by A.I sire LT Ledger. Typical of Ledgers he is thick, soft and very complete. Makes the top 5% for Rib and Rump fat. Top 10% for IMF.



June 2016 Australasian Charolais GROUP BREEDPLAN

	CED	CEDT	GL	BW	200	400	600	MCW	MK	SS	CW	EMA	RIB	RMP	RBY	IMF
EBV	+7.8	+0.0	-4.0	-1.5	+12	+22	+27	+19	+6	+2.8	+16	+1.5	+1.7	+2.9	-1.3	+0.9
Acc	42%	34%	73%	70%	62%	64%	60%	55%	41%	73%	52%	48%	50%	48%	49%	47%

Purchaser: Price:

Lot 39 AIRLIE KNOW-ALL (P)

Born: 16/09/2014 Ident: A1S K725E Grade: Aust. Purebred Colour: White

EATONS LEADER 2233 P M652217 (OAU X2217E) (P) EATONS CANDIDATE 9177 M613098

SIRE: AIRLIE FRECKLE (A1S F189E) (P/S)

AIRLIE KATRINA U139E R/F (A1S U139E) (P)

TREGENNA SIZZLER (ROG S12E)

DAM: AIRLIE NANCY Y741E (A1S Y741E) (P)

AIRLIE NANCY U270E (A1S U270E) (P)

EATONS RHODORA 9506 F868346
AIRLIE QUAMBONE (A1S Q307E)
AIRLIE KATRINA R85E (A1S R85E) (P)

ROSEDALE NAVIGATOR (MR N84E)(P)
TREGENNA PAMPAS (ROG P6D)

TATTENHALL VAUBON (IAE D6711F)
AIRLIE NEPTHY'S (A1S N157D) (P)

Airlie Know-All is a polled bull. Big and stretchy, with thickness, and softness.



June 2016 Australasian Charolais GROUP BREEDPLAN

	CED	CEDT	GL	BW	200	400	600	MCW	MK	SS	CW	EMA	RIB	RMP	RBY	IMF
EBV	-10.3	-2.8	-1.4	+2.5	+7	+15	+25	+24	+3	+1.2	+9	+0.4	+0.2	+0.6	-0.2	+0.3
Acc	38%	32%	47%	68%	59%	60%	57%	53%	43%	71%	48%	43%	43%	42%	44%	41%

Purchaser: Price:

Lot 40 AIRLIE KINDLE K115E (AI) (P)

Born: 13/09/2014 Ident: A1S K115E Grade: Aust. Purebred Colour: White

LT BLUEGRASS 4017P M686569 (OAU Z4017E) (P)

SIRE: LT LEDGER 0332 M791626 (OAU F3168E) (P)

LT BRENDA 6120 PLD F1046992 (PED -6992E)

AIRLIE WASSERMANN (A1S W121E)

DAM: AIRLIE STONEHUT D151E (A1S D151E)

AIRLIE STONEHUT V161E (A1S V161E)

LT ASSERTION 1277 M620193
LT PEARLS BREEZE 2236 F956080
LT RIO BRAVO 3181 P M665507 (P)
LT BRENDA'S EASE 3055 PLD F979389

TREGENNA TOMMO (ROG T65E)
TALIS AGNES S60E (TAL S60E)

BROOKFIELD REAGEN R16 253/FF3442/80 (253 R16)
AIRLIE LUCINDA 2 (A1S L221E) (P)

Airlie Kindle is another polled calf by LT Ledger. Had a tough start to life but has come a long way. A thick, moderate bull that has some power behind him. Top 5% for birth.



June 2016 Australasian Charolais GROUP BREEDPLAN

	CED	CEDT	GL	BW	200	400	600	MCW	MK	SS	CW	EMA	RIB	RMP	RBY	IMF
EBV	+10.5	+5.4	-6.8	-2.2	+6	+11	+8	-2	+5	+1.5	+8	+0.8	+0.0	+0.6	-0.2	+0.5
Acc	45%	37%	74%	71%	64%	65%	62%	56%	45%	73%	53%	48%	50%	49%	50%	47%

Purchaser: Price:

Lot 41 AIRLIE KALLIO (P)

Born: 30/09/2014 Ident: A1S K138E Grade: Aust. Purebred Colour: White

LT SILVER VALUE 2122 P 645761 (OAU X5761E) (P)

SIRE: AIRLIE GALLIC (A1S G213E) (P)

AIRLIE MANCIA (A1S M106E)

JDJ SMOKESTER J1377 P ET M509419 (OAU U9419E) (P)

DAM: AIRLIE KATRINA F56E (A1S F56E) (P)

AIRLIE KATRINA U139E R/F (A1S U139E) (P)

\$\$ MONTANA SILVER M454024 (P)
D LT UNLIMITED MAID 7184 P F 793032

AIRLIE JUNGLE 2 (A1S J149E)
AIRLIE JANEITE (A1S J54E)

LHD CIGAR E46 M 434790 (P)
JD MS COMMANDER B309 F658745

AIRLIE QUAMBONE (A1S Q307E)
AIRLIE KATRINA R85E (A1S R85E) (P)

Airlie Kallio is a polled son of Airlie Gallic. A real powerhouse bull that is moderate with length.



June 2016 Australasian Charolais GROUP BREEDPLAN

	CED	CEDT	GL	BW	200	400	600	MCW	MK	SS	CW	EMA	RIB	RMP	RBY	IMF
EBV	-4.8	+3.7	-2.3	+1.6	+12	+22	+29	+21	+10	-0.2	+13	+0.7	-0.4	-0.2	+0.5	+0.1
Acc	34%	29%	45%	67%	57%	59%	55%	51%	39%	71%	46%	42%	42%	41%	43%	40%

Purchaser: Price:

Lot 42 AIRLIE KALLEN (AI) (P)

Born: 09/09/2014

Ident: A1S K113E

Grade: Aust. Purebred

Colour: White

AIRLIE CUPID (A1S C154E) (P/S)

LT SILVER VALUE 2122 P 645761 (OAU X5761E)
AIRLIE PRINCESS Z258E (A1S Z258E)

SIRE: AIRLIE FIALE (A1S F726E) (P)

AIRLIE KELLY Y253E (A1S Y253E)

AIRLIE WEAPON (A1S W44F)
AIRLIE KELLY Q167E (A1S Q167E)

AIRLIE X91E (A1S X91E)

AIRLIE UNDER (A1S U233E)
AIRLIE OPAL T255E (A1S T255E) (P)

DAM: AIRLIE PRINCESS E738E (A1S E738E)

AIRLIE PRINCESS Y213E (A1S Y213E)

AIRLIE VIEWFINDER (A1S V120E)
AIRLIE PRINCESS T283E (A1S T283E)

Airlie Kallen is a polled red factor bull by Airlie Fiale. A well made bull that has thickness and softness.



June 2016 Australasian Charolais GROUP BREEDPLAN

	CED	CEDT	GL	BW	200	400	600	MCW	MK	SS	CW	EMA	RIB	RMP	RBY	IMF
EBV	-1.6	+3.0	+0.3	+0.9	+9	+13	+20	+36	+5	+0.3	+14	+1.4	-0.4	-0.3	+0.5	+0.1
Acc	33%	25%	70%	67%	58%	61%	56%	51%	36%	41%	47%	30%	30%	29%	30%	28%

Purchaser:

Price:

Lot 43 AIRLIE KLAXON (AI) (P)

Born: 30/09/2014

Ident: A1S K141E

Grade: Aust. Purebred

Colour: White

SVY PIONEER 402P MC288416 (PED -8416E)

LT RIO BLANCO 1234 P M620591 (P)
SVY JINGLES 153L FC303049

SIRE: SVY PILGRIM PLD 655S MC303031 (P)

HFCC FRENCHKISS 919J PFC269584 (PED -9584E)

RGP EUREKA 17E PMC179283 (P)
QCR FRENCHKISS 33F FC238979

WATERFORD BONAPART (WET B1E) (P/S)

MINNIE VALE THUNDERBOLT
WATERFORD (WET W15E)

DAM: AIRLIE ALATHEA G24E (A1S G24E) (P)

DAMONA ALATHEA D11 (WDM D11E) (P)

KALINKA ARIZONA (NKA A23E) (P)
GLEN DYR ALATHEA (APH A6E) (P)

Airlie Klaxon is a polled bull by SVY Pilgrim. A Pilgrim calf with growth and thickness. A soft bull. A bull with real sire potential.



June 2016 Australasian Charolais GROUP BREEDPLAN

	CED	CEDT	GL	BW	200	400	600	MCW	MK	SS	CW	EMA	RIB	RMP	RBY	IMF
EBV	-2.9	-8.9	-2.3	+0.9	+11	+23	+31	+26	+6	+0.1	+17	+1.3	+0.4	+0.6	+0.0	+0.3
Acc	44%	40%	73%	70%	64%	65%	62%	57%	49%	74%	53%	48%	52%	50%	50%	47%

Purchaser:

Price:

Lot 44 AIRLIE KILT K107E (AI) (P)

Born: 06/09/2014

Ident: A1S K107E

Grade: Aust. Purebred

Colour: White

LT BLUEGRASS 4017P M686569 (OAU Z4017E) (P)

LT ASSERTION 1277 M620193
LT PEARLS BREEZE 2236 F956080

SIRE: LT LEDGER 0332 M791626 (OAU F3168E) (P)

LT BRENDA 6120 PLD F1046992 (PED -6992E)

LT RIO BRAVO 3181 P M665507 (P)
LT BRENDA'S EASE 3055 PLD F979389

GOBONGO VILLEROY V80E (GO V80E)

FERNVALE ROADSTER (FEN R37E)
GUNNADOO IRENE M103D (P)

DAM: DAMONA YOLANDE (WDM E3E) (P/S)

GLEN DYR YOLANDE (APH Y1E)

SILVERSTREAM JONAH J91F 83/FF12682/94
GLEN DYR TRISHA (CV T5E) (P)

Airlie Kilt is a polled bull by LT Ledger. A bull that personifies red meat. Another Ledger that smashes the EBV's out of the park.



June 2016 Australasian Charolais GROUP BREEDPLAN

	CED	CEDT	GL	BW	200	400	600	MCW	MK	SS	CW	EMA	RIB	RMP	RBY	IMF
EBV	+5.2	-2.5	-2.0	+0.1	+14	+28	+39	+34	+10	+2.4	+21	+1.0	+0.1	+0.8	-0.3	+0.7
Acc	45%	37%	74%	71%	64%	65%	62%	57%	45%	74%	54%	49%	52%	50%	51%	48%

Purchaser:

Price:

Lot 45 AIRLIE KRIS K737E (P)

Born: 26/09/2014 Ident: A1S K737E Grade: Aust. Purebred Colour: White

AIRLIE CUPID (A1S C154E) (P/S)

LT SILVER VALUE 2122 P 645761 (OAU X5761E) (P)
AIRLIE PRINCESS Z258E (A1S Z258E)

SIRE: AIRLIE FARLAND (A1S F752E) (P)

AIRLIE PUSSYCAT X722E (A1S X722E) (P)

AIRLIE UNCANNY (A1S U258E) (P)
AIRLIE PUSSYCAT U254E FS220 (A1S U254E) (P)

AIRLIE WHIRLWIND (A1S W57F)

BROOKFIELD REAGEN R16 253/FF3442/80 (253 R16F)
AIRLIE DIANNA R239F (A1S R239F)

DAM: AIRLIE NOREEN C707E (A1S C707E)

AIRLIE NOREEN U187E (A1S U187E)

AIRLIE SUNDAY (A1S S14E)
AIRLIE ELLE S25E (A1S S25E)

Airlie Kris is a polled bull that is long, clean, thick an soft. Comes with solid growth EBV's



June 2016 Australasian Charolais GROUP BREEDPLAN

	CED	CEDT	GL	BW	200	400	600	MCW	MK	SS	CW	EMA	RIB	RMP	RBY	IMF
EBV	-7.6	+1.0	-1.7	+1.8	+15	+27	+37	+48	+3	+1.7	+20	+1.2	-0.9	-1.2	+1.1	-0.4
Acc	34%	27%	42%	68%	59%	61%	58%	53%	37%	72%	48%	42%	43%	41%	44%	41%

Purchaser: Price:

Lot 46 AIRLIE KAWASAKI (P)

Born: 10/10/2014 Ident: A1S K754E Grade: Aust. Purebred Colour: Red Factor

EATONS LEADER 2233 P M652217 (OAU X2217E) (P)

EATONS CANDIDATE 9177 M613098
EATONS RHODORA 9506 F868346

SIRE: AIRLIE FRECKLE (A1S F189E) (P/S)

AIRLIE KATRINA U139E R/F (A1S U139E) (P)

AIRLIE QUAMBONE (A1S Q307E)
AIRLIE KATRINA R85E (A1S R85E) (P)

AIRLIE CUPID (A1S C154E) (P/S)

LT SILVER VALUE 2122 P 645761 (P)
AIRLIE PRINCESS Z258E (A1S Z258E)

DAM: AIRLIE CANDY F742E (A1S F742E) (P)

AIRLIE CANDY U271E (A1S U271E)

AIRLIE QUAMBONE (A1S Q307E)
AIRLIE CANDY R129E (A1S R129E)

Airlie Kawasaki is a polled red factor bull with length and good growth. He comes loaded with a little extra power.



June 2016 Australasian Charolais GROUP BREEDPLAN

	CED	CEDT	GL	BW	200	400	600	MCW	MK	SS	CW	EMA	RIB	RMP	RBY	IMF
EBV	-2.3	+0.6	-2.5	+0.6	+10	+15	+22	+25	+5	+0.3	+10	+0.8	+0.2	+0.6	-0.2	+0.4
Acc	35%	29%	41%	66%	56%	58%	55%	50%	39%	71%	46%	42%	42%	41%	43%	41%

Purchaser: Price:

Lot 47 AIRLIE K78E

Born: 20/7/2014 Ident: AISK78E Grade: Commercial

HARVIE REDEMPTION 36P MC286641 (P)

LT WYOMING WIND 4020 PLD M411450 (P)
HARVIE MS MOLSON 53M QPFC316280 (P)

SIRE: AIRLIE EXPONENTIAL (A1S E105E) (P)

AIRLIE KELLY Z168E (A1S Z168E)

AIRLIE WASSERMANN (A1S W121E)
AIRLIE NANETTE (A1S N61E)

AIRLIE CALIX C726E (P)

AIRLIE X91E
Airlie NANCY Y741E
AIRLIE CHAROLAIS COW
AIRLIE IONA Z608E

DAM: AIRLIE IONA G203E

AIRLIE IONA B185E

Airlie K78E is a polled, red factor bull that is from our heifer specialist Sire Airlie Exponential. A correct bull that is thick, correct and has growth.



Purchaser: Price:

Lot 48 AIRLIE KAYAK (R/F)

Born: 26/07/2014

Ident: A1S K51E

Grade: Aust. Purebred

Colour: Red factor

KALINKA EASY GOING (NKA E30E)

KALINKA ARIZONA (NKA A23E) (P)
KALINKA YANK (NKA Y17E)

SIRE: AIRLIE HORUS (A1S H27E) (P)

AIRLIE KATRINA C212E (A1S C212E)

AIRLIE WASSERMANN (A1S W121E)
AIRLIE KATRINA Z241E (A1S Z241E)

AIRLIE EXPONENTIAL (A1S E105E) (P)

HARVIE REDEMPTION 36P MC286641 (P)
AIRLIE KELLY Z168E (A1S Z168E)

DAM: AIRLIE BUNNIE G133E (A1S G133E)

AIRLIE BUNNIE E143E (A1S E143E)

AIRLIE VERSION (A1S V251E)
AIRLIE BUNNIE Z131E (A1S Z131E)

Airlie Kayak is a red factor bull and the only Airlie Horus calf to be offered for sale. A big bull that is long, thick and soft.



June 2016 Australasian Charolais GROUP BREEDPLAN

	CED	CEDT	GL	BW	200	400	600	MCW	MK	SS	CW	EMA	RIB	RMP	RBY	IMF
EBV	-2.5		-1.4	+1.4	+7	+18	+23	+26	+8	-0.3	+14	+0.7	-0.3	-0.5	+0.2	+0.2
Acc	27%		38%	64%	53%	56%	52%	47%	31%	69%	43%	39%	38%	37%	40%	37%

Purchaser:

Price:

Lot 49 AIRLIE KOALA (P)

Born: 27/07/2014

Ident: A1S K80E

Grade: Aust. Purebred

Colour: Red Factor

HARVIE REDEMPTION 36P MC286641 (OAC Z6641E) (P)

LT WYOMING WIND 4020 PLD M411450 (P)
HARVIE MS MOLSON 53M QPFC316280 (P)

SIRE: AIRLIE EXPONENTIAL (A1S E105E) (P)

AIRLIE KELLY Z168E (A1S Z168E)

AIRLIE WASSERMANN (A1S W121E)
AIRLIE NANETTE (A1S N61E)

AIRLIE DALGITE (A1S D57E) (P)

AIRLIE XYLEM (A1S X104E)
AIRLIE NANCY W166E (A1S W166E) (P)

DAM: AIRLIE KELLY G209E (A1S G209E) (P)

AIRLIE KELLY D140E (A1S D140E) (P)

AIRLIE ACADEMY (A1S A728F) (P)
AIRLIE KELLY V63E (A1S V63E)

Airlie Koala is a polled red factor bull from a super cow in the Airlie herd. A bull that expresses length, growth and softness.



June 2016 Australasian Charolais GROUP BREEDPLAN

	CED	CEDT	GL	BW	200	400	600	MCW	MK	SS	CW	EMA	RIB	RMP	RBY	IMF
EBV	+3.1	+3.5	-2.6	-0.1	+9	+20	+26	+19	+6	+1.3	+18	+1.5	+0.1	+0.3	+0.4	+0.0
Acc	35%	28%	44%	65%	45%	45%	46%	44%	35%	39%	35%	28%	30%	29%	29%	28%

Purchaser:

Price:

Lot 50 AIRLIE LATITUDE L19E (AI) (ET) (P)

Born: 01/04/2015

Ident: A1S L19E

Grade: Aust. Purebred

Colour: White

SVY PIONEER 402P MC288416 (PED -8416E)

LT RIO BLANCO 1234 P M620591 (P)
SVY JINGLES 153L FC303049 (PED -3049E)

SIRE: SVY PILGRIM PLD 655S MC303031 (P)

HFCC FRENCHKISS 919J PFC269584

RGP EUREKA 17E PMC179283 (P)
QCR FRENCHKISS 33F FC238979

AIRLIE CARMELO (A1S C150F)

JUDICAE 4594100551 (OAF P551F)
AIRLIE MARTINE (A1S V179F)

DAM: AIRLIE FRIESIA G726E (A1S G726E) (P)

AIRLIE FRIESIA B735E (A1S B735E) (P)

AIRLIE VAGABOND R/F (A1S V68E) (P)
AIRLIE FRIESIA (A1S V262E)

Airlie Latitude is a polled embryo calf from the Melbourne Royal Inter-breed champion cow. A long, tall bull filled with red meat. A good set of growth and carcass EBV's.



June 2016 Australasian Charolais GROUP BREEDPLAN

	CED	CEDT	GL	BW	200	400	600	MCW	MK	SS	CW	EMA	RIB	RMP	RBY	IMF
EBV	-4.6	-12.5	-2.6	+0.9	+16	+30	+42	+40	+6	+1.8	+24	+2.0	+0.7	+1.1	-0.1	+0.2
Acc	44%	40%	52%	59%	54%	54%	54%	49%	47%	50%	46%	38%	46%	46%	41%	38%

Purchaser:

Price:

Lot 51 AIRLIE LARRIKIN L18E (AI) (ET) (P)

Born: 30/03/2015 Ident: A1S L18E Grade: Aust. Purebred Colour: White

KEYS SPECIALIST 18U M761126 (OAU -1126E) (P)

KEYS TEN-ACIOUS 166S M724532 (P)

SIRE: KEYS ALL STATE 149X M792787 (P)

MISS KEY KRISTEN 63K F874318 (P)

MISS KEY MEG 2T F1079615 (OAU -9615E) (P)

KEYS CHUMLEY 8R M711391 (P)

MISS KEY MEG 4R F1027839 (P)

EXCALIBUR FMC423 M64617 (IAC E6084F)

VAINQUEUR V03 71 105 V03 (ZZF V3F)

DAM: AIRLIE REBECCA Z55F (A1S Z55F)

URSULE 5869351 (ZZF X677F)

AIRLIE REBECCA W26F (A1S W26F)

BROOKFIELD REAGEN R16 253/FF3442/80

AIRLIE REBECCA Q88F (A1S Q88F)

Airlie Larrikin is a polled bull from another awesome Full French donor cow in the Airlie herd. Here's a bull with real power but still maintains a clean front end.



June 2016 Australasian Charolais GROUP BREEDPLAN

	CED	CEDT	GL	BW	200	400	600	MCW	MK	SS	CW	EMA	RIB	RMP	RBY	IMF
EBV	+0.5	-1.4	-4.6	+0.5	+11	+26	+29	+29	+0	+0.8	+26	+2.4	-0.1	-0.8	+1.0	-0.4
Acc	40%	32%	52%	52%	49%	48%	47%	42%	38%	46%	39%	30%	35%	34%	32%	29%

Purchaser: Price:

Lot 52 AIRLIE LANDLUBBER (AI) (P)

Born: 23/03/2015 Ident: A1S L12E Grade: Aust. Purebred Colour: White

KEYS SPECIALIST 18U M761126 (OAU -1126E) (P)

KEYS TEN-ACIOUS 166S M724532 (P)

SIRE: KEYS ALL STATE 149X M792787 (P)

MISS KEY KRISTEN 63K F874318 (P)

MISS KEY MEG 2T F1079615 (OAU -9615E) (P)

KEYS CHUMLEY 8R M711391 (P)

MISS KEY MEG 4R F1027839 (P)

AIRLIE CARMELO (A1S C150F)

JUDICAEL 4594100551 (OAF P551F)

DAM: AIRLIE RUBY F743E (A1S F743E)

AIRLIE MARTINE (A1S V179F)

AIRLIE RUBY Z771E (A1S Z771E)

AIRLIE UNCANNY (A1S U258E) (P)

AIRLIE RUBY V127F (A1S V127F)

Airlie Landlubber is a polled bull by A.I sire Keys All State. A soft bull that is clean fronted and adequate muscle pattern to him.



June 2016 Australasian Charolais GROUP BREEDPLAN

	CED	CEDT	GL	BW	200	400	600	MCW	MK	SS	CW	EMA	RIB	RMP	RBY	IMF
EBV	-1.4		-4.5	+0.7	+12	+23	+29	+31	+3	+1.1	+23		+0.1	-0.5	+0.8	
Acc	34%		46%	49%	43%	43%	41%	36%	26%	39%	33%		28%	28%	26%	

Purchaser: Price:

Lot 53 AIRLIE LEGATO (AI) (ET) (P)

Born: 19/03/2015 Ident: A1S L5E Grade: Aust. Purebred Colour: White

KEYS SPECIALIST 18U M761126 (OAU -1126E) (P)

KEYS TEN-ACIOUS 166S M724532 (P)

SIRE: KEYS ALL STATE 149X M792787 (P)

MISS KEY KRISTEN 63K F874318 (P)

MISS KEY MEG 2T F1079615 (OAU -9615E) (P)

KEYS CHUMLEY 8R M711391 (P)

MISS KEY MEG 4R F1027839 (P)

EXCALIBUR FMC423 M64617 (IAC E6084F)

VAINQUEUR V03 71 105 V03 (ZZF V3F)

DAM: AIRLIE REBECCA Z55F (A1S Z55F)

URSULE 5869351 (ZZF X677F)

AIRLIE REBECCA W26F (A1S W26F)

BROOKFIELD REAGEN R16 253/FF3442/80

AIRLIE REBECCA Q88F (A1S Q88F)

Airlie Legato is a polled bull and full brother to lot 51 & 52. A thicker bull that is moderate, soft and correct. Still the same great cow line.



June 2016 Australasian Charolais GROUP BREEDPLAN

	CED	CEDT	GL	BW	200	400	600	MCW	MK	SS	CW	EMA	RIB	RMP	RBY	IMF
EBV	+1.5	-1.1	-4.7	+0.3	+10	+25	+28	+27	+0	+0.8	+25	+2.4	-0.1	-0.8	+1.0	-0.4
Acc	41%	32%	54%	66%	58%	55%	54%	50%	38%	46%	42%	30%	35%	34%	32%	29%

Purchaser: Price:

Lot 54 AIRLIE KNOWLEDGE

Born: 16/09/2014 Ident: A1S K726E Grade: Aust. Purebred Colour: White

EATONS LEADER 2233 P M652217 (OAU X2217E) (P)

EATONS CANDIDATE 9177 M613098

SIRE: AIRLIE FRECKLE (A1S F189E) (P/S)

EATONS RHODORA 9506 F868346

AIRLIE KATRINA U139E R/F (A1S U139E) (P)

AIRLIE QUAMBONE (A1S Q307E)

AIRLIE KATRINA R85E (A1S R85E) (P)

AIRLIE X91E (A1S X91E)

AIRLIE UNDER (A1S U233E)

DAM: AIRLIE GOLDSTAR C769E (A1S C769E)

AIRLIE OPAL T255E (A1S T255E) (P)

AIRLIE GOLDSTAR V108E (A1S V108E)

AIRLIE SUNDAY (A1S S14E)

PINNAROO GOLDSTAR 3 (BAA S75E)



June 2016 Australasian Charolais GROUP BREEDPLAN

	CED	CEDT	GL	BW	200	400	600	MCW	MK	SS	CW	EMA	RIB	RMP	RBY	IMF
EBV	-3.4	-3.8	-1.8	+1.5	+5	+2	+7	+9	+0	-0.8	+0	+0.6	+0.2	+0.4	+0.1	+0.2
Acc	36%	30%	42%	67%	57%	59%	55%	51%	40%	70%	46%	42%	42%	41%	43%	41%

Purchaser: Price:

Lot 55 AIRLIE KNOCKOUT

Born: 13/09/2014 Ident: A1S K721E Grade: Aust. Purebred Colour: White

EATONS LEADER 2233 P M652217 (OAU X2217E) (P)

EATONS CANDIDATE 9177 M613098

SIRE: AIRLIE FRECKLE (A1S F189E) (P/S)

EATONS RHODORA 9506 F868346

AIRLIE KATRINA U139E R/F (A1S U139E) (P)

AIRLIE QUAMBONE (A1S Q307E)

AIRLIE KATRINA R85E (A1S R85E) (P)

AIRLIE XERO (A1S X36D) (P)

TREGENNA TESTIMONY (ROG T46D)

DAM: AIRLIE ROSE B866E (A1S B866E)

AIRLIE NAPHTHA (A1S N256D) (P)

AIRLIE ROSE Y770E (A1S Y770E)

AIRLIE UNCANNY (A1S U258E) (P)

AIRLIE ROSE V233E (A1S V233E)



June 2016 Australasian Charolais GROUP BREEDPLAN

	CED	CEDT	GL	BW	200	400	600	MCW	MK	SS	CW	EMA	RIB	RMP	RBY	IMF
EBV	+0.2	+0.8	-1.8	+0.2	+3	+1	+5	+0	+2	-0.7	+2	+1.0	+0.1	+0.3	+0.1	+0.3
Acc	35%	30%	42%	66%	56%	58%	55%	50%	39%	70%	46%	42%	43%	41%	43%	41%

Purchaser: Price:

Landmark Livestock is at South Eastern Livestock Exchange.



From mid-August 2016, Landmark Yass will be offering a full drafting, penning and selling service, for cattle and sheep, at the newly completed SELX.

With this hands on approach, you can expect high quality, valued service, advice and market knowledge from the livestock team at Landmark Yass.



Sheep sales | Wednesday 9am Cattle sales | Thursday 8am Monthly Friday store cattle sales

LANDMARK YASS LIVESTOCK TEAM

Livestock Manager | Samuel Hunter 0429 020 141

Livestock Sales | Sam Sutton 0448 080 607

Landmark Yass | 02 6226 1777



Lot 56 TALIS LUKE (AI) (TW) (P)

Born: 02/04/2015 Ident: AISL951

KARINA BEN LOMOND (AI) (P)

KOANUI SPY T15 (IMP NZL) (P)
YALGOO CHERRYRIPE R43 (P)

SIRE: KARINA CHERRY Z8 (P)

KARINA MARSALA S18 (P)

LLANDILLO NASHVILLE (P)
KARINA MARSALA P61 (AI) (P)

MONREID STATESMAN (H)

BRAMBLE PARAMOUNT P206 (H)
MONREID JESSICA L (H)

DAM: TALIS TWILIGHT Z950 (AI) (H)

EURANGATUCK TWILIGHT 357 (H)

CHARVEL QUINELLA (AI) (ET) (H)
EURANGATUCK TWILIGHT 338 (H)



Talis Luke is polled bull by A.I sire Karina Cherry. A bull that displays length, thickness with a clean front.

July 2016 Angus Australia BREEDPLAN

Selection Indexes	Supermarket Index: +\$68				Grass Fed Steer Index: +\$64				Grain Fed Steer Index: +\$79				EU Index: +\$77				
	CED	CEDT	GL	BW	200	400	600	MCW	MLK	SS	DC	CWT	EMA	RIB	RMP	RBY	IMF
EBV	-2.6	-0.1	+0.9	+5.2	+30	+50	+65	+57	+12	+1.8	-	+36	+2.4	+0.5	+0.8	+0.2	+0.6
Acc	46%	42%	56%	55%	55%	54%	54%	51%	52%	52%	-	50%	45%	46%	48%	45%	47%

Purchaser: Price:

Lot 57 TALIS LUCIFER (AI) (P)

Born: 12/04/2015 Ident: AISL954

KARINA BEN LOMOND (AI) (P)

KOANUI SPY T15 (IMP NZL) (P)
YALGOO CHERRYRIPE R43 (P)

SIRE: KARINA CHERRY Z8 (P)

KARINA MARSALA S18 (P)

LLANDILLO NASHVILLE (P)
KARINA MARSALA P61 (AI) (P)

ACADEMY BABYLON T58 (H)

ACADEMY BABALON R27 ET (ET) (H)
ACADEMY CHERRY RIPE N2 ET4 (AI) (ET) (H)

DAM: TALIS TWILIGHT B954 (AI) (H)

EURANGATUCK TWILIGHT 357 (H)

CHARVEL QUINELLA (AI) (ET) (H)
EURANGATUCK TWILIGHT 338 (H)



Talis Lucifer is a polled bull also by Karina Cherry. A well made bull that is long and clean fronted.

July 2016 Angus Australia BREEDPLAN

Selection Indexes	Supermarket Index: +\$63				Grass Fed Steer Index: +\$58				Grain Fed Steer Index: +\$69				EU Index: +\$71				
	CED	CEDT	GL	BW	200	400	600	MCW	MLK	SS	DC	CWT	EMA	RIB	RMP	RBY	IMF
EBV	-1.6	+0.8	-1.0	+5.5	+30	+47	+62	+56	+11	+1.2	-	+32	+1.3	+0.5	+0.7	-0.2	+0.4
Acc	46%	43%	65%	56%	58%	55%	55%	51%	51%	50%	-	50%	44%	45%	47%	44%	46%

Purchaser: Price:

DESIGNS@DOGTRAP

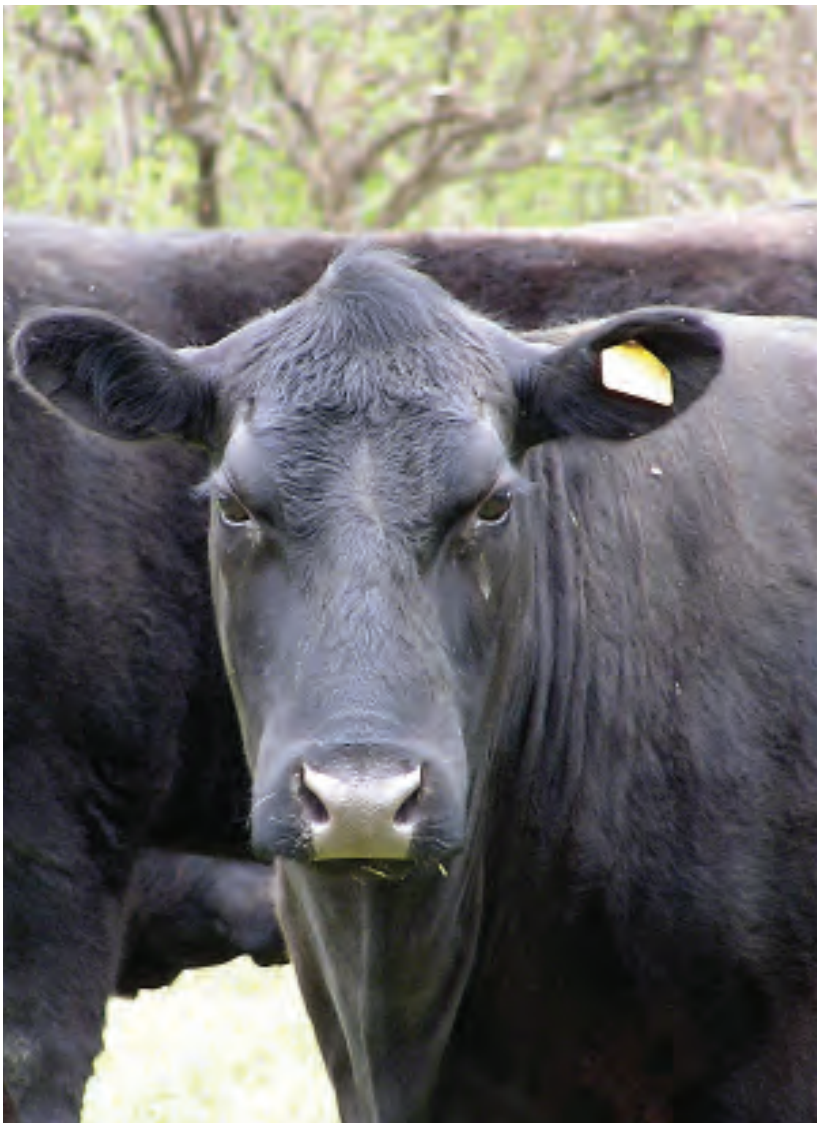
SALE CATALOGUES
WEBSITES
FLYERS
BROCHURES
ADVERTISEMENTS
eNEWSLETTERS
INVITATIONS
LOGOS



DESIGNS@DOGTRAP

Ph: 0411 242 001
E: diana@designsatdogtrap.com.au

www.designsatdogtrap.com.au



**QUAYLE
MILLING**

Supplier of Quality Animal Nutrition Needs.

Manufacturer of excellent ruminant feeds
from quality ingredients

- Including sheep, beef and dairy cattle pellets
- We can provide nutritional support
- We offer a full range of standard and custom rations

For more information Contact Quayle Milling on
Phone: (02) 6382 1666
Address: 133 Lovell St, YOUNG, NSW 2594



AuctionsPlus



Can't make the sale?

Log onto AuctionsPlus and bid on your phone, tablet or computer

Contact AuctionsPlus on (02) 9262 4222

www.auctionsplus.com.au

Notes::



Buyers Instructions:

NO VERBAL INSTRUCTIONS CAN BE ACCEPTED

Name: **PIC:**

Address:
.....
.....

Lots Purchased:	Lot No.	Lot No.
	Lot No.	Lot No.
	Lot No.	Lot No.
	Lot No.	Lot No.
	Lot No.	Lot No.

Consign to:
.....

Feed & bedding requirements:
.....

Insure for (state period):

Invoice to:

Transfer Required: Yes/No Transfer To:

Signature of Buyer:

Date:

Out & About:

Champion Lightweight
Carcase Sydney 2014

SIRE AIRLIE DALGITE



TALIS GAS GAS G337

Grand Champion Bull Sydney 2014



AIRLIE HORUS (P)

Senior Champion Bull Sydney 2014



AIRLIE REBECCA G10F

Supreme Matron of Australia & Interbreed Pair, Brisbane Royal 2013



Bull Sale
Wednesday 10th
August - 1pm
'North Logan',
Cowra NSW



www.mclachlan.com.au