



# WAKEFIELD

[www.wakefieldcharolais.com.au](http://www.wakefieldcharolais.com.au)



Lot 20  
Wakefield Jinx J537



Lot 4 Wakefield King Pin K813E



Lot 10 Wakefield Keen K823E



# 11TH ANNUAL CHAROLAIS & ANGUS BULL SALE

Friday 12th August 2016 at 1pm  
"Wakefield", Wollomombi, NSW

Approximately 55km east of Armidale on the Waterfall Way  
141kms south west of Grafton 35km west of Ebor

**39 CHAROLAIS BULLS**  
(INCLUDING 9 HOMOZYGOUS POLLED BULLS)  
**17 ANGUS BULLS**  
**4 CHAROLAIS SHORTHORN COMPOSITE BULLS**  
**3 CHAROLAIS ANGUS BULLS**

Greg & Jenny Frizell "Wakefield" Wollomombi via Armidale  
phone 02 6778 1346 fax 02 6778 1205 email [wakefieldstud@bigpond.com](mailto:wakefieldstud@bigpond.com)  
website [www.wakefieldcharolais.com.au](http://www.wakefieldcharolais.com.au)



INTERFACED FOR THE 2016 BULL SALE  
FOR DETAILS, SEE THE "SALE INFORMATION" PAGE



SELLING AGENTS



**MIDCOAST**  
RURAL • AGENCIES  
Stock & Station and Real Estate Agents

Mark Haywood – Midcoast Rural Agencies  
phone 0437 286 494 office 02 6562 5131

**RAY DONOVAN**  
STOCK & STATION AGENTS Pty Limited

Ray Donovan Stock & Station  
phone 0428 918 971 office 02 6643 4411



### **We are pleased to welcome you to the eleventh annual Wakefield sale.**

At the time of writing this Sale Foreword it seems that the widespread drought conditions are easing and El-Nino is officially over. Seasonal conditions over the preceding twelve months have varied widely with some areas reporting the best season for many years and others experiencing record rainfall deficits.

At Wakefield we had a very dry late summer and autumn resulting in the lowest feed levels leading into winter we have ever seen and are supplementing a large proportion of our herd. Luckily our cattle numbers are still at normal numbers as restocking at current prices would be a very expensive exercise, yet with the national beef herd predicted to reach its lowest level next year there should be little chance of major price reductions in the foreseeable future. More likely is the prospect of continued price rises into the spring as restocker demand drives the market higher – it will be very interesting to see what happens in the next six months. Despite the price rises, we are still only catching up in real terms to where we were many years ago and much of the extra income will be needed to be used on infrastructure, fertiliser, loan reductions, restocking and genetic improvement. Almost certainly further down the track we should see an increase in the prices paid for land suitable for cattle production.

On the family front, our eldest daughter Lucy, an agronomist, continues to help us on the farm and with an increase in land and cattle her input has been invaluable, she is a great asset to our business. Our youngest daughter Claire is completing 5th year Vet Science in Wagga and travelling around doing clinic pracs for the next 12 months. Jenny and I have enjoyed the opportunity to see quite a lot of baby calves and weaners sired by Wakefield bulls lately and are very proud of what is happening over a wide range of environments and cow breeds.

Over the last 12 months, once again, there have been many outstanding results in feedlots, sales, abattoirs and stud bull auctions from stock sired by Wakefield bulls. The overwhelming comments have been how well the bulls are performing under tough conditions and the great growth and softness of their progeny.

We would like to thank our bull buyers for their loyalty and it appears that the persistence shown by the beef industry is finally paying off.

The Wakefield bull breeding program is tailored to produce calves which will fit the specifications of a wide range of markets and remember we are a commercial operation as well and have a good understanding of what is required. We appreciate feedback from our clients on how our bulls are performing as it helps us to make more informed breeding decisions. For the first time at this sale we have horn/poled tested a number of our Charolais bulls and have identified eight homozygous polled bulls (all progeny should be polled regardless of cow status) in the catalogue. We are planning to test a number of both females and bulls over the next twelve months.



Once again, 2016 will see the majority of our purebred calves born by AI and embryo transfer with the emphasis on breeding tough cattle that are at the top of the breed for dollars earned. The bulls have been prepared on a mainly silage ration with a light grain supplementation and will be in a forward but not fat condition. We do not aim to present 1000kg bulls for sale but prefer to produce bulls that can be put straight to work. Quite a few of our bulls are jumped directly off the truck straight into client's cow herds!

We look forward to seeing you on Friday the 12th of August at our "all weather" sale complex. Complimentary lunch will be available prior to the sale, which commences at 1pm. Remember if you would like any more information we are only a phone call away and on the day, pack a jumper and bring your catalogue!



# STUD HISTORY

This year we celebrate 156 years of continuous cattle breeding and Wakefield has been held in the same family since 1860. Wakefield began breeding Charolais in 1970 when the breed was first introduced into Australia and used most of the early French bulls in grading up programs until currently a herd of 450 Charolais, Charolais composite and Angus females are maintained. Through the years there have been selected introductions of stud Charolais females, purchase of embryos, regular artificial insemination and embryo transfer programs. We have been breeding Angus for our composite program for many years and made the decision to join our grandparent lines to Angus to produce purebred. In combination with upgrading these cows to APR status and introduction of industry leading embryos the Angus herd is growing rapidly.

Our emphasis is to produce bulls to increase profit in our client's herds and the calves born over the next few years will be sired by a smaller number of select sires. Last year we imported semen from two promising Canadian Charolais sires, PCC Spartan and PCC Sudden Impact. We will have progeny from these two sires in our 2017 sale. Wakefield has exclusive marketing rights to these two sires. We think that Canadian, French and Australian Charolais sires provide the balance of growth and carcass characteristics we require. Less reliance will be placed on American Charolais sires, which in general are lacking top end growth and uniformity. Wakefield was amongst the pioneers in the use of Charolais Composite bulls and it is pleasing to see Charolais being recognised as the "breed of choice" in crossbreeding programs. We are finding that many purebred herds are using composite bulls to produce a three-way cross and cross-bred herds are coming back to purebred Charolais bulls to stabilise their genetics.

A lot of herds are using composite bulls as a stepping stone into the Charolais breed and quickly realise the financial benefits of crossbreeding.

Our aim is to breed moderate birth weight Charolais while maintaining good growth and carcass characteristics. Wakefield is a Group Breedplan member so EBVs are available on all purebred bulls and our herd is based around selecting for commercially important traits, such as yield which will become increasingly important under new payment systems. We are bull breeders not bull feeders. Structural correctness is very important to us and we like to have feedback from our clients to make sure the bulls are performing well under all conditions. We are proud of our sale bulls and can recommend them to you as herd improvers and they can be purchased in the knowledge that they will perform well under commercial conditions.



From left: Claire, Greg, Lucy and Jenny Frizell



## REFRESHMENTS

Complimentary lunch and refreshments will be provided by Wakefield.

## INSPECTION

Inspection can be made prior to sale day by appointment with the agents or the vendors. Bulls will be available for inspection on sale day from 10am.

## TREATMENT SCHEDULE BULLS

**20/6/2016** 8 in 1 booster (booster required yearly)

Lepto vaccination

Pestivirus vaccination

Vibriosis vaccination

Three-day sickness vaccination

Multimin injection

Pour on Cydectin

Exifluka oral

**29/6/2016** Demize pour on

**20/7/2016** Lepto booster (booster required yearly)

Pestivirus booster (booster required yearly)

Vibriosis vaccination (booster required yearly)

Three-day sickness booster (booster required yearly)

Note all pastures have been treated with Selcote Ultra

## QUALITY CONTROL

Pestivirus tested negative (hair sample)

Semen tested

Johnes Status – Protected Zone

EU Accredited herd

Tested by Bovine Scanning Services for

- Eye muscle area

- Rib fat

- Rump fat

- IMF

- Scrotal circumference

Angus bulls clear of genetic conditions AM, NH,CA and DD

## GUARANTEE

In the unlikely event of infertility, provided it is not caused by injury, stress or disease contracted post sale, we will endeavour to supply a satisfactory replacement if available or issue a credit to equal the purchase price minus the salvage value to be used at future Wakefield sales.

The purchaser will provide a veterinarian's certificate within six months of the purchase date.

## TRANSPORT

Carriers will be attendance at the sale. We take a keen interest in arranging the most favourable transport for your purchases. This year we are offering free freight from Wakefield to Inverell, Grafton and Kempsey saleyards, with carrier of our choice. Delivery arrangements are to be made in writing on the buyers instruction form provided in the back of this catalogue.

## STUD TRANSFERS

All registered animals are eligible for transfer. For transfer of animals purchasers must be members of the relevant breed society.

## REBATE

2% rebate available to outside agents accompanying potential purchasers and settling for purchases within 7 days of receipt of invoice.

## NOTICE TO BUYERS

All lots will be sold subject to the usual terms and conditions governing auction sales. Phone service is available at sale complex. Please contact the vendors or your preferred agent on sale day to arrange phone hook-up. This year's sale is also interfaced with AuctionsPlus.

## CARING FOR YOUR BULL

This year's sale bulls range from 16 – 39 months of age and will need to be managed accordingly. There are many advantages in buying younger bulls. You see the bull closer to the weights you are likely to be marketing your cattle at. You will get an extra year of use from your bull and most importantly you are getting the 'pick of the crop'. In our experience the best bulls will be good at all stages of growth and not only when they are mature. You can be confident that a young bull with eye appeal will only get better! But younger bulls are still growing quickly and need enough feed to maintain their growth pattern while settling your cows. Younger bulls can be introduced into paddocks with older bulls but remember he will be on the bottom of the pecking order and will need room to avoid the others. His nutritional requirements will be greater than a mature bull so make sure he has adequate feed. Our bulls are used to running in a mob and will arrive in a strange environment at the purchaser's property. Unload him and if possible make sure he has a steer or cow as a companion straight away. Our cattle are mustered on motorbikes and are handled gently but firmly. The bulls have been trained to respect electric fencing.



## This year's WAKEFIELD BULL SALE will be interfaced with AuctionsPlus.

This sale is live online in real time, but will be interfaced with a physical auction that is being controlled by an auctioneer. A hand-held wireless connected computer is used to bring the onsite prices to the internet, for the remotely connected bidders to observe. These bidders can place a bid on their computer and the result is immediately transferred to the person onsite, who the wireless device will raise that bid with the auctioneer.

### Important information

Bidding is only available to registered AuctionsPlus users.

You must register **at least 24 hrs prior to the sale** with AuctionsPlus Sydney on their website

**www.auctionsplus.com.au**

For further information about AuctionsPlus,

please contact Mark Haywood on 0437 286 494

or email mark.haywood@midcoastruralagencies.com.au



Wakefield has exclusive Australian semen rights to the Canadian sire **PCC Sudden Impact**. The first calves will be available for sale next year.



Wakefield has exclusive Australian semen rights to the Canadian sire **PCC Spartan**. The first calves will be available for sale next year.

# UNDERSTANDING ESTIMATED BREEDING VALUES (EBVs)



## Charolais BREEDPLAN EBV Explanations EBVs

An animal's breeding value is its genetic merit, half of which will be passed on to its progeny. While we will never know the exact breeding value, for performance traits it is possible to make good estimates. These estimates are called Estimated Breeding Values (EBVs).

In the calculation of EBVs, the performance of individual animals within a contemporary group is directly compared to the average of other animals in that group. A contemporary group consists of animals of the same sex and age class within a herd, run under the same management conditions and treated equally. Indirect comparisons are made between animals reared in different contemporary groups, through the use of pedigree links between the groups.

EBVs are expressed in the units of measurement for each particular trait. They are shown as +ive or -ive differences between an individual animal's genetics difference and the genetic base to which the animal is compared. For example, a bull with an EBV of +50 kg for 600-Day Weight is estimated to have genetic merit 50kg above the breed base of 0kg. Since the breed base is set to an historical benchmark, the average EBVs of animals in each year drop has changed over time as a result of genetic progress within the breed.

The absolute value of any EBV is not critical, but rather the differences in EBVs between animals. Particular animals should be viewed as being "above or below breed average" for a particular trait.

Whilst EBVs provide the best basis for the comparison of the genetic merit of animals reared in different environments and management conditions, they can only be used to compare animals analysed within the same analysis. Consequently, Charolais BREEDPLAN EBVs cannot be validly compared with EBVs for any other breed.

Although EBVs provide an estimate of an animal's genetic merit for a range of production traits, they do not provide information for all of the traits that must be considered during selection of functional animals. In all situations, EBVs should be used in conjunction with visual assessment for other traits of importance (such as structural soundness, temperament, fertility etc). A recommended practice is to firstly select breeding stock based on EBVs and to then select from this group to ensure that the final selections are otherwise acceptable.

EBVs are published for a range of traits covering fertility, calving ease, milking ability, growth, carcass merit and docility. When using EBVs to assist in selection decisions it is important to achieve a balance between the different groups of traits and to place emphasis on those traits that are important to the particular herd, markets and environment. One of the advantages of having a comprehensive range of EBVs is that it is possible to avoid extremes in particular traits and select for animals with balanced overall performance.

**Calving Ease EBVs (%)** are based on calving difficulty scores, birth weights and gestation length information. More positive EBVs are favourable and indicate easier calving.

**CE % Dir** = Direct Calving Ease – The EBV for direct calving ease indicates the influence of the sire on calving ease in purebred females calving at two years of age.

**CE % Daughters** = Daughters' Calving Ease – The EBV for daughters' calving ease indicates how easily that sire's daughters will calve at two years of age.

**Gestation Length EBV (days)** is an estimate of the time from conception to the birth of the calf and is based on Artificial Insemination and hand mating records. Lower (negative) Gestation Length EBVs indicate shorter gestation length and therefore easier calving and increased growth after birth.

**Birth Weight EBV (kg)** is based on the measured birth weight of progeny, adjusted for dam age. The lower the value the lighter the calf at birth and the lower the likelihood of a difficult birth. This is particularly important when selecting sires for use over heifers.

**200-Day Growth EBV (kg)** is calculated from the weight of progeny taken between 80 and 300 days of age. Values are adjusted to 200 days and for age of dam. This EBV is the best single estimate of an animal's genetic merit for growth to early ages.

**400-Day Weight EBV (kg)** is calculated from the weight of progeny taken between 301 and 500 days of age, adjusted to 400 days and for age of dam. This EBV is the best single estimate of an animal's genetic merit for yearling weight.

**600-Day Weight EBV (kg)** is calculated from the weight of progeny taken between 501 and 900 days of age, adjusted to 600 days and for age of dam. This EBV is the best single estimate of an animal's genetic merit for growth beyond yearling age.

**Mature Cow Weight EBV (kg)** is based on the cow weight when the calf is weighed for weaning, adjusted to 5 years of age. This EBV is an estimate of the genetic difference in cow weight at 5 years of age and is an indicator of growth at later ages and potential feed maintenance requirements of the females in the breeding herd. Steer breeders wishing to grow animals out to a larger weight may also use the Mature Cow Weight EBV.

**Milk EBV (kg)** is an estimate of an animal's milking ability. For sires, this EBV indicates the effect of the daughter's milking ability, inherited from the sire, on the 200-day weights of her calves. For dams, it indicates her milking ability.

**Scrotal Size EBV (cm)** is calculated from the circumference of the scrotum taken between 300 and 700 days of age and adjusted to 400 days of age. This EBV is an estimate of an animal's genetic merit for scrotal size. There is also a small negative correlation with age of puberty in female progeny and therefore selection for increased scrotal size will result in reduced age at calving of female progeny.

**Carcass Weight EBV (kg)** is based on abattoir carcass records and is an indicator of the genetic differences in carcass weight at the standard age of 650 days.





# UNDERSTANDING ESTIMATED BREEDING VALUES (EBVs)

**Eye Muscle Area EBV** (sq cm) is calculated from measurements from live animal ultrasound scans and from abattoir carcass data, adjusted to a standard 300 kg carcass. This EBV estimates genetic differences in eye muscle area at the 12/13th rib site of a 300 kg dressed carcass. More positive EBVs indicate better muscling on animals. Sires with relatively higher Eye Muscle Area EBVs are expected to produce better muscled and higher percentage yielding progeny at the same carcass weight than will sires with lower Eye Muscle Area EBVs.

**Rib Fat and Rump Fat EBVs** (mm) are calculated from measurements of subcutaneous fat depth at the 12/13 rib site and the P8 rump site (from live animal ultrasound scans and from abattoir carcasses) and are adjusted to a standard 300 kg carcass. These EBVs are indicators of the genetic differences in fat distribution on a standard 300 kg carcass. Sires with low, or negative, fat EBVs are expected to produce leaner progeny at any particular carcass weight than will sires with higher EBVs.

**Retail Beef Yield EBV** (%) indicates genetic differences between animals for retail yield percentage in a standard 300 kg carcass. Sires with larger EBVs are expected to produce progeny with higher yielding carcasses.

**Intramuscular Fat EBV** (%) is an estimate of the genetic difference in the percentage of intramuscular fat (marbling) at the 12/13th rib site in a 300 kg carcass. Depending on market targets, larger more positive values are generally more favourable.

## Selection Indices

Charolais selection indices are calculated for three market specifications, namely, Domestic, Export and Northern Terminal. Index values are reported as EBVs, in units of relative earning capacity (\$'s) for a given market. They reflect both the short-term profit generated by a sire through the sale of his progeny, and the longer-term profit generated by his daughters in a self-replacing cow herd. A selection index combines the EBVs with economic information (costs and returns) for specific market and production systems to rank animals based on relative profit values. Note that different types of animals can give similar profit values, so consideration should be given to both the index and the component EBVs when selecting animals for a particular production system. More information is available on selecting animals using a selection index. The Index values are derived using BreedObject technology. More information is available from the BreedObject web site.

**Domestic Index** (\$) – Estimates the genetic differences between animals in net profitability per cow joined for an example commercial herd with a British cow base (eg Angus) targeting grass-finished production for the domestic trade. This Index assumes pasture grown & finished steers weighing 430 kg (240 kg HSCW and 6 mm P8 fat depth) at 12 months. Daughters are retained or sold for breeding therefore maternal traits are of importance. In response to industry feedback, positive emphasis has been placed on finishing ability.

**Export Index** (\$) – Estimates the genetic differences between animals in net profitability per cow joined for an example commercial herd with a British cow base (eg Angus) targeting the production of steers for export markets. This Index assumes pasture grown & finished steers weighing 700 kg (380 kg HSCW and 9 mm P8 fat depth) at 29 months. Daughters are retained or sold for breeding therefore maternal traits are of importance. In response to industry feedback, positive emphasis has been placed on finishing ability.

**Northern Terminal Index** (\$) – Estimates the genetic differences between animals in net profitability per cow joined for an example commercial herd in Northern Australia (ie Brahman cows) targeting the production of grass finished steers for the Jap Ox market. Steers are sold direct to slaughter at 630 kg (345 kg HSCW and 5 mm P8 fat depth) at 28 months. All progeny are slaughtered. In response to industry feedback positive emphasis has been placed on finishing ability.

## Accuracy

**Accuracy** (%) is based on the amount of performance information available on the animal and its close relatives – particularly the number of progeny analysed. Accuracy is also based on the heritability of the trait and the genetic correlations with other recorded traits. Hence accuracy indicates the “confidence level” of the EBV. The higher the accuracy value the lower the likelihood of change in the animal’s EBV as more information is analysed for that animal or its relatives. Even though an EBV with a low accuracy may change in the future, it is still the best estimate of an animal’s genetic merit for that trait. As more information becomes available, an EBV is just as likely to increase in value, as it is to decrease. Accuracy values range from 0-99%. The following guide is given for interpreting accuracy:

## Accuracy range Interpretation

### less than 50%

Low accuracy. EBVs are preliminary and could change substantially as more performance information becomes available.

### 50-74%

Medium accuracy, usually based on the animal’s own records and pedigree.

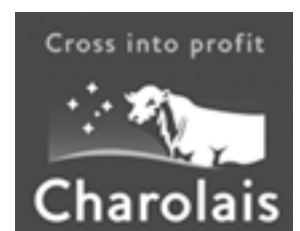
### 75-90%

Medium-high accuracy. Some progeny information included. EBVs may change with addition of more progeny data.

### more than 90%

High accuracy estimate of the animal’s true breeding value. As a rule, animals should be compared on EBVs regardless of accuracy. However, where two animals have similar EBVs the one with higher accuracy could be the safer choice, assuming other factors are equal.

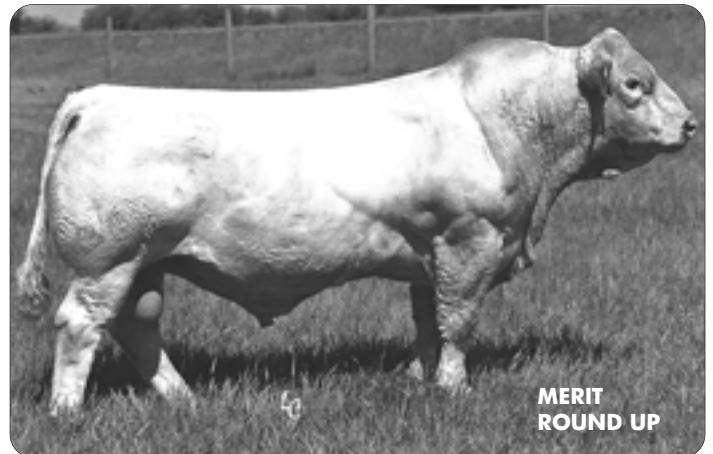
For further information, contact the  
**Charolais Society** (02 6771 1666) or  
**Charolais BREEDPLAN** (02 6773 3059)





## Merit Round Up

Merit Round Up was selected for use as an outcross sire and his progeny have proven to be very correct on a substantial frame with exceptional eye appeal. They are exhibiting tremendous growth with wonderful temperaments. This bull is homozygous polled producing easy fleshing calves that are born easily. Six sons sell today.



## Wakefield Hornblower

This son of Pinay has been used extensively in the Wakefield herd for his calving ease, growth and breed leading eye muscle area. Pinay's daughters have tremendous calving ease and are proving very valuable in our herd. Hornblower has given us sons with wonderful temperaments, smooth muscle patterns and tremendous eye appeal. Six sons sell today.



## Ascot Eldorado

Eldorado is an Australian bred homozygous polled red factor bull that is breeding consistent progeny with excellent growth, scrotal and eye muscle area. His dam Gobongo Isabella was a leading matron in the Gobongo herd. Three sons sell today.



## G.Bros Thin Red Line

This red factor Canadian bull has been used because he is homozygous polled and has good muscling and finishing ability. The bull is an outcross sire for the Charolais breed. The progeny are soft, easy fleshing with eye appeal. Two sons sell today.





# CHAROLAIS REFERENCE SIRES

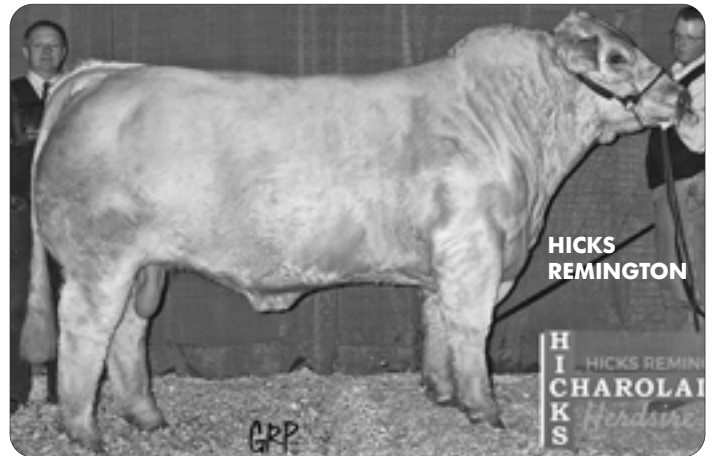
## Advance XR8

XR8 is a powerful red factor sire that is producing high growth, phenotypically correct progeny. He is a trait leader for all growth traits. The daughters have wonderful udders and milking ability on good frames. Three sons sell today.



## Hicks Remington

A Homozygous polled Canadian sire that is producing progeny with style and structure. The calves are easily born and have great finishing ability. We have used Hicks Remington for his excellent calving ease and he is throwing uniform progeny with great phenotype. Ten sons sell today.



*Can't make the sale?*

Log onto AuctionsPlus and bid on your phone, tablet or computer

Contact AuctionsPlus on (02) 9262 4222

[www.auctionsplus.com.au](http://www.auctionsplus.com.au)

## Millah Murrah Equator D78

Millah Murrah Equator D78 has been used in our herd as he is a trait leader for 200, 400 and 600 day growth, docility, retail beef yield and more importantly gestation length. The sons of D78 are pleasing to the eye, soft easy doing bulls with excellent frames and are exhibiting the growth and capacity of their father. Three sons to sell.



MILLAR  
MURRAH  
EQUATOR D78

## Ardrossan Equator A241

Ardrossan Equator was the number one AI sire in Australia and we think he'll be around for a long time yet! The progeny from A241 are muscular and correct while maintaining natural finishing ability. Females are breeding well in our herd and the bulls have wonderful phenotypes with good temperaments. Three sons to sell.



ARDROSSAN  
EQUATOR A241

## SAV Thunderbird

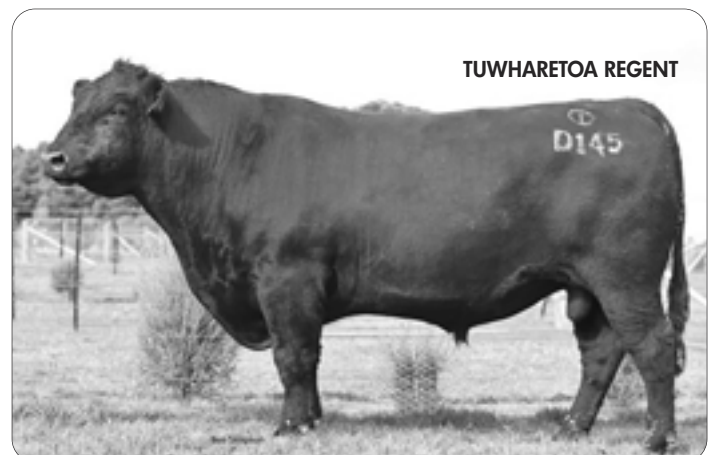
SAV Thunderbird is a curve-bender in the Angus breed. We've used in the herd very successfully as his calving ease is exceptional. The progeny are very stylish with plenty of punch and growth. Docility is very good. Five sons to sell.



SAV THUNDERBIRD

## Tuwharetoa Regent

Tuwharetoa Regent has been used for his growth, phenotype, capacity and length of body. The progeny have a wonderful length and depth of body with plenty of muscle on a bigger frame. Two sons to sell.



TUWHARETOA REGENT





# RAY DONOVAN

STOCK & STATION AGENTS Pty Limited

**Are your 100% locally owned family  
business in Grafton**

## **We conduct**

- Live weight cattle sales every Tuesday
- Store cattle sales third Thursday of every month
- Annual Stud sales
- Paddock sales, over the hook & direct to feedlot sales
- Regular horse sales
- Clearing and general auction sales
- Rural property and Real Estate sales

*Sell with the progressive local team who strive to keep  
competition alive*

*Offering maximum returns on all your Livestock sales*

For friendly competent service and advice  
see Ray, Helen, Mitch and their staff at

**50 Armidale Street, SOUTH GRAFTON**

or by telephoning

**02 66434411**

Ray: 0428 918 971      Mitch: 0428 470 132

**[www.raydonovan.com.au](http://www.raydonovan.com.au)**

1

**WAKEFIELD KEYNOTE**

BORN: 10/05/2014 IDENT: BIS K810E COLOUR: White

PINAY 8552394134 (OAF U4134F)

IMPAIR 1893102983 (OAF N189F)  
MARY 8596100049 (OAF R8596F)

**SIRE: WAKEFIELD HORNBLOWER (BIS H203E) (P)**

WAKEFIELD AMAZE 3 (BIS C154E) (P)

WCR SIR IMPRESSIVE 8191P M477998 (OAU T7998E) (P)  
WAKEFIELD AMAZE (BIS A820E)

HICKS REMINGTON 31U PMC321438 (OAC D1438E) (P)

WESC HICKS REVOLVER 14R PMC295963 (PED -5963E)  
JWK RUBY K003 PFC332642 (PED -2642E)

**DAM: WAKEFIELD EMPRESS 2 (BIS H232E) (P)**

WAKEFIELD EMPRESS (BIS E406E)

EXCALIBUR FMC423 M64617 (JAC E6084F)  
WAKEFIELD BLONDIE (BIS B903D) (P)

Index	\$Value
Domestic	+\$41
Export	+\$57
Terminal	+\$32

June 2016 Australian Charolais GROUP BREEDPLAN

	CE Dir	CE Dtr	GL	BW	200	400	600	MCW	MILK	SS	CWT	EMA	RIB	Rump	R3Y	IMF
EBV	+6.8	+0.1	-4.8	+0.1	+20	+37	+50	+58	+6	+0.9	+33	+2.8	+0.1	-0.3	+0.6	+0.3
Acc	39%	34%	53%	58%	55%	57%	63%	53%	37%	46%	50%	43%	45%	43%	44%	41%

**Notes:** Keynote exudes a real presence. He has enormous potential to make a stud sire with his outstanding phenotype, smooth muscle pattern and excellent conformation. His sire Hornblower was a tremendous Pinay son, a real curve bender, which has bred a consistent line of sons and daughters with no variables! A bull that has excellent calving ease with exceptional growth traits. **Top 5% for 200 and 400 day growth, top 10% for EMA, 600 day growth and export index and top 15% for gestation length.**

Purchaser.....Price \$.....

2

**WAKEFIELD KEYSTONE (AI) (P) (R/F)**

BORN: 07/05/2014 IDENT: BIS K807E COLOUR: Red factor

JMB DATELINE 754T PMC310942 (PED -3109E)

BXB DATELINE SON 65R PMC303803 (PED -3803E)  
JMB MARTHA 234M PFC316449 (PED -6449E)

**SIRE: G. BROS THIN RED LINE 527W MC326475 (OAC E6475E) (P)**

G BROS TULIP 101T PFC359984 (PED -9984E)

SVS MASTERCARD 2M QPMC269158 (PED -9158E)  
POOLEDALE MISS CHAMA 62G PFC240875 (PED -2408E)

PINAY 8552394134 (OAF U4134F)

IMPAIR 1893102983 (OAF N189F)  
MARY 8596100049 (OAF R8596F)

**DAM: WAKEFIELD BEAUTY 2 (BIS E444E) (P)**

WAKEFIELD BEAUTY (BIS B909D) (P)

FERNVALE PRIME MOVER (FEN P25E)  
WAKEFIELD YOU BET (BIS Y538C) (P)

Index	\$Value
Domestic	+\$24
Export	+\$28
Terminal	+\$14

June 2016 Australian Charolais GROUP BREEDPLAN

	CE Dir	CE Dtr	GL	BW	200	400	600	MCW	MILK	SS	CWT	EMA	RIB	Rump	R3Y	IMF
EBV	-0.9	+2.9	-6.6	+0.3	+11	+27	+26	+30	+4	+2.1	+23	+2.0	+0.7	+0.3	+0.3	-0.4
Acc	43%	33%	74%	71%	61%	62%	67%	58%	39%	52%	53%	46%	49%	48%	43%	45%

**Notes:** Keystone is a red factor son of AI sire G.Bros Thin Red Line out of a very stylish polled Pinay Dam. He exhibits wonderful muscle, with a tremendous top line and a good temperament. Keystone has a softness which suggests he'd be an ideal herd improver for all carcass traits especially the muscle component. **Top 5% for gestation length and top 20% for rib fat.**

Purchaser.....Price \$.....

3

**WAKEFIELD KNOCKOUT (AI) (P)**

BORN: 14/05/2014 IDENT: BIS K812E COLOUR: Cream

CS PLD JUNCTION 4J MC228742 (OAC U8742E) (P)

ROGC KALAMAZOO 387F PMC191257 (PED -1257E) (P)  
CS EXCLUSIVE'S GUEST 5G EFC242100 (PED -2100E)

**SIRE: ASCOT ELDORADO (JAJ E14E) (P)**

GOBONGO ISABELLA D10E (GO D10E) (P)

HARVIE REDEMPTION 36P MC286641 (OAC 26641E) (P)  
GOBONGO ISABELLA (GO T48E)

PINAY 8552394134 (OAF U4134F)

IMPAIR 1893102983 (OAF N189F)  
MARY 8596100049 (OAF R8596F)

**DAM: WAKEFIELD ALANNA 19 (BIS E492E) (P)**

WAKEFIELD ALANNA (BIS A803E) (P)

CHARNELLE TENNESSEE R/F (GKA T83E) (P)  
MOUNT WILLIAM V92E (BS V92E)

Index	\$Value
Domestic	+\$30
Export	+\$40
Terminal	+\$28

June 2016 Australian Charolais GROUP BREEDPLAN

	CE Dir	CE Dtr	GL	BW	200	400	600	MCW	MILK	SS	CWT	EMA	RIB	Rump	R3Y	IMF
EBV	-2.2	+1.7	-3.6	+0.8	+20	+39	+54	+46	+7	+1.4	+38	+4.4	-0.7	-0.9	+2.2	-0.3
Acc	47%	41%	74%	72%	63%	64%	68%	60%	47%	54%	56%	48%	53%	52%	59%	47%

**Notes:** An eye catching young polled, Eldorado son to start the sale off this year. A bull that could be used in any commercial or stud operation. Outstanding growth, a smooth muscle pattern and an excellent temperament and top line make this young sire hard to overlook. His dam Alanna 19 has been a very reliable breeder and produced excellent lines consistently in the Wakefield herd. Well worth your consideration. **Top 1% for eye muscle area and top 5% for 200, 400 and 600 day growth.**

Purchaser.....Price \$.....

4

### WAKEFIELD KING PIN (AI) (P) (R/F)

BORN: 14/05/2014 IDENT: BIS K813E COLOUR: Red factor

CS PLD JUNCTION 4J MC228742 (OAC U8742E) (P)  
**SIRE: ASCOT ELDORADO (JAJ E14E) (P)**  
 GOBONGO ISABELLA D10E (GO D10E) (P)  
 BALDRIDGE FASTTRACK 82E M447863 (OAU R82E) (P)  
**DAM: BOONGATTI CLASSIQUE 2 E82 (BOO E82E) (P)**  
 BOONGATTI CLASSIQUE (BOO C5E)

RDGC KALAMAZOO 387F PMC191257 (PED -1257E) (P)  
 CS EXCLUSIVE'S GUEST 5G EFC242100 (PED -2100E)  
 HARVIE REDEMPTION 36P MC286641 (OAC 26641E) (P)  
 GOBONGO ISABELLA (GO T48E)  
 LT UNLIMITED EASE 9108 M 301930 (OAU J9108E)  
 BALDRIDGE SWEETHEART 53D F711331 (PED -1331E) (P)  
 LAUREL 7195122401 (OAF Q7195F)  
 POLLYJOH WINIFRED (JGG W4E)

Index	\$Value
Domestic	+\$25
Export	+\$31
Terminal	+\$21

June 2016 Australasian Charolais GROUP BREEDPLAN

	CE Dir	CE Dtr	GL	BW	200	400	600	MCW	MILK	SS	CWT	EMA	RIB	Rump	RY	IMF
EBV	-1.3	-0.3	-2.7	-0.6	+18	+32	+39	+25	+7	+1.0	+27	+1.9	+0.0	+0.2	+0.6	-0.2
Acc	45%	38%	73%	71%	61%	62%	68%	59%	45%	53%	55%	46%	52%	51%	49%	45%

**Notes:** King Pin is a soft muscled, polled bull with a good top line and tremendous length. He is sired by Ascot Eldorado who has been used in the Wakefield herd for his tremendous growth, muscle and natural finishing ability. This bull will do the job for any cross breeder or stud operation. He has been used lightly in the Wakefield herd. **Top 10% for 200 day growth and top 15% for 400 day growth and top 20% for low birth weight.**

Purchaser..... Price \$.....

5

### WAKEFIELD KICK OFF (AI) (P)

BORN: 04/11/2014 IDENT: BIS K858E COLOUR: White

WESC HICKS REVOLVER 14R PMC295963 (PED -5963E)  
**SIRE: HICKS REMINGTON 31U PMC321438 (OAC D1438E) (P)**  
 JWIK RUBY K003 PFC332642 (PED -2642E)  
 GAUGUIN 8591105891 (OAF L859F)  
**DAM: WAKEFIELD GOLD STAR (BIS G45E)**  
 WAKEFIELD CRUMBLE (BIS C108E) (P)

BRIDOR MONTY 29M PMC263827 (PED -2638E)  
 WESC EAGLE'S PRIDE 9N PFC325544 (PED -5544E)  
 BALDRIDGE FASTTRACK 82E M447863 (OAU R82E) (P)  
 JWIK RUBY H026 F817395 (PED -7395E)  
 ABDUKIR 71 85 119662 (OAF E662F)  
 TOMBOLA 8582108915 (OAF -8582F)  
 WAKEFIELD ATTACK (BIS A814E) (P)  
 WAKEFIELD APPLE (BIS A856E) (P)

Index	\$Value
Domestic	+\$28
Export	+\$38
Terminal	+\$16

June 2016 Australasian Charolais GROUP BREEDPLAN

	CE Dir	CE Dtr	GL	BW	200	400	600	MCW	MILK	SS	CWT	EMA	RIB	Rump	RY	IMF
EBV	+7.3	-0.3	-1.3	-0.5	+11	+17	+19	+20	+0	+0.3	+15	+1.4	+0.7	+0.3	-0.1	+0.3
Acc	44%	36%	70%	72%	61%	64%	69%	60%	40%	72%	55%	46%	53%	51%	50%	46%

**Notes:** Kick Off with this thick, meaty, polled bull that has bred true to type. He is by calving ease Canadian sire Hicks Remington from a Gauguin dam. He is a soft yet muscular bull who has a great top line. His dam just keeps on producing year after year. Wonderful temperament, don't overlook him! **Top 15% for calving ease direct and top 20% for low birth weight and rib fat.**

Purchaser..... Price \$.....

6

### WAKEFIELD KERUFFLE (AI) (P)

BORN: 06/11/2014 IDENT: BIS K859E COLOUR: White

CS PLD JUNCTION 4J MC228742 (OAC U8742E) (P)  
**SIRE: ASCOT ELDORADO (JAJ E14E) (P)**  
 GOBONGO ISABELLA D10E (GO D10E) (P)  
 LT BLUEGRASS 4017P M686569 (OAU Z4017E) (P)  
**DAM: WAKEFIELD ABRACADABRA 11 (BIS G20E) (P)**  
 WAKEFIELD ABRACADABRA 6 (BIS D386E) (P)

RDGC KALAMAZOO 387F PMC191257 (PED -1257E) (P)  
 CS EXCLUSIVE'S GUEST 5G EFC242100 (PED -2100E)  
 HARVIE REDEMPTION 36P MC286641 (OAC 26641E) (P)  
 GOBONGO ISABELLA (GO T48E)  
 LT ASSERTION 1277 M620193 (PED W1277F)  
 LT PEARLS BREEZE 2236 P956080 (PED X2236F)  
 WAKEFIELD ABBOT (BIS A8180) (P)  
 WAKEFIELD ABRACADABRA (BIS A821E)

Index	\$Value
Domestic	+\$38
Export	+\$49
Terminal	+\$26

June 2016 Australasian Charolais GROUP BREEDPLAN

	CE Dir	CE Dtr	GL	BW	200	400	600	MCW	MILK	SS	CWT	EMA	RIB	Rump	RY	IMF
EBV	+1.8	-1.5	-5.0	-0.4	+18	+33	+35	+23	+5	+2.2	+28	+4.4	+1.1	+1.9	+0.9	-0.2
Acc	46%	39%	75%	73%	63%	65%	71%	61%	44%	73%	58%	50%	56%	55%	53%	49%

**Notes:** Keruffle is a smooth coated son of Eldorado. He has an overall eye appeal; a naturally thick bull who has a great combination of birth weight, growth and carcass. His Dam is renowned for her milking ability, fertility and early maturity patterns from the Bluegrass sire. Keruffle is a **homozygous** polled bull that would suit many enterprises from vealer to export steers. **Top 1% for EMA, top 10% for gestation length, 200 day growth, scrotal and rib and rump fat and top 15% for 400 day growth, retail beef yield and domestic index.**

Purchaser..... Price \$.....

7

**WAKEFIELD KNIGHT (AI) (P)**

BORN: 03/10/2014 IDENT: BIS K843E COLOUR: White

MXS VERMILLION 527R MC299214 (OAC A9214E) (P)

SOS POLLED DETONATOR 8M (OAC X7034E) (P)  
MXS ESPEON 122L FC305308 (PED -5308E)

**SIRE: MERIT ROUNDUP 9508W PMC326558 (OAC E6558E) (P)**

MERIT YOLANDA 7244T PFC361301 (PED -1301E)

MERIT 1058L PMC258317 (PED -8317E)  
MERIT YOLANDA 6116F PFC232626 (PED -2626E)  
WCR SIR PERFECTION 734 M 272305 (OAC -734E)  
LHD MS SHOWME OFF W159 F 496651 (OAC -159E)

LHD MR PERFECT Y416 M 314744 (OAC J416E) (P)

**DAM: WAKEFIELD AMAZE 2 (BIS C129E) (P)**

WAKEFIELD AMAZE (BIS A820E)

EXCALIBUR FMC423 M64617 (IAC E6084F)  
MOUNT WILLIAM V92E (BS V92E)

Index	\$Value
Domestic	+533
Export	+542
Terminal	+521

June 2016 Australasian Charolais GROUP BREEDPLAN

	CE Dir	CE Dir	GL	BW	200	400	600	MCW	MILK	SS	CWT	EMA	RIB	Rump	RY	IMF
EBV	+7.2	+3.9	-5.5	-1.1	+18	+26	+29	+15	+2	+1.9	+16	-0.3	-0.7	-0.6	+0.4	-0.4
Acc	49%	39%	76%	73%	65%	67%	70%	61%	45%	74%	58%	48%	53%	52%	51%	48%

**Notes:** This bull has a true to type Charolais pattern with length, muscle, smooth coat and clean shoulders. He is a son of Canadian homozygous polled sire Merit Round Up used for calving ease, gestation length and growth. An ideal 'curve bending' bull for any cattle operation. Combined with the Mr Perfect genes on his dam's side Knight ticks all the boxes for many cattle operations. **Top 10% for gestation length, 200 day growth and scrotal circumference and top 15% for calving ease direct and low birth weight.**

Purchaser.....Price \$.....

8

**WAKEFIELD KHAL DROGO (AI) (P) (R/F)**

BORN: 29/09/2014 IDENT: BIS K847E COLOUR: Red factor

WESC HICKS REVOLVER 14R PMC295963 (PED -5963E)

BRIDOR MONTY 29M PMC263827 (PED -2638E)  
WESC EAGLE'S PRIDE 9N PFC325544 (PED -5544E)

**SIRE: HICKS REMINGTON 31U PMC321438 (OAC D1438E) (P)**

JWK RUBY K003 PFC332642 (PED -2642E)

BALDRIDGE FASTTRACK 82E M447863 (OAU R82E) (P)  
JWK RUBY H026 F817395 (PED -7395E)  
GUNNADOO RED BARON R/F (GN1 Q31D)  
PALGROVE DIGNA 36 (PK N168E) (P)

CHARNELLE TENNESSEE R/F (GKA T83E) (P)

**DAM: WAKEFIELD AMBER (BIS A804E)**

MOUNT WILLIAM V92E (BS V92E)

TALGOONA QANTAS (CG Q4E)  
MOUNT WILLIAM SYBIL (BS 572E)

Index	\$Value
Domestic	+539
Export	+558
Terminal	+518

June 2016 Australasian Charolais GROUP BREEDPLAN

	CE Dir	CE Dir	GL	BW	200	400	600	MCW	MILK	SS	CWT	EMA	RIB	Rump	RY	IMF
EBV	+11.4	+8.1	-5.7	-1.2	+7	+13	+17	+15	-1	+2.0	+15	+0.7	+1.2	+1.0	-0.7	-0.1
Acc	46%	38%	75%	72%	62%	64%	70%	60%	46%	73%	59%	47%	52%	51%	50%	46%

**Notes:** Khal Drogo is a smooth coated, deep flanked, polled red factor bull that has tremendous muscularity and a natural softness. He is phenotypically correct and has a great top line. Well worth a look! **Top 10% for calving ease direct, gestation length, low birth weight, scrotal circumference, export index and rib fat.**

Purchaser.....Price \$.....

9

**WAKEFIELD KEEPSAKE (AI) (P)**

BORN: 02/11/2014 IDENT: BIS K854E COLOUR: White

LT WESTERN SPUR 2061 PLD M645785 (OAU X2061E) (P)

EATONS PREDICTOR 9230 M304405 (PED J9230E)  
LT MAIDEN'S BREEZE 8242P F822166 (PED T8242E) (P)

**SIRE: LT WESTERN EDGE 4057 PLD M686616 (OAU Z6616E) (P)**

LT DUCHESS OF MAC 7076 P F792993 (PED -2993E)

BBCR DUKE'S SON 786 PLD M427034 (PED -7034E)  
BBCR MAXINE 429 F633378 (PED -3378E)  
IMPAIR 1893102983 (OAF N189F)  
MARY 8596100049 (OAF R8596F)

PINAY 8552394134 (OAF U4134F)

**DAM: BOONGATTI ELOISE (BOO E34E)**

AYR ELDON'S SUSETTE 3RD (AYR X113E)

AYR FLINDERS ELDON (AYR S262F)  
AYR HEATH'S SUSELLE (AYR P67E)

Index	\$Value
Domestic	+543
Export	+553
Terminal	+522

June 2016 Australasian Charolais GROUP BREEDPLAN

	CE Dir	CE Dir	GL	BW	200	400	600	MCW	MILK	SS	CWT	EMA	RIB	Rump	RY	IMF
EBV	+4.5	+8.7	-5.6	-1.3	+9	+28	+32	+30	+18	+1.5	+22	+0.5	+0.7	+1.1	-0.6	+0.1
Acc	52%	47%	76%	71%	58%	58%	59%	57%	53%	54%	51%	45%	49%	49%	41%	45%

**Notes:** Keepsake is a bull with tremendous body length and a smooth muscle pattern, with good neck extension and a slick coat that makes him an outstanding package for any beef enterprise. His sire LT Western Edge continues to impress us with his positive carcass attributes and good calving ease. Keepsake has been used in the Wakefield herd over Charolais heifers. His Dam is a reliable and consistent cow calving every year without fail; she has daughters retained in the herd because of her fertility, milking ability and longevity. This bull has good feet and legs on a good frame. **Top 10% for gestation length, birth weight and domestic index and top 20% for scrotal and rib and rump fat.**

Purchaser.....Price \$.....



10

**WAKEFIELD KEEN (AI) (P)**

BORN: 21/07/2014 IDENT: BIS K823E COLOUR: White

MXS VERMILLION 527R MC299214 (OAC A9214E) (P)

SOS POLLED DETONATOR 8M (DAC X7034E) (P)  
MXS ESPEON 122L FC305308 (PED -5308E)**SIRE: MERIT ROUNDUP 9508W PMC326558 (OAC E6558E) (P)**

MERIT YOLANDA 7244T PFC361301 (PED -1301E)

MERIT 1058L PMC258317 (PED -8317E)  
MERIT YOLANDA 6116F PFC232626 (PED -2626E)

PINAY 8552394134 (OAF U4134F)

IMPAIR 1893102983 (OAF N189F)  
MARY 8596100049 (OAF R8596F)**DAM: WAKEFIELD EVERMORE (BIS E488E) (P)**

WAKEFIELD BECOOL (BIS B948E) (P)

WCR SIR IMPRESSIVE 8191P M477998 (DAU T7998E) (P)  
MOUNT WILLIAM V92E (BS V92E)

Index	\$Value
Domestic	+\$41
Export	+\$55
Terminal	+\$30

June 2016 Australasian Charolais GROUP BREEDPLAN

	CE Dir	CE Dtr	GL	BW	200	400	600	MCW	MILK	SS	CWT	EMA	RIB	Rump	R3Y	IMF
EBV	+6.9	+5.2	-7.5	-0.5	+21	+36	+46	+42	+5	+2.2	+28	+1.2	-1.1	-1.2	+1.2	-0.3
Acc	46%	34%	75%	70%	58%	57%	57%	52%	39%	53%	46%	37%	43%	43%	31%	37%

Notes: Keen is a homozygous polled son of Canadian bull Merit RoundUp. He is developing into a thick, easy doing young bull with plenty of muscle from his Pinay sired dam. Keen has a solid top line with good length of body. Top 5% for gestation length, 200 day growth, scrotal circumference and retail beef yield, top 15% for 400 and 600 day growth, domestic and export indexes.

Purchaser.....Price \$.....

11

**WAKEFIELD KNOCK KNOCK (P/S)**

BORN: 18/07/2014 IDENT: BIS K821E COLOUR: White

PINAY 8552394134 (OAF U4134F)

IMPAIR 1893102983 (OAF N189F)  
MARY 8596100049 (OAF R8596F)**SIRE: WAKEFIELD HORNBLOWER (BIS H203E) (P)**

WAKEFIELD AMAZE 3 (BIS C154E) (P)

WCR SIR IMPRESSIVE 8191P M477998 (DAU T7998E) (P)  
WAKEFIELD AMAZE (BIS A820E)

LT BLUEGRASS 4017P M686569 (OAU Z4017E) (P)

LT ASSERTION 1277 M620193 (PED W1277F)  
LT PEARLS BREEZE 2236 F956080 (PED X2236F)**DAM: WAKEFIELD AMAZE 13 (BIS G44E) (P)**

WAKEFIELD AMAZE 9 (BIS E435E)

UOUFFLU 6327351004 (OAF N6327F)  
WAKEFIELD AMAZE 2 (BIS C129E) (P)

Index	\$Value
Domestic	+\$42
Export	+\$54
Terminal	+\$30

June 2016 Australasian Charolais GROUP BREEDPLAN

	CE Dir	CE Dtr	GL	BW	200	400	600	MCW	MILK	SS	CWT	EMA	RIB	Rump	R3Y	IMF
EBV	+9.3	+3.1	-6.5	-0.2	+20	+31	+39	+37	+5	+0.8	+28	+3.6	-0.5	-0.5	+1.4	+0.2
Acc	42%	38%	54%	59%	56%	59%	64%	55%	42%	68%	53%	45%	50%	49%	41%	46%

Notes: Knock Knock is a stylish young bull with good muscularity and body length. The combination of Wakefield bred dam Amaze on his dam's side and French sire Pinay on the top side give him a good blend of calving ease, growth and carcass EBVs. An outstanding bull for any beef operation. Top 5% for 200 day growth, EMA, retail beef yield and gestation length, top 10% for calving ease direct and domestic index and top 15% for export index.

Purchaser.....Price \$.....

12

**WAKEFIELD KNEE DEEP (AI) (P)**

BORN: 06/01/2014 IDENT: BIS K833E COLOUR: White

MXS VERMILLION 527R MC299214 (OAC A9214E) (P)

SOS POLLED DETONATOR 8M (DAC X7034E) (P)  
MXS ESPEON 122L FC305308 (PED -5308E)**SIRE: MERIT ROUNDUP 9508W PMC326558 (OAC E6558E) (P)**

MERIT YOLANDA 7244T PFC361301 (PED -1301E)

MERIT 1058L PMC258317 (PED -8317E)  
MERIT YOLANDA 6116F PFC232626 (PED -2626E)

ROSEDALE DONOTELLO (MR D22E) (P)

PARINGA NOVOTEL A100 (TOL A100E) (P)  
ROSEDALE REBECCA A38 (MR A38E) (P)**DAM: WAKEFIELD AUGUST 8 (BIS G36E)**

WAKEFIELD AUGUST (BIS A825E)

EXCALIBUR FMC423 M64617 (JAC E6084F)  
MOUNT WILLIAM V92E (BS V92E)

Index	\$Value
Domestic	+\$49
Export	+\$70
Terminal	+\$32

June 2016 Australasian Charolais GROUP BREEDPLAN

	CE Dir	CE Dtr	GL	BW	200	400	600	MCW	MILK	SS	CWT	EMA	RIB	Rump	R3Y	IMF
EBV	+10.3	+4.8	-7.4	-1.7	+18	+32	+43	+36	+7	+2.9	+26	+0.8	-0.1	+0.1	+0.2	-0.1
Acc	44%	31%	71%	71%	62%	64%	67%	58%	35%	69%	54%	45%	52%	51%	41%	45%

Notes: This soft young bull by homozygous polled sire Merit RoundUphas plenty of muscle and body length with a great top line and a good temperament. Top 5% for gestation length, scrotal, domestic and export indexes, top 10% for calving ease direct, low birth weight, 200 day growth and top 15% for 400 day growth.

Purchaser.....Price \$.....

13

**WAKEFIELD KING OF THE ROAD (AI) (P)**

BORN: 07/11/2014 IDENT: BIS KB61E COLOUR: White

MXS VERMILLION 527R MC299214 (OAC A9214E) (P)  
**SIRE: MERIT ROUNDUP 9508W PMC326558 (OAC E6558E) (P)**  
 MERIT YOLANDA 7244T PFC361301 (PED -1301E)  
 WAKEFIELD CORLEONE (BIS C183E) (P)  
**DAM: WAKEFIELD ELSPETH (BIS E475E) (P)**  
 WAKEFIELD AMITY (BIS A805E)

SOS POLLED DETONATOR 8M (OAC X7034E) (P)  
 MXS ESPEON 122L FC305308 (PED -5308E)  
 MERIT 1058L PMC258317 (PED -8317E)  
 MERIT YOLANDA 6116F PFC232626 (PED -2626E)  
 ESPION (JAF E6034F)  
 WAKEFIELD ACTRESS (BIS A855D) (P)  
 CHARNELLE TENNESSEE R/F (GKA T83E) (P)  
 MOUNT WILLIAM V92E (BS V92E)

Index	\$Value
Domestic	+\$45
Export	+\$70
Terminal	+\$33

June 2016 Australasian Charolais GROUP BREEDPLAN

	CE Dir	CE Dir	GL	BW	200	400	600	MCW	MILK	SS	CWT	EMA	RIB	Rump	R1Y	IMF
EBV	+8.0	+3.9	-3.8	-0.5	+19	+35	+54	+43	+3	+3.8	+28	-0.3	-0.5	-0.3	+0.1	-0.2
Acc	44%	31%	75%	73%	63%	65%	69%	59%	38%	73%	55%	46%	50%	49%	41%	45%

**Notes:** A slick coated homozygous polled young bull that has good length, softness and muscle pattern. His dam has been a reliable cow for us breeding bulls for sale every year. King of the Road has wonderful ease of calving and exceptional growth which makes him a real curve bending young bull. His cam Elspeth produced the top priced bull two years ago and is a good consistent breeder for us. **Top 5% for 600 day growth and export index, top 10% for 200 and 400 day growth and domestic index, top 15% for calving ease direct.**

Purchaser.....Price \$.....

14

**WAKEFIELD KOW TOW (AI) (P)**

BORN: 03/06/2014 IDENT: BIS KB18E COLOUR: White

CS PLD JUNCTION 4J MC228742 (OAC U8742E) (P)  
**SIRE: ASCOT ELDORADO (JAJ E14E) (P)**  
 GOBONGO ISABELLA D10E (GO D10E) (P)  
 INDIANA 0393112617 (OAF N393F)  
**DAM: WAKEFIELD AUTUMN 4 (BIS D313E) (P)**  
 WAKEFIELD AUTUMN (BIS A810E) (P)

ROGC KALAMAZOO 387F PMC191257 (PED -1257E) (P)  
 CS EXCLUSIVE'S GUEST 5G EFC242100 (PED -2100E)  
 HARVIE REDEMPTION 36P MC286641 (OAC Z6641E) (P)  
 GOBONGO ISABELLA (GO T48E)  
 TREPIDENT 8582101412 (OAF X8582F)  
 TRISTESSE 5882122145 (PED -5882F)  
 WCR PRIME CUT 764 PLD PMC223447 (OAC S764E) (P)  
 DURSLEY RIDDLE (BK RAE)

Index	\$Value
Domestic	+\$17
Export	+\$18
Terminal	+\$17

June 2016 Australasian Charolais GROUP BREEDPLAN

	CE Dir	CE Dir	GL	BW	200	400	600	MCW	MILK	SS	CWT	EMA	RIB	Rump	R1Y	IMF
EBV	-2.9	-5.9	-5.5	-0.8	+19	+31	+33	+30	+3	+1.1	+25	+2.4	-0.1	+0.0	+1.0	-0.3
Acc	47%	40%	74%	72%	63%	64%	68%	60%	46%	53%	55%	47%	52%	51%	41%	46%

**Notes:** Another homozygous polled, smooth coated Eldorado son who has plenty of muscle and a natural doing ability. The combination of his pedigree with Prime Cut and Indiana on the dam's side mixed with Eldorado make him very true to type. He will suit many enterprises. **Top 10% for gestation length and 200 day growth, top 15% for EMA.**

Purchaser.....Price \$.....

15

**WAKEFIELD KNEE JERK (P)**

BORN: 01/11/2014 IDENT: BIS KB51E COLOUR: White

PINAY 8552394134 (OAF U4134F)  
**SIRE: WAKEFIELD HORNBLOWER (BIS H203E) (P)**  
 WAKEFIELD AMAZE 3 (BIS C154E) (P)  
 CS PLD JUNCTION 4J MC228742 (OAC U8742E) (P)  
**DAM: WAKEFIELD GYPSY (BIS G21E)**  
 WAKEFIELD BONFIRE (BIS B963D) (P)

IMPAIR 1893102983 (OAF N189F)  
 MARY 8596100049 (OAF R8596F)  
 WCR SIR IMPRESSIVE 8191P M477998 (OAU T7998E) (P)  
 WAKEFIELD AMAZE (BIS A820E)  
 ROGC KALAMAZOO 387F PMC191257 (PED -1257E) (P)  
 CS EXCLUSIVE'S GUEST 5G EFC242100 (PED -2100E)  
 PLATINUM ULTRA (AJ1 U37E) (P)  
 WAKEFIELD ZOE (BIS Z739C) (P)

Index	\$Value
Domestic	+\$16
Export	+\$19
Terminal	+\$19

June 2016 Australasian Charolais GROUP BREEDPLAN

	CE Dir	CE Dir	GL	BW	200	400	600	MCW	MILK	SS	CWT	EMA	RIB	Rump	R1Y	IMF
EBV	-7.1	-2.5	-5.1	+1.0	+20	+34	+46	+45	+9	+0.9	+29	+3.8	+0.0	+0.1	+1.2	+0.4
Acc	41%	36%	56%	70%	58%	60%	67%	57%	40%	70%	52%	44%	47%	46%	41%	44%

**Notes:** Another Hornblower son that has smooth shoulders and tremendous muscling, explosive growth with a natural finishing ability. He is polled and has a strong frame and would suit many programs from weaners to export steers. Well worth your consideration! **Top 1% for EMA, top 5% for 200 day growth and top 10% for gestation length, 400 day growth and retail beef yield and top 15% for 600 day growth.**

Purchaser.....Price \$.....

16

**WAKEFIELD KIBOSH (AI) (P)**

BORN: 10/05/2014 IDENT: BIS K808E COLOUR: White

WESC HICKS REVOLVER 14R PMC295963 (PED -5963E)

BRIDOR MONTY 29M PMC263827 (PED -2638E)  
WESC EAGLE'S PRIDE 9N PFC325544 (PED -5544E)

**SIRE: HICKS REMINGTON 31U PMC321438 (OAC D1438E) (P)**

JWK RUBY K003 PFC332642 (PED -2642E)

BALDRIDGE FASTTRACK 82E M447863 (DAU R82E) (P)  
JWK RUBY H026 F817395 (PED -7395E)

LT RIO BRAVO 3181 P M665507 (DAU Y5507E) (P)

LT RIO BLANCO 1234 P M620591 (DAU W591E) (P)  
LT 7N OF DUKE 9083 PLD F852553 (DAU U2553E) (P)

**DAM: WAKEFIELD ALANNA 22 (BIS F711E) (P)**

WAKEFIELD ALANNA 7 (BIS C139E) (P)

BURRADON TALISMAN MBM0004745 (IAE X4745F)  
WAKEFIELD ALANNA (BIS A803E) (P)

Index	\$Value
Domestic	+\$34
Export	+\$47
Terminal	+\$21

June 2016 Australian Charolais GROUP BREEDPLAN

	CE Dir	CE Dir	GL	BW	200	400	600	MCW	MILK	SS	CWT	EMA	RIB	Rump	RY	IMF
EBV	+7.8	-2.2	-4.2	-1.3	+13	+22	+25	+26	+3	+1.2	+18	+0.9	+1.0	+1.2	-0.7	+0.4
Acc	43%	35%	73%	71%	59%	61%	66%	57%	39%	51%	51%	44%	48%	47%	46%	43%

Notes: A powerful homozygous polled bull by calving ease Canadian sire Hicks Remington that really would suit the F1 coastal cattle operation. He is a very muscular bull with plenty of length. He has a good finishing ability along with good growth figures. Well worth a look. **Top 10% for low birth weight, top 15% for calving ease direct and rib fat, top 20% for rump fat and both indexes.**

Purchaser.....Price \$.....

17

**WAKEFIELD KENDO (AI) (P)**

BORN: 01/13/2014 IDENT: BIS K842E COLOUR: White

WESC HICKS REVOLVER 14R PMC295963 (PED -5963E)

BRIDOR MONTY 29M PMC263827 (PED -2638E)  
WESC EAGLE'S PRIDE 9N PFC325544 (PED -5544E)

**SIRE: HICKS REMINGTON 31U PMC321438 (OAC D1438E) (P)**

JWK RUBY K003 PFC332642 (PED -2642E)

BALDRIDGE FASTTRACK 82E M447863 (DAU R82E) (P)  
JWK RUBY H026 F817395 (PED -7395E)

WAKEFIELD CHEROKEE (BIS C107E) (P)

INDIANA 0393112617 (DAF N393F)  
WAKEFIELD AUTUMN (BIS A810E) (P)

**DAM: WAKEFIELD MAXINE 9 (BIS F768E) (P)**

WAKEFIELD MAXINE (BIS C110E)

BEKKA-DEE ZULU (BEC Z1E)  
MOUNT WILLIAM V92E (BS V92E)

Index	\$Value
Domestic	+\$31
Export	+\$36
Terminal	+\$13

June 2016 Australian Charolais GROUP BREEDPLAN

	CE Dir	CE Dir	GL	BW	200	400	600	MCW	MILK	SS	CWT	EMA	RIB	Rump	RY	IMF
EBV	+10.2	+2.9	-4.7	-1.5	+9	+13	+5	+10	+2	+0.6	+13	+1.7	+0.7	+0.3	+0.3	-0.5
Acc	41%	32%	75%	71%	61%	63%	69%	59%	39%	72%	54%	45%	51%	50%	49%	44%

Notes: This bull will produce progeny with a great combination of calving ease and punch. Kendo is a solid compact polled bull with a well-defined hind quarters and a square top. Don't overlook this one! **Top 10% for calving ease direct and low birth weight, top 15% for gestation length.**

Purchaser.....Price \$.....

18

**WAKEFIELD KNOCK DOWN (AI) (P) (R/F)**

BORN: 02/11/2014 IDENT: BIS K852E COLOUR: Red factor

WESC HICKS REVOLVER 14R PMC295963 (PED -5963E)

BRIDOR MONTY 29M PMC263827 (PED -2638E)  
WESC EAGLE'S PRIDE 9N PFC325544 (PED -5544E)

**SIRE: HICKS REMINGTON 31U PMC321438 (OAC D1438E) (P)**

JWK RUBY K003 PFC332642 (PED -2642E)

BALDRIDGE FASTTRACK 82E M447863 (DAU R82E) (P)  
JWK RUBY H026 F817395 (PED -7395E)

WAKEFIELD ACQUIT (BIS W195E)

ACQUIT A27 71416 A27 (IAF A6020F)  
WAKEFIELD POPPY (BIS P718E)

**DAM: WAKEFIELD BLUSH (BIS B938D) (P)**

WAKEFIELD YASMINE (BIS Y500C) (P)

BR DUKE 261 M 246564 (DAU C261E) (P)  
WAKEFIELD VICTORIA (BIS V2238) (P)

Index	\$Value
Domestic	+\$28
Export	+\$40
Terminal	+\$12

June 2016 Australian Charolais GROUP BREEDPLAN

	CE Dir	CE Dir	GL	BW	200	400	600	MCW	MILK	SS	CWT	EMA	RIB	Rump	RY	IMF
EBV	+10.3	+1.4	-3.9	-1.2	+8	+10	+11	+13	+1	+0.2	+5	-1.0	+1.4	+1.2	-1.9	+0.8
Acc	44%	35%	74%	73%	62%	64%	69%	61%	44%	72%	54%	45%	51%	50%	48%	45%

Notes: This thickset homozygous polled young bull has good length of body with an excellent top line. The combination of Australian genetics with the Canadian calving ease sire Hicks Remington has made this bull a well-balanced bull suiting any commercial operation. **Top 5% for rib fat and IMF, top 10% for calving ease direct and low birth weight, top 20% for rump fat.**

Purchaser.....Price \$.....

19

**WAKEFIELD JUMBLE (AI) (P/S) (R/F)**

BORN: 22/04/2013 IDENT: BIS J526E COLOUR: Red factor

CAVALIER C27 71226 C27 (ZZF C27F)  
**SIRE: ESPION (IAF E6034F)**  
 SABINE (ZZF X291F)  
 EXCLUSIF 8589103317 (OAF J858F)  
**DAM: WAKEFIELD BRILLIANT (BIS B958E)**  
 MOUNT WILLIAM V92E (BS V92E)

AMIRAL (ZZF X1241F)  
 VENUS (ZZF X616F)  
 QUIBERON (ZZF X1225F)  
 MASCOTTE (ZZF X445F)  
 TILL FMC6073 (OAF B816F)  
 REINETTE BS 80108477 (PED X8580F)  
 TALGOONA QANTAS (CG Q4E)  
 MOUNT WILLIAM SYBL (BS 572E)

Index	\$Value
Domestic	+\$25
Export	+\$31
Terminal	+\$16

June 2016 Australasian Charolais GROUP BREEDPLAN

	CE Dir	CE Dir	GL	8W	200	400	600	MCW	MILK	SS	CWT	EMA	RIB	Rump	R3Y	IMF
EBV	+4.2	+7.4	-1.4	+0.8	+9	+19	+21	+19	-1	+0.2	+19	+3.0	-0.5	-0.8	+1.7	-0.5
Acc	51%	41%	56%	76%	60%	64%	62%	58%	47%	69%	52%	45%	46%	44%	47%	44%

**Notes:** A very stylish scurred red factor bull that was used in the Wakefield herd as a yearling bull. After seeing his progeny we decided to use him for another year. Jumble was used in our herd for his calving ease, birth weight and outstanding phenotype. Jumble is out of an Exclusif dam that produced daughters that are still in our herd. Brilliant has eye appeal and a gentle nature; she is a good milking fertile female that is a reliable breeder with longevity on her side. This bull has recently had a daughter win her class at the Charolais National in Dubbo and his sons sell as yearling bulls in Lot 29 and Lot 33. You be the judge... this bull keeps giving us progeny with a natural thickness, eye appeal and great dispositions. Well worth a look. **Top 1% for retail beef yield and top 5% for EMA, top 10% for calving ease on daughters.**

Purchaser..... Price \$.....

20

**WAKEFIELD JINX 2 (AI) (P) (TW)**

BORN: 08/07/2013 IDENT: BIS J537E COLOUR: White

JMB DATELINE 754T PMC310942 (PED -3109E)  
**SIRE: G. BROS THIN RED LINE 527W (OAC E6475E) (P)**  
 G BROS TULIP 101T PFC359984 (PED -9984E)  
 WAKEFIELD ATTACK (BIS A814E) (P)  
**DAM: WAKEFIELD BLOSSOM 3 (BIS D359E) (P)**  
 WAKEFIELD BLOSSOM (BIS B936E)

BXB DATELINE SON 65R PMC303803 (PED -3803E)  
 JMB MARTHA 234M PFC316449 (PED -6449E)  
 SVS MASTERCARD 2M QPMC269158 (PED -9158E)  
 POOLEDAL MISS CHAMA 62G PFC240875 (PED -2408E)  
 CMF 192 WRANGLER 256 M615145 (OAU V5145E) (P)  
 DURSLEY RIDDLE (BK R4E)  
 PALGROVE MURDOCK R/F (PK M109E)  
 AIRLIE MAHLAN (A15 M81E)

Index	\$Value
Domestic	+\$23
Export	+\$32
Terminal	+\$11

June 2016 Australasian Charolais GROUP BREEDPLAN

	CE Dir	CE Dir	GL	8W	200	400	600	MCW	MILK	SS	CWT	EMA	RIB	Rump	R3Y	IMF
EBV	+1.5	+2.6	-5.8	-0.4	+8	+20	+19	+14	+0	+2.4	+13	-0.3	+1.0	+0.9	-0.9	+0.0
Acc	47%	31%	58%	72%	56%	55%	57%	52%	40%	47%	41%	31%	35%	34%	33%	31%

**Notes:** A polled son of Thin Red Line with great body length, muscularity and growth. Jinx 2 has been used in the Wakefield herd as a backup bull and his progeny are born easily and grow well. He is an easy doing bull with a great temperament. **Top 5% for scrotal circumference, top 10% for gestation length and top 15% for rib fat.**

Purchaser..... Price \$.....

21

**WAKEFIELD KABOOM (AI) (P)**

BORN: 25/07/2014 IDENT: BIS K827E COLOUR: White

WESC HICKS REVOLVER 14R PMC295963 (PED -5963E)  
**SIRE: HICKS REMINGTON 31U PMC321438 (OAC D1438E) (P)**  
 JWK RUBY K003 PFC332642 (PED -2642E)  
 NELSON 397108304 (OAF S8304F)  
**DAM: WAKEFIELD DAWN (BIS D383E) (P)**  
 WAKEFIELD BECOOL (BIS B948E) (P)

BRIDOR MONTY 29M PMC263827 (PED -2638E)  
 WESC EAGLE'S PRIDE 9N PFC325544 (PED -5544E)  
 BALDRIDGE FASTTRACK 82E M447863 (OAU R82E) (P)  
 JWK RUBY H026 F817395 (PED -7395E)  
 INDICE 5893113049 (PED -3049F)  
 ETOILE 389109544 (PED -9544F)  
 WCR SIR IMPRESSIVE 8191P M477998 (OAU T7998E) (P)  
 MOUNT WILLIAM V92E (BS V92E)

Index	\$Value
Domestic	+\$19
Export	+\$26
Terminal	+\$14

June 2016 Australasian Charolais GROUP BREEDPLAN

	CE Dir	CE Dir	GL	8W	200	400	600	MCW	MILK	SS	CWT	EMA	RIB	Rump	R3Y	IMF
EBV	+4.4	-0.9	-4.7	+0.3	+13	+22	+25	+37	-1	+0.5	+16	-0.2	+0.2	-0.4	-0.2	-0.3
Acc	44%	36%	74%	70%	59%	61%	66%	57%	41%	69%	52%	42%	47%	46%	43%	41%

**Notes:** A smooth shouldered bull with good neck extension, Kaboom, son of Hicks Remington should produce calves that are born easily and grow well. **Top 15% for gestation length.**

Purchaser..... Price \$.....

22

**WAKEFIELD VILLAROY (AI) (ET)**

BORN: 06/03/2015 IDENT: BIS L925E COLOUR: White

FERNVALE ROADSTER (FEN R37E)

FERNVALE MONTY (FEN M30D)  
FERNVALE MANDIE (FEN M37E)**SIRE: GOBONGO VILLEROY V80E (GO V80E)**

GUNNADOO IRENE M103D (GN1 M103D) (P)

BAR DIAMOND PRESTIGE 10Y 105967 (IAC J10E)  
GUNNADOO IRENE H103C (GN1 H103C) (P)  
SALDPIAU 71161 502 (IAF A6056F)  
CONROY LAURA 23 (ODC J4F)

CONROY SALUTE (DOC N7F)

**DAM: GOBONGO ELLA (GO T39E)**

CHERENTON ELLA (CO Q13E)

MANDALONG LOVER (RP L73E) (P/S)  
MANDALONG ELLA M32E (RP M32E)

Index	\$Value
Domestic	+\$25
Export	+\$37
Terminal	+\$21

June 2016 Australian Charolais GROUP BREEDPLAN

	CE Dir	CE Dtr	GL	BW	200	400	600	MCW	MILK	SS	CWT	EMA	RIB	Rump	RBY	IMF
EBV	+2.5	+3.3	-2.1	+0.6	+13	+26	+40	+45	+9	+1.2	+24	+1.5	-1.2	-1.7	+1.1	+0.0
Acc	43%	40%	54%	68%	57%	57%	58%	55%	55%	50%	49%	37%	42%	41%	35%	37%

**Notes:** This bull was purchased as an embryo from the Gobongo stud. Gobongo Villeroiy has produced another naturally thick, stylish, slick coated young sire. He has a great top line with good muscularity, tremendous length and good growth. **Top 20% for retail beef yield.**

Purchaser.....Price \$.....

23

**WAKEFIELD LEADER (P)**

BORN: 18/02/2015 IDENT: BIS L910E COLOUR: White

PINAY 8552394134 (OAF U4134F)

IMPAIR 1893102983 (OAF N189F)  
MARY 8596100049 (OAF R8596F)**SIRE: WAKEFIELD HORNBLOWER (BIS H203E) (P)**

WAKEFIELD AMAZE 3 (BIS C154E) (P)

WCR SIR IMPRESSIVE 8191P M477998 (DAU T7998E) (P)  
WAKEFIELD AMAZE (BIS A820E)  
LANG'S ERIC THE RED 3E MC178117 (PED -8117E) (P/S)  
HARVIE MISS FRANCIS 47F FC234929 (OAC R4929E)

HARVIE JAGER 65J PMC228759 (OAC U8759E) (P)

**DAM: WAKEFIELD ABRACADABRA 10 (BIS F760E) (P)**

WAKEFIELD ABRACADABRA (BIS A821E)

EXCALIBUR FMC423 M64617 (IAC E6084F)  
MOUNT WILLIAM V92E (BS V92E)

Index	\$Value
Domestic	+\$46
Export	+\$57
Terminal	+\$31

June 2016 Australian Charolais GROUP BREEDPLAN

	CE Dir	CE Dtr	GL	BW	200	400	600	MCW	MILK	SS	CWT	EMA	RIB	Rump	RBY	IMF
EBV	+5.6	+5.5	-5.8	+0.1	+20	+38	+45	+42	+3	+0.8	+33	+4.1	-0.1	+0.0	+1.3	+0.2
Acc	42%	37%	56%	69%	59%	64%	62%	57%	43%	73%	54%	48%	51%	50%	51%	48%

**Notes:** Leader is a well-balanced bull that oozes eye appeal with a natural softness while still maintaining a soft muscle pattern. His sire Hornblower was an exceptional bull for us and his sons are proving to be soft, growthy, muscular free moving bulls that we are sure will suit many enterprises from stud sire to any beef commercial operation. The combination of Canadian sire Harvie Jager on his dam's side and Pinay as his grandfather make this young homozygous polled bull a star in our eyes! His mother has just entered our donor program as she is a very correct, true to type Charolais female. **Top 1% for EMA, top 5% for 200 and 400 day growth and RBY, top 10% for gestation length and domestic and export indexes, top 15% for 600 day growth and top 20% for calving ease direct.**

24

**WAKEFIELD LAST STAND (P)**

BORN: 15/02/2015 IDENT: BIS L907E COLOUR: White

PINAY 8552394134 (OAF U4134F)

IMPAIR 1893102983 (OAF N189F)  
MARY 8596100049 (OAF R8596F)**SIRE: WAKEFIELD HOTSTUFF (BIS H287E) (P)**

WAKEFIELD FOXY LADY (BIS F748E) (P)

HARVIE JAGER 65J PMC228759 (OAC U8759E) (P)  
WAKEFIELD ANNA (BIS A802E) (P)  
SVY PIONEER 402P MC288416 (PED -8416E)  
HFCC FRENCHKISS 919J PFC269584 (PED -9584E)

SVY PILGRIM PLD 6555 MC303031 (OAC B3031E) (P)

**DAM: WAKEFIELD AMELIA 2 (BIS H225E) (P)**

WAKEFIELD AMELIA (BIS A857E) (P)

CHARNELLE TENNESSEE R/F (GKA T83E) (P)  
MOUNT WILLIAM V92E (BS V92E)

Index	\$Value
Domestic	+\$29
Export	+\$41
Terminal	+\$28

June 2016 Australian Charolais GROUP BREEDPLAN

	CE Dir	CE Dtr	GL	BW	200	400	600	MCW	MILK	SS	CWT	EMA	RIB	Rump	RBY	IMF
EBV	-1.0	+2.5	-4.8	+1.4	+17	+37	+54	+46	+5	+1.8	+35	+3.5	-0.6	-0.8	+1.8	-0.3
Acc	40%	36%	57%	69%	58%	63%	61%	56%	41%	73%	52%	48%	51%	50%	51%	47%

**Notes:** A young polled bull with loads of potential by homebred sire Hotstuff. Last Stand has tremendous body length and muscle pattern that is typical of Charolais. He has a natural doing ability, good growth with a good top line. **Top 1% for retail beef yield, top 5% for EMA, 400 and 600 day growth, top 15% for 200 day growth and scrotal circumference.**

Purchaser.....Price \$.....

25

**WAKEFIELD LEFT FIELD (AI) (P)**

BORN: 16/03/2015 IDENT: BIS L940E COLOUR: White

WESC HICKS REVOLVER 14R PMC295963 (PED -5963E)

BRIDOR MONTY 29M PMC263827 (PED -2638E)  
WESC EAGLE'S PRIDE 9N PFC325544 (PED -5544E)

**SIRE: HICKS REMINGTON 31U PMC321438 (OAC D1438E) (P)**

JWK RUBY K003 PFC332642 (PED -2642E)

BALDRIDGE FASTTRACK 82E M447863 (DAU R82E) (P)

JWK RUBY H026 F817395 (PED -7395E)

EXCALIBUR FMC423 M64617 (IAC E6084F)

VAINQUEUR V03 71105 V03 (ZZF V3F)

URSULE 5869351 (ZZF X677F)

**DAM: WAKEFIELD EMPRESS (BIS E406E)**

WAKEFIELD BLONDIE (BIS B903D) (P)

GENK 1891101481 (OAF L481F)

WAKEFIELD ZINGER (BIS Z699C) (P)

Index	\$Value
Domestic	+\$31
Export	+\$45
Terminal	+\$28

June 2016 Australasian Charolais GROUP BREEDPLAN

	CE Div	CE Dtr	GL	BW	200	400	600	MCW	MILK	SS	CWT	EMA	RIB	Rump	RY	IMF
EBV	+2.3	-7.6	-2.0	+1.3	+22	+43	+54	+68	+3	+1.8	+34	+1.4	+0.4	-0.2	-0.1	+0.1
Acc	45%	37%	73%	70%	61%	65%	63%	56%	43%	74%	53%	47%	49%	48%	49%	46%

**Notes:** Left Field is a polled yearling bull by calving ease Canadian sire Hicks Remington out of a big framed good milking Excalibur daughter. This deep bodied, moderately framed bull has explosive growth and weight for age. He is displaying the early maturity patterns so sought after in the cross breeding operations. **Top 1% for 400 day growth, top 5% for 200 and 600 day growth and top 15% for scrotal circumference.**

Purchaser.....Price \$.....

26

**WAKEFIELD LION HEART (AI) (P)**

BORN: 10/02/2015 IDENT: BIS L903E COLOUR: White

HFCC PLD EVOLUTION 5L PMC256316 (PED -6316E)

SPARROWS ALLIANCE 513G M469401 (PED -277E)  
HFCC ELIRA 916J PFC268576 (PED -9576E)

**SIRE: SVY FREEDOM PLD 307N PMC280878 (OAC Y2808E) (P)**

SVY PURRFECT 184L PFC303051 (PED -3051E)

RA BIG CAT 9017 PLD PMC238309 (PED -8309E)

SVY JUSTLIKEPERFECT 432D FC207625 (PED -7625E)

SILVERSTREAM JONAH J91F 83/FF12682/94 (83 J91F)

CRANEBROOK STUART 51 BR.HB.12942 (IAE A6197F)

BROOKFIELD OCELOT 017 253/FF1713/78 (253 017F)

**DAM: WAKEFIELD ACE (BIS A862E)**

MOUNT WILLIAM V92E (BS V92E)

TALGOONA QANTAS (CG Q4E)

MOUNT WILLIAM SYBIL (BS 572E)

Index	\$Value
Domestic	+\$22
Export	+\$31
Terminal	+\$13

June 2016 Australasian Charolais GROUP BREEDPLAN

	CE Div	CE Dtr	GL	BW	200	400	600	MCW	MILK	SS	CWT	EMA	RIB	Rump	RY	IMF
EBV	+3.7	+0.9	-4.5	+0.2	+7	+12	+15	+14	+4	+1.5	+5	+0.6	+1.1	+1.8	-0.6	+0.2
Acc	51%	47%	73%	71%	60%	60%	60%	58%	54%	54%	51%	43%	48%	48%	45%	42%

**Notes:** Plenty of meat on this young bull. Tremendous eye appeal with good birth weight and calving ease make this polled bull well worth a look! His dam is a donor in our herd from the show winning Ace line, she is very correct with a moderate frame, a good udder, fertility, milk and longevity on her side. Lionheart has a wonderful temperament and is the half-brother of last year's top priced bull. Lucy's pick! **Top 10% for rib and rump fat and top 15% for gestation length, top 20% for scrotal.**

Purchaser.....Price \$.....

27

**WAKEFIELD LANNISTER (P)**

BORN: 11/04/2015 IDENT: BIS L949E COLOUR: White

PINAY 8552394134 (OAF U4134F)

IMPAIR 1893102983 (OAF N189F)

MARY 8596100049 (OAF R8596F)

**SIRE: WAKEFIELD HORNBLOWER (BIS H203E) (P)**

WAKEFIELD AMAZE 3 (BIS C154E) (P)

WCR SIR IMPRESSIVE 8191P M477998 (DAU T7998E) (P)

WAKEFIELD AMAZE (BIS A820E)

HIGH BLUFF HANK 41R MC297682 (OAC A7682E) (P)

MVX DOUGARHILL HANK 720G MC200052 (PED -52E)

HOLMSYDE HOT-ON-TOP 212M PFC317940 (PED -7940E)

**DAM: WAKEFIELD ASCOT 13 (BIS F709E) (P)**

WAKEFIELD ASCOT 7 (BIS D346E) (P)

NELSON 397108304 (OAF S8304F)

WAKEFIELD ASCOT (BIS A854D) (P)

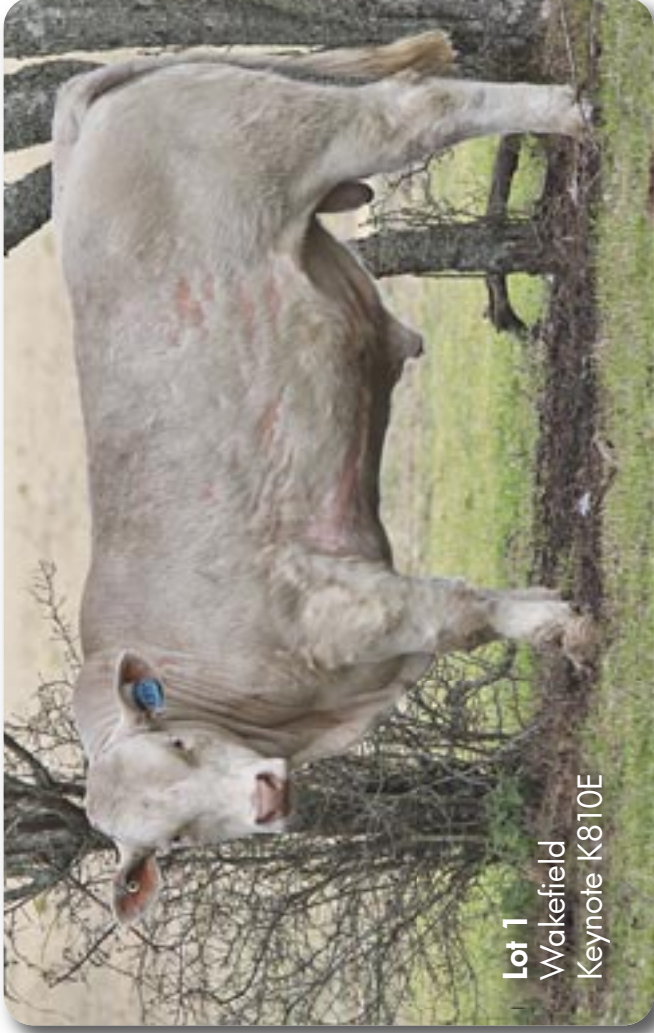
Index	\$Value
Domestic	+\$31
Export	+\$36
Terminal	+\$21

June 2016 Australasian Charolais GROUP BREEDPLAN

	CE Div	CE Dtr	GL	BW	200	400	600	MCW	MILK	SS	CWT	EMA	RIB	Rump	RY	IMF
EBV	+3.1	+3.4	-6.4	-0.1	+13	+28	+33	+36	+7	+0.5	+23	+2.4	-0.5	-0.6	+1.0	+0.2
Acc	42%	37%	55%	67%	52%	53%	55%	52%	42%	46%	45%	37%	43%	43%	46%	36%

**Notes:** A very stylish, correct young homozygous polled bull that has great length of body and a good top line. Another son of Wakefield Hornblower that has continued to impress us. He has good calving ease and birth weight figures packed with tremendous growth and muscle. Worth a tick on anyone's list! **Top 5% for gestation length, top 10% for retail beef yield and top 15% for EMA.**

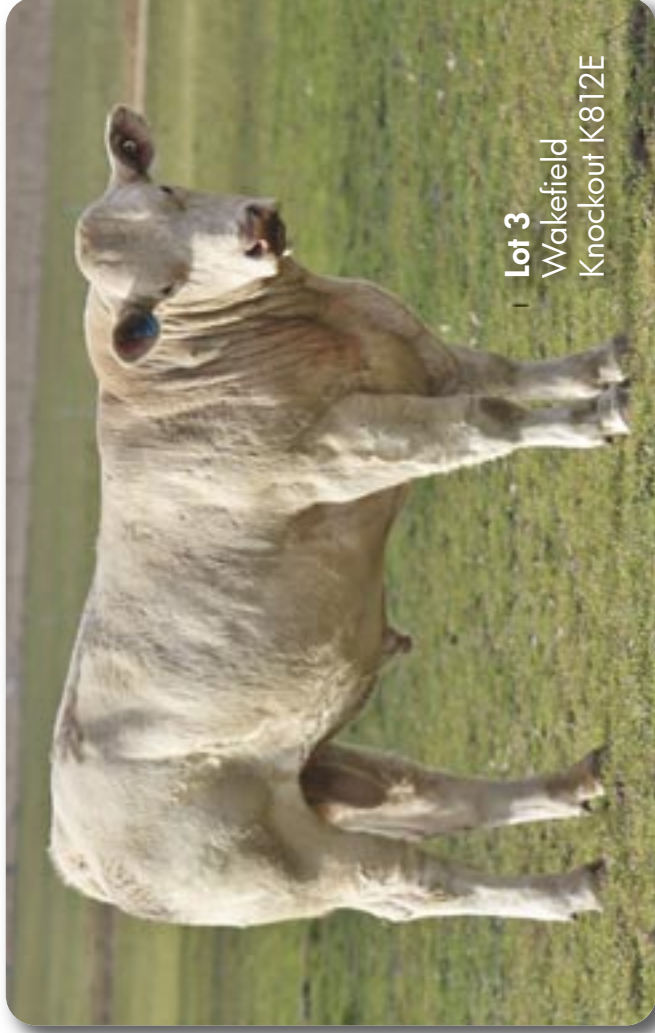
Purchaser.....Price \$.....



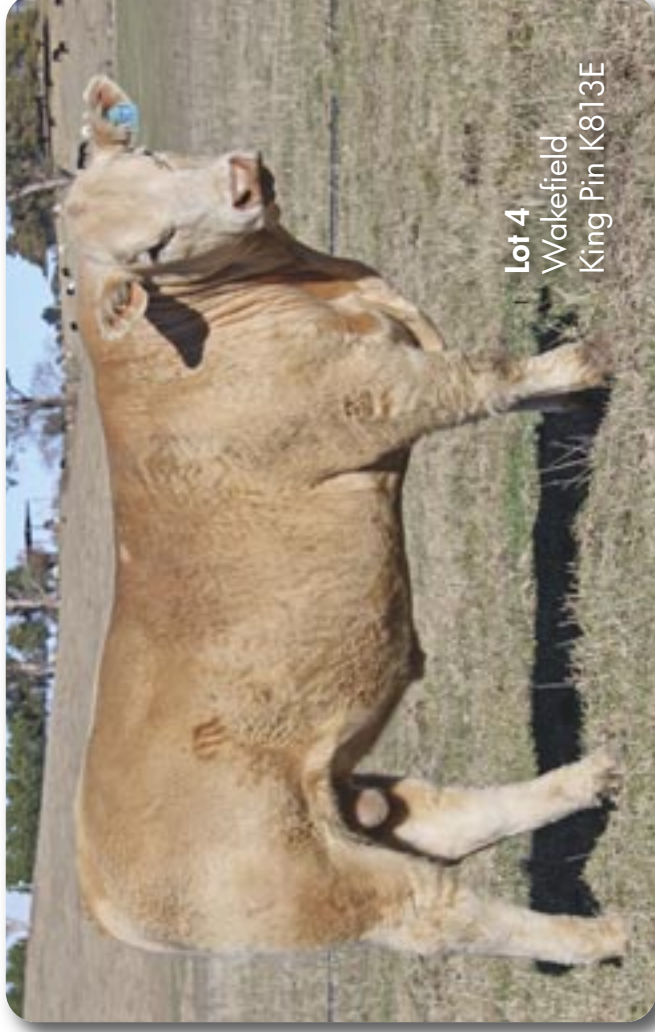
**Lot 1**  
Wakefield  
Keynote K810E



**Lot 2**  
Wakefield  
Keystone K807E



**Lot 3**  
Wakefield  
Knockout K812E



**Lot 4**  
Wakefield  
King Pin K813E



Lot 5  
Wakefield  
Kick Off K858E



Lot 6  
Wakefield  
Kerfuffle K859E



Lot 10  
Wakefield  
Keen K823E



Lot 16  
Wakefield  
Kibosh K808E





Lot 19  
Wakefield  
Jumble J526E



Lot 20  
Wakefield  
Jinx J537E



Lot 22  
Wakefield  
Villaroy L925E



Lot 23  
Wakefield  
Leader L910E



**Lot 42**  
Wakefield  
Thunderbird K686



**Lot 45**  
Wakefield  
Regent K658



**Lot 58**  
Wakefield  
K514



**Lot 60**  
Wakefield  
1905

28

**WAKEFIELD LARRIKIN (AI) (P/S)**

BORN: 03/03/2015 IDENT: BIS L922E COLOUR: White

WESC HICKS REVOLVER 14R PMC295963 (PED -5963E)  
**SIRE: HICKS REMINGTON 31U PMC321438 (OAC D1438E) (P)**  
 JWK RUBY K003 PFC332642 (PED -2642E)  
 PINAY 8552394134 (OAF U4134F)  
**DAM: WAKEFIELD ECHO 2 (BIS H219E)**  
 WAKEFIELD ECHO (BIS E400E) (P)

BRIDOR MONTY 29M PMC263827 (PED -2638E)  
 WESC EAGLE'S PRIDE 9N PFC325544 (PED -5544E)  
 BALDRIDGE FASTTRACK 82E M447863 (DAU R82E) (P)  
 JWK RUBY H026 F817395 (PED -7395E)  
 IMPAIR 1893102983 (OAF N189F)  
 MARY 8596100049 (OAF R8596F)  
 LHO MR PERFECT Y416 M 314744 (OAC J416E) (P)  
 WAKEFIELD BISCUIT (BIS B929E)

Index	\$Value
Domestic	+\$40
Export	+\$53
Terminal	+\$22

June 2016 Australian Charolais GROUP BREEDPLAN

	CE Dir	CE % <sub>yr</sub>	GL	BW	200	400	600	MCW	MILK	SS	CWT	EMA	RIB	Rump	RY	IMF
EBV	+10.4	+5.4	-6.1	-1.4	+13	+21	+24	+25	+5	+1.5	+20	+2.1	+0.5	-0.1	+0.6	-0.3
Acc	44%	36%	74%	71%	60%	64%	61%	55%	40%	73%	51%	46%	49%	48%	48%	45%

**Notes:** Another powerful grandson of French sire Pinay. Pinay will continue to be used at Wakefield for his calving ease, gestation length, muscularity and carcass attributes. Larrikin is a scurred bull that has a wonderful phenotype and exceptional growth and muscle. His Dam Echo produces progeny with good calving ease, temperament and a smooth muscle pattern true to the Charolais breed. **Top 5% for gestation length, top 10% for calving ease direct and low birth weight, top 15% for domestic and export indexes and top 20% for scrotal.**

Purchaser..... Price \$.....

29

**WAKEFIELD LANDLORD (R/F)**

BORN: 01/04/2015 IDENT: BIS L946E COLOUR: Red factor

ESPION (IAF E6034F)  
**SIRE: WAKEFIELD JUMBLE (BIS J526E) (P/S)**  
 WAKEFIELD BRILLIANT (BIS B958E)  
 PINAY 8552394134 (OAF U4134F)  
**DAM: WAKEFIELD EMILY (BIS E438E)**  
 WAKEFIELD BENITA (BIS B904E)

CAVALIER C27 71226 C27 (ZZF C27F)  
 SABINE (ZZF X291F)  
 EXCLUSIF 8589103317 (OAF J858F)  
 MOUNT WILLIAM V92E (BS V92E)  
 IMPAIR 1893102983 (OAF N189F)  
 MARY 8596100049 (OAF R8596F)  
 SUCRE 03163 596 (IAF A6004F)  
 WAKEFIELD POPPY (BIS P718E)

Index	\$Value
Domestic	+\$22
Export	+\$26
Terminal	+\$14

June 2016 Australian Charolais GROUP BREEDPLAN

	CE Dir	CE % <sub>yr</sub>	GL	BW	200	400	600	MCW	MILK	SS	CWT	EMA	RIB	Rump	RY	IMF
EBV	+2.1	+7.0	-2.0	+0.3	+7	+17	+21	+24	+7	+0.5	+19	+2.5	-0.7	-1.0	+1.3	-0.1
Acc	39%	35%	51%	67%	56%	61%	58%	53%	40%	72%	49%	45%	46%	44%	47%	44%

**Notes:** This young red factor bull is a moderate framed bull with plenty of length and depth of body. He has a smooth muscle pattern and has well laid in shoulders with a good neck extension. By homebred sire Jumble that has produced us very feminine heifers that ooze eye appeal with good ease of calving and great temperament don't overlook this one! **Top 5% for RBY and top 10% for EMA.**

Purchaser..... Price \$.....

30

**WAKEFIELD LEXUS (AI) (ET) (R/F)**

BORN: 11/03/2015 IDENT: BIS L933E COLOUR: Red factor

PALGROVE UPTURN (PK U353E)  
**SIRE: ADVANCE XR8 (ADV X50E)**  
 ADVANCE GINA R/F (ADV T3E)  
 PALGROVE TRADER (PK T128E)  
**DAM: GOBONGO REBBY W36E (GO W36E)**  
 GOBONGO REBBY S106E (GO S106E)

PALGROVE QUINTERO (PK Q228E)  
 PALGROVE FELICITY 27 (PK P111E)  
 AYR DUNEARN (AYR P210E)  
 YARRIBIN 1222 (YAR L1222D)  
 PALGROVE Q.C.L. (PK Q59E) (P)  
 PALGROVE FELICITY 24 (PK N84E)  
 ROSEWOOD SHOW BOY (WD4 P1E) (P)  
 MANDALONG OREGON M47E (RP M47E)

Index	\$Value
Domestic	+\$6
Export	+\$16
Terminal	+\$17

June 2016 Australian Charolais GROUP BREEDPLAN

	CE Dir	CE % <sub>yr</sub>	GL	BW	200	400	600	MCW	MILK	SS	CWT	EMA	RIB	Rump	RY	IMF
EBV	-10.8	-1.1	-1.1	+2.9	+21	+35	+60	+77	+10	+1.6	+27	+2.1	-0.4	-0.7	+0.8	+0.4
Acc	44%	41%	51%	68%	61%	64%	63%	57%	54%	72%	55%	48%	51%	49%	50%	47%

**Notes:** This stylish young bull has a stack of power and grunt and should be an excellent bull for Bos Indicus cross cow herds. Lexus was bought as an embryo from the Gobongo stud he has tremendous growth figures and a very correct phenotype. **Top 5% for 200 and 600 day growth and top 10% for 400 day growth.**

Purchaser..... Price \$.....

31

**WAKEFIELD LANCER (AI) (ET) (R/F)**

BORN: 13/03/2015 IDENT: BIS L936E COLOUR: Red factor

PALGROVE UPTURN (PK U353E)

PALGROVE QUINTERO (PK Q228E)  
PALGROVE FELICITY 27 (PK P111E)

**SIRE: ADVANCE XR8 (ADV X50E)**

ADVANCE GINA R/F (ADV T3E)

AYR DUNEARN (AYR P210E)  
YARRIBIN 1222 (YAR L1222D)  
PALGROVE Q.C.L. (PK Q59E) (P)  
PALGROVE FELICITY 24 (PK N84E)

PALGROVE TRADER (PK T128E)

**DAM: GOBONGO REBBY W36E (GO W36E)**

GOBONGO REBBY S106E (GO S106E)

ROSEWOOD SHOW BOY (WD4 P1E) (P)  
MANDALONG OREGON M47E (RP M47E)

Index	\$Value
Domestic	+\$20
Export	+\$35
Terminal	+\$25

June 2016 Australasian Charolais GROUP BREEDPLAN

	CE Dir	CE Dir	GL	BW	200	400	600	MCW	MILK	SS	CWT	EMA	RIB	Rump	RBY	IMF
EBV	-7.2	-0.2	-2.0	+2.3	+24	+41	+66	+84	+10	+2.6	+32	+2.2	-0.2	-0.4	+0.7	+0.4
Acc	44%	41%	51%	68%	61%	64%	63%	57%	54%	72%	55%	48%	51%	49%	50%	47%

**Notes:** Another young bull that is a full flush brother to the previous lot from the XR8 sire. This young bull has great length of body and stands on good bone. He has tremendous growth and would suit a Bos Indicus cross cow herd. **Top 1% for 200 and 600 day growth and top 5% for 400 day growth, scrotal circumference and top 20% for EMA.**

Purchaser..... Price \$.....

32

**WAKEFIELD LAMBORGHINI (AI) (ET) (R/F)**

BORN: 12/03/2015 IDENT: BIS L935E COLOUR: Red factor

PALGROVE UPTURN (PK U353E)

PALGROVE QUINTERO (PK Q228E)  
PALGROVE FELICITY 27 (PK P111E)

**SIRE: ADVANCE XR8 (ADV X50E)**

ADVANCE GINA R/F (ADV T3E)

AYR DUNEARN (AYR P210E)  
YARRIBIN 1222 (YAR L1222D)  
PALGROVE Q.C.L. (PK Q59E) (P)  
PALGROVE FELICITY 24 (PK N84E)

PALGROVE TRADER (PK T128E)

**DAM: GOBONGO REBBY W36E (GO W36E)**

GOBONGO REBBY S106E (GO S106E)

ROSEWOOD SHOW BOY (WD4 P1E) (P)  
MANDALONG OREGON M47E (RP M47E)

Index	\$Value
Domestic	+\$9
Export	+\$18
Terminal	+\$19

June 2016 Australasian Charolais GROUP BREEDPLAN

	CE Dir	CE Dir	GL	BW	200	400	600	MCW	MILK	SS	CWT	EMA	RIB	Rump	RBY	IMF
EBV	-8.5	-0.5	-1.4	+2.6	+20	+33	+56	+74	+11	+1.3	+26	+2.1	-0.1	-0.4	+0.8	+0.1
Acc	44%	41%	51%	68%	61%	64%	63%	57%	54%	72%	55%	48%	51%	49%	50%	47%

**Notes:** A full flush brother again to the previous lot. He was bought as an embryo from the Gobongo stud and has incredible growth which comes from the XR8 sire. We think he would be ideal on a Bos Indicus cross herd. A very correct slick coated young bull that has a wonderful presence with a great top line. Well worth a look! **Top 5% for 200 day growth, top 10% for 600 day growth and scrotal circumference and top 15% for 400 day growth.**

Purchaser..... Price \$.....

33

**WAKEFIELD LATINO (P) (R/F)**

BORN: 31/03/2015 IDENT: BIS L945E COLOUR: Red factor

ESPION (IAF E6034F)

CAVALIER C27 71226 C27 (ZZF C27F)  
SABINE (ZZF X291F)

**SIRE: WAKEFIELD JUMBLE (BIS J526E) (P/S)**

WAKEFIELD BRILLIANT (BIS B958E)

EXCLUSIF 8589103317 (OAF 858F)  
MOUNT WILLIAM V92E (BS V92E)  
IMPAIR 1893102983 (OAF N189F)  
MARY 8596100049 (OAF R8596F)

PINAY 8552394134 (OAF U4134F)

**DAM: WAKEFIELD BOLERO 3 (BIS G83E) (P)**

WAKEFIELD BOLERO 2 (BIS E478E) (P)

WAKEFIELD CORLEONE (BIS C183E) (P)  
WAKEFIELD BOLERO (BIS 8947D) (P)

Index	\$Value
Domestic	+\$32
Export	+\$37
Terminal	+\$20

June 2016 Australasian Charolais GROUP BREEDPLAN

	CE Dir	CE Dir	GL	BW	200	400	600	MCW	MILK	SS	CWT	EMA	RIB	Rump	RBY	IMF
EBV	+6.6	+5.1	-3.3	-0.1	+9	+20	+22	+18	+4	-0.2	+22	+4.0	-0.3	-0.5	+1.8	-0.3
Acc	38%	33%	50%	67%	56%	62%	59%	54%	37%	72%	50%	46%	48%	47%	49%	45%

**Notes:** Another polled red factor son of outstanding Wakefield sire Jumble. He is a soft muscled yet punchy young bull that has wonderful calving ease and birthweight figures with good growth that we've come to expect from this homebred sire. **Top 1% for EMA and RBY and top 20% for calving ease.**

Purchaser..... Price \$.....

34

**WAKEFIELD LARIAT (AI) (P)**

BORN: 07/03/2015 IDENT: BIS L927E COLOUR: White

WESC HICKS REVOLVER 14R PMC295963 (PED -5963E)

**SIRE: HICKS REMINGTON 31U PMC321438 (OAC D1438E) (P)**

JWK RUBY K003 PFC332642 (PED -2642E)

PINAY 8552394134 (OAF U4134F)

**DAM: WAKEFIELD CLOVER 2 (BIS H271E) (P)**

WAKEFIELD CLOVER (BIS C104D) (P)

BRIDOR MONTY 29M PMC263827 (PED -2638E)  
WESC EAGLE'S PRIDE 9N PFC325544 (PED -5544E)

BALDRIDGE FASTTRACK 82E M447863 (OAU R82E) (P)

JWK RUBY H026 F817395 (PED -7395E)

IMPAIR 1893102983 (OAF N189F)

MARY 8596100049 (OAF R8596F)

SHAMROCK AMBASSADEUR 03179 A02 (IAE E6159F)

WAKEFIELD YASMINE (BIS Y500C) (P)

Index	\$Value
Domestic	+533
Export	+544
Terminal	+518

June 2016 Australasian Charolais GROUP BREEDPLAN

	CE Dir	CE Dir	GL	BW	200	400	600	MCW	MILK	SS	CWT	EMA	RIB	Rump	RBY	IMF
EBV	+9.9	+2.1	-4.5	-1.3	+10	+17	+18	+23	+5	+0.7	+17	+2.2	+0.4	-0.2	+0.3	+0.1
Acc	44%	36%	74%	71%	59%	64%	61%	56%	40%	73%	51%	46%	49%	48%	48%	45%

**Notes:** This son of homozygous polled calving ease Canadian sire Hicks Remington is also homozygous polled. This slick coated young sire brings together some of the best genetics in the Charolais breed. Great length of body and a good top line. **Top 10% for calving ease direct and low birth weight, top 15% for gestation length and top 20% for EMA.**

Purchaser.....Price \$.....

35

**WAKEFIELD LEYLAND (AI) (P/S)**

BORN: 08/03/2015 IDENT: BIS L931E COLOUR: White

WESC HICKS REVOLVER 14R PMC295963 (PED -5963E)

**SIRE: HICKS REMINGTON 31U PMC321438 (OAC D1438E) (P)**

JWK RUBY K003 PFC332642 (PED -2642E)

PINAY 8552394134 (OAF U4134F)

**DAM: WAKEFIELD ELVIRA 2 (BIS H220E)**

WAKEFIELD ELVIRA (BIS E401E) (P)

BRIDOR MONTY 29M PMC263827 (PED -2638E)  
WESC EAGLE'S PRIDE 9N PFC325544 (PED -5544E)

BALDRIDGE FASTTRACK 82E M447863 (OAU R82E) (P)

JWK RUBY H026 F817395 (PED -7395E)

IMPAIR 1893102983 (OAF N189F)

MARY 8596100049 (OAF R8596F)

LHD MR PERFECT Y416 M 314744 (OAC J416E) (P)

WAKEFIELD BISCUIT (BIS B929E)

Index	\$Value
Domestic	+535
Export	+544
Terminal	+515

June 2016 Australasian Charolais GROUP BREEDPLAN

	CE Dir	CE Dir	GL	BW	200	400	600	MCW	MILK	SS	CWT	EMA	RIB	Rump	RBY	IMF
EBV	+8.6	+4.4	-4.7	-1.4	+10	+17	+16	+21	+6	+0.3	+13	+0.8	+0.8	+0.4	-0.7	+0.7
Acc	44%	36%	74%	71%	60%	64%	63%	56%	40%	73%	53%	47%	52%	51%	50%	47%

**Notes:** A smooth coated beautifully muscled Pinay grandson with all the attributes we expect from this champion French sire. Leyland has wonderful calving ease and birthweight figures with positive carcass attributes. His dam Elvira 2 is from a line of reliable breeders that calve every year and produce saleable animals. Well worth considering! **Top 10% for low birth weight and IMF and top 15% for gestation length and calving ease direct and top 20% for rib fat.**

Purchaser.....Price \$.....

36

**WAKEFIELD LANCELOT (P)**

BORN: 01/04/2015 IDENT: BIS L947E COLOUR: White

HICKS REMINGTON 31U PMC321438 (OAC D1438E) (P)

**SIRE: WAKEFIELD HIGH NOON (BIS H266E) (P)**

WAKEFIELD FRIESIA (BIS F739E)

WAKEFIELD EXHILARATE (BIS E474E)

**DAM: WAKEFIELD EDEN 2 (BIS H264E) (P)**

WAKEFIELD EDEN (BIS E414E) (P)

WESC HICKS REVOLVER 14R PMC295963 (PED -5963E)  
JWK RUBY K003 PFC332642 (PED -2642E)

BLAWEARY BARDOQUE (BLO B1E) (P)

WAKEFIELD CLOVER (BIS C104D) (P)

PINAY 8552394134 (OAF U4134F)

WAKEFIELD AMAZE 3 (BIS C154E) (P)

PARINGA SENTINAL RULER C93E (TOL C93E) (P)

WAKEFIELD CLOVER (BIS C104D) (P)

Index	\$Value
Domestic	+534
Export	+547
Terminal	+516

June 2016 Australasian Charolais GROUP BREEDPLAN

	CE Dir	CE Dir	GL	BW	200	400	600	MCW	MILK	SS	CWT	EMA	RIB	Rump	RBY	IMF
EBV	+8.9	+2.1	-4.2	-1.5	+9	+15	+18	+24	+8	+1.0	+9	-0.1	+0.9	+1.0	-1.4	+1.0
Acc	30%	25%	48%	54%	54%	59%	56%	49%	29%	72%	48%	44%	46%	44%	46%	43%

**Notes:** A complete powerful young polled bull by homebred High Noon that was used on heifers. He has tremendous calving ease and birthweight figures and exhibits good neck extension and smooth shoulders. **Top 5% for IMF, top 10% for calving ease direct and low birthweight and top 20% for gestation length, rib fat and domestic and export indexes.**

Purchaser.....Price \$.....

37

**WAKEFIELD LASSO (AI) (P)**

BORN: 28/02/2015 IDENT: BIS L919E COLOUR: White

MXS VERMILLION 527R MC299214 (OAC A9214E) (P)

SOS POLLED DETONATOR 8M (OAC X7034E) (P)  
MXS ESPEON 122L FC305308 (PED -5308E)

**SIRE: MERIT ROUNDUP 9508W PMC326558 (OAC E6558E) (P)**

MERIT YOLANDA 7244T PFC361301 (PED -1301E)

MERIT 1058L PMC258317 (PED -8317E)  
MERIT YOLANDA 6116F PFC232626 (PED -2626E)

THW DEE V8 (THW D19E) (P/S)

IMPAIR 1893102983 (OAF N189F)  
ADVANCE FRIESIA 256 (ADV 256E) (P)

**DAM: WAKEFIELD HONEYSUCKLE (BIS H294E)**

MOUNT WILLIAM V92E (BS V92E)

TALGOONA QANTAS (CG Q4E)  
MOUNT WILLIAM SYBIL (BS 572E)

Index	\$Value
Domestic	+\$39
Export	+\$54
Terminal	+\$27

June 2016 Australasian Charolais GROUP BREEDPLAN

	CE Dir	CE Dtr	GL	BW	200	400	600	MCW	MILK	SS	CWT	EMA	RIB	Rump	RBY	IMF
EBV	+8.5	+7.1	-6.8	-0.4	+19	+31	+40	+39	+3	+1.8	+24	+0.7	-0.8	-1.0	+0.8	-0.4
Acc	44%	31%	73%	71%	61%	65%	61%	55%	35%	73%	52%	46%	50%	48%	48%	45%

**Notes:** An outstanding thickset polled young bull by homozygous Canadian sire Merit Round Up. His dam is producing bulls with eye appeal and great phenotypes true to the Charolais breed. Lasso has very good calving ease and birthweight figures with above average growth making him a real curve bending bull. He would be a useful addition to any herd. **Top 5% for gestation length and top 15% for calving ease direct and domestic and export indexes.**

Purchaser..... Price \$.....

38

**WAKEFIELD LARGO (AI) (P/S)**

BORN: 27/02/2015 IDENT: BIS L918E COLOUR: White

MXS VERMILLION 527R MC299214 (OAC A9214E) (P)

SOS POLLED DETONATOR 8M (OAC X7034E) (P)  
MXS ESPEON 122L FC305308 (PED -5308E)

**SIRE: MERIT ROUNDUP 9508W PMC326558 (OAC E6558E) (P)**

MERIT YOLANDA 7244T PFC361301 (PED -1301E)

MERIT 1058L PMC258317 (PED -8317E)  
MERIT YOLANDA 6116F PFC232626 (PED -2626E)

ADVANCE DOMINO D36 (ADV D36E) (P)

LINKLETTER A11E (LJA A11E) (P)  
ADVANCE GOLDSTAR Y46 (ADV Y46E)

**DAM: WAKEFIELD ELOISE 2 (BIS H270E) (P)**

BOONGATTI ELOISE (BOO E34E)

PINAY 8552394134 (OAF U4134F)  
AYR ELDON'S SUSETTE 3RD (AYR X113E)

Index	\$Value
Domestic	+\$37
Export	+\$50
Terminal	+\$22

June 2016 Australasian Charolais GROUP BREEDPLAN

	CE Dir	CE Dtr	GL	BW	200	400	600	MCW	MILK	SS	CWT	EMA	RIB	Rump	RBY	IMF
EBV	+8.3	+6.8	-7.1	-0.9	+15	+25	+30	+24	+3	+2.5	+17	-0.2	-0.7	-0.6	+0.2	-0.1
Acc	42%	27%	74%	71%	62%	65%	61%	55%	31%	73%	52%	46%	49%	48%	48%	46%

**Notes:** Largo is a scurred son of Canadian sire Merit Round Up. He has good growth on a moderate frame with excellent calving ease and birthweight figures. This young bull will add value to any beef enterprise. **Top 5% for gestation length and scrotal circumference and top 15% for calving ease direct and low birth weight and top 20% for both domestic and export indexes.**

Purchaser..... Price \$.....

39

**WAKEFIELD LEAD HAND (AI) (P)**

BORN: 15/03/2015 IDENT: BIS L937E COLOUR: White

LT RIO BRAVO 3181 P M665507 (OAU Y5507E) (P)

LT RIO BLANCO 1234 P M620591 (OAU W591E) (P)  
LT 7N OF DUKE 9083 PLD F852553 (OAU U2553E) (P)

**SIRE: RANGAN PARK RIO BRAVO D15 (RAN D15E) (P)**

PALGROVE SHOW GIRL 6 (PK P82E) (P)

WCR SIR FA MAC 2244 M 234430 (OAU 82244E) (P)  
PALGROVE SHOW GIRL 5 (PK L123E)

PINAY 8552394134 (OAF U4134F)

IMPAIR 1893102983 (OAF N189F)  
MARY 8596100049 (OAF R8596F)

**DAM: WAKEFIELD RIDDLE 2 (BIS H205E)**

WAKEFIELD ESCAPE (BIS E469E) (P)

WAKEFIELD CORLEONE (BIS C183E) (P)  
DURSLEY RIDDLE (BK R4E)

Index	\$Value
Domestic	+\$33
Export	+\$38
Terminal	+\$26

June 2016 Australasian Charolais GROUP BREEDPLAN

	CE Dir	CE Dtr	GL	BW	200	400	600	MCW	MILK	SS	CWT	EMA	RIB	Rump	RBY	IMF
EBV	+1.1	-0.7	-4.1	+0.3	+17	+31	+38	+44	+10	-0.1	+28	+4.9	+0.4	+1.0	+1.2	+0.6
Acc	47%	43%	72%	71%	61%	65%	62%	59%	49%	73%	55%	51%	52%	51%	51%	50%

**Notes:** Lead Hand has a great set of positive carcase figures. His positive fats and the highest EMA ebv in the sale today make this Pinay grandson well worth considering. Last Charolais bull to sell today. **Top 1% for EMA, top 10% for IMF and RBY and top 20% for gestation length.**

Purchaser..... Price \$.....

40

## WAKEFIELD CREED L703 (AI)

BORN: 06/03/2015 IDENT: ANNL703 HERDBOOK: HBR

GUMBO GULCH CREED 945

SIRE: CAN1526335 DMM CREED 75W

RED DMM ESSENCE 156P

S A V NET WORTH 4200

DAM: ANNF852 WAKEFIELD CRYSTAL F852 (AI)

WAKEFIELD CRYSTAL C1095 (AI) (ET)

TC FREEDOM 104  
CASSIE OF GUMBO GULCH 58MRED LCC MAJOR LEAGUE A502M  
RED STEN ESSENCE 42GS A V 8180 TRAVELER 004  
S A V MAY 2410ALBERDA TRAVELER 416  
TE MANIA JEDDA P123

Index	\$Value
Breeding	+\$71
Domestic	+\$85
Heavy Grain	+\$57
Heavy Grass	+\$79

Genetic Conditions: AM AMFU NH NHFU CA CAFU DD DDFU

July 2016 Angus Australia BREEDPLAN

	CE Dir	CE Dir	GL	BW	200	400	600	MCW	MILK	SS	CWT	EMA	RIB	Rump	RY	IMF
EBV	-1.8	-2.6	-1.7	+5.5	+43	+71	+89	+86	+13	+1.5	+52	+3.6	-0.1	-0.5	+0.7	+0.6
Acc	40%	32%	78%	66%	57%	56%	56%	52%	47%	45%	47%	42%	44%	42%	40%	39%

Notes: L703 is a powerful young son of Canadian sire DMM Creed (the only Creed son selling at our sale this year) that will add eye appeal, muscularity and tremendous length of body to his progeny. He is smooth coated with a wonderful top line, don't overlook this young bull.

Purchaser.....Price \$.....

41

## WAKEFIELD EQUATOR K683 (APR) (AI)

BORN: 30/05/2014 IDENT: ANNK683 HERDBOOK: APR

BT EQUATOR 395M

SIRE: NMMD78 MILLAH MURRAH EQUATOR D78 (AI)

MILLAH MURRAH RADO Y119 (AI)

SITZ ALLIANCE 6595

DAM: ANNB1088 WAKEFIELD B1088 (APR)

PAPA EQUATOR 2928  
RM BLACK MAGIC 7574 E A RYTHANBRAE HENRY VIII U8 (AI) (ET)  
MILLAH MURRAH RADO V31 (AI)SITZ TRAVELER 8180  
SITZ BARBARAMERE JET 2698

Index	\$Value
Breeding	+\$112
Domestic	+\$106
Heavy Grain	+\$108
Heavy Grass	+\$115

Genetic Conditions: AM AMF NH NHF CA CAF DD DDF

July 2016 Angus Australia BREEDPLAN

	CE Dir	CE Dir	GL	BW	200	400	600	MCW	MILK	SS	CWT	EMA	RIB	Rump	RY	IMF
EBV	+0.1	+1.8	-5.7	+5.1	+51	+95	+130	+121	+17	+2.1	+74	+3.5	+0.2	-0.6	+0.6	+0.5
Acc	53%	45%	83%	73%	67%	67%	72%	68%	57%	72%	63%	60%	60%	61%	56%	55%

Notes: K683 is an outstanding young son of Millah Murrah Equator D78 that will add eye appeal with his natural muscle pattern, explosive growth and a great topline to his progeny. He has a good temperament with a natural finishing ability and depth of body. K683 is out of a Sitz Alliance 6595 female B1088 that has given us muscle power in her sons and fertility, longevity and milking ability in her females. Well worth your consideration. Top 5% for 200, 400 and 600 day growth.

42

## WAKEFIELD THUNDERBIRD K686 (APR) (AI)

BORN: 13/10/2014 IDENT: ANNK686 HERDBOOK: APR

S A V FINAL ANSWER 0035

SIRE: USA16396499 S A V THUNDERBIRD 9061

S A V EMBLYNETTE 7411

ALBERDA TRAVELER 416

DAM: ANNB1089 WAKEFIELD B1089 (APR)

SITZ TRAVELER 8180  
S A V EMULOUS 8345S A V BISMARCK 5682  
S A V EMBLYNETTE 4408D H D TRAVELER 6807  
ALBERDA QUEEN KIMBERLY 222

Index	\$Value
Breeding	+\$93
Domestic	+\$97
Heavy Grain	+\$88
Heavy Grass	+\$98

Genetic Conditions: AM AMFU NH NHFU CA CAFU DD DDFU

July 2016 Angus Australia BREEDPLAN

	CE Dir	CE Dir	GL	BW	200	400	600	MCW	MILK	SS	CWT	EMA	RIB	Rump	RY	IMF
EBV	-0.9	-4.1	+0.7	+4.3	+47	+86	+112	+101	+14	+1.1	+62	+4.7	+0.0	-1.1	+0.5	+1.0
Acc	54%	50%	83%	73%	68%	67%	72%	68%	56%	72%	60%	59%	59%	60%	55%	54%

Notes: A good young bull from curve-bending sire SAV Thunderbird. Thunderbirds are renowned for their exceptional growth, temperament, finishing ability and calving ease. This bull has a tremendous top line and muscularity as well as being a free moving sire with presence. Top 15% for 400 day growth and top 20% for 600 day growth.

Purchaser.....Price \$.....

43

## WAKEFIELD THUNDERBIRD K661 (AI) (ET)

BORN: 20/08/2014 IDENT: ANNK661 HERDBOOK: HBR

S A V FINAL ANSWER 0035

SIRE: USA16396499 S A V THUNDERBIRD 9061

S A V EMBLYNETTE 7411

R/M ULTRA CASH FLOW 102

DAM: ANNF861 WAKEFIELD VICKY F861 (AI) (ET)

GLENCAIRN VICKY V63 (AI) (ET)

SITZ TRAVELER 8180  
S A V EMULOUS 8145S A V BISMARCK 5682  
S A V EMBLYNETTE 4408  
B T ULTRAVOX 297E  
G M A SHANES ELLA 901RITO 9FB3 OF SH11 FULLBACK  
MERRIGRANGE VICKY H47+88 (AI) (ET)

Index	\$Value
Breeding	+\$94
Domestic	+\$101
Heavy Grain	+\$82
Heavy Grass	+\$101

Genetic Conditions: AM AMFU NH NHFU CA CAFU DD DDFU

July 2016 Angus Australia BREEDPLAN

	CE Dir	CE Dtr	GL	BW	200	400	600	MCW	MILK	SS	CWT	EMA	RIB	Rump	RFY	IMF
EBV	+2.0	-0.6	-4.8	+3.4	+48	+83	+106	+94	+16	+0.8	+62	+4.4	+1.5	+0.0	+0.4	+0.6
Acc	55%	50%	61%	73%	68%	67%	71%	66%	57%	70%	60%	59%	60%	60%	56%	55%

Notes: This young son of Thunderbird has been used over heifers in the Wakefield herd for his curve-bending attributes. He has a smooth shoulder set and good neck extension for calving ease with good growth traits a lot like his sire. A complete bull with good muscularity, depth of body and style. Don't overlook this young bull. **Top 15% for 200 day growth and top 10% for rib fat.**

Purchaser.....Price \$.....

44

## WAKEFIELD THUNDERBIRD K662 (AI) (ET)

BORN: 22/08/2014 IDENT: ANNK662 HERDBOOK: HBR

S A V FINAL ANSWER 0035

SIRE: USA16396499 S A V THUNDERBIRD 9061

S A V EMBLYNETTE 7411

R/M ULTRA CASH FLOW 102

DAM: ANNF861 WAKEFIELD VICKY F861 (AI) (ET)

GLENCAIRN VICKY V63 (AI) (ET)

SITZ TRAVELER 8180  
S A V EMULOUS 8145S A V BISMARCK 5682  
S A V EMBLYNETTE 4408  
B T ULTRAVOX 297E  
G M A SHANES ELLA 901RITO 9FB3 OF SH11 FULLBACK  
MERRIGRANGE VICKY H47+88 (AI) (ET)

Index	\$Value
Breeding	+\$92
Domestic	+\$99
Heavy Grain	+\$80
Heavy Grass	+\$100

Genetic Conditions: AM AMFU NH NHFU CA CAFU DD DDFU

July 2016 Angus Australia BREEDPLAN

	CE Dir	CE Dtr	GL	BW	200	400	600	MCW	MILK	SS	CWT	EMA	RIB	Rump	RFY	IMF
EBV	+1.4	-0.9	-4.8	+3.6	+48	+83	+106	+93	+15	-0.1	+61	+4.2	+1.8	+0.3	+0.1	+0.7
Acc	55%	50%	61%	73%	68%	67%	71%	66%	57%	70%	60%	59%	60%	60%	56%	55%

Notes: A full flush brother to the previous lot this Thunderbird son has good growth, muscle pattern and capacity. The Thunderbirds are born easily and then exhibit good growth and finishing ability. K662 has good length of body on a moderate frame with a smooth muscle pattern. **Top 15% for 200 day growth and top 5% for rib fat.**

Purchaser.....Price \$.....

45

## WAKEFIELD REGENT K658 (APR) (AI) (ET)

BORN: 20/08/2014 IDENT: ANNK658 HERDBOOK: APR

TE MANIA AMBASSADOR A134 (AI)

SIRE: BNAD145 TUWHARETOA REGENT D145 (AI) (ET)

LAWSON'S HENRY VIII Y5 (AI)

WAKEFIELD DIRECTION D511 (APR)

DAM: ANNF876 WAKEFIELD F876 (APR)

WAKEFIELD W341 (APR)

RENNYLEA XPNENTIAL X555 (AI) (ET)  
TE MANIA LOWAN Y211 (ACR) (AI)YTHANBRAE HENRY VIII U8 (AI) (ET)  
YTHANBRAE DIRECTION T270 (AI)KAROO W109 DIRECTION Z181  
WAKEFIELD B1098 (APR)

Index	\$Value
Breeding	+\$100
Domestic	+\$93
Heavy Grain	+\$111
Heavy Grass	+\$95

Genetic Conditions: AM AMFU NH NHFU CA CAFU DD DDFU

July 2016 Angus Australia BREEDPLAN

	CE Dir	CE Dtr	GL	BW	200	400	600	MCW	MILK	SS	CWT	EMA	RIB	Rump	RFY	IMF
EBV	-2.2	-3.5	-3.3	+5.1	+40	+73	+97	+91	+13	+2.3	+64	+4.2	+0.6	+0.3	-0.4	+2.7
Acc	54%	50%	59%	73%	66%	65%	70%	65%	55%	69%	60%	58%	58%	60%	56%	54%

Notes: This powerful son of Regent has tremendous length and muscle on a bigger frame. The Regent progeny are showing exceptional growth and overall eye appeal well worth a look!

Purchaser.....Price \$.....



46

## WAKEFIELD EQUATOR K685 (APR) (AI)

BORN: 05/10/2014 IDENT: ANNK685 HERDBOOK: APR

PAPA EQUATOR 2928

SIRE: NAQA241 ARDROSSAN EQUATOR A241 (AI) (ET)

ARDROSSAN PRINCESS W38 (AI) (ET)

ALBERDA TRAVELER 416

DAM: ANNF892 WAKEFIELD F892 (AI)

WAKEFIELD Z686 (APR)

PAPA POWER 096

PAPA ENVIOUS BLACKBIRD 8849

B/R NEW DIMENSION 7127

ARDROSSAN PRINCESS U24 (AI) (ET)

D H D TRAVELER 6807

ALBERDA QUEEN KIMBERLY 222

B/R NEW DESIGN 036

Index	\$Value
Breeding	+\$108
Domestic	+\$103
Heavy Grain	+\$110
Heavy Grass	+\$107

Genetic Conditions: AM AMFU NH NHFU CA CAFU DD DOF

July 2016 Angus Australia BREEDPLAN

	CE Dir	CE Dir	GL	BW	200	400	600	MCW	MILK	SS	CWT	EMA	RIB	Rump	RBY	IMF
EBV	+0.6	-1.8	-4.6	+4.0	+43	+80	+106	+94	+16	+2.1	+64	+4.6	-0.3	+0.4	+0.4	+1.7
Acc	58%	55%	84%	74%	68%	67%	72%	67%	58%	72%	63%	62%	62%	63%	60%	59%

Notes: This Equator A241 son has calving ease, tremendous growth, muscle and a good top line. He has a good temperament with excellent carcase ebvs across the board and a great do-ability.

Purchaser..... Price \$.....

47

## WAKEFIELD EQUATOR K684 (APR) (AI)

BORN: 03/10/2014 IDENT: ANNK684 HERDBOOK: APR

BT EQUATOR 395M

SIRE: NMMD78 MILLAH MURRAH EQUATOR D78 (AI)

MILLAH MURRAH RADO Y119 (AI)

L T 598 BANDO 9074

DAM: ANNF851 WAKEFIELD FANCY PANTS F851 (APR) (AI)

WAKEFIELD D502 (APR)

PAPA EQUATOR 2928

RM BLACK MAGIC 7574 E A R

YTHANBRAE HENRY VIII U8 (AI) (ET)

MILLAH MURRAH RADO V31 (AI)

S A F 598 BANDO 5175

MILL COULEE BARBARA K323

ALBERDA TRAVELER 416

Index	\$Value
Breeding	+\$120
Domestic	+\$108
Heavy Grain	+\$122
Heavy Grass	+\$120

Genetic Conditions: AM AMFU NH NHFU CA CAFU DD DOF

July 2016 Angus Australia BREEDPLAN

	CE Dir	CE Dir	GL	BW	200	400	600	MCW	MILK	SS	CWT	EMA	RIB	Rump	RBY	IMF
EBV	+0.8	+2.7	-6.6	+4.5	+52	+96	+135	+133	+19	+2.7	+72	+1.8	-0.3	-0.4	+0.4	+0.8
Acc	55%	48%	84%	74%	68%	68%	73%	67%	57%	72%	62%	61%	62%	63%	59%	58%

Notes: A stylish son of D78 exhibiting muscle and finishing ability. D78 is an all-rounder in the Angus breed the bulls are 'punchy' yet have a natural doing ability with exceptional growth on a big frame. K684 is another bull with positive calving ease, short gestation length, exceptional growth, capacity and an excellent scrotal circumference. Top 5% for 200 and 400 day growth and top 1% for 600 day growth and top 10% for gestation length, breeding indexes and scrotal circumference.

48

## WAKEFIELD EQUATOR K655 (APR) (AI)

BORN: 26/07/2014 IDENT: ANNK655 HERDBOOK: APR

BT EQUATOR 395M

SIRE: NMMD78 MILLAH MURRAH EQUATOR D78 (AI)

MILLAH MURRAH RADO Y119 (AI)

B/R NEW DESIGN 323

DAM: ANNA900 WAKEFIELD A900 (APR)

PAPA EQUATOR 2928

RM BLACK MAGIC 7574 E A R

YTHANBRAE HENRY VIII U8 (AI) (ET)

MILLAH MURRAH RADO V31 (AI)

B/R NEW DESIGN 036

B/R RUBY OF TIFFANY 155

Index	\$Value
Breeding	+\$99
Domestic	+\$99
Heavy Grain	+\$96
Heavy Grass	+\$101

Genetic Conditions: AM AMF NH NHF CA CAF DD DOF

July 2016 Angus Australia BREEDPLAN

	CE Dir	CE Dir	GL	BW	200	400	600	MCW	MILK	SS	CWT	EMA	RIB	Rump	RBY	IMF
EBV	-0.1	+1.3	-4.6	+4.4	+45	+82	+111	+120	+15	+1.1	+63	+4.5	-1.0	-1.6	+1.2	+0.7
Acc	53%	47%	83%	64%	64%	65%	70%	63%	56%	70%	59%	59%	60%	61%	54%	55%

Notes: Another Millah Murrah Equator D78 son who has great depth, growth and a smooth muscle pattern with a natural finishing ability. The D78 calves are born easily and early and then have exceptional growth. The last D78 son on offer today. He will suit a range of enterprises. Top 10% for retail beef yield.

Purchaser..... Price \$.....

49

## WAKEFIELD EQUATOR K681 (APR) (AI)

BORN: 28/09/2014 IDENT: ANNK681 HERDBOOK: APR

PAPA EQUATOR 2928

SIRE: NAQA241 ARDROSSAN EQUATOR A241 (AI) (ET)

ARDROSSAN PRINCESS W38 (AI) (ET)

P A R B DESIGN PLUS 97

DAM: ANNB1200 WAKEFIELD B1200 (APR) (AI)

WAKEFIELD A893 (APR)

PAPA POWER 096

PAPA ENVIOUS BLACKBIRD 8849

B/R NEW DIMENSION 7127

ARDROSSAN PRINCESS U24 (AI) (ET)

B/R NEW DESIGN 036

P A R B PRIMROSE 5968

TINAMBA NUMBERS N62 (AI)

Index	\$Value
Breeding	+\$106
Domestic	+\$106
Heavy Grain	+\$113
Heavy Grass	+\$105

Genetic Conditions: AM AMFU NH NHFU CA CAFU DO DDF

July 2016 Angus Australia BREEDPLAN

	CE Dir	CE Dtr	GL	BW	200	400	600	MCW	MILK	SS	CWT	EMA	RIB	Rump	RIY	IMF
EBV	+1.0	+0.2	-6.6	+4.0	+46	+86	+111	+105	+17	+2.0	+69	+2.6	-1.7	-1.6	+0.7	+1.9
Acc	58%	54%	84%	73%	68%	68%	72%	67%	59%	72%	63%	62%	62%	63%	60%	58%

Notes: A son of Equator A241 with a smooth coat, plenty of muscle and an easy fleshing ability on a big frame. K681 is a bull that moves well and would suit a number of operations that are looking for good calving ease and growth. A good all-round bull with a great scrotum. **Top 10% gestation length.**

Purchaser.....Price \$.....

50

## WAKEFIELD THUNDERBIRD K666 (APR) (AI) (TW)

BORN: 28/08/2014 IDENT: ANNK666 HERDBOOK: APR

S A V FINAL ANSWER 0035

SIRE: USA16396499 S A V THUNDERBIRD 9061

S A V EMBLYNETTE 7411

WAKEFIELD DIRECTION D511 (APR)

DAM: ANNG978 WAKEFIELD G978 (APR)

WAKEFIELD W323 (APR)

SITZ TRAVELER 8180

S A V EMULOUS 8145

S A V BISMARCK 5682

S A V EMBLYNETTE 4408

KAROO W109 DIRECTION Z181

WAKEFIELD B1098 (APR)

Index	\$Value
Breeding	+\$99
Domestic	+\$103
Heavy Grain	+\$93
Heavy Grass	+\$102

Genetic Conditions: AM AMFU NH NHFU CA CAFU DO DDFU

July 2016 Angus Australia BREEDPLAN

	CE Dir	CE Dtr	GL	BW	200	400	600	MCW	MILK	SS	CWT	EMA	RIB	Rump	RIY	IMF
EBV	+1.1	-0.2	-5.4	+3.8	+45	+80	+101	+91	+11	+1.3	+57	+3.7	+0.7	-0.2	+0.6	+1.0
Acc	50%	45%	56%	60%	57%	57%	59%	55%	49%	52%	50%	50%	52%	50%	48%	49%

Notes: Another Thunderbird son who is exhibiting the trade mark growth that we've come to expect from this sire. Good depth, capacity, and a natural finishing ability. This bull has great eye appeal and would suit a range of beef operations from vealers to heavy export steers.

Purchaser.....Price \$.....

51

## WAKEFIELD BARTEL K673 (APR) (AI)

BORN: 17/09/2014 IDENT: ANNK673 HERDBOOK: APR

TE MANIA BARTEL B219 (AI) (ET)

SIRE: HIOE7 AYRVALE BARTEL E7 (AI) (ET)

EAGLEHAWK JEDDA B32 (AI)

WAKEFIELD INFINITY F856 (AI) (ET)

DAM: ANNH330 WAKEFIELD FINE TIME H330 (APR)

WAKEFIELD FINE TIME F866 (APR) (AI)

B/R NEW DIMENSION 7127

TE MANIA JEDDA W85 (AI) (ET)

MYTTY IN FOCUS

EAGLEHAWK JEDDA Z48 (AI)

TE MANIA INFINITY 04 379 AB

THE GRANGE RITA 2811 B238 (AI) (ET)

BT RIGHT TIME 24J

WAKEFIELD B1089 (APR)

Index	\$Value
Breeding	+\$129
Domestic	+\$118
Heavy Grain	+\$142
Heavy Grass	+\$122

Genetic Conditions: AM AMFU NH NHFU CA CAFU DO DDFU

July 2016 Angus Australia BREEDPLAN

	CE Dir	CE Dtr	GL	BW	200	400	600	MCW	MILK	SS	CWT	EMA	RIB	Rump	RIY	IMF
EBV	+3.9	+3.6	-7.1	+2.4	+44	+82	+103	+79	+21	+1.6	+67	+6.2	-0.3	+1.0	-0.5	+3.0
Acc	54%	51%	83%	71%	66%	66%	71%	66%	54%	70%	60%	59%	60%	61%	54%	55%

Notes: Our only bull by Ayrvale Bartel (more sons to sell next year) with wonderful calving ease, excellent growth, finishing ability and a smooth muscle pattern on a moderate frame. K673 is a free moving bull that is one of our topindexing Angus bulls here today, well worth your consideration. **Top 5% for gestation length, top 10% for birth weight, calving ease direct and IMF.**

Purchaser.....Price \$.....

52

## WAKEFIELD DYNAMITE K687 (APR)

BORN: 15/16/2014 IDENT: ANNK687 HERDBOOK: APR

MOHNEN DYNAMITE 1356

SIRE: ANNH337 WAKEFIELD DYNAMITE H337 (APR) (AI)

WAKEFIELD V251 (APR)

WAKEFIELD DIRECTION D511 (APR)

DAM: ANNG983 WAKEFIELD G983 (APR)

WAKEFIELD W347 (APR)

BALDRIDGE KABOOM K243 KCF  
MOHNEN JILT 910

B/R NEW DESIGN 036

KAROO W109 DIRECTION Z181  
WAKEFIELD B1098 (APR)

Index	\$Value
Breeding	+\$89
Domestic	+\$94
Heavy Grain	+\$81
Heavy Grass	+\$92

Genetic Conditions: AM AMF NH NHF CA CAF DD DOF

July 2016 Angus Australia BREEDPLAN

	CE Dir	CE Dev	GL	BW	200	400	600	MCW	MILK	SS	CWT	EMA	RIB	Rump	RBY	IMF
EBV	+0.0	-0.1	-4.9	+4.5	+37	+69	+87	+79	+8	+1.3	+50	+4.0	+1.6	+1.8	-0.1	+1.3
Acc	35%	29%	50%	68%	60%	59%	67%	59%	35%	65%	50%	49%	50%	52%	46%	42%

Notes: A Mohnen Dynamite grandson that is exhibiting plenty of muscle and a good top line with a natural finishing ability. He is well worth a look! Top 10% for rib and rump fat.

Purchaser.....Price \$.....

53

## WAKEFIELD THUNDERBIRD K674 (APR) (AI)

BORN: 17/05/2014 IDENT: ANNK674 HERDBOOK: APR

S A V FINAL ANSWER 0035

SIRE: USA16396499 S A V THUNDERBIRD 9061

S A V EMBLYNETTE 7411

WAKEFIELD DIRECTION D511 (APR)

DAM: ANNH322 WAKEFIELD HARLOT H322

WAKEFIELD U235 (APR)

SITZ TRAVELER 8180  
S A V EMULOUS 8145S A V BISMARCK 5682  
S A V EMBLYNETTE 4408KAROO W109 DIRECTION Z181  
WAKEFIELD B1098 (APR)

DULVERTON QANTUM LEAP Q16 (AI) (ET)

Index	\$Value
Breeding	+\$96
Domestic	+\$101
Heavy Grain	+\$89
Heavy Grass	+\$99

Genetic Conditions: AM AMFU NH NHFU CA CAFU DD DDFU

July 2016 Angus Australia BREEDPLAN

	CE Dir	CE Dev	GL	BW	200	400	600	MCW	MILK	SS	CWT	EMA	RIB	Rump	RBY	IMF
EBV	+1.8	+0.5	-5.5	+3.5	+43	+77	+98	+88	+15	+1.9	+54	+2.0	+1.1	+0.1	+0.5	+0.9
Acc	51%	46%	55%	70%	65%	65%	69%	63%	50%	69%	56%	56%	55%	56%	52%	51%

Notes: The last Sav Thunderbird son on offer today. This bull has a natural do ability and a great calving ease that would indicate he would be suitable for heifers. Top 15% for rib fat.

Purchaser.....Price \$.....

54

## WAKEFIELD EQUATOR K675 (APR) (AI)

BORN: 19/05/2014 IDENT: ANNK675 HERDBOOK: APR

PAPA EQUATOR 2928

SIRE: NAQA241 ARDROSSAN EQUATOR A241 (AI) (ET)

ARDROSSAN PRINCESS W38 (AI) (ET)

WAKEFIELD DIRECTION F850 (APR) (AI)

DAM: ANNH336 WAKEFIELD HIGHNESS H336 (APR)

WAKEFIELD C1203 (APR)

PAPA POWER 096  
PAPA ENVIOUS BLACKBIRD 8849B/R NEW DIMENSION 7127  
ARDROSSAN PRINCESS U24 (AI) (ET)KAROO W109 DIRECTION Z181  
WAKEFIELD DREAMGIRL E505 (APR) (AI)

P A R B DESIGN PLUS 97

Index	\$Value
Breeding	+\$93
Domestic	+\$97
Heavy Grain	+\$89
Heavy Grass	+\$95

Genetic Conditions: AM AMFU NH NHFU CA CAFU DD DDFU

July 2016 Angus Australia BREEDPLAN

	CE Dir	CE Dev	GL	BW	200	400	600	MCW	MILK	SS	CWT	EMA	RIB	Rump	RBY	IMF
EBV	-1.8	-2.4	-3.8	+4.0	+42	+76	+96	+83	+17	+1.8	+62	+5.5	-0.5	-0.3	+0.9	+1.3
Acc	54%	51%	55%	70%	65%	65%	69%	64%	53%	69%	60%	59%	58%	60%	57%	55%

Notes: The last son of A241 on offer today exhibiting typical Angus features. He will suit a range of enterprises from vealer production to feeder steers.

Purchaser.....Price \$.....

55

**WAKEFIELD EXTERMINATOR J494 (APR) (AI)**

BORN: 27/05/2013 IDENT: ANNJ494 HERDBOOK: APR

ONEILLS EXPEDITION  
**SIRE: QRFE201 RAFF EXTERMINATOR E201 (AI) (ET)**  
 HOFF STARLETTE SC 441  
 P A R B DESIGN PLUS 97  
**DAM: ANNB1200 WAKEFIELD B1200 (APR) (AI)**  
 WAKEFIELD A893 (APR)

CIRCLE A ADVENTURE D124  
 ONEILLS DELIA 715  
 HOFF SUPER BULL S C 5113  
 HOFF HI GAL S C 410  
 B/R NEW DESIGN 036  
 P A R B PRIMROSE 5968  
 TINAMBA NUMBERS N62 (AI)

Index	\$Value
Breeding	+\$95
Domestic	+\$102
Heavy Grain	+\$90
Heavy Grass	+\$100

Genetic Conditions: AM AMFU NH NHFU CA CAFU DD DDF

July 2016 Angus Australia BREEDPLAN

	CE Dir	CE Dtr	GL	BW	200	400	600	MCW	MILK	SS	CWT	EMA	RIB	Rump	RBY	IMF
EBV	+0.1	-0.5	-5.7	+5.6	+47	+83	+109	+106	+9	+1.3	+61	+5.3	-1.6	-2.1	+1.8	+0.8
Acc	45%	37%	80%	72%	65%	65%	70%	63%	47%	70%	55%	55%	55%	57%	51%	48%

Notes: This Angus bull on offer today has been used in the Wakefield herd. He has a tremendous length that we admire and enough 'punch' where it counts. He has good finishing ability, an absolute meat machine and would suit many cattle operations. **Top 5% for retail beef yield.**

Purchaser.....Price \$.....

56

**WAKEFIELD REGENT L704 (APR) (AI) (ET)**

BORN: 07/03/2015 IDENT: ANNL704 HERDBOOK: APR

TE MANIA AMBASSADOR A134 (AI)  
**SIRE: BNAD145 TUWHARETOA REGENT D145 (AI) (ET)**  
 LAWSONS HENRY VIII Y5 (AI)  
 WAKEFIELD DIRECTION D511 (APR)  
**DAM: ANNF876 WAKEFIELD F876 (APR)**  
 WAKEFIELD W341 (APR)

RENNYLEA XPONENTIAL X555 (AI) (ET)  
 TE MANIA LOWAN Y211 (ACR) (AI)  
 YTHANBRAE HENRY VIII UB (AI) (ET)  
 YTHANBRAE DIRECTION T270 (AI)  
 KAROO W109 DIRECTION Z181  
 WAKEFIELD B1098 (APR)

Index	\$Value
Breeding	+\$89
Domestic	+\$87
Heavy Grain	+\$95
Heavy Grass	+\$86

Genetic Conditions: AM AMFU NH NHFU CA CAFU DD DDFU

July 2016 Angus Australia BREEDPLAN

	CE Dir	CE Dtr	GL	BW	200	400	600	MCW	MILK	SS	CWT	EMA	RIB	Rump	RBY	IMF
EBV	-2.2	-3.5	-3.4	+4.9	+37	+67	+89	+86	+13	+1.1	+60	+3.5	+0.5	+0.1	-0.4	+2.5
Acc	54%	50%	59%	69%	63%	64%	63%	61%	55%	66%	58%	56%	56%	58%	54%	53%

Notes: This yearling bull by Regent should grow into a bull with plenty of muscle and length on a bigger frame. His mother has a wonderful temperament, tremendous milking ability, fertility and longevity. Plenty of attributes to consider in this young fellow.

Purchaser.....Price \$.....

57

**WAKEFIELD K695 (P)**

BORN: 29/09/14 75% ANGUS 25% CHAROLAIS COLOUR: Black

Sire: Wakefield Dynamite H337 (AI)(APR) (Angus)  
 Dam: Wakefield 98 (Charolais x Angus)

Scrotal 34cm	RUMP 4mm	RIB 3mm	EMA 78	IMF 3.7
--------------	----------	---------	--------	---------

Notes: A very good bull with exceptional muscle and a good top line. This bull has a very bright future.

Purchaser.....Price \$.....

58

**WAKEFIELD K514 (P)**

BORN: 07/08/14 50% CHAROLAIS 50% ANGUS COLOUR: Grey

Sire: Wakefield Hornblower H203(AI)(P) (Charolais)  
 Dam: Wakefield C1203 (Angus)

Scrotal 36cm	RUMP 3mm	RIB 3mm	EMA 92	IMF 3.2
--------------	----------	---------	--------	---------

Notes: A bull that is an outstanding individual, he has a tremendous length of body and is very deep flanked, with a natural finishing ability - oozing eye appeal. He would be ideal for producing fat cattle show animals.

Purchaser.....Price \$.....

59

**WAKEFIELD K822 (P)**

BORN: 18/07/14 75% CHAROLAIS 25% ANGUS COLOUR: Grey

Sire: Merit Round Up (Charolais)  
Dam: Wakefield A857

Scrotal 39cm RUMP 3mm RIB 2mm EMA 90 IMF 2.4

Notes: A very solid bull with good growth and muscle pattern and softness from his dam's side

Purchaser..... Price \$.....

60

**WAKEFIELD 1905 (P)**

BORN: 06/07/14 50% CHAROLAIS 50% SHORTHORN COLOUR: Red

Sire: Wakefield 770 (Charolais x Shorthorn)  
Dam: Wakefield 940 (Charolais x Shorthorn)

Scrotal 37cm RUMP 4mm RIB 3mm EMA 104 IMF 4.1

Notes: One of the last of the two 770 sons that will ever be offered for sale. A bull with tremendous length of body on a good frame with plenty of capacity. The heaviest composite bull in the draft.

Purchaser..... Price \$.....

61

**WAKEFIELD 1906 (P)**

BORN: 10/07/14 25% CHAROLAIS 75% SHORTHORN COLOUR: Red

Sire: Wakefield 1400 (Shorthorn)  
Dam: Wakefield 1471

Scrotal 35cm RUMP 8mm RIB 6mm EMA 89 IMF 5.3

Notes: A grandson of the renowned Shorthorn sire Yamburgan Clyde 16th, he is a powerful young bull with a natural finishing ability, suiting vealer to feeder steer operations, well worth a look!

Purchaser..... Price \$.....

62

**WAKEFIELD 1908 (P)**

BORN: 12/07/14 50% CHAROLAIS 50% SHORTHORN COLOUR: Red Roan

Sire: Wakefield 1735 (Charolais x Shorthorn)  
Dam: Wakefield 1281 (Charolais x Shorthorn)

Scrotal 35cm RUMP 3mm RIB 3mm EMA 90 IMF 3.7

Notes: A bull with great length, plenty of capacity and a natural softness.

Purchaser..... Price \$.....

63

**WAKEFIELD 1903 (P)**

BORN: 29/06/14 50% CHAROLAIS 50% SHORTHORN COLOUR: Straw

Sire: Wakefield 770 (Charolais x Shorthorn)  
Dam: Wakefield 970 (Charolais x Shorthorn)

Scrotal 38cm RUMP 3mm RIB 3mm EMA 99 IMF 2.8

Notes: To finish the sale we have a young polled bull with tremendous length of body, muscularity and finishing ability with the explosive growth of his father. The 770 bull has produced daughters that have good feet and udders; they have good frames, are fertile and have longevity on their side. 770 has passed on, but his daughters remain favourites in the Wakefield herd.

Purchaser..... Price \$.....



## WHAT IS THE POLL GENE MARKER TEST?

The Poll test is used to measure the likelihood that a polled animal only carries the polled gene, following its release in 2010 by the CRC for Beef Genetic Technologies. AGL continues to invest in R&D to increase accuracy and application across a wider number of breeds.

The test is used to determine if an animal is 'true polled', known as homozygous (PP), or heterozygous (PH). Identifying breeding animals that are 'true polled' and carry two copies of the poll allele will dramatically reduce the requirement for dehorning in subsequent generations.

# T.J. & J.L. Foley

Livestock, Wool & General Carriers

“Dallyn”

ARMIDALE NSW 2350

*Fully insured*

Telephone/Fax (02) 6772 3456

Mobiles 0428 659 072 / 0428 961 014

Email [tjfoley@northnet.com.au](mailto:tjfoley@northnet.com.au)

*Transporting in New England since 1972*

## **CASTLEREAGH ARTIFICIAL BREEDERS**

*“Advancing Livestock Genetics in Northern NSW”*

Artificial Insemination Programs & Equipment

Liquid Nitrogen Sales & Delivery

Bull Semen Collection, Sales & Storage

Contact Margaret Shedden

Phone 0408 498 922

[info@castlereaghab.com.au](mailto:info@castlereaghab.com.au)

[www.castlereaghab.com.au](http://www.castlereaghab.com.au)

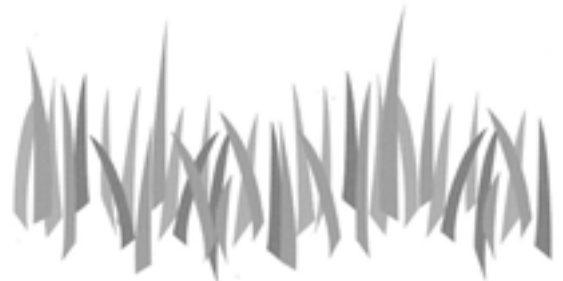


**Midcoast Rural Agencies**  
are your accredited  
**AuctionsPlus** assessors  
on the Mid North Coast



**MIDCOAST**  
**RURAL • AGENCIES**  
Stock & Station and Real Estate Agents

Shop 1/52 Elbow Street West Kempsey  
PO BOX 224 KEMPSEY NSW 2440  
Phone 02 6562 5131 Fax 02 6562 5150  
[www.midcoastruralagencies.com.au](http://www.midcoastruralagencies.com.au)



grain & trade

Grain, fodder and fertiliser

Sales and marketing

Personalised service

Competitive pricing

Freight and logistics made easy

Fully independent

Large and small tonnages

Contactable all hours

Contact:  
Keith Moen  
0477 000 737

[keith@grainandtrade.com.au](mailto:keith@grainandtrade.com.au)  
[www.grainandtrade.com.au](http://www.grainandtrade.com.au)

# GRAZAG

GRAZING AND AGRICULTURAL PRODUCTION SOLUTIONS

## Specialising in;

Animal Health, Animal Nutrition, Agronomy Services, Fertiliser, Pasture Seed, Agricultural Chemicals and Rural Fencing Supplies.

## Full drive through service

GrazAg Pty Ltd  
12 Ampol Street  
PO Box 4439  
Armidale NSW 2350

Phone 02 6770 3400  
Fax 02 6770 3440  
admin@grazag.com.au

GrazAg Pty Ltd  
159-161 Bradley Street  
Guyra NSW 2359

Phone 02 6770 3420  
Fax 02 6779 1171

### Administration

Kellie Litchfield	Administration	0427 711 595 – 6770 3401	kellie@grazag.com.au
Kate Saunders	Administration	0412 124 110 – 6770 3409	kate@grazag.com.au
Heather Cartledge	Administration	6770 3400	info@grazag.com.au

### Armidale Branch

12 Ampol Street, Armidale NSW 2350			
Jason Litchfield	Manager	0488 711 599 – 6770 3402	jason@grazag.com.au
Matt Foster	Agronomist	0488 720 989 – 6770 3404	matt@grazag.com.au
Ben Foster	Animal Health	0488 753 724 – 6770 3405	ben@grazag.com.au
Philip Radburn	Animal Health	0488 725 385 – 6770 3403	philip@grazag.com.au
Chris Heywood	Animal Health	0411 104 065 – 6770 3410	chris@grazag.com.au
Michael Ward	Produce	0402 433 787 – 6770 3406	mick@grazag.com.au
Toby Pearson	Produce	0437 466 927 – 6770 3400	toby@grazag.com.au

### Guyra Branch

159 –161 Bradley Street, Guyra NSW 2365			
Julian Percy	Merchandise	0488 720 123 – 6770 3420	julian@grazag.com.au
Jake Obrien	Agronomist	0488 711 133 – 6770 3420	jacob@grazag.com.au

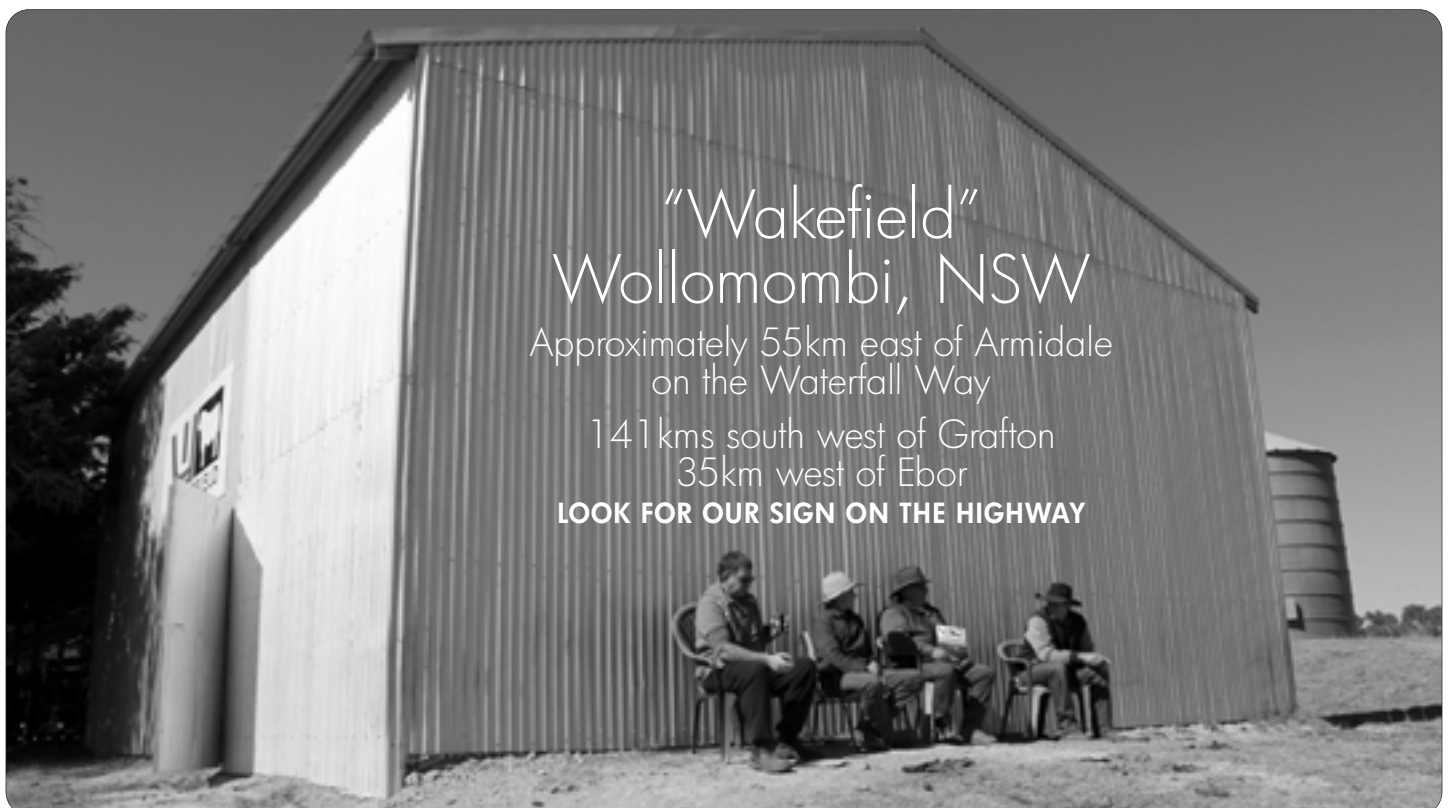
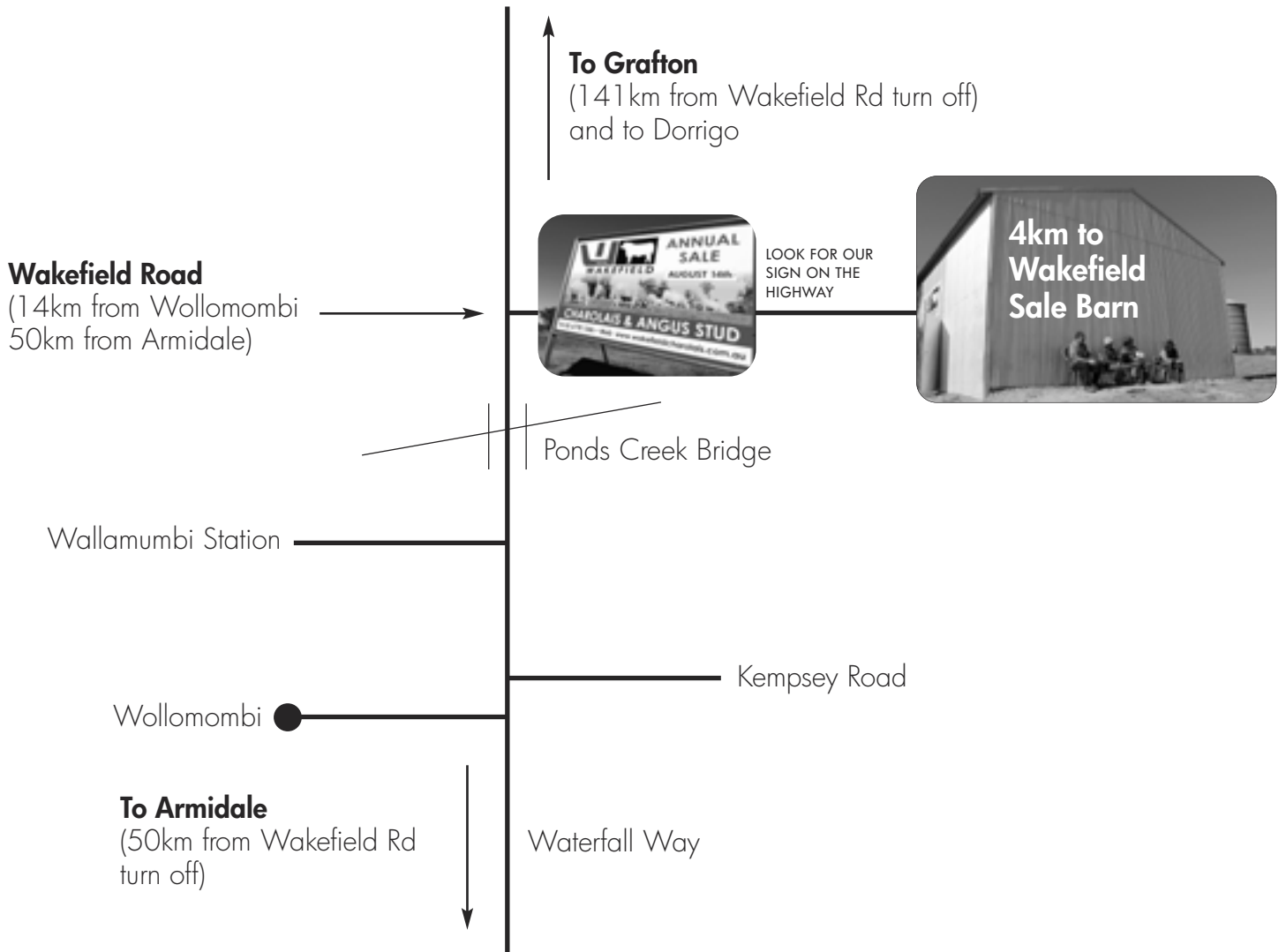
### Glen Innes Branch

4-6 Wullamulla Street, Glen Innes NSW 2370			
Bruce Smith	Merchandise	0419 394 823 – 6770 3430	bruce@grazag.com.au
Paul Tudor	Agronomist	0499 703 436 – 6770 3430	paul@grazag.com.au





# DIRECTIONS



# BUYERS INSTRUCTIONS



Name

Address

Phone

Fax

Email

Bid Card Number

Lots Purchased

Total Purchased

Destination PIC

Destination Address

Trucking Details

Are you EU Accredited?

Do you require insurance?

YES

NO

Do you require stud transfer of lots?

YES

NO

Stud Name

Other instructions

Buyer signature

Date



**Team Wakefield** at the **Charolais Youth Stampede 2016**, Dubbo



Intermediate National All Breeds Champion 2015,  
**Wakefield Ace 6 K800E**



**Wakefield Autumn 15 L974E** Charolais National Showcase Winner of 10-12 mth heifer class 2016



**Wakefield Leapfrog L956E**  
Charolais National Showcase winner of 12 mth bull class 2016



SINCE 1860



# WAKEFIELD

**Lot 8** Wakefield  
Khal Drogo K847E



**Lot 40** Wakefield  
Creed L703



  
**AuctionsPlus**  
Interfaced with  
AuctionsPlus

**11TH ANNUAL CHAROLAIS & ANGUS BULL SALE**

Friday 12th August 2016 at 1pm  
"Wakefield", Wollomombi, NSW

Greg & Jenny Frizell  
Phone 02 6778 1346 Mobile 0427 781 346  
email [wakefieldstud@bigpond.com](mailto:wakefieldstud@bigpond.com)  
[www.wakefieldcharolais.com.au](http://www.wakefieldcharolais.com.au) 