

ASSESSOR REFERENCE CARD

STORE SHEEP *(Current as at July 2018)*

STOCK CATEGORY

| | | |
|---------------------------|----------------------------|--------------------------------|
| Suckers | Unweaned lambs | No permanent incisors |
| Lambs | Weaned lambs | No permanent incisors |
| Hoggets | Any sex | Up to 2 permanent incisors |
| Ewes | Females | |
| Ewes & Lambs | Females with lambs at foot | |
| Wethers | Castrated males | |
| Ewes & Wethers | Mixed sex | One or more permanent incisors |
| Rams | Entire males | |
| Goats | Any age, any sex | |

SEX CODE

| | |
|-----------|--------------------------|
| Wether | Castrated male |
| Ewe | Female |
| Mixed Sex | Nominate Sex Composition |
| Ram | Entire male |

SALE TYPES

| | |
|---|-------------------------|
| H | \$ per head |
| L | c per kg liveweight |
| C | c per kg carcase weight |

BREED COMPOSITION

Example

| Description | Sire | Dam |
|-------------|------------------|---------------|
| Pure | Merino | Merino |
| 1st Cross | Border Leicester | Merino |
| 2nd Cross | Poll Dorset | Border/Merino |
| Other | Dorper | F3 Dorper |

GRAZING CONDITIONS

Nominate prior to and following assessment.

STOCK HISTORY

Where bred—if purchased, nominate district of origin

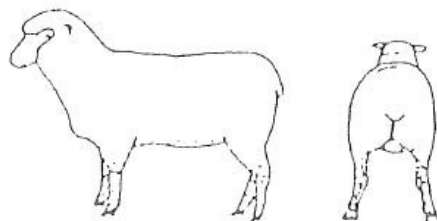
GENERAL SKIN/WOOL COMMENT

Note any seed penetration into skin as well as the health and colour of skin.

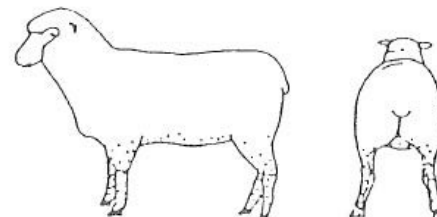
Note additional burr or skin details.

BURR & SEED

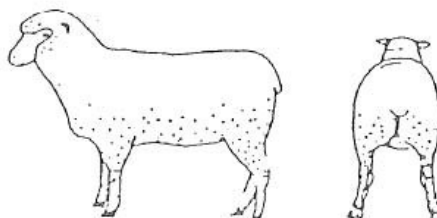
Very Light



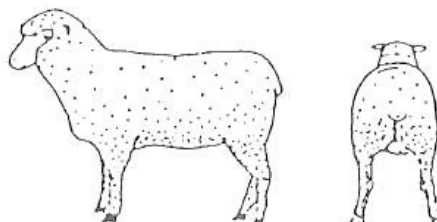
Light



Medium



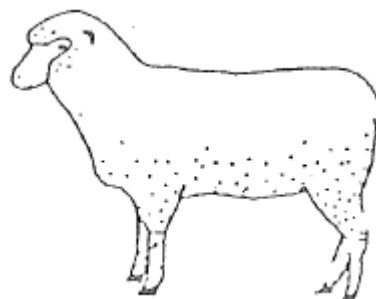
Heavy



Note: These standards apply in all areas.

SEED IDENTIFICATION POINTS

1. Brisket, Shoulder, Neck
2. Lower Rib, Belly
3. Hind Leg, Breech
4. Head



LIVE WEIGHING

1. Test scales for accuracy prior to every assessment.
2. Record weights of a representative sample: Recommended minimum of: 20% or 100 head, whichever is GREATER
3. Record time off feed and water

SKIN LENGTH

| Inches | MM |
|------------|---------|
| 0.0 - 0.25 | 0 - 5 |
| 0.25 - 0.5 | 6 - 13 |
| 0.5 - 1.0 | 14 - 25 |
| 1.0 - 1.5 | 26 - 38 |
| 1.5 - 2.0 | 39 - 51 |
| 2.0 - 2.5 | 52 - 64 |
| 2.5 - 3.0 | 65 - 76 |
| 3.0+ | 77+ |

Measure mid back position.

Note: Skins are usually traded in imperial measurements, not metric.

STANDARD LIVEWEIGHT RANGES

| Class | Weight kg | Class | Weight kg |
|-------|-----------|-------|-----------|
| 16 | Below 16 | 40 | 36-40 |
| 20 | 16 -20 | 44 | 40-44 |
| 24 | 20-24 | 48 | 44-48 |
| 28 | 24-28 | 52 | 48-52 |
| 32 | 28-32 | 56 | Over 52 |
| 36 | 32-36 | | |

ADDITIONAL SKIN DETAIL

Information to be sourced from "Wool Reports" - micron, wool cuts and yield of the lot being assessed.

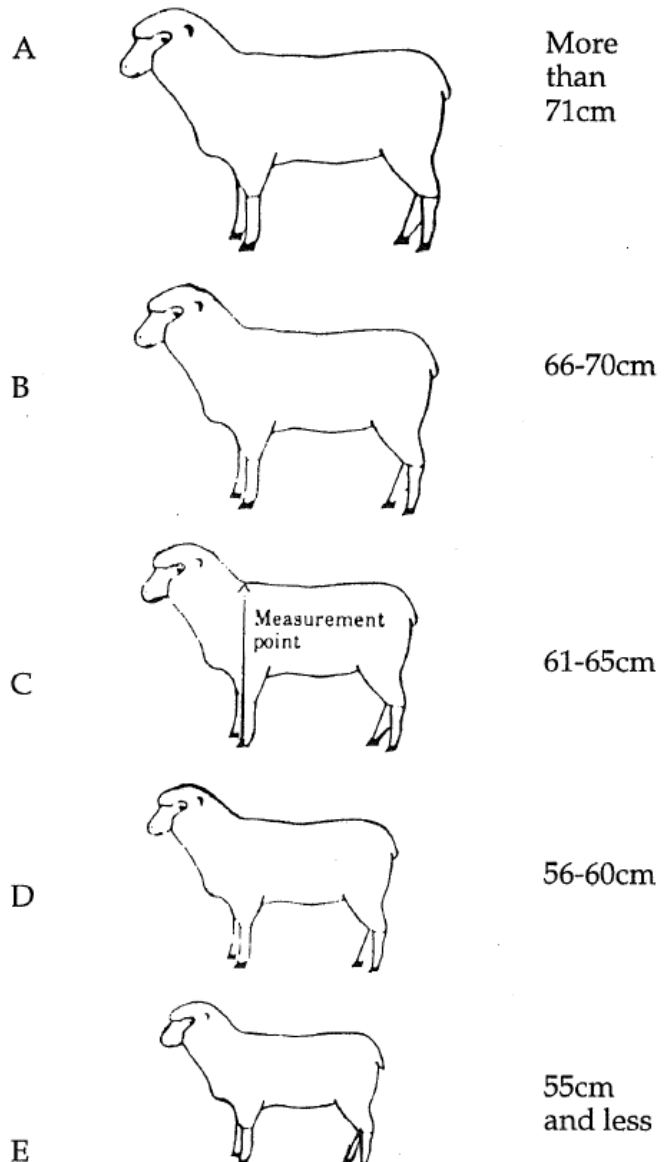
STORE STOCK BREEDING QUALITY

Should not be confused with condition - relates to the Breeding Quality of the line being assessed.

| | |
|-----------|--|
| EXCELLENT | Top sires used, with high standards of selection and management, ie the very small percentage of REALLY first class stock. |
| VERY GOOD | Quality sires used. Large frame. Structurally sound. Strict selection criteria used. Will realise full potential. |
| GOOD | Exhibiting some better characteristics of the breed, and showing evidence of some reasonable selection practices. Medium to large frame. |
| FAIR | Limited potential. Lacking better characteristics of the breed. Small to medium frame. |
| PLAIN | Very poor quality, with structural or conformation faults. Limited future growth and fattening potential. Very small frame. |

FRAME SCORES

Height from ground to highest point of withers (shoulders) in centimetres, less skin length.



WRINKLE SCORES

