



2024 ANNUAL
BULL SALE

**51 BULLS | RISING TWO-YEAR-OLD
TUESDAY 6 FEBRUARY | 11AM | GINGIN SALEYARDS**

www.ardcairnieangus.com.au



2024 ANNUAL BULL SALE



RISING TWO-YEAR-OLD BULLS TUESDAY 6 FEBRUARY | 11AM | GINGIN SALEYARDS

Interfaced with  AuctionsPlus

INSPECTION FROM 9AM | MORNING TEA PROVIDED
COMPLIMENTARY LUNCH AND REFRESHMENTS AFTER THE SALE



ARDCAIRNIE ANGUS

Joe Dewar
0488 685 177

Frank Dewar
0418 771 009

Jessica Dewar
0433 644 687

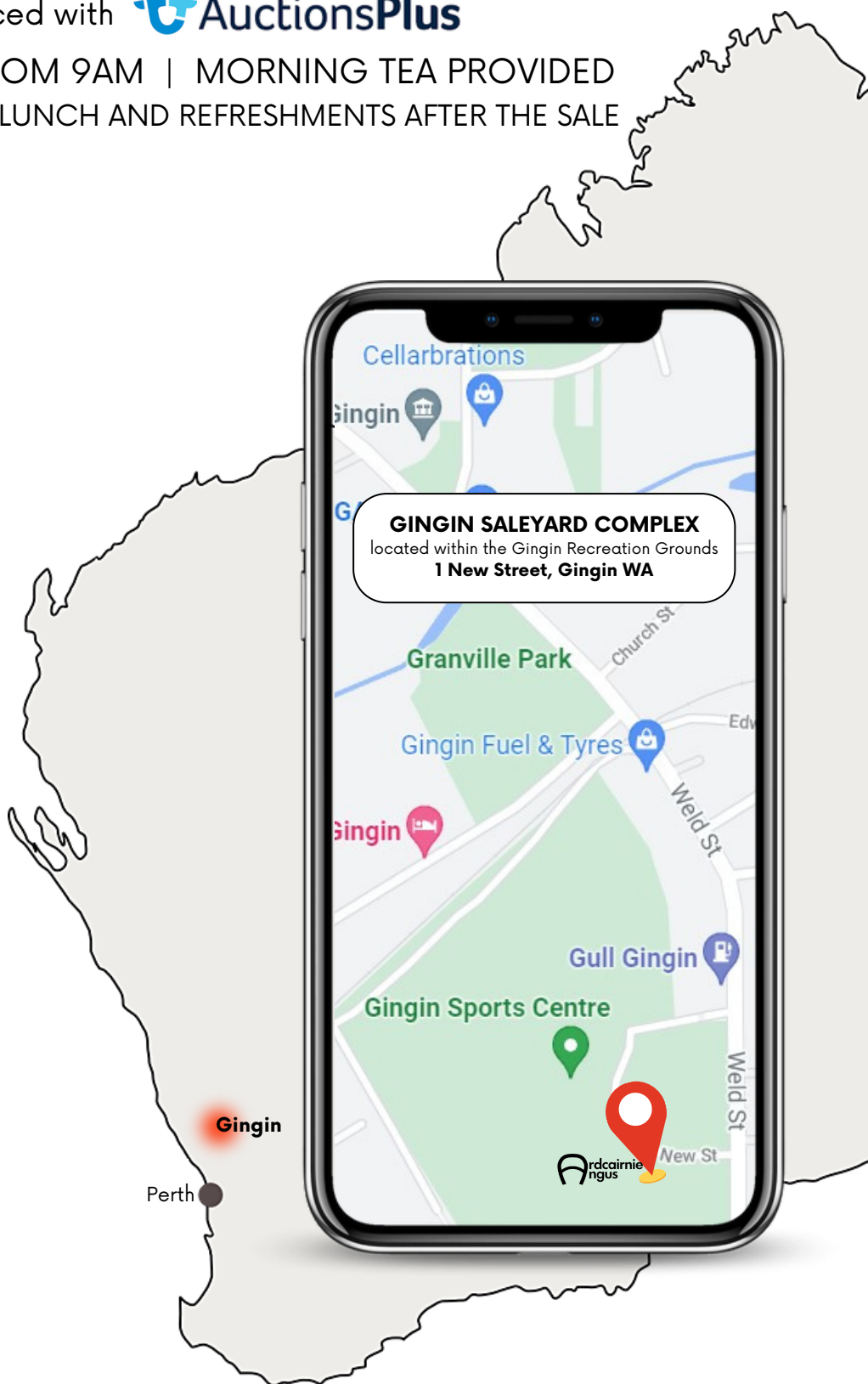


Leon Giglia | WA Manager
0407 931 036

Greg Neaves | Agent
0428 942 344


Tiny Holly | Auctioneer
0422 272 727

Nutrien | Midvale Office
08 6459 8495





WELCOME

A herd of black cattle is grazing in a field of tall, golden-brown grass. The background shows a line of trees and a clear blue sky. The text is overlaid on the right side of the image.

The Dewar family invite you to join us at our annual rising two-year-old bull sale for 2024. The sale will be held at Gingin saleyards on Tuesday, 6th February starting at 11am, with inspection of bulls on sale day commencing at 9am. The sale will also be interfaced with Auctions Plus.

The 51 bulls in our 2024 sale team have been drafted stringently on conformation, temperament, growth and natural do-ability and have been selected for their performance under adverse seasonal conditions. We believe that they will breed the kind of cattle that will handle any environment.

The premium for selecting the "right" genetics has never been more evident than this year. These Ardcairnie bulls will work under pressure and produce cows that will wean good calves, no matter the season.

Our breeding objectives focus on low maintenance, easy-doing animals that are docile and thrive in any environment - all aimed at ease of management. Our management system aims to breed an all-round animal that adds value to every segment of the beef supply chain from the consumer back to the commercial breeder, with an emphasis on low inputs.

We once again present our bulls in working condition to increase their chances of a long and fertile life.

We look forward to welcoming you to our 2024 sale and wish you every success with your purchases. Please stay for a chat after the sale and enjoy our signature scotch fillet burger and refreshments.

The Dewar family.



SALE INFORMATION

AGE OF SALE BULLS

The bulls on offer are between 19 and 22 months old.

SELLING SYSTEM

The annual Ardcairnie Angus bull sale will be conducted by Nutrien as a ring sale auction, interfaced with Auctions Plus. We welcome auctioneer Tiny Holly, who will conduct the sale. Bulls will be penned for inspection at 9am on the day of the sale. The auction will commence at 11am. All buyers must register prior to the sale and obtain a buyers card.

FERTILITY

All 2024 sale bulls have been semen tested by Farm West on 7 December 2023 and are guaranteed for fertility.

PHYSICAL EXAMINATION

Rigorous structural assessments have been conducted on the bulls to ensure they are all sound. All bulls were scanned by Ben Glatz on 7 October 2023 for rib, rump, IMF and EMA.

HEALTH

All bulls have been vaccinated with Pestiguard, Vibrovax and 7in1.

RECESSIVE GENETIC CONDITIONS

All animals are free of the four main genetic conditions (AM, CA, DD and NH) by pedigree or test. Ardcairnie conducts extensive genetic testing across the herd to only bring you the best genetics that are free from recessive conditions. All bulls have been sire verified via AngusGS which also improves the accuracy of their EBV's.

SEMEN RIGHTS

Ardcairnie Angus reserves the right to collect semen for their own use, from any bull at their cost and the purchaser's convenience.

SALE CONDITIONS

The conditions of sale are those displayed on sale day by the selling agents, Nutrien. Vendors reserve the right to withdraw any animals from the sale on the day of the sale.

INSURANCE

Bulls become property of the bidder at the fall of the hammer. Therefore purchases are advised to insure their animals at the completion of the sale.

DELIVERY

We offer free delivery within 700kms of the sale location and must be accessible by B-Double, otherwise bulls will be delivered to the nearest major center.

BUYERS INSTRUCTIONS

Verbal instructions will not be accepted. Written instructions are required. Please see buyer registration table after sale to complete delivery note.

GUARANTEE

All bulls are guaranteed capable of natural service at the date of the sale and for 12 months following. No warranty is given for any bull which becomes infertile due to illness, injury or disease. If a bull should prove infertile, the purchaser must notify the vendor in writing accompanied by a veterinarian certificate of infertility. The vendor reserves the right to obtain independent veterinarian confirmation of any claim.

EBV Quick Reference for Ardcairnie Bull Sale 2024

Animal Ident	Calving Ease				Birth				Growth				Fertility				Carcass				Other				Structural				Selection Indexes	
	CED	CEM	GL	BW	200	400	600	MCW	Milk	SS	DC	CWT	EMA	Rib	Rump	RBW	IMF	NFI-F	Doc	Claw	Angle	Leg	SA	SA-L	SA	SA-L				
1	WJM22T042	+9.4	-3.3	-2.2	+1.8	+51	+102	+126	+110	+20	+2.6	-4.5	+85	+11.5	-2.2	-2.7	+1.9	+2.6	+0.03	+25	+1.14	+0.98	+0.94	\$243	\$411					
2	WJM22T082	-0.2	+4.1	-7.0	+4.7	+60	+113	+140	+119	+28	+1.8	-3.2	+96	+13.2	-1.5	-3.9	+1.8	+1.2	+0.54	+22	+0.84	+0.86	+1.04	\$230	\$386					
3	WJM22T036	+6.2	+4.5	-9.1	+3.1	+56	+99	+140	+91	+17	+0.1	-4.9	+91	+6.1	+0.0	+1.3	+0.4	+0.8	+0.03	+8	+1.14	+1.20	+1.02	\$242	\$394					
4	WJM22T136	+4.9	+7.4	-6.3	+3.0	+46	+84	+116	+103	+18	+0.9	-4.9	+69	-0.8	-0.3	-3.2	+0.2	+2.3	-0.20	+16	+0.92	+1.20	+1.28	\$171	\$321					
5	WJM22T009	+2.9	+6.6	-9.2	+5.9	+57	+100	+127	+131	+1	+3.0	-8.0	+56	+3.9	+1.5	+1.3	+0.1	+2.7	+0.35	+16	+0.62	+0.82	+1.04	\$240	\$430					
6	WJM22T004	+3.0	+2.3	-8.4	+4.0	+50	+93	+128	+108	+16	+1.1	-5.4	+64	+8.2	-1.4	-2.3	+1.2	+1.0	+0.09	+23	+0.60	+0.82	+1.14	\$206	\$359					
7	WJM22T252	-4.3	-0.4	-4.4	+6.8	+66	+126	+176	+166	+17	+3.0	-5.3	+97	+2.1	+0.0	-0.9	-0.2	+0.7	-0.07	+13	+0.92	+1.28	+1.00	\$190	\$377					
8	WJM22T150	-1.6	+2.4	-3.4	+5.0	+52	+107	+141	+134	+16	+4.2	-5.2	+85	+12.4	-0.1	-0.7	+1.2	+1.7	+0.66	+10	+0.50	+1.02	+1.00	\$211	\$383					
9	WJM22T025	+8.5	+4.8	-3.0	+2.4	+50	+89	+111	+88	+20	+1.2	-4.1	+61	+11.1	+1.5	-0.4	+1.0	+2.2	-0.50	+13	+0.86	+0.90	+1.16	\$227	\$374					
10	WJM22T206	-9.9	-2.5	+0.5	+5.6	+58	+104	+137	+125	+11	+1.5	-4.0	+84	+3.6	-1.9	-3.8	+1.3	+0.4	-0.47	+19	+0.86	+1.08	+1.00	\$161	\$288					
11	WJM22T038	+7.4	+4.7	-6.4	+1.9	+47	+86	+100	+76	+19	+1.6	-7.2	+56	+9.1	-0.2	-1.2	+1.1	+2.1	+0.46	-3	+1.18	+1.08	+1.06	\$242	\$391					
12	WJM22T097	+6.0	+4.2	-9.4	+3.3	+54	+95	+129	+126	+16	+2.2	-4.5	+76	+3.1	-2.7	-4.6	+0.8	+1.2	-0.18	+14	+0.80	+0.90	+1.04	\$178	\$346					
13	WJM22T033	+0.8	+1.6	-6.1	+3.8	+61	+108	+138	+132	+11	+0.4	-3.5	+94	+6.9	+0.2	+0.0	+0.6	+0.0	+0.60	+14	+0.96	+1.00	+1.12	\$197	\$362					
14	WJM22T188	-10.7	+0.1	-1.1	+6.9	+54	+116	+148	+131	+22	+2.6	-4.6	+80	+9.5	-1.6	+0.1	+0.9	+0.7	-0.26	+22	+0.78	+0.96	+0.96	\$182	\$326					
15	WJM22T043	-4.3	-7.2	-4.0	+6.5	+52	+96	+129	+127	+11	+0.9	-5.5	+84	+6.0	-1.0	+1.0	+1.1	-1.4	+0.04	+32	+0.54	+0.76	+0.78	\$159	\$300					
16	WJM22T160	+4.5	-4.2	-11.4	+5.7	+51	+100	+131	+112	+16	+1.1	-4.6	+65	+3.2	+0.0	+0.0	+0.0	+2.6	-0.31	+17	+0.94	+1.02	+1.02	\$198	\$349					
17	WJM22T142	+2.1	+4.6	-3.5	+5.3	+59	+100	+141	+143	+14	+2.1	-3.2	+86	+3.2	-1.7	-4.5	+1.1	-0.9	+0.24	+7	+0.78	+1.08	+1.20	\$152	\$320					
18	WJM22T116	-9.6	+1.8	-2.8	+7.3	+69	+115	+159	+153	+16	+3.4	-4.8	+90	+5.1	-1.9	-2.1	+0.0	+2.3	-0.31	+7	+0.68	+1.12	+1.14	\$191	\$351					
19	WJM22T162	-0.8	+0.8	-3.2	+5.6	+53	+95	+121	+101	+15	+2.0	-5.8	+69	+4.8	+1.0	-0.6	+0.6	+1.4	-0.15	+15	+0.62	+0.90	+1.08	\$205	\$347					
20	WJM22T177	+3.9	-1.7	-8.4	+4.2	+48	+100	+130	+115	+18	+2.3	-5.0	+64	+8.9	-2.2	-3.0	+2.2	-0.7	+0.17	+17	+0.84	+0.84	+1.00	\$194	\$351					
21	WJM22T275	-4.7	-3.4	-5.8	+6.1	+54	+102	+145	+143	+18	+0.9	-1.1	+89	+4.5	-1.0	-1.1	+0.4	+1.0	+0.08	+11	+0.92	+1.24	+1.26	\$132	\$272					
22	WJM22T224	-8.5	-0.2	-4.1	+7.2	+62	+114	+151	+121	+17	+3.0	-8.2	+90	+8.5	+3.2	+3.3	-0.1	+1.7	+0.51	+38	+0.56	+0.74	+0.80	\$246	\$402					
23	WJM22T084	+0.5	-5.6	-6.8	+6.0	+68	+115	+150	+152	+11	+3.5	-5.7	+75	+9.7	-2.2	-3.5	+0.7	+2.1	-0.21	+13	+0.98	+1.16	+1.22	\$226	\$408					
24	WJM22T161	-2.9	+2.3	-3.6	+4.9	+51	+89	+118	+96	+12	+0.5	-4.1	+79	+5.3	+3.9	+4.7	-0.5	+1.9	+0.11	+19	+0.68	+0.84	+0.80	\$190	\$318					
25	WJM22T059	+3.3	+8.0	-8.5	+3.6	+56	+103	+150	+144	+17	+1.2	-3.7	+94	+2.0	+1.5	+0.4	+0.0	+1.4	+0.13	+18	+0.96	+1.10	+0.92	\$185	\$367					
26	WJM22T003	-1.8	+5.5	-8.5	+6.2	+63	+97	+146	+123	+11	+1.3	-3.8	+89	+2.4	+0.7	+2.3	+0.0	+0.4	-0.03	+33	+0.70	+0.78	+1.00	\$195	\$346					
27	WJM22T135	+1.5	+8.0	-5.4	+4.0	+48	+101	+140	+109	+21	+3.6	-6.4	+78	+10.5	-1.0	-0.8	+0.7	+1.3	+0.67	+23	+0.74	+1.04	+1.02	\$220	\$388					
28	WJM22T130	-8.6	-0.3	-7.9	+5.7	+52	+91	+115	+89	+15	+1.3	-2.3	+70	+9.4	-0.7	-3.2	+1.5	+0.9	-0.11	+14	+1.26	+1.22	+1.14	\$164	\$261					
29	WJM22T101	+2.6	+5.8	-9.3	+3.4	+57	+105	+132	+135	+9	+2.1	-6.9	+68	+6.9	-1.8	-3.7	+1.0	+3.2	-0.22	+9	+1.00	+0.96	+1.00	\$240	\$428					
30	WJM22T278	+8.2	+4.6	-6.0	+1.0	+40	+77	+95	+66	+23	+0.5	-5.6	+56	-0.3	+1.8	+1.6	-0.5	+4.3	+0.19	+1	+1.10	+1.00	+1.10	\$204	\$335					
31	WJM22T024	+2.0	-0.2	-3.5	+2.8	+47	+93	+131	+122	+16	+0.2	-3.4	+85	+7.6	-0.3	-0.2	+0.8	+3.0	-0.30	+41	+0.56	+0.88	+0.82	\$195	\$347					
32	WJM22T114	+3.4	+3.6	-2.5	+5.5	+46	+89	+117	+101	+13	-0.4	-3.9	+72	+0.4	+0.0	+0.7	+0.2	+0.5	-0.35	+12	+0.72	+0.78	+1.04	\$164	\$305					
33	WJM22T109	-8.4	-3.9	-4.7	+4.5	+49	+90	+113	+103	+12	+1.1	-4.0	+65	+8.0	-1.1	-0.2	+0.9	+1.4	+0.07	+11	+0.98	+1.00	+1.08	\$164	\$276					
34	WJM22T312	+0.3	-0.7	-3.3	+5.3	+51	+96	+120	+109	+14	+0.1	-4.9	+64	+6.1	-0.4	-1.0	+1.5	-0.3	+0.08	+4	+0.98	+0.88	+1.00	\$192	\$335					

EBV Quick Reference for Ardcairnie Bull Sale 2024

Animal Ident	Calving Ease			Birth			Growth			Fertility			Carcass			Other			Structural			Selection Indexes		
	CED	CEM	GL	BW	200	400	600	MCW	Milk	SS	DC	CWT	EMA	Rib	Rump	RBV	IMF	NFI-F	Doc	Claw	Angle	Leg	SA	\$A-L
35	WJM22T051	+0.7	+6.2	-4.4	+3.0	+54	+119	+90	+23	+1.4	-2.9	+80	+7.7	-2.9	-4.8	+1.4	+0.7	-0.46	+23	+0.72	+0.88	+1.08	\$193	\$323
36	WJM22T163	-5.3	-2.1	-3.5	+6.6	+53	+112	+99	+8	+3.1	-5.1	+58	+7.1	-0.4	-1.5	+1.3	+0.6	+0.40	+17	+0.66	+0.86	+1.02	\$182	\$305
37	WJM22T015	-2.9	+5.2	-4.5	+6.0	+66	+120	+159	+142	+2.7	-6.7	+82	+2.2	-2.7	-4.6	+0.1	+2.4	-0.22	+41	+1.12	+1.04	+1.06	\$224	\$405
38	WJM22T126	+6.5	+9.1	-1.0	+1.7	+58	+106	+129	+99	+3.4	-4.4	+88	+8.4	+0.1	+0.4	+0.8	+0.0	+0.42	-7	+1.04	+0.90	+1.10	\$232	\$399
39	WJM22T020	+5.5	+3.2	-6.7	+2.8	+42	+122	+96	+14	+0.3	-4.8	+73	+2.9	+3.2	+5.7	-0.6	+2.6	+0.55	+22	+1.16	+1.22	+1.06	\$201	\$351
40	WJM22T021	+2.5	-2.6	-3.9	+3.1	+53	+112	+105	+9	+1.8	-6.2	+72	+3.4	-1.0	-2.2	+0.7	+3.4	+0.24	+28	+0.92	+0.90	+1.00	\$220	\$370
41	WJM22T013	-1.0	-4.5	-5.6	+5.6	+59	+124	+91	+13	+3.1	-6.0	+68	+11.2	+0.2	-1.4	+1.1	+1.6	+0.34	+33	+0.38	+0.76	+0.96	\$240	\$372
42	WJM22T148	-2.2	+4.9	-3.9	+5.5	+47	+93	+124	+120	+2.1	-5.4	+66	+7.7	+1.0	+1.0	+0.6	+1.5	+0.20	+16	-	-	-	\$185	\$340
43	WJM22T138	+2.7	+3.5	-3.9	+3.9	+47	+88	+123	+108	+1.7	-5.9	+75	+4.1	+1.5	+1.3	-0.3	+2.2	+0.77	+27	+0.80	+1.00	+1.06	\$190	\$345
44	WJM22T011	-0.3	+5.5	-5.1	+4.6	+62	+112	+147	+131	+1.6	-3.8	+80	+8.7	+1.7	+0.9	+0.7	+0.0	-0.05	+44	+0.62	+0.80	+1.16	\$216	\$385
45	WJM22T078	-7.9	-7.5	-4.2	+6.3	+60	+106	+138	+153	+2.0	-4.3	+75	+9.9	-1.5	-2.1	+1.5	+0.6	-0.41	+25	+0.92	+0.90	+1.10	\$172	\$324
46	WJM22T219	+3.0	+1.3	-6.3	+3.7	+47	+91	+115	+95	+2.1	-5.2	+61	+2.3	+1.5	+1.4	+0.1	+1.2	+0.19	+16	-	-	-	\$186	\$330
47	WJM22T037	+7.5	+7.1	-5.7	+2.5	+44	+74	+97	+66	+0.5	-6.2	+54	+6.7	+2.5	-3.0	+0.0	+1.5	+0.60	+16	+0.92	+0.90	+1.18	\$215	\$350
48	WJM22T118	+2.5	+3.8	-8.0	+4.9	+56	+94	+115	+90	+0.0	-5.7	+68	+6.0	-1.4	-2.9	+0.5	+3.0	+0.21	+13	+1.00	+0.88	+1.16	\$236	\$377
49	WJM22T168	-3.8	-0.8	+2.1	+4.8	+44	+82	+106	+91	+2.5	-6.0	+64	+16.1	+1.1	-0.8	+1.3	+2.2	+1.02	+16	+0.74	+1.02	+1.02	\$204	\$330
50	WJM22T125	+3.7	+1.9	-4.5	+4.6	+47	+90	+118	+118	+2.6	-4.3	+64	+9.6	-1.5	-2.6	+1.2	+1.6	-0.24	+10	-	-	-	\$181	\$338
51	WJM22T306	-2.8	-0.8	+3.7	+4.2	+50	+94	+126	+102	+2.1	-1.3	+73	+9.1	-2.9	-2.5	+2.2	-1.0	+0.01	+35	+0.60	+0.74	+1.08	\$159	\$277
	CED	CEM	GL	BW	200	400	600	MCW	Milk	SS	DC	CWT	EMA	Rib	Rump	RBV	IMF	NFI-F	Doc	Claw	Angle	Leg	SA	\$A-L
	+1.9	+2.8	-4.4	+3.9	+51	+92	+119	+101	+17	+2.2	-4.6	+67	+6.6	+0.0	-0.3	+0.5	+2.4	+0.23	+21	+0.85	+0.97	+1.03	+202	+347



"Herd Improvement Specialists"

FARMWEST Supplying Professional Services in Genetics, Synchronized AI programs, Semen Quality Testing, Custom collection of Bulls and Freeze Branding to The Dewar business.

Other Farmwest Services include:
 Semen/Embryo Sales
 Storage & Despatch
 AI Equipment & LN2 Tanks
 Calf De Budding

To get the genetic advantage and to utilise our services contact us today

28 Clifford Street, Bunbury, WA, 6230
 PO Box 463, Bunbury, WA, 6231
 abn 49 050 135 281 | P 08 9726 2626 | F 08 9726 0070
 frontdesk@farmwest.com.au | www.farmwest.com.au

HERD HEALTH SERVICES

Dr Mick Clews BVSc

Herd Health Service is a mobile, on farm cattle veterinary practice.

**Pregnancy Scanning.
 Artificial Insemination.
 On Farm Advisory and
 Consulting services.**



Phone 0418 155 992
 Email mick@herdhealthservices.com.au

Lot 1 **ARDCAIRNIE TECHNIQUE T042 SV** **WJM22T042**

DOB: 17/04/2022 Registration Status: **HBR** Mating Type: **Natural** Genetic Status: **AMFU,CAFU,DDFU,NHFU**

GRANITE RIDGE KAISER K26 SV
 KOOJAN HILLS KAISER N91 SV
 KOOJAN HILLS H28 #

CONNEALY IN SURE 8524 #
 G A R FAIL SAFE PV
 G A R PROGRESS 830 #

Sire: WJMR199 ARDCAIRNIE REFLECTION R199 SV
 WAITARA PIO FEDERAL F73 SV
 ARDCAIRNIE ABBIE K71 #
 ARDCAIRNIE ABBIE G35 #

Dam: WJMR109 ARDCAIRNIE ABBIE R109 #
 MAR INNOVATION 251 PV
 ARDCAIRNIE ABBIE N67 #
 ARDCAIRNIE ABBIE K144 #

January 2024 TransTasman Angus Cattle Evaluation

TACE	CE Dir	CE Dtrs	GL	BW	200	400	600	MCW	Milk	SS	DC
EBV	+9.4	+3.3	-2.2	+1.8	+51	+102	+126	+110	+20	+2.6	-4.5
ACC	61%	50%	82%	81%	81%	79%	80%	76%	71%	77%	37%
Perc	3	48	83	11	48	20	34	34	26	32	53

Selection Indexes

\$A	\$A-L
\$243	\$411
12	9

TACE	CWT	EMA	Rib	Rump	RBV	IMF	NFI-F	Doc	Claw	Angle	Leg
EBV	+85	+11.5	-2.2	-2.7	+1.9	+2.6	+0.03	+25	+1.14	+0.98	+0.94
ACC	67%	67%	66%	68%	57%	72%	58%	72%	63%	63%	57%
Perc	10	8	91	87	2	40	29	32	94	51	21

Traits Observed: CE, 200WT, Genomics

Notes:

Purchaser: \$

Lot 2 **ARDCAIRNIE TERMINATOR T082 SV** **WJM22T082**

DOB: 26/04/2022 Registration Status: **HBR** Mating Type: **Natural** Genetic Status: **AMF,CAF,DDF,NHF**

ARDCAIRNIE K244 SV
 ARDCAIRNIE N52 SV
 ARDCAIRNIE ISOBEL L9 #
Sire: WJMR106 ARDCAIRNIE REFINED R106 SV
 BALDRIDGE BRONC SV
 ARDCAIRNIE ABBIE P167 #
 ARDCAIRNIE ABBIE E204 #

SYDGEN TRUST 6228 #
 ARDCAIRNIE J27 SV
 ARDCAIRNIE ELMA G96 #
Dam: WJMR54 ARDCAIRNIE GEORGINA R54 #
 V A R GENERATION 2100 PV
 ARDCAIRNIE GEORGINA N63 #
 ARDCAIRNIE GEORGINA K200 #

January 2024 TransTasman Angus Cattle Evaluation

TACE	CE Dir	CE Dtrs	GL	BW	200	400	600	MCW	Milk	SS	DC
EBV	-0.2	+4.1	-7.0	+4.7	+60	+113	+140	+119	+28	+1.8	-3.2
ACC	62%	50%	81%	81%	82%	79%	80%	76%	71%	77%	37%
Perc	72	40	15	67	12	6	12	23	2	62	82

Selection Indexes

\$A	\$A-L
\$230	\$386
22	22

TACE	CWT	EMA	Rib	Rump	RBV	IMF	NFI-F	Doc	Claw	Angle	Leg
EBV	+96	+13.2	-1.5	-3.9	+1.8	+1.2	+0.54	+22	+0.84	+0.86	+1.04
ACC	69%	68%	68%	69%	59%	73%	60%	72%	59%	59%	56%
Perc	2	3	81	95	3	78	82	43	48	23	53

Traits Observed: CE, 200WT, Genomics

Notes:

Purchaser: \$

Lot 3 **ARDCAIRNIE TEMPTATION T036 SV** **WJM22T036**

DOB: 18/04/2022 Registration Status: **HBR** Mating Type: **AI** Genetic Status: **AMFU,CAFU,DDFU,NHFU**

AYRVALE BARTEL E7 PV
 AYRVALE HERCULES H9 PV
 LAWSONS INVINCIBLE F338 SV
Sire: DXTP613 TEXAS POWERPLAY P613 PV
 BANGADANG WESTERN EXPRESS E10 SV
 TEXAS UNDINE H647 SV
 TEXAS UNDINE Z183 PV

WAITARA PIO FEDERAL F73 SV
 ARDCAIRNIE K122 SV
 ARDCAIRNIE ELMA C121 #
Dam: WJMN249 ARDCAIRNIE GEORGINA N249 #
 BT RIGHT TIME 24J #
 ARDCAIRNIE GEORGINA F135 #
 ARDCAIRNIE GEORGINA Y33 #

January 2024 TransTasman Angus Cattle Evaluation

TACE	CE Dir	CE Dtrs	GL	BW	200	400	600	MCW	Milk	SS	DC
EBV	+6.2	+4.5	-9.1	+3.1	+56	+99	+140	+91	+17	+0.1	-4.9
ACC	64%	53%	82%	82%	82%	81%	81%	77%	72%	78%	41%
Perc	17	35	4	30	25	28	11	66	52	98	43

Selection Indexes

\$A	\$A-L
\$242	\$394
13	18

TACE	CWT	EMA	Rib	Rump	RBV	IMF	NFI-F	Doc	Claw	Angle	Leg
EBV	+91	+6.1	+0.0	+1.3	+0.4	+0.8	+0.03	+8	+1.14	+1.20	+1.02
ACC	69%	69%	69%	70%	62%	73%	60%	74%	61%	61%	57%
Perc	4	55	48	22	53	86	29	92	94	91	46

Traits Observed: GL, CE, 200WT, Genomics

Notes:

Purchaser: \$

Lot 4

ARDCAIRNIE THUNDERBOLT T136 SV

WJM22T136

DOB: 08/05/2022

Registration Status: **HBR**

Mating Type: **Natural**

Genetic Status: **AMFU,CAFU,DDF,NHFU**

MORDALLUP DENSITY D36 SV
 MORDALLUP DENSITY J403 SV
 MORDALLUP GEORGETTE F304 #
Sire: WGMP257 MORDALLUP KWOKA P257 SV
 MORDALLUP KODJA F129 SV
 MORDALLUP LEONIE J471 #
 MORDALLUP LEONIE E271 #

BOOROOMOOKA DESIGN Y120 SV
 ARDCAIRNIE B24 SV
 ARDCAIRNIE BAKESS Z45 #
Dam: WJMF161 ARDCAIRNIE INFANTA F161 #
 ARDCAIRNIE V36 #
 ARDCAIRNIE INFANTA Z176 #
 ARDCAIRNIE INFANTA V14 #

January 2024 TransTasman Angus Cattle Evaluation

TACE	CE Dir	CE Dtrs	GL	BW	200	400	600	MCW	Milk	SS	DC
EBV	+4.9	+7.4	-6.3	+3.0	+46	+84	+116	+103	+18	+0.9	-4.9
ACC	60%	48%	80%	80%	81%	78%	79%	74%	70%	75%	34%
Perc	28	10	22	28	74	74	56	46	38	89	43

TACE	CWT	EMA	Rib	Rump	RBV	IMF	NFI-F	Doc	Claw	Angle	Leg
EBV	+69	-0.8	-0.3	-3.2	+0.2	+2.3	-0.20	+16	+0.92	+1.20	+1.28
ACC	67%	65%	65%	67%	56%	70%	55%	69%	59%	59%	56%
Perc	45	99	55	91	66	48	11	71	65	91	98

Selection Indexes

\$A	\$A-L
\$171	\$321
82	73

Traits Observed: CE, BWT, 200WT, Genomics

Notes:

Purchaser: \$

Lot 5

ARDCAIRNIE T009 SV

WJM22T009

DOB: 02/04/2022

Registration Status: **HBR**

Mating Type: **AI**

Genetic Status: **AMFU,CAFU,DDFU,NHFU**

BENFIELD SUBSTANCE 8506 #
 MOHNEN SUBSTANTIAL 272 #
 MOHNEN GLYN MAWR ELBA 1758 #
Sire: USA18397542 SITZ STELLAR 726D PV
 CONNEALY FINAL PRODUCT PV
 SITZ PRIDE 200B #
 SITZ PRIDE 308Y #

ARDCAIRNIE J27 SV
 ARDCAIRNIE N298 SV
 ARDCAIRNIE ISOBEL J122 #
Dam: WJMR162 ARDCAIRNIE R162 #
 K C F BENNETT ABSOLUTE #
 ARDCAIRNIE DIANARAM J19 #
 ARDCAIRNIE DIANARAM G153 #

January 2024 TransTasman Angus Cattle Evaluation

TACE	CE Dir	CE Dtrs	GL	BW	200	400	600	MCW	Milk	SS	DC
EBV	+2.9	+6.6	-9.2	+5.9	+57	+100	+127	+131	+1	+3.0	-8.0
ACC	66%	52%	82%	82%	82%	80%	81%	76%	71%	78%	37%
Perc	46	15	3	87	21	26	32	11	99	21	3

TACE	CWT	EMA	Rib	Rump	RBV	IMF	NFI-F	Doc	Claw	Angle	Leg
EBV	+56	+3.9	+1.5	+1.3	+0.1	+2.7	+0.35	+16	+0.62	+0.82	+1.04
ACC	69%	69%	68%	69%	61%	73%	58%	74%	69%	69%	61%
Perc	81	80	18	22	72	38	65	70	10	16	53

Selection Indexes

\$A	\$A-L
\$240	\$430
14	4

Traits Observed: GL, CE, 200WT, Genomics

Notes:

Purchaser: \$

Lot 6

ARDCAIRNIE T004 SV

WJM22T004

DOB: 31/03/2022

Registration Status: **HBR**

Mating Type: **AI**

Genetic Status: **AMFU,CAFU,DDFU,NHFU**

BENFIELD SUBSTANCE 8506 #
 MOHNEN SUBSTANTIAL 272 #
 MOHNEN GLYN MAWR ELBA 1758 #
Sire: USA18397542 SITZ STELLAR 726D PV
 CONNEALY FINAL PRODUCT PV
 SITZ PRIDE 200B #
 SITZ PRIDE 308Y #

ARDCAIRNIE J67 SV
 ARDCAIRNIE M214 SV
 ARDCAIRNIE DIANARAM D25 #
Dam: WJMR180 ARDCAIRNIE ISDEN R180 #
 TE MANIA BERKLEY B1 PV
 ARDCAIRNIE ISDEN L31 #
 ARDCAIRNIE ISDEN J192 #

January 2024 TransTasman Angus Cattle Evaluation

TACE	CE Dir	CE Dtrs	GL	BW	200	400	600	MCW	Milk	SS	DC
EBV	+3.0	+2.3	-8.4	+4.0	+50	+93	+128	+108	+16	+1.1	-5.4
ACC	65%	51%	81%	81%	82%	80%	80%	76%	70%	78%	37%
Perc	45	59	6	51	54	45	31	38	56	85	31

TACE	CWT	EMA	Rib	Rump	RBV	IMF	NFI-F	Doc	Claw	Angle	Leg
EBV	+64	+8.2	-1.4	-2.3	+1.2	+1.0	+0.09	+23	+0.60	+0.82	+1.14
ACC	68%	68%	68%	68%	60%	72%	57%	74%	69%	69%	63%
Perc	60	30	80	82	12	82	35	38	9	16	81

Selection Indexes

\$A	\$A-L
\$206	\$359
49	44

Traits Observed: GL, CE, 200WT, Genomics

Notes:

Purchaser: \$

Lot 7

ARDCAIRNIE TURBOCHARGE T252 SV

WJM22T252

DOB: 26/05/2022

Registration Status: **HBR**

Mating Type: **Natural**

Genetic Status: **AMFU,CAFU,DDFU,NHFU**

ARDROSSAN EQUATOR A241 PV
 COONAMBLE KEVIN K314 PV
 COONAMBLE D94 SV
Sire: WDCN444 COONAMBLE KEVIN N444 SV
 COONAMBLE HUNTER H274 SV
 COONAMBLE K284 PV
 COONAMBLE B019 B19 SV

CONNEALY MENTOR 7374 SV
 CONNEALY COUNSELOR #
 JAZE OF CONANGA 234 #
Dam: WJMP9 ARDCAIRNIE GEORGINA P9 #
 KAROO D145 GENERATOR G220 PV
 ARDCAIRNIE GEORGINA M152 #
 ARDCAIRNIE GEORGINA E16 #

January 2024 TransTasman Angus Cattle Evaluation

TACE	CE Dir	CE Dtrs	GL	BW	200	400	600	MCW	Milk	SS	DC
EBV	-4.3	-0.4	-4.4	+6.8	+66	+126	+176	+166	+17	+3.0	-5.3
ACC	60%	49%	81%	80%	81%	79%	79%	75%	71%	77%	38%
Perc	91	81	50	95	4	1	1	1	51	21	33

TACE	CWT	EMA	Rib	Rump	RBV	IMF	NFI-F	Doc	Claw	Angle	Leg
EBV	+97	+2.1	+0.0	-0.9	-0.2	+0.7	-0.07	+13	+0.92	+1.28	+1.00
ACC	68%	67%	67%	68%	58%	72%	58%	70%	63%	63%	59%
Perc	2	92	48	60	85	88	20	79	65	96	39

Selection Indexes

\$A	\$A-L
\$190	\$377
66	28

Traits Observed: BWT, 200WT, Genomics

Notes:

Purchaser: \$

Lot 8

ARDCAIRNIE TOUCHDOWN T150 SV

WJM22T150

DOB: 10/05/2022

Registration Status: **HBR**

Mating Type: **Natural**

Genetic Status: **AMFU,CAFU,DDFU,NHFU**

ARDROSSAN EQUATOR A241 PV
 COONAMBLE KEVIN K314 PV
 COONAMBLE D94 SV
Sire: WDCN444 COONAMBLE KEVIN N444 SV
 COONAMBLE HUNTER H274 SV
 COONAMBLE K284 PV
 COONAMBLE B019 B19 SV

ARDCAIRNIE F96 SV
 ARDCAIRNIE K244 SV
 ARDCAIRNIE PAMELA E1 #
Dam: WJMN120 ARDCAIRNIE BAKESS N120 #
 ARDCAIRNIE H10 SV
 ARDCAIRNIE BAKESS L205 SV
 ARDCAIRNIE BAKESS H139 #

January 2024 TransTasman Angus Cattle Evaluation

TACE	CE Dir	CE Dtrs	GL	BW	200	400	600	MCW	Milk	SS	DC
EBV	-1.6	+2.4	-3.4	+5.0	+52	+107	+141	+134	+16	+4.2	-5.2
ACC	62%	51%	81%	81%	82%	80%	80%	76%	72%	78%	40%
Perc	80	58	67	73	41	12	11	10	56	5	36

TACE	CWT	EMA	Rib	Rump	RBV	IMF	NFI-F	Doc	Claw	Angle	Leg
EBV	+85	+12.4	-0.1	-0.7	+1.2	+1.7	+0.66	+10	+0.50	+1.02	+1.00
ACC	70%	68%	68%	70%	59%	73%	60%	72%	60%	60%	57%
Perc	9	5	50	57	12	65	89	89	3	61	39

Selection Indexes

\$A	\$A-L
\$211	\$383
43	24

Traits Observed: CE, BWT, 200WT, Genomics

Notes:

Purchaser: \$

Lot 9

ARDCAIRNIE TRANSCEND T025 SV

WJM22T025

DOB: 09/04/2022

Registration Status: **HBR**

Mating Type: **AI**

Genetic Status: **AMFU,CAFU,DDFU,NHFU**

EF COMPLEMENT 8088 PV
 EF COMMANDO 1366 PV
 RIVERBEND YOUNG LUCY W1470 #
Sire: NMMP15 MILLAH MURRAH PARATROOPER P15 PV
 MILLAH MURRAH HIGHLANDER G18 SV
 MILLAH MURRAH ELA M9 PV
 MILLAH MURRAH ELA K127 SV

YON FUTURE FORCE Z77 #
 YON FULL FORCE C398 PV
 YON SARAH A100 #
Dam: WJMR48 ARDCAIRNIE ISDEN R48 #
 ARDCAIRNIE F96 SV
 ARDCAIRNIE ISDEN P11 #
 ARDCAIRNIE ISDEN M192 #

January 2024 TransTasman Angus Cattle Evaluation

TACE	CE Dir	CE Dtrs	GL	BW	200	400	600	MCW	Milk	SS	DC
EBV	+8.5	+4.8	-3.0	+2.4	+50	+89	+111	+88	+20	+1.2	-4.1
ACC	68%	57%	83%	82%	82%	81%	81%	77%	73%	79%	41%
Perc	5	32	73	18	54	60	67	71	26	82	63

TACE	CWT	EMA	Rib	Rump	RBV	IMF	NFI-F	Doc	Claw	Angle	Leg
EBV	+61	+11.1	+1.5	-0.4	+1.0	+2.2	-0.50	+13	+0.86	+0.90	+1.16
ACC	70%	69%	69%	70%	62%	73%	59%	76%	69%	69%	67%
Perc	70	9	18	51	19	51	3	80	53	31	85

Selection Indexes

\$A	\$A-L
\$227	\$374
25	31

Traits Observed: GL, CE, 200WT, Genomics

Notes:

Purchaser: \$

Lot 10

ARDCAIRNIE TRIUMPHANT T206 SV

WJM22T206

DOB: 18/05/2022

Registration Status: **HBR**

Mating Type: **Natural**

Genetic Status: **AMFU,CAFU,DDFU,NHFU**

SYDGEN TRUST 6228 #
ARDCAIRNIE J27 SV
ARDCAIRNIE ELMA G96 #

DEER VALLEY ALL IN SV
ARDCAIRNIE L14 SV
ARDCAIRNIE FLORAL J140 #
V A R RESERVE 1111 PV
ARDCAIRNIE BAKESS L209 SV
ARDCAIRNIE BAKESS F151 #

Sire: **WJMN285 ARDCAIRNIE N285 SV**

Dam: **WJMP188 ARDCAIRNIE BAKESS P188 #**

ARDCAIRNIE F96 SV
ARDCAIRNIE GEORGINA J186 SV
ARDCAIRNIE GEORGINA D113 #

January 2024 TransTasman Angus Cattle Evaluation

TACE	CE Dir	CE Dtrs	GL	BW	200	400	600	MCW	Milk	SS	DC
EBV	-9.9	-2.5	+0.5	+5.6	+58	+104	+137	+125	+11	+1.5	-4.0
ACC	61%	50%	80%	80%	81%	79%	79%	75%	70%	77%	38%
Perc	99	91	98	83	17	17	15	16	90	73	65

Selection Indexes

\$A	\$A-L
\$161	\$288
88	88

TACE	CWT	EMA	Rib	Rump	RBV	IMF	NFI-F	Doc	Claw	Angle	Leg
EBV	+84	+3.6	-1.9	-3.8	+1.3	+0.4	-0.47	+19	+0.86	+1.08	+1.00
ACC	68%	67%	67%	68%	59%	72%	59%	71%	60%	60%	57%
Perc	10	82	87	94	9	92	3	58	53	74	39

Traits Observed: BWT, 200WT, Genomics

Notes:

Purchaser: \$

Lot 11

ARDCAIRNIE TRANSFORM T038 SV

WJM22T038

DOB: 15/04/2022

Registration Status: **HBR**

Mating Type: **Natural**

Genetic Status: **AMFU,CAFU,DDFU,NHFU**

A A R TEN X 7008 S A SV
V A R FOREMAN 3339 PV
SANDPOINT BLACKBIRD 8809 #

AYRVALE BARTEL E7 PV
ESSLEMONT BARTEL K5 SV
ESSLEMONT HEIDI H16 PV
ARDCAIRNIE F250 SV
ARDCAIRNIE ABBIE K81 #
ARDCAIRNIE ABBIE G78 #

Sire: **WJMP87 ARDCAIRNIE P87 SV**

Dam: **WJMM163 ARDCAIRNIE ABBIE M163 #**

ARDCAIRNIE G33 SV
ARDCAIRNIE ABBIE L228 SV
ARDCAIRNIE ABBIE E203 #

January 2024 TransTasman Angus Cattle Evaluation

TACE	CE Dir	CE Dtrs	GL	BW	200	400	600	MCW	Milk	SS	DC
EBV	+7.4	+4.7	-6.4	+1.9	+47	+86	+100	+76	+19	+1.6	-7.2
ACC	62%	51%	81%	81%	82%	80%	80%	77%	72%	77%	38%
Perc	10	33	21	12	67	68	87	86	35	70	7

Selection Indexes

\$A	\$A-L
\$242	\$391
13	19

TACE	CWT	EMA	Rib	Rump	RBV	IMF	NFI-F	Doc	Claw	Angle	Leg
EBV	+56	+9.1	-0.2	-1.2	+1.1	+2.1	+0.46	-3	+1.18	+1.08	+1.06
ACC	68%	67%	67%	68%	59%	72%	58%	71%	59%	59%	56%
Perc	81	22	53	66	15	53	75	99	96	74	59

Traits Observed: CE, 200WT, Genomics

Notes:

Purchaser: \$

Lot 12

ARDCAIRNIE TROUBLESHOOTER T097 SV

WJM22T097

DOB: 30/04/2022

Registration Status: **HBR**

Mating Type: **Natural**

Genetic Status: **AMFU,CAFU,DDFU,NHFU**

SYDGEN TRUST 6228 #
ARDCAIRNIE J27 SV
ARDCAIRNIE ELMA G96 #

TEHAMA 717 BAND 876 #
TEHAMA SCHWARZENEGGER N600 #
TEHAMA BLACKCAP E406 #
ARDCAIRNIE Y11 SV
ARDCAIRNIE ISOBEL A144 SV
ARDCAIRNIE ISOBEL Y69 #

Sire: **WJMN298 ARDCAIRNIE N298 SV**

Dam: **WJMK53 ARDCAIRNIE ISOBEL K53 #**

ARDROSSAN CASINO C18 PV
ARDCAIRNIE ISOBEL J122 #
ARDCAIRNIE ISOBEL D87 #

January 2024 TransTasman Angus Cattle Evaluation

TACE	CE Dir	CE Dtrs	GL	BW	200	400	600	MCW	Milk	SS	DC
EBV	+6.0	+4.2	-9.4	+3.3	+54	+95	+129	+126	+16	+2.2	-4.5
ACC	62%	51%	81%	81%	82%	80%	80%	76%	71%	77%	40%
Perc	19	39	3	34	33	40	29	15	60	47	53

Selection Indexes

\$A	\$A-L
\$178	\$346
77	54

TACE	CWT	EMA	Rib	Rump	RBV	IMF	NFI-F	Doc	Claw	Angle	Leg
EBV	+76	+3.1	-2.7	-4.6	+0.8	+1.2	-0.18	+14	+0.80	+0.90	+1.04
ACC	69%	67%	68%	69%	60%	72%	58%	70%	59%	59%	56%
Perc	26	86	95	97	29	78	12	76	39	31	53

Traits Observed: CE, BWT, 200WT, Genomics

Notes:

Purchaser: \$

Lot 13

ARDCAIRNIE TOTALITY T033 SV

WJM22T033

DOB: 08/04/2022

Registration Status: **HBR**

Mating Type: **Natural**

Genetic Status: **AMFU,CAFU,DDFU,NHFU**

A A R TEN X 7008 S A SV
V A R FOREMAN 3339 PV
SANDPOINT BLACKBIRD 8809 #

WAITARA PIO FEDERAL F73 SV
ARDCAIRNIE K122 SV
ARDCAIRNIE ELMA C121 #
TE MANIA BERKLEY B1 PV
ARDCAIRNIE GEORGINA G130 #
ARDCAIRNIE GEORGINA X3 #

Sire: WJMP87 ARDCAIRNIE P87 SV

Dam: WJMN323 ARDCAIRNIE GEORGINA N323 #

ARDCAIRNIE G33 SV
ARDCAIRNIE ABBIE L228 SV
ARDCAIRNIE ABBIE E203 #

January 2024 TransTasman Angus Cattle Evaluation

TACE	CE Dir	CE Dtrs	GL	BW	200	400	600	MCW	Milk	SS	DC
EBV	+0.8	+1.6	-6.1	+3.8	+61	+108	+138	+132	+11	+0.4	-3.5
ACC	62%	51%	81%	81%	82%	80%	80%	77%	72%	77%	38%
Perc	65	66	24	46	9	10	14	11	90	95	76

Selection Indexes

\$A	\$A-L
\$197	\$362
59	41

TACE	CWT	EMA	Rib	Rump	RBV	IMF	NFI-F	Doc	Claw	Angle	Leg
EBV	+94	+6.9	+0.2	+0.0	+0.6	+0.0	+0.60	+14	+0.96	+1.00	+1.12
ACC	68%	67%	67%	68%	59%	72%	58%	71%	60%	60%	56%
Perc	3	45	43	43	41	96	86	77	72	56	76

Traits Observed: CE, 200WT, Genomics

Notes:

Purchaser: \$

Lot 14

ARDCAIRNIE TAILORED T188 SV

WJM22T188

DOB: 17/05/2022

Registration Status: **HBR**

Mating Type: **Natural**

Genetic Status: **AMFU,CAFU,DDFU,NHFU**

ARDROSSAN EQUATOR A241 PV
COONAMBLE KEVIN K314 PV
COONAMBLE D94 SV
COONAMBLE HUNTER H274 SV
COONAMBLE K284 PV
COONAMBLE B019 B19 SV

TC ABERDEEN 759 SV
ARDCAIRNIE H10 SV
ARDCAIRNIE ELMA F73 #
DUNOON EVIDENT E614 PV
ARDCAIRNIE BAKESS H139 #
ARDCAIRNIE BAKESS C144 #

Sire: WDCN444 COONAMBLE KEVIN N444 SV

Dam: WJML205 ARDCAIRNIE BAKESS L205 SV

January 2024 TransTasman Angus Cattle Evaluation

TACE	CE Dir	CE Dtrs	GL	BW	200	400	600	MCW	Milk	SS	DC
EBV	-10.7	+0.1	-1.1	+6.9	+54	+116	+148	+131	+22	+2.6	-4.6
ACC	63%	52%	81%	82%	83%	81%	81%	77%	73%	78%	41%
Perc	99	78	91	96	33	4	5	12	16	32	50

Selection Indexes

\$A	\$A-L
\$182	\$326
73	70

TACE	CWT	EMA	Rib	Rump	RBV	IMF	NFI-F	Doc	Claw	Angle	Leg
EBV	+80	+9.5	-1.6	+0.1	+0.9	+0.7	-0.26	+22	+0.78	+0.96	+0.96
ACC	70%	69%	69%	70%	60%	74%	60%	73%	56%	56%	53%
Perc	16	18	83	42	24	88	8	45	35	46	27

Traits Observed: BWT, 200WT, Genomics

Notes:

Purchaser: \$

Lot 15

ARDCAIRNIE TENACIOUS T043 SV

WJM22T043

DOB: 20/04/2022

Registration Status: **HBR**

Mating Type: **Natural**

Genetic Status: **AMF,CAF,DDF,NHF**

COONAMBLE Z3 PV
COONAMBLE ELEVATOR E11 PV
BANGADANG B31 SV
CONNEALY FORMATION 60C #
ARDCAIRNIE ABBIE E158 #
ARDCAIRNIE ABBIE Z22 #

ARDROSSAN EQUATOR A241 PV
BOOROOMOOKA INSPIRED E124 PV
BOOROOMOOKA SIGNAL B325 SV
ARDCAIRNIE ABBIE J85 #
ARDCAIRNIE C136 SV
ARDCAIRNIE ABBIE F184 SV
ARDCAIRNIE ABBIE C162 SV

Sire: WJMK69 ARDCAIRNIE K69 SV

Dam: WJMJ85 ARDCAIRNIE ABBIE J85 #

January 2024 TransTasman Angus Cattle Evaluation

TACE	CE Dir	CE Dtrs	GL	BW	200	400	600	MCW	Milk	SS	DC
EBV	-4.3	-7.2	-4.0	+6.5	+52	+96	+129	+127	+11	+0.9	-5.5
ACC	62%	53%	81%	81%	81%	79%	80%	76%	72%	77%	41%
Perc	91	99	57	93	41	37	27	15	89	89	29

Selection Indexes

\$A	\$A-L
\$159	\$300
89	83

TACE	CWT	EMA	Rib	Rump	RBV	IMF	NFI-F	Doc	Claw	Angle	Leg
EBV	+84	+6.0	-1.0	+1.0	+1.1	-1.4	+0.04	+32	+0.54	+0.76	+0.78
ACC	68%	67%	67%	69%	59%	73%	59%	72%	64%	64%	60%
Perc	11	56	72	26	15	99	30	12	5	9	2

Traits Observed: CE, 200WT, Genomics

Notes:

Purchaser: \$

Lot 16

ARDCAIRNIE TERRITORY T160 SV

WJM22T160

DOB: 12/05/2022

Registration Status: HBR

Mating Type: Natural

Genetic Status: AMFU,CAFU,DDFU,NHFU

EF COMMANDO 1366 PV
BALDRIDGE BRONC SV
BALDRIDGE ISABEL Y69 #
Sire: WJMP159 ARDCAIRNIE P159 SV
G A R OBJECTIVE 7125 #
ARDCAIRNIE ISOBEL H106 #
ARDCAIRNIE ISOBEL A144 SV

ARDROSSAN MODEST W37 SV
ARDROSSAN CASINO C18 PV
ARDROSSAN PRINCESS W211 PV
Dam: WJMK83 ARDCAIRNIE INFANTA K83 #
B/R NEW FRONTIER 095 #
ARDCAIRNIE INFANTA B65 #
ARDCAIRNIE INFANTA V14 #

January 2024 TransTasman Angus Cattle Evaluation

Table with 12 columns: TACE, CE Dir, CE Dtrs, GL, BW, 200, 400, 600, MCW, Milk, SS, DC. Rows include EBV, ACC, Perc and CWT, EMA, Rib, Rump, RBY, IMF, NFI-F, Doc, Claw, Angle, Leg.

Selection Indexes table with columns \$A and \$A-L. Values: \$198, \$349, 58, 52.

Traits Observed: BWT, 200WT, Genomics

Notes:

Purchaser: \$

Lot 17

ARDCAIRNIE TESTIFY T142 SV

WJM22T142

DOB: 08/05/2022

Registration Status: HBR

Mating Type: Natural

Genetic Status: AMFU,CAFU,DDFU,NHFU

SYDGEN TRUST 6228 #
ARDCAIRNIE J27 SV
ARDCAIRNIE ELMA G96 #
Sire: WJMN298 ARDCAIRNIE N298 SV
ARDROSSAN CASINO C18 PV
ARDCAIRNIE ISOBEL J122 #
ARDCAIRNIE ISOBEL D87 #

ARDCAIRNIE B59 PV
ARDCAIRNIE F96 SV
ARDCAIRNIE DIANARAM D25 #
Dam: WJM140 ARDCAIRNIE FLORAL J140 #
ARDCAIRNIE V36 #
ARDCAIRNIE FLORAL Z134 #
ARDCAIRNIE FLORAL P21+94 #

January 2024 TransTasman Angus Cattle Evaluation

Table with 12 columns: TACE, CE Dir, CE Dtrs, GL, BW, 200, 400, 600, MCW, Milk, SS, DC. Rows include EBV, ACC, Perc and CWT, EMA, Rib, Rump, RBY, IMF, NFI-F, Doc, Claw, Angle, Leg.

Selection Indexes table with columns \$A and \$A-L. Values: \$152, \$320, 92, 74.

Traits Observed: CE, BWT, 200WT, Genomics

Notes:

Purchaser: \$

Lot 18

ARDCAIRNIE TALENTED T116 SV

WJM22T116

DOB: 03/05/2022

Registration Status: HBR

Mating Type: Natural

Genetic Status: AMFU,CAFU,DDFU,NHFU

SYDGEN TRUST 6228 #
ARDCAIRNIE J27 SV
ARDCAIRNIE ELMA G96 #
Sire: WJMN298 ARDCAIRNIE N298 SV
ARDROSSAN CASINO C18 PV
ARDCAIRNIE ISOBEL J122 #
ARDCAIRNIE ISOBEL D87 #

CONNEALY IMPRESSION #
MAR INNOVATION 251 PV
MAR FINAL KAHUNA 856 #
Dam: WJMN53 ARDCAIRNIE PROUDRAM N53 #
BOOROOMOOKA INSPIRED E124 PV
ARDCAIRNIE PROUDRAM K91 #
ARDCAIRNIE PROUDRAM E57 SV

January 2024 TransTasman Angus Cattle Evaluation

Table with 12 columns: TACE, CE Dir, CE Dtrs, GL, BW, 200, 400, 600, MCW, Milk, SS, DC. Rows include EBV, ACC, Perc and CWT, EMA, Rib, Rump, RBY, IMF, NFI-F, Doc, Claw, Angle, Leg.

Selection Indexes table with columns \$A and \$A-L. Values: \$191, \$351, 65, 50.

Traits Observed: CE, BWT, 200WT, Genomics

Notes:

Purchaser: \$

Lot 19

ARDCAIRNIE TARGETED T162 SV

WJM22T162

DOB: 13/05/2022

Registration Status: **HBR**

Mating Type: **Natural**

Genetic Status: **AMFU,CAFU,DDFU,NHFU**

MORDALLUP DENSITY D36 SV
 MORDALLUP DENSITY J403 SV
 MORDALLUP GEORGETTE F304 #
Sire: WGMP257 MORDALLUP KWOKA P257 SV
 MORDALLUP KODJA F129 SV
 MORDALLUP LEONIE J471 #
 MORDALLUP LEONIE E271 #

SITZ UPWARD 307R SV
 THOMAS UP RIVER 1614 PV
 THOMAS CAROL 7595 #
Dam: WJMM86 ARDCAIRNIE PROUDRAM M86 #
 ARDCAIRNIE E48 SV
 ARDCAIRNIE PROUDRAM J207 #
 ARDCAIRNIE PROUDRAM E123 #

January 2024 TransTasman Angus Cattle Evaluation

TACE	CE Dir	CE Dtrs	GL	BW	200	400	600	MCW	Milk	SS	DC
EBV	-0.8	+0.8	-3.2	+5.6	+53	+95	+121	+101	+15	+2.0	-5.8
ACC	62%	51%	81%	80%	82%	79%	80%	76%	71%	76%	37%
Perc	76	73	70	83	39	39	45	49	64	54	23

TACE	CWT	EMA	Rib	Rump	RBY	IMF	NFI-F	Doc	Claw	Angle	Leg
EBV	+69	+4.8	+1.0	-0.6	+0.6	+1.4	-0.15	+15	+0.62	+0.90	+1.08
ACC	68%	66%	66%	68%	57%	72%	58%	71%	59%	60%	54%
Perc	43	70	26	55	41	73	14	73	10	31	65

Selection Indexes

\$A	\$A-L
\$205	\$347
50	54

Traits Observed: BWT, 200WT, Genomics

Notes:

Purchaser: \$

Lot 20

ARDCAIRNIE TINKER T177 SV

WJM22T177

DOB: 15/05/2022

Registration Status: **HBR**

Mating Type: **Natural**

Genetic Status: **AMFU,CAFU,DDFU,NHFU**

EF COMMANDO 1366 PV
 BALDRIDGE BRONC SV
 BALDRIDGE ISABEL Y69 #
Sire: WJMP159 ARDCAIRNIE P159 SV
 G A R OBJECTIVE 7125 #
 ARDCAIRNIE ISOBEL H106 #
 ARDCAIRNIE ISOBEL A144 SV

WAITARA PIO FEDERAL F73 SV
 ARDCAIRNIE K122 SV
 ARDCAIRNIE ELMA C121 #
Dam: WJMN198 ARDCAIRNIE GEORGINA N198 #
 ARDCAIRNIE B34 SV
 ARDCAIRNIE GEORGINA F126 #
 ARDCAIRNIE GEORGINA X3 #

January 2024 TransTasman Angus Cattle Evaluation

TACE	CE Dir	CE Dtrs	GL	BW	200	400	600	MCW	Milk	SS	DC
EBV	+3.9	-1.7	-8.4	+4.2	+48	+100	+130	+115	+18	+2.3	-5.0
ACC	60%	48%	80%	80%	81%	79%	79%	75%	70%	75%	36%
Perc	37	88	6	56	63	25	26	28	45	43	40

TACE	CWT	EMA	Rib	Rump	RBY	IMF	NFI-F	Doc	Claw	Angle	Leg
EBV	+64	+8.9	-2.2	-3.0	+2.2	-0.7	+0.17	+17	+0.84	+0.84	+1.00
ACC	67%	65%	66%	67%	57%	70%	56%	69%	60%	61%	56%
Perc	59	23	91	89	1	99	45	65	48	19	39

Selection Indexes

\$A	\$A-L
\$194	\$351
62	50

Traits Observed: BWT, 200WT, Genomics

Notes:

Purchaser: \$

Lot 21

ARDCAIRNIE TRANSCRIPT T275 SV

WJM22T275

DOB: 03/06/2022

Registration Status: **HBR**

Mating Type: **Natural**

Genetic Status: **AMFU,CAFU,DDFU,NHFU**

SYDGEN TRUST 6228 #
 ARDCAIRNIE J27 SV
 ARDCAIRNIE ELMA G96 #
Sire: WJMN285 ARDCAIRNIE N285 SV
 ARDCAIRNIE F96 SV
 ARDCAIRNIE GEORGINA J186 SV
 ARDCAIRNIE GEORGINA D113 #

THOMAS UP RIVER 1614 PV
 MILLAH MURRAH LOCH UP L133 PV
 MILLAH MURRAH BRENDA H49 SV
Dam: WJMP94 ARDCAIRNIE NEUTRON P94 #
 ARDCAIRNIE H35 SV
 ARDCAIRNIE NEUTRON L71 #
 ARDCAIRNIE NEUTRON J1 #

January 2024 TransTasman Angus Cattle Evaluation

TACE	CE Dir	CE Dtrs	GL	BW	200	400	600	MCW	Milk	SS	DC
EBV	-4.7	-3.4	-5.8	+6.1	+54	+102	+145	+143	+18	+0.9	-1.1
ACC	62%	52%	81%	81%	82%	80%	80%	76%	71%	78%	41%
Perc	92	94	28	90	33	22	7	5	37	89	97

TACE	CWT	EMA	Rib	Rump	RBY	IMF	NFI-F	Doc	Claw	Angle	Leg
EBV	+89	+4.5	-1.0	-1.1	+0.4	+1.0	+0.08	+11	+0.92	+1.24	+1.26
ACC	69%	68%	68%	70%	61%	73%	60%	72%	61%	61%	59%
Perc	6	74	72	64	53	82	34	86	65	94	97

Selection Indexes

\$A	\$A-L
\$132	\$272
97	92

Traits Observed: BWT, 200WT, Genomics

Notes:

Purchaser: \$

Lot 22

ARDCAIRNIE TRUSTFUND T224 SV

WJM22T224

DOB: 22/05/2022

Registration Status: HBR

Mating Type: Natural

Genetic Status: AMFU,CAFU,DDFU,NHFU

ARDROSSAN EQUATOR A241 PV
COONAMBLE KEVIN K314 PV
COONAMBLE D94 SV
Sire: WDCN444 COONAMBLE KEVIN N444 SV
COONAMBLE HUNTER H274 SV
COONAMBLE K284 PV
COONAMBLE B019 B19 SV

EF COMMANDO 1366 PV
BALDRIDGE BRONC SV
BALDRIDGE ISABEL Y69 #
Dam: WJMP193 ARDCAIRNIE ELMA P193 #
BOOROOMOOKA INSPIRED E124 PV
ARDCAIRNIE ELMA J55 #
ARDCAIRNIE ELMA C121 #

January 2024 TransTasman Angus Cattle Evaluation

Table with 12 columns: TACE, CE Dir, CE Dtrs, GL, BW, 200, 400, 600, MCW, Milk, SS, DC. Rows include EBV, ACC, Perc and CWT, EMA, Rib, Rump, RBY, IMF, NFI-F, Doc, Claw, Angle, Leg.

Selection Indexes table with columns \$A and \$A-L. Values: \$246, \$402, 11, 13.

Traits Observed: BWT, 200WT, Genomics

Notes:

Purchaser: \$

Lot 23

ARDCAIRNIE TYPHOON T084 SV

WJM22T084

DOB: 26/04/2022

Registration Status: HBR

Mating Type: Natural

Genetic Status: AMFU,CAFU,DDFU,NHFU

GRANITE RIDGE KAISER K26 SV
KOOJAN HILLS KAISER N91 SV
KOOJAN HILLS H28 #
Sire: WJMR199 ARDCAIRNIE REFLECTION R199 SV
WAITARA PIO FEDERAL F73 SV
ARDCAIRNIE ABBIE K71 #
ARDCAIRNIE ABBIE G35 #

EF COMMANDO 1366 PV
BALDRIDGE BRONC SV
BALDRIDGE ISABEL Y69 #
Dam: WJMR157 ARDCAIRNIE BAKESS R157 #
SYDGEN TRUST 6228 #
ARDCAIRNIE BAKESS J34 SV
ARDCAIRNIE BAKESS G94 #

January 2024 TransTasman Angus Cattle Evaluation

Table with 12 columns: TACE, CE Dir, CE Dtrs, GL, BW, 200, 400, 600, MCW, Milk, SS, DC. Rows include EBV, ACC, Perc and CWT, EMA, Rib, Rump, RBY, IMF, NFI-F, Doc, Claw, Angle, Leg.

Selection Indexes table with columns \$A and \$A-L. Values: \$226, \$408, 26, 11.

Traits Observed: CE, Genomics

Notes:

Purchaser: \$

Lot 24

ARDCAIRNIE TRANSLATION T161 SV

WJM22T161

DOB: 13/05/2022

Registration Status: HBR

Mating Type: Natural

Genetic Status: AMFU,CAFU,DDFU,NHFU

COONAMBLE Z3 PV
COONAMBLE ELEVATOR E11 PV
BANGADANG B31 SV
Sire: WJMK69 ARDCAIRNIE K69 SV
CONNELLY FORMATION 60C #
ARDCAIRNIE ABBIE E158 #
ARDCAIRNIE ABBIE Z22 #

TUWHARETOA REGENT D145 PV
KAROO D145 GENERATOR G220 PV
KAROO WILCOOLA B15 SV
Dam: WJMM152 ARDCAIRNIE GEORGINA M152 #
TE MANIA INFINITY 04 379 AB #
ARDCAIRNIE GEORGINA E16 #
ARDCAIRNIE GEORGINA C36 #

January 2024 TransTasman Angus Cattle Evaluation

Table with 12 columns: TACE, CE Dir, CE Dtrs, GL, BW, 200, 400, 600, MCW, Milk, SS, DC. Rows include EBV, ACC, Perc and CWT, EMA, Rib, Rump, RBY, IMF, NFI-F, Doc, Claw, Angle, Leg.

Selection Indexes table with columns \$A and \$A-L. Values: \$190, \$318, 67, 75.

Traits Observed: BWT, 200WT, Genomics

Notes:

Purchaser: \$

Lot 25

ARDCAIRNIE TURBULENCE T059^{SV}

WJM22T059

DOB: 21/04/2022

Registration Status: **HBR**

Mating Type: **AI**

Genetic Status: **AMFU,CAFU,DDFU,NHFU**

AYRVALE BARTEL E7^{PV}
 AYRVALE HERCULES H9^{PV}
 LAWSONS INVINCIBLE F338^{SV}

RENNYLEA EDMUND E11^{PV}
 ARDROSSAN HONOUR H255^{PV}
 ARDROSSAN WILCOOLA D17^{PV}

Sire: DXTP613 TEXAS POWERPLAY P613^{PV}
 BANGADANG WESTERN EXPRESS E10^{SV}
 TEXAS UNDINE H647^{SV}
 TEXAS UNDINE Z183^{PV}

Dam: WJML16 ARDCAIRNIE DIANARAM L16 #
 SYDGEN TRUST 6228 #
 ARDCAIRNIE DIANARAM J5 #
 ARDCAIRNIE DIANARAM G41 #

January 2024 TransTasman Angus Cattle Evaluation

TACE	CE Dir	CE Dtrs	GL	BW	200	400	600	MCW	Milk	SS	DC
EBV	+3.3	+8.0	-8.5	+3.6	+56	+103	+150	+144	+17	+1.2	-3.7
ACC	66%	56%	83%	82%	83%	81%	81%	78%	74%	79%	44%
Perc	43	7	5	41	27	18	5	5	47	82	72

Selection Indexes

\$A	\$A-L
\$185	\$367
71	37

TACE	CWT	EMA	Rib	Rump	RBV	IMF	NFI-F	Doc	Claw	Angle	Leg
EBV	+94	+2.0	+1.5	+0.4	+0.0	+1.4	+0.13	+18	+0.96	+1.10	+0.92
ACC	71%	71%	70%	71%	63%	75%	62%	76%	64%	64%	63%
Perc	3	92	18	36	77	73	40	63	72	78	17

Traits Observed: GL, CE, 200WT, Genomics

Notes:

Purchaser: \$

Lot 26

ARDCAIRNIE T003^{SV}

WJM22T003

DOB: 29/03/2022

Registration Status: **HBR**

Mating Type: **AI**

Genetic Status: **AMFU,CAFU,DDFU,NHFU**

AYRVALE BARTEL E7^{PV}
 AYRVALE HERCULES H9^{PV}
 LAWSONS INVINCIBLE F338^{SV}

ARDCAIRNIE B59^{PV}
 ARDCAIRNIE F96^{SV}
 ARDCAIRNIE DIANARAM D25 #

Sire: DXTP613 TEXAS POWERPLAY P613^{PV}
 BANGADANG WESTERN EXPRESS E10^{SV}
 TEXAS UNDINE H647^{SV}
 TEXAS UNDINE Z183^{PV}

Dam: WJMR35 ARDCAIRNIE ABBIE R35 #
 ARDCAIRNIE K156^{SV}
 ARDCAIRNIE ABBIE P192 #
 ARDCAIRNIE ABBIE L107 #

January 2024 TransTasman Angus Cattle Evaluation

TACE	CE Dir	CE Dtrs	GL	BW	200	400	600	MCW	Milk	SS	DC
EBV	-1.8	+5.5	-8.5	+6.2	+63	+97	+146	+123	+11	+1.3	-3.8
ACC	64%	53%	82%	81%	82%	80%	80%	76%	71%	78%	40%
Perc	81	25	5	91	7	34	7	18	89	79	70

Selection Indexes

\$A	\$A-L
\$195	\$346
61	55

TACE	CWT	EMA	Rib	Rump	RBV	IMF	NFI-F	Doc	Claw	Angle	Leg
EBV	+89	+2.4	+0.7	+2.3	+0.0	+0.4	-0.03	+33	+0.70	+0.78	+1.00
ACC	69%	68%	68%	69%	60%	73%	60%	74%	63%	63%	60%
Perc	5	90	32	12	77	92	23	11	21	11	39

Traits Observed: GL, CE, 200WT, Genomics

Notes:

Purchaser: \$

Lot 27

ARDCAIRNIE TITAN T135^{SV}

WJM22T135

DOB: 07/05/2022

Registration Status: **HBR**

Mating Type: **Natural**

Genetic Status: **AMFU,CAFU,DDF,NHFU**

ARDROSSAN EQUATOR A241^{PV}
 COONAMBLE KEVIN K314^{PV}
 COONAMBLE D94^{SV}

TC ABERDEEN 759^{SV}
 ARDCAIRNIE H35^{SV}
 ARDCAIRNIE ABBIE F137 #

Sire: WDCN444 COONAMBLE KEVIN N444^{SV}
 COONAMBLE HUNTER H274^{SV}
 COONAMBLE K284^{PV}
 COONAMBLE B019 B19^{SV}

Dam: WJML107 ARDCAIRNIE ABBIE L107 #
 ARDCAIRNIE E122^{SV}
 ARDCAIRNIE ABBIE J246 #
 ARDCAIRNIE ABBIE E205 #

January 2024 TransTasman Angus Cattle Evaluation

TACE	CE Dir	CE Dtrs	GL	BW	200	400	600	MCW	Milk	SS	DC
EBV	+1.5	+8.0	-5.4	+4.0	+48	+101	+140	+109	+21	+3.6	-6.4
ACC	62%	51%	81%	81%	82%	80%	80%	77%	72%	78%	40%
Perc	59	7	34	51	62	23	11	36	18	10	14

Selection Indexes

\$A	\$A-L
\$220	\$388
32	21

TACE	CWT	EMA	Rib	Rump	RBV	IMF	NFI-F	Doc	Claw	Angle	Leg
EBV	+78	+10.5	-1.0	-0.8	+0.7	+1.3	+0.67	+23	+0.74	+1.04	+1.02
ACC	69%	68%	68%	69%	60%	73%	59%	71%	59%	60%	56%
Perc	22	12	72	58	34	75	89	38	27	66	46

Traits Observed: CE, BWT, 200WT, Genomics

Notes:

Purchaser: \$

Lot 28

ARDCAIRNIE TASKMASTER T130 SV

WJM22T130

DOB: 05/05/2022

Registration Status: **HBR**

Mating Type: **Natural**

Genetic Status: **AMFU,CAFU,DDFU,NHFU**

A A R TEN X 7008 S A SV
V A R FOREMAN 3339 PV
SANDPOINT BLACKBIRD 8809 #

TC ABERDEEN 759 SV
ARDCAIRNIE H10 SV
ARDCAIRNIE ELMA F73 #
ARDCAIRNIE QUERN N157 #
PA POWER TOOL 9108 SV
ARDCAIRNIE QUERN K44 #
ARDCAIRNIE QUERN H27 #

Sire: **WJMP87 ARDCAIRNIE P87 SV**

Dam: **WJMN157 ARDCAIRNIE QUERN N157 #**

ARDCAIRNIE G33 SV
ARDCAIRNIE ABBIE L228 SV
ARDCAIRNIE ABBIE E203 #

January 2024 TransTasman Angus Cattle Evaluation

TACE	CE Dir	CE Dtrs	GL	BW	200	400	600	MCW	Milk	SS	DC
EBV	-8.6	-0.3	-7.9	+5.7	+52	+91	+115	+89	+15	+1.3	-2.3
ACC	61%	50%	80%	80%	81%	79%	80%	76%	71%	76%	38%
Perc	98	81	8	85	43	53	59	70	70	79	92

TACE	CWT	EMA	Rib	Rump	RBV	IMF	NFI-F	Doc	Claw	Angle	Leg
EBV	+70	+9.4	-0.7	-3.2	+1.5	+0.9	-0.11	+14	+1.26	+1.22	+1.14
ACC	67%	66%	66%	67%	57%	71%	57%	71%	64%	64%	59%
Perc	42	19	65	91	5	84	17	78	99	93	81

Selection Indexes

\$A	\$A-L
\$164	\$261
86	94

Traits Observed: CE, BWT, 200WT, Genomics

Notes:

Purchaser: \$

Lot 29

ARDCAIRNIE TANTALIZING T101 SV

WJM22T101

DOB: 30/04/2022

Registration Status: **HBR**

Mating Type: **Natural**

Genetic Status: **AMFU,CAFU,DDFU,NHFU**

A A R TEN X 7008 S A SV
V A R FOREMAN 3339 PV
SANDPOINT BLACKBIRD 8809 #

S A V PIONEER 7301 #
WAITARA PIO FEDERAL F73 SV
WAITARA 1407 PAGEANT Z66 SV
TE MANIA BERKLEY B1 PV
ARDCAIRNIE INFANTA G81 #
ARDCAIRNIE INFANTA B65 #

Sire: **WJMP87 ARDCAIRNIE P87 SV**

Dam: **WJMN149 ARDCAIRNIE INFANTA N149 #**

ARDCAIRNIE G33 SV
ARDCAIRNIE ABBIE L228 SV
ARDCAIRNIE ABBIE E203 #

January 2024 TransTasman Angus Cattle Evaluation

TACE	CE Dir	CE Dtrs	GL	BW	200	400	600	MCW	Milk	SS	DC
EBV	+2.6	+5.8	-9.3	+3.4	+57	+105	+132	+135	+9	+2.1	-6.9
ACC	63%	52%	81%	81%	82%	80%	80%	77%	72%	77%	41%
Perc	49	22	3	37	20	16	22	9	95	51	9

TACE	CWT	EMA	Rib	Rump	RBV	IMF	NFI-F	Doc	Claw	Angle	Leg
EBV	+68	+6.9	-1.8	-3.7	+1.0	+3.2	-0.22	+9	+1.00	+0.96	+1.00
ACC	69%	68%	68%	69%	59%	73%	60%	73%	64%	64%	59%
Perc	48	45	86	94	19	27	10	91	79	46	39

Selection Indexes

\$A	\$A-L
\$240	\$428
14	5

Traits Observed: CE, BWT, Genomics

Notes:

Purchaser: \$

Lot 30

ARDCAIRNIE TEMPERATE T278 SV

WJM22T278

DOB: 03/06/2022

Registration Status: **HBR**

Mating Type: **Natural**

Genetic Status: **AMFU,CAFU,DDFU,NHFU**

EF COMMANDO 1366 PV
BALDRIDGE BRONC SV
BALDRIDGE ISABEL Y69 #

CONNEALY IMPRESSION #
ARDCAIRNIE G33 SV
ARDCAIRNIE NODDY E23 #
TE MANIA DESTINATION Z401 SV
ARDCAIRNIE GEORGINA D249 #
ARDCAIRNIE GEORGINA A55 SV

Sire: **WJMP159 ARDCAIRNIE P159 SV**

Dam: **WJML130 ARDCAIRNIE GEORGINA L130 #**

G A R OBJECTIVE 7125 #
ARDCAIRNIE ISOBEL H106 #
ARDCAIRNIE ISOBEL A144 SV

January 2024 TransTasman Angus Cattle Evaluation

TACE	CE Dir	CE Dtrs	GL	BW	200	400	600	MCW	Milk	SS	DC
EBV	+8.2	+4.6	-6.0	+1.0	+40	+77	+95	+66	+23	+0.5	-5.6
ACC	61%	49%	80%	81%	81%	79%	80%	76%	71%	76%	37%
Perc	6	34	26	5	91	89	92	93	12	94	27

TACE	CWT	EMA	Rib	Rump	RBV	IMF	NFI-F	Doc	Claw	Angle	Leg
EBV	+56	-0.3	+1.8	+1.6	-0.5	+4.3	+0.19	+1	+1.10	+1.00	+1.10
ACC	68%	66%	67%	68%	58%	72%	57%	70%	60%	61%	56%
Perc	82	98	14	19	93	10	47	99	91	56	71

Selection Indexes

\$A	\$A-L
\$204	\$335
51	63

Traits Observed: BWT, 200WT, Genomics

Notes:

Purchaser: \$

Lot 31

ARDCAIRNIE TEXTURE T024 PV

WJM22T024

DOB: 09/04/2022

Registration Status: **HBR**

Mating Type: **AI**

Genetic Status: **AMFU,CAFU,DDFU,NHFU**

AYRVALE BARTEL E7 PV
 AYRVALE HERCULES H9 PV
 LAWSONS INVINCIBLE F338 SV
Sire: DXTP613 TEXAS POWERPLAY P613 PV
 BANGADANG WESTERN EXPRESS E10 SV
 TEXAS UNDINE H647 SV
 TEXAS UNDINE Z183 PV

V A R RESERVE 1111 PV
 ARDCAIRNIE L49 SV
 ARDCAIRNIE ISOBEL H106 #
Dam: WJMR268 ARDCAIRNIE PROUDRAM R268 SV
 ARDCAIRNIE F96 SV
 ARDCAIRNIE PROUDRAM L151 #
 ARDCAIRNIE PROUDRAM F182 #

January 2024 TransTasman Angus Cattle Evaluation

TACE	CE Dir	CE Dtrs	GL	BW	200	400	600	MCW	Milk	SS	DC
EBV	+2.0	-0.2	-3.5	+2.8	+47	+93	+131	+122	+16	+0.2	-3.4
ACC	64%	53%	82%	81%	82%	80%	80%	76%	72%	78%	40%
Perc	55	80	65	24	69	46	24	19	54	97	78

TACE	CWT	EMA	Rib	Rump	RBY	IMF	NFI-F	Doc	Claw	Angle	Leg
EBV	+85	+7.6	-0.3	-0.2	+0.8	+3.0	-0.30	+41	+0.56	+0.88	+0.82
ACC	69%	68%	68%	69%	60%	73%	59%	75%	65%	65%	61%
Perc	9	36	55	47	29	31	7	3	6	27	4

Selection Indexes

\$A	\$A-L
\$195	\$347
62	53

Traits Observed: GL, CE, 200WT, Genomics

Notes:

Purchaser: \$

Lot 32

ARDCAIRNIE TRANSITION T114 SV

WJM22T114

DOB: 01/05/2022

Registration Status: **HBR**

Mating Type: **Natural**

Genetic Status: **AMFU,CAFU,DDFU,NHFU**

COONAMBLE Z3 PV
 COONAMBLE ELEVATOR E11 PV
 BANGADANG B31 SV
Sire: WJMK69 ARDCAIRNIE K69 SV
 CONNEALY FORMATION 60C #
 ARDCAIRNIE ABBIE E158 #
 ARDCAIRNIE ABBIE Z22 #

G A R NEW DESIGN 5050 #
 G A R INGENUITY #
 G A R OBJECTIVE 1067 #
Dam: WJMK13 ARDCAIRNIE BAKESS K13 #
 OAKCHURCH FIELD MARSHALL K143 SV
 ARDCAIRNIE BAKESS H87 #
 ARDCAIRNIE BAKESS B102 #

January 2024 TransTasman Angus Cattle Evaluation

TACE	CE Dir	CE Dtrs	GL	BW	200	400	600	MCW	Milk	SS	DC
EBV	+3.4	+3.6	-2.5	+5.5	+46	+89	+117	+101	+13	-0.4	-3.9
ACC	63%	53%	81%	81%	82%	80%	80%	77%	72%	78%	41%
Perc	42	45	79	82	74	58	53	50	80	99	68

TACE	CWT	EMA	Rib	Rump	RBY	IMF	NFI-F	Doc	Claw	Angle	Leg
EBV	+72	+0.4	+0.0	+0.7	+0.2	+0.5	-0.35	+12	+0.72	+0.78	+1.04
ACC	69%	68%	68%	69%	60%	73%	59%	72%	64%	64%	59%
Perc	36	97	48	31	66	91	5	82	24	11	53

Selection Indexes

\$A	\$A-L
\$164	\$305
86	82

Traits Observed: CE, BWT, 200WT, Genomics

Notes:

Purchaser: \$

Lot 33

ARDCAIRNIE TYRANT T109 PV

WJM22T109

DOB: 29/04/2022

Registration Status: **HBR**

Mating Type: **Natural**

Genetic Status: **AMFU,CAFU,DDFU,NHFU**

A A R TEN X 7008 S A SV
 V A R FOREMAN 3339 PV
 SANDPOINT BLACKBIRD 8809 #
Sire: WJMP87 ARDCAIRNIE P87 SV
 ARDCAIRNIE G33 SV
 ARDCAIRNIE ABBIE L228 SV
 ARDCAIRNIE ABBIE E203 #

ARDCAIRNIE B59 PV
 ARDCAIRNIE F96 SV
 ARDCAIRNIE DIANARAM D25 #
Dam: WJM186 ARDCAIRNIE GEORGINA J186 SV
 RITO 4L6 OF 2536 208 #
 ARDCAIRNIE GEORGINA D113 #
 ARDCAIRNIE GEORGINA Y47 #

January 2024 TransTasman Angus Cattle Evaluation

TACE	CE Dir	CE Dtrs	GL	BW	200	400	600	MCW	Milk	SS	DC
EBV	-8.4	-3.9	-4.7	+4.5	+49	+90	+113	+103	+12	+1.1	-4.0
ACC	63%	52%	81%	81%	82%	80%	80%	77%	72%	78%	39%
Perc	97	95	45	63	56	54	64	46	86	85	65

TACE	CWT	EMA	Rib	Rump	RBY	IMF	NFI-F	Doc	Claw	Angle	Leg
EBV	+65	+8.0	-1.1	-0.2	+0.9	+1.4	+0.07	+11	+0.98	+1.00	+1.08
ACC	69%	68%	68%	69%	59%	73%	59%	72%	65%	65%	60%
Perc	58	32	74	47	24	73	33	86	76	56	65

Selection Indexes

\$A	\$A-L
\$164	\$276
87	91

Traits Observed: CE, BWT, Genomics

Notes:

Purchaser: \$

Lot 34

ARDCAIRNIE TIMELESS T312 SV

WJM22T312

DOB: 17/06/2022

Registration Status: HBR

Mating Type: Natural

Genetic Status: AMFU,CAFU,DDFU,NHFU

EF COMMANDO 1366 PV
BALDRIDGE BRONC SV
BALDRIDGE ISABEL Y69 #
Sire: WJMP159 ARDCAIRNIE P159 SV
G A R OBJECTIVE 7125 #
ARDCAIRNIE ISOBEL H106 #
ARDCAIRNIE ISOBEL A144 SV

G A R ULTIMATE #
LAWSONS NADAL E398 SV
LAWSONS CONVERGENCE B887 #
Dam: WJMH18 ARDCAIRNIE PROUDRAM H18 #
TC ABERDEEN 759 SV
ARDCAIRNIE PROUDRAM F82 #
ARDCAIRNIE PROUDRAM B58 #

January 2024 TransTasman Angus Cattle Evaluation

Table with columns: TACE, CE Dir, CE Dtrs, GL, BW, 200, 400, 600, MCW, Milk, SS, DC. Rows include EBV, ACC, Perc and CWT, EMA, Rib, Rump, RBY, IMF, NFI-F, Doc, Claw, Angle, Leg.

Selection Indexes table with columns: \$A, \$A-L. Values: \$192, \$335, 64, 63.

Traits Observed: BWT, 200WT, Genomics

Notes:

Purchaser: \$

Lot 35

ARDCAIRNIE TENET T051 PV

WJM22T051

DOB: 22/04/2022

Registration Status: HBR

Mating Type: Natural

Genetic Status: AMFU,CAFU,DDFU,NHFU

KOUPALS B&B IDENTITY SV
BUSHS WIND CHILL 982 PV
BUSHS LADY TROOPER 1453 #
Sire: WJMR79 ARDCAIRNIE RAMBLER R79 SV
ARDCAIRNIE K244 SV
ARDCAIRNIE BAKESS N120 #
ARDCAIRNIE BAKESS L205 SV

COONAMBLE KEVIN K314 PV
COONAMBLE KEVIN N444 SV
COONAMBLE K284 PV
Dam: WJMR310 ARDCAIRNIE FLORAL R310 SV
G A R OBJECTIVE 7125 #
ARDCAIRNIE FLORAL H140 #
ARDCAIRNIE FLORAL C168 #

January 2024 TransTasman Angus Cattle Evaluation

Table with columns: TACE, CE Dir, CE Dtrs, GL, BW, 200, 400, 600, MCW, Milk, SS, DC. Rows include EBV, ACC, Perc and CWT, EMA, Rib, Rump, RBY, IMF, NFI-F, Doc, Claw, Angle, Leg.

Selection Indexes table with columns: \$A, \$A-L. Values: \$193, \$323, 63, 72.

Traits Observed: CE, 200WT, Genomics

Notes:

Purchaser: \$

Lot 36

ARDCAIRNIE TOURNAMENT T163 SV

WJM22T163

DOB: 13/05/2022

Registration Status: HBR

Mating Type: Natural

Genetic Status: AMFU,CAFU,DDFU,NHFU

MORDALLUP DENSITY D36 SV
MORDALLUP DENSITY J403 SV
MORDALLUP GEORGETTE F304 #
Sire: WGMP257 MORDALLUP KWOKA P257 SV
MORDALLUP KODJA F129 SV
MORDALLUP LEONIE J471 #
MORDALLUP LEONIE E271 #

RENNYLEA EDMUND E11 PV
ARDROSSAN HONOUR H255 PV
ARDROSSAN WILCOOLA D17 PV
Dam: WJMP90 ARDCAIRNIE QUEBEC P90 #
ARDCAIRNIE J198 SV
ARDCAIRNIE QUEBEC M275 #
ARDCAIRNIE QUEBEC E13 #

January 2024 TransTasman Angus Cattle Evaluation

Table with columns: TACE, CE Dir, CE Dtrs, GL, BW, 200, 400, 600, MCW, Milk, SS, DC. Rows include EBV, ACC, Perc and CWT, EMA, Rib, Rump, RBY, IMF, NFI-F, Doc, Claw, Angle, Leg.

Selection Indexes table with columns: \$A, \$A-L. Values: \$182, \$305, 74, 81.

Traits Observed: BWT, 200WT, Genomics

Notes:

Purchaser: \$

Lot 37

ARDCAIRNIE TRANSPORTER T015 SV

WJM22T015

DOB: 02/04/2022

Registration Status: **HBR**

Mating Type: **AI**

Genetic Status: **AMFU,CAFU,DDFU,NHFU**

CONNEALY IN SURE 8524 #
 G A R SURE FIRE SV
 CHAIR ROCK 5050 G A R 8086 #
Sire: USA18789776 G A R BONFIRE PV
 G A R PROPHET SV
 CHAIR ROCK PROPHET 3054 #
 CHAIR ROCK 5050 G A R 1131 #

COONAMBLE KEVIN K314 PV
 COONAMBLE KEVIN N444 SV
 COONAMBLE K284 PV
Dam: WJMR344 ARDCAIRNIE FLORAL R344 #
 ARDROSSAN JUSTICE J93 SV
 ARDCAIRNIE FLORAL M67 #
 ARDCAIRNIE FLORAL J32 #

January 2024 TransTasman Angus Cattle Evaluation

TACE	CE Dir	CE Dtrs	GL	BW	200	400	600	MCW	Milk	SS	DC
EBV	-2.9	+5.2	-4.5	+6.0	+66	+120	+159	+142	+16	+2.7	-6.7
ACC	64%	54%	81%	81%	82%	80%	80%	77%	72%	78%	42%
Perc	86	28	49	88	4	2	2	6	59	29	11

TACE	CWT	EMA	Rib	Rump	RBV	IMF	NFI-F	Doc	Claw	Angle	Leg
EBV	+82	+2.2	-2.7	-4.6	+0.1	+2.4	-0.22	+41	+1.12	+1.04	+1.06
ACC	70%	69%	69%	70%	61%	74%	60%	73%	66%	66%	60%
Perc	14	91	95	97	72	45	10	3	92	66	59

Selection Indexes

\$A	\$A-L
\$224	\$405
27	12

Traits Observed: GL, CE, 200WT, Genomics

Notes:

Purchaser: \$

Lot 38

ARDCAIRNIE TANTAMOUNT T126 SV

WJM22T126

DOB: 03/05/2022

Registration Status: **HBR**

Mating Type: **Natural**

Genetic Status: **AMFU,CAFU,DDFU,NHFU**

ARDCAIRNIE K244 SV
 ARDCAIRNIE N52 SV
 ARDCAIRNIE ISOBEL L9 #
Sire: WJMR106 ARDCAIRNIE REFINED R106 SV
 BALDRIDGE BRONC SV
 ARDCAIRNIE ABBIE P167 #
 ARDCAIRNIE ABBIE E204 #

LD CAPITALIST 316 PV
 MUSGRAVE 316 STUNNER PV
 MCATL BLACKBIRD 831-1378 #
Dam: WJMR256 ARDCAIRNIE ABBIE R256 #
 PA POWER TOOL 9108 SV
 ARDCAIRNIE ABBIE K30 #
 ARDCAIRNIE ABBIE H48 #

January 2024 TransTasman Angus Cattle Evaluation

TACE	CE Dir	CE Dtrs	GL	BW	200	400	600	MCW	Milk	SS	DC
EBV	+6.5	+9.1	-1.0	+1.7	+58	+106	+129	+99	+25	+3.4	-4.4
ACC	62%	50%	81%	80%	81%	79%	79%	75%	70%	76%	37%
Perc	15	3	92	10	17	13	29	54	5	13	55

TACE	CWT	EMA	Rib	Rump	RBV	IMF	NFI-F	Doc	Claw	Angle	Leg
EBV	+88	+8.4	+0.1	+0.4	+0.8	+0.0	+0.42	-7	+1.04	+0.90	+1.10
ACC	67%	66%	66%	67%	56%	71%	57%	72%	63%	64%	59%
Perc	7	28	46	36	29	96	72	99	84	31	71

Selection Indexes

\$A	\$A-L
\$232	\$399
20	15

Traits Observed: CE, 200WT, Genomics

Notes:

Purchaser: \$

Lot 39

ARDCAIRNIE TEXAN T020 SV

WJM22T020

DOB: 05/04/2022

Registration Status: **HBR**

Mating Type: **AI**

Genetic Status: **AMFU,CAFU,DDFU,NHFU**

AYRVALE BARTEL E7 PV
 AYRVALE HERCULES H9 PV
 LAWSONS INVINCIBLE F338 SV
Sire: DXTP613 TEXAS POWERPLAY P613 PV
 BANGADANG WESTERN EXPRESS E10 SV
 TEXAS UNDINE H647 SV
 TEXAS UNDINE Z183 PV

V A R RESERVE 1111 PV
 ARDCAIRNIE L49 SV
 ARDCAIRNIE ISOBEL H106 #
Dam: WJMR315 ARDCAIRNIE ISOBEL R315 #
 DEER VALLEY ALL IN SV
 ARDCAIRNIE ISOBEL L18 #
 ARDCAIRNIE ISOBEL J122 #

January 2024 TransTasman Angus Cattle Evaluation

TACE	CE Dir	CE Dtrs	GL	BW	200	400	600	MCW	Milk	SS	DC
EBV	+5.5	+3.2	-6.7	+2.8	+42	+87	+122	+96	+14	+0.3	-4.8
ACC	63%	52%	82%	81%	82%	80%	80%	76%	71%	77%	39%
Perc	23	50	18	24	85	66	42	59	71	96	45

TACE	CWT	EMA	Rib	Rump	RBV	IMF	NFI-F	Doc	Claw	Angle	Leg
EBV	+73	+2.9	+3.2	+5.7	-0.6	+2.6	+0.55	+22	+1.16	+1.22	+1.06
ACC	67%	67%	67%	68%	59%	72%	58%	73%	64%	64%	60%
Perc	33	88	4	1	94	40	82	41	95	93	59

Selection Indexes

\$A	\$A-L
\$201	\$351
55	50

Traits Observed: GL, CE, 200WT, Genomics

Notes:

Purchaser: \$

Lot 40

ARDCAIRNIE TREMENDOUS T021 SV

WJM22T021

DOB: 06/04/2022

Registration Status: HBR

Mating Type: AI

Genetic Status: AMFU,CAFU,DDFU,NHFU

CONNEALY IN SURE 8524 #
G A R SURE FIRE SV
CHAIR ROCK 5050 G A R 8086 #
Sire: USA18789776 G A R BONFIRE PV
G A R PROPHET SV
CHAIR ROCK PROPHET 3054 #
CHAIR ROCK 5050 G A R 1131 #

ARDCAIRNIE F96 SV
ARDCAIRNIE M117 SV
ARDCAIRNIE ABBIE G78 #
Dam: WJMR130 ARDCAIRNIE GEORGINA R130 #
BOOROOMOOKA INSPIRED E124 PV
ARDCAIRNIE GEORGINA K58 #
ARDCAIRNIE GEORGINA F63 #

January 2024 TransTasman Angus Cattle Evaluation

Table with columns: TACE, CE Dir, CE Dtrs, GL, BW, 200, 400, 600, MCW, Milk, SS, DC. Rows: EBV, ACC, Perc, EBV, ACC, Perc.

Selection Indexes table with columns: \$A, \$A-L. Rows: \$220, \$370, 32, 34.

Traits Observed: GL, CE, 200WT, Genomics

Notes:
Purchaser: \$

Lot 41

ARDCAIRNIE TIDAL T013 SV

WJM22T013

DOB: 04/04/2022

Registration Status: HBR

Mating Type: AI

Genetic Status: AMFU,CAFU,DDFU,NHFU

BOOROOMOOKA DESIGN Y120 SV
ARDCAIRNIE B59 PV
ARDCAIRNIE ELMA Z71 #
Sire: WJMF96 ARDCAIRNIE F96 SV
KAROO W109 DIRECTION Z181 SV
ARDCAIRNIE DIANARAM D25 #
ARDCAIRNIE DIANARAM B39 #

EF COMMANDO 1366 PV
BALDRIDGE 38 SPECIAL PV
BALDRIDGE ISABEL Y69 #
Dam: WJMR14 ARDCAIRNIE BAKESS R14 #
RENNYLEA EDMUND E11 PV
ARDCAIRNIE BAKESS P52 #
ARDCAIRNIE BAKESS M24 #

January 2024 TransTasman Angus Cattle Evaluation

Table with columns: TACE, CE Dir, CE Dtrs, GL, BW, 200, 400, 600, MCW, Milk, SS, DC. Rows: EBV, ACC, Perc, EBV, ACC, Perc.

Selection Indexes table with columns: \$A, \$A-L. Rows: \$240, \$372, 14, 32.

Traits Observed: GL, CE, 200WT, Genomics

Notes:
Purchaser: \$

Lot 42

ARDCAIRNIE TRANSPARENT T148 SV

WJM22T148

DOB: 10/05/2022

Registration Status: HBR

Mating Type: Natural

Genetic Status: AMFU,CAFU,DDFU,NHFU

ARDROSSAN EQUATOR A241 PV
COONAMBLE KEVIN K314 PV
COONAMBLE D94 SV
Sire: WDCN444 COONAMBLE KEVIN N444 SV
COONAMBLE HUNTER H274 SV
COONAMBLE K284 PV
COONAMBLE B019 B19 SV

TE MANIA DAIQUIRI D19 PV
ARDCAIRNIE J67 SV
ARDCAIRNIE ABBIE A174 SV
Dam: WJMM174 ARDCAIRNIE GEORGINA M174 #
TE MANIA BERKLEY B1 PV
ARDCAIRNIE GEORGINA H78 #
ARDCAIRNIE GEORGINA B6 #

January 2024 TransTasman Angus Cattle Evaluation

Table with columns: TACE, CE Dir, CE Dtrs, GL, BW, 200, 400, 600, MCW, Milk, SS, DC. Rows: EBV, ACC, Perc, EBV, ACC, Perc.

Selection Indexes table with columns: \$A, \$A-L. Rows: \$185, \$340, 71, 59.

Traits Observed: CE, BWT, 200WT

Notes:
Purchaser: \$

TUESDAY, 6 FEBRUARY | 11AM | GINGIN SALEYARDS

Lot 43

ARDCAIRNIE TEQUILA T138 SV

WJM22T138

DOB: 08/05/2022

Registration Status: **HBR**

Mating Type: **Natural**

Genetic Status: **AMFU,CAFU,DDFU,NHFU**

ARDROSSAN EQUATOR A241 PV
 COONAMBLE KEVIN K314 PV
 COONAMBLE D94 SV
Sire: WDCN444 COONAMBLE KEVIN N444 SV
 COONAMBLE HUNTER H274 SV
 COONAMBLE K284 PV
 COONAMBLE B019 B19 SV

SYDGEN TRUST 6228 #
 ARDCAIRNIE J27 SV
 ARDCAIRNIE ELMA G96 #
Dam: WJMP171 ARDCAIRNIE INFANTA P171 #
 BT RIGHT TIME 24J #
 ARDCAIRNIE INFANTA F68 #
 ARDCAIRNIE INFANTA B65 #

January 2024 TransTasman Angus Cattle Evaluation

TACE	CE Dir	CE Dtrs	GL	BW	200	400	600	MCW	Milk	SS	DC
EBV	+2.7	+3.5	-3.9	+3.9	+47	+88	+123	+108	+14	+1.7	-5.9
ACC	63%	52%	81%	81%	82%	80%	80%	77%	72%	78%	42%
Perc	48	46	59	48	70	63	39	38	75	66	22

TACE	CWT	EMA	Rib	Rump	RBY	IMF	NFI-F	Doc	Claw	Angle	Leg
EBV	+75	+4.1	+1.5	+1.3	-0.3	+2.2	+0.77	+27	+0.80	+1.00	+1.06
ACC	70%	69%	69%	70%	61%	74%	61%	73%	61%	61%	59%
Perc	28	78	18	22	88	51	93	24	39	56	59

Selection Indexes

\$A	\$A-L
\$190	\$345
67	55

Traits Observed: CE, BWT, 200WT, Genomics

Notes:

Purchaser: \$

Lot 44

ARDCAIRNIE T011 SV

WJM22T011

DOB: 04/04/2022

Registration Status: **HBR**

Mating Type: **AI**

Genetic Status: **AMFU,CAFU,DDFU,NHFU**

BENFIELD SUBSTANCE 8506 #
 MOHNEN SUBSTANTIAL 272 #
 MOHNEN GLYN MAWR ELBA 1758 #
Sire: USA18397542 SITZ STELLAR 726D PV
 CONNEALY FINAL PRODUCT PV
 SITZ PRIDE 200B #
 SITZ PRIDE 308Y #

COONAMBLE KEVIN K314 PV
 COONAMBLE KEVIN N444 SV
 COONAMBLE K284 PV
Dam: WJMR277 ARDCAIRNIE INFANTA R277 #
 TE MANIA EMPEROR E343 PV
 ARDCAIRNIE INFANTA L116 #
 ARDCAIRNIE INFANTA Z176 #

January 2024 TransTasman Angus Cattle Evaluation

TACE	CE Dir	CE Dtrs	GL	BW	200	400	600	MCW	Milk	SS	DC
EBV	-0.3	+5.5	-5.1	+4.6	+62	+112	+147	+131	+15	+1.6	-3.8
ACC	65%	51%	82%	81%	82%	80%	80%	76%	71%	78%	38%
Perc	73	25	39	65	8	6	6	11	65	70	70

TACE	CWT	EMA	Rib	Rump	RBY	IMF	NFI-F	Doc	Claw	Angle	Leg
EBV	+80	+8.7	+1.7	+0.9	+0.7	+0.0	-0.05	+44	+0.62	+0.80	+1.16
ACC	69%	68%	68%	69%	60%	73%	58%	74%	69%	69%	64%
Perc	16	25	15	28	34	96	21	2	10	13	85

Selection Indexes

\$A	\$A-L
\$216	\$385
37	23

Traits Observed: GL, CE, 200WT, Genomics

Notes:

Purchaser: \$

Lot 45

ARDCAIRNIE TITANIUM T078 SV

WJM22T078

DOB: 25/04/2022

Registration Status: **HBR**

Mating Type: **AI**

Genetic Status: **AMF,CAF,DDF,NHF**

RITO 707 OF IDEAL 3407 7075 #
 S A V RESOURCE 1441 PV
 S A V BLACKCAP MAY 4136 #
Sire: USA17923527 S A V REAL PERFORMANCE 4876 PV
 S A V NET WORTH 4200 #
 S A V EMBLYNETTE 7545 #
 S A V EMBLYNETTE 7260 #

SYDGEN TRUST 6228 #
 ARDCAIRNIE J27 SV
 ARDCAIRNIE ELMA G96 #
Dam: WJMM187 ARDCAIRNIE NEUTRON M187 #
 ARDCAIRNIE B59 PV
 ARDCAIRNIE NEUTRON E236 SV
 ARDCAIRNIE NEUTRON C37 #

January 2024 TransTasman Angus Cattle Evaluation

TACE	CE Dir	CE Dtrs	GL	BW	200	400	600	MCW	Milk	SS	DC
EBV	-7.9	-7.5	-4.2	+6.3	+60	+106	+138	+153	+7	+2.0	-4.3
ACC	62%	52%	81%	80%	81%	79%	79%	76%	72%	77%	38%
Perc	97	99	54	91	11	14	13	3	99	54	58

TACE	CWT	EMA	Rib	Rump	RBY	IMF	NFI-F	Doc	Claw	Angle	Leg
EBV	+75	+9.9	-1.5	-2.1	+1.5	+0.6	-0.41	+25	+0.92	+0.90	+1.10
ACC	69%	68%	67%	68%	59%	72%	58%	71%	68%	68%	63%
Perc	27	16	81	80	5	89	4	30	65	31	71

Selection Indexes

\$A	\$A-L
\$172	\$324
82	71

Traits Observed: GL, CE, 200WT, Genomics

Notes:

Purchaser: \$

Lot 46

ARDCAIRNIE TUXEDO T219 SV

WJM22T219

DOB: 23/05/2022

Registration Status: HBR

Mating Type: Natural

Genetic Status: AMFU,CAFU,DDFU,NHFU

EF COMMANDO 1366 PV
BALDRIDGE BRONC SV
BALDRIDGE ISABEL Y69 #
Sire: WJMP159 ARDCAIRNIE P159 SV
G A R OBJECTIVE 7125 #
ARDCAIRNIE ISOBEL H106 #
ARDCAIRNIE ISOBEL A144 SV

WAITARA PIO FEDERAL F73 SV
ARDCAIRNIE K122 SV
ARDCAIRNIE ELMA C121 #
Dam: WJMP307 ARDCAIRNIE BAKESS P307 #
LAWSONS NOVAK E313 SV
ARDCAIRNIE BAKESS H21 #
ARDCAIRNIE BAKESS F133 #

January 2024 TransTasman Angus Cattle Evaluation

Table with 12 columns: TACE, CE Dir, CE Dtrs, GL, BW, 200, 400, 600, MCW, Milk, SS, DC. Rows include EBV, ACC, Perc and CWT, EMA, Rib, Rump, RBY, IMF, NFI-F, Doc, Claw, Angle, Leg.

Selection Indexes table with columns \$A and \$A-L. Values: \$186, \$330, 70, 67.

Traits Observed: BWT, 200WT

Notes:

Purchaser: \$

Lot 47

ARDCAIRNIE TROOPER T037 SV

WJM22T037

DOB: 15/04/2022

Registration Status: HBR

Mating Type: Natural

Genetic Status: AMF,CAF,DDF,NHF

A A R TEN X 7008 S A SV
V A R FOREMAN 3339 PV
SANDPOINT BLACKBIRD 8809 #
Sire: WJMP87 ARDCAIRNIE P87 SV
ARDCAIRNIE G33 SV
ARDCAIRNIE ABBIE L228 SV
ARDCAIRNIE ABBIE E203 #

LAWSONS DINKY-DI Z191 SV
ARDCAIRNIE E36 SV
ARDCAIRNIE JOYCE C100 #
Dam: WJM159 ARDCAIRNIE ISOBEL J159 #
ARDCAIRNIE Z74 SV
ARDCAIRNIE ISOBEL C130 #
ARDCAIRNIE ISOBEL U39 #

January 2024 TransTasman Angus Cattle Evaluation

Table with 12 columns: TACE, CE Dir, CE Dtrs, GL, BW, 200, 400, 600, MCW, Milk, SS, DC. Rows include EBV, ACC, Perc and CWT, EMA, Rib, Rump, RBY, IMF, NFI-F, Doc, Claw, Angle, Leg.

Selection Indexes table with columns \$A and \$A-L. Values: \$215, \$350, 38, 51.

Traits Observed: CE, 200WT, Genomics

Notes:

Purchaser: \$

Lot 48

ARDCAIRNIE TIPPLE T118 SV

WJM22T118

DOB: 02/05/2022

Registration Status: HBR

Mating Type: Natural

Genetic Status: AMFU,CAFU,DDFU,NHFU

A A R TEN X 7008 S A SV
V A R FOREMAN 3339 PV
SANDPOINT BLACKBIRD 8809 #
Sire: WJMP87 ARDCAIRNIE P87 SV
ARDCAIRNIE G33 SV
ARDCAIRNIE ABBIE L228 SV
ARDCAIRNIE ABBIE E203 #

EXAR DENVER 2002B #
QUAKER HILL DEAD CENTER SV
QUAKER HILL BLACKCAP 0A32 #
Dam: WJMN80 ARDCAIRNIE DIANARAM N80 #
L T 598 BANDO 9074 #
ARDCAIRNIE DIANARAM G41 #
ARDCAIRNIE DIANARAM E238 #

January 2024 TransTasman Angus Cattle Evaluation

Table with 12 columns: TACE, CE Dir, CE Dtrs, GL, BW, 200, 400, 600, MCW, Milk, SS, DC. Rows include EBV, ACC, Perc and CWT, EMA, Rib, Rump, RBY, IMF, NFI-F, Doc, Claw, Angle, Leg.

Selection Indexes table with columns \$A and \$A-L. Values: \$236, \$377, 17, 29.

Traits Observed: CE, BWT, 200WT, Genomics

Notes:

Purchaser: \$

Lot 49

ARDCAIRNIE TEAMSTER T168 SV

WJM22T168

DOB: 14/05/2022

Registration Status: HBR

Mating Type: Natural

Genetic Status: AMFU,CAFU,DDFU,NHFU

ARDROSSAN EQUATOR A241 PV
COONAMBLE KEVIN K314 PV
COONAMBLE D94 SV
Sire: WDCN444 COONAMBLE KEVIN N444 SV
COONAMBLE HUNTER H274 SV
COONAMBLE K284 PV
COONAMBLE B019 B19 SV

RENNYLEA EDMUND E11 PV
ARDROSSAN JUSTICE J93 SV
ARDROSSAN EVERELDA ENTENSE F6 SV
Dam: WJMM146 ARDCAIRNIE ISOBEL M146 #
LAWSON'S INVINCIBLE C402 PV
ARDCAIRNIE ISOBEL F28 #
ARDCAIRNIE ISOBEL D74 #

January 2024 TransTasman Angus Cattle Evaluation

Table with columns: TACE, CE Dir, CE Dtrs, GL, BW, 200, 400, 600, MCW, Milk, SS, DC. Rows include EBV, ACC, Perc and CWT, EMA, Rib, Rump, RBY, IMF, NFI-F, Doc, Claw, Angle, Leg.

Selection Indexes table with columns: \$A, \$A-L. Values: \$204, \$330, 51, 67.

Traits Observed: BWT, 200WT, Genomics

Notes:

Purchaser: \$

Lot 50

ARDCAIRNIE TACTITION T125 PV

WJM22T125

DOB: 04/05/2022

Registration Status: HBR

Mating Type: Natural

Genetic Status: AMFU,CAFU,DDFU,NHFU

GRANITE RIDGE KAISER K26 SV
KOOJAN HILLS KAISER N91 SV
KOOJAN HILLS H28 #
Sire: WJMR199 ARDCAIRNIE REFLECTION R199 SV
WAITARA PIO FEDERAL F73 SV
ARDCAIRNIE ABBIE K71 #
ARDCAIRNIE ABBIE G35 #

ARDCAIRNIE J67 SV
ARDCAIRNIE M214 SV
ARDCAIRNIE DIANARAM D25 #
Dam: WJMR351 ARDCAIRNIE ABBIE R351 SV
CONNEALY THUNDER #
ARDCAIRNIE ABBIE E78 #
ARDCAIRNIE ABBIE A60 #

January 2024 TransTasman Angus Cattle Evaluation

Table with columns: TACE, CE Dir, CE Dtrs, GL, BW, 200, 400, 600, MCW, Milk, SS, DC. Rows include EBV, ACC, Perc and CWT, EMA, Rib, Rump, RBY, IMF, NFI-F, Doc, Claw, Angle, Leg.

Selection Indexes table with columns: \$A, \$A-L. Values: \$181, \$338, 75, 61.

Traits Observed: CE, 200WT

Notes:

Purchaser: \$

Lot 51

ARDCAIRNIE TRAINER T306 SV

WJM22T306

DOB: 17/06/2022

Registration Status: HBR

Mating Type: Natural

Genetic Status: AMFU,CAFU,DDFU,NHFU

COONAMBLE Z3 PV
COONAMBLE ELEVATOR E11 PV
BANGADANG B31 SV
Sire: WJMK69 ARDCAIRNIE K69 SV
CONNEALY FORMATION 60C #
ARDCAIRNIE ABBIE E158 #
ARDCAIRNIE ABBIE Z22 #

CONNEALY CONSENSUS 7229 SV
V A R GENERATION 2100 PV
SANDPOINT BLACKBIRD 8809 #
Dam: WJMN190 ARDCAIRNIE ABBIE N190 #
ARDCAIRNIE F96 SV
ARDCAIRNIE ABBIE J261 #
ARDCAIRNIE ABBIE E203 #

January 2024 TransTasman Angus Cattle Evaluation

Table with columns: TACE, CE Dir, CE Dtrs, GL, BW, 200, 400, 600, MCW, Milk, SS, DC. Rows include EBV, ACC, Perc and CWT, EMA, Rib, Rump, RBY, IMF, NFI-F, Doc, Claw, Angle, Leg.

Selection Indexes table with columns: \$A, \$A-L. Values: \$159, \$277, 89, 91.

Traits Observed: BWT, 200WT, Genomics

Notes:

Purchaser: \$



For all your rural and business insurance requirements call



Mark Paris
0407 441 681
Mark.Paris@wfi.com.au

Good people to know.

To see if our products are right for you, always read the PDS from the product issuer, Insurance Australia Limited ABN 11 000 016 722 AFSL 778681 trading as WFI (WFI). Mark Paris (AR 252742) is an Authorised Representative of WFI.




W&J GREENWELL
GINGIN EST 1947
GENERAL STOREKEEPERS AND AGENT FOR Nutrien

FOOTWEAR • POLY PIPE AND FITTINGS • GAL PIPE AND FITTINGS • FARM MERCHANDISE • HARDWARE • CEMENT • RURAL FENCING • RURAL GATES • STOCK FOODS • KITCHENWARE • DRAPERY • ELECTRICAL GOODS • STATIONARY • GARDEN SUPPLIES

wjgreenwell@bigpond.com

Shop 9575 2220
Alan 0407 993 620
Sean 0427 042 711



WESFARMERS FEDERATION INSURANCE • FAST AND FRIENDLY SERVICE GUARANTEED





REFERENCE SIRES



EBV Quick Reference for sires referenced in Ardcairnie Bull Sale 2024

Animal Ident	Calving Ease				Birth			Growth				Fertility				Carcase				Other				Structural			Selection Indexes		
	CED	CEM	GL	BW	200	400	600	MCW	Milk	SS	DC	CWT	EMA	Rib	Rump	RBV	IMF	NFL-F	Doc	Claw	Angle	Leg	\$A	\$A-L					
RS DXT613	+7.6	+9.3	-6.7	+0.0	+44	+84	+121	+88	+15	+0.3	-3.6	+81	+8.0	+2.8	+5.0	-0.1	+2.7	+0.47	+24	+1.16	+1.04	+0.82	\$220	\$372					
RS NMMP15	+6.3	+5.7	-8.8	+3.1	+65	+115	+141	+118	+17	+2.9	-3.7	+90	+7.1	-0.8	-1.9	+0.5	+2.2	+0.18	+20	+0.88	+0.80	+1.06	\$245	\$422					
RS USA17923527	-2.7	-1.5	-4.4	+5.4	+61	+112	+141	+137	+15	+1.9	-3.1	+75	+10.6	-0.7	-2.1	+1.2	+0.3	-0.29	+28	+0.96	+0.82	+0.98	\$192	\$351					
RS USA18397542	+6.0	+8.4	-9.1	+2.6	+56	+107	+140	+110	+18	+1.3	-7.7	+58	+4.3	+3.6	+3.3	+0.0	+1.4	+0.24	+32	+0.60	+0.80	+1.16	\$263	\$448					
RS USA18789776	-0.1	+1.3	-0.5	+4.6	+74	+127	+159	+144	+16	+2.6	-7.3	+93	+1.7	-3.0	-5.3	+0.2	+3.8	-0.32	+27	+1.26	+1.12	+0.96	\$269	\$460					
RS WDCN444	-7.3	+1.9	-0.8	+5.9	+42	+90	+120	+90	+18	+2.5	-6.0	+74	+11.0	+1.2	+1.1	+0.4	+1.4	+0.80	+24	+0.60	+0.98	+1.06	\$179	\$300					
RS WGMP257	-13.6	+0.2	-3.7	+8.9	+66	+108	+150	+158	+9	+1.2	-2.9	+89	+3.6	-3.1	-5.8	+1.5	+0.3	-0.71	+28	+0.76	+0.86	+1.04	\$138	\$273					
RS WJMF96	+4.5	+0.1	-4.4	+3.1	+49	+88	+122	+91	+14	+1.8	-3.5	+67	+6.7	-1.7	-1.7	+1.1	+1.0	-0.11	+24	+0.48	+0.84	+0.94	\$193	\$326					
RS WJMK69	-1.8	+4.7	+0.5	+6.6	+56	+107	+152	+145	+15	+1.1	-2.3	+91	+4.5	-2.0	-1.5	+0.5	-0.4	-0.41	+33	+0.70	+0.64	+0.78	\$149	\$311					
RS WJMN285	-2.9	+1.4	-4.4	+3.6	+43	+82	+114	+94	+11	+0.8	-4.2	+69	+8.0	+0.8	+1.0	+1.1	+1.8	+0.17	+3	+0.88	+1.08	+1.08	\$185	\$309					
RS WJMN298	-3.0	+3.1	-7.1	+6.2	+64	+105	+146	+155	+9	+2.2	-3.1	+88	+3.6	-1.9	-3.2	+0.7	+0.8	-0.26	+8	+0.64	+0.96	+1.20	\$166	\$333					
RS WJMP159	+4.9	+2.1	-10.4	+4.0	+52	+102	+131	+113	+14	+1.7	-6.0	+69	+2.9	+1.6	+1.0	+0.3	+0.8	-0.18	+15	+1.00	+0.78	+0.96	\$211	\$378					
RS WJMP87	-3.8	+5.1	-7.2	+6.2	+60	+101	+129	+129	+12	-0.2	-4.1	+81	+7.6	-0.6	-2.5	+1.4	-0.7	-0.10	+13	+1.10	+0.90	+1.06	\$184	\$334					
RS WJMR106	-0.1	+7.1	-5.0	+4.2	+57	+106	+132	+113	+24	+2.3	-1.8	+81	+10.9	-2.0	-2.2	+1.4	+0.2	+0.39	+6	+0.96	+1.00	+1.04	\$195	\$343					
RS WJMR199	+3.4	-0.8	-4.9	+5.1	+61	+108	+146	+149	+16	+3.2	-4.4	+87	+8.9	-2.1	-3.8	+1.2	+1.5	-0.41	+27	+1.08	+0.94	+1.12	\$205	\$387					
RS WJMR79	-16.7	-4.5	-3.7	+7.3	+74	+131	+170	+155	+27	+2.2	-3.5	+105	+4.9	-4.4	-6.2	+0.9	+0.9	-0.54	+7	+0.82	+0.82	+1.04	\$167	\$301					
FACE	CED	CEM	GL	BW	200	400	600	MCW	Milk	SS	DC	CWT	EMA	Rib	Rump	RBV	IMF	NFL-F	Doc	Claw	Angle	Leg	\$A	\$A-L					
	+1.9	+2.8	-4.4	+3.9	+51	+92	+119	+101	+17	+2.2	-4.6	+67	+6.6	+0.0	-0.3	+0.5	+2.4	+0.23	+21	+0.85	+0.97	+1.03	+202	+347					



RS **ARDCAIRNIE F96 SV** **WJMF96**

DOB: 21/05/2010 Registration Status: **HBR** Mating Type: **Natural** Genetic Status: **AMFU,CAF,DDF,NHF**

BON VIEW NEW DESIGN 1407 #
 BOOROOMOOKA DESIGN Y120 SV
 BOOROOMOOKA WAITARA W196 #
Sire: WJMB59 ARDCAIRNIE B59 PV
 ARDCAIRNIE W1 SV
 ARDCAIRNIE ELMA Z71 #
 ARDCAIRNIE ELMA X13 #

ARDROSSAN DIRECTION W109 PV
 KAROO W109 DIRECTION Z181 SV
 KAROO FLATS MADONNA V56 #
Dam: WJMD25 ARDCAIRNIE DIANARAM D25 #
 L T 598 BANDO 9074 #
 ARDCAIRNIE DIANARAM B39 #
 ARDCAIRNIE DIANARAM Z24 #

January 2024 TransTasman Angus Cattle Evaluation

TACE	CE Dir	CE Dtrs	GL	BW	200	400	600	MCW	Milk	SS	DC
EBV	+4.5	+0.1	-4.4	+3.1	+49	+88	+122	+91	+14	+1.8	-3.5
ACC	89%	77%	98%	98%	97%	97%	97%	95%	95%	96%	64%
Perc	31	78	50	30	59	61	43	67	71	62	76

TACE	CWT	EMA	Rib	Rump	RBV	IMF	NFI-F	DOC	Claw	Angle	Leg
EBV	+67	+6.7	-1.7	-1.7	+1.1	+1.0	-0.11	+24	+0.48	+0.84	+0.94
ACC	92%	91%	91%	91%	86%	92%	81%	89%	87%	87%	82%
Perc	51	47	85	74	15	82	17	35	2	19	21

Selection Indexes

\$A	\$A-L
\$193	\$326
64	69

Traits Observed: CE, BWT, 200WT, 400WT, 600WT, SC, Scan(EMA, Rib, Rump, IMF), Genomics

LOT 41

Statistics: Number of Herds: 27, Prog Analysed: 383, Genomic Prog: 75

RS **ARDCAIRNIE K69 SV** **WJMK69**

DOB: 12/05/2014 Registration Status: **HBR** Mating Type: **AI** Genetic Status: **AMF,CAF,DDF,NHF**

B S S LIMITED DESIGN #
 COONAMBLE Z3 PV
 IMRAN ROSEBUD U17 #
Sire: WDCE11 COONAMBLE ELEVATOR E11 PV
 KOOJAN HILLS XCELL W29 #
 BANGADANG B31 SV
 BANGADANG WILCOOLA Y1 #

S A V 8180 TRAVELER 004 #
 CONNEALY FORMATION 60C #
 BLACK CRANE OF CONANGA 204 #
Dam: WJME158 ARDCAIRNIE ABBIE E158 #
 EXAR EXPAND 1241 #
 ARDCAIRNIE ABBIE Z22 #
 ARDCAIRNIE ABBIE X28 #

January 2024 TransTasman Angus Cattle Evaluation

TACE	CE Dir	CE Dtrs	GL	BW	200	400	600	MCW	Milk	SS	DC
EBV	-1.8	+4.7	+0.5	+6.6	+56	+107	+152	+145	+15	+1.1	-2.3
ACC	70%	60%	83%	86%	86%	83%	83%	80%	76%	79%	49%
Perc	81	33	98	94	25	12	4	5	65	85	92

TACE	CWT	EMA	Rib	Rump	RBV	IMF	NFI-F	DOC	Claw	Angle	Leg
EBV	+91	+4.5	-2.0	-1.5	+0.5	-0.4	-0.41	+33	+0.70	+0.64	+0.78
ACC	74%	71%	72%	72%	65%	75%	63%	74%	69%	69%	65%
Perc	4	74	88	71	47	98	4	10	21	2	2

Selection Indexes

\$A	\$A-L
\$149	\$311
92	78

Traits Observed: GL, BWT, 200WT, 400WT, 600WT, SC, Scan(EMA, Rib, Rump, IMF), Genomics

Statistics: Number of Herds: 1, Prog Analysed: 12, Genomic Prog: 10

RS **ARDCAIRNIE N285 SV** **WJMN285**

DOB: 06/06/2017 Registration Status: **HBR** Mating Type: **Natural** Genetic Status: **AMFU,CAFU,DDFU,NHFU**

SCR PROMISE 4042 #
 SYDGEN TRUST 6228 #
 SYDGEN FOREVER LADY 4413 #
Sire: WJMJ27 ARDCAIRNIE J27 SV
 TE MANIA BERKLEY B1 PV
 ARDCAIRNIE ELMA G96 #
 ARDCAIRNIE ELMA C200 #

ARDCAIRNIE B59 PV
 ARDCAIRNIE F96 SV
 ARDCAIRNIE DIANARAM D25 #
Dam: WJMJ186 ARDCAIRNIE GEORGINA J186 SV
 RITO 4L6 OF 2536 208 #
 ARDCAIRNIE GEORGINA D113 #
 ARDCAIRNIE GEORGINA Y47 #

January 2024 TransTasman Angus Cattle Evaluation

TACE	CE Dir	CE Dtrs	GL	BW	200	400	600	MCW	Milk	SS	DC
EBV	-2.9	+1.4	-4.4	+3.6	+43	+82	+114	+94	+11	+0.8	-4.2
ACC	72%	58%	84%	93%	91%	88%	87%	83%	76%	86%	48%
Perc	86	68	50	41	82	79	61	62	91	91	60

TACE	CWT	EMA	Rib	Rump	RBV	IMF	NFI-F	DOC	Claw	Angle	Leg
EBV	+69	+8.0	+0.8	+1.0	+1.1	+1.8	+0.17	+3	+0.88	+1.08	+1.08
ACC	79%	75%	76%	77%	70%	79%	68%	74%	49%	49%	46%
Perc	45	32	30	26	15	62	45	98	57	74	65

Selection Indexes

\$A	\$A-L
\$185	\$309
71	80

Traits Observed: BWT, 200WT, 400WT, 600WT, SC, Scan(EMA, Rib, Rump, IMF), Genomics

Statistics: Number of Herds: 1, Prog Analysed: 59, Genomic Prog: 34

RS **ARDCAIRNIE N298 SV** **WJMN298**

DOB: 10/06/2017 Registration Status: **HBR** Mating Type: **Natural** Genetic Status: **AMFU,CAF,DDFU,NHFU**

SCR PROMISE 4042 #
 SYDGEN TRUST 6228 #
 SYDGEN FOREVER LADY 4413 #
Sire: WJMJ27 ARDCAIRNIE J27 SV
 TE MANIA BERKLEY B1 PV
 ARDCAIRNIE ELMA G96 #
 ARDCAIRNIE ELMA C200 #

ARDROSSAN MODEST W37 SV
 ARDROSSAN CASINO C18 PV
 ARDROSSAN PRINCESS W211 PV
Dam: WJMJ122 ARDCAIRNIE ISOBEL J122 #
 BEN NEVIS ZEXAR Z86 PV
 ARDCAIRNIE ISOBEL D87 #
 ARDCAIRNIE ISOBEL A104 #

January 2024 TransTasman Angus Cattle Evaluation

TACE	CE Dir	CE Dtrs	GL	BW	200	400	600	MCW	Milk	SS	DC
EBV	-3.0	+3.1	-7.1	+6.2	+64	+105	+146	+155	+9	+2.2	-3.1
ACC	72%	60%	85%	94%	93%	91%	89%	85%	79%	87%	49%
Perc	86	51	14	91	5	14	7	3	97	47	83

TACE	CWT	EMA	Rib	Rump	RBV	IMF	NFI-F	DOC	Claw	Angle	Leg
EBV	+88	+3.6	-1.9	-3.2	+0.7	+0.8	-0.26	+8	+0.64	+0.96	+1.20
ACC	80%	77%	78%	78%	72%	79%	66%	73%	49%	49%	46%
Perc	6	82	87	91	34	86	8	92	12	46	91

Selection Indexes

\$A	\$A-L
\$166	\$333
85	65

Traits Observed: BWT, 200WT, 400WT, 600WT, SC, Scan(EMA, Rib, Rump, IMF), Genomics

Statistics: Number of Herds: 1, Prog Analysed: 87, Genomic Prog: 54

RS **ARDCAIRNIE P159 SV** **WJMP159**

DOB: 14/05/2018 Registration Status: **HBR** Mating Type: **AI** Genetic Status: **AMFU,CAFU,DDF,NHFU**

EF COMPLEMENT 8088 PV
 EF COMMANDO 1366 PV
 RIVERBEND YOUNG LUCY W1470 #
Sire: USA18229425 BALDRIDGE BRONC SV
 STYLES UPGRADE J59 #
 BALDRIDGE ISABEL Y69 #
 BALDRIDGE ISABEL T935 #

S S OBJECTIVE T510 0T26 #
 G A R OBJECTIVE 7125 #
 G A R 1407 NEW DESIGN 1463 #
Dam: WJMH106 ARDCAIRNIE ISOBEL H106 #
 ARDCAIRNIE Y11 SV
 ARDCAIRNIE ISOBEL A144 SV
 ARDCAIRNIE ISOBEL Y69 #

January 2024 TransTasman Angus Cattle Evaluation

TACE	CE Dir	CE Dtrs	GL	BW	200	400	600	MCW	Milk	SS	DC
EBV	+4.9	+2.1	-10.4	+4.0	+52	+102	+131	+113	+14	+1.7	-6.0
ACC	71%	57%	83%	91%	89%	85%	86%	82%	74%	79%	44%
Perc	28	61	1	51	45	20	25	30	77	66	20

TACE	CWT	EMA	Rib	Rump	RBV	IMF	NFI-F	DOC	Claw	Angle	Leg
EBV	+69	+2.9	+1.6	+1.0	+0.3	+0.8	-0.18	+15	+1.00	+0.78	+0.96
ACC	75%	71%	72%	72%	65%	74%	60%	72%	70%	70%	64%
Perc	43	88	16	26	60	86	12	74	79	11	27

Selection Indexes

\$A	\$A-L
\$211	\$378
43	28

Traits Observed: GL, BWT, 200WT, 400WT, 600WT, SC, Scan(EMA, Rib, Rump, IMF), Genomics

Statistics: Number of Herds: 1, Prog Analysed: 53, Genomic Prog: 28

RS **ARDCAIRNIE P87 SV** **WJMP87**

DOB: 25/04/2018 Registration Status: **HBR** Mating Type: **AI** Genetic Status: **AMF,CAF,DDF,NHF**

MYTTY IN FOCUS #
 A A R TEN X 7008 S A SV
 A A R LADY KELTON 5551 #
Sire: USA17607585 V A R FOREMAN 3339 PV
 CONNEALY ONWARD #
 SANDPOINT BLACKBIRD 8809 #
 RIVERBEND BLACKBIRD 4301 #

CONNEALY IMPRESSION #
 ARDCAIRNIE G33 SV
 ARDCAIRNIE NODDY E23 #
Dam: WJML228 ARDCAIRNIE ABBIE L228 SV
 KOOJAN HILLS VENTURA B156 SV
 ARDCAIRNIE ABBIE E203 #
 ARDCAIRNIE ABBIE W30 #

January 2024 TransTasman Angus Cattle Evaluation

TACE	CE Dir	CE Dtrs	GL	BW	200	400	600	MCW	Milk	SS	DC
EBV	-3.8	+5.1	-7.2	+6.2	+60	+101	+129	+129	+12	-0.2	-4.1
ACC	72%	59%	84%	92%	90%	87%	88%	84%	77%	83%	47%
Perc	89	29	13	91	12	22	28	13	86	99	63

TACE	CWT	EMA	Rib	Rump	RBV	IMF	NFI-F	DOC	Claw	Angle	Leg
EBV	+81	+7.6	-0.6	-2.5	+1.4	-0.7	-0.10	+13	+1.10	+0.90	+1.06
ACC	78%	72%	73%	74%	66%	76%	63%	76%	67%	67%	60%
Perc	15	36	63	85	7	99	17	80	91	31	59

Selection Indexes

\$A	\$A-L
\$184	\$334
72	64

Traits Observed: GL, BWT, 200WT, 400WT, 600WT, SC, Scan(EMA, Rib, Rump, IMF), Genomics

Statistics: Number of Herds: 1, Prog Analysed: 57, Genomic Prog: 30

RS**SITZ STELLAR 726D PV****USA18397542**

DOB: 23/01/2016

Registration Status: **HBR**Mating Type: **Natural**Genetic Status: **AMF,CAF,DDF,NHF,DWF,MAF,MHF,OHF,OSF**

H A IMAGE MAKER 0415 #
 BENFIELD SUBSTANCE 8506 #
 BENFIELD EDELLA 1105 #
Sire: USA17292558 MOHNEN SUBSTANTIAL 272 #
 LT TERRITORY 5824 OF EA #
 MOHNEN GLYN MAWR ELBA 1758 #
 MOHNEN GLYN MAWR ELBA 1345 #

CONNEALY PRODUCT 568 #
 CONNEALY FINAL PRODUCT PV
 EBONISTA OF CONANGA 471 #
Dam: USA17776820 SITZ PRIDE 200B #
 SITZ UPWARD 307R SV
 SITZ PRIDE 308Y #
 SITZ PRIDE 44P #

January 2024 TransTasman Angus Cattle Evaluation

TACE	CE Dir	CE Dtrs	GL	BW	200	400	600	MCW	Milk	SS	DC
EBV	+6.0	+8.4	-9.1	+2.6	+56	+107	+140	+110	+18	+1.3	-7.7
ACC	85%	64%	99%	98%	98%	98%	97%	92%	87%	97%	49%
Perc	19	5	4	21	27	12	12	35	44	79	4

TACE	CWT	EMA	Rib	Rump	RBV	IMF	NFI-F	DOC	Claw	Angle	Leg
EBV	+58	+4.3	+3.6	+3.3	+0.0	+1.4	+0.24	+32	+0.60	+0.80	+1.16
ACC	88%	89%	87%	85%	81%	89%	66%	95%	99%	99%	82%
Perc	76	76	3	6	77	73	53	11	9	13	85

Selection Indexes

\$A	\$A-L
\$263	\$448
4	2

Traits Observed: Genomics**LOT 5, LOT 44, LOT 47**

Statistics: Number of Herds: 121, Prog Analysed: 1320, Genomic Prog: 559

**RS****MORDALLUP KWOKA P257 SV****WGMP257**

DOB: 08/04/2018

Registration Status: **HBR**Mating Type: **Natural**Genetic Status: **AMFU,CAFU,DDFU,NHFU**

S A V 004 DENSITY 4336 SV
 MORDALLUP DENSITY D36 SV
 MORDALLUP VICEREE B7 #
Sire: WGMJ403 MORDALLUP DENSITY J403 SV
 MORDALLUP VOYAGER V96 #
 MORDALLUP GEORGETTE F304 #
 MORDALLUP ILLUME A251 #

MORDALLUP NET WORTH C170 SV
 MORDALLUP KODJA F129 SV
 MORDALLUP HEATHER C256 #
Dam: WGMJ471 MORDALLUP LEONIE J471 #
 MORDALLUP NEW ERA A211 SV
 MORDALLUP LEONIE E271 #
 MORDALLUP LEONIE U99 #

January 2024 TransTasman Angus Cattle Evaluation

TACE	CE Dir	CE Dtrs	GL	BW	200	400	600	MCW	Milk	SS	DC
EBV	-13.6	+0.2	-3.7	+8.9	+66	+108	+150	+158	+9	+1.2	-2.9
ACC	67%	51%	81%	88%	86%	82%	82%	78%	71%	76%	34%
Perc	99	78	62	99	4	10	5	2	96	82	86

TACE	CWT	EMA	Rib	Rump	RBV	IMF	NFI-F	DOC	Claw	Angle	Leg
EBV	+89	+3.6	-3.1	-5.8	+1.5	+0.3	-0.71	+28	+0.76	+0.86	+1.04
ACC	71%	65%	66%	67%	56%	71%	56%	69%	57%	57%	51%
Perc	6	82	97	99	5	93	1	21	31	23	53

Selection Indexes

\$A	\$A-L
\$138	\$273
96	92

Traits Observed: BWT, Genomics

Statistics: Number of Herds: 1, Prog Analysed: 18, Genomic Prog: 16

RS**TEXAS POWERPLAY P613^{PV}****DXTP613**

DOB: 06/07/2018

Registration Status: **HBR**Mating Type: **ET**Genetic Status: **AMF,CAF,DDF,NHF,DWF,MAF,MHF,OHF,OSF,**

TE MANIA BARTEL B219^{PV}
 AYRVALE BARTEL E7^{PV}
 EAGLEHAWK JEDDA B32^{SV}
Sire: HIOH9 AYRVALE HERCULES H9^{PV}
 LAWSONS INVINCIBLE C402^{PV}
 LAWSONS INVINCIBLE F338^{SV}
 LAWSONS TOTAL D1152 #

COONAMBLE Z3^{PV}
 BANGADANG WESTERN EXPRESS E10^{SV}
 BANGADANG WILCOOLA Y7 #
Dam: DXTH647 TEXAS UNDINE H647^{SV}
 BUSHS GRAND DESIGN #
 TEXAS UNDINE Z183^{PV}
 TEXAS UNDINE X221 #

January 2024 TransTasman Angus Cattle Evaluation

TACE	CE Dir	CE Dtrs	GL	BW	200	400	600	MCW	Milk	SS	DC
EBV	+7.6	+9.3	-6.7	+0.0	+44	+84	+121	+88	+15	+0.3	-3.6
ACC	79%	66%	98%	98%	95%	95%	92%	87%	80%	92%	55%
Perc	9	3	18	2	81	72	46	72	66	96	74

TACE	CWT	EMA	Rib	Rump	RBV	IMF	NFI-F	DOC	Claw	Angle	Leg
EBV	+81	+8.0	+2.8	+5.0	-0.1	+2.7	+0.47	+24	+1.16	+1.04	+0.82
ACC	82%	82%	82%	82%	77%	82%	69%	91%	78%	77%	73%
Perc	15	32	6	2	81	38	76	34	95	66	4

Selection Indexes

\$A	\$A-L
\$220	\$372
32	33

Traits Observed: BWT, 200WT, 400WT, 600WT, SC, Scan(EMA, Rib, Rump, IMF), DOC, Genomics

LOT 3, LOT 25, LOT 26, LOT 31, LOT 39

Statistics: Number of Herds: 34, Prog Analysed: 497, Genomic Prog: 256



Tyres - Supply, Fitting, Repairs- we sell most brands
 Passenger - 4WD - Motorcycle - Truck - Machinery - Industrial - Earthmoving

We stock a large range of products:

Mobil and Fuchs lubricants - Hydraulic hoses and fittings - Batteries - Bare-Co parts
 Auto parts and accessories - BOC welding gases - Hills gas household and forklift
 Farm merchandise inc. Fencing - Animal health - Fertiliser and chemicals

14 Weld St, GINGIN WA 6503
 PHONE - 9575 2339
 EMAIL- ginginfuel@bigpond.com



animalHealth
 SUPPLIES

100% Australian Made. 100% Australian Owned

Trace mineral supplements for cattle and sheep
 Cobalt pellets for cattle
 Selenium pellets for cattle
 Copper capsules for cattle

Please go to-
www.animalhealthsupplies.com.au
 for more information

RS**G A R BONFIRE PV****USA18789776**

DOB: 14/02/2017

Registration Status: **HBR**Mating Type: **Natural**Genetic Status: **AMF,CAF,DDF,NHF,MHF,OHF,OSF**

MYTTY IN FOCUS #
 CONNEALY IN SURE 8524 #
 ENTREENA OF CONANGA 657 #
Sire: USA17328461 G A R SURE FIRE SV
 G A R NEW DESIGN 5050 #
 CHAIR ROCK 5050 G A R 8086 #
 CHAIR ROCK GRID MAKER 2107 #

C R A BEXTOR 872 5205 608 #
 G A R PROPHET SV
 G A R OBJECTIVE 1885 #
Dam: USA17799512 CHAIR ROCK PROPHET 3054 #
 G A R NEW DESIGN 5050 #
 CHAIR ROCK 5050 G A R 1131 #
 CHAIR ROCK OBJECTIVE 7042 #

January 2024 TransTasman Angus Cattle Evaluation

TACE	CE Dir	CE Dtrs	GL	BW	200	400	600	MCW	Milk	SS	DC
EBV	-0.1	+1.3	-0.5	+4.6	+74	+127	+159	+144	+16	+2.6	-7.3
ACC	79%	69%	96%	95%	93%	93%	93%	90%	86%	90%	60%
Perc	71	69	95	65	1	1	2	5	56	32	6

TACE	CWT	EMA	Rib	Rump	RBV	IMF	NFI-F	DOC	Claw	Angle	Leg
EBV	+93	+1.7	-3.0	-5.3	+0.2	+3.8	-0.32	+27	+1.26	+1.12	+0.96
ACC	86%	85%	84%	83%	79%	87%	72%	86%	84%	84%	75%
Perc	3	94	96	99	66	16	6	25	99	81	27

Selection Indexes

\$A	\$A-L
\$269	\$460
3	1

Traits Observed: Genomics

LOT 37, LOT 40

Statistics: Number of Herds: 11, Prog Analysed: 78, Genomic Prog: 33

**RS****COONAMBLE KEVIN N444 SV****WDCN444**

DOB: 20/09/2017

Registration Status: **HBR**Mating Type: **Natural**Genetic Status: **AMFU,CAFU,DDFU,NHFU**

PAPA EQUATOR 2928 #
 ARDROSSAN EQUATOR A241 PV
 ARDROSSAN PRINCESS W38 PV
Sire: WDCK314 COONAMBLE KEVIN K314 PV
 BOOROOMOOKA WARWICK W245 E
 COONAMBLE D94 SV
 COONAMBLE B170 #

TUWHARETOA REGENT D145 PV
 COONAMBLE HUNTER H274 SV
 BANGDANG LOWAN A61 PV
Dam: WDCK284 COONAMBLE K284 PV
 TE MANIA XPO X84 #
 COONAMBLE B019 B19 SV
 COONAMBLE Z274 #

January 2024 TransTasman Angus Cattle Evaluation

TACE	CE Dir	CE Dtrs	GL	BW	200	400	600	MCW	Milk	SS	DC
EBV	-7.3	+1.9	-0.8	+5.9	+42	+90	+120	+90	+18	+2.5	-6.0
ACC	72%	61%	84%	94%	93%	90%	89%	85%	80%	86%	52%
Perc	96	63	93	87	85	56	47	68	43	36	20

TACE	CWT	EMA	Rib	Rump	RBV	IMF	NFI-F	DOC	Claw	Angle	Leg
EBV	+74	+11.0	+1.2	+1.1	+0.4	+1.4	+0.80	+24	+0.60	+0.98	+1.06
ACC	80%	76%	77%	77%	70%	79%	67%	75%	65%	65%	64%
Perc	32	10	22	25	53	73	94	37	9	51	59

Selection Indexes

\$A	\$A-L
\$179	\$300
76	83

Traits Observed: BWT, 200WT, 400WT, SC, Scan(EMA, Rib, Rump, IMF), Genomics

Statistics: Number of Herds: 1, Prog Analysed: 93, Genomic Prog: 61

RS**MILLAH MURRAH PARATROOPER P15 PV****NMMP15**

DOB: 29/01/2018

Registration Status: HBR

Mating Type: AI

Genetic Status: AMF,CAF,DDF,NHF,DWF,MAF,MHF,OHF,OSF,

BASIN FRANCHISE P142 #
EF COMPLEMENT 8088 PVHIGHLANDER OF STERN AB #
MILLAH MURRAH HIGHLANDER G18 SV

EF EVERELDA ENTENSE 6117 #

MILLAH MURRAH PRUE D85 PV

Sire: USA17082311 EF COMMANDO 1366 PV

Dam: NMMM9 MILLAH MURRAH ELA M9 PV

B/R AMBUSH 28 #

MATAURI REALITY 839 #

RIVERBEND YOUNG LUCY W1470 #

MILLAH MURRAH ELA K127 SV

RIVERBEND YOUNG LUCY T1080 #

MILLAH MURRAH ELA G88 SV

January 2024 TransTasman Angus Cattle Evaluation

TACE	CE Dir	CE Dtrs	GL	BW	200	400	600	MCW	Milk	SS	DC
EBV	+6.3	+5.7	-8.8	+3.1	+65	+115	+141	+118	+17	+2.9	-3.7
ACC	91%	79%	99%	99%	99%	99%	98%	95%	92%	98%	59%
Perc	17	23	4	30	4	4	11	23	51	24	72

TACE	CWT	EMA	Rib	Rump	RBV	IMF	NFI-F	DOC	Claw	Angle	Leg
EBV	+90	+7.1	-0.8	-1.9	+0.5	+2.2	+0.18	+20	+0.88	+0.80	+1.06
ACC	90%	89%	90%	90%	85%	88%	74%	99%	98%	98%	97%
Perc	5	42	67	77	47	51	46	53	57	13	59

Selection Indexes

\$A	\$A-L
\$245	\$422
11	6

LOT 9

Traits Observed: GL, BWT, 200WT(x2), 400WT(x2), Scan(EMA, Rib, Rump, IMF), DOC, Genomics

Statistics: Number of Herds: 282, Prog Analysed: 5411, Genomic Prog: 3697

**RS****S A V REAL PERFORMANCE 4876 PV****USA17923527**

DOB: 07/01/2014

Registration Status: HBR

Mating Type: Natural

Genetic Status: AMFU,CAFU,DDFU,NHFU

R R RITO 707 #
RITO 707 OF IDEAL 3407 7075 #
IDEAL 3407 OF 1418 076 #S A V 8180 TRAVELER 004 #
S A V NET WORTH 4200 #
S A V MAY 2410 #

Sire: USA17016597 S A V RESOURCE 1441 PV

Dam: USA15778874 S A V EMBLYNETTE 7545 #

S A V 8180 TRAVELER 004 #

N BAR EMULATION EXT #

S A V BLACKCAP MAY 4136 #

S A V EMBLYNETTE 7260 #

S A V MAY 2397 #

S A V EMBLYNETTE APRIL 1509 #

January 2024 TransTasman Angus Cattle Evaluation

TACE	CE Dir	CE Dtrs	GL	BW	200	400	600	MCW	Milk	SS	DC
EBV	-2.7	-1.5	-4.4	+5.4	+61	+112	+141	+137	+15	+1.9	-3.1
ACC	75%	66%	90%	90%	89%	88%	87%	84%	85%	85%	50%
Perc	85	87	50	80	10	6	11	8	65	58	83

TACE	CWT	EMA	Rib	Rump	RBV	IMF	NFI-F	DOC	Claw	Angle	Leg
EBV	+75	+10.6	-0.7	-2.1	+1.2	+0.3	-0.29	+28	+0.96	+0.82	+0.98
ACC	82%	80%	78%	76%	72%	82%	66%	78%	84%	84%	57%
Perc	28	12	65	80	12	93	7	22	72	16	33

Selection Indexes

\$A	\$A-L
\$192	\$351
64	51

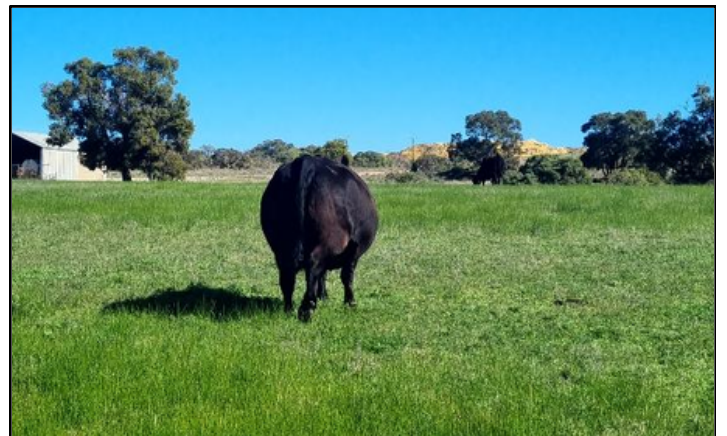
Traits Observed: Genomics

Statistics: Number of Herds: 6, Prog Analysed: 22, Genomic Prog: 13



25 SPRING CALVING REGISTERED COWS

PTIC with 5m old registered calves at foot.



AVAILABLE NOW FOR PRIVATE SELECTION ON-FARM

Mixed age (2.5 - 10 year old) Due to calve August 2024 for six weeks.
Majority of calves at foot by Sitz Stellar, Texas Powerplay, Albert of Stern
and Ardcairnie Reflexion R199.

**Al'd to Ellingson Prolific, Rennylea Prospect, Albert of Stern, backed up with
Ardcairnie Reflexion R199 and Ardcairnie N298 for two cycles.**

Further details and EBV's available upon enquiry. Inspection is welcome and encouraged.
Please contact Joe Dewar 0488 685 177.

www.ardcairnieangus.com.au



HARD-WORKING BULLS
BRED FOR
COMMERCIAL ENVIRONMENTS

Buyers INSTRUCTION SLIP

NAME

PHONE

TRADING NAME

EMAIL

AGENT

LOT/S PURCHASED

ADDRESS

DELIVERY INSTRUCTIONS

INSURANCE

3 MONTHS

6 MONTHS

12 MONTHS



ANGUS AUSTRALIA TRANSFER REQUIRED

YES

NO



HERD IDENT

SIGNATURE OF THE BUYER

| 6 FEBRUARY 2024

Disclaimer AND PRIVACY INFORMATION

ATTENTION BUYER

Animal details included in this catalogue, including but not limited to pedigree, DNA information, Estimated Breeding Values (EBVs) and Index values, are based on information provided by the breeder or owner of the animal. Whilst all reasonable care has been taken to ensure that the information provided in this catalogue was correct at the time of publication, Angus Australia will assume no responsibility for the accuracy or completeness of the information, nor for the outcome (including consequential loss) of any action taken based on this information.

PARENT VERIFICATION SUFFIXES

The animals listed within this catalogue including its pedigree, are displaying a Parent Verification Suffix which indicates the DNA parent verification status that has been conducted on the animal.

The Parent Verification Suffixes that will appear at the end of each animal's name are as follows:

PV: both parents have been verified by DNA

SV: the sire has been verified by DNA

DV: the dam has been verified by DNA

#: DNA verification has not yet been conducted

E: DNA verification has identified that the sire and/or dam may possibly be incorrect, but this cannot be confirmed conclusively.

PRIVACY INFORMATION

In order for Angus Australia to process the transfer of a registered animal in this catalogue, the vendor will need to provide certain information to Angus Australia and the buyer consents to the collection and disclosure of that information by Angus Australia in certain circumstances. If the buyer does not wish for his or her information to be stored and disclosed by Angus Australia, the buyer must complete the form included below and forward it to Angus Australia. If the form is not completed, the buyer will be taken to have consented to the disclosure of such information.

BUYERS OPTION TO OPT OUT OF DISCLOSING PERSONAL INFORMATION TO ANGUS AUSTRALIA

If you do not complete this form, you will be taken to have consented to Angus Australia using your name, address and phone number for the purposes of effecting a change of registration of the animal(s) that you have purchased, maintaining its database and disclosing that information to its members on its website.

I, the buyer of animals with the following idents _____

from member _____ (name) do not consent to Angus Australia using my name, address and phone number for the purposes of effecting a change of registration of the animals I have mentioned above that I have purchased, maintaining its database and disclosing that information to its members on its website.

Name: _____

Signature: _____ Date: _____

Please forward this completed consent form to Angus Australia, 86 Glen Innes Road, Armidale NSW 2350.

If you have any questions or queries regarding any of the above, please contact Angus Australia on (02) 6773 4600 or email office@angusaustralia.com.au



