

**BRENDALE**

**CHAROLAIS**

*Signature  
Collection '23*

**November 1st, 2023**

**Sale commences 3.00pm [EDST]**

**2.00pm Queensland time**

**Brendale, Tallagalla, Qld.**



**AuctionsPlus**

*Buy and Sell stock nationally*

**Elders**

# Signature Collection '23

Working with the families, British breed cattle in the Lockyer Valley gave Brendan a desire to breed more performance orientated cattle. Brendan started Brendale Charolais in 1996 as a youth member. From day one the Brendale program has focussed on producing cattle with the Charolais performance the breed is renowned for.

One of the first purchases was a Full French female, Palgrove Desire 26 from which the highly successful Brendale Letitia family originated. A stud highlight was having Brendale Letitia 2 sashed grand champion female at the EKKA in 2002 and then win the Interbreed Supreme Pair alongside David and Prue from Palgrove. Prominent Queensland herds such as Riverglen, Barclay, and Fernvale also had a significant impact on the herd. Females from these initial purchases are prominent in the herd today and many lots on offer come from these foundation families that have stood the test of time.

We have a strong focus on producing sires for the commercial industry and believe Charolais should have growth muscle and shape. We show our sale bulls and have had considerable success over the years. At the EKKA this year, our bulls won four classes and placed second twice in six classes. Two of these bulls scanned over 145cm<sup>2</sup> EMA highlighting our breeding direction to focus on traits to add profit to commercial herds.

The last ten years has seen additional properties purchased and the herd has increased substantially to where we are calving out over 100 registered females a year. We cull our herd heavily and for this reason our herd growth has taken a slow and steady approach which is now paying dividends.

Herd sires are now used more than AI and we endeavour to purchase the best sires available. Current sires Levi, Phantom, Real Impact and Maximus have been outstanding for consistency and industry focussed Charolais cattle. Select their daughters with confidence. In the past, sires like Trevlac Freeway, a Full French sire we used heavily have stamped our herd. Freeway produced 97 registered progeny and we still have 17 daughters retained in the herd.

The last two years has seen a significant number of heifers born allowing us to dig deep into the heifer pen and offer these heifers. They represent our best bloodlines and we would be happy to keep every one, if we owned more land!

Our belief in the Charolais breed is as strong today as when we started. Charolais are now recognised as a profitable addition to northern commercial beef enterprises and we feel these heifers have the genetics that are well suited to this sector. We are proud to sign off on these genetics and the breeding potential available through this catalogue

If we can be of any assistance prior to sale, please do not hesitate to contact us.



*Brendan, Marnie & Ben*

Contact : Brendan 0438 513 633  
Email: bscheiwe@hotmail.com



**BRENDALE**  
**CHAROLAIS**

# ***Aim to succeed with Brendale genetics!***



**Clearview Actress 5**  
**Winner Heifer 8 to 12 months EKKA 2023**



**Clearview Actress 4**  
**Winner Heifer 12 to 14 months EKKA 2023**  
**Reserve Junior Champion Heifer**



## ***Congratulations***

Clearview Charolais on their success at the Brisbane Royal this year with progeny of Brendale Ridley (pic. right). Two class winners, Reserve Junior Champion Heifer and the Sires Progeny Class. Ridley was purchased at the 2021 Advance sale for \$20,000 and is breeding well.

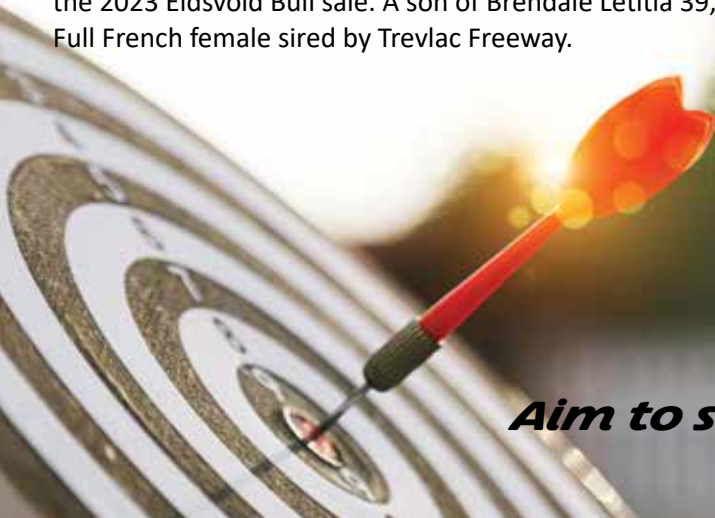


## ***Congratulations***

Clare Charolais selling Clare Silverstone (P) for \$18,000 at the 2023 Eidsvold Bull sale. A son of Brendale Letitia 39, a Full French female sired by Trevlac Freeway.



**Brendale Yvette S57E (P)** sired by 4 Ways Phantom (P)  
**Junior Champion Female: Taroom Feature Show 2023**  
**Class winner Brisbane EKKA 2023**



***Aim to succeed with Brendale genetics!***

# Sale Information

## Venue

The **Brendale Signature Collection 2023 Female Sale** will be online only via Auctionsplus. Sale commences 3.00pm Eastern Daylight Saving Time, [2.00pm Qld].

## Inspection

The offering will be available for inspection at "Brendale" 166 Berlins Road, Tallagalla Queensland 10.00am to 4.00pm [QLD time] on Saturday 21st October 2023, BBQ lunch and drinks will be available. The heifers will also be penned on sale day from 1.00pm. [QLD time] Inspection is welcome by appointment if this day is not convenient. Contact Brendan 0438 513 633.

## Registration Status

All heifers are registered with the Charolais Society of Australia. All registered lots will be transferred by the vendor to the purchaser (if requested in writing) as per instructions written on the buyers instruction slip.

## Animal Identification

All heifers are tattooed as per Charolais Society regulations. All lots are permanently identified in accordance with the National Livestock Identification Scheme (NLIS). Lot numbers will be paint branded on all sale lots on inspection day and have a corresponding lot number tag.

## Health Treatments

All heifers have been vaccinated with 3 germ blood, 3 day sickness & 7 in 1 vaccines.

## Supplementary Sheet

A weight sheet and supplementary sheet will be available on Auctionsplus prior to the sale day.

## Guarantee

All heifers are guaranteed breeders. Any claim against the breeding ability of an animal purchased should be made in writing and accompanied by a veterinary certificate within 6- months of the sale date. Any animal failing to breed may either be replaced or a credit given to the value of the purchase price at the following sale.

## Delivery

Heifers will be available for delivery immediately after the sale. Heifers will be tick free and ready for immediate movement into clean areas. The Vendor can coordinate delivery to assist delivery if required, please talk to the vendor prior to sale or on sale day. All delivery instructions are required to be in writing.

## Catalogue Photographs

All photographs taken on farm late September 2023. Thank you to Five Star Creative Promotions.

## Insurance

Insurance will be available at the completion of the auction, please contact your agent. **Ownership is at timer completion.**

## DNA Genomic Testing

All heifers have been tested on the Charolais Standard bundle and are Sire Qualified, 100K SNP profiled and tested free for Myophosphorylase and Progressive Ataxia.

## Terms and Conditions

Please read and be aware of the Queensland Livestock Agents Association Limited - Standard Stud Stock Auction Terms and Conditions of Sale which are available from the selling agents.

## Sale Catalogue Disclaimer

Animal details included in this catalogue, including but not limited to pedigree, DNA information, Estimated Breeding Values (EBVs) and Index values, are based on information provided by the breeder or owner of the animal. Whilst all reasonable care has been taken to ensure that the information provided in this catalogue was correct at the time of publication, neither the vendor, Charolais Society of Australia, or the selling agents assume any responsibility for the accuracy or completeness of the information, nor for the outcome (including consequential loss) of any action taken based on this information.

## BREEDPLAN

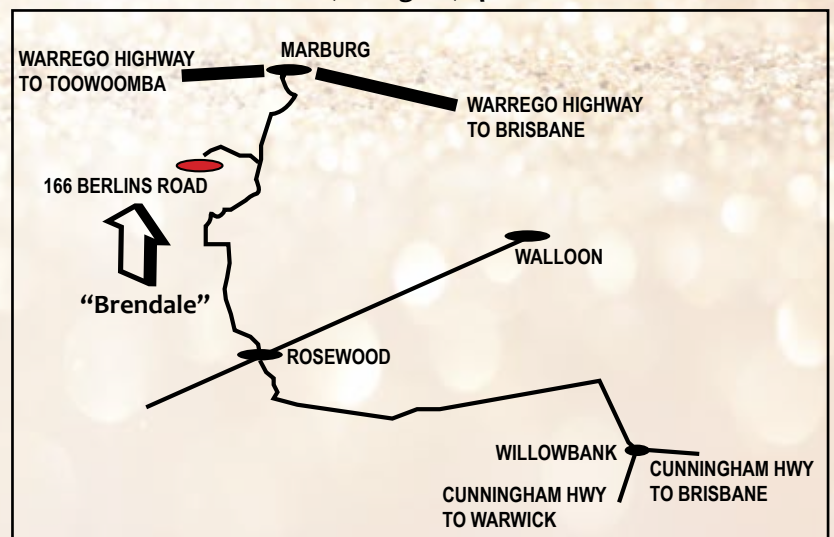
Any purchaser looking for more information and description of the BREEDPLAN traits is encouraged to either talk to the Charolais office or go to the BREEDPLAN website <https://breedplan.une.edu.au/help-centre/>

## Breed EBV Averages:

August 2023 Australasian Charolais BREEDPLAN Analysis

	CE DIR	CE DTR	GL	BW	200	400	600	MCW	MILK
EBV	+0.8	+0.8	-2.9	+0.2	+13	+25	+33	+34	+7
SS	CW	EMA	RIB	RUMP	RYB	IMF	\$ INDEX VALUES		
+1.2	+21	+1.6	+0.4	+0.5	+0.0	+0.2	DTI	NMI	
							+\$24	+\$39	

## "Brendale" 166 Berlins Road, Tallagalla, Queensland





*Progeny*



**Brendale Quarterback (P)**  
Sold for \$33,000 to Spenbar Cattle Co



**Brendale Ridley (Tw)**  
Sold for \$20,000 to Clearview Charolais Stud.



**Brendale Side Step (Tw)**  
Sold for \$24,000 to YLE Grazing, Roma Qld.

**Top price Male \$20,000, Charolais National Sale 2017**  
**Grand Champion Charolais Male, Brisbane Royal 2017**  
**Supreme Interbreed Pair, Brisbane Royal 2017**

Levi was purchased with Advance Charolais at the Charolais National 2017 for the top price of \$20,000. Sons have sold to \$33,000 and have topped the Advance Bull sale 2021 and 2022. Superbly consistent, this bull has never put a foot out of place, Beautiful nature and great calving ease. The eldest Levi daughters are now five years olds and are breeding on as we expected.

August 2023 Australasian Charolais BREEDPLAN Analysis

	CE DIR	CE DTR	GL	BW	200	400	600	MCW	MILK
EBV	+2.9	+3.8	-5.3	+0.1	+5	+25	+31	+26	+13
Acc	60%	42%	85%	85%	82%	81%	79%	72%	67%
	SS	CW	EMA	RIB	RUMP	RBY	IMF	\$ INDEX VALUES	
	+1.4	+27	+2.2	-0.1	-0.8	+1.0	-0.5	DTI	NMI
	66%	67%	60%	67%	66%	61%	60%	+\$27	+\$50



**Brendale Thunder T7E (P)(R/F)**  
Son of a Colinta Levi daughter  
Sold for \$16,000



## BRENDALE CHLOE T23

**BORN:** 17/07/2022

**TATTOO:** BS2 22T23E

KEYS ALL STATE 149X (OAU F2787E) (P)  
**SIRE: COLINTA LEVI (ISA L5044E) (P)**  
 COLINTA EMMALEE (ISA E5126E) (P)

KEYS SPECIALIST 18U (OAU -1126E) (P)  
 MISS KEY MEG 2T (OAU -9615E) (P)  
 GREENWOOD XRAY (TSP X31E) (P)  
 COLINTA Y1504F (ISA Y1504F)

COAT LEZARD (IAF K6096F)  
**DAM: SUNSET CHLOE (JCM K1F)**  
 SUNSET KRISTINA (JCM C7F)

GEAI 03 71 (ZZF X2100F)  
 HOTESSE 03 72 (ZZF X2101F)  
 AYR ANGELO'S FIELDING (AYR Z388F)  
 SUNSET KIRSTY (JCM X22F)

### August 2023 Australasian Charolais BREEDPLAN Analysis

	CE DIR	CE DTR	GL	BW	200	400	600	MCW	MILK
EBV	+0.6	+2.7	-4.0	+0.9	+5	+17	+18	+26	+5
Acc	39%	32%	55%	52%	58%	53%	52%	49%	45%

SS	CW	EMA	RIB	RUMP	RBY	IMF	\$ INDEX VALUES	
+0.4	+17	+1.8	-0.7	-1.3	+1.2	-0.5	DTI	NMI
42%	44%	37%	40%	40%	38%	36%	+\$18	+\$17

Notes: Horned heifer out of a Full French Coat Lezard cow, This female has plenty of softness and stacks of volume. We have retained two sisters in the stud.

Purchaser.....

Price \$.....



## BRENDALE XINA T22 (P)

**BORN:** 13/07/2022

**TATTOO:** BS2 22T22E

KEYS ALL STATE 149X (OAU F2787E) (P)  
**SIRE: COLINTA LEVI (ISA L5044E) (P)**  
 COLINTA EMMALEE (ISA E5126E) (P)

KEYS SPECIALIST 18U (OAU -1126E) (P)  
 MISS KEY MEG 2T (OAU -9615E) (P)  
 GREENWOOD XRAY (TSP X31E) (P)  
 COLINTA Y1504F (ISA Y1504F)

TREVLAC FREEWAY (WF7 F12F)  
**DAM: BRENDALE XINA 6 (BS2 J5E)**  
 BRENDALE XINA 5 (BS2 F8E)

SUEDOIS (OAF W5811F)  
 TREVLAC ACTRESS (WF7 X10F)  
 BRENDALE DUDLEY (BS2 D101F)  
 BRENDALE XINA R/F (BS2 X17E)

### August 2023 Australasian Charolais BREEDPLAN Analysis

	CE DIR	CE DTR	GL	BW	200	400	600	MCW	MILK
EBV	-1.5	-1.2	-3.1	+0.8	+8	+21	+28	+34	+7
Acc	33%	25%	46%	50%	58%	53%	52%	48%	41%

SS	CW	EMA	RIB	RUMP	RBY	IMF	\$ INDEX VALUES	
+0.9	+20	+1.5	-0.5	-1.0	+0.7	-0.2	DTI	NMI
39%	43%	35%	39%	38%	37%	35%	+\$19	+\$22

Notes: Polled Heifer with plenty of growth and style, Have a look back in this heifer's breeding, there are some very good old sires and dams in this pedigree.

Purchaser.....

Price \$.....



### 3 BRENDALE KATRINA T28

**BORN:** 02/08/2022      **TATTOO:** BS2 22T28E

**KEYS ALL STATE 149X** (OAU F2787E) (P)  
**SIRE: COLINTA LEVI (ISA L5044E)** (P)  
 COLINTA EMMALEE (ISA E5126E) (P)  
 GUNNADOO NUGGET N166D R/F (GN1 N166D)  
**DAM: MOUNTVIEW HAWKINS J9E (IJB J9E)** (P)  
 MOUNTVIEW HAWKINS 5 (IJB C14E) (P)

**KEYS SPECIALIST 18U** (OAU -1126E) (P)  
 MISS KEY MEG 2T (OAU -9615E) (P)  
 GREENWOOD XRAY (TSP X31E) (P)  
 COLINTA Y1504F (ISA Y1504F)  
 GUNNADOO KING K144D (GN1 K144D)  
 PALGROVE BRIDGETTE 2 (PK B2D)  
 ROSEDALE WILLIE (MR W114E) (P)  
 MOUNTVIEW HAWKINS 3 (IJB V6E) (P)



**August 2023 Australasian Charolais BREEDPLAN Analysis**

	CE DIR	CE DTR	GL	BW	200	400	600	MCW	MILK
EBV	+1.1	+3.4	-1.7	+0.1	+4	+18	+17	+15	+7
Acc	37%	30%	55%	52%	60%	55%	53%	50%	44%

SS	CW	EMA	RIB	RUMP	RBY	IMF	\$ INDEX VALUES	
+0.7	+18	+1.6	-0.1	-0.3	+0.5	-0.2	DTI	NMI
42%	44%	35%	39%	38%	36%	35%	+\$18	+\$29

Notes: Horned heifer out of a great old Mountview cow that has breed well for us, A heifer with a bit more frame and growth. We have retained 3 sisters in the stud. Due to the dry conditions we started these females on feed and this heifer took a while to start feeding, she will be a different heifer come sale day.

Purchaser..... Price \$.....

### 4 BRENDALE BRIDGET T35

**BORN:** 07/08/2022      **TATTOO:** BS2 22T35E

**KEYS ALL STATE 149X** (OAU F2787E) (P)  
**SIRE: COLINTA LEVI (ISA L5044E)** (P)  
 COLINTA EMMALEE (ISA E5126E) (P)  
 SUEDOIS (OAF W5811F)  
**DAM: BRENDALE BRIDGET 5 E27 (BS2 E27F)**  
 BAROOLA KARLA 7 (NCF X552F)

**KEYS SPECIALIST 18U** (OAU -1126E) (P)  
 MISS KEY MEG 2T (OAU -9615E) (P)  
 GREENWOOD XRAY (TSP X31E) (P)  
 COLINTA Y1504F (ISA Y1504F)  
 IDEALISTE (OAF N5537F)  
 PLUIE (PED -9561F)  
 EXCLUSIF (OAF J858F)  
 BAROOLA KARLA (NCF K1F)



**August 2023 Australasian Charolais BREEDPLAN Analysis**

	CE DIR	CE DTR	GL	BW	200	400	600	MCW	MILK
EBV	-2.2	-0.3	-2.4	+1.1	+9	+24	+29	+37	+6
Acc	38%	30%	54%	52%	49%	49%	48%	44%	43%

SS	CW	EMA	RIB	RUMP	RBY	IMF	\$ INDEX VALUES	
+1.0	+23	+2.0	-0.8	-1.5	+1.3	-0.5	DTI	NMI
41%	41%	35%	39%	38%	36%	34%	+\$23	+\$26

Notes: Horned heifer by Levi that is deep sided with plenty of volume and softness, Our Bridget cow line was started from the full french cow Baroola Karla. This heifers dam is still in the herd at 14 years of age and has recently just calved again.

Purchaser..... Price \$.....

### 5 BRENDALE FANDANGO T36 (P)

**BORN:** 09/08/2022      **TATTOO:** BS2 22T36E

**KEYS ALL STATE 149X** (OAU F2787E) (P)  
**SIRE: COLINTA LEVI (ISA L5044E)** (P)  
 COLINTA EMMALEE (ISA E5126E) (P)  
 CLARINDA MR EASY (KEN E7E) (P)  
**DAM: GATES FANDANGO N9E (GAT N9E)** (P)  
 GATES L41E (GAT L41E) (P)

**KEYS SPECIALIST 18U** (OAU -1126E) (P)  
 MISS KEY MEG 2T (OAU -9615E) (P)  
 GREENWOOD XRAY (TSP X31E) (P)  
 COLINTA Y1504F (ISA Y1504F)  
 LT EASY PRO 1158 PLD (OAU W6203E) (P)  
 BJR SILVER MAID 717 ET (OAU C8469E) (P)  
 RANGAN PARK DOC SILVER H32 (RAN H32E) (P)  
 FERVALE FANDANGO (FEN F51E) (P)

### Homozygous Poll



**August 2023 Australasian Charolais BREEDPLAN Analysis**

	CE DIR	CE DTR	GL	BW	200	400	600	MCW	MILK
EBV	+6.7	+3.2	-5.2	-0.9	+13	+35	+46	+34	+14
Acc	39%	31%	55%	57%	59%	55%	54%	51%	44%

SS	CW	EMA	RIB	RUMP	RBY	IMF	\$ INDEX VALUES	
+1.6	+31	+1.6	+0.6	+0.6	-0.1	+0.4	DTI	NMI
42%	45%	36%	40%	39%	37%	36%	+\$39	+\$74

Notes: Homozygous polled heifer that goes back to the great maternal bull, Mac 2244 on her dams side. Mac 2244 is a Charolais trait leader for 400 and 600 day weight and Milk. This heifer is very deep sided with a stack of volume and softness. Great data for growth and Milk

Purchaser..... Price \$.....



## 6 BRENDALÉ FESTOON T39

BORN: 15/08/2022

TATTOO: BS2 22T39E

KEYS ALL STATE 149X (OAU F2787E) (P)  
**SIRE: COLINTA LEVI (ISA L5044E) (P)**  
 COLINTA EMMALEE (ISA E5126E) (P)

PLATINUM WIND-FALL W75E (AJ1 W75E) (P)  
**DAM: PALGROVE FESTOON 250 (PK F59E) (P)**  
 PALGROVE FESTOON 106 (PK X461E)

KEYS SPECIALIST 18U (OAU -1126E) (P)  
 MISS KEY MEG 2T (OAU -9615E) (P)  
 GREENWOOD XRAY (TSP X31E) (P)  
 COLINTA Y1504F (ISA Y1504F)

LT WYOMING WIND 4020 (OAU P4020E) (P)  
 DOWNUNDER GERALDINE (1LP G1D)  
 PALGROVE QUINTERO (PK Q228E)  
 PALGROVE FESTOON 50 (PK S99E)



### August 2023 Australasian Charolais BREEDPLAN Analysis

	CE DIR	CE DTR	GL	BW	200	400	600	MCW	MILK
EBV	+0.2	+7.2	-4.5	-0.2	+3	+13	+16	+12	+9
Acc	43%	36%	53%	57%	61%	57%	56%	53%	48%

SS	CW	EMA	RIB	RUMP	RBV	IMF	\$ INDEX VALUES	
+1.1	+14	+1.3	+0.3	+0.1	+0.3	-0.2	DTI	NMI
46%	48%	41%	44%	44%	42%	40%	+\$13	+\$31

Notes: Horned heifer by Levi out of a Palgrove Festoon female that goes back to the great old sires of the breed in Platinum Wind Fall and Quintero, David Bondfield rates Quintero as one of the most influential Palgrove sires ever! This heifer is thick bodied, long with plenty of shape and softness.

Purchaser.....Price \$.....

## 7 BRENDALÉ FANDANGO T43 (P)

BORN: 08/09/2022

TATTOO: BS2 22T43E

KEYS ALL STATE 149X (OAU F2787E) (P)  
**SIRE: COLINTA LEVI (ISA L5044E) (P)**  
 COLINTA EMMALEE (ISA E5126E) (P)

PARINGA RIO BRAVO E342 (TOL E342E)  
**DAM: ROMSTECK FANDANGO (GAT J63E) (P)**  
 FERVALE FANDANGO (FEN F51E) (P)

KEYS SPECIALIST 18U (OAU -1126E) (P)  
 MISS KEY MEG 2T (OAU -9615E) (P)  
 GREENWOOD XRAY (TSP X31E) (P)  
 COLINTA Y1504F (ISA Y1504F)

LT RIO BRAVO 3181 P (OAU Y5507E) (P)  
 PARINGA IMPRESSIVE B157 (TOL B157E) (P)  
 WCR SIR FA MAC 2244 (OAU B2244E) (P)  
 FERVALE ANGEL (FEN A30E)



### August 2023 Australasian Charolais BREEDPLAN Analysis

	CE DIR	CE DTR	GL	BW	200	400	600	MCW	MILK
EBV	+3.6	+1.8	-4.8	-0.2	+9	+30	+40	+34	+14
Acc	39%	30%	50%	55%	59%	55%	54%	50%	43%

SS	CW	EMA	RIB	RUMP	RBV	IMF	\$ INDEX VALUES	
+1.8	+29	+2.4	+0.3	+0.5	+0.5	+0.0	DTI	NMI
43%	45%	36%	40%	39%	38%	36%	+\$33	+\$61

Notes: Polled heifer that goes back to Mac 2244 on her dams side, so should be plenty of milk here. She's a heifer with growth thickness and soft to go with it.

Purchaser.....Price \$.....

## 8 BRENDALÉ XINA T53 (P)

BORN: 08/10/2022

TATTOO: BS2 22T53E

KEYS ALL STATE 149X (OAU F2787E) (P)  
**SIRE: COLINTA LEVI (ISA L5044E) (P)**  
 COLINTA EMMALEE (ISA E5126E) (P)

HIGH BLUFF HANK 41R (OAC A7682E) (P)  
**DAM: BRENDALÉ XINA 7 (BS2 L2E)**  
 BRENDALÉ XINA R/F (BS2 X17E)

KEYS SPECIALIST 18U (OAU -1126E) (P)  
 MISS KEY MEG 2T (OAU -9615E) (P)  
 GREENWOOD XRAY (TSP X31E) (P)  
 COLINTA Y1504F (ISA Y1504F)

MXV COUGARHILL HANK 720G (PED -52E)  
 HOLMSYDE HOT-ON-TOP 212M (PED -7940E)  
 PALGROVE MURDOCK R/F (PK M109E)  
 FERVALE SASHA (FEN S22E)



### August 2023 Australasian Charolais BREEDPLAN Analysis

	CE DIR	CE DTR	GL	BW	200	400	600	MCW	MILK
EBV	-0.2	+2.6	-4.4	+0.2	+5	+19	+26	+18	+9
Acc	38%	31%	51%	53%	59%	55%	54%	50%	44%

SS	CW	EMA	RIB	RUMP	RBV	IMF	\$ INDEX VALUES	
+1.2	+19	+1.6	-0.1	-0.4	+0.7	-0.1	DTI	NMI
43%	45%	38%	42%	41%	39%	37%	+\$20	+\$41

Notes: Homozygous polled heifer out of a very productive High Bluff Hank cow, A square soft heifer with length and volume

Purchaser.....Price \$.....

## Homozygous Poll

## 9 BRENDALE REBECCA T58 (P)

**BORN:** 12/10/2022

**TATTOO:** BS2 22T58E

**KEYS ALL STATE 149X** (OAU F2787E) (P)  
**SIRE: COLINTA LEVI (ISA L5044E)** (P)  
 COLINTA EMMALEE (ISA E5126E) (P)

**REIDS LENNON** (RCS L1E) (P)  
**DAM: BRENDALE REBECCA 6 (BS2 N12E)** (P)  
 BAROOLA REBECCA D864E (NCF D864E) (P)

**KEYS SPECIALIST 18U** (OAU -1126E) (P)  
**MISS KEY MEG 2T** (OAU -9615E) (P)  
**GREENWOOD XRAY** (TSP X31E) (P)  
 COLINTA Y1504F (ISA Y1504F)  
**REIDS HORATIO** (RCS H23E) (P)  
**PLATINUM PRINCESS 7 Y133E** (AJ1 Y133E) (P)  
**PALGROVE ZONATE** (PK Z342E)  
 BAROOLA REBECCA 3 (NCF Y833E)

Notes: Polled heifer that we really love, Her dam goes back to Baroola Rebecca who has breed well for us. This heifer has balance volume and softness

Purchaser..... Price \$.....

### August 2023 Australasian Charolais BREEDPLAN Analysis

	CE DIR	CE DTR	GL	BW	200	400	600	MCW	MILK
EBV	+1.7	+1.7	-4.0	+0.1	+6	+22	+30	+24	+12
Acc	33%	25%	46%	49%	57%	53%	52%	47%	42%

SS	CW	EMA	RIB	RUMP	RBY	IMF	\$ INDEX VALUES	
+1.5	+23	+2.1	+0.1	-0.2	+0.8	-0.3	DTI	NMI
41%	43%	36%	39%	39%	37%	36%	+\$24	+\$46



*Signature  
Collection '23*

## 10 BRENDALE XCITE T61

**BORN:** 03/11/2022

**TATTOO:** BS2 22T61E

**KEYS ALL STATE 149X** (OAU F2787E) (P)  
**SIRE: COLINTA LEVI (ISA L5044E)** (P)  
 COLINTA EMMALEE (ISA E5126E) (P)

**REIDS LENNON** (RCS L1E) (P)  
**DAM: BRENDALE XCITE 2 (BS2 N43E)** (P)  
 KINDARA PW X-SITE 7 (K4P G22E)

**KEYS SPECIALIST 18U** (OAU -1126E) (P)  
**MISS KEY MEG 2T** (OAU -9615E) (P)  
**GREENWOOD XRAY** (TSP X31E) (P)  
 COLINTA Y1504F (ISA Y1504F)  
**REIDS HORATIO** (RCS H23E) (P)  
**PLATINUM PRINCESS 7 Y133E** (AJ1 Y133E) (P)  
**PLATINUM WIND-FALL W75E** (AJ1 W75E) (P)  
 KINDARA MZ X-SITE (K4P E26E)

### August 2023 Australasian Charolais BREEDPLAN Analysis

	CE DIR	CE DTR	GL	BW	200	400	600	MCW	MILK
EBV	+1.4	+2.6	-4.4	+0.0	+5	+23	+31	+24	+12
Acc	34%	26%	48%	49%	57%	53%	51%	47%	42%

SS	CW	EMA	RIB	RUMP	RBY	IMF	\$ INDEX VALUES	
+1.6	+23	+1.8	+0.4	+0.3	+0.4	-0.1	DTI	NMI
41%	43%	36%	39%	39%	37%	36%	+\$24	+\$48



Notes: Horned heifer that is really hard to part with, She is a full sister to Brendale Quarterback that's we sold for \$33000 in 2021 and Brendale Sideline we sold for \$9000 this year. This heifer is thick, soft, has plenty of shape and still feminine.

Purchaser..... Price \$.....

# 11 BRENDALE PENNY T62 (P) (R/F)

**BORN:** 03/11/2022      **TATTOO:** BS2 22T62E

KEYS ALL STATE 149X (OAU F2787E) (P)  
**SIRE: COLINTA LEVI (ISA L5044E) (P)**  
 COLINTA EMMALEE (ISA E5126E) (P)  
 REIDS LENNON (RCS L1E) (P)  
**DAM: LOCKYER PENNY (8PS P2E)**  
 BRENDALE ELLE E26 (BS2 E26E)

KEYS SPECIALIST 18U (OAU -1126E) (P)  
 MISS KEY MEG 2T (OAU -9615E) (P)  
 GREENWOOD XRAY (TSP X31E) (P)  
 COLINTA Y1504F (ISA Y1504F)  
 REIDS HORATIO (RCS H23E) (P)  
 PLATINUM PRINCESS 7 Y133E (AJ1 Y133E) (P)  
 BIRD HILL CASPER (T8K C6F)  
 BAROOLA BEATRIX C617E (NCF C617E)



**August 2023 Australasian Charolais BREEDPLAN Analysis**

	CE DIR	CE DTR	GL	BW	200	400	600	MCW	MILK
EBV	+2.3	-3.7	+0.2	+7	+22	+30	+30	+30	+11
Acc	32%	45%	49%	56%	53%	51%	47%	41%	

Notes: Polled heifer that goes back to our Elle line that have breed well for us, Her dam is by Reids Lennon who put near perfect udders on his females. A Red factor heifer with loads of volume and thickness.

SS	CW	EMA	RIB	RUMP	RBY	IMF	\$ INDEX VALUES	
+1.4	+23	+1.9	+0.3	+0.2	+0.4	+0.0	DTI	NMI
40%	42%	36%	39%	38%	37%	35%	+\$24	+\$43

Purchaser..... Price \$.....

# 12 BRENDALE REBECCA T70 (P)

**BORN:** 05/11/2022      **TATTOO:** BS2 22T70E

KEYS ALL STATE 149X (OAU F2787E) (P)  
**SIRE: COLINTA LEVI (ISA L5044E) (P)**  
 COLINTA EMMALEE (ISA E5126E) (P)  
 REIDS LENNON (RCS L1E) (P)  
**DAM: BRENDALE REBECCA 7 (BS2 P22E) (P)**  
 BAROOLA REBECCA D864E (NCF D864E) (P)

KEYS SPECIALIST 18U (OAU -1126E) (P)  
 MISS KEY MEG 2T (OAU -9615E) (P)  
 GREENWOOD XRAY (TSP X31E) (P)  
 COLINTA Y1504F (ISA Y1504F)  
 REIDS HORATIO (RCS H23E) (P)  
 PLATINUM PRINCESS 7 Y133E (AJ1 Y133E) (P)  
 PALGROVE ZONATE (PK Z342E)  
 BAROOLA REBECCA 3 (NCF Y833E)

## Homozygous Poll



**August 2023 Australasian Charolais BREEDPLAN Analysis**

	CE DIR	CE DTR	GL	BW	200	400	600	MCW	MILK
EBV	+1.7	+1.7	-4.1	+0.3	+9	+25	+34	+31	+12
Acc	33%	25%	46%	49%	56%	53%	51%	47%	41%

Notes: Homozygous polled heifer who's dam is by Reids Lennon and has plenty of milk. This heifer is upstanding with growth, style and softness.

SS	CW	EMA	RIB	RUMP	RBY	IMF	\$ INDEX VALUES	
+1.6	+25	+2.0	+0.2	-0.1	+0.7	-0.3	DTI	NMI
41%	43%	36%	39%	38%	37%	35%	+\$27	+\$50

Purchaser..... Price \$.....





# 4 Ways Phantom (P)

## Progeny



**Brendale Supreme (P)**  
Sold for \$24,000 to Parker Family



**Lockyer Senator (P)(R/F)**  
Sold for \$18,000 to Yaccamunda Investments



**Brendale Yvette S57E (P)**  
Junior Champion Taroom Feature Show 2023

**Son of \$83,000 sire, Moongool Lunar Rise (AI)(P)**  
**Progeny are exceptionally even and well developed**  
**First drop of sons sold to \$24,000 and averaged \$13,833**

Phantom was purchased privately from the 4 Ways program at Inverell. Sires bred at 4 Ways have been keenly sought after in the industry and Phantom stood out for his exceptional muscle pattern and growth backed by a rock solid pedigree. Sire, Moongool Lunar Rise (P) held the Australian Charolais record price for many years and his calves have displayed the consistency we look for in a sire. We calved Phantom's first calves in 2021 and have been impressed with their shape, temperament and growth ability. His first sons were available this year and they were sought after in our sale draft.

### August 2023 Australasian Charolais BREEDPLAN Analysis

	CE DIR	CE DTR	GL	BW	200	400	600	MCW	MILK
EBV	-2.5	-9.9	-0.3	+1.6	+13	+25	+38	+44	+5
Acc	39%	34%	37%	57%	67%	66%	62%	57%	42%

SS	CW	EMA	RIB	RUMP	RBY	IMF	\$ INDEX VALUES	
+0.3	+22	+1.7	-0.5	-0.8	+0.7	+0.1	DTI	NMI
39%	53%	46%	47%	45%	46%	45%	+\$23	+\$20

## 13 BRENDALE BRIDGET T24

**BORN:** 24/07/2022

**TATTOO:** BS2 22T24E

MOONGOOL LUNAR RISE (DP2 L401E) (P)  
**SIRE: 4 WAYS PHANTOM (4WC P68E) (P)**  
 4 WAYS HARRIETT G22E (4WC G22E)

COLINTA LEVI (ISA L5044E) (P)  
**DAM: BRENDALE BRIDGET 20 (BS2 P5E) (P)**  
 BRENDALE BRIDGET 10 (BS2 H16E)

SILVERSTREAM EVOLUTION E168 (OAN E168E) (P)  
 MOONGOOL ROWENA 8 (DP2 F130D) (P)  
 MOONGOOL CURRAJONG (DP2 C195D)  
 4 WAYS HARRIETT C46E (4WC C46E)  
 KEYS ALL STATE 149X (OAU F2787E) (P)  
 COLINTA EMMALEE (ISA E5126E) (P)  
 PALGROVE CASSIUS S (PK C336E) (P/S)  
 BRENDALE BRIDGET 5 E27 (BS2 E27F)

Notes: Horned heifer who's dam has a perfect udder with plenty of milk. If this heifer ends up like her dam she will be a tank with shape and softness. Don't discount these horned heifers, join to a Homozygous sire to produce a poll calf with the grunt you get from the horned genetics.

Purchaser.....

Price \$.....

### August 2023 Australasian Charolais BREEDPLAN Analysis

	CE DIR	CE DTR	GL	BW	200	400	600	MCW	MILK
EBV	-2.5	-1.7	+1.1	+9	+22	+32	+36	+8	
Acc	26%	30%	40%	53%	47%	45%	42%	32%	

SS	CW	EMA	RIB	RUMP	RBY	IMF	\$ INDEX VALUES	
+0.6	+22	+1.9	-0.4	-0.9	+0.9	-0.2	DTI	NMI
29%	37%	28%	30%	29%	29%	28%	+\$21	+\$24



## 14 BRENDALE CONNIE T26 (P)

**BORN:** 02/08/2022

**TATTOO:** BS2 22T26E

MOONGOOL LUNAR RISE (DP2 L401E) (P)  
**SIRE: 4 WAYS PHANTOM (4WC P68E) (P)**  
 4 WAYS HARRIETT G22E (4WC G22E)

COLINTA LEVI (ISA L5044E) (P)  
**DAM: BRENDALE CONNIE 12 (BS2 P4E) (P)**  
 BRENDALE CONNIE 5 (BS2 H7E)

SILVERSTREAM EVOLUTION E168 (OAN E168E) (P)  
 MOONGOOL ROWENA 8 (DP2 F130D) (P)  
 MOONGOOL CURRAJONG (DP2 C195D)  
 4 WAYS HARRIETT C46E (4WC C46E)  
 KEYS ALL STATE 149X (OAU F2787E) (P)  
 COLINTA EMMALEE (ISA E5126E) (P)  
 PALGROVE CASSIUS S (PK C336E) (P/S)  
 BRENDALE CONNIE 2 (BS2 A43E)

Notes: Homozygous Polled heifer who's dam was Grand Champion at Toowoomba Royal 2021. This heifer is deep sided with loads of thickness and softness. We shouldn't be selling this heifer as we believe she is outstanding and would make a great show heifer.

Purchaser.....

Price \$.....

### August 2023 Australasian Charolais BREEDPLAN Analysis

	CE DIR	CE DTR	GL	BW	200	400	600	MCW	MILK
EBV	-2.0	-1.6	+1.5	+12	+25	+37	+43	+7	
Acc	26%	30%	40%	54%	48%	46%	42%	32%	

SS	CW	EMA	RIB	RUMP	RBY	IMF	\$ INDEX VALUES	
+0.7	+23	+1.6	-0.4	-0.8	+0.7	-0.1	DTI	NMI
29%	37%	29%	30%	29%	29%	28%	+\$22	+\$26



**Homozygous Poll**



## 15 BREDALE LETITIA T41 (P)

**BORN:** 01/09/2022

**TATTOO:** BS2 22T41E

MOONGOOL LUNAR RISE (DP2 L401E) (P)

**SIRE:** 4 WAYS PHANTOM (4WC P68E) (P)

4 WAYS HARRIETT G22E (4WC G22E)

COLINTA FUSILIER (ISA F5049F)

**DAM:** BREDALE LETITIA 48 (BS2 M9F)

BREDALE LETITIA 37 (BS2 H23F)

SILVERSTREAM EVOLUTION E168 (OAN E168E) (P)

MOONGOOL ROWENA 8 (DP2 F130D) (P)

MOONGOOL CURRAJONG (DP2 C195D)

4 WAYS HARRIETT C46E (4WC C46E)

CARABINIER C33 (IAF C6041F)

COLINTA BRIGITTE (ISA B5005F)

TREVLAC FREEWAY (WF7 F12F)

BREDALE LETITIA 5 (BS2 Z34F)



### August 2023 Australasian Charolais BREEDPLAN Analysis

	CE DIR	CE DTR	GL	BW	200	400	600	MCW	MILK
EBV	-3.4	-0.2	+2.1	+14	+24	+37	+50	+3	
Acc	25%	27%	39%	53%	48%	46%	42%	31%	

SS	CW	EMA	RIB	RUMP	RBV	IMF	\$ INDEX VALUES	
+0.5	+21	+1.7	-0.8	-1.3	+1.0	-0.1	DTI	NMI
27%	37%	29%	30%	29%	30%	28%		

Notes: Polled heifer out of a full French dam. This Letita heifer has growth loose skin thick with plenty of bone while being clean through the front end. Another very good, 4 Ways Phantom heifer.

Purchaser.....Price \$.....

## 16 BREDALE FLARE T78 (P)

**BORN:** 15/11/2022

**TATTOO:** BS2 22T78E

MOONGOOL LUNAR RISE (DP2 L401E) (P)

**SIRE:** 4 WAYS PHANTOM (4WC P68E) (P)

4 WAYS HARRIETT G22E (4WC G22E)

RANGAN PARK BLUEGRASS D55 (RAN D55E) (P)

**DAM:** KYAN PARK FLARE L93 (DMS L93E) (P)

KYAN PARK FLARE B12E (DMS B12E)

SILVERSTREAM EVOLUTION E168 (OAN E168E) (P)

MOONGOOL ROWENA 8 (DP2 F130D) (P)

MOONGOOL CURRAJONG (DP2 C195D)

4 WAYS HARRIETT C46E (4WC C46E)

LT BLUEGRASS 4017P (OAU Z4017E) (P)

PALGROVE BRONWIN 83 (PK Z249E)

BAROOLA XPLODE (NCF X656E)

PALGROVE FLARE 48 (PK X116E)



### August 2023 Australasian Charolais BREEDPLAN Analysis

	CE DIR	CE DTR	GL	BW	200	400	600	MCW	MILK
EBV	-3.8	-9.1	-0.9	+1.8	+11	+21	+30	+30	+6
Acc	33%	31%	33%	43%	48%	46%	44%	41%	39%

SS	CW	EMA	RIB	RUMP	RBV	IMF	\$ INDEX VALUES	
+1.0	+16	+1.7	+0.0	+0.0	+0.5	+0.2	DTI	NMI
36%	39%	34%	35%	34%	34%	33%	+\$18	+\$21

Notes: Polled heifer out of a David Smith cow we purchased a few years ago, Her dam goes back to Rangan Park Bluegrass that has done a mighty job for Palgrove. She has extra growth bone softness length and volume, we believe she would make a show heifer

Purchaser.....Price \$.....

Signature  
Collection '23





# FOR TRUSTED STUD STOCK SERVICE

Elders Stud Stock are your leading stud sales team with proven experience and professional service to support your business. Speak to our trusted team about your stud stock needs today.

## Contact our Team:

Michael Smith	0428 541 711
Blake Munro	0428 862 469
Andrew Meara	0427 210 634
James Matts	0421 063 501
Anthony Ball	0428 275 499
Mark Scholes	0409 694 696
Randall Spann	0429 700 332
Adam Geddes	0427 500 413
Lisa Hedges	0427 891 367
Eliza Connors	0419 644 813

## Elders Stud Stock - QLD Offices

PO Box 395  
Rockhampton  
P. 07 4838 9000

PO Box 7270  
Toowoomba  
P. 07 4636 8888





# Yuranga Park Real Impact R01 (P)(R/F)



**Palgrove Hallmark (P)(R/F)**  
Sire of Yuranga Park Real Impact R01 (P)(R/F)

### **Homozygous Poll Sire**

**Son of renowned sire, Palgrove Hallmark (AI)(P)(R/F)**

**Exceptional calving ease: CED +6.3, GL -6.2, BW -0.1**

Real Impact was purchased as a calf at foot on his dam with the intention to retain him for stud use. He has been used mainly on heifers and many of these sale daughters are from first calving heifers. Sired by the renowned Palgrove Hallmark sire and from a dam with Bluegrass influence he is bred to perform. Hallmark has close to 600 registered progeny and is +4.1 for EMA. Hallmark is the sire of Palgrove Platinum (P)(R/F) sold for \$48,000 to the Bode Family. Platinum had 26 sons in the Palgrove sale this year. Also sire of Palgrove Kudos sold to Ascot Charolais for \$40,000 and the \$38,000 Palgrove Kenworth. This pedigree will bred on. These sale heifers are from his first drop.

#### August 2023 Australasian Charolais BREEDPLAN Analysis

	CE DIR	CE DTR	GL	BW	200	400	600	MCW	MILK
<b>EBV</b>	<b>+6.3</b>	<b>-0.3</b>	<b>-6.2</b>	<b>-0.1</b>	<b>+15</b>	<b>+28</b>	<b>+28</b>	<b>+28</b>	<b>+4</b>
<b>Acc</b>	<b>48%</b>	<b>45%</b>	<b>54%</b>	<b>56%</b>	<b>66%</b>	<b>60%</b>	<b>58%</b>	<b>56%</b>	<b>54%</b>
	SS	CW	EMA	RIB	RUMP	RBY	IMF	<b>\$ INDEX VALUES</b>	
	<b>+1.6</b>	<b>+21</b>	<b>+2.9</b>	<b>+1.5</b>	<b>+1.9</b>	<b>+0.0</b>	<b>-0.1</b>	<b>DTI</b>	<b>NMI</b>
	<b>52%</b>	<b>51%</b>	<b>43%</b>	<b>46%</b>	<b>46%</b>	<b>44%</b>	<b>43%</b>	<b>+\$32</b>	<b>+\$48</b>



## 17 BRENDAL CHLOE T42 (P)

**BORN:** 08/09/2022

**TATTOO:** BS2 22T42E

**SIRE:** YURANGA PARK REAL IMPACT R01 (M4L R01E) (P)  
YURANGA PARK BRONWYN P02 (M4L P2E) (P)

**DAM:** BRENDAL CHLOE 2 (BS2 Q23E) (P)  
SUNSET CHLOE (JCM K1F)

PALGROVE CHARM (PK C1043E) (P)  
PALGROVE ALYSSA 47 (PK B835E) (P)  
JAY TEES JETE BATTU (JT J16E) (P)  
YURANGA PARK BRONWYN 2 (M4L K8E) (P)  
KEYS ALL STATE 149X (OAU F2787E) (P)  
COLINTA EMMALEE (ISA E5126E) (P)  
COAT LEZARD 375127603 (IAF K6096F)  
SUNSET KRISTINA (JCM C7F)



Notes: Polled heifer going back to a french cow family that has served us well. Like all the calves by Real Impact, she is soft with plenty of volume and thickness.

Purchaser.....

Price \$.....

### August 2023 Australasian Charolais BREEDPLAN Analysis

	CE DIR	CE DTR	GL	BW	200	400	600	MCW	MILK
EBV	+3.6	+1.2	-5.1	+0.2	+9	+21	+21	+23	+5
Acc	31%	28%	39%	40%	53%	46%	45%	42%	37%

SS	CW	EMA	RIB	RUMP	RBY	IMF	\$ INDEX VALUES	
+0.9	+18	+2.3	+0.4	+0.3	+0.6	-0.3	DTI	NMI
34%	36%	28%	30%	30%	29%	28%	+\$24	+\$34



## 18 BRENDAL WINDSOR ROSE T45 (P)

**BORN:** 11/09/2022

**TATTOO:** BS2 22T45E

**SIRE:** YURANGA PARK REAL IMPACT R01 (M4L R01E) (P)  
YURANGA PARK BRONWYN P02 (M4L P2E) (P)

**DAM:** BRENDAL WINDSOR ROSE 8 (BS2 Q13E) (P)  
BRENDAL WINDSOR ROSE 6 (BS2 H21E)

PALGROVE CHARM (PK C1043E) (P)  
PALGROVE ALYSSA 47 (PK B835E) (P)  
JAY TEES JETE BATTU (JT J16E) (P)  
YURANGA PARK BRONWYN 2 (M4L K8E) (P)  
KEYS ALL STATE 149X (OAU F2787E) (P)  
COLINTA EMMALEE (ISA E5126E) (P)  
TREV LAC FREEWAY (WF7 F12F)  
BRENDAL WINDSOR ROSE 2 (BS2 B61E)

Notes: Polled heifer. Real Impact has made an impact on all these heifers in the sale, all being soft with heaps of volume and thickness like this heifer has. Maternal pedigree featuring Levi and Freeway just completes the package with this heifer.

Purchaser.....

Price \$.....

### August 2023 Australasian Charolais BREEDPLAN Analysis

	CE DIR	CE DTR	GL	BW	200	400	600	MCW	MILK
EBV	+2.4	-1.0	-4.7	+0.6	+13	+27	+32	+37	+6
Acc	29%	26%	36%	40%	53%	46%	44%	41%	36%

SS	CW	EMA	RIB	RUMP	RBY	IMF	\$ INDEX VALUES	
+1.2	+22	+2.2	+0.5	+0.4	+0.4	-0.2	DTI	NMI
33%	36%	27%	29%	29%	28%	27%	+\$28	+\$38



## 19 BREDALE CONNIE T46 (P) (R/F)

**BORN:** 12/09/2022

**TATTOO:** BS2 22T46E

**SIRE:** PALGROVE HALLMARK (PK H535E) (P)  
YURANGA PARK REAL IMPACT R01 (M4L R01E) (P)  
YURANGA PARK BRONWYN P02 (M4L P2E) (P)

**DAM:** ASCOT MAXIMUS M607E (JAJ M607E) (P/S)  
BREDALE CONNIE 13 (BS2 Q29E) (P)  
BREDALE CONNIE 9 (BS2 M18E)

PALGROVE CHARM (PK C1043E) (P)  
PALGROVE ALYSSA 47 (PK B835E) (P)  
JAY TEES JETE BATTU (JT J16E) (P)  
YURANGA PARK BRONWYN 2 (M4L K8E) (P)  
ASCOT JUGGERNAUT J134E (JAJ J134E) (P)  
ASCOT JULIETTE J143E (JAJ J143E) (P)  
COLINTA FUSILIER (ISA F5049F)  
BREDALE CONNIE 4 (BS2 G4E)



### August 2023 Australasian Charolais BREEDPLAN Analysis

	CE DIR	CE DTR	GL	BW	200	400	600	MCW	MILK
EBV	+0.3	-4.0	-4.1	+0.4	+16	+29	+35	+40	+6
Acc	28%	26%	34%	38%	52%	45%	44%	41%	36%

SS	CW	EMA	RIB	RUMP	RBY	IMF	\$ INDEX VALUES	
+1.3	+23	+2.2	+1.3	+1.7	-0.3	+0.1	DTI	NMI
34%	36%	28%	29%	29%	28%	27%		

Notes: Polled heifer who's dam is by Ascot Maximus, this heifer should have plenty of milk and will be a easy keeping female. We believe this heifer would fit into the show ring .

Purchaser..... Price \$.....

## 20 BREDALE QUADE T47 (P) (R/F)

**BORN:** 14/09/2022

**TATTOO:** BS2 22T47E

**SIRE:** PALGROVE HALLMARK (PK H535E) (P)  
YURANGA PARK REAL IMPACT R01 (M4L R01E) (P)  
YURANGA PARK BRONWYN P02 (M4L P2E) (P)

**DAM:** ASCOT MAXIMUS M607E (JAJ M607E) (P/S)  
LOCKYER QUADE (8PS Q4E)  
LOCKYER KATE (8PS K5E)

PALGROVE CHARM (PK C1043E) (P)  
PALGROVE ALYSSA 47 (PK B835E) (P)  
JAY TEES JETE BATTU (JT J16E) (P)  
YURANGA PARK BRONWYN 2 (M4L K8E) (P)  
ASCOT JUGGERNAUT J134E (JAJ J134E) (P)  
ASCOT JULIETTE J143E (JAJ J143E) (P)  
TREV LAC FREEWAY (WF7 F12F)  
BREDALE ELLE E26 (BS2 E26E)



### August 2023 Australasian Charolais BREEDPLAN Analysis

	CE DIR	CE DTR	GL	BW	200	400	600	MCW	MILK
EBV	+0.7	-3.4	-4.4	+0.5	+18	+32	+41	+49	+7
Acc	28%	26%	34%	38%	52%	45%	44%	41%	36%

SS	CW	EMA	RIB	RUMP	RBY	IMF	\$ INDEX VALUES	
+1.5	+26	+2.4	+1.2	+1.5	-0.1	+0.1	DTI	NMI
34%	36%	28%	29%	29%	28%	27%		

Notes: Polled heifer whos dam goes back to our Elle cow family, This heifer is soft with heaps of thickness and volume. She is red factor but does have a small white splash on her forehead and we couldn't bring ourselves to cull her for that reason. A true performance pedigree.

Purchaser..... Price \$.....

## 21 BREDALE BRIDGET T51 (P)

**BORN:** 26/09/2022

**TATTOO:** BS2 22T51E

**SIRE:** PALGROVE HALLMARK (PK H535E) (P)  
YURANGA PARK REAL IMPACT R01 (M4L R01E) (P)  
YURANGA PARK BRONWYN P02 (M4L P2E) (P)

**DAM:** COLINTA LEVI (ISA LS044E) (P)  
BREDALE BRIDGET 23 (BS2 R12E) (P)  
BREDALE BRIDGET 5 E27 (BS2 E27F)

PALGROVE CHARM (PK C1043E) (P)  
PALGROVE ALYSSA 47 (PK B835E) (P)  
JAY TEES JETE BATTU (JT J16E) (P)  
YURANGA PARK BRONWYN 2 (M4L K8E) (P)  
KEYS ALL STATE 149X (OAU F2787E) (P)  
COLINTA EMMALEE (ISA E5126E) (P)  
SUEDOIS 5811102125 (OAF W5811F)  
BAROOLA KARLA 7 (NCF X552F)



### August 2023 Australasian Charolais BREEDPLAN Analysis

	CE DIR	CE DTR	GL	BW	200	400	600	MCW	MILK
EBV	+2.3	-0.3	-4.3	+0.5	+12	+26	+29	+34	+5
Acc	31%	27%	38%	41%	53%	46%	45%	42%	37%

SS	CW	EMA	RIB	RUMP	RBY	IMF	\$ INDEX VALUES	
+1.3	+23	+2.4	+0.3	+0.2	+0.7	-0.3	DTI	NMI
34%	36%	28%	30%	29%	28%	27%	+\$28	+\$38

Notes: Polled heifer that goes back to our old french cow E27F, this heifer like all the Impact progeny is thick,soft with plenty of volume.

Purchaser..... Price \$.....

## 22 BRENDALÉ RUBY T54 (P)(R/F)

BORN: 08/10/2022

TATTOO: BS2 22T54E

PALGROVE HALLMARK (PK H535E) (P)  
**SIRE: YURANGA PARK REAL IMPACT R01 (M4L R01E) (P)**  
 YURANGA PARK BRONWYN P02 (M4L P2E) (P)

ASCOT MAXIMUS M607E (JAJ M607E) (P/S)  
**DAM: LOCKYER RUBY (8PS R10E) (P)**  
 LOCKYER HEIDI (8PS H20E)

PALGROVE CHARM (PK C1043E) (P)  
 PALGROVE ALYSSA 47 (PK B835E) (P)  
 JAY TEES JETE BATTU (JT J16E) (P)  
 YURANGA PARK BRONWYN 2 (M4L K8E) (P)  
 ASCOT JUGGERNAUT J134E (JAJ J134E) (P)  
 ASCOT JULIETTE J143E (JAJ J143E) (P)  
 TREV LAC FREEWAY (WF7 F12F)  
 PINEMIST BRUNELLA (PIN B2E)



Notes: Polled heifer out of a Maximus daughter that has a near perfect udder with plenty of milk. This heifer is soft square and clean fronted.

### August 2023 Australasian Charolais BREEDPLAN Analysis

	CE DIR	CE DTR	GL	BW	200	400	600	MCW	MILK
EBV	+0.7	-4.2	-4.4	+0.3	+16	+30	+37	+43	+8
Acc	28%	26%	34%	38%	52%	45%	44%	41%	36%

SS	CW	EMA	RIB	RUMP	RBY	IMF	\$ INDEX VALUES	
+1.3	+24	+2.2	+1.1	+1.5	-0.2	+0.1	DTI	NMI
34%	36%	28%	29%	29%	28%	28%		

Purchaser..... Price \$.....

## 23 BRENDALÉ REBECCA T59 (P)

BORN: 16/10/2022

TATTOO: BS2 22T59E

PALGROVE HALLMARK (PK H535E) (P)  
**SIRE: YURANGA PARK REAL IMPACT R01 (M4L R01E) (P)**  
 YURANGA PARK BRONWYN P02 (M4L P2E) (P)

ASCOT MAXIMUS M607E (JAJ M607E) (P/S)  
**DAM: BRENDALÉ REBECCA R29E (BS2 R29E) (P)**  
 BRENDALÉ REBECCA 4 (BS2 K26E) (P)

PALGROVE CHARM (PK C1043E) (P)  
 PALGROVE ALYSSA 47 (PK B835E) (P)  
 JAY TEES JETE BATTU (JT J16E) (P)  
 YURANGA PARK BRONWYN 2 (M4L K8E) (P)  
 ASCOT JUGGERNAUT J134E (JAJ J134E) (P)  
 ASCOT JULIETTE J143E (JAJ J143E) (P)  
 MERIT ROUNDUP 9508W (OAC E6558E) (P)  
 BRENDALÉ REBECCA (BS2 G10E)



Notes: Polled heifer out of another Maximus daughter, This heifer is long growthy with plenty of softness and volume.

### August 2023 Australasian Charolais BREEDPLAN Analysis

	CE DIR	CE DTR	GL	BW	200	400	600	MCW	MILK
EBV	+1.7	-3.0	-5.1	-0.1	+17	+31	+37	+37	+6
Acc	29%	27%	35%	39%	53%	46%	44%	42%	36%

SS	CW	EMA	RIB	RUMP	RBY	IMF	\$ INDEX VALUES	
+2.1	+23	+2.0	+1.1	+1.5	-0.2	+0.0	DTI	NMI
35%	36%	28%	30%	30%	29%	28%		

Purchaser..... Price \$.....

## 24 BRENDALÉ HAYLEY T80 (P) (R/F)

BORN: 15/11/2022

TATTOO: BS2 22T80E

PALGROVE HALLMARK (PK H535E) (P)  
**SIRE: YURANGA PARK REAL IMPACT R01 (M4L R01E) (P)**  
 YURANGA PARK BRONWYN P02 (M4L P2E) (P)

COLINTA LEVI (ISA L5044E) (P)  
**DAM: BRENDALÉ HAYLEY 15 (BS2 Q21E) (P)**  
 BRENDALÉ HAYLEY 12 (BS2 M8E)

PALGROVE CHARM (PK C1043E) (P)  
 PALGROVE ALYSSA 47 (PK B835E) (P)  
 JAY TEES JETE BATTU (JT J16E) (P)  
 YURANGA PARK BRONWYN 2 (M4L K8E) (P)  
 KEYS ALL STATE 149X (OAU F2787E) (P)  
 COLINTA EMMALEE (ISA E5126E) (P)  
 COLINTA FUSILIER (ISA F5049F)  
 BRENDALÉ HAYLEY 4 (BS2 C98E) (P)

### Homozygous Poll



Notes: Homozygous Polled Heifer from our Hayley family, her dam is a Levi daughter. Her Grand dam was only retired at 18 years of age a few weeks ago, so longevity is in her breeding. She is soft with volume and style.

### August 2023 Australasian Charolais BREEDPLAN Analysis

	CE DIR	CE DTR	GL	BW	200	400	600	MCW	MILK
EBV	+3.5	-0.5	-4.5	+0.4	+12	+27	+31	+33	+8
Acc	29%	26%	36%	37%	40%	38%	37%	35%	33%

SS	CW	EMA	RIB	RUMP	RBY	IMF	\$ INDEX VALUES	
+1.3	+22	+2.1	+0.4	+0.3	+0.4	-0.2	DTI	NMI
32%	32%	28%	30%	29%	28%	28%		

Purchaser..... Price \$.....



*Ascot  
Maximus M607E (P)*

*Progeny*



**Brendale Thunder T7E (P)(R/F)**  
Sold for \$16,000 to Yakka Grazing, Injune, Qld



**Brendale Raider (P)**  
Sold for \$17,000



**Brendale Quinnex (P)**  
Sold for \$16,000

- Trait Leader 400 Day Weight**
- Top 5% 200 and 600 Day Weight**
- Top 5% Milk EBVs**
- Top 5% Rib & Rump Fat EBVs**
- Top 10% IMF EBVs**
- Son of Ascot Juggernaut J134E (P)(R/F), Quadruple Trait Leader**

Maximus has stamped his progeny with high growth, tremendous muscle and his first daughters are now in production and we are extremely happy with their udder development. Maximus's dam is from the renowned Gobongo Juliette family. His grand dam was a donor of distinction in the Ascot program.



**Ascot Juggernaut J134E (AI)(P/S)(R/F)**  
**Sire of Ascot Maximus M607E (AI)(P/S)**  
**Beef Australia 2015 Grand Champion Bull**

August 2023 Australasian Charolais BREEDPLAN Analysis

	CE DIR	CE DTR	GL	BW	200	400	600	MCW	MILK
<b>EBV</b>	-8.2	-10.0	-4.0	+0.0	+22	+44	+62	+66	+14
<i>Acc</i>	49%	45%	72%	73%	73%	75%	71%	67%	64%
	SS	CW	EMA	RIB	RUMP	RBY	IMF	\$ INDEX VALUES	
	+1.9	+36	+2.2	+2.3	+3.5	-1.4	+0.7	DTI	NMI
	73%	65%	61%	64%	63%	63%	61%	+\$35	+\$56

**25 BRENDALE DUCHESS T83**

**BORN:** 25/11/2022

**TATTOO:** BS2 22T83E

ASCOT JUGGERNAUT J134E (JAJ J134E) (P)  
**SIRE:** ASCOT MAXIMUS M607E (JAJ M607E) (P/S)  
 ASCOT JULIETTE J143E (JAJ J143E) (P)

NOVOTEL (OAF S7519F)  
**DAM:** SUNSET DUCHESS 2 (JCM K3F)  
 SUNSET DUCHESS (JCM E30F)

ASCOT ELDORADO (JAJ E14E) (P)  
 PALGROVE ESTELLA 291 (PK D870E) (P)  
 LT RIO BRAVO 3181 P (OAU Y5507E) (P)  
 GOBONGO JULIETTE B43E (GO B43E) (P)  
 HASTING (OAF M149F)  
 DATCHA (PED -1456F)  
 COBRABALD OFFSHORE A23 (ASH A23F)  
 SUNSET DREAM GIRL SM (JCM A28F)

Notes: Horned heifer out of a full french Novotel cow, Brothers have sold to \$9000 with one doing stud duties. This heifer has plenty of volume and thickness. Remember, the heifers are catalogued in sire groups and therefore lot order is no reflection of the quality of the heifer.

Purchaser.....

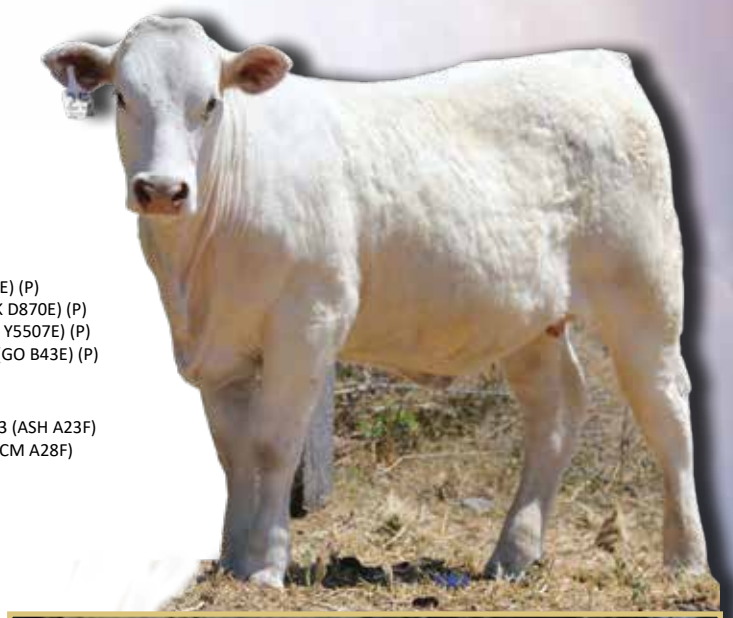
Price \$.....

**September 2023 Australasian Charolais BREEDPLAN Analysis**

	CE DIR	CE DTR	GL	BW	200	400	600	MCW	MILK
EBV	-5.9	-9.3	-2.7	+0.7	+20	+34	+48	+57	+9
Acc	34%	32%	50%	48%	56%	52%	51%	48%	42%

SS	CW	EMA	RIB	RUMP	RBY	IMF	\$ INDEX VALUES	
+1.2	+29	+2.4	+1.0	+1.4	-0.1	+0.1	DTI	NMI
45%	44%	39%	40%	40%	40%	38%	+\$29	+\$36



***Aim to succeed with Brendale genetics!***

*Signature*

*Wishing successful purchasers all the best with their selection from the Collection '23*



# AuctionsPlus

## How to Register and Bid on AuctionsPlus

- 1 Go to [www.auctionsplus.com.au](http://www.auctionsplus.com.au) to register at least 48 hours before the sale.
- 2 Select “**Sign Up**” in the top right hand corner.
- 3 Fill out your name, mobile number, email address and create a password.
- 4 Go to your emails and confirm the account.
- 5 Return to AuctionsPlus and log in.
- 6 Select “**Dashboard**” and then select “**Request Approval to Buy**”.
- 7 Fill in buyer details and once completed go back to Dashboard.
- 8 Complete buyer induction module (approx. 30 minutes).
- 9 AuctionsPlus will email you to let you know that your account has been approved.
- 10 Log in on sale day and connect to auction.
- 11 Bid using the two-step process – unlock the bid button and bid at that price.
- 12 If you are successful, the selling agent will contact you post sale to organise delivery and payment.

For more information please contact us on:

Phone: (02) 9262 4222

Email: [info@auctionsplus.com.au](mailto:info@auctionsplus.com.au)

# ***Brendale New Sires***

***Reids***

***Rancher R30E (P)/(R/F)***

**Homozygous Poll Red Factor Sire**

Super smooth, clean fronted homozygous poll red factor sire. Backed by the proven well known, Advance Gina family.



***4 Ways***

***MK S9E (P)***

**Homozygous Poll Sire**

Sired by Moongool Kakadu (AI)(P), a young sire with tremendous depth of body and shape.



***Mount William***

***Suregrip (P)/(R/F)***

**Poll Red Factor Sire**

Sired by Palgrove Hannibal (P)(R/F), Top 1% for EMA and IMF%, Top 5% Rib and Rump Fat. A sire with shape and growth. Purchased for \$22,000.

**Top 1% for EMA +3.7**

**Top 5% IMF% +1.0**



***Follow us on Facebook  
/BrendaleCharolais***



# BRENDALE

## CHAROLAIS



*Brendale offering Charolais Bulls in 2024*

**ADVANCE**

**ANNUAL BULL SALE**

**Roma: August 26<sup>th</sup>, 2024**

