



# Yanco Sheep Studs



**Eighth Annual Performance Ram Sale**

**11:00am EST Thursday 14th September 2023**

**On-Farm Helmsman Auction interfaced with Auctions Plus**

**51 WHITE SUFFOLK**

**10 POLL MERINO**

**PERFORMANCE RAMS**

**YANCO AGRICULTURAL HIGH SCHOOL**

**259 Euroley Road, Yanco, 2703**



Year 9 Animal Studies conducting structural assessments



Year 10 Animal Studies muscle and fat scanning lambs



Year 9 Agriculture weighing ewes



Year 10 Animal Management weighing ewes



Year 9 Animal Management halter training ewes



Year 11 Agriculture programming ewes for AI

# **YANCO SHEEP STUDS**

**EIGHTH ANNUAL**

## **PERFORMANCE RAM SALE**

**51 YANCO WHITE SUFFOLK RAMS**

(Est. 2003, Flock No. 524)

**10 YAHS POLL MERINO RAMS**

(Est. 2020, Flock No. 6009)

Held on-site, interfaced with Auctions Plus

### **Yanco Agricultural High School**

259 Euroley Road, Yanco, 2703

Thursday 14th September 2023  
11:00 am EST

Inspection prior to sale by appointment only during  
the week prior to the sale

Web site: <http://www.yancoag-h.schools.nsw.edu.au/agriculture-and-equine/yanco-white-suffolk-stud>

Contact: Ellie Quinn  
0429317738

Please call Ellie on her mobile to book an inspection time with at least 2 business days notice

## Sale Information

### **PRE – SALE INSPECTIONS:**

Please contact Ellie Quinn on 0429317738 to schedule an inspection.

### **RAM HEALTH:**

Yanco's White Suffolk Stud (Flock No. 0542) is an:

Accredited Ovine Brucellosis Free (Cert. No. Y478) Expiry: 30/04/2024

Accredited Ovine Johne's Disease MN3V (NS13071) Expiry: 30/04/2023  
(Pending reaccreditation)

A vendor declaration will be supplied for: Footrot Status

Lice

Shorn:

July 2023

Veterinarian Checked:

Full Ram Breeding Soundness Assessment performed by Colac Veterinary Services on 14<sup>th</sup> August 2023

### **LOT ORDER:**

All rams are lotted in birth order only, except for Lots 1 and 2 that were used as backup rams in the stud.

### **NOTE:**

Lambplan Data reported is from the 15<sup>th</sup> August 2023 run and Merinoselect data is from the 21<sup>st</sup> August 2023 run. Raw weights are from the 24<sup>th</sup> August 2023. Please access the Ramsselect webpage, Sheep Genetics catalogue and AuctionsPlus for the most up-to-date figures. Whilst all care is taken to ensure pedigrees and data are reported correctly, including verification of parentage using DNA, no responsibility is accepted for errors or omissions.

### **DELIVERY:**

Free delivery will be offered to purchasers who live within 100km of the School with a minimum purchase of 4 rams. Alternatively, pickup of rams can be organised by appointment by contacting Stud Manager, Ellie Quinn on 0429317738 or Farm Foreman on 0427498788.

### **AGENTS:**

**Breed and Hutchinson – Tim Hutchinson**

53-55 Pine Avenue, Leeton

Telephone: 02 69532555 Fax: 02 69532190

Email: [sales@breedandhutchinson.com.au](mailto:sales@breedandhutchinson.com.au)

Mobile: 0427 931 533

**Elders Narrandera – Jacob Kerrisk**

137/149 Audley Street, Narrandera

Telephone: 02 69599092 Fax: 02 69594891

Email: [narrandera@elders.com.au](mailto:narrandera@elders.com.au)

Mobile: 0457516070

## **Welcome to Yanco's Eighth Annual Ram Sale 2023**

Welcome to the Seventh Annual Yanco White Suffolk Performance Ram Sale.

Highlights of 2022 and 2023 include:

- In September 2022, Year 10 Animal Management hosted our seventh ram sale, interfaced with AuctionsPlus, clearing 100% clearance at an average of \$1805 and a top of \$15,025. The first Poll Merino sires were also offered for sale.
- Students in Year 10 Animal Management in 2023 assisted in selecting the sires for use in the 2023 AI program and continued this by assisting in implementing the AI program.
- The AI program continued to be a success with a 72% conception rate to the AI, and an overall pregnancy scanning rate of 155%. Lambs are currently on the ground from this program.

Yanco has on offer rams by leading White Suffolk Lambplan performance sires from across Australia. These include; SuperWhites Young Sires Ashmore 200997, Farrer 200044 and Felix 201156, industry leading sires Ashmore 170526 and Langley Heights 180231, and outcross sires, Maroola 205250 and Poll Dorset industry leading sires Linton 160625 and Hillcroft Farms 130156, as well as Yanco sires 150074 and 180035, all used in the AI program.

Poll Merino sires include Anderson 160390 and Trigger Vale 190039, as well as backup ram YAHS 210275.

Finally, thank you to the 2023 Year 9 and 10 Animal Studies students who have been actively involved in the direction and management of the stud. Their contributions include; sire selection, crutching, vaccinating, drenching, scoring, regular weight monitoring. We thank them for their commitment, effort and interest in striving to continually improve the Yanco White Suffolk and YAHS Poll Merino sheep and stud.

Ellie Quinn  
Stud Manager

Stuart McVittie  
Animal Studies Teacher

## **Sheep Structural Assessment**

The Yanco Sale rams have been structurally assessed in August 2023. The system uses the Researcher Version of Visual Sheep Scores developed by Australian Wool Innovation Limited (AWI) and Meat and Livestock Australia (MLA). All females have been and will continue to be structurally assessed to ensure the Yanco flock maintains a structurally sound breeding base. Any animals deemed inadequate will be culled.

The Visual Scores are reported alongside the animal data in the catalogue in 2023 and was conducted on the 1/8/2022. Please note, these are a snapshot score at that point in time. Some scores may change. All toe scores were performed prior to trimming of feet due to wet conditions.

### **How to use The Visual Sheep Scores**

The Sheep Structural Assessment System uses a 1-5 scoring system for each conformational trait. A score of 3 is usually ideal, with 2 and 4 being slight-moderate deviation from the ideal conformation and 1 and 5 being extremes of the trait. Yanco does not catalogue animals with these extreme conformational issues.

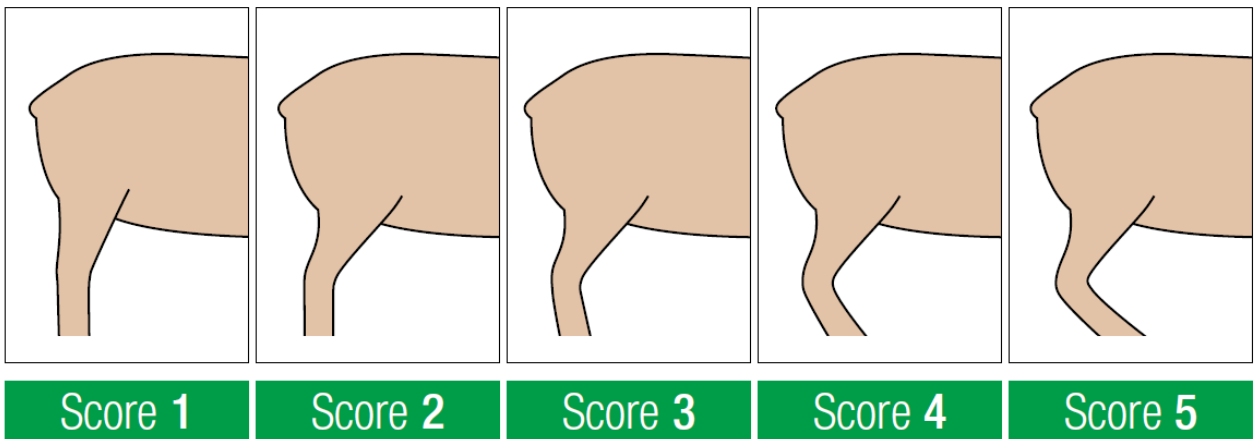
### **Hocks**

Hocks refers to the soundness of leg structure, in particular the angulation of the hocks joint.

Score 1: Very little or no hock angulation, i.e. post-legged

Score 3: Moderate hock angulation (ideal)

Score 5: Extreme hock angulation, i.e. sickle-hocked



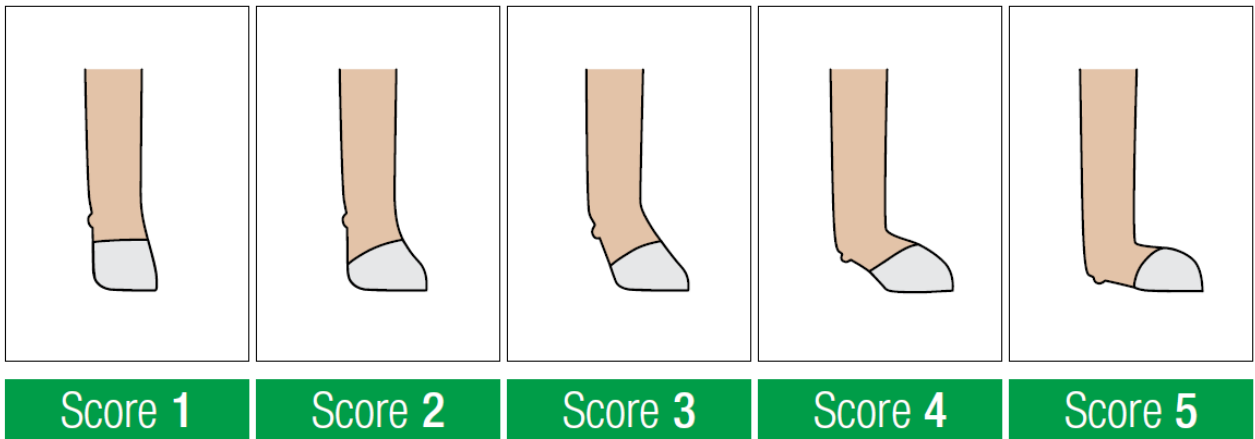
## **Pasterns**

Pastern refers to the soundness of structure, in particular the angulation of the pastern joint.

Score 1: Very little or no angulation of the pastern, i.e. walking on the front of the toe

Score 3: Moderate angulation of the pastern

Score 5: Extreme angulation of the pastern, i.e. pasterns resting on the ground



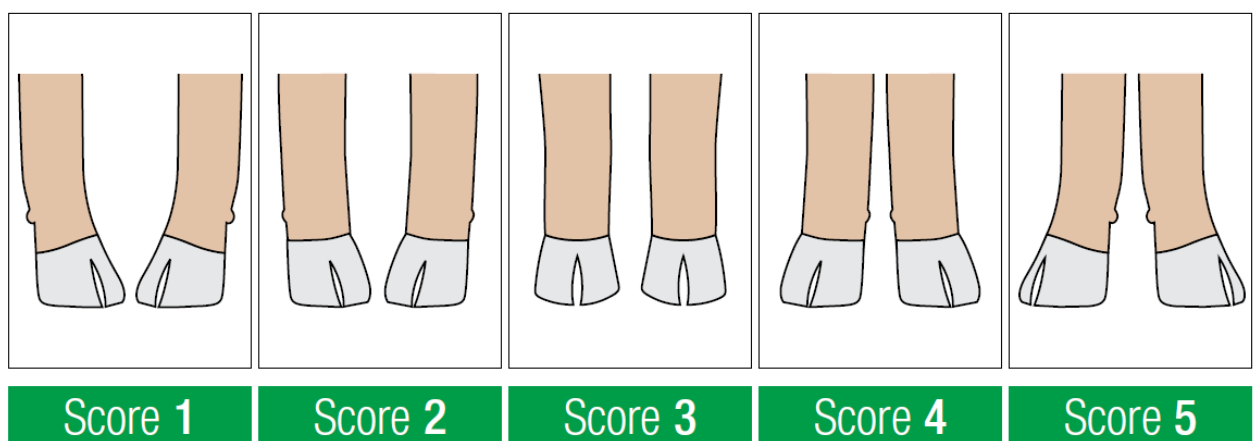
## **Front Legs**

Front legs refers to the soundness of leg structure, in particular the orientation of the front legs and feet.

Score 1: Extreme inward orientation (pigeon-toed) of the pasterns and feet

Score 3: Pastern and feet have no orientation, i.e. point squarely forward

Score 5: Extreme outward orientation (splayed) of the pasterns and feet



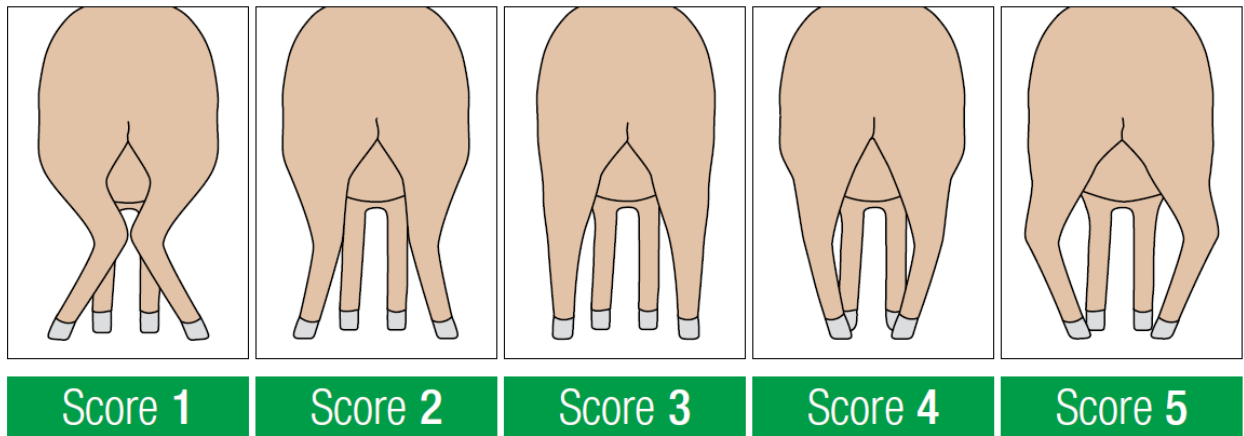
## Back Legs

Back legs refers to the soundness of the hind leg structure, in particular the orientation of the back legs and angulation of the hock joints in relation to the feet.

Score 1: Upper hind legs close together and orientate inwards; hocks touching and feet splayed; extreme angulation of hocks

Score 3: Good width of stance; straight hind legs that stand squarely over feet.

Score 5: Hind legs that 'bow' outwards at the hocks, pasterns and feet 'pigeon toed', extreme angulation of hocks



## Toes

Toes refers to the direction and the degree of the growth of the toes on all four feet.

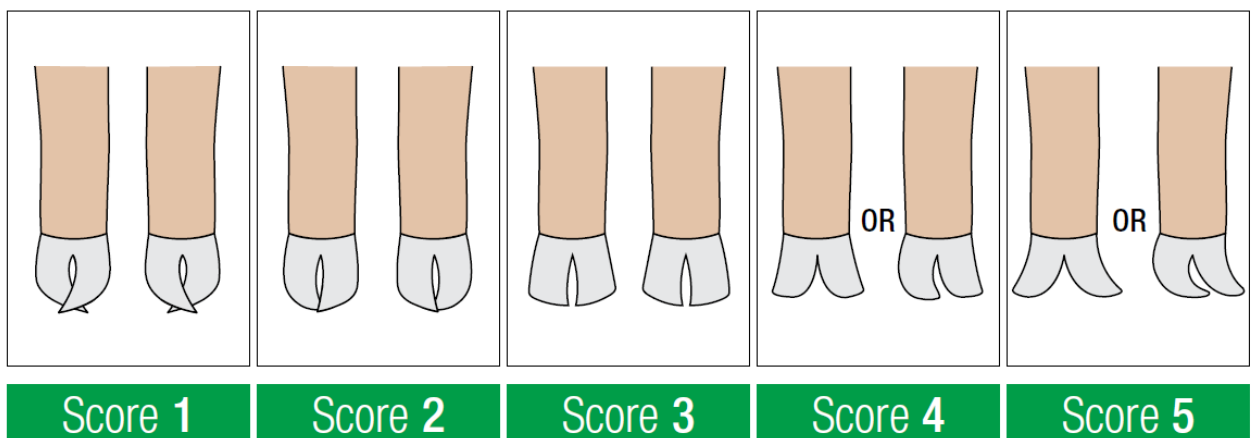
Score 1: Long or very long toes that curl severely inwards and crossover

Score 2: Long or very long toes that curl slightly inwards and touch.

Score 3: Toes growing straight and do not touch one another; are square and normal length.

Score 4: Long or very long toes that open slightly outwards or are slightly rolled over (either inward to outward).

Score 5: Long or very long toes that open severely outwards or are severely rolled over (either inward to outward).





## **Shoulders**

Shoulder refers to the soundness of the shoulder blades and their positioning in relation to the neck and spine.

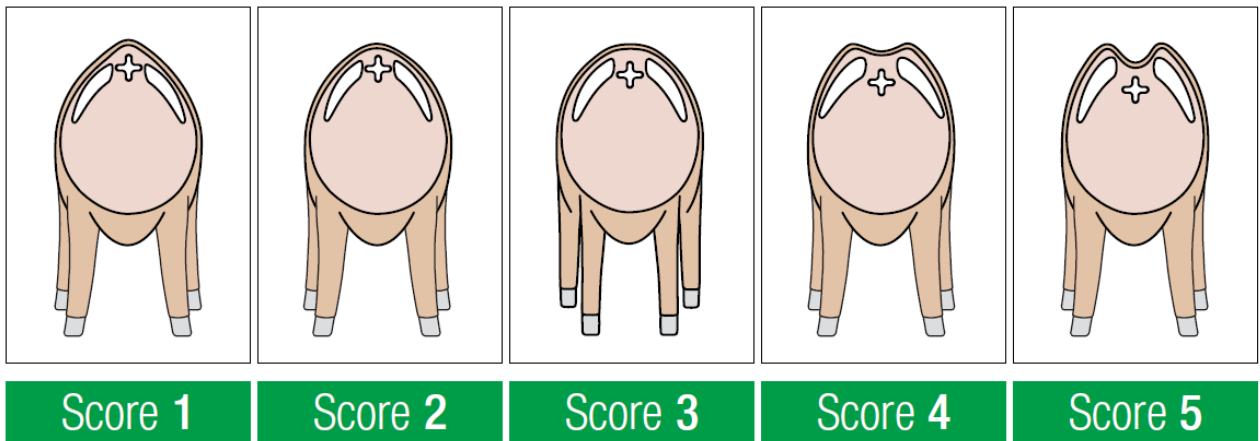
Score 1: Extremely low and narrow shoulder blades that create a sharp 'ridge' above the spine; back dips severely behind the shoulders.

Score 2: Shoulders positioned slightly below the spine to create a 'ridge'; back dips slightly behind the shoulders.

Score 3: Shoulder blades sit squarely either side of the spine i.e. no trough or ridge between the shoulders; back straight between shoulders and hips.

Score 4: Shoulders positioned slightly above the spine to create a 'trough' between the shoulder blades; back dips slightly behind the shoulders.

Score 5: Extremely high and wide shoulder blades that create a deep 'trough' above the spine; back dips severely behind the shoulders.



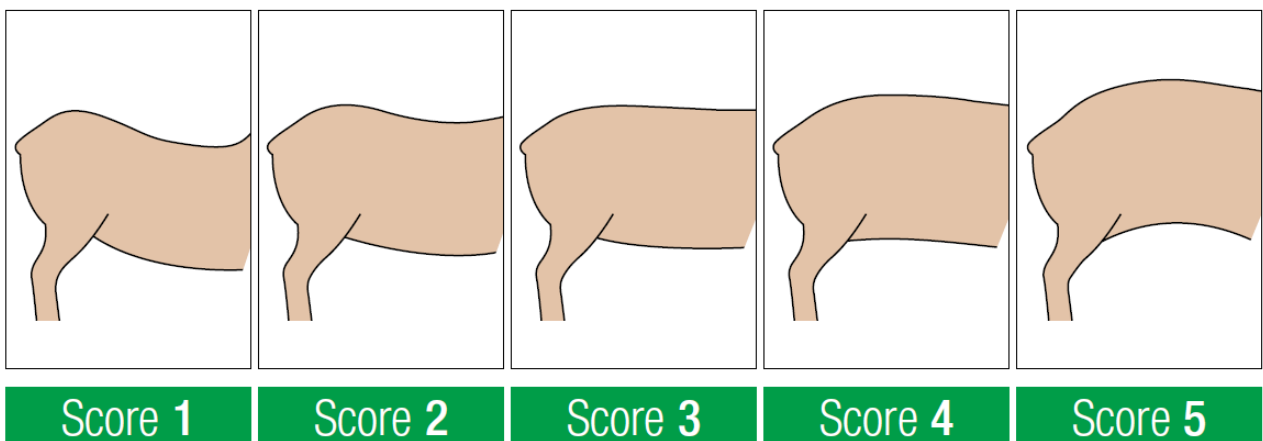
## **Back**

Back refers to the soundness of the back structure, in particular the degree of 'dip' or 'arch' in the sheep's backline.

Score 1: Extremely 'dipped' backline; back is severely swayed downwards.

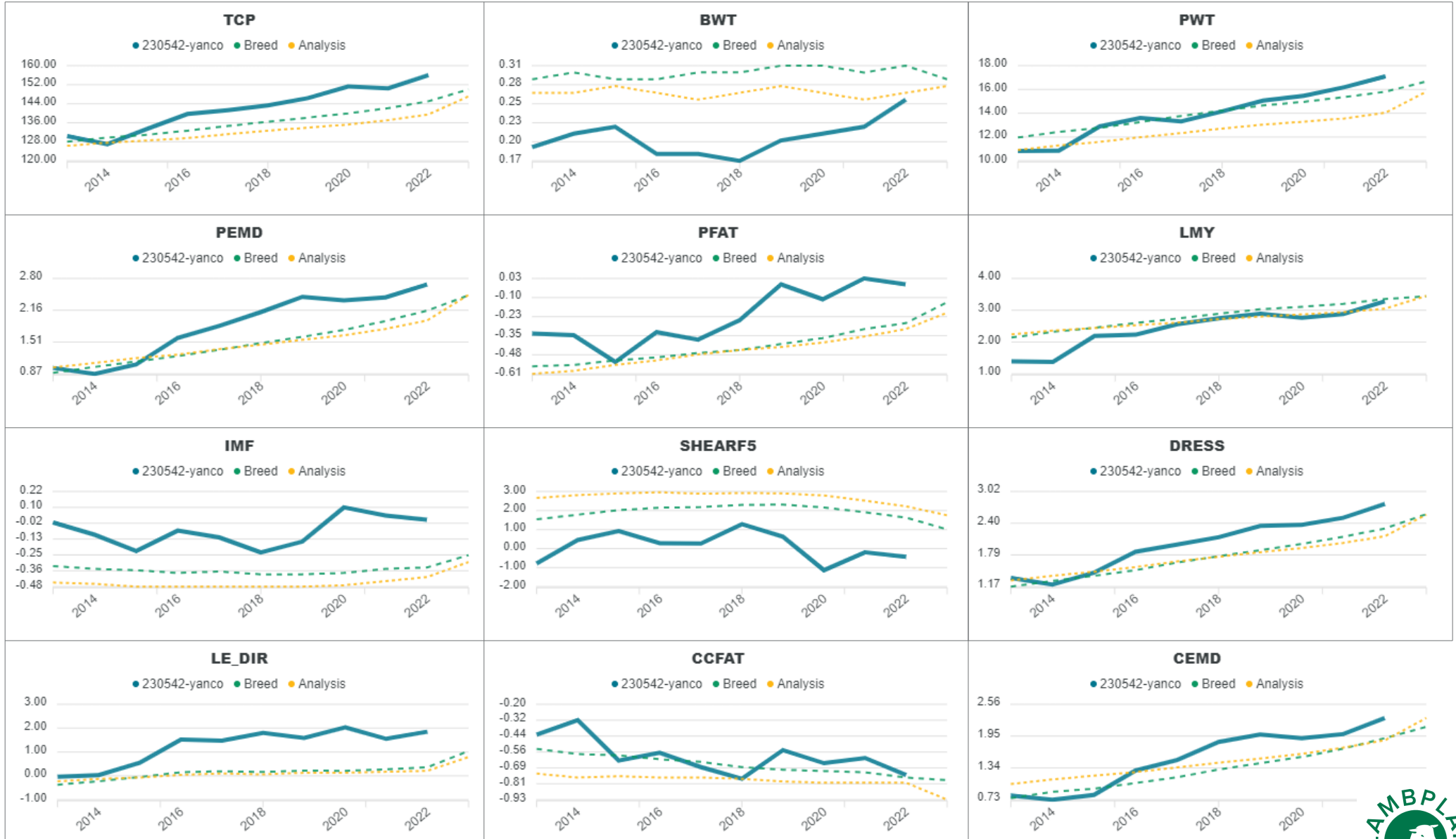
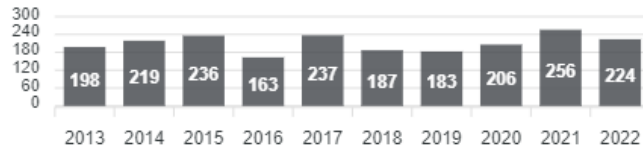
Score 3: Back straight between shoulders and hips.

Score 5: Extremely 'arched' backline; back is severely arched upwards.



**Report:** Genetic Trends  
**Analysis:** TERMINAL  
**Analysis date:** 15/08/2023  
**Flock code:** 230542  
**Flock name:** 230542-YANCO

**Total animals by drop**



Reports are prepared using data supplied by breeders and/or accredited operators. We cannot guarantee the accuracy of this data. ASBV's are designed to estimate genetic merit of animals from the data supplied. The reports are provided to assist breeders but no liability is accepted for the outcome resulting from the use of this information.



Report: Percentile Bands  
 Analysis: TERMINAL  
 Analysis date: 15/08/2023  
 Drop Year: 2022



Band	BWT	PWT	PEMD	PFAT	PWEC	LMY	IMF	SHEARF5	LEQ	TCP
1	-0.54	19.89	4.23	1.22	-68.22	5.47	0.36	-2.95	163.32	163.1
5	-0.27	18.43	3.57	0.65	-57.32	4.79	0.08	-1.32	156.14	158.03
10	0	17.68	3.23	0.41	-50.74	4.44	-0.03	-0.56	151.95	154.9
20	0.15	16.76	2.82	0.13	-42.42	4.04	-0.16	0.33	146.72	150.7
30	0.23	16.07	2.51	-0.06	-35.75	3.76	-0.25	0.98	142.81	147.42
40	0.28	15.43	2.24	-0.21	-29.62	3.51	-0.33	1.53	139.17	144.25
50	0.33	14.8	1.99	-0.35	-23.47	3.27	-0.41	2.09	135.68	141.13
60	0.37	14.06	1.73	-0.49	-17.03	3.02	-0.49	2.71	132.3	137.95
70	0.42	13.13	1.45	-0.63	-10.07	2.69	-0.57	3.46	129.17	134.51
80	0.47	11.83	1.13	-0.79	-1.34	2.24	-0.67	4.4	125.58	130.33
90	0.54	10	0.73	-1	11.12	1.54	-0.82	5.63	120.3	124.77

# LAMBPLAN terminal indexes

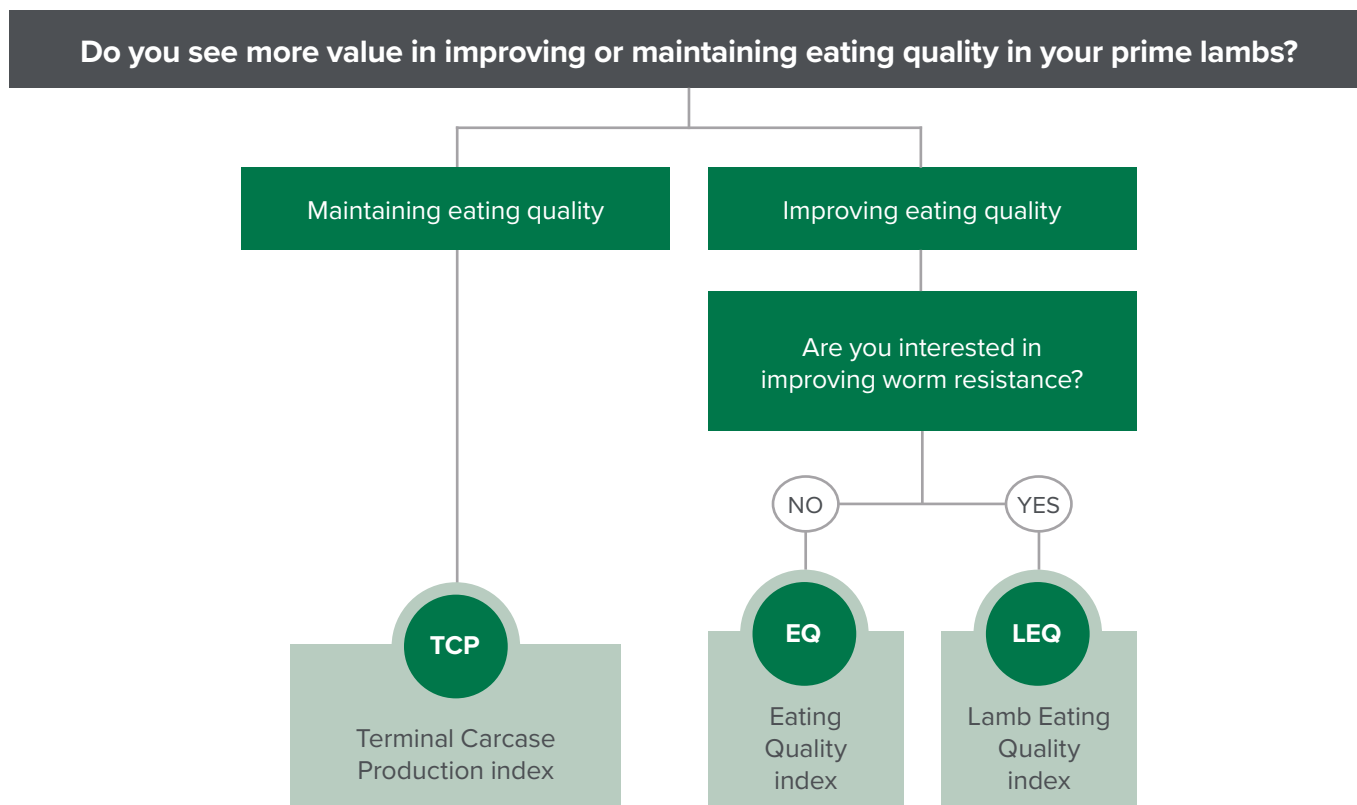
## A ram buyer's guide

Indexes help you select animals for use within a breeding program when there are many traits of importance.

Using indexes in your ram purchasing decisions allows you to make balanced genetic progress towards more profitable sheep. A ram with a higher index will produce progeny that are more profitable in that production system.

### Choosing the right index

The following flowchart helps producers determine the best index for their terminal production system:



### How to use the chosen index to assist in purchasing decisions:

#### Before the sale:

1. Rank animals in the sale on the value of your chosen index.
2. Consider the individual ASBVs which are important to you to create a short list of rams to look at on sale day.

#### At the sale:

3. Look through your short list of rams to find the ones that meet your structural and type requirements.

To assist in benchmarking sale rams relative to the current year drop of animals in the Sheep Genetics database, use the percentile band tables, which are found on the Sheep Genetics website: [sgsearch.sheepgenetics.org.au/Search/Percentiles.aspx?AnalysisId=2](https://sgsearch.sheepgenetics.org.au/Search/Percentiles.aspx?AnalysisId=2). The animals in the top 10th percentile rank the highest on the index, and those in the 90th percentile rank the lowest.

A brief overview of each of the indexes is included below. If you would like further information on how these selection indexes are generated, please refer to the *Terminal Indexes – ram breeder guide* at [sheepgenetics.org.au/Getting-started/ASBVs-and-Indexes](https://sheepgenetics.org.au/Getting-started/ASBVs-and-Indexes).

## Terminal Carcase Production (TCP)

The TCP index is for a prime lamb production system where terminal sires are joined to ewes of a Merino/maternal breed or cross. The TCP index focuses on increasing weight and muscle while reducing carcase fat. These are changes which contribute to higher lean meat yield. TCP also has emphasis on modest improvements in eating quality.

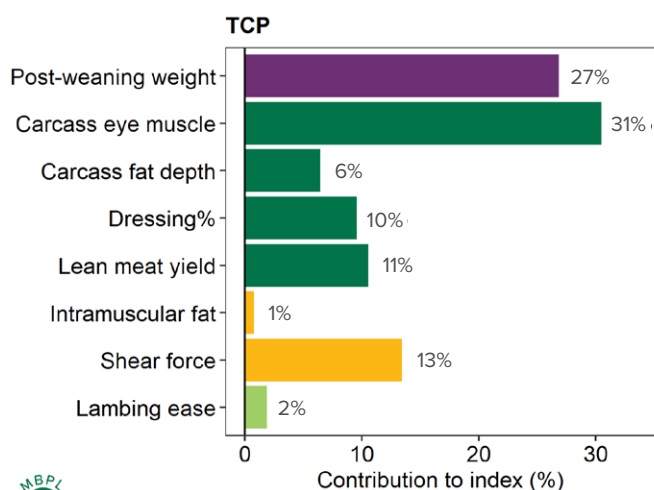
Typical trait changes for the TCP index include:

- increasing post weaning weight
- increasing carcase eye muscle depth
- decreasing carcase fat depth
- increasing dressing percentage
- increasing lean meat yield
- slightly improving eating quality
- improving lambing ease.

Sheep with better eating quality will have higher ASBVs for intramuscular fat (more marbling) and lower ASBVs for shear force (better tenderness).

Figure 1 illustrates which traits are in the index and how much they contribute to the overall balance of the index. The longer the bar, the greater the impact on the index, and the greater impact on the profitability of the production system.

**Figure 1: The traits in the TCP index and how they contribute to the overall balance of the index**



© Sheep Genetics 2022



## Eating Quality (EQ)

The EQ index is for a prime lamb operation where terminal sires are joined to ewes of a Merino/maternal breed or cross, and where producers are interested in improving the eating quality of their lambs to a greater degree than is possible with the TCP index. Because of the added emphasis on eating quality, there is less emphasis on growth and carcass traits, although they will still improve.

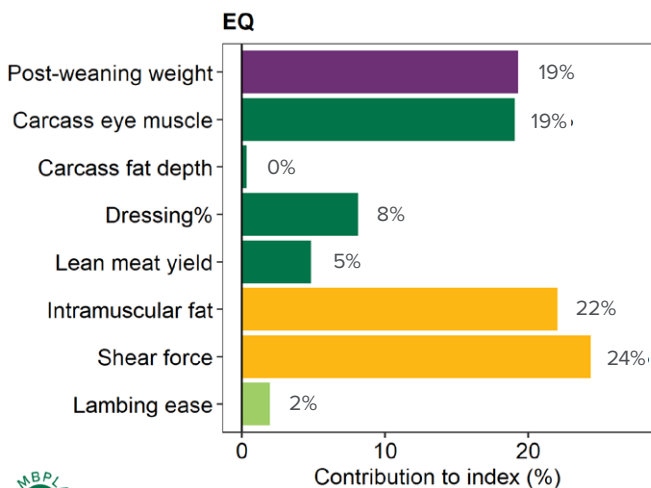
Typical trait changes for the EQ index include:

- increasing post weaning weight
- increasing eye muscle depth
- maintaining/small reduction in carcass fat
- increasing dressing percentage
- increasing lean meat yield
- large improvement in eating quality
- improving lambing ease.

Sheep with better eating quality will have higher ASBVs for intramuscular fat (more marbling) and lower ASBVs for shear force (better tenderness).

Figure 2 illustrates which traits are in the index and how much they contribute to the overall balance of the index. The longer the bar, the greater the impact on the index, and the greater impact on the profitability of the production system.

**Figure 2: The traits in the EQ index and how they contribute to the overall balance of the index**



© Sheep Genetics 2022

## Lamb Eating Quality (LEQ)

The LEQ index is for a prime lamb operation where terminal sires are joined to ewes of a Merino/maternal breed or cross in high rainfall and/or high input management systems where internal parasites may cause significant economic losses.

Producers who select this index are interested in improving the eating quality of their lambs to a greater degree than is possible with the TCP index. Growth and carcass traits will still improve, and inclusion of worm egg count will aid in control of internal parasites.

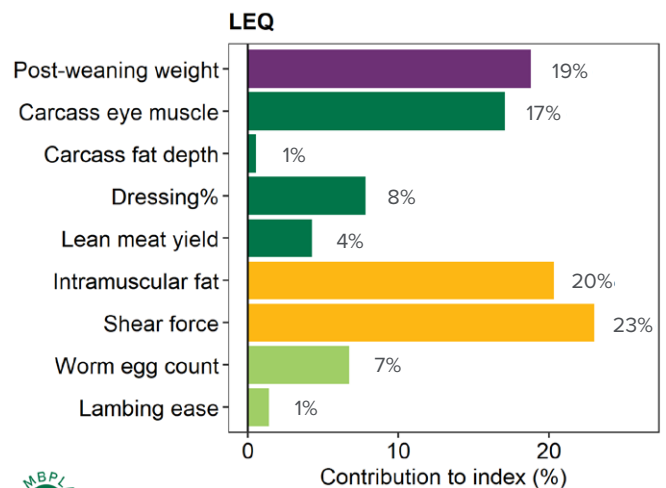
Typical trait changes for the LEQ index include:

- increasing post weaning weight
- increasing eye muscle depth
- maintaining/small reduction in carcass fat
- increasing dressing percentage
- increasing lean meat yield
- large improvement in eating quality
- improving lambing ease
- increasing resistance to worms.

Sheep with better eating quality will have higher ASBVs for intramuscular fat (more marbling) and lower ASBVs for shear force (better tenderness).

Figure 3 illustrates which traits are in the index and how much they contribute to the overall balance of the index. The longer the bar, the greater the impact on the index, and the greater impact on the profitability of the production system.

**Figure 3: The traits in the LEQ index and how they contribute to the overall balance of the index**



© Sheep Genetics 2022

Factsheet current as at September 2022

More information

02 8055 1818

info@sheepgenetics.org.au

www.sheepgenetics.org.au

# LOT 1: YANCO 220062

Sire:	LANGLEY HEIGHTS 180231	Date of Birth:	26/07/2022		
Dam:	YANCO 200104	Birth Type:	Twin	Rear Type:	2
SOD:	ASHMORE 170986	Raw Weight:	93.5 kgs on 24/08/2023		

ASBVs	BWT (kg)	WWT (kg)	PWT (kg)	PEMD (mm)	PFAT (mm)	PWEC (%)	LMY (%)	IMF (%)	SF5 (%)	TCP	LEQ
	0.28	12.67	19.22	2.40	0.02	-22.08	3.64	0.33	-1.11	158.15	162.94
Accuracy %	68%	70%	69%	71%	69%	60%	61%	56%	55%	55%	53%

Visual Scores	Front Pastern	Back Pastern	Front Legs	Back Legs	Front Toes	Back Toes	Hocks	Back	Shoulder	Grade
	2	2	3	3	3	2	2	3	3	1

# LOT 2: YANCO 220043

Sire:	LINTON 160625 (PD)	Date of Birth:	26/07/2022		
Dam:	YANCO 190006	Birth Type:	Twin	Rear Type:	2
SOD:	ASHMORE 170526	Raw Weight:	106 kgs on 24/08/2023		

ASBVs	BWT (kg)	WWT (kg)	PWT (kg)	PEMD (mm)	PFAT (mm)	PWEC (%)	LMY (%)	IMF (%)	SF5 (%)	TCP	LEQ
	0.33	12.45	19.49	2.32	-0.47	-21.38	3.70	0.44	-3.24	168.02	173.97
Accuracy %	68%	70%	69%	71%	69%	55%	62%	63%	61%	59%	58%

Visual Scores	Front Pastern	Back Pastern	Front Legs	Back Legs	Front Toes	Back Toes	Hocks	Back	Shoulder	Grade
	3	3	3	3	4	3	3	3	3	1

# LOT 3: YANCO 220010

Sire:	LANGLEY HEIGHTS 180231	Date of Birth:	25/07/2022		
Dam:	YANCO 190149	Birth Type:	Single	Rear Type:	1
SOD:	YANCO 180035	Raw Weight:	95.5 kgs on 24/08/2023		

ASBVs	BWT (kg)	WWT (kg)	PWT (kg)	PEMD (mm)	PFAT (mm)	PWEC (%)	LMY (%)	IMF (%)	SF5 (%)	TCP	LEQ
	0.23	10.56	16.18	3.71	-0.03	-14.50	4.02	0.26	-0.33	161.29	164.54
Accuracy %	67%	69%	69%	70%	69%	55%	61%	61%	59%	57%	56%

Visual Scores	Front Pastern	Back Pastern	Front Legs	Back Legs	Front Toes	Back Toes	Hocks	Back	Shoulder	Grade
	3	3	3	3	3	3	3	3	4	1

Top 5%
Top 10%
Top 20%
Top 30%

## LOT 4: YANCO 220014

Sire:	YANCO 180035	Date of Birth:	25/07/2022		
Dam:	YANCO 200011	Birth Type:	Triplet	Rear Type:	3
SOD:	FELIX 180850	Raw Weight:	97 kgs on 24/08/2023		

ASBVs	BWT (kg)	WWT (kg)	PWT (kg)	PEMD (mm)	PFAT (mm)	PWEC (%)	LMY (%)	IMF (%)	SF5 (%)	TCP	LEQ
	0.26	12.47	20.35	2.85	0.41	-13.80	3.94	0.05	-0.35	165.98	166.98
Accuracy %	65%	69%	67%	69%	68%	46%	59%	59%	56%	54%	53%

Visual Scores	Front Pastern	Back Pastern	Front Legs	Back Legs	Front Toes	Back Toes	Hocks	Back	Shoulder	Grade
	3	3	3	2	3	3	4	3	4	1

## LOT 5: YANCO 220115

Sire:	FARRER 200044	Date of Birth:	28/07/2022		
Dam:	YANCO 190078	Birth Type:	Single	Rear Type:	1
SOD:	FELIX 151229	Raw Weight:	92.5 kgs on 24/08/2023		

ASBVs	BWT (kg)	WWT (kg)	PWT (kg)	PEMD (mm)	PFAT (mm)	PWEC (%)	LMY (%)	IMF (%)	SF5 (%)	TCP	LEQ
	0.33	9.71	15.92	3.50	0.26	-38.10	2.78	0.03	-0.81	159.7	162.31
Accuracy %	69%	71%	70%	71%	69%	57%	60%	56%	55%	55%	53%

Visual Scores	Front Pastern	Back Pastern	Front Legs	Back Legs	Front Toes	Back Toes	Hocks	Back	Shoulder	Grade
	2	2	4	3	3	3	2	3	3	1

## LOT 6: YANCO 220028

Sire:	FARRER 200044	Date of Birth:	26/07/2022		
Dam:	YANCO 160017	Birth Type:	Twin	Rear Type:	2
SOD:	FARRER 140019	Raw Weight:	102.5 kgs on 24/08/2023		

ASBVs	BWT (kg)	WWT (kg)	PWT (kg)	PEMD (mm)	PFAT (mm)	PWEC (%)	LMY (%)	IMF (%)	SF5 (%)	TCP	LEQ
	0.06	10.47	17.92	3.05	0.12	-41.12	3.09	0.14	-1.67	163.91	168.33
Accuracy %	70%	72%	71%	72%	70%	57%	62%	56%	55%	56%	53%

Visual Scores	Front Pastern	Back Pastern	Front Legs	Back Legs	Front Toes	Back Toes	Hocks	Back	Shoulder	Grade
	3	3	3	3	2	2	3	3	4	1

Top 5%
Top 10%
Top 20%
Top 30%



## LOT 7: YANCO 220030

Sire:	FARRER 200044	Date of Birth:	25/07/2022		
Dam:	YANCO 200053	Birth Type:	Twin	Rear Type:	2
SOD:	GEMINI 170171	Raw Weight:	80 kgs on 24/08/2023		

ASBVs	BWT (kg)	WWT (kg)	PWT (kg)	PEMD (mm)	PFAT (mm)	PWEC (%)	LMY (%)	IMF (%)	SF5 (%)	TCP	LEQ
	0.31	11.04	17.37	2.93	-0.09	-50.43	3.48	-0.13	0.43	159.8	161.74
Accuracy %	67%	69%	68%	70%	68%	52%	58%	54%	52%	53%	50%

Visual Scores	Front Pastern	Back Pastern	Front Legs	Back Legs	Front Toes	Back Toes	Hocks	Back	Shoulder	Grade
	2	3	2	3	4	3	3	3	4	1

## LOT 8: YANCO 220031

Sire:	LINTON 160625 (PD)	Date of Birth:	26/07/2022		
Dam:	YANCO 180151	Birth Type:	Triplet	Rear Type:	1
SOD:	YANCO 170092 APP	Raw Weight:	95 kgs on 24/08/2023		

ASBVs	BWT (kg)	WWT (kg)	PWT (kg)	PEMD (mm)	PFAT (mm)	PWEC (%)	LMY (%)	IMF (%)	SF5 (%)	TCP	LEQ
	0.45	13.09	19.50	2.82	-0.23	24.80	4.06	-0.10	2.00	160.5	156.32
Accuracy %	68%	70%	69%	71%	69%	53%	62%	62%	60%	58%	57%

Visual Scores	Front Pastern	Back Pastern	Front Legs	Back Legs	Front Toes	Back Toes	Hocks	Back	Shoulder	Grade
	3	3	4	3	3	3	3	2	3	1

## LOT 9: YANCO 220036

Sire:	MARoola 205250	Date of Birth:	26/07/2022		
Dam:	YANCO 200146	Birth Type:	Twin	Rear Type:	2
SOD:	ELLA MATTA 170300	Raw Weight:	90.5 kgs on 24/08/2023		

ASBVs	BWT (kg)	WWT (kg)	PWT (kg)	PEMD (mm)	PFAT (mm)	PWEC (%)	LMY (%)	IMF (%)	SF5 (%)	TCP	LEQ
	0.36	11.07	18.28	3.64	0.66	13.75	3.82	-0.27	0.40	159.04	153.91
Accuracy %	67%	69%	68%	69%	68%	47%	58%	53%	51%	52%	49%

Visual Scores	Front Pastern	Back Pastern	Front Legs	Back Legs	Front Toes	Back Toes	Hocks	Back	Shoulder	Grade
	2	3	2	4	3	3	2	3	4	1

Top 5%

Top 10%

Top 20%

Top 30%

## LOT 10: YANCO 220048

Sire:	FARRER 200044	Date of Birth:	26/07/2022		
Dam:	YANCO 200082	Birth Type:	Twin	Rear Type:	2
SOD:	FARRER 140019	Raw Weight:	96.5 kgs on 24/08/2023		

ASBVs	BWT (kg)	WWT (kg)	PWT (kg)	PEMD (mm)	PFAT (mm)	PWEC (%)	LMY (%)	IMF (%)	SF5 (%)	TCP	LEQ
	0.29	11.40	18.65	2.54	-0.26	-54.48	3.51	0.13	-0.91	164.28	169.61
Accuracy %	67%	69%	68%	69%	68%	57%	58%	55%	53%	53%	51%

Visual Scores	Front Pastern	Back Pastern	Front Legs	Back Legs	Front Toes	Back Toes	Hocks	Back	Shoulder	Grade
	2	4	4	3	3	3	3	3	4	1

## LOT 11: YANCO 220050

Sire:	FARRER 200044	Date of Birth:	30/07/2022		
Dam:	YANCO 190165	Birth Type:	Triplet	Rear Type:	3
SOD:	YANCO 180140 APP	Raw Weight:	79.5 kgs on 24/08/2023		

ASBVs	BWT (kg)	WWT (kg)	PWT (kg)	PEMD (mm)	PFAT (mm)	PWEC (%)	LMY (%)	IMF (%)	SF5 (%)	TCP	LEQ
	0.19	10.96	18.92	4.02	0.89	-40.06	3.39	-0.24	-0.74	168.31	168.08
Accuracy %	67%	69%	68%	70%	68%	53%	58%	52%	50%	52%	49%

Visual Scores	Front Pastern	Back Pastern	Front Legs	Back Legs	Front Toes	Back Toes	Hocks	Back	Shoulder	Grade
	2	2	3	3	3	2	2	3	4	1

## LOT 12: YANCO 220057

Sire:	FARRER 200044	Date of Birth:	27/07/2022		
Dam:	YANCO 180036	Birth Type:	Triplet	Rear Type:	3
SOD:	HILLCROFT FARMS 130156 (PD)	Raw Weight:	100.5 kgs on 24/08/2023		

ASBVs	BWT (kg)	WWT (kg)	PWT (kg)	PEMD (mm)	PFAT (mm)	PWEC (%)	LMY (%)	IMF (%)	SF5 (%)	TCP	LEQ
	0.31	9.23	14.92	3.07	-0.20	-33.88	3.38	-0.29	0.04	154.61	153.43
Accuracy %	67%	69%	69%	70%	68%	55%	59%	54%	52%	53%	50%

Visual Scores	Front Pastern	Back Pastern	Front Legs	Back Legs	Front Toes	Back Toes	Hocks	Back	Shoulder	Grade
	2	3	4	2	3	2	3	3	3	1

Top 5%

Top 10%

Top 20%

Top 30%

# LOT 13: YANCO 220070

<b>Sire:</b>	FARRER 200044	<b>Date of Birth:</b>	27/07/2022		
<b>Dam:</b>	YANCO 180002	<b>Birth Type:</b>	Twin	<b>Rear Type:</b>	2
<b>SOD:</b>	FELIX 150721	<b>Raw Weight:</b>	98 kgs on 24/08/2023		

ASBVs	BWT (kg)	WWT (kg)	PWT (kg)	PEMD (mm)	PFAT (mm)	PWEC (%)	LMY (%)	IMF (%)	SF5 (%)	TCP	LEQ
	0.29	10.79	16.43	3.91	-0.41	-52.17	4.31	-0.43	1.46	161.26	160.01
<b>Accuracy %</b>	68%	70%	69%	70%	69%	56%	59%	54%	53%	54%	51%

Visual Scores	Front Pastern	Back Pastern	Front Legs	Back Legs	Front Toes	Back Toes	Hocks	Back	Shoulder	Grade
	2	3	3	3	3	3	3	3	3	1

# LOT 14: YANCO 220074

<b>Sire:</b>	MAROOOLA 205250	<b>Date of Birth:</b>	27/07/2022		
<b>Dam:</b>	RAMSAY PARK 188310	<b>Birth Type:</b>	Twin	<b>Rear Type:</b>	1
<b>SOD:</b>	RAMSAY PARK 177272	<b>Raw Weight:</b>	102 kgs on 24/08/2023		

ASBVs	BWT (kg)	WWT (kg)	PWT (kg)	PEMD (mm)	PFAT (mm)	PWEC (%)	LMY (%)	IMF (%)	SF5 (%)	TCP	LEQ
	0.40	11.73	18.84	2.84	0.53	-4.37	3.34	-0.19	1.61	153.19	150.49
<b>Accuracy %</b>	65%	68%	67%	70%	68%	39%	58%	50%	48%	50%	46%

Visual Scores	Front Pastern	Back Pastern	Front Legs	Back Legs	Front Toes	Back Toes	Hocks	Back	Shoulder	Grade
	2	3	3	3	3	3	2	2	4	1

# LOT 15: YANCO 220076

<b>Sire:</b>	MAROOOLA 205250	<b>Date of Birth:</b>	27/07/2022		
<b>Dam:</b>	RAMSAY PARK 188194	<b>Birth Type:</b>	Twin	<b>Rear Type:</b>	2
<b>SOD:</b>	SOMERSET 160067	<b>Raw Weight:</b>	99.5 kgs on 24/08/2023		

ASBVs	BWT (kg)	WWT (kg)	PWT (kg)	PEMD (mm)	PFAT (mm)	PWEC (%)	LMY (%)	IMF (%)	SF5 (%)	TCP	LEQ
	0.61	12.19	20.61	3.68	0.39	-30.05	4.95	-0.55	1.78	167.41	162.95
<b>Accuracy %</b>	68%	70%	69%	71%	70%	42%	60%	54%	52%	54%	50%

Visual Scores	Front Pastern	Back Pastern	Front Legs	Back Legs	Front Toes	Back Toes	Hocks	Back	Shoulder	Grade
	2	3	3	3	3	3	3	2	4	1

Top 5%
Top 10%
Top 20%
Top 30%

## LOT 16: YANCO 220079

Sire:	FELIX 201156	Date of Birth:	27/07/2022		
Dam:	YANCO 190102	Birth Type:	Twin	Rear Type:	2
SOD:	FELIX 151229	Raw Weight:	98.5 kgs on 24/08/2023		

ASBVs	BWT (kg)	WWT (kg)	PWT (kg)	PEMD (mm)	PFAT (mm)	PWEC (%)	LMY (%)	IMF (%)	SF5 (%)	TCP	LEQ
	0.31	12.04	19.07	1.71	0.61	-29.25	2.29	0.02	-1.51	154.7	156.63
Accuracy %	69%	71%	70%	71%	70%	58%	60%	54%	53%	54%	51%

Visual Scores	Front Pastern	Back Pastern	Front Legs	Back Legs	Front Toes	Back Toes	Hocks	Back	Shoulder	Grade
	3	3	4	3	3	2	2	3	3	1

## LOT 17: YANCO 220081

Sire:	HILLCROFT FARMS 130156 (PD)	Date of Birth:	30/07/2022		
Dam:	YANCO 210005	Birth Type:	Twin	Rear Type:	2
SOD:	FARRER 190111	Raw Weight:	97 kgs on 24/08/2023		

ASBVs	BWT (kg)	WWT (kg)	PWT (kg)	PEMD (mm)	PFAT (mm)	PWEC (%)	LMY (%)	IMF (%)	SF5 (%)	TCP	LEQ
	0.25	11.73	18.98	3.43	0.13	-31.12	4.37	-0.28	1.03	169.14	167.77
Accuracy %	67%	69%	68%	70%	68%	59%	61%	60%	59%	57%	56%

Visual Scores	Front Pastern	Back Pastern	Front Legs	Back Legs	Front Toes	Back Toes	Hocks	Back	Shoulder	Grade
	2	2	4	3	4	3	3	3	3	1

## LOT 18: YANCO 220083

Sire:	YANCO 180035	Date of Birth:	27/07/2022		
Dam:	YANCO 200130	Birth Type:	Twin	Rear Type:	2
SOD:	YANCO 190005	Raw Weight:	87.5 kgs on 24/08/2023		

ASBVs	BWT (kg)	WWT (kg)	PWT (kg)	PEMD (mm)	PFAT (mm)	PWEC (%)	LMY (%)	IMF (%)	SF5 (%)	TCP	LEQ
	0.16	10.68	16.87	3.30	0.59	-8.66	3.50	-0.13	1.24	156.67	155.06
Accuracy %	64%	68%	66%	69%	67%	43%	58%	58%	56%	54%	52%

Visual Scores	Front Pastern	Back Pastern	Front Legs	Back Legs	Front Toes	Back Toes	Hocks	Back	Shoulder	Grade
	2	3	3	2	3	2	3	3	4	1

Top 5%

Top 10%

Top 20%

Top 30%

## LOT 19: YANCO 220085

Sire:	MARoola 205250	Date of Birth:	27/07/2022		
Dam:	YANCO 200043	Birth Type:	Twin	Rear Type:	2
SOD:	ASHMORE 170986	Raw Weight:	73 kgs on 24/08/2023		

ASBVs	BWT (kg)	WWT (kg)	PWT (kg)	PEMD (mm)	PFAT (mm)	PWEC (%)	LMY (%)	IMF (%)	SF5 (%)	TCP	LEQ
	0.31	10.60	17.91	3.72	0.74	-6.80	3.88	-0.19	-0.36	161.3	159.04
Accuracy %	67%	68%	68%	70%	68%	45%	59%	53%	51%	52%	49%

Visual Scores	Front Pastern	Back Pastern	Front Legs	Back Legs	Front Toes	Back Toes	Hocks	Back	Shoulder	Grade
	3	3	3	3	3	3	3	3	4	1

## LOT 20: YANCO 220089

Sire:	LINTON 160625 (PD)	Date of Birth:	29/07/2022		
Dam:	YANCO 190104	Birth Type:	Triplet	Rear Type:	3
SOD:	FELIX 151229	Raw Weight:	90.5 kgs on 24/08/2023		

ASBVs	BWT (kg)	WWT (kg)	PWT (kg)	PEMD (mm)	PFAT (mm)	PWEC (%)	LMY (%)	IMF (%)	SF5 (%)	TCP	LEQ
	0.41	10.43	16.74	2.55	-0.74	-13.17	3.29	0.30	-4.41	165.48	169.23
Accuracy %	68%	70%	69%	70%	69%	57%	62%	63%	61%	59%	58%

Visual Scores	Front Pastern	Back Pastern	Front Legs	Back Legs	Front Toes	Back Toes	Hocks	Back	Shoulder	Grade
	3	3	4	3	4	2	3	3	4	1

## LOT 21: YANCO 220091

Sire:	YANCO 180035	Date of Birth:	27/07/2022		
Dam:	YANCO 200120	Birth Type:	Twin	Rear Type:	1
SOD:	GEMINI 170171	Raw Weight:	91.5 kgs on 24/08/2023		

ASBVs	BWT (kg)	WWT (kg)	PWT (kg)	PEMD (mm)	PFAT (mm)	PWEC (%)	LMY (%)	IMF (%)	SF5 (%)	TCP	LEQ
	0.31	10.65	17.26	2.14	-0.32	-6.08	3.29	0.04	-0.69	154.19	154.47
Accuracy %	64%	67%	66%	68%	66%	41%	58%	58%	55%	53%	52%

Visual Scores	Front Pastern	Back Pastern	Front Legs	Back Legs	Front Toes	Back Toes	Hocks	Back	Shoulder	Grade
	2	2	3	3	4	4	3	3	4	1

Top 5%

Top 10%

Top 20%

Top 30%

## LOT 22: YANCO 220095

Sire:	ASHMORE 200997	Date of Birth:	29/07/2022		
Dam:	YANCO 190125	Birth Type:	Triplet	Rear Type:	2
SOD:	FELIX 151229	Raw Weight:	88 kgs on 24/08/2023		

ASBVs	BWT (kg)	WWT (kg)	PWT (kg)	PEMD (mm)	PFAT (mm)	PWEC (%)	LMY (%)	IMF (%)	SF5 (%)	TCP	LEQ
	0.53	12.39	20.09	2.61	0.41	2.20	2.89	0.19	-1.85	159.92	161.03
Accuracy %	68%	70%	70%	71%	69%	57%	60%	53%	52%	54%	50%

Visual Scores	Front Pastern	Back Pastern	Front Legs	Back Legs	Front Toes	Back Toes	Hocks	Back	Shoulder	Grade
	3	3	4	3	3	3	3	3	3	1

## LOT 23: YANCO 220098

Sire:	LANGLEY HEIGHTS 180231	Date of Birth:	28/07/2022		
Dam:	YANCO 200114	Birth Type:	Twin	Rear Type:	2
SOD:	FELIX 180850	Raw Weight:	79 kgs on 24/08/2023		

ASBVs	BWT (kg)	WWT (kg)	PWT (kg)	PEMD (mm)	PFAT (mm)	PWEC (%)	LMY (%)	IMF (%)	SF5 (%)	TCP	LEQ
	0.21	10.20	16.89	2.70	0.52	-22.43	2.41	0.23	-2.72	156.6	160.27
Accuracy %	68%	69%	69%	70%	69%	60%	61%	55%	54%	55%	52%

Visual Scores	Front Pastern	Back Pastern	Front Legs	Back Legs	Front Toes	Back Toes	Hocks	Back	Shoulder	Grade
	3	3	3	3	4	3	2	3	3	1

## LOT 24: YANCO 220101

Sire:	YANCO 180035	Date of Birth:	28/07/2022		
Dam:	YANCO 200040	Birth Type:	Twin	Rear Type:	2
SOD:	FELIX 180850	Raw Weight:	107.5 kgs on 24/08/2023		

ASBVs	BWT (kg)	WWT (kg)	PWT (kg)	PEMD (mm)	PFAT (mm)	PWEC (%)	LMY (%)	IMF (%)	SF5 (%)	TCP	LEQ
	0.31	11.54	19.08	2.24	-0.52	-18.39	4.31	-0.25	-0.51	162.94	161.07
Accuracy %	65%	69%	67%	69%	68%	46%	59%	59%	57%	55%	53%

Visual Scores	Front Pastern	Back Pastern	Front Legs	Back Legs	Front Toes	Back Toes	Hocks	Back	Shoulder	Grade
	2	3	3	3	3	3	2	3	3	1

Top 5%

Top 10%

Top 20%

Top 30%

## LOT 25: YANCO 220113

Sire:	FARRER 200044	Date of Birth:	29/07/2022		
Dam:	YANCO 200027	Birth Type:	Triplet	Rear Type:	3
SOD:	FARRER 140019	Raw Weight:	110 kgs on 24/08/2023		

ASBVs	BWT (kg)	WWT (kg)	PWT (kg)	PEMD (mm)	PFAT (mm)	PWEC (%)	LMY (%)	IMF (%)	SF5 (%)	TCP	LEQ
	0.19	12.68	20.58	2.22	-0.80	-45.60	4.39	-0.38	1.77	162	161
Accuracy %	67%	69%	68%	69%	68%	56%	58%	54%	52%	53%	50%

Visual Scores	Front Pastern	Back Pastern	Front Legs	Back Legs	Front Toes	Back Toes	Hocks	Back	Shoulder	Grade
	2	3	3	3	3	2	3	3	4	1

## LOT 26: YANCO 220114

Sire:	FARRER 200044	Date of Birth:	28/07/2022		
Dam:	YANCO 200027	Birth Type:	Triplet	Rear Type:	1
SOD:	FARRER 140019	Raw Weight:	96.5 kgs on 24/08/2023		

ASBVs	BWT (kg)	WWT (kg)	PWT (kg)	PEMD (mm)	PFAT (mm)	PWEC (%)	LMY (%)	IMF (%)	SF5 (%)	TCP	LEQ
	0.19	11.10	17.53	2.97	-0.05	-47.12	3.39	-0.13	1.35	155.93	157.72
Accuracy %	67%	69%	68%	70%	68%	55%	58%	54%	53%	53%	51%

Visual Scores	Front Pastern	Back Pastern	Front Legs	Back Legs	Front Toes	Back Toes	Hocks	Back	Shoulder	Grade
	2	3	3	3	4	3	3	3	3	1

## LOT 27: YANCO 220123

Sire:	FELIX 201156	Date of Birth:	28/07/2022		
Dam:	YANCO 190140	Birth Type:	Twin	Rear Type:	2
SOD:	YANCO 180035	Raw Weight:	91 kgs on 24/08/2023		

ASBVs	BWT (kg)	WWT (kg)	PWT (kg)	PEMD (mm)	PFAT (mm)	PWEC (%)	LMY (%)	IMF (%)	SF5 (%)	TCP	LEQ
	0.23	12.33	19.14	2.59	0.54	-0.27	3.19	0.17	-0.25	156.82	158.06
Accuracy %	68%	70%	69%	71%	70%	54%	60%	53%	51%	53%	49%

Visual Scores	Front Pastern	Back Pastern	Front Legs	Back Legs	Front Toes	Back Toes	Hocks	Back	Shoulder	Grade
	2	3	3	4	3	3	3	2	4	1

Top 5%
Top 10%
Top 20%
Top 30%

## LOT 28: YANCO 220127

Sire:	FELIX 201156	Date of Birth:	30/07/2022		
Dam:	YANCO 200025	Birth Type:	Triplet	Rear Type:	3
SOD:	WOOLUMBOOL 173980	Raw Weight:	103 kgs on 24/08/2023		

ASBVs	BWT (kg)	WWT (kg)	PWT (kg)	PEMD (mm)	PFAT (mm)	PWEC (%)	LMY (%)	IMF (%)	SF5 (%)	TCP	LEQ
	0.23	11.76	18.49	1.97	-0.06	-19.88	3.17	0.12	-0.58	155.48	157.8
Accuracy %	68%	69%	69%	70%	69%	58%	59%	52%	51%	53%	49%

Visual Scores	Front Pastern	Back Pastern	Front Legs	Back Legs	Front Toes	Back Toes	Hocks	Back	Shoulder	Grade
	3	3	3	3	3	2	3	2	3	1

## LOT 29: YANCO 220133

Sire:	MAROOOLA 205250	Date of Birth:	28/07/2022		
Dam:	YANCO 190071	Birth Type:	Triplet	Rear Type:	3
SOD:	FARRER 170015	Raw Weight:	84.5 kgs on 24/08/2023		

ASBVs	BWT (kg)	WWT (kg)	PWT (kg)	PEMD (mm)	PFAT (mm)	PWEC (%)	LMY (%)	IMF (%)	SF5 (%)	TCP	LEQ
	0.28	11.10	17.17	3.07	0.12	-13.39	3.59	-0.41	0.64	156.57	152.23
Accuracy %	66%	68%	68%	70%	68%	43%	58%	53%	51%	53%	49%

Visual Scores	Front Pastern	Back Pastern	Front Legs	Back Legs	Front Toes	Back Toes	Hocks	Back	Shoulder	Grade
	3	3	3	3	3	2	3	3	4	1

## LOT 30: YANCO 220137

Sire:	FARRER 200044	Date of Birth:	29/07/2022		
Dam:	YANCO 200019	Birth Type:	Single	Rear Type:	1
SOD:	FARRER 140019	Raw Weight:	114 kgs on 24/08/2023		

ASBVs	BWT (kg)	WWT (kg)	PWT (kg)	PEMD (mm)	PFAT (mm)	PWEC (%)	LMY (%)	IMF (%)	SF5 (%)	TCP	LEQ
	0.48	12.46	20.20	1.96	-0.26	-54.90	3.68	-0.08	0.98	159.19	162.25
Accuracy %	66%	68%	68%	69%	68%	56%	58%	54%	52%	53%	50%

Visual Scores	Front Pastern	Back Pastern	Front Legs	Back Legs	Front Toes	Back Toes	Hocks	Back	Shoulder	Grade
	3	3	3	2	4	3	2	3	4	1

Top 5%

Top 10%

Top 20%

Top 30%



# LOT 31: YANCO 220138

Sire:	FARRER 200044	Date of Birth:	29/07/2022		
Dam:	YANCO 200096	Birth Type:	Single	Rear Type:	1
SOD:	ASHMORE 170986	Raw Weight:	98 kgs on 24/08/2023		

ASBVs	BWT (kg)	WWT (kg)	PWT (kg)	PEMD (mm)	PFAT (mm)	PWEC (%)	LMY (%)	IMF (%)	SF5 (%)	TCP	LEQ
	0.27	10.36	16.89	3.09	-0.26	-44.11	4.11	-0.05	1.10	157.97	160.43
Accuracy %	67%	68%	68%	69%	68%	56%	58%	54%	52%	53%	50%

Visual Scores	Front Pastern	Back Pastern	Front Legs	Back Legs	Front Toes	Back Toes	Hocks	Back	Shoulder	Grade
	2	3	4	3	3	3	3	3	4	1

# LOT 32: YANCO 220150

Sire:	FELIX 201156	Date of Birth:	29/07/2022		
Dam:	YANCO 190012	Birth Type:	Twin	Rear Type:	2
SOD:	FARRER 170015	Raw Weight:	92.5 kgs on 24/08/2023		

ASBVs	BWT (kg)	WWT (kg)	PWT (kg)	PEMD (mm)	PFAT (mm)	PWEC (%)	LMY (%)	IMF (%)	SF5 (%)	TCP	LEQ
	0.01	11.37	18.42	3.32	-0.45	-11.50	5.17	-0.34	2.16	163.65	160.18
Accuracy %	68%	70%	69%	71%	69%	56%	60%	52%	51%	53%	49%

Visual Scores	Front Pastern	Back Pastern	Front Legs	Back Legs	Front Toes	Back Toes	Hocks	Back	Shoulder	Grade
	3	3	3	2	3	3	3	3	3	1

# LOT 33: YANCO 220152

Sire:	FELIX 201156	Date of Birth:	29/07/2022		
Dam:	YANCO 190074	Birth Type:	Twin	Rear Type:	2
SOD:	FELIX 151229	Raw Weight:	93.5 kgs on 24/08/2023		

ASBVs	BWT (kg)	WWT (kg)	PWT (kg)	PEMD (mm)	PFAT (mm)	PWEC (%)	LMY (%)	IMF (%)	SF5 (%)	TCP	LEQ
	0.33	12.68	20.02	2.21	-0.15	-19.63	3.80	-0.31	1.97	156.96	154.34
Accuracy %	69%	71%	70%	71%	70%	58%	61%	54%	52%	54%	51%

Visual Scores	Front Pastern	Back Pastern	Front Legs	Back Legs	Front Toes	Back Toes	Hocks	Back	Shoulder	Grade
	3	3	3	3	4	4	3	3	4	1

Top 5%
Top 10%
Top 20%
Top 30%

## LOT 34: YANCO 220154

Sire:	FARRER 200044	Date of Birth:	29/07/2022		
Dam:	YANCO 200026	Birth Type:	Single	Rear Type:	1
SOD:	WOOLUMBOOL 173980	Raw Weight:	90.5 kgs on 24/08/2023		

ASBVs	BWT (kg)	WWT (kg)	PWT (kg)	PEMD (mm)	PFAT (mm)	PWEC (%)	LMY (%)	IMF (%)	SF5 (%)	TCP	LEQ
	0.28	9.46	15.74	3.45	-0.09	-53.79	3.55	0.16	-0.72	157.68	163.31
Accuracy %	67%	69%	68%	70%	68%	56%	59%	54%	52%	53%	50%

Visual Scores	Front Pastern	Back Pastern	Front Legs	Back Legs	Front Toes	Back Toes	Hocks	Back	Shoulder	Grade
	2	3	4	3	3	2	3	3	3	1

## LOT 35: YANCO 220155

Sire:	LINTON 160625 (PD)	Date of Birth:	30/07/2022		
Dam:	YANCO 200018	Birth Type:	Single	Rear Type:	1
SOD:	WOOLUMBOOL 173980	Raw Weight:	114.5 kgs on 24/08/2023		

ASBVs	BWT (kg)	WWT (kg)	PWT (kg)	PEMD (mm)	PFAT (mm)	PWEC (%)	LMY (%)	IMF (%)	SF5 (%)	TCP	LEQ
	0.30	11.22	17.51	3.12	-0.04	-30.58	2.96	0.43	-3.42	165.88	172.3
Accuracy %	65%	67%	66%	65%	66%	56%	61%	61%	60%	57%	56%

Visual Scores	Front Pastern	Back Pastern	Front Legs	Back Legs	Front Toes	Back Toes	Hocks	Back	Shoulder	Grade
	3	2	3	3	3	3	3	3	4	1

## LOT 36: YANCO 220156

Sire:	LINTON 160625 (PD)	Date of Birth:	30/07/2022		
Dam:	YANCO 200046	Birth Type:	Single	Rear Type:	1
SOD:	ASHMORE 170986	Raw Weight:	95 kgs on 24/08/2023		

ASBVs	BWT (kg)	WWT (kg)	PWT (kg)	PEMD (mm)	PFAT (mm)	PWEC (%)	LMY (%)	IMF (%)	SF5 (%)	TCP	LEQ
	0.44	11.14	17.90	3.36	0.27	-24.27	2.56	0.58	-5.01	169.16	176.78
Accuracy %	69%	70%	70%	71%	69%	58%	63%	64%	62%	60%	59%

Visual Scores	Front Pastern	Back Pastern	Front Legs	Back Legs	Front Toes	Back Toes	Hocks	Back	Shoulder	Grade
	3	3	3	3	3	3	3	3	3	1

Top 5%
Top 10%
Top 20%
Top 30%

## LOT 37: YANCO 220159

Sire:	FELIX 201156	Date of Birth:	30/07/2022		
Dam:	YANCO 190105	Birth Type:	Single	Rear Type:	1
SOD:	FELIX 151229	Raw Weight:	106 kgs on 24/08/2023		

ASBVs	BWT (kg)	WWT (kg)	PWT (kg)	PEMD (mm)	PFAT (mm)	PWEC (%)	LMY (%)	IMF (%)	SF5 (%)	TCP	LEQ
	0.38	13.09	19.19	2.60	0.46	-31.10	3.29	-0.08	0.96	156.98	157.78
Accuracy %	68%	70%	69%	68%	68%	58%	59%	53%	52%	53%	50%

Visual Scores	Front Pastern	Back Pastern	Front Legs	Back Legs	Front Toes	Back Toes	Hocks	Back	Shoulder	Grade
	2	2	4	2	3	2	2	3	3	1

## LOT 38: YANCO 220160

Sire:	YANCO 150074 APP	Date of Birth:	30/07/2022		
Dam:	YANCO 210080	Birth Type:	Single	Rear Type:	1
SOD:	ELLA MATTA 190030	Raw Weight:	86 kgs on 24/08/2023		

ASBVs	BWT (kg)	WWT (kg)	PWT (kg)	PEMD (mm)	PFAT (mm)	PWEC (%)	LMY (%)	IMF (%)	SF5 (%)	TCP	LEQ
	0.22	9.75	14.97	1.22	-0.43	-17.09	3.01	0.24	-0.51	144.35	148.05
Accuracy %	65%	68%	67%	68%	67%	48%	58%	56%	54%	53%	51%

Visual Scores	Front Pastern	Back Pastern	Front Legs	Back Legs	Front Toes	Back Toes	Hocks	Back	Shoulder	Grade
	2	3	4	3	3	3	3	3	3	1

## LOT 39: YANCO 220167

Sire:	FELIX 201156	Date of Birth:	31/07/2022		
Dam:	YANCO 180175	Birth Type:	Triplet	Rear Type:	3
SOD:	YANCO 160003	Raw Weight:	100.5 kgs on 24/08/2023		

ASBVs	BWT (kg)	WWT (kg)	PWT (kg)	PEMD (mm)	PFAT (mm)	PWEC (%)	LMY (%)	IMF (%)	SF5 (%)	TCP	LEQ
	0.34	12.14	19.90	2.09	-0.28	-18.01	3.24	-0.09	-0.54	159.22	159.17
Accuracy %	68%	70%	69%	71%	69%	55%	60%	53%	51%	53%	49%

Visual Scores	Front Pastern	Back Pastern	Front Legs	Back Legs	Front Toes	Back Toes	Hocks	Back	Shoulder	Grade
	3	3	3	3	3	2	3	3	4	1

Top 5%

Top 10%

Top 20%

Top 30%

## LOT 40: YANCO 220186

Sire:	YANCO 210112	Date of Birth:	30/07/2022		
Dam:	YANCO 200010	Birth Type:	Twin	Rear Type:	2
SOD:	FELIX 180850	Raw Weight:	90.5 kgs on 24/08/2023		

ASBVs	BWT (kg)	WWT (kg)	PWT (kg)	PEMD (mm)	PFAT (mm)	PWEC (%)	LMY (%)	IMF (%)	SF5 (%)	TCP	LEQ
	0.04	9.84	16.24	3.60	0.99	-17.66	2.41	0.35	-1.69	156.88	161.51
Accuracy %	61%	64%	63%	66%	64%	46%	54%	50%	48%	48%	46%

Visual Scores	Front Pastern	Back Pastern	Front Legs	Back Legs	Front Toes	Back Toes	Hocks	Back	Shoulder	Grade
	2	3	3	3	4	3	3	3	4	1

## LOT 41: YANCO 220190

Sire:	YANCO 210112	Date of Birth:	15/08/2022		
Dam:	YANCO 170143	Birth Type:	Triplet	Rear Type:	3
SOD:	YANCO 160047	Raw Weight:	77.5 kgs on 24/08/2023		

ASBVs	BWT (kg)	WWT (kg)	PWT (kg)	PEMD (mm)	PFAT (mm)	PWEC (%)	LMY (%)	IMF (%)	SF5 (%)	TCP	LEQ
	0.21	9.59	15.86	2.02	0.28	-17.48	1.73	0.42	-2.72	148.37	153.81
Accuracy %	63%	66%	65%	67%	65%	46%	55%	50%	49%	50%	47%

Visual Scores	Front Pastern	Back Pastern	Front Legs	Back Legs	Front Toes	Back Toes	Hocks	Back	Shoulder	Grade
	2	3	3	2	3	3	3	2	4	1

## LOT 42: YANCO 220191

Sire:	YANCO 210112	Date of Birth:	15/08/2022		
Dam:	YANCO 170143	Birth Type:	Triplet	Rear Type:	3
SOD:	YANCO 160047	Raw Weight:	88.5 kgs on 24/08/2023		

ASBVs	BWT (kg)	WWT (kg)	PWT (kg)	PEMD (mm)	PFAT (mm)	PWEC (%)	LMY (%)	IMF (%)	SF5 (%)	TCP	LEQ
	0.04	9.14	16.75	2.70	0.44	-7.54	2.26	0.03	-2.24	152.73	153.04
Accuracy %	64%	67%	66%	65%	65%	46%	56%	51%	50%	51%	47%

Visual Scores	Front Pastern	Back Pastern	Front Legs	Back Legs	Front Toes	Back Toes	Hocks	Back	Shoulder	Grade
	3	3	3	3	2	4	2	3	4	1

Top 5%

Top 10%

Top 20%

Top 30%

## LOT 43: YANCO 220192

Sire:	YANCO 210022	Date of Birth:	17/08/2022		
Dam:	YANCO 190124	Birth Type:		Rear Type:	4
SOD:	FELIX 151229	Raw Weight:	77.5 kgs on 24/08/2023		

ASBVs	BWT (kg)	WWT (kg)	PWT (kg)	PEMD (mm)	PFAT (mm)	PWEC (%)	LMY (%)	IMF (%)	SF5 (%)	TCP	LEQ
	0.44	9.98	15.70	1.62	-0.67	-43.79	3.47	-0.18	0.70	148.86	149.87
Accuracy %	60%	62%	62%	64%	62%	45%	54%	48%	47%	48%	45%

Visual Scores	Front Pastern	Back Pastern	Front Legs	Back Legs	Front Toes	Back Toes	Hocks	Back	Shoulder	Grade
	2	4	4	3	3	2	4	3	2	1

## LOT 44: YANCO 220194

Sire:	YANCO 210022	Date of Birth:	17/08/2022		
Dam:	YANCO 190124	Birth Type:		Rear Type:	4
SOD:	FELIX 151229	Raw Weight:	75 kgs on 24/08/2023		

ASBVs	BWT (kg)	WWT (kg)	PWT (kg)	PEMD (mm)	PFAT (mm)	PWEC (%)	LMY (%)	IMF (%)	SF5 (%)	TCP	LEQ
	0.53	10.72	17.18	2.56	-0.07	-45.94	3.48	0.14	-1.05	157.86	162.48
Accuracy %	62%	65%	64%	67%	64%	47%	55%	51%	49%	49%	47%

Visual Scores	Front Pastern	Back Pastern	Front Legs	Back Legs	Front Toes	Back Toes	Hocks	Back	Shoulder	Grade
	2	4	4	3	3	3	3	3	3	1

## LOT 45: YANCO 220196

Sire:	YANCO 210088	Date of Birth:	22/08/2022		
Dam:	YANCO 190106	Birth Type:	Twin	Rear Type:	2
SOD:	FELIX 151229	Raw Weight:	94.5 kgs on 24/08/2023		

ASBVs	BWT (kg)	WWT (kg)	PWT (kg)	PEMD (mm)	PFAT (mm)	PWEC (%)	LMY (%)	IMF (%)	SF5 (%)	TCP	LEQ
	0.67	13.25	19.26	1.82	-1.02	-30.09	4.52	-0.24	1.70	158.15	157.2
Accuracy %	62%	65%	64%	66%	64%	48%	54%	51%	49%	49%	47%

Visual Scores	Front Pastern	Back Pastern	Front Legs	Back Legs	Front Toes	Back Toes	Hocks	Back	Shoulder	Grade
	2	3	3	2	3	3	2	3	4	1

Top 5%

Top 10%

Top 20%

Top 30%

## LOT 46: YANCO 220205

Sire:	YANCO 210088	Date of Birth:	29/08/2022		
Dam:	YANCO 160020	Birth Type:	Twin	Rear Type:	2
SOD:	FARRER 140019	Raw Weight:	89.5 kgs on 24/08/2023		

ASBVs	BWT (kg)	WWT (kg)	PWT (kg)	PEMD (mm)	PFAT (mm)	PWEC (%)	LMY (%)	IMF (%)	SF5 (%)	TCP	LEQ
	0.16	9.09	14.30	1.04	-0.80	-20.19	2.25	0.31	0.10	140.8	145.5
Accuracy %	63%	66%	65%	67%	65%	48%	56%	53%	51%	50%	48%

Visual Scores	Front Pastern	Back Pastern	Front Legs	Back Legs	Front Toes	Back Toes	Hocks	Back	Shoulder	Grade
	2	3	3	3	2	2	3	3	4	1

## LOT 47: YANCO 220206

Sire:	YANCO 210088	Date of Birth:	29/08/2022		
Dam:	YANCO 160020	Birth Type:	Twin	Rear Type:	2
SOD:	FARRER 140019	Raw Weight:	97 kgs on 24/08/2023		

ASBVs	BWT (kg)	WWT (kg)	PWT (kg)	PEMD (mm)	PFAT (mm)	PWEC (%)	LMY (%)	IMF (%)	SF5 (%)	TCP	LEQ
	0.22	9.84	15.01	1.02	-0.81	-24.06	2.37	0.41	-1.11	145.72	151.75
Accuracy %	63%	66%	65%	67%	65%	49%	56%	53%	51%	50%	48%

Visual Scores	Front Pastern	Back Pastern	Front Legs	Back Legs	Front Toes	Back Toes	Hocks	Back	Shoulder	Grade
	3	3	3	2	4	3	3	3	4	1

## LOT 48: YANCO 220208

Sire:	YANCO 210112	Date of Birth:	30/07/2022		
Dam:	YANCO 190098	Birth Type:	Twin	Rear Type:	2
SOD:	ASHMORE 170526	Raw Weight:	73 kgs on 24/08/2023		

ASBVs	BWT (kg)	WWT (kg)	PWT (kg)	PEMD (mm)	PFAT (mm)	PWEC (%)	LMY (%)	IMF (%)	SF5 (%)	TCP	LEQ
	-0.05	7.64	13.24	2.83	-0.18	-21.13	2.32	0.12	-0.58	144.63	147.15
Accuracy %	63%	66%	64%	66%	64%	46%	54%	52%	50%	49%	47%

Visual Scores	Front Pastern	Back Pastern	Front Legs	Back Legs	Front Toes	Back Toes	Hocks	Back	Shoulder	Grade
	2	3	3	3	3	2	3	3	4	1

Top 5%

Top 10%

Top 20%

Top 30%

## LOT 49: YANCO 220210

Sire:	YANCO 210088	Date of Birth:	30/08/2022		
Dam:	YANCO 200041	Birth Type:	Twin	Rear Type:	2
SOD:	ASHMORE 170986	Raw Weight:	85.5 kgs on 24/08/2023		

ASBVs	BWT (kg)	WWT (kg)	PWT (kg)	PEMD (mm)	PFAT (mm)	PWEC (%)	LMY (%)	IMF (%)	SF5 (%)	TCP	LEQ
	0.44	11.84	18.06	2.33	-0.53	-29.58	3.86	0.18	-0.01	157.14	160.9
Accuracy %	61%	64%	64%	66%	63%	47%	53%	51%	49%	49%	47%

Visual Scores	Front Pastern	Back Pastern	Front Legs	Back Legs	Front Toes	Back Toes	Hocks	Back	Shoulder	Grade
	2	3	3	2	4	3	3	3	3	1

## LOT 50: YANCO 220211

Sire:	YANCO 210088	Date of Birth:	30/08/2022		
Dam:	YANCO 200041	Birth Type:	Twin	Rear Type:	2
SOD:	ASHMORE 170986	Raw Weight:	86.5 kgs on 24/08/2023		

ASBVs	BWT (kg)	WWT (kg)	PWT (kg)	PEMD (mm)	PFAT (mm)	PWEC (%)	LMY (%)	IMF (%)	SF5 (%)	TCP	LEQ
	0.42	11.73	18.13	2.14	-0.34	-22.18	3.65	0.21	0.37	154.25	157.73
Accuracy %	61%	64%	64%	66%	64%	47%	54%	51%	49%	49%	47%

Visual Scores	Front Pastern	Back Pastern	Front Legs	Back Legs	Front Toes	Back Toes	Hocks	Back	Shoulder	Grade
	2	3	3	2	4	2	3	3	3	1

## LOT 51: YANCO 220214

Sire:	YANCO 210112	Date of Birth:	02/09/2022		
Dam:	YANCO 210154	Birth Type:	Twin	Rear Type:	2
SOD:	WOOLUMBOOL 173980	Raw Weight:	73.5 kgs on 24/08/2023		

ASBVs	BWT (kg)	WWT (kg)	PWT (kg)	PEMD (mm)	PFAT (mm)	PWEC (%)	LMY (%)	IMF (%)	SF5 (%)	TCP	LEQ
	0.03	9.15	15.41	2.95	0.82	-20.68	2.06	0.08	-0.98	147.04	148.92
Accuracy %	64%	66%	65%	67%	65%	49%	55%	53%	52%	51%	49%

Visual Scores	Front Pastern	Back Pastern	Front Legs	Back Legs	Front Toes	Back Toes	Hocks	Back	Shoulder	Grade
	2	2	3	2	3	3	3	3	4	1

Top 5%

Top 10%

Top 20%

Top 30%

## Ram Buyer Guide:

# 2023 MERINOSELECT Research Indexes

---

### Overview:

This document is targeted at Ram Buyers that are seeking an overview of the MERINOSELECT Research Indexes and how they can use them.

### Contents:

1. How to use indexes to assist in purchasing decisions
2. Introducing the MERINOSELECT research indexes
3. Choosing the right index

## 1. How to use the chosen index to assist in purchasing decisions

### Before the sale:

1. Rank animals in the sale on the value of your chosen index.
2. Consider the individual ASBVs which are important to you to create a short list of rams to look at on sale day.

### At the sale:

3. Look through your short list of rams to find the ones that meet your structural and type requirements.



## 2. Introducing the MERINOSELECT research indexes

There are five MERINOSELECT research indexes, each representing a different breeding objective and production system. The dots in the following table depict the relative trait importance in each of the indexes.

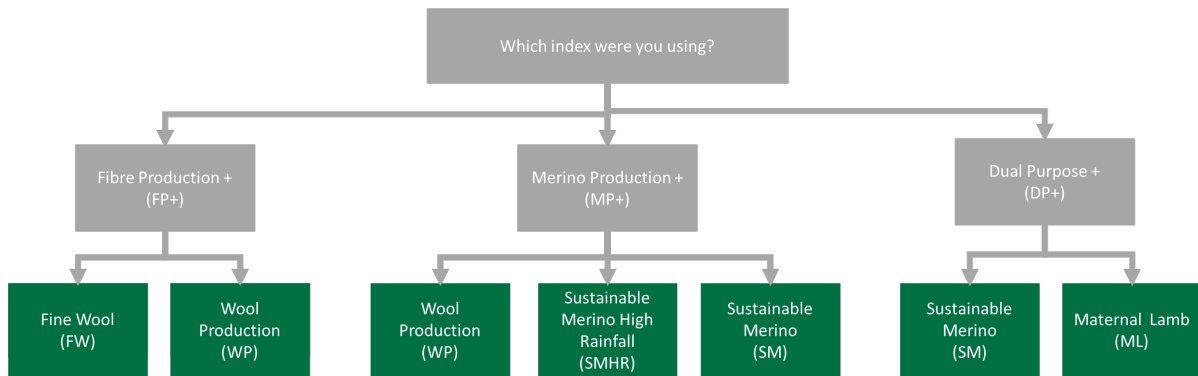
Table 1: MERINOSELECT research indexes.

Trait	Maternal + Lamb	Sustainable Merino	Sustainable Merino - HR	Wool Production	Fine Wool
Clean fleece weight	●●	●●●	●●●	●●●●	●●●
Fibre diameter	●	●	●	●●	●●●
Lamb growth	●●●	●●	●●	●	●
Carcase composition	●●	●	●		
Adult weight	-●	-●	-●		
Worm egg count			●●		●
Reproduction	●●●	●●	●●	●	●
Breech wrinkle	●●	●●	●●	●●	●●
Dag			●●		
Condition score	●●	●	●	●	●

Please note, the negative symbol associated with the Adult Weight trait in the above table is an indication that higher feed costs occur for bigger ewes, and that there is a trade-off that bigger ewes also produce more lambs which reach sale weight faster. In other words, the indexes aim to increase reproduction and lamb growth while limiting increases in mature size.

## 3. Choosing the right index

The new research MERINOSELECT indexes build upon the existing indexes to meet the changing needs of industry and in turn encapsulate a greater number of traits targeting not only production but also resilience, welfare, and disease. For those using the existing Fibre Production Plus (FP+), Merino Production Plus (MP+) and Dual Purpose Plus (DP+), the flow chart below provides a guide to which of the new indexes is most likely to align with your breeding objective.



The following figure (figure 1) provides an understanding the relative economic importance of each of the trait groups within the research indexes. The relative economic weighting reflects the economic value relative to genetic variation of each trait, allowing comparison between traits. Some traits may have a large economic value reflecting a substantial impact on profit, but lower genetic variation relative to other traits which can reduce their relative contribution (ewe rearing ability for example). A negative contribution indicates that there is an economic advantage to reduce the trait, for example wrinkle and fibre diameter.

With the new indexes closest to you breeding objective identified, use the below figure to select the most suitable index to your production system based on the traits of interest and importance.

**Trait contributions across research indexes**

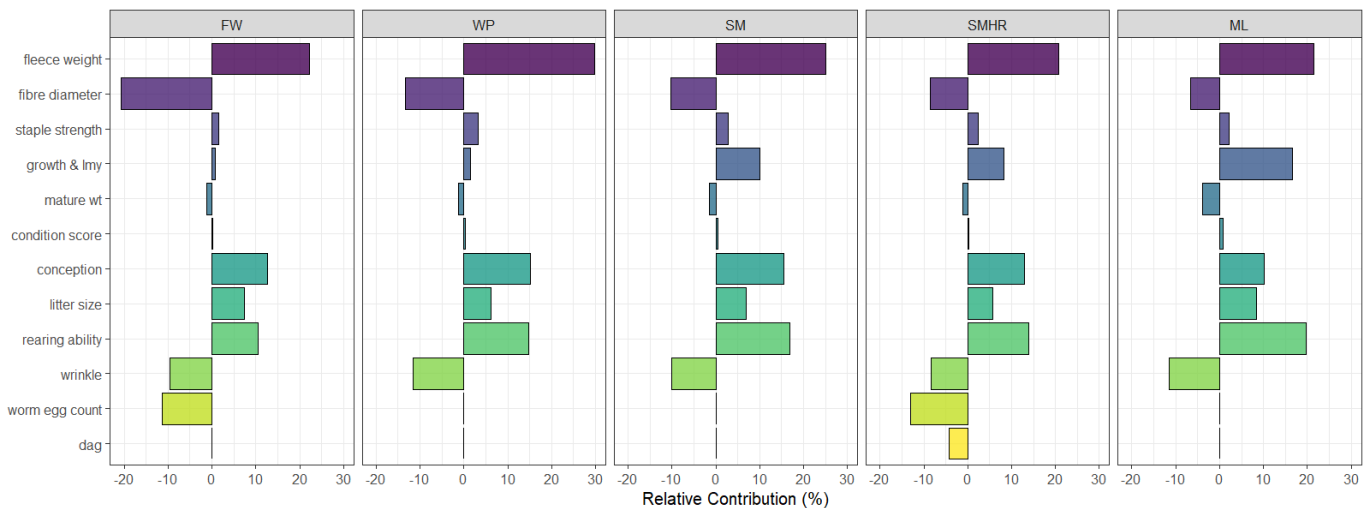


Figure 1: Relative economic weighting of trait groups within the research indexes, Fine Wool (FW), Wool Production (WP), Sustainable Merino (SM), Sustainable Merino High Rainfall (SMHR) and Maternal Lamb (ML).

## Acknowledgement

Sheep Genetics would like to acknowledge the R&D work behind the Sheep Genetics evaluations and these new indexes completed by the Animal Genetics and Breeding Unit (AGBU) funded by Meat and Livestock Australia (MLA).



## Maternal + Lamb (ML)

### Summary of Maternal + Lamb indexes

- The Maternal + Lamb index is based on a production system where the majority of income is from sheepmeat production.
- ML focuses on genetic improvement of fleece weight, growth and lean meat yield, and reproduction.
- A focus has also been placed on reducing wrinkle.

### Production system outline

The Maternal + Lamb index is suitable for a self-replacing Merino flock where older ewes are joined to a terminal sire for lamb production. The majority of income in this production system is from the sale of sheepmeat and cull ewes. There is a strong focus on fleece weight, growth and lean meat yield, and reproduction, as well as some emphasis placed on reducing wrinkle.

### Trait contributions

Figure 1 illustrates the relative contribution of each trait in the Maternal + Lamb index. These have been developed on an updated economic model reflecting 5-year averages from 2018 to 2023.

### More information

For more information on the Merino research indexes, please scan the QR code, or go to the link: <https://www.sheepgenetics.org.au/news/research-indexes/>

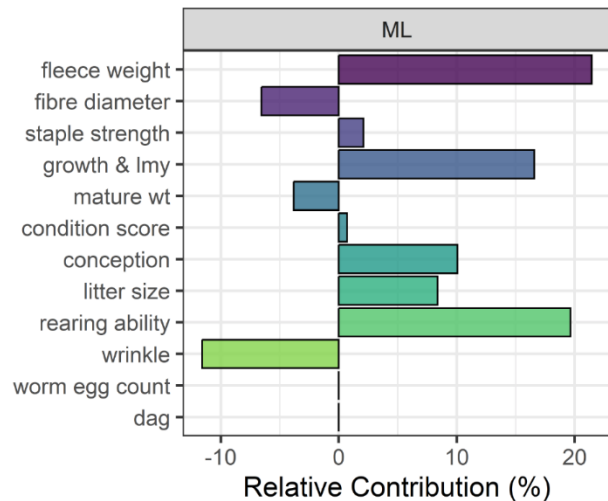
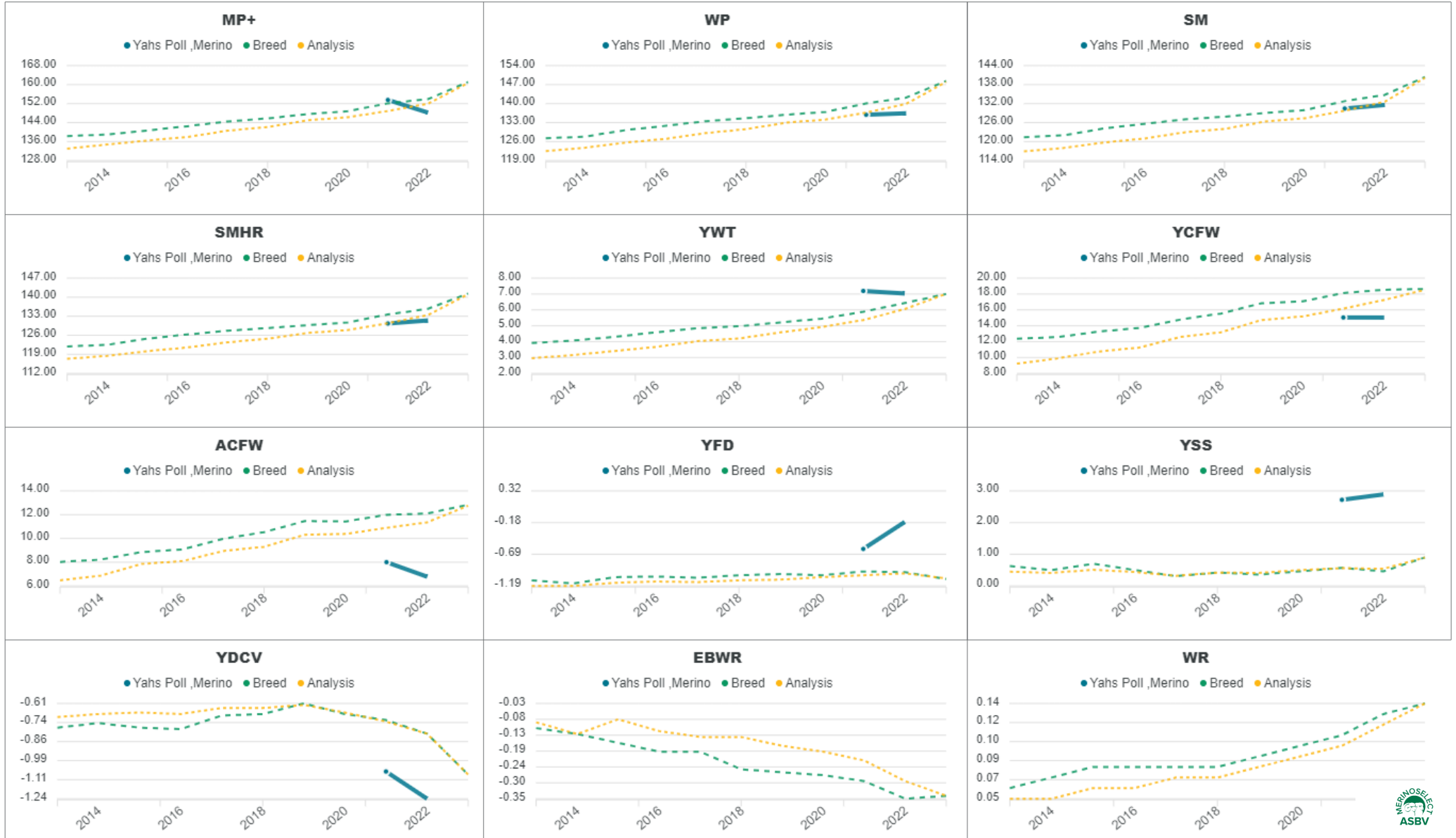


Figure 1: relative economic weighting of trait groups within Maternal + Lamb



**Report:** Genetic Trends  
**Analysis:** MERINO  
**Analysis date:** 07/08/2023  
**Flock code:** 606009  
**Flock name:** YAHS POLL MERINO

**Total animals by drop**



Reports are prepared using data supplied by breeders and/or accredited operators. We cannot guarantee the accuracy of this data. ASBV's are designed to estimate genetic merit of animals from the data supplied. The reports are provided to assist breeders but no liability is accepted for the outcome resulting from the use of this information.

Report: Percentile Bands  
 Analysis: MERINO  
 Analysis date: 07/08/2023  
 Drop Year: 2022



Band	PWT	YWT	YEMD	YFAT	YCFW	YSL	YWEC	WR	ML	SM
1	10.59	13.18	3.37	2.02	38.39	24.97	-72.72	0.36	151.25	161.16
5	8.99	11.26	2.7	1.47	32.04	20.47	-60.47	0.29	144.77	153.24
10	8.13	10.22	2.29	1.18	28.75	18.2	-53.74	0.25	141.37	149.29
20	7.04	8.98	1.77	0.86	24.78	15.06	-44.45	0.21	137.29	144.63
30	6.25	8.08	1.39	0.6	22.01	12.69	-36.61	0.17	134.37	141.42
40	5.58	7.29	1.07	0.38	19.67	10.81	-28.72	0.15	131.85	138.65
50	4.94	6.55	0.75	0.17	17.49	9.2	-21.1	0.12	129.49	136.05
60	4.3	5.82	0.44	-0.04	15.27	7.64	-12.61	0.1	127.08	133.45
70	3.6	5.02	0.12	-0.24	12.91	6.01	-2.01	0.07	124.45	130.61
80	2.75	4.07	-0.23	-0.44	10.18	4.12	11.25	0.04	121.28	127.15
90	1.47	2.66	-0.68	-0.72	6.11	1.45	30.5	0	116.44	121.85

## Sustainable Merino (SM)

### Summary of Sustainable Merino index

- The Sustainable Merino index is based on a production system where the majority of income is from sheepmeat production, but there is still a large focus on wool clip and quality.
- SM focuses on genetic improvement of fleece weight, fibre diameter, and reproduction.
- A focus has also been placed on reducing wrinkle, and increasing growth and lean meat yield.

### Production system outline

The Sustainable Merino index is suitable for a self-replacing Merino flock where wethers are sold at a post-weaning age stage, off shears. The majority of income in this production system is from the sale of sheepmeat, but there is a strong focus on fleece weight, fibre diameter and reproduction, as well as growth and lean meat yield, and the reduction of wrinkle.

### Trait contributions

Figure 1 illustrates the relative contribution of each trait in the Sustainable Merino index. These have been developed on an updated economic model reflecting 5-year averages from 2018 to 2023.

### More information

For more information on the Merino research indexes, please scan the QR code, or go to the link: <https://www.sheepgenetics.org.au/news/research-indexes/>

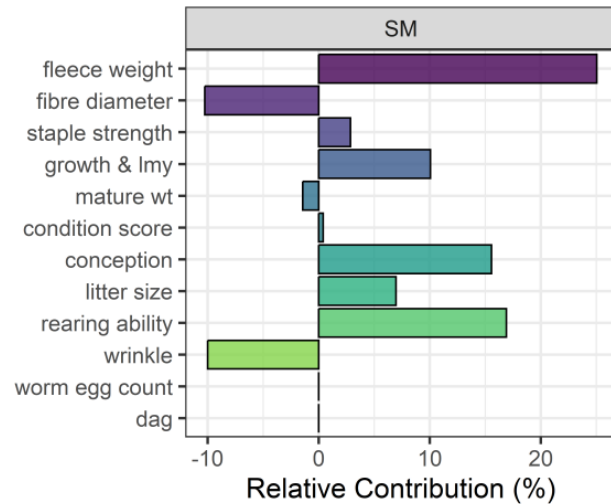


Figure 1: relative economic weighting of trait groups within Sustainable Merino



## LOT 61: YAHS 220507

<b>Sire:</b>	ANDERSON 160390	<b>Date of Birth:</b>	30/07/2022		
<b>Dam:</b>	TOLAND POLL 180435	<b>Birth Type:</b>	Single	<b>Rear Type:</b>	1
<b>SOD:</b>	TOLAND POLL 151058	<b>Raw Weight:</b>	75 kgs on 24/08/2023		

ASBVs	PWT (kg)	YWT (kg)	YEMD (mm)	YFAT (mm)	YCFW (kg)	YSL (mm)	DP+	ML
	5.33	7.03	1.45	0.44	19.90	15.88	177.26	132.93
Accuracy %	66%	67	62	61	65	66		

Visual Scores	Front Pastern	Back Pastern	Front Legs	Back Legs	Front Toes	Back Toes	Hocks	Back	Shoulder	Grade
	3	4	3	2	2	4	3	3	3	1

## LOT 61: YAHS 220507

<b>Sire:</b>	ANDERSON 160390	<b>Date of Birth:</b>	30/07/2022		
<b>Dam:</b>	TOLAND POLL 180435	<b>Birth Type:</b>	Single	<b>Rear Type:</b>	1
<b>SOD:</b>	TOLAND POLL 151058	<b>Raw Weight:</b>	75 kgs on 24/08/2023		

ASBVs	PWT (kg)	YWT (kg)	YEMD (mm)	YFAT (mm)	YCFW (kg)	YSL (mm)	DP+	ML
	5.33	7.03	1.45	0.44	19.90	15.88	177.26	132.93
Accuracy %	66%	67	62	61	65	66		

Visual Scores	Front Pastern	Back Pastern	Front Legs	Back Legs	Front Toes	Back Toes	Hocks	Back	Shoulder	Grade
	3	4	3	2	2	4	3	3	3	1

## LOT 62: YAHS 220509

<b>Sire:</b>	TRIGGER VALE 190039	<b>Date of Birth:</b>	30/07/2022		
<b>Dam:</b>	TOLAND POLL 180701	<b>Birth Type:</b>	Twin	<b>Rear Type:</b>	2
<b>SOD:</b>	TOLAND POLL 161029	<b>Raw Weight:</b>	75.5 kgs on 24/08/2023		

ASBVs	PWT (kg)	YWT (kg)	YEMD (mm)	YFAT (mm)	YCFW (kg)	YSL (mm)	DP+	ML
	5.11	6.55	1.22	0.91	12.47	12.36	156.97	125.65
Accuracy %	64%	65	59	58	61	63		

Visual Scores	Front Pastern	Back Pastern	Front Legs	Back Legs	Front Toes	Back Toes	Hocks	Back	Shoulder	Grade
	3	3	3	2	4	3	3	3	3	1

Top 5%	Top 10%	Top 20%	Top 30%
--------	---------	---------	---------



## LOT 62: YAHS 220509

<b>Sire:</b>	TRIGGER VALE 190039	<b>Date of Birth:</b>	30/07/2022		
<b>Dam:</b>	TOLAND POLL 180701	<b>Birth Type:</b>	Twin	<b>Rear Type:</b>	2
<b>SOD:</b>	TOLAND POLL 161029	<b>Raw Weight:</b>	75.5 kgs on 24/08/2023		

ASBVs	PWT (kg)	YWT (kg)	YEMD (mm)	YFAT (mm)	YCFW (kg)	YSL (mm)	DP+	ML
	5.11	6.55	1.22	0.91	12.47	12.36	156.97	125.65
Accuracy %	64%	65	59	58	61	63		

Visual Scores	Front Pastern	Back Pastern	Front Legs	Back Legs	Front Toes	Back Toes	Hocks	Back	Shoulder	Grade
	3	3	3	2	4	3	3	3	3	1

## LOT 63: YAHS 220513

<b>Sire:</b>	TRIGGER VALE 190039	<b>Date of Birth:</b>	03/07/2022		
<b>Dam:</b>	TOLAND POLL 180382	<b>Birth Type:</b>	Triplet	<b>Rear Type:</b>	2
<b>SOD:</b>	TOLAND POLL 151042	<b>Raw Weight:</b>	81.5 kgs on 24/08/2023		

ASBVs	PWT (kg)	YWT (kg)	YEMD (mm)	YFAT (mm)	YCFW (kg)	YSL (mm)	DP+	ML
	5.97	7.29	1.24	0.86	18.57	11.95	167.53	129.46
Accuracy %	65%	66	60	59	61	64		

Visual Scores	Front Pastern	Back Pastern	Front Legs	Back Legs	Front Toes	Back Toes	Hocks	Back	Shoulder	Grade
	3	3	3	3	4	4	3	3	3	1

## LOT 63: YAHS 220513

<b>Sire:</b>	TRIGGER VALE 190039	<b>Date of Birth:</b>	03/07/2022		
<b>Dam:</b>	TOLAND POLL 180382	<b>Birth Type:</b>	Triplet	<b>Rear Type:</b>	2
<b>SOD:</b>	TOLAND POLL 151042	<b>Raw Weight:</b>	81.5 kgs on 24/08/2023		

ASBVs	PWT (kg)	YWT (kg)	YEMD (mm)	YFAT (mm)	YCFW (kg)	YSL (mm)	DP+	ML
	5.97	7.29	1.24	0.86	18.57	11.95	167.53	129.46
Accuracy %	65%	66	60	59	61	64		

Visual Scores	Front Pastern	Back Pastern	Front Legs	Back Legs	Front Toes	Back Toes	Hocks	Back	Shoulder	Grade
	3	3	3	3	4	4	3	3	3	1

Top 5%
Top 10%
Top 20%
Top 30%

## LOT 64: YANCO AG 220518

<b>Sire:</b>	ANDERSON 160390	<b>Date of Birth:</b>	01/08/2022		
<b>Dam:</b>	TOLAND POLL 180012	<b>Birth Type:</b>	Single	<b>Rear Type:</b>	1
<b>SOD:</b>	TOLAND POLL 120282	<b>Raw Weight:</b>	75 kgs on 24/08/2023		

ASBVs	PWT (kg)	YWT (kg)	YEMD (mm)	YFAT (mm)	YCFW (kg)	YSL (mm)	DP+	ML
	9.60	10.86	2.40	0.89	9.66	10.29	176.69	136.32
Accuracy %	58%	59	56	56	57	58		

Visual Scores	Front Pastern	Back Pastern	Front Legs	Back Legs	Front Toes	Back Toes	Hocks	Back	Shoulder	Grade
	4	4	4	3	4	4	3	3	3	1

## LOT 64: YANCO AG 220518

<b>Sire:</b>	ANDERSON 160390	<b>Date of Birth:</b>	01/08/2022		
<b>Dam:</b>	TOLAND POLL 180012	<b>Birth Type:</b>	Single	<b>Rear Type:</b>	1
<b>SOD:</b>	TOLAND POLL 120282	<b>Raw Weight:</b>	75 kgs on 24/08/2023		

ASBVs	PWT (kg)	YWT (kg)	YEMD (mm)	YFAT (mm)	YCFW (kg)	YSL (mm)	DP+	ML
	9.60	10.86	2.40	0.89	9.66	10.29	176.69	136.32
Accuracy %	58%	59	56	56	57	58		

Visual Scores	Front Pastern	Back Pastern	Front Legs	Back Legs	Front Toes	Back Toes	Hocks	Back	Shoulder	Grade
	4	4	4	3	4	4	3	3	3	1

## LOT 65: YAHS 220521

<b>Sire:</b>	TRIGGER VALE 190039	<b>Date of Birth:</b>	01/08/2022		
<b>Dam:</b>	TOLAND POLL 180305	<b>Birth Type:</b>	Twin	<b>Rear Type:</b>	2
<b>SOD:</b>	TOLAND POLL 150560	<b>Raw Weight:</b>	92 kgs on 24/08/2023		

ASBVs	PWT (kg)	YWT (kg)	YEMD (mm)	YFAT (mm)	YCFW (kg)	YSL (mm)	DP+	ML
	6.35	7.82	1.81	1.21	16.37	15.90	172.58	133.04
Accuracy %	67%	67	62	61	63	64		

Visual Scores	Front Pastern	Back Pastern	Front Legs	Back Legs	Front Toes	Back Toes	Hocks	Back	Shoulder	Grade
	3	3	3	3	3	4	3	3	3	1

Top 5%	Top 10%	Top 20%	Top 30%
--------	---------	---------	---------

## LOT 65: YAHS 220521

<b>Sire:</b>	TRIGGER VALE 190039	<b>Date of Birth:</b>	01/08/2022		
<b>Dam:</b>	TOLAND POLL 180305	<b>Birth Type:</b>	Twin	<b>Rear Type:</b>	2
<b>SOD:</b>	TOLAND POLL 150560	<b>Raw Weight:</b>	92 kgs on 24/08/2023		

ASBVs	PWT (kg)	YWT (kg)	YEMD (mm)	YFAT (mm)	YCFW (kg)	YSL (mm)	DP+	ML
	6.35	7.82	1.81	1.21	16.37	15.90	172.58	133.04
Accuracy %	67%	67	62	61	63	64		

Visual Scores	Front Pastern	Back Pastern	Front Legs	Back Legs	Front Toes	Back Toes	Hocks	Back	Shoulder	Grade
	3	3	3	3	3	4	3	3	3	1

## LOT 66: YANCO AG 220523

<b>Sire:</b>	ANDERSON 160390	<b>Date of Birth:</b>	01/08/2022		
<b>Dam:</b>	TOLAND POLL 180261	<b>Birth Type:</b>	Twin	<b>Rear Type:</b>	1
<b>SOD:</b>	TOLAND POLL 161084	<b>Raw Weight:</b>	85 kgs on 24/08/2023		

ASBVs	PWT (kg)	YWT (kg)	YEMD (mm)	YFAT (mm)	YCFW (kg)	YSL (mm)	DP+	ML
	4.81	6.35	1.80	0.56	14.67	13.36	163.22	127.29
Accuracy %	65%	66	59	59	63	64		

Visual Scores	Front Pastern	Back Pastern	Front Legs	Back Legs	Front Toes	Back Toes	Hocks	Back	Shoulder	Grade
	3	3	3	3	4	4	3	3	3	1

## LOT 66: YANCO AG 220523

<b>Sire:</b>	ANDERSON 160390	<b>Date of Birth:</b>	01/08/2022		
<b>Dam:</b>	TOLAND POLL 180261	<b>Birth Type:</b>	Twin	<b>Rear Type:</b>	1
<b>SOD:</b>	TOLAND POLL 161084	<b>Raw Weight:</b>	85 kgs on 24/08/2023		

ASBVs	PWT (kg)	YWT (kg)	YEMD (mm)	YFAT (mm)	YCFW (kg)	YSL (mm)	DP+	ML
	4.81	6.35	1.80	0.56	14.67	13.36	163.22	127.29
Accuracy %	65%	66	59	59	63	64		

Visual Scores	Front Pastern	Back Pastern	Front Legs	Back Legs	Front Toes	Back Toes	Hocks	Back	Shoulder	Grade
	3	3	3	3	4	4	3	3	3	1

Top 5%

Top 10%

Top 20%

Top 30%

## LOT 67: YAHS 220527

<b>Sire:</b>	TRIGGER VALE 190039	<b>Date of Birth:</b>	01/08/2022		
<b>Dam:</b>	TOLAND POLL 180419	<b>Birth Type:</b>	Twin	<b>Rear Type:</b>	2
<b>SOD:</b>	TOLAND POLL 121931	<b>Raw Weight:</b>	88 kgs on 24/08/2023		

ASBVs	PWT (kg)	YWT (kg)	YEMD (mm)	YFAT (mm)	YCFW (kg)	YSL (mm)	DP+	ML
	5.87	7.56	1.35	0.86	14.27	10.94	160.3	125.01
Accuracy %	64%	65	59	58	61	63		

Visual Scores	Front Pastern	Back Pastern	Front Legs	Back Legs	Front Toes	Back Toes	Hocks	Back	Shoulder	Grade
	3	3	4	2	3	4	3	3	4	1

## LOT 67: YAHS 220527

<b>Sire:</b>	TRIGGER VALE 190039	<b>Date of Birth:</b>	01/08/2022		
<b>Dam:</b>	TOLAND POLL 180419	<b>Birth Type:</b>	Twin	<b>Rear Type:</b>	2
<b>SOD:</b>	TOLAND POLL 121931	<b>Raw Weight:</b>	88 kgs on 24/08/2023		

ASBVs	PWT (kg)	YWT (kg)	YEMD (mm)	YFAT (mm)	YCFW (kg)	YSL (mm)	DP+	ML
	5.87	7.56	1.35	0.86	14.27	10.94	160.3	125.01
Accuracy %	64%	65	59	58	61	63		

Visual Scores	Front Pastern	Back Pastern	Front Legs	Back Legs	Front Toes	Back Toes	Hocks	Back	Shoulder	Grade
	3	3	4	2	3	4	3	3	4	1

## LOT 68: YAHS 220531

<b>Sire:</b>	TRIGGER VALE 190039	<b>Date of Birth:</b>	02/08/2022		
<b>Dam:</b>	TOLAND POLL 180502	<b>Birth Type:</b>	Twin	<b>Rear Type:</b>	2
<b>SOD:</b>	TOLAND POLL 161850	<b>Raw Weight:</b>	79.5 kgs on 24/08/2023		

ASBVs	PWT (kg)	YWT (kg)	YEMD (mm)	YFAT (mm)	YCFW (kg)	YSL (mm)	DP+	ML
	4.26	5.67	1.13	0.82	13.67	12.29	147.33	121.84
Accuracy %	64%	64	58	57	60	63		

Visual Scores	Front Pastern	Back Pastern	Front Legs	Back Legs	Front Toes	Back Toes	Hocks	Back	Shoulder	Grade
	3	3	3	2	4	4	4	3	3	1

Top 5%

Top 10%

Top 20%

Top 30%

# LOT 68: YAHS 220531

<b>Sire:</b>	TRIGGER VALE 190039	<b>Date of Birth:</b>	02/08/2022		
<b>Dam:</b>	TOLAND POLL 180502	<b>Birth Type:</b>	Twin	<b>Rear Type:</b>	2
<b>SOD:</b>	TOLAND POLL 161850	<b>Raw Weight:</b>	79.5 kgs on 24/08/2023		

ASBVs	PWT (kg)	YWT (kg)	YEMD (mm)	YFAT (mm)	YCFW (kg)	YSL (mm)	DP+	ML
	4.26	5.67	1.13	0.82	13.67	12.29	147.33	121.84
Accuracy %	64%	64	58	57	60	63		

Visual Scores	Front Pastern	Back Pastern	Front Legs	Back Legs	Front Toes	Back Toes	Hocks	Back	Shoulder	Grade
	3	3	3	2	4	4	4	3	3	1

# LOT 69: YAHS 220538

<b>Sire:</b>	YANCO 210275	<b>Date of Birth:</b>	03/08/2023		
<b>Dam:</b>	TOLAND POLL 180558	<b>Birth Type:</b>	Twin	<b>Rear Type:</b>	2
<b>SOD:</b>	TOLAND POLL 161451	<b>Raw Weight:</b>	77 kgs on 24/08/2023		

DATA WAS SUBMITTED INCORRECTLY TO SG - WILL BE AVAILABLE NEXT RUN

ASBVs	PWT (kg)	YWT (kg)	YEMD (mm)	YFAT (mm)	YCFW (kg)	YSL (mm)	DP+	ML
Accuracy %	0%							

Visual Scores	Front Pastern	Back Pastern	Front Legs	Back Legs	Front Toes	Back Toes	Hocks	Back	Shoulder	Grade
	4	4	3	3	4	3	4	3	3	1

# LOT 69: YAHS 220538

<b>Sire:</b>	YANCO 210275	<b>Date of Birth:</b>	03/08/2023		
<b>Dam:</b>	TOLAND POLL 180558	<b>Birth Type:</b>	Twin	<b>Rear Type:</b>	2
<b>SOD:</b>	TOLAND POLL 161451	<b>Raw Weight:</b>	77 kgs on 24/08/2023		

DATA WAS SUBMITTED INCORRECTLY TO SG - WILL BE AVAILABLE NEXT RUN

ASBVs	PWT (kg)	YWT (kg)	YEMD (mm)	YFAT (mm)	YCFW (kg)	YSL (mm)	DP+	ML
Accuracy %	0%							

Visual Scores	Front Pastern	Back Pastern	Front Legs	Back Legs	Front Toes	Back Toes	Hocks	Back	Shoulder	Grade
	4	4	3	3	4	3	4	3	3	1

Top 5%
Top 10%
Top 20%
Top 30%

# LOT 70: YAHS 220541

Sire:	YANCO 210275	Date of Birth:	03/08/2022		
Dam:	TOLAND POLL 180143	Birth Type:	Triplet	Rear Type:	3
SOD:	TOLAND POLL 150227	Raw Weight:	70 kgs on 24/08/2023		

ASBVs	PWT (kg)	YWT (kg)	YEMD (mm)	YFAT (mm)	YCFW (kg)	YSL (mm)	DP+	ML
Accuracy %	0%							

DATA WAS SUBMITTED INCORRECTLY TO SG - WILL BE AVAILABLE NEXT RUN

Visual Scores	Front Pastern	Back Pastern	Front Legs	Back Legs	Front Toes	Back Toes	Hocks	Back	Shoulder	Grade
	2	3	3	2	4	3	2	2	3	1

# LOT 70: YAHS 220541

Sire:	YANCO 210275	Date of Birth:	03/08/2022		
Dam:	TOLAND POLL 180143	Birth Type:	Triplet	Rear Type:	3
SOD:	TOLAND POLL 150227	Raw Weight:	70 kgs on 24/08/2023		

ASBVs	PWT (kg)	YWT (kg)	YEMD (mm)	YFAT (mm)	YCFW (kg)	YSL (mm)	DP+	ML
Accuracy %	0%							

DATA WAS SUBMITTED INCORRECTLY TO SG - WILL BE AVAILABLE NEXT RUN

Visual Scores	Front Pastern	Back Pastern	Front Legs	Back Legs	Front Toes	Back Toes	Hocks	Back	Shoulder	Grade
	2	3	3	2	4	3	2	2	3	1

# LOT 71: YAHS 220546

Sire:	YANCO 210275	Date of Birth:	03/08/2022		
Dam:	TOLAND POLL 180225	Birth Type:	Single	Rear Type:	1
SOD:	TOLAND POLL 161084	Raw Weight:	72.5 kgs on 24/08/2023		

DATA WAS SUBMITTED INCORRECTLY TO SG - WILL BE AVAILABLE NEXT RUN

ASBVs	PWT (kg)	YWT (kg)	YEMD (mm)	YFAT (mm)	YCFW (kg)	YSL (mm)	DP+	ML
Accuracy %	0%							

Visual Scores	Front Pastern	Back Pastern	Front Legs	Back Legs	Front Toes	Back Toes	Hocks	Back	Shoulder	Grade
	3	3	3	3	4	4	3	3	3	1

Top 5%

Top 10%

Top 20%

Top 30%

# LOT 71: YAHS 220546

<b>Sire:</b>	YANCO 210275	<b>Date of Birth:</b>	03/08/2022		
<b>Dam:</b>	TOLAND POLL 180225	<b>Birth Type:</b>	Single	<b>Rear Type:</b>	1
<b>SOD:</b>	TOLAND POLL 161084	<b>Raw Weight:</b>	72.5 kgs on 24/08/2023		

ASBVs	PWT (kg)	YWT (kg)	YEMD (mm)	YFAT (mm)	YCFW (kg)	YSL (mm)	DP+	ML
Accuracy %	0%							

DATA WAS SUBMITTED INCORRECTLY TO SG - WILL BE AVAILABLE NEXT RUN

Visual Scores	Front Pastern	Back Pastern	Front Legs	Back Legs	Front Toes	Back Toes	Hocks	Back	Shoulder	Grade
	3	3	3	3	4	4	3	3	3	1

Top 5%

Top 10%

Top 20%

Top 30%

## **How to Maximise the Potential from your White Suffolk Rams**

These Yanco White Suffolk rams have been recently checked by a veterinarian and are free of disease but are still actively growing. On arrival home we suggest they are kept away from older rams to avoid any risk of injury from fighting.

### **YEAR ROUND MANAGEMENT**

- Maintain weight within  $\pm$  10 Kilograms of the rams individual optimum weight .(i.e. 100 Kilograms) and a fat score of 3 all year round. Thus this ram should stay between 90 – 110 Kilograms. Over-fat rams are more prone to breakdown due to excessive weight on limbs and are less mobile around the paddock.
- Shearing rams 8 - 10 weeks prior to joining is recommended. Shearing too close to joining can be detrimental to semen quality in hot weather, as the fleece protects the animal against high radiant temperatures.
- Ringing around the pizzle is warranted especially if belly wool is burry.
- Ensure rams are drenched (with an effective drench) at strategic times along with the rest of the flock.
- Maintain an annual booster vaccination of 6 in 1.
- Keep rams feet trimmed if necessary to reduce the risk of lameness or foot abscess. A ram with feet problems will seek out and mount ewes less actively than normal.
- Jetting ram on the poll during fly season may help to avoid strike and losses.
- Avoid handling of rams in such a way they are “tonguing” within 6 weeks before mating as this may cause reduced fertility. These practices include; excessive speed in moving the rams or limited rest periods especially in hot weather, shearing, crutching and foot trimming.

### **PRE-MATING MANAGEMENT**

- Carry out a pre mating physical examination prior to mating to ensure there are no problems with feet, teeth, testicles, penis and scrotum
- Supplementary feeding of rams 6 - 8 weeks prior to joining can have a marked effect on the semen quality and volume. Feeding lupins approximately 0.5 - 1 Kg / head / day after an initial introduction program should be plenty to achieve a result.
- Ideally, ram should be in condition score 3.5 - 4 prior to joining.
- If joining rams after a long dry spell without green feed, supplementation with vitamin A may be necessary 8 weeks prior to joining and just before mating.
- Yanco White Suffolk rams can be safely joined at 1.5 - 2 % unless the geography, pasture availability, paddock size and high ambient temperatures require an increase in the ram percentage. The optimum joining period is for 2 cycles: that is five weeks. Longer joining period may be required for autumn drop lambs. e.g. 8 weeks
- If possible, do not mate old rams and young rams together because of domination. Also, mate older rams with maiden ewes and young rams to older ewes

**We hope the above information helps you to get the best from your Yanco White Suffolk rams. For more detailed information please don't hesitate to ask.**





Rams are bred for high growth.  
After all, weight is what you get  
paid for!

Rams are  
selected for  
muscling in  
the loin and  
leg. They are  
the most  
expensive  
cuts.



Rams are bred  
from the best  
genetics in  
Australia and then  
performance  
tested to identify  
the best



#### About Superwhites:

- The SuperWhites genetic improvement group was formed in 1995 and comprises 20 members across Australia
- The group has a strong commercial focus and is committed to producing the highest performing White Suffolk rams in Australia
- The group select rams that perform in the paddock under commercial conditions
- The group identify the best genetics in Australia each year and use these within member flocks
- Collectively the group represent 5,000 breeding ewes and produces around 15% of

<http://www.whitesuffolk.org.au/superwhites/index.htm>

Contact your local SuperWhites Breeder for  
the highest performing White Suffolk rams:

**YANCO WHITE SUFFOLKS**



## **YEAR 9 ANIMAL STUDIES CLASS OF 2023**

Mitchell Allen  
Holly Allitt  
Billy Beckett  
Augustus Carney  
Riley Cattle  
Beatrice Davis  
Loki Fahl  
Darcy Gleeon  
Jack Golder  
Seth Gray  
Jackson Green  
Darcy Hinds  
Thomas Hunt

Zahli Ivanoff  
Patrick Madden  
Joel Mahy  
Harry Marcus  
Ollie Menzies  
Bailey Neill  
Will Nicholson  
Owen Plane  
Cooper Roberts  
Arabella Roohan  
Zac Scott  
Hamish Warhurst



## **YEAR 10 ANIMAL STUDIES CLASS OF 2023**

Jack Anderson  
Alister Brown  
Zach Burton  
Ashley Cooper  
Nate Corbett  
Kaitlyn Cox  
Ruby Deacon  
Piper Demamiel  
Leah Diamond  
Maddison Eade  
Dom Edwards  
Pia Fattore

Chelsea Golder  
Jessie Harris  
Alana Jones  
Rori Miller  
Charlotte Millington  
Victoria O'Donnell  
Lucy Palmer  
Spencer Plane  
Hannah Quinn  
Sophie Taylor  
Madeline Thornley



Year 11 students shearing sheep



Young ewes with AI triplets

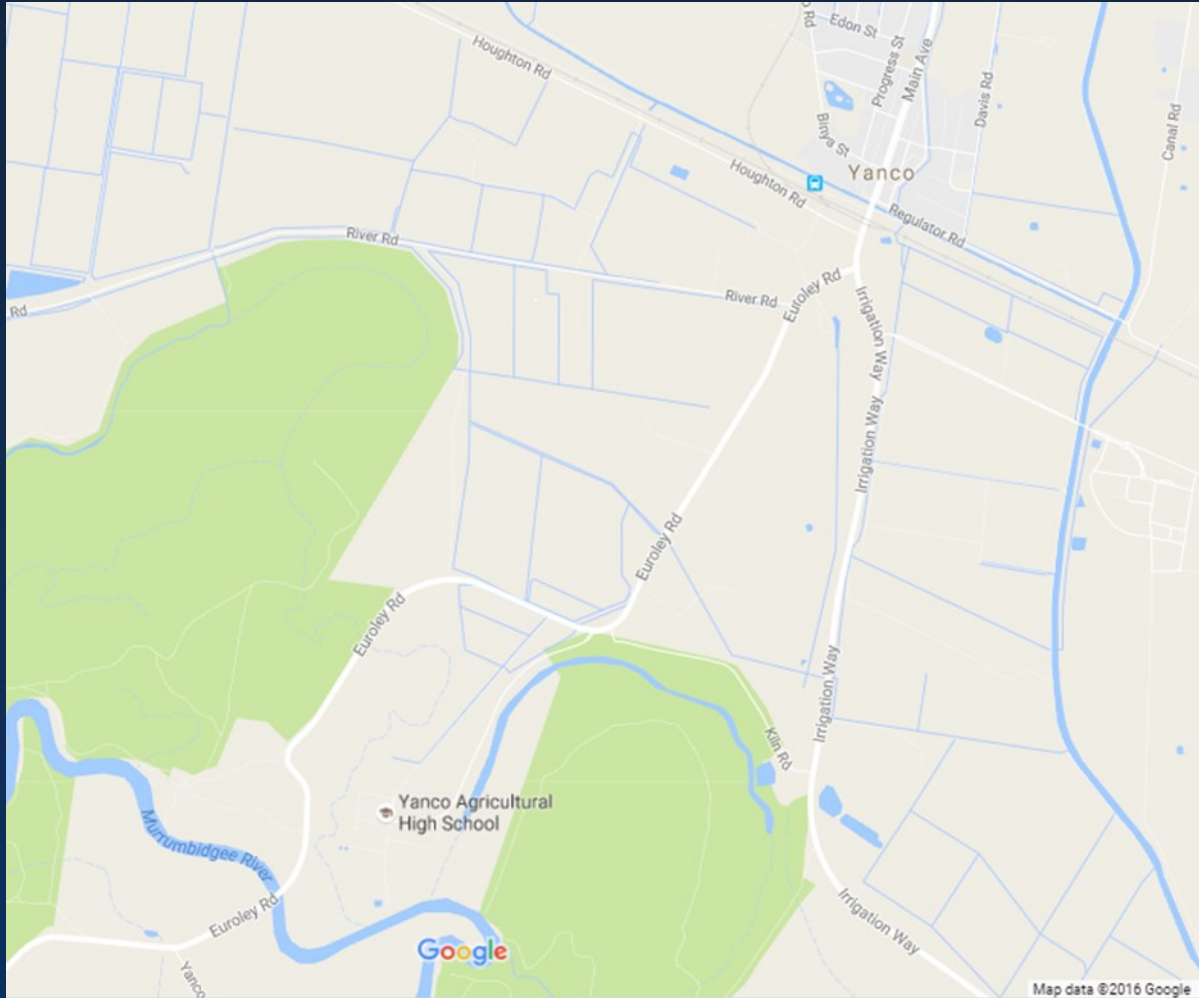


AI ewes in joining mobs

# YANCO SHEEP STUDS

## DIRECTIONS

Yanco Agricultural High School is located 10 kilometres from Yanco and 24.4 kilometres from Narandera on Euroley Road. It can be reached from Leeton by travelling down Irrigation Way, through Yanco and turning right onto Euroley Road, then turning left after approximately 2km at the second entrance to the School. Inspections by appointment only.



Special thanks goes to the Staff and Students of Yanco Agricultural High School