



MERTEX

TEXEL & WHITE SUFFOLK STUD

No. 349 No. 799

EXTRA MEAT MEANS EXTRA PROFIT

BASIL, HEATHER & TIM JORGENSEN

BASIL MOB: 0428 975 224

TIM MOB: 0429 188 319

www.mertexstuds.com.au



5th Annual Texel & White Suffolk Ram Sale

Thursday 28th September 2023

Inspection from 11am Sale Day - Sale 1:00pm

Sale Interfaced with AuctionsPlus

Offering:

10 Stud White Suffolk Rams

100 White Suffolk Rams

15 Texel Rams

42 Texel X White Suffolk Rams

25 White Suffolk Stud Ewes

Pre-register by QR Code



Please collect bidder number at auction on sale day

On Property at 'MERTEX' - 11 Stoney Crossing Rd, Antwerp 3414

Brucellosis Accredited
OJD Vaccinated, Lambplan & Stockscan Recorded



'EXTRA MEAT MEANS EXTRA PROFIT'



Agent - Brock Quick
0488 913 313

Vendor
Tim Jorgensen
0429 188 319



LIVESTOCK & PROPERTY

Agent - Will Schilling
0456 698 744



MERTEX

TEXEL & WHITE SUFFOLK STUD

No. 349 No. 799

EXTRA MEAT MEANS EXTRA PROFIT

BASIL, HEATHER & TIM JORGENSEN

BASIL MOB: 0428 975 224

TIM MOB: 0429 188 319

www.mertexstuds.com.au



MERTEX 5th Annual Texel & White Suffolk Ram Sale

We have an exceptional lineup of rams on offer at our 5th on property sale on Thursday 28th September at 1pm which will be Interfaced with AuctionsPlus. We will also be offering 20 Stud White Suffolk ewes in the auction this year. Pre-registration via QR Code, bidder number to be collected on-site on sale day. To follow sale day updates, find us on Facebook.

'EXTRA MEAT MEANS EXTRA PROFIT'

Mertex would like to welcome you to our 5th on property sale

Mertex show success continues into 2023

After a stellar show season in 2022 Mertex has continued the Supreme Interbreed ribbons, supreme breed exhibits and most successful breed exhibitors into 2023.

At The Australian Sheep and Wool Show in July Mertex took out the Supreme exhibits in both the Texel and White Suffolk breeds as well as both the champion ram and ewe in both breeds, including most successful exhibitors also. The Mertex White Suffolk group of 1 Ram & 2 ewes won the Supreme Interbreed Prime Lamb Group for the 2nd year in a row. Mertex's White Suffolk Ewe was also sashed the reserve Prime Lamb Exhibit.

Mertex success continued at Sheepvention Rural Expo again taking out the Supreme white Suffolk exhibit, Grand champion ram and champion ewe. In the Texel show ring Mertex won Champion Texel ewe and reserve champion ram. Mertex also took out most successful exhibitor in both breeds. In the interbreed the Mertex White Suffolk group took 1st place in the supreme interbreed short wool group of 1 ram and 2 ewes. The Mertex Texel rams won the Interbreed pen of 3 rams and the White Suffolk ram & ewe came 2nd in both the Interbreed short wool ram and ewe events.

The Royal Adelaide Show was an extremely successful show case of our stud for the 2nd consecutive year taking out the prestigious interbreed pen of 3 rams again with our white suffolk trio as well as the supreme interbreed breeders group. Our white suffolk ewe 220280 was also sashed the supreme interbreed short wool and supreme white suffolk exhibit. We also won champion Texel ram and champion and reserve champion Texel ewe awards.

At the Bendigo Elite Show and Sale, we were awarded most successful exhibitor again which we have been awarded at all shows again exhibited in 2023. Reserve senior champion ewe and sold our dearest ever ram 220505 for \$14,500 in the auction to Spring Creek White Suffolk Stud.

The show success is great and it's good to be out catching up with clients, fellow breeders and just chatting to all personal stopping to look over our sheep. The success hasn't come without hard work and dedication to keep on improving the quality stock we produce especially for all the prime lamb producers using our rams to grow their prime lamb operations in a positive direction. We continue to breed sheep with a commercial focus to enhance growth rates, meat yield and doing ability for market suitability. As well as a major focus on structural correctness and breed standards.

We have an exceptional lineup of rams on offer again for you to cast your eyes and bids over for our 5th on property sale on Thursday 28th September at 1pm which will be Interfaced with AuctionsPlus. We will also be offering 25 Stud White Suffolk ewes in the auction this year. To follow sale day updates look us up on Facebook Mertex Texel & White Suffolk Stud

If you require a presale inspection please be in contact - by appointment only

AWN Livestock & DMD will be the Agents conducting the sale again this year and Mertex thanks them for their on going support of our operation and sale. DMD are the settling agents of this years sale.

Our Rams are bred for structural correctness, growth and lambing ease to breed prime lambs with high yielding carcasses, growth and doing ability. As prime lamb producers we know what puts \$\$\$ in your pocket.

CHECK US OUT ON FACEBOOK

MERTEX TEXEL & WHITE SUFFOLK STUD



STUD HISTORY

Mertex Texel Stud was registered in 1996 when we purchased 10 ewes in lamb from The Australian Texel Corporation and has grown into a Flock of 150 stud ewes. We started showing Texel's in 2000 and have done so ever since. We have had a lot of success over the years winning many Major Broad Ribbons, Most Successful Exhibitors and some Interbreed success along the way as well.

Mertex White Suffolk Stud was registered in 2012. Ewes were sourced from some stud dispersal sales in the beginning (Burwood, Tapton, Adalinda, Wheetelande) and from some mated ewe sales (Detpa Grove, Bundara Downs and Gemini). We began showing White Suffolks in 2014 and continue to do so. Our first major win came in 2015 with Supreme White Suffolk Exhibit (Mertex 140360) at Hamilton Sheepvention with our Champion Ewe from over 200 exhibits in the breeds 30th Anniversary year. 140360 then went on to win Supreme Interbreed Short Wool Ewe. The Stud has continued to grow and establish having more show success along the way with Champion Ribbons, Supreme Exhibits, Most Successful Exhibitors and Interbreed Success.

Mertex success has not only come from the show ring but from numerous Prime Lamb Competitions and Carcase Competitions also which is where it really counts. Our Champion pen of Texel X lambs on the hook in the 2018 Royal Geelong Show Carcase competition received a score of 99/100 which were also awarded Champion Pen of lambs on the hoof. Our Lambs and sheep in our commercial enterprise also stand up in the saleyard selling system having topped the Horsham market.

Mertex is an Ovine Brucellosis accredited free flock. Number 2382

Mertex is a Gudair Vaccinated Flock (15 years) and in the Northwest Biosecurity Zone

Drenched: 1st June 2023 - Duocare LV

6S B12 Injection: 1st June 2023

Mertex is a Lambplan & Stock Scan Recorded Flock



Supreme Interbreed short wool group ASWS 2023

The meat index allows a group of young sheep with different liveweights, eye muscle dimensions and fat depth to be analytically compared.

Referring to the diagram at right, research has shown that:

Eye muscle width (A) is more to do with the type of animal, i.e. shape and leanness.

Eye muscle depth (B) is associated with the environment: feeding etc., which could change the ranking, if the animals were under stress at the time of scanning.

Fat Depth (measurement C) affects the index only slightly.

MUSCLE TO WEIGHT RATIO

The muscle to weight ratio figure (EMA/LW) is calculated to help the breeders identify sheep with more meat, thus higher yielding carcasses. With the introduction of VISCAN these higher yielding carcasses will be more profitable.

LOIN MEASUREMENT

Stockscan in New Zealand has been working with Agresearch and together have perfected a technique to provide a loin measurement. We feel this has tremendous benefit to breeders and their clients.

Loin measurement will identify lambs which have good body length and are well muscled. Shoulder issues and mobility are a problem related to shorter sheep; these types are not able to progress into a class of heavier carcass weights. Identifying longer bodied sheep with optimal muscling could have benefits for the sheep industry.

If requested, loin measurement will be available to Australian clients and the processed results included with your normal analysis data report.

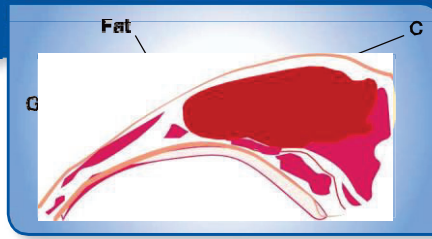


Figure 1: Exposed 12th rib on the carcass cut through the last thoracic and first lumbar vertebrae

The image above shows the location of the measurement sites: the eye muscle width (A), eye muscle depth (B) and fat over the eye muscle (C).

WHAT IS THE MEAT INDEX?

The meat index formula is based on the eye muscle width (A), eye muscle depth (B) and fat (C) measurements. A higher predominance is given to eye muscle width (A) because it is more heritable while eye muscle depth (B) is influenced by environment factors. Fat (C) is penalised slightly. The resulting number is then adjusted for the age of the sheep, so the index is what the sheep's index would have been at eight months of age.

Scanning for performance traits in animals has become a significant on-farm measuring tool for many years.

Australian Stockscan Services P/L scanners assess sheep at around 8-12 months of age for:

Live Weight (LW)

Eye Muscle Width (A)

Eye Muscle Depth (B)

Fat Depth (C)

Eye Muscle Area (EMA) is calculated using the eye muscle width (A) and depth (B) measurements ($A \times B$).

Eye Muscle Area (EMA) to Live Weight (LW) ratio calculated.

Meat Index Live Weight measurement.

EASY TO READ RESULTS

The table below is an example of the results provided after scanning and processing. The table includes the ranking of your flock, from highest to lowest, plus the measurements and the important **Stockscan Index**. If Sire ID is provided, a Sire Summary will also be included. This makes it easy to focus on your flock's best or worst performers.

Understanding ASBV's and Indexes

Australian Sheep Breeding Values (ASBV's) are an estimate of an animal's true breeding value based on pedigree and performance figures. They are the unit of measurement LAMBPLAN uses to analyse animals and are essentially a projection of how that animal's progeny will perform for a range of traits.

ASBV Abbreviation	Full Term	Description
BWT	Birth Weight ASBV	Rams with a lower BWT ASBV are estimated to produce lambs which are lighter at birth.
WWT	Weaning Weight ASBV	<u>100 day</u> weight. This describes the animal's genetic merit for growth rate. A positive ASBV indicates the animal is genetically faster growing.
PWWT	Post Weaning Weight ASBV	<u>200 day</u> weight. This describes the animal's genetic merit for growth rate. A positive ASBV indicates the animal is genetically faster growing.
PFAT	Post Weaning Fat Depth ASBV	This describes the value of an animal's genes for fat depth at a constant weight. A negative ASBV means a genetically leaner animal.
PEMD	Post Weaning Eye Muscle Depth ASBV	This describes the value of animals' genes for eye muscle depth at a constant weight. A positive ASBV means a genetically thicker-muscled animal, and one that will have slightly more of its lean tissue in the higher-priced cuts.
C+	Carcase Plus Index	The Carcase Plus Index is a desired gains index promoting animals with high growth and muscle, while maintaining carcass leanness. This index identifies high growth animals by the traits for Weaning Weight and Post Weaning Weight and also aims to recognise carcass traits by rewarding for increased Eye Muscle Depth. It also puts a small emphasis on Fat Depth to maintain a level of leanness.
TCP	Terminal Carcass Production Index	The TCP index focuses on increasing weight and muscle while reducing carcass fat. These are changes which contribute to higher lean meat yield. TCP also has emphasis on modest improvements in eating quality.

**NATIONAL VENDOR DECLARATION
(SHEEP AND LAMBS) AND WAYBILL**

S0720

25095318

Part A To be completed by the owner or person who is responsible for the husbandry of the sheep or lambs.

Owner of sheep or lambs TIM SORESENSEN (FULL TRADING NAME)

Property/place where the journey commenced 11 STONEY CROSSING (ROAD ADDRESS)

ROAD ANTWERP 3414 (TOWN/SUBURB) (STATE)

Property Identification Code (PIC) of this property 3HMRJ000
This MUST be the PIC of the property that the stock is being moved from

Description of sheep or lambs	Year born (OROP)	Description (BREED, SEX & TYPE E.G. CROSS-BRED, WETHER, LAMB)	Month of shearing	PIC or Brand on Ear Tags (IF DIFFERENT TO PIC SHOWN ABOVE)	Earmarks (IF PRESENT OR REQUIRED)
110	22	WS RAMS	AUG		DD
15	22	TEXEL RAMS	AUG		DD
42	22	TEX WS X RAMS	AUG		DD
25	22	WS EWES	AUG		DD
192	Total				

Use the Attachment Forms for consignments that require more lines to describe the stock. (See Explanatory Notes)

A. Have PICs on all of the NLS tags only on sheep in this consignment been listed in the Description table above (other than the PIC printed on this NVD)? - Yes OR

B. Have all sheep in this consignment been tagged with an NLS tag with the PIC printed on this NVD or the associated WA brand as listed in the description table above - Yes AND/OR

Number of electronic NLS devices in this consignment 192

Hours off feed and water before transporting

Consigned to DMD WHILL (NAME OF PERSON OR BUSINESS)

(ADDRESS) (TOWN/SUBURB) (STATE)

Destination (if different) of sheep or lambs (LOCATION ADDRESS)

Destination PIC (REQ: WA & TAS)

Details of other statutory documents relating to this movement e.g. health statement

DOCUMENT TYPE NUMBER OFFICE OF ISSUE EXPIRY DATE

1 Have these sheep or lambs been raised consistent with the rules of an independently audited QA program on the property the PIC of which is shown above?

Yes No If Yes, give details: _____

2 Have all the sheep or lambs in this consignment been treated with a Scabby Mouth Vaccination either at marking or at least 14 days prior to their presentation for sale?

Yes No If Yes, give details: _____

3 Were all of these sheep or lambs bred by the owner or vendor?

Yes No If No, how long ago were the sheep or lambs obtained or purchased? (If purchased at different times, tick the box corresponding to the time of the most recent purchase.)

A. Less than 2 months B. 2-6 months C. 6-12 months D. more than 12 months

4 Are any of the sheep or lambs in this consignment still within a Withholding Period (WHP) or Export Slaughter Interval (ESI) as set by APVMA or SAFE MEAT, following treatment with any veterinary drug or chemical?

Yes No If Yes, give details: (Record additional details in question 7)

CHEMICAL PRODUCT DATE APPLIED WHP ESI (IF SET)

5 In the past 60 days, have any of the sheep or lambs in this consignment consumed any material that was still within a withholding period when harvested, collected or first grazed?

Yes No If Yes, give details: _____

CHEMICAL PRODUCT DATE APPLIED GRAZING WHP DATE FIRST FED/GRAZED DATE FEEDING/GRAZING CEASED

6 Have the sheep or lambs in this consignment ever in their lives been fed feed containing animal fats? (See Explanatory Notes)

Yes No

7 Please include any additional information below
e.g. vaccination programs, animal health certification, additional declarations, etc.

GOODAIR VACCINATED

Declaration

I TIM SORESENSEN 11 STONEY CROSSING ROAD
FULL NAME ADDRESS CONT. FULL ADDRESS L P A

declare that, I am the owner or the person responsible for the husbandry of the sheep or lambs and that all the information in part A of this document is true and correct.

I also declare that I have read and understood all the questions that I have answered, that I have read and understood the explanatory notes, and that, while under my control,

the sheep or lambs were not fed restricted animal material (including meat and bone meal) in breach of State or Territory legislation.

Signature* Tim Sorensen Date* 28 / 09 / 2023

*Only the person whose name appears above may sign this declaration, or make amendments which must be initialled.

Tel no. 0429188319 Fax no. _____

Email: mortex@bigpond.com

Part B To be completed by the person in charge of the sheep or lambs while they are being moved.
Completion of this part is optional in SA and VIC.

Movement commenced: _____ / _____ / 20 _____ : _____ (am/pm)

Vehicle registration number(s)**: _____

I am the person in charge of the sheep or lambs during the movement and declare all the information in Part B is true and correct.

Signature _____ Date _____ / _____ / 20 _____ Tel no. _____

*When more than one truck is carrying the sheep or lambs, other vehicle registration numbers are to be recorded.

SIRE REFERENCE										
SIRE ID	BWT	WWT	PWWT	PFAT	PEMD	TCP	LMY	IMF	SHF5	DESCRIPTION
WHITE SUFFOLK										
160060 SUNNYBANKS	0.45	9.05	13.84	0.01	2.23	132.2	2.75	-0.57	3.6	JUNIOR CHAMPION RAM ROYAL ADELAIDE SHOW 2017
170575 MERTEX	0.42	6.53	12.1	0.07	2.2	141.7	1.87	-0.75	-3.9	TOP 5% FOR SHEARF5, JUNIOR CHAMPION RAM ASWS & SHEEPVENTION 2018, SUPREME WS EXHIBIT ROYAL MELBOURNE SHOW & ROYAL GEELONG SHOW
180031 SUNNYBANKS	0.39	8.26	11.87	0.4	2.51	133.8	2.22	-0.43	0	SON OF 160060 SUNNYBANKS
180291 DETPA GROVE	0.53	9.36	15.62	-0.76	1.98	147.3	3.25	-0.44	-1.51	TOP 5% FOR SHEARF5
181718 WINGAMIN	0.61	12.22	18.14	-1.02	2.01	147.7	4.74	-0.63	3.56	CHAMPION RAM SHEEPVENTION 2019
200140 OMAD	-0.12	8.39	13.31	1.41	3.09	145.5	1.13	0.55	-1.98	TOP 5% FOR IMF & SHEARF5
200247 DETPA GROVE	0.38	10.64	16.81	-1.01	1.78	142.2	4.18	-0.65	5.09	SOLID RAM WITH BIG HINDQUARTER
200256 MERTEX	0.32	7.79	13.4	-0.47	2.32	149.2	2.45	-0.72	-4.07	TOP 5% FOR SHEARF5, THICK SOLID RAM
200259 MERTEX	0.28	6.61	10.64	-0.19	2.19	135.5	2.12	-0.6	-0.11	TOP 20% FOR SHEARF5, BIG BARRELLED RAM WITH GOOD HINDQUARTER AND WS HEAD
200530 MERTEX	0.53	9.85	14.93	-0.54	2.33	145.9	3.41	-0.39	-1.48	TOP 5% FOR SHEARF5, MEATY RAM SON OF SOMERSET 170147
210326 MERTEX	0.24	10.5	16.4	0.35	2.97	147	3.17	-0.45	2.13	SIRE OF THE CHAMPION WS EWE FROM ASWS, SHEEPVENTION & SUPREME EXHIBIT ADELAIDE ROYAL 2023
210358 MERTEX	-0.02	8.18	14.01	0.21	2.6	143.4	2.6	-0.55	1.2	
210522 MERTEX	0.26	8.71	13.33	-0.39	1.49	134.5	2.78	0.06	1.44	SOLD TO RIDGELL DOWNS FOR \$4500
210533 MERTEX	0.17	7.13	11.23	-0.11	2.07	134.3	2.16	-0.01	0.57	SOLD TO OMEO FOR \$6000
210564 MERTEX	0.62	9.74	15.16	-0.74	0.55	133.2	2.73	-0.49	1.22	SOLD TO OTTO STUD FOR \$12,500
210595 MERTEX	0.3	9.74	14.93	-0.28	1.2	133.6	2.58	-0.27	3.83	SOLD TO GEE JAY STUD FOR \$5000
210608 MERTEX	0.5	9.02	15.5	-0.51	0.82	139.5	2.78	-0.65	0.09	SOLD TO MOUNTAIN VALLEY FOR \$3000
210633 MERTEX	0.35	12.4	18.57	-0.54	2.4	153.6	4.42	-0.52	3.6	TOP 5% FOR WWT & PWWT, E.T SON OF ELITE STUD EWE & SIRE BY IDA VALE 194051
TEXEL										
930002 CREMORNE	0.45	3.12	3.32	-0.78	2.92	128.5	4.26	-1.04	-1.07	(NICHOLAS)
180103 MURRAY HEIGHTS	0.32	5.85	9.09	-0.41	2.86	145	4.02	-0.59	-3.1	TOP 5% FOR SHEARFORCE
190143 TULLAMORE PARK	0.3	5.7	7.16	0.59	2.82	129.6	2.63	-0.81	0.8	DEEP BARRELLED RAM
200022 MERTEX	0.43	5.54	7.89	-0.35	3.18	137.6	4.78	-1.06	0.87	MEATY SON OF 930002 CREMORNE (NICHOLAS)
200096 MERTEX	0.42	4.96	7.47	-1.33	0.94	129.9	3.32	-0.91	-0.75	BIG LONG UPSTANDING RAM
200119 MERTEX	0.39	6.82	10.2	-0.33	3.12	143.6	4.55	-1.22	0.53	SOLID THICK MEATY RAM
200380 CYPRESS PARK	0.08	6.91	9.83	-0.71	3	141.6	4.5	-0.69	1.52	SOLID THICK MEATY RAM
DG = DETPA GROVE OM = OMAD SB= SUNNYBANKS W = WINDGAMIN WH = WHEELLANDE CP=CYPRESS PARK CM=CREMORNE TPK=TULLAMORE PARK WST1=TEXEL WHITE SUFFOLK X EWE MH = MURRAY HEIGHTS										

10 STUD WHITE SUFFOLK RAMS															
LOT	RAM ID	SIRE	DAM	DOB	BWT	WWT	PWWT	PFAT	PEMD	TCP	LMY	IMF	SHF5	BUYER	PRICE
1	220472 Tw	210633	180429 Tw	18-Jun	0.47	10.8	16.09	-0.65	2.3	144	4.29	-0.81	5.13		
2	220268 Tri	200247 DG	200656 Tri	24-Apr	0.59	12.14	19.07	-0.49	1.26	136	4.13	-1.33	7.3		
3	220541	200247 DG	180330 Tw	22-Jun	0.29	10.05	15.48	-0.32	1.93	132	3.54	-0.7	6.23		
4	220704 Tw	200247 DG	170570 Tw	17-Jul	0.63	10.64	16.56	-1.25	1.17	140.6	4.53	-0.96	4.41		
5	220635 Tw	200247 DG	180714 Tw	4-Jul	0.54	11.08	17.72	-1.37	0.79	141.3	4.38	-0.77	4.66		
6	220346 Tw	200247 DG	160532 Tw	16-May	0.32	9.07	14.84	-0.25	1.84	136.2	3.15	-0.88	4.16		
7	220662 Tw	200247 DG	200231	9-Jul	0.5	10.73	16.19	-0.61	2.3	142.2	4.58	-1.05	4.95		
8	220895 Tw	210326	210406 Tw	9-Aug	0.47	11.32	17.67	-0.39	1.75	146.7	3.5	-0.75	2.36		
9	220623 Tw	200247 DG	200542 Tw	4-Jul	0.33	10.24	15.63	-0.15	1.14	136.1	2.59	-0.36	1.96		
10	220935 Tri	210608	210292 Tri	11-Aug	0.46	11.16	18.13	-0.71	1.61	145.7	4.06	-0.99	3.67		
100 WHITE SUFFOLK RAMS															
11	220616 Tw	200247 DG	200235 Tw	3-Jul	0.21	9.35	14.69	-0.07	2.48	137.7	3.66	-0.88	4.45		
12	220547 Tri	200247 DG	180699 Tw	23-Jun	0.51	10.42	16.13	-0.74	1.16	136.3	3.43	-0.64	4.09		
13	220852	210633	211260	8-Aug	0.42	11.8	17.44	-1	1.38	145.3	5.06	-0.91	5.58		
14	220664	200247 DG	200241 Tw	9-Jul	0.31	9.11	13.77	-0.38	2.43	135.2	3.59	-0.61	4.75		
15	220475 Tw	210633	180492	18-Jun	0.5	11.96	17.88	-0.6	1.54	142.3	4.01	-0.79	4.25		
16	220960 Tw	200247 DG	180348 Tw	19-Aug	0.46	10.66	16.93	-1.27	1.16	143.9	4.29	-0.71	3.73		
17	220329 Tri	200140 OM	190616 Tw	14-May	0.36	11.64	17.72	-0.36	1.04	142.8	3.14	-0.24	2.92		
18	220267 Tri	200247 DG	200656 Tri	24-Apr	0.53	11.36	17.92	-0.68	1.37	138.9	3.88	-0.9	5.36		
19	220491	160060 SB	180614	19-Jun	0.25	7.04	10.96	0.16	2.39	127.8	2.15	-0.4	1.51		
20	220439	200259	130266 Tw	16-Jun	0.37	8.13	11.83	-0.77	1.39	133.3	3.17	-0.65	2.27		
21	220633 Tw	210633	180490 Tw	4-Jul	0.25	9.36	14.92	-0.73	2.06	141.7	3.95	-0.75	3.07		
22	220684	210358	200455 Tw	9-Jul	0.17	9.68	15.48	-0.21	2.98	148.2	3.91	-0.88	1.76		
23	220410 Tw	200530	180831 Tw	8-Jun	0.51	9.72	14.96	-0.47	2.76	149.5	4.4	-0.89	0.08		
24	220314 Tw	200247 DG	200218 Tw	11-May	0.34	10.37	17.05	0.1	2.2	148.4	2.67	-0.38	0.99		
25	220875 Tw	210564	210288	8-Aug	0.49	11.03	17.43	-0.53	0.64	134.4	3.24	-0.8	4.6		
26	220404 Tw	210633	180480 Tri	5-Jun	0.41	10.48	15.03	0.35	2.49	140.1	2.91	-0.32	3.06		
27	220286 Tw	200247 DG	170413 Tw	4-May	0.27	8.94	13.9	-0.66	1.74	136.1	3.24	-0.55	2.62		
28	220269	200256	200877 Tw	24-Apr	0.54	10.13	16.2	-0.17	2.27	144.3	3.11	-0.8	0.51		

100 WHITE SUFFOLK RAMS - cont															
LOT	RAM ID	SIRE	DAM	DOB	BWT	WWT	PWWT	PFAT	PEMD	TCP	LMY	IMF	SHF5	BUYER	PRICE
29	220285 Tw	200247 DG	170413 Tw	4-May	0.4	10.77	16.71	-0.82	1.89	144	4.11	-0.7	3.46		
30	220369	200259	190355 Tw	17-May	0.31	7.98	12.67	-0.17	0.97	130.6	2.06	-0.39	0.72		
31	220354	200247 DG	190522	16-May	0.42	10.05	15.81	-0.83	1.88	142.4	3.83	-0.69	3.11		
32	220405 Tw	210633	180480 Tri	5-Jun	0.46	10.9	16.01	-0.56	1.44	141.2	3.37	-0.39	2.86		
33	220274 Tw	200259	190334	25-Apr	0.3	8.23	12.8	-0.47	2.21	141.3	2.64	-0.57	-0.32		
34	220728 Tw	210633	158027 WH	23-Jul	0.29	10.29	15.05	-0.06	2.69	144.3	3.42	-0.33	2.58		
35	220284 Tw	200247 DG	170408 Tw	1-May	0.31	9.75	15.29	-0.59	1.66	137.8	3.38	-0.55	3.32		
36	220594	181718 W	200595 Tw	28-Jun	0.59	10.33	16.27	-0.5	1.85	143.1	3.48	-0.59	1.16		
37	220364 Tw	200140 OM	190645 Tri	18-May	0.27	8.32	13.02	0.33	2.39	142.7	1.99	-0.04	-1.75		
38	220498 Tw	160060 SB	190223 Tw	19-Jun	0.44	8.74	13.63	-0.4	1.92	136.2	3.23	-0.76	2.42		
39	220779 Tw	200247 DG	200918	4-Aug	0.32	10.21	16.81	-1.02	1.57	142.6	3.91	-0.74	3.85		
40	220419	200247 DG	170825 Tw	14-Jun	0.46	10.19	15.38	-1.34	1.17	141	4.31	-0.74	3.55		
41	220484 Tw	160060 SB	180692 Tw	19-Jun	0.52	9.88	15.15	-0.4	1.09	130.6	3.02	-0.68	4.56		
42	220601	200247 DG	200494 Tw	29-Jun	0.47	10.74	16.43	-0.68	2.31	143.4	4.06	-0.82	3.41		
43	220449	180291 DG	180714 Tw	17-Jun	0.63	10.48	16.86	-1.37	0.66	142.1	3.91	-0.67	1.66		
44	220496 Tw	180291 DG	180714 Tw	19-Jun	0.63	10.75	17.18	-1.34	0.9	144.1	4.11	-0.7	1.78		
45	220426 Tw	210633	190214 Tw	15-Jun	0.39	10.85	16.49	-0.77	2.03	146.1	4.3	-0.62	3		
46	220294	200259	190327 Tw	7-May	0.35	8.88	14.1	0.13	2.7	142.9	3.15	-0.53	1.98		
47	220450	200247 DG	190555	17-Jun	0.4	10.66	16.46	-0.58	2.36	145.4	4.15	-0.74	4.22		
48	220557 Tw	200256	201107	23-Jun	0.42	9.13	14.61	-0.94	1.36	144.7	3.53	-0.73	-0.46		
49	220373 Tw	200140 OM	180590 Tw	18-May	0.21	9.83	15.42	0.41	1.51	140.5	1.9	0.09	0.11		
50	220297 Tw	200140 OM	190235 Tw	7-May	0.19	8.44	13.81	1.36	2.73	141.8	1.43	-0.02	-1.28		
51	220389	200140 OM	180400 Tw	23-May	0.05	8.32	13.52	0.65	3.19	145	2.53	-0.17	0.56		
52	220433 Tri	200259	180373 Tri	15-Jun	0.37	8.75	13.48	-0.62	0.97	131.6	2.88	-0.68	2.72		
53	220573	200530	190672 Tw	24-Jun	0.54	10	15.26	-0.39	1.54	135.4	3.02	-0.54	2.05		
54	220499 Tw	200259	180838 Tw	19-Jun	0.32	7.72	11.25	-0.45	2.1	137.7	3.13	-0.64	0.63		
55	220337 Tw	200140 OM	190305 Tw	14-May	0.12	8.11	13.15	0.4	2.03	140	1.79	-0.03	-0.67		
56	220307 Tri	200247 DG	170444	10-May	0.35	8.35	12.96	-0.9	1.08	132.3	2.83	-0.43	2.51		
57	220276 Tw	200530	200535 Tw	25-Apr	0.43	9.46	14.31	-0.79	1.64	139.1	3.48	-0.56	0.9		
58	220257	200256	200754 Tw	22-Apr	0.4	8.72	13.71	-0.3	0.94	131	1.92	-0.6	0.59		

100 WHITE SUFFOLK RAMS - cont															
LOT	RAM ID	SIRE	DAM	DOB	BWT	WWT	PWWT	PFAT	PEMD	TCP	LMY	IMF	SHF5	BUYER	PRICE
59	220388	200140 OM	190606 Tw	21-May	0.21	10.45	16.07	0.28	2.34	144.1	2.87	-0.17	2.12		
60	220436 Tw	200256	190635	15-Jun	0.49	10.01	15.39	-0.86	0.87	137.3	3.03	-0.72	1.43		
61	220709 Tw	210633	160503 Tw	19-Jul	0.48	11.62	17.33	-1.16	0.86	143.7	3.89	-0.42	2.7		
62	220356 Tw	200530	190369 Tw	16-May	0.52	9.56	15.11	-0.8	1.49	141.4	3.38	-0.54	0.24		
63	220379 Tw	200140 OM	180474 Tri	18-May	0.19	9.6	14.12	0.32	2.08	137.9	2.22	-0.14	1.82		
64	220718 Tw	200530	200832 Tw	21-Jul	0.53	11.05	16.41	-0.82	1.83	144.7	3.85	-0.6	1.63		
65	220392 Tw	200140 OM	180476 Tri	25-May	0.09	8.43	12.69	0.78	2.76	138.1	1.77	-0.08	0.72		
66	220680 Tw	181718 W	200856 Tw	11-Jul	0.5	10.45	16.42	-0.02	2.41	143.8	3.4	-0.66	1.8		
67	220805 Tw	210595	210750 Tri	6-Aug	0.49	10.96	16.38	-0.91	0.63	134.4	3.7	-0.66	5.41		
68	220313 Tw	200247 DG	200218 Tw	11-May	0.3	10.42	16.54	0	2.37	145.4	3.11	-0.43	2.46		
69	220479 Tri	170575	190687	18-Jun	0.49	7.56	12.79	0.12	2	133.5	1.96	-0.76	-0.14		
70	220497 Tw	160060 SB	190223 Tw	19-Jun	0.41	8.45	13.18	-0.17	2.22	136.2	3.06	-0.73	2.12		
71	220778 Tw	200247 DG	200918	4-Aug	0.4	10.68	16.67	-0.98	1.19	137.7	3.86	-0.75	5.17		
72	220578 Tri	200530	200248 Tw	25-Jun	0.54	9.8	15.6	-0.87	1.68	144.3	3.65	-0.58	0.12		
73	220703 Tw	200247 DG	180700 Tw	16-Jul	0.58	12	18.73	-1.35	0.71	141.9	4.4	-0.8	5.2		
74	220343 Tri	200530	180377 Qu	16-May	0.45	10.67	16.77	-0.37	1.96	145	3.74	-0.67	1.78		
75	220941 Tri	200247 DG	158026 W	15-Aug	0.42	10	15.56	-1.09	1.34	137	3.88	-0.54	4.41		
76	220466 Tw	160060 SB	190665	18-Jun	0.35	9.81	15.05	-0.32	1.25	128.3	3.27	-0.72	5.42		
77	220663 Tw	200247 DG	200231	9-Jul	0.52	11	16.43	-1.04	1.53	140.8	4.49	-0.86	4.6		
78	220272 Tw	210326	200224 Tw	24-Apr	0.43	10.71	17.18	-0.24	2.04	146.3	3.46	-0.54	1.72		
79	220469 Tw	160060 SB	200796 Tri	18-Jun	0.44	9.44	14.21	-0.39	1.64	132.7	3.16	-0.82	4.05		
80	220474 Tw	160060 SB	190694	18-Jun	0.41	8.93	13.35	-0.08	2.15	130.8	2.85	-0.71	4.08		
81	220311	200247 DG	190295	10-May	0.37	8.79	14.07	-0.89	1.29	136.4	3.07	-0.51	2.08		
82	220632 Tw	210633	180490 Tw	4-Jul	0.32	9.78	15.5	-0.51	2.11	145.6	3.54	-0.52	1.75		
83	220559 Tw	200256	200842	23-Jun	0.4	7.77	12.04	-0.9	1.34	135.4	2.71	-0.62	-0.17		
84	220366 Tw	200259	190600	17-May	0.44	8.2	12.47	-0.81	1.81	135.5	3.23	-0.75	2.35		
85	220901 Tw	210522	210730	9-Aug	0.5	9.74	15.53	-0.66	1.02	136.7	3.27	-0.45	2.46		
86	220832 Tri	210533	210808 Tri	7-Aug	0.37	10.46	15.02	-0.74	1.31	138.5	3.46	-0.35	2.74		
87	220877 Tw	210358	210782 Tw	8-Aug	0.33	10.55	16.31	-0.52	1.87	143.1	3.69	-0.65	3.31		

15 TEXEL RAMS

LOT	RAM ID	SIRE	DAM	DOB	BWT	WWT	PWWT	PFAT	PEMD	TCP	LMY	IMF	SHF5	BUYER	PRICE
111	220033 Tw	200380 CP	160195	17-Jun	0.27	6.13	8.79	-0.44	2.3	134	4.16	-0.85	1.69		
112	220013 Tw	190143 TPK	190141	15-Jun	0.32	6.24	8.12	-0.12	2.03	132.1	3.16	-0.8	1.11		
113	220039	190143 TPK	160050	18-Jun	0.27	5.04	6.3	0.36	2.57	127.9	3.25	-1.04	1.7		
114	220022 Qu	200380 CP	190108 Tw	16-Jun	0.32	8.35	11.34	-0.7	2.96	148.2	4.99	-0.68	0.33		
115	220015 Tw	200380 CP	190177 Tw	15-Jun	0.29	8.43	12.06	-0.8	2.2	144	4.61	-0.72	1.43		
116	220059	190143 TPK	200021 Tw	19-Jun	0.41	6.1	7.79	-0.32	2.45	132	3.99	-1	1.63		
117	220037 Tw	190143 TPK	200090 Tw	17-Jun	0.43	6.85	9.18	-0.35	1.13	127.5	2.68	-0.65	1.33		
118	220155	200096	180070	5-Aug	0.49	6.58	9.72	-1.42	-0.56	119.2	3.49	-0.93	3.51		
119	220079 Tw	180103 MH	160103 Tw	25-Jun	0.27	5.6	9	-0.51	2.94	144.2	4.27	-0.81	-1.98		
120	220035 Tw	930002 CM	160188 Tw	17-Jun	0.44	4.89	6.25	-0.92	2.54	132.8	4.45	-1.1	0.15		
121	220045 Tw	930002 CM	150055 Tw	18-Jun	0.35	4.53	6.25	-0.88	2.38	135.1	3.91	-0.91	-1.29		
122	220091 Tw	180103 MH	140003	30-Jun	0.43	6.52	9.32	-0.36	2.17	142.4	3.45	-0.57	-2.45		
123	220031 Tw	190143 TPK	190055 Tw	17-Jun	0.31	6.78	9.64	-0.35	2.13	136.5	3.76	-0.81	0.99		
124	220212 Tw	200119	190155 Tw	29-Jun	0.41	7.04	9.92	-0.86	2	140.9	4.13	-0.8	-0.5		
125	220208 Tw	200119	150017 Tri	24-Jun	0.38	6.6	10.37	-0.24	2.41	141.8	3.71	-1.03	-0.4		



Sheepvention Rural Expo 2023 Interbreed Pen of 3 Rams - Texel Rams

42 TEXEL WHITE SUFFOLK X RAMS															
LOT	RAM ID	SIRE	DAM	DOB	BWT	WWT	PWWT	PFAT	PEMD	TCP	LMY	IMF	SHF5	BUYER	PRICE
126	221233 Tw	181718 W	170115 Tw - Tex	7-Jul	0.54	10.34	15.47	-1.42	0.65	140.9	4.64	-0.75	3		
127	221108 Tw	200119	170375 Tw - WS	3-Jun	0.34	7.62	11.33	-0.26	2.27	138.9	3.46	-0.83	0.5		
128	221117 Tw	200119	190388 Tw - WS	9-Jun	0.44	8.24	12.74	-0.6	2.24	141.4	4.1	-1.13	1.11		
129	221183 Tw	170575	180061 Tw - Tex	24-Jun	0.35	6.11	10	-0.5	1.93	135.9	3.08	-0.83	-0.83		
130	221228 Tw	181718 W	190080 Tw - Tex	5-Jul	0.48	9.19	13.47	-0.77	2.19	144.4	4.33	-0.63	1.33		
131	221151	170575	180155 - Tex	20-Jun	0.34	5.57	9.04	-0.75	1.96	138.5	2.88	-0.73	-2.54		
132	221120 Tri	200022	180630 Tw - WS	9-Jun	0.57	9.07	13.76	-0.95	1.48	137.5	4.66	-1.02	3.48		
133	221104 Tw	200022	170774 Tw - WS	14-May	0.34	6.67	10.3	-0.55	2.59	138.2	4.33	-1.06	1.29		
134	221149 Tw	200022	180626 Tw - WS	19-Jun	0.6	8.3	11.9	-1.29	0.84	131.6	4.31	-0.89	2.85		
135	221159	170575	180001 - Tex	21-Jun	0.36	6.55	10.88	-0.38	1.88	140.1	2.89	-0.78	-2.05		
136	220494 Tw	160060 SB	150410 Tw - WST1	19-Jun	0.39	8.8	13.38	-0.38	1.95	134.9	3.49	-0.71	3.55		
137	221188 Tw	200119	190537 - WS	25-Jun	0.46	9.03	13.63	-0.7	1.6	140.6	3.87	-0.9	1.27		
138	220407	200256	200213 Tw - WST1	6-Jun	0.41	9	14.14	-0.81	1.7	142.1	3.57	-0.91	0.42		
139	221252 Tw	200259	170813 Tw - WST3	17-Jul	0.4	8.3	11.9	-0.85	1.35	137.2	3.34	-0.74	1.13		
140	220848 Tw	210358	211302 Tw - WST1	7-Aug	0.23	8.66	19.82	-0.59	1.77	140.2	3.82	-0.77	2.66		
141	221235 Tw	200022	190390 Tw - WS	8-Jul	0.44	6.8	9.8	-0.39	2.22	134.8	3.48	-0.78	0.04		
142	221333 Tw		190435 Tri - WS	30-Aug	0.28	8.61	13.3	-0.02	1.82	134.6	2.83	-0.57	1.38		
143	221292 Tw	181718 W	190077 Tw - Tex	11-Aug	0.48	8.67	13.85	-0.87	1.57	143.1	4	-0.54	0.54		
144	221269 Tw	180103 MH	201057 - WST1	4-Aug	0.42	8.32	12.82	-0.78	1.84	143.7	4.44	-0.83	0.68		
145	221312		190448 Tw - WS	24-Aug	0.28	8.47	12.78	-0.39	1.52	134	2.82	-0.38			
146	221218 Tw	200119	200281 Tw - WS	30-Jun	0.4	8.03	11.85	-0.24	2.5	139.2	3.63	-0.83	1.11		
147	221247 Tw	181718 W	200056 Tw - Tex	16-Jul	0.51	9.44	13.85	-0.92	2.26	144.4	4.65	-0.86	2.45		
148	221148	170575	160207 - Tex	19-Jun	0.36	5.92	9.7	-0.43	2.53	140.2	3.27	-0.95	-1.49		
149	221168 Tri	200119	190644 Tri - WS	22-Jun	0.34	5.37	9.41	0.02	2.49	137	2.5	-0.7	-2.34		
150	221145 Tri	200022	200217 Tw - WS	17-Jun	0.29	7.3	11.46	0.03	3.27	144	3.79	-0.71	0.32		
151	221297 Tw	200022	190713 Tw - WS	16-Aug	0.55	9.52	14.26	-0.45	2.18	138.1	4.58	-1.07	4.26		
152	221113 Tw	200119	190451 Tw - WS	5-Jun	0.29	7.6	12	-0.17	2.73	141.9	3.77	-0.94	1.14		
153	221229	170575	160125 Tw - Tex	6-Jul	0.4	5.93	9.8	-0.64	2.1	140.8	2.93	-0.81	-3		
154	221147 Tw	200022	180438 Tw - WS	19-Jun	0.42	7.61	11.6	-0.38	1.68	132	3.76	-0.82	2.66		
155	221128 Qu	200022	190301 - WS	11-Jun	0.5	7.22	10.31	-0.77	1.64	132.5	3.73	-0.91	1.12		

42 TEXEL WHITE SUFFOLK X RAMS - cont

LOT	RAM ID	SIRE	DAM	DOB	BWT	WWT	PWWT	PFAT	PEMD	TCP	LMY	IMF	SHF5	BUYER	PRICE
156	221177 Tw	200119	190475 Tw - WS	23-Jun	0.42	7.86	11.91	-0.16	2.34	137.8	3.34	-0.84	1		
157	221355 Tw		190300 Tw - WS	12-Sep	0.34	8.25	13.08	-0.68	1.06	134.1	2.76	-0.5	0.17		
158	221351 Tw		160490 Tw - WS	9-Sep	0.44	8.95	13.4	-0.6	2.21	142.6	3.93	-1	1.1		
159	221305 Tw	200022	190373 Tw - WS	19-Aug	0.25	7.76	11.5	0.06	1.38	125.8	2.01	-0.38			
160	221265 Tw	200119	200375 Tw - WS	30-Jul	0.35	7.14	10.88	-0.41	2.44	139.2	3.53	-0.89	-0.02		
161	221138 Tw	200022	190660 Tw - WS	14-Jun	0.44	7.25	10.78	-0.53	2.34	137.4	4.14	-0.97	1.72		
162	221268 Tw		190497 Tw - WS	3-Aug	0.48	8.55	12.6	-0.18	2.3	140.7	3.65	-0.88	0.88		
163	220862 Tw	210334	210662 Tw - WST1	8-Aug	0.45	10.83	16.42	-0.61	0.38	130	2.93	-0.57	4.53		
164	221101 Tw	200022	180359 Tri - WS	1-May	0.35	7.19	10.7	-0.82	1.95	136.2	4.23	-0.86	2.18		
165	221258 Tw	200022	200767 Tw - WS	19-Jul	0.37	7	10.96	-0.04	2.55	139.7	3.5	-0.84	-0.22		
166	221370 Tw		190018 Tw - Tex	23-Sep	0.26	6.44	9.18	-0.75	0.73	124.7	3.16	-0.63			
167	221249	170575	200049 - Tex	16-Jul	0.32	6.39	10.34	-0.28	2.21	137.9	3.22	-0.89	-0.42		



Interbreed Pen of 3 Rams Royal Adelaide Show 2023 - W/S RAMS

25 WHITE SUFFOLK EWES															
LOT	EWE ID	SIRE	DAM	DOB	BWT	WWT	PWWT	PFAT	PEMD	TCP	LMY	IMF	SHF5	BUYER	PRICE
168	220760 Tw	200247 DG	200791 Tri	1-Aug	0.52	11.3	17.56	-0.76	1.61	145.3	4	-0.64	3.31		
169	220368	200259	190385	17-May	0.36	8.24	12.93	-0.28	1.8	134.6	2.74	-0.63	1.84		
170	220890	210652	210415 Tw	8-Aug	0.2	9.6	15.58	0.07	1.95	142.3	2.15	-0.22	-0.22		
171	220317 Tw	200247 DG	200285	12-May	0.55	9.97	15.5	-1.34	1.11	138.7	3.77	-0.81	3.16		
172	220376 Tw	200259	190489	18-May	0.34	8.15	12.83	-0.6	1.63	135.2	2.88	-0.65	1.94		
173	220377 Tw	200259	190489	18-May	0.42	8.73	13.57	-1.11	1.13	135.2	3.32	-0.74	2.56		
174	220800	210326	210324 Tw	6-Aug	0.33	10.47	16.05	-0.26	1.94	143.1	3.49	-0.45	2.92		
175	220689 Tw	200530	200203 Tw	12-Jul	0.56	10.73	16.18	-0.6	1.78	144.5	3.46	-0.45	0.24		
176	220570	200247 DG	200510	24-Jun	0.38	9.84	14.77	-0.77	2.75	144.5	4.18	-0.74	2.69		
177	220492 Tri	180031 SB	200750	19-Jun	0.29	8.61	13.44	0.26	3	143.9	2.89	-0.51	-0.02		
178	220885 Tw	210652	210788	8-Aug	0.52	11.8	18.2	-0.81	0.6	139	3.7	-0.82	4.73		
179	220969	181718 W	200945 Tw	23-Aug	0.56	11.19	16.77	-0.5	1.22	135.1	3.36	-0.55	3.82		
180	220265 Tw	200256	200514	23-Apr	0.44	9.82	15.52	-0.54	2.54	149.6	3.48	-0.87	-0.88		
181	220520 Tw	200530	200502	21-Jun	0.55	10.27	15.7	-0.71	1.35	142	3.08	-0.42	-0.32		
182	220453	180031 SB	200247 Tw	17-Jun	0.47	9.03	13.75	-0.68	1.42	136.2	3.12	-0.61	1.26		
183	220790 Tw	210595	210740	5-Aug	0.31	9.65	15.04	-0.35	1.41	137	3.12	-0.38	3.17		
184	220665 Tw	200256	180462 Tw	9-Jul	0.37	7.7	12.51	-0.54	1.82	137.8	2.55	-0.62	-0.47		
185	220332 Tw	200247 DG	190750	14-May	0.27	8.65	13.97	-0.9	1.39	136.8	3.33	-0.69	2.93		
186	220825 Tw	210326	210825	7-Aug	0.38	10.83	16.64	-0.27	2.34	146.2	3.74	-0.6	2.54		
187	220791 Tw	210595	210740	5-Aug	0.31	9.72	14.89	-0.55	1.04	134.9	3.12	-0.38	3.52		
188	220905 Tw	200247 DG	200690 Tw	9-Aug	0.43	9.01	14.42	-0.58	1.8	138.3	3.29	-0.67	2.39		
189	220854 Tw	210633	210885 Tri	8-Aug	0.54	11.98	18.5	-0.51	2.07	151	4.11	-0.5	2.29		
190	220894 Tri	210633	210790	9-Aug	0.4	12.52	18.42	-0.54	2.84	152.9	4.78	-0.73	4.3		
191	220448 Tw	200256	200367 Tw	17-Jun	0.36	8.07	13.21	0.1	2	136.6	1.91	-0.51	-1.14		
192	220711 Tri	200259	180444 Tw	19-Jul	0.44	9.38	13.38	-0.67	1.75	135.7	3.23	-0.66	3.09		

10 STUD WHITE SUFFOLK RAMS - RAW DATA													
		ACTUAL	ACTUAL	LAMBPLAN FIGURES POST WEANING			STOCK SCAN FIGURES 19 - 09 - 23						
LOT	RAM ID	BWT	WWT	WEIGHT	FAT	EMD	WEIGHT	WIDTH	DEPTH	FAT	EMA	EMA/LW	INDEX
1	220472 Tw	7.3	62	84	5.5	45	131	118	53	8	48.16	0.368	1834
2	220268 Tri	5.2	55.5	63	5	37	144	110	52	8	44.04	0.306	1580
3	220541	6.2	54	74.5	5	44	128.5	107	54	7.5	44.49	0.346	1539
4	220704 Tw	6.8	52	91	4.5	46.5	124	107	49	7.5	40.37	0.326	1429
5	220635 Tw	6.2	48	78	5	42.5	133	107	51	7.5	42.02	0.316	1473
6	220346 Tw	6.3	41	53	3.5	33	125	107	51	7	42.02	0.336	1475
7	220662 Tw	6.1	48	69.5	5.5	43.5	129.5	112	49	7	42.26	0.326	1576
8	220895 Tw	6	49	75	4.5	43.5	113	112	51	7	43.98	0.389	1620
9	220623 Tw	5.4	45.5	68	6	40.5	113	111	49	7	41.88	0.371	1547
10	220935 Tri	4.8	42	75	4.5	46	122	110	51	7	43.19	0.354	1562
100 WHITE SUFFOLK RAMS - RAW DATA													
11	220616 Tw	4.8	53.5	72.5	5.5	43.5	113.5	110	51	7	43.19	0.381	1562
12	220547 Tri	6.2	56	75.5	6.5	42	128	114	50	8	43.89	0.343	1652
13	220852	6.2	56	89.5	5.5	48	129	116	54	7.5	48.23	0.374	1800
14	220664	6.7	49	71.5	5	45.5	114	106	48	7	39.18	0.344	1380
15	220475 Tw	6.3	62.5	89	6	43	127	116	54	7.5	48.23	0.38	1800
16	220960 Tw	6.2	37.5	80.5	4	42	113.5	105	44	5.5	35.57	0.313	1269
17	220329 Tri	5.2	54	61	4	35	116	110	53	7	44.89	0.387	1606
18	220267 Tri	5	52	63	4	38	116	112	55	7	47.43	0.409	1708
19	220491	6.4	59.5	77	5	43	120	117	56	8	50.45	0.42	1871
20	220439	6.8	66.5	82	5	41	115	106	49	7	39.99	0.348	1402
21	220633 Tw	5.6	43	69.5	5	41	120	109	54	7	45.32	0.378	1599
22	220684	6.4	56	79.5	6	48	129	119	52	7.5	47.65	0.369	1843
23	220410 Tw	6.4	51	76	6.5	45	115	110	51	7	43.19	0.376	1562
24	220314 Tw	5.7	46	54.5	4	36	114.5	103	46	6.5	36.48	0.319	1251
25	220875 Tw	6	46	72.5	4.5	42.5	109	102	45	7	35.34	0.324	1198
26	220404 Tw	6.8	68	83.5	8.5	46	140	124	57	8	54.42	0.389	2096
27	220286 Tw	5.6	46	50.5	3.5	34	114	110	54	7	45.74	0.401	1628
28	220269	6.5	63.5	72.5	5.5	46	126	117	57	7.5	51.35	0.408	1895

100 WHITE SUFFOLK RAMS - cont - RAW DATA													
		ACTUAL	ACTUAL	LAMBPLAN FIGURES POST WEANING			STOCK SCAN FIGURES 19 - 09 - 23						
LOT	RAM ID	BWT	WWT	WEIGHT	FAT	EMD	WEIGHT	WIDTH	DEPTH	FAT	EMA	EMA/LW	INDEX
29	220285 Tw	6.5	61	68	4.5	42	128.5	118	56	7.5	50.88	0.396	1902
30	220369	6.8	60	64.5	5.5	38	115.5	100	47	7	36.19	0.313	1184
31	220354	7	52	60	3	39	110	109	51	7	42.81	0.389	1533
32	220405 Tw	6.5	63.5	85	5.5	41	118	109	48	7	40.28	0.341	1467
33	220274 Tw	5.7	39	52	4	36.5	111	110	52	7.5	44.04	0.397	1582
34	220728 Tw	5.6	48	84	5	45	122	109	51	6.5	42.81	0.351	1535
35	220284 Tw	5.5	48	59	4	38	113.5	106	49	6	39.99	0.352	1406
36	220594	6.6	59	84.5	6	44	116	104	47	6	37.64	0.324	1304
37	220364 Tw	6.6	48.5	50.5	4	36	116	111	52	7	44.44	0.383	1613
38	220498 Tw	6.8	55.5	72	4.5	41	110	104	45	6	36.03	0.328	1260
39	220779 Tw	5.8	40	76.5	4	46.5	105	106	51	7	41.62	0.396	1446
40	220419	7.8	66	86	5	44	110.5	106	50	6.5	40.81	0.369	1426
41	220484 Tw	6.9	58	80	7	42.5	114.5	104	51	6	40.84	0.357	1392
42	220601	7	57				112	106	49	6	39.99	0.357	1406
43	220449	8	66.5	89	5	42.5	139	101	45	6.5	34.99	0.252	1171
44	220496 Tw	7.2	63	82.5	4.5	43	136.5	109	49	7.5	41.12	0.301	1487
45	220426 Tw	6.4	60	83.5	5	46	105	109	52	7	43.64	0.416	1555
46	220294	6.2	64.5	69	6	44	115	113	55	7	47.85	0.416	1737
47	220450	7	62.5	76	4	42.5	108.5	110	53	7	44.89	0.414	1606
48	220557 Tw	5.6	57	80	5	43	116.5	107	51	6.5	42.02	0.361	1477
49	220373 Tw	5.9	57	64	4.5	38	106	106	52	7	42.44	0.4	1468
50	220297 Tw	6.7	51.5	57.5	7	39	105	106	52	7	42.44	0.404	1468
51	220389	6	50	56	4	43	109	109	54	6.5	45.32	0.416	1601
52	220433 Tri	5.7	56	75	5	41	106	103	51	6	40.45	0.382	1363
53	220573	7	59	75	5.5	41	103	103	47	6	37.27	0.362	1275
54	220499 Tw	6.2	58.5	73	6	43	96.5	102	49	6	38.48	0.399	1290
55	220337 Tw	5.3	45.5	53	4	35	100.5	110	54	6.5	45.74	0.455	1630
56	220307 Tri	5	35	42	2.5	30	98	104	50	6.5	40.04	0.409	1368
57	220276 Tw	5.2	47.5	55.5	3.5	34	103.5	106	53	6	43.26	0.418	1494
58	220257	6.1	52.5	59	4.5	34	111	101	47	6	36.55	0.329	1217

100 WHITE SUFFOLK RAMS - cont - RAW DATA													
		ACTUAL	ACTUAL	LAMBPLAN FIGURES POST WEANING			STOCK SCAN FIGURES 19 - 09 - 23						
LOT	RAM ID	BWT	WWT	WEIGHT	FAT	EMD	WEIGHT	WIDTH	DEPTH	FAT	EMA	EMA/LW	INDEX
59	220388	6.8	61.5	66.5	5	41	108.5	106	50	6.5	40.81	0.376	1426
60	220436 Tw	7	59	74.5	6	40.5	112	113	54	7	46.98	0.42	1715
61	220709 Tw	5.1	50	94	4.5	44	119	107	51	6	42.02	0.353	1479
62	220356 Tw	6.6	44.5	54.5	3.5	35	112.5	105	50	6	40.42	0.359	1399
63	220379 Tw	6.4	51.5	57	4	37.5	114.5	104	52	6.5	41.64	0.364	1412
64	220718 Tw	6.4	55.5	81	4.5	46.5	106	108	51	7	42.41	0.4	1504
65	220392 Tw	5.8	44.5	49.5	4	39	113	106	47	6	38.36	0.339	1362
66	220680 Tw	6.3	48	73	8	46	105	100	45	5.5	34.65	0.33	1146
67	220805 Tw	5.5	52.5	73.5	4	42	103	97	46	6	34.36	0.334	1079
68	220313 Tw	5.6	49.5	54	5	38	110	104	45	6	36.03	0.328	1260
69	220479 Tri	6.2	39				104.5	108	50	6	41.58	0.398	1486
70	220497 Tw	6.8	55.5	67.5	5	41.5	112	107	50	7.5	41.19	0.368	1451
71	220778 Tw	6	44.5	61.5	4	39.5	103.5	101	47	6.5	36.55	0.353	1215
72	220578 Tri	5.2	41.5	66	4.5	40	99	105	50	6.5	40.42	0.408	1397
73	220703 Tw	6.5	54.5	94.5	6	46	114.5	105	50	6.5	40.42	0.353	1397
74	220343 Tri	5.6	56	59.5	5	39	104.5	106	49	6.5	39.99	0.383	1404
75	220941 Tri	6	34.5	65	3.5	38	102.5	100	43	5.5	33.11	0.323	1102
76	220466 Tw	6.2	57.5	77	5.5	41	115	104	46	7	36.83	0.32	1278
77	220663 Tw	6.2	48				113	100	50	7	38.5	0.341	1250
78	220272 Tw	5.8	48	61.5	5.5	39	116.5	109	53	7	44.48	0.382	1577
79	220469 Tw	5.8	52	63	3.5	37.5	96.5	103	49	6	38.86	0.403	1319
80	220474 Tw	6.8	55	65.5	5	40	98	103	49	6	38.86	0.397	1319
81	220311	5.4	46.5	52.5	3	34	101	105	46	5.5	37.19	0.368	1313
82	220632 Tw	5.2	39.5	72.5	6	43	100.5	107	50	6	41.19	0.41	1457
83	220559 Tw	7	51	61	3	35.5	103	103	47	6	37.27	0.362	1275
84	220366 Tw	7	48	48.5	2.5	35	100.5	94	44	5.5	31.85	0.317	950
85	220901 Tw	6	40.5	70.5	4	42.5	105.5	105	49	6	39.61	0.376	1377
86	220832 Tri	4.2	44.5	65	4	39	109	103	49	6	38.86	0.357	1319
87	220877 Tw	5.2	43.5	69	4	42	99.5	98	45	5.5	33.95	0.341	1088

42 TEXEL WHITE SUFFOLK X RAMS - RAW DATA													
		ACTUAL	ACTUAL	LAMBPLAN FIGURES POST WEANING			STOCK SCAN FIGURES 19 - 09 - 23						
LOT	RAM ID	BWT	WWT	WEIGHT	FAT	EMD	WEIGHT	WIDTH	DEPTH	FAT	EMA	EMA/LW	INDEX
126	221233 Tw	4.8	47	81	5	43	110	106	51	7	41.62	0.378	1446
127	221108 Tw	6	65	78	6	44.5	110	102	48	7	37.7	0.343	1264
128	221117 Tw	6.8	62	81	5.5	46.5	119	113	53	7	46.11	0.388	1693
129	221183 Tw	5.6	47	70.5	4.5	40	96.5	105	50	7	40.42	0.419	1395
130	221228 Tw	5.6	42	71	6	44.5	101.5	104	50	6.5	40.04	0.394	1368
131	221151	6.5	55	67	3.5	40	99.5	101	49	5.5	38.11	0.383	1263
132	221120 Tri	6.6	57.5	82	5.5	43	116.5	106	48	6.5	39.18	0.336	1382
133	221104 Tw	6.1	45	53.5	4	38	98.5	101	47	6	36.55	0.371	1217
134	221149 Tw	7.6	63	75	4	38.5	106	99	47	6	35.82	0.338	1159
135	221159	6.2	58.5				101.5	100	46	6	35.42	0.349	1166
136	220494 Tw	6.2	61	83	6	43.5	102.5	101	49	5.5	38.11	0.372	1263
137	221188 Tw	6.3	58.5	81	5.5	45.5	110	95	46	6	33.65	0.306	1021
138	220407	6.7	64.5	82.5	6	43.5	112.5	112	54	7	46.57	0.414	1686
139	221252 Tw	6.2	52.5	77.5	5	44.5	105.5	94	44	5.5	31.85	0.302	950
140	220848 Tw	5.6	42	70	4	44	95	95	44	5.5	32.18	0.339	979
141	221235 Tw	6.2	46	64	6	43	98.5	107	52	6.5	42.84	0.435	1499
142	221333 Tw	6.3	41	68.5	5	47.5	95.5	104	50	6	40.04	0.419	1370
143	221292 Tw	5.8	29	70	4	42.5	101.5	101	47	5.5	36.55	0.36	1219
144	221269 Tw	5.8	40.5	74	4.5	43	92.5	99	47	5.5	35.83	0.387	1161
145	221312	7	50.5	76.5	5	48	101	104	50	7	40.04	0.396	1366
146	221218 Tw	6.3	51.5	69	5.5	44.5	105	106	48	7	39.18	0.373	1380
147	221247 Tw	5.6	38	72	4.5	44	103.5	100	49	6	37.73	0.365	1232
148	221148	6.7	54	73.5	6	42.5	99.5	103	49	6	38.86	0.391	1319
149	221168 Tri	5	27	60	5	40	98	101	50	6.5	38.88	0.397	1281
150	221145 Tri	5.4	42.5	68	5.5	45.5	98	101	47	5.5	36.55	0.373	1219
155	221297 Tw	6.4	48	76	5	50	98	104	50	6.5	40.04	0.409	1368
152	221113 Tw	5.1	57	81	7.5	47	99	104	48	6	38.44	0.388	1326
153	221229	8	56	82	6.5	44.5	105	101	49	6	38.11	0.363	1261
154	221147 Tw	6.8	49.5	77.5	6.5	41	99	101	49	5.5	38.11	0.385	1263
155	221128 Qu	5.6	63.5	64	3.5	38.5	98	90	42	5	29.11	0.297	792

42 TEXEL WHITE SUFFOLK X RAMS - cont - RAW DATA													
		ACTUAL	ACTUAL	LAMBPLAN FIGURES POST WEANING			STOCK SCAN FIGURES 19 - 09 - 23						
LOT	RAM ID	BWT	WWT	WEIGHT	FAT	EMD	WEIGHT	WIDTH	DEPTH	FAT	EMA	EMA/LW	INDEX
156	221177 Tw	6.4	52.5	72.5	5.5	43.5	98	107	51	6	42.01	0.429	1479
157	221355 Tw	6.5	42.5	72	4	43.5	96	101	48	6	37.33	0.389	1239
158	221351 Tw	5.8	46	70	4	48	97.5	103	50	6	39.65	0.407	1341
159	221305 Tw	5.8	39.5	58	4.5	41.5	94	94	44	5.5	31.85	0.339	950
160	221265 Tw	5.6	38.5	62.5	4	42	92	102	47	6	36.91	0.401	1246
161	221138 Tw	6.4	56.5	71	5	42.5	94	101	47	5.5	36.55	0.389	1219
162	221268 Tw	6	46.5	72	5	43.5	94.5	100	43	5.5	33.11	0.35	1102
163	220862 Tw	6.2	43	70	4	41.5	96.5	92	44	5.5	31.17	0.323	892
164	221101 Tw	5.4	48	54	3	35	103	109	52	6.5	43.64	0.424	1557
165	221258 Tw	5.5	38.5	64.5	5	43	90	94	45	5.5	32.57	0.362	972
166	221370 Tw	5.1	33.5	52.5	3.5	35.5	84	99	42	5.5	32.02	0.381	1051
167	221249	4.8	38.5	62	4.5	42	87.5	92	45	5.5	31.88	0.364	914



Champion and Reserve Champion White Suffolk Ewes
Royal Adelaide Show 2023

25 WHITE SUFFOLK EWES - RAW DATA																		
LOT	EWE ID	LAMBPLAN FIGURES POST WEANING																
		ACTUAL BWT	ACTUAL WWT	WEIGHT	FAT	EMD												
168	220760 Tw	6.3	51	73.5	6	44.5												
169	220368	6.6	47.5	50.5	5	37												
170	220890	5.8	52.5	70	6	45												
171	220317 Tw	6.5	44.5	47.5	2.5	34												
172	220376 Tw	5.6	40	45	3.5	35												
173	220377 Tw	6.3	41.5	48	2.5	34												
174	220800	5.7	53	62.5	4	39												
175	220689 Tw	6	54	66	5.5	41.5												
176	220570	6	51.5	59	4	41												
177	220492 Tri	4.8	43	58	5	41.5												
178	220885 Tw	6	52.5	73.5	5.5	44												
179	220969	6	45.5	62.5	4	39												
180	220265 Tw	4.8	48	56.5	5	39												
181	220520 Tw	5.4	41.5	55.5	4	33												
182	220453	6.2	49.5	65	4.5	38.5												
183	220790 Tw	4.8	39	58.5	4	38.5												
184	220665 Tw	6	39.5	57.5	4	41.5												
185	220332 Tw	3.5	36	41	3	32												
186	220825 Tw	4.6	41	53	4	41												
187	220791 Tw	4.6	40.5	56	3.5	35.5												
188	220905 Tw	6.2	34.5	50.5	3.5	35.5												
189	220854 Tw	5.6	44.5	66.5	5	45												
190	220894 Tri	3.9	48.5	61	4	44.5												
191	220448 Tw	5.9	42	54	4.5	38												
192	220711 Tri	5.2	52	62	4.5	40.5												



Mertex 220280
Supreme Interbreed Short Wool Ewe & Supreme
WS Exhibit Royal Adelaide Show, Champion WS Ewe ASWS,
Sheepvention & Royal Adelaide Show, Reserve Prime Lamb
Exhibit ASWS, 2nd Interbreed Short Wool Ewe Sheepvention,
Reserve Senior Champion Ewe - Bendigo Elite Show, Part of
The Supreme Interbreed Group At the Victorian Sheep Show,
ASWS, Sheepvention & Royal Adelaide Show