



MILONG ANGUS STUD

EST.
1928



WWW.MILONGANGUSSTUD.COM.AU
FRIDAY 25TH AUGUST

2023 BULL SALE



50 ANGUS BULLS
SELL ON PROPERTY
& VIA AUCTIONSPLUS

EASY DOING BULLS WITH
LONGEVITY, TEMPERAMENT
& MARBLING

@MILONG.ANGUS.STUD



BULL INSPECTIONS:
BEEF WEEK OPEN DAY,
OPEN DAY FRIDAY 11TH
AUGUST &/OR
SALE DAY AM 25TH AUGUST
'MILONG WEST' YOUNG NSW

Nutrien

AuctionsPlus

WILLIAM DAY 0429 416 754
MILONGPTYLTD@GMAIL.COM





WELCOME TO MILONG ANGUS STUD

2022
OPEN DAY
22ND JULY
BULL SALE
5TH AUGUST

2022 SALE
VIDEOS CAN BE
VIEWED ON
OUR WEBSITE,
UNDER SALES
AND VIA
AUCTIONSPLUS
LINK

Milong Angus Breeding Philosophy – Overview

Milong Angus Stud has been committed to producing an easy, well doing herd that suits a range of climatic conditions across NSW for almost 100 years.

The main traits in our herd we have focused on is temperament, marbling and longevity, with key emphasis on commercial production. We believe that providing these traits for our clients is providing profitability amongst their commercial beef enterprise. Temperament is one of our key management areas as we believe there is a huge correlation between temperament and carcass quality, the advantage of quiet cattle is tenfold.

We have a strong emphasis on our maternal function as that is where the production and profitability lie.

We believe that bull selection is highly important but knowing the position of your cow herd is paramount as you can't rely solely on a bull to achieve your desired traits and results. We work closely with our clients to select a bull that will suit your cow herd requirements and outcomes. We believe that 90% of calving is on management, cow conditions and timing. We will assist to ensure optimal traits are selected from our bulls for your herd and management practices; i.e. condition of cows, when you calve, time of year for joining/weaning etc. This selection is vital for enhancing your breeding outcomes and creating a profitable and versatile beef enterprise.

ABOUT US

History of Milong Angus Stud

MILONG ANGUS STUD IS ONE OF THE OLDEST ANGUS STUDS IN THE COUNTRY AND HAS BEEN IN CONTINUOUS OPERATION AT THE ORIGINAL MILONG WEST PROPERTY AT YOUNG IN NEW SOUTH WALES FOR ALMOST 100 YEARS.

IT REMAINS IN THE HANDS OF THE SAME FAMILY AND ITS COMMITMENT TO PRODUCING QUALITY ANGUS BULLS THAT MEET THE NEEDS OF THE COMMERCIAL CATTLE PRODUCER.

EST. 1928

Milong Angus Stud was founded by A.W. Scott in 1928 when he purchased 10 females from New Zealand. He travelled to New Zealand, America, Canada and Scotland where he inspected several studs and became very interested in the New Zealand genetics particularly.

Over the next 5 years the stud females increased to 24 with a consistent growth over the many years ahead. Bulls were purchased and imported from New Zealand, Canada and Scotland to begin the establishment of a strong gene pool. Many of the early sires included Edinglassie, Mulben and Abington genes all from Scottish bloodlines. Canadian bloodlines were also purchased and imported including Canadian bred bull, Trangie Page, who produced very well at Milong.

By 1958, Milong had produced some excellent performing bulls from a diverse gene pool that was a key focus from the early establishment days and is still a strong focus today. Bill Scott (son of A.W. Scott) who had a strong focus on establishing the stud purchased Elect of Westdrum in 1958 by the mighty Ballot of Belladrum, he was imported from Scotland. Along with many other early sires, Elect of Westdrum was crucial in the development of the line of females at Milong Angus.

Over the next 35 years, sires were purchased from New Zealand and from a range of breeders across Australia, continually adding to growth and versatility of the herd. Milong Torpedo, Milong Toronto, Milong Xcellent and Milong Zulu were some of the outstanding Sires bred by Milong Angus during the earlier years being good performers/producers and Sydney Royal winners.

WWW.MILONGANGUSSTUD.COM.AU

ABOUT US

Milong Angus Today:



IN THE DAYS BEFORE ARTIFICIAL INSEMINATION, FOUNDATION SIRES WERE IMPORTED FROM SCOTLAND, CANADA AND NEW ZEALAND AND OVER THE LAST THIRTY YEARS, FOURTH GENERATION STUDMASTER WILLIAM DAY HAS BUILT ON THIS SOLID FOUNDATION. THE STUD CONSISTENTLY PRODUCES ANGUS BULLS THAT ARE ABOVE AVERAGE IN LENGTH AND DEPTH WITH SOFT SKIN AND KIND HEADS THAT OFFER EASY CALVING AND MANAGEMENT. THEY ARE SUITED TO CONDITIONS FROM SOUTHERN QUEENSLAND TO TASMANIA IN BOTH TOUGH AND EXCELLENT TIMES.

Milong Angus is still run today from the original stud sheds of 'Milong West' and by the same family almost 100 years later. William Day, owner and manager of Milong Angus has been committed to building on the quality line of cattle for the past 30 years, working in conjunction with his family. Milong Angus is a highly family oriented operation, spanning 5 generations, William has assistance from prior stud manager and mother Nonie Day (daughter of Bill Scott) and his brother John Day whom all together run a mixed farming operation, Milong Pty Ltd alongside the stud.

Milong Pty Ltd is a mixed farming operation across various properties from Young, Junee and Wagga Wagga, NSW. The cattle herd consists of 200 stud registered breeders and 1000 commercial herd breeders. Milong Angus has a strong focus on their commercial herd production, however during the drought they had to downsize but are now working towards increasing their number of breeders back up again.

Milong Angus Stud is committed to producing a strong, even, well doing herd with bulls that produce the same quality traits for their clients as they expect in their herd, including longevity, temperament and marbling. Milong Angus has sold bulls privately on property since the 1930s and 2021 is the first year that a bull sale via AuctionsPlus will be held.

A mixed farming operation is crucial in order to keep the land productive and sustainable within the particular climate and conditions. The properties at Young, NSW, are home to the stud and part commercial herd, with mainly grazing and cropping for pasture and haymaking. The Junee properties are focused on the commercial herd production, sheep production, grazing and cropping and the Wagga Wagga property purely focused on commercial herd breeding with potential for pasture fattening.

WWW.MILONGANGUSSTUD.COM.AU

BREEDING PHILOSOPHY

At Milong Angus Stud

Milong Angus Stud has been committed to producing an easy, well doing herd that suits a range of climatic conditions across NSW for almost 100 years.

Established in 1928 and long before artificial insemination, foundation sires were imported from Scotland, Canada and New Zealand to increase the gene pool within the Milong Angus Stud and Australian Angus cattle. This allowed Milong Angus to select their desired traits and genetics from across the world, over many years and generations which has led towards the durable overall type within the herd today. The main traits in our herd we have focused on is temperament, marbling and longevity, with key emphasis on commercial production. We believe that providing these traits for our clients is providing profitability amongst their commercial beef enterprise.



TEMPERAMENT IS ONE OF OUR KEY MANAGEMENT AREAS AS WE BELIEVE THERE IS A HUGE CORRELATION BETWEEN TEMPERAMENT AND CARCASS QUALITY, THE ADVANTAGE OF QUIET CATTLE IS TENFOLD.

The angle of the commercial herd is focused on our preferred traits and genetics but also on our stock handling and management practices, therefore increasing overall production and driving profitability. The temperament and quietness of our cattle leads to heightened traits including easy calving and longevity. However, it drives our herd from a profitability point of view as assists down the agricultural chain producing good quality carcass, high marbling, less dark cutters, higher weight gain and assisting farmers and feedlot handlers in management.

WWW.MILONGANGUSSTUD.COM.AU

BREEDING PHILOSOPHY

At Milong Angus Stud



Maternal Power

We have a strong emphasis on our maternal function as that is where the production and profitability lie.

We have a focus on easy doing large frame cows with structural and feet soundness, udder set and high milk production, femininity, longevity, easy calving and temperament. For these, we focus on producing bulls that suit both younger and bigger frame cows, therefore, two main lines of bulls have been developed; the soft smaller compact bull and then the smooth shouldered, longer frame bull. We believe that bull selection is highly important but knowing the position of your cow herd is paramount as you can't rely solely on a bull to achieve your desired traits and results.

We work closely with our clients to select a bull that will suit your cow herd requirements and outcomes. We believe that 90% of calving is on management, cow conditions and timing. We will assist to ensure optimal traits are selected from our bulls for your herd and management practices; i.e. condition of cows, when you calve, time of year for joining/weaning etc. This selection is vital for enhancing your breeding outcomes and creating a profitable and versatile beef enterprise.

WWW.MILONGANGUSSTUD.COM.AU

Reference Sire



Animal ID QRFJ125
NLIS Visual No/RFID - / -
Date of Birth 31/03/2013
Inventory Season n/a
Sex Male
Register Herd Book Register
Mating Type Natural
Colour Black
Birth Number Single
Status Active
DNA Profile Stored SNP
Parentage Verification Parent verified
Genetic Conditions AMFU,CAFU,DDF,NHFU

USA7078 VERMILION DATELINE 7078[#]
 BCHA10 J & C APPEAL A10^{PV}
 BCHW3 J & C MISS CHEYENNE W3[#]
Sire: QRFE269 RAFF EMPIRE E269^{SV}
 USA5175 S A F 598 BANDO 5175[#]
 QRFA55 RAFF DORIS A55[#]
 QRFY70 RAFF DORIS Y70[#]
 USA0845 SUMMITCREST SCOTCH CAP 0B45[#]
 VONV84 BANQUET VENZO V84[#]
 VONM41+92 BANQUET KIWI DREAM+92[#]
Dam: QRFY68 RAFF BURNETTE Y68^{SV}
 USA315 V D A R NEW TREND 315[#]
 QRFM51+92 RAFF BURNETTE M51+92[#]
 QRFK33+90 FORRES BURNETTE K33+90[#]

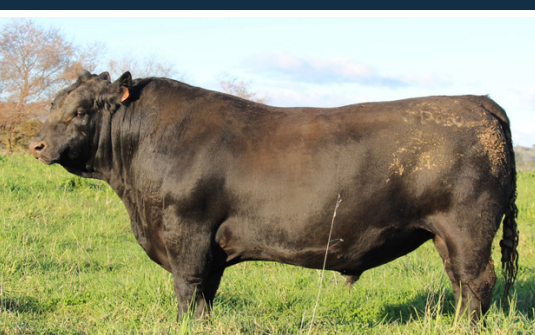
Raff Jumbuck J125 is a very special sire at Milong Angus as he has a great temperament, smooth shouldered, offers easy calving and is a great doer. He was purchased due to multiple factors but has always had extra eye appeal and was a very mobile, loose skinned individual. He was out of a highly fertile line of females and that has been proven through the bulls and females he has produced.

The Raff bloodlines are ones we find of very high standard and match our breeding requirements, with their great temperament and easy calving; producing good size cows and bulls.

Mid July 2022 TransTasman Angus Cattle Evaluation												
TACE	Calving Ease				Growth					Fertility		
	Calving Ease Dir	Calving Ease Dtrs	Gest. Length	Birth Wt	200 Day Growth	400 Day Weight	600 Day Weight	Mat. Cow Weight	Milk	Days to Calving	Scrotal Size	
EBV	-4.7	-6.3	-5.5	+7.5	+46	+81	+113	+89	+19	-0.5	+1.4	
Acc	74%	66%	79%	94%	83%	82%	85%	82%	73%	49%	75%	
Perc	91	98	36	98	69	76	57	70	34	97	75	
Carcass												
TACE	Carcass				Feed		Temp		Structural		Selection Index	
	Carcass Weight	EMA	Rib Fat	Rump Fat	RBV	IMF	NFI-F	Docility	Angle	Claw	\$A	\$A-L
EBV	+58	+6.6	-0.5	+0.2	+1.4	+1.2	-0.15	-	+1.12	+0.96	\$145	\$239
Acc	76%	67%	72%	69%	68%	67%	59%	-	61%	61%	-	-
Perc	79	40	63	34	17	81	15	-	80	72	90	95

Traits Observed: CE,BWT,200WT(x2),400WT(x2),600WT(x2),SC,Scan(EMA,Rib,Rump,IMF),Genomics

Reference Sire



Animal ID BGRP407
NLIS Visual No/RFID - / -
Date of Birth 26/08/2018
Inventory Season n/a
Sex Male
Register Herd Book Register
Mating Type Natural
Colour Black
Birth Number Single
Status Active
DNA Profile Stored SNP
Parentage Verification Sire verified
Genetic Conditions AMF,CAF,DDF,NHF,DWF,MAF,MHF,OHF,OSF,RGF

Crawford P407

WDCZ3 COONAMBLE Z3^{PV}
 WHH10 BANGADANG WESTERN EXPRESS E10^{SV}
 WHHY7 BANGADANG WILCOOLA Y7[#]
Sire: DXTK542 TEXAS KELVIN KLEIN K542^{SV}
 NAQW109 ARDROSSAN DIRECTION W109^{PV}
 DXTD035 TEXAS TOQUE D035^{PV}
 DXTZ008 TEXAS TOQUE 2008^{SV}
 USA13987017 BALDRIDGE KABOOM K243 KCF[#]
 USA15585939 MOHNEN DYNAMITE 1356[#]
 USA13820692 MOHNEN JILT 910[#]
Dam: BGRG802 BGRAHAM G802[#]
 USA65D BT DIRECTION 65D[#]
 BGRX010 BGRAHAM X010^{SV}
 VVNL127+91 WILLOW FIELDS LOTUS L127+91[#]

June 2023 TransTasman Angus Cattle Evaluation													
TACE	Calving Ease				Growth					Fertility			Temp
	Calving Ease Dir	Calving Ease Dtrs	Gest. Length	Birth Wt	200 Day Growth	400 Day Weight	600 Day Weight	Mat. Cow Weight	Milk	Days to Calving	Scrotal Size	Docility	
EBV	-7.3	-5.9	-4.5	+7.2	+49	+92	+127	+155	+8	-3.2	+2.9	+19	
Acc	65%	49%	73%	92%	77%	74%	75%	74%	64%	41%	75%	39%	
Perc	96	98	54	96	54	44	28	2	98	85	21	54	
Carcass													
TACE	Carcass				Feed Efficiency		Structural		Selection Index				
	Carcass Weight	EMA	Rib Fat	Rump Fat	RBV	IMF	NFI-F	Claw Set	Foot Angle	Leg Angle	\$A	\$A-L	
EBV	+61	-1.0	+0.2	+0.3	+0.0	+0.1	+0.36	+0.86	+0.98	+0.92	\$79	\$222	
Acc	65%	62%	64%	64%	64%	65%	52%	63%	63%	57%	-	-	
Perc	65	99	42	38	77	94	73	54	52	16	99	97	

Traits Observed: BWT,200WT,400WT,SC,Scan(EMA,Rib,Rump,IMF),Genomics
 Statistics: Number of Herds: 1 Prog Analysed: 111

Crawford P407 has a strong pedigree that we were looking to add into the herd, combining Texas and US blood lines. He is an exceptionally long, deep, meaty bull with outstanding calving ease. We first joined P407 to young heifers and we were amazed with the results and his progeny.

Reference Sire



Animal ID QQFH147
NLIS Visual No/RFID NJ040705XBG04887 / 982 123460014114
Date of Birth 05/08/2012
Inventory Season n/a
Sex Male
Register Herd Book Register
Mating Type AI
Colour Black
Birth Number Single
Status Active
DNA Profile Stored Microsatellite & SNP
Parentage Verification Parent verified
Genetic Conditions AMFU,CAFU,DDF,NHFU

VTMY437 TE MANIA YORKSHIRE Y437^{PV}
 VTMB1 TE MANIA BERKLEY B1^{PV}
 VTMZ53 TE MANIA LOWAN Z53[#]
Sire: VTME343 TE MANIA EMPEROR E343^{PV}
 USA297E B T ULTRAVOX 297E[#]
 VTMZ74 TE MANIA LOWAN Z74^{PV}
 VTMZ201 TE MANIA LOWAN V201[#]
 NGMA238 BOOROOMOOKA NEUTRON A238^{PV}
 NMMD108 MILLAH MURRAH DIGBY D108^{PV}
 NMMZ70 MILLAH MURRAH FLOWER A70^{PV}
Dam: NMMF123 MILLAH MURRAH BRENDA F123^{PV}
 NZE04379 TE MANIA INFINITY 04 379 AB[#]
 NMMD113 MILLAH MURRAH BRENDA D113^{PV}
 NMMB211 MILLAH MURRAH BRENDA B211^{PV}

June 2023 TransTasman Angus Cattle Evaluation													
TACE	Calving Ease				Growth					Fertility			Temp
	Calving Ease Dir	Calving Ease Dtrs	Gest. Length	Birth Wt	200 Day Growth	400 Day Weight	600 Day Weight	Mat. Cow Weight	Milk	Days to Calving	Scrotal Size	Docility	
EBV	-5.9	+3.5	-5.2	+7.4	+60	+109	+152	+131	+15	-5.9	+3.6	+14	
Acc	94%	83%	98%	99%	98%	98%	98%	97%	97%	76%	98%	97%	
Perc	94	45	42	97	12	9	4	10	68	18	8	77	
Carcass													
TACE	Carcass				Feed Efficiency		Structural		Selection Index				
	Carcass Weight	EMA	Rib Fat	Rump Fat	RBV	IMF	NFI-F	Claw Set	Foot Angle	Leg Angle	\$A	\$A-L	
EBV	+85	-2.4	+0.7	+0.6	-0.8	+2.6	+0.51	+0.44	+0.80	+1.02	\$189	\$347	
Acc	96%	94%	95%	95%	93%	95%	87%	95%	95%	92%	-	-	
Perc	8	99	31	33	97	35	86	2	13	45	62	48	

Traits Observed: BWT,200WT,400WT,600WT,SC,Scan(EMA,Rib,Rump,IMF),Genomics
 Statistics: Number of Herds: 77 Prog Analysed: 1050 Genomic Progeny: 409

Hallmark is an outstanding sire package with his large frame, exceptional feet, structure and temperament and his indexes are all in the top 1%. His pedigree is exquisite with combination of Te Mania Emperor and Millah Murrah Brenda lines.



Reference Sire

Ascot Lionheart L305



Animal ID QQFL305
NLIS Visual No/RFID - / 982 091016191237
Date of Birth 15/03/2015
Inventory Season n/a
Sex Male
Register Herd Book Register
Mating Type AI
Colour Black
Birth Number Single
Status Active
DNA Profile Stored SNP
Parentage Verification Parent verified
Genetic Conditions AMFU,CAFU,DDFU,NHFU

VTMB1 TE MANIA BERKLEY B1^{PV}
 VTME343 TE MANIA EMPEROR E343^{PV}
 VTMZ74 TE MANIA LOWAN Z74^{PV}
Sire: QQFH147 ASCOT HALLMARK H147^{PV}
 NMMD108 MILLAH MURRAH DIGBY D108^{PV}
 NMMF123 MILLAH MURRAH BRENDA F123^{PV}
 NMMD113 MILLAH MURRAH BRENDA D113^{PV}
 VTMB219 TE MANIA BARTEL B219^{PV}
 BHRE614 DUNOON EVIDENT E614^{PV}
 BHR681 DUNOON ELSA B681^{PV}
Dam: QQFH148 ASCOT H148^{PV}
 NMMD78 MILLAH MURRAH EQUATOR D78^{PV}
 NMMF126 MILLAH MURRAH FLOWER F126^{PV}
 NMMB76 MILLAH MURRAH FLOWER B76^{PV}



June 2023 TransTasman Angus Cattle Evaluation												
TACE	Calving Ease				Growth				Fertility			Temp
	Calving Ease Dir	Calving Ease Dtrs	Gest. Length	Birth Wt	200 Day Growth	400 Day Weight	600 Day Weight	Mat. Cow Weight	Milk	Days to Calving	Scrotal Size	Docility
EBV	-2.8	-0.6	-5.8	+6.6	+62	+112	+145	+121	+14	-5.2	+4.4	+17
Acc	81%	66%	96%	97%	95%	95%	95%	91%	90%	57%	91%	73%
Perc	86	82	33	92	8	5	7	18	73	34	2	66
	Carcass						Feed Efficiency		Structural		Selection Index	
	Carcass Weight	EMA	Rib Fat	Rump Fat	RBY	IMF	NFI-F	Claw Set	Foot Angle	Leg Angle	SA	SA-L
EBV	+86	+9.8	-3.1	-4.2	+1.5	+1.6	+0.26	+0.62	+0.70	+0.84	\$230	\$385
Acc	86%	84%	85%	85%	81%	83%	68%	67%	66%	64%	-	-
Perc	7	14	97	96	5	64	61	11	4	5	19	19

Traits Observed: BWT,200WT,400WT(x2),SC,Scan(EMA,Rib,Rump,IMF),Genomics
 Statistics: Number of Herds: 25 Prog Analysed: 337 Genomic Progeny: 142
 Lion Heart was the \$70,000 son of Ascot Hallmark purchased by Ben Nevis Angus & Trio Angus. Lion Heart is a very rare animal across the board with show stopping looks, a B muscle pattern, softness, impeccable structure and a docile nature. His pedigree is Australian Angus royalty, combining the magic of the Millah Murrah Flower and Brenda lines with breed legends Te Mania Emperor and Dunoon Evident.. (From Breeder Genetics)

Reference Sire

KR Pacesetter USA



- ▲ A step ahead of the competition
- ▲ High performance with exceptional phenotype
- ▲ Outcross pedigree and high \$B

Registration: 18874634
 Birthdate: 2017/02/15
 Tattoo: 7039
 Breed: Angus

Syden 928 Destination 5420
 Prairie Pride Next Step 2036
 Flying V Miss Pride 426
 RBM Step Ahead C80
 EXAR 263C
 Basin Charisma U691
 Basin Charisma 4866
 Sitz Dash 10277
 Barstow Cash
 Barstow Queen W16
 KR Blackbird 4295
 Summitcrest Darth 0X19
 WK Blackbird 2250
 Summitcrest Blackbird 22W1

	PRODUCTION										MATERNAL					
	CED	BW	WW	YW	RADG	DMI	YH	SC	HP	CEM	MILK	MW	MH	SEN		
EPD	-2	34	89	165	.36	1.87	14	2.04	13.2	12	25	122	1.1	-47		
ACC	.45	.82	.36	.67	.37	.37	.66	.65	.21	.43	.40	.41	.42			
% Rank	95	90	2	1	1	95	1	2	30	15	55	3	3	95		

	MANAGEMENT				CARCASS				\$VALUES						
	DOC	CLAW	ANGLE	PAP	HS	CW	MARB	RE	FAT	\$M	\$W	\$F	\$G	\$B	\$C
EPD	17	.50	.45	2.40	.58	83	.79	.77	-.031	57	68	137	65	202	319
ACC	.38	.27	.27	.23	.26	.56	.52	.49	.49						
% Rank	55	50	30	80	60	1	25	25	10	60	25	1	20	2	3

American Angus Association - 5/2023

altabeef.com



Reference Sire

Raff Jovial J350



Animal ID QRFJ350
NLIS Visual No/RFID - / -
Date of Birth 21/07/2013
Inventory Season n/a
Sex Male
Register Herd Book Register
Mating Type ET
Colour Black
Birth Number Single
Status Active
DNA Profile Stored SNP
Parentage Verification Dam verified
Genetic Conditions AMFU,CAFU,DDFU,NHFU

NZE36174 WAITARA VALLEY BIG MAX[#]
 NZE36917 WAITARA VALLEY TEX[#]
 NZE196063 WAITARA VALLEY L578[#]
Sire: NZE469 HINGAIA 469[#]
 NZE33811 BACK TRACK P&P ROYAL 28[#]
 NZE217493 HINGAIA 910[#]
 NZE186216 HINGAIA D208[#]
 USA13556245 CIRCLE A ADVENTURE 0124[#]
 USA14761330 ONEILLS EXPEDITION[#]
 USA14134966 ONEILLS DELIA 715[#]
Dam: QRFF14 RAFF BLACKBIRD F14[#]
 USA12224884 S V F BANDOLIER[#]
 USA15141036 HOFF BLACKBIRD 594 5217[#]
 USA12431774 HOFF BOSS LADY S C 3V9[#]

Raff Jovial J350 is the newer stud sire at Milong Angus and 2020 was the first year we have joined him. He was a stud sire at Raff Angus previously where he returned with of hip and pin to females with increased spring of rib, capacity and udder quality. He has the traditional head shape, muzzle strength and improved docility and added extra muscle in their herd.

Mid July 2023 TransTasman Angus Cattle Evaluation												
TACE	Calving Ease				Growth				Fertility			Temp
	Calving Ease Dir	Calving Ease Dtrs	Gest. Length	Birth Wt	200 Day Growth	400 Day Weight	600 Day Weight	Mat. Cow Weight	Milk	Days to Calving	Scrotal Size	Docility
EBV	-5.7	-7.2	-4.4	+6.8	+47	+83	+120	+123	+19	-5.3	+1.2	+41
Acc	86%	82%	97%	96%	97%	97%	98%	96%	95%	65%	96%	85%
Perc	93	99	56	94	66	71	43	17	35	32	81	2
	Carcass						Feed Efficiency		Structural		Selection Index	
	Carcass Weight	EMA	Rib Fat	Rump Fat	RBY	IMF	NFI-F	Claw Set	Foot Angle	Leg Angle	SA	SA-L
EBV	+67	+9.0	+0.2	-0.9	+1.0	-0.3	-0.36	+0.88	+1.02	+1.06	\$135	\$261
Acc	90%	88%	88%	88%	84%	86%	71%	74%	74%	69%	-	-
Perc	47	20	43	61	18	98	4	57	62	58	94	92

Traits Observed: BWT,200WT(x2),400WT,600WT(x2),SC,Scan(EMA,Rib,Rump,IMF),Genomics
 Statistics: Number of Herds: 13 Prog Analysed: 513 Genomic Progeny: 139

Reference Sire



Animal ID QRFM93
 NLIS Visual No/RFID MAKG0450XBMM0093 / -
 Date of Birth 03/09/2016
 Inventory Season n/a
 Sex Male
 Register Herd Book Register
 Mating Type Natural
 Colour Black
 Birth Number Single
 Status Active
 DNA Profile Stored SNP
 Parentage Verification Parent verified
 Genetic Conditions AMFU,CAFU,DDFU,NHFU

BCHA10 J & C APPEAL A10^{PV}
 QRFE269 RAFF EMPIRE E269^{SV}
 QRF A55 RAFF DORIS A55[#]
 Sire: QRFK76 RAFF KINGDOM K76^{PV}
 USA14761330 ONEILLS EXPEDITION[#]
 QRFF14 RAFF BLACKBIRD F14[#]
 USA15141036 HOFF BLACKBIRD 594 5217[#]
 USA14037894 HYLIN RIGHT WAY 781[#]
 VRR A191 ROSSANDER BLACK THUNDER A191^{SV}
 VRRX339 ROSSANDER ESTELLA X339^{SV}
 Dam: QRFD296 RAFF DORIS D296^{PV}
 USA13119152 HOFF LIMITED EDITION S C 594[#]
 QRFB226 RAFF DORIS B226^{PV}
 QRFS128 RAFF DORIS S128[#]

Raff Kingdom M93 has produced very well at Milong Angus. He is a very large individual with a really quiet temperament. He has sired many of the bulls we have produced and also cows retained in our herd. He is very consistent of type of the Raff angus herd and is why we love having their genetics within our cattle.

Mid July 2022 TransTasman Angus Cattle Evaluation												
TACE	Calving Ease				Growth				Fertility			
	Calving Ease Dir	Calving Ease Dtrs	Gest. Length	Birth Wt	200 Day Growth	400 Day Weight	600 Day Weight	Mat. Cow Weight	Milk	Days to Calving	Scrotal Size	
EBV	-6.8	-4.8	-2.9	+6.1	+47	+84	+117	+97	+14	+1.8	+0.5	
Acc	64%	52%	59%	87%	79%	81%	85%	76%	62%	40%	72%	
Perc	95	96	77	88	62	67	48	56	76	99	95	
TACE	Carcase					Feed	Temp	Structural		Selection Index		
	Carcase Weight	EMA	Rib Fat	Rump Fat	RBY	IMF	NFI-F	Docility	Angle	Claw	\$A	\$A-L
EBV	+69	+6.0	-1.4	-1.1	+0.9	+1.1	+0.15	-	-	-	\$128	\$220
Acc	69%	60%	62%	63%	58%	56%	47%	-	-	-	-	-
Perc	40	50	85	68	32	84	47	-	-	-	94	97

Traits Observed: CE,200WT(x2),400WT(x2),600WT,SC,Scan(EMA,Rib,Rump,IMF)

Reference Sire



Animal ID QRFL169
 NLIS Visual No/RFID - / -
 Date of Birth 09/03/2015
 Inventory Season n/a
 Sex Male
 Register Herd Book Register
 Mating Type ET
 Colour Black
 Birth Number Single
 Status Active
 DNA Profile Stored SNP
 Parentage Verification Parent verified
 Genetic Conditions AMFU,CAFU,DDFU,NHFU

USA12186639 ANKONIAN ELIXIR DB[#]
 USA12758219 ANKONIAN ELIXIR 100[#]
 USA11979216 ANKONY LASS 206T[#]
 Sire: UKI541616100052 NETHERALLAN PETER
 CAN679078 YOUNG DALE HOGAN 3Y[#]
 CANRWZ54418 NIGHTINGALE PRIDE OF PERSHORE
 CAN597832 T A F PRIDE 395[#]
 USA2700 LEACHMAN RIGHT TIME^{SV}
 USA24J BT RIGHT TIME 24J[#]
 USA1905 SITZ EVERELDA ENTENSE 1905[#]
 Dam: SJKD65 GRANITE RIDGE DREAM D65^{PV}
 USA2164 TC STOCKMAN 2164[#]
 CCVZ83 VERMONT DREAM Z83^{PV}
 VONQ34+95 BANQUET DREAM Q34+95[#]

Raff Pershore L169

Raff Pershore L169 is a bull with great capacity. The strong Scottish bloodlines are what drew us to him initially as we wanted to continue those key traits that we have seen consistently throughout our herd over the past 100 years. He has been very successful with mature breeding producing great sized offspring. He has sired many of the bulls we offer for sale as displaying the key traits including; temperament, softness, longevity and marbling.

Mid July 2022 TransTasman Angus Cattle Evaluation												
TACE	Calving Ease				Growth				Fertility			
	Calving Ease Dir	Calving Ease Dtrs	Gest. Length	Birth Wt	200 Day Growth	400 Day Weight	600 Day Weight	Mat. Cow Weight	Milk	Days to Calving	Scrotal Size	
EBV	-5.6	-8.2	-1.0	+6.7	+56	+106	+158	+148	+21	+0.5	+3.3	
Acc	71%	59%	65%	93%	81%	83%	87%	79%	68%	43%	63%	
Perc	93	99	94	93	19	10	2	3	22	99	10	
TACE	Carcase					Feed	Temp	Structural		Selection Index		
	Carcase Weight	EMA	Rib Fat	Rump Fat	RBY	IMF	NFI-F	Docility	Angle	Claw	\$A	\$A-L
EBV	+84	+4.9	-3.0	-2.0	+1.5	+0.3	-0.22	-	-	-	\$119	\$266
Acc	71%	58%	62%	61%	59%	57%	49%	-	-	-	-	-
Perc	6	69	99	85	14	97	10	-	-	-	96	90

Traits Observed: BWT,200WT

Reference Sire



Animal ID QRFH180
 NLIS Visual No/RFID - / -
 Date of Birth 14/06/2012
 Inventory Season n/a
 Sex Male
 Register Herd Book Register
 Mating Type Natural
 Colour Black
 Birth Number Single
 Status Active
 DNA Profile Stored SNP
 Parentage Verification Parent verified
 Genetic Conditions AMFU,CAC,DDFU,NHFU

USA11616257 S A R SUPERCHARGER 8418[#]
 USASC242 HOFF CHARGER S C 242[#]
 USA11775885 HOFF MISS FLYER S C E01[#]
 Sire: QRFE69 RAFF EMBLEM E69^{PV}
 USA12120282 HOFF WESTWIND S C 070[#]
 USA13119135 HOFF MORIAH S C 635[#]
 USA12632581 HOFF MISS SUNSHINE S C 9262[#]
 USA12346200 TWIN VALLEY PRECISION E161[#]
 USA13898124 BR MIDLAND[#]
 USA13253905 BR ROYAL LASS 7036-19[#]
 Dam: QRFZ199 RAFF DORIS Z199[#]
 QRFU27 RAFF ULTIMATE U27^{SV}
 QRFW10 RAFF DORIS W10[#]
 QRFS128 RAFF DORIS S128[#]

Raff Emblem H180

Raff Emblem H180 was an excellent all round bull with outstanding performance on both heifers and mature cows, including calving ease and progeny with great eye appeal. Similar to all Raff bulls has a great temperament.

Mid July 2022 TransTasman Angus Cattle Evaluation												
TACE	Calving Ease				Growth				Fertility			
	Calving Ease Dir	Calving Ease Dtrs	Gest. Length	Birth Wt	200 Day Growth	400 Day Weight	600 Day Weight	Mat. Cow Weight	Milk	Days to Calving	Scrotal Size	
EBV	-4.9	+0.1	-2.3	+5.8	+41	+75	+112	+114	+15	+1.0	-0.2	
Acc	76%	66%	80%	95%	86%	85%	88%	84%	73%	48%	75%	
Perc	91	75	85	84	87	88	60	26	69	99	99	
TACE	Carcase					Feed	Temp	Structural		Selection Index		
	Carcase Weight	EMA	Rib Fat	Rump Fat	RBY	IMF	NFI-F	Docility	Angle	Claw	\$A	\$A-L
EBV	+60	-2.4	-0.5	+0.2	-1.6	+2.2	+0.03	-	+1.08	+1.14	\$82	\$192
Acc	78%	65%	71%	68%	67%	65%	57%	-	59%	59%	-	-
Perc	74	99	63	34	98	43	32	-	73	93	99	99

Traits Observed: CE,BWT,200WT,400WT(x2),SC,Scan(EMA,Rib,Rump,IMF),Genomics
 Statistics: Number of Herds: 1 Prog Analysed: 174

TransTasman Angus Cattle Evaluation - July 2022 Reference Tables

TransTasman Angus Cattle Evaluation - July 2022 Reference Tables



BREED AVERAGE EBVs																								
Brd Avg	Calving Ease			Birth		Growth			Fertility				Carcass				Other			Structure			Selection Indexes	
	CEDir	CEDrs	+2.6	GL	BW	200	400	600	MCW	Milk	SS	DTC	CWT	EMA	RIB	P8	RYB	IMF	NF-F	DOC	Angle	Claw	\$A	\$A-L
	+2.2	+2.6	-4.7	-4.7	+4.1	+49	+89	+116	+100	+17	+2.1	-4.6	+66	+6.2	+0.0	-0.4	+0.5	+2.1	+0.19	+7	+0.98	+0.85	+194	+335

* Breed average represents the average EBV of all 2020 drop Australian Angus and Angus-influenced seedstock animals analysed in the July 2022 TransTasman Angus Cattle Evaluation.

PERCENTILE BANDS TABLE																																							
% Band	Calving Ease				Birth		Growth						Fertility				Carcass				Other			Structure				Selection Indexes											
	Less	More	Difficult	Calving	GL	BW	200	400	600	MCW	Milk	SS	Shorter	Calving	Carcass	CWT	EMA	RIB	P8	RYB	IMF	Greater	Feed	Efficiency	Docile	More	Sound	Angle	Claw	\$A	Greater	Profitability	\$A-L						
1%	+11.0	+9.9	+9.9	-10.6	-0.1	+68	+120	+161	+158	+28	+4.7	-9.9	+93	+12.7	+3.5	+3.6	+2.9	+4.6	-0.56	+36	+0.60	+0.42	+279	+451															
5%	+9.1	+8.3	+8.3	-8.7	+1.2	+62	+110	+146	+139	+25	+3.7	-8.3	+85	+10.6	+2.3	+2.2	+2.1	+3.8	-0.34	+27	+0.72	+0.56	+255	+420															
10%	+8.0	+7.3	+7.3	-7.8	+1.9	+59	+105	+139	+129	+23	+3.3	-7.4	+80	+9.5	+1.8	+1.6	+1.8	+3.4	-0.22	+22	+0.78	+0.62	+242	+403															
15%	+7.1	+6.6	+6.6	-7.2	+2.4	+57	+102	+135	+123	+22	+3.0	-6.9	+77	+8.2	+1.4	+1.2	+1.5	+3.2	-0.14	+20	+0.82	+0.66	+234	+391															
20%	+6.4	+5.9	+5.9	-6.7	+2.7	+56	+100	+131	+118	+21	+2.8	-6.4	+75	+8.7	+1.1	+0.9	+1.3	+2.9	-0.08	+17	+0.84	+0.70	+227	+381															
25%	+5.7	+5.4	+5.4	-6.3	+3.0	+54	+98	+128	+115	+20	+2.7	-6.1	+74	+7.7	+0.9	+0.6	+1.1	+2.8	-0.03	+15	+0.86	+0.72	+221	+373															
30%	+5.1	+4.9	+4.9	-5.9	+3.2	+53	+96	+125	+111	+20	+2.5	-5.8	+72	+7.3	+0.7	+0.4	+1.0	+2.6	+0.02	+14	+0.90	+0.74	+216	+366															
35%	+4.5	+4.4	+4.4	-5.6	+3.5	+52	+94	+123	+108	+19	+2.4	-5.4	+70	+7.0	+0.5	+0.2	+0.9	+2.4	+0.06	+12	+0.92	+0.78	+211	+359															
40%	+4.0	+3.9	+3.9	-5.3	+3.7	+51	+92	+121	+105	+18	+2.3	-5.2	+69	+6.6	+0.3	+0.0	+0.8	+2.3	+0.10	+10	+0.94	+0.80	+206	+352															
45%	+3.4	+3.5	+3.5	-5.0	+3.9	+50	+91	+118	+103	+18	+2.1	-4.9	+68	+6.3	+0.1	-0.2	+0.6	+2.2	+0.14	+9	+0.96	+0.82	+201	+346															
50%	+2.8	+3.0	+3.0	-4.7	+4.1	+49	+89	+116	+100	+17	+2.0	-4.6	+66	+6.0	+0.0	-0.4	+0.5	+2.0	+0.18	+8	+0.98	+0.84	+196	+340															
55%	+2.2	+2.5	+2.5	-4.4	+4.3	+49	+88	+114	+97	+17	+1.9	-4.3	+65	+5.7	-0.2	-0.6	+0.4	+1.9	+0.22	+6	+1.00	+0.86	+192	+333															
60%	+1.6	+2.0	+2.0	-4.1	+4.5	+48	+86	+112	+95	+16	+1.8	-4.1	+64	+5.5	-0.4	-0.8	+0.3	+1.8	+0.26	+4	+1.02	+0.88	+187	+326															
65%	+0.9	+1.4	+1.4	-3.8	+4.7	+47	+85	+110	+92	+16	+1.7	-3.8	+62	+5.2	-0.5	-1.0	+0.2	+1.7	+0.30	+3	+1.04	+0.92	+182	+319															
70%	+0.1	+0.8	+0.8	-3.4	+5.0	+46	+83	+107	+89	+15	+1.6	-3.5	+61	+4.9	-0.7	-1.2	+0.0	+1.6	+0.35	+1	+1.06	+0.94	+176	+311															
75%	-0.7	+0.2	+0.2	-3.1	+5.2	+45	+81	+105	+86	+14	+1.4	-3.1	+59	+4.5	-0.9	-1.4	-0.1	+1.4	+0.39	-1	+1.08	+0.98	+170	+302															
80%	-1.7	-0.6	-0.6	-2.7	+5.5	+43	+79	+102	+82	+14	+1.3	-2.4	+55	+4.1	-1.1	-1.6	-0.3	+1.3	+0.45	-3	+1.12	+1.00	+163	+292															
85%	-2.9	-1.5	-1.5	-2.3	+5.8	+42	+77	+98	+78	+13	+1.1	-2.8	+55	+3.7	-1.4	-2.0	-0.5	+1.1	+0.52	-5	+1.14	+1.04	+154	+280															
90%	-4.5	-2.7	-2.7	-1.7	+6.3	+40	+74	+94	+72	+12	+0.9	-1.8	+52	+3.1	-1.7	-2.3	-0.8	+0.9	+0.60	-8	+1.20	+1.10	+143	+263															
95%	-6.9	-4.6	-4.6	-0.8	+7.0	+37	+69	+87	+63	+10	+0.5	-0.9	+48	+2.2	-2.2	-3.0	-1.2	+0.5	+0.73	-12	+1.26	+1.16	+122	+235															
99%	-12.4	-8.7	-8.7	+1.3	+8.4	+30	+58	+73	+45	+7	-0.2	+1.1	+39	+0.2	-3.3	-4.3	-2.0	-0.1	+0.98	-20	+1.40	+1.32	+80	+170															

* The percentile bands represent the distribution of EBVs across the 2020 drop Australian Angus and Angus-influenced seedstock animals analysed in the July 2022 TransTasman Angus Cattle Evaluation.

TransTasman Angus Cattle Evaluation - July 2022 Reference Tables



TransTasman Angus Cattle Evaluation - July 2022 Reference Tables

BREED AVERAGE EBVs										
	\$A	\$D	\$GN	\$GS	\$A-L	\$D-L	\$GN-L	\$GS-L	\$PRO	\$T
Brd Avg	+194	+160	+255	+178	+335	+289	+400	+376	+141	+179

* Breed average represents the average EBV of all 2020 drop Australian Angus and Angus-influenced seedstock animals analysed in the July 2022 TransTasman Angus Cattle Evaluation .

PERCENTILE BANDS TABLE										
% Band	\$A	\$D	\$GN	\$GS	\$A-L	\$D-L	\$GN-L	\$GS-L	\$PRO	\$T
1%	Greater Profitability	Greater Profitability	Greater Profitability	Greater Profitability	Greater Profitability	Greater Profitability	Greater Profitability	Greater Profitability	Greater Profitability	Greater Profitability
5%	+279	+232	+375	+266	+451	+390	+548	+510	+218	+242
10%	+255	+211	+341	+241	+420	+363	+509	+474	+197	+225
15%	+242	+200	+323	+228	+403	+348	+487	+455	+185	+216
20%	+234	+193	+311	+219	+391	+337	+472	+440	+177	+209
25%	+227	+187	+301	+212	+381	+329	+459	+429	+171	+204
30%	+221	+182	+292	+205	+373	+322	+448	+420	+165	+199
35%	+216	+177	+284	+200	+366	+315	+439	+411	+160	+195
40%	+211	+173	+277	+195	+359	+309	+430	+403	+156	+191
45%	+206	+169	+271	+190	+352	+304	+421	+395	+152	+188
50%	+201	+165	+264	+185	+346	+298	+413	+388	+147	+184
55%	+196	+161	+257	+180	+340	+293	+404	+380	+143	+181
60%	+192	+157	+250	+175	+333	+287	+396	+373	+139	+177
65%	+187	+154	+244	+170	+326	+281	+387	+365	+134	+173
70%	+182	+149	+236	+164	+319	+275	+378	+357	+130	+169
75%	+176	+145	+229	+159	+311	+268	+368	+348	+125	+165
80%	+170	+140	+220	+153	+302	+261	+357	+338	+119	+161
85%	+163	+134	+211	+146	+292	+253	+344	+326	+112	+155
90%	+154	+128	+200	+137	+280	+242	+329	+313	+105	+149
95%	+143	+118	+184	+125	+263	+229	+308	+294	+93	+141
99%	+122	+102	+158	+105	+235	+205	+274	+264	+75	+127
	+80	+69	+105	+66	+170	+151	+196	+191	+38	+95
	Lower Profitability	Lower Profitability	Lower Profitability	Lower Profitability	Lower Profitability	Lower Profitability	Lower Profitability	Lower Profitability	Lower Profitability	Lower Profitability

* The percentile bands represent the distribution of EBVs across the 2020 drop Australian Angus and Angus-influenced seedstock animals analysed in the July 2022 TransTasman Angus Cattle Evaluation .

GOING FURTHER FOR LIVESTOCK

Nutrien Ag Solutions has the expertise and resources to take your livestock business further.

Visit our Wagga Wagga branch today or discover more online at NutrienAgSolutions.com.au/Livestock

Livestock	Peter Cabot	0418 601 695
Livestock	Jarrod Slattery	0428 695 700
Livestock	James Croker	0427 753 533
Livestock	Hamish McGeoch	0467 715 232
Livestock	Ken Miall	0427 135 974
Livestock	Jaiden Burke	0407 666 768
Livestock	Peter Dorsett	0427 953 979
Branch Manager	John Settree	0408 297 368
Livestock Stud Specialist		
Insurance Manager	Fiona Petersen	0408 924 508

BUYERS INFORMATION

Milong Angus Stud:

Health:

- Vet checked, Semen examined and tested
- Tested free of Pesti Virus; sale bulls are not vaccinated against Pesti Virus
- Fully vaccinated; 7 in 1, Vibrio and Lepto
- Routine husbandry & maintenance; routinely drenched
- Low stress stock handling practices adopted, horses & dogs used, temperament is key

Transport: Transport will be provided complimentary for purchasers located within 500km of 'Milong West', Young if required. William Day 0429 416 754 Or Davidge Transport, contact Stephen Davidge 0459 771 427

Open day: Friday 11th August 2023 10am - 4pm, Lunch and refreshments provided - persons entering upon this property do so at their own risk.

Bull Sale: Milong Angus Stud sale will be run through an on property Helmsman selling system and online via AuctionsPlus, held on Friday 25th August 12pm (SYD,NSW) - Please get in contact with Ken Miall, 0427 135 974 with questions regarding the Helmsman selling system



AuctionsPlus - Terms & Conditions

Sale Conducted under AuctionsPlus User Agreement and Sale Terms and Code of Conduct
Trading Terms are those of the Selling Agent

Please note all new registered AuctionsPlus buyers are required to complete Buyer Induction Training prior to bidding. AuctionsPlus recommends that all intending bidders have completed their registration and training 24 hours prior to auction.

For all enquiries please contact AuctionsPlus 02 9262 4222 or send us an email.

The AuctionsPlus Code of Conduct has been developed to provide all users with some simple rules that assist in delivering a positive and trusted environment to all business conducted on the platform

FOR MORE INFORMATION

PLEASE CONTACT:

WILLIAM DAY - MILONG ANGUS - 0429 416 754

KEN MIALL - NUTRIEN - 0427 135 974

Information on AuctionsPlus



How do I register as an AuctionsPlus user?

How to register and verify an account to browse, bid and buy on AuctionsPlus.

Registering to bid on AuctionsPlus is a 2-step process. Firstly, Sign Up to AuctionsPlus, creating a new account by filling in details including your name, email, contact number and create a password. Signing up enables you to view auctions as a guest, and access sale results.

After signing up, you will be required to confirm your email address, and you will have the option to immediately 'Request Approval to Buy'. AuctionsPlus require some more information from you including: PIC Number, Address, ABN etc. before you can be registered as a buyer.

Once this information has been filled out, you will be required to complete a buyer induction process, including a few videos and taking a short quiz. You must pass the quiz in order to be approved as a buyer. The buyer induction is accessed in your Dashboard.

From this point, AuctionsPlus will confirm your details and then approve your registration.

If you have previously signed up and later wish to register as a Buyer, you will need to log in and access your Dashboard, and then click on 'Request Approval to Buy'. You will then need to complete the buyer induction process to upgrade your account.

For more information please head to:

<https://help.auctionsplus.com.au/knowledge/how-do-i-register-to-bid>

How do I bid on AuctionsPlus?

How to bid in both a SIM and a SEQ sale online.

You must be registered as a full user on our system in order to place a bid. If you have not already registered you will need to verify your ID, accept our Terms & Conditions and complete an induction quiz. For more information on registering, click here.

SIMULTANEOUS (SIM) SALE

To place a bid in a simultaneous sale, connect to the auction and then click on the tile of the lot you are interested in bidding on. Further details of the lot will appear on the right-hand side of the screen, including a link for the assessment and photos. The current price will also be shown, and the bidding screen will show the next bid price. To place a bid, you must unlock the lot, by clicking the padlock and then click the blue button which will say 'Bid \$ ____'. The lot will turn green once you place a bid, to indicate you are holding the lot. If you are outbid, the lot will turn red.

For further information head to: <https://help.auctionsplus.com.au/knowledge/how-do-i-bid-on-auctionsplus>

SEQUENTIAL (SEQ) SALE

To place a bid in a sequential sale, connect to the auction. The lots will be shown one after the other, once the sale has been set to running, you have the ability to scroll down the screen and place a bid on any lot by unlocking the padlock. You can also bid on each lot individually, whilst it is being sold. The lot will be green if you are holding the lot, and red if you have been outbid.

To watch a video demonstration of bidding in a SEQ sale, please head to <https://help.auctionsplus.com.au/knowledge/how-do-i-bid-on-auctionsplus>

We also recommend considering the use of an autobid during an interfaced sequential auction. When a sale has a physical component as well, the lots can be sold very quickly and using an autobid is the best way of enabling AuctionsPlus to relay the bid to ensure it is accepted by the auctioneer. Please see more information [here](#).

To access our demonstration auctions, where you can practice placing a bid or observe the bidding platform format, please head to: <https://help.auctionsplus.com.au/knowledge/how-do-i-bid-on-auctionsplus>

What happens if I purchase a lot?

As a successful purchaser, it is your responsibility to arrange transport from the nominated Delivery Point (usually the vendor's property) to their destination.

If you would like for the lot to be covered by Transit Insurance, you must arrange this - the stock become your responsibility once loaded onto trucks.

Livestock must be picked up within the delivery dates specified on the assessment.

Payment is made to the listed selling agent. You must abide by the trading terms set by the selling agent, as specified in the assessment.

Your bid price is exclusive of GST.

While AuctionsPlus does not mandate you use an agent to settle your purchase, some agents will specify that buyers must settle through an agent, and in some circumstances require full cash payment prior to loading stock for delivery.

It is important if settling through an agent, that you notify the selling agent of your intentions.

<https://help.auctionsplus.com.au/knowledge/what-happens-if-i-purchase-a-lot>

Who contacts who after the Auction?

Once the sale has concluded, the selling agent is given the contact information of you as the successful buyer or as the highest passed in bidder. From here, the agent may contact you directly. However, as the buyer it is your responsibility to arrange transport and payment, so the agent's information will be available in your Dashboard for you to make contact.

We recommend reaching out to the selling agent as soon as possible to begin the post-sale conversations.

<https://help.auctionsplus.com.au/knowledge/who-contacts-who-after-the-auction>

Lot 1A

S85 MILONG SPORTSMAN



Animal ID NSM21S85
NLIS Visual No/RFID NE630044XBS07834 / -
Date of Birth 28/07/2021
Inventory Season n/a
Sex Male
Register Herd Book Register
Mating Type AI
Colour Black
Birth Number Single
Status Active
DNA Profile Stored No profile is stored
Parentage Verification DNA parentage verification not conducted
Genetic Conditions AMFU,CA25%,DDFU,NHFU

Sire: QQFH147 ASCOT HALLMARK H147^{PV}
 NMMD108 MILLAH MURRAH DIGBY D108^{PV}
 NMMF123 MILLAH MURRAH BRENDA F123^{PV}
 NMMD113 MILLAH MURRAH BRENDA D113^{PV}
Dam: NSML87 MILONG LORRANIE L87[#]
 QRFE69 RAFF EMBLEM E69^{PV}
 QRFH180 RAFF EMBLEM H180^{PV}
 QRFZ199 RAFF DORIS Z199[#]
 NMMF82 MILLAH MURRAH INFINITY F82^{PV}
 NSMH21 MILONG HEART THROB H21[#]
 NSME39 MILONG ELEANOR E39[#]

Sportsman S85 is a deep, compact bull with a good topline and thick rump. For a compact package he also has great length and slick soft skin. He is one of the heavier bulls offered and will certainly add meat and weight to his progeny.

August 2023 TransTasman Angus Cattle Evaluation													
TACE	Calving Ease				Growth				Fertility			Temp	
	Calving Ease Dir	Calving Ease Dirs	Gest. Length	Birth Wt	200 Day Growth	400 Day Weight	600 Day Weight	Mat. Cow Weight	Milk	Days to Calving	Scrotal Size	Docility	
EBV	-5.4	+1.5	-5.8	+7.1	+52	+94	+132	+122	+13	-4.4	+2.2	+14	
Acc	60%	51%	82%	74%	65%	63%	63%	63%	58%	43%	60%	51%	
Perc	93	65	33	96	40	40	20	18	83	58	44	78	
	Carcase						Feed Efficiency		Structural			Selection Index	
	Carcase Weight	EMA	Rib Fat	Rump Fat	RBV	IMF	NFI-F	Claw Set	Foot Angle	Leg Angle	SA	SA-L	
EBV	+73	-1.3	+0.4	+0.1	-0.5	+2.2	+0.34	-	-	-	\$150	\$287	
Acc	59%	57%	59%	59%	56%	60%	52%	-	-	-	-	-	
Perc	31	99	38	42	93	46	70	-	-	-	90	85	

Traits Observed: GL,CE,BWT

Birth Wt: 43 kg, Weight as of 9/8/23: 912 kg



Lot 1

S11 MILONG SPRINGER



Animal ID NSM21S11
NLIS Visual No/RFID NE630044XBS07550 / -
Date of Birth 04/06/2021
Inventory Season n/a
Sex Male
Register Herd Book Register
Mating Type Natural
Colour Black
Birth Number Single
Status Active
DNA Profile Stored No profile is stored
Parentage Verification DNA parentage verification not conducted
Genetic Conditions AM3%,CA26%,DDFU,NH3%

Sire: QRFE269 RAFF EMPIRE E269^{SV}
 QRFK76 RAFF KINGDOM K76^{PV}
 QRFF14 RAFF BLACKBIRD F14[#]
Sire: QRFM93 RAFF KINGDOM M93^{PV}
 VVRA191 ROSSANDER BLACK THUNDER A191^{SV}
 QRFD296 RAFF DORIS D296^{PV}
 QRFB226 RAFF DORIS B226^{PV}
Dam: QRFE69 RAFF EMBLEM E69^{PV}
 QRFH180 RAFF EMBLEM H180^{PV}
 QRFZ199 RAFF DORIS Z199[#]
Dam: NSMP85 MILONG PROSPECT P85[#]
 NSME3 MILONG ECHO E3^{SV}
 NSMJ85 MILONG JOANNA J85[#]
 NSME24 MILONG ERIN E24[#]

Springer S11 is a large, long bull with superb feet, mobility, docility and smooth shoulder. He is a later maturing bull so has lots of growing ahead of him. He is one of the heavier bulls offered and will certainly add meat and weight to his progeny.

August 2023 TransTasman Angus Cattle Evaluation													
TACE	Calving Ease				Growth				Fertility			Temp	
	Calving Ease Dir	Calving Ease Dtrs	Gest. Length	Birth Wt	200 Day Growth	400 Day Weight	600 Day Weight	Mat. Cow Weight	Milk	Days to Calving	Scrotal Size	Docility	
EBV	-14.0	-8.1	-0.9	+8.8	+51	+87	+123	+119	+12	-2.0	+0.7	-	
Acc	49%	37%	49%	71%	57%	55%	57%	54%	42%	26%	48%	-	
Perc	99	99	94	99	44	60	36	21	84	96	92	-	
Carcass				Feed Efficiency			Structural			Selection Index			
	Carcass Weight	EMA	Rib Fat	Rump Fat	RBY	IMF	NFI-F	Claw Set	Foot Angle	Leg Angle	SA	SA-L	
EBV	+73	+4.1	-1.2	-0.7	+0.6	+0.9	+0.03	-	-	-	\$101	\$193	
Acc	47%	40%	43%	43%	38%	42%	32%	-	-	-	-	-	
Perc	29	76	75	57	40	82	30	-	-	-	99	99	

Traits Observed: CE,BWT
 Statistics: Number of Herds: 0 Prog Analysed: 0

Birth Wt: 43 kg, Weight as of 9/8/23: 924 kg

Lot 2

S124 MILONG SQUIRE



Animal ID NSM21S124
NLIS Visual No/RFID - / -
Date of Birth 02/09/2021
Inventory Season n/a
Sex Male
Register Herd Book Register
Mating Type Natural
Colour Black
Birth Number Single
Status Active
DNA Profile Stored No profile is stored
Parentage Verification DNA parentage verification not conducted
Genetic Conditions AMFU,CA3%,DDFU,NHFU

Sire: BCHA10 J & C APPEAL A10^{PV}
 QRFE269 RAFF EMPIRE E269^{SV}
 QRFA55 RAFF DORIS A55[#]
Sire: QRFJ125 RAFF JUMBUCK J125^{PV}
 VONV84 BANQUET VENZO V84[#]
 QRFY68 RAFF BURNETTE Y68^{SV}
 QRFM51+92 RAFF BURNETTE M51+92[#]
Dam: USA2164 TC STOCKMAN 2164[#]
 QRFG424 RAFF STOCKMAN G424^{PV}
 QRFD227 RAFF LADY DURHAM D227^{PV}
Dam: NSMK54 MILONG KENYA K54[#]
 NLRY478 REILAND GUARD Y478^{SV}
 NSMD34 MILONG DENT D34[#]
 NSMW67 MILONG WESTERN W67[#]

LOT 2 - S124 MILONG SQUIRE

Squire S124 is a larger, thick, deep bull with an exceptional temperament. He also has that nice soft skin and good strong topline. He is one of the last sons offered by outstanding sire Jumbuck J125, who had a great temperament, smooth shoulders, offered easy calving and was a great doer. He was purchased due to multiple factors but always had extra eye appeal and was a very mobile, loose skinned individual.

August 2023 TransTasman Angus Cattle Evaluation													
TACE	Calving Ease				Growth				Fertility			Temp	
	Calving Ease Dir	Calving Ease Dtrs	Gest. Length	Birth Wt	200 Day Growth	400 Day Weight	600 Day Weight	Mat. Cow Weight	Milk	Days to Calving	Scrotal Size	Docility	
EBV	-5.8	-2.0	-4.3	+6.5	+45	+81	+111	+102	+16	-1.8	+1.5	-	
Acc	52%	43%	58%	73%	60%	57%	59%	58%	49%	31%	51%	-	
Perc	94	88	57	92	73	75	64	47	59	96	71	-	
Carcass				Feed Efficiency			Structural			Selection Index			
	Carcass Weight	EMA	Rib Fat	Rump Fat	RBY	IMF	NFI-F	Claw Set	Foot Angle	Leg Angle	SA	SA-L	
EBV	+61	+2.9	-1.4	-0.1	+0.6	+0.2	-0.14	-	-	-	\$109	\$213	
Acc	51%	45%	49%	49%	43%	49%	39%	-	-	-	-	-	
Perc	65	87	79	46	40	93	14	-	-	-	98	98	

Traits Observed: BWT
 Statistics: Number of Herds: 0 Prog Analysed: 0

Birth Wt: 39 kg, Weight as of 9/8/23: 842 kg

Lot 3

S112 Milong Comm



Sire: BCHA10 J & C APPEAL A10^{PV}
 QRFE269 RAFF EMPIRE E269^{SV}
 QRFA55 RAFF DORIS A55[#]
Sire: QRFJ125 RAFF JUMBUCK J125^{PV}
 VONV84 BANQUET VENZO V84[#]
 QRFY68 RAFF BURNETTE Y68^{SV}
 QRFM51+92 RAFF BURNETTE M51+92[#]
Sire: NSM Milong Neuada N65
 USA5321 C A FUTURE DIRECTION 5321[#]
 NDIB276 KENNY'S CREEK FUTURE DIRECTION B27[#]
 NDIW37 KENNY'S CREEK PATRIOT W37[#]
Dam: NSMH41 MILONG HYDE H41[#]
 NSMX24 MILONG X24^{SV}
 NSMD24 MILONG DAYLE D24[#]
 NSMT3 MILONG TWO TIMMER T3[#]

Dam: NSM Milong J17

Milong S112 is an impressive package that would suit many needs of the commercial breeder. He is a long, stretchy bull with an excellent topline, depth, and thick hindquarters, he will certainly add style, weight and muscle to your herd. He will be a good allrounder suiting heifers and calves with those smooth shoulders and good semen count.

Weight as of 9/8/23: 890 kg

Lot 4

S24 MILONG SEYMOUR



Animal ID NSM21S24
NLIS Visual No/RFID NE630044XBS07845 / -
Date of Birth 17/06/2021
Inventory Season n/a
Sex Male
Register Herd Book Register
Mating Type Natural
Colour Black
Birth Number Single
Status Active
DNA Profile Stored No profile is stored
Parentage Verification DNA parentage verification not conducted
Genetic Conditions AMFU,CA1%,DDFU,NHFU

NZE36917 WAITARA VALLEY TEX®
 NZE469 HINGAIA 469®
 NZE217493 HINGAIA 910®
Sire: QRFJ350 RAFF JOVIAL J350^{DV}
 USA14761330 ONEILLS EXPEDITION®
 QRFF14 RAFF BLACKBIRD F14®
 USA15141036 HOFF BLACKBIRD 594 5217®
 QRFE269 RAFF EMPIRE E269^{SV}
 QRFJ125 RAFF JUMBUCK J125^{PV}
 QRFY68 RAFF BURNETTE Y68^{SV}
Dam: NSMP101 MILONG PROVIDENCE P101®
 QRFG424 RAFF STOCKMAN G424^{PV}
 NSMK76 MILONG KEIRA K76®
 NSMD16 MILONG DEPLOY D16®

Seymour S24 is a superb package with that eye appeal, strong head, excellent movement and good topline. He is a really smooth, long, thick bull, and is the heaviest sale bull so will add the kilos, meat & muscle to your herd. His Sire Jovial J350 breeds very true to type displaying his same length and thickness through hind and has longevity on his side.

August 2023 TransTasman Angus Cattle Evaluation													
TACE	Calving Ease				Growth				Fertility			Temp	
	Calving Ease Dir	Calving Ease Dtrs	Gest. Length	Birth Wt	200 Day Growth	400 Day Weight	600 Day Weight	Mat. Cow Weight	Milk	Days to Calving	Scrotal Size	Docility	
EBV	-2.3	-2.5	-4.8	+5.2	+42	+77	+107	+101	+18	-3.6	+1.3	+30	
Acc	55%	50%	61%	72%	64%	62%	62%	57%	57%	38%	59%	44%	
Perc	84	90	49	74	84	84	71	48	38	78	78	13	
TACE	Carcase						Feed Efficiency		Structural			Selection Index	
	Carcase Weight	EMA	Rib Fat	Rump Fat	RBV	IMF	NFI-F	Claw Set	Foot Angle	Leg Angle	SA	SA-L	
EBV	+59	+5.8	-0.2	+0.0	+0.7	+0.2	-0.20	-	-	-	\$128	\$245	
Acc	56%	54%	56%	56%	52%	56%	45%	-	-	-	-	-	
Perc	71	55	53	44	33	93	10	-	-	-	96	95	

Traits Observed: CE,BWT
 Statistics: Number of Herds: 0 Proq Analysed: 0

Birth Wt: 32 kg, Weight as of 9/8/23: 910 kg

Lot 5

S6 MILONG SANDHURST



Animal ID NSM21S6
NLIS Visual No/RFID NE630044XBS07825 / -
Date of Birth 28/05/2021
Inventory Season n/a
Sex Male
Register Herd Book Register
Mating Type Natural
Colour Black
Birth Number Single
Status Active
DNA Profile Stored No profile is stored
Parentage Verification DNA parentage verification not conducted
Genetic Conditions AMFU,CA1%,DDFU,NHFU

QRFE269 RAFF EMPIRE E269^{SV}
 QRFK76 RAFF KINGDOM K76^{PV}
 QRFF14 RAFF BLACKBIRD F14®
Sire: QRFM93 RAFF KINGDOM M93^{PV}
 VRR191 ROSSANDER BLACK THUNDER A191^{SV}
 QRFD296 RAFF DORIS D296^{PV}
 QRFB226 RAFF DORIS B226^{PV}
 UKI541616100052 NETHERALLAN PETER
 QRFL169 RAFF PERSHORE L169^{PV}
 SJKD65 GRANITE RIDGE DREAM D65^{PV}
Dam: NSMP26 MILONG PINETOP P26®
 QRFG424 RAFF STOCKMAN G424^{PV}
 NSML63 MILONG LAGACY L63®
 NSMD36 MILONG DOUBLE DUTCH D36®

Sandhurst S6 is a large framed individual but still has great thickness and depth for a later maturing bull. With lots of growing still left to do he will certainly add his scale and weight into the herd. He will be an exceptional allrounder with that softness, great feet and smooth shoulders, suit both heifers and cows.

August 2023 TransTasman Angus Cattle Evaluation													
TACE	Calving Ease				Growth				Fertility			Temp	
	Calving Ease Dir	Calving Ease Dtrs	Gest. Length	Birth Wt	200 Day Growth	400 Day Weight	600 Day Weight	Mat. Cow Weight	Milk	Days to Calving	Scrotal Size	Docility	
EBV	-2.1	-1.9	-2.7	+4.4	+44	+82	+112	+97	+16	-1.5	+1.3	-	
Acc	48%	36%	45%	70%	56%	55%	57%	54%	41%	25%	46%	-	
Perc	83	88	80	58	77	74	60	54	56	97	78	-	
TACE	Carcase						Feed Efficiency		Structural			Selection Index	
	Carcase Weight	EMA	Rib Fat	Rump Fat	RBV	IMF	NFI-F	Claw Set	Foot Angle	Leg Angle	SA	SA-L	
EBV	+68	+4.9	-1.3	-0.1	+0.8	+0.5	+0.15	-	-	-	\$130	\$241	
Acc	46%	39%	42%	42%	37%	41%	31%	-	-	-	-	-	
Perc	46	66	77	46	28	89	46	-	-	-	95	95	

Traits Observed: CE,BWT
 Statistics: Number of Herds: 0 Proq Analysed: 0

Birth Wt: 29 kg, Weight as of 9/8/23: 894 kg

Lot 6

S258 Milong Comm



LOT 6 - S258 MILONG Comm

USA12758219 ANKONIAN ELIXIR 100®
 UKI541616100052 NETHERALLAN PETER PERSHORE
 CANRWZS4418 NIGHTINGALE PRIDE OF
Sire: QRFL169 RAFF PERSHORE L169^{PV}
 USA24J BT RIGHT TIME 24J®
 SJKD65 GRANITE RIDGE DREAM D65^{PV}
 CCVZ83 VERMONT DREAM Z83^{PV}
Sire: NSM Milong Nathan N92
 USA5321 C A FUTURE DIRECTION 5321®
 NDI276 KENNY'S CREEK FUTURE DIRECTION B27^{PV}
 NDIW37 KENNY'S CREEK PATRIOT W37®
Dam: NSMH56 MILONG HAPPY H56®
 NLR478 REILAND GUARD Y478^{SV}
 NSMD36 MILONG DOUBLE DUTCH D36®
 NSMX29 MILONG X29®

Dam: NSM Milong L107

Milong S258 is a large, long bull with thickness and depth. He has great movement and exceptional tracking. He will suit the needs of the commercial breeder who needs an all round bull that will bring capacity and longevity to the herd.

Weight as of 9/8/23: 912 kg

Lot 7

S92 MILONG SMURF



Animal ID NSM21S92
NLIS Visual No/RFID NE630044XBS07894 / -
Date of Birth 31/07/2021
Inventory Season n/a
Sex Male
Register Herd Book Register
Mating Type AI
Colour Black
Birth Number Single
Status Active
DNA Profile Stored No profile is stored
Parentage Verification DNA parentage verification not conducted
Genetic Conditions AM13%,CAFU,DD10%,NH13%

VTMB1 TE MANIA BERKLEY B1^{PV}
 VTME343 TE MANIA EMPEROR E343^{PV}
 VTMZ74 TE MANIA LOWAN Z74^{PV}
Sire: QQFH147 ASCOT HALLMARK H147^{PV}
 NMMD108 MILLAH MURRAH DIGBY D108^{PV}
 NMMF123 MILLAH MURRAH BRENDA F123^{PV}
 NMMD113 MILLAH MURRAH BRENDA D113^{PV}
 USA5321 C A FUTURE DIRECTION 5321[#]
 NDB276 KENNY'S CREEK FUTURE DIRECTION B27^{PV}
 NDIW37 KENNY'S CREEK PATRIOT W37[#]
Dam: NSMH58 MILONG HUDDLE H58[#]
 NZE691 KAHARAU MASTER 691[#]
 NSMZ46 MILONG Z46[#]
 NSMT9 MILONG TWO FOLD T9[#]

Smurf S92 has that extra eye appeal with his good stance, smooth skin and slick hair. He has a good strong topline, strength and muscle in his hindquarters. He is also displaying traits of his sire hallmark H147, with his exceptional feet and temperament, showing true to type.

August 2023 TransTasman Angus Cattle Evaluation													
TACE	Calving Ease				Growth				Fertility			Temp	
	Calving Ease Dir	Calving Ease Dtrs	Gest. Length	Birth Wt	200 Day Growth	400 Day Weight	600 Day Weight	Mat. Cow Weight	Milk	Days to Calving	Scrotal Size	Docility	
EBV	-1.7	+3.5	-4.0	+5.1	+43	+81	+111	+99	+15	-4.0	+2.0	+15	
Acc	60%	52%	82%	74%	65%	63%	63%	62%	57%	44%	58%	51%	
Perc	81	45	62	72	81	77	64	51	68	69	52	75	
	Carcase						Feed Efficiency		Structural			Selection Index	
	Carcase Weight	EMA	Rib Fat	Rump Fat	RBV	IMF	NFI-F	Claw Set	Foot Angle	Leg Angle	SA	SA-L	
EBV	+61	-0.2	+0.6	+0.5	-0.1	+1.8	+0.33	-	-	-	\$141	\$268	
Acc	59%	56%	58%	58%	55%	58%	51%	-	-	-	-	-	
Perc	66	98	34	35	81	58	69	-	-	-	93	91	

Traits Observed: GL,CE,BWT
 Statistics: Number of Herds: 0 Proq Analysed: 0

Birth Wt: 38 kg, Weight as of 9/8/23: 826 kg

Lot 8

S147 MILONG SUNDOWNER



Animal ID NSM21S147
NLIS Visual No/RFID NE630044XBS07474 / -
Date of Birth 14/09/2021
Inventory Season n/a
Sex Male
Register Angus Performance Register
Mating Type Natural
Colour Black
Birth Number Single
Status Active
DNA Profile Stored No profile is stored
Parentage Verification DNA parentage verification not conducted
Genetic Conditions AM13%,CA3%,DDFU,NH13%

WHHE10 BANGADANG WESTERN EXPRESS E10^{SV}
 DXTK542 TEXAS KELVIN KLEIN K542^{SV}
 DXTD035 TEXAS TOQUE D035^{PV}
Sire: BGRP407 CRAWFORD P407^{SV}
 USA15585939 MOHNNEN DYNAMITE 1356[#]
 BGRG802 BGRAHAM G802[#]
 BGRX010 BGRAHAM X010^{SV}
 USA5321 C A FUTURE DIRECTION 5321[#]
 NDB276 KENNY'S CREEK FUTURE DIRECTION B27^{PV}
 NDIW37 KENNY'S CREEK PATRIOT W37[#]
Dam: NSMH61 MILONG HURRICANE H61[#]
 NLR478 REILAND GUARD Y478^{SV}
 NSMC18 MILONG CASHMERE C18[#]
 NSMY21 MILONG YAAMAB Y21[#]

Sundowner S147 is a stylish individual with his loose skin, good thick rump and strong topline. He is one of the younger bulls offered this year and still has lots of growing to do, he will fill out into a big bull. He will be a great all round heifer and cow bull.

August 2023 TransTasman Angus Cattle Evaluation													
TACE	Calving Ease				Growth				Fertility			Temp	
	Calving Ease Dir	Calving Ease Dtrs	Gest. Length	Birth Wt	200 Day Growth	400 Day Weight	600 Day Weight	Mat. Cow Weight	Milk	Days to Calving	Scrotal Size	Docility	
EBV	-8.2	-3.9	-2.5	+7.2	+46	+84	+116	+132	+11	-3.2	+1.9	+18	
Acc	52%	40%	53%	73%	58%	55%	56%	55%	45%	29%	50%	25%	
Perc	97	94	83	96	69	69	53	10	93	85	56	59	
	Carcase						Feed Efficiency		Structural			Selection Index	
	Carcase Weight	EMA	Rib Fat	Rump Fat	RBV	IMF	NFI-F	Claw Set	Foot Angle	Leg Angle	SA	SA-L	
EBV	+61	+0.3	-0.6	-0.7	+0.4	+0.4	+0.20	-	-	-	\$88	\$211	
Acc	47%	43%	47%	46%	41%	47%	37%	-	-	-	-	-	
Perc	66	97	62	57	53	91	53	-	-	-	99	98	

Traits Observed: BWT
 Statistics: Number of Herds: 0 Proq Analysed: 0

Birth Wt: 44 kg, Weight as of 9/8/23: 836 kg

Lot 9

S89 MILONG SKYHIGH



Animal ID NSM21S89
NLIS Visual No/RFID NE630044XBS07873 / -
Date of Birth 30/07/2021
Inventory Season n/a
Sex Male
Register Angus Performance Register
Mating Type AI
Colour Black
Birth Number Single
Status Active
DNA Profile Stored No profile is stored
Parentage Verification DNA parentage verification not conducted
Genetic Conditions AM13%,CA3%,DDFU,NH13%

VTME343 TE MANIA EMPEROR E343^{PV}
 QQFH147 ASCOT HALLMARK H147^{PV}
 NMMF123 MILLAH MURRAH BRENDA F123^{PV}
Sire: QQLF305 ASCOT LION HEART L305^{PV}
 BHRE614 DUNOON EVIDENT E614^{PV}
 QQFH148 ASCOT H148^{SV}
 NMMF126 MILLAH MURRAH FLOWER F126^{PV}
 USA5321 C A FUTURE DIRECTION 5321[#]
 NDB276 KENNY'S CREEK FUTURE DIRECTION B27^{PV}
 NDIW37 KENNY'S CREEK PATRIOT W37[#]
Dam: NSMH88 MILONG HELPER H88[#]
 NLR478 REILAND GUARD Y478^{SV}
 NSMC39 MILONG C39[#]
 NSMY18 MILONG YARD Y18[#]

Skyhigh S89 is an extremely thick and compact individual. He is soft skinned and has great deep hindquarters. He shows many similar traits to that of his sire such as his eye catching presence and docile nature. He is one of the heavier lots offered and will certainly add the weight and depth to your herd.

August 2023 TransTasman Angus Cattle Evaluation													
TACE	Calving Ease				Growth				Fertility			Temp	
	Calving Ease Dir	Calving Ease Dtrs	Gest. Length	Birth Wt	200 Day Growth	400 Day Weight	600 Day Weight	Mat. Cow Weight	Milk	Days to Calving	Scrotal Size	Docility	
EBV	-3.2	-0.5	-4.7	+6.5	+52	+94	+123	+112	+16	-4.1	+2.6	+16	
Acc	55%	43%	81%	74%	64%	62%	62%	60%	55%	35%	55%	41%	
Perc	87	81	51	92	42	40	37	29	62	67	29	68	
	Carcase						Feed Efficiency		Structural			Selection Index	
	Carcase Weight	EMA	Rib Fat	Rump Fat	RBV	IMF	NFI-F	Claw Set	Foot Angle	Leg Angle	SA	SA-L	
EBV	+72	+5.7	-2.2	-2.9	+1.1	+1.1	+0.16	-	-	-	\$170	\$304	
Acc	55%	51%	54%	53%	49%	53%	43%	-	-	-	-	-	
Perc	32	56	90	89	14	77	47	-	-	-	79	78	

Traits Observed: GL,CE,BWT
 Statistics: Number of Herds: 0 Proq Analysed: 0

Birth Wt: 43 kg, Weight as of 9/8/23: 886 kg

Lot 10

S134 MILONG STETSON



Animal ID NSM21S134
NLIS Visual No/RFID NE630044XBS07451 / -
Date of Birth 09/09/2021
Inventory Season n/a
Sex Male
Register Angus Performance Register
Mating Type AI
Colour Black
Birth Number Single
Status Active
DNA Profile Stored No profile is stored
Parentage Verification DNA parentage verification not conducted
Genetic Conditions AM6%,CA1%,DDFU,NH6%

VTME343 TE MANIA EMPEROR E343^{PV}
 QQFH147 ASCOT HALLMARK H147^{PV}
 NMMF123 MILLAH MURRAH BRENDA F123^{PV}
Sire: QQFL305 ASCOT LION HEART L305^{PV}
 BHRE614 DUNOON EVIDENT E614^{PV}
 QQFH148 ASCOT H148^{SV}
 NMMF126 MILLAH MURRAH FLOWER F126^{PV}
 NZE04379 TE MANIA INFINITY 04 379 AB[#]
 NMMF82 MILLAH MURRAH INFINITY F82^{PV}
 NMMD58 MILLAH MURRAH PRUE D58^{PV}
Dam: NSMJ64 MILONG JACARANDA J64[#]
 NDIB276 KENNY'S CREEK FUTURE DIRECTION
 NSME5 MILONG ENRICH E5[#]
 NSMB14 MILONG B14[#]

Stetson S134 is an extremely eye catching bull with superb head carriage and movement. He is a powerful package with immense length, thickness, topline and meaty hindquarters. With his strong muscling, he will no doubt carry that through to his offspring as he has from his sire Lionheart L305.

August 2023 TransTasman Angus Cattle Evaluation													
TACE	Calving Ease				Growth				Fertility			Temp	
	Calving Ease Dir	Calving Ease Dtrs	Gest. Length	Birth Wt	200 Day Growth	400 Day Weight	600 Day Weight	Mat. Cow Weight	Milk	Days to Calving	Scrotal Size	Docility	
EBV	-5.1	-2.2	-4.7	+6.3	+53	+95	+124	+112	+13	-4.2	+3.0	+17	
Acc	55%	44%	82%	72%	62%	60%	60%	59%	54%	35%	56%	42%	
Perc	92	89	51	90	37	36	35	30	79	64	18	62	
TACE	Carcase						Feed Efficiency		Structural			Selection Index	
	Carcase Weight	EMA	Rib Fat	Rump Fat	RYB	IMF	NFI-F	Claw Set	Foot Angle	Leg Angle	SA	SA-L	
EBV	+70	+6.0	-1.7	-2.4	+1.0	+1.3	+0.24	-	-	-	\$171	\$301	
Acc	54%	52%	54%	54%	50%	54%	43%	-	-	-	-	-	
Perc	39	52	84	83	18	72	58	-	-	-	78	79	

Traits Observed: GL,BWT

Statistics: Number of Herds: 0 Proq Analysed: 0

Birth Wt: 41 kg Weight as of 9/8/23: 850 kg

Lot 11

S107 MILONG SCAMP



Animal ID NSM21S107
NLIS Visual No/RFID NE630044XBS07524 / -
Date of Birth 05/08/2021
Inventory Season n/a
Sex Male
Register Herd Book Register
Mating Type Natural
Colour Black
Birth Number Single
Status Active
DNA Profile Stored No profile is stored
Parentage Verification DNA parentage verification not conducted
Genetic Conditions AM3%,CA27%,DDFU,NH3%

WHHE10 BANGADANG WESTERN EXPRESS E10^{SV}
 DXTK542 TEXAS KELVIN KLEIN K542^{SV}
 DXTD035 TEXAS TOQUE D035^{PV}
Sire: BGRP407 CRAWFORD P407^{SV}
 USA15585939 MOHNER DYNAMITE 1356[#]
 BGRG802 BGRAHAM G802[#]
 BGRX010 BGRAHAM X010^{SV}
 QRFE69 RAFF EMBLEM E69^{PV}
 QRFH180 RAFF EMBLEM H180^{PV}
 QRFZ199 RAFF DORIS Z199[#]
Dam: NSMN19 MILONG NOSH N19[#]
 NSME3 MILONG ECHO E3^{SV}
 NSMK38 MILONG KAMMIT K38[#]
 NSMF48 MILONG FORNICATE F48[#]

Scamp S107 is an exquisite all round bull with that eye catching nature and strong stance. He is one of the younger bulls and still has lots of growing ahead of him, displaying that he will be a very large, strong and impressive mature bull. He is extremely soft and smooth shouldered, with the length and height that will be carried through onto his progeny. He is by Crawford P407 who has immense calving ease and breeds very true to type.

August 2023 TransTasman Angus Cattle Evaluation													
TACE	Calving Ease				Growth				Fertility			Temp	
	Calving Ease Dir	Calving Ease Dtrs	Gest. Length	Birth Wt	200 Day Growth	400 Day Weight	600 Day Weight	Mat. Cow Weight	Milk	Days to Calving	Scrotal Size	Docility	
EBV	-3.3	-0.1	-3.3	+5.4	+40	+75	+104	+117	+10	-2.8	+1.4	-	
Acc	49%	37%	53%	72%	58%	55%	56%	55%	45%	27%	51%	-	
Perc	87	78	73	78	88	88	76	23	95	90	75	-	
TACE	Carcase						Feed Efficiency		Structural			Selection Index	
	Carcase Weight	EMA	Rib Fat	Rump Fat	RYB	IMF	NFI-F	Claw Set	Foot Angle	Leg Angle	SA	SA-L	
EBV	+53	-1.0	+0.4	+0.7	-0.1	+1.0	+0.24	-	-	-	\$89	\$212	
Acc	47%	43%	47%	46%	41%	48%	36%	-	-	-	-	-	
Perc	85	99	38	31	81	80	58	-	-	-	99	98	

Traits Observed: CE,BWT

Statistics: Number of Herds: 0 Proq Analysed: 0

Birth Wt: 35 kg, Weight as of 9/8/23: 792 kg

Lot 12

S238 Milong Comm



BCHA10 J & C APPEAL A10^{PV}
 QRFE269 RAFF EMPIRE E269^{SV}
 QRFA55 RAFF DORIS A55[#]
Sire: QRFJ125 RAFF JUMBUCK J125^{PV}
 VONV84 BANQUET VENZO V84[#]
 QRFY68 RAFF BURNETTE Y68^{SV}
 QRFM51+92 RAFF BURNETTE M51+92[#]
Sire: NSM Milong Nigel N44
 NZE04379 TE MANIA INFINITY 04 379 AB[#]
 NMMF82 MILLAH MURRAH INFINITY F82^{PV}
 NMMD58 MILLAH MURRAH PRUE D58^{PV}
Dam: NSMJ55 MILONG JINGLEBERRY J55[#]
 NLRV478 REILAND GUARD Y478^{SV}
 NSMD36 MILONG DOUBLE DUTCH D36[#]
 NSMX29 MILONG X29[#]

Dam: NSM Milong

Milong S238 is a compact individual with immense meat and muscle. He has great length and depth through the hindquarters, excellent scrotal development and movement. He would be an excellent addition to a commercial herd and will certainly add these great traits.

Weight as of 10/7/23: 852 kg

Lot 13

S84 MILONG SANTIAGO



Animal ID NSM21S84
NLIS Visual No/RFID NE630044XBS07900 / -
Date of Birth 28/07/2021
Inventory Season n/a
Sex Male
Register Herd Book Register
Mating Type AI
Colour Black
Birth Number Single
Status Active
DNA Profile Stored No profile is stored
Parentage Verification DNA parentage verification not conducted
Genetic Conditions AMFU,CA25%,DDFU,NHFU

USA17367599 PRAIRIE PRIDE NEXT STEP 2036#
 USA18336337 RBM STEP AHEAD C80#
 USA16010348 BASIN CHARISMA U691#
Sire: USA18874634 KR PACSETER#
 USA17145326 BARSTOW CASH#
 USA17944650 KR BLACKBIRD 4295#
 USA17350593 WK BLACKBIRD 2250#
 QRFE69 RAFF EMBLEM E69#^{PV}
 QRFH180 RAFF EMBLEM H180#^{PV}
 QRFZ199 RAFF DORIS Z199#^{PV}
Dam: NSMM29 MILONG MILWAUKEE M29#
 USA297E B T ULTRAVOX 297E#
 NSME32 MILONG ERICA E32#
 NSMV50 MILONG VERGENNES V50#

Santiago S84 is a soft skinned individual with an excellent temperament. He is thick and deep with good scrotal circumference and development. His sire Pacesetter also displays the same thickness and depth, so if you're wanting to add the kilos and muscling then S84 has the phenotype to pass onto progeny.

August 2023 TransTasman Angus Cattle Evaluation												
TACE	Calving Ease				Growth					Fertility		Temp
	Calving Ease Dir	Calving Ease Dtrs	Gest. Length	Birth Wt	200 Day Growth	400 Day Weight	600 Day Weight	Mat. Cow Weight	Milk	Days to Calving	Scrotal Size	Docility
EBV	-3.4	-0.1	-5.4	+6.9	+60	+105	+140	+136	+14	-	+2.0	+16
Acc	48%	34%	81%	71%	59%	56%	56%	55%	48%	-	50%	25%
Perc	88	78	39	94	12	14	11	7	74	-	52	70
	Carcase				Feed Efficiency			Structural		Selection Index		
	Carcase Weight	EMA	Rib Fat	Rump Fat	RBV	IMF	NFI-F	Claw Set	Foot Angle	Leg Angle	SA	SA-L
EBV	+79	+3.4	-1.2	-1.9	+0.4	+1.3	-0.20	-	-	-	\$168	\$319
Acc	50%	47%	48%	46%	42%	51%	35%	-	-	-	-	-
Perc	16	82	75	77	53	72	10	-	-	-	80	69

Traits Observed: GL,CE,BWT

Statistics: Number of Herds: 0 Prog Analysed: 0

Birth Wt: 38.5 kg, Weight as of 10/7/23: 794 kg

Lot 14

S71 Milong Comm



Milong S71 is a nice, smooth bull with overall capacity. He is even with a good topline and movement. He has the depth through the hindquarter and spring of rib that we like to see in our commercial herd.

BCHA10 J & C APPEAL A10#^{PV}
 QRFE269 RAFF EMPIRE E269#^{SV}
 QRFA55 RAFF DORIS A55#
Sire: QRFJ125 RAFF JUMBUCK J125#^{PV}
 VONV84 BANQUET VENZO V84#
 QRFY68 RAFF BURNETTE Y68#^{SV}
 QRFM51+92 RAFF BURNETTE M51+92#
Sire: NSM Milong Neuada N65
 USA5321 C A FUTURE DIRECTION 5321#
 NDIB276 KENNY'S CREEK FUTURE DIRECTION B27#^{PV}
 NDIW37 KENNY'S CREEK PATRIOT W37#
Dam: NSMH41 MILONG HYDE H41#
 NSMX24 MILONG X24#^{SV}
 NSMD24 MILONG DAYLE D24#
 NSMT3 MILONG TWO TIMMER T3#
 USA5321 C A FUTURE DIRECTION 5321#
 NMMW100 MILLAH MURRAH WOODY W100#
 NMMU7 MILLAH MURRAH BRENDA U7#
Sire: NMMC58 MILLAH MURRAH BV DESIGN C58#^{PV}
 USA036 B/R NEW DESIGN 036#
 NMMY12 MILLAH MURRAH BRENDA Y12#
 NMMP135+94 MILLAH MURRAH BRENDA
Dam: NSM Milong Fabulous F6
 USA13254554 G A R GRID MAKER#
 NLR478 REILAND GUARD Y478#^{SV}
 NLRQ112+95 REILAND THOUGHTS Q112+95#
Dam: NSMB26 MILONG B26#
 NZE691 KAHARAU MASTER 691#
 NSMY54 MILONG YOGA Y54#
 NSMN27+93 MILONG NONNA N27+93#

Weight as of 10/7/23: 802 kg

Lot 15

S221 Milong Comm



Milong S221 is a young and very compact bull with exceptional muscling. He is thick, with that spring of rib, soft skin and mobility. An all round superb commercial package.

BCHA10 J & C APPEAL A10#^{PV}
 QRFE269 RAFF EMPIRE E269#^{SV}
 QRFA55 RAFF DORIS A55#
Sire: QRFJ125 RAFF JUMBUCK J125#^{PV}
 VONV84 BANQUET VENZO V84#
 QRFY68 RAFF BURNETTE Y68#^{SV}
 QRFM51+92 RAFF BURNETTE M51+92#
Sire: NSM Milong Nigel N44
 NZE04379 TE MANIA INFINITY 04 379 AB#
 NMMF82 MILLAH MURRAH INFINITY F82#^{PV}
 NMMD58 MILLAH MURRAH PRUE D58#^{PV}
Dam: NSMJ55 MILONG JINGLEBERRY J55#
 NLR478 REILAND GUARD Y478#^{SV}
 NSMD36 MILONG DOUBLE DUTCH D36#
 NSMX29 MILONG X29#

Dam: NSM Milong M240

Weight as of 10/7/23: 810 kg

Lot 16

S145 MILONG SHEPHARD



Animal ID NSM21S145
NLIS Visual No/RFID NE630044XBS07471 / -
Date of Birth 13/09/2021
Inventory Season n/a
Sex Male
Register Angus Performance Register
Mating Type AI
Colour Black
Birth Number Single
Status Active
DNA Profile Stored No profile is stored
Parentage Verification DNA parentage verification not conducted
Genetic Conditions AM6%,CA27%,DDFU,NH6%

VTMB1 TE MANIA BERKLEY B1^{PV}
VTME343 TE MANIA EMPEROR E343^{PV}
VTM274 TE MANIA LOWAN Z74^{PV}
Sire: QRFH147 ASCOT HALLMARK H147^{PV}
NMMD108 MILLAH MURRAH DIGBY D108^{PV}
NMMF123 MILLAH MURRAH BRENDA F123^{PV}
NMMD113 MILLAH MURRAH BRENDA D113^{PV}
QRFE69 RAFF EMBLEM E69^{PV}
QRFH180 RAFF EMBLEM H180^{PV}
QRFZ199 RAFF DORIS Z199[#]
Dam: NSML13 MILONG LONESOME L13[#]
NDIB276 KENNY'S CREEK FUTURE DIRECTION
NSMH61 MILONG HURRICANE H61[#]
NSMC18 MILONG CASHMERE C18[#]

Shephard S145 has that stretch we like to see combined with thickness and depth. He moves well, has top level scrotal development and excellent spring of rib. He still has lots of growing ahead of him, so will be a big strong boy when he finishes.

August 2023 TransTasman Angus Cattle Evaluation													
TACE	Calving Ease				Growth				Fertility			Temp	
	Calving Ease Dir	Calving Ease Dtrs	Gest. Length	Birth Wt	200 Day Growth	400 Day Weight	600 Day Weight	Mat. Cow Weight	Milk	Days to Calving	Scrotal Size	Docility	
EBV	-6.6	+1.3	-3.1	+7.0	+50	+91	+129	+120	+14	-4.0	+1.9	+13	
Acc	60%	51%	82%	73%	64%	63%	63%	63%	57%	42%	59%	50%	
Perc	95	67	76	95	49	48	25	19	71	69	56	83	
	Carcase						Feed Efficiency		Structural			Selection Index	
	Carcase Weight	EMA	Rib Fat	Rump Fat	RBV	IMF	NFI-F	Claw Set	Foot Angle	Leg Angle	SA	SA-L	
EBV	+73	-1.5	+0.1	+0.3	-0.4	+2.1	+0.26	-	-	-	\$137	\$267	
Acc	59%	57%	59%	58%	55%	59%	51%	-	-	-	-	-	
Perc	29	99	46	38	91	49	60	-	-	-	94	91	

Traits Observed: GL,BWT

Statistics: Number of Herds: 0 Prog Analysed: 0

Birth Wt: 45 kg Weight as of 9/8/23: 850 kg

Lot 17

S105 Milong Comm



BCHA10 J & C APPEAL A10^{PV}
QRFE269 RAFF EMPIRE E269^{SV}
QRFA55 RAFF DORIS A55[#]
Sire: QRFJ125 RAFF JUMBUCK J125^{PV}
VONV84 BANQUET VENZO V84[#]
QRFY68 RAFF BURNETTE Y68^{SV}
QRFM51+92 RAFF BURNETTE M51+92[#]

Sire: NSM Milong Maxwell M75

USA13254554 G A R GRID MAKER[#]
NLRY478 REILAND GUARD Y478^{SV}
NLRQ112+95 REILAND THOUGHTS Q112+95[#]
Dam: NSMF39 MILONG FANCIA F39[#]
NLRV24 REILAND THEO V24[#]
NSMA60 MILONG A60[#]
NSMQ28+95 MILONG QUESTION AIR Q28+95[#]

Dam: NSM Milong Q99

USASC242 HOFF CHARGER S C 242[#]
QRFE69 RAFF EMBLEM E69^{PV}
USA13119135 HOFF MORIAH S C 635[#]
Sire: QRFH180 RAFF EMBLEM H180^{PV}
USA13898124 BR MIDLAND[#]
QRFZ199 RAFF DORIS Z199[#]
QRFW10 RAFF DORIS W10[#]
USA2164 TC STOCKMAN 2164[#]
QRFG424 RAFF STOCKMAN G424^{PV}
QRFD227 RAFF LADY DURHAM D227^{PV}
Dam: NSML58 MILONG LARA L58[#]
NDIB276 KENNY'S CREEK FUTURE DIRECTION
NSMH50 MILONG HENRY H50[#]
NSMB81 MILONG B81[#]

Weight as of 9/8/23: 818 kg

Milong S105 is an even, long, deep bull with strength through the topline, spring of rib, excellent docility and temperament. He would suit any commercial herd.

Lot 18

S28 MILONG SATCHEL



Animal ID NSM21S28
NLIS Visual No/RFID NE630044XBS07804 / -
Date of Birth 21/06/2021
Inventory Season n/a
Sex Male
Register Herd Book Register
Mating Type Natural
Colour Black
Birth Number Single
Status Active
DNA Profile Stored No profile is stored
Parentage Verification DNA parentage verification not conducted
Genetic Conditions AMFU,CA1%,DDFU,NHFU

NZE36917 WAITARA VALLEY TEX[#]
NZE469 HINGAIA 469[#]
NZE217493 HINGAIA 910[#]
Sire: QRFJ350 RAFF JOVIAL J350^{PV}
USA14761330 ONEILLS EXPEDITION[#]
QRFF14 RAFF BLACKBIRD F14[#]
USA15141036 HOFF BLACKBIRD 594 5217[#]
UKI541616100052 NETHERALLAN PETER
QRFL169 RAFF PERSHORE L169^{PV}
SJKD65 GRANITE RIDGE DREAM D65^{PV}
Dam: NSMP124 MILONG PAJARO P124[#]
QRFG424 RAFF STOCKMAN G424^{PV}
NSMK54 MILONG KENYA K54[#]
NSMD34 MILONG DENT D34[#]

Satchel S28 is a very long, large, smooth bull with great depth and thickness down through hind. He has that good strong topline that leads right through to his tail setting with excellent mobility and tracks well. He also has that good temperament and docility of the Raff sires and his sire Jovial has certainly bred true to type in S28.

August 2023 TransTasman Angus Cattle Evaluation													
TACE	Calving Ease				Growth				Fertility			Temp	
	Calving Ease Dir	Calving Ease Dtrs	Gest. Length	Birth Wt	200 Day Growth	400 Day Weight	600 Day Weight	Mat. Cow Weight	Milk	Days to Calving	Scrotal Size	Docility	
EBV	-11.2	-7.6	-2.6	+8.4	+54	+96	+137	+141	+16	-3.3	+1.9	+31	
Acc	56%	50%	61%	72%	63%	61%	62%	61%	56%	37%	57%	44%	
Perc	99	99	82	99	32	35	14	5	60	84	56	12	
	Carcase						Feed Efficiency		Structural			Selection Index	
	Carcase Weight	EMA	Rib Fat	Rump Fat	RBV	IMF	NFI-F	Claw Set	Foot Angle	Leg Angle	SA	SA-L	
EBV	+77	+6.2	-1.4	-1.5	+1.0	-0.5	-0.26	-	-	-	\$113	\$237	
Acc	55%	53%	55%	54%	51%	55%	44%	-	-	-	-	-	
Perc	19	49	79	71	18	98	7	-	-	-	98	96	

Traits Observed: CE,BWT

Statistics: Number of Herds: 0 Prog Analysed: 0

Birth Wt: 45 kg Weight as of 9/8/23: 828 kg

Lot 19

S93 MILONG STUDLEY



Animal ID NSM21S93
NLIS Visual No/RFID NE630044XBS07869 / -
Date of Birth 31/07/2021
Inventory Season n/a
Sex Male
Register Herd Book Register
Mating Type AI
Colour Black
Birth Number Single
Status Active
DNA Profile Stored No profile is stored
Parentage Verification DNA parentage verification not conducted
Genetic Conditions AM6%,CA26%,DDFU,NH6%

VTME343 TE MANIA EMPEROR E343^{PV}
 QQFH147 ASCOT HALLMARK H147^{PV}
 NMMF123 MILLAH MURRAH BRENDA F123^{PV}
Sire: QQFL305 ASCOT LION HEART L305^{PV}
 BHR614 NUONON EVIDENT E614^{PV}
 QQFH148 ASCOT H148^{SV}
 NMMF126 MILLAH MURRAH FLOWER F126^{PV}
 QRFE69 RAFF EMBLEM E69^{PV}
 QRFH180 RAFF EMBLEM H180^{PV}
 QRFZ199 RAFF DORIS Z199[#]
Dam: NSML11 MILONG LILY L11[#]
 NDB276 KENNY'S CREEK FUTURE DIRECTION
 NSMH89 MILONG HARRIET H89[#]
 NSMC61 MILONG CONTRAST C61[#]

Studley S93 has overall sire capacity with his excellent mobility, thickness and depth. He has the length, topline and temperament that would advantageous in any herd. His thickness through his hindquarters will add style and meat to his progeny.

August 2023 TransTasman Angus Cattle Evaluation												
TACE	Calving Ease				Growth				Fertility			Temp
	Calving Ease Dir	Calving Ease Dtrs	Gest. Length	Birth Wt	200 Day Growth	400 Day Weight	600 Day Weight	Mat. Cow Weight	Milk	Days to Calving	Scrotal Size	Docility
EBV	-6.1	-0.9	-4.1	+7.2	+52	+94	+127	+119	+14	-3.3	+2.2	+14
Acc	55%	43%	81%	73%	64%	62%	62%	60%	55%	34%	57%	39%
Perc	94	83	61	96	38	38	29	21	74	84	44	77
TACE	Carcase					Feed Efficiency		Structural		Selection Index		
	Carcase Weight	EMA	Rib Fat	Rump Fat	RBV	IMF	NFI-F	Claw Set	Foot Angle	Leg Angle	SA	SA-L
EBV	+74	+4.6	-1.9	-2.4	+0.8	+1.5	+0.09	-	-	-	\$153	\$280
Acc	55%	52%	55%	54%	50%	54%	43%	-	-	-	-	-
Perc	28	70	87	83	28	67	38	-	-	-	89	87

Traits Observed: GL,CE,BWT
 Statistics: Number of Herds: 0 Prog Analysed: 0

Birth Wt: 45 kg, Weight as of 9/8/22: 842 kg

Lot 20

S019 Milong Comm



BCHA10 J & C APPEAL A10^{PV}
 QRFE269 RAFF EMPIRE E269^{SV}
 QRFA55 RAFF DORIS A55[#]
Sire: QRFJ125 RAFF JUMBUCK J125^{PV}
 VONV84 BANQUET VENZO V84[#]
 QRFY68 RAFF BURNETTE Y68^{SV}
 QRFM51+92 RAFF BURNETTE M51+92[#]

Sire: NSM Milong Park P66

NDB276 KENNY'S CREEK FUTURE DIRECTION
 NSME3 MILONG ECHO E3^{SV}
 NSMB18 MILONG B18[#]
Dam: NSMK46 MILONG KADEY K46[#]
 NLRV24 REILAND THEO V24[#]
 NSMA60 MILONG A60[#]
 NSMC28+95 MILONG QUESTION AIR Q28+95[#]

Dam: NSM Milong Hazen H43

USA1680 G A R PRECISION 1680[#]
 USA5321 C A FUTURE DIRECTION 5321[#]
 USA12054694 C A MISS POWER FIX 308[#]
Sire: NDB276 KENNY'S CREEK FUTURE DIRECTION
 USA9440 R R SCOTCHCAP 9440[#]
 NDIW37 KENNY'S CREEK PATRIOT W37[#]
 NDI797 KENNY'S CREEK PATRIOT T97[#]
 USA416 ALBERDA TRAVELER 416[#]
 NLRV24 REILAND THEO V24[#]
 NLR566 REILAND THEA S66[#]
Dam: NSMY29 MILONG YOGI Y29[#]
 QMTP55+94 TEXAS MAXIMUM P55+94[#]
 NSMV51 MILONG VENEER V51[#]
 NSMQ39+95 MILONG QUIET TIME Q39+95[#]

Weight as of 9/8/23: 774 kg

Milong S019 is a nice thick bull with a strong topline. He will be suitable for the commercial breeder looking for bull for young females and mature cows due to his smooth shoulders and structural development.

Lot 21

S97 MILONG SAWYER



Animal ID NSM21S97
NLIS Visual No/RFID NE630044XBS07864 / -
Date of Birth 31/07/2021
Inventory Season n/a
Sex Male
Register Angus Performance Register
Mating Type AI
Colour Black
Birth Number Single
Status Active
DNA Profile Stored No profile is stored
Parentage Verification DNA parentage verification not conducted
Genetic Conditions AMFU,CA3%,DDFU,NHFU

USA17367599 PRAIRIE PRIDE NEXT STEP 2036[#]
 USA18336337 RBM STEP AHEAD C80[#]
 USA16010348 BASIN CHARISMA U691[#]
Sire: USA18874634 KR PACESETTER^{SV}
 USA17145326 BARSTOW CASH[#]
 USA17944650 KR BLACKBIRD 4295[#]
 USA17350593 WK BLACKBIRD 2250[#]
 USA2164 TC STOCKMAN 2164[#]
 QRFQ424 RAFF STOCKMAN G424^{PV}
 QRFD227 RAFF LADY DURHAM D227^{PV}
Dam: NSMM25 MILONG MOSE VALE M25[#]
 NLRV478 REILAND GUARD Y478^{SV}
 NSMD21 MILONG DOUBLE UP D21[#]
 NSMX5 MILONG X5[#]

Sawyer S97 has that eye appeal as he stands and tracks well, is smooth shoulders and has good depth and thickness. S97 is a bull that will suit the commercial cattle breeder looking for a bull for both heifers and cows. His dam M25 is by Raff stockman G424, who produced excellent females, many we have retained in the herd.

August 2023 TransTasman Angus Cattle Evaluation												
TACE	Calving Ease				Growth				Fertility			Temp
	Calving Ease Dir	Calving Ease Dtrs	Gest. Length	Birth Wt	200 Day Growth	400 Day Weight	600 Day Weight	Mat. Cow Weight	Milk	Days to Calving	Scrotal Size	Docility
EBV	-5.5	+1.8	-4.8	+7.4	+64	+114	+147	+145	+13	-	+2.6	+18
Acc	48%	34%	81%	71%	58%	55%	55%	54%	48%	-	49%	25%
Perc	93	62	49	97	5	4	6	4	83	-	29	58
TACE	Carcase					Feed Efficiency		Structural		Selection Index		
	Carcase Weight	EMA	Rib Fat	Rump Fat	RBV	IMF	NFI-F	Claw Set	Foot Angle	Leg Angle	SA	SA-L
EBV	+87	+2.7	-2.4	-2.6	+0.6	+0.4	-0.23	-	-	-	\$169	\$326
Acc	49%	47%	47%	45%	41%	50%	34%	-	-	-	-	-
Perc	6	88	92	86	40	91	9	-	-	-	80	64

Traits Observed: GL,CE,BWT
 Statistics: Number of Herds: 0 Prog Analysed: 0

Birth Wt: 44 kg Weight as of 9/8/23: 870 kg

Lot 22

S65 MILONG SPUNK



Animal ID NSM21S65
NLIS Visual No/RFID NE630044XBS07881 / -
Date of Birth 17/07/2021
Inventory Season n/a
Sex Male
Register Herd Book Register
Mating Type Natural
Colour Black
Birth Number Single
Status Active
DNA Profile Stored No profile is stored
Parentage Verification DNA parentage verification not conducted
Genetic Conditions AM3%,CAFU,DDFU,NH3%

NZE36917 WAITARA VALLEY TEX[#]
 NZE469 HINGAIA 469[#]
 NZE217493 HINGAIA 910[#]
Sire: QRFJ350 RAFF JOVIAL J350^{DPV}
 USA14761330 ONEILLS EXPEDITION[#]
 QRFF14 RAFF BLACKBIRD F14[#]
 USA15141036 HOFF BLACKBIRD 594 5217[#]
 UKI541616100052 NETHERALLAN PETER
 QRFL169 RAFF PERSHORE L169^{PV}
 SKJD65 GRANITE RIDGE DREAM D65^{PV}
Dam: NSMP43 MILONG PENGROVE P43[#]
 QRFG136 RAFF DUKE G136^{PV}
 NSML86 MILONG LESLIE L86[#]
 NSMH68 MILONG HAMPER H68[#]

Spunk S65 is a thick compact but long, soft skinned bull with that great thickness through the hindquarters. He moves and tracks well, so will cover the distance with ease. He dam P43 is by the great L169, who has been very successful with mature breeding producing great sized offspring, with his key traits; temperament, softness, longevity and marbling.

August 2023 TransTasman Angus Cattle Evaluation													
TACE	Calving Ease				Growth				Fertility			Temp	
	Calving Ease Dir	Calving Ease Dtrs	Gest. Length	Birth Wt	200 Day Growth	400 Day Weight	600 Day Weight	Mat. Cow Weight	Milk	Days to Calving	Scrotal Size	Docility	
EBV	-5.5	-4.9	-2.8	+6.2	+47	+84	+120	+118	+18	-4.1	+1.6	+30	
Acc	54%	49%	59%	70%	62%	61%	62%	61%	56%	37%	57%	44%	
Perc	93	96	79	89	66	69	43	22	44	67	68	13	
Carcase													
TACE	Carcase Weight	EMA	Rib Fat	Rump Fat	RBV	IMF	Feed Efficiency		Structural		Selection Index		
							NFI-F	Claw Set	Foot Angle	Leg Angle	SA	SA-L	
EBV	+68	+7.5	-0.5	-0.7	+1.0	+0.0	-0.16	-	-	-	\$135	\$258	
Acc	55%	53%	55%	54%	50%	54%	43%	-	-	-	-	-	
Perc	46	34	60	57	18	95	13	-	-	-	94	93	

Traits Observed: CE,BWT

Statistics: Number of Herds: 0 Proq Analysed: 0

Birth Wt: 39 kg, Weight as of 9/8/23: 792 kg

Lot 23

S102 MILONG SPRUCE



Animal ID NSM21S102
NLIS Visual No/RFID NE630044XBS07534 / -
Date of Birth 02/08/2021
Inventory Season n/a
Sex Male
Register Angus Performance Register
Mating Type AI
Colour Black
Birth Number Single
Status Active
DNA Profile Stored No profile is stored
Parentage Verification DNA parentage verification not conducted
Genetic Conditions AM6%,CA2%,DDFU,NH6%

VTME343 TE MANIA EMPEROR E343^{PV}
 QQFH147 ASCOT HALLMARK H147^{PV}
 NMMF123 MILLAH MURRAH BRENDA F123^{PV}
Sire: QQL305 ASCOT LION HEART L305^{PV}
 BHRE614 DUNOON EVIDENT E614^{PV}
 QQFH148 ASCOT H148^{SV}
 NMMF126 MILLAH MURRAH FLOWER F126^{PV}
 NZE526 MATAURI STOCKMAN 526 AB^{SV}
 NSMF76 MILONG FRUMP F76^{SV}
 NSMA14 MILONG A14[#]
Dam: NSMK50 MILONG KAIDEE K50[#]
 NDBI276 KENNY'S CREEK FUTURE DIRECTION
 NSMF3 MILONG F3[#]
 NSMB16 MILONG B16[#]

Spruce S102 is a stylish individual with soft skin, smooth shoulders and excellent mobility. He is a very appealing young sire with the overall capacity and structural formation to suit any herd. He will add power, weight and eye appeal to the herd. He has that good topline, meat on backend, thickness, depth and spring of rib. His dam K50 has strong maternal power and is one of our top females.

August 2023 TransTasman Angus Cattle Evaluation													
TACE	Calving Ease				Growth				Fertility			Temp	
	Calving Ease Dir	Calving Ease Dtrs	Gest. Length	Birth Wt	200 Day Growth	400 Day Weight	600 Day Weight	Mat. Cow Weight	Milk	Days to Calving	Scrotal Size	Docility	
EBV	-5.5	-0.7	-1.7	+5.6	+46	+86	+109	+98	+14	-4.4	+2.6	+17	
Acc	55%	43%	82%	73%	62%	60%	61%	59%	53%	34%	54%	40%	
Perc	93	82	90	81	68	62	67	53	74	58	29	67	
Carcase													
TACE	Carcase Weight	EMA	Rib Fat	Rump Fat	RBV	IMF	Feed Efficiency		Structural		Selection Index		
							NFI-F	Claw Set	Foot Angle	Leg Angle	SA	SA-L	
EBV	+63	+5.6	-1.8	-2.2	+1.2	+1.2	+0.14	-	-	-	\$158	\$275	
Acc	54%	50%	53%	52%	48%	52%	42%	-	-	-	-	-	
Perc	61	57	86	81	11	75	44	-	-	-	86	89	

Traits Observed: GL,CE,BWT

Statistics: Number of Herds: 0 Proq Analysed: 0

Birth Wt: 40 kg, Weight as of 9/8/23: 770 kg

Lot 24

S155 MILONG SAMSON



Animal ID NSM21S155
NLIS Visual No/RFID NE630044XBS07515 / -
Date of Birth 04/08/2021
Inventory Season n/a
Sex Male
Register Herd Book Register
Mating Type Natural
Colour Black
Birth Number Single
Status Active
DNA Profile Stored No profile is stored
Parentage Verification DNA parentage verification not conducted
Genetic Conditions AM13%,CAFU,DDFU,NH13%

WHHE10 BANGADANG WESTERN EXPRESS E10^{SV}
 DXTK542 TEXAS KELVIN KLEIN K542^{SV}
 DXTD035 TEXAS TOQUE D035^{PV}
Sire: BGRP407 CRAWFORD P407^{SV}
 USA15585939 MOHNNEN DYNAMITE 1356[#]
 BGRG802 BGRAHAM G802[#]
 BGRX010 BGRAHAM X010^{SV}
 USA5321 C A FUTURE DIRECTION 5321[#]
 NDBI276 KENNY'S CREEK FUTURE DIRECTION B27^{PV}
 NDIW37 KENNY'S CREEK PATRIOT W37[#]
Dam: NSMF4 MILONG FLOSS F4[#]
 NSMX24 MILONG X24^{SV}
 NSMB37 MILONG B37[#]
 NSMX19 MILONG X19[#]

Samson S155 has that extra eye appeal, overall structural development and capacity of an outstanding sire. He is a powerful package with the thickness, depth, muscling, movement and pedigree to suit all needs. He has excellent pendulus testes and is a large bull for age with more growing ahead of him. His sire, pacesetter has immense calving ease so S155 will suit a wide range of needs.

August 2023 TransTasman Angus Cattle Evaluation													
TACE	Calving Ease				Growth				Fertility			Temp	
	Calving Ease Dir	Calving Ease Dtrs	Gest. Length	Birth Wt	200 Day Growth	400 Day Weight	600 Day Weight	Mat. Cow Weight	Milk	Days to Calving	Scrotal Size	Docility	
EBV	-6.4	-3.8	-3.7	+6.6	+44	+83	+113	+130	+13	-2.7	+1.8	-	
Acc	51%	40%	54%	73%	58%	55%	56%	55%	46%	29%	49%	-	
Perc	95	94	67	92	78	72	60	11	82	91	60	-	
Carcase													
TACE	Carcase Weight	EMA	Rib Fat	Rump Fat	RBV	IMF	Feed Efficiency		Structural		Selection Index		
							NFI-F	Claw Set	Foot Angle	Leg Angle	SA	SA-L	
EBV	+58	-0.5	-0.4	-0.7	+0.2	+0.3	+0.11	-	-	-	\$77	\$201	
Acc	48%	43%	47%	46%	41%	47%	37%	-	-	-	-	-	
Perc	75	99	58	57	66	92	40	-	-	-	99	99	

Traits Observed: CE,BWT

Statistics: Number of Herds: 0 Proq Analysed: 0

Birth Wt: 43 kg, Weight as of 9/8/23: 810 kg

Lot 25

S132 MILONG SIDELINE



Animal ID NSM21S132
NLIS Visual No/RFID NE630044XBS07464 / -
Date of Birth 08/09/2021
Inventory Season n/a
Sex Male
Register Herd Book Register
Mating Type Natural
Colour Black
Birth Number Single
Status Active
DNA Profile Stored No profile is stored
Parentage Verification DNA parentage verification not conducted
Genetic Conditions AM13%,CAFU,DDFU,NH13%

Sire: BCHA10 J & C APPEAL A10^{PV}
 QRFE269 RAFF EMPIRE E269^{SV}
 QRFA55 RAFF DORIS A55[#]
 QRFJ125 RAFF JUMBUCK J125^{PV}
 VONV84 BANQUET VENZO V84[#]
 QRFY68 RAFF BURNETTE Y68^{SV}
 QRFM51+92 RAFF BURNETTE M51+92[#]

Dam: USA5321 C A FUTURE DIRECTION 5321[#]
 NDIB276 KENNY'S CREEK FUTURE DIRECTION B27^{PV}
 NDIW37 KENNY'S CREEK PATRIOT W37[#]
 NSMH77 MILONG HARNESS H77[#]
 NZE97311 KAHARAU 311[#]
 NSMW39 MILONG WILLOW W39[#]
 NSMH12+88 MILONG HOBBY H12+88[#]

Sideline S132 is a very even, soft bull with that nice slick skin and smooth shoulders. He has the length, depth through the rump and good strong topline to add the muscling and capacity to the herd. He is one of the younger bulls offered and has extremely high docility. He is one of the last bulls offered by a favourite sire J125.

August 2023 TransTasman Angus Cattle Evaluation														
TACE	Calving Ease				Growth				Fertility			Temp		
	Calving Ease Dir	Calving Ease Dtrs	Gest. Length	Birth Wt	200 Day Growth	400 Day Weight	600 Day Weight	Mat. Cow Weight	Milk	Days to Calving	Scrotal Size	Docility		
EBV	-6.7	-4.9	-3.3	+7.5	+42	+74	+107	+98	+15	-1.6	+0.9	-		
Acc	52%	44%	55%	73%	61%	58%	59%	58%	48%	32%	50%	-		
Perc	95	96	73	97	84	89	72	53	65	97	88	-		
TACE	Carcase					Feed Efficiency		Structural			Selection Index			
	Carcase Weight	EMA	Rib Fat	Rump Fat	RBY	IMF	NFI-F	Claw Set	Foot Angle	Leg Angle	SA	SA-L		
EBV	+56	+4.0	-1.0	-0.6	+0.8	+0.4	-0.14	-	-	-	\$98	\$190		
Acc	51%	44%	48%	47%	42%	48%	38%	-	-	-	-	-		
Perc	78	77	71	55	28	91	14	-	-	-	99	99		

Traits Observed: BWT

Statistics: Number of Herds: 0 Prog Analysed: 0

Birth Wt: 37 kg, Weight as of 8/9/23: 772 kg

Lot 26

S143 MILONG STYVENSON



Animal ID NSM21S143
NLIS Visual No/RFID NE630044XBS07466 / -
Date of Birth 12/09/2021
Inventory Season n/a
Sex Male
Register Herd Book Register
Mating Type Natural
Colour Black
Birth Number Single
Status Active
DNA Profile Stored No profile is stored
Parentage Verification DNA parentage verification not conducted
Genetic Conditions AMFU,CAFU,DDFU,NHFU

Sire: WHHE10 BANGADANG WESTERN EXPRESS E10^{SV}
 DXTK542 TEXAS KELVIN KLEIN K542^{SV}
 DXTD035 TEXAS TOQUE D035^{PV}
 BGRP407 CRAWFORD P407^{SV}
 USA15585939 MOHNNEN DYNAMITE 1356[#]
 BGRG802 BGRAHAM G802[#]
 BGRX010 BGRAHAM X010^{SV}

Dam: USA2164 TC STOCKMAN 2164[#]
 QRFG424 RAFF STOCKMAN G424^{PV}
 QRFD227 RAFF LADY DURHAM D227^{PV}
 NSMM101 MILONG MALTEE M101[#]
 NZE526 MATAURI STOCKMAN 526 AB^{SV}
 NSMF77 MILONG FOOLISH F77[#]
 NSMA73 MILONG A73[#]

Styvenson S143 is a super soft, supple, smooth, even bull with all round sire potential. He has that extra eye appeal with his exceptional head carriage and strength through to his tail setting, has that soft skin smooth and great movement. He is by an exceptionally easy calving sire P407.

August 2023 TransTasman Angus Cattle Evaluation														
TACE	Calving Ease				Growth				Fertility			Temp		
	Calving Ease Dir	Calving Ease Dtrs	Gest. Length	Birth Wt	200 Day Growth	400 Day Weight	600 Day Weight	Mat. Cow Weight	Milk	Days to Calving	Scrotal Size	Docility		
EBV	-11.6	-4.7	-2.6	+7.4	+48	+90	+120	+140	+9	-2.9	+2.3	+19		
Acc	51%	39%	56%	72%	58%	55%	56%	55%	47%	30%	51%	26%		
Perc	99	96	82	97	58	52	43	6	96	89	40	53		
TACE	Carcase					Feed Efficiency		Structural			Selection Index			
	Carcase Weight	EMA	Rib Fat	Rump Fat	RBY	IMF	NFI-F	Claw Set	Foot Angle	Leg Angle	SA	SA-L		
EBV	+64	-0.9	-0.7	+0.0	+0.2	-0.1	+0.14	-	-	-	\$72	\$193		
Acc	48%	45%	48%	48%	43%	49%	39%	-	-	-	-	-		
Perc	56	99	65	44	66	96	44	-	-	-	99	99		

Traits Observed: BWT

Statistics: Number of Herds: 0 Prog Analysed: 0

Birth Wt: 42 kg, Weight as of 9/8/23: 852 kg

Lot 27

S122 Milong Comm



Sire: BCHA10 J & C APPEAL A10^{PV}
 QRFE269 RAFF EMPIRE E269^{SV}
 QRFA55 RAFF DORIS A55[#]
 QRFJ125 RAFF JUMBUCK J125^{PV}
 VONV84 BANQUET VENZO V84[#]
 QRFY68 RAFF BURNETTE Y68^{SV}
 QRFM51+92 RAFF BURNETTE M51+92[#]
 NSM Milong Maxwell M75
 USA13254554 G A R GRID MAKER[#]
 NLRV478 REILAND GUARD Y478^{SV}
 NLRQ112+95 REILAND THOUGHTS Q112+95[#]
Dam: NSMF39 MILONG FANCIA F39[#]
 NLRV24 REILAND THEO V24[#]
 NSMA60 MILONG A60[#]
 NSMQ28+95 MILONG QUESTION AIR Q28+95[#]

Milong S122 is a superior commercial bull with his length, depth, smooth shoulder, strength through the topline, impressive stance and head carriage. He has an exceptional semen count and is out of a young maternal first calver, so would suit both heifers and cows.

Dam: NSM Milong Q210

Weight as of 10/7/23: 832 kg

Lot 28

S017 Milong Comm



BHRE614 DUNOON EVIDENT E614^{PV}
 NZE14738012269 MERCHISTON EXCLUSIVE 269[#]
 NZE14738107611 MERCHISTON DUCHESS 611[#]
Sire: NZE14738014489 MERCHISTON STEAKHOUSE
 NZE16932003365 TE MANIA 03 365[#]
 NZE14738108684 MERCHISTON RANGI 684[#]
 NZE14738104281 MERCHISTON RANGI 281[#]
 USA2164 TC STOCKMAN 2164[#]
 QRFG424 RAFF STOCKMAN G424^{PV}
 QRFD227 RAFF LADY DURHAM D227^{PV}
Dam: NSMK61 MILONG KAELAN K61[#]
 NSMX24 MILONG X24^{SV}
 NSMB82 MILONG B82[#]
 NSMV12 MILONG VERSE V12[#]

Sire: NSM Milong Portland P78

Dam: NSM Milong K161

Weight as of 9/8/23: 78 kg

Milong S017 is a compact bull that will suit both heifers and cows and will certainly put muscle and weight into your herd. He has that excellent temperament, spring of rib, good topline through to tail setting, thick rump, good testes and overall muscle mass.

Lot 29

S96 MILONG SENSATION



Animal ID NSM21S96
NLIS Visual No/RFID NE630044XBS07871 / -
Date of Birth 31/07/2021
Inventory Season n/a
Sex Male
Register Herd Book Register
Mating Type AI
Colour Black
Birth Number Single
Status Active
DNA Profile Stored No profile is stored
Parentage Verification DNA parentage verification not conducted
Genetic Conditions AMFU,CA3%,DDFU,NHFU

USA17367599 PRAIRIE PRIDE NEXT STEP 2036[#]
 USA18336337 RBM STEP AHEAD C80[#]
 USA16010348 BASIN CHARISMA U691[#]
Sire: USA18874634 KR PACESETTER^{SV}
 USA17145326 BARSTOW CASH[#]
 USA17944650 KR BLACKBIRD 4295[#]
 USA17350593 WK BLACKBIRD 2250[#]
 USA2164 TC STOCKMAN 2164[#]
 QRFG424 RAFF STOCKMAN G424^{PV}
 QRFD227 RAFF LADY DURHAM D227^{PV}
Dam: NSML82 MILONG LIMBO L82[#]
 NLR478 REILAND GUARD Y478^{SV}
 NSMC16 MILONG CLEAR C16[#]
 NSMY17 MILONG YAMBALL Y17[#]

Sensation S96 is a very mobile, thick, deep, smooth shouldered individual who will continue to grow and mature into a large bull. He is by the high performing Pacesetter who has great calving ease and his dam L82 is by Stockman G424, a very dense and large framed bull but also had exceptional calving ease ability, amazing for such a large bull. Combining those genetics he has the potential to be an excellent heifer bull but would suit the needs of someone looking for an all round bull.

TACE	August 2023 TransTasman Angus Cattle Evaluation											
	Calving Ease				Growth				Fertility			Temp
	Calving Ease Dir	Calving Ease Dtrs	Gest. Length	Birth Wt	200 Day Growth	400 Day Weight	600 Day Weight	Mat. Cow Weight	Milk	Days to Calving	Scrotal Size	Docility
EBV	-5.9	+2.3	-4.3	+7.1	+63	+112	+144	+143	+12	-	+2.5	+18
Acc	49%	35%	81%	71%	59%	56%	56%	54%	48%	-	49%	25%
Perc	94	57	57	96	6	6	8	5	87	-	33	57
	Carcase						Feed Efficiency		Structural		Selection Index	
	Carcase Weight	EMA	Rib Fat	Rump Fat	RBY	IMF	NFI-F	Claw Set	Foot Angle	Leg Angle	SA	SA-L
	EBV	+85	+2.7	-2.4	-2.7	+0.6	+0.4	-0.30	-	-	-	\$158
Acc	50%	47%	48%	45%	41%	50%	34%	-	-	-	-	-
Perc	8	88	92	87	40	91	6	-	-	-	86	74

Traits Observed: GL,CE,BWT
 Statistics: Number of Herds: 0 Proq Analysed: 0

Birth Wt: 40 kg, Weight as of 9/8/23: 836 kg

Lot 30

S154 Milong Comm



Sire: NSM Milong P113

USA12758219 ANKONIAN ELIXIR 100[#]
 UKI541616100052 NETHERALLAN PETER PERSHORE
 CANRWZS4418 NIGHTINGALE PRIDE OF
Sire: QRFL169 RAFF PERSHORE L169^{PV}
 USA24J BT RIGHT TIME 24J[#]
 SJKD65 GRANITE RIDGE DREAM D65^{PV}
 CCVZ83 VERMONT DREAM Z83^{PV}
Dam: NSM Milong Pioneer P38
 QRFE69 RAFF EMBLEM E69^{PV}
 QRFH180 RAFF EMBLEM H180^{PV}
 QRZ199 RAFF DORIS Z199[#]
Dam: NSML95 MILONG LAWLESS L95[#]
 NMMW100 MILLAH MURRAH WOODY W100[#]
 NSMG7 MILONG GLORIA G7[#]
 NSMV51 MILONG VENEER V51[#]

Dam: NSM Milong Pioneer P38

Weight as of 9/8/23: 782 kg

Milong S154 is a compact bull with deep hind quarters and an excellent temperament. His Sire P113 has great length and muscle mass so will certainly assist with adding the kilos and muscling into the herd. His dam P38 is by L169 who has been very successful with mature breeding producing great sized offspring, with his key traits; temperament, softness, longevity and marbling.

Lot 31

S72 MILONG SHERLOCK



Animal ID NSM21S72
NLIS Visual No/RFID NE630044XBS07806 / -
Date of Birth 24/07/2021
Inventory Season n/a
Sex Male
Register Herd Book Register
Mating Type Natural
Colour Black
Birth Number Single
Status Active
DNA Profile Stored No profile is stored
Parentage Verification DNA parentage verification not conducted
Genetic Conditions AMFU,CAFU,DD6%,NH13%

Sire: QRFJ125 RAFF JUMBUCK J125^{PV}
 VONV84 BANQUET VENZO V84[#]
 QRFY68 RAFF BURNETTE Y68^{SV}
 QRFM51+92 RAFF BURNETTE M51+92[#]

Dam: NSMF10 MILONG FOND F10[#]
 NSMX24 MILONG X24^{SV}
 NSMB23 MILONG B23[#]
 NSMX61 MILONG X61[#]

Sherlock S72 is a very eye catching smooth bull with style, presence and good stance. He is a large frame bull with length, strength through the topline and tail setting, he will certainly add frame and scale to the herd. He is one of the few bulls on offer this year by a favourite sire J125 who had a great temperament, smooth shoulders, offered easy calving and was a great doer. S72 has the capacity to be a great all round sire.

August 2023 TransTasman Angus Cattle Evaluation												
TACE	Calving Ease				Growth				Fertility			Temp
	Calving Ease Dir	Calving Ease Dtrs	Gest. Length	Birth Wt	200 Day Growth	400 Day Weight	600 Day Weight	Mat. Cow Weight	Milk	Days to Calving	Scrotal Size	Docility
EBV	-1.4	-0.5	-4.0	+5.5	+37	+69	+94	+80	+18	-2.7	+1.3	-
Acc	52%	43%	57%	73%	58%	56%	58%	56%	46%	30%	49%	-
Perc	79	81	62	79	93	94	89	81	42	91	78	-
TACE	Carcass						Feed Efficiency		Structural		Selection Index	
	Carcass Weight	EMA	Rib Fat	Rump Fat	RBV	IMF	NFI-F	Claw Set	Foot Angle	Leg Angle	SA	SA-L
EBV	+48	+4.4	+0.3	+1.0	+0.6	+0.7	-0.09	-	-	-	\$122	\$222
Acc	49%	43%	46%	46%	41%	46%	37%	-	-	-	-	-
Perc	92	72	41	26	40	86	18	-	-	-	97	97

Traits Observed: CE,BWT

Statistics: Number of Herds: 0 Prog Analysed: 0

Birth Wt: 38 kg, Weight as of 9/8/23: 720 kg

Lot 32

S68 MILONG SMITHFORD



Animal ID NSM21S68
NLIS Visual No/RFID NE630044XBS07852 / -
Date of Birth 19/07/2021
Inventory Season n/a
Sex Male
Register Angus Performance Register
Mating Type Natural
Colour Black
Birth Number Single
Status Active
DNA Profile Stored No profile is stored
Parentage Verification DNA parentage verification not conducted
Genetic Conditions AMFU,CA3%,DDFU,NHFU

Sire: QRFJ125 RAFF JUMBUCK J125^{PV}
 VONV84 BANQUET VENZO V84[#]
 QRFY68 RAFF BURNETTE Y68^{SV}
 QRFM51+92 RAFF BURNETTE M51+92[#]

Dam: NSMJ25 MILONG JINGLE J25[#]
 NLR478 REILAND GUARD Y478^{SV}
 NSME8 MILONG ELDORADO E8[#]
 NSMZ36 MILONG Z36[#]

Smithford S68 is a nice long bull with good length through neck, soft skinned and has excellent scrotal development. He still has much growing ahead of him and grow into a large bull who will add thickness, meat & muscle into the herd. He is another J125 son offered this year, who always had extra eye appeal and was a very mobile, loose skinned individual. He was out of a highly fertile line of females and that has been proven through the bulls and females he has produced.

August 2023 TransTasman Angus Cattle Evaluation												
TACE	Calving Ease				Growth				Fertility			Temp
	Calving Ease Dir	Calving Ease Dtrs	Gest. Length	Birth Wt	200 Day Growth	400 Day Weight	600 Day Weight	Mat. Cow Weight	Milk	Days to Calving	Scrotal Size	Docility
EBV	-2.6	-2.8	-4.0	+6.1	+43	+78	+107	+92	+16	-3.2	+1.7	-
Acc	53%	44%	59%	74%	61%	59%	60%	59%	50%	31%	53%	-
Perc	85	91	62	88	80	82	71	63	62	85	64	-
TACE	Carcass						Feed Efficiency		Structural		Selection Index	
	Carcass Weight	EMA	Rib Fat	Rump Fat	RBV	IMF	NFI-F	Claw Set	Foot Angle	Leg Angle	SA	SA-L
EBV	+58	+5.7	-1.1	-0.2	+0.9	+0.7	+0.01	-	-	-	\$142	\$252
Acc	52%	47%	50%	50%	45%	51%	40%	-	-	-	-	-
Perc	74	56	73	48	23	86	28	-	-	-	92	94

Traits Observed: CE,BWT

Statistics: Number of Herds: 0 Prog Analysed: 0

Birth Wt: 39.5 kg, Weight as of 9/8/23: 828 kg

Lot 33

S99 MILONG SLICK



Animal ID NSM21S99
NLIS Visual No/RFID NE630044XBS07844 / -
Date of Birth 31/07/2021
Inventory Season n/a
Sex Male
Register Herd Book Register
Mating Type AI
Colour Black
Birth Number Single
Status Active
DNA Profile Stored No profile is stored
Parentage Verification DNA parentage verification not conducted
Genetic Conditions AM6%,CA4%,DDFU,NH6%

Sire: QQFH147 ASCOT HALLMARK H147^{PV}
 NMMD108 MILLAH MURRAH DIGBY D108^{PV}
 NMMF123 MILLAH MURRAH BRENDA F123^{PV}
 NMMD113 MILLAH MURRAH BRENDA D113^{PV}

Dam: NSMJ84 MILONG JOANNE J84[#]
 NLR478 REILAND GUARD Y478^{SV}
 NSMC63 MILONG CHERRY C63[#]
 NSMV38 MILONG VERONICA V38[#]

Slick S99 in a large, overall impressive and stylish bull with great sire potential. He is thick, compact, has that thick set rump, excellent mobility, spring of rib, great depth, so will certainly add the power and capacity to the herd. He is certainly one to watch, being a Hallmark son, combining his phenotype and pedigree, makes for a powerful package.

August 2023 TransTasman Angus Cattle Evaluation												
TACE	Calving Ease				Growth				Fertility			Temp
	Calving Ease Dir	Calving Ease Dtrs	Gest. Length	Birth Wt	200 Day Growth	400 Day Weight	600 Day Weight	Mat. Cow Weight	Milk	Days to Calving	Scrotal Size	Docility
EBV	-3.8	+2.5	-3.8	+6.2	+46	+84	+114	+104	+14	-4.8	+2.1	+15
Acc	60%	51%	81%	74%	64%	62%	63%	62%	56%	42%	56%	50%
Perc	89	55	65	89	69	68	57	43	75	46	48	74
TACE	Carcass						Feed Efficiency		Structural		Selection Index	
	Carcass Weight	EMA	Rib Fat	Rump Fat	RBV	IMF	NFI-F	Claw Set	Foot Angle	Leg Angle	SA	SA-L
EBV	+62	-0.4	+0.2	+0.1	+0.1	+1.5	+0.32	-	-	-	\$148	\$275
Acc	58%	54%	56%	56%	53%	57%	50%	-	-	-	-	-
Perc	62	99	43	42	71	67	68	-	-	-	90	89

Traits Observed: GL,CE,BWT

Statistics: Number of Herds: 0 Prog Analysed: 0

Birth Wt: 42 kg, Weight as of 9/8/23: 842 kg

Lot 34

S148 MILONG SEAGER



Animal ID NSM21S148
NLIS Visual No/RFID NE630044XBS07495 / -
Date of Birth 15/09/2021
Inventory Season n/a
Sex Male
Register Angus Performance Register
Mating Type Natural
Colour Black
Birth Number Single
Status Active
DNA Profile Stored No profile is stored
Parentage Verification DNA parentage verification not conducted
Genetic Conditions AM6%,CA27%,DDFU,NH6%

WHHE10 BANGADANG WESTERN EXPRESS E10^{SV}
 DXTK542 TEXAS KELVIN KLEIN K542^{SV}
 DXTD035 TEXAS TOQUE D035^{PV}
Sire: BGRP407 CRAWFORD P407^{SV}
 USA15585939 MOHNEN DYNAMITE 1356[#]
 BGRG802 BGRAHAM G802[#]
 BGRX010 BGRAHAM X010^{SV}
 QRFE69 RAFF EMBLEM E69^{PV}
 QRFH180 RAFF EMBLEM H180^{PV}
 QRFZ199 RAFF DORIS Z199[#]
Dam: NSML16 MILONG LUCKY L16[#]
 NDIB276 KENNY'S CREEK FUTURE DIRECTION
 NSMH66 MILONG HAMILTON H66[#]
 NSMC10 MILONG CLEOPATRA C10[#]

Seager S148 is a long, very mobile and smooth bull. He has smooth skin and shoulders, tracks well & good movement, has depth throughout and down through hidquarters. He will add scale to the herd as he is a very young bull and still growing. His sire L169, has been very successful with mature breeding producing great sized offspring, also displaying his key traits including; temperament, softness, longevity and marbling.

August 2023 TransTasman Angus Cattle Evaluation													
TACE	Calving Ease				Growth				Fertility			Temp	
	Calving Ease Dir	Calving Ease Dtrs	Gest. Length	Birth Wt	200 Day Growth	400 Day Weight	600 Day Weight	Mat. Cow Weight	Milk	Days to Calving	Scrotal Size	Docility	
EBV	-8.3	-3.6	-3.0	+7.2	+46	+83	+116	+133	+11	-3.0	+1.5	-	
Acc	50%	38%	55%	72%	58%	55%	56%	55%	45%	27%	51%	-	
Perc	97	94	77	96	70	70	52	9	91	88	71	-	
TACE	Carcase						Feed Efficiency		Structural			Selection Index	
	Carcase Weight	EMA	Rib Fat	Rump Fat	RBY	IMF	NFI-F	Claw Set	Foot Angle	Leg Angle	\$A	\$A-L	
EBV	+61	-0.8	-0.2	+0.0	+0.0	+0.8	+0.17	-	-	-	\$84	\$206	
Acc	48%	44%	48%	47%	42%	48%	37%	-	-	-	-	-	
Perc	65	99	53	44	76	84	48	-	-	-	99	99	

Traits Observed: BWT

Statistics: Number of Herds: 0 Prog Analysed: 0

Birth Wt: 40 kg, Weight as of 9/8/23: 820kg

Lot 35

S59 MILONG SILVERTON



Animal ID NSM21S59
NLIS Visual No/RFID NE630044XBS07836 / -
Date of Birth 16/07/2021
Inventory Season n/a
Sex Male
Register Herd Book Register
Mating Type Natural
Colour Black
Birth Number Single
Status Active
DNA Profile Stored No profile is stored
Parentage Verification DNA parentage verification not conducted
Genetic Conditions AMFU,CA25%,DDFU,NHFU

WHHE10 BANGADANG WESTERN EXPRESS E10^{SV}
 DXTK542 TEXAS KELVIN KLEIN K542^{SV}
 DXTD035 TEXAS TOQUE D035^{PV}
Sire: BGRP407 CRAWFORD P407^{SV}
 USA15585939 MOHNEN DYNAMITE 1356[#]
 BGRG802 BGRAHAM G802[#]
 BGRX010 BGRAHAM X010^{SV}
 QRFE69 RAFF EMBLEM E69^{PV}
 QRFH180 RAFF EMBLEM H180^{PV}
 QRFZ199 RAFF DORIS Z199[#]
Dam: NSMN13 MILONG NICKLED N13[#]
 QRFG424 RAFF STOCKMAN G424^{PV}
 NSMK61 MILONG KAELAN K61[#]
 NSMB82 MILONG B82[#]

Silverton S59 is an extremely docile and long bull. He has a good strong topline, softness and smooth shoulders. He is by Crawford P407, who has been an excellent sire already at Milong, displaying his immense calving ease ability and his length, strength and muscle mass throughout his progeny. He is also one of the heavier bulls offered, so he has the potential to add weight and scale to the herd with calving ease.

August 2023 TransTasman Angus Cattle Evaluation													
TACE	Calving Ease				Growth				Fertility			Temp	
	Calving Ease Dir	Calving Ease Dtrs	Gest. Length	Birth Wt	200 Day Growth	400 Day Weight	600 Day Weight	Mat. Cow Weight	Milk	Days to Calving	Scrotal Size	Docility	
EBV	-6.8	-1.8	-3.0	+6.4	+45	+84	+116	+134	+10	-2.6	+1.7	-	
Acc	50%	38%	54%	72%	58%	56%	57%	55%	46%	28%	52%	-	
Perc	95	87	77	91	74	69	51	8	94	92	64	-	
TACE	Carcase						Feed Efficiency		Structural			Selection Index	
	Carcase Weight	EMA	Rib Fat	Rump Fat	RBY	IMF	NFI-F	Claw Set	Foot Angle	Leg Angle	\$A	\$A-L	
EBV	+61	-1.7	+0.1	+0.6	-0.2	+0.8	+0.18	-	-	-	\$81	\$209	
Acc	48%	45%	48%	48%	42%	49%	38%	-	-	-	-	-	
Perc	65	99	46	33	85	84	50	-	-	-	99	98	

Traits Observed: CE,BWT

Statistics: Number of Herds: 0 Prog Analysed: 0

Birth Wt: 39 kg, Weight as of 9/8/23: 896 kg

Lot 36

S121 MILONG SUEDE



Animal ID NSM21S121
NLIS Visual No/RFID NE630044XBS07531 / -
Date of Birth 23/08/2021
Inventory Season n/a
Sex Male
Register Herd Book Register
Mating Type Natural
Colour Black
Birth Number Single
Status Active
DNA Profile Stored No profile is stored
Parentage Verification DNA parentage verification not conducted
Genetic Conditions AMFU,CA26%,DDFU,NHFU

WHHE10 BANGADANG WESTERN EXPRESS E10^{SV}
 DXTK542 TEXAS KELVIN KLEIN K542^{SV}
 DXTD035 TEXAS TOQUE D035^{PV}
Sire: BGRP407 CRAWFORD P407^{SV}
 USA15585939 MOHNEN DYNAMITE 1356[#]
 BGRG802 BGRAHAM G802[#]
 BGRX010 BGRAHAM X010^{SV}
 QRFE69 RAFF EMBLEM E69^{PV}
 QRFH180 RAFF EMBLEM H180^{PV}
 QRFZ199 RAFF DORIS Z199[#]
Dam: NSMN15 MILONG NUDGUNG N15[#]
 QRFG424 RAFF STOCKMAN G424^{PV}
 NSMK68 MILONG KINDA K68[#]
 NSMC53 MILONG CORTINA C53[#]

Suede S121 is a fantastic young big bull with length, stretch, muscling and mobility behind him. He is smooth shouldered, soft skinned, and eye catching with his strong head carriage and topline. He is also by the easy calving sire P407 so will certainly suit someone looking for a heifer bull but also for mature breeding.

August 2023 TransTasman Angus Cattle Evaluation													
TACE	Calving Ease				Growth				Fertility			Temp	
	Calving Ease Dir	Calving Ease Dtrs	Gest. Length	Birth Wt	200 Day Growth	400 Day Weight	600 Day Weight	Mat. Cow Weight	Milk	Days to Calving	Scrotal Size	Docility	
EBV	-6.8	-1.9	-3.0	+6.4	+45	+84	+116	+133	+10	-2.4	+1.7	-	
Acc	49%	38%	54%	72%	58%	55%	56%	55%	46%	28%	52%	-	
Perc	95	88	77	91	74	69	52	9	95	93	64	-	
TACE	Carcase						Feed Efficiency		Structural			Selection Index	
	Carcase Weight	EMA	Rib Fat	Rump Fat	RBY	IMF	NFI-F	Claw Set	Foot Angle	Leg Angle	\$A	\$A-L	
EBV	+62	-1.4	-0.1	+0.5	-0.1	+0.7	+0.20	-	-	-	\$82	\$209	
Acc	48%	45%	48%	48%	42%	49%	37%	-	-	-	-	-	
Perc	64	99	50	35	81	86	53	-	-	-	99	98	

Traits Observed: BWT

Statistics: Number of Herds: 0 Prog Analysed: 0

Birth Wt: 39 kg, Weight as of 9/8/23: 748kg

Lot 37

S109 Milong Comm



Milong S109 is a nice, soft, smooth bull, by easy calving sire P407. He is a flashy type with good strong head carriage and topline, length, depth and a very thick rump. He will be an excellent all round bull for the commercial breeder.

Sire: BGR Crawford P407

WDCZ3 COONAMBLE Z3^{PV}
 WHHE10 BANGADANG WESTERN EXPRESS E10^{SV}
 WHHY7 BANGADANG WILCOOLA Y7^F
Sire: DXTK542 TEXAS KELVIN KLEIN K542^{SV}
 NAQW109 ARDROSSAN DIRECTION W109^{PV}
 DXTD035 TEXAS TOQUE D035^{PV}
 DXTZ008 TEXAS TOQUE Z008^{SV}
 USA13987017 BALDRIDGE KABOOM K243 KCF^F
 USA15585939 MOHNEN DYNAMITE 1356^F
 USA13620692 MOHNEN JILT 910^F
Dam: BGRG802 BGRAHAM G802^F
 USA65D BT DIRECTION 65D^F
 BGRX010 BGRAHAM X010^{SV}
 VVNL127+91 WILLOW FIELDS LOTUS L127+91^F
 USA878 BON VIEW NEW DESIGN 878^F
 USA14528330 CONNEALY REFLECTION^F
 USA13447172 HAPPY GRILL OF CONANGA 6260^F
Sire: USA16748826 JINDRA DOUBLE VISION^{SV}
 USA13119152 HOFF LIMITED EDITION S C 594^F
 USA14806260 HOFF RACHEL 8312 405^F
 USA13145626 HOFF MISS EXPO S C 4223^F
Dam: NSM Milong Litany L37
 USA13254554 G A R GRID MAKER^F
 NLR478 REILAND GUARD Y478^{SV}
 NLRQ112+95 REILAND THOUGHTS Q112+95^F
Dam: NSMB14 MILONG B14^F
 BIEU60 ONSLOW JACKEROO U60^F
 NSMY52 MILONG YI Y52^F
 NSMU29 MILONG UPSHOT U29^F

Weight as of 9/8/23: 740 kg

Lot 38

S150 Milong Comm



Milong S150 is an impressive commercial sire with excellent mobility, length and depth backing him. He is a younger, smooth skinned bull and a P113 son, who has great length and muscle mass so will certainly assist with adding the kilos and muscling.

Sire: NSM Milong P113

USA12758219 ANKONIAN ELIXIR 100^F
 UKI541616100052 NETHERALLAN PETER PERSHORE
 CANRWZS4418 NIGHTINGALE PRIDE OF
Sire: QRFL169 RAFF PERSHORE L169^{PV}
 USA24J BT RIGHT TIME 24J^F
 SJKD65 GRANITE RIDGE DREAM D65^{PV}
 CCVZ83 VERMONT DREAM Z83^{PV}
Dam: NSM Milong Pomona P52
 USA14528330 CONNEALY REFLECTION^F
 USA16748826 JINDRA DOUBLE VISION^{SV}
 USA14806260 HOFF RACHEL 8312 405^F
Dam: NSML37 MILONG LITANY L37^{SV}
 NLR478 REILAND GUARD Y478^{SV}
 NSMB14 MILONG B14^F
 NSMY52 MILONG YI Y52^F

Weight as of 9/8/23: 810kg

Lot 39

S161 MILONG STUBBIE



Animal ID NSM21S161
NLIS Visual No/RFID NE630044XBS07461 / -
Date of Birth 24/10/2021
Inventory Season n/a
Sex Male
Register Herd Book Register
Mating Type Natural
Colour Black
Birth Number Single
Status Active
DNA Profile Stored No profile is stored
Parentage Verification DNA parentage verification not conducted
Genetic Conditions AM3%,CAFU,DDFU,NH3%

WHHE10 BANGADANG WESTERN EXPRESS E10^{SV}
 DXTK542 TEXAS KELVIN KLEIN K542^{SV}
 DXTD035 TEXAS TOQUE D035^{PV}
Sire: BGRP407 CRAWFORD P407^{SV}
 USA15585939 MOHNEN DYNAMITE 1356^F
 BGRG802 BGRAHAM G802^F
 BGRX010 BGRAHAM X010^{SV}
 QRFD367 RAFF DUKE D367^{PV}
 QRFQ136 RAFF DUKE G136^{PV}
 QRF32 RAFF DORIS E32^F
Dam: NSMK29 MILONG K29^F
 VICE72 IRELANDS EMBLEM E72^{SV}
 NSMH9 MILONG HAT H9^F
 NSMF4 MILONG FLOSS F4^F

Stubbie S161 is a smooth shouldered, low birth weight bull. He has good length and muscling, a younger bull so still has lots of growing ahead of him. He will make an excellent heifer bull with his low birth weight and exceptional calving ease ability.

August 2023 TransTasman Angus Cattle Evaluation													
TACE	Calving Ease				Growth				Fertility			Temp	
	Calving Ease Dir	Calving Ease Dtrs	Gest. Length	Birth Wt	200 Day Growth	400 Day Weight	600 Day Weight	Mat. Cow Weight	Milk	Days to Calving	Scrotal Size	Docility	
EBV	-7.7	-4.0	-2.4	+6.6	+45	+83	+112	+126	+11	-3.3	+1.7	-	
Acc	48%	36%	53%	70%	58%	55%	56%	54%	45%	27%	51%	-	
Perc	96	94	84	92	72	71	61	14	91	84	64	-	
	Carcase				Feed Efficiency			Structural			Selection Index		
	Carcase Weight	EMA	Rib Fat	Rump Fat	RBV	IMF	NFI-F	Claw Set	Foot Angle	Leg Angle	\$A	\$A-L	
EBV	+59	+1.3	-0.1	+0.2	+0.4	+0.4	+0.18	-	-	-	\$96	\$217	
Acc	47%	44%	47%	47%	41%	48%	37%	-	-	-	-	-	
Perc	72	95	50	40	53	91	50	-	-	-	99	98	

Traits Observed: BWT
 Statistics: Number of Herds: 0 Prog Analysed: 0

Birth Wt: 37 kg, Weight as of 9/8/23: 740kg

Lot 40

S016 Milong Comm



USA9894245 PINE DRIVE BIG SKY#
 NZE386 WAITAPU GOVERNOR (AI)(NZ)#
 NZE2306 WAITAPU LULU 380#
Sire: NZE51 WAITAPU DIPLOMAT 51#
 CAN60E EARLY SUNSET EMULOUS 60E#
 NZE225867 WAITAPU 23#
 NZE210131 WAITAPU QUETTA 590#

Sire: NSM Milong Galliano G9

USA13254554 G A R GRID MAKER#
 NLR478 REILAND GUARD Y478^{SV}
 NLRQ112+95 REILAND THOUGHTS Q112+95#
Dam: NSMB45 MILONG B45#
 NSMR7+96 MILONG RING BARK R7+96#
 NSMV86 MILONG VANDAL V86#
 NSMP47+94 MILONG PLEASANT P47+94#

Dam: NSM Milong J216

Weight as of 9/8/23: 772 kg

Milong S016 is an exceptional commercial sire with the length, thickness, depth and muscling desired for the commercial herd. He has a good strong topline, excellent mobility and tracking so will cover the distance well. Combining the NZ genetics he would be an advantageous addition to the commercial herd desiring his key traits.

Lot 41

S177 MILONG STRIDE



Animal ID NSM21S177
NLIS Visual No/RFID NE630044XBS07467 / -
Date of Birth 15/11/2021
Inventory Season n/a
Sex Male
Register Angus Performance Register
Mating Type Natural
Colour Black
Birth Number Single
Status Active
DNA Profile Stored No profile is stored
Parentage Verification DNA parentage verification not conducted
Genetic Conditions AMFU,CAFU,DDFU,NHFU

WHHE10 BANGADANG WESTERN EXPRESS E10^{SV}
 DXTK542 TEXAS KELVIN KLEIN K542^{SV}
 DXTD035 TEXAS TOQUE D035^{PV}
Sire: BGRP407 CRAWFORD P407^{SV}
 USA15585939 MOHNEN DYNAMITE 1356#
 BGRG802 BGRAHAM G802#
 BGRX010 BGRAHAM X010^{SV}

QRFE269 RAFF EMPIRE E269^{SV}
 QRFJ125 RAFF JUMBUCK J125^{PV}
 QRFY68 RAFF BURNETTE Y68^{SV}
Dam: NSMM69 MILONG MUTTAMA M69#
 NLRV24 REILAND THEO V24#
 NSMA60 MILONG A60#
 NSMQ28+95 MILONG QUESTION AIR Q28+95#

Stride S177 is a compact pocket rocket with excellent mobility and tracking. He is a very young bull but already has great depth, thickness and width across the rump. He will certainly add depth, meat and muscling to the herd.

August 2023 TransTasman Angus Cattle Evaluation												
TACE	Calving Ease				Growth				Fertility			Temp
	Calving Ease Dir	Calving Ease Dtrs	Gest. Length	Birth Wt	200 Day Growth	400 Day Weight	600 Day Weight	Mat. Cow Weight	Milk	Days to Calving	Scrotal Size	Docility
EBV	-4.2	-5.3	-4.7	+6.6	+42	+80	+111	+119	+13	-2.8	+2.2	-
Acc	49%	38%	54%	71%	58%	55%	56%	55%	45%	28%	51%	-
Perc	90	97	51	92	82	79	63	21	83	90	44	-
	Carcase						Feed Efficiency		Structural		Selection Index	
	Carcase Weight	EMA	Rib Fat	Rump Fat	RBY	IMF	NFI-F	Claw Set	Foot Angle	Leg Angle	SA	SA-L
EBV	+53	+1.1	+0.2	+0.7	+0.2	+0.5	+0.24	-	-	-	\$93	\$214
Acc	47%	44%	47%	47%	41%	48%	37%	-	-	-	-	-
Perc	85	96	43	31	66	89	58	-	-	-	99	98

Traits Observed: BWT
 Statistics: Number of Herds: 0 Prog Analysed: 0

Birth Wt: 38 kg, Weight as of 9/8/23: 692 kg

Lot 42

S170 MILONG SHOOTOUT



Animal ID NSM21S170
NLIS Visual No/RFID NE630044XBS07500 / -
Date of Birth 06/11/2021
Inventory Season n/a
Sex Male
Register Angus Performance Register
Mating Type Natural
Colour Black
Birth Number Single
Status Active
DNA Profile Stored No profile is stored
Parentage Verification DNA parentage verification not conducted
Genetic Conditions AM13%,CA3%,DDFU,NH13%

WHHE10 BANGADANG WESTERN EXPRESS E10^{SV}
 DXTK542 TEXAS KELVIN KLEIN K542^{SV}
 DXTD035 TEXAS TOQUE D035^{PV}
Sire: BGRP407 CRAWFORD P407^{SV}
 USA15585939 MOHNEN DYNAMITE 1356#
 BGRG802 BGRAHAM G802#
 BGRX010 BGRAHAM X010^{SV}

USA5321 C A FUTURE DIRECTION 5321#
 NDI8276 KENNY'S CREEK KELVIN KLEIN K542^{SV}
 NDIW37 KENNY'S CREEK PATRIOT W37#
Dam: NSMF3 MILONG F3#
 NLR478 REILAND GUARD Y478^{SV}
 NSMB16 MILONG B16#
 NSMY10 MILONG YELWA Y10#

Shootout S170 has that extra eye appeal, overall structural development, mobility, and capacity of an outstanding sire. He is certainly one to keep an eye on as is a powerful package with the softness, smoothness, thickness, length, muscling, movement and pedigree to suit all needs. He has a good strong topline and excellent tracking so will cover the distance and has easy calving ability in his genetics.

August 2023 TransTasman Angus Cattle Evaluation												
TACE	Calving Ease				Growth				Fertility			Temp
	Calving Ease Dir	Calving Ease Dtrs	Gest. Length	Birth Wt	200 Day Growth	400 Day Weight	600 Day Weight	Mat. Cow Weight	Milk	Days to Calving	Scrotal Size	Docility
EBV	-6.2	-2.8	-3.1	+6.4	+44	+82	+112	+126	+13	-3.5	+1.9	+18
Acc	51%	40%	53%	72%	58%	55%	56%	55%	45%	29%	50%	25%
Perc	94	91	76	91	77	73	61	13	83	80	56	59
	Carcase						Feed Efficiency		Structural		Selection Index	
	Carcase Weight	EMA	Rib Fat	Rump Fat	RBY	IMF	NFI-F	Claw Set	Foot Angle	Leg Angle	SA	SA-L
EBV	+59	+0.2	-0.5	-0.5	+0.3	+0.5	+0.21	-	-	-	\$94	\$219
Acc	48%	43%	47%	46%	41%	47%	37%	-	-	-	-	-
Perc	71	98	60	53	59	89	54	-	-	-	99	98

Traits Observed: BWT
 Statistics: Number of Herds: 0 Prog Analysed: 0

Birth Wt: 38 kg, Weight as of 9/8/23: 704 kg

Lot 43

S158 MILONG SHACKLE



Animal ID NSM21S158
NLIS Visual No/RFID NE630044XBS07455 / -
Date of Birth 24/10/2021
Inventory Season n/a
Sex Male
Register Herd Book Register
Mating Type Natural
Colour Black
Birth Number Single
Status Active
DNA Profile Stored No profile is stored
Parentage Verification DNA parentage verification not conducted
Genetic Conditions AMFU,CA3%,DDFU,NHFU

WHHE10 BANGADANG WESTERN EXPRESS E10^{SV}
 DXTK542 TEXAS KELVIN KLEIN K542^{SV}
 DXTD035 TEXAS TOQUE D035^{PV}
Sire: BGRP407 CRAWFORD P407^{SV}
 USA15585939 MOHNNEN DYNAMITE 1356[#]
 BGRG802 BGRAHAM G802[#]
 BGRX010 BGRAHAM X010^{SV}
 USA14842384 S A V INITIATIVE 4406^{SV}
 NZE17732007297 WAITAPU INITIATIVE 297 AB^{SV}
 NZE177321942594 WAITAPU MINERVA 254 AB[#]
Dam: NSMH16 MILONG HOVER H16[#]
 NLRY478 REILAND GUARD Y478^{SV}
 NSMD16 MILONG DEPLOY D16[#]
 NSMW74 MILONG WYALONG W74[#]

Shackle S158 is a compact young bull. He has great muscle mass, thickness, good topline and spring of rib. S158 has a great blending of genetics and traits to be a suitable all-rounder.

August 2023 TransTasman Angus Cattle Evaluation												
TACE	Calving Ease				Growth				Fertility			Temp
	Calving Ease Dir	Calving Ease Dtrs	Gest. Length	Birth Wt	200 Day Growth	400 Day Weight	600 Day Weight	Mat. Cow Weight	Milk	Days to Calving	Scrotal Size	Docility
EBV	-3.9	-4.1	-5.2	+6.7	+47	+87	+118	+135	+10	-3.3	+2.2	+22
Acc	50%	38%	59%	72%	60%	56%	57%	56%	48%	29%	52%	26%
Perc	89	95	42	93	62	60	47	8	95	84	44	40
	Carcase						Feed Efficiency		Structural		Selection Index	
	Carcase Weight	EMA	Rib Fat	Rump Fat	RBV	IMF	NFI-F	Claw Set	Foot Angle	Leg Angle	SA	SA-L
EBV	+56	+1.2	-0.1	-0.5	+0.5	+0.1	+0.18	-	-	-	\$104	\$242
Acc	49%	46%	49%	48%	43%	49%	38%	-	-	-	-	-
Perc	79	95	50	53	47	94	50	-	-	-	99	95

Traits Observed: BWT

Statistics: Number of Herds: 0 Prog Analysed: 0

Birth Wt: 38 kg, Weight as of 9/8/23: 758 kg

Lot 44

S174 MILONG SCRIBBLE



VTMB1 TE MANIA BERKLEY B1^{PV}
 VTME343 TE MANIA EMPEROR E343^{PV}
 VTMZ74 TE MANIA LOWAN Z74^{PV}
Sire: QQFH147 ASCOT HALLMARK H147^{PV}
 NMMD108 MILLAH MURRAH DIGBY D108^{PV}
 NMMF123 MILLAH MURRAH BRENDA F123^{PV}
 NMMD113 MILLAH MURRAH BRENDA D113^{PV}
Sire: QQFL305 ASCOT LIONHEART
 VTMB219 TE MANIA BARTEL B219^{PV}
 BHRE614 DUNOON EVIDENT E614^{PV}
 BHRB681 DUNOON ELSA B681^{SV}
Dam: QQFH148 ASCOT H148^{SV}
 NMMD78 MILLAH MURRAH EQUATOR D78^{PV}
 NMMF126 MILLAH MURRAH FLOWER F126^{PV}
 NMMB76 MILLAH MURRAH FLOWER B76^{PV}
 USA5321 C A FUTURE DIRECTION 5321[#]
 NDIB276 KENNY'S CREEK FUTURE DIRECTION B27^{PV}
 NDIW37 KENNY'S CREEK PATRIOT W37[#]
Sire: NSME3 MILONG ECHO E3^{SV}
 NLRY478 REILAND GUARD Y478^{SV}
 NSMB18 MILONG B18[#]
 NSMY58 MILONG YULE Y58[#]
Dam: NSM Milong Kadey K46
 USA416 ALBERDA TRAVELER 416[#]
 NLRV24 REILAND THEO V24[#]
 NLR566 REILAND THEA S66[#]
Dam: NSMA60 MILONG A60[#]
 NZE395 FREEDOM OF TURIROA (IMP NZE)[#]
 NSMQ28+95 MILONG QUESTION AIR Q28+95[#]
 NSME12+85 MILONG ECLARE E12.[#]

Scribble S174 is another very young, compact, mobile calf offered this year. He has the depth, smoothness, temperament, and will continue to grow into a nice bull. His sire, Lionheart has show stopping looks, a B muscle pattern, softness, impeccable structure and a docile nature which S174 is certainly displaying.

Birth Wt: 39 kg, Weight as of 9/8/23: 644kg

Lot 45

S81 MILONG SHERLOCK



Animal ID NSM21S81
NLIS Visual No/RFID NE630044XBS07891 / -
Date of Birth 27/07/2021
Inventory Season n/a
Sex Male
Register Herd Book Register
Mating Type Natural
Colour Black
Birth Number Single
Status Active
DNA Profile Stored No profile is stored
Parentage Verification DNA parentage verification not conducted
Genetic Conditions AMFU,CAFU,DDFU,NHFU

WHHE10 BANGADANG WESTERN EXPRESS E10^{SV}
 DXTK542 TEXAS KELVIN KLEIN K542^{SV}
 DXTD035 TEXAS TOQUE D035^{PV}
Sire: BGRP407 CRAWFORD P407^{SV}
 USA15585939 MOHNNEN DYNAMITE 1356[#]
 BGRG802 BGRAHAM G802[#]
 BGRX010 BGRAHAM X010^{SV}
 QRFE269 RAFF EMPIRE E269^{SV}
 QRFJ125 RAFF JUMBUCK J125^{PV}
 QRFY68 RAFF BURNETTE Y68^{SV}
Dam: NSMN117 MILONG NAPOLI N117[#]
 USA297E B T ULTRAVOX 297E[#]
 NSME24 MILONG ERIN E24[#]
 NARW53 NARRANGULLEN EDETTE W53[#]

Sherlock S81 is a large but compact package. He is soft, exceptional movement and has weight behind him being one of the heavier fellows offered. He is a P407 son, who has great calving ease and upon semen testing the vet noted his exceptional penile structure, so he certainly has the potential to cover the ground and work hard. He is an all round sire suited to most needs.

August 2023 TransTasman Angus Cattle Evaluation												
TACE	Calving Ease				Growth				Fertility			Temp
	Calving Ease Dir	Calving Ease Dtrs	Gest. Length	Birth Wt	200 Day Growth	400 Day Weight	600 Day Weight	Mat. Cow Weight	Milk	Days to Calving	Scrotal Size	Docility
EBV	-15.8	-10.4	-4.3	+8.0	+50	+90	+123	+133	+12	-3.2	+2.5	+18
Acc	52%	40%	56%	72%	59%	56%	57%	56%	47%	30%	52%	25%
Perc	99	99	57	99	48	52	37	9	87	85	33	57
	Carcase						Feed Efficiency		Structural		Selection Index	
	Carcase Weight	EMA	Rib Fat	Rump Fat	RBV	IMF	NFI-F	Claw Set	Foot Angle	Leg Angle	SA	SA-L
EBV	+61	+2.5	-0.3	+0.0	+0.4	+0.3	+0.14	-	-	-	\$80	\$182
Acc	49%	46%	49%	49%	44%	50%	39%	-	-	-	-	-
Perc	65	89	55	44	53	92	44	-	-	-	99	99

Traits Observed: CE,BWT

Statistics: Number of Herds: 0 Prog Analysed: 0

Birth Wt: 45 kg, Weight as of 9/8/23: 918kg

Lot 46

S149 MILONG SHOWTIME



Animal ID NSM21S149
NLIS Visual No/RFID NE630044XBS07480 / -
Date of Birth 15/09/2021
Inventory Season n/a
Sex Male
Register Angus Performance Register
Mating Type AI
Colour Black
Birth Number Single
Status Active
DNA Profile Stored No profile is stored
Parentage Verification DNA parentage verification not conducted
Genetic Conditions AM6%,CA25%,DDFU,NH6%

Sire: QQFH147 ASCOT HALLMARK H147^{PV}
 NMMD108 MILLAH MURRAH DIGBY D108^{PV}
 NMMF123 MILLAH MURRAH BRENDA F123^{PV}
 NMMD113 MILLAH MURRAH BRENDA D113^{PV}
Dam: NSML71 MILONG LOVELY L71[#]
 NDIB276 KENNY'S CREEK FUTURE DIRECTION
 NSMH81 MILONG HOUSTON H81[#]
 NSMZ41 MILONG Z41[#]

Showtime S149 is a larger framed bull but still is soft with excellent thickness. He has that strong topline, good mobility and will mature well. His sire, Emblem H180 was an excellent all round bull with outstanding performance on both heifers and mature cows, including calving ease and progeny with great eye appeal.

TACE	August 2023 TransTasman Angus Cattle Evaluation												
	Calving Ease				Growth				Fertility			Temp	
	Calving Ease Dir	Calving Ease Dirs	Gest. Length	Birth Wt	200 Day Growth	400 Day Weight	600 Day Weight	Mat. Cow Weight	Milk	Days to Calving	Scrotal Size	Dociity	
EBV	-5.8	+1.0	-1.7	+6.2	+46	+86	+121	+113	+15	-3.5	+1.7	+13	
Acc	59%	50%	82%	72%	64%	63%	63%	62%	58%	43%	59%	50%	
Perc	94	69	90	89	68	64	41	28	67	80	64	82	
TACE	Carcase						Feed Efficiency		Structural			Selection Index	
	Carcase Weight	EMA	Rib Fat	Rump Fat	RBV	IMF	NFI-F	Claw Set	Foot Angle	Leg Angle	SA	SA-L	
EBV	+67	-1.8	+0.4	+0.5	-0.4	+2.2	+0.22	-	-	-	\$126	\$249	
Acc	59%	57%	59%	58%	55%	59%	51%	-	-	-	-	-	
Perc	46	99	38	35	91	46	55	-	-	-	96	94	

Traits Observed: GL,BWT
 Statistics: Number of Herds: 0 Proq Analysed: 0

Birth Wt: 39 kg, Weight as of 9/8/23: 916kg

Lot 47

S115 MILONG STEFFON



Animal ID NSM21S115
NLIS Visual No/RFID NE630044XBS07520 / -
Date of Birth 11/08/2021
Inventory Season n/a
Sex Male
Register Herd Book Register
Mating Type Natural
Colour Black
Birth Number Single
Status Active
DNA Profile Stored No profile is stored
Parentage Verification DNA parentage verification not conducted
Genetic Conditions AM6%,CA26%,DDFU,NH6%

Sire: BGRP407 CRAWFORD P407^{SV}
 USA15585939 MOHLEN DYNAMITE 1356[#]
 BGRG802 BGRAHAM G802[#]
 BGRX010 BGRAHAM X010^{SV}
Dam: NSMN75 MILONG NATURE N75[#]
 NDIB276 KENNY'S CREEK FUTURE DIRECTION
 NSMH59 MILONG HEMP H59[#]
 NSMC66 MILONG CARRIE C66[#]

Steffon S115 is a nice long bull with superb mobility and strong topline. He has soft smooth shoulders and has fantastic semen quality and scoring. S115 will put length and muscle into his calves. He will be a top all round bull.

TACE	August 2023 TransTasman Angus Cattle Evaluation												
	Calving Ease				Growth				Fertility			Temp	
	Calving Ease Dir	Calving Ease Dirs	Gest. Length	Birth Wt	200 Day Growth	400 Day Weight	600 Day Weight	Mat. Cow Weight	Milk	Days to Calving	Scrotal Size	Dociity	
EBV	-9.7	-3.6	-2.5	+7.8	+47	+85	+121	+139	+8	-2.5	+1.5	-	
Acc	50%	38%	53%	72%	58%	55%	56%	55%	45%	28%	51%	-	
Perc	98	94	83	98	62	67	41	6	97	93	71	-	
TACE	Carcase						Feed Efficiency		Structural			Selection Index	
	Carcase Weight	EMA	Rib Fat	Rump Fat	RBV	IMF	NFI-F	Claw Set	Foot Angle	Leg Angle	SA	SA-L	
EBV	+63	-0.8	-0.3	-0.3	+0.0	+0.8	+0.13	-	-	-	\$76	\$198	
Acc	48%	44%	47%	47%	42%	48%	37%	-	-	-	-	-	
Perc	59	99	55	50	76	84	43	-	-	-	99	99	

Traits Observed: CE,BWT
 Statistics: Number of Herds: 0 Proq Analysed: 0

Birth Wt: 44 kg, Weight as of 9/8/23: 892 kg

Lot 48

S108 MILONG SUTHERLAND



Animal ID NSM21S108
NLIS Visual No/RFID NE630044XBS07501 / -
Date of Birth 07/08/2021
Inventory Season n/a
Sex Male
Register Herd Book Register
Mating Type Natural
Colour Black
Birth Number Single
Status Active
DNA Profile Stored No profile is stored
Parentage Verification DNA parentage verification not conducted
Genetic Conditions AMFU,CAFU,DDFU,NH6%

Sire: BGRP407 CRAWFORD P407^{SV}
 USA15585939 MOHLEN DYNAMITE 1356[#]
 BGRG802 BGRAHAM G802[#]
 BGRX010 BGRAHAM X010^{SV}
Dam: NSMN85 MILONG NUDE N85[#]
 QRFJ125 RAFF JUMBUCK J125^{PV}
 QRFY68 RAFF BURNETTE Y68^{SV}
 NSMK57 MILONG KAYA K57[#]
 NSME53 MILONG EMMA E53[#]

Sutherland S108 is a long, soft skinned bull with plenty of growing ahead of him still. He moves and tracks well, so will cover the distance with ease. He has proven performance and worked already, guarantee calves at foot. His by an exceptional sire with Texas bloodlines and great calving ease ability.

TACE	August 2023 TransTasman Angus Cattle Evaluation												
	Calving Ease				Growth				Fertility			Temp	
	Calving Ease Dir	Calving Ease Dirs	Gest. Length	Birth Wt	200 Day Growth	400 Day Weight	600 Day Weight	Mat. Cow Weight	Milk	Days to Calving	Scrotal Size	Dociity	
EBV	-5.5	-2.6	-4.0	+6.4	+45	+84	+114	+122	+12	-2.7	+2.2	-	
Acc	50%	39%	56%	71%	58%	56%	56%	55%	46%	28%	52%	-	
Perc	93	91	62	91	73	69	57	17	87	91	44	-	
TACE	Carcase						Feed Efficiency		Structural			Selection Index	
	Carcase Weight	EMA	Rib Fat	Rump Fat	RBV	IMF	NFI-F	Claw Set	Foot Angle	Leg Angle	SA	SA-L	
EBV	+59	+1.2	-0.3	+0.5	+0.3	+0.3	+0.15	-	-	-	\$100	\$224	
Acc	48%	45%	48%	48%	42%	49%	38%	-	-	-	-	-	
Perc	71	95	55	35	59	92	46	-	-	-	99	97	

Traits Observed: CE,BWT
 Statistics: Number of Herds: 0 Proq Analysed: 0

Birth Wt: 37 kg, Weight as of 9/8/23: 762kg

Lot 49

S106 Milong Comm



Milong S106 is a lovely compact heifer bull. He is soft skinned, tracks well and has top thickness through his hindquarters. He would be a highly advantageous heifer bull for the commercial breeder.

Sire: NSM Milong Preston P115

BHRE614 DUNOON EVIDENT E614^{PV}
 NZE14738012269 MERCHISTON EXCLUSIVE 269[#]
 NZE14738107611 MERCHISTON DUCHESS 611[#]
Sire: NZE14738014489 MERCHISTON STEAKHOUSE
 NZE16932003365 TE MANIA 03 365[#]
 NZE14738108684 MERCHISTON RANGI 684[#]
 NZE14738104281 MERCHISTON RANGI 281[#]
 USA2164 TC STOCKMAN 2164[#]
 QRF424 RAFF STOCKMAN G424^{PV}
 QRF227 RAFF LADY DURHAM D227^{PV}
Dam: NSMK68 MILONG KINDA K68[#]
 NLR478 REILAND GUARD Y478^{SV}
 NSMC53 MILONG CORTINA C53[#]
 NSMS8 MILONG STROLLER S8[#]

Dam: NSM Milong Q64

Weight as of 9/8/23: 818kg

Lot 50

S30 MILONG SIDEHUSTLE



Sidehustle S30 has that extra eye appeal, overall structural development and capacity of an outstanding sire. He is certainly one to keep an eye on as is a powerful package with the thickness, depth, muscling, smooth shoulders, movement and pedigree to suit all needs. He is a lovely bull with a low birth weight (30kgs) and potential to pack muscling, weight, docility and style into the herd.

Animal ID NSM21S30
NLIS Visual No/RFID NE630044XBS07828 / -
Date of Birth 26/06/2021
Inventory Season n/a
Sex Male
Register Angus Performance Register
Mating Type Natural
Colour Black
Birth Number Twin
Status Active
DNA Profile Stored No profile is stored
Parentage Verification DNA parentage verification not conducted
Genetic Conditions AM3%,CAFU,DDFU,NH3%

WHHE10 BANGADANG WESTERN EXPRESS E10^{SV}
 DXTK542 TEXAS KELVIN KLEIN K542^{SV}
 DXTD035 TEXAS TOQUE D035^{PV}
Sire: BGRP407 CRAWFORD P407^{SV}
 USA15585939 MOHNNEN DYNAMITE 1356[#]
 BGRG802 BGRAHAM G802[#]
 BGRX010 BGRAHAM X010^{SV}
 QRFE269 RAFF EMPIRE E269^{SV}
 QRFJ125 RAFF JUMBUCK J125^{PV}
 QRFY68 RAFF BURNETTE Y68^{SV}
Dam: NSMN30 MILONG NICELY N30[#]
 VICE72 IRELANDS EMBLEM E72^{SV}
 NSMH3 MILONG HICKORY H3[#]
 NSMF2 MILONG F2[#]

August 2023 TransTasman Angus Cattle Evaluation													
TACE	Calving Ease				Growth				Fertility			Temp	
	Calving Ease Dir	Calving Ease Dtrs	Gest. Length	Birth Wt	200 Day Growth	400 Day Weight	600 Day Weight	Mat. Cow Weight	Milk	Days to Calving	Scrotal Size	Docility	
EBV	-7.0	-4.3	-3.7	+7.1	+47	+86	+116	+124	+13	-3.2	+2.1	-	
Acc	48%	37%	53%	70%	58%	55%	56%	55%	45%	27%	51%	-	
Perc	95	95	67	96	64	63	52	15	80	85	48	-	
	Carcase					Feed Efficiency		Structural			Selection Index		
	Carcase Weight	EMA	Rib Fat	Rump Fat	RBY	IMF	NFI-F	Claw Set	Foot Angle	Leg Angle	SA	SA-L	
EBV	+61	+1.8	-0.4	+0.1	+0.3	+0.4	+0.15	-	-	-	\$105	\$227	
Acc	48%	44%	47%	47%	42%	48%	37%	-	-	-	-	-	
Perc	67	93	58	42	59	91	46	-	-	-	99	97	

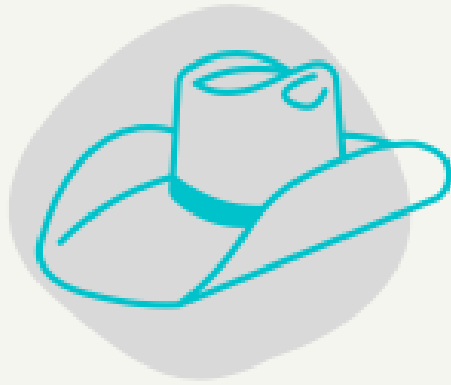
Traits Observed: BWT
 Statistics: Number of Herds: 0 Prog Analysed: 0

Birth Wt: 30 kg, Weight as of 9/8/23: 878kg

NOTES

WWW.MILONGANGUSSTUD.COM.AU
 @MILONG.ANGUS.STUD
 WILLIAM: 0429416754





COWBOY HATS FOR KATE

SUPPORTING BRAIN CANCER RESEARCH



**the brain
cancer centre**
MANY MINDS. ONE FOCUS.

Founded by
**Carrie's Beansies
4 Brain Cancer**

"Brain cancer is a devastating illness.
Currently there is no cure.
We need to change this." - The Brain Cancer Centre

Profits donated to The Brain Cancer Centre

In aid of bringing together the brightest medical research
minds to end brain cancer as a terminal illness.

@cowboyhatsforkate

With many thanks from the team at Milong Angus!



WWW.MILONGANGUSSTUD.COM.AU

@MILONG.ANGUS.STUD



Thank you very much for your valued support and we wish you all the best with your breeding programs!



Lot 13 Milong S238



Lot 37 Milong S109



Lot 34 Milong Slick S99



Lot 37 Milong Suede S121



**MILONG
ANGUS
STUD**

WWW.MILONGANGUSSTUD.COM.AU

@MILONG.ANGUS.STUD

