

Curragindi Charolais

2nd Annual Sale on the Monaro

15
September
2023

2023 SALE BULLS

AGES 15 - 24 MTHS

HOMO POLLED

RED FACTOR & WHITE

RANGE OF SIRE GROUPS

"CURRAGINDI"

815 NUMERALLA ROAD

COOMA NSW

The 2023 2nd Annual Sale on the Monaro is the
1ST OFFERING OF CURRAGINDI FEMALES AT AUCTION!

Heifers sired by
CURRAGINDI NULLA

NESBITT PARTNERSHIP

PH: (02)6452 6169

MOB: 0419 434 153

SALE INFORMATION

Curragindi Welcomes all existing prospective and new clients to our Curragindi Charolais 2nd Annual Sale on the Monaro

We are pleased to offer our selection of even, modern, structurally sound bulls for sale. This line-up of bulls exhibit a moderate frame, natural do-ability, and will produce progeny of low birth weight with exceptional weight gain capability.

Health Information:

All sale animals are tested negative for Pestivirus

J BAS 7

Fully vaccinated 7 in 1 program

Ivomec Plus August 2023

All Bulls independently vet checked by Dr. Peter J Brennan B.V.Sc of Monaro Veterinary Clinic

A supplementary information sheet containing weight data and examination of reproductive organs and structural assessment will be available prior to our sale day.

Semen Tested: see supplementary sheet prior to sale

Sire Verification: All bulls have been sire verified by DNA

Bulls have been Horn/ Poll tested. See individual lot for Poll status - Homozygous Poll (PP) status indicates the bulls that should produce poll progeny (even if the cow they are mated to is horned)

Inspection: We welcome inspection by appointment

Sale Conditions:

All lots will be sold subject to the usual terms and conditions governing auctions sales.

Responsibility passes to the purchaser at the fall of the hammer. All lots are sold exclusive of GST.

AuctionsPlus potential buyers must register with AuctionsPlus prior to the sale and we recommend that you make these arrangements at least one week prior to sale day.

Go to www.auctionsplus.com.au to complete registration and receive your password.

Should you have any queries or problems prior or on sale day regarding the AuctionsPlus process, please call Nutrien Livestock Agent

Transport:

We offer Bulls to be delivered free of charge to major selling complex within 200km of Curragindi Charolais on an agreeable date, and where possible direct to your farm.

Remember it is extremely important on arrival at your property to have a few cows in the yards to help your new investment settle in.

Online Bidding:

Online bidding will be conducted through the Auctions Plus live.

Link: Curragindi Charolais 2nd Annual Sale On The Monaro

CURRAGINDI NULLA (AI) (P) (R/F)

HOMOZYGOUS POLL

IDENT: CCNN2E



S: LT BLUEGRASS 4017P (P)
 S: LT LEDGER 0332 (P)
 D: LT BRENDA 6120 PLD

S: ASHWOOD PARK ELDORADO (P)
 D: CURRAGINDI KUMA (P) (R/F)
 D: VIOLET HILLS H35E (P)

TOP 5% of Charolais breed:
 Calving Ease Direct
 Birth Weight
 Rib Fat
 Rump Fat

TOP 10% of Charolais breed:
 Gestation Length
 Scrotal Size

SIRE OF LOTS: 1, 6, 7, 11, 12 & 13

June 2023 Australasian Charolais BREEDPLAN Analysis																
	Calving Ease DIR (%)	Calving Ease DTRS (%)	Gestation Length (days)	Birth Wt. (kg)	200 Day Wt. (kg)	400 Day Wt. (kg)	600 Day Wt. (kg)	Mat. Cow Wt. (kg)	Milk (kg)	Scrotal Size (cm)	Carcase Wt. (kg)	Eye Muscle Area (sq.cm)	Rib Fat (mm)	Rump Fat (mm)	Retail Beef Yield (%)	IMF (%)
EBV	+12.3	+1.3	-5.5	-3.5	+7	+16	+10	-7	+7	+2.4	+12	+1.5	+1.8	+2.6	-1.2	+0.6
Accuracy	58%	49%	71%	77%	65%	67%	66%	63%	55%	70%	58%	46%	50%	49%	47%	45%

CURRAGINDI AWESOME (AI) (ET) (P)

HETEROZYGOUS POLL

IDENT: CCNQ97E



S: PALGROVE DAMN AWESOME
 S: PALGROVE HOW AWESOME (AI) (P)
 D: PALGROVE MAXINE 128 (P)

S: 2UP THE VEGEMITE KID (AI) (P)
 D: ROSEDALE GERTY V97 (P)
 D: ROSEDALE GERTY 4 (AI)

TOP 15% of Charolais breed:
 400 Day Weight

TOP 20% of Charolais breed:
 Calving Ease Daughters

Awesome is above the Charolais breed average for all weight EBV's

SIRE OF LOTS: 2, 8, 10, 14, 15 & 16

June 2023 Australasian Charolais BREEDPLAN Analysis																
	Calving Ease DIR (%)	Calving Ease DTRS (%)	Gestation Length (days)	Birth Wt. (kg)	200 Day Wt. (kg)	400 Day Wt. (kg)	600 Day Wt. (kg)	Mat. Cow Wt. (kg)	Milk (kg)	Scrotal Size (cm)	Carcase Wt. (kg)	Eye Muscle Area (sq.cm)	Rib Fat (mm)	Rump Fat (mm)	Retail Beef Yield (%)	IMF (%)
EBV	-3.3	+5.3	-0.4	+1.6	+13	+35	+40	+49	+2	-0.1	+26	+0.9	-0.2	-0.4	+0.2	-0.2
Accuracy	54%	46%	58%	70%	62%	63%	62%	59%	57%	65%	54%	44%	46%	45%	44%	43%

SILVERSTREAM GEDDES G102 (P)

POLL

IDENT: OANG102D



S: SILVERSTREAM BOOKMAKER (P)
S: SILVERSTREAM ENTICER E30 (P)
D: SILVERSTREAM JULIE A27

S: HIGHWAY STEFAN S52
D: SILVERSTREAM DOLLY V5
D: SILVERSTREAM T89

TOP 1% of Charolais breed:
Carcase Weight

TOP 5% of Charolais breed:
400 Day Weight
Mature Cow Weight
Eye Muscle Area

TOP 10% of Charolais breed:
600 Day Weight
Scrotal Size

SIRE OF LOT: 9

June 2023 Australasian Charolais BREEDPLAN Analysis																
	Calving Ease DIR (%)	Calving Ease DTRS (%)	Gestation Length (days)	Birth Wt. (kg)	200 Day Wt. (kg)	400 Day Wt. (kg)	600 Day Wt. (kg)	Mat. Cow Wt. (kg)	Milk (kg)	Scrotal Size (cm)	Carcase Wt. (kg)	Eye Muscle Area (sq.cm)	Rib Fat (mm)	Rump Fat (mm)	Retail Beef Yield (%)	IMF (%)
EBV	-3.1	+4.1	-0.9	+1.7	+14	+44	+56	+64	-3	+2.4	+39	+3.2	+0.3	+0.5	+0.7	-0.3
Accuracy	84%	79%	95%	96%	95%	96%	91%	94%	95%	88%	80%	87%	86%	81%	78%	

SCR TRIUMPH 2135 (P)

HOMOZYGOUS POLL

IDENT: OACH5788E



S: FC MARBLER 841 (P)
S: SCR TUFFY 0119 (P)
D: SCR MISS KING MICKY 7055

S: JCH MR BULL DOZER P146 (P)
D: SCR MS BABY DOLL 7140 (P)
D: SCR MISS ROYALTY 9302

TOP 10% of Charolais breed:
Gestation Length

TOP 15% of Charolais breed:
200 Day Weight
Rib Fat

SIRE OF LOTS: 3, 4, 5

June 2023 Australasian Charolais BREEDPLAN Analysis																
	Calving Ease DIR (%)	Calving Ease DTRS (%)	Gestation Length (days)	Birth Wt. (kg)	200 Day Wt. (kg)	400 Day Wt. (kg)	600 Day Wt. (kg)	Mat. Cow Wt. (kg)	Milk (kg)	Scrotal Size (cm)	Carcase Wt. (kg)	Eye Muscle Area (sq.cm)	Rib Fat (mm)	Rump Fat (mm)	Retail Beef Yield (%)	IMF (%)
EBV	-3.1	-0.5	-5.9	+0.1	+18	+26	+26	+38	-5	+1.4	+19	0.0	+1.3	+0.6	-1.1	-0.1
Accuracy	55%	27%	86%	88%	71%	69%	65%	59%	33%	57%	49%	28%	41%	41%	35%	28%

LOT 01 CURRAGINDI SAHARA

DOB: 26/08/2021

HOMO POLL

IDENT: CCNS26E



S: LT LEDGER
 CURRAGINDI NULLA
 D: CURRAGINDI KUMA

S: PARINGA HOWLER M344
 D: GLENLEA OLIVE 14TH
 D: GLENLEA OLIVE 10TH

Sahara is a soft, fleshy homozygous polled son of Curragindi Nulla. Sahara sits within the top 10% of the Charolais breed for calving ease direct and birth weight, a true calving specialist - suitable for heifers.

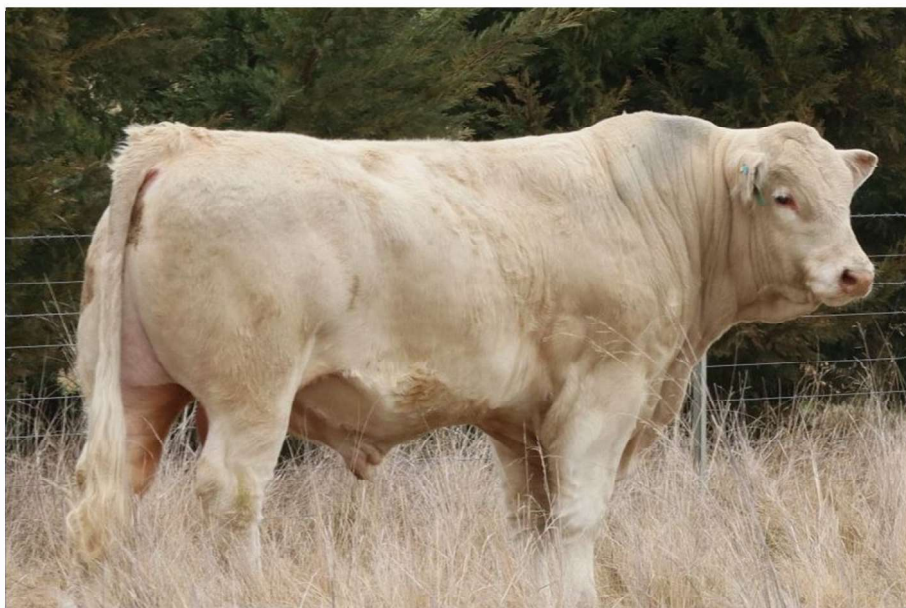
June 2023 Australasian Charolais BREEDPLAN Analysis																
	Calving Ease DIR (%)	Calving Ease DTRS (%)	Gestation Length (days)	Birth Wt. (kg)	200 Day Wt. (kg)	400 Day Wt. (kg)	600 Day Wt. (kg)	Mat. Cow Wt. (kg)	Milk (kg)	Scrotal Size (cm)	Carcase Wt. (kg)	Eye Muscle Area (sq.cm)	Rib Fat (mm)	Rump Fat (mm)	Retail Beef Yield (%)	IMF (%)
EBV	+11.7	+2.5	-4.1	-2.4	+8	+19	+19	+6	+7	+1.8	+16	+1.8	+1.1	+1.5	-0.5	+0.5
Accuracy	34%	29%	42%	52%	41%	42%	42%	40%	33%	42%	35%	28%	30%	30%	29%	28%

LOT 02 CURRAGINDI SOCIAL DISTANCE

DOB: 18/11/2021

HOMO POLL

IDENT: CCNS95E



S: PALGROVE HOW AWESOME
 CURRAGINDI AWESOME
 D: ROSEDALE GERTY V97

S: VIOLET HILLS FANFARE
 D: VIOLET HILLS H95
 D: VIOLET HILLS ALL DRESSED UP

A bull with plenty of frame and thickness. This homozygous polled son of Curragindi Awesome is well worth your consideration. His Dam Violet Hills H95 is a treasured matron of the Curragindi herd. Always weaning her calves within the heaviest of the mob.

June 2023 Australasian Charolais BREEDPLAN Analysis																
	Calving Ease DIR (%)	Calving Ease DTRS (%)	Gestation Length (days)	Birth Wt. (kg)	200 Day Wt. (kg)	400 Day Wt. (kg)	600 Day Wt. (kg)	Mat. Cow Wt. (kg)	Milk (kg)	Scrotal Size (cm)	Carcase Wt. (kg)	Eye Muscle Area (sq.cm)	Rib Fat (mm)	Rump Fat (mm)	Retail Beef Yield (%)	IMF (%)
EBV	+4.9	+3.2	-1.8	-0.5	+9	+23	+23	+25	+5	+0.9	+17	+0.6	+0.2	+0.1	-0.1	-0.2
Accuracy	39%	33%	43%	68%	56%	61%	59%	54%	42%	71%	49%	30%	33%	33%	32%	29%

LOT 03 CURRAGINDI SLING SHOT

DOB: 18/11/2021

HOMO POLL

IDENT: CCNS6E



S: SCR TUFFY 0119
S: SCR TRIUMPH 2135
 D: SCR MS BABY DOLL 7140

S: LEACHMAN WHITE GOLD P002X
D: CURRAGINDI ENCORE NICOLETTE
 D: ROSEDALE ENCORE J240

Sling Shot is a thick, soft homozygous polled bull. Sling Shot sits within the top 10% of the Charolais breed for gestation length, rib and rump fat EBV's. His Dam Curragindi Encore Nicolette was shown successfully at Sydney Royal Easter Show & Charolais Nationals 2019. Sling Shot has been used in the stud

June 2023 Australasian Charolais BREEDPLAN Analysis																
	Calving Ease DIR (%)	Calving Ease DTRS (%)	Gestation Length (days)	Birth Wt. (kg)	200 Day Wt. (kg)	400 Day Wt. (kg)	600 Day Wt. (kg)	Mat. Cow Wt. (kg)	Milk (kg)	Scrotal Size (cm)	Carcase Wt. (kg)	Eye Muscle Area (sq.cm)	Rib Fat (mm)	Rump Fat (mm)	Retail Beef Yield (%)	IMF (%)
EBV	+7.3	+5.7	-5.8	-1.5	+13	+18	+20	+15	-2	+1.8	+14	+0.6	+1.7	+2.0	-1.2	+0.2
Accuracy	40%	27%	57%	70%	57%	61%	57%	53%	34%	70%	47%	29%	34%	35%	32%	29%

LOT 04 CURRAGINDI TRIUMPH

DOB: 22/11/2021

HOMO POLL

IDENT: CCNS34E



S: SCR TUFFY 0119
S: SCR TRIUMPH 2135
 D: SCR MS BABY DOLL 7140

S: CURRAGINDI LANDCRUISER
D: CURRAGINDI PETAL
 D: VIOLET HILLS H35

Curragindi Triumph is a bull with presence. Strong through the spine, deep sided and soft. A sire that is sure to stamp his mark on his progeny. We thought highly of this mating, returning Curragindi Petal to SCR Triumph - a beautiful polled heifer

June 2023 Australasian Charolais BREEDPLAN Analysis																
	Calving Ease DIR (%)	Calving Ease DTRS (%)	Gestation Length (days)	Birth Wt. (kg)	200 Day Wt. (kg)	400 Day Wt. (kg)	600 Day Wt. (kg)	Mat. Cow Wt. (kg)	Milk (kg)	Scrotal Size (cm)	Carcase Wt. (kg)	Eye Muscle Area (sq.cm)	Rib Fat (mm)	Rump Fat (mm)	Retail Beef Yield (%)	IMF (%)
EBV	+2.0	-	-3.9	-1.0	+10	+11	+11	+15	-1	+0.7	+10	-	+0.9	+0.6	-	-
Accuracy	34%	-	65%	58%	52%	58%	53%	47%	26%	69%	44%	-	27%	27%	-	-

LOT 05 CURRAGINDI SALUTE

DOB: 23/11/2021

HOMO POLL

IDENT: CCNS30E



S: SCR TUFFY 0119
S: SCR TRIUMPH 2135
 D: SCR MS BABY DOLL 7140

S: CURRAGINDI WESTERN SUN
D: CURRAGINDI PROMISE
 D: AIRLIE RIVERGLEN J29E

Curragindi Salute is a well-rounded sire. Perfect structure, stride and presence.

Curragindi Salute was used in the stud as a yearling. We appreciate his faultless disposition, style and carcass traits.

June 2023 Australasian Charolais BREEDPLAN Analysis																
	Calving Ease DIR (%)	Calving Ease DTRS (%)	Gestation Length (days)	Birth Wt. (kg)	200 Day Wt. (kg)	400 Day Wt. (kg)	600 Day Wt. (kg)	Mat. Cow Wt. (kg)	Milk (kg)	Scrotal Size (cm)	Carcass Wt. (kg)	Eye Muscle Area (sq.cm)	Rib Fat (mm)	Rump Fat (mm)	Retail Beef Yield (%)	IMF (%)
EBV	+1.5	-	-3.8	-0.3	+14	+23	+27	+36	+5	+1.1	+20	-	+0.8	+0.4	-	-
Accuracy	34%	-	65%	69%	54%	59%	55%	50%	26%	69%	43%	-	26%	26%	-	-

LOT 06 CURRAGINDI SOVEREIGN

DOB: 08/12/2021

HOMO POLL

IDENT: CCNS31E



S: LT LEDGER 0332
S: CURRAGINDI NULLA
 D: CURRAGINDI KUMA

S: CURRAGINDI WESTERN SUN
D: CURRAGINDI PEARL 31
 D: ROSEDALE NICKY K31

An opportunity to secure a Curragindi Nulla sire! Sovereign is a bull with huge development, thickness and doability. EBV's within the top 10% of the Charolais breed include scrotal size, rib & rump fats.

Sovereign is a sire that oozes the traits for early development and finishing ability

June 2023 Australasian Charolais BREEDPLAN Analysis																
	Calving Ease DIR (%)	Calving Ease DTRS (%)	Gestation Length (days)	Birth Wt. (kg)	200 Day Wt. (kg)	400 Day Wt. (kg)	600 Day Wt. (kg)	Mat. Cow Wt. (kg)	Milk (kg)	Scrotal Size (cm)	Carcass Wt. (kg)	Eye Muscle Area (sq.cm)	Rib Fat (mm)	Rump Fat (mm)	Retail Beef Yield (%)	IMF (%)
EBV	+4.4	-2.5	-4.3	-1.6	+10	+18	+20	+8	+6	+3.3	+11	+0.7	+1.5	+2.3	-1.0	+0.3
Accuracy	37%	30%	47%	67%	52%	59%	55%	51%	34%	70%	45%	28%	31%	31%	29%	28%

LOT 07 CURRAGINDI SOCIALITE (R/F)

DOB: 09/12/2021

HETERO POLL

IDENT: CCNS23E



S: LT LEDGER 0332
 S: CURRAGINDI NULLA
 D: CURRAGINDI KUMA

S: GERRARD MONTEZUMA 6T
 D: WATERFORD LAVENDER L22E
 D: ROSEDALE ESTRA C88

A red factor sire with eye appeal! Socialite stands on good feet and legs, is smooth fronted and has an exceptional temperament. Socialite would be an asset to any program, with positive fat EBV's and demonstrating high early growth this is a bull that will produce soft, early finishing progeny

June 2023 Australasian Charolais BREEDPLAN Analysis																
	Calving Ease DIR (%)	Calving Ease DTRS (%)	Gestation Length (days)	Birth Wt. (kg)	200 Day Wt. (kg)	400 Day Wt. (kg)	600 Day Wt. (kg)	Mat. Cow Wt. (kg)	Milk (kg)	Scrotal Size (cm)	Carcase Wt. (kg)	Eye Muscle Area (sq.cm)	Rib Fat (mm)	Rump Fat (mm)	Retail Beef Yield (%)	IMF (%)
EBV	+2.9	-1.2	-5.2	-0.8	+12	+27	+30	+26	+9	+1.7	+19	+1.7	+1.5	+1.8	-0.7	+0.6
Accuracy	40%	35%	53%	68%	55%	61%	57%	53%	39%	71%	49%	32%	35%	35%	33%	33%

LOT 08 CURRAGINDI SHOWDOWN

DOB: 20/12/2021

DEHORND

IDENT: CCNS8E



S: PALGROVE HOW AWESOME
 S: CURRAGINDI AWESOME
 D: ROSEDALE GERTY V97

S: VIOLET HILLS DANE
 D: VIOLET HILLS H8E
 D: VIOLET HILLS X0036E

If horned genetics don't worry you, you should consider this bull! A bull that displays huge growth potential, plenty of bone, perfect feet and legs. Showdown is bred from one of the matrons of our herd, Violet Hills H8E. A red factor, 11-year old cow that continues to cement her position in the top of our herd. A true beef producer!

June 2023 Australasian Charolais BREEDPLAN Analysis																
	Calving Ease DIR (%)	Calving Ease DTRS (%)	Gestation Length (days)	Birth Wt. (kg)	200 Day Wt. (kg)	400 Day Wt. (kg)	600 Day Wt. (kg)	Mat. Cow Wt. (kg)	Milk (kg)	Scrotal Size (cm)	Carcase Wt. (kg)	Eye Muscle Area (sq.cm)	Rib Fat (mm)	Rump Fat (mm)	Retail Beef Yield (%)	IMF (%)
EBV	+2.7	+0.6	-1.6	+0.4	+12	+26	+26	+28	+5	-0.5	+18	+1.4	+0.5	+0.4	0.0	0.0
Accuracy	40%	35%	45%	68%	56%	62%	59%	54%	43%	71%	50%	32%	35%	35%	33%	30%

LOT 09 CURRAGINDI GEDDES 2 (R/F)

DOB: 08/03/2022

HETERO POLL

IDENT: CCN22T2E



S: SILVERSTREAM ENTICER E30
 S: SILVERSTREAM GEDDES G102
 D: SILVERSTREAM DOLLY V5
 S: ASHWOOD PARK ELDORADO F38
 D: CURRAGINDI KUMA
 D: VIOLET HILLS H35E

A polled son of Silverstream Geddes and the only offered in this sale! Geddes is a bull with high early growth, backed by his eye muscle area EBV within the top 5% of the Charolais breed. Shown successfully. His Dam, Curragindi Kuma is the dam of numerous successful sires in the industry, namely Curragindi Nulla This is your opportunity to secure a high calibre red factor sire

June 2023 Australasian Charolais BREEDPLAN Analysis																
	Calving Ease DIR (%)	Calving Ease DTRS (%)	Gestation Length (days)	Birth Wt. (kg)	200 Day Wt. (kg)	400 Day Wt. (kg)	600 Day Wt. (kg)	Mat. Cow Wt. (kg)	Milk (kg)	Scrotal Size (cm)	Carcase Wt. (kg)	Eye Muscle Area (sq.cm)	Rib Fat (mm)	Rump Fat (mm)	Retail Beef Yield (%)	IMF (%)
EBV	-0.8	0.0	-2.4	-0.2	+7	+26	+26	+26	0	+2.0	+22	+3.0	+1.1	+1.5	+0.3	-0.2
Accuracy	49%	44%	55%	59%	59%	62%	61%	56%	53%	69%	55%	44%	48%	48%	45%	43%

LOT 10 CURRAGINDI AWESOME 2

DOB: 22/04/2022

HETERO POLL

IDENT: CCN22T32E



S: PALGROVE HOW AWESOME
 S: CURRAGINDI AWESOME
 D: ROSEDALE GERTY V97
 S: CURRAGINDI LANDCRUISER
 D: CURRAGINDI PRIMROSE
 D: CURRAGINDI MONTANA



A young sire with plenty of potential. Awesome stands over a lot of ground, oozing thickness, depth and length. His temperament is second to none.

Awesome 2 has displayed an impressive growth pattern and weight gain while maintaining the smooth front and shoulders desirable for a Charolais sire.

June 2023 Australasian Charolais BREEDPLAN Analysis																
	Calving Ease DIR (%)	Calving Ease DTRS (%)	Gestation Length (days)	Birth Wt. (kg)	200 Day Wt. (kg)	400 Day Wt. (kg)	600 Day Wt. (kg)	Mat. Cow Wt. (kg)	Milk (kg)	Scrotal Size (cm)	Carcase Wt. (kg)	Eye Muscle Area (sq.cm)	Rib Fat (mm)	Rump Fat (mm)	Retail Beef Yield (%)	IMF (%)
EBV	+0.4	+3.3	-1.1	+0.3	+11	+26	+27	+31	+4	-0.4	+19	+1.2	+0.4	+0.4	-0.1	0.0
Accuracy	32%	26%	36%	49%	45%	51%	47%	42%	33%	62%	40%	25%	27%	27%	26%	25%

LOT 11 CURRAGINDI TULLY

DOB: 01/06/2022

HETERO POLL

IDENT: CCN22T40E



S: LT LEDGER 0332
S: CURRAGINDI NULLA
 D: CURRAGINDI KUMA

S: SILVERSTREAM COLORADO C26
D: CURRAGINDI QUEENIE
 D: BRYSON GERTY 10

Curragindi Tully, the youngest bull in the sale - but well deserving his spot! A soft, easy doing bull that has the desired depth and capacity of a Charolais sire. EBV's low birthweight, calving ease and positive fats. Tully is a descendant of the Gerty heritage, which is intertwined throughout our herd for their longevity, structure and temperaments.

June 2023 Australasian Charolais BREEDPLAN Analysis

	Calving Ease DIR (%)	Calving Ease DTRS (%)	Gestation Length (days)	Birth Wt. (kg)	200 Day Wt. (kg)	400 Day Wt. (kg)	600 Day Wt. (kg)	Mat. Cow Wt. (kg)	Milk (kg)	Scrotal Size (cm)	Carcase Wt. (kg)	Eye Muscle Area (sq.cm)	Rib Fat (mm)	Rump Fat (mm)	Retail Beef Yield (%)	IMF (%)
EBV	+7.5	+1.9	-4.8	-1.7	+10	+21	+25	+20	+7	+1.5	+16	+0.2	+1.2	+1.7	-1.2	+0.5
Accuracy	37%	32%	45%	51%	43%	44%	43%	41%	37%	42%	39%	32%	34%	35%	32%	33%

LOT 12 CURRAGINDI SUNRISE

DOB: 14/12/2021

POLL

IDENT: CCNS36B



S: LT LEDGER 0332
S: CURRAGINDI NULLA
 D: CURRAGINDI KUMA

S: CURRAGINDI LANDCRUISER
D: CURRAGINDI JULIA 234
 D: CURRAGINDI GENERIC DAM (B)

Sunrise is a bull with plenty of frame, standing on good feet and legs. A strong bull with excellent bone. Sunrise is a bull that would suit programs looking to add carcass and softness to their herd.

July 2023 Australasian Charolais BREEDPLAN Analysis

	Calving Ease DIR (%)	Calving Ease DTRS (%)	Gestation Length (days)	Birth Wt. (kg)	200 Day Wt. (kg)	400 Day Wt. (kg)	600 Day Wt. (kg)	Mat. Cow Wt. (kg)	Milk (kg)	Scrotal Size (cm)	Carcase Wt. (kg)	Eye Muscle Area (sq.cm)	Rib Fat (mm)	Rump Fat (mm)	Retail Beef Yield (%)	IMF (%)
EBV	+4.3	+0.8	-3.7	-1.0	+11	+26	+27	+20	+5	+1.6	+20	+1.0	+1.5	+1.8	-1.1	+0.4
Accuracy	34%	27%	44%	67%	51%	58%	54%	49%	31%	70%	44%	26%	28%	28%	27%	25%

LOT 13 CURRAGINDI STRAWBERRY (R/F)

DOB: 30/10/2021

POLL

IDENT: CCNS9E



SIRE: CURRAGINDI NULLA

S: LT LEDGER 0332
 S: CURRAGINDI NULLA (R/F)
 D: CURRAGINDI KUMA (R/F)
 S: CHARNELLE LOUIS
 D: GLENLEA CHIFFON 25TH
 D: VALLEY VIEW CHIFFON 58 (R/F)

A very special red factor, polled female that is sure to make a positive impact to any herd! This is your opportunity to secure a red factor Nulla female - a VERY hard decision to list this beautiful heifer, but our loss is your GAIN Strawberry has been handled for your consideration as a show prospect
Mating records will be available prior to the sale

June 2023 Australasian Charolais BREEDPLAN Analysis

	Calving Ease DIR (%)	Calving Ease DTRS (%)	Gestation Length (days)	Birth Wt. (kg)	200 Day Wt. (kg)	400 Day Wt. (kg)	600 Day Wt. (kg)	Mat. Cow Wt. (kg)	Milk (kg)	Scrotal Size (cm)	Carcase Wt. (kg)	Eye Muscle Area (sq.cm)	Rib Fat (mm)	Rump Fat (mm)	Retail Beef Yield (%)	IMF (%)
EBV	+4.7	-3.1	-3.9	-1.2	+8	+19	+19	+7	+7	+1.9	+15	+2.3	+1.7	+2.3	-0.5	+0.4
Accuracy	38%	32%	45%	52%	42%	43%	43%	41%	35%	42%	36%	28%	31%	31%	30%	28%

LOT 14 CURRAGINDI SATIN

DOB: 24/12/2021

POLL

IDENT: CCNS35E



DAM: VIOLET HILLS H35

S: PALGROVE HOW AWESOME
 S: CURRAGINDI AWESOME
 D: ROSEDALE GERTY V97
 S: VIOLET HILLS ELLIS
 D: VIOLET HILLS H35E
 D: VIOLET HILLS X0106E

Satin is a large capacity, long bodied heifer that stands on good feet & legs Violet Hills H35E is leaving her legacy here at Curragindi. Her females are thick, good milking females that are highly uniform Satin has been handled for your consideration as a show prospect
Mating records will be available prior to the sale

June 2023 Australasian Charolais BREEDPLAN Analysis

	Calving Ease DIR (%)	Calving Ease DTRS (%)	Gestation Length (days)	Birth Wt. (kg)	200 Day Wt. (kg)	400 Day Wt. (kg)	600 Day Wt. (kg)	Mat. Cow Wt. (kg)	Milk (kg)	Scrotal Size (cm)	Carcase Wt. (kg)	Eye Muscle Area (sq.cm)	Rib Fat (mm)	Rump Fat (mm)	Retail Beef Yield (%)	IMF (%)
EBV	+2.6	+5.9	-1.2	0.0	+11	+20	+20	+28	+1	+0.3	+16	+1.9	-0.5	-0.7	+0.9	-0.4
Accuracy	38%	33%	40%	52%	46%	48%	48%	44%	42%	44%	41%	30%	33%	32%	31%	28%

LOT 15 CURRAGINDI HILARY 4TH

DOB: 20/04/2022

POLL

IDENT: CCN22T45E



MATERNAL SISTER

S: PALGROVE HOW AWESOME
 S: CURRAGINDI AWESOME
 D: ROSEDALE GERTY V97

 S: CURRAGINDI PLAYBACK
 D: CURRAGINDI HILARY
 D: VIOLET HILLS H35E

The first calf of Curragindi Hilary, a young female sired by Curragindi Playback a sire sold into Victoria as a walking herd sire. Playback's presence is evident in this young heifer. A beautiful fronted heifer that is sure to catch the judge's eye Hilary 4th has been handled for your consideration as a show prospect

Mating records will be available prior to the sale

June 2023 Australasian Charolais BREEDPLAN Analysis																
	Calving Ease DIR (%)	Calving Ease DTRS (%)	Gestation Length (days)	Birth Wt. (kg)	200 Day Wt. (kg)	400 Day Wt. (kg)	600 Day Wt. (kg)	Mat. Cow Wt. (kg)	Milk (kg)	Scrotal Size (cm)	Carcase Wt. (kg)	Eye Muscle Area (sq.cm)	Rib Fat (mm)	Rump Fat (mm)	Retail Beef Yield (%)	IMF (%)
EBV	+1.0	+4.9	-1.1	+0.7	+12	+27	+32	+37	+2	+0.3	+22	+1.5	-0.2	-0.4	+0.6	-0.3
Accuracy	34%	29%	38%	49%	41%	41%	41%	39%	36%	39%	35%	27%	29%	29%	28%	26%

LOT 16 CURRAGINDI MOSAIC 4TH

DOB: 26/04/2022

DEHORND

IDENT: CCN22T28E



DAM: CURRAGINDI MOSAIC



S: PALGROVE HOW AWESOME
 S: CURRAGINDI AWESOME
 D: ROSEDALE GERTY V97

S: CURRAGINDI KOSCIUSKO K1E
 D: CURRAGINDI MOSAIC
 D: VIOLET HILLS H8E (R/F)

The youngest heifer offered - Moasic 4th descends from the Violet Hills H8E line that is well proven. These females always producing calves in the top weight brackets, thick and heavy! Don't let her horned genetics sway you - Moasic should definitely be considered

Mating records will be available prior to the sale

June 2023 Australasian Charolais BREEDPLAN Analysis																
	Calving Ease DIR (%)	Calving Ease DTRS (%)	Gestation Length (days)	Birth Wt. (kg)	200 Day Wt. (kg)	400 Day Wt. (kg)	600 Day Wt. (kg)	Mat. Cow Wt. (kg)	Milk (kg)	Scrotal Size (cm)	Carcase Wt. (kg)	Eye Muscle Area (sq.cm)	Rib Fat (mm)	Rump Fat (mm)	Retail Beef Yield (%)	IMF (%)
EBV	+0.9	+1.5	-1.7	-0.2	+8	+20	+17	+16	+4	-0.1	+14	+1.4	+0.7	+0.8	-0.1	-0.1
Accuracy	35%	29%	38%	61%	44%	44%	45%	43%	35%	39%	35%	26%	28%	28%	27%	25%