



# KIDMAN

Poll Herefords Angus



## 31st On Property BULL SALE

Tuesday 29th August 2023

1pm "Dulcidene" Dubbo



39 POLL HEREFORD BULLS  
12 STUD & 30 COMMERCIAL FEMALES  
40 ANGUS BULLS

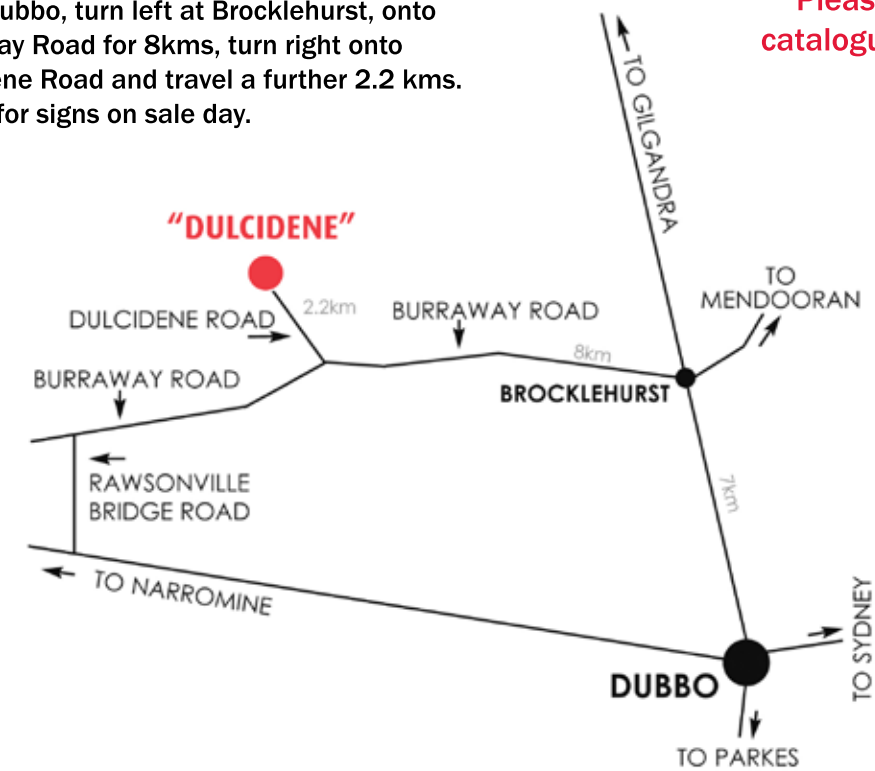




### Sale Location

From Dubbo, turn left at Brocklehurst, onto Burraway Road for 8kms, turn right onto Dulcidene Road and travel a further 2.2 kms. Watch for signs on sale day.

Please bring this catalogue to the sale!



# KIDMAN

Poll Herefords



# KIDMAN

Angus

Nelson Carlow  
Mobile: 0427 823 832  
22L Dulcidene Rd MS4 Dubbo NSW 2830  
Neil and Jenny Carlow Phone: 02 6848 8858

Randall and Kylie Carlow  
Mobile 0477 016 983  
540 Bullagreen Bourbah Rd Gilgandra NSW 2827  
www.kidmanangus.com.au

Angus Open Day  
15th August - On Property at Gilgandra

Follow us on



# Sale Information

**GST:** Our Sale will be a GST Exclusive Sale, which means GST is to be added onto the purchase price at the fall of the Auctioneer's hammer.

**REBATE:** 2% Rebate offered to outside agents introducing successful buyers. To qualify contact vendors prior to the day of sale.

**INSPECTION:** Inspections can be made from 10.00am on the day of the sale or by contacting the Carlow's or the participating agents prior to the sale.

**SALE LOCATION:** Dulcidene Stud Selling Complex is situated 18kms from Dubbo City. Map on inside back cover.

**PHONE BIDDING:** Contact Agents prior to sale.

**ACCOMMODATION:** Good accommodation is available in Dubbo.

**HEALTH:** All bulls have been treated with 7 in 1 and Vibrovax and received cydectin pour on in the lead up to the sale. Angus bulls have also received 2 x Pestigard.

**PESTIVIRUS:**

All bulls have tested negative to Pestivirus

**JOHNE'S DISEASE:**

Both herds are JBAS 6

**FEET:** No foot trimming, all lots feet untouched

**FERTILITY:** All bulls will pass semen morphology testing

**INSURANCE:** It is recommended insurance be effected at the fall of the hammer. Insurance representative will be in attendance.

**DELIVERY:** Delivery will be available on sale day, animals can remain at Kidman by arrangement and every assistance will be given to arrange delivery as requested. A delivery instruction slip must be filled in and handed to the selling agents.

**SUPPLEMENTARY SHEETS:** Will be available on Sale Day containing weights and scrotal measurements plus further information.

**SELLING SYSTEM AND BUYER'S REGISTRATION:** All lots will be sold subject to the usual terms and conditions governing auction sales. Intending purchasers should obtain a Buyer's Number and registration slip available from the selling agents prior to the sale. **Sale will be conducted as a video sale on televisions placed around the sale ring bulls will not enter the ring.**

**REFRESHMENTS:** Morning tea and lunch will be available.

**DISCLAIMER:** The vendors, family, sale staff and representatives accept no liability for accidents that may occur, although these are rare at cattle sales. Any person attending does so at their own risk. The vendors take no responsibility for personal valuables.

**Please bring this Catalogue to the Sale**

*Every care has been taken in compiling this catalogue to ensure accuracy of information, but no responsibility is accepted.*

**VIEW ALL PHOTOS AND VIDEOS OF SALE LOTS ON AUCTIONS PLUS.**

**Nutrien**  
Livestock

**AUCTIONEER**

**Paul Dooley - 0458 662 646**

NSW Regional Office Dubbo .....02 6841 1000  
John Settree ..... Stud Stock NSW ....0408 297 368  
Peter Godbolt ..... VIC.....0457 591 929

**AuctionsPlus**

**www.auctionsplus.com.au Ph: 02 9262 4222**

1. Register online. Click Sign up to begin registration.
2. Complete Buyer induction.
3. View catalogue. Photos, videos, pedigrees available.
4. Enter Auction. Log into Auction anytime, anywhere.
5. Auto Bid - Set up a maximum bid on the lot you want to purchase.
6. Contact selling agent - If successful, contact agent to arrange payment.
7. Delivery - Arrange transport at your expense.

**Kidman Poll Herefords: Nelson Carlow - 0427 823 832**

**Kidman Angus: Randall Carlow - 0477 016 983**

## Taking delivery of your new bull

To help your new bull or bulls settle into their new home as well as possible, we recommend the following.

- All Kidman bulls have been run in mobs all their lives with plenty of mates around and have never been alone.
- It is a good idea to have some of your own cattle in the yard when your new bull or bulls arrive, a handful of steers or some PTIC cows, just something to keep them company whilst they settle in to their new environment.
- At Kidman we handle our cattle quietly and confidently, we always give our cattle respect and our cattle respect us.
- The bulls have not been handled with dogs.

## Sale day safety

All the sale bulls have been screened for temperament and are quiet to handle under normal circumstances. However, there are inherent risks associated with cattle handling.

**Visitors enter the cattle pens at their own risk. Children must not enter the yards.**

People entering the yards are at risk of injury. Be especially alert for bulls fighting and if one is playful with you. Remember the quietest bull is sometimes the most unpredictable.

We do not expect the bulls to be aggressive, but sale day places extraordinary pressure on them as they experience an entirely foreign environment.

We cannot cover every example of the dangers of cattle handling, so please use common sense and be alert at all times.

# Poll Hereford History

Kidman Poll Hereford Stud was founded in 1986 by Nelson and Randall Carlow. They named the stud after Sir Sidney Kidman, The Cattle King. The brothers were admirers of Kidman, who put an empire together from very humble beginnings, proving what can be achieved with the right mix of dedication and ambition.

The stud's foundation females were sourced from both local and interstate herds including Corrodgery, Cortina, Ardn, Yagaburne and Heatherdale studs. Honest value for money cattle were selected with a commercial outlook and hard working genetics that could withstand a testing environment at times.

The stud had great guidance from parents Neil and Jenny (now co – principals) whose valuable experience helped cut a few corners. Neil and Jenny previously ran the Dulcidene Poll Hereford Stud which was formed in 1982 with females centred around Sevenbardot bloodlines.

In 1992 a move was made by the Carlow family looking towards the future. The Dulcidene herd was combined with the Kidman herd to carry the Kidman prefix bigger and stronger.

The use of AI over the years has had a major impact with the Kidman breeding program, enabling them to infuse some of the best bulls worldwide into the herd, which is reflected in their success over recent years.

The Carlow family will strive to continue breeding top quality functional cattle into the future with the challenge ahead to advance the stud's breeding reputation within the beef industry.

## Highlights in our history include:

### **Glen Innes Bull Sale**

- 1988 Top & then Record Unled Price Bull selling for \$21,000

### **Dubbo National Show and Sale**

- 1994 Junior Champion Bull selling for \$30,000
- 2002 Class Winner selling for \$25,000
- 2003 Reserve Intermediate Champion selling for \$28,000
- 2005 Junior & Grand Champion Bull Top Priced Bull selling for \$60,000  
Class Winner selling for \$26,000 President's Shield Winning Team
- 2006 Ribbon Winner selling for \$20,000

- 2008 Presidents Shield Winning Team
- 2010 2nd Presidents Shield  
2nd top priced bull selling for \$22,000
- 2012 Dubbo National Class winner selling for \$16,000
- 2016 Class winner selling for \$24,000, team of 3 avg \$17,333

### **On Property Bull Sale**

- 1993 Inaugural Sale
- 2002 Top Price Bull selling for \$20,000
- 2003 Top Price Bull selling for \$17,000
- 2004 Top Price Bull selling for \$19,000
- 2005 Record Top Price Bull selling for \$31,000
- 2007 Top Price Bull selling for \$15,000
- 2011 Record average 52 bulls avg. \$6,663
- 2011 Top Price Kidman Think Big E31 sold for \$27000
- 2012 Annual Bull Sale averaged \$5,800, Top price of \$11,500
- 2013 Annual sale top price bull \$11,000
- 2014 Top priced Bull Kidman Decker H273 selling for \$30,000.
- 2015 Top priced Bull Kidman Advancer J312 selling for \$20,000
- 2015 Record average 43 Bulls avg \$7,716
- 2016 Bull sale Record average 35 bulls average \$7,914
- 2016 Record top priced bull Kidman Competition selling for \$35,000
- 2017 bull sale top price \$18,000 - 51 bulls avg \$7,068.
- 2018 bull sale - 22 bulls sold to a top of \$9,000 twice and avg \$5,666.
- 2019 sale 16 bulls sold to a top of \$14,000 to avg \$5,250
- 2020 30 bulls sold to \$16,000 twice to avg \$8,858
- 2021 42 Bulls sold to a top of \$28,000 Kidman Hitman Q067 avg \$11,952
- 2022 44 Bulls sold to a record sale top price of \$36,000 avg \$10,772.

## 2022 Sale and Sire Photos



**KIDMAN CAPTIVATE P030**



**YARAWA SOUTH PARADISE P112**



**KIDMAN MOMENTUM R115 SOLD TO ROSE ISLE LOUTH FOR \$18,000**



**KIDMAN INTENT R141 SOLD TO WARRENSVILLE SA FOR \$18,000.**



**2022 SALE TOP PRICED BULL KIDMAN CHESTER R140 SELLING TO WALLAN CREEK HEREFORDS QLD FOR \$36,000**



**KIDMAN EVIDENT R068 SOLD TO ROTHERFIELD FOR \$32,000**



# Breedplan made easy

Breedplan is a performance evaluation program that compares bulls "on a level playing field" for a number of important commercial traits.

The difference between a bull's genetics and the breed benchmark for a range of traits is reported as an Estimated Breeding Value (EBV) – an estimate of how a bull will perform as a parent rather than how he looks on the day.

EBVs can be positive (+) or negative (-), ie, above or below the breed benchmark of zero.

EBVs are calculated from the available performance information on the animal, its parents, progeny and its close relatives within the breed.

The information is adjusted for age, dam age, and for differences between herds, years, season of calving, management effects and for mating and selection biases. The heritability of the trait is also taken into account.

EBVs – what do they tell me about a bull

## BIRTH

Birth Weight: The Birth Weight EBV (kg) is based on the measured birth weight of animals, adjusted for dam age. The lower the value the lighter the calf at birth and the lower the likelihood of a difficult birth. This is particularly important when selecting sires for use over heifers.

## FERTILITY

Scrotal Size: The Scrotal Size EBV (cm) is an indicator of male fertility. Higher (positive) EBVs indicate higher fertility. Higher SS EBVs are also positively associated with female fertility through earlier age of puberty.

## GROWTH

Milk: 200-Day Milk EBV (kg) is an estimate of the contribution that a dam makes to the 200 day weight of her progeny. For sires, this is an indication of the contribution that his daughters will make to the 200 day weight of their calves.

200-Day Growth: The 200-Day EBV (kg) is calculated from the weight of animals taken between 80 and 300 days of age. Values are adjusted

to 200 days and for dam age. This EBV is the best single estimate of an animal's genetic merit for growth to early ages (ie. 8-10 months).

400-Day Weight: The 400-Day Weight EBV (kg) is calculated from the weight of progeny taken between 301 and 500 days of age, adjusted to 400 days and for dam age. This EBV is the best single estimate of an animal's genetic merit for yearling weight.

600-Day Weight: The 600-Day Weight EBV (kg) is calculated from the weight of progeny taken between 501 and 900 days of age, adjusted to 600 days and for dam age. This EBV is the best single estimate of an animal's genetic merit for growth beyond yearling age.

## CARCASE

Eye Muscle Area: The EMA EBV (cm<sup>2</sup>) estimates genetic differences in eye muscle area at the 12/13th rib site of a 300kg dressed carcass. More positive EBVs indicate better muscling on animals.

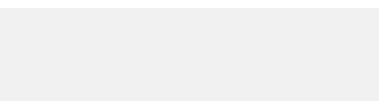
Rib Fat: The Rib Fat EBV (mm) estimates the genetic differences

in fat depth at the 12/13th rib in a 300kg dressed carcass. More positive EBVs indicate more subcutaneous fat and earlier maturity.

Rump Fat: The Rump Fat EBV (mm) estimates the genetic differences in fat depth at the P8 site of a 300kg dressed carcass. More positive EBVs indicate more subcutaneous fat and earlier maturity.

Intramuscular Fat Percent: The IMF% EBV (%) is an estimate of the genetic difference in the percentage of intra-muscular fat at the 12/13th rib site in a 300kg carcass. More positive EBVs indicate higher marbling.

EBVs on sale cards displayed on sale day may vary from those published in this catalogue.



Breed Avg. EBVs for 2021 Born Calves

CE	CE DTR	GL	BW	200	400	600	MCW	Milk	SS	DC	Cwt	EMA	Rib	Rump	RBV	IMF%
+2.8	+2.4	-0.8	+3.9	+34	+56	+79	+66	+17	+2.2	-3.1	+52	+3.9	+0.8	+1.0	+0.8	+0.6
\$ Index Values:			Southern Self Replacing: +\$137				Northern Self Replacing: +\$124			Southern Baldy Maternal: +\$140			Northern Baldy Terminal: +\$103			

## Australian Hereford Selection Indexes

There are currently four different selection indexes calculated for Australian

Hereford animals. These are:

- Southern Self-Replacing Index
- Southern Baldy Maternal Index
- Northern Self-Replacing Index
- Northern Baldy Terminal Index

Each selection index describes a different production/market scenario and relates to a typical commercial herd using Hereford bulls. Producers are advised to use the selection index that most closely aligns to their production system.

All four selection indexes are focussed on maintaining and improving eating quality. Significant premiums are applied for increasing marble score up to a marble score of 3. Pressure is also applied to early life growth to maintain low ossification scores and good MSA compliance. In addition, each selection index targets the following specifications.

## SOUTHERN SELF-REPLACING INDEX

Estimates the genetic differences between animals in net profitability per cow joined in a commercial self-replacing straight bred Hereford herd targeting the domestic market. Daughters are retained for breeding and so maternal traits are of importance.

Steers are slaughtered at 20 to 22 months of age to produce 300 kg carcasses with 10 mm P8 fat depth. A moderate cost is applied for cow

feed costs during the annual feed shortage period.

## NORTHERN SELF-REPLACING INDEX

Estimates the genetic differences between animals in net profitability per cow joined in a commercial self-replacing herd targeting the domestic market. This index is suitable for use by both straight bred Hereford herds and in crossbreeding programs where Hereford bulls are being used over a Bos indicus based cow herd (e.g. flatback). Daughters are retained for breeding and so maternal traits are of importance. Steers are slaughtered at 20 to 22 months of age to produce 340 kg carcasses with 12 mm P8 fat depth. A high cost is applied for cow feed costs during the annual feed shortage period.

## SOUTHERN BALDY MATERNAL INDEX

Estimates the genetic differences between animals in net profitability per cow joined in a commercial crossbred herd using Hereford bulls over Bos taurus females (e.g. Angus). A portion of the heifers are retained for breeding and so maternal traits are of importance. The steers and surplus heifers are destined for slaughter at 20 to 22 months of age. Steers produce 300 kg carcasses with 10 mm of P8 fat depth, while heifers produce 270 kg carcasses with 12 mm of P8 fat depth. A moderate cost is applied for cow feed costs during the annual feed shortage period.

## NORTHERN BALDY TERMINAL INDEX

Estimates the genetic differences between animals in net profitability per cow joined in a commercial crossbred herd (e.g. flatback) using Hereford bulls over Bos indicus/Tropical females (e.g. Santa Gertrudis) where all progeny (male and female) are destined for slaughter. Steers and heifers are slaughtered at 20 to 22 months of age. Steers produce 340 kg carcasses with 14 mm of P8 fat depth while heifers produce 300 kg carcasses with 17 mm of P8 fat depth.

Hereford Selection Indexes make bull buying easier. They take the hard work out of knowing how much emphasis you should give to each of the available EBVs when selecting a replacement sire by weighting the available EBVs according to their impact on the long-term profitability of your herd, balancing fertility and maternal traits with growth and carcass traits. The index is in fact a multi-trait EBV that estimates the relative value of each animal to your chosen market goal – reflecting the extra earning capacity per cow joined in a self replacing commercial herd.

Animals can be compared using Selections Index values in the same manner as comparing them using EBVs for single traits, but instead of looking at a large number of EBVs (up to 18) the first screening at least, can be on the single index value. You may then fine tune the match with your herd by considering individual EBVs.

Typical production statistics, prices and costs underlie each Index. Each index has subtly different input

statistics appropriate to the market end-point, eg. age and weight at sale, marbling etc.

Benefits and costs evaluated include both those for the long-term sustainability of the cow herd and those for the sale animal from birth to slaughter. Essential compromises between traits such as the flow-on effects of increased growth on birth-weight & cow maintenance are accounted for when calculating indexes.

In pasture phases, feed is assumed to be a limiting factor for part of the year, and that any increase in feed requirement at herd level is a cost. The assumed herd calving rate and level of calving difficulty each reflect a moderate level of concern that these traits not change unfavourably from the selection of new sires.

Animals will have selection indexes reported only if sufficient information has been recorded for them. Specifically, an animal must have:

- performance recorded with BREEDPLAN or progeny with performance recorded
- one of the birth EBVs (B.Wt, CED) with an accuracy of 40% or higher
- one of the growth EBVs (200, 400, 600) with an accuracy of 40% or higher
- one of the scan or carcass EBVs (EMA, IMF, Fat Depth) with an accuracy of 40% or higher
- one of the fertility EBVs (DTC, SS, CEDtrs) with an accuracy of 30% or higher

Selection index values will not be reported for animals that do not meet these criteria.



# 2023 Poll Hereford Welcome

Welcome to our 31st Annual Bull Sale.

Things seem to be a little tougher season wise, especially across central and northern NSW, and some are managing their operations differently to the last couple of years. The cattle market has had its anticipated correction now that the restocker demand has eased. This correction has some producers concerned but our livestock returns are still on par or marginally better than back in 2016, the year before the last big drought started. The future of the beef industry remains positive.

This year we are moving in a new direction in regards to our auction. We will be holding a video auction with our primary consideration being the welfare of the animals. Our on property bull sale will proceed as normal with the only difference being that the bulls will not enter the sale ring. They will all be on property for display and inspection from 10 am prior to auction. The video auctions are certainly going to be the thing of the future.

Catalogued this year will be 39 bulls, 12 stud females and 30 commercial females.

Some time ago we set out in our breeding program to add more muscle and thickness to our cattle and it is starting to show in this year's lineup of bulls. This can be seen visually and is also backed up by their carcass breedplan ebv's. This has been achieved while keeping them soft, structurally correct and athletic.

The bulls have been run through the summer on lucerne pasture and have been grazing on oats and cereal crops since the start of June. The bulls will all pass a stringent semen morphology test and have all been fully vaccinated with 7 in 1 and vibrio having had their last booster shots on the 24th of July. As well as being pestivirus free all bulls have been Genomics tested and are all sire verified and free of all genetic conditions, while also having complete up to date breedplan figures. They present in

exceptional order and we are extremely proud of this year's line up.

The offering comprises of another drop of Kidman Monaro sons displaying loads of natural muscle expression, some really impressive Kidman Captivate P030 sons, the first sons of Yarawa South Paradise P112, Hunter Lakes Paradise L103, Kidman Genius P126 and Grathlyn Pagan P004, along with the first sons of our low birth weight home bred sire Kidman Evident Q098. Amongst the offering there will be numerous bulls particularly suited for heifer joining. They will be marked with a large H on their lot.

Our stud female offering will comprise of 8 cows and calves and 4 outstanding unjoined T heifers.

The sale will again be interfaced with Auctions Plus so if you can't make it on sale day you are more than welcome to inspect the sale offering prior to sale day, and we are more than happy to arrange an inspection.

Kind regards,

Nelson Carlow

Nelson 0427 823 832 Neil 02 68 488 858



Nelson, Susan, Ellie, Harrison, Neil & Jenny

The Carlow family donated a young Kidman Monaro heifer Kidman Vanity T181 to be awarded to the Most Potential Future Breeder at the Herefords Australia National Youth Expo held recently in Parkes. Nelson was excited to announce Albert Telford and his Telfordvale Stud as the winner of this classy young female.







# KIDMAN COMMITTED S160 (AI) (PP)

Tattoo: S160

Born: 14/08/2021

Rego No: KIDS160

ALLENDALE WATERHOUSE D1 (PP)  
 DAYS ROBIN HOOD H38 (AI) (ET) (PP)  
 ALLENDALE FANCY U5 (AI) (P)  
 Sire: **HUNTER LAKES LANCELOT L103 (AI) (ET) (PP)**  
 SOUTH BUKALONG WALLACE 2 (P)  
 HUNTER LAKES FANCY F7 (AI) (P)  
 ALLENDALE FANCY D24 (AI) (P)  
 SOUTH BUKALONG WALLACE 2 (P)  
 WIRRUNA ELDER E327 (AI) (ET) (P)  
 WIRRUNA MADAM A10 (AI) (ET) (P)  
 Dam: **KIDMAN MINNY J034 (P)**  
 MAWARRA VIRGINIAN (H)  
 KIDMAN MINNY G120 (AI) (P)  
 KIDMAN MINNY A190 (AI) (P)

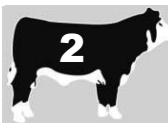


July 2023 Hereford BREEDPLAN																
CE	CE DTR	GL	BW	200	400	600	MCW	Milk	SS	DC	Cwt	EMA	Rib	Rump	RBY	IMF%
+6.5	+6.1	-3.5	+5.0	+42	+67	+90	+68	+18	+2.7	-2.6	+62	+5.3	+1.4	+2.7	+0.7	+1.5
41%	48%	75%	69%	69%	69%	70%	62%	60%	68%	39%	60%	53%	56%	59%	51%	+1.5
\$ Index Values:			Southern Self Replacing: +\$182				Northern Self Replacing: +\$176				Southern Baldy Maternal: +\$195			Northern Baldy Terminal: +\$141		

Traits Observed: GL,400WT,600WT,SS,FAT,EMA,IMF,Genomics

Committed is a stylish bull with great phenotype, length of body great skin & hair along with really impressive ebv's. He has stood out amongst his mob since he was a calf which led us to use him as a cover bull over our stud cows following an AI programme. Top 10% C/E dtrs, G/L, imf & rump fat top 15% 200 day wt top 20% 400 day wt & ema..

Purchaser: ..... Price \$ .....



# KIDMAN COWBOY S077 (AI) (PP)

Tattoo: S077

Born: 08/06/2021

Rego No: KIDS077

NJW 73S W18 HOMETOWN 10Y (IMP USA) (P)  
 KCF BENNETT HOMELAND C34 (IMP USA) (PP)  
 KCF MISS PROFICIENT A47 (P)  
 Sire: **YARAWA SOUTH PARADISE P112 (AI) (PP)**  
 ALLENDALE VAGABOND A74 (AI) (P)  
 YARAWA SOUTH RUBY L104 (AI) (P)  
 YARAWA SOUTH RUBY G134 (P)  
 DAYS CALIBRE G74 (PP)  
 KIDMAN EXCEPTIONAL K066 (AI) (PP)  
 KIDMAN MARJORIE E106 (P)  
 Dam: **KIDMAN VANITY N276 (P)**  
 KIDMAN LEGACY D155 (S)  
 KIDMAN VANITY J261 (P)  
 KIDMAN VANITY B227 (AI) (P)



July 2023 Hereford BREEDPLAN																
CE	CE DTR	GL	BW	200	400	600	MCW	Milk	SS	DC	Cwt	EMA	Rib	Rump	RBY	IMF%
+4.1	+4.1	+2.3	+3.7	+37	+64	+91	+83	+17	+3.1	-1.6	+62	+6.0	-0.3	-0.5	+2.2	-0.1
28%	36%	72%	67%	66%	65%	66%	57%	48%	64%	31%	54%	46%	51%	54%	45%	-0.1
\$ Index Values:			Southern Self Replacing: +\$155				Northern Self Replacing: +\$144				Southern Baldy Maternal: +\$168			Northern Baldy Terminal: +\$124		

Traits Observed: GL,400WT,600WT,SS,FAT,EMA,IMF,Genomics

Cowboy is a soft easy doing Paradise son with loads of muscle and thickness along with depth of body, he possesses a great head and loads of quality. His dam is a deep bodied big strong female who is amongst our leading females. We also used Cowboy to cover an AI programme. Top 5% RBY top 10% ema top 15% scrotal.

Purchaser: ..... Price \$ .....





# KIDMAN HOWIE S067 (PP)

Tattoo: S067

Born: 23/06/2021

Rego No: KIDS067

WIRRUNA HARTWIG H297 (P)  
 WIRRUNA KALIMNA K326 (PP)  
 WIRRUNA CORA H303 (AI) (ET) (P)  
 Sire: **KIDMAN EVIDENT Q098 (AI) (PP)**  
 TYCOLAH GOLD RUSH (S)  
 KIDMAN DUCHESS H236 (AI) (P)  
 KIDMAN DUCHESS A210 (AI) (P)



DAYS CALIBRE G74 (PP)  
 KIDMAN MACUMBA K036 (AI) (PP)  
 MOUNT DIFFICULT NOBLESSE C195 (P)  
 Dam: **KIDMAN MISS GUNN Q038 (AI) (P)**  
 WIRRUNA ELDER E327 (AI) (ET) (P)  
 KIDMAN MISS GUNN L143 (P)  
 KIDMAN MISS GUNN E90 (P)

July 2023 Hereford BREEDPLAN																
CE	CE DTR	GL	BW	200	400	600	MCW	Milk	SS	DC	Cwt	EMA	Rib	Rump	RBV	IMF%
+4.1	+4.3	-0.4	+5.1	+39	+60	+86	+79	+24	+3.0	-2.7	+55	+4.7	-0.2	-0.6	+2.0	+0.3
29%	33%	64%	64%	64%	64%	67%	58%	51%	70%	35%	56%	48%	53%	56%	49%	+0.3
\$ Index Values:			Southern Self Replacing: +\$144				Northern Self Replacing: +\$129				Southern Baldy Maternal: +\$157			Northern Baldy Terminal: +\$120		

Traits Observed: 400WT,600WT,SS,FAT,EMA,IMF,Genomics

Howie S067 oozes stud sire potential exhibiting stylish phenotype while also possessing length, depth of body and growth for age. He is a heifers first calf, sired by Evident Q098 who's maternal brother sold at last years sale for second top price of \$32,000 to the Rotherfield stud. His grand dam L143 also bred Kidman Genius who has done an exceptional job at the Oak Downs stud in South Australia producing sale toppers to \$22,000 for them. Top 10% milk, rby top 15% scrotal

Purchaser: ..... Price \$ .....



# KIDMAN MARINER S018 (PP)

Tattoo: S018

Born: 27/03/2021

Rego No: KIDS018

WIRRUNA HARTWIG H297 (P)  
 WIRRUNA KALIMNA K326 (PP)  
 WIRRUNA CORA H303 (AI) (ET) (P)  
 Sire: **KIDMAN CAPTIVATE P030 (AI) (PP)**  
 DAYS CALIBRE G74 (PP)  
 KIDMAN ALMOND JOY K093 (AI) (P)  
 KIDMAN ALMOND JOY Z102 (AI) (P)



WIRRUNA JEANS J134 (AI) (PP)  
 WIRRUNA LEGO L395 (PP)  
 WIRRUNA HYACINTH H250 (P)  
 Dam: **KIDMAN BELLONA P153 (P)**  
 KIDMAN DECKER H273 (PP)  
 KIDMAN BELLONA L093 (AI) (P)  
 KIDMAN BELLONA C3 (P)

July 2023 Hereford BREEDPLAN																
CE	CE DTR	GL	BW	200	400	600	MCW	Milk	SS	DC	Cwt	EMA	Rib	Rump	RBV	IMF%
+5.4	+5.0	-3.9	+6.2	+48	+76	+106	+90	+20	+3.8	-4.6	+69	+4.0	+0.3	+0.4	+1.2	+0.8
30%	36%	73%	66%	66%	65%	67%	59%	52%	64%	37%	56%	49%	54%	57%	49%	+0.8
\$ Index Values:			Southern Self Replacing: +\$195				Northern Self Replacing: +\$178				Southern Baldy Maternal: +\$201			Northern Baldy Terminal: +\$145		

Traits Observed: GL,200WT,600WT(x2),FAT,EMA,IMF,Genomics

Another impressive individual who has just kept doing and impressing, Mariner obtains great depth of body and carries beautifully down his lower thigh while also exhibiting thickness from behind, he exhibits length, structure, quality and a sires head. He is also a heifers first calf sired by Captivate who was sold to Cascade and out of Bellona P153 who is becoming one of our leading matrons who has two more very impressive bulls coming on in the next couple of years. Top 1% 200 top 5% 400 & 600 day wts & scrotal size top 10% GL CWT and all indexes. Stud sire potential..

Purchaser: ..... Price \$ .....





# KIDMAN BYRON S032 (AI) (PP)

Tattoo: S032

Born: 07/04/2021

Rego No: KIDS032

SHF WONDER M326 W18 ET (P)  
NJW 73S W18 HOMETOWN 10Y (IMP USA) (P)  
NJW P606 72N DAYDREAM 73S (P)

Sire: **KCF BENNETT HOMELAND C34 (IMP USA) (PP)**  
EFBEEF SCHU-LAR PROFICIENT N093 (IMP USA) (P)  
KCF MISS PROFICIENT A47 (P)  
KCF MISS REVOLUTION Y102 (ET) (P)

CB 57U CAN DOO 102Y (IMP CAN) (P)  
YAVENVALE KAHUNA K115 (AI) (PP)  
YAVENVALE LOCHIEL LADY D488 (P)

Dam: **KIDMAN MINERVA QUEEN P042 (AI) (P)**  
KIDMAN CONQUER G076 (P)  
KIDMAN MINERVA QUEEN J146 (P)  
KIDMAN MINERVA QUEEN E249 (AI) (ET) (P)



July 2023 Hereford BREEDPLAN																
CE	CE DTR	GL	BW	200	400	600	MCW	Milk	SS	DC	Cwt	EMA	Rib	Rump	RBY	IMF%
+2.1	+0.8	-0.1	+5.0	+41	+68	+96	+82	+25	+2.0	-2.4	+60	+3.3	-0.3	-1.4	+1.7	+0.1
37%	45%	74%	67%	66%	65%	68%	61%	56%	64%	35%	58%	50%	54%	57%	51%	+0.1
\$ Index Values:			Southern Self Replacing: +\$147				Northern Self Replacing: +\$121				Southern Baldy Maternal: +\$151			Northern Baldy Terminal: +\$111		

Traits Observed: GL,200WT,600WT(x2),FAT,EMA,IMF,Genomics

Another heifers first calf sired by Homeland who acquires prescence with a lovely slick skin, tremendous depth and length of body with added thickness. His dam P042 is a strong bodied quality large framed cow with a strong muzzled head, she is the descendant of a very good family line. Top 5% milk top 15% 200,400,600 day wt. Stud sire potential.

Purchaser: ..... Price \$ .....



# KIDMAN PRESIDENT S038 (AI) (PP)

Tattoo: S038

Born: 05/06/2021

Rego No: KIDS038

ALLENDALE WATERHOUSE D1 (PP)  
DAYS ROBIN HOOD H38 (AI) (ET) (PP)  
ALLENDALE FANCY U5 (AI) (P)

Sire: **HUNTER LAKES LANCELOT L103 (AI) (ET) (PP)**  
SOUTH BUKALONG WALLACE 2 (P)  
HUNTER LAKES FANCY F7 (AI) (P)  
ALLENDALE FANCY D24 (AI) (P)

WIRRUNA ELDER E327 (AI) (ET) (P)  
KIDMAN DECKER H273 (PP)  
KIDMAN MINERVA F135 (P)

Dam: **KIDMAN CORAL N041 (AI) (P)**  
KIDMAN BLOCKADE G128 (AI) (P)  
KIDMAN CORAL K231 (P)  
KIDMAN CORAL G130 (AI) (P)



July 2023 Hereford BREEDPLAN																
CE	CE DTR	GL	BW	200	400	600	MCW	Milk	SS	DC	Cwt	EMA	Rib	Rump	RBY	IMF%
+4.7	+2.7	-0.1	+1.7	+30	+48	+60	+30	+16	+1.3	-3.6	+51	+5.4	+2.3	+3.9	+0.3	+1.9
40%	47%	76%	69%	69%	69%	71%	63%	58%	73%	37%	61%	53%	57%	60%	54%	+1.9
\$ Index Values:			Southern Self Replacing: +\$151				Northern Self Replacing: +\$151				Southern Baldy Maternal: +\$148			Northern Baldy Terminal: +\$101		

Traits Observed: GL,400WT,600WT,SS,FAT,EMA,IMF,Genomics

President is an impressive really well balanced quality Lancelot son who just oozes type and style. His dam N041 is a really nice Decker cow who has not long weaned off an exceptional full sister to S038, he also has some really handy ebv's. Top 1% in the breed for rump fat, top 5% for rib fat & imf,top 15% for birth weight & ema. Could handle stud duties as a heifer bull..

Purchaser: ..... Price \$ .....





# KIDMAN SPRINGER S062 (PP)

Tattoo: S062

Born: 14/06/2021

Rego No: KIDS062

Sire: **KIDMAN MONARO N063 (PP)**  
 KIDMAN EXCEPTIONAL K066 (AI) (PP)  
 KIDMAN MARJORIE E106 (P)  
 KIDMAN SECURITY G1 (AI) (P)  
 KIDMAN COUNTESS J204 (P)  
 KIDMAN COUNTESS F125 (AI) (P)

Dam: **KIDMAN CARNATION N149 (P)**  
 KIDMAN BLOCKADE G128 (AI) (P)  
 KIDMAN SELECT 037 (PP)  
 KIDMAN COUNTESS E117 (P)  
 TYCOLAH GOLD RUSH (S)  
 KIDMAN CARNATION K140 (AI) (P)  
 KIDMAN CARNATION C63 (P)



July 2023 Hereford BREEDPLAN																
CE	CE DTR	GL	BW	200	400	600	MCW	Milk	SS	DC	Cwt	EMA	Rib	Rump	RBY	IMF%
		-1.1	+7.1	+36	+54	+88	+89	+7	+3.5	-2.9	+53	+5.9	+1.0	+1.7	+1.2	+0.8
		56%	62%	64%	65%	69%	59%	46%	72%	29%	56%	46%	51%	56%	48%	+0.8
\$ Index Values:		Southern Self Replacing: +\$144					Northern Self Replacing: +\$137				Southern Baldy Maternal: +\$140			Northern Baldy Terminal: +\$101		

Traits Observed: 400WT,600WT,SS,FAT,EMA,IMF,Genomics

The first of some really powerful Monaro sons S062 really exemplifies power displaying muscle & thickness depth of body along with a strong sires head. Backed up by some really impressive breedplan figures, with his carcass figures all above average. S062 had the highest raw ema measurement of his draft of 21 bulls, top 10% for ema & scrotal size. The first of many nice Monaro sons in the offering..

Purchaser: ..... Price \$ .....



# KIDMAN DEXTER S162 (PP)

Tattoo: S162

Born: 14/09/2021

Rego No: KIDS162

Sire: **KIDMAN MONARO N063 (PP)**  
 KIDMAN EXCEPTIONAL K066 (AI) (PP)  
 KIDMAN MARJORIE E106 (P)  
 KIDMAN SECURITY G1 (AI) (P)  
 KIDMAN COUNTESS J204 (P)  
 KIDMAN COUNTESS F125 (AI) (P)

Dam: **KIDMAN MISS GUNN H214 (AI) (P)**  
 MERAWAH MISSOURI (AI) (P)  
 MERAWAH WIDELoad Y112 (AI) (ET) (P)  
 MERAWAH SHAMROCK M60 (P)  
 KIDMAN FORWARD Z69 (AI) (P)  
 KIDMAN MISS GUNN B229 (P)  
 KIDMAN MISS GUNN W99 (P)



July 2023 Hereford BREEDPLAN																
CE	CE DTR	GL	BW	200	400	600	MCW	Milk	SS	DC	Cwt	EMA	Rib	Rump	RBY	IMF%
	+0.1	+0.2	+5.0	+32	+52	+79	+79	+10	+2.5	-1.9	+50	+4.2	+0.7	+1.1	+0.7	+0.7
	28%	58%	63%	64%	66%	70%	60%	50%	73%	31%	57%	48%	52%	57%	50%	+0.7
\$ Index Values:		Southern Self Replacing: +\$120					Northern Self Replacing: +\$110				Southern Baldy Maternal: +\$120			Northern Baldy Terminal: +\$91		

Traits Observed: 400WT,600WT,SS,FAT,EMA,IMF,Genomics

The second of some impressive Monaro sons, Dexter offers sire power carrying tremendous thickness, length,depth of body, structure along with a tight sheath and out of a really good older Merawah wideload female..

Purchaser: ..... Price \$ .....





# KIDMAN GAME CHANGER S158 (AI) (PP)

Tattoo: S158

Born: 21/08/2021

Rego No: KIDS158

SCHU-LAR ON TARGET 22S (IMP USA) (ET) (P)

KCF BENNETT ENCORE Z311 (ET) (PP)

KCF MISS REVOLUTION X338 (ET) (P)

Sire: **NJW 79Z Z311 ENDURE 173D (IMP USA) (ET) (PP)**

NJW 73S M326 TRUST 100W ET (IMP USA) (ET) (P)

BW 91H 100W RITA 79Z (ET) (P)

REMITALL RITA 91H (P)

ALLENDALE WATERHOUSE D1 (PP)

DAYS CALIBRE G74 (PP)

ALLENDALE DAWN C62 (AI) (P)

Dam: **KIDMAN MARITANA LASS K232 (AI) (P)**

COLUMBIAN X178 IMAGE A98 (P)

KIDMAN MARITANA LASS D85 (P)

KIDMAN MARITANA LASS V68 (AI) (P)



July 2023 Hereford BREEDPLAN																
CE	CE DTR	GL	BW	200	400	600	MCW	Milk	SS	DC	Cwt	EMA	Rib	Rump	RBY	IMF%
+6.2	+4.0	+3.2	+4.5	+37	+63	+81	+58	+17	+1.6	-3.7	+58	+9.0	+1.8	+2.2	+1.1	+1.8
39%	49%	76%	70%	69%	69%	71%	65%	62%	74%	38%	62%	56%	58%	61%	55%	+1.8
\$ Index Values:			Southern Self Replacing: +\$178				Northern Self Replacing: +\$171				Southern Baldy Maternal: +\$180			Northern Baldy Terminal: +\$127		

Traits Observed: GL,400WT,600WT,SS,FAT,EMA,IMF,Genomics

Game Changer by name Game Changer indeed this Endure son possesses what a lot of breeders require from Endure progeny Softness. Along with being soft he exhibits good sound structure and that extra muscle that Endure is known for along with some incredible carcase figures. His dam K232 is a solid deep bodied strong headed Calibre female, her first bull calf selling in last years sale for \$8,000 to Melrose farming. Top 1% for ema top 5% imf top 15% ce dtrs rib & rump fat and some indexes

Purchaser: ..... Price \$ .....



# KIDMAN MOMENTUM S123 (TW) (P)

Tattoo: S123

Born: 10/08/2021

Rego No: KIDS123

DAYS CALIBRE G74 (PP)

KIDMAN EXCEPTIONAL K066 (AI) (PP)

KIDMAN MARJORIE E106 (P)

Sire: **KIDMAN MONARO N063 (PP)**

KIDMAN SECURITY G1 (AI) (P)

KIDMAN COUNTESS J204 (P)

KIDMAN COUNTESS F125 (AI) (P)

CB 57U CAN DOO 102Y (IMP CAN) (P)

YAVENVALE KAHUNA K115 (AI) (PP)

YAVENVALE LOCHIEL LADY D488 (P)

Dam: **KIDMAN N097 (P)**

WIRRUNA ELDER E327 (AI) (ET) (P)

KIDMAN K249 (P)

KIDMAN ALBIA G297 (AI) (P)



July 2023 Hereford BREEDPLAN																
CE	CE DTR	GL	BW	200	400	600	MCW	Milk	SS	DC	Cwt	EMA	Rib	Rump	RBY	IMF%
+2.8	+2.3	-1.5	+5.4	+40	+63	+95	+73	+21	+2.9	-4.5	+66	+4.7	+1.4	+1.7	+1.1	+1.3
25%	30%	59%	64%	65%	65%	67%	57%	47%	66%	33%	54%	47%	51%	54%	44%	+1.3
\$ Index Values:			Southern Self Replacing: +\$181				Northern Self Replacing: +\$166				Southern Baldy Maternal: +\$179			Northern Baldy Terminal: +\$127		

Traits Observed: 400WT,600WT,SS,FAT,EMA,IMF,Genomics

Momentum is an impressive Monaro son offering sound structure with a well balanced muscle pattern along with length of body. Maternal brothers out of N097 have sold at previous sales for \$12,000 and \$18,000. Momentum has a top class maternal sister in this sale as lot 91. Top 15% cwt, imf & some indexes top 20% 200,600 d/wt, milk & ss

Purchaser: ..... Price \$ .....





# KIDMAN JACKSON S112 (S)

Tattoo: S112

Born: 03/09/2021

Rego No: KIDS112

KOANUI UNANIMOUS 0408 (P)  
KOANUI TECHNO 3062 (IMP NZL) (PP)  
KOANUI BLUSH 6455 (P)

Sire: **GRATHLYN PAGAN (AI) (PP)**

HEATHERDALE BONANZA Z48 (AI) (P)  
GRATHLYN CHANCE F35 (P)  
GRATHLYN CHANCE B30 (P)

KIDMAN COSMO B25 (AI) (ET) (P)  
KIDMAN LEGACY D155 (S)  
KIDMAN MINNY A173 (AI) (P)

Dam: **KIDMAN DAPHNE J165 (P)**

BOWEN TORNADO Z260 (AI) (ET) (PP)  
KIDMAN DAPHNE D35 (P)  
KIDMAN DAPHNE W107 (P)



July 2023 Hereford BREEDPLAN

CE	CE DTR	GL	BW	200	400	600	MCW	Milk	SS	DC	Cwt	EMA	Rib	Rump	RBY	IMF%
-0.7	-1.7	-1.2	+4.4	+38	+68	+104	+92	+15	+0.8	-2.3	+69	+4.0	+0.4	+0.3	+1.2	+1.2
31%	35%	62%	63%	63%	65%	68%	59%	53%	72%	34%	56%	48%	51%	55%	49%	+1.2
\$ Index Values:			Southern Self Replacing: +\$166				Northern Self Replacing: +\$147			Southern Baldy Maternal: +\$160			Northern Baldy Terminal: +\$117			

Traits Observed: 400WT,600WT,SS,FAT,EMA,IMF,Genomics

The first of the Pagan Sons to be offered, Jackson has a magnificent slick Dark coat along with length and depth of body. His dam is an impressive Legacy matron who had a son sell in 2021 for \$13,000 and another son sell at last years sale for \$10,000. Top 10% cwt & 600 d/wt

Purchaser: ..... Price \$ .....



# KIDMAN CAMRY S116 (AI) (S)

Tattoo: S116

Born: 17/08/2021

Rego No: KIDS116

ALLENDALE WATERHOUSE D1 (PP)  
DAYS ROBIN HOOD H38 (AI) (ET) (PP)  
ALLENDALE FANCY U5 (AI) (P)

Sire: **HUNTER LAKES LANCELOT L103 (AI) (ET) (PP)**

SOUTH BUKALONG WALLACE 2 (P)  
HUNTER LAKES FANCY F7 (AI) (P)  
ALLENDALE FANCY D24 (AI) (P)

ALLENDALE TIMOR B120 (P)  
KIDMAN OXFORD G085 (P)  
KIDMAN CORAL D70 (P)

Dam: **KIDMAN MARITANA LASS J134 (P)**

COLUMBIAN X178 IMAGE A98 (P)  
KIDMAN MARITANA LASS D85 (P)  
KIDMAN MARITANA LASS V68 (AI) (P)



July 2023 Hereford BREEDPLAN

CE	CE DTR	GL	BW	200	400	600	MCW	Milk	SS	DC	Cwt	EMA	Rib	Rump	RBY	IMF%
+3.7	+2.8	-1.2	+6.0	+36	+52	+78	+82	+12	+1.3	-2.3	+48	+3.9	+0.1	+0.8	+1.3	+0.3
38%	44%	75%	68%	68%	68%	71%	63%	58%	75%	36%	60%	52%	55%	59%	53%	+0.3
\$ Index Values:			Southern Self Replacing: +\$126				Northern Self Replacing: +\$118			Southern Baldy Maternal: +\$134			Northern Baldy Terminal: +\$101			

Traits Observed: GL,400WT,600WT,SS,FAT,EMA,IMF,Genomics

A really impressive soft looking Lancelot son out of an equally soft dam in j134 who has had sons sell to \$10,000. Camry will impress a lot of good cattle judges and will get a lot of second glances..

Purchaser: ..... Price \$ .....





# KIDMAN HYPERNO S134 (AI) (PP)

Tattoo: S134

Born: 16/08/2021

Rego No: KIDS134

ALLENDALE WATERHOUSE D1 (PP)  
 DAYS ROBIN HOOD H38 (AI) (ET) (PP)  
 ALLENDALE FANCY U5 (AI) (P)  
 Sire: **HUNTER LAKES LANCELOT L103 (AI) (ET) (PP)**  
 SOUTH BUKALONG WALLACE 2 (P)  
 HUNTER LAKES FANCY F7 (AI) (P)  
 ALLENDALE FANCY D24 (AI) (P)

CANNAWIGRA X247GLENFIDDICH F53 (P)  
 CASCADE KNOX K122 (P)  
 CASCADE PURITY F194 (AI) (ET) (P)  
 Dam: **KIDMAN N260 (P)**  
 WIRRUNA ELDER E327 (AI) (ET) (P)  
 KIDMAN COUNTESS J070 (P)  
 KIDMAN COUNTESS G098 (P)



July 2023 Hereford BREEDPLAN																
CE	CE DTR	GL	BW	200	400	600	MCW	Milk	SS	DC	Cwt	EMA	Rib	Rump	RBY	IMF%
+4.8	+4.1	-1.7	+6.1	+46	+71	+107	+108	+19	+0.8	-0.8	+69	+3.8	-1.0	-0.9	+2.0	-0.1
38%	45%	74%	69%	68%	68%	70%	62%	56%	74%	36%	59%	52%	54%	58%	52%	-0.1
\$ Index Values:			Southern Self Replacing: +\$160				Northern Self Replacing: +\$141				Southern Baldy Maternal: +\$178			Northern Baldy Terminal: +\$136		

Traits Observed: GL,400WT,600WT,SS,FAT,EMA,IMF,Genomics

Hyperno is a classy looking individual exhibiting good length, style and a beautiful skin and hair, he will take a lot of good cattle judges eyes on sale day. Top 5% for 200 & 600 day wt top 10% 400 day wt, rby & cwt

Purchaser: ..... Price \$ .....



# KIDMAN HITMAN S169 (AI) (PP)

Tattoo: S169

Born: 17/08/2021

Rego No: KIDS169

NJW 73S W18 HOMETOWN 10Y (IMP USA) (P)  
 KCF BENNETT HOMELAND C34 (IMP USA) (PP)  
 KCF MISS PROFICIENT A47 (P)  
 Sire: **YARAWA SOUTH PARADISE P112 (AI) (PP)**  
 ALLENDALE VAGABOND A74 (AI) (P)  
 YARAWA SOUTH RUBY L104 (AI) (P)  
 YARAWA SOUTH RUBY G134 (P)

ALLENDALE WATERHOUSE D1 (PP)  
 DAYS CALIBRE G74 (PP)  
 ALLENDALE DAWN C62 (AI) (P)  
 Dam: **KIDMAN COUNTESS L159 (AI) (P)**  
 TYCOLAH GOLD RUSH (S)  
 KIDMAN COUNTESS F53 (P)  
 KIDMAN COUNTESS Y165 (P)

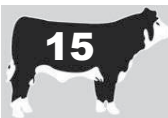


July 2023 Hereford BREEDPLAN																
CE	CE DTR	GL	BW	200	400	600	MCW	Milk	SS	DC	Cwt	EMA	Rib	Rump	RBY	IMF%
+6.0	+3.8	-0.8	+6.7	+42	+65	+92	+92	+14	+2.7	-3.5	+58	+5.1	+0.5	+0.7	+1.4	+0.2
33%	41%	75%	69%	69%	68%	70%	62%	52%	74%	35%	59%	50%	54%	58%	52%	+0.2
\$ Index Values:			Southern Self Replacing: +\$158				Northern Self Replacing: +\$146				Southern Baldy Maternal: +\$164			Northern Baldy Terminal: +\$120		

Traits Observed: GL,400WT,600WT,SS,FAT,EMA,IMF,Genomics

Maternal brother to our HAL super sire Kidman Hitman Q067 who was also our top priced bull in our 2021 bull sale selling for \$28,000 selling to Boobook Herefords in QLD. S169 is as equally impressive with phenotype, structure, length in an athletic package, a Paradise son well worth a look. Top 15% 200 day wt c/e dtrs top 20% ema..

Purchaser: ..... Price \$ .....



# KIDMAN LINE BREAK S145 (AI) (PP)

Tattoo: S145

Born: 14/08/2021

Rego No: KIDS145

KOANUI UNANIMOUS 7174 (P)  
 KOANUI UNANIMOUS 0408 (P)  
 KOANUI GIRLIE 3048 (P)  
 Sire: **KOANUI TECHNO 3062 (IMP NZL) (PP)**  
 LEELANDS X-TENSION 293 (P)  
 KOANUI BLUSH 6455 (P)  
 KOANUI BLUSH 3304 (P)

KOANUI ROCKET 0219 (IMP NZL) (P)  
 MARKOWEN FEDERER (AI) (PP)  
 MARKOWEN DIANA D19 (AI) (P)  
 Dam: **KIDMAN VANITY M244 (P)**  
 WIRRUNA ELDER E327 (AI) (ET) (P)  
 KIDMAN VANITY K013 (P)  
 KIDMAN VANITY G270 (P)

### July 2023 Hereford BREEDPLAN

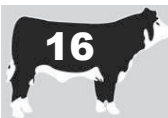
CE	CE DTR	GL	BW	200	400	600	MCW	Milk	SS	DC	Cwt	EMA	Rib	RUM	RBY	IMF%	
+3.3	+3.6	-1.8	+7.4	+46	+75	+114	+105	+22	+4.1	-4.0	+73	+4.6	+1.4	+1.8	+0.6	+1.9	
52%	48%	74%	69%	69%	69%	71%	65%	63%	74%	48%	63%	57%	60%	62%	57%	61%	
\$ Index Values:			Southern Self Replacing: +\$194				Northern Self Replacing: +\$175				Southern Baldy Maternal: +\$200			Northern Baldy Terminal: +\$150			

Traits Observed: GL,400WT,600WT,SS,FAT,EMA,IMF,Genomics

The only Techno son in the sale this year, and what a fine example he is of the stamp Techno has put on the breed. S145 exhibits performance with added length, depth of body and capacity his mother M244 produces one of the heaviest calves every year. His ebv's are well balanced with calving ease, gestation length growth, milk, fertility and carcase all well above average. Top 5% 200,400 & 600 d/wt, ss & imf top 10% milk & all indexes.

Purchaser: .....

Price \$ .....



# KIDMAN INTEGRITY S167 (AI) (S)

Tattoo: S167

Born: 22/08/2021

Rego No: KIDS167

NJW 73S W18 HOMETOWN 10Y (IMP USA) (P)  
 KCF BENNETT HOMELAND C34 (IMP USA) (PP)  
 KCF MISS PROFICIENT A47 (P)  
 Sire: **YARAWA SOUTH PARADISE P112 (AI) (PP)**  
 ALLENDALE VAGABOND A74 (AI) (P)  
 YARAWA SOUTH RUBY L104 (AI) (P)  
 YARAWA SOUTH RUBY G134 (P)

ALLENDALE WATERHOUSE D1 (PP)  
 DAYS CALIBRE G74 (PP)  
 ALLENDALE DAWN C62 (AI) (P)  
 Dam: **KIDMAN DUCHESS K056 (AI) (P)**  
 BOWEN TORNADO Z260 (AI) (ET) (PP)  
 KIDMAN DUCHESS C62 (TW) (P)  
 KIDMAN DUCHESS W15 (AI) (P)

### July 2023 Hereford BREEDPLAN

CE	CE DTR	GL	BW	200	400	600	MCW	Milk	SS	DC	Cwt	EMA	Rib	RUM	RBY	IMF%	
+2.0	+4.2	+1.3	+3.1	+33	+62	+81	+62	+9	+2.9	-2.5	+58	+6.9	+0.5	+0.5	+1.7	+0.7	
41%	33%	75%	68%	67%	67%	70%	61%	50%	73%	35%	59%	50%	54%	58%	52%	55%	
\$ Index Values:			Southern Self Replacing: +\$165				Northern Self Replacing: +\$160				Southern Baldy Maternal: +\$163			Northern Baldy Terminal: +\$112			

Traits Observed: GL,400WT,600WT,SS,FAT,EMA,IMF,Genomics

This powerful Paradise son displays loads of muscle and thickness along with a tremendous spine out of a good honest performing female, notice his below average birth weight to above average growth rates. Top 5% ema top 15% retail beef yield top 20% scrotal

Purchaser: .....

Price \$ .....



# KIDMAN OCTANE S175 (AI) (PP)

Tattoo: S175

Born: 26/08/2021

Rego No: KIDS175

SCHU-LAR ON TARGET 22S (IMP USA) (ET) (P)  
 KCF BENNETT ENCORE Z311 (ET) (PP)  
 KCF MISS REVOLUTION X338 (ET) (P)  
 Sire: **NJW 79Z Z311 ENDURE 173D (IMP USA) (ET) (PP)**  
 NJW 73S M326 TRUST 100W ET (IMP USA) (ET) (P)  
 BW 91H 100W RITA 79Z (ET) (P)  
 REMITALL RITA 91H (P)

KIDMAN COSMO B25 (AI) (ET) (P)  
 KIDMAN LEGACY D155 (S)  
 KIDMAN MINNY A173 (AI) (P)  
 Dam: **KIDMAN LADY ECLIPSE F196 (P)**  
 TYCOLAH COBBADAH (P)  
 KIDMAN LADY ECLIPSE C13 (P)  
 KIDMAN LADY ECLIPSE Z88 (AI) (P)

### July 2023 Hereford BREEDPLAN

CE	CE DTR	GL	BW	200	400	600	MCW	Milk	SS	DC	Cwt	EMA	Rib	RUM	RBY	IMF%	
+3.4	+4.3	+5.9	+3.6	+30	+49	+71	+48	+20	+2.5	-4.5	+48	+6.9	+2.0	+1.7	+1.1	+1.2	
47%	36%	75%	69%	69%	69%	71%	64%	61%	75%	37%	62%	56%	57%	60%	52%	59%	
\$ Index Values:			Southern Self Replacing: +\$154				Northern Self Replacing: +\$142				Southern Baldy Maternal: +\$153			Northern Baldy Terminal: +\$106			

Traits Observed: GL,400WT,600WT,SS,EMA,IMF,Genomics

This Endure son also offers loads of Muscle in a really dark skin and strong pigmented eyes, F196 has been a great breeder for us every bull calf she has produced has made our bull sales selling to \$12,000, she has only just been retired this year after weaning off her 10th and last calf. Top 5% for ema top 10% r/fat

Purchaser: .....

Price \$ .....





# KIDMAN FORBES S028 (PP)

Tattoo: S028

Born: 25/03/2021

Rego No: KIDS028

WIRRUNA JEANS J134 (AI) (PP)  
 WIRRUNA LEGO L395 (PP)  
 WIRRUNA HYACINTH H250 (P)  
 Sire: **KIDMAN GENIUS P126 (PP)**  
 WIRRUNA ELDER E327 (AI) (ET) (P)  
 KIDMAN MISS GUNN L143 (P)  
 KIDMAN MISS GUNN E90 (P)

H VICTOR 0136 (IMP USA) (P)  
 TALBALBA THE HOFF L076 (AI) (PP)  
 KESWICK IRISH ROSE D091 (P)  
 Dam: **KIDMAN SERENADE P052 (P)**  
 KIDMAN BLOCKADE G128 (AI) (P)  
 KIDMAN SERENADE K028 (P)  
 KIDMAN SERENADE F231 (P)

July 2023 Hereford BREEDPLAN																
CE	CE DTR	GL	BW	200	400	600	MCW	Milk	SS	DC	Cwt	EMA	Rib	RUM	RBY	IMF%
+4.0		+1.3	+5.3	+42	+60	+85	+55	+15	+0.7	-2.8	+59	+5.4	+1.4	+2.0	+1.3	+1.5
27%		69%	62%	64%	63%	67%	57%	47%	60%	28%	54%	44%	48%	52%	46%	48%
\$ Index Values:			Southern Self Replacing: +\$181				Northern Self Replacing: +\$174				Southern Baldy Maternal: +\$183			Northern Baldy Terminal: +\$128		

Traits Observed: GL,200WT,600WT(x2),FAT,EMA,IMF,Genomics

Forbes is a Genius son with tremendous phenotype and length with plenty of thickness throughout. Genius was sold to the Oak Downs stud in South Australia where he bred their two top priced bulls in their sale earlier this year selling to \$22,000. Forbes had the highest imf measurement of his run. Notice all his carcass figures are all well above average. Top 15% 200 day wt ema & imf

Purchaser: ..... Price \$ .....



# COMMERCIAL S022

Tattoo: S022

Born: 27/05/2021

Rego No: UNREGISTERED



S022 is a Matty grandson a first calf out of a Kidman Agent J002 female he is an unregistered bull and wow look at the quality of depth and power in this great individual.

Purchaser: ..... Price \$ .....



# KIDMAN MASTER S027 (S)

Tattoo: S027

Born: 19/03/2021

Rego No: KIDS027

WIRRUNA HARTWIG H297 (P)  
 WIRRUNA KALIMNA K326 (PP)  
 WIRRUNA CORA H303 (AI) (ET) (P)  
 Sire: **KIDMAN CAPTIVATE P030 (AI) (PP)**  
 DAYS CALIBRE G74 (PP)  
 KIDMAN ALMOND JOY K093 (AI) (P)  
 KIDMAN ALMOND JOY Z102 (AI) (P)

WIRRUNA JEANS J134 (AI) (PP)  
 WIRRUNA LEGO L395 (PP)  
 WIRRUNA HYACINTH H250 (P)  
 Dam: **KIDMAN MISS GUNN P168 (P)**  
 KIDMAN BLOCKADE G128 (AI) (P)  
 KIDMAN MISS GUNN L092 (P)  
 KIDMAN MISS GUNN B105 (AI) (P)

July 2023 Hereford BREEDPLAN																
CE	CE DTR	GL	BW	200	400	600	MCW	Milk	SS	DC	Cwt	EMA	Rib	RUM	RBY	IMF%
+4.4	+4.1	-1.2	+8.8	+57	+82	+114	+94	+22	+3.2	-3.9	+76	+5.9	+1.1	+1.7	+1.3	+1.1
34%	29%	72%	64%	65%	64%	67%	58%	51%	62%	35%	55%	48%	53%	56%	48%	53%
\$ Index Values:			Southern Self Replacing: +\$205				Northern Self Replacing: +\$189				Southern Baldy Maternal: +\$211			Northern Baldy Terminal: +\$154		

Traits Observed: GL,200WT,600WT(x2),FAT,EMA,IMF,Genomics

Master is a heifers first calf who exhibits tremendous growth and length all encompassed in a really well structured package. Top 1% 200 day wt, top 5% 400 & 600 day wt cwt & all indexes top 10% ema, top 15% milk & scrotal & top 20% imf.

Purchaser: ..... Price \$ .....



# KIDMAN MARRINGTON S044 (PP)



Tattoo: S044

Born: 01/08/2021

Rego No: KIDS044

WIRRUNA HARTWIG H297 (P)  
 WIRRUNA KALIMNA K326 (PP)  
 WIRRUNA CORA H303 (AI) (ET) (P)  
 Sire: **KIDMAN EVIDENT Q098 (AI) (PP)**  
 TYCOLAH GOLD RUSH (S)  
 KIDMAN DUCHESS H236 (AI) (P)  
 KIDMAN DUCHESS A210 (AI) (P)

H VICTOR 0136 (IMP USA) (P)  
 TALBALBA THE HOFF L076 (AI) (PP)  
 KESWICK IRISH ROSE D091 (P)  
 Dam: **KIDMAN MINNY Q120 (P)**  
 WIRRUNA ELDER E327 (AI) (ET) (P)  
 KIDMAN MINNY J034 (P)  
 KIDMAN MINNY G120 (AI) (P)

### July 2023 Hereford BREEDPLAN

CE	CE DTR	GL	BW	200	400	600	MCW	Milk	SS	DC	Cwt	EMA	Rib	RUM	RBY	IMF%	
+5.8	+3.5	-1.1	+1.7	+29	+48	+60	+43	+17	+2.7	-2.7	+44	+3.6	+1.7	+2.4	-0.1	+1.2	
32%	27%	60%	63%	63%	63%	65%	57%	49%	62%	34%	54%	47%	52%	55%	45%	52%	
\$ Index Values:		Southern Self Replacing: +\$125				Northern Self Replacing: +\$121				Southern Baldy Maternal: +\$136				Northern Baldy Terminal: +\$102			

Traits Observed: 400WT,600WT,SS,FAT,EMA,IMF,Genomics

Another classy Evident son who is a genuine heifer bull, he is a heifers first calf and offers a nice well balanced muscle pattern with loads of quality. Top 15% rib & rump fat,top 20% birth weight & top 25% imf

Purchaser: .....

Price \$ .....



# KIDMAN DELIVER S049 (AI) (PP)

Tattoo: S049

Born: 04/06/2021

Rego No: KIDS049

ALLENDALE WATERHOUSE D1 (PP)  
 DAYS ROBIN HOOD H38 (AI) (ET) (PP)  
 ALLENDALE FANCY U5 (AI) (P)  
 Sire: **HUNTER LAKES LANCELOT L103 (AI) (ET) (PP)**  
 SOUTH BUKALONG WALLACE 2 (P)  
 HUNTER LAKES FANCY F7 (AI) (P)  
 ALLENDALE FANCY D24 (AI) (P)

MARKOWEN FEDERER (AI) (PP)  
 KIDMAN MOUNTAINEER M097 (PP)  
 KIDMAN MISS CORRISANDE J082 (P)  
 Dam: **KIDMAN MISS GUNN P048 (P)**  
 BAHLOO E51 BONANZA J33 (P)  
 KIDMAN MISS GUNN L193 (P)  
 KIDMAN MISS GUNN G075 (S)

### July 2023 Hereford BREEDPLAN

CE	CE DTR	GL	BW	200	400	600	MCW	Milk	SS	DC	Cwt	EMA	Rib	RUM	RBY	IMF%	
+2.8	+5.0	-0.5	+3.2	+30	+46	+59	+57	+11	+0.7	-3.4	+38	+3.7	+1.9	+3.8	+0.0	+0.4	
43%	37%	72%	66%	66%	66%	68%	59%	54%	72%	34%	57%	49%	52%	56%	50%	53%	
\$ Index Values:		Southern Self Replacing: +\$113				Northern Self Replacing: +\$117				Southern Baldy Maternal: +\$117				Northern Baldy Terminal: +\$85			

Traits Observed: GL,400WT,600WT,SS,FAT,EMA,IMF,Genomics

Another soft Lancelot son displaying a good skin and a great sires head. His above average fat measurements have certainly attributed to his extra soft doing ability. Top 5% rib & rump fat.

Purchaser: .....

Price \$ .....



# KIDMAN LIFE GUARD S036 (PP)

Tattoo: S036

Born: 01/06/2021

Rego No: KIDS036

NJW 73S W18 HOMETOWN 10Y (IMP USA) (P)  
 KCF BENNETT HOMELAND C34 (IMP USA) (PP)  
 KCF MISS PROFICIENT A47 (P)  
 Sire: **YARAWA SOUTH PARADISE P112 (AI) (PP)**  
 ALLENDALE VAGABOND A74 (AI) (P)  
 YARAWA SOUTH RUBY L104 (AI) (P)  
 YARAWA SOUTH RUBY G134 (P)

MINLACOWIE GRIFFIN (PP)  
 YAVENVALE KINGPIN K317 (PP)  
 YAVENVALE TREASURE D403 (P)  
 Dam: **KIDMAN KERRY MAID N084 (AI) (P)**  
 KIDMAN CONQUER G076 (P)  
 KIDMAN KERRY MAID K010 (P)  
 KIDMAN KERRY MAID F140 (P)

### July 2023 Hereford BREEDPLAN

CE	CE DTR	GL	BW	200	400	600	MCW	Milk	SS	DC	Cwt	EMA	Rib	RUM	RBY	IMF%	
+4.7	+3.2	+1.0	+4.1	+43	+80	+108	+95	+17	+2.4	-3.0	+76	+3.9	+0.2	+0.1	+1.5	+0.2	
37%	28%	66%	67%	66%	66%	69%	59%	48%	72%	31%	57%	47%	51%	56%	49%	53%	
\$ Index Values:		Southern Self Replacing: +\$189				Northern Self Replacing: +\$174				Southern Baldy Maternal: +\$198				Northern Baldy Terminal: +\$145			

Traits Observed: 400WT,600WT,SS,FAT,EMA,IMF,Genomics

Lifeguard is a bull with tremendous capacity displaying great length, depth and neck rein he is athletic and moves well. Top 5% 400,600 & cwt top 10% 200 & all indexes top 20% rby

Purchaser: .....

Price \$ .....





# KIDMAN CHARLEVILLE S031 (PP)

Tattoo: S031

Born: 17/03/2021

Rego No: KIDS031

WIRRUNA HARTWIG H297 (P)  
 WIRRUNA KALIMNA K326 (PP)  
 WIRRUNA CORA H303 (AI) (ET) (P)  
 Sire: **KIDMAN CAPTIVATE P030 (AI) (PP)**  
 DAYS CALIBRE G74 (PP)  
 KIDMAN ALMOND JOY K093 (AI) (P)  
 KIDMAN ALMOND JOY Z102 (AI) (P)

MERAWAH ELLIOTT F115 (PP)  
 KERLSON PINES JESTER J99 (PP)  
 KERLSON PINES U-BEAUTY C34 (P)  
 Dam: **KIDMAN PEARL P045 (AI) (P)**  
 ALLENDALE TIMOR B120 (P)  
 KIDMAN PEARL K045 (P)  
 KIDMAN PEARL B132 (P)

July 2023 Hereford BREEDPLAN																
CE	CE DTR	GL	BW	200	400	600	MCW	Milk	SS	DC	Cwt	EMA	Rib	RUM	RBY	IMF%
+2.4	+2.6	-3.7	+4.7	+38	+64	+80	+80	+14	+2.7	-1.5	+56	+4.2	+0.8	+1.4	+0.9	+0.0
36%	30%	74%	65%	65%	64%	67%	59%	51%	63%	35%	56%	48%	52%	56%	49%	53%
\$ Index Values:			Southern Self Replacing: +\$123				Northern Self Replacing: +\$118				Southern Baldy Maternal: +\$133			Northern Baldy Terminal: +\$102		

Traits Observed: GL,200WT,600WT(x2),FAT,EMA,IMF,Genomics

A solid captivate son who goes back to jester who did great job at Kidman.Top 10% gestation length

Purchaser: ..... Price \$ .....



# KIDMAN LAGER S020 (PP)

Tattoo: S020

Born: 02/04/2021

Rego No: KIDS020

WIRRUNA JEANS J134 (AI) (PP)  
 WIRRUNA LEGO L395 (PP)  
 WIRRUNA HYACINTH H250 (P)  
 Sire: **KIDMAN GENIUS P126 (PP)**  
 WIRRUNA ELDER E327 (AI) (ET) (P)  
 KIDMAN MISS GUNN L143 (P)  
 KIDMAN MISS GUNN E90 (P)

KIDMAN DICTATOR F115 (P)  
 KIDMAN PACKAGE J305 (PP)  
 KIDMAN COUNTESS C19 (P)  
 Dam: **KIDMAN KERRYMAID P064 (P)**  
 DAYS CALIBRE G74 (PP)  
 KIDMAN KERRYMAID K002 (AI) (P)  
 KIDMAN KERRYMAID F65 (P)

July 2023 Hereford BREEDPLAN																
CE	CE DTR	GL	BW	200	400	600	MCW	Milk	SS	DC	Cwt	EMA	Rib	RUM	RBY	IMF%
+5.3		-0.9	+6.5	+45	+58	+81	+41	+19	+2.3	-4.9	+56	+5.8	+2.4	+3.2	+0.7	+1.6
28%		70%	63%	65%	64%	67%	57%	48%	62%	30%	55%	44%	48%	53%	46%	49%
\$ Index Values:			Southern Self Replacing: +\$191				Northern Self Replacing: +\$181				Southern Baldy Maternal: +\$190			Northern Baldy Terminal: +\$127		

Traits Observed: GL,200WT,600WT(x2),FAT,EMA,IMF,Genomics

A really soft doing Genius son if you are looking for a bull to breed stock that finish a little earlier the Genius sons are it, have a look at the impressive spread of carcass ebv's. Top 5% 200 day wt, rib & rump fat ,top 10 % imf & top 15% ema.

Purchaser: ..... Price \$ .....



# KIDMAN DETROIT S152 (S)

Tattoo: S152

Born: 14/09/2021

Rego No: KIDS152

DAYS CALIBRE G74 (PP)  
 KIDMAN EXCEPTIONAL K066 (AI) (PP)  
 KIDMAN MARJORIE E106 (P)  
 Sire: **KIDMAN MONARO N063 (PP)**  
 KIDMAN SECURITY G1 (AI) (P)  
 KIDMAN COUNTESS J204 (P)  
 KIDMAN COUNTESS F125 (AI) (P)

ALLENDALE ANZAC E114 (PP)  
 INJEMIRA ANZAC H002 (PP)  
 INJEMIRA BEGONIA E087 (TW) (P)  
 Dam: **KIDMAN LADY ECLIPSE M211 (AI) (P)**  
 DEBARRY EDEN (PP)  
 KIDMAN LADY ECLIPSE C151 (AI) (P)  
 KIDMAN LADY ECLIPSE A22 (AI) (P)

July 2023 Hereford BREEDPLAN																
CE	CE DTR	GL	BW	200	400	600	MCW	Milk	SS	DC	Cwt	EMA	Rib	RUM	RBY	IMF%
+0.2		-1.4	+3.2	+30	+49	+71	+59	+15	+2.3	-3.2	+46	+3.7	+1.3	+1.9	+0.2	+0.7
26%		58%	63%	64%	65%	68%	58%	47%	73%	32%	56%	47%	50%	55%	48%	51%
\$ Index Values:			Southern Self Replacing: +\$122				Northern Self Replacing: +\$112				Southern Baldy Maternal: +\$119			Northern Baldy Terminal: +\$85		

Traits Observed: 400WT,600WT,SS,FAT,EMA,IMF,Genomics

Detroit is a well balanced Monaro son offering a good even muscle pattern and solid structure, he goes back to some of the breed leading sires in Waterhouse, Goldrush, Anzac & Vincent.

Purchaser: ..... Price \$ .....



# KIDMAN HOLBROOK S060 (PP)

Tattoo: S060

Born: 18/09/2021

Rego No: KIDS060

Sire: **KIDMAN MONARO N063 (PP)**  
 KIDMAN SECURITY G1 (AI) (P)  
 KIDMAN COUNTESS J204 (P)  
 KIDMAN COUNTESS F125 (AI) (P)

Dam: **KIDMAN TWIGHLIGHT K239 (P)**  
 TYCOLAH COBBADAH (P)  
 KIDMAN TWIGHLIGHT B188 (P)  
 KIDMAN TWIGHLIGHT X239 (P)

July 2023 Hereford BREEDPLAN																
CE	CE DTR	GL	BW	200	400	600	MCW	Milk	SS	DC	Cwt	EMA	Rib	RUM	RBY	IMF%
+0.6		-0.5	+4.5	+27	+39	+62	+65	+17	+2.6	-3.6	+34	+2.7	+0.4	+0.8	+0.3	+0.5
27%		58%	64%	65%	67%	70%	60%	50%	74%	32%	58%	49%	53%	57%	51%	53%
\$ Index Values:		Southern Self Replacing: +\$90					Northern Self Replacing: +\$75			Southern Baldy Maternal: +\$91			Northern Baldy Terminal: +\$69			

Traits Observed: 400WT,600WT,SS,FAT,EMA,IMF,Genomics

Holbrook is the ultimate example of temperament he exudes a great disposition. He also has balance and great structure.

Purchaser: .....

Price \$ .....



# KIDMAN WANGMAN S163 (PP)



Tattoo: S163

Born: 08/08/2021

Rego No: KIDS163

Sire: **KIDMAN EVIDENT Q098 (AI) (PP)**  
 TYCOLAH GOLD RUSH (S)  
 KIDMAN DUCHESS H236 (AI) (P)  
 KIDMAN DUCHESS A210 (AI) (P)

Dam: **KIDMAN LADY ECLIPSE Q049 (AI) (P)**  
 WIRRUNA ELDER E327 (AI) (ET) (P)  
 KIDMAN LADY ECLIPSE L109 (P)  
 KIDMAN VANITY J272 (P)

July 2023 Hereford BREEDPLAN																
CE	CE DTR	GL	BW	200	400	600	MCW	Milk	SS	DC	Cwt	EMA	Rib	RUM	RBY	IMF%
+5.9	+4.1	-2.4	-0.8	+24	+30	+36	+6	+23	+2.8	-5.5	+32	+1.9	+2.7	+3.5	-0.9	+1.3
36%	31%	64%	63%	64%	65%	68%	59%	51%	71%	36%	57%	49%	53%	57%	50%	54%
\$ Index Values:		Southern Self Replacing: +\$109					Northern Self Replacing: +\$106			Southern Baldy Maternal: +\$113			Northern Baldy Terminal: +\$79			

Traits Observed: 400WT,600WT,SS,FAT,EMA,IMF,Genomics

Here we have a genuine heifer bull with loads of low birth weight genetics in his pedigree. Wangman offers softness and balance in a nice package. Top 5% b/w & rib & rump fat, top 10% milk & top 20% GL & imf

Purchaser: .....

Price \$ .....



# KIDMAN ARCADE S206 (PP)

Tattoo: S206

Born: 20/11/2021

Rego No: KIDS206

Sire: **GRATHLYN PAGAN (AI) (PP)**  
 HEATHERDALE BONANZA Z48 (AI) (P)  
 GRATHLYN CHANCE F35 (P)  
 GRATHLYN CHANCE B30 (P)

Dam: **KIDMAN SHAMROCK L072 (P)**  
 TYCOLAH GOLD RUSH (S)  
 KIDMAN SHAMROCK H167 (AI) (P)  
 KIDMAN SHAMROCK E257 (AI) (ET) (P)

July 2023 Hereford BREEDPLAN																
CE	CE DTR	GL	BW	200	400	600	MCW	Milk	SS	DC	Cwt	EMA	Rib	RUM	RBY	IMF%
+0.0	+2.0	-1.6	+6.8	+41	+73	+105	+89	+11	+2.9	-4.8	+67	+3.3	+2.1	+2.7	+0.0	+1.2
36%	32%	62%	63%	63%	63%	65%	57%	52%	63%	35%	54%	47%	52%	55%	46%	52%
\$ Index Values:		Southern Self Replacing: +\$186					Northern Self Replacing: +\$170			Southern Baldy Maternal: +\$175			Northern Baldy Terminal: +\$119			

Traits Observed: 400WT,600WT,SS,FAT,EMA,IMF,Genomics

Arcade is the youngest bull in the draft, he possesses good length and balance with beautiful dark skin and hair. Top 5% 600 day wt & rib fat top 10% 400 day wt top 15% CW & 200 day wt top 20% imf & scrotal

Purchaser: .....

Price \$ .....





# KIDMAN ARNIE S140 (AI) (PP)

Tattoo: S140

Born: 15/08/2021

Rego No: KIDS140

ALLENDALE WATERHOUSE D1 (PP)  
 DAYS CALIBRE G74 (PP)  
 ALLENDALE DAWN C62 (AI) (P)  
 Sire: **KIDMAN MACUMBA K036 (AI) (PP)**  
 MOUNT DIFFICULT JUMBO Y74 (AI) (P)  
 MOUNT DIFFICULT NOBLESSE C195 (P)  
 MOUNT DIFFICULT NOBLESSE W391 (P)

SOUTH BUKALONG WALLACE 2 (P)  
 WIRRUNA ELDER E327 (AI) (ET) (P)  
 WIRRUNA MADAM A10 (AI) (ET) (P)  
 Dam: **KIDMAN MINERVA QUEEN L117 (P)**  
 TYCOLAH GOLD RUSH (S)  
 KIDMAN MINERVA QUEEN H159 (AI) (P)  
 KIDMAN MINERVA QUEEN E30 (P)

July 2023 Hereford BREEDPLAN																
CE	CE DTR	GL	BW	200	400	600	MCW	Milk	SS	DC	Cwt	EMA	Rib	RUM	RBY	IMF%
+1.3	+5.6	-0.7	+7.7	+43	+72	+101	+97	+14	+2.5	-2.7	+63	+4.5	+0.2	+0.1	+1.4	+0.6
39%	33%	74%	65%	65%	65%	68%	59%	55%	72%	35%	57%	49%	52%	56%	50%	52%
\$ Index Values:			Southern Self Replacing: +\$165				Northern Self Replacing: +\$147				Southern Baldy Maternal: +\$167			Northern Baldy Terminal: +\$119		

Traits Observed: GL,400WT,600WT,SS,FAT,EMA,IMF,Genomics

Arnie exudes power and performance he displays tremendous length growth and performance ideal for bullock or long fed production. Top 10% 200,400 & 600 day wts top 20% ce dtrs & cwt

Purchaser: .....

Price \$ .....



# KIDMAN HONDURAS S110 (AI) (PP)



Tattoo: S110

Born: 19/08/2021

Rego No: KIDS110

SCHU-LAR ON TARGET 22S (IMP USA) (ET) (P)  
 KCF BENNETT ENCORE Z311 (ET) (PP)  
 KCF MISS REVOLUTION X338 (ET) (P)  
 Sire: **NJW 79Z Z311 ENDURE 173D (IMP USA) (ET) (PP)**  
 NJW 73S M326 TRUST 100W ET (IMP USA) (ET) (P)  
 BW 91H 100W RITA 79Z (ET) (P)  
 REMITALL RITA 91H (P)

SOUTH BUKALONG WALLACE 2 (P)  
 WIRRUNA ELDER E327 (AI) (ET) (P)  
 WIRRUNA MADAM A10 (AI) (ET) (P)  
 Dam: **KIDMAN LADY ECLIPSE L109 (P)**  
 KIDMAN LEGACY D155 (S)  
 KIDMAN VANITY J272 (P)  
 KIDMAN VANITY F87 (P)

July 2023 Hereford BREEDPLAN																
CE	CE DTR	GL	BW	200	400	600	MCW	Milk	SS	DC	Cwt	EMA	Rib	RUM	RBY	IMF%
+8.1	+7.6	+0.9	+1.5	+36	+54	+73	+44	+19	+1.8	-2.5	+54	+4.5	+1.6	+1.0	+0.3	+1.8
48%	37%	75%	69%	69%	68%	70%	63%	60%	74%	37%	61%	54%	57%	59%	53%	58%
\$ Index Values:			Southern Self Replacing: +\$166				Northern Self Replacing: +\$155				Southern Baldy Maternal: +\$182			Northern Baldy Terminal: +\$130		

Traits Observed: GL,400WT,600WT,SS,FAT,EMA,IMF,Genomics

Another bull suited for heifer joining sired by Endure and out of a good producing Elder female, he has a good muscle pattern in a well balanced package. Top 5% calving ease dtrs& imf, top 15% calv/ease dir, birth wt & rib fat

Purchaser: .....

Price \$ .....



# KIDMAN KEYSTONE S119 (HPR) (AI) (PP)

Tattoo: S119

Born: 25/08/2021

Rego No: KIDS119

SCHU-LAR ON TARGET 22S (IMP USA) (ET) (P)  
 KCF BENNETT ENCORE Z311 (ET) (PP)  
 KCF MISS REVOLUTION X338 (ET) (P)  
 Sire: **NJW 79Z Z311 ENDURE 173D (IMP USA) (ET) (PP)**  
 NJW 73S M326 TRUST 100W ET (IMP USA) (ET) (P)  
 BW 91H 100W RITA 79Z (ET) (P)  
 REMITALL RITA 91H (P)

KOANUI ROCKET 0219 (IMP NZL) (P)  
 MARKOWEN FEDERER (AI) (PP)  
 MARKOWEN DIANA D19 (AI) (P)  
 Dam: **KIDMAN BELLONA M231 (HPR) (P)**  
 KIDMAN VAN DER HUM G115 (AI) (P)  
 KIDMAN BELLONA J158 (HPR) (P)  
 KIDMAN BELLONA C3 (P)

July 2023 Hereford BREEDPLAN																
CE	CE DTR	GL	BW	200	400	600	MCW	Milk	SS	DC	Cwt	EMA	Rib	RUM	RBY	IMF%
+3.8	+4.6	+4.7	+2.8	+40	+70	+90	+59	+20	+4.5	-5.9	+62	+5.8	+2.3	+2.2	-0.1	+1.9
47%	36%	74%	69%	69%	68%	70%	63%	60%	74%	36%	61%	54%	56%	59%	53%	58%
\$ Index Values:			Southern Self Replacing: +\$195				Northern Self Replacing: +\$181				Southern Baldy Maternal: +\$190			Northern Baldy Terminal: +\$131		

Traits Observed: GL,400WT,600WT,SS,FAT,EMA,IMF,Genomics

Here we have one of the best Endures in this offering, if he wasn't a performance registered bull he would be in line for a stud. An Endure son with power and balance with that typical Endure muscle expression. Top 5% scrotal, rib fat & imf, top 15% rump fat, ema & 200 & 400 day wt & top 20% 600 day

Purchaser: .....

Price \$ .....



# KIDMAN ENHANCE S138 (AI) (PP)

Tattoo: S138

Born: 26/08/2021

Rego No: KIDS138

SCHU-LAR ON TARGET 22S (IMP USA) (ET) (P)  
KCF BENNETT ENCORE Z311 (ET) (PP)  
KCF MISS REVOLUTION X338 (ET) (P)

ALLENDALE ANZAC E114 (PP)  
INJEMIRA ANZAC H002 (PP)  
INJEMIRA BEGONIA E087 (TW) (P)

Sire: **NJW 79Z Z311 ENDURE 173D (IMP USA) (ET) (PP)**

Dam: **KIDMAN COUNTESS M156 (AI) (P)**

NJW 73S M326 TRUST 100W ET (IMP USA) (ET) (P)  
BW 91H 100W RITA 79Z (ET) (P)  
REMITALL RITA 91H (P)

KIDMAN LOTTO C21 (P)  
KIDMAN COUNTESS G142 (P)  
KIDMAN COUNTESS Y165 (P)

July 2023 Hereford BREEDPLAN

CE	CE DTR	GL	BW	200	400	600	MCW	Milk	SS	DC	Cwt	EMA	Rib	RUM	RBY	IMF%
+2.1	+4.2	+4.8	+7.3	+48	+81	+114	+101	+16	+2.5	-2.2	+70	+7.3	-0.4	-1.9	+2.7	+0.3
46%	35%	75%	68%	68%	68%	70%	63%	59%	74%	36%	60%	54%	56%	58%	52%	57%
\$ Index Values:		Southern Self Replacing: +\$193				Northern Self Replacing: +\$172				Southern Baldy Maternal: +\$197			Northern Baldy Terminal: +\$141			

Traits Observed: GL,400WT,600WT,SS,FAT,EMA,IMF,Genomics

These Endure sons would be ideal in a crossbreeding program if you are looking for that extra carcase quality in your herd. Enhance offers fantastic muscle in a well balanced package. Enhance S138 Had the largest raw ema measurement of his draft of 26 bulls. His ebvs back up those measurements. Top 5% ema, 200,400 & 600 day wt's & retail beef yield, top 15% cwt & all indexes.

Purchaser: .....

Price \$ .....



# KIDMAN OBRIEN S120 (AI) (PP)

Tattoo: S120

Born: 11/08/2021

Rego No: KIDS120

BOWEN TORNADO Z260 (AI) (ET) (PP)  
KIDMAN DICTATOR F115 (P)  
KIDMAN LIONESS B172 (P)

WIRRUNA ELDER E327 (AI) (ET) (P)  
KIDMAN TREATY J094 (P)  
KIDMAN MARITANA F138 (P)

Sire: **KIDMAN ADVANCER J312 (PP)**

Dam: **KIDMAN VIRGINIA N038 (P)**

KIDMAN COSMO Y46 (AI) (P)  
KIDMAN ADVANCE B221 (AI) (P)  
KIDMAN ADVANCE S80 (P)

TYCOLAH GOLD RUSH (S)  
KIDMAN VIRGINIA K258 (AI) (P)  
KIDMAN VIRGINIA A201 (AI) (P)

July 2023 Hereford BREEDPLAN

CE	CE DTR	GL	BW	200	400	600	MCW	Milk	SS	DC	Cwt	EMA	Rib	RUM	RBY	IMF%
+2.3	+3.2	-3.4	+4.9	+38	+55	+87	+82	+16	-0.3	-0.5	+56	+2.8	+0.7	+0.9	+0.2	+0.9
34%	26%	73%	66%	66%	66%	69%	60%	54%	72%	30%	57%	48%	52%	56%	50%	51%
\$ Index Values:		Southern Self Replacing: +\$128				Northern Self Replacing: +\$110				Southern Baldy Maternal: +\$140			Northern Baldy Terminal: +\$106			

Traits Observed: GL,400WT,600WT,SS,FAT,EMA,IMF,Genomics

Advancer son who displays that extra length with softness to boot. Top 10% G/L

Purchaser: .....

Price \$ .....



# KIDMAN PEDDLER S095 (PP)

Tattoo: S095

Born: 07/11/2021

Rego No: KIDS095

DAYS CALIBRE G74 (PP)  
KIDMAN EXCEPTIONAL K066 (AI) (PP)  
KIDMAN MARJORIE E106 (P)

CB 57U CAN DOO 102Y (IMP CAN) (P)  
YAVENVALE KAHUNA K115 (AI) (PP)  
YAVENVALE LOCHIEL LADY D488 (P)

Sire: **KIDMAN MONARO N063 (PP)**

Dam: **KIDMAN DELUSION N113 (AI) (P)**

KIDMAN SECURITY G1 (AI) (P)  
KIDMAN COUNTESS J204 (P)  
KIDMAN COUNTESS F125 (AI) (P)

ALLENDALE TIMOR B120 (P)  
KIDMAN DELUSION K078 (P)  
KIDMAN DELUSION F133 (P)

July 2023 Hereford BREEDPLAN

CE	CE DTR	GL	BW	200	400	600	MCW	Milk	SS	DC	Cwt	EMA	Rib	RUM	RBY	IMF%
+0.4	+1.7	-1.4	+4.9	+35	+56	+88	+78	+17	+1.9	-3.0	+58	+3.8	+1.6	+2.2	+0.0	+1.8
29%	25%	58%	63%	64%	65%	68%	59%	47%	71%	32%	57%	47%	51%	55%	49%	53%
\$ Index Values:		Southern Self Replacing: +\$147				Northern Self Replacing: +\$131				Southern Baldy Maternal: +\$146			Northern Baldy Terminal: +\$108			

Traits Observed: 400WT,600WT,SS,FAT,EMA,IMF,Genomics

Here is a really classy Monaro son who should really be catalogued a little earlier than here. He has great phenotype along with depth and quality, the first two sons of N113 have sold for \$10,000 & \$8,000 . Top 10% imf top 20% rib & rump fat

Purchaser: .....

Price \$ .....





# KIDMAN BONAFIDE S168 (PP)

Tattoo: S168

Born: 07/09/2021

Rego No: KIDS168

KOANUI UNANIMOUS 0408 (P)  
KOANUI TECHNO 3062 (IMP NZL) (PP)  
KOANUI BLUSH 6455 (P)

ALLENDALE WATERHOUSE D1 (PP)  
DAYS CALIBRE G74 (PP)  
ALLENDALE DAWN C62 (AI) (P)

Sire: **GRATHLYN PAGAN (AI) (PP)**

Dam: **KIDMAN COUNTESS L226 (AI) (P)**

HEATHERDALE BONANZA Z48 (AI) (P)  
GRATHLYN CHANCE F35 (P)  
GRATHLYN CHANCE B30 (P)

KIDMAN ARCHIBALD B198 (P)  
KIDMAN COUNTESS G126 (AI) (P)  
KIDMAN COUNTESS C19 (P)

July 2023 Hereford BREEDPLAN																
CE	CE DTR	GL	BW	200	400	600	MCW	Milk	SS	DC	Cwt	EMA	Rib	RUM	RBY	IMF%
-0.1	+2.6	-1.9	+4.5	+35	+62	+85	+79	+12	+2.7	-2.8	+59	+5.5	+2.0	+3.0	+0.0	+1.9
37%	34%	63%	64%	64%	64%	66%	58%	52%	69%	36%	56%	47%	52%	54%	49%	52%
\$ Index Values:			Southern Self Replacing: +\$147				Northern Self Replacing: +\$141				Southern Baldy Maternal: +\$145			Northern Baldy Terminal: +\$107		

Traits Observed: 400WT,600WT,SS,FAT,EMA,IMF,Genomics

A stylish Pagan son here in a real quality soft package along with some really handy ebv's, maternal half brothers have sold in previous sales to \$8,000. Top 5% rib, rump fat & imf top 15% ema

Purchaser: ..... Price \$ .....



# KIDMAN PAYROLL S150 (PP)

Tattoo: S150

Born: 18/11/2021

Rego No: KIDS150

DAYS CALIBRE G74 (PP)  
KIDMAN EXCEPTIONAL K066 (AI) (PP)  
KIDMAN MARJORIE E106 (P)

ALLENDALE UNRIVALLED (TW) (P)  
ALLENDALE TIMOR B120 (P)  
ALLENDALE FANCY V206 (P)

Sire: **KIDMAN MONARO N063 (PP)**

Dam: **KIDMAN DELUSION K078 (P)**

KIDMAN SECURITY G1 (AI) (P)  
KIDMAN COUNTESS J204 (P)  
KIDMAN COUNTESS F125 (AI) (P)

TYCOLAH GOLD RUSH (S)  
KIDMAN DELUSION F133 (P)  
KIDMAN DELUSION Y34 (AI) (P)

July 2023 Hereford BREEDPLAN																
CE	CE DTR	GL	BW	200	400	600	MCW	Milk	SS	DC	Cwt	EMA	Rib	RUM	RBY	IMF%
-3.2	-0.4	-0.2	+6.9	+39	+64	+91	+85	+15	+2.4	-2.6	+52	+3.4	+1.2	+1.7	+0.3	+0.8
33%	30%	53%	54%	58%	63%	66%	57%	48%	69%	32%	55%	46%	50%	54%	48%	48%
\$ Index Values:			Southern Self Replacing: +\$128				Northern Self Replacing: +\$112				Southern Baldy Maternal: +\$121			Northern Baldy Terminal: +\$88		

Traits Observed: 400WT,600WT,SS,FAT,EMA,IMF

Another nice Pagan of similar type to the previos two bulls.

Purchaser: ..... Price \$ .....



# KIDMAN GUNDY S201 (AI) (TW) (P)

Tattoo: S201

Born: 24/08/2021

Rego No: KIDS201

BOWEN TORNADO Z260 (AI) (ET) (PP)  
KIDMAN DICTATOR F115 (P)  
KIDMAN LIONESS B172 (P)

KIDMAN DICTATOR F115 (P)  
KIDMAN PACKAGE J305 (PP)  
KIDMAN COUNTESS C19 (P)

Sire: **KIDMAN ADVANCER J312 (PP)**

Dam: **KIDMAN SHAMROCK M154 (P)**

KIDMAN COSMO Y46 (AI) (P)  
KIDMAN ADVANCE B221 (AI) (P)  
KIDMAN ADVANCE S80 (P)

KIDMAN SECURITY G1 (AI) (P)  
KIDMAN SHAMROCK J202 (P)  
KIDMAN SHAMROCK F72 (AI) (P)

July 2023 Hereford BREEDPLAN																
CE	CE DTR	GL	BW	200	400	600	MCW	Milk	SS	DC	Cwt	EMA	Rib	RUM	RBY	IMF%
+0.4	+0.3	-2.3	+5.3	+38	+63	+95	+89	+12	+1.0	-1.1	+60	+3.8	+0.5	+0.4	+0.8	+1.0
34%	26%	56%	60%	60%	62%	61%	53%	49%	60%	29%	52%	43%	48%	51%	44%	48%
\$ Index Values:			Southern Self Replacing: +\$145				Northern Self Replacing: +\$129				Southern Baldy Maternal: +\$148			Northern Baldy Terminal: +\$111		

Traits Observed: 400WT,600WT,SS,FAT,EMA,IMF

Gundy is a double cross of Dictator, he has tremendous length and is literally as long as a train, length equals weight weight equals \$\$\$\$. Top 15% for 600 day wt & top 20% for 200 day wt

Purchaser: ..... Price \$ .....



# KIDMAN ASHTON S091 (P)

Tattoo: S091

Born: 09/11/2021

Rego No: KIDS091

KOANUI UNANIMOUS 0408 (P)  
 KOANUI TECHNO 3062 (IMP NZL) (PP)  
 KOANUI BLUSH 6455 (P)

HF 4L BEYOND 36N (IMP CAN) (PP)  
 NOVA QUASAR (AI) (P)  
 NOVA FLAMES CORISANDE (AI) (P)

Sire: **GRATHLYN PAGAN (AI) (PP)**

Dam: **KIDMAN ASTER GIRL H122 (P)**

HEATHERDALE BONANZA Z48 (AI) (P)  
 GRATHLYN CHANCE F35 (P)  
 GRATHLYN CHANCE B30 (P)

KIDMAN PATERSON V141 (P)  
 KIDMAN ASTER GIRL D187 (P)  
 KIDMAN ASTER GIRL A176 (P)

July 2023 Hereford BREEDPLAN																
CE	CE DTR	GL	BW	200	400	600	MCW	Milk	SS	DC	Cwt	EMA	Rib	RUM	RBY	IMF%
-3.1	-3.3	+0.2	+7.8	+42	+67	+98	+88	+15	+2.4	-1.3	+59	+4.3	-0.2	-0.6	+2.1	+0.0
32%	29%	54%	52%	54%	60%	58%	50%	45%	54%	31%	49%	41%	45%	48%	41%	45%
\$ Index Values:			Southern Self Replacing: +\$135				Northern Self Replacing: +\$116				Southern Baldy Maternal: +\$130			Northern Baldy Terminal: +\$95		

Traits Observed: 400WT

This Pagan son is only a baby being the second youngest catalogued in this offering. He offers tremendous growth for age and will grow into a awesome individual. H122 has produced sons selling to \$10,000. Top 5% retail beef yield top 10% 200 day wt & top 15% 400 day wt.

Purchaser: ..... Price \$ .....





# Poll Hereford Females



## KIDMAN MARITANA LASS M084 (P)

**Tattoo: M084**

**Born: 15/06/2016**

**Rego No: KIDM084**

BOWEN TORNADO Z260 (AI) (ET) (PP)  
 KIDMAN DICTATOR F115 (P)  
 KIDMAN LIONESS B172 (P)

KIDMAN BRADMAN W101 (AI) (P)  
 KIDMAN INVINCIBLE A243 (PP)  
 DIMBY AMETHYST 28 (P)

Sire: **KIDMAN PACKAGE J305 (PP)**

Dam: **KIDMAN MARITANA LASS E204 (AI) (P)**

KIDMAN LIONHEART A93 (AI) (P)  
 KIDMAN COUNTESS C19 (P)  
 KIDMAN COUNTESS Z161 (AI) (P)

KIDMAN FORWARD Z69 (AI) (P)  
 KIDMAN MARITANA LASS B6 (P)  
 KIDMAN MARITANA LASS Y191 (AI) (P)

July 2023 Hereford BREEDPLAN

CE	CE DTR	GL	BW	200	400	600	MCW	Milk	SS	DC	Cwt	EMA	Rib	RUM	RBY	IMF%	
+2.4	+0.4	-2.4	+6.5	+35	+54	+80	+87	+3	+1.8	-2.2	+43	+2.5	-0.3	-0.8	+0.9	+0.5	
30%	25%	54%	56%	59%	59%	60%	53%	54%	56%	30%	51%	42%	47%	51%	44%	48%	
\$ Index Values:			Southern Self Replacing: +\$122				Northern Self Replacing: +\$109				Southern Baldy Maternal: +\$125			Northern Baldy Terminal: +\$95			

**Traits Observed:**

A nice package female with a beautiful skin and hair, depth of body and nice lines. Bull calf born 12/4/23 by Kidman Monaro N063

Purchaser: .....

Price \$ .....



## KIDMAN BELLONA N200 (P)

**Tattoo: N200**

**Born: 17/08/2017**

**Rego No: KIDN200**

KIDMAN ARCHIBALD B198 (P)  
 KIDMAN BLOCKADE G128 (AI) (P)  
 KIDMAN VANITY C36 (P)

KARINA CHERRY Z8 (PP)  
 TYCOLAH GOLD RUSH (S)  
 TYCOLAH COUNTESS Z04 (P)

Sire: **KIDMAN SELECT 037 (PP)**

Dam: **KIDMAN BELLONA J141 (AI) (P)**

ALLENDALE TIMOR B120 (P)  
 KIDMAN COUNTESS E117 (P)  
 KIDMAN COUNTESS Y165 (P)

BOWEN TORNADO Z260 (AI) (ET) (PP)  
 KIDMAN BELLONA E110 (P)  
 KIDMAN BELLONA Y147 (AI) (P)

July 2023 Hereford BREEDPLAN

CE	CE DTR	GL	BW	200	400	600	MCW	Milk	SS	DC	Cwt	EMA	Rib	RUM	RBY	IMF%	
-0.2	+2.8	-3.2	+4.6	+32	+48	+68	+63	+11	+2.0	-2.1	+43	+3.7	+0.6	+0.4	+1.3	+0.3	
30%	26%	57%	57%	61%	61%	64%	56%	56%	59%	30%	54%	45%	50%	54%	47%	49%	
\$ Index Values:			Southern Self Replacing: +\$112				Northern Self Replacing: +\$104				Southern Baldy Maternal: +\$110			Northern Baldy Terminal: +\$79			

**Traits Observed:**

Long feminine Select daughter who goes back to Gold Rush & Tornado on her dams side. Very impressive The Ranch Remington bull calf at foot born 24/6/23

Purchaser: .....

Price \$ .....



# Poll Hereford Females



## KIDMAN N284 (P)

Tattoo: N284

Born: 02/10/2017

Rego No: KIDN284

ALLENDALE WATERHOUSE D1 (PP)  
 DAYS CALIBRE G74 (PP)  
 ALLENDALE DAWN C62 (AI) (P)  
 Sire: **KIDMAN EXCEPTIONAL K066 (AI) (PP)**  
 KIDMAN COSMO B25 (AI) (ET) (P)  
 KIDMAN MARJORIE E106 (P)  
 KIDMAN MARJORIE A231 (AI) (P)

SOUTH BUKALONG WALLACE 2 (P)  
 WIRRUNA ELDER E327 (AI) (ET) (P)  
 WIRRUNA MADAM A10 (AI) (ET) (P)  
 Dam: **KIDMAN COUNTESS H260 (P)**  
 TYCOLAH GOLD RUSH (S)  
 KIDMAN COUNTESS F53 (P)  
 KIDMAN COUNTESS Y165 (P)

July 2023 Hereford BREEDPLAN																
CE	CE DTR	GL	BW	200	400	600	MCW	Milk	SS	DC	Cwt	EMA	Rib	RUM	RBY	IMF%
+4.6	+5.9	+1.3	+4.5	+33	+49	+73	+63	+14	+2.5	-2.4	+48	+3.4	+0.7	+1.1	+0.5	+0.6
38%	33%	63%	60%	62%	62%	64%	57%	58%	58%	35%	55%	47%	52%	56%	49%	52%
\$ Index Values:			Southern Self Replacing: +\$132				Northern Self Replacing: +\$121				Southern Baldy Maternal: +\$142			Northern Baldy Terminal: +\$102		

**Traits Observed:**

This nice Exceptional daughter displays depth of body and capacity. Impressive bull calf at foot born 16/7/23 by Tobruk Regent.

Purchaser: ..... Price \$ .....



## KIDMAN MISS GUNN R127 (P)

Tattoo: R127

Born: 06/04/2020

Rego No: KIDR127

OTAPAWA SPARK 3060 (IMP NZL) (AI) (ET) (P)  
 WIRRUNA JEANS J134 (AI) (PP)  
 WIRRUNA CORA C394 (P)  
 Sire: **WIRRUNA LEGO L395 (PP)**  
 WIRRUNA ECHUCA E99 (AI) (P)  
 WIRRUNA HYACINTH H250 (P)  
 WIRRUNA HYACINTH C28 (AI) (P)

ALLENDALE TIMOR B120 (P)  
 KIDMAN AGENT J002 (P)  
 KIDMAN MINNY B65 (TW) (P)  
 Dam: **KIDMAN MISS GUNN N171 (P)**  
 WIRRUNA ELDER E327 (AI) (ET) (P)  
 KIDMAN MISS GUNN H192 (P)  
 KIDMAN MISS GUNN F61 (P)

July 2023 Hereford BREEDPLAN																
CE	CE DTR	GL	BW	200	400	600	MCW	Milk	SS	DC	Cwt	EMA	Rib	RUM	RBY	IMF%
+4.8	+5.8	-0.6	+5.7	+43	+60	+88	+67	+20	+2.7	-3.4	+54	+2.7	+1.0	+1.2	+0.2	+0.7
30%	25%	49%	58%	64%	64%	68%	60%	52%	56%	32%	57%	45%	54%	59%	51%	54%
\$ Index Values:			Southern Self Replacing: +\$159				Northern Self Replacing: +\$141				Southern Baldy Maternal: +\$168			Northern Baldy Terminal: +\$118		

**Traits Observed:** 200WT,600WT,FAT,EMA,IMF

Large framed feminine Lego daughter, Lego sons have sold to \$22,000 at Kidman. Very good bull calf at foot born 19/7/23 by Tobruk Regent R10

Purchaser: ..... Price \$ .....



# Poll Hereford Females



## KIDMAN MISS CORRISANDE R018 (P)

Tattoo: R018

Born: 16/04/2020

Rego No: KIDR018

OTAPAWA SPARK 3060 (IMP NZL) (AI) (ET) (P)  
 WIRRUNA JEANS J134 (AI) (PP)  
 WIRRUNA CORA C394 (P)  
 Sire: **WIRRUNA LEGO L395 (PP)**  
 WIRRUNA ECHUCA E99 (AI) (P)  
 WIRRUNA HYACINTH H250 (P)  
 WIRRUNA HYACINTH C28 (AI) (P)

KIDMAN DICTATOR F115 (P)  
 KIDMAN ADVANCER J312 (PP)  
 KIDMAN ADVANCE B221 (AI) (P)  
 Dam: **KIDMAN MISS CORRISANDE N128 (AI) (P)**  
 WIRRUNA ELDER E327 (AI) (ET) (P)  
 KIDMAN MISS CORRISANDE J082 (P)  
 KIDMAN MISS CORRISANDE G039 (P)

July 2023 Hereford BREEDPLAN																
CE	CE DTR	GL	BW	200	400	600	MCW	Milk	SS	DC	Cwt	EMA	Rib	RUM	RBY	IMF%
+4.9	+5.5	-1.1	+6.1	+48	+68	+101	+71	+21	+2.5	-3.3	+65	+4.3	+1.1	+1.3	+1.1	+1.0
33%	27%	56%	60%	65%	65%	69%	61%	52%	58%	32%	58%	46%	55%	60%	52%	54%
\$ Index Values:			Southern Self Replacing: +\$195				Northern Self Replacing: +\$178				Southern Baldy Maternal: +\$202			Northern Baldy Terminal: +\$141		

Traits Observed: 200WT,600WT,FAT,EMA,IMF

R018 is a nice Lego daughter with some really handy ebv's to back her up. Top 5% 200 d/wt top 10% 600 d/wt top 15% 400 d/wt & all indexes. Bull calf at foot by Bowen QC born 2/7/23

Purchaser: ..... Price \$ .....



## KIDMAN COUNTESS R094 (P)

Tattoo: R094

Born: 17/08/2020

Rego No: KIDR094

TH 122 711 VICTOR 719T (IMP USA) (P)  
 H VICTOR 0136 (IMP USA) (P)  
 H LADY EXCELL 824 ET (P)  
 Sire: **TALBALBA THE HOFF L076 (AI) (PP)**  
 KESWICK DEVIATE X177 (AI) (P)  
 KESWICK IRISH ROSE D091 (P)  
 KESWICK IRISH ROSE Y084 (P)

ALLENDALE WATERHOUSE D1 (PP)  
 DAYS CALIBRE G74 (PP)  
 ALLENDALE DAWN C62 (AI) (P)  
 Dam: **KIDMAN COUNTESS L226 (AI) (P)**  
 KIDMAN ARCHIBALD B198 (P)  
 KIDMAN COUNTESS G126 (AI) (P)  
 KIDMAN COUNTESS C19 (P)

July 2023 Hereford BREEDPLAN																
CE	CE DTR	GL	BW	200	400	600	MCW	Milk	SS	DC	Cwt	EMA	Rib	RUM	RBY	IMF%
+3.6	+3.9	-2.0	+5.0	+38	+65	+93	+96	+6	+3.4	-2.4	+58	+4.4	-0.3	-0.1	+1.4	+0.7
36%	31%	58%	61%	65%	65%	69%	61%	52%	61%	32%	58%	48%	56%	60%	53%	55%
\$ Index Values:			Southern Self Replacing: +\$160				Northern Self Replacing: +\$153				Southern Baldy Maternal: +\$166			Northern Baldy Terminal: +\$124		

Traits Observed: 200WT,600WT,FAT,EMA,IMF

Hoff Daughter exhibiting length, good structure, femininity & a nice neck & shoulder setup. Bull calf at foot born 11/4/23 by WIRRUNA Querido Q266

Purchaser: ..... Price \$ .....



## KIDMAN COUNTESS R086 (P)

Tattoo: R086

Born: 07/09/2020

Rego No: KIDR086

TH 122 711 VICTOR 719T (IMP USA) (P)  
 H VICTOR 0136 (IMP USA) (P)  
 H LADY EXCELL 824 ET (P)  
 Sire: **TALBALBA THE HOFF L076 (AI) (PP)**  
 KESWICK DEVIATE X177 (AI) (P)  
 KESWICK IRISH ROSE D091 (P)  
 KESWICK IRISH ROSE Y084 (P)

MATARIKI HOLY - SMOKE (IMP NZL) (P)  
 YARRANDABBIE JINGLE J018 (AI) (PP)  
 OSULLIVANS FANCY A65 (AI) (ET) (P)  
 Dam: **KIDMAN COUNTESS M304 (AI) (ET) (P)**  
 KIDMAN ARCHIBALD B198 (P)  
 KIDMAN COUNTESS G126 (AI) (P)  
 KIDMAN COUNTESS C19 (P)

July 2023 Hereford BREEDPLAN																
CE	CE DTR	GL	BW	200	400	600	MCW	Milk	SS	DC	Cwt	EMA	Rib	RUM	RBY	IMF%
+0.7	+0.0	-1.4	+5.8	+43	+70	+96	+88	+8	+3.3	-2.1	+63	+4.7	-0.6	-0.5	+2.2	+0.0
34%	27%	56%	60%	64%	65%	69%	60%	51%	60%	31%	57%	46%	54%	59%	51%	54%
\$ Index Values:			Southern Self Replacing: +\$159				Northern Self Replacing: +\$151				Southern Baldy Maternal: +\$157			Northern Baldy Terminal: +\$115		

Traits Observed: 200WT,600WT,FAT,EMA,IMF

A Hoff daughter on her first calf offering a quality package with a heifer calf at foot born 2/5/23 by Kidman Evident Q098.

Purchaser: ..... Price \$ .....

# Poll Hereford Females



## KIDMAN TWIGHLIGHT T203 (PP)

Tattoo: T203

Born: 28/10/2022

Rego No: KIDT203

KOANUI UNANIMOUS 0408 (P)  
KOANUI TECHNO 3062 (IMP NZL) (PP)  
KOANUI BLUSH 6455 (P)

MERAWAH ELLIOTT F115 (PP)  
KERLSON PINES JESTER J99 (PP)  
KERLSON PINES U-BEAUTY C34 (P)

Sire: **GRATHLYN PAGAN (AI) (PP)**

Dam: **KIDMAN TWIGHLIGHT M240 (P)**

HEATHERDALE BONANZA Z48 (AI) (P)  
GRATHLYN CHANCE F35 (P)  
GRATHLYN CHANCE B30 (P)

BOWEN TORNADO Z260 (AI) (ET) (PP)  
KIDMAN TWIGHLIGHT F146 (P)  
KIDMAN TWIGHLIGHT B188 (P)

July 2023 Hereford BREEDPLAN																
CE	CE DTR	GL	BW	200	400	600	MCW	Milk	SS	DC	Cwt	EMA	Rib	RUM	RBY	IMF%
+0.4		-0.8	+6.0	+38	+56	+81	+69	+19	+2.5	-2.3	+47	+3.7	+1.0	+1.1	+1.0	+0.1
27%		48%	54%	55%	54%	55%	48%	44%	53%	27%	45%	38%	42%	45%	37%	42%
\$ Index Values:		Southern Self Replacing: +\$127				Northern Self Replacing: +\$112				Southern Baldy Maternal: +\$129			Northern Baldy Terminal: +\$92			

Traits Observed: 200WT

Twilight T203 is a class female with plenty of black type, her dam M240 is out of the same cow F146 who was the dam of Kidman Palisade H279 who has done a great job at Injemira. M240's first son sold for \$16,000 in our 2021 sale, sired by our beautiful skinned sire Pagan.

Purchaser: .....

Price \$ .....



## KIDMAN ALBIA T081 (AI) (PP)

Tattoo: T081

Born: 18/08/2022

Rego No: KIDT081

MSU MF HUDSON 19H (P)  
SHF YORK 19H Y02 (P)  
LOEWEN MISS P20 10W (P)

CB 57U CAN DOO 102Y (IMP CAN) (P)  
YAVENVALE KAHUNA K115 (AI) (PP)  
YAVENVALE LOCHIEL LADY D488 (P)

Sire: **CHURCHILL BROADWAY 858F (IMP USA) (PP)**

Dam: **KIDMAN N097 (P)**

KCF BENNETT ENCORE Z311 (ET) (PP)  
CHURCHILL LADY 640D (P)  
CHURCHILL LADY 4164B (H#)

WIRRUNA ELDER E327 (AI) (ET) (P)  
KIDMAN K249 (P)  
KIDMAN ALBIA G297 (AI) (P)

July 2023 Hereford BREEDPLAN																
CE	CE DTR	GL	BW	200	400	600	MCW	Milk	SS	DC	Cwt	EMA	Rib	RUM	RBY	IMF%
+7.8	+5.4	-1.2	+5.0	+50	+77	+114	+90	+18	+4.0	-4.1	+75	+2.9	+0.9	-0.1	+0.4	+1.1
38%	27%	75%	68%	68%	66%	66%	58%	53%	64%	32%	56%	49%	53%	53%	42%	53%
\$ Index Values:		Southern Self Replacing: +\$212				Northern Self Replacing: +\$190				Southern Baldy Maternal: +\$224			Northern Baldy Terminal: +\$160			

Traits Observed: GL, 200WT, Genomics

Albia T081 is out of a female in N097 who is really setting herself up as one of our leading females her first two sons selling for \$12,000 & \$18,000 and another as lot 10 in this sale. T081 was one of the heaviest heifers at weaning weighing 354kg. Top 1% 200 d/wt top 5% 400 & 600 d/wt, scrotal, cwt & all indexes top 20% for both calving ease

Purchaser: .....

Price \$ .....



## KIDMAN ASTER GIRL T197 (PP)

Tattoo: T197

Born: 14/10/2022

Rego No: KIDT197

ALLENDALE ANZAC E114 (PP)  
WIRRUNA MATTY M288 (AI) (ET) (PP)  
WIRRUNA CIRCLE H13 (AI) (PP)

WIRRUNA JEANS J134 (AI) (PP)  
WIRRUNA LEGO L395 (PP)  
WIRRUNA HYACINTH H250 (P)

Sire: **KIDMAN JACKSON R056 (AI) (PP)**

Dam: **KIDMAN ASTER GIRL Q001 (P)**

KIDMAN LEGACY D155 (S)  
KIDMAN DAPHNE J165 (P)  
KIDMAN DAPHNE D35 (P)

KERLSON PINES JESTER J99 (PP)  
KIDMAN ASTER GIRL M311 (P)  
KIDMAN ASTER GIRL G33 (S)

July 2023 Hereford BREEDPLAN																
CE	CE DTR	GL	BW	200	400	600	MCW	Milk	SS	DC	Cwt	EMA	Rib	RUM	RBY	IMF%
+4.1	+3.3	-2.0	+5.4	+39	+58	+84	+61	+21	+2.9	-2.7	+56	+5.4	+1.0	+1.4	+1.5	+0.8
31%	26%	57%	62%	63%	62%	63%	54%	49%	60%	31%	51%	43%	48%	51%	41%	49%
\$ Index Values:		Southern Self Replacing: +\$161				Northern Self Replacing: +\$150				Southern Baldy Maternal: +\$168			Northern Baldy Terminal: +\$121			

Traits Observed: 200WT, Genomics

Aster Girl is another classy lot sired by homebred sire Jackson who has a really classy son coming on for next year. T197 is a heifers first calf and is a real star lot, have a look at her impressive ebv's. Top 20% SS, milk, ema & rby

Purchaser: .....

Price \$ .....





# KIDMAN MINERVA QUEEN T077 (AI) (PP)

Tattoo: T077

Born: 12/08/2022

Rego No: KIDT077

ALLENDALE WATERHOUSE D1 (PP)  
 DAYS ROBIN HOOD H38 (AI) (ET) (PP)  
 ALLENDALE FANCY U5 (AI) (P)  
 Sire: **HUNTER LAKES LANCELOT L103 (AI) (ET) (PP)**  
 SOUTH BUKALONG WALLACE 2 (P)  
 HUNTER LAKES FANCY F7 (AI) (P)  
 ALLENDALE FANCY D24 (AI) (P)

KIDMAN DICTATOR F115 (P)  
 KIDMAN ADVANCER J312 (PP)  
 KIDMAN ADVANCE B221 (AI) (P)  
 Dam: **KIDMAN MINERVA QUEEN N145 (AI) (P)**  
 KIDMAN CONQUER G076 (P)  
 KIDMAN MINERVA QUEEN J279 (P)  
 KIDMAN MINERVA QUEEN F226 (P)

July 2023 Hereford BREEDPLAN																
CE	CE DTR	GL	BW	200	400	600	MCW	Milk	SS	DC	Cwt	EMA	Rib	RUM	RBY	IMF%
+4.2	+4.7	-2.4	+2.6	+28	+45	+68	+51	+14	+1.0	-2.2	+45	+4.4	+1.1	+1.9	+0.9	+1.2
44%	37%	75%	68%	68%	67%	69%	60%	56%	67%	35%	57%	50%	54%	58%	49%	56%
\$ Index Values:			Southern Self Replacing: +\$141				Northern Self Replacing: +\$135			Southern Baldy Maternal: +\$148			Northern Baldy Terminal: +\$106			

Traits Observed: GL,200WT,Genomics

The last of a very nice lineup of future stud females T077 has nice structure with soft skin & hair, carcass ebv, all above average. Top 20% G/L

Purchaser: ..... Price \$ .....

## Lot 94 - Poll Hereford PTIC Heifers

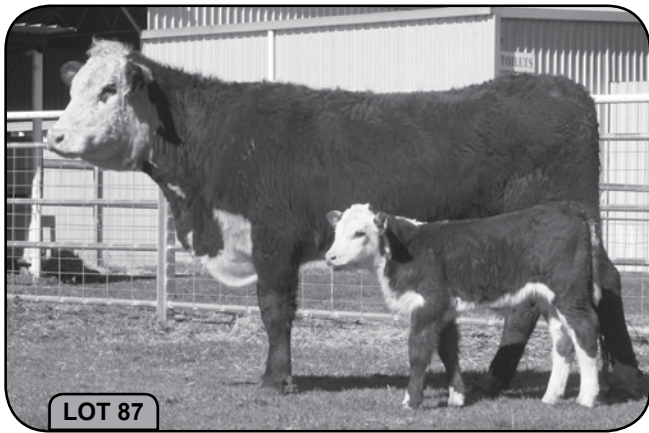
Purchaser: ..... Price \$ .....

## Lot 95 - Poll Hereford PTIC Heifers

Purchaser: ..... Price \$ .....

## Lot 96 - Poll Hereford PTIC Heifers

Purchaser: ..... Price \$ .....





**croakmedia**  
design | print | deliver

“ **LIANA** from Croak Media has always been **helpful, efficient** and has kept us **on time** and up to *speed* with our stud advertising and catalogue production. ”

*Randall & Nelson Carlow - Kidman Poll Herefords and Angus Studs*

- ✓ Friendly and reliable customer service
- ✓ Fast turn around to meet deadlines
- ✓ Print organisation and direct mail outs
- ✓ Life long experience in the cattle industry
- ✓ Based in Central West NSW
- ✓ Honest and competitive pricing

0401 327 445 | [info@croakmedia.com.au](mailto:info@croakmedia.com.au)



## At Cowra Toyota



***You Always get a Better Deal***

We Guarantee a Good Deal First Time Every Time with Personal Service from Owner Operators, Ron & Kelly (Carlow) Hattenfels

## Cowra Toyota

50-56 Young Rd, PO Box 552 Cowra 2794

Phone 02 63 421 988

Email: [sales@cowratoyota.com.au](mailto:sales@cowratoyota.com.au)

[www.cowratoyota.com.au](http://www.cowratoyota.com.au)



## BUYER'S INSTRUCTION SLIP

To be handed to the settling agent immediately after the sale (by all purchasers)

Buyer No.....

### PURCHASER DETAILS

Name/trading as: .....

Address: .....

.....

Tel/Mobile: ..... Email: .....

P.I.C.: .....

Signature: ..... Date: .....

### DELIVERY DETAILS

Lots purchased: .....

Insure for: (period)..... Amount (\$) .....

Transport arrangements: (*please provide a mud map*) .....

.....

.....

### STUD TRANSFER (POLL HEREFORDS)

Transfer registration to Herefords Australia Limited? (*Please Circle*) Y / N

If yes, please provide stud number:.....

AGENT TO INVOICE .....

## BUYER'S INSTRUCTION SLIP - Mud Map