



HAZELDEAN

LITCHFIELD

EST 1865



Hazeldean New England Bull Sale

77 Performance Bulls

Tuesday 8th August, TRLX, Tamworth, NSW

2023



HAZELDEAN
LITCHFIELD
EST 1865

Hazeldean New England Bull Sale 2023

We welcome you to our New England Bull Sale. Our catalogue is comprehensive and detailed providing you with as much detail as possible to aid your selection. Photos and videos will be available on AuctionsPlus and inspections welcome at any time.

- ☆ Super sound, very fertile, superior carcass
- ☆ Featuring sons of breed leading Hazeldean sires
- ☆ Exceptional temperaments and easy to handle
- ☆ Free delivery NSW

Please join us for dinner the night prior to sale in Tamworth at The Post Office Hotel, 8 Fitzroy St, Tamworth. Please RSVP to Jenni admin@hazeldean.com.au.



Hazeldean New England Bull Sale

Tuesday 8th August 2023

TRLX, Tamworth NSW
Commencing at 1pm

Inspection from 10.30am on sale day

Enquiries:

Ed Bradley: 0412 298 546

Bea Litchfield: 0427 933 103

Hazeldean Office: 02 6453 5555

admin@hazeldean.com.au

Selling Agents:

Nutrien Boultons Walcha

Mathew Larkings 0427 002 427

Nutrien Ag Solutions Tamworth

Joel Fleming 0467 725 195

Nutrien Studstock

John Settree 0408 297 368

Phone Bidding

Mat Larkings 0427 002 427

Nutrien
Livestock™

77 Performance Bulls



Account: Hazeldean Pty Ltd

ACN 000 012 760

ABN 33 000 012 760

Bull Deliveries

Hazeldean will arrange delivery of your bulls free of charge to the purchaser's property within NSW. For purchasers outside NSW bulls will be delivered to the closest major centre.

Catering

Lunch will be available prior to sale

We welcome you to stay on after the sale for refreshments.

Agent Rebate

A 2% rebate is offered to outside agents attending the sale to introduce and assist buyers.

To qualify, agents must:

- **Introduce the client in writing by email 12 hours prior to the sale;**
admin@hazeldean.com.au
- **attend the sale with the client**

AuctionsPlus™

Sale will be interfaced with AuctionsPlus.

Videos & photos on-line 10 days prior to sale plus final weights at:

www.hazeldean.com.au & www.auctionsplus.com.au

**Register on-line prior to the sale @ www.hazeldean.com.au
and we will have your bid card ready for you on the day**

Sale Day Safety

Visitors enter the pens at their own risk. Children under 16 years are not permitted to enter the pens unless supervised at all times.

All care is taken to ensure livestock pose minimum threat to us and our clients. However, we cannot predict nor guarantee their behaviour. All sale bulls have been assessed for temperament and are quiet to handle under normal circumstances. Sale day places bulls under stresses that are foreign to their normal routine. They are not used to having a crowd of people around them and so the behaviour of even the quietest bull under normal circumstances can be unpredictable. Bulls may also fight in the pens and at these times they are oblivious to people who may be in their way. Do not put pressure on the bulls in the yards and do not enter the yards unless you need to. If you would like assistance with inspections, please ask any Hazeldean staff member or agent assisting with the sale.

Be sure of a catalogue – Bring this one with you

Disclaimer All reasonable care has been taken to ensure the information in this catalogue is correct at time of publication. The vendor makes no other representations about the accuracy, reliability or completeness of the information provided and does not assume any responsibility for the use or interpretation of the information.

Welcome to Hazeldean

Dear Cattlebreeders,

We are thrilled to welcome you to our fourth Hazeldean New England Bull Sale! We are excited to present to you top quality Angus genetics with a focus on traits of economic and commercial relevance.

As we all know, weather patterns can have a significant impact on the cattle industry, and predicted drier conditions can bring their own set of challenges. Our family at Hazeldean Angus has dedicated extensive efforts to ensure that the bulls on offer are well-equipped with a strong genetic foundation to handle the potential environmental challenges that lie ahead. We recognize the importance of economically viable traits that will not only help you weather the storm but also contribute to your long-term success. Our bulls have been bred and selected for fertility, calving ease, and adaptability in mind. We understand that these traits are critical for maintaining profitability and sustainability during periods of environmental stress.

Our focus is on traits that have commercial relevance, ensuring that the bulls you'll find at the sale are well-suited for various market demands. Whether you're looking to enhance carcass quality, improve growth rates, or drive strong maternal fertility, we've got you covered. Our commitment to providing bulls with exceptional genetics means that you can confidently invest in animals that will not only meet but exceed your commercial expectations.

The team has been raised predominantly on pasture with a short stint on grazing crops in the last couple of months leading up to the sale. They are not over fat but fit, healthy and ready to work. We are very pleased with the quality of the bulls on offer, both from a performance and phenotypic perspective. Offering industry leading EBVs relevant to current markets is a core focus at Hazeldean. We sell commercial feeder steers just like our clients - so we know what works. We take great pride in the impeccable temperaments of our cattle. Our bulls have been bred and managed to have docile personalities, making them easy to handle and work with.

Please mark your calendars and join us for the Hazeldean New England Bull Sale 2023. Together, let's navigate the challenges ahead, armed with the best Angus genetics and a shared commitment to thriving despite challenges beyond our control. We look forward to seeing you there!

All the best from Bea Litchfield, Ed Bradley, Jim and Libby Litchfield

Proven Genetic Performance

SELECT from a herd bred under commercial conditions.

Hazeldean cattle are bred under commercial conditions and share their paddocks with sheep. The main breeding herd is located in the foothills of the Snowy Mountains with long cold winters, severe frost and a late spring. Hazeldean females are expected to re-breed before the Spring flush and as such are selected for high fertility under low nutrition levels. They are well-known for their hardiness and ability to thrive. Their hardiness suits northern conditions also where animals must work in the heat and be capable of storing energy quickly as body fat and not fall in a heap after calving. With experience in the south and the north we know these are the sort of cattle that will perform in both environments.

INVEST in a cow herd with TRUE depth of breeding

The bulls bred at Hazeldean come from a 3500 strong female herd with unequalled depth of breeding spanning 60 years. Hazeldean cattle breed true to type and reflect their breeding heritage with uniform high performing calves that achieve premiums in all markets.

BOOST your herd's fertility

Hazeldean Angus are renowned for high fertility, and good mothering to give consistent and superior reproductive performance. Selection pressure on females to breed a live calf every year from 2 years of age is strict and any female who fails to do so for any reason is "out".

ACHIEVE higher prices at the saleyards.

Hazeldean blood animals command higher prices at market and are sought after by feedlotter and backgrounders.



Hazeldean Breeding and Management

Established in 1927, Hazeldean Angus is part of Hazeldean Pty Ltd, a pastoral enterprise owned and operated by the Litchfield family of Cooma, NSW since 1865. Hazeldean provides the beef industry with large numbers of high quality, high performing stud and commercial Angus bulls. Seedstock and commercial beef production has been Hazeldean's business for over 150 years. The company understands genetics and what's important to run a successful commercial beef cattle operation.

The Hazeldean herd consists of 3500 commercial, APR and stud cattle, which are bred and grazed on the Monaro in southern NSW. Hazeldean cattle are renowned as being "good doing", hardy cattle that will thrive in any climate. The female herd has a reputation of exceptional fertility, lower than average birth weights, excellent calving ease, teamed with high growth and above average carcass.

Hazeldean's core business is providing functional, profitable bulls to the commercial beef industry and this means first of all maximizing the number of pregnancies and the number of live calves hitting the ground, building on that base rapid growth rates and on top of that superior carcass data. This is the basis of any successful breeding enterprise.

Hazeldean selects for quiet temperament in their breeding program and sire selection and their cattle have an enviable reputation of being exceptionally quiet and easy to manage. This shows in the docility EBV's of Hazeldean cattle. Temperament is highly heritable, it affects carcass quality, growth rate, and handling – any animal that shows bad temperament is culled.

Stud & Performance History

The Hazeldean Angus herd was established in 1927, replacing a herd of primarily shorthorn cattle that had run on the property for many years. In 1952 the stud was founded with the purchase of in-calf heifers from six New Zealand studs. These heifers were specially selected for scale, length and docile temperament – traits that still remain important to the stud 60 years later. As the commercial herd was of a very high standard and as a means to fully utilize the foundation sire "Wallah Ottoman", a selection of top grade commercial females were selected to join the bull-producing herd. The strength of the Hazeldean herd has always been its ability to produce large numbers of high performing bulls with emphasis always on commercial reality.

In 1960 Hazeldean became one of the first beef seedstock producers anywhere in the world to embrace the concept of Performance testing and has continued to use accurate measured production in its selection and breeding programmes ever since. Hazeldean was the first beef herd in Australia to trial Breedplan and was later chosen as the site of the national launch in 1985. Hazeldean Angus is involved in carcass and feedlot performance trials and sire progeny testing programmes to identify the leading sires for profitability to the industry.

Bull Sales Around 500 bulls are sold each year by auction at selling centres located at "Hazeldean", Cooma, NSW (May & Sept), Drillham QLD (August) and Tamworth, NSW (August).

Female Sales Commercial females and select registered females are sold on-property at Hazeldean's annual Female Sale at Cooma in May.

Semen Sales Semen is available from Hazeldean's top sires. Contact Hazeldean or view our website www.hazeldean.com.au



Hazeldean Breeding and Management

Management & Breeding Programme

The Hazeldean properties are extensive grazing properties suited to commercial beef production. The Hazeldean herd is run under strict commercial conditions with stud cows sharing their paddocks with sheep and only receiving supplementary feeding in drought. Hazeldean sources the most proven and high performing Angus sires and multiplies these genetics throughout the herd using their comprehensive (AI) and (ET) programme. Elite Hazeldean cows are flushed and used as donors in the ET programme.

The provision of bulls by a seedstock breeder to a commercial breeder must do five things. They are, in order of importance, as follows:

1. Serve cows effectively and efficiently so that the number of pregnancies in your herd is as high as it can be over a 6 week joining.
2. Produce daughters that are fertile at an early age, able to calve unassisted at 2 years of age and breed back every year thereafter.
3. Sire calves that grow quickly to reach maximum liveweight at the turnoff time targeted by the breeder.
4. Have sufficient constitution and athleticism to survive and breed effectively for a number of years.
5. Sire calves with valuable carcasses that maximise returns to the breeder and the processor for each kilogram of beef produced.

It is vital that these targets are met in this order for beef producers to make money out of beef cattle and this is the focus of the Hazeldean program.



Purchasing a bull from Hazeldean

Health Check All sale bulls are thoroughly assessed by a bull fertility technician prior to the sale. Animals displaying faults that are likely to interfere with a normal productive life are culled.

The Hazeldean herd has JBAS8 status.

Bulls are vaccinated for Pestivirus, Vibriosis and 7 in 1

Fertility Although sale bulls are vet checked immediately prior to sale day, which includes a full examination of reproductive organs, we recommend that you organize a pre-mating bull examination at least 6 weeks prior to joining to ensure that your bulls are in the best of health and capable of producing pregnancies. The procedure should include a serving ability test where the bull is observed serving a cow or heifer.

Hazeldean has an uncompromising approach to structural assessment All Hazeldean bulls and females are annually assessed and those failing the assessment are culled. Before cataloguing, each animal is inspected by an independent assessor to ensure a high standard of structural correctness, particularly with regard to conformation, shoulders, legs and feet. (See beef class structural assessment system). Only animals that pass this rigorous inspection are entered for sale. No animal has received treatment to their feet.

Bulls are freeze-branded on the near side rump with the Hazeldean brand and their number.



Semen Terms & Conditions Hazeldean retains semen rights on all bulls unless otherwise agreed upon, according to Hazeldean Semen Terms and Conditions.

See full Terms and Conditions at the back of the catalogue.

Our Guarantee and Replacements, Refunds, Credits

Although we do our very best to ensure every bull we catalogue sees out many years of good service, occasionally premature breakdowns occur. In this event we guarantee unconditionally all bulls for 12 months from purchase and further if poor reproduction results from a genetic defect we were unaware of pre-sale. Our policy is to look after the people who look after us so if there is a problem please let us know.

To resolve the issue of a bull breakdown we will work with you to achieve the best outcome for your breeding enterprise. In the instance of a bull breaking down during the breeding season we will endeavour to find a replacement and get him to you ASAP. If you are able to cover the breakdown with a spare, then we will either offer a replacement at a later date or issue a credit equivalent to the purchase price of the original bull that you can use at a future sale.

Animal Health

Although Hazeldean employs best practice procedures in livestock husbandry and does its best to ensure every animal catalogued for sale is free from disease, internal parasites and external parasites, it does not guarantee that any sale animal is free of disease, internal parasites or external parasites.

Beef Class Structural Assessment System

Structural problems in cattle have a substantial effect on both the reproductive and growth performance of a beef herd. It is widely recognised that structural problems in sires have detrimental effects on conception rates, calving patterns and thus profitability.

Similarly, females with inadequate structural characteristics are more prone to weaning lighter calves or conceiving later in the breeding season than their more functional counterparts. These structural problems are filtered through the supply chain resulting in reduced income for the producer, feedlot and thus reducing the overall productivity of the Australian Beef Industry.

Over the past decade, use of the Beef Class Structural Assessment System in the seedstock industry has produced a marked improvement in herds which have shown commitment to using the information appropriately. Through these dedicated breeders, there has been a flow on affect of structural improvement throughout all sectors of the beef cattle industry.

Liam Cardile of 'BEEFXCEL' structurally assesses many of the leading seedstock herds in Australia. 'BEEFXCEL' is not involved in any genetic marketing or specific breeding advice and therefore has no conflict of interests to influence their stock appraisal. The integrity of the structural data provided by 'BEEFXCEL' is recognised throughout the industry as Liam is a fully INDEPENDENT assessor.

Hazeldean Structural Program

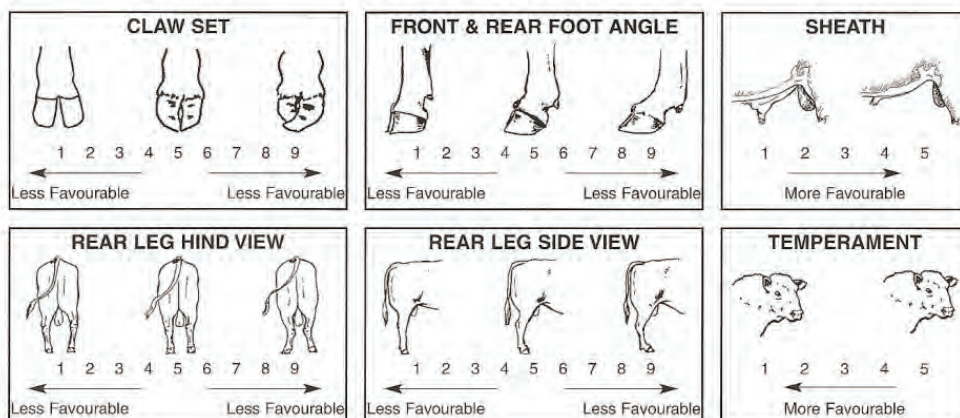
The Hazeldean Sale Bulls have been independently structurally assessed to maximise the quality of stock on offer. Any animals deemed inadequate have been removed from the sale draft.

The Hazeldean sale bulls were assessed by Liam Cardile of BEEFXCEL. In addition to annual bull assessments, Hazeldean has recently completed a full female herd assessment program. An ongoing program of assessing first calving females during lactation also helps to further strengthen the structural soundness of the entire Hazeldean breeding herd.

How to use The Beef Class Structural Assessment System

The Beef Class Structural Assessment System uses a 1- 9 scoring system

- A score of 5 is ideal. (Note: Temperament Score of 1 is preferable)
- A score of 4 or 6 shows slight variation from ideal, but this includes most animals. An animal scoring 4 or 6 would be acceptable in any breeding program.
- A score of 3 or 7 shows greater variation but would be acceptable in most commercial programs. However, seedstock producers should be vigilant and understand that this score indicates greater variation from ideal.
- A score of 2 or 8 are low scoring animals and should be looked closely before purchasing.
- A score of 1 or 9 should not be catalogued and are considered culls.



Liam Cardile – Beef Xcel – 0409 572 570

Understanding EBV's

Group Breedplan analyses the growth and production attributes of beef cattle and provides predictions of the genetic merit of individual animals called Estimated Breeding Values (EBV's).

Breedplan is logical and straight forward and provides the only solution to the otherwise impossible task of weighing up individual bull performance and adjusting for pedigree and the performance of brothers and sisters. It gives the correct weighting to all available information and then gives a value and accuracy level for each trait measured. The higher the accuracy percentage, the more confidence you can have in the figure. Without any figures selection becomes guess work. EBV's are shown as +ve or -ve differences from the breed base. The average EBV's for traits change over time as the breed makes genetic progress. The breed average EBV's provide a useful benchmark for comparisons of EBV's for individual animals.

The following is a brief explanation of the figures and what to look for. Remember, all the figures are calculated from the animal's individual performance AND the performance of its relatives that have also been measured or weighed. This is important as it improves the accuracy of the predicted performance of the bull you purchase. For example, if the bull you purchased was light for birth weight, yet one of its parents was heavy at birth, there is a fair chance that some of your bull's calves will inherit the grandparent's high birth weight. Breedplan works out the likelihood of this occurring and includes it in the estimated figure. The same applies to all other measured traits.

CALVING EASE **Calving Ease (CE)**

Appears on sires only and is self explanatory to a large extent. CE (DIR) is Calving Ease direct and refers to the amount of calving difficulty you can expect from this bull directly from the cows he is joined to. CE (DTRS) is Calving Ease daughters and refers to the amount of calving difficulty you can expect from his daughters. **A plus figure in both instances is good.**

Gestation Length (GL)

Some cattle have shorter pregnancies than normal and some longer pregnancies. As growth starts from conception, generally a bull with short gestation length EBV will sire smaller calves at birth than one with a longer gestation length EBV. It also means that the cow has more time to recover from calving to get back in calf for next year. **A negative figure here is good.**

Birthweight (BWT)

Birthweight generally applies mostly to those looking for a heifer bull. Generally at Hazeldean we get a little nervy when we go much above +4.5 for our own heifer joining, although some areas seem to be able to tolerate more birthweight than we can on the Monaro. Even if you are not looking for a heifer bull, keep in mind that a bull with a big birthweight will sire heifer calves and you may run into problems when his daughters calve down. In a well designed program, birthweight EBV should be able to gradually increase as the size of your heifers at 2 years of age increases through selection for improved growth rate.

A low figure here is good, especially over heifers, but be careful that it does not get so low that calf mortality starts to increase. Also, you should challenge your heifers to be able to handle higher birthweights, otherwise calving ease will go the wrong way.

GROWTH & MATERNAL

200, 400 & 600 Day Growth

These figures indicate the sort of weight differences you can expect from the progeny of these bulls (as an average) at 200, 400 and 600 days of age. In other words, if you have two bulls and for 600 Day weight one is +70 and the other is +80, you could expect the bull who is +80 to sire calves that would average 5kgs more bodyweight (as the sire provides half the genes to the calf, that is 10kg divided by 2) at 600 days than the bull who is +70. **A plus figure in all areas is good**, relative to your production, provided birthweight does not get out of control.

Mature Cow Weight

Provides an estimate of the genetic differences between animals in cow weight at 5 years of age. Obviously smaller cows have less maintenance requirements and those that can still wean heavy calves are valuable however remember there is a high negative correlation between low Mature Cow Weight and growth meaning selection for this trait can put pressure on growth rate of progeny. More efficient "easy-care" cows have a MCW lower than their 600 DWT and we select for this.

Understanding EBV's

Milk

Milk is the figure that most people find hardest to understand. How can you work out how much milk an animal is capable of producing in its offspring with out actually milking them and measuring the quantity? Milk is obviously an important consideration especially for those beef producers turning calves straight off their mothers. Too much of a good thing can lead to udder problems and also result in failure to get back in calf early, especially if a really good milker hits a tight Spring. There are some cows that will milk well and yet still retain enough body condition to start cycling soon after calving. They are obviously very desirable. **A plus figure here is good** but beware of the problems associated with extreme production.

FERTILITY

Scrotal Size (SS)

There is a strong correlation between scrotal size and both male and female fertility. Bulls with big testicles generally sire more fertile daughters. You may notice a discrepancy between scrotal size on sale day and the EBV. This is because testicles, like just about everything else, grow at different rates in different bulls and rankings will therefore change. As with all Breedplan analysis, information on relatives also has an effect. The measurement for the EBV was taken at the same time as we started to program the heifers for their AI program back in early September. The reason we did this was to identify those bulls who failed to reach sexual maturity at the minimum age we want our heifers to be cycling. We cull all bulls who fail to reach a minimum of 30cm at 12 months of age as these animals, if allowed to go through into the sale group, will be more likely to breed heifers who will not get in calf early. **A plus figure here is good.**

Days to Calving (DC)

This figure is an indication of the expected time between the start of joining and the subsequent calving of progeny. Lower Days to Calving means an animal is expected to produce daughters that conceive earlier. Females with Lower Days to calving also tend to show earlier puberty as heifers and earlier return to oestrus. **A minus figure here is good.**

CARCASE

Carcase weight (CWT)

Carcase weight refers to the difference you can expect in the weight of this bull's steer progeny when slaughtered at 650 days of age. Remember that this is an EBV and therefore the actual contribution of this trait to the bull's offspring is half of the number published. This is because only half of any animal's genes come from the sire. The other half comes from the mother. **A high figure is good.**

Eye Muscle Area (EMA)

This trait is measured by ultrasound when the bulls are approximately 15-18 months old. As muscling is consistent throughout the body, EMA is a good indicator of overall muscle content when the measurement is taken and analysed in the light of total body weight. It is actually impossible to have an animal with more meat in his hindquarter than in his forequarter, or vice versa. Many years ago, Professor Rex Butterfield dissected numerous carcasses from many breeds to prove that as a proportion of total muscle weight, almost exactly the same amounts of muscle were found in various parts of the animal regardless of breed or physical appearance. Despite general opinion to the contrary, it has been recently proven that increased muscle is not linked to poor fertility or calving difficulty. **A plus figure here is good.**

Fat Depth – Rib & Rump

Also calculated from ultrasound measurement, high fat depth EBV's will mean bulls that leave fatter carcasses and lower lean meat yield. However, recent research has shown that bulls that are positive for fat generally sire more fertile daughters than those that are negative, all other things being equal. Care has to be taken, therefore, not to select poorer types that lack doing ability and constitution resulting in low fertility. This EBV needs to be kept in balance and **extremes of plus or minus should be avoided.**

Retail Beef Yield (RBY%)

This figure is calculated to give you the expected amount of retail beef as a percentage of the total carcass weight in a 300 kg carcass sired by this bull. Again you need to understand that as animals receive half their genes from their mother and half from their father, this figure needs to be divided by two to ascertain just how much is a result of the bull's influence.

Understanding EBV's

Intramuscular Fat- Marbling (IMF%)

As abattoir data is always slow, there are big benefits in measuring live cattle. The Animal Genetics and Breeding Unit (AGBU) at Armidale with Meat Research has been researching marbling scanning since 1996 and has come up with some very Corporation, CRC and Breed Society support encouraging results for genetic evaluation. IMF% and actual marble score are reasonably well correlated and therefore selection on IMF% will improve marbling. To further improve accuracy, the figure or IMF% calculated by Breedplan also includes abattoir data and overseas EPD data, as well as ultrasound. The US data on marbling is generated purely from abattoir carcase information.

A plus figure here is good.

\$ Index Values

There are currently four selection indexes calculated for animals within the Angus BREEDPLAN analysis. The Angus Breeding Index is a general purpose selection index that is suitable for use in the majority of commercial beef operations, whereas the Domestic, Heavy Grain and Heavy Grass selection indexes are specific to beef operations targeting a defined production system and market endpoint.

Angus Breeding Index - estimates the genetic differences between animals in net profitability per cow joined in a typical commercial self replacing herd using Angus bulls. This selection index is not specific to a particular production system or market end-point, but identifies animals that will improve overall profitability in the majority of commercial grass and grain finishing beef production systems. The index is particularly suited to commercial producers who sell progeny into different markets, or to seedstock producers supplying bulls to commercial clients who produce for a range of different production systems and market end points.

Domestic Index - estimates the genetic differences between animals in net profitability per cow joined in a commercial self replacing herd targeting the domestic supermarket trade, with progeny finished using either grass, grass supplemented by grain or grain finishing systems.

Heavy Grain Index - estimates the genetic differences between animals in net profitability per cow joined in a commercial self replacing herd targeting pasture grown steers with a 200 day feedlot finishing period for the grain fed high quality, highly marbled markets.

Heavy Grass Index - estimates the genetic differences between animals in net profitability per cow joined in a commercial self replacing herd targeting pasture finished heavy steers. Further information regarding each selection index is available from www.angusaustralia.com.au

Trial Docility - This EBV is expressed as the difference in the percentage of progeny that will be scored with acceptable temperament. **Higher scores are more favourable.** For example, a bull with an EBV of +20 would be expected to on average produce 15% more progeny with acceptable temperament than a bull with an EBV of -10.

Heritability of Traits

Some traits are more likely to be inherited than others. The most **highly heritable traits** (over 35%) are: birthweight, 600 day weight, mature cow weight, scrotal size, rump fat, retail beef yield and docility. Traits of **medium heritability**, (20 -30%) are gestation length, eye muscle area, rib fat and 200 & 400 day weight and those with the **lowest heritability**, (less than 20%) are days to calving, calving ease and milk.

The team at Hazeldean systematically collect as accurately as possible all the required information that is then submitted to Breedplan for analysis. Every calf is tagged and weighed at birth, again at 200 days, 400 days and 600 days. Every animal is scanned for carcase data, all male animals have testicles measured at 400 days and structural and docility assessments are done by an independent assessor (Liam Cardile from BeefXcel).



Looking after your new Hazeldean bull

Bulls are like us. Some settle easily in to a new location - others don't. Here are a few pointers to help your new bull/s settle in.

Bulls are social animals and there is a hierarchy within each mob. Usually we have around 4 mobs of bulls for any one sale. If bulls are purchased from different mobs and put together they will very likely fight to sort out who's "boss". If you buy more than one bull, find out from us at the end of the sale what mobs are represented in your purchases and we can tell you whether you are likely to experience fighting when we get them home for you.

When the bull/s arrive at your home, let them settle in by leaving them in the yards overnight and observe how they are reacting to their new home. Give them fresh water and good quality hay. If they are fighting you might have to split them, depending on how serious it is. Two bulls fighting is often less of a concern than 3 bulls fighting as sometimes the third bull will broadside one of the bulls locked in battle and serious injury can result. If you have purchased only one bull, then find a mate or two for him straight away. If you have bought multiple bulls from a number of different management groups or studs it is often better to put them all together at once. Introducing new bulls into a mob one at a time can lead to the new bull being given a very hard time indeed by his contemporaries. Sometimes a young bull will team up with a bigger older bull but often it should be one or two cows or steers. Bulls left on their own are much more likely to jump or push through fences and be unsettled and once they get into the habit are hard to stop.

We do not use dogs on our cattle so your new bull might react strangely if you use a dog. In all instances read the body language of your new bull/s and take appropriate action. Sometimes this might involve a stint in the yards, other times it might be better to let them into a paddock straight away with one or two cows. The added advantage of running them with cows is that it will help them develop immunity to foreign bugs they may not have previously encountered well before the breeding season. Whatever the circumstances, do not take the view that everything will be fine because sometimes it isn't and each bull will be different. For further advice please do not hesitate to call us.

Your new bull will be up to date with vaccine and parasite treatment at the time of sale however a booster vaccination should be given annually including Vibriosis, Pestivirus and 7 in 1. These vaccinations can be given anytime to fit in with your normal management routine however 4 to 6 weeks before mating is a good time and this also gives you a chance to inspect all your bulls and establish their general soundness before the breeding season.

Prior to mating a breeding soundness evaluation of all the bulls you own is a good idea. You may wish to undertake this yourself or get a vet to do it for you. Bulls should be assessed for reproductive soundness including palpation and measuring of the testicles. Testes should be at least 32 cm in circumference and tennis ball firm, not hard or soft. They should be symmetrical and free from abnormal lumps and bumps. The epididymus at the base of the testicle should not be enlarged or irregular and the cords at the top of the testicle also free of lumps. It is a good idea to observe your bull's actual physical prowess in a serving ability test. When a bull is mounting a cow he must thrust and complete a service fully before he can be given a tick. Stand to the right and to the rear of the bull and check for corkscrew penis. Corkscrew penis is a condition where the end of the penis spirals preventing entry into the vagina. Corkscrew penis will always deviate to the right side of the cow. Also check the bull for muscle tremor, muscle wastage, lameness, favouring of one hind leg or any other indication he may be unsound. Look for other indicators - unevenly grown hind toes can be a sign of hip problems for instance.

Once your bulls have passed through all these hoops they are ready for joining however do not think that you can now take your eye off the ball (so to speak) because during joining an injury is even more likely to occur, or a long standing problem resurface, due to the workload. Inspect your bulls twice a week at close proximity. Look for the same things you observed in your pre joining check. When you have passed the first 3 weeks of joining make sure there are not large numbers of cows cycling. Even if your bull is serving well and normally there is always a small risk he may be infertile due to poor quality sperm. This may be a temporary or permanent problem. If you are in any doubt replace the bull with another.

It is important to remember that the fundamental profit driver in a beef enterprise is reproduction. It is therefore vital to spend time making sure your bulls are working properly.

During the non-breeding season DO NOT LET YOUR BULLS GET FAT!! Bulls will last longer, have fewer feet problems and will be more agile and virile generally if they are not overweight. The best mature bull paddock is often your worst paddock. Young bulls may need a better paddock as they are still growing.

At the 6 week pre joining check-up, move all bulls to better paddocks to start lifting them before mating.

If you are in any doubt as to the soundness of your bull/s, or what you should be doing or looking for, please call us.

Jim Litchfield

TransTasman Angus Cattle Evaluation - June 2023 Reference Tables

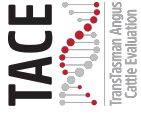
BREED AVERAGE EBVs																							
Calving Ease		Birth			Growth			Fertility			Carcase			Other			Structure			Selection Indexes			
CEDir	CEDirs	GL	BW	200	400	600	MCW	Milk	SS	DTC	CWT	EMA	RIB	P8	RBV	IMF	NF-F	DOC	Claw	Angle	Leg	\$A	\$A-L
+2.2	+2.6	-4.8	+4.1	+50	+90	+117	+100	+17	+2.1	-4.6	+66	+6.3	-0.1	-0.3	+0.5	+2.2	+0.19	+20	+0.84	+0.97	+1.03	+197	+339
Brd Avg																							

* Breed average represents the average EBV of all 2021 drop Australian Angus and Angus-influenced seedstock animals analysed in the June 2023 TransTasman Angus Cattle Evaluation .

PERCENTILE BANDS TABLE																								
% Band	Calving Ease		Birth			Growth			Fertility			Carcase			Other			Structure			Selection Indexes			
	Less	More	GL	BW	200	400	600	MCW	Milk	SS	Shorter	Calving	EMA	RIB	P8	Higher	More	Greater	Docile	Lower	Angle	Leg	\$A	\$A-L
1%	+10.9	+9.9	-10.7	-0.4	+70	+123	+162	+160	+4.8	-8.0	+98	+14.5	+4.2	+5.0	+2.0	+5.8	-0.53	+44	+0.42	+0.60	+0.76	+273	+448	
5%	+9.1	+8.3	-8.8	+1.0	+64	+112	+148	+140	+3.9	-7.0	+88	+11.9	+2.8	+3.3	+1.5	+4.6	-0.32	+36	+0.54	+0.72	+0.84	+252	+418	
10%	+7.9	+7.3	-7.9	+1.8	+61	+107	+140	+130	+3.5	-6.5	+83	+10.6	+2.2	+2.4	+1.3	+4.0	-0.20	+32	+0.60	+0.76	+0.88	+241	+402	
15%	+7.0	+6.5	-7.2	+2.2	+58	+104	+136	+124	+3.2	-6.1	+79	+9.7	+1.7	+1.9	+1.1	+3.6	-0.13	+29	+0.66	+0.80	+0.90	+233	+392	
20%	+6.3	+5.9	-6.8	+2.6	+57	+101	+132	+119	+3.0	-5.8	+77	+9.0	+1.3	+1.4	+1.0	+3.3	-0.07	+27	+0.68	+0.84	+0.94	+227	+383	
25%	+5.7	+5.4	-6.3	+2.9	+55	+99	+129	+115	+2.8	-5.6	+75	+8.4	+1.0	+1.1	+0.9	+3.1	-0.02	+25	+0.72	+0.86	+0.96	+222	+376	
30%	+5.1	+4.9	-6.0	+3.2	+54	+97	+126	+112	+2.6	-5.4	+73	+7.8	+0.8	+0.8	+0.8	+2.9	+0.03	+24	+0.74	+0.88	+0.96	+217	+369	
35%	+4.5	+4.4	-5.7	+3.4	+53	+95	+124	+109	+2.5	-5.2	+71	+7.4	+0.6	+0.5	+0.7	+2.6	+0.07	+23	+0.76	+0.90	+0.98	+213	+363	
40%	+4.0	+3.9	-5.4	+3.6	+52	+94	+121	+105	+2.3	-5.0	+69	+6.6	+0.3	+0.2	+0.6	+2.5	+0.11	+22	+0.80	+0.92	+1.00	+209	+357	
45%	+3.4	+3.5	-5.0	+3.8	+51	+92	+119	+103	+2.2	-4.8	+68	+6.0	+0.1	-0.1	+0.6	+2.3	+0.14	+21	+0.82	+0.94	+1.02	+204	+350	
50%	+2.9	+3.0	-4.8	+4.1	+50	+90	+117	+100	+2.1	-4.7	+66	+6.2	-0.1	-0.3	+0.5	+2.1	+0.18	+20	+0.84	+0.96	+1.02	+200	+344	
55%	+2.3	+2.5	-4.5	+4.3	+49	+89	+115	+97	+2.0	-4.5	+64	+5.8	-0.3	-0.6	+0.4	+1.9	+0.22	+19	+0.86	+0.98	+1.04	+196	+338	
60%	+1.6	+2.0	-4.2	+4.5	+48	+87	+112	+94	+1.8	-4.3	+63	+5.4	-0.5	-0.9	+0.3	+1.8	+0.25	+18	+0.88	+1.00	+1.06	+191	+331	
65%	+1.0	+1.5	-3.8	+4.7	+47	+85	+110	+91	+1.7	-4.2	+61	+5.0	-0.7	-1.1	+0.3	+1.6	+0.29	+17	+0.90	+1.02	+1.08	+186	+324	
70%	+0.3	+1.0	-3.5	+4.9	+46	+83	+108	+88	+1.6	-4.0	+59	+4.6	-0.9	-1.4	+0.2	+1.4	+0.34	+16	+0.94	+1.04	+1.10	+181	+316	
75%	-0.6	+0.3	-3.2	+5.2	+44	+81	+105	+84	+1.4	-3.8	+57	+4.2	-1.2	-1.7	+0.0	+1.2	+0.38	+15	+0.96	+1.08	+1.10	+175	+308	
80%	-1.5	-0.4	-2.8	+5.5	+43	+79	+102	+80	+1.3	-3.5	+55	+3.7	-1.4	-2.1	+0.0	+1.0	+0.44	+14	+1.00	+1.10	+1.12	+168	+298	
85%	-2.7	-1.3	-2.3	+5.9	+41	+77	+98	+76	+1.1	-3.2	+53	+3.1	-1.8	-2.5	-0.2	+0.8	+0.50	+12	+1.04	+1.14	+1.16	+159	+285	
90%	-4.3	-2.5	-1.7	+6.3	+39	+73	+93	+70	+0.8	-2.8	+50	+2.4	-2.2	-3.1	-0.3	+0.5	+0.58	+10	+1.08	+1.18	+1.18	+147	+267	
95%	-6.9	-4.3	-0.7	+7.0	+36	+68	+86	+60	+0.5	-2.0	+45	+1.2	-2.8	-3.9	-0.6	+0.0	+0.71	+7	+1.16	+1.26	+1.24	+129	+239	
99%	-12.6	-8.3	+1.4	+8.5	+29	+57	+71	+41	-0.3	-0.3	+34	-1.2	-4.1	-5.6	-1.1	-0.8	+0.96	+0	+1.30	+1.40	+1.34	+94	+186	
More	Calving	Difficulty	Longer	Heavier	Lighter	Live	Weight	Lighter	Live	Weight	Lighter	Live	Weight	Lighter	Live	Weight	Lighter	Live	Weight	Lighter	Live	Weight	Lighter	Live
Less	Calving	Difficulty	Shorter	Lighter	Heavier	Live	Weight	Lighter	Live	Weight	Lighter	Live	Weight	Lighter	Live	Weight	Lighter	Live	Weight	Lighter	Live	Weight	Lighter	Live

* The percentile bands represent the distribution of EBVs across the 2021 drop Australian Angus and Angus-influenced seedstock animals analysed in the June 2023 TransTasman Angus Cattle Evaluation .

TransTasman Angus Cattle Evaluation - June 2023 Reference Tables



BREED AVERAGE EBVs										
	\$A	\$D	\$GN	\$GS	\$A-L	\$D-L	\$GN-L	\$GS-L	\$PRO	\$T
Brd Avg	+197	+163	+259	+181	+339	+293	+405	+380	+145	+181

* Breed average represents the average EBV of all 2021 drop Australian Angus and Angus-influenced seedstock animals analysed in the June 2023 TransTasman Angus Cattle Evaluation .

PERCENTILE BANDS TABLE										
% Band	\$A	\$D	\$GN	\$GS	\$A-L	\$D-L	\$GN-L	\$GS-L	\$PRO	\$T
1%	+273	+229	+363	+260	+448	+391	+539	+511	+227	+235
5%	+252	+210	+335	+238	+418	+363	+502	+474	+204	+221
10%	+241	+200	+319	+226	+402	+349	+483	+455	+192	+213
15%	+233	+194	+309	+218	+392	+339	+470	+442	+184	+207
20%	+227	+189	+300	+212	+383	+332	+459	+431	+177	+203
25%	+222	+184	+293	+207	+376	+325	+450	+422	+171	+199
30%	+217	+180	+286	+201	+369	+319	+442	+414	+166	+196
35%	+213	+176	+280	+197	+363	+314	+434	+407	+161	+192
40%	+209	+172	+274	+192	+357	+308	+426	+400	+157	+189
45%	+204	+169	+269	+188	+350	+297	+419	+392	+152	+186
50%	+200	+165	+263	+183	+344	+297	+411	+385	+148	+183
55%	+196	+161	+257	+179	+338	+292	+403	+378	+143	+180
60%	+191	+157	+250	+174	+331	+286	+395	+370	+138	+176
65%	+186	+153	+244	+169	+324	+279	+386	+362	+133	+173
70%	+181	+149	+237	+164	+316	+273	+377	+353	+127	+169
75%	+175	+144	+229	+158	+308	+265	+366	+343	+121	+165
80%	+168	+138	+219	+151	+298	+256	+354	+332	+114	+160
85%	+159	+131	+208	+142	+285	+245	+338	+317	+105	+154
90%	+147	+121	+193	+131	+267	+231	+317	+298	+92	+146
95%	+129	+106	+170	+113	+239	+207	+283	+265	+73	+134
99%	+94	+77	+129	+80	+186	+160	+224	+201	+38	+110

* The percentile bands represent the distribution of EBVs across the 2021 drop Australian Angus and Angus-influenced seedstock animals analysed in the June 2023 TransTasman Angus Cattle Evaluation .

HAZELDEAN NEW ENGLAND BULL SALE EBV SUMMARY TACE JUNE 2023

LOT	Society Id	REG	MGNT GRP	sire id	CE DIR	E DTR	Bwt	200	400	600	Mwt	DC	SS	DOC	Cwt	EMA	Rib	P8	RBV	IMF	\$A	
65	NHZ21S571	APR	4	NHZP242	3.9	-0.8	4.6	54	93	127	102	-6.5	1.1	9	76	5	-0.4	-0.6	0.6	1.3	\$219	
66	NHZ21S428	APR	4	USA17960	-1.2	1.5	5.8	56	96	130	128	-5.8	3.3	12	63	4.3	0	-0.2	0.2	1.4	\$185	
67	NHZ21S1207	APR	4	NHZN508	4.5	4.2	3.1	45	95	123	122	-5.2	1.3	28	68	3.9	2.6	2.9	-0.2	2.2	\$189	
68	NHZ21S1156	APR	4	NHZN508	3.5	0.1	2.9	46	86	118	100	-4.2	1.6	32	71	-1.1	2.2	3.3	-0.5	1.1	\$159	
69	NHZ21S1407	APR	4	NHZQ481	7.4	7.7	2.6	50	88	116	101	-7.2	3.1	19	67	1.7	1.2	1.8	-0.1	1.6	\$211	
70	NHZ21S1308	APR	4	NHZQ641	2.4	-1.3	3.2	45	89	122	82	-7.4	3.2	29	69	8.2	3.3	3.3	0	2.5	\$230	
71	NHZ21S1070	APR	4	NHZQ11	-2.7	2.8	7	52	92	131	121	-3.8	0.6	15	67	7.9	-3.3	-4.5	0.9	3.7	\$190	
72	NHZ21S1606	APR	4	NHZQ1237	3.9	5.6	3.8	38	76	101	84	-5.3	0.9	28	59	8.6	-0.9	-1	1.4	1.8	\$194	
73	NHZ21S1082	APR	4	NURN70	-1.2	4.8	5.5	57	90	125	140	-6.2	1.8	31	71	6.6	0.2	0.1	0.3	3.4	\$209	
74	NHZ21S1071	APR	4	NHZN508	10.4	8.1	-0.2	34	69	94	79	-6	0.9	38	47	5.9	1.6	1.9	0.2	2.8	\$188	
75	NHZ21S1078	APR	4	NHZQ1229	5.4	5.2	3.2	44	78	107	71	-5.3	5.4	25	56	5.4	-0.4	-0.8	0.5	2.8	\$202	
76	NHZ21S1855	APR	4	NHZQ87	4.4	3.7	4.4	55	102	139	115	-6.4	2.7	8	87	7	-0.3	-2.4	1.1	0.9	\$227	
77	NHZ21S699	APR	4	NHZQ1593	7.2	4.8	1.2	41	74	75	66	-7.7	3.2	39	41	6.9	4	2.7	0.3	2.9	\$225	
TACE JUNE 2023 BREED AVERAGE									90	117	100	-4.6	2.1	20	66	6.3	-0.1	-0.3	0.5	2.2	\$197	
								TOP 5%		TOP 10%		TOP 30%										



HAZELDEAN NEW ENGLAND BULL SALE REFERENCE SIRE TACE SUMMARY JUNE 2023

id	SONS IN SALE	name	reg	SIRE ID	DOB	CED	CEDtBwt	200	400	600	Mwt	DC	SS	DOC	Cwt	EMA	Rib	P8	RBY	IMF	\$A	
NURN70	2	MURRAY KODAK N70	HBR	NORK522	18/08/2017	3.8	6	59	102	136	137	-6	5.1	22	80	9.8	-2	-2	0.8	3.9	\$244	
NURP92	1	MURRAY LONGSHOT P92	HBR	VTML107	18/08/2018	9.3	6.3	56	103	146	93	-5	0.1	25	85	7.2	0.6	0.9	-1	6	\$269	
QBUQ303	1	BURENDA Q303	HBR	HIOH9	25/07/2019	2.4	3	52	94	125	96	-7	2	25	76	19	0.9	-1	2	1.5	\$266	
QBUQ334	1	BURENDA DUNLIN Q334	APR	USA169815	29/07/2019	4.3	1.8	47	95	109	60	-5	1.9	25	76	8.5	0.9	2.9	0	4.7	\$256	
QBUQ48	1	BURENDA Q48	HBR	USA169815	24/02/2019	7.6	5.6	60	108	136	119	-4	1.6	13	83	8.7	-1	-1	0.6	2.5	\$245	
SMPM778	1	PATHFINDER MAGNUM M778	HBR	VTMG67	10/04/2016	6.9	7.2	44	88	124	105	-7	1.9	6	59	7.8	0.8	0.4	0.2	3.1	\$223	
USA16198	1	EF COMPLEMENT 8088	HBR	USA14686	18/01/2008	5.8	9.4	53	98	130	96	-8	1.3	22	77	7.6	1.3	2	0.4	1.8	\$268	
USA17960	4	BALDRIDGE BEAST MODE B074	HBR	USA162956	7/02/2014	5.4	5.5	75	120	145	129	-3	2.7	33	75	2.3	-2	-4	0	2.3	\$237	
USA18837	1	BALDRIDGE ALTERNATIVE E125	HBR	USA167509	30/01/2017	6.2	9.4	67	112	145	134	-5	2.2	31	86	13	-1	-4	0.9	3.2	\$274	
TACE JUNE 2023 BREED AVERAGE																						
						2.2	2.6	4.1	50	90	117	100	-5	2.1	20	66	6.3	-0	0.5	2.2	\$197	
						TOP 5%		TOP 10%		TOP 30%												



NEW ENGLAND 2023



SALE BULLS

1 HAZELDEAN S145 (AI) SV APR AMFU NHFU CAFU DDFU Born: 09/07/2021 Society Id: NHZ21S145

ARDROSSAN EQUATOR A241
HAZELDEAN JAIPUR J140
HAZELDEAN C33
Sire: HAZELDEAN M182
HAZELDEAN GUARDIAN G553
HAZELDEAN K807
HAZELDEAN G568

ARDROSSAN EQUATOR A241
HAZELDEAN JACKY J127
HAZELDEAN E44
Dam: HAZELDEAN L1072
G A R PROPHET
HAZELDEAN J827
HAZELDEAN G577

Front	Rear	Front	Rear	Front	Rear	MUSCLE	TEMP.	SHEATH
6	6	6	6	5	5	C+	2	5

Structural EBV's			
TACE	ANGLE	CLAW	LEGS
	+0.64	+0.36	1.04
ACC%	70%	70%	60%

TRANSTASMAN ANGUS CATTLE EVALUATION - JUNE 2023																						
TACE	CALVING EASE				GROWTH & MATERNAL				FERTILITY		CWT	CARCASE					Doc	Angus Index	Dom	Heavy Grain	Heavy Grass	
	DIR	DTRS	GL	B Wt	200	400	600	MWt	Milk	SS	DC	C Wt	EMA	RIB	RUMP	RBV%	IMF%	Doc.				
EBV	+3.8	+6.6	-5.2	+3.6	+53	+91	+128	+101	+24	+3.2	-5.8	+73	+3.9	+1.3	+1.5	-0.5	+3.3	+45	+219	+168	+290	+207
ACC%	57%	45%	83%	73%	74%	72%	73%	70%	62%	76%	39%	62%	62%	63%	64%	57%	66%	58%				

Soft and supple young sire with plenty of stretch! Exceptional structural EBVs - top 1% & 2%. Top 1% docility and great fats. Better than breed average for 19 traits. Suitable for heifers and used as a worker in 2022 joining.

Purchaser..... Price.....

2 HAZELDEAN S327 (AI) SV APR AMFU NHFU CA50% DDFU Born: 13/07/2021 Society Id: NHZ21S327

G A R PROPHET
TE MANIA LONGSHOT L107
TE MANIA BARUNAH J1125
Sire: MURRAY LONGSHOT NURP92
MURRAY POWER TOOL K22
MURRAY M POWERTOOL M81
MURRAY REGENT K31

C R A BEXTOR 872 5205 608
G A R PROPHET
G A R OBJECTIVE 1885
Dam: HAZELDEAN J827
HAZELDEAN CARDRONA C677
HAZELDEAN G577
HAZELDEAN D566

Front	Rear	Front	Rear	Front	Rear	MUSCLE	TEMP.	SHEATH
6	5	6	6	5	5	C	2	5

Structural EBV's			
TACE	ANGLE	CLAW	LEGS
	+0.9	+0.92	0.88
ACC%	66%	66%	60%

TRANSTASMAN ANGUS CATTLE EVALUATION - JUNE 2023																						
TACE	CALVING EASE				GROWTH & MATERNAL				FERTILITY		CWT	CARCASE					Doc	Angus Index	Dom	Heavy Grain	Heavy Grass	
	DIR	DTRS	GL	B Wt	200	400	600	MWt	Milk	SS	DC	C Wt	EMA	RIB	RUMP	RBV%	IMF%	Doc.				
EBV	+6.6	+5.6	-3.4	+3.5	+53	+93	+118	+55	+26	+0.8	-4.5	+72	+8.5	+1.8	+2.3	-0.4	+3.9	+17	+264	+207	+366	+248
ACC%	57%	46%	83%	73%	74%	72%	73%	70%	63%	73%	40%	63%	62%	64%	64%	58%	66%	56%				

An attractive young sire, plenty of eye appeal and balance. Impressive carcass traits - IMF is a real highlight. Better than breed average for 15 traits. Suitable for heifers and used as a worker in 2022 joining.

Purchaser..... Price.....

3 HAZELDEAN S1971 (ET) PV APR AMFU NHFU CAFU DDFU Born: 07/08/2021 Society Id: NHZ21S1971

G A R INGENUITY
H P C A INTENSITY
G A R PREDESTINED 287L
Sire: RENNYLEA NORL519
TE MANIA BERKLEY B1
RENNYLEA H414
RENNYLEA C310

BOOROOMOOKA UNDERTAKEN Y145
RENNYLEA EDMUND E11
LAWSONS HENRY VIII Y5
Dam: HAZELDEAN K458
RENNYLEA C574
HAZELDEAN H488
HAZELDEAN IRONWOOD D259

Front	Rear	Front	Rear	Front	Rear	MUSCLE	TEMP.	SHEATH
5	5	5	6	5	6	C+	1	4

Structural EBV's			
TACE	ANGLE	CLAW	LEGS
	+0.66	+0.5	0.88
ACC%	73%	73%	71%

TRANSTASMAN ANGUS CATTLE EVALUATION - JUNE 2023																						
TACE	CALVING EASE				GROWTH & MATERNAL				FERTILITY		CWT	CARCASE					Doc	Angus Index	Dom	Heavy Grain	Heavy Grass	
	DIR	DTRS	GL	B Wt	200	400	600	MWt	Milk	SS	DC	C Wt	EMA	RIB	RUMP	RBV%	IMF%	Doc.				
EBV	+2.9	+1	-6.4	+4.9	+61	+109	+145	+146	+15	+2.4	-6.1	+79	+2.1	+2	+0.8	-0.6	+3.7	+28	+222	+180	+295	+207
ACC%	66%	57%	73%	76%	76%	75%	75%	74%	69%	77%	51%	69%	67%	68%	68%	64%	70%	66%				

A well built L519 son out of an Edmund cow, bigger frame and a real powerhouse! Very good structural EBVs. Top 6% for 600d and not an extreme birth weight. Top 14% for carcass weight and IMF. Very good raw structural data and structural EBVs.

Purchaser..... Price.....

Top 5% Top 10% Top 30%

Ranking in Angus Aust. June 2023

Proven Genetic Performance

www.hazeldean.com.au

NEW ENGLAND 2023



SALE BULLS

4 HAZELDEAN S406 (AI) SV APR AMFU NHFU CAFU DDFU Born: 15/07/2021 Society Id: NHZ21S406

RENNYLEA EDMUND E11
HAZELDEAN KATZEN K416
HAZELDEAN H342
Sire: HAZELDEAN P242
HAZELDEAN KGB K489
HAZELDEAN M351
HAZELDEAN K130

BASIN PAYWEIGHT 006S
BASIN PAYWEIGHT 1682 USA17038724
21AR O LASS 7017
Dam: HAZELDEAN N779
G A R PROPHET
HAZELDEAN H442
HAZELDEAN F327

Front	Rear	Front	Rear	Front	Rear	MUSCLE	TEMP.	SHEATH
6	5	5	5	5	5	C+	1	5

Structural EBV's			
TACE	ANGLE	CLAW	LEGS
	+0.8	+0.9	1.02
ACC%	72%	69%	63%

TRANSTASMAN ANGUS CATTLE EVALUATION - JUNE 2023																						
TACE	CALVING EASE				GROWTH & MATERNAL				FERTILITY		CWT	CARCASE					Doc	Angus Index	Dom	Heavy Grain	Heavy Grass	
	DIR	DTRS	GL	B Wt	200	400	600	MWt	Milk	SS	DC	C Wt	EMA	RIB	RUMP	RBV%	IMF%	Doc.				
EBV	-1.3	+3.6	-3.5	+5.6	+68	+109	+142	+116	+13	+3.3	-6.4	+88	+4.7	-0.4	-1.3	+0.1	+2	+35	+243	+204	+316	+227
ACC%	54%	42%	83%	74%	72%	71%	71%	68%	59%	72%	36%	60%	59%	60%	60%	54%	63%	55%				

Hazeldean P242 has done a very good job as a young sire and should breed on well. S406 is larger framed, with lots of scope. Seriously quiet. Top 2% for 200d growth, top 6% for docility and carcass weight EBVs. Mature cow weight is significantly smaller than 600d which is a positive in our eyes. Suitable for heifers and used as a worker in 2022 joining.

Purchaser..... Price.....

5 HAZELDEAN S21 (AI) SV APR AMFU NHFU CAFU DDFU Born: 05/07/2021 Society Id: NHZ21S21

G A R INGENUITY
H P C A INTENSITY
G A R PREDESTINED 287L
Sire: RENNYLEA NORL519
TE MANIA BERKLEY B1
RENNYLEA H414
RENNYLEA C310

ARDROSSAN EQUATOR A241
HAZELDEAN JAIPUR J140
HAZELDEAN C33
Dam: HAZELDEAN M535
LAWSONS TANK VLY B1155
HAZELDEAN H699
HAZELDEAN B1033

Front	Rear	Front	Rear	Front	Rear	MUSCLE	TEMP.	SHEATH
6	5	5	6	5	6	C+	2	4

Structural EBV's			
TACE	ANGLE	CLAW	LEGS
	+0.66	+0.18	0.82
ACC%	70%	74%	69%

TRANSTASMAN ANGUS CATTLE EVALUATION - JUNE 2023																						
TACE	CALVING EASE				GROWTH & MATERNAL				FERTILITY		CWT	CARCASE					Doc	Angus Index	Dom	Heavy Grain	Heavy Grass	
	DIR	DTRS	GL	B Wt	200	400	600	MWt	Milk	SS	DC	C Wt	EMA	RIB	RUMP	RBV%	IMF%	Doc.				
EBV	+4.1	+3.2	-1.1	+4.3	+58	+104	+136	+143	+10	+2.2	-7.6	+79	+5.4	+0.2	-1.4	-0.5	+5.3	+39	+239	+196	+318	+228
ACC%	64%	55%	83%	76%	74%	73%	75%	73%	68%	74%	49%	66%	65%	67%	67%	62%	68%	61%				

A robust L519 son with a good square build. Top 1% for gestation length and claw set EBV. Top 2% for days to calving and IMF. Top 15% for 600d. Better than breed average for scrotal. Suitable for heifers and used as a worker in 2022 joining.

Purchaser..... Price.....

6 HAZELDEAN S68 (AI) SV APR AMFU NHFU CAFU DDFU Born: 07/07/2021 Society Id: NHZ21S68

ARDROSSAN EQUATOR A241
HAZELDEAN JAIPUR J140
HAZELDEAN C33
Sire: HAZELDEAN M182
HAZELDEAN GUARDIAN G553
HAZELDEAN K807
HAZELDEAN G568

SCHURRTOP REALITY X723
MATAURI REALITY 839
MATAURI 06663
Dam: HAZELDEAN K1630
RENNYLEA C574
HAZELDEAN H1604
HAZELDEAN BOOMTIME F1006

Front	Rear	Front	Rear	Front	Rear	MUSCLE	TEMP.	SHEATH
7	5	6	6	5	6	C	1	4

Structural EBV's			
TACE	ANGLE	CLAW	LEGS
	+0.94	+0.72	1.3
ACC%	69%	69%	66%

TRANSTASMAN ANGUS CATTLE EVALUATION - JUNE 2023																						
TACE	CALVING EASE				GROWTH & MATERNAL				FERTILITY		CWT	CARCASE					Doc	Angus Index	Dom	Heavy Grain	Heavy Grass	
	DIR	DTRS	GL	B Wt	200	400	600	MWt	Milk	SS	DC	C Wt	EMA	RIB	RUMP	RBV%	IMF%	Doc.				
EBV	+4.6	+6.6	-9.3	+3.7	+55	+99	+135	+114	+21	+3.7	-4.4	+80	+6.5	+0.3	-0.2	-0.4	+3.7	+48	+215	+166	+291	+204
ACC%	59%	48%	84%	74%	73%	71%	72%	68%	62%	73%	41%	62%	61%	62%	62%	57%	64%	59%				

Attractive young Hazeldean Maverick son. Plenty of frame, good scope and very gentle disposition. Top 1% for docility, top 7% for scrotal size, top 14% for IMF and carcass weight. Ticks a lot of boxes. Suitable for heifers and used as a worker in 2022 joining.

Purchaser..... Price.....

Top 5% Top 10% Top 30%

Ranking in Angus Aust. June 2023

Proven Genetic Performance

www.hazeldean.com.au

NEW ENGLAND 2023



SALE BULLS

7 HAZELDEAN S44 (AI) PV APR AMFU NHFU CAFU DDFU Born: 06/07/2021 Society Id: NHZ21S44

G A R MOMENTUM USA17354145 SYDGEN BLACK PEARL 2006
 LAWSONS MOMENTOUS M518 HAZELDEAN LEBANON L332
 LAWSONS AFRICA H229 VLYH229 H341
Sire: MURDEDUKE QUARTERBACK Q011 **Dam: HAZELDEAN N903**
 CARABAR DOCKLANDS D62 LAWSONS INVINCIBLE C402
 MURDEDUKE BARUNDAH N026 HAZELDEAN J236
 MURDEDUKE BARUNAH C191 HAZELDEAN G163

Front	Rear	Front	Rear	Front	Rear	MUSCLE	TEMP.	SHEATH
7	6	7	6	6	5	C+	2	4

Structural EBV's			
TACE	ANGLE	CLAW	LEGS
	+1	+0.76	1.06
ACC%	73%	73%	67%

TRANSTASMAN ANGUS CATTLE EVALUATION - JUNE 2023																							
TACE	CALVING EASE				GROWTH & MATERNAL				FERTILITY		CWT	CARCASE					Doc	Angus Index	Dom	Heavy Grain	Heavy Grass		
	DIR	DTRS	GL	B Wt	200	400	600	MWt	Milk	SS	DC	C Wt	EMA	RIB	RUMP	RBV%	IMF%	Doc.					
EBV	+4.6	+1.9	-10	+3.1	+55	+105	+138	+101	+23	+2.5	-6.3	+83	+9.2	-1.3	-1.6	+0.3	+3.4	+14	+253	+208	+331	+242	
ACC%	58%	46%	83%	75%	73%	72%	73%	68%	60%	74%	37%	61%	60%	61%	61%	55%	63%	59%					

Great skin type and one of the deepest sided bulls in his group. Really thick. Impressive birth to growth, top 18% for EMA, top 19% for IMF top 12% for 600d growth and days to calving. Suitable for heifers and used as a worker in 2022 joining.

Purchaser..... Price.....

8 HAZELDEAN S509 (AI) SV HBR AMFU NHFU CAFU DDFU Born: 19/07/2021 Society Id: NHZ21S509

C R A BEXTOR 872 5205 608 S A F FOCUS OF E R
 G A R PROPHET TE MANIA YORKSHIRE Y437
 G A R OBJECTIVE 1885 TE MANIA LOWAN U275
Sire: BALDRIDGE BEAST MODE B074 **Dam: HAZELDEAN G314**
 STYLES UPGRADE J59 HAZELDEAN RENAISSANCE R13
 BALDRIDGE ISABEL Y69 HAZELDEAN A592
 BALDRIDGE ISABEL T935 HAZELDEAN Y1001

Front	Rear	Front	Rear	Front	Rear	MUSCLE	TEMP.	SHEATH
6	5	6	6	5	6	C+	1	4

Structural EBV's			
TACE	ANGLE	CLAW	LEGS
	+0.72	+0.38	1.08
ACC%	73%	73%	70%

TRANSTASMAN ANGUS CATTLE EVALUATION - JUNE 2023																							
TACE	CALVING EASE				GROWTH & MATERNAL				FERTILITY		CWT	CARCASE					Doc	Angus Index	Dom	Heavy Grain	Heavy Grass		
	DIR	DTRS	GL	B Wt	200	400	600	MWt	Milk	SS	DC	C Wt	EMA	RIB	RUMP	RBV%	IMF%	Doc.					
EBV	-0.4	+6.6	+0.3	+6.8	+79	+122	+165	+168	+15	+4.1	-3.7	+93	+3.3	-5	-6	+1.2	-0.1	+37	+206	+175	+264	+188	
ACC%	65%	56%	83%	75%	74%	73%	73%	72%	69%	70%	48%	66%	65%	66%	66%	62%	67%	62%					

POWER PLUS! Lots of frame and very thick young Beast Mode son. Top 1% for 200d, 600d, growth & claw EBVs. Top 3% for scrotal size and carcase weight. Used as a worker in 2022 joining

Purchaser..... Price.....

9 HAZELDEAN S2040 (ET) PV APR AMFU NHFU CAFU DDFU Born: 01/08/2021 Society Id: NHZ21S2040

G A R PROPHET BON VIEW NEW DESIGN 208
 BALDRIDGE BEAST MODE B074 TC TOTAL 410
 BALDRIDGE ISABEL Y69 TC ERICA EILEEN 2047
Sire: HAZELDEAN P16 **Dam: HAZELDEAN H308**
 LAWSONS INVINCIBLE C402 BOOROOMOOKA THEO T030
 HAZELDEAN G90 HAZELDEAN THEO Y1254
 HAZELDEAN B4 HAZELDEAN W522

Front	Rear	Front	Rear	Front	Rear	MUSCLE	TEMP.	SHEATH
6	6	6	6	5	6	C+	1	5

Structural EBV's			
TACE	ANGLE	CLAW	LEGS
	+0.86	+0.78	1.04
ACC%	71%	71%	64%

TRANSTASMAN ANGUS CATTLE EVALUATION - JUNE 2023																							
TACE	CALVING EASE				GROWTH & MATERNAL				FERTILITY		CWT	CARCASE					Doc	Angus Index	Dom	Heavy Grain	Heavy Grass		
	DIR	DTRS	GL	B Wt	200	400	600	MWt	Milk	SS	DC	C Wt	EMA	RIB	RUMP	RBV%	IMF%	Doc.					
EBV	-3	+1.4	-6.5	+4.5	+58	+99	+133	+120	+14	+2.8	-3.3	+69	+1	+0.5	+0.4	-0.3	+1.5	+58	+165	+131	+222	+147	
ACC%	60%	50%	72%	76%	75%	74%	74%	70%	63%	71%	41%	63%	62%	64%	64%	58%	65%	62%					

Real length of rein makes for long bull. Very attractive and genuine Beast Mode type. Top 15% for 200d growth and top 1% for docility. Suitable for heifers and used as a worker in 2022 joining

Purchaser..... Price.....

Top 5% Top 10% Top 30%

Ranking in Angus Aust. June 2023

Proven Genetic Performance

www.hazeldean.com.au

NEW ENGLAND 2023



SALE BULLS

10 HAZELDEAN S1052 (Nat) SV APR AMFU NHFU CAFU DDFU Born: 03/08/2021 Society Id: NHZ21S1052

HAZELDEAN JAIPUR J140
HAZELDEAN MAGNUM M586
HAZELDEAN H356
Sire: HAZELDEAN Q1593
RENNYLEA EDMUND E11
HAZELDEAN L356
HAZELDEAN J674

HIGHLANDER OF STERN AB
BRAVEHEART OF STERN 1217000784
STERN 3886
Dam: HAZELDEAN M51
CARABAR DOCKLANDS D62
HAZELDEAN K303
HAZELDEAN F335

Front	Rear	Front	Rear	MUSCLE	TEMP.	SHEATH		
6	6	6	7	6	5	C+	1	5

Structural EBV's			
TACE	ANGLE	CLAW	LEGS
	+1.14	+1.02	1.2
ACC%	65%	64%	63%

TRANSTASMAN ANGUS CATTLE EVALUATION - JUNE 2023																							
TACE	CALVING EASE				GROWTH & MATERNAL				FERTILITY		CWT	CARCASE					Doc	Angus Index	Dom	Heavy Grain	Heavy Grass		
	DIR	DTRS	GL	B Wt	200	400	600	MWt	Milk	SS	DC	C Wt	EMA	RIB	RUMP	RBV%	IMF%	Doc.					
EBV	+8.8	+8.2	-9	+2	+48	+101	+132	+96	+26	+2.5	-7.7	+84	-0.4	+5.1	+5.4	-1.1	+2.4	+11	+236	+198	+302	+225	
ACC%	55%	45%	67%	72%	71%	68%	69%	67%	59%	71%	38%	60%	58%	60%	60%	53%	62%	51%					

Another impressive young Magnum grandson, with a bigger hindquarter and nice muscle pattern. Industry leading calving ease and top 2% for days to calving. Top 1% for rib and rump fats. Suitable for heifers and used as a worker in 2022 joining

Purchaser..... Price.....

11 HAZELDEAN S2000 (ET) PV APR AMFU NHFU CAFU DDFU Born: 31/07/2021 Society Id: NHZ21S2000

ARDROSSAN EQUATOR A241
HAZELDEAN JAIPUR J140
HAZELDEAN C33
Sire: HAZELDEAN MAGNUM M586
RENNYLEA C574
HAZELDEAN H356
HAZELDEAN F573

WKREPLAY USA16154968
HAZELDEAN FLAIR F493
HAZELDEAN D786
Dam: HAZELDEAN J306
WKREPLAY USA16154968
HAZELDEAN F139
HAZELDEAN LEAD ON Z137

Front	Rear	Front	Rear	MUSCLE	TEMP.	SHEATH		
7	6	6	6	4	6	C	1	5

Structural EBV's			
TACE	ANGLE	CLAW	LEGS
	+0.98	+0.84	1.02
ACC%	72%	75%	67%

TRANSTASMAN ANGUS CATTLE EVALUATION - JUNE 2023																							
TACE	CALVING EASE				GROWTH & MATERNAL				FERTILITY		CWT	CARCASE					Doc	Angus Index	Dom	Heavy Grain	Heavy Grass		
	DIR	DTRS	GL	B Wt	200	400	600	MWt	Milk	SS	DC	C Wt	EMA	RIB	RUMP	RBV%	IMF%	Doc.					
EBV	+5.7	+5.3	-9.5	+3.3	+55	+108	+140	+128	+20	+5	-9.7	+73	+7.7	+1.1	+0.1	+0.4	+3.3	+35	+272	+235	+337	+266	
ACC%	60%	47%	73%	76%	75%	74%	74%	72%	65%	75%	42%	67%	65%	67%	67%	60%	69%	64%					

Very typical of the Magnum types, he has a big pair of testes reflecting his SS EBV! We have only a few Magnum sons this year so this guy is rare! Top 1% for days to calving, scrotal size and nearly all indexes. Very attractive commercially orientated bull. Suitable for heifers and used as a worker in 2022 joining.

Purchaser..... Price.....

12 HAZELDEAN S673 (Nat) SV APR AMFU NH50% CAFU DDFU Born: 25/07/2021 Society Id: NHZ21S673

HAZELDEAN JAIPUR J140
HAZELDEAN MAGNUM M586
HAZELDEAN H356
Sire: HAZELDEAN Q319
HAZELDEAN JALANA J1510
HAZELDEAN L1175
HAZELDEAN H1603

TE MANIA YORKSHIRE Y437
TE MANIA BERKLEY B1
TE MANIA LOWAN Z53
Dam: HAZELDEAN F588
HAZELDEAN BANDO B320
HAZELDEAN D891
HAZELDEAN W415

Front	Rear	Front	Rear	MUSCLE	TEMP.	SHEATH		
6	6	6	6	5	6	C+	2	5

Structural EBV's			
TACE	ANGLE	CLAW	LEGS
	+1.1	+0.78	0.88
ACC%	63%	63%	59%

TRANSTASMAN ANGUS CATTLE EVALUATION - JUNE 2023																							
TACE	CALVING EASE				GROWTH & MATERNAL				FERTILITY		CWT	CARCASE					Doc	Angus Index	Dom	Heavy Grain	Heavy Grass		
	DIR	DTRS	GL	B Wt	200	400	600	MWt	Milk	SS	DC	C Wt	EMA	RIB	RUMP	RBV%	IMF%	Doc.					
EBV	+8.3	+9.2	-7.3	+1.5	+48	+94	+129	+125	+16	+2.9	-8.9	+81	+4.5	+3	+1.4	-0.3	+3.6	+19	+236	+195	+296	+229	
ACC%	57%	46%	74%	75%	72%	70%	71%	69%	63%	70%	40%	61%	60%	62%	62%	55%	64%	50%					

Well rounded Hazeldean Q319 son. Making his mark in the industry, Q319 is very balanced through his phenotype and performance data as is this son. S673 provides ample calving ease, top 27% for 600d growth, top 1% for days to calving, top 15% for IMF. Suitable for heifers and used as a worker in 2022 joining

Purchaser..... Price.....

Top 5% Top 10% Top 30%
Ranking in Angus Aust. June 2023

Proven Genetic Performance

www.hazeldean.com.au

NEW ENGLAND 2023



SALE BULLS

13 HAZELDEAN S78 (AI) SV APR AMFU NHFU CAFU DDFU Born: 07/07/2021 Society Id: NHZ21S78

G A R MOMENTUM USA17354145 SITZ UPWARD 307R
 LAWSONS MOMENTOUS M518 PLATTEMERE WEIGH UP K360
 LAWSONS AFRICA H229 VLYH229 BARBARA OF PLATTEMERE 337 USA16274856
Sire: MURDEDUKE QUARTERBACK Q011 **Dam: HAZELDEAN M647**
 CARABAR DOCKLANDS D62 HAZELDEAN CASHFLOW B728
 MURDEDUKE BARUNDAH N026 HAZELDEAN D1051
 MURDEDUKE BARUNAH C191 HAZELDEAN Y1257

Front	Rear	Front	Rear	Front	Rear	MUSCLE	TEMP.	SHEATH
6	6	6	6	5	6	C	2	5

Structural EBV's			
TACE	ANGLE	CLAW	LEGS
	+0.86	+0.68	1.06
ACC%	71%	74%	67%

TRANSTASMAN ANGUS CATTLE EVALUATION - JUNE 2023																							
TACE	CALVING EASE				GROWTH & MATERNAL				FERTILITY			CWT	CARCASE					Doc	Angus Index	Dom	Heavy Grain	Heavy Grass	
	DIR	DTRS	GL	B Wt	200	400	600	MWt	Milk	SS	DC	C Wt	EMA	RIB	RUMP	RYBY%	IMF%	Doc.					
EBV	+4.5	+5.4	-9	+1.4	+47	+88	+101	+70	+20	+2.6	-5.7	+62	+4.4	0	-1	+0.6	+2	+25	+215	+193	+279	+195	
ACC%	58%	46%	83%	75%	73%	72%	73%	69%	60%	74%	38%	61%	61%	63%	63%	56%	64%	60%					

Deep sided Quarterback son with a more moderate frame size and full of stretch. Better than breed average for 15 traits. Suitable for heifers and used as a worker in 2022 joining.

Purchaser..... Price.....

14 HAZELDEAN S153 (AI) SV HBR AMFU NHFU CAFU DDFU Born: 09/07/2021 Society Id: NHZ21S153

POSS TOTAL IMPACT 745 RENNYLEA EDMUND E11
 POSS EASY IMPACT 0119 ARDROSSAN JUSTICE NAQJ93
 POSS ELMARETTA 736 ARDROSSAN EVERELDA AI(ET) NAQF6
Sire: BALDRIDGE ALTERNATIVE E125 **Dam: HAZELDEAN N56**
 HOOVER DAM TE MANIA YORKSHIRE Y437
 BALDRIDGE BLACKBIRD A030 HAZELDEAN G21
 BALDRIDGE BLACKBIRD X89 HAZELDEAN B301

Front	Rear	Front	Rear	Front	Rear	MUSCLE	TEMP.	SHEATH
7	6	6	6	5	5	C+	3	4

Structural EBV's			
TACE	ANGLE	CLAW	LEGS
	+1.04	+1.24	1.22
ACC%	74%	74%	65%

TRANSTASMAN ANGUS CATTLE EVALUATION - JUNE 2023																							
TACE	CALVING EASE				GROWTH & MATERNAL				FERTILITY			CWT	CARCASE					Doc	Angus Index	Dom	Heavy Grain	Heavy Grass	
	DIR	DTRS	GL	B Wt	200	400	600	MWt	Milk	SS	DC	C Wt	EMA	RIB	RUMP	RYBY%	IMF%	Doc.					
EBV	+7.3	+6.9	-7.8	+3.2	+59	+96	+127	+116	+17	+3.1	-6.7	+75	+5.5	+0.3	-1.5	+0.1	+2.8	+15	+235	+193	+306	+219	
ACC%	57%	43%	83%	75%	73%	72%	73%	69%	63%	74%	37%	63%	62%	63%	62%	57%	65%	58%					

Heavy set with plenty of frame. Better than breed average for 15 traits. Great balance of profit driving traits in a beef cow and calf operation. Suitable for heifers and used as a worker in 2022 joining.

Purchaser..... Price.....

15 HAZELDEAN S243 (AI) SV APR AMFU NHFU CAFU DDFU Born: 11/07/2021 Society Id: NHZ21S243

G A R INGENUITY BOOROOMOOKA UNDERTAKEN Y145
 H P C A INTENSITY RENNYLEA EDMUND E11
 G A R PREDESTINED 287L LAWSONS HENRY VIII Y5
Sire: RENNYLEA NORL519 **Dam: HAZELDEAN K722**
 TE MANIA BERKLEY B1 TE MANIA BERKLEY B1
 RENNYLEA H414 HAZELDEAN F426
 RENNYLEA C310 HAZELDEAN Z1165

Front	Rear	Front	Rear	Front	Rear	MUSCLE	TEMP.	SHEATH
6	5	6	6	5	5	C+	1	4

Structural EBV's			
TACE	ANGLE	CLAW	LEGS
	+0.82	+0.66	0.92
ACC%	75%	74%	70%

TRANSTASMAN ANGUS CATTLE EVALUATION - JUNE 2023																							
TACE	CALVING EASE				GROWTH & MATERNAL				FERTILITY			CWT	CARCASE					Doc	Angus Index	Dom	Heavy Grain	Heavy Grass	
	DIR	DTRS	GL	B Wt	200	400	600	MWt	Milk	SS	DC	C Wt	EMA	RIB	RUMP	RYBY%	IMF%	Doc.					
EBV	+3.2	+3.5	-6.5	+4.3	+52	+94	+127	+133	+13	+0.4	-6.4	+69	+6.3	+2.4	+0.3	+0.2	+3.2	+35	+215	+174	+280	+200	
ACC%	65%	57%	83%	76%	75%	73%	75%	72%	69%	75%	50%	67%	65%	67%	67%	63%	68%	62%					

Impressive shape, softness and a nice gentle disposition. Very good raw data for angle and claw scores - backed up by good claw EBV. Very good fertility traits. Suitable for heifers and used as a worker in 2022 joining

Purchaser..... Price.....

Top 5% **Top 10%** **Top 30%**

Ranking in Angus Aust. June 2023

Proven Genetic Performance

www.hazeldean.com.au



HAZELDEAN
LITCHFIELD
EST 1865

NEW ENGLAND 2023

SALE BULLS

16 HAZELDEAN S889 (Nat) SV APR AMFU NHFU CAFU DDFU Born: 29/07/2021 Society Id: NHZ21S889

LD CAPITALIST 316
MUSGRAVE 316 STUNNER USA18467508
MCATL BLACKBIRD 831-1378
Sire: HAZELDEAN Q95
ARDROSSAN JUSTICE NAQJ93
HAZELDEAN N29
HAZELDEAN K75

EF COMPLEMENT 8088
MILLWILLAH COMPLEMENT NJWK108
MILWILLAH MITTAGONG H257
Dam: HAZELDEAN N501
TE MANIA BERKLEY B1
HAZELDEAN J12
HAZELDEAN A913

Front	Rear	Front	Rear	MUSCLE	TEMP.	SHEATH		
6	5	5	6	6	5	C+	2	4

Structural EBV's			
TACE	ANGLE	CLAW	LEGS
	+0.78	+0.62	0.78
ACC%	68%	68%	59%

TRANSTASMAN ANGUS CATTLE EVALUATION - JUNE 2023																							
TACE	CALVING EASE				GROWTH & MATERNAL				FERTILITY		CWT	CARCASE					Doc	Angus Index	Dom	Heavy Grain	Heavy Grass		
	DIR	DTRS	GL	B Wt	200	400	600	MWt	Milk	SS	DC	C Wt	EMA	RIB	RUMP	RBV%	IMF%	Doc.					
EBV	+5.9	+0.5	-7	+4.1	+62	+108	+135	+104	+19	+1.6	-5.3	+89	+12.4	+0.9	-0.9	+1	+1.5	+2	+263	+223	+345	+244	
ACC%	54%	44%	71%	72%	71%	69%	71%	67%	60%	72%	35%	59%	57%	59%	59%	52%	62%	50%					

It's easy to see why we used this bull as a yearling in the stud. Top 4% for most of his indexes, this guy is better than breed average for 17 traits. Top 4% for EMA and top 9% for both structural EBVs. Suitable for heifers and used as a worker in 2022 joining

Purchaser..... Price.....

17 HAZELDEAN S1228 (Nat) PV APR AMFU NHFU CAFU DDFU Born: 10/08/2021 Society Id: NHZ21S1228

ARDROSSAN HONOUR H255
ARDROSSAN MAGISTRATE M101
ARDROSSAN PRINCESS H230
Sire: HAZELDEAN Q589
HAZELDEAN FLAIR F493
HAZELDEAN J1218
HAZELDEAN F135

HAZELDEAN HERT H30
HAZELDEAN KIGALI K176
HAZELDEAN G38
Dam: HAZELDEAN M1024
HAZELDEAN BOOMTIME D1150
HAZELDEAN F702
HAZELDEAN W639

Front	Rear	Front	Rear	MUSCLE	TEMP.	SHEATH		
7	6	6	6	5	6	C	2	5

Structural EBV's			
TACE	ANGLE	CLAW	LEGS
	+0.98	+0.76	1
ACC%	60%	66%	54%

TRANSTASMAN ANGUS CATTLE EVALUATION - JUNE 2023																							
TACE	CALVING EASE				GROWTH & MATERNAL				FERTILITY		CWT	CARCASE					Doc	Angus Index	Dom	Heavy Grain	Heavy Grass		
	DIR	DTRS	GL	B Wt	200	400	600	MWt	Milk	SS	DC	C Wt	EMA	RIB	RUMP	RBV%	IMF%	Doc.					
EBV	+4.1	+5.5	-1	+3.3	+47	+87	+112	+86	+21	+1.9	-4.7	+67	+5.4	-0.4	-0.6	+0.1	+2.7	+15	+199	+163	+264	+182	
ACC%	51%	39%	69%	72%	70%	69%	70%	67%	59%	72%	31%	58%	56%	59%	59%	51%	61%	46%					

More moderate frame with softness. Good calving ease and milk. Suitable for heifers and used as a worker in 2022 joining

Purchaser..... Price.....

18 HAZELDEAN S2063 (ET) PV APR AMFU NHFU CAFU DDFU Born: 11/08/2021 Society Id: NHZ21S2063

C A FUTURE DIRECTION 5321
BASIN FRANCHISE P142
BASIN CHLOE 812L
Sire: EF COMPLEMENT 8088
BR MIDLAND
EF EVERELDA ENTENSE 6117
H F EVERELDA ENTENSE 869

C R A BEXTOR 872 5205 608
G A R PROPHET
G A R OBJECTIVE 1885
Dam: HAZELDEAN J823
HAZELDEAN CARDRONA C677
HAZELDEAN G724

Front	Rear	Front	Rear	MUSCLE	TEMP.	SHEATH		
6	6	6	6	5	6	C+	1	5

Structural EBV's			
TACE	ANGLE	CLAW	LEGS
	+1.04	+0.76	0.88
ACC%	75%	78%	71%

TRANSTASMAN ANGUS CATTLE EVALUATION - JUNE 2023																							
TACE	CALVING EASE				GROWTH & MATERNAL				FERTILITY		CWT	CARCASE					Doc	Angus Index	Dom	Heavy Grain	Heavy Grass		
	DIR	DTRS	GL	B Wt	200	400	600	MWt	Milk	SS	DC	C Wt	EMA	RIB	RUMP	RBV%	IMF%	Doc.					
EBV	+0.9	+4.3	-2.5	+4	+60	+101	+135	+104	+21	+2.7	-7.2	+69	-0.9	+1.3	+1.2	-1.3	+4.8	+27	+240	+189	+326	+227	
ACC%	67%	61%	74%	77%	77%	76%	76%	74%	69%	77%	55%	69%	68%	69%	69%	65%	71%	68%					

Nice topline - even from tip to toe. Handy growth section and top 4% for IMF. Very good fertility EBVs. Suitable for heifers and used as a worker in 2022 joining

Purchaser..... Price.....

Top 5% **Top 10%** **Top 30%**
Ranking in Angus Aust. June 2023

Proven Genetic Performance

www.hazeldean.com.au

NEW ENGLAND 2023



SALE BULLS

19 HAZELDEAN S891 (Nat) SV APR AMFU NHFU CAFU DDFU Born: 29/07/2021 Society Id: NHZ21S891

HAZELDEAN JAIPUR J140 EF COMPLEMENT 8088
 HAZELDEAN MAGNUM M586 MILLWILLAH COMPLEMENT NJWK108
 HAZELDEAN H356 MILWILLAH MITTAGONG H257
Sire: HAZELDEAN Q898 Dam: **HAZELDEAN N865**
 HAZELDEAN KIBBITZ K553 HAZELDEAN HALYARD H506
 HAZELDEAN N1012 HAZELDEAN K1025
 HAZELDEAN K3 HAZELDEAN G890

Front	Rear	Front	Rear	Front	Rear	MUSCLE	TEMP.	SHEATH
6	6	6	6	5	5	C	2	4

Structural EBV's			
TACE	ANGLE	CLAW	LEGS
	+1.04	+0.82	0.96
ACC%	69%	69%	59%

TRANSTASMAN ANGUS CATTLE EVALUATION - JUNE 2023																							
TACE	CALVING EASE				GROWTH & MATERNAL				FERTILITY		CWT	CARCASE					Doc	Angus Index	Dom	Heavy Grain	Heavy Grass		
	DIR	DTRS	GL	B Wt	200	400	600	MWt	Milk	SS	DC	C Wt	EMA	RIB	RUMP	RBV%	IMF%	Doc.					
EBV	+3.7	+2.8	-2.6	+4.2	+53	+100	+125	+98	+20	+1.3	-7.2	+75	+8.3	+0.6	+0.1	+0.5	+2.9	+14	+256	+219	+330	+241	
ACC%	54%	42%	69%	72%	70%	69%	70%	66%	58%	72%	34%	58%	57%	59%	59%	52%	62%	49%					

Square top and good spring of rib. A good balance across economically significant traits makes for big indexes. Note: he has a little white in flanks and a small scar on o/s eye. Suitable for heifers and used as a worker in 2022 joining.

Purchaser..... Price.....

20 HAZELDEAN S203 (AI) SV HBR AMFU NHFU CAFU DDFU Born: 10/07/2021 Society Id: NHZ21S203

G A R INGENUITY ARDOSSAN EQUATOR A241
 H P C A INTENSITY HAZELDEAN JAIPUR J140
 G A R PREDESTINED 287L HAZELDEAN C33
Sire: RENNYLEA NORL519 Dam: **HAZELDEAN N99**
 TE MANIA BERKLEY B1 RENNYLEA EDMUND E11
 RENNYLEA H414 HAZELDEAN L6
 RENNYLEA C310 HAZELDEAN J91

Front	Rear	Front	Rear	Front	Rear	MUSCLE	TEMP.	SHEATH
6	5	6	5	5	6	C	1	4

Structural EBV's			
TACE	ANGLE	CLAW	LEGS
	+0.94	+0.7	0.96
ACC%	73%	70%	69%

TRANSTASMAN ANGUS CATTLE EVALUATION - JUNE 2023																							
TACE	CALVING EASE				GROWTH & MATERNAL				FERTILITY		CWT	CARCASE					Doc	Angus Index	Dom	Heavy Grain	Heavy Grass		
	DIR	DTRS	GL	B Wt	200	400	600	MWt	Milk	SS	DC	C Wt	EMA	RIB	RUMP	RBV%	IMF%	Doc.					
EBV	+6.1	+4.6	-6.4	+3	+55	+99	+134	+123	+17	+3.9	-6.9	+76	+3.5	+2	+1.1	-0.2	+3.3	+39	+232	+189	+300	+221	
ACC%	64%	55%	84%	75%	74%	73%	73%	72%	67%	74%	49%	66%	64%	66%	66%	61%	67%	61%					

Super long was the yard comment and from his pedigree, it's no wonder! 19 traits better than breed average, an HBR bull for the stud breeders to consider. Top 3% for docility, top 12% for carcass weight, claw set and calving ease direct. Top 17% for 600d growth and positive fats. One not to miss. Suitable for heifers and used as a worker in 2022 joining

Purchaser..... Price.....

21 HAZELDEAN S2145 (Nat) SV APR AMFU NHFU CAFU DDFU Born: 22/08/2021 Society Id: NHZ21S2145

C R A BEXTOR 872 5205 608 BOOROOMOOKA UNDERTAKEN Y145
 G A R PROPHET RENNYLEA EDMUND E11
 G A R OBJECTIVE 1885 LAWSONS HENRY VIII Y5
Sire: BALDRIDGE BEAST MODE B074 Dam: **HAZELDEAN N302**
 STYLES UPGRADE J59 HAZELDEAN HARVEY H14
 BALDRIDGE ISABEL Y69 HAZELDEAN L955
 BALDRIDGE ISABEL T935 HAZELDEAN H610

Front	Rear	Front	Rear	Front	Rear	MUSCLE	TEMP.	SHEATH
5	5	5	6	5	6	C	1	4

Structural EBV's			
TACE	ANGLE	CLAW	LEGS
	+0.84	+0.54	0.98
ACC%	72%	72%	70%

TRANSTASMAN ANGUS CATTLE EVALUATION - JUNE 2023																							
TACE	CALVING EASE				GROWTH & MATERNAL				FERTILITY		CWT	CARCASE					Doc	Angus Index	Dom	Heavy Grain	Heavy Grass		
	DIR	DTRS	GL	B Wt	200	400	600	MWt	Milk	SS	DC	C Wt	EMA	RIB	RUMP	RBV%	IMF%	Doc.					
EBV	+5.2	-0.2	-1.6	+4.8	+63	+109	+139	+129	+20	+2.2	-4.6	+83	+4.9	-1.4	-3.4	+0.3	+2.5	+33	+217	+182	+290	+198	
ACC%	64%	56%	73%	72%	73%	72%	72%	70%	67%	68%	47%	65%	64%	65%	65%	61%	67%	60%					

Thickness! Beast Mode really puts some meat on them. Top 8% for 400d growth and docility. Top 5% for claw set. Suitable for heifers and used as a worker in 2022 joining

Purchaser..... Price.....

Top 5% **Top 10%** **Top 30%**
 Ranking in Angus Aust. June 2023

Proven Genetic Performance



HAZELDEAN
LITCHFIELD
EST 1865

NEW ENGLAND 2023

SALE BULLS

22 HAZELDEAN S32 (AI) SV APR AMFU NHFU CAFU DDFU Born: **06/07/2021**
Society Id: **NHZ21S32**

G A R MOMENTUM USA17354145 BT RIGHT TIME 24J
LAWSON'S MOMENTOUS M518 RENNYLEA NORF42
LAWSON'S AFRICA H229 VLYH229 RENNYLEA B36
Sire: **MURDEDUKE QUARTERBACK Q011** Dam: **HAZELDEAN J87**
CARABAR DOCKLANDS D62 BR MIDLAND
MURDEDUKE BARUNDAH N026 HAZELDEAN F20
MURDEDUKE BARUNAH C191 HAZELDEAN A255

Front	Rear	Front	Rear	Front	Rear	MUSCLE	TEMP.	SHEATH
6	6	6	6	5	5	C+	1	4

Structural EBV's			
TACE	ANGLE	CLAW	LEGS
	+0.84	+0.8	0.98
ACC%	71%	71%	69%

TRANSTASMAN ANGUS CATTLE EVALUATION - JUNE 2023																							
TACE	CALVING EASE				GROWTH & MATERNAL				FERTILITY		CWT	CARCASE					Doc	Angus Index	Dom	Heavy Grain	Heavy Grass		
	DIR	DTRS	GL	B Wt	200	400	600	MWt	Milk	SS	DC	C Wt	EMA	RIB	RUMP	RBV%	IMF%	Doc.					
EBV	+7.3	+4.4	-9.4	+1.5	+40	+82	+103	+71	+26	+3.1	-6.8	+58	+0.2	+3.3	+3.4	-1.6	+5.2	+19	+206	+165	+281	+194	
ACC%	59%	47%	83%	75%	74%	73%	73%	70%	62%	75%	39%	62%	62%	64%	64%	58%	65%	62%					

This young bull handled his work as a yearling well, he has real softness and smooth type. Top 3% for rib fat & IMF. Top 4% for gestation length and milk EBV. Suitable for heifers and used as a worker in 2022 joining.

Purchaser..... Price.....

23 HAZELDEAN S67 (AI) SV APR AMFU NHFU CAFU DDFU Born: **07/07/2021**
Society Id: **NHZ21S67**

ARDROSSAN EQUATOR A241 KAROO W109 DIRECTION Z181
HAZELDEAN JAIPUR J140 CARABAR DOCKLANDS D62
HAZELDEAN C33 CARABAR BLACKCAP MARY B12
Sire: **HAZELDEAN P434** Dam: **HAZELDEAN K1089**
RENNYLEA EDMUND E11 HAZELDEAN BARD B21 (AI)(ET)
HAZELDEAN L527 HAZELDEAN E332
HAZELDEAN E453 HAZELDEAN Y1188

Front	Rear	Front	Rear	Front	Rear	MUSCLE	TEMP.	SHEATH
7	6	7	7	6	6	C+	1	4

Structural EBV's			
TACE	ANGLE	CLAW	LEGS
	+1.26	+0.94	1.02
ACC%	71%	71%	63%

TRANSTASMAN ANGUS CATTLE EVALUATION - JUNE 2023																							
TACE	CALVING EASE				GROWTH & MATERNAL				FERTILITY		CWT	CARCASE					Doc	Angus Index	Dom	Heavy Grain	Heavy Grass		
	DIR	DTRS	GL	B Wt	200	400	600	MWt	Milk	SS	DC	C Wt	EMA	RIB	RUMP	RBV%	IMF%	Doc.					
EBV	+9.9	+8	-10.6	+2.2	+54	+97	+137	+127	+21	+1.6	-5.2	+92	+3	-0.1	-1.4	+0.5	+1.6	+38	+205	+165	+262	+191	
ACC%	57%	47%	84%	76%	74%	73%	74%	69%	62%	74%	41%	62%	61%	63%	63%	57%	64%	58%					

Very long stretchy type, super quiet, really does match his top 4% docility EBV. Industry leading calving ease with top 14% 600d growth. Suitable for heifers and used as a worker in 2022 joining.

Purchaser..... Price.....

24 HAZELDEAN S1307 (Nat) SV APR AMFU NHFU CAFU DDFU Born: **14/08/2021**
Society Id: **NHZ21S1307**

RENNYLEA EDMUND E11 TE MANIA YORKSHIRE Y437
HAZELDEAN KIBBITZ K553 TE MANIA BERKLEY B1
HAZELDEAN H434 TE MANIA LOWAN Z53
Sire: **HAZELDEAN Q641** Dam: **HAZELDEAN G619**
RENNYLEA C574 HAZELDEAN TRAVELER V112
HAZELDEAN H1604 HAZELDEAN TRAVELER X928
HAZELDEAN BOOMTIME F1006 HAZELDEAN USQUEBAUGH U523

Front	Rear	Front	Rear	Front	Rear	MUSCLE	TEMP.	SHEATH
6	6	5	6	5	5	C+	1	4

Structural EBV's			
TACE	ANGLE	CLAW	LEGS
	+0.8	+0.54	1.06
ACC%	72%	72%	63%

TRANSTASMAN ANGUS CATTLE EVALUATION - JUNE 2023																							
TACE	CALVING EASE				GROWTH & MATERNAL				FERTILITY		CWT	CARCASE					Doc	Angus Index	Dom	Heavy Grain	Heavy Grass		
	DIR	DTRS	GL	B Wt	200	400	600	MWt	Milk	SS	DC	C Wt	EMA	RIB	RUMP	RBV%	IMF%	Doc.					
EBV	-1.8	-0.4	-3.7	+6.7	+57	+109	+153	+149	+18	+3.1	-6.9	+89	+7.2	+1	+0.4	+0.9	+1.8	+23	+223	+184	+275	+216	
ACC%	55%	45%	68%	73%	71%	70%	72%	67%	61%	72%	39%	60%	57%	60%	60%	53%	62%	53%					

Ample power and length added, dependable commercial type. Top 3% for 600d, top 5% for carcass weight and claw set EBV.

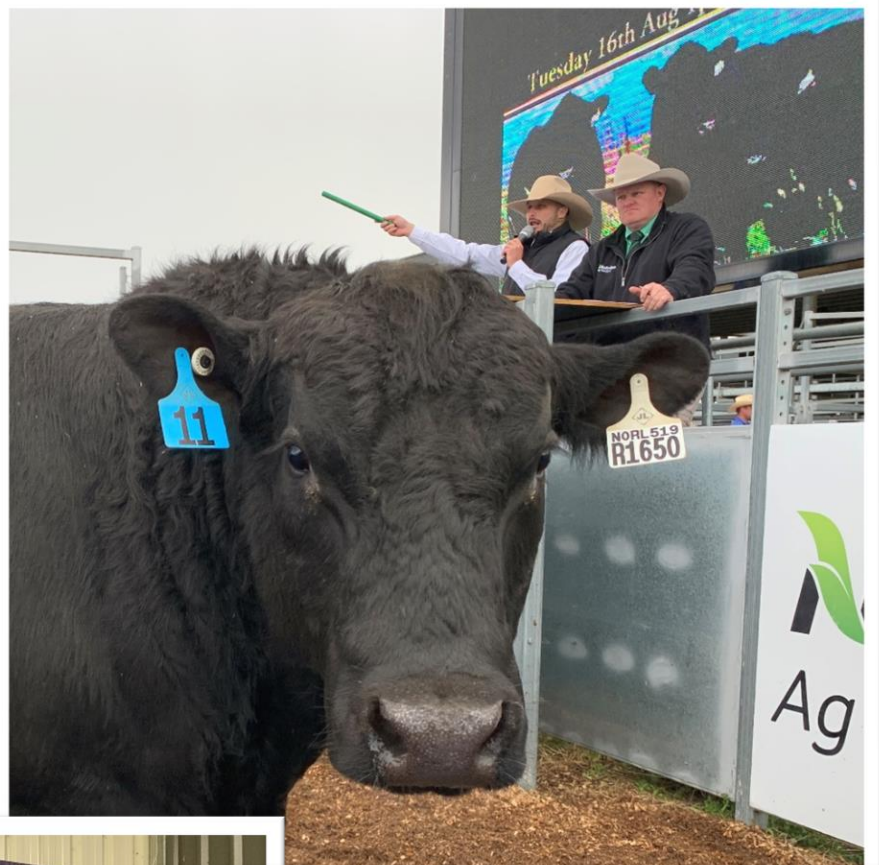
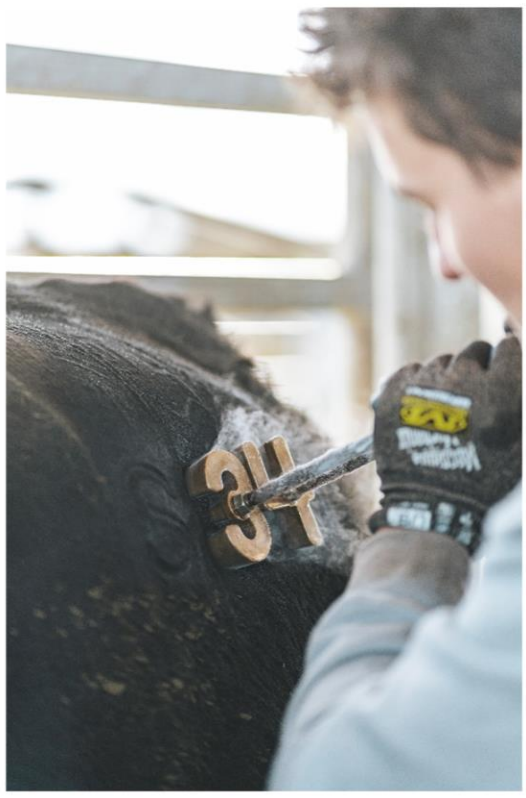
Purchaser..... Price.....

Top 5% **Top 10%** **Top 30%**

Ranking in Angus Aust. June 2023

Proven Genetic Performance

www.hazeldean.com.au





HAZELDEAN
LITCHFIELD
EST 1865

NEW ENGLAND 2023

SALE BULLS

25 HAZELDEAN S503 (AI) SV APR AMFU NHFU CAFU DDFU Born: 18/07/2021 Society Id: NHZ21S503

G A R INGENUITY SYDGEN BLACK PEARL 2006
H P C A INTENSITY HAZELDEAN LAMBREQUIN L21
G A R PREDESTINED 287L HAZELDEAN J180
Sire: RENNYLEA NORL519 Dam: HAZELDEAN P1110
TE MANIA BERKLEY B1 SITZ JACKSON 431T
RENNYLEA H414 HAZELDEAN J592
RENNYLEA C310 HAZELDEAN B1258

Front	Rear	Front	Rear	Front	Rear	MUSCLE	TEMP.	SHEATH
6	6	5	6	5	5	C+	1	5

Structural EBV's			
TACE	ANGLE	CLAW	LEGS
	+0.98	+0.88	1.02
ACC%	74%	74%	67%

TRANSTASMAN ANGUS CATTLE EVALUATION - JUNE 2023																						
TACE	CALVING EASE				GROWTH & MATERNAL				FERTILITY		CWT	CARCASE					Doc	Angus Index	Dom	Heavy Grain	Heavy Grass	
	DIR	DTRS	GL	B Wt	200	400	600	MWt	Milk	SS	DC	C Wt	EMA	RIB	RUMP	RBY%	IMF%	Doc.				
EBV	-4	+0.5	-3	+7.4	+59	+104	+146	+149	+14	+1.7	-4.3	+83	+4.5	-0.1	-1.3	+0.5	+2.2	+7	+184	+144	+240	+170
ACC%	60%	51%	83%	75%	71%	72%	74%	68%	61%	74%	45%	63%	58%	61%	61%	58%	59%	59%				

Bigger frame with real softness. Top 6% for 600d growth. Better than breed average for IMF.

Purchaser..... Price.....

26 HAZELDEAN S440 (AI) PV APR AMFU NHFU CAFU DDFU Born: 16/07/2021 Society Id: NHZ21S440

RENNYLEA EDMUND E11 HAZELDEAN HARLEQUIN H2
RENNYLEA KODAK K522 HAZELDEAN LUTYENS L708
RENNYLEA EISA ERICA F810 HAZELDEAN F570
Sire: MURRAY KODAK N70 Dam: HAZELDEAN N1257
GARDENS WAVE TE MANIA BERKLEY B1
MURRAY WAVE J53 HAZELDEAN H56
TE MANIA QUEANBEYAN D113 HAZELDEAN A124

Front	Rear	Front	Rear	Front	Rear	MUSCLE	TEMP.	SHEATH
6	6	6	6	5	5	C+	2	4

Structural EBV's			
TACE	ANGLE	CLAW	LEGS
	+0.92	+0.92	0.84
ACC%	70%	70%	61%

TRANSTASMAN ANGUS CATTLE EVALUATION - JUNE 2023																						
TACE	CALVING EASE				GROWTH & MATERNAL				FERTILITY		CWT	CARCASE					Doc	Angus Index	Dom	Heavy Grain	Heavy Grass	
	DIR	DTRS	GL	B Wt	200	400	600	MWt	Milk	SS	DC	C Wt	EMA	RIB	RUMP	RBY%	IMF%	Doc.				
EBV	+0.9	+6.9	-4.4	+6.9	+70	+119	+156	+162	+11	+3.3	-7	+99	+6.4	-1	-2.3	+0.6	+1.9	-4	+246	+213	+311	+233
ACC%	56%	45%	83%	76%	74%	72%	74%	69%	62%	74%	39%	65%	63%	65%	65%	58%	68%	57%				

Bigger framed bull and lots of power for your cows here. Industry leading growth in the 2% for 200d and 400d, 3% for 600d. Better than breed average EMA and appealing indexes. A nice bright future for this young bull.

Purchaser..... Price.....

27 HAZELDEAN S1656 (Nat) SV APR AMFU NHFU CAFU DDFU Born: 29/08/2021 Society Id: NHZ21S1656

RENNYLEA EDMUND E11 LEACHMAN BOOM TIME
HAZELDEAN KIBBITZ K553 HAZELDEAN ELLIOT E417 (APR)
HAZELDEAN H434 HAZELDEAN X656
Sire: HAZELDEAN Q641 Dam: HAZELDEAN G660
RENNYLEA C574 HAZELDEAN CATALYST C28 (AI) (ET)
HAZELDEAN H1604 HAZELDEAN E542
HAZELDEAN BOOMTIME F1006 HAZELDEAN B931

Front	Rear	Front	Rear	Front	Rear	MUSCLE	TEMP.	SHEATH
7	7	6	7	5	5	C+	1	4

Structural EBV's			
TACE	ANGLE	CLAW	LEGS
	+0.96	+0.92	1.06
ACC%	71%	71%	59%

TRANSTASMAN ANGUS CATTLE EVALUATION - JUNE 2023																						
TACE	CALVING EASE				GROWTH & MATERNAL				FERTILITY		CWT	CARCASE					Doc	Angus Index	Dom	Heavy Grain	Heavy Grass	
	DIR	DTRS	GL	B Wt	200	400	600	MWt	Milk	SS	DC	C Wt	EMA	RIB	RUMP	RBY%	IMF%	Doc.				
EBV	-1.2	+3.2	-6.9	+5.1	+51	+87	+119	+97	+17	+0.4	-6.9	+72	+6.9	+2.3	+1.3	+0.6	+1.8	+22	+223	+181	+284	+207
ACC%	53%	42%	66%	73%	71%	69%	72%	67%	60%	71%	34%	58%	56%	58%	58%	51%	61%	52%				

Capacious type with real softness. Very, very docile. Positive fats and breed leading days to calving EBV. Suitable for heifers

Purchaser..... Price.....

Top 5% Top 10% Top 30%

Ranking in Angus Aust. June 2023

Proven Genetic Performance

www.hazeldean.com.au



HAZELDEAN
LITCHFIELD
EST 1865

NEW ENGLAND 2023

SALE BULLS

28 HAZELDEAN S271 (AI) PV APR AMFU NHFU CAFU DDFU Born: 11/07/2021 Society Id: NHZ21S271

G A R MOMENTUM USA17354145 HAZELDEAN JAIPUR J140
LAWSONS MOMENTOUS M518 HAZELDEAN M807
LAWSONS AFRICA H229 VLYH229 HAZELDEAN G45
Sire: MURDEDUKE QUARTERBACK Q011 Dam: HAZELDEAN P1285
CARABAR DOCKLANDS D62 HAZELDEAN KINGS CROSS K146
MURDEDUKE BARUNDAH N026 HAZELDEAN M1113
MURDEDUKE BARUNAH C191 HAZELDEAN F573

Front	Rear	Front	Rear	MUSCLE	TEMP.	SHEATH
6	6	5	6	5	5	C+ 2 5

Structural EBV's			
TACE	ANGLE	CLAW	LEGS
	+1.02	+0.82	0.98
ACC%	74%	74%	67%

TRANSTASMAN ANGUS CATTLE EVALUATION - JUNE 2023																							
TACE	CALVING EASE				GROWTH & MATERNAL				FERTILITY		CWT	CARCASE					Doc	Angus Index	Dom	Heavy Grain	Heavy Grass		
	DIR	DTRS	GL	B Wt	200	400	600	MWt	Milk	SS	DC	C Wt	EMA	RIB	RUMP	RBV%	IMF%	Doc.					
EBV	+4.7	+4.3	-9.1	+5.6	+52	+98	+138	+125	+22	+3.7	-5.1	+79	+2.7	-2.8	-3.8	+0.3	+3.7	+13	+199	+158	+255	+190	
ACC%	56%	44%	82%	75%	73%	72%	74%	68%	59%	73%	37%	60%	61%	63%	63%	57%	64%	57%					

One of the thickest bulls in his paddock group and it carries all the way through. Thick and even. Top 7% for scrotal. Top 27% for 400d growth and top 14% for IMF. Suitable for heifers

Purchaser..... Price.....

29 HAZELDEAN S1154 (Nat) SV APR AMFU NHFU CAFU DDFU Born: 07/08/2021 Society Id: NHZ21S1154

ARDROSSAN HONOUR H255 ARDROSSAN ADMIRAL A2
ARDROSSAN MAGISTRATE M101 HAZELDEAN ADMIRAL D960
ARDROSSAN PRINCESS H230 HAZELDEAN X418
Sire: HAZELDEAN Q589 Dam: HAZELDEAN G881
HAZELDEAN FLAIR F493 HAZELDEAN RENAISSANCE R13
HAZELDEAN J1218 HAZELDEAN B1382
HAZELDEAN F135 HAZELDEAN Z944

Front	Rear	Front	Rear	MUSCLE	TEMP.	SHEATH
6	6	6	6	6	5	C+ 1 4

Structural EBV's			
TACE	ANGLE	CLAW	LEGS
	+1	+0.86	1.08
ACC%	70%	70%	59%

TRANSTASMAN ANGUS CATTLE EVALUATION - JUNE 2023																							
TACE	CALVING EASE				GROWTH & MATERNAL				FERTILITY		CWT	CARCASE					Doc	Angus Index	Dom	Heavy Grain	Heavy Grass		
	DIR	DTRS	GL	B Wt	200	400	600	MWt	Milk	SS	DC	C Wt	EMA	RIB	RUMP	RBV%	IMF%	Doc.					
EBV	+5.6	+10.1	-2.2	+2.7	+50	+96	+126	+99	+22	+3.4	-7.6	+72	+3.2	+1.3	+2	-0.5	+2.7	+24	+233	+196	+296	+222	
ACC%	55%	44%	71%	74%	72%	70%	73%	68%	62%	73%	39%	61%	59%	61%	61%	55%	63%	52%					

Stretchy which makes him cover the ground well. High quality with plenty of real softness. Top 1% for calving ease daughters and top 31% for 600d weight. Very good days to calving EBV. Suitable for heifers

Purchaser..... Price.....

30 HAZELDEAN S431 (AI) SV APR AMFU NHFU CAFU DDFU Born: 16/07/2021 Society Id: NHZ21S431

C R A BEXTOR 872 5205 608 ARDROSSAN EQUATOR A241
G A R PROPHET HAZELDEAN JAIPUR J140
G A R OBJECTIVE 1885 HAZELDEAN C33
Sire: BALDRIDGE BEAST MODE B074 Dam: HAZELDEAN L889
STYLES UPGRADE J59 HAZELDEAN BOOMTIME D931
BALDRIDGE ISABEL Y69 HAZELDEAN G541
BALDRIDGE ISABEL T935 HAZELDEAN A140

Front	Rear	Front	Rear	MUSCLE	TEMP.	SHEATH
5	5	5	5	4	5	B- 1 4

Structural EBV's			
TACE	ANGLE	CLAW	LEGS
	+0.68	+0.42	0.96
ACC%	76%	75%	68%

TRANSTASMAN ANGUS CATTLE EVALUATION - JUNE 2023																							
TACE	CALVING EASE				GROWTH & MATERNAL				FERTILITY		CWT	CARCASE					Doc	Angus Index	Dom	Heavy Grain	Heavy Grass		
	DIR	DTRS	GL	B Wt	200	400	600	MWt	Milk	SS	DC	C Wt	EMA	RIB	RUMP	RBV%	IMF%	Doc.					
EBV	-5.8	+1.1	-4.6	+7.3	+77	+122	+154	+147	+11	+3.5	-5.3	+98	+1.6	-2.8	-3.4	+0.1	+0.8	+38	+208	+182	+273	+187	
ACC%	64%	55%	83%	75%	74%	73%	74%	71%	68%	74%	47%	66%	65%	66%	66%	62%	67%	60%					

A big and upstanding Beast Mode son with plenty of punch. Top 2% 200d and 400d growth. Mature cow lower than 600d with is preferred and top 1% for claw EBV. Powerful bull.

Purchaser..... Price.....

Top 5% Top 10% Top 30%

Ranking in Angus Aust. June 2023

Proven Genetic Performance

www.hazeldean.com.au



HAZELDEAN
LITCHFIELD
EST 1865

NEW ENGLAND 2023

SALE BULLS

31 HAZELDEAN S222 (A1) SV APR AMFU NHFU CAFU DDFU Born: 10/07/2021
Society Id: NHZ21S222

ARDROSSAN EQUATOR A241
HAZELDEAN JAIPUR J140
HAZELDEAN C33
Sire: HAZELDEAN P434
RENNYLEA EDMUND E11
HAZELDEAN L527
HAZELDEAN E453

BASIN FRANCHISE P142
EF COMPLEMENT 8088
EF EVERELDA ENTENSE 6117
Dam: HAZELDEAN P329
JINDRA DOUBLE VISION 16748826
HAZELDEAN L727
HAZELDEAN G560

Front	Rear	Front	Rear	Front	Rear	MUSCLE	TEMP.	SHEATH
7	6	7	6	5	5	C+	1	3

Structural EBV's			
TACE	ANGLE	CLAW	LEGS
	+1.22	+0.86	1.1
ACC%	73%	73%	63%

TRANSTASMAN ANGUS CATTLE EVALUATION - JUNE 2023																						
TACE	CALVING EASE				GROWTH & MATERNAL				FERTILITY		CWT	CARCASE					Doc	Angus Index	Dom	Heavy Grain	Heavy Grass	
	DIR	DTRS	GL	B Wt	200	400	600	MWt	Milk	SS	DC	C Wt	EMA	RIB	RUMP	RBV%	IMF%	Doc.				
EBV	+7	+8	-7.9	+1.9	+44	+87	+119	+92	+17	+1.5	-5.5	+78	+1.7	-1.6	-3.1	+0.8	+2.1	+38	+199	+167	+246	+188
ACC%	58%	47%	84%	75%	73%	72%	74%	69%	60%	74%	41%	61%	60%	62%	62%	56%	64%	56%				

A balanced commercial bull with very good calving ease to better than breed average 600d growth and IMF. Top 4% for docility. Suitable for heifers.

Purchaser..... Price.....

32 HAZELDEAN S1789 (Nat) PV APR AMFU NHFU CAFU DDFU Born: 10/09/2021
Society Id: NHZ21S1789

ARDROSSAN HONOUR H255
ARDROSSAN MAGISTRATE M101
ARDROSSAN PRINCESS H230
Sire: HAZELDEAN Q1380
HAZELDEAN JAIPUR J140
HAZELDEAN M81
HAZELDEAN J366

RENNYLEA EDMUND E11
HAZELDEAN LUCIANO L8
HAZELDEAN J153
Dam: HAZELDEAN N1308
HAZELDEAN JIREENA J95
HAZELDEAN L1030
HAZELDEAN J436

Front	Rear	Front	Rear	Front	Rear	MUSCLE	TEMP.	SHEATH
6	5	6	5	4	5	C+	1	4

Structural EBV's			
TACE	ANGLE	CLAW	LEGS
	+0.98	+0.78	0.96
ACC%	61%	66%	59%

TRANSTASMAN ANGUS CATTLE EVALUATION - JUNE 2023																						
TACE	CALVING EASE				GROWTH & MATERNAL				FERTILITY		CWT	CARCASE					Doc	Angus Index	Dom	Heavy Grain	Heavy Grass	
	DIR	DTRS	GL	B Wt	200	400	600	MWt	Milk	SS	DC	C Wt	EMA	RIB	RUMP	RBV%	IMF%	Doc.				
EBV	-0.8	+0.8	-7.7	+6	+53	+93	+121	+105	+18	+1.4	-6.9	+79	+2.5	-0.4	-1.8	+0.4	+1.2	+40	+195	+169	+245	+179
ACC%	52%	40%	65%	72%	70%	68%	68%	65%	57%	69%	34%	58%	56%	58%	58%	50%	61%	45%				

Balanced and even, super docile with better than breed average growth.

Purchaser..... Price.....

33 HAZELDEAN S1333 (Nat) PV APR AMFU NHFU CAFU DD7% Born: 14/08/2021
Society Id: NHZ21S1333

TE MANIA EMPEROR E343
STORTH OAKS JACK J7
STORTH OAKS G183
Sire: HAZELDEAN Q522
JINDRA DOUBLE VISION 16748826
HAZELDEAN L727
HAZELDEAN G560

PLATTEMERE WEIGH UP K360
HAZELDEAN M812
HAZELDEAN H897
Dam: HAZELDEAN P1086
BOWMONT JACKPOT SRKJ310
HAZELDEAN M249
HAZELDEAN K897

Front	Rear	Front	Rear	Front	Rear	MUSCLE	TEMP.	SHEATH
6	6	6	7	5	5	C+	2	5

Structural EBV's			
TACE	ANGLE	CLAW	LEGS
	+1.24	+0.84	1.06
ACC%	71%	71%	60%

TRANSTASMAN ANGUS CATTLE EVALUATION - JUNE 2023																						
TACE	CALVING EASE				GROWTH & MATERNAL				FERTILITY		CWT	CARCASE					Doc	Angus Index	Dom	Heavy Grain	Heavy Grass	
	DIR	DTRS	GL	B Wt	200	400	600	MWt	Milk	SS	DC	C Wt	EMA	RIB	RUMP	RBV%	IMF%	Doc.				
EBV	+5.4	+8.4	-1.3	+2	+45	+85	+104	+99	+19	+1.6	-5.4	+57	+1.7	-0.8	-2.5	0	+3.1	+5	+182	+157	+239	+162
ACC%	52%	40%	67%	73%	70%	70%	72%	66%	58%	72%	34%	58%	57%	59%	59%	53%	61%	50%				

Chunky type with thickness, a little more moderate with truck loads of calving ease. Top 24% for IMF. Suitable for heifers. Note: a little white in flanks

Purchaser..... Price.....

Top 5% Top 10% Top 30%

Ranking in Angus Aust. June 2023

Proven Genetic Performance

www.hazeldean.com.au

NEW ENGLAND 2023



SALE BULLS

34 HAZELDEAN S2081 (Nat) PV APR AMFU NHFU CAFU DDFU Born: 15/08/2021 Society Id: NHZ21S2081

MATAURI REALITY 839
KAROO KNOCKOUT K176
KAROO JEDDA H213
Sire: HAZELDEAN Q828
HAZELDEAN KIP K793
HAZELDEAN M407
K1093

RENNYLEA EDMUND E11
HAZELDEAN LANCE L49
HAZELDEAN J279
Dam: HAZELDEAN N960
KO DYNAMITE F80(AI)(ET) NZCF80
HAZELDEAN J1025
HAZELDEAN E336

Front	Rear	Front	Rear	Front	Rear	MUSCLE	TEMP.	SHEATH
6	5	5	5	5	5	C+	2	4

Structural EBV's			
TACE	ANGLE	CLAW	LEGS
	+0.66	+0.52	0.96
ACC%	68%	61%	57%

TRANSTASMAN ANGUS CATTLE EVALUATION - JUNE 2023																						
TACE	CALVING EASE				GROWTH & MATERNAL				FERTILITY		CWT	CARCASE					Doc	Angus Index	Dom	Heavy Grain	Heavy Grass	
	DIR	DTRS	GL	B Wt	200	400	600	MWt	Milk	SS	DC	C Wt	EMA	RIB	RUMP	RBY%	IMF%	Doc.				
EBV	-7.9	+2	-1.5	+6.8	+59	+109	+135	+121	+10	+2.8	-5.5	+85	+4.5	-1.2	-1.2	+0.5	+1.3	+22	+194	+174	+247	+178
ACC%	52%	41%	68%	73%	70%	69%	72%	65%	58%	71%	34%	58%	55%	58%	58%	50%	60%	50%				

Extreme thickness! Big carcass weight EBV (top 8%) and it really matches what you see in the flesh! Also top 8% for 400d growth EBV and claw set. Top 3% for foot angle.

Purchaser..... Price.....

35 HAZELDEAN S972 (Nat) SV APR AMFU NHFU CAFU DDFU Born: 31/07/2021 Society Id: NHZ21S972

MATAURI REALITY 839
KAROO KNOCKOUT K176
KAROO JEDDA H213
Sire: HAZELDEAN Q902
EF COMPLEMENT 8088
HAZELDEAN N674
HAZELDEAN G355

TWYNAM D111 NXTD111
HAZELDEAN HOKEY-POKEY H1521
HAZELDEAN BUSHWACKER Y1409
Dam: HAZELDEAN K1510
HAZELDEAN LEAD ON Z18
HAZELDEAN B1133
HAZELDEAN X542

Front	Rear	Front	Rear	Front	Rear	MUSCLE	TEMP.	SHEATH
6	6	6	6	6	5	C+	2	4

Structural EBV's			
TACE	ANGLE	CLAW	LEGS
	+0.8	+0.62	1.06
ACC%	63%	67%	56%

TRANSTASMAN ANGUS CATTLE EVALUATION - JUNE 2023																						
TACE	CALVING EASE				GROWTH & MATERNAL				FERTILITY		CWT	CARCASE					Doc	Angus Index	Dom	Heavy Grain	Heavy Grass	
	DIR	DTRS	GL	B Wt	200	400	600	MWt	Milk	SS	DC	C Wt	EMA	RIB	RUMP	RBY%	IMF%	Doc.				
EBV	+5.1	+3.8	-2.4	+4.1	+48	+90	+115	+110	+14	-1	-4.2	+66	+8.2	+0.9	+1	+1.2	+1.5	+14	+211	+178	+274	+190
ACC%	53%	42%	69%	72%	71%	68%	69%	65%	60%	69%	33%	58%	55%	58%	58%	50%	60%	48%				

Great capacity and looks a lot like his grandfather - Knockout. Balanced performance and top 13% for both claw and foot angle EBVs. Suitable for heifers.

Purchaser..... Price.....

36 HAZELDEAN S1523 (Nat) SV APR AMFU NHFU CAFU DDFU Born: 21/08/2021 Society Id: NHZ21S1523

HAZELDEAN JAIPUR J140
HAZELDEAN MAGNUM M586
HAZELDEAN H356
Sire: HAZELDEAN Q783
MATAURI REALITY 839
HAZELDEAN N272
HAZELDEAN K452

MUSGRAVE AVIATOR USA17264774
MUSGRAVE APACHE USA18194405
MUSGRAVE CAROLINE 1304-189
Dam: HAZELDEAN P322
LAWSON'S DINKY-DI Z191
HAZELDEAN H626
HAZELDEAN F689

Front	Rear	Front	Rear	Front	Rear	MUSCLE	TEMP.	SHEATH
6	6	6	6	5	6	C+	1	4

Structural EBV's			
TACE	ANGLE	CLAW	LEGS
	+1.22	+0.82	1.14
ACC%	72%	72%	61%

TRANSTASMAN ANGUS CATTLE EVALUATION - JUNE 2023																						
TACE	CALVING EASE				GROWTH & MATERNAL				FERTILITY		CWT	CARCASE					Doc	Angus Index	Dom	Heavy Grain	Heavy Grass	
	DIR	DTRS	GL	B Wt	200	400	600	MWt	Milk	SS	DC	C Wt	EMA	RIB	RUMP	RBY%	IMF%	Doc.				
EBV	+8.4	+8.1	-9.5	+2.8	+34	+72	+100	+67	+25	+1.2	-6.7	+57	+4.9	+2.5	+1.6	-0.6	+4.4	+20	+204	+158	+267	+194
ACC%	53%	41%	69%	70%	71%	69%	71%	67%	58%	72%	34%	59%	58%	60%	60%	53%	62%	50%				

Long and very well muscled. Will grow and develop into a very nice young bull. Sleep all night calving ease! Top 7% for calving ease direct, rib fat, days to calving and IMF! Lots happening here, one not to miss! Suitable for heifers

Purchaser..... Price.....

Top 5% Top 10% Top 30%
Ranking in Angus Aust. June 2023

Proven Genetic Performance

www.hazeldean.com.au



HAZELDEAN
LITCHFIELD
EST 1865

NEW ENGLAND 2023

SALE BULLS

37 HAZELDEAN S1595 (Nat) SV APR AMFU NHFU CAFU DDFU Born: 25/08/2021
Society Id: NH21S1595

TE MANIA BERKLEY B1
TE MANIA EMPEROR E343
TE MANIA LOWAN Z74
Sire: HAZELDEAN Q1167
RENNYLEA EDMUND E11
HAZELDEAN K458
HAZELDEAN H488

RENNYLEA EDMUND E11
ARDROSSAN JUSTICE NAQJ93
ARDROSSAN EVERELDA AI(ET) NAQF6
Dam: HAZELDEAN N632
ARDROSSAN EQUATOR A241
HAZELDEAN H854
HAZELDEAN A913

Front	Rear	Front	Rear	Front	Rear	MUSCLE	TEMP.	SHEATH
6	6	5	5	4	5	C	1	4

Structural EBV's			
TACE	ANGLE	CLAW	LEGS
	+0.94	+0.82	1.08
ACC%	70%	64%	60%

TRANSTASMAN ANGUS CATTLE EVALUATION - JUNE 2023																						
TACE	CALVING EASE				GROWTH & MATERNAL				FERTILITY		CWT	CARCASE					Doc	Angus Index	Dom	Heavy Grain	Heavy Grass	
	DIR	DTRS	GL	B Wt	200	400	600	MWt	Milk	SS	DC	C Wt	EMA	RIB	RUMP	RBY%	IMF%	Doc.				
EBV	+2	-2	-3.9	+4.2	+49	+81	+106	+101	+14	+2.2	-6.7	+63	+4.4	+0.9	-0.4	+0.5	+2.1	+12	+193	+161	+247	+175
ACC%	57%	48%	70%	74%	72%	71%	73%	68%	61%	73%	42%	62%	60%	62%	62%	56%	65%	55%				

Moderate framed, nimble young bull. 10 traits better than breed average. Suitable for heifers

Purchaser..... Price.....

38 HAZELDEAN S1599 (Nat) SV APR AMFU NHFU CAFU DDFU Born: 25/08/2021
Society Id: NH21S1599

TE MANIA EMPEROR E343
STORTH OAKS JACK J7
STORTH OAKS G183
Sire: HAZELDEAN Q566
RENNYLEA EDMUND E11
HAZELDEAN L420
HAZELDEAN J649

TE MANIA BERKLEY B1
HAZELDEAN F1023
HAZELDEAN B723
Dam: HAZELDEAN P921
TUWHARETOA BNAE151
HAZELDEAN H828
HAZELDEAN BRAVE E575

Front	Rear	Front	Rear	Front	Rear	MUSCLE	TEMP.	SHEATH
6	6	6	6	5	5	C+	1	4

Structural EBV's			
TACE	ANGLE	CLAW	LEGS
	+1.18	+0.84	1.04
ACC%	71%	66%	63%

TRANSTASMAN ANGUS CATTLE EVALUATION - JUNE 2023																						
TACE	CALVING EASE				GROWTH & MATERNAL				FERTILITY		CWT	CARCASE					Doc	Angus Index	Dom	Heavy Grain	Heavy Grass	
	DIR	DTRS	GL	B Wt	200	400	600	MWt	Milk	SS	DC	C Wt	EMA	RIB	RUMP	RBY%	IMF%	Doc.				
EBV	+6	+6	-3.1	+2.2	+43	+82	+109	+80	+18	+2.9	-4.5	+60	+8.4	+3.1	+3.1	-0.4	+4	+10	+212	+164	+288	+201
ACC%	54%	44%	71%	72%	71%	69%	72%	66%	59%	72%	36%	60%	59%	61%	61%	54%	63%	51%				

More moderate build and athletic type. Top 10 % for IMF and very good fats. Better than breed average for 11 traits. Suitable for heifers

Purchaser..... Price.....

39 HAZELDEAN S1865 (Nat) SV APR AMFU NHFU CAFU DDFU Born: 16/09/2021
Society Id: NH21S1865

TE MANIA BERKLEY B1
HAZELDEAN F1023
HAZELDEAN B723
Sire: HAZELDEAN Q1229
G A R PROPHET
HAZELDEAN J823
HAZELDEAN G724

RENNYLEA C574
HAZELDEAN HUFF H373
HAZELDEAN F461
Dam: HAZELDEAN K1692
TE MANIA INFINITY 04 379 AB
HAZELDEAN F108
HAZELDEAN ADMIRAL D100

Front	Rear	Front	Rear	Front	Rear	MUSCLE	TEMP.	SHEATH
7	7	6	7	4	6	C+	2	4

Structural EBV's			
TACE	ANGLE	CLAW	LEGS
	+1.16	+1.02	0.84
ACC%	70%	70%	60%

TRANSTASMAN ANGUS CATTLE EVALUATION - JUNE 2023																						
TACE	CALVING EASE				GROWTH & MATERNAL				FERTILITY		CWT	CARCASE					Doc	Angus Index	Dom	Heavy Grain	Heavy Grass	
	DIR	DTRS	GL	B Wt	200	400	600	MWt	Milk	SS	DC	C Wt	EMA	RIB	RUMP	RBY%	IMF%	Doc.				
EBV	+2.4	+6.4	-4	+3.5	+45	+81	+100	+67	+21	+0.9	-7.1	+62	+14.1	+0.4	0	+1.6	+1.6	+30	+250	+215	+317	+234
ACC%	55%	43%	72%	75%	72%	70%	72%	67%	60%	73%	37%	60%	58%	60%	60%	53%	63%	51%				

Plenty of carcass with a really athletic walk. HUGE EMA - top 2%. Top 4% retail beef and top 5% for days to calving. Suitable for heifers

Purchaser..... Price.....

Top 5% Top 10% Top 30%

Ranking in Angus Aust. June 2023

Proven Genetic Performance

www.hazeldean.com.au

NEW ENGLAND 2023



SALE BULLS

40 HAZELDEAN S1485 (Nat) PV APR AMFU NHFU CAFU DDFU Born: 20/08/2021 Society Id: NH221S1485

HAZELDEAN JAIPUR J140
HAZELDEAN MAGNUM M586
HAZELDEAN H356
Sire: HAZELDEAN Q898
HAZELDEAN KIBBITZ K553
HAZELDEAN N1012
HAZELDEAN K3

RENNYLEA EDMUND E11
HAZELDEAN LAKOTA L345
HAZELDEAN J644
Dam: HAZELDEAN N916
HAZELDEAN CARDRONA C677
HAZELDEAN G968
HAZELDEAN ADMIRAL D100

Front	Rear	Front	Rear	Front	Rear	MUSCLE	TEMP.	SHEATH
6	6	6	6	5	5	C+	2	4

Structural EBV's			
TACE	ANGLE	CLAW	LEGS
	+1	+0.64	1.2
ACC%	63%	67%	57%

TRANSTASMAN ANGUS CATTLE EVALUATION - JUNE 2023																							
TACE	CALVING EASE				GROWTH & MATERNAL				FERTILITY				CWT	CARCASE					Doc	Angus Index	Dom	Heavy Grain	Heavy Grass
	DIR	DTRS	GL	B Wt	200	400	600	MWt	Milk	SS	DC	C Wt	EMA	RIB	RUMP	RBV%	IMF%	Doc.					
EBV	+5.5	+4.4	-5.2	+3.7	+46	+82	+122	+88	+26	+3.5	-7.7	+68	+4.2	+2.2	+0.7	-0.2	+3.2	+12	+221	+169	+279	+213	
ACC%	53%	41%	69%	72%	70%	68%	69%	67%	58%	71%	34%	59%	57%	60%	60%	52%	63%	49%					

Real softness and doability. 13 traits are better than breed average. Top 22% for IMF, top 2% for days to calving. Awesome fertility traits. Note: a little white in front of testes. Suitable for heifers

Purchaser..... Price.....

41 HAZELDEAN S1818 (Nat) SV APR AMFU NHFU CAFU DDFU Born: 12/09/2021 Society Id: NH221S1818

HAZELDEAN JAIPUR J140
HAZELDEAN MAGNUM M586
HAZELDEAN H356
Sire: HAZELDEAN Q1580
RENNYLEA EDMUND E11
HAZELDEAN L32
HAZELDEAN J9

ARDROSSAN EQUATOR A241
HAZELDEAN JUAN J459
HAZELDEAN D748
Dam: HAZELDEAN L874
ARDROSSAN EQUATOR A241
HAZELDEAN G351
HAZELDEAN FUTURA A981

Front	Rear	Front	Rear	Front	Rear	MUSCLE	TEMP.	SHEATH
5	5	5	6	5	5	C+	1	4

Structural EBV's			
TACE	ANGLE	CLAW	LEGS
	+1.08	+0.54	1.22
ACC%	61%	66%	56%

TRANSTASMAN ANGUS CATTLE EVALUATION - JUNE 2023																							
TACE	CALVING EASE				GROWTH & MATERNAL				FERTILITY				CWT	CARCASE					Doc	Angus Index	Dom	Heavy Grain	Heavy Grass
	DIR	DTRS	GL	B Wt	200	400	600	MWt	Milk	SS	DC	C Wt	EMA	RIB	RUMP	RBV%	IMF%	Doc.					
EBV	+2	+6.1	-1.9	+3	+42	+83	+108	+71	+22	+3.7	-7.2	+67	+7	-0.4	0	+0.4	+4.5	+14	+238	+195	+306	+229	
ACC%	54%	42%	72%	75%	72%	70%	71%	69%	61%	72%	38%	61%	59%	62%	62%	54%	64%	52%					

Slick and thick - very good doing in his condition from the pasture paddock. Almost straight 5's is nice to see in the raw structural assessment. Top 5% for claw EBV to back this up! Top 4% for days to calving and top 6% for IMF and scrotal size. Suitable for heifers.

Purchaser..... Price.....

42 HAZELDEAN S1544 (Nat) SV APR AMFU NHFU CAFU DDFU Born: 23/08/2021 Society Id: NH221S1544

HAZELDEAN JAIPUR J140
HAZELDEAN MAGNUM M586
HAZELDEAN H356
Sire: HAZELDEAN Q750
HAZELDEAN KATZEN K416
HAZELDEAN N291
HAZELDEAN K1534

BOOROOMOOKA UNDERTAKEN Y145
RENNYLEA EDMUND E11
LAWSONS HENRY VIII Y5
Dam: HAZELDEAN L379
ARDROSSAN EQUATOR A241
HAZELDEAN H529
HAZELDEAN B818

Front	Rear	Front	Rear	Front	Rear	MUSCLE	TEMP.	SHEATH
5	6	5	6	5	5	C+	1	4

Structural EBV's			
TACE	ANGLE	CLAW	LEGS
	+0.84	+0.48	0.96
ACC%	68%	61%	57%

TRANSTASMAN ANGUS CATTLE EVALUATION - JUNE 2023																							
TACE	CALVING EASE				GROWTH & MATERNAL				FERTILITY				CWT	CARCASE					Doc	Angus Index	Dom	Heavy Grain	Heavy Grass
	DIR	DTRS	GL	B Wt	200	400	600	MWt	Milk	SS	DC	C Wt	EMA	RIB	RUMP	RBV%	IMF%	Doc.					
EBV	+4.2	+4.4	-7.6	+4.2	+46	+77	+108	+72	+17	+2	-8.7	+73	+9.1	+3.2	+3.6	+0.5	+1.5	+30	+248	+202	+307	+237	
ACC%	55%	46%	70%	74%	72%	71%	73%	68%	62%	73%	40%	62%	60%	62%	62%	56%	65%	53%					

Very eye catching, very nice type. Heavy boned and very masculine looking! Top 4% for rib and rump fats. Top 1% for days to calving and 2% for claw set EBV. Lots of economic relevance resulting in good indexes overall. Suitable for heifers

Purchaser..... Price.....

Top 5% Top 10% Top 30%

Ranking in Angus Aust. June 2023

Proven Genetic Performance

www.hazeldean.com.au



HAZELDEAN
LITCHFIELD
EST 1865

NEW ENGLAND 2023

SALE BULLS

43 HAZELDEAN S1283 (Nat) SV APR AMFU NHFU CAFU DDFU Born: 13/08/2021 Society Id: NHZ21S1283

TE MANIA BERKLEY B1 ARDROSSAN EQUATOR A241
TE MANIA EMPEROR E343 BOWMONT JACKPOT SRKJ310
TE MANIA LOWAN Z74 ARDROSSAN WILCOOLA Z31
Sire: HAZELDEAN Q1167 Dam: HAZELDEAN M293
RENNYLEA EDMUND E11 MATAURI REALITY 839
HAZELDEAN K458 HAZELDEAN K162
HAZELDEAN H488 HAZELDEAN BRAVE E59

Front	Rear	Front	Rear	Front	Rear	MUSCLE	TEMP.	SHEATH
6	6	6	6	5	6	C+	1	4

Structural EBV's			
TACE	ANGLE	CLAW	LEGS
	+0.84	+0.48	0.98
ACC%	71%	71%	61%

TRANSTASMAN ANGUS CATTLE EVALUATION - JUNE 2023																							
TACE	CALVING EASE				GROWTH & MATERNAL				FERTILITY		CWT	CARCASE					Doc	Angus Index	Dom	Heavy Grain	Heavy Grass		
	DIR	DTRS	GL	B Wt	200	400	600	MWt	Milk	SS	DC	C Wt	EMA	RIB	RUMP	RBY%	IMF%	Doc.					
EBV	+1.8	+1.8	-4.2	+3.5	+47	+87	+116	+101	+12	+1.8	-6.9	+65	+5.6	+1.7	+1	+0.3	+2.8	+22	+216	+178	+274	+203	
ACC%	56%	47%	68%	74%	72%	71%	73%	68%	61%	72%	42%	61%	59%	62%	62%	56%	63%	53%					

Even type from a nice commercially relevant pedigree. Top 2% for claw EBV and good fats. Suitable for heifers

Purchaser..... Price.....

44 HAZELDEAN S1399 (Nat) SV APR AMFU NHFU CAFU DDFU Born: 17/08/2021 Society Id: NHZ21S1399

RENNYLEA EDMUND E11 SITZ NEW DESIGN 458N
HAZELDEAN KIBBITZ K553 HAZELDEAN NEW DESIGN D1052
HAZELDEAN H434 HAZELDEAN Y1260
Sire: HAZELDEAN Q641 Dam: HAZELDEAN G649
RENNYLEA C574 HAZELDEAN FUTURA Y942
HAZELDEAN H1604 HAZELDEAN A782
HAZELDEAN BOOMTIIME F1006 HAZELDEAN U677

Front	Rear	Front	Rear	Front	Rear	MUSCLE	TEMP.	SHEATH
6	5	6	6	5	5	C+	1	4

Structural EBV's			
TACE	ANGLE	CLAW	LEGS
	+0.96	+0.72	1.08
ACC%	71%	71%	59%

TRANSTASMAN ANGUS CATTLE EVALUATION - JUNE 2023																							
TACE	CALVING EASE				GROWTH & MATERNAL				FERTILITY		CWT	CARCASE					Doc	Angus Index	Dom	Heavy Grain	Heavy Grass		
	DIR	DTRS	GL	B Wt	200	400	600	MWt	Milk	SS	DC	C Wt	EMA	RIB	RUMP	RBY%	IMF%	Doc.					
EBV	+5.3	+3.9	-5.5	+3.6	+47	+90	+116	+84	+23	+2.1	-6.9	+69	+3.2	+2.5	+2.9	-0.3	+2.9	+29	+229	+191	+297	+215	
ACC%	53%	42%	67%	73%	71%	70%	72%	67%	61%	71%	36%	59%	56%	59%	59%	51%	61%	52%					

Plenty of calving ease and top 7% for both rib and rump fats. Top 6% for days to calving to help your herd fertility. Suitable for heifers

Purchaser..... Price.....

45 HAZELDEAN S417 (AI) SV APR AMFU NHFU CAFU DDFU Born: 15/07/2021 Society Id: NHZ21S417

G A R PROPHET TC TOTAL 410
BALDRIDGE BEAST MODE B074 HAZELDEAN HIGH ROLLER H6
BALDRIDGE ISABEL Y69 HAZELDEAN A90
Sire: HAZELDEAN P16 Dam: HAZELDEAN P864
LAWSONS INVINCIBLE C402 HAZELDEAN FENDER F348
HAZELDEAN G90 HAZELDEAN H1019
HAZELDEAN B4 HAZELDEAN DESIGN D1064

Front	Rear	Front	Rear	Front	Rear	MUSCLE	TEMP.	SHEATH
6	5	6	6	5	5	C+	1	4

Structural EBV's			
TACE	ANGLE	CLAW	LEGS
	+1.06	+0.8	1
ACC%	75%	74%	64%

TRANSTASMAN ANGUS CATTLE EVALUATION - JUNE 2023																							
TACE	CALVING EASE				GROWTH & MATERNAL				FERTILITY		CWT	CARCASE					Doc	Angus Index	Dom	Heavy Grain	Heavy Grass		
	DIR	DTRS	GL	B Wt	200	400	600	MWt	Milk	SS	DC	C Wt	EMA	RIB	RUMP	RBY%	IMF%	Doc.					
EBV	+4.2	+2.7	-4.1	+2.5	+50	+98	+123	+105	+16	+3	-3	+68	+8	-2.3	-2.7	+1.1	+1.6	+46	+192	+166	+249	+176	
ACC%	56%	45%	83%	75%	72%	72%	74%	69%	60%	74%	37%	60%	59%	61%	61%	55%	63%	55%					

Athletic type, seriously docile and the EBVs back it up! Suitable for heifers Note: a little white at the base of scrotum.

Purchaser..... Price.....

Top 5% Top 10% Top 30%

Ranking in Angus Aust. June 2023

Proven Genetic Performance

www.hazeldean.com.au



HAZELDEAN
LITCHFIELD
EST 1865

NEW ENGLAND 2023

SALE BULLS

46 HAZELDEAN S627 (AI) PV APR AMFU NHFU CAFU DDFU Born: 24/07/2021
Society Id: NHZ21S627

PA POWER TOOL 9108
PA FULL POWER 1208
PINE VIEW SQR RITA W091
Sire: BURENDA Q48

TE MANIA EMPEROR E343
BURENDA NICK NACK N520
BURENDA BEEAC G214
Dam: BURENDA BEEAC Q809
ARDROSSAN EQUATOR A241
BURENDA BEEAC E19
TE MANIA BEEAC U343

Front	Rear	Front	Rear	Front	Rear	MUSCLE	TEMP.	SHEATH
6	5	5	5	5	5	B-	2	4

Structural EBV's			
TACE	ANGLE	CLAW	LEGS
	+0.76	+0.88	1.04
ACC%	69%	69%	61%

TRANSTASMAN ANGUS CATTLE EVALUATION - JUNE 2023																							
TACE	CALVING EASE				GROWTH & MATERNAL				FERTILITY		CWT	CARCASE					Doc	Angus Index	Dom	Heavy Grain	Heavy Grass		
	DIR	DTRS	GL	B Wt	200	400	600	MWt	Milk	SS	DC	C Wt	EMA	RIB	RUMP	RBV%	IMF%	Doc.					
EBV	+7.3	+3.6	-6.3	+2.7	+55	+95	+123	+102	+18	+2.4	-5.2	+71	+8.3	-1.4	-2.6	+0.7	+3.3	+15	+236	+193	+311	+219	
ACC%	54%	45%	69%	71%	70%	68%	71%	66%	60%	71%	38%	59%	58%	60%	60%	53%	64%	46%					

Bigger frame with a lot of power, a real red meat bull. Easy to look at and better than breed average for 16 traits. Suitable for heifers

Purchaser..... Price.....

47 HAZELDEAN S1648 (Nat) SV APR AMFU NHFU CAFU DDFU Born: 28/08/2021
Society Id: NHZ21S1648

TE MANIA BERKLEY B1
TE MANIA EMPEROR E343
TE MANIA LOWAN Z74
Sire: HAZELDEAN Q1167
RENNYLEA EDMUND E11
HAZELDEAN K458
HAZELDEAN H488

HIGHLANDER OF STERN AB
BRAVEHEART OF STERN 1217000784
STERN 3886
Dam: HAZELDEAN M88
RENNYLEA EDMUND E11
HAZELDEAN K404
HAZELDEAN H469

Front	Rear	Front	Rear	Front	Rear	MUSCLE	TEMP.	SHEATH
6	6	5	6	5	5	C+	2	4

Structural EBV's			
TACE	ANGLE	CLAW	LEGS
	+0.8	+0.78	0.94
ACC%	69%	69%	59%

TRANSTASMAN ANGUS CATTLE EVALUATION - JUNE 2023																							
TACE	CALVING EASE				GROWTH & MATERNAL				FERTILITY		CWT	CARCASE					Doc	Angus Index	Dom	Heavy Grain	Heavy Grass		
	DIR	DTRS	GL	B Wt	200	400	600	MWt	Milk	SS	DC	C Wt	EMA	RIB	RUMP	RBV%	IMF%	Doc.					
EBV	-3.7	+0.7	-3.8	+6.2	+44	+80	+110	+94	+15	+1.8	-5.6	+61	+7.7	-0.1	-1.4	+0.6	+2.8	+26	+179	+142	+230	+167	
ACC%	57%	49%	68%	74%	72%	71%	74%	68%	62%	74%	44%	62%	61%	63%	63%	57%	65%	54%					

Easy fleshing and very docile in the yards to handle. This is backed up by a docility EBV in the top 23%. Top 30% EMA and IMF.

Purchaser..... Price.....

48 HAZELDEAN S1621 (Nat) SV APR AMFU NHFU CAFU DDFU Born: 27/08/2021
Society Id: NHZ21S1621

RENNYLEA EDMUND E11
HAZELDEAN KIBBITZ K553
HAZELDEAN H434
Sire: HAZELDEAN Q641
RENNYLEA C574
HAZELDEAN H1604
HAZELDEAN BOOMTIME F1006

TE MANIA ULONG U41
TE MANIA AFRICA A217
TE MANIA JEDDA Y32
Dam: HAZELDEAN G334
HAZELDEAN THEO Y1282
HAZELDEAN THEO B1250
HAZELDEAN V799

Front	Rear	Front	Rear	Front	Rear	MUSCLE	TEMP.	SHEATH
7	6	6	6	5	6	C+	1	4

Structural EBV's			
TACE	ANGLE	CLAW	LEGS
	+0.98	+0.76	1.2
ACC%	70%	70%	60%

TRANSTASMAN ANGUS CATTLE EVALUATION - JUNE 2023																							
TACE	CALVING EASE				GROWTH & MATERNAL				FERTILITY		CWT	CARCASE					Doc	Angus Index	Dom	Heavy Grain	Heavy Grass		
	DIR	DTRS	GL	B Wt	200	400	600	MWt	Milk	SS	DC	C Wt	EMA	RIB	RUMP	RBV%	IMF%	Doc.					
EBV	-4.9	-2.4	-5.8	+6.8	+62	+110	+154	+139	+18	+4.3	-6.8	+86	+3.3	+1.7	+2	-1.1	+4.3	+17	+217	+165	+291	+210	
ACC%	55%	46%	67%	73%	71%	70%	72%	68%	61%	71%	40%	60%	58%	60%	60%	54%	63%	54%					

Explosive growth from this Africa grandson. BIG 600d without a massive birthweight. Top 8% for IMF and top 3% for scrotal.

Purchaser..... Price.....

Top 5% **Top 10%** **Top 30%**

Ranking in Angus Aust. June 2023

Proven Genetic Performance

www.hazeldean.com.au

NEW ENGLAND 2023



SALE BULLS

49 HAZELDEAN S391 (AI) PV APR AMFU NHFU CAFU DD1% Born: 15/07/2021 Society Id: NHZ21S391

TE MANIA AFRICA A217
TE MANIA GARTH G67
TE MANIA MITTAGONG E28
Sire: PATHFINDER MAGNUM M778
TE MANIA BERKLEY B1
PATHFINDER BERKLEY G148
PATHFINDER GRADE D3

G A R PROPHET
BURENDA NATUROPATH N260
BURENDA WELCOME L359
Dam: BURENDA FRANGIPANI Q672
AYRVALE BARTEL E7
BURENDA FRANGIPANI L388
BURENDA FRANGIPANI F215

Front	Rear	Front	Rear	Front	Rear	MUSCLE	TEMP.	SHEATH
7	6	7	6	5	5	C+	2	5

Structural EBV's			
TACE	ANGLE	CLAW	LEGS
	+1.18	+1.22	1.1
ACC%	72%	72%	64%

TRANSTASMAN ANGUS CATTLE EVALUATION - JUNE 2023																							
TACE	CALVING EASE				GROWTH & MATERNAL				FERTILITY		CWT	CARCASE					Doc	Angus Index	Dom	Heavy Grain	Heavy Grass		
	DIR	DTRS	GL	B Wt	200	400	600	MWt	Milk	SS	DC	C Wt	EMA	RIB	RUMP	RBY%	IMF%	Doc.					
EBV	+0.5	+5.1	-6.7	+5.5	+57	+97	+128	+103	+19	+1	-7.1	+81	+7.6	-0.7	-0.9	+0.3	+2.9	+13	+246	+202	+320	+231	
ACC%	58%	48%	71%	74%	73%	71%	74%	70%	63%	74%	39%	61%	61%	62%	62%	56%	65%	56%					

Good hindquarter and strong topline. High indexing with better than breed average growth, EMA, IMF and milk.

Purchaser..... Price.....

50 HAZELDEAN S1107 (Nat) SV APR AMFU NHFU CAFU DDFU Born: 05/08/2021 Society Id: NHZ21S1107

RENNYLEA EDMUND E11
HAZELDEAN KATZEN K416
HAZELDEAN H342
Sire: HAZELDEAN N508
LEACHMAN BOOM TIME
HAZELDEAN F307
HAZELDEAN YELLOWSTONE A618

BON VIEW NEW DESIGN 208
TC TOTAL 410
TC ERICA EILEEN 2047
Dam: HAZELDEAN H119
B/R NEW DESIGN 323-9150
HAZELDEAN DESIGN C86
HAZELDEAN A67

Front	Rear	Front	Rear	Front	Rear	MUSCLE	TEMP.	SHEATH
7	6	6	6	5	5	C+	1	4

Structural EBV's			
TACE	ANGLE	CLAW	LEGS
	+0.86	+0.88	0.9
ACC%	69%	72%	64%

TRANSTASMAN ANGUS CATTLE EVALUATION - JUNE 2023																							
TACE	CALVING EASE				GROWTH & MATERNAL				FERTILITY		CWT	CARCASE					Doc	Angus Index	Dom	Heavy Grain	Heavy Grass		
	DIR	DTRS	GL	B Wt	200	400	600	MWt	Milk	SS	DC	C Wt	EMA	RIB	RUMP	RBY%	IMF%	Doc.					
EBV	+6.7	+5.8	-4.5	+1.8	+40	+73	+93	+84	+21	+0.8	-3.6	+51	+7.1	-1.1	-1.8	+1.1	+1.2	+44	+164	+138	+215	+144	
ACC%	56%	47%	71%	75%	73%	71%	73%	69%	63%	71%	40%	62%	61%	62%	63%	56%	64%	57%					

Good muscle pattern and a long even type. Better than average 600d and impressive scrotal size in the top 2%. Note: small scar on o/s eye.

Purchaser..... Price.....

51 HAZELDEAN S1467 (Nat) PV APR AMFU NHFU CAFU DD2% Born: 20/08/2021 Society Id: NHZ21S1467

AYRVALE BARTEL E7
AYRVALE HERCULES H9
LAWSONS INVINCIBLE F338
Sire: BURENDA Q303

PA FULL POWER 1208
BURENDA MAESTRO M249
BURENDA FLUSTER H108
Dam: BURENDA GARDINER Q384
BURENDA GEIGER COUNTER G49
BURENDA GARDINER L275
BURENDA GARDINER H414

Front	Rear	Front	Rear	Front	Rear	MUSCLE	TEMP.	SHEATH
6	5	6	6	5	5	C+	1	5

Structural EBV's			
TACE	ANGLE	CLAW	LEGS
	+1.08	+0.92	1.04
ACC%	69%	69%	61%

TRANSTASMAN ANGUS CATTLE EVALUATION - JUNE 2023																							
TACE	CALVING EASE				GROWTH & MATERNAL				FERTILITY		CWT	CARCASE					Doc	Angus Index	Dom	Heavy Grain	Heavy Grass		
	DIR	DTRS	GL	B Wt	200	400	600	MWt	Milk	SS	DC	C Wt	EMA	RIB	RUMP	RBY%	IMF%	Doc.					
EBV	-0.4	+0.7	-8.9	+4.8	+51	+95	+131	+101	+24	+3.5	-4.5	+71	+19.4	-0.9	-2.2	+2	+1.9	+29	+234	+186	+300	+224	
ACC%	55%	45%	71%	72%	70%	69%	72%	66%	59%	71%	35%	59%	58%	59%	60%	53%	63%	49%					

HUGE EMA! The highest EMA bull we are selling this year. This bull really covers the ground and really can see the capacity in him. With a good birth to growth, this young sire also features a big scrotal EBV. Suitable for heifers

Purchaser..... Price.....

Top 5% Top 10% Top 30%

Ranking in Angus Aust. June 2023

Proven Genetic Performance

www.hazeldean.com.au

NEW ENGLAND 2023



SALE BULLS

52 HAZELDEAN S1471 (Nat) SV APR AMFU NHFU CAFU DD50% Born: 20/08/2021 Society Id: NHZ21S1471

ARDROSSAN HONOUR H255
 ARDROSSAN MAGISTRATE M101
 ARDROSSAN PRINCESS H230
Sire: HAZELDEAN Q589
 HAZELDEAN FLAIR F493
 HAZELDEAN J1218
 HAZELDEAN F135

TE MANIA ULONG U41
 TE MANIA AFRICA A217
 TE MANIA JEDDA Y32
Dam: HAZELDEAN G20
 R/M ULTRA CASH FLOW 102
 HAZELDEAN A294
 HAZELDEAN X22

Front	Rear	Front	Rear	Front	Rear	MUSCLE	TEMP.	SHEATH
7	6	6	7	5	5	C+	1	4

Structural EBV's			
TACE	ANGLE	CLAW	LEGS
	+0.88	+0.62	1.22
ACC%	70%	70%	60%

TRANSTASMAN ANGUS CATTLE EVALUATION - JUNE 2023																						
TACE	CALVING EASE				GROWTH & MATERNAL				FERTILITY		CWT	CARCASE					Doc	Angus Index	Dom	Heavy Grain	Heavy Grass	
	DIR	DTRS	GL	B Wt	200	400	600	MWt	Milk	SS	DC	C Wt	EMA	RIB	RUMP	RYBY%	IMF%	Doc.				
EBV	+8.5	+8.2	-6.2	+2.2	+34	+63	+84	+53	+21	+2	-5.5	+45	+0.4	+2.7	+4.4	-0.6	+2.5	+28	+175	+139	+229	+159
ACC%	56%	46%	70%	73%	72%	70%	72%	69%	63%	71%	39%	61%	60%	62%	62%	55%	64%	52%				

Length and scope with plenty of real calving ease. Fantastic fats and milk. Suitable for heifers

Purchaser..... Price.....

53 HAZELDEAN S48 (AI) SV APR AMFU NHFU CAFU DDFU Born: 06/07/2021 Society Id: NHZ21S48

G A R PROPHET
 BALDRIDGE BEAST MODE B074
 BALDRIDGE ISABEL Y69
Sire: HAZELDEAN P16
 LAWSONS INVINCIBLE C402
 HAZELDEAN G90
 HAZELDEAN B4

ARDROSSAN EQUATOR A241
 HAZELDEAN JAIPUR J140
 HAZELDEAN C33
Dam: HAZELDEAN P340
 RENNYLEA NORF42
 HAZELDEAN J649
 HAZELDEAN F458

Front	Rear	Front	Rear	Front	Rear	MUSCLE	TEMP.	SHEATH
6	6	6	6	5	5	C+	2	4

Structural EBV's			
TACE	ANGLE	CLAW	LEGS
	+0.98	+0.62	0.96
ACC%	73%	73%	61%

TRANSTASMAN ANGUS CATTLE EVALUATION - JUNE 2023																						
TACE	CALVING EASE				GROWTH & MATERNAL				FERTILITY		CWT	CARCASE					Doc	Angus Index	Dom	Heavy Grain	Heavy Grass	
	DIR	DTRS	GL	B Wt	200	400	600	MWt	Milk	SS	DC	C Wt	EMA	RIB	RUMP	RYBY%	IMF%	Doc.				
EBV	+2.2	+2.4	-8.4	+4.1	+50	+83	+123	+98	+18	+2.5	-3.5	+68	+7.9	-2.3	-2.7	+1.2	+1.6	+34	+186	+140	+240	+174
ACC%	57%	46%	84%	75%	73%	72%	75%	69%	61%	74%	40%	61%	61%	63%	63%	57%	64%	56%				

MEAT AND MUSCLE! Powerful just like his dad, Hazeldean P16. Balanced traits and good structural EBVs. Suitable for heifers

Purchaser..... Price.....

54 HAZELDEAN S432 (AI) PV APR AMFU NHFU CAFU DDFU Born: 16/07/2021 Society Id: NHZ21S432

RENNYLEA EDMUND E11
 HAZELDEAN KATZEN K416
 HAZELDEAN H342
Sire: HAZELDEAN P242
 HAZELDEAN KGB K489
 HAZELDEAN M351
 HAZELDEAN K130

G A R PROPHET
 HAZELDEAN JALANA J1510
 HAZELDEAN G270
Dam: HAZELDEAN L1224
 MOHNEN DYNAMITE 1356
 HAZELDEAN H1628
 HAZELDEAN FIN F1110

Front	Rear	Front	Rear	Front	Rear	MUSCLE	TEMP.	SHEATH
5	6	5	6	5	5	C+	1	4

Structural EBV's			
TACE	ANGLE	CLAW	LEGS
	+1.04	+0.78	1.14
ACC%	71%	70%	57%

TRANSTASMAN ANGUS CATTLE EVALUATION - JUNE 2023																						
TACE	CALVING EASE				GROWTH & MATERNAL				FERTILITY		CWT	CARCASE					Doc	Angus Index	Dom	Heavy Grain	Heavy Grass	
	DIR	DTRS	GL	B Wt	200	400	600	MWt	Milk	SS	DC	C Wt	EMA	RIB	RUMP	RYBY%	IMF%	Doc.				
EBV	+7.4	+3.9	-6.5	+2.3	+48	+93	+123	+121	+20	+1.4	-5.9	+77	+1	+1.5	+0.8	-0.3	+1.8	+25	+182	+152	+235	+165
ACC%	55%	43%	83%	75%	72%	72%	74%	67%	59%	74%	35%	60%	59%	61%	61%	54%	63%	53%				

A thickset Hazeldean P242 son with moderate birth weight leading into good growth data. Diverse bull with 13 traits better than breed average and very correct structural scores. Suitable for heifers

Purchaser..... Price.....

Top 5% Top 10% Top 30%

Ranking in Angus Aust. June 2023

Proven Genetic Performance

www.hazeldean.com.au



HAZELDEAN
LITCHFIELD
EST 1865

NEW ENGLAND 2023

SALE BULLS

55 HAZELDEAN S594 (AI) SV APR AMFU NHFU CAFU DDFU Born: 23/07/2021 Society Id: NHZ21S594

G A R PROPHET
BALDRIDGE BEAST MODE B074
BALDRIDGE ISABEL Y69
Sire: HAZELDEAN P16
LAWSONS INVINCIBLE C402
HAZELDEAN G90
HAZELDEAN B4

CONNELLY REFLECTION USA14528330
JINDRA DOUBLE VISION 16748826
HOFF RACHEL 8312405
Dam: HAZELDEAN L727
HAZELDEAN BENEDICT B569
HAZELDEAN G560
HAZELDEAN D998

Front	Rear	Front	Rear	Front	Rear	MUSCLE	TEMP.	SHEATH
7	6	7	6	5	6	C+	1	4

Structural EBV's			
TACE	ANGLE	CLAW	LEGS
	+1.28	+1.16	0.98
ACC%	74%	73%	61%

TRANSTASMAN ANGUS CATTLE EVALUATION - JUNE 2023																						
TACE	CALVING EASE				GROWTH & MATERNAL				FERTILITY		CWT	CARCASE					Doc	Angus Index	Dom	Heavy Grain	Heavy Grass	
	DIR	DTRS	GL	B Wt	200	400	600	MWt	Milk	SS	DC	C Wt	EMA	RIB	RUMP	RBY%	IMF%	Doc.				
EBV	-3.3	+4.5	-1.1	+6	+44	+85	+115	+111	+10	+2.6	-3	+65	+6.5	-1.7	-1.3	+1.1	+1.9	+40	+153	+126	+198	+143
ACC%	57%	45%	83%	75%	73%	73%	75%	69%	62%	75%	38%	61%	61%	62%	62%	57%	64%	58%				

Really nice P16 power house with punch and capacity. Top 3% for docility.

Purchaser..... Price.....

56 HAZELDEAN S28 (AI) SV APR AMFU NHFU CAFU DDFU Born: 05/07/2021 Society Id: NHZ21S28

RENNYLEA EDMUND E11
HAZELDEAN KATZEN K416
HAZELDEAN H342
Sire: HAZELDEAN P242
HAZELDEAN KGB K489
HAZELDEAN M351
HAZELDEAN K130

TE MANIA BERKLEY B1
TE MANIA EMPEROR E343
TE MANIA LOWAN Z74
Dam: HAZELDEAN P745
HAZELDEAN GUARDIAN G553
HAZELDEAN K843
HAZELDEAN G385

Front	Rear	Front	Rear	Front	Rear	MUSCLE	TEMP.	SHEATH
7	6	6	6	5	5	C+	1	4

Structural EBV's			
TACE	ANGLE	CLAW	LEGS
	+0.84	+0.76	0.92
ACC%	72%	71%	60%

TRANSTASMAN ANGUS CATTLE EVALUATION - JUNE 2023																						
TACE	CALVING EASE				GROWTH & MATERNAL				FERTILITY		CWT	CARCASE					Doc	Angus Index	Dom	Heavy Grain	Heavy Grass	
	DIR	DTRS	GL	B Wt	200	400	600	MWt	Milk	SS	DC	C Wt	EMA	RIB	RUMP	RBY%	IMF%	Doc.				
EBV	+9.1	+4.8	-1.1	+2	+55	+102	+139	+125	+19	+2.1	-6.4	+77	+7	+3.6	+2.5	+0.2	+0.9	+30	+228	+188	+290	+214
ACC%	56%	46%	84%	75%	73%	72%	74%	69%	60%	74%	40%	62%	61%	63%	63%	57%	65%	55%				

Really soft and sexy bull. Very appealing birth to growth - curve bender! Excellent fats too. Top 1% for gestation length, top 11% for 600d, days to calving and rump fat. Suitable for heifers

Purchaser..... Price.....

57 HAZELDEAN S1468 (Nat) PV APR AMFU NHFU CAFU DDFU Born: 20/08/2021 Society Id: NHZ21S1468

PA POWER TOOL 9108
PA FULL POWER 1208
PINE VIEW SQR RITA W091
Sire: BURENDA DUNLIN Q334
G A R SURE FIRE
BURENDA DUNLIN N338
BURENDA DUNLIN L493

TEXAS MOUNT K002
BURENDA NEGRITO N389
BURENDA KADUNA K489
Dam: BURENDA Q676
AYRVALE HERCULES H9
BURENDA DORIS M200
BURENDA DORIS K599

Front	Rear	Front	Rear	Front	Rear	MUSCLE	TEMP.	SHEATH
6	5	6	6	5	5	C+	2	4

Structural EBV's			
TACE	ANGLE	CLAW	LEGS
	+1.1	+0.92	0.92
ACC%	70%	70%	59%

TRANSTASMAN ANGUS CATTLE EVALUATION - JUNE 2023																						
TACE	CALVING EASE				GROWTH & MATERNAL				FERTILITY		CWT	CARCASE					Doc	Angus Index	Dom	Heavy Grain	Heavy Grass	
	DIR	DTRS	GL	B Wt	200	400	600	MWt	Milk	SS	DC	C Wt	EMA	RIB	RUMP	RBY%	IMF%	Doc.				
EBV	+0.4	-3.2	-2.4	+4.4	+46	+91	+109	+59	+22	+3	-6.2	+62	+16.9	-1.2	+0.5	+1.7	+3.3	+13	+273	+231	+356	+261
ACC%	54%	43%	69%	72%	70%	68%	72%	67%	58%	72%	34%	58%	57%	59%	59%	53%	63%	48%				

A more moderate framed carcass bull with extreme EMA, top 1% well and truly. Awesome indexes top 2% for the Angus Breeding Index. Suitable for heifers

Purchaser..... Price.....

Top 5% Top 10% Top 30%

Ranking in Angus Aust. June 2023

Proven Genetic Performance

www.hazeldean.com.au

NEW ENGLAND 2023



SALE BULLS

58 HAZELDEAN S1492 (Nat) SV APR AMFU NHFU CAFU DDFU Born: 20/08/2021 Society Id: NHZ21S1492

TE MANIA EMPEROR E343 S A V FINAL ANSWER 0035
 STORTH OAKS JACK J7 LD CAPITALIST 316
 STORTH OAKS G183 LD DIXIE ERICA 2053
Sire: HAZELDEAN Q522 **Dam: HAZELDEAN P941**
 JINDRA DOUBLE VISION 16748826 HAZELDEAN CARDRONA C677
 HAZELDEAN L727 HAZELDEAN G968
 HAZELDEAN G560 HAZELDEAN ADMIRAL D100

Front	Rear	Front	Rear	MUSCLE	TEMP.	SHEATH
7	6	6	6	5	5	C+ 2 4

Structural EBV's			
TACE	ANGLE	CLAW	LEGS
	+1.14	+0.96	0.92
ACC%	71%	71%	59%

TRANSTASMAN ANGUS CATTLE EVALUATION - JUNE 2023																							
TACE	CALVING EASE				GROWTH & MATERNAL				FERTILITY		CWT	CARCASE					Doc	Angus Index	Dom	Heavy Grain	Heavy Grass		
	DIR	DTRS	GL	B Wt	200	400	600	MWt	Milk	SS	DC	C Wt	EMA	RIB	RUMP	RBY%	IMF%	Doc.					
EBV	+5.6	+8.4	-4	+3.6	+49	+91	+113	+89	+16	+1.6	-4.2	+66	+11.4	+1.3	+1.1	+0.9	+0.8	-4	+218	+187	+281	+200	
ACC%	55%	44%	71%	73%	71%	70%	73%	67%	60%	73%	38%	60%	59%	61%	61%	55%	63%	53%					

Balanced type with a moderate frame. Lots of calving ease and EMA. Note a small scar on o/s eye.

Purchaser..... Price.....

59 HAZELDEAN S317 (AI) SV APR AMFU NHFU CAFU DDFU Born: 12/07/2021 Society Id: NHZ21S317

G A R MOMENTUM USA17354145 TC TOTAL 410
 LAWSONS MOMENTOUS M518 HAZELDEAN HIGH ROLLER H6
 LAWSONS AFRICA H229 VLYH229 HAZELDEAN A90
Sire: MURDEDUKE QUARTERBACK Q011 **Dam: HAZELDEAN P563**
 CARABAR DOCKLANDS D62 LAWSONS TANK VLY B1155
 MURDEDUKE BARUNDAH N026 HAZELDEAN H644
 MURDEDUKE BARUNAH C191 HAZELDEAN B889

Front	Rear	Front	Rear	MUSCLE	TEMP.	SHEATH
6	5	6	6	5	6	C+ 2 4

Structural EBV's			
TACE	ANGLE	CLAW	LEGS
	+0.86	+0.9	0.92
ACC%	74%	74%	67%

TRANSTASMAN ANGUS CATTLE EVALUATION - JUNE 2023																							
TACE	CALVING EASE				GROWTH & MATERNAL				FERTILITY		CWT	CARCASE					Doc	Angus Index	Dom	Heavy Grain	Heavy Grass		
	DIR	DTRS	GL	B Wt	200	400	600	MWt	Milk	SS	DC	C Wt	EMA	RIB	RUMP	RBY%	IMF%	Doc.					
EBV	+4.8	+2.1	-6.9	+2.8	+49	+85	+118	+102	+21	+2.5	-6.4	+63	+9.3	+2.6	+2.2	-0.5	+4.9	+30	+229	+172	+314	+219	
ACC%	59%	47%	83%	75%	73%	72%	74%	69%	60%	75%	38%	61%	61%	62%	62%	56%	64%	60%					

Easy doing and very thick. Top 18% for EMA, top 4% for IMF. Good calving ease and better than average 600d EBV. Suitable for heifers

Purchaser..... Price.....

60 HAZELDEAN S236 (AI) SV APR AMFU NHFU CAFU DD50% Born: 11/07/2021 Society Id: NHZ21S236

ARDROSSAN EQUATOR A241 BON VIEW NEW DESIGN 1407
 HAZELDEAN JAIPUR J140 SITZ NEW DESIGN 458N
 HAZELDEAN C33 SITZ ELLUNAS ELITE 3308
Sire: HAZELDEAN P434 **Dam: HAZELDEAN F26**
 RENNYLEA EDMUND E11 HAZELDEAN FUTURA W133
 HAZELDEAN L527 HAZELDEAN FUTURA A260
 HAZELDEAN E453 HAZELDEAN AMBUSH W21

Front	Rear	Front	Rear	MUSCLE	TEMP.	SHEATH
6	6	5	6	5	5	C+ 1 4

Structural EBV's			
TACE	ANGLE	CLAW	LEGS
	+0.8	+0.52	0.94
ACC%	71%	71%	60%

TRANSTASMAN ANGUS CATTLE EVALUATION - JUNE 2023																							
TACE	CALVING EASE				GROWTH & MATERNAL				FERTILITY		CWT	CARCASE					Doc	Angus Index	Dom	Heavy Grain	Heavy Grass		
	DIR	DTRS	GL	B Wt	200	400	600	MWt	Milk	SS	DC	C Wt	EMA	RIB	RUMP	RBY%	IMF%	Doc.					
EBV	+6.8	+6.3	-4.6	+3.3	+45	+77	+99	+94	+13	+2.1	-5.2	+65	+5.7	-3.2	-4.7	+1.4	+2.5	+34	+192	+165	+243	+176	
ACC%	60%	50%	83%	76%	74%	72%	75%	69%	62%	74%	43%	63%	61%	63%	63%	57%	65%	59%					

Big back end with volume through his barrel. Plenty of calving easy from this nice type of bull. Suitable for heifers.

Purchaser..... Price.....

Top 5% **Top 10%** **Top 30%**

Ranking in Angus Aust. June 2023

Proven Genetic Performance

www.hazeldean.com.au



HAZELDEAN
LITCHFIELD
EST 1865

NEW ENGLAND 2023

SALE BULLS

61 HAZELDEAN S1624 (Nat) SV APR AMFU NHFU CAFU DDFU Born: 27/08/2021 Society Id: NHZ21S1624

RENNYLEA EDMUND E11
HAZELDEAN KATZEN K416
HAZELDEAN H342
Sire: HAZELDEAN N508
LEACHMAN BOOM TIME
HAZELDEAN F307
HAZELDEAN YELLOWSTONE A618

BON VIEW NEW DESIGN 208
TC TOTAL 410
TC ERICA EILEEN 2047
Dam: HAZELDEAN H4
L T 598 BANDO 9074
HAZELDEAN A90
HAZELDEAN Y310

Front	Rear	Front	Rear	Front	Rear	MUSCLE	TEMP.	SHEATH
6	6	6	6	5	6	C+	1	5

Structural EBV's			
TACE	ANGLE	CLAW	LEGS
	+1.04	+0.86	1.02
ACC%	74%	74%	65%

TRANSTASMAN ANGUS CATTLE EVALUATION - JUNE 2023																						
TACE	CALVING EASE				GROWTH & MATERNAL					FERTILITY		CWT	CARCASE					Doc	Angus Index	Dom	Heavy Grain	Heavy Grass
	DIR	DTRS	GL	B Wt	200	400	600	MWt	Milk	SS	DC	C Wt	EMA	RIB	RUMP	RBV%	IMF%	Doc.				
EBV	-0.8	+4.6	-2.7	+3.7	+54	+93	+123	+113	+20	+0.5	-4.8	+7.6	+6	+2.8	+3	-0.6	+2.5	+56	+197	+153	+272	+177
ACC%	58%	49%	70%	75%	73%	72%	74%	70%	63%	74%	42%	63%	61%	63%	63%	57%	65%	57%				

Gentle disposition with good capacity and a big top. Square framed. Better than breed average for 16 traits, top 1% for docility.

Purchaser..... Price.....

62 HAZELDEAN S931 (Nat) SV APR AMFU NHFU CAFU DDFU Born: 30/07/2021 Society Id: NHZ21S931

MATAURI REALITY 839
KAROO KNOCKOUT K176
KAROO JEDDA H213
Sire: HAZELDEAN Q331
RENNYLEA EDMUND E11
HAZELDEAN L25
HAZELDEAN J19

SYDGEN TRUST 6228
SYDGEN BLACK PEARL 2006
SYDGEN ANITA 8611
Dam: HAZELDEAN M9
RENNYLEA NORF42
HAZELDEAN J623
HAZELDEAN F355

Front	Rear	Front	Rear	Front	Rear	MUSCLE	TEMP.	SHEATH
6	6	6	6	5	5	C+	1	4

Structural EBV's			
TACE	ANGLE	CLAW	LEGS
	+1	+0.74	1.02
ACC%	71%	71%	64%

TRANSTASMAN ANGUS CATTLE EVALUATION - JUNE 2023																						
TACE	CALVING EASE				GROWTH & MATERNAL					FERTILITY		CWT	CARCASE					Doc	Angus Index	Dom	Heavy Grain	Heavy Grass
	DIR	DTRS	GL	B Wt	200	400	600	MWt	Milk	SS	DC	C Wt	EMA	RIB	RUMP	RBV%	IMF%	Doc.				
EBV	-2.5	+2.6	-5.2	+5.2	+50	+93	+123	+128	+20	+4	-5.3	+65	+7	+0.8	+0.1	+0.1	+3.9	+25	+186	+149	+251	+174
ACC%	56%	47%	70%	72%	71%	70%	71%	68%	61%	72%	38%	60%	58%	60%	60%	54%	63%	51%				

Good shape and a promising balance in his EBVs. Top 5% for scrotal and top 12% for IMF.

Purchaser..... Price.....

63 HAZELDEAN S1479 (Nat) SV APR AMFU NHFU CAFU DDFU Born: 20/08/2021 Society Id: NHZ21S1479

BOOROOMOOKA UNDERTAKEN Y145
RENNYLEA EDMUND E11
LAWSONS HENRY VIII Y5
Sire: HAZELDEAN LEBRUN L355
CARABAR DOCKLANDS D62
HAZELDEAN J668
HAZELDEAN C661

ARDROSSAN EQUATOR A241
HAZELDEAN JAIPUR J140
HAZELDEAN C33
Dam: HAZELDEAN M159
HAZELDEAN HOBNAIL H360
HAZELDEAN K866
HAZELDEAN G909

Front	Rear	Front	Rear	Front	Rear	MUSCLE	TEMP.	SHEATH
5	6	5	6	5	6	C+	1	5

Structural EBV's			
TACE	ANGLE	CLAW	LEGS
	+0.82	+0.62	0.98
ACC%	72%	72%	64%

TRANSTASMAN ANGUS CATTLE EVALUATION - JUNE 2023																						
TACE	CALVING EASE				GROWTH & MATERNAL					FERTILITY		CWT	CARCASE					Doc	Angus Index	Dom	Heavy Grain	Heavy Grass
	DIR	DTRS	GL	B Wt	200	400	600	MWt	Milk	SS	DC	C Wt	EMA	RIB	RUMP	RBV%	IMF%	Doc.				
EBV	-0.3	+2.9	-6.5	+5.1	+57	+104	+160	+142	+24	+2.4	-5.5	+94	-4.8	+1	+0.5	-2.2	+4.5	-1	+173	+114	+235	+164
ACC%	58%	49%	68%	74%	73%	72%	74%	69%	63%	73%	42%	62%	60%	62%	63%	57%	64%	57%				

Great capacity and volume lots of Hazeldean L355 in him. Very good claw EBV and raw claw score. Moderate birth to explosive growth - top 2% for 600d EBV and a lower mature cow weight. Top 7% for milk and IMF.

Purchaser..... Price.....

Top 5% Top 10% Top 30%

Ranking in Angus Aust. June 2023

Proven Genetic Performance

www.hazeldean.com.au



HAZELDEAN
LITCHFIELD
EST 1865

NEW ENGLAND 2023

SALE BULLS

64 HAZELDEAN S2045 (ET) PV APR AMFU NHFU CAFU DDFU Born: 03/08/2021
Society Id: NHZ21S2045

G A R INGENUITY BOOROOMOOKA UNDERTAKEN Y145
H P C A INTENSITY RENNYLEA EDMUND E11
G A R PREDESTINED 287L LAWSONS HENRY VIII Y5
Sire: RENNYLEA NORL519 Dam: HAZELDEAN K458
TE MANIA BERKLEY B1 RENNYLEA C574
RENNYLEA H414 HAZELDEAN H488
RENNYLEA C310 HAZELDEAN IRONWOOD D259

Front	Rear	Front	Rear	Front	Rear	MUSCLE	TEMP.	SHEATH
6	5	6	6	5	6	C+	2	5

Structural EBV's			
TACE	ANGLE	CLAW	LEGS
	+0.66	+0.34	0.9
ACC%	73%	73%	71%

TRANSTASMAN ANGUS CATTLE EVALUATION - JUNE 2023																						
TACE	CALVING EASE				GROWTH & MATERNAL				FERTILITY		CWT	CARCASE					Doc	Angus Index	Dom	Heavy Grain	Heavy Grass	
	DIR	DTRS	GL	B Wt	200	400	600	MWt	Milk	SS	DC	C Wt	EMA	RIB	RUMP	RBV%	IMF%	Doc.				
EBV	+5	+5.4	-5.1	+3.5	+51	+91	+123	+119	+12	+1.8	-5.1	+65	+7.9	-0.9	-3.1	+1.1	+2.8	+17	+212	+175	+271	+198
ACC%	67%	58%	73%	76%	76%	75%	76%	74%	69%	77%	51%	69%	67%	68%	68%	64%	70%	66%				

Heavy boned and thick set L519 son. A big future lies ahead. Thick fore legs and strong topline. ET bred from a very sound cow. Top 1% for claw EBV. Good carcass traits and better than breed average for 16 traits. Suitable for heifers.

Purchaser..... Price.....

65 HAZELDEAN S571 (Nat) SV APR AMFU NHFU CA40% DDFU Born: 22/07/2021
Society Id: NHZ21S571

RENNYLEA EDMUND E11 KAROO W109 DIRECTION Z181
HAZELDEAN KATZEN K416 CARABAR DOCKLANDS D62
HAZELDEAN H342 CARABAR BLACKCAP MARY B12
Sire: HAZELDEAN P242 Dam: HAZELDEAN J204
HAZELDEAN KGB K489 HAZELDEAN LEAD ON Z166
HAZELDEAN M351 HAZELDEAN B416
HAZELDEAN K130 HAZELDEAN Y234

Front	Rear	Front	Rear	Front	Rear	MUSCLE	TEMP.	SHEATH
6	5	6	6	5	5	C+	1	5

Structural EBV's			
TACE	ANGLE	CLAW	LEGS
	+0.92	+0.84	1.04
ACC%	67%	68%	63%

TRANSTASMAN ANGUS CATTLE EVALUATION - JUNE 2023																						
TACE	CALVING EASE				GROWTH & MATERNAL				FERTILITY		CWT	CARCASE					Doc	Angus Index	Dom	Heavy Grain	Heavy Grass	
	DIR	DTRS	GL	B Wt	200	400	600	MWt	Milk	SS	DC	C Wt	EMA	RIB	RUMP	RBV%	IMF%	Doc.				
EBV	+3.7	-1.1	-9.5	+4.6	+54	+93	+127	+101	+24	+1.1	-6.5	+77	+4.8	-0.3	-0.4	+0.6	+1.3	+9	+220	+180	+280	+203
ACC%	56%	45%	71%	74%	73%	71%	71%	68%	61%	68%	40%	61%	60%	62%	62%	56%	64%	57%				

Length of rein with a very bright outlook. Nice birth to growth, top 3% for gestation length and top 7% for milk EBV. Suitable for heifers.

Purchaser..... Price.....

66 HAZELDEAN S428 (AI) SV APR AMFU NHFU CAFU DDFU Born: 16/07/2021
Society Id: NHZ21S428

C R A BEXTOR 872 5205 608 BT RIGHT TIME 24J
G A R PROPHET RENNYLEA NORF42
G A R OBJECTIVE 1885 RENNYLEA B36
Sire: BALDRIDGE BEAST MODE B074 Dam: HAZELDEAN H546
STYLES UPGRADE J59 HAZELDEAN DESTINATION B793
BALDRIDGE ISABEL Y69 HAZELDEAN D1002
BALDRIDGE ISABEL T935 HAZELDEAN FOCUS X858

Front	Rear	Front	Rear	Front	Rear	MUSCLE	TEMP.	SHEATH
7	5	6	6	5	5	C+	1	4

Structural EBV's			
TACE	ANGLE	CLAW	LEGS
	+0.98	+0.6	0.98
ACC%	72%	76%	68%

TRANSTASMAN ANGUS CATTLE EVALUATION - JUNE 2023																						
TACE	CALVING EASE				GROWTH & MATERNAL				FERTILITY		CWT	CARCASE					Doc	Angus Index	Dom	Heavy Grain	Heavy Grass	
	DIR	DTRS	GL	B Wt	200	400	600	MWt	Milk	SS	DC	C Wt	EMA	RIB	RUMP	RBV%	IMF%	Doc.				
EBV	-1.6	+1.2	-2.3	+5.8	+56	+96	+130	+128	+11	+3.3	-5.8	+62	+4.3	0	-0.2	+0.2	+1.4	+12	+183	+153	+233	+171
ACC%	64%	55%	83%	76%	74%	73%	74%	72%	68%	74%	46%	66%	66%	66%	66%	61%	67%	62%				

Meat man with lots of muscle. Better than breed average for 10 traits. Very good growth.

Purchaser..... Price.....

Top 5% Top 10% Top 30%

Ranking in Angus Aust. June 2023

Proven Genetic Performance

www.hazeldean.com.au



HAZELDEAN
LITCHFIELD
EST 1865

NEW ENGLAND 2023

SALE BULLS

67 HAZELDEAN S1207 (Nat) SV APR AMFU NHFU CAFU DDFU Born: 09/08/2021 Society Id: NH21S1207

RENNYLEA EDMUND E11
HAZELDEAN KATZEN K416
HAZELDEAN H342
Sire: HAZELDEAN N508
LEACHMAN BOOM TIME
HAZELDEAN F307
HAZELDEAN YELLOWSTONE A618

LAWSONS TANK X1235(AI) VLYX1235
LAWSONS TANK VLY B1155
LAWSONS NEW DESIGN 1407 Z1393
Dam: HAZELDEAN H930
HAZELDEAN CASHFLOW B702
HAZELDEAN D1045
HAZELDEAN Y1044

Front	Rear	Front	Rear	Front	Rear	MUSCLE	TEMP.	SHEATH
6	6	5	6	5	5	C+	1	5

Structural EBV's			
TACE	ANGLE	CLAW	LEGS
	+1.02	+0.96	0.92
ACC%	73%	72%	63%

TRANSTASMAN ANGUS CATTLE EVALUATION - JUNE 2023																						
TACE	CALVING EASE				GROWTH & MATERNAL				FERTILITY		CWT	CARCASE					Doc	Angus Index	Dom	Heavy Grain	Heavy Grass	
	DIR	DTRS	GL	B Wt	200	400	600	MWt	Milk	SS	DC	C Wt	EMA	RIB	RUMP	RBV%	IMF%	Doc.				
EBV	+4.6	+4.1	-7.3	+3.1	+45	+95	+122	+122	+12	+1.3	-5.2	+68	+3.9	+2.5	+2.8	-0.2	+2.2	+28	+188	+160	+242	+173
ACC%	55%	45%	68%	75%	73%	72%	74%	69%	63%	73%	40%	62%	60%	62%	63%	56%	64%	57%				

Thicker coat type on top of a robust and thick set young bull. Plenty of bone makes him a hearty young fellow. Nice birth to growth. Better than breed average for 15 traits. Top 7% fats. Suitable for heifers.

Purchaser..... Price.....

68 HAZELDEAN S1156 (Nat) SV APR AMFU NHFU CAFU DDFU Born: 07/08/2021 Society Id: NH21S1156

RENNYLEA EDMUND E11
HAZELDEAN KATZEN K416
HAZELDEAN H342
Sire: HAZELDEAN N508
LEACHMAN BOOM TIME
HAZELDEAN F307
HAZELDEAN YELLOWSTONE A618

LAWSONS DINKY-DI Z191
HAZELDEAN FAIROAKS F328
HAZELDEAN B982
Dam: HAZELDEAN H581
HAZELDEAN BANDO A125
HAZELDEAN C1026
HAZELDEAN Z423

Front	Rear	Front	Rear	Front	Rear	MUSCLE	TEMP.	SHEATH
7	6	7	6	5	5	C	1	5

Structural EBV's			
TACE	ANGLE	CLAW	LEGS
	+1.08	+0.98	1.02
ACC%	73%	73%	64%

TRANSTASMAN ANGUS CATTLE EVALUATION - JUNE 2023																						
TACE	CALVING EASE				GROWTH & MATERNAL				FERTILITY		CWT	CARCASE					Doc	Angus Index	Dom	Heavy Grain	Heavy Grass	
	DIR	DTRS	GL	B Wt	200	400	600	MWt	Milk	SS	DC	C Wt	EMA	RIB	RUMP	RBV%	IMF%	Doc.				
EBV	+3.5	+0.1	-5.3	+2.8	+47	+86	+118	+100	+23	+1.6	-4.3	+72	-1.2	+2.2	+3.2	-0.5	+1.1	+32	+161	+127	+214	+143
ACC%	55%	44%	70%	75%	73%	72%	74%	69%	62%	74%	38%	61%	60%	62%	62%	55%	64%	56%				

Very long with lots of capacity, bigger framed. Ample calving ease with better than breed average 600d. Industry leading fats.

Purchaser..... Price.....

69 HAZELDEAN S1407 (Nat) SV APR AMFU NHFU CAFU DDFU Born: 17/08/2021 Society Id: NH21S1407

HAZELDEAN JAIPUR J140
HAZELDEAN MAGNUM M586
HAZELDEAN H356
Sire: HAZELDEAN Q481
SYDGEN TRUST 6228
HAZELDEAN K826
HAZELDEAN E408

RENNYLEA EDMUND E11
ARDROSSAN JUSTICE NAQJ93
ARDROSSAN EVERELDA AI(ET) NAQF6
Dam: HAZELDEAN M76
ARDROSSAN EQUATOR A241
HAZELDEAN J120
HAZELDEAN TOTAL C64

Front	Rear	Front	Rear	Front	Rear	MUSCLE	TEMP.	SHEATH
6	6	6	6	5	6	C	2	5

Structural EBV's			
TACE	ANGLE	CLAW	LEGS
	+0.9	+0.64	1
ACC%	68%	68%	57%

TRANSTASMAN ANGUS CATTLE EVALUATION - JUNE 2023																						
TACE	CALVING EASE				GROWTH & MATERNAL				FERTILITY		CWT	CARCASE					Doc	Angus Index	Dom	Heavy Grain	Heavy Grass	
	DIR	DTRS	GL	B Wt	200	400	600	MWt	Milk	SS	DC	C Wt	EMA	RIB	RUMP	RBV%	IMF%	Doc.				
EBV	+7.2	+7.8	-5.6	+2.5	+50	+87	+114	+98	+23	+3.2	-7.1	+66	+1.7	+1.3	+2	-0.1	+1.6	+19	+212	+179	+270	+196
ACC%	55%	43%	69%	74%	72%	71%	73%	68%	60%	72%	37%	61%	59%	62%	62%	55%	64%	52%				

Well rounded bull with nice curvature. Balanced traits and suitable for heifers.

Purchaser..... Price.....

Top 5% Top 10% Top 30%

Ranking in Angus Aust. June 2023

Proven Genetic Performance

www.hazeldean.com.au

NEW ENGLAND 2023



SALE BULLS

70 HAZELDEAN S1308 (Nat) SV APR AMFU NHFU CAFU DDFU Born: 14/08/2021 Society Id: NH221S1308

RENNYLEA EDMUND E11
HAZELDEAN KIBBITZ K553
HAZELDEAN H434
Sire: HAZELDEAN Q641
RENNYLEA C574
HAZELDEAN H1604
HAZELDEAN BOOMTIME F1006

LT 598 BANDO 9074
HAZELDEAN ELIZABETHAN E635 (APR)
HAZELDEAN W796
Dam: HAZELDEAN G892
CONNEALY LEAD ON
HAZELDEAN Z537
HAZELDEAN U649

Front	Rear	Front	Rear	Front	Rear	MUSCLE	TEMP.	SHEATH
7	6	6	6	5	5	C+	2	5

Structural EBV's			
TACE	ANGLE	CLAW	LEGS
	+1.04	+0.86	1.12
ACC%	70%	69%	57%

TRANSTASMAN ANGUS CATTLE EVALUATION - JUNE 2023																							
TACE	CALVING EASE				GROWTH & MATERNAL				FERTILITY			CWT	CARCASE					Doc	Angus Index	Dom	Heavy Grain	Heavy Grass	
	DIR	DTRS	GL	B Wt	200	400	600	MWt	Milk	SS	DC	C Wt	EMA	RIB	RUMP	RBY%	IMF%	Doc.					
EBV	+2.2	-1.5	-3.1	+3.2	+45	+89	+122	+83	+23	+3.1	-7.4	+70	+8.3	+3.2	+3.3	+0.1	+2.5	+29	+231	+186	+294	+222	
ACC%	53%	42%	67%	73%	71%	70%	71%	67%	61%	71%	37%	59%	56%	59%	59%	52%	61%	51%					

Extra softness with a lot of style. Quite eye catching in his peer group. Top 3% for days to calving and rib fat EBV. Top 15% for scrotal size and docility EBV. Suitable for heifers.

Purchaser..... Price.....

71 HAZELDEAN S1070 (Nat) SV APR AMFU NHFU CAFU DDFU Born: 04/08/2021 Society Id: NH221S1070

ARDROSSAN HONOUR H255
ARDROSSAN MAGISTRATE M101
ARDROSSAN PRINCESS H230
Sire: HAZELDEAN Q11
SYDGEN BLACK PEARL 2006
HAZELDEAN L3
HAZELDEAN J234

BON VIEW NEW DESIGN 1407
LAWSONS DINKY-DI Z191
G A R PRECISION 1900
Dam: HAZELDEAN H193
BALDRIDGE NEBRASKA USA13412671
HAZELDEAN B282
HAZELDEAN W113

Front	Rear	Front	Rear	Front	Rear	MUSCLE	TEMP.	SHEATH
7	6	6	6	5	6	C+	2	4

Structural EBV's			
TACE	ANGLE	CLAW	LEGS
	+1.04	+1.06	1.12
ACC%	66%	71%	61%

TRANSTASMAN ANGUS CATTLE EVALUATION - JUNE 2023																							
TACE	CALVING EASE				GROWTH & MATERNAL				FERTILITY			CWT	CARCASE					Doc	Angus Index	Dom	Heavy Grain	Heavy Grass	
	DIR	DTRS	GL	B Wt	200	400	600	MWt	Milk	SS	DC	C Wt	EMA	RIB	RUMP	RBY%	IMF%	Doc.					
EBV	-2.6	+3	-6.5	+7	+52	+93	+132	+121	+18	+0.6	-3.8	+67	+7.9	-3.4	-4.6	+0.9	+3.7	+15	+190	+144	+252	+176	
ACC%	56%	46%	70%	73%	71%	70%	71%	68%	61%	72%	39%	60%	59%	61%	61%	55%	64%	51%					

Plenty of punch for your cows here, top 21% for 600d growth and top 14% for IMF.

Purchaser..... Price.....

72 HAZELDEAN S1606 (Nat) SV APR AMFU NHFU CAFU DDFU Born: 26/08/2021 Society Id: NH221S1606

ARDROSSAN EQUATOR A241
HAZELDEAN JAIPUR J140
HAZELDEAN C33
Sire: HAZELDEAN Q1237
CARABAR DOCKLANDS D62
HAZELDEAN J447
HAZELDEAN D684

BONGONGO BULLETPROOF Z3
HAZELDEAN DIRK D174
HAZELDEAN B263
Dam: HAZELDEAN F1052
HAZ COM BULL
HAZELDEAN D1273
HAZELDEAN X798

Front	Rear	Front	Rear	Front	Rear	MUSCLE	TEMP.	SHEATH
6	6	6	6	5	5	C+	2	4

Structural EBV's			
TACE	ANGLE	CLAW	LEGS
	+0.92	+0.42	0.88
ACC%	69%	69%	57%

TRANSTASMAN ANGUS CATTLE EVALUATION - JUNE 2023																							
TACE	CALVING EASE				GROWTH & MATERNAL				FERTILITY			CWT	CARCASE					Doc	Angus Index	Dom	Heavy Grain	Heavy Grass	
	DIR	DTRS	GL	B Wt	200	400	600	MWt	Milk	SS	DC	C Wt	EMA	RIB	RUMP	RBY%	IMF%	Doc.					
EBV	+3.6	+5.4	-2	+3.9	+38	+76	+101	+84	+18	+0.9	-5.3	+59	+8.5	-0.9	-1	+1.4	+1.8	+28	+193	+162	+242	+180	
ACC%	54%	43%	72%	75%	72%	71%	73%	68%	62%	72%	36%	60%	57%	60%	60%	53%	62%	52%					

Well balanced and even throughout. Overall constitution is appealing. Big EMA in the top 22% and top 1% for claw EBV. Suitable for heifers.

Purchaser..... Price.....

Top 5% Top 10% Top 30%

Ranking in Angus Aust. June 2023

Proven Genetic Performance

www.hazeldean.com.au



HAZELDEAN
LITCHFIELD
EST 1865

NEW ENGLAND 2023

SALE BULLS

73 HAZELDEAN S1082 (Nat) SV APR AMFU NHFU CAFU DDFU Born: 04/08/2021 Society Id: NHZ21S1082

RENNYLEA EDMUND E11 BOOROOMOOKA UNDERTAKEN Y145
RENNYLEA KODAK K522 RENNYLEA EDMUND E11
RENNYLEA EISA ERICA F810 LAWSONS HENRY VIII Y5
Sire: MURRAY KODAK N70 Dam: HAZELDEAN L1155
GARDENS WAVE LAWSONS DINKY-DI Z191
MURRAY WAVE J53 HAZELDEAN GROWL G1604
TE MANIA QUEANBEYAN D113 HAZELDEAN Z716

Front	Rear	Front	Rear	Front	Rear	MUSCLE	TEMP.	SHEATH
6	6	6	6	5	6	C+	1	5

Structural EBV's			
TACE	ANGLE	CLAW	LEGS
	+0.8	+0.68	0.86
ACC%	72%	72%	66%

TRANSTASMAN ANGUS CATTLE EVALUATION - JUNE 2023																						
TACE	CALVING EASE				GROWTH & MATERNAL				FERTILITY		CWT	CARCASE					Doc	Angus Index	Dom	Heavy Grain	Heavy Grass	
	DIR	DTRS	GL	B Wt	200	400	600	MWt	Milk	SS	DC	C Wt	EMA	RIB	RUMP	RBV%	IMF%	Doc.				
EBV	-0.9	+4.8	-2.9	+5.5	+57	+89	+123	+138	+8	+1.8	-6.4	+71	+6.3	+0.3	+0.2	+0.2	+3.4	+32	+208	+164	+273	+192
ACC%	58%	48%	72%	75%	73%	72%	72%	70%	62%	73%	42%	64%	64%	65%	65%	59%	68%	59%				

Well developed with a very good muscle pattern. Very good IMF.

Purchaser..... Price.....

74 HAZELDEAN S1071 (Nat) SV APR AMFU NHFU CAFU DDFU Born: 04/08/2021 Society Id: NHZ21S1071

RENNYLEA EDMUND E11 TE MANIA ULONG U41
HAZELDEAN KATZEN K416 TE MANIA AFRICA A217
HAZELDEAN H342 TE MANIA JEDDA Y32
Sire: HAZELDEAN N508 Dam: HAZELDEAN H350
LEACHMAN BOOM TIME HAZELDEAN NEW DESIGN D1052
HAZELDEAN F307 HAZELDEAN F529
HAZELDEAN YELLOWSTONE A618 HAZELDEAN C78

Front	Rear	Front	Rear	Front	Rear	MUSCLE	TEMP.	SHEATH
6	6	6	7	6	5	C	1	4

Structural EBV's			
TACE	ANGLE	CLAW	LEGS
	+1.34	+1.06	1.32
ACC%	74%	73%	65%

TRANSTASMAN ANGUS CATTLE EVALUATION - JUNE 2023																						
TACE	CALVING EASE				GROWTH & MATERNAL				FERTILITY		CWT	CARCASE					Doc	Angus Index	Dom	Heavy Grain	Heavy Grass	
	DIR	DTRS	GL	B Wt	200	400	600	MWt	Milk	SS	DC	C Wt	EMA	RIB	RUMP	RBV%	IMF%	Doc.				
EBV	+10.3	+8.1	-7.5	-0.2	+34	+69	+94	+79	+20	+0.9	-6	+47	+5.8	+1.5	+1.8	+0.2	+2.9	+38	+189	+150	+244	+174
ACC%	57%	47%	71%	72%	73%	71%	73%	69%	63%	74%	41%	62%	60%	62%	62%	56%	64%	57%				

Calving ease deluxe! Outstanding docility and good fats. Suitable for heifers.

Purchaser..... Price.....

75 HAZELDEAN S1078 (Nat) SV APR AMFU NHFU CAFU DDFU Born: 04/08/2021 Society Id: NHZ21S1078

TE MANIA BERKLEY B1 SCHURRTOP REALITY X723
HAZELDEAN F1023 MATAURI REALITY 839
HAZELDEAN B723 MATAURI 06663
Sire: HAZELDEAN Q1229 Dam: HAZELDEAN K775
G A R PROPHET LEACHMAN BOOM TIME
HAZELDEAN J823 HAZELDEAN D986
HAZELDEAN G724 HAZELDEAN X649

Front	Rear	Front	Rear	Front	Rear	MUSCLE	TEMP.	SHEATH
7	6	6	6	5	5	C+	1	4

Structural EBV's			
TACE	ANGLE	CLAW	LEGS
	+1	+0.76	1.14
ACC%	72%	72%	64%

TRANSTASMAN ANGUS CATTLE EVALUATION - JUNE 2023																						
TACE	CALVING EASE				GROWTH & MATERNAL				FERTILITY		CWT	CARCASE					Doc	Angus Index	Dom	Heavy Grain	Heavy Grass	
	DIR	DTRS	GL	B Wt	200	400	600	MWt	Milk	SS	DC	C Wt	EMA	RIB	RUMP	RBV%	IMF%	Doc.				
EBV	+4.9	+5	-4.3	+3.4	+43	+78	+107	+72	+21	+5.4	-5.3	+56	+5.4	-0.5	-1	+0.5	+2.8	+23	+198	+159	+251	+188
ACC%	58%	47%	72%	75%	72%	71%	73%	68%	61%	72%	40%	60%	58%	60%	61%	54%	63%	53%				

Functional athletic heifer bull. Top 1% for scrotal size and better than breed average for calving ease. Suitable for heifers.

Purchaser..... Price.....

Top 5% Top 10% Top 30%

Ranking in Angus Aust. June 2023

Proven Genetic Performance

www.hazeldean.com.au

NEW ENGLAND 2023



SALE BULLS

76 HAZELDEAN S1855 (Nat) SV APR AMFU NHFU CAFU DDFU Born: **15/09/2021**
 Society Id: **NHZ21S1855**

ARDROSSAN HONOUR H255
 ARDROSSAN MAGISTRATE M101
 ARDROSSAN PRINCESS H230
Sire: HAZELDEAN Q87
 MILLWILLAH COMPLEMENT NJWK108
 HAZELDEAN N88
 HAZELDEAN G306

ARDROSSAN EQUATOR A241
 HAZELDEAN JAIPUR J140
 HAZELDEAN C33
Dam: HAZELDEAN N287
 A A R TEN X 7008 S A
 HAZELDEAN J345
 HAZELDEAN D754

Front	Rear	Front	Rear	MUSCLE	TEMP.	SHEATH
7	5	6	5	5	5	5

Structural EBV's			
TACE	ANGLE	CLAW	LEGS
	+0.92	+0.74	1.04
ACC%	64%	64%	61%

TRANSTASMAN ANGUS CATTLE EVALUATION - JUNE 2023																						
TACE	CALVING EASE				GROWTH & MATERNAL					FERTILITY		CWT	CARCASE					Doc	Angus Index	Dom	Heavy Grain	Heavy Grass
	DIR	DTRS	GL	B Wt	200	400	600	MWt	Milk	SS	DC	C Wt	EMA	RIB	RUMP	RBY%	IMF%	Doc.				
EBV	+4.5	+3.7	-8.1	+4.4	+54	+102	+138	+115	+21	+2.7	-6.4	+86	+7	-0.4	-2.4	+1.1	+0.9	+8	+224	+191	+276	+213
ACC%	54%	43%	71%	71%	70%	67%	68%	65%	59%	68%	36%	59%	58%	59%	60%	53%	63%	48%				

Impressive birth to growth, with top 10% days to calving EBV. Better than breed average for 16 traits. Suitable for heifers.

Purchaser..... Price.....

77 HAZELDEAN S699 (Nat) SV APR AMFU NHFU CAFU DDFU Born: **26/07/2021**
 Society Id: **NHZ21S699**

HAZELDEAN JAIPUR J140
 HAZELDEAN MAGNUM M586
 HAZELDEAN H356
Sire: HAZELDEAN Q1593
 RENNYLEA EDMUND E11
 HAZELDEAN L356
 HAZELDEAN J674

S A V THUNDERBIRD 9061
 HAZELDEAN KELLER K1039
 HAZELDEAN B940
Dam: HAZELDEAN M1029
 TE MANIA BERKLEY B1
 HAZELDEAN H357
 HAZELDEAN F655

Front	Rear	Front	Rear	MUSCLE	TEMP.	SHEATH
7	6	6	6	5	6	4

Structural EBV's			
TACE	ANGLE	CLAW	LEGS
	+0.96	+0.68	0.8
ACC%	67%	67%	60%

TRANSTASMAN ANGUS CATTLE EVALUATION - JUNE 2023																						
TACE	CALVING EASE				GROWTH & MATERNAL					FERTILITY		CWT	CARCASE					Doc	Angus Index	Dom	Heavy Grain	Heavy Grass
	DIR	DTRS	GL	B Wt	200	400	600	MWt	Milk	SS	DC	C Wt	EMA	RIB	RUMP	RBY%	IMF%	Doc.				
EBV	+7.1	+4.7	-6.6	+1.1	+40	+73	+73	+63	+3	+3.2	-7.8	+40	+7	+4.1	+2.8	+0.3	+2.9	+38	+225	+208	+288	+206
ACC%	53%	42%	67%	72%	71%	69%	70%	67%	59%	72%	35%	59%	57%	60%	60%	52%	62%	48%				

Plenty of fertility and calving ease traits in this Magnum grandson. Very good fats and these traits combine for high economic relevance - indexes. Suitable for heifers.

Purchaser..... Price.....

Top 5% Top 10% Top 30%

Ranking in Angus Aust. June 2023

Proven Genetic Performance

www.hazeldean.com.au

Hazeldean Semen Terms & Conditions

Hazeldean retains semen rights on all bulls unless otherwise agreed upon.

- 1 The buyer may use bulls only:
 - To naturally service stock owned by the buyer, or
 - To collect semen for use in stock owned by the buyerAnd will not dispose of, or advertise the disposal of semen or semen rights from any bull to any other party.
- 2 Hazeldean retains the right to collect and market semen from any bull sold either at the buyer's premises or by transporting the bulls to a registered artificial insemination facility on the basis:
 - That Hazeldean will consult with the buyer and ensure that such collection of semen by Hazeldean will take place at a time which will not unreasonably interfere with the use of the bull/s by the buyer
 - Hazeldean will pay all costs of such collection: and
 - Hazeldean will indemnify the buyer in respect of any injury or damage to such bull during the collection process or while the bull is in Hazeldean's possession.
- 3 The semen rights terms bind any successor in title to the buyer, and any person in possession of bulls purchased from Hazeldean.
- 4 The buyer will not dispose of or part with possession of any bull the subject of the semen rights terms unless the party to whom disposal is to be made or to whom possession is to be given first, signs a document accepting the semen terms accrue for the benefit of Hazeldean, and Hazeldean can enforce the semen rights terms.
- 5 The buyer acknowledges:
 - That the physical transfer of bulls from Hazeldean to the buyer is an act that accepts the semen rights terms;
 - That the bulls subject to the semen rights terms are adequately described in the documents of sale, which includes any sale or auction information;
 - That Hazeldean may register the interest created by the semen rights terms pursuant to the Personal Property Securities Act 2009 of the Commonwealth;
 - That Hazeldean may take possession of the bull dealt with in any way that contravenes the semen rights terms;
 - That the buyer, and any successor in title to the buyer and any person to whom the buyer passes possession of the bull will be liable jointly and individually for the reasonable expenses of Hazeldean under the semen rights terms, any reasonable expenses in enforcing those terms.



PREPARE YOUR BULLS BEFORE JOINING



Vaccinating bulls is the key to prevention of vibriosis.

Vibriosis is a major venereal disease and can cause infertility and abortion in cattle.

Conception rates can drop as low as **40%**¹

Vaccinating bulls is effective and practical

- It can lead to increased pregnancy rates
- It has no adverse impact on testicular function and semen morphology²



AVAILABLE AT YOUR LOCAL RURAL SUPPLIER

1. Hum S. NSW Department of Primary Industries (DPI) February 2007. *Primefact*, 451.
2. Zoetis Study Number B930R-AU-14-285. Data on file.

Zoetis Australia Pty Ltd. ABN 94 156 476 425. Level 6, 5 Rider Boulevard Rhodes, NSW 2138. © 2019 Zoetis Inc. All rights reserved. ZL1079. 03/19



LivestockSolutions Information in your hands

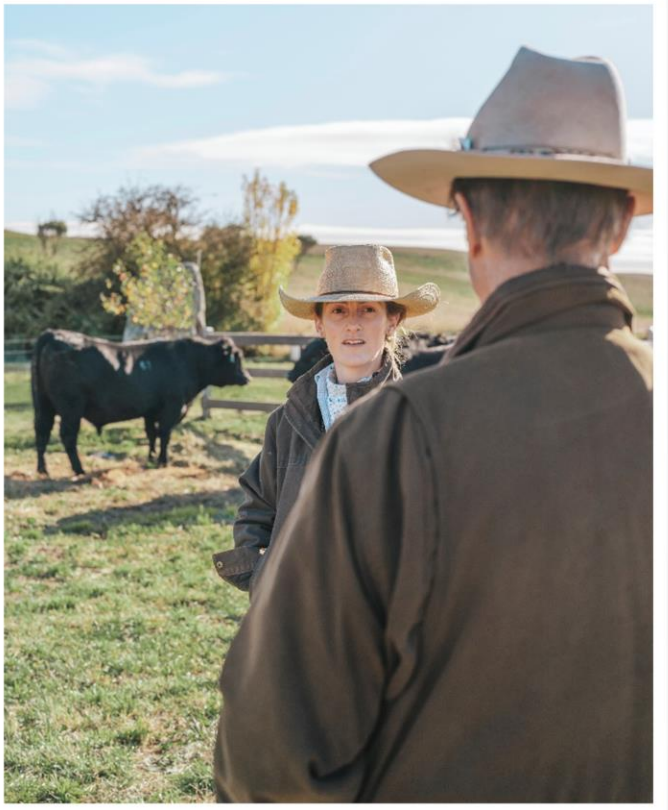
ZOETIS.COM.AU/LS



HAZELDEAN
LITCHFIELD

Notes

Dotted lines for notes.





HAZELDEAN
LITCHFIELD
EST 1865

Ed Bradley
0412 298 546

Bea Litchfield
0427 933 103

Jim Litchfield
02 6453 5555

0417 676 561

Hazeldean Office 02 6453 5555
admin@hazeldean.com.au

www.hazeldean.com.au