



Exton Angus **BULL SALE**



Offering
48 Bulls

Friday, 25th August 2023 - 12 noon

ON PROPERTY - 98 STARK ROAD, HADEN

Helmsman Auction

 **AuctionsPlus™**

How to find us!

Unfortunately some maps take you on a bit of an adventure, so here's some directions:

98 Stark Road, Bergen (Haden)

- Turn onto Bergen Road from Haden-Crows Nest Road.
(Bergen Road turnoff is approx 9.5km from New England Highway and 6km from Haden)
- Take the first right onto Stark Road.
- Exton Angus is approximately 1km along on the right.





Exton Angus
BULL SALE

with guest Vendor



**For further information regarding the sale or
bulls, please do not hesitate to contact us!**

Tim Schmaling

Exton Angus

0438 668 229

tim@extonangus.com.au

Eliza Borchardt

Oakvale Angus

0408 209 803

seborchardt@hotmail.com



WADE HARTWIG

Hartwig & Bliss Livestock & Property Sales

0447 174 071

wade@hartwigbliss.com.au



BRENDAN GILLILAND

Gilliland Livestock Marketing

0428 830 337

brendan@glm.net.au

Welcome, from Exton Angus...

Exton Angus, based at Haden Qld (40km north of Toowoomba), was established in 2012 as a result of our rural backgrounds and Tim's passion for genetics and Angus cattle. We are committed to providing a family-friendly lifestyle in a fast-paced world for our two sons, Jacob (8) and Luke (6).

As a Stud, we focus on breeding cattle with "maternal power" – meaning fertility, foot quality and udder set all coming together for better longevity with maternal instinct and intelligence that cannot be selected with EBV's. Good temperament in our cattle is also non-negotiable. This is reflected in our line-up of bulls again this year, which will go on to breed the same traits.

Exton bulls are bulls that look like bulls – they're masculine. They will produce daughters that look how females should. Our approach to sire selection aligns with our focus on breeding cattle with strong maternal traits, which creates long-term performance. We keep it simple and balanced – we're not chasing top EBV's for birthweight, growth and carcass, because we believe that 'top' is not always 'best'. Emphasis is placed on phenotype – we produce bulls that are consistent, with good bone and enough growth to perform well in any environment.

Our bulls have been prepared on a silage ration, consisting of oaten silage, hay and a small amount of grain. They also have access to approximately 50 acres of pasture in the hills to keep them fit and healthy, which we believe gives them an advantage for when they are put out to work.

We set a major goal in the leadup to last years' sale - to bring our sale home in 2023. We're proud to say, we have done it! What a year it has been! We started with a completely blank canvas, with bull pens to be built, water to be run and a shed to be erected. Now it is all ready, and we can't wait to welcome you all to our part of the world... By now, many of you know our story and we cannot thank you enough for following along and supporting us over the years. For those who are just joining us now, we look forward to establishing a lasting partnership that will benefit us all.

The relationship doesn't end when you purchase a bull from us – it's just the beginning. Our favourite part of this business is making connections and keeping in touch with our clients and their successes.

We hope to see you at the sale!

Tim, Vicki, Jacob & Luke Schmaling



A note from Oakvale Angus...

On behalf of Oakvale Angus, we would like to thank the Schmalings family for the opportunity to run a combined bull sale once again. We look forward to working with the Schmalings family for many years to come.

Oakvale Angus was established in 1997 and has been focused on carcase quality, fertility, soundness & yield as proven phenotypically & through EBV's. Retail beef yield = higher yielding animals, this we have focused on.

We are established between Moonie & Tara where we operate a commercial grazing operation which is predominately Angus based alongside our stud cattle whilst operating 3500 acres of cultivation.

Cattle markets are on a downturn though investing in high quality bulls now will pay off with increased return in the future. We hope you see value and the ability of bulls being offered by both studs to assist in taking you forward with your cattle production.

Our bulls are QLD bred ready for QLD conditions – bulls that are mobile, structurally sound & that can cover the distance. Bulls are handled by dogs, horses, motorbikes & our children.

Bulls were weaned onto oats, grown out on Leucaena & natural pastures & then brought back onto oats for sale preparation – yes, we were partiality one of the lucky ones being early to plant oats, along with our wheat & barley though at the moment our cows are running on oats as well due to the dry times occurring & lack of grass.

This year we are offering a sale draft of 14 bulls without compromising quality. We are proud of this year's line-up showing the performance of their sires & what they have left in our herd. The bulls on offer are all sired mostly by Burenda Jericho & one lot by Ireland's Jensen.

We look forward to catching up with you on Friday, 25th August 2023. If you can't make it to sale day, prior inspections are welcome – the bulls are very accessible. If we can be of any assistance prior to the sale, please do not hesitate to contact us.

Kind regards,

Scott, Eliza, Briella & Max Borchardt





Hartwig & Bliss is a local, family-owned livestock & property agency with extensive knowledge of the Darling Downs area. As a trusted and independent agency, we deliver exceptional service with integrity and professionalism. We specialize in rural & residential real estate & livestock sales in Goombungee, Meringandan, Gowrie Junction, Kingsthorpe, Haden, Crows Nest, and everywhere in between.



Wade Hartwig
0447 174 071

wade@hartwigbliss.com.au



Hayden King
0458 138 272

hayden@hartwigbliss.com.au

www.hartwigbliss.com.au

107a Mocatta Street, Goombungee Qld 4354



GILLILAND LIVESTOCK MARKETING

LIVESTOCK & PROPERTY AGENTS

*100% Locally Owned + Operated.
Offering Innovative Service With Traditional values...*



Brendan Gilliland
0428 830 337
brendan@glm.net.au



Richard Bumstead
0428 637 219
richard@glm.net.au



Connor Veraart
0428 014 065
connor@glm.net.au

WWW.GLM.NET.AU

SALE INFORMATION

Bull Deliveries:

Bulls will be delivered free of charge across QLD and NSW. We request that no bulls are to leave the property on sale day.

Health Status:

All bulls have been vaccinated for 7 in 1, 3-germ/tick blooded, Vibrio, and 3-day sickness. Vendors are J-BAS 6 herds.

Fertility & Breeding Guarantee:

All bulls have been semen motility and morphology tested and are guaranteed breeders. Any claim against the breeding ability of an animal purchased should be accompanied by a Veterinary Certificate. We recommend insurance for your purchase/s.

Supplementary Sheets:

Weights, fat depths, EMA & IMF scans, scrotal size, motility and morphology will be detailed on the supplementary sheets on sale day. Data will be displayed per vendor due to differing bull preparation, to allow for ease of reference on each program.

Inspections:

Inspections are welcome at any time prior to the sale - this is part of our service to buyers. We're here to assist with planning your breeding programs by making sure you get the right bull. Bulls can be viewed from 9am on sale day.

Selling System:

The sale will be conducted as a Helmsman Auction, interfaced with AuctionsPlus. Agents will operate under the ALPA livestock auction terms and conditions of sale. All buyers are required to register with the Agents before the commencement of the sale. On completion of the sale, successful purchasers are to complete purchaser instructions in writing and provide to the Agent when checking off.

SALE INFORMATION

GST:

All lots will be sold GST exclusive. GST will be added onto the purchase price at the close of the Auction. You will be invoiced the purchase price plus GST.

Rebate:

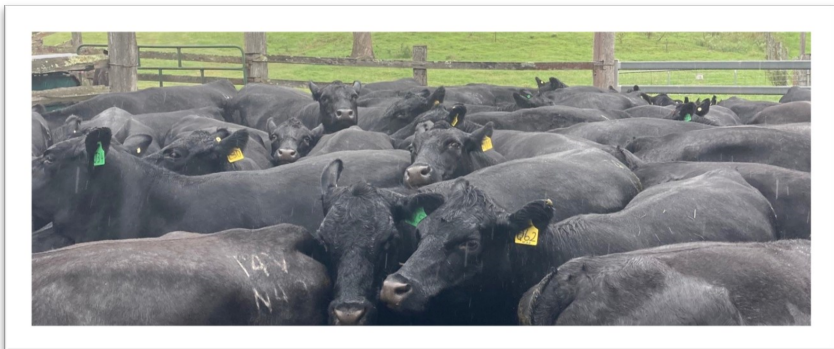
4% rebate will be paid to outside agents who introduce purchasers in writing prior to the sale, and who accompany the client to the sale. Settlement within seven days is required for rebate to be applicable.

Risk & Liability:

Any person/s attending this sale do so entirely at their own risk. The vendors, selling agents, its members, subsidiary of relation corporations, officers, agents, employees and its principles, for themselves and for those whom the act, do not assume or accept any responsibility or liability of whatever nature for any injury or damage whatsoever, which may occur.

Sale Catalogue Disclaimer:

All reasonable care has been taken by the vendor to ensure that the information provided in this catalogue is correct at the time of publication. However, neither the vendors nor the selling agents make any other representations about the accuracy, reliability or completeness of any information provided in this catalogue and do not assume any responsibility for the use or interpretation of the information included in this catalogue. You are encouraged to seek independent verification of any information contained in this catalogue before relying on such information.



Why Helmsman? And how it works...

The benefits:

- You have more time to consider lodging a bid. You can place genuine bids on any bull of your choice at any time during the sale period.
- You have the opportunity to re-assess each lot during the sale period without any pressure to make an instant decision.
- You have the opportunity to take home the bulls you want, irrespective of lot order.
- Across multiple bulls, Helmsman gives you flexibility and time to average your purchase costs.

How it works:

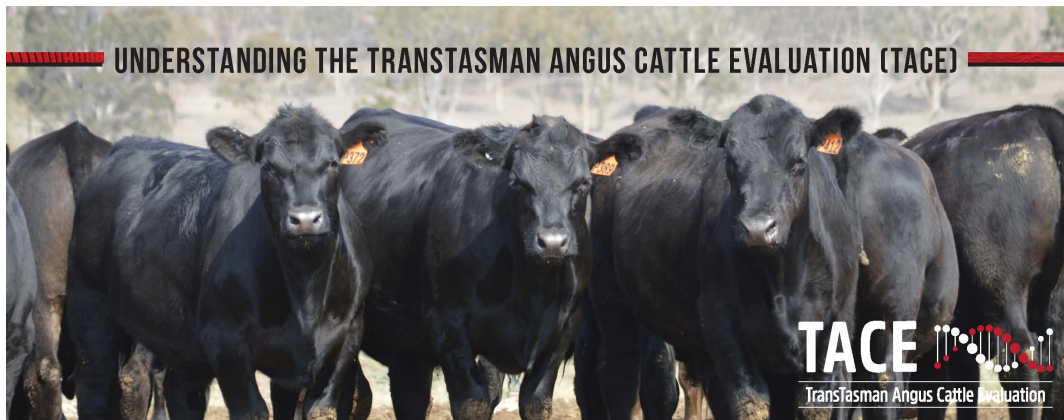
- On arrival, intending purchasers must register at the agent office and receive a bid card number.
- All bulls are displayed for inspection, with relevant information provided in the catalogue and additional information available on supplementary sheet.
- The sale is opened and the timer starts. When the sale commences, all animals are on the market simultaneously. All lots are open for sale for the full duration of the sale and will conclude on all lots at the same time. Timer – sale will be open for 1 hour before the timer count down starts using the AuctionsPlus timer from the last active bid to close the sale.
- Buyers may bid on any animal regardless of the lot number by completing a bidding card and submitting to the office. Alternatively, AuctionsPlus will be live and online bidding available.
- You may open bidding at the reserve price indicated for each animal and contest bids in multiples of no less than \$500.00.
- A bid once submitted to the office and recorded cannot be retracted. The person responsible for submitting such a bid will be responsible for it until it is outbid.
- Following the completion of the sale the agent office will close for a period to finalise data and generate documents for successful purchasers to check off and complete purchaser instructions.

We extend an invitation for anyone to come along and inspect our bulls and enjoy **lunch and refreshments** on us throughout the day! Bulls will be penned and ready for viewing from 9am on sale day.

There will also be a **lucky gate prize!** Everyone over the age of 18 who attends our sale will receive a ticket in the draw. The winner will be drawn following the closing of the Auction. You must be present at the time of the draw to receive the prize!



UNDERSTANDING THE TRANSTASMAN ANGUS CATTLE EVALUATION (TACE)



What is the TransTasman Angus Cattle Evaluation?

The TransTasman Angus Cattle Evaluation is the genetic evaluation program adopted by Angus Australia for Angus and Angus influenced beef cattle. The TransTasman Angus Cattle Evaluation uses Best Linear Unbiased Prediction (BLUP) technology to produce Estimated Breeding Values (EBVs) of recorded cattle for a range of important production traits (e.g. weight, carcass, fertility).

The TransTasman Angus Cattle Evaluation is an international genetic evaluation and includes pedigree, performance and genomic information from the Angus Australia and Angus New Zealand databases, along with selected information from the American and Canadian Angus Associations.

The TransTasman Angus Cattle Evaluation utilises a range of genetic evaluation software, including the internationally recognised BLUPF90 family of programs, and BREEDPLAN® beef genetic evaluation analytical software, as developed by the Animal Genetics and Breeding Unit (AGBU), a joint institute of NSW Agriculture and the University of New England, and Meat and Livestock Australia Limited (MLA).

What is an EBV?

An animal's breeding value can be defined as its genetic merit for each trait. While it is not possible to determine an animal's true breeding value, it is possible to estimate it. These estimates of an animal's true breeding value are called EBVs (Estimated Breeding Values).

EBVs are expressed as the difference between an individual animal's genetics and a historical genetic level (i.e. group of animals) within the TACE genetic evaluation, and are reported in the units in which the measurements are taken.

Using EBVs to Compare the Genetics of Two Animals

TACE EBVs can be used to estimate the expected difference in the genetics of two animals, with the expected difference equating to half the difference in the EBVs of the animals, all other things being equal (e.g. they are joined to the same animal/s).

For example, a bull with a 200 Day Growth EBV of +60 would be expected to produce progeny that are, on average, 10 kg heavier at 200 days of age than a bull with a 200 Day Growth EBV of +40 kg (i.e. 20 kg difference between the sire's EBVs, then halved as the sire only contributes half the genetics).

Or similarly, a bull with an IMF EBV of +3.0 would be expected to produce progeny with on average, 1% more intramuscular fat in a 400 kg carcass than a bull with a IMF EBV of +1.0 (i.e. 2% difference between the sire's EBVs, then halved as the sire only contributes half the genetics).

Using EBVs to Benchmark an Animal's Genetics with the Breed

EBVs can also be used to benchmark an animal's genetics relative to the genetics of other Angus or Angus infused animals recorded with Angus Australia.

To benchmark an animal's genetics relative to other Angus animals, an animal's EBV can be compared to the EBV reference tables, which provide:

- the breed average EBV
- the percentile bands table

The current breed average EBV is listed on the bottom of each page in this publication, while the current EBV reference tables are included at the end of these introductory notes. For easy reference, the percentile band in which an animal's EBV ranks is also published in association with the EBV.

Considering Accuracy

An accuracy value is published with each EBV, and is usually displayed as a percentage value immediately below the EBV.

The accuracy value provides an indication of the reliability of the EBV in estimating the animal's genetics (or true breeding value), and is an indication of the amount of information that has been used in the calculation of the EBV.

EBVs with accuracy values below 50% should be considered as preliminary or of low accuracy, 50-74% as of medium accuracy, 75-90% of medium to high accuracy, and 90% or greater as high accuracy.

Description of TACE EBVs

EBVs are calculated for a range of traits within TACE, covering calving ease, growth, fertility, maternal performance, carcass merit, feed efficiency and structural soundness. A description of each EBV included in this publication is provided on the following page.

UNDERSTANDING ESTIMATED BREEDING VALUES (EBVS)

Calving Ease	CEDir	%	Genetic differences in the ability of a sire's calves to be born unassisted from 2 year old heifers.	Higher EBVs indicate fewer calving difficulties in 2 year old heifers.
	CEDir _{trs}	%	Genetic differences in the ability of a sire's daughters to calve unassisted at 2 years of age.	Higher EBVs indicate fewer calving difficulties in 2 year old heifers.
	GL	days	Genetic differences between animals in the length of time from the date of conception to the birth of the calf.	Lower EBVs indicate shorter gestation length.
	BW	kg	Genetic differences between animals in calf weight at birth.	Lower EBVs indicate lighter birth weight.
Growth	200 Day	kg	Genetic differences between animals in live weight at 200 days of age due to genetics for growth.	Higher EBVs indicate heavier live weight.
	400 Day	kg	Genetic differences between animals in live weight at 400 days of age.	Higher EBVs indicate heavier live weight.
	600 Day	kg	Genetic differences between animals in live weight at 600 days of age.	Higher EBVs indicate heavier live weight.
	MCW	kg	Genetic differences between animals in live weight of cows at 5 years of age.	Higher EBVs indicate heavier mature weight.
	Milk	kg	Genetic differences between animals in live weight at 200 days of age due to the maternal contribution of its dam.	Higher EBVs indicate heavier live weight.
Fertility	DtC	days	Genetic differences between animals in the time from the start of the joining period (i.e. when the female is introduced to a bull) until subsequent calving.	Lower EBVs indicate shorter time to calving.
	SS	cm	Genetic differences between animals in scrotal circumference at 400 days of age.	Higher EBVs indicate larger scrotal circumference.
Carcase	CWT	kg	Genetic differences between animals in hot standard carcase weight at 750 days of age.	Higher EBVs indicate heavier carcase weight.
	EMA	cm ²	Genetic differences between animals in eye muscle area at the 12/13th rib site in a 400 kg carcase.	Higher EBVs indicate larger eye muscle area.
	Rib Fat	mm	Genetic differences between animals in fat depth at the 12/13th rib site in a 400 kg carcase.	Higher EBVs indicate more fat.
	P8 Fat	mm	Genetic differences between animals in fat depth at the P8 rump site in a 400 kg carcase.	Higher EBVs indicate more fat.
	RBY	%	Genetic differences between animals in boned out saleable meat from a 400 kg carcase.	Higher EBVs indicate higher yield.
	IMF	%	Genetic differences between animals in intramuscular fat (marbling) at the 12/13th rib site in a 400 kg carcase.	Higher EBVs indicate more intramuscular fat.
Feed/Temp.	NFI-F	kg/day	Genetic differences between animals in feed intake at a standard weight and rate of weight gain when animals are in a feedlot finishing phase.	Lower EBVs indicate more feed efficiency.
	Doc	%	Genetic differences between animals in temperament.	Higher EBVs indicate better temperament.
Structure	Foot Angle	score	Genetic differences in foot angle (strength of pastern, depth of heel).	Lower EBVs indicate more desirable foot angle.
	Claw Set	score	Genetic differences in claw set structure (shape and evenness of claws).	Lower EBVs indicate more desirable claw structure.

TransTasman Angus Cattle Evaluation - Mid June 2023 Reference Tables



BREED AVERAGE EBVs																								
Brd Avg	Calving Ease		Birth		Growth				Fertility			Carcase					Other		Structure		Selection Indexes			
	CEDir	CEDir _{trs}	GL	BW	200	400	600	MCW	Milk	SS	DtC	CWT	EMA	Rib	P8	RBY	IMF	NFI-F	DOC	Claw	Angle	Lag	\$A	\$A-L
	+2.2	+2.6	-4.8	+4.1	+50	+90	+117	+100	+17	+2.1	-4.6	+66	+6.3	+0.0	-0.3	+0.5	+2.2	+0.19	+20	+0.84	+0.97	+1.03	+197	+339

* Breed average represents the average EBV of all 2021 drop Australian Angus and Angus-influenced seedstock animals analysed in the Mid June 2023 TransTasman Angus Cattle Evaluation

EXTON REFERENCE SIRES

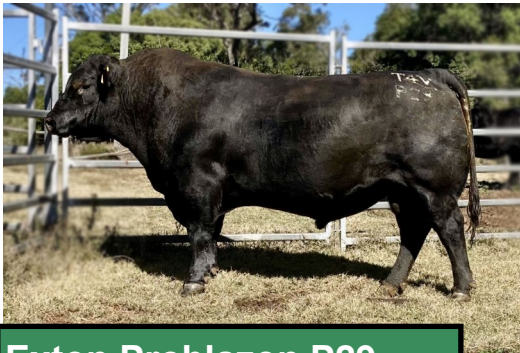


Exton Nation N41

N41 is Sitz Alliance X TC Stockman 365 who throws calves with great disposition - he has proven himself in our breeding program.

He is deep ribbed whilst being moderate in frame. We retained him due to his maternal pedigree - his daughters milk well, yet maintain their flesh while doing so.

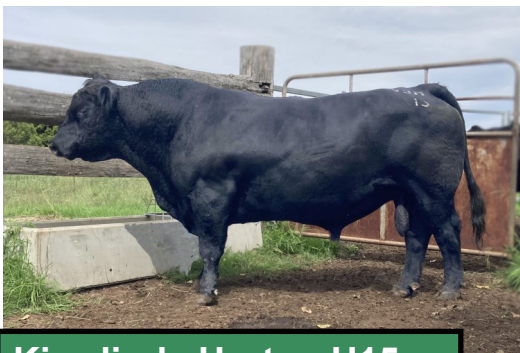
All his calves are extremely loose skinned and easy fleshing.



Exton Problazon P29

P29 was a standout calf, no different to prior calves from his dam, which made the decision to retain him quite easy!

He offers tremendous thickness, capacity and fleshing ability. His progeny are very consistent - his daughters are ideal with exceptional udder quality.



Kirralinda Horton H15

Kirralinda Horton (Yabba) in his working clothes at 10 years old.

Yabba breeds long bodied powerful cattle with inbuilt carcass. His daughters are beautiful, big capacity females, with plenty of milk and great udder set.

EXTON REFERENCE SIRES



Musgrave Crackerjack

Crackerjack has a powerful yet proud look, structure and balanced phenotype. His productive dam has power, substance and complimentary femininity, with incredible udder quality and excellent feet. We have used him for these reasons...



N Bar Bando 5175 Y54

Bando sires progeny with good bone and excellent structure, that are good doers with plenty of body capacity.

He's a balanced sire that has added power to his progeny

His maternal sister topped at the Premier Angus Dispersal in 2020.



SAV Ten Percent 3085

We have used 10% as he is genetically and phenotypically outstanding - stylish, muscular, with superb structure.

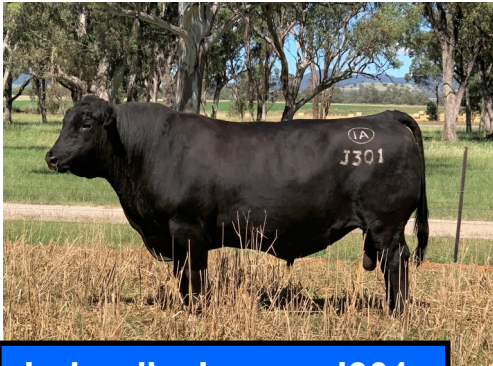
His dam is moderate framed and beautifully uddered.

OAKVALE REFERENCE SIRES



Burenda Jericho J102

Burenda Jericho has added some punch & performance into his progeny & we have some fantastic females in our herd sired by him, hence why we have used him so heavily in recent years. His strength of spine & muscle was next to none & he was as sound as anything as a 9 year old sire but it's unfortunately the time comes when you have to say goodbye. There will be two more lines of sale bulls offered by him after this year's sale.



Ireland's Jensen J301

Ireland's Jensen only has one son offered in the sale & this is his last but what a son he has left with us. Again, Jensen was an extremely sound bull where he finished his working days in a commercial lim-flex herd in NSW as a 9 year old as well. He added bone, foot structure & fertility into his progeny.



BULL INSURANCE MADE EASY!

DISCOUNT'S APPLY TO EXISTING
MGA FARM CLIENTS

Step 1
Purchase bull
at auction



Step 2
Take a photo of
the front page of
auction catalogue



Step 3
Photograph lot #
purchased in
the catalogue



Step 4
Email photo's to
joe.regan@mga.com
with price paid & your
company details to
get covered



MGA Offices
Australia wide

www.mga.com

MGA Insurance Brokers Pty Ltd
ABN: 29 008 096 277
AFSL: 244601

Joe Regan
Broker

(07) 4624 4900
0412 114 649

joe.regan@mga.com
121 McDowall St, Roma 4455

MGA22_010

MGA
INSURANCE GROUP
STANDING BY YOU

Lot 1 EXTON SECRET WEAPON S129^{SV} HBR

Ident: QNN21S129 **DOB:** 17/07/2021 - 25 months **Conditions:** AMFU,CAFU,DD5%,NHFU

KOUPALS B&B IDENTITY
 BUSHS WIND CHILL 982
 BUSHS LADY TROOPER 1453

LD CAPITALIST 316
 MUSGRAVE 316 STUNNER
 MCATL BLACKBIRD 831-1378

Sire: EXTON QUICKDRAW Q55

Dam: EXTON DUCHESS Q5

KIRRALINDA HARLEY H3
 EXTON RIPPONLEA M10
 KIRRALINDA RIPPONLEA J34

TE MANIA EMPEROR E343
 KIRRALINDA DUCHESS L7
 KARNAHLA DUCHESS G4

TACE



Mid June 2023 TransTasman Angus Cattle Evaluation

	Dir	Dtrs	GL	BWT	200D	400D	600D	MCW	Milk
EBVs	-3.8	+2.0	-3.5	+6.3	+67	+118	+150	+139	+20
Acc	51%	40%	69%	66%	68%	64%	65%	63%	56%
	DtC	CWT	EMA	RIB	RUMP	RBV	IMF%	NFI-F	DOC
Scrotal	+2.4	-4.1	+94	+8.2	-1.4	-2.2	+1.0	-0.1	+18
	61%	30%	55%	54%	56%	49%	59%	44%	35%

Traits Observed: BWT,400WT,Genomics

Notes: Secret Weapon is a big, powerful bull with a beautiful temperament. With plenty of length and plenty of depth, he's full of volume which comes from his Duchess dam.

Purchaser:\$.....

Lot 2 EXTON STORMY S126^{SV} HBR

Ident: QNN21S126 **DOB:** 12/07/2021 - 25 months **Conditions:** AM2%,CAFU,DD12%,NHFU

TE MANIA ULONG U41
 CAMPBELL FARMS YABBA Y035
 CAMPBELL FARMS NIGHTINGALE W582

S CHISUM 6175
 EXTON MAVERICK M14
 RAFF DORIS W29

Sire: KIRRALINDA HORTON H15

Dam: EXTON BURNETTE P34

ARDROSSAN ADMIRAL A2
 KIRRALINDA SUN F5
 KIRRALINDA SUN C8

KIRRALINDA HARLEY H3
 EXTON BURNETTE M45
 KIRRALINDA BURNETTE K28

TACE



Mid June 2023 TransTasman Angus Cattle Evaluation

	Dir	Dtrs	GL	BWT	200D	400D	600D	MCW	Milk
EBVs	+2.3	-2.0	-2.0	+3.3	+45	+74	+87	+66	+16
Acc	49%	39%	66%	66%	67%	64%	66%	63%	54%
	DtC	CWT	EMA	RIB	RUMP	RBV	IMF%	NFI-F	DOC
Scrotal	+0.8	-4.8	+47	+6.3	+1.7	+1.9	+0.8	+1.8	+0.25
	60%	32%	54%	53%	56%	48%	59%	45%	33%

Traits Observed: BWT,400WT,600WT,Genomics

Notes: Heifer option - A powerful bull with plenty of muscle and masculinity. He is a H15 son, who breeds long-bodied sons, with S126 being no exception.

Purchaser:\$.....

Lot 3

EXTON SNOOPY S134^{SV}

HBR

Ident: QNN21S134

DOB: 13/07/2021 - 25 months

Conditions: AMFU,CAFU,DD3%,NHFU

O C C EMBLAZON 854E
LD EMBLAZON 999
SH FOREVER LADY 3124 5118

KIRRALINDA ELITE E5
KIRRALINDA HARLEY H3
ABBOTSLEIGH PRINCESS D34

Sire: EXTON PROBLAZON P29

Dam: EXTON ECLYPTA Q51

PRIME JUGGERNAUT J15
KIRRALINDA WILCOOLA L22
KIRRALINDA WILCOOLA H23

KIRRALINDA FOREMOST F8
KIRRALINDA ECLYPTA H20
KARNAHLA ECLYPTA F22

TACE



Mid June 2023 TransTasman Angus Cattle Evaluation

	Dir	Dtrs	GL	BWT	200D	400D	600D	MCW	Milk
EBVs	+3.2	+3.2	-5.6	+5.9	+51	+84	+122	+141	+6
Acc	48%	37%	65%	67%	68%	65%	66%	63%	54%
Scrotal	DtC	CWT	EMA	RIB	RUMP	RBV	IMF%	NFI-F	DOC
+1.3	-1.3	+53	+6.5	-1.9	-2.9	+1.4	+0.3	-0.18	+22
60%	29%	54%	53%	55%	55%	47%	58%	44%	33%

Traits Observed: BWT,400WT,600WT,Genomics

Notes: He is a total power machine - long with a beautiful muscle pattern, nice clean sheath and a great top line. If you are looking for a balanced performer with eye appeal, this will be the bull for you.

Purchaser:\$.....

Lot 4

EXTON SHAPELY S138^{SV}

HBR

Ident: QNN21S138

DOB: 18/09/2021 - 23 months

Conditions: AM2%,CAFU,DDFU,NHFU

TE MANIA ULONG U41
CAMPBELL FARMS YABBA Y035
CAMPBELL FARMS NIGHTINGALE W582

CONNELLY PRODUCT 568
CONNELLY FINAL PRODUCT
EBONISTA OF CONANGA 471

Sire: KIRRALINDA HORTON H15

Dam: BUNYA CREEK QIANGSIANG J63

ARDROSSAN ADMIRAL A2
KIRRALINDA SUN F5
KIRRALINDA SUN C8

ROCKN D AMBUSH 1531
BUNYA CREEK QIANGJIANG W56
BOOROOMOOKA QIANGJIANG Q108+95

TACE



Mid June 2023 TransTasman Angus Cattle Evaluation

	Dir	Dtrs	GL	BWT	200D	400D	600D	MCW	Milk
EBVs	+5.3	+6.0	-9.0	+1.6	+39	+74	+91	+72	+18
Acc	55%	44%	71%	69%	70%	67%	68%	65%	58%
Scrotal	DtC	CWT	EMA	RIB	RUMP	RBV	IMF%	NFI-F	DOC
+1.6	-6.2	+46	+0.5	+2.8	+3.3	-0.5	+1.5	+0.25	+32
62%	36%	58%	57%	59%	59%	52%	61%	48%	41%

Traits Observed: BWT,400WT,600WT,Genomics

Notes: Heifer option - S138 is another strong H15 son, with plenty of length. He has the added maternal bonus of J63 as his mother, who is a 10 year old cow with proven fertility (with 9 calves on the ground).

Purchaser:\$.....

Lot 5

EXTON SIZABLE S141^{SV}

HBR

Ident: QNN21S141

DOB: 21/09/2021 - 23 months

Conditions: AM2%,CAFU,DDFU,NHFU

TE MANIA ULONG U41
 CAMPBELL FARMS YABBA Y035
 CAMPBELL FARMS NIGHTINGALE W582

WILLSBRO RENAISSANCE A14
 WILLSBRO A14 RENAISSANCE D082
 WILLSBRO DESIGN SF Z18

Sire: KIRRALINDA HORTON H15

Dam: EXTON CELESTE L40

ARDROSSAN ADMIRAL A2
 KIRRALINDA SUN F5
 KIRRALINDA SUN C8

CONNEALY FINAL PRODUCT
 BUNYA CREEK QIANGSIANG J63
 BUNYA CREEK QIANGJIANG W56

TACE



Mid June 2023 Trans Tasman Angus Cattle Evaluation

	Dir	Dtrs	GL	BWT	200D	400D	600D	MCW	Milk
EBVs	-0.9	-1.0	+0.0	+3.5	+52	+89	+107	+84	+20
Acc	51%	40%	68%	68%	69%	66%	67%	64%	56%
Scrotal	DtC	CWT	EMA	RIB	RUMP	RBV	IMF%	NFI-F	DOC
+0.0	-5.7	+70	+1.6	+1.1	+2.1	-0.4	+1.9	-0.32	+38
62%	32%	57%	55%	57%	57%	50%	60%	46%	38%

Traits Observed: BWT,600WT,Genomics

Notes: Heifer option - He is long and deep, with good hair type. He exudes plenty of grunt and power whilst remaining very refined through the shoulder. His dam, L40, is one of our best performing cows, which we flushed last year. We think a lot of this bull.

Purchaser:\$.....

Lot 6

EXTON NATION S145^{SV}

APR

Ident: QNN21S145

DOB: 9/11/2021 - 22 months

Conditions: AM6%,CA6%,DD6%,NH6%

SITZ TRAVELER 8180
 SITZ ALLIANCE 6595
 SITZ BARBARAMERE JET 2698

Sire: EXTON NATION N41

Dam: EXTON L49

TC STOCKMAN 365
 EAGLEHAWK JEDDA T015
 TE MANIA K140+90

TACE



Mid June 2023 Trans Tasman Angus Cattle Evaluation

	Dir	Dtrs	GL	BWT	200D	400D	600D	MCW	Milk
EBVs	+4.4	+5.4	-0.7	+3.6	+32	+58	+64	+41	+13
Acc	46%	37%	61%	64%	65%	62%	63%	60%	51%
Scrotal	DtC	CWT	EMA	RIB	RUMP	RBV	IMF%	NFI-F	DOC
+2.2	-1.5	+29	+0.9	+3.1	+3.8	-0.6	+1.4	+0.23	+28
57%	33%	52%	51%	53%	53%	47%	56%	43%	34%

Traits Observed: Genomics

Notes: Heifer option - This bull has been a standout calf since weaning. He's got plenty of growth and carcass to him with a good hair type.

Purchaser:\$.....

Lot 7**EXTON STOOMPY S144^{SV}****HBR****Ident:** QNN21S144**DOB:** 1/11/2021 - 22 months**Conditions:** AMFU,CAFU,DD9%,NHFUSITZ TRAVELER 8180
SITZ ALLIANCE 6595CARABAR DOCKLANDS D62
EXTON MILESTONE M42

SITZ BARBARAMERE JET 2698

KIRRALINDA WILCOOLA H23

Sire: EXTON NATION N41**Dam:** EXTON RIPPONLEA Q53TC STOCKMAN 365
EAGLEHAWK JEDDA T015AYRVALE BARTEL E7
KIRRALINDA RIPPONLEA J34

TE MANIA K140+90

KIRRALINDA RIPPONLEA F10

TACE**Mid June 2023 TransTasman Angus Cattle Evaluation**

	Dir	Dtrs	GL	BWT	200D	400D	600D	MCW	Milk
EBVs	-0.2	+4.3	-7.7	+5.4	+57	+94	+135	+137	+9
Acc	53%	44%	65%	69%	68%	66%	67%	64%	56%
Scrotal	DtC	CWT	EMA	RIB	RUMP	RBY	IMF%	NFI-F	DOC
+2.6	-3.1	+73	+1.8	-2.0	-2.8	+0.7	+1.2	+0.00	+29
61%	38%	57%	55%	57%	57%	51%	60%	48%	40%

Traits Observed: BWT,400WT,600WT,Genomics**Notes:** S144 is an extremely deep bodied, thick bull with lots of eye muscle. If you are looking for more milk in your cows, this bull will be the one for you - his Ripponlea cow line adds extra milk.**Purchaser:**\$.....**Lot 8****EXTON TASKMASTER T170^{SV}****HBR****Ident:** QNN22T170**DOB:** 18/02/2022 - 18 months**Conditions:** AMFU,CAFU,DDFU,NHFUO C C EMBLAZON 854E
LD EMBLAZON 999
SH FOREVER LADY 3124 5118SUMMITCREST FOCUS 2U66
EXTON MIDNIGHT M4
KIRRALINDA RIPPONLEA J5**Sire:** EXTON PROBLAZON P29**Dam:** EXTON DORGAMMER N60PRIME JUGGERNAUT J15
KIRRALINDA WILCOOLA L22RIPPLE VALE VOLUNTEER V46
RIPPLE VALE DORGAMMER Z52

KIRRALINDA WILCOOLA H23

RIPPLE VALE DORGAMMER R71+96

TACE**Mid June 2023 TransTasman Angus Cattle Evaluation**

	Dir	Dtrs	GL	BWT	200D	400D	600D	MCW	Milk
EBVs	+1.5	-3.6	-2.8	+5.5	+48	+81	+100	+94	+16
Acc	51%	39%	66%	68%	68%	66%	66%	63%	56%
Scrotal	DtC	CWT	EMA	RIB	RUMP	RBY	IMF%	NFI-F	DOC
+1.0	-3.9	+53	+7.9	+1.7	+2.7	+0.7	+0.5	+0.15	+27
61%	29%	56%	54%	56%	56%	48%	59%	45%	37%

Traits Observed: BWT,200WT,400WT,Genomics**Notes:** This bull has a good thick top, with a lovely hair type and plenty of style. His sire, Exton Problazon P29, has bred plenty of muscle and fat cover into this bull.**Purchaser:**\$.....

Lot 9

EXTON SUNSHINE S146^{SV}

HBR

Ident: QNN21S146

DOB: 5/11/2021 - 22 months

Conditions: AMFU,CA25%,DD1%,NHFU

SITZ TRAVELER 8180

D H D TRAVELER 6807

SITZ ALLIANCE 6595

ALBERDA TRAVELER 416

SITZ BARBARAMERE JET 2698

ALBERDA QUEEN KIMBERLY 222

Sire: EXTON NATION N41

Dam: EXTON JEDDA N43

TC STOCKMAN 365

TE MANIA KELP K207+90

EAGLEHAWK JEDDA T015

TE MANIA JEDDA P123+94

TE MANIA K140+90

TE MANIA JEDDA L171+91

TACE



Mid June 2023 TransTasman Angus Cattle Evaluation

	Dir	Dtrs	GL	BWT	200D	400D	600D	MCW	Milk
EBVs	+4.9	+3.1	-3.6	+4.5	+34	+63	+84	+72	+17
<i>Acc</i>	54%	47%	67%	71%	70%	68%	70%	66%	60%
Scrotal	DtC	CWT	EMA	RIB	RUMP	RBY	IMF%	NFI-F	DOC
+2.1	-2.5	+43	+0.4	+4.3	+6.4	-0.8	+0.7	+0.5	+20
64%	44%	60%	59%	61%	61%	55%	63%	51%	44%

Traits Observed: BWT,400WT,600WT,Genomics

Notes: Plenty of thickness with extra fat coverage, he is an easy doing bull that will have the ability to work in and adapt to any environment.

Purchaser:\$.....

Lot 10

EXTON SENSATION S148^{SV}

HBR

Ident: QNN21S148

DOB: 15/11/2021 - 21 months

Conditions: AMFU,CAFU,DDFU,NHFU

SITZ TRAVELER 8180

SITZ NEW DESIGN 458N

SITZ ALLIANCE 6595

TEXAS GLOBAL G563

SITZ BARBARAMERE JET 2698

TEXAS UNDINE Z036

Sire: EXTON NATION N41

Dam: EXTON MERIMBULA M24

TC STOCKMAN 365

CONNEALY FINAL PRODUCT

EAGLEHAWK JEDDA T015

BUNYA CREEK RELIEF J65

TE MANIA K140+90

BUNYA CREEK RELIEF X35

TACE



Mid June 2023 TransTasman Angus Cattle Evaluation

	Dir	Dtrs	GL	BWT	200D	400D	600D	MCW	Milk
EBVs	+2.0	+0.5	-3.1	+5.7	+48	+84	+107	+99	+12
<i>Acc</i>	53%	44%	68%	70%	70%	67%	70%	65%	58%
Scrotal	DtC	CWT	EMA	RIB	RUMP	RBY	IMF%	NFI-F	DOC
+2.1	-3.8	+56	+1.5	+0.9	+1.1	+0.1	+0.2	-0.14	+25
63%	39%	59%	57%	59%	59%	53%	62%	49%	44%

Traits Observed: BWT,400WT,600WT,Genomics

Notes: S148 is another good all-round Nation son - good bone, plenty of depth and easy doing ability bred into him.

Purchaser:\$.....

Lot 11 EXTON SPARTACUS S150^{SV} HBR

Ident: QNN21S150 **DOB:** 28/11/2021 - 21 months **Conditions:** AMFU,CAFU,DDFU,NHFU

SITZ TRAVELER 8180 KIRRALINDA ELITE E5
 SITZ ALLIANCE 6595 KIRRALINDA HARLEY H3
 SITZ BARBARAMERE JET 2698 ABBOTSLEIGH PRINCESS D34

Sire: EXTON NATION N41

Dam: EXTON MERIMBULA L30

TC STOCKMAN 365
 EAGLEHAWK JEDDA T015
 TE MANIA K140+90

CONNEALY FINAL PRODUCT
 BUNYA CREEK RELIEF J65
 BUNYA CREEK RELIEF X35

TACE



Mid June 2023 TransTasman Angus Cattle Evaluation

	Dir	Dtrs	GL	BWT	200D	400D	600D	MCW	Milk
EBVs	-2.0	+1.6	-2.4	+5.7	+43	+75	+97	+82	+14
Acc	52%	42%	66%	70%	69%	67%	69%	65%	56%
Scrotal	DtC	CWT	EMA	RIB	RUMP	RBV	IMF%	NFI-F	DOC
+1.4	-2.9	+49	+4.3	+1.1	+1.3	+0.8	+0.0	-0.09	+19
62%	36%	57%	56%	58%	58%	51%	61%	47%	41%

Traits Observed: BWT, 400WT, 600WT, Genomics

Notes: Like all the Nation sons, he is loose skinned leaving plenty of room to grow and perform. He has plenty of depth and will mature into a very stylish bull.

Purchaser:\$.....

Lot 12 EXTON SIR S122^{SV} HBR

Ident: QNN21S122 **DOB:** 21/06/2021 - 26 months **Conditions:** AM2%,CAFU,DDFU,NHFU

TE MANIA ULONG U41 TE MANIA EMPEROR E343
 CAMPBELL FARMS YABBA Y035 ASCOT HALLMARK H147
 CAMPBELL FARMS NIGHTINGALE W582 MILLAH MURRAH BRENDA F123

Sire: KIRRALINDA HORTON H15

Dam: EXTON BURNETTE P10

ARDROSSAN ADMIRAL A2
 KIRRALINDA SUN F5
 KIRRALINDA SUN C8

DMM SHIFT 78S
 RAFF BURNETTE E181
 RAFF BURNETTE C160

TACE



Mid June 2023 TransTasman Angus Cattle Evaluation

	Dir	Dtrs	GL	BWT	200D	400D	600D	MCW	Milk
EBVs	-3.9	-10.7	+0.6	+4.3	+30	+56	+59	+36	+11
Acc	52%	43%	69%	68%	69%	66%	67%	65%	57%
Scrotal	DtC	CWT	EMA	RIB	RUMP	RBV	IMF%	NFI-F	DOC
+1.1	-4.8	+32	+4.2	+0.8	+0.9	+0.8	+2.0	+0.27	+22
62%	35%	57%	56%	58%	58%	51%	61%	48%	40%

Traits Observed: BWT, 400WT, Genomics

Notes: Heifer option - A very long bodied bull. Like most of the H15 sons, he has a lot of muscle, a lovely hair type and a good clean shoulder for calving ease.

Purchaser:\$.....

Lot 13

EXTON NATION S155^{SV}

APR

Ident: QNN21S155

DOB: 25/11/2021 - 21 months

Conditions: AM6%,CA6%,DD6%,NH6%

SITZ TRAVELER 8180

SITZ ALLIANCE 6595

SITZ BARBARAMERE JET 2698

Sire: EXTON NATION N41

Dam: EXTON M78

TC STOCKMAN 365

EAGLEHAWK JEDDA T015

TE MANIA K140+90

TACE



Mid June 2023 TransTasman Angus Cattle Evaluation

	Dir	Dtrs	GL	BWT	200D	400D	600D	MCW	Milk
EBVs	+7.0	+6.6	-1.5	+2.1	+26	+52	+68	+58	+14
<i>Acc</i>	46%	37%	62%	64%	66%	63%	63%	60%	51%
Scrotal	DtC	CWT	EMA	RIB	RUMP	RBV	IMF%	NFI-F	DOC
+0.1	+0.4	+24	-0.8	+4.8	+5.9	-0.7	+1.0	0.26	+28
58%	33%	53%	52%	54%	54%	47%	57%	43%	34%

Traits Observed: Genomics

Notes: Heifer option - A good topped bull with with loads of length and an abundance of doing ability.

Purchaser:\$.....

Lot 14

EXTON PROBLAZON T154^{SV}

APR

Ident: QNN22T154

DOB: 4/02/2022 - 19 months

Conditions: AM2%,CA2%,DD12%,NH2%

KOUPALS B&B IDENTITY

EXAR DENVER 2002B

BUSHS WIND CHILL 982

QUAKER HILL DEAD CENTER

BUSHS LADY TROOPER 1453

QUAKER HILL BLACKCAP 0A32

Sire: EXTON QUICKDRAW Q55

Dam: EXTON BELLE P4

KIRRALINDA HARLEY H3

RAFF BLACK DOUGLAS Z218

EXTON RIPPONLEA M10

EXTON G10

KIRRALINDA RIPPONLEA J34

UNKNOWN

TACE



Mid June 2023 TransTasman Angus Cattle Evaluation

	Dir	Dtrs	GL	BWT	200D	400D	600D	MCW	Milk
EBVs	-0.2	+4.1	-4.5	+4.5	+54	+98	+129	+105	+21
<i>Acc</i>	48%	35%	68%	66%	67%	64%	64%	61%	53%
Scrotal	DtC	CWT	EMA	RIB	RUMP	RBV	IMF%	NFI-F	DOC
+1.4	-3.6	+76	+5.3	-0.9	-2.1	+1.0	-0.1	-0.23	+19
59%	27%	53%	52%	54%	54%	46%	57%	42%	32%

Traits Observed: 400WT, Genomics

Notes: There is plenty of power, grunt and style in this bull. He will grow into a larger framed bull, while still keeping plenty of meat and muscle.

Purchaser:\$.....

Lot 15

EXTON TATE T157^{SV}

HBR

Ident: QNN22T157

DOB: 15/01/2022 - 19 months

Conditions: AMFU,CAFU,DDFU,NHFU

CONNEALY CONSENSUS 7229
 CONNEALY BLACK GRANITE
 EURA ELGA OF CONANGA 9109

LD CAPITALIST 316
 MUSGRAVE 316 STUNNER
 MCATL BLACKBIRD 831-1378

Sire: QHF WWA BLACK ONYX 5Q11

Dam: EXTON RENOUNCE R57

MCC DAYBREAK
 WILKS BLACKCAP 0D82
 QHF BLACKCAP 6E2 OF4V16 4355

CONNEALY COMRADE 1385
 EXTON RENOUNCE P16
 EXTON RENOUNCE M5

TACE



Mid June 2023 TransTasman Angus Cattle Evaluation

	Dir	Dtrs	GL	BWT	200D	400D	600D	MCW	Milk
EBVs	+3.6	+2.8	-7.0	+3.3	+62	+111	+134	+111	+18
Acc	59%	47%	82%	71%	73%	70%	71%	69%	64%
Scrotal	DtC	CWT	EMA	RIB	RUMP	RBY	IMF%	NFI-F	DOC
+0.5	-4.7	+81	+3.3	+0.5	-0.2	-0.3	+1.3	-0.58	+17
67%	35%	62%	61%	62%	62%	56%	64%	48%	54%

Traits Observed: GL,BWT,200WT,400WT,Genomics

Notes: Heifer option - Good clean coated bull with plenty of shape and style. This fella will improve udders - the last four generations on his dam side have all had impeccable udders.

Purchaser:\$.....

Lot 16

EXTON TYLER T165^{SV}

HBR

Ident: QNN22T165

DOB: 21/01/2022 - 19 months

Conditions: AMFU,CAFU,DDC,NHFU

LD CAPITALIST 316
 MUSGRAVE 316 STUNNER
 MCATL BLACKBIRD 831-1378

G A R PROPHET
 CLUNES CROSSING DUSTY M13
 CLUNES CROSSING GLORIOUS G1

Sire: MUSGRAVE CRACKERJACK

Dam: CLUNES CROSSING LOWAN P13

MUSGRAVE BIG SKY
 MUSGRAVE RITO JET A649
 G C F MISS NEW LEVEL R216

TE MANIA DAIQUIRI D19
 CLUNES CROSSING KARDASHIAN K11
 HAZELDEAN A304

TACE



Mid June 2023 TransTasman Angus Cattle Evaluation

	Dir	Dtrs	GL	BWT	200D	400D	600D	MCW	Milk
EBVs	+9.0	+7.2	-10.5	+1.8	+59	+106	+135	+93	+22
Acc	57%	45%	73%	72%	72%	70%	70%	68%	61%
Scrotal	DtC	CWT	EMA	RIB	RUMP	RBY	IMF%	NFI-F	DOC
+1.8	-5.2	+82	+6.7	-1.8	-2.4	+0.6	+1.7	0.24	+18
67%	36%	62%	61%	62%	61%	55%	65%	50%	46%

Traits Observed: BWT,200WT,400WT,Genomics

Notes: Heifer option - A Musgrave Crackerjack son - he has a good fine hair type, with plenty of depth and performance. He is the highest Angus Breeding Index bull we are offering in this sale.

Purchaser:\$.....

Lot 17

EXTON TERRENCE T166^{SV}

HBR

Ident: QNN22T166

DOB: 26/01/2022 - 19 months

Conditions: AMFU,CAFU,DDFU,NHFU

LD CAPITALIST 316

EXAR DENVER 2002B

MUSGRAVE 316 STUNNER

QUAKER HILL DEAD CENTER

MCATL BLACKBIRD 831-1378

QUAKER HILL BLACKCAP 0A32

Sire: MUSGRAVE CRACKERJACK

Dam: EXTON CELESTE P31

MUSGRAVE BIG SKY

CONNELY FINAL PRODUCT

MUSGRAVE RITO JET A649

BUNYA CREEK QIANGSIANG J63

G C F MISS NEW LEVEL R216

BUNYA CREEK QIANGJIANG W56

TACE



Mid June 2023 TransTasman Angus Cattle Evaluation

	Dir	Dtrs	GL	BWT	200D	400D	600D	MCW	Milk
EBVs	+4.7	+4.3	-4.1	+2.3	+56	+103	+124	+93	+20
Acc	55%	42%	82%	73%	72%	69%	70%	67%	60%
Scrotal	DtC	CWT	EMA	RIB	RUMP	RBY	IMF%	NFI-F	DOC
+2.9	-3.6	+73	+9.2	-1.1	-1.6	+1.1	+0.8	+0.05	+17
66%	33%	60%	59%	60%	60%	54%	63%	47%	46%

Traits Observed: GL,BWT,200VWT,400VWT,Genomics

Notes: Heifer option - T166 is a good bodied, performance-style bull. He takes your eye in the paddock with his clean coat. He is also full of maternal power through his grand-dam, J63.

Purchaser:\$.....

Lot 18

EXTON THREEFOLD T167^{SV}

HBR

Ident: QNN22T167

DOB: 27/01/2022 - 19 months

Conditions: AMFU,CAFU,DDFU,NHFU

MYTTY IN FOCUS

S A V RESOURCE 1441

A A R TEN X 7008 S A

BEACONSFIELD RESOURCE M100

A A R LADY KELTON 5551

S A V ERICA 9663

Sire: S A V TEN PERCENT 3085

Dam: EXTON BURNETTE P148

S A V FREE SPIRIT 8164

TE MANIA EMPEROR E343

S A V EMBLYNETTE 1314

KIRRALINDA BURNETTE L6

S A V EMBLYNETTE 5622

RAFF BURNETTE E181

TACE



Mid June 2023 TransTasman Angus Cattle Evaluation

	Dir	Dtrs	GL	BWT	200D	400D	600D	MCW	Milk
EBVs	+0.1	-2.6	-4.0	+6.3	+52	+94	+121	+86	+21
Acc	52%	42%	81%	70%	70%	67%	68%	65%	61%
Scrotal	DtC	CWT	EMA	RIB	RUMP	RBY	IMF%	NFI-F	DOC
+0.9	-4.4	+74	+5.1	-1.7	-3.2	+1.0	-0.2	-0.17	+13
63%	35%	59%	57%	59%	58%	52%	62%	46%	35%

Traits Observed: GL,BWT,200VWT,400VWT,Genomics

Notes: This guy has a real presence about him. Every time he pulls up, his stance is strong and square - he was a pleasure to photograph! He has a very strong SAV influence in his pedigree, which gives him a little bit more grunt and power through his body with plenty of thickness.

Purchaser:\$.....

Lot 19

EXTON SCORCH S142^{SV}

HBR

Ident: QNN21S142

DOB: 28/09/2021 - 23 months

Conditions: AMFU,CAFU,DDFU,NHFU

SITZ TRAVELER 8180

CARABAR DOCKLANDS D62

SITZ ALLIANCE 6595

EXTON MILESTONE M42

SITZ BARBARAMERE JET 2698

KIRRALINDA WILCOOLA H23

Sire: EXTON NATION N41

Dam: EXTON MERIMBULA Q56

TC STOCKMAN 365

KIRRALINDA HARLEY H3

EAGLEHAWK JEDDA T015

EXTON MERIMBULA L30

TE MANIA K140+90

BUNYA CREEK RELIEF J65

TACE



Mid June 2023 TransTasman Angus Cattle Evaluation

	Dir	Dtrs	GL	BWT	200D	400D	600D	MCW	Milk
EBVs	+5.5	+5.6	-4.3	+2.2	+31	+56	+71	+36	+16
Acc	52%	42%	65%	68%	69%	66%	66%	64%	55%
	DiC	CWT	EMA	RIB	RUMP	RBV	IMF%	NFI-F	DOC
Scrotal	+1.5	-4.4	+32	+3.3	+4.1	+4.0	-0.3	+2.1	+0.41
	61%	36%	57%	55%	57%	51%	60%	47%	39%

Traits Observed: BWT,400WT,600WT,Genomics

Notes: Heifer option - S142 had a hard run as a calf (orphaned from a 1st calf heifer). He is maturing out well, and will be a good all-round bull.

Purchaser:\$.....

Lot 20

EXTON MANUEL T212^{SV}

APR

Ident: QNN22T212

DOB: 26/01/2022 - 19 months

Conditions: AM6%,CA6%,DD6%,NH6%

KIRRALINDA ELITE E5

KIRRALINDA HARLEY H3

ABBOTSLEIGH PRINCESS D34

Sire: EXTON MANUEL M46

Dam: EXTON L140

WERNER WESTWARD 357

KIRRALINDA PRINCESS J32

ABBOTSLEIGH PRINCESS D15

TACE



Mid June 2023 TransTasman Angus Cattle Evaluation

	Dir	Dtrs	GL	BWT	200D	400D	600D	MCW	Milk
EBVs	-2.8	-0.5	-0.5	+4.3	+41	+69	+91	+63	+18
Acc	42%	31%	60%	61%	63%	59%	60%	58%	48%
	DiC	CWT	EMA	RIB	RUMP	RBV	IMF%	NFI-F	DOC
Scrotal	+1.7	-	+52	+4	+1.7	+1.9	+0.3	+1.1	0.03
	55%	-	49%	48%	51%	42%	54%	40%	-

Traits Observed: Genomics

Notes: A long bodied bull with a clean coat. He adds pretty much everything - growth, carcass and maternal.

Purchaser:\$.....



Lot 1 - Exton Secret Weapon S129



Lot 2 - Exton Stormy S126



Lot 3 - Exton Snoopy S134



Lot 5 - Exton Sizable S141



Lot 6 - Exton Nation S145



Lot 18 - Exton Threefold T167



Lot 42 - Exton Tino T162



Lot 44 - Exton Tarzan T171



Lot 23 - Oakvale Solid Gold S12



Lot 24 - Oakvale Spot Light S24



Lot 28 - Oakvale Sanman S11



Lot 33 - Oakvale Storm Boy S21

Lot 21

OAKVALE SCOTCH & DRY S3^{SV}

HBR

Ident: EMN21S3

DOB: 27/08/2021 - 23 months

Conditions: AMFU,CAFU,DD50%,NHFU

TE MANIA BARTEL B219

ARDROSSAN DIRECTION W109

AYRVALE BARTEL E7

ARDROSSAN ADMIRAL A2

EAGLEHAWK JEDDA B32

KENNY'S CREEK ROSEBUD W171

Sire: BURENDA JERICHO J102

Dam: NARRAWOLGA JEDDA H9

ARDROSSAN EQUATOR A241

P A R B DESIGN PLUS 97

BURENDA BEEAC E19

COMFORT HILL JEDDA X335

TE MANIA BEEAC U343

ROYAL-LINE JEDDA Q29+95

TACE



Mid June 2023 Trans Tasman Angus Cattle Evaluation

	Dir	Dtrs	GL	BWT	200D	400D	600D	MCW	Milk
EBVs	-1.4	-8.8	-3.4	+6.2	+57	+97	+133	+119	+16
Acc	58%	50%	69%	72%	71%	69%	72%	68%	62%
Scrotal	DtC	CWT	EMA	RIB	RUMP	RBY	IMF%	NFI-F	DOC
+1.6	-5.5	+79	+6.7	-4.8	-7.5	+2.0	+1.1	-0.41	+35
65%	43%	61%	59%	61%	61%	55%	64%	53%	47%

Traits Observed: BWT,200WT,400WT,600WT,DOC,Genomics

Notes: An awesome Jedda son to start the Oakvale sale line with. Sit back & have a SCOTCH & DRY knowing S3 is going to get the job done. A powerhouse from birth & he hasn't stopped. A thick, meaty bull that will add some punch to any herd. He's in the top 10% for DOC, top 1% RBY, top 20% for 200 & 600 day weights & CWT.

Purchaser:\$.....

Lot 22

OAKVALE STETSON S7^{SV}

HBR

Ident: EMN21S7

DOB: 1/09/2021 - 23 months

Conditions: AMFU,CAFU,DDFU,NHFU

TE MANIA BARTEL B219

TE MANIA BERKLEY B1

AYRVALE BARTEL E7

TE MANIA EMPEROR E343

EAGLEHAWK JEDDA B32

TE MANIA LOWAN Z74

Sire: BURENDA JERICHO J102

Dam: OAKVALE JEDDA N34

ARDROSSAN EQUATOR A241

ARDROSSAN ADMIRAL A2

BURENDA BEEAC E19

NARRAWOLGA JEDDA H4

TE MANIA BEEAC U343

COMFORT HILL JEDDA X335

TACE



Mid June 2023 Trans Tasman Angus Cattle Evaluation

	Dir	Dtrs	GL	BWT	200D	400D	600D	MCW	Milk
EBVs	+0.8	+1.9	-0.4	+5.2	+51	+97	+129	+99	+21
Acc	57%	50%	70%	71%	71%	68%	71%	67%	61%
Scrotal	DtC	CWT	EMA	RIB	RUMP	RBY	IMF%	NFI-F	DOC
+3.1	-6.6	+81	+1.5	-2.3	-2.2	+1.0	+1.2	+0.21	+26
64%	43%	60%	59%	61%	61%	55%	64%	53%	47%

Traits Observed: BWT,200WT,400WT,600WT,DOC,Genomics

Notes: You'll nod your hat what you see STETSON, he has plenty of presence about him with a heap of spring of rib, excellent top line, thickness through the hindquarter - this is what we aim to breed. A long bodied, good boned bull that's sure to breed the house down. He's in the top 10% for DTC, top 20% for SS, CWT & RBY.

Purchaser:\$.....

Lot 23

OAKVALE SOLID GOLD S12^{SV}

HBR

Ident: EMN21S12

DOB: 5/09/2021 - 23 months

Conditions: AMFU,CAFU,DD25%,NHFU

TE MANIA BARTEL B219
 AYRVALE BARTEL E7
 EAGLEHAWK JEDDA B32

DOUBLE AA OLD POST BANDOLIER
 NARRAWOLGA HILUX H7
 COMFORT HILL WILCOOLA X146

Sire: BURENDA JERICHO J102

Dam: OAKVALE JEDDA MINNIE MOUSE M07

ARDROSSAN EQUATOR A241
 BURENDA BEEAC E19
 TE MANIA BEEAC U343

ARDROSSAN ADMIRAL A2
 NARRAWOLGA JEDDA H9
 COMFORT HILL JEDDA X335

TACE



Mid June 2023 TransTasman Angus Cattle Evaluation

	Dir	Dtrs	GL	BWT	200D	400D	600D	MCW	Milk
EBVs	-4.6	-3.1	+0.6	+7.0	+58	+97	+127	+108	+14
Acc	54%	45%	67%	71%	69%	67%	71%	66%	59%
	DtC	CWT	EMA	RIB	RUMP	RBV	IMF%	NFI-F	DOC
Scrotal	+2.7	-4.8	+80	-3.2	-2.8	+1.0	+1.4	-0.38	+31
	61%	37%	58%	57%	58%	51%	60%	48%	40%

Traits Observed: BWT,200WT,400WT,600WT,DOC,Genomics

Notes: Our daughter Briella's first bull to be offered & what a bull she has produced. Full of power & performance aka SOLID GOLD, he's got the top, the phenotype & bone which we all desire but wait until you stand behind this bull the spring of rib and hindquarter is second to none. Top 15% for 200 day wt, DOC & CWT, top 20% for RBV.

Purchaser:\$.....

Lot 24

OAKVALE SPOT LIGHT S24^{SV}

HBR

Ident: EMN21S24

DOB: 20/10/2021 - 21 months

Conditions: AMFU,CAFU,DDFU,NHFU

TE MANIA BARTEL B219
 AYRVALE BARTEL E7
 EAGLEHAWK JEDDA B32

S A F FOCUS OF E R
 BALDRIDGE NEBRASKA 901
 BALDRIDGE FLOSSIE 367

Sire: BURENDA JERICHO J102

Dam: DSK BN DANDALOO G12

ARDROSSAN EQUATOR A241
 BURENDA BEEAC E19
 TE MANIA BEEAC U343

J R JUICE Z005
 DSK JC DANDALOO C41
 DSK HU DANDLOO Z81

TACE



Mid June 2023 TransTasman Angus Cattle Evaluation

	Dir	Dtrs	GL	BWT	200D	400D	600D	MCW	Milk
EBVs	-1.5	-2.9	+3.3	+5.2	+54	+86	+118	+100	+15
Acc	56%	48%	71%	70%	71%	68%	69%	66%	61%
	DtC	CWT	EMA	RIB	RUMP	RBV	IMF%	NFI-F	DOC
Scrotal	+1.3	-5.4	+72	+2.7	-2.2	+0.5	+3.4	-0.33	+24
	64%	42%	60%	58%	60%	54%	63%	51%	44%

Traits Observed: BWT,200WT,400WT,600WT,DOC,Genomics

Notes: One for the SPOT LIGHT - the youngest yet one of the biggest who has had an amazing growth pattern, talk about growth for age! A bull that really needs looking at, he's got the muscle, phonotype, growth & length of body who will walk the hills or the flats for days. Top 20% for IMF.

Purchaser:\$.....

Lot 25

OAKVALE SURE THING S8^{SV}

APR

Ident: EMN21S8

DOB: 1/09/2021 - 23 months

Conditions: AM6%,CA6%,DD6%,NH6%

TE MANIA BARTEL B219

AYRVALE BARTEL E7

EAGLEHAWK JEDDA B32

Sire: BURENDA JERICHO J102

Dam: OAKVALE JUST IRRESISTIBLE J9

ARDROSSAN EQUATOR A241

BURENDA BEEAC E19

TE MANIA BEEAC U343

TACE



Mid June 2023 Trans Tasman Angus Cattle Evaluation

	Dir	Dtrs	GL	BWT	200D	400D	600D	MCW	Milk
EBVs	-2.4	+1.3	-1.8	+5.3	+46	+86	+114	+114	+10
Acc	50%	41%	64%	69%	67%	65%	68%	63%	55%
Scrotal	DtC	CWT	EMA	RIB	RUMP	RBY	IMF%	NFI-F	DOC
+0.7	-2.3	+66	+0.4	-4.3	-4.1	+1.4	+0.5	-0.48	+24
59%	34%	55%	53%	55%	56%	48%	59%	46%	36%

Traits Observed: BWT,200WT,400WT,600WT,DOC,Genomics

Notes: A very kind eyed bull who always wants to please, he'll be the SURE THING. He's smooth upfront & carries that smick performance all the way through with a beautiful skin type to him. Top 10% for RBY.

Purchaser:\$.....

Lot 26

OAKVALE SHOWMAN S18^{SV}

HBR

Ident: EMN21S18

DOB: 17/09/2021 - 23 months

Conditions: AMFU,CAFU,DDFU,NHFU

TE MANIA BARTEL B219

SITZ UPWARD 307R

AYRVALE BARTEL E7

THOMAS UP RIVER 1614

EAGLEHAWK JEDDA B32

THOMAS CAROL 7595

Sire: BURENDA JERICHO J102

Dam: OAKVALE JEDDA Q2

ARDROSSAN EQUATOR A241

TE MANIA EMPEROR E343

BURENDA BEEAC E19

OAKVALE JEDDA N34

TE MANIA BEEAC U343

NARRAWOLGA JEDDA H4

TACE



Mid June 2023 Trans Tasman Angus Cattle Evaluation

	Dir	Dtrs	GL	BWT	200D	400D	600D	MCW	Milk
EBVs	+5.6	+4.1	-0.3	+4.4	+59	+113	+138	+121	+20
Acc	56%	48%	68%	70%	70%	68%	71%	67%	60%
Scrotal	DtC	CWT	EMA	RIB	RUMP	RBY	IMF%	NFI-F	DOC
+3.1	-4.3	+88	+7.7	-2.9	-4.3	+1.3	+1.5	-0.23	+19
63%	41%	60%	58%	60%	60%	54%	63%	52%	46%

Traits Observed: BWT,200WT,400WT,600WT,DOC,Genomics

Notes: A long, structurally sound, later maturing but wait until he grows into himself, SHOWMAN will amaze you just like his mother. Top 15% for 200 & 600 day weights, top 5% for 400 day weight, top 20% for MCW, SS, top 10% for CWT & RBY.

Purchaser:\$.....

Lot 27**OAKVALE SUPER MAN S19^{SV}****HBR****Ident:** EMN21S19**DOB:** 28/09/2021 - 22 months**Conditions:** AMFU,CAFU,DDFU,NHFUTE MANIA BARTEL B219
AYRVALE BARTEL E7
EAGLEHAWK JEDDA B32TC STOCKMAN
TC STOCKMAN 365
TC PRIDE 0014**Sire:** BURENDA JERICHO J102**Dam:** OAKVALE JEDDA Q10ARDROSSAN EQUATOR A241
BURENDA BEEAC E19
TE MANIA BEEAC U343ARDROSSAN ADMIRAL A2
NARRAWOLGA JEDDA H10
COMFORT HILL JEDDA X335**TACE****Mid June 2023 TransTasman Angus Cattle Evaluation**

	Dir	Dtrs	GL	BWT	200D	400D	600D	MCW	Milk
EBVs	-1.3	+1.3	-1.2	+5.3	+54	+96	+116	+103	+12
Acc	56%	49%	71%	71%	71%	68%	71%	67%	60%
Scrotal	DtC	CWT	EMA	RIB	RUMP	RBY	IMF%	NFI-F	DOC
+3.8	-5.3	+65	+11	-5.2	-5.8	+2.7	-0.3	-0.17	+30
64%	44%	60%	59%	60%	61%	55%	64%	53%	45%

Traits Observed: BWVT,200WT,400WT,600WT,DOC,Genomics**Notes:** Plenty of bone & chunk about this young SUPER MAN, he will perform & add some thinkness into his calves. Top 10% for SS, EMA, top 1% for RBY & top 15% for DOC.**Purchaser:**\$.....**Lot 28****OAKVALE SANMAN S11^{SV}****HBR****Ident:** EMN21S11**DOB:** 3/09/2021 - 23 months**Conditions:** AMFU,CAFU,DD8%,NHFUTE MANIA BARTEL B219
AYRVALE BARTEL E7
EAGLEHAWK JEDDA B32C A FUTURE DIRECTION 5321
OUTWEST FD ANZAC A62
OUTWEST 9FB3 SAPPHERE U2**Sire:** BURENDA JERICHO J102**Dam:** OUTWEST ANZ AFRICA F45ARDROSSAN EQUATOR A241
BURENDA BEEAC E19
TE MANIA BEEAC U343BON VIEW NEW DESIGN 1407
OUTWEST 1407 AFRICA B11
MINALTY AFRICA U10**TACE****Mid June 2023 TransTasman Angus Cattle Evaluation**

	Dir	Dtrs	GL	BWT	200D	400D	600D	MCW	Milk
EBVs	+3.7	+5.6	-1.1	+2.8	+38	+71	+96	+71	+15
Acc	56%	48%	69%	73%	71%	69%	72%	68%	62%
Scrotal	DtC	CWT	EMA	RIB	RUMP	RBY	IMF%	NFI-F	DOC
+1.5	-5.8	+55	+6.7	-0.1	-0.1	0.4	+4.0	+0.37	+20
65%	41%	61%	59%	61%	61%	55%	63%	51%	44%

Traits Observed: BWVT,200WT,400WT,600WT,DOC,Genomics**Notes:** Heifer option - A bull that will walk for miles chasing his females, he's slick coated, smooth fronted & great in the feet. Top 10% for IMF.**Purchaser:**\$.....

Lot 29

OAKVALE SIMON S1^{SV}

HBR

Ident: EMN21S1

DOB: 7/08/2021 - 24 months

Conditions: AMFU,CAFU,DDFU,NHFU

BRAVEHEART OF STERN

G D A R TRAVELER 044

ATAHUA FREEDOM 609-10

G A R GRID MAKER

ATAHUA ALICE 285-05

G A R PRECISION 2536

Sire: IRELANDS JENSEN J301

Dam: OAKVALE BELLE B10

H A POWER ALLIANCE 1025

SCOTCH CAP

TOOPUNTUL POLLY F38

KANSAS VICKY S51

TOOPUNTUL POLLY S53

MERRIGRANGE VICKY F94.

TACE



Mid June 2023 TransTasman Angus Cattle Evaluation

	Dir	Dtrs	GL	BWT	200D	400D	600D	MCW	Milk
EBVs	-2.1	+2.5	-4.5	+5.2	+38	+81	+92	+83	+10
Acc	54%	45%	68%	71%	69%	68%	71%	65%	59%
Scrotal	DtC	CWT	EMA	RIB	RUMP	RBY	IMF%	NFI-F	DOC
+1.5	-3.4	+41	+10.5	-0.6	-0.4	+2.3	+0.2	+0.15	+15
62%	37%	58%	55%	57%	58%	51%	60%	47%	40%

Traits Observed: BWT,200WT,400WT,600WT,DOC,Genomics

Notes: Has been used over heifers this year already - Simon is a structually sound sire & is the last progeny from Belle B10 to be offered for sale, we have retired her at the age of 17 - she has produced many daughters who have gone onto produce some amazing progeny. Top 15% for EMA & top 1% for RBY.

Purchaser:\$.....

Lot 30

OAKVALE STOCKMAN S16^{SV}

HBR

Ident: EMN21S16

DOB: 14/09/2021 - 23 months

Conditions: AMFU,CAFU,DDFU,NHFU

TE MANIA BARTEL B219

TC STOCKMAN

AYRVALE BARTEL E7

TC STOCKMAN 365

EAGLEHAWK JEDDA B32

TC PRIDE 0014

Sire: BURENDA JERICHO J102

Dam: OAKVALE ELLIE P3

ARDROSSAN EQUATOR A241

S A V ANGUS VALLEY 1867

BURENDA BEEAC E19

OAKVALE ELLIE L28

TE MANIA BEEAC U343

OAKVALE ELLIE E18

TACE



Mid June 2023 TransTasman Angus Cattle Evaluation

	Dir	Dtrs	GL	BWT	200D	400D	600D	MCW	Milk
EBVs	+4.2	+7.2	+1.5	+3.7	+35	+63	+87	+69	+15
Acc	56%	48%	70%	71%	70%	68%	71%	67%	60%
Scrotal	DtC	CWT	EMA	RIB	RUMP	RBY	IMF%	NFI-F	DOC
+2.1	-5.3	+60	+5.2	-2.2	-2.8	+1.4	+2.1	+0.11	+16
63%	43%	60%	59%	60%	61%	54%	63%	52%	45%

Traits Observed: BWT,200WT,400WT,600WT,DOC,Genomics

Notes: Heifer option - A lengthy bodied bull who has some presence about him, a pedigree to back him. Top 15% for CE Dtrs & top 10% for RBY.

Purchaser:\$.....

Lot 31

OAKVALE SIZZLER S14^{SV}

APR

Ident: EMN21S14

DOB: 10/09/2021 - 23 months

Conditions: AM3%,CA3%,DD3%,NH3%

TE MANIA BARTEL B219

AYRVALE BARTEL E7

EAGLEHAWK JEDDA B32

Sire: BURENDA JERICHO J102

Dam: OAKVALE BELLE P10

ARDROSSAN EQUATOR A241

G A R GRID MAKER

BURENDA BEEAC E19

OAKVALE BELLE B10

TE MANIA BEEAC U343

KANSAS VICKY S51

TACE



Mid June 2023 TransTasman Angus Cattle Evaluation

	Dir	Dtrs	GL	BWT	200D	400D	600D	MCW	Milk	
EBVs	-1.1	+3.4	-0.6	+5.3	+50	+90	+118	+104	+14	
Acc	46%	38%	49%	68%	64%	65%	69%	62%	43%	
	DtC	CWT	EMA	RIB	RUMP	RBY	IMF%	NFI-F	DOC	
Scrotal	+2.2	-3.8	+68	+6.4	-2.4	-2.2	+1.4	+1.7	-0.01	+20
	42%	33%	53%	41%	43%	39%	43%	37%	38%	

Traits Observed: BVWT,200WVT,400WVT,600WVT,DOC

Notes: A bull that will suit a variety of herds, will add thickness, performance & soundness to his progeny. Top 10% for RBY.

Purchaser:\$.....

Lot 32

OAKVALE SENSATION S17^{SV}

HBR

Ident: EMN21S17

DOB: 15/09/2021 - 23 months

Conditions: AMFU,CAFU,DDFU,NHFU

TE MANIA BARTEL B219

TC STOCKMAN

AYRVALE BARTEL E7

TC STOCKMAN 365

EAGLEHAWK JEDDA B32

TC PRIDE 0014

Sire: BURENDA JERICHO J102

Dam: OAKVALE DUCHESS P1

ARDROSSAN EQUATOR A241

HF TIGER 5T

BURENDA BEEAC E19

OAKVALE DUCHESS K26

TE MANIA BEEAC U343

RAFF DUCHESS C57

TACE



Mid June 2023 TransTasman Angus Cattle Evaluation

	Dir	Dtrs	GL	BWT	200D	400D	600D	MCW	Milk	
EBVs	-3.8	+0.9	-1.1	+5.2	+48	+83	+117	+104	+16	
Acc	56%	48%	70%	71%	70%	68%	71%	67%	60%	
	DtC	CWT	EMA	RIB	RUMP	RBY	IMF%	NFI-F	DOC	
Scrotal	+2.2	-3.6	+72	+6.1	-3.7	-3.4	+1.3	+2.3	+0.06	+27
	63%	43%	60%	58%	60%	60%	54%	63%	52%	44%

Traits Observed: BVWT,200WVT,400WVT,600WVT,DOC,Genomics

Notes: He has a SENSATIONAL head character which adds to his appeal of this long bodied, structurally sound bull that has the ability to add loads of style to his crop of calves. Top 10% for RBY.

Purchaser:\$.....

Lot 33

OAKVALE STORM BOY S21^{SV}

HBR

Ident: EMN21S21

DOB: 29/09/2021 - 22 months

Conditions: AMFU,CAFU,DDFU,NHFU

TE MANIA BARTEL B219

CONNELLY CAPITALIST 028

AYRVALE BARTEL E7

LD CAPITALIST 316

EAGLEHAWK JEDDA B32

LD DIXIE ERICA 2053

Sire: BURENDA JERICHO J102

Dam: OAKVALE DUCHESS Q1

ARDROSSAN EQUATOR A241

HF TIGER 5T

BURENDA BEEAC E19

OAKVALE DUCHESS K26

TE MANIA BEEAC U343

RAFF DUCHESS C57

TACE



Mid June 2023 TransTasman Angus Cattle Evaluation

	Dir	Dtrs	GL	BWT	200D	400D	600D	MCW	Milk
EBVs	+6.4	+7.6	-3.0	+3.8	+47	+94	+122	+123	+16
Acc	56%	47%	70%	70%	70%	68%	71%	66%	59%
	DiC	CWT	EMA	RIB	RUMP	RBV	IMF%	NFI-F	DOC
Scrotal	+2.4	-5.6	+72	+4.2	-2.6	-2.5	+1.1	+1.4	+0.00
	62%	40%	59%	57%	59%	59%	53%	62%	50%

Traits Observed: BWT,200WT,400WT,600WT,DOC,Genomics

Notes: Heifer option - A bull that truly packs some punch with his tremendous thickness and extra depth make him an appealing package in a moderate frame. Top 10% for CE Dtrs, top 15% for RBV & top 20% for MCW.

Purchaser:\$.....

Lot 34

OAKVALE SUCCEED S22^{SV}

HBR

Ident: EMN21S22

DOB: 2/10/2021 - 21 months

Conditions: AMFU,CAFU,DDFU,NHFU

TE MANIA BARTEL B219

DOUBLE AA OLD POST BANDOLIER

AYRVALE BARTEL E7

NARRAWOLGA HILUX H7

EAGLEHAWK JEDDA B32

COMFORT HILL WILCOOLA X146

Sire: BURENDA JERICHO J102

Dam: OAKVALE GRETEL M02

ARDROSSAN EQUATOR A241

YTHANBRAE ROCKN D AMBUSH W129

BURENDA BEEAC E19

WATTLETOP GRETEL B205

TE MANIA BEEAC U343

WATTLETOP GRETEL U147

TACE



Mid June 2023 TransTasman Angus Cattle Evaluation

	Dir	Dtrs	GL	BWT	200D	400D	600D	MCW	Milk
EBVs	+1.9	+4.2	-2.4	+4.2	+54	+102	+127	+114	+13
Acc	54%	45%	67%	69%	70%	67%	71%	66%	59%
	DiC	CWT	EMA	RIB	RUMP	RBV	IMF%	NFI-F	DOC
Scrotal	+2.9	-5.6	+75	+4.1	-1.6	+0.7	+2.1	-0.05	+23
	62%	38%	59%	56%	58%	58%	51%	61%	49%

Traits Observed: BWT,200WT,400WT,600WT,DOC,Genomics

Notes: Heifer option - SUCCEED is a clean fronted, big scrotal, free moving Jericho son whose full brothers are breeding exceptionally well in QLD. Top 20% for 400 day.

Purchaser:\$.....

Lot 35

EXTON BANDO T188^{SV}

HBR

Ident: QNN22T188

DOB: 27/04/2022 - 16 months

Conditions: AMFU,CAFU,DDFU,NHFU

BON VIEW BANDO 598

CONNELLY CONSENSUS 7229

S A F 598 BANDO 5175

CONNELLY COMRADE 1385

S A F ROYAL LASS 1002

HAPPY GEE OF CONANGA 919

Sire: N BAR BANDO 5175 Y54

Dam: EXTON RENOUNCE P16

TC STOCKMAN 365

HYLINE RIGHT WAY 781

KENNY'S CREEK BARA U44

EXTON RENOUNCE M5

KENNY'S CREEK BARA Q8+95

BUNYA CREEK J82

TACE



Mid June 2023 TransTasman Angus Cattle Evaluation

	Dir	Dtrs	GL	BWT	200D	400D	600D	MCW	Milk
EBVs	+3.1	+8.0	-5.2	+4.5	+47	+90	+116	+100	+21
Acc	59%	50%	81%	72%	73%	70%	71%	69%	65%
Scrotal	DtC	CWT	EMA	RIB	RUMP	RBV	IMF%	NFI-F	DOC
+1.3	-4.4	+68	+7.0	-2.2	-3.7	+1.3	+0.4	+0.2	+25
67%	45%	63%	62%	63%	63%	58%	65%	52%	48%

Traits Observed: GL,BWT,400WT,Genomics

Notes: Son of N Bar Bando Y54, a bull that breeds plenty of length, bone and power into his calves. T188 is out of P16, a cow that has plenty of milk and maternal value to her.

Purchaser:\$.....

Lot 36

EXTON COLUMBUS T189^{SV}

HBR

Ident: QNN22T189

DOB: 30/04/2022 - 16 months

Conditions: AMFU,CAFU,DDFU,NHFU

A A R TEN X 7008 S A

TRIO DOCKLANDS H1

V A R DISCOVERY 2240

EXTON NED N38

DEER VALLEY RITA 0308

EXTON CELESTE L40

Sire: QUAKER HILL COLUMBUS 6V48

Dam: EXTON MOONGARA Q20

CONNELLY CONFIDENCE 0100

BON VIEW NEW DESIGN 1407

QUAKER HILL BLACKCAP 3N23

EXTON MOONGARA N39

QHF BLACKCAP 6E2 OF4V16 4355

EAGLEHAWK MOONGARA T004

TACE



Mid June 2023 TransTasman Angus Cattle Evaluation

	Dir	Dtrs	GL	BWT	200D	400D	600D	MCW	Milk
EBVs	+5.6	+7.4	-7.0	+2.7	+54	+95	+124	+74	+19
Acc	52%	42%	80%	67%	69%	67%	67%	65%	59%
Scrotal	DtC	CWT	EMA	RIB	RUMP	RBV	IMF%	NFI-F	DOC
+1.4	-3.6	+76	+7.5	+1.4	+1.7	+0.2	+1.7	+0.31	+37
63%	34%	59%	58%	59%	59%	52%	63%	48%	41%

Traits Observed: GL,BWT,200WT,400WT,DOC,Genomics

Notes: Heifer option - T189 has plenty of performance, with enough phenotype to balance it out. He has plenty of maternal power through the Moongara cow line.

Purchaser:\$.....

Lot 37

EXTON BANDO T190^{SV}

HBR

Ident: QNN22T190

DOB: 6/05/2022 - 16 months

Conditions: AMFU,CAFU,DDF,NHFU

BON VIEW BANDO 598

B/R NEW DESIGN 036

S A F 598 BANDO 5175

BON VIEW NEW DESIGN 1407

S A F ROYAL LASS 1002

BON VIEW PRIDE 664

Sire: N BAR BANDO 5175 Y54

Dam: EXTON MOONGARA N39

TC STOCKMAN 365

LEACHMAN RIGHT TIME

KENNY'S CREEK BARA U44

EAGLEHAWK MOONGARA T004

KENNY'S CREEK BARA Q8+95

TE MANIA MOONGARA L22+91

TACE



Mid June 2023 TransTasman Angus Cattle Evaluation

	Dir	Dtrs	GL	BWT	200D	400D	600D	MCW	Milk
EBVs	+1.5	+5.1	-3.4	+5.0	+48	+83	+102	+92	+13
<i>Acc</i>	60%	53%	81%	71%	73%	71%	71%	69%	66%
Scrotal	DtC	CWT	EMA	RIB	RUMP	RBY	IMF%	NFI-F	DOC
+0.1	-3.6	+64	+6.2	-1.7	-2.6	+1.1	+2.1	-0.17	+33
68%	48%	64%	63%	64%	65%	60%	66%	55%	49%

Traits Observed: GL,BWT,200WT,400WT,DOC,Genomics

Notes: T190 is sired by Bando Y54, which brings in some old school grunt and power, whilst still exhibiting enough softness and doing ability to perform in all environments.

Purchaser:\$.....

Lot 38

EXTON JUGGERNAUT T192^{SV}

HBR

Ident: QNN22T192

DOB: 8/05/2022 - 16 months

Conditions: AMFU,CA25%,DD1%,NHFU

TE MANIA AMBASSADOR A134

D H D TRAVELER 6807

TUWHARETOA REGENT D145

ALBERDA TRAVELER 416

LAWSONS HENRY VIII Y5

ALBERDA QUEEN KIMBERLY 222

Sire: PRIME JUGGERNAUT J15

Dam: EXTON JEDDA N34

TE MANIA ULONG U41

TE MANIA KELP K207+90

PRIME LOWAN F20

TE MANIA JEDDA P123+94

PRIME LOWAN D13

TE MANIA JEDDA L171+91

TACE



Mid June 2023 TransTasman Angus Cattle Evaluation

	Dir	Dtrs	GL	BWT	200D	400D	600D	MCW	Milk
EBVs	-2.0	-6.6	-1.1	+5.0	+41	+70	+89	+82	+16
<i>Acc</i>	63%	56%	81%	72%	73%	71%	71%	70%	66%
Scrotal	DtC	CWT	EMA	RIB	RUMP	RBY	IMF%	NFI-F	DOC
+0.2	-2.4	+53	+7.3	-2.1	-1.9	+1.4	+2.3	+0.27	+9
68%	50%	65%	64%	66%	66%	62%	67%	57%	57%

Traits Observed: GL,BWT,200WT,400WT,DOC,Genomics

Notes: The only Juggernaut son in the sale, he has plenty of length with a good thick top on him. Juggernaut has bred plenty of thickness and meat back into his calves.

Purchaser:\$.....

Lot 39

EXTON NATION T216^{SV}

APR

Ident: QNN22T216

DOB: 16/03/2022 - 18 months

Conditions: AM6%,CA6%,DD6%,NH6%

SITZ TRAVELER 8180

SITZ ALLIANCE 6595

SITZ BARBARAMERE JET 2698

Sire: EXTON NATION N41

Dam: EXTON K7

TC STOCKMAN 365

EAGLEHAWK JEDDA T015

TE MANIA K140+90

TACE



Mid June 2023 TransTasman Angus Cattle Evaluation

	Dir	Dtrs	GL	BWT	200D	400D	600D	MCW	Milk
EBVs	+2.7	+4.4	-1.3	+4.2	+39	+71	+91	+79	+12
<i>Acc</i>	39%	32%	45%	50%	50%	48%	48%	47%	39%
Scrotal	DtC	CVWT	EMA	RIB	RUMP	RBY	IMF%	NFI-F	DOC
+2.0	-0.2	+47	+0.6	+1.3	+1.3	+0.0	+1.0	+0.12	+28
43%	30%	42%	40%	42%	42%	38%	43%	34%	34%

Traits Observed: None

Notes: Heifer option - He has always had a lovely clean hair type, with an abundance of muscle and style to him. Plenty of doing ability.

Purchaser:\$.....

Lot 40

EXTON STERLING S151^{SV}

HBR

Ident: QNN21S151

DOB: 28/11/2021 - 21 months

Conditions: AMFU,CAFU,DD3%,NHFU

SITZ TRAVELER 8180

KIRRALINDA ELITE E5

SITZ ALLIANCE 6595

KIRRALINDA HARLEY H3

SITZ BARBARAMERE JET 2698

ABBOTSLEIGH PRINCESS D34

Sire: EXTON NATION N41

Dam: EXTON ECLYPTA N61

TC STOCKMAN 365

KIRRALINDA FOREMOST F8

EAGLEHAWK JEDDA T015

KIRRALINDA ECLYPTA H20

TE MANIA K140+90

KARNAHLA ECLYPTA F22

TACE



Mid June 2023 TransTasman Angus Cattle Evaluation

	Dir	Dtrs	GL	BWT	200D	400D	600D	MCW	Milk
EBVs	+5.9	+5.5	-2.2	+2.2	+25	+39	+53	+33	+18
<i>Acc</i>	52%	42%	66%	70%	69%	67%	69%	65%	56%
Scrotal	DtC	CVWT	EMA	RIB	RUMP	RBY	IMF%	NFI-F	DOC
+1.7	-4.4	+29	+1.9	+2.0	+2.8	+0.3	+1.4	-0.11	+26
62%	36%	57%	56%	58%	58%	51%	61%	48%	40%

Traits Observed: BWT,400WT,600WT,Genomics

Notes: Heifer option - This guy will grow into a large framed, good bodied bull. He is like all the Nation sons - they are loose skinned with plenty of room to grow into it.

Purchaser:\$.....

Lot 41

EXTON NATION T182 SV

APR

Ident: QNN22T182

DOB: 4/04/2022 - 17 months

Conditions: AM3%,CA3%,DD3%,NH3%

SITZ TRAVELER 8180

O C C EMBLAZON 854E

SITZ ALLIANCE 6595

LD EMBLAZON 999

SITZ BARBARAMERE JET 2698

SH FOREVER LADY 3124 5118

Sire: EXTON NATION N41

Dam: EXTON BELLE P32

TC STOCKMAN 365

EAGLEHAWK JEDDA T015

EXTON G7

TE MANIA K140+90

TACE



Mid June 2023 TransTasman Angus Cattle Evaluation

	Dir	Dtrs	GL	BWT	200D	400D	600D	MCW	Milk
EBVs	+6.7	+8.7	-1.3	+2.8	+39	+69	+92	+96	+12
Acc	51%	41%	68%	70%	68%	65%	66%	64%	56%
	DiC	CWT	EMA	RIB	RUMP	RBV	IMF%	NFI-F	DOC
Scrotal	+1.0	-2.8	+44	+0.3	+2.3	+0.1	+0.1	-0.08	+26
	60%	35%	56%	55%	57%	50%	60%	46%	42%

Traits Observed: BWVT,200WT,400WT,DOC,Genomics

Notes: Heifer option - Another Nation son, which shows what Nation does best - he is deep bodied with enough length and plenty of doing ability.

Purchaser:\$.....

Lot 42

EXTON TINO T162 SV

HBR

Ident: QNN22T162

DOB: 21/01/2022 - 19 months

Conditions: AMFU,CAFU,DDFU,NHFU

WAITARA VALLEY TEX

CONNELLY CONSENSUS 7229

HINGAIA 469

RIVERBEND NONE BETTER Y095

HINGAIA 910

CCC BLACKBIRD 9101

Sire: RAFF JOVIAL J350

Dam: EXTON BURNETTE P18

ONEILLS EXPEDITION

B C EMBLAZON 854E 8023

RAFF BLACKBIRD F14

EXTON BURNETTE M2

HOFF BLACKBIRD 594 5217

KIRRALINDA BURNETTE J7

TACE



Mid June 2023 TransTasman Angus Cattle Evaluation

	Dir	Dtrs	GL	BWT	200D	400D	600D	MCW	Milk
EBVs	+2.7	-2.7	-6.6	+5.3	+45	+73	+90	+82	+16
Acc	58%	51%	82%	73%	73%	70%	71%	69%	65%
	DiC	CWT	EMA	RIB	RUMP	RBV	IMF%	NFI-F	DOC
Scrotal	+0.3	-5.8	+51	+3.9	+1.0	+0.0	+1.0	-0.26	+31
	67%	40%	62%	61%	62%	57%	64%	50%	51%

Traits Observed: GL,BWVT,200WT,400WT,Genomics

Notes: Coming from an extremely fertile cow line, Exton Tino has plenty of maternal value on both sides of his pedigree. With grunt, power and bone displayed in his length and muscling down the rump.

Purchaser:\$.....

Lot 43**EXTON NATION T169^{SV}****HBR****Ident:** QNN22T169**DOB:** 18/02/2022 - 18 months**Conditions:** AMFU,CAFU,DDFU,NHFUSITZ TRAVELER 8180
SITZ ALLIANCE 6595CARABAR DOCKLANDS D62
TRIO DOCKLANDS H1

SITZ BARBARAMERE JET 2698

KANSAS HEART D15

Sire: EXTON NATION N41**Dam:** EXTON DUCHESS P21TC STOCKMAN 365
EAGLEHAWK JEDDA T015TE MANIA EMPEROR E343
KIRRALINDA DUCHESS L7

TE MANIA K140+90

KARNAHLA DUCHESS G4

TACE**Mid June 2023 TransTasman Angus Cattle Evaluation**

	Dir	Dtrs	GL	BWT	200D	400D	600D	MCW	Milk
EBVs	+0.7	+0.9	-3.5	+5.2	+40	+74	+96	+86	+11
Acc	54%	45%	67%	71%	70%	67%	68%	65%	58%
Scrotal	DtC	CWT	EMA	RIB	RUMP	RBY	IMF%	NFI-F	DOC
+3.1	-4.7	+53	+1.1	+0.3	+1.4	+0.3	-0.3	-0.23	+30
63%	39%	59%	58%	60%	60%	54%	62%	50%	44%

Traits Observed: BWV,200WV,400WV,Genomics**Notes:** Yet another great young Nation son - exuding shape and style, with good bone and plenty of loose skin to grow into.**Purchaser:**\$.....**Lot 44****EXTON TARZAN T171^{SV}****HBR****Ident:** QNN22T171**DOB:** 18/02/2022 - 18 months**Conditions:** AMFU,CAFU,DD1%,NHFUO C C EMBLAZON 854E
LD EMBLAZON 999
SH FOREVER LADY 3124 5118HYLINE RIGHT TIME 338
HYLINE RIGHT WAY 781
HYLINE ELLEN 86**Sire:** EXTON PROBLAZON P29**Dam:** EXTON RENOUNCE M5PRIME JUGGERNAUT J15
KIRRALINDA WILCOOLA L22CONNEALY FINAL PRODUCT
BUNYA CREEK J82

KIRRALINDA WILCOOLA H23

BUNYA CREEK RENOUNCE D74

TACE**Mid June 2023 TransTasman Angus Cattle Evaluation**

	Dir	Dtrs	GL	BWT	200D	400D	600D	MCW	Milk
EBVs	+2.7	+3.2	-1.6	+3.8	+42	+82	+98	+97	+12
Acc	57%	45%	68%	70%	69%	67%	67%	65%	59%
Scrotal	DtC	CWT	EMA	RIB	RUMP	RBY	IMF%	NFI-F	DOC
+1.5	-4.7	+48	+3.8	+1.2	+1.8	+0.7	+1.8	-0.07	+17
63%	33%	58%	56%	58%	58%	51%	61%	47%	42%

Traits Observed: BWV,200WV,400WV,Genomics**Notes:** Heifer option - An Exton Problazon P29 son, he carries the same attributes as his sire - oozing fleshing ability and phenotype. If you're looking for an udder improver, look no further than this bull.**Purchaser:**\$.....

Lot 45 EXTON TURBOCHARGER T172 ^{SV} HBR

Ident: QNN22T172 **DOB:** 22/02/2022 - 18 months **Conditions:** AMFU,CAFU,DDFU,NHFU

O C C EMBLAZON 854E TE MANIA BERKLEY B1
 LD EMBLAZON 999 TE MANIA EMPEROR E343
 SH FOREVER LADY 3124 5118 TE MANIA LOWAN Z74

Sire: EXTON PROBLAZON P29 **Dam:** KIRRALINDA DUCHESS L7
 PRIME JUGGERNAUT J15 RAFF BLACK THUNDER D302
 KIRRALINDA WILCOOLA L22 KARNAHLA DUCHESS G4
 KIRRALINDA WILCOOLA H23 RAFF DUCHESS Z82

TACE



Mid June 2023 TransTasman Angus Cattle Evaluation

	Dir	Dtrs	GL	BWT	200D	400D	600D	MCW	Milk
EBVs	+0.6	+1.6	-5.9	+6.1	+51	+89	+123	+126	+12
Acc	52%	43%	68%	69%	69%	67%	67%	65%	59%
Scrotal	DiC	CWT	EMA	RIB	RUMP	RBV	IMF%	NFI-F	DOC
+2.2	-4.0	+59	+6.4	-1.3	-2.1	+1.6	-0.7	+0.00	+31
62%	35%	57%	56%	58%	58%	51%	61%	47%	43%

Traits Observed: BWT, 200WT, 400WT, Genomics

Notes: Another Problazon son with a little bit more performance and power coming through from his Dam L7, a big powerful cow. She has bred plenty of grunt and style through to T172.

Purchaser:\$.....

Lot 46 EXTON NATION T174 ^{SV} HBR

Ident: QNN22T174 **DOB:** 1/03/2022 - 18 months **Conditions:** AMFU,CAFU,DDFU,NHFU

SITZ TRAVELER 8180 HINGAIA 469
 SITZ ALLIANCE 6595 RAFF JOVIAL J350
 SITZ BARBARAMERE JET 2698 RAFF BLACKBIRD F14

Sire: EXTON NATION N41 **Dam:** EXTON DORGAMMER P45
 TC STOCKMAN 365 RIPPLE VALE VOLUNTEER V46
 EAGLEHAWK JEDDA T015 RIPPLE VALE DORGAMMER Z52
 TE MANIA K140+90 RIPPLE VALE DORGAMMER R71+96

TACE



Mid June 2023 TransTasman Angus Cattle Evaluation

	Dir	Dtrs	GL	BWT	200D	400D	600D	MCW	Milk
EBVs	-1.2	-1.4	-3.8	+6.2	+44	+75	+101	+99	+13
Acc	53%	44%	68%	70%	69%	66%	67%	65%	57%
Scrotal	DiC	CWT	EMA	RIB	RUMP	RBV	IMF%	NFI-F	DOC
+1.8	-3.4	+55	+0.9	-0.7	-1.3	+0.4	+0.4	-0.07	+25
62%	38%	58%	56%	59%	59%	52%	61%	48%	42%

Traits Observed: BWT, 200WT, 400WT, Genomics

Notes: T174 is an excellently balanced Nation son - a true example of what Nation breeds. Thick, with extra top, plenty of doing ability and backed by a really good cow line on the bottom side of his pedigree.

Purchaser:\$.....

Lot 47

EXTON NATION T179^{SV}

HBR

Ident: QNN22T179

DOB: 16/03/2022 - 18 months

Conditions: AMFU,CAFU,DDFU,NHFU

SITZ TRAVELER 8180

LEACHMAN RIGHT TIME 338-5605

SITZ ALLIANCE 6595

WMR TIMELESS 458

SITZ BARBARAMERE JET 2698

WMR BLACKCAP 521

Sire: EXTON NATION N41

Dam: KIRRALINDA WILCOOLA H23

TC STOCKMAN 365

RAFF BLACK THUNDER D302

EAGLEHAWK JEDDA T015

KARNAHLA WILCOOLA F17

TE MANIA K140+90

ARDROSSAN WILCOOLA V054

TACE



Mid June 2023 TransTasman Angus Cattle Evaluation

	Dir	Dtrs	GL	BWT	200D	400D	600D	MCW	Milk
EBVs	-0.4	+0.1	-4.2	+5.1	+44	+79	+105	+87	+18
Acc	55%	46%	68%	70%	70%	67%	68%	65%	58%
Scrotal	DtC	CWT	EMA	RIB	RUMP	RBV	IMF%	NFI-F	DOC
+2.1	-3.7	+59	-1.3	+1.3	+2.0	-0.4	+0.6	-0.12	+35
63%	38%	58%	57%	59%	59%	53%	61%	48%	43%

Traits Observed: BWT,400WT,Genomics

Notes: This bull will grow into a larger frame. His mother continues to breed cattle with a little bit more bone in them. Coupled with Nation's softness and easy doing ability, he's come together well.

Purchaser:\$.....

Lot 48

EXTON NATION T186^{SV}

HBR

Ident: QNN22T186

DOB: 24/04/2022 - 16 months

Conditions: AMFU,CAFU,DDFU,NHFU

SITZ TRAVELER 8180

TRIO DOCKLANDS H1

SITZ ALLIANCE 6595

EXTON NED N38

SITZ BARBARAMERE JET 2698

EXTON CELESTE L40

Sire: EXTON NATION N41

Dam: EXTON DUCHESS Q62

TC STOCKMAN 365

CONNELLY COMRADE 1385

EAGLEHAWK JEDDA T015

EXTON DUCHESS N32

TE MANIA K140+90

RAFF DUCHESS D162

TACE



Mid June 2023 TransTasman Angus Cattle Evaluation

	Dir	Dtrs	GL	BWT	200D	400D	600D	MCW	Milk
EBVs	+7.0	+2.9	-6.3	+2.5	+49	+86	+102	+68	+21
Acc	52%	43%	65%	68%	69%	66%	67%	64%	56%
Scrotal	DtC	CWT	EMA	RIB	RUMP	RBV	IMF%	NFI-F	DOC
+2.6	-3.8	+67	+0.4	+1.4	+1.7	-0.2	+0.4	+0.27	+41
62%	36%	57%	56%	58%	58%	51%	61%	48%	43%

Traits Observed: BWT,200WT,400WT,DOC,Genomics

Notes: Heifer option - Another Nation son out of a very good deep-bodied cow - we think a lot of this bull. He's got plenty of muscle and is an athletic, good all-round stylish bull.

Purchaser:\$.....

DISCLAIMER AND PRIVACY INFORMATION

Attention Buyer

Animal details included in this catalogue, including but not limited to pedigree, DNA information, Estimated Breeding Values (EBVs) and Index values, are based on information provided by the breeder or owner of the animal. Whilst all reasonable care has been taken to ensure that the information provided in this catalogue was correct at the time of publication, Angus Australia will assume no responsibility for the accuracy or completeness of the information, nor for the outcome (including consequential loss) of any action taken based on this information.

Parent Verification Suffixes

The animals listed within this catalogue including its pedigree, are displaying a Parent Verification Suffix which indicates the DNA parent verification status that has been conducted on the animal. The Parent Verification Suffixes that will appear at the end of each animal's name.

The suffix displayed at the end of each animal's name indicates the DNA parentage verification that has been conducted by Angus Australia.

PV : both parents have been verified by DNA.

SV : the sire has been verified by DNA.

DV : the dam has been verified by DNA.

: DNA verification has not been conducted.

E : DNA verification has identified that the sire and/or dam may possibly be incorrect, but this cannot be confirmed conclusively.

Privacy Information

In order for Angus Australia to process the transfer of a registered animal in this catalogue, the vendor will need to provide certain information to Angus Australia and the buyer consents to the collection and disclosure of that information by Angus Australia in certain circumstances. If the buyer does not wish for his or her information to be stored and disclosed by Angus Australia, the buyer must complete the form included below and forward it to Angus Australia. If the form is not completed, the buyer will be taken to have consented to the disclosure of such information.

BUYERS OPTION TO OPT OUT OF DISCLOSING PERSONAL INFORMATION TO ANGUS AUSTRALIA

If you do not complete this form, you will be taken to have consented to Angus Australia using your name, address and phone number for the purposes of effecting a change of registration of the animal(s) that you have purchased, maintaining its database and disclosing that information to its members on its website.

I, the buyer of animals with the following idents.....
.....

from member.....(name) do not consent to Angus Australia using my name, address and phone number for the purposes of effecting a change of registration of the animals I have mentioned above that I have purchased, maintaining its database and disclosing that information to its members on its website.

Name: Signature:

Date:

Please forward this completed consent form to Angus Australia, 86 Glen Innes Road, Armidale NSW 2350.



If you have any questions or queries regarding any of the above, please contact Angus Australia on (02) 6773 4600 or email office@angusaustralia.com.au



**Exton Celeste L40
Dam of Lot 5**



**Kirrallinda Duchess L7
Dam of Lot 45**



Exton Renounce N9





Grassfed Steer -
Sired by H15 (Yabba)



NOTES: _____





Next Bull Sale
Last Friday in August
30th August 2024