

BRIDGEWATER

PERFORMANCE +

ANGUS



ANNUAL BULL SALE
THURSDAY AUGUST 3RD 2023, 1PM

ON PROPERTY 'MYOLA' BLACK MOUNTAIN

OPEN DAY: WEDNESDAY 26TH JULY, 10AM - 3PM



'Myola' 278 Toms Gully Road, Black Mountain, NSW, 2365 | Nick Rogers: 0429 382 108 | Roger Flower: 0407 958 224

WWW.BRIDGEWATERANGUS.COM.AU



LOT 1 - BRIDGEWATER PRESIDENT S010^{PV}



LOT 6 - BRIDGEWATER S099^{PV}



LOT 8 - BRIDGEWATER S100^{PV}



LOT 13 - BRIDGEWATER PARATROOPER S113^{SV}



LOT 29 - BRIDGEWATER MAGNIFICENT S073^{SV}

 @bridgewaterangus

 @bridgewaterangus

BRIDGEWATER
PERFORMANCE +
ANGUS



ANNUAL BULL SALE

On Property "Myola"
278 Toms Gully Road Black Mountain

THURSDAY 3RD AUGUST 2023
COMMENCING AT 1PM

OPEN DAY
Wednesday 26th July, 10am - 3pm

Offering
48 SIRE ASSURED BULLS



FOR FURTHER PARTICULARS PLEASE CONTACT

Roger Flower 0407 958 224

James Flower 0448 816 778

Email: roger@bridgewaterangus.com.au

Selling Agents: Davidson Cameron Co Guyra

Nick Rogers 0429 382 108

Angus McTavish 0427 165 120

 AuctionsPlus

The sale will also be interfaced with
AUCTIONS PLUS

Auctions Plus Sydney - 02 9262 4222

www.auctionsplus.com.au

 **Davidson Cameron & Co**
A NUTRIEN AG SOLUTIONS PARTNER

WELCOME TO THE BRIDGEWATER ANGUS 2023 BULL SALE

Dear Cattle Breeder

Welcome to our 6th on property Bull Sale.

The Flower family have been farming in Australia since the 1870's. Originally starting out in the Bega valley in Southern NSW but dry seasons down south had Frederick Gregg Flower looking for "greener pastures" in the north, so they put their cattle herd on the train and made the move to the northern rivers district in 1905. From there Geoff Flower moved the family to the Guyra area in 1963. That makes 5 generations of the Flower family in the cattle business.

We have been breeding Angus cattle at Black Mountain since 1996, with the foundation of our stud herd coming from a strong base of Wattletop and Ayrvale genetics. We have been evolving this solid base into a very desirable product.

Over the past few years we have focused on breeding cattle that have traits for high growth, high EMA and good structural foot scores. This has been achieved through considered selection of A/I sires and back-up bulls with a good solid set of figures. Structural assessments of the bulls by Alastair Rayner from Rayner Ag ensure that we have a well rounded product. A full bull assessment check has been carried out by Dr Leisa Brown from Guyra District Veterinary Clinic.

Recent additions to our stud program include:

Booroomooka President P22- The top priced bull at Booroomooka's 2020 sale. He was selected for his frame and great spread of EBVs. He scores highly on structural scores, CWT, EMA, Rib and P8. We have 21 sons in our 2023 catalogue which we have been eagerly awaiting to present to our customer base.

Renny Lea P559 - An Edmund E11 son with a solid set of figures. He was purchased by Ayrvale Angus Stud in 2019. We were unsuccessful in buying him at the Ayrvale dispersal sale and eventually tracked him down at Barnett Angus in Tasmania and were fortunate in sourcing semen. He has 8 sons in the sale

Shacorrahdalu New Ground R17 - We purchased this outstanding bull in 2020. Thomson family at Berremangra NSW. We cannot speak highly enough of this bull. He has a cracking set of figures and the Phenotype to match. His progeny really stand out, we have 4 of his yearling sons in the sale. 18 of his daughters will be joined in early November, with plans to use him as an A/I sire with our mature cows.

We attended the Landfall Angus sale in Launceston in March of this year and purchased 2 of the heaviest bulls in the Sale. Landfall Pheasantry TFA21S1769 drew our attention as a back up bull for our 2023 A/I program. He not only offers growth and desirable CWT/EMA but also has an impressive IMF score of 6.6. Who says you can't have it all?

We have just got our first Landfall Lorenzo TFAR625 heifer calf on the ground for 2023 which we bought in 2022. He has been used by Landfall Angus as a stud sire in their 2021 joining program. He was purchased for his great growth and his very impressive Rib and P8 EBVs.

We have 48 bulls on offer this year and 12 of them are yearlings with very impressive figures. There are 12 in the cohort that are suitable for joining with heifers. We invite you to inspect our 2023 line up on Wednesday 26th July between 10am and 3pm.

SHACORRAHDALU NEW GROUND R17^{PV}

S: LANDFALL NEW GROUND N90^{PV} x
D: SHACORRAHDALU BLACKBIRD N178^{PV}

	BIRTH				GROWTH				
	DIR	DTRS	GL	BWT	200	400	600	MWT	
EBV	+8.3	+10.0	-5.3	+1.6	+56	+105	+132	+110	
Acc	70%	57%	74%	88%	86%	81%	80%	77%	
	FERTILITY				CARCASE				
	Milk	DC	SS	CWT	EMA	Rib	Rump	RBY	IMF
	+15	-5.3	+6.7	+67	+15.2	+1.1	+0.0	+1.5	+1.7
	68%	44%	74%	2%	64%	66%	66%	60%	67%



SALE LOCATION

Bridgewater Angus is situated 6 Km in off the New England Highway 30 Km north of Armidale and 12 Km south of Guyra at 278 Toms Gully Road, Black Mountain. If travelling north turn left at the BP Black Mountain Road House into Black Mountain Road proceed through the village of Black Mountain and across the old railway line which becomes Toms Gully Road. Myola is situated 2.8 Km on the right (stone entrance).

INSPECTION

Bulls can be inspected on Wednesday 26th July between 10am and 3pm and at any other time by contacting Roger Flower 0407 958 224, OR Nick Rogers Davidson Cameron & Co Guyra 0429 382 108. On the morning of the sale the bulls will be penned and ready for inspection from 10am.

REBATE

2% rebate to agents introducing clients 24 hours prior to sale and settling their account under Davidson Cameron Co trading terms.

METHOD OF SELLING

The sale will be conducted under open auction in conjunction with Auctions Plus. Please remember to register with Auctions Plus at least 24 hours prior to the sale and log in early if bidding online. Your livestock agent will assist with this and phone bidding is available if you prefer (please contact one of our agents to organise this)

REFRESHMENTS

Once again we shall have our local Barista Chris from Bean Travelin on site from 10am. Morning tea and a BBQ lunch will be provided on the day of the Sale

INSURANCE

It is our recommendation that insurance is taken out for all purchases. An insurance agent from ACHMEA will be available on the day.

HERD HEALTH

All 2 year old bulls have been ear notched tested free of Pestivirus. They have a full vaccination history since birth have been given a Zoetis 7 in 1, 2 doses of Vibrovax, 2 doses of Pestigard and have been drenched with Flukazole. All bulls in the sale are free of the following genetic conditions AM,NH CC,CA AND DD. All two year old bulls have been semen tested and Morphology has been conducted by Dr Leisa Brown, Guyra District Veterinary Clinic. Dr Brown has also taken all scrotal measurements. Please refer to each lot for the individual results. The yearling bulls have been ear notched tested free of Pestivirus have had a crush side semen test and scrotal measurement taken. They have had 2 doses of Zoetis 7 in 1, two pestigard a multimin and a Nitromec Injectable. The Bridgewater Herd has a J-BAS score of 7. All two year old bulls have been structurally assessed by Alistair Rayner from Rayner Ag.

NUTRITION

The bulls are predominantly grass fed and have just recently been given a small ration of straw and 18% protein pellets.

DNA PARENT VERIFICATION

Buyers can feel confident about the pedigree of the bulls in this Bridgewater Sale, as the bulls have been verified to their sires.

The suffix displayed at the end of each animal's name indicates the DNA parentage verification that has been conducted by Angus Australia.

PV: both parents have been verified by DNA

SV: the sire has been verified by DNA

DV: the dam has been verified by DNA

#: DNA verification has not been conducted

E: DNA verification has identified that the sire and/or dam may possibly be incorrect, but this cannot be confirmed conclusively

All the bulls have all had genomic and DNA testing done through Neogen Australia.

NLIS AND ANGUS SOCIETY TRANSFERS

Bridgewater Angus will provide complimentary NLIS transfers (please ensure your PIC No is recorded on the Buyers Registration form). Please also indicate if you would like the registration of your bull transferred to you from the Angus Society.

GUARANTEE

Bridgewater Angus guarantees the structural soundness and fertility of their Sale Bulls for a period of six months from the Sale date. The vendor must receive written notification together with a certificate from a registered veterinarian stating the nature of the infertility before the expiration of that period. Animals injured or lost as a result of accident, negligence, or any disease are not covered by this guarantee. Vendor liability relating to infertility claims will not exceed the purchase price of the animal and are limited to a credit equal to the purchase price less the salvage value, which may be utilized at a future Bridgewater Sale.

SAFETY

We select animals with traits of good temperament and ease of handling. However, all animals can be unpredictable, particularly if stressed. Visitors enter pens at their own risk.

- CHILDREN ARE NOT PERMITTED IN PENS
- Do not overcrowd the pens
- Keep movement and noise to a minimum
- Be aware of your surroundings

DISCLAIMER

Every care has been taken in the compilation of this catalogue to ensure the accuracy of information supplied. However, no responsibility will be accepted for any errors which may have occurred.



We look forward to welcoming you to our open day,
Wednesday 26th July and to our sixth on property Bull Sale.

Roger, Geryl and James



TACE - MID JUNE 2023 REFERENCE TABLES

BREED AVERAGE EBVS

CALVING EASE	BIRTH		GROWTH				FERTILITY			CARCASS				OTHER			STRUCTURE			SELECTION INDEXES				
	CEDir	CEDtrs	GL	BW	200	400	600	MCW	Milk	SS	DTC	CWT	EMA	RIB	P8	RBV	IMF	NFI-F	DOC	Claw	Angle	Leg	\$A	\$A-L
Brd Avg	+2.2	+2.6	-4.8	+4.1	+50	+90	+117	+100	+17	+2.1	-4.6	+66	+6.3	+0.0	-0.3	+0.5	+2.2	+0.19	+20	+0.84	+0.97	+1.03	+197	+339

* Breed average represents the average EBV of all 2021 drop Australian Angus and Angus-influenced seedstock animals analysed in the Mid June 2023 TransTasman Angus Cattle Evaluation

PERCENTILE BANDS TABLE

CALVING EASE	BIRTH		GROWTH				FERTILITY			CARCASS				OTHER			STRUCTURE			SELECTION INDEXES				
	CEDir	CEDtrs	GL	BW	200	400	600	MCW	Milk	SS	DTC	CWT	EMA	RIB	P8	RBV	IMF	NFI-F	DOC	Claw	Angle	Leg	\$A	\$A-L
Less Calving Difficulty	Less Calving Difficulty	Shorter Gestation Length	Lighter Birth Weight	Heavier Live Weight	Heavier Live Weight	Heavier Live Weight	Heavier Mature Weight	Heavier Live Weight	Larger Scrotal Size	Shorter Time to Calving	Heavier Carcass Weight	Larger EMA	More Fat	More Fat	Higher Yield	More IMF	Greater Feed Efficiency	More Docile	Lower Score	Lower Score	Lower Score	Lower Score	Lower Profitability	Greater Profitability
+11.0	+10.0	-10.7	-0.4	+70	+123	+162	+159	+28	+4.8	-8.0	+98	+14.5	+4.2	+5.0	+2.0	+5.8	-0.53	+44	+0.42	+0.60	+0.74	+273	+449	
+9.1	+8.3	-8.8	+1.0	+64	+112	+148	+140	+25	+3.9	-7.0	+88	+11.9	+2.8	+3.3	+1.5	+4.6	-0.32	+36	+0.54	+0.72	+0.84	+253	+418	
+8.0	+7.3	-7.9	+1.7	+61	+107	+140	+130	+23	+3.5	-6.5	+83	+10.6	+2.2	+2.5	+1.3	+4.0	-0.20	+32	+0.60	+0.76	+0.88	+241	+403	
+7.1	+6.5	-7.2	+2.2	+58	+104	+136	+124	+22	+3.2	-6.1	+79	+9.7	+1.7	+1.9	+1.1	+3.6	-0.13	+29	+0.66	+0.80	+0.90	+234	+392	
+6.3	+5.9	-6.8	+2.6	+57	+101	+132	+119	+21	+3.0	-5.9	+77	+9.0	+1.3	+1.4	+1.0	+3.3	-0.07	+27	+0.68	+0.84	+0.94	+228	+383	
+5.7	+5.4	-6.4	+2.9	+55	+99	+129	+115	+20	+2.8	-5.6	+75	+8.4	+1.1	+1.1	+0.9	+3.1	-0.02	+25	+0.72	+0.86	+0.94	+222	+376	
+5.1	+4.9	-6.0	+3.1	+54	+97	+126	+112	+19	+2.6	-5.4	+73	+7.8	+0.8	+0.8	+0.8	+2.9	+0.02	+24	+0.74	+0.88	+0.96	+218	+369	
+4.6	+4.4	-5.7	+3.4	+53	+95	+124	+108	+19	+2.5	-5.2	+71	+7.4	+0.6	+0.5	+0.7	+2.7	+0.07	+23	+0.76	+0.90	+0.98	+213	+363	
+4.0	+4.0	-5.4	+3.6	+52	+94	+121	+105	+18	+2.3	-5.0	+69	+7.0	+0.3	+0.2	+0.6	+2.5	+0.11	+22	+0.80	+0.92	+1.00	+209	+357	
+3.4	+3.5	-5.1	+3.8	+51	+92	+119	+102	+18	+2.2	-4.8	+68	+6.6	+0.1	-0.1	+0.6	+2.3	+0.14	+21	+0.82	+0.94	+1.02	+205	+350	
+2.9	+3.0	-4.8	+4.0	+50	+90	+117	+100	+17	+2.1	-4.7	+66	+6.2	-0.1	-0.3	+0.5	+2.1	+0.18	+20	+0.84	+0.96	+1.02	+200	+344	
+2.3	+2.5	-4.5	+4.3	+49	+89	+115	+97	+16	+2.0	-4.5	+64	+5.8	-0.3	-0.6	+0.4	+1.9	+0.22	+19	+0.86	+0.98	+1.04	+196	+338	
+1.6	+2.0	-4.2	+4.5	+48	+87	+112	+94	+16	+1.8	-4.3	+63	+5.4	-0.5	-0.9	+0.3	+1.8	+0.25	+18	+0.88	+1.00	+1.06	+191	+332	
+1.0	+1.5	-3.9	+4.7	+47	+85	+110	+91	+15	+1.7	-4.2	+61	+5.0	-0.7	-1.1	+0.3	+1.6	+0.29	+17	+0.90	+1.02	+1.08	+186	+325	
+0.3	+1.0	-3.5	+4.9	+46	+83	+107	+88	+15	+1.6	-4.0	+59	+4.6	-0.9	-1.4	+0.2	+1.4	+0.34	+16	+0.94	+1.04	+1.08	+181	+317	
-0.6	+0.3	-3.2	+5.2	+44	+81	+105	+84	+14	+1.4	-3.8	+57	+4.2	-1.2	-1.7	+0.1	+1.2	+0.38	+15	+0.96	+1.08	+1.10	+175	+308	
-1.5	-0.4	-2.8	+5.5	+43	+79	+102	+80	+13	+1.3	-3.5	+55	+3.7	-1.4	-2.1	+0.0	+1.0	+0.44	+14	+1.00	+1.10	+1.12	+168	+298	
-2.7	-1.3	-2.3	+5.9	+41	+77	+98	+76	+12	+1.1	-3.2	+53	+3.1	-1.8	-2.5	-0.2	+0.8	+0.50	+12	+1.04	+1.14	+1.16	+159	+285	
-4.3	-2.5	-1.6	+6.3	+39	+73	+93	+70	+11	+0.8	-2.8	+50	+2.3	-2.2	-3.1	-0.3	+0.5	+0.58	+10	+1.08	+1.18	+1.18	+147	+268	
-7.0	-4.4	-0.7	+7.0	+36	+68	+86	+60	+10	+0.5	-2.0	+45	+1.2	-2.8	-3.9	-0.6	+0.0	+0.71	+7	+1.16	+1.26	+1.24	+129	+240	
-12.7	-8.4	+1.3	+8.5	+29	+57	+71	+41	+6	-0.4	-0.2	+34	-1.2	-4.2	-5.6	-1.1	-0.8	+0.96	+0	+1.30	+1.40	+1.34	+94	+187	
More Calving Difficulty	More Calving Difficulty	Longer Gestation Length	Heavier Birth Weight	Lighter Live Weight	Lighter Live Weight	Lighter Mature Weight	Lighter Live Weight	Lighter Live Weight	Smaller Scrotal Size	Longer Time to Calving	Lighter Carcass Weight	Smaller EMA	Less Fat	Less Fat	Lower Yield	Less IMF	Lower Feed Efficiency	Less Docile	Higher Score	Higher Score	Higher Score	Higher Score	Lower Profitability	Lower Profitability

* The percentile bands represent the distribution of EBVs across the 2021 drop Australian Angus and Angus-influenced seedstock animals analysed in the Mid June 2023 TransTasman Angus Cattle Evaluation

BRIDGEWATER ANGUS 2023 BULL SUMMARY

Lot	Animal ID	CALVING EASE		BIRTH		GROWTH				FERTILITY				CARCASE			OTHER		STRUCTURAL			INDEXES			
		CED	CEM	GL	BWT	200	400	600	MCW	Milk	SS	DTC	CWT	EMA	Rib	Rump	RBY	IMF	NFI-F	Doc	Claw	Angle	Leg	\$A	\$A-L
1	BON21S010	+4.1	+2.7	-4.7	+1.9	+46	+89	+115	+95	+22	+1.5	-4.7	+65	+7.8	+0.1	+0.1	+0.0	+4.6	+0.38	+16	+0.72	+0.84	+0.82	\$216	\$362
2	BON21S048	-5.9	-3.5	-3.6	+7.3	+63	+114	+148	+136	+16	+1.9	-5.0	+83	+8.8	-0.1	+1.2	-0.1	+4.3	-0.08	+14	+0.66	+0.64	+0.90	\$233	\$391
3	BON21S082	-5.9	+0.1	-6.3	+6.9	+61	+107	+143	+139	+11	+3.1	-5.1	+74	+6.2	-2.0	-3.4	+0.4	+2.3	-0.18	+11	+0.62	+0.68	+0.84	\$187	\$344
4	BON21S101	-0.2	+0.4	-8.2	+6.1	+63	+116	+155	+161	+22	+2.7	-4.2	+96	+3.0	-2.8	-5.0	+0.9	+1.6	+0.00	+21	+0.64	+0.98	+1.16	\$186	\$368
5	BON21S109	+5.0	+6.5	-6.5	+3.6	+49	+93	+117	+82	+17	+3.2	-5.8	+70	+7.7	-0.5	-1.4	+0.3	+4.0	+0.16	+18	+0.74	+0.88	+0.88	\$241	\$390
6	BON21S099	-2.2	+2.7	-9.4	+3.9	+49	+91	+110	+84	+22	+2.0	-4.8	+60	+10.0	-1.1	-2.7	+1.2	+1.4	+0.35	+22	+0.66	+0.86	+1.06	\$199	\$321
7	BON21S030	+1.9	+1.3	-8.1	+5.0	+59	+105	+144	+127	+23	+1.1	-4.6	+92	+9.9	-0.6	-0.5	+1.2	+0.5	+0.06	+14	+0.76	+0.68	+0.84	\$222	\$386
8	BON21S100	+1.7	+2.8	-9.1	+4.5	+58	+114	+145	+128	+14	+3.4	-5.2	+78	+6.9	-0.7	-2.2	+0.2	+3.8	+0.29	+15	+0.50	+0.78	+1.12	\$234	\$411
9	BON21S064	-1.3	+3.5	-6.7	+4.4	+57	+97	+125	+104	+22	+2.8	-6.1	+71	+8.4	-1.1	-1.8	+0.8	+1.9	-0.13	+16	+0.66	+0.88	+0.94	\$223	\$370
10	BON21S012	+3.3	+3.9	-6.7	+4.6	+53	+91	+119	+100	+15	+1.7	-5.9	+69	+4.6	-0.7	-2.5	+0.5	+2.3	+0.09	+18	+0.70	+0.78	+0.76	\$213	\$362
11	BON21S015	-3.9	-2.5	-3.1	+5.4	+54	+95	+131	+126	+14	+1.3	-5.8	+73	+5.7	+0.0	-0.6	+0.4	+3.1	-0.34	+13	+0.60	+0.60	+0.72	\$200	\$348
12	BON21S077	-6.8	-0.5	-3.5	+5.9	+55	+100	+129	+122	+16	+2.5	-5.8	+75	+8.4	+1.2	+0.9	+0.8	+1.7	-0.02	+16	+0.44	+0.88	+0.98	\$201	\$345
13	BON21S113	+7.5	+2.7	-8.1	+1.8	+45	+79	+97	+77	+21	+2.8	-5.4	+50	+11.7	+1.6	+1.6	+0.7	+3.4	+0.25	+17	+0.88	+0.90	+0.96	\$230	\$371
14	BON21S112	+2.2	+4.9	-7.6	+4.2	+60	+115	+148	+143	+16	+3.5	-3.5	+84	+9.3	-2.6	-6.1	+1.4	+1.8	-0.03	+22	+0.72	+0.88	+0.98	\$207	\$388
15	BON21S107	+0.7	-0.1	-8.5	+6.2	+59	+106	+138	+134	+11	+2.6	-4.3	+79	+7.3	-0.5	-2.5	+0.6	+2.5	+0.33	+23	+0.62	+0.62	+1.00	\$205	\$371
16	BON21S104	-7.7	-4.9	-7.8	+8.0	+70	+124	+156	+160	+14	+5.0	-4.9	+91	+6.7	-2.6	-5.3	+1.1	+2.3	+0.29	+18	+0.80	+0.94	+0.82	\$204	\$374
17	BON22T007	+4.2	+7.7	-10.8	+3.2	+57	+93	+116	+73	+25	+1.4	-3.7	+69	+5.1	-1.6	-3.0	+0.1	+2.4	-0.12	+14	+0.82	+0.88	+1.18	\$218	\$346
18	BON22T048	-3.7	+1.2	-4.1	+7.7	+66	+111	+139	+136	+18	+1.9	-3.5	+92	+10.1	-3.9	-4.9	+1.7	+1.2	-0.17	+21	+0.84	+0.86	+1.02	\$210	\$364
19	BON22T022	+2.5	+4.0	-6.5	+4.4	+58	+105	+129	+103	+19	+2.1	-3.9	+74	+10.2	-3.6	-5.3	+1.3	+3.3	+0.10	+27	+0.98	+1.12	+0.82	\$239	\$390
20	BON22T029	+5.6	+6.1	-8.3	+1.8	+41	+78	+102	+87	+21	+1.9	-6.8	+51	+0.6	+2.8	+1.9	-0.5	+2.6	+0.27	+22	+1.06	+1.06	+0.90	\$186	\$333
21	BON22T031	-4.5	-6.8	-6.1	+4.1	+50	+90	+115	+111	+23	+2.5	-4.7	+63	+10.4	-1.2	-2.1	+1.1	+2.2	+0.30	+22	+0.66	+0.94	+0.86	\$176	\$303
22	BON22T072	+0.8	+1.7	-6.9	+5.3	+60	+109	+153	+154	+21	+2.7	-5.3	+82	+5.2	-1.6	-3.0	+0.6	+2.8	-0.03	+5	+0.52	+0.78	+0.92	\$208	\$393
23	BON22T002	+6.3	+6.4	-6.3	+3.7	+52	+98	+125	+92	+23	+4.6	-5.4	+63	+8.5	+0.1	+0.6	+0.7	+1.7	+0.35	+30	+0.80	+0.76	+0.78	\$237	\$396
24	BON22T004	+7.7	+8.7	-7.4	+2.0	+58	+102	+139	+120	+19	+5.0	-5.0	+77	+7.9	-1.1	-3.6	+0.3	+3.5	+0.31	+31	+0.94	+0.84	+0.84	\$229	\$412
25	BON22T005	+10.4	+7.0	-5.5	+1.6	+50	+92	+108	+72	+21	+4.7	-7.4	+55	+16.6	+4.0	+4.5	+1.3	+1.0	+0.70	+29	+0.72	+0.74	+0.98	\$283	\$443
26	BON22T057	+9.6	+11.1	-7.0	+0.9	+54	+100	+125	+105	+25	+4.7	-4.3	+69	+6.5	-2.6	-3.3	+0.5	+3.1	+0.49	+24	+0.98	+0.72	+0.94	\$220	\$393
27	BON22T061	-2.4	+0.5	-1.6	+6.2	+69	+118	+159	+142	+26	+3.7	-2.8	+86	+8.8	-4.0	-6.1	+1.0	+1.9	-0.20	+21	+0.58	+0.76	+0.86	\$206	\$367
28	BON22T024	+5.1	+4.6	-5.7	+4.2	+71	+125	+169	+153	+24	+3.2	-4.1	+103	+6.8	-3.5	-5.8	+1.5	+0.5	-0.25	+33	+0.82	+1.06	+1.06	\$237	\$433
29	BON21S073	-5.3	-3.9	-1.1	+5.3	+53	+89	+113	+98	+19	+2.1	-1.9	+58	+10.9	-2.5	-3.5	+0.5	+4.3	+0.09	+12	+0.78	+0.76	+0.84	\$174	\$282
30	BON21S066	-3.1	+4.5	-1.7	+4.2	+52	+90	+113	+93	+20	+2.0	-3.3	+75	+11.4	-4.2	-4.4	+1.4	+3.7	+0.21	+16	+0.94	+0.88	+0.94	\$208	\$331
31	BON21S089	-1.1	-2.2	-7.1	+5.9	+56	+101	+132	+114	+19	+1.9	-7.0	+79	+12.9	-2.1	-3.0	+1.8	+1.7	+0.10	+8	+0.38	+0.76	+0.86	\$245	\$399
32	BON21S123	+2.9	+2.3	-7.5	+4.1	+50	+91	+122	+100	+22	+1.3	-4.6	+68	+6.5	+0.6	+1.1	-0.1	+2.8	+0.01	+12	+0.60	+0.74	+0.76	\$205	\$349
33	BON21S118	+5.4	+2.7	-2.5	+3.0	+51	+96	+120	+97	+23	+3.0	-5.2	+68	+12.4	+0.3	+0.4	+1.0	+2.6	+0.48	+16	+0.94	+0.88	+1.16	\$242	\$398
34	BON21S115	-0.7	-1.5	-6.1	+5.2	+56	+101	+138	+131	+19	+3.0	-5.4	+82	+4.8	-2.3	-3.9	+0.9	+2.0	-0.10	+21	+0.80	+1.00	+1.10	\$192	\$351
35	BON21S114	+5.4	+3.8	-6.2	+4.6	+65	+113	+145	+116	+23	+3.1	-5.0	+90	+0.2	-0.4	-1.2	-0.2	+0.8	+0.02	+28	+0.64	+0.70	+1.12	\$218	\$387
36	BON21S105	+8.4	+8.2	-8.7	+3.6	+54	+97	+123	+111	+17	+2.6	-6.0	+81	+7.5	-3.3	-3.8	+1.6	+0.4	-0.02	+14	+0.94	+0.78	+0.94	\$221	\$395
37	BON21S011	-6.2	-3.2	-4.9	+8.1	+69	+116	+156	+152	+11	+1.6	-6.0	+98	+8.1	-1.3	-1.6	+0.9	+2.1	-0.13	+16	+0.84	+0.88	+0.86	\$234	\$403
38	BON21S038	-6.2	+4.4	-5.8	+6.8	+65	+112	+141	+134	+16	+1.2	-5.1	+94	+8.9	-3.2	-4.3	+1.1	+2.1	-0.17	+21	+0.84	+0.76	+1.02	\$220	\$376
39	BON21S079	-4.5	-2.7	-5.4	+5.8	+65	+110	+137	+142	+14	+2.5	-5.0	+83	+5.4	+1.5	+1.3	+0.3	+1.0	-0.07	+20	+0.72	+0.84	+0.94	\$199	\$361
40	BON21S090	-8.0	+0.1	-4.4	+7.0	+56	+92	+112	+98	+10	+1.0	-5.6	+67	+7.4	-0.9	-2.0	+1.3	+1.2	-0.03	+26	+0.68	+0.84	+1.00	\$198	\$315
41	BON21S085	-6.1	-3.2	-5.6	+6.9	+53	+94	+127	+120	+15	+1.3	-5.5	+73	+9.1	-0.5	-0.9	+1.1	+1.5	+0.45	+16	+0.50	+0.60	+0.92	\$190	\$326
42	BON21S093	+3.6	+1.8	-2.5	+1.1	+33	+63	+79	+52	+20	+1.2	-5.7	+37	+3.4	+2.0	+1.4	-0.8	+5.7	+0.57	+27	+0.66	+0.80	+0.72	\$185	\$291
43	BON21S121	+2.4	+3.8	-3.9	+4.4	+62	+107	+142	+143	+15	+2.9	-5.2	+77	+8.0	-1.4	-2.1	+0.5	+2.8	+0.18	+24	+0.48	+0.54	+0.86	\$224	\$409
44	BON21S122	+1.1	-6.1	-4.0	+4.6	+50	+97	+133	+128	+21	+3.1	-6.3	+72	+5.9	-0.2	-0.3	-0.2	+4.8	+0.36	+17	+0.68	+0.76	+0.90	\$205	\$367
45	BON21S128	-1.0	-5.5	-7.3	+4.4	+57	+96	+124	+87	+19	+3.3	-6.0	+69	+10.1	+2.2	+2.7	-0.1	+3.8	+0.75	+22	+0.30	+0.64	+0.82	\$248	\$380
46	BON21S130	+0.8	+3.3	-6.4	+6.0	+59	+99	+129	+111	+19	+1.8	-4.3	+74	+7.7	-0.4	-1.0	+0.3	+2.9	+0.02	+17	+0.62	+0.66	+0.86	\$221	\$371
47	BON21S014	-0.5	-3.1	-2.9	+6.7	+63	+108	+146	+111	+21	+3.4	-4.9	+92	+8.4	-2.0	-2.3	+0.5	+2.3	-0.12	+34	+0.66	+1.08	+0.84	\$231	\$378
48	BON21S086	+2.9	+1.1	-5.2	+4.6	+61	+104	+141	+111	+25	+3.2	-5.9	+89	+4.4	-0.2	-1.5	+0.7	+1.5	-0.06	+23	+0.82	+0.88	+0.92	\$233	\$392
		CED	CEM	GL	BW	200	400	600	MCW	Milk	SS	DC	CWT	EMA	Rib	Rump	RBY	IMF	NFI-F	Doc	Claw	Angle	Leg	\$A	\$A-L
		+2.2	+2.6	-4.8	+4.1	+50	+90	+117	+100	+17	+2.1	-4.6	+66	+6.3	+0.0	-0.3	+0.5	+2.2	+0.19	+20	+0.84	+0.97	+1.03	+197	+339

LOT 1

BRIDGEWATER PRESIDENT S010 PV

HBR

TUWHARETOA REGENT D145 PV
BOOROOMOOKA KINGY K9 PV
BOOROOMOOKA TRACEY A281 PV

G A R MOMENTUM PV
LAWSONS MAGNIFICENT M638 SV
LAWSONS NZ09104 K1057 #

DOB: 12/7/2021
Society Ident: BON21S010
Genetic Status: AMFU,CAFU,DDFU,NHFU
Traits Observed: GL,WT,200WT,400WT,600WT,DOC,Genomics

BOOROOMOOKA PRESIDENT P22 PV

BRIDGEWATER Q062 PV

BOOROOMOOKA GENIUS G120 PV
BOOROOMOOKA WIGANE K640 SV
BOOROOMOOKA WIGANE H67 #

SPRING COVE GENTLEMAN JACK #
BRIDGEWATER N013 SV
WATTLETOP J217 #

TACE	CALVING EASE		BIRTH		GROWTH				
	Direct	Dtrs	Gest. Lgth	Birth Wt.	200 Wt.	400 Wt.	600 Wt.	MCW	Milk
EBV	4.1	2.7	-4.7	1.9	46	89	115	95	22
Acc	55%	43%	83%	74%	73%	71%	74%	68%	60%
Perc	39	53	51	12	70	54	55	58	15
FERTILITY		CARCASE					OTHER		
Scrotal	D to Calv.	Carc. W.	EMA	Rib Fat	Rump Fat	RBV%	IMF%	NFI-F	Doc
1.5	-4.7	65	7.8	0.1	0.1	0	4.6	0.38	16
66%	35%	60%	59%	61%	61%	54%	64%	50%	54%
72	48	53	30	45	42	77	5	75	70

Mid June 2023 TransTasman Angus Cattle Evaluation

SUITABLE FOR HEIFERS Well muscled moderate framed bull, high IMF with +rib & P8 and good feet

Purchaser: _____ \$: _____

Semen Motility ✓

Scrotal Measurement	Semen Morphology
41MM	94%

\$INDEX VALUES	
\$A	\$A-L
\$216	\$362

7.49/10
Classified by Alastair Rayner
5 Jun 2023 (Bull Selection criteria)

Breeder: **Bridgewater Angus**
Roger Flower
0407958224
james@bridgewateraustr.com.au

LOT 2

BRIDGEWATER PRESIDENT S048 SV

HBR

TUWHARETOA REGENT D145 PV
BOOROOMOOKA KINGY K9 PV
BOOROOMOOKA TRACEY A281 PV

BT CROSSOVER 758N #
SILVEIRAS CONVERSION 8064 #
EXG SARAS DREAM S609 R3 #

DOB: 9/8/2021
Society Ident: BON21S048
Genetic Status: AMFU,CAFU,DDFU,NHFU
Traits Observed: GL,CE,BWT,200WT,400WT,600WT, DOC,Genomics

BOOROOMOOKA PRESIDENT P22 PV

WATTLETOP USUAL K118 #

BOOROOMOOKA GENIUS G120 PV
BOOROOMOOKA WIGANE K640 SV
BOOROOMOOKA WIGANE H67 #

WATTLETOP ACONITES A95 SV
WATTLETOP USUAL C357 #
WATTLETOP USUAL Z286 #

TACE	CALVING EASE		BIRTH		GROWTH				
	Direct	Dtrs	Gest. Lgth	Birth Wt.	200 Wt.	400 Wt.	600 Wt.	MCW	Milk
EBV	-5.9	-3.5	-3.6	7.3	63	114	148	136	16
Acc	57%	47%	83%	75%	73%	72%	74%	68%	62%
Perc	94	93	69	96	7	4	5	7	55
FERTILITY		CARCASE					OTHER		
Scrotal	D to Calv.	Carc. W.	EMA	Rib Fat	Rump Fat	RBV%	IMF%	NFI-F	Doc
1.9	-5	83	8.8	-0.1	1.2	-0.1	4.3	-0.08	14
67%	37%	62%	60%	62%	62%	56%	64%	51%	56%
56	40	10	21	50	23	81	8	19	79

Mid June 2023 TransTasman Angus Cattle Evaluation

Big framed bull with top 5% for 600D. CWT and IMF top 10%

Purchaser: _____ \$: _____

Semen Motility ✓

Scrotal Measurement	Semen Morphology
41MM	TBA

\$INDEX VALUES	
\$A	\$A-L
\$233	\$391

7.82/10
Classified by Alastair Rayner
5 Jun 2023 (Bull Selection criteria)

Breeder: **Bridgewater Angus**
Roger Flower
0407958224
james@bridgewateraustr.com.au

LOT 3

BRIDGEWATER PRESIDENT S082 PV

HBR

TUWHARETOA REGENT D145 PV
BOOROOMOOKA KINGY K9 PV
BOOROOMOOKA TRACEY A281 PV

A A R TEN X 7008 S A SV
V A R DISCOVERY 2240 PV
DEER VALLEY RITA 0308 #

DOB: 7/9/2021
Society Ident: BON21S082
Genetic Status: AMFU,CAFU,DDFU,NHFU
Traits Observed: CE,BWT,200WT,400WT,600WT,DOC,Genomics

BOOROOMOOKA PRESIDENT P22 PV

BRIDGEWATER BARUNAH P010 SV

BOOROOMOOKA GENIUS G120 PV
BOOROOMOOKA WIGANE K640 SV
BOOROOMOOKA WIGANE H67 #

KENNY'S CREEK REGENT G213 SV
WATTLETOP BARUNAH K111 #
WATTLETOP BARUNAH G56 #

TACE	CALVING EASE		BIRTH		GROWTH				
	Direct	Dtrs	Gest. Lgth	Birth Wt.	200 Wt.	400 Wt.	600 Wt.	MCW	Milk
EBV	-5.9	0.1	-6.3	6.9	61	107	143	139	11
Acc	57%	45%	74%	74%	73%	71%	74%	68%	61%
Perc	94	77	26	94	9	10	8	6	92
FERTILITY		CARCASE					OTHER		
Scrotal	D to Calv.	Carc. W.	EMA	Rib Fat	Rump Fat	RBV%	IMF%	NFI-F	Doc
3.1	-5.1	74	6.2	-2	-3.4	0.4	2.3	-0.18	11
66%	37%	61%	60%	62%	62%	55%	64%	51%	57%
16	37	28	49	88	92	53	43	12	90

Mid June 2023 TransTasman Angus Cattle Evaluation

High growth President son. Top 10% for all growth

Purchaser: _____ \$: _____

Semen Motility ✓

Scrotal Measurement	Semen Morphology
40MM	80%

\$INDEX VALUES	
\$A	\$A-L
\$187	\$344

8.36/10
Classified by Alastair Rayner
5 Jun 2023 (Bull Selection criteria)

Breeder: **Bridgewater Angus**
Roger Flower
0407958224
james@bridgewateraustr.com.au

LOT 4

BRIDGEWATER S101^{SV}

HBR

BOOROOMOOKA UNDERTAKEN Y145^{PV}
 RENNYLEA EDMUND E11^{PV}
 LAWSONS HENRY VIII Y5^{SV}

TEHAMA TOTAL M811 #
 SILVEIRAS M811 TOTAL 6103 #
 SILVEIRA ELBA 3309 #

DOB: 16/10/2021
 Society Ident: BON21S101
 Genetic Status:
 AMFU,CAFU,DDFU,NHFU
 Traits Observed:
 GL,BWT,600WT,Genomics

RENNYLEA P559^{PV}

WATTLETOP J257 #

H P C A INTENSITY #
 RENNYLEA L507^{PV}
 RENNYLEA H414^{SV}

WATTLETOP OB45 X75 #
 WATTLETOP ANN Z397^{SV}
 WATTLETOP ANN T105 #

TACE	CALVING EASE		BIRTH		GROWTH				
	Direct	Dtrs	Gest. Lgth	Birth Wt.	200 Wt.	400 Wt.	600 Wt.	MCW	Milk
EBV	-0.2	0.4	-8.2	6.1	63	116	155	161	22
Acc	58%	49%	82%	71%	72%	70%	71%	69%	62%
Perc	73	75	8	88	6	3	3	1	14
FERTILITY		CARCASE					OTHER		
Scrotal	D to Calv.	Carc. W.	EMA	Rib Fat	Rump Fat	RBV%	IMF%	NFI-F	Doc
2.7	-4.2	96	3	-2.8	-5	0.9	1.6	0	21
66%	40%	62%	60%	62%	62%	56%	65%	52%	41%
26	63	2	86	95	99	23	64	27	45

Mid June 2023 TransTasman Angus Cattle Evaluation

Long bodied bull with highest structural assessment score of 9.68. Top 6% growth and top 2% CWT

Purchaser: _____ \$: _____

Semen Motility ✓
 Scrotal Measurement **44MM**
 Semen Morphology **TBA**

\$INDEX VALUES	
\$A	\$A-L
\$186	\$368

9.68/10
 Classified by Alastair Rayner
 5 Jun 2023
 (Bull Selection criteria)

Eyes, Pigment, Hooding, Front Legs (Front), Front Feet (Claws), Front Feet, Rear Legs (Side), Rear Legs (Rear), Rear Feet, Size and Shape, Muscle Score, Shoulders (Side profile).

Breeder **Bridgewater Angus**
 Roger Flower
 0407958224
 james@bridgewateraustr.com.au

LOT 5

BRIDGEWATER S109^{SV}

HBR

BOOROOMOOKA UNDERTAKEN Y145^{PV}
 RENNYLEA EDMUND E11^{PV}
 LAWSONS HENRY VIII Y5^{SV}

WATTLETOP E111 H253^{SV}
 WATTLETOP B DURHAM H253 K101^{SV}
 WATTLETOP BARUNAH C144 #

DOB: 20/10/2021
 Society Ident: BON21S109
 Genetic Status:
 AMFU,CAFU,DDFU,NHFU
 Traits Observed:
 GL,BWT,400WT,600WT, Genomics

RENNYLEA P559^{PV}

WATTLETOP BARUNAH M481 #

H P C A INTENSITY #
 RENNYLEA L507^{PV}
 RENNYLEA H414^{SV}

TUWHARETOA REGENT D145^{PV}
 WATTLETOP J75 #
 WATTLETOP BARUNAH F321 #

TACE	CALVING EASE		BIRTH		GROWTH				
	Direct	Dtrs	Gest. Lgth	Birth Wt.	200 Wt.	400 Wt.	600 Wt.	MCW	Milk
EBV	5	6.5	-6.5	3.6	49	93	117	82	17
Acc	55%	46%	82%	73%	71%	69%	72%	67%	60%
Perc	31	15	23	39	57	41	50	78	55
FERTILITY		CARCASE					OTHER		
Scrotal	D to Calv.	Carc. W.	EMA	Rib Fat	Rump Fat	RBV%	IMF%	NFI-F	Doc
3.2	-5.8	70	7.7	-0.5	-1.4	0.3	4	0.16	18
65%	39%	60%	59%	61%	61%	54%	64%	52%	40%
14	21	37	31	60	69	60	10	47	59

Mid June 2023 TransTasman Angus Cattle Evaluation

SUITABLE FOR HEIFERS High marbling P559 heifer bull. IMF in top 10%

Purchaser: _____ \$: _____

Semen Motility ✓
 Scrotal Measurement **40.5MM**
 Semen Morphology **91%**

\$INDEX VALUES	
\$A	\$A-L
\$241	\$390

8.02/10
 Classified by Alastair Rayner
 5 Jun 2023
 (Bull Selection criteria)

Eyes, Pigment, Hooding, Front Legs (Front), Front Feet (Claws), Front Feet, Rear Legs (Side), Rear Legs (Rear), Rear Feet, Size and Shape, Muscle Score, Shoulders (Side profile).

Breeder **Bridgewater Angus**
 Roger Flower
 0407958224
 james@bridgewateraustr.com.au

LOT 6

BRIDGEWATER S099^{PV}

HBR

BOOROOMOOKA UNDERTAKEN Y145^{PV}
 RENNYLEA EDMUND E11^{PV}
 LAWSONS HENRY VIII Y5^{SV}

CONNELLY EARNAN 076E^{PV}
 MUSGRAVE BIG SKY^{PV}
 SAV PRIMROSE 7861 #

DOB: 15/10/2021
 Society Ident: BON21S099
 Genetic Status:
 AMFU,CAFU,DDFU,NHFU
 Traits Observed:
 GL,BWT,400WT,600WT, Genomics

RENNYLEA P559^{PV}

BRIDGEWATER ANN P029^{SV}

H P C A INTENSITY #
 RENNYLEA L507^{PV}
 RENNYLEA H414^{SV}

WATTLETOP FRANKEL J173^{SV}
 WATTLETOP ANN L416 #
 WATTLETOP ANN G142 #

TACE	CALVING EASE		BIRTH		GROWTH				
	Direct	Dtrs	Gest. Lgth	Birth Wt.	200 Wt.	400 Wt.	600 Wt.	MCW	Milk
EBV	-2.2	2.7	-9.4	3.9	49	91	110	84	22
Acc	56%	48%	81%	71%	71%	68%	71%	67%	60%
Perc	83	53	4	46	57	47	64	76	16
FERTILITY		CARCASE					OTHER		
Scrotal	D to Calv.	Carc. W.	EMA	Rib Fat	Rump Fat	RBV%	IMF%	NFI-F	Doc
2	-4.8	60	10	-1.1	-2.7	1.2	1.4	0.35	22
65%	40%	60%	58%	60%	60%	54%	63%	51%	44%
52	45	68	13	73	87	11	69	72	38

Mid June 2023 TransTasman Angus Cattle Evaluation

Purchaser: _____ \$: _____

Semen Motility ✓
 Scrotal Measurement **39MM**
 Semen Morphology **91%**

\$INDEX VALUES	
\$A	\$A-L
\$199	\$321

8.56/10
 Classified by Alastair Rayner
 5 Jun 2023
 (Bull Selection criteria)

Eyes, Pigment, Hooding, Front Legs (Front), Front Feet (Claws), Front Feet, Rear Legs (Side), Rear Legs (Rear), Rear Feet, Size and Shape, Muscle Score, Shoulders (Side profile).

Breeder **Bridgewater Angus**
 Roger Flower
 0407958224
 james@bridgewateraustr.com.au

LOT 7

BRIDGEWATER PRESIDENT S030 SV

HBR

TUWHARETOA REGENT D145 PV
BOOROOMOOKA KINGY K9 PV
BOOROOMOOKA TRACEY A281 PV

G A R PREDESTINED #
WERNER WESTWARD 357 #
BFF EVERELDA ENTENSE 4015 #

DOB: 2/8/2021
Society Ident: BON21S030
Genetic Status: AMFU,CAFU,DDFU,NHFU
Traits Observed: GL,BWT,400WT,600WT, Genomics

BOOROOMOOKA PRESIDENT P22 PV

WATTLETOP USUAL L221 #

BOOROOMOOKA GENIUS G120 PV
BOOROOMOOKA WIGANE K640 SV
BOOROOMOOKA WIGANE H67 #

BOOROOMOOKA FRANKEL F510 PV
WATTLETOP J306 SV
WATTLETOP USUAL C93 #

TACE	CALVING EASE		BIRTH		GROWTH				
	Direct	Dtrs	Gest. Lgth	Birth Wt.	200 Wt.	400 Wt.	600 Wt.	MCW	Milk
EBV	1.9	1.3	-8.1	5	59	105	144	127	23
Acc	57%	46%	83%	73%	74%	71%	72%	70%	61%
Perc	58	67	9	71	13	14	8	13	11
FERTILITY		CARCASE					OTHER		
Scrotal	D to Calv.	Carc. W.	EMA	Rib Fat	Rump Fat	RBV%	IMF%	NFI-F	Doc
1.1	-4.6	92	9.9	-0.6	-0.5	1.2	0.5	0.06	14
67%	38%	62%	60%	62%	62%	56%	65%	52%	55%
84	51	3	14	62	53	11	89	34	79

Mid June 2023 TransTasman Angus Cattle Evaluation

Top 8% 600D and top 3% CWT

Purchaser: _____ \$: _____

Semen Motility ✓

Scrotal Measurement	Semen Morphology
40.5MM	TBA

\$INDEX VALUES	
\$A	\$A-L
\$222	\$386

7.74/10
Classified by Alastair Rayner
5 Jun 2023
(Bull Selection criteria)

Breeder: **Bridgewater Angus**
Roger Flower
0407958224
james@bridgewateraustr.com.au

LOT 8

BRIDGEWATER S100 PV

APR

BOOROOMOOKA UNDERTAKEN Y145 PV
RENNYLEA EDMUND E11 PV
LAWSONS HENRY VIII Y5 SV

A A R TEN X 7008 S A SV
V A R DISCOVERY 2240 PV
DEER VALLEY RITA 0308 #

DOB: 16/10/2021
Society Ident: BON21S100
Genetic Status: AMFU,CAFU,DDFU,NHFU
Traits Observed: GL,BWT,400WT,600WT, Genomics

RENNYLEA P559 PV

BRIDGEWATER P024 SV

H P C A INTENSITY #
RENNYLEA L507 PV
RENNYLEA H414 SV

SILVEIRAS M811 TOTAL 6103 #
WATTLETOP H47 #
WATTLETOP F132 #

TACE	CALVING EASE		BIRTH		GROWTH				
	Direct	Dtrs	Gest. Lgth	Birth Wt.	200 Wt.	400 Wt.	600 Wt.	MCW	Milk
EBV	1.7	2.8	-9.1	4.5	58	114	145	128	14
Acc	57%	48%	82%	71%	71%	69%	72%	67%	60%
Perc	60	52	4	60	16	4	7	12	74
FERTILITY		CARCASE					OTHER		
Scrotal	D to Calv.	Carc. W.	EMA	Rib Fat	Rump Fat	RBV%	IMF%	NFI-F	Doc
3.4	-5.2	78	6.9	-0.7	-2.2	0.2	3.8	0.29	15
65%	40%	60%	59%	61%	61%	54%	64%	52%	45%
11	34	17	41	64	81	66	13	64	75

Mid June 2023 TransTasman Angus Cattle Evaluation

Structural score 8.82 moderate frame top 7% 400D/600D. Good feet

Purchaser: _____ \$: _____

Semen Motility ✓

Scrotal Measurement	Semen Morphology
40.5MM	93%

\$INDEX VALUES	
\$A	\$A-L
\$234	\$411

8.82/10
Classified by Alastair Rayner
5 Jun 2023
(Bull Selection criteria)

Breeder: **Bridgewater Angus**
Roger Flower
0407958224
james@bridgewateraustr.com.au

LOT 9

BRIDGEWATER PRESIDENT S064 PV

APR

TUWHARETOA REGENT D145 PV
BOOROOMOOKA KINGY K9 PV
BOOROOMOOKA TRACEY A281 PV

TC FRANKLIN 619 #
WATTLETOP FRANKLIN G188 SV
WATTLETOP BARUNAH E295 DV

DOB: 26/8/2021
Society Ident: BON21S064
Genetic Status: AMFU,CAFU,DDFU,NHFU
Traits Observed: CE,BWT,200WT,400WT, 600WT,DOC,Genomics

BOOROOMOOKA PRESIDENT P22 PV

BRIDGEWATER P085 PV

BOOROOMOOKA GENIUS G120 PV
BOOROOMOOKA WIGANE K640 SV
BOOROOMOOKA WIGANE H67 #

ARDROSSAN EQUATOR A241 PV
MYOLA-APR G036 SV
MYOLA-APR 4117 #

TACE	CALVING EASE		BIRTH		GROWTH				
	Direct	Dtrs	Gest. Lgth	Birth Wt.	200 Wt.	400 Wt.	600 Wt.	MCW	Milk
EBV	-1.3	3.5	-6.7	4.4	57	97	125	104	22
Acc	57%	45%	73%	74%	73%	71%	74%	68%	60%
Perc	79	45	21	57	21	31	33	43	15
FERTILITY		CARCASE					OTHER		
Scrotal	D to Calv.	Carc. W.	EMA	Rib Fat	Rump Fat	RBV%	IMF%	NFI-F	Doc
2.8	-6.1	71	8.4	-1.1	-1.8	0.8	1.9	-0.13	16
66%	37%	61%	60%	61%	62%	55%	64%	51%	56%
23	15	34	25	73	76	28	55	15	67

Mid June 2023 TransTasman Angus Cattle Evaluation

Good all rounder. Mother is by famed Wattletop G188

Purchaser: _____ \$: _____

Semen Motility ✓

Scrotal Measurement	Semen Morphology
42CMM	87%

\$INDEX VALUES	
\$A	\$A-L
\$223	\$370

8.36/10
Classified by Alastair Rayner
5 Jun 2023
(Bull Selection criteria)

Breeder: **Bridgewater Angus**
Roger Flower
0407958224
james@bridgewateraustr.com.au

LOT 10

BRIDGEWATER PRESIDENT S012 PV

HBR

TUWHARETOA REGENT D145 PV
BOOROOMOOKA KINGY K9 PV
BOOROOMOOKA TRACEY A281 PV

G A R PROPHET SV
CLUNES CROSSING DUSTY M13 PV
CLUNES CROSSING GLORIOUS G1 SV

DOB: 13/7/2021
Society Ident: BON21S012
Genetic Status: AMFU,CAFU,DDFU,NHFU
Traits Observed: GL,BWT,200WT,400WT,600WT,DOC, Genomics

BOOROOMOOKA PRESIDENT P22 PV

BRIDGEWATER BARUNAH Q051 SV

BOOROOMOOKA GENIUS G120 PV
BOOROOMOOKA WIGANE K640 SV
BOOROOMOOKA WIGANE H67 #

KENNY'S CREEK REGENT G213 SV
WATTLETOP BARUNAH K111 #
WATTLETOP BARUNAH G56 #

TACE	CALVING EASE		BIRTH		GROWTH				
	Direct	Dtrs	Gest. Lgth	Birth Wt.	200 Wt.	400 Wt.	600 Wt.	MCW	Milk
EBV	3.3	3.9	-6.7	4.6	53	91	119	100	15
Acc	57%	45%	83%	74%	73%	71%	74%	68%	60%
Perc	46	41	21	62	35	47	45	50	67
FERTILITY		CARCASE					OTHER		
Scrotal	D to Calv.	Carc. W.	EMA	Rib Fat	Rump Fat	RBV%	IMF%	NFI-F	Doc
1.7	-5.9	69	4.6	-0.7	-2.5	0.5	2.3	0.09	18
66%	36%	61%	60%	62%	62%	55%	64%	51%	56%
64	19	41	70	64	85	47	43	38	57

Mid June 2023 TransTasman Angus Cattle Evaluation

Semen Motility ✓
Scrotal Measurement **36.5MM**
Semen Morphology **63.5%**

\$INDEX VALUES	
\$A	\$A-L
\$213	\$362

Purchaser: _____ \$: _____

LOT 11

BRIDGEWATER PRESIDENT S015 PV

APR

TUWHARETOA REGENT D145 PV
BOOROOMOOKA KINGY K9 PV
BOOROOMOOKA TRACEY A281 PV

ESSLEMONT LOTTO L3 PV
BRIDGEWATER LOTTO N010 PV
MURRAY STRATEGY G60 PV

DOB: 17/7/2021
Society Ident: BON21S015
Genetic Status: AMFU,CAFU,DDFU,NHFU
Traits Observed: GL,BWT,200WT,400WT,600WT,DOC,Genomics

BOOROOMOOKA PRESIDENT P22 PV

BRIDGEWATER Q111 SV

BOOROOMOOKA GENIUS G120 PV
BOOROOMOOKA WIGANE K640 SV
BOOROOMOOKA WIGANE H67 #

TRIPLE A GARSEN G32 SV
BRIDGEWATER MYOLA-APR K019 #
MYOLA-APR H69 SV

TACE	CALVING EASE		BIRTH		GROWTH				
	Direct	Dtrs	Gest. Lgth	Birth Wt.	200 Wt.	400 Wt.	600 Wt.	MCW	Milk
EBV	-3.9	-2.5	-3.1	5.4	54	95	131	126	14
Acc	55%	43%	82%	73%	72%	71%	73%	67%	59%
Perc	89	90	76	78	33	35	22	14	76
FERTILITY		CARCASE					OTHER		
Scrotal	D to Calv.	Carc. W.	EMA	Rib Fat	Rump Fat	RBV%	IMF%	NFI-F	Doc
1.3	-5.8	73	5.7	0	-0.6	0.4	3.1	-0.34	13
66%	35%	60%	59%	61%	61%	54%	64%	50%	53%
78	21	31	56	48	55	53	24	5	83

Mid June 2023 TransTasman Angus Cattle Evaluation

NFI in top 5% another large framed President son with a lot of grunt

Semen Motility ✓
Scrotal Measurement **40MM**
Semen Morphology **82%**

\$INDEX VALUES	
\$A	\$A-L
\$200	\$348

Purchaser: _____ \$: _____

7.96/10
Classified by Alastair Rayner
5 Jun 2023 (Bull Selection criteria)

Eyes, Pigment, Hooding, Front Legs (Front), Front Feet (Claws), Front Feet, Rear Legs (Side), Rear Legs (Rear), Rear Feet, Size and Shape, Muscle Score, Shoulders (Side profile).

Breeder: **Bridgewater Angus**
Roger Flower
0407958224
james@bridgewateraustr.com.au

LOT 12

BRIDGEWATER PRESIDENT S077 PV

APR

TUWHARETOA REGENT D145 PV
BOOROOMOOKA KINGY K9 PV
BOOROOMOOKA TRACEY A281 PV

TE MANIA BERKLEY B1 PV
TE MANIA EMPEROR E343 PV
TE MANIA LOWAN Z74 PV

DOB: 5/9/2021
Society Ident: BON21S077
Genetic Status: AMFU,CAFU,DDFU,NHFU
Traits Observed: CE,BWT,200WT,400WT,600WT,DOC,Genomics

BOOROOMOOKA PRESIDENT P22 PV

BRIDGEWATER P055 PV

BOOROOMOOKA GENIUS G120 PV
BOOROOMOOKA WIGANE K640 SV
BOOROOMOOKA WIGANE H67 #

LANDFALL FORCE F3 SV
MYOLA-APR J110 SV
MYOLA-APR 9232 #

TACE	CALVING EASE		BIRTH		GROWTH				
	Direct	Dtrs	Gest. Lgth	Birth Wt.	200 Wt.	400 Wt.	600 Wt.	MCW	Milk
EBV	-6.8	-0.5	-3.5	5.9	55	100	129	122	16
Acc	57%	47%	73%	74%	73%	71%	73%	68%	60%
Perc	95	81	70	85	26	23	25	18	60
FERTILITY		CARCASE					OTHER		
Scrotal	D to Calv.	Carc. W.	EMA	Rib Fat	Rump Fat	RBV%	IMF%	NFI-F	Doc
2.5	-5.8	75	8.4	1.2	0.9	0.8	1.7	-0.02	16
66%	39%	61%	60%	62%	62%	56%	64%	52%	56%
33	21	25	25	22	28	28	61	25	71

Mid June 2023 TransTasman Angus Cattle Evaluation

Purchaser: _____ \$: _____

Semen Motility ✓
Scrotal Measurement **41MM**
Semen Morphology **86%**

\$INDEX VALUES	
\$A	\$A-L
\$201	\$345

7.62/10
Classified by Alastair Rayner
5 Jun 2023 (Bull Selection criteria)

Eyes, Pigment, Hooding, Front Legs (Front), Front Feet (Claws), Front Feet, Rear Legs (Side), Rear Legs (Rear), Rear Feet, Size and Shape, Muscle Score, Shoulders (Side profile).

Breeder: **Bridgewater Angus**
Roger Flower
0407958224
james@bridgewateraustr.com.au

LOT 13

BRIDGEWATER PARATROOPER S113 SV

HBR

EF COMPLEMENT 8088 PV
EF COMMANDO 1366 PV
RIVERBEND YOUNG LUCY W1470 #

BON VIEW NEW DESIGN 1407 #
WATTLETOP 1407 F77 PV
WATTLETOP IDOLDEE C29 SV

DOB: 22/10/2021
Society Ident: BON21S113
Genetic Status: AMFU,CAFU,DDFU,NHFU
Traits Observed: GL,BWT,400WT,600WT,Genomics

MILLAH MURRAH PARATROOPER P15 PV

WATTLETOP BARUNAH L237 #

MILLAH MURRAH HIGHLANDER G18 SV
MILLAH MURRAH ELA M9 PV
MILLAH MURRAH ELA K127 SV

TUWHARETOA REGENT D145 PV
WATTLETOP J291 #
WATTLETOP BARUNAH UZ318 #

TACE	CALVING EASE		BIRTH		GROWTH				
	Direct	Dtrs	Gest. Lgth	Birth Wt.	200 Wt.	400 Wt.	600 Wt.	MCW	Milk
EBV	7.5	2.7	-8.1	1.8	45	79	97	77	21
Acc	62%	50%	83%	74%	74%	72%	74%	70%	63%
Perc	13	53	9	11	74	80	86	84	20
FERTILITY		CARCASE					OTHER		
Scrotal	D to Calv.	Carc. W.	EMA	Rib Fat	Rump Fat	RBV%	IMF%	NFI-F	Doc
2.8	-5.4	50	11.7	1.6	1.6	0.7	3.4	0.25	17
69%	37%	62%	61%	62%	63%	56%	64%	50%	55%
23	29	90	6	16	18	34	19	59	62

Mid June 2023 TransTasman Angus Cattle Evaluation

SUITABLE FOR HEIFERS Stylish Paratrooper heifer bull with exceptional carcass traits

Purchaser: _____ \$: _____

Semen Motility ✓
Scrotal Measurement **41.MM** Semen Morphology **92%**

\$INDEX VALUES	
\$A	\$A-L
\$230	\$371

8.05/10
Classified by Alastair Rayner
5 Jun 2023 (Bull Selection criteria)

Breeder: **Bridgewater Angus**
Roger Flower
0407958224
james@bridgewateraustr.com.au

LOT 14

BRIDGEWATER S112 PV

APR

BOOROOMOOKA UNDERTAKEN Y145 PV
RENNYLEA EDMUND E11 PV
LAWSONS HENRY VIII Y5 SV

A A R TEN X 7008 S A SV
V A R DISCOVERY 2240 PV
DEER VALLEY RITA 0308 #

DOB: 21/10/2021
Society Ident: BON21S112
Genetic Status: AMFU,CAFU,DDFU,NHFU
Traits Observed: GL,BWT,400WT,600WT,Genomics

RENNYLEA P559 PV

BRIDGEWATER P082 SV

H P C A INTENSITY #
RENNYLEA L507 PV
RENNYLEA H414 SV

HOOVER DAM #
BRIDGEWATER L035 #
MYOLA-APR H70 SV

TACE	CALVING EASE		BIRTH		GROWTH				
	Direct	Dtrs	Gest. Lgth	Birth Wt.	200 Wt.	400 Wt.	600 Wt.	MCW	Milk
EBV	2.2	4.9	-7.6	4.2	60	115	148	143	16
Acc	57%	48%	82%	72%	71%	69%	72%	67%	60%
Perc	56	30	12	53	11	4	5	4	58
FERTILITY		CARCASE					OTHER		
Scrotal	D to Calv.	Carc. W.	EMA	Rib Fat	Rump Fat	RBV%	IMF%	NFI-F	Doc
3.5	-3.5	84	9.3	-2.6	-6.1	1.4	1.8	-0.03	22
65%	40%	60%	59%	61%	61%	54%	64%	52%	45%
9	80	9	18	94	99	7	58	24	36

Mid June 2023 TransTasman Angus Cattle Evaluation

Top 5% 400/600D. Top 10% CWT and RBV

Purchaser: _____ \$: _____

Semen Motility ✓
Scrotal Measurement **40.5MM** Semen Morphology **81%**

\$INDEX VALUES	
\$A	\$A-L
\$207	\$388

7.84/10
Classified by Alastair Rayner
5 Jun 2023 (Bull Selection criteria)

Breeder: **Bridgewater Angus**
Roger Flower
0407958224
james@bridgewateraustr.com.au

LOT 15

BRIDGEWATER S107 SV

HBR

BOOROOMOOKA UNDERTAKEN Y145 PV
RENNYLEA EDMUND E11 PV
LAWSONS HENRY VIII Y5 SV

LAWSONS NADAL E398 SV
WATTLETOP NADAL H132 SV
WATTLETOP USUAL E314 #

DOB: 19/10/2021
Society Ident: BON21S107
Genetic Status: AMFU,CAFU,DDFU,NHFU
Traits Observed: GL,BWT,400WT,600WT,Genomics

RENNYLEA P559 PV

WATTLETOP ANN K311 #

H P C A INTENSITY #
RENNYLEA L507 PV
RENNYLEA H414 SV

TE MANIA AFRICA A217 PV
WATTLETOP ANN G183 PV
WATTLETOP ANN D155 SV

TACE	CALVING EASE		BIRTH		GROWTH				
	Direct	Dtrs	Gest. Lgth	Birth Wt.	200 Wt.	400 Wt.	600 Wt.	MCW	Milk
EBV	0.7	-0.1	-8.5	6.2	59	106	138	134	11
Acc	57%	48%	82%	73%	72%	69%	72%	67%	61%
Perc	67	78	7	89	13	13	12	8	90
FERTILITY		CARCASE					OTHER		
Scrotal	D to Calv.	Carc. W.	EMA	Rib Fat	Rump Fat	RBV%	IMF%	NFI-F	Doc
2.6	-4.3	79	7.3	-0.5	-2.5	0.6	2.5	0.33	23
66%	40%	61%	59%	61%	61%	54%	64%	52%	41%
29	60	16	36	60	85	40	38	69	36

Mid June 2023 TransTasman Angus Cattle Evaluation

Purchaser: _____ \$: _____

Semen Motility ✓
Scrotal Measurement **40.5MM** Semen Morphology **TBA**

\$INDEX VALUES	
\$A	\$A-L
\$205	\$371

7.86/10
Classified by Alastair Rayner
5 Jun 2023 (Bull Selection criteria)

Breeder: **Bridgewater Angus**
Roger Flower
0407958224
james@bridgewateraustr.com.au

LOT 16

BRIDGEWATER S104 SV

HBR

BOOROOMOOKA UNDERTAKEN Y145 PV
 RENNYLEA EDMUND E11 PV
 LAWSONS HENRY VIII Y5 SV

SILVEIRAS CONVERSION 8064 #
 WATTLETOP CONVERSION K155 SV
 WATTLETOP BARUNAH G316 #

DOB: 17/10/2021
 Society Ident: BON21S104
 Genetic Status:
 AMFU,CAFU,DDFU,NHFU
 Traits Observed:
 GL,BWT,400WT,600WT,
 Genomics

RENNYLEA P559 PV

WATTLETOP USUAL M499 #

H P C A INTENSITY #
 RENNYLEA L507 PV
 RENNYLEA H414 SV

TE MANIA INFINITY 04 379 AB #
 WATTLETOP USUAL F174 #
 WATTLETOP USUAL D97 #

TACE	CALVING EASE		BIRTH		GROWTH				
	Direct	Dtrs	Gest. Lgth	Birth Wt.	200 Wt.	400 Wt.	600 Wt.	MCW	Milk
EBV	-7.7	-4.9	-7.8	8	70	124	156	160	14
Acc	56%	47%	82%	72%	72%	69%	72%	67%	60%
Perc	96	96	11	99	2	1	3	1	73
FERTILITY		CARCASS					OTHER		
Scrotal	D to Calv.	Carc. W.	EMA	Rib Fat	Rump Fat	RBV%	IMF%	NFI-F	Doc
5	-4.9	91	6.7	-2.6	-5.3	1.1	2.3	0.29	18
66%	40%	60%	59%	61%	61%	54%	64%	52%	42%
1	42	4	43	94	99	14	43	64	61

7.81/10
 Classified by Alastair Rayner
 5 Jun 2023
 (Bull Selection criteria)

Scrotal Measurement: **46.5MM**
 Semen Morphology: **86%**

\$INDEX VALUES
 \$A: **\$204**
 \$A-L: **\$374**

Mid June 2023 TransTasman Angus Cattle Evaluation

Top 1% for 400D and top 3% for 200D/600D Top 4% CWT

Purchaser: _____ \$: _____

LOT 17

BRIDGEWATER PARATROOPER T007 SV

HBR

EF COMPLEMENT 8088 PV
 EF COMMANDO 1366 PV
 RIVERBEND YOUNG LUCY W1470 #

CONNELLY EARNAN 076E PV
 MUSGRAVE BIG SKY PV
 SAV PRIMROSE 7861 #

DOB: 30/7/2022
 Society Ident: BON22T007
 Genetic Status:
 AMFU,CAFU,DDFU,NHFU
 Traits Observed:
 GL,BWT,200WT,DOC,
 Genomics

MILLAH MURRAH PARATROOPER P15 PV

WATTLETOP BARUNAH M114 #

MILLAH MURRAH HIGHLANDER G18 SV
 MILLAH MURRAH ELA M9 PV
 MILLAH MURRAH ELA K127 SV

WATTLETOP CONNECTION D144 F371 #
 WATTLETOP J339 #
 WATTLETOP BARUNAH F158 SV

TACE	CALVING EASE		BIRTH		GROWTH				
	Direct	Dtrs	Gest. Lgth	Birth Wt.	200 Wt.	400 Wt.	600 Wt.	MCW	Milk
EBV	4.2	7.7	-10.8	3.2	57	93	116	73	25
Acc	62%	50%	83%	74%	74%	72%	73%	69%	62%
Perc	38	8	1	31	20	42	51	87	4
FERTILITY		CARCASS					OTHER		
Scrotal	D to Calv.	Carc. W.	EMA	Rib Fat	Rump Fat	RBV%	IMF%	NFI-F	Doc
1.4	-3.7	69	5.1	-1.6	-3	0.1	2.4	-0.12	14
69%	38%	62%	61%	63%	63%	57%	64%	50%	58%
75	76	41	64	82	89	71	41	16	81

Mid June 2023 TransTasman Angus Cattle Evaluation

SUITABLE FOR HEIFERS

Purchaser: _____ \$: _____

Semen Motility: **35MM**
 Scrotal Measurement: **35MM**

\$INDEX VALUES
 \$A: **\$218**
 \$A-L: **\$346**

LOT 18

BRIDGEWATER PARATROOPER T048 SV

HBR

EF COMPLEMENT 8088 PV
 EF COMMANDO 1366 PV
 RIVERBEND YOUNG LUCY W1470 #

TUWHARETOA REGENT D145 PV
 WATTLETOP J268 SV
 WATTLETOP DANDLOO D17 SV

DOB: 11/8/2022
 Society Ident: BON22T048
 Genetic Status:
 AMFU,CAFU,DDFU,NHFU
 Traits Observed:
 GL,BWT,200WT,DOC,
 Genomics

MILLAH MURRAH PARATROOPER P15 PV

WATTLETOP USUAL L388 #

MILLAH MURRAH HIGHLANDER G18 SV
 MILLAH MURRAH ELA M9 PV
 MILLAH MURRAH ELA K127 SV

LAWSONS NADAL E398 SV
 WATTLETOP USUAL H249 #
 WATTLETOP USUAL D244 #

TACE	CALVING EASE		BIRTH		GROWTH				
	Direct	Dtrs	Gest. Lgth	Birth Wt.	200 Wt.	400 Wt.	600 Wt.	MCW	Milk
EBV	-3.7	1.2	-4.1	7.7	66	111	139	136	18
Acc	63%	50%	83%	75%	74%	73%	73%	71%	64%
Perc	89	68	61	98	4	6	12	7	42
FERTILITY		CARCASS					OTHER		
Scrotal	D to Calv.	Carc. W.	EMA	Rib Fat	Rump Fat	RBV%	IMF%	NFI-F	Doc
1.9	-3.5	92	10.1	-3.9	-4.9	1.7	1.2	-0.17	21
69%	37%	63%	62%	63%	63%	57%	65%	51%	56%
56	80	3	13	99	98	3	75	12	42

Mid June 2023 TransTasman Angus Cattle Evaluation

An early maturing Paratrooper son with high growth and exceptional RBV

Purchaser: _____ \$: _____

Semen Motility: **32MM**
 Scrotal Measurement: **32MM**

\$INDEX VALUES
 \$A: **\$210**
 \$A-L: **\$364**

Top 15%



LOT 2 - BRIDGEWATER PRESIDENT S048 ^{SV}



LOT 25 - BRIDGEWATER NEW GROUND T005 ^{PV}



LOT 19

BRIDGEWATER HOMETOWN T022 SV

HBR

G A R EARLY BIRD #
G A R ASHLAND PV
CHAIR ROCK AMBUSH 1018 #

THOMAS UP RIVER 1614 PV
TRIPLE A LEGEND L2 SV
TRIPLE A GIGI G1 #

DOB: 6/8/2022
Society Ident: BON22T022
Genetic Status: AMFU,CAFU,DD1%,NHFU
Traits Observed: GL,BWT,200WT,DOC, Genomics

G A R HOME TOWN PV

G A R SURE FIRE SV
CHAIR ROCK SURE FIRE 6095 #
CHAIR ROCK PROGRESS 3005 #

TRIPLE A NATALIE N1 #

TRIPLE A ECHO E3 PV
TRIPLE A JACIE J40 SV
TRIPLE A F45 #

TACE	CALVING EASE		BIRTH		GROWTH				
	Direct	Dtrs	Gest. Lgth	Birth Wt.	200 Wt.	400 Wt.	600 Wt.	MCW	Milk
EBV	2.5	4	-6.5	4.4	58	105	129	103	19
Acc	57%	44%	83%	73%	73%	71%	71%	68%	62%
Perc	53	39	23	57	16	14	25	45	36
FERTILITY		CARCASE					OTHER		
Scrotal	D to Calv.	Carc. W.	EMA	Rib Fat	Rump Fat	RBV%	IMF%	NFI-F	Doc
2.1	-3.9	74	10.2	-3.6	-5.3	1.3	3.3	0.1	27
68%	34%	62%	62%	62%	62%	56%	65%	50%	53%
48	71	27	12	98	99	9	20	39	21

Mid June 2023 TransTasman Angus Cattle Evaluation

High growth Hometown son with plenty of growth and IMF to match

Purchaser: _____ \$: _____

Semen Motility ✓

Scrotal Measurement
35.5MM

\$INDEX VALUES

\$A	\$A-L
\$239	\$390

LOT 20

BRIDGEWATER PRESIDENT T029 PV

APR

TUWHARETOA REGENT D145 PV
BOOROOMOOKA KINGY K9 PV
BOOROOMOOKA TRACEY A281 PV

MOHNEN DENSITY 730 #
MOHNEN SOUTH DAKOTA 402 PV
MOHNEN JILT 539 #

DOB: 6/8/2022
Society Ident: BON22T029
Genetic Status: AMFU,CAFU,DDFU,NHFU
Traits Observed: GL,BWT,200WT,DOC, Genomics

BOOROOMOOKA PRESIDENT P22 PV

BOOROOMOOKA GENIUS G120 PV
BOOROOMOOKA WIGANE K640 SV
BOOROOMOOKA WIGANE H67 #

BRIDGEWATER BARUNAH N034 PV

MILLAH MURRAH NEUTRON E78 PV
MYOLA-APR G103 SV
MYOLA-APR 6443 #

TACE	CALVING EASE		BIRTH		GROWTH				
	Direct	Dtrs	Gest. Lgth	Birth Wt.	200 Wt.	400 Wt.	600 Wt.	MCW	Milk
EBV	5.6	6.1	-8.3	1.8	41	78	102	87	21
Acc	55%	43%	83%	73%	72%	70%	71%	67%	60%
Perc	26	19	8	11	86	82	80	71	21
FERTILITY		CARCASE					OTHER		
Scrotal	D to Calv.	Carc. W.	EMA	Rib Fat	Rump Fat	RBV%	IMF%	NFI-F	Doc
1.9	-6.8	51	0.6	2.8	1.9	-0.5	2.6	0.27	22
65%	34%	60%	58%	60%	60%	54%	63%	49%	54%
56	7	89	97	5	15	93	36	62	39

Mid June 2023 TransTasman Angus Cattle Evaluation

SUITABLE FOR HEIFERS

Purchaser: _____ \$: _____

Semen Motility ✓

Scrotal Measurement
36MM

\$INDEX VALUES

\$A	\$A-L
\$186	\$333

LOT 21

BRIDGEWATER PRESIDENT T031 SV

HBR

TUWHARETOA REGENT D145 PV
BOOROOMOOKA KINGY K9 PV
BOOROOMOOKA TRACEY A281 PV

TEHAMA TOTAL M811 #
SILVEIRAS M811 TOTAL 6103 #
SILVEIRA ELBA 3309 #

DOB: 7/8/2022
Society Ident: BON22T031
Genetic Status: AMFU,CAFU,DDFU,NHFU
Traits Observed: GL,BWT,200WT,DOC, Genomics

BOOROOMOOKA PRESIDENT P22 PV

BOOROOMOOKA GENIUS G120 PV
BOOROOMOOKA WIGANE K640 SV
BOOROOMOOKA WIGANE H67 #

WATTLETOP ANN H225 #

BT EQUATOR 395M #
WATTLETOP ANN C260 #
WATTLETOP ANN Z28 #

TACE	CALVING EASE		BIRTH		GROWTH				
	Direct	Dtrs	Gest. Lgth	Birth Wt.	200 Wt.	400 Wt.	600 Wt.	MCW	Milk
EBV	-4.5	-6.8	-6.1	4.1	50	90	115	111	23
Acc	58%	46%	83%	74%	73%	71%	72%	69%	61%
Perc	91	99	28	51	50	52	55	31	9
FERTILITY		CARCASE					OTHER		
Scrotal	D to Calv.	Carc. W.	EMA	Rib Fat	Rump Fat	RBV%	IMF%	NFI-F	Doc
2.5	-4.7	63	10.4	-1.2	-2.1	1.1	2.2	0.3	22
67%	36%	61%	59%	61%	61%	55%	63%	50%	52%
33	48	58	11	75	80	14	46	66	37

Mid June 2023 TransTasman Angus Cattle Evaluation

Purchaser: _____ \$: _____

Semen Motility ✓

Scrotal Measurement
36MM

\$INDEX VALUES

\$A	\$A-L
\$176	\$303

LOT 22

BRIDGEWATER PRESIDENT T072 PV

APR

TUWHARETOA REGENT D145 PV
BOOROOMOOKA KINGY K9 PV
BOOROOMOOKA TRACEY A281 PV

MOHNEN DENSITY 730 #
MOHNEN SOUTH DAKOTA 402 PV
MOHNEN JILT 539 #

DOB: 26/8/2022
Society Id: BON22T072
Genetic Status: AMFU,CAFU,DDFU,NHFU
Traits Observed: BWT,200WT,DOC, Genomics

BOOROOMOOKA PRESIDENT P22 PV

BRIDGEWATER N046 PV

BOOROOMOOKA GENIUS G120 PV
BOOROOMOOKA WIGANE K640 SV
BOOROOMOOKA WIGANE H67 #

ARDROSSAN EQUATOR A241 PV
MYOLA-APR G036 SV
MYOLA-APR 4117 #

TACE	CALVING EASE		BIRTH		GROWTH				
	Direct	Dtrs	Gest. Lgth	Birth Wt.	200 Wt.	400 Wt.	600 Wt.	MCW	Milk
EBV	0.8	1.7	-6.9	5.3	60	109	153	154	21
Acc	57%	45%	73%	73%	73%	70%	71%	67%	60%
Perc	66	63	18	76	11	9	3	2	18
FERTILITY		CARCASE					OTHER		
Scrotal	D to Calv.	Carc. W.	EMA	Rib Fat	Rump Fat	RBY%	IMF%	NFI-F	Doc
2.7	-5.3	82	5.2	-1.6	-3	0.6	2.8	-0.03	5
66%	35%	60%	58%	60%	60%	54%	63%	49%	54%
26	32	11	62	82	89	40	31	24	97

Mid June 2023 TransTasman Angus Cattle Evaluation

High indexing President son

Purchaser: _____ \$: _____

Semen Motility ✓
Scrotal Measurement
34MM

\$INDEX VALUES	
\$A	\$A-L
\$208	\$393

LOT 23

BRIDGEWATER NEW GROUND T002 PV

APR

V A R DISCOVERY 2240 PV
LANDFALL NEW GROUND N90 PV
LANDFALL ELSA L88 PV

EF COMMANDO 1366 PV
BALDRIDGE COMPASS C041 SV
BALDRIDGE ISABEL Y69 #

DOB: 25/7/2022
Society Id: BON22T002
Genetic Status: AMFU,CAFU,DDFU,NHFU
Traits Observed: BWT,200WT,DOC, Genomics

SHACORRAHDALU NEW GROUND R17 PV

BRIDGEWATER Q017 PV

EF COMPLEMENT 8088 PV
SHACORRAHDALU BLACKBIRD N178 PV
SHACORRAHDALU FOCUS BLACKBIRD F2 PV

AYRVALE BARTEL E7 PV
MYOLA-APR H47 SV
MYOLA-APR 30096 #

TACE	CALVING EASE		BIRTH		GROWTH				
	Direct	Dtrs	Gest. Lgth	Birth Wt.	200 Wt.	400 Wt.	600 Wt.	MCW	Milk
EBV	6.3	6.4	-6.3	3.7	52	98	125	92	23
Acc	55%	45%	70%	72%	72%	69%	70%	67%	60%
Perc	20	16	26	41	39	27	33	64	10
FERTILITY		CARCASE					OTHER		
Scrotal	D to Calv.	Carc. W.	EMA	Rib Fat	Rump Fat	RBY%	IMF%	NFI-F	Doc
4.6	-5.4	63	8.5	0.1	0.6	0.7	1.7	0.35	30
65%	35%	59%	57%	59%	59%	52%	62%	49%	51%
2	29	60	24	45	33	34	61	72	14

Mid June 2023 TransTasman Angus Cattle Evaluation

SUITABLE FOR HEIFERS

Purchaser: _____ \$: _____

Semen Motility ✓
Scrotal Measurement
38.5MM

\$INDEX VALUES	
\$A	\$A-L
\$237	\$396

LOT 24

BRIDGEWATER NEW GROUND T004 PV

APR

V A R DISCOVERY 2240 PV
LANDFALL NEW GROUND N90 PV
LANDFALL ELSA L88 PV

A A R TEN X 7008 S A SV
V A R DISCOVERY 2240 PV
DEER VALLEY RITA 0308 #

DOB: 29/7/2022
Society Id: BON22T004
Genetic Status: AMFU,CAFU,DDFU,NHFU
Traits Observed: BWT,200WT,DOC, Genomics

SHACORRAHDALU NEW GROUND R17 PV

BRIDGEWATER P067 SV

EF COMPLEMENT 8088 PV
SHACORRAHDALU BLACKBIRD N178 PV
SHACORRAHDALU FOCUS BLACKBIRD F2 PV

BALD BLAIR FRANKLIN H109 PV
BRIDGEWATER MYOLA-APR K098 #
MYOLA-APR G016 SV

TACE	CALVING EASE		BIRTH		GROWTH				
	Direct	Dtrs	Gest. Lgth	Birth Wt.	200 Wt.	400 Wt.	600 Wt.	MCW	Milk
EBV	7.7	8.7	-7.4	2	58	102	139	120	19
Acc	56%	45%	70%	72%	72%	69%	70%	67%	61%
Perc	12	4	14	13	18	19	11	20	33
FERTILITY		CARCASE					OTHER		
Scrotal	D to Calv.	Carc. W.	EMA	Rib Fat	Rump Fat	RBY%	IMF%	NFI-F	Doc
5	-5	77	7.9	-1.1	-3.6	0.3	3.5	0.31	31
65%	36%	60%	58%	60%	60%	53%	63%	50%	51%
1	40	21	29	73	94	60	17	67	12

Mid June 2023 TransTasman Angus Cattle Evaluation

SUITABLE FOR HEIFERS

Great Calving Ease, good growth and IMF

Purchaser: _____ \$: _____

Semen Motility ✓
Scrotal Measurement
35.5MM

\$INDEX VALUES	
\$A	\$A-L
\$229	\$412

LOT 25

BRIDGEWATER NEW GROUND T005 PV

HBR

V A R DISCOVERY 2240 PV
 LANDFALL NEW GROUND N90 PV
 LANDFALL ELSA L88 PV

TE MANIA FOE F734 SV
 GRANITE RIDGE KAISER K26 SV
 GRANITE RIDGE SUPREME F158 SV

DOB: 29/7/2022
 Society Id: BON22T005
 Genetic Status:
 AMFU,CAFU,DDFU,NHFU
 Traits Observed:
 BWT,200WT,DOC,
 Genomics

SHACORRAHDALU NEW GROUND R17 PV

AYRVALE QUEEN VICTORIA Q1 PV

EF COMPLEMENT 8088 PV
 SHACORRAHDALU BLACKBIRD N178 PV
 SHACORRAHDALU FOCUS BLACKBIRD F2 PV

CARABAR DOCKLANDS D62 PV
 AYRVALE KATE K17 PV
 AYRVALE EASE E3 PV

TACE	CALVING EASE		BIRTH		GROWTH				
	Direct	Dtrs	Gest. Lgth	Birth Wt.	200 Wt.	400 Wt.	600 Wt.	MCW	Milk
EBV	10.4	7	-5.5	1.6	50	92	108	72	21
Acc	56%	45%	68%	71%	72%	69%	69%	67%	60%
Perc	2	12	37	9	52	46	69	89	23
FERTILITY		CARCASE					OTHER		
Scrotal	D to Calv.	Carc. W.	EMA	Rib Fat	Rump Fat	RBY%	IMF%	NFI-F	Doc
4.7	-7.4	55	16.6	4	4.5	1.3	1	0.7	29
65%	35%	59%	58%	59%	60%	53%	62%	49%	52%
2	3	80	1	2	2	9	80	95	16

Mid June 2023 TransTasman Angus Cattle Evaluation

SUITABLE FOR HEIFERS

A standout yearling well rounded EBVs with Phenotype to match!
 EMA 16.6 Rib/P8 top 2%

Purchaser: _____ \$: _____

Semen Motility ✓

Scrotal Measurement
38.5MM

\$INDEX VALUES

\$A	\$A-L
\$283	\$443

LOT 26

BRIDGEWATER NEW GROUND T057 PV

HBR

V A R DISCOVERY 2240 PV
 LANDFALL NEW GROUND N90 PV
 LANDFALL ELSA L88 PV

G A R MOMENTUM PV
 LAWSONS MAGNIFICENT M638 SV
 LAWSONS NZ09104 K1057 #

DOB: 15/8/2022
 Society Id: BON22T057
 Genetic Status:
 AMFU,CAFU,DDFU,NHFU
 Traits Observed:
 BWT,200WT,DOC,
 Genomics

SHACORRAHDALU NEW GROUND R17 PV

BRIDGEWATER Q022 PV

EF COMPLEMENT 8088 PV
 SHACORRAHDALU BLACKBIRD N178 PV
 SHACORRAHDALU FOCUS BLACKBIRD F2 PV

WATTLETOP FRANKLIN G188 SV
 WATTLETOP N10 SV
 WATTLETOP BARUNAH L239 #

TACE	CALVING EASE		BIRTH		GROWTH				
	Direct	Dtrs	Gest. Lgth	Birth Wt.	200 Wt.	400 Wt.	600 Wt.	MCW	Milk
EBV	9.6	11.1	-7	0.9	54	100	125	105	25
Acc	54%	43%	67%	71%	71%	68%	68%	66%	58%
Perc	4	1	17	5	33	22	32	41	5
FERTILITY		CARCASE					OTHER		
Scrotal	D to Calv.	Carc. W.	EMA	Rib Fat	Rump Fat	RBY%	IMF%	NFI-F	Doc
4.7	-4.3	69	6.5	-2.6	-3.3	0.5	3.1	0.49	24
63%	33%	58%	56%	58%	58%	50%	61%	48%	49%
2	60	40	46	94	92	47	24	84	30

Mid June 2023 TransTasman Angus Cattle Evaluation

SUITABLE FOR HEIFERS

Calving Ease in top 4% Heifer bull

Purchaser: _____ \$: _____

Semen Motility ✓

Scrotal Measurement
33MM

\$INDEX VALUES

\$A	\$A-L
\$220	\$393

LOT 27

BRIDGEWATER SPECIAL T061 SV

HBR

EF COMPLEMENT 8088 PV
 EF COMMANDO 1366 PV
 RIVERBEND YOUNG LUCY W1470 #

WATTLETOP FRANKLIN G188 SV
 WATTLETOP FRANKLIN G188 K23 SV
 WATTLETOP USUAL H77 #

DOB: 17/8/2022
 Society Id: BON22T061
 Genetic Status:
 AMFU,CAFU,DDFU,NHFU
 Traits Observed:
 GL,BWT,200WT,DOC,
 Genomics

BALDRIDGE 38 SPECIAL PV

WATTLETOP USUAL M505 #

STYLES UPGRADE J59 #
 BALDRIDGE ISABEL Y69 #
 BALDRIDGE ISABEL T935 #

KENNY'S CREEK REGENT G213 SV
 WATTLETOP USUAL K346 #
 WATTLETOP USUAL E69 #

TACE	CALVING EASE		BIRTH		GROWTH				
	Direct	Dtrs	Gest. Lgth	Birth Wt.	200 Wt.	400 Wt.	600 Wt.	MCW	Milk
EBV	-2.4	0.5	-1.6	6.2	69	118	159	142	26
Acc	60%	48%	82%	74%	74%	72%	73%	70%	64%
Perc	84	74	90	89	2	2	2	5	4
FERTILITY		CARCASE					OTHER		
Scrotal	D to Calv.	Carc. W.	EMA	Rib Fat	Rump Fat	RBY%	IMF%	NFI-F	Doc
3.7	-2.8	86	8.8	-4	-6.1	1	1.9	-0.2	21
68%	37%	63%	62%	63%	62%	56%	65%	50%	55%
7	90	7	21	99	99	18	55	10	41

Mid June 2023 TransTasman Angus Cattle Evaluation

All growth in top 2%. CWT top 7% and great foot score

Purchaser: _____ \$: _____

Semen Motility ✓

Scrotal Measurement
35.5MM

\$INDEX VALUES

\$A	\$A-L
\$206	\$367

LOT 28

BRIDGEWATER QUEST T024 PV

APR

H P C A INTENSITY #
RENNYLEA L519 PV
RENNYLEA H414 SV

TC FRANKLIN 619 #
WATTLETOP FRANKLIN G188 SV
WATTLETOP BARUNAH E295 DV

DOB: 6/8/2022
Society Ident: BON22T024
Genetic Status:
AMFU,CAFU,DDFU,NHFU
Traits Observed:
GL,BWT,200WT,DOC,
Genomics

PATHFINDER QUEST Q1357 PV

BRIDGEWATER P051 PV

CARABAR DOCKLANDS D62 PV
PATHFINDER ULALIA M18 SV
PATHFINDER ULALIA K592 #

AYRVALE BARTEL E7 PV
MYOLA-APR H47 SV
MYOLA-APR 30096 #

TACE	CALVING EASE		BIRTH		GROWTH				
	Direct	Dtrs	Gest. Lgth	Birth Wt.	200 Wt.	400 Wt.	600 Wt.	MCW	Milk
EBV	5.1	4.6	-5.7	4.2	71	125	169	153	24
Acc	56%	46%	82%	73%	72%	69%	69%	67%	60%
Perc	30	33	34	53	1	1	1	2	7
FERTILITY		CARCASE					OTHER		
Scrotal	D to Calv.	Carc. W.	EMA	Rib Fat	Rump Fat	RBV%	IMF%	NFI-F	Doc
3.2	-4.1	103	6.8	-3.5	-5.8	1.5	0.5	-0.25	33
64%	37%	60%	58%	59%	60%	53%	62%	50%	52%
14	66	1	42	98	99	5	89	8	9

Mid June 2023 TransTasman Angus Cattle Evaluation

He was the heaviest calf at weaning 486Kg. Impressive CWT of 102. Growth in top 1%

Semen Motility ✓

Scrotal Measurement
35.5MM

\$INDEX VALUES

\$A	\$A-L
\$237	\$433

Purchaser: _____ \$: _____

LOT 29

BRIDGEWATER MAGNIFICENT S073 SV

HBR

G A R PROGRESS SV
G A R MOMENTUM PV
G A R BIG EYE 1770 #

BT CROSSOVER 758N #
SILVEIRAS CONVERSION 8064 #
EXG SARAS DREAM S609 R3 #

DOB: 31/8/2021
Society Ident: BON21S073
Genetic Status:
AMFU,CAFU,DDFU,NHFU
Traits Observed:
CE,BWT,200WT,400WT,
600WT,DOC,Genomics

LAWSONS MAGNIFICENT M638 SV

WATTLETOP ANN L279 #

LAWSONS ANGUS NZ 09104 #
LAWSONS NZ09104 K1057 #
LAWSONS EVIDENT H404 #

TC FRANKLIN 619 #
WATTLETOP ANN G172 #
WATTLETOP ANN E172 #

TACE	CALVING EASE		BIRTH		GROWTH				
	Direct	Dtrs	Gest. Lgth	Birth Wt.	200 Wt.	400 Wt.	600 Wt.	MCW	Milk
EBV	-5.3	-3.9	-1.1	5.3	53	89	113	98	19
Acc	58%	49%	71%	73%	72%	70%	73%	69%	63%
Perc	93	94	94	76	36	53	58	53	38
FERTILITY		CARCASE					OTHER		
Scrotal	D to Calv.	Carc. W.	EMA	Rib Fat	Rump Fat	RBV%	IMF%	NFI-F	Doc
2.1	-1.9	58	10.9	-2.5	-3.5	0.5	4.3	0.09	12
66%	39%	61%	58%	60%	60%	54%	63%	51%	46%
48	96	74	9	93	93	47	8	38	86

Mid June 2023 TransTasman Angus Cattle Evaluation

IMF and EMA top 10%

Semen Motility ✓

Scrotal Measurement
39.5MM

Semen Morphology
85%

\$INDEX VALUES

\$A	\$A-L
\$174	\$282

Purchaser: _____ \$: _____

6.85/10
Classified by Alastair Rayner
5 Jun 2023
(Bull Selection criteria)

Breeder: **Bridgewater Angus**
Roger Flower
0407958224
james@bridgewateraust.com.au

LOT 30

BRIDGEWATER MAGNIFICENT S066 SV

HBR

G A R PROGRESS SV
G A R MOMENTUM PV
G A R BIG EYE 1770 #

TUWHARETOA REGENT D145 PV
WATTLETOP J268 SV
WATTLETOP DANDLOO D17 SV

DOB: 26/8/2021
Society Ident: BON21S066
Genetic Status:
AMFU,CAFU,DDFU,NHFU
Traits Observed:
CE,BWT,200WT,400WT,
600WT,DOC,Genomics

LAWSONS MAGNIFICENT M638 SV

WATTLETOP DANDLOO L404 #

LAWSONS ANGUS NZ 09104 #
LAWSONS NZ09104 K1057 #
LAWSONS EVIDENT H404 #

SILVEIRAS M811 TOTAL 6103 #
WATTLETOP DANDLOO H62 #
WATTLETOP DANDLOO F104 #

TACE	CALVING EASE		BIRTH		GROWTH				
	Direct	Dtrs	Gest. Lgth	Birth Wt.	200 Wt.	400 Wt.	600 Wt.	MCW	Milk
EBV	-3.1	4.5	-1.7	4.2	52	90	113	93	20
Acc	56%	46%	71%	73%	73%	71%	74%	69%	63%
Perc	87	34	90	53	39	51	59	62	28
FERTILITY		CARCASE					OTHER		
Scrotal	D to Calv.	Carc. W.	EMA	Rib Fat	Rump Fat	RBV%	IMF%	NFI-F	Doc
2	-3.3	75	11.4	-4.2	-4.4	1.4	3.7	0.21	16
67%	37%	61%	58%	60%	60%	53%	63%	50%	43%
52	83	24	7	99	97	7	14	54	70

Mid June 2023 TransTasman Angus Cattle Evaluation

Big framed with plenty of stretch IMF 3.7 EMA 11.4

Semen Motility ✓

Scrotal Measurement
38MM

Semen Morphology
82%

\$INDEX VALUES

\$A	\$A-L
\$208	\$331

Purchaser: _____ \$: _____

7.18/10
Classified by Alastair Rayner
5 Jun 2023
(Bull Selection criteria)

Breeder: **Bridgewater Angus**
Roger Flower
0407958224
james@bridgewateraust.com.au

LOT 31

BRIDGEWATER PRESIDENT S089 PV

HBR

TUWHARETOA REGENT D145 PV
BOOROOMOOKA KINGY K9 PV
BOOROOMOOKA TRACEY A281 PV

AYRVALE GENERAL G18 PV
GLENDOCH KALLI K115 SV
GLENDOCH FLOWER H90 #

DOB: 16/9/2021
Society Ident: BON21S089
Genetic Status: AMFU,CAFU,DDFU,NH2%
Traits Observed: CE,BWT,200WT(x2),400WT,600WT,DOC,Genomics

BOOROOMOOKA PRESIDENT P22 PV

BRIDGEWATER BARUNAH P040 SV

BOOROOMOOKA GENIUS G120 PV
BOOROOMOOKA WIGANE K640 SV
BOOROOMOOKA WIGANE H67 #

WATTLETOP CONVERSION J39 SV
WATTLETOP BARUNAH L344 #
WATTLETOP BARUNAH H335 #

TACE	CALVING EASE		BIRTH		GROWTH				
	Direct	Dtrs	Gest. Lgth	Birth Wt.	200 Wt.	400 Wt.	600 Wt.	MCW	Milk
EBV	-1.1	-2.2	-7.1	5.9	56	101	132	114	19
Acc	56%	44%	72%	73%	73%	70%	71%	68%	59%
Perc	78	89	16	85	22	20	21	26	35
FERTILITY		CARCASE					OTHER		
Scrotal	D to Calv.	Carc. W.	EMA	Rib Fat	Rump Fat	RBV%	IMF%	NFI-F	Doc
1.9	-7	79	12.9	-2.1	-3	1.8	1.7	0.1	8
66%	34%	60%	58%	60%	61%	53%	63%	49%	54%
56	5	16	3	89	89	2	61	39	95

Mid June 2023 TransTasman Angus Cattle Evaluation

Purchaser: _____ \$: _____

Semen Motility ✓
Scrotal Measurement **40.5MM**
Semen Morphology **91%**

\$INDEX VALUES	
\$A	\$A-L
\$245	\$399

7.30/10
Classified by Alastair Rayner
5 Jun 2023 (Bull Selection criteria)

Breeder: **Bridgewater Angus**
Roger Flower
0407958224
james@bridgewateraustr.com.au

LOT 32

BRIDGEWATER PRESIDENT S123 PV

HBR

TUWHARETOA REGENT D145 PV
BOOROOMOOKA KINGY K9 PV
BOOROOMOOKA TRACEY A281 PV

WERNER WESTWARD 357 #
WATTLETOP WESTWARD L45 SV
WATTLETOP J79 #

DOB: 3/11/2021
Society Ident: BON21S123
Genetic Status: AMFU,CAFU,DDFU,NHFU
Traits Observed: BWT,400WT,600WT,Genomics

BOOROOMOOKA PRESIDENT P22 PV

BRIDGEWATER BARUNAH N018 SV

BOOROOMOOKA GENIUS G120 PV
BOOROOMOOKA WIGANE K640 SV
BOOROOMOOKA WIGANE H67 #

KENNY'S CREEK REGENT G213 SV
WATTLETOP BARUNAH K111 #
WATTLETOP BARUNAH G56 #

TACE	CALVING EASE		BIRTH		GROWTH				
	Direct	Dtrs	Gest. Lgth	Birth Wt.	200 Wt.	400 Wt.	600 Wt.	MCW	Milk
EBV	2.9	2.3	-7.5	4.1	50	91	122	100	22
Acc	55%	43%	72%	74%	73%	71%	74%	68%	60%
Perc	50	57	13	51	51	48	39	49	17
FERTILITY		CARCASE					OTHER		
Scrotal	D to Calv.	Carc. W.	EMA	Rib Fat	Rump Fat	RBV%	IMF%	NFI-F	Doc
1.3	-4.6	68	6.5	0.6	1.1	-0.1	2.8	0.01	12
67%	35%	61%	59%	61%	61%	54%	64%	50%	52%
78	51	44	46	34	25	81	31	28	86

Mid June 2023 TransTasman Angus Cattle Evaluation

Purchaser: _____ \$: _____

Semen Motility ✓
Scrotal Measurement **38.5MM**
Semen Morphology **87%**

\$INDEX VALUES	
\$A	\$A-L
\$205	\$349

6.84/10
Classified by Alastair Rayner
5 Jun 2023 (Bull Selection criteria)

Breeder: **Bridgewater Angus**
Roger Flower
0407958224
james@bridgewateraustr.com.au

LOT 33

BRIDGEWATER PARATROOPER S118 SV

APR

EF COMPLEMENT 8088 PV
EF COMMANDO 1366 PV
RIVERBEND YOUNG LUCY W1470 #

TUWHARETOA REGENT D145 PV
WATTLETOP REGENT J83 PV
WATTLETOP DANDLOO F2 #

DOB: 25/10/2021
Society Ident: BON21S118
Genetic Status: AMFU,CAFU,DDFU,NHFU
Traits Observed: GL,BWT,200WT,400WT,600WT,DOC,Genomics

MILLAH MURRAH PARATROOPER P15 PV

WATTLETOP L472 #

MILLAH MURRAH HIGHLANDER G18 SV
MILLAH MURRAH ELA M9 PV
MILLAH MURRAH ELA K127 SV

WATTLETOP 1407 B46 SV
WATTLETOP D307 #
WATTLETOP A90 #

TACE	CALVING EASE		BIRTH		GROWTH				
	Direct	Dtrs	Gest. Lgth	Birth Wt.	200 Wt.	400 Wt.	600 Wt.	MCW	Milk
EBV	5.4	2.7	-2.5	3	51	96	120	97	23
Acc	61%	49%	83%	75%	74%	72%	74%	69%	63%
Perc	28	53	83	27	46	33	44	54	11
FERTILITY		CARCASE					OTHER		
Scrotal	D to Calv.	Carc. W.	EMA	Rib Fat	Rump Fat	RBV%	IMF%	NFI-F	Doc
3	-5.2	68	12.4	0.3	0.4	1	2.6	0.48	16
70%	37%	63%	62%	63%	63%	57%	65%	50%	55%
18	34	43	4	40	36	18	36	84	71

Mid June 2023 TransTasman Angus Cattle Evaluation

SUITABLE FOR HEIFERS What a combination! EMA 12.4 + Rib/P8/RBY
Purchaser: _____ \$: _____

Semen Motility ✓
Scrotal Measurement **39.5MM**
Semen Morphology **80%**

\$INDEX VALUES	
\$A	\$A-L
\$242	\$398

7.64/10
Classified by Alastair Rayner
5 Jun 2023 (Bull Selection criteria)

Breeder: **Bridgewater Angus**
Roger Flower
0407958224
james@bridgewateraustr.com.au

LOT 34

BRIDGEWATER S115 SV

HBR

BOOROOMOOKA UNDERTAKEN Y145 PV
 RENNYLEA EDMUND E11 PV
 LAWSONS HENRY VIII Y5 SV

SILVEIRAS CONVERSION 8064 #
 WATTLETOP CONVERSION J39 SV
 WATTLETOP BARUNAH G314 #

DOB: 24/10/2021
 Society Ident: BON21S115
 Genetic Status:
 AMFU,CAFU,DDFU,NH3%
 Traits Observed:
 GL,BWT,200WT,400WT,
 600WT,DOC,Genomics

RENNYLEA P559 PV

WATTLETOP BARUNAH L344 #

H P C A INTENSITY #
 RENNYLEA L507 PV
 RENNYLEA H414 SV

WATTLETOP YOGI F224 SV
 WATTLETOP BARUNAH H335 #
 WATTLETOP BARUNAH D264 SV

TACE	CALVING EASE		BIRTH		GROWTH				
	Direct	Dtrs	Gest. Lgth	Birth Wt.	200 Wt.	400 Wt.	600 Wt.	MCW	Milk
EBV	-0.7	-1.5	-6.1	5.2	56	101	138	131	19
Acc	55%	46%	82%	73%	71%	69%	71%	68%	61%
Perc	76	86	28	74	22	21	13	10	34
FERTILITY		CARCASE					OTHER		
Scrotal	D to Calv.	Carc. W.	EMA	Rib Fat	Rump Fat	RBV%	IMF%	NFI-F	Doc
3	-5.4	82	4.8	-2.3	-3.9	0.9	2	-0.1	21
65%	38%	60%	58%	60%	61%	53%	63%	51%	42%
18	29	11	67	91	95	23	52	17	44

Mid June 2023 TransTasman Angus Cattle Evaluation

Semen Motility ✓
 Scrotal Measurement **39MM** Semen Morphology **93%**

\$INDEX VALUES	
\$A	\$A-L
\$192	\$351

Purchaser: _____ \$: _____

7.53/10
 Classified by Alastair Rayner
 5 Jun 2023 (Bull Selection criteria)

Eyes, Pigment, Hooding, Front Legs (Front), Front Feet (Claws), Front Feet, Rear Legs (Side), Rear Legs (Rear), Rear Feet, Size and Shape, Muscle Score, Shoulders (Side profile).

Breeder: **Bridgewater Angus**
 Roger Flower
 0407958224
 james@bridgewateraustr.com.au

LOT 35

BRIDGEWATER PARATROOPER S114 PV

HBR

EF COMPLEMENT 8088 PV
 EF COMMANDO 1366 PV
 RIVERBEND YOUNG LUCY W1470 #

TE MANIA EMPEROR E343 PV
 MURRAY EMPEROR L52 SV
 MURRAY BLACK LABEL G49 SV

DOB: 24/10/2021
 Society Ident: BON21S114
 Genetic Status:
 AMFU,CAFU,DDFU,NHFU
 Traits Observed:
 GL,BWT,400WT,600WT,
 Genomics

MILLAH MURRAH PARATROOPER P15 PV

BRIDGEWATER OBJECTIVE N023 PV

MILLAH MURRAH HIGHLANDER G18 SV
 MILLAH MURRAH ELA M9 PV
 MILLAH MURRAH ELA K127 SV

S S OBJECTIVE T510 0T26 #
 MURRAY OBJECTIVE G93 PV
 LAWSONS GAR NEW DESIGN 1407 A1173 SV

TACE	CALVING EASE		BIRTH		GROWTH				
	Direct	Dtrs	Gest. Lgth	Birth Wt.	200 Wt.	400 Wt.	600 Wt.	MCW	Milk
EBV	5.4	3.8	-6.2	4.6	65	113	145	116	23
Acc	62%	49%	82%	74%	74%	72%	74%	69%	62%
Perc	28	42	27	62	4	5	7	24	11
FERTILITY		CARCASE					OTHER		
Scrotal	D to Calv.	Carc. W.	EMA	Rib Fat	Rump Fat	RBV%	IMF%	NFI-F	Doc
3.1	-5	90	0.2	-0.4	-1.2	-0.2	0.8	0.02	28
69%	38%	63%	63%	64%	64%	58%	66%	52%	58%
16	40	4	98	57	66	85	84	29	17

Mid June 2023 TransTasman Angus Cattle Evaluation

Growth top 10% and CWT 90

Semen Motility ✓
 Scrotal Measurement **39MM** Semen Morphology **81%**

\$INDEX VALUES	
\$A	\$A-L
\$218	\$387

Purchaser: _____ \$: _____

7.26/10
 Classified by Alastair Rayner
 5 Jun 2023 (Bull Selection criteria)

Eyes, Pigment, Hooding, Front Legs (Front), Front Feet (Claws), Front Feet, Rear Legs (Side), Rear Legs (Rear), Rear Feet, Size and Shape, Muscle Score, Shoulders (Side profile).

Breeder: **Bridgewater Angus**
 Roger Flower
 0407958224
 james@bridgewateraustr.com.au

LOT 36

BRIDGEWATER PARATROOPER S105 PV

HBR

EF COMPLEMENT 8088 PV
 EF COMMANDO 1366 PV
 RIVERBEND YOUNG LUCY W1470 #

AYRVALE GENERAL G18 PV
 GLENOCH KALLI K115 SV
 GLENOCH FLOWER H90 #

DOB: 19/10/2021
 Society Ident: BON21S105
 Genetic Status:
 AMFU,CAFU,DDFU,NHFU
 Traits Observed:
 GL,BWT,400WT,600WT,
 Genomics

MILLAH MURRAH PARATROOPER P15 PV

BRIDGEWATER USUAL P037 SV

MILLAH MURRAH HIGHLANDER G18 SV
 MILLAH MURRAH ELA M9 PV
 MILLAH MURRAH ELA K127 SV

WATTLETOP J268 SV
 WATTLETOP USUAL L388 #
 WATTLETOP USUAL H249 #

TACE	CALVING EASE		BIRTH		GROWTH				
	Direct	Dtrs	Gest. Lgth	Birth Wt.	200 Wt.	400 Wt.	600 Wt.	MCW	Milk
EBV	8.4	8.2	-8.7	3.6	54	97	123	111	17
Acc	62%	49%	81%	74%	73%	71%	74%	68%	61%
Perc	8	6	6	39	30	30	38	31	52
FERTILITY		CARCASE					OTHER		
Scrotal	D to Calv.	Carc. W.	EMA	Rib Fat	Rump Fat	RBV%	IMF%	NFI-F	Doc
2.6	-6	81	7.5	-3.3	-3.8	1.6	0.4	-0.02	14
68%	35%	61%	60%	61%	62%	55%	63%	49%	54%
29	17	14	34	98	95	4	91	25	79

Mid June 2023 TransTasman Angus Cattle Evaluation

SUITABLE FOR HEIFERS Great Calving Ease top 8% RBV Top 4%

Semen Motility ✓
 Scrotal Measurement **39.5MM** Semen Morphology **82%**

\$INDEX VALUES	
\$A	\$A-L
\$221	\$395

Purchaser: _____ \$: _____

6.66/10
 Classified by Alastair Rayner
 5 Jun 2023 (Bull Selection criteria)

Eyes, Pigment, Hooding, Front Legs (Front), Front Feet (Claws), Front Feet, Rear Legs (Side), Rear Legs (Rear), Rear Feet, Size and Shape, Muscle Score, Shoulders (Side profile).

Breeder: **Bridgewater Angus**
 Roger Flower
 0407958224
 james@bridgewateraustr.com.au

LOT 37

BRIDGEWATER PRESIDENT S011 PV

HBR

TUWHARETOA REGENT D145 PV
BOOROOMOOKA KINGY K9 PV
BOOROOMOOKA TRACEY A281 PV

PATHFINDER GENERAL K7 SV
BOORAGUL GENERAL N5 SV
BOORAGUL QUEEN K44 SV

DOB: 12/7/2021
Society Ident: BON21S011
Genetic Status: AMFU,CAFU,DDFU,NHFU
Traits Observed: GL,BWT,200WT,400WT,600WT,DOC,Genomics

BOOROOMOOKA PRESIDENT P22 PV

BRIDGEWATER Q105 PV

BOOROOMOOKA GENIUS G120 PV
BOOROOMOOKA WIGANE K640 SV
BOOROOMOOKA WIGANE H67 #

S S OBJECTIVE T510 0T26 #
MURRAY OBJECTIVE G93 PV
LAWSONS GAR NEW DESIGN 1407 A1173 SV

TACE	CALVING EASE		BIRTH		GROWTH				
	Direct	Dtrs	Gest. Lgth	Birth Wt.	200 Wt.	400 Wt.	600 Wt.	MCW	Milk
EBV	-6.2	-3.2	-4.9	8.1	69	116	156	152	11
Acc	58%	46%	82%	74%	73%	71%	74%	68%	61%
Perc	94	93	47	99	2	3	2	2	92
FERTILITY		CARCASE					OTHER		
Scrotal	D to Calv.	Carc. W.	EMA	Rib Fat	Rump Fat	RBV%	IMF%	NFI-F	Doc
1.6	-6	98	8.1	-1.3	-1.6	0.9	2.1	-0.13	16
67%	37%	61%	60%	62%	62%	55%	65%	52%	56%
68	17	2	27	77	73	23	49	15	69

Mid June 2023 TransTasman Angus Cattle Evaluation

All growth in top 3%

Purchaser: _____ \$: _____

Semen Motility ✓
Scrotal Measurement **38.5MM** Semen Morphology **74.50%**

\$INDEX VALUES	
\$A	\$A-L
\$234	\$403

7.22/10
Classified by Alastair Rayner
5 Jun 2023 (Bull Selection criteria)

Breeder: **Bridgewater Angus**
Roger Flower
0407958224
james@bridgewateraustr.com.au

LOT 38

BRIDGEWATER PARATROOPER S038 SV

HBR

EF COMPLEMENT 8088 PV
EF COMMANDO 1366 PV
RIVERBEND YOUNG LUCY W1470 #

TUWHARETOA REGENT D145 PV
WATTLETOP J268 SV
WATTLETOP DANDLOO D17 SV

DOB: 6/8/2021
Society Ident: BON21S038
Genetic Status: AMFU,CAFU,DDFU,NHFU
Traits Observed: GL,CE,BWT,200WT,400WT,600WT,DOC,Genomics

MILLAH MURRAH PARATROOPER P15 PV

WATTLETOP USUAL L388 #

MILLAH MURRAH HIGHLANDER G18 SV
MILLAH MURRAH ELA M9 PV
MILLAH MURRAH ELA K127 SV

LAWSONS NADAL E398 SV
WATTLETOP USUAL H249 #
WATTLETOP USUAL D244 #

TACE	CALVING EASE		BIRTH		GROWTH				
	Direct	Dtrs	Gest. Lgth	Birth Wt.	200 Wt.	400 Wt.	600 Wt.	MCW	Milk
EBV	-6.2	4.4	-5.8	6.8	65	112	141	134	16
Acc	62%	49%	83%	75%	74%	73%	75%	70%	64%
Perc	94	35	33	94	4	5	10	8	56
FERTILITY		CARCASE					OTHER		
Scrotal	D to Calv.	Carc. W.	EMA	Rib Fat	Rump Fat	RBV%	IMF%	NFI-F	Doc
1.2	-5.1	94	8.9	-3.2	-4.3	1.1	2.1	-0.17	21
69%	37%	63%	62%	63%	63%	57%	65%	51%	56%
81	37	3	21	97	97	14	49	12	42

Mid June 2023 TransTasman Angus Cattle Evaluation

Top 10% Growth and CWT 94

Purchaser: _____ \$: _____

Semen Motility ✓
Scrotal Measurement **39MM** Semen Morphology **73%**

\$INDEX VALUES	
\$A	\$A-L
\$220	\$376

7.23/10
Classified by Alastair Rayner
5 Jun 2023 (Bull Selection criteria)

Breeder: **Bridgewater Angus**
Roger Flower
0407958224
james@bridgewateraustr.com.au

LOT 39

BRIDGEWATER PRESIDENT S079 PV

APR

TUWHARETOA REGENT D145 PV
BOOROOMOOKA KINGY K9 PV
BOOROOMOOKA TRACEY A281 PV

TC FRANKLIN 619 #
WATTLETOP FRANKLIN G188 SV
WATTLETOP BARUNAH E295 DV

DOB: 6/9/2021
Society Ident: BON21S079
Genetic Status: AMFU,CAFU,DDFU,NHFU
Traits Observed: BWT,200WT,400WT,600WT,DOC,Genomics

BOOROOMOOKA PRESIDENT P22 PV

BRIDGEWATER P071 PV

BOOROOMOOKA GENIUS G120 PV
BOOROOMOOKA WIGANE K640 SV
BOOROOMOOKA WIGANE H67 #

ARDROSSAN DIRECTION D196 PV
MYOLA-APR G011 SV
MYOLA-APR 1921 #

TACE	CALVING EASE		BIRTH		GROWTH				
	Direct	Dtrs	Gest. Lgth	Birth Wt.	200 Wt.	400 Wt.	600 Wt.	MCW	Milk
EBV	-4.5	-2.7	-5.4	5.8	65	110	137	142	14
Acc	57%	45%	73%	74%	73%	71%	73%	67%	60%
Perc	91	91	39	84	5	8	14	5	78
FERTILITY		CARCASE					OTHER		
Scrotal	D to Calv.	Carc. W.	EMA	Rib Fat	Rump Fat	RBV%	IMF%	NFI-F	Doc
2.5	-5	83	5.4	1.5	1.3	0.3	1	-0.07	20
66%	36%	61%	59%	61%	61%	54%	63%	51%	56%
33	40	10	60	17	22	60	80	20	49

Mid June 2023 TransTasman Angus Cattle Evaluation

Dam by famed Wattletop G188. Great Growth

Purchaser: _____ \$: _____

Semen Motility ✓
Scrotal Measurement **41MM** Semen Morphology **74%**

\$INDEX VALUES	
\$A	\$A-L
\$199	\$361

7.40/10
Classified by Alastair Rayner
5 Jun 2023 (Bull Selection criteria)

Breeder: **Bridgewater Angus**
Roger Flower
0407958224
james@bridgewateraustr.com.au

LOT 40

BRIDGEWATER S090 PV

HBR

TUWHARETOA REGENT D145 PV
BOOROOMOOKA KINGY K9 PV
BOOROOMOOKA TRACEY A281 PV

WATTLETOP SITZ 458N E111 SV
WATTLETOP E111 M205 SV
WATTLETOP BARUNAH K191 #

DOB: 17/9/2021
Society Ident: BON21S090
Genetic Status: AMFU,CAFU,DDFU,NHFU
Traits Observed: CE,200WT,400WT,600WT,DOC,Genomics

BOOROOMOOKA PRESIDENT P22 PV

BRIDGEWATER BARUNAH P041 SV

BOOROOMOOKA GENIUS G120 PV
BOOROOMOOKA WIGANE K640 SV
BOOROOMOOKA WIGANE H67 #

MUSGRAVE BIG SKY PV
WATTLETOP BARUNAH M114 #
WATTLETOP J339 #

TACE	CALVING EASE		BIRTH		GROWTH				
	Direct	Dtrs	Gest. Lgth	Birth Wt.	200 Wt.	400 Wt.	600 Wt.	MCW	Milk
EBV	-8	0.1	-4.4	7	56	92	112	98	10
Acc	55%	43%	72%	72%	73%	71%	72%	68%	60%
Perc	97	77	56	95	24	45	61	52	93
FERTILITY		CARCASS					OTHER		
Scrotal	D to Calv.	Carc. W.	EMA	Rib Fat	Rump Fat	RBV%	IMF%	NFI-F	Doc
1	-5.6	67	7.4	-0.9	-2	1.3	1.2	-0.03	26
66%	35%	61%	59%	61%	61%	54%	63%	50%	53%
86	25	47	35	69	79	9	75	24	24

Mid June 2023 TransTasman Angus Cattle Evaluation

Purchaser: _____ \$: _____

Semen Motility ✓
Scrotal Measurement **37.5MM** Semen Morphology **92%**

\$INDEX VALUES	
\$A	\$A-L
\$198	\$315

7.15/10
Classified by Alastair Rayner
5 Jun 2023 (Bull Selection criteria)

Breeder: **Bridgewater Angus**
Roger Flower
0407958224
james@bridgewateraustr.com.au

LOT 41

BRIDGEWATER PRESIDENT S085 PV

APR

TUWHARETOA REGENT D145 PV
BOOROOMOOKA KINGY K9 PV
BOOROOMOOKA TRACEY A281 PV

TE MANIA BERKLEY B1 PV
TE MANIA EMPEROR E343 PV
TE MANIA LOWAN Z74 PV

DOB: 8/9/2021
Society Ident: BON21S085
Genetic Status: AMFU,CAFU,DDFU,NHFU
Traits Observed: CE,BWT,200WT,400WT,600WT,DOC,Genomics

BOOROOMOOKA PRESIDENT P22 PV

BRIDGEWATER P092 SV

BOOROOMOOKA GENIUS G120 PV
BOOROOMOOKA WIGANE K640 SV
BOOROOMOOKA WIGANE H67 #

WATTLETOP AFRICA G134 #
MYOLA-APR J043 #
MYOLA-APR G123 SV

TACE	CALVING EASE		BIRTH		GROWTH				
	Direct	Dtrs	Gest. Lgth	Birth Wt.	200 Wt.	400 Wt.	600 Wt.	MCW	Milk
EBV	-6.1	-3.2	-5.6	6.9	53	94	127	120	15
Acc	58%	48%	73%	74%	73%	71%	73%	68%	60%
Perc	94	93	36	94	35	38	30	19	67
FERTILITY		CARCASS					OTHER		
Scrotal	D to Calv.	Carc. W.	EMA	Rib Fat	Rump Fat	RBV%	IMF%	NFI-F	Doc
1.3	-5.5	73	9.1	-0.5	-0.9	1.1	1.5	0.45	16
66%	39%	61%	60%	62%	62%	56%	64%	52%	56%
78	27	29	19	60	60	14	67	81	72

Mid June 2023 TransTasman Angus Cattle Evaluation

Well muscled President son EMA 9.1

Purchaser: _____ \$: _____

Semen Motility ✓
Scrotal Measurement **40.5MM** Semen Morphology **94%**

\$INDEX VALUES	
\$A	\$A-L
\$190	\$326

6.94/10
Classified by Alastair Rayner
5 Jun 2023 (Bull Selection criteria)

Breeder: **Bridgewater Angus**
Roger Flower
0407958224
james@bridgewateraustr.com.au

LOT 42

BRIDGEWATER PRESIDENT S093 PV

APR

TUWHARETOA REGENT D145 PV
BOOROOMOOKA KINGY K9 PV
BOOROOMOOKA TRACEY A281 PV

G A R PROGRESS SV
G A R MOMENTUM PV
G A R BIG EYE 1770 #

DOB: 28/9/2021
Society Ident: BON21S093
Genetic Status: AMFU,CAFU,DDFU,NHFU
Traits Observed: BWT,200WT,400WT,600WT,DOC,Genomics

BOOROOMOOKA PRESIDENT P22 PV

BRIDGEWATER P088 PV

BOOROOMOOKA GENIUS G120 PV
BOOROOMOOKA WIGANE K640 SV
BOOROOMOOKA WIGANE H67 #

BALD BLAIR DEBONAIR D34 SV
MYOLA-APR G173 SV
MYOLA-APR 5155 #

TACE	CALVING EASE		BIRTH		GROWTH				
	Direct	Dtrs	Gest. Lgth	Birth Wt.	200 Wt.	400 Wt.	600 Wt.	MCW	Milk
EBV	3.6	1.8	-2.5	1.1	33	63	79	52	20
Acc	59%	48%	73%	73%	73%	70%	73%	68%	61%
Perc	43	62	83	6	97	98	98	98	24
FERTILITY		CARCASS					OTHER		
Scrotal	D to Calv.	Carc. W.	EMA	Rib Fat	Rump Fat	RBV%	IMF%	NFI-F	Doc
1.2	-5.7	37	3.4	2	1.4	-0.8	5.7	0.57	27
66%	37%	61%	60%	61%	62%	55%	64%	51%	55%
81	22	99	83	12	20	97	2	90	20

Mid June 2023 TransTasman Angus Cattle Evaluation

SUITABLE FOR HEIFERS High marbling heifer bull top 2% of the breed

Purchaser: _____ \$: _____

Semen Motility ✓
Scrotal Measurement **37.5MM** Semen Morphology **77.50%**

\$INDEX VALUES	
\$A	\$A-L
\$185	\$291

7.09/10
Classified by Alastair Rayner
5 Jun 2023 (Bull Selection criteria)

Breeder: **Bridgewater Angus**
Roger Flower
0407958224
james@bridgewateraustr.com.au

LOT 43

BRIDGEWATER PRESIDENT S121 PV

HBR

TUWHARETOA REGENT D145 PV
BOOROOMOOKA KINGY K9 PV
BOOROOMOOKA TRACEY A281 PV

G A R PROPHET SV
BALDRIDGE BEAST MODE B074 PV
BALDRIDGE ISABEL Y69 #

DOB: 28/10/2021
Society Ident: BON21S121
Genetic Status: AMFU,CAFU,DDFU,NHFU
Traits Observed: BWT,400WT,600WT, Genomics

BOOROOMOOKA PRESIDENT P22 PV

BRIDGEWATER BARA Q097 PV

BOOROOMOOKA GENIUS G120 PV
BOOROOMOOKA WIGANE K640 SV
BOOROOMOOKA WIGANE H67 #

RENNYLEA 458N ELVIS E307 SV
KENNY'S CREEK BARA H261 SV
KENNY'S CREEK BARA F118 #

TACE	CALVING EASE		BIRTH		GROWTH				
	Direct	Dtrs	Gest. Lgth	Birth Wt.	200 Wt.	400 Wt.	600 Wt.	MCW	Milk
EBV	2.4	3.8	-3.9	4.4	62	107	142	143	15
Acc	57%	46%	71%	71%	72%	70%	73%	68%	60%
Perc	54	42	64	57	8	10	9	4	69
FERTILITY		CARCASE					OTHER		
Scrotal	D to Calv.	Carc. W.	EMA	Rib Fat	Rump Fat	RBV%	IMF%	NFI-F	Doc
2.9	-5.2	77	8	-1.4	-2.1	0.5	2.8	0.18	24
66%	37%	61%	59%	61%	61%	55%	63%	50%	55%
21	34	20	28	79	80	47	31	50	31

Mid June 2023 TransTasman Angus Cattle Evaluation

A young bull born late October.
Great Pedigree out of a Beastmode heifer Good Growth

Purchaser: _____ \$: _____

Semen Motility ✓
Scrotal Measurement **39MM** Semen Morphology **83%**

\$INDEX VALUES	
\$A	\$A-L
\$224	\$409

6.05/10
Classified by Alastair Rayner
5 Jun 2023 (Bull Selection criteria)

Breeder: **BridgeWater Angus**
Roger Flower
0407958224
james@bridgewateraustr.com.au

LOT 44

BRIDGEWATER PRESIDENT S122 PV

HBR

TUWHARETOA REGENT D145 PV
BOOROOMOOKA KINGY K9 PV
BOOROOMOOKA TRACEY A281 PV

A A R TEN X 7008 S A SV
V A R DISCOVERY 2240 PV
DEER VALLEY RITA 0308 #

DOB: 1/11/2021
Society Ident: BON21S122
Genetic Status: AMFU,CAFU,DDFU,NHFU
Traits Observed: BWT,400WT,600WT, Genomics

BOOROOMOOKA PRESIDENT P22 PV

BRIDGEWATER ANN P019 SV

BOOROOMOOKA GENIUS G120 PV
BOOROOMOOKA WIGANE K640 SV
BOOROOMOOKA WIGANE H67 #

TUWHARETOA REGENT D145 PV
WATTLETOP ANN K217 #
WATTLETOP ANN F45 SV

TACE	CALVING EASE		BIRTH		GROWTH				
	Direct	Dtrs	Gest. Lgth	Birth Wt.	200 Wt.	400 Wt.	600 Wt.	MCW	Milk
EBV	1.1	-6.1	-4	4.6	50	97	133	128	21
Acc	57%	46%	74%	74%	73%	71%	74%	68%	61%
Perc	64	98	62	62	50	30	18	12	22
FERTILITY		CARCASE					OTHER		
Scrotal	D to Calv.	Carc. W.	EMA	Rib Fat	Rump Fat	RBV%	IMF%	NFI-F	Doc
3.1	-6.3	72	5.9	-0.2	-0.3	-0.2	4.8	0.36	17
66%	38%	62%	60%	62%	62%	56%	65%	52%	56%
16	12	34	53	52	49	85	4	73	62

Mid June 2023 TransTasman Angus Cattle Evaluation

18 month old sound well muscled President son. Top 4% IMF

Purchaser: _____ \$: _____

Semen Motility ✓
Scrotal Measurement **37MM** Semen Morphology **78%**

\$INDEX VALUES	
\$A	\$A-L
\$205	\$367

6.77/10
Classified by Alastair Rayner
5 Jun 2023 (Bull Selection criteria)

Breeder: **BridgeWater Angus**
Roger Flower
0407958224
james@bridgewateraustr.com.au

LOT 45

BRIDGEWATER PRESIDENT S128 PV

APR

TUWHARETOA REGENT D145 PV
BOOROOMOOKA KINGY K9 PV
BOOROOMOOKA TRACEY A281 PV

PATHFINDER GENESIS G357 PV
BRIDGEWATER GENESIS M1 PV
MYOLA-APR H67 SV

DOB: 9/11/2021
Society Ident: BON21S128
Genetic Status: AMFU,CAFU,DDFU,NHFU
Traits Observed: BWT,400WT,600WT, Genomics

BOOROOMOOKA PRESIDENT P22 PV

BRIDGEWATER P110 SV

BOOROOMOOKA GENIUS G120 PV
BOOROOMOOKA WIGANE K640 SV
BOOROOMOOKA WIGANE H67 #

BRAVEHEART OF STERN SV
BRIDGEWATER MYOLA-APR K067 #
MYOLA-APR G138 SV

TACE	CALVING EASE		BIRTH		GROWTH				
	Direct	Dtrs	Gest. Lgth	Birth Wt.	200 Wt.	400 Wt.	600 Wt.	MCW	Milk
EBV	-1	-5.5	-7.3	4.4	57	96	124	87	19
Acc	55%	43%	71%	73%	73%	70%	73%	67%	59%
Perc	77	97	15	57	18	32	35	71	31
FERTILITY		CARCASE					OTHER		
Scrotal	D to Calv.	Carc. W.	EMA	Rib Fat	Rump Fat	RBV%	IMF%	NFI-F	Doc
3.3	-6	69	10.1	2.2	2.7	-0.1	3.8	0.75	22
66%	35%	60%	58%	60%	61%	53%	63%	50%	51%
12	17	42	13	10	8	81	13	96	37

Mid June 2023 TransTasman Angus Cattle Evaluation

18 month old with the complete package CWT EMA RIB P8 IMF

Purchaser: _____ \$: _____

Semen Motility ✓
Scrotal Measurement **37.5MM** Semen Morphology **89%**

\$INDEX VALUES	
\$A	\$A-L
\$248	\$380

6.94/10
Classified by Alastair Rayner
5 Jun 2023 (Bull Selection criteria)

Breeder: **BridgeWater Angus**
Roger Flower
0407958224
james@bridgewateraustr.com.au

LOT 46

BRIDGEWATER PRESIDENT S130 PV

APR

TUWHARETOA REGENT D145 PV
BOOROOMOOKA KINGY K9 PV
BOOROOMOOKA TRACEY A281 PV

AYRVALE BARTEL E7 PV
SEAFORTH BARTEL J119 PV
KANSAS RITA G90 SV

DOB: 12/11/2021
Society Ident: BON21S130
Genetic Status: AMFU,CAFU,DDFU,NHFU
Traits Observed: BWT,400WT,600WT, Genomics

BOOROOMOOKA PRESIDENT P22 PV

BRIDGEWATER N100 SV

BOOROOMOOKA GENIUS G120 PV
BOOROOMOOKA WIGANE K640 SV
BOOROOMOOKA WIGANE H67 #

44 STIMULUS 8523 #
BRIDGEWATER MYOLA-APR K080 #
MYOLA-APR G057 SV

TACE	CALVING EASE		BIRTH		GROWTH				
	Direct	Dtrs	Gest. Lgth	Birth Wt.	200 Wt.	400 Wt.	600 Wt.	MCW	Milk
EBV	0.8	3.3	-6.4	6	59	99	129	111	19
Acc	55%	43%	71%	73%	72%	70%	73%	67%	59%
Perc	66	47	24	86	15	25	26	32	30
FERTILITY		CARCASE					OTHER		
Scrotal	D to Calv.	Carc. W.	EMA	Rib Fat	Rump Fat	RBV%	IMF%	NFI-F	Doc
1.8	-4.3	74	7.7	-0.4	-1	0.3	2.9	0.02	17
66%	35%	60%	58%	60%	60%	53%	63%	49%	51%
60	60	28	31	57	62	60	28	29	67

Mid June 2023 TransTasman Angus Cattle Evaluation

Purchaser: _____ \$: _____

Semen Motility ✓
Scrotal Measurement **37.5MM** Semen Morphology **83%**

\$INDEX VALUES	
\$A	\$A-L
\$221	\$371

7.32/10
Classified by Alastair Rayner
5 Jun 2023 (Bull Selection criteria)

Eyes, Pigment, Hooding, Front Legs (Front), Front Feet (Claws), Front Feet, Rear Legs (Side), Rear Legs (Rear), Rear Feet, Size and Shape, Muscle Score, Shoulders (Side profile).

Breeder: **Bridgewater Angus**
Roger Flower
0407958224
james@bridgewateraustr.com.au

LOT 47

BRIDGEWATER ENHANCE S014 PV

APR

SYDGEN GOOGOL #
SYDGEN EXCEED 3223 PV
SYDGEN FOREVER LADY 1255 #

TUWHARETOA REGENT D145 PV
WATTLETOP REGENT L78 PV
WATTLETOP ANN F40 SV

DOB: 14/7/2021
Society Ident: BON21S014
Genetic Status: AMFU,CAFU,DDFU,NHFU
Traits Observed: GL,BWT,200WT,400WT, 600WT,DOC,Genomics

SYDGEN ENHANCE SV

BRIDGEWATER Q081 SV

SYDGEN LIBERTY GA 8627 #
SYDGEN RITA 2618 #
FOX RUN RITA 9308 #

PATHFINDER GENESIS G357 PV
BRIDGEWATER M015 #
MYOLA-APR G039 SV

TACE	CALVING EASE		BIRTH		GROWTH				
	Direct	Dtrs	Gest. Lgth	Birth Wt.	200 Wt.	400 Wt.	600 Wt.	MCW	Milk
EBV	-0.5	-3.1	-2.9	6.7	63	108	146	111	21
Acc	62%	53%	82%	74%	73%	71%	72%	70%	66%
Perc	75	92	78	93	6	10	6	32	20
FERTILITY		CARCASE					OTHER		
Scrotal	D to Calv.	Carc. W.	EMA	Rib Fat	Rump Fat	RBV%	IMF%	NFI-F	Doc
3.4	-4.9	92	8.4	-2	-2.3	0.5	2.3	-0.12	34
69%	40%	64%	63%	64%	64%	59%	66%	53%	56%
11	42	3	25	88	82	47	43	16	7

Mid June 2023 TransTasman Angus Cattle Evaluation

Used in our commercial herd. Good all rounder

Purchaser: _____ \$: _____

Semen Motility ✓
Scrotal Measurement **39MM** Semen Morphology **TBA**

\$INDEX VALUES	
\$A	\$A-L
\$231	\$378

8.09/10
Classified by Alastair Rayner
5 Jun 2023 (Bull Selection criteria)

Eyes, Pigment, Hooding, Front Legs (Front), Front Feet (Claws), Front Feet, Rear Legs (Side), Rear Legs (Rear), Rear Feet, Size and Shape, Muscle Score, Shoulders (Side profile).

Breeder: **Bridgewater Angus**
Roger Flower
0407958224
james@bridgewateraustr.com.au

LOT 48

BRIDGEWATER PRESIDENT S086 PV

HBR

TUWHARETOA REGENT D145 PV
BOOROOMOOKA KINGY K9 PV
BOOROOMOOKA TRACEY A281 PV

WERNER WESTWARD 357 #
GLENAVON L114 SV
GLENAVON J221 #

DOB: 9/9/2021
Society Ident: BON21S086
Genetic Status: AMFU,CAFU,DDFU,NHFU
Traits Observed: CE,BWT,200WT,400WT, 600WT,DOC,Genomics

BOOROOMOOKA PRESIDENT P22 PV

BRIDGEWATER P039 SV

BOOROOMOOKA GENIUS G120 PV
BOOROOMOOKA WIGANE K640 SV
BOOROOMOOKA WIGANE H67 #

S A F STRATEGY 9015 #
MURRAY STRATEGY G60 PV
LAWSONS GAR NEW DESIGN 1407 A1173 SV

TACE	CALVING EASE		BIRTH		GROWTH				
	Direct	Dtrs	Gest. Lgth	Birth Wt.	200 Wt.	400 Wt.	600 Wt.	MCW	Milk
EBV	2.9	1.1	-5.2	4.6	61	104	141	111	25
Acc	57%	45%	71%	73%	73%	70%	71%	68%	60%
Perc	50	69	42	62	10	14	10	32	5
FERTILITY		CARCASE					OTHER		
Scrotal	D to Calv.	Carc. W.	EMA	Rib Fat	Rump Fat	RBV%	IMF%	NFI-F	Doc
3.2	-5.9	89	4.4	-0.2	-1.5	0.7	1.5	-0.06	23
66%	35%	60%	59%	61%	61%	54%	63%	50%	55%
14	19	5	72	52	71	34	67	21	34

Mid June 2023 TransTasman Angus Cattle Evaluation

Used in our commercial herd. His mother is the biggest cow in the herd

Purchaser: _____ \$: _____

Semen Motility ✓
Scrotal Measurement **40.5MM** Semen Morphology **86%**

\$INDEX VALUES	
\$A	\$A-L
\$233	\$392

REFERENCE SIRES



LAWSONS MAGNIFICENT M638 - VLYM638



SHACORRAHDALU NEW GROUND R17



SYDGEN ENHANCE - USA18170041

Reference Sire Name	CE Dir %	CE Dtrs %	Gest. Lgth	Birth Wt.	200 Day Wt.	400 Day Wt.	600 Day Wt.	Mat Cow Wt.	Milk	SS	D to Calv.	Carc. Wt.	EMA	Rib Fat	RBV %	IMF %	NFI-F
BALDRIDGE 38 SPECIAL ^{PV}	+8.3	+6.2	-5.5	+2.5	+63	+109	+142	+113	+23	+2.8	-4.9	+70	+7.2	+0.6	-0.2	+2.7	+0.31
BOOROOMOOKA PRESIDENT P22 ^{PV}	-0.4	+0.6	-7.0	+4.9	+56	+97	+129	+113	+20	+2.1	-6.9	+73	+7.9	+0.9	+0.3	+2.9	+0.25
G A R HOME TOWN ^{PV}	+6.8	+5.6	-6.7	+2.3	+58	+101	+119	+78	+15	+1.5	-4.8	+73	+14.3	-2.8	+1.1	+5.0	+0.11
LAWSONS MAGNIFICENT M638 ^{SV}	+3.6	+4.6	-1.7	+2.6	+51	+88	+118	+86	+27	+0.9	-0.8	+70	+8.0	-3.5	+0.3	+5.4	+0.33
MILLAH MURRAH PARATROOPER P15	+8.4	+7.5	-9.1	+3.2	+67	+117	+145	+119	+24	+3.1	-4.7	+91	+6.7	-1.4	+0.4	+2.3	+0.10
PATHFINDER QUEST Q1357 ^{PV}	+1.5	-1.5	-5.8	+4.7	+63	+115	+158	+160	+18	+2.2	-5.6	+86	+7.2	-0.3	+0.6	+3.6	+0.43
RENNYLEA P559 ^{PV}	+4.1	+4.6	-7.9	+4.2	+54	+103	+132	+114	+16	+2.6	-6.0	+73	+6.4	+1.5	+0.2	+3.5	+0.20
SHACORRAHDALU NEW GROUND R17	+8.3	+10.2	-5.3	+1.6	+56	+104	+132	+110	+15	+6.7	-5.4	+67	+15.0	+1.1	+1.4	+1.7	+0.77
SYDGEN ENHANCE ^{SV}	+5.8	-1.5	-3.6	+3.2	+60	+108	+142	+109	+19	+2.9	-2.9	+76	+7.8	-2.2	+0.0	+3.1	-0.66



MILLAH MURRAH PARATROOPER P15



BALDRIDGE 38 SPECIAL



BOOROOMOOKA PRESIDENT P22 - NGMP22



UNDERSTANDING THE TRANSTASMAN ANGUS CATTLE EVALUATION (TACE)

WHAT IS THE TRANSTASMAN ANGUS CATTLE EVALUATION?

The TransTasman Angus Cattle Evaluation is the genetic evaluation program adopted by Angus Australia for Angus and Angus influenced beef cattle. The TransTasman Angus Cattle Evaluation uses Best Linear Unbiased Prediction (BLUP) technology to produce Estimated Breeding Values (EBVs) of recorded cattle for a range of important production traits (e.g. weight, carcase, fertility).

The TransTasman Angus Cattle Evaluation is an international genetic evaluation and includes pedigree, performance and genomic information from the Angus Australia and Angus New Zealand databases, along with selected information from the American and Canadian Angus Associations.

The TransTasman Angus Cattle Evaluation utilises a range of genetic evaluation software, including the internationally recognised BLUPF90 family of programs, and BREEDPLAN beef genetic evaluation analytical software, as developed by the Animal Genetics and Breeding Unit (AGBU), a joint institute of NSW Agriculture and the University of New England, and Meat and Livestock Australia Limited (MLA).

WHAT IS AN EBV?

An animal's breeding value can be defined as its genetic merit for each trait. While it is not possible to determine an animal's true breeding value, it is possible to estimate it. These estimates of an animal's true breeding value are called EBVs (Estimated Breeding Values).

EBVs are expressed as the difference between an individual animal's genetics and a historical genetic level (i.e. group of animals) within the TACE genetic evaluation, and are reported in the units in which the measurements are taken.

USING EBVS TO COMPARE THE GENETICS OF TWO ANIMALS

TACE EBVs can be used to estimate the expected difference in the genetics of two animals, with the expected difference equating to half the difference in the EBVs of the animals, all other things being equal (e.g. they are joined to the same animal/s).

For example, a bull with a 200 Day Growth EBV of +60 would be expected to produce progeny that are, on average, 10 kg heavier at 200 days of age than a bull with a 200 Day Growth EBV of +40 kg (i.e. 20 kg difference between the sire's EBVs, then halved as the sire only contributes half the genetics).

Or similarly, a bull with an IMF EBV of +3.0 would be expected to produce progeny with on average, 1% more intramuscular fat in a 400 kg carcase than a bull with a IMF EBV of +1.0 (i.e. 2% difference between the sire's EBVs, then halved as the sire only contributes half the genetics).

USING EBVS TO BENCHMARK AN ANIMAL'S GENETICS WITH THE BREED

EBVs can also be used to benchmark an animal's genetics relative to the genetics of other Angus or Angus infused animals in Australia.

To benchmark an animal's genetics relative to other Angus animals, an animal's EBV can be compared to the EBV reference tables, which provide:

- the breed average EBV
- the percentile bands table

The current breed average EBV is listed on the bottom of each page in this publication, while the current EBV reference tables are included at the end of these introductory notes.

For easy reference, the percentile band in which an animal's EBV ranks is also published in association with the EBV.

CONSIDERING ACCURACY

An accuracy value is published with each EBV, and is usually displayed as a percentage value immediately below the EBV.

The accuracy value provides an indication of the reliability of the EBV in estimating the animal's genetics (or true breeding value), and is an indication of the amount of information that has been used in the calculation of the EBV.

EBVs with accuracy values below 50% should be considered as preliminary or of low accuracy, 50-74% as of medium accuracy, 75-90% of medium to high accuracy, and 90% or greater as high accuracy.



DESCRIPTION OF TACE EBVS

EBVs are calculated for a range of traits within TACE, covering calving ease, growth, fertility, maternal performance, carcass merit, feed efficiency and structural soundness. A description of each EBV included in this publication is provided below.

CALVING EASE	CEDir	%	Genetic differences in the ability of a sire's calves to be born unassisted from 2 year old heifers.	Higher EBVs indicate fewer calving difficulties in 2 year old heifers.
	CEDtrs	%	Genetic differences in the ability of a sire's daughters to calve unassisted at 2 years of age.	Higher EBVs indicate fewer calving difficulties in 2 year old heifers.
	GL	days	Genetic differences between animals in the length of time from the date of conception to the birth of the calf.	Lower EBVs indicate shorter gestation length.
	BW	kg	Genetic differences between animals in calf weight at birth.	Lower EBVs indicate lighter birth weight.
GROWTH	200 Day	kg	Genetic differences between animals in live weight at 200 days of age due to genetics for growth.	Higher EBVs indicate heavier live weight.
	400 Day	kg	Genetic differences between animals in live weight at 400 days of age.	Higher EBVs indicate heavier live weight.
	600 Day	kg	Genetic differences between animals in live weight at 600 days of age.	Higher EBVs indicate heavier live weight.
	MCW	kg	Genetic differences between animals in live weight of cows at 5 years of age.	Higher EBVs indicate heavier mature weight.
	Milk	kg	Genetic differences between animals in live weight at 200 days of age due to the maternal contribution of its dam.	Higher EBVs indicate heavier live weight.
	FERTILITY	DtC	days	Genetic differences between animals in the time from the start of the joining period (i.e. when the female is introduced to a bull) until subsequent calving.
SS		cm	Genetic differences between animals in scrotal circumference at 400 days of age.	Higher EBVs indicate larger scrotal circumference.
CARCASS	CWT	kg	Genetic differences between animals in hot standard carcass weight at 750 days of age.	Higher EBVs indicate heavier carcass weight.
	EMA	cm ²	Genetic differences between animals in eye muscle area at the 12/13th rib site in a 400 kg carcass.	Higher EBVs indicate larger eye muscle area.
	Rib Fat	mm	Genetic differences between animals in fat depth at the 12/13th rib site in a 400 kg carcass.	Higher EBVs indicate more fat.
	P8 Fat	mm	Genetic differences between animals in fat depth at the P8 rump site in a 400 kg carcass.	Higher EBVs indicate more fat.
	RBV	%	Genetic differences between animals in boned out saleable meat from a 400 kg carcass.	Higher EBVs indicate higher yield.
	IMF	%	Genetic differences between animals in intramuscular fat (marbling) at the 12/13th rib site in a 400 kg carcass.	Higher EBVs indicate more intramuscular fat.
OTHER	NFI-F	kg/day	Genetic differences between animals in feed intake at a standard weight and rate of weight gain when animals are in a feedlot finishing phase.	Lower EBVs indicate more feed efficiency.
	Doc	%	Genetic differences between animals in temperament.	Higher EBVs indicate better temperament.
STRUCTURE	Foot Angle	score	Genetic differences in foot angle (strength of pastern, depth of heel).	Lower EBVs indicate more desirable foot angle.
	Claw Set	score	Genetic differences in claw set structure (shape and evenness of claws).	Lower EBVs indicate more desirable claw structure.
SELECTION INDEX	\$A	\$	Genetic differences between animals in net profitability per cow joined in a typical commercial self replacing herd using Angus bulls. This selection index is not specific to a particular market end-point, but identifies animals that will improve overall net profitability in the majority of commercial, self replacing, grass and grain finishing beef production systems.	Higher selection indexes indicate greater profitability.
	\$A-L	\$	Genetic differences between animals in net profitability per cow joined in a typical commercial self replacing herd using Angus bulls. This selection index is not specific to a particular market end-point, but identifies animals that will improve overall net profitability in the majority of commercial, self replacing, grass and grain finishing beef production systems. The \$A-L index is similar to the \$A index but is modelled on a production system where feed is surplus to requirements for the majority of the year, or the cost of supplying additional feed when animal feed requirements increase is low. While the \$A aims to maintain mature cow weight, the \$A-L does not aim to limit the increase in mature cow weight as there is minimal cost incurred if the feed maintenance requirements of the female breeding herd increase as a result of selection decisions.	Higher selection indexes indicate greater profitability.

Your Local Livestock Agents

Livestock, Stud Stock, Specialty Sales,
Agistment, Clearing Sales and more!
Contact us today to discuss your needs!

Nicholas Rogers | **Angus MacTavish** | **John Pearson**

0429 382 108

0427 165 120

0428 255 994

For all email enquiries - livestock@dcco.com.au

Livestock Office 0267 420 185



View our website to keep up to date on all things
Davidson Cameron www.dcco.com.au

Find us on Facebook @DCCOLivestock



Your Local Rural Sales Specialists

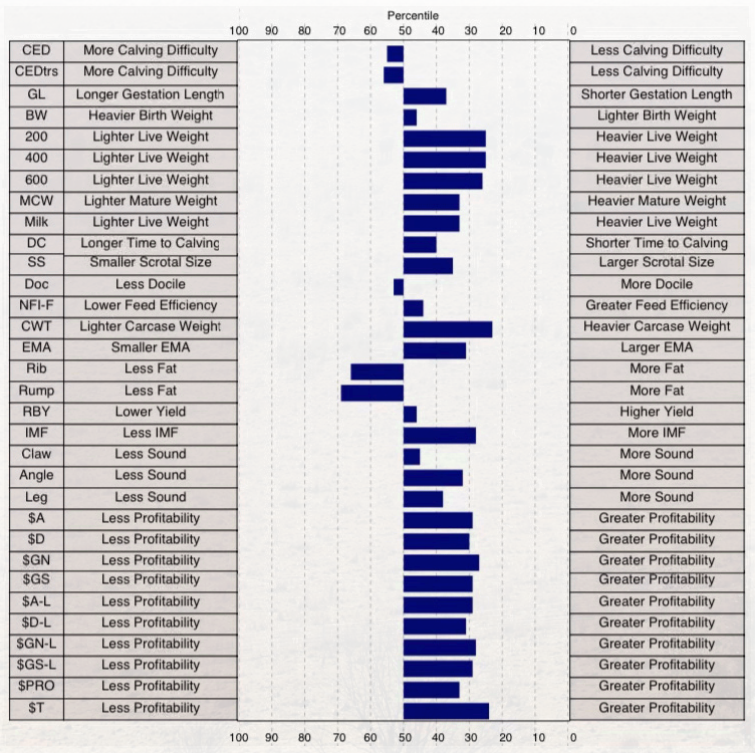
Simon Burke
0427 634 341
sburke@dcco.com.au

Scott Bray
0427 270 754
sbray@dcco.com.au

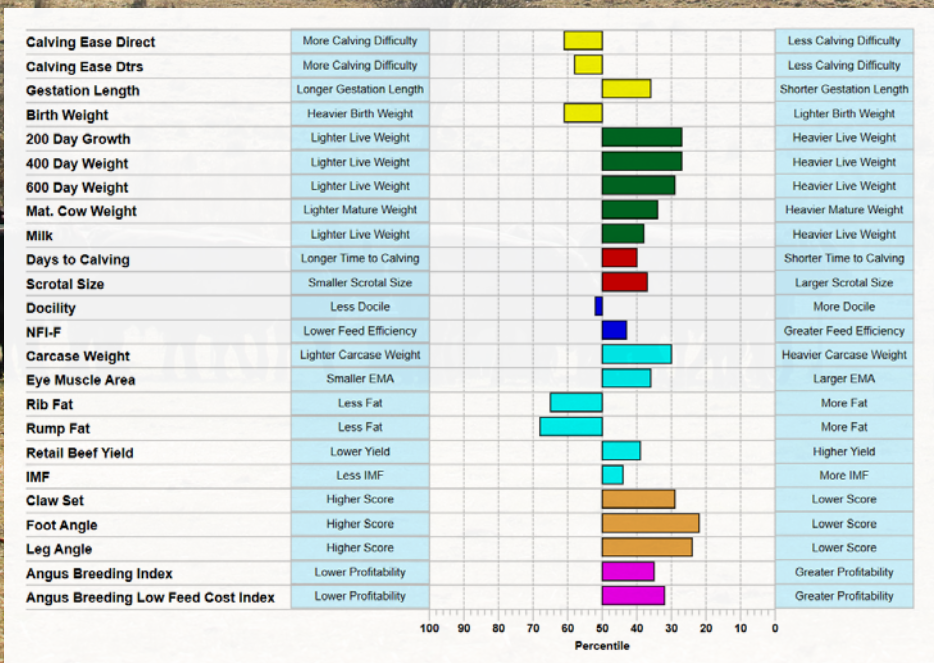


GENETIC POSITION OF BRIDGEWATER DAMS IN INVENTORY

Trait	Herd	Breed	Percentile Band
Calving Ease Direct	+1.2	+1.3	55
Calving Ease Dtrs	+1.6	+1.8	56
Gestation Length	-4.9	-4.1	37
Birth Weight	+4.1	+4.2	46
200 Day Growth	+52	+46	25
400 Day Weight	+94	+84	25
600 Day Weight	+122	+109	26
Mat. Cow Weight	+105	+94	33
Milk	+18	+16	33
Days to Calving	-4.8	-4.3	40
Scrotal Size	+2.2	+1.9	35
Docility	+18	+19	53
NFI-F	+0.12	+0.16	44
Carcase Weight	+72	+61	23
Eye Muscle Area	+7.0	+5.6	31
Rib Fat	-0.8	-0.1	66
Rump Fat	-1.3	-0.3	69
Retail Beef Yield	+0.6	+0.6	46
IMF	+2.5	+1.9	28
Claw Set	+0.82	+0.85	45
Foot Angle	+0.89	+0.96	32
Leg Angle	+1.00	+1.02	38
Angus Breeding (\$A)	+204	+177	29
Domestic (\$D)	+168	+146	30
Heavy Grain (\$GN)	+270	+233	27
Heavy Grass (\$GS)	+188	+161	29
Angus Breeding Low Feed Cost (\$A-L)	+348	+308	29
Domestic Low Feed Cost (\$D-L)	+299	+266	31
Heavy Grain Low Feed Cost (\$GN-L)	+417	+366	28
Heavy Grass Low Feed Cost (\$GS-L)	+391	+345	29
AngusPRO (\$PRO)	+148	+125	33
Angus Terminal Sire (\$T)	+188	+165	24



THE AVERAGE EBVS OF THE BULLS IN THIS SALE



Ag minded marketing

Specialising in
Graphic design
Video production
Photography



0428 518 880
8ptr.design@gmail.com @eightpointer @eightpointer_creative



Guyra District Vet
207 Falconer Street
South Guyra, New South Wales 2365
Ph: 02 6779 1173
Email: reception@guyradistrictvet.com.au
Date: 07-06-2023

This is to certify that, Leisa Brown of Guyra District Veterinary Services carried out a complete breeding soundness evaluation on each 2 year old (S) bull listed in the Bridgewater Angus catalogue.

This included:-

- A *physical examination* - to ensure structural soundness
- *Examination of the reproductive organs* - rectal palpation to examine the secondary sexual organs, measurement of scrotal circumference, palpation of the testicles and full examination of the penis and prepuce
- *Semen collection and assessment of gross motility* - using an electroejaculator and assessment of motility using iSperm technology
 - *Semen morphology* - samples were sent for assessment by a UQSMSP accredited morphologist at Australian Veterinary Semen Morphology (AVetSM). Semen morphology is an essential part of the veterinary bull breeding soundness evaluation. It is used to assess individual sperm cells for defects that can impact the fertility of the bull and conception rates in your herd.

Yearling bulls received a full physical examination, including examination of internal and external genitalia. Semen assessment was performed crush side only with no morphology samples being collected.

To achieve optimal fertility in a herd, an individual bull needs to achieve a pregnancy rate of 65% per cycle. The ultimate aim of a bull breeding soundness evaluation is to identify any problems/risk factors that may compromise this.

Signed: Leisa Brown Date: 07-06-2023

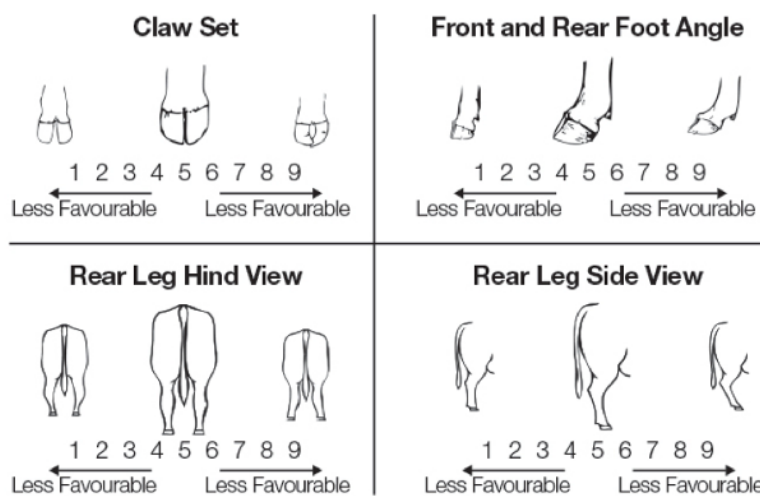


STRUCTURAL ASSESSMENT

Bridgewater Angus is committed to providing our clients with the most accurate information regarding our sale bulls. In addition to our commitment to genetic recording and BreedPlan, all our bulls this year have been independently assessed by Alastair Rayner, of RaynerAg. Alastair is a highly regarded beef specialist across the country. He has worked with many seedstock and commercial programs to improve their businesses, and is a well-respected judge and assessor of cattle. As a fully independent specialist, Alastair brings his experience and impartiality to the assessment of this year's sale bulls.

Each bull has been assessed for individual traits using the Beef Class Structural Assessment System. As such the following traits were scored using a 1 – 9 scoring system, where:

- A score of 5 is considered ideal
- A score of 4 or 6 shows slight variation from ideal, but this includes most animals, and any animal scoring 4 and 6 would be considered acceptable in any breeding program
- A score of 3 or 7 shows greater variation, but would be acceptable in most commercial breeding programs, however seedstock producers may be wary
- A score of 2 or 8 are low scoring animals and should be carefully evaluating before using in a breeding program
- A score of 1 or 9 are considered culls



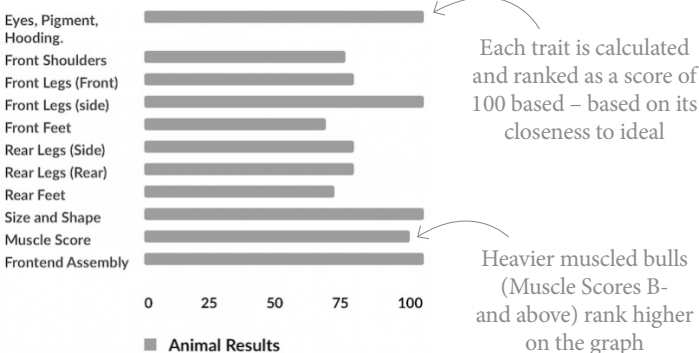
In addition each bull was scored on its shoulder set, front shoulder angle, testicular size and shape and sheath angle and shape. All bulls were also muscle scored.

UNDERSTANDING THE ASSESSMENT RESULTS

Every bull assessed in this year's catalogue has been further evaluated through the Classmate System. The Classmate system uses the trait scores to rank a trait on a scale of 100 and report this in individual graphs for clearer interpretation.

In addition, the combination of physical traits assessed by Alastair Rayner, are then used to determine an overall score out of 10.

- A score of 7 or above is considered an animal with optimal physical traits
- A score of 4 -6.99 is considered to have acceptable physical traits
- Scores below 4 are considered as culls for physical traits.



The combination of traits is then used by Classmate to score each bull out of 10

We encourage our clients to use the combination of each bull's genetic information from BREEDPLAN and the physical assessments provided to create an individual lists of bulls that are suitable for your breeding objectives and business.

This individual list can be used in combination with the checklist we have provided to help you rank your chosen bulls in preference for bidding ahead of the sale.

BUYERS INSTRUCTION SLIP

Bid Card Number

THURSDAY 3RD AUGUST 2023

On Property "Myola" 278 Toms Gully Road, Black Mountain

* No verbal instructions will be accepted

Name: _____

Address: _____

Phone: _____ Email: _____

Purchase Property Identification Code (PIC): _____

BILLING DETAILS

Please send the account direct to me

Please send the account to my agent, who is:

LOTS PURCHASED:

Transfer of Bull Registration/s Required:

Yes No

TRANSPORT ARRANGEMENTS:

INSURANCE:

12 Months 6 Months 3 Months

SIGNATURE OF PURCHASER OR AGENT

Name: _____ Phone: _____

Signature: _____ Date: _____

SPECIAL NOTE TO BUYERS

In the interest of buyers, and to prevent the occurrence of mistakes, all instructions concerning the delivery and trucking of stock must be given in writing and signed by the buyer or their representative.





JOSH LAWLOR
Branch Manager
Guyra

We do...

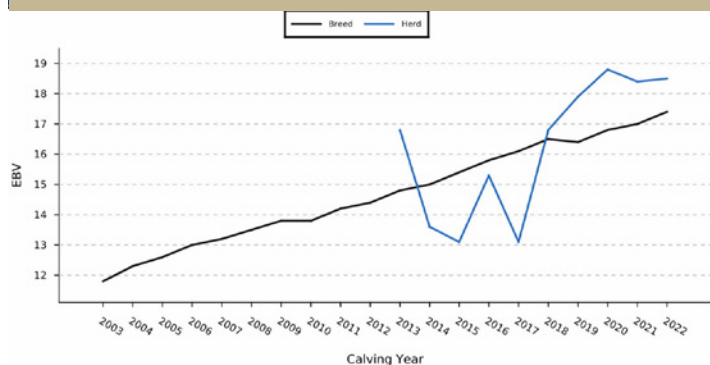
- **Rural Merchandise**
 - **Animal Health**
 - **Fertiliser**
 - **Agronomy**
 - **Gas**
 - **Water**
 - **Insurance**
 - **Finance**

Nutrien
Ag Solutions[®]

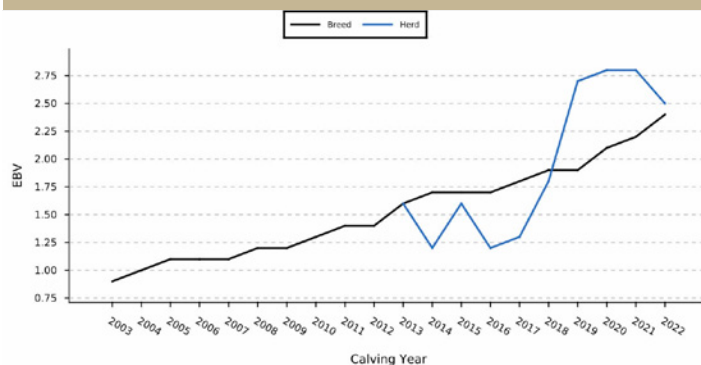
**PROUDLY SUPPORTING
BRIDGEWATER
ANGUS BULL
SALE 2023**

GENETIC PROGRESS BY TRAIT FOR THE BRIDGEWATER HERD

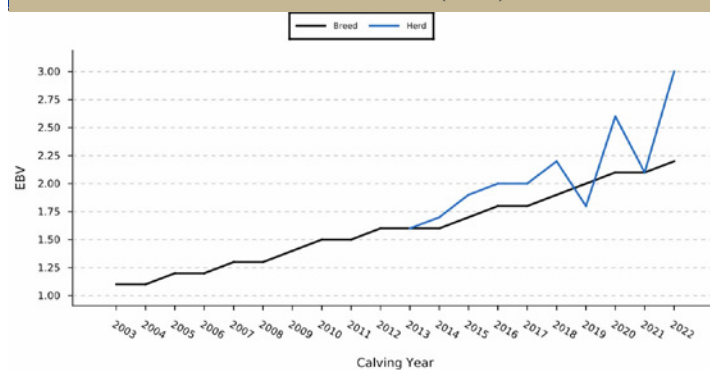
200 DAY MILK (KG)



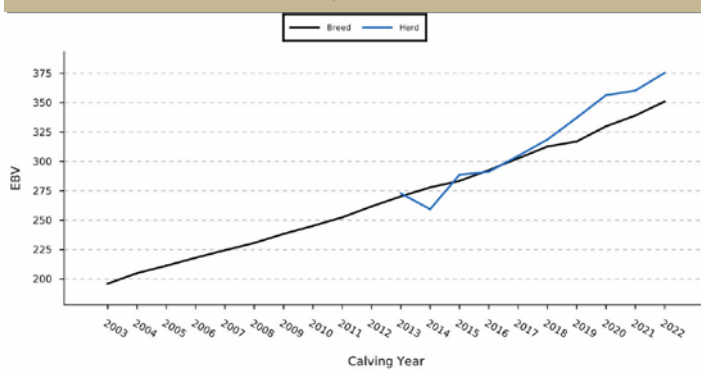
CARCASE IMF (%)



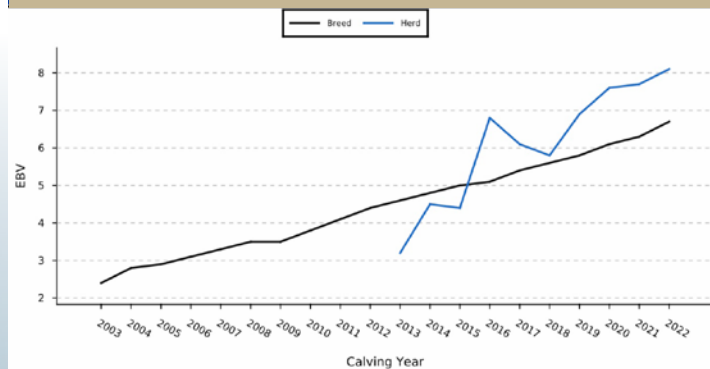
SCROTAL SIZE (CM)



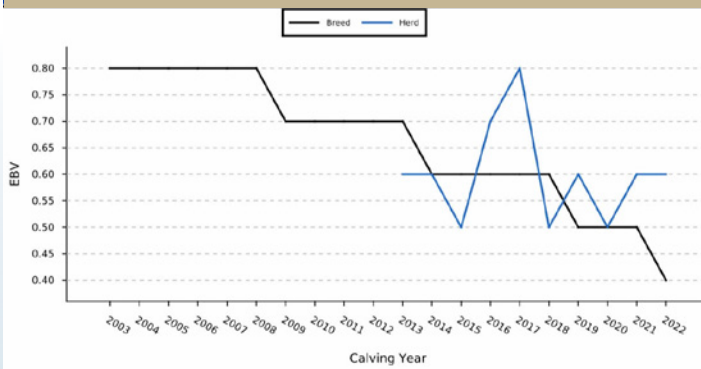
\$A-L



CARCASE EMA (SQ.CM)



CARCASE RBY (%)





LOT 20 - BRIDGEWATER PRESIDENT T029 PV



LOT 22 - BRIDGEWATER PRESIDENT T072 PV



LOT 18 - BRIDGEWATER PARATROOPER T048 SV



LOT 27 - BRIDGEWATER SPECIAL T061 SV

