



Moore Park

our bloodlines...your success

*Inaugural Twilight Angus Bull Sale
July 31 2023 4pm, Glen Innes Showground
Interfaced on Auctions Plus
Selling Agent Shad Bailey 0458 322 283 (Colin Say & Co)*

<i>Reference Sires</i>	Calving Ease Direct	Calving Ease Dtrs	Gestation Length	Birth Weight	200 Day Growth	400 Day Weight	600 Day Weight	Milk	IMF	Mat. Cow Weight	Days to Calving	Scrotal Size	Carcase Weight	Eye Muscle Area	Rib Fat	Rump Fat	Retail Beef Yield
G A R HOME TOWN	+6.8	+5.2	-6.7	+2.4	+59	+101	+118	+15	+5	+79	-4.8	+1.5	+73	+14.4	-2.9	-5.9	+1.2
G A R Phoenix	+7.3	+3.7	-3.4	+2.9	+72	+126	+162	+16	+2.2	+132	-6.0	+4.4	+98	+8.7	-1.9	-2.6	+1
G A R Ashland	+1.3	+2.3	-6.4	+3.4	+68	+116	+147	+17	+3.1	+121	-3.0	+1.5	+81	+12.9	-2.9	-3.0	+1.2
Mytty in Focus	+13.6	+6.3	-3.6	+0.9	+48	+81	+99	+16	+1.3	+74	-5.5	+3.2	+58	+4.5	-0.4	-1.2	+0.7
Breed Avg EBVs	+2.2	+2.6	-4.8	+4.1	+50	+90	+117	+17	+2.3	+100	-4.6	+2.1	+66	+6.3	+0.0	+0.8	+0.5

Breed Average EBVs sourced from Trans Tasman Angus Cattle Evaluation – June 2023 Reference Tables

Top 1% Breed Top 5% Breed Top 10% Breed Top 25% Breed

<i>Reference Sires</i>	Angus Breeding Index	Angus Breeding Low Feed Cost Index	Domestic Index	Heavy Grain Index	Heavy Grass Index	Domestic Low Feed Cost Index	Heavy Grain Low Feed Cost Index	Heavy Grass Low Feed Cost Index	AngusPRO Index	Angus Terminal Sire Index
G A R HOME TOWN	\$287	\$436	\$242	\$393	\$271	\$378	\$546	\$473	\$225	\$240
G A R Phoenix	\$292	\$492	\$249	\$376	\$279	\$432	\$582	\$558	\$248	\$255
G A R Ashland	\$263	\$426	\$215	\$362	\$245	\$362	\$528	\$466	\$196	\$246
Mytty in Focus	+\$200	\$336	+\$173	+257	+\$180	+\$297	+\$397	+\$368	+\$154	+\$176
Breed Avg Selection Indexes	+\$197	+\$339	+\$163	+\$259	+\$181	+\$293	+\$405	+\$380	+\$145	+\$181

GAR Home Town is the complete package of the ideal traits of merit. Big-hipped, wide based with an attractive herd bull presence, his carcass data and the appeal of his females are a standout. His IMF sits in the top 3% of the breed with an 89% accuracy level.



G A R Home Town USA19266718

GAR Phoenix offers genetics for growth and carcass merit like few can. He is a leading \$Value index sire in Australia and the world, while still offering well above average EBVs for calving ease. His progeny are known to hit growth targets and mature early.



G A R Phoenix USA18636106

The Sire of Home Town, **GAR Ashland** has cemented himself as a leading carcass sire for marble and muscle while maintaining moderate stature in his progeny. His females that we have kept are deep bodied standouts that calved easily as two year olds unassisted.



G A R Ashland USA18217198

Mytty in Focus is the go to option for calving heifers where background knowledge is limited. Used extensively in hundreds of herds, this sire has continued to maintain his position in the top 1% for calving ease in the entire Angus breed.



Mytty in Focus USA13880818

Welcome

We are excited to offer you this line up of bulls and took motivation from reading Dulverton's 2023 catalogue. They started with a sale of just 20 bulls in the beginning and built from there. This did to extent spur us on to bite the bullet and have our first public auction with a small quality lineup. We have already been selling bulls in the paddock for years and are fortunate to have multiple repeat purchasers who have encouraged us to expand this aspect of our operation due to their referrals to friends and neighbours. Our family truly value this support and feedback from past clients.

The 23 bulls we have on offer are all sired by high indexing Sires combined with strong female lines that incorporate Bartel and GAR genetics with outcrosses from Kenny's Creek, Lawson, Temania and Wattletop Angus studs, all strong influencers in the Angus breed.

Personally, I have never made money from a lost cow or calf calving. There is no weight gain in a dead calf. Calving ease is paramount in our herd, not only in the bulls we choose to use, but in the females we breed from. The discipline to cull and cull hard based on pregnancy results from 100% AI with no mop up bulls used in our program has left us with great fertility traits in our females. Embracing Stockbook into our management system has enabled us to connect kill data to various females and base future genetic decisions on yield, marble, weight and MSA index results. This attention to detail we believe has paid off with our MSA benchmarking remarkably above the NSW and National averages with our grass fed indexes outperforming both grain and grass averages. In 2023 we head towards our entire Purebred Angus herd being recorded with the Angus Society to enhance data collection and feedback.

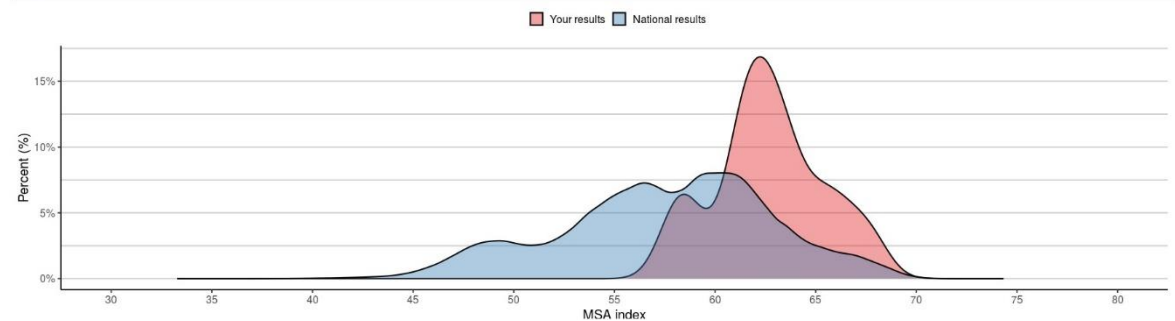
Regardless of your operation's goals, whether it is to improve your pregnancy rates, carcass quality, reduce debt or expand and buy more country, we believe these profit driven genetics can assist in achieving these objectives.

We look forward to welcoming you on July 31.

Regards

Tom, Jane, Tommy and India

95th percentile (top)	67.10	65.84
Average	62.65	57.51
5th percentile (bottom)	58.30	47.98





How to register as an AuctionsPlus user/buyer



1. To sign up to AuctionsPlus, fill in your details and create a security PIN.
2. Verify your email and phone number.
3. Follow the steps to verify your ID.
4. Enter your PIC number, ABN and business details if relevant.
5. Carefully read and accept our user rules and responsibilities.
6. Complete the user quiz.
7. Submit your request to our team.



Scan to sign up now



Scan to see detailed step by step instructions

www.auctionsplus.com.au



(02) 9262 4222

ONE CHOICE



Oino Gustus is taken from the Celtic origin of the name Angus. Meaning “One Choice” these two words illustrate the culture that stands behind the Signature Beef suite of brands.

Sale Information

Inspection

All Stock will be penned at the Glen Innes Showground from 1pm Sale Day. Inspection can be arranged any time prior to sale day by appointment with the agents or vendor.

Notice to Buyers

All lots will be sold subject to the usual conditions governing auction sales in NSW.

Bidding

The sale will be interfaced with Auctions Plus. Please refer to instructions on how to register and bid on Page 2. Not tech savvy? Phone bidding will also be available. Contact Colin Say & Co or Tom and Jane for more information.

Insurance

We recommend insuring your new bull on sale day. A Colin Say and Co representative will be available on sale day to arrange this if you do not have an existing broker.

Rebate

3% rebate available to outside agents following written introduction at least 24 hrs prior to sale if settlement occurs within 7 days of receipt of invoice.

Refreshments

Will be available on the night. Gold coin donation to the Westpac Rescue Helicopter.

Vaccination Program

JBAS=6

7 in 1 at weaning. Last booster May 2023 – booster required May 2024.

Exifluke – May 2023.

Dectomax Pour On – May 2023.

Cobalife B12 – May 2023.

Pestiguard Vaccination given July 2023 – booster required July 2024.

Tick Fever Vaccination given July 2023

QLD clients who require this coverage Please Note: Due to DPI shortages/wait times on blooded tick vaccine, bulls will not be vaccinated before 11/12th July. We are happy to run bulls post sale to complete the 30 days needed for coverage.

Return to “Home”

All bulls will be trucked back to Glenmore at the completion of the sale, with delivery/pickup available from the following day Aug 1st. Please contact Tom to discuss options if you are not ready to take delivery of your bull straight away, particularly if you require coverage with Tick Fever Vaccination (see below). We are happy to continue to run all sale bulls for convenience, but at the purchaser's risk. As stated, we recommend insuring your bull on sale day.

Buyer's Instruction Slip and Transport Arrangements

Please supply correct and complete name, address, PIC (Property Identification Code), delivery instructions and contact details on the Buyer's Instruction Slip to ensure smooth transport and NLIS transfer arrangements.

Our Guarantee To You

To the best of our knowledge, we believe the bulls in this catalogue are fertile and structurally sound. All bulls have been semen tested by Dr Lachlan Perkins (B.V.Sc.) of Glen Innes Veterinary Hospital. If, in the next 12 months, a bull becomes infertile or breaks down due to reasons other than injury or misadventure, we will provide you with a satisfactory replacement if available, or issue you with a credit equal to the purchase price less the salvage value. This credit may be used to purchase any bull or female offered at future Moore Park Sales. Any claims are to be substantiated by a veterinary certificate and photograph of the bull from a registered veterinarian. All vet costs are the responsibility of the purchaser.

EBVs

A guide to understanding estimated breeding values (EBVs) and choosing the selection index of relevance to your breeding program can be found on Page 4. Due to being a young stud, we have used a combination of EBVs, Expected Average progeny EBVs and Sire EBVs in our data. We support, value and use EBVs to form decisions in our own breeding herd. However, these are a guide only. Knowledge of your own breeding females and your personal objectives should always take precedence when considering potential purchases.

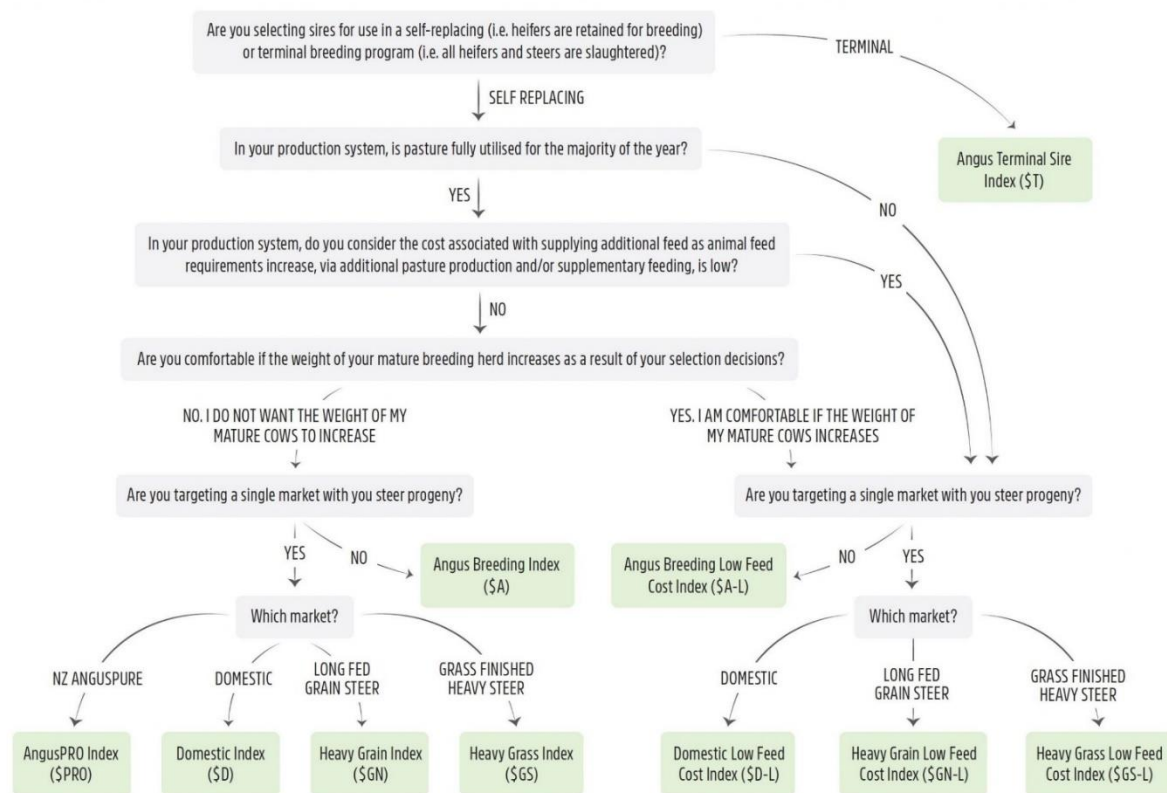
Disclaimer

Whilst all care and attention has been paid to the accuracy in the compilation of this catalogue, neither the vendors nor the selling agents or representatives thereof, nor Angus Australia assume any responsibility whatsoever for the correctness, use or interpretation of the information on the animals included in this sale catalogue.

UNDERSTANDING ESTIMATED BREEDING VALUES (EBVS)

CALVING EASE/BIRTH			
Calving Ease Direct	%	Genetic differences in the ability of a sire's calves to be born unassisted from 2 year old heifers.	Higher EBVs indicate fewer calving difficulties in 2 year old heifers.
Calving Ease Daughters	%	Genetic differences in the ability of a sire's daughters to calve unassisted at 2 years of age.	Higher EBVs indicate fewer calving difficulties in 2 year old heifers.
Gestation Length	days	Genetic differences between animals in the length of time from the date of conception to the birth of the calf.	Lower EBVs indicate shorter gestation length.
Birth Weight	kg	Genetic differences between animals in calf weight at birth.	Lower EBVs indicate lighter birth weight.
GROWTH			
200 Day Growth	kg	Genetic differences between animals in live weight at 200 days of age due to genetics for growth.	Higher EBVs indicate heavier live weight.
400 Day Weight	kg	Genetic differences between animals in live weight at 400 days of age.	Higher EBVs indicate heavier live weight.
600 Day Weight	kg	Genetic differences between animals in live weight at 600 days of age.	Higher EBVs indicate heavier live weight.
Mature Cow Weight	kg	Genetic differences between animals in live weight of cows at 5 years of age.	Higher EBVs indicate heavier mature weight.
Milk	kg	Genetic differences between animals in live weight at 200 days of age due to the maternal contribution of its dam.	Higher EBVs indicate heavier live weight.
FERTILITY			
Days to Calving	days	Genetic differences between animals in the time from the start of the joining period (i.e. when the female is introduced to a bull) until subsequent calving.	Lower EBVs indicate shorter time to calving.
Scrotal Size	cm	Genetic differences between animals in scrotal circumference at 400 days of age.	Higher EBVs indicate larger scrotal circumference.
CARCASE			
Carcase Weight	kg	Genetic differences between animals in hot standard carcase weight at 750 days of age.	Higher EBVs indicate heavier carcase weight.
Eye Muscle Area	cm ²	Genetic differences between animals in eye muscle area at the 12/13th rib site in a 400 kg carcase.	Higher EBVs indicate larger eye muscle area.
Rib Fat	mm	Genetic differences between animals in fat depth at the 12/13th rib site in a 400 kg carcase.	Higher EBVs indicate more fat.
Rump Fat	mm	Genetic differences between animals in fat depth at the P8 rump site in a 400 kg carcase.	Higher EBVs indicate more fat.
Retail Beef Yield	%	Genetic differences between animals in boned out saleable meat from a 400 kg carcase.	Higher EBVs indicate higher yield.
Intramuscular Fat	%	Genetic differences between animals in intramuscular fat (marbling) at the 12/13th rib site in a 400 kg carcase.	Higher EBVs indicate more intramuscular fat.

Choosing the selection index of relevance to your breeding program



Lot 1 Moore Park S59_{sv}

HBR IDENT: MPL21S59 DOB 1/07/2021

Selection Indexes	Angus Breeding Index	Angus Breeding Low Feed Cost Index	Domestic Index	Heavy Grain Index	Heavy Grass Index	Domestic Low Feed Cost Index	Heavy Grain Low Feed Cost Index	Heavy Grass Low Feed Cost Index	Angus PRO Index	Angus Terminal Sire Index
MPL21S59	\$271	\$422	\$225	\$360	\$256	\$364	\$515	\$467	\$212	\$223
A. Breed Avg	+\$197	+\$339	+\$163	+\$259	+\$181	+\$293	+\$405	+\$380	+\$145	+\$181

EBVs	Calving Ease Direct	Calving Ease Dtrs	Gestation Length	Birth Weight	200 Day Growth	400 Day Weight	600 Day Weight	Milk	IMF	Mat. Cow Weight	Days to Calving	Scrotal Size	Carcase Weight	Eye Muscle Area	Rib Fat	Rump Fat	Retail Beef Yield
MPL21S59	+6.2	+6	-5.9	+2.7	+55	+97	+121	+19	+4	+83	-5.4	+2.2	+73	+11.3	-1.7	-2.5	+1.0
A. Breed Avg	+2.2	+2.6	-4.8	+4.1	+50	+90	+117	+17	+2.3	+100	-4.6	+2.1	+66	+6.3	+0.0	+0.8	+0.5

Sire: G A R EARLY BIRD#
 Sire: G A R ASHLANDPv
 Dam: CHAIR ROCK AMBUSH 1018#
Sire: G A R HOME TOWNPv
 Sire: G A R SURE FIREsv
 Dam: CHAIR ROCK SURE FIRE 6095#
 Dam: CHAIR ROCK PROGRESS 3005#

Sire: TE MANIA BARTEL B219Pv
 Sire: AYRVALE BARTEL E7Pv
 Dam: EAGLEHAWK JEDDA B32sv
Dam: MOORE PARK P71#
 Sire: THE GRANGE ECHELON E179Pv
 Dam: ABERDEEN ESTATE NANNY G26#
 Dam: VERMONT NANNY E060Pv

Comments The magic cross of Home Town and Bartel, S59's bloodlines offer calving ease, early growth, marble and muscle.



Top 1%
 Top 5%
 Top 10%
 Top 25%

Purchaser:

Price: \$

Lot 2 Moore Park S43_{sv}

HBR IDENT: MPL21S43 DOB 1/02/2022

Expected Average Progeny Values	Angus Breeding Index	Angus Breeding Low Feed Cost Index	Domestic Index	Heavy Grain Index	Heavy Grass Index	Domestic Low Feed Cost Index	Heavy Grain Low Feed Cost Index	Heavy Grass Low Feed Cost Index	Angus PRO Index	Angus Terminal Sire Index
MPL21S43	\$207	\$341	\$168	\$281	\$188	\$289	\$417	\$380	\$140	\$191
A. Breed Avg	+\$197	+\$339	+\$163	+\$259	+\$181	+\$293	+\$405	+\$380	+\$145	+\$181

Expected Average Progeny Values	Calving Ease Direct	Calving Ease Dtrs	Gestation Length	Birth Weight	200 Day Growth	400 Day Weight	600 Day Weight	Milk	IMF	Mat. Cow Weight	Days to Calving	Scrotal Size	Carcase Weight	Eye Muscle Area	Rib Fat	Rump Fat	Retail Beef Yield
MPL21S43	-5	-0.9	-4.6	+5.4	+62	+101	+131	+17	+2	+115	-3.9	+1.5	+76	+9.2	-2.2	-2.1	+1.0
A. Breed Avg	+2.2	+2.6	-4.8	+4.1	+50	+90	+117	+17	+2.3	+100	-4.6	+2.1	+66	+6.3	+0.0	+0.8	+0.5

Sire: G A R DAYLIGHT#
 Sire: G A R EARLY BIRD#
 Dam: G A R PROGRESS 830#
Sire: G A R ASHLANDPv
 Sire: B/R AMBUSH 28#
 Dam: CHAIR ROCK AMBUSH 1018#
 Dam: G A R YIELD GRADE N366#

Sire: S A V HERITAGE 6295#
 Sire: S A V HARVESTOR 0338#
 Dam: S A V EMBLYNETTE 7749#
Dam: MOORE PARK N4#
 Sire: SILVEIRAS M811 TOTAL 6103#
 Dam: WATTLETOP BARUNAH H382#
 Dam: WATTLETOP BARUNAH Z132Pv

Comments: A GAR Ashland son that is well muscled, smooth coated and mobile.



Top 1%
 Top 5%
 Top 10%
 Top 25%

Purchaser:

Price: \$

Lot 3 Moore Park T33_{sv}								Expected Average Progeny Values	Angus Breeding Index	Angus Breeding Low Feed Cost Index	Domestic Index	Heavy Grain Index	Heavy Grass Index	Domestic Low Feed Cost Index	Heavy Grain Low Feed Cost Index	Heavy Grass Low Feed Cost Index	AngusPRO Index	Angus Terminal Sire Index
HBR IDENT: MPL22T33 DOB 1/03/2022								MPL22T33	\$264	\$433	\$223	\$340	\$249	\$379	\$515	\$487	\$211	\$221
								A. Breed Avg	+\$197	+\$339	+\$163	+\$259	+\$181	+\$293	+\$405	+\$380	+\$145	+\$181

Expected Average Progeny Values	Calving Ease Direct	Calving Ease Dtrs	Gestation Length	Birth Weight	200 Day Growth	400 Day Weight	600 Day Weight	Milk	IMF	Mat. Cow Weight	Days to Calving	Scrotal Size	Carcase Weight	Eye Muscle Area	Rib Fat	Rump Fat	Retail Beef Yield
MPL22T33	+6.9	+4.6	-4.2	+3.2	+60	+106	+135	+20	+2.4	+103	-6.0	+3.2	+80	+7.5	-1.1	-1.2	+0.9
A. Breed Avg	+2.2	+2.6	-4.8	+4.1	+50	+90	+117	+17	+2.3	+100	-4.6	+2.1	+66	+6.3	+0.0	+0.8	+0.5

Sire: CONNEALY IN SURE 8524#
 Sire: G A R SURE FIREsv
 Dam: CHAIR ROCK 5050 G A R 8086#
Sire: G A R PHOENIXpv
 Sire: G A R PROPHETsv
 Dam: G A R PROPHET N744#
 Dam: G A R DAYBREAK 440#

Sire: TE MANIA BARTEL B219pv
 Sire: AYRVALE BARTEL E7pv
 Dam: EAGLEHAWK JEDDA B32sv
Dam: MOORE PARK Q28#
 Sire: EXAR UPSHOT 0562B#
 Dam: MOORE PARK ANNIE L10#
 Dam: KANSAS ANNIE Y71sv



Top 1%
 Top 5%
 Top 10%
 Top 25%

Comment: One of the picks of the sale, T33 combines Bartel with Phoenix and encompasses everything we're trying to achieve with calving ease, early growth, marble and muscle.

Purchaser: **Price:** \$

Lot 4 Moore Park T18_{sv}								Selection Indexes	Angus Breeding Index	Angus Breeding Low Feed Cost Index	Domestic Index	Heavy Grain Index	Heavy Grass Index	Domestic Low Feed Cost Index	Heavy Grain Low Feed Cost Index	Heavy Grass Low Feed Cost Index	AngusPRO Index	Angus Terminal Sire Index
APR IDENT: MPL22T18 DOB 1/02/2022								MPL22T18	\$237	\$393	\$197	\$306	\$221	\$341	\$467	\$437	\$191	\$204
								A. Breed Avg	+\$197	+\$339	+\$163	+\$259	+\$181	+\$293	+\$405	+\$380	+\$145	+\$181
EBVs	Calving Ease Direct	Calving Ease Dtrs	Gestation Length	Birth Weight	200 Day Growth	400 Day Weight	600 Day Weight	Milk	IMF	Mat. Cow Weight	Days to Calving	Scrotal Size	Carcase Weight	Eye Muscle Area	Rib Fat	Rump Fat	Retail Beef Yield	
MPL22T18	+7.7	+5.6	-3.3	+2.2	+52	+93	+121	+16	+2.3	+92	-4.8	+2.5	+73	+6.5	-0.1	-0.4	+1.0	
A. Breed Avg	+2.2	+2.6	-4.8	+4.1	+50	+90	+117	+17	+2.3	+100	-4.6	+2.1	+66	+6.3	+0.0	+0.8	+0.5	

Sire: CONNEALY IN SURE 8524#
 Sire: G A R SURE FIREsv
 Dam: CHAIR ROCK 5050 G A R 8086#
Sire: G A R PHOENIXpv
 Sire: G A R PROPHETsv
 Dam: G A R PROPHET N744#
 Dam: G A R DAYBREAK 440#

Sire: TE MANIA BARTEL B219pv
 Sire: AYRVALE BARTEL E7pv
 Dam: EAGLEHAWK JEDDA B32sv
Dam: MOORE PARK P6480#
 Sire: LAWSONS KI K6428 (unreg)



Top 1%
 Top 5%
 Top 10%
 Top 25%

Comment: A tall, stretchy Phoenix son, T18 has great muscle pattern and is certainly athletic. Moore Park P6480, sired by Bartel is a great carcass and milk female.

Purchaser: **Price:** \$

Lot 5 Moore Park T30_{sv}

HBR IDENT: MPL22T30 DOB 1/03/2022

Selection Indexes	Angus Breeding Index	Angus Breeding Low Feed Cost Index	Domestic Index	Heavy Grain Index	Heavy Grass Index	Domestic Low Feed Cost Index	Heavy Grain Low Feed Cost Index	Heavy Grass Low Feed Cost Index	AngusPRO Index	Angus Terminal Sire Index
MPL22T30	+\$267	+\$443	+\$226	+348	+\$252	\$386	+\$527	+\$498	+\$212	+\$229
A. Breed Avg	+\$197	+\$339	+\$163	+\$259	+\$181	+\$293	+\$405	+\$380	+\$145	+\$181

EBVs	Calving Ease Direct	Calving Ease Dtrs	Gestation Length	Birth Weight	200 Day Growth	400 Day Weight	600 Day Weight	Milk	IMF	Mat. Cow Weight	Days to Calving	Scrotal Size	Carcase Weight	Eye Muscle Area	Rib Fat	Rump Fat	Retail Beef Yield
MPL22T30	+4.7	+2.9	-2.0	+3.9	+65	+113	+145	+19	+2.5	+117	-6.0	+2.5	+87	+7.8	-2.1	-2.6	+1.1
A. Breed Avg	+2.2	+2.6	-4.8	+4.1	+50	+90	+117	+17	+2.3	+100	-4.6	+2.1	+66	+6.3	+0.0	+0.8	+0.5

Sire: CONNEALY IN SURE 8524#
 Sire: G A R SURE FIRESv
 Dam: CHAIR ROCK 5050 G A R 8086#
Sire: G A R PHOENIXpv
 Sire: G A R PROPHETsv
 Dam: G A R PROPHET N744#
 Dam: G A R DAYBREAK 440#

Sire: MCC DAYBREAK#
 Sire: G A R SUNRISEsv
 Dam: G A R OBJECTIVE R227#
Dam: LAWSONS KI SUNRISE P6534#
 Sire: AYRVALE BARTEL E7pv
 Dam: LAWSONS KI BARTEL J6317#
 Dam: LAWSONS NEW DESIGN 5050 E113 E1132#



Top 1%
 Top 5%
 Top 10%
 Top 25%

Comment: This bull has been a standout from the start and has presense to match his impressive performance index figures.

Purchaser: **Price:** \$

Lot 6 Moore Park T3_{sv}

HBR IDENT: MPL22T3 DOB 1/06/2022

Expected Average Progeny Values	Angus Breeding Index	Angus Breeding Low Feed Cost Index	Domestic Index	Heavy Grain Index	Heavy Grass Index	Domestic Low Feed Cost Index	Heavy Grain Low Feed Cost Index	Heavy Grass Low Feed Cost Index	AngusPRO Index	Angus Terminal Sire Index
MPL22T3	\$237	\$401	\$203	\$305	\$221	\$353	\$474	\$449	\$185	\$209
A. Breed Avg	+\$197	+\$339	+\$163	+\$259	+\$181	+\$293	+\$405	+\$380	+\$145	+\$181

Expected Average Progeny Values	Calving Ease Direct	Calving Ease Dtrs	Gestation Length	Birth Weight	200 Day Growth	400 Day Weight	600 Day Weight	Milk	IMF	Mat. Cow Weight	Days to Calving	Scrotal Size	Carcase Weight	Eye Muscle Area	Rib Fat	Rump Fat	Retail Beef Yield
MPL22T3	+5.9	+1.5	-4.2	+3.8	+61	+107	+135	+16	+1.7	+109	-5.1	+3.0	+82	+6.8	-1.3	-2.6	+0.9
A. Breed Avg	+2.2	+2.6	-4.8	+4.1	+50	+90	+117	+17	+2.3	+100	-4.6	+2.1	+66	+6.3	+0.0	+0.8	+0.5

Sire: CONNEALY IN SURE 8524#
 Sire: G A R SURE FIRESv
 Dam: CHAIR ROCK 5050 G A R 8086#
Sire: G A R PHOENIXpv
 Sire: G A R PROPHETsv
 Dam: G A R PROPHET N744#
 Dam: G A R DAYBREAK 440#

Sire: SITZ UPWARD 307Rsv
 Sire: EXAR UPSHOT 0562B#
 Dam: EXAR BARBARA T020#
Dam: MOORE PARK FINKS MIS K292#
 Sire: MYTTY IN FOCUS#
 Dam: KENNY'S CREEK FINKS MISS F843#
 Dam: KENNY'S CREEK FINKS MISS B44pv



Top 1%
 Top 5%
 Top 10%
 Top 25%

Comment: T3 duplicates the growth and style of GAR Phoenix. Phoenix is known for producing great daughters.

Purchaser: **Price:** \$

Lot 7 Moore Park T31

HBR IDENT: MPL22T31 DOB 1/03/2022

Expected Average Progeny Values	Angus Breeding Index	Angus Breeding Low Feed Cost Index	Domestic Index	Heavy Grain Index	Heavy Grass Index	Domestic Low Feed Cost Index	Heavy Grain Low Feed Cost Index	Heavy Grass Low Feed Cost Index	AngusPRO Index	Angus Terminal Sire Index
MPL22T31	\$244	\$412	\$204	\$317	\$228	\$358	\$490	\$463	\$196	\$215
A. Breed Avg	+\$197	+\$339	+\$163	+\$259	+\$181	+\$293	+\$405	+\$380	+\$145	+\$181

Expected Average Progeny Values	Calving Ease Direct	Calving Ease Dtrs	Gestation Length	Birth Weight	200 Day Growth	400 Day Weight	600 Day Weight	Milk	IMF	Mat. Cow Weight	Days to Calving	Scrotal Size	Carcase Weight	Eye Muscle Area	Rib Fat	Rump Fat	Retail Beef Yield
MPL22T31	+4.6	+4.0	-3.7	+3.0	+61	+105	+136	+16	+2.0	+112	-5.4	+2.9	+80	+7.4	-1.2	-1.4	+0.7
A. Breed Avg	+2.2	+2.6	-4.8	+4.1	+50	+90	+117	+17	+2.3	+100	-4.6	+2.1	+66	+6.3	+0.0	+0.8	+0.5

Sire: CONNEALY IN SURE 8524#
 Sire: G A R SURE FIREsv
 Dam: CHAIR ROCK 5050 G A R 8086#
Sire: G A R PHOENIXpv
 Dam: G A R PROPHETsv
 Dam: G A R PROPHET N744#
 Dam: G A R DAYBREAK 440#

Sire: SUMMITCREST COMPLETE 1P55#
 Sire: KM BROKEN BOW 002pv
 Dam: SUMMITCREST PRINCESS 0P12#
Dam: MOORE PARK BURNETTE M5#
 Sire: S A V HARVESTOR 0338#
 Dam: MOORE PARK BURNETTE K305#
 Dam: RAFF BURNETTE B148#



Top 1%
 Top 5%
 Top 10%
 Top 25%

Comment: T31 is a growthy Phoenix out of one of our best Broken Bow cows. M5 stands out in our herd, possessing strength and structure.

Purchaser: Price: \$

Lot 8 Moore Park T42_{sv}

HBR IDENT: MPL22T42 DOB 1/02/2022

Expected Average Progeny Values	Angus Breeding Index	Angus Breeding Low Feed Cost Index	Domestic Index	Heavy Grain Index	Heavy Grass Index	Domestic Low Feed Cost Index	Heavy Grain Low Feed Cost Index	Heavy Grass Low Feed Cost Index	AngusPRO Index	Angus Terminal Sire Index
MPL22T42	\$250	\$414	\$205	\$323	\$238	\$355	\$491	\$474	\$197	\$217
A. Breed Avg	+\$197	+\$339	+\$163	+\$259	+\$181	+\$293	+\$405	+\$380	+\$145	+\$181

Expected Average Progeny Values	Calving Ease Direct	Calving Ease Dtrs	Gestation Length	Birth Weight	200 Day Growth	400 Day Weight	600 Day Weight	Milk	IMF	Mat. Cow Weight	Days to Calving	Scrotal Size	Carcase Weight	Eye Muscle Area	Rib Fat	Rump Fat	Retail Beef Yield
MPL22T42	+2.9	+4.0	-4.9	+4.0	+60	+106	+141	+20	+2.6	+110	-5.7	+3.6	+82	+9.1	-2.1	-2.4	+0.9
A. Breed Avg	+2.2	+2.6	-4.8	+4.1	+50	+90	+117	+17	+2.3	+100	-4.6	+2.1	+66	+6.3	+0.0	+0.8	+0.5

Sire: CONNEALY IN SURE 8524#
 Sire: G A R SURE FIREsv
 Dam: CHAIR ROCK 5050 G A R 8086#
Sire: G A R PHOENIXpv
 Dam: G A R PROPHETsv
 Dam: G A R PROPHET N744#
 Dam: G A R DAYBREAK 440#

Sire: MURRAY EL GRANDO G20sv
 Sire: MURRAY GRANDO J136pv
 Dam: MURRAY PREDESTINED F22pv
Dam: MOORE PARK N21#
 Sire: C BAR D ALTERNATIVE K903#
 Dam: MURRAY ALTERNATIVE K107#
 Dam: MURRAY B27 H119sv



Top 1%
 Top 5%
 Top 10%
 Top 25%

Comment: A smooth and thick Phoenix son with terrific length and growth.

Purchaser: Price: \$

Lot 9 Moore Park T17 _{sv}							Selection indexes	Angus Breeding Index	Angus Breeding Low Feed Cost Index	Domestic Index	Heavy Grain Index	Heavy Grass Index	Domestic Low Feed Cost Index	Heavy Grain Low Feed Cost Index	Heavy Grass Low Feed Cost Index	AngusPRO Index	Angus Terminal Sire Index
HBR IDENT: MPL22T17 DOB 1/02/2022							MPL22T17	+\$249	+\$382	+\$201	+336	+\$233	+\$323	+\$472	+\$424	+\$181	+\$217
							A. Breed Avg	+\$197	+\$339	+\$163	+\$259	+\$181	+\$293	+\$405	+\$380	+\$145	+\$181
EBVs	Calving Ease Direct	Calving Ease Dtrs	Gestation Length	Birth Weight	200 Day Growth	400 Day Weight	600 Day Weight	Milk	IMF	Mat. Cow Weight	Days to Calving	Scrotal Size	Carcase Weight	Eye Muscle Area	Rib Fat	Rump Fat	Retail Beef Yield
MPL22T17	+2.6	-0.5	-4.2	+4.8	+58	+99	+126	+19	+4.2	+85	-4.2	+2.7	+73	+10.2	-2.7	-3.9	+0.8
A. Breed Avg	+2.2	+2.6	-4.8	+4.1	+50	+90	+117	+17	+2.2	+100	-4.6	+2.1	+66	+6.3	+0.0	-0.3	+0.5

Sire: G A R EARLY BIRD#
 Sire: G A R ASHLANDPv
 Dam: CHAIR ROCK AMBUSH 1018#
Sire: G A R HOME TOWNpv
 Sire: G A R SURE FIREsv
 Dam: CHAIR ROCK SURE FIRE 6095#
 Dam: CHAIR ROCK PROGRESS 3005#

Sire: G A R PREDESTINED#
 Sire: PA POWER TOOL 9108sv
 Dam: SHAMROCKS BEEBEE QUEEN 3095#
Dam: MURRAY POWER TOOL K79#
 Sire: TUWHARETOA DIPLOMAT D106pv
 Dam: MURRAY DIPLOMAT H75sv
 Dam: PRIME XOTIC E26#



Top 1%
 Top 5%
 Top 10%
 Top 25%

Comment: GAR Hometown provides unapparelled marbling and muscle combined with ideal stature. T17 boast IMF of 4.2 with an Angus Breed Index in the top 7% of the Angus breed.

Purchaser: **Price:** \$

Lot 10 Moore Park T22 _{sv}							Selection indexes	Angus Breeding Index	Angus Breeding Low Feed Cost Index	Domestic Index	Heavy Grain Index	Heavy Grass Index	Domestic Low Feed Cost Index	Heavy Grain Low Feed Cost Index	Heavy Grass Low Feed Cost Index	AngusPRO Index	Angus Terminal Sire Index
HBR IDENT: MPL22T22 DOB 1/03/2022							MPL22T22	\$273	\$419	\$228	\$364	\$256	\$362	\$514	\$460	\$214	\$220
							A. Breed Avg	+\$197	+\$339	+\$163	+\$259	+\$181	+\$293	+\$405	+\$380	+\$145	+\$181
EBVs	Calving Ease Direct	Calving Ease Dtrs	Gestation Length	Birth Weight	200 Day Growth	400 Day Weight	600 Day Weight	Milk	IMF	Mat. Cow Weight	Days to Calving	Scrotal Size	Carcase Weight	Eye Muscle Area	Rib Fat	Rump Fat	Retail Beef Yield
MPL22T22	+6.3	+5.4	-5.1	+3.1	+56	+94	+115	+17	+3.9	+78	-5.7	+1.5	+69	+10.7	-1.8	-2.8	+1.0
A. Breed Avg	+2.2	+2.6	-4.8	+4.1	+50	+90	+117	+17	+2.3	+100	-4.6	+2.1	+66	+6.3	+0.0	+0.8	+0.5

Sire: G A R EARLY BIRD#
 Sire: G A R ASHLANDPv
 Dam: CHAIR ROCK AMBUSH 1018#
Sire: G A R HOME TOWNpv
 Sire: G A R SURE FIREsv
 Dam: CHAIR ROCK SURE FIRE 6095#
 Dam: CHAIR ROCK PROGRESS 3005#

Sire: TE MANIA BARTEL B219pv
 Sire: AYRVALE BARTEL E7pv
 Dam: EAGLEHAWK JEDDA B32sv
Dam: MOORE PARK P120#
 Sire: G A R PROPHETsv
 Dam: MOORE PARK M12#
 Dam: ABERDEEN ESTATE IRIS F26#



Top 1%
 Top 5%
 Top 10%
 Top 25%

Comment: A great carcass pedigree, combining Home Town, Bartel and GAR Phophet. This dam's pedigree mix has consistently given us strong carcass results with our benchmarking well above the National MSA average.

Purchaser: **Price:** \$

Lot 11 Moore Park T41_{sv}							Expected Average Progeny Values	Angus Breeding Index	Angus Breeding Low Feed Cost Index	Domestic Index	Heavy Grain Index	Heavy Grass Index	Domestic Low Feed Cost Index	Heavy Grain Low Feed Cost Index	Heavy Grass Low Feed Cost Index	Angus PRO Index	Angus Terminal Sire Index
HBR	IDENT: MPL22T41		DOB 1/02/2022				MPL22T41	\$269	\$417	\$223	\$361	\$253	\$362	\$517	\$459	\$216	\$221
A. Breed Avg							+\$197	+\$339	+\$163	+\$259	+\$181	+\$293	+\$405	+\$380	+\$145	+\$181	
Expected Average Progeny Values	Calving Ease Direct	Calving Ease Dtrs	Gestation Length	Birth Weight	200 Day Growth	400 Day Weight	600 Day Weight	Milk	IMF	Mat. Cow Weight	Days to Calving	Scrotal Size	Carcase Weight	Eye Muscle Area	Rib Fat	Rump Fat	Retail Beef Yield
MPL22T41	+8.2	+6.2	-4.9	+2.1	+52	+90	+108	+16	+4.7	+79	-6.0	+1.4	+65	+12.2	-1.2	-2.5	+0.9
A. Breed Avg	+2.2	+2.6	-4.8	+4.1	+50	+90	+117	+17	+2.3	+100	-4.6	+2.1	+66	+6.3	+0.0	+0.8	+0.5

Sire: G A R EARLY BIRD#

Sire: TE MANIA BERKLEY B1pv

Sire: G A R ASHLANDpv

Sire: ALLOURA GET CRACKING G10sv

Dam: CHAIR ROCK AMBUSH 1018#

Dam: ALLOURA JEDDA Z15#

Sire: G A R HOME TOWNpv

Dam: LAWSONS KI GET CRACKING P647 P6477#

Sire: G A R SURE FIRESv

Sire: LAWSONS INCREDIBLE H803pv

Dam: CHAIR ROCK SURE FIRE 6095#

Dam: LAWSONS KI INCREDIBLE L6354#

Dam: CHAIR ROCK PROGRESS 3005#

Dam: LANDFALL JOYLE E22sv

Comment: A great bull encompassing everything that our herd achieves. Out of an outstanding G10 cow, T41 promotes low birth, early growth, marble and muscle in a moderate stature.



- Top 1%
- Top 5%
- Top 10%
- Top 25%

Lot 12 Moore Park T38_{sv}							Expected Average Progeny Values	Angus Breeding Index	Angus Breeding Low Feed Cost Index	Domestic Index	Heavy Grain Index	Heavy Grass Index	Domestic Low Feed Cost Index	Heavy Grain Low Feed Cost Index	Heavy Grass Low Feed Cost Index	Angus PRO Index	Angus Terminal Sire Index
HBR	IDENT: MPL22T38		DOB 1/04/2022				MPL22T38	\$221	\$370	\$186	\$291	\$204	\$322	\$444	\$411	\$168	\$199
A. Breed Avg							+\$197	+\$339	+\$163	+\$259	+\$181	+\$293	+\$405	+\$380	+\$145	+\$181	
Expected Average Progeny Values	Calving Ease Direct	Calving Ease Dtrs	Gestation Length	Birth Weight	200 Day Growth	400 Day Weight	600 Day Weight	Milk	IMF	Mat. Cow Weight	Days to Calving	Scrotal Size	Carcase Weight	Eye Muscle Area	Rib Fat	Rump Fat	Retail Beef Yield
MPL22T38	+4.9	+2.1	-3.7	+3.1	+55	+97	+122	+16	+2	+96	-4.5	+3.0	+71	+7.5	-0.3	-0.9	+0.7
A. Breed Avg	+2.2	+2.6	-4.8	+4.1	+50	+90	+117	+17	+2.3	+100	-4.6	+2.1	+66	+6.3	+0.0	+0.8	+0.5

Sire: CONNEALY IN SURE 8524#

Sire: SITZ UPWARD 307Rsv

Sire: G A R SURE FIRESv

Sire: EXAR UPSHOT 0562B#

Dam: CHAIR ROCK 5050 G A R 8086#

Dam: EXAR BARBARA T020#

Sire: G A R PHOENIXpv

Dam: MOORE PARK M1#

Sire: G A R PROPHETsv

Sire: SCOTCH CAP#

Dam: G A R PROPHET N744#

Dam: KENNY'S CREEK BARA X213#

Dam: G A R DAYBREAK 440#

Dam: TE MANIA BARA K150+90#

Comment: Another very good Phoenix son with good muscle pattern. We have always admired the "longevity" genetics held in M1's pedigree through Scotch Cap, an important attribute in any profitable commercial herd.



- Top 1%
- Top 5%
- Top 10%
- Top 25%

Purchaser: **Price:** \$

Lot 13 Moore Park T25_{sv}							Expected Average Progeny Values	Angus Breeding Index	Angus Breeding Low Feed Cost Index	Domestic Index	Heavy Grain Index	Heavy Grass Index	Domestic Low Feed Cost Index	Heavy Grain Low Feed Cost	Heavy Grass Low Feed Cost	Angus PRO Index	Angus Terminal Sire Index
HBR IDENT: MPL22T25 DOB 1/03/2022							MPL22T25	\$265	\$436	\$223	\$346	\$251	\$379	\$522	\$490	\$215	\$224
							A. Breed Avg	+\$197	+\$339	+\$163	+\$259	+\$181	+\$293	+\$405	+\$380	+\$145	+\$181
Expected Average Progeny Values	Calving Ease Direct	Calving Ease Dtrs	Gestation Length	Birth Weight	200 Day Growth	400 Day Weight	600 Day Weight	Milk	IMF	Mat. Cow Weight	Days to Calving	Scrotal Size	Carcass Weight	Eye Muscle Area	Rib Fat	Rump Fat	Retail Beef Yield
MPL22T25	+6.7	+5.5	-4.0	+2.2	+59	+104	+134	+20	+2.9	+103	-6.1	+3.1	+81	+7.1	-1.3	-1.2	+0.7
A. Breed Avg	+2.2	+2.6	-4.8	+4.1	+50	+90	+117	+17	+2.3	+100	-4.6	+2.1	+66	+6.3	+0.0	+0.8	+0.5

Sire: CONNEALY IN SURE 8524#
 Sire: G A R SURE FIREsv
 Dam: CHAIR ROCK 5050 G A R 8086#
Sire: G A R PHOENIXpv
 Sire: G A R PROPHETsv
 Dam: G A R PROPHET N744#
 Dam: G A R DAYBREAK 440#

Sire: TE MANIA BARTEL B219pv
 Sire: AYRVALE BARTEL E7pv
 Dam: EAGLEHAWK JEDDA B32sv
Dam: LAWSONS KI BARTEL E7 P6491#
 Sire: LAWSONS NOVAK E313sv
 Dam: LAWSONS KI NOVAK J6144#
 Dam: LAWSONS EQUATOR E196#



Top 1%
 Top 5%
 Top 10%
 Top 25%

Comment: Calving ease, eye muscle and marble are all profit drivers apparent in this Phoenix/Bartel son.

Purchaser: **Price:** \$

Lot 14 Moore Park T23_{sv}							Selection Indexes	Angus Breeding Index	Angus Breeding Low Feed Cost Index	Domestic Index	Heavy Grain Index	Heavy Grass Index	Domestic Low Feed Cost Index	Heavy Grain Low Feed Cost Index	Heavy Grass Low Feed Cost Index	AngusPRO Index	Angus Terminal Sire Index
HBR IDENT: MPL22T23 DOB 1/03/2022							MPL22T23	+\$236	+\$397	+\$199	+311	+\$218	346	+\$476	+\$443	+\$179	+\$213
							A. Breed Avg	+\$197	+\$339	+\$163	+\$259	+\$181	+\$293	+\$405	+\$380	+\$145	+\$181
EBVs	Calving Ease Direct	Calving Ease Dtrs	Gestation Length	Birth Weight	200 Day Growth	400 Day Weight	600 Day Weight	Milk	IMF	Mat. Cow Weight	Days to Calving	Scrotal Size	Carcass Weight	Eye Muscle Area	Rib Fat	Rump Fat	Retail Beef Yield
MPL22T23	+2.5	+1.0	-2.7	+3.7	+63	+107	+135	+17	+2.3	+114	-5.1	+3.1	+80	+6.8	-1.6	-2.4	+0.6
A. Breed Avg	+2.2	+2.6	-4.8	+4.1	+50	+90	+117	+17	+2.3	+100	-4.6	+2.1	+66	+6.3	+0.0	-0.3	+0.5

Sire: CONNEALY IN SURE 8524#
 Sire: G A R SURE FIREsv
 Dam: CHAIR ROCK 5050 G A R 8086#
Sire: G A R PHOENIXpv
 Sire: G A R PROPHETsv
 Dam: G A R PROPHET N744#
 Dam: G A R DAYBREAK 440#

Sire: SITZ UPWARD 307Rsv
 Sire: TEHAMA UPWARD Y238#
 Dam: TEHAMA ELITE BLACKBIRD T735#
Dam: WATTLETOP ANN M418#
 Sire: RITO 9M25 OF RITA 5F56 PREDsv
 Dam: WATTLETOP J283#
 Dam: WATTLETOP ANN F82#



Top 1%
 Top 5%
 Top 10%
 Top 25%

Comment: T23 has strong carcass indexes across the board on both grain and grass. GAR Phoenix is a trait leader across the breed.

Purchaser: **Price:** \$

Lot 15	Moore Park T26_{sv}	Selection Indexes	Angus Breeding Index	Angus Breeding Low Feed Cost Index	Domestic Index	Heavy Grain Index	Heavy Grass Index	Domestic Low Feed Cost Index	Heavy Grain Low Feed Cost Index	Heavy Grass Low Feed Cost Index	AngusPRO Index	Angus Terminal Sire Index			
		HBR	IDENT: MPL22T26	DOB 30/04/2022	MPL22T26	+\$281	+\$430	+\$238	+381	+\$263	374	+\$534	+\$468	+\$214	+\$234
		A. Breed Avg			+\$197	+\$339	+\$163	+\$259	+\$181	+\$293	+\$405	+\$380	+\$145	+\$181	

EBVs	Calving Ease Direct	Calving Ease Dtrs	Gestation Length	Birth Weight	200 Day Growth	400 Day Weight	600 Day Weight	Milk	IMF	Mat. Cow Weight	Days to Calving	Scrotal Size	Carcase Weight	Eye Muscle Area	Rib Fat	Rump Fat	Retail Beef Yield
MPL22T26	+5.1	+3.1	-5.7	+3.0	+61	+105	+125	+18	+4.2	+87	-5.0	+1.1	+78	+11.3	-2.7	-4.1	+1.1
A. Breed Avg	+2.2	+2.6	-4.8	+4.1	+50	+90	+117	+17	+2.3	+100	-4.6	+2.1	+66	+6.3	+0.0	-0.3	+0.5

Sire: G A R EARLY BIRD#
 Sire: G A R RASHLANDpv
 Dam: CHAIR ROCK AMBUSH 1018#
Sire: G A R HOME TOWNpv
 Sire: G A R SURE FIRESv
 Dam: CHAIR ROCK SURE FIRE 6095#
 Dam: CHAIR ROCK PROGRESS 3005#

Sire: MCC DAYBREAK#
 Sire: G A R SCALE HOUSEpv
 Dam: G A R 5050 NEW DESIGN 1039#
Dam: AYRVALE QUADREL Q54pv
 Sire: G A R PROPHETsv
 Dam: AYRVALE MITTAGONG L23pv
 Dam: STRATHEWEN EVIDENT MITAGONG H42pv

Comment: Top 1% for Angus Breeding Index and Top 3% for Angus Breeding Low Feed Cost Index are the standout figures for T26. This bull is the youngest in the catalogue from a very good cow purchased at the Ayrevale Dispersal.

Purchaser: **Price:** \$



Top 1%
 Top 5%
 Top 10%
 Top 25%

Lot 16	Moore Park T34_{sv}	Selection Indexes	Angus Breeding Index	Angus Breeding Low Feed Cost Index	Domestic Index	Heavy Grain Index	Heavy Grass Index	Domestic Low Feed Cost Index	Heavy Grain Low Feed Cost	Heavy Grass Low Feed Cost	AngusPRO Index	Angus Terminal Sire Index			
		HBR	IDENT: MPL22T34	DOB 28/04/2022	MPL22T34	\$227	\$354	\$183	\$313	\$207	\$299	\$443	\$385	\$164	\$200
		A. Breed Avg			+\$197	+\$339	+\$163	+\$259	+\$181	+\$293	+\$405	+\$380	+\$145	+\$181	

Sire: G A R EARLY BIRD#
 Sire: G A R RASHLANDpv
 Dam: CHAIR ROCK AMBUSH 1018#
Sire: G A R HOME TOWNpv
 Sire: G A R SURE FIRESv
 Dam: CHAIR ROCK SURE FIRE 6095#
 Dam: CHAIR ROCK PROGRESS 3005#

Sire: G A R MOMENTUMpv
 Sire: G A R INERTIApv
 Dam: G A R PROPHET 2984#
Dam: MOORE PARK P104#
 Sire: SILVEIRAS M811 TOTAL 6103#
 Dam: WATTLETOP BARUNAH H91#
 Dam: WATTLETOP BARUNAH E179#

Comment: T34 is the second youngest bull in the sale that will grow out into a great bull. His dam is a deep cow that dispays the postive carcass traits of GAR Inertia.

Purchaser: **Price:** \$



Top 1%
 Top 5%
 Top 10%
 Top 25%

Lot 17 Moore Park T19_{sv}								Expected Average Progeny Values	Angus Breeding Index	Angus Breeding Low Feed Cost Index	Domestic Index	Heavy Grain Index	Heavy Grass Index	Domestic Low Feed Cost Index	Heavy Grain Low Feed Cost Index	Heavy Grass Low Feed Cost Index	Angus PRO Index	Angus Terminal Sire Index
HBR IDENT: MPL22T19 DOB 1/02/2022								MPL22T19	\$238	\$408	\$205	\$303	\$224	\$360	\$478	\$464	\$193	\$207
								A. Breed Avg	+\$197	+\$339	+\$163	+\$259	+\$181	+\$293	+\$405	+\$380	+\$145	+\$181
Expected Average Progeny Values	Calving Ease Direct	Calving Ease Dtrs	Gestation Length	Birth Weight	200 Day Growth	400 Day Weight	600 Day Weight	Milk	IMF	Mat. Cow Weight	Days to Calving	Scrotal Size	Carcase Weight	Eye Muscle Area	Rib Fat	Rump Fat	Retail Beef Yield	
MPL22T19	+3.4	+0.9	-2.7	+4.8	+63	+107	+139	+14	+1.5	+120	-6.1	+3.2	+82	+5.8	-1.5	-2.1	+0.9	
A. Breed Avg	+2.2	+2.6	-4.8	+4.1	+50	+90	+117	+17	+2.3	+100	-4.6	+2.1	+66	+6.3	+0.0	+0.8	+0.5	

Sire: CONNEALY IN SURE 8524#
 Sire: G A R SURE FIRESv
 Dam: CHAIR ROCK 5050 G A R 8086#
Sire: G A R PHOENIXpv
 Sire: G A R PROPHETsv
 Dam: G A R PROPHET N744#
 Dam: G A R DAYBREAK 440#

Sire: S A V HERITAGE 6295#
 Sire: S A V HARVESTOR 0338#
 Dam: S A V EMBLYNETTE 7749#
Dam: MOORE PARK FINKS MISS N5#
 Sire: MYTTY IN FOCUS#
 Dam: KENNY'S CREEK FINKS MISS F843#
 Dam: KENNY'S CREEK FINKS MISS B44pv



Comment: An active thick bull with consistant traits of merit across the board.

Purchaser: **Price:** \$

Lot 18 Moore Park T28_{sv}								Expected Average Progeny Values	Angus Breeding Index	Angus Breeding Low Feed Cost Index	Domestic Index	Heavy Grain Index	Heavy Grass Index	Domestic Low Feed Cost Index	Heavy Grain Low Feed Cost	Heavy Grass Low Feed Cost	Angus PRO Index	Angus Terminal Sire Index
HBR IDENT: MPL22T28 DOB 1/03/2022								MPL22T28	\$260	\$432	\$218	\$335	\$245	\$375	\$512	\$487	\$208	\$221
								A. Breed Avg	+\$197	+\$339	+\$163	+\$259	+\$181	+\$293	+\$405	+\$380	+\$145	+\$181
Expected Average Progeny Values	Calving Ease Direct	Calving Ease Dtrs	Gestation Length	Birth Weight	200 Day Growth	400 Day Weight	600 Day Weight	Milk	IMF	Mat. Cow Weight	Days to Calving	Scrotal Size	Carcase Weight	Eye Muscle Area	Rib Fat	Rump Fat	Retail Beef Yield	
MPL22T28	+5.6	+5.1	-3.8	+3.3	+61	+106	+137	+18	+2.4	+111	-6.0	+3.2	+84	+7.6	-1.9	-2.0	+1.0	
A. Breed Avg	+2.2	+2.6	-4.8	+4.1	+50	+90	+117	+17	+2.3	+100	-4.6	+2.1	+66	+6.3	+0.0	+0.8	+0.5	

Sire: CONNEALY IN SURE 8524#
 Sire: G A R SURE FIRESv
 Dam: CHAIR ROCK 5050 G A R 8086#
Sire: G A R PHOENIXpv
 Sire: G A R PROPHETsv
 Dam: G A R PROPHET N744#
 Dam: G A R DAYBREAK 440#

Sire: TE MANIA BARTEL B219pv
 Sire: AYRVALE BARTEL E7pv
 Dam: EAGLEHAWK JEDDA B32sv
Dam: MOORE PARK P018#
 Sire: WATTLETOP FRANKLIN H179sv
 Dam: MOORE PARK BARUNAH K K298#
 Dam: WATTLETOP BARUNAH H382#



Comment: A bull with length and stretch, T28 carries the Phoenix/Bartel cross which are known to be highly profitable cattle.

Purchaser: **Price:** \$

- Top 1%
- Top 5%
- Top 10%
- Top 25%

Lot 19 Moore Park T7_{sv}								Selection Indexes	Angus Breeding Index	Angus Breeding Low Feed Cost Index	Domestic Index	Heavy Grain Index	Heavy Grass Index	Domestic Low Feed Cost Index	Heavy Grain Low Feed Cost	Heavy Grass Low Feed Cost	AngusPRO Index	Angus Terminal Sire Index
HBR IDENT: MPL22T7 DOB 1/03/2022								MPL22T7	\$254	\$438	\$219	\$334	\$236	\$387	\$523	\$486	\$197	\$234
								A. Breed Avg	+\$197	+\$339	+\$163	+\$259	+\$181	+\$293	+\$405	+\$380	+\$145	+\$181
EBVs	Calving Ease Direct	Calving Ease Dtrs	Gestation Length	Birth Weight	200 Day Growth	400 Day Weight	600 Day Weight	Milk	IMF	Mat. Cow Weight	Days to Calving	Scrotal Size	Carcase Weight	Eye Muscle Area	Rib Fat	Rump Fat	Retail Beef Yield	
MPL22T7	+5.0	+3.7	-4.1	+3.0	+68	+120	+150	+19	+2.0	+129	-4.7	+3.3	+92	+7.4	-2.5	-2.9	+0.8	
A. Breed Avg	+2.2	+2.6	-4.8	+4.1	+50	+90	+117	+17	+2.3	+100	-4.6	+2.1	+66	+6.3	+0.0	+0.8	+0.5	

Sire: CONNEALY IN SURE 8524#
 Sire: G A R SURE FIRESv
 Dam: CHAIR ROCK 5050 G A R 8086#
Sire: G A R PHOENIXpv
 Sire: G A R PROPHETsv
 Dam: G A R PROPHET N744#
 Dam: G A R DAYBREAK 440#

Sire: SUMMITCREST COMPLETE 1P55#
 Sire: KM BROKEN BOW 002pv
 Dam: SUMMITCREST PRINCESS 0P12#
Dam: MOORE PARK N116#
 Sire: SILVEIRAS M811 TOTAL 6103#
 Dam: WATTLETOP USUAL H23#
 Dam: WATTLETOP USUAL F62#

Comment: A tall, stretchy Phoenix son.

Purchaser: Price: \$



Lot 20 Moore Park S109_{sv}								Selection Indexes	Angus Breeding Index	Angus Breeding Low Feed Cost Index	Domestic Index	Heavy Grain Index	Heavy Grass Index	Domestic Low Feed Cost Index	Heavy Grain Low Feed Cost Index	Heavy Grass Low Feed Cost Index	AngusPRO Index	Angus Terminal Sire Index
HBR IDENT: MPL21S109 DOB 1/09/2021								MPL21S109	+\$234	+\$400	+\$195	+309	+\$214	+\$348	+\$481	+\$439	+\$184	+\$208
								A. Breed Avg	+\$197	+\$339	+\$163	+\$259	+\$181	+\$293	+\$405	+\$380	+\$145	+\$181
EBVs	Calving Ease Direct	Calving Ease Dtrs	Gestation Length	Birth Weight	200 Day Growth	400 Day Weight	600 Day Weight	Milk	IMF	Mat. Cow Weight	Days to Calving	Scrotal Size	Carcase Weight	Eye Muscle Area	Rib Fat	Rump Fat	Retail Beef Yield	
MPL21S109	+6.7	+6.3	-5.4	+2.0	+53	+94	+119	+15	+2.9	+110	-5.1	+0.4	+63	+8.3	-0.7	-1.0	+0.8	
A. Breed Avg	+2.2	+2.6	-4.8	+4.1	+50	+90	+117	+17	+2.2	+100	-4.6	+2.1	+66	+6.3	+0.0	-0.3	+0.5	

Sire: G A R DAYLIGHT#
 Sire: G A R EARLY BIRD#
 Dam: G A R PROGRESS 830#
Sire: G A R ASHLANDpv
 Sire: B/R AMBUSH 28#
 Dam: CHAIR ROCK AMBUSH 1018#
 Dam: G A R YIELD GRADE N366#

Sire: LCC NEW STANDARDsv
 Sire: ALCOA NEW STANDARD 427#
 Dam: ALC 5427 OF 5346-OBJECTIVE#
Dam: MURRAY NEW STANDARD K27pv
 Sire: TE MANIA BERKLEY B1pv
 Dam: MURRAY BERKLEY F4sv
 Dam: MURRAY SANDY Y29#

Comment: GAR Ashland boasts 9 generations top and bottom of fully proven sires throughout with 0.9 accuracy and higher. S109 possesses body, depth and thickness and is very active, typical of the GAR Ashlands.

Purchaser: Price: \$



- Top 1%
- Top 5%
- Top 10%
- Top 25%

Lot 21 Moore Park S76_{sv}

APR IDENT: MPL21S76 DOB 22/06/2021

Selection Indexes	Angus Breeding Index	Angus Breeding Low Feed Cost Index	Domestic Index	Heavy Grain Index	Heavy Grass Index	Domestic Low Feed Cost Index	Heavy Grain Low Feed Cost Index	Heavy Grass Low Feed Cost	AngusPRO Index	Angus Terminal Sire Index
MPL21S76	\$171	\$305	\$142	\$224	\$151	\$265	\$362	\$330	\$123	\$164
A. Breed Avg	+\$197	+\$339	+\$163	+\$259	+\$181	+\$293	+\$405	+\$380	+\$145	+\$181

EBVs	Calving Ease Direct	Calving Ease Dtrs	Gestation Length	Birth Weight	200 Day Growth	400 Day Weight	600 Day Weight	Milk	IMF	Mat. Cow Weight	Days to Calving	Scrotal Size	Carcase Weight	Eye Muscle Area	Rib Fat	Rump Fat	Retail Beef Yield
MPL21S76	+8.6	+4.0	-2.2	+3.4	+46	+78	+100	+13	+1.2	+85	-3.2	+2.4	+57	+5.3	-0.6	-0.9	+0.7
A. Breed Avg	+2.2	+2.6	-4.8	+4.1	+50	+90	+117	+17	+2.2	+100	-4.6	+2.1	+66	+6.3	+0.0	-0.3	+0.5

Sire: S A F FAME#
 Sire: S A F FOCUS OF E R#
 Dam: G D A R FOREVER LADY 246#
Sire: MYTTY IN FOCUS#
 Sire: SITZ ALLIANCE 6595#
 Dam: MYTTY COUNTESS 906#
 Dam: BALDRIDGE COUNTESS 357#

Sire: G A R PROPHETSV
 Sire: MOORE PARK M7
 Dam: KENNY'S CREEK FINKS MISS F843
Dam: MOORE PARK P75
 Sire: R/M IRONSTONE 4047#
 Dam: BOORAGUL GLAZE G101 #
 Dam: BOORAGUL GLAZE B60#



Comment: By the legend himself Mytty In Focus. It may be old genetics but he has had a huge influence on the Angus breed world wide with calving ease being his standout trait. S76 would be a potential heifer bull and is extremely quiet.

Purchaser: **Price:** \$

Lot 22 Moore Park S100_{sv}

HBR IDENT: MPL21S100 DOB 1/09/2021

Expected Average Progeny Values	Angus Breeding Index	Angus Breeding Low Feed Cost Index	Domestic Index	Heavy Grain Index	Heavy Grass Index	Domestic Low Feed Cost Index	Heavy Grain Low Feed Cost	Heavy Grass Low Feed Cost	AngusPRO Index	Angus Terminal Sire Index
MPL21S100	\$263	\$411	\$221	\$350	\$246	\$357	\$502	\$451	\$205	\$215
A. Breed Avg	+\$197	+\$339	+\$163	+\$259	+\$181	+\$293	+\$405	+\$380	+\$145	+\$181

Expected Average Progeny Values	Calving Ease Direct	Calving Ease Dtrs	Gestation Length	Birth Weight	200 Day Growth	400 Day Weight	600 Day Weight	Milk	IMF	Mat. Cow Weight	Days to Calving	Scrotal Size	Carcase Weight	Eye Muscle Area	Rib Fat	Rump Fat	Retail Beef Yield
MPL21S100	+7.3	+5.7	-5.9	+2.8	+54	+94	+114	+18	+3.7	+79	-5.5	+1.8	+69	+10.5	-1.8	-2.9	+1.1
A. Breed Avg	+2.2	+2.6	-4.8	+4.1	+50	+90	+117	+17	+2.3	+100	-4.6	+2.1	+66	+6.3	+0.0	+0.8	+0.5

Sire: G A R EARLY BIRD#
 Sire: G A R ASHLANDPv
 Dam: CHAIR ROCK AMBUSH 1018#
Sire: G A R HOME TOWNPv
 Sire: G A R SURE FIREsv
 Dam: CHAIR ROCK SURE FIRE 6095#
 Dam: CHAIR ROCK PROGRESS 3005#

Sire: TE MANIA BARTEL B219pv
 Sire: AYRVALE BARTEL E7pv
 Dam: EAGLEHAWK JEDDA B32sv
Dam: MOORE PARK P019#
 Sire: EXAR UPSHOT 0562B#
 Dam: MOORE PARK FINKS MIS K292#
 Dam: KENNY'S CREEK FINKS MISS F843#



Comment: S100 is a great carcass bull mixing GAR Home Town and Ayrevale Bartel, known trait leaders for calving ease. This is a combination that has worked extremely well for us, producing great females and carcass traits

Purchaser: **Price:** \$

- Top 1%
- Top 5%
- Top 10%
- Top 25%

Lot 23 Moore Park S124

HBR IDENT: MPL21S124 DOB 1/09/2021

Expected Average Progeny Values	Angus Breeding Index	Angus Breeding Low Feed Cost Index	Domestic Index	Heavy Grain Index	Heavy Grass Index	Domestic Low Feed Cost Index	Heavy Grain Low Feed Cost Index	Heavy Grass Low Feed Cost Index	AngusPRO Index	Angus Terminal Sire Index
MPL21S124	\$215	\$349	\$181	\$293	\$196	\$303	\$430	\$379	\$152	\$196
A. Breed Avg	+\$197	+\$339	+\$163	+\$259	+\$181	+\$293	+\$405	+\$380	+\$145	+\$181

Expected Average Progeny Values	Calving Ease Direct	Calving Ease Dtrs	Gestation Length	Birth Weight	200 Day Growth	400 Day Weight	600 Day Weight	Milk	IMF	Mat. Cow Weight	Days to Calving	Scrotal Size	Carcase Weight	Eye Muscle Area	Rib Fat	Rump Fat	Retail Beef Yield
MPL21S124	+1.8	+2.0	-5.0	+3.5	+54	+92	+112	+15	+3.2	+94	-3.8	+1.4	+68	+9.7	-2.8	-4.0	+1.2
A. Breed Avg	+2.2	+2.6	-4.8	+4.1	+50	+90	+117	+17	+2.3	+100	-4.6	+2.1	+66	+6.3	+0.0	+0.8	+0.5

Sire: G A R EARLY BIRD#

Sire: TEHAMA TOTAL M811#

Sire: G A R ASHLANDpv

Sire: SILVEIRAS M811 TOTAL 6103#

Sire: G A R

WITHDRAWN

309#

TY 04 379 AB#

Dam: CHAIR ROCK PROGRESS 3005#

Dam: WATTLETOP USUAL C102PV



Comment: Early maturing Home Town son.

Purchaser:

Price: \$

Notes

Tomorrow Starts Today.

First foals to compete in Australia 2025.
Booked Full 2023.
Owned by Plantation Farms LLC

BBR
BADBOONARISING

Sydney
PHOTOGRAPHY



Find Value. Save Time.

www.mooreparklivestock.com

Email: williamson.tom@bigpond.com

Tom: 0429908324

Jane 0427334620

