

Your Invitation to...



For Better Beef

ANNUAL BULL SALE

TUESDAY, 11TH JULY 2023

44 QUALITY BULLS – ON PROPERTY SALE

Sale commences 1.00 pm



ENQUIRIES WELCOME

Kim, Liz, Ned & Katja Williams

mobile: KIM 0428 885 191 | NED 0427 370 381



email: polldale@bigpond.com
www.polldalestudshorthorns.com





"WELCOME TO POLLDALE'S ANNUAL ON-PROPERTY BULL SALE"

Fellow Breeders, due to the seasons drying conditions we are not offering commercial females. We are offering 40 plus functional bulls that we consider will meet our clients' requirements.

All bulls are guaranteed sound, semen tested, vaccinated and vet inspected. These bulls are in good working condition. The consistency of our 2023 draft we believe will create uniformity in our client's progeny. All bulls are around 2 years old, and are practical soft easy doing bulls.

We are proud of the correctness of our cattle, and after 63 years of breeding we consider paddock performance and kill data very important to us. Our sire battery we believe is second to none and we are seeing excellent results. Our belief is in breeding easy care productive cattle that are breeder and market required.

If we can assist you in selecting your next sire please contact us at any time, and hope you can find time to inspect our bulls on sale day.

Regards

The Polldale Family



The Third, Fourth and Fifth Generation of the Williams family Breeding Shorthorns



ANNUAL ON-PROPERTY BULL SALE

65L Mogriguy Road Dubbo at POLLDALE Yards

TUESDAY 11TH JULY 2023 AT 1.00 PM

*Inspection from 10.00 am
Lunch and refreshments will be provided*

44 2YO Quality Bulls on Offer

*Photos and videos available on AuctionsPlus, Youtube, Facebook and QR code,
or alternatively visit our website.*

ENQUIRIES WELCOME

Kim, Liz, Ned & Katja Williams
phone: **02 6888 5191**

mobile: **KIM 0428 885 191 – NED 0427 370 381**

email: polldale@bigpond.com

www.polldalestudshorthorns.com



John Settree 0408 297 368
Peter Godbolt 0457 591 929
Richie Miller 0428 849 327
Tim Woodham 0436 015 115

Paul Dooley 0458 662 646

Paul Jameson 0428 667 998
Brian Kennedy 0427 844 047
Lincoln Mckinlay 0419 239 963
Martin Simmons 0427 210 634

TESTIMONIAL


I have been using Polldale Bulls for over 20 years.

I believe the resultant placid nature of my herd contributes to their soft prime finish and makes them a pleasure to draft and work them through the yards.


With young female employees and family members working the cattle it is essential that the livestock are easy to handle.

*Rod and Juleen Young,
Coonabarabran NSW*

SYCA 2023 RAFFLE HEIFER





Presented by
Macquarie Anglican
Grammar School



POLLDALÉ PETA T26

Kindly donated by Polldale shorthorns
Major Sponsors of the National Shorthorn Youth Expo Dubbo 2023

TO PURCHASE TICKETS PLEASE VISIT OUR FACEBOOK PAGE  [Australian Shorthorn Youth Group](#)



NUTRIEN LIVESTOCK



YOUR BREEDING SPECIALISTS

At Nutrien Ag Solutions, we have developed a comprehensive network of stud stock specialists, giving you access to some of the very best genetics across Australia and the world.

Our dedicated team offer a range of services for those looking to increase flock or herd productivity, including advice on breeding programs, cattle and sheep genetics and selection, and livestock classing.

Talk to our stud stock team today:

New South Wales

John Settree
m. 0408 297 368

Victoria

Peter Godbolt
m. 0457 519 929

Queensland

Colby Ede
m. 0417 265 980

South Australia

Gordon Wood
m. 0408 813 215

SALES TERMS AND CONDITIONS

Health

JD status is JBAS 6. All bulls have been vaccinated twice and given booster shots prior to sale for pestivirus and 7 in 1. Bulls have been tested negative for persistently infected Pestivirus (BVDV). All bulls have been vibriosis vaccinated once prior to sale, we suggest a 2nd shot should be given. Bulls have been worked and yarded by 2 wheel & 4 wheel motor bikes and utes, not by horse or dogs, it may take a short time for your new bull to adjust to new environment. We suggest to have companion cattle for him on arrival home.

Insurance

We suggest you insure your purchased lot or lots. All care will be taken from fall of hammer, but it is the purchaser's responsibility for any injury or death. An insurance agent will be in attendance sale day.

Catering

Will be available on sale day.

Accommodation

Dubbo is only 16km away, where there are motels available, please book early.

Guarantee

All animals are guaranteed to breed with the exception in the event of injury or disease that occurs to the animal after the sale or gross negligence wilful misconduct on the part of the purchaser. Any complaint must be lodged in writing including a relevant veterinary certificate within 6 months of the sale to the vendor.

Selling Agent

Elders & Nutrien are the selling agents. The sale will operate under the usual terms and conditions of livestock auction sales with a buyers number system. All buyers are to register prior to the commencement of the sale. All lots will be sold exclusive of GST. At the fall of the hammer animals are at the purchaser's risk we suggest that all animals be insured.

Inspection

Animals can be inspected prior to sale by appointment with vendor or selling agent. Inspection on sale day will commence from 10am.

The Selling System

The sale shed is located in close proximity to the bull pens. The auctioneer will be selling the bulls by auction with video of each lot projected onto the screen. Bulls will not be run through a sale ring.

Rebate

- 1) Outside agent rebate of 2% will be offered to agents introducing buyers in writing to selling agents or vendor within 24 hours prior to sale day and settling within 7 days of the sale this will be strictly enforced.
- 2) Any outside agent traveling a distance to the sale with the client and settling on their behalf within 7 days should contact the vendors for a larger rebate prior for approval.

AuctionPlus

The sale is interfaced with AuctionPlus where Audio and Live bidding will be available.

There is mobile phone reception at the sale venue so please make prior arrangements with the selling agents or vendors if you wish to place bids during the sale.

Freight

Transport details to be coordinated after the sale. These details must be in WRITING and given to the agents and carriers. For a safer delivery, we recommend "Falls Livestock Transport".

A Rebate of \$200 for transport per bull is given to interstate buyers. For NSW buyers assistance may be available providing our recommended carriers are used, see vendors for details.

Disclaimer

The owners, employees and representatives of the Vendors and selling agents accept no Liability for any accidents, Injury or damage that may occur at the sale complex. Any person attending our sale do so at their own risk. Viewing laneways are available to view cattle from outside the pens for your convenience. All reasonable care has been taken by the vendors to ensure that the information provided in this catalogue is correct. Neither the vendors or selling agents assume any responsibility for the correctness, use or interpretation of the information in this catalogue.

Strictly NO CHILDREN ALLOWED IN CATTLE PENS.



FOR A SUCCESSFUL STUD STOCK BUSINESS

Our experienced and professional network, located across Australia, are dedicated to achieving the best results for your stud stock business.

Elders Stud Stock provide superior marketing packages, professional auctioneering services, as well as dedicated pre and post-sale customer support. This is backed by an extensive commercial client base throughout Australia. We work closely with stud stock breeders, providing tailored services to achieve your agribusiness goals.

Paul Jameson	Stud Stock Manager NSW	0428 667 998
Brian Kennedy	Stud Stock Specialist/ Auctioneer	0427 844 047
Lincoln McKinlay	Stud Stock Specialist/ Auctioneer	0419 239 963
Florance McGufficke	Livestock & Stud Stock SSO	0456 801 429
Martin Simmons	Branch Manager Dubbo	0427 854 825

Elders Stud Stock NSW
E. eldersstudstocknsw@elders.com.au
Facebook. [@eldersstudstock](https://www.facebook.com/eldersstudstock)



UNDERSTANDING IGS EPD'S

MATERNAL EPDS

CALVING EASE DIRECT (CE-D)

Reported as the percentage of extra unassisted births in first calving heifers, relative to the average. CE-D is relative to the direct Calving Ease of the animal. Higher values are more favourable.

CALVING EASE MATERNAL (CE-M)

Reported as the percentage of extra unassisted births in first calving heifers, relative to the average. CE-M is relative to the Calving Ease of the daughters of the animal. Higher values are more favourable.

MILK

Reported as pounds of weaning weight of progeny from the animals daughters, relative to the average. Predicts the difference in maternal production of daughters relative to milk production of mothering. Values are relative to the environment of the production system. Low input environments should be very conscious of introducing too much milk due to the increased nutrient requirements that it can place on cows.

MATERNAL WEANING WEIGHT

Reported as pounds of weaning weight of progeny from the animals daughters, relative to the average. This is a measure of weaning weight differences relative to the combined effects of growth and milk. Breeders who are not looking to change milk production should consider Total Maternal as the most relevant EPD for maternal weaning weights. Higher values are more favourable.

STAYABILITY (STAY)

Reported as the differences in percentage of a sire's offspring that are predicted to still be in the herd at 6 years of age ... given that they calved at 2, relative to the average. Stayability is a measure of reproductive longevity. Higher values are more favourable.

DOCILITY

Reported as the percentage of progeny, relative to the average, that will record a score of docile. Higher values are more favourable.

GROWTH EPDS

BIRTH WEIGHT

Reported in pounds of birth weight relative to the average. When selecting bulls to use on heifers, breeders should also focus on the Calving Ease EPD as Birthweight is already used in the Calving Ease EPD calculation

WEANING WEIGHT – ADJUSTED TO 205 DAYS

Reported in pounds of weaning weight of direct progeny, relative to the average. Higher values are usually more favourable dependant on its relationship with birthweight.

YEARLING WEIGHT – ADJUSTED TO 365 DAYS

Reported in pounds of yearling weight of direct progeny, relative to the average. Higher values are usually more favourable dependant on its relationship with birthweight.

CARCASE EPD'S – ADJUSTED TO 475 DAYS OF AGE

CARCASE WEIGHT

Reported as pounds of Carcase Weight relative to the average. Higher values are usually more favourable, however this is relevant to each producer's target market.

RIB EYE AREA

Reported as square inches relative to the average. Higher values are usually more favourable.

FAT

Reported as inches of back fat relative to the average. Higher values are usually more favourable, however this requires a balance between adequate doing ability in daughters and carcass fat thresholds for target markets.

YIELD GRADE

Reported as expected differences in progeny average USDA Yield Grade scores. Yield Grade is used to improve the yield potential of progeny and may seem a strange value for Australian animals. Whilst Australian animals will never receive a USDA graded Yield Grade score, they will also never receive an actual Retail Beef Yield % value either. However, US Shorthorns (including progeny of Australian sires used in the US) are USDA graded each year and so the pedigree linkages provide linkage to actual USDA Yield Grade values. Lower values are usually more favourable, however because of the negative correlations between fat and yield it is important to maintain some balance in the selection.

MARBLE SCORE

Reported as the differences in actual carcass marble scores relative to the average. This is different to IMF% which is used as an indicator trait in Marble Score. Higher values are more favourable.

ALL PURPOSE \$INDEX – API

Though EPDs allow for the comparison of genetic levels for many economically important traits, they only provide a piece of the economic puzzle. That's where \$ Indexes come in. Through well conceived, rigorous mathematical computation, \$ Indexes blend EPD's and economics to estimate an animal's overall impact on your bottom line.

The All Purpose \$Index (API) evaluates sires for use on the entire cow herd, bred to both first-calf heifers and mature cows, with the portion of their daughters required to maintain herd size retained and the remaining heifers and steers put onto feed and marketed for both quality grade and yield.

UNDERSTANDING ACCURACIES

BOLT EPD accuracies have experienced the most change, usually lowering numerically and especially for non-parent animals, however the reported accuracy will be more accurate. Accuracy refers to the amount a reported EPD can possibly change as more data is added. EPD values with higher accuracy result in less possible change for the value over time. More accurate accuracies better represent the amount of possible change for each EPD.

May 2023 Shorthorn Breed Average

	CE	BW	WW	YW	Milk	MCE	MWWT	STAY	DOC	CW	REA	FAT	MARB	YG	API
EPD	7.8	2.9	53.4	82.2	25.1	5.6	51.7	12.7	10.5	4.2	0.38	-0.080	-0.03	-0.34	109.72

FALLS

Livestock Transport

FINLEY

*Specialists in Stud Stock
Servicing all States Australia Wide*



Lockie Falls – 0429 826 342
www.fallslivestock.com.au





AuctionsPlus

How to Register and Bid on AuctionsPlus

1

Go to www.auctionsplus.com.au to register at least 48 hours before the sale.

2

Select “**Sign Up**” in the top right hand corner.

3

Fill out your name, mobile number, email address and create a password.

4

Go to your emails and confirm the account.

5

Return to AuctionsPlus and log in.

6

Select “**Dashboard**” and then select “**Request Approval to Buy**”.

7

Fill in buyer details and once completed go back to Dashboard.

8

Complete buyer induction module (approx. 30 minutes).

9

AuctionsPlus will email you to let you know that your account has been approved.

10

Log in on sale day and connect to auction.

11

Bid using the two-step process – unlock the bid button and bid at that price.

12

If you are successful, the selling agent will contact you post sale to organise delivery and payment.

For more information please contact us on:

Phone: (02) 9262 4222

Email: info@auctionsplus.com.au

REFERENCE SIRES

Reference Sire

SPRYS UNLIMITED GLS P146

Colour: Red **Born:** 22/8/2018 **Tattoo:** GLS P146
 SASKVALLEY TRADITION 106T THE GROVE TIDE-RIP E667
SIRE: MURIDALE THERMAL ENERGY 15A **DAM:** SPRYS TIDE RIPS FRANCES H246
 MURIDALE GOOSE 32R EDEN PARK LEGENDS FRANCES W006



2023 MAY SHORTHORN GROUP BREEDPLAN EPDs														
CE	BW	WW	YW	MILK	MCE	MWWT	STAY	DOC	CW	REA	FAT	MARB	YG	API
9.8	2.3	67.0	91.0	26.4	7.6	59.9	17.1	11.3	13.8	0.47	-0.073	0.24	-0.31	139.76
56%	65%	64%	62%	19%	28%	34%	32%	51%	48%	44%	36%	45%	36%	
25	35	10	25	40	20	10	10	45	15	25	30	4	75	2

Comments: Has bred outstanding progeny, Perfect to use on heifers we have had no problems with calving. His genotype is of the Highest and he is passing these traits onto his progeny. There structure is very correct, thick topped and well balanced. What a find for POLLDALE. His heifers look very good coming up to calve.

Reference Sire

ROYALLA ULTIMATE JSN N176

Colour: Red **Born:** 21/6/2017 **Tattoo:** N176
 ROYALLA OSTENTATIOUS G404 WEEBOLLABOLLA THEODORE T85
SIRE: ROYALLA ROCKSTAR K274 **DAM:** MARELLAN DORA 8074L
 MARELLAN MITZI 8087L INVERARY DORA W184



2023 MAY SHORTHORN GROUP BREEDPLAN EPDs														
CE	BW	WW	YW	MILK	MCE	MWWT	STAY	DOC	CW	REA	FAT	MARB	YG	API
13.4	0.5	43.3	66.2	26.1	8.7	47.8	12.0	15.4	-11.8	0.32	-0.071	-0.09	-0.36	112.19
53%	61%	60%	57%	22%	28%	35%	33%	34%	45%	43%	35%	45%	35%	
10	10	90	95	45	10	75	65	10	100	70	25	70	40	40

Comments: By the well known breeding Royalla Rockstar, and from renowned female line "Iverary Dora". His first progeny was offered at our 2022 Inaugural Bull sale to great success. He has certainly stamped his calves very functional easy doing cattle with strong spine and big toplines. We are very pleased with his consistent breeding and good performance. Very commercially acceptable. Females by him have been maternal and are really hitting their straps with their second calves.

Reference Sire

POLLDALE NASTY POL N28

Colour: Red **Born:** 27/4/2017 **Tattoo:** POL N28
 ROYALLA NOSTALGIA SPRYS EXCLUSIVE E021
SIRE: ROYALLA QUANDIALLA J209 **DAM:** POLLDALE CECILIA 28TH
 ROYALLA LADYBIRD G333 POLLDALE CECILIA 21ST



2023 MAY SHORTHORN GROUP BREEDPLAN EPDs														
CE	BW	WW	YW	MILK	MCE	MWWT	STAY	DOC	CW	REA	FAT	MARB	YG	API
4.9	3.2	57.3	87.0	24.1	5.4	52.8	8.8	12.8	0.5	0.37	-0.044	-0.02	-0.26	99.14
51%	53%	51%	50%	15%	21%	27%	28%	30%	40%	36%	32%	41%	31%	
85	55	35	35	65	55	45	95	25	65	55	3	45	95	85

Comments: A bull with tremendous meat and cover, Responds very quick. Out of a really easy doing cow. All S Exclusive females are breeding very well, with perfect udders. He is breeding above expectations as can be seen by his sons in our sale draft. Used in stud, and commercially. He is a bull that has left a big impact already. His first progeny sold in 2022. They are easy doing with good carcass shape, docility and excellent phenotype. You can use his progeny with confidence.

Reference Sire

POLLDALE PACKER POL P27

Colour: Red **Born:** 18/4/2018 **Tattoo:** POL P27
 RONELLE PARK HURRICANE H242 MOOMBI OOKTALI G55
SIRE: BAYVIEW OLYMPIC L122 **DAM:** POLLDALE MARJORY 58TH
 BAYVIEW DAINTY A21 POLLDALE MARJORY 48TH



2023 MAY SHORTHORN GROUP BREEDPLAN EPDs														
CE	BW	WW	YW	MILK	MCE	MWWT	STAY	DOC	CW	REA	FAT	MARB	YG	API
6.5	5.9	60.0	86.3	32.9	2.9	62.9	12.0	11.4	10.1	0.58	-0.076	-0.08	-0.37	100.06
47%	46%	50%	48%	12%	21%	25%	28%	28%	10%	40%	37%	30%	36%	
65	100	20	40	4	90	5	65	45	25	10	35	65	35	80

Comments: By the outstanding sire B Olympic. A home bred bull that has been used in quite a herd's now with amazing results. You will notice in our sale his progeny are standouts, and a bull we will continue to use in our herd at home. We are keeping a son of his, that is the confidence we have in his progeny, his heifers are the complete package and we can't wait until they calve. They have excellent do-ability

Reference Sire

ELDERVALE IMAGINE P301

Colour: Red **Born:** 14/4/2018 **Tattoo:** PINP301
 YAMBURGAN ZEUS H140 YAMBURGAN MAJOR J20
SIRE: YAMBURGAN ZEUS L173 **DAM:** MOOMBI ISOBEL L10
 YAMBURGAN CLOUDY J245 MOOMBI ISOBEL J47



2023 MAY SHORTHORN GROUP BREEDPLAN EPDs														
CE	BW	WW	YW	MILK	MCE	MWWT	STAY	DOC	CW	REA	FAT	MARB	YG	API
8.0	3.8	63.1	97.5	24.5	6.7	56.1	13.9	13.6	9.2	0.66	-0.057	0.00	-0.35	116.32
44%	44%	46%	43%	8%	20%	21%	29%	8%	37%	35%	28%	37%	29%	
45	70	15	15	60	30	25	35	20	30	3	10	40	50	30

Comments: Purchased by Peter Falls in 2020, and used at Polldale for the next 2 years with very defined progeny. His calves are similar type, dark red, correct with thick tops. Most of his heifers are show ring quality and he is making a big impact in our stud.

2023 SALE LOTS

LOT 1 | POLLDALE SASSY | POLS138

Colour: Red **Born:** 8 August 2021 **Tattoo:** POLS138

RONELLE PARK HURRICANE H242
 BAYVIEW OLYMPIC L122
 BAYVIEW DAINTY A21
SIRE: POLLDALE PACKER P27
 MOOMBI OOKTALI G55
 POLLDALE MARJORY 58TH
 POLLDALE MARJORY 48TH

SPRYS ALL GOLD D052
 BLACKJACK THE STRIP
 WAUKARU MINNIE 1063
DAM: POLLDALE LOVING 256TH
 YAMBURGAN SPARTA H369
 POLLDALE LOVING 221ST
 POLLDALE LOVING 200TH

MAY 2023 BREEDPLAN IGS EPD'S															
	CE	BW	WW	YW	MILK	MCE	MWWT	STAY	DOC	CW	REA	FAT	MARB	YG	API
EPD	6.7	6.1	62.7	94.4	27.4	4.4	58.8	10.0	11.2	9.2	0.41	-0.066	0.10	-0.29	107.07
Acc	38%	36%	39%	38%	6%	16%	17%	24%	5%	32%	30%	27%	31%	26%	
%RK	65	100	15	20	35	75	15	85	45	30	40	15	15	85	60

- Top 15% Marbling
- Top 15% Weaning Weight
- Top 15% Maternal Weaning Weight
- Top 15% Fat
- Top 20% Yearling weight

Homozygous Polled.
 Only an August calf with very good performance. Always a standout in his group. Thick, deep bodied and correct by Polldale Packer who is breeding well above expectations. Most of his progeny would make any show team, with his correctness and softness that is hard to find. This bull will increase your weaning weight. One of our best.



Purchaser: \$

LOT 2 | POLLDALE SWALLOW | POLS45

Colour: Red **Born:** 20 May 2021 **Tattoo:** POLS45

SASKVALLEY TRADITION 106T
 MURIDALE THERMAL ENERGY 15A
 MURIDALE GOOSE 32R
SIRE: SPRYS UNLIMITED P146
 THE GROVE TIDE-RIP E667
 SPRYS TIDE RIPS FRANCES H246
 EDEN PARKI LEGENDS FRANCES W006

ROYALLA NOSTALGIA
 ROYALLA QUANDIALLA J209
 ROYALLA LADYBIRD G333
DAM: POLLDALE DUCHESS 9TH N4
 MOOMBI OOKTALI G34
 POLLDALE DUCHESS 3RD
 DRD E90



MAY 2023 BREEDPLAN IGS EPD'S															
	CE	BW	WW	YW	MILK	MCE	MWWT	STAY	DOC	CW	REA	FAT	MARB	YG	API
EPD	10.3	2.3	70.8	107.1	22.9	8.5	58.3	13.4	14.2	11.5	0.41	-0.079	0.18	-0.32	133.39
Acc	41%	40%	41%	39%	10%	17%	20%	27%	33%	35%	34%	27%	33%	28%	
%RK	20	35	3	3	70	10	15	40	15	25	40	45	10	75	4

- Top 4% API
- Top 3% Weaning Weight
- Top 3% Yearling Weight
- Top 10% Marbling & Maternal Calving ease
- Top 15% Maternal Weaning Weight, & Docility
- Top 20% Calving Ease
- Top 25% Cow Weight

A STAR LOT
 Homozygous Polled
 The first S Unlimited we are offering and the calves just keep getting better. API of 4% at the very top end. A long bodied, very correct young stud sire, we rate this bull very highly. Semen retained for our use. He is out of a top breeding R Quandialla Cow, same sire as Polldale Nasty. Don't overlook this bull.



Purchaser: \$

LOT 3 | **POLLDAL NAVIGATOR** | **POLS143**

Colour: Red **Born:** 11 August 2021 **Tattoo:** POLS143

SASKVALLEY TRADITION 106T
MURIDALE THERMAL ENERGY 15A
MURIDALE GOOSE 32R
SIRE: SPRYS UNLIMITED P146
THE GROVE TIDE-RIP E667
SPRYS TIDE RIPS FRANCES H246
EDEN PARK LEGENDS FRANCES W006

RONELLE PARK HURRICANE H242
BAYVIEW OLYMPIC L122
BAYVIEW DAINTY A21
DAM: POLLDAL JANICE 75TH
NARRALDA LEGEND Z132
POLLDAL JANICE 48TH F90
POLLDAL JANICE 43RD



MAY 2023 BREEDPLAN IGS EPD'S															
	CE	BW	WW	YW	MILK	MCE	MWWT	STAY	DOC	CW	REA	FAT	MARB	YG	API
EPD	8.0	3.4	62.3	89.0	28.0	5.3	59.2	14.4	6.8	12.1	0.36	-0.051	0.18	-0.23	125.75
Acc	36%	39%	38%	38%	9%	16%	19%	26%	32%	35%	33%	28%	35%	27%	
%RK	45	60	15	30	30	60	15	30	90	20	55	4	10	100	10

- Top 4% Fat
- Top 10% API
- Top 10% Marbling
- Top 15% Maternal Weaning Weight & Weaning Weight
- Top 20% Cow Weight

Homozygous Polled.
A very complete STUD sire at the top end with his genotype, body type and maturity pattern, it makes him a hard bull to go past. From one of our best B Olympic cows and from a noted Polldale Janice family. A top Thermal Energy grandson. **Retaining semen.**



Purchaser: \$

LOT 4 | **POLLDAL SILENT** | **POLS112**

Colour: Red **Born:** 25 July 2021 **Tattoo:** POLS112

RONELLE PARK HURRICANE H242
BAYVIEW OLYMPIC L122
BAYVIEW DAINTY A21
SIRE: POLLDAL PACKER P27
MOOMBI OOKTALI G55
POLLDAL MARJORY 58TH
POLLDAL MARJORY 48TH

ROYALLA NOSTALGIA
ROYALLA QUANDIALLA J209
ROYALLA LADYBIRD G333
DAM: POLLDAL FREANA 3RD N27
YAMBURGAN TOBERMOREY F090
POLLDAL FREANA J118
DRD E85

MAY 2023 BREEDPLAN IGS EPD'S															
	CE	BW	WW	YW	MILK	MCE	MWWT	STAY	DOC	CW	REA	FAT	MARB	YG	API
EPD	7.5	4.4	62.1	94.9	30.5	5.4	61.6	10.8	11.5	6.0	0.51	-0.083	-0.25	-0.38	94.13
Acc	39%	38%	40%	39%	11%	16%	21%	26%	7%	34%	31%	26%	33%	26%	
%RK	55	85	15	15	15	55	10	80	40	40	20	55	100	25	95

- Top 10% Maternal Weaning weight
- Top 15% Weaning Weight
- Top 15% Yearling Weight
- Top 15% Milk
- Top 20% Rib Eye Area

Homozygous Polled
A very correct Polldale Packer son, rich in colour with lovely soft skin and hair type. Big topped with ample muscle and shape, a very attractive unit. All quality again from a R Quandialla female, and you will notice Olympic in the mix.



Purchaser: \$

LOT 5 | **POLLDALE NEAT-N-TIDY** | **POLS154**

Colour: Red

Born: 15 August 2021

Tattoo: POLS154

ROYALLA OSTENTATIOUS G404
 ROYALLA ROCKSTAR K274
 MARELLAN MITZI 8087L
SIRE: ROYALLA ULTIMATE N176
 WEEBOLLABOLLA THEODORE T85
 MARELLAN DORA 8074L
 INVERARY DORA W184

RYFIELD PARK WILLIAM
 MOOMBI WILLIAM L203
 MOOMBI JOYCE H201
DAM: POLLDALE MARJORY 81ST
 POLLDALE BASHFULL
 POLLDALE MARJORY 50TH
 POLLDALE MARJORY 31ST



MAY 2023 BREEDPLAN IGS EPD'S

	CE	BW	WW	YW	MILK	MCE	MWWT	STAY	DOC	CW	REA	FAT	MARB	YG	API
EPD	9.5	2.2	47.9	69.1	27.4	7.8	51.4	12.9	11.4	-9.5	0.43	-0.065	-0.04	-0.38	110.10
Acc	39%	40%	41%	39%	11%	17%	21%	26%	9%	34%	33%	27%	34%	27%	
%RK	30	35	80	90	35	15	55	50	45	95	35	15	50	30	45

Top 15% Maternal Carving Ease & Fat
Top 30% Calving Ease and Yield Grade

Homozygous Polled.

Very smooth and very correct. A real young sire who has all the best attributes of his father as a young bull! He has good coverage and do-ability.



Purchaser: \$

LOT 6 | **POLLDALE SUPERCOOL** | **POLS151**

Colour: Roan

Born: 15 August 2021

Tattoo: POLS151

YAMBURGAN ZEUS H140
 YAMBURGAN ZEUS L173
 YAMBURGAN CLOUDY J245
SIRE: ELDERVALE IMAGINE P301
 YAMBURGAN MAJOR J20
 MOOMBI ISOBEL L10
 MOOMBI ISOBEL J47

RYFIELD PARK WILLIAM
 MOOMBI WILLIAM L203
 MOOMBI JOYCE H201
DAM: POLLDALE DUCHESS 13TH
 SPRYS EXCLUSIVE E021
 POLLDALE DUCHESS J121
 DRD E90

MAY 2023 BREEDPLAN IGS EPD'S

	CE	BW	WW	YW	MILK	MCE	MWWT	STAY	DOC	CW	REA	FAT	MARB	YG	API
EPD	6.2	4.1	61.4	96.9	22.5	5.9	53.2	12.5	10.6	-3.7	0.55	-0.034	-0.21	-0.31	98.77
Acc	38%	35%	39%	38%	8%	15%	18%	24%	5%	32%	31%	27%	30%	26%	
%RK	70	75	20	15	75	45	40	55	55	85	10	2	95	75	85

Top 2% Fat
Top 10% Rib eye area
Top 15% Yearling weight
Top 20% Weaning weight

What an August calf he is proving to be, thick, soft, correct and well balanced. A really good bull to note by E Imagine who is doing a top job at Polldale. He is only young and he will go on.



Purchaser: \$

LOT 7 | **POLLDAL NO-NAME** | **POLS108**

Colour: Roan **Born:** 21 July 2021 **Tattoo:** POLS108

YAMBURGAN ZEUS H140
 YAMBURGAN ZEUS L173
 YAMBURGAN CLOUDY J245
SIRE: ELDERVALE IMAGINE P301
 YAMBURGAN MAJOR J20
 MOOMBI ISOBEL L10
 MOOMBI ISOBEL J47

YAMBURGAN SPARTA F149
 YAMBURGAN SPARTA H369
 YAMBURGAN SPARTA H369
DAM: POLLDAL APPROVAL 44TH
 POLLDAL ABLAZE
 POLLDAL APPROVAL 32ND
 POLLDAL APPROVAL 26TH

MAY 2023 BREEDPLAN IGS EPD'S															
	CE	BW	WW	YW	MILK	MCE	MWWT	STAY	DOC	CW	REA	FAT	MARB	YG	API
EPD	10.1	4.2	65.7	98.7	19.5	7.4	52.4	17.4	11.7	8.8	0.66	-0.051	0.07	-0.34	129.82
Acc	38%	37%	38%	37%	9%	16%	19%	25%	5%	32%	31%	27%	31%	26%	
%RK	25	80	10	10	90	20	50	5	40	30	3	4	20	60	10

- Top 3% Rib Eye Area
- Top 4% Fat
- Top 5% Stayability
- Top 10% API, Weaning Weight & Yearling Weight

Homozygous Polled.
 Another E Imagine son correct, soft, strong spine and well structured. He is at the top end of the Index with **10% API**, a bull that would be an asset to any herd. A mid maturity patten sire, that would suit most beef producing operations.



Purchaser: \$

LOT 8 | **POLLDAL LIMITLESS** | **POLS107**

Colour: Red **Born:** 21 July 2021 **Tattoo:** POLS107

ROYALLA NOSTALGIA
 ROYALLA QUANDIALLA J209
 ROYALLA LADYBIRD G333
SIRE: POLLDAL NASTY N28
 SPRYS EXCLUSIVE E021
 POLLDAL CECILIA 28TH
 POLLDAL CECILIA 21ST

ROYALLA NOSTALGIA
 ROYALLA QUANDIALLA J209
 ROYALLA LADYBIRD G333
DAM: POLLDAL FANCY 80TH N12
 WEEBOLLABOLLA IMPACT Y156
 POLLDAL FANCY 58TH
 POLLDAL FANCY 45TH

MAY 2023 BREEDPLAN IGS EPD'S															
	CE	BW	WW	YW	MILK	MCE	MWWT	STAY	DOC	CW	REA	FAT	MARB	YG	API
EPD	6.9	3.3	59.4	91.2	25.5	6.2	55.2	10.5	11.9	2.4	0.39	-0.044	0.02	-0.26	108.10
Acc	41%	40%	41%	40%	11%	17%	21%	27%	9%	34%	32%	29%	33%	27%	
%RK	60	60	25	25	50	40	30	80	35	60	50	3	35	95	55

- Top 3% Fat
- Top 25% Weaning Weight
- Top 25% Yearling Weight

Homozygous Polled
 Perhaps our thickest Polldale Nasty son yet. The bulk of this bull is unbelievable. He has width and depth, Polldale Nasty would have to be at the very top end of sires used at Polldale. Also note a double cross of R Quandialla an exceptional breeding sire, he has really worked. Ned's favourite.



Purchaser: \$

LOT 9 | **POLLDALE SENSATION** | **POLS125**

Colour: Red **Born:** 30 July 2021 **Tattoo:** POLS125

YAMBURGAN ZEUS H140
YAMBURGAN ZEUS L173
YAMBURGAN CLOUDY J245
SIRE: ELDERVALE IMAGINE P301
YAMBURGAN MAJOR J20
MOOMBI ISOBEL L10
MOOMBI ISOBEL J47

RYFIELD PARK WILLIAM
MOOMBI WILLIAM L203
MOOMBI JOYCE H201
DAM: POLLDALE ROANY 168TH
DUNBEACON CONSOL
POLLDALE ROANY 87TH
POLLDALE ROANY 52ND

MAY 2023 BREEDPLAN IGS EPD'S

	CE	BW	WW	YW	MILK	MCE	MWWT	STAY	DOC	CW	REA	FAT	MARB	YG	API
EPD	6.1	4.8	61.9	93.6	22.9	5.4	53.9	16.0	11.0	33.1	0.80	-0.061	0.02	-0.31	116.36
Acc	38%	36%	39%	37%	8%	16%	18%	25%	4%	32%	31%	27%	32%	26%	
%RK	70	90	15	20	70	55	40	15	50	1	1	10	35	75	30

- Top 1% Carcase Weight
- Top 1% Rib Eye Area
- Top 10% Fat
- Top 15% Weaning Weight & Stayability
- Top 20% Yearling Weight

Homozygous Polled.
A good sound, long bodied, rich red bull by E Imagine. This bull will impress you. Sound genotype especially in his carcase, sound structure and very athletic in the paddock he will have no trouble finding your cows. Will breed excellent females by going on his female line, **Isobel, Joyce, Roany and Cloudy** all top females that are maternal and have performed.



Purchaser: \$

LOT 10 | **POLLDALE SUPER** | **POLS26**

Colour: Red **Born:** 13 May 2021 **Tattoo:** POLS26

RONELLE PARK EAGLE
RONELLE PARK HURRICANE H242
NARRALDA ZENA C080
SIRE: BAYVIEW OLYMPIC L122
ROYALLA EXTERMINATOR
BAYVIEW DAINTY A21
BAYVIEW DAINTY X65

POLLDALE ABLAZE
POLLDALE FIDDLER F5
MOOMBI PETA Z68
DAM: POLLDALE CECILIA 34TH
POLLDALE SURPRISE
POLLDALE CECILIA 21ST
POLLDALE CECILIA 19TH



MAY 2023 BREEDPLAN IGS EPD'S

	CE	BW	WW	YW	MILK	MCE	MWWT	STAY	DOC	CW	REA	FAT	MARB	YG	API
EPD	4.3	6.2	59.6	98.6	31.6	1.3	61.4	13.4	10.2	21.9	0.73	-0.078	-0.23	-0.38	93.51
Acc	40%	40%	41%	40%	14%	18%	23%	27%	8%	34%	32%	27%	33%	27%	
%RK	90	100	25	10	10	100	10	40	60	4	2	40	100	30	95

- Top 2% Rib Eye Area
- Top 4% Carcase Weight
- Top 10% Yearling Weight, Milk & Maternal Weaning Weight

Homozygous Polled
Another sire prospect by no more than B Olympic. A mid maturity pattern, deep bodied rich red, with soft hair and skin with very good feet and structure. This bull will breed on with a top pedigree to boot. **Semen retained.**



Purchaser: \$

LOT 11 **POLLDAL SAIL** **POLS62**

Colour: White **Born:** 28 May 2021 **Tattoo:** POLS62

RONELLE PARK HURRICANE H242
 BAYVIEW OLYMPIC L122
 BAYVIEW DAINTY A21
SIRE: POLLDAL PACKER P27
 MOOMBI OOKTALI G55
 POLLDAL MARJORY 58TH
 POLLDAL MARJORY 48TH

YAMBURGAN OSSIE D220
 MOOMBI OOKTALI G55
 MOOMBI LUCY X20
DAM: POLLDAL LOVING 249TH N129
 WAUKARU ORION 2047 ET
 POLLDAL LOVING 211TH
 POLLDAL LOVING 46



MAY 2023 BREEDPLAN IGS EPD'S															
	CE	BW	WW	YW	MILK	MCE	MWWT	STAY	DOC	CW	REA	FAT	MARB	YG	API
EPD	2.3	5.7	66.3	97.9	33.9	1.5	67.1	11.6	10.2	19.6	0.62	-0.101	-0.10	-0.41	96.22
Acc	39%	38%	41%	40%	10%	17%	20%	26%	4%	36%	34%	27%	32%	28%	
%RK	100	100	10	15	3	100	2	70	60	10	5	95	70	10	90

- Top 2% Maternal Weaning Weight,
- Top 3% Milk
- Top 5% Rib Eye Area
- Top 10% Carcase Weight, Weaning Weight & Yield Grade
- Top 15% Yearling Weight

Homozygous Polled.
 Once again by Polldale Packer. Take notice of his muscle pattern and wide topline. He was born thick and correct, always impressive. A real find with thickness, he will add to his progeny. M Ooktali has bred feminine beautiful females, no holes in his cows.



Purchaser: \$

TEMPERAMENT (OUR THOUGHTS)

We should all be working towards a good temperament.

It is a must as we are all getting older and usually have a smaller work force or use family members.

Temperament goes further than safety. Quiet cattle are easier to yard and work with, less stress on yourself, perform better on pastures and in feedlots and don't test your infrastructure. We buy quite a lot of trade cattle for our Nevertire property and this is becoming more and more obvious. Stirry cattle take longer to finish and encourage the rest of the herd to go ratty, (one bad apple).

Polldale's aim is to breed the complete package, so our clients have less care and worry. Cattle with carcase, structure, fat, performance, breeding consistency, milk and softness leads to finishing early with a good conversion rate.

If we supply you with a bull whose temperament does not suit you, then let us know.

LOT 12 | **POLLDALE IMAGINE** | **POLS59**

Colour: Red **Born:** 25 May 2021 **Tattoo:** POLS59

YAMBURGAN ZEUS H140
YAMBURGAN ZEUS L173
YAMBURGAN CLOUDY J245
SIRE: ELDERVALE IMAGINE P301
YAMBURGAN MAJOR J20
MOOMBI ISOBEL L10
MOOMBI ISOBEL J47

YAMBURGAN OSSIE D220
MOOMBI OOKTALI G55
MOOMBI LUCY X20
DAM: POLLDALE GLORIA 5TH N78
WEEBOLLABOLLA F120
POLLDALE GLORIA J126
DRD E18

MAY 2023 BREEDPLAN IGS EPD'S

	CE	BW	WW	YW	MILK	MCE	MWWT	STAY	DOC	CW	REA	FAT	MARB	YG	API
EPD	7.7	3.5	59.4	88.4	26.1	6.6	55.8	15.0	11.8	1.4	0.60	-0.055	0.04	-0.36	118.97
Acc	39%	38%	39%	38%	7%	15%	18%	26%	3%	33%	31%	27%	34%	26%	
%RK	50	65	25	30	45	35	25	20	40	65	10	10	30	40	25

- Top 10% Rib Eye Area
- Top 10% Fat
- Top 20% Stayability
- Top 25% API
- Top 25% Weaning Weight
- Top 25% Maternal Weaning Weight

Homozygous Polled
Another rich coated son of E Imagine, a quality young sire. Mid maturity growth pattern with plenty to offer as a herd improver. Don't overlook this bull.



Purchaser: \$

LOT 13 | **POLLDALE SALOON** | **POLS46**

Colour: Red **Born:** 20 May 2021 **Tattoo:** POLS46

YAMBURGAN ZEUS H140
YAMBURGAN ZEUS L173
YAMBURGAN CLOUDY J245
SIRE: ELDERVALE IMAGINE P301
YAMBURGAN MAJOR J20
MOOMBI ISOBEL L10
MOOMBI ISOBEL J47

YAMBURGAN OSSIE D220
MOOMBI OOKTALI G55
MOOMBI LUCY X20
DAM: POLLDALE DURHAM 2ND N88
WOOLCOTT B389
DRD E85
ADAIR B020

MAY 2023 BREEDPLAN IGS EPD'S

	CE	BW	WW	YW	MILK	MCE	MWWT	STAY	DOC	CW	REA	FAT	MARB	YG	API
EPD	6.8	3.6	53.5	80.1	28.7	5.9	55.5	10.5	11.6	8.4	0.46	-0.066	-0.08	-0.31	99.46
Acc	38%	36%	40%	37%	8%	15%	19%	27%	4%	33%	32%	26%	33%	26%	
%RK	65	65	50	60	25	45	30	80	40	30	30	15	65	75	85

- Top 15% Fat
- Top 25% Milk

Homozygous Polled
A very complete son of E Imagine Showing a lot of promise. A deep bodied bull with a wide butt and very correct. Will add value to many beef production operations.



Purchaser: \$

LOT 14 **POLLDAL SALEABLE** **POLS37**

Colour: Red

Born: 16 May 2021

Tattoo: POLS37

SASKVALLEY TRADITION 106T
MURIDALE THERMAL ENERGY 15A
MURIDALE GOOSE 32R

YAMBURGAN ACHILLES
YAMBURGAN HECTOR K477
YAMBURGAN E244

SIRE: SPRYS UNLIMITED P146

DAM: POLLDAL PEERESS 45TH

THE GROVE TIDE-RIP E667
SPRYS TIDE RIPS FRANCES H246
EDEN PARK LEGENDS FRANCES W006

MOOMBI DYNAMIC F55
POLLDAL PEERESS 40TH
POLLDAL PEERESS 35TH

MAY 2023 BREEDPLAN IGS EPD'S

	CE	BW	WW	YW	MILK	MCE	MWWT	STAY	DOC	CW	REA	FAT	MARB	YG	API
EPD	6.4	5.0	65.7	92.4	31.0	4.8	63.9	13.2	8.9	22.7	0.72	-0.086	0.16	-0.39	119.40
Acc	40%	40%	42%	41%	11%	17%	21%	26%	32%	34%	34%	28%	31%	28%	
%RK	70	90	10	20	10	70	4	45	75	4	2	65	10	25	25

- Top 2% Rib Eye Area
- Top 4% Maternal Weaning Weight
- Top 4% Carcase Weight
- Top 10% Marbling, Weaning Weight & Milk
- Top 20% Yearling Weight
- Top 25% Yield Grade

Homozygous Polled

By S Unlimited, What a find he was! Does nothing but impress, all his sons are structurally correct and his heifers are coming up to calf, they look good as does this young sire. He will impress you.



Purchaser: \$

LOT 15 **POLLDAL STUDMAN** **POLS166**

Colour: Red

Born: 26 August 2021

Tattoo: POLS166

ROYALLA NOSTALGIA
ROYALLA QUANDIALLA J209
ROYALLA LADYBIRD G333

YAMBURGAN ZEUS H140
FUTURITY LAZARUS L159
FUTURITY PHENOMENONS ENIA E20

SIRE: POLLDAL NASTY N28

DAM: POLLDAL MARGUERITE 59TH

SPRYS EXCLUSIVE E021
POLLDAL CECILIA 28TH
POLLDAL CECILIA 21ST

RONELLE PARK HURRICANE H242
POLLDAL MARGUERITE 46TH
POLLDAL MARGUERITE 32ND

MAY 2023 BREEDPLAN IGS EPD'S

	CE	BW	WW	YW	MILK	MCE	MWWT	STAY	DOC	CW	REA	FAT	MARB	YG	API
EPD	5.1	2.5	43.0	68.3	25.0	5.0	46.5	15.4	15.5	-7.5	0.34	-0.059	0.03	-0.32	111.44
Acc	39%	38%	39%	38%	9%	15%	19%	26%	10%	33%	31%	27%	31%	26%	
%RK	85	40	95	90	55	65	85	20	10	95	65	10	30	70	45

- Top 10% Docility
- Top 10% Fat
- Top 20% Stayability

A Top son of Polldale Nasty, Easy doing and very correct. A soft rich colour with good fat cover and constitution. He is always in good condition and a real standout lot in our sale. Only an August calf. Semen retained. A STUD Sire.



Purchaser: \$

LOT 16 | **POLLDAL WHITEY** | **POLS123**

Colour: White **Born:** 29 July 2021 **Tattoo:** POLS123

RONELLE PARK HURRICANE H242
 BAYVIEW OLYMPIC L122
 BAYVIEW DAINTY A21
SIRE: POLLDAL PACKER P27
 MOOMBI OOKTALI G55
 POLLDAL MARJORY 58TH
 POLLDAL MARJORY 48TH

MOOMBI DYNAMIC F55
 POLLDAL JAFFA J18
 POLLDAL FLORA KATE 21ST
DAM: POLLDAL SUMMERTON 57TH
 WEEBOLLABOLLA IMPACT Y156
 POLLDAL SUMMERTON 53RD
 POLLDAL SUMMERTON 52ND

MAY 2023 BREEDPLAN IGS EPD'S

	CE	BW	WW	YW	MILK	MCE	MWWT	STAY	DOC	CW	REA	FAT	MARB	YG	API
EPD	6.8	4.4	58.1	88.2	30.3	4.0	59.4	11.5	10.7	22.4	0.74	-0.084	-0.09	-0.39	102.00
Acc	39%	37%	40%	38%	9%	16%	19%	25%	3%	33%	31%	27%	34%	26%	
%RK	65	85	30	35	15	80	15	70	55	4	1	60	70	20	

- Top 1% Rib Eye Area
- Top 4% Carcase Weight
- Top 15% Milk & Maternal Weaning Weight
- Top 20% Yield Grade

A very correct son of Polldale Packer with a good cover. Polldale Packer has bred outstanding for us, and was purchased by the Falls family. This bull should not be overlooked, What a bull!



Purchaser: \$

LOT 17 | **POLLDAL SILVER** | **POLS174**

Colour: Red **Born:** 7 September 2021 **Tattoo:** POLS174

ROYALLA NOSTALGIA
 ROYALLA QUANDIALLA J209
 ROYALLA LADYBIRD G333
SIRE: POLLDAL NASTY N28
 SPRYS EXCLUSIVE E021
 POLLDAL CECILIA 28TH
 POLLDAL CECILIA 21ST

SPRYS ALL GOLD D052
 BLACKJACK THE STRIP
 WAUKARU MINNIE 1063
DAM: POLLDAL FRENA 7TH
 YAMBURGAN TOBERMOREY F090
 POLLDAL FRENA J118
 DRD E85

MAY 2023 BREEDPLAN IGS EPD'S

	CE	BW	WW	YW	MILK	MCE	MWWT	STAY	DOC	CW	REA	FAT	MARB	YG	API
EPD	7.3	3.0	60.9	95.7	24.8	6.6	55.3	7.2	12.3	11.4	0.58	-0.076	-0.04	-0.37	100.70
Acc	39%	39%	40%	39%	9%	16%	19%	26%	9%	33%	31%	27%	31%	26%	
%RK	55	50	20	15	55	35	30	100	30	25	10	35	50	35	

- Top 10% Rib Eye Area
- Top 15% Yearling Weight
- Top 25% Carcase Weight
- Top 30% Docility

Silver is a very upstanding son of Polldale Nasty, He has a lot to offer our shorthorn breed. Big topped, square quartered and soft body type. This bull will go on to be a top sire. We like him a lot.



Purchaser: \$

LOT 18 | **POLDDALE PACKSURE** | **POLS137**

Colour: Red

Born: 8 August 2021

Tattoo: POLS137

ROYALLA OSTENTATIOUS G404
 ROYALLA ROCKSTAR K274
 MARELLAN MITZI 8087L
SIRE: ROYALLA ULTIMATE N176
 WEEBOLLABOLLA THEODORE T85
 MARELLAN DORA 8074L
 INVERARY DORA W184

YAMBURGAN SPARTA F149
 YAMBURGAN SPARTA H369
 BROUGHTON PARK FIRST LADY E115
DAM: POLDDALE LOVING 239TH
 POLDDALE GOLDEN G16
 POLDDALE LOVING 207TH
 POLDDALE LOVING 148TH



MAY 2023 BREEDPLAN IGS EPD'S

	CE	BW	WW	YW	MILK	MCE	MWWT	STAY	DOC	CW	REA	FAT	MARB	YG	API
EPD	9.2	2.5	52.4	76.5	19.2	6.5	45.4	14.1	12.6	-4.5	0.35	-0.071	-0.11	-0.34	109.51
Acc	40%	41%	41%	40%	13%	17%	22%	26%	10%	34%	33%	27%	33%	27%	
%RK	30	40	55	70	90	35	85	30	30	85	60	25	75	55	

- Top 25% Fat
- Top 30% Calving Ease
- Top 30% Stayability
- Top 30% Docility

Homozygous Polled

Just like his sire R Ultimate. Very well made, a complete bull with muscle and cover, thick top and strong spine. He will impress upon your herd a STUD SIRE, like his dad he will breed on.



Purchaser: \$

LOT 19 | **POLDDALE SHAKER** | **POLS134**

Colour: Red

Born: 6 August 2021

Tattoo: POLS134

ROYALLA OSTENTATIOUS G404
 ROYALLA ROCKSTAR K274
 MARELLAN MITZI 8087L
SIRE: ROYALLA ULTIMATE N176
 WEEBOLLABOLLA THEODORE T85
 MARELLAN DORA 8074L
 INVERARY DORA W184

KEVLIN DOWNS EXPRESSO E121
 FUTURITY HERCULES
 FUTURITY PHENOS GERTRUDE F47
DAM: SOUTHERN CROSS TROJON VIOLA M1
 BAYVIEW OUTBACK E25
 MAJOR VIOLA H33
 MAJOR VIOLA Z44

MAY 2023 BREEDPLAN IGS EPD'S

	CE	BW	WW	YW	MILK	MCE	MWWT	STAY	DOC	CW	REA	FAT	MARB	YG	API
EPD	11.0	1.2	44.7	67.9	22.6	8.0	45.0	11.2	9.0	10.2	0.64	-0.107	-0.11	-0.47	106.62
Acc	40%	41%	41%	40%	12%	18%	22%	27%	10%	33%	32%	29%	35%	27%	
%RK	20	20	90	90	75	15	90	75	75	25	4	100	75	2	

- Top 2% Yield Grade
- Top 4% Rib Eye Area
- Top 15% Maternal Calving Ease
- Top 20% Calving Ease Direct & Birth Weight

A very well muscled and correct son of R Ultimate, What a find. Look him over you, won't be disappointed. Everything right with him would make a stud sire. Owned by Katja and the boys.



Purchaser: \$

LOT 20 | **POLLDALE SUPERBRIGHT** | **POLS153**

Colour: Red **Born:** 15 August 2021 **Tattoo:** POLS153

YAMBURGAN ZEUS H140
YAMBURGAN ZEUS L173
YAMBURGAN CLOUDY J245
SIRE: ELDERVALE IMAGINE P301
YAMBURGAN MAJOR J20
MOOMBI ISOBEL L10
MOOMBI ISOBEL J47

RYFIELD PARK WILLIAM
MOOMBI WILLIAM L203
MOOMBI JOYCE H201
DAM: POLLDALE ROANY 163RD
WEEBOLLABOLLA CENTURION C149
POLLDALE ROANY 122ND
POLLDALE ROANY 62ND

MAY 2023 BREEDPLAN IGS EPD'S

	CE	BW	WW	YW	MILK	MCE	MWWT	STAY	DOC	CW	REA	FAT	MARB	YG	API
EPD	5.7	5.1	71.6	110.2	27.8	5.2	63.6	10.3	11.0	19.8	0.77	-0.054	-0.04	-0.34	105.21
Acc	36%	35%	36%	35%	6%	15%	16%	25%	4%	31%	31%	26%	29%	25%	
%RK	75	95	2	2	30	60	4	85	50	10	1	5	50	60	

- Top 1% Rib Eye Area
- Top 2% Weaning Weight & Yearling Weight
- Top 4% Maternal Weaning Weight
- Top 5% Fat
- Top 10% Carcase Weight

Homozygous Polled
A very correct bull with **fantastic balance between genotype and phenotype**. Dark coloured, squarely made, thick and very complete. Another impressive calf by E Imagine, don't overlook his potential. What a bull. We like him a lot.



Purchaser: \$

LOT 21 | **POLLDALE SPECKLE** | **POLS3**

Colour: White **Born:** 25 April 2021 **Tattoo:** POLS3

ROYALLA OSTENTATIOUS G404
ROYALLA ROCKSTAR K274
MARELLAN MITZI 8087L
SIRE: ROYALLA ULTIMATE N176
WEEBOLLABOLLA THEODORE T85
MARELLAN DORA 8074L
INVERARY DORA W184

MOOMBI IDEAL X24
BAYVIEW PANORAMA E21
BAYVIEW MISS BETTY A73
DAM: POLLDALE MANDY 24TH
POLLDALE DOM 2ND
POLLDALE MANDY 20TH
POLLDALE MANDY 18TH

MAY 2023 BREEDPLAN IGS EPD'S

	CE	BW	WW	YW	MILK	MCE	MWWT	STAY	DOC	CW	REA	FAT	MARB	YG	API
EPD	7.6	2.3	47.7	71.1	21.7	5.9	45.6	13.6	14.3	-2.9	0.42	-0.079	0.00	-0.38	111.41
Acc	39%	40%	40%	39%	11%	17%	21%	26%	8%	35%	33%	26%	32%	27%	
%RK	50	35	80	85	80	45	85	40	15	80	40	45	40	25	

- Top 15% Docility
- Top 25% Yield Grade

Homozygous polled
A very impressive bull, all the attributes of a top sire, Fault free. A good outlook with all the quality that's forgotten about in a lot of breeding programs. R Ultimate has bred outstanding progeny at Polldale and is proving to be a real asset in our herd.



Purchaser: \$

LOT 22 | **POLLDAL SNOW FLAKE** | **POLS68**

Colour: White **Born:** 2 June 2021 **Tattoo:** POLS68

ROYALLA OSTENTATIOUS G404
 ROYALLA ROCKSTAR K274
 MARELLAN MITZI 8087L
SIRE: ROYALLA ULTIMATE N176
 WEEBOLLABOLLA THEODORE T85
 MARELLAN DORA 8074L
 INVERARY DORA W184

YAMBURGAN OSSIE D220
 MOOMBI OOKTALI G55
 MOOMBI LUCY X20
DAM: POLLDAL ROANY 152ND N71
 POLLDAL FIDDLER F5
 POLLDAL ROANY 116TH
 POLLDAL ROANY 66TH

MAY 2023 BREEDPLAN IGS EPD'S															
	CE	BW	WW	YW	MILK	MCE	MWWT	STAY	DOC	CW	REA	FAT	MARB	YG	API
EPD	8.2	3.0	52.5	76.1	29.1	6.2	55.4	12.2	13.1	3.2	0.53	-0.087	-0.14	-0.41	102.32
Acc	39%	39%	42%	40%	11%	17%	21%	26%	9%	34%	34%	28%	33%	28%	
%RK	45	50	55	70	20	40	30	60	25	55	15	65	85	10	75

- Top 10% Yield Grade
- Top 15% Rib Eye Area
- Top 20% Milk
- Top 25% Docility

As the lot before, another R Ultimate son showing the softness we look for. A mid maturity pattern that would contribute to any beef production operation. A real herd improver..



Purchaser: \$

LOT 23 | **POLLDAL SHAKER** | **POLS47**

Colour: Red **Born:** 21 May 2021 **Tattoo:** POLS47

BELMORE JACKAROO Z109
 SOUTHCOTE HERO H1
 SOUTHCOTE F56
SIRE: POLLDAL HERO 10TH
 RONELLE PARK JUMBO
 POLLDAL CECELIA 123RD
 POLLDAL CECELIA 37TH

BELMORE JACKAROO Z109
 SOUTHCOTE HERO H1
 SOUTHCOTE F56
DAM: POLLDAL FANCY 95TH
 POLLDAL DOM 2ND
 POLLDAL FANCY 56TH
 POLLDAL FANCY 30TH

MAY 2023 BREEDPLAN IGS EPD'S															
	CE	BW	WW	YW	MILK	MCE	MWWT	STAY	DOC	CW	REA	FAT	MARB	YG	API
EPD	4.7	4.0	56.9	88.4	20.0	4.0	48.5	9.5	13.3	3.9	0.49	-0.092	-0.14	-0.41	93.33
Acc	40%	41%	41%	40%	13%	19%	22%	27%	11%	35%	34%	29%	32%	29%	
%RK	90	75	35	30	90	80	75	90	20	50	20	80	85	15	95

- Top 15% Yield Grade
- Top 20% Rib Eye Area
- Top 20% Docility

Homozygous Polled
 A bull with tremendous length and even fat cover over a good muscle pattern and structure. A double cross of Southcote Hero. His sire Hero the 10th sold to Mullengudgary as a heifer bull and worked well. We recommend this bull as a lower birthweight bull, knowing his pedigree. Don't overlook him!



Purchaser: \$

LOT 24 | **POLLDALE SAILOR** | **POLS18**

Colour: Red Little White **Born:** 10 May 2021 **Tattoo:** POLS18

SASKVALLEY TRADITION 106T YAMBURGAN ZEUS H140
MURIDALE THERMAL ENERGY 15A FUTURITY LAZARUS L159
MURIDALE GOOSE 32R FUTURITY PHENOMENONS ENIA E20
SIRE: SPRYS UNLIMITED P146 **DAM: POLLDALE ROANY 166TH**
THE GROVE TIDE-RIP E667 YAMBURGAN SPARTA H369
SPRYS TIDE RIPS FRANCES H246 POLLDALE ROANY 137TH
EDEN PARK LEGENDS FRANCES W006 POLLDALE ROANY 110TH

MAY 2023 BREEDPLAN IGS EPD'S															
	CE	BW	WW	YW	MILK	MCE	MWWT	STAY	DOC	CW	REA	FAT	MARB	YG	API
EPD	10.5	3.0	66.1	100.4	24.6	8.2	57.7	14.1	14.2	-3.9	0.31	-0.054	0.26	-0.28	136.42
Acc	40%	41%	41%	40%	10%	18%	20%	26%	33%	35%	33%	28%	32%	27%	
%RK	20	50	10	10	60	10	20	30	15	85	70	5	3	90	3

- Top 3% Marbling
- Top 3% API
- Top 5% Fat
- Top 10% Maternal Calving Ease, Yearling Weight & Weaning Weight
- Top 15% Docility
- Top 20% Maternal Weaning Weight & Calving Ease

We consider Polldale Sailor as a lower birth weight bull on heifers and smaller cows. An API in the top 3%. A bull with an earlier maturity pattern, correct and would suit most breeding programs.



Purchaser: \$

LOT 25 | **POLLDALE SALVATION** | **POLS86**

Colour: Red Little White **Born:** 23 June 2021 **Tattoo:** POLS86

SASKVALLEY TRADITION 106T YAMBURGAN SPARTA F149
MURIDALE THERMAL ENERGY 15A YAMBURGAN SPARTA H369
MURIDALE GOOSE 32R BROUGHTON PARK FIRST LADY E115
SIRE: SPRYS UNLIMITED P146 **DAM: POLLDALE ACTION DUCHESS 189TH**
THE GROVE TIDE-RIP E667 MOOMBI ZORO C71
SPRYS TIDE RIPS FRANCES H246 POLLDALE ACTION DUCHESS 153RD
EDEN PARK LEGENDS FRANCES W006 POLLDALE ACTION DUCHESS 98TH

MAY 2023 BREEDPLAN IGS EPD'S															
	CE	BW	WW	YW	MILK	MCE	MWWT	STAY	DOC	CW	REA	FAT	MARB	YG	API
EPD	6.8	3.6	64.6	89.2	17.7	5.7	50.0	17.5	12.3	-1.2	0.29	-0.080	0.09	-0.33	125.68
Acc	40%	40%	42%	41%	11%	17%	21%	27%	32%	35%	33%	28%	34%	28%	
%RK	65	65	10	30	95	50	65	5	30	75	75	45	20	60	10

- Top 5% Stayability
- Top 10% Weaning Weight
- Top 10% API
- Top 20% Marbling

Another son by S Unlimited, his mother is from our top breeding family, "Action Duchess". API top 10%.



Purchaser: \$



LOT 26 POLLDALE SALAMANDER POLS54

Colour: Red

Born: 23 May 2021

Tattoo: POLS54

SASKVALLEY TRADITION 106T
MURIDALE THERMAL ENERGY 15A
MURIDALE GOOSE 32R

SIRE: SPRYS UNLIMITED P146

THE GROVE TIDE-RIP E667
SPRYS TIDE RIPS FRANCES H246
EDEN PARK LEGENDS FRANCES W006

SOUTHCOTE YALE Y157
SPRYS EXCLUSIVE E021
SPRYS AUGUSTAS BENCHMARK C069

DAM: POLLDALE LOVING 196TH

POLLDALE GOLDEN EAGLE
POLLDALE LOVING 108TH
POLLDALE LOVING 98TH

MAY 2023 BREEDPLAN IGS EPD'S

	CE	BW	WW	YW	MILK	MCE	MWWT	STAY	DOC	CW	REA	FAT	MARB	YG	API
EPD	9.8	-0.7	38.9	47.8	21.2	7.7	40.7	17.8	10.8	-10.6	0.12	-0.080	0.08	-0.32	126.51
Acc	41%	41%	42%	41%	12%	17%	22%	26%	34%	34%	34%	29%	33%	28%	
%RK	25	3	100	100	85	15	100	4	50	100	100	45	20	75	10

- Top 3% Birth Weight
- Top 4% Stayability
- Top 10% API
- Top 15% Maternal Calving Ease
- Top 20% Marbling

Homozygous Polled

A very low birth weight bull that would suit a heifer or small cow joining in our opinion. A good outlook and correct with a proud presence in the paddock.



Purchaser: \$

LOT 27 POLLDALE SABBATH POLS43

Colour: Red

Born: 19 May 2021

Tattoo: POLS43

YAMBURGAN ZEUS H140
YAMBURGAN ZEUS L173
YAMBURGAN CLOUDY J245

SIRE: ELDERVALE IMAGINE P301

YAMBURGAN MAJOR J20
MOOMBI ISOBEL L10
MOOMBI ISOBEL J47

YAMBURGAN OSSIE D220
MOOMBI OOKTALI G55
MOOMBI LUCY X20

DAM: POLLDALE ROANY 155TH N100

NARRALDA LEGEND Z132
POLLDALE ROANY 99TH
POLLDALE ROANY 66TH

MAY 2023 BREEDPLAN IGS EPD'S

	CE	BW	WW	YW	MILK	MCE	MWWT	STAY	DOC	CW	REA	FAT	MARB	YG	API
EPD	4.7	4.2	60.9	94.5	27.3	5.1	57.8	14.3	11.7	7.3	0.42	-0.062	0.05	-0.30	113.80
Acc	38%	36%	39%	38%	8%	15%	18%	26%	3%	33%	32%	27%	32%	27%	
%RK	90	80	20	20	35	60	20	30	40	35	40	10	25	85	35

- Top 10% Fat
- Top 20% Weaning Weight
- Top 20% Yearling Weight
- Top 20% Maternal Weaning Weight
- Top 25% Marbling

Homozygous Polled

Another top son of E Imagine from a good Ooktali cow with N Legend, Polldale Roany and Isobel behind him in a solid pedigree. Therefore a good well balanced bull you see.



Purchaser: \$

LOT 28 | **POLLDALE SAFEGUARD** | **POLS63**

Colour: Roan **Born:** 29 May 2021 **Tattoo:** POLS63

ROYALLA OSTENTATIOUS G404
 ROYALLA ROCKSTAR K274
 MARELLAN MITZI 8087L
SIRE: ROYALLA ULTIMATE N176
 WEEBOLLABOLLA THEODORE T85
 MARELLAN DORA 8074L
 INVERARY DORA W184

NAGOL PARK E.M ZONE Z003
 MOOMBI ZORO C71
 POLLDALE PETA
DAM: POLLDALE MANDY 23RD
 POLLDALE ABLAZE
 POLLDALE MANDY 18TH
 POLLDALE MANDY 13TH

MAY 2023 BREEDPLAN IGS EPD'S

	CE	BW	WW	YW	MILK	MCE	MWWT	STAY	DOC	CW	REA	FAT	MARB	YG	API
EPD	9.3	3.5	36.9	58.0	21.6	6.7	40.1	14.5	12.5	2.7	0.08	-0.088	-0.08	-0.27	104.44
Acc	40%	40%	42%	41%	12%	18%	22%	27%	8%	35%	35%	29%	33%	29%	
%RK	30	65	100	100	80	30	100	25	30	55	100	70	65	95	70

- Top 25% Stayability
- Top 30% Calving Ease
- Top 30% Maternal Calving Ease
- Top 30% Docility

Homozygous Polled
 A thick easy doing roan that's well put together with a lot to offer. He will mature out to be a mid maturity pattern that is correct. Like all R Ultimate's sons you will appreciate his quality on seeing him.



Purchaser: \$

LOT 29 | **POLLDALE SACK** | **POLS83**

Colour: Roan **Born:** 18 June 2021 **Tattoo:** POLS83

SASKVALLEY TRADITION 106T
 MURIDALE THERMAL ENERGY 15A
 MURIDALE GOOSE 32R
SIRE: SPRYS UNLIMITED P146
 THE GROVE TIDE-RIP E667
 SPRYS TIDE RIPS FRANCES H246
 EDEN PARK LEGENDS FRANCES W006

YAMBURGAN OSSIE D220
 MOOMBI OOKTALI G55
 MOOMBI LUCY X20
DAM: POLLDALE FANCY 83RD N76
 POLLDALE DOM 2ND
 POLLDALE FANCY 56TH
 POLLDALE FANCY 30TH

MAY 2023 BREEDPLAN IGS EPD'S

	CE	BW	WW	YW	MILK	MCE	MWWT	STAY	DOC	CW	REA	FAT	MARB	YG	API
EPD	5.1	3.3	62.2	91.7	28.8	4.8	59.9	16.4	14.1	20.6	0.63	-0.089	-0.03	-0.38	115.56
Acc	39%	39%	40%	40%	10%	16%	20%	25%	32%	35%	32%	28%	33%	27%	
%RK	85	60	15	25	20	70	10	10	15	10	4	75	50	30	30

- Top 4% Rib Eye Area
- Top 10% Carcase Weight
- Top 10% Maternal Weaning Weight
- Top 10% Stayability
- Top 15% Docility & Weaning Weight
- Top 20% Milk

Homozygous Polled
 A soft roan, very correct son of S Unlimited. This bull is a very complete no holes bull.



Purchaser: \$

LOT 30 | **POLLDAL SALUTE** | **POLS15**

Colour: Roan **Born:** 8 May 2021 **Tattoo:** POLS15

SASKVALLEY TRADITION 106T
MURIDALE THERMAL ENERGY 15A
MURIDALE GOOSE 32R
SIRE: SPRYS UNLIMITED P146
THE GROVE TIDE-RIP E667
SPRYS TIDE RIPS FRANCES H246
EDEN PARK LEGENDS FRANCES W006

RYFIELD PARK WILLIAM
MOOMBI WILLIAM L203
MOOMBI JOYCE H201
DAM: POLLDAL MANDY 41ST
POLLDAL DOM 2ND
POLLDAL MANDY 20TH
POLLDAL MANDY 18TH

MAY 2023 BREEDPLAN IGS EPD'S															
	CE	BW	WW	YW	MILK	MCE	MWWT	STAY	DOC	CW	REA	FAT	MARB	YG	API
EPD	8.4	3.3	58.2	82.2	21.5	6.9	50.6	17.5	11.0	12.1	0.48	-0.090	0.00	-0.37	121.36
Acc	39%	40%	41%	39%	10%	17%	20%	26%	32%	34%	32%	28%	31%	27%	
%RK	40	60	30	50	80	30	60	5	50	20	25	75	40	35	20

- Top 5% Stayability
- Top 20% Carcase Weight
- Top 20% API
- Top 25% Rib Eye Area

Homozygous Polled
Another correct S Unlimited son, a soft roan. We can't speak highly enough of S Unlimited progeny. This bull is a perfect example of that.



Purchaser: \$

LOT 31 | **POLLDAL STUNTMAN** | **POLS29**

Colour: Red Little White **Born:** 14 May 2021 **Tattoo:** POLS29

SASKVALLEY TRADITION 106T
MURIDALE THERMAL ENERGY 15A
MURIDALE GOOSE 32R
SIRE: SPRYS UNLIMITED P146
THE GROVE TIDE-RIP E667
SPRYS TIDE RIPS FRANCES H246
EDEN PARK LEGENDS FRANCES W006

RYFIELD PARK WILLIAM
MOOMBI WILLIAM L203
MOOMBI JOYCE H201
DAM: POLLDAL CECILIA 136TH
POLLDAL FIDDLER F5
POLLDAL CECILIA 34TH
POLLDAL CECILIA 21ST

MAY 2023 BREEDPLAN IGS EPD'S															
	CE	BW	WW	YW	MILK	MCE	MWWT	STAY	DOC	CW	REA	FAT	MARB	YG	API
EPD	8.4	5.1	65.0	94.7	28.8	7.6	61.3	12.1	12.0	-0.9	0.48	-0.068	0.00	-0.36	110.64
Acc	39%	40%	41%	40%	9%	17%	20%	26%	32%	34%	32%	26%	31%	27%	
%RK	40	95	10	20	20	20	10	60	35	75	25	20	40	40	45

- Top 10% Weaning Weight
- Top 10% Maternal Weaning Weight
- Top 20% Yearling Weight, Milk, Fat & Maternal Carving Ease
- Top 25% Rib Eye Area

Homozygous Polled
A thick topped long bodied structurally sound rich red bull. He goes back to Polldale Fiddler who made quite an impact at Polldale.



Purchaser: \$



LOT 32 | **POLLDALE SAM** | **POLS105**

Colour: Red **Born:** 20 July 2021 **Tattoo:** POLS105

ROYALLA NOSTALGIA
 ROYALLA QUANDIALLA J209
 ROYALLA LADYBIRD G333
SIRE: POLLDALE NASTY N28
 SPRYS EXCLUSIVE E021
 POLLDALE CECILIA 28TH
 POLLDALE CECILIA 21ST

CRATHES DENON
 CRATHES HASTINGS
 CRATHES ENIA 6TH
DAM: POLLDALE LOVING 268TH
 BAYVIEW PANORAMA E21
 POLLDALE MARGUERITE 34TH
 POLLDALE MARGUERITE 20TH

MAY 2023 BREEDPLAN IGS EPD'S															
	CE	BW	WW	YW	MILK	MCE	MWWT	STAY	DOC	CW	REA	FAT	MARB	YG	API
EPD	4.9	2.8	45.6	69.5	23.4	5.0	46.2	11.3	13.7	-1.2	0.41	-0.060	0.24	-0.32	114.89
Acc	39%	39%	41%	39%	9%	16%	20%	25%	10%	32%	32%	29%	30%	27%	
%RK	85	45	85	85	70	65	85	70	20	75	40	10	4	70	35

- Top 4% Marbling
- Top 10% Fat
- Top 20% Docility

Homozygous Polled
 From a very good C Hastings cow. The quality of this bull stands out because of his sire Polldale Nasty. He is still in use. As his EPD's suggest, he is very well covered.



Purchaser: \$

LOT 33 | **UNREGISTERED** | **NOT IGS RECORDED**

Colour: Roan **Born:** September 2021

POLLDALE LAZARUS PEDIGREE / EPD (Sire)

YAMBURGAN ZEUS D79
 YAMBURGAN ZEUS H150
 BROUGHTON PARK HARMONY F55
SIRE: FUTURITY LAZURUS L159
 THE GROVE PHENOMEN B295
 FUTURITY PHENOMENONS ENIA E20
 FUTURITY ENIA'S HOPE B5

DAM UNKNOWN

A long bodied silver roan, herd improver. Quiet and always in excellent condition. Smooth shoulder with a strong spine. A very complete young sire. Ben's bull.



Purchaser: \$

LOT 34 | **POLLDAL SUPERSLICK** | **POLS152**

Colour: Red **Born:** 15 August 2021 **Tattoo:** POLS152

YAMBURGAN ZEUS H140
YAMBURGAN ZEUS L173
YAMBURGAN CLOUDY J245
SIRE: ELDERVALE IMAGINE P301
YAMBURGAN MAJOR J20
MOOMBI ISOBEL L10
MOOMBI ISOBEL J47

RYFIELD PARK WILLIAM
MOOMBI WILLIAM L203
MOOMBI JOYCE H201
DAM: POLLDAL ROANY 163RD
WEEBOLLABOLLA CENTURION C149
POLLDAL ROANY 122ND
POLLDAL ROANY 62ND

MAY 2023 BREEDPLAN IGS EPD'S															
	CE	BW	WW	YW	MILK	MCE	MWWT	STAY	DOC	CW	REA	FAT	MARB	YG	API
EPD	5.3	7.1	67.4	101.5	27.8	5.2	61.5	13.3	11.0	9.8	0.63	-0.063	-0.04	-0.35	104.82
Acc	34%	35%	36%	35%	7%	15%	17%	25%	4%	32%	30%	26%	30%	25%	
%RK	80	100	5	10	30	60	10	45	50	25	4	15	50	45	65

- Top 4% Rib Eye Area
- Top 5% Weaning Weight
- Top 10% Yearling Weight & Maternal Weaning Weight
- Top 15% Fat

Homozygous Polled
What can we say, another impressive E Imagine Son. He keeps producing high quality calves, that are strong spined, correct with good feet. Just the way we like them.



Purchaser: \$

LOT 35 | **POLLDAL SALE-0** | **POLS160**

Colour: White **Born:** 20 August 2021 **Tattoo:** POLS160

RONELLE PARK HURRICANE H242
BAYVIEW OLYMPIC L122
BAYVIEW DAINTY A21
SIRE: POLLDAL PACKER P27
MOOMBI OOKTALI G55
POLLDAL MARJORY 58TH
POLLDAL MARJORY 48TH

MOOMBI IDEAL X24
BAYVIEW PANORAMA E21
BAYVIEW MISS BETTY A73
DAM: POLLDAL FANCY 62ND
POLLDAL ABLAZE
POLLDAL FANCY 51ST F13
POLLDAL FANCY 31ST

MAY 2023 BREEDPLAN IGS EPD'S															
	CE	BW	WW	YW	MILK	MCE	MWWT	STAY	DOC	CW	REA	FAT	MARB	YG	API
EPD	4.4	5.0	50.2	74.8	29.3	2.6	54.4	13.5	11.6	-2.8	0.29	-0.094	-0.21	-0.38	91.45
Acc	38%	37%	40%	39%	10%	15%	20%	25%	3%	32%	31%	27%	32%	26%	
%RK	90	90	65	75	20	95	35	40	40	80	75	85	95	30	95

- Top 20% Milk
- Top 30% Yield Grade
- Top 35% Maternal Weaning Weight

Homozygous Polled
Another good, sound, Polldale Packer son. His heifers are as good or better than his sons. His progeny will only get better over time, and will be still producing for years to come.



Purchaser: \$

FEMALES

We concentrate on our female lines. We believe a cow usually adds 60%-70% of influence over her progeny.

Any new sire's mother is very important to that sire's progeny, because you can hang your hat on that sire's daughters to improve your herd's breeding capabilities.

I have known a lot of successful cattlemen over the years and they all concentrate on the strengths of their cow herd. We cull for fertility, to instill fertility in our female herd.

STRONG FEMALES PRODUCE EVEN BETTER PROGENY

IGS EPD'S

Figures are important if they apply to a correct, functional breeding unit. At times you see fantastic EPD's applying to a very average phenotype animal.

We believe – look at the bull first, if he has little to offer, then figures won't help him at all, and neither will his progeny add to your breeding program. ***“Like to Like, Breeds Like”*** – is a saying that a lot of older stockmen, Dad and Grandfather have quoted to me. Don't change your type just because of figures. If you can marry up the figures with an animal you like you will be on a winner, if not your standing still or going backwards.

Something to think about.



LOT 36 | **POLLLDALE STARBUCK** | **POLS161**

Colour: Roan **Born:** 21 August 2021 **Tattoo:** POLS161

ROYALLA OSTENTATIOUS G404
 ROYALLA ROCKSTAR K274
 MARELLAN MITZI 8087L
SIRE: ROYALLA ULTIMATE N176
 WEEBOLLABOLLA THEODORE T85
 MARELLAN DORA 8074L
 INVERARY DORA W184

YAMBURGAN OSSIE D220
 MOOMBI OOKTALI G55
 MOOMBI LUCY X20
DAM: POLLLDALE BUD 21ST N64
 SPRYS ALL GOLD D052
 POLLLDALE BUD 15TH
 POLLLDALE BUD 9TH F3

MAY 2023 BREEDPLAN IGS EPD'S

	CE	BW	WW	YW	MILK	MCE	MWWT	STAY	DOC	CW	REA	FAT	MARB	YG	API
EPD	8.8	4.0	50.8	79.4	29.1	6.4	54.5	13.3	13.8	11.7	0.68	-0.095	-0.14	-0.45	104.15
Acc	40%	41%	41%	39%	12%	18%	22%	26%	9%	36%	33%	28%	32%	28%	
%RK	35	75	65	60	20	35	35	45	20	20	3	85	85	3	70

- Top 3% Rib Eye Area
- Top 3% Yield Grade
- Top 20% Carcase Weight
- Top 20% Milk & Docility

Homozygous Polled

A very upright, long bodied son of R Ultimate who has bred four sons that have sold for over \$30,000. A top producing bull that will put money back in your pocket.



Purchaser: \$

LOT 37 | **POLLLDALE SPACEMAN** | **POLS39**

Colour: Red **Born:** 18 May 2021 **Tattoo:** POLS39

RONELLE PARK HURRICANE H242
 BAYVIEW OLYMPIC L122
 BAYVIEW DAINTY A21
SIRE: POLLLDALE PACKER P27
 MOOMBI OOKTALI G55
 POLLLDALE MARJORY 58TH
 POLLLDALE MARJORY 48TH

YAMBURGAN OSSIE D220
 MOOMBI OOKTALI G55
 MOOMBI LUCY X20
DAM: POLLLDALE PRINCESS 18TH N90
 BUNDALEER COLLINGWOOD C39
 POLLLDALE PRINCESS 8TH F25
 POLLLDALE PRINCESS 6TH

MAY 2023 BREEDPLAN IGS EPD'S

	CE	BW	WW	YW	MILK	MCE	MWWT	STAY	DOC	CW	REA	FAT	MARB	YG	API
EPD	6.2	4.2	49.6	76.7	32.7	4.3	57.5	11.7	11.1	8.5	0.39	-0.073	-0.03	-0.31	101.41
Acc	40%	38%	41%	40%	10%	16%	20%	25%	4%	35%	33%	26%	31%	27%	
%RK	70	80	70	70	4	75	20	65	45	30	50	30	50	80	80

- Top 4% Milk
- Top 20% Mature Weaning Weight

Homozygous Polled

A bull with a tremendous outlook by Packer. We considered keeping him for our own breeding program. He is very similar to his sire at the same age, a very stylish bull that will breed a very good female line.



Purchaser: \$

LOT 38 | **POLLDALE SNAPPY** | **POLS1**

Colour: Red **Born:** 11 April 2021 **Tattoo:** POLS1

SASKVALLEY TRADITION
MURIDALE THERMAL ENERGY 15A
MURIDALE GOOSE 32R
SIRE: SPRYS UNLIMITED P146
THE GROVE TIDE-RIP E667
SPRYS TIDE RIPS FRANCES H246
EDEN PARK LEGENDS FRANCES W006

BELMORE JACKAROO Z109
SOUTHCOTE HERO H1
SOUTHCOTE F56
DAM: POLLDALE PRINCESS 20TH
RONELLE PARK HURRICANE H242
POLLDALE PRINCESS 14TH
POLLDALE PRINCESS 8TH F25

MAY 2023 BREEDPLAN IGS EPD'S															
	CE	BW	WW	YW	MILK	MCE	MWWT	STAY	DOC	CW	REA	FAT	MARB	YG	API
EPD	8.8	4.4	59.9	89.0	24.6	6.4	54.6	15.7	10.7	21.1	0.78	-0.100	-0.03	-0.45	116.95
Acc	41%	41%	42%	41%	11%	18%	21%	28%	34%	35%	32%	28%	33%	27%	
%RK	35	85	20	30	60	35	35	15	55	5	1	95	50	3	30

- Top 1% Rib Eye Area
- Top 3% Yield Grade
- Top 5% Carcase Weight
- Top 15% Stayability
- Top 20% Weaning Weight

Homozygous Polled
Like all S Unlimited bulls, he has a lot to offer. A NO holes approach bull who is complete. He is worth a second look.



Purchaser: \$

LOT 39 | **POLLDALE SADDLE** | **POLS21**

Colour: Red **Born:** 11 May 2021 **Tattoo:** POLS21

SASKVALLEY TRADITION
MURIDALE THERMAL ENERGY 15A
MURIDALE GOOSE 32R
SIRE: SPRYS UNLIMITED P146
THE GROVE TIDE-RIP E667
SPRYS TIDE RIPS FRANCES H246
EDEN PARK LEGENDS FRANCES W006

BELMORE JACKAROO Z109
SOUTHCOTE HERO H1
SOUTHCOTE F56
DAM: POLLDALE MARGUERITE 71ST
HS ROLEX 772 (IMP USA)
POLLDALE MARGUERITE 49TH
POLLDALE MARGUERITE 28TH

MAY 2023 BREEDPLAN IGS EPD'S															
	CE	BW	WW	YW	MILK	MCE	MWWT	STAY	DOC	CW	REA	FAT	MARB	YG	API
EPD	7.7	3.8	56.2	76.3	25.5	6.3	53.6	12.0	9.5	18.3	0.53	-0.105	0.11	-0.40	113.87
Acc	40%	41%	42%	41%	10%	19%	21%	27%	34%	35%	33%	28%	32%	28%	
%RK	50	70	35	70	50	40	40	65	70	10	15	100	15	20	35

- Top 10% Carcase Weight
- Top 15% Rib Eye Area
- Top 15% Marbling
- Top 20% Yield Grade

Homozygous Polled
Like all S Unlimited bulls, he has a lot to offer, and as time goes on they just keep getting better and better. A no-holes complete bull give him a second Look.



Purchaser: \$

LOT 40 | POLLDALE SAINT | POLS14

Colour: Red

Born: 6 May 2021

Tattoo: POLS14

SASKVALLEY TRADITION
MURIDALE THERMAL ENERGY 15A
MURIDALE GOOSE 32R
SIRE: SPRYS UNLIMITED P146
THE GROVE TIDE-RIP E667
SPRYS TIDE RIPS FRANCES H246
EDEN PARK LEGENDS FRANCES W006

YAMBURGAN ACHILLES
YAMBURGAN HECTOR K477
YAMBURGAN E244
DAM: POLLDALE JANICE 77TH
YAMBURGAN SPARTA H369
POLLDALE JANICE 64TH
POLLDALE JANICE 47TH F2

MAY 2023 BREEDPLAN IGS EPD'S															
	CE	BW	WW	YW	MILK	MCE	MWWT	STAY	DOC	CW	REA	FAT	MARB	YG	API
EPD	9.9	4.8	72.8	108.3	26.5	7.2	62.9	19.1	15.2	7.3	0.40	-0.087	0.12	-0.35	137.45
Acc	40%	40%	41%	40%	11%	18%	21%	26%	32%	34%	33%	27%	32%	27%	
%RK	25	90	2	3	40	25	5	2	10	35	45	65	15	45	2

- Top 2% Weaning Weight
- Top 2% API
- Top 2% Stayability
- Top 3% Yearling Weight
- Top 5% Mature Weaning Weight
- Top 10% Docility
- Top 15% Marbling

Homozygous Polled
API Rank 2%. Always stands upright and very athletic. A functional bull with a very complete set of figures. With good feet, strong spine, shoulders and head carriage blends well into a very handy package. Don't overlook him.



Purchaser: \$

LOT 41 | POLLDALE SLICK | POLS164

Colour: Red

Born: 23 August 2021

Tattoo: POLS164

ROYALLA NOSTALGIA
ROYALLA QUANDIALLA J209
ROYALLA LADYBIRD G333
SIRE: POLLDALE NASTY N28
SPRYS EXCLUSIVE E021
POLLDALE CECILIA 28TH
POLLDALE CECILIA 21ST

MARELLAN HIGHLANDER
RONELLE PARK EAGLE
RONELLE PARK VALERIE A528
DAM: POLLDALE LOVING 216TH
NARRALDA LEGEND Z132
POLLDALE LOVING 188TH
POLLDALE LOVING 128TH

MAY 2023 BREEDPLAN IGS EPD'S															
	CE	BW	WW	YW	MILK	MCE	MWWT	STAY	DOC	CW	REA	FAT	MARB	YG	API
EPD	6.1	3.6	57.4	87.0	24.5	5.0	53.2	12.8	10.8	3.0	0.40	-0.080	0.03	-0.35	111.42
Acc	39%	40%	40%	40%	11%	16%	21%	27%	9%	33%	32%	28%	32%	27%	
%RK	70	65	30	35	60	65	40	50	50	55	45	45	30	50	45

- Top 30% Weaning Weight
- Top 30% Marbling

Homozygous Polled
Like all Polldale Nasty progeny, very hard to fault. Big topped and soft. You are yet to see the very best out of this bull. Only an August calf, a stand out lot.



Purchaser: \$

LOT 42 | **POLLDAL SAPHIRE** | **POLS162**

Colour: Roan **Born:** 21 August 2021 **Tattoo:** POLS162

ROYALLA OSTENTATIOUS G404
 ROYALLA ROCKSTAR K274
 MARELLAN MITZI 8087L
SIRE: ROYALLA ULTIMATE N176
 WEEBOLLABOLLA THEODORE T85
 MARELLAN DORA 8074L
 INVERARY DORA W184

BELMORE JACKAROO Z109
 SOUTHCOTE HERO H1
 SOUTHCOTE F56
DAM: POLLDAL GLORIA 7TH
 YAMBURGAN SPARTA H369
 POLLDAL GLORIA 2ND
 POLLDAL GLORIA J126

MAY 2023 BREEDPLAN IGS EPD'S															
	CE	BW	WW	YW	MILK	MCE	MWWT	STAY	DOC	CW	REA	FAT	MARB	YG	API
EPD	12.3	1.1	49.9	74.4	24.4	8.1	49.3	14.5	14.8	-7.6	0.46	-0.109	-0.03	-0.49	121.24
Acc	40%	41%	43%	41%	12%	18%	22%	27%	11%	34%	32%	27%	31%	27%	
%RK	10	15	70	75	60	15	70	25	10	95	30	100	50	1	20

- Top 1% Yield Grade
- Top 10% Calving Ease
- Top 10% Docility
- Top 15% Birth Weight & Maternal Calving Ease
- Top 20% API

Homozygous Polled
 What an August calf! Very correct soft roan with NO holes. A young sire. He will breed just like his father and produce good progeny. We have confidence in this bull.



Purchaser: \$

LOT 43 | **POLLDAL WHITE PACKER** | **POLS121**

Colour: White **Born:** 28 July 2021 **Tattoo:** POLS121

RONELLE PARK HURRICANE H242
 BAYVIEW OLYMPIC L122
 BAYVIEW DAINTY A21
SIRE: POLLDAL PACKER P27
 MOOMBI OOKTALI G55
 POLLDAL MARJORY 58TH
 POLLDAL MARJORY 48TH

SPRYS ALL GOLD D052
 BLACKJACK THE STRIP
 WAUKARU MINNIE 1063
DAM: POLLDAL FANCY 90TH
 POLLDAL JACKHAMMER J39
 POLLDAL FANCY 71ST
 POLLDAL FANCY 56TH

MAY 2023 BREEDPLAN IGS EPD'S															
	CE	BW	WW	YW	MILK	MCE	MWWT	STAY	DOC	CW	REA	FAT	MARB	YG	API
EPD	3.7	3.0	52.2	78.7	28.8	0.8	54.9	12.2	11.1	5.3	0.54	-0.077	-0.12	-0.38	97.28
Acc	38%	36%	39%	37%	9%	15%	19%	25%	4%	32%	33%	27%	31%	27%	
%RK	95	50	55	65	20	100	30	60	45	45	15	35	80	30	90

- Top 15% Rib Eye Area
- Top 20% Milk

A good solid white Polldale Packer son. Mid maturity pattern who will do any herd good!
 Everything is right with this bull.



Purchaser: \$

LOT 44 | **POLLDAL SELWYN 2ND** | **POLS96**

Colour: Red Little White

Born: 11 July 2021

Tattoo: POLS96

ROYALLA NOSTALGIA
 ROYALLA QUANDIALLA J209
 ROYALLA LADYBIRD G333
SIRE: POLLDAL NASTY N28
 SPRYS EXCLUSIVE E021
 POLLDAL CECILIA 28TH
 POLLDAL CECILIA 21ST

SPRYS ALL GOLD D052
 BLACKJACK THE STRIP
 WAUKARU MINNIE 1063
DAM: POLLDAL MANDY 46TH
 MOOMBI ZORO C71
 POLLDAL MANDY 23RD
 POLLDAL MANDY 18TH

MAY 2023 BREEDPLAN IGS EPD'S

	CE	BW	WW	YW	MILK	MCE	MWWT	STAY	DOC	CW	REA	FAT	MARB	YG	API
EPD	4.4	4.5	68.9	108.1	26.3	3.7	60.8	10.7	11.9	20.2	0.32	-0.077	0.00	-0.25	106.11
Acc	39%	38%	39%	38%	8%	16%	18%	24%	9%	33%	32%	27%	33%	27%	
%RK	90	85	4	3	45	85	10	80	35	10	70	35	40	95	65

- Top 3% Yearling Weight
- Top 4% Weaning Weight
- Top10% Mature Weaning Weight
- Top 10% Carcase Weight

Another solid Polldale Nasty son. A very easy doing and correct bull. A complete package to conclude this sale.



Purchaser: \$

NOTES

POLLDALE'S FUTURE SIRES

Future Sire

ROYALLA ZZ TOP



JSN R046
Purchased 2021

Future Sire

SNAKE CREEK SUPERMAN



SC S20
Purchased April 2023

Future Sire

CASKIEBEN OLYMPUS



CAS R24
Purchased 2022

Future Sire

BAYVIEW DELEGATE



HT Q46
Purchased 2021

Polldale would like to thank everyone who has supported our Annual Bull Sales.

We wish you all the best in the Future.

POLLDALE'S CHAMPION FEMALES



The Williams Family of Polldale, with the Grand Champion Heifer at the 2023 Dubbo Show, All Breeds Heifer Show, Pol S176 Polldale Princess the 30th.



An outstanding lineup of Polldale Heifers, Exhibited and shown by The Macquarie Anglican Grammer School, at Dubbo Show 2023.

Breeding Better Bulls from even Better Females

PURCHASER DETAILS

Name:

Address

Postcode:

Phone: PIC Number:

Email:

Signature:

REGISTRATION TRANSFER DETAILS

Do you wish to have the Shorthorn Society animal registration transferred into your name?

No Yes Member No:

DELIVERY INSTRUCTIONS

Lots Purchased:

Special Instructions:

INSURANCE

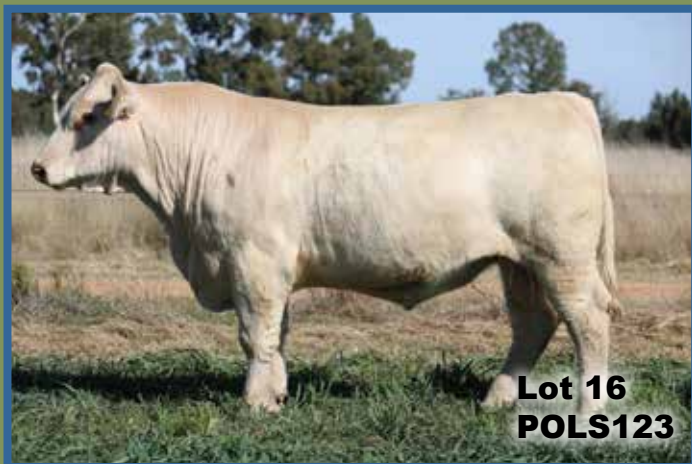
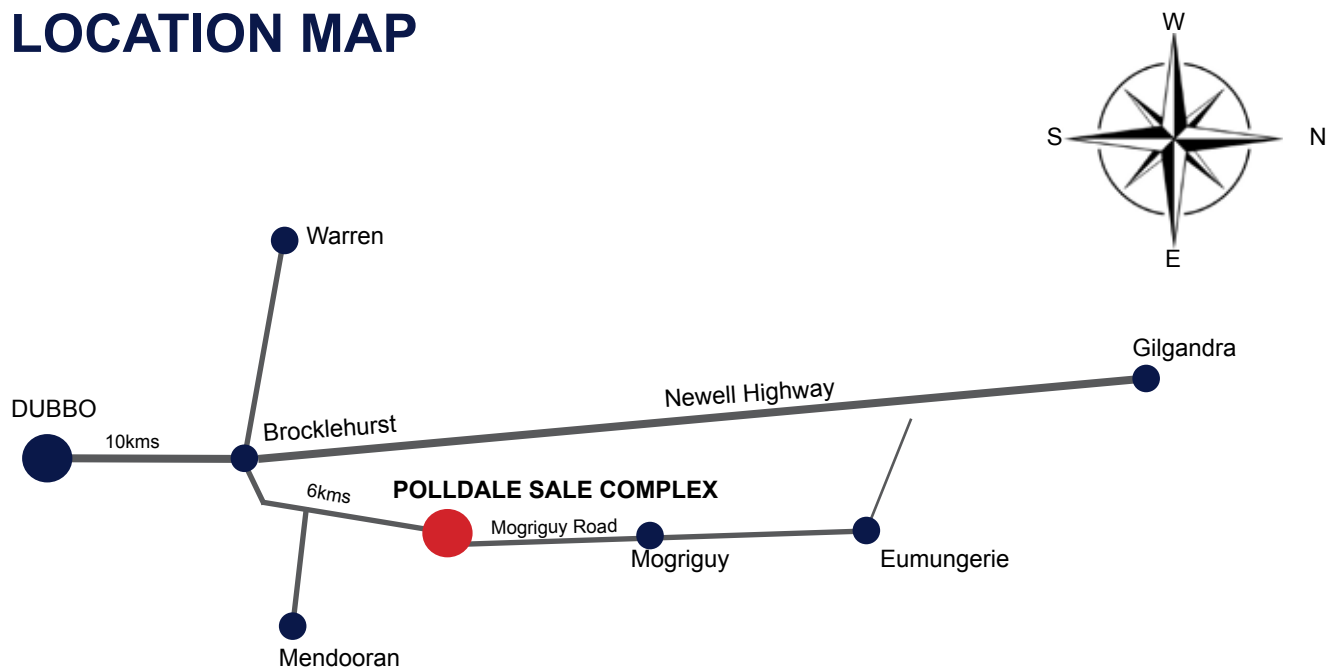
Do you require insurance cover? Yes No

ACCOUNT SETTLEMENT

The signature of your Agent is required if you elect to settle through an Agent.

Agent: Signature:

LOCATION MAP





CURRENT SUCCESSES

Inaugural Polldale On-Property Bull sale. Sale Topped at \$32,000 for Polldale Rawhide (R119), Sold to Andy and Sally Withers, Belmore Shorthorn Stud South Australia.



PAST SUCCESSES

The 2nd and 3rd Top Price at the National Shorthorn Show and Sale 2022. Purchased by Jane and Richard Gould, Naracoorte South Australia. Our team of 3 averaged \$28,000.