



HAZELDEAN

LITCHFIELD

EST 1865



Hazeldean Autumn Bull Sale

80 Performance Bulls Thursday 4th May 2023

Hazeldean, Cooma NSW

Open Day Friday 28th April

80 PTIC Heifers AuctionsPlus 5th May 2023

2023



HAZELDEAN
LITCHFIELD
EST 1865

Hazeldean Autumn Bull Sale 2023

- ★ Free delivery in VIC and NSW
- ★ Super sound; featuring sons of top Hazeldean Sires
- ★ Superior carcass and fertility
- ★ Excellent temperaments

**** OPEN DAY FRIDAY 28TH APRIL ****

Bulls will be available for inspection between 10am - 2pm

**** Hazeldean will be offering 80 PTIC heifers on AuctionsPlus on Friday 5th May. These heifers will be penned for inspection on bull sale day. ****



We will have a catch up dinner at the Alpine Hotel in Cooma the night before the sale from 6.30pm. Please contact Jenni for bookings 0264535555

Hazeldean Autumn Bull Sale

OPEN DAY TUESDAY 28TH APRIL

80 Performance Bulls

**SALE DAY THURSDAY 4TH MAY
ON PROPERTY HAZELDEAN COOMA NSW
Commencing at 1pm**

Inspection from 10.00am on sale day



Account: Hazeldean Pty Ltd
ACN 000 012 760
ABN 33 000 012 760

Enquiries:

Ed Bradley: 0412 298 546
Bea Litchfield: 0427 933 103
Jim Litchfield: 0417 676 561

Hazeldean Office: 02 6453 5555
admin@hazeldean.com.au

Selling Agents:

Nutrien Stud Stock
Tim Woodham 0436 015 115
Damo Roach 0427 253 250
Gary Evans 0400 356 484



Bull Deliveries

Hazeldean offers free delivery to all parts of NSW and VIC. Outside these states we will get your bull to the nearest major centre.

Catering

Lunch will be available prior to sale courtesy Cooma Pony Club. Please stay on for refreshments after the sale.

Agent Rebate

A 2% rebate is offered to outside agents attending the sale to introduce and assist buyers.

To qualify, agents **MUST**:

- Introduce clients at least 12 hours prior to the sale by email to admin@hazeldean.com.au
- Attend the sale with the client.

Phone Bidding

Tim Woodham 0436 015 115



Sale will be interfaced with AuctionsPlus.

**Videos & photos on-line 10 days prior to sale plus final weights at:
www.hazeldean.com.au & www.auctionsplus.com.au**

**Register on-line prior to the sale @ www.hazeldean.com.au
and we will have your bid card ready for you on the day**

Sale Day Safety

Visitors enter the pens at their own risk. Children under 16 years are not permitted to enter the pens unless supervised at all times.

All care is taken to ensure livestock pose minimum threat to us and our clients. However, we cannot predict nor guarantee their behaviour. All sale bulls have been assessed for temperament and are quiet to handle under normal circumstances. Sale day places bulls under stresses that are foreign to their normal routine. They are not used to having a crowd of people around them and so the behaviour of even the quietest bull under normal circumstances can be unpredictable. Bulls may also fight in the pens and at these times they are oblivious to people who may be in their way. Do not put pressure on the bulls in the yards and do not enter the yards unless you need to. If you would like assistance with inspections, please ask any Hazeldean staff member or agent assisting with the sale.

Be sure of a catalogue – Bring this one with you

Disclaimer All reasonable care has been taken to ensure the information in this catalogue is correct at time of publication. The vendor makes no other representations about the accuracy, reliability or completeness of the information provided and does not assume any responsibility for the use or interpretation of the information.

Welcome to Hazeldean

Dear Cattle Breeders,

We are excited to extend a warm welcome to our upcoming Autumn Angus bull sale, where we will offer an exceptional selection of premium quality cattle. Our breeding program is built on a foundation of objective measurement and careful selection, ensuring that we produce only the finest animals for your consideration.

In this year's sale team, you will find a range of bulls that have been carefully evaluated and selected based on their objective measurements and structural integrity. Our breeding philosophy prioritizes traits of fertility, growth and carcase quality to produce bulls that are genetically superior and highly marketable. We believe that these objective measurements are essential in ensuring that our cattle are of the highest standard.

We take great pride in the impeccable temperaments of our cattle. Our bulls have been carefully bred and managed to have docile personalities, making them easy to handle and work with. Our commitment to raising animals with excellent temperaments is a testament to our dedication to producing cattle that are not only of the highest quality but also a pleasure to work with.

In our breeding program, we also believe that structural soundness is essential to ensure longevity and profitability for our clients' cattle herds. Our bulls have been carefully selected based on their conformation and soundness, ensuring that they will have the ability to withstand the demands of commercial production.

We would like to invite you to take a closer look at our bulls during the sale or at our open day on the 28th April. We are confident that you will be impressed with the exceptional quality of our animals. Our team will be on hand to answer any questions you may have and provide guidance on selecting the best bull for your operation.

Thank you for considering our cattle for your breeding program. We look forward to seeing you at our sale.

Sincerely,

Jim, Libby and Bea
Litchfield and Ed Bradley



Proven Genetic Performance

SELECT from a herd bred under commercial conditions.

Hazeldean cattle are bred under commercial conditions and share their paddocks with sheep. The main breeding herd is located in the foothills of the Snowy Mountains with long cold winters, severe frost and a late spring. Hazeldean females are expected to re-breed before the Spring flush and as such are selected for high fertility under low nutrition levels. They are well-known for their hardiness and ability to thrive. Their hardiness suits northern conditions also where animals must work in the heat and be capable of storing energy quickly as body fat and not fall in a heap after calving. With experience in the south and the north we know these are the sort of cattle that will perform in both environments.

INVEST in a cow herd with TRUE depth of breeding

The bulls bred at Hazeldean come from a 3500 strong female herd with unequalled depth of breeding spanning 60 years. Hazeldean cattle breed true to type and reflect their breeding heritage with uniform high performing calves that achieve premiums in all markets.

BOOST your herd's fertility

Hazeldean Angus are renowned for high fertility, and good mothering to give consistent and superior reproductive performance. Selection pressure on females to breed a live calf every year from 2 years of age is strict and any female who fails to do so for any reason is "out".

ACHIEVE higher prices at the saleyards.

Hazeldean blood animals command higher prices at market and are sought after by feedlotter and backgrounders.



Hazeldean Breeding and Management

Established in 1927, Hazeldean Angus is part of Hazeldean Pty Ltd, a pastoral enterprise owned and operated by the Litchfield family of Cooma, NSW since 1865. Hazeldean provides the beef industry with large numbers of high quality, high performing stud and commercial Angus bulls. Seedstock and commercial beef production has been Hazeldean's business for over 150 years. The company understands genetics and what's important to run a successful commercial beef cattle operation.

The Hazeldean herd consists of 3500 commercial, APR and stud cattle, which are bred and grazed on the Monaro in southern NSW. Hazeldean cattle are renowned as being "good doing", hardy cattle that will thrive in any climate. The female herd has a reputation of exceptional fertility, lower than average birth weights, excellent calving ease, teamed with high growth and above average carcass.

Hazeldean's core business is providing functional, profitable bulls to the commercial beef industry and this means first of all maximizing the number of pregnancies and the number of live calves hitting the ground, building on that base rapid growth rates and on top of that superior carcass data. This is the basis of any successful breeding enterprise.

Hazeldean selects for quiet temperament in their breeding program and sire selection and their cattle have an enviable reputation of being exceptionally quiet and easy to manage. This shows in the docility EBV's of Hazeldean cattle. Temperament is highly heritable, it affects carcass quality, growth rate, and handling – any animal that shows bad temperament is culled.

Stud & Performance History

The Hazeldean Angus herd was established in 1927, replacing a herd of primarily shorthorn cattle that had run on the property for many years. In 1952 the stud was founded with the purchase of in-calf heifers from six New Zealand studs. These heifers were specially selected for scale, length and docile temperament – traits that still remain important to the stud 60 years later. As the commercial herd was of a very high standard and as a means to fully utilize the foundation sire "Wallah Ottoman", a selection of top grade commercial females were selected to join the bull-producing herd. The strength of the Hazeldean herd has always been its ability to produce large numbers of high performing bulls with emphasis always on commercial reality.

In 1960 Hazeldean became one of the first beef seedstock producers anywhere in the world to embrace the concept of Performance testing and has continued to use accurate measured production in its selection and breeding programmes ever since. Hazeldean was the first beef herd in Australia to trial Breedplan and was later chosen as the site of the national launch in 1985. Hazeldean Angus is involved in carcass and feedlot performance trials and sire progeny testing programmes to identify the leading sires for profitability to the industry.

Bull Sales Around 500 bulls are sold each year by auction at selling centres located at "Hazeldean", Cooma, NSW (May & Sept), Drillham QLD (August) and Tamworth, NSW (August).

Female Sales Commercial females and select registered females are sold on-property at Hazeldean's annual Female Sale in Cooma in May.

Semen Sales Semen is available from Hazeldean's top sires. Contact Hazeldean or view our website www.hazeldean.com.au



Hazeldean Breeding and Management

Management & Breeding Programme

The Hazeldean properties are extensive grazing properties suited to commercial beef production. The Hazeldean herd is run under strict commercial conditions with stud cows sharing their paddocks with sheep and only receiving supplementary feeding in drought. Hazeldean sources the most proven and high performing Angus sires and multiplies these genetics throughout the herd using their comprehensive (AI) and (ET) programme. Elite Hazeldean cows are flushed and used as donors in the ET programme.

The provision of bulls by a seedstock breeder to a commercial breeder must do five things. They are, in order of importance, as follows:

1. Serve cows effectively and efficiently so that the number of pregnancies in your herd is as high as it can be over a 6 week joining.
2. Produce daughters that are fertile at an early age, able to calve unassisted at 2 years of age and breed back every year thereafter.
3. Sire calves that grow quickly to reach maximum liveweight at the turnoff time targeted by the breeder.
4. Have sufficient constitution and athleticism to survive and breed effectively for a number of years.
5. Sire calves with valuable carcasses that maximise returns to the breeder and the processor for each kilogram of beef produced.

It is vital that these targets are met in this order for beef producers to make money out of beef cattle and this is the focus of the Hazeldean program.



Purchasing a bull from Hazeldean

Health

- ✓ Bulls are vaccinated for Pestivirus, Vibriosis and 7in1
- ✓ The Hazeldean herd maintains a JBAS 8 score.
- ✓ All sale bulls are thoroughly assessed by a bull fertility technician prior to sale which includes a full examination of reproductive organs, and semen tested. Animals displaying faults likely to interfere with a normal productive life are culled.

Fertility

We recommend that you organise a pre-mating bull examination at least 6 weeks prior to joining to ensure that your bulls are in the best of health and capable of producing pregnancies. The procedure should include a serving ability test where the bull is observed serving a cow/heifer.

Structural integrity

Hazeldean has an uncompromising approach to structural assessment. All Hazeldean bulls and females are annually assessed and those failing the assessment are culled. Before cataloguing, each animal is inspected by an independent assessor to ensure a high standard of structural correctness, particularly with regard to conformation, shoulders, legs and feet. (See Beef Class Structural Assessment System). Only animals that pass this rigorous inspection are entered for sale. No animal has received treatment to their feet.

Temperament

All bulls have been assessed for temperament. Any animals displaying aggressive or dangerous behaviour is culled immediately.

Semen Terms & Conditions

Hazeldean retains semen rights on all bulls unless otherwise agreed upon, according to Hazeldean Semen Terms and Conditions. See back of catalogue for details.



Bulls are freeze branded on the near side rump with the Hazeldean brand and their number.

Our Guarantee and Replacements, Refunds, Credits

Although we do our very best to ensure every bull we catalogue sees out many years of good service, occasionally premature breakdowns occur. In this event we guarantee unconditionally all bulls for 12 months from purchase and further if poor reproduction results from a genetic defect we were unaware of pre-sale. Our policy is to look after the people who look after us so if there is a problem please let us know. To resolve the issue of a bull breakdown we will work with you to achieve the best outcome for your breeding enterprise. In the instance of a bull breaking down during the breeding season we will endeavour to find a replacement and get him to you ASAP. If you are able to cover the breakdown with a spare, then we will either offer a replacement at a later date or issue a credit equivalent to the purchase price of the original bull that you can use at a future sale.

Animal Health

Although Hazeldean employs best practice procedures in livestock husbandry and does its best to ensure every animal catalogued for sale is free from disease, internal parasites and external parasites, it does not guarantee that any sale animal is free of disease, internal parasites or external parasites.

Beef Class Structural Assessment System

Structural problems in cattle have a substantial effect on both the reproductive and growth performance of a beef herd. It is widely recognised that structural problems in sires have detrimental effects on conception rates, calving patterns and thus profitability.

Similarly, females with inadequate structural characteristics are more prone to weaning lighter calves or conceiving later in the breeding season than their more functional counterparts. These structural problems are filtered through the supply chain resulting in reduced income for the producer, feedlot and thus reducing the overall productivity of the Australian Beef Industry.

Over the past decade, use of the Beef Class Structural Assessment System in the seedstock industry has produced a marked improvement in herds which have shown commitment to using the information appropriately. Through these dedicated breeders, there has been a flow on affect of structural improvement throughout all sectors of the beef cattle industry.

Liam Cardile of 'BEEFXCEL' structurally assesses many of the leading seedstock herds in Australia. 'BEEFXCEL' is not involved in any genetic marketing or specific breeding advice and therefore has no conflict of interests to influence their stock appraisal. The integrity of the structural data provided by 'BEEFXCEL' is recognised throughout the industry as Liam is a fully INDEPENDENT assessor.

Hazeldean Structural Program

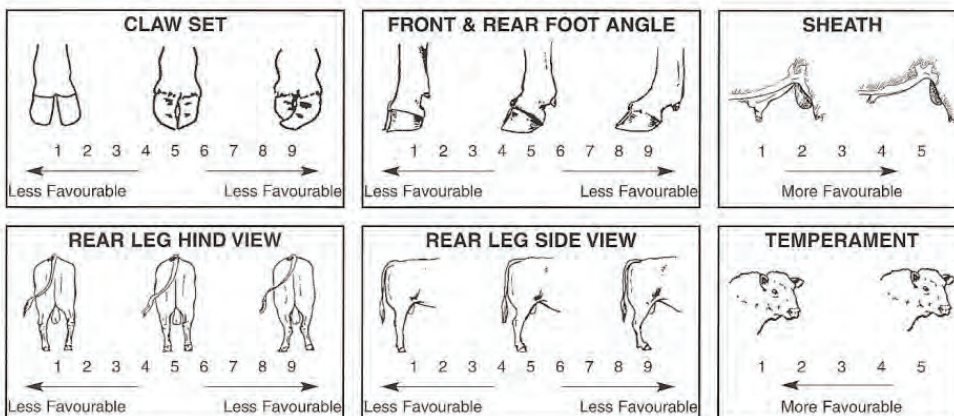
The Hazeldean Sale Bulls have been independently structurally assessed to maximise the quality of stock on offer. Any animals deemed inadequate have been removed from the sale draft.

The Hazeldean sale bulls were assessed by Liam Cardile of BEEFXCEL. In addition to annual bull assessments, Hazeldean has recently completed a full female herd assessment program. An ongoing program of assessing first calving females during lactation also helps to further strengthen the structural soundness of the entire Hazeldean breeding herd.

How to use The Beef Class Structural Assessment System

The Beef Class Structural Assessment System uses a 1- 9 scoring system

- A score of 5 is ideal. (Note: Temperament Score of 1 is preferable)
- A score of 4 or 6 shows slight variation from ideal, but this includes most animals. An animal scoring 4 or 6 would be acceptable in any breeding program.
- A score of 3 or 7 shows greater variation but would be acceptable in most commercial programs. However, seedstock producers should be vigilant and understand that this score indicates greater variation from ideal.
- A score of 2 or 8 are low scoring animals and should be looked closely before purchasing.
- A score of 1 or 9 should not be catalogued and are considered culls.



Liam Cardile – Beef Xcel – 0409 572 570

Looking after your new Hazeldean bull

Bulls are like us. Some settle easily in to a new location - others don't. Here are a few pointers to help your new bull/s settle in.

Bulls are social animals and there is a hierarchy within each mob. Usually we have around 4 mobs of bulls for any one sale. If bulls are purchased from different mobs and put together they will very likely fight to sort out who's "boss". If you buy more than one bull, find out from us at the end of the sale what mobs are represented in your purchases and we can tell you whether you are likely to experience fighting when we get them home for you.

When the bull/s arrive at your home, let them settle in by leaving them in the yards overnight and observe how they are reacting to their new home. Give them fresh water and good quality hay. If they are fighting you might have to split them, depending on how serious it is. Two bulls fighting is often less of a concern than 3 bulls fighting as sometimes the third bull will broadside one of the bulls locked in battle and serious injury can result. If you have purchased only one bull, then find a mate or two for him straight away. If you have bought multiple bulls from a number of different management groups or studs it is often better to put them all together at once. Introducing new bulls into a mob one at a time can lead to the new bull being given a very hard time indeed by his contemporaries. Sometimes a young bull will team up with a bigger older bull but often it should be one or two cows or steers. Bulls left on their own are much more likely to jump or push through fences and be unsettled and once they get into the habit are hard to stop.

We do not use dogs on our cattle so your new bull might react strangely if you use a dog. In all instances read the body language of your new bull/s and take appropriate action. Sometimes this might involve a stint in the yards, other times it might be better to let them into a paddock straight away with one or two cows. The added advantage of running them with cows is that it will help them develop immunity to foreign bugs they may not have previously encountered well before the breeding season. Whatever the circumstances, do not take the view that everything will be fine because sometimes it isn't and each bull will be different. For further advice please do not hesitate to call us.

Your new bull will be up to date with vaccine and parasite treatment at the time of sale however a booster vaccination should be given annually including Vibriosis, Pestivirus and 7 in 1. These vaccinations can be given anytime to fit in with your normal management routine however 4 to 6 weeks before mating is a good time and this also gives you a chance to inspect all your bulls and establish their general soundness before the breeding season.

Prior to mating a breeding soundness evaluation of all the bulls you own is a good idea. You may wish to undertake this yourself or get a vet to do it for you. Bulls should be assessed for reproductive soundness including palpation and measuring of the testicles. Testes should be at least 32 cm in circumference and tennis ball firm, not hard or soft. They should be symmetrical and free from abnormal lumps and bumps. The epididymus at the base of the testicle should not be enlarged or irregular and the cords at the top of the testicle also free of lumps. It is a good idea to observe your bull's actual physical prowess in a serving ability test. When a bull is mounting a cow he must thrust and complete a service fully before he can be given a tick. Stand to the right and to the rear of the bull and check for corkscrew penis. Corkscrew penis is a condition where the end of the penis spirals preventing entry into the vagina. Corkscrew penis will always deviate to the right side of the cow. Also check the bull for muscle tremor, muscle wastage, lameness, favouring of one hind leg or any other indication he may be unsound. Look for other indicators - unevenly grown hind toes can be a sign of hip problems for instance.

Once your bulls have passed through all these hoops they are ready for joining however do not think that you can now take your eye off the ball (so to speak) because during joining an injury is even more likely to occur, or a long standing problem resurface, due to the workload. Inspect your bulls twice a week at close proximity. Look for the same things you observed in your pre joining check. When you have passed the first 3 weeks of joining make sure there are not large numbers of cows cycling. Even if your bull is serving well and normally there is always a small risk he may be infertile due to poor quality sperm. This may be a temporary or permanent problem. If you are in any doubt replace the bull with another.

It is important to remember that the fundamental profit driver in a beef enterprise is reproduction. It is therefore vital to spend time making sure your bulls are working properly.

During the non-breeding season DO NOT LET YOUR BULLS GET FAT!! Bulls will last longer, have fewer feet problems and will be more agile and virile generally if they are not overweight. The best mature bull paddock is often your worst paddock. Young bulls may need a better paddock as they are still growing.

At the 6 week pre joining check-up, move all bulls to better paddocks to start lifting them before mating.

If you are in any doubt as to the soundness of your bull/s, or what you should be doing or looking for, please call us.

Jim Litchfield

Understanding EBV's

Group Breedplan analyses the growth and production attributes of beef cattle and provides predictions of the genetic merit of individual animals called Estimated Breeding Values (EBV's).

Breedplan is logical and straight forward and provides the only solution to the otherwise impossible task of weighing up individual bull performance and adjusting for pedigree and the performance of brothers and sisters. It gives the correct weighting to all available information and then gives a value and accuracy level for each trait measured. The higher the accuracy percentage, the more confidence you can have in the figure. Without any figures selection becomes guess work. EBV's are shown as +ve or -ve differences from the breed base. The average EBV's for traits change over time as the breed makes genetic progress. The breed average EBV's provide a useful benchmark for comparisons of EBV's for individual animals.

The following is a brief explanation of the figures and what to look for. Remember, all the figures are calculated from the animal's individual performance AND the performance of its relatives that have also been measured or weighed. This is important as it improves the accuracy of the predicted performance of the bull you purchase. For example, if the bull you purchased was light for birth weight, yet one of its parents was heavy at birth, there is a fair chance that some of your bull's calves will inherit the grandparent's high birth weight. Breedplan works out the likelihood of this occurring and includes it in the estimated figure. The same applies to all other measured traits.

CALVING EASE

Calving Ease (CE)

Appears on sires only and is self explanatory to a large extent. CE (DIR) is Calving Ease direct and refers to the amount of calving difficulty you can expect from this bull directly from the cows he is joined to. CE (DTRS) is Calving Ease daughters and refers to the amount of calving difficulty you can expect from his daughters.

A plus figure in both instances is good.

Gestation Length (GL)

Some cattle have shorter pregnancies than normal and some longer pregnancies. As growth starts from conception, generally a bull with short gestation length EBV will sire smaller calves at birth than one with a longer gestation length EBV. It also means that the cow has more time to recover from calving to get back in calf for next year. **A negative figure here is good.**

Birthweight (BWT)

Birthweight generally applies mostly to those looking for a heifer bull. Generally at Hazeldean we get a little nervy when we go much above +4.5 for our own heifer joining, although some areas seem to be able to tolerate more birthweight than we can on the Monaro. Even if you are not looking for a heifer bull, keep in mind that a bull with a big birthweight will sire heifer calves and you may run into problems when his daughters calve down. In a well designed program, birthweight EBV should be able to gradually increase as the size of your heifers at 2 years of age increases through selection for improved growth rate.

A low figure here is good, especially over heifers, but be careful that it does not get so low that calf mortality starts to increase. Also, you should challenge your heifers to be able to handle higher birthweights, otherwise calving ease will go the wrong way.

GROWTH & MATERNAL

200, 400 & 600 Day Growth

These figures indicate the sort of weight differences you can expect from the progeny of these bulls (as an average) at 200, 400 and 600 days of age. In other words, if you have two bulls and for 600 Day weight one is +70 and the other is +80, you could expect the bull who is +80 to sire calves that would average 5kgs more bodyweight (as the sire provides half the genes to the calf, that is 10kg divided by 2) at 600 days than the bull who is +70. **A plus figure in all areas is good**, relative to your production, provided birthweight does not get out of control.

Mature Cow Weight

Provides an estimate of the genetic differences between animals in cow weight at 5 years of age. Obviously smaller cows have less maintenance requirements and those that can still wean heavy calves are valuable however remember there is a high negative correlation between low Mature Cow Weight and growth meaning selection for this trait can put pressure on growth rate of progeny. More efficient "easy-care" cows have a MCW lower than their 600 DWT and we select for this.

Understanding EBV's

Milk

Milk is the figure that most people find hardest to understand. How can you work out how much milk an animal is capable of producing in its offspring with out actually milking them and measuring the quantity? Milk is obviously an important consideration especially for those beef producers turning calves straight off their mothers. Too much of a good thing can lead to udder problems and also result in failure to get back in calf early, especially if a really good milker hits a tight Spring. There are some cows that will milk well and yet still retain enough body condition to start cycling soon after calving. They are obviously very desirable. **A plus figure here is good** but beware of the problems associated with extreme production.

FERTILITY

Scrotal Size (SS)

There is a strong correlation between scrotal size and both male and female fertility. Bulls with big testicles generally sire more fertile daughters. You may notice a discrepancy between scrotal size on sale day and the EBV. This is because testicles, like just about everything else, grow at different rates in different bulls and rankings will therefore change. As with all Breedplan analysis, information on relatives also has an effect. The measurement for the EBV was taken at the same time as we started to program the heifers for their AI program back in early September. The reason we did this was to identify those bulls who failed to reach sexual maturity at the minimum age we want our heifers to be cycling. We cull all bulls who fail to reach a minimum of 30cm at 12 months of age as these animals, if allowed to go through into the sale group, will be more likely to breed heifers who will not get in calf early. **A plus figure here is good.**

Days to Calving (DC)

This figure only appears on sires and is an indication of the time taken for his daughters to get back in calf after calving. Some cows take longer to return to their normal heat cycle after calving than others. Those that recover quickly and need fewer days before they get back in calf are obviously more worthwhile having around. **A minus figure here is good.**

CARCASE

Carcase weight (CWT)

Carcase weight refers to the difference you can expect in the weight of this bull's steer progeny when slaughtered at 650 days of age. Remember that this is an EBV and therefore the actual contribution of this trait to the bull's offspring is half of the number published. This is because only half of any animal's genes come from the sire. The other half comes from the mother. **A high figure is good.**

Eye Muscle Area (EMA)

This trait is measured by ultrasound when the bulls are approximately 15-18 months old. As muscling is consistent throughout the body, EMA is a good indicator of overall muscle content when the measurement is taken and analysed in the light of total body weight. It is actually impossible to have an animal with more meat in his hindquarter than in his forequarter, or vice versa. Many years ago, Professor Rex Butterfield dissected numerous carcasses from many breeds to prove that as a proportion of total muscle weight, almost exactly the same amounts of muscle were found in various parts of the animal regardless of breed or physical appearance. Despite general opinion to the contrary, it has been recently proven that increased muscle is not linked to poor fertility or calving difficulty. **A plus figure here is good.**

Fat Depth – Rib & Rump

Also calculated from ultrasound measurement, high fat depth EBV's will mean bulls that leave fatter carcasses and lower lean meat yield. However, recent research has shown that bulls that are positive for fat generally sire more fertile daughters than those that are negative, all other things being equal. Care has to be taken, therefore, not to select poorer types that lack doing ability and constitution resulting in low fertility. This EBV needs to be kept in balance and **extremes of plus or minus should be avoided.**

Retail Beef Yield (RBY%)

This figure is calculated to give you the expected amount of retail beef as a percentage of the total carcass weight in a 300 kg carcass sired by this bull. Again you need to understand that as animals receive half their genes from their mother and half from their father, this figure needs to be divided by two to ascertain just how much is a result of the bull's influence.

Understanding EBV's

Intramuscular Fat- Marbling (IMF%)

As abattoir data is always slow, there are big benefits in measuring live cattle. The Animal Genetics and Breeding Unit (AGBU) at Armidale with Meat Research has been researching marbling scanning since 1996 and has come up with some very Corporation, CRC and Breed Society support encouraging results for genetic evaluation. IMF% and actual marble score are reasonably well correlated and therefore selection on IMF% will improve marbling. To further improve accuracy, the figure or IMF% calculated by Breedplan also includes abattoir data and overseas EPD data, as well as ultrasound. The US data on marbling is generated purely from abattoir carcase information.

A plus figure here is good.

\$ Index Values

There are currently four selection indexes calculated for animals within the Angus BREEDPLAN analysis. The Angus Breeding Index is a general purpose selection index that is suitable for use in the majority of commercial beef operations, whereas the Domestic, Heavy Grain and Heavy Grass selection indexes are specific to beef operations targeting a defined production system and market endpoint.

Angus Breeding Index - estimates the genetic differences between animals in net profitability per cow joined in a typical commercial self replacing herd using Angus bulls. This selection index is not specific to a particular production system or market end-point, but identifies animals that will improve overall profitability in the majority of commercial grass and grain finishing beef production systems. The index is particularly suited to commercial producers who sell progeny into different markets, or to seedstock producers supplying bulls to commercial clients who produce for a range of different production systems and market end points.

Domestic Index - estimates the genetic differences between animals in net profitability per cow joined in a commercial self replacing herd targeting the domestic supermarket trade, with progeny finished using either grass, grass supplemented by grain or grain finishing systems.

Heavy Grain Index - estimates the genetic differences between animals in net profitability per cow joined in a commercial self replacing herd targeting pasture grown steers with a 200 day feedlot finishing period for the grain fed high quality, highly marbled markets.

Heavy Grass Index - estimates the genetic differences between animals in net profitability per cow joined in a commercial self replacing herd targeting pasture finished heavy steers. Further information regarding each selection index is available from www.angusaustralia.com.au

Trial Docility - This EBV is expressed as the difference in the percentage of progeny that will be scored with acceptable temperament. **Higher scores are more favourable.** For example, a bull with an EBV of +20 would be expected to on average produce 15% more progeny with acceptable temperament than a bull with an EBV of -10.

Heritability of Traits

Some traits are more likely to be inherited than others. The most **highly heritable traits** (over 35%) are: birthweight, 600 day weight, mature cow weight, scrotal size, rump fat, retail beef yield and docility. Traits of **medium heritability**, (20 -30%) are gestation length, eye muscle area, rib fat and 200 & 400 day weight and those with the **lowest heritability**, (less than 20%) are days to calving, calving ease and milk.

The team at Hazeldean systematically collect as accurately as possible all the required information that is then submitted to Breedplan for analysis. Every calf is tagged and weighed at birth, again at 200 days, 400 days and 600 days. Every animal is scanned for carcase data, all male animals have testicles measured at 400 days and structural and docility assessments are done by an independent assessor (Liam Cardile from BeefXcel).



**2023 HAZELDEAN AUTUMN BULL SALE EBV SUMMARY MARCH 2023 TRANSTASMAN ANGUS CATTLE
EVALUATION**

LOT	Society Id	Sire Name	CE Dir	CE.Mil	GL	BWT	200 G	400 G	600 G	MCow	SS	DC	CWT	EMA	RIB	P8	RBY	IMF	Doc.	\$A	DOM	HGRN	HGRS
1	NHZ221S744	CHILTERN PARK MOE M6	9.2	6.6	-7.3	2.5	49	97	127	87	1.2	-5.7	86	3.7	-0.6	-0.3	0.2	2.5	37	212	171	275	199
2	NHZ221S791	LAWSONS MOMENTOUS M518	-5.5	-2.4	-5.5	5.9	65	115	153	128	4.7	-6.3	88	7.9	-2.5	-2.8	1.1	3.7	14	160	122	212	146
3	NHZ221S864	HAZELDEAN M182	6.2	7.1	-5.5	3	58	112	151	127	4.2	-4.1	95	1.3	0.1	0.6	-1	1.2	37	159	133	201	148
4	NHZ221S381	HAZELDEAN P16	3.1	4.2	-4.3	3.8	57	102	134	112	2.6	-4.2	79	9.7	-0.7	-0.1	0.4	4.7	27	237	197	314	223
5	NHZ221S339	HAZELDEAN P16	6	4.1	-4.4	2.8	61	113	144	141	2.8	-3.3	92	3.6	-3.8	-3.9	0.8	5.7	46	210	164	281	199
6	NHZ221S204	RENNYLEA NORL519	5.8	7.8	-7.1	3	49	96	122	113	0.7	-4.8	68	8.1	1.1	0.3	0.2	4.9	32	228	188	298	215
7	NHZ221S261	HAZELDEAN P16	5.8	2.6	-6.2	3.1	53	95	133	116	2.6	-5.4	77	4.6	-0.1	-0.5	0.1	2.9	35	215	179	286	198
8	NHZ221S921	CHILTERN PARK MOE M6	5.1	1.7	-3.4	2.5	54	94	126	66	1.6	-4.8	79	11	-0.5	1	0.7	4.3	32	230	182	314	216
9	NHZ221S1007	RENNYLEA NORL519	6.3	3.1	-4.5	2.5	48	95	124	98	2.1	-6.4	72	8.3	2.7	1.6	-0.2	3.8	8	215	173	293	196
10	NHZ221S1199	HAZELDEAN Q462	6.5	5.7	-4.6	3.8	52	106	142	122	2.6	-5	84	3.9	-0.3	-0.2	0.7	2.7	39	211	166	274	198
11	NHZ221S2030	HAZELDEAN P16	6	1.6	-1.1	3	59	109	142	122	2.5	-3.4	78	4.7	0	-0.5	-0.4	3.9	21	216	165	297	200
12	NHZ221S62	HAZELDEAN P16	-0.3	2	-8.6	4.2	44	84	115	108	0.4	-2.9	69	6.8	-2.6	-3.2	1.6	2.7	45	209	173	269	196
13	NHZ221S241	LAWSONS MOMENTOUS M518	10	6.5	-7	0.6	39	78	98	69	1.3	-5.2	44	11	3.2	3.5	0	2.9	38	215	175	279	202
14	NHZ221S346	RENNYLEA NORL519	3.7	2.4	-5.9	3.8	51	83	111	88	0	-5.5	69	6.3	0.3	-2.1	0.5	2	40	206	178	269	188
15	NHZ221S350	RENNYLEA NORL519	6.1	1.4	-5.1	3.5	53	93	120	117	0.8	-6.3	73	3.2	4	3.9	-0.7	3.1	24	197	154	270	180
16	NHZ221S598	CHILTERN PARK MOE M6	7.5	1.2	0.7	1	50	92	114	83	0.7	-3.9	74	6.2	-1	0.2	-0.2	3	14	216	172	286	196
17	NHZ221S749	MURRAY LONGSHOT NURP92	10	9.2	-4.7	-1.3	34	68	90	33	1.1	-4.9	55	7.8	0	-0.3	0.3	3.8	24	226	183	304	209
18	NHZ221S900	HAZELDEAN P16	2.5	0.1	-4.4	4.7	61	106	140	106	3.6	-4.4	75	2.9	-1.6	-2.6	-0.2	2.2	27	212	180	269	197
19	NHZ221S1092	HAZELDEAN Q991	6.2	1.3	-4.8	3.2	53	96	116	89	3.4	-3.7	68	10	1.6	0.6	0.6	3.4	29	237	190	319	223
20	NHZ221S1324	HAZELDEAN Q748	3.9	2.6	-6	4.9	60	102	131	132	0.6	-5.1	75	6.4	-1.1	-3	0.6	1.1	29	224	193	281	209
21	NHZ221S1419	HAZELDEAN Q1566	5.4	3.1	-5.2	2.6	40	74	94	64	2.3	-6	59	2.5	0.2	0.7	0.2	1.3	37	206	179	263	191
22	NHZ221S1522	HAZELDEAN Q865	2.8	5	-5.2	3.7	55	97	134	120	1.9	-5.8	74	5.1	-0.4	-2.2	0.2	1.5	37	246	207	314	229
23	NHZ221S1874	HAZELDEAN Q1	6.9	3.7	-9.7	1.8	43	85	106	76	3.3	-6	52	9	1.5	1	0.3	4.5	10	216	166	287	205
24	NHZ221S657	HAZELDEAN P16	8.1	5.7	-8.7	0	43	84	106	74	2.3	-5	60	6.6	1.9	1.6	0.2	3.3	11	218	181	284	204
25	NHZ221S1843	HAZELDEAN Q321	5.4	7.7	-4.9	1.2	49	90	117	64	2.7	-5.4	60	11	-1.3	-0.7	0.5	2.8	25	206	166	289	184
26	NHZ221S166	HAZELDEAN P434	11	9.1	-6.8	0.2	44	88	113	79	2.7	-6.3	71	1.7	-1.7	-3	0.1	3.4	6	223	182	291	209
27	NHZ221S1046	HAZELDEAN P709	4.7	1.6	-4.7	1.7	47	80	98	73	3.1	-3.5	50	13	0.2	-0.7	0.8	1.8	34	206	173	267	190
28	NHZ221S1180	HAZELDEAN Q1128	1.2	4	-5.7	6	58	102	144	121	4.1	-5.2	79	10	-0.7	-1.1	0.7	2.9	13	249	212	321	235
29	NHZ221S1476	HAZELDEAN Q405	1.4	3.1	-5.2	4.6	50	97	131	122	3.9	-5.1	69	3	-0.5	-1.2	0.2	1.6	33	223	188	284	208
30	NHZ221S1645	HAZELDEAN Q1128	-7.5	7	-4.7	6.7	54	84	116	113	1.3	-3.2	67	5.2	-5.1	-8.2	1.6	4.4	20	222	171	299	207
31	NHZ221S2047	HAZELDEAN JAIPUR J140	6.1	8.4	-5.4	3.5	46	89	127	140	2.2	-6.3	76	0.3	-1.2	-2.5	0.5	2.3	47	237	196	307	224
32	NHZ221S1232	HAZELDEAN Q779	-2.2	0.5	0.2	6.8	48	89	106	95	1.8	-6	66	9.3	0.1	-1.2	1.1	0.3	6	203	165	256	189
ANGUS AUSTRALIA 2021 DROP AVG EBVS			2.2	2.7	-4.8	4.1	50	90	117	101	2.1	-4.6	66	6.4	0	-0.3	0.5	2.2	20	197	162	259	181

**2023 HAZELDEAN AUTUMN BULL SALE EBV SUMMARY MARCH 2023 TRANSTASMAN ANGUS CATTLE
EVALUATION**

LOT	Society Id	Sire Name	CE Dir	CE.Mil	GL	BWT	200 G	400 G	600 G	MCow	SS	DC	CWT	EMA	RIB	P8	RBY	IMF	Doc.	\$A	DOM	HGRN	HGRS
33	NHZ221S1813	HAZELDEAN Q405	3.3	7.4	-4.5	3.7	53	92	125	104	3.6	-5	69	2.9	1.3	0.5	-0.5	2.2	19	210	181	266	197
34	NHZ221S1988	HAZELDEAN F1023	-0.2	-0.3	-1.1	4.9	53	94	120	122	1.7	-4.2	71	4.3	0.3	-1.2	0.3	3.1	54	207	165	278	195
35	NHZ221S1956	LAWSONS MOMENTOUS M518	2.4	1.6	-4.6	4	51	90	123	113	3.8	-5.3	56	12	-1.3	-2.7	1.5	3.4	36	220	178	294	206
36	NHZ221S135	HAZELDEAN M182	8.8	12	-6.6	-0.5	38	69	92	68	3.1	-6.6	55	1.9	1.2	0.7	-0.7	2	29	259	206	342	244
37	NHZ221S490	HAZELDEAN Q1229	3.7	4.9	-4	3.6	39	72	98	66	2.5	-5.5	53	9.2	2.5	1.3	0.2	2.2	31	198	163	252	186
38	NHZ221S1226	HAZELDEAN Q331	8.5	3.4	-2.9	1.8	36	71	83	72	2.1	-7.1	47	0.6	5.5	6.3	-0.9	3.8	24	237	193	313	226
39	NHZ221S1586	HAZELDEAN Q481	3.9	4.3	-6.2	4.9	45	76	114	75	3.4	-9.1	64	1.7	2.4	3.4	-0.4	4	17	219	175	304	203
40	NHZ221S1650	HAZELDEAN LEBRUN L355	1.8	1.1	-5	3.7	42	78	104	91	0.6	-5.2	60	4.9	2.1	1.6	-0.1	2.9	26	202	156	268	189
41	NHZ221S1720	HAZELDEAN Q1080	9.9	7.6	-6.4	1	44	83	97	76	1.1	-6.9	60	7.1	2.1	1.4	0.8	2.5	21	227	191	306	209
42	NHZ221S1767	HAZELDEAN LEBRUN L355	3.8	3.5	-8.6	3.5	44	97	134	132	2.5	-5.3	77	-0.2	1.2	0.1	-0.7	1.6	18	199	171	255	182
43	NHZ221S1839	HAZELDEAN Q968	5	6.6	-6.2	2.7	51	90	120	129	-0.3	-5.8	79	7	-0.4	-2.3	1.2	2.3	27	229	181	292	220
44	NHZ221S1983	RENNYLEA NORJ474	0.6	0	-5.8	4.2	52	82	117	96	1.6	-4.9	82	4.5	-0.5	-0.8	0.3	1	20	211	180	265	199
45	NHZ221S2059	HAZELDEAN JAIPUR J140	10	7.8	-7.5	3.2	47	84	116	109	1.8	-6.6	74	5.5	-1	-2.5	1	2.5	21	188	147	247	175
46	NHZ221S1760	HAZELDEAN Q11	5.4	3.3	-9.8	2.7	49	95	127	100	0.7	-4.8	69	8.4	0.5	0	0.9	3.6	23	195	166	260	178
47	NHZ221S1	RENNYLEA NORL519	0.5	0.9	-9.6	6.2	57	104	142	142	1.3	-5.2	86	7.7	0	-0.6	0.5	1.9	13	202	180	259	184
48	NHZ221S6	HAZELDEAN LEBRUN L355	5.9	-0.2	-7.6	2.7	44	86	121	110	1.5	-5.1	67	-1.7	0.9	-1.8	-0.7	2.4	40	188	162	244	172
49	NHZ221S328	HAZELDEAN M182	2.1	7.4	-4.7	2.7	49	90	121	114	2	-5.9	68	8.1	0.9	0.5	0.5	2.9	34	222	186	293	202
50	NHZ221S635	HAZELDEAN Q968	0.6	3.4	-10	7.2	65	111	150	148	1.8	-6.9	86	1.2	0.2	-1.2	-0.7	3.1	19	225	184	289	214
51	NHZ221S1120	HAZELDEAN Q1003	2.7	4	-1.5	5.4	57	95	122	119	3.4	-5.4	65	3.7	-0.3	-1.1	0.4	1.7	17	187	160	236	172
52	NHZ221S2036	MURRAY KODAK N70	-2.7	1.7	-5.2	7.5	64	101	138	128	2.8	-6.7	94	7.3	-0.2	-0.4	0.8	3.7	23	233	187	303	221
53	NHZ221S2044	RENNYLEA NORL519	6.2	6	-9.7	4.1	56	105	145	157	2.5	-7.5	75	1.1	0.8	-1.2	-0.7	1.7	31	174	146	219	164
54	NHZ221S2073	HAZELDEAN F1023	7.7	3.6	-5.6	2.5	42	77	99	76	5	-6.3	49	6.8	0	-2.4	0.2	1	18	198	159	262	181
55	NHZ221S2074	HAZELDEAN F1023	5.8	4.9	-6.7	3.4	51	94	124	110	4.3	-6.3	69	1.7	-0.9	-3.8	0	3.3	4	217	173	283	203
56	NHZ221S353	MURRAY KODAK N70	-0.4	0.9	-5	5.2	50	79	101	90	3.9	-7.8	62	6	0.1	0.7	0.6	1.7	20	218	172	266	211
57	NHZ221S817	HAZELDEAN Q11	1.8	6.5	-8.8	4.4	49	86	119	92	1.9	-5.4	68	10	0.7	-0.2	1	2.9	10	246	207	309	234
58	NHZ221S824	HAZELDEAN Q331	1.2	5.9	-9.6	4.6	54	94	121	119	3.8	-5.7	62	8	-1.1	-2.2	1	1.6	31	141	114	184	125
59	NHZ221S977	HAZELDEAN Q968	5	2.1	-9	4.5	54	94	129	135	2.7	-6.4	69	5.3	0.4	-0.9	0.2	3.1	3	184	146	242	168
60	NHZ221S1223	HAZELDEAN P709	1.4	-3	-1.8	4.8	50	81	112	99	4.7	-4.7	58	11	-1.5	-2.8	1.1	2.4	20	193	154	244	182
61	NHZ221S1241	HAZELDEAN N508	7.3	5.6	-6.4	1	36	73	88	80	3	-6.4	53	4.8	3.6	4.4	-0.1	0.9	18	223	192	286	207
62	NHZ221S1451	MURRAY KODAK N70	4.7	2.5	-4.4	4.3	56	97	132	125	3.4	-6	71	7.4	-1	-1.1	0.5	2	29	235	207	302	215
63	NHZ221S1587	HAZELDEAN Q1593	7.2	7.7	-3.9	3.3	48	86	112	82	2.9	-7.4	65	5.9	1	0.6	0.4	0.7	7	211	175	269	194
64	NHZ221S1693	HAZELDEAN Q1195	6.1	3.3	-3.9	2.6	41	76	106	85	2.8	-4.8	51	10	-0.8	-2.1	1.1	3.8	7	171	137	220	163
ANGUS AUSTRALIA 2021 DROP AVG EBVS			2.2	2.7	-4.8	4.1	50	90	117	101	2.1	-4.6	66	6.4	0	-0.3	0.5	2.2	20	197	162	259	181

**2023 HAZELDEAN AUTUMN BULL SALE EBV SUMMARY MARCH 2023 TRANSTASMAN ANGUS CATTLE
EVALUATION**

LOT	Society Id	Sire Name	CE Dir	CE.Mil	GL	BWT	200 G	400 G	600 G	MCow	SS	DC	CWT	EMA	RIB	P8	RBY	IMF	Doc.	\$A	DOM	HGRN	HGRS
65	NHZ221S1701	HAZELDEAN Q991	3.6	2.6	-6	4.9	56	102	129	108	3.4	-6.5	68	5	4.2	4.3	-0.4	2	22	191	154	248	178
66	NHZ221S1916	HAZELDEAN Q416	6.1	5.4	-10	5.3	56	95	129	102	4.2	-6	87	2.5	0.7	0.7	0.1	1.9	15	207	174	265	189
67	NHZ221S2017	LAWSONS MOMENTOUS M518	3.6	2.9	-7.4	4.1	48	96	123	111	0.3	-6.1	66	11	1.3	1.4	0.4	3.3	14	252	202	336	238
68	NHZ221S2058	LAWSONS MOMENTOUS M518	-3.8	0.3	-4	4.7	43	78	102	82	3.2	-5.9	44	8.9	2.9	2.9	0.4	3.5	14	228	190	299	215
69	NHZ221S1478	HAZELDEAN P242	-4.8	3.3	-3.5	4.5	55	96	128	91	2.8	-5	81	5.1	1.7	2.5	0	0.6	30	211	178	263	199
70	NHZ221S1079	HAZELDEAN Q1128	7.4	8.1	-3.2	3.3	49	87	120	106	3.6	-4	70	8.9	1	-0.2	0.3	3	25	221	177	285	208
71	NHZ221S106	RENNYLEA NORL519	6.4	0.1	-13	4.1	56	109	140	135	0.8	-7.3	92	3	0.9	-0.4	-0.8	4	-5	210	156	281	194
72	NHZ221S287	MURRAY LONGSHOT NURP92	5.4	3.9	-3.5	2.1	47	84	113	98	0.6	-4.3	59	9	1	1.8	0.1	3	17	184	153	245	165
73	NHZ221S326	HAZELDEAN M182	4.2	5.4	-4.3	2.3	46	95	125	92	3	-4	80	7.9	-1.6	-3	1	3.4	38	236	195	312	222
74	NHZ221S430	HAZELDEAN P242	4.4	7	-8.6	4.6	62	111	147	142	2.2	-5.6	92	5.1	-1.7	-3.3	1	4.2	20	226	171	307	213
75	NHZ221S443	BALDRIDGE BEAST MODE B074	4.8	7	-2	4.5	71	117	154	144	5.4	-4	88	-0.1	-4.8	-6.8	0.7	3.3	52	214	171	294	198
76	NHZ221S574	HAZELDEAN Q11	2.2	3.3	-7.9	3.8	54	101	132	116	2	-6.2	80	6.4	-1.8	-2.7	0.1	2.3	3	240	196	306	226
77	NHZ221S1401	HAZELDEAN Q589	8.1	6.8	-3.5	0.8	48	90	120	91	4.6	-6.7	81	4	2.3	1.6	-0.3	4.9	29	222	178	287	212
78	NHZ221S480	BALDRIDGE ALTERNATIVE E125	2	7	-3.4	5.3	64	100	132	120	2.7	-4.9	88	12	-2.8	-5.1	2.1	2.2	33	171	143	209	164
79	NHZ221S2029	EF COMPLEMENT 8088	1.2	6.3	-1.9	4.1	53	93	129	89	1.5	-5.2	72	2.1	2.3	2.8	-1	6.9	15	224	174	311	212
80	NHZ221S2051	TE MANIA KIRBY K138	4.4	6	-1.8	2.7	41	81	104	80	0.4	-6.8	58	2	1.5	1.7	-1.3	3.1	16	198	158	261	185
81	NHZ221S245	BALDRIDGE BEAST MODE B074	4.3	-1.3	-4.3	3.1	51	82	103	78	2.8	-4.9	57	4.6	-0.8	-0.7	0.3	2.8	33	216	176	273	202
82	NHZ221S344	HAZELDEAN P16	3	3.2	-5.4	2.7	56	97	128	102	3	-2.6	69	5.1	-0.2	-0.6	-0.3	5.3	12	215	175	283	206
83	NHZ221S692	HAZELDEAN P242	11	10	-11	-1.4	42	73	87	55	3.6	-9.5	54	6.5	4.8	4.3	-0.4	4	12	207	172	266	195
ANGUS AUSTRALIA 2021 DROP AVG EBVS			2.2	2.7	-4.8	4.1	50	90	117	101	2.1	-4.6	66	6.4	0	-0.3	0.5	2.2	20	197	162	259	181



REFERENCE SIREs 2023 AUTUMN SALE TEAM MARCH TRANSTASMN ANGUS CATTLE EVALUATION

Society Id	Name	SONS IN SALE	Sire Name	CE Di	CE-M	GL	BWT	200 G	400 G	600 G	MCo	SS	DC	CWT	EMA	RIB	P8	RBY	IMF	Doc.	\$A	DOM	HGRN	HGRS
USA18837398	BALDRIDGE ALTERNATIVE E125	1	POSS EASY IMPACT 0119	8.4	9.6	-6.4	3.5	67	110	141	134	2.1	-5.4	84	14	-1.4	-3.9	1.1	3.1	32	275	230	362	260
USA17960722	BALDRIDGE BEAST MODE B074	2	G A R PROPHET	5.3	5.5	-3.5	3.5	75	119	148	135	2.7	-3.1	77	2.8	-2.1	-3.4	-0.1	2.4	33	233	196	320	209
GTMN6	CHILTERN PARK MOE M6	3	TE MANIA FOE F734	6.5	4.4	-1.8	3	53	103	135	92	1.6	-5.7	80	7.1	-0.2	1.3	0.2	1.8	47	245	202	318	230
USA16198796	EF COMPLEMENT 8088	1	BASIN FRANCHISE P142	5.5	9.2	-5.2	2.9	53	98	130	96	1.3	-7.6	77	7.6	1.3	1.9	0.4	1.8	22	263	220	333	249
NHZJ140	HAZELDEAN JAIPUR J140	2	ARDROSSAN EQUATOR A241	8.8	8.1	-5	1.8	39	74	104	82	3.3	-7.3	70	5.2	-1	-1.4	1	2.7	54	209	171	259	199
NHZF1023	HAZELDEAN F1023	3	TE MANIA BERKLEY B1	5.6	2.5	-3.4	3.1	41	77	90	72	3.7	-6.4	51	9.6	3.2	0	0	6.3	6	233	192	318	223
NHZL355	HAZELDEAN LEBRUN L355	3	RENNYLEA EDMUND E11	3.5	0.1	-9.1	3.5	45	87	124	117	2.1	-5.4	69	-4.2	1.8	0	-1.7	4.9	-2	156	114	210	145
NHZM182	HAZELDEAN M182	4	HAZELDEAN JAIPUR J140	3.5	5.7	-5.3	2.8	48	94	133	105	3.6	-4.6	79	9.3	0.4	0.3	0	4.8	69	225	169	302	218
NHZN508	HAZELDEAN N508	1	HAZELDEAN KATZEN K416	11	8.4	-8.4	0.1	48	92	114	98	1.8	-5.8	72	-0.9	3.7	3.6	-0.9	1.5	45	192	164	253	171
NHZP16	HAZELDEAN P16	8	BALDRIDGE BEAST MODE B074	4.1	2.3	-7.8	4.2	60	104	139	120	3	-3.1	78	5.2	-1.8	-2	0.4	1.9	45	204	167	267	188
NHZP242	HAZELDEAN P242	3	HAZELDEAN KATZEN K416	8.2	5.5	-9.6	1.6	57	101	134	116	3.1	-5.5	85	2.1	1.7	1.3	-0.5	1.8	31	211	173	277	195
NHZP434	HAZELDEAN P434	1	HAZELDEAN JAIPUR J140	10	7.3	-7.7	1.5	47	87	116	100	2.7	-6.9	76	6.7	-1.1	-3.4	1.1	3.3	40	231	193	290	219
NHZP709	HAZELDEAN P709	2	HAZELDEAN F1023	5.9	1.6	-1.3	1.9	47	81	105	73	4.6	-4.3	52	15	-0.4	-1.1	0.8	5.6	36	244	188	338	235
NHZQ1	HAZELDEAN Q1	1	ARDROSSAN MAGISTRATE M11	8	9.4	-11	0.3	42	78	103	58	1.6	-5.1	64	11	0.9	-0.1	0.6	3.1	18	233	185	308	218
NHZQ1003	HAZELDEAN Q1003	1	HAZELDEAN N3000	6.5	4.8	-2.9	5	52	90	125	93	4.8	-5.8	73	9	-0.6	-1.9	0.8	1.3	25	218	179	271	209
NHZQ1080	HAZELDEAN Q1080	1	HAZELDEAN N189	4.1	4.4	-2.9	3.8	54	101	124	98	1.3	-5.2	75	13	0	0.2	1.4	1.6	33	255	220	331	238
NHZQ11	HAZELDEAN Q11	3	ARDROSSAN MAGISTRATE M11	2	3.6	-11	3.3	50	92	126	105	1.2	-4.7	67	11	0.9	-0.1	0.6	1.8	4	208	165	272	193
NHZQ1128	HAZELDEAN Q1128	3	HAZELDEAN JAIPUR J140	5.5	9.3	-7.1	3.8	56	100	137	122	3.9	-5.7	84	6.9	-1	-2.3	0.5	2.9	39	228	185	293	217
NHZQ1195	HAZELDEAN Q1195	1	HAZELDEAN F1023	3.7	4.8	-4	5.4	54	94	124	107	4.8	-6.9	68	12	0	-2.2	1.5	1.8	8	242	207	300	233
NHZQ1229	HAZELDEAN Q1229	1	HAZELDEAN F1023	-1.2	3.4	-2.8	5.1	61	110	140	107	4.7	-6.5	85	8	-0.6	-2.2	0.1	4.7	12	258	213	345	249
NHZQ1566	HAZELDEAN Q1566	1	HAZELDEAN N202	8.6	3.7	-6.6	0.3	44	89	117	82	3.2	-3.9	75	3.9	1.9	3.2	-1.2	3.7	17	191	146	266	178
NHZQ1593	HAZELDEAN Q1593	1	HAZELDEAN MAGNUM M586	9.6	9.2	-9.5	1.9	49	95	122	103	3.2	-7.4	72	5.4	3.6	2.9	-0.3	4.2	38	253	211	328	243
NHZQ321	HAZELDEAN Q321	1	ARDROSSAN MAGISTRATE M11	2	6.9	-8.2	4.3	57	101	138	113	4	-5.6	73	11	-2	-2.5	1.2	1.4	6	231	190	293	220
NHZQ331	HAZELDEAN Q331	2	KAROO KNOCKOUT K176	4.4	6.8	-9.2	4.9	58	110	138	159	4	-5.8	77	-0.9	1.9	1.4	-0.5	2.9	24	198	175	258	183
NHZQ405	HAZELDEAN Q405	2	STORTH OAKS JACK J7	4.1	8	-5.7	3.8	60	111	144	131	4.4	-7.5	80	-0.3	1.2	0.3	-1.3	3.4	28	225	191	291	215
NHZQ416	HAZELDEAN Q416	1	HAZELDEAN MAGNUM M586	4.4	6.7	-6.9	5.3	62	107	147	133	3.3	-5.8	95	0.4	-0.3	-0.8	-0.5	2.8	40	220	178	283	207

REFERENCE SIREs 2023 AUTUMN SALE TEAM MARCH TRANSTASMN ANGUS CATTLE EVALUATION

Society Id	Name	Sire Name	CE Di	CE:M	GL	BWT	200 G	400 G	600 G	MCo	DC	CWT	EMA	RIB	P8	RBY	IMF	Doc.	\$A	DOM	HGRN	HGRS	
NHZQ462	HAZELDEAN Q462	ARDROSSAN MAGISTRATE M11	8.5	4.3	-4.9	0.1	39	87	112	88	1.1	-5.2	65	7.5	0.6	-0.2	1.1	1	8	197	170	247	183
NHZQ481	HAZELDEAN Q481	HAZELDEAN MAGNUM M586	4	8.3	-6.8	4.8	58	96	133	107	3.8	-8.3	75	5.4	0.6	0.9	0	2.6	29	255	209	321	246
NHZQ589	HAZELDEAN Q589	ARDROSSAN MAGISTRATE M11	2.9	6.2	-1.6	3.2	47	86	118	80	4.1	-6.4	68	5.8	1.4	2.2	-0.3	3.3	18	224	177	292	215
NHZQ748	HAZELDEAN Q748	BALDRIDGE BEAST MODE B074	1.7	6.2	-5.8	5.9	69	117	154	141	2.2	-5	90	1.5	0	-0.7	-0.2	1.7	36	227	189	298	209
NHZQ779	HAZELDEAN Q779	HAZELDEAN F1023	3.5	2.1	-2.4	5.1	48	86	103	90	3.6	-5.4	58	7.9	-0.9	-3.2	1	2.8	12	205	181	264	189
NHZQ865	HAZELDEAN Q865	ARDROSSAN MAGISTRATE M11	1.7	-0.2	-5	5	53	92	128	115	3	-5.3	72	11	1	-1.3	0.4	4.4	9	224	171	299	214
NHZQ968	HAZELDEAN Q968	HAZELDEAN N480	3.6	5	-9.7	4.8	57	102	139	151	1.7	-6.1	75	3.8	-1.3	-2.7	0.4	2.3	20	199	165	254	185
NHZQ991	HAZELDEAN Q991	HAZELDEAN N910	2.8	0.2	-4.1	4.1	52	90	110	77	4	-6.8	57	7.8	2.1	2.2	0.5	1.3	19	233	202	300	217
VLYM518	LAWSONS MOMENTOUS M518	G A R MOMENTUM USAI7354	-3.1	-3.9	-5.8	4	52	94	116	87	2.7	-3.3	51	14	-0.7	-0.5	0.6	5.9	39	232	178	338	218
NURN70	MURRAY KODAK N70	RENNYLEA KODAK K522	4.3	6.3	-7.2	4.4	60	101	132	129	5.1	-6.6	79	10	-1.3	-1.8	0.8	4	27	256	212	332	246
NURP92	MURRAY LONGSHOT NURP92	TE MANIA LONGSHOT L107	9.1	6.4	-8.2	0.6	54	103	138	92	0.3	-5.9	81	5.3	1.1	1.7	-0.9	5.2	24	266	205	367	254
NORJ474	RENNYLEA NORJ474	TUWHARETOA REGENT D145	-5.8	-2.8	-1.4	5.1	45	72	109	104	2.8	-5.2	64	2.3	-1.2	-0.4	-0.2	5.5	7	162	108	225	149
NORL519	RENNYLEA NORL519	H P C A INTENSITY	4.4	3.1	-8.1	4.4	56	106	138	136	1.1	-7	77	9.5	2.7	2.2	-0.1	4.1	38	256	209	341	244
NHZVTMK138	TE MANIA KIRBY K138	G A R PROPHET	0.8	6.4	-1.7	4.3	49	89	119	93	2.4	-9.4	66	5.3	1.8	3.1	-1.9	8.7	9	266	201	375	264
ANGUS AUSTRALIA 2021 DROP AVG EBVS			2.2	2.7	-4.8	4.1	50	90	117	101	2.1	-4.6	66	6.4	0	-0.3	0.5	2.2	20	197	162	259	181
			TOP 5%			TOP 10%			TOP 30%														



TransTasman Angus Cattle Evaluation - March 2023 Reference Tables

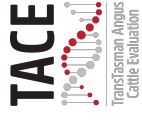
BREED AVERAGE EBVs																							
Calving Ease		Birth		Growth				Fertility		Carcase				Other		Structure			Selection Indexes				
CEDir	CEDirs	GL	BW	200	400	600	MCW	Milk	SS	DTC	CWT	EMA	RIB	P8	RBV	IMF	NF-F	DOC	Claw	Angle	Leg	\$A	\$A-L
Brd Avg	+2.2	+2.7	-4.8	+4.1	+50	+90	+101	+17	+2.1	-4.6	+66	+6.4	+0.0	-0.3	+0.5	+2.2	+0.19	+20	+0.85	+0.97	+1.03	+197	+339

* Breed average represents the average EBV of all 2021 drop Australian Angus and Angus-influenced seedstock animals analysed in the March 2023 TransTasman Angus Cattle Evaluation .

PERCENTILE BANDS TABLE																																																		
% Band	Calving Ease			Birth		Growth				Fertility			Carcase				Other		Structure			Selection Indexes																												
	Less	Calving	Difficuly	GL	BW	200	400	600	MCW	Milk	SS	Shorter	Calving	Heavier	Carcase	Weight	Larger	EMA	RIB	P8	Higher	Yield	More	IMF	NF-F	DOC	Claw	Angle	Leg	Greater	\$A	Greater	\$A-L																	
1%	+10.9	+9.9	-10.7	-0.3	+70	+122	+162	+159	+28	+4.8	-8.0	+98	+14.6	+4.1	+4.9	+2.0	+5.9	-0.52	+43	+0.44	+0.60	+0.76	+272	+448																										
5%	+9.0	+8.2	-8.8	+1.1	+64	+112	+148	+140	+25	+3.9	-7.0	+88	+11.9	+2.8	+3.2	+1.5	+4.6	-0.31	+36	+0.56	+0.72	+0.84	+252	+418																										
10%	+7.9	+7.2	-7.9	+1.8	+60	+107	+140	+130	+23	+3.5	-6.5	+83	+10.6	+2.1	+2.4	+1.3	+4.1	-0.19	+32	+0.62	+0.76	+0.88	+241	+402																										
15%	+7.0	+6.5	-7.2	+2.2	+58	+104	+136	+124	+22	+3.2	-6.1	+79	+9.7	+1.7	+1.8	+1.1	+3.7	-0.12	+29	+0.66	+0.80	+0.90	+233	+392																										
20%	+6.3	+5.9	-6.7	+2.6	+57	+101	+132	+120	+21	+3.0	-5.8	+77	+9.0	+1.3	+1.4	+1.0	+3.3	-0.06	+27	+0.70	+0.84	+0.94	+227	+383																										
25%	+5.6	+5.4	-6.3	+2.9	+55	+99	+129	+116	+20	+2.8	-5.6	+75	+8.4	+1.0	+1.0	+0.9	+3.1	-0.01	+26	+0.72	+0.86	+0.96	+222	+376																										
30%	+5.1	+4.9	-6.0	+3.2	+54	+97	+126	+112	+20	+2.6	-5.4	+73	+7.9	+0.8	+0.7	+0.8	+2.9	+0.03	+24	+0.74	+0.88	+0.96	+217	+369																										
35%	+4.5	+4.4	-5.7	+3.4	+53	+95	+124	+109	+19	+2.5	-5.2	+71	+7.4	+0.6	+0.5	+0.7	+2.7	+0.07	+23	+0.78	+0.90	+0.98	+213	+363																										
40%	+3.9	+4.0	-5.4	+3.6	+52	+94	+122	+106	+18	+2.3	-5.0	+69	+7.0	+0.3	+0.2	+0.6	+2.5	+0.11	+22	+0.80	+0.92	+1.00	+209	+357																										
45%	+3.4	+3.5	-5.1	+3.8	+51	+92	+119	+103	+18	+2.2	-4.8	+68	+6.6	-0.1	-0.1	+0.6	+2.3	+0.14	+21	+0.82	+0.94	+1.02	+204	+351																										
50%	+2.8	+3.0	-4.8	+4.1	+50	+90	+117	+100	+17	+2.1	-4.6	+66	+6.2	-0.1	-0.3	+0.5	+2.0	+0.18	+20	+0.84	+0.96	+1.02	+200	+345																										
55%	+2.2	+2.6	-4.5	+4.3	+49	+89	+115	+98	+17	+2.0	-4.5	+65	+5.9	-0.3	-0.6	+0.4	+2.0	+0.22	+19	+0.86	+0.98	+1.04	+196	+338																										
60%	+1.6	+2.1	-4.2	+4.5	+48	+87	+113	+95	+16	+1.9	-4.3	+63	+5.5	-0.5	-0.8	+0.3	+1.8	+0.25	+18	+0.88	+1.00	+1.06	+191	+332																										
65%	+0.9	+1.6	-3.9	+4.7	+47	+85	+110	+92	+15	+1.7	-4.1	+61	+5.1	-0.7	-1.1	+0.3	+1.6	+0.29	+17	+0.92	+1.02	+1.08	+186	+325																										
70%	+0.2	+1.0	-3.5	+4.9	+46	+84	+108	+89	+15	+1.6	-4.0	+60	+4.7	-0.9	-1.4	+0.2	+1.4	+0.34	+16	+0.94	+1.06	+1.10	+181	+317																										
75%	-0.6	+0.4	-3.2	+5.2	+45	+82	+105	+85	+14	+1.5	-3.8	+58	+4.2	-1.1	-1.7	+0.0	+1.2	+0.38	+15	+0.96	+1.08	+1.12	+175	+308																										
80%	-1.5	-0.3	-2.8	+5.5	+43	+79	+102	+82	+13	+1.3	-3.5	+56	+3.7	-1.4	-2.1	+0.0	+1.0	+0.44	+14	+1.00	+1.10	+1.14	+168	+298																										
85%	-2.7	-1.2	-2.3	+5.9	+42	+77	+98	+77	+13	+1.1	-3.2	+53	+3.2	-1.7	-2.5	-0.2	+0.8	+0.50	+13	+1.04	+1.14	+1.16	+159	+285																										
90%	-4.3	-2.4	-1.7	+6.3	+39	+73	+94	+71	+11	+0.9	-2.8	+50	+2.4	-2.1	-3.0	-0.3	+0.5	+0.58	+11	+1.10	+1.18	+1.18	+147	+268																										
95%	-6.9	-4.3	-0.7	+7.0	+36	+68	+87	+62	+10	+0.5	-2.1	+45	+1.2	-2.8	-3.9	-0.6	+0.1	+0.71	+8	+1.16	+1.26	+1.24	+129	+240																										
99%	-12.6	-8.1	+1.3	+8.4	+29	+57	+72	+43	+7	-0.3	-0.3	+35	-1.1	-4.0	-5.5	-1.1	-0.7	+0.96	+1	+1.32	+1.40	+1.34	+94	+188																										
More	Calving	Difficuly	Longer	Heavier	Birth	Lighter	Live	Weight	Lighter	Live	Weight	Lighter	Live	Weight	Lighter	Live	Weight	Lighter	Live	Weight	Lighter	Live	Weight	Lighter	Live	Weight	Lighter	Live	Weight	Smaller	EMA	Less	Fat	Less	Fat	Lower	Yield	Less	IMF	Lower	Feed	Efficiency	Less	Docile	Higher	Score	Higher	Score	Lower	Profitability

* The percentile bands represent the distribution of EBVs across the 2021 drop Australian Angus and Angus-influenced seedstock animals analysed in the March 2023 TransTasman Angus Cattle Evaluation .

TransTasman Angus Cattle Evaluation - March 2023 Reference Tables



BREED AVERAGE EBVs										
	\$A	\$D	\$GN	\$GS	\$A-L	\$D-L	\$GN-L	\$GS-L	\$PRO	\$T
Brd Avg	+197	+162	+259	+181	+339	+293	+405	+380	+145	+181

* Breed average represents the average EBV of all 2021 drop Australian Angus and Angus-influenced seedstock animals analysed in the March 2023 TransTasman Angus Cattle Evaluation .

PERCENTILE BANDS TABLE										
% Band	\$A	\$D	\$GN	\$GS	\$A-L	\$D-L	\$GN-L	\$GS-L	\$PRO	\$T
1%	+272	+228	+363	+260	+448	+390	+539	+512	+227	+236
5%	+252	+209	+335	+238	+418	+363	+503	+474	+204	+221
10%	+241	+200	+319	+226	+402	+349	+484	+455	+192	+213
15%	+233	+193	+309	+218	+392	+339	+470	+442	+184	+208
20%	+227	+188	+300	+212	+383	+331	+459	+423	+177	+203
25%	+222	+183	+293	+206	+376	+325	+450	+423	+171	+199
30%	+217	+179	+286	+201	+369	+319	+442	+415	+166	+196
35%	+213	+176	+280	+197	+363	+313	+434	+407	+161	+193
40%	+209	+172	+274	+192	+357	+308	+427	+400	+157	+190
45%	+204	+169	+269	+188	+351	+303	+419	+393	+152	+186
50%	+200	+165	+263	+183	+345	+297	+411	+386	+148	+183
55%	+196	+161	+257	+179	+338	+292	+403	+378	+143	+180
60%	+191	+157	+250	+174	+332	+286	+395	+371	+138	+177
65%	+186	+153	+244	+169	+325	+280	+386	+363	+133	+173
70%	+181	+149	+237	+164	+317	+273	+377	+354	+127	+169
75%	+175	+144	+229	+158	+308	+265	+366	+344	+121	+165
80%	+168	+138	+220	+151	+298	+257	+354	+332	+114	+160
85%	+159	+131	+208	+142	+285	+246	+338	+318	+105	+154
90%	+147	+121	+194	+131	+268	+231	+318	+299	+92	+146
95%	+129	+106	+171	+113	+240	+207	+284	+267	+73	+134
99%	+94	+77	+129	+80	+188	+162	+225	+203	+38	+111

* The percentile bands represent the distribution of EBVs across the 2021 drop Australian Angus and Angus-influenced seedstock animals analysed in the March 2023 TransTasman Angus Cattle Evaluation .

Autumn Sale 2023



Sale Bulls

1 HAZELDEAN S744 (APR) (AI) AMFU NHFU CAFU DD50% Born: 26/07/2021 Society Id: NHZ21S744

TE MANIA CALAMUS C46 RENNYLEA EDMUND E11
 TE MANIA FOE F734 HAZELDEAN N549
 TE MANIA DANDLOO D700 HAZELDEAN H1616
Sire: CHILTERN PARK MOE M6 Dam: HAZELDEAN Q1464
 HIDDEN VALLEY TIMEOUT A45 HAZELDEAN JABBER J618
 STRATHEWEN TIMEOUT JADE F15 HAZELDEAN L884
 STRATHEWEN 1407 JADE C05 HAZELDEAN G431

Front	Rear	Front	Rear	Front	Rear	MUSCLE	TEMP.	SHEATH
6	5	6	5	5	5	C+	1	5

Structural EBV's			
TACE	ANGLE	CLAW	LEGS
	+1	+0.82	1.06
ACC%	66%	66%	66%

TRANSTASMAN ANGUS CATTLE EVALUATION - MARCH 2023																						
TACE	CALVING EASE				GROWTH & MATERNAL				FERTILITY		CWT	CARCASE					Doc	Angus Index	Dom	Heavy Grain	Heavy Grass	
	DIR	DTRS	GL	B Wt	200	400	600	MWt	Milk	SS	DC	C Wt	EMA	RIB	RUMP	RBY%	IMF%	Doc.				
EBV	+9.2	+6.6	-7.3	+2.5	+49	+97	+127	+87	+23	+1.2	-5.7	+86	+3.7	-0.6	-0.3	+0.2	+1.6	+33	+223	+188	+284	+208
ACC%	60%	48%	82%	74%	73%	71%	71%	68%	62%	74%	39%	63%	62%	63%	64%	57%	66%	54%				

Very nice type, real thickness, slicker coat type. Great calving ease and fertility traits. Top 9% for docility and top 7% for carcass weight. Suitable for heifers.

Purchaser..... Price.....

2 HAZELDEAN S791 (APR) (AI) AMFU NHFU CAFU DDFU Born: 27/07/2021 Society Id: NHZ21S791

G A R PROGRESS ARDROSSAN EQUATOR A241
 G A R MOMENTUM USA17354145 HAZELDEAN JAIPUR J140
 G A R BIG EYE 1770 HAZELDEAN C33
Sire: LAWSONS MOMENTOUS M518 Dam: HAZELDEAN Q1133
 TE MANIA AFRICA A217 HAZELDEAN HALYARD H506
 LAWSONS AFRICA H229 VLYH229 HAZELDEAN K399
 LAWSONS ROCKND AMBUSH E1103 G40

Front	Rear	Front	Rear	Front	Rear	MUSCLE	TEMP.	SHEATH
7	5	5	5	4	5	C+	1	4

Structural EBV's			
TACE	ANGLE	CLAW	LEGS
	+0.86	+0.74	1.12
ACC%	68%	68%	67%

TRANSTASMAN ANGUS CATTLE EVALUATION - MARCH 2023																						
TACE	CALVING EASE				GROWTH & MATERNAL				FERTILITY		CWT	CARCASE					Doc	Angus Index	Dom	Heavy Grain	Heavy Grass	
	DIR	DTRS	GL	B Wt	200	400	600	MWt	Milk	SS	DC	C Wt	EMA	RIB	RUMP	RBY%	IMF%	Doc.				
EBV	-5.5	-2.4	-5.5	+5.9	+65	+115	+153	+128	+30	+4.7	-6.3	+88	+7.9	-2.5	-2.8	+1.1	+2.3	+47	+237	+196	+307	+224
ACC%	63%	54%	83%	74%	74%	72%	72%	70%	66%	75%	45%	66%	65%	66%	66%	61%	68%	58%				

Handsome young man, eye catching in the pen along with power. Top 3% for 600d, top 1% for milk and docility.

Purchaser..... Price.....

3 HAZELDEAN S864 (APR) (AI) AMFU NHFU CAFU DDFU Born: 28/07/2021 Society Id: NHZ21S864

ARDROSSAN EQUATOR A241 TE MANIA EMPEROR E343
 HAZELDEAN JAIPUR J140 STORTH OAKS JACK J7
 HAZELDEAN C33 STORTH OAKS G183
Sire: HAZELDEAN M182 Dam: HAZELDEAN Q1827
 HAZELDEAN GUARDIAN G553 HAZELDEAN LODGER L739
 HAZELDEAN K807 HAZELDEAN N1287
 HAZELDEAN G568 HAZELDEAN L1027

Front	Rear	Front	Rear	Front	Rear	MUSCLE	TEMP.	SHEATH
6	6	6	6	5	6	C+	1	4

Structural EBV's			
TACE	ANGLE	CLAW	LEGS
	+0.94	+0.7	1.04
ACC%	65%	65%	61%

TRANSTASMAN ANGUS CATTLE EVALUATION - MARCH 2023																						
TACE	CALVING EASE				GROWTH & MATERNAL				FERTILITY		CWT	CARCASE					Doc	Angus Index	Dom	Heavy Grain	Heavy Grass	
	DIR	DTRS	GL	B Wt	200	400	600	MWt	Milk	SS	DC	C Wt	EMA	RIB	RUMP	RBY%	IMF%	Doc.				
EBV	+6.2	+7.1	-5.5	+3	+58	+112	+151	+127	+24	+4.2	-4.1	+95	+1.3	+0.1	+0.6	-1	+3.1	+54	+207	+165	+278	+195
ACC%	56%	43%	83%	73%	72%	70%	70%	67%	58%	74%	36%	60%	60%	61%	61%	55%	64%	54%				

Very balanced son of Hazeldean Maverick. Maverick sons sold exceptionally well last year, plenty of frame size, fills it well. Awesome birth to growth - Top 1% for docility, top 3% for scrotal size, top 4% for 600d.

Purchaser..... Price.....

Top 5% **Top 10%** **Top 30%**
 Ranking in Angus Aust. March 2023

Proven Genetic Performance

www.hazeldean.com.au

Autumn Sale 2023



Sale Bulls

4 HAZELDEAN S381 (HBR) (AI) AMFU NHFU CAFU DDFU Born: 14/07/2021 Society Id: NHZ21S381

G A R PROPHET
BALDRIDGE BEAST MODE B074
BALDRIDGE ISABEL Y69
Sire: HAZELDEAN P16
LAWSONS INVINCIBLE C402
HAZELDEAN G90
HAZELDEAN B4

BOWMONT JACKPOT SRKJ310
HAZELDEAN M74
HAZELDEAN J100
Dam: HAZELDEAN P163
SYDGEN TRUST 6228
HAZELDEAN K111
HAZELDEAN C74

Front	Rear	Front	Rear	Front	Rear	MUSCLE	TEMP.	SHEATH
6	5	6	6	5	5	C+	2	4

Structural EBV's			
TACE	ANGLE	CLAW	LEGS
	+1.1	+0.66	1.1
ACC%	66%	66%	63%

TRANSTASMAN ANGUS CATTLE EVALUATION - MARCH 2023																						
TACE	CALVING EASE				GROWTH & MATERNAL				FERTILITY		CWT	CARCASE						Doc	Angus Index	Dom	Heavy Grain	Heavy Grass
	DIR	DTRS	GL	B Wt	200	400	600	MWt	Milk	SS	DC	C Wt	EMA	RIB	RUMP	RBV%	IMF%	Doc.				
EBV	+3.1	+4.2	-4.3	+3.8	+57	+102	+134	+112	+17	+2.6	-4.2	+79	+9.7	-0.7	-0.1	+0.4	+3.4	+29	+237	+190	+319	+223
ACC%	55%	44%	82%	73%	71%	70%	69%	66%	57%	73%	35%	59%	57%	60%	60%	53%	61%	45%				

Whole package here. Type, EBVs and a pedigree! Very usable for plenty of matings and appealing carcase traits. Top 19% for IMF and top 15% for EMA. Would make a nice addition to a commercially focused Angus Stud. Suitable for heifers.

Purchaser..... Price.....

5 HAZELDEAN S339 (HBR) (AI) AMFU NHFU CAFU DDFU Born: 13/07/2021 Society Id: NHZ21S339

G A R PROPHET
BALDRIDGE BEAST MODE B074
BALDRIDGE ISABEL Y69
Sire: HAZELDEAN P16
LAWSONS INVINCIBLE C402
HAZELDEAN G90
HAZELDEAN B4

ARDROSSAN EQUATOR A241
HAZELDEAN JAIPUR J140
HAZELDEAN C33
Dam: HAZELDEAN P42
KM BROKEN BOW 002
HAZELDEAN K127
HAZELDEAN B366

Front	Rear	Front	Rear	Front	Rear	MUSCLE	TEMP.	SHEATH
6	6	6	5	4	5	C+	1	5

Structural EBV's			
TACE	ANGLE	CLAW	LEGS
	+0.88	+0.62	0.94
ACC%	66%	66%	63%

TRANSTASMAN ANGUS CATTLE EVALUATION - MARCH 2023																						
TACE	CALVING EASE				GROWTH & MATERNAL				FERTILITY		CWT	CARCASE						Doc	Angus Index	Dom	Heavy Grain	Heavy Grass
	DIR	DTRS	GL	B Wt	200	400	600	MWt	Milk	SS	DC	C Wt	EMA	RIB	RUMP	RBV%	IMF%	Doc.				
EBV	+6	+4.1	-4.4	+2.8	+61	+113	+144	+141	+14	+2.8	-3.3	+92	+3.6	-3.8	-3.9	+0.8	+2	+40	+206	+178	+269	+188
ACC%	56%	44%	83%	74%	72%	71%	70%	67%	59%	74%	38%	61%	59%	61%	61%	55%	63%	47%				

Stand out bull just like his sale topping dad, Hazeldean P16. Awesome birth to growth. Top 5% for 400d, top 3% for docility and carcase weight, top 8% for claw set. Suitable for heifers. Note: white in flank.

Purchaser..... Price.....

6 HAZELDEAN S204 (APR) (AI) AMFU NHFU CAFU DDFU Born: 10/07/2021 Society Id: NHZ21S204

G A R INGENUITY
H P C A INTENSITY
G A R PREDESTINED 287L
Sire: RENNYLEA NORL519
TE MANIA BERKLEY B1
RENNYLEA H414
RENNYLEA C310

SYDGEN C C & 7
HOOVER DAM
ERICA OF ELLSTON C124
Dam: HAZELDEAN N310
SYDGEN BLACK PEARL 2006
HAZELDEAN L497
HAZELDEAN E403

Front	Rear	Front	Rear	Front	Rear	MUSCLE	TEMP.	SHEATH
6	6	5	6	5	6	B-	1	5

Structural EBV's			
TACE	ANGLE	CLAW	LEGS
	+0.88	+0.38	0.94
ACC%	69%	69%	67%

TRANSTASMAN ANGUS CATTLE EVALUATION - MARCH 2023																						
TACE	CALVING EASE				GROWTH & MATERNAL				FERTILITY		CWT	CARCASE						Doc	Angus Index	Dom	Heavy Grain	Heavy Grass
	DIR	DTRS	GL	B Wt	200	400	600	MWt	Milk	SS	DC	C Wt	EMA	RIB	RUMP	RBV%	IMF%	Doc.				
EBV	+5.8	+7.8	-7.1	+3	+49	+96	+122	+113	+19	+0.7	-4.8	+68	+8.1	+1.1	+0.3	+0.2	+2.9	+35	+215	+179	+286	+198
ACC%	64%	55%	84%	74%	74%	72%	72%	71%	66%	69%	47%	65%	64%	66%	66%	61%	67%	58%				

One of the nicest bulls in the catalogue, impressive type, real thickness all the way through. Very useable EBVs with very little issues. Top 1% for claw EBV, top 6% for docility EBV and plenty of carcase attributes. Suitable for heifers.

Purchaser..... Price.....

Top 5% **Top 10%** **Top 30%**
Ranking in Angus Aust. March 2023

Proven Genetic Performance

www.hazeldean.com.au

Autumn Sale 2023



Sale Bulls

7 HAZELDEAN S261 (APR) (AI) AMFU NHFU CAFU DDFU Born: 11/07/2021 Society Id: NHZ21S261

G A R PROPHET
BALDRIDGE BEAST MODE B074
BALDRIDGE ISABEL Y69
Sire: HAZELDEAN P16
LAWSONS INVINCIBLE C402
HAZELDEAN G90
HAZELDEAN B4

TE MANIA BERKLEY B1
HAZELDEAN F1023
HAZELDEAN B723
Dam: HAZELDEAN P380
HAZELDEAN JAIPUR J140
HAZELDEAN M146
HAZELDEAN K627

Front	Rear	Front	Rear	Front	Rear	MUSCLE	TEMP.	SHEATH
5	6	5	6	5	5	C+	1	5

Structural EBV's			
TACE	ANGLE	CLAW	LEGS
	+0.66	+0.42	0.78
ACC%	66%	65%	63%

TRANSTASMAN ANGUS CATTLE EVALUATION - MARCH 2023																						
TACE	CALVING EASE				GROWTH & MATERNAL				FERTILITY		CWT	CARCASE					Doc	Angus Index	Dom	Heavy Grain	Heavy Grass	
	DIR	DTRS	GL	B Wt	200	400	600	MWt	Milk	SS	DC	C Wt	EMA	RIB	RUMP	RBY%	IMF%	Doc.				
EBV	+5.8	+2.6	-6.2	+3.1	+53	+95	+133	+116	+18	+2.6	-5.4	+77	+4.6	-0.1	-0.5	+0.1	+2.7	+39	+211	+166	+274	+198
ACC%	58%	46%	73%	72%	71%	71%	70%	66%	58%	74%	37%	60%	58%	60%	60%	54%	62%	47%				

Extra thickness in the Hazeldean P16 son. Ample bone and plenty of punch with his 600d EBV in the top 20%. Docility in the top 3% and top 2% for claw and leg angle EBV. Suitable for heifers.

Purchaser..... Price.....

8 HAZELDEAN S921 (APR) (AI) AMFU NHFU CAFU DD2% Born: 30/07/2021 Society Id: NHZ21S921

TE MANIA CALAMUS C46
TE MANIA FOE F734
TE MANIA DANDLOO D700
Sire: CHILTERN PARK MOE M6
HIDDEN VALLEY TIMEOUT A45
STRATHEWEN TIMEOUT JADE F15
STRATHEWEN 1407 JADE C05

PA POWER TOOL 9108
PA FULL POWER 1208
PINE VIEW SQR RITA W091
Dam: BURENDA HILARIOUS Q350
BURENDA LATELY L171
BURENDA HILARIOUS N237
BURENDA HILARIOUS K235

Front	Rear	Front	Rear	Front	Rear	MUSCLE	TEMP.	SHEATH
6	6	6	6	5	6	C+	2	4

Structural EBV's			
TACE	ANGLE	CLAW	LEGS
	+1.08	+0.86	1.1
ACC%	68%	68%	67%

TRANSTASMAN ANGUS CATTLE EVALUATION - MARCH 2023																						
TACE	CALVING EASE				GROWTH & MATERNAL				FERTILITY		CWT	CARCASE					Doc	Angus Index	Dom	Heavy Grain	Heavy Grass	
	DIR	DTRS	GL	B Wt	200	400	600	MWt	Milk	SS	DC	C Wt	EMA	RIB	RUMP	RBY%	IMF%	Doc.				
EBV	+5.1	+1.7	-3.4	+2.5	+54	+94	+126	+66	+24	+1.6	-4.8	+79	+11.3	-0.5	+1	+0.7	+2	+29	+259	+206	+342	+244
ACC%	63%	51%	74%	74%	74%	72%	73%	70%	65%	75%	41%	65%	65%	66%	66%	60%	69%	57%				

Impressive frame, very quiet in yards, big future for Moe sons. Mature cow weight is much lower than 600d weight if that is something you are looking to work on. Suitable for heifers.

Purchaser..... Price.....

9 HAZELDEAN S1007 (HBR) (AI) AMFU NHFU CAFU DDFU Born: 11/08/2021 Society Id: NHZ21S1007

G A R INGENUITY
H P C A INTENSITY
G A R PREDESTINED 287L
Sire: RENNYLEA NORL519
TE MANIA BERKLEY B1
RENNYLEA H414
RENNYLEA C310

ARDROSSAN HONOUR H255
ARDROSSAN MAGISTRATE M101
ARDROSSAN PRINCESS H230
Dam: HAZELDEAN Q1391
HAZELDEAN K61
HAZELDEAN M328
HAZELDEAN K59

Front	Rear	Front	Rear	Front	Rear	MUSCLE	TEMP.	SHEATH
6	6	5	6	4	6	C+	2	4

Structural EBV's			
TACE	ANGLE	CLAW	LEGS
	+0.9	+0.54	1.06
ACC%	69%	69%	68%

TRANSTASMAN ANGUS CATTLE EVALUATION - MARCH 2023																						
TACE	CALVING EASE				GROWTH & MATERNAL				FERTILITY		CWT	CARCASE					Doc	Angus Index	Dom	Heavy Grain	Heavy Grass	
	DIR	DTRS	GL	B Wt	200	400	600	MWt	Milk	SS	DC	C Wt	EMA	RIB	RUMP	RBY%	IMF%	Doc.				
EBV	+6.3	+3.1	-4.5	+2.5	+48	+95	+124	+98	+21	+2.1	-6.4	+72	+8.3	+2.7	+1.6	-0.2	+3.8	+24	+237	+193	+313	+226
ACC%	62%	53%	82%	74%	73%	71%	72%	70%	64%	74%	45%	65%	63%	65%	65%	59%	67%	56%				

Fantastic both ways bull, has a lot going for him. HBR son of L519. Top 11% for days to calving, top 6% for rib fat, top 13% for IMF, top 5% for claw set. Suitable for heifers.

Purchaser..... Price.....

Top 5% Top 10% Top 30%

Ranking in Angus Aust. March 2023

Proven Genetic Performance

www.hazeldean.com.au

Autumn Sale 2023



Sale Bulls

10 HAZELDEAN S1199 (APR) (AI) AMFU NHFU CAFU DD50% Born: **8/08/2021**
 Society Id: **NH221S1199**

ARDROSSAN HONOUR H255
 ARDROSSAN MAGISTRATE M101
 ARDROSSAN PRINCESS H230
Sire: HAZELDEAN Q462
 HAZELDEAN FENDER F348
 HAZELDEAN H1019
 HAZELDEAN DESIGN D1064

MATAURI REALITY 839
 KAROO KNOCKOUT K176
 KAROO JEDDA H213
Dam: HAZELDEAN Q816
 HAZELDEAN KATZEN K416
 HAZELDEAN N244
 HAZELDEAN L1217

Front	Rear	Front	Rear	Front	Rear	MUSCLE	TEMP.	SHEATH
7	5	6	6	5	6	C+	2	4

Structural EBV's			
TACE	ANGLE	CLAW	LEGS
	+0.88	+0.82	1
ACC%	63%	63%	60%

TRANSTASMAN ANGUS CATTLE EVALUATION - MARCH 2023																						
TACE	CALVING EASE				GROWTH & MATERNAL				FERTILITY		CWT	CARCASE					Doc	Angus Index	Dom	Heavy Grain	Heavy Grass	
	DIR	DTRS	GL	B Wt	200	400	600	MWt	Milk	SS	DC	C Wt	EMA	RIB	RUMP	RBY%	IMF%	Doc.				
EBV	+6.5	+5.7	-4.6	+3.8	+52	+106	+142	+122	+26	+2.6	-5	+84	+3.9	-0.3	-0.2	+0.7	+1	+20	+211	+180	+265	+199
ACC%	53%	41%	70%	71%	69%	67%	67%	64%	56%	71%	32%	58%	55%	57%	58%	50%	60%	40%				

Capacious & deep sided bull out of a Magistrate / Knockout cross. Good performance and plenty of type. Top 9% for 600d and top 3% for milk. Suitable for heifers.

Purchaser..... Price.....

11 HAZELDEAN S2030 (APR) (AI)(ET) AMFU NHFU CAFU DDFU Born: **26/07/2021**
 Society Id: **NH221S2030**

G A R PROPHET
 BALDRIDGE BEAST MODE B074
 BALDRIDGE ISABEL Y69
Sire: HAZELDEAN P16
 LAWSONS INVINCIBLE C402
 HAZELDEAN G90
 HAZELDEAN B4

BON VIEW NEW DESIGN 208
 TC TOTAL 410
 TC ERICA EILEEN 2047
Dam: HAZELDEAN H308
 BOOROOMOOKA THEO T030
 HAZELDEAN THEO Y1254
 HAZELDEAN W522

Front	Rear	Front	Rear	Front	Rear	MUSCLE	TEMP.	SHEATH
7	7	6	6	5	6	C+	1	5

Structural EBV's			
TACE	ANGLE	CLAW	LEGS
	+0.94	+0.84	1.02
ACC%	68%	67%	64%

TRANSTASMAN ANGUS CATTLE EVALUATION - MARCH 2023																						
TACE	CALVING EASE				GROWTH & MATERNAL				FERTILITY		CWT	CARCASE					Doc	Angus Index	Dom	Heavy Grain	Heavy Grass	
	DIR	DTRS	GL	B Wt	200	400	600	MWt	Milk	SS	DC	C Wt	EMA	RIB	RUMP	RBY%	IMF%	Doc.				
EBV	+6	+1.6	-10.6	+3	+59	+109	+142	+122	+18	+2.5	-3.4	+78	+4.7	0	-0.5	-0.4	+3.3	+52	+214	+171	+294	+198
ACC%	59%	49%	73%	76%	74%	74%	73%	69%	62%	71%	40%	63%	60%	62%	62%	56%	64%	54%				

High quality, enormous, docile, super quiet in the yards and top 1% docility EBV backs that up. Top 20% for IMF & top 8% for 400d. Suitable for heifers.

Purchaser..... Price.....

12 HAZELDEAN S62 (APR) (AI) AMFU NHFU CAFU DDFU Born: **7/07/2021**
 Society Id: **NH221S62**

G A R PROPHET
 BALDRIDGE BEAST MODE B074
 BALDRIDGE ISABEL Y69
Sire: HAZELDEAN P16
 LAWSONS INVINCIBLE C402
 HAZELDEAN G90
 HAZELDEAN B4

PAPA EQUATOR 2928
 ARDROSSAN EQUATOR A241
 ARDROSSAN PRINCESS W38
Dam: HAZELDEAN J496
 HAZELDEAN BENEDICT B569
 HAZELDEAN BENEDICT E525
 HAZELDEAN B1509

Front	Rear	Front	Rear	Front	Rear	MUSCLE	TEMP.	SHEATH
6	6	5	6	5	5	B-	1	4

Structural EBV's			
TACE	ANGLE	CLAW	LEGS
	+0.92	+0.68	1.06
ACC%	65%	65%	61%

TRANSTASMAN ANGUS CATTLE EVALUATION - MARCH 2023																						
TACE	CALVING EASE				GROWTH & MATERNAL				FERTILITY		CWT	CARCASE					Doc	Angus Index	Dom	Heavy Grain	Heavy Grass	
	DIR	DTRS	GL	B Wt	200	400	600	MWt	Milk	SS	DC	C Wt	EMA	RIB	RUMP	RBY%	IMF%	Doc.				
EBV	-0.3	+2	-8.6	+4.2	+44	+84	+115	+108	+5	+0.4	-2.9	+69	+6.8	-2.6	-3.2	+1.6	+1.2	+37	+159	+133	+201	+148
ACC%	58%	49%	84%	75%	72%	72%	71%	69%	62%	75%	40%	62%	59%	61%	61%	55%	63%	50%				

Extra thickness, robust square from hip to pin, no extremes, a great sound commercial bull.

Purchaser..... Price.....

Top 5% **Top 10%** **Top 30%**
 Ranking in Angus Aust. March 2023

Proven Genetic Performance

Autumn Sale 2023



Sale Bulls

13 HAZELDEAN S241 (APR) (AI) AMFU NHFU CAFU DDFU Born: 11/07/2021 Society Id: NHZ21S241

G A R PROGRESS BOOROOMOOKA UNDERTAKEN Y145
 G A R MOMENTUM USA17354145 RENNYLEA EDMUND E11
 G A R BIG EYE 1770 LAWSONS HENRY VIII Y5
Sire: LAWSONS MOMENTOUS M518 Dam: HAZELDEAN K404
 TE MANIA AFRICA A217 TUWHARETOA BNAE151
 LAWSONS AFRICA H229 VLYH229 HAZELDEAN H469
 LAWSONS ROCKND AMBUSH E1103 HAZELDEAN E453

Front	Rear	Front	Rear	Front	Rear	MUSCLE	TEMP.	SHEATH
6	6	6	6	5	6	C+	1	4

Structural EBV's			
TACE	ANGLE	CLAW	LEGS
	+1.1	+0.86	1.08
ACC%	71%	71%	70%

TRANSTASMAN ANGUS CATTLE EVALUATION - MARCH 2023																						
TACE	CALVING EASE				GROWTH & MATERNAL				FERTILITY		CWT	CARCASE					Doc	Angus Index	Dom	Heavy Grain	Heavy Grass	
	DIR	DTRS	GL	B Wt	200	400	600	MWt	Milk	SS	DC	C Wt	EMA	RIB	RUMP	RBV%	IMF%	Doc.				
EBV	+10.1	+6.5	-7	+0.6	+39	+78	+98	+69	+21	+1.3	-5.2	+44	+11	+3.2	+3.5	0	+4.3	+32	+230	+182	+314	+216
ACC%	65%	56%	83%	75%	75%	73%	73%	72%	68%	76%	47%	67%	66%	67%	67%	62%	69%	60%				

Long, stretchy, typical of Momentous, big carcass bull - top 9% for EMA, top 3% for rib fat and top 8% for IMF. Suitable for heifers.

Purchaser..... Price.....

14 HAZELDEAN S346 (APR) (AI) AMFU NHFU CAFU DDFU Born: 13/07/2021 Society Id: NHZ21S346

G A R INGENUITY MUSGRAVE AVIATOR USA17264774
 H P C A INTENSITY MUSGRAVE APACHE USA18194405
 G A R PREDESTINED 287L MUSGRAVE CAROLINE 1304-189
Sire: RENNYLEA NORL519 Dam: HAZELDEAN P452
 TE MANIA BERKLEY B1 PLATTEMERE WEIGH UP K360
 RENNYLEA H414 HAZELDEAN M790
 RENNYLEA C310 HAZELDEAN F506

Front	Rear	Front	Rear	Front	Rear	MUSCLE	TEMP.	SHEATH
6	5	5	6	5	5	C+	1	4

Structural EBV's			
TACE	ANGLE	CLAW	LEGS
	+1.06	+0.92	1.04
ACC%	72%	71%	69%

TRANSTASMAN ANGUS CATTLE EVALUATION - MARCH 2023																						
TACE	CALVING EASE				GROWTH & MATERNAL				FERTILITY		CWT	CARCASE					Doc	Angus Index	Dom	Heavy Grain	Heavy Grass	
	DIR	DTRS	GL	B Wt	200	400	600	MWt	Milk	SS	DC	C Wt	EMA	RIB	RUMP	RBV%	IMF%	Doc.				
EBV	+3.7	+2.4	-5.9	+3.8	+51	+83	+111	+88	+20	0	-5.5	+69	+6.3	+0.3	-2.1	+0.5	+3	+14	+216	+172	+286	+196
ACC%	62%	53%	83%	74%	73%	71%	71%	70%	65%	74%	44%	64%	62%	64%	64%	59%	65%	58%				

A handsome young bull with a nice pedigree and a bright future. Suitable for heifers.

Purchaser..... Price.....

15 HAZELDEAN S350 (APR) (AI) AM50% NHFU CAFU DDFU Born: 13/07/2021 Society Id: NHZ21S350

G A R INGENUITY RENNYLEA EDMUND E11
 H P C A INTENSITY HAZELDEAN LANCASHIRE L612
 G A R PREDESTINED 287L HAZELDEAN F373
Sire: RENNYLEA NORL519 Dam: HAZELDEAN P795
 TE MANIA BERKLEY B1 HAZELDEAN DESTINATION B793
 RENNYLEA H414 HAZELDEAN DESTINATION D895
 RENNYLEA C310 HAZELDEAN W437

Front	Rear	Front	Rear	Front	Rear	MUSCLE	TEMP.	SHEATH
6	6	5	5	5	5	C+	1	4

Structural EBV's			
TACE	ANGLE	CLAW	LEGS
	+0.92	+0.72	0.9
ACC%	69%	69%	68%

TRANSTASMAN ANGUS CATTLE EVALUATION - MARCH 2023																						
TACE	CALVING EASE				GROWTH & MATERNAL				FERTILITY		CWT	CARCASE					Doc	Angus Index	Dom	Heavy Grain	Heavy Grass	
	DIR	DTRS	GL	B Wt	200	400	600	MWt	Milk	SS	DC	C Wt	EMA	RIB	RUMP	RBV%	IMF%	Doc.				
EBV	+6.1	+1.4	-5.1	+3.5	+53	+93	+120	+117	+10	+0.8	-6.3	+73	+3.2	+4	+3.9	-0.7	+3.8	+24	+226	+183	+304	+209
ACC%	62%	53%	82%	74%	73%	71%	71%	70%	64%	74%	45%	64%	63%	65%	65%	59%	65%	57%				

Well put together, great fats, very quiet. Top 12% for days to calving EBV, IMF and leg angle EBV. Suitable for heifers.

Purchaser..... Price.....

Top 5% **Top 10%** **Top 30%**
 Ranking in Angus Aust. March 2023

Proven Genetic Performance

Autumn Sale 2023



Sale Bulls

16 HAZELDEAN S598 (APR) (AI) AMFU NHFU CAFU DDFU Born: 23/07/2021 Society Id: NHZ21S598

TE MANIA CALAMUS C46
TE MANIA FOE F734
TE MANIA DANDLOO D700
Sire: CHILTERN PARK MOE M6
HIDDEN VALLEY TIMEOUT A45
STRATHEWEN TIMEOUT JADE F15
STRATHEWEN 1407 JADE C05

BASIN PAYWEIGHT 1682 USA17038724
SPRING COVE PAYGRADE 5064
SPRING COVE ELLA 064
Dam: HAZELDEAN P318
PLATTEMERE WEIGH UP K360
HAZELDEAN M600
HAZELDEAN G489

Front	Rear	Front	Rear	Front	Rear	MUSCLE	TEMP.	SHEATH
7	6	6	6	5	5	C	1	5

Structural EBV's			
TACE	ANGLE	CLAW	LEGS
	+1.02	+0.96	1.22
ACC%	70%	70%	66%

TRANSTASMAN ANGUS CATTLE EVALUATION - MARCH 2023																						
TACE	CALVING EASE				GROWTH & MATERNAL					FERTILITY		CWT	CARCASE					Doc	Angus Index	Dom	Heavy Grain	Heavy Grass
	DIR	DTRS	GL	B Wt	200	400	600	MWt	Milk	SS	DC	C Wt	EMA	RIB	RUMP	RBY%	IMF%	Doc.				
EBV	+7.5	+1.2	+0.7	+1	+50	+92	+114	+83	+30	+0.7	-3.9	+74	+6.2	-1	+0.2	-0.2	+2.8	+25	+206	+166	+289	+184
ACC%	61%	48%	84%	74%	73%	72%	72%	69%	63%	75%	39%	64%	63%	65%	65%	58%	67%	57%				

Agile young bull very suitable for heifers. Top 1% for milk EBV and top 12% for calving ease direct.

Purchaser..... Price.....

17 HAZELDEAN S749 (APR) (AI) AMFU NHFU CAFU DDFU Born: 26/07/2021 Society Id: NHZ21S749

G A R PROPHET
TE MANIA LONGSHOT L107
TE MANIA BARUNAH J1125
Sire: MURRAY LONGSHOT NURP92
MURRAY POWER TOOL K22
MURRAY M POWERTOOL M81
MURRAY REGENT K31

EF COMPLEMENT 8088
HAZELDEAN N600
HAZELDEAN J415
Dam: HAZELDEAN Q1783
HAZELDEAN FLAIR F493
HAZELDEAN J538
HAZELDEAN F84

Front	Rear	Front	Rear	Front	Rear	MUSCLE	TEMP.	SHEATH
7	6	7	6	5	5	C+	1	5

Structural EBV's			
TACE	ANGLE	CLAW	LEGS
	+0.82	+0.66	1.02
ACC%	63%	63%	60%

TRANSTASMAN ANGUS CATTLE EVALUATION - MARCH 2023																						
TACE	CALVING EASE				GROWTH & MATERNAL					FERTILITY		CWT	CARCASE					Doc	Angus Index	Dom	Heavy Grain	Heavy Grass
	DIR	DTRS	GL	B Wt	200	400	600	MWt	Milk	SS	DC	C Wt	EMA	RIB	RUMP	RBY%	IMF%	Doc.				
EBV	+10.1	+9.2	-4.7	-1.3	+34	+68	+90	+33	+31	+1.1	-4.9	+55	+7.8	0	-0.3	+0.3	+4.4	+20	+222	+171	+299	+207
ACC%	52%	40%	82%	72%	70%	69%	68%	65%	55%	72%	32%	58%	55%	58%	58%	50%	61%	35%				

Thick, balances, deep barrel - ample calving ease and top 7% for IMF. Top 1% for birth weight and milk EBV. Suitable for heifers.

Purchaser..... Price.....

18 HAZELDEAN S900 (APR) (AI) AMFU NHFU CAFU DDFU Born: 29/07/2021 Society Id: NHZ21S900

G A R PROPHET
BALDRIDGE BEAST MODE B074
BALDRIDGE ISABEL Y69
Sire: HAZELDEAN P16
LAWSONS INVINCIBLE C402
HAZELDEAN G90
HAZELDEAN B4

G A R PROPHET
BALDRIDGE BEAST MODE B074
BALDRIDGE ISABEL Y69
Dam: HAZELDEAN Q487
RENNYLEA EDMUND E11
HAZELDEAN L474
HAZELDEAN F903

Front	Rear	Front	Rear	Front	Rear	MUSCLE	TEMP.	SHEATH
6	6	6	6	5	6	C+	1	5

Structural EBV's			
TACE	ANGLE	CLAW	LEGS
	+0.98	+0.62	1.04
ACC%	60%	60%	57%

TRANSTASMAN ANGUS CATTLE EVALUATION - MARCH 2023																						
TACE	CALVING EASE				GROWTH & MATERNAL					FERTILITY		CWT	CARCASE					Doc	Angus Index	Dom	Heavy Grain	Heavy Grass
	DIR	DTRS	GL	B Wt	200	400	600	MWt	Milk	SS	DC	C Wt	EMA	RIB	RUMP	RBY%	IMF%	Doc.				
EBV	+2.5	+0.1	-4.4	+4.7	+61	+106	+140	+106	+17	+3.6	-4.4	+75	+2.9	-1.6	-2.6	-0.2	+3.4	+36	+220	+178	+294	+206
ACC%	59%	48%	84%	75%	73%	72%	72%	69%	61%	75%	39%	62%	60%	62%	62%	55%	64%	49%				

Well balanced, power & punch. P16 sons are ticking a lot of boxes. Top 8% for scrotal size. Top 10% for 200d. Suitable for heifers.

Purchaser..... Price.....

Top 5% **Top 10%** **Top 30%**
Ranking in Angus Aust. March 2023

Proven Genetic Performance

Autumn Sale 2023



Sale Bulls

19 HAZELDEAN S1092 (APR) AMFU NHFU CAFU DDFU Born: **14/08/2021**
 Society Id: **NH221S1092**

HAZELDEAN KAYKO K790 TE MANIA BERKLEY B1
 HAZELDEAN N910 HAZELDEAN F1023
 HAZELDEAN K989 HAZELDEAN B723
Sire: HAZELDEAN Q991 **Dam: HAZELDEAN P515**
 JMB TRACTION USA17262374 HAZELDEAN KINGSCROSS K724
 HAZELDEAN N932 HAZELDEAN M1162
 HAZELDEAN J827 HAZELDEAN J44

Front	Rear	Front	Rear	Front	Rear	MUSCLE	TEMP.	SHEATH
6	6	5	5	4	6	C+	2	5

Structural EBV's			
TACE	ANGLE	CLAW	LEGS
	+0.7	+0.78	0.7
ACC%	64%	64%	60%

TRANSTASMAN ANGUS CATTLE EVALUATION - MARCH 2023																							
TACE	CALVING EASE				GROWTH & MATERNAL				FERTILITY		CWT	CARCASE					Doc	Angus Index	Dom	Heavy Grain	Heavy Grass		
	DIR	DTRS	GL	B Wt	200	400	600	MWt	Milk	SS	DC	C Wt	EMA	RIB	RUMP	RBV%	IMF%	Doc.					
EBV	+6.2	+1.3	-4.8	+3.2	+53	+96	+116	+89	+19	+3.4	-3.7	+68	+10.2	+1.6	+0.6	+0.6	+2.5	+21	+227	+191	+306	+209	
ACC%	51%	40%	68%	71%	69%	67%	67%	64%	55%	71%	32%	57%	55%	57%	57%	50%	60%	34%					

Well muscled, balanced young sire, suitable for heifers with impeccable structural EBVs.

Purchaser..... Price.....

20 HAZELDEAN S1324 (APR) AMFU NHFU CAFU DDFU Born: **14/08/2021**
 Society Id: **NH221S1324**

G A R PROPHET RENNYLEA EDMUND E11
 BALDRIDGE BEAST MODE B074 ARDROSSAN JUSTICE NAQJ93
 BALDRIDGE ISABEL Y69 ARDROSSAN EVERELDA AI(ET) NAQF6
Sire: HAZELDEAN Q748 **Dam: HAZELDEAN M959**
 HAZELDEAN KATZEN K416 HAZELDEAN ADMIRAL D960
 HAZELDEAN N243 HAZELDEAN J347
 HAZELDEAN K983 HAZELDEAN D589

Front	Rear	Front	Rear	Front	Rear	MUSCLE	TEMP.	SHEATH
6	5	5	5	4	5	C+	2	5

Structural EBV's			
TACE	ANGLE	CLAW	LEGS
	+0.52	+0.38	0.84
ACC%	65%	64%	63%

TRANSTASMAN ANGUS CATTLE EVALUATION - MARCH 2023																							
TACE	CALVING EASE				GROWTH & MATERNAL				FERTILITY		CWT	CARCASE					Doc	Angus Index	Dom	Heavy Grain	Heavy Grass		
	DIR	DTRS	GL	B Wt	200	400	600	MWt	Milk	SS	DC	C Wt	EMA	RIB	RUMP	RBV%	IMF%	Doc.					
EBV	+3.9	+2.6	-6	+4.9	+60	+102	+131	+132	+12	+0.6	-5.1	+75	+6.4	-1.1	-3	+0.6	+2.9	+34	+222	+186	+293	+202	
ACC%	54%	43%	68%	71%	70%	68%	68%	65%	58%	72%	35%	58%	56%	58%	58%	52%	60%	43%					

Easy doing, very fleshy, robust with thickness. Top 1% for claw and angle EBV. Top 11% for 200d.

Purchaser..... Price.....

21 HAZELDEAN S1419 (APR) AMFU NHFU CAFU DDFU Born: **17/08/2021**
 Society Id: **NH221S1419**

KOUPALS B&B IDENTITY HAZELDEAN KATZEN K416
 HAZELDEAN N202 HAZELDEAN N1242
 HAZELDEAN L1297 HAZELDEAN K331
Sire: HAZELDEAN Q1566 **Dam: HAZELDEAN Q1373**
 RENNYLEA EDMUND E11 HAZELDEAN KIMBERLEY K934
 HAZELDEAN J3023 HAZELDEAN M355
 HAZELDEAN K1659

Front	Rear	Front	Rear	Front	Rear	MUSCLE	TEMP.	SHEATH
6	6	5	6	5	5	C+	2	4

Structural EBV's			
TACE	ANGLE	CLAW	LEGS
	+0.8	+0.72	1.02
ACC%	60%	59%	57%

TRANSTASMAN ANGUS CATTLE EVALUATION - MARCH 2023																							
TACE	CALVING EASE				GROWTH & MATERNAL				FERTILITY		CWT	CARCASE					Doc	Angus Index	Dom	Heavy Grain	Heavy Grass		
	DIR	DTRS	GL	B Wt	200	400	600	MWt	Milk	SS	DC	C Wt	EMA	RIB	RUMP	RBV%	IMF%	Doc.					
EBV	+5.4	+3.1	-5.2	+2.6	+40	+74	+94	+64	+15	+2.3	-6	+59	+2.5	+0.2	+0.7	+0.2	+1.7	+17	+187	+160	+236	+172	
ACC%	49%	38%	65%	71%	69%	67%	66%	63%	53%	70%	29%	56%	53%	55%	55%	47%	59%	29%					

Bone in front legs with good overall constitution. Very sound commercial bull that will get out and work. Suitable for heifers.

Purchaser..... Price.....

Top 5% **Top 10%** **Top 30%**
 Ranking in Angus Aust. March 2023

Proven Genetic Performance

www.hazeldean.com.au

Autumn Sale 2023

Sale Bulls

22 HAZELDEAN S1522 (APR) Born: 21/08/2021
AMFU NHFU CAFU DDFU Society Id: NH221S1522

ARDROSSAN HONOUR H255
ARDROSSAN MAGISTRATE M101
ARDROSSAN PRINCESS H230
Sire: HAZELDEAN Q865
HAZELDEAN F1023
HAZELDEAN N395
HAZELDEAN K865

BASIN FRANCHISE P142
EF COMPLEMENT 8088
EF EVERELDA ENTENSE 6117
Dam: HAZELDEAN P283
HAZELDEAN HOBNAIL H360
HAZELDEAN K866
HAZELDEAN G909

Front	Rear	Front	Rear	MUSCLE	TEMP.	SHEATH		
6	5	5	5	4	6	C+	1	4

Structural EBV's			
TACE	ANGLE	CLAW	LEGS
	+0.82	+0.9	0.96
ACC%	65%	65%	63%

TRANSTASMAN ANGUS CATTLE EVALUATION - MARCH 2023																						
TACE	CALVING EASE				GROWTH & MATERNAL				FERTILITY		CWT	CARCASE					Doc	Angus Index	Dom	Heavy Grain	Heavy Grass	
	DIR	DTRS	GL	B Wt	200	400	600	MWt	Milk	SS	DC	C Wt	EMA	RIB	RUMP	RBY%	IMF%	Doc.				
EBV	+2.8	+5	-5.2	+3.7	+55	+97	+134	+120	+19	+1.9	-5.8	+74	+5.1	-0.4	-2.2	+0.2	+3.3	+4	+217	+173	+283	+203
ACC%	54%	43%	71%	71%	70%	69%	68%	65%	57%	72%	36%	59%	57%	60%	60%	52%	62%	41%				

A good all rounder, with a bright future. Better than breed average for 13 traits. Suitable for heifers.

Purchaser..... Price.....



23 HAZELDEAN S1874 (APR) Born: 16/09/2021
AMFU NHFU CAFU DD50% Society Id: NH221S1874

ARDROSSAN HONOUR H255
ARDROSSAN MAGISTRATE M101
ARDROSSAN PRINCESS H230
Sire: HAZELDEAN Q1
KM BROKEN BOW 002
HAZELDEAN K97
HAZELDEAN F103

RENNYLEA EDMUND E11
HAZELDEAN LAMARCK L609
HAZELDEAN BRAVE E470
Dam: HAZELDEAN Q1530
TE MANIA AFRICA A217
G349
HAZELDEAN THEO B1250

Front	Rear	Front	Rear	MUSCLE	TEMP.	SHEATH		
6	5	5	5	5	5	C	1	4

Structural EBV's			
TACE	ANGLE	CLAW	LEGS
	+0.88	+0.64	1
ACC%	61%	61%	60%

TRANSTASMAN ANGUS CATTLE EVALUATION - MARCH 2023																						
TACE	CALVING EASE				GROWTH & MATERNAL				FERTILITY		CWT	CARCASE					Doc	Angus Index	Dom	Heavy Grain	Heavy Grass	
	DIR	DTRS	GL	B Wt	200	400	600	MWt	Milk	SS	DC	C Wt	EMA	RIB	RUMP	RBY%	IMF%	Doc.				
EBV	+6.9	+3.7	-9.7	+1.8	+43	+85	+106	+76	+21	+3.3	-6	+52	+9	+1.5	+1	+0.3	+3.5	+14	+228	+190	+299	+215
ACC%	52%	41%	67%	71%	70%	68%	67%	65%	56%	71%	34%	58%	56%	58%	58%	50%	61%	37%				

Balanced type with plenty of carcass traits bred into him. Top 12% for scrotal size, top 10% for claw EBV. Top 17% for Rib fat EBV and IMF. Suitable for heifers.

Purchaser..... Price.....

Top 5% **Top 10%** **Top 30%**

Ranking in Angus Aust. March 2023

Autumn Sale 2023



Sale Bulls

24 HAZELDEAN S657 (APR) (AI) AMFU NHFU CAFU DD50% Born: **24/07/2021**
 Society Id: **NHZ21S657**

G A R PROPHET
 BALDRIDGE BEAST MODE B074
 BALDRIDGE ISABEL Y69
Sire: HAZELDEAN P16
 LAWSONS INVINCIBLE C402
 HAZELDEAN G90
 HAZELDEAN B4

RENNYLEA EDMUND E11
 HAZELDEAN N59
 HAZELDEAN H85
Dam: HAZELDEAN Q1651
 SITZ JACKSON 431T
 HAZELDEAN J1572
 HAZELDEAN F1091

Front	Rear	Front	Rear	Front	Rear	MUSCLE	TEMP.	SHEATH
7	7	6	7	5	5	C+	2	5

Structural EBV's			
TACE	ANGLE	CLAW	LEGS
	+1.06	+0.88	0.92
ACC%	64%	64%	61%

TRANSTASMAN ANGUS CATTLE EVALUATION - MARCH 2023																						
TACE	CALVING EASE				GROWTH & MATERNAL				FERTILITY		CWT	CARCASE					Doc	Angus Index	Dom	Heavy Grain	Heavy Grass	
	DIR	DTRS	GL	B Wt	200	400	600	MWt	Milk	SS	DC	C Wt	EMA	RIB	RUMP	RBV%	IMF%	Doc.				
EBV	+8.1	+5.7	-8.7	0	+43	+84	+106	+74	+17	+2.3	-5	+60	+6.6	+1.9	+1.6	+0.2	+1.8	+34	+206	+173	+267	+190
ACC%	56%	44%	83%	73%	71%	70%	69%	66%	57%	73%	35%	59%	56%	58%	58%	52%	61%	43%				

Good birth to growth, nice long type. Great docility and calving ease. Suitable for heifers.

Purchaser..... Price.....

25 HAZELDEAN S1843 (APR) AMFU NHFU CAFU DDFU Born: **13/09/2021**
 Society Id: **NHZ21S1843**

ARDROSSAN HONOUR H255
 ARDROSSAN MAGISTRATE M101
 ARDROSSAN PRINCESS H230
Sire: HAZELDEAN Q321
 HAZELDEAN ADMIRAL D960
 HAZELDEAN G881
 HAZELDEAN B1382

SITZ UPWARD 307R
 KROUPALS B&B IDENTITY
 B&B ERICA 605
Dam: HAZELDEAN Q1956
 G A R PROPHET
 HAZELDEAN J823
 HAZELDEAN G724

Front	Rear	Front	Rear	Front	Rear	MUSCLE	TEMP.	SHEATH
6	6	6	6	4	6	C+	3	4

Structural EBV's			
TACE	ANGLE	CLAW	LEGS
	+0.98	+1.12	0.86
ACC%	64%	64%	60%

TRANSTASMAN ANGUS CATTLE EVALUATION - MARCH 2023																						
TACE	CALVING EASE				GROWTH & MATERNAL				FERTILITY		CWT	CARCASE					Doc	Angus Index	Dom	Heavy Grain	Heavy Grass	
	DIR	DTRS	GL	B Wt	200	400	600	MWt	Milk	SS	DC	C Wt	EMA	RIB	RUMP	RBV%	IMF%	Doc.				
EBV	+5.4	+7.7	-4.9	+1.2	+49	+90	+117	+64	+31	+2.7	-5.4	+60	+11.2	-1.3	-0.7	+0.5	+3.3	+14	+252	+202	+336	+238
ACC%	55%	43%	69%	71%	70%	67%	68%	66%	58%	72%	35%	59%	58%	60%	60%	52%	63%	43%				

Sturdy young bull. Suitable for heifers.

Purchaser..... Price.....

26 HAZELDEAN S166 (APR) (AI) AMFU NHFU CAFU DDFU Born: **9/07/2021**
 Society Id: **NHZ21S166**

ARDROSSAN EQUATOR A241
 HAZELDEAN JAIPUR J140
 HAZELDEAN C33
Sire: HAZELDEAN P434
 RENNYLEA EDMUND E11
 HAZELDEAN L527
 HAZELDEAN E453

ARDROSSAN JUSTICE NAQJ93
 HAZELDEAN LORNE L982
 HAZELDEAN H857
Dam: HAZELDEAN N1286
 JINDRA DOUBLE VISION 16748826
 HAZELDEAN L593
 HAZELDEAN H929

Front	Rear	Front	Rear	Front	Rear	MUSCLE	TEMP.	SHEATH
6	6	6	6	5	6	C+	1	4

Structural EBV's			
TACE	ANGLE	CLAW	LEGS
	+0.84	+0.64	0.9
ACC%	59%	59%	57%

TRANSTASMAN ANGUS CATTLE EVALUATION - MARCH 2023																						
TACE	CALVING EASE				GROWTH & MATERNAL				FERTILITY		CWT	CARCASE					Doc	Angus Index	Dom	Heavy Grain	Heavy Grass	
	DIR	DTRS	GL	B Wt	200	400	600	MWt	Milk	SS	DC	C Wt	EMA	RIB	RUMP	RBV%	IMF%	Doc.				
EBV	+10.8	+9.1	-6.8	+0.2	+44	+88	+113	+79	+24	+2.7	-6.3	+71	+1.7	-1.7	-3	+0.1	+4.9	+32	+228	+188	+298	+215
ACC%	54%	43%	83%	74%	72%	70%	70%	67%	58%	74%	37%	61%	59%	61%	61%	54%	64%	50%				

Calving ease deluxe! Top 2% of calving ease direct and daughters. Top 8% milk and top 4% of the breed for IMF. Long framed this P434 son ticks a lot of boxes. Suitable for heifers.

Purchaser..... Price.....

Top 5% **Top 10%** **Top 30%**
 Ranking in Angus Aust. March 2023

Proven Genetic Performance

Autumn Sale 2023



Sale Bulls

27 HAZELDEAN S1046 (APR) AMFU NHFU CAFU DDFU Born: **3/08/2021**
 Society Id: **NH221S1046**

TE MANIA BERKLEY B1
 HAZELDEAN F1023
 HAZELDEAN B723
Sire: HAZELDEAN P709
 HAZELDEAN GUARANTOR G52
 HAZELDEAN M1192
 HAZELDEAN H321

SUMMITCREST COMPLETE 1P55
 KM BROKEN BOW 002
 SUMMITCREST PRINCESS 0P12
Dam: HAZELDEAN J728
 HAZELDEAN ELYSIUM E428 (APR)
 HAZELDEAN G755
 HAZELDEAN E449

Front	Rear	Front	Rear	Front	Rear	MUSCLE	TEMP.	SHEATH
7	6	7	6	5	5	C+	1	4

Structural EBV's			
TACE	ANGLE	CLAW	LEGS
	+0.98	+0.74	1
ACC%	64%	64%	61%

TRANSTASMAN ANGUS CATTLE EVALUATION - MARCH 2023																							
TACE	CALVING EASE				GROWTH & MATERNAL				FERTILITY		CWT	CARCASE					Doc	Angus Index	Dom	Heavy Grain	Heavy Grass		
	DIR	DTRS	GL	B Wt	200	400	600	MWt	Milk	SS	DC	C Wt	EMA	RIB	RUMP	RBV%	IMF%	Doc.					
EBV	+4.7	+1.6	-4.7	+1.7	+47	+80	+98	+73	+17	+3.1	-3.5	+50	+13	+0.2	-0.7	+0.8	+4	+17	+219	+175	+304	+203	
ACC%	54%	43%	70%	74%	72%	71%	71%	68%	60%	73%	37%	61%	59%	61%	61%	55%	63%	48%					

Big carcass bull on paper & in the pen, genuine thickness. Top 3% for EMA and top 11% for IMF. Suitable for heifers.

Purchaser..... Price.....

28 HAZELDEAN S1180 (APR) AMFU NHFU CAFU DD50% Born: **8/08/2021**
 Society Id: **NH221S1180**

ARDROSSAN EQUATOR A241
 HAZELDEAN JAIPUR J140
 HAZELDEAN C33
Sire: HAZELDEAN Q1128
 G A R PROPHET
 HAZELDEAN J115
 HAZELDEAN A243

BOOROOMOOKA UNDERTAKEN Y145
 RENNYLEA EDMUND E11
 LAWSONS HENRY VIII Y5
Dam: HAZELDEAN K452
 RENNYLEA NORF42
 HAZELDEAN H1001
 HAZELDEAN E406

Front	Rear	Front	Rear	Front	Rear	MUSCLE	TEMP.	SHEATH
6	6	5	6	5	6	C+	1	4

Structural EBV's			
TACE	ANGLE	CLAW	LEGS
	+0.78	+0.64	1.06
ACC%	65%	65%	63%

TRANSTASMAN ANGUS CATTLE EVALUATION - MARCH 2023																							
TACE	CALVING EASE				GROWTH & MATERNAL				FERTILITY		CWT	CARCASE					Doc	Angus Index	Dom	Heavy Grain	Heavy Grass		
	DIR	DTRS	GL	B Wt	200	400	600	MWt	Milk	SS	DC	C Wt	EMA	RIB	RUMP	RBV%	IMF%	Doc.					
EBV	+1.2	+4	-5.7	+6	+58	+102	+144	+121	+18	+4.1	-5.2	+79	+10.3	-0.7	-1.1	+0.7	+2.3	+27	+229	+181	+292	+220	
ACC%	56%	47%	70%	73%	72%	71%	70%	67%	60%	74%	41%	62%	59%	61%	62%	55%	64%	48%					

Power bull, the whole package top 8% for 600d growth. Top 4% for scrotal size and top 12% for EMA. Old n/s eye scar.

Purchaser..... Price.....

29 HAZELDEAN S1476 (APR) AM50% NHFU CAFU DDFU Born: **20/08/2021**
 Society Id: **NH221S1476**

TE MANIA EMPEROR E343
 STORTH OAKS JACK J7
 STORTH OAKS G183
Sire: HAZELDEAN Q405
 HAZELDEAN HARLEQUIN H2
 HAZELDEAN L1170
 HAZELDEAN F1033

ARDROSSAN ADMIRAL A2
 HAZELDEAN ADMIRAL D966
 HAZELDEAN X457
Dam: HAZELDEAN J428
 LEMMON NEWSLINE USAC804
 HAZELDEAN A937
 HAZELDEAN Y1285

Front	Rear	Front	Rear	Front	Rear	MUSCLE	TEMP.	SHEATH
6	6	5	5	5	5	C+	1	3

Structural EBV's			
TACE	ANGLE	CLAW	LEGS
	+1.04	+0.92	0.96
ACC%	63%	63%	59%

TRANSTASMAN ANGUS CATTLE EVALUATION - MARCH 2023																							
TACE	CALVING EASE				GROWTH & MATERNAL				FERTILITY		CWT	CARCASE					Doc	Angus Index	Dom	Heavy Grain	Heavy Grass		
	DIR	DTRS	GL	B Wt	200	400	600	MWt	Milk	SS	DC	C Wt	EMA	RIB	RUMP	RBV%	IMF%	Doc.					
EBV	+1.4	+3.1	-5.2	+4.6	+50	+97	+131	+122	+18	+3.9	-5.1	+69	+3	-0.5	-1.2	+0.2	+1.7	+31	+174	+146	+219	+164	
ACC%	52%	41%	69%	72%	70%	68%	68%	66%	59%	72%	34%	58%	56%	59%	59%	52%	61%	43%					

Balanced birth to growth - top 5% for scrotal size. Great docility EBV. Stretchy, plenty of volume, super sound. Suitable for heifers.

Purchaser..... Price.....

Top 5% **Top 10%** **Top 30%**
 Ranking in Angus Aust. March 2023

Proven Genetic Performance

Autumn Sale 2023



Sale Bulls

30 HAZELDEAN S1645 (APR) AMFU NHFU CAFU DDFU Born: 28/08/2021 Society Id: NH221S1645

ARDROSSAN EQUATOR A241
HAZELDEAN JAIPUR J140
HAZELDEAN C33
Sire: HAZELDEAN Q1128
G A R PROPHET
HAZELDEAN J115
HAZELDEAN A243

TC TOTAL 410
HAZELDEAN HARLEQUIN H2
HAZELDEAN A90
Dam: HAZELDEAN K185
TE MANIA YORKSHIRE Y437
HAZELDEAN G8
HAZELDEAN UNLIMITED D80

Front	Rear	Front	Rear	Front	Rear	MUSCLE	TEMP.	SHEATH
6	6	6	6	5	5	C+	1	4

Structural EBV's			
TACE	ANGLE	CLAW	LEGS
	-	-	0.98
ACC%	-	-	63%

TRANSTASMAN ANGUS CATTLE EVALUATION - MARCH 2023																						
TACE	CALVING EASE				GROWTH & MATERNAL				FERTILITY		CWT	CARCASE					Doc	Angus Index	Dom	Heavy Grain	Heavy Grass	
	DIR	DTRS	GL	B Wt	200	400	600	MWt	Milk	SS	DC	C Wt	EMA	RIB	RUMP	RBY%	IMF%	Doc.				
EBV	-7.5	+7	-4.7	+6.7	+54	+84	+116	+113	+12	+1.3	-3.2	+67	+5.2	-5.1	-8.2	+1.6	+1.6	+31	+141	+114	+184	+125
ACC%	54%	43%	67%	71%	71%	70%	70%	67%	60%	73%	38%	60%	58%	60%	60%	53%	62%	46%				

Impressive type, stand out in the group, strong top line. Top 11% for docility EBV, top 4% for retail beef yield.

Purchaser..... Price.....

31 HAZELDEAN S2047 (APR) (AI)(ET) AMFU NHFU CAFU DDFU Born: 9/08/2021 Society Id: NH221S2047

PAPA EQUATOR 2928
ARDROSSAN EQUATOR A241
ARDROSSAN PRINCESS W38
Sire: HAZELDEAN JAIPUR J140
HAZELDEAN RENAISSANCE R13
HAZELDEAN C33
HAZELDEAN V15

TE MANIA YORKSHIRE Y437
TE MANIA BERKLEY B1
TE MANIA LOWAN Z53
Dam: HAZELDEAN K801
LEACHMAN BOOM TIME
HAZELDEAN F307
HAZELDEAN YELLOWSTONE A618

Front	Rear	Front	Rear	Front	Rear	MUSCLE	TEMP.	SHEATH
6	5	5	5	5	5	C+	1	5

Structural EBV's			
TACE	ANGLE	CLAW	LEGS
	+1.02	+0.52	0.9
ACC%	70%	70%	68%

TRANSTASMAN ANGUS CATTLE EVALUATION - MARCH 2023																						
TACE	CALVING EASE				GROWTH & MATERNAL				FERTILITY		CWT	CARCASE					Doc	Angus Index	Dom	Heavy Grain	Heavy Grass	
	DIR	DTRS	GL	B Wt	200	400	600	MWt	Milk	SS	DC	C Wt	EMA	RIB	RUMP	RBY%	IMF%	Doc.				
EBV	+6.1	+8.4	-5.4	+3.5	+46	+89	+127	+140	+15	+2.2	-6.3	+76	+0.3	-1.2	-2.5	+0.5	+2.2	+33	+171	+143	+209	+164
ACC%	63%	54%	73%	76%	75%	74%	74%	71%	67%	75%	52%	68%	66%	67%	68%	63%	70%	61%				

VGQ - Birth to growth, curve bending, volume powerful, real J140 type - extra length. Nice birth to growth, top 5% calving ease daughters and top 8% claw set. Suitable for heifers.

Purchaser..... Price.....

32 HAZELDEAN S1232 (APR) AMFU NHFU CAFU DDFU Born: 10/08/2021 Society Id: NH221S1232

TE MANIA BERKLEY B1
HAZELDEAN F1023
HAZELDEAN B723
Sire: HAZELDEAN Q779
HAZELDEAN LIVINGSTON L855
HAZELDEAN N1239
HAZELDEAN L85

RENNYLEA EDMUND E11
ARDROSSAN JUSTICE NAQJ93
ARDROSSAN EVERELDA AI(ET) NAQF6
Dam: HAZELDEAN P86
HAZELDEAN HARVEY H14
HAZELDEAN L116
HAZELDEAN H293

Front	Rear	Front	Rear	Front	Rear	MUSCLE	TEMP.	SHEATH
6	5	5	5	5	5	C+	2	4

Structural EBV's			
TACE	ANGLE	CLAW	LEGS
	+1.14	+0.74	0.96
ACC%	64%	64%	63%

TRANSTASMAN ANGUS CATTLE EVALUATION - MARCH 2023																						
TACE	CALVING EASE				GROWTH & MATERNAL				FERTILITY		CWT	CARCASE					Doc	Angus Index	Dom	Heavy Grain	Heavy Grass	
	DIR	DTRS	GL	B Wt	200	400	600	MWt	Milk	SS	DC	C Wt	EMA	RIB	RUMP	RBY%	IMF%	Doc.				
EBV	-2.2	+0.5	+0.2	+6.8	+48	+89	+106	+95	+17	+1.8	-6	+66	+9.3	+0.1	-1.2	+1.1	+1.9	+13	+202	+180	+259	+184
ACC%	53%	41%	70%	71%	70%	69%	68%	65%	57%	72%	35%	59%	57%	59%	59%	52%	61%	42%				

Carcase bull, good skin type, covers the ground. Top 14% for retail beef yield EBV and top 16% for days to calving EBV.

Purchaser..... Price.....

Top 5% **Top 10%** **Top 30%**
Ranking in Angus Aust. March 2023

Proven Genetic Performance

www.hazeldean.com.au

Autumn Sale 2023



Sale Bulls

33 HAZELDEAN S1813 (APR) AMFU NHFU CAFU DDFU Born: 12/09/2021 Society Id: NH221S1813

TE MANIA EMPEROR E343 MURRAY 1407 Z366 NORZ366
 STORTH OAKS JACK J7 TWYNAM D111 NXXD111
 STORTH OAKS G183 TWYNAM B427 NXXB427
Sire: HAZELDEAN Q405 **Dam: HAZELDEAN G424**
 HAZELDEAN HARLEQUIN H2 HAZELDEAN NEW LEVEL B622
 HAZELDEAN L1170 HAZELDEAN D751
 HAZELDEAN F1033 HAZELDEAN B960

Front	Rear	Front	Rear	MUSCLE	TEMP.	SHEATH		
6	6	6	6	5	5	C+	2	4

Structural EBV's			
TACE	ANGLE	CLAW	LEGS
	+0.74	+0.8	0.94
ACC%	61%	63%	59%

TRANSTASMAN ANGUS CATTLE EVALUATION - MARCH 2023																						
TACE	CALVING EASE				GROWTH & MATERNAL				FERTILITY		CWT	CARCASE					Doc	Angus Index	Dom	Heavy Grain	Heavy Grass	
	DIR	DTRS	GL	B Wt	200	400	600	MWt	Milk	SS	DC	C Wt	EMA	RIB	RUMP	RBY%	IMF%	Doc.				
EBV	+3.3	+7.4	-4.5	+3.7	+53	+92	+125	+104	+14	+3.6	-5	+69	+2.9	+1.3	+0.5	-0.5	+2	+22	+191	+154	+248	+178
ACC%	52%	40%	69%	72%	70%	69%	68%	66%	60%	73%	34%	59%	57%	59%	59%	52%	62%	45%				

Well balanced type & nice spread of EBVs. Top 9% for calving ease daughters and scrotal size. Deep barrelled and suitable for heifers.

Purchaser..... Price.....

34 HAZELDEAN S1988 (APR) (AI)(ET) AMFU NHFU CAFU DDFU Born: 10/08/2021 Society Id: NH221S1988

TE MANIA YORKSHIRE Y437 TC TOTAL 410
 TE MANIA BERKLEY B1 HAZELDEAN HALYARD H506
 TE MANIA LOWAN Z53 HAZELDEAN TOTAL C507
Sire: HAZELDEAN F1023 **Dam: HAZELDEAN K917**
 HAZELDEAN FUTURA W133 HAZELDEAN BOOMTIME D931
 HAZELDEAN B723 HAZELDEAN G541
 HAZELDEAN X375 HAZELDEAN A140

Front	Rear	Front	Rear	MUSCLE	TEMP.	SHEATH		
6	6	7	7	5	5	C	1	5

Structural EBV's			
TACE	ANGLE	CLAW	LEGS
	+1	+0.82	1.12
ACC%	70%	70%	69%

TRANSTASMAN ANGUS CATTLE EVALUATION - MARCH 2023																						
TACE	CALVING EASE				GROWTH & MATERNAL				FERTILITY		CWT	CARCASE					Doc	Angus Index	Dom	Heavy Grain	Heavy Grass	
	DIR	DTRS	GL	B Wt	200	400	600	MWt	Milk	SS	DC	C Wt	EMA	RIB	RUMP	RBY%	IMF%	Doc.				
EBV	-0.2	-0.3	-1.1	+4.9	+53	+94	+120	+122	+8	+1.7	-4.2	+71	+4.3	+0.3	-1.2	+0.3	+3	+17	+184	+153	+245	+165
ACC%	61%	51%	72%	75%	74%	73%	73%	70%	65%	75%	44%	66%	64%	66%	66%	59%	68%	59%				

Impressive to look at, thick all the way through. Son of famous F1023, a very dependable sire. Suitable for heifers.

Purchaser..... Price.....

35 HAZELDEAN S1956 (UNREG) (AI)(ET) AMFU NHFU CAFU DDFU Born: 5/08/2021 Society Id: NH221S1956

G A R PROGRESS PAPA EQUATOR 2928
 G A R MOMENTUM USA17354145 ARDROSSAN EQUATOR A241
 G A R BIG EYE 1770 ARDROSSAN PRINCESS W38
Sire: LAWSONS MOMENTOUS M518 **Dam: HAZELDEAN J137**
 TE MANIA AFRICA A217 BALDRIDGE NEBRASKA USA13412671
 LAWSONS AFRICA H229 VLYH229 HAZELDEAN B156
 LAWSONS ROCKND AMBUSH E1103 HAZELDEAN LEAD ON Z25

Front	Rear	Front	Rear	MUSCLE	TEMP.	SHEATH		
7	6	6	6	5	5	C+	1	4

Structural EBV's			
TACE	ANGLE	CLAW	LEGS
	-	-	1.08
ACC%	-	-	69%

TRANSTASMAN ANGUS CATTLE EVALUATION - MARCH 2023																						
TACE	CALVING EASE				GROWTH & MATERNAL				FERTILITY		CWT	CARCASE					Doc	Angus Index	Dom	Heavy Grain	Heavy Grass	
	DIR	DTRS	GL	B Wt	200	400	600	MWt	Milk	SS	DC	C Wt	EMA	RIB	RUMP	RBY%	IMF%	Doc.				
EBV	+2.4	+1.6	-4.6	+4	+51	+90	+123	+113	+23	+3.8	-5.3	+56	+11.9	-1.3	-2.7	+1.5	+3	+25	+221	+177	+285	+208
ACC%	65%	56%	73%	75%	75%	74%	74%	72%	68%	76%	48%	67%	66%	67%	67%	62%	69%	60%				

Long type with real depth - this shows in this big EMA EBV (top 5%). Slick coated and pretty appeal. Suitable for heifers.

Purchaser..... Price.....

Top 5% **Top 10%** **Top 30%**

Ranking in Angus Aust. March 2023

Proven Genetic Performance

www.hazeldean.com.au

Autumn Sale 2023



Sale Bulls

36 HAZELDEAN S135 (APR) (AI) AMFU NHFU CAFU DD50% Born: **9/07/2021**
 Society Id: **NHZ21S135**

ARDROSSAN EQUATOR A241
 HAZELDEAN JAIPUR J140
 HAZELDEAN C33
Sire: HAZELDEAN M182
 HAZELDEAN GUARDIAN G553
 HAZELDEAN K807
 HAZELDEAN G568

S A F FOCUS OF E R
 TE MANIA YORKSHIRE Y437
 TE MANIA LOWAN U275
Dam: HAZELDEAN G1046
 LAWSONS DINKY-DI Y191
 HAZELDEAN E310
 HAZELDEAN Z870

Front	Rear	Front	Rear	Front	Rear	MUSCLE	TEMP.	SHEATH
6	6	6	6	5	5	C+	2	5

Structural EBV's			
TACE	ANGLE	CLAW	LEGS
	+0.9	+0.62	1.2
ACC%	66%	66%	64%

TRANSTASMAN ANGUS CATTLE EVALUATION - MARCH 2023																						
TACE	CALVING EASE				GROWTH & MATERNAL				FERTILITY		CWT	CARCASE					Doc	Angus Index	Dom	Heavy Grain	Heavy Grass	
	DIR	DTRS	GL	B Wt	200	400	600	MWt	Milk	SS	DC	C Wt	EMA	RIB	RUMP	RBV%	IMF%	Doc.				
EBV	+8.8	+11.5	-6.6	-0.5	+38	+69	+92	+68	+15	+3.1	-6.6	+55	+1.9	+1.2	+0.7	-0.7	+5.7	+46	+210	+164	+281	+199
ACC%	58%	47%	84%	75%	74%	72%	73%	70%	62%	74%	41%	63%	62%	64%	64%	58%	65%	58%				

Awesome IMF, top 2%. Top 1% docility, calving ease daughters and birth weight. He looks exactly like his sale topping dad, Hazeldean Maverick. Suitable for heifers.

Purchaser..... Price.....

37 HAZELDEAN S490 (APR) AMFU NHFU CAFU DDFU Born: **18/07/2021**
 Society Id: **NHZ21S490**

TE MANIA BERKLEY B1
 HAZELDEAN F1023
 HAZELDEAN B723
Sire: HAZELDEAN Q1229
 G A R PROPHET
 HAZELDEAN J823
 HAZELDEAN G724

TE MANIA YORKSHIRE Y437
 TE MANIA BERKLEY B1
 TE MANIA LOWAN Z53
Dam: HAZELDEAN K704
 HAZELDEAN FUTURA W133
 HAZELDEAN B681
 HAZELDEAN DESIGN X644

Front	Rear	Front	Rear	Front	Rear	MUSCLE	TEMP.	SHEATH
6	6	5	6	5	5	C+	2	4

Structural EBV's			
TACE	ANGLE	CLAW	LEGS
	+0.82	+0.46	1
ACC%	63%	63%	63%

TRANSTASMAN ANGUS CATTLE EVALUATION - MARCH 2023																						
TACE	CALVING EASE				GROWTH & MATERNAL				FERTILITY		CWT	CARCASE					Doc	Angus Index	Dom	Heavy Grain	Heavy Grass	
	DIR	DTRS	GL	B Wt	200	400	600	MWt	Milk	SS	DC	C Wt	EMA	RIB	RUMP	RBV%	IMF%	Doc.				
EBV	+3.7	+4.9	-4	+3.6	+39	+72	+98	+66	+21	+2.5	-5.5	+53	+9.2	+2.5	+1.3	+0.2	+4.5	+10	+216	+166	+287	+205
ACC%	58%	48%	73%	75%	72%	71%	71%	68%	61%	73%	41%	62%	60%	62%	62%	55%	65%	48%				

Hazeldean Q1229 is a young sire with hundreds of progeny in the pipeline and a big future. Super sound - top 1% for claw EBV. Top 6% and 7% for Rib fat and IMF. Very easy fleshing with softness. NOTE a little white around balls. Suitable for heifers.

Purchaser..... Price.....

38 HAZELDEAN S1226 (APR) AMFU NHFU CAFU DDFU Born: **10/08/2021**
 Society Id: **NHZ21S1226**

MATAURI REALITY 839
 KAROO KNOCKOUT K176
 KAROO JEDDA H213
Sire: HAZELDEAN Q331
 RENNYLEA EDMUND E11
 HAZELDEAN L25
 HAZELDEAN J19

BOOROOMOOKA UNDERTAKEN Y145
 RENNYLEA EDMUND E11
 LAWSONS HENRY VIII Y5
Dam: HAZELDEAN K523
 L T 598 BANDO 9074
 HAZELDEAN H453
 HAZELDEAN F702

Front	Rear	Front	Rear	Front	Rear	MUSCLE	TEMP.	SHEATH
7	6	7	6	5	5	C+	1	5

Structural EBV's			
TACE	ANGLE	CLAW	LEGS
	+0.76	+0.46	0.94
ACC%	60%	60%	60%

TRANSTASMAN ANGUS CATTLE EVALUATION - MARCH 2023																						
TACE	CALVING EASE				GROWTH & MATERNAL				FERTILITY		CWT	CARCASE					Doc	Angus Index	Dom	Heavy Grain	Heavy Grass	
	DIR	DTRS	GL	B Wt	200	400	600	MWt	Milk	SS	DC	C Wt	EMA	RIB	RUMP	RBV%	IMF%	Doc.				
EBV	+8.5	+3.4	-2.9	+1.8	+36	+71	+83	+72	+16	+2.1	-7.1	+47	+0.6	+5.5	+6.3	-0.9	+3.6	+23	+195	+166	+260	+178
ACC%	57%	48%	71%	73%	72%	70%	70%	68%	62%	73%	41%	62%	60%	62%	62%	55%	64%	46%				

Slick, thick, athlete - top 1% for rib fat, rump fat and claw set EBV. Top 4% for days to calving. Suitable for heifers.

Purchaser..... Price.....

Top 5% **Top 10%** **Top 30%**
 Ranking in Angus Aust. March 2023

Proven Genetic Performance

www.hazeldean.com.au

Autumn Sale 2023



Sale Bulls

39 HAZELDEAN S1586 (APR) AMFU NHFU CAFU DDFU Born: 25/08/2021 Society Id: NH221S1586

HAZELDEAN JAIPUR J140
HAZELDEAN MAGNUM M586
HAZELDEAN H356
Sire: HAZELDEAN Q481
SYDGEN TRUST 6228
HAZELDEAN K826
HAZELDEAN E408

KAROO W109 DIRECTION Z181
CARABAR DOCKLANDS D62
CARABAR BLACKCAP MARY B12
Dam: HAZELDEAN K710
HAZELDEAN BANDO B540
HAZELDEAN BANDO D596
HAZELDEAN B1354

Front	Rear	Front	Rear	Front	Rear	MUSCLE	TEMP.	SHEATH
7	7	6	7	5	6	C+	1	4

Structural EBV's			
TACE	ANGLE	CLAW	LEGS
	-	-	1.32
ACC%	-	-	59%

TRANSTASMAN ANGUS CATTLE EVALUATION - MARCH 2023																							
TACE	CALVING EASE				GROWTH & MATERNAL				FERTILITY		CWT	CARCASE					Doc	Angus Index	Dom	Heavy Grain	Heavy Grass		
	DIR	DTRS	GL	B Wt	200	400	600	MWt	Milk	SS	DC	C Wt	EMA	RIB	RUMP	RBV%	IMF%	Doc.					
EBV	+3.9	+4.3	-6.2	+4.9	+45	+76	+114	+75	+21	+3.4	-9.1	+64	+1.7	+2.4	+3.4	-0.4	+1.7	+20	+218	+172	+266	+211	
ACC%	54%	44%	70%	73%	72%	70%	70%	67%	60%	73%	37%	61%	58%	60%	60%	53%	63%	43%					

Nice coat type, real softness from the grandfather - Hazeldean Magnum. Awesome fertility traits. Top 1% for days to calving. Great fats. Suitable for heifers.

Purchaser..... Price.....

40 HAZELDEAN S1650 (APR) AMFU NHFU CAFU DDFU Born: 28/08/2021 Society Id: NH221S1650

BOOROOMOOKA UNDERTAKEN Y145
RENNYLEA EDMUND E11
LAWSON'S HENRY VIII Y5
Sire: HAZELDEAN LEBRUN L355
CARABAR DOCKLANDS D62
HAZELDEAN J668
HAZELDEAN C661

CARABAR DOCKLANDS D62
HAZELDEAN KENZO K723
HAZELDEAN F433
Dam: HAZELDEAN M462
ARDROSSAN EQUATOR A241
HAZELDEAN K811
HAZELDEAN A554

Front	Rear	Front	Rear	Front	Rear	MUSCLE	TEMP.	SHEATH
6	6	6	7	5	6	C+	2	4

Structural EBV's			
TACE	ANGLE	CLAW	LEGS
	+0.92	+0.58	1.08
ACC%	61%	61%	60%

TRANSTASMAN ANGUS CATTLE EVALUATION - MARCH 2023																							
TACE	CALVING EASE				GROWTH & MATERNAL				FERTILITY		CWT	CARCASE					Doc	Angus Index	Dom	Heavy Grain	Heavy Grass		
	DIR	DTRS	GL	B Wt	200	400	600	MWt	Milk	SS	DC	C Wt	EMA	RIB	RUMP	RBV%	IMF%	Doc.					
EBV	+1.8	+1.1	-5	+3.7	+42	+78	+104	+91	+10	+0.6	-5.2	+60	+4.9	+2.1	+1.6	-0.1	+3.1	+3	+184	+146	+242	+168	
ACC%	57%	48%	69%	74%	72%	71%	70%	68%	61%	74%	40%	61%	59%	62%	62%	55%	64%	51%					

Great fats and top 7% for claw EBV. Even type a great prospect as a commercial bull. Suitable for heifers.

Purchaser..... Price.....

41 HAZELDEAN S1720 (APR) AMFU NHFU CAFU DDFU Born: 5/09/2021 Society Id: NH221S1720

VAR GENERATION 2100 USA17171587
HAZELDEAN N189
HAZELDEAN L1303
Sire: HAZELDEAN Q1080
MILLWILLAH COMPLEMENT NJWK108
HAZELDEAN N43
HAZELDEAN K93

MUSGRAVE AVIATOR USA17264774
MUSGRAVE MEDIATOR 29AN1988
MUSGRAVE BARBARA LASS 273
Dam: HAZELDEAN N661
RENNYLEA EDMUND E11
HAZELDEAN K543
HAZELDEAN H337

Front	Rear	Front	Rear	Front	Rear	MUSCLE	TEMP.	SHEATH
6	6	5	6	5	6	C+	1	4

Structural EBV's			
TACE	ANGLE	CLAW	LEGS
	+0.94	+0.84	0.9
ACC%	61%	61%	57%

TRANSTASMAN ANGUS CATTLE EVALUATION - MARCH 2023																							
TACE	CALVING EASE				GROWTH & MATERNAL				FERTILITY		CWT	CARCASE					Doc	Angus Index	Dom	Heavy Grain	Heavy Grass		
	DIR	DTRS	GL	B Wt	200	400	600	MWt	Milk	SS	DC	C Wt	EMA	RIB	RUMP	RBV%	IMF%	Doc.					
EBV	+9.9	+7.6	-6.4	+1	+44	+83	+97	+76	+20	+1.1	-6.9	+60	+7.1	+2.1	+1.4	+0.8	+2	+29	+235	+207	+302	+215	
ACC%	52%	41%	67%	71%	70%	68%	68%	65%	57%	72%	31%	57%	55%	58%	58%	50%	61%	36%					

Easy doing moderate, thick. Plenty of calving ease in the bull suitable for heifers.

Purchaser..... Price.....

Top 5% **Top 10%** **Top 30%**
Ranking in Angus Aust. March 2023

Proven Genetic Performance

Autumn Sale 2023



Sale Bulls

42 HAZELDEAN S1767 (APR) AMFU NHFU CAFU DDFU Born: **8/09/2021**
 Society Id: **NH221S1767**

BOOROOMOOKA UNDERTAKEN Y145
 RENNYLEA EDMUND E11
 LAWSONS HENRY VIII Y5
Sire: HAZELDEAN LEBRUN L355
 CARABAR DOCKLANDS D62
 HAZELDEAN J668
 HAZELDEAN C661

RENNYLEA EDMUND E11
 HAZELDEAN KAMCHATKA K530
 HAZELDEAN H688
Dam: HAZELDEAN M306
 HAZELDEAN HOKKAIDO H504
 HAZELDEAN K1687
 HAZELDEAN D1026

Front	Rear	Front	Rear	Front	Rear	MUSCLE	TEMP.	SHEATH
7	6	6	6	5	5	C+	2	5

Structural EBV's			
TACE	ANGLE	CLAW	LEGS
	+1.02	+0.7	0.94
ACC%	59%	59%	59%

TRANSTASMAN ANGUS CATTLE EVALUATION - MARCH 2023																						
TACE	CALVING EASE				GROWTH & MATERNAL				FERTILITY		CWT	CARCASE					Doc	Angus Index	Dom	Heavy Grain	Heavy Grass	
	DIR	DTRS	GL	B Wt	200	400	600	MWt	Milk	SS	DC	C Wt	EMA	RIB	RUMP	RBV%	IMF%	Doc.				
EBV	+3.8	+3.5	-8.6	+3.5	+44	+97	+134	+132	+15	+2.5	-5.3	+77	-0.2	+1.2	+0.1	-0.7	+3.8	+7	+171	+137	+220	+163
ACC%	55%	46%	68%	74%	73%	71%	71%	68%	61%	71%	40%	62%	59%	62%	62%	55%	64%	50%				

Typical of Lebrun, long type with plenty of phenotype. Hazeldean Lebrun has bred plenty of high price sale bulls over the years. Great calving ease and top 13% for IMF. Suitable for heifers.

Purchaser..... Price.....

43 HAZELDEAN S1839 (APR) AMFU NHFU CAFU DDFU Born: **13/09/2021**
 Society Id: **NH221S1839**

HAZELDEAN KATZEN K416
 HAZELDEAN N480
 HAZELDEAN D998
Sire: HAZELDEAN Q968
 EF COMPLEMENT 8088
 HAZELDEAN N277
 HAZELDEAN K1535

EF COMPLEMENT 8088
 MILLWILLAH COMPLEMENT NJWK108
 MILWILLAH MITTAGONG H257
Dam: HAZELDEAN N253
 JINDRA DOUBLE VISION 16748826
 HAZELDEAN L555
 HAZELDEAN F475

Front	Rear	Front	Rear	Front	Rear	MUSCLE	TEMP.	SHEATH
6	5	5	6	5	6	C+	2	4

Structural EBV's			
TACE	ANGLE	CLAW	LEGS
	+1.12	+1.04	1.22
ACC%	57%	57%	53%

TRANSTASMAN ANGUS CATTLE EVALUATION - MARCH 2023																						
TACE	CALVING EASE				GROWTH & MATERNAL				FERTILITY		CWT	CARCASE					Doc	Angus Index	Dom	Heavy Grain	Heavy Grass	
	DIR	DTRS	GL	B Wt	200	400	600	MWt	Milk	SS	DC	C Wt	EMA	RIB	RUMP	RBV%	IMF%	Doc.				
EBV	+5	+6.6	-6.2	+2.7	+51	+90	+120	+129	+17	-0.3	-5.8	+79	+7	-0.4	-2.3	+1.2	+1.9	+15	+207	+174	+265	+189
ACC%	53%	41%	69%	72%	71%	68%	68%	66%	57%	73%	33%	58%	56%	58%	58%	50%	61%	39%				

Slicker skinned and well rounded type. Top 11% for retail beef yield and plenty of calving ease. Suitable for heifers.

Purchaser..... Price.....

44 HAZELDEAN S1983 (APR) (AI)(ET) AMFU NHFU CAFU DDFU Born: **4/08/2021**
 Society Id: **NH221S1983**

TE MANIA AMBASSADOR A134
 TUWHARETOA REGENT D145
 LAWSONS HENRY VIII Y5
Sire: RENNYLEA NORJ474
 TE MANIA UNLIMITED U3271
 RENNYLEA C310
 RENNYLEA Z369

TUWHARETOA REGENT D145
 MILWILLAH GATSBY G279
 MILWILLAH LOWAN D112
Dam: HAZELDEAN K1054
 HAZELDEAN CATALYST C28 (AI) (ET)
 HAZELDEAN F604
 HAZELDEAN B1480

Front	Rear	Front	Rear	Front	Rear	MUSCLE	TEMP.	SHEATH
6	6	5	6	5	5	C+	2	4

Structural EBV's			
TACE	ANGLE	CLAW	LEGS
	+0.74	+0.76	0.98
ACC%	65%	64%	64%

TRANSTASMAN ANGUS CATTLE EVALUATION - MARCH 2023																						
TACE	CALVING EASE				GROWTH & MATERNAL				FERTILITY		CWT	CARCASE					Doc	Angus Index	Dom	Heavy Grain	Heavy Grass	
	DIR	DTRS	GL	B Wt	200	400	600	MWt	Milk	SS	DC	C Wt	EMA	RIB	RUMP	RBV%	IMF%	Doc.				
EBV	+0.6	0	-5.8	+4.2	+52	+82	+117	+96	+14	+1.6	-4.9	+82	+4.5	-0.5	-0.8	+0.3	+4	-5	+210	+156	+281	+194
ACC%	61%	52%	74%	77%	76%	75%	75%	72%	66%	75%	46%	67%	66%	67%	67%	61%	69%	60%				

Plenty of punch, great IMF - top %. Top 7% for foot angle EBV and 11% for carcass weight. K1054 has been flushed a few times at Hazeldean - the data is very accurate - a very proven cow. Suitable for heifers.

Purchaser..... Price.....

Top 5% **Top 10%** **Top 30%**

Ranking in Angus Aust. March 2023

Proven Genetic Performance

www.hazeldean.com.au



HAZELDEAN
LITCHFIELD
EST 1865

Autumn Sale 2023

Sale Bulls

45 HAZELDEAN S2059 (APR) (AI)(ET) Born: 4/08/2021
AMFU NHFU CAFU DDFU Society Id: NHZ21S2059

PAPA EQUATOR 2928
ARDROSSAN EQUATOR A241
ARDROSSAN PRINCESS W38
Sire: HAZELDEAN JAIPUR J140
HAZELDEAN RENAISSANCE R13
HAZELDEAN C33
HAZELDEAN V15

TE MANIA YORKSHIRE Y437
TE MANIA BERKLEY B1
TE MANIA LOWAN Z53
Dam: HAZELDEAN K801
LEACHMAN BOOM TIME
HAZELDEAN F307
HAZELDEAN YELLOWSTONE A618

Front	Rear	Front	Rear	Front	Rear	MUSCLE	TEMP.	SHEATH
5	5	5	5	4	5	C+	1	3

Structural EBV's			
TACE	ANGLE	CLAW	LEGS
	+0.96	+0.52	0.84
ACC%	70%	70%	68%

TRANSTASMAN ANGUS CATTLE EVALUATION - MARCH 2023																						
TACE	CALVING EASE				GROWTH & MATERNAL				FERTILITY		CWT	CARCASE					Doc	Angus Index	Dom	Heavy Grain	Heavy Grass	
	DIR	DTRS	GL	B Wt	200	400	600	MWt	Milk	SS	DC	C Wt	EMA	RIB	RUMP	RBY%	IMF%	Doc.				
EBV	+10.1	+7.8	-7.5	+3.2	+47	+84	+116	+109	+22	+1.8	-6.6	+74	+5.5	-1	-2.5	+1	+2.8	+33	+216	+176	+273	+202
ACC%	64%	55%	72%	75%	75%	73%	73%	71%	66%	75%	52%	67%	66%	67%	67%	63%	69%	61%				

Long, complete barrel - plenty of calving ease and top 7% for claw EBV with reasonable high accuracy. J140 sons are very well known for being super docile. Note: small patch of white in flank.

Purchaser..... Price.....

46 HAZELDEAN S1760 (APR) Born: 8/09/2021
AMFU NHFU CAFU DDFU Society Id: NHZ21S1760

ARDROSSAN HONOUR H255
ARDROSSAN MAGISTRATE M101
ARDROSSAN PRINCESS H230
Sire: HAZELDEAN Q11
SYDGEN BLACK PEARL 2006
HAZELDEAN L3
HAZELDEAN J234

KAROO W109 DIRECTION Z181
CARABAR DOCKLANDS D62
CARABAR BLACKCAP MARY B12
Dam: HAZELDEAN J392
LEACHMAN BOOM TIME
HAZELDEAN BOOMTIME E599
HAZELDEAN V868

Front	Rear	Front	Rear	Front	Rear	MUSCLE	TEMP.	SHEATH
6	6	6	6	5	5	B-	2	3

Structural EBV's			
TACE	ANGLE	CLAW	LEGS
	+1.02	+0.72	1.12
ACC%	65%	65%	61%

TRANSTASMAN ANGUS CATTLE EVALUATION - MARCH 2023																						
TACE	CALVING EASE				GROWTH & MATERNAL				FERTILITY		CWT	CARCASE					Doc	Angus Index	Dom	Heavy Grain	Heavy Grass	
	DIR	DTRS	GL	B Wt	200	400	600	MWt	Milk	SS	DC	C Wt	EMA	RIB	RUMP	RBY%	IMF%	Doc.				
EBV	+5.4	+3.3	-9.8	+2.7	+49	+95	+127	+100	+25	+0.7	-4.8	+69	+8.4	+0.5	0	+0.9	+0.7	+7	+211	+175	+269	+194
ACC%	55%	46%	71%	72%	71%	69%	69%	67%	60%	73%	38%	60%	58%	60%	60%	53%	63%	44%				

A moderate heifer bull. Top 3% for gestation length, top 4% for Milk. Nice birth to growth - 600d in the top 30% - suitable for heifers.

Purchaser..... Price.....

47 HAZELDEAN S1 (HBR) (AI) Born: 30/06/2021
AMFU NHFU CAFU DDFU Society Id: NHZ21S1

G A R INGENUITY
H P C A INTENSITY
G A R PREDESTINED 287L
Sire: RENNYLEA NORL519
TE MANIA BERKLEY B1
RENNYLEA H414
RENNYLEA C310

G A R SOLUTION
LAWSONS INVINCIBLE C402
LAWSONS PREDESTINED A598
Dam: HAZELDEAN G90
SUMMITCREST SCOTCH CAP OB45
HAZELDEAN B4
HAZELDEAN T468

Front	Rear	Front	Rear	Front	Rear	MUSCLE	TEMP.	SHEATH
7	6	6	7	5	5	C+	1	4

Structural EBV's			
TACE	ANGLE	CLAW	LEGS
	+1.14	+0.84	0.94
ACC%	68%	68%	68%

TRANSTASMAN ANGUS CATTLE EVALUATION - MARCH 2023																						
TACE	CALVING EASE				GROWTH & MATERNAL				FERTILITY		CWT	CARCASE					Doc	Angus Index	Dom	Heavy Grain	Heavy Grass	
	DIR	DTRS	GL	B Wt	200	400	600	MWt	Milk	SS	DC	C Wt	EMA	RIB	RUMP	RBY%	IMF%	Doc.				
EBV	+0.5	+0.9	-9.6	+6.2	+57	+104	+142	+142	+12	+1.3	-5.2	+86	+7.7	0	-0.6	+0.5	+2.5	+37	+212	+171	+275	+199
ACC%	65%	57%	75%	76%	75%	74%	74%	73%	69%	73%	50%	67%	66%	67%	67%	63%	69%	61%				

Powerful & capacious - plenty of L519 coming through here top 9% for 600d growth, without a massive BW. Top 7% carcass weight. Top 4% for gestation length and docility.

Purchaser..... Price.....

Top 5% **Top 10%** **Top 30%**
Ranking in Angus Aust. March 2023

Proven Genetic Performance

www.hazeldean.com.au

Autumn Sale 2023



Sale Bulls

48 HAZELDEAN S6 (APR) AMFU NHFU CAFU DDFU Born: 2/07/2021 Society Id: NHZ21S6

BOOROOMOOKA UNDERTAKEN Y145 RENNYLEA EDMUND E11
 RENNYLEA EDMUND E11 ARDROSSAN JUSTICE NAQJ93
 LAWSONS HENRY VIII Y5 ARDROSSAN EVERELDA AI(ET) NAQF6
Sire: HAZELDEAN LEBRUN L355 **Dam: HAZELDEAN M181**
 CARABAR DOCKLANDS D62 MATAURI REALITY 839
 HAZELDEAN J668 HAZELDEAN K648
 HAZELDEAN C661 HAZELDEAN F431

Front	Rear	Front	Rear	Front	Rear	MUSCLE	TEMP.	SHEATH
7	6	6	6	5	6	C+	2	5

Structural EBV's			
TACE	ANGLE	CLAW	LEGS
	+1.08	+0.68	1.04
ACC%	61%	61%	60%

TRANSTASMAN ANGUS CATTLE EVALUATION - MARCH 2023																						
TACE	CALVING EASE				GROWTH & MATERNAL					FERTILITY		CWT	CARCASE					Doc	Angus Index	Dom	Heavy Grain	Heavy Grass
	DIR	DTRS	GL	B Wt	200	400	600	MWt	Milk	SS	DC	C Wt	EMA	RIB	RUMP	RBV%	IMF%	Doc.				
EBV	+5.9	-0.2	-7.6	+2.7	+44	+86	+121	+110	+21	+1.5	-5.1	+67	-1.7	+0.9	-1.8	-0.7	+3.7	+14	+160	+122	+212	+146
ACC%	58%	49%	70%	75%	73%	72%	71%	69%	63%	75%	43%	63%	61%	64%	64%	57%	66%	54%				

Looks like his dad, long & balanced. Hazeldean Lebrun - plenty of calving ease and in the top 14% for IMF. Suitable for heifers.

Purchaser..... Price.....

49 HAZELDEAN S328 (APR) (AI) AMFU NHFU CAFU DDFU Born: 13/07/2021 Society Id: NHZ21S328

ARDROSSAN EQUATOR A241 SCR PROMISE 4042
 HAZELDEAN JAIPUR J140 SYDGEN TRUST 6228
 HAZELDEAN C33 SYDGEN FOREVER LADY 4413
Sire: HAZELDEAN M182 **Dam: HAZELDEAN K630**
 HAZELDEAN GUARDIAN G553 LEACHMAN BOOM TIME
 HAZELDEAN K807 HAZELDEAN BOOMTIME E435
 HAZELDEAN G568 HAZELDEAN X524

Front	Rear	Front	Rear	Front	Rear	MUSCLE	TEMP.	SHEATH
6	6	6	6	5	5	C+	1	4

Structural EBV's			
TACE	ANGLE	CLAW	LEGS
	+0.88	+0.56	1.06
ACC%	66%	67%	64%

TRANSTASMAN ANGUS CATTLE EVALUATION - MARCH 2023																						
TACE	CALVING EASE				GROWTH & MATERNAL					FERTILITY		CWT	CARCASE					Doc	Angus Index	Dom	Heavy Grain	Heavy Grass
	DIR	DTRS	GL	B Wt	200	400	600	MWt	Milk	SS	DC	C Wt	EMA	RIB	RUMP	RBV%	IMF%	Doc.				
EBV	+2.1	+7.4	-4.7	+2.7	+49	+90	+121	+114	+17	+2	-5.9	+68	+8.1	+0.9	+0.5	+0.5	+2.9	+38	+215	+175	+279	+202
ACC%	59%	48%	83%	75%	74%	72%	73%	69%	62%	75%	41%	63%	62%	64%	63%	58%	65%	57%				

Very nice grandson of Magnum, thick, long, big barrelled young sire.

Purchaser..... Price.....

50 HAZELDEAN S635 (APR) (AI) AMFU NHFU CAFU DDFU Born: 24/07/2021 Society Id: NHZ21S635

HAZELDEAN KATZEN K416 BOOROOMOOKA UNDERTAKEN Y145
 HAZELDEAN N480 RENNYLEA EDMUND E11
 HAZELDEAN D998 LAWSONS HENRY VIII Y5
Sire: HAZELDEAN Q968 **Dam: HAZELDEAN N192**
 EF COMPLEMENT 8088 HAZELDEAN HOBNAIL H360
 HAZELDEAN N277 HAZELDEAN K866
 HAZELDEAN K1535 HAZELDEAN G909

Front	Rear	Front	Rear	Front	Rear	MUSCLE	TEMP.	SHEATH
6	6	6	6	5	6	C+	2	4

Structural EBV's			
TACE	ANGLE	CLAW	LEGS
	+0.94	+0.88	0.98
ACC%	59%	59%	56%

TRANSTASMAN ANGUS CATTLE EVALUATION - MARCH 2023																						
TACE	CALVING EASE				GROWTH & MATERNAL					FERTILITY		CWT	CARCASE					Doc	Angus Index	Dom	Heavy Grain	Heavy Grass
	DIR	DTRS	GL	B Wt	200	400	600	MWt	Milk	SS	DC	C Wt	EMA	RIB	RUMP	RBV%	IMF%	Doc.				
EBV	+0.6	+3.4	-10.3	+7.2	+65	+111	+150	+148	+11	+1.8	-6.9	+86	+1.2	+0.2	-1.2	-0.7	+3.4	+6	+223	+182	+291	+209
ACC%	53%	44%	69%	72%	70%	69%	68%	66%	58%	73%	37%	59%	57%	59%	59%	52%	62%	38%				

Power & punch!! Top 4% for 200d & 600d. Top 7% for carcass weight and days to calving. Awesome gestation length EBV in the top 2%. Big growth yet still softness in type.

Purchaser..... Price.....

Top 5% **Top 10%** **Top 30%**
 Ranking in Angus Aust. March 2023

Proven Genetic Performance

www.hazeldean.com.au

Autumn Sale 2023

Sale Bulls

51 HAZELDEAN S1120 (APR) AMFU NHFU CAFU DDFU Born: **5/08/2021**
 Society Id: **NH221S1120**

KENNY'S CREEK WHITWORTH D132(AI) BASIN PAYWEIGHT 006S
 HAZELDEAN N3000 BASIN PAYWEIGHT 1682 USA17038724
 HAZELDEAN TOTAL C507 21AR O LASS 7017
Sire: HAZELDEAN Q1003 **Dam: HAZELDEAN N107**
 HAZELDEAN LAUDALINO L382 TE MANIA AFRICA A217
 HAZELDEAN N1247 HAZELDEAN H23
 HAZELDEAN L924 HAZELDEAN A90

Front	Rear	Front	Rear	MUSCLE	TEMP.	SHEATH		
7	6	7	6	6	5	C+	2	5

Structural EBV's			
TACE	ANGLE	CLAW	LEGS
	+0.98	+1	0.96
ACC%	61%	61%	57%

TRANSTASMAN ANGUS CATTLE EVALUATION - MARCH 2023																						
TACE	CALVING EASE				GROWTH & MATERNAL					FERTILITY		CWT	CARCASE					Doc	Angus Index	Dom	Heavy Grain	Heavy Grass
	DIR	DTRS	GL	B Wt	200	400	600	MWt	Milk	SS	DC	C Wt	EMA	RIB	RUMP	RBY%	IMF%	Doc.				
EBV	+2.7	+4	-1.5	+5.4	+57	+95	+122	+119	+11	+3.4	-5.4	+65	+3.7	-0.3	-1.1	+0.4	+1.6	+18	+199	+171	+255	+182
ACC%	52%	40%	68%	71%	69%	68%	67%	65%	56%	72%	32%	57%	55%	57%	57%	50%	60%	36%				

Slicker skinned, solid built. Top 11% scrotal. Top 21% for 200d growth.

Purchaser..... Price.....



52 HAZELDEAN S2036 (APR) (AI)(ET) AMFU NHFU CAFU DDFU Born: **1/08/2021**
 Society Id: **NH221S2036**

RENNYLEA EDMUND E11 TUWHARETOA REGENT D145
 RENNYLEA KODAK K522 MILWILLAH GATSBY G279
 RENNYLEA EISA ERICA F810 MILWILLAH LOWAN D112
Sire: MURRAY KODAK N70 **Dam: HAZELDEAN K1054**
 GARDENS WAVE HAZELDEAN CATALYST C28 (AI) (ET)
 MURRAY WAVE J53 HAZELDEAN F604
 TE MANIA QUEANBEYAN D113 HAZELDEAN B1480

Front	Rear	Front	Rear	MUSCLE	TEMP.	SHEATH		
7	6	6	6	5	6	C+	1	5

Structural EBV's			
TACE	ANGLE	CLAW	LEGS
	+0.9	+0.86	0.98
ACC%	69%	69%	67%

TRANSTASMAN ANGUS CATTLE EVALUATION - MARCH 2023																						
TACE	CALVING EASE				GROWTH & MATERNAL					FERTILITY		CWT	CARCASE					Doc	Angus Index	Dom	Heavy Grain	Heavy Grass
	DIR	DTRS	GL	B Wt	200	400	600	MWt	Milk	SS	DC	C Wt	EMA	RIB	RUMP	RBY%	IMF%	Doc.				
EBV	-2.7	+1.7	-5.2	+7.5	+64	+101	+138	+128	+10	+2.8	-6.7	+94	+7.3	-0.2	-0.4	+0.8	+2.3	+3	+240	+196	+306	+226
ACC%	58%	47%	72%	75%	74%	72%	72%	69%	61%	74%	40%	65%	64%	65%	66%	58%	68%	57%				

Even type, strong top line. Murray Kodak is a new sire to Hazeldean for this selling season and they are showing signs of punch, power and carcass weight.

Purchaser..... Price.....

Top 5%
Top 10%
Top 30%
 Ranking in Angus Aust. March 2023

Autumn Sale 2023



Sale Bulls

53 HAZELDEAN S2044 (APR) (AI)(ET) AMFU NHFU CAFU DDFU Born: 31/07/2021 Society Id: NH21S2044

G A R INGENUITY BOOROOMOOKA UNDERTAKEN Y145
 H P C A INTENSITY RENNYLEA EDMUND E11
 G A R PREDESTINED 287L LAWSONS HENRY VIII Y5
Sire: RENNYLEA NORL519 **Dam: HAZELDEAN K458**
 TE MANIA BERKLEY B1 RENNYLEA C574
 RENNYLEA H414 HAZELDEAN H488
 RENNYLEA C310 HAZELDEAN IRONWOOD D259

Front	Rear	Front	Rear	Front	Rear	MUSCLE	TEMP.	SHEATH
7	6	5	5	5	5	C+	1	5

Structural EBV's			
TACE	ANGLE	CLAW	LEGS
	+0.66	+0.2	0.74
ACC%	72%	72%	71%

TRANSTASMAN ANGUS CATTLE EVALUATION - MARCH 2023																						
TACE	CALVING EASE				GROWTH & MATERNAL				FERTILITY		CWT	CARCASE					Doc	Angus Index	Dom	Heavy Grain	Heavy Grass	
	DIR	DTRS	GL	B Wt	200	400	600	MWt	Milk	SS	DC	C Wt	EMA	RIB	RUMP	RBV%	IMF%	Doc.				
EBV	+6.2	+6	-9.7	+4.1	+56	+105	+145	+157	+13	+2.5	-7.5	+75	+1.1	+0.8	-1.2	-0.7	+4.9	+29	+222	+178	+287	+212
ACC%	66%	57%	72%	75%	76%	74%	74%	73%	67%	76%	50%	68%	65%	67%	67%	62%	68%	59%				

Plenty of bone, thickness and an awesome birth to growth spread. Top 1% for claw and leg EBVs. Top 3% for days to calving and top 4% IMF. Suitable for heifers.

Purchaser..... Price.....

54 HAZELDEAN S2073 (APR) (AI)(ET) AMFU NHFU CAFU DDFU Born: 10/08/2021 Society Id: NH21S2073

TE MANIA YORKSHIRE Y437 BOOROOMOOKA UNDERTAKEN Y145
 TE MANIA BERKLEY B1 RENNYLEA EDMUND E11
 TE MANIA LOWAN Z53 LAWSONS HENRY VIII Y5
Sire: HAZELDEAN F1023 **Dam: HAZELDEAN K458**
 HAZELDEAN FUTURA W133 RENNYLEA C574
 HAZELDEAN B723 HAZELDEAN H488
 HAZELDEAN X375 HAZELDEAN IRONWOOD D259

Front	Rear	Front	Rear	Front	Rear	MUSCLE	TEMP.	SHEATH
6	6	6	6	5	5	C+	2	4

Structural EBV's			
TACE	ANGLE	CLAW	LEGS
	+0.86	+0.3	1.2
ACC%	70%	70%	69%

TRANSTASMAN ANGUS CATTLE EVALUATION - MARCH 2023																						
TACE	CALVING EASE				GROWTH & MATERNAL				FERTILITY		CWT	CARCASE					Doc	Angus Index	Dom	Heavy Grain	Heavy Grass	
	DIR	DTRS	GL	B Wt	200	400	600	MWt	Milk	SS	DC	C Wt	EMA	RIB	RUMP	RBV%	IMF%	Doc.				
EBV	+7.7	+3.6	-5.6	+2.5	+42	+77	+99	+76	+17	+5	-6.3	+49	+6.8	0	-2.4	+0.2	+5.3	+12	+215	+175	+283	+206
ACC%	64%	54%	72%	76%	76%	74%	74%	72%	66%	76%	48%	68%	66%	67%	67%	61%	69%	58%				

Slick coated, muscle pattern very typical of the type F1023 throws, these have been very popular over the years. Top 3% of the breed for IMF and top 1% for claw and scrotal size. Note: white at base of nuts.

Purchaser..... Price.....

55 HAZELDEAN S2074 (APR) (AI)(ET) AMFU NHFU CAFU DDFU Born: 5/08/2021 Society Id: NH21S2074

TE MANIA YORKSHIRE Y437 BOOROOMOOKA UNDERTAKEN Y145
 TE MANIA BERKLEY B1 RENNYLEA EDMUND E11
 TE MANIA LOWAN Z53 LAWSONS HENRY VIII Y5
Sire: HAZELDEAN F1023 **Dam: HAZELDEAN K458**
 HAZELDEAN FUTURA W133 RENNYLEA C574
 HAZELDEAN B723 HAZELDEAN H488
 HAZELDEAN X375 HAZELDEAN IRONWOOD D259

Front	Rear	Front	Rear	Front	Rear	MUSCLE	TEMP.	SHEATH
6	5	5	5	4	5	C+	2	5

Structural EBV's			
TACE	ANGLE	CLAW	LEGS
	+0.98	+0.5	1.06
ACC%	70%	70%	69%

TRANSTASMAN ANGUS CATTLE EVALUATION - MARCH 2023																						
TACE	CALVING EASE				GROWTH & MATERNAL				FERTILITY		CWT	CARCASE					Doc	Angus Index	Dom	Heavy Grain	Heavy Grass	
	DIR	DTRS	GL	B Wt	200	400	600	MWt	Milk	SS	DC	C Wt	EMA	RIB	RUMP	RBV%	IMF%	Doc.				
EBV	+5.8	+4.9	-6.7	+3.4	+51	+94	+124	+110	+19	+4.3	-6.3	+69	+1.7	-0.9	-3.8	0	+4	+12	+207	+172	+266	+195
ACC%	64%	54%	72%	75%	75%	74%	74%	72%	66%	76%	48%	68%	66%	67%	67%	61%	69%	58%				

Thick from hip, good muscle pattern, white at base of nuts + Flanks

Purchaser..... Price.....

Top 5% Top 10% Top 30%

Ranking in Angus Aust. March 2023

Proven Genetic Performance

www.hazeldean.com.au

Autumn Sale 2023



Sale Bulls

56 HAZELDEAN S353 (APR) (AI) AMFU NHFU CAFU DDFU Born: 13/07/2021 Society Id: NHZ21S353

RENNYLEA EDMUND E11 BOWMONT JACKPOT SRKJ310
 RENNYLEA KODAK K522 HAZELDEAN M74
 RENNYLEA EISA ERICA F810 HAZELDEAN J100
Sire: MURRAY KODAK N70 Dam: HAZELDEAN P1137
 GARDENS WAVE ARDROSSAN EQUATOR A241
 MURRAY WAVE J53 HAZELDEAN K794
 TE MANIA QUEANBEYAN D113 HAZELDEAN D759

Front	Rear	Front	Rear	Front	Rear	MUSCLE	TEMP.	SHEATH
6	6	6	6	4	5	C+	1	5

Structural EBV's			
TACE	ANGLE	CLAW	LEGS
	+0.84	+0.72	0.9
ACC%	68%	68%	65%

TRANSTASMAN ANGUS CATTLE EVALUATION - MARCH 2023																							
TACE	CALVING EASE				GROWTH & MATERNAL				FERTILITY		CWT	CARCASE					Doc	Angus Index	Dom	Heavy Grain	Heavy Grass		
	DIR	DTRS	GL	B Wt	200	400	600	MWt	Milk	SS	DC	C Wt	EMA	RIB	RUMP	RBV%	IMF%	Doc.					
EBV	-0.4	+0.9	-5	+5.2	+50	+79	+101	+90	+15	+3.9	-7.8	+62	+6	+0.1	+0.7	+0.6	+2.2	+27	+212	+180	+269	+197	
ACC%	54%	42%	82%	74%	72%	71%	70%	67%	59%	73%	37%	63%	63%	64%	65%	57%	67%	52%					

A thick son of Kodak, very docile with plenty of scope. Great net feed efficiency EBV - this could be a large growth sector in the future.

Purchaser..... Price.....

57 HAZELDEAN S817 (APR) AMFU NHFU CAFU DDFU Born: 28/07/2021 Society Id: NHZ21S817

ARDROSSAN HONOUR H255 BT RIGHT TIME 24J
 ARDROSSAN MAGISTRATE M101 RENNYLEA NORF42
 ARDROSSAN PRINCESS H230 RENNYLEA B36
Sire: HAZELDEAN Q11 Dam: HAZELDEAN J748
 SYDGEN BLACK PEARL 2006 HAZELDEAN ETIQUETTE E338 (APR)
 HAZELDEAN L3 HAZELDEAN G168
 HAZELDEAN J234 HAZELDEAN B1463

Front	Rear	Front	Rear	Front	Rear	MUSCLE	TEMP.	SHEATH
7	5	6	5	4	6	C+	1	5

Structural EBV's			
TACE	ANGLE	CLAW	LEGS
	+1.04	+0.74	1
ACC%	65%	65%	60%

TRANSTASMAN ANGUS CATTLE EVALUATION - MARCH 2023																							
TACE	CALVING EASE				GROWTH & MATERNAL				FERTILITY		CWT	CARCASE					Doc	Angus Index	Dom	Heavy Grain	Heavy Grass		
	DIR	DTRS	GL	B Wt	200	400	600	MWt	Milk	SS	DC	C Wt	EMA	RIB	RUMP	RBV%	IMF%	Doc.					
EBV	+1.8	+6.5	-8.8	+4.4	+49	+86	+119	+92	+23	+1.9	-5.4	+68	+10.4	+0.7	-0.2	+1	+0.3	+6	+203	+165	+256	+189	
ACC%	54%	42%	70%	72%	70%	69%	68%	66%	59%	73%	34%	59%	57%	59%	59%	52%	62%	43%					

Big carcass, very eye catching, thick & square back end. Plenty of EMA and Milk. Top 5% for gestation length. Suitable for heifers.

Purchaser..... Price.....

58 HAZELDEAN S824 (APR) AMFU NHFU CAFU DDFU Born: 28/07/2021 Society Id: NHZ21S824

MATAURI REALITY 839 MYTTY IN FOCUS
 KAROO KNOCKOUT K176 A A R TEN X 7008 S A
 KAROO JEDDA H213 A A R LADY KELTON 5551
Sire: HAZELDEAN Q331 Dam: HAZELDEAN K692
 RENNYLEA EDMUND E11 L T 598 BANDO 9074
 HAZELDEAN L25 HAZELDEAN BANDO E420
 HAZELDEAN J19 HAZELDEAN X757

Front	Rear	Front	Rear	Front	Rear	MUSCLE	TEMP.	SHEATH
7	6	7	6	5	5	C+	2	4

Structural EBV's			
TACE	ANGLE	CLAW	LEGS
	+0.98	+0.86	0.84
ACC%	68%	68%	65%

TRANSTASMAN ANGUS CATTLE EVALUATION - MARCH 2023																							
TACE	CALVING EASE				GROWTH & MATERNAL				FERTILITY		CWT	CARCASE					Doc	Angus Index	Dom	Heavy Grain	Heavy Grass		
	DIR	DTRS	GL	B Wt	200	400	600	MWt	Milk	SS	DC	C Wt	EMA	RIB	RUMP	RBV%	IMF%	Doc.					
EBV	+1.2	+5.9	-9.6	+4.6	+54	+94	+121	+119	+10	+3.8	-5.7	+62	+8	-1.1	-2.2	+1	+2.2	+19	+210	+181	+266	+197	
ACC%	55%	46%	70%	71%	70%	68%	68%	66%	60%	73%	38%	59%	58%	60%	60%	53%	62%	44%					

Deep barrel and great balance of EBVs for a commercial cattle operation. Nothing too extreme - doing lots of things right. Suitable for heifers. Note: old scar on n/s eye.

Purchaser..... Price.....

Top 5% **Top 10%** **Top 30%**
 Ranking in Angus Aust. March 2023

Proven Genetic Performance

www.hazeldean.com.au

Autumn Sale 2023



Sale Bulls

59 HAZELDEAN S977 (APR) AMFU NHFU CAFU DDFU Born: 31/07/2021 Society Id: NHZ21S977

HAZELDEAN KATZEN K416
HAZELDEAN N480
HAZELDEAN D998
Sire: HAZELDEAN Q968
EF COMPLEMENT 8088
HAZELDEAN N277
HAZELDEAN K1535

RENNYLEA EDMUND E11
HAZELDEAN KATZEN K416
HAZELDEAN H342
Dam: HAZELDEAN N230
RENNYLEA EDMUND E11
HAZELDEAN L2004
HAZELDEAN J3045

Front	Rear	Front	Rear	Front	Rear	MUSCLE	TEMP.	SHEATH
6	6	5	6	5	6	C+	2	5

Structural EBV's			
TACE	ANGLE	CLAW	LEGS
	+0.94	+0.84	1.12
ACC%	60%	60%	57%

TRANSTASMAN ANGUS CATTLE EVALUATION - MARCH 2023																							
TACE	CALVING EASE				GROWTH & MATERNAL				FERTILITY		CWT	CARCASE					Doc	Angus Index	Dom	Heavy Grain	Heavy Grass		
	DIR	DTRS	GL	B Wt	200	400	600	MWt	Milk	SS	DC	C Wt	EMA	RIB	RUMP	RYBY%	IMF%	Doc.					
EBV	+5	+2.1	-9	+4.5	+54	+94	+129	+135	+12	+2.7	-6.4	+69	+5.3	+0.4	-0.9	+0.2	+2.2	+31	+198	+163	+252	+186	
ACC%	52%	41%	69%	72%	70%	68%	68%	65%	57%	73%	35%	59%	57%	59%	59%	51%	62%	39%					

Real length and docility from this Katzen son. Top 11% for days to calving and docility EBV. Suitable for heifers.

Purchaser..... Price.....

60 HAZELDEAN S1223 AMFU NHFU CAFU DDFU Born: 10/08/2021 Society Id: NHZ21S1223

TE MANIA BERKLEY B1
HAZELDEAN F1023
HAZELDEAN B723
Sire: HAZELDEAN P709
HAZELDEAN GUARANTOR G52
HAZELDEAN M1192
HAZELDEAN H321

KAROO W109 DIRECTION Z181
CARABAR DOCKLANDS D62
CARABAR BLACKCAP MARY B12
Dam: HAZELDEAN J186
BR MIDLAND
HAZELDEAN MIDLAND D3
HAZELDEAN W61

Front	Rear	Front	Rear	Front	Rear	MUSCLE	TEMP.	SHEATH
6	6	6	6	5	6	C+	2	4

Structural EBV's			
TACE	ANGLE	CLAW	LEGS
	-	-	0.9
ACC%	-	-	61%

TRANSTASMAN ANGUS CATTLE EVALUATION - MARCH 2023																							
TACE	CALVING EASE				GROWTH & MATERNAL				FERTILITY		CWT	CARCASE					Doc	Angus Index	Dom	Heavy Grain	Heavy Grass		
	DIR	DTRS	GL	B Wt	200	400	600	MWt	Milk	SS	DC	C Wt	EMA	RIB	RUMP	RYBY%	IMF%	Doc.					
EBV	+1.4	-3	-1.8	+4.8	+50	+81	+112	+99	+22	+4.7	-4.7	+58	+10.8	-1.5	-2.8	+1.1	+2.5	+21	+188	+147	+247	+175	
ACC%	56%	46%	71%	73%	72%	71%	71%	69%	62%	68%	41%	62%	60%	62%	62%	56%	64%	49%					

Top 2% for scrotal and top 9% for EMA. J186 has had 9 progeny on the trot for Hazeldean with a set of twins last year.

Purchaser..... Price.....

61 HAZELDEAN S1241 (APR) AMFU NHFU CAFU DDFU Born: 11/08/2021 Society Id: NHZ21S1241

RENNYLEA EDMUND E11
HAZELDEAN KATZEN K416
HAZELDEAN H342
Sire: HAZELDEAN N508
LEACHMAN BOOM TIME
HAZELDEAN F307
HAZELDEAN YELLOWSTONE A618

PAPA EQUATOR 2928
ARDROSSAN EQUATOR A241
ARDROSSAN PRINCESS W38
Dam: HAZELDEAN H715
TE MANIA INFINITY 04 379 AB
HAZELDEAN F533
HAZELDEAN V419

Front	Rear	Front	Rear	Front	Rear	MUSCLE	TEMP.	SHEATH
5	5	5	5	5	5	B-	1	4

Structural EBV's			
TACE	ANGLE	CLAW	LEGS
	+0.94	+0.72	0.98
ACC%	66%	66%	64%

TRANSTASMAN ANGUS CATTLE EVALUATION - MARCH 2023																							
TACE	CALVING EASE				GROWTH & MATERNAL				FERTILITY		CWT	CARCASE					Doc	Angus Index	Dom	Heavy Grain	Heavy Grass		
	DIR	DTRS	GL	B Wt	200	400	600	MWt	Milk	SS	DC	C Wt	EMA	RIB	RUMP	RYBY%	IMF%	Doc.					
EBV	+7.3	+5.6	-6.4	+1	+36	+73	+88	+80	+18	+3	-6.4	+53	+4.8	+3.6	+4.4	-0.1	+2.4	+40	+188	+162	+244	+172	
ACC%	57%	48%	70%	74%	73%	71%	71%	69%	62%	74%	42%	62%	60%	62%	62%	56%	65%	52%					

Fantastic feet on this N508 son who delivers top 2% fats and top 3% docility EBV. Suitable for heifers.

Purchaser..... Price.....

Top 5% **Top 10%** **Top 30%**
Ranking in Angus Aust. March 2023

Proven Genetic Performance

www.hazeldean.com.au

Autumn Sale 2023



Sale Bulls

62 HAZELDEAN S1451 (APR) AMFU NHFU CAFU DDFU Born: 19/08/2021 Society Id: NH221S1451

RENNYLEA EDMUND E11 CARABAR DOCKLANDS D62
 RENNYLEA KODAK K522 HAZELDEAN JEZEBEL J484
 RENNYLEA EISA ERICA F810 HAZELDEAN ULTRAVOX A772
Sire: MURRAY KODAK N70 **Dam: HAZELDEAN L802**
 GARDENS WAVE BONGONGO BULLETPROOF Z3
 MURRAY WAVE J53 HAZELDEAN D773
 TE MANIA QUEANBEYAN D113 HAZELDEAN B1064

Front	Rear	Front	Rear	MUSCLE	TEMP.	SHEATH		
6	6	5	6	5	5	C+	2	4

Structural EBV's			
TACE	ANGLE	CLAW	LEGS
	-	-	0.92
ACC%	-	-	65%

TRANSTASMAN ANGUS CATTLE EVALUATION - MARCH 2023																						
TACE	CALVING EASE				GROWTH & MATERNAL				FERTILITY		CWT	CARCASE					Doc	Angus Index	Dom	Heavy Grain	Heavy Grass	
	DIR	DTRS	GL	B Wt	200	400	600	MWt	Milk	SS	DC	C Wt	EMA	RIB	RUMP	RBV%	IMF%	Doc.				
EBV	+4.7	+2.5	-4.4	+4.3	+56	+97	+132	+125	+14	+3.4	-6	+71	+7.4	-1	-1.1	+0.5	+3.7	+23	+233	+187	+303	+221
ACC%	55%	43%	71%	74%	72%	70%	70%	67%	59%	73%	37%	63%	62%	63%	64%	56%	66%	52%				

Upstanding, even, balanced - great birth to growth. Top 14% for IMF. Top 16% for days to calving, leg angle and Angus Breeding Index. Top 11% for scrotal size. Suitable for heifers.

Purchaser..... Price.....

63 HAZELDEAN S1587 (APR) AMFU NHFU CAFU DDFU Born: 25/08/2021 Society Id: NH221S1587

HAZELDEAN JAIPUR J140 RENNYLEA C574
 HAZELDEAN MAGNUM M586 HAZELDEAN HOBNAIL H360
 HAZELDEAN H356 HAZELDEAN F304
Sire: HAZELDEAN Q1593 **Dam: HAZELDEAN K866**
 RENNYLEA EDMUND E11 HAZELDEAN BENEDICT B569
 HAZELDEAN L356 HAZELDEAN G909
 HAZELDEAN J674 HAZELDEAN D772

Front	Rear	Front	Rear	MUSCLE	TEMP.	SHEATH		
6	5	6	6	5	5	C+	2	4

Structural EBV's			
TACE	ANGLE	CLAW	LEGS
	-	-	1.14
ACC%	-	-	60%

TRANSTASMAN ANGUS CATTLE EVALUATION - MARCH 2023																						
TACE	CALVING EASE				GROWTH & MATERNAL				FERTILITY		CWT	CARCASE					Doc	Angus Index	Dom	Heavy Grain	Heavy Grass	
	DIR	DTRS	GL	B Wt	200	400	600	MWt	Milk	SS	DC	C Wt	EMA	RIB	RUMP	RBV%	IMF%	Doc.				
EBV	+7.2	+7.7	-3.9	+3.3	+48	+86	+112	+82	+12	+2.9	-7.4	+65	+5.9	+1	+0.6	+0.4	+2.9	+10	+246	+207	+309	+234
ACC%	53%	41%	69%	72%	70%	69%	69%	66%	59%	73%	35%	59%	57%	60%	60%	52%	62%	43%				

Big barrel, plenty of capacity. Top 8% for calving ease daughters, top 3% for days to calving, top 5% for claw set. An overall good mix. Suitable for heifers.

Purchaser..... Price.....

64 HAZELDEAN S1693 (APR) AMFU NHFU CAFU DD50% Born: 2/09/2021 Society Id: NH221S1693

TE MANIA BERKLEY B1 SITZ NEW DESIGN 458N
 HAZELDEAN F1023 HAZELDEAN FALTER F36
 HAZELDEAN B723 HAZELDEAN BANDO B24
Sire: HAZELDEAN Q1195 **Dam: HAZELDEAN H920**
 ARDROSSAN EQUATOR A241 BR MIDLAND
 HAZELDEAN J137 HAZELDEAN F308
 HAZELDEAN B156 HAZELDEAN YELLOWSTONE A637

Front	Rear	Front	Rear	MUSCLE	TEMP.	SHEATH		
6	6	6	6	4	6	C	2	4

Structural EBV's			
TACE	ANGLE	CLAW	LEGS
	+0.96	+0.92	1
ACC%	64%	64%	61%

TRANSTASMAN ANGUS CATTLE EVALUATION - MARCH 2023																						
TACE	CALVING EASE				GROWTH & MATERNAL				FERTILITY		CWT	CARCASE					Doc	Angus Index	Dom	Heavy Grain	Heavy Grass	
	DIR	DTRS	GL	B Wt	200	400	600	MWt	Milk	SS	DC	C Wt	EMA	RIB	RUMP	RBV%	IMF%	Doc.				
EBV	+6.1	+3.3	-3.9	+2.6	+41	+76	+106	+85	+16	+2.8	-4.8	+51	+10.3	-0.8	-2.1	+1.1	+2.4	+20	+193	+154	+244	+182
ACC%	53%	43%	66%	72%	70%	68%	68%	66%	60%	72%	36%	59%	57%	59%	59%	52%	61%	44%				

Good calving ease and in the top 14% for retail beef yield and plenty of calving ease to suit heifers.

Purchaser..... Price.....

Top 5% **Top 10%** **Top 30%**
 Ranking in Angus Aust. March 2023

Proven Genetic Performance

www.hazeldean.com.au

Autumn Sale 2023



Sale Bulls

65 HAZELDEAN S1701 (APR) AMFU NHFU CAFU DDFU Born: **3/09/2021**
 Society Id: **NH221S1701**

HAZELDEAN KAYKO K790 RENNYLEA EDMUND E11
 HAZELDEAN N910 HAZELDEAN KATZEN K416
 HAZELDEAN K989 HAZELDEAN H342
Sire: HAZELDEAN Q991 **Dam: HAZELDEAN P241**
 JMB TRACTION USA17262374 HAZELDEAN JALANA J1510
 HAZELDEAN N932 HAZELDEAN L1224
 HAZELDEAN J827 HAZELDEAN H1628

Front	Rear	Front	Rear	Front	Rear	MUSCLE	TEMP.	SHEATH
6	6	6	6	5	5	C+	1	4

Structural EBV's			
TACE	ANGLE	CLAW	LEGS
	+1.12	+0.72	0.94
ACC%	61%	61%	59%

TRANSTASMAN ANGUS CATTLE EVALUATION - MARCH 2023																						
TACE	CALVING EASE				GROWTH & MATERNAL				FERTILITY		CWT	CARCASE					Doc	Angus Index	Dom	Heavy Grain	Heavy Grass	
	DIR	DTRS	GL	B Wt	200	400	600	MWt	Milk	SS	DC	C Wt	EMA	RIB	RUMP	RBV%	IMF%	Doc.				
EBV	+3.6	+2.6	-6	+4.9	+56	+102	+129	+108	+18	+3.4	-6.5	+68	+5	+4.2	+4.3	-0.4	+0.9	+18	+223	+192	+286	+207
ACC%	51%	40%	68%	71%	69%	67%	66%	64%	55%	72%	32%	57%	54%	56%	57%	49%	60%	36%				

Big rump, plenty of red meat. Top 25% for 600d growth. Top 1 & 2 % for fats. Top 10 % for both days to calving and scrotal. Plenty of boxes being ticked here.

Purchaser..... Price.....

66 HAZELDEAN S1916 (APR) AMFU NHFU CAFU DD50% Born: **28/09/2021**
 Society Id: **NH221S1916**

HAZELDEAN JAIPUR J140 HAZELDEAN GUARDIAN G553
 HAZELDEAN MAGNUM M586 HAZELDEAN KLEIN K609
 HAZELDEAN H356 HAZELDEAN G469
Sire: HAZELDEAN Q416 **Dam: HAZELDEAN M1041**
 HAZELDEAN EDGELEY E493 (APR) ARDROSSAN EQUATOR A241
 HAZELDEAN G936 HAZELDEAN G199
 HAZELDEAN A657 HAZELDEAN NEW DESIGN X11

Front	Rear	Front	Rear	Front	Rear	MUSCLE	TEMP.	SHEATH
7	6	7	6	5	6	C+	2	4

Structural EBV's			
TACE	ANGLE	CLAW	LEGS
	+1.3	+0.92	1.26
ACC%	57%	56%	54%

TRANSTASMAN ANGUS CATTLE EVALUATION - MARCH 2023																						
TACE	CALVING EASE				GROWTH & MATERNAL				FERTILITY		CWT	CARCASE					Doc	Angus Index	Dom	Heavy Grain	Heavy Grass	
	DIR	DTRS	GL	B Wt	200	400	600	MWt	Milk	SS	DC	C Wt	EMA	RIB	RUMP	RBV%	IMF%	Doc.				
EBV	+6.1	+5.4	-10	+5.3	+56	+95	+129	+102	+15	+4.2	-6	+87	+2.5	+0.7	+0.7	+0.1	+0.6	+30	+211	+178	+263	+199
ACC%	51%	40%	69%	69%	70%	68%	68%	65%	58%	69%	34%	59%	57%	59%	60%	52%	63%	40%				

Well rounded, athletic type with plenty of scope. Top 3% scrotal size and top 2% gestation length.

Purchaser..... Price.....

67 HAZELDEAN S2017 (UNREG) (AI)(ET) AMFU NHFU CAFU DDFU Born: **3/08/2021**
 Society Id: **NH221S2017**

G A R PROGRESS HAZELDEAN JAIPUR J140
 G A R MOMENTUM USA17354145 HAZELDEAN MAGNUM M586
 G A R BIG EYE 1770 HAZELDEAN H356
Sire: LAWSONS MOMENTOUS M518 **Dam: HAZELDEAN P1242**
 TE MANIA AFRICA A217 RENNYLEA EDMUND E11
 LAWSONS AFRICA H229 VLYH229 HAZELDEAN K412
 LAWSONS ROCKND AMBUSH E1103 HAZELDEAN H854

Front	Rear	Front	Rear	Front	Rear	MUSCLE	TEMP.	SHEATH
6	5	5	5	4	5	C+	2	4

Structural EBV's			
TACE	ANGLE	CLAW	LEGS
	-	-	0.96
ACC%	-	-	66%

TRANSTASMAN ANGUS CATTLE EVALUATION - MARCH 2023																						
TACE	CALVING EASE				GROWTH & MATERNAL				FERTILITY		CWT	CARCASE					Doc	Angus Index	Dom	Heavy Grain	Heavy Grass	
	DIR	DTRS	GL	B Wt	200	400	600	MWt	Milk	SS	DC	C Wt	EMA	RIB	RUMP	RBV%	IMF%	Doc.				
EBV	+3.6	+2.9	-7.4	+4.1	+48	+96	+123	+111	+19	+0.3	-6.1	+66	+11.1	+1.3	+1.4	+0.4	+3.4	+38	+236	+195	+312	+222
ACC%	65%	55%	73%	75%	75%	73%	73%	72%	66%	71%	45%	67%	66%	67%	68%	62%	70%	58%				

Good type with some great production traits, just what we can expect from Momentous. Top 8% for EMA and top 19% for IMF. Better than breed average for growth and calving ease. Suitable for heifers.

Purchaser..... Price.....

Top 5% **Top 10%** **Top 30%**
 Ranking in Angus Aust. March 2023

Proven Genetic Performance

www.hazeldean.com.au

Autumn Sale 2023



Sale Bulls

68 HAZELDEAN S2058 (APR) Born: 4/08/2021
 (AI)(ET) AMFU NHFU CAFU DDFU Society Id: NHZ21S2058

G A R PROGRESS BT RIGHT TIME 24J
 G A R MOMENTUM USA17354145 RENNYLEA NORF42
 G A R BIG EYE 1770 RENNYLEA B36
Sire: LAWSONS MOMENTOUS M518 **Dam: HAZELDEAN J644**
 TE MANIA AFRICA A217 TE MANIA BERKLEY B1
 LAWSONS AFRICA H229 VLYH229 HAZELDEAN F386
 LAWSONS ROCKND AMBUSH E1103 HAZELDEAN Y1053

Front	Rear	Front	Rear	Front	Rear	MUSCLE	TEMP.	SHEATH
6	5	6	6	5	5	C+	2	4

Structural EBV's			
TACE	ANGLE	CLAW	LEGS
	+1	+0.64	1.1
ACC%	71%	70%	69%

TRANSTASMAN ANGUS CATTLE EVALUATION - MARCH 2023																						
TACE	CALVING EASE				GROWTH & MATERNAL				FERTILITY		CWT	CARCASE					Doc	Angus Index	Dom	Heavy Grain	Heavy Grass	
	DIR	DTRS	GL	B Wt	200	400	600	MWt	Milk	SS	DC	C Wt	EMA	RIB	RUMP	RBV%	IMF%	Doc.				
EBV	-3.8	+0.3	-4	+4.7	+43	+78	+102	+82	+19	+3.2	-5.9	+44	+8.9	+2.9	+2.9	+0.4	+3.1	+16	+198	+158	+261	+185
ACC%	66%	56%	74%	76%	76%	75%	75%	73%	68%	77%	46%	68%	66%	67%	67%	62%	69%	63%				

Well rounded, great carcase traits and he looks like a real red meat machine in the flesh. Great fertility traits too. Suitable for heifers.

Purchaser..... Price.....

69 HAZELDEAN S1478 (APR) Born: 20/08/2021
 AMFU NHFU CAFU DDFU Society Id: NHZ21S1478

RENNYLEA EDMUND E11 BT RIGHT TIME 24J
 HAZELDEAN KATZEN K416 RENNYLEA NORF42
 HAZELDEAN H342 RENNYLEA B36
Sire: HAZELDEAN P242 **Dam: HAZELDEAN J984**
 HAZELDEAN KGB K489 HAZELDEAN BOOMTIME D158
 HAZELDEAN M351 HAZELDEAN F548
 HAZELDEAN K130 HAZELDEAN Y1526

Front	Rear	Front	Rear	Front	Rear	MUSCLE	TEMP.	SHEATH
6	6	6	6	5	6	C+	1	4

Structural EBV's			
TACE	ANGLE	CLAW	LEGS
	+0.96	+0.94	1.08
ACC%	64%	64%	60%

TRANSTASMAN ANGUS CATTLE EVALUATION - MARCH 2023																						
TACE	CALVING EASE				GROWTH & MATERNAL				FERTILITY		CWT	CARCASE					Doc	Angus Index	Dom	Heavy Grain	Heavy Grass	
	DIR	DTRS	GL	B Wt	200	400	600	MWt	Milk	SS	DC	C Wt	EMA	RIB	RUMP	RBV%	IMF%	Doc.				
EBV	-4.8	+3.3	-3.5	+4.5	+55	+96	+128	+91	+26	+2.8	-5	+81	+5.1	+1.7	+2.5	0	+1	+18	+198	+159	+262	+181
ACC%	55%	43%	71%	74%	71%	71%	69%	67%	60%	73%	35%	60%	56%	58%	59%	51%	61%	44%				

Just what to expect in the hot young sire of HAZ P242. Softness, the whole package. Top 4% Milk, good fats and growth. Suitable for heifers.

Purchaser..... Price.....

70 HAZELDEAN S1079 (APR) Born: 4/08/2021
 AMFU NHFU CAFU DDFU Society Id: NHZ21S1079

ARDROSSAN EQUATOR A241 B/R NEW DAY 454
 HAZELDEAN JAIPUR J140 V A R RESERVE 1111
 HAZELDEAN C33 SANDPOINT BLACKBIRD 8809
Sire: HAZELDEAN Q1128 **Dam: HAZELDEAN K1007**
 G A R PROPHET TE MANIA BERKLEY B1
 HAZELDEAN J115 HAZELDEAN F553
 HAZELDEAN A243 HAZELDEAN A792

Front	Rear	Front	Rear	Front	Rear	MUSCLE	TEMP.	SHEATH
6	6	6	6	5	5	C+	1	4

Structural EBV's			
TACE	ANGLE	CLAW	LEGS
	+0.62	+0.54	0.94
ACC%	66%	66%	63%

TRANSTASMAN ANGUS CATTLE EVALUATION - MARCH 2023																						
TACE	CALVING EASE				GROWTH & MATERNAL				FERTILITY		CWT	CARCASE					Doc	Angus Index	Dom	Heavy Grain	Heavy Grass	
	DIR	DTRS	GL	B Wt	200	400	600	MWt	Milk	SS	DC	C Wt	EMA	RIB	RUMP	RBV%	IMF%	Doc.				
EBV	+7.4	+8.1	-3.2	+3.3	+49	+87	+120	+106	+21	+3.6	-4	+70	+8.9	+1	-0.2	+0.3	+2.9	+26	+202	+156	+268	+189
ACC%	55%	45%	67%	73%	71%	70%	69%	67%	60%	73%	40%	60%	58%	60%	60%	54%	63%	46%				

Great structure, it's great to see the mature cow weight EBV lower than the 600d. Top 1% for foot angle and top 8% for scrotal size. Suitable for heifers.

Purchaser..... Price.....

Top 5% **Top 10%** **Top 30%**
 Ranking in Angus Aust. March 2023

Proven Genetic Performance

Autumn Sale 2023



Sale Bulls

71 HAZELDEAN S106 AMFU NHFU CAFU DDFU Born: **8/07/2021**
Society Id: **NHZ21S106**

G A R INGENUITY CARABAR DOCKLANDS D62
H P C A INTENSITY HAZELDEAN K61
G A R PREDESTINED 287L HAZELDEAN H12
Sire: **RENNYLEA NORL519** Dam: **HAZELDEAN M328**
TE MANIA BERKLEY B1 RENNYLEA EDMUND E11
RENNYLEA H414 HAZELDEAN K59
RENNYLEA C310 HAZELDEAN H137

Front	Rear	Front	Rear	Front	Rear	MUSCLE	TEMP.	SHEATH
7	6	7	6	5	5	C+	1	5

Structural EBV's			
TACE	ANGLE	CLAW	LEGS
	-	-	0.8
ACC%	-	-	70%

TRANSTASMAN ANGUS CATTLE EVALUATION - MARCH 2023																							
TACE	CALVING EASE				GROWTH & MATERNAL				FERTILITY		CWT	CARCASE					Doc	Angus Index	Dom	Heavy Grain	Heavy Grass		
	DIR	DTRS	GL	B Wt	200	400	600	MWt	Milk	SS	DC	C Wt	EMA	RIB	RUMP	RBV%	IMF%	Doc.					
EBV	+6.4	+0.1	-12.5	+4.1	+56	+109	+140	+135	+14	+0.8	-7.3	+92	+3	+0.9	-0.4	-0.8	+4.7	+27	+237	+197	+314	+223	
ACC%	62%	53%	82%	74%	73%	71%	72%	70%	65%	74%	46%	64%	63%	65%	65%	59%	66%	58%					

Power & punch, a bigger frame type. Top 1% for gestation length and top 8% for 400d growth. Top 5% for IMF. Great indexes. Suitable for heifers.

Purchaser..... Price.....

72 HAZELDEAN S287 (APR) (AI) AMFU NHFU CAFU DD50% Born: **12/07/2021**
Society Id: **NHZ21S287**

G A R PROPHET LAWSONS INVINCIBLE C402
TE MANIA LONGSHOT L107 HAZELDEAN GAIUS G57
TE MANIA BARUNAH J1125 HAZELDEAN E77
Sire: **MURRAY LONGSHOT NURP92** Dam: **HAZELDEAN K903**
MURRAY POWER TOOL K22 SITZ NEW DESIGN 458N
MURRAY M POWERTOOL M81 HAZELDEAN E621
MURRAY REGENT K31 HAZELDEAN V907

Front	Rear	Front	Rear	Front	Rear	MUSCLE	TEMP.	SHEATH
7	5	6	6	5	6	C	2	5

Structural EBV's			
TACE	ANGLE	CLAW	LEGS
	-	-	0.98
ACC%	-	-	57%

TRANSTASMAN ANGUS CATTLE EVALUATION - MARCH 2023																							
TACE	CALVING EASE				GROWTH & MATERNAL				FERTILITY		CWT	CARCASE					Doc	Angus Index	Dom	Heavy Grain	Heavy Grass		
	DIR	DTRS	GL	B Wt	200	400	600	MWt	Milk	SS	DC	C Wt	EMA	RIB	RUMP	RBV%	IMF%	Doc.					
EBV	+5.4	+3.9	-3.5	+2.1	+47	+84	+113	+98	+17	+0.6	-4.3	+59	+9	+1	+1.8	+0.1	+3.9	+21	+216	+165	+297	+200	
ACC%	55%	43%	84%	74%	72%	71%	71%	68%	60%	75%	35%	61%	58%	60%	60%	53%	63%	42%					

Carcase bull on paper & in type, thickness with a good EMA EBV. Top 13% for birth weight and IMF. Suitable for heifers.

Purchaser..... Price.....

73 HAZELDEAN S326 (APR) (AI) AMFU NHFU CAFU DDFU Born: **13/07/2021**
Society Id: **NHZ21S326**

ARDROSSAN EQUATOR A241 LAWSONS TANK X1235(AI) VLYX1235
HAZELDEAN JAIPUR J140 LAWSONS TANK VLY B1155
HAZELDEAN C33 LAWSONS NEW DESIGN 1407 Z1393
Sire: **HAZELDEAN M182** Dam: **HAZELDEAN J752**
HAZELDEAN GUARDIAN G553 TC TOTAL 410
HAZELDEAN K807 HAZELDEAN G301
HAZELDEAN G568 HAZELDEAN A501

Front	Rear	Front	Rear	Front	Rear	MUSCLE	TEMP.	SHEATH
6	6	6	6	5	5	B-	1	3

Structural EBV's			
TACE	ANGLE	CLAW	LEGS
	+0.7	+0.56	0.92
ACC%	70%	70%	66%

TRANSTASMAN ANGUS CATTLE EVALUATION - MARCH 2023																							
TACE	CALVING EASE				GROWTH & MATERNAL				FERTILITY		CWT	CARCASE					Doc	Angus Index	Dom	Heavy Grain	Heavy Grass		
	DIR	DTRS	GL	B Wt	200	400	600	MWt	Milk	SS	DC	C Wt	EMA	RIB	RUMP	RBV%	IMF%	Doc.					
EBV	+4.2	+5.4	-4.3	+2.3	+46	+95	+125	+92	+24	+3	-4	+80	+7.9	-1.6	-3	+1	+2.7	+45	+209	+173	+269	+196	
ACC%	58%	47%	83%	74%	73%	72%	72%	69%	61%	74%	40%	62%	61%	63%	63%	57%	64%	57%					

Very correct, deep, capacious overall type. Great birth to growth spread. Top 1% for docility, top 6% for milk and top 5% for foot angle EBV. Hitting lots of good areas here. Suitable for heifers. Note: a little white on pizzle.

Purchaser..... Price.....

Top 5% **Top 10%** **Top 30%**

Ranking in Angus Aust. March 2023

Proven Genetic Performance

www.hazeldean.com.au

Autumn Sale 2023



Sale Bulls

74 HAZELDEAN S430 (APR) AMFU NHFU CAFU DDFU Born: 16/07/2021 Society Id: NHZ21S430

RENNYLEA EDMUND E11
HAZELDEAN KATZEN K416
HAZELDEAN H342
Sire: HAZELDEAN P242
HAZELDEAN KGB K489
HAZELDEAN M351
HAZELDEAN K130

PAPA EQUATOR 2928
ARDROSSAN EQUATOR A241
ARDROSSAN PRINCESS W38
Dam: HAZELDEAN J100
HAZELDEAN BARD B21 (AI)(ET)
HAZELDEAN E79
HAZELDEAN A255

Front	Rear	Front	Rear	Front	Rear	MUSCLE	TEMP.	SHEATH
7	7	6	6	5	5	C+	1	4

Structural EBV's			
TACE	ANGLE	CLAW	LEGS
	+0.88	+0.86	1.08
ACC%	64%	63%	61%

TRANSTASMAN ANGUS CATTLE EVALUATION - MARCH 2023																						
TACE	CALVING EASE				GROWTH & MATERNAL				FERTILITY		CWT	CARCASE					Doc	Angus Index	Dom	Heavy Grain	Heavy Grass	
	DIR	DTRS	GL	B Wt	200	400	600	MWt	Milk	SS	DC	C Wt	EMA	RIB	RUMP	RBV%	IMF%	Doc.				
EBV	+4.4	+7	-8.6	+4.6	+62	+111	+147	+142	+18	+2.2	-5.6	+92	+5.1	-1.7	-3.3	+1	+1.1	+29	+224	+193	+281	+209
ACC%	56%	45%	71%	74%	72%	71%	70%	68%	60%	74%	39%	61%	58%	60%	61%	54%	63%	45%				

Impressive all round commercial bull. Not many weaknesses in the paper work and pretty easy to look at. Top 6% for 400d and 600d. Top 3% for carcass weight and real red meat machine. Suitable for heifers.

Purchaser..... Price.....

75 HAZELDEAN S443 (HBR) (AI) AMFU NHFU CAFU DDFU Born: 16/07/2021 Society Id: NHZ21S443

C R A BEXTOR 872 5205 608
G A R PROPHET
G A R OBJECTIVE 1885
Sire: BALDRIDGE BEAST MODE B074
STYLES UPGRADE J59
BALDRIDGE ISABEL Y69
BALDRIDGE ISABEL T935

ARDROSSAN EQUATOR A241
HAZELDEAN JAIPUR J140
HAZELDEAN C33
Dam: HAZELDEAN P167
HAZELDEAN HARVEY H14
HAZELDEAN K178
HAZELDEAN G125

Front	Rear	Front	Rear	Front	Rear	MUSCLE	TEMP.	SHEATH
7	5	6	6	5	6	C+	1	5

Structural EBV's			
TACE	ANGLE	CLAW	LEGS
	+0.66	+0.64	0.88
ACC%	71%	71%	68%

TRANSTASMAN ANGUS CATTLE EVALUATION - MARCH 2023																						
TACE	CALVING EASE				GROWTH & MATERNAL				FERTILITY		CWT	CARCASE					Doc	Angus Index	Dom	Heavy Grain	Heavy Grass	
	DIR	DTRS	GL	B Wt	200	400	600	MWt	Milk	SS	DC	C Wt	EMA	RIB	RUMP	RBV%	IMF%	Doc.				
EBV	+4.8	+7	-2	+4.5	+71	+117	+154	+144	+16	+5.4	-4	+88	-0.1	-4.8	-6.8	+0.7	+1.3	+37	+206	+179	+263	+191
ACC%	63%	54%	83%	74%	74%	72%	72%	70%	65%	74%	46%	65%	64%	66%	66%	61%	67%	58%				

Eye catching amongst his peers, he has a big barrel and is in the top 3% for 400d and 600d growth. Suitable for heifers.

Purchaser..... Price.....

76 HAZELDEAN S574 (APR) AMFU NHFU CAFU DDFU Born: 22/07/2021 Society Id: NHZ21S574

ARDROSSAN HONOUR H255
ARDROSSAN MAGISTRATE M101
ARDROSSAN PRINCESS H230
Sire: HAZELDEAN Q11
SYDGEN BLACK PEARL 2006
HAZELDEAN L3
HAZELDEAN J234

WKREPLAY USA1615498
HAZELDEAN FLAIR F493
HAZELDEAN D786
Dam: HAZELDEAN J541
HAZELDEAN ADMIRAL D966
HAZELDEAN F586
HAZELDEAN B1161

Front	Rear	Front	Rear	Front	Rear	MUSCLE	TEMP.	SHEATH
7	6	6	6	5	6	C+	1	3

Structural EBV's			
TACE	ANGLE	CLAW	LEGS
	+0.96	+0.72	1.16
ACC%	65%	65%	61%

TRANSTASMAN ANGUS CATTLE EVALUATION - MARCH 2023																						
TACE	CALVING EASE				GROWTH & MATERNAL				FERTILITY		CWT	CARCASE					Doc	Angus Index	Dom	Heavy Grain	Heavy Grass	
	DIR	DTRS	GL	B Wt	200	400	600	MWt	Milk	SS	DC	C Wt	EMA	RIB	RUMP	RBV%	IMF%	Doc.				
EBV	+2.2	+3.3	-7.9	+3.8	+54	+101	+132	+116	+19	+2	-6.2	+80	+6.4	-1.8	-2.7	+0.1	+3.3	+11	+218	+181	+284	+204
ACC%	53%	41%	68%	72%	70%	68%	69%	67%	59%	72%	33%	60%	58%	60%	60%	52%	63%	43%				

Cracking type and a great balance across the EBV tables. Top 20% for IMF and a good days to calving EBV. Suitable for heifers.

Purchaser..... Price.....

Top 5% **Top 10%** **Top 30%**
Ranking in Angus Aust. March 2023

Proven Genetic Performance

Autumn Sale 2023



Sale Bulls

77 HAZELDEAN S1401 (APR) AMFU NHFU CAFU DDFU Born: 17/08/2021 Society Id: NHZ21S1401

ARDROSSAN HONOUR H255
 ARDROSSAN MAGISTRATE M101
 ARDROSSAN PRINCESS H230
Sire: HAZELDEAN Q589
 HAZELDEAN FLAIR F493
 HAZELDEAN J1218
 HAZELDEAN F135

TE MANIA YORKSHIRE Y437
 TE MANIA BERKLEY B1
 TE MANIA LOWAN Z53
Dam: HAZELDEAN J366
 HAZELDEAN DESTINATION B951
 HAZELDEAN D1076
 HAZELDEAN Z556

Front	Rear	Front	Rear	FE	FW	MUSCLE	TEMP.	SHEATH
7	6	6	6	5	6	C+	1	4

Structural EBV's			
TACE	ANGLE	CLAW	LEGS
	+1.06	+0.92	1.1
ACC%	63%	63%	61%

TRANSTASMAN ANGUS CATTLE EVALUATION - MARCH 2023																						
TACE	CALVING EASE				GROWTH & MATERNAL				FERTILITY		CWT	CARCASE					Doc	Angus Index	Dom	Heavy Grain	Heavy Grass	
	DIR	DTRS	GL	B Wt	200	400	600	MWt	Milk	SS	DC	C Wt	EMA	RIB	RUMP	RBY%	IMF%	Doc.				
EBV	+8.1	+6.8	-3.5	+0.8	+48	+90	+120	+91	+20	+4.6	-6.7	+81	+4	+2.3	+1.6	-0.3	+3.1	+19	+225	+184	+289	+214
ACC%	56%	46%	71%	72%	71%	69%	70%	68%	61%	73%	38%	61%	58%	61%	61%	54%	63%	43%				

Even type with a nice top line. Top 8% for days to calving and rib fat. Very low birth weight to better than breed average for 600d growth. Top 2% for scrotal size. Suitable for heifers.

Purchaser..... Price.....

78 HAZELDEAN S480 (APR) (AI) AMFU NHFU CAFU DDFU Born: 17/07/2021 Society Id: NHZ21S480

POSS TOTAL IMPACT 745
 POSS EASY IMPACT 0119
 POSS ELMARETTA 736
Sire: BALDRIDGE ALTERNATIVE E125
 HOOVER DAM
 BALDRIDGE BLACKBIRD A030
 BALDRIDGE BLACKBIRD X89

ARDROSSAN EQUATOR A241
 HAZELDEAN JAIPUR J140
 HAZELDEAN C33
Dam: HAZELDEAN P385
 RENNYLEA NORF42
 H678
 HAZELDEAN D963

Front	Rear	Front	Rear	FE	FW	MUSCLE	TEMP.	SHEATH
7	6	6	6	4	5	C+	2	4

Structural EBV's			
TACE	ANGLE	CLAW	LEGS
	+1.06	+0.82	1.1
ACC%	71%	71%	66%

TRANSTASMAN ANGUS CATTLE EVALUATION - MARCH 2023																						
TACE	CALVING EASE				GROWTH & MATERNAL				FERTILITY		CWT	CARCASE					Doc	Angus Index	Dom	Heavy Grain	Heavy Grass	
	DIR	DTRS	GL	B Wt	200	400	600	MWt	Milk	SS	DC	C Wt	EMA	RIB	RUMP	RBY%	IMF%	Doc.				
EBV	+2	+7	-3.4	+5.3	+64	+100	+132	+120	+12	+2.7	-4.9	+88	+12.3	-2.8	-5.1	+2.1	+1.5	+37	+246	+207	+314	+229
ACC%	56%	42%	83%	74%	73%	71%	70%	67%	62%	74%	37%	62%	62%	63%	62%	57%	65%	55%				

Well put together, big carcass bull with a massive EMA EBV - leading top 1% for retail beef yield. Top 4% for docility EBV also. Great option for cow joinings.

Purchaser..... Price.....

79 HAZELDEAN S2029 (APR) (AI)(ET) AMFU NHFU CAFU DDFU Born: 11/08/2021 Society Id: NHZ21S2029

C A FUTURE DIRECTION 5321
 BASIN FRANCHISE P142
 BASIN CHLOE 812L
Sire: EF COMPLEMENT 8088
 BR MIDLAND
 EF EVERELDA ENTENSE 6117
 H F EVERELDA ENTENSE 869

C R A BEXTOR 872 5205 608
 G A R PROPHET
 G A R OBJECTIVE 1885
Dam: HAZELDEAN J823
 HAZELDEAN CARDRONA C677
 HAZELDEAN G724

Front	Rear	Front	Rear	FE	FW	MUSCLE	TEMP.	SHEATH
6	6	5	6	5	6	C+	1	5

Structural EBV's			
TACE	ANGLE	CLAW	LEGS
	+1.08	+0.74	0.92
ACC%	73%	74%	70%

TRANSTASMAN ANGUS CATTLE EVALUATION - MARCH 2023																						
TACE	CALVING EASE				GROWTH & MATERNAL				FERTILITY		CWT	CARCASE					Doc	Angus Index	Dom	Heavy Grain	Heavy Grass	
	DIR	DTRS	GL	B Wt	200	400	600	MWt	Milk	SS	DC	C Wt	EMA	RIB	RUMP	RBY%	IMF%	Doc.				
EBV	+1.2	+6.3	-1.9	+4.1	+53	+93	+129	+89	+19	+1.5	-5.2	+72	+2.1	+2.3	+2.8	-1	+4.2	+20	+226	+171	+307	+213
ACC%	68%	62%	74%	77%	77%	76%	76%	74%	68%	77%	55%	69%	68%	69%	69%	65%	70%	66%				

Easy doing type nice feet and overall structure. Great fats and top 9% for IMF. Out of a very special donor cow at Hazeldean - J823.

Purchaser..... Price.....

Top 5% **Top 10%** **Top 30%**
 Ranking in Angus Aust. March 2023

Proven Genetic Performance

www.hazeldean.com.au

Autumn Sale 2023



Sale Bulls

80 HAZELDEAN S2051 (APR) (AI)(ET) AMFU NHFU CAFU DDFU Born: 5/08/2021 Society Id: NHZ21S2051

C R A BEXTOR 872 5205 608
G A R PROPHET
G A R OBJECTIVE 1885
Sire: **TE MANIA KIRBY K138**
TE MANIA FORGO F893
PEDIGREE ONLY
TE MANIA BEEAC F709

TE MANIA BERKLEY B1
HAZELDEAN F1023
HAZELDEAN B723
Dam: **HAZELDEAN P747**
G A R PROPHET
HAZELDEAN J503
HAZELDEAN C1026

Front	Rear	Front	Rear	Front	Rear	MUSCLE	TEMP.	SHEATH
7	6	6	6	5	5	C	2	5

Structural EBV's			
TACE	ANGLE	CLAW	LEGS
	+0.94	+0.84	1.08
ACC%	70%	70%	68%

TRANSTASMAN ANGUS CATTLE EVALUATION - MARCH 2023																						
TACE	CALVING EASE				GROWTH & MATERNAL				FERTILITY		CWT	CARCASE					Doc	Angus Index	Dom	Heavy Grain	Heavy Grass	
	DIR	DTRS	GL	B Wt	200	400	600	MWt	Milk	SS	DC	C Wt	EMA	RIB	RUMP	RBV%	IMF%	Doc.				
EBV	+4.4	+6	-1.8	+2.7	+41	+81	+104	+80	+18	+0.4	-6.8	+58	+2	+1.5	+1.7	-1.3	+6.9	+15	+224	+174	+311	+212
ACC%	63%	53%	74%	75%	75%	73%	73%	71%	67%	73%	48%	67%	67%	67%	68%	63%	70%	60%				

Pretty special bull by Te Mania Kirby; one of best IMF bulls in the industry at the moment. Well and truly in the top 1% of the breed for IMF !! One not to miss. Suitable for heifers. Note: a little white at the base of testes.

Purchaser..... Price.....

81 HAZELDEAN S245 (APR) (AI) AMFU NHFU CAFU DDFU Born: 11/07/2021 Society Id: NHZ21S245

C R A BEXTOR 872 5205 608
G A R PROPHET
G A R OBJECTIVE 1885
Sire: **BALDRIDGE BEAST MODE B074**
STYLES UPGRADE J59
BALDRIDGE ISABEL Y69
BALDRIDGE ISABEL T935

TUWHARETOA REGENT D145
MILWILLAH GATSBY G279
MILWILLAH LOWAN D112
Dam: **HAZELDEAN K1031**
HAZELDEAN BOOMTIME D790
HAZELDEAN F381
HAZELDEAN A831

Front	Rear	Front	Rear	Front	Rear	MUSCLE	TEMP.	SHEATH
7	6	6	6	5	5	C+	1	5

Structural EBV's			
TACE	ANGLE	CLAW	LEGS
	+0.68	+0.58	0.96
ACC%	72%	72%	69%

TRANSTASMAN ANGUS CATTLE EVALUATION - MARCH 2023																						
TACE	CALVING EASE				GROWTH & MATERNAL				FERTILITY		CWT	CARCASE					Doc	Angus Index	Dom	Heavy Grain	Heavy Grass	
	DIR	DTRS	GL	B Wt	200	400	600	MWt	Milk	SS	DC	C Wt	EMA	RIB	RUMP	RBV%	IMF%	Doc.				
EBV	+4.3	-1.3	-4.3	+3.1	+51	+82	+103	+78	+18	+2.8	-4.9	+57	+4.6	-0.8	-0.7	+0.3	+3.8	+8	+215	+173	+293	+196
ACC%	66%	57%	83%	75%	74%	73%	73%	71%	68%	74%	46%	66%	64%	66%	66%	61%	67%	60%				

Carcase bull with exceptional structural EBVs. Out of a proven cow which has produced 7 calves on back to back.

Purchaser..... Price.....

82 HAZELDEAN S344 (APR) (AI) AMFU NHFU CAFU DDFU Born: 13/07/2021 Society Id: NHZ21S344

G A R PROPHET
BALDRIDGE BEAST MODE B074
BALDRIDGE ISABEL Y69
Sire: **HAZELDEAN P16**
LAWSONS INVINCIBLE C402
HAZELDEAN G90
HAZELDEAN B4

SITZ UPWARD 307R
KROUPALS B&B IDENTITY
B&B ERICA 605
Dam: **HAZELDEAN P291**
MATAURI REALITY 839
HAZELDEAN K775
HAZELDEAN D986

Front	Rear	Front	Rear	Front	Rear	MUSCLE	TEMP.	SHEATH
6	6	6	6	5	5	C+	1	4

Structural EBV's			
TACE	ANGLE	CLAW	LEGS
	+0.7	+0.78	0.94
ACC%	67%	67%	63%

TRANSTASMAN ANGUS CATTLE EVALUATION - MARCH 2023																						
TACE	CALVING EASE				GROWTH & MATERNAL				FERTILITY		CWT	CARCASE					Doc	Angus Index	Dom	Heavy Grain	Heavy Grass	
	DIR	DTRS	GL	B Wt	200	400	600	MWt	Milk	SS	DC	C Wt	EMA	RIB	RUMP	RBV%	IMF%	Doc.				
EBV	+3	+3.2	-5.4	+2.7	+56	+97	+128	+102	+10	+3	-2.6	+69	+5.1	-0.2	-0.6	-0.3	+3.1	+24	+197	+154	+270	+180
ACC%	56%	45%	83%	74%	72%	71%	70%	67%	59%	74%	37%	60%	58%	61%	61%	55%	62%	47%				

Overall type with real softness. Signs of the many Hazeldean P16 sons we will be selling this year. Suitable for heifers.

Purchaser..... Price.....

Top 5% **Top 10%** **Top 30%**
Ranking in Angus Aust. March 2023

Autumn Sale 2023



Sale Bulls

83 HAZELDEAN S692 (APR) Born: 26/07/2021
 AMFU NHFU CAFU DDFU Society Id: NHZ21S692

RENNYLEA EDMUND E11
 HAZELDEAN KATZEN K416
 HAZELDEAN H342
 Sire: HAZELDEAN P242
 HAZELDEAN KGB K489
 HAZELDEAN M351
 HAZELDEAN K130

TE MANIA YORKSHIRE Y437
 TE MANIA BERKLEY B1
 TE MANIA LOWAN Z53
 Dam: HAZELDEAN J91
 L T 598 BANDO 9074
 HAZELDEAN D228
 HAZELDEAN X126

Front	Rear	Front	Rear	Front	Rear	MUSCLE	TEMP.	SHEATH
7	6	7	7	5	5	C+	1	5

Structural EBV's			
TACE	ANGLE	CLAW	LEGS
	+1.08	+0.9	1.1
ACC%	63%	61%	60%

TRANSTASMAN ANGUS CATTLE EVALUATION - MARCH 2023																						
TACE	CALVING EASE				GROWTH & MATERNAL				FERTILITY		CWT	CARCASE					Doc	Angus Index	Dom	Heavy Grain	Heavy Grass	
	DIR	DTRS	GL	B Wt	200	400	600	MWt	Milk	SS	DC	C Wt	EMA	RIB	RUMP	RBV%	IMF%	Doc.				
EBV	+11.1	+10.2	-10.7	-1.4	+42	+73	+87	+55	+21	+3.6	-9.5	+54	+6.5	+4.8	+4.3	-0.4	+2.9	+13	+249	+212	+321	+235
ACC%	56%	46%	72%	74%	72%	72%	71%	69%	61%	75%	40%	62%	59%	61%	62%	55%	64%	46%				

Tidy heifer type, modern carcass bull with a low mature cow weight if you are looking to moderate females. Top 1% for days to calving, calving ease direct, calving ease daughters gestation length, birth weight and rib fat.

Purchaser..... Price.....



Top 5% **Top 10%** **Top 30%**

Ranking in Angus Aust. March 2023

Proven Genetic Performance

www.hazeldean.com.au

Hazeldean Semen Terms & Conditions

Hazeldean retains semen rights on all bulls unless otherwise agreed upon.

- 1 The buyer may use bulls only:
 - To naturally service stock owned by the buyer, or
 - To collect semen for use in stock owned by the buyerAnd will not dispose of, or advertise the disposal of semen or semen rights from any bull to any other party.
- 2 Hazeldean retains the right to collect and market semen from any bull sold either at the buyer's premises or by transporting the bulls to a registered artificial insemination facility on the basis:
 - That Hazeldean will consult with the buyer and ensure that such collection of semen by Hazeldean will take place at a time which will not unreasonably interfere with the use of the bull/s by the buyer
 - Hazeldean will pay all costs of such collection: and
 - Hazeldean will indemnify the buyer in respect of any injury or damage to such bull during the collection process or while the bull is in Hazeldean's possession.
- 3 The semen rights terms bind any successor in title to the buyer, and any person in possession of bulls purchased from Hazeldean.
- 4 The buyer will not dispose of or part with possession of any bull the subject of the semen rights terms unless the party to whom disposal is to be made or to whom possession is to be given first, signs a document accepting the semen terms accrue for the benefit of Hazeldean, and Hazeldean can enforce the semen rights terms.
- 5 The buyer acknowledges:
 - That the physical transfer of bulls from Hazeldean to the buyer is an act that accepts the semen rights terms;
 - That the bulls subject to the semen rights terms are adequately described in the documents of sale, which includes any sale or auction information;
 - That Hazeldean may register the interest created by the semen rights terms pursuant to the Personal Property Securities Act 2009 of the Commonwealth;
 - That Hazeldean may take possession of the bull dealt with in any way that contravenes the semen rights terms;
 - That the buyer, and any successor in title to the buyer and any person to whom the buyer passes possession of the bull will be liable jointly and individually for the reasonable expenses of Hazeldean under the semen rights terms, any reasonable expenses in enforcing those terms.





Directions to Hazeldean from Cooma

If you are entering Cooma from the Canberra (Eastern) end turn left at the first roundabout in the centre of town by the park. If entering from the Jindabyne (Western) it will be a right turn at the second roundabout. Follow this street, Bombala St, (also the Snowy Mountains Highway to Bega and the South Coast) until you reach a bridge over the Cooma Creek on the outskirts of town. Turn right just before the bridge. The sign says Bobundara 34 and also Church Rd.

Follow this road exactly 14kms from the turn and the Hazeldean mailbox and entrance is on the right - about 1 km past the only bridge you cross on the Bobundara Rd.

Airports

Hazeldean is located 1.5 hours' drive south of Canberra near Cooma. There are daily flights from all Capital cities to Canberra airport. Hazeldean is 20 minutes from the Snowy Mountains/Cooma Airport which is all weather and has lights. For privately chartered aircraft please contact 02 6452 5999 for more details.



Where to stay

Nebula Motel
42 Bombala Street
02 4552 4133

Altair Motel
192 Sharp Street
02 6452 1211

White Manor Motel
252 Sharp Street
02 6452 1152

When booking mention you are coming for the Hazeldean sale and they will give you a great deal.

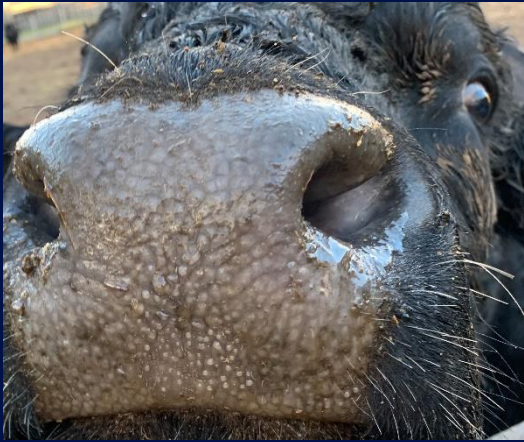


HAZELDEAN
LITCHFIELD
EST 1865





HAZELDEAN
LITCHFIELD
EST 1865





HAZELDEAN
LITCHFIELD
EST 1865

Ed Bradley
0412 298 546

Bea Litchfield
0427 933 103

Jim Litchfield
0417 676 561

Hazeldean Office 02 6453 5555
admin@hazeldean.com.au

www.hazeldean.com.au