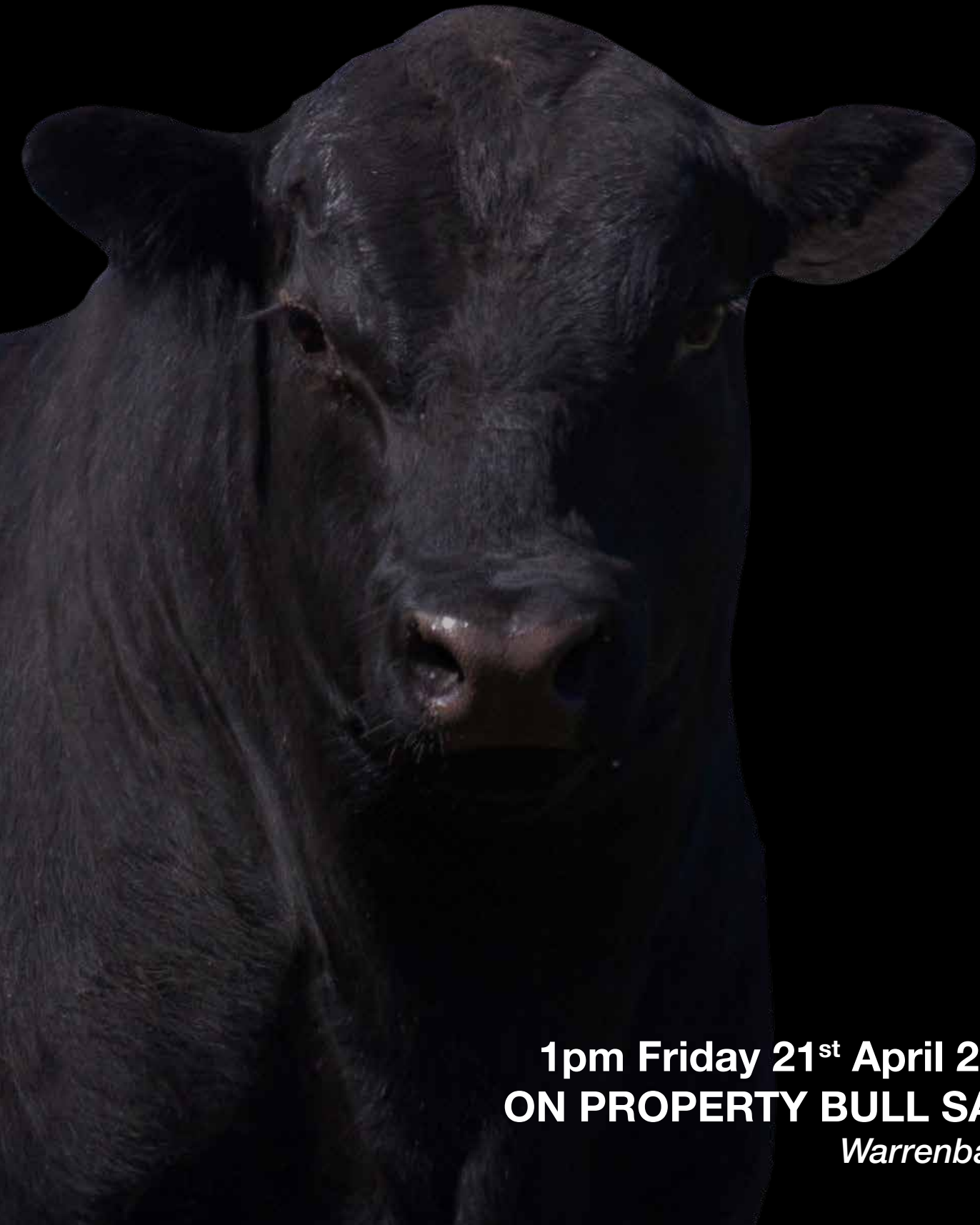


PRIME ANGUS

Bred to Perform



1pm Friday 21st April 2023
ON PROPERTY BULL SALE
Warrenbayne



Welcome to the 2023 Prime Angus Autumn Bull Sale.

We would like to Welcome you all to join us at “Glenwellyn” for the “Prime Angus 2023 Autumn Bull Sale”. All the Sale Bulls will be on display and we hope to also have the Females for the “Prime Angus Complete Dispersal Stage 2” on display.

2022/23 has been a year of extremes, having had one of the wettest and cool Winter and Springs and now followed by a very dry Summer. The cattle struggled through the wet but have recovered and are in good condition having extra supplementary feeding.

We at Prime Angus are very proud of this team of bulls, believing that they are the best bulls we have presented. There is a choice of 18-month-old bulls, with sires like – Beast Mode, Rennylea K447 and Granite Ridge Pay Weight and Punisher, and a powerful Byergo Black Magic son.

The Yearlings are well grown and brimming with potential, sporting such sires as Sterling Pacific – the first sons to sell in Australia – they are standouts, being thick and well structured. E G Eyes Onyou, the first sons to sell in Australia- they are powerful with amazing growth. Millah Murrah Quixote Q96, a bull that has a useful pedigree diversity, being sound with balanced EBV'S. Te Mania Qorinth - the IMF specialist, sporting a +7.5 IMF in a package that has great phenotype and soundness. G A R Ashland and more. There is something for everyone, with structure and growth foremost but also some more moderate sons to mate your heifers. We will not mention specific Lots as It is important that you like the bull you purchase as he will be in your paddock for a long time.

You can buy with confidence, as all bulls are Sire Verified (SV), with many Parent Verified (PV). All bulls have been vaccinated (7 in 1, Pestigard and Vibrax), they are ear-notch tested free of pestivirus, semen tested, their scanning and genomics are included in their EBV's. All bulls are free from the known genetic defects by testing (AMF, NHF, CAF, DDF) or pedigree (AMFU, NHFU, CAFU, DDFU).

The whole Prime herd is JBas 8, having all been faeces tested Johnes free in June 2021, making Prime cattle able to be sold Australia wide.

‘Prime Cattle are ‘Bred to Perform’

Prime Angus - Bred to Perform



**Prime Angus
2023 Autumn Bull Sale**

50

Comprising 18 Month old bulls and Yearlings

**Friday 21st April 2023
at 1PM On-Property**

Sale will also be interfaced with AuctionsPlus

1174 Benalla Warrenbayne Rd
WARRENBAYNE VIC 3670

Contact Details:

Colin Flanagan: 0408 848 864

Pat Ebert: 0438 880 653

Email: pat.ebert@outlook.com

Website: www.primeangusstud.com.au



James Brown - 0419 333 295

Michael Glasser - 0403 526 702

Chloe Janic - 0477 949 627

David Benson - 0428 275 504



Catalogue created by Fiona Hanks

Prime Angus - Bred to Perform

PAYMENTS, REBATES & DISCOUNTS

4%
Rebate

We are pleased to offer a 4% rebate to all agents who attend with or on behalf of their clients and settle within seven (7) days. All Introductions to be made to Colin Flanagan Email Pat.ebert@outlook.com

2%
Rebate

A 2% rebate is offered to all other agents who introduce their client in writing 24 hours before the sale and settle within seven (7) days

FREE
Delivery

Prime Angus will deliver Bulls to major centres or on farm up to 200km radius.



Lot 13 - PRIME QUIXOTE T13^{PV}

Prime Angus - Bred to Perform



1. Prime Angus is LPA Accredited and J BAS 8

Last faeces sample test June 2021

Prime Cattle are accepted in all Australian states – including WA.

2. All bulls have been DNA sire verified and a number have been parent verified (Sire and Dam).

Prime is working towards all animals being Parent Verified.



3. Recessive Genetic Conditions

All Sale bulls are free from genetic defects, AM, NH, CA, & DD either by pedigree or by testing.

4. DNA Genomics

Prime Bulls have been DNA Tested for Genomic Markers which have been incorporated into their Angus EBV's.

5. Breeding Soundness

Prime Angus bulls have undergone a thorough examination by Nationwide AB, including a physical examination and semen testing on 24th March 2023.

6. Scanning

Bulls were scanned by Max Bowman Livestock (Accreditation No. 1026) March 27, 2023.

7. Pestivirus

Prime bulls have been ear notched and tested free of Pestivirus.

8. Animal Health

Bulls have been 7 in 1 vaccinated

Bulls have been Vibrax Vaccinated

Bulls have been Pestigard Vaccinated

Bulls have been treated with Cydectin Platinum Pour on

Bulls have been treated with Panacure 25 Oral Drench

Bulls have been treated with Multimin

Warranty

All bulls have been independently evaluated for structural soundness and fertility. To the best of our knowledge the bulls are all in sound working order at the time of sale.

If in the next 12 months, a bull becomes infertile or breaks down, provided it is not caused by injury or disease contracted after leaving Prime. (a veterinary certificate may be required)

We will –

a) Replace the bull with a suitable match (excluding any costs and expenditure of the purchaser taking delivery), or

b) Grant a credit (less any salvage value) to be used at Primes next bull sale.

Prime Angus - Bred to Perform

Sale Date & Prior Inspection Time

Selling will commence at 1 PM on Friday 21st April 2023. All Sale Lots can be inspected on the morning of the sale from 10am or at any other time by arrangement with Colin Flanagan – 0408 848 864.

Phone Bidding

Phone Bidding can be arranged prior to the sale by contacting James Brown 0419 333 295 or Colin Flanagan – 0408 848 864.

Selling System

Bull Sale will be conducted by Video, under normal Auction conditions, interfaced with AuctionsPlus. All bulls will be sold exclusive of GST. Each bull will be sold as a separate Lot.

Delivery

Prime Angus offers free delivery for bulls within 200km radius. Arrangements must be made on sale day by filling in the Buyer's Instruction sheet in the catalogue and handing it to an Agent and will be arranged at the carriers convenience.

Insurance

All cattle are at the risk of the buyer from the completion of the bidding at the sale. Please see one of GTSM staff to organise any insurance requirements.

Registration

All bulls are HBR Registered with Angus Australia. Prime Angus will transfer each bull to the new owner, so please supply the correct information on the buyers instruction sheet.

Caring for your New Bull

On arrival at their new home it is important that you have a suitable group of animals to greet the bull, this minimises stress. Remember they are leaving the security of a large mob and will be arriving in unfamiliar surroundings. Steers or pregnant cows would be suitable, certainly not other bulls.

The bulls are in good working condition at point of sale, but good nutrition for the bull during mating is imperative and will equate to good joining results. Check bulls regularly to detect any problems early, therefore minimising damage to the bull and to conception rates. It is important to continue to look after your bull after mating, as yearlings they still have a lot of growing to do.

Catering

Refreshments are available on Sale day with the compliments of Prime Angus. This includes a barbecue lunch.

Accommodation

Benalla, Mansfield and Wangaratta all have numerous options for accommodation within easy driving.

Health & Safety of Visitors

Our bulls are bred to work so they need to be shown respect.

Under normal circumstances they are quiet to handle, however even the quietest bull is in fact an unpredictable animal so be alert.

Do not crowd the bulls or loiter inside the pens unnecessarily.

Please call on an escort through the bulls if required.

VISITORS ENTER THE CATTLE PENS AT THEIR OWN RISK

NO CHILDREN ALLOWED IN PENS

Prime Angus - Bred to Perform

TransTasman Angus Cattle Evaluation - March 2023 Reference Tables



BREED AVERAGE EBVs

Brd Avg	Calving Ease				Birth				Growth				Fertility				Carcase				Other				Structure				Selection Indexes			
	Less Diffculty	More Diffculty	Less Diffculty	More Diffculty	GL	Length	Lighter	Heavier	Weight	200	400	600	MCW	Milk	SS	SS	DTC	CWT	EMA	RIB	P8	RBV	IMF	NFI-F	DOC	Claw	Angle	Leg	SA	\$A-L		
+2.2	+2.7	-4.8	+4.1	+50	+90	+117	+101	+17	+2.1	-4.6	+66	+6.4	+0.0	-0.3	+0.5	+2.2	+0.19	+20	+0.85	+0.97	+1.03	+197	+339									

* Breed average represents the average EBV of all 2021 drop Australian Angus and Angus-influenced seedstock animals analysed in the March 2023 TransTasman Angus Cattle Evaluation .

PERCENTILE BANDS TABLE

% Band	Calving Ease				Birth				Growth				Fertility				Carcase				Other				Structure				Selection Indexes			
	Less Diffculty	More Diffculty	Less Diffculty	More Diffculty	GL	Length	Lighter	Heavier	Weight	200	400	600	MCW	Milk	SS	SS	DTC	CWT	EMA	RIB	P8	RBV	IMF	Greater Feed Efficiency	More Docile	Lower Score	Lower Angle	Lower Leg	Greater Profitability	Lower Profitability		
1%	+10.9	+9.9	-10.7	-0.3	+70	+122	+162	+159	+28	+4.8	-8.0	+98	+14.6	+4.1	+4.9	+2.0	+5.9	-0.52	+43	+0.44	+0.60	+0.76	+272	+448								
5%	+9.0	+8.2	-8.8	+1.1	+64	+112	+148	+140	+25	+3.9	-7.0	+88	+11.9	+2.8	+3.2	+1.5	+4.6	-0.31	+36	+0.56	+0.72	+0.84	+252	+418								
10%	+7.9	+7.2	-7.9	+1.8	+60	+107	+140	+130	+23	+3.5	-6.5	+83	+10.6	+2.1	+2.4	+1.3	+4.1	-0.19	+32	+0.62	+0.76	+0.88	+241	+402								
15%	+7.0	+6.5	-7.2	+2.2	+58	+104	+136	+124	+22	+3.2	-6.1	+79	+9.7	+1.7	+1.8	+1.1	+3.7	-0.12	+29	+0.66	+0.80	+0.90	+233	+392								
20%	+6.3	+5.9	-6.7	+2.6	+57	+101	+132	+120	+21	+3.0	-5.8	+77	+9.0	+1.3	+1.4	+1.0	+3.3	-0.06	+27	+0.70	+0.84	+0.94	+227	+383								
25%	+5.6	+5.4	-6.3	+2.9	+55	+99	+129	+116	+20	+2.8	-5.6	+75	+8.4	+1.0	+1.0	+0.9	+3.1	-0.01	+26	+0.72	+0.86	+0.96	+222	+376								
30%	+5.1	+4.9	-6.0	+3.2	+54	+97	+126	+112	+20	+2.6	-5.4	+73	+7.9	+0.8	+0.7	+0.8	+2.9	+0.03	+24	+0.74	+0.88	+0.96	+217	+369								
35%	+4.5	+4.4	-5.7	+3.4	+53	+95	+124	+109	+19	+2.5	-5.2	+71	+7.4	+0.6	+0.5	+0.7	+2.7	+0.07	+23	+0.78	+0.90	+0.98	+213	+363								
40%	+3.9	+4.0	-5.4	+3.6	+52	+94	+122	+106	+18	+2.3	-5.0	+69	+7.0	+0.3	+0.2	+0.6	+2.5	+0.11	+22	+0.80	+0.92	+1.00	+209	+357								
45%	+3.4	+3.5	-5.1	+3.8	+51	+92	+119	+103	+18	+2.2	-4.8	+68	+6.6	+0.1	-0.1	+0.5	+2.3	+0.14	+21	+0.82	+0.94	+1.02	+204	+351								
50%	+2.8	+3.0	-4.8	+4.1	+50	+90	+117	+100	+17	+2.1	-4.6	+66	+6.2	-0.1	-0.3	+0.6	+2.1	+0.18	+20	+0.84	+0.96	+1.02	+200	+345								
55%	+2.2	+2.6	-4.5	+4.3	+49	+89	+115	+98	+17	+2.0	-4.5	+65	+5.9	-0.3	-0.6	+0.4	+2.0	+0.22	+19	+0.86	+0.98	+1.04	+196	+338								
60%	+1.6	+2.1	-4.2	+4.5	+48	+87	+113	+95	+16	+1.9	-4.3	+63	+5.5	-0.5	-0.8	+0.3	+1.8	+0.25	+18	+0.88	+1.00	+1.06	+191	+332								
65%	+0.9	+1.6	-3.9	+4.7	+47	+85	+110	+92	+15	+1.7	-4.1	+61	+5.1	-0.7	-1.1	+0.3	+1.6	+0.29	+17	+0.92	+1.02	+1.08	+186	+325								
70%	+0.2	+1.0	-3.5	+4.9	+46	+84	+108	+89	+15	+1.6	-4.0	+60	+4.7	-0.9	-1.4	+0.2	+1.4	+0.34	+16	+0.94	+1.06	+1.10	+181	+317								
75%	-0.6	+0.4	-3.2	+5.2	+45	+82	+105	+85	+14	+1.5	-3.8	+58	+4.2	-1.1	-1.7	+0.1	+1.2	+0.38	+15	+0.96	+1.08	+1.12	+175	+308								
80%	-1.5	-0.3	-2.8	+5.5	+43	+79	+102	+82	+13	+1.3	-3.5	+56	+3.7	-1.4	-2.1	+0.0	+1.0	+0.44	+14	+1.00	+1.10	+1.14	+168	+298								
85%	-2.7	-1.2	-2.3	+5.9	+42	+77	+98	+77	+13	+1.1	-3.2	+53	+3.2	-1.7	-2.5	-0.2	+0.8	+0.50	+13	+1.04	+1.14	+1.16	+159	+285								
90%	-4.3	-2.4	-1.7	+6.3	+39	+73	+94	+71	+11	+0.9	-2.8	+50	+2.4	-2.1	-3.0	-0.3	+0.5	+0.58	+11	+1.10	+1.18	+1.18	+147	+268								
95%	-6.9	-4.3	-0.7	+7.0	+36	+68	+87	+62	+10	+0.5	-2.1	+45	+1.2	-2.8	-3.9	-0.6	+0.1	+0.71	+8	+1.16	+1.26	+1.24	+129	+240								
99%	-12.6	-8.1	+1.3	+8.4	+29	+57	+72	+43	+7	-0.3	-0.3	+35	-1.1	-4.0	-5.5	-1.1	-0.7	+0.96	+1	+1.32	+1.40	+1.34	+94	+188								

* The percentile bands represent the distribution of EBVs across the 2021 drop Australian Angus and Angus-influenced seedstock animals analysed in the March 2023 TransTasman Angus Cattle Evaluation

PRIME ANGUS 2023 AUTUMN BULLS QUICK EBVS

Animal Ident	Calving Ease/Birth				Growth				Fertility				Carcase				Feed				Structural				Selection Indexes	
	CEDir	CEDirs	GL	BWT	200	400	600	MCW	Milk	SS	DTC	CWT	EMA	RB	P8	RBV	IMF	NFI-F	Doc	Temp.	Claw	Angle	Leg	\$A	\$A-L	
1	CXB21S146	+7.1	+7.9	-6.5	+2.8	+45	+75	+105	+83	+16	+3.1	-5.9	+53	+4.7	+2.5	+3.4	-0.1	+2.8	+0.21	+27	+0.82	+0.84	+0.86	\$212	\$360	
2	CXB21S164	+2.7	+2.7	-7.5	+5.9	+56	+97	+135	+145	+8	+0.6	-4.4	+74	+11.9	+0.6	-1.0	+1.4	+0.6	-0.22	+15	+0.86	+1.22	+1.10	\$201	\$376	
3	CXB21S158	+3.7	+2.5	-0.6	+4.2	+55	+99	+122	+127	+9	+1.2	-4.0	+62	+2.9	-0.8	-0.9	+0.0	+2.9	-0.02	+28	+0.52	+0.70	+0.86	\$192	\$357	
4	CXB21S141	+8.4	+3.0	-11.1	+4.0	+57	+104	+143	+141	+12	+3.3	-8.0	+80	+3.5	+3.3	+2.9	-0.1	+0.9	+0.14	+26	+1.16	+1.28	+1.12	\$225	\$428	
5	CXB21S159	+3.8	+4.3	-3.9	+3.5	+49	+87	+118	+109	+4	+1.7	-6.1	+66	+5.5	-0.2	-1.2	+1.0	+0.1	+0.02	+23	+0.78	+1.02	+1.00	\$190	\$347	
6	CXB21S167	+4.4	+2.8	-6.8	+5.6	+54	+93	+129	+141	+11	+3.4	-6.6	+68	+3.4	+1.8	+0.1	+0.0	+2.3	+0.25	+23	+0.74	+0.98	+1.22	\$192	\$375	
7	CXB21S105	+3.0	+2.8	-5.5	+4.0	+68	+107	+133	+117	+14	+3.1	-5.7	+68	+5.4	-0.9	-2.1	-0.2	+3.3	-0.04	+26	+0.68	+0.84	+0.94	\$243	\$411	
8	CXB21S157	-1.3	+0.3	-3.1	+4.5	+51	+85	+115	+100	+18	+1.0	-4.0	+64	+10.8	+0.4	+0.7	+0.6	+3.4	-0.19	+16	+0.70	+0.96	+0.98	\$208	\$338	
9	CXB21S160	-4.6	-2.2	-2.3	+6.5	+50	+85	+121	+110	+18	+1.3	-4.5	+69	+7.4	+0.8	+0.9	+0.5	+2.7	-0.03	+26	+0.66	+0.80	+1.14	\$181	\$307	
10	CXB21S166	+1.8	-0.9	-4.5	+4.5	+46	+86	+111	+103	+9	+2.6	-6.4	+61	+3.1	+2.8	+1.6	-0.2	+2.4	+0.43	+21	+0.86	+1.10	+1.16	\$185	\$332	
11	CXB21S147	-7.0	-7.4	-5.4	+7.2	+49	+86	+113	+102	+21	+3.1	-4.1	+65	+5.2	-2.5	-2.4	+0.7	+1.5	+0.37	+13	+0.64	+0.92	+1.20	\$139	\$246	
12	CXB22T15	+2.4	+1.5	-8.8	+4.2	+62	+110	+141	+134	+13	+1.5	-4.3	+86	+4.8	-1.0	-3.6	+1.0	+0.9	-0.11	+29	+1.04	+1.08	+0.98	\$207	\$377	
13	CXB22T13	+5.7	+9.1	-7.4	+3.4	+63	+110	+142	+118	+31	+3.3	-5.7	+89	+7.3	+0.0	-2.0	+0.4	+1.5	+0.38	+19	+0.90	+1.14	+0.94	\$241	\$421	
14	CXB22T29	+4.1	+2.1	-4.1	+3.3	+56	+105	+128	+113	+19	+2.4	-7.6	+78	+6.2	+4.1	+4.8	-0.6	+3.4	+0.58	+27	+0.68	+0.84	+1.02	\$257	\$434	
15	CXB22T14	+1.9	-0.7	-9.1	+4.4	+65	+120	+152	+137	+16	+2.4	-5.6	+90	+8.6	+2.1	+2.7	-0.2	+2.8	+0.01	+30	+1.22	+1.10	+1.10	\$256	\$441	
16	CXB22T27	+4.4	+2.0	-6.7	+3.6	+47	+88	+104	+85	+19	+2.3	-7.6	+56	+8.7	+1.9	+2.9	+0.1	+3.3	+0.52	+13	+0.60	+0.82	+0.94	\$243	\$394	
17	CXB22T10	+5.9	+7.8	-8.0	+2.6	+62	+101	+122	+84	+16	+2.8	-4.4	+66	+14.1	-0.2	-0.9	+0.9	+3.0	+0.02	+13	+0.92	+0.98	+0.90	\$278	\$431	
18	CXB22T51	-7.1	+2.5	+1.4	+6.0	+60	+93	+128	+122	+13	+2.8	-5.8	+79	+3.5	-2.3	-4.2	+0.1	+3.6	-0.23	+19	+0.76	+0.92	+1.10	\$184	\$322	
19	CXB22T37	+0.3	+4.6	-6.1	+5.1	+64	+102	+128	+96	+17	+2.9	-7.3	+81	+8.4	-0.4	-1.0	+0.7	+0.8	+0.41	+17	+0.78	+1.04	+1.12	\$254	\$405	
20	CXB22T9	+1.2	+2.9	-10.2	+5.9	+64	+118	+154	+133	+13	+3.3	-4.6	+81	+7.2	-1.3	-2.6	+1.1	+0.3	-0.07	+31	+1.00	+1.00	+1.08	\$224	\$399	
21	CXB22T55	-4.1	-0.1	-4.3	+8.4	+60	+96	+125	+111	+12	+3.7	-5.9	+67	+7.5	-1.4	-2.8	+0.6	+2.6	+0.27	+24	+0.78	+0.92	+1.06	\$210	\$350	
22	CXB22T44	-2.7	+0.5	-5.6	+7.5	+72	+117	+143	+118	+11	+2.9	-5.1	+86	+10.7	+0.2	+0.1	+0.6	+1.5	+0.36	+26	+0.98	+0.86	+0.98	\$260	\$417	
23	CXB22T36	-4.8	-1.5	-4.2	+5.8	+72	+131	+171	+152	+26	+2.7	-5.0	+105	+2.0	-0.5	-2.1	-0.7	+3.7	-0.24	+32	+0.74	+0.86	+1.00	\$225	\$401	
24	CXB22T28	-0.9	+2.0	-6.0	+4.6	+60	+110	+145	+121	+13	+2.6	-6.1	+82	+14.7	+0.6	+1.4	+1.0	+3.3	+0.45	+30	+1.08	+1.14	+0.94	\$278	\$448	
25	CXB22T52	+2.6	+5.8	+0.5	+4.3	+49	+81	+109	+88	+13	+1.4	-5.4	+65	+2.6	-0.7	-1.8	+0.2	+3.7	-0.35	+21	+1.06	+1.22	+1.16	\$206	\$342	
26	CXB22T76	-1.1	+3.1	-8.0	+5.4	+51	+95	+129	+135	+11	+2.0	-5.7	+67	+3.0	-2.7	-4.5	+1.6	+1.1	-0.14	+23	+0.92	+1.02	+1.04	\$175	\$337	
27	CXB22T62	-2.6	+2.9	-8.4	+6.9	+62	+101	+131	+117	+21	+4.1	-6.8	+72	+3.3	-2.6	-2.3	+0.3	+0.7	-0.09	+21	+0.74	+1.02	+1.20	\$197	\$350	
28	CXB22T17	+3.7	+4.0	-8.1	+5.5	+61	+109	+141	+142	+8	+3.3	-5.1	+70	+0.7	-0.4	-2.2	+0.0	+2.8	-0.03	+30	+0.80	+0.94	+1.22	\$207	\$392	
29	CXB22T42	-5.2	+2.2	-2.6	+6.0	+50	+90	+116	+107	+20	+2.9	-7.3	+63	+4.8	-1.2	-1.3	-0.5	+6.0	+0.63	+9	+0.98	+0.90	+1.06	\$208	\$349	
30	CXB22T48	-1.8	-1.8	-0.4	+5.0	+55	+100	+126	+119	+15	+2.8	-4.1	+70	+7.1	+1.6	+1.3	+0.3	+2.5	+0.38	+31	+1.02	+0.96	+1.12	\$198	\$346	
31	CXB22T24	+3.7	+7.3	-5.4	+2.8	+50	+79	+106	+83	+24	+2.3	-6.2	+62	+9.6	-2.6	-4.1	+1.3	+1.9	+0.38	+15	+0.70	+1.00	+1.08	\$217	\$354	
32	CXB22T85	+3.5	+3.6	-7.8	+4.9	+67	+118	+159	+138	+19	+3.1	-5.0	+89	+5.2	-0.1	-0.2	-0.3	+3.9	-0.21	+25	+0.96	+0.88	+0.98	\$253	\$441	
33	CXB22T23	+6.3	+4.3	-7.9	+3.6	+65	+120	+149	+134	+17	+1.0	-4.9	+86	+7.7	-1.3	-1.6	+0.8	+1.9	-0.46	+27	+0.74	+0.92	+0.86	\$259	\$448	
34	CXB22T61	+1.9	+3.2	-6.1	+4.6	+43	+71	+92	+61	+18	+3.6	-7.9	+44	+4.6	+1.0	+1.0	-0.2	+4.1	+0.85	+10	+0.78	+0.80	+0.96	\$219	\$340	



CEDir	CEDirs	GL	BWT	200	400	600	MCW	Milk	SS	DTC	CWT	EMA	RB	P8	RBV	IMF	NFI-F	Doc	Temp.	Claw	Angle	Leg	\$A	\$A-L
+2.2	+2.7	-4.8	+4.1	+50	+90	+117	+101	+17	+2.1	-4.6	+66	+6.4	+0.0	-0.3	+0.5	+2.2	+0.19	+20	+0.85	+0.97	+1.03	+197	+339	

Animal Ident	Calving Ease/Birth				Growth				Fertility				Carcase				Feed			Temp.			Structural			Selection Indexes	
	CEDir	CEDirs	GL	BWT	200	400	600	MCW	Milk	SS	DTC	CWT	EMA	RIB	P8	RBV	IMF	NFI-F	Doc	Claw	Angle	Leg	SA	SA-L			
35	CXB22T34	+0.5	+2.5	-5.6	+5.8	+72	+122	+162	+143	+17	+2.0	-3.5	+96	+7.0	-1.9	+0.4	+1.4	+0.08	+26	+0.76	+0.80	+0.90	\$228	\$404			
36	CXB22T30	+8.6	+3.0	-6.4	+1.0	+61	+114	+142	+124	+22	+3.4	-4.6	+82	+5.1	+0.6	-0.3	+3.5	+0.13	+30	+0.86	+0.90	+0.84	\$233	\$417			
37	CXB22T73	+5.7	+7.2	-6.9	+1.9	+47	+94	+123	+100	+20	+1.4	-7.5	+69	+5.4	+2.7	+0.2	+2.7	+0.46	+17	+0.94	+1.08	+1.28	\$246	\$415			
38	CXB22T57	+1.9	+4.0	-3.5	+4.7	+59	+112	+136	+119	+17	+3.5	-7.3	+72	+4.3	+0.5	+0.0	+2.7	+0.21	+22	+0.84	+0.80	+0.84	\$246	\$424			
39	CXB22T49	-2.0	-2.2	-0.1	+4.4	+41	+70	+87	+69	+11	+3.0	-8.0	+53	+0.7	+2.2	-1.0	+4.5	+0.81	+15	+0.72	+0.80	+0.98	\$183	\$297			
40	CXB22T81	+6.8	+5.2	-8.5	+2.5	+46	+83	+103	+64	+21	+3.8	-8.2	+52	+6.6	+1.6	-0.3	+4.0	+0.71	+10	+0.84	+0.92	+0.98	\$249	\$393			
41	CXB22T60	-2.8	+5.5	-8.1	+6.3	+64	+103	+142	+111	+21	+1.3	-4.7	+78	+10.3	-2.9	+1.1	+2.6	-0.52	+18	+0.76	+0.86	+1.12	\$241	\$385			
42	CXB22T46	-2.2	-0.4	-0.1	+5.7	+55	+98	+124	+104	+14	+4.8	-7.0	+52	+5.4	+0.9	-0.3	+4.3	+0.14	+28	+0.88	+0.90	+0.92	\$230	\$378			
43	CXB22T43	+0.2	-0.1	-3.1	+3.4	+47	+95	+116	+111	+16	+1.8	-5.9	+55	+3.9	+0.2	+0.1	+3.7	-0.01	+39	+0.72	+1.06	+1.10	\$192	\$344			
44	CXB22T83	-9.1	-2.6	-0.7	+6.3	+63	+113	+151	+137	+15	+4.6	-6.9	+81	+7.9	+0.8	+0.9	+2.3	+0.45	+14	+0.72	+0.82	+1.04	\$220	\$378			
45	CXB22T70	+2.0	+7.0	-0.7	+4.2	+53	+93	+130	+115	+17	+2.8	-6.0	+79	+2.4	-0.6	-3.2	+2.9	-0.08	+21	+0.68	+1.20	+1.16	\$197	\$357			
46	CXB22T50	+3.7	+9.1	-5.2	+4.5	+43	+84	+110	+84	+18	+1.2	-7.4	+64	+7.1	+1.2	+0.9	+1.4	+0.36	+20	+0.88	+1.02	+1.14	\$223	\$371			
47	CXB22T53	+0.2	+5.4	-5.0	+4.8	+62	+101	+135	+113	+23	+2.0	-6.3	+72	+7.4	-0.4	-0.4	+1.9	-0.13	+20	+0.94	+0.94	+1.18	\$239	\$397			
48	CXB22T66	+5.3	+4.3	-3.1	+3.1	+37	+67	+79	+59	+15	+0.8	-7.1	+38	+5.9	+3.8	+4.2	+7.1	+0.79	+11	+0.72	+0.62	+0.88	\$228	\$354			
49	CXB22T80	+0.4	+3.7	-3.9	+5.0	+70	+121	+160	+147	+24	+3.2	-4.7	+87	+6.5	-1.6	-2.5	+2.1	-0.26	+24	+1.08	+1.04	+1.00	\$233	\$417			
50	CXB22T39	-0.5	-4.2	-2.6	+4.4	+36	+72	+93	+69	+15	+2.2	-6.9	+52	+6.4	+2.3	+2.0	+5.3	+0.93	+16	+0.74	+0.96	+1.14	\$196	\$309			

TACE		CEDir		CEDirs		GL		BWT		200		400		600		MCW		Milk		SS		DTC		CWT		EMA		RIB		P8		RBV		IMF		NFI-F		Doc		Claw		Angle		Leg		SA		SA-L	
		+2.2	+2.7	-4.8	+4.1	+50	+90	+117	+101	+17	+2.1	-4.6	+66	+6.4	+0.0	-0.3	+0.5	+2.2	+0.19	+20	+0.85	+0.97	+1.03	\$197	+339																								



Lot 1

PRIME PAYWEIGHT S146^{PV}

CXB21S146

DOB: 12/08/2021

Registration Status: HBR

Mating Type: Natural

Genetic Status: AMFU,CAFU,DDFU,NHFU

MILLAH MURRAH EQUATOR D78^{PV}
 AYRVALE JAGGER J12^{PV}
 AYRVALE EASE E3^{PV}

S A V THUNDERBIRD 9061^{SV}
 PRIME KATAPALT K1^{SV}
 PRIME JEDDA H81[#]

Sire: SJKP16 GRANITE RIDGE PAYWEIGHT P16^{SV}

Dam: CXBQ93 PRIME JAPARA Q93^{SV}

BOOROOMOOKA THEO T030^{SV}
 GRANITE RIDGE IMRAN ROSEBUD M54[#]
 THE GRANGE IMRAN ROSEBUD D81^{PV}

PRIME AFRICA G25^{SV}
 PRIME JAPARA K92[#]
 PRIME JAPARA F2[#]

March 2023 TransTasman Angus Cattle Evaluation

TACE	Dir	Dtrs	GL	BW	200 W	400 W	600 W	MCW	Milk	SS	Doc
EBV	+7.1	+7.9	-6.5	+2.8	+45	+75	+105	+83	+16	+3.1	+27
ACC	54%	43%	70%	70%	70%	67%	68%	65%	58%	65%	34%
Perc	14	7	23	23	73	88	75	79	58	16	21

TACE	D t C	CWT	EMA	Rib	Rump	RBV	IMF	NFI-F	Claw	Angle	Leg
EBV	-5.9	+53	+4.7	+2.5	+3.4	-0.1	+2.8	+0.21	+0.82	+0.84	+0.86
ACC	34%	58%	57%	59%	59%	52%	62%	49%	64%	64%	61%
Perc	18	85	70	7	5	82	31	54	43	19	7

Selection Indexes

\$A	\$A-L
\$212	\$360
36	38

Traits Observed: BWT,200WT,400WT,Genomics

Notes: A Payweight son with good calving credentials, he also sports positive fat in the top 10% of the breed and high IMF. Should work well over heifers or cows.

Purchaser:.....\$:.....



Lot 2

PRIME SUBLIME S164^{PV}

CXB21S164

DOB: 10/09/2021

Registration Status: HBR

Mating Type: Natural

Genetic Status: AMFU,CAFU,DDFU,NHFU

BOOROOMOOKA UNDERTAKEN Y145^{PV}
 RENNYLEA EDMUND E11^{PV}
 LAWSONS HENRY VIII Y5^{SV}

G A R INGENUITY[#]
 V A R INDEX 3282^{PV}
 SANDPOINT BLACKBIRD 8809[#]

Sire: NORK447 RENNYLEA K447^{SV}

Dam: CXBN1 PRIME JEDDA N1^{SV}

TE MANIA BERKLEY B1^{PV}
 RENNYLEA H457[#]
 RENNYLEA E6^{PV}

PRIME EMPEROR H92^{SV}
 PRIME JEDDA L98[#]
 PRIME JEDDA G39[#]

March 2023 TransTasman Angus Cattle Evaluation

TACE	Dir	Dtrs	GL	BW	200 W	400 W	600 W	MCW	Milk	SS	Doc
EBV	+2.7	+2.7	-7.5	+5.9	+56	+97	+135	+145	+8	+0.6	+15
ACC	60%	51%	74%	72%	73%	71%	72%	69%	65%	69%	45%
Perc	51	54	13	85	22	32	16	4	98	94	77

TACE	D t C	CWT	EMA	Rib	Rump	RBV	IMF	NFI-F	Claw	Angle	Leg
EBV	-4.4	+74	+11.9	+0.6	-1.0	+1.4	+0.6	-0.22	+0.86	+1.22	+1.10
ACC	41%	63%	62%	64%	64%	58%	66%	53%	68%	68%	67%
Perc	56	27	5	33	62	6	88	9	52	93	70

Selection Indexes

\$A	\$A-L
\$201	\$376
50	25

Traits Observed: CE,B-WT,200WT,400WT,Genomics

Notes: There is a lot to like about this K447 son out of a beautiful Jedda cow. S164 has a good spread of figures, with 600 DW being +135, Carcase Weight +74 and being in the top 5% of the breed for both RBV and EMA +10.8.

Purchaser:.....\$:.....

Prime Angus - Bred to Perform

Lot 3

PRIME BEAST MODE S158^{PV}

CXB21S158

DOB: 19/08/2021 Registration Status: HBR Mating Type: AI Genetic Status: AMFU,CAFU,DDFU,NHFU
 C R A BEXTOR 872 5205 608# HINGAIA 469#
 G A R PROPHET^{SV} MILLAH MURRAH KINGDOM K35^{PV}
 G A R OBJECTIVE 1885# MILLAH MURRAH FLOWER G41^{PV}
Sire: USA17960722 BALDRIDGE BEAST MODE B074^{PV} **Dam: NAQM183 ARDROSSAN PRINCESS M183^{SV}**
 STYLES UPGRADE J59# RENNYLEA EDMUND E11^{PV}
 BALDRIDGE ISABEL Y69# ARDROSSAN PRINCESS H390^{SV}
 BALDRIDGE ISABEL T935# ARDROSSAN PRINCESS F254#

March 2023 TransTasman Angus Cattle Evaluation

Selection Indexes

TACE	Dir	Dtrs	GL	BW	200 W	400 W	600 W	MCW	Milk	SS	Doc
EBV	+3.7	+2.5	-0.6	+4.2	+55	+99	+122	+127	+9	+1.2	+28
ACC	65%	56%	83%	74%	74%	72%	73%	71%	67%	70%	57%
Perc	42	56	96	53	26	24	39	13	97	82	18

TACE	D t C	CWT	EMA	Rib	Rump	RBV	IMF	NFI-F	Claw	Angle	Leg
EBV	-4.0	+62	+2.9	-0.8	-0.9	+0.0	+2.9	-0.02	+0.52	+0.70	+0.86
ACC	46%	66%	65%	67%	67%	62%	69%	58%	71%	71%	69%
Perc	68	64	87	67	61	77	29	24	3	4	7

\$A	\$A-L
\$192	\$357
60	40

Traits Observed: GL,B-WT,200WT,400WT,Genomics

Notes: A Beast Mode son with all his quality. All that thickness and softness we have come to expect, standing well on strong feet and legs.

Purchaser:.....\$:

Lot 4

PRIME SUBLIME S141^{PV}

CXB21S141

DOB: 11/08/2021 Registration Status: HBR Mating Type: Natural Genetic Status: AMFU,CAFU,DDFU,NHFU
 BOOROOMOOKA UNDERTAKEN Y145^{PV} S A V THUNDERBIRD 9061^{SV}
 RENNYLEA EDMUND E11^{PV} PRIME KATAPALUT K1^{SV}
 LAWSONS HENRY VIII Y5^{SV} PRIME JEDDA H81#
Sire: NORK447 RENNYLEA K447^{SV} **Dam: CXBP34 PRIME JAPARA P34^{SV}**
 TE MANIA BERKLEY B1^{PV} PRIME AFRICA G25^{SV}
 RENNYLEA H457# PRIME JAPARA K92#
 RENNYLEA E6^{PV} PRIME JAPARA F2#

March 2023 TransTasman Angus Cattle Evaluation

Selection Indexes

TACE	Dir	Dtrs	GL	BW	200 W	400 W	600 W	MCW	Milk	SS	Doc
EBV	+8.4	+3.0	-11.1	+4.0	+57	+104	+143	+141	+12	+3.3	+26
ACC	60%	51%	74%	73%	74%	72%	73%	70%	66%	69%	44%
Perc	8	50	1	48	21	16	8	5	88	12	23

TACE	D t C	CWT	EMA	Rib	Rump	RBV	IMF	NFI-F	Claw	Angle	Leg
EBV	-8.0	+80	+3.5	+3.3	+2.9	-0.1	+0.9	+0.14	+1.16	+1.28	+1.12
ACC	42%	64%	63%	65%	65%	59%	67%	54%	65%	65%	64%
Perc	1	14	82	3	7	82	82	44	95	96	75

\$A	\$A-L
\$225	\$428
23	4

Traits Observed: BWT,200WT,400WT,Genomics

Notes: A great example of the K447 cattle - Sublime S141 has an excellent spread of figures. Calving ease and GL in top 1% of the breed followed by explosive growth and quality carcass, including high positive fat.

Purchaser:.....\$:

Lot 5

PRIME PUNISHER S159^{PV}

CXB21S159

DOB: 20/08/2021 Registration Status: HBR Mating Type: Natural Genetic Status: AMFU,CAFU,DDF,NHFU
 HINGAIA 469# BASIN FRANCHISE P142#
 MILLAH MURRAH TEX K51^{PV} EF COMPLEMENT 8088^{PV}
 MILLAH MURRAH PRUE G89^{PV} EF EVERELDA ENTENSE 6117#
Sire: SJKP216 GRANITE RIDGE PUNISHER P216^{SV} **Dam: NAQM71 ARDROSSAN WILCOOLA M71^{SV}**
 TE MANIA BERKLEY B1^{PV} ARDROSSAN EQUATOR E151^{SV}
 GRANITE RIDGE EMILLESQUE H62# ARDROSSAN WILCOOLA K355^{SV}
 GRANITE RIDGE EMMILLESQUE C160# ARDROSSAN WILCOOLA E44#

March 2023 TransTasman Angus Cattle Evaluation

Selection Indexes

TACE	Dir	Dtrs	GL	BW	200 W	400 W	600 W	MCW	Milk	SS	Doc
EBV	+3.8	+4.3	-3.9	+3.5	+49	+87	+118	+109	+4	+1.7	+23
ACC	55%	45%	71%	73%	72%	69%	70%	67%	60%	67%	35%
Perc	41	36	64	36	56	62	48	35	99	65	34

TACE	D t C	CWT	EMA	Rib	Rump	RBV	IMF	NFI-F	Claw	Angle	Leg
EBV	-6.1	+66	+5.5	-0.2	-1.2	+1.0	+0.1	+0.02	+0.78	+1.02	+1.00
ACC	38%	60%	59%	61%	61%	55%	63%	51%	60%	61%	59%
Perc	15	52	60	52	66	18	95	29	35	61	37

\$A	\$A-L
\$190	\$347
62	49

Traits Observed: BWT,200WT,400WT,Genomics

Notes: Punisher S159 has strong potential, with low birth and strong growth, a versatile young bull, who should work well over cows or heifers, with good Calving Ease and low Birth Weight.

Purchaser:.....\$:

Prime Angus - Bred to Perform

Lot 6

PRIME SUBLIME S167^{PV}

CXB21S167

DOB: 26/09/2021

Registration Status: HBR

Mating Type: Natural

Genetic Status: AMFU,CAFU,DDFU,NHFU

BOOROOMOOKA UNDERTAKEN Y145^{PV}
 RENNYLEA EDMUND E11^{PV}
 LAWSONS HENRY VIII Y5^{SV}

TE MANIA EMPEROR E343^{PV}
 PRIME EMPEROR H92^{SV}
 PRIME JEDDA X601 E91[#]

Sire: NORK447 RENNYLEA K447^{SV}

Dam: CXBP87 PRIME LOWAN P87^{SV}

TE MANIA BERKLEY B1^{PV}
 RENNYLEA H457[#]
 RENNYLEA E6^{PV}

PRIME AFRICA G25^{SV}
 PRIME LOWAN J114[#]
 PRIME LOWAN D42[#]

March 2023 TransTasman Angus Cattle Evaluation

TACE	Dir	Dtrs	GL	BW	200 W	400 W	600 W	MCW	Milk	SS	Doc
EBV	+4.4	+2.8	-6.8	+5.6	+54	+93	+129	+141	+11	+3.4	+23
ACC	57%	48%	68%	71%	69%	67%	67%	65%	61%	64%	42%
Perc	36	53	19	81	31	41	26	5	93	11	34

TACE	D t C	CWT	EMA	Rib	Rump	RBV	IMF	NFI-F	Claw	Angle	Leg
EBV	-6.6	+68	+3.4	+1.8	+0.1	+0.0	+2.3	+0.25	+0.74	+0.98	+1.22
ACC	40%	60%	59%	61%	61%	56%	62%	50%	65%	65%	65%
Perc	9	45	83	13	42	77	44	59	27	51	93

Selection Indexes

\$A	\$A-L
\$192	\$375
60	26

Traits Observed: CE,BWT,200WT,400WT

Notes: Prime Lowan P87 has again done a great job, with her last son selling for \$19,000. Sublime 167 is worth a second look for both his top phenotype but also a pretty good set of figures.

Purchaser: \$:



Lot 7 - PRIME BEAST MODE S105^{PV}

Lot 7

PRIME BEAST MODE S105^{PV}

CXB21S105

DOB: 25/07/2021

Registration Status: HBR

Mating Type: AI

Genetic Status: AMFU,CAFU,DDFU,NHFU

C R A BEXTOR 872 5205 608[#]
 G A R PROPHET^{SV}
 G A R OBJECTIVE 1885[#]

TE MANIA EMPEROR E343^{PV}
 PRIME LINCOLN L12^{SV}
 PRIME JEDDA E19[#]

Sire: USA17960722 BALDRIDGE BEAST MODE B074^{PV}

Dam: CXBQ83 PRIME KARA KARA Q83^{SV}

STYLES UPGRADE J59[#]
 BALDRIDGE ISABEL Y69[#]
 BALDRIDGE ISABEL T935[#]

AA R TEN X 7008 S A^{SV}
 PRIME KARAKARA L6^{SV}
 PRIME KARAKARA J75[#]

March 2023 TransTasman Angus Cattle Evaluation

TACE	Dir	Dtrs	GL	BW	200 W	400 W	600 W	MCW	Milk	SS	Doc
EBV	+3.0	+2.8	-5.5	+4.0	+68	+107	+133	+117	+14	+3.1	+26
ACC	64%	55%	81%	72%	73%	71%	71%	70%	65%	69%	54%
Perc	48	53	37	48	2	11	19	23	78	16	23

TACE	D t C	CWT	EMA	Rib	Rump	RBV	IMF	NFI-F	Claw	Angle	Leg
EBV	-5.7	+68	+5.4	-0.9	-2.1	-0.2	+3.3	-0.04	+0.68	+0.84	+0.94
ACC	44%	64%	64%	65%	65%	60%	67%	56%	70%	70%	69%
Perc	22	44	61	69	80	85	20	22	17	19	20

Selection Indexes

\$A	\$A-L
\$243	\$411
9	8

Traits Observed: GL,B-WT,200WT,400WT,Genomics

Notes: Heifers first calf, by Beast Mode, who has strong figures, moderate birth to high growth, large scrotal, high IMF and is very thick and soft. S105's grand dam has sold sons to \$27,000.

Purchaser: \$:

Prime Angus - Bred to Perform

Lot 8

PRIME PAYWEIGHT S157^{PV}

CXB21S157

DOB: 18/08/2021

Registration Status: HBR

Mating Type: Natural

Genetic Status: AMFU,CAFU,DDFU,NHFU

MILLAH MURRAH EQUATOR D78^{PV}
 AYRVALE JAGGER J12^{PV}
 AYRVALE EASE E3^{PV}

G A R INGENUITY#
 V A R INDEX 3282^{PV}
 SANDPOINT BLACKBIRD 8809#

Sire: SJKP16 GRANITE RIDGE PAYWEIGHT P16^{SV}

Dam: CXBQ47 PRIME SHASTA Q47^{PV}

BOOROOMOOKA THEO T030^{SV}
 GRANITE RIDGE IMRAN ROSEBUD M54#
 THE GRANGE IMRAN ROSEBUD D81^{PV}

PRIME JUGGERNAUT J15^{SV}
 PRIME SHASTA M36^{SV}
 PRIME SHASTA H105#

March 2023 TransTasman Angus Cattle Evaluation

Selection Indexes

TACE	Dir	Dtrs	GL	BW	200 W	400 W	600 W	MCW	Milk	SS	Doc
EBV	-1.3	+0.3	-3.1	+4.5	+51	+85	+115	+100	+18	+1.0	+16
ACC	55%	44%	70%	69%	70%	67%	68%	65%	58%	65%	36%
Perc	79	76	76	60	44	66	56	51	45	87	70

TACE	D t C	CWT	EMA	Rib	Rump	RBV	IMF	NFI-F	Claw	Angle	Leg
EBV	-4.0	+64	+10.8	+0.4	+0.7	+0.6	+3.4	-0.19	+0.70	+0.96	+0.98
ACC	35%	58%	57%	59%	59%	52%	62%	49%	64%	64%	61%
Perc	68	58	9	38	30	40	19	10	20	46	31

\$A	\$A-L
\$208	\$338
41	56

traits Observed: BWT,200WT,400WT,Genomics

Notes: There is some good breeding in this young bull, Theo, Equator D78, VAR Index and Juggernaut. A good spread of figures, high lighted by an EMA in top 10%, having positive fat, high IMF and RBV.

Purchaser:..... \$:.....



Lot 8 - PRIME PAYWEIGHT S157^{PV}

Lot 9

PRIME PAYWEIGHT S160^{PV}

CXB21S160

DOB: 21/08/2021

Registration Status: HBR

Mating Type: Natural

Genetic Status: AMFU,CAFU,DDFU,NHFU

MILLAH MURRAH EQUATOR D78^{PV}
 AYRVALE JAGGER J12^{PV}
 AYRVALE EASE E3^{PV}

MILLAH MURRAH EQUATOR D78^{PV}
 PRIME MAXIMUS M7^{PV}
 PRIME MITTAGONG K5^{SV}

Sire: SJKP16 GRANITE RIDGE PAYWEIGHT P16^{SV}

Dam: CXBQ96 PRIME MITTAGONG Q96^{SV}

BOOROOMOOKA THEO T030^{SV}
 GRANITE RIDGE IMRAN ROSEBUD M54#
 THE GRANGE IMRAN ROSEBUD D81^{PV}

KENNY'S CREEK SANDY S15^{SV}
 PRIME MITTAGONG H22#
 PRIME MITTAGONG E9#

March 2023 TransTasman Angus Cattle Evaluation

Selection Indexes

TACE	Dir	Dtrs	GL	BW	200 W	400 W	600 W	MCW	Milk	SS	Doc
EBV	-4.6	-2.2	-2.3	+6.5	+50	+85	+121	+110	+18	+1.3	+26
ACC	53%	42%	70%	70%	71%	68%	69%	66%	59%	66%	33%
Perc	91	90	85	92	50	66	41	35	45	79	24

TACE	D t C	CWT	EMA	Rib	Rump	RBV	IMF	NFI-F	Claw	Angle	Leg
EBV	-4.5	+69	+7.4	+0.8	+0.9	+0.5	+2.7	-0.03	+0.66	+0.80	+1.14
ACC	35%	59%	58%	60%	61%	53%	64%	50%	56%	56%	53%
Perc	53	43	35	29	27	47	33	23	14	13	80

traits Observed: BWT,200WT,400WT,Genomics

Notes: Payweight S160 is a smooth sided bull who stands up well on his feet. He sports strong growth, slick coat and a good clean head. Not a bad effort for a heifers first calf.

Purchaser:..... \$:.....

Prime Angus - Bred to Perform

Lot 10

PRIME SUBLIME S166^{SV}

CXB21S166

DOB: 16/09/2021

Registration Status: HBR

Mating Type: Natural

Genetic Status: AMFU,CAFU,DDFU,NHFU

BOOROOMOOKA UNDERTAKEN Y145^{PV}
 RENNYLEA EDMUND E11^{PV}
 LAWSONS HENRY VIII Y5^{SV}

TE MANIA YORKSHIRE Y437^{PV}
 PRIME YORKSHIRE D29^{SV}
 PRIME MOONGARA B35[#]

Sire: NORK447 RENNYLEA K447^{SV}

Dam: CXBG70 PRIME SHASTA G70[#]

TE MANIA BERKLEY B1^{PV}
 RENNYLEA H457[#]
 RENNYLEA E6^{PV}

BON VIEW NEW DESIGN 208^{SV}
 PRIME SHASTA Y57[#]
 MERRIC RIVERS SHASTA V46[#]

March 2023 TransTasman Angus Cattle Evaluation

TACE	Dir	Dtrs	GL	BW	200 W	400 W	600 W	MCW	Milk	SS	Doc
EBV	+1.8	-0.9	-4.5	+4.5	+46	+86	+111	+103	+9	+2.6	+21
ACC	62%	53%	74%	74%	74%	73%	73%	71%	67%	69%	43%
Perc	59	84	54	60	71	64	64	46	96	29	46

TACE	D t C	CWT	EMA	Rib	Rump	RBY	IMF	NFI-F	Claw	Angle	Leg
EBV	-6.4	+61	+3.1	+2.8	+1.6	-0.2	+2.4	+0.43	+0.86	+1.10	+1.16
ACC	43%	65%	64%	65%	65%	59%	67%	54%	66%	66%	65%
Perc	11	67	86	5	17	85	41	80	52	78	84

Selection Indexes

\$A	\$A-L
\$185	\$332
66	60

Traits Observed: CE,B-WT,200WT,400WT,Genomics

Notes: Sublime S166 is the ninth calf of Shasta G70. The Shasta family has bred well at Prime and this young K447 son is a good example. A bull that should work well in most herds.

Purchaser:..... \$:.....



Lot 11

PRIME BLACK MAGIC S147^{PV}

CXB21S147

DOB: 13/08/2021

Registration Status: HBR

Mating Type: AI

Genetic Status: AMFU,CAFU,DDFU,NHFU

BT CROSSOVER 758N[#]
 SILVEIRAS CONVERSION 8064[#]
 EXG SARAS DREAM S609 R3[#]

PAPA EQUATOR 2928[#]
 ARDROSSAN EQUATOR A241^{PV}
 ARDROSSAN PRINCESS W38^{PV}

Sire: USA17803074 BYERGO BLACK MAGIC 3348^{PV}

Dam: NAQJ260 ARDROSSAN WILCOOLA J260^{SV}

BYERGO PICASSO[#]
 BYERGO ELIA CUPCAKE 5900[#]
 BYERGO MISS CUPCAKE 3600[#]

ARDROSSAN CONNECTION X15^{SV}
 ARDROSSAN WILCOOLA C286[#]
 ARDROSSAN WILCOOLA Z31^{PV}

March 2023 TransTasman Angus Cattle Evaluation

TACE	Dir	Dtrs	GL	BW	200 W	400 W	600 W	MCW	Milk	SS	Doc
EBV	-7.0	-7.4	-5.4	+7.2	+49	+86	+113	+102	+21	+3.1	+13
ACC	57%	48%	83%	74%	73%	71%	71%	68%	64%	67%	47%
Perc	96	99	39	96	55	64	59	47	23	16	82

TACE	D t C	CWT	EMA	Rib	Rump	RBY	IMF	NFI-F	Claw	Angle	Leg
EBV	-4.1	+65	+5.2	-2.5	-2.4	+0.7	+1.5	+0.37	+0.64	+0.92	+1.20
ACC	41%	63%	63%	64%	63%	57%	66%	52%	69%	70%	63%
Perc	65	53	63	93	84	34	67	74	12	36	91

Selection Indexes

\$A	\$A-L
\$139	\$246
93	95

Traits Observed: GL,B-WT,200WT,400WT,Genomics

Notes: Byergo Black magic was considered to be one of the best looking bulls in America, and was said to breed beautiful daughters - we used sexed semen and was surprised to have a son - worth a second look , he is growing into a top bull.

Purchaser:..... \$:.....

Prime Angus - Bred to Perform

Lot 12

PRIME STERLING PACIFIC T15^{PV}

CXB22T15

DOB: 20/02/2022

Registration Status: HBR

Mating Type: AI

Genetic Status: AMFU,CAFU,DDFU,NHFU

MOGCK BULLSEYE^{PV}
 HOOVER NO DOUBT^{PV}
 MISS BLACKCAP ELLSTON J2[#]
Sire: USA19444025 STERLING PACIFIC 904^{PV}
 G A R PROPHET^{SV}
 BALDRIDGE ISABEL B082[#]
 BALDRIDGE ISABEL Y69[#]

S A V THUNDERBIRD 9061^{SV}
 PRIME KATAPULT K1^{SV}
 PRIME JEDDA H81[#]
Dam: CXBP18 PRIME HUMPSOL P18^{PV}
 PRIME JUGGERNAUT J15^{SV}
 PRIME HUMPSOL L144^{SV}
 PRIME HUMPSOL E18[#]

March 2023 TransTasman Angus Cattle Evaluation

TACE	Dir	Dtrs	GL	BW	200 W	400 W	600 W	MCW	Milk	SS	Doc
EBV	+2.4	+1.5	-8.8	+4.2	+62	+110	+141	+134	+13	+1.5	+29
ACC	55%	43%	83%	74%	73%	70%	69%	67%	60%	65%	43%
Perc	54	66	5	53	8	8	10	8	85	72	16

TACE	D t C	CWT	EMA	Rib	Rump	RBV	IMF	NFI-F	Claw	Angle	Leg
EBV	-4.3	+86	+4.8	-1.0	-3.6	+1.0	+0.9	-0.11	+1.04	+1.08	+0.98
ACC	33%	61%	60%	60%	60%	54%	64%	48%	68%	68%	57%
Perc	59	7	68	72	94	18	82	16	84	74	31

Selection Indexes

\$A	\$A-L
\$207	\$377
42	25

Traits Observed: GL,BWT,200WT,Genomics

Notes: A young bull with a very strong pedigree, Pacific T15 is sired by the top level sire Sterling Pacific and his dam has both Juggernaut and Katapult in her pedigree. There is a lot of potential when you add this to his strong set of EBV's.

Purchaser:..... \$:.....

Lot 13

PRIME QUIXOTE T13^{PV}

CXB22T13

DOB: 20/02/2022

Registration Status: HBR

Mating Type: AI

Genetic Status: AMFU,CAFU,DDFU,NHFU

S CHISUM 6175^{PV}
 S CHISUM 255^{SV}
 S BLOSSOM 0278[#]
Sire: NMMQ96 MILLAH MURRAH QUIXOTE Q96^{PV}
 MILLAH MURRAH KLOONEY K42^{PV}
 MILLAH MURRAH BRENDA N8^{PV}
 MILLAH MURRAH BRENDA L73^{PV}

TE MANIA BERKLEY B1^{PV}
 PATHFINDER GENESIS G357^{PV}
 PATHFINDER DIRECTION D245^{SV}
Dam: CXBQ36 PRIME LOWAN Q36^{SV}
 TE MANIA ULONG U41^{SV}
 PRIME LOWAN F20^{SV}
 PRIME LOWAN D13[#]

March 2023 TransTasman Angus Cattle Evaluation

TACE	Dir	Dtrs	GL	BW	200 W	400 W	600 W	MCW	Milk	SS	Doc
EBV	+5.7	+9.1	-7.4	+3.4	+63	+110	+142	+118	+31	+3.3	+19
ACC	57%	45%	74%	73%	74%	72%	72%	68%	60%	69%	57%
Perc	25	3	14	34	6	7	9	22	1	12	55

TACE	D t C	CWT	EMA	Rib	Rump	RBV	IMF	NFI-F	Claw	Angle	Leg
EBV	-5.7	+89	+7.3	+0.0	-2.0	+0.4	+1.5	+0.38	+0.90	+1.14	+0.94
ACC	39%	62%	62%	63%	63%	57%	65%	52%	69%	68%	66%
Perc	22	5	36	48	79	54	67	75	61	84	20

Selection Indexes

\$A	\$A-L
\$241	\$421
10	5

Traits Observed: BWT,200WT, Genomics

Notes: Exceptional spread of figures, having very good Calving credentials, followed by extremely high growth - having all growth in top 10% and carcass weight of +88 (top 5%). Should work well over heifers or cows.

Purchaser:..... \$:.....

Lot 14

PRIME STERLING PACIFIC T29^{PV}

CXB22T29

DOB: 25/02/2022

Registration Status: HBR

Mating Type: AI

Genetic Status: AMFU,CAFU,DDFU,NHFU

MOGCK BULLSEYE^{PV}
 HOOVER NO DOUBT^{PV}
 MISS BLACKCAP ELLSTON J2[#]
Sire: USA19444025 STERLING PACIFIC 904^{PV}
 G A R PROPHET^{SV}
 BALDRIDGE ISABEL B082[#]
 BALDRIDGE ISABEL Y69[#]

AYRVALE GENERAL G18^{PV}
 ESSLEMONT LOTTO L3^{PV}
 ESSLEMONT JENNY J8^{PV}
Dam: CXBP69 PRIME SHASTA P69^{SV}
 PRIME YORKSHIRE D29^{SV}
 PRIME SHASTA G70[#]
 PRIME SHASTA Y57[#]

March 2023 TransTasman Angus Cattle Evaluation

TACE	Dir	Dtrs	GL	BW	200 W	400 W	600 W	MCW	Milk	SS	Doc
EBV	+4.1	+2.1	-4.1	+3.3	+56	+105	+128	+113	+19	+2.4	+27
ACC	55%	43%	83%	74%	73%	70%	69%	67%	60%	65%	44%
Perc	38	60	61	32	22	13	28	29	36	36	20

TACE	D t C	CWT	EMA	Rib	Rump	RBV	IMF	NFI-F	Claw	Angle	Leg
EBV	-7.6	+78	+6.2	+4.1	+4.8	-0.6	+3.4	+0.58	+0.68	+0.84	+1.02
ACC	34%	62%	60%	61%	60%	54%	65%	50%	70%	70%	61%
Perc	2	18	50	1	2	95	19	90	17	19	44

Selection Indexes

\$A	\$A-L
\$257	\$434
4	3

Traits Observed: GL,BWT,200WT, Genomics

Notes: A very productive mating - Sterling Pacific with Shasta P69 - a truly balanced set of EBV's and an impressive calf who is structurally correct with all the frame, thickness and maternal strength you could ask for. P69 has sold 2 sons for \$9,000 & \$17,000.

Purchaser:..... \$:.....

Prime Angus - Bred to Perform

Lot 15

PRIME EYES ONYOU T14^{PV}

CXB22T14

DOB: 20/02/2022

Registration Status: HBR

Mating Type: AI

Genetic Status: AMFU,CAFU,DDFU,NHFU

MOGCK BULLSEYE^{PV}
 HOOVER NO DOUBT^{PV}
 MISS BLACKCAP ELLSTON J2[#]

AYRVALE GENERAL G18^{PV}
 ESSLEMONT LOTTO L3^{PV}
 ESSLEMONT JENNY J8^{PV}

Sire: USA19470275 E G EYES ONYOU^{PV}

Dam: CXBQ100 PRIME BEEAC Q100^{PV}

HAYNES OUTRIGHT 452[#]
 BALDRIDGE ISABEL D275[#]
 BALDRIDGE ISABEL Y69[#]

MILLAH MURRAH EQUATOR D78^I
 PRIME BEEAC M30^{SV}
 PRIME K46[#]

March 2023 TransTasman Angus Cattle Evaluation

TACE	Dir	Dtrs	GL	BW	200 W	400 W	600 W	MCW	Milk	SS	Doc
EBV	+1.9	-0.7	-9.1	+4.4	+65	+120	+152	+137	+16	+2.4	+30
ACC	54%	42%	82%	72%	71%	68%	68%	66%	60%	64%	37%
Perc	58	82	4	57	4	2	3	7	56	36	15

TACE	D t C	CWT	EMA	Rib	Rump	RBV	IMF	NFI-F	Claw	Angle	Leg
EBV	-5.6	+90	+8.6	+2.1	+2.7	-0.2	+2.8	+0.01	+1.22	+1.10	+1.10
ACC	33%	60%	60%	60%	59%	54%	64%	49%	68%	68%	60%
Perc	24	4	24	10	8	85	31	28	97	78	70

Selection Indexes

\$A	\$A-L
\$256	\$441
4	2

Traits Observed: GL,BWT,200WT, Genomics

Notes: E G Eyes Onyou has impressed us with his consistency of type, bringing a package that would please most cattlemen. Thick, soft bodies, top structure and EBV's that are truly impressive. Eyes Onyou T14 reflects all these traits.

Purchaser:..... \$:.....



Lot 13 - PRIME QUIXOTE T13^{PV}

Lot 16

PRIME QORINTH T27^{PV}

CXB22T27

DOB: 23/02/2022

Registration Status: HBR

Mating Type: AI

Genetic Status: AMFU,CAFU,DDFU,NHFU

G A R PROPHET^{SV}
 TE MANIA KIRBY K138^{PV}
 TE MANIA BEEAC H17^{SV}

TE MANIA BERKLEY B1^{PV}
 KENNY'S CREEK BERKLEY H16^{PV}
 KENNY'S CREEK BARA F66^{SV}

Sire: VTMQ1225 TE MANIA QORINTH Q1225^{PV}

Dam: NDIM5 KENNY'S CREEK FINKS MISS M5^{PV}

TUWHARETOA REGENT D145^{PV}
 TE MANIA LOWAN J825^{PV}
 TE MANIA LOWAN Z74^{PV}

KENNY'S CREEK AFRICA G655^{PV}
 KENNY'S CREEK FINKS MISS K5^{PV}
 KENNY'S CREEK FINKS MISS G767

March 2023 TransTasman Angus Cattle Evaluation

TACE	Dir	Dtrs	GL	BW	200 W	400 W	600 W	MCW	Milk	SS	Doc
EBV	+4.4	+2.0	-6.7	+3.6	+47	+88	+104	+85	+19	+2.3	+13
ACC	55%	45%	82%	71%	71%	68%	69%	67%	60%	65%	38%
Perc	36	61	21	39	67	58	77	76	31	40	85

TACE	D t C	CWT	EMA	Rib	Rump	RBV	IMF	NFI-F	Claw	Angle	Leg
EBV	-7.6	+56	+8.7	+1.9	+2.9	+0.1	+3.3	+0.52	+0.60	+0.82	+0.94
ACC	37%	60%	58%	60%	61%	54%	64%	51%	63%	63%	63%
Perc	2	79	23	12	7	72	20	87	8	16	20

Selection Indexes

\$A	\$A-L
\$243	\$394
9	14

Traits Observed: GL,BWT,200WT, Genomics

Notes: Don't overlook the Qorinth Q1225 sons, they have lots to offer and Qorinth T27 is a great example. Calving credentials that should suit mating heifers and high quality carcass, EMA, Fat,and IMF. M5 sold for \$9,500 at our Dispersal and her last son sold for \$10,000.

Purchaser:..... \$:.....

Prime Angus - Bred to Perform

Lot 17

PRIME ASHLAND T10^{PV}

CXB22T10

DOB: 20/02/2022

Registration Status: HBR

Mating Type: AI

Genetic Status: AMFU,CAFU,DDFU,NHFU

G A R DAYLIGHT#
G A R EARLY BIRD#
G A R PROGRESS 830#

G A R PROPHET^{SV}
BALDRIDGE BEAST MODE B074^{PV}
BALDRIDGE ISABEL Y69#

Sire: USA18217198 G A R ASHLAND^{PV}

Dam: CXBQ12 PRIME MOONGARA Q12^{PV}

B/R AMBUSH 28#
CHAIR ROCK AMBUSH 1018#
G A R YIELD GRADE N366#

V A R INDEX 3282^{PV}
PRIME MOONGARA N2^{SV}
PRIME MOONGARA L40#

March 2023 TransTasman Angus Cattle Evaluation

Selection Indexes

TACE	Dir	Dtrs	GL	BW	200 W	400 W	600 W	MCW	Milk	SS	Doc
EBV	+5.9	+7.8	-8.0	+2.6	+62	+101	+122	+84	+16	+2.8	+13
ACC	64%	53%	83%	74%	74%	73%	73%	71%	66%	71%	58%
Perc	23	7	9	20	8	20	40	77	63	23	85

\$A	\$A-L
\$278	\$431
1	3

TACE	D t C	CWT	EMA	Rib	Rump	RBV	IMF	NFI-F	Claw	Angle	Leg
EBV	-4.4	+66	+14.1	-0.2	-0.9	+0.9	+3.0	+0.02	+0.92	+0.98	+0.90
ACC	39%	65%	65%	66%	66%	60%	68%	55%	70%	70%	67%
Perc	56	52	2	52	61	23	26	29	65	51	12

Traits Observed: GL,BWT,200WT, Genomics

Notes: Calving Ease (tick), GL (tick), Low BW (tick), strong Growth (tick, tick, tick), SS (tick), EMA (tick) IMF (tick) \$A (tick) \$A-L (tick). Ashland T10 has it all, wrapped in a great package. Moongara Q12 sold at our Dispersal for \$9,500.

Purchaser:..... \$:.....

Lot 18

PRIME PUNISHER T51^{PV}

CXB22T51

DOB: 09/03/2022

Registration Status: HBR

Mating Type: AI

Genetic Status: AMFU,CAFU,DDFU,NHFU

HINGAIA 469#
MILLAH MURRAH TEX K51^{PV}
MILLAH MURRAH PRUE G89^{PV}

TUWHARETOA REGENT D145^{PV}
RENNYLEA J474^{SV}
RENNYLEA C310#

Sire: SJKP216 GRANITE RIDGE PUNISHER P216^{SV}

Dam: CXBQ75 PRIME LOWAN Q75^{SV}

TE MANIA BERKLEY B1^{PV}
GRANITE RIDGE EMILLESQUE H62#
GRANITE RIDGE EMMILLESQUE C160#

PRIME KATAPALULT K1^{SV}
PRIME LOWAN M63^{SV}
PRIME LOWAN D13#

March 2023 TransTasman Angus Cattle Evaluation

Selection Indexes

TACE	Dir	Dtrs	GL	BW	200 W	400 W	600 W	MCW	Milk	SS	Doc
EBV	-7.1	+2.5	+1.4	+6.0	+60	+93	+128	+122	+13	+2.8	+19
ACC	54%	43%	82%	72%	71%	68%	69%	66%	58%	66%	35%
Perc	96	56	99	87	12	41	27	17	84	23	56

\$A	\$A-L
\$184	\$322
67	67

TACE	D t C	CWT	EMA	Rib	Rump	RBV	IMF	NFI-F	Claw	Angle	Leg
EBV	-5.8	+79	+3.5	-2.3	-4.2	+0.1	+3.6	-0.23	+0.76	+0.92	+1.10
ACC	35%	59%	58%	59%	60%	52%	62%	49%	60%	61%	60%
Perc	20	16	82	92	97	72	16	8	31	36	70

Traits Observed: GL,BWT,200WT, Genomics

Notes: A GR Punisher P216 son out of a tidy Lowan cow, brings strong growth (with all growth EBV's being in the top 30% of breed and 200 DW in top 10%), excellent structure and skin. A definite choice for a cow bull, with the added bonus of that extra IMF.

Purchaser:..... \$:.....

Lot 19

PRIME QUIXOTE T37^{PV}

CXB22T37

DOB: 26/02/2022

Registration Status: HBR

Mating Type: AI

Genetic Status: AMFU,CAFU,DDFU,NHFU

S CHISUM 6175^{PV}
S CHISUM 255^{SV}
S BLOSSOM 0278#

RENNYLEA EDMUND E11^{PV}
LANDFALL KEYSTONE K132^{PV}
LANDFALL ARCHER H807^{SV}

Sire: NMMQ96 MILLAH MURRAH QUIXOTE Q96^{PV}

Dam: CXBR8 PRIME ZANZDU R8^{PV}

MILLAH MURRAH KLOONEY K42^{PV}
MILLAH MURRAH BRENDA N8^{PV}
MILLAH MURRAH BRENDA L73^{PV}

PRIME KATAPALULT K1^{SV}
PRIME ZANADU M103^{SV}
PRIME ZANADU K93#

March 2023 TransTasman Angus Cattle Evaluation

Selection Indexes

TACE	Dir	Dtrs	GL	BW	200 W	400 W	600 W	MCW	Milk	SS	Doc
EBV	+0.3	+4.6	-6.1	+5.1	+64	+102	+128	+96	+17	+2.9	+17
ACC	57%	44%	83%	73%	73%	71%	71%	67%	59%	68%	55%
Perc	70	33	28	73	5	18	27	59	50	21	65

\$A	\$A-L
\$254	\$405
5	9

TACE	D t C	CWT	EMA	Rib	Rump	RBV	IMF	NFI-F	Claw	Angle	Leg
EBV	-7.3	+81	+8.4	-0.4	-1.0	+0.7	+0.8	+0.41	+0.78	+1.04	+1.12
ACC	36%	60%	61%	62%	62%	56%	64%	50%	67%	67%	65%
Perc	3	13	25	58	62	34	84	78	35	66	75

Traits Observed: GL,BWT,200WT, Genomics

Notes: A Keystone daughter, Zanadu R8, has brought more frame & length to this Quixote son, bringing extra growth. Sporting a Carcase Wt of +80 and EMA +8.0. Not a bad effort for a heifers first calf.

Purchaser:..... \$:.....

Prime Angus - Bred to Perform

Lot 20

PRIME EYES ONYOU T9^{PV}

CXB22T9

DOB: 19/02/2022

Registration Status: HBR

Mating Type: AI

Genetic Status: AMFU,CAFU,DDFU,NHFU

MOGCK BULLSEYE^{PV}
 HOOVER NO DOUBT^{PV}
 MISS BLACKCAP ELLSTON J2[#]

S A V THUNDERBIRD 9061^{SV}
 PRIME KATAPALUT K1^{SV}
 PRIME JEDDA H81[#]

Sire: USA19470275 E G EYES ONYOU^{PV}

Dam: CXBQ50 PRIME SHASTA Q50^{SV}

HAYNES OUTRIGHT 452[#]
 BALDRIDGE ISABEL D275[#]
 BALDRIDGE ISABEL Y69[#]

TE MANIA YORKSHIRE Y437^{PV}
 PRIME SHASTA F58[#]
 PRIME SHASTA B58[#]

March 2023 TransTasman Angus Cattle Evaluation

TACE	Dir	Dtrs	GL	BW	200 W	400 W	600 W	MCW	Milk	SS	Doc
EBV	+1.2	+2.9	-10.2	+5.9	+64	+118	+154	+133	+13	+3.3	+31
ACC	52%	39%	82%	72%	70%	68%	68%	65%	60%	64%	36%
Perc	63	51	2	85	5	3	3	9	80	12	12

TACE	D t C	CWT	EMA	Rib	Rump	RBY	IMF	NFI-F	Claw	Angle	Leg
EBV	-4.6	+81	+7.2	-1.3	-2.6	+1.1	+0.3	-0.07	+1.00	+1.00	+1.08
ACC	31%	59%	59%	59%	58%	52%	63%	47%	68%	68%	60%
Perc	50	12	38	78	86	14	92	19	79	56	64

Selection Indexes

\$A	\$A-L
\$224	\$399
23	12

Traits Observed: GL,BWT,200WT, Genomics

Notes: A Powerful & Impressive Eyes Onyou son, having a -8.9 for GL, being born early followed by explosive growth (top 6% for all growth), Eyes Onyou T9 is a standout, having a huge spring of rib with extra frame and thickness.

Purchaser: \$:



Lot 20 - PRIME EYES ONYOU T9^{PV}

Lot 21

PRIME PUNISHER T55^{PV}

CXB22T55

DOB: 13/03/2022

Registration Status: HBR

Mating Type: Natural

Genetic Status: AMFU,CAFU,DDFU,NHFU

HINGAIA 469[#]
 MILLAH MURRAH TEX K51^{PV}
 MILLAH MURRAH PRUE G89^{PV}

G A R PROPHET^{SV}
 BALDRIDGE BEAST MODE B074^{PV}
 BALDRIDGE ISABEL Y69[#]

Sire: SJKP216 GRANITE RIDGE PUNISHER P216^{SV}

Dam: CXBQ4 PRIME MITTAGONG Q4^{PV}

TE MANIA BERKLEY B1^{PV}
 GRANITE RIDGE EMILLESQUE H62[#]
 GRANITE RIDGE EMMILESQUE C160[#]

PRIME JUGGERNAUT J15^{SV}
 PRIME MITTAGONG N21^{PV}
 PRIME MITTAGONG K5^{SV}

March 2023 TransTasman Angus Cattle Evaluation

TACE	Dir	Dtrs	GL	BW	200 W	400 W	600 W	MCW	Milk	SS	Doc
EBV	-4.1	-0.1	-4.3	+8.4	+60	+96	+125	+111	+12	+3.7	+24
ACC	55%	45%	70%	72%	71%	69%	69%	66%	59%	66%	36%
Perc	90	79	57	99	12	34	32	33	86	7	30

TACE	D t C	CWT	EMA	Rib	Rump	RBY	IMF	NFI-F	Claw	Angle	Leg
EBV	-5.9	+67	+7.5	-1.4	-2.8	+0.6	+2.6	+0.27	+0.78	+0.92	+1.06
ACC	36%	59%	58%	60%	60%	53%	63%	50%	61%	61%	59%
Perc	18	48	34	79	88	40	36	62	35	36	58

Selection Indexes

\$A	\$A-L
\$210	\$350
38	46

Traits Observed: BWT,200WT, Genomics

Notes: A growthy young bull, Punisher T55, had one of the top weaning weights, making it quicker & easier to hit the weaner market, but his calves will continue to grow on. Added bonus is his large Scrotal and high EMA, a very thick bull.

Purchaser: \$:

Prime Angus - Bred to Perform

Lot 22

PRIME EYES ONYOU T44^{PV}

CXB22T44

DOB: 02/03/2022

Registration Status: HBR

Mating Type: AI

Genetic Status: AMFU,CAFU,DDFU,NHFU

MOGCK BULLSEYE^{PV}

EF COMPLEMENT 8088^{PV}

HOOVER NO DOUBT^{PV}

EF COMMANDO 1366^{PV}

MISS BLACKCAP ELLSTON J2[#]

RIVERBEND YOUNG LUCY W1470^U

Sire: USA19470275 E G EYES ONYOU^{PV}

Dam: CXBQ10 PRIME HUMPSOL Q10^{PV}

HAYNES OUTRIGHT 452[#]

PRIME JUGGERNAUT J15^{SV}

BALDRIDGE ISABEL D275[#]

PRIME HUMPSOL L144^{SV}

BALDRIDGE ISABEL Y69[#]

PRIME HUMPSOL E18[#]

March 2023 TransTasman Angus Cattle Evaluation

Selection Indexes

TACE	Dir	Dtrs	GL	BW	200 W	400 W	600 W	MCW	Milk	SS	Doc
EBV	-2.7	+0.5	-5.6	+7.5	+72	+117	+143	+118	+11	+2.9	+26
ACC	54%	42%	82%	72%	71%	68%	68%	66%	60%	64%	36%
Perc	85	74	36	97	1	3	8	23	93	21	23

TACE	D t C	CWT	EMA	Rib	Rump	RBV	IMF	NFI-F	Claw	Angle	Leg
EBV	-5.1	+86	+10.7	+0.2	+0.1	+0.6	+1.5	+0.36	+0.98	+0.86	+0.98
ACC	32%	60%	59%	60%	59%	53%	63%	48%	68%	68%	59%
Perc	36	7	10	43	42	40	67	73	76	23	31

\$A	\$A-L
\$260	\$417
3	6

Traits Observed: GL,BWT,200WT, Genomics

Notes: It was Eyes Onyou T44 who always caught the eye even as a young calf, he was always extra deep and thick - he stoodout. He still has that ability to standout, and his powerful figures back-up that impression giving him huge potential.

Purchaser: \$:

Lot 23

PRIME STERLING PACIFIC T36^{PV}

CXB22T36

DOB: 26/02/2022

Registration Status: HBR

Mating Type: AI

Genetic Status: AMFU,CAFU,DDFU,NHFU

MOGCK BULLSEYE^{PV}

MILLAH MURRAH EQUATOR D78^{PV}

HOOVER NO DOUBT^{PV}

PRIME MAXIMUS M7^{PV}

MISS BLACKCAP ELLSTON J2[#]

PRIME MITTAGONG K5^{SV}

Sire: USA19444025 STERLING PACIFIC 904^{PV}

Dam: CXBQ86 PRIME JAPARA Q86^{PV}

G A R PROPHET^{SV}

PRIME JUGGERNAUT J15^{SV}

BALDRIDGE ISABEL B082[#]

PRIME JAPARA N5^{SV}

BALDRIDGE ISABEL Y69[#]

PRIME JAPARA L30[#]

March 2023 TransTasman Angus Cattle Evaluation

Selection Indexes

TACE	Dir	Dtrs	GL	BW	200 W	400 W	600 W	MCW	Milk	SS	Doc
EBV	-4.8	-1.5	-4.2	+5.8	+72	+131	+171	+152	+26	+2.7	+32
ACC	55%	41%	83%	73%	72%	69%	68%	66%	59%	64%	41%
Perc	92	87	59	84	1	1	1	2	3	26	10

TACE	D t C	CWT	EMA	Rib	Rump	RBV	IMF	NFI-F	Claw	Angle	Leg
EBV	-5.0	+105	+2.0	-0.5	-2.1	-0.7	+3.7	-0.24	+0.74	+0.86	+1.00
ACC	31%	60%	58%	59%	58%	52%	63%	47%	69%	68%	60%
Perc	39	1	92	60	80	96	14	8	27	23	37

\$A	\$A-L
\$225	\$401
22	11

Traits Observed: GL,BWT,200WT, Genomics

Notes: Growth, growth and more growth - all in the top 1% of the breed (200DW, 400DW, 600DW & Carcase Wt). Astounding depth and thickness in this Sterling Pacific son with good milk, High IMF and large Scrotal adding to the blend.

Purchaser: \$:

Lot 24

PRIME EYES ONYOU T28^{PV}

CXB22T28

DOB: 24/02/2022

Registration Status: HBR

Mating Type: AI

Genetic Status: AMFU,CAFU,DDFU,NHFU

MOGCK BULLSEYE^{PV}

AYRVALE GENERAL G18^{PV}

HOOVER NO DOUBT^{PV}

ESSLEMONT LOTTO L3^{PV}

MISS BLACKCAP ELLSTON J2[#]

ESSLEMONT JENNY J8^{PV}

Sire: USA19470275 E G EYES ONYOU^{PV}

Dam: CXBP12 PRIME MOONGARA P12^{SV}

HAYNES OUTRIGHT 452[#]

ARDROSSAN EQUATOR A241^{PV}

BALDRIDGE ISABEL D275[#]

PRIME MOONGARA G61[#]

BALDRIDGE ISABEL Y69[#]

TE MANIA MOONGARA X333[#]

March 2023 TransTasman Angus Cattle Evaluation

Selection Indexes

TACE	Dir	Dtrs	GL	BW	200 W	400 W	600 W	MCW	Milk	SS	Doc
EBV	-0.9	+2.0	-6.0	+4.6	+60	+110	+145	+121	+13	+2.6	+30
ACC	54%	42%	83%	73%	71%	69%	69%	67%	61%	65%	38%
Perc	77	61	30	62	11	7	7	19	84	29	13

TACE	D t C	CWT	EMA	Rib	Rump	RBV	IMF	NFI-F	Claw	Angle	Leg
EBV	-6.1	+82	+14.7	+0.6	+1.4	+1.0	+3.3	+0.45	+1.08	+1.14	+0.94
ACC	34%	61%	61%	61%	60%	54%	65%	50%	66%	67%	57%
Perc	15	11	1	33	20	18	20	81	89	84	20

\$A	\$A-L
\$278	\$448
1	2

Traits Observed: GL,BWT,200WT, Genomics

Notes: A performance powerhouse, this Eyes Onyou son has it all, Moderate BW and explosive growth, fat, high IMF and is in the top 1% for EMA and the Selection Indexes. His dam sold at dispersal for \$18,000. One to add to your list!

Purchaser: \$:

Prime Angus - Bred to Perform

Lot 25

PRIME PUNISHER T52^{PV}

CXB22T52

DOB: 11/03/2022

Registration Status: **HBR**

Mating Type: **AI**

Genetic Status: **AMFU,CAFU,DDFU,NHFU**

HINGAIA 469#
MILLAH MURRAH TEX K51^{PV}
MILLAH MURRAH PRUE G89^{PV}

TE MANIA EMPEROR E343^{PV}
PRIME LINCOLN L12^{SV}
PRIME JEDDA E19#

Sire: SJKP216 GRANITE RIDGE PUNISHER P216^{SV}

Dam: CXBQ61 PRIME MITTAGONG Q61^{SV}

TE MANIA BERKLEY B1^{PV}
GRANITE RIDGE EMILLESQUE H62#
GRANITE RIDGE EMMILLESQUE C160#

PRIME JUGGERNAUT J15^{SV}
PRIME MITTAGONG L46#
PRIME MITTAGONG E8#

March 2023 TransTasman Angus Cattle Evaluation

TACE	Dir	Dtrs	GL	BW	200 W	400 W	600 W	MCW	Milk	SS	Doc
EBV	+2.6	+5.8	+0.5	+4.3	+49	+81	+109	+88	+13	+1.4	+21
ACC	52%	41%	81%	72%	71%	68%	68%	65%	58%	65%	31%
Perc	52	21	98	55	55	77	68	72	80	76	45

TACE	D t C	CWT	EMA	Rib	Rump	RBV	IMF	NFI-F	Claw	Angle	Leg
EBV	-5.4	+65	+2.6	-0.7	-1.8	+0.2	+3.7	-0.35	+1.06	+1.22	+1.16
ACC	34%	58%	57%	59%	59%	52%	62%	48%	60%	60%	59%
Perc	29	53	89	65	76	66	14	4	86	93	84

Selection Indexes

\$A	\$A-L
\$206	\$342
43	53

Traits Observed: GL,BWT,200WT, Genomics

Notes: Prime Punisher T52 is so well put together with the top foot & leg structure of his sire, with a moderate BW, and being 400kg at weaning. T52 has excellent Net Feed Efficiency - being in the top 5% and IMF in top 15%. A good all-round Bull.

Purchaser:..... \$:.....



Lot 21 - PRIME PUNISHER T55^{PV}

Lot 26

PRIME KEYSTONE T76^{SV}

CXB22T76

DOB: 06/04/2022

Registration Status: **HBR**

Mating Type: **Natural**

Genetic Status: **AMFU,CAFU,DDFU,NHFU**

RENNYLEA EDMUND E11^{PV}
LANDFALL KEYSTONE K132^{PV}
LANDFALL ARCHER H807^{SV}

TE MANIA AFRICA A217^{PV}
PRIME AFRICA G25^{SV}
PRIME JEDDA B47#

Sire: CXBR23 PRIME KEYSTONE R23^{PV}

Dam: CXBK87 PRIME AFRICA G25 K87#

PRIME JUGGERNAUT J15^{SV}
PRIME MOONGARA P28^{PV}
PRIME MOONGARA M4^{SV}

TE MANIA YORKSHIRE Y437^{PV}
PRIME SHASTA F58#
PRIME SHASTA B58#

March 2023 TransTasman Angus Cattle Evaluation

TACE	Dir	Dtrs	GL	BW	200 W	400 W	600 W	MCW	Milk	SS	Doc
EBV	-1.1	+3.1	-8.0	+5.4	+51	+95	+129	+135	+11	+2.0	+23
ACC	55%	45%	70%	69%	70%	68%	69%	66%	59%	64%	37%
Perc	78	49	9	78	43	37	26	8	93	52	37

TACE	D t C	CWT	EMA	Rib	Rump	RBV	IMF	NFI-F	Claw	Angle	Leg
EBV	-5.7	+67	+3.0	-2.7	-4.5	+1.6	+1.1	-0.14	+0.92	+1.02	+1.04
ACC	36%	59%	58%	60%	60%	53%	63%	49%	64%	64%	64%
Perc	22	48	86	95	98	4	78	14	65	61	51

Selection Indexes

\$A	\$A-L
\$175	\$337
75	56

Traits Observed: BWT,200WT, Genomics

Notes: An April born calf out of a very reliable cow K87 , who sold in our February Dispersal. T76 is Sired by Prime Keystone R23, who brings extra frame and length on which to pack all that meat - top 4% for RBV.

Purchaser:..... \$:.....

Prime Angus - Bred to Perform

Lot 27

PRIME QUICKSILVER T62^{PV}

CXB22T62

DOB: 17/03/2022

Registration Status: **HBR**

Mating Type: **Natural**

Genetic Status: **AMFU,CAFU,DDFU,NHFU**

TE MANIA GARTH G67^{PV}
TE MANIA MORTLAKE M1484^{PV}
TE MANIA BARUNAH J1049^{SV}

THOMAS UP RIVER 1614^{PV}
PRIME NIRVANA N33^{SV}
PRIME BARWON H68[#]

Sire: SJKQ12 GRANITE RIDGE QUICKSILVER Q12^{SV}

Dam: CXBR67 PRIME SHASTA R67^{SV}

AYRVALE JAGGER J12^{PV}
GRANITE RIDGE EMILLESQUE N72[#]
GRANITE RIDGE EMILLESQUE K233[#]

TE MANIA ULONG U41^{SV}
PRIME SHASTA F8[#]
PRIME SHASTA Y57[#]

March 2023 TransTasman Angus Cattle Evaluation

TACE	Dir	Dtrs	GL	BW	200 W	400 W	600 W	MCW	Milk	SS	Doc
EBV	-2.6	+2.9	-8.4	+6.9	+62	+101	+131	+117	+21	+4.1	+21
ACC	54%	42%	72%	71%	71%	68%	69%	66%	59%	65%	30%
Perc	85	51	7	95	7	20	22	23	18	4	45

TACE	D t C	CWT	EMA	Rib	Rump	RBY	IMF	NFI-F	Claw	Angle	Leg
EBV	-6.8	+72	+3.3	-2.6	-2.3	+0.3	+0.7	-0.09	+0.74	+1.02	+1.20
ACC	33%	59%	57%	59%	60%	52%	63%	49%	57%	57%	54%
Perc	7	34	84	94	83	60	86	18	27	61	91

Selection Indexes

\$A	\$A-L
\$197	\$350
54	46

Traits Observed: BWT,200WT, Genomics

Notes: Prime Angus breeding always has an eye to "Weight for Age" and good structure, GR Quicksilver Q12 brings both of these to his offspring. Quicksilver T62 has growth in the top 20% of the breed and sports a SS in top 5% all in a great package.

Purchaser:..... \$:

Lot 28

PRIME STERLING PACIFIC T17^{PV}

CXB22T17

DOB: 21/02/2022

Registration Status: **HBR**

Mating Type: **AI**

Genetic Status: **AMFU,CAFU,DDFU,NHFU**

MOGCK BULLSEYE^{PV}
HOOVER NO DOUBT^{PV}
MISS BLACKCAP ELLSTON J2[#]

SCHURRTOP REALITY X723[#]
MATAURI REALITY 839[#]
MATAURI 06663[#]

Sire: USA19444025 STERLING PACIFIC 904^{PV}

Dam: CXBN26 PRIME SHASTA N26^{SV}

G A R PROPHET^{SV}
BALDRIDGE ISABEL B082[#]
BALDRIDGE ISABEL Y69[#]

TE MANIA EMPEROR E343^{PV}
PRIME SHASTA J16[#]
PRIME SHASTA F8[#]

March 2023 TransTasman Angus Cattle Evaluation

TACE	Dir	Dtrs	GL	BW	200 W	400 W	600 W	MCW	Milk	SS	Doc
EBV	+3.7	+4.0	-8.1	+5.5	+61	+109	+141	+142	+8	+3.3	+30
ACC	57%	45%	83%	74%	73%	70%	70%	67%	61%	65%	45%
Perc	42	40	9	80	10	8	10	5	98	12	14

TACE	D t C	CWT	EMA	Rib	Rump	RBY	IMF	NFI-F	Claw	Angle	Leg
EBV	-5.1	+70	+0.7	-0.4	-2.2	+0.0	+2.8	-0.03	+0.80	+0.94	+1.22
ACC	38%	62%	61%	62%	61%	55%	65%	51%	68%	68%	59%
Perc	36	40	97	58	81	77	31	23	39	41	93

Selection Indexes

\$A	\$A-L
\$207	\$392
42	15

Traits Observed: GL,BWT,200WT, Genomics

Notes: A well put together Sterling Pacific son, showing the deep, stout, square framed body of his sire and promising added performance for his offspring, with a set of figures that show-cases weight for age.

Purchaser:..... \$:

Lot 29

PRIME QORINTH T42^{PV}

CXB22T42

DOB: 01/03/2022

Registration Status: **HBR**

Mating Type: **AI**

Genetic Status: **AMFU,CAFU,DDFU,NHFU**

G A R PROPHET^{SV}
TE MANIA KIRBY K138^{PV}
TE MANIA BEEAC H17^{SV}

TUWHARETOA REGENT D145^{PV}
PRIME JUGGERNAUT J15^{SV}
PRIME LOWAN F20^{SV}

Sire: VTMQ1225 TE MANIA QORINTH Q1225^{PV}

Dam: CXBN31 PRIME BEEAC N31^{SV}

TUWHARETOA REGENT D145^{PV}
TE MANIA LOWAN J825^{PV}
TE MANIA LOWAN Z74^{PV}

CHERYLTON STEWIE D19^{PV}
PRIME K46[#]
PRIME BEEAC G114[#]

March 2023 TransTasman Angus Cattle Evaluation

TACE	Dir	Dtrs	GL	BW	200 W	400 W	600 W	MCW	Milk	SS	Doc
EBV	-5.2	+2.2	-2.6	+6.0	+50	+90	+116	+107	+20	+2.9	+9
ACC	56%	47%	82%	71%	71%	68%	69%	67%	60%	65%	44%
Perc	93	59	82	87	48	53	54	39	27	21	93

TACE	D t C	CWT	EMA	Rib	Rump	RBY	IMF	NFI-F	Claw	Angle	Leg
EBV	-7.3	+63	+4.8	-1.2	-1.3	-0.5	+6.0	+0.63	+0.98	+0.90	+1.06
ACC	39%	60%	60%	61%	61%	55%	64%	52%	65%	65%	64%
Perc	3	62	68	76	68	93	1	93	76	31	58

Selection Indexes

\$A	\$A-L
\$208	\$349
41	47

Traits Observed: GL,BWT,200WT, Genomics

Notes: This Qorinth Q1225 son is a favorite, he is so well put together, having a good head and coat , with excellent structure, he catches the eye. A more balanced set of figures with a standout +6.0 for IMF (top 1%).

Purchaser:..... \$:

Prime Angus - Bred to Perform

Lot 30

PRIME EYES ONYOU T48^{SV}

CXB22T48

DOB: 05/03/2022

Registration Status: **HBR**

Mating Type: **AI**

Genetic Status: **AMFU,CAFU,DDFU,NHFU**

MOGCK BULLSEYE^{PV}
 HOOVER NO DOUBT^{PV}
 MISS BLACKCAP ELLSTON J2[#]

TE MANIA YORKSHIRE Y437^{PV}
 PRIME YORKSHIRE D29^{SV}
 PRIME MOONGARA B35[#]

Sire: USA19470275 E G EYES ONYOU^{PV}

Dam: CXBJ96 PRIME KARAKARA J96[#]

HAYNES OUTRIGHT 452[#]
 BALDRIDGE ISABEL D275[#]
 BALDRIDGE ISABEL Y69[#]

KENNY'S CREEK WHITWORTH W134
 PRIME KARA KARAA33[#]
 TE MANIA KARA KARA X724[#]

March 2023 TransTasman Angus Cattle Evaluation

Selection Indexes

TACE	Dir	Dtrs	GL	BW	200 W	400 W	600 W	MCW	Milk	SS	Doc
EBV	-1.8	-1.8	-0.4	+5.0	+55	+100	+126	+119	+15	+2.8	+31
ACC	53%	41%	83%	73%	72%	69%	69%	67%	61%	64%	32%
Perc	81	88	96	71	29	22	31	22	67	23	12

TACE	D t C	CWT	EMA	Rib	Rump	RBY	IMF	NFI-F	Claw	Angle	Leg
EBV	-4.1	+70	+7.1	+1.6	+1.3	+0.3	+2.5	+0.38	+1.02	+0.96	+1.12
ACC	31%	61%	60%	60%	59%	54%	64%	47%	65%	65%	56%
Perc	65	39	39	16	21	60	38	75	82	46	75

\$A	\$A-L
\$198	\$346
53	50

Traits Observed: GL,BWT,200WT, Genomics

Notes: We have been impressed with the consistency of the Eyes Onyou progeny - they are performance powerhouses and physical standouts. Eyes Onyou T48 is a great example and he has that extra carcase quality.

Purchaser:..... \$:.....



Lot 22 - PRIME EYES ONYOU T44^{PV}

Lot 31

PRIME QUIXOTE T24^{SV}

CXB22T24

DOB: 23/02/2022

Registration Status: **HBR**

Mating Type: **AI**

Genetic Status: **AMFU,CAFU,DDFU,NHFU**

S CHISUM 6175^{PV}
 S CHISUM 255^{SV}
 S BLOSSOM 0278[#]

TUWHARETOA REGENT D145^{PV}
 PRIME JUGGERNAUT J15^{SV}
 PRIME LOWAN F20^{SV}

Sire: NMMQ96 MILLAH MURRAH QUIXOTE Q96^{PV}

Dam: CXBL5 PRIME ZANDY L5[#]

MILLAH MURRAH KLOONEY K42^{PV}
 MILLAH MURRAH BRENDA N8^{PV}
 MILLAH MURRAH BRENDA L73^{PV}

BOOROOMOOKA INSPIRED E124[!]
 PRIME ZANDY J46[#]
 PRIME ZANDY F33[#]

March 2023 TransTasman Angus Cattle Evaluation

Selection Indexes

TACE	Dir	Dtrs	GL	BW	200 W	400 W	600 W	MCW	Milk	SS	Doc
EBV	+3.7	+7.3	-5.4	+2.8	+50	+79	+106	+83	+24	+2.3	+15
ACC	57%	45%	74%	73%	74%	72%	72%	68%	60%	68%	56%
Perc	42	10	39	23	50	81	74	78	9	40	76

TACE	D t C	CWT	EMA	Rib	Rump	RBY	IMF	NFI-F	Claw	Angle	Leg
EBV	-6.2	+62	+9.6	-2.6	-4.1	+1.3	+1.9	+0.38	+0.70	+1.00	+1.08
ACC	37%	61%	61%	62%	62%	56%	64%	50%	68%	68%	65%
Perc	13	64	16	94	96	8	56	75	20	56	64

\$A	\$A-L
\$217	\$354
31	43

Traits Observed: BWT,200WT, Genomics

Notes: Quixote T24 has a strong head, good feet and a pleasing presentation. Calving Ease and low birth making him suitable to use over heifers. He has very balanced carcase figures, sporting a very high EMA and RBY.

Purchaser:..... \$:.....

Prime Angus - Bred to Perform

Lot 32

PRIME QUICKSILVER T85^{PV}

CXB22T85

DOB: 20/05/2022

Registration Status: HBR

Mating Type: Natural

Genetic Status: AMFU,CAFU,DDF,NHFU

TE MANIA GARTH G67^{PV}
 TE MANIA MORTLAKE M1484^{PV}
 TE MANIA BARUNAH J1049^{SV}
Sire: SJKQ12 GRANITE RIDGE QUICKSILVER Q12^{SV}
 AYRVALE JAGGER J12^{PV}
 GRANITE RIDGE EMILLESQUE N72[#]
 GRANITE RIDGE EMILLESQUE K233[#]

Dam: CXBR19 PRIME MOONGARA R19^{PV}

G A R PROPHET^{SV}
 BALDRIDGE BEAST MODE B074^{PV}
 BALDRIDGE ISABEL Y69[#]
 PRIME KATAPULT K1^{SV}
 PRIME MOONGARA P5^{PV}
 PRIME MOONGARA M47^{SV}

March 2023 TransTasman Angus Cattle Evaluation

TACE	Dir	Dtrs	GL	BW	200 W	400 W	600 W	MCW	Milk	SS	Doc
EBV	+3.5	+3.6	-7.8	+4.9	+67	+118	+159	+138	+19	+3.1	+25
ACC	55%	43%	71%	69%	70%	67%	68%	65%	58%	64%	34%
Perc	44	44	11	68	3	3	2	7	32	16	26

TACE	D t C	CWT	EMA	Rib	Rump	RBV	IMF	NFI-F	Claw	Angle	Leg
EBV	-5.0	+89	+5.2	-0.1	-0.2	-0.3	+3.9	-0.21	+0.96	+0.88	+0.98
ACC	33%	58%	56%	58%	58%	51%	61%	48%	64%	64%	61%
Perc	39	4	63	50	47	89	12	9	72	27	31

Selection Indexes

\$A	\$A-L
\$253	\$441
5	2

Traits Observed: BWT,200WT, Genomics

Notes: GR Quicksilver Q12 has done his job here, over a top Beast Mode daughter Prime R19 who sold for \$10,000 at our stage 1 Dispersal. Moderate birth to extreme growth (in top 5%) for all growth & Carcase Wt EBV's. Don't forget he is the youngest in the sale lineup, only being born May 20th.

Purchaser:..... \$:.....



Lot 24 - PRIME EYES ONYOU T28^{PV}

Lot 33

PRIME STERLING PACIFIC T23^{PV}

CXB22T23

DOB: 22/02/2022

Registration Status: HBR

Mating Type: AI

Genetic Status: AMFU,CAFU,DDF,NHFU

MOGCK BULLSEYE^{PV}
 HOOVER NO DOUBT^{PV}
 MISS BLACKCAP ELLSTON J2[#]
Sire: USA19444025 STERLING PACIFIC 904^{PV}
 G A R PROPHET^{SV}
 BALDRIDGE ISABEL B082[#]
 BALDRIDGE ISABEL Y69[#]

Dam: CXBQ59 PRIME BARWON Q59^{SV}

CONNEALY CAPITALIST 028[#]
 LD CAPITALIST 316^{PV}
 LD DIXIE ERICA 2053[#]
 TE MANIA AFRICA A217^{PV}
 PRIME MOONGARA H6[#]
 PRIME MOONGARA F55[#]

March 2023 TransTasman Angus Cattle Evaluation

TACE	Dir	Dtrs	GL	BW	200 W	400 W	600 W	MCW	Milk	SS	Doc
EBV	+6.3	+4.3	-7.9	+3.6	+65	+120	+149	+134	+17	+1.0	+27
ACC	58%	46%	83%	73%	73%	69%	69%	67%	61%	65%	45%
Perc	20	36	10	39	4	2	5	8	50	87	21

TACE	D t C	CWT	EMA	Rib	Rump	RBV	IMF	NFI-F	Claw	Angle	Leg
EBV	-4.9	+86	+7.7	-1.3	-1.6	+0.8	+1.9	-0.46	+0.74	+0.92	+0.86
ACC	35%	61%	60%	60%	60%	54%	64%	49%	69%	69%	60%
Perc	42	7	32	78	73	28	56	2	27	36	7

Selection Indexes

\$A	\$A-L
\$259	\$448
4	2

Traits Observed: GL,BWT,200WT, Genomics

Notes: The power in these Sterling Pacific calves is impressive. Pacific T23 has a curve bending set of figures - +3.6 BW to a +150 for 600 DW. To top this off his \$A and \$A-L are in top 3% of the breed and Excellent structure and phenotype.

Purchaser:..... \$:.....

Prime Angus - Bred to Perform

Lot 34

PRIME QORINTH T61^{PV}

CXB22T61

DOB: 17/03/2022

Registration Status: HBR

Mating Type: Natural

Genetic Status: AMFU,CAFU,DDFU,NHFU

G A R PROPHET^{SV}
TE MANIA KIRBY K138^{PV}
TE MANIA BEEAC H17^{SV}

TUWHARETOA REGENT D145^{PV}
PRIME JUGGERNAUT J15^{SV}
PRIME LOWAN F20^{SV}

Sire: VTMQ1225 TE MANIA QORINTH Q1225^{PV}

Dam: CXBP28 PRIME MOONGARA P28^{PV}

TUWHARETOA REGENT D145^{PV}
TE MANIA LOWAN J825^{PV}
TE MANIA LOWAN Z74^{PV}

PRIME KATAPALUT K1^{SV}
PRIME MOONGARA M4^{SV}
PRIME MOONGARA K6[#]

March 2023 TransTasman Angus Cattle Evaluation

TACE	Dir	Dtrs	GL	BW	200 W	400 W	600 W	MCW	Milk	SS	Doc
EBV	+1.9	+3.2	-6.1	+4.6	+43	+71	+92	+61	+18	+3.6	+10
ACC	57%	47%	72%	71%	71%	68%	69%	67%	61%	66%	44%
Perc	58	48	28	62	82	93	92	96	41	8	91

TACE	D t C	CWT	EMA	Rib	Rump	RBV	IMF	NFI-F	Claw	Angle	Leg
EBV	-7.9	+44	+4.6	+1.0	+1.0	-0.2	+4.1	+0.85	+0.78	+0.80	+0.96
ACC	39%	61%	60%	61%	62%	55%	65%	52%	61%	61%	61%
Perc	2	96	71	25	25	85	10	98	35	13	25

Selection Indexes

\$A	\$A-L
\$219	\$340
28	54

Traits Observed: BWT,200WT, Genomics

Notes: A strong stretchy bull who punches far above what his EBV's would suggest, being out of Moongara Q28 who was long and had extra frame - Her last son was sold for \$11K. T61 has Positive fat, a high IMF +4.1 and Large Scrotal.

Purchaser:..... \$:.....

Lot 35

PRIME BEAST MODE T34^{PV}

CXB22T34

DOB: 25/02/2022

Registration Status: HBR

Mating Type: AI

Genetic Status: AMFU,CAFU,DDFU,NHFU

C R A BEXTOR 872 5205 608[#]
G A R PROPHET^{SV}
G A R OBJECTIVE 1885[#]

THOMAS UP RIVER 1614^{PV}
PRIME NIRVANA N33^{SV}
PRIME BARWON H68[#]

Sire: USA17960722 BALDRIDGE BEAST MODE B074^{PV}

Dam: CXBR52 PRIME SHASTA R52^{SV}

STYLES UPGRADE J59[#]
BALDRIDGE ISABEL Y69[#]
BALDRIDGE ISABEL T935[#]

TE MANIA EMPEROR E343^{PV}
PRIME SHASTA K36[#]
PRIME SHASTA G109[#]

March 2023 TransTasman Angus Cattle Evaluation

TACE	Dir	Dtrs	GL	BW	200 W	400 W	600 W	MCW	Milk	SS	Doc
EBV	+0.5	+2.5	-5.6	+5.8	+72	+122	+162	+143	+17	+2.0	+26
ACC	63%	53%	83%	73%	73%	71%	72%	70%	65%	69%	55%
Perc	68	56	36	84	1	2	1	4	48	52	23

TACE	D t C	CWT	EMA	Rib	Rump	RBV	IMF	NFI-F	Claw	Angle	Leg
EBV	-3.5	+96	+7.0	-1.9	-2.9	+0.4	+1.4	+0.08	+0.76	+0.80	+0.90
ACC	44%	64%	64%	65%	65%	60%	67%	55%	71%	71%	68%
Perc	80	2	40	87	89	54	70	36	31	13	12

Selection Indexes

\$A	\$A-L
\$228	\$404
20	10

Traits Observed: GL,BWT,200WT, Genomics

Notes: A Beast Mode son with all his quality, being the first calf of Prime Shasta R52. A thick powerful young bull with heaps of potential, growth and Carcase Weight all in the top 2% of the breed. He is a standout.

Purchaser:..... \$:.....

Lot 36

PRIME STERLING PACIFIC T30^{PV}

CXB22T30

DOB: 25/02/2022

Registration Status: HBR

Mating Type: AI

Genetic Status: AMFU,CAFU,DDFU,NHFU

MOGCK BULLSEYE^{PV}
HOOVER NO DOUBT^{PV}
MISS BLACKCAP ELLSTON J2[#]

S A V THUNDERBIRD 9061^{SV}
PRIME KATAPALUT K1^{SV}
PRIME JEDDA H81[#]

Sire: USA19444025 STERLING PACIFIC 904^{PV}

Dam: CXBR54 PRIME BEEAC R54^{PV}

G A R PROPHET^{SV}
BALDRIDGE ISABEL B082[#]
BALDRIDGE ISABEL Y69[#]

MILLAH MURRAH EQUATOR D78[#]
PRIME BEEAC M30^{SV}
PRIME K46[#]

March 2023 TransTasman Angus Cattle Evaluation

TACE	Dir	Dtrs	GL	BW	200 W	400 W	600 W	MCW	Milk	SS	Doc
EBV	+8.6	+3.0	-6.4	+1.0	+61	+114	+142	+124	+22	+3.4	+30
ACC	54%	41%	83%	73%	72%	69%	69%	66%	60%	64%	43%
Perc	7	50	24	5	10	4	9	16	15	11	13

TACE	D t C	CWT	EMA	Rib	Rump	RBV	IMF	NFI-F	Claw	Angle	Leg
EBV	-4.6	+82	+5.1	+0.6	-0.9	-0.3	+3.5	+0.13	+0.86	+0.90	+0.84
ACC	32%	60%	59%	59%	59%	53%	63%	48%	68%	68%	59%
Perc	50	11	65	33	61	89	17	43	52	31	5

Selection Indexes

\$A	\$A-L
\$233	\$417
16	6

Traits Observed: GL,BWT,200WT, Genomics

Notes: This Sterling Pacific son has a curve bending set of figures from birth (+0.9) to 600DW (+144). Pacific T30 is a truly balanced animal, ticking many boxes - Calving Ease, Milk, Scrotal, EMA, Rib Fat, Growth, phenotype - all big ticks.

Purchaser:..... \$:.....

Prime Angus - Bred to Perform

Lot 37

PRIME KEYSTONE T73^{PV}

CXB22T73

DOB: 04/04/2022

Registration Status: HBR

Mating Type: Natural

Genetic Status: AMFU,CAFU,DDFU,NHFU

RENNYLEA EDMUND E11^{PV}
 LANDFALL KEYSTONE K132^{PV}
 LANDFALL ARCHER H807^{SV}

BASIN FRANCHISE P142[#]
 EF COMPLEMENT 8088^{PV}
 EF EVERELDA ENTENSE 6117[#]

Sire: CXBR23 PRIME KEYSTONE R23^{PV}

Dam: CXBP47 PRIME JEDDA P47^{SV}

PRIME JUGGERNAUT J15^{SV}
 PRIME MOONGARA P28^{PV}
 PRIME MOONGARA M4^{SV}

PRIME EMPEROR H92^{SV}
 PRIME JEDDA L98[#]
 PRIME JEDDA G39[#]

March 2023 TransTasman Angus Cattle Evaluation

Selection Indexes

TACE	Dir	Dtrs	GL	BW	200 W	400 W	600 W	MCW	Milk	SS	Doc
EBV	+5.7	+7.2	-6.9	+1.9	+47	+94	+123	+100	+20	+1.4	+17
ACC	56%	47%	71%	70%	70%	67%	68%	66%	59%	64%	40%
Perc	25	10	18	11	63	39	37	51	26	76	65

TACE	D t C	CWT	EMA	Rib	Rump	RBV	IMF	NFI-F	Claw	Angle	Leg
EBV	-7.5	+69	+5.4	+2.7	+3.1	+0.2	+2.7	+0.46	+0.94	+1.08	+1.28
ACC	37%	58%	57%	59%	59%	53%	62%	50%	65%	65%	64%
Perc	3	42	61	6	6	66	33	82	69	74	97

\$A	\$A-L
\$246	\$415
8	6

Traits Observed: BWT,200WT, Genomics

Notes: This Prime Keystone R23 son is a strong contender to use over heifers, with calving ease and low birth, followed with strong growth. Add to this high EMA & fatin top 5% of the breed, and Selection Indexes in top 10%. His dam sold for \$12,500 and her last son sold for \$11K. Great potential.

Purchaser:..... \$:.....



Lot 38

PRIME QUICKSILVER T57^{PV}

CXB22T57

DOB: 15/03/2022

Registration Status: HBR

Mating Type: Natural

Genetic Status: AMFU,CAFU,DDFU,NHFU

TE MANIA GARTH G67^{PV}
 TE MANIA MORTLAKE M1484^{PV}
 TE MANIA BARUNAH J1049^{SV}

THOMAS UP RIVER 1614^{PV}
 PRIME NIRVANA N33^{SV}
 PRIME BARWON H68[#]

Sire: SJKQ12 GRANITE RIDGE QUICKSILVER Q12^{SV}

Dam: CXBR68 PRIME MOONGARA R68^{PV}

AYRVALE JAGGER J12^{PV}
 GRANITE RIDGE EMILLESQUE N72[#]
 GRANITE RIDGE EMILLESQUE K233[#]

AYRVALE GENETIC G11^{PV}
 PRIME MOONGARA M47^{SV}
 PRIME MOONGARA H91[#]

March 2023 TransTasman Angus Cattle Evaluation

Selection Indexes

TACE	Dir	Dtrs	GL	BW	200 W	400 W	600 W	MCW	Milk	SS	Doc
EBV	+1.9	+4.0	-3.5	+4.7	+59	+112	+136	+119	+17	+3.5	+22
ACC	53%	41%	71%	70%	70%	67%	68%	65%	57%	64%	29%
Perc	58	40	70	64	13	6	15	21	55	9	41

TACE	D t C	CWT	EMA	Rib	Rump	RBV	IMF	NFI-F	Claw	Angle	Leg
EBV	-7.3	+72	+4.3	+0.5	+0.4	+0.0	+2.7	+0.21	+0.84	+0.80	+0.84
ACC	31%	57%	56%	58%	58%	50%	62%	48%	59%	60%	57%
Perc	3	31	74	36	36	77	33	54	48	13	5

\$A	\$A-L
\$246	\$424
8	4

Traits Observed: BWT,200WT, Genomics

Notes: A heifers first calf and you will agree she has done a good job. T57 is a GR Quicksilver Q12 son who has oodles of growth, plus solid carcass quality. T57's grand dam was a prolific cow, with sons selling for \$10K, \$12K and \$13K. Lots of potential here.

Purchaser:..... \$:.....

Prime Angus - Bred to Perform

Lot 39

PRIME QORINTH T49^{PV}

CXB22T49

DOB: 06/03/2022

Registration Status: HBR

Mating Type: AI

Genetic Status: AMFU,CAFU,DDFU,NHFU

G A R PROPHET^{SV}
TE MANIA KIRBY K138^{PV}
TE MANIA BEEAC H17^{SV}

BOOROOMOOKA UNDERTAKEN Y145
RENNYLEA EDMUND E11^{PV}
LAWSONS HENRY VIII Y5^{SV}

Sire: VTMQ1225 TE MANIA QORINTH Q1225^{PV}

Dam: NAQH190 ARDROSSAN WILCOOLA H190^{SV}

TUWHARETOA REGENT D145^{PV}
TE MANIA LOWAN J825^{PV}
TE MANIA LOWAN Z74^{PV}

ARDROSSAN APOLLO A334^{SV}
ARDROSSAN WILCOOLA F433[#]
ARDROSSAN WILCOOLA C23[#]

March 2023 TransTasman Angus Cattle Evaluation

TACE	Dir	Dtrs	GL	BW	200 W	400 W	600 W	MCW	Milk	SS	Doc
EBV	-2.0	-2.2	-0.1	+4.4	+41	+70	+87	+69	+11	+3.0	+15
ACC	57%	48%	82%	72%	71%	68%	69%	67%	61%	65%	43%
Perc	82	90	97	57	87	94	95	92	92	18	77

TACE	D t C	CWT	EMA	Rib	Rump	RBV	IMF	NFI-F	Claw	Angle	Leg
EBV	-8.0	+53	+0.7	+2.2	+1.9	-1.0	+4.5	+0.81	+0.72	+0.80	+0.98
ACC	40%	60%	60%	61%	61%	55%	64%	52%	66%	66%	65%
Perc	1	86	97	9	14	99	6	98	23	13	31

Selection Indexes

\$A	\$A-L
\$183	\$297
68	81

Traits Observed: GL,BWT,200WT, Genomics

Notes: This young bull has standout potential, being sired by Te Mania Qorinth Q1225 who is an IMF specialist, out of Ardrossan Wilcoola H190 who is long & very sound - a beautiful and productive cow. H190 sold at our dispersal as a 10 y.o. for \$20,500 and her last 2 sons have sold for \$16,000 and \$20,000.

Purchaser: \$:

Lot 40

PRIME QORINTH T81^{PV}

CXB22T81

DOB: 14/04/2022

Registration Status: HBR

Mating Type: Natural

Genetic Status: AMFU,CAFU,DDFU,NHFU

G A R PROPHET^{SV}
TE MANIA KIRBY K138^{PV}
TE MANIA BEEAC H17^{SV}

S A V THUNDERBIRD 9061^{SV}
PRIME KATAPALU K1^{SV}
PRIME JEDDA H81[#]

Sire: VTMQ1225 TE MANIA QORINTH Q1225^{PV}

Dam: CXBQ20 PRIME MOONGARA Q20^{SV}

TUWHARETOA REGENT D145^{PV}
TE MANIA LOWAN J825^{PV}
TE MANIA LOWAN Z74^{PV}

CARABAR DOCKLANDS D62^{PV}
PRIME MOONGARA L40[#]
PRIME MOONGARA J9[#]

March 2023 TransTasman Angus Cattle Evaluation

TACE	Dir	Dtrs	GL	BW	200 W	400 W	600 W	MCW	Milk	SS	Doc
EBV	+6.8	+5.2	-8.5	+2.5	+46	+83	+103	+64	+21	+3.8	+10
ACC	55%	45%	71%	69%	71%	68%	68%	66%	59%	65%	43%
Perc	16	27	7	18	68	71	79	94	19	6	92

TACE	D t C	CWT	EMA	Rib	Rump	RBV	IMF	NFI-F	Claw	Angle	Leg
EBV	-8.2	+52	+6.6	+1.6	+1.1	-0.3	+4.0	+0.71	+0.84	+0.92	+0.98
ACC	37%	59%	58%	60%	60%	53%	63%	50%	64%	65%	63%
Perc	1	87	45	16	24	89	11	95	48	36	31

Selection Indexes

\$A	\$A-L
\$249	\$393
7	15

Traits Observed: BWT,200WT, Genomics

Notes: Te Mania Qorinth Q1225 was purchased as an 18 month old for a herd sire, for a purpose and that was to bring more IMF into the herd, he has terrific feet and has grown into a splendid bull. When you add this to Qorinths mothers credentials you have a great package. Moongara Q20 sold for \$12,000.

Purchaser: \$:

Lot 41

PRIME QUICKSILVER T60^{PV}

CXB22T60

DOB: 16/03/2022

Registration Status: HBR

Mating Type: Natural

Genetic Status: AMFU,CAFU,DDFU,NHFU

TE MANIA GARTH G67^{PV}
TE MANIA MORTLAKE M1484^{PV}
TE MANIA BARUNAH J1049^{SV}

G A R PROPHET^{SV}
CLUNES CROSSING DUSTY M13^{PV}
CLUNES CROSSING GLORIOUS G1

Sire: SJKQ12 GRANITE RIDGE QUICKSILVER Q12^{SV}

Dam: CXBR17 PRIME SHASTA R17^{PV}

AYRVALE JAGGER J12^{PV}
GRANITE RIDGE EMILLESQUE N72[#]
GRANITE RIDGE EMILLESQUE K233[#]

SYDGEN BLACK PEARL 2006^{PV}
PRIME SHASTA P22^{SV}
PRIME SHASTA F8[#]

March 2023 TransTasman Angus Cattle Evaluation

TACE	Dir	Dtrs	GL	BW	200 W	400 W	600 W	MCW	Milk	SS	Doc
EBV	-2.8	+5.5	-8.1	+6.3	+64	+103	+142	+111	+21	+1.3	+18
ACC	55%	44%	71%	70%	70%	67%	68%	65%	58%	64%	35%
Perc	86	24	9	90	5	16	9	33	18	79	60

TACE	D t C	CWT	EMA	Rib	Rump	RBV	IMF	NFI-F	Claw	Angle	Leg
EBV	-4.7	+78	+10.3	-2.9	-3.8	+1.1	+2.6	-0.52	+0.76	+0.86	+1.12
ACC	34%	58%	57%	59%	59%	52%	63%	50%	63%	63%	61%
Perc	47	18	12	96	95	14	36	1	31	23	75

Selection Indexes

\$A	\$A-L
\$241	\$385
10	19

Traits Observed: BWT,200WT, Genomics

Notes: A very good looking & sound GR Quicksilver Q12 son, an easy doing bull with lots of meat - RBV of +1.2 (top 10%). Growth is totally covered with 600DW in top 10% of the breed and a huge EMA of +10.3 Quicksilver is breeding very well.

Purchaser: \$:

Prime Angus - Bred to Perform

Lot 42

PRIME STERLING PACIFIC T46^{PV}

CXB22T46

DOB: 03/03/2022

Registration Status: HBR

Mating Type: AI

Genetic Status: AMFU,CAFU,DDFU,NHFU

MOGCK BULLSEYE^{PV}
 HOOVER NO DOUBT^{PV}
 MISS BLACKCAP ELLSTON J2[#]

TE MANIA EMPEROR E343^{PV}
 PRIME EMPEROR H92^{SV}
 PRIME JEDDA X601 E91[#]

Sire: USA19444025 STERLING PACIFIC 904^{PV}

Dam: CXBN88 PRIME EXPRESS MAX N88^{SV}

G A R PROPHET^{SV}
 BALDRIDGE ISABEL B082[#]
 BALDRIDGE ISABEL Y69[#]

TE MANIA ULONG U41^{SV}
 PRIME F32[#]
 PRIME XPRESS MAX X19[#]

March 2023 TransTasman Angus Cattle Evaluation

Selection Indexes

TACE	Dir	Dtrs	GL	BW	200 W	400 W	600 W	MCW	Milk	SS	Doc
EBV	-2.2	-0.4	-0.1	+5.7	+55	+98	+124	+104	+14	+4.8	+28
ACC	55%	42%	83%	73%	73%	69%	69%	66%	60%	64%	42%
Perc	83	81	97	83	26	27	35	45	74	1	17

\$A	\$A-L
\$230	\$378
18	24

TACE	D t C	CWT	EMA	Rib	Rump	RBV	IMF	NFI-F	Claw	Angle	Leg
EBV	-7.0	+52	+5.4	+0.9	-0.3	+0.0	+4.3	+0.14	+0.88	+0.90	+0.92
ACC	33%	61%	59%	60%	59%	53%	63%	48%	68%	68%	59%
Perc	5	87	61	27	49	77	8	44	57	31	16

Traits Observed: GL,BWT,200WT, Genomics

Notes: This is a thick Sterling Pacific son out of a powerful cow Prime N88, whose last son sold for \$11,000. T46 has lots to impress - a +4.9 Scrotal (top 1%), and IMF of +4.2 (top 8%) plus Positive Rib fat added to very sound structure and Selection Indexes in top 20% of the breed.

Purchaser:..... \$:.....



Lot 30 - PRIME EYES ONYOU T48^{PV}

Lot 43

PRIME STERLING PACIFIC T43^{SV}

CXB22T43

DOB: 02/03/2022

Registration Status: HBR

Mating Type: AI

Genetic Status: AMFU,CAFU,DDFU,NHFU

MOGCK BULLSEYE^{PV}
 HOOVER NO DOUBT^{PV}
 MISS BLACKCAP ELLSTON J2[#]

TE MANIA ULONG U41^{SV}
 TE MANIA AFRICA A217^{PV}
 TE MANIA JEDDA Y32^{SV}

Sire: USA19444025 STERLING PACIFIC 904^{PV}

Dam: CXBH43 PRIME XANDY H43[#]

G A R PROPHET^{SV}
 BALDRIDGE ISABEL B082[#]
 BALDRIDGE ISABEL Y69[#]

TE MANIA YORKSHIRE Y437^{PV}
 PRIME XANDY F68[#]
 PRIME XANDYA52[#]

March 2023 TransTasman Angus Cattle Evaluation

Selection Indexes

TACE	Dir	Dtrs	GL	BW	200 W	400 W	600 W	MCW	Milk	SS	Doc
EBV	+0.2	-0.1	-3.1	+3.4	+47	+95	+116	+111	+16	+1.8	+39
ACC	56%	44%	83%	75%	73%	70%	70%	68%	62%	65%	45%
Perc	70	79	76	34	64	36	53	32	58	61	3

\$A	\$A-L
\$192	\$344
59	51

TACE	D t C	CWT	EMA	Rib	Rump	RBV	IMF	NFI-F	Claw	Angle	Leg
EBV	-5.9	+55	+3.9	+0.2	+0.1	-0.3	+3.7	-0.01	+0.72	+1.06	+1.10
ACC	37%	62%	61%	61%	60%	55%	64%	50%	68%	69%	59%
Perc	18	81	78	43	42	89	14	25	23	70	70

Traits Observed: GL,BWT,200WT, Genomics

Notes: A more moderate Sterling Pacific son, out of a long, super sound older cow Prime Xandy H43. Low birth to good growth, a quiet disposition and high IMF at +3.6.

Purchaser:..... \$:.....

Prime Angus - Bred to Perform

Lot 44

PRIME QORINTH T83^{PV}

CXB22T83

DOB: 25/04/2022

Registration Status: HBR

Mating Type: Natural

Genetic Status: AMFU,CAFU,DDFU,NHFU

G A R PROPHET^{SV}
 TE MANIA KIRBY K138^{PV}
 TE MANIA BEEAC H17^{SV}
Sire: VTMQ1225 TE MANIA QORINTH Q1225^{PV}
 TUWHARETOA REGENT D145^{PV}
 TE MANIA LOWAN J825^{PV}
 TE MANIA LOWAN Z74^{PV}

RITO 707 OF IDEAL 3407 7075[#]
 S A V RESOURCE 1441^{PV}
 S A V BLACKCAP MAY 4136[#]
Dam: NAQN256 ARDROSSAN JAPARA N256^{PV}
 MATAURI REALITY 839[#]
 ARDROSSAN JAPARA K183^{PV}
 ARDROSSAN JAPARA G39^{SV}

March 2023 TransTasman Angus Cattle Evaluation

Selection Indexes

TACE	Dir	Dtrs	GL	BW	200 W	400 W	600 W	MCW	Milk	SS	Doc
EBV	-9.1	-2.6	-0.7	+6.3	+63	+113	+151	+137	+15	+4.6	+14
ACC	56%	46%	71%	70%	71%	68%	68%	66%	60%	65%	43%
Perc	98	91	95	90	6	5	4	7	66	2	80

TACE	D t C	CWT	EMA	Rib	Rump	RBY	IMF	NFI-F	Claw	Angle	Leg
EBV	-6.9	+81	+7.9	+0.8	+0.9	+0.3	+2.3	+0.45	+0.72	+0.82	+1.04
ACC	37%	59%	59%	60%	60%	54%	63%	51%	66%	67%	64%
Perc	6	12	30	29	27	60	44	81	23	16	51

\$A	\$A-L
\$220	\$378
28	24

Traits Observed: BWT,200WT, Genomics

Notes: The match of Te Mania Qorinth Q1225 over the beautiful Ardrossan Japara N256 is something special, there is so much to like and huge potential, as he will only be 12 months old on Sale Day. His Dam sold for \$15,750 to a Western Australian Stud. Growth in spades, positive Fat large EMA, huge Scrotal.

Purchaser:..... \$:.....

Lot 45

PRIME PUNISHER T70^{PV}

CXB22T70

DOB: 27/03/2022

Registration Status: HBR

Mating Type: Natural

Genetic Status: AMFU,CAFU,DDFU,NHFU

HINGAIA 469[#]
 MILLAH MURRAH TEX K51^{PV}
 MILLAH MURRAH PRUE G89^{PV}
Sire: SJKP216 GRANITE RIDGE PUNISHER P216^{SV}
 TE MANIA BERKLEY B1^{PV}
 GRANITE RIDGE EMILLESQUE H62[#]
 GRANITE RIDGE EMMILESQUE C160[#]

TE MANIA EMPEROR E343^{PV}
 PRIME LINCOLN L12^{SV}
 PRIME JEDDA E19[#]
Dam: CXBQ98 PRIME HUMPSOL Q98^{SV}
 CLUNIE RANGE FIRST CLASS F526
 PRIME HUMPSOL K66[#]
 PRIME HUMPSOL F43[#]

March 2023 TransTasman Angus Cattle Evaluation

Selection Indexes

TACE	Dir	Dtrs	GL	BW	200 W	400 W	600 W	MCW	Milk	SS	Doc
EBV	+2.0	+7.0	-0.7	+4.2	+53	+93	+130	+115	+17	+2.8	+21
ACC	53%	42%	70%	72%	71%	68%	69%	65%	58%	66%	30%
Perc	57	12	95	53	36	43	24	26	52	23	45

TACE	D t C	CWT	EMA	Rib	Rump	RBY	IMF	NFI-F	Claw	Angle	Leg
EBV	-6.0	+79	+2.4	-0.6	-3.2	+0.1	+2.9	-0.08	+0.68	+1.20	+1.16
ACC	34%	58%	57%	59%	60%	52%	62%	49%	59%	59%	56%
Perc	16	17	90	62	91	72	29	18	17	91	84

\$A	\$A-L
\$197	\$357
54	40

Traits Observed: BWT,200WT, Genomics

Notes: The Punisher P216 sons are structurally sound with good growth, it has been commented that Punisher P216 is a great example of what an Angus bull should be - Long, thick, have a good head and even better feet - a bull that looks powerful - so we hope you can see the future of the bull that T70 will be.

Purchaser:..... \$:.....

Lot 46

PRIME PUNISHER T50^{PV}

CXB22T50

DOB: 06/03/2022

Registration Status: HBR

Mating Type: AI

Genetic Status: AMFU,CAFU,DDFU,NHFU

HINGAIA 469[#]
 MILLAH MURRAH TEX K51^{PV}
 MILLAH MURRAH PRUE G89^{PV}
Sire: SJKP216 GRANITE RIDGE PUNISHER P216^{SV}
 TE MANIA BERKLEY B1^{PV}
 GRANITE RIDGE EMILLESQUE H62[#]
 GRANITE RIDGE EMMILESQUE C160[#]

EF COMPLEMENT 8088^{PV}
 EF COMMANDO 1366^{PV}
 RIVERBEND YOUNG LUCY W1470[#]
Dam: CXBQ17 PRIME SHASTA Q17^{SV}
 PRIME AFRICA G25^{SV}
 PRIME AFRICA G25 K87[#]
 PRIME SHASTA F58[#]

March 2023 TransTasman Angus Cattle Evaluation

Selection Indexes

TACE	Dir	Dtrs	GL	BW	200 W	400 W	600 W	MCW	Milk	SS	Doc
EBV	+3.7	+9.1	-5.2	+4.5	+43	+84	+110	+84	+18	+1.2	+20
ACC	55%	44%	81%	72%	71%	68%	69%	66%	58%	66%	34%
Perc	42	3	42	60	80	70	66	78	41	82	50

TACE	D t C	CWT	EMA	Rib	Rump	RBY	IMF	NFI-F	Claw	Angle	Leg
EBV	-7.4	+64	+7.1	+1.2	+0.9	+0.8	+1.4	+0.36	+0.88	+1.02	+1.14
ACC	35%	59%	58%	59%	60%	53%	62%	49%	61%	61%	60%
Perc	3	56	39	22	27	28	70	73	57	61	80

\$A	\$A-L
\$223	\$371
24	29

Traits Observed: GL,BWT,200WT, Genomics

Notes: Prime Punisher T50 is a potential choice for heifers, with good calving ease and moderate birth. His dam Shasta Q17 sold well at our dispersal and her daughter Shasta S5 sold for \$12,000. A very sound bull with positive fat and large EMA.

Purchaser:..... \$:.....

Prime Angus - Bred to Perform

Lot 47

PRIME QUICKSILVER T53^{PV}

CXB22T53

DOB: 11/03/2022

Registration Status: HBR

Mating Type: AI

Genetic Status: AMFU,CAFU,DDFU,NHFU

TE MANIA GARTH G67^{PV}
TE MANIA MORTLAKE M1484^{PV}
TE MANIA BARUNAH J1049^{SV}

G A R PROPHET^{SV}
BALDRIDGE BEAST MODE B074^{PV}
BALDRIDGE ISABEL Y69[#]

Sire: SJKQ12 GRANITE RIDGE QUICKSILVER Q12^{SV}

Dam: CXBR28 PRIME MOONGARA R28^{PV}

AYRVALE JAGGER J12^{PV}
GRANITE RIDGE EMILLESQUE N72[#]
GRANITE RIDGE EMILLESQUE K233[#]

V A R INDEX 3282^{PV}
PRIME MOONGARA N2^{SV}
PRIME MOONGARA L40[#]

March 2023 TransTasman Angus Cattle Evaluation

TACE	Dir	Dtrs	GL	BW	200 W	400 W	600 W	MCW	Milk	SS	Doc
EBV	+0.2	+5.4	-5.0	+4.8	+62	+101	+135	+113	+23	+2.0	+20
ACC	54%	43%	81%	70%	70%	67%	68%	65%	58%	64%	35%
Perc	70	25	46	66	7	21	16	29	9	52	50

TACE	D t C	CWT	EMA	Rib	Rump	RBV	IMF	NFI-F	Claw	Angle	Leg
EBV	-6.3	+72	+7.4	-0.4	-0.4	+0.4	+1.9	-0.13	+0.94	+0.94	+1.18
ACC	33%	58%	57%	59%	59%	51%	62%	48%	64%	64%	61%
Perc	12	32	35	58	51	54	56	14	69	41	88

Selection Indexes

\$A	\$A-L
\$239	\$397
12	13

Traits Observed: GL,BWT,200WT, Genomics

Notes: A heifers first calf, this GR Quicksilver Q12 son has lots to offer, with moderate birth and very strong growth, making him in the top 15% of the breed for both the \$A and \$A-L Selection Indexes. Lots to like in this young bull.

Purchaser:..... \$:.....



Lot 36 - PRIME STERLING PACIFIC T30^{PV}

Lot 48

PRIME QORINTH T66^{SV}

CXB22T66

DOB: 21/03/2022

Registration Status: HBR

Mating Type: Natural

Genetic Status: AMFU,CAFU,DDFU,NHFU

G A R PROPHET^{SV}
TE MANIA KIRBY K138^{PV}
TE MANIA BEEAC H17^{SV}

TUWHARETOA REGENT D145^{PV}
PRIME JUGGERNAUT J15^{SV}
PRIME LOWAN F20^{SV}

Sire: VTMQ1225 TE MANIA QORINTH Q1225^{PV}

Dam: CXBL50 PRIME KARA KARA L50[#]

TUWHARETOA REGENT D145^{PV}
TE MANIA LOWAN J825^{PV}
TE MANIA LOWAN Z74^{PV}

BONGONGO BULLETPROOF Z3^{PV}
PRIME KARA KARA E83[#]
TE MANIA KARA KARA X724[#]

March 2023 TransTasman Angus Cattle Evaluation

TACE	Dir	Dtrs	GL	BW	200 W	400 W	600 W	MCW	Milk	SS	Doc
EBV	+5.3	+4.3	-3.1	+3.1	+37	+67	+79	+59	+15	+0.8	+11
ACC	57%	48%	73%	72%	72%	69%	70%	68%	62%	67%	45%
Perc	28	36	76	28	94	96	98	97	68	91	90

TACE	D t C	CWT	EMA	Rib	Rump	RBV	IMF	NFI-F	Claw	Angle	Leg
EBV	-7.1	+38	+5.9	+3.8	+4.2	-1.2	+7.1	+0.79	+0.72	+0.62	+0.88
ACC	40%	62%	61%	62%	63%	56%	66%	53%	61%	61%	61%
Perc	4	99	54	2	3	99	1	97	23	2	9

Selection Indexes

\$A	\$A-L
\$228	\$354
20	42

Traits Observed: BWT,200WT, Genomics

Notes: Qorinth T66 has a great pedigree which includes GAR Prophet, Regent, Juggernaut and Bulletproof. His Dam Kara Kara L50 was a favorite, having sons who sold for \$11K & \$14K. T66 Has good calving potential and should work well over heifers or cows.

Purchaser:..... \$:.....

Prime Angus - Bred to Perform

Lot 49

PRIME QUICKSILVER T80^{PV}

CXB22T80

DOB: 13/04/2022

Registration Status: HBR

Mating Type: Natural

Genetic Status: AMFU,CAFU,DDFU,NHFU

TE MANIA GARTH G67^{PV}
 TE MANIA MORTLAKE M1484^{PV}
 TE MANIA BARUNAH J1049^{SV}

G A R PROPHET^{SV}
 BALDRIDGE BEAST MODE B074^{PV}
 BALDRIDGE ISABEL Y69[#]

Sire: SJKQ12 GRANITE RIDGE QUICKSILVER Q12^{SV}

Dam: CXBR40 PRIME ZANDY R40^{SV}

AYRVALE JAGGER J12^{PV}
 GRANITE RIDGE EMILLESQUE N72[#]
 GRANITE RIDGE EMILLESQUE K233[#]

PRIME JUGGERNAUT J15^{SV}
 PRIME ZANDY L5[#]
 PRIME ZANDY J46[#]

March 2023 TransTasman Angus Cattle Evaluation

TACE	Dir	Dtrs	GL	BW	200 W	400 W	600 W	MCW	Milk	SS	Doc
EBV	+0.4	+3.7	-3.9	+5.0	+70	+121	+160	+147	+24	+3.2	+24
ACC	54%	43%	71%	69%	70%	68%	69%	65%	58%	64%	35%
Perc	69	43	64	71	1	2	2	3	6	14	31

Selection Indexes

\$A	\$A-L
\$233	\$417
16	6

TACE	D t C	CWT	EMA	Rib	Rump	RBV	IMF	NFI-F	Claw	Angle	Leg
EBV	-4.7	+87	+6.5	-1.6	-2.5	+0.3	+2.1	-0.26	+1.08	+1.04	+1.00
ACC	33%	58%	56%	58%	59%	51%	62%	48%	63%	63%	60%
Perc	47	6	46	83	85	60	50	7	89	66	37

Traits Observed: BWT,200WT, Genomics

Notes: If your herd needs that extra thickness and growth - this could be the bull for you. Being in the top 10% or better for 200DW, 400DW, 600DW, Carcase Wt, NFI F and \$A-L. A heifers first calf and he is a keeper.

Purchaser: \$:



Lot 43 - PRIME STERLING PACIFIC T43^{PV}

Lot 50

PRIME QORINTH T39^{PV}

CXB22T39

DOB: 28/02/2022

Registration Status: HBR

Mating Type: AI

Genetic Status: AMFU,CAFU,DDFU,NHFU

G A R PROPHET^{SV}
 TE MANIA KIRBY K138^{PV}
 TE MANIA BEEAC H17^{SV}
Sire: VTMQ1225 TE MANIA QORINTH Q1225^{PV}
 TUWHARETOA REGENT D145^{PV}
 TE MANIA LOWAN J825^{PV}
 TE MANIA LOWAN Z74^{PV}

RENNYLEA EDMUND E11^{PV}
 ARDROSSAN EDMUND H214^{SV}
 ARDROSSAN PRINCESS D93^{SV}
Dam: NAQK316 ARDROSSAN PRINCESS K316^{SV}
 ARDROSSAN ADMIRAL A2^{PV}
 ARDROSSAN PRINCESS D89[#]
 ARDROSSAN PRINCESS U102[#]

March 2023 TransTasman Angus Cattle Evaluation

TACE	Dir	Dtrs	GL	BW	200 W	400 W	600 W	MCW	Milk	SS	Doc
EBV	-0.5	-4.2	-2.6	+4.4	+36	+72	+93	+69	+15	+2.2	+16
ACC	56%	46%	82%	72%	71%	68%	69%	67%	60%	65%	39%
Perc	75	95	82	57	95	92	91	92	70	44	73

Selection Indexes

\$A	\$A-L
\$196	\$309
56	75

TACE	D t C	CWT	EMA	Rib	Rump	RBV	IMF	NFI-F	Claw	Angle	Leg
EBV	-6.9	+52	+6.4	+2.3	+2.0	-0.5	+5.3	+0.93	+0.74	+0.96	+1.14
ACC	38%	60%	59%	61%	61%	54%	64%	52%	64%	64%	63%
Perc	6	87	48	8	13	93	3	99	27	46	80

Traits Observed: GL,BWT,200WT, Genomics

Notes: Prime Qorinth T39 has an astounding +5.2 for his IMF, being sired by an IMF expert TeMania Qorinth Q1225. T39 will bring carcass quality and excellent phenotype to your herd, having positive fat and large EMA to boot.

Purchaser: \$:

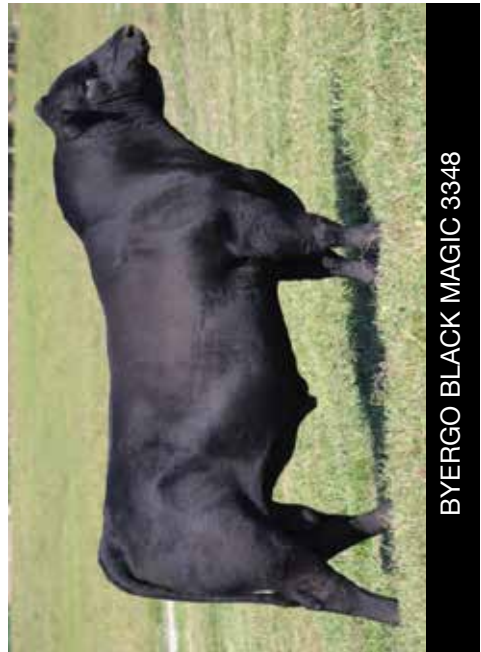
Prime Angus - Bred to Perform

REFERENCE SIRES FOR 2023 AUTUMN SALE

Animal	Sire	B.D.	TAGE	CEDir	CEDirs	GL	B. Wt.	200	400	600	Milk	SS	Cwt	EMA	Rib	P8	RBY	IMF	\$A	\$A-L	March 2023 Angus Australia TACE										
																					EBV	Perc	EBV	Perc	EBV	Perc	EBV	Perc	EBV	Perc	EBV
Byergo Black Magic 3348 USA17803074	Silveire Conversion USA16262077	14/8/2013		-21.7	-16.5	+0.1	+10.2	+73	+129	+169	+20	+4.2	+95	+9.6	-4.5	-3.5	+0.8	+1.6	\$152	\$254											
				99	99	98	99	1	14	1	26	3	2	16	99	93	28	64	89	93											
G A R Ashland USA18217198	G A R Early Bird USA117354178	31/1/2015		+0.5	+4.0	-6.4	+3.5	+68	+117	+149	+19	+1.5	+83	+13.4	-1	-3.2	+1.3	+3.1	\$266	\$430											
				68	40	24	36	2	3	5	33	72	10	3	97	91	8	24	2	3											
Baldrige Beast Mode B074 USA17960722	GAR Prophet USA16295688	7/2/2014		+5.3	+5.5	-3.5	+3.5	+75	+119	+148	+12	+2.7	+77	+2.8	-2.1	-3.4	-0.1	+2.4	\$233	\$414											
				28	24	70	36	1	2	5	89	26	21	88	89	93	82	41	16	7											
Rennylea K447 NORK447	Rennylea Edmund NORE11	26/7/2014		+5.3	+1.4	-9.9	+4.8	+54	+89	+121	+7	+2.9	+73	+7.9	+2.0	-0.3	+0.4	+2.1	\$216	\$394											
				25	59	3	66	29	53	36	99	20	9	30	9	34	69	26	46	16											
Sterling Pacific 904 USA19444025	Hoover No Doubt USA1788262	13/2/2019		-0.9	+0.9	-4.0	+4.4	+66	+123	+152	+14	+1.9	+86	+4.5	-0.4	-2.0	+0.0	+3.0	\$236	\$410											
				77	71	62	57	3	1	4	74	57	7	72	58	79	77	26	14	18											
Granite Ridge Punisher P216 SJKP216	MM Tex K51 NMMK51	14/4/2018		-5.2	+6.6	-0.8	+7.1	+60	+100	+142	+8	+3.3	+84	+4.0	-1.8	-4.7	+0.7	+1.4	\$183	\$341											
				93	14	95	96	11	23	9	99	12	9	77	86	98	34	70	68	53											
Granite Ridge Payweight P16 SIKP16	Aynvale Jagger J12 HIOJ12	10/3/2018		+3.1	+2.2	-6.7	+3.6	+52	+83	+122	+17	+2.4	+64	+4.2	+3.9	+5.1	-0.7	+2.9	\$201	\$351											
				41	54	27	47	25	33	15	30	23	38	93	3	2	97	51	54	33											
E G Eyes Onyou USA19470275	Hoover No Doubt USA1788262	3/9/2018		+1.2	-0.6	-6.8	+6.5	+81	+146	+186	+14	+4.0	+106	+7.0	-0.1	+0.2	-0.4	+2.2	\$273	\$479											
				63	82	19	92	1	1	1	77	4	1	40	50	40	91	47	1	1											
Te Mania Qorinth Q1225 VTMQ1225	Te Mania Kirby K138 VTMK138	17/8/2019		-0.2	+4.4	-3.3	+3.8	+43	+82	+102	+20	+3.9	+55	+3.4	+3.0	+4.1	-1.9	+7.3	\$239	\$376											
				73	35	73	43	80	74	81	26	5	81	83	4	3	99	1	12	26											
Millah Murrrah Quixote Q96 NMMQ96	S Chisom 255 USA1728481	8/3/2019		+4.8	+9.0	-3.8	+3.1	+57	+92	+118	+25	+3.3	+75	+8.6	-0.8	-2.5	+0.8	+2.2	\$246	\$392											
				32	3	66	28	20	46	49	5	12	26	24	67	85	28	47	8	15											
Prime Keystone R23 CXBR23	Landfall Keystone TFAK132	4/2/2020		+3.5	+3.3	-10.4	+4.4	+57	+103	+141	+13	+0.1	+84	+5.0	-1.0	-2.7	+1.1	+2.1	\$212	\$389											
				44	47	2	57	21	17	10	80	99	8	66	72	87	14	50	36	17											



GRANITE RIDGE PUNISHER P216



BYERGO BLACK MAGIC 3348



RENNYLEA K447

Prime Angus - Bred to Perform

DISCLAIMER AND PRIVACY INFORMATION

Attention Buyer

Animal details included in this catalogue, including but not limited to pedigree, DNA information, Estimated Breeding Values (EBVs) and Index values, are based on information provided by the breeder or owner of the animal. Whilst all reasonable care has been taken to ensure that the information provided in this catalogue was correct at the time of publication, Angus Australia will assume no responsibility for the accuracy or completeness of the information, nor for the outcome (including consequential loss) of any action taken based on this information.

Parent Verification Suffixes

The animals listed within this catalogue including its pedigree, are displaying a Parent Verification Suffix which indicates the DNA parent verification status that has been conducted on the animal. The Parent Verification Suffixes that will appear at the end of each animal's name.

The suffix displayed at the end of each animal's name indicates the DNA parentage verification that has been conducted by Angus Australia.

PV : both parents have been verified by DNA.

SV : the sire has been verified by DNA.

DV : the dam has been verified by DNA.

: DNA verification has not been conducted.

E : DNA verification has identified that the sire and/or dam may possibly be incorrect, but this cannot be confirmed conclusively.

Privacy Information

In order for Angus Australia to process the transfer of a registered animal in this catalogue, the vendor will need to provide certain information to Angus Australia and the buyer consents to the collection and disclosure of that information by Angus Australia in certain circumstances. If the buyer does not wish for his or her information to be stored and disclosed by Angus Australia, the buyer must complete the form included below and forward it to Angus Australia. If the form is not completed, the buyer will be taken to have consented to the disclosure of such information.

BUYERS OPTION TO OPT OUT OF DISCLOSING PERSONAL INFORMATION TO ANGUS AUSTRALIA

If you do not complete this form, you will be taken to have consented to Angus Australia using your name, address and phone number for the purposes of effecting a change of registration of the animal(s) that you have purchased, maintaining its database and disclosing that information to its members on its website.

I, the buyer of animals with the following idents.....

.....(name) do not consent to Angus Australia using my name, address and phone number for the purposes of effecting a change of registration of the animals I have mentioned above that I have purchased, maintaining its database and disclosing that information to its members on its website.

Name: Signature:

Date:

Please forward this completed consent form to Angus Australia, 86 Glen Innes Road, Armidale NSW 2350.



If you have any questions or queries regarding any of the above, please contact Angus Australia on (02) 6773 4600 or email office@angusaustralia.com.au

Updated 25/11/2020

PRIME ANGUS BUYER'S INSTRUCTION SHEET

PURCHASER DETAILS

Name:.....

Address:.....

.....Postcode:.....

Telephone:.....

Email:.....

Signature:.....

DELIVERY INSTRUCTIONS

Lots Purchased:.....

Special Instructions:.....

.....

.....

.....

REGISTRATION TRANSFER DETAILS

Do you wish to have the Angus Society of Australia's registration of your bull transferred into your name?

Yes Society ID No:.....

No

INSURANCE

Do you require insurance cover? Yes No

ACCOUNT SETTLEMENT

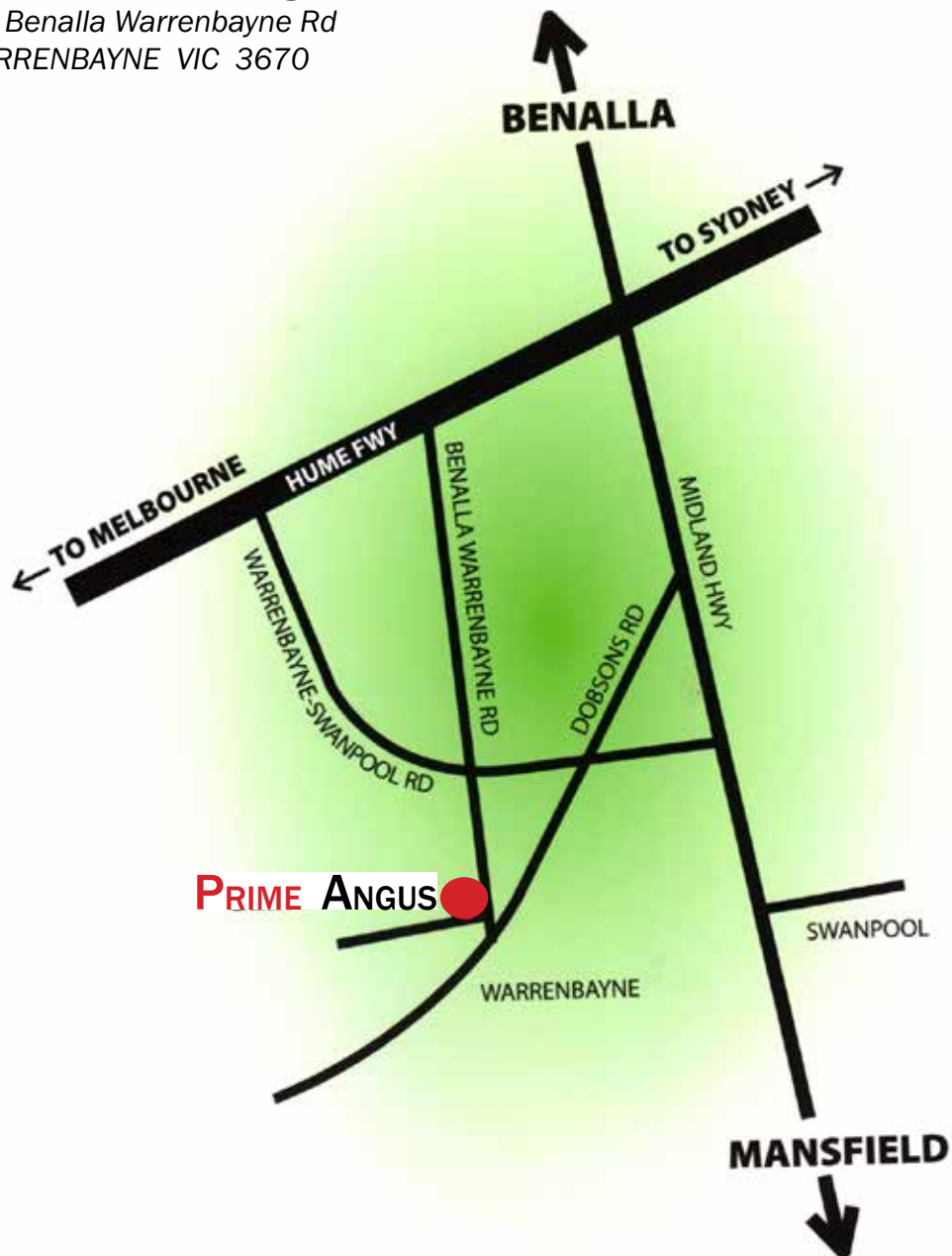
The signature of your Agent is required if you elect to settle through an Agent.

Agent:..... Signature:.....



How to find Prime Angus:

1174 Benalla Warrenbayne Rd
WARRENBAYNE VIC 3670



Our Thanks

We would like to thank all purchasers and underbidders as well as all visitors for supporting the Prime Angus Bull Sale.

It is you who make the day a success and we are grateful for your attendance, please join us for a BBQ and refreshments.

PRIME ANGUS

Bred to Perform★



E G EYES ONYOU



Lot 20 - PRIME EYES ONYOU T9



Lot 24 - PRIME EYES ONYOU T28

Bred to Perform★

PRIME ANGUS

Bred to Perform★



STERLING PACIFIC 904



Lot 14 - PRIME STERLING PACIFIC T29



Lot 36 - PRIME STERLING PACIFIC T30

Bred to Perform★