

SALE SUPPLEMENTARY

SILVERDALE BRAHMAN FEMALE SALE 2023

INCLUDING THE FIREFLY BRAHMAN DISPERSAL

LOT	ANIMAL	ADDITIONAL INFORMATION
1	MALABAR 2297 (PS)	Unjoined
2	MALABAR 2285	Unjoined
3	HALGENAES HONEY (PS)	Unjoined
4	HALGENAES HANNAH	Unjoined
5	BURRADOO RUBY 544 (PS)	Unjoined
6	BURRADOO MISS 505 (PS)	Unjoined
7	BURRADOO VERO 545 (PS)	Unjoined
8	BURRADOO MISS DOMINIC 551	Unjoined
9	JANDEE MISTY CREEK	Unjoined
10	JANDEE PEACHES	Unjoined
11	JANDEE POMPEII (PS)	Unjoined
12	LOMA NAOMI	Unjoined
13	VALKYRIE GEORGINA (PS)	Unjoined
14	RODLYN MISS 13/21 (PS)	Unjoined
15	RODLYN MISS 31/21 (PS)	Unjoined
16	RODLYN MISS 44/21	Unjoined
17	RODLYN MISS 68/21 (PS)	Unjoined
18	RODLYN MISS 69/21 (PS)	Unjoined
19	RODLYN MISS 55/21 (PS)	Unjoined
20	RODLYN MISS 56/21 (PS)	Unjoined
21	RODLYN MISS 34/21 (PS)	Unjoined
22	RODLYN MISS 54/21 (PS)	Unjoined
23	RODLYN MISS 57/21 (PS)	Unjoined
24	PETRIE PARK RENEE DE MANSO	PTIC – OVER 4 MONTHS
25	PETRIE PARK IRANI DE MANSO	NDP
26	PETRIE PARK KIRRA DE MANSO	NDP
27	EJP MISS PIPER	NDP
28	EJP RAYNA DE MANSO	10 WEEKS
29	EJP SCARLETT DE MANSO	NDP
30	EJP MISS LENNON	NDP
31	DUNGULLEN FLOP 997	Unjoined
32	DUNGULLEN ASTER 1003	Unjoined
33	DUNGULLEN JEWEL 1073	Unjoined
34	DUNGULLEN MISS DIRK 1056	Unjoined
35	DUNGULLEN MISS CANDY 1083	Unjoined
36	DUNGULLEN MISS 1073	Unjoined
37	MALABAR MARY 89 (PS)	EMBRYO PACKAGE – 3 EMBRYOS – 1 PREGNANCY GUARANTEE

38	FIREFLY ZANNA (PS)	14 WEEKS
39	FIREFLY ALOHA (PS)	4 MONTHS
40	FIREFLY CIERRA (PS)	5 MONTHS
41	FIREFLY DELILAH (PS)	UNJOINED
42	FIREFLY IRRESPONSIBLE 368 (PS)	5 MONTHS
43	FIREFLY IRRESPONSIBLE YEN (PS)	5 MONTHS
44	FIREFLY ASPEN (PS)	4 MONTHS
45	FIREFLY CLONTARF (PS)	NDP
46	MUAN SIERRA 2974	NDP
47	FIREFLY KIRSTIE 454 (PS)	5 WEEKS
48	FIREFLY XINA (PS)	NDP
49	FIREFLY CONSTANTINE (PS)	9 WEEKS
50	FIREFLY BRIE (PS)	15 WEEKS
51	FIREFLY DORIS (PS)	NDP - COW ONLY NO CALF
52	FIREFLY XYLIA (PS)	6 WEEKS
53	FIREFLY BENITA (PS)	10 WEEKS
54	FIREFLY WYNONA (PS)	12 WEEKS
55	FIREFLY CLAIR (PS)	14 WEEKS
56	FIREFLY CATHERINE (PS)	NDP
57	FIREFLY ZARA (PS)	NDP
58	FIREFLY DELTA (PS)	4 MONTHS
59	FIREFLY XIN (PS)	4.5 MONTHS
60	WITHDRAWN	
61	FIREFLY XIANG (PS)	5 MONTHS
62	FIREFLY ADELE (PS)	4 MONTHS
63	PALMVALE KIRSTIE 2844	16 WEEKS
64	FIREFLY BROOK	NDP
65	FIREFLY KIRSTIE 1 (PS)	4 MONTHS
66	FIREFLY CLONCURRY (PS)	NDP
67	FIREFLY CASSE (PS)	4.5 MONTHS
68	FIREFLY CHARLOTTE (PS)	5 MONTHS
69	FIREFLY CAMISH (PS)	5 WEEKS
70	FIREFLY CASSANDRIA (PS)	5 MONTHS
71	FIREFLY DEE (PS)	14 WEEKS
72	FIREFLY DOLLY (PS)	5 MONTHS
73	FIREFLY INDU DUCHESS	5 MONTHS
74	FIREFLY KIRSTY	5 MONTHS
75	FIREFLY DINAH (PS)	4 MONTHS
76	FIREFLY DOLBY (PS)	4 MONTHS
77	FIREFLY INDU KING ROYAL (PS)	NDP
78	FIREFLY ELLA (PS)	UNJOINED
79	FIREFLY YELLOW STONE 520 (PS)	UNJOINED – AMENDED PEDIGREE ATTACHED
80	FIREFLY ETTA (PS)	UNJOINED
81	FIREFLY ELEKTRA (PS)	UNJOINED

Brahman Lot Details

Lot: 79 - SILVERDALE BRAHMAN FEMALE SALE 2023 (Including Dispersal of Firefly Brahman Stud)

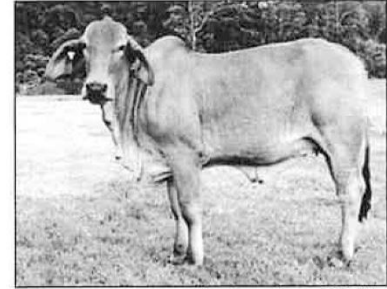
FIREFLY ELEGANT (PS)

[First](#) [Previous](#) [Next](#) [Last](#)

[View Animal Details](#) [View Catalogue](#) [Search/Sort Catalogue](#) [Sale Notes](#)

[Home](#) [Animal Enquiry](#) [EBV Enquiry](#) [Mating Predictor](#) [Member Enquiry](#) [Sale Catalogues](#) [Semen Catalogues](#) [Download Files](#) [Online Registrations](#)

Vendor's Name: [BD SCHNEIDER](#)
Identifier: SBJ502F
Sex: Female
Birth Date: 18/09/2021
Registration Status: Registered
Horn: Polled/Scurred
Colour: Red
DNA Status: POLL/HORN (HPc)
Pompe Status: Tested Free
DNA Genotype: SNP(SEKSIRE Ref:1212524)



[View Larger Image: 278.4kb](#)
[Play Video: 0.96mb](#)

Unjoined. A beautiful heifer ready for the bull of your choice. Vaccs: Tick Fever, 7 in 1.

Sale comments provided by the Vendor. Australian Brahman Breeders Association assumes no responsibility for the accuracy of these comments.

- [ARROW J MILLMARONE 925](#)
- [MR 3H X-RAY 825 \(IMP US\)\(ET\)+](#)
- [MISS 3H 290 +](#)
- **Sire: [MOGUL MR DENVER \(ET\)\(H\)](#)**
- [HK PASSPORT 113/7](#)
- [JHC FELICIA 177 \(IMP US\)\(H\)](#)
- [JHC FELICIA 30](#)
- Animal: [FIREFLY ELEGANT \(PS\)](#)**
- [FERN HILLS KINGSTON 1840 \(PS\)](#)
- [CAIWARRA TRIUMPHANT \(ET\)\(PS\)](#)
- [CAIWARRA RED TRIUMPH \(ET\)\(PS\)](#)
- **Dam: [FIREFLY KIRSTIE 1 \(PS\)](#)**
- [PALMVALE ZEPHYR \(ET\)\(PS\)](#)
- [PALMVALE KIRSTIE 2844 \(ET\)\(H\)](#)
- [PALMVALE KIRSTIE 2340 \(AI\)\(H\)](#)

February 2023 Brahman BREEDPLAN																		
EBV	Gestation Length (days)	Birth Wt. (kg)	200 Day Wt (kg)	400 Day Wt (kg)	600 Day Wt (kg)	Mat Cow Wt (kg)	Milk (kg)	Scrotal Size (cm)	Days to Calving (days)	Carcass Wt (kg)	Eye Muscle Area (sq.cm)	Rib Fat (mm)	Rump Fat (mm)	Retail Beef Yield (%)	IMF (%)	Percent Normal Sperm (%)	Flight Time (secs)	Shear Force (kgs)
EBV	+0.4	+4.9	+28	+38	+56	+73	0	+0.9	-0.8	+27	+4.6	-1.2	-1.3	+1.3	-0.3	-	-0.02	+0.21
Breed Avg. EBVs for 2021 Born Calves Click for Percentiles																		
EBV	-0.5	+2.5	+19	+27	+38	+42	-1	+1.0	-1.9	+22	+2.9	-0.3	-0.4	+0.6	-0.1	+1.2	+0.01	+0.00

SELECTION INDEX VALUES		
Market Target	Index Value	Breed Average
Production Index (\$)	+\$ 93	+\$ 67
Live Export Index (\$)	+\$ 31	+\$ 28

Sale Date
10 AM SATURDAY 25TH MARCH 2023

Sale Location
SILVERDALE SALEYARDS

[Sale Notes](#)

