



VC SIMMENTALS *Online*
AUTUMN
BULL & FEMALE SALE

Friday 3RD MARCH 2023

sale broadcasted online with AuctionPlus www.auctionplus.com.au

welcome to the sale

Welcome, to the 2nd VC online Autumn bull & female sale. In future years auctions will be held on the first Friday in March and the third Friday in September. This arrangement will give the commercial producer two opportunities to purchase VC yearling bulls. This will give the buyer the time to acclimatize bulls for use or put them straight out to work for a spring joining. Rest assured if this is the case, we will personally transport your bull/bulls/females the very next day for your joining requirements, providing a positive ROI on their investment, into the future.

Indeed, we feel there are genetics hear that will go onto escalate any program & generate a large ROI. The progressive programs that do their homework & are prepared for the sale on Friday 3rd March 2023 at 6.30pm on Auctions Plus will benefit as there is always excellent value at any price point. We have proved that bulls & heifers at any price point can have strong returns for purchases & be very financially rewarding into the future.

We always say the cattle business, in particularly seedstock is all about people, passions, programs & product!

DNA be sure of what you're buying. All sale animals have been parent verified (PV) for up to 4 generations.

What does this mean? Buying Simmental cattle with 100% assurance that the pedigrees are true & correct.

Buying Simmental cattle that EBV's are generated using a combination of mid parent, raw data harvested on farm & on the IGS front a combination of raw data combined with the genomics information.

Our yearling bull & female sale draft have got at the point of catalogue a GL, BWT, 200 WT. DOC recorded & analysed at point of cataloguing. Also added to this will be a 400-day, IMF, EMA, RIB, RUMP & Scrotal measurement that will be incorporated into the next breed plan run at point of sale.

As we look at this years offering of bulls & heifers I cannot help but think that to get to where you are going you also need to reflect on the past. The evolution of the breed & now in our case reds, blacks & traditional. Yes, now we can use a European breed as a calving ease bull, calving ease is just not birth weight but more importantly calving ease direct, pelvic shape in his daughters & most importantly of all structure & that he's built correctly. Yes, performance cattle that can be industry leading maternally as well as not just terminal. Cattle can be harvested at a much earlier age with a quicker return on your financial investment, as well as being able to run more breeders because you are off loading them at an earlier age. Less time in the system overall. Earlier maturing efficient cattle. It makes sense to supply the industry with these types of genetics. We are in the business for the long haul & much like our customers its about the bottom line & capitalizing on our investments.

With VC selling the entire T drop heifers the plan is to buy a farming home base in which we make no secret of. All ET heifer's calves sold in the Autumn & all natural/AI calves sold in the Spring which will be 60/70 lots on offer. All heifers come with full access to the exclusive VC Semen battery this enables us to help steer the customer in the direction we believe that will make a ROI into the future. VC strongly believe in our after sales service this grows the breed by insuring out comes & hopefully in the right direction.

All people in the supply chain need & deserve a piece of the action therefor the bull breeder, the new up & coming breeder, the youth breeder, the weaner producer, the finisher or the feed lotter & most importantly of all the processor. Something we have been working & very conscious of is keeping & optimizing our IMF, RAW Data to ensure a great eating experience for the consumer down the supply chain the meat quality on a VC sired animal is designed not to not compromise the eating quality of the end consumer bulls like Sunny Valley Canon 86E identified in time as breed leading for traditional Simmental for these sorts of traits.

VC would like to congratulate Simmental Australia on officially moving to IGS & CGEN data base. Starting April 1st, we strongly believe this is the best move for the traditional Simmental in Australia for the past 20 years. Example, the ability to adopt genomics plus a huge data set with less variation & variable change & less ability to corrupt data in system because of data base sires & breed linkage all over the world. The change will scare some people but its all what's best for Simmental in the medium to long term & to validate us in the Australian Industry. If we can measure & evaluate correctly, we can not only use this as a tool or guide to improve particular traits & cater for the industry needs into the future. We are not against Breed Plan at all, just there is not enough Simmental breeders doing this correctly & the data base size is just too small to make it work & can be easily manipulated these are just "Our Opinion" there is abit of negativity out there about this subject if you have any questions please don't hesitate to call VC directly we do understand our views will cost us sales & friends but its about the breed & the future not the past.

"I can live with about anything, but not a lack of effort, if you want to play in the game, you must give 100%"

We pride ourselves as leaders in the cattle industry of sourcing, measuring and blending the highest performing genetics that will provide the opportunity for our commercial clients to improve the quality of their herds. We call this "Raising the Bar". Improved herd genetics sourced from VC will improve profit and efficiency, this is the backbone of the VC program.

Looking to the future, exclusive genetic rights to VC Simmentals – BBL RUMBLE 62H, R PLUS MANDATE 1044J & MADER WALK THE LINE 92J



This year's sale draft has been performing on Quayle Milling pellets, individually tailored for VC. Each bull/heifer getting 6kgs a day hand feed plus pasture silage. Be assured that they are well presented & not overdone.

- VC are proud to offer 5 Black Simmental bulls which are sired by Structure, Supercharged & the legend himself Spring Creek Liner 56U
- 3 black Sim-Angus bulls sired by Millah Murrah Quixote Q96, all 3 flush brothers are out of great donor cow CIRLCE 8 MISS LUCY K299 these boys are sure to attract some attention.
- 8 Black heifers featuring the first Cream Soda x Spring Creek Liner 56U pedigree, note these cannot be replicated.
- 1 Red Heifer
- 2 Traditional heifers, which are sired by Siefried that are sure to make some waves these are half siblings to the \$31,000 heifer VC Covergirl S015 & VC Secret Squirrel that stands at Lucrana Simmentals. VC would be very interested in potentially jointly flushing these females with their new owners to the exclusive BBL Rumble 62H after they have had their first calf.
- 4 x RF Caliber 014G / VC Lady Luck R16 embryos
- 2 packs of 10 semen straws of RF Caliber 014G
- 2 packs of 10 semen straws of Sunny Valley Canon 86E

These lots will enable the smaller operation to operate at the top end of the Simmental job with marketability & exclusivity.

At VC we strive to sell cattle that will be profitable for their new owners. This we believe is a measure of our processes and success. We rely on a 100% hands on approach and a marketing strategy based on honesty, offering elite genetics that are presented well. With an old fashion handshake guarantee, working for you and with you in the livestock industry we at VC can see a strong future ahead for the Simmental breed. We look forward to building a relationship with new & repeat customers who strive to improve the livestock industry.

Stuart & Samantha Moeck, Team VC!



VALLEY CREEK SIMMENTALS Stuart and Samantha Moeck
Binda, New South Wales
Stuart: 0419465242 Samantha: 0423249746

VC SIMMENTALS *Online* AUTUMN BULL & FEMALE SALE

Friday
3RD MARCH 2023

 **AuctionsPlus** sale broadcasted online with
www.auctionsplus.com.au

Helmsman Auction from 6:30pm

SALE DAY INFORMATION

INSPECTIONS

We welcome inspections of the cattle before the sale to provide you with necessary time to ensure you are selecting the correct female or bull for your program. Please contact Stuart Moeck on 0419465242 or Samantha Moeck on 0423249746 so that you get that one-on-one service.

BIDDING

All bidding will take place on Auctions Plus & will commence at 6.30pm Friday 3th March 2023 running for 1hr as a timed-out helmsman auction. Time clock will start at 7.30pm. Please contact Tim Woodham on 0436 015 115 if you are unsure of this process or wish to phone bid.

DNA

All heifers & bulls have been parent verified. All heifers & bulls have had genomic samples submitted and reported. Colour tested, polled tested, PI tested. The highest level of catalogue integrity available.

All animals have had a 200 day weight submitted docility, birth weight, gestation length submitted at time of printing EBV's for sale catalogue. In addition to this there will be a 400 day weight scrotal, EMA, Rib & Rump, IMF submitted for the February run. Breed Plan will have updated the Simmental data base by the 8-9th of February 2023 with this additional information as we cannot improve if we do not measure! IGS numbers will be made available upon request.

TRANSPORT/DELIVERY

As a part of our service, we offer FREE CARTAGE

- Australia Wide (Mainland) to all major selling centres.

REBATE

Selling agents are Nutrien Livestock. Outside agents are entitled to a 5% rebate under the strict following conditions:

- Introducing the buyer in writing to the selling agent at least 24 hours prior to the sale and settling within 7 days

TRANSFER

All sale cattle are registered with Simmental Australia and are eligible for transfer to your ownership. Please advise on your bidding registration sheet.

INSURANCE

We recommend insuring your purchases at the fall of the hammer. A Nutrien Insurance representative will be available – Insurance Manager Fiona Petersen 0408 924 508. All cattle are at the purchaser's risk from the fall of the hammer/timer.

GST

All lots are sold exclusive of GST.

INDEPENDENT ASSEMENT

Please feel free to contact any of the Nutrien staff listed to discuss your potential purchase.

Tim Woodham 0436 015 115
Peter Godbolt 0457 591 929
John Palmer 0417 653 445

STRUCTURAL ASSESSMENT

All sale lots have been inspected and passed an independent accredited structural assessment (feet and legs) VC cattle were inspected by Roger Evans of Bovine Scanning Services (Accreditation No. 1018) in late January 2023

PHOTOS & VIDEOS OF SALE LOTS

Videos of all lots will be available on Auctions Plus. Photos and videos of sale lots will also be posted on the respective stud Facebook pages. Videos will be available on Auctionsplus.

HEALTH & FERTILITY

VC are Accredited J-BAS Status 7 herd. All cattle have been tested free of Pestivirus. All bulls and heifers have undergone a full 7 in 1 and Pestivirus vaccination program with booster vaccinations prior to sale. VC cattle have been drenched with Ivomec. All VC bulls have been semen tested by Ironmines Veterinary Clinic.

LOCATION

Binda is a tiny village located **19 km north-west of Crookwell** and 259 km south-west of Sydney via the Hume Highway and Goulburn.

GUARANTEE

If there is ever a problem with any of our sale cattle, we would appreciate being the first to know! All our heifers & bulls are fully guaranteed. In the event that a heifer/bull is found to be infertile or incapable of natural service, (which has not occurred due to disease or injury), following the fall of the hammer, we will offer a replacement heifer/bull, or a credit will be given for the following sale, less the salvage value of the animal. This guarantee does not include interest, expenses, costs, or damages. Any claims should be made in writing within 4 months and accompanied by a veterinary certificate.

IN HERD SEMEN RIGHTS

VC reserve the right to collect semen from any bull catalogued for sale for respective in-herd use only. If acted upon any collection will be arranged at a time of convenience to the purchaser. All expenses will be met by VC Simmentals

FEMALE GENETICS

VC retains the rights to flush any VC heifers catalogued. If acted upon any collection will be arranged at a time of convenience to the purchaser. All expenses will be met by VC Simmentals.

SALE CATALOGUE DISCLAIMER

All reasonable care has been taken by the vendor and designer to ensure that the information provided in this catalogue is correct at the time of publication. However, neither the vendor, selling agents and designer make no other representations about the accuracy, reliability or completeness of any information provided in this catalogue and do not assume any responsibility for the use or interpretation of the information included in the catalogue.

EBV INFORMATION

SIMMENTAL GROUP BREEDPLAN

The breed plan values in this catalogue were calculated in the 2017 Simmental Trans-Tasman Group Breed plan evaluation. Each reported trait shows an EBV and its accuracy level. The EBV (Estimated Breeding Value) provides the best current estimate of the bull's true genetic merit for that trait, relative to the overall base for the Simmental breed. It indicates how its progeny should perform relative to those of other bulls in the breed. The accuracy indicates how well an EBV predicts the true genetic worth of an animal. The accuracy of an EBV will be higher for traits with a higher heritability and will increase as more performance information on an animal and its relatives become available. The accuracy of an EBV is reported as a percentage. EBV's with higher accuracy will change less than EBV's of low accuracy when more performance records are analysed. See more information on pages 6 and 7

POLLED AND COAT COLOR INFORMATION

Bull	Cow	Resulting Calves
HOMO POLLED - the bull carries two copies of the polled gene		
Homo Polled	Homo Polled	100% Polled
	Hetero Polled	100% Polled
	Horned	100% Polled
HETERO POLLED - the bull carries one polled gene and one horned gene		
Hetero Polled	Homo Polled	100% Polled
	Hetero Polled	75% Polled, 25% Horned
	Horned	50% Polled, 50% Horned
HOMO BLACK - the bull carries two copies of the black gene		
Homo Black	Homo Black	100% Black
	Hetero Black	100% Black
	Red	100% Black
HETERO BLACK - the bull is black in color, but carries one black gene and one red gene. Black is dominant to red, so the red color is not expressed when it is paired with a black gene.		
Hetero Black	Homo Black	100% Black
	Hetero Black	75% Black, 25% Red
	Red	50% Black, 50% Red
RED - the bull carries two copies of the red gene. This example assumes the bull is diluter free.		
Red	Homo Black	100% Black
	Hetero Black	75% Black, 25% Red
	Red	100% Red

STRUCTURAL ASSESSMENT in Beef Cattle

Structural traits are widely recognized as key traits for any breeding program. The question is, how to objectively measure these traits and relay those objective measures to prospective buyers?

Structure is one of the most subjective traits in the beef industry. What constitutes good structure in one breeders mind may also be inadequate in another.

However, one constant remains a fact, beyond subjective opinion, that poor structure costs the Australian beef industry millions of dollars annually in lost production.

Structural problems in cattle have a substantial effect on both the reproductive and growth performance of a beef herd. It is widely recognised that structural problems in sires has a detrimental effect on conception rates, calving patterns and therefore profitability. Similarly, females with inadequate structural characteristics are more prone to weaning lighter calves or conceiving later in the breeding season than their more functional counterparts. These structural problems are filtered through the supply chain resulting in reduced income for the producer or feedlot and thus reduces the overall profitability of the Australian beef industry.

Whilst genetic improvement for maternal, growth and carcass traits will continue to be pivotal in developing the Australian beef industry, correct structure and temperament remain fundamentals that all other traits are built on.

HERITABILITY OF STRUCTURE Structure is a moderately to highly heritable trait and can therefore be improved genetically. Front and Rear foot angle, or heel depth and Front and Rear claw settings have similar and high heritability. Rear leg angle and Rear leg set, are moderately heritable traits, similar to growth traits, and are also able to be improved genetically. This means that careful selection of genetics will not only improve structure within a herd, but also that, incorrect selection of genetics for a herd, will also decrease structural integrity within a herd. It also means that correct culling for less functional cattle will increase the genetic potential within a herd to achieve good structure.

EFFECT OF POOR STRUCTURE ON BULLS Bulls work much like elite athletes to complete a joining season. Apart from the workload of serving the cows, bulls must also find time to graze. Bulls showing structural issues may have reduced function, reducing their ability to cover the required number of females in the required time. This can result in delayed or extended calving patterns, reducing the herds ability to retain a 12-month calving cycle, reducing weaning weights and potentially leaving valuable cows empty. Often these cows are culled for infertility, despite not having contributed to the fertility issues.

Bulls also represent a tremendous investment for any breeding program and achieving a long working life maximises the bull return on investment. Bulls with reduced function have higher rates of breakdowns at an earlier age, leading to lost investment.

The high heritability of structural traits means that the bull will also pass on any structural issues to their progeny, affecting profitability for years to come, unless affected progeny are culled from the herd.

BEEF CLASS STRUCTURAL ASSESSMENT SYSTEM.

Bringing Objective Measurement to Structure The Beef Class Structural Assessment System was designed by MLA, the BIA and several breed societies to address the structural problems in the beef industry. Detailed analysis of 300 genetically linked herds indicated that structural characteristics such as leg and foot structure were moderately to highly heritable.

As a result, the Beef Class Structural Assessment System was developed to assist producers to objectively measure these traits.

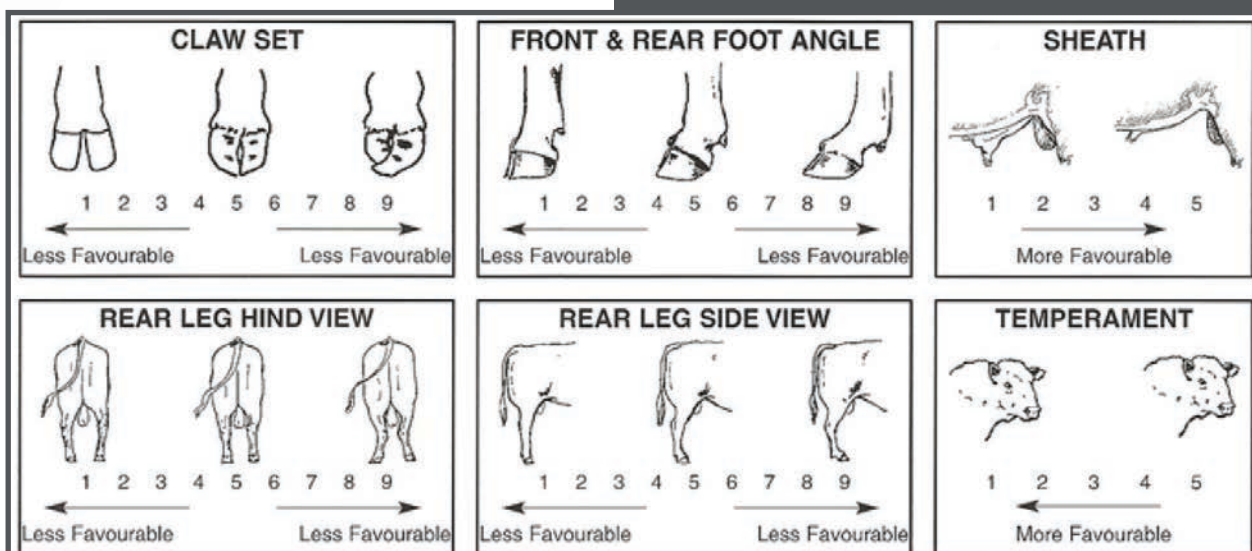
Whilst most breeders are conscious of structure and endeavour to improve structure within their herds, it is the ability to independently and objectively measure these traits and to present the results in a clear format to purchasers that was not previously available.

Assessors must be registered and have to undergo an accreditation process before being given an accredited assessor number. Only cattle assessed by accredited assessors should have Beef Class Assessment Structural data supplied to purchasers.

How the Beef Class Structural Assessment System works?

The Beef Class Structural Assessment System uses a 1-9 scoring system;

- A score of 5 is ideal. (Note: Temperament Score of 1 is preferable);
- A score of 4 or 6 shows slight variation from ideal, but this includes most animals. An animal scoring 4 or 6 would be acceptable in any breeding program;
- A score of 3 or 7 shows greater variation but would be acceptable in most commercial programs. However, seed stock producers should be vigilant and understand that this score indicates greater variation from ideal;
- A score of 2 or 8 are low scoring animals and should be looked at closely before purchasing;
- A score of 1 or 9 should not be catalogued and are considered culls.



SIMMENTAL GROUP BREEDPLAN

Interpreting THE FIGURES

An animal's breeding value is its genetic merit, half of which will be passed on to its progeny. While we will never know the exact breeding value, for performance traits it is possible to make good estimates. These estimates are called Estimated Breeding Values (EBVs).

In the calculation of EBVs, the performance of individual animals within a contemporary group is directly compared to the average of other animals in that group. A contemporary group consists of animals of the same sex and age class within a herd, run under the same management conditions and treated equally. Indirect comparisons are made between animals reared in different contemporary groups, through the use of pedigree links between the groups.

EBVs are expressed in the units of measurement for each particular trait. They are shown as +ive or -ive differences between an individual animal's genetics difference and the genetic base to which the animal is compared. For example, a bull with an EBV of +50 kg for 600-Day Weight is estimated to have genetic merit 50 kg above the breed base of 0 kg. Since the breed base is set to an historical benchmark, the average EBVs of animals in each year drop has changed over time as a result of genetic progress within the breed.

The absolute value of any EBV is not critical, but rather the differences in EBVs between animals. Particular animals should be viewed as being "above or below breed average" for a particular trait.

Whilst EBVs provide the best basis for the comparison of the genetic merit of animals reared in different environments and management conditions, they can only be used to compare animals analysed within the same analysis. Consequently, Simmental GROUP BREEDPLAN EBVs cannot be validly compared with EBVs from any other BREEDPLAN analysis.

EBVs are published for a range of traits covering fertility, calving ease, milking ability, growth, and carcase merit. When using EBVs to assist in selection decisions it is important to achieve a balance between the different groups of traits and to place emphasis on those traits that are important to the particular herd, markets and environment. One of the advantages of having a comprehensive range of EBVs is that it is possible to avoid extremes in particular traits and select for animals with balanced overall performance.

EBV EXPLANATION

Calving Ease EBVs (%) are based on calving difficulty scores, birth weights and gestation length information. More positive EBVs are favourable and indicate easier calving.

- **CE % Dir = Direct Calving Ease** - The EBV for direct calving ease indicates the influence of the sire on calving ease in purebred females calving at two years of age.
- **CE % Daughters = Daughters' Calving Ease** - The EBV for daughters' calving ease indicates how easily that sire's daughters will calve at two years of age.

Gestation Length EBV (days) is an estimate of the time from conception to the birth of the calf and is based on Artificial Insemination and hand mating records. Lower (negative) Gestation Length EBVs indicate shorter gestation length and therefore easier calving and increased growth after birth.

Birth Weight EBV (kg) is based on the measured birth weight of progeny, adjusted for dam age. The lower the value the lighter the calf at birth and the lower the likelihood of a difficult birth. This is particularly important when selecting sires for use over heifers.

200-Day Growth EBV (kg) is calculated from the weight of progeny taken between 80 and 300 days of age. Values are adjusted to 200 days and for age of dam. This EBV is the best single estimate of an animal's genetic merit for growth to early ages.

400-Day Weight EBV (kg) is calculated from the weight of progeny taken between 301 and 500 days of age, adjusted to 400 days and for age of dam. This EBV is the best single estimate of an animal's genetic merit for yearling weight.

600-Day Weight EBV (kg) is calculated from the weight of progeny taken between 501 and 900 days of age, adjusted to 600 days and for age of dam. This EBV is the best single estimate of an animal's genetic merit for growth beyond yearling age.

Mature Cow Weight EBV (kg) is based on the cow weight when the calf is weighed for weaning, adjusted to 5 years of age. This EBV is an estimate of the genetic difference in cow weight at 5 years of age and is an indicator of growth at later ages and potential feed maintenance requirements of the females in the breeding herd. Steer breeders wishing to grow animals out to a larger weight may also use the Mature Cow Weight EBV.

Milk EBV (kg) is an estimate of an animal's milking ability. For sires, this EBV indicates the effect of the daughter's milking ability, inherited from the sire, on the 200-day weights of her calves. For dams, it indicates her milking ability.

Scrotal Size EBV (cm) is calculated from the circumference of the scrotum taken between 300 and 700 days of age and adjusted to 400 days of age. This EBV is an estimate of an animal's genetic merit for scrotal size. There is also a small negative correlation with age of puberty in female progeny and therefore selection for increased scrotal size will result in reduced age at calving of female progeny.

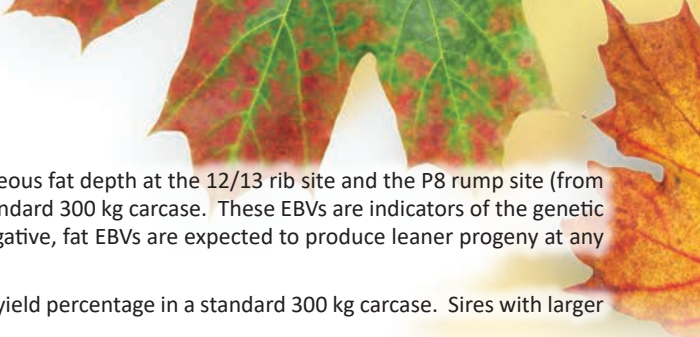
Days to Calving EBV (days) indicates the fertility of the daughters of the sire. It is the time interval between the day when the female is first exposed to a bull in a paddock mating to the day when she subsequently calves. A negative EBV for days to calving indicates a shorter interval from bull-in date to calving and therefore higher fertility.

Carcase Weight EBV (kg) is based on abattoir carcase records and is an indicator of the genetic differences in carcase weight at the standard age of 650 days.

Eye Muscle Area EBV (sq cm) is calculated from measurements from live animal ultrasound scans and from abattoir carcase data, adjusted to a standard 300 kg carcase. This EBV estimates genetic differences in eye muscle area at the 12/13th rib site of a 300 kg dressed carcase. More positive EBVs indicate better muscling on animals. Sires with relatively higher Eye Muscle Area EBVs are expected to produce better muscled and higher percentage yielding progeny at the same carcase weight than will sires with lower Eye Muscle Area EBVs.

JANUARY 2023 SIMMENTAL GROUP AVERAGE EBV'S FOR 2022 BORN CALVES

BREED AVERAGE	BIRTH		GROWTH				FERT	CARCASS					INDEXES			
	GL	BW	200D	400D	600D	MILK	SS	EMA	RIB	RUMP	RBY	IMF	DM	EM	NT	VT
	-1.6	0.6	21	37	46	8	0.5	2.5	0.5	0.2	0.5	0.3	40	49	25	35



Rib Fat and Rump Fat EBVs (mm) are calculated from measurements of subcutaneous fat depth at the 12/13 rib site and the P8 rump site (from live animal ultrasound scans and from abattoir carcasses) and are adjusted to a standard 300 kg carcass. These EBVs are indicators of the genetic differences in fat distribution on a standard 300 kg carcass. Sires with low, or negative, fat EBVs are expected to produce leaner progeny at any particular carcass weight than will sires with higher EBVs.

Retail Beef Yield EBV (%) indicates genetic differences between animals for retail yield percentage in a standard 300 kg carcass. Sires with larger EBVs are expected to produce progeny with higher yielding carcasses.

Intramuscular Fat EBV (%) is an estimate of the genetic difference in the percentage of intramuscular fat (marbling) at the 12/13th rib site in a 300 kg carcass. Depending on market targets, larger more positive values are generally more favourable.

SELECTION INDEXES

Simmental selection indexes are calculated for four market specifications, namely, Domestic Maternal, Export Maternal, Northern Terminal and Vealer Terminal. These Indexes relate to typical Simmental herds in temperate Australia targeting these specifications.

Indexes are reported as an EBV, in units of relative earning capacity (\$'s) for a given market. They reflect both the short-term profit generated by a sire through the sale of his progeny, and the longer-term profit generated by his daughters in a self-replacing cow herd. Note that different types of animals can give similar profit values, so consideration should be given to both the index and the component EBVs when selecting animals for a particular production system. More information is available on selecting animals using a selection index.

The Indexes are derived using the BreedObject technology. More information on this technology is available from the BreedObject web site.

Domestic Maternal Index - Estimates the genetic differences between animals in net profitability per cow joined for an example commercial herd in Southern Australia (e.g. Angus cows) targeting the domestic supermarket trade. Steers are either finished on grass or grain (e.g. 60-70 days). Steers are marketed at 430 kg live weight (240 kg HSCW and 6 mm P8 fat depth) at 14 months of age. Daughters are retained for breeding.

Export Maternal Index - Estimates the genetic differences between animals in net profitability per cow joined for an example commercial herd in Southern Australia (e.g. Angus cows) targeting the export trade. Steers are finished on grain (e.g. 120 days) and marketed at 700 kg live weight (380 kg HSCW and 8 mm P8 fat depth) at 28 months of age. Daughters are retained for breeding.

Northern Terminal Index - Estimates the genetic differences between animals in net profitability per cow joined for an example commercial herd in Northern Australia (e.g. Brahman cows) targeting the export trade. Steers are finished on grass and marketed at 630 kg live weight (345 kg HSCW and 12 mm P8 fat depth) at 28 months of age. This is a terminal production system therefore no daughters are retained for breeding.

Vealer Terminal Index - Estimates the genetic differences between animals in net profitability per cow joined for an example commercial herd in Southern Australia (e.g. Angus cows) targeting the vealer trade. Vealers are weaned and sold at 8 months of age weighing 350 kg (195 kg HSCW and 6 mm P8 fat depth). This is a terminal production system therefore heifers are not retained for breeding purposes.

Note that \$Index Values for individual animals are sensitive to the assumptions used in the BreedObject analysis to calculate the relevant selection index. More information is available on the weightings used in the Simmental Selection Indexes.

ACCURACY

Accuracy (%) is based on the amount of performance information available on the animal and its close relatives - particularly the number of progeny analysed. Accuracy is also based on the heritability of the trait and the genetic correlations with other recorded traits. Hence accuracy indicates the "confidence level" of the EBV. The higher the accuracy value the lower the likelihood of change in the animal's EBV as more information is analysed for that animal or its relatives. Even though an EBV with a low accuracy may change in the future, it is still the best estimate of an animal's genetic merit for that trait. As more information becomes available, an EBV is just as likely to increase in value, as it is to decrease.

Accuracy values range from 0-99%. The following guide is given for interpreting accuracy:

ACCURACY RANGE	INTERPRETATION
less than 50%	EBV should be considered as a preliminary estimate. It could change substantially as more performance information becomes available.
50-74%	Medium accuracy, usually based on the animal's own records and pedigree. Still subject to substantial changes with more information, particularly when the performance of progeny are analysed.
75-90%	Medium - high accuracy and includes some progeny information. Becoming a more reliable indicator of the animal's value as a parent.
more than 90%	High accuracy estimate of the animal's true breeding value. It is unlikely that the EBV will change much with the addition of more progeny data.

As a rule, animals should be compared on EBVs regardless of accuracy. However, where two animals have similar EBVs the one with higher accuracy could be the safer choice, assuming other factors are equal.

For further information please contact the Simmental Society or Simmental BREEDPLAN.



AuctionsPlus

How to Register and Bid on AuctionsPlus

- 1 Go to www.auctionsplus.com.au to register at least 48 hours before the sale.
- 2 Select "**Sign Up**" in the top right hand corner.
- 3 Fill out your name, mobile number, email address and create a password.
- 4 Go to your emails and confirm the account.
- 5 Return to AuctionsPlus and log in.
- 6 Select "**Dashboard**" and then select "**Request Approval to Buy**".
- 7 Fill in buyer details and once completed go back to Dashboard.
- 8 Complete buyer induction module (approx. 30 minutes).
- 9 AuctionsPlus will email you to let you know that your account has been approved.
- 10 Log in on sale day and connect to auction.
- 11 Bid using the two-step process – unlock the bid button and bid at that price.
- 12 If you are successful, the selling agent will contact you post sale to organise delivery and payment.

For more information please contact us on:

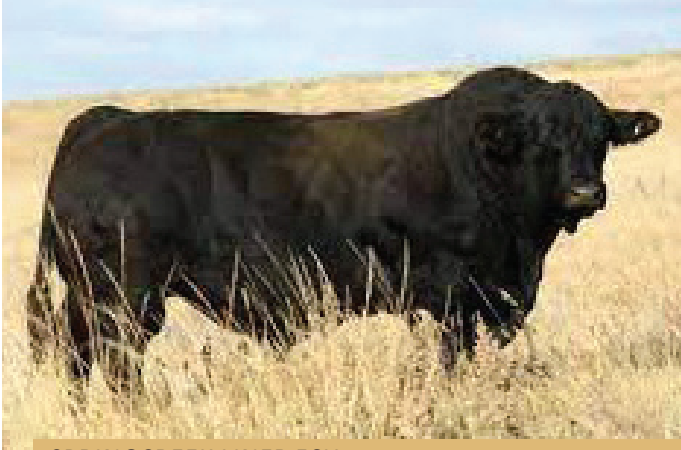
Phone: (02) 9262 4222

Email: info@auctionsplus.com.au

VALLEY CREEK

reference sires

FULLBLOOD ■ BLACK ■ RED GENETICS



SPRINGCREEK LINER 56U



MILLAH MURRAH QUIXOTE Q96



MADER WALK THIS WAY 224B



RF SUPERCHARGED 9150G



SIEGFRIED

SIEGFRIED





VC *Take Charge* (PP) (ET) (AI) (B)

ZMJPT017	2nd April 2022	Homo Polled	Homo Black	Purebred									
EBVS	GL	BW	200D	400D	600D	MILK	SC	EMA	RIB	RUMP	RBV	IMF	DOC
	-2.3	-0.4	22	37	34	4	-	3.7	1.9	1.0	-0.4	0.0	-
Structure & Docility Assessments													
Front Feet Claw Set: 6		Hind Feet Claw Set: 5		Front Feet Angle: 6		Rear Feet Angle: 6		Rear Legs Side View: 7		Rear Legs Hind View: 6			
Scrotal (cm): 33		Sheath: 4		Temperament: 1		EMA: 84 cm		Rib: 5 mm		Rump: 9 mm		IMF: 4.90% Age: 10.5 mon.	



RCC/TCF LINE DRIVE M181
SPRINGCREEK LINER 56U
 NEVAS L93

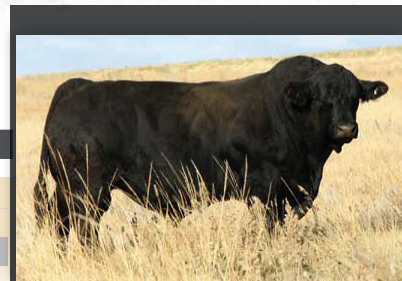
DRAKE POKER FACE 2X
VC CREAM SODA Q013
 HPF CREAM SODA Y010

HC POWER DRIVE 88H
 BOZ SWEET TEMPTATION
 TNT BLACK SHADOW J30
 NEVAS BLACK FOOT H819

JS SURE BET 4T
 DRAKE TULA 1R
 JF MILESTONE 999W
 IC CREAM SODA R56

An impeccable pedigree, phenotype & ideal EPD's surround the great "Take Charge" His sire Springcreek Liner 56U is an exciting sire we feel has proven to be one of the best breeding bulls in existence. It is hard almost impossible to combine the numbers & impeccable pedigree that T017 carries. He has muscle shape, stoutness, depth of body, foot quality & overall soundness in an attractive package. He will add true presence, thickness & overall marketability to his calves. We are excited to offer the 56U genetics & share in the potential breeding opportunity that he offers. Blooded for tick fever, 7 in 1 & Pestiguard.

Homozygous Polled & Homozygous Black



Sire of Take Charge
SPRINGCREEK LINER 56U



Dam of Take Charge
VC CREAM SODA Q013



Maternal Grand Dam
HPF CREAM SODA Y010



EBVS		Structure & Docility Assessments	
GL	-2.3	Front Feet Claw Set:	6
BW	-0.4	Hind Feet Claw Set:	5
200D	22	Front Feet Angle:	6
400D	37	Rear Feet Angle:	6
600D	34	Rear Legs Side View:	7
MILK	4	Rear Legs Hind View:	6
SC	-	Scrotal (cm):	37
EMA	3.7	Sheath:	4
RIB	1.9	Temper:	1
RUMP	1.0	EMA:	82 cm
RBV	-0.4	Rib:	4 mm
IMF	0.0	Rump:	5 mm
DOC	-	IMF:	5.50%
		Age:	10.5 m



Sire: LINER 56U



Grand Dam: Y010

VC Timeless (PP) (ET) (AI) (B)

ZMJPT010 29th March 2022 Homo Polled Purebred



RCC/TCF LINE DRIVE M181
SPRINGCREEK LINER 56U
 NEVAS L93

DRAKE POKER FACE 2X
VC CREAM SODA Q013
 HPF CREAM SODA Y010

HC POWER DRIVE 88H
 BOZ SWEET TEMPTATION
 TNT BLACK SHADOW J30
 NEVAS BLACK FOOT H819

JS SURE BET 4T
 DRAKE TULA 1R
 JF MILESTONE 999W
 IC CREAM SODA R56

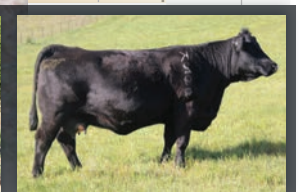
Plenty of power & thickness that's deep sided. Full flush brother to lot 1, he's wide topped & will add extra pounds to your calf crop. His dam VC Cream Soda Q13 go's back to the great HPF Cream Soda Y010 in Canada that has proven genetics. One not to be overlooked for the commercial edge. Blooded for tick fever, 7 in 1 & Pestiguard.
Homozygous Polled & Heterozygous Black.



EBVS		Structure & Docility Assessments	
GL	-5.4	Front Feet Claw Set:	5
BW	-3.8	Hind Feet Claw Set:	5
200D	14	Front Feet Angle:	6
400D	28	Rear Feet Angle:	6
600D	40	Rear Legs Side View:	7
MILK	3	Rear Legs Hind View:	6
SC	0.0	Scrotal (cm):	35
EMA	0.0	Sheath:	4
RIB	4.8	Temper:	1
RUMP	4.3	EMA:	89 cm
RBV	-3.6	Rib:	4 mm
IMF	1.8	Rump:	5 mm
DOC	-	IMF:	5.30%
		Age:	10.5 m



Sire: QUIXOTE Q96



Dam: MISS LUCY K299

VC Tailored (PP) (ET) (AI) (B)

ZMJ1T016 2nd April 2022 Homo Polled SimAngus



S CHISUM 255
MILLAH MURRAH QUIXOTE Q96
 MILLAH MURRAH BRENDA N8

TNT TANKER U263
CIRCLE EIGHT MISS LUCY K299
 ST PAULS DREAM LUCY E431

S CHISUM 6175
 S BLOSSOM 0278
 MILLAH MURRAH KLOONEY K42
 MILLAH MURRAH BRENDA L73

MR NLC SUPERIOR S6018
 TNT MISS S17
 CNS DREAM ON L186
 LUCAS MS 129L 594R

What a way to kick off the Sim-Angus bulls with T016 sired by the high selling \$60,000 bull from Millah Murrah bull sale in 2020. Tailored presents an outstanding new bloodline with widespread commercial & seed stock appeal. Blooded for tick fever, 7 in 1 & Pestiguard.
Homozygous Polled & Heterozygous Black



EBVS		Structure & Docility Assessments	
GL	-5.4	Front Feet Claw Set:	5
BW	-3.8	Hind Feet Claw Set:	5
200D	14	Front Feet Angle:	6
400D	28	Rear Feet Angle:	6
600D	40	Rear Legs Side View:	7
MILK	3	Rear Legs Hind View:	6
SC	0.0	Scrotal (cm):	34
EMA	0.0	Sheath:	4
RIB	4.8	Temper:	1
RUMP	4.3	EMA:	89 cm
RBV	-3.6	Rib:	5 mm
IMF	1.8	Rump:	7 mm
DOC	-	IMF:	5.50%
		Age:	10.5 m



Sire: QUIXOTE Q96

Dam: MISS LUCY K299

VC Taylor Made (PP) (ET) (B)

ZMJ1T008 28th March 2022 Homo Polled SimAngus

Taylor Made displays plenty of length & growth. He replicates his dam Circle 8 Miss Lucy K299 with a big foot & strong head. Really exciting outcross on offer for the commercial edge. An easy-keeping sim-angus bull. Blooded for tick fever, 7 in 1 & Pestiguard.

Homozygous Polled & Heterozygous Black.



S CHISUM 255
MILLAH MURRAH QUIXOTE Q96
 MILLAH MURRAH BRENDA N8

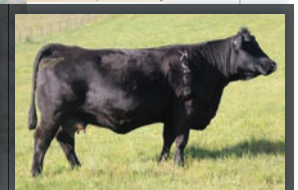
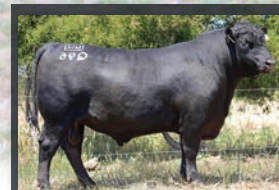
S CHISUM 6175
 S BLOSSOM 0278
 MILLAH MURRAH KLOONEY K42
 MILLAH MURRAH BRENDA L73

TNT TANKER U263
CIRCLE EIGHT MISS LUCY K299
 ST PAULS DREAM LUCY E431

MR NLC SUPERIOR S6018
 TNT MISS S17
 CNS DREAM ON L186
 LUCAS MS 129L 594R



EBVS		Structure & Docility Assessments	
GL	-5.4	Front Feet Claw Set:	5
BW	-3.8	Hind Feet Claw Set:	5
200D	14	Front Feet Angle:	6
400D	28	Rear Feet Angle:	6
600D	40	Rear Legs Side View:	6
MILK	3	Rear Legs Hind View:	6
SC	0.0	Scrotal (cm):	37
EMA	0.0	Sheath:	4
RIB	4.8	Temper:	1
RUMP	4.3	EMA:	80 cm
RBV	-3.6	Rib:	3 mm
IMF	1.8	Rump:	4 mm
DOC	-	IMF:	5.40%
		Age:	10.5 m



Sire: QUIXOTE Q96

Sire: MISS LUCY K299

VC True Blue (PP) (ET) (AI) (B)

ZMJ1T012 29th March 2022 Homo Polled SimAngus

A young sire that manages to combine a lovely smooth front end with fantastic carcass attributes. The amount of carcass that he carries & his progeny should reach target weights & market specifications at a young age. A lovely sim-angus bull not to be missed. Blooded for tick fever, 7 in 1 & Pestiguard.

Homozygous Polled & Heterozygous Black.



S CHISUM 255
MILLAH MURRAH QUIXOTE Q96
 MILLAH MURRAH BRENDA N8

S CHISUM 6175
 S BLOSSOM 0278
 MILLAH MURRAH KLOONEY K42
 MILLAH MURRAH BRENDA L73

TNT TANKER U263
CIRCLE EIGHT MISS LUCY K299
 ST PAULS DREAM LUCY E431

MR NLC SUPERIOR S6018
 TNT MISS S17
 CNS DREAM ON L186
 LUCAS MS 129L 594R



EBVS		Structure & Docility Assessments	
GL	-1.6	Front Feet Claw Set:	6
BW	-0.8	Hind Feet Claw Set:	6
200D	21	Front Feet Angle:	6
400D	39	Rear Feet Angle:	6
600D	35	Rear Legs Side View:	6
MILK	2	Rear Legs Hind View:	6
SC	-0.2	Scrotal (cm):	40
EMA	3.6	Sheath:	5
RIB	1.4	Temper:	1
RUMP	0.4	EMA:	90 cm
RBV	-0.3	Rib:	4 mm
IMF	0.0	Rump:	5 mm
DOC	-	IMF:	5.20%
		Age:	10.5 m

VC Transmission (PP) (B)

ZMJPT001 24th February 2022 Homo Polled Purebred



RF CAPACITY 742E
RF SUPERCHARGED 9150G
RF CERTAINLY FLIRTIN 202Z

WFL WESTCOTT 24C
RF FAMOUS 409B/CC-RC
WHEATLAND STOUT 930W
RF FLIRTIN FOR CERTIN 37U

SPRINGCREEK LINER 56U
VC RED SAGE Q015
WFL RED SAGE 506C

RCC/TCF LINE DRIVE M181
NEVAS L93
R PLUS RELOAD 2006Z
WFL RED SAGE 1003Y



Dam: RED SAGE Q015



Granddam: SAGE 506C

A natural calf out of VC Red Sage Q015. The oldest bull of the Autumn drop, a bull with much thickness & eye appeal, phenotype & style. Outcross sire to the Simmental Breed in Australia. Blooded for tick fever, 7 in 1 & Pestiguard.
Homozygous Polled & Heterozygous Black



EBVS		Structure & Docility Assessments	
GL	-0.6	Front Feet Claw Set:	6
BW	0.4	Hind Feet Claw Set:	6
200D	25	Front Feet Angle:	6
400D	44	Rear Feet Angle:	6
600D	38	Rear Legs Side View:	6
MILK	5	Rear Legs Hind View:	6
SC	0.2	Scrotal (cm):	34
EMA	3.3	Sheath:	5
RIB	0.6	Temper:	1
RUMP	-0.7	EMA:	79 cm
RBV	-0.1	Rib:	6 mm
IMF	0.4	Rump:	6 mm
DOC	-	IMF:	4.20%
		Age:	10.5 m

VC Team Player (PP) (ET) (AI) (B)

ZMJPT021 8th April 2022 Homo Polled Purebred



RF CAPACITY 742E
RF SUPERCHARGED 9150G
RF CERTAINLY FLIRTIN 202Z

WFL WESTCOTT 24C
RF FAMOUS 409B/CC-RC
WHEATLAND STOUT 930W
RF FLIRTIN FOR CERTIN 37U

VALLEY CREEK MARKSMAN
VC LADY LUCK Q003
VALLEY CREEK LADY LUCK

WOONALLEE JARGON
LANCASTER ERICA A330
MR NLC UPGRADE U8676
LANCASTER POPPY B376



Pat Grandsire: CAPACITY



Granddam: LADY LUCK

Team Player is a powerful young long bodied bull with a typical VC lady Luck Q3 style. We are proud to offer him to the industry, utilize T021 to add overall performance through his length, bone & added frame score combined with stoutness & muscle shape while enhancing foot quality. Blooded for tick fever, 7 in 1 & Pestiguard.
Homozygous Polled & Heterozygous Black.



EBVS		Structure & Docility Assessments	
GL	-3.4	Front Feet Claw Set:	6
BW	0.5	Hind Feet Claw Set:	6
200D	27	Front Feet Angle:	6
400D	45	Rear Feet Angle:	6
600D	42	Rear Legs Side View:	6
MILK	3	Rear Legs Hind View:	6
SC	0.2	Scrotal (cm):	33
EMA	3.7	Sheath:	4
RIB	1.2	Temper:	1
RUMP	0.1	EMA:	72 cm
RBV	-0.1	Rib:	4 mm
IMF	0.3	Rump:	6 mm
DOC	-	IMF:	4.90%
		Age:	10.5 m



Sire: STRUCTURE 34D

Dam: RED SAGE Q016

VC *Thrilling* (PP) (ET) (AI) (B)

ZMJPT009 28th March 2022 Homo Polled Purebred



NCB COBRA 47Y
NGDB STRUCTURE 34D
 NGDB LOUISE 411 B

LFE VIPER 455U
 NCB MISS DREAM 22T
 DRAKE POKER FACE 2X
 NGDB 204Z

SPRINGCREEK LINER 56U
VC RED SAGE Q016
 WFL RED SAGE 506C

RCC/TCF LINE DRIVE M181
 NEVAS L93
 R PLUS RELOAD 2006Z
 WFL RED SAGE 1003Y

Clean coated, balanced bull with outstanding squareness of hip. His dam stems from the very consistent "Red Sage Family" Definitely a bull we haven't seen the best of yet! Blooded for tick fever, 7 in 1 & Pestiguard. **Homozygous Polled & Heterozygous Black.**

Nutrien Livestock.
Your Breeding Stock Specialists.

VICTORIA	
Ray Attwell	0428 836 136
Peter Godbolt	0457 591 929
Nick Farley	0427 529 335
Stephen Chalmers	0427 908 831
NEW SOUTH WALES	
Rick Power	0437 131 925
Tim Woodham	0436 015 115
John Setttee	0408 297 368
Brad Wilson	0417 467 911
QUEENSLAND	
Colby Ede	0417 265 980
Dane Pearce	0439 917 428
SOUTH AUSTRALIA	
Andrew Wilson	0439 354 228
Gordon Wood	0408 813 215

Nutrien Ag Solutions®
 NutrienAgSolutions.com.au

FALLS
 Livestock Transport
 FINLEY
 Specialists in Stud Stock
 Servicing all States Australia Wide

Lockie Falls – 0429 826 342
 www.fallslivestock.com.au

f
 Instagram



VC Cream Soda T015 (PP) (ET) (AI) (B)

ZMJPT015	1st April 2022	Homo Polled	Homo Black	Purebred									
EBVS	GL	BW	200D	400D	600D	MILK	SC	EMA	RIB	RUMP	RBV	IMF	DOC
	-2.3	-0.4	22	37	34	4	-	3.7	1.9	1.0	-0.4	0.0	-
Structure & Docility Assessments													
Front Feet Claw Set: 6	Hind Feet Claw Set: 6	Front Feet Angle: 6	Rear Feet Angle: 6	Rear Legs Side View: 7	Rear Legs Hind View: 6								
	Sheath: 4	Temperament: 2	EMA: 75 cm	Rib: 6 mm	Rump: 6 mm	IMF: 46.4%	Age: 10.5 mon.						



RCC/TCF LINE DRIVE M181
SPRINGCREEK LINER 56U
 NEVAS L93

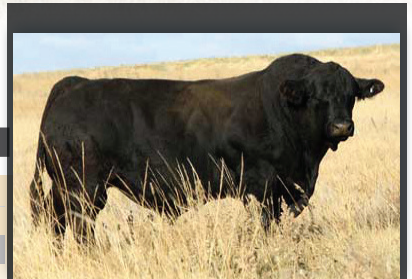
DRAKE POKER FACE 2X
VC CREAM SODA Q013
 HPF CREAM SODA Y010

HC POWER DRIVE 88H
 BOZ SWEET TEMPTATION
 TNT BLACK SHADOW J30
 NEVAS BLACK FOOT H819

JS SURE BET 4T
 DRAKE TULA 1R
 JF MILESTONE 999W
 IC CREAM SODA R56

An absolute sale feature & one we are proud to offer to the industry. Much like her donor dam, T015 is flawless in her design with a bold spring to her mid-section, deep, sweeping rib shape with ample bone, extra neck extension with that look at me presence. She exemplifies everything we have come to expect from this great breed. Blooded for tick fever, 7 in 1 & Pestiguard.

Homozygous Polled & Homozygous Black



Sire of Take Charge
SPRINGCREEK LINER 56U



Dam of Take Charge
VC CREAM SODA Q013



Maternal Grand Dam
HPF CREAM SODA Y010



EBVS		Structure & Docility Assessments	
GL	-2.3	Front Feet Claw Set:	6
BW	-0.4	Hind Feet Claw Set:	6
200D	22	Front Feet Angle:	6
400D	37	Rear Feet Angle:	6
600D	34	Rear Legs Side View:	6
MILK	4	Rear Legs Hind View:	6
SC	-	Scrotal (cm):	-
EMA	3.7	Sheath:	5
RIB	1.9	Temper:	1
RUMP	1.0	EMA:	77 cm
RBV	-0.4	Rib:	4 mm
IMF	0.0	Rump:	6 mm
DOC	-	IMF:	5.30%
		Age:	10.5 m

VC Cream Soda T014 (PP)(ET)(AI)(B)

ZMJPT014 31st March 2022 Homo Polled Purebred



RCC/TCF LINE DRIVE M181
SPRINGCREEK LINER 56U
 NEVAS L93

DRAKE POKER FACE 2X
VC CREAM SODA Q013
 HPF CREAM SODA Y010

HC POWER DRIVE 88H
 BOZ SWEET TEMPTATION
 TNT BLACK SHADOW J30
 NEVAS BLACK FOOT H819

JS SURE BET 4T
 DRAKE TULA 1R
 JF MILESTONE 999W
 IC CREAM SODA R56



Mat Grand sire: POKER FACE



Dam: CREAM SODA Q013

Here are 1 of 4 flush mate sisters (Lot 9,10,11 & 12) These are out of over very productive donor dam VC Cream Soda Q13. The cream soda cow family is reaching elite stats with progeny topping sales across the world. As well as being sired by the famous female producer Liner 56U. These females are no fluke consistency & quality runs deep in these heifers on offer. Blooded for tick fever, 7 in 1 & Pestiguard.
Homozygous Polled & Homozygous Red



EBVS		Structure & Docility Assessments	
GL	-2.3	Front Feet Claw Set:	6
BW	-0.4	Hind Feet Claw Set:	5
200D	22	Front Feet Angle:	6
400D	37	Rear Feet Angle:	7
600D	34	Rear Legs Side View:	7
MILK	4	Rear Legs Hind View:	6
SC	-	Scrotal (cm):	-
EMA	3.7	Sheath:	4
RIB	1.9	Temper:	1
RUMP	1.0	EMA:	78 cm
RBV	-0.4	Rib:	6 mm
IMF	0.0	Rump:	4 mm
DOC	-	IMF:	5.90%
		Age:	10.5 m

VC Cream Soda T006 (PP) (ET) (B)

ZMJPT006 7th March 2022 Homo Polled Purebred



RCC/TCF LINE DRIVE M181
SPRINGCREEK LINER 56U
 NEVAS L93

DRAKE POKER FACE 2X
VC CREAM SODA Q013
 HPF CREAM SODA Y010

HC POWER DRIVE 88H
 BOZ SWEET TEMPTATION
 TNT BLACK SHADOW J30
 NEVAS BLACK FOOT H819

JS SURE BET 4T
 DRAKE TULA 1R
 JF MILESTONE 999W
 IC CREAM SODA R56



Sire: LINER 56U

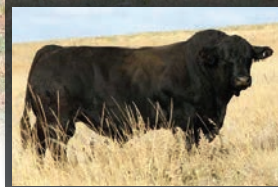


Dam: CREAM SODA Q013

Full sibling to lot 9,10 & 12 to the hottest sire in the breed would be Liner 56U. A female that's easy to fall in love with. She the kind that continues to impress as she keeps getting better & better every day. We believe T006 is developing into her dam's footsteps & we feel the potential & marketability will be quite high in this elite female. . Blooded for tick fever, 7 in 1 & Pestiguard.
 Not suitable for kids show heifers, do not like being out on their own. **Homozygous Polled & Homozygous Red**



EBVS		Structure & Docility Assessments	
GL	-2.3	Front Feet Claw Set:	6
BW	-0.4	Hind Feet Claw Set:	5
200D	22	Front Feet Angle:	6
400D	37	Rear Feet Angle:	6
600D	34	Rear Legs Side View:	7
MILK	4	Rear Legs Hind View:	6
SC	-	Scrotal (cm):	-
EMA	3.7	Sheath:	5
RIB	1.9	Temper:	2
RUMP	1.0	EMA:	72 cm
RBV	-0.4	Rib:	5 mm
IMF	0.0	Rump:	6 mm
DOC	-	IMF:	5.80%
		Age:	10.5 m



Sire: LINER 56U



Dam: CREAM SODA Q013

VC Cream Soda T020 (PP)(ET)(AI)(B)

ZMJPT020 7th April 2022 Homo Polled Purebred



RCC/TCF LINE DRIVE M181
SPRINGCREEK LINER 56U
 NEVAS L93

DRAKE POKER FACE 2X
VC CREAM SODA Q013
 HPF CREAM SODA Y010

HC POWER DRIVE 88H
 BOZ SWEET TEMPTATION
 TNT BLACK SHADOW J30
 NEVAS BLACK FOOT H819

JS SURE BET 4T
 DRAKE TULA 1R
 JF MILESTONE 999W
 IC CREAM SODA R56

Full sibling to lot 9,10 & 11. The cream soda cow family has been at the forefront of the Simmental Industry for a few years now. Take your pick, red or black either way you can't go wrong. Any way the saying goes our loss your gain. Smart money would be this one flout turning out some future ROI. Blooded for tick fever, 7 in 1 & Pestiguard. Not suitable for kids show heifers, do not like being out on their own.

Homozygous Polled & Homozygous Black



EBVS		Structure & Docility Assessments	
GL	-0.3	Front Feet Claw Set:	6
BW	2.1	Hind Feet Claw Set:	5
200D	20	Front Feet Angle:	6
400D	36	Rear Feet Angle:	6
600D	43	Rear Legs Side View:	7
MILK	41	Rear Legs Hind View:	6
SC	1.8	Scrotal (cm):	-
EMA	3.0	Sheath:	5
RIB	0.0	Temper:	1
RUMP	0.4	EMA:	66 cm
RBV	1.4	Rib:	5 mm
IMF	0.2	Rump:	5 mm
DOC	-	IMF:	4.90%
		Age:	10.5 m



Sre: SIEGFRIED



Dam: COVERGIRL N046

VC Covergirl T024 (Pp) (ET) (AI)

ZMJPT024 8th April 2022 Polled Purebred



SULTAN II 4842
SIEGFRIED 146340
 BIENE 30335

WORMBETE KENT K22
VALLEY CREEK COVERGIRL N046
 VALLEY CREEK COVERGIRL

SENATOR 36000
 LISELOTTE 26148
 FINK 62070
 BETTI 26967

CALLENDALE FRANK
 WORMBETE LIBBY F141
 VALLEY CREEK JOKER
 VALLEY CREEK HEDWIG 026

We are pleased to offer this outcross female by the legend Siegfried. A very sweet heifer that's put together in a complete package. She's soft sided, bold sprung & sound from the ground up. Her mother has loads of length & extra frame, which T024 is showing all the signs off. If your on the hunt for a traditional that ticks all the boxes with big time credentials, She's the one! Blooded for tick fever, 7 in 1 & Pestiguard.

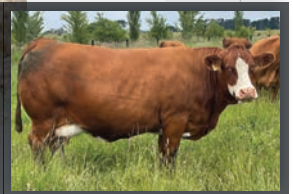
Heterozygous Polled



EBVS		Structure & Docility Assessments	
GL	-0.3	Front Feet Claw Set:	6
BW	2.1	Hind Feet Claw Set:	5
200D	20	Front Feet Angle:	6
400D	36	Rear Feet Angle:	6
600D	43	Rear Legs Side View:	7
MILK	14	Rear Legs Hind View:	6
SC	1.8	Scrotal (cm):	-
EMA	3.0	Sheath:	5
RIB	0.0	Temper:	2
RUMP	0.4	EMA:	64 cm
RBV	1.4	Rib:	4 mm
IMF	0.2	Rump:	4 mm
DOC	-	IMF:	5.50%
		Age:	10.5 m



Dam: COVERGIRL N046



Mat Great Granddam: 026

VC Covergirl T019 (PP) (ET) (AI)

ZMJPT019 6th April 2022 Polled Purebred



SULTAN II 4842
SIEGFRIED 146340
BIENE 30335

SENATOR 36000
LISELOTTE 26148
FINK 62070
BETTI 26967

WORMBETE KENT K22
VALLEY CREEK COVERGIRL N046
VALLEY CREEK COVERGIRL

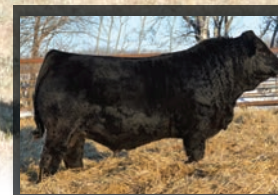
CALLENDALE FRANK
WORMBETE LIBBY F141
VALLEY CREEK JOKER
VALLEY CREEK HEDWIG 026

Full flush sister to lot 13, Little does this heifer know, she is everything but as good as her dam & we are thrilled to be able to maintain a piece of Covergirl allowing this opportunity of her daughters to now be in the spotlight. T019 is balanced & super correct in her structure making her as complete as they come. Blooded for tick fever, 7 in 1 & Pestiguard.

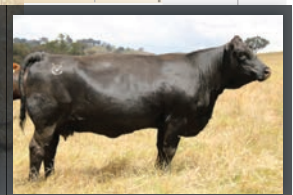
Heterozygous Polled



EBVS		Structure & Docility Assessments	
GL	-1.7	Front Feet Claw Set:	6
BW	-0.3	Hind Feet Claw Set:	5
200D	25	Front Feet Angle:	6
400D	44	Rear Feet Angle:	6
600D	41	Rear Legs Side View:	7
MILK	0	Rear Legs Hind View:	6
SC	0.3	Scrotal (cm):	-
EMA	3.9	Sheath:	4
RIB	0.7	Temper:	1
RUMP	-0.6	EMA:	81 cm
RBV	0.0	Rib:	4 mm
IMF	0.1	Rump:	6 mm
DOC	-	IMF:	5.00%
		Age:	10.5 m



Sire: SUPERCHARGED



Dam: LUCY P042

VC Lucy T002 (PP) (B)

ZMJPT002 27th February 2022 Homo Polled Purebred



RF CAPACITY 742E
RF SUPERCHARGED 9150G
RF CERTAINLY FLIRTIN 202Z

WFL WESTCOTT 24C
RF FAMOUS 409B/CC-RC
WHEATLAND STOUT 930W
RF FLIRTIN FOR CERTIN 37U

LFE THE RIDDLER 323B
VC LUCY P042
CIRCLE EIGHT MISS LUCY K299

LFE GOTHAM 819Y
LFE BS CHARO 23Y
TNT TANKER U263
ST PAULS DREAM LUCY E431

The only natural born heifer in this group to sell, with the performance & bone T002 has a staked pedigree combining Lucy K299, RF Certainly Flirtin 202Z (now Deceased) on the top side resulting progeny are sure to be a standout, with bone, muscle shape, size & capacity. A beautiful heifer that sure is to be seen in the future. Blooded for tick fever, 7 in 1 & Pestiguard.

Not suitable for kids show heifers, do not like being out on their own. **Homozygous Polled & Homozygous Black.**



EBVS		Structure & Docility Assessments	
GL	-3.0	Front Feet Claw Set:	5
BW	0.2	Hind Feet Claw Set:	5
200D	28	Front Feet Angle:	5
400D	43	Rear Feet Angle:	5
600D	47	Rear Legs Side View:	7
MILK	3	Rear Legs Hind View:	6
SC	0.5	Scrotal (cm):	-
EMA	3.8	Sheath:	4
RIB	0.6	Temper:	1
RUMP	-0.6	EMA:	78 cm
RBV	0.0	Rib:	6 mm
IMF	0.2	Rump:	6 mm
DOC	-	IMF:	5.20%
		Age:	10.5 m



Sire: WALK THIS WAY



Mat Great Sire: EL TIGRE

VC Lucy T013 (ET) (AI) (B)

ZMJPT013

30th March 2022

Homo Polled

Purebred



NCB COBRA 47Y
MADER WALK THIS WAY 224B
MADER P IRON SUGAR 7X

LFE VIPER 455U
NCB MISS DREAM 22T
MADER P BLACK IRONMAN 22U
LFE FAMOUS 632T

IPU TIGER 73C
VC LUCY P043
CIRCLE EIGHT MISS LUCY K299

MRL EL TIGRE 52Z
IPU MS RED EFFORT 104S
TNT TANKER U263
ST PAULS DREAM LUCY E431

T013 is long bodied, smooth coated, big feet & a disposition to match it all. From a very well-known cow family that just keeps on producing sound functional cattle. We sound like a broken record, but these WTW cattle consistently produce great looking cattle with a lift in data set. Blooded for tick fever, 7 in 1 & Pestiguard.

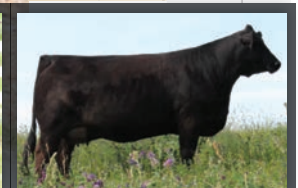
Homozygous Polled & Homozygous Black



EBVS		Structure & Docility Assessments	
GL	-3.0	Front Feet Claw Set:	6
BW	0.2	Hind Feet Claw Set:	5
200D	28	Front Feet Angle:	6
400D	43	Rear Feet Angle:	6
600D	47	Rear Legs Side View:	7
MILK	3	Rear Legs Hind View:	6
SC	0.5	Scrotal (cm):	-
EMA	3.8	Sheath:	5
RIB	0.6	Temper:	1
RUMP	-0.6	EMA:	69 cm
RBV	0.0	Rib:	4 mm
IMF	0.2	Rump:	5 mm
DOC	-	IMF:	4.80%
		Age:	10.5 m



Pat Grandsire: COBRA



Pat Granddam: 7X

VC Lucy T011 (PP) (ET) (AI) (B)

ZMJPT011

29th March 2022

Homo Polled

Purebred



NCB COBRA 47Y
MADER WALK THIS WAY 224B
MADER P IRON SUGAR 7X

LFE VIPER 455U
NCB MISS DREAM 22T
MADER P BLACK IRONMAN 22U
LFE FAMOUS 632T

IPU TIGER 73C
VC LUCY P043
CIRCLE EIGHT MISS LUCY K299

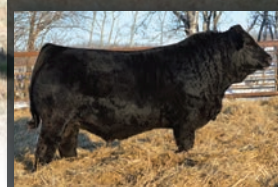
MRL EL TIGRE 52Z
IPU MS RED EFFORT 104S
TNT TANKER U263
ST PAULS DREAM LUCY E431

Full flush sister to lot 16, a carbon copy of her sister. A soft easy doing heifer who would be a valuable addition to any seed stock operation. An opportunity for the stud or extremely savvy commercial buyer. Blooded for tick fever, 7 in 1 & Pestiguard.

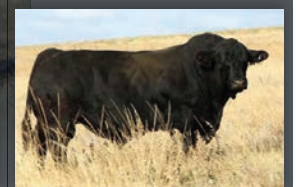
Homozygous Polled & Homozygous Black



EBVS		Structure & Docility Assessments	
GL	-1.6	Front Feet Claw Set:	6
BW	-0.2	Hind Feet Claw Set:	6
200D	23	Front Feet Angle:	5
400D	39	Rear Feet Angle:	5
600D	36	Rear Legs Side View:	7
MILK	1	Rear Legs Hind View:	6
SC	-0.1	Scrotal (cm):	-
EMA	3.5	Sheath:	4
RIB	1.5	Temper:	1
RUMP	0.6	EMA:	76 cm
RBV	-0.3	Rib:	6 mm
IMF	0.1	Rump:	6 mm
DOC	-	IMF:	5.70%
		Age:	10.5 m



Sire: SUPERCHARGED



Mat Grand sire: LINER 56U

VC Red Sage T018 (PP) (ET) (AI) (B)

ZMJPT018 | 4th April 2022 | Homo Polled | Purebred



RF CAPACITY 742E
RF SUPERCHARGED 9150G
RF CERTAINLY FLIRTIN 202Z

WFL WESTCOTT 24C
RF FAMOUS 409B/CC-RC
WHEATLAND STOUT 930W
RF FLIRTIN FOR CERTIN 37U

SPRINGCREEK LINER 56U
VC RED SAGE Q016
WFL RED SAGE 506C

RCC/TCF LINE DRIVE M181
NEVAS L93
R PLUS RELOAD 2006Z
WFL RED SAGE 1003Y

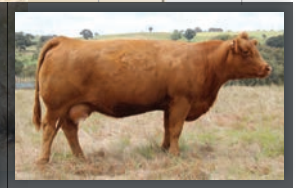
This neat package is backed by some of the most exciting genetics in the world, look at her pedigree. WFL Westcott 24C, RF Supercharged 9150G, Springcreek Liner 56U & WFL Red Sage 506C. It is evident this mating would result in exceptional individuals with strong marketability phenotype & EPD profile. Blooded for tick fever, 7 in 1 & Pestiguard. Not suitable for kids show heifers, do not like being out on their own. **Homozygous Polled & Heterozygous Black**



EBVS		Structure & Docility Assessments	
GL	-3.4	Front Feet Claw Set:	6
BW	0.5	Hind Feet Claw Set:	6
200D	27	Front Feet Angle:	5
400D	45	Rear Feet Angle:	5
600D	42	Rear Legs Side View:	4
MILK	3	Rear Legs Hind View:	5
SC	0.2	Scrotal (cm):	-
EMA	3.7	Sheath:	5
RIB	1.2	Temper:	2
RUMP	0.1	EMA:	73 cm
RBV	-0.1	Rib:	5 mm
IMF	0.3	Rump:	7 mm
DOC	-	IMF:	6.60%
		Age:	10.5 m



Sire: STRUCTURE 34D



Dam: RED SAGE Q016

VC Red Sage T007 (PP) (ET) (AI) (B)

ZMJPT007 | 27th March 2022 | Homo Polled | Purebred



NCB COBRA 47Y
NGDB STRUCTURE 34D
NGDB LOUISE 411 B

LFE VIPER 455U
NCB MISS DREAM 22T
DRAKE POKER FACE 2X
NGDB 204Z

SPRINGCREEK LINER 56U
VC RED SAGE Q016
WFL RED SAGE 506C

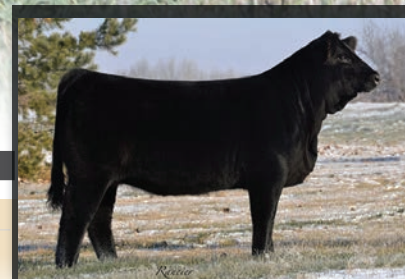
RCC/TCF LINE DRIVE M181
NEVAS L93
R PLUS RELOAD 2006Z
WFL RED SAGE 1003Y

A neat made structure heifer. Her dam & grand dam have been no miss producing with great udders. A special genetic opportunity for producers, she's wide made with added depth, softness & doing ability to grow into a magnificent, shaped female. Blooded for tick fever, 7 in 1 & Pestiguard. **Homozygous Polled & Heterozygous Black**



RF *Caliber* 014G (P) (B)

IMCPQ0444		30th December 2019				Homo Polled				Purebred			
EBVS	GL	BW	200D	400D	600D	MILK	SC	EMA	RIB	RUMP	RBY	IMF	DOC
	-2.7	1.3	29	48	44	1	0.2	3.6	0.8	-0.5	0.1	0.1	-



Dam of Callber 014G
RF NOT JUST A FLIRT 404B



NCB COBRA 47Y
NGDB STRUCTURE 34D
NGDB LOUISE 411 B

SVS CAPTAIN MORGAN 11Z
RF NOT JUST A FLIRT 404B
RF CERTAINLY FLIRTIN 202Z

LFE VIPER 455U
NCB MISS DREAM 22T
DRAKE POKER FACE 2X
NGDB 204Z

HARVIE JDF WALLBANGER111X
SUNNYVALLEY BLK JENNA 880U
WHEATLAND STOUT 930W
RF FLIRTIN FOR CERTIN 37U



Sire of Callber 014G
NGDB STRUCTURE 34D

RF Caliber 014G is a bull bred for the real world and his future impact on this great breed is truly exciting. This \$150,000 attractive powerhouse of a breeding piece ranks 1% of the breed for WW and YW plus 3% for MWW and a strong set of EPDs throughout. He comes with a nice set of number, but his true value is the phenotype and genotype that he has to offer as it is a world leading! He is backed by 404B who a past was Supreme Champion Female at Farm-Fair & Agribition and has evolved into one of the great breeding donors of all time. The Structure sons topped every bull sale they sold in, and he has been a true breed leader with Caliber being his best accomplishment to date. 2 Breed leaders, Lewis Farms & LaBatte Simmentals bought exclusive packages in this valuable sire and with this will be the first semen ever offered to public in 2022 in Australia. Here is your chance to be a part of Caliber, one of the most exciting bulls to ever hit the Simmental Industry!

Homozygous Polled & Homozygous Black.

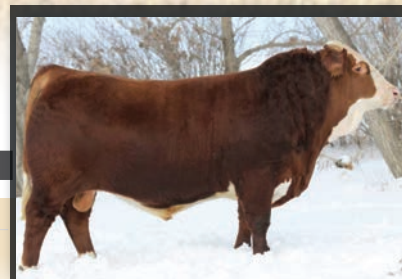
20: 10 Units 21: 10 Units

All semen stored at Holbrook Vets. Buyer to pay all shipping costs.



Sunny Valley *Canon* 86E (PP)

	IMCPN086			4th February 2017				Homo Polled				Purebred			
EBVS	GL	BW	200D	400D	600D	MILK	SC	EMA	RIB	RUMP	RBY	IMF	DOC		
	3.0	1.6	26	34	36	9	0.5	3.1	-0.1	-0.5	0.4	0.5	31		



Sire of Canon
STARWEST POL BLUEPRINT



ANCHOR T RUSTY 59G
STARWEST POL BLUEPRINT
 PHS HOMOZYGOUS XCEPTIONAL

KLONDIKE GOLD RUSH 418B
 ANCHOR T HELGA 10Y
 CHAMPS BRAVO
 WCC WELLS' PLD TALULAH 7T

ANCHOR D VIPER 103W
SUNNY VALLEY TRINITY 53Z
 SUNNY VALLEY TRINITY 70T

DOUBLE BAR D MAESTRO 100S
 PRL LOPEZ 147L
 VIRGINIA'S MANIA 960M
 SUNNY VALLEY CARRIE 62M

A rare opportunity to sure semen in the world leading fullblood homozygous polled sire. Described by his Canadian owners as powerful, very complete, deep bodied, think & structurally correct & we can only attest to these accolades by the exceptional progeny he has produced to date. No on-sale or transfer/use of this semen to or by another stud or breeder permitted.
Homozygous Polled & Homozygous Black.

22: 10 Units 23: 10 Units
 All semen stored at Holbrook Vets. Buyer to pay all shipping costs.



Valley Creek *Lady Luck* Dam of R016

embryo opportunity **Four (4) Embryos**

RF Caliber 014G x VC Lady Luck R016



NGDB STRUCTURE 34D
RF CALIBER 014G
 RF NOT JUST A FLIRT 404B

SVS CAPTAIN MORGAN 11Z
VC LADY LUCK R016
 VALLEY CREEK LADY LUCK

NCB COBRA 47Y
 NGDB LOUISE 411 B
 SVS CAPTAIN MORGAN 11Z
 RF CERTAINLY FLIRTIN 202Z

HARVIE JDF WALLBANGER111X
 SUNNYVALLEY BLK JENNA 880U
 MR NLC UPGRADE U8676
 LANCASTER POPPY B376

VC Lady Luck R16 is a soft sided, long fronted, powerful female with a ton of brood cow promise & style. Lucky Luck has a unique pedigree – with SVS Captain Morgan 11Z on the top side & Lancaster Poppy B376 on the bottom. You can't make them any nicer than this. We believe these genetics have unlimited potential & will be a valuable breeding piece in any program.



RF *Caliber* **014G**

VC

Thank you
to our buyers

JN LAURIE
S & E MULLER
SOUTHERN BLACK SIMMENTALS
MICHAEL MAWM
GLEN CO PASTRAL
DARREN WEIR
ST PAULS GENETICS
GRANGEBURN SIMMENTALS
ELITE CATTLE CO
WOMBETTA PTY LTD
LUKE SCICLUNA
RJ BAILEY
PETER & ODETTE MORLEY
CANNON DEE SIMMENTALS
WOMBAT HILLS SIMMENTALS
INTERNATIONAL ANIMAL HEALTH
HEART & SPADE SIMMENTALS
GAVIN ROBINSON
BARRY & KAY GRAHAM
HARTFIELD SIMMENTALS
LUCRANA SIMMENTALS
TULLAYR SIMMENTALS
WILLS PARTNERSHIP
HAMILTON & ANNE BARBER
C & S ANDREWARTHA
MCWILLIAM CATTLE
CLOVERNOOK PARTNERSHIP
MAGPIE PARK SIMMENTALS
ICT INDIGO CREEK TRADING
SETTLER SIMMENTALS

D & C BLAKE
CHRIS & RACHEAL SODERLAND
H & L LIVESTOCK
GLEN-LEE ASH STUD
BRM FARMS
LNA LIVESTOCK
JOHN & CORRINA ADAMS
I & P BARNARD PTY LTD
MERCHANTS CONTRACTING
MR R & MRS M FLANNERY
KIDMAN DOWNS SIMMENTALS
SPRINGSIDE SIMMENTALS
HOBBS LIVESTOCK
ABARRAK FARMING CO
JACK DAWSON
DAVID FELETTA
CRAIG BULLOCK
MICHELLE GROSSER
WOONALLEE SIMMENTALS
LOGIE SIMMENTALS
CHELSEA GREEN

JEFF & ROBBIE KNOX
SUMMERHILL SIMMENTALS
BLUE GENE CATTLE CO
BARANA SIMMENTALS
MELDON PARK SIMMENTALS
KWIKSTED PTD LTD
K W PERKINS & T L CROUCH
AVONEL BEEF
R & L PARKER TRADING
GM & MC DENT
GB LIVESTOCK

VC SIMMENTALS ONLINE
AUTUMN *Bull and Female Sale*