

REILAND ANGUS



AUTUMN BULL SALE

Wednesday, April 19, 2023 at 1.30pm

CARCASE WITHOUT COMPROMISE

LOT 4



REILAND SUPER SI225 - NLR2ISI225

LOT 5



REILAND STEEL SI198 - NLR2ISI198

LOT 7



REILAND SCANDAL SI413 - NLR2ISI413

LOT 8



REILAND SNAPSHOT S471 - NLR2IS471



AUTUMN BULL SALE

A/c REILAND ANGUS, Lucas Partnership

Wednesday, April 19, 2023 at 1.30pm

AT KILLIMICAT STATION, 786 BRUNGLE ROAD, KILLIMICAT NSW 2720

Selling **82 ANGUS BULLS**

Vendor - The Lucas Family

Harry Lucas

Ph: 02 6944 9131

M: 0427 449 131

Mark Lucas

Ph: 02 6944 1044

M: 0428 693 585

Sam Lucas

M: 0402 450 686

Jess Reynolds

M: 0403 933 966

jess@reilandangus.com.au

Huw Lucas

M: 0405 683 813

www.reilandangus.com.au



Jenni O'Sullivan

Wangaratta - 0428 222 080

Nick Gilvarry

Tumut/ Adelong - 0438 871 653

Harrison Daley

Tumut - 0428 977 437



Dick Whale

For Independent Assessment

0427 697 968

Auctioneer - Brian Leslie 0418 365 934

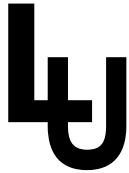


AuctionsPlus[®]

Australia's Livestock Marketplace

**Contact your Agent
for assistance with
AuctionsPlus[®]**

"YOU CAN ONLY WIN IN THE FUTURE IF YOU INVEST IN IT!"



“Your Brand of Distinction”

“The modern Angus cow is the greatest asset a cattleman can base his livelihood on.

Combined with management and stockmanship, “blue-chip” shares are over rated.”

Roland Lucas philosophy 1995

Dear clients,

It is with pleasure that we offer this run of extraordinary uniform, genetically superior bulls to the industry. upon cataloguing the past selection criteria embracing commercial relevant traits of calving ease, growth and carcass excellence abound throughout the offering.

Genetic selection is taken seriously at Reiland Angus with both AI and backup sire selection carefully considered to deliver gains across each generation that is produced. Hopefully what you see when you view the bulls will confirm our objective has been achieved.

With the cooling in prices undoubtedly there is a sense of realism across the production chain. your best baseline is to graze productive pastures with genetically aligned cattle that suit Your properties unique landscape and production system.

Balance of growth and carcass selection is paramount however at no point should it override the all important aspect of ease of doing and fertility.

It is very pleasing to note that 16% of the catalogue emanates from two year old calving heifers. If these bulls can come from well behind at weaning to be equal or better than a mature cow’s calf, speaks volumes for the genetic progress.

Our past investment in The Rock Momentum Q8 is impacting such balance an elevated IMF in his offspring - we hope you enjoy the increased IMF across his sons. He has remained docile, sound footed and easy doing which is pleasing for both Reiland Angus and our valued clients.



The Rock Momentum Q8

Looking forward to catching you on sale day

The Lucas Family

Please note - Open yard day inspection
Sunday 2nd April 2023 – 11am-3pm



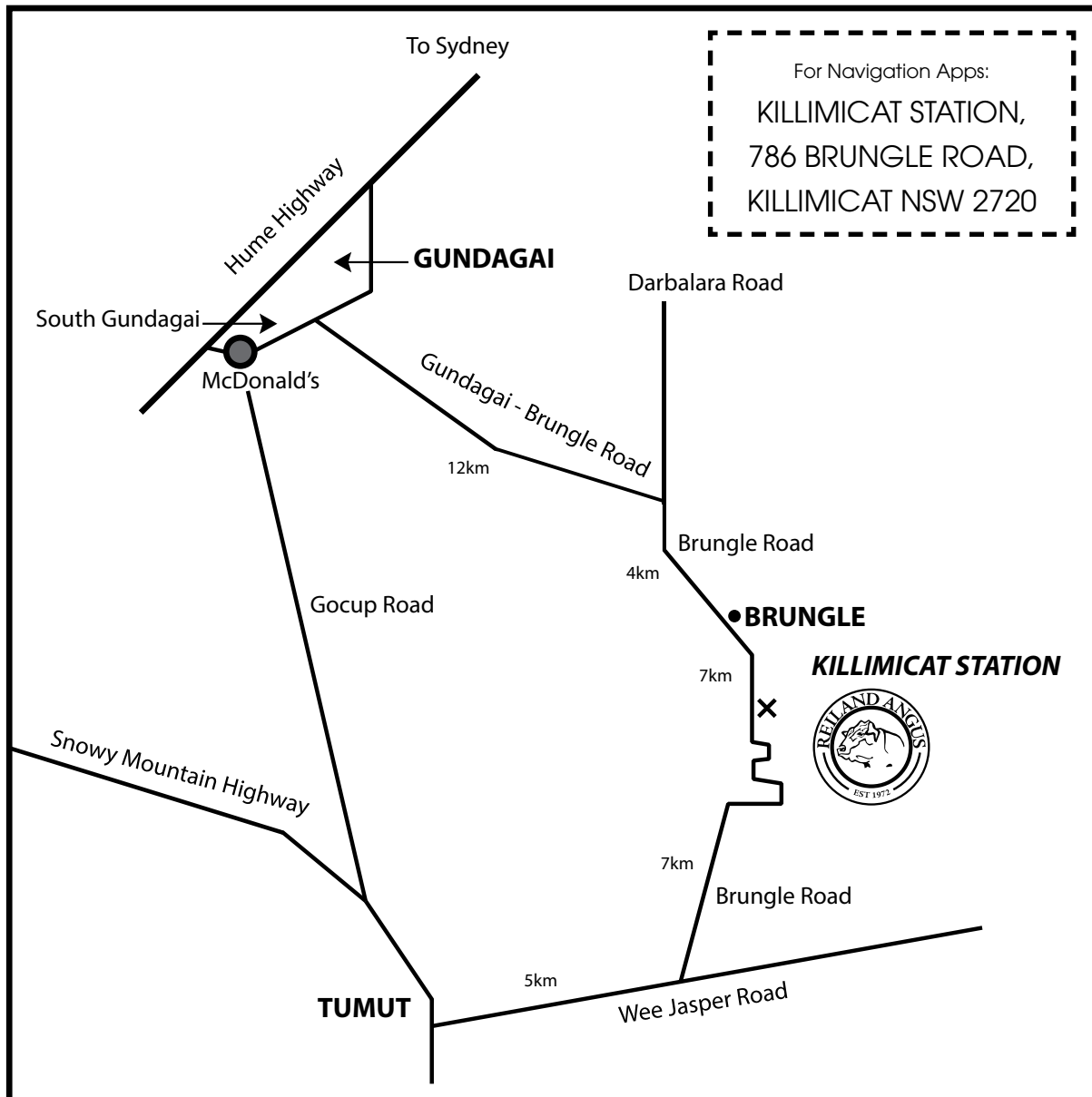
REILAND SPECULATOR NLR2IS257

August March 2023 TransTasman Angus Cattle Evaluation - Breed Average EBVs																					
TACE	Calving Ease				Growth				Fertility			Temp.	Carcass						Feed Eff.	Selection Index	
	CE Direct	CE Dtrs	Gest. Length	Birth Weight	200 D Growth	400 D Weight	600 D Weight	MCW	Milk (kg)	Days to Calving	Scrotal Size	Docility	Carcass Weight	Eye Muscle Area	Rib Fat	Rump Fat	RBV	IMF	NFI-F	\$A+	\$A-L
EBV	+9.5	+3.1	-4.2	+1.8	+65	+107	+147	+110	+27	-6.5	+2.3	+18	+91	+13.9	+1.8	+2.3	-0.1	+3.9	+0.22	\$294	\$474
Acc	56%	45%	70%	73%	72%	69%	69%	67%	62%	36%	67%	40%	61%	60%	62%	62%	55%	64%	51%		
Perc	4	50	59	10	4	11	6	33	3	10	40	62	4	2	13	11	82	12	55	1	1

AN ANGUS BREEDING PROGRAM IS THE ONLY SAFE ECONOMIC POSITION WITHIN A VOLATILE INDUSTRY

DIRECTIONS

- **TO REILAND ANGUS** Signage both from Gundagai and Tumut will be apparent on sale day. Map plus directions outlined below will assist you. Frequent road-works are ongoing on these roads do to flood damage so allow some possible delay time to your journey.



TO KILLIMICAT STATION from Hume Hwy Gundagai

- Turn off Hume Hwy at Shell Service Station Exit—South Gundagai
- Turn left into Mount Street and follow for 1.5kms until arrive at bridge crossing river heading back into Gundagai township
- Turn Right onto Brungle Rd, Brungle . Proceed northeast for 13kms
- At T intersection cross the Tumut river turn right onto Brungle Rd Brungle (4km to Brungle village)
- Continue straight through village on Brungle Rd and follow signs to Tumut
- After 5kms - Reiland Angus, Killimicat Station will be on your left hand side.

TO KILLIMICAT STATION from Snowy Mountains Highway Tumut

- Coming from Adelong to Tumut on Snowy Mountains Highway, continue through town until you reach River Glade Caravan Park
- Just past park entrance, turn left, cross Tumut River onto Pioneer Bridge
- Follow for 4.9km until left hand turn onto Brungle Rd
- Follow for 7.7km until you reach Reiland Angus, Killimicat Station on your right hand side.

INSURANCE SOLUTIONS

WITH 150 YEARS OF EXPERIENCE, WE UNDERSTAND YOUR INSURANCE NEEDS.

Because I live and work in the area, I will tailor an insurance solution that will best suit you.

Before I start suggesting any solutions I'll take the time to work with you to better understand your needs and goals. I also have the whole Nutrien Ag Solutions network behind me, that's 150 years of experience and the support of 1,600 professionals across the Nutrien Ag Solutions business, meaning you get the exact cover you need

I can assist with arranging insurance cover for:

- Farm
- Crop
- Equine
- Motor
- Business
- Livestock
- Travel
- Home & contents

Call me today.

Fiona Petersen 0408 924 508

Insurance Manager

fiona.petersen@nutrien.com.au

Fiona Petersen & Nutrien Ag Solutions Limited ABN 73 008 743 217 are authorised representatives of Marsh Advantage Insurance Pty Ltd, AFS Licence No. 238369.



Nutrien Ag Solutions is an authorised representative of
**MARSH ADVANTAGE
INSURANCE**

Nutrien
Ag Solutions®

Calving Ease EBVs

It is important to be aware that the modifications that have been implemented have resulted in a considerable increase in the standard deviation, or spread of Calving Ease EBVs, when viewing the Calving Ease EBVs for animals in this catalogue.

This is illustrated by an increase in the 1% percentile band for the Calving Ease Direct EBV increasing from +5.0 to +12.2. Similarly, the 99% percentile band for the Calving Ease Direct EBV has decreased from -7.6 to -13.1.

THE TYPE THAT THRIVES IN OUR ENVIRONMENT

Visual appraisal is still very important for selecting bulls to perform in the High Country.

MASCULINE TRAITS – A strong head and jaw and thick neck indicate high levels of libido, testosterone and reproduction efficiency.

STRUCTURAL SOUNDNESS, FEET AND BONE – High country cattle cover large distances over rugged terrain so a strong skeleton is essential.

HIDE – A good thick skin and coat is essential in the cold harsh environment.



NECK LENGTH – A thicker necked animal matures and reaches puberty earlier and has more libido. A longer neck indicates a high maintenance animal that is slower to reach puberty and rebreed.

HEART GIRTH – Large heart girth is an indicator of vigor and easy keeping ability. Small heart girth animals are more susceptible to stress, are higher maintenance and do not perform well on lesser quality forage.

FLANK – Deep flanked animals are easier keeping, have more meat in the rump and have more maternal and reproductive efficiency. Higher flanked animals tend to be flighty, are higher maintenance and take longer to finish on grass.

STRUCTURAL ASSESSMENT & SELECTION INDEXES

Structural problems in cattle have a substantial effect on both the reproductive and growth performance of a beef herd. It is widely recognized that structural problems in sires have detrimental effects on conception rates, calving patterns and thus profitability. Similarly, females with inadequate structural characteristics are more prone to weaning lighter calves or conceiving later in the breeding season than their more functional counterparts.

These structural problems are filtered through the supply chain resulting in reduced income for the producer, feedlot and thus reducing the overall productivity of the Australian Beef Industry.

Over the past decade, use of the Beef Class Structural Assessment System in the seedstock industry has produced

a marked improvement in herds which have shown commitment to using the information appropriately. Through these dedicated breeders, there has been a flow on affect of structural improvement throughout all sectors of the beef cattle industry.

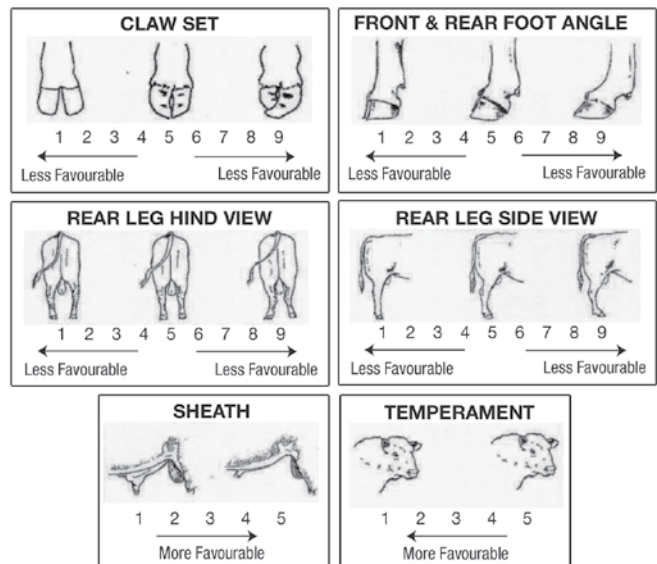
Jim Green and Liam Cardile of BEEFXCEL now service many seedstock operations in Australia, in their selection and grading of stock using the Beef Class Structural Assessment System. BEEFXCEL is not involved in any genetic marketing or specific breeding advice and therefore has no conflict of interests to influence their stock appraisal. The integrity of the structural data provided by BEEFXCEL is recognised throughout the industry as Jim and Liam are full INDEPENDENT assessors.

HOW TO USE THE BEEF CLASS STRUCTURAL ASSESSMENT SYSTEM

STRUCTURAL SCORES

The Beef Class Structural Assessment System (1-9 scoring system for feet and leg structure)

- A score of 5 is ideal;
- A score of 4 or 6 shows slight variation from ideal, but this includes most sound animals.
- An animal scoring 4 or 6 would be acceptable in any breeding program;
- A score of 3 or 7 shows greater variation but would be acceptable in most commercial programs. However, seedstock producers should be vigilant and understand that this score indicates greater variation from ideal;
- A score of 2 or 8 are low scoring animals and should be looked at cautiously and inspected very closely before purchasing;
- A score of 1 or 9 should not be catalogued and are considered immediate culls.



UNDERSTANDING ESTIMATED BREEDING VALUES (EBVs) SELECTION INDEXES

Selection Indexes	SA	\$	Genetic differences between animals in net profitability per cow joined in a typical commercial self replacing herd using Angus bulls. This selection index is not specific to a particular market end-point, but identifies animals that will improve overall net profitability in the majority of commercial, self replacing, grass and grain finishing beef production systems.	Higher selection indexes indicate greater profitability.
	SA-L	\$	Genetic differences between animals in net profitability per cow joined in a typical commercial self replacing herd using Angus bulls. This selection index is not specific to a particular market end-point, but identifies animals that will improve overall net profitability in the majority of commercial, self replacing, grass and grain finishing beef production systems.	
			The SA-L index is similar to the SA index but is modelled on a production system where feed is surplus to requirements for the majority of the year, or the cost of supplying additional feed when animal feed requirements increase is low. While the SA aims to maintain mature cow weight, the SA-L does not aim to limit the increase in mature cow weight as there is minimal cost incurred if the feed maintenance requirements of the female breeding herd increase as a result of selection decisions.	Higher selection indexes indicate greater profitability.

SALE INFORMATION

COVID 19 REGULATIONS

The sale will be run under the NSW Covid regulations that are current at the time of the sale. Please sanitise/wash hands and if unwell please stay home.

INSPECTIONS

Cattle will be yarded in pens at Killimicat Station and will be available for inspection from 10.30 am on sale day. Inspections can be arranged at any time prior to the sale by appointment with agents or any of the Reiland team.

AGENTS AND BUYER'S SALE REBATES

A rebate of 2.5% will be paid to all agents who introduce their clients or attend the sale with or on behalf of their client and settle within the trading terms of the settling agent. To qualify for this rebate agents must introduce the client in writing to the vendor prior to the sale.

A rebate of 1% will be paid to all agents who settle within the trading terms of settling agent but do not introduce their client or attend the sale.

BULL GUARANTEE

Reiland Angus principals guarantee structural soundness and fertility of all bulls. All bulls have been examined by veterinarians and are fertile and structurally sound to the best of our knowledge. If an animal becomes infertile or breaks down due to reason other than injury or misadventure at anytime in the first 24 months from purchase we will:

1. Provide you with a satisfactory replacement if available or
2. Issue you with a credit equal to the purchase price less the salvage value that may be used to purchase an animal in future Reiland Sales.

Any claims are to be accompanied by a certificate from a registered vet. All vet costs are the responsibility of the purchaser.

In the event of a bull proving to be infertile for natural service in the first 6 months from sale date, the vendor will offer to supply a suitable replacement (if available), or credit the purchase price (less any salvage value of the bull) to be used at the next sale. This is provided problem is not caused by injury or disease since sale day. Any claim must be accompanied by a relevant Veterinary certificate.

BULL REGISTRATION & TRANSFERS

All bulls in the sale are HBR or APR registered through Angus Australia unless stated otherwise. The Settling Agent of the sale will conduct individual NLIS transfers to purchasers nominated PIC on registration form. Reiland Angus will transfer eligible bulls to into new purchases name through Angus Australia, if possible please advise Angus Australia herd prefix.

BIDDING / BUYER NUMBER SYSTEM

The bidding / buyer number system will be used.

AUCTIONS PLUS

The bull sale is interlinked with Auctions plus. Usual protocol to register for bidding is required through this channel.

PHONE BIDDING

Please contact agents prior to sale to arrange phone bidding.

CATERING

Complimentary Morning tea, coffee, tea, cool drinks and steak sandwich will be available on sale day

COUPLING REGISTER

This had been initiated to allow buyers to consider whether a common interest in a particular animal can be discovered. If a stud from a heightened JBAS level herd is interesting in purchasing a quarter share, semen interest only, that this interest is then duly passed onto either:

- 1) Interested parties prior to sale
or
- 2) Successful buyer post sale

This register will streamline any opportunities, negotiations and established market values more accurately.

CARTAGE / FREIGHT

Reiland Angus will organise transport and arrange delivery at buyer's convenience throughout NSW. We will co-ordinate freight assistance on distant deliveries. Please confirm on sale day at time of settlement.

INSURANCE

Reiland Angus recommends you take out insurance to cover your new purchase. At the fall of the hammer the bull you have purchased is your responsibility. If they are injured in the yards or on the truck being delivered it is no longer the responsibility of the vendor.

ANIMAL HEALTH

All bulls have received the following assessments/treatments:

- All bulls have been ear notched or bloodtested a Bovine Viral Diarrhea (BVD) negative
- Received 2 VIBRIOVAX shots
- Fully vaccinated with 7 in 1 and drenched to control any internal/external parasites
- Reiland Angus is recorded at JBAS 6. All cattle are free to travel to all areas of NSW, VIC, TAS, SA & QLD.

RECESSIVE GENETIC CONDITION

All lots are clearly marked with their genetic status.

DISCLAIMER

- Reiland Angus, the selling agents, officers, agents and employees while exercising due care provide all information without responsibility and do not warrant its accuracy. They also accept no responsibility for accidents that occur on or about the venue. You attend the venue and the sale at your own risk.
- People entering upon this property for any purpose whatsoever, including attendance of cattle auctions, do so at their own risk. We are not liable to you for personal injury or death suffered by you and/or for the theft, loss of or damage to any personal property caused or contributed to by us or by any person whether caused or contributed to by our or their negligence, deliberate act or unlawful conduct. "We", "Us" or "Our" refer to the owners, their employees, contractors and agents and each of them. Every care has been taken in compiling this catalogue to ensure accuracy of information supplied, but no responsibility is accepted for any errors which may have occurred.

OH&S

For the safety of all clients, Reiland Angus requests that no children are allowed within the individual yard area. Signs will on display to define these areas. All children need to be supervised at Killimicat Station at all times.



denotes elite animals that Reiland reserves the semen/marketing rights or right to access semen at buyers convenience.

WE LIVE YOUR BUSINESS LIKE YOU DO

LIVESTOCK

Rob Stubbs | Livestock Manager | 0417 478 886
Harrison Daley | Territory Sales Manager | 0428 977 437
Nick Gilvarry | Territory Sales Manager | 0438 871 653
Jake Smith | Territory Sales Manager | 0400 281 347
Harry Waters | Territory Sales Manager | 0417 441 155

SUPPORT & SPECIALISTS

Ross Tout | Branch Manager | 0427 144 430
Tim McMeekin | District Wool Manager | 0427 830 003
Jenni O'Sullivan | Stud Stock Specialist | 0428 222 080

FARM SUPPLIES

Daniel McDonnell | Gundagai | 0418 979 243
David Crooks | Adelong | 0407 632 347
Rebecca Reeves | Tumut | 0427 559 500



Adelong P. 02 6941 3100
Gundagai P. 02 6944 1155
Tumut P. 02 6981 3100



TransTasman Angus Cattle Evaluation - March 2023 Reference Tables

BREED AVERAGE EBVs																																				
Brd Avg	Calving Ease				Birth				Growth				Fertility				Carcass				Other				Structure				Selection Indexes							
	Less Calving Difficulty	More Calving Difficulty	Lighter Birth Weight	Heavier Birth Weight	Lighter Birth Length	Heavier Birth Length	Lighter Birth Weight	Heavier Birth Weight	Lighter Live Weight	Heavier Live Weight	Lighter Mature Weight	Heavier Mature Weight	Lighter Live Weight	Heavier Live Weight	Lighter Scrotal Size	Heavier Scrotal Size	Shorter Calving Time to Calving	Longer Calving Time to Calving	Lighter Carcass Weight	Heavier Carcass Weight	Lighter Fat	Heavier Fat	Lighter RIB	Heavier RIB	Lighter P8	Heavier P8	Greater Feed Efficiency	Less Docile	More Docile	Lower Score	Higher Score	Lower Angle	Higher Angle	Lower Leg	Higher Leg	Greater Profitability
+2.2	+2.7	-4.8	+4.1	+50	+90	+117	+101	+17	+2.1	-4.6	+66	+6.4	+0.0	-0.3	+0.5	+2.2	+0.19	+20	+0.85	+0.97	+1.03	+197	+339													

* Breed average represents the average EBV of all 2021 drop Australian Angus and Angus-influenced seedstock animals analysed in the March 2023 TransTasman Angus Cattle Evaluation .

PERCENTILE BANDS TABLE																																								
% Band	Calving Ease				Birth				Growth				Fertility				Carcass				Other				Structure				Selection Indexes											
	Less Calving Difficulty	More Calving Difficulty	Lighter Birth Weight	Heavier Birth Weight	Lighter Birth Length	Heavier Birth Length	Lighter Birth Weight	Heavier Birth Weight	Lighter Live Weight	Heavier Live Weight	Lighter Mature Weight	Heavier Mature Weight	Lighter Live Weight	Heavier Live Weight	Lighter Scrotal Size	Heavier Scrotal Size	Shorter Calving Time to Calving	Longer Calving Time to Calving	Lighter Carcass Weight	Heavier Carcass Weight	Lighter Fat	Heavier Fat	Lighter RIB	Heavier RIB	Lighter P8	Heavier P8	Higher Yield	Lower Yield	Less IMF	More IMF	Greater Feed Efficiency	Less Docile	More Docile	Lower Score	Higher Score	Lower Angle	Higher Angle	Lower Leg	Higher Leg	Greater Profitability
1%	+10.9	+9.9	-10.7	-0.3	+70	+122	+122	+159	+28	+4.8	-8.0	+98	+4.1	+4.9	+2.0	+5.9	-0.52	+43	+0.44	+0.60	+0.76	+272	+448																	
5%	+9.0	+8.2	-8.8	+1.1	+64	+112	+148	+140	+25	+3.9	-7.0	+88	+2.8	+3.2	+1.5	+4.6	-0.31	+36	+0.56	+0.72	+0.84	+252	+418																	
10%	+7.9	+7.2	-7.9	+1.8	+60	+107	+140	+130	+23	+3.5	-6.5	+83	+2.1	+2.4	+1.3	+4.1	-0.19	+32	+0.62	+0.76	+0.88	+241	+402																	
15%	+7.0	+6.5	-7.2	+2.2	+58	+104	+136	+124	+22	+3.2	-6.1	+79	+1.7	+1.8	+1.1	+3.7	-0.12	+29	+0.66	+0.80	+0.90	+233	+392																	
20%	+6.3	+5.9	-6.7	+2.6	+57	+101	+132	+120	+21	+3.0	-5.8	+77	+1.3	+1.4	+1.0	+3.3	-0.06	+27	+0.70	+0.84	+0.94	+227	+383																	
25%	+5.6	+5.4	-6.3	+2.9	+55	+99	+129	+116	+20	+2.8	-5.6	+75	+0.8	+1.0	+0.9	+3.1	-0.01	+26	+0.72	+0.86	+0.96	+222	+376																	
30%	+5.1	+4.9	-6.0	+3.2	+54	+97	+126	+112	+20	+2.6	-5.4	+73	+0.8	+0.7	+0.8	+2.9	+0.03	+24	+0.74	+0.88	+0.96	+217	+369																	
35%	+4.5	+4.4	-5.7	+3.4	+53	+95	+124	+109	+19	+2.5	-5.2	+71	+0.6	+0.5	+0.7	+2.7	+0.07	+23	+0.78	+0.90	+0.98	+213	+363																	
40%	+3.9	+4.0	-5.4	+3.6	+52	+94	+122	+106	+18	+2.3	-5.0	+69	+0.3	+0.2	+0.6	+2.5	+0.11	+22	+0.80	+0.92	+1.00	+209	+357																	
45%	+3.4	+3.5	-5.1	+3.8	+51	+92	+119	+103	+18	+2.2	-4.8	+68	+0.1	-0.1	+0.6	+2.3	+0.14	+21	+0.82	+0.94	+1.02	+204	+351																	
50%	+2.8	+3.0	-4.8	+4.1	+50	+90	+117	+100	+17	+2.1	-4.6	+66	+0.2	-0.3	+0.5	+2.1	+0.18	+20	+0.84	+0.96	+1.02	+200	+345																	
55%	+2.2	+2.6	-4.5	+4.3	+49	+89	+115	+98	+17	+2.0	-4.5	+65	+0.3	-0.6	+0.4	+2.0	+0.22	+19	+0.86	+0.98	+1.04	+196	+348																	
60%	+1.6	+2.1	-4.2	+4.5	+48	+87	+113	+95	+16	+1.9	-4.3	+63	+0.5	-0.8	+0.3	+1.8	+0.25	+18	+0.88	+1.00	+1.06	+191	+332																	
65%	+0.9	+1.6	-3.9	+4.7	+47	+85	+110	+92	+15	+1.7	-4.1	+61	+0.7	-1.1	+0.3	+1.6	+0.29	+17	+0.92	+1.02	+1.08	+186	+325																	
70%	+0.2	+1.0	-3.5	+4.9	+46	+84	+108	+89	+15	+1.6	-4.0	+60	+0.9	-1.4	+0.2	+1.4	+0.34	+16	+0.94	+1.06	+1.10	+181	+317																	
75%	-0.6	+0.4	-3.2	+5.2	+45	+82	+105	+85	+14	+1.5	-3.8	+58	+1.1	-1.7	+0.1	+1.2	+0.38	+15	+0.96	+1.08	+1.12	+175	+308																	
80%	-1.5	-0.3	-2.8	+5.5	+43	+79	+102	+82	+13	+1.3	-3.5	+56	+1.4	-2.1	+0.0	+1.0	+0.44	+14	+1.00	+1.10	+1.14	+168	+298																	
85%	-2.7	-1.2	-2.3	+5.9	+42	+77	+98	+77	+13	+1.1	-3.2	+53	+1.7	-2.5	-0.2	+0.8	+0.50	+13	+1.04	+1.14	+1.16	+159	+285																	
90%	-4.3	-2.4	-1.7	+6.3	+39	+73	+94	+71	+11	+0.9	-2.8	+50	+2.4	-3.0	-0.3	+0.5	+0.58	+11	+1.10	+1.18	+1.18	+147	+268																	
95%	-6.9	-4.3	-0.7	+7.0	+36	+68	+87	+62	+10	+0.5	-2.1	+45	+2.8	-3.9	-0.6	+0.1	+0.71	+8	+1.16	+1.26	+1.24	+129	+240																	
99%	-12.6	-8.1	+1.3	+8.4	+29	+57	+72	+43	+7	-0.3	-0.3	+35	+1.1	-5.5	-1.1	-0.7	+0.96	+1	+1.32	+1.40	+1.34	+94	+188																	

* The percentile bands represent the distribution of EBVs across the 2021 drop Australian Angus and Angus-influenced seedstock animals analysed in the March 2023 TransTasman Angus Cattle Evaluation .

ESSELMONT QUOKKA Q24 ^{PV} WWEQ24

August March 2023 TransTasman Angus Cattle Evaluation - Breed Average EBVs

TACE	Calving Ease				Growth				Fertility			Temp.	Carcase						Feed Eff.	Selection Index	
	CE Direct	CE Dtrs	Gest. Length	Birth Weight	200 D Growth	400 D Weight	600 D Weight	MCW	Milk (kg)	Days to Calving	Scrotal Size	Docility	Carcase Weight	Eye Muscle Area	Rib Fat	Rump Fat	RBV	IMF	NFI-F	\$A+	\$A-L
EBV	5.4	0.7	-2.8	2.5	45	83	106	65	23	-6.4	4.3	34	63	20.7	1	0.4	2.4	2.7	0.99	\$357	\$415
Acc	67%	52%	93%	93%	89%	85%	83%	79%	65%	45%	80%	84%	73%	71%	73%	73%	67%	73%	58%		
Perc	27	73	80	18	75	72	73	94	11	11	3	7	60	1	25	36	1	33	99	7	6

REILAND PATRIOT P908 ^{PV} NLRP908

August March 2023 TransTasman Angus Cattle Evaluation - Breed Average EBVs

TACE	Calving Ease				Growth				Fertility			Temp.	Carcase						Feed Eff.	Selection Index	
	CE Direct	CE Dtrs	Gest. Length	Birth Weight	200 D Growth	400 D Weight	600 D Weight	MCW	Milk (kg)	Days to Calving	Scrotal Size	Docility	Carcase Weight	Eye Muscle Area	Rib Fat	Rump Fat	RBV	IMF	NFI-F	\$A+	\$A-L
EBV	5.4	6.7	-4	4.1	49	90	107	61	23	-7.3	3.6	36	53	9.3	0.6	1.4	0.3	3.2	0.78	\$358	\$406
Acc	71%	60%	74%	93%	87%	88%	85%	81%	70%	54%	85%	59%	75%	76%	77%	77%	72%	76%	64%		
Perc	27	14	62	50	56	52	72	96	12	3	8	5	86	18	33	20	60	22	97	7	9

REILAND PLYMOUTH P960 ^{PV} NLRP960

August March 2023 TransTasman Angus Cattle Evaluation - Breed Average EBVs

TACE	Calving Ease				Growth				Fertility			Temp.	Carcase						Feed Eff.	Selection Index	
	CE Direct	CE Dtrs	Gest. Length	Birth Weight	200 D Growth	400 D Weight	600 D Weight	MCW	Milk (kg)	Days to Calving	Scrotal Size	Docility	Carcase Weight	Eye Muscle Area	Rib Fat	Rump Fat	RBV	IMF	NFI-F	\$A+	\$A-L
EBV	4.3	6	-8.5	2.9	49	85	112	97	15	-7.4	2.9	17	72	6.5	0.5	0.9	-0.2	4.3	0.25	\$335	\$394
Acc	71%	58%	94%	92%	85%	86%	83%	79%	69%	50%	85%	55%	74%	74%	75%	75%	71%	75%	63%		
Perc	37	19	7	25	53	66	61	56	68	3	21	67	31	46	36	27	85	8	59	18	14

SYDGEN ENHANCE ^{SV} USA1870041

August March 2023 TransTasman Angus Cattle Evaluation - Breed Average EBVs

TACE	Calving Ease				Growth				Fertility			Temp.	Carcase						Feed Eff.	Selection Index	
	CE Direct	CE Dtrs	Gest. Length	Birth Weight	200 D Growth	400 D Weight	600 D Weight	MCW	Milk (kg)	Days to Calving	Scrotal Size	Docility	Carcase Weight	Eye Muscle Area	Rib Fat	Rump Fat	RBV	IMF	NFI-F	\$A+	\$A-L
EBV	5.2	-2.1	-3.6	3.3	60	108	140	113	20	-3.3	2.8	47	76	8.4	-2.3	-2	0.1	3.2	-0.69	\$319	\$378
Acc	95%	83%	99%	99%	99%	99%	99%	97%	95%	56%	98%	98%	93%	91%	91%	90%	87%	91%	73%		
Perc	29	89	69	32	11	9	11	30	26	84	23	1	22	25	92	79	72	22	1	30	24



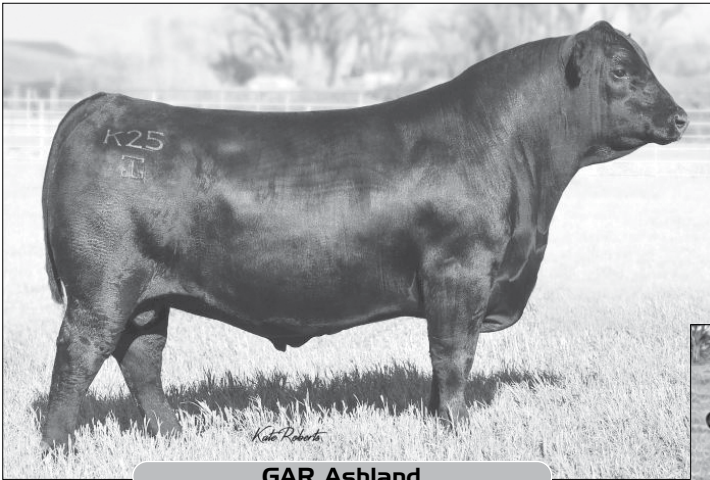
Sydden Enhance

REFERENCE SIRES

G A R ASHLAND ^{PV} USA18217198

August March 2023 TransTasman Angus Cattle Evaluation - Breed Average EBVs

TACE	Calving Ease				Growth				Fertility			Temp.	Carcase						Feed Eff.	Selection Index	
	CE Direct	CE Dtrs	Gest. Length	Birth Weight	200 D Growth	400 D Weight	600 D Weight	MCW	Milk (kg)	Days to Calving	Scrotal Size	Docility	Carcase Weight	Eye Muscle Area	Rib Fat	Rump Fat	RBV	IMF	NFI-F	\$A+	\$A-L
EBV	0.5	4	-6.4	3.5	68	117	149	123	19	-3.3	1.5	8	83	13.4	-3.1	-3.2	1.3	3.1	-0.08	\$367	\$430
Acc	93%	76%	99%	99%	99%	99%	98%	96%	93%	54%	98%	98%	92%	92%	91%	89%	86%	91%	71%		
Perc	68	40	24	36	2	3	5	17	33	84	72	95	10	3	97	91	8	24	18	4	3



GAR Ashland



Reiland Pirelli P913

REILAND PIRELLI P913 ^{PV} NLRP913

August March 2023 TransTasman Angus Cattle Evaluation - Breed Average EBVs

TACE	Calving Ease				Growth				Fertility			Temp.	Carcase						Feed Eff.	Selection Index	
	CE Direct	CE Dtrs	Gest. Length	Birth Weight	200 D Growth	400 D Weight	600 D Weight	MCW	Milk (kg)	Days to Calving	Scrotal Size	Docility	Carcase Weight	Eye Muscle Area	Rib Fat	Rump Fat	RBV	IMF	NFI-F	\$A+	\$A-L
EBV	6.3	3.9	-7	4.6	63	114	151	143	18	-5.7	3.4	15	94	8.7	-1.6	-2.6	1	3.3	0.18	\$396	\$457
Acc	69%	54%	91%	95%	92%	91%	87%	82%	69%	49%	90%	63%	76%	77%	78%	77%	72%	77%	60%		
Perc	20	41	17	62	6	4	4	5	42	22	11	73	3	23	83	86	18	20	50	1	1

THE ROCK MOMENTUM Q8 ^{PV} ATZQ8

August March 2023 TransTasman Angus Cattle Evaluation - Breed Average EBVs

TACE	Calving Ease				Growth				Fertility			Temp.	Carcase						Feed Eff.	Selection Index	
	CE Direct	CE Dtrs	Gest. Length	Birth Weight	200 D Growth	400 D Weight	600 D Weight	MCW	Milk (kg)	Days to Calving	Scrotal Size	Docility	Carcase Weight	Eye Muscle Area	Rib Fat	Rump Fat	RBV	IMF	NFI-F	\$A+	\$A-L
EBV	1.2	5	-4.7	2.3	44	78	107	85	19	-3	1.2	30	59	10.8	1.8	1.8	-0.5	6.4	0.83	\$259	\$332
Acc	73%	60%	93%	94%	88%	87%	84%	81%	71%	52%	87%	63%	76%	76%	77%	77%	73%	77%	63%		
Perc	63	29	51	16	78	83	73	75	35	88	82	14	71	9	13	15	93	1	98	79	60

REILAND NED N1164 ^{SV} NLRN1164

August March 2023 TransTasman Angus Cattle Evaluation - Breed Average EBVs

TACE	Calving Ease				Growth				Fertility			Temp.	Carcase						Feed Eff.	Selection Index	
	CE Direct	CE Dtrs	Gest. Length	Birth Weight	200 D Growth	400 D Weight	600 D Weight	MCW	Milk (kg)	Days to Calving	Scrotal Size	Docility	Carcase Weight	Eye Muscle Area	Rib Fat	Rump Fat	RBV	IMF	NFI-F	\$A+	\$A-L
EBV	7.9	7.6	-7.6	2.5	60	106	144	122	22	-6.2	4.9	31	89	6.7	-1.4	-1.7	1	1.9	0.07	\$382	\$440
Acc	66%	52%	92%	88%	84%	83%	81%	77%	67%	47%	82%	48%	72%	68%	71%	71%	65%	71%	57%		
Perc	10	8	12	18	11	12	8	18	15	13	1	11	5	44	79	74	18	56	35	2	2

BALDRIDGE BEAST MODE B074 ^{PV} USA17960722

August March 2023 TransTasman Angus Cattle Evaluation - Breed Average EBVs

TACE	Calving Ease				Growth				Fertility			Temp.	Carcase						Feed Eff.	Selection Index	
	CE Direct	CE Dtrs	Gest. Length	Birth Weight	200 D Growth	400 D Weight	600 D Weight	MCW	Milk (kg)	Days to Calving	Scrotal Size	Docility	Carcase Weight	Eye Muscle Area	Rib Fat	Rump Fat	RBV	IMF	NFI-F	\$A+	\$A-L
EBV	+5.3	+5.9	-3.5	+3.4	+75	+119	+148	+134	+12	-3.2	+2.7	+33	+76	+2.8	-2.1	-3.4	-0.1	+2.4	-0.22	\$235	\$417
Acc	96%	84%	99%	99%	99%	99%	99%	98%	97%	73%	99%	99%	96%	94%	94%	94%	92%	93%	81%		
Perc	28	21	70	34	1	2	5	8	89	85	26	8	21	88	89	93	82	41	9	14	6



Baldridge Beast Mode B074



GB Fireball 672

GB FIREBALL 672 ^{PV} USA18690054

August March 2023 TransTasman Angus Cattle Evaluation - Breed Average EBVs

TACE	Calving Ease				Growth				Fertility			Temp.	Carcase						Feed Eff.	Selection Index	
	CE Direct	CE Dtrs	Gest. Length	Birth Weight	200 D Growth	400 D Weight	600 D Weight	MCW	Milk (kg)	Days to Calving	Scrotal Size	Docility	Carcase Weight	Eye Muscle Area	Rib Fat	Rump Fat	RBV	IMF	NFI-F	\$A+	\$A-L
EBV	+3.2	+5.8	-5.0	+2.6	+63	+100	+129	+121	+11	-6.1	+2.8	+7	+78	+14.4	-2.2	-3.7	+1.0	+5.0	-0.18	\$274	\$450
Acc	88%	63%	99%	99%	98%	98%	98%	91%	81%	46%	98%	97%	86%	88%	85%	83%	78%	87%	60%		
Perc	47	22	46	20	6	24	25	18	90	15	23	96	19	2	90	94	18	3	11	1	1

Lot 1 REILAND SINGLE S1222^{SV} NLR2IS1222

AMFU.CAFU.DDFU.NHFU DOB: 16/7/2021 (AI) HBR

ESSELMONT LOTTO L3^{PV} WWEL3

PRIME MAXIMUS M7^{PV} CXBM7

Sire: REILAND PLYMOUTH P960^{PV} NLRP960

Dam: REILAND MELBA Q1062[#] NLRQ1062

REILAND LOWEN M407^{SV} NLRM407

AYRVALE MELBA M14^{PV} HIOM14

TACE	March 2023 TransTasman Angus Cattle Evaluation																		ABI	ABI-L
	CED	CEM	GL	BW	200W	400W	600W	MCW	MILK	SS	DC	CWT	EMA	RIB	RUMP	RBY	IMF	NFI-F		
EBV	+6.9	+4.3	-8.2	+2.5	+46	+83	+106	+83	+20	+3.1	-7.1	+67	+11.9	-1.4	-1.2	+1.3	+2.6	+0.38	\$243	\$394
ACC	56%	46%	82%	72%	71%	68%	69%	66%	58%	72%	36%	59%	59%	61%	61%	55%	63%	51%		

Traits Observed	GL,BWT,400WT(x2),SC,Scan(EMA,Rib,Rump,IMF),Genomics								
	Trait Focus	CALVING EASE - HEIFERS - EYE MUSCLE							
		Structural Assessment							
		Claw Set	Front Angle	Rear Angle	Rear Legs	Rear Legs	Sheath	Muscle	Temp
		F 6 H 6	6	6	6	6	4	C	1

A heifers first calf with that "something special". A faultless son of previous high selling Reiland Plymouth P960. See Plymouth dam photo. Ideal heifer or cow joining sire given low birth and top 8% gestation length. Excels in both fertility with +3.1 scrotal and carcass with top 5% EMA at +11.9.

Purchaser: \$



Reiland Plymouth P960 dam - NLRM407

Lot 2 REILAND STAR S1421^{PV} NLR2IS1421

AMFU.CAFU.DDFU.NHFU DOB: 9/8/2021 (AI) APR

G A R PROPHET^{SV} USA16295688

WITHERSWOOD REALITY M0048^{SV} CWJM0048

Sire: BALDRIDGE BEAST MODE B074^{PV} USA17960722

Dam: REILAND DIRECTION P1318^{SV} NLRP1318

BALDRIDGE ISABEL Y69[#] USA17149410

REILAND DIRECTION M600[#] NLRM600

TACE	March 2023 TransTasman Angus Cattle Evaluation																		ABI	ABI-L
	CED	CEM	GL	BW	200W	400W	600W	MCW	MILK	SS	DC	CWT	EMA	RIB	RUMP	RBY	IMF	NFI-F		
EBV	+10.9	+9.7	-11.1	+1.7	+54	+89	+114	+98	+13	+1.7	-3.8	+59	+1.4	+1.4	+0.6	-0.4	+2.3	+0.21	\$197	\$354
ACC	63%	53%	83%	74%	73%	71%	72%	70%	65%	68%	43%	64%	63%	65%	65%	60%	67%	55%		

Traits Observed	GL,BWT,200WT,Genomics								
	Trait Focus	LOW BIRTH - GESTATION - POSITIVE FAT							
		Structural Assessment							
		Claw Set	Front Angle	Rear Angle	Rear Legs	Rear Legs	Sheath	Muscle	Temp
		F 6 H 6	6	6	6	5	4	C+	1

A heifer joining specialist with top 1% calving ease direct/daughters combines well with top 1% short gestation and a mere +1.7 for birth weight. Ideal growth profile and real quality focus by this Beast Mode sire. A complete package when you consider his phenotype and balance.

Purchaser: \$

TACE	Mid-March 2023 TransTasman Angus Cattle Evaluation - Breed Average EBVs																		\$A	\$A-L
	CED	CEM	GL	BW	200W	400W	600W	MCW	MILK	SS	DC	CWT	EMA	RIB	RUMP	RBY	IMF	NFI-F		
EBV	+2.2	+2.7	-4.8	+4.1	+50	+90	+117	+101	+17	+2.1	-4.6	+66	+6.4	+0.0	-0.3	+0.5	+2.2	+0.19	+197	+339

Lot 3 REILAND SENATE S395^{SV} NLR2IS395

AMFU,CAFU,DDFU,NHFU DOB: 10/8/2021 (AI) HBR

G A R SURE FIRE 6404 # USA17965471

G A R PROPHET^{SV} USA16295688

Sire: GB FIREBALL 672^{PV} USA18690054

Dam: REILAND PREMIER P46 # NLRP46

GB ANTICIPATION 432 # USA18054344

REILAND PREMIER M84 # NLRM84

TACE	March 2023 TransTasman Angus Cattle Evaluation																		ABI	ABI-L
	CED	CEM	GL	BW	200W	400W	600W	MCW	MILK	SS	DC	CWT	EMA	RIB	RUMP	RBY	IMF	NFI-F		
EBV	+4.3	+5.4	-5.4	+3.1	+53	+86	+119	+100	+10	+1.6	-5.2	+69	+5.8	+0.4	+1.2	+0.1	+2.8	+0.02	\$221	\$372
ACC	61%	47%	83%	74%	73%	71%	72%	68%	60%	74%	37%	62%	62%	63%	63%	57%	65%	49%		

Traits Observed	GL,BWT,400WT(x2),SC,Scan(EMA,Rib,Rump,IMF),Genomics									
	Trait Focus	LOW BIRTH - CALVING EASE - PEDIGREE								
		Structural Assessment								
		Claw Set	Front Angle	Rear Angle	Rear Legs	Rear Legs	Sheath	Muscle	Temp	
		F 6	H 5	6	6	6	6	5	C	2

A high IMF pedigree with ideal growth and mature cow weight ratio. Smooth shoulder set for carefree calving outcome in either heifer or cow joining's. Premier is one of the influential NZ based cow families imported exclusively for Reiland Angus.

Purchaser: \$

Lot 4 REILAND SUPER S1225^{SV} NLR2IS1225

AMFU,CAFU,DDFU,NHFU DOB: 19/7/2021 (AI) HBR

G A R MOMENTUM^{PV} USA17354145

STRATHEWEN REGENT E23 H70^{PV} VSNH70

Sire: G A R INERTIA^{PV} USA18636043

Dam: REILAND DAME Q1045 # NLRQ1045

G A R PROPHET 2984 # USA17965352

LANDFALL DAME M81 # TFAM81

TACE	March 2023 TransTasman Angus Cattle Evaluation																		ABI	ABI-L
	CED	CEM	GL	BW	200W	400W	600W	MCW	MILK	SS	DC	CWT	EMA	RIB	RUMP	RBY	IMF	NFI-F		
EBV	-1.9	-0.2	-4.5	+4.9	+64	+106	+143	+133	+12	+2.3	-5.7	+83	+4.7	+2.3	+2.5	-0.8	+3.7	+0.28	\$226	\$393
ACC	60%	51%	82%	74%	73%	71%	72%	70%	63%	73%	39%	63%	62%	63%	63%	58%	65%	50%		

Traits Observed	GL,CE,BWT,400WT(x2),SC,Scan(EMA,Rib,Rump,IMF),Genomics									
	Trait Focus	GROWTH - IMF - CARCASE								
		Structural Assessment								
		Claw Set	Front Angle	Rear Angle	Rear Legs	Rear Legs	Sheath	Muscle	Temp	
		F 6	H 5	6	6	6	6	5	C	1

Impressive carcass length with mobility/skin quality from a heifers first calf. A stand out in his contemporary group since weaning. Top 10% 400/600 D growth at +106/+143 combines well with top 14% IMF at +3.7. Positive fats and positive for those wishing to correct for leanness.

Purchaser: \$

Lot 5 REILAND STEEL S1198^{PV} NLR2IS1198

AMFU,CAFU,DDFU,NHFU DOB: 8/8/2021 (AI) HBR

G A R SURE FIRE 6404 # USA17965471

EF COMPLEMENT 8088^{PV} USA16198796

Sire: GB FIREBALL 672^{PV} USA18690054

Dam: REILAND HENLEY P936^{PV} NLRP936

GB ANTICIPATION 432 # USA18054344

REILAND HENLEY H909^{SV} NLRH909



TACE	March 2023 TransTasman Angus Cattle Evaluation																		ABI	ABI-L
	CED	CEM	GL	BW	200W	400W	600W	MCW	MILK	SS	DC	CWT	EMA	RIB	RUMP	RBY	IMF	NFI-F		
EBV	+1.2	+6.8	-5.4	+4	+68	+114	+151	+126	+18	+3.2	-4.4	+89	+13	-1.6	-2.3	+0.7	+3.9	-0.07	\$271	\$445
ACC	62%	48%	83%	74%	73%	72%	72%	68%	61%	69%	38%	62%	63%	63%	63%	57%	66%	50%		

Traits Observed	GL,BWT,200WT,Genomics									
	Trait Focus	GROWTH - SIRE - EYE MUSCLE								
		Structural Assessment								
		Claw Set	Front Angle	Rear Angle	Rear Legs	Rear Legs	Sheath	Muscle	Temp	
		F 5	H 5	6	6	5	6	5	C	1

An imposing sire with an impressive data set given low birth +4.0 through to top 4% 600D at +151. His dam is a donor from the Henley H909 who is still in production. Top 3% EMA at +13.0 combines ideally with top 10% marbling at +3.9 and top 5% carcass weight at +89. Hard to fault with Reiland Angus retaining 50% semen and marketing rights in this impressive breed leading sire.

Purchaser: \$

TACE	Mid-March 2023 TransTasman Angus Cattle Evaluation - Breed Average EBVs																		\$A	\$A-L
	CED	CEM	GL	BW	200W	400W	600W	MCW	MILK	SS	DC	CWT	EMA	RIB	RUMP	RBY	IMF	NFI-F		
EBV	+2.2	+2.7	-4.8	+4.1	+50	+90	+117	+101	+17	+2.1	-4.6	+66	+6.4	+0.0	-0.3	+0.5	+2.2	+0.19	+197	+339

Lot 6 REILAND STAMINA S631 SV NLR2IS631

AMFU,CAFU,DDFU,NHFU DOB: 28/8/2021 (AI) APR

G A R MOMENTUM PV USA17354145

G A R SURE FIRE SV USA17328461

Sire: THE ROCK MOMENTUM Q8 PV ATZQ8

Dam: REILAND TANIA N830 # NLRN830

MURRAY WAVE J43 PV NURJ43

REILAND TANIA K103 # NLRK103

TACE	March 2023 TransTasman Angus Cattle Evaluation																		ABI	ABI-L
	CED	CEM	GL	BW	200W	400W	600W	MCW	MILK	SS	DC	CWT	EMA	RIB	RUMP	RBY	IMF	NFI-F		
EBV	-5.7	+2.7	-3.8	+5.3	+60	+103	+135	+116	+13	+1.8	-3	+80	+12.7	-2.3	-2.1	+1.4	+1.3	-0.09	\$206	\$342
ACC	56%	45%	72%	73%	70%	68%	68%	65%	58%	72%	37%	59%	59%	60%	60%	54%	63%	50%		

Traits Observed	BWT,400WT(x2),SC,Scan(EMA,Rib,Rump,IMF),Genomics
Trait Focus	GROWTH - EYE MUSCLE - RBY

Structural Assessment								
Claw Set	Front Angle	Rear Angle	Rear Legs	Rear Legs	Sheath	Muscle	Temp	
F 6 H 6	6	6	6	6	6	4	C	1

Deep bodied young sire with true commercial cattleman's focus via his top 15% growth at +103 (400D) and +135 (600D) along with his top 4% eye muscle at +12.7. Pedigree combines the "whose who" in elite carcass within the Angus breed. Invest confidently.

Purchaser: \$

Lot 7 REILAND SCANDAL S14B SV NLR2IS14B

AMFU,CAFU,DDI%,NHFU DOB: 28/7/2021 (Natural) HBR

ESSELMONT GENERAL N12 PV WWEN12

REILAND HANCOCK H830 SV NLRH830

Sire: ESSELMONT QUOKKA Q24 PV WWEQ24

Dam: REILAND JUNO Q677 # NLRQ677

ESSELMONT NUCKLE N7 PV WWEN7

REILAND JUNO H1011 # NLRH1011

TACE	March 2023 TransTasman Angus Cattle Evaluation																		ABI	ABI-L
	CED	CEM	GL	BW	200W	400W	600W	MCW	MILK	SS	DC	CWT	EMA	RIB	RUMP	RBY	IMF	NFI-F		
EBV	+6.8	+0	-5.3	+3.2	+50	+90	+119	+94	+15	+3.5	-6.1	+72	+12.4	+1	-0.9	+1.9	+0.7	+0.47	\$235	\$388
ACC	54%	42%	70%	73%	72%	69%	69%	66%	58%	65%	35%	59%	59%	61%	61%	54%	63%	49%		

Traits Observed	BWT,200WT,Genomics
Trait Focus	HEIFERS - LOW BIRTH - EMA

Structural Assessment								
Claw Set	Front Angle	Rear Angle	Rear Legs	Rear Legs	Sheath	Muscle	Temp	
F 6 H 6	6	6	6	6	6	4	C+	1

A heifers first calf by WA sire purchased from Lindsay and Alison Wolrige Esslemont stud. Calving ease and low birth sire, well suited for heifers and later cow joining. Top 4% EMA at +12.4 and top 2% RBY at +1.9 impress with this complete young sire.

Purchaser: \$

Lot 8 REILAND SNAPSHOT S471 SV NLR2IS471

AMFU,CAF,DDFU,NHFU DOB: 9/7/2021 (AI) HBR

MATAURI REALITY 839 # NZE14647008839

ESSELMONT LOTTO L3 PV WWEL3

Sire: WITHERSWOOD REALITY M0048 SV CWJM0048

Dam: REILAND THELMA P1221 # NLRP1221

WITHERSWOOD QUEIED K0082 SV CWJK0082

REILAND THELMA H815 # NLRH815

TACE	March 2023 TransTasman Angus Cattle Evaluation																		ABI	ABI-L
	CED	CEM	GL	BW	200W	400W	600W	MCW	MILK	SS	DC	CWT	EMA	RIB	RUMP	RBY	IMF	NFI-F		
EBV	+2.9	+2	-6.8	+4.7	+57	+96	+131	+116	+23	+2.2	-3	+70	+8.1	-0.9	-2.1	+1	+2.1	-0.18	\$204	\$353
ACC	55%	46%	71%	72%	71%	69%	69%	66%	59%	65%	40%	60%	59%	61%	61%	56%	63%	51%		

Traits Observed	BWT,200WT,Genomics
Trait Focus	GROWTH - STYLE - MILK

Structural Assessment								
Claw Set	Front Angle	Rear Angle	Rear Legs	Rear Legs	Sheath	Muscle	Temp	
F 6 H 6	6	5	6	6	5	C+	1	

Imposing young sire with carcass depth/length and overall capacity. Top 20% growth at +131 (600D) from a modest birth of +4.7 combines well with short gestation of -6.8 (top 20%). Difficult to fault this sire across his data set, pedigree and phenotype.

Purchaser: \$

TACE	Mid-March 2023 TransTasman Angus Cattle Evaluation - Breed Average EBVs																		\$A	\$A-L
	CED	CEM	GL	BW	200W	400W	600W	MCW	MILK	SS	DC	CWT	EMA	RIB	RUMP	RBY	IMF	NFI-F		
EBV	+2.2	+2.7	-4.8	+4.1	+50	+90	+117	+101	+17	+2.1	-4.6	+66	+6.4	+0.0	-0.3	+0.5	+2.2	+0.19	+197	+339

Lot 9 REILAND SHARP SI467 # NLR2ISI467

AMFU,CAFU,DD25%,NHFU DOB: 11/8/2021 (AI) HBR

HOOVER DAM # USA16124994
Sire: **SS NIAGARA Z29^{SV} USA17287387**
JET SS X144 # USA16715036

REILAND HILARY H874^{PV} NLRH874
Dam: **REILAND NEW DESIGN Q882 # NLRQ882**
REILAND NEW DESIGN J936 # NLRJ936

TACE	March 2023 TransTasman Angus Cattle Evaluation																		ABI	ABI-L
	CED	CEM	GL	BW	200W	400W	600W	MCW	MILK	SS	DC	CWT	EMA	RIB	RUMP	RBY	IMF	NFI-F		
EBV	+2.9	+1.6	-2.5	+4.3	+56	+101	+138	+125	+16	+2.1	-4.6	+78	+9.2	-2.1	-2.6	+1.2	+1.6	-0.21	\$214	\$378
ACC	55%	43%	82%	73%	68%	65%	66%	62%	56%	60%	35%	57%	56%	57%	56%	53%	57%	44%		

Traits Observed	GL,BWT,200WT								Structural Assessment								
Trait Focus	GROWTH - LOW BIRTH - CARCASE								Claw Set	Front Angle	Rear Angle	Rear Legs	Rear Legs	Sheath	Muscle	Temp	
									F	H							
									6	6	6	5	6	5	5	C	1

A heifers first calf by new sire SS Niagara, who was selected for elite calving ease/birth/growth and docility. Carcase length is front of mind upon inspection along with growth expression. Top 20% for eye muscle at +9.2. Easy to observe this sire. Genomics and PV pending.

Purchaser: \$

Lot 10 REILAND SUPERIOR S982^{PV} NLR2IS982

AMFU,CAFU,DDFU,NHFU DOB: 13/8/2021 (AI) HBR

SYDGEN EXCEED 3223^{PV} USA17501893
Sire: **SYDGEN ENHANCE^{SV} USA18170041**
SYDGEN RITA 2618 # USA17405676

EF COMPLEMENT 8088^{PV} USA16198796
Dam: **REILAND HENLEY P935^{PV} NLRP935**
REILAND HENLEY H909^{SV} NLRH909



TACE	March 2023 TransTasman Angus Cattle Evaluation																		ABI	ABI-L
	CED	CEM	GL	BW	200W	400W	600W	MCW	MILK	SS	DC	CWT	EMA	RIB	RUMP	RBY	IMF	NFI-F		
EBV	+7.4	+5.7	-10.4	+2.5	+54	+108	+139	+94	+26	+3.8	-5.3	+79	+11.9	-0.2	+0.5	+0.4	+3.3	+0.1	\$267	\$436
ACC	64%	56%	82%	74%	74%	72%	73%	71%	66%	70%	41%	65%	64%	65%	65%	60%	67%	55%		

Traits Observed	GL,BWT,200WT,Genomics								Structural Assessment								
Trait Focus	TOP INDEX - LOW BIRTH - GROWTH								Claw Set	Front Angle	Rear Angle	Rear Legs	Rear Legs	Sheath	Muscle	Temp	
									F	H							
									6	6	5	5	6	5	4	C+	1

Aptly named, Reiland Superior excels across his entire data set for all profit/production traits. Top 10% calving ease and top 2% gestation length (-10.4). Top 10% 400D growth +108 and 600D at +139 and docility. Carcase exceptional as he is of true Angus character from his donor dam Henley P935. \$5000 semen option in this sire via COUPLING register (see sale details) if of interest. Reiland Angus retains 50% semen and marketing rights in this impressive young sire.

Purchaser: \$

Lot 11 REILAND SUPERB S959^{PV} NLR2IS959

AMFU,CAFU,DDFU,NHFU DOB: 7/8/2021 (ET) HBR

KIDMAN IMPACT K99^{SV} BKCK99
Sire: **REILAND NED N1164^{SV} NLRN1164**
REILAND FIREPLAY K943 # NLRK943

LAWSONS NOVAK E313^{SV} VLYE313
Dam: **AYRVALE LEAH L33^{PV} HIOL33**
AYRVALE HARRIET H18^{PV} HIOH18

TACE	March 2023 TransTasman Angus Cattle Evaluation																		ABI	ABI-L
	CED	CEM	GL	BW	200W	400W	600W	MCW	MILK	SS	DC	CWT	EMA	RIB	RUMP	RBY	IMF	NFI-F		
EBV	+3.4	+7.5	-7.5	+4.7	+62	+105	+142	+134	+19	+4	-6.2	+79	+5.7	-1.8	-2.9	+0.6	+3.3	+0.15	\$240	\$425
ACC	56%	46%	72%	72%	73%	71%	71%	68%	61%	68%	40%	62%	61%	63%	63%	57%	66%	53%		

Traits Observed	BWT,200WT,SC,Scan(EMA,Rib,Rump,IMF),Genomics								Structural Assessment								
Trait Focus	GROWTH - MARBLING - SCROTAL								Claw Set	Front Angle	Rear Angle	Rear Legs	Rear Legs	Sheath	Muscle	Temp	
									F	H							
									6	5	6	6	5	6	4	C	1

If you are looking for a bull with it all, look no further. An imposing sire in terms of phenotype and genetic background. A top 10% growth sire with +142 600D from a modest +4.7 birth weight. Top 10% calving ease augers well for future herd profitability along with top 4% scrotal at +4.0. To cap this off he records top 4% \$A-L index. Traits Observed BWT,200WT,SC,Scan(EMA,Rib,Rump,IMF),Genomics Trait Focus GROWTH - MARBLING - SCROTAL

Purchaser: \$

TACE	Mid-March 2023 TransTasman Angus Cattle Evaluation - Breed Average EBVs																		\$A	\$A-L
	CED	CEM	GL	BW	200W	400W	600W	MCW	MILK	SS	DC	CWT	EMA	RIB	RUMP	RBY	IMF	NFI-F		
EBV	+2.2	+2.7	-4.8	+4.1	+50	+90	+117	+101	+17	+2.1	-4.6	+66	+6.4	+0.0	-0.3	+0.5	+2.2	+0.19	+197	+339

Lot 12 REILAND SOLITUDE S954^{PV} NLR2IS954

AMFU,CAFU,DDFU,NHFU DOB: 7/8/2021 (ET) HBR

KIDMAN IMPACT K99^{SV} BKCK99
Sire: REILAND NED N1164^{SV} NLRN1164
REILAND FIREPLAY K943 # NLRK943

LAWSONS NOVAK E313^{SV} VLYE313
Dam: AYRVALE LEAH L33^{PV} HIOL33
AYRVALE HARRIET H18^{PV} HIOH18

TACE	March 2023 TransTasman Angus Cattle Evaluation																		ABI	ABI-L
	CED	CEM	GL	BW	200W	400W	600W	MCW	MILK	SS	DC	CWT	EMA	RIB	RUMP	RBY	IMF	NFI-F		
EBV	+0.2	+3.7	-3.3	+5	+64	+111	+148	+127	+21	+2.7	-5	+92	+10.2	-2.3	-3.2	+1.3	+2.8	+0.21	\$254	\$422
ACC	57%	47%	72%	72%	73%	71%	71%	68%	61%	68%	40%	62%	61%	63%	63%	57%	66%	53%		

Traits Observed	BWT,200WT,SC,Scan(EMA,Rib,Rump,IMF),Genomics
Trait Focus	GROWTH - EMA - CARCASE

Structural Assessment								
Claw Set	Front Angle	Rear Angle	Rear Legs	Rear Legs	Sheath	Muscle	Temp	
5	5	6	6	6	5	C	1	

A full ET brother to previous lot with a comparable data set for growth at +148 (600D) top 10% EMA at +10.2 and breed leading carcass weight at +92 (top 3%). Difficult to decide between these impressive sires by Reiland Ned.

Purchaser: \$

Lot 13 REILAND STEAMER S936^{PV} NLR2IS936

AMFU,CAFU,DDFU,NHFU DOB: 12/8/2021 (ET) HBR

KIDMAN IMPACT K99^{SV} BKCK99
Sire: REILAND NED N1164^{SV} NLRN1164
REILAND FIREPLAY K943 # NLRK943

LAWSONS NOVAK E313^{SV} VLYE313
Dam: AYRVALE LEAH L33^{PV} HIOL33
AYRVALE HARRIET H18^{PV} HIOH18

TACE	March 2023 TransTasman Angus Cattle Evaluation																		ABI	ABI-L
	CED	CEM	GL	BW	200W	400W	600W	MCW	MILK	SS	DC	CWT	EMA	RIB	RUMP	RBY	IMF	NFI-F		
EBV	+2.6	+1.9	-2.8	+3.2	+52	+91	+124	+100	+23	+4	-6.3	+75	+9.4	+0	+0.6	+0.7	+2.7	+0.26	\$233	\$385
ACC	57%	47%	72%	72%	73%	71%	71%	68%	61%	68%	40%	62%	61%	63%	63%	57%	66%	53%		

Traits Observed	BWT,200WT,SC,Scan(EMA,Rib,Rump,IMF),Genomics
Trait Focus	SCROTAL - LOW BIRTH - MILK

Structural Assessment								
Claw Set	Front Angle	Rear Angle	Rear Legs	Rear Legs	Sheath	Muscle	Temp	
5	6	5	6	6	4	C+	1	

Follow on ET brother to previous lots with slightly less growth, however a phenotype of carcass length and overall balance. Could be superior for his excellent carcass balance and neutral fats combining with top 4% scrotal and docility.

Purchaser: \$

Lot 14 REILAND SHOWMAN S949^{PV} NLR2IS949

AMFU,CAFU,DDFU,NHFU DOB: 3/8/2021 (ET) HBR

SYDGEN EXCEED 3223^{PV} USA17501893
Sire: SYDGEN ENHANCE^{SV} USA18170041
SYDGEN RITA 2618 # USA17405676

NARRACALCA VALIANT V7^{SV} NNDV7
Dam: REILAND NICKY Z413^{PV} NLRZ413
REILAND NICKIE W167 # NLRW167

TACE	March 2023 TransTasman Angus Cattle Evaluation																		ABI	ABI-L
	CED	CEM	GL	BW	200W	400W	600W	MCW	MILK	SS	DC	CWT	EMA	RIB	RUMP	RBY	IMF	NFI-F		
EBV	+3.4	+1.3	-5.5	+5.2	+55	+95	+123	+123	+11	+2.4	-2.3	+65	+9	-1	-0.7	+0.5	+1.9	-0.32	\$181	\$335
ACC	65%	55%	74%	75%	76%	75%	75%	73%	69%	73%	42%	67%	66%	67%	67%	62%	69%	55%		

Traits Observed	BWT,200WT,SC,Scan(EMA,Rib,Rump,IMF),Genomics
Trait Focus	PEDIGREE - DOCILITY - EMA

Structural Assessment								
Claw Set	Front Angle	Rear Angle	Rear Legs	Rear Legs	Sheath	Muscle	Temp	
6	6	7	6	6		C+	1	

An interesting study in a sire with exceptional length. His dam is the prepotent donor NLRZ413 who has 45 calves registered to her. This Sydgen Enhance son reflects her easy doing/high fertility with slick skin and exceptional carcass length. Top 5% docility at +36 and NFI which will be a point of discussion as the industry confronts methane emissions/carbon. Very few Angus sires are positive in this trait. A public thank you to John Gaskin, Tuwharetoa Stud, Tarcutta who urged us to flush this 2004 born elite donor.

Purchaser: \$

TACE	Mid-March 2023 TransTasman Angus Cattle Evaluation - Breed Average EBVs																		\$A	\$A-L
	CED	CEM	GL	BW	200W	400W	600W	MCW	MILK	SS	DC	CWT	EMA	RIB	RUMP	RBY	IMF	NFI-F		
EBV	+2.2	+2.7	-4.8	+4.1	+50	+90	+117	+101	+17	+2.1	-4.6	+66	+6.4	+0.0	-0.3	+0.5	+2.2	+0.19	+197	+339

Lot 15 REILAND STUART S958^{PV} NLR2IS958

AMFU,CAFU,DDFU,NHFU DOB: 16/8/2021 (ET) HBR

Sire: **TUWHARETOA REGENT D145^{PV} BNAD145**
STRATHEWEN REGENT E23 H70^{PV} VSNH70
STRATHEWEN DINKY-DI MITTAGONG E23^{PV} VSNE23

Dam: **G A R PROPHET^{SV} USA16295688**
REILAND LOWEN P915^{PV} NLRP915
REILAND LOWEN K927^{PV} NLRK927



TACE	March 2023 TransTasman Angus Cattle Evaluation																		ABI	ABI-L
	CED	CEM	GL	BW	200W	400W	600W	MCW	MILK	SS	DC	CWT	EMA	RIB	RUMP	RBY	IMF	NFI-F		
EBV	+3.5	-1.4	-1.1	+4.2	+50	+90	+120	+88	+25	+1.8	-5.6	+71	+6.7	-0.5	-0.1	+0.1	+4.1	+0.4	\$229	\$365
ACC	61%	53%	71%	72%	74%	72%	72%	70%	65%	69%	44%	64%	64%	65%	65%	60%	67%	56%		

Traits Observed	BWT,200WT,SC,Scan(EMA,Rib,Rump,IMF),Genomics	Structural Assessment								
Trait Focus	MARBLING - MILK - INDEX	Claw Set	Front Angle	Rear Angle	Rear Legs	Rear Legs	Sheath	Muscle	Temp	
		F 6 H 6	6	6	6	6	6	4	C	1

Deep sided and massive made with an easy muscle sore of B-. A top 10% IMF bull at +4.1 rarely carries this degree of muscle and body capacity. A highly attractive data set across growth/fertility/longevity that emanates from his dam, Reiland Lowan P915. Could be a star attraction for those seeking type and performance. Reiland Angus retains the right to collect semen in this sire at buyers' convenience.

Purchaser: \$

Lot 16 REILAND SURPRISE S960^{PV} NLR2IS960

AMFU,CAFU,DDFU,NHFU DOB: 7/8/2021 (ET) HBR

Sire: **SITZ WISDOM 481T # USA15636992**
STONE POINT KINGPIN K211^{SV} SGMK211
STONE POINT YANKEE QUEEN H208^{PV} SGMH208

Dam: **G A R PROPHET^{SV} USA16295688**
REILAND LOWEN P915^{PV} NLRP915
REILAND LOWEN K927^{PV} NLRK927

TACE	March 2023 TransTasman Angus Cattle Evaluation																		ABI	ABI-L
	CED	CEM	GL	BW	200W	400W	600W	MCW	MILK	SS	DC	CWT	EMA	RIB	RUMP	RBY	IMF	NFI-F		
EBV	+1.4	+1	-5.9	+5.9	+59	+104	+133	+118	+21	+1.3	-6.3	+70	+6.9	-2.3	-3.3	+0.4	+3.1	+0.22	\$231	\$392
ACC	57%	47%	71%	72%	72%	70%	70%	68%	62%	68%	38%	62%	61%	63%	63%	57%	65%	52%		

Traits Observed	BWT,200WT,SC,Scan(EMA,Rib,Rump,IMF),Genomics	Structural Assessment							
Trait Focus	INDEX - MUSCLE - GROWTH	Claw Set	Front Angle	Rear Angle	Rear Legs	Rear Legs	Sheath	Muscle	Temp
		F 6 H 6	6	6	5	5	5	C	1

A maternal brother to previous lot with increased growth by Stoney Point Kingpin K211 at +133 (600D) whilst maintaining moderate MCW. Highly muscled sire with bone/capacity and genetic excellence.

Purchaser: \$

Lot 17 REILAND STETSON S953^{PV} NLR2IS953

AMFU,CAFU,DDFU,NHFU DOB: 8/8/2021 (ET) HBR

Sire: **SITZ WISDOM 481T # USA15636992**
STONE POINT KINGPIN K211^{SV} SGMK211
STONE POINT YANKEE QUEEN H208^{PV} SGMH208

Dam: **G A R PROPHET^{SV} USA16295688**
REILAND LOWEN P915^{PV} NLRP915
REILAND LOWEN K927^{PV} NLRK927

TACE	March 2023 TransTasman Angus Cattle Evaluation																		ABI	ABI-L
	CED	CEM	GL	BW	200W	400W	600W	MCW	MILK	SS	DC	CWT	EMA	RIB	RUMP	RBY	IMF	NFI-F		
EBV	+4.2	+1.1	-4.4	+3.9	+60	+105	+134	+106	+26	+2.2	-5.4	+73	+11.8	-0.7	-0.6	+0.7	+3.4	+0.57	\$264	\$425
ACC	57%	46%	71%	71%	72%	70%	70%	68%	62%	68%	38%	61%	61%	62%	62%	56%	65%	52%		

Traits Observed	BWT,200WT,SC,Scan(EMA,Rib,Rump,IMF),Genomics	Structural Assessment							
Trait Focus	EYE MUSCLE - LENGTH - IMF	Claw Set	Front Angle	Rear Angle	Rear Legs	Rear Legs	Sheath	Muscle	Temp
		F 6 H 5	6	6	6	6	5	C	1

Impressive high indexing sire from the up-and-coming donor. He possesses a faultless data set with positive calving ease, birth weight and top 15% growth at +134 (600D). Top 5% eye muscle at +11.8 is easy to observe in this sire who boasts +3.4% IMF. A great all-rounder for future herd improvement.

Purchaser: \$

TACE	Mid-March 2023 TransTasman Angus Cattle Evaluation - Breed Average EBVs																		\$A	\$A-L
	CED	CEM	GL	BW	200W	400W	600W	MCW	MILK	SS	DC	CWT	EMA	RIB	RUMP	RBY	IMF	NFI-F		
EBV	+2.2	+2.7	-4.8	+4.1	+50	+90	+117	+101	+17	+2.1	-4.6	+66	+6.4	+0.0	-0.3	+0.5	+2.2	+0.19	+197	+339

Lot 18 REILAND SEAL S1171^{SV} NLR2IS1171

AMFU,CAFU,DDFU,NHF DOB: 6/9/2021 (Natural) HBR

RENNYLEA EDMUND E11^{PV} NORE11

STEVENSON CE DELUXE 1914 # USA14659834

Sire: AVALON ANGUS LUBAR L20^{SV} EQWL20

Dam: REILAND ROSEBANK J941 # NLRJ941

AVALON ANGUS HIBISCUS H54 # EQWH54

CAMPBELL FARMS ROSEBANK Z299^{SV} VVXZ299

TACE	March 2023 TransTasman Angus Cattle Evaluation																		ABI	ABI-L
	CED	CEM	GL	BW	200W	400W	600W	MCW	MILK	SS	DC	CWT	EMA	RIB	RUMP	RBY	IMF	NFI-F		
EBV	-3.7	-1.8	-6.5	+6.1	+55	+95	+117	+94	+13	+1.4	-6	+62	+5.3	+0.1	+2.3	+0.1	+1.6	-0.34	\$211	\$340
ACC	55%	46%	68%	73%	72%	69%	69%	67%	61%	71%	39%	61%	60%	62%	62%	56%	65%	52%		

Traits Observed	BWT,200WT,SC,Scan(EMA,Rib,Rump,IMF),Genomics							
Trait Focus	PHENOTYPE - MUSCLE - LENGTH							

Structural Assessment								
Claw Set	Front Angle	Rear Angle	Rear Legs	Rear Legs	Sheath	Muscle	Temp	
F 6	H 5	6	6	5	5	4	C	1

Both this bull and following lot are by one of the industry's best R. Edmund E11 sons in L20 from a sister herd Avalon Angus. They exude great muscle expression, balance, soundness and slick hair type. The sister to these bulls is moderate in size and very productive. You be the judge.

Purchaser: \$

Lot 19 REILAND SAFARI S1183^{PV} NLR2IS1183

AMFU,CAFU,DDFU,NHFU DOB: 12/9/2021 (Natural) HBR

RENNYLEA EDMUND E11^{PV} NORE11

TE MANIA BERKLEY B1^{PV} VTMB1

Sire: AVALON ANGUS LUBAR L20^{SV} EQWL20

Dam: STRATHEWEN BERKLY BLACKBIRD F11^{PV} VSNF11

AVALON ANGUS HIBISCUS H54 # EQWH54

STRATHEWEN BOOMTIME BLACKBIRD D38^{PV} VNSD38



TACE	March 2023 TransTasman Angus Cattle Evaluation																		ABI	ABI-L
	CED	CEM	GL	BW	200W	400W	600W	MCW	MILK	SS	DC	CWT	EMA	RIB	RUMP	RBY	IMF	NFI-F		
EBV	+6.6	+6.3	-4.4	+4.3	+50	+88	+117	+77	+17	+3.2	-8.8	+63	+6.6	+4.7	+4.6	-0.3	+2.7	+0.28	\$267	\$426
ACC	58%	50%	69%	74%	73%	71%	71%	69%	63%	72%	44%	63%	62%	64%	64%	58%	66%	55%		

Traits Observed	BWT,200WT,SC,Scan(EMA,Rib,Rump,IMF),Genomics							
Trait Focus	POSTIVE FAT - CALVING EASE - DAYS TO CALV							

Structural Assessment								
Claw Set	Front Angle	Rear Angle	Rear Legs	Rear Legs	Sheath	Muscle	Temp	
F 5	H 5	6	6	5	6	4	C	2

If you are looking for a sire to maintain moderate frame (+77 MCW), calving ease and top 1% positive fats at 4.7 & +4.6 then here is your bull. Sound footed with ideal birth to growth and carcass data for widespread commercial (and Stud) use. Unique proven cow line. Reiland Angus reserves the right to collect semen at purchaser convenience.

Purchaser: \$

Lot 20 REILAND SILVESTER S1181^{SV} NLR2IS1181

AMFU,CAFU,DDFU,NHFU DOB: 25/8/2021 (Natural) APR

CLUNES CROSSING DUSTY M13^{PV} QMUM13

RENNYLEA EDMUND E11^{PV} NORE11

Sire: AYRVALE QUAD Q9^{PV} HIOQ9

Dam: REILAND TANIA K933 # NLRK933

AYRVALE LUCY L20^{PV} HIOL20

TWYNAM E46^{SV} NXTE46

TACE	March 2023 TransTasman Angus Cattle Evaluation																		ABI	ABI-L
	CED	CEM	GL	BW	200W	400W	600W	MCW	MILK	SS	DC	CWT	EMA	RIB	RUMP	RBY	IMF	NFI-F		
EBV	+2.3	+1.4	-4.2	+3.8	+50	+91	+115	+83	+12	+1.4	-5.2	+68	+9.5	-0.7	-2.7	+0.7	+3.8	+0.45	\$234	\$368
ACC	57%	48%	68%	71%	71%	68%	69%	67%	60%	71%	39%	60%	60%	62%	62%	55%	65%	52%		

Traits Observed	BWT,200WT,SC,Scan(EMA,Rib,Rump,IMF),Genomics							
Trait Focus	HEIFERS - EYE MUSCLE - IMF							

Structural Assessment								
Claw Set	Front Angle	Rear Angle	Rear Legs	Rear Legs	Sheath	Muscle	Temp	
F 6	H 5	6	6	5	6	5	C	2

One of the first bulls by Ayrvale Quad Q9, who is a high merit carcass/maternal sire and posts a top 1% EMA at +15.5 and top \$A/\$A-L index. Controlled MCW sire with style, ample bone, and exceptional carcass data.

Purchaser: \$

TACE	Mid-March 2023 TransTasman Angus Cattle Evaluation - Breed Average EBVs																		\$A	\$A-L
	CED	CEM	GL	BW	200W	400W	600W	MCW	MILK	SS	DC	CWT	EMA	RIB	RUMP	RBY	IMF	NFI-F		
EBV	+2.2	+2.7	-4.8	+4.1	+50	+90	+117	+101	+17	+2.1	-4.6	+66	+6.4	+0.0	-0.3	+0.5	+2.2	+0.19	+197	+339

Lot 21 REILAND SILK S1150^{SV} NLR21S1150

AMFU,CAFU,DDFU,NHFU DOB: 28/9/2021 (Natural) HBR

Sire: REILAND HILARY H874^{PV} NLRH874
REILAND MOSMAN M1035^{SV} NLRM1035
COOLANA ELDORENE ERICA G110^{SV} VCCG110

Dam: REILAND HANCOCK H830^{SV} NLRH830
REILAND ESTER P141[#] NLRP141
REILAND ESTER G966[#] NLRG966

TACE	March 2023 TransTasman Angus Cattle Evaluation																		ABI	ABI-L
	CED	CEM	GL	BW	200W	400W	600W	MCW	MILK	SS	DC	CWT	EMA	RIB	RUMP	RBY	IMF	NFI-F		
EBV	+6.2	+4.6	-3.5	+3.1	+48	+82	+103	+91	+17	+5.1	-5.1	+46	+12.1	-1.4	-3.4	+1.6	+2.7	+0.36	\$217	\$364
ACC	54%	42%	69%	73%	71%	69%	69%	66%	60%	72%	35%	59%	59%	60%	60%	54%	63%	48%		

Traits Observed	BWT,200WT,SC,Scan(EMA,Rib,Rump,IMF),Genomics							
Trait Focus	HEIFERS - LOW BIRTH - EYE MUSCLE							

Structural Assessment								
Claw Set	Front Angle	Rear Angle	Rear Legs	Rear Legs	Sheath	Muscle	Temp	
F 5 H 5	6	6	6	6	5	C	2	

Higher frame score sire with top 5% eye muscle and top 1% scrotal at +5.1 are two indicators you will easily identify upon inspection. The Ester cow line is renown with deep sided, roomy cows with above average fertility.

Purchaser: \$

Lot 22 REILAND SULLY S1154^{SV} NLR21S1154

AMFU,CAFU,DDFU,NHFU DOB: 30/9/2021 (Natural) HBR

Sire: REILAND JORDAN J61^{SV} NLRJ61
REILAND PIRELLI P913^{PV} NLRP913
STRATHEWEN REGENT WILPEN A J49^{PV} VSNJ49

Dam: KO 338 RIGHT TIME D91^{SV} NZCD91
REILAND GEORGINA H1173[#] NLRH1173
REILAND GEORGINA Y340[#] NLR340

TACE	March 2023 TransTasman Angus Cattle Evaluation																		ABI	ABI-L
	CED	CEM	GL	BW	200W	400W	600W	MCW	MILK	SS	DC	CWT	EMA	RIB	RUMP	RBY	IMF	NFI-F		
EBV	+1.7	+3	-7.8	+5.5	+58	+106	+141	+137	+14	+2.1	-5.7	+79	+5	-0.9	-0.7	+0.2	+3.6	+0.14	\$227	\$405
ACC	54%	43%	68%	73%	71%	69%	69%	66%	59%	66%	35%	59%	58%	60%	60%	54%	62%	48%		

Traits Observed	BWT,SC,Scan(EMA,Rib,Rump,IMF),Genomics							
Trait Focus	GROWTH - IMF - CARCASE							

Structural Assessment								
Claw Set	Front Angle	Rear Angle	Rear Legs	Rear Legs	Sheath	Muscle	Temp	
F 6 H 5	6	6	6	7	3	C	2	

A big hitter for growth at +141 (top 10%) emanates from his sire in Pirelli. Given his positive gestation Length -7.8 (top 10%) this bull will produce those front-line weaners at any sale. Marbling at +3.6 is a positive along with top 15% carcass weight. Study carefully.

Purchaser: \$

Lot 23 REILAND SUNLINE S1170^{SV} NLR21S1170

AMF,CAFU,DDFU,NHFU DOB: 12/9/2021 (Natural) HBR

Sire: CLUNES CROSSING DUSTY M13^{PV} QMUM13
AYRVALE QUAD Q9^{PV} HIOQ9
AYRVALE LUCY L20^{PV} HIOL20

Dam: REILAND GAMBLE G77^{SV} NLRG77
REILAND NEW STONE K1001[#] NLRK1001
BLACK LABEL NEW STONE Y149[#] DJBY149

TACE	March 2023 TransTasman Angus Cattle Evaluation																		ABI	ABI-L
	CED	CEM	GL	BW	200W	400W	600W	MCW	MILK	SS	DC	CWT	EMA	RIB	RUMP	RBY	IMF	NFI-F		
EBV	-0.8	+5	-8.1	+4.6	+63	+99	+131	+96	+12	+2.5	-4.8	+75	+16.6	-2.1	-4	+2.1	+0.7	+0.2	\$255	\$395
ACC	55%	45%	68%	71%	71%	68%	69%	66%	60%	69%	36%	60%	59%	61%	61%	54%	64%	50%		

Traits Observed	BWT,200WT,SC,Scan(EMA,Rib,Rump,IMF),Genomics							
Trait Focus	GROWTH - EMA - RETAIL YIELD							

Structural Assessment								
Claw Set	Front Angle	Rear Angle	Rear Legs	Rear Legs	Sheath	Muscle	Temp	
F 5 H 5	6	6	5	5	4	C+	2	

Higher growth sire at +131 (600D) with top 1% EMA at +16.6 and RBY at +2.1. A real carcass king with mid maturity and positive gestation. Pedigree is dominated with exceptionally functional females which is a big asset for any Angus or cross breeding herd program.

Purchaser: \$

TACE	Mid-March 2023 TransTasman Angus Cattle Evaluation - Breed Average EBVs																		\$A	\$A-L
	CED	CEM	GL	BW	200W	400W	600W	MCW	MILK	SS	DC	CWT	EMA	RIB	RUMP	RBY	IMF	NFI-F		
EBV	+2.2	+2.7	-4.8	+4.1	+50	+90	+117	+101	+17	+2.1	-4.6	+66	+6.4	+0.0	-0.3	+0.5	+2.2	+0.19	+197	+339

Lot 24 REILAND SAMSON S460^{SV} NLR2IS460

AMFU.CAFU.DDF.NHFU DOB: 18/7/2021 (AI) APR

REILAND JORDAN J61^{SV} NLRJ61

REILAND KIWI K201^{PV} NLRK201

Sire: REILAND PIRELLI P913^{PV} NLRP913

Dam: REILAND BLACK BEAUTY P328[#] NLRP328

STRATHEWEN REGENT WILPENA J49^{PV} VSNJ49

REILAND BLACK BEAUTY H400[#] NLRH400

TACE	March 2023 TransTasman Angus Cattle Evaluation																		ABI	ABI-L
	CED	CEM	GL	BW	200W	400W	600W	MCW	MILK	SS	DC	CWT	EMA	RIB	RUMP	RBY	IMF	NFI-F		
EBV	+5.7	+4.4	-3.8	+4.7	+62	+107	+136	+119	+20	+3.7	-5.3	+82	+16.4	-2.1	-3.1	+2.8	+0.6	+0.13	\$273	\$449
ACC	54%	42%	70%	74%	72%	70%	69%	67%	59%	72%	35%	60%	60%	62%	62%	55%	64%	49%		

Traits Observed	BWT,200WT,SC,Scan(EMA,Rib,Rump,IMF),Genomics							
Trait Focus	GROWTH - DIMENSION - BLOODLINE							

Structural Assessment								
Claw Set	Front Angle	Rear Angle	Rear Legs	Rear Legs	Sheath	Muscle	Temp	
F 6	H 6	6	6	6	6	5	C+	2

An exceptional sire for all the right reasons with the aggregation of highly productive/fertile bloodlines. Positive calving ease at +5.7, low birth and top 15% growth at +136 (600D). Top 1% EMA at +16.4 easy to observe with this bull's dimension and weight for age. Very hard to fault.

Purchaser: \$

Lot 25 REILAND STATEMENT S952^{PV} NLR2IS952

AMFU.CAFU.DDFU.NHFU DOB: 15/8/2021 (ET) HBR

G A R PROPHET^{SV} USA16295688

SYDGEN C C & 7[#] USA15330743

Sire: BALDRIDGE BEAST MODE B074^{PV} USA17960722

Dam: BULLIAC ESTER J21^{SV} QPDJ21

BALDRIDGE ISABEL Y69[#] USA17149410

FORRES ESTER X201[#] NFJX201

TACE	March 2023 TransTasman Angus Cattle Evaluation																		ABI	ABI-L
	CED	CEM	GL	BW	200W	400W	600W	MCW	MILK	SS	DC	CWT	EMA	RIB	RUMP	RBY	IMF	NFI-F		
EBV	+5	+1.1	-3.1	+3.2	+61	+109	+145	+137	+16	+2.9	-3.9	+78	+3.1	-2	-2.1	+0.1	+2.5	-0.02	\$204	\$381
ACC	64%	55%	73%	74%	75%	73%	74%	72%	67%	71%	47%	67%	66%	67%	67%	62%	69%	57%		

Traits Observed	BWT,200WT,SC,Scan(EMA,Rib,Rump,IMF),Genomics							
Trait Focus	GROWTH - SIRE - DOCILITY							

Structural Assessment								
Claw Set	Front Angle	Rear Angle	Rear Legs	Rear Legs	Sheath	Muscle	Temp	
F 5	H 5	6	6	5	6	4	C	1

Top 5% growth sire at +145 (600D) whilst retaining a +3.2-birth weight is kind of unique! Positive calving ease at +5.0 aligns well with the super Ester cow family line that adds fertility. Beast Mode is a proven growth, docility, and foot shape improver across the Angus breed.

Purchaser: \$

Lot 26 REILAND SODA S956^{PV} NLR2IS956

AMFU.CAFU.DDFU.NHFU DOB: 13/8/2021 (ET) APR

G A R PROPHET^{SV} USA16295688

RENNYLEA C511^{PV} NORC511

Sire: BALDRIDGE BEAST MODE B074^{PV} USA17960722

Dam: TWYNAM F116^{SV} NXTF116

BALDRIDGE ISABEL Y69[#] USA17149410

TWYNAM B439^{PV} NXTB439

TACE	March 2023 TransTasman Angus Cattle Evaluation																		ABI	ABI-L
	CED	CEM	GL	BW	200W	400W	600W	MCW	MILK	SS	DC	CWT	EMA	RIB	RUMP	RBY	IMF	NFI-F		
EBV	+3.5	+2.3	-1.6	+3.4	+51	+87	+100	+76	+14	+2.6	-4	+53	+9.4	+0.1	-0.8	+1	+2.5	+0.34	\$221	\$349
ACC	66%	57%	73%	74%	75%	73%	73%	72%	69%	71%	48%	67%	66%	67%	67%	63%	69%	58%		

Traits Observed	BWT,200WT,SC,Scan(EMA,Rib,Rump,IMF),Genomics							
Trait Focus	EYE MUSCLE - MATURITY - MCW							

Structural Assessment								
Claw Set	Front Angle	Rear Angle	Rear Legs	Rear Legs	Sheath	Muscle	Temp	
F 5	H 5	6	6	5	5	5	C+	1

A muscular but mobile sire with a mid maturity pattern. A higher muscled Beastmode son with docility, calving ease and marbling.

Purchaser: \$

TACE	Mid-March 2023 TransTasman Angus Cattle Evaluation - Breed Average EBVs																		\$A	\$A-L
	CED	CEM	GL	BW	200W	400W	600W	MCW	MILK	SS	DC	CWT	EMA	RIB	RUMP	RBY	IMF	NFI-F		
EBV	+2.2	+2.7	-4.8	+4.1	+50	+90	+117	+101	+17	+2.1	-4.6	+66	+6.4	+0.0	-0.3	+0.5	+2.2	+0.19	+197	+339

Lot 27 REILAND SEMENT S950^{PV} NLR2IS950 AMFU,CAFU,DDFU,NHFU DOB: 19/8/2021 (ET) HBR

G A R PROPHET^{SV} USA16295688
Sire: BALDRIDGE BEAST MODE B074^{PV} USA17960722
BALDRIDGE ISABEL Y69[#] USA17149410

SYDGEN C C & 7[#] USA15330743
Dam: BULLIAC ESTER J21^{SV} QPDJ21
FORRES ESTER X201[#] NFJX201

TACE	March 2023 TransTasman Angus Cattle Evaluation																		ABI	ABI-L
	CED	CEM	GL	BW	200W	400W	600W	MCW	MILK	SS	DC	CWT	EMA	RIB	RUMP	RBY	IMF	NFI-F		
EBV	+4.7	+2.6	-1.8	+4.1	+62	+102	+136	+134	+14	+2.4	-4.6	+72	+2.2	-0.9	-1.3	-0.1	+2.1	-0.32	\$200	\$374
ACC	65%	56%	73%	74%	75%	73%	74%	72%	67%	70%	47%	67%	66%	67%	67%	62%	68%	57%		

Traits Observed	BWT,200WT,SC,Scan(EMA,Rib,Rump,IMF),Genomics							
Trait Focus	NFI - GROWTH - CALVING EASE							

Structural Assessment								
Claw Set	Front Angle	Rear Angle	Rear Legs	Rear Legs	Sheath	Muscle	Temp	
F 5	H 5	6	6	5	6	5	C	2

Full ET brother to Lot 25 with comparable birth at +4.1, however, records top 8% 200D growth. The mating of QPDJ21 to Beast Mode has proven highly favourable in terms of Angus character, muscle expression, and fertility.

Purchaser: \$

Lot 28 REILAND SPLENDID S955^{PV} NLR2IS955 AMFU,CAFU,DDFU,NHFU DOB: 10/8/2021 (ET) HBR

G A R SURE FIRE 6404[#] USA17965471
Sire: GB FIREBALL 672^{PV} USA18690054
GB ANTICIPATION 432[#] USA18054344

G A R PROPHET^{SV} USA16295688
Dam: STRATHEWEN PROPHET WILPENAL03[#] VSNL03
STRATHEWEN COMMANDO WILPENAL G14^{PV} VSNG14

TACE	March 2023 TransTasman Angus Cattle Evaluation																		ABI	ABI-L
	CED	CEM	GL	BW	200W	400W	600W	MCW	MILK	SS	DC	CWT	EMA	RIB	RUMP	RBY	IMF	NFI-F		
EBV	-16.7	-0.2	-2.3	+7.6	+70	+108	+143	+135	+9	+0.5	-5.1	+85	+12.4	-1.3	-2.2	+0.5	+5	+0.08	\$220	\$345
ACC	62%	48%	72%	73%	74%	73%	73%	69%	62%	71%	38%	63%	64%	64%	64%	58%	67%	52%		

Traits Observed	BWT,200WT,SC,Scan(EMA,Rib,Rump,IMF),Genomics							
Trait Focus	GROWTH - MARBLING - EMA							

Structural Assessment								
Claw Set	Front Angle	Rear Angle	Rear Legs	Rear Legs	Sheath	Muscle	Temp	
F 6	H 5	6	6	5	6	5	C+	1

Impressive phenotype sire by GB Fireball with explosive growth at +143. A mature cow sire that will add type, growth for age and big time IMF at +5.0 (top 3%). Top 4% eye muscle at +12.4 completes a major herd sire profile. His dam is a lead ET donor at Reiland and the dam of upcoming Reiland Speculator S257 posting top 1% \$A and \$A-L at +\$292 and +\$472.

Purchaser: \$

Lot 29 REILAND STOCKBROKER S449^{SV} NLR2IS449 AMFU,CAFU,DDFU,NHFU DOB: 3/9/2021 (Natural) HBR

TUWHARETOA REGENT D145^{PV} BNAD145
Sire: REILAND JEFFERSON J956^{PV} NLRJ956
TWINAM E69^{SV} NXTE69

REILAND HILARY H874^{PV} NLRH874
Dam: REILAND NEW DESIGN P802[#] NLRP802
REILAND NEW DESIGN J936[#] NLRJ936

TACE	March 2023 TransTasman Angus Cattle Evaluation																		ABI	ABI-L
	CED	CEM	GL	BW	200W	400W	600W	MCW	MILK	SS	DC	CWT	EMA	RIB	RUMP	RBY	IMF	NFI-F		
EBV	+5.2	+4.8	-6.2	+2.7	+47	+84	+119	+106	+21	+3.1	-6.6	+71	+4.7	-2	-2.6	+1.1	+1.8	+0.17	\$201	\$359
ACC	57%	48%	68%	73%	72%	69%	70%	68%	62%	70%	41%	61%	61%	63%	63%	56%	65%	52%		

Traits Observed	BWT,200WT,SC,Scan(EMA,Rib,Rump,IMF),Genomics							
Trait Focus	HEIFERS - DAYS TO CALVING - RBY							

Structural Assessment								
Claw Set	Front Angle	Rear Angle	Rear Legs	Rear Legs	Sheath	Muscle	Temp	
F 6	H 5	6	6	5	5	4	C	2

Low birth bull that will let you sleep easy at night! From one of our favourite cow lines New Design that falls in the top 9% Days to Calving. A strong pedigree on his sires side that hails back to top performing sire bull Tuwharetoa Regent D145.

Purchaser: \$

TACE	Mid-March 2023 TransTasman Angus Cattle Evaluation - Breed Average EBVs																		\$A	\$A-L
	CED	CEM	GL	BW	200W	400W	600W	MCW	MILK	SS	DC	CWT	EMA	RIB	RUMP	RBY	IMF	NFI-F		
EBV	+2.2	+2.7	-4.8	+4.1	+50	+90	+117	+101	+17	+2.1	-4.6	+66	+6.4	+0.0	-0.3	+0.5	+2.2	+0.19	+197	+339

Lot 30 REILAND STOCKADE S448^{PV} NLR2IS448 AMF,CAFU,DDFU,NHFU DOB: 25/8/2021 (AI) HBR

TUWHARETOA REGENT D145^{PV} BNAD145

SYDGEN BLACK PEARL 2006^{PV} USA17236055

Sire: REILAND JEFFERSON J956^{PV} NLRJ956

Dam: REILAND ROSEBUD P924^{PV} NLRP924

TWYNAM E69^{SV} NXTE69

TROWBRIDGE BBB A241 ROSEBUD K74^{PV} DCGK74

TACE	March 2023 TransTasman Angus Cattle Evaluation																		ABI	ABI-L
	CED	CEM	GL	BW	200W	400W	600W	MCW	MILK	SS	DC	CWT	EMA	RIB	RUMP	RBY	IMF	NFI-F		
EBV	+1.1	+4.1	-8.1	+4	+53	+91	+121	+104	+18	+2.2	-4.9	+79	+2	-1	-1.6	+0.4	+1.1	-0.11	\$181	\$324
ACC	58%	50%	68%	73%	71%	69%	70%	68%	62%	70%	43%	61%	61%	63%	63%	57%	65%	53%		

Traits Observed	BWT,200WT,SC,Scan(EMA,Rib,Rump,IMF),Genomics																		
Trait Focus	GESTATION - CARCASS WEIGHT - HEIFERS																		
				Structural Assessment															
Claw Set		Front Angle	Rear Angle	Rear Legs	Rear Legs	Sheath	Muscle	Temp											
F	H								6	5	6	6	6	4	C	2			

Easy keeping sire with softness/style and imposing pedigree by previous sale topper Reiland Jefferson sold to Springhill Angus, Mittagong. Strong maternal base in this bull.

Purchaser: \$

Lot 31 REILAND SPARTACUS S1360^{SV} NLR2IS1360 AMF,CAFU,DDFU,NHFU DOB: 11/8/2021 (AI) HBR

G A R SURE FIRE 6404 # USA17965471

REILAND KELP K318^{SV} NLRK318

Sire: GB FIREBALL 672^{PV} USA18690054

Dam: REILAND ERILA N534 # NLRN534

GB ANTICIPATION 432 # USA18054344

REILAND ERILA H49 # NLRH49

TACE	March 2023 TransTasman Angus Cattle Evaluation																		ABI	ABI-L
	CED	CEM	GL	BW	200W	400W	600W	MCW	MILK	SS	DC	CWT	EMA	RIB	RUMP	RBY	IMF	NFI-F		
EBV	+2.7	+2.8	-4.3	+2.7	+52	+83	+105	+91	+9	+2.4	-6.2	+63	+9.2	-3	-4.2	+1.5	+3.2	-0.16	\$232	\$373
ACC	59%	44%	82%	74%	73%	71%	71%	67%	59%	73%	33%	61%	61%	61%	61%	55%	64%	47%		

Traits Observed	GL,BWT,200WT(x2),SC,Scan(EMA,Rib,Rump,IMF),Genomics																			
Trait Focus	HEIFERS - EMA - NFI																			
				Structural Assessment																
Claw Set		Front Angle	Rear Angle	Rear Legs	Rear Legs	Sheath	Muscle	Temp												
F	H								7	6	6	6	5	6	5	C	1			

Muscular sire with excellent weight for age and style. Has inherited high feed efficiency from his dam's sire in Reiland Kelp who is top 1% of the Angus population. We have to take this methane emission seriously moving forward. Feed efficiency and growth for age will be the major drivers for such change.

Purchaser: \$

Lot 32 REILAND SCORPIO S1451^{SV} NLR2IS1451 AMF,CAFU,DDFU,NHFU DOB: 22/8/2021 (Natural) HBR

AYRVALE GENERAL G18^{PV} HIOG18

KAROO D145 GENERATOR G220^{PV} NENG220

Sire: THE ROCK GENERAL P44^{PV} ATZP44

Dam: REILAND LOWEN M925 # NLRM925

THE ROCK M3^{SV} ATZM3

ST PAULS 458N LOWAN D111^{PV} NSTD111

TACE	March 2023 TransTasman Angus Cattle Evaluation																		ABI	ABI-L
	CED	CEM	GL	BW	200W	400W	600W	MCW	MILK	SS	DC	CWT	EMA	RIB	RUMP	RBY	IMF	NFI-F		
EBV	+5	+0.9	-6.7	+3.3	+51	+89	+112	+90	+13	+1.7	-6.4	+63	+12.6	+1.8	+1.6	+1.1	+1.8	+0.54	\$250	\$399
ACC	56%	47%	69%	72%	71%	69%	69%	67%	60%	73%	38%	60%	59%	61%	61%	55%	64%	51%		

Traits Observed	BWT,200WT,SC,Scan(EMA,Rib,Rump,IMF),Genomics																			
Trait Focus	HEIFERS - EMA - POSITIVE FATS																			
				Structural Assessment																
Claw Set		Front Angle	Rear Angle	Rear Legs	Rear Legs	Sheath	Muscle	Temp												
F	H								6	5	6	6	5	5	5	C+	2			

Easy doing sire with ideal spread of data and interestingly, a positive retail beef yield and positive rib/rump fat. A unique combination whilst retaining soundness. Top 4% EMA at +12.6 and low birth at +3.3.

Purchaser: \$

TACE	Mid-March 2023 TransTasman Angus Cattle Evaluation - Breed Average EBVs																		\$A	\$A-L
	CED	CEM	GL	BW	200W	400W	600W	MCW	MILK	SS	DC	CWT	EMA	RIB	RUMP	RBY	IMF	NFI-F		
EBV	+2.2	+2.7	-4.8	+4.1	+50	+90	+117	+101	+17	+2.1	-4.6	+66	+6.4	+0.0	-0.3	+0.5	+2.2	+0.19	+197	+339

Lot 33 REILAND SURVEY S1120^{SV} NLR2IS1120 AMFU,CAFU,DDFU,NHFU DOB: 30/7/2021 (Natural) HBR

Sire: REILAND JORDAN J61^{SV} NLRJ61
REILAND PIRELLI P913^{PV} NLRP913
STRATHEWEN REGENT WILPENNA J49^{PV} VSNJ49

Dam: REILAND LANDFALL RIGHT TIME 24J G483^{SV} TFAG483
REILAND NEW DESIGN K1313[#] NLRK1313
TUWHARETOA C260^{PV} BNAC260



TACE	March 2023 TransTasman Angus Cattle Evaluation																		ABI	ABI-L
	CED	CEM	GL	BW	200W	400W	600W	MCW	MILK	SS	DC	CWT	EMA	RIB	RUMP	RBY	IMF	NFI-F		
EBV	+6.8	+2.7	-5.7	+3.5	+64	+113	+142	+133	+19	-0.3	-4.1	+95	+5.7	-1.9	-1.8	+1	+1.5	-0.64	\$239	\$419
ACC	55%	44%	70%	74%	72%	70%	70%	67%	59%	72%	37%	60%	60%	62%	62%	56%	64%	50%		

Traits Observed	BWT,200WT,SC,Scan(EMA,Rib,Rump,IMF),Genomics							
Trait Focus	STUD PROSPECT - GROWTH - CARCASE WEIGHT							

Structural Assessment								
Claw Set	Front Angle	Rear Angle	Rear Legs	Rear Legs	Sheath	Muscle	Temp	
F 6	H 5	6	6	5	5	4	C+	2

There's one that always catches your eye - he's done it since he was 3 months of age. A true leading herd sire with style, muscle/weight, and a pedigree full of standout cows. His grand dam, Tuwharetoa C260 is still breeding and as sound as you would find a cow at 16 years - still holding an IMF of +2.5 and growth of +123. Positive calving ease and low birth +3.5 and top 10% growth at +142 (actual + genomics). Faultless sire who epitomises what the Angus breed is all about. Top 1% NFI so he has feed efficiency plus top 2% carcase weight.

Purchaser: \$

Lot 34 REILAND SCHOLAR S1349^{SV} NLR2IS1349 AMFU,CAFU,DDFU,NHFU DOB: 11/8/2021 (AI) HBR

Sire: G A R EARLY BIRD[#] USA17354178
G A R ASHLAND^{PV} USA18217198
CHAIR ROCK AMBUSH 1018[#] USA16934264

Dam: REILAND GAMBLE G77^{SV} NLRG77
REILAND WILCOOLA M1017[#] NLRM1017
REILAND WILCOOLA F604[#] NLRF604

TACE	March 2023 TransTasman Angus Cattle Evaluation																		ABI	ABI-L
	CED	CEM	GL	BW	200W	400W	600W	MCW	MILK	SS	DC	CWT	EMA	RIB	RUMP	RBY	IMF	NFI-F		
EBV	+3.7	+3.9	-4.8	+2.8	+57	+96	+125	+98	+10	+1.2	-4	+71	+12.1	-0.2	-0.1	+0.9	+3.2	-0.03	\$252	\$402
ACC	62%	50%	82%	74%	73%	72%	72%	70%	64%	73%	37%	64%	63%	65%	64%	59%	66%	52%		

Traits Observed	GL,BWT,200WT(x2),SC,Scan(EMA,Rib,Rump,IMF),Genomics							
Trait Focus	HEIFERS - EMA - IMF							

Structural Assessment								
Claw Set	Front Angle	Rear Angle	Rear Legs	Rear Legs	Sheath	Muscle	Temp	
F 6	H 6	6	6	5	6	5	C	2

A low birth Ashland son with outstanding birth to growth +125 (600D) that emanates from a strong maternal Wilcoola lineage. Easy to use on heifers then to cow herd use to maximize superior carcase traits of +12.1 EMA (top 5%) and +3.2 (top 20%) marbling.

Purchaser: \$

Lot 35 REILAND SOMERERO S1465^{SV} NLR2IS1465 AMFU,CAFU,DDFU,NHFU DOB: 21/8/2021 (Natural) HBR

Sire: AYRVALE GENERAL G18^{PV} HIOG18
THE ROCK GENERAL P44^{PV} ATZP44
THE ROCK M3^{SV} ATZM3

Dam: REILAND FRESHLAD F704^{SV} NLRF704
REILAND NEW DESIGN L1268[#] NLR1268
REILAND NEW DESIGN H86[#] NLRH86

TACE	March 2023 TransTasman Angus Cattle Evaluation																		ABI	ABI-L
	CED	CEM	GL	BW	200W	400W	600W	MCW	MILK	SS	DC	CWT	EMA	RIB	RUMP	RBY	IMF	NFI-F		
EBV	-5.8	-6.4	-4.2	+6.6	+59	+101	+137	+123	+16	+3.4	-4.7	+81	+8.2	-2.5	-4.9	+0.9	+3.3	+0.09	\$194	\$329
ACC	55%	45%	69%	72%	70%	68%	68%	66%	59%	72%	37%	59%	59%	61%	61%	54%	63%	51%		

Traits Observed	BWT,200WT,SC,Scan(EMA,Rib,Rump,IMF),Genomics							
Trait Focus	GROWTH - LENGTH - SCROTAL							

Structural Assessment								
Claw Set	Front Angle	Rear Angle	Rear Legs	Rear Legs	Sheath	Muscle	Temp	
F 6	H 5	6	6	6	6	5	C	2

A major cow herd sire with true horsepower. Top 14% growth at +137 combines with obvious carcase length and weight for age. Top 10% for scrotal at +3.4 ensures ongoing heifer maturity and fertility.

Purchaser: \$

TACE	Mid-March 2023 TransTasman Angus Cattle Evaluation - Breed Average EBVs																		\$A	\$A-L
	CED	CEM	GL	BW	200W	400W	600W	MCW	MILK	SS	DC	CWT	EMA	RIB	RUMP	RBY	IMF	NFI-F		
EBV	+2.2	+2.7	-4.8	+4.1	+50	+90	+117	+101	+17	+2.1	-4.6	+66	+6.4	+0.0	-0.3	+0.5	+2.2	+0.19	+197	+339

Lot 36 REILAND SHOWTIME S1105^{PV} NLR2IS1105 AMFU.CAFU.DDFU.NHFU DOB: 1/9/2021 (Natural) HBR

CLUNES CROSSING DUSTY M13^{PV} QMUM13
Sire: AYRVALE QUAD Q9^{PV} HIOQ9
AYRVALE LUCY L20^{PV} HIOL20

AYRVALE BARTEL E7^{PV} HIOE7
Dam: REILAND CAMEO M10^{SV} NLRM10
REILAND CAMEO D635 # NLRD635



TACE	March 2023 TransTasman Angus Cattle Evaluation																		ABI	ABI-L
	CED	CEM	GL	BW	200W	400W	600W	MCW	MILK	SS	DC	CWT	EMA	RIB	RUMP	RBY	IMF	NFI-F		
EBV	+3.9	+2.8	-9.9	+5.1	+63	+119	+153	+123	+21	+2.7	-6.3	+90	+14.1	-2.8	-2.9	+2	+1.6	+0.12	\$289	\$471
ACC	56%	47%	69%	71%	71%	68%	69%	67%	60%	73%	39%	60%	60%	62%	62%	55%	65%	53%		

Traits Observed	BWT,200WT,SC,Scan(EMA,Rib,Rump,IMF),Genomics							
Trait Focus	GROWTH - CARCASS WEIGHT - GESTATION							
Structural Assessment								
Claw Set	Front Angle	Rear Angle	Rear Legs	Rear Legs	Sheath	Muscle	Temp	
F 6 H 5	6	6	5	5	5	C+	2	

Who says you can't have it all. Assess his credentials. * Positive Calving Ease ✓. Top 3% Gestation at -9.9- ✓. Top 3% 400/600D at +119/+153- ✓. Top 4% EMA at +14.1 ✓ and CWT at +90- ✓. You do the math on this "cracking" sire from one of the best cows in Reiland M10, one of Sam's favourites. Reiland Angus retains 50% semen and marketing rights.

Purchaser: \$

Lot 37 REILAND SAILOR S1435^{PV} NLR2IS1435 AMFU.CAFU.DDFU.NHFU DOB: 9/8/2021 (Natural) HBR

G A R MOMENTUM^{PV} USA17354145
Sire: THE ROCK MOMENTUM Q8^{PV} ATZQ8
MURRAY WAVE J43^{PV} NURJ43

V A R RESERVE 1111^{PV} USA16916944
Dam: STRATHEWEN RES WILPENA J47 M12^{PV} VSNM12
STRATHEWEN REGENT WILPENA J47^{PV} VSNJ47



TACE	March 2023 TransTasman Angus Cattle Evaluation																		ABI	ABI-L
	CED	CEM	GL	BW	200W	400W	600W	MCW	MILK	SS	DC	CWT	EMA	RIB	RUMP	RBY	IMF	NFI-F		
EBV	+7.7	+1.5	-5.9	+1.1	+42	+78	+101	+71	+23	+1.2	-3.9	+62	+7.4	+0.9	+0.2	-0.4	+5.5	+0.44	\$205	\$332
ACC	59%	49%	71%	73%	72%	70%	70%	68%	61%	73%	40%	61%	61%	62%	63%	57%	65%	52%		

Traits Observed	BWT,200WT,SC,Scan(EMA,Rib,Rump,IMF),Genomics							
Trait Focus	MARBLING - MILK - DOCILITY							
Structural Assessment								
Claw Set	Front Angle	Rear Angle	Rear Legs	Rear Legs	Sheath	Muscle	Temp	
F 6 H 5	6	6	5	6	4	C+	2	

The Rock Momentum Q8 was purchased by Reiland Angus to add not only marbling but a rock-solid maternal line to the registered herd. Here is proof that the mating's have delivered in spades with top 2% IMF at +5.5 from a +1.1-birth weight. High quality, slick skinned sire with calving ease (top 10%) at top 15% for docility and milk. Reiland Angus reserves the right to collect semen at the purchaser's convenience.

Purchaser: \$

Lot 38 REILAND SCHOONER S1458^{SV} NLR2IS1458 AMFU.CAFU.DDFU.NHFU DOB: 18/8/2021 (Natural) HBR

G A R MOMENTUM^{PV} USA17354145
Sire: THE ROCK MOMENTUM Q8^{PV} ATZQ8
MURRAY WAVE J43^{PV} NURJ43

A A R TEN X 7008 S A^{SV} USA15719841
Dam: REILAND NICKY K913 # NLRK913
REILAND NICKY Z413^{PV} NLRZ413

TACE	March 2023 TransTasman Angus Cattle Evaluation																		ABI	ABI-L
	CED	CEM	GL	BW	200W	400W	600W	MCW	MILK	SS	DC	CWT	EMA	RIB	RUMP	RBY	IMF	NFI-F		
EBV	-5.2	+2.6	-4.4	+5.9	+58	+97	+133	+122	+12	+1.4	-3.3	+77	+9.6	+0.1	-1.2	+0.1	+4.1	+0.4	\$199	\$338
ACC	57%	47%	70%	73%	71%	69%	69%	67%	60%	73%	40%	61%	60%	62%	62%	56%	64%	51%		

Traits Observed	BWT,200WT,SC,Scan(EMA,Rib,Rump,IMF),Genomics							
Trait Focus	MARBLING - GROWTH - POSITIVE FAT							
Structural Assessment								
Claw Set	Front Angle	Rear Angle	Rear Legs	Rear Legs	Sheath	Muscle	Temp	
F 6 H 6	6	6	5	6	5	C+	2	

Carcass quality plus with Q8's high marbling (+4.1) and quality carcass is easy to observe on this sire. Top 15% growth at +133. Note the Nicky family influence on maternal dam line.

Purchaser: \$

TACE	Mid-March 2023 TransTasman Angus Cattle Evaluation - Breed Average EBVs																		\$A	\$A-L
	CED	CEM	GL	BW	200W	400W	600W	MCW	MILK	SS	DC	CWT	EMA	RIB	RUMP	RBY	IMF	NFI-F		
EBV	+2.2	+2.7	-4.8	+4.1	+50	+90	+117	+101	+17	+2.1	-4.6	+66	+6.4	+0.0	-0.3	+0.5	+2.2	+0.19	+197	+339

Lot 39 REILAND SINATRA S1431^{SV} NLR2IS1431 AMFU,CAFU,DDF,NHFU DOB: 25/9/2021 (Natural) HBR

G A R MOMENTUM^{PV} USA17354145
Sire: THE ROCK MOMENTUM Q8^{PV} ATZQ8
MURRAY WAVE J43^{PV} NURJ43

TE MANIA AFRICA A217^{PV} VTMA217
Dam: REILAND WILCOOLA H1027[#] NLRH1027
ABBOTSLEIGH WILCOOLA B11[#] QCVB11

TACE	March 2023 TransTasman Angus Cattle Evaluation																		ABI	ABI-L
	CED	CEM	GL	BW	200W	400W	600W	MCW	MILK	SS	DC	CWT	EMA	RIB	RUMP	RBY	IMF	NFI-F		
EBV	-5.3	+1	-1.5	+5.4	+53	+95	+126	+102	+24	+4	-5.2	+64	+10.2	-0.3	+1.6	+0.3	+3.5	+0.25	\$215	\$348
ACC	58%	49%	71%	74%	72%	70%	70%	68%	61%	73%	41%	61%	61%	62%	63%	57%	65%	53%		

Traits Observed	Structural Assessment								
	Claw Set	Front Angle	Rear Angle	Rear Legs	Rear Legs	Sheath	Muscle	Temp	
Trait Focus	EMA - SCROTAL - IMF								
	F 5	H 5	6	6	5	6	5	C+	2

An extremely positive outcome given this sire is from a proven "H" cow by Te Mania Africa. Carcase/maternal repeated, combined with fertility at +4.0 scrotal (top 4%). Sound, docile and a real investment.

Purchaser: \$

Lot 40 REILAND SAHARA S1428^{PV} NLR2IS1428 AMFU,CAFU,DDFU,NHFU DOB: 6/8/2021 (AI) HBR

G A R MOMENTUM^{PV} USA17354145
Sire: THE ROCK MOMENTUM Q8^{PV} ATZQ8
MURRAY WAVE J43^{PV} NURJ43

TROWBRIDGE BBB GATSBY N13^{PV} DCGN13
Dam: REILAND BARTEL Q953^{PV} NLRQ953
LAWSONS BARTEL E7 J695^{SV} VLYJ695

TACE	March 2023 TransTasman Angus Cattle Evaluation																		ABI	ABI-L
	CED	CEM	GL	BW	200W	400W	600W	MCW	MILK	SS	DC	CWT	EMA	RIB	RUMP	RBY	IMF	NFI-F		
EBV	+2.1	+2.4	-7.4	+3.6	+41	+61	+82	+53	+14	+2.1	-5.7	+39	+8.3	+1.7	+1.9	-0.4	+5.2	+0.74	\$207	\$311
ACC	55%	45%	82%	73%	72%	69%	70%	67%	59%	71%	37%	60%	60%	61%	62%	55%	64%	51%		

Traits Observed	Structural Assessment								
	Claw Set	Front Angle	Rear Angle	Rear Legs	Rear Legs	Sheath	Muscle	Temp	
Trait Focus	IMF - POSITIVE FAT - HEIFERS								
	F 6	H 5	6	6	5	5	5	C+	1

Heifers first calf recording top 2% IMF at +5.2, aligned with top 20% eye muscle and still competitive with bulls developed from mature cows. Will attract plenty of comments.

Purchaser: \$

Lot 41 REILAND SASSAFRAS S1466^{SV} NLR2IS1466 AMFU,CAFU,DDFU,NHFU DOB: 31/8/2021 (Natural) HBR

G A R MOMENTUM^{PV} USA17354145
Sire: THE ROCK MOMENTUM Q8^{PV} ATZQ8
MURRAY WAVE J43^{PV} NURJ43

REILAND EVERITT E17^{PV} NLR17
Dam: REILAND DRESDEN M942[#] NLRM942
REILAND DRESDEN D12^{DV} NLRD12

TACE	March 2023 TransTasman Angus Cattle Evaluation																		ABI	ABI-L
	CED	CEM	GL	BW	200W	400W	600W	MCW	MILK	SS	DC	CWT	EMA	RIB	RUMP	RBY	IMF	NFI-F		
EBV	-1	+2.1	-3.8	+3.6	+48	+83	+107	+97	+15	+0.6	-3	+63	+8.4	+0.3	+0.2	+0.1	+4.2	-0.06	\$186	\$311
ACC	57%	46%	70%	73%	71%	69%	69%	66%	60%	72%	38%	60%	60%	62%	62%	55%	64%	51%		

Traits Observed	Structural Assessment								
	Claw Set	Front Angle	Rear Angle	Rear Legs	Rear Legs	Sheath	Muscle	Temp	
Trait Focus	IMF - EMA - HEIFERS								
	F 6	H 5	6	6	5	5	3	C	2

The Rock Momentum Q8 has excelled across maternal and carcass traits. He stands on superb feet and moves effortlessly. His mating with ET Dresden family cow M942 yields an easy doing sire with top 8% IMF at +4.2 and top 25% EMA at +8.4. A real quality sire with maternal strength.

Purchaser: \$

TACE	Mid-March 2023 TransTasman Angus Cattle Evaluation - Breed Average EBVs																		\$A	\$A-L
	CED	CEM	GL	BW	200W	400W	600W	MCW	MILK	SS	DC	CWT	EMA	RIB	RUMP	RBY	IMF	NFI-F		
EBV	+2.2	+2.7	-4.8	+4.1	+50	+90	+117	+101	+17	+2.1	-4.6	+66	+6.4	+0.0	-0.3	+0.5	+2.2	+0.19	+197	+339

Lot 42 REILAND SOLITAIRE S1455^{PV} NLR2ISI455 AMFU.CAFU.DDFU.NHFU DOB: 14/8/2021 (Natural) HBR

G A R MOMENTUM^{PV} USA17354145
 Sire: THE ROCK MOMENTUM Q8^{PV} ATZQ8
 MURRAY WAVE J43^{PV} NURJ43

WK REPLAY[#] USA16154968
 Dam: LANDFALL ELSA J342^{SV} TFAJ342
 LANDFALL ELSA X57[#] TFAJ57

TACE	March 2023 TransTasman Angus Cattle Evaluation																		ABI	ABI-L
	CED	CEM	GL	BW	200W	400W	600W	MCW	MILK	SS	DC	CWT	EMA	RIB	RUMP	RBY	IMF	NFI-F		
EBV	-1.5	+2.9	-5.1	+4.9	+54	+89	+134	+129	+16	+1.5	-2.3	+75	+8.1	-3	-4.3	+1	+2.6	+0.19	\$166	\$308
ACC	59%	49%	73%	74%	73%	71%	71%	69%	63%	74%	41%	63%	62%	63%	64%	58%	65%	52%		

Traits Observed	BWT,200WT,SC,Scan(EMA,Rib,Rump,IMF),Genomics
Trait Focus	GROWTH - FRAME - CARCASS WEIGHT

Structural Assessment								
Claw Set	Front Angle	Rear Angle	Rear Legs	Rear Legs	Sheath	Muscle	Temp	
F 7	H 6	7	6	5	5	5	C	1

You will put plenty of ticks across this young sire. Top 15% for 600D growth at +134 whilst maintaining high end carcass traits of EMA at +8.1 and RBY at +1.0 (top 18%). Elsa cow family is the strongest lineage at Landfall (Tas).

Purchaser: \$

Lot 43 REILAND SHADE S1361^{SV} NLR2ISI361 AMFU.CAFU.DDFU.NHFU DOB: 23/8/2021 (Natural) HBR

ESSELMONT LOTTO L3^{PV} WWEL3
 Sire: AVALON ANGUS NORMAN N21^{SV} EQWN21
 AVALON ANGUS LOGIC L36[#] EQWL36

KAROO D145 GENERATOR G220^{PV} NENG220
 Dam: REILAND LOWEN M932[#] NLRM932
 ST PAULS 458N LOWAN D111^{PV} NSTD111

TACE	March 2023 TransTasman Angus Cattle Evaluation																		ABI	ABI-L
	CED	CEM	GL	BW	200W	400W	600W	MCW	MILK	SS	DC	CWT	EMA	RIB	RUMP	RBY	IMF	NFI-F		
EBV	-0.8	-2.9	-4.9	+5.7	+53	+99	+138	+114	+23	+2.9	-5.5	+84	+2.5	-1	-1.5	+0.7	+1.3	-0.05	\$191	\$335
ACC	57%	48%	70%	73%	72%	69%	69%	67%	60%	71%	39%	61%	60%	62%	62%	56%	64%	52%		

Traits Observed	BWT,200WT(x2),SC,Scan(EMA,Rib,Rump,IMF),Genomics
Trait Focus	GROWTH - MILK - CARCASS WEIGHT

Structural Assessment								
Claw Set	Front Angle	Rear Angle	Rear Legs	Rear Legs	Sheath	Muscle	Temp	
F 5	H 6	6	6	6	6	5	C	2

Massive made sire with top 12% 600D +138. Really high quality, slick haired and major dimension sire from a high-performance dam lineage emanating from the D11 cow. Soft, easy doing and a true herd improver.

Purchaser: \$

Lot 44 REILAND SOLO S1115^{PV} NLR2ISI115 AMFU.CAFU.DDFU.NHFU DOB: 21/8/2021 (AI) HBR

SYDGEN EXCEED 3223^{PV} USA17501893
 Sire: SYDGEN ENHANCE^{SV} USA18170041
 SYDGEN RITA 2618[#] USA17405676

CONNEALY ONWARD[#] USA14216491
 Dam: STONEY POINT ABIGALE L913^{SV} SYAL913
 S A V ABIGALE 5632[#] USA15107850

TACE	March 2023 TransTasman Angus Cattle Evaluation																		ABI	ABI-L
	CED	CEM	GL	BW	200W	400W	600W	MCW	MILK	SS	DC	CWT	EMA	RIB	RUMP	RBY	IMF	NFI-F		
EBV	+6.4	-0.6	-5.3	+3.1	+55	+99	+123	+89	+19	+3.8	-4.6	+68	+6.3	-0.2	-0.8	-0.3	+2.7	-0.05	\$214	\$360
ACC	61%	52%	83%	75%	68%	67%	68%	67%	62%	75%	38%	61%	60%	62%	62%	59%	60%	48%		

Traits Observed	GL,BWT,SC,Scan(EMA,Rib,Rump,IMF)
Trait Focus	OUTCROSS - DONOR - SCROTAL

Structural Assessment								
Claw Set	Front Angle	Rear Angle	Rear Legs	Rear Legs	Sheath	Muscle	Temp	
F 6	H 6	6	6	5	5	5	C+	1

From a donor cow who is an imported USA embryo purchased at Stony Point dispersal. Suitable for heifer joining followed by later cow joining. Top 15% scrotal at +3.8.

Purchaser: \$

TACE	Mid-March 2023 TransTasman Angus Cattle Evaluation - Breed Average EBVs																		\$A	\$A-L
	CED	CEM	GL	BW	200W	400W	600W	MCW	MILK	SS	DC	CWT	EMA	RIB	RUMP	RBY	IMF	NFI-F		
EBV	+2.2	+2.7	-4.8	+4.1	+50	+90	+117	+101	+17	+2.1	-4.6	+66	+6.4	+0.0	-0.3	+0.5	+2.2	+0.19	+197	+339

Lot 45 REILAND SPORRAN SIII0 PV NLR2ISIII0 AMFU,CAFU,DDF,NHFU DOB: 19/8/2021 (Natural) HBR

AYRVALE BARTEL E7^{PV} HIOE7
Sire: THE ROCK N49^{PV} ATZN49
THE ROCK K6^{PV} ATZK6

REILAND JOCUND J272^{SV} NLRJ272
Dam: REILAND VIXEN N114^{SV} NLRN114
REILAND VIXEN L18[#] NLR118

TACE	March 2023 TransTasman Angus Cattle Evaluation																		ABI	ABI-L
	CED	CEM	GL	BW	200W	400W	600W	MCW	MILK	SS	DC	CWT	EMA	RIB	RUMP	RBY	IMF	NFI-F		
EBV	+11.1	+6	-4.9	+0.8	+44	+92	+115	+85	+21	+2.6	-6.7	+67	+5.2	+2.8	+3.8	+0.1	+2.4	+0.43	\$234	\$395
ACC	55%	46%	68%	74%	72%	70%	70%	68%	60%	71%	39%	61%	60%	63%	63%	56%	65%	53%		

Traits Observed	BWT,200WT,SC,Scan(EMA,Rib,Rump,IMF),Genomics								Structural Assessment																
Trait Focus	HEIFERS - BIRTH - POSITIVE FAT								Claw Set	Front Angle	Rear Angle	Rear Legs	Rear Legs	Sheath	Muscle	Temp	F	H							
									6	5	6	6	5	5	5	C+	1								

Rest easy at calving given the top 1% calving ease and low birth at +0.8. Does not give any growth up as he compares favourably with higher growth sires in his contemporary. Top 3% for fats for those looking to add quicker maturity and ease of doing in tight years.

Purchaser: \$

Lot 46 REILAND SIMON S373 SV NLR2IS373 AMFU,CAFU,DDFU,NHFU DOB: 21/7/2021 (AI) HBR

SITZ WISDOM 481T[#] USA15636992
Sire: STONEY POINT KINGPIN K211^{SV} SGMK211
STONEY POINT YANKEE QUEEN H208^{PV} SGMH208

REILAND KIWI K201^{PV} NLRK201
Dam: REILAND COSMOS P314[#] NLRP314
REILAND COSMOS G524[#] NLRG524

TACE	March 2023 TransTasman Angus Cattle Evaluation																		ABI	ABI-L
	CED	CEM	GL	BW	200W	400W	600W	MCW	MILK	SS	DC	CWT	EMA	RIB	RUMP	RBY	IMF	NFI-F		
EBV	+5.4	+5.8	-4.7	+2.8	+59	+101	+126	+110	+23	+4.1	-5.1	+72	+12.8	-1.8	-2.7	+1.2	+2.7	+0.37	\$249	\$417
ACC	54%	42%	69%	73%	71%	69%	68%	66%	60%	73%	34%	59%	58%	60%	60%	54%	62%	48%		

Traits Observed	BWT,400WT,SC,Scan(EMA,Rib,Rump,IMF),Genomics								Structural Assessment																
Trait Focus	CALVING EASE - EMA - MARBLING								Claw Set	Front Angle	Rear Angle	Rear Legs	Rear Legs	Sheath	Muscle	Temp	F	H							
									6	6	6	6	5	5	5	C+	2								

As previously noted, Kingpin is exclusive to Reiland Angus and is used selectively on cow lines to add growth type and style. Top 4% EMA at +12.8. A near perfect data set, producing a top 6% \$A-L Index at \$417. The K201 sire was sold to Brewer Beef as an aged stud sire and still sound at 9 years of age and an IMF of +5.0. Longevity on his side.

Purchaser: \$

Lot 47 REILAND SIMMONS S397 SV NLR2IS397 AMFU,CAFU,DDFU,NHFU DOB: 20/7/2021 (AI) HBR

G A R EARLY BIRD[#] USA17354178
Sire: G A R ASHLAND^{PV} USA18217198
CHAIR ROCK AMBUSH 1018[#] USA16934264

REILAND KIWI K201^{PV} NLRK201
Dam: REILAND NEW DESIGN P350[#] NLRP350
REILAND E732[#] NLR E732

TACE	March 2023 TransTasman Angus Cattle Evaluation																		ABI	ABI-L
	CED	CEM	GL	BW	200W	400W	600W	MCW	MILK	SS	DC	CWT	EMA	RIB	RUMP	RBY	IMF	NFI-F		
EBV	+5.1	+6.7	-5.3	+2.8	+51	+89	+121	+89	+18	+2.1	-4	+63	+11.6	+0	-0.7	+0.5	+4.2	+0.37	\$239	\$385
ACC	61%	50%	70%	74%	73%	71%	71%	69%	63%	74%	37%	63%	63%	64%	64%	58%	65%	51%		

Traits Observed	BWT,400WT,SC,Scan(EMA,Rib,Rump,IMF),Genomics								Structural Assessment																
Trait Focus	HEIFERS - EMA - MARBLING								Claw Set	Front Angle	Rear Angle	Rear Legs	Rear Legs	Sheath	Muscle	Temp	F	H							
									6	5	6	6	5	6	4	C	1								

Low birth with ideal growth/MCW combination. Top 14% calving ease and a birth of +2.8 aligns well with common sense / economic beef production. Maternal side is high, previous marbling with top 9% recorded at +4.2. Top 5% EMA at +11.6 balances this young sire out very well.

Purchaser: \$

TACE	Mid-March 2023 TransTasman Angus Cattle Evaluation - Breed Average EBVs																		\$A	\$A-L
	CED	CEM	GL	BW	200W	400W	600W	MCW	MILK	SS	DC	CWT	EMA	RIB	RUMP	RBY	IMF	NFI-F		
EBV	+2.2	+2.7	-4.8	+4.1	+50	+90	+117	+101	+17	+2.1	-4.6	+66	+6.4	+0.0	-0.3	+0.5	+2.2	+0.19	+197	+339

Lot 48 REILAND SAFEGUARD SI443^{PV} NLR2IS1443

AMF.CAF.DDF.NHF DOB: 25/8/2021 (AI) APR

ESLEMONT GENERAL N12^{PV} WWEN12

TROWBRIDGE BBB GATSBY N13^{PV} DCGN13

Sire: ESLEMONT QUOKKA Q24^{PV} WWEQ24

Dam: REILAND LUCY Q956^{SV} NLRQ956

ESLEMONT NUCKLE N7^{PV} WWEN7

REILAND LUCY J12050 # NLRJ12050

TACE	March 2023 TransTasman Angus Cattle Evaluation																		ABI	ABI-L
	CED	CEM	GL	BW	200W	400W	600W	MCW	MILK	SS	DC	CWT	EMA	RIB	RUMP	RBY	IMF	NFI-F		
EBV	-0.3	-0.5	-1.7	+4.9	+51	+87	+115	+82	+18	+3.6	-5.1	+68	+16	-1.2	-2.6	+2.3	+1.3	+0.66	\$234	\$358
ACC	52%	40%	70%	72%	71%	68%	68%	65%	57%	71%	32%	58%	57%	59%	59%	52%	62%	48%		

Traits Observed	BWT,200WT,SC,Scan(EMA,Rib,Rump,IMF),Genomics							
Trait Focus	EMA - RBY - MCW							

Structural Assessment								
Claw Set	Front Angle	Rear Angle	Rear Legs	Rear Legs	Sheath	Muscle	Temp	
F 6	H 6	6	6	5	6	5	C	2

A heifers first calf by WA E Quokka who is now a trait leader in EMA at +20.7. His son's EMA at +16.0 is following his footsteps with high yield carcass and strong maternal base. Top 1% RBY at +2.3 and retains positive IMF.

Purchaser: \$

Lot 49 REILAND STEWART S390^{SV} NLR2IS390

AMFU.CAFU.DDFU.NHFU DOB: 12/8/2021 (AI) HBR

G A R SURE FIRE^{SV} USA17328461

REILAND KIWI K201^{PV} NLRK201

Sire: G A R PHOENIX^{PV} USA18636106

Dam: REILAND DESTINATION P277 # NLRP277

G A R PROPHET N744 # USA18127279

KENNY'S CREEK DESTINATION B183^E NDIB183

TACE	March 2023 TransTasman Angus Cattle Evaluation																		ABI	ABI-L
	CED	CEM	GL	BW	200W	400W	600W	MCW	MILK	SS	DC	CWT	EMA	RIB	RUMP	RBY	IMF	NFI-F		
EBV	+7.1	-1.5	-2.7	+2.8	+62	+109	+132	+105	+15	+3.7	-5.9	+83	+8.8	+1.3	+1.4	+0.4	+2.6	+0.08	\$266	\$435
ACC	58%	47%	82%	74%	73%	71%	71%	68%	62%	74%	38%	62%	62%	63%	63%	57%	65%	53%		

Traits Observed	GL,BWT,400WT,SC,Scan(EMA,Rib,Rump,IMF),Genomics							
Trait Focus	HEIFERS - GROWTH - EMA							

Structural Assessment								
Claw Set	Front Angle	Rear Angle	Rear Legs	Rear Legs	Sheath	Muscle	Temp	
F 6	H 6	6	6	6	5	5	C+	2

Anyone looking to invest into a balanced breeding program, here's the result. All the hard work and disappointment done. Top 14% calving ease, low birth at +2.8 through to +132 600D combines well with positive fat at top 20% eye muscle at +8.8. Hard to fault with this youngster. Top 3% / \$A-L at \$435.

Purchaser: \$

Lot 50 REILAND STONE S376^{SV} NLR2IS376

AMFU.CAFU.DDFU.NHFU DOB: 6/8/2021 (AI) HBR

SYDGEN EXCEED 3223^{PV} USA17501893

ESLEMONT LOTTO L3^{PV} WWEL3

Sire: SYDGEN ENHANCE^{SV} USA18170041

Dam: REILAND ANNABELL P894 # NLRP894

SYDGEN RITA 2618 # USA17405676

REILAND ANNABELL M1195 # NLRM1195

TACE	March 2023 TransTasman Angus Cattle Evaluation																		ABI	ABI-L
	CED	CEM	GL	BW	200W	400W	600W	MCW	MILK	SS	DC	CWT	EMA	RIB	RUMP	RBY	IMF	NFI-F		
EBV	+4.4	+2.6	-7	+2.5	+48	+83	+104	+88	+14	+3.2	-5.7	+51	+10	+0.1	-0.3	+0.4	+4.4	-0.09	\$229	\$373
ACC	63%	54%	83%	74%	73%	71%	72%	70%	65%	75%	40%	64%	64%	65%	65%	60%	67%	54%		

Traits Observed	GL,BWT,400WT,SC,Scan(EMA,Rib,Rump,IMF),Genomics							
Trait Focus	BIRTH - HEIFERS - CARCASS							

Structural Assessment								
Claw Set	Front Angle	Rear Angle	Rear Legs	Rear Legs	Sheath	Muscle	Temp	
F 6	H 5	7	6	5	6	4	C+	1

Another elite data set and high phenotype sire by S Enhance who has continued to impress for low birth/ growth/ docile offspring. He is a top 1% temp bull at +47. Reiland will continue to use Enhance as his offspring continue to impress. Top 7% for EMA at +10.0 and IMF at +4.4 will certainly impress those who choose to inspect the bull.

Purchaser: \$

TACE	Mid-March 2023 TransTasman Angus Cattle Evaluation - Breed Average EBVs																		\$A	\$A-L
	CED	CEM	GL	BW	200W	400W	600W	MCW	MILK	SS	DC	CWT	EMA	RIB	RUMP	RBY	IMF	NFI-F		
EBV	+2.2	+2.7	-4.8	+4.1	+50	+90	+117	+101	+17	+2.1	-4.6	+66	+6.4	+0.0	-0.3	+0.5	+2.2	+0.19	+197	+339

Lot 51 REILAND SCHMIDT S394^{SV} NLR2IS394

AMF,CAFU,DDFU,NHFU DOB: 20/7/2021 (AI) HBR

SYDGEN EXCEED 3223^{PV} USA17501893

STRATHEWEN GENETIC J49 M02^{PV} VSNM02

Sire: SYDGEN ENHANCE^{SV} USA18170041

Dam: REILAND RITA P1224 # NLRP1224

SYDGEN RITA 2618 # USA17405676

REILAND RITA J858 # NLRJ858

TACE	March 2023 TransTasman Angus Cattle Evaluation																		ABI	ABI-L
	CED	CEM	GL	BW	200W	400W	600W	MCW	MILK	SS	DC	CWT	EMA	RIB	RUMP	RBY	IMF	NFI-F		
EBV	-2.1	-10.5	-3.9	+6.3	+64	+112	+154	+146	+22	+1.2	-4	+89	+3.4	-4	-4.3	+0.1	+2.7	-0.52	\$181	\$335
ACC	63%	54%	71%	74%	73%	71%	71%	70%	64%	75%	36%	63%	62%	64%	63%	58%	66%	52%		

Traits Observed	BWT,400WT,SC,Scan(EMA,Rib,Rump,IMF),Genomics							
Trait Focus	GROWTH - MILK - CARCASE WEIGHT							

Structural Assessment								
Claw Set	Front Angle	Rear Angle	Rear Legs	Rear Legs	Sheath	Muscle	Temp	
F 6 H 6	6	6	5	6	5	C+	1	

A high growth sire by Enhance at +154 (top 3%) will deliver that extra bull power for growth in mature cow joining's. Top 1% NFI and top 5% docility, is a strong attribute as we all age (just that little!).

Purchaser: \$

Lot 52 REILAND STARFIRE S408^{SV} NLR2IS408

AMF,CAFU,DDFU,NHFU DOB: 17/7/2021 (AI) APR

ESSEMONT LOTTO L3^{PV} WWEL3

THE ROCK L15^{PV} ATZL15

Sire: REILAND PLYMOUTH P960^{PV} NLRP960

Dam: REILAND BURNETTE P396 # NLRP396

REILAND LOWEN M407^{SV} NLRM407

REILAND BURNETTE J573^{PV} NLRJ573

TACE	March 2023 TransTasman Angus Cattle Evaluation																		ABI	ABI-L
	CED	CEM	GL	BW	200W	400W	600W	MCW	MILK	SS	DC	CWT	EMA	RIB	RUMP	RBY	IMF	NFI-F		
EBV	+8	+8.3	-8.7	+2.6	+56	+99	+131	+112	+17	+2	-6	+88	+4.5	+0.2	+0	-0.8	+5.2	+0.45	\$245	\$424
ACC	54%	45%	71%	73%	71%	69%	68%	66%	58%	72%	36%	59%	59%	61%	61%	55%	63%	51%		

Traits Observed	BWT,400WT,SC,Scan(EMA,Rib,Rump,IMF),Genomics							
Trait Focus	MARBLING - GESTATION - HEIFERS							

Structural Assessment								
Claw Set	Front Angle	Rear Angle	Rear Legs	Rear Legs	Sheath	Muscle	Temp	
F 6 H 5	6	6	5	6	5	C+	1	

An imposing Plymouth son with added growth at +131 (top 20%) from a low +2.6 birth. Added calving ease at +8.0 / +8.3 aligns this bull to be a heifer specialist. Added top 2% IMF at +5.2 makes him a valuable addition to any sire battery. Extremely sound and high indexing (top 4%).
Note: previous pinkeye scarring on LHS but no issue on vet check.

Purchaser: \$

Lot 53 REILAND SHAW S403^{SV} NLR2IS403

AMF,CAFU,DDFU,NHFU DOB: 15/7/2021 (AI) HBR

ESSEMONT GENERAL N12^{PV} WWEN12

SYDGEN BLACK PEARL 2006^{PV} USA17236055

Sire: ESSEMONT QUOKKA Q24^{PV} WWEQ24

Dam: REILAND FAR OUT P576 # NLRP576

ESSEMONT NUCKLE N7^{PV} WWEN7

REILAND FAR OUT L960 # NLR960

TACE	March 2023 TransTasman Angus Cattle Evaluation																		ABI	ABI-L
	CED	CEM	GL	BW	200W	400W	600W	MCW	MILK	SS	DC	CWT	EMA	RIB	RUMP	RBY	IMF	NFI-F		
EBV	+2.8	+0.9	-6.4	+4.3	+47	+84	+109	+83	+15	+3	-6.5	+60	+12.7	-0.8	-1.4	+1.7	+1.8	+0.35	\$234	\$371
ACC	54%	44%	72%	73%	71%	68%	68%	66%	57%	71%	36%	59%	58%	60%	60%	54%	62%	49%		

Traits Observed	BWT,400WT,SC,Scan(EMA,Rib,Rump,IMF),Genomics							
Trait Focus	EMA - DOCILITY - HEIFERS							

Structural Assessment								
Claw Set	Front Angle	Rear Angle	Rear Legs	Rear Legs	Sheath	Muscle	Temp	
F 6 H 5	6	6	5	6	5	C+	2	

A super sound Quokka son imparting top 4% eye muscle and +12.7 and +1.7 RBY. Quokka is as sound as a bull and a true B muscle sire.

Purchaser: \$

TACE	Mid-March 2023 TransTasman Angus Cattle Evaluation - Breed Average EBVs																		\$A	\$A-L
	CED	CEM	GL	BW	200W	400W	600W	MCW	MILK	SS	DC	CWT	EMA	RIB	RUMP	RBY	IMF	NFI-F		
EBV	+2.2	+2.7	-4.8	+4.1	+50	+90	+117	+101	+17	+2.1	-4.6	+66	+6.4	+0.0	-0.3	+0.5	+2.2	+0.19	+197	+339

Lot 54 REILAND SMITH S404^{SV} NLR2IS404

AMFU,CAFU,DDI7%,NHFU DOB: 21/7/2021 (AI) HBR

ESSELMONT LOTTO L3^{PV} WWEL3

REILAND JORDAN J61^{SV} NLRJ61

Sire: REILAND PLYMOUTH P960^{PV} NLRP960

Dam: REILAND PRINCESS P55 # NLRP55

REILAND LOWEN M407^{SV} NLRM407

REILAND PRINCESS L661 # NLR661

TACE	March 2023 TransTasman Angus Cattle Evaluation																		ABI	ABI-L
	CED	CEM	GL	BW	200W	400W	600W	MCW	MILK	SS	DC	CWT	EMA	RIB	RUMP	RBY	IMF	NFI-F		
EBV	+3	+4.1	-3.7	+4	+60	+107	+135	+118	+15	+2.5	-6.4	+89	+10.4	-2.1	-1.5	+1.5	+2.2	+0.24	\$267	\$441
ACC	54%	43%	73%	73%	71%	69%	69%	66%	58%	72%	35%	59%	59%	61%	61%	55%	63%	50%		

Traits Observed	BWT,400WT,SC,Scan(EMA,Rib,Rump,IMF),Genomics							
Trait Focus	GROWTH - EMA - CARCASS WEIGHT							

Structural Assessment								
Claw Set	Front Angle	Rear Angle	Rear Legs	Rear Legs	Sheath	Muscle	Temp	
F 6	H 5	6	6	6	6	5	C	1

Easy to use on heifers or cow herds given balance of calving ease, gestation, and birth weight. Top 4% for carcass weight and that the rail they say you on. Top 10% EMA at +10.4 contributes to his top 2% combined Index at \$A-L \$441.

Purchaser: \$

Lot 55 REILAND SALAMANDER S616^{PV} NLR2IS616

AM25%,CAFU,DDFU,NHFU DOB: 15/7/2021 (AI) HBR

G A R EARLY BIRD # USA17354178

REILAND KEKA K232^{SV} NLRK232

Sire: G A R ASHLAND^{PV} USA18217198

Dam: REILAND PRIMROSE Q610^{SV} NLRQ610

CHAIR ROCK AMBUSH 1018 # USA16934264

REILAND PRIMROSE M1409 # NLRM1409

TACE	March 2023 TransTasman Angus Cattle Evaluation																		ABI	ABI-L
	CED	CEM	GL	BW	200W	400W	600W	MCW	MILK	SS	DC	CWT	EMA	RIB	RUMP	RBY	IMF	NFI-F		
EBV	+3.9	+8.5	-8.3	+1.6	+55	+101	+134	+113	+24	+0.8	-2.6	+76	+14.7	-3.1	-2.7	+1.7	+2.4	+0	\$237	\$396
ACC	61%	49%	82%	73%	72%	70%	70%	68%	61%	72%	35%	62%	62%	63%	63%	57%	64%	49%		

Traits Observed	GL,BWT,SC,Scan(EMA,Rib,Rump,IMF),Genomics							
Trait Focus	GROWTH - EMA - HEIFERS							

Structural Assessment								
Claw Set	Front Angle	Rear Angle	Rear Legs	Rear Legs	Sheath	Muscle	Temp	
F 6	H 6	6	6	5	5	5	C+	1

A deep sided sire with real dimension while retaining fleshing ability. A true curve bender given top 8% birth at +1.6 to top 15% 600D at +134. A docile, high phenotype sire with true performance given top 1% EMA at +14.7 and +2.4 for IMF. Will impart conformation, quality to your cow herd and \$ in the back pocket.

Purchaser: \$

Lot 56 REILAND SPIN S1434^{SV} NLR2IS1434

AMFU,CAFU,DDFU,NHFU DOB: 17/8/2021 (AI) HBR

HOOVER DAM # USA16124994

REILAND MANILLA M404^{SV} NLRM404

Sire: S S NIAGARA Z29^{SV} USA17287387

Dam: REILAND LARINA Q894 # NLRQ894

JET S S X144 # USA16715036

ST PAULS LARINA M101 # NSTM101

TACE	March 2023 TransTasman Angus Cattle Evaluation																		ABI	ABI-L
	CED	CEM	GL	BW	200W	400W	600W	MCW	MILK	SS	DC	CWT	EMA	RIB	RUMP	RBY	IMF	NFI-F		
EBV	+7.9	+1.1	+0.2	+0.6	+50	+89	+116	+94	+17	+3.1	-5.3	+73	+8.4	+0.3	+1.2	+0.1	+2.8	+0.2	\$218	\$372
ACC	57%	45%	82%	73%	72%	69%	71%	67%	61%	73%	35%	61%	60%	62%	61%	55%	64%	48%		

Traits Observed	GL,BWT,200WT,SC,Scan(EMA,Rib,Rump,IMF),Genomics							
Trait Focus	CALVING EASE - LOW BIRTH - CARCASS							

Structural Assessment								
Claw Set	Front Angle	Rear Angle	Rear Legs	Rear Legs	Sheath	Muscle	Temp	
F 6	H 6	6	6	5	6	5	C+	2

Not too many bulls are genomically tested at +0.6 birth (top 3%) and +116 600D growth. These bulls bred from first calf heifers never fail to impress as they grow and develop. Exceptional carcass and soundness traits across the board. A sire worth another look!

Purchaser: \$

TACE	Mid-March 2023 TransTasman Angus Cattle Evaluation - Breed Average EBVs																		\$A	\$A-L
	CED	CEM	GL	BW	200W	400W	600W	MCW	MILK	SS	DC	CWT	EMA	RIB	RUMP	RBY	IMF	NFI-F		
EBV	+2.2	+2.7	-4.8	+4.1	+50	+90	+117	+101	+17	+2.1	-4.6	+66	+6.4	+0.0	-0.3	+0.5	+2.2	+0.19	+197	+339

Lot 57 REILAND SUMO S1426^{SV} NLR2IS1426

AMFU.CAFU.DDFU.NHFU DOB: 5/8/2021 (AI) HBR

G A R EARLY BIRD # USA17354178
 Sire: G A R ASHLAND^{PV} USA18217198
 CHAIR ROCK AMBUSH 1018 # USA16934264

AYRVALE MONTANA M13^{PV} HIOM13
 Dam: REILAND ESTER Q274 # NLRQ274
 MERRIDALE ESTER L105 # CMDL105

TACE	March 2023 TransTasman Angus Cattle Evaluation																		ABI	ABI-L
	CED	CEM	GL	BW	200W	400W	600W	MCW	MILK	SS	DC	CWT	EMA	RIB	RUMP	RBY	IMF	NFI-F		
EBV	+2.2	+1.1	-7.4	+4.1	+50	+90	+116	+85	+23	+0.3	-5.3	+69	+8	+0.7	+1.1	-0.3	+4.2	+0.31	\$229	\$362
ACC	62%	50%	82%	72%	72%	70%	71%	69%	63%	73%	36%	63%	63%	63%	63%	58%	66%	51%		

Traits Observed	GL,BWT,SC,Scan(EMA,Rib,Rump,IMF),Genomics
Trait Focus	MARBLING - POSITIVE FAT - MILK

Structural Assessment								
Claw Set	Front Angle	Rear Angle	Rear Legs	Rear Legs	Sheath	Muscle	Temp	
F 6	H 5	6	6	5	5	5	C+	2

A heifers first calf with a top 9% IMF at +4.2 and impressive birth, growth spread whilst retaining sensible MCW at +85. Again, the Ester cow family produces the goods.

Purchaser: \$

Lot 58 REILAND SCOTT S410^{SV} NLR2IS410

AMFU.CAFU.DDFU.NHFU DOB: 1/10/2021 (AI) HBR

G A R SURE FIRE 6404 # USA17965471
 Sire: GB FIREBALL 672^{PV} USA18690054
 GB ANTICIPATION 432 # USA18054344

REILAND LANCEFIELD L934^{PV} NLR934
 Dam: REILAND AMBUSH P1218 # NLRP1218
 REILAND AMBUSH G707 # NLRG707

TACE	March 2023 TransTasman Angus Cattle Evaluation																		ABI	ABI-L
	CED	CEM	GL	BW	200W	400W	600W	MCW	MILK	SS	DC	CWT	EMA	RIB	RUMP	RBY	IMF	NFI-F		
EBV	+7.7	+6.5	-6.9	+1.3	+55	+96	+126	+100	+21	+2.8	-5.9	+74	+12.7	-0.7	-0.6	+0.8	+4	+0.23	\$269	\$439
ACC	61%	46%	74%	74%	73%	71%	71%	67%	59%	73%	33%	61%	62%	63%	62%	56%	65%	48%		

Traits Observed	BWT,400WT,SC,Scan(EMA,Rib,Rump,IMF),Genomics
Trait Focus	HEIFERS - CALVING EASE - MARBLING

Structural Assessment								
Claw Set	Front Angle	Rear Angle	Rear Legs	Rear Legs	Sheath	Muscle	Temp	
F 5	H 5	6	6	5	6	4	C+	2

Stacked pedigree for calving ease/birth/growth and carcass. An ideal data set, top 10% calving ease at +7.7 with a low birth of +1.3 combines well with top 10% IMF.

Purchaser: \$

Lot 59 REILAND SARGENT S1278^{SV} NLR2IS1278

AMFU.CAFU.DDFU.NHFU DOB: 19/7/2021 (AI) HBR

G A R MOMENTUM^{PV} USA17354145
 Sire: THE ROCK MOMENTUM Q8^{PV} ATZQ8
 MURRAY WAVE J43^{PV} NURJ43

LANDFALL REALITY L76^{SV} TFAL76
 Dam: REILAND MILDRED Q359 # NLRQ359
 REILAND MILDRED N1261 # NLRN1261

TACE	March 2023 TransTasman Angus Cattle Evaluation																		ABI	ABI-L
	CED	CEM	GL	BW	200W	400W	600W	MCW	MILK	SS	DC	CWT	EMA	RIB	RUMP	RBY	IMF	NFI-F		
EBV	-6.3	+2.8	-4.9	+5.5	+62	+114	+141	+129	+15	+3.1	-5.1	+81	+10.7	+0.1	-0.5	+0.6	+2.5	+0.57	\$226	\$383
ACC	55%	44%	82%	73%	71%	69%	68%	66%	57%	72%	35%	58%	58%	60%	60%	54%	62%	48%		

Traits Observed	GL,BWT,400WT(x2),SC,Scan(EMA,Rib,Rump,IMF),Genomics
Trait Focus	GROWTH - EMA - DOCILITY

Structural Assessment								
Claw Set	Front Angle	Rear Angle	Rear Legs	Rear Legs	Sheath	Muscle	Temp	
F 6	H 6	6	6	5	5	4	C	1

A heifers first calf with outstanding performance given the top 8% 600D weight at +141 and EMA at +10.7. The Rock Momentum Q8 stamps this dominance via balanced carcass traits including neutral /positive fat EBVs.

Purchaser: \$

TACE	Mid-March 2022 TransTasman Angus Cattle Evaluation - Breed Average EBVs																		\$A	\$A-L
	CED	CEM	GL	BW	200W	400W	600W	MCW	MILK	SS	DC	CWT	EMA	RIB	RUMP	RBY	IMF	NFI-F		
EBV	+2.3	+2.6	+4.7	+4.1	+50	+89	+117	+101	+18	+2.1	-4.7	+66	+6.2	+0.0	-0.4	-0.4	+2.1	+0.19	+195	+337

Murdeduke **QUARTERBACK** Q011

Reg: CSWQ011

Lawsons Momentum M518 x Carabar Docklands

- One of the most talked about sires in the breed over the past 2 seasons - Watch out in 2023 as his sons are poised to the top bull sales across the country.
- Combines the paperwork from his sire with the superb maternal qualities from his cow family. His dam has 4 flush sisters still in production in a large contemporary groups and his granddam sold to a syndicate of breeders across 3 states in 2020. The cow family is littered with stud sire producing dams and donors. Now with almost 2000 registered progeny in Australia; his unique data set makes him one of the breeds most complete all-rounders.



Australian EBVs March 2023

	CED	CEM	GL	BW	200D	400D	600D	MCW	MILK	DTC	SS	DOC	CLAW SET	FT ANGLE	CWT	EMA	RIB	RUMP	RBY	IMF	\$A	\$A-L
EBV	+8	+3	-10.3	+3	+57	+104	+142	+122	+23	-5.7	+5	+23	+0.76	+1	+79	+7	+0.8	+1	-0.7	+5	\$239	\$422
Perc	11	55	2	21	20	15	9	18	11	22	2	37	31	36	17	45	29	32	96	3	12	5

Sterling **PACIFIC** 904

Reg: USA19444025

Hoover No Doubt X G A R Prophet

- One of the highest selling USA sires over the past 2 seasons, Pacific's progeny are set to make their mark - thick and deep with great temperament and excellent foot structure. His first sons offered in the USA topped sales, a feat which is sure to be repeated here in Australia from early reports.
- With his balance of phenotype and EBV data set; he is staking a claim as one of the best of many Baldrige Isabel Y69 influenced sons on the market.



Australian EBVs March 2023

	CED	CEM	GL	BW	200D	400D	600D	MCW	MILK	DTC	SS	DOC	CLAW SET	FT ANGLE	CWT	EMA	RIB	RUMP	RBY	IMF	\$A	\$A-L
EBV	-0.9	+1	-4	+4	+66	+123	+152	+135	+14	-4.9	+2	+39	+0.74	+1	+86	+5	-0.4	-2	+0	+3	\$236	\$410
Perc	77	71	62	57	3	1	4	8	74	42	57	3	27	7	7	72	58	79	77	26	14	8

Chiltern Park **PICASSO** P9

Reg: GTNP9

Paringa Judd J5 x Ayrvale Bartel E7

- Coming through the Angus Benchmark program PICASSO was one of the best in his cohort for carcass weight, EMA, fat cover and marbling, he is also the No.1 docility bull and among the best for claw and foot angle.
- His \$index percentiles read like a picket fence; you could do worse than have a punt on Picasso in '23!



Australian EBVs March 2023

	CED	CEM	GL	BW	200D	400D	600D	MCW	MILK	DTC	SS	DOC	CLAW SET	FT ANGLE	CWT	EMA	RIB	RUMP	RBY	IMF	\$A	\$A-L
EBV	9.3	+6	-3.6	+2	+57	+103	+134	+99	+22	-7.3	+3	+35	+0.80	+1	+98	+8	-0.6	+1	-0.4	+5	\$277	\$455
Perc	4	16	69	8	21	17	18	53	14	3	11	6	39	5	2	31	62	23	91	5	1	1



Agri-Gene P/L

123-125 Tone Road, Wangaratta Victoria 3677



P: 03 5722 2666

E: info@agrigene.com.au

www.agrigene.com.au

Lot 60 REILAND SERGIO S1276^{SV} NLR2IS1276 AMFU,CAFU,DDFU,NHFU DOB: 20/8/2021 (AI) APR

G A R MOMENTUM^{PV} USA17354145
Sire: THE ROCK MOMENTUM Q8^{PV} ATZQ8
MURRAY WAVE J43^{PV} NURJ43

REILAND LANE L131^{SV} NLR131
Dam: REILAND ZACINITH Q306^{SV} NLRQ306
REILAND ZACINITH N279[#] NLRN279

TACE	March 2023 TransTasman Angus Cattle Evaluation																		ABI	ABI-L
	CED	CEM	GL	BW	200W	400W	600W	MCW	MILK	SS	DC	CWT	EMA	RIB	RUMP	RBY	IMF	NFI-F		
EBV	+2.1	+5.3	-2.9	+2.9	+41	+75	+99	+81	+15	+1.4	-0.6	+55	+8	+1.2	+1.3	+0	+3.8	+0.58	\$160	\$273
ACC	42%	34%	52%	53%	53%	50%	49%	49%	41%	48%	27%	43%	43%	45%	45%	41%	46%	36%		

Traits Observed	None							
Trait Focus	HEIFERS - IMF - EMA							

Structural Assessment								
Claw Set	Front Angle	Rear Angle	Rear Legs	Rear Legs	Sheath	Muscle	Temp	
F 5	H 5	6	6	5	5	4	C+	1

Heifers first calf by The Rock Q8 sire. Wonderfully proportioned and amazing body length. Easy heifer joining sire given such a low +2.9 birth weight. Top 10% IMF at +3.8.

Purchaser: \$

Lot 61 REILAND SUPERSONIC S1281^{PV} NLR2IS1281 AMFU,CAFU,DDFU,NHFU DOB: 20/7/2021 (AI) APR

G A R MOMENTUM^{PV} USA17354145
Sire: THE ROCK MOMENTUM Q8^{PV} ATZQ8
MURRAY WAVE J43^{PV} NURJ43

AYRVALE MONTANA M13^{PV} HIOM13
Dam: REILAND DIRECTION Q594^{SV} NLRQ594
REILAND DIRECTION M600[#] NLRM600

TACE	March 2023 TransTasman Angus Cattle Evaluation																		ABI	ABI-L
	CED	CEM	GL	BW	200W	400W	600W	MCW	MILK	SS	DC	CWT	EMA	RIB	RUMP	RBY	IMF	NFI-F		
EBV	+0.2	-1.2	-5	+3.3	+47	+84	+116	+86	+22	+1.4	-4.7	+67	+5.3	+2.9	+2.8	-1.1	+5.1	+0.41	\$200	\$325
ACC	55%	43%	83%	73%	71%	69%	68%	66%	57%	72%	34%	59%	58%	61%	61%	54%	62%	48%		

Traits Observed	GL,BWT,400WT(x2),SC,Scan(EMA,Rib,Rump,IMF),Genomics							
Trait Focus	IMF - POSITIVE FATS - GROWTH							

Structural Assessment								
Claw Set	Front Angle	Rear Angle	Rear Legs	Rear Legs	Sheath	Muscle	Temp	
F 6	H 5	6	6	5	6	4	C+	1

Heifers first calf with top 3% IMF at +5.1. Excellent carcass balance given positive fats (top 5%) and easy doing character. These heifers have gone on to make wonderful core herd cows into the future.

Purchaser: \$

Lot 62 REILAND SECRET S1284^{PV} NLR2IS1284 AMFU,CAFU,DDFU,NHFU DOB: 12/7/2021 (AI) HBR

KIDMAN IMPACT K99^{SV} BKCK99
Sire: REILAND NED N1164^{SV} NLRN1164
REILAND FIREPLAY K943[#] NLRK943

STRATHEWEN REGENT E23 H70^{PV} VSNH70
Dam: REILAND UNDERSTUDY Q309^{SV} NLRQ309
REILAND UNDERSTUDY N355[#] NLRN355

TACE	March 2023 TransTasman Angus Cattle Evaluation																		ABI	ABI-L
	CED	CEM	GL	BW	200W	400W	600W	MCW	MILK	SS	DC	CWT	EMA	RIB	RUMP	RBY	IMF	NFI-F		
EBV	+5.8	+2.5	-10.2	+5.2	+62	+109	+145	+129	+18	+3.8	-6.1	+93	+8	-0.5	-0.5	+1.1	-0.1	+0.25	\$235	\$418
ACC	53%	41%	83%	72%	70%	68%	68%	65%	57%	72%	34%	58%	57%	59%	60%	53%	61%	47%		

Traits Observed	GL,BWT,400WT(x2),SC,Scan(EMA,Rib,Rump,IMF),Genomics							
Trait Focus	GROWTH - CALVING EASE - EMA							

Structural Assessment								
Claw Set	Front Angle	Rear Angle	Rear Legs	Rear Legs	Sheath	Muscle	Temp	
F 6	H 6	6	6	6	6	5	C+	2

The maternal strength of this sire is evident from the heifers first calf producing at top 7% 600D growth at +145 along with a top 3% carcass weight at +93. Now that "profit plus" coming from a breeding program when you consider top 20% calving ease.

Purchaser: \$

TACE	Mid-March 2023 TransTasman Angus Cattle Evaluation - Breed Average EBVs																		\$A	\$A-L
	CED	CEM	GL	BW	200W	400W	600W	MCW	MILK	SS	DC	CWT	EMA	RIB	RUMP	RBY	IMF	NFI-F		
EBV	+2.2	+2.7	-4.8	+4.1	+50	+90	+117	+101	+17	+2.1	-4.6	+66	+6.4	+0.0	-0.3	+0.5	+2.2	+0.19	+197	+339

Lot 63 REILAND SUPERMAN S1280^{PV} NLR2IS1280 AMFU,CAFU,DDFU,NHFU DOB: 16/7/2021 (AI) HBR

Sire: **G A R EARLY BIRD** # USA17354178
G A R ASHLAND^{PV} USA18217198
CHAIR ROCK AMBUSH 1018 # USA16934264

Dam: **REILAND KIWI K201^{PV} NLRK201**
REILAND DANDLOO Q661^{SV} NLRQ661
REILAND DANDLOO L1029 # NLR1029

TACE	March 2023 TransTasman Angus Cattle Evaluation																		ABI	ABI-L
	CED	CEM	GL	BW	200W	400W	600W	MCW	MILK	SS	DC	CWT	EMA	RIB	RUMP	RBY	IMF	NFI-F		
EBV	+2.6	+4.4	-6.8	+3.2	+64	+115	+141	+132	+13	+1.6	-3.5	+88	+10.7	-1.4	-1.2	+0.9	+1.6	-0.08	\$236	\$412
ACC	61%	49%	82%	74%	73%	71%	71%	69%	63%	74%	36%	62%	62%	63%	63%	58%	65%	50%		

Traits Observed	GL,BWT,400WT(x2),SC,Scan(EMA,Rib,Rump,IMF),Genomics							
Trait Focus	LOW BIRTH - GROWTH - CALVING EASE							

Structural Assessment								
Claw Set	Front Angle	Rear Angle	Rear Legs	Rear Legs	Sheath	Muscle	Temp	
F 6	H 5	6	6	5	5	4	C+	1

Could be one of the elite bulls in the sale given calving ease/low birth/growth combined at +141 top 10% (600D). The K201 Kiwi bull is extremely influential with maternal traits. Top 5% carcass weight at +88.

Purchaser: \$

Lots 64-68 Used lightly in spring joining

Lot 64 REILAND SOLOMON S913^{PV} NLR2IS913 AMFU,CAFU,DDFU,NHFU DOB: 19/3/2021 (ET) HBR

Sire: **MATAURI REALITY 839** # NZE14647008839
STONE POINT REALITY M911^{PV} SYAM911
STONE POINT DREAM F302^{PV} SGMF302

Dam: **NARRACALCA VALIANT V7^{SV} NNDV7**
REILAND NICKY Z413^{PV} NLRZ413
REILAND NICKIE W167 # NLRW167

TACE	March 2023 TransTasman Angus Cattle Evaluation																		ABI	ABI-L
	CED	CEM	GL	BW	200W	400W	600W	MCW	MILK	SS	DC	CWT	EMA	RIB	RUMP	RBY	IMF	NFI-F		
EBV	+3.5	+3.9	-5.9	+5.8	+53	+106	+140	+136	+15	+2.3	-1.5	+69	+7.7	-0.5	-0.2	+0.3	+1.8	+0.23	\$174	\$342
ACC	60%	50%	73%	76%	75%	73%	73%	70%	65%	75%	43%	64%	63%	65%	65%	59%	67%	54%		

Traits Observed	BWT,200WT,400WT,SC,Scan(EMA,Rib,Rump,IMF),Genomics							
Trait Focus	FRAME - LENGTH - CALVING EASE							

Structural Assessment								
Claw Set	Front Angle	Rear Angle	Rear Legs	Rear Legs	Sheath	Muscle	Temp	
F 6	H 6	6	6	7	6	5	C	1

Slightly later maturity sire with abundant softness and growth performance given his +140 (600D) ranking top 10%. Expect top end females from his strong maternal lineage.

Purchaser: \$

Lot 65 REILAND STORM S926^{PV} NLR2IS926 AMFU,CAFU,DDFU,NHFU DOB: 28/3/2021 (ET) HBR

Sire: **REILAND JORDAN J61^{SV} NLRJ61**
REILAND PIRELLI P913^{PV} NLRP913
STRATHEWEN REGENT WILPENA J49^{PV} VSNJ49

Dam: **BR MIDLAND** # USA13898124
ESSLEMONT CHERRY C16^{PV} WWEC16
ESSLEMONT ATINO A20^{PV} WWEA20

TACE	March 2023 TransTasman Angus Cattle Evaluation																		ABI	ABI-L
	CED	CEM	GL	BW	200W	400W	600W	MCW	MILK	SS	DC	CWT	EMA	RIB	RUMP	RBY	IMF	NFI-F		
EBV	+1.6	-4.8	-7.8	+5	+56	+99	+131	+129	+13	+3.7	-5.1	+72	+8.6	-0.7	-1.2	+1.3	+1.9	-0.15	\$210	\$372
ACC	59%	50%	73%	74%	74%	73%	72%	70%	63%	74%	42%	64%	63%	65%	65%	59%	67%	54%		

Traits Observed	BWT,200WT,400WT,SC,Scan(EMA,Rib,Rump,IMF),Genomics							
Trait Focus	GROWTH - SCROTAL - GESTATION							

Structural Assessment								
Claw Set	Front Angle	Rear Angle	Rear Legs	Rear Legs	Sheath	Muscle	Temp	
F 6	H 6	7	6	5	6	5	C	1

A failproof son of Pirelli who has not only the looks but significant growth performance. Acceptable data set across the board for producing ideal feeder steers/heifer with top 20% EMA at +8.6.

Purchaser: \$

TACE	Mid-March 2023 TransTasman Angus Cattle Evaluation - Breed Average EBVs																		\$A	\$A-L
	CED	CEM	GL	BW	200W	400W	600W	MCW	MILK	SS	DC	CWT	EMA	RIB	RUMP	RBY	IMF	NFI-F		
EBV	+2.2	+2.7	-4.8	+4.1	+50	+90	+117	+101	+17	+2.1	-4.6	+66	+6.4	+0.0	-0.3	+0.5	+2.2	+0.19	+197	+339

Lot 66 REILAND SAXON S902 PV NLR2IS902

AMFU,CAFU,DDFU,NHFU DOB: 21/3/2021 (ET) HBR

Sire: REILAND JORDAN J61^{SV} NLRJ61

Dam: BR MIDLAND # USA13898124

REILAND PIRELLI P913^{PV} NLRP913

ESSEMONT CHERRY C16^{PV} WWEC16

STRATHEWEN REGENT WILPENA J49^{PV} VSNJ49

ESSEMONT ATINO A20^{PV} WWEA20

TACE	March 2023 TransTasman Angus Cattle Evaluation																		ABI	ABI-L
	CED	CEM	GL	BW	200W	400W	600W	MCW	MILK	SS	DC	CWT	EMA	RIB	RUMP	RBY	IMF	NFI-F		
EBV	+6.1	+0.9	-7.3	+2.6	+57	+105	+134	+128	+16	+1.8	-5.7	+81	+10.8	-1.6	-1.9	+1.6	+2	+0.01	\$248	\$427
ACC	59%	49%	72%	75%	74%	72%	72%	69%	63%	74%	41%	63%	63%	64%	64%	58%	66%	53%		

Traits Observed	Structural Assessment								
	Claw Set	Front Angle	Rear Angle	Rear Legs	Rear Legs	Sheath	Muscle	Temp	
Trait Focus	HEIFERS - CALVING EASE - EMA								
	F 6	H 6	7	6	6	6	5	C	1

A positive calving ease Pirelli son with width and dimension. Top 9% eye muscle at +10.8. His dam was a productive mid maturity cow with soundness and longevity.

Purchaser: \$

Lot 67 REILAND SOLO S901 PV NLR2IS901

AMFU,CAFU,DDFU,NHFU DOB: 22/3/2021 (ET) HBR

Sire: TUWHARETOA REGENT D145^{PV} BNAD145

Dam: NARRACALCA VALIANT V7^{SV} NNDV7

STRATHEWEN REGENT E23 H70^{PV} VSNH70

REILAND BLACKLIZ Z509^{PV} NLRZ509

STRATHEWEN DINKY-DI MITTAGONG E23^{PV} VSNE23

WOOLAMIA W90^{SV} NHWW90

TACE	March 2023 TransTasman Angus Cattle Evaluation																		ABI	ABI-L
	CED	CEM	GL	BW	200W	400W	600W	MCW	MILK	SS	DC	CWT	EMA	RIB	RUMP	RBY	IMF	NFI-F		
EBV	+8.9	-1	-3.6	+3	+43	+76	+93	+90	+13	+1.9	-4.6	+53	+6.8	-0.1	-0.1	+0.3	+4.8	+0.29	\$197	\$335
ACC	61%	52%	72%	76%	75%	74%	74%	71%	68%	72%	45%	66%	65%	67%	67%	61%	68%	55%		

Traits Observed	Structural Assessment								
	Claw Set	Front Angle	Rear Angle	Rear Legs	Rear Legs	Sheath	Muscle	Temp	
Trait Focus	IMF - DOCILE - HEIFERS								
	F 6	H 6	6	6	6	6	5	C	1

An ET son from the famed Z509 cow. Top 4% IMF at +4.8. Easy doing, mobile sire with superior carcase and calving ease.

Purchaser: \$

Lot 68 REILAND STROLLER S98 PV NLR2IS98

AMFU,CAFU,DDFU,NHFU DOB: 13/3/2021 (AI) HBR

Sire: G A R EARLY BIRD # USA17354178

Dam: REILAND JORDAN J61^{SV} NLRJ61

G A R ASHLAND^{PV} USA18217198

REILAND MISS MAX Q904^{PV} NLRQ904

CHAIR ROCK AMBUSH 1018 # USA16934264

COOLANA MISS MAX D455 # VCCD455

TACE	March 2023 TransTasman Angus Cattle Evaluation																		ABI	ABI-L
	CED	CEM	GL	BW	200W	400W	600W	MCW	MILK	SS	DC	CWT	EMA	RIB	RUMP	RBY	IMF	NFI-F		
EBV	-4.4	+1.3	-5.8	+4.2	+62	+103	+132	+115	+14	+2.6	-3.7	+76	+9.5	-2.4	-3.3	+1.3	+2.7	-0.37	\$221	\$361
ACC	63%	51%	82%	73%	74%	72%	72%	70%	65%	70%	38%	64%	64%	65%	64%	59%	67%	53%		

Traits Observed	Structural Assessment								
	Claw Set	Front Angle	Rear Angle	Rear Legs	Rear Legs	Sheath	Muscle	Temp	
Trait Focus	EMA - MATURITY - RBY								
	F 6	H 5	6	6	5	5	5	C+	1

A heifers first calf. Mid maturity, well-muscled sire with exceptional early growth at +62 (200D) +103 (400D) expression. Ashland son from ET bred heifer who has grown out exceptionally well.

Purchaser: \$

TACE	Mid-March 2023 TransTasman Angus Cattle Evaluation - Breed Average EBVs																		\$A	\$A-L
	CED	CEM	GL	BW	200W	400W	600W	MCW	MILK	SS	DC	CWT	EMA	RIB	RUMP	RBY	IMF	NFI-F		
EBV	+2.2	+2.7	-4.8	+4.1	+50	+90	+117	+101	+17	+2.1	-4.6	+66	+6.4	+0.0	-0.3	+0.5	+2.2	+0.19	+197	+339

Lot 69 REILAND SHEFFORD S878^{SV} NLR2IS878 AMFU,CAFU,DDFU,NHFU DOB: 25/8/2021 (Natural) HBR

Sire: **REILAND JORDAN J61^{SV} NLRJ61**
REILAND PIRELLI P913^{PV} NLRP913
STRATHEWEN REGENT WILPENNA J49^{PV} VSNJ49

Dam: **V A R RESERVE 1111^{PV} USA16916944**
REILAND MAX CAP L932 # NLR932
ABERDEEN ESTATE MAX CAP F36^{SV} AHWF36

TACE	March 2023 TransTasman Angus Cattle Evaluation																		ABI	ABI-L
	CED	CEM	GL	BW	200W	400W	600W	MCW	MILK	SS	DC	CWT	EMA	RIB	RUMP	RBY	IMF	NFI-F		
EBV	+2.3	+1.8	-3.9	+4.5	+61	+110	+146	+146	+15	+1.6	-5.1	+98	+7.6	-2.9	-3.6	+1.3	+2.5	-0.5	\$231	\$414
ACC	57%	46%	72%	75%	74%	72%	71%	69%	61%	75%	39%	62%	62%	64%	64%	58%	66%	52%		

Traits Observed	BWT,400WT,SC,Scan(EMA,Rib,Rump,IMF),Genomics							
Trait Focus	GROWTH - INDEX - CARCASS WEIGHT							

Structural Assessment								
Claw Set	Front Angle	Rear Angle	Rear Legs	Rear Legs	Sheath	Muscle	Temp	
F 6	H 5	6	6	6	6	5	C+	2

A heavy hitter from all growth parameters +110 (400D) whilst maintaining a modest birth weight of +4.5 and positive calving ease. R Pirelli has continued to sire excellent soundness in his offspring along with breed leading growth. Solid maternal lineage back to F36 cow. Top 2% carcass weight at +98 and NFI makes this bull a high-end sire on your shopping list.

Purchaser: \$

Lot 70 REILAND STRIKING S833^{SV} NLR2IS833 AMFU,CAFU,DDFU,NHFU DOB: 24/8/2021 (Natural) APR

Sire: **REILAND JORDAN J61^{SV} NLRJ61**
REILAND PIRELLI P913^{PV} NLRP913
STRATHEWEN REGENT WILPENNA J49^{PV} VSNJ49

Dam: **EF COMPLEMENT 8088^{PV} USA16198796**
REILAND NEW DESIGN L642 # NLR642
REILAND NEW DESIGN J571 # NLRJ571

TACE	March 2023 TransTasman Angus Cattle Evaluation																		ABI	ABI-L
	CED	CEM	GL	BW	200W	400W	600W	MCW	MILK	SS	DC	CWT	EMA	RIB	RUMP	RBY	IMF	NFI-F		
EBV	+4.3	+4.6	-8.2	+5.5	+69	+119	+154	+126	+26	+6.1	-7.8	+91	+9.8	-1.5	-1.5	+1.2	+1.6	+0.09	\$291	\$484
ACC	57%	47%	73%	74%	73%	71%	71%	68%	61%	74%	40%	62%	62%	63%	63%	57%	65%	53%		

Traits Observed	BWT,200WT,SC,Scan(EMA,Rib,Rump,IMF),Genomics							
Trait Focus	GROWTH - SIRE OPTION - SCROTAL							

Structural Assessment								
Claw Set	Front Angle	Rear Angle	Rear Legs	Rear Legs	Sheath	Muscle	Temp	
F 6	H 5	6	6	6	6	5	C+	1

Possibly the best bull in his contemporary group according to anyone that views him. Docile, high foot score soundness combines well with top 1% scrotal at +6.1 and all growth parameters of 200D, 400D, 600D and carcass weight at +91. Combined with positive calving ease and top 8% (-8.2day) gestation length and top 1% \$A/\$A-L at \$484 makes you have a second look. Could be one of the best bulls offered on the day.

Purchaser: \$

Lot 71 REILAND SPELLBINDER S970^{SV} NLR2IS970 AMFU,CAFU,DDFU,NHFU DOB: 20/7/2021 (AI) HBR

Sire: **G A R SURE FIRE^{SV} USA17328461**
G A R PHOENIX^{PV} USA18636106
G A R PROPHET N744 # USA18127279

Dam: **AYRVALE MONTANA M13^{PV} HIOM13**
REILAND MAX CAP Q1072 # NLRQ1072
REILAND MAX CAP L927 # NLR927

TACE	March 2023 TransTasman Angus Cattle Evaluation																		ABI	ABI-L
	CED	CEM	GL	BW	200W	400W	600W	MCW	MILK	SS	DC	CWT	EMA	RIB	RUMP	RBY	IMF	NFI-F		
EBV	+5.2	+0.6	-3.5	+3.7	+60	+105	+138	+111	+16	+3.3	-4.6	+83	+9.2	-1.5	-1.9	+0.9	+2.4	+0.16	\$242	\$404
ACC	54%	43%	83%	73%	66%	64%	65%	63%	56%	61%	36%	57%	57%	59%	58%	54%	59%	49%		

Traits Observed	GL,BWT,200WT,400WT,SC,Scan(EMA,Rib,Rump,IMF)							
Trait Focus	HEIFERS - CARCASS - BIRTH							

Structural Assessment								
Claw Set	Front Angle	Rear Angle	Rear Legs	Rear Legs	Sheath	Muscle	Temp	
F 6	H 6	6	6	6	6	5	C	1

A major birth/growth sire +3.7 through to +138 describes a bull that can be used on heifer or cow herds to good effect. Strength of this sire is equally contributed by sire and dam line. A bull who excels across the board, hence this top 10% \$A and \$A-L ranking.

Purchaser: \$

TACE	Mid-March 2023 TransTasman Angus Cattle Evaluation - Breed Average EBVs																		\$A	\$A-L
	CED	CEM	GL	BW	200W	400W	600W	MCW	MILK	SS	DC	CWT	EMA	RIB	RUMP	RBY	IMF	NFI-F		
EBV	+2.2	+2.7	-4.8	+4.1	+50	+90	+117	+101	+17	+2.1	-4.6	+66	+6.4	+0.0	-0.3	+0.5	+2.2	+0.19	+197	+339

Lot 72 REILAND SHORE S893^{SV} NLR2IS893

AMFU.CAFU.DDFU.NHFU DOB: 4/10/2021 (Natural) APR

G A R PROPHET^{SV} USA16295688

AVALON ANGUS GEORGIA G4^{SV} EQWG4

Sire: REILAND PATRIOT P908^{PV} NLRP908

Dam: REILAND ETTALONG K1014[#] NLRK1014

REILAND LOWEN K927^{PV} NLRK927

REILAND ETTALONG E424[#] NLR424

TACE	March 2023 TransTasman Angus Cattle Evaluation																		ABI	ABI-L
	CED	CEM	GL	BW	200W	400W	600W	MCW	MILK	SS	DC	CWT	EMA	RIB	RUMP	RBY	IMF	NFI-F		
EBV	+2.8	+5.3	-5.6	+4.5	+57	+95	+122	+93	+20	+3.7	-5.5	+65	+8.2	-0.2	-0.1	+0.7	+1.9	+0.55	\$237	\$385
ACC	54%	43%	65%	73%	71%	68%	69%	66%	58%	72%	36%	59%	58%	60%	60%	54%	62%	49%		

Traits Observed	BWT,400WT,SC,Scan(EMA,Rib,Rump,IMF),Genomics							
Trait Focus	EMA - MILK - HEIFERS							

Structural Assessment								
Claw Set	Front Angle	Rear Angle	Rear Legs	Rear Legs	Sheath	Muscle	Temp	
F 6	H 5	6	6	5	6	5	C	1

A later born sire (Oct) with ample genetic growth, style and mobility. Top 7% for scrotal at +3.7 will ensure ongoing heifer fertility and early puberty. The Ettalong cow family emanates from the revered Bulgary Stud from Collingullie, in the early eighties.

Purchaser: \$

Lot 73 REILAND SOUTHAMPTON S721^{SV} NLR2IS721

AMFU.CAFU.DDFU.NHFU DOB: 30/8/2021 (Natural) HBR

G A R PROPHET^{SV} USA16295688

RENNYLEA EDMUND E11^{PV} NORE11

Sire: REILAND PATRIOT P908^{PV} NLRP908

Dam: REILAND ESTER J405[#] NLRJ405

REILAND LOWEN K927^{PV} NLRK927

REILAND ESTER G784[#] NLRG784

TACE	March 2023 TransTasman Angus Cattle Evaluation																		ABI	ABI-L
	CED	CEM	GL	BW	200W	400W	600W	MCW	MILK	SS	DC	CWT	EMA	RIB	RUMP	RBY	IMF	NFI-F		
EBV	+10.7	+8.4	-5.2	-0.1	+29	+57	+64	+12	+23	+2.2	-6	+32	+8.3	+1.7	+1.3	+0.4	+3.2	+0.21	\$210	\$304
ACC	57%	48%	69%	74%	72%	70%	70%	67%	60%	72%	41%	61%	60%	62%	62%	56%	64%	52%		

Traits Observed	BWT,400WT,SC,Scan(EMA,Rib,Rump,IMF),Genomics							
Trait Focus	EMA - CALVING EASE - MILK							

Structural Assessment								
Claw Set	Front Angle	Rear Angle	Rear Legs	Rear Legs	Sheath	Muscle	Temp	
F 6	H 6	6	6	5	5	5	C	1

An interesting study as he is a half-brother to the previous lot. Genuinely as sound as you can make a bull, however he is included in the sale to demonstrate that not all genetic descriptions are 100% accurate. Similar weight and frame but records a very low birth of -0.1 (top 2%), top 2% calving ease (+10.7) and an incredibly low mature cow weight of +12, with +64 (600D). A sire to contain size and allow you to sleep through calving.

Purchaser: \$

Lot 74 REILAND SHOTGUN S781^{SV} NLR2IS781

AMFU.CAFU.DDFU.NHFU DOB: 28/9/2021 (Natural) HBR

BALDRIDGE BEAST MODE B074^{PV} USA17960722

AYRVALE LALOR L56^{PV} HIOL56

Sire: CAMPASPE ROCKS BEAST MODE Q10^{PV} HTMQ10

Dam: REILAND QUIX P234[#] NLRP234

ABERDEEN ESTATE WILCOOLA F107^{PV} AHWF107

REILAND QUIX G927[#] NLRG927

TACE	March 2023 TransTasman Angus Cattle Evaluation																		ABI	ABI-L
	CED	CEM	GL	BW	200W	400W	600W	MCW	MILK	SS	DC	CWT	EMA	RIB	RUMP	RBY	IMF	NFI-F		
EBV	-0.9	-2.4	-3	+4.7	+55	+96	+123	+102	+18	+0.6	-5.8	+67	+10.7	+1.2	+0.8	+0.4	+3.5	-0.01	\$239	\$380
ACC	54%	44%	66%	72%	70%	67%	68%	66%	58%	70%	35%	58%	57%	60%	60%	53%	62%	48%		

Traits Observed	BWT,200WT,SC,Scan(EMA,Rib,Rump,IMF),Genomics							
Trait Focus	BALANCE - SIRE - IMF							

Structural Assessment								
Claw Set	Front Angle	Rear Angle	Rear Legs	Rear Legs	Sheath	Muscle	Temp	
F 6	H 5	6	6	5	6	5	C	2

Strong phenotype sire with softness, balance and muscularity given +10.7 EMA (top 10%). Hard to fault this sire with his sisters scanning supremely for IMF and eye muscle.

Purchaser: \$

TACE	Mid-March 2023 TransTasman Angus Cattle Evaluation - Breed Average EBVs																		\$A	\$A-L
	CED	CEM	GL	BW	200W	400W	600W	MCW	MILK	SS	DC	CWT	EMA	RIB	RUMP	RBY	IMF	NFI-F		
EBV	+2.2	+2.7	-4.8	+4.1	+50	+90	+117	+101	+17	+2.1	-4.6	+66	+6.4	+0.0	-0.3	+0.5	+2.2	+0.19	+197	+339

Lot 75 REILAND SIBERIA S840^{SV} NLR2IS840 AMFU.CAFU.DDFU.NHFU DOB: 28/9/2021 (Natural) HBR

AYRVALE BARTEL E7^{PV} HIOE7

G A R SURE FIRE^{SV} USA17328461

Sire: THE ROCK N49^{PV} ATZN49

Dam: REILAND PREMIER N1281[#] NLRN1281

THE ROCK K6^{PV} ATZK6

REILAND PREMIER G854[#] NLRG854

TACE	March 2023 TransTasman Angus Cattle Evaluation																		ABI	ABI-L
	CED	CEM	GL	BW	200W	400W	600W	MCW	MILK	SS	DC	CWT	EMA	RIB	RUMP	RBY	IMF	NFI-F		
EBV	+7.2	+6.3	-6.2	+3.2	+61	+117	+148	+131	+20	+2.9	-5.8	+90	+6.3	-1.7	-1.7	+0.5	+3.3	-0.07	\$260	\$457
ACC	56%	47%	70%	73%	71%	69%	69%	67%	60%	71%	40%	61%	60%	62%	62%	56%	65%	53%		

Traits Observed	BWT,200WT,SC,Scan(EMA,Rib,Rump,IMF),Genomics
Trait Focus	GROWTH - CALVING EASE - CARCASS WEIGHT

Structural Assessment								
Claw Set	Front Angle	Rear Angle	Rear Legs	Rear Legs	Sheath	Muscle	Temp	
6 5	6	6	4	6	5	C	2	

Impressive combination of data, pedigree and performance. Top 5% growth at +148 from a modest +3.2 birth and top 10% calving ease. A sire like him could easily do seedstock duties with pedigree and type.

Purchaser: \$

Lot 76 REILAND SCARBOROUGH S700^{SV} NLR2IS700 AMFU.CAFU.DDFU.NHFU DOB: 14/8/2021 (Natural) HBR

G A R PROPHET^{SV} USA16295688

CAMPBELL FARMS E953^{SV} VVXE953

Sire: REILAND PATRIOT P908^{PV} NLRP908

Dam: REILAND BARUNAH J477[#] NLRJ477

REILAND LOWEN K927^{PV} NLRK927

REILAND BARUNAH G362^{SV} NLRG362

TACE	March 2023 TransTasman Angus Cattle Evaluation																		ABI	ABI-L
	CED	CEM	GL	BW	200W	400W	600W	MCW	MILK	SS	DC	CWT	EMA	RIB	RUMP	RBY	IMF	NFI-F		
EBV	+8.2	+6	-7	+1.9	+42	+79	+95	+44	+23	+4.6	-7.8	+45	+5.3	+1.6	+2.6	-0.9	+5.5	+0.49	\$250	\$383
ACC	54%	43%	66%	74%	71%	69%	69%	66%	58%	72%	36%	60%	60%	62%	62%	55%	64%	50%		

Traits Observed	BWT,400WT,SC,Scan(EMA,Rib,Rump,IMF),Genomics
Trait Focus	IMF - CALVING EASE - HEIFERS

Structural Assessment								
Claw Set	Front Angle	Rear Angle	Rear Legs	Rear Legs	Sheath	Muscle	Temp	
6 6	6	6	6	5	4	C	1	

Superior phenotype with data to improve not only heifer calving but big-time carcass given +5.5 IMF recorded. Positive docility from a maternal line that is powerful and productive.

Purchaser: \$

Lot 77 REILAND STEVE S816^{SV} NLR2IS816 AMFU.CAFU.DDFU.NHFU DOB: 5/8/2021 (Natural) HBR

ESSELMONT LOTTO L3^{PV} WWEL3

AYRVALE BARTEL E7^{PV} HIOE7

Sire: AVALON ANGUS NEVILLE N3^{SV} EQWN3

Dam: REILAND LAURA N226[#] NLRN226

AVALON ANGUS LUCY L55[#] EQWL55

REILAND LAURA G947[#] NLRG947

TACE	March 2023 TransTasman Angus Cattle Evaluation																		ABI	ABI-L
	CED	CEM	GL	BW	200W	400W	600W	MCW	MILK	SS	DC	CWT	EMA	RIB	RUMP	RBY	IMF	NFI-F		
EBV	+7.4	+2.4	-8.1	+3.2	+58	+98	+125	+118	+14	+2.7	-6.8	+81	+9.9	-2.5	-2.2	+1	+3.6	+0.37	\$259	\$437
ACC	55%	46%	71%	72%	71%	69%	69%	67%	60%	72%	40%	61%	60%	62%	62%	56%	64%	52%		

Traits Observed	BWT,200WT,SC,Scan(EMA,Rib,Rump,IMF),Genomics
Trait Focus	IMF - CALVING EASE - GESTATION

Structural Assessment								
Claw Set	Front Angle	Rear Angle	Rear Legs	Rear Legs	Sheath	Muscle	Temp	
6 6	6	6	5	6	5	C	1	

A bull that is well conformed and stands square. Softness and type with a compliant data set highlighted by +3.6 IMF (top 15%).

Purchaser: \$

TACE	Mid-March 2023 TransTasman Angus Cattle Evaluation - Breed Average EBVs																		\$A	\$A-L
	CED	CEM	GL	BW	200W	400W	600W	MCW	MILK	SS	DC	CWT	EMA	RIB	RUMP	RBY	IMF	NFI-F		
EBV	+2.2	+2.7	-4.8	+4.1	+50	+90	+117	+101	+17	+2.1	-4.6	+66	+6.4	+0.0	-0.3	+0.5	+2.2	+0.19	+197	+339

Lot 78 REILAND SANDWELL S870^{SV} NLR2IS870 AMFU,CAFU,DDFU,NHFU DOB: 13/9/2021 (Natural) HBR

WITHERSWOOD PERFORMER E49^{SV} CWJE49
Sire: **AYRVALE MERCURY M20^{PV} HIOM20**
AYRVALE JEWEL J23^{PV} HIOJ23

AYRVALE BARTEL E7^{PV} HIOE7
Dam: **REILAND NICKY P945^{PV} NLRP945**
REILAND NICKY Z413^{PV} NLRZ413

TACE	March 2023 TransTasman Angus Cattle Evaluation																		ABI	ABI-L
	CED	CEM	GL	BW	200W	400W	600W	MCW	MILK	SS	DC	CWT	EMA	RIB	RUMP	RBY	IMF	NFI-F		
EBV	+4.4	+1	-6.2	+3.6	+53	+96	+124	+93	+19	+2.5	-4.9	+73	+8.5	+0.3	+0.4	+0.5	+2.7	+0.51	\$234	\$381
ACC	59%	49%	69%	73%	72%	70%	70%	67%	59%	73%	40%	61%	60%	62%	62%	56%	64%	51%		

Traits Observed	BWT,400WT,SC,Scan(EMA,Rib,Rump,IMF),Genomics							
Trait Focus	GROWTH - PEDIGREE - GESTATION							

Structural Assessment								
Claw Set	Front Angle	Rear Angle	Rear Legs	Rear Legs	Sheath	Muscle	Temp	
F 6 H 6	6	6	5	5	5	C	2	

As far as a neat EBV spread this bull has it down pat. Birth to 600D all in the top 30% and all carcass traits range from top 25% for EMA through to top 30% for IMF.

Purchaser: \$

Lot 79 REILAND STONEAGE S541^{SV} NLR2IS541 AMFU,CAFU,DDFU,NHFU DOB: 17/8/2021 (AI) HBR

V A R DISCOVERY 2240^{PV} USA17262835
Sire: **REILAND PRIME P920^{PV} NLRP920**
ABERDEEN ESTATE MAX CAP F36^{SV} AHWF36

AYRVALE KILLARNEY K37^{PV} HIOK37
Dam: **REILAND MILDRED N1261[#] NLRN1261**
REILAND MILDRED L911[#] NLRL911

TACE	March 2023 TransTasman Angus Cattle Evaluation																		ABI	ABI-L
	CED	CEM	GL	BW	200W	400W	600W	MCW	MILK	SS	DC	CWT	EMA	RIB	RUMP	RBY	IMF	NFI-F		
EBV	-2.1	+0.6	+1.1	+3.9	+51	+91	+113	+94	+18	+1.3	-4	+72	+9.7	-0.3	-0.1	+0.6	+3.3	+0.12	\$209	\$336
ACC	54%	44%	81%	70%	70%	67%	68%	65%	59%	64%	35%	58%	57%	59%	53%	62%	49%			

Traits Observed	GL,BWT,200WT,SC,Scan(EMA,Rib,Rump,IMF),Genomics							
Trait Focus	PEDIGREE - EMA - DOCILITY							

Structural Assessment								
Claw Set	Front Angle	Rear Angle	Rear Legs	Rear Legs	Sheath	Muscle	Temp	
F 6 H 6	6	6	5	6	5	C+	2	

Stoneage is set to produce those front line weaners from cow joining.

Purchaser: \$

Lot 80 REILAND SOLICITOR S744^{SV} NLR2IS744 AMFU,CAFU,DDFU,NHFU DOB: 18/9/2021 (Natural) APR

REILAND JUGGLER J803^{PV} NLRJ803
Sire: **REILAND MOGILLA M1479^{PV} NLRM1479**
STRATHEWEN REGENT WILPENA J47^{PV} VSNJ47

REILAND GRIFFITH G743^{SV} NLRG743
Dam: **REILAND EILEEN L63[#] NLR L63**
AVALON ANGUS EILEEN E10[#] EQWE10

TACE	March 2023 TransTasman Angus Cattle Evaluation																		ABI	ABI-L
	CED	CEM	GL	BW	200W	400W	600W	MCW	MILK	SS	DC	CWT	EMA	RIB	RUMP	RBY	IMF	NFI-F		
EBV	+6	+1.8	-6.7	+1.7	+44	+82	+112	+73	+16	+2.2	-4.8	+58	+9.5	+2.2	+2.3	+0.1	+3.8	+0.33	\$229	\$361
ACC	52%	42%	66%	72%	70%	67%	67%	65%	59%	70%	34%	58%	56%	58%	58%	51%	61%	48%		

Traits Observed	BWT,200WT,SC,Scan(EMA,Rib,Rump,IMF),Genomics							
Trait Focus	HEIFERS - POSITIVE FAT - IMF							

Structural Assessment								
Claw Set	Front Angle	Rear Angle	Rear Legs	Rear Legs	Sheath	Muscle	Temp	
F 5 H 5	6	6	5	5	5	C+	1	

Well conformed sire with ample option for uses across heifers/cows. Adds significant carcass excellence through top 15% EMA at +9.5, positive fats and top 15% IMF at +3.8.

Purchaser: \$

TACE	Mid-March 2023 TransTasman Angus Cattle Evaluation - Breed Average EBVs																		\$A	\$A-L
	CED	CEM	GL	BW	200W	400W	600W	MCW	MILK	SS	DC	CWT	EMA	RIB	RUMP	RBY	IMF	NFI-F		
EBV	+2.2	+2.7	-4.8	+4.1	+50	+90	+117	+101	+17	+2.1	-4.6	+66	+6.4	+0.0	-0.3	+0.5	+2.2	+0.19	+197	+339

Lot 81 REILAND STRONGBOW S542^{SV} NLR2IS542 AMFU,CAFU,DDFU,NHFU DOB: 7/9/2021 (Natural) HBR

EF COMPLEMENT 8088^{PV} USA16198796

STRATHEWEN REGENT E23 H70^{PV} VSNH70

Sire: REILAND LEVI L165^{SV} NLRL165

Dam: REILAND EXOLA N677[#] NLRN677

REILAND WILCOOLA J69[#] NLRJ69

REILAND EXOLA K670[#] NLRK670

TACE	March 2023 TransTasman Angus Cattle Evaluation																		ABI	ABI-L
	CED	CEM	GL	BW	200W	400W	600W	MCW	MILK	SS	DC	CWT	EMA	RIB	RUMP	RBY	IMF	NFI-F		
EBV	+3.9	+0.3	-4.7	+4.8	+52	+92	+119	+108	+10	+1	-6.3	+70	+9.5	-1.1	-3	+0.7	+4.1	+0.24	\$236	\$392
ACC	55%	45%	68%	73%	72%	69%	69%	66%	60%	70%	37%	59%	59%	61%	61%	54%	63%	50%		

Traits Observed	BWT,200WT,SC,Scan(EMA,Rib,Rump,IMF),Genomics							
Trait Focus	TYPE - GROWTH - IMF							

Structural Assessment								
Claw Set	Front Angle	Rear Angle	Rear Legs	Rear Legs	Sheath	Muscle	Temp	
6	5	6	6	5	5	5	C+	2

Very attractive phenotype with appealing data set of +9.5 EMA and +4.1 IMF (top 10%). Pedigree is loaded full of carcass excellence with his sire still in use, fully fit and in vogue with the current generation of back up sires used at Reiland.

Purchaser: \$

Lot 82 REILAND STOKER S537^{SV} NLR2IS537 AMFU,CAFU,DDFU,NHFU DOB: 9/8/2021 (AI) HBR

REILAND JORDAN J61^{SV} NLRJ61

REILAND LEVI L165^{SV} NLRL165

Sire: REILAND PIRELLI P913^{PV} NLRP913

Dam: REILAND PATRICIA N694[#] NLRN694

STRATHEWEN REGENT WILPENNA J49^{PV} VSNJ49

REILAND PATRICIA L586[#] NLRL586

TACE	March 2023 TransTasman Angus Cattle Evaluation																		ABI	ABI-L
	CED	CEM	GL	BW	200W	400W	600W	MCW	MILK	SS	DC	CWT	EMA	RIB	RUMP	RBY	IMF	NFI-F		
EBV	-1	-0.2	-4.1	+4.8	+51	+93	+122	+106	+13	+2.9	-5.5	+65	+7.6	+1.4	+0	+0.5	+3.2	+0.42	\$213	\$357
ACC	53%	41%	82%	73%	71%	69%	68%	66%	57%	71%	34%	58%	58%	60%	60%	54%	62%	48%		

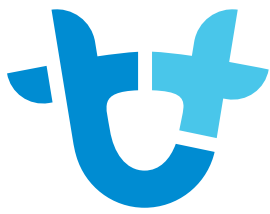
Traits Observed	GL,BWT,200WT,SC,Scan(EMA,Rib,Rump,IMF),Genomics							
Trait Focus	GROWTH - PEDIGREE - POSITIVE FATS							

Structural Assessment								
Claw Set	Front Angle	Rear Angle	Rear Legs	Rear Legs	Sheath	Muscle	Temp	
6	6	6	6	5	6	5	C	1

Well-muscled son of impact sire, Reiland Pirelli combined with the longevity of Levi L165. The strong maternal influence from both dam lines is easily observed via both pedigree and super structure of this sire. A faultless bull that will enhance productivity and fertility across your herd profile.

Purchaser: \$

TACE	Mid-March 2023 TransTasman Angus Cattle Evaluation - Breed Average EBVs																		\$A	\$A-L
	CED	CEM	GL	BW	200W	400W	600W	MCW	MILK	SS	DC	CWT	EMA	RIB	RUMP	RBY	IMF	NFI-F		
EBV	+2.2	+2.7	-4.8	+4.1	+50	+90	+117	+101	+17	+2.1	-4.6	+66	+6.4	+0.0	-0.3	+0.5	+2.2	+0.19	+197	+339



AuctionsPlus

How to Register as an AuctionsPlus user

1. To sign up to AuctionsPlus, fill in your details and create a password.
2. Verify your email.
3. Follow the steps to verify your ID.
4. Enter your PIC number, ABN and business details if relevant.
5. Carefully read and accept our user rules and responsibilities.
6. Complete the user quiz.
7. Submit your request to our team.



Scan to sign up now



Scan to see detailed
step by step instructions



TEAM PROFILE

Stephen Piper

Stud stock manager at Reiland Angus



Address where you live?

- Goobragandra – Tumut NSW

Brief History and career pathway?

- Various different positions, studied Agriculture/Horse husbandry at Tocal Agricultural College. Stockman at Jindalee feedlot. Linesman at Essential Energy for 12 years before starting with Reiland Angus in August 2021.

Where you grew up/interests?

- Born in Wagga, lived there until 4 years old then moved to Tumut/Goobragandra onto the family farm which I now own part of and run my own livestock.
- Growing up my interests were hunting, fishing, swimming in the river, riding horses & motor bikes and also competed in saddle bronc riding and campdrafts.

Type of cattle you like?

- My current herd of 60 breeding cows are predominately Herefords but due to market

trends I have joined them to all Angus bulls. I like cattle with good temperaments and will continue to choose my breeding stock with this in mind.

Future industry forecast?

- I think the Angus industry will continue to thrive based on the superior genetics and the continued improvement and stayability of the breed.

Name a memorable highlight of your career?

- Achieving my qualification as a linesman would have been up there. But now working with cattle and kelpies every day is something that will be very memorable for me.

Where do you see yourself in 10 years' time?

- Still working for Reiland Angus (maybe a couple less hours in the week!) and continuing to run my own property with most likely an all Angus herd.

GREAT GENETICS DESERVE INDUSTRY LEADING NUTRITION

To help manage Bloat and Tetany
this winter, talk to the team at ANP

Michael Savli
Technical Support Manager
0409 580 066

Paul Meggison
Nutritionist
0417 438 196

www.ausfarmnutrition.com



AusFarm Nutrition Products

Farm feed supplements... Growing Your Investment





PANORAMA
ACCOUNTING & ADVISORY

**Giving you the best view
of your business**



Tumut (02) 6947 0000 - Canberra (02) 6257 1488

DISCLAIMER AND PRIVACY INFORMATION

Attention Buyer

Animal details included in this catalogue, including but not limited to pedigree, DNA information, Estimated Breeding Values (EBVs) and Index values, are based on information provided by the breeder or owner of the animal. Whilst all reasonable care has been taken to ensure that the information provided in this catalogue was correct at the time of publication, Angus Australia will assume no responsibility for the accuracy or completeness of the information, nor for the outcome (including consequential loss) of any action taken based on this information.

Parent Verification Suffixes

The animals listed within this catalogue including its pedigree, are displaying a Parent Verification Suffix which indicates the DNA parent verification status that has been conducted on the animal. The Parent Verification Suffixes that will appear at the end of each animal's name.

The suffix displayed at the end of each animal's name indicates the DNA parentage verification that has been conducted by Angus Australia.

PV : both parents have been verified by DNA.

SV : the sire has been verified by DNA.

DV : the dam has been verified by DNA.

: DNA verification has not been conducted.

E : DNA verification has identified that the sire and/or dam may possibly be incorrect, but this cannot be confirmed conclusively.

Privacy Information

In order for Angus Australia to process the transfer of a registered animal in this catalogue, the vendor will need to provide certain information to Angus Australia and the buyer consents to the collection and disclosure of that information by Angus Australia in certain circumstances. If the buyer does not wish for his or her information to be stored and disclosed by Angus Australia, the buyer must complete the form included below and forward it to Angus Australia. If the form is not completed, the buyer will be taken to have consented to the disclosure of such information.

.....

BUYERS OPTION TO OPT OUT OF DISCLOSING PERSONAL INFORMATION TO ANGUS AUSTRALIA

If you do not complete this form, you will be taken to have consented to Angus Australia using your name, address and phone number for the purposes of effecting a change of registration of the animal(s) that you have purchased, maintaining its database and disclosing that information to its members on its website.

I, the buyer of animals with the following idents.....
.....

from member.....(name) do not consent to Angus Australia using my name, address and phone number for the purposes of effecting a change of registration of the animals I have mentioned above that I have purchased, maintaining its database and disclosing that information to its members on its website.

Name: Signature:

Date:

Please forward this completed consent form to Angus Australia, 86 Glen Innes Road, Armidale NSW 2350.

.....



If you have any questions or queries regarding any of the above, please contact Angus Australia on (02) 6773 4600 or email office@angusaustralia.com.au

Updated 25/11/2020

DISCLAIMER NOTE: Any person(s) entering the property known as "Killimicat Station" for any purpose (including but not limited to the attendance of cattle sales and auctions) enters the property at your own risk. You release to the full extent permitted by law and indemnify us from and against personal injury, loss or death suffered by you or any other person arising directly or indirectly from any cause at the property. You also release us to the full extent permitted by law and indemnify us from and against any theft, loss or damage of any kind to personal property sustained by you or any other persons arising directly or indirectly from any cause at the property. "We" or "us" refers to the Lucas family, employees, contractors, Elders Limited, and / or outside agents.

REILAND REWARDS LOYAL CLIENTS

With the 2023 autumn sale only weeks away we would like to introduce a new initiative for clients to remain labour efficient.

Investing in a Reiland bull will allow you to access the opportunity to utilise the most advanced weighing system available without even yarding the cattle!

Optiweigh will be at this sale on April 19

Open date in the yards will be targeted for

Sunday, April 2 - 11am until 3pm

where all bulls will be yarded and available for your appraisal

Reiland Angus – *assisting our clients to achieve optimum efficiency*



Cattle producers can take advantage of the Reiland Angus Client Reward Program to tap into the benefits of the cutting edge Optiweigh system

We allocate the Optiweigh unit and you simply let your cattle weigh themselves in-paddock, putting data at your fingertips

Contact us for details at
www.reilandangus.com.au
Mark Lucas - 0428 693 585

For more information on Optiweigh visit
www.optiweigh.com.au



Reiland Angus
Autumn Bull Sale
April 19th, 2023

Kilimicat Station, Tumut NSW

Invest in Reiland Genetics' to access the Client Reward program

LOT
11



REILAND SUPURB S959 - NLR2IS959

LOT
12



REILAND SOLITUDE S954 - NLR2IS954

LOT
14



REILAND SHOWMAN S949 - NLR2IS949

LOT
37



REILAND SAILOR SI435 - NLR2ISI435

LOT
10



REILAND SUPERIOR 5982 - NLR2I5982

LOT
16



REILAND SURPRISE 5960 - NLR2I5960