

GLENLEA BEEF

presents

the complete dispersal of

Mawarra Charolais

1pm on Friday 28th April 2023



Lot 6

26 Cows & Calves **6** Joined Females **26** Joined Heifers

Sale Venue: Scone Saleyards
Fully undercover both display and selling

& via AuctionsPlus

WWW.GLENLEABEEF.COM.AU

 AuctionsPlus
Buy and Sell stock nationally

McGrath
Upper Hunter

 Nutrien

SCX JEHU 233E

Highest Priced Charolais bull ever sold
at Auction in Canada for \$CAD245,000.



*Photos at
5 years of age.*

- Proven Breeding Bull with daughters in production.
- Sons have sold to \$CAN80,000.
- Homozygous Polled (PP)
- NZ Semen Rights owned by Silverstream Charolais.



Australian Semen
Rights Owned by
Glenlea Beef.

We welcome our Australian partners in JEHU:

Charnelle Charolais - QLD semen rights

Waterford Charolais - VIC semen rights.

Challambi Charolais - NSW with an exclusive semen package.

JOINING SIRE to lots 41, 42, 43, 45, 47, 49, 52, 53, 54, 55, 56, 57, 58, 59 & 60.

Welcome to the Complete Dispersal of MAWARRA CHAROLAIS.



Due to family health issues, the decision has been made to sell the farm and disperse the Mawarra Charolais stud. This herd, and the farm near Scone in the Hunter Valley, has been the passion of Neville Wildes fulfilling a lifelong dream, to breed high quality Charolais Stud cattle.

The Glenlea Beef Team has been heavily involved in the breeding and genetic selection in the herd for the last 4 years, with Pinedock fitting showing cattle at both Sydney Royal and various shows in QLD on behalf of the family.

Successful sales of bull progeny have been facilitated by Glenlea Beef through their sales network and only the best females retained to build the herd with special individuals added when opportunities arose.

The disappointment of having to sell the herd from the Wildes family perspective is offset by the opportunity it creates for buyers to start their Charolais breeding journey or build upon what they have. This herd is full of highlights and outstanding individuals and cow families.

I look forward to discussing animals with prospective purchasers, any of Glenlea's special sale offers that apply to cattle in the sale or any other aspect of your breeding, management and marketing program for your stud. The whole Glenlea Beef team is here to assist in any way we can to improve your financial returns and enjoyment of breeding great Charolais Cattle



Regards,
Roderick Binny
Glenlea Beef

Glenlea Special Offers Terms & Conditions

SHOW RING PRIZE MONEY

1. Royal shows means Capital city Royal Shows only.
2. A quality high resolution photo with exhibitor and championship ribbon on animal must be provided to Glenlea with full permission to reproduce.
3. Any definition of shows as Regional or Local is at Glenlea's sole discretion and final say.
4. 50% of prize money will be provided as a cash payment, in person with a high quality photo of presentation and 50% will be provided as credit at any of Glenlea's future sales.

INTEREST FREE TERMS

1. To approved purchasers only by contacting Roderick Binny a minimum of 5 days prior to sale to discuss and arrange.
2. No terms if not arranged prior to sale
3. Invoices will be issued in late June and if not paid by 3rd of July 2023 interest will apply from sale date at 10% pa rate.

PROGENY OF GLENLEA KOWBOY (P) R/F TO BE SOLD IN GLENLEA SALES

1. Progeny grown out (at purchaser's property) and delivered to Pinedock Fitting at Casino NSW between February 15th and March 15th 2024. Minimum entry weights will apply.
2. Sale preparation performed from then till sale day by Pinedock Fitting.
3. All cost associated with preparation to be paid by owner. Full costing provided prior to delivery.
4. Glenlea will determine which sale and catalogue order.
5. Any female progeny will be subject to same basic conditions and Pinedock will produce a costing prior to delivery on case by case basis.

TRANSPORT SUBSIDIES ON SALE CATTLE, NORTH AND SOUTH OF HUNTER VALLEY

Delivery will be co-ordinated by nominated sale agents. Maximum charges for delivery to Albury for southern buyers is \$250 per cow/calf and \$200 per individual lot. To Toowoomba for northern buyers that will be \$250 per cow/calf and \$200 per individual lot. Feeding charges may apply while waiting for transport, this is modest and will be charged by HVLX or settling agent to purchasers' account.

Mawarra Charolais Herd Complete Dispersal

Presented By  GLENLEA BEEF

1pm Friday 28th April 2023

Sale to be held at Scone Saleyards.

Completely under cover. All lots will go through the sale ring.

Livestream, both live video and audio, via AuctionsPlus.

26 Cows & Calves

All but two cows have big weaners, ready to wean immediately.

6 Joined Cows and 26 Joined Heifers

3 may calve prior to sale.

INSPECTIONS

At Scone from 12pm Thursday 27th April and on sale day from 9am (Friday 28th April). Private inspections can be arranged prior by contacting Roderick Binny to arrange.

All cattle are currently located at Guyra.

VIDEOS

Videos will be available on AuctionsPlus prior to sale.



Contact

Roderick Binny P: 0409 911 791

E: rbinny@australiangrassfedmeats.com

CONTACTS

Pinedock Pastoral

*For independent assessment
on any of the sale offering call*

James Dockrill P: 0400 387 116

McGrath Upper Hunter

Stuart Sheldrake 0403 129 357



Gavin Beard 0438 452 810

Chris Dobie 0418 434 061

John Setttee 0408 297 368

WWW.GLENLEABEEF.COM.AU

Conditions of Sale

HEALTH AND FERTILITY: All females are sold as fertile and joined, PTIC or unjoined. We have a number of lots that maybe too early to detect in calf on sale day. These will be sold as joined and a recommendation to run with a bull when arrived at purchaser's property. More details will be provided in the supplementary sheet prior to sale as to the pregnancy status of individual lots.

Any animal not conceiving within 6 months of purchase, the procedure will be a vet examination then discussion with Glenlea Beef. We will either arrange to return the animal to get pregnant at one of our properties and then return to purchasers at 50/50 share cost of transport or find another solution by mutual agreement if the first solution is not practical due to distance or other factors. This does not include animals that are injured or suffering disease contracted after the sale. We strongly recommend you insure your purchases.

On rare occasion a female tested and sold as PTIC may lose the pregnancy after sale, due to transport stress, change of environment or other factor, this is at purchaser's risk.

Vaccinations: 7 in 1 up to date. Dectomax and Mutli min given on 10/3/23.

INSURANCE: We recommend you insure your new purchases. Nutiren or Mcgrath's can help you can arrange this at fall of hammer sale day.

AGENT REBATE: A rebate of 1% to all licensed agents is available, introducing buyers 24 hours prior to sale and settling accounts within 7 days. This applies to agent and / or buyer attending in person, this will not apply to online purchases through AuctionsPlus.

REFRESHMENTS: Light refreshments will be provided by Glenlea at sale venue.

TRANSPORT: Delivery will be co-ordinated by nominated sale agents. Maximum charges for delivery to Albury for southern buyers is \$250 per cow/calf and \$200 per individual lot. To Toowoomba for northern buyers that will be \$250 per cow/calf and \$200 per individual lot. Feeding charges may apply while waiting for transport, this is modest and will be charged by HVLX or settling agent to purchasers' account.

PHONE BIDDING: Phone bidding is available by contacting the agents or Glenlea prior to sale to arrange for a dedicated agent to call you and assist you with your bidding.

ACCURACY OF CATALOGUE: : Every effort is made to be as accurate as possible. However mistakes can happen in the construction of catalogue and printing, we will resolve any issues at best as possible but make no warranty as to accuracy, Glenlea Beef and its agents prepared the catalogue from information supplied by Mawarra and make no warranty as to its accuracy. If DNA testing has not be done on any lot Glenlea make no warranty as to DNA verification.

CHAROLAIS BREEDPLAN: We no longer print detailed explanations of BREEDPLAN in our catalogues. All information explaining BREEDPLAN and how to use it to help with your selections is available at the click of your mouse. Of particular relevance is that Charolais EBV's can only be compared within the Charolais breed. For instance the average 600 Day weight EBV in Charolais is +33kg for the average for Angus is +110kg . This is not a reflection of Angus having a higher 600-day growth, rather they have a much lower base breed growth and an average animal needs a 600 weight above the base of +110kg above the base of Angus where as Charolais are a much higher growth breed that has a higher base weight, therefore an average Charolais only needs to be +33kg above the base to be average for the Charolais breed. This is often confused when trying to compare breeds and performance. The key point is don't compare EBV's across breeds as they are only able to comparable within each breed.



Can't make the sale?
Register in just seven easy steps and log onto AuctionsPlus to bid from anywhere on your phone, tablet or desktop.

- 1 REGISTER ONLINE**
FREE once off registration for all auctions.
- 2 COMPLETE BUYER INDUCTION**
The buyer induction will help you understand the roles and responsibilities of everyone on the AuctionsPlus system.
- 3 VIEW CATALOGUE**
Stock history, photos, videos, pedigrees and more. You can also favourite lots you are interested in.
- 4 ENTER AUCTION**
Log into the auction anytime, anywhere and bid on your mobile, tablet or computer. Auctions can end after 30 minutes so get in early.
- 5 Auto bid**
Can't stay for the whole sale? Set your maximum bid on the lot that you want to purchase and let the computer bid for you.
- 6 CONTACT SELLER**
If successful, contact selling agent to arrange payment and delivery. Or if you are the highest bidder you can log into your dashboard to meet the reserve.
- 7 PAYMENT**
Via the selling agent's terms and conditions.
- 8 DELIVERY**
Arrange transport of livestock at your expense.

*Contact AuctionsPlus on (02) 9262 4222
or www.auctionsplus.com.au*

REFERENCE SIRE
GLENLEA KOWBOY Q405 (P) (R/F)
TATTOO: GLE Q405E | **DOB:** 28/03/2019 | **COLOUR:** Red Factor

LT EASY BLEND 5125 PLD (OAU A5113E) (P)

GLENLEA BIG GUN (GLE B10E) (AI) (P) (R/F)

SIRE: WON-CANYA KOWBOY (RJU K4E) (AI) (P/S) (R/F) (S) **DAM:** GLENLEA NOLANA 60TH (P/S) (R/F) GLEG1E (S)

ASHWOOD PARK GARNET (HAS G124E) (H)

GLENLEA NOLANA31ST (GLE C20E) (R/F)(AI)(ET)(R/F)(H)

March 2023 Australasian Charolais BREEDPLAN Analysis												
	CE Dir	GL	BW	200	400	600	Milk	SS	Carc Wt	EMA	Rump	IMF
EBV	-6.8	-2.6	+1.2	+19	+37	+53	+8	+0.8	+30	+1.4	-0.3	+0.2
Acc	41%	45%	59%	54%	56%	64%	38%	68%	50%	42%	43%	41%

COMMENTS: Top priced bull at our 2021 Clermont bull sale, massive volume, overall carcass yield and growth, medium framed with extra fine hair type, great bone and very docile nature. His EBV's reflect Top 10% for all growth traits, above average EMA, beef yield and milk with moderate BW. Kowboy has sired the majority of calves at foot in this sale. He was put out with the main Mawarra herd in spring 2021 to produce a complete drop of Red Factor polled calves, and achieved 100% conception with the cows he was exposed to. As a special offer Glenlea Beef is committing to pay up to \$5000 for any male or female progeny of Kowboy that wins a Championship at a Royal show or feature show, and a reduced amount for regional and local shows. See our specials offers in this sale catalogue for details, T & C.


REFERENCE SIRE
GLENLEA HONOURABLE (AI) (ET) (P) (R/F)
TATTOO: VLW H25E | **DOB:** 20/09/2012 | **COLOUR:** Red Factor

HARVIE REDEMPTION 36P (OAC Z6641E) (P) (R/F)

FERVALE RIPPER (FEN R1E) (H)

SIRE: RANGAN PARK REDEMPTION E42 (RAN E42E) (AI)(ET)(P)(R/F) **DAM:** FERVALE CHIFFON (FEN C22E) (AI) (ET)

RANGAN PARK SHOWGIRL C7 (RAN C7E) (AI) (ET) (H)

FERVALE PRIMADONNA (FEN P28E) (AI) (ET)

March 2023 Australasian Charolais BREEDPLAN Analysis												
	CE Dir	GL	BW	200	400	600	Milk	SS	Carc Wt	EMA	Rump	IMF
EBV	-27.0	+3.1	+4.0	+21	+34	+59	+1	+0.9	+26	+1.6	+0.1	+0.3
Acc	74%	88%	90%	82%	85%	85%	72%	84%	74%	63%	70%	63%

COMMENTS: Honourable has left a legacy through his daughters, big powerful females, that pass on his extra performance and over all punch into their progeny. There are several daughter's in this sale, out of breed leading cows families that will produce leading sale bulls and heifers into the 2030's.



REFERENCE SIRE & JOINING SIRE

GLENLEA JUST RED (AI) (ET) (P) (R/F)

TATTOO: GLE J5E | DOB: 06/02/2013 | COLOUR: Red Factor

HARVIE REDEMPTION 36P (OAC Z6641E) (P) (R/F)

GLENLEA MEATBALL (GLE M44E) (P)

SIRE: RANGAN PARK REDEMPTION E42 (RAN E42E) (AI)(ET)(P)(R/F) DAM: GLENLEA JANET U6E (GLE U6E) (R/F) (P) (TW)

RANGAN PARK SHOWGIRL C7 (RAN C7E) (AI) (ET) (H)

GLENLEA JANET N36E (GLE N36E) (AI) (P)

March 2023 Australasian Charolais BREEDPLAN Analysis												
Charolais	CE Dir	GL	BW	200	400	600	Milk	SS	Carc Wt	EMA	Rump	IMF
EBV	-16.5	-1.6	+2.9	+22	+44	+62	+4	+0.9	+29	+0.8	+1.2	+0.6
Acc	69%	83%	87%	78%	78%	79%	66%	80%	68%	59%	66%	55%

COMMENTS: The original GLENLEA RED sire. Homozygous Red and Polled, his progeny are all apricot colour and polled out of horned or polled white charolais cows. The red factor in Charolais is an economic factor when selling bulls in Qld, an equal quality Red factor bull (apricot colour) will attract higher bids than a similar quality white bull in most sales. His genetic value goes far beyond hide colour, a trait leader for all growth traits with over 100 registered progeny, extremely fine hair coat, he will change hair in 1 generation, super correct feet and daughter's with neat well attached udders and perfect teat size and placement. JR as we call him, is still going strong at 10 years of age working naturally. Semen is no longer available so this sale will be one of your last chances to purchase females in calf to this breed leading sire and his two daughter's in the sale at lot 5 and 10.



REFERENCE SIRE & JOINING SIRE

ORARA WATERFALL GLENLEA NEPTUNE (P)

TATTOO: WFA N42E | DOB: 06/08/2017 | COLOUR: White

GLENLEA EDDIE (GLE E14E) (AI) (P)

GLENLEA FREEWAY (GLE F22E) (AI) (P)

SIRE: GLENLEA JEDDI (VLW J15E) (P)

DAM: GOODVIEW BLONDIE 3RD (HEL J10E) (P)

FERNVALE BONNY MANDIE (FEN B24E) (AI) (ET)

GOODVIEW BLONDIE (HEL B4E) (P)

March 2023 Australasian Charolais BREEDPLAN Analysis												
Charolais	CE Dir	GL	BW	200	400	600	Milk	SS	Carc Wt	EMA	Rump	IMF
EBV	+7.6	-2.4	-0.1	+13	+25	+36	+8	+1.3	+24	+2.7	-0.5	+0.2
Acc	37%	48%	66%	46%	49%	50%	32%	46%	39%	34%	34%	33%

COMMENTS: This sire has been a revelation! Early maturity, growth, carcass, docility and eye appeal. His photo does not reflect his carcass strength and overall thickness. He is a genuine carcass bull with excellent maternal strength, low BW and positive calving ease. Glenlea Beef and our associated studs herds use these types of bulls to join heifer's, that have the ability to breed sale quality bulls out of charolais heifers. The Team at Glenlea is constantly searching for Low BW, calving ease sires that have the carcass, bone, performance and strength of type to breed high value progeny. Neptune's first two yearling sons, progeny from LOT 17 and LOT 21 sold at Glenlea's Roma bull sale in 2022 for \$20,000 and \$24,000, both female's first calves. Neptune's first daughters are offered in this sale at Lot 46 and 49 are outstanding, mid framed, early maturing, very beefy heifers, that will attract the attention of many. This bull has been exclusive to Glenlea and Mawarra and has been used heavily in A.I. programs in 2022 and we are excited to see bigger numbers of progeny come through.



Joining sire to lots. 7, 9, 14, 16, 18, 20, 36, 37, 38, 40, 48.

JOINING SIRE

SHANDON GLENLEA Q-BRICK (P)

TATTOO: GWN Q9E | **DOB:** 13/10/2019 | **COLOUR:** White

GLENLEA HILTON (GLE H30E) (AI) (P)

GLENLEA JIMMY (GLE J4E) (AI) (ET) (P) (R/F)

SIRE: ORARA WATERFALL GLENLEA NORTH (WFA N25E) (P)

DAM: SHANDON JANET 1ST (GWN N5E) (P)

GLENLEA CHAROL 72ND (GLE J8E) (P)

GLENLEA JANET 90TH (GLE K73E) (P)

COMMENTS: Q-brick's progeny will feature in many of our future sales. Early maturing with amazing doability, low BW, great carcass and easy finishing, perfect

temperament, big testicles fine hair type and Homozygous (PP) Polled. He is a complete fault free sire with great maternal strength. His first progeny have great carcass yield, bone, strong head and jaw, docile and low BW. We consider him so superior to many imported A.I. sires from North America and have used him continually in several herds through the Glenlea Beef program naturally and through A.I. His progeny from the Mawarra females in this sale will be high value stud cattle, with a range of market opportunities.



March 2023 Australasian Charolais BREEDPLAN Analysis

	CE Dir	GL	BW	200	400	600	Milk	SS	Carc Wt	EMA	Rump	IMF
EBV	-1.3	-3.2	0.0	+16	+34	+49	+11	+1.8	+29	+1.3	+0.1	+0.2
Acc	32%	34%	45%	38%	40%	40%	30%	37%	34%	30%	33%	30%



Photo at 23 months



Inset photo at 2.5 years after joining one mob and out with his second mob of cows.



Waterford Red Rascal (PP) R/F (WET R121E)

- New Sire at GLENLEA BEEF.
- Sired by Moongool Monopoly
 - Joining sire to Lot 35.
 - Age in photo 32 months



**MAW / Glenlea Neptune S31 (PP)
2021 drop bull of LOT 21**

- High selling yearling bull at Glenlea's Roma Bull Sale 2022 for \$24,000.
- Sired by WFA/ Glenlea Neptune (P) an exclusive sire to Mawarra and Glenlea.



**MAW / Glenlea Neptune (P)
2021 son of LOT 17**

- Sold for \$20,000 at Glenlea's Roma Bull Sale 2022.
- Sired by WFA/ Glenlea Neptune (P) exclusive to Mawarra and Glenlea.



**MAW / Glenlea Lannister S93 (P)
2021 son of LOT 13**

- Sold for \$14,000 at Glenlea's Roma Bull Sale 2022.



**MAW / Glenlea Ashwood S32 (PP)
2021 son of LOT 11**

- Sold for \$15,000 at Glenlea's Roma Bull Sale 2022.



**MAW / Glenlea Ashwood S38 (PP)
2021 son of LOT 22**

- Sold for \$19,000 at Glenlea's Roma Bull Sale 2022.



**MAW / Glenlea Swagger S10E (P) R/F
2021 son of LOT 14**

- Sold for \$10,000 at Glenlea's Casino Sale 2022

LOT
1

MILFORD
ESTELLA Q2E (AI) (P)

TATTOO: JOH Q2E
DOB: 26/08/2019

CALOONA PARK HERO (LSF H104E)
SIRE: CALOONA PARK LITTLE HERO (LSF L93E)
CALOONA PARK DAFFODIL (LSF D135E) (P)

NOVOTEL 5897127519 (OAF S7519F)
DAM: VALLEY VIEW ESTELLA C14 9E (VLW J9E) (P/S)
PALGROVE ESTELLA 214 (PK A416E) (P)

February 2023 Australasian Charolais BREEDPLAN Analysis

A.I. 27/9/22 Turnbulls' Duty Free (PP).
Joined to Shandon / Glenlea Q-brick
(PP) from 10/10/22 till 21/1/23.

	CE Dir	GL	BW	200	400	600	Milk	SS	Carc Wt	EMA	Rump	IMF
EBV	+2.2	-2.7	+0.4	+10	+18	+21	+7	+1.0	+14	+1.8	-0.2	-0.1
Acc	35%	67%	59%	41%	40%	42%	36%	33%	32%	27%	28%	26%

COMMENTS: A powerhouse female to lead off the sale. The strength of her in type and overall carcass is evident with one glance at her photo. Very good bone, strong polled head and massive capacity, I estimate she weighs 800kg in her photo. Her sire was Sydney Royal Grand Champion Bull, a thick soft and growthy junior bull that impressed me personally at inspection and the judge who made him Sydney Champion. Her dam is from the famous Estella cow family at Palgrove and is offered at lot 13 with another tremendous heifer at side.



EBV's with minimal data recorded from Q2's sire and dam current EBV's are not a reflection of the growth and carcass on this female.

LOT
2

GLENLEA
ESTELLA 16TH (P)

TATTOO: GLE Q75E
DOB: 24/09/2019

RANGAN PARK RIO BRAVO D15 (RAN D15E) (P)
SIRE: GLENLEA KENWORTH (GLE K80E) (P)
THW TATT MAC D10E (THW D10E) (P)

IMPAIR 1893102983 (OAF N189F)
DAM: VALLEY VIEW ESTELLA 416 (VLW H26E) (P)
PALGROVE ESTELLA 214 (PK A416E) (P)

February 2023 Australasian Charolais BREEDPLAN Analysis

A.I. 27/9/22 Turnbulls' Duty Free (PP).
Joined to Shandon / Glenlea Q-brick
(PP) from 10/10/22 till 21/1/23.

	CE Dir	GL	BW	200	400	600	Milk	SS	Carc Wt	EMA	Rump	IMF
EBV	-0.7	-3.7	+0.9	+17	+34	+49	+13	+1.2	+28	+1.9	+0.1	+0.5
Acc	46%	47%	68%	52%	52%	53%	44%	45%	43%	36%	38%	35%

COMMENTS: WOW! This female is a donor prospect in every sense of the word, the calibre of female that you could build an entire stud program around. Growth, softness, carcass and maternal strength. **Homozygous (PP) polled.** Q75 will be the 5th generation of donors in her cow family originating with the Famous Estella 7th. She is maternal sibling to Glenlea Phoenix (PP) R/F who topped our 2020 Clermont Bull sale and his first 2 year old sons will sell this year who are outstanding. Sire is Kenworth, sire of numerous high selling bulls and females, including champion female at the 2021 Charnelle Invitational Female Sale.



EBV's are at the top of the breed across all growth, fat cover and IMF% traits, with moderate BW and with good accuracy.

LOT
3

GLENLEA
NANETTE 2ND (P) (R/F)

TATTOO: GLE Q73E
DOB: 11/09/2019

RANGAN PARK RIO BRAVO D15 (RAN D15E) (P)
SIRE: **GLENLEA KENWORTH (GLE K80E) (P)**
THW TATT MAC D10E (THW D10E) (P)

PALGROVE YUKON JACK (PK Y441E) (P)
DAM: **PALGROVE NANETTE 190 E431E (PK E431E)**
PALGROVE NANETTE 114 (PK Z296E)

*A.I. 27/9/22 Turnbulls' Duty Free (PP).
Joined to Shandon / Glenlea Q-brick
(PP) from 10/10/22 till 21/1/23.*



February 2023 Australasian Charolais BREEDPLAN Analysis

	CE Dir	GL	BW	200	400	600	Milk	SS	Carc Wt	EMA	Rump	IMF
EBV	+0.4	-2.2	+1.0	+12	+24	+34	+7	+1.0	+20	+1.7	+1.0	+0.5
Acc	40%	50%	64%	51%	49%	50%	41%	42%	40%	32%	34%	31%

COMMENTS: These females deserve to be inspected in person, worth a long drive or flight to appreciate their quality! Massive volumed, soft, well muscled carcass, fine coated and perfect udder and teat placement. Dam has been a great producer and still going at 14 years of age. Q73 is a maternal sister to Honourable P80 one of our "GLENLEA REDS". Sire is again Kenworth and lot 2 and 3 are two of his best daughter's, both purchased by Mawarra as weaners as future donor prospects and with this dispersal sale now is your opportunity to add them to your herd.



EBV's reflect above average growth across all growth traits, fat cover and EMA with moderate BW.

SPECIAL OFFERS

... GLENLEA BEEF giving value and opportunity to our clients new and old!

- 1 Glenlea Beef will offer interest free terms till July 2023.
50% of sale price. Normal agent terms - 7 days. Balance due 3 July 2023.
- 2 Any bull calf or heifer calf sired by Glenlea Kowboy Q405E (P) R/F can be sold in 2024 at any of our bull sales in QLD or Female sales located anywhere. Giving all purchasers' the opportunity to sell sale bulls directly to the QLD market in established single vendors sales.
- 3 All progeny of Glenlea Kowboy Q405E (P) R/F are eligible for Glenlea Beef prize money for show ring success.
 - * \$5000 for Royal Show Championship.
 - * \$2000 for Regional or Feature Show Championship
 - * \$500 for local Show Championship
- 4 Freight subsidies to Toowoomba in North and Albury in South.

Terms and conditions apply. See inside front cover (below the Welcome) for details.

LOT
4

GLENLEA
SANDY 8TH (P) (R/F)

TATTOO: GLE Q61E
DOB: 16/08/2019

LT VENTURE 3198 M835612 (OAU J5612E) (P)
SIRE: **CHALLAMBI MUSCLES (CHA M15E) (P)**
ROSEDALE HIGHNESS G114E (MR G114E) (P)

GLENLEA HONOURABLE (VLW H25E) (P)
DAM: **GLENLEA SANDY 2ND (GLE M70E) (P)**
MULLUM SANDY 2 (BLA D8E) (P)

February 2023 Australasian Charolais BREEDPLAN Analysis

A.I. 27/9/22 Silverstream Geddes (P).
Joined to Shandon / Glenlea Q-brick
(PP) from 10/10/22 till 21/1/23.



	CE Dir	GL	BW	200	400	600	Milk	SS	Carc Wt	EMA	Rump	IMF
EBV	-10.3	-2.3	+0.6	+18	+36	+49	+7	+1.4	+29	+1.6	+1.1	+0.0
Acc	38%	42%	49%	43%	44%	44%	37%	43%	38%	33%	36%	33%

COMMENTS: Another tremendous Glenlea female. Length, thickness, perfect udder and that extra softness that is so sort after in charolais females. She raised a lovely heifer calf that is catalogued at Lot 56. Dam is one of Glenlea's best Honorable daughters with her 2nd heifer calf by Kenworth retained by Glenlea. She has just weaned a lead bull prospect for 2024. Q61's Sire Muscles has been a fantastic producer, originally selected as a heifer bull, he has out produced himself many times, early maturing, extra carcass and fat cover with Low BW and very strong milking ability in his daughters. Q61 is a **Led female** and will be a very competitive in show ring in 2023/2024.



EBV's show excellent growth well above average and similar for carcass traits, 9 traits above breed average.

LOT
5

GLENLEA
JANET 126TH (P) (R/F)

TATTOO: GLE R32E
DOB: 02/07/2020

RANGAN PARK REDEMPTION E42 (RAN E42E) (P)
SIRE: **GLENLEA JUST RED (GLE J5E) (P)**
GLENLEA JANET U6E R/F (GLE U6E) (P)

RANGAN PARK RIO BRAVO D15 (RAN D15E) (P)
DAM: **GLENLEA JANET 91ST (GLE L34E) (P)**
GLENLEA JANET 30TH (GLE E10E) (P)

February 2023 Australasian Charolais BREEDPLAN Analysis

Will calve prior to the sale
to Turnbull's Duty Free (PP).



	CE Dir	GL	BW	200	400	600	Milk	SS	Carc Wt	EMA	Rump	IMF
EBV	-9.4	-3.5	+1.8	+21	+42	+54	+5	+0.9	+30	+1.6	+1.0	+0.7
Acc	46%	54%	71%	61%	63%	61%	45%	51%	53%	46%	58%	45%

COMMENTS: This female has the style to catch anyone's eye. Super fine coated, deep apricot colour, growth, perfect udder, excellent bone with great volume and softness. Purchased from Glenlea's Dawn of the Decade Sale in 2021 as an 8 month old weaner heifer for \$7000. Her dam is one of 3 full sister's producing in 3 stud herds. Her Dam's 10 year old full sister sold in Glenlea's Casino 2022 Female Sale for \$16,000, to new breeders from Longreach QLD to join their donor herd. Another full sister is grand dam to stud sire Sandon / Glenlea Q brick (PP) joining sire in this sale. The Janet cow family is one of Glenlea's most recognised and prolific, your chance to own one of the best!



EBV's top of breed growth, excellent carcass data across all traits. 9 traits above breed average.

Led female, broken in for showing as young heifers by PINEDOCK FITTING as all the Led females in this sale were. Will be competitive show cow in 2023/24

LOT
6

MAW GLENLEA
JANET 1ST (AI) (ET) (P) (R/F)

TATTOO: MAW R106E
DOB: 14/09/2020

SILVERSTREAM EVOLUTION E168 (OAN E168E) (P)
SIRE: SILVERSTREAM HOLSTER H187 (OAN H187E) (P)
SILVERSTREAM JILLY E105 (OAN E105E) (P)

VIOLET HILLS WINTON (VHV W74E)
DAM: GLENLEA JANET Z8E (GLE Z8E) (P)
GLENLEA JANET U6E R/F (GLE U6E) (P)

A.I. 27/9/22 LT Countdown (PP).
Joined to Shandon / Glenlea Q-brick (PP) from 10/10/22 till 21/1/23.



February 2023 Australasian Charolais BREEDPLAN Analysis

	CE Dir	GL	BW	200	400	600	Milk	SS	Carc Wt	EMA	Rump	IMF
EBV	+1.5	-3.3	+1.0	+14	+27	+35	+3	+0.3	+22	+1.8	-0.7	-0.2
Acc	52%	58%	62%	58%	57%	57%	57%	55%	51%	46%	49%	45%

COMMENTS: What a tremendous female to start a run of 5 E.T. heifers. Thick bodied, excellent fat cover, bone, strong polled head. **PLEASE NOTE all of the females in this sale presented straight out of the paddock with no supplementary feeding, which really just highlights their quality.** Dam is Glenlea Janet Z8E, she raised her last natural calf at 16 years. Her lifetime earnings are in excess of \$75,000, R106 could easily exceed this figure. Sired by breed legend, Silverstream Hostler (P) growth, carcass and finish are his progeny hallmarks. **DNA PV verified to mating**



Led female that will attract attention whenever she is on a halter in the show ring.

EBV's above average growth, with added carcass yield is highlighted by the data.

LOT
7

MAW GLENLEA
NUNCIATA 1ST (AI) (ET) (P) (R/F)

TATTOO: MAW R102E
DOB: 11/09/2020

MERIT VINTAGE 4065P (OAC -414E) (P)
SIRE: CML DISTINCTION 318A (OAC J318E) (P)
TARGET PLD GINNY 40P (OAC Z486E) (P)

PALGROVE DINKUM (PK D1028E) (P)
DAM: ALLEDNAW NUNCIATA G109 (AKT G109E) (P)
ALLEDNAW NUNCIATA C28 (AKT C28E)

A.I. 27/9/22 WFA Glenlea Neptune N42 (P). **Joined to Shandon/Glenlea Q-brick (PP) from 10/10/22 till 21/1/23.**



February 2023 Australasian Charolais BREEDPLAN Analysis

	CE Dir	GL	BW	200	400	600	Milk	SS	Carc Wt	EMA	Rump	IMF
EBV	+0.3	-1.8	+0.9	+16	+33	+45	+4	+2.1	+27	+1.1	+0.2	+0.1
Acc	41%	49%	54%	48%	47%	48%	42%	43%	39%	30%	33%	29%

COMMENTS: Absolute outstanding Red Factor females like R102 never get sold, except in a dispersal such as this sale! Growth, fine coated, great bone, carcass and strong maternal traits, bred to breed stud sires! Dam has been a great producer, from another of Glenlea's oldest cow families with one of the lead young cows and calves at lot 18 a full sister to R102E. Sire is a growth trait leader in the breed with nearly 100 registered progeny and this heifer and Lot 18 are two of his best daughters. **DNA PV verified to mating**



Led female that would be competitive at any show in 2023/24.

EBV's well above breed average growth with carcass data that will improve as her progeny data is added to BreedPlan, all good judges will recognise her carcass quality.

LOT
8

MAW GLENLEA
CHAROL 2ND (AI) (ET) (P)

TATTOO: MAW R103E
DOB: 12/09/2020

GERRARD PREACHER 31U (OAC D9989E) (P)
SIRE: GERRARD PASTOR 35Z (OAC H7921E) (P)
GERRARD ROXANNE 18P (PED -4620E)

ROSEDALE DINGA (MR D25E) (P)
DAM: GLENLEA CHAROL 72ND (GLE J8E) (P)
GLENLEA CAAROL 42ND F37 (GLE F37E) (P)

A.I. 27/9/22 LT Countdown (PP).

Joined to Shandon / Glenlea Q-brick (PP) from 10/10/22 till 21/1/23.



February 2023 Australasian Charolais BREEDPLAN Analysis

	CE Dir	GL	BW	200	400	600	Milk	SS	Carc Wt	EMA	Rump	IMF
EBV	-9.9	-0.7	+1.2	+17	+29	+49	+9	+1.9	+28	+1.6	+0.3	-0.2
Acc	41%	50%	52%	49%	48%	49%	42%	45%	41%	35%	39%	35%

COMMENTS: The first of 3 E.T. daughter's of Glenlea Charol 72nd (PP). Long bodied, growth, carcass with excellent fat cover, and strong polled head. Dam is one of Glenlea's most valued donors, producing stud sires and females like R103. Sire, Gerrard Pastor, is also the sire of Elders Blackjack. Semen not generally available, we used this sire to add softness and maintain bone, growth and overall power. We think R103 is a great outcome. **Homozygous Polled. DNA PV verified to mating**



HOMOZYGOUS POLLED

EBV's are outstanding with 10 traits above breed average, including all growth traits with moderate BW.

Led female that would be competitive in any show in 2023/24.

LOT
9

MAW GLENLEA
CHAROL 1ST (AI) (ET) (P)

TATTOO: MAW R105E
DOB: 14/09/2020

GERRARD PREACHER 31U (OAC D9989E) (P)
SIRE: GERRARD PASTOR 35Z (OAC H7921E) (P)
GERRARD ROXANNE 18P (PED -4620E)

ROSEDALE DINGA (MR D25E) (P)
DAM: GLENLEA CHAROL 72ND (GLE J8E) (P)
GLENLEA CAAROL 42ND F37 (GLE F37E) (P)

A.I. 27/9/22 WFA Glenlea Neptune

N42 (P). Joined to Shandon/Glenlea Q-brick (PP) from 10/10/22 till 21/1/23.



February 2023 Australasian Charolais BREEDPLAN Analysis

	CE Dir	GL	BW	200	400	600	Milk	SS	Carc Wt	EMA	Rump	IMF
EBV	-9.9	-0.7	+1.2	+17	+29	+49	+9	+1.9	+28	+1.6	+0.3	-0.2
Acc	41%	50%	52%	49%	48%	49%	42%	45%	41%	35%	39%	35%

COMMENTS: Full sister to lot 8 and all the same comments apply. This heifer had a recip dam that under performed in raising this her but she has made up for it since weaning and almost caught up to her sister. With a dam as strong in type as Charol 72nd and sire with the ability to breed on like Pastor, you can buy a female like this with your eyes closed. **Homozygous Polled. DNA PV verified to mating**



HOMOZYGOUS POLLED

EBV's are outstanding with 10 traits above breed average, including all growth traits with moderate BW.

NOTE: AI Sire for lots 7 & 9, WFA Glenlea Neptune N42, is the sire of our two highest priced Yearling bulls at Glenlea's 2022 Roma Bull Sale at \$24,000 and \$20,000. This sire only used in the Mawarra and Glenlea herds.

LOT
10

MAW GLENLEA
CHAROL 3RD (AI) (ET) (P) (R/F)

TATTOO: MAW R107E

DOB: 14/09/2020

RANGAN PARK REDEMPTION E42 (RAN E42E) (P)

ROSEDALE DINGA (MR D25E) (P)

SIRE: **GLENLEA JUST RED (GLE J5E) (P)**

DAM: **GLENLEA CHAROL 72ND (GLE J8E) (P)**

GLENLEA JANET U6E R/F (GLE U6E) (P)

GLENLEA CAAROL 42ND F37 (GLE F37E) (P)

*Will calve prior to sale
to Lt Ledger 9603 PLD*

February 2023 Australasian Charolais BREEDPLAN Analysis

	CE Dir	GL	BW	200	400	600	Milk	SS	Carc Wt	EMA	Rump	IMF
EBV	-8.2	-2.2	+1.9	+20	+37	+57	+6	+1.4	+29	+1.0	-0.2	+0.1
Acc	43%	49%	56%	48%	49%	49%	40%	47%	42%	37%	41%	35%

COMMENTS: Another very classy Red Factor **Homozygous polled** female with super fine hair coat, perfect udder forming, eye appeal, growth and finish. One of only two females and one calf in this sale by breed legend Glenlea Just Red (PP) R/F. Dam is the outstanding Charol 72nd one of Glenlea's high profile cow families, buy lot 8,9 and 10 and have an established cow family in your herd from one sale. **DNA PV verified to mating.**



HOMOZYGOUS POLLED

EBV's are well above breed average for all growth traits, and positive EMA and IMF%



Lot 17 with her 6 month old calf by Glenlea Kowboy (P) R/F

Outstanding unit!

LT RIO BRAVO 3181 P (OAU Y5507E) (P)
SIRE: ASCOT GOLDRUSH G136E (JAJ G136E) (P)
PARINGA BLUEGRASS D125 (TOL D125E) (P)

HARVIE REDEMPTION 36P (OAC Z6641E) (P)
DAM: GOBONGO ISABELLA D10E (GO D10E) (P)
GOBONGO ISABELLA (GO T48E)

A.I. Silverstream Geddes (P) 27/9/22
Exposed to Shandon/Glenlea Q-Brick
(PP) 10/10/22 till 21/1/23.
Exposed Glenlea Just Red (PP) R/F
10/3/23 till 25/4/23.



February 2023 Australasian Charolais BREEDPLAN Analysis

	CE Dir	GL	BW	200	400	600	Milk	SS	Carc Wt	EMA	Rump	IMF
EBV	+4.2	-4.7	-1.0	+15	+32	+40	+9	+2.1	+24	+2.2	+2.5	+1.2
Acc	55%	65%	72%	68%	66%	66%	61%	63%	59%	52%	56%	52%



COMMENTS: Great producing young cow to lead off the cows and calves, and with outstanding twin heifers at side ready to wean sired by the leading WA sire Maximum Impact. She is a direct daughter of Isabella D10 the dam of Ascot Eldorado, a foundation sire in the Ascot herd, one of the most prominent and highest earning cow families in the breed.

Her earnings have started on a high with her 1st bull calf sold at Glenlea's Roma 2022 sale at 16 months for \$15,000 to Hartley Grazing. P59's future earnings will be high and the Glenlea Beef team can assist you in achieving this.

EBV's Top 5% Fat and IMF%, well above average growth, top 15% EMA and below average BW.



CALF: MAW ISABELLA 3RD (AI) (P) (TW)

TATTOO: MAW 22T598E

DOB: 17/06/2022 **COLOUR:** White

SIRE: VENTURON MAXIMUM IMPACT (VE7 M60E) (P)

Calf-at-foot: A class heifer that will be 10 months old on sale day, would be suitable to join in spring 2023 and a show prospect heifer. Lots of eye appeal and you wouldn't know she is a twin.



CALF: MAW ISABELLA 4TH (AI) (P) (TW)

TATTOO: MAW 22T599E

DOB: 17/06/2022 **COLOUR:** White

SIRE: VENTURON MAXIMUM IMPACT (VE7 M60E) (P)

Calf-at-foot: Just like her sister, same comments apply. Mum has done a fantastic job of raising these two keeper heifers!



Lot 13 VLW J9E

Photo taken in 2021.
Age 8 years



Lot 17 GLE Q2E

Photo taken in 2021.
Age 2 years



Lot 24 GLE Q10E

Photo taken in 2020. Age 12 months.
She was Champion Female at the
Charnelle invitational sale in 2020.



Lot 31 GLE K60E

Photo taken in 2021.
Age 7 years



GLE J8E

Donor and Dam of Lots 8, 9, 10 & 28.



Lot 4 GLE Q61E

Age 11 months

LOT
12

ASCOT
NANCEY P77E (AI) (P)

TATTOO: JAJ P77E
DOB: 24/09/2018

ASCOT GOLDRUSH G136E (JAJ G136E) (P)
SIRE: ASCOT GOLDRUSH L87E (JAJ L87E) (P)
GOBONGO GEORGINA D156E (GO D156E) (P)

LT LEDGER 0332 M791626 (OAU F3168E) (P)
DAM: ASCOT NANCEY L31E (JAJ L31E) (P)
MOONGOOL NANCEY (DP2 A414E)

A.I. Silverstream Geddes (P) 27/9/22.
Exposed to Shandon/Glenlea Q-Brick (PP) 10/10/22 till 21/1/23.
Exposed Glenlea Just Red (PP) R/F 10/3/23 till 25/4/23.



February 2023 Australasian Charolais BREEDPLAN Analysis

	CE Dir	GL	BW	200	400	600	Milk	SS	Carc Wt	EMA	Rump	IMF
EBV	+5.8	-4.6	-1.7	+15	+25	+35	+13	+1.0	+22	+1.9	+2.2	+1.0
Acc	44%	62%	71%	62%	59%	60%	49%	52%	50%	41%	46%	41%

COMMENTS: Lovely deep bodied, soft easy doing young cow that has raised a tremendous heifer by A.I. sire Maximum Impact. Her 2021 heifer offered at Lot 49 is a standout in the 2021 heifers. What a pedigree, Dam is a daughter of USA breed legend "Ledger" from a Moongool Female by their leading foundation sire "MV Sundance". P77's sire was an impressive bull used in 4 stud herds.

EBV's are breed leading all positive carcass data, above average growth with very Low BW.

Calf-at-foot: Beautiful heifer, 10 month old, ready to drop straight into your keeper heifers. Show prospect.



CALF: MAW NANCEY 2ND (AI) (P) TATTOO: MAW 22T77E
DOB: 17/06/2022 COLOUR: White
SIRE: VENTURON MAXIMUM IMPACT (VE7 M60E) (P)

LOT
13

VALLEY VIEW
ESTELLA C14 9E (AI) (ET) (P/S)

TATTOO: VLW J9E
DOB: 02/03/2013

HASTING (OAF M149F)
SIRE: NOVOTEL (OAF S7519F)
DATCHA (PED -1456F)

BR DUKE 261 M246564 (OAU C261E) (P)
DAM: PALGROVE ESTELLA 214 (PK A416E) (P)
PALGROVE ESTELLA 73 (PK S201E)

A.I. Venturon Maximum Impact (PP) 27/9/22 exposed to Shandon/Glenlea Q-Brick (PP) 10/10/22 till 21/1/23.
Exposed Glenlea Just Red (PP) R/F 10/3/23 till 25/4/23.



February 2023 Australasian Charolais BREEDPLAN Analysis

	CE Dir	GL	BW	200	400	600	Milk	SS	Carc Wt	EMA	Rump	IMF
EBV	+2.1	-3.1	+0.5	+13	+24	+29	+11	+1.4	+21	+2.2	-1.0	-0.5
Acc	58%	69%	67%	60%	60%	60%	59%	56%	54%	48%	50%	45%

COMMENTS: This female is a powerful cow, was purchased for the Mawarra donor herd but due to the wet seasons no E.T. program were done from 2020 on. Massive volume, carcass and overall yield with great bone and very strong head showing breed character. Her magnificent heifer calf at side is a standout. Sired by excellent French sire Novotel. Her dam is from the famous Estella cow family. Females like this rarely come onto the market. Her 2019 daughter sells as Lot 1 and her 2021 bull calf sold at Glenlea's Roma 2022 sale for \$14,000 at 16 months.

EBV's show top 5% overall beef yield, 15% Milk and EMA, above average growth, with moderate BW.

Calf-at-foot: Extra powerful heifer, just like her Dam. Would make a competitive show heifer and cow.



CALF: MAW ESTELLA 12TH (AI) (P) TATTOO: MAW 22T9E
DOB: 17/06/2022 COLOUR: White
SIRE: TURNBULLS DUTY-FREE 358D (OAC M1309E) (P)

LOT
14

HUON
YVONNE 2 (P)

TATTOO: DG1 N27E
DOB: 19/03/2017

MERIT ROUNDUP 9508W (OAC E6558E) (P)
SIRE: RANGAN ROUNDUP K18 (RAN K18E) (P)
RANGAN PARK ALETTA H57 (RAN H57E) (P)

RANGAN PARK PERFORMER E30 (RAN E30E)
DAM: HUON YVONNE (DG1 K14E)
ASH-LIN YVONNE (ACW B1E)

A.I. WFA/Glenlea Neptune(P) 27/9/22
Exposed to Shandon/Glenlea Q-Brick
(PP) 10/10/22 till 21/1/23.
Exposed Glenlea Just Red (PP) R/F
10/3/23 till 25/4/23.



February 2023 Australasian Charolais BREEDPLAN Analysis

	CE Dir	GL	BW	200	400	600	Milk	SS	Carc Wt	EMA	Rump	IMF
EBV	+1.7	-4.1	+0.7	+19	+41	+57	+7	+2.8	+34	+2.3	-1.6	+0.0
Acc	46%	55%	71%	60%	57%	57%	44%	50%	46%	37%	41%	37%

COMMENTS: Big strong polled cow in her prime! Deep bodied, easy finishing and great udder. Her 2021 bull sold as a Yearling at the Glenlea Casino sale for \$10,000. Sire was a high selling bull in 2016, with 142 registered progeny and is a trait leader for 400 and 600 day weight. Dam is by a powerful son of Silverstream Performer who was one of the best sires ever imported from NZ.

EBV's Top 5% 400, 600 day weight, scrotal and carcass weight, top 15% EMA all with moderate BW.

Calf-at-foot: Powerful thick bodied heifer showing the performance of her dam and strength of type of her sire.



CALF: MAW YVONNE 4TH (AI) (P) TATTOO: MAW 22T27E
DOB: 15/06/2022 COLOUR: White
SIRE: PALGROVE VIAGRA (PK V92E) (P)

LOT
15

DOUGLASDALE
MISSY HIGGINS (P)

TATTOO: DOU M19D
DOB: 31/10/2016

PALGROVE VIAGRA (PK V92E) (P)
SIRE: DOUGLASDALE VIAGRA (DOU C6E) (P)
PALGROVE BRONWIN 73 (PK Y275E)

EVORA ROYAL FP119 (LAW R7F)
DAM: BARAMBAH-DALE BOUQUET (DAV B95C)
BARAMBAH-DALE U10B (DAV U10B)

A.I. Venturon Maximum Impact (PP)
27/9/22. Exposed to Shandon/Glenlea
Q-Brick (PP) 10/10/22 till 21/1/23.
Exposed Glenlea Just Red (PP) R/F
10/3/23 till 25/4/23.



February 2023 Australasian Charolais BREEDPLAN Analysis

	CE Dir	GL	BW	200	400	600	Milk	SS	Carc Wt	EMA	Rump	IMF
EBV	+7.5	-3.9	-0.5	+7	+12	+10	+9	+0.7	+12	+1.9	-0.4	-0.1
Acc	45%	50%	69%	52%	51%	53%	47%	42%	43%	33%	34%	32%

COMMENTS: Beautiful square thick bodied cow, perfect udder, strong attractive head and broad muzzle, good bone and has produced some excellent progeny, her 2021 daughter sells at lot 57. We think a lot of this female and she has the strength of type to produce for northern markets and southern markets alike. Sire was an early maturing bull, good carcass with excellent maternal traits and 97 registered progeny. Dam was a female heavy with French influence and M19 was her best daughter.

EBV's reflect her early maturity and good overall carcass, with above average milk, EMA and beef yield and Low BW.

Calf-at-foot: Super stylish high performance heifer, shows herself off every time in the paddock. Show prospect.



CALF: MAW MISSY 2ND (AI) (P) (TW) TATTOO: MAW 22T19E
DOB: 14/06/2022 COLOUR: White
SIRE: VENTURON MAXIMUM IMPACT (VE7 M60E) (P)

LOT
16

WATERFORD
LADY GINA L33E (P)

TATTOO: WET L33E
DOB: 20/09/2015

PALGROVE CALIBRE S 251404XBC01564 (PK C264E) (P)
SIRE: PALGROVE HERMES (PK H549E) (P)
PALGROVE ESTELLA 304 (PK E98E) (P)

MOONGOOL YOKEL (DP2 Y218E)
DAM: DSK MY GINA D23E (DSK D23E) (P)
NANDILLYAN A57E (F A57E) (P)

February 2023 Australasian Charolais BREEDPLAN Analysis

A.I. WFA/Glenlea Neptune(P) 5/12/22
Exposed to Q Brick 10/12/22
then to Glenlea Just Red (PP) R/F
10/3/23 to 25/4/23.

	CE Dir	GL	BW	200	400	600	Milk	SS	Carc Wt	EMA	Rump	IMF
EBV	+5.5	-1.3	-0.1	+9	+15	+24	+9	+1.2	+13	+0.7	+0.4	-0.2
Acc	45%	52%	66%	59%	61%	59%	47%	51%	52%	41%	46%	41%

COMMENTS: This cow has a show career to envy - Junior interbreed heifer at Melbourne Charolais feature show in 2016, selling for \$16,000, then turning up with her first calf at foot at BEEF 2018 in Rockhampton to just be beaten by a mature cow to be Reserve Champion Charolais female. Big strong polled cow, great milker, from one of the leading cows in the Waterford Stud. **LED FEMALE.** She has 3 daughters in the sale, Lot 40 and 41 and her outstanding polled red factor heifer calf.

EBV's due to very limited data being submitted to breedplan on this female's sire and dam, and herself. Her EBV's may not reflect her true breeding value in our opinion.

Calf-at-foot: Tremendous calf, one of the best Kowboy heifers, red and polled. *NOTE Glenlea's Special Offer*



CALF: MAW GINA 3RD (P) (R/F) TATTOO: MAW 22T33E
DOB: 09/09/2022 COLOUR: Red Factor
SIRE: GLENLEA KOWBOY Q405 (GLE Q405E) (P)

LOT
17

GLENLEA
ADAWNA 7TH (P) (R/F)

TATTOO: GLE Q2E
DOB: 02/01/2019

LT VENTURE 3198 M835612 (OAU J5612E) (P)
SIRE: CHALLAMBI MUSCLES (CHA M15E) (P)
ROSEDALE HIGHNESS G114E (MR G114E) (P)

GLENLEA JUST RED (GLE J5E) (P)
DAM: GLENLEA ADAWNA 5TH (GLE M106E) (P)
MIXHILL ADAWNA (MIX A455E)

Exposed to Shandon/Glenlea Q-Brick (PP) 10/10/22 till 21/1/23.
Exposed Glenlea Just Red (PP) R/F
10/3/23 till 25/4/23.

	CE Dir	GL	BW	200	400	600	Milk	SS	Carc Wt	EMA	Rump	IMF
EBV	-4.6	-3.5	-0.1	+16	+33	+45	+10	+1.8	+27	+1.3	+1.5	+0.0
Acc	39%	42%	62%	47%	47%	48%	39%	42%	38%	33%	36%	32%

COMMENTS: One of the standout females in the sale, and there are many! Bomb proof temperament, easy doing, easy finishing, perfect udder, fine hair coat, strong polled head and muzzle. Young cow with her second calf at foot, ready to wean as are nearly all calves in the sale. Purchased in 2020 as a feature heifer at the Charnelle sale. Sire is one of Glenlea's best producing sires in last few years. Dam is an impressive cow family with a maternal sister selling for \$16,000 at 15 months of age in 2022. **Homozygous polled (PP)** Led and been shown as Heifer. Excellent earning potential, Q2 first bull calf sold for \$20,000 at 16 months at Glenlea's Roma 2022 Bull Sale.

EBV's outstanding with 11 traits above breed average including all growth traits and fat cover, with well below breed average BW.

Calf-at-foot: Eye appealing balanced heifer. Just waiting for a halter and a show. *NOTE Glenlea's Special Offer*



CALF: MAW ADWANA 6TH (P) (R/F) TATTOO: MAW 22T2E
DOB: 20/10/2022 COLOUR: Red Factor
SIRE: GLENLEA KOWBOY Q405 (GLE Q405E) (P)

LOT
18

GLENLEA
NUNCIATA 121ST (AI) (ET) (P)

TATTOO: GLE Q901E
DOB: 10/05/2019

MERIT VINTAGE 4065P (OAC -414E) (P)
SIRE: CML DISTINCTION 318A (OAC J318E) (P)
TARGET PLD GINNY 40P (OAC Z486E) (P)

PALGROVE DINKUM (PK D1028E) (P)
DAM: ALLEDNAW NUNCIATA G109 (AKT G109E) (P)
ALLEDNAW NUNCIATA C28 (AKT C28E)

A.I. 5/12/22 to WFA / Glenlea Neptune (P). Exposed Shandon/Glenlea Q-Brick 10/12/22 then exposed to Glenlea JR 10/3/23 to 25/4/23



February 2023 Australasian Charolais BREEDPLAN Analysis

	CE Dir	GL	BW	200	400	600	Milk	SS	Carc Wt	EMA	Rump	IMF
EBV	+0.4	-1.9	+0.9	+18	+37	+48	+4	+2.1	+30	+1.0	-0.4	+0.0
Acc	42%	51%	66%	54%	57%	55%	42%	45%	46%	37%	48%	33%

COMMENTS: Great young female, a proven producer. Good frame and bone, feminine and lovely udder. A full E.T. sister sells at lot 7. Purchased in 2020 as part of a group of 12 elite heifer's bought privately from Glenlea. Her 2021 heifer sells as one of the feature "S" heifers at lot 51. Sire is a genuine low BW high growth sire who is a trait leader for all growth traits and well below breed average BW. Dam is a Nunciata cow, one of Glenlea's oldest and strongest with this cow being purchased by Glenlea in 2017 to join their donor herd.



Homoyzous Polled (PP)

EBV's Top 10% 400 ,600 day weight and carcass weight!

Calf-at-foot: Lovely polled red heifer. Several peoples pick of the Kowboy heifers. Ready for the show ring and collecting up to \$5000 in prize money! *NOTE Glenlea's Special Offer*

CALF: MAW NUNCIATA 2ND (P) (R/F) TATTOO: MAW 22T901E
DOB: 20/09/2022 **COLOUR:** Red Factor
SIRE: GLENLEA KOWBOY Q405 (GLE Q405E) (P)

LOT
19

ASCOT
P57E (AI) (P)

TATTOO: JAJ P57E
DOB: 04/09/2018

LT STAGECOACH 8068 PLD (OAU D7606E) (P)
SIRE: LT VENTURE 3198 (OAU J5612E) (P)
LT BALLET 9219 (OAU E7686E) (P)

PALGROVE HEADLINE (PK H1417E) (P)
DAM: ASCOT M34E (JAJ M34E) (P)
ASCOT JAJG0120 (JAJ G120E) (P)

A.I. Silverstream Geddes (P) 05/12/22 Exposed to Shandon/Glenlea Q-Brick (PP) 10/10/22 to 21/1/23. Exposed Glenlea Just Red (PP) R/F 10/3/23 till 25/4/23.



February 2023 Australasian Charolais BREEDPLAN Analysis

	CE Dir	GL	BW	200	400	600	Milk	SS	Carc Wt	EMA	Rump	IMF
EBV	+4.3	-6.0	-1.7	+21	+42	+52	+12	+3.2	+32	+0.8	+1.9	+0.6
Acc	53%	61%	72%	66%	64%	64%	55%	57%	55%	47%	54%	48%

COMMENTS: What a unit, the first with a KOWBOY bull calf at foot. Tremendous cow with growth, softness and milk, lovely fine hair type and the dam of lot 46, her first calf and outstanding joined heifer. Sire LT Venture is a very popular sire, known for calving ease and carcass. Her dam has some of the leading cows that formed the foundation of the Ascot herd.



EBVs Top 10% 400 day, 600 day, Milk, carcass weight and Rump fat. 14 traits above breed average!

Calf-at-foot: A powerhouse bull that ticks many boxes. Potential sire. *See Glenlea's special sale offers*, this fellow can be sold at any 2024 Glenlea Bull Sale and eligible for the show prize money.

CALF: MAW KOWBOY T57 (P) (R/F) TATTOO: MAW 22T57E
DOB: 08/09/2022 **COLOUR:** Red Factor
SIRE: GLENLEA KOWBOY Q405 (GLE Q405E) (P)

LOT
20

PALGROVE
FESTOON P940E (P)

TATTOO: PK P940E
DOB: 28/08/2018

PARINGA HARVEY H338 (TOL H338E) (P)
SIRE: PARINGA MANTRA M354 (TOL M354E) (P)
PARINGA WHITE GOLD H410 (TOL H410E) (P)

SILVERSTREAM HOLSTER H187 (OAN H187E) (P)
DAM: PALGROVE FESTOON L368E (PK L368E) (P)
PALGROVE FESTOON 213 (PK D797E)

A.I. WFA/Glenlea Neptune(P) 5/12/22
Exposed to Shandon/Glenlea Q-Brick
(PP) 10/12/22 then to Glenlea Just
Red (PP) R/F 10/3/23 till 25/4/23.



February 2023 Australasian Charolais BREEDPLAN Analysis

	CE Dir	GL	BW	200	400	600	Milk	SS	Carc Wt	EMA	Rump	IMF
EBV	-4.3	-4.6	+1.1	+20	+38	+46	+8	+0.8	+27	+2.4	+1.1	+0.8
Acc	47%	56%	70%	66%	62%	60%	51%	58%	51%	45%	48%	45%

COMMENTS: Great unit! Moderate framed, big volumed, high yielding, perfect uddered Palgrove female with her second calf at side, a stout polled, red bull. Selected at the 2021 Palgrove sale by Rod Binny as his pick for our herd of the joined heifers. Her 2021 heifer by LT Vista sells at lot 48. Sire is a high performance, trait leading sire for all growth traits with over 100 registered progeny at Palgrove. Dam is an outstanding Holster daughter from the Festoon cow family, proven genetics. **DNA Sire verified**

EBVs are outstanding Top 10% for all growth traits, top 15% EMA, 11 traits above breed average.

Calf-at-foot: Thick, fine coated, great carcass, early maturing. *NOTE Glenlea's Special Offer*



CALF: MAW KOWBOY T940 (P) (R/F) TATTOO: MAW 22T940E
DOB: 14/09/2022 COLOUR: Red Factor
SIRE: GLENLEA KOWBOY Q405 (GLE Q405E) (P)

LOT
21

ASCOT
LAONIE P65E (AI) (P)

TATTOO: JAJ P65E
DOB: 12/09/2018

VPI FREE LUNCH 708T M736773 (OAU C6773E) (P)
SIRE: PARINGA KILO PACKER K330 (TOL K330E) (P)
PARINGA WHITE GOLD H410 (TOL H410E) (P)

ASCOT KINGMAKER K11E (JAJ K11E) (P)
DAM: ASCOT LAONIE M84E (JAJ M84E) (P)
CRATHES LAONIE 2 (KRG E11E)

A.I. PCC Sudden Impact (P) 5/12/22
Exposed to Shandon/Glenlea Q-Brick
(PP) 10/12/22 till 21/1/23.
Exposed Glenlea Just Red (PP) R/F
10/3/23 till 25/4/23.



February 2023 Australasian Charolais BREEDPLAN Analysis

	CE Dir	GL	BW	200	400	600	Milk	SS	Carc Wt	EMA	Rump	IMF
EBV	+11.4	-6.5	-2.9	+18	+35	+44	+9	+3.0	+33	+2.8	+1.2	+0.5
Acc	47%	63%	71%	65%	64%	63%	50%	59%	54%	47%	53%	47%

COMMENTS: Moderate, early maturing, perfect udder, extra beef yield, fine hair type, strong head and jaw and a powerhouse producer. Her first yearling son sold for \$24,000 at the Glenlea Roma bull sale in 2022.

EBV's top 5% of breed for Calving Ease, Gestation, Low BW, Scrotal, Carcass Weight and EMA, Top 15% for 200 and 400 day weight, top 25% for 600 day, Fat Cover and IMF%. In total 15 out of 16 recorded traits above breed average, no wonder she is breeding great progeny!

Calf-at-foot: An outstanding Red Factor, Polled bull calf. Carcass, growth, fine hair type, docile, this bull will be a sale topper or a sire for the buyer to retain.

NOTE Glenlea's Special Offer



CALF: MAW KOWBOY T65 (P) (R/F) TATTOO: MAW 22T65E
DOB: 15/09/2022 COLOUR: Red Factor
SIRE: GLENLEA KOWBOY Q405 (GLE Q405E) (P)

LOT
22

ASCOT
GOLDEN P12E (AI) (P)

TATTOO: JAJ P12E
DOB: 05/04/2018

VPI FREE LUNCH 708T M736773 (OAU C6773E) (P)
SIRE: ASCOT KING ARTHUR K44E (JAJ K44E) (P)
PARINGA RIO D213 F331 (AI) (TOL F331E) (P)

ROSEDALE CASHIER (MR C132E) (P)
DAM: ASHWOOD PARK GOLDEN (HAS G54E) (P)
ASHWOOD PARK CINDY (HAS C1E) (P)

A.I. Silverstream Geddes (P) 5/12/22
Exposed to Shandon/Glenlea Q-Brick (PP) 10/12/22 till 21/1/23.
Exposed Glenlea Just Red (PP) R/F 10/3/23 till 25/4/23.



February 2023 Australasian Charolais BREEDPLAN Analysis

	CE Dir	GL	BW	200	400	600	Milk	SS	Carc Wt	EMA	Rump	IMF
EBV	+12.4	-6.1	-3.9	+9	+20	+25	+18	+1.6	+16	+2.1	+4.9	+0.5
Acc	42%	72%	71%	63%	65%	62%	51%	57%	55%	47%	58%	47%

COMMENTS: Moderate, early maturing, super soft young cow, fine hair coat, **Homozygous (PP) Polled** that has already produced high value progeny. A super Low BW specialist with top 1% of breed milk. Her 2021 yearling son sold for \$19,000 at Glenlea's 2022 Roma Bull Sale, and her calf at foot is a lovely soft Low BW Red polled bull.

EBV's Top 1% for Milk, Rib and Rump Fat, Top 2% for calving ease, Low BW, Top 5% for Gestation length, top 20% EMA and IMF%. Total of 9 traits above breed average.

Calf-at-foot: Classy Low BW bull calf, very easy finishing. Polled and Red. *NOTE Glenlea's Special Offer*



HOMOZYGOUS POLLED

CALF: MAW KOWBOY T12 (P) (R/F) TATTOO: MAW 22T12E
DOB: 16/09/2022 COLOUR: Red Factor
SIRE: GLENLEA KOWBOY Q405 (GLE Q405E) (P)

LOT
23

ASCOT
ESTELLA N81E (AI) (P)

TATTOO: JAJ N81E
DOB: 04/10/2017

VPI FREE LUNCH 708T M736773 (OAU C6773E) (P)
SIRE: ASCOT LIQUID GOLD L7E (JAJ L7E) (P)
PARINGA WHITE GOLD H372 (TOL H372E)

ASCOT ELDORADO (JAJ E14E) (P)
DAM: ASCOT ESTELLA L84E (JAJ L84E) (P)
PALGROVE ESTELLA 291 (PK D870E) (P)

A.I. PCC Sudden Impact (P) 5/12/22
Exposed to Shandon/Glenlea Q-Brick (PP) 10/12/22 till 21/1/23.
Exposed Glenlea Just Red (PP) R/F 10/3/23 till 25/4/23.



February 2023 Australasian Charolais BREEDPLAN Analysis

	CE Dir	GL	BW	200	400	600	Milk	SS	Carc Wt	EMA	Rump	IMF
EBV	+4.3	-6.1	-0.9	+24	+38	+53	+10	+1.6	+33	+2.7	+2.7	+0.6
Acc	43%	74%	70%	63%	66%	63%	49%	57%	56%	49%	61%	50%

COMMENTS: These classy moderate framed females would make a lovely line to add to a stud herd or start one! N81 has extra growth across the growth curve, early maturing young cow, fine hair type and easy finishing. Dam is another from the Estella cow family, this time from Ascot's Leading Donor. **Homozygous (PP) polled** and her 2021 bull calf sold for \$12,000 at Glenlea's 2022 Roma bull sale.

EBV's Top 2% 200-day growth. Top 5% Rib and Rump Fat, Carcass Wt and Gestation Length. Top 10% 400 and 600 day growth and EMA. Total of 14 out of 16 recorded Traits above breed average.

Calf-at-foot: Feminine, soft, polled, red heifer. Very docile. *NOTE Glenlea's Special Offer*



HOMOZYGOUS POLLED

CALF: MAW ESTELLA 5TH (P) (R/F) TATTOO: MAW 22T81E
DOB: 03/09/2022 COLOUR: Red Factor
SIRE: GLENLEA KOWBOY Q405 (GLE Q405E) (P)

LOT
24

GLENLEA
ESTELLA 15TH (P) (R/F)

TATTOO: GLE Q10E
DOB: 30/01/2019

RANGAN PARK REDEMPTION E42 (RAN E42E) (P)
SIRE: GLENLEA HONOURABLE (VLW H25E) (P)
FERNVALE CHIFFON (FEN C22E)

THW DEE V8 (THW D19E) (P/S)
DAM: VALLEY VIEW MISS ESTELLA (VLW G58E) (P)
VALLEY VIEW C004 ESTELLA 145 (VLW C4E) (P)

Exposed to Shandon/Glenlea Q-Brick (PP) 10/10/22 till 21/1/23.

Exposed Glenlea Just Red (PP) R/F 10/3/23 till 25/4/23.



February 2023 Australasian Charolais BREEDPLAN Analysis

	CE Dir	GL	BW	200	400	600	Milk	SS	Carc Wt	EMA	Rump	IMF
EBV	-10.6	-1.2	+2.2	+19	+30	+46	+4	+0.5	+25	+2.1	-0.5	-0.1
Acc	45%	57%	71%	55%	55%	56%	44%	48%	45%	37%	42%	37%

COMMENTS: A powerful young cow, lovely udder, fine hair type, excellent bone, length and attractive polled head all on a medium frame. Sired by reference sire Honourable a true impact sire. Dam is by the 2010 Sydney Royal Horden trophy winner DEE V8, she has been a tremendous producer with daughter's retained by Glenlea. Q10 was purchased by Mawarra for \$11,000 at the 2020 Charnelle invitational where she was Grand Champion of the sale. Her first calf, a heifer, is offered at Lot 47 in this sale, a feature female of the "S" heifers.

Led female.

EBV's Top 10% 200 day weight, Top 25% 400 and 600, EMA and Beef Yield %.

Calf-at-foot: Powerful darker red factor heifer. Tremendous width across the spine, lovely carcass, will breed great progeny. *NOTE Glenlea's Special Offer*



CALF: MAW ESTELLA 7TH (P/S) (R/F) TATTOO: MAW 22T10E
DOB: 30/09/2022 COLOUR: Red Factor
SIRE: GLENLEA KOWBOY Q405 (GLE Q405E) (P)

LOT
25

GLENLEA
FRIESIA 10TH (P) (R/F)

TATTOO: GLE Q49E
DOB: 01/04/2019

RANGAN PARK REDEMPTION E42 (RAN E42E) (P)
SIRE: GLENLEA HONOURABLE (VLW H25E) (P)
FERNVALE CHIFFON (FEN C22E)

WCR SIR FA MAC 2244 (OAU B2244E) (P)
DAM: CHARNELLE FRIESIA 4 (GKA H34E) (P)
PALGROVE FRIESIA 19 (PK Y224E) (P)

A.I. Silverstream Geddes (P) 5/12/22
Exposed to Shandon/Glenlea Q-Brick (PP) 10/12/22 till 21/1/23.

Exposed Glenlea Just Red (PP) R/F 10/3/23 till 25/4/23.



February 2023 Australasian Charolais BREEDPLAN Analysis

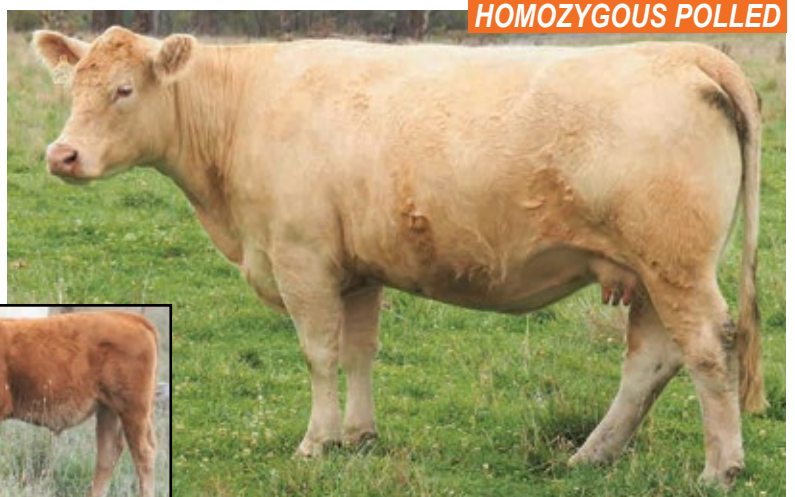
	CE Dir	GL	BW	200	400	600	Milk	SS	Carc Wt	EMA	Rump	IMF
EBV	-15.0	-0.3	+2.8	+20	+36	+59	+4	+0.9	+31	+3.0	+1.6	+0.3
Acc	49%	58%	69%	60%	64%	62%	51%	54%	55%	48%	59%	49%

COMMENTS: Another powerful medium framed Honourable daughter with extra softness. Lovely neat beef udder and overall thickness, extremely docile nature and attractive polled head. Sired by Honourable, with her Dam from the well-known Friesia cow family at Charnelle that has produced many sale toppers. All these young cows are at the end of lactation with their calves and so udders are empty with big calves taking all they can get, normally these would have been weaned in early march, but have been left on their mother's due to this dispersal sale.

Homozygous (PP) Polled and Led female

EBV's top 5% all growth traits, EMA and Carcass Wt. Top 20% Fat Cover. Total of 10 Traits above breed average.

Calf-at-foot: Darker Red polled Bull, will grow into a powerful sire. *NOTE Glenlea's Special Offer*



CALF: MAW KOWBOY T49 (P) (R/F) TATTOO: MAW 22T49E
DOB: 18/09/2022 COLOUR: Red Factor
SIRE: GLENLEA KOWBOY Q405 (GLE Q405E) (P)

LOT
26

GLENLEA
NUNCIATA 115TH (P) (R/F)

TATTOO: GLE Q4E
DOB: 10/01/2019

LT VENTURE 3198 (OAU J5612E) (P)
SIRE: CHALLAMBI MUSCLES (CHA M15E) (P)
ROSEDALE HIGHNESS G114E (MR G114E) (P)

VERNOLA JUST RIGHT J6E (VIW J6E) (P/S)
DAM: ALLEDNAW NUNCIATA M63E (AKT M63E)
ALLEDNAW NUNCIATA G109 (AKT G109E) (P)

A.I. PCC Sudden Impact (P) 5/12/22
Exposed to Shandon/Glenlea Q-Brick
(PP) 10/12/22 till 21/1/23.
Exposed Glenlea Just Red (PP) R/F
10/3/23 till 25/4/23.



February 2023 Australasian Charolais BREEDPLAN Analysis

	CE Dir	GL	BW	200	400	600	Milk	SS	Carc Wt	EMA	Rump	IMF
EBV	+0.0	-3.7	-0.2	+16	+35	+46	+9	+1.8	+30	+2.1	+1.0	-0.1
Acc	38%	41%	59%	46%	46%	47%	40%	43%	38%	32%	36%	32%

COMMENTS: The next of three young Red Factor Glenlea bred cows. An outstanding young cow. Medium framed, very docile, extra carcass yield, fine hair type, ideal beef udder and plenty of performance. Sired by reference sire Muscles out of a cow from one of Glenlea's oldest and most prominent cow families. Q4 is the 115th Nunciata, and will create an established cow family for her purchaser.



EBV's Top 15% 400 and 600 day growth and Carcass Wt. Top 25% EMA with below breed average BW. Total of 14 out 16 recorded traits above breed average.



Calf-at-foot: Big powerful Red, Polled Bull calf. Will be a sale topper in 2024 for sure.

NOTE Glenlea's Special Offer

CALF: MAW NUNCIATA 4TH (P) (R/F) TATTOO: MAW 22T4E
DOB: 14/09/2022 COLOUR: Red Factor
SIRE: GLENLEA KOWBOY Q405 (GLE Q405E) (P)

LOT
27

GLENLEA
REBBY 16TH (P)

TATTOO: GLE Q41E
DOB: 10/03/2019

RANGAN PARK REDEMPTION E42 (RAN E42E) (P)
SIRE: GLENLEA HONOURABLE (VLW H25E) (P)
FERNVALE CHIFFON (FEN C22E)

LHD CIGAR E46 M434790 (OAU Q46E) (P)
DAM: VALLEY VIEW REBBY CIGAR 14TH (VLW H14E) (P)
GOBONGO REBBY D213E (GO D213E) (P)

A.I. PCC Sudden Impact (P) 5/12/22
Exposed to Shandon/Glenlea Q-Brick
(PP) 10/12/22 till 21/1/23.
Exposed Glenlea Just Red (PP) R/F
10/3/23 till 25/4/23.



February 2023 Australasian Charolais BREEDPLAN Analysis

	CE Dir	GL	BW	200	400	600	Milk	SS	Carc Wt	EMA	Rump	IMF
EBV	-14.4	-1.5	+1.3	+15	+25	+37	+4	+1.4	+12	+0.0	-0.5	+0.3
Acc	48%	57%	70%	60%	64%	62%	48%	52%	55%	46%	58%	47%

COMMENTS: The run of powerful Glenlea Bred young cows continues with Q41. Medium framed, long bodied, good bone, fine hair type, strong polled head and very docile. Her first calf is offered at Lot 54 in this sale and is an outstanding heifer. Her sire is again reference sire Honourable, and her dam is the outstanding breeding female Rebbly Cigar 14th. **Homozygous (PP) Polled and Led female.**



EBV's are above breed average for 200 and 600 day Wt.



Calf-at-foot: Growthy, loose hided, fine coated Red, Polled bull that will grow into a great bull. All special offers in this sale for Kowboy progeny apply.

CALF: MAW KOWBOY T41 (P) (R/F) TATTOO: MAW 22T41E
DOB: 19/09/2022 COLOUR: Red Factor
SIRE: GLENLEA KOWBOY Q405 (GLE Q405E) (P)

LOT
28

GLENLEA
CHAROL 114TH (P)

TATTOO: GLE Q19E
DOB: 08/02/2019

BRANCH VIEW HOWLER (BVC H118E) (P)
SIRE: **PARINGA HOWLER M344 (TOL M344E) (P)**
PARINGA REDEMPTION G437 (TOL G437E) (P)

ROSEDALE DINGA (MR D25E) (P)
DAM: **GLENLEA CHAROL 72ND (GLE J8E) (P)**
GLENLEA CAAROL 42ND F37 (GLE F37E) (P)

A.I. PCC Sudden Impact (P) 5/12/22
Exposed to Shandon/Glenlea Q-Brick (PP) 10/12/22 till 21/1/23.
Exposed Glenlea Just Red (PP) R/F 10/3/23 till 25/4/23.



February 2023 Australasian Charolais BREEDPLAN Analysis

	CE Dir	GL	BW	200	400	600	Milk	SS	Carc Wt	EMA	Rump	IMF
EBV	+2.8	-2.3	+1.1	+19	+36	+52	+5	+1.8	+31	+1.9	+0.1	-0.1
Acc	37%	41%	68%	54%	60%	56%	35%	47%	49%	42%	55%	43%

COMMENTS: This female is one of 4 daughters out of DONOR Dam Glenlea Charol 72nd (PP) in the sale. Long bodied, exhibiting the extra carcass yield of her Dam, fine hair coat, perfect udder, attractive strong polled head. Her sire, Paringa Howler, was used in the Glenlea Herd leaving 62 registered progeny and a good number of highly productive daughters. **Homozygous Polled and Led female.**



HOMOZYGOUS POLLED

EBV's Top 10% all growth traits and Carcass Wt. Total of 10 traits above breed average.



Calf-at-foot: Stylish Red, Polled bull calf with great skin, broad head and well covered carcass. All special offers in this sale for Kowboy progeny apply.

CALF: MAW KOWBOY T199 (P) (R/F) TATTOO: MAW 22T199E
DOB: 11/09/2022 COLOUR: Red Factor
SIRE: GLENLEA KOWBOY Q405 (GLE Q405E) (P)

LOT
29

GLENLEA
ISABELLA 12TH (P)

TATTOO: GLE Q55E
DOB: 17/06/2019

GALLWAY - RS (OAF G1063F) (P)
SIRE: **CHARNELLE LOUIS (GKA L73E) (P)**
CHARNELLE ELLE (GKA E10E) (P)

RANGAN PARK RIO BRAVO D15 (RAN D15E) (P)
DAM: **GLENLEA ISABELLA 2ND (GLE L22E) (P)**
GOBONGO ISABELLA D86E (GO D86E) (P)

Exposed to Shandon/Glenlea Q-Brick (PP) 10/10/22 till 21/1/23.
Exposed Glenlea Just Red (PP) R/F 10/3/23 till 25/4/23.



February 2023 Australasian Charolais BREEDPLAN Analysis

	CE Dir	GL	BW	200	400	600	Milk	SS	Carc Wt	EMA	Rump	IMF
EBV	-3.5	-3.7	+0.3	+11	+30	+32	+12	+1.5	+21	+3.0	+2.5	+0.9
Acc	45%	54%	58%	51%	51%	51%	43%	48%	43%	35%	40%	34%

COMMENTS: Another very well bred Glenlea prefixed young cow, long and deep bodied, fine hair type, excellent udder, medium framed, very docile. Her outstanding 2021 heifer sells at lot 55. Her sire Charnelle Louis(PP), a resident sire at Glenlea has been an outstanding breeding bull, over 150 registered progeny in 16 stud herds across Australia. His carcass data is breed leading. Q55's Dam is Lot 43 in this sale, Glenlea Isabella 2nd (P) the Dam of Australia's highest priced charolais female in 2021, making Q55 is a maternal sister. **Homozygous (PP) Polled, Led female.**



HOMOZYGOUS POLLED

EBV's Top 5% EMA, Rib and Rump Fat and IMF%. Top 15% Milk.



Calf-at-foot: Lovely type, Red, Polled Heifer. Had set back when younger, powering along now, will grow out into a very stylish thick bodied heifer.

CALF: MAW ISABELLA 6TH (P) (R/F) TATTOO: MAW 22T55E
DOB: 12/10/2022 COLOUR: Red Factor
SIRE: GLENLEA KOWBOY Q405 (GLE Q405E) (P)

NOTE Glenlea's Special Offer

LOT
30

GLENLEA
NOLANA 121ST (P)

TATTOO: GLE Q54E
DOB: 30/04/2019

LT VENTURE 3198 (OAU J5612E) (P)
SIRE: **CHALLAMBI MUSCLES (CHA M15E) (P)**
ROSEDALE HIGHNESS G114E (MR G114E) (P)

RANGAN PARK RIO BRAVO D15 (RAN D15E) (P)
DAM: **GLENLEA NOLANA 94TH (GLE L28E) (P)**
GLENLEA NOLANA 33RD (GLE C66E) (P)

A.I. Silverstream Geddes (P) 5 /12/22
Exposed to Shandon/Glenlea Q-Brick
(PP) 10/12/22 till 21/1/23.
Exposed Glenlea Just Red (PP) R/F
10/3/23 till 25/4/23.



February 2023 Australasian Charolais BREEDPLAN Analysis

	CE Dir	GL	BW	200	400	600	Milk	SS	Carc Wt	EMA	Rump	IMF
EBV	-6.9	-3.2	+1.1	+20	+42	+58	+12	+2.2	+35	+2.7	+1.7	+0.3
Acc	41%	43%	62%	52%	56%	54%	40%	46%	47%	41%	52%	42%

COMMENTS: Moderate framed, feminine young cow with perfect udder, fine hair type, attractive polled head. Sired by reference Sire Muscles, and out of another great Glenlea cow family, the Nolana's. She is the 121st Nolana. Q54 has her first calf in this sale at Lot 53 and lovely "S" drop heifer that is an impressive type.

EBV's Top 5% all growth traits, Carcass Wt, Top 10% EMA. Top 15% Rib and Rump Fat. Total 11 traits above breed average.

Calf-at-foot: Smooth muscled, fine coated Red, Polled Bull. All special offers in this sale for Kowboy progeny apply.



CALF: MAW KOWBOY T54 (P) (R/F) **TATTOO:** MAW 22T54E
DOB: 07/09/2022 **COLOUR:** Red Factor
SIRE: GLENLEA KOWBOY Q405 (GLE Q405E) (P)



Lot 35 with her Polled, Red heifer calf sired by Glenlea Just Red (PP) R/F at front.

LOT
31

GLENLEA
ISABELLA 1ST (P) (R/F)

TATTOO: GLE K60E
DOB: 07/09/2014

LT RIO BRAVO 3181 P (OAU Y5507E) (P)

SIRE: RANGAN PARK RIO BRAVO D15 (RAN D15E) (P)

PALGROVE SHOW GIRL 6 (PK P82E) (P)

HARVIE REDEMPTION 36P (OAC Z6641E) (P)

DAM: GOBONGO ISABELLA D86E (GO D86E) (P)

GOBONGO ISABELLA (GO T48E)

A.I. Silverstream Geddes (P) 5/12/22

Exposed to Shandon/Glenlea Q-Brick (PP) 10/12/22 till 21/1/23.

Exposed Glenlea Just Red (PP) R/F 10/3/23 till 25/4/23.



February 2023 Australasian Charolais BREEDPLAN Analysis

	CE Dir	GL	BW	200	400	600	Milk	SS	Carc Wt	EMA	Rump	IMF
EBV	+0.7	-3.8	-1.1	+12	+29	+32	+14	+1.6	+22	+2.8	+2.9	+1.4
Acc	59%	62%	77%	68%	66%	67%	62%	64%	58%	51%	53%	50%



COMMENTS: A mature cow with a tremendous production record. She was purchased by Mawarra from the 2021 Glenlea Scone female sale for top price of the sale at \$15,000 with plans to enter a E.T. program.

Sire is one of Glenlea's most valued sire's, RIO D15, with nearly 300 registered progeny in 28 stud herds. RIO D15 is a trait leader for all growth traits, Milk, EMA, Rib and Rump Fat, IMF% and Carcass Wt, an impact sire in every way. Her dam is from one of Australia's best known and highest earning cow families with 29 registered progeny and more to come.

K60 was born in deep drought in 2014 and as a result did not quite grow out to the same size as her full sister, Lot 43 Isabella 2nd. This hasn't limited her production, two stud sires, GLE M92E and GLE R16E, the latter who sold as a yearling at Glenlea's 2021 Clermont Bull sale for \$12,000. In 2019 her 2017 daughter was top price yearling heifer at Glenlea's Drought Buster Female Sale, sired by reference sire Honourable. Unfortunately, her exceptional 2021 daughter suffered an injury and will not be offered in this sale.

EBV's Top 1% IMF, Top 5% Milk, EMA, Rib and Rump Fat. Top 20% Low BW. Total of 10 traits above breed average.



CALF: MAW KOWBOY T60 (P) (R/F)

TATTOO: MAW 22T60E

DOB: 14/09/2022 **COLOUR:** Red Factor

SIRE: GLENLEA KOWBOY Q405 (GLE Q405E) (P)

Calf-at-foot: Darker Red Polled bull, good frame, will grow out into a well-balanced Low BW sire.

All special offers in this sale for Kowboy progeny apply.

LOT
32

HUON
ESTELLA 17 (P)

TATTOO: DG1 N23E
DOB: 14/03/2017

MERIT ROUNDUP 9508W (OAC E6558E) (P)
SIRE: RANGAN ROUNDUP K18 (RAN K18E) (P)
RANGAN PARK ALETTA H57 (RAN H57E) (P)

FERNVALE ZIG ZAG (FEN Z128E) (P)
DAM: HUON ESTELLA F3 (DG1 F3E)
THW ESTELLA 32 CIGAR (THW D13E) (P)

February 2023 Australasian Charolais BREEDPLAN Analysis

Exposed to Shandon/Glenlea Q-Brick (PP) 10/10/22 till 21/1/23.
Exposed Glenlea Just Red (PP) R/F 10/3/23 till 25/4/23.

	CE Dir	GL	BW	200	400	600	Milk	SS	Carc Wt	EMA	Rump	IMF
EBV	-2.3	-3.7	+1.0	+16	+36	+42	+6	+2.5	+23	+1.3	-0.2	-0.1
Acc	46%	53%	71%	60%	57%	57%	46%	49%	46%	37%	41%	37%

COMMENTS: Big strong, deep bodied, young polled cow. Perfect udder, great milker, doing a great job on her calf. Her softness in type is not in sync with her data, but as little data has been submitted on this female or her dam, we feel she is more positive for fat cover than her EBV's would suggest. Sire has nearly 150 registered progeny, is a trait leader for 400, 600 day weight and scrotal. Dam is another Estella, totally proven genetics.

EBV's Top 15% 400-day growth. Top 20% 200 and 600 day growth. Moderate BW. Total 8 Traits above breed average.

Calf-at-foot: Performance heifer, straw coloured, good bone and carcass. All special offers in this sale for Kowboy progeny apply.



CALF: MAW ESTELLA 2ND (P) (R/F) TATTOO: MAW 22T83E
DOB: 24/09/2022 COLOUR: Red Factor
SIRE: GLENLEA KOWBOY Q405 (GLE Q405E) (P)

LOT
33

HUON
BARONIA 11 (P)

TATTOO: DG1 N44E
DOB: 30/03/2017

MERIT ROUNDUP 9508W (OAC E6558E) (P)
SIRE: RANGAN ROUNDUP K18 (RAN K18E) (P)
RANGAN PARK ALETTA H57 (RAN H57E) (P)

RANGAN PARK PERFORMER E30 (RAN E30E)
DAM: HUON BARONIA 2 (DG1 J40E) (P)
GOBONGO BARONIA (GO U18E)

February 2023 Australasian Charolais BREEDPLAN Analysis

Exposed Glenlea Just Red (PP) R/F 10/3/23 till 25/4/23.

	CE Dir	GL	BW	200	400	600	Milk	SS	Carc Wt	EMA	Rump	IMF
EBV	+1.2	-3.5	+0.9	+17	+32	+46	+3	+2.6	+27	+2.0	-1.4	-0.1
Acc	44%	50%	71%	60%	59%	59%	44%	51%	48%	39%	45%	39%

COMMENTS: Another big deep bodied, soft easy doing young cow, great udder fine coated and **Homozygous (PP) Polled**. Her calf is an Autumn bull calf, polled and strong red by Kowboy, born 8/3/23 and will be a Glenlea Prefix. Sire is Roundup K18, same as Lot 32. Dam is a powerful grand daughter of Silverstream Performer out of a great Gobongo Cow family.

EBV's Top 15% Beef Yield, Top 20% 200, 400 and 600 day growth, EMA, Carcass Wt. Total 10 traits above breed average.

Calf-at-foot: Young calf show great type Polled and deep apricot colour. All special offers in this sale for Kowboy progeny apply.



CALF: GLENLEA KOWBOY U22 (P) (R/F) TATTOO: GLE 23U22E
DOB: 8/03/2023 COLOUR: Red Factor
SIRE: GLENLEA KOWBOY Q405 (GLE Q405E) (P)

LOT
34

CHARNELLE
DREAMGIRL 7 (AI) (ET)

TATTOO: GKA J5F
DOB: 28/01/2013

ORGANDI 16867 M 16867 (ZZF X2116F)
SIRE: AGA KHAN 58693 A38 (IAF A6019F)
PERLE F 68788 (ZZF X757F)

LAVERA ETERNITY (LAV X20F)
DAM: RIVERVIEW ANGEL (RIV A16F)
PALGROVE DREAM GIRL 13 (PK W374F)

A.I. Turnbull's Duty Free (PP) 5/12/22
Exposed to Shandon/Glenlea Q-Brick
(PP) 10/12/22 till 21/1/23.
Exposed Glenlea Just Red (PP) R/F
10/3/23 till 25/4/23.



February 2023 Australasian Charolais BREEDPLAN Analysis

	CE Dir	GL	BW	200	400	600	Milk	SS	Carc Wt	EMA	Rump	IMF
EBV	-4.0	+1.6	+2.1	+9	+16	+24	+9	+0.6	+15	+1.7	-2.1	-0.2
Acc	58%	61%	66%	61%	61%	61%	64%	58%	56%	46%	46%	43%

COMMENTS: Matron of the herd. **Full French**, big strong cow, bone, frame and large strong feet, strong attractive head and jaw. From a very well-known and admired cow family. Sire is a breed legend with nearly 2700 registered progeny spanning 5 decades! Noted for his calving ease, maternal strength, fine hair type and high yield carcasses with big EMA. This female is a clear candidate for an E.T. program. Her 2020 daughter, big strong maximum performance heifer is offered in this sale at Lot 42.

EBV's reflect the later maturity of her genetics, good mature weight with above average EMA and Beef Yield (Carcass Yield) in top 1% of the breed.

Calf-at-foot: Big strong red bull, fine coated. Photo doesn't show off the carcass thickness in this fellow, he will be a big strong, potential sale topping bull. *NOTE Glenlea's Special Offer*



CALF: MAW KOWBOY T5 (P/S) (R/F) TATTOO: MAW 22T5E
DOB: 03/09/2022 COLOUR: Red Factor
SIRE: GLENLEA KOWBOY Q405 (GLE Q405E) (P)

LOT
35

DSK
VCD REFINE L49E (AI) (P)

TATTOO: DSK L49E
DOB: 03/09/2015

CCR SURESHOT 1107F7 ET (OAU R1107E) (P)
SIRE: VENTURON CRUSTY DEMON (VE7 C5E) (P)
LINKLETTER A7E (LJAA7E)

CS PLD JUNCTION 4J (OAC U8742E) (P)
DAM: DSK PJ REFINE J88E (DSK J88E) (P)
MOONGOOL REFINE 17 (DP2 Z210E)

Hand mated to Waterford Red Rascal
WET R121E 9/3/23 (PP) R/F.
Exposed Glenlea Just Red (PP) R/F
10/3/23 till 25/4/23.



February 2023 Australasian Charolais BREEDPLAN Analysis

	CE Dir	GL	BW	200	400	600	Milk	SS	Carc Wt	EMA	Rump	IMF
EBV	-9.5	-3.1	+1.9	+16	+33	+52	+10	+1.5	+22	+0.6	+0.8	+0.3
Acc	47%	72%	61%	60%	62%	68%	51%	51%	57%	47%	60%	48%

COMMENTS: Big strong polled cow, performance, fine coat, very well-known high earning cow family that was selected by Glenlea Beef from the DSK dispersal in 2021. Her heifer calf was a standout and was later sold as a show prospect heifer to S.A. sire is a leading performance sire in W.A. This cow was flushed for 10 A grade embryos in 2021. DNA Sire Verified, approved for E.T.

Homozygous (PP) Polled

EBV's Top 10% 600 day growth.
Top 20% 400 day growth and Milk.

Calf-at-foot: Polled, Red heifer calf sired by Glenlea Just Red (PP) R/F Homozygous Polled by pedigree and will be Glenlea Prefix.



HOMOZYGOUS POLLED

CALF: GLENLEA REFINE 18TH (P) (R/F) TATTOO: GLE 23U23E
DOB: 11/02/2023 COLOUR: Red Factor
SIRE: GLENLEA JUST RED (GLE J5E) (P)

LOT
36

DSK
CRUSTY L70 P6E (AI) (P) (R/F)

TATTOO: DSK P6E
DOB: 05/04/2018

CCR SURESHOT 1107F7 ET (OAU R1107E) (P)
SIRE: VENTURON CRUSTY DEMON (VE7 C5E) (P)
LINKLETTER A7E (LJA A7E)

TEMANA GOLDEN LOGIE G66E (TJ G66E) (P)
DAM: DSK TGL B43 L70E (DSK L70E) (P)
DSK EXP B43EB H42E (DSK H42E) (P)

A.I. WFA/Glenlea Neptune 27/9/22
exposed to Shandon/Glenlea Q-Brick
(PP) 10/10/22 till 21/1/23.
Exposed Glenlea Just Red (PP) R/F
10/3/23 till 25/4/23.



February 2023 Australasian Charolais BREEDPLAN Analysis

	CE Dir	GL	BW	200	400	600	Milk	SS	Carc Wt	EMA	Rump	IMF
EBV	-0.5	-3.9	+1.0	+12	+28	+41	+10	+1.6	+19	+1.1	+1.2	+0.4
Acc	46%	70%	59%	50%	50%	52%	49%	47%	45%	38%	44%	38%

COMMENTS: A big framed, powerful bodied, polled red factor, young cow, with perfect udder, fine hair type and great bone. Selected on Mawarra's behalf by Rod Binny, Glenlea Beef, as the pick of the 1st calvers at the DSK dispersal in 2021. Her calf at foot at that sale, a horned bull, sold for \$12,000 at Glenlea's 2022 Roma bull sale. Sire is a powerful performance bull from W.A, with many high selling and champion progeny. Dam is from one of the leading cow families in the DSK herd. Her 2022 Bull calf retained for sale later in 2023. A powerful female that would have entered our E.T. Program.
DNA sire verified.



EBV's Top 20% 600 day growth and Milk. Total of 9 traits above breed average.

LOT
37

ASCOT
P56E (AI) (P)

TATTOO: JAJ P56E
DOB: 03/09/2018

LT STAGECOACH 8068 PLD (OAU D7606E) (P)
SIRE: LT VENTURE 3198 (OAU J5612E) (P)
LT BALLETT 9219 (OAU E7686E) (P)

PALGROVE HEADLINE (PK H1417E) (P)
DAM: ASCOT M69E (JAJ M69E) (P)
ASCOT JAJG0072 (JAJ G72E) (P)

A.I. WFA/Glenlea Neptune 5/12/22
exposed to Shandon/Glenlea Q-Brick
(PP) 10/12/22 till 21/1/23.
Exposed Glenlea Just Red (PP) R/F
10/3/23 till 25/4/23.



February 2023 Australasian Charolais BREEDPLAN Analysis

	CE Dir	GL	BW	200	400	600	Milk	SS	Carc Wt	EMA	Rump	IMF
EBV	-1.0	-5.0	-0.4	+23	+44	+56	+10	+3.0	+34	+1.6	+2.6	+0.8
Acc	54%	61%	72%	66%	64%	64%	56%	58%	55%	48%	53%	48%

COMMENTS: Outstanding young cow. Type, performance, very docile with length, carcass and finish. Her 2022 calf was lost in the wet spring and so is presented as a joined female. Sire is well known imported sire, LT Venture and very few his daughters are offered for sale. Dam is a from the same cow family that produced many stud sires for Ascot, including Goldrush and Governor General. Her 2021 heifer was sold privately in 2022, that heifer was so outstanding she was re-joined again to the sire Neptune.



EBV's Top 5% all growth traits, Carcass Wt, Rib and Rump Fat and IMF%. Total of 13 traits above breed average

LOT
38

ASCOT
ESTELLA P809E (AI) (ET) (P)

TATTOO: JAJ P809E
DOB: 22/09/2018

ROSEDALE FAIRLANE (MR F8E) (P)
SIRE: ROSEDALE LUMP SUM (MR L8E) (P)
ROSEDALE BEATRIX G231 (MR G231E) (P)

LT WYOMING WIND 4020 PLD (OAU P4020E) (P)
DAM: PALGROVE ESTELLA 195 (PK Z498E) (P)
PALGROVE ESTELLA 73 (PK S201E)

A.I. WFA/Glenlea Neptune 27/9/22
exposed to Shandon/Glenlea Q-Brick
(PP) 10/10/22 till 21/1/23.
Exposed Glenlea Just Red (PP) R/F
10/3/23 till 25/4/23.



February 2023 Australasian Charolais BREEDPLAN Analysis

	CE Dir	GL	BW	200	400	600	Milk	SS	Carc Wt	EMA	Rump	IMF
EBV	+0.5	-2.0	-0.1	+12	+20	+27	+11	+1.0	+18	+1.2	+1.9	+0.1
Acc	53%	64%	73%	67%	66%	65%	57%	64%	57%	51%	55%	50%

COMMENTS: Very appealing young cow, length, softness, depth, fine coated, strong attractive polled head, good bone. This type of female would fit into the top end of any stud. Sire is Lump Sum, trait leader for all growth traits and Milk with well over 100 registered progeny who has produced very high value progeny at Ascot. Dam is a tremendous DONOR female with 17 registered progeny and is a full sister to the very well known sire, Palgrove Viagra (P). So incredibly proven genetics in this female. Her 2021 bull sold at Glenlea's Roma Bull Sale 2022 for \$13,000 at 16 months. Her 2022 Bull calf retained for sale later in 2023. She is offered as a joined female.



EBV's Top 10% Rib and Rump Fat, Top 15% milk.

LOT
39

GLENLEA
CHAROL 115TH (P) (R/F)

TATTOO: GLE Q22E
DOB: 05/02/2019

GALLWAY - RS (OAF G1063F) (P)
SIRE: CHARNELLE LOUIS (GKA L73E) (P)
CHARNELLE ELLE (GKA E10E) (P)

RANGAN PARK RIO BRAVO D15 (RAN D15E) (P)
DAM: GLENLEA CHAROL 78TH (GLE J15E) (P)
GLENLEA CAAROL 38TH R/F (PS) (GLE C51E) (P/S)

A.I. 5/12/22 to WFA/Glenlea Neptune
(P) then exposed Q-Brick 10/12/22 to
21/1/23 then to Glenlea Just Red (PP)
R/F 10/3/23 to 25/4/23.



February 2023 Australasian Charolais BREEDPLAN Analysis

	CE Dir	GL	BW	200	400	600	Milk	SS	Carc Wt	EMA	Rump	IMF
EBV	-4.0	-3.6	+0.7	+8	+23	+25	+10	+1.5	+15	+2.2	+2.1	+0.9
Acc	45%	54%	71%	57%	60%	59%	42%	50%	49%	40%	51%	40%

COMMENTS: Another outstanding red factor, polled, Glenlea bred young female. Length, easy finishing, thickness and eye appeal. Sire is the great breeding bull Louis, with nearly 150 registered progeny in 16 stud herds across Australia. Dam has been a great producer, a daughter of multi trait leading sire Rio D15. Q22's 2022 bull calf was found dead in January of unknown cause, so she is offered as a joined female.



EBV's Top 10% for Rib and Rump Fat Cover and IMF%. Top 25% for EMA

LOT
40

MILFORD
GINA Q27E (AI) (P)

TATTOO: JOH Q27E
DOB: 23/03/2019

PALGROVE CHARM (PK C1043E) (P)
SIRE: PALGROVE HALLMARK (PK H535E) (P)
PALGROVE ALYSSA 47 (PK B835E) (P)

PALGROVE HERMES (PK H549E) (P)
DAM: WATERFORD LADY GINA L33E (WET L33E) (P)
DSK MY GINA D23E (DSK D23E) (P)

A.I. WFA/Glenlea Neptune 27/9/22
exposed to Shandon/Glenlea Q-Brick
(PP) 10/10/22 till 21/1/23.
Exposed Glenlea Just Red (PP) R/F
10/3/23 till 25/4/23.



	CE Dir	GL	BW	200	400	600	Milk	SS	Carc Wt	EMA	Rump	IMF
EBV	+7.3	-5.1	-0.6	+8	+19	+19	+7	+1.3	+17	+2.4	+1.4	-0.4
Acc	51%	67%	60%	56%	57%	56%	52%	54%	51%	45%	48%	45%

February 2023 Australasian Charolais BREEDPLAN Analysis

COMMENTS: This young cow has extra length, softness and bomb proof temperament. Photo of her will be on AuctionsPlus prior to sale day. Sire is well known Hallmark, with over 550 registered progeny he is a totally proven sire. Dam is lot 16 the champion show cow. She has 3 daughters in this sale. Her 2022 Bull calf retained for sale later in 2023, she is offered as a joined female. Double Polled.



Photo: Q27's Dam, Waterford Lady Gina L33E.

EBV's Top 15% EMA, gestation Length and Calving ease. Top 25% Rib and Rump Fat. 9 traits above breed average.

LOT
41

MAW
LADY GINA 1ST (AI) (P)

TATTOO: MAW R2E
DOB: 11/03/2020

SILVERSTREAM FOCUS F6 (PED F6E)
SIRE: SILVERSTREAM LANDIS L179 (OAN L179E) (P)
SILVERSTREAM DASHER H104 (OAN H104E) (P)

PALGROVE HERMES (PK H549E) (P)
DAM: WATERFORD LADY GINA L33E (WET L33E) (P)
DSK MY GINA D23E (DSK D23E) (P)

A.I. to SCX JEHU 24/3/23



	CE Dir	GL	BW	200	400	600	Milk	SS	Carc Wt	EMA	Rump	IMF
EBV	+0.8	-3.1	+1.1	+15	+26	+35	+7	+1.0	+19	+1.3	+1.3	+0.4
Acc	44%	52%	57%	54%	55%	54%	47%	51%	48%	40%	43%	39%

March 2023 Australasian Charolais BREEDPLAN Analysis

COMMENTS: Maternal sister to Lot 40. Same extra length of body, docility, fine hair coat, good bone and medium framed. Sire is Silverstream Landis who is proven to be a very high growth bull, already a trait leader for 200 day growth and with 63 registered progeny in 19 stud herds. This heifer is no doubt one of his best daughter's to date. Dam is Lot 16 an outstanding cow, breeding outstanding daughters like this one. Double Polled



EBV's all above average growth and carcass traits with total of 9 traits above breed average.

LOT
42

MILFORD
DREAMGIRL (P)

TATTOO: JOH R42E
DOB: 05/03/2020

MOONGOOL GENERAL (DP2 G695E) (P)
SIRE: PALGROVE LEADER L204E (PK L204E) (P/S)
PALGROVE PANACHE 262 (PK F730E)

AGA KHAN 58693 A38 (IAF A6019F)
DAM: CHARNELLE DREAMGIRL 7 (GKA J5F)
RIVERVIEW ANGEL (RIV A16F)

A.I. to SCX JEHU 24/3/23



February 2023 Australasian Charolais BREEDPLAN Analysis

	CE Dir	GL	BW	200	400	600	Milk	SS	Carc Wt	EMA	Rump	IMF
EBV	-7.3	+1.6	+3.4	+15	+26	+41	+9	+0.9	+24	+2.5	-1.2	-0.2
Acc	40%	46%	65%	50%	49%	50%	44%	42%	41%	34%	35%	32%

COMMENTS: Big strong heifer. Maximum performance female - length, carcass and softness - will be an outstanding breeder. Sire is a maximum performance bull, a combination of Moongool and Palgrove genetics. Dam is Lot 34 is this sale a big strong Full French cow, so this female has power genetics from all sides.

EBV's Top 15% EMA and Beef Yield, above breed average in all growth traits. total of 8 traits above breed average.



**Lot 20 and her outstanding 6 month old bull calf
by Glenlea Kowboy (P) R/F**

LOT
43

GLENLEA
ISABELLA 2ND (P)

TATTOO: GLE L22E

DOB: 19/08/2015

LT RIO BRAVO 3181 P (OAU Y5507E) (P)
SIRE: RANGAN PARK RIO BRAVO D15 (RAN D15E) (P)
PALGROVE SHOW GIRL 6 (PK P82E) (P)

HARVIE REDEMPTION 36P (OAC Z6641E) (P)
DAM: GOBONGO ISABELLA D86E (GO D86E) (P)
GOBONGO ISABELLA (GO T48E)

A.I. to SCX JEHU 24/3/23

February 2023 Australasian Charolais BREEDPLAN Analysis

	CE Dir	GL	BW	200	400	600	Milk	SS	Carc Wt	EMA	Rump	IMF
EBV	-3.3	-3.4	+0.0	+18	+39	+49	+13	+1.9	+29	+2.7	+3.4	+1.3
Acc	57%	63%	75%	63%	64%	64%	62%	58%	56%	50%	55%	49%



COMMENTS: This cow has some background! **Dam of the highest priced Charolais female sold in Australia in 2021!** Glenlea Isabella 14th (PP) R/F sold for \$26,500 to Ashely and Dan Humphries, ASHDAN Charolais NSW. Her full sister sells at Lot 31, herself with a great production record.

L22 is a big, strong, polled, deep soft cow, amazing udder and milking ability. The photo says it all. Her sire is the multi trait leading RIO D15 with nearly 300 registered progeny and her dam is the prolific Donor cow D86, with 29 registered progeny in 6 stud herds!

L22's first calf was a Champion Heifer at Lismore Feature Show at 8 months of age and sold for \$5750 at 12 months of age way back in 2019 when that was a high-priced heifer! Her second daughter is offered at Lot 29 in this sale, an outstanding daughter of Charnelle Louis, carcass improver for all traits. Her 3rd daughter was Isabella 14th noted above, and her 4th daughter is a full sister to that high priced female being offered in this sale at Lot 59.

L22 was purchased by Mawarra from Glenlea's Sale of the Decade in 2021 for \$12,000 as a joined cow. She and her weaned calf had a combined value of \$38,500 in that sale. Additionally she flushed 8 A grade embryos, 2 of which sold at the same 2021 Glenlea sale for \$1750 each. L22's lifetime earnings with a conservative value on the two daughters in this sale, including embryos is currently over \$68,000. This does not include her sale value when last offered at Auction, a further \$12,000.

Rarely does an opportunity come along to purchase such a proven female, with such high earning capacity so well established, still in her prime of life! A cow to build a stud herd around or add an elite cow family to an existing stud.

EBV's Top 1% of breed for Rib and Rump Fat and IMF%, top 5% for Milk, Top 10% for EMA, Top 15% for all growth traits, Carcass Wt. and Scrotal. All this and still below breed average BW. And looks as classy as she does! Total of 13 traits better than breed average!



Photo above:
First calf of L22, Glenlea Isabella 3rd (P)
GLE P2E at age 12 months.

Approved for E.T. DNA Recorded, Led Female.

LOT
44

GLENLEA
ADWANA 14TH (P) (R/F)

TATTOO: GLE S14E
DOB: 31/01/2021

GLENLEA HILTON (GLE H30E) (P) GLENLEA JUST RED (GLE J5E) (P)
SIRE: ORARA WATERFALL GLENLEA NORTH (WFA N25E) (P) DAM: GLENLEA ADAWNA 5TH (GLE M106E) (P)
GLENLEA CHAROL 72ND (GLE J8E) (P) MIXHILL ADAWNA (MIX A455E)

A.I. to SCX JEHU 24/3/23

February 2023 Australasian Charolais BREEDPLAN Analysis

	CE Dir	GL	BW	200	400	600	Milk	SS	Carc Wt	EMA	Rump	IMF
EBV	-4.9	-1.8	+1.4	+17	+32	+51	+9	+1.6	+27	+1.1	-0.7	+0.1
Acc	35%	40%	67%	46%	47%	49%	33%	39%	36%	31%	33%	30%

COMMENTS: Another special Glenlea Bred female! Medium framed, thick bodied, early maturing, with softness and overall yield. **Homozygous Polled Led female.** Sired by reference sire NORTH (P) an early maturing high performance bull that has sired outstanding progeny, Dam is one of Glenlea's most prolific emerging cows families that is building a string of high sellers and show winners. S14 was purchased by Mawarra for \$16,000 at the 2022 Charnelle invitation sale where she was top priced female, she was selected to be a next generation Donor female in the herd. Her maternal sister is offered at Lot 17 so she gives a look into the future of how this heifer will develop and breed. So rare for buyers to be able to access multiple animals from the same cow family, at the same sale. A buyer could purchase lot 17 and this female and have two (PP) Polled, Red Factor, Led females that are maternal sisters to build a stud herd around.



EBV's Top 10% 600-day growth. Top 15% 200- and 400-day growth. Top 20% Milk and Carcass Wt and beef yield. Total 8 traits better than breed average.

LOT
45

MAW
PENNY 1ST (P)

TATTOO: MAW S19E
DOB: 03/03/2021

LT LEDGER 0332 (OAU F3168E) (P) PARINGA LINKED IN L410 (TOL L410E) (P)
SIRE: RANGAN LEDGER N100 (RAN N100E) (P) DAM: ASCOT PENNY P32E (JAJ P32E) (P)
RANGAN PARK SHOWGIRL C29 (RAN C29E) (P) ASCOT PENNY K3E (JAJ K3E) (P)

Will calve prior to sale to
Turnbulls' Duty Free (PP)

March 2023 Australasian Charolais BREEDPLAN Analysis

	CE Dir	GL	BW	200	400	600	Milk	SS	Carc Wt	EMA	Rump	IMF
EBV	-3.0	-3.6	+0.6	+18	+36	+46	+5	+2.3	+27	+1.9	+0.7	+0.8
Acc	37%	47%	52%	47%	47%	46%	40%	47%	40%	36%	39%	36%

COMMENTS: Classy first calver, Medium framed, fine coated, well muscled polled feminine female, perfect udder development and will calve prior to sale. Sire is a growthy son of LT Ledger and Dam is a high-performance female from a great cow family.

EBV's Top 10% IMF, Top 15% all growth traits. Total of 10 traits better than breed average.



LOT
46

MAW
MADONNA 3RD (AI) (P)

TATTOO: MAW S36E
DOB: 01/05/2021

GLENLEA JEDDI (VLW J15E) (P) LT VENTURE 3198 (OAU J5612E) (P)
SIRE: ORARA WATERFALL GLENLEA NEPTUNE (WFA N42E) (P) DAM: ASCOT P57E (JAJ P57E) (P)
GOODVIEW BLONDIE 3RD (HEL J10E) (P) ASCOT M34E (JAJ M34E) (P)

A.I. LT Countdown 27/9/22 PTIC



February 2023 Australasian Charolais BREEDPLAN Analysis

	CE Dir	GL	BW	200	400	600	Milk	SS	Carc Wt	EMA	Rump	IMF
EBV	+6.8	-4.8	-1.1	+17	+33	+44	+10	+2.3	+28	+1.7	+0.7	+0.4
Acc	32%	60%	51%	40%	40%	41%	32%	37%	34%	29%	32%	29%

COMMENTS: These joined heifers are an outstanding line of planned matings. S36 is an early maturing, deep bodied, easy doing, thick stylish female, very fine coated, with a perfect udder developing and an attractive strong polled head. This heifer has many admirers that have seen her in person. Perfect structure, very docile, a fault free female. Sired by Mawarra and Glenlea's exclusive sire Neptune (P) and out of the Lot 19 female, P57. Her Dam gives you a window into the future of this heifer with her outstanding bull calf at foot.



EBV's Top 20% all growth traits, Milk and Carcass Wt. with well below breed average BW. Total of 14 traits better than breed average!

LOT
47

MAW
ESTELLA 1ST (AI) (P)

TATTOO: MAW S34E
DOB: 06/05/2021

ASHWOOD PARK RIO D213 F56E (HAS F56E) (P) GLENLEA HONOURABLE (VLW H25E) (P)
SIRE: RANGAN ASHWOOD F56 L84 (RAN L84E) (P) DAM: GLENLEA ESTELLA 15TH (GLE Q10E) (P)
RANGAN PARK DELIGHT G42 (RAN G42E) (P) VALLEY VIEW MISS ESTELLA (VLW G58E) (P)

A.I. to SCX JEHU 24/3/23



February 2023 Australasian Charolais BREEDPLAN Analysis

	CE Dir	GL	BW	200	400	600	Milk	SS	Carc Wt	EMA	Rump	IMF
EBV	+8.5	-5.0	-0.8	+15	+27	+36	+12	+1.1	+20	+2.5	+1.4	+0.3
Acc	45%	67%	60%	52%	53%	52%	47%	51%	46%	40%	45%	40%

COMMENTS: A lovely long bodied, thick, early maturing female, perfect balance of softness and muscle in heifer with an attractive strong polled head. S34 is the first calf of Lot 24 in this sale, sired by a curve bending bull Ashwood L84 that Glenlea sourced semen from to join heifers to. She was designed to be well above average and her data is backing that up.



EBV's Top 10% Milk and calving ease. Top 15% EMA, gestation length Top 20% Rump Fat and Low BW. Total of 13 traits better than breed average.

LOT
48

MAW
FESTOON 1ST (AI) (P)

TATTOO: MAW S60E
DOB: 02/07/2021

LT SUNDANCE 2251 (PED H2251E) (P)
SIRE: LT VISTA 5319 (OAU L5319E) (P)
LT ATHENA 2040 (PED H2040E) (P)

PARINGA MANTRA M354 (TOL M354E) (P)
DAM: PALGROVE FESTOON P940E (PK P940E) (P)
PALGROVE FESTOON L368E (PK L368E) (P)

A.I. WFA/Glenlea Neptune 27/9/22
PTIC



March 2023 Australasian Charolais BREEDPLAN Analysis

	CE Dir	GL	BW	200	400	600	Milk	SS	Carc Wt	EMA	Rump	IMF
EBV	-4.4	-5.6	-1.1	+14	+31	+33	+11	+1.0	+22	+1.2	+1.7	+0.7
Acc	46%	54%	57%	53%	52%	49%	39%	50%	42%	36%	41%	36%

COMMENTS: Moderate framed, and early maturing, good carcass with softness and eye appeal. The first calf from Lot 20 P940, which gives you a window into this heifer's future as her dam has her second calf at foot and is breeding great progeny. S60's sire is a Low BW specialist LT Vista, a trait leader for Low BW with extra doability and softness a feature of his progeny.

EBV's Top 10% gestation length and IMF%, Top 15% Rib and Rump Fat and Milk, Top 20% 400 day wt and Low BW. Total 10 traits better than breed average.



LOT
49

MAW
NANCEY 1ST (AI) (P)

TATTOO: MAW S100E
DOB: 11/05/2021

GLENLEA JEDDI (VLW J15E) (P)
SIRE: ORARA WATERFALL GLENLEA NEPTUNE (WFA N42E) (P)
GOODVIEW BLONDIE 3RD (HEL J10E) (P)

ASCOT GOLDRUSH L87E (JAJ L87E) (P)
DAM: ASCOT NANCEY P77E (JAJ P77E) (P)
ASCOT NANCEY L31E (JAJ L31E) (P)

A.I. to SCX JEHU 24/3/23



February 2023 Australasian Charolais BREEDPLAN Analysis

	CE Dir	GL	BW	200	400	600	Milk	SS	Carc Wt	EMA	Rump	IMF
EBV	+6.2	-3.2	-0.8	+14	+25	+36	+10	+1.1	+23	+2.3	+0.8	+0.6
Acc	29%	60%	51%	39%	39%	39%	29%	36%	32%	27%	29%	26%

COMMENTS: This is another class heifer. Overall thickness, softness and carcass yield in a stylish phenotype with strong maternal strength - what we set out to breed into our females! Sired by Neptune, Mawarra and Glenlea's exclusive sire and out of lot 12 in this sale. S100's outstanding Dam gives you a window in the future potential of this heifer. Just examine the pedigree of Lot 12, P77 and you can see her quality in S100.

EBV's Top 15% EMA and IMF% .Top 20% Gestation length and Milk. Top 25% Low BW. Total 13 traits better than breed average.



LOT
50

GL LIVESTOCK
TREASURE MAKER (AI) (P)

TATTOO: GUM 22T1E
DOB: 09/03/2022

KAYR GRID GRID IRON 400S (OAC B4093E) (P)
SIRE: **CSS SIR GRIDMAKER 2W (OAC E7387E) (P)**
CSS LADY RED NAVIGATOR 1T (OAC C1966E) (P)

DOUGLASDALE VENTURA (DOU K36E)
DAM: **DOUGLASDALE PEACEFUL (DOU P12E) (P)**
HUON YVONNE (DG1 K14E)

Unjoined.



February 2023 Australasian Charolais BREEDPLAN Analysis

	CE Dir	GL	BW	200	400	600	Milk	SS	Carc Wt	EMA	Rump	IMF
EBV	+0.7	-6.6	-0.9	+14	+25	+34	+8	+1.9	+26	+2.9	-0.6	-0.3
Acc	48%	52%	59%	54%	55%	54%	50%	51%	48%	42%	45%	42%

COMMENTS: This lot and Lot 51 have been included in this sale as show prospect heifer's prepared by PINEDOCK FITTING. T1 is 12 months old in photo. **Fully broken in and ready for her first show!** An outstanding heifer with eye appeal and high breeding value. Sired by Sir Gridmaker a champion sire from Canada imported by Palgrove with over 250 registered progeny and a trait leader for Low BW and Top 1% of breed for EMA and Beef yield! Dam is the leading show cow for GL livestock, Molong NSW. T1's Dam Peaceful has won many Grand Championships at regional shows in the central west of NSW. Purchased from the now dispersed Douglasdale Stud, from one of their most dominant cows, Yvonne a granddaughter of Silverstream Performer. This heifer is bred to win and perform in the paddock after her show career.



EBV's Top 5% EMA and Beef Yield. Top 10% Gestation length, Top 20% Low BW. Total 8 traits better than breed average.

LOT
51

DOUGLASDALE
TASTE OF APPEAL (AI) (P)

TATTOO: DOU 22T2E
DOB: 03/03/2022

LHD CIGAR E46 (OAU Q46E) (P)
SIRE: **JDJ SMOKESTER J1377 P ET (OAU U9419E) (P)**
JD MS COMMANDER B309 (PED -8745E)

PALGROVE BECKHAM S 251404XBC01282 (PK B417E) (P/S)
DAM: **DOUGLASDALE APPEAL 19 (DOU N8E) (P)**
DOUGLASDALE LOTS OF APPEAL (DOU L9E)

Unjoined.



February 2023 Australasian Charolais BREEDPLAN Analysis

	CE Dir	GL	BW	200	400	600	Milk	SS	Carc Wt	EMA	Rump	IMF
EBV	-5.1	-4.8	+1.5	+15	+21	+33	+15	+1.5	+10	+0.6	+0.6	+0.0
Acc	44%	56%	55%	50%	50%	50%	48%	47%	44%	37%	41%	35%

COMMENTS: A powerful carcass heifer with real eye appeal. Length, thickness and strong attractive polled head. A competitive show heifer 12 months old in photo, with a great breeding future. Prepared by PINEDOCK FITTING and **ready for her first show.** Sired by powerful carcass sire Smokester, a Cigar son, one of the most sort after bloodlines ever imported from the USA. Her dam is a powerful, thick easy doing cow that catches your eye in the paddock every time with a powerful cow family, one of Palgrove's originals backing up her genetic value.



EBV's Top 5% Milk. 7 traits better than breed average.

LOT
52

MAW
NUNCIATA 1ST (P)

TATTOO: MAW S901E
DOB: 25/09/2021

LT VENTURE 3198 (OAU J5612E) (P)
SIRE: **CHALLAMBI MUSCLES (CHA M15E) (P)**
ROSEDALE HIGHNESS G114E (MR G114E) (P)

CML DISTINCTION 318A (OAC J318E) (P)
DAM: **GLENLEA NUNCIATA 121ST (GLE Q901E) (P)**
ALLEDNAW NUNCIATA G109 (AKT G109E) (P)

A.I. to SCX JEHU 24/3/23



March 2023 Australasian Charolais BREEDPLAN Analysis

	CE Dir	GL	BW	200	400	600	Milk	SS	Carc Wt	EMA	Rump	IMF
EBV	-0.5	-3.6	-0.7	+17	+37	+47	+9	+2.3	+32	+1.5	+1.0	-0.2
Acc	37%	40%	49%	43%	44%	45%	36%	41%	38%	33%	39%	32%

COMMENTS: This beautiful heifer starts a run of 5 outstanding heifer's sired by reference sire Muscles out of some feature females in this sale. S901 is the first calf of Lot 18 and she is a full sister to lot 7. S901's cow family, the Nunciata's is one of Glenlea's oldest and most prolific, this heifer's great grand dam was sold to Allednaw Stud in Victoria in 2007 as part of a parcel of 50 cows to rebuild their stud. Glenlea purchased this heifer's grand dam in 2017 knowing the strength of the cow family and put her straight into a E.T. program which produced lot 18 and lot 7. Mawarra's breeding program has followed the Glenlea ethos aiming for growth, doability, carcass, maternal strength and maintaining calving ease, backed by data - S901 is a great example



EBV's Top 15% all growth traits, Carcass Wt and Scrotal . Top 25% Low BW and Milk.
Total of 12 traits better than breed average.

LOT
53

MAW
NOLANA 1ST (P)

TATTOO: MAW S54E
DOB: 15/08/2021

LT VENTURE 3198 (OAU J5612E) (P)
SIRE: **CHALLAMBI MUSCLES (CHA M15E) (P)**
ROSEDALE HIGHNESS G114E (MR G114E) (P)

CHALLAMBI MUSCLES (CHA M15E) (P)
DAM: **GLENLEA NOLANA 121ST (GLE Q54E) (P)**
GLENLEA NOLANA 94TH (GLE L28E) (P)

A.I. to SCX JEHU 24/3/23



March 2023 Australasian Charolais BREEDPLAN Analysis

	CE Dir	GL	BW	200	400	600	Milk	SS	Carc Wt	EMA	Rump	IMF
EBV	-4.1	-4.2	-0.6	+18	+39	+52	+13	+2.4	+34	+2.3	+2.0	0.0
Acc	41%	41%	51%	47%	48%	48%	39%	45%	42%	38%	44%	38%

COMMENTS: Stylish, thick and easy doing, would look great in the paddock with previous lot. **Photos and videos of all lots will be available on Auctions Plus prior to sale.** Dam is offered at Lot 30 from the "Nolana" cow family, a cow family with 40+ years of history in the Glenlea herd.

EBV's Top 5% Carcass Wt. Top 10% 200,400and 600 day Growth, Milk, Rib and Rump Fat, Scrotal

LOT
54

MAW
REBBY 1ST (P)

TATTOO: MAW S41E
DOB: 25/08/2021

LT VENTURE 3198 (OAU J5612E) (P)
SIRE: CHALLAMBI MUSCLES (CHA M15E) (P)
ROSEDALE HIGHNESS G114E (MR G114E) (P)

GLENLEA HONOURABLE (VLW H25E) (P)
DAM: GLENLEA REBBY 16TH (GLE Q41E) (P)
VALLEY VIEW REBBY CIGAR 14TH (VLW H14E) (P)

A.I. to SCX JEHU 24/3/23



March 2023 Australasian Charolais BREEDPLAN Analysis

	CE Dir	GL	BW	200	400	600	Milk	SS	Carc Wt	EMA	Rump	IMF
EBV	-7.7	-3.3	-0.4	+16	+30	+41	+9	+2.0	+22	+1.0	+0.9	0.0
Acc	39%	42%	50%	45%	47%	47%	38%	43%	41%	36%	42%	36%

COMMENTS: Purchasing these Muscles heifer's would be a great way to start a stud charolais herd or grow one. S41 is very similar in type to the previous two lots. Her dam is offered at Lot 27 in this sale. They have all been joined to the proven record priced Canadian bull SCX Jehu (PP), that Glenlea owns Australian Semen rights in - their calves will be exciting.

EBV's Top 25% 200, 400 and 600 day weight. Total 10 traits better than breed average.

LOT
55

MAW
ISABELLA 2ND (P)

TATTOO: MAW S55E
DOB: 16/08/2021

LT VENTURE 3198 (OAU J5612E) (P)
SIRE: CHALLAMBI MUSCLES (CHA M15E) (P)
ROSEDALE HIGHNESS G114E (MR G114E) (P)

CHARNELLE LOUIS (GKA L73E) (P)
DAM: GLENLEA ISABELLA 12TH (GLE Q55E) (P)
GLENLEA ISABELLA 2ND (GLE L22E) (P)

A.I. to SCX JEHU 24/3/23



March 2023 Australasian Charolais BREEDPLAN Analysis

	CE Dir	GL	BW	200	400	600	Milk	SS	Carc Wt	EMA	Rump	IMF
EBV	-2.6	-4.4	-1.0	+13	+33	+39	+12	+2.0	+27	+2.5	+2.4	+0.3
Acc	38%	41%	46%	42%	43%	43%	37%	42%	37%	32%	36%	32%

COMMENTS: Another easy doing Muscles daughter with good Carcass, extra fat cover and strong maternal data. The first calf from lot 29 and she is an Isabella! These heifer's will produce leading progeny into the 2030's!

EBV's Top 5% Rib and Rump Fat. Top 10% EMA and Milk. Total of 12 traits better than breed average.

LOT
56

MAW
SANDY 1ST (P) (R/F)

TATTOO: MAW S61E
DOB: 12/11/2021

LT VENTURE 3198 (OAU J5612E) (P)
SIRE: CHALLAMBI MUSCLES (CHA M15E) (P)
ROSEDALE HIGHNESS G114E (MR G114E) (P)

CHALLAMBI MUSCLES (CHA M15E) (P)
DAM: GLENLEA SANDY 8TH (GLE Q61E) (P)
GLENLEA SANDY 2ND (GLE M70E) (P)

A.I. to SCX JEHU 24/3/23



March 2023 Australasian Charolais BREEDPLAN Analysis

	CE Dir	GL	BW	200	400	600	Milk	SS	Carc Wt	EMA	Rump	IMF
EBV	-5.8	-3.7	-0.8	+17	+36	+48	+10	+2.0	+31	+1.8	+1.8	-0.2
Acc	40%	41%	47%	44%	44%	45%	38%	44%	39%	35%	39%	35%

COMMENTS: A red Factor heifer to complete the offering of these 5 Muscles heifers. This heifer the first calf from Lot 4. Extra length, fine hair coat, and several months younger than the previous 4 lots.

EBV's Top 10% Carcass Wt. Top 15% 200, 400 and 600 day growth. Top 20% Milk, Low BW.

LOT
57

MAW
MISSY 1ST

TATTOO: MAW S1E
DOB: 15/04/2021

ASCOT JUGGERNAUT J134E (JAJ J134E) (P)
SIRE: ASCOT MILESTONE M622E (JAJ M622E) (P/S)
ASCOT J119E (JAJ J119E) (P)

DOUGLASDALE VIAGARA (DOU C6E) (P)
DAM: DOUGLASDALE MISSY HIGGINS (DOU M19D) (P)
BARAMBAH-DALE BOUQUET (DAV B95C)

A.I. to SCX JEHU 24/3/23



March 2023 Australasian Charolais BREEDPLAN Analysis

	CE Dir	GL	BW	200	400	600	Milk	SS	Carc Wt	EMA	Rump	IMF
EBV	0.0	-2.0	0.0	+11	+19	+22	+8	+1.4	+17	+2.3	+0.7	+0.4
Acc	33%	43%	51%	43%	43%	45%	36%	43%	37%	32%	34%	31%

COMMENTS: Long bodied and good frame, the only heifer in the sale by Milestone. Dam is Lot 15 and has an outstanding half sibling to this heifer at foot. This heifer's SCX Jehu calf could be a great one!

EBV's Top 20% EMA, all positive growth and carcass data with below breed average BW.

LOT
58

MAW
MARY 1ST (P)

TATTOO: MAW S2E
DOB: 02/03/2021

LT LEDGER 0332 (OAU F3168E) (P)
SIRE: RANGAN LEDGER N100 (RAN N100E) (P)
RANGAN PARK SHOWGIRL C29 (RAN C29E) (P)

PARINGA LINKED IN L410 (TOL L410E) (P)
DAM: ASCOT MARY P16E (JAJ P16E) (P)
ASCOT M7E (JAJ M7E) (P)

A.I. to SCX JEHU 24/3/23



February 2023 Australasian Charolais BREEDPLAN Analysis

	CE Dir	GL	BW	200	400	600	Milk	SS	Carc Wt	EMA	Rump	IMF
EBV	+4.3	-5.8	-1.6	+16	+34	+41	+11	+2.8	+26	+1.2	+1.3	+0.7
Acc	37%	48%	52%	47%	47%	46%	40%	47%	41%	37%	40%	37%

COMMENTS: Long bodied and good frame. Sired by Ledger N100 as is lot 44 who will have a calf at foot sale day and will give you a good indication of how S2 will produce.

EBV's Top 10% for IMF% and Scrotal. Top 15% Gestation length and Low BW. Top 20% Milk. Top 25% 200, 400, 600-day growth, and Rump Fat. Total 13 traits better than breed average.

LOT
59

MAW
ISABELLA 1ST (P) (R/F)

TATTOO: MAW S11E
DOB: 30/09/2021

RANGAN PARK REDEMPTION E42 (RAN E42E) (P)
SIRE: GLENLEA JUST RED (GLE J5E) (P)
GLENLEA JANET U6E R/F (GLE U6E) (P)

RANGAN PARK RIO BRAVO D15 (RAN D15E) (P)
DAM: GLENLEA ISABELLA 2ND (GLE L22E) (P)
GOBONGO ISABELLA D86E (GO D86E) (P)

A.I. to SCX JEHU 24/3/23



February 2023 Australasian Charolais BREEDPLAN Analysis

	CE Dir	GL	BW	200	400	600	Milk	SS	Carc Wt	EMA	Rump	IMF
EBV	-9.7	-2.5	+1.4	+20	+41	+55	+9	+1.4	+29	+1.7	+2.3	+1.0
Acc	45%	52%	58%	51%	51%	51%	46%	50%	45%	39%	43%	37%

COMMENTS: 2021 daughter of Lot 43. Red and polled, long bodied and fine hair coat. Outstanding bloodlines. The background to this heifer detailed with her Dam at lot 43.

EBV's Top 5% all growth traits and IMF%. Top 10% Rib and Rump Fat. Total 11 traits better than breed average.

LOT
60

ASCOT
P62E (AI) (P)

TATTOO: JAJ P62E

DOB: 10/09/2018

LT STAGECOACH 8068 PLD (OAU D7606E) (P)
SIRE: LT VENTURE 3198 (OAU J5612E) (P)
LT BALLET (OAU E7686E) (P)

PALGROVE HEADLINE (PK H1417E) (P)
DAM: ASCOT M39E (JAJ M39E) (P)
ASCOT JAJG0080 (JAJ G80E) (P)

A.I. to SCX JEHU 24/3/23



February 2023 Australasian Charolais BREEDPLAN Analysis

	CE Dir	GL	BW	200	400	600	Milk	SS	Carc Wt	EMA	Rump	IMF
EBV	-0.4	-5.0	-0.7	+20	+38	+50	+11	+2.8	+31	+1.9	+3.0	+0.6
Acc	53%	58%	72%	66%	64%	64%	55%	57%	55%	47%	54%	47%

COMMENTS: A great young cow to finish the sale. A daughter of LT Venture, out of one Ascot's most prolific cow families. Early maturing, great carcass, fine hair and strong maternal traits. Videos available on AuctionsPlus prior to sale. P62's 2022 bull calf retained to sell later in 2023. Offered as joined female to the exciting SCX JEHU (PP)

EBV's Top 5% Rib and Rump Fat, Top 10% 200, 400, 600 day growth and Carcass Wt. Top 15% Milk and IMF%. Total of 14 traits better than breed average.



END OF SALE

James & Jane Dockrill
James: 0400 387 116
Jane: 0438 812 240
Ph: 02 66 63 1274
E: pinedock@gmail.com



The Dockrill family are an integral part of Glenlea Beef and provide a range of services, from feeding and showing our cattle, preparing bulls for our range of bull sales, marketing photos, clipping and video taking, production and editing. Additionally an increasing amount of private bulls directly from their Casino, NSW property.

All the rest of the Glenlea Beef team thank them for all their support, input and hard work without which Glenlea Beef could not operate in the way it does currently.

BUYERS INSTRUCTION SLIP

**Mawarra Charolais
Complete Dispersal**

Friday 28th April 2023



Please email completed form to:
Gavin Beard at Nutrien
E: gavin.beard@nutrien.com.au

Name: _____

Address: _____

_____ PIC No: _____

Email: _____

Phone: _____ Mobile: _____

Account To: _____

Lot No's Purchased: _____ Total Number of Lots: _____

Society registration transfer Required? Yes No Society / Tattoo Prefix: _____

Transport arrangements. Please give details:

Name of Carrier: _____ Phone: _____

Destination: _____

Insurance Required: _____

Other Instructions: _____

Agent Name and Contact: _____

Buyers Signature: _____ Date: _____ / _____ / _____

Verbal instructions will not be accepted



**Glenlea
Mandy (P)
GLE Q335E**

Junior Champion
BEEF AUSTRALIA
2021

*Paternal sister to
Lots 24, 25, 26*



**Glenlea
Confidence 32nd
(PP) (R/F) GLE Q88E**

Reserve Junior
Champion BEEF
AUSTRALIA 2021

*Paternal Sister to
Lots 2 and 3.*



**Glenlea
Isabella 14th
(PP) (R/F) GLE R24E**

Reserve Heifer Calf
Champion BEEF
AUSTRALIA 2021

Daughter of Lot 43.

*Paternal sister to
Lots 5 and 10.*

Calf on Lot 35.



Glenlea Kenworth (PP) GLE K80E

- Sire at Glenlea Beef.
- Sire of lot 2 & 3.
- Paternal brother to lot 31 and 43.



OW / Glenlea North (P) WFA N25E

- Sire at Glenlea Beef and Shandon Charolais, Dorrigo.
- Sire of lot 45.
- Maternal brother to lots 8, 9, 10 and 28.



Glenlea Pluto (P) GLE P38E

- Sire at Glenlea Beef.
- Maternal brother to lot 27.



Glenlea Pheonix (PP) R/F GLE P41E

- AI Sire at Glenlea Beef and top price bull at \$25,000 at Glenlea's 2020 Clermont bull sale.
- Maternal brother to lot 2.
- Paternal brother to Lot 5 & 10 and calf at foot Lot 35.



Challambi Muscles (PP) CHA M15E

- Sire at Glenlea Beef.
- Sire of lots 4, 52, 53, 54, 55 & 56.



Glenlea Honorable P80E (P) R/F

- Sire at Glenlea Beef and Mawarra Charolais.

Selection of joined sale Heifers.
Left to Right Lot 5, 10, 44, 3, 4, 7 & 2.



SPECIAL OFFERS

... GLENLEA BEEF giving value and opportunity to our clients new and old!

1 Glenlea Beef will offer interest free terms till July 2023.
50% of sale price. Normal agent terms - 7 days. Balance due 3 July 2023.

2 Any bull calf or heifer calf sired by Glenlea Kowboy Q405E (P) R/F can be sold in 2024 at any of our bull sales in QLD or Female sales located anywhere. Giving all purchasers' the opportunity to sell sale bulls directly to the QLD market in established single vendors sales.

3 All progeny of Glenlea Kowboy Q405E (P) R/F are eligible for Glenlea Beef prize money for show ring success.

- * \$5000 for Royal Show Championship.
- * \$2000 for Regional or Feature Show Championship
- * \$500 for local Show Championship

Terms and conditions apply. See information pages at the front of the catalogue.