



# KENMERE CHAROLAIS

10<sup>th</sup> ANNUAL ON PROPERTY BULL SALE

“Moorak” Rankins Lane, Holbrook NSW



**Bull videos online**

[www.kenmerecharolais.com.au](http://www.kenmerecharolais.com.au)

**Friday 10th March 2023**

**Sale commences 1pm**

**44 Bulls**  
*featuring*

**25 HOMOZYGOUS  
POLL BULLS**

# Welcome 2023

Kenmere Charolais welcomes everyone to attend our 10th Annual Bull Sale at "Moorak" Rankins Lane, Holbrook, NSW. We are delighted to offer this draft of bulls included in our sale catalogue. This is the first time we have offered all poll sires.

This year we have 44 bulls for sale that include 25 Homozygous polls and 17 Heterozygous polls. There are 23 bulls bred from eight Kenmere sires and 19 bulls bred from International and Australian AI Sires. Amongst our International sire group are bulls bred from Lt Badge 9184, Lt Nationwide, RBM Fargo 111, Lt Nationwide, LT Long Distance, HRJ Maverick, Merit Round Up 9508W and Sparrows Seminole 927W.

Kenmere has exclusive rights to Lt Badge 9184 and this year we have three of his sons offered in the sale that are the first to be sold in Australia. To date we have bred 77 progeny that are on the ground and we are impressed that they calve easily and commence growing quickly.

The draft includes the third drop of Kenmere Maximus M19E a homozygous son of LT Long Distance who has bred 212 progeny in our herd. His progeny are low birth weight and are born easily, commence growing quickly and catch up by the time calves are weaned. Maximus has set the standard for calving ease in the Kenmere herd and is a trait leader for birth weight in the Charolais breed. Kenmere has sold 29 Maximus sons under auction and we are confident he has a long breeding career ahead of him.

Kenmere Doc Silver Q107E and Kenmere Free Lunch P16E are two promising new sires who have progeny in the sale that are on offer for the first time

All our 400 day scan data on the bulls being offered for sale was recorded on 2nd December, 2022 that was the date the group came off grass. After that date the group has been prepared for the annual sale.

Our stud has a strong track record of performance recording and we are a member of BREEDPLAN. We hold a Five Star rating awarded as a result of methodical observations recording data and timely submissions to ADBRI. The herd averages include data that has been collected over the last seventeen years. We acknowledge that EBV figures can be a useful guide and understand there are many factors you need to consider when choosing your sale bull.

Kenmere is a J BAS 7 status with a Pesti Virus free herd and we have a consistently strong record of animal health status within our herds and we record scan data on both our bulls and heifers.

For sale day safety precautions, all sale bulls will be penned on the sale day. Purchasers should be aware that they enter the cattle pens at their own risk. Children are not allowed to enter the pens.



**All bulls will be available for inspection prior to the sale by appointment at Holbrook by contacting Ann-Marie Collins 0412 608 043 or Matt Collins 0412 265 017**

**[www.kenmerecharolais.com.au](http://www.kenmerecharolais.com.au)**





# KENMERE CHAROLAIS

10<sup>th</sup> ANNUAL ON PROPERTY BULL SALE

“Moorak” Rankins Lane, Holbrook NSW

**Friday 10th March 2023**

Inspection 10.00am

Sale commences 1.00pm

Lunch, Tea & Coffee provided



## 44 Bulls



**Kenmere Charolais**

Ann-Marie Collins 0412 608 043

Matt Collins 0412 265 017

[www.kenmerecharolais.com.au](http://www.kenmerecharolais.com.au)

**Nutrien**  
Livestock™



**Rodwells**  
A RURALCO BUSINESS

Peter Godbolt: 0457 591 929  
Tim Woodham 0436 015 115  
Matt Pitzen 0428 362 030

Peter Ruaro: 0447 600 825  
Scott Campbell 0428 686 072

# Kenmere Sale Bulls

## Kenmere Sale Bulls

Kenmere Charolais specialises in the production of small numbers of quality bulls that are typically early finishing bulls suitable for both the Stud and Commercial cattleman. The scale of production enables us to concentrate on the traits we believe are important for producers to maximise profits from their progeny.

The real drivers for a profitable calf drop are live calves born early every year. At Kenmere we concentrate on calf shape, lower birth weight and short gestation as well as finishing ability and temperament.

There has been a strong focus on the finishing ability of the herd over many years. This includes using EBV's and scanning progeny for Rib and Rump fat and Marbling as well as proving our genetics in our own vealer production enterprise at Cookardinia. Charolais are high performance cattle so you will still get a weight boost in the progeny even if the bull hasn't got high growth EBV's within the breed.

The bulls on offer have been bred at Kenmere Stud. All the sires have been individually selected to join with Kenmere dams that comprise the backbone of our stud. At Kenmere our breeding programs are carried out on farm in order to retain control over the total operation including the hand selection of recipients and to help maintain the integrity of our JBAS 7 status.

The bull scanning provides an indication on the animal itself and should be closely considered during your evaluation. The most important assessment should be your visual inspection to look at the physical traits that you are seeking.

Disclaimer : People entering onto this property for any purpose whatsoever including attendance at cattle auctions do so at their own risk. We are not liable to you for any personal injury or death suffered by you and for theft loss or damage to any property caused or contributed to by us or by any other person whether caused or contributed to by or by negligence deliberate act or unlawful conduct. "We" or "us" or "our" refer to the owners their employees contractors and agents and each of them. While every care has been taken in compiling this catalogue to ensure accuracy of information supplied no responsibility is accepted for any errors which may have occurred.

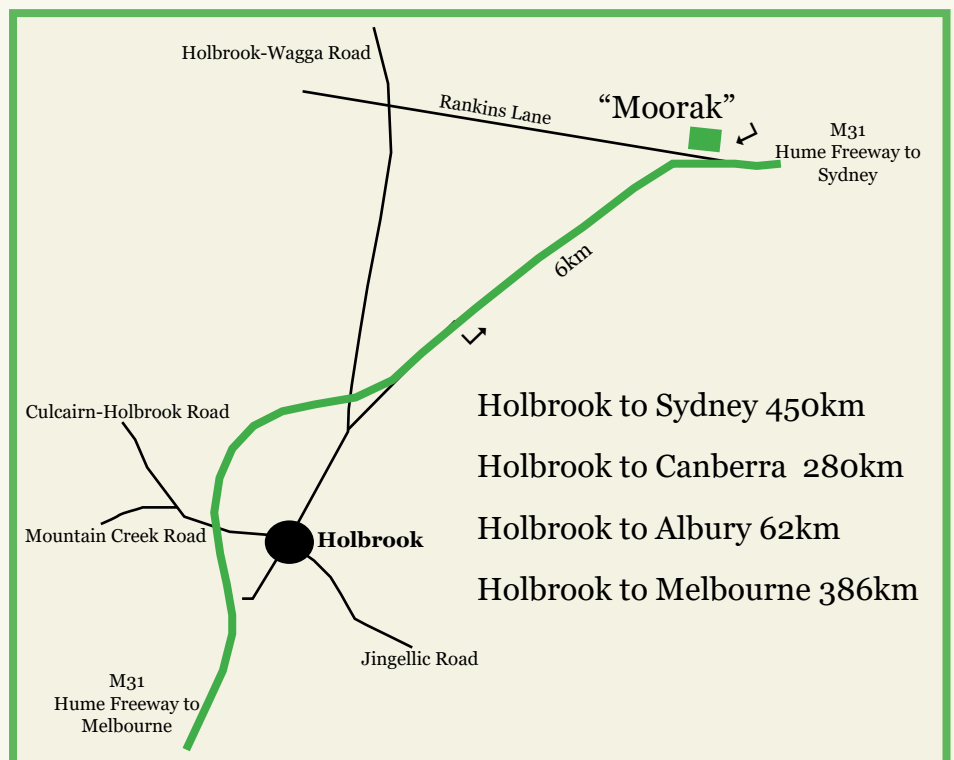
## Kenmere Sale Bulls Preparation

This group of bulls were weaned straight onto pasture. They continued to be raised on pasture until approximately 90 days prior to the sale. They were then supplemented with a pellet ration to ensure they are ready to go out to work after sale day.

A 400 day or 600 day weight and the first set of scan data (fat -rib & rump measurements, eye muscle area & marbling) was collected in November by Bovine Scanning Services, prior to the bulls going on any supplementary feed. This data was submitted to Breedplan to create more accurate carcass figures on the bulls. Breedplan will only accept one set of scan data therefore there's no supplementary feeding influencing these figures.

A pre-sale scan, weight and scrotal measurement will be taken in February to assist buyers in comparing the bulls. The bulls have a lifetime vaccination history and have received a booster shot of 7in1 and were drenched in January. They will also receive double vaccinations of Pestigard and Vibrovax prior to sale.

All sale bulls have had a DNA sample analysed and the bulls have all been Sire Verified and horn/poll tested. Holbrook Vet Clinic will conduct a structural assessment of each bull prior to sale and a semen test will be done to ensure the bulls are ready to work from the day they leave Kenmere Charolais.



# Sale Information

**Inspection:** Inspections by appointment are welcome prior to sale with the listed agents, Ann-Marie or Matt Collins. Bulls will be on display from 10am on Sale day.

**Lunch:** Will be available on the day

**Health:** All catalogued sale bulls have been semen tested and examined for structural soundness by Holbrook Veterinary Centre. The bulls have received booster shots of 7in1, pour on drench and double vaccinations of Pestigard and Vibrovax prior to sale. All sale bulls have been DNA tested and are all PI negative.

## **Johne's Beef Assurance Score (J-BAS)**

Kenmere has enrolled in J-BAS 7 specifically in relation to Johne's Disease and the relevant procedures for cattle. Our registered approved veterinarian has overseen the development of our bio-security plan and we have completed the triennial check test that returned negative results to Johne's disease when tested by an approved laboratory.

**Raw Data:** All bulls will have Scan Data available prior to the sale for eye muscle area (EMA), rump and rib fat, marbling (IMF%) as well as sale weight and scrotal measurement.

**Telephone Link-Up:** Mobile telephones will be available. Please arrange with the Vendor or Agent to ensure a line number is available.

**Terms And Conditions:** Terms of the sale are as per Conditions of Sale, NSW Stud Stock. A copy will be available sale day.

**Insurance:** Ownership passes at the fall of the hammer. An insurance representative will be in attendance on Sale day

**Guarantee:** All bulls have been evaluated for structural soundness and fertility and to the best of our knowledge the bulls are in sound working order at the time of the sale. Any claim against a structural breakdown of any animal must be made in writing and accompanied by a Veterinary Certificate within 6 months of the sale date. The Veterinary report must state that, the bull has not suffered any injury, maltreatment or acquired disease which could have affected his breeding ability since delivery to the purchaser. Any bull failing to breed when joined as a single sire mating within six months of the sale may be either replaced with an animal of similar value or credit made available to the value of the purchase price, minus the salvage value, for use at a future sale. The purchaser will be responsible for any costs incurred. **Strictly –No cash refunds.**

**Delivery:** A delivery instruction slip must be completed and signed by successful purchasers. Stock awaiting delivery will be held free of charge – all care will be taken, but absolutely no responsibility will be accepted for any injury or loss considered during, as a consequence of, or in relation to any holding.

**Transport:** Stock carriers will be available at the sale to deliver your bulls. Please provide written instructions to the Sale Agents.

**Rebate:** 4% rebate will be offered to all agents on the condition that a letter of introduction is received 24 hours prior to the sale or the Agent accompanies the purchaser to the sale and settles on their behalf within 7 days. (This clause will be strictly adhered to).

**PLEASE NOTE:** It is unethical for anyone to promote, advertise or arrange the sale of any cattle, other than those in this sale on this sale premises.



*Buy and Sell stock nationally*

## Auctionsplus

Auctions plus is an alternative bidding platform option if you cannot attend the sale in person. However it is only available to registered users. We recommend registering as soon as possible at least 48 hours prior to the sale.

**Register at [www.auctionsplus.com.au](http://www.auctionsplus.com.au)**



Matthew & Ann-Marie Collins

# Kenmere History

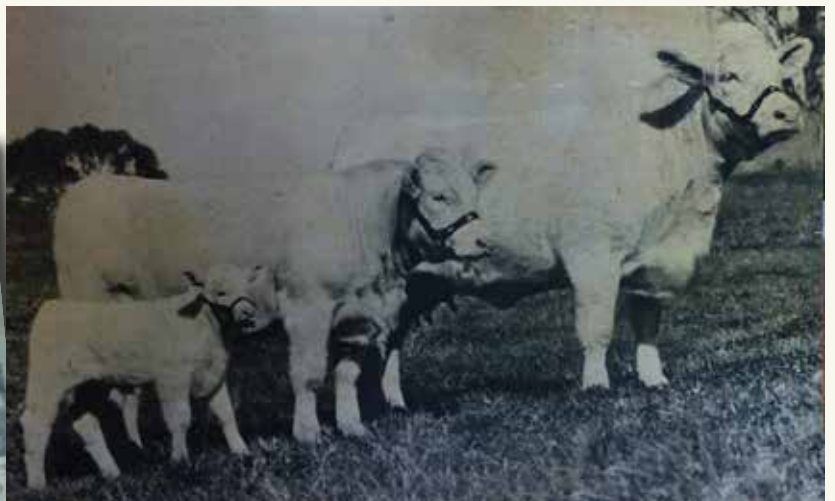
Kenmere Charolais was established in the early 1970's with original French bloodlines imported via New Zealand to Australia. This provided a genetically sound base from which we could increase numbers and reproduce the quality traits that were associated with Charolais.

In 1988 John Collins changed the focus of the stud and in 2004 Matthew and Ann-Marie Collins purchased all the cattle and began the work of rebuilding the stud at Cobbitty. The Kenmere females we purchased back enabled us to breed heifers which would become the new foundation herd. We purchased quality heifers from leading studs and many of these had bloodlines that were originally Kenmere genetics.

Ann-Marie became very active in all aspects of the stud particularly in recommencing using the Kenmere dams for embryo transfers. Kenmere Kristina III who was sired by Mandalong Chock and her dam was Gilmandyke Park Kristina II was the first cow to be flushed in the programme.

Gilmandyke Park Kristina II dam was Kenmere Kristina the first pure bred cow bred by Kenmere in New Zealand and transported to Australia. This effectively means we are breeding animals that take us back to pure bred Charolais blood where our breeding commenced.

Today the Kenmere stud is based at Holbrook in Southern NSW where we are specialising in breeding cattle that are moderate framed animals that suit the southern markets with low birth weight, calving ease and early maturing to suit 400 day market grid.



# Kenmere Performance



## Southern Weaner Sales

### European and Whiteface Cattle Sale

Day Four – Friday 6 January, 2023

NVLX, Barnawatha Victoria

European and white faced cattle had their time to shine during the fourth day of annual weaner sales at the Northern Victoria Livestock Exchange Wodonga. A Kenmere repeat customer sold the champion pen of Charolais –cross steers for \$1,750. The 349kg Kenmere blood weaners were nine to eleven months of age.

John Neilson, Sandy Creek, Victoria sold a total of 30 head through Peter Ruaro Livestock that included a pen that won the Champion Euro pen of the day. John said the season had been very tough and it had been so wet but the cattle still held good condition and he was happy with how the spring finished.

*Report courtesy The Land 12th January 2023*



John Neilson, Johleen, Sandy Creek Victoria with his Champion pen of Kenmere blood weaners.

[www.kenmerecharolais.com.au](http://www.kenmerecharolais.com.au)

# CHAROLAIS BREEDPLAN

January 2023 Charolais BREEDPLAN Breed Avg EBVs for 2021 Born Calves.  
Percentile Range available at <http://breedplan.une.edu.au>

	CE DIR	CE DTR	GL	BW	200	400	600	MCW	MILK	SS
EBV	+0.8	+0.8	-3.0	+0.2	+13	+25	+34	+35	+7	+1.2

	CW	EMA	RIB	RUMP	RBV	IMF
EBV	+21	+1.6	+0.4	+0.5	+0.0	+0.2

## \$ Index Values

DTI (\$)	NMI (\$)
+\$25	+\$39

All EBVs quoted in this catalogue are Charolais Group Breedplan EBVs and are directly comparable with the EBVs from other Charolais Group Breedplan herds.

## EBVs

An animal's breeding value is its genetic merit, half of which will be passed on to its progeny. While we will never know the exact breeding value, for performance traits it is possible to make good estimates. These estimates are called Estimated Breeding Values (EBVs).

### Accuracy

Accuracy (%) is based on the amount of performance information available on the animal and its close relatives - particularly the number of progeny analysed. Accuracy is also based on the heritability of the trait and the genetic correlations with other recorded traits. The higher the accuracy value the lower the likelihood of change in the animal's EBV as more information is analysed for that animal or its relatives.

## TRAITS

**Calving Ease EBVs (%)** are based on calving difficulty scores, birth weights and gestation length information. More positive EBVs are favourable and indicate easier calving.

**CE % Dir = Direct Calving Ease** - The EBV for direct calving ease indicates the influence of the sire on calving ease in purebred females calving at two years of age.

**CE % Daughters = Daughters' Calving Ease** - The EBV for daughters' calving ease indicates how easily that sire's daughters will calve at two years of age.

**Gestation Length EBV (days)** is an estimate of the time from conception to the birth of the calf and is based on Artificial Insemination & hand mating records. Lower (negative) Gestation Length EBVs indicate shorter gestation length & therefore easier calving & increased growth after birth.

**Birth Weight EBV (kg)** is based on the measured birth weight of progeny, adjusted for dam age. The lower the value the lighter the calf at birth and the lower the likelihood of a difficult birth. This is particularly important when selecting sires for use over heifers.

**200-Day Growth EBV (kg)** is calculated from the weight of progeny taken between 80 and 300 days of age. Values are adjusted to 200 days and for age of dam. This EBV is the best single estimate of an animal's genetic merit for growth to early ages.

**400-Day Weight EBV (kg)** is calculated from the weight of progeny taken between 301 and 500 days of age, adjusted to 400 days and for age of dam. This EBV is the best single estimate of an animal's genetic merit for yearling weight.

**600-Day Weight EBV (kg)** is calculated from the weight of progeny taken between 501 and 900 days of age, adjusted to 600 days and for age of dam. This EBV is the best single estimate of an animal's genetic merit for growth beyond yearling age.

**Mature Cow Weight EBV (kg)** is based on the cow weight when the calf is weighed for weaning, adjusted to 5 years of age. This EBV is an estimate of the genetic difference in cow weight at 5 years of age and is an indicator of growth at later ages and potential feed maintenance requirements of the females in the breeding herd. Steer breeders wishing to grow animals out to a larger weight may also use the Mature Cow Weight EBV.

**Milk EBV (kg)** is an estimate of an animal's milking ability. For sires, this EBV indicates the effect of the daughter's milking ability, inherited from the sire, on the 200-day weights of her calves. For dams, it indicates her milking ability.

**Scrotal Size EBV (cm)** is calculated from the circumference of the scrotum taken between 300 and 700 days of age and adjusted to 400 days of age. This EBV is an estimate of an animal's genetic merit for scrotal size. There is also a small negative correlation with age of puberty in female progeny and therefore selection for increased scrotal size will result in reduced age at calving of female progeny.

**Eye Muscle Area EBV (sq cm)** is calculated from measurements from live animal ultrasound scans and from abattoir carcass data, adjusted to a standard 300 kg carcass. This EBV estimates genetic differences in eye muscle area at the 12/13th rib site of a 300 kg dressed carcass. More positive EBVs indicate better muscling on animals. Sires with relatively higher Eye Muscle Area EBVs are expected to produce better muscled and higher percentage yielding progeny at the same carcass weight than will sires with lower Eye Muscle Area EBVs.

**Rib Fat and Rump Fat EBVs (mm)** are calculated from measurements of subcutaneous fat depth at the 12/13 rib site and the P8 rump site (from live animal ultrasound scans and from abattoir carcasses) and are adjusted to a standard 300 kg carcass. These EBVs are indicators of the genetic differences in fat distribution on a standard 300 kg carcass. Sires with low, or negative, fat EBVs are expected to produce leaner progeny at any particular carcass weight than will sires with higher EBVs.

**Retail Beef Yield EBV (%)** indicates genetic differences between animals for retail yield percentage in a standard 300 kg carcass. Sires with larger EBVs are expected to produce progeny with higher yielding carcasses.







**Intramuscular Fat EBV (%)** is an estimate of the genetic difference in the percentage of intramuscular fat (marbling) at the 12/13th rib site in a 300 kg carcasse. Depending on market targets, larger more positive values are generally more favourable.

### Selection Indices

Charolais selection indices are calculated for market specifications, including Southern and Northern markets. Index values are reported as EBVs, in units of relative earning capacity (\$'s) for a given market. They reflect both the short-term profit generated by a sire through the sale of his progeny, and the longer-term profit generated by his daughters in a self-replacing cow herd. A selection index combines the EBVs with economic information (costs and returns) for specific market and production systems to rank animals based on relative profit values. More information is available on selecting animals using a selection index. The Index values are derived using BreedObject technology. More information is available from the BreedObject web site.

**Domestic Terminal Index (\$) [DTI]**- Estimates the genetic differences between animals in net profitability per cow joined for a typical commercial herd where Charolais bulls are joined with a British breed cow base (e.g. Angus) targeting the domestic trade. This index assumes all progeny will be marketed with steers finished in the feedlot for 90 days, and weighing 450 kg (250 kg HSCW and 7 mm P8 fat depth) when marketed at 12 months. Heifers will be in the feedlot for 75 days, and weigh 430 kg (230 kg HSCW and 9 mm P8 fat depth) at 12 months. In response to industry feedback, positive emphasis has been placed on finishing ability.

**Northern Maternal Index (\$) [NMI]** – Estimates the genetic differences between animals in net profitability per cow joined for a typical commercial self-replacing herd where Charolais bulls are joined with Bos indicus cows in Northern Australia targeting the grass fed Jap Ox market. Selected heifers are retained for breeding and so maternal traits are of importance. Steers target 650 kg live weight (360 kg HSCW and 12 mm P8 fat depth) and heifers 630 kg (340 kg HSCW and 14 mm P8 fat depth), at 26 months of age. In response to industry feedback; positive emphasis has been placed on finishing ability.



# Poll Genetics

## Poll Inheritance

Understanding the Horn/Poll status of a bull is important when determining whether a potential new bull meets your breeding objectives. A poll bull can be either 'true polled' (homozygous PP), or is a carrier of horned genetics (heterozygous Ph). The polled variant of the gene (P) is usually dominant to the horned variant of the gene (h), which means polled animals may be either PP or Ph. Homozygous PP animals will always pass a copy of the polled variant to their offspring, increasing the likelihood that the offspring will be polled. Identifying breeding animals that carry two copies of the polled variant will dramatically reduce the requirement for dehorning in subsequent generations. Kenmere have tested via DNA poll animals in this sale to determine their poll status.

Genotype	Status	Explanation
PP Homozygous Polled	Polled	This animal possesses two copies of the polled variant of the gene. This animal is highly likely to be polled and will always pass a poll variant to its progeny.
Ph Heterozygous Polled	Carrier	This animal carries one copy of the polled variant and one copy of the horned variant of the gene. This animal is likely to be polled but in some instances may be scurred or horned. This animal will transmit either the horned or polled variant to its progeny.
hh Homozygous Horned	Horned	This animal carries two copies of the horned variant of the gene. This animal is highly likely to be horned and will always transmit the horned variant to its progeny.

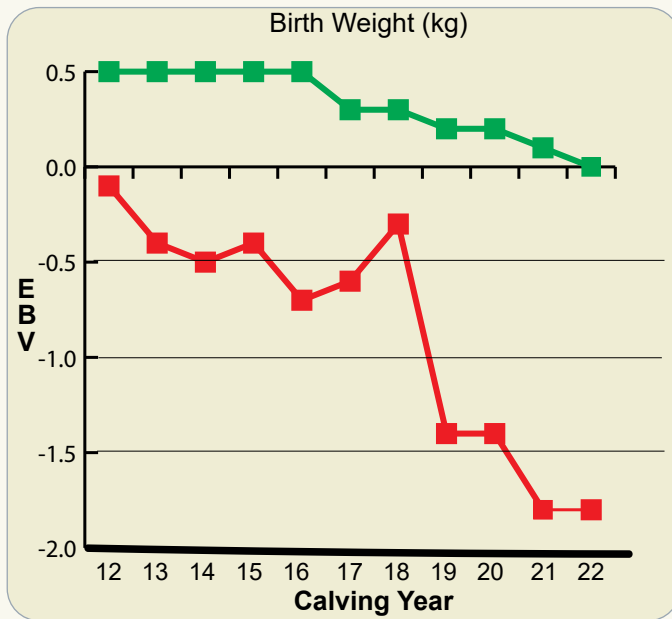
## Is polled always dominant to horned?

In Bos taurus breeds, polled is almost always dominant to horned; -PP- animals are always polled and -Ph- animals are usually always polled (they are sometimes scurred). In Bos indicus influenced breeds, such as Brahman and Droughtmaster, this is not necessarily the case. Whilst -PP animals are usually always polled, -Ph- animals can be polled, scurred and sometimes horned. For example, an Angus bull bred to horned Brahman cows will produce offspring that all have a genotype of -Ph- but can be a mixture of polled, scurred and horned. Whilst the vast majority will be polled and scurred, some horned animals are usually observed due to the influence of other genes interacting with the poll gene.

## Kenmere Sale Bulls

Homozygous Poll animals in this sale have been DNA tested at Neogen and their Poll Status is indicated where a test result is available.

# KENMERE GENETIC TRENDS



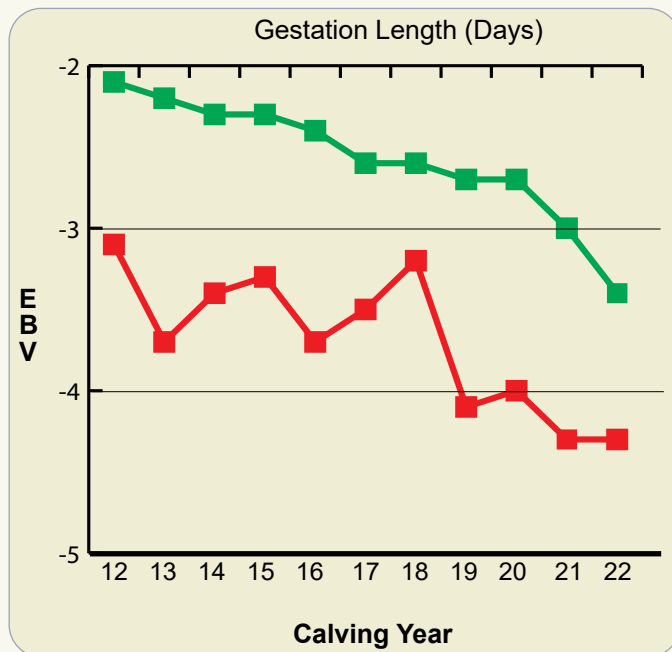
## Kenmere Genetic Trends for calving traits

The real profit drivers for a profitable calf crop are live calves born early every year!

**Birth Weight figures** are expressed in kilograms and are calculated from the weights of the calves taken at birth and compared to the other calves in the group.

ALL KENMERE CALVES ARE WEIGHED AT BIRTH giving a great bank of actual data to start to build performance upon. With all bulls being sire verified we can be confident of the pedigree and how we can expect animal to perform and influence his progeny. Lower birth weight figures are generally more desirable.

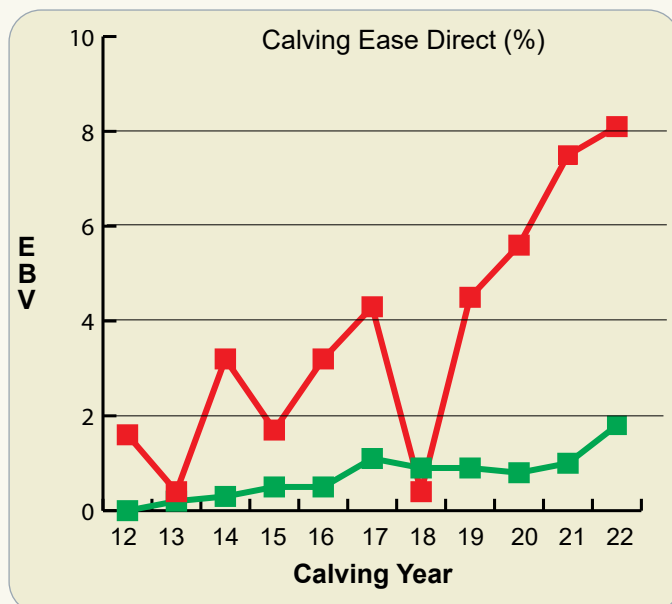
**Gestation Length EBV's** are an indicator of the days from conception to birth. This is important to allow cows longer to rebreed and calve on time year upon year as well as having an influence on lowering birth weight. The figure is calculated in days and a lower or lesser figure is more favourable.



**Calving Ease Direct** points to the calving ability of the sire's calves to be born unassisted. This means less stress on the cows, giving them a better opportunity to rebreed at the first opportunity. Higher figures are more favourable.

The other factor to keep in mind with reproductive traits, especially when mating maiden heifers is that there will be a trade off in performance when using sires with a really low birth weight figure. This is balanced by having live calves and the ability of Charolais genetics to drive weight gain, especially if you are cross breeding and getting the benefits of hybrid vigour – a win, win and a proven way to get high dollar returns.

As shown in the graphs, the Kenmere herd sits well above the breed average for Calving Ease, well below the breed average on Birth Weight and shorter than the breed average for Gestation Length.



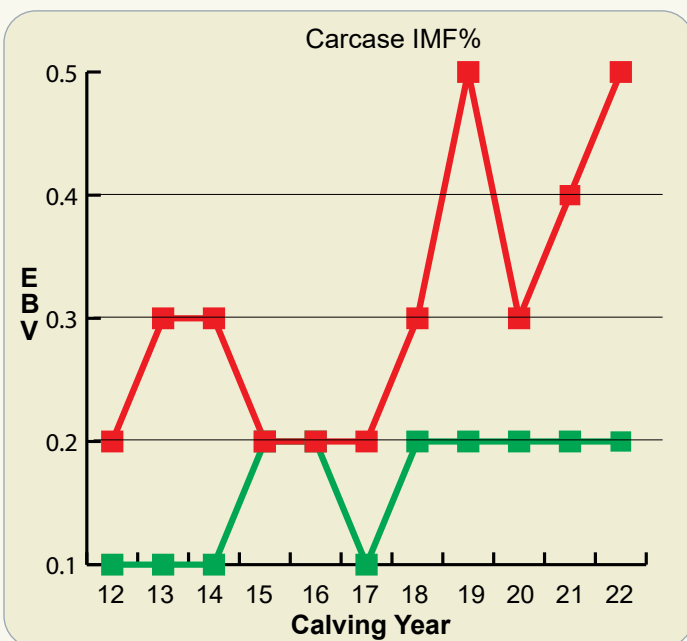
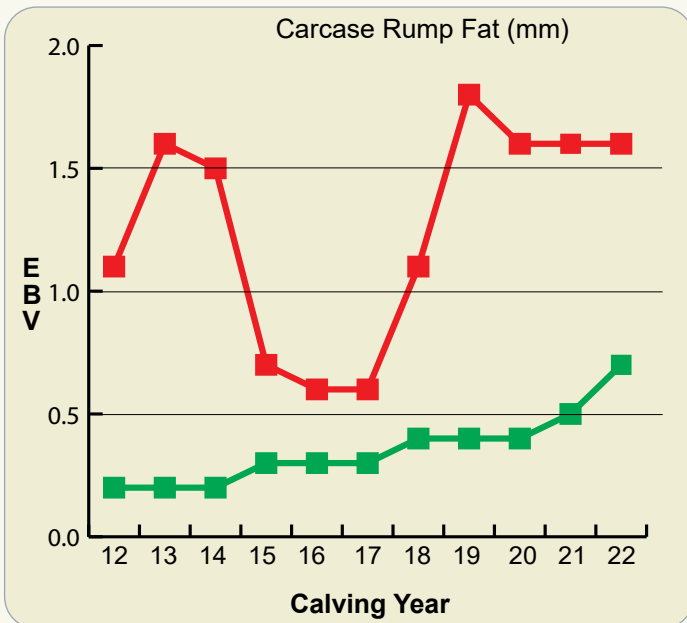
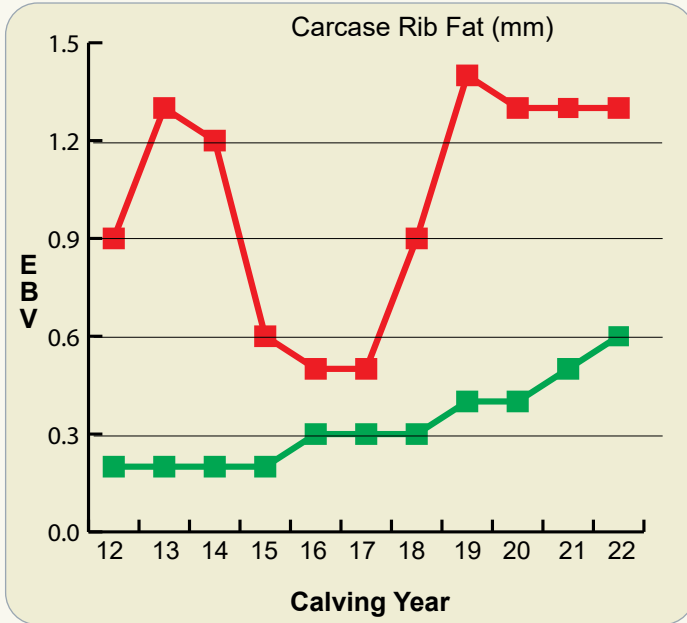
75% of the bulls in this catalogue rate in the top 20% of the breed for either Birth weight, Gestation or Calving Ease Direct. The other 25% are bred for mature cow mating's based around carcass and performance traits.

It is not only the individual sire's effect but consistent, repeatable traits in the Kenmere herd as a whole.



**Kenmere**

**Charolais Breed**



## Kenmere Genetic Trends for Rib, Rump and IMF

The benefits of using Charolais genetics for growth and yield coupled with ability of Kenmere bulls to lay down fat and their marbling ability make for a very sound breeding strategy.

Higher Rib and Rump fat is not only beneficial when turning off lines of cattle to fit industry requirements but for females retained that can deal with testing seasonal conditions and maintain a healthy fat score to feed their offspring and rebreed in a short space of time. This is the key to profitable beef production.

Although the sacrifice value of Charolais cross heifers is every bit as good as their male siblings, the real worth of these females is in their ability to function as highly profitable cows.

With 10 years of solid weighing and scanning data collated on the Kenmere herd of male and female progeny we can map progress of our genetics on traits not always seen by the eye and IMF is certainly one of these. Cattle that can turn grass into high weight gains and a high quality, saleable product has always been the goal for Kenmere Charolais.

**Rib Fat EBVs** are expressed in millimetres. They estimate the difference in the fat measurement over the rib between animals. The fat measurements that were sent to Breedplan on this set of bulls to produce these EBVs were taken on December 2nd, off pasture. We view a positive EBV figure to be an advantage as the progeny will be easier to finish.

**Rump Fat EBVs** are also expressed in millimetres. They estimate the difference in the fat measurement over the rump. Again, we view a positive EBV figure to be an advantage.

**Intramuscular Fat (IMF) EBVs** are estimates of genetic differences between animals in intramuscular fat (marbling) IMF EBVs are reported as differences in percentage (%) IMF. Higher IMF EBVs are more favourable and can contribute to carcass value. Sixty% of the bulls in this catalogue have Rib, Rump or IMF EBVs in the top 20% of the breed. The other bulls excel in Calving Ease or Muscularity (EMA & RBY)

As shown in the graphs the herd as a whole is built with carcass quality and fattening ability traits which makes for reliability and uniformity.



# Kenmere Reference Sires



**KENMERE CHOCK N20E (MCS N20E) (P)**

Chock N20E is the son of Kenmere Chock E12E that we chose to retain in the stud. He exhibits his sire's length, softness and temperament but he has more performance, combined with a well laid in shoulder, good neck extension and plenty of depth. He has over 60 progeny in the herd and we are proud to offer to offer seven sons in this sale . N20E has rib, rump fat and imf EBV's in the top 1% of the breed.



**KENMERE MAXIMUS (MCS M19E) (P)(R/F)**

Maximus has been extensively used at Kenmere as our calving ease specialist with over 120 progeny. He reliably produces small, easy born calves with short gestation. He is a homo polled, moderate red factor son of LT Long Distance that is structurally sound and still working in the Stud. His calves have good performance and fat cover regardless of their small start. He has 7 sons in this sale. M19E has the lowest birthweight EBV in the Charolais breed.



**KENMERE NUTRIENT (MCS N131E) (P)**

Nutrient is a powerful thick bodied bull who is packed with muscle from head to tail. He stands on heavy bone and has sire head. Kenmere has used Nutrient for breeding steers and replacement females for our commercial business. The progeny are stout animals that grow and finish quickly and typically at the top end of the weights



**KENMERE KRISTO'S BOY (MCS N53E) (P)**

Kristo's Boy (P) is a polled bull who has been used to breed low birth weight progeny who calve easily and grow quickly and carry the meat quality traits including rib and rump fat and imf that Kenmere focuses on. Kristo Boy's is in the top 1% for birthweight, calving ease direct and top 10% for rib and rump fat



**LT BADGE 9184 PLD (OAU Q7067E) (P)**



**LT NATIONWIDE 8455 PLD (OAU P2440E) (P)**



**RBM FARGO Y111 (OAU G9088E) (P)**



**LT LONG DISTANCE 9001 (OAU E143E) (P)**



**HRJ MAVERICK 556 (OAC L6375E) (P)**



**SPARROWS SEMINOLE 927W (OAC E927E) (P)**



**MERIT ROUND UP 9508W (OAC E6558E) (P)**



# 1 KENMERE SOMERVILLE S43E (P)

Tattoo: MCS S43E Born: 08/03/2021

PINAY (OAF U4134F)

KENMERE PINAY J57E (MCS J57E) (P)

KENMERE GOLDEN SPUR (MCS G3E) (P)

**SIRE: KENMERE NUTRIENT (MCS N131E) (P)**

SEDALIA BORN WINNER (DEG B15F)

NARGOON WILMUR H017F (J5Y H17F)

NARGOON WILMUR 1 (J5Y B43F)

LT WESTERN SPUR 2061 PLD (OAU X2061E) (P)

KENMERE DAKOTA SPUR D9E (MCS D9E)

KARINA INVESTMENTS WINDY WENDY (GPK A15E) (P)

**DAM: KENMERE QUE SERA K53E (MCS K53E) (P)**

LT BLUEGRASS 4017P (OAU Z4017E) (P)

KENMERE QUE SERA E95E (MCS E95E) (P)

KENMERE QUE SERA B8E (MCS B8E) (P)

Comments: Somerville is an impresssive son of Kenmere Nutrient who has sire blood lines going back to Pinay and Dakota Spur. Somerville has dam lines from Nargoon Wilmur and Kenmere Que Sera both who have been all round sound breeders in the Kenmere herd.

	CE DIR	CE DTR	GL	BW	200	400	600	MCW	MILK	SS
EBV	+4.8	+5.3	-5.5	-2.1	+7	+14	+17	+18	+9	+0.3
Acc	49%	44%	47%	73%	66%	69%	72%	65%	49%	74%

	CW	EMA	RIB	RUMP	RBV	IMF
EBV	+14	+1.2	+1.4	+1.7	-1.0	+0.7
Acc	61%	52%	58%	57%	56%	52%

## \$ Index Values

DTI (\$) NMI (\$)

+\$17 +\$27



Purchaser:

\$:

# 2 KENMERE STAND UP S161E (P)

Tattoo: MCS S161E Born: 19/06/2021

ASHWOOD PARK SYNERGY G29E (HAS G29E) (P)

KENMERE SYNERGY'S MAN (MCS M40E) (P)

KENMERE PING E20E (MCS E20E) (P)

**SIRE: KENMERE PHILEMON (MCS P151E) (P)**

LIBERTY EXHIBITIONIST (Y1K E24E) (P)

KENMERE QUE SERA H33E (MCS H33E) (P)

KENMERE QUE SERA B9E (MCS B9E)

NANDILLYAN PEUGEOT (F U1E) (P)

KENMERE GRAND MASTER (MCS G6E) (P)

KENMERE CALAMITY C56E (MCS C56E) (P)

**DAM: KENMERE EMILY J11E (MCS J11E) (P)**

LT EASY BLEND 5125 PLD (OAU A5113E) (P)

KENMERE EMILY F103E (MCS F103E) (P)

ROSEDALE EMILY Z207 (MR Z207E) (P)

Comments: Stand Up is a a Kenmere Philemon son of Synergy's Man On the dam side Kenmere Grand Master is the sire who bred 169 progeny in the Kenmere and Temana Charolais herds Standup should suit cattlemen looking for red meat quality.

	CE DIR	CE DTR	GL	BW	200	400	600	MCW	MILK	SS
EBV	-13.4	+0.9	-2.9	-0.4	+7	+6	+17	-5	+8	+2.0
Acc	43%	38%	47%	71%	63%	64%	63%	60%	47%	74%

	CW	EMA	RIB	RUMP	RBV	IMF
EBV	+1	+0.8	+4.2	+5.7	-2.6	+1.0
Acc	54%	49%	52%	51%	52%	48%

## \$ Index Values

DTI (\$) NMI (\$)

-\$10 +\$17



Purchaser:

\$:

**HOMOZYGOUS  
POLL - DNA**

HOMOZYGOUS  
POLL - DNA

### 3 KENMERE SHERLOCK S12E (AI) (P)

Tattoo: MCS S12E Born: 23/02/2021

LT SILVER DISTANCE 5342 (OAU A7559E) (P)  
LT LONG DISTANCE 9001 (OAU E143E) (P)  
LT BELLE 7026 (OAU C9133E) (P)

**SIRE: KENMERE MAXIMUS (MCS M19E) (P)**

KENMERE GRAND MASTER (MCS G6E) (P)  
KENMERE NICOLA J46E (MCS J46E) (P)  
KENMERE NICOLA F73E (MCS F73E) (P)

JSR TROPHY 88T (OAC C9184E) (P)  
PCC SPARTAN 4Y (OAC G6672E) (P)  
SPARROWS TEMPEST 174K (PED -732E) (P)

**DAM: KENMERE PRIMA-DONNA (MCS P102E) (P)**

LT BLUEGRASS 4017P (OAU Z4017E) (P)  
KENMERE ELITE (MCS E101E) (P)  
MINNIE-VALE SLIPPER B35E (SGS B35E) (P)

Comments: Sherlock is an outstanding bull that leads the draft of Maximus sons in our sale today .On the dam side the sire is an impressive Canadian PCC Spartan daughter out of one of our best cows Kenmere Elite (MCS E101E), verified to mating. If you are looking for a stud sire prospect Sherlock may suit your needs.

	CE DIR	CE DTR	GL	BW	200	400	600	MCW	MILK	SS
EBV	+17.4	+7.6	-7.0	-3.8	+10	+16	+17	+4	+8	+0.6
Acc	49%	42%	74%	74%	67%	69%	73%	66%	48%	75%

	CW	EMA	RIB	RUMP	RBV	IMF
EBV	+14	+0.6	+1.9	+2.2	-1.6	+0.4
Acc	61%	52%	59%	58%	56%	52%

**\$ Index Values**

DTI (\$)	NMI (\$)
+\$23	+\$48



Purchaser:

\$:

HOMOZYGOUS  
POLL - DNA

### 4 KENMERE SEBASTION S41E (P) (TW)

Tattoo: MCS S41E Born: 05/03/2021

PINAY 8552394134 (OAF U4134F)  
KENMERE PINAY J57E (MCS J57E) (P)  
KENMERE GOLDEN SPUR (MCS G3E) (P)

**SIRE: KENMERE NUTRIENT (MCS N131E) (P)**

SEDALIA BORN WINNER (DEG B15F)  
NARGOON WILMUR H017F (J5Y H17F)  
NARGOON WILMUR 1 (J5Y B43F)

LT BLUEGRASS 4017P (OAU Z4017E) (P)  
KENMERE CHOCK E12E (MCS E12E) (P)  
KENMERE KRISTINA III FL87 (MCS M18E)

**DAM: KENMERE NIMISHA (MCS N145E) (P)**

LT SILVER VALUE 2122 P (OAU X5761E) (P)  
KENMERE FUCHSIA (MCS F68E) (P)  
KARINA INVESTMENTS WINDY WENDY (GPK A15E) (P)

Comments: Sebastian should be a bull suited to breeding steers and replacement females who will put weight into his progeny the bull's EBVs suggest he will have calving ease that would fit with commercial breeders.

	CE DIR	CE DTR	GL	BW	200	400	600	MCW	MILK	SS
EBV	+4.9	+5.9	-3.7	+0.2	+13	+27	+41	+53	+6	+0.4
Acc	47%	41%	42%	62%	63%	65%	68%	61%	46%	70%

	CW	EMA	RIB	RUMP	RBV	IMF
EBV	+26	+1.2	-0.4	-0.6	+0.2	+0.1
Acc	58%	49%	55%	54%	53%	49%

**\$ Index Values**

DTI (\$)	NMI (\$)
+\$30	+\$42



Purchaser:

\$:

# 5 KENMERE STEFANO S107E (P)

Tattoo: MCS S107E Born: 24/04/2021

TEMANA GOLDEN LOGIE G66E (TJ G66E) (P)  
DSK TGL KAKADU K69E (DSK K69E) (P)  
DSK MY BEATRIX C69E (DSK C69E) (P)

**SIRE: KENMERE PALMETTO (MCS P87E) (P)**

LIBERTY EXHIBITIONIST (Y1K E24E) (P)  
KENMERE QUE SERA MCS H31E (MCS H31E) (P)  
KENMERE QUE SERA D59E (MCS D59E) (P)

DBAR SYNERGY 721T (OAC C3100E) (P)  
ASHWOOD PARK SYNERGY G29E (HAS G29E) (P)  
ASHWOOD PARK ANGEL 2 (HAS D22E) (P)

**DAM: KENMERE PING L90E (MCS L90E) (P)**

KENMERE DAKOTA SPUR D9E (MCS D9E)  
KENMERE PING (MCS H61E) (P)  
KENMERE PING E20E (MCS E20E) (P)

Comments: Stefano is a Homozygous Poll bull sired by Kenmere Palmetto. The sire is thick and meaty very suited to stud or commercial who will go out and breed.

	CE DIR	CE DTR	GL	BW	200	400	600	MCW	MILK	SS
EBV	-10.2	-0.6	-2.3	+0.9	+4	+13	+8	+9	+12	+0.8
Acc	43%	38%	46%	72%	64%	67%	71%	63%	46%	73%

	CW	EMA	RIB	RUMP	RBV	IMF
EBV	+5	-0.1	-0.3	-0.4	+0.1	-0.1
Acc	58%	50%	55%	54%	53%	49%

**\$ Index Values**

DTI (\$)	NMI (\$)
+\$2	-\$11



Purchaser:

\$:

# 6 KENMERE SILVESTER S60E (P)

Tattoo: MCS S60E Born: 24/03/2021

LT WESTERN SPUR 2061 PLD (OAU X2061E) (P)  
KENMERE GILMAN KRISTO D17E E (MCS D17E)  
KENMERE KRISTINA III FL87 (MCS M18E)

**SIRE: KENMERE KRISTO'S BOY (MCS N53E) (P)**

KENMERE GRAND MASTER (MCS G6E) (P)  
KENMERE BLISSFUL J44E (MCS J44E) (P)  
KENMERE BLISSFUL (MCS E18E) (P)

TEMANA GOLDEN LOGIE G66E (TJ G66E) (P)  
DSK TGL KAKADU K69E (DSK K69E) (P)  
DSK MY BEATRIX C69E (DSK C69E) (P)

**DAM: KENMERE PAVLOVA (MCS P133E) (P)**

RAI (OAF V8611F)  
NARGOON VAMPIRE H004F (J5Y H4F)  
NARGOON VAMPIRE 3 (J5Y C37F)

Comments: This is a young bull whose sire is Kenmere Kristo's Boy and from the dam, Kenmere Pavlova (MCS P133E). The Grand Dam is a full French cow. Again there are a number of options here.

	CE DIR	CE DTR	GL	BW	200	400	600	MCW	MILK	SS
EBV	+18.9	+3.2	-4.0	-3.1	+7	+16	+11	+12	+5	+1.6
Acc	45%	36%	45%	73%	65%	68%	71%	62%	43%	74%

	CW	EMA	RIB	RUMP	RBV	IMF
EBV	+12	+0.0	+0.0	+0.1	-1.0	+0.4
Acc	59%	50%	56%	55%	54%	49%

**\$ Index Values**

DTI (\$)	NMI (\$)
+\$23	+\$28



Purchaser:

\$:



# 7 KENMERE SUPERMAN S114E (P)

Tattoo: MCS S114E Born: 29/04/2021

LT BLUEGRASS 4017P (OAU Z4017E) (P)  
 KENMERE CHOCK E12E (MCS E12E) (P)  
 KENMERE KRISTINA III FL87 (MCS M18E)

**SIRE: KENMERE CHOCK N20E (MCS N20E) (P)**

GOBONGO BOY G196E (GO G196E) (P)  
 KENMERE KIKO (MCS K19E) (P)  
 KENMERE GRACE (MCS G73E)

LT UNLIMITED EASE 9108 (OAU J9108E)  
 LT EASY BLEND 5125 PLD (OAU A5113E) (P)  
 LT BRENDA 1014 PLD (PED -4572E)

**DAM: KENMERE LILLIE (MCS L2E) (P)**

NARGOON ELWOOD E074F (J5Y E74F)  
 NARGOON WILMUR H100E (J5Y H100E)  
 NARGOON WILMUR 4 (J5Y D37E)

Comments: Superman is a commercially focused bull who will tick all the boxes. His sire Kenmere Chock N20E (P) has bred progeny that put weight into his calves suiting different markets where EMA, Rib, Rump and IMF is important. Inspect this sire on sale day and we are confident Superman will not disappoint you.

	CE DIR	CE DTR	GL	BW	200	400	600	MCW	MILK	SS
EBV	+8.0	+6.2	-4.7	-2.3	+7	+14	+25	+16	+9	+2.2
Acc	49%	42%	50%	74%	67%	69%	72%	65%	50%	75%

	CW	EMA	RIB	RUMP	RBV	IMF
EBV	+17	+0.1	+1.2	+1.6	-1.2	+0.0
Acc	61%	52%	56%	55%	54%	51%

\$ Index Values	
DTI (\$)	NMI (\$)
+\$16	+\$48



Purchaser: \_\_\_\_\_

\$: \_\_\_\_\_

# 8 KENMERE STARLIGHT S169E (AI) (P)

Tattoo: MCS S169E Born: 25/07/2021

LT LEDGER 0332 (OAU F3168E) (P)  
 LT PATRIOT 4004 PLD (PED K2822E) (P)  
 LK MISS RIO 2119 F1076232 (PED H1464E) (P)

**SIRE: LT NATIONWIDE 8455 PLD ET (OAU P2440E) (P)**

LT BRIDGER 9191 (OAU E188E) (P)  
 LT BRENDA 2184 PLD (PED H6384E) (P)  
 LT BRENDA 8034 PLD (PED D9884E) (P)

GUNNADOO NUGGET N166D R/F (GN1 N166D)  
 KENMERE NUGGETT G68E (MCS G68E) (P)  
 KENMERE CALAMITY C56E (MCS C56E) (P)

**DAM: KENMERE KIORA (MCS K18E) (P)**

LT SILVER VALUE 2122 P (OAU X5761E) (P)  
 KENMERE FUCHSIA (MCS F68E) (P)  
 KARINA INVESTMENTS WINDY WENDY (GPK A15E) (P)

Comments: Starlight is the first LT Nationwide sire sold by Kenmere and he has stood out in the paddock from an early age. We really like the power in this bull, balanced with a softness and smooth muscling. Bred from Kenmere Kiora who passes performance onto her progeny. Verified to sire with leading figures.

	CE DIR	CE DTR	GL	BW	200	400	600	MCW	MILK	SS
EBV	+13.2	-0.6	-7.0	-4.1	+12	+28	+30	+2	+11	+2.8
Acc	43%	35%	74%	73%	65%	66%	63%	59%	44%	73%

	CW	EMA	RIB	RUMP	RBV	IMF
EBV	+25	+2.1	+2.0	+2.9	-1.0	+0.5
Acc	54%	47%	52%	51%	51%	46%

\$ Index Values	
DTI (\$)	NMI (\$)
+\$38	+\$83



Purchaser: \_\_\_\_\_

\$: \_\_\_\_\_

**HOMOZYGOUS POLL - DNA**

# 9 KENMERE SOCIETY ONE (AI) (ET) (P)

Tattoo: MCS S226E Born: 09/08/2021

LT SILVER YIELD 3196 (PED Y5495E) (P)  
 LT SILVER DISTANCE 5342 (OAU A7559E) (P)  
 LT MATTIE 9026 (OAU U2542E) (P)

**SIRE: LT LONG DISTANCE 9001 (OAU E143E) (P)**

LT EASY PRO 1158 PLD (OAU W6203E) (P)  
 LT BELLE 7026 (OAU C9133E) (P)  
 LT BELLE 5110 (OAU A5415E) (P)

LT ASSERTION 1277 (PED W1277F) (P)  
 LT BLUEGRASS 4017P (OAU Z4017E) (P)  
 LT PEARLS BREEZE 2236 (PED X2236F) (P)

**DAM: KENMERE KRISTINA E19E (MCS E19E) (P)**

MANDALONG CHOCK (RP C59E) (P/S)  
 KENMERE KRISTINA III FL87 (MCS M18E)  
 GILMANDYKE PARK KRISTINA 2ND (AGP N17F)

Comments: This bull is a son of the AI sire LT Long Distance who is well recognised for breeding easy care progeny. We have a smooth shouldered well balanced sire with cover of muscle throughout supported with strong scan data. The dam Kenmere Kristina E19E has been one of our best cows

	CE DIR	CE DTR	GL	BW	200	400	600	MCW	MILK	SS
EBV	+12.6	-1.4	-4.9	-1.9	+9	+11	+12	-1	+6	+0.7
Acc	56%	52%	61%	72%	66%	68%	67%	65%	60%	73%

	CW	EMA	RIB	RUMP	RBY	IMF
EBV	+5	-0.4	+2.7	+3.4	-2.3	+0.5
Acc	60%	55%	59%	59%	57%	54%

## \$ Index Values

DTI (\$)	NMI (\$)
+\$13	+\$35



Purchaser:

\$:

# 10 KENMERE STEFANO (P)

Tattoo: MCS S238E Born: 16/08/2021

S\$ MONTANA SILVER (OAU R4024E) (P)  
 NWMSU DOC SILVER 362 PLD (OAU Y9488E) (P)  
 NWMSU DOLORES ET 0035 (PED -8646E)

**SIRE: KENMERE DOC SILVER Q107E (MCS Q107E) (P)**

ROSEDALE Y106E (MR Y106E) (P)  
 KENMERE CALAMITY C56E (MCS C56E) (P)  
 MINNIE-VALE PING A49E (SGS A49E) (P)

TEMANA GOLDEN LOGIE G66E (TJ G66E) (P)  
 DSK TGL KAKADU K69E (DSK K69E) (P)  
 DSK MY BEATRIX C69E (DSK C69E) (P)

**DAM: KENMERE QUINTANNA Q55E (MCS Q55E) (P/S)**

DBAR SYNERGY 721T (OAC C3100E) (P)  
 ASHWOOD PARK GLACIER (HAS G86E) (P)  
 ASHWOOD PARK ANGEL (HAS A6E) (P)

Comments: Stefano is a striking polled bull with curve bending EBV figures. It is hard to breed a sire in the top 10% for low birth weight and 200 day weight and then backup with being in the the top 1% for Rib,Rump,IMF and the domestic index. This bull bred by a heifer Kenmere Quintannia Q55E is an outstanding prospect.

	CE DIR	CE DTR	GL	BW	200	400	600	MCW	MILK	SS
EBV	+14.9	+3.9	-3.9	-2.9	+19	+36	+45	+45	+17	+1.2
Acc	45%	39%	46%	71%	63%	65%	63%	61%	45%	73%

	CW	EMA	RIB	RUMP	RBY	IMF
EBV	+28	+2.2	+2.7	+3.7	-1.4	+1.1
Acc	55%	49%	53%	52%	52%	49%

## \$ Index Values

DTI (\$)	NMI (\$)
+\$46	+\$81



Purchaser:

\$:

# 11 KENMERE STAR STRUCK S214E (AI) (P) (R/F)

Tattoo: MCS S214E Born: 04/08/2021

LT LEDGER 0332 (OAU F3168E) (P)  
 LT PATRIOT 4004 PLD (PED K2822E) (P)  
 LK MISS RIO 2119 (PED H1464E) (P)

**SIRE: LT NATIONWIDE 8455 PLD ET (OAU P2440E) (P)**

LT BRIDGER 9191 (OAU E188E) (P)  
 LT BRENDA 2184 PLD (PED H6384E) (P)  
 LT BRENDA 8034 PLD (PED D9884E) (P)

GUNNADOO KING K144D (GN1 K144D)  
 GUNNADOO NUGGET N166D R/F (GN1 N166D)  
 PALGROVE BRIDGETTE 2 (PK B2D)

**DAM: KENMERE HAITI (MCS H94E) (P)**

NANDILLYAN PEUGEOT (F U1E) (P)  
 CALOONA PARK A0091 (LSF A91E) (P)  
 CALOONA PARK WILMA (LSF W4E)

Comments: Starstruck is an exceptional red factor, low birthweight polled bull with smooth muscling and soft skin with even fat scans and positive EMA and IMF. The maternal dam, Kenmere Haiti has had eight calves and has been a sound breeder with positive growth and EMA.

	CE DIR	CE DTR	GL	BW	200	400	600	MCW	MILK	SS
EBV	+10.4	-1.6	-2.8	-1.2	+9	+28	+20	+23	+6	+0.8
Acc	43%	35%	74%	73%	65%	66%	62%	59%	44%	73%

	CW	EMA	RIB	RUMP	RBV	IMF
EBV	+23	+2.3	+0.4	+0.7	+0.1	+0.3
Acc	54%	47%	52%	51%	51%	46%

## \$ Index Values

DTI (\$)	NMI (\$)
+\$35	+\$41



Purchaser:

\$:

# 12 KENMERE FARGO S198E (AI) (P)

Tattoo: MCS S198E Born: 31/07/2021

WINN MANS LANZA 610S (OAC B7395E) (P)  
 SPARROWS FARGO 811U (PED D4935E) (P)  
 SPARROWS DELIGHT 74L (PED W74E)

**SIRE: RBM FARGO Y111 (OAU G9088E) (P)**

LT EASY PRO 1158 PLD (OAU W6203E) (P)  
 HC RHINESTONE 5100 (PED A6859E) (P)  
 HC JACK 2082 (PED X3757E) (P)

GOBONGO DECOY D85E (GO D85E) (P)  
 GOBONGO BOY G196E (GO G196E) (P)  
 GOBONGO ELODIE E117E (GO E117E) (P)

**DAM: KENMERE RADIANCE J79E (MCS J79E) (P)**

KENMERE DAKOTA SPUR D9E (MCS D9E)  
 KENMERE RADIANCE G14E (MCS G14E) (P)  
 KENMERE RADIANCE D21E (MCS D21E) (P)

Comments: This is a quality bull that is bred impeccably. He has inherited the Fargo traits including calving ease, low birth weight, 200, 400 and 600 day weights with Rib and Rump fats and IMF. The maternal strength of the dam who has had seven calves is present here. Stud buyers do not overlook this sire he will add performance, class and carcass into his progeny.

	CE DIR	CE DTR	GL	BW	200	400	600	MCW	MILK	SS
EBV	+1.6	+2.0	-5.7	-1.7	+15	+22	+28	+17	+11	+2.4
Acc	42%	34%	74%	73%	63%	64%	62%	58%	43%	73%

	CW	EMA	RIB	RUMP	RBV	IMF
EBV	+19	+1.9	+3.0	+3.5	-1.5	+0.3
Acc	51%	45%	50%	49%	49%	45%

## \$ Index Values

DTI (\$)	NMI (\$)
+\$22	+\$60



Purchaser:

\$:

# 13 KENMERE SWITCH GEAR (AI) (P)

Tattoo: MCS S270E Born: 01/09/2021

LHD CHOTEAU B1699 (PED K6888E) (P)  
 LT AUTHORITY 7229 PLD (OAU N8189E) (P)  
 LT KATY 4273 PLD (PED K477E) (P)

**SIRE: LT BADGE 9184 PLD (OAU Q7067E) (P)**

LT PATRIOT 4004 PLD (PED K2822E) (P)  
 LT MADALYNN 6108 (PED M5399E) (P)  
 LT MADALYNN 0154 (PED F4365E) (P)

DBAR SYNERGY 721T (OAC C3100E) (P)  
 ASHWOOD PARK SYNERGY G29E (HAS G29E) (P)  
 ASHWOOD PARK ANGEL 2 (HAS D22E) (P)

**DAM: KENMERE QUE SERA L97E (MCS L97E) (P)**

LT BLUEGRASS 4017P (OAU Z4017E) (P)  
 KENMERE QUE SERA E95E (MCS E95E) (P)  
 KENMERE QUE SERA B8E (MCS B8E) (P)

Comments: Switch Gear is the first LT Badge 9184 son sold in Australia. Thick and powerful, yet one of the younger bulls in the sale the contribution from his sire and dam Kenmere Que Sera L97E cannot be overlooked. Exceptional combination of carcass data, growth for age and body type.

	CE DIR	CE DTR	GL	BW	200	400	600	MCW	MILK	SS
EBV	+10.0	+9.1	-5.8	-4.0	+8	+15	+13	-5	+17	+1.3
Acc	45%	34%	74%	73%	65%	66%	63%	60%	42%	73%

	CW	EMA	RIB	RUMP	RBV	IMF
EBV	+13	+1.1	+2.1	+2.5	-1.4	+0.8
Acc	54%	47%	51%	50%	50%	46%

## \$ Index Values

DTI (\$)	NMI (\$)
+\$23	+\$54



Purchaser: \_\_\_\_\_

\$: \_\_\_\_\_

# 14 KENMERE SILVER MOON (AI) (P)

Tattoo: MCS S272E Born: 02/09/2021

LHD CHOTEAU B1699 (PED K6888E) (P)  
 LT AUTHORITY 7229 PLD (OAU N8189E) (P)  
 LT KATY 4273 PLD (PED K477E) (P)

**SIRE: LT BADGE 9184 PLD (OAU Q7067E) (P)**

LT PATRIOT 4004 PLD (PED K2822E) (P)  
 LT MADALYNN 6108 (PED M5399E) (P)  
 LT MADALYNN 0154 (PED F4365E) (P)

TEMANA GOLDEN LOGIE G66E (TJ G66E) (P)  
 DSK TGL KAKADU K69E (DSK K69E) (P)  
 DSK MY BEATRIX C69E (DSK C69E) (P)

**DAM: KENMERE KRISTINA N80E (MCS N80E) (P)**

LT BLUEGRASS 4017P (OAU Z4017E) (P)  
 KENMERE KRISTINA E16E (MCS E16E) (P)  
 KENMERE KRISTINA III FL87 (MCS M18E)

Comments: Silver Moon is a September born homozygous poll, LT Badge 9184 son again with a moderate build with an appealing carcass and a soft coat. The dam Kenmere Kristina L106E contributes calving ease, low birth weight, 200 and 600 day weight, fats and IMF. Overall Silver Moon is a young sire who should suit many cattlemen's requirements.

	CE DIR	CE DTR	GL	BW	200	400	600	MCW	MILK	SS
EBV	+12.6	+2.8	-4.8	-1.8	+15	+30	+36	+45	+7	+2.5
Acc	45%	35%	74%	73%	65%	66%	62%	60%	42%	72%

	CW	EMA	RIB	RUMP	RBV	IMF
EBV	+26	+2.2	+2.7	+3.3	-1.2	+0.0
Acc	53%	46%	51%	50%	50%	46%

## \$ Index Values

DTI (\$)	NMI (\$)
+\$35	+\$72



Purchaser: \_\_\_\_\_

\$: \_\_\_\_\_

**HOMOZYGOUS  
 POLL - DNA**

# 15 KENMERE NEW SENSATION (AI) (P)

Tattoo: MCS S271E Born: 02/09/2021

LHD CHOTEAU B1699 (PED K6888E) (P)

LT AUTHORITY 7229 PLD (OAU N8189E) (P)

LT KATY 4273 PLD (PED K477E) (P)

**SIRE: LT BADGE 9184 PLD (OAU Q7067E) (P)**

LT PATRIOT 4004 PLD (PED K2822E) (P)

LT MADALYNN 6108 (PED M5399E) (P)

LT MADALYNN 0154 (PED F4365E) (P)

LT EASY BLEND 5125 PLD (OAU A5113E) (P)

KENMERE RADIATOR E90E (MCS E90E) (P)

MINNIE-VALE RADIANCE B34E (SGS B34E) (P)

**DAM: KENMERE LILYBETH L106E (MCS L106E) (P)**

ROSEDALE Y106E (MR Y106E) (P)

KENMERE CORDELIA C55E (MCS C55E) (P)

ROSEDALE EMILY Z207 (MR Z207E) (P)

Comments: New Sensation is a tidy soft coated, easy on the eye sire with calving ease, positive fats, EMA and IMF - all favourable carcase traits. The dam Kenmere Lilybeth L106E has raised six cows in six years.

	CE DIR	CE DTR	GL	BW	200	400	600	MCW	MILK	SS
EBV	+2.5	+8.7	-4.0	-1.8	+4	+10	+8	+2	+5	+1.3
Acc	45%	34%	74%	73%	66%	66%	63%	60%	44%	72%

	CW	EMA	RIB	RUMP	RBV	IMF
EBV	+7	-0.1	+2.4	+3.1	-2.1	+0.4
Acc	54%	47%	51%	50%	50%	46%

## \$ Index Values

DTI (\$)	NMI (\$)
+\$6	+\$35



Purchaser:

\$:

# 16 KENMERE SUNRISE S180E (AI) (P) (TW)

Tattoo: MCS S180E Born: 27/07/2021

LT LEDGER 0332 (OAU F3168E) (P)

LT PATRIOT 4004 PLD (PED K2822E) (P)

LK MISS RIO 2119 (PED H1464E) (P)

**SIRE: LT NATIONWIDE 8455 PLD ET (OAU P2440E) (P)**

LT BRIDGER 9191 (OAU E188E) (P)

LT BRENDA 2184 PLD (PED H6384E) (P)

LT BRENDA 8034 PLD (PED D9884E) (P)

IJOUFFLU (OAF N6327F)

RAI (OAF V8611F)

NOUMBA (PED -3210F)

**DAM: NARGOON VAMPIRE H004F (J5Y H4F)**

FERNVALE ZAMBO (FEN Z73F)

NARGOON VAMPIRE 3 (J5Y C37F)

NARGOON VAMPIRE (J5Y V37F)

Comments: Sunrise is a calving ease bull whose EBVs suggest above average milk, growth values, EMA and fats. The dam Nargoan Vampire has been a maternal female who has bred eight calves in seven years including Sunrise's twin born this year.

	CE DIR	CE DTR	GL	BW	200	400	600	MCW	MILK	SS
EBV	+6.8	-4.7	-4.4	-1.1	+13	+29	+36	+32	+11	+1.7
Acc	40%	32%	59%	71%	62%	64%	60%	57%	44%	71%

	CW	EMA	RIB	RUMP	RBV	IMF
EBV	+26	+1.8	-0.5	-0.7	+0.6	+0.0
Acc	51%	44%	47%	46%	46%	43%

## \$ Index Values

DTI (\$)	NMI (\$)
+\$35	+\$46



Purchaser:

\$:

# 17 KENMERE SEXTON S7E (AI) (P)

Tattoo: MCS S7E Born: 21/02/2021

LT LONG DISTANCE 9001 (OAU E143E) (P)  
 WC DOUBLETREE 2009 (PED H1653E) (P)  
 WC PRIASE 0058 (PED E8993E) (P)

**SIRE: HRJ MAVERICK 556C (OAC L6375E) (P)**

SPARROWS KINGSTON 139Y (OAC G139E) (P)  
 PRO-CHAR CASSY 32A (PED J252E) (P)  
 CST MISS CASTINE 7S (PED B5631E) (P)

LT EASY BLEND 5125 PLD (OAU A5113E) (P)  
 KENMERE RADIATOR E90E (MCS E90E) (P)  
 MINNIE-VALE RADIANCE B34E (SGS B34E) (P)

**DAM: KENMERE PERLINA M2E (MCS M2E) (P)**

KENMERE DAKOTA SPUR D9E (MCS D9E)  
 KENMERE PERLINA F38E (MCS F38E)  
 KENMERE PERLINA (MCS P78E)

Comments: Sexton is a HRJ Maverick 556C son who is an outcross American sire that Kenmere lightly used for his carcase attributes. Sexton is deep flanked with depth and volume in the rump. The dam Kenmere Perlina is a young cow who is a Kenmere Radiator daughter. With the carcase quality Sexton should suit a commercial breeder.

	CE DIR	CE DTR	GL	BW	200	400	600	MCW	MILK	SS
EBV	+6.2	+5.2	-6.9	-2.3	+6	+10	+20	+10	+4	+2.4
Acc	40%	32%	73%	71%	62%	64%	68%	59%	40%	71%

	CW	EMA	RIB	RUMP	RBV	IMF
EBV	+12	+0.5	+2.0	+2.3	-1.6	+0.0
Acc	54%	44%	46%	45%	46%	43%

\$ Index Values	
DTI (\$)	NMI (\$)
+\$9	+\$50



Purchaser:

\$:

**HOMOZYGOUS POLL - DNA**

# 18 KENMERE SANTORINI S177E (AI) (P)

Tattoo: MCS S177E Born: 27/07/2021

LT LEDGER 0332 (OAU F3168E) (P)  
 LT PATRIOT 4004 PLD (PED K2822E) (P)  
 LK MISS RIO 2119 (PED H1464E) (P)

**SIRE: LT NATIONWIDE 8455 PLD ET (OAU P2440E) (P)**

LT BRIDGER 9191 (OAU E188E) (P)  
 LT BRENDA 2184 PLD (PED H6384E) (P)  
 LT BRENDA 8034 PLD (PED D9884E) (P)

PLATINUM WIND-FALL W75E (AJ1 W75E) (P)  
 KENMERE SIR LAWRENCE (MCS L12E) (P)  
 ROSEDALE BLISSFUL Z210 (MR Z210E) (P)

**DAM: KENMERE WILMUR P76E (MCS P76E) (P)**

KENMERE CHOCK E12E (MCS E12E) (P)  
 KENMERE WILMUR L77E (MCS L77E)  
 NARGOON WILMUR H007F (J5Y H7F)

Comments: An impressive Lt Nationwide calf who is growthy with plenty of soft muscling. Well worthy of your inspection, Santorini has strong EBV's including calving ease, carcase traits, Rib, Rump and IMF and high Domestic Index value. The dam, Kenmere Wilmur P76E is an easy doing cow with performance.

	CE DIR	CE DTR	GL	BW	200	400	600	MCW	MILK	SS
EBV	+15.4	+0.5	-6.9	-3.3	+13	+31	+36	+21	+15	+1.6
Acc	42%	33%	74%	72%	64%	66%	62%	59%	40%	73%

	CW	EMA	RIB	RUMP	RBV	IMF
EBV	+29	+1.3	+0.5	+0.5	-0.1	+0.3
Acc	53%	47%	52%	51%	51%	47%

\$ Index Values	
DTI (\$)	NMI (\$)
+\$42	+\$67



Purchaser:

\$:

# 19 KENMERE STERLING S9E (AI) (P)

Tattoo: MCS S9E Born: 22/02/2021

LT SILVER DISTANCE 5342 (OAU A7559E) (P)  
 LT LONG DISTANCE 9001 (OAU E143E) (P)  
 LT BELLE 7026 (OAU C9133E) (P)

**SIRE: KENMERE MAXIMUS (MCS M19E) (P)**

KENMERE GRAND MASTER (MCS G6E) (P)  
 KENMERE NICOLA J46E (MCS J46E) (P)  
 KENMERE NICOLA F73E (MCS F73E) (P)

DBAR SYNERGY 721T (OAC C3100E) (P)  
 ASHWOOD PARK SYNERGY G29E (HAS G29E) (P)  
 ASHWOOD PARK ANGEL 2 (HAS D22E) (P)

**DAM: KENMERE PERLINA P78E (MCS P78E) (P)**

KENMERE GARRISON (MCS G9E) (P)  
 KENMERE PERLINA J12E (MCS J12E) (P)  
 KENMERE PERLINA F37E (MCS F37E)

Comments: If you are considering a Homozgous Poll bull with calving ease to breed cows easily, Sterling may be the bull that you have been looking for with the credentials that may suit heifer joinings.

	CE DIR	CE DTR	GL	BW	200	400	600	MCW	MILK	SS
EBV	+17.8	+11.6	-8.4	-6.5	-2	-7	-15	-38	+13	+0.4
Acc	50%	44%	73%	74%	68%	70%	73%	67%	51%	76%

	CW	EMA	RIB	RUMP	RBV	IMF
EBV	-3	-0.1	+1.9	+2.4	-2.0	+0.6
Acc	61%	53%	59%	59%	56%	53%

**\$ Index Values**

DTI (\$) NMI (\$)

+\$4 +\$18



Purchaser:

\$:

# 20 KENMERE SEYMOUR (P)

Tattoo: MCS S248E Born: 22/08/2021

S\$ MONTANA SILVER (OAU R4024E) (P)  
 NWMSU DOC SILVER 362 PLD (OAU Y9488E) (P)  
 NWMSU DOLORES ET 0035 (PED -8646E)

**SIRE: KENMERE DOC SILVER Q107E (MCS Q107E) (P)**

ROSEDALE Y106E (MR Y106E) (P)  
 KENMERE CALAMITY C56E (MCS C56E) (P)  
 MINNIE-VALE PING A49E (SGS A49E) (P)

ASHWOOD PARK SYNERGY G29E (HAS G29E) (P)  
 KENMERE SYNERGY'S MAN (MCS M40E) (P)  
 KENMERE PING E20E (MCS E20E) (P)

**DAM: KENMERE QUTIE Q109E (MCS Q109E) (P)**

KENMERE RADIATOR E90E (MCS E90E) (P)  
 KENMERE KICKY-DEE (MCS K57E) (P)  
 GOBONGO ELODIE E117E (GO E117E) (P)

Comments: A moderate tidy and smoothly made bull with a clean coat and skin. A calving ease bull out of a tremendous young cow with lots of milk and very impressive carcass attributes, growth for age and Heterzygous Polled highly recommended

	CE DIR	CE DTR	GL	BW	200	400	600	MCW	MILK	SS
EBV	+4.9	+5.3	-3.2	-0.7	+18	+38	+45	+45	+16	+1.2
Acc	46%	40%	47%	72%	64%	66%	63%	61%	44%	74%

	CW	EMA	RIB	RUMP	RBV	IMF
EBV	+27	+1.7	+1.6	+2.2	-1.1	+1.2
Acc	55%	50%	53%	52%	53%	49%

**\$ Index Values**

DTI (\$) NMI (\$)

+\$41 +\$64



Purchaser:

\$:

**HOMOZYGOUS  
POLL - DNA**

# 21 KENMERE SOMERVILLE (AI) (P) (TW)

Tattoo: MCS S183E Born: 27/07/2021

LT LEDGER 0332 (OAU F3168E) (P)  
 LT PATRIOT 4004 PLD (PED K2822E) (P)  
 LK MISS RIO 2119 (PED H1464E) (P)

**SIRE: LT NATIONWIDE 8455 PLD ET (OAU P2440E) (P)**

LT BRIDGER 9191 (OAU E188E) (P)  
 LT BRENDA 2184 PLD (PED H6384E) (P)  
 LT BRENDA 8034 PLD (PED D9884E) (P)

LT BLUEGRASS 4017P (OAU Z4017E) (P)  
 KENMERE CHOCK E12E (MCS E12E) (P)  
 KENMERE KRISTINA III FL87 (MCS M18E)

**DAM: KENMERE KORELLE (MCS K62E) (P)**

ROSEDALE Y106E (MR Y106E) (P)  
 KENMERE DOROTHEA D38E P (MCS D38E) (P)  
 MINNIE-VALE QUEENIE A68E (SGS A68E) (P)

Comments: Somerville is a Homozygous Nationwide son who is deep sided, easy doing with an impressive soft skin. His EBV's are standouts including birthweight, and growth 200, 400 and 600 day weight milk, fats and IMF. The dam, Kenmere Korelle is a Kenmere Chock E12E daughter who has passed on the calving ease, growth, EMA, fats and IMF to the son Somerville.

	CE DIR	CE DTR	GL	BW	200	400	600	MCW	MILK	SS
EBV	+9.7	+4.5	-4.5	-1.0	+11	+34	+45	+31	+12	+2.9
Acc	44%	36%	57%	73%	65%	66%	63%	60%	46%	71%

	CW	EMA	RIB	RUMP	RBY	IMF
EBV	+30	+1.5	+0.6	+0.9	-0.2	+0.3
Acc	54%	48%	53%	52%	51%	48%

## \$ Index Values

DTI (\$)	NMI (\$)
+\$39	+\$83



Purchaser:

\$:

**HOMOZYGOUS  
POLL - DNA**

# 22 KENMERE SYVESTER S156E (P) (TW)

Tattoo: MCS S156E Born: 07/06/2021

LT SILVER DISTANCE 5342 (OAU A7559E) (P)  
 LT LONG DISTANCE 9001 (OAU E143E) (P)  
 LT BELLE 7026 (OAU C9133E) (P)

**SIRE: KENMERE MAXIMUS (MCS M19E) (P)**

KENMERE GRAND MASTER (MCS G6E) (P)  
 KENMERE NICOLA J46E (MCS J46E) (P)  
 KENMERE NICOLA F73E (MCS F73E) (P)

LT EASY BLEND 5125 PLD (OAU A5113E) (P)  
 KENMERE RADIATOR E90E (MCS E90E) (P)  
 MINNIE-VALE RADIANCE B34E (SGS B34E) (P)

**DAM: KENMERE MARIAH (MCS M114E) (P)**

LT WESTERN SPUR 2061 PLD (OAU X2061E) (P)  
 KENMERE GOLDEN SPUR (MCS G3E) (P)  
 KARINA INVESTMENTS WINDY WENDY (GPK A15E) (P)

Comments: Syvester is a soft skinned Maximus son with a tidy sheath and scrotal with great temperament and doing ability. The dam Kenmere Mariah is a Kenmere Radiator daughter. There is a strong influence here on both sides with LT Western Spur and LT Easy Blend.

	CE DIR	CE DTR	GL	BW	200	400	600	MCW	MILK	SS
EBV	+10.6	+5.0	-5.3	-2.5	+6	+14	+19	+13	+8	+0.3
Acc	51%	46%	54%	62%	59%	60%	60%	59%	53%	57%

	CW	EMA	RIB	RUMP	RBY	IMF
EBV	+13	+0.3	+1.8	+2.3	-1.8	+0.5
Acc	52%	44%	51%	51%	46%	44%

## \$ Index Values

DTI (\$)	NMI (\$)
+\$17	+\$39



Purchaser:

\$:



# 23 KENMERE SANTIAGO (P)

Tattoo: MCS S296E Born: 25/09/2021

LT SILVER DISTANCE 5342 (OAU A7559E) (P)  
 LT LONG DISTANCE 9001 (OAU E143E) (P)  
 LT BELLE 7026 (OAU C9133E) (P)

**SIRE: KENMERE MAXIMUS (MCS M19E) (P)**

KENMERE GRAND MASTER (MCS G6E) (P)  
 KENMERE NICOLA J46E (MCS J46E) (P)  
 KENMERE NICOLA F73E (MCS F73E) (P)

LT RIO BLANCO 1234 P (OAU W591E) (P)  
 VPI FREE LUNCH 708T (OAU C6773E) (P)  
 VPI MISS DUCHESS 404 P (PED -5358E) (P)

**DAM: KENMERE QUE SERA P70E (MCS P70E) (P)**

ROSEDALE Y106E (MR Y106E) (P)  
 KENMERE QUE SERA B6E (MCS B6E) (P)  
 KENMERE QUE SERA (KNC Q18E) (P)

Comments: Santiago is a Homozygous poll bull who was born in September. He is soft skinned, wedge shaped with a moderate frame and adequate muscle who has EBV's showing low birth weight, calving ease, milk and IMF at the top end of the scale. Verified to mating.

	CE DIR	CE DTR	GL	BW	200	400	600	MCW	MILK	SS
EBV	+11.1	+6.6	-5.5	-2.3	+14	+25	+37	+18	+10	+1.6
Acc	52%	46%	56%	72%	66%	67%	66%	64%	52%	70%

	CW	EMA	RIB	RUMP	RBV	IMF
EBV	+21	+0.6	+0.2	+0.4	-0.8	+0.7
Acc	57%	51%	57%	56%	54%	50%

**\$ Index Values**

DTI (\$) NMI (\$)

+\$31 +\$62



Purchaser:

\$:

# 24 KENMERE SPRING HOPE S178E (AI) (P)

Tattoo: MCS S178E Born: 22/07/2021

LT LEDGER 0332 (OAU F3168E) (P)  
 LT PATRIOT 4004 PLD (PED K2822E) (P)  
 LK MISS RIO 2119 (PED H1464E) (P)

**SIRE: LT NATIONWIDE 8455 PLD ET (OAU P2440E) (P)**

LT BRIDGER 9191 (OAU E188E) (P)  
 LT BRENDA 2184 PLD (PED H6384E) (P)  
 LT BRENDA 8034 PLD (PED D9884E) (P)

KENMERE CHOCK E12E (MCS E12E) (P)  
 KENMERE GANGSTER (MCS G54E) (P)  
 KENMERE DEJAVU D93E (MCS D93E) (P)

**DAM: KENMERE NAVARRO K77E (MCS K77E) (P)**

KENMERE RADIATOR E90E (MCS E90E) (P)  
 KENMERE NAVARRO H64E (MCS H64E) (P)  
 KENMERE NAVARRO B14E (MCS B14E)

Comments: A quality balanced young bull with a great topline who has sound EBVs that back up his raw data. The dam Kenmere Navarro K77E has had six calves in six years.

	CE DIR	CE DTR	GL	BW	200	400	600	MCW	MILK	SS
EBV	+18.4	+12.7	-8.5	-5.4	+4	+15	+13	-11	+13	+2.0
Acc	42%	33%	74%	73%	64%	61%	60%	58%	45%	52%

	CW	EMA	RIB	RUMP	RBV	IMF
EBV	+19	+1.4	+1.5	+2.1	-1.0	+0.4
Acc	48%	37%	45%	45%	41%	37%

**\$ Index Values**

DTI (\$) NMI (\$)

+\$26 +\$67



Purchaser:

\$:

# 25 KENMERE STODDARD S110E (P)

Tattoo: MCS S110E Born: 25/04/2021

LT RIO BLANCO 1234 P (OAU W591E) (P)  
VPI FREE LUNCH 708T (OAU C6773E) (P)  
VPI MISS DUCHESS 404 P (PED -5358E) (P)

**SIRE: KENMERE FREELUNCH P16E (MCS P16E) (P)**

KENMERE GRAND MASTER (MCS G6E) (P)  
KENMERE TINKERBELLE L15E (MCS L15E) (P)  
KENMERE TINKERBELLE H75E (MCS H75E) (P)

PINAY (OAF U4134F)

KENMERE PINAY J57E (MCS J57E) (P)  
KENMERE GOLDEN SPUR (MCS G3E) (P)

**DAM: KENMERE NADIA (MCS N8E) (P)**

KENMERE CHOCK E12E (MCS E12E) (P)  
KENMERE KASHMIR (MCS K48E) (P)  
KENMERE FRAGRANCE (MCS F90E) (P)

Comments: Kenmere has used Stoddard's sire extensively in the stud and we have had good success with VPI Free Lunch progeny. Stoddard is a sire with presence and an appealing softness through his topline and through the rump. The dam Tinkerbelle MCSL15E has had nine progeny and has left her mark in our herd.

	CE DIR	CE DTR	GL	BW	200	400	600	MCW	MILK	SS
EBV	+10.5	+0.4	-5.7	-2.6	+12	+20	+21	+8	+13	+0.4
Acc	46%	39%	52%	73%	65%	68%	71%	64%	46%	73%

	CW	EMA	RIB	RUMP	RBY	IMF
EBV	+17	+1.5	+0.6	+0.7	-0.4	+0.5
Acc	59%	50%	56%	55%	54%	50%

**\$ Index Values**

DTI (\$)	NMI (\$)
+\$29	+\$35



Purchaser:

\$:

# 26 KENMERE SPENCER S99E (P)

Tattoo: MCS S99E Born: 21/04/2021

LT RIO BLANCO 1234 P (OAU W591E) (P)  
VPI FREE LUNCH 708T (OAU C6773E) (P)  
VPI MISS DUCHESS 404 P (PED -5358E) (P)

**SIRE: KENMERE FREELUNCH P16E (MCS P16E) (P)**

KENMERE GRAND MASTER (MCS G6E) (P)  
KENMERE TINKERBELLE L15E (MCS L15E) (P)  
KENMERE TINKERBELLE H75E (MCS H75E) (P)

KENMERE RADIATOR E90E (MCS E90E) (P)

KENMERE HERICHIO (MCS H103E) (P)  
KENMERE DIAMOND SPUR D8E (MCS D8E) (P)

**DAM: KENMERE NICOLA N160E (MCS N160E) (P)**

LT BLUEGRASS 4017P (OAU Z4017E) (P)  
KENMERE NICOLA F73E (MCS F73E) (P)  
KENMERE NICOLA (MCS N56E)

Comments: Spencer is a polled Kenmere Free Lunch son that Kenmere bred to be able to supply moderate poll sires and dams that have abundant milk, calving ease, carcass weight Rib, Rump and IMF.

	CE DIR	CE DTR	GL	BW	200	400	600	MCW	MILK	SS
EBV	+2.4	+0.4	-3.2	+0.2	+18	+33	+40	+52	+7	+0.5
Acc	46%	40%	52%	73%	65%	68%	71%	64%	47%	74%

	CW	EMA	RIB	RUMP	RBY	IMF
EBV	+20	-0.3	+0.6	+0.9	-1.7	+1.2
Acc	59%	50%	56%	55%	54%	50%

**\$ Index Values**

DTI (\$)	NMI (\$)
+\$29	+\$34



Purchaser:

\$:

HOMOZYGOUS  
POLL - DNA

# 27 KENMERE SALVADOR S23E (AI) (P)

Tattoo: MCS S23E Born: 28/02/2021

LT LONG DISTANCE 9001 (OAU E143E) (P)

WC DOUBLETREE 2009 (PED H1653E) (P)

WC PRIASE 0058 (PED E8993E) (P)

**SIRE: HRJ MAVERICK 556C (OAC L6375E) (P)**

SPARROWS KINGSTON 139Y (OAC G139E) (P)

PRO-CHAR CASSY 32A (PED J252E) (P)

CST MISS CASTINE 7S (PED B5631E) (P)

LT BLUEGRASS 4017P (OAU Z4017E) (P)

KENMERE CHOCK E12E (MCS E12E) (P)

KENMERE KRISTINA III FL87 (MCS M18E)

**DAM: KENMERE LATASHA (MCS L108E) (P/S)**

KENMERE DAKOTA SPUR D9E (MCS D9E)

KENMERE RADIANCE G14E (MCS G14E) (P)

KENMERE RADIANCE D21E (MCS D21E) (P)

Comments: Salvador is a HRK Maverick 556C son who is a half brother to lot 30 The sire Maverick is a thick across the top line and has a deep wide rump from behind. Kenmere used Maverick to gain the benefits from a larger carcass The dam Kenmere Latasha is a Kenmere Chock E12E daughter who has bred four progeny in five years

	CE DIR	CE DTR	GL	BW	200	400	600	MCW	MILK	SS
EBV	+8.0	-0.6	-4.0	-1.0	+10	+17	+33	+19	+10	+1.7
Acc	41%	35%	73%	72%	62%	65%	69%	60%	41%	72%

	CW	EMA	RIB	RUMP	RBV	IMF
EBV	+18	+0.4	+0.8	+0.5	-0.8	+0.0
Acc	55%	46%	50%	49%	49%	45%

## \$ Index Values

DTI (\$) NMI (\$)

+\$19 +\$51



Purchaser:

\$:

# 28 KENMERE SAMBIT S121E (P)

Tattoo: MCS S121E Born: 02/05/2021

ASHWOOD PARK SYNERGY G29E (HAS G29E) (P)

KENMERE SYNERGY'S MAN (MCS M40E) (P)

KENMERE PING E20E (MCS E20E) (P)

**SIRE: KENMERE PHILEMON (MCS P151E) (P)**

LIBERTY EXHIBITIONIST (Y1K E24E) (P)

KENMERE QUE SERA H33E (MCS H33E) (P)

KENMERE QUE SERA B9E (MCS B9E)

KALINKA EASY GOING (NKA E30E)

AIRLIE HORUS (A1S H27E) (P)

AIRLIE KATRINA C212E (A1S C212E)

**DAM: KENMERE LAVINA (MCS L30E) (P)**

AIRLIE FRECKLE (A1S F189E) (P/S)

AIRLIE REBECCA H51E (A1S H51E)

AIRLIE REBECCA E174F (A1S E174F)

Comments: Sambit is a good looking bull with a moderate build with impressive natural thickness and softness throughout showing strong carcass traits and good growth for age.

	CE DIR	CE DTR	GL	BW	200	400	600	MCW	MILK	SS
EBV	-5.5	+2.9	-3.3	-1.3	+1	-4	-6	-22	+10	+0.1
Acc	39%	33%	43%	71%	63%	65%	69%	61%	45%	73%

	CW	EMA	RIB	RUMP	RBV	IMF
EBV	-6	+0.2	+3.1	+3.9	-2.0	+0.6
Acc	55%	46%	48%	46%	48%	45%

## \$ Index Values

DTI (\$) NMI (\$)

-\$11 -\$6



Purchaser:

\$:

**HOMOZYGOUS  
POLL - DNA**

# 29 KENMERE SIMEON S137E (P)

Tattoo: MCS S137E Born: 19/05/2021

LT BLUEGRASS 4017P (OAU Z4017E) (P)

KENMERE CHOCK E12E (MCS E12E) (P)

KENMERE KRISTINA III FL87 (MCS M18E)

**SIRE: KENMERE CHOCK N20E (MCS N20E) (P)**

GOBONGO BOY G196E (GO G196E) (P)

KENMERE KIKO (MCS K19E) (P)

KENMERE GRACE (MCS G73E)

DBAR SYNERGY 721T (OAC C3100E) (P)

ASHWOOD PARK SYNERGY G29E (HAS G29E) (P)

ASHWOOD PARK ANGEL 2 (HAS D22E) (P)

**DAM: KENMERE MAHALIA (MCS M86E) (P/S)**

LT EASY BLEND 5125 PLD (OAU A5113E) (P)

KENMERE EMILY F103E (MCS F103E) (P)

ROSEDALE EMILY Z207 (MR Z207E) (P)

Comments: Simeon is a great looking Homozygous, Chock N20E son verified to the Sire who will grow into a moderate build with natural softness throughout. Simeon has calving ease, good growth, milk, fats and IMF.

	CE DIR	CE DTR	GL	BW	200	400	600	MCW	MILK	SS
EBV	-9.9	+3.8	-2.6	+0.6	+8	+19	+25	+18	+15	-0.5
Acc	49%	42%	49%	74%	66%	69%	72%	65%	49%	75%

	CW	EMA	RIB	RUMP	RBY	IMF
EBV	+12	-0.4	+1.4	+1.8	-1.5	+0.5
Acc	60%	51%	56%	55%	54%	51%



Purchaser:

\$:

**HOMOZYGOUS  
POLL - DNA**

# 30 KENMERE SPIRO S105E (P)

Tattoo: MCS S105E Born: 23/04/2021

TEMANA GOLDEN LOGIE G66E (TJ G66E) (P)

DSK TGL KAKADU K69E (DSK K69E) (P)

DSK MY BEATRIX C69E (DSK C69E) (P)

**SIRE: KENMERE PALMETTO (MCS P87E) (P)**

LIBERTY EXHIBITIONIST (Y1K E24E) (P)

KENMERE QUE SERA MCS H31E (MCS H31E) (P)

KENMERE QUE SERA D59E (MCS D59E) (P)

LT BLUEGRASS 4017P (OAU Z4017E) (P)

KENMERE CHOCK E12E (MCS E12E) (P)

KENMERE KRISTINA III FL87 (MCS M18E)

**DAM: KENMERE LETICIA (MCS L89E) (P)**

RNJ'S CHAMPION (RJ7 C15E)

NARGOON NELL H032E (J5Y H32E)

NARGOON NELL 1 (J5Y B54F) (P)

Comments: Spiro is a stylish type of bull with a steady temperament, whose sire, Kenmere Palmetto was a clean skinned animal with moderate thickness and a great topline. Spiro is the second calf produced by the dam Kenmere Leticia.

	CE DIR	CE DTR	GL	BW	200	400	600	MCW	MILK	SS
EBV	-2.6	-4.6	-1.4	+1.5	+11	+28	+34	+47	+6	+3.1
Acc	41%	36%	42%	70%	63%	66%	70%	62%	43%	73%

	CW	EMA	RIB	RUMP	RBY	IMF
EBV	+21	+0.8	-0.7	-0.8	+0.5	-0.2
Acc	57%	49%	54%	53%	52%	48%

**\$ Index Values**

DTI (\$)	NMI (\$)
+\$23	+\$38



Purchaser:

\$:

# 31 KENMERE SILAS S61E (P)

Tattoo: MCS S61E Born: 24/03/2021

LT WESTERN SPUR 2061 PLD (OAU X2061E) (P)  
 KENMERE GILMAN KRISTO D17E E (MCS D17E)  
 KENMERE KRISTINA III FL87 (MCS M18E)

**SIRE: KENMERE KRISTO'S BOY (MCS N53E) (P)**

KENMERE GRAND MASTER (MCS G6E) (P)  
 KENMERE BLISSFUL J44E (MCS J44E) (P)  
 KENMERE BLISSFUL (MCS E18E) (P)

TEMANA GOLDEN LOGIE G66E (TJ G66E) (P)  
 DSK TGL KAKADU K69E (DSK K69E) (P)  
 DSK MY BEATRIX C69E (DSK C69E) (P)

**DAM: KENMERE PEPPERMINT (MCS P128E)**

EATONS LEADER 2233 P (OAU X2217E) (P)  
 KENMERE ESSENCE (MCS E17E) (P)  
 QUICKSILVER BREE (1QS B7E) (P)

Comments: Silas is a polled son of Kenmere Kristo's Boy who would suit breeders who produce early finishing vealers where Rib, Rump and fat are important for meat quality.

	CE DIR	CE DTR	GL	BW	200	400	600	MCW	MILK	SS
EBV	+15.5	+1.4	-3.3	-1.1	+13	+28	+28	+28	+5	+1.2
Acc	45%	37%	45%	73%	65%	68%	71%	62%	44%	74%

	CW	EMA	RIB	RUMP	RBV	IMF
EBV	+21	+0.2	-0.4	-0.6	-0.3	+0.2
Acc	59%	51%	56%	55%	54%	50%

**\$ Index Values**

DTI (\$)	NMI (\$)
+\$34	+\$44



Purchaser:

\$:

# 32 KENMERE SHELDON S33E (AI) (P) (R/F)

Tattoo: MCS S33E Born: 03/03/2021

LT SILVER DISTANCE 5342 (OAU A7559E) (P)  
 LT LONG DISTANCE 9001 (OAU E143E) (P)  
 LT BELLE 7026 (OAU C9133E) (P)

**SIRE: KENMERE MAXIMUS (MCS M19E) (P)**

KENMERE GRAND MASTER (MCS G6E) (P)  
 KENMERE NICOLA J46E (MCS J46E) (P)  
 KENMERE NICOLA F73E (MCS F73E) (P)

NANDILLYAN PEUGEOT (F U1E) (P)  
 KENMERE LANZ (MCS L23E) (P)  
 KENMERE CALAMITY C56E (MCS C56E) (P)

**DAM: KENMERE RADIANCE P139E (MCS P139E) (P)**

KENMERE CHOCK E12E (MCS E12E) (P)  
 KENMERE LATASHA (MCS L108E) (P/S)  
 KENMERE RADIANCE G14E (MCS G14E) (P)

Comments: Sheldon is a moderate poll bull with a wedged shape and fine smooth coat. A strong calving ease bull with sound credentials. The dam, Kenmere Latasha has bred four calves in four years and her pedigree contains Chock E12E and Radiance G14E, highly regarded at Kenmere.

	CE DIR	CE DTR	GL	BW	200	400	600	MCW	MILK	SS
EBV	+13.9	+4.0	-3.2	-2.4	+10	+13	+22	+1	+13	-1.0
Acc	51%	44%	75%	75%	68%	70%	73%	67%	51%	76%

	CW	EMA	RIB	RUMP	RBV	IMF
EBV	+14	+0.8	+1.3	+1.4	-1.2	+0.5
Acc	62%	53%	60%	59%	57%	53%

**\$ Index Values**

DTI (\$)	NMI (\$)
+\$19	+\$26



Purchaser:

\$:

**HOMOZYGOUS  
 POLL - DNA**

# 33 KENMERE SABINO S66E (P)

Tattoo: MCS S66E Born: 27/03/2021

TEMANA GOLDEN LOGIE G66E (TJ G66E) (P)  
 DSK TGL KAKADU K69E (DSK K69E) (P)  
 DSK MY BEATRIX C69E (DSK C69E) (P)

**SIRE: KENMERE PALMETTO (MCS P87E) (P)**

LIBERTY EXHIBITIONIST (Y1K E24E) (P)  
 KENMERE QUE SERA MCS H31E (MCS H31E) (P)  
 KENMERE QUE SERA D59E (MCS D59E) (P)

LT BLUEGRASS 4017P (OAU Z4017E) (P)  
 KENMERE CHOCK E12E (MCS E12E) (P)  
 KENMERE KRISTINA III FL87 (MCS M18E)  
**DAM: KENMERE MICHELLE H101E (MCS H101E) (P)**  
 ROSEDALE Y106E (MR Y106E) (P)  
 KENMERE MICHELLE MCS D20E (MCS D20E) (P)  
 MINNIE-VALE MICHELLE B28E (SGS B28E) (P)

Comments: Another cracking calf sired by Kenmere Palmetto a quality young bull with a strong sires head. The dam Kenmere Michelle H101E (P) has bred eight calves in her breeding years.

	CE DIR	CE DTR	GL	BW	200	400	600	MCW	MILK	SS
EBV	+7.0	+5.8	-2.1	-0.4	+7	+20	+21	+18	+10	+1.9
Acc	44%	39%	46%	73%	65%	68%	71%	64%	48%	75%

	CW	EMA	RIB	RUMP	RBY	IMF
EBV	+16	+0.7	-0.5	-0.6	+0.4	-0.2
Acc	59%	51%	56%	55%	54%	50%

\$ Index Values	
DTI (\$)	NMI (\$)
+\$23	+\$42



Purchaser:

\$:

# 34 KENMERE SPIRO S64E (P)

Tattoo: MCS S64E Born: 26/03/2021

LT SILVER DISTANCE 5342 (OAU A7559E) (P)  
 LT LONG DISTANCE 9001 (OAU E143E) (P)  
 LT BELLE 7026 (OAU C9133E) (P)

**SIRE: KENMERE MAXIMUS (MCS M19E) (P)**

KENMERE GRAND MASTER (MCS G6E) (P)  
 KENMERE NICOLA J46E (MCS J46E) (P)  
 KENMERE NICOLA F73E (MCS F73E) (P)

GERRARD PASTOR 35Z (OAC H7921E) (P)  
 ELDER'S BLACKJACK 788B (OAC K788E) (P)  
 SVY STARTSTRUCK 8X (OAC F8E) (P)

**DAM: CHARNELLE FESTOON 11 (GKA N52E) (P)**

CHARNELLE GUS (GKA G7F)  
 CHARNELLE FESTOON 6 (GKA J51E)  
 PALGROVE FESTOON 55 (PK T91E)

Comments: Spiro is a combination of the sire Kenmere Maximus (AI) (P) (RF) and dam Charnelle Festoon 11 (AI) (P) The pedigree in this bull should be worthy of your inspection.

	CE DIR	CE DTR	GL	BW	200	400	600	MCW	MILK	SS
EBV	+12.5	+10.4	-4.8	-3.5	+7	+13	+19	+1	+9	+0.5
Acc	49%	42%	60%	73%	67%	69%	72%	63%	49%	75%

	CW	EMA	RIB	RUMP	RBY	IMF
EBV	+15	+1.2	+2.5	+3.1	-1.8	+0.7
Acc	60%	51%	55%	54%	53%	50%

\$ Index Values	
DTI (\$)	NMI (\$)
+\$20	+\$55



Purchaser:

\$:

# 35 KENMERE SENATOR S129E (P)

Tattoo: MCS S129E Born: 09/05/2021

LT BLUEGRASS 4017P (OAU Z4017E) (P)  
KENMERE CHOCK E12E (MCS E12E) (P)  
KENMERE KRISTINA III FL87 (MCS M18E)

**SIRE: KENMERE CHOCK N20E (MCS N20E) (P)**

GOBONGO BOY G196E (GO G196E) (P)  
KENMERE KIKO (MCS K19E) (P)  
KENMERE GRACE (MCS G73E)

DBAR SYNERGY 721T (OAC C3100E) (P)  
ASHWOOD PARK SYNERGY G29E (HAS G29E) (P)  
ASHWOOD PARK ANGEL 2 (HAS D22E) (P)

**DAM: KENMERE QUE SERA L27E (MCS L27E) (P)**

EATONS LEADER 2233 P (OAU X2217E) (P)  
KENMERE QUE SERA E2E (MCS E2E) (P)  
KENMERE QUE SERA B6E (MCS B6E) (P)

Comments: Senator is verified to his Sire, Kenmere Chock N20E who has bred 83 progeny in the herd, typically calves are born easily and the females all milk well. Senator is a homozygous poll all round sire, with exceptional figures that suggest he will suit early finishing calves.

	CE DIR	CE DTR	GL	BW	200	400	600	MCW	MILK	SS
EBV	+0.7	+11.6	-4.8	-1.4	+6	+15	+19	+6	+18	+0.8
Acc	49%	42%	48%	74%	67%	69%	72%	65%	50%	75%

	CW	EMA	RIB	RUMP	RBV	IMF
EBV	+15	+0.7	+0.9	+0.8	-0.4	-0.2
Acc	61%	52%	56%	56%	54%	51%

**\$ Index Values**

DTI (\$)	NMI (\$)
+\$13	+\$27



Purchaser:

\$:

# 36 KENMERE SAFFRON S145E (P)

Tattoo: MCS S145E Born: 26/05/2021

LT SILVER DISTANCE 5342 (OAU A7559E) (P)  
LT LONG DISTANCE 9001 (OAU E143E) (P)  
LT BELLE 7026 (OAU C9133E) (P)

**SIRE: KENMERE MAXIMUS (MCS M19E) (P)**

KENMERE GRAND MASTER (MCS G6E) (P)  
KENMERE NICOLA J46E (MCS J46E) (P)  
KENMERE NICOLA F73E (MCS F73E) (P)

LT BLUEGRASS 4017P (OAU Z4017E) (P)  
KENMERE CHOCK E12E (MCS E12E) (P)  
KENMERE KRISTINA III FL87 (MCS M18E)

**DAM: KENMERE MEISHA (MCS M88E) (P/S)**

NARGOON FIRE (J5Y F5E)  
NARGOON HELL FIRE (J5Y H63E) (P)  
NARGOON BEC 5 E04E (J5Y E4E) (P)

Comments: Saffron is a red factor powerful Maximus son with low birth weight The dam Nargoan Hell Fire (P) raised seven calves during her lifetime.

	CE DIR	CE DTR	GL	BW	200	400	600	MCW	MILK	SS
EBV	+19.4	+4.4	-4.7	-4.7	+5	+6	+13	-21	+13	-0.2
Acc	51%	46%	58%	74%	68%	70%	73%	67%	53%	76%

	CW	EMA	RIB	RUMP	RBV	IMF
EBV	+12	+0.4	+1.4	+1.7	-1.6	+0.7
Acc	61%	53%	58%	57%	55%	52%

**\$ Index Values**

DTI (\$)	NMI (\$)
+\$17	+\$39



Purchaser:

\$:

HOMOZYGOUS  
POLL - DNA

# 37 KENMERE SAFARI S176E (AI) (P)

Tattoo: MCS S176E Born: 26/07/2021

LT BLUEGRASS 4017P (OAU Z4017E) (P)  
KENMERE CHOCK E12E (MCS E12E) (P)  
KENMERE KRISTINA III FL87 (MCS M18E)

**SIRE: KENMERE NUCLEAR ENERGY (MCS N112E) (P)**

SIRRAH ANAKIN (4BV A3E) (P)  
NARGOON CUTTING EDGE G114E (J5Y G114E) (P)  
NARGOON CUTTING EDGE (J5Y C54E) (P)

LT LONG DISTANCE 9001 (OAU E143E) (P)  
KENMERE MAXIMUS (MCS M19E) (P)  
KENMERE NICOLA J46E (MCS J46E) (P)

**DAM: KENMERE PING Q9E (MCS Q9E) (P)**

ASHWOOD PARK SYNERGY G29E (HAS G29E) (P)  
KENMERE PING L90E (MCS L90E) (P)  
KENMERE PING (MCS H61E) (P)

Comments: Safari is a Homozygous Bull who is verified to his sire Kenmere Nuclear Energy. Safari's dam is Kenmere Ping Q9E who is a red factor daughter of Kenmere Maximus who is a maternal cow with good growth and plenty of milk and strong carcass figures.

	CE DIR	CE DTR	GL	BW	200	400	600	MCW	MILK	SS
EBV	+19.3	+7.4	-7.2	-5.5	+10	+18	+19	-3	+15	+0.6
Acc	39%	35%	68%	69%	61%	64%	61%	58%	41%	74%

	CW	EMA	RIB	RUMP	RBV	IMF
EBV	+19	+0.3	+1.0	+1.0	-1.3	+0.5
Acc	53%	49%	52%	51%	51%	48%

**\$ Index Values**

DTI (\$)	NMI (\$)
+\$29	+\$50



Purchaser:

\$:

HOMOZYGOUS  
POLL - DNA

# 38 KENMERE SERGEANT S39E (AI) (P) (R/F)

Tattoo: MCS S39E Born: 10/03/2021

2UP PEUGEOT (2UP P46E) (P)  
NANDILLYAN PEUGEOT (F U1E) (P)  
ROSEDALE WALLAH Q69 (MR Q69E) (P)

**SIRE: KENMERE LANZ (MCS L23E) (P)**

ROSEDALE Y106E (MR Y106E) (P)  
KENMERE CALAMITY C56E (MCS C56E) (P)  
MINNIE-VALE PING A49E (SGS A49E) (P)

LT SILVER DISTANCE 5342 (OAU A7559E) (P)  
LT LONG DISTANCE 9001 (OAU E143E) (P)  
LT BELLE 7026 (OAU C9133E) (P)

**DAM: KENMERE MICHELLE P36E (MCS P36E) (P)**

KENMERE CHOCK E12E (MCS E12E) (P)  
KENMERE MICHELLE M5E (MCS M5E) (P)  
KENMERE MICHELLE MCS D20E (MCS D20E) (P)

Comments: Sergeant is verified to mating with Kenmere Lanz MCS L23e who Kenmere sold to Elstow Pastoral Company at Barradine (Kenmere retained semen) Kenmere has bred successfully from Lanz and we are confident Sergeant will breed true to type

	CE DIR	CE DTR	GL	BW	200	400	600	MCW	MILK	SS
EBV	+2.7	-0.7	+0.8	-0.5	+5	+10	+17	-5	+14	-0.1
Acc	47%	44%	74%	72%	64%	62%	63%	62%	52%	53%

	CW	EMA	RIB	RUMP	RBV	IMF
EBV	+8	+0.6	+1.4	+1.7	-0.9	+0.5
Acc	52%	42%	50%	50%	46%	42%

**\$ Index Values**

DTI (\$)	NMI (\$)
+\$11	+\$23



Sire: Kenmere Lanz MCS L23E

Purchaser:

\$:



# 39 KENMERE SOMETHING DIFFERENT (AI) (P)

Tattoo: MCS S196E Born: 30/07/2021

SOS POLLED DETONATOR 8M (OAC X7034E) (P)

MXS VERMILLION 527R (OAC A9214E) (P)

MXS ESPEON 122L (PED -5308E)

**SIRE: MERIT ROUNDUP 9508W (OAC E6558E) (P)**

MERIT 1058L (PED -8317E)

MERIT YOLANDA 7244T (PED -1301E)

MERIT YOLANDA 6116F (PED -2626E)

LT BLUEGRASS 4017P (OAU Z4017E) (P)

KENMERE CHOCK E12E (MCS E12E) (P)

KENMERE KRISTINA III FL87 (MCS M18E)

**DAM: KENMERE WILMUR L37E (MCS L37E)**

SEDALIA BORN WINNER (DEG B15F)

NARGOON WILMUR H017F (J5Y H17F)

NARGOON WILMUR 1 (J5Y B43F)

Comments: Something Different is a polled bull who is a low birthweight who calves easily who has strong growth performance and packs the weight on to his carcass - well worthy of your inspection

	CE DIR	CE DTR	GL	BW	200	400	600	MCW	MILK	SS
EBV	+10.0	+6.8	-6.0	-1.7	+18	+31	+40	+36	+1	+3.7
Acc	52%	48%	75%	73%	68%	69%	67%	65%	58%	75%

	CW	EMA	RIB	RUMP	RBY	IMF
EBV	+25	+0.1	-0.9	-1.4	+0.5	-0.7
Acc	60%	53%	58%	57%	56%	53%

## \$ Index Values

DTI (\$) NMI (\$)

+\$38 +\$81



Purchaser:

\$:

# 40 KENMERE SATELITE (AI) (ET) (P)

Tattoo: MCS S230E Born: 10/08/2021

LT SILVER YIELD 3196 (PED Y5495E) (P)

LT SILVER DISTANCE 5342 (OAU A7559E) (P)

LT MATTIE 9026 (OAU U2542E) (P)

**SIRE: LT LONG DISTANCE 9001 (OAU E143E) (P)**

LT EASY PRO 1158 PLD (OAU W6203E) (P)

LT BELLE 7026 (OAU C9133E) (P)

LT BELLE 5110 (OAU A5415E) (P)

LT ASSERTION 1277 (PED W1277F) (P)

LT BLUEGRASS 4017P (OAU Z4017E) (P)

LT PEARLS BREEZE 2236 (PED X2236F) (P)

**DAM: KENMERE KRISTINA E19E (MCS E19E) (P)**

MANDALONG CHOCK (RP C59E) (P/S)

KENMERE KRISTINA III FL87 (MCS M18E)

GILMANDYKE PARK KRISTINA 2ND (AGP N17F)

Comments: Satellite is full brother to Lot 9 and is a quality son from Lt Long Distance, a homozygous Poll bull with plenty of height and performance that does not compromise the strong carcass features. Out of the same Dam Kenmere Kristina. Satellite is a sound easy doing bull that are the type we enjoy breeding.

	CE DIR	CE DTR	GL	BW	200	400	600	MCW	MILK	SS
EBV	+14.2	-0.7	-5.3	-2.7	+8	+9	+10	-6	+6	+0.9
Acc	56%	52%	61%	72%	66%	68%	67%	65%	60%	73%

	CW	EMA	RIB	RUMP	RBY	IMF
EBV	+4	-0.4	+2.6	+3.4	-2.5	+0.8
Acc	60%	55%	59%	59%	57%	54%

## \$ Index Values

DTI (\$) NMI (\$)

+\$13 +\$37



Purchaser:

\$:

# 41 KENMERE FARGO S222E (AI) (P)

Tattoo: MCS S222E Born: 06/08/2021

WINN MANS LANZA 610S (OAC B7395E) (P)  
SPARROWS FARGO 811U (PED D4935E) (P)  
SPARROWS DELIGHT 74L (PED W74E)

**SIRE: RBM FARGO Y111 (OAU G9088E) (P)**

LT EASY PRO 1158 PLD (OAU W6203E) (P)  
HC RHINESTONE 5100 (PED A6859E) (P)  
HC JACK 2082 (PED X3757E) (P)

LT BLUEGRASS 4017P (OAU Z4017E) (P)  
KENMERE EXPRESS 104E (MCS E104E) (P)  
KENMERE TRES BONNE (KNC T49E) (P)

**DAM: KENMERE TINKERBELLE H75E (MCS H75E) (P)**

LT EASY BLEND 5125 PLD (OAU A5113E) (P)  
KENMERE TINKERBELLE E42E (MCS E42E) (P)  
KENMERE TINKERBELLE (KNC T60E)

Comments: Fargo is soft moderate bull with adequate muscle and depth of body with a quality carcass Fargo's dam Kenmere Tinkerbelle H75E (P) has been a fertile breeder who bred nine calves in her lifetime

	CE DIR	CE DTR	GL	BW	200	400	600	MCW	MILK	SS
EBV	+4.4	-11.6	-3.2	-0.7	+19	+33	+35	+32	+6	+1.1
Acc	43%	35%	74%	72%	63%	64%	62%	58%	44%	73%

	CW	EMA	RIB	RUMP	RBV	IMF
EBV	+24	+1.3	+1.7	+2.0	-1.3	+0.8
Acc	51%	45%	49%	48%	48%	45%

**\$ Index Values**

DTI (\$)	NMI (\$)
+\$34	+\$51



Purchaser:

\$:

# 42 KENMERE SENEPOL S204E (AI) (P)

Tattoo: MCS S204E Born: 01/08/2021

ABC EDMUND LATIN (PED -9426E)  
ABC LATORO 263G (PED -4167E)  
ABC CHAR CHISPA (PED -7043E)

**SIRE: SPARROWS SEMINOLE 927W (OAC E927E) (P)**

SPARROWS ALLIANCE 513G (PED -277E)  
SPARROWS ANGEL EYES 258N (PED Y258E) (P)  
SPARROWS ANGEL EYES 58L (PED W58E) (P)

LT EASY BLEND 5125 PLD (OAU A5113E) (P)  
KENMERE RADIATOR E90E (MCS E90E) (P)  
MINNIE-VALE RADIANCE B34E (SGS B34E) (P)

**DAM: KENMERE NAVARRO M1E (MCS M1E) (P/S)**

KENMERE EXPRESS 104E (MCS E104E) (P)  
KENMERE NAVARRO H69E (MCS H69E) (P)  
KENMERE NAVARRO F12E (MCS F12E)

Comments: Senepol is a son of Sparrows Seminole 927W who is a Canadian sire bred by Stepler Charolais the sire has tremendous thickness of spine and depth of rib

	CE DIR	CE DTR	GL	BW	200	400	600	MCW	MILK	SS
EBV	+1.5	+3.4	-3.1	-0.6	+6	+12	+19	+13	+5	+0.3
Acc	38%	33%	73%	69%	64%	65%	63%	58%	47%	72%

	CW	EMA	RIB	RUMP	RBV	IMF
EBV	+12	+0.2	+0.8	+0.6	-0.7	+0.1
Acc	53%	44%	47%	45%	47%	43%



Purchaser:

\$:

# 43 KENMERE SILVER SIDE S207E (AI) (P)

Tattoo: MCS S207E Born: 02/08/2021

LT LEDGER 0332 (OAU F3168E) (P)  
 LT PATRIOT 4004 PLD (PED K2822E) (P)  
 LK MISS RIO 2119 (PED H1464E) (P)

**SIRE: LT NATIONWIDE 8455 PLD ET (OAU P2440E) (P)**

LT BRIDGER 9191 (OAU E188E) (P)  
 LT BRENDA 2184 PLD (PED H6384E) (P)  
 LT BRENDA 8034 PLD (PED D9884E) (P)

LT EASY BLEND 5125 PLD (OAU A5113E) (P)  
 KENMERE RADIATOR E90E (MCS E90E) (P)  
 MINNIE-VALE RADIANCE B34E (SGS B34E) (P)

**DAM: KENMERE LILYBETH (MCS L47E) (P)**

SEDALIA YARDLEY (DEG Y13F)  
 SEDALIA ANNABELLA (DEG B6E) (P)  
 SEDALIA UREN FR110 (DEG U8E) (P)

Comments: Silver Side is very strong young sire who is an impressive calf with performance and body weight. The dam Kenmere Lilybeth (P) has bred six calves in five years. Silver Side has an impressive EBV projections backed up with scan data.-

	CE DIR	CE DTR	GL	BW	200	400	600	MCW	MILK	SS
EBV	+1.9	+4.7	-4.2	-0.3	+16	+38	+50	+49	+10	+3.0
Acc	43%	33%	75%	73%	65%	66%	62%	59%	44%	74%

	CW	EMA	RIB	RUMP	RBV	IMF
EBV	+33	+2.0	+0.5	+0.8	+0.2	-0.1
Acc	54%	47%	50%	49%	49%	46%

## \$ Index Values

DTI (\$)	NMI (\$)
+\$39	+\$81



Purchaser:

\$:

# 44 KENMERE SUTHERLAND S118E (P)

Tattoo: MCS S118E Born: 30/04/2021

MERIT VINTAGE 4065P (OAC -414E) (P)  
 CML DISTINCTION 318A (OAC J318E) (P)  
 TARGET PLD GINNY 40P (OAC Z486E) (P)

**SIRE: CHARNELLE DISTINCTION N42E (GKA N42E) (P)**

CHARNELLE FEDERATION (GKA F29E) (P)  
 CHARNELLE FESTOON 5 (GKA H58E) (P/S)  
 PALGROVE FESTOON 55 (PK T91E)

PINAY (OAF U4134F)  
 KENMERE PINAY J57E (MCS J57E) (P)  
 KENMERE GOLDEN SPUR (MCS G3E) (P)

**DAM: KENMERE RADIANCE N35E (MCS N35E) (P)**

ASHWOOD PARK SYNERGY G29E (HAS G29E) (P)  
 KENMERE RADIANCE K101E (MCS K101E) (P)  
 MINNIE-VALE RADIANCE B34E (SGS B34E) (P)

Comments: Sutherland is a son of CML Distinction 318A, an outcross sire who is amongst the heavy end of the sale draft with strong scan data. The dam, Kenmere Radiance is a young female who has bred three bulls in three years.

	CE DIR	CE DTR	GL	BW	200	400	600	MCW	MILK	SS
EBV	+5.4	+10.2	-4.7	-0.6	+13	+25	+42	+33	+7	+2.5
Acc	46%	36%	50%	73%	66%	68%	71%	63%	44%	74%

	CW	EMA	RIB	RUMP	RBV	IMF
EBV	+28	+2.4	-0.5	-0.7	+1.3	-0.2
Acc	59%	50%	56%	55%	53%	48%

## \$ Index Values

DTI (\$)	NMI (\$)
+\$35	+\$76



Purchaser:

\$:

# Kenmere Maternal Power





# AuctionsPlus

## How to Register and Bid on AuctionsPlus

1

Go to [www.auctionsplus.com.au](http://www.auctionsplus.com.au) to register at least 48 hours before the sale.

2

Select “**Sign Up**” in the top right hand corner.

3

Fill out your name, mobile number, email address and create a password.

4

Go to your emails and confirm the account.

5

Return to AuctionsPlus and log in.

6

Select “**Dashboard**” and then select “**Request Approval to Buy**”.

7

Fill in buyer details and once completed go back to Dashboard.

8

Complete buyer induction module (approx. 30 minutes).

9

AuctionsPlus will email you to let you know that your account has been approved.

10

Log in on sale day and connect to auction.

11

Bid using the two-step process – unlock the bid button and bid at that price.

12

If you are successful, the selling agent will contact you post sale to organise delivery and payment.

For more information please contact us on:

Phone: (02) 9262 4222

Email: [info@auctionsplus.com.au](mailto:info@auctionsplus.com.au)

# Notes

---



## Nutrien Livestock.

Your Breeding Stock Specialists.

<b>VICTORIA</b>	Ray Attwell	0428 836 136
	Peter Godbolt	0457 591 929
	Stephen Chalmers	0427 908 831
	Nick Farley	0427 529 335
<b>NEW SOUTH WALES</b>	Rick Power	0437 131 925
	Tim Woodham	0436 015 115
	John Setttee	0408 297 368
	Brad Wilson	0417 467 911
<b>QUEENSLAND</b>	Colby Ede	0417 265 980
	Dane Pearce	0439 917 428
<b>SOUTH AUSTRALIA</b>	Gordon Wood	0408 813 215
	Andrew Wilson	0439 354 228



NutrienAgSolutions.com.au

**Nutrien**  
Livestock™

**Rodwells**  
A NUTRIEN AG SOLUTIONS BUSINESS

**Peter Ruaro**  
livestock & property

### WODONGA

**Peter Ruaro**

**0447 600 825**

**Scott Campbell**

**0428 686 072**

**Zach Weidner**

**0488 289 137**

**Adam Roberts**

**0409 122 388**

### EUROA

**Michael Curtis**

**0428 953 222**

### BENALLA

**Justin Way**

**0429 625 513**

