

ALL ROADS LEAD TO HAY

Speckle Park

On The Plains

1PM SATURDAY MARCH 4 2023
HAY SALEYARDS, HAY NSW
BULLS FEMALES GENETIC PACKAGES



AuctionsPlus™



DIMITY COMB
0434 036 506



LOT 4 Keiross Ulysses S39 Ident KRS S39



ALL ROADS LEAD TO HAY

Speckle Park

On The Plains

1PM SATURDAY MARCH 4 2023
HAY SALEYARDS, HAY NSW

LOT 56 Keiross Birdie S66 Ident KRS S66

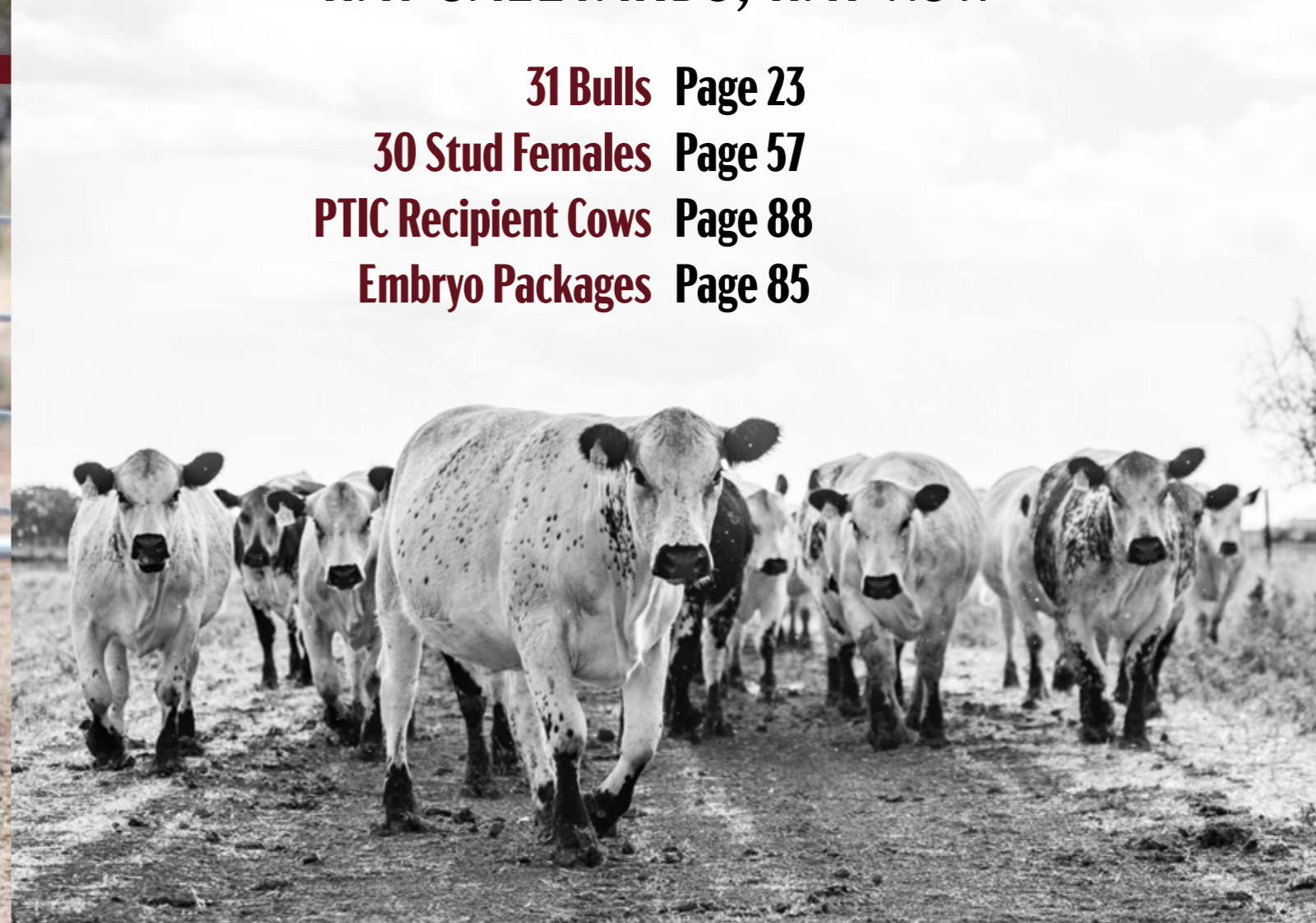


31 Bulls Page 23

30 Stud Females Page 57

PTIC Recipient Cows Page 88

Embryo Packages Page 85



Welcome

The Comb Family of Keiross Speckle Park extend a very warm welcome to our First Annual Speckle Park Sale: Speckle Park on the Plains. We are very proud of the direction our Speckle Park stud has taken in the past 6 years and are excited to offer high quality bulls, females and genetic packages throughout this catalogue.

About Us

Keiross Speckle Park is located in the heart of the Riverina, north west of Hay, "in the back country". Our fourth-generation family farm is 57,000 acres with a number of livestock enterprises including 7000 commercial Merino's, White Suffolk's, Border Leicester's and importantly Speckle Park cattle.

Our venture into Speckle Park stud cattle began in 2017 when owner Doug Comb developed a strong interest in the Speckle Park cattle breed and the traits inherent to them. High yielding, great temperament, structure, ability to convert feed and ultimately the beef value grabbed Doug's attention. A butcher for 9 years prior to going back to the family farm, Doug has been heavily involved in many meat breeds of sheep and cattle, however, the Speckle Park are now our sole cattle focus. We enjoy quality meat on the plate, and that is one attribute we are seeing in the Speckle Park. Our herd started out rather small in 2017, however we are now calving down over 100 pure bred registered stud calves each year.

Success is derived from hard work and good people; we would like to acknowledge Neil and Glenda Gorell of the late Three Way Speckle Park and Dale and Bin Humphreys at Wattle Grove, where a number of our genetics began. We pride ourselves on our authentic approach and hard work. Keiross Speckle Park Stud numbers have quickly expanded as a result of the technologies we imbed into our breeding programs. Valuing high quality genetics, we spend extensive time investing into cattle that have proven to breed good consistent progeny. We would also like to acknowledge Udo and Adriana Mahne for the significant influence they have had on our cattle stud; Udo's expertise and advice has been much appreciated and utilised throughout our breeding operations.

Our vision is to breed high quality and resilient Speckle Park Cattle that can withstand the diverse climatic conditions throughout Australia without compromise. At Keiross Speckle Park, we pay particular attention to each animals' structure, temperament and genetic make up and place great value in breed plan data. We believe, if you buy the best quality you should be able to breed the best quality, this philosophy is the fundamentals for what we aim to achieve at Keiross Speckle Park. The animals we have throughout our catalogue are hardy, they have seen what could have been a fantastic season impinged by severe flooding, and they have been moved from our large-scale property to our small hobby farm, but their ability to maintain integrity has been phenomenal. They are tough and they have been bred to be productive!

We hope that you appreciate the quality of animals and genetics we are offering. Thank you for taking the time of exploring our stud and our cattle. All the best for the 2023 season.

The Comb Family



All Roads Lead to Hay

SALE DAY

Saturday 4th March 2023

Hay Cattle Yards, Maude Road, Hay NSW

Head west on the Maude Road (past Nutrien) for approximately 3km. The Cattle Yards are located on the left-hand side.

9 AM:

Gates open for inspection of sale animals.

1 PM:

Auction commences.

Morning tea and lunch will be provided.

No deliveries of animals until the conclusion of the sale.

SUNDAY 5TH MARCH

All cattle to be removed by 5pm Sunday unless a prior arrangement has been made. Please contact Dimity or an Elders agent prior to collecting cattle.

Peter Head Elders Hay - 0417 545 822
Andrew Low Elders Hay - 0427 533 377
Dimity Comb - 0434036506

INSPECTIONS

Friday 24th February 9am - 2pm

Keiross Speckle Park will be hosting an Inspection Day on Friday the 24th of February, 9am - 2pm, on farm in Hay, to view the bulls and Speckle Park females being offered prior to sale day. If the inspection date does not suit you, or you require additional information, please feel free to contact Dimity on 0434036506 to make other arrangements.

INSPECTIONS ADDRESS

110 Rye Lane Hay, NSW, 2711

North through Hay, first left after the racecourse.

If you are unable to get to Hay in person there will be videos and photographs of bulls and heifers for you to access. Please contact us!

WHERE IS HAY?

All roads lead to Hay!!!

The town of Hay is where the Sturt, Cobb and Mid-Western Highways all meet, in the heart of the Riverina.

Wagga Wagga

Hay is only 269 km west of Wagga on the Sturt Highway.

Echuca

Hay is 180 km north of Echuca and the Victorian border

Griffith

Hay is 140 km west of Griffith (daily flights from Griffith to Sydney)

Swan Hill

Hay is 150 km northeast of Swan Hill

Albury

Hay is 330 km northwest of Albury

Melbourne

Hay is 400 km north of Melbourne.

Dubbo

Hay is 512 km southwest of Dubbo

Sydney to Adelaide

Hay is halfway between Sydney and Adelaide.

ACCOMMODATION

There are several motels, caravan parks and B&Bs in Hay. Some include:

Saltbush Motor Inn - 02 6993 4555

Highway Inn Motel - 02 6993 2102

Bidgee Motor Inn - 02 6993 2260

Please note that the Hay Pro Rodeo will be held the same night as the sale, therefore it is recommended you book accommodation as early as possible.

AND WHY NOT STAY FOR THE HAY PRO RODEO UNDER LIGHTS!

Coincidence or not, the Hay Pro Rodeo is the night of the Keiross Speckle Park sale so why not stay for some live entertainment!

Hay Pro Rodeo

(Hay's 70th Anniversary Rodeo)
4th March 2023

Hay Rodeo Grounds (just north of Hay)
Starting at 6.30 pm.

For more information contact 0405063353.



Sale Information

SELLING AGENTS AND AUCTIONEERS

Elders Hay/Albury
 Jenni O'Sullivan Elders Albury – 0428 222 080
 Brett Shea Elders Albury – 0428 691 489
 Peter Head Elders Hay– 0417 545 822
 Andrew Low Elders Hay – 0427 533 377
 Ryan Bajada Elders Auctioneer – 0435 411 536
 eldersstudstock@elders.com.au

A 2% rebate is offered to outside agents who introduce buyers 24 hours prior to sale in writing and email to eldersstudstock@elders.com.au and settle invoices within 7 days.

ONLINE PLATFORM

Auctions Plus - Online bidding
 There is online bidding available for buyers who are unable to attend the sale in person. If you are not currently registered to bid with Auctions Plus complete your registration at least 48 hours prior to sale day. See page 12 for further information.

BUYERS' REGISTRATION

Animals and genetics at the sale can only be purchased by registered bidders! The sale will be conducted under the buyer registration system. Pre-registration is available, or alternatively see the sale office on sale day. 10% GST will be added to purchase price. Buyers Registration Form via QR code



MOBILE PHONE SERVICE

Mobile phone service is very sound in Hay and at the cattle yards, particularly when using the Telstra network. For phone bidding, please contact Jenni O'Sullivan 0428 222 080 or another Elders agent prior to sale.

GUARANTEE

(Physical Examinations/Veterinary Inspections)
 Keiross Speckle Park has taken the utmost care to ensure all sale animals are at optimum health and that all animals are sound breeders prior to, and at the time of sale.

Bull Guarantee

All bulls are guaranteed breeders and come with a bull fertility certificate, supplied by Keith Petersen at Ovasem Animal Reproductive Solutions. Bulls have all had scrotal circumference measurements which are documented in this catalogue. (See raw data)

Stud Female Guarantee

All purebred Speckle Park females in this sale have had a reproductive examination to ensure they have normal genital tracts and two ovaries present. A certificate from Dr Udo Mahne will be provided to female buyers.

Many females in this sale are pregnant and have been pregnancy tested prior to sale by Hay Veterinarian Wayne Gardam. Pregnancy certificates will be provided to buyers of females that have been pregnancy tested in calf.

Recipient Cow Guarantee

Recipient cows in this sale will also come with a pregnancy certificate from Wayne Gardam Veterinarian Hay. Certificates will be provided to all buyers.

Guarantee Note:

Buyers must however be aware, that breeding livestock involves a certain amount of risk and can be unpredictable at times. Formal possession, risk and expenses pass to the buyer at the fall of the hammer. It is then the buyer's responsibility to insure purchased sale animals for infertility, injury or mishappening. No insurance equals no guarantee.

HERD HEALTH

At Keiross Speckle Park we take the utmost care to ensure the health and welfare of our animals is optimal. We place great importance on vaccination of our cattle. See below the vaccinations administered to cattle at this sale. All animals have routine vaccination and drenching.

Recently administered:

Bulls

26/12/22 Coopers Piliguard, Ultravac 7in1, Vibrovax, Multimin Evolution
 23/1/23 Ultravac 7in1 booster, Vibrovax booster
 2/02/2023 Pestigard
 Pestigard booster will be administered to bulls (see supplementary sheet for date)

Stud Females

27/12/22 Coopers Piliguard, Ultravac 7in1, Pestigard, Multimin Evolution
 23/1/23 Ultravac 7in1 booster, Pestigard booster

Note = each registered speckle park animal has also had a Pesti virus check at the time of DNA testing and has returned a negative result.

Recipient Cows

See supplementary sheet.

NUTRITION

Prior to November 2022, all animals were on natural paddock feed at Keiross (80km northwest of Hay). Following a major flood event, the bulls and females in the sale (not including recipient cows) were moved to our small farm in Hay and have been fed barley hay and a custom-made grain mix. Animals have also been exposed to Olssons 365 mineral lick blocks.

GENERAL NOTE

Some females in this sale have been flushed. An "F" in the lot description indicates the female has been flushed.
 Some bulls in this sale have had semen collected to be used only by Keiross Speckle Park. These bulls will have an "S" in their lot description.

DNA TESTING

Keiross Speckle Park is a proud member of Speckle Park International. All registered animals in this sale have a 50K SNP profile, are parent verified and pedigree assured through Speckle Park International.

They were also tested for myostatin, red gene and poll genes. Animals have also received a leptin classification. Genetic profile codes are explained below.

Coat Colour	RGF: homozygous dominant black RGC: dominant black/recessive red
Poll/Horn Testing	PP: Homozygous Polled. Carries two copies of the poll gene. HP: Heterozygous Polled. Carries one copy of the horn gene HH: Horned. Carries two copies of the horn gene
Myostatin	NC: non-carrier of the nt821 myostatin gene C: carrier of one copy of nt821 myostatin gene
Leptin	Represented as TT, CT or CC.

Each animal at the sale has a certified pedigree, health certificate and transfer form available to the new owner after the sale.

If you are interested or wish to register as a new member with SPI, please visit www.specklepark.org or for more information call SPI on 1800 221 271.

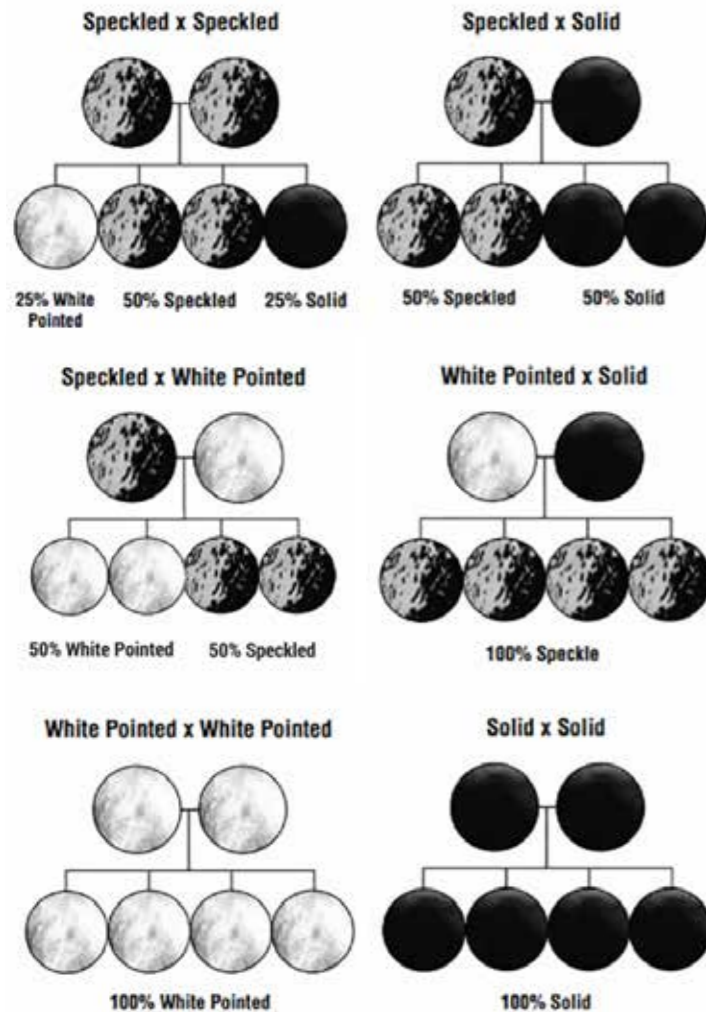


Sale Information

COLOUR PATTERN

Speckle Park cattle come in four distinct colours: speckled, leopard, white with black points and solid black. The leopard and speckled pattern are genetically the same but display various degrees of spotting. Some Speckle Park cattle can produce red colour patterns if both parents carry the recessive red gene. It is important to understand how the Speckle Park colour patterns are inherited in order to achieve your breeding goals.

Please see the colour guide below for a visual illustration.



EMBRYO LOTS

All embryos sold today have been collected by a qualified embryo transfer technician and are grade 1 embryos. These embryos are stored at Apiam Genetics. It is up to the buyer to get in touch with Keiross Speckle Park after the sale to arrange movement of the embryos. Embryos are not eligible for export. These embryos are sold with no guarantee. It is the responsibility of the buyer to ensure proper advice is sought when using these embryos.

BREED PLAN

An animal's breeding value can be defined as its genetic merit for each trait. While it is not possible to determine an animal's true breeding value, it is possible to make an estimation. These estimates of an animal's true breeding value are called EBVs. EBVs for each animal are listed in the catalogue as well as the February Breedplan reference table for comparisons. Keiross Speckle Park value collecting and studying cattle data as a means of improving particular animal traits.

You will also notice throughout the catalogue raw data on each individual animal. Note: animals current weight in catalogue were taken on 2/2/2023. A more recent weight will be available on the supplementary sheet.

VISITOR SAFETY

Every care has been taken to ensure your comfort and safety whilst attending our sale. Please be cautious and aware when moving through the sale yard facilities and around animals. While precautions have been taken to minimize hazards, cattle can be unpredictable at times. No children are allowed to enter holding pens, sale pens or the loading area. In the case of an accident, Keiross Speckle Park have no responsibility.

TRANSPORT

Hay is a very accessible location for livestock transport. We recommend the below carriers:

AAA Livestock Hay

Boof and Amanda Curtis of AAA Livestock Hay Boof has done extensive livestock carting for us over the years and does a great job. He can be contacted on **0447 118 448** to arrange transportation of animal/s.

Falls Transport

A family owned and operated business that operates Australia wide, Falls Transport cart some of the finest and most prestigious livestock around Australia with a high-quality service. Lockie Falls **0429 826 342**.

ADVICE DISCLAIMER

The Comb family are willing to provide advice to those seeking guidance on the cattle and genetics in this sale, however the final decision is that of the purchaser. We, at Keiross Speckle Park cannot be held responsible for final results and performance of animals or genetic packages.

SALE CATALOGUE DISCLAIMER

We strive to provide information in this catalogue that is correct to the best of our knowledge at the time of publication. However, neither the vendor, selling agents or representatives there of assume any responsibility for the accuracy, reliability or completeness of any information provided in this catalogue, nor the use or interpretation thereof. It is advised to seek independent verification of any information contained in this catalogue before relying on such information.

SUPPLEMENTARY INFORMATION

A supplementary sheet of updated information will be available on the sale day.

CONTACT DETAILS

For more information about the sale, more detailed information about the cattle or any other enquires contact:

Dimity Comb 0434 036 506

Like us on **Facebook** @ Keiross Speckle Park

Email: lcomb@bigpond.com
or comb_17@hotmail.com

We understand people are busy, therefore if you are unable to visit us at our inspection day, please contact us to arrange private inspections or to discuss how we can assist you.





AuctionsPlus

How to Register and Bid on AuctionsPlus

- 1 Go to www.auctionsplus.com.au to register at least 48 hours before the sale.
- 2 Select "Sign Up" in the top right hand corner.
- 3 Fill out your name, mobile number, email address and create a password.
- 4 Go to your emails and confirm the account.
- 5 Return to AuctionsPlus and log in.
- 6 Select "Dashboard" and then select "Request Approval to Buy".
- 7 Fill in buyer details and once completed go back to Dashboard.
- 8 Complete buyer induction module (approx. 30 minutes).
- 9 AuctionsPlus will email you to let you know that your account has been approved.
- 10 Log in on sale day and connect to auction.
- 11 Bid using the two-step process – unlock the bid button and bid at that price.
- 12 If you are successful, the selling agent will contact you post sale to organise delivery and payment.

For more information please contact us on:

Phone: (02) 9262 4222

Email: info@auctionsplus.com.au

EBVs

BREED PERCENTILE BANDS FOR 2021 BORN CALVES

Percentile Band	Gestation Length (days)	Birth Wt (kg)	200 Day Wt (kg)	400 Day Wt (kg)	600 Day Wt (kg)	Mat Cow Wt (kg)	Milk (kg)	Scrotal Size (cm)	Carcase Wt (kg)	Eye Muscle Area (sq cm)	Rib Fat (mm)	Rump Fat (mm)	Retail Beef Yield (%)	IMF (%)
Top Value	-3.4	-2.9	+44	+66	+80	+84	+11	+2.0	+51	+3.3	+3.0	+4.1	+2.5	+1.7
Top 1%	-2.2	-1.3	+30	+46	+60	+67	+9	+1.4	+35	+2.1	+2.0	+2.7	+1.5	+1.2
Top 5%	-1.3	-0.2	+26	+39	+51	+56	+7	+1.0	+30	+1.6	+1.3	+1.8	+1.0	+0.7
Top 10%	-1.0	+0.3	+23	+35	+47	+51	+6	+0.8	+27	+1.3	+1.0	+1.3	+0.8	+0.6
Top 15%	-0.7	+0.6	+21	+33	+44	+47	+6	+0.7	+26	+1.2	+0.8	+1.1	+0.6	+0.4
Top 20%	-0.5	+0.8	+20	+31	+41	+44	+5	+0.6	+24	+1.1	+0.7	+0.9	+0.4	+0.4
Top 25%	-0.4	+1.0	+19	+29	+39	+42	+5	+0.6	+23	+1.0	+0.6	+0.7	+0.3	+0.3
Top 30%	-0.2	+1.2	+18	+28	+37	+39	+5	+0.5	+22	+0.9	+0.5	+0.6	+0.2	+0.3
Top 35%	-0.1	+1.3	+17	+27	+36	+37	+5	+0.4	+21	+0.8	+0.4	+0.4	+0.2	+0.2
Top 40%	+0.0	+1.5	+16	+26	+34	+35	+4	+0.4	+20	+0.8	+0.3	+0.3	+0.1	+0.2
Top 45%	+0.1	+1.6	+16	+25	+32	+33	+4	+0.4	+19	+0.7	+0.2	+0.2	+0.0	+0.1
Top 50%	+0.2	+1.7	+15	+24	+31	+32	+4	+0.3	+19	+0.6	+0.1	+0.1	-0.1	+0.1
Top 55%	+0.3	+1.9	+14	+23	+30	+30	+4	+0.3	+18	+0.5	+0.1	+0.1	-0.1	+0.1
Top 60%	+0.4	+2.0	+13	+22	+28	+28	+3	+0.2	+17	+0.5	+0.0	-0.1	-0.2	+0.0
Top 65%	+0.5	+2.2	+13	+20	+27	+27	+3	+0.2	+16	+0.4	-0.1	-0.2	-0.3	+0.0
Top 70%	+0.6	+2.3	+12	+19	+25	+25	+3	+0.1	+15	+0.3	-0.2	-0.3	-0.4	-0.1
Top 75%	+0.7	+2.5	+11	+18	+24	+22	+3	+0.1	+14	+0.2	-0.3	-0.4	-0.5	-0.1
Top 80%	+0.8	+2.7	+10	+17	+22	+20	+2	+0.0	+13	+0.1	-0.4	-0.5	-0.6	-0.2
Top 85%	+1.0	+3.0	+9	+15	+20	+18	+2	-0.1	+11	+0.0	-0.5	-0.7	-0.8	-0.2
Top 90%	+1.2	+3.4	+8	+13	+17	+14	+1	-0.2	+10	-0.2	-0.6	-0.9	-1.0	-0.3
Top 95%	+1.4	+3.8	+5	+9	+12	+8	+1	-0.4	+7	-0.4	-0.9	-1.3	-1.2	-0.5
Top 99%	+2.1	+5.0	+1	+2	+4	-3	-1	-0.9	+2	-0.8	-1.4	-1.9	-1.7	-0.8
Low Value	+3.4	+7.2	-5	-13	-21	-39	-3	-2.3	-13	-1.8	-2.1	-3.0	-2.8	-1.2

BREED AVERAGE EBVS FOR 2021 BORN CALVES

GL	BW	200	400	600	MCW	MILK	SS	CWT	EMA	RIB	RUMP	RBY	IMF
+0.1	+1.8	+15	+24	+31	+32	+4	+0.3	+19	+0.6	+0.2	+0.2	-0.1	+0.1

IDENT NGL L12

THREE WAY KINGS RANSOM

Information

Colour	Speckled
Horn	Polled
Poll	PcPc
Coat	ED/ED
MSTN	Non Carrier (Free)
Leptin	C/T

P.A.R. MOO FASSA 03M (Speckled)
 WATTLE GROVE 54P MOO FASA E34 (ET) (Speckled)
 NOTTA PHO-FINISH 54P (Speckled)
ALMARLEA E6 KINGSLEY (Speckled)
 STAR BANK LACERTA 68L (Speckled)
 ALMARLEA 68L AMYS GIRL E6 (ET) (Speckled)
 PRAIRIE HILL AMY'S GIRL 21K (Speckled)
 SPOTS 'N SPROUTS JUNO 103J (Speckled)
 STAR BANK LACERTA 68L (Speckled)
 STAR BANK 55H (Speckled)
ALMARLEA 68L MELISSA (ET) (White)
 STYALS 3K (Speckled)
 CODIAK MELISA RKW 64M (Speckled)
 WILDWOOD KIT 6K (ET) (White)



IDENT BED 94A

RIVER HILL 12X A'MAN 94A

Information

Colour	Speckled
Horn	-
Poll	-
Coat	-
MSTN	-
Leptin	-

HWY. 4 SPECKLE PARK 20L (Speckled)
 CODIAK TRUMP GNK 20T (P) (Speckled)
 EL RANCHO NO GOTTO SHANS 02J (Speckled)
RIVER HILL GNK 12X (Speckled)
 RAVEN MEADOWS MAGNUM 10N (Speckled)
 CODIAK SALLY SUE GNK 17U (P) (White)
 CODIAK CDK 26P (Leopard)
 PRAIRIE HILL MASTERPLAN 97G (Speckled)
 PRAIRIE HILL MASTERPLAN II 87L (Speckled)
 PRAIRIE HILL LUCKY ROLLIE 87G (Speckled)
PRAIRIE HILL PASSION 94P (Speckled)
 PRAIRIE HILL ENTICER 89G (Speckled)
 PRAIRIE HILL FANCY PANTS 93J (Speckled)
 PRAIRIE HILL 2G (Speckled)



IDENT RMS 103E

MX EL GUAPO 103E

Information

Colour	Speckled
Horn	Polled
Poll	PcPc
Coat	ED/ED
MSTN	Non Carrier (Free)
Leptin	C/C

P.A.R. TOUCH DOWN 600T (P) (Leopard)
 PAR ACE IN A HOLE 66A (Speckled)
 P.A.R. WONDER BRA 66W (P) (Speckled)
P.A.R. CASANOVA 55C (P) (Speckled)
 CALAMASUE 4M (Speckled)
 POPPY OF P.A.R. 55P (Leopard)
 MELISSA OF P.A.R. 5M (Speckled)
 P.A.R. PAPA RAZZI 6P (Speckled)
 P.A.R. THROTTLE 66T (P) (Speckled)
 ROB 'N SON'S FARMS 6P (Speckled)
P.A.R. HIGH MAINTENANCE OF MX 103Z (P) (Speckled)
 P.A.R. KING PIN 1K (Speckled)
 SPECIAL DESIGN OF P.A.R. 20S (P) (Speckled)
 ANGEL OF P.A.R. 2K (Leopard)



IDENT MBG 25U

UPTO SPECS ULYSSES 25U

Information

Colour	Speckled
Horn	Polled
Poll	-
Coat	-
MSTN	-
Leptin	-

P.A.R. JACK DANIELS 3F (Speckled)
 SPRUCE LANE VENTURE 3J (Speckled)
 WILDWOOD LYNN 7G (Speckled)
RAVEN MEADOWS MAGNUM 10N (Speckled)
 DOUBLE J DUNOONS CHARLIE 54E
 PARKLAND SPECKLE PARK 10J (Speckled)
 PARKLAND SPECKLE PARKS 7C
 DOUBLE RR RASCAL 183'88
 THUNDER 1C (Speckled)
 LIGHTNING LADY 11Z
PRAIRIE HILL REBA 154F (Speckled)
 SPOTS AND SPROUTS 1Y
 SPOTS 'N SPROUTS 1D (White)
 SPOTS AND SPROUTS 14X



IDENT WGS L275

WATTLE GROVE SMOKE AND MIRRORS L275

Information

Colour	Leopard
Horn	Polled
Poll	-
Coat	-
MSTN	-
Leptin	-

CODIAK PHLEP GNK 3P (Speckled)
 CODIAK OSCAR GNK 8S (P) (Leopard)
 CODIAK MATEUSA RKW 63M (White)
CODIAK PUTNAM GNK 61Y (P) (Leopard)
 FLATLAKE BUZZ 60K (Speckled)
 NORTHERN LIGHTS 14N (White)
 CODIAK KLIPSO RKW 31K (Leopard)
 SPRUCE LANE VENTURE 3J (Speckled)
 RAVEN MEADOWS MAGNUM 10N (Speckled)
 PARKLAND SPECKLE PARK 10J (Speckled)
CODIAK GOOD GOLLY GNK 11U (P) (Speckled)
 ASPEN ACRES FREEDOM 31F (Speckled)
 SPOTS 'N SPROUTS 3K (Speckled)
 SPOTS 'N SPROUTS 6F (Black)



IDENT JMG 64R

NOTTA ROMEO 64R

Information

Colour	Speckled
Horn	Polled
Poll	-
Coat	-
MSTN	-
Leptin	-

P.A.R. GREAT WESTERN 11F
 SPOTS 'N SPROUTS JUNO 103J (Speckled)
 SPOTS 'N SPROUTS 6A
STAR BANK LACERTA 68L (Speckled)
 NORALTA 9E
 STAR BANK 55H (Speckled)
 STAR BANK 43F
 NORALTA 2B
 NORALTA 9E
 SPOTS AND SPROUTS 12A
STAR BANK 64L (Speckled)
 P.A.R. LITTLE EDDIE II 93E
 JANETTE OF P.A.R. 44H (Speckled)
 PUSSY KAT II OF P.A.R. 11D (Speckled)



IDENT US 1D

UNDERHILL ALL OUT 1D

Information

Colour	Speckled
Horn	Polled
Poll	PcPc
Coat	ED/ED
MSTN	Carrier
Leptin	-

STAR BANK LACERTA 68L (Speckled)
 RIVER HILL 68L STRIKER 50U (P) (Speckled)
 PRAIRIE HILL NABOB 50N (Speckled)
RIVER HILL 50U ALL IN 60A (White)
 P.A.R. MOO FASSA 03M (Speckled)
 RIVER HILL SHOW ME OFF 60S (P) (Speckled)
 RIVER HILL SNAP SHOT 60M (Speckled)
 RIVER HILL BLINK 182K (Speckled)
 CDS FARMS PAUL 2M (Speckled)
 CDS FARMS PAULA 6K (White)
SPOTS 'N SPROUTS 10S (P) (Speckled)
 P.A.R. LITTLE EDDIE II 93E
 JANE OF P.A.R. 12J (Speckled)
 ASPEN ACRES 1A (Speckled)



IDENT MSM E11

MAINSTREAM ELDORADO E11

Information

Colour	White
Horn	Polled
Poll	HPc
Coat	ED/ED
MSTN	Non Carrier (Free)
Leptin	C/T

DOUBLE RR RASCAL 138'88
 PARKLAND SPECKLE PARKS 5B
 PARKLAND SPECKLE PARKS 2Y
HWY. 4 SPECKLE PARK 2H (Speckled)
 ASPEN ACRES T.N.T. 4Y (Speckled)
 LEIGH-AL-ANN PRINCESS 1B
 LEIGH-ANN 1Z
 THUNDER 1C (Speckled)
 ASPEN ACRES FREEDOM 31F (Speckled)
 ASPEN ACRES 2Y (Speckled)
SPOTS 'N SPROUTS 3K (Speckled)
 SPOTS 'N SPROUTS BOOMER 102B
 SPOTS 'N SPROUTS 6F (Black)
 SPOTS 'N SPROUTS 5C



IDENT MAU K247

MAUNGAHINA KIDMANS COVE

Information

Colour	Leopard
Horn	Polled
Poll	HPc
Coat	ED/e
MSTN	Non Carrier (Free)
Leptin	C/C

BELMORAL'S SPECIAL 99H (Speckled)
 A & W 15R (P) (Leopard)
 TRIPLE A GEM 15G (Speckled)
SPKNZ FALCON (AI) (ET) (P) (Speckled)
 CODIAK MR. BLACK RKW 13M (Black)
 CODIAK TERESSA GNK 12T (P) (Speckled)
 CODIAK RKW 07J (Speckled)
 PARKLAND SPECKLE PARKS 5B
 HWY. 4 SPECKLE PARK 2H (Speckled)
 LEIGH-AL-ANN PRINCESS 1B
MAINSTREAM E12 (ET) (P) (Speckled)
 STAR BANK LACERTA 68L (Speckled)
 NOTTA PHO-FINISH 54P (Speckled)
 STAR BANK LEONID NIGHT 54L (Speckled)



IDENT GNK 107D

GODIAK MONUMENT GNK 107D

Information

Colour	White
Horn	Polled
Poll	PcPc
Coat	ED/ED
MSTN	Non Carrier (Free)
Leptin	-

UPTO SPECS HOMER 24K (Speckled)
 CODIAK PHLEP GNK 3P (Speckled)
 CODIAK HILLARY 81H (White)
CODIAK OSCAR GNK 8S (P) (Leopard)
 HWY. 4 SPECKLE PARK 2H (Speckled)
 CODIAK MATEUSA RKW 63M (White)
 EL RANCHO NO GOTTO SHANS 02J (Speckled)
 HWY. 4 SPECKLE PARK 2H (Speckled)
 CODIAK MR. BLACK RKW 13M (Black)
 PRAIRIE HILL REBA 154F (Speckled)
CODIAK UNIQUE GNK 8R (P) (Speckled)
 P.A.R. IMPACT 11G (Leopard)
 CODIAK RKW 07J (Speckled)
 ATIM LADY 3D (Speckled)



IDENT GNK 61Y

GODIAK PUTNAM GNK 61Y

Information

Colour	Leopard
Horn	Polled
Poll	-
Coat	-
MSTN	-
Leptin	-

UPTO SPECS HOMER 24K (Speckled)
 CODIAK PHLEP GNK 3P (Speckled)
 CODIAK HILLARY 81H (White)
CODIAK OSCAR GNK 8S (P) (Leopard)
 HWY. 4 SPECKLE PARK 2H (Speckled)
 CODIAK MATEUSA RKW 63M (White)
 EL RANCHO NO GOTTO SHANS 02J (Speckled)
 PRAIRIE HILL AFTER SHOCK 75G (Speckled)
 FLATLAKE BUZZ 60K (Speckled)
 CODIAK LITTLE LADY 60H (White)
NORTHERN LIGHTS 14N (White)
 HWY. 4 SPECKLE PARK 2H (Speckled)
 CODIAK KLIPSO RKW 31K (Leopard)
 SPOTS 'N SPROUTS 13G (Speckled)



IDENT JSF 36E

JSF WALL STREET 36E

Information

Colour	Speckled
Horn	Polled
Poll	PcPc
Coat	ED/ED
MSTN	Non Carrier (Free)
Leptin	-

NORTON
 SPOTS AND SPROUTS DYNAMITE 23T
 TAG# 92
ASPEN ACRES T.N.T. 4Y (Speckled)
 PUSSY CAT 11
 ASPEN ACRES 4U
 COW #69
 ASPEN ACRES RADAR 5R (P) (Speckled)
 REDNECK RANCH'S TEDDY 5T (P) (Speckled)
 UPTO SPECS LACEY 30L (Speckled)
REDNECK WHISKEY 7W (P) (White)
 P.A.R. MOO FASSA 03M (Speckled)
 REDNECK RANCH'S SCARLET 1S (P) (Speckled)
 PRAIRIE HILL PADDY 233P (Speckled)



IDENT GNK 36B

CODIAK BIRDIE GNK 36B

Information

Colour	Speckled
Horn	-
Poll	-
Coat	-
MSTN	-
Leptin	-

HWY. 4 SPECKLE PARK 3H (Speckled)
 HWY. 4 SPECKLE PARK 20L (Speckled)
 HWY. 4 SPECKLE PARK 3D
CODIAK TRUMP GNK 20T (P) (Speckled)
 SPOTS 'N SPROUTS BULLET 107E
 EL RANCHO NO GOTTO SHANS 02J (Speckled)
 SPOTS 'N SPROUTS 2G (Speckled)
 SPRUCE LANE VENTURE 3J (Speckled)
 RAVEN MEADOWS MAGNUM 10N (Speckled)
 PARKLAND SPECKLE PARK 10J (Speckled)
CODIAK WAITIN ON YOU 55W (P) (White)
 CODIAK PRAIRIE FIRE RKW 14J (P) (Leopard)
 CODIAK RAYLEANE GNK 52R (P) (Speckled)
 EL RANCHO NO GOTTO SHANS 02J (Speckled)



IDENT GNK 66A

CODIAK ACRES BELINDA 66A

Information

Colour	Speckled
Horn	-
Poll	HPc
Coat	ED/ED
MSTN	Non Carrier (Free)
Leptin	-

UPTO SPECS HOMER 24K (Speckled)
 CODIAK PHLEP GNK 3P (Speckled)
 CODIAK HILLARY 81H (White)
CODIAK OSCAR GNK 8S (P) (Leopard)
 HWY. 4 SPECKLE PARK 2H (Speckled)
 CODIAK MATEUSA RKW 63M (White)
 EL RANCHO NO GOTTO SHANS 02J (Speckled)
 SPRUCE LANE VENTURE 3J (Speckled)
 RAVEN MEADOWS MAGNUM 10N (Speckled)
 PARKLAND SPECKLE PARK 10J (Speckled)
UPTO SPECS TORI 10T (P) (Leopard)
 HWY. 4 SPECKLE PARK 2H (Speckled)
 UPTO SPECS MILLIE 74M (White)
 WILDWOOD BETSY 9J (White)



IDENT KRS Q39

KEIROSS BIRDIE Q39

Information

Colour	Speckled
Horn	-
Poll	HPc
Coat	ED/ED
MSTN	Non Carrier (Free)
Leptin	C/T

CODIAK PHLEP GNK 3P (Speckled)
 CODIAK OSCAR GNK 8S (P) (Leopard)
 CODIAK MATEUSA RKW 63M (White)
CODIAK MONUMENT GNK 107D (P) (White)
 CODIAK MR. BLACK RKW 13M (Black)
 CODIAK UNIQUE GNK 8R (P) (Speckled)
 CODIAK RKW 07J (Speckled)
 HWY. 4 SPECKLE PARK 20L (Speckled)
 CODIAK TRUMP GNK 20T (P) (Speckled)
 EL RANCHO NO GOTTO SHANS 02J (Speckled)
CODIAK BIRDIE GNK 36B (Speckled)
 RAVEN MEADOWS MAGNUM 10N (Speckled)
 CODIAK WAITIN ON YOU 55W (P) (White)
 CODIAK RAYLEANE GNK 52R (P) (Speckled)



IDENT GNK 30B

CODIAK MARUSA GNK 30B

Information

Colour	Speckled
Horn	Polled
Poll	HPc
Coat	ED/e
MSTN	Non Carrier (Free)
Leptin	-

HWY. 4 SPECKLE PARK 2H (Speckled)
 NOTTA FRONTLINE 303X (Speckled)
 NOTTA PRETENDER 64P (ET) (Speckled)
CODIAK SUMMIT SUPREME GNK 10Z (P) (White)
 CODIAK TIMOTHY GNK 22T (P) (Speckled)
 CODIAK GNK 15X (Speckled) (TW)
 CODIAK COUGAR GNK 54R (P) (Speckled)
 RAVEN MEADOWS MAGNUM 10N (Speckled)
 UPTO SPECS SANTO 2S (P) (Speckled)
 RAVEN MEADOWS PEARL 18P (Speckled)
CODIAK BLACK MAJIC GNK 40W (P) (Black)
 RAVEN MEADOWS MAGNUM 10N (Speckled)
 UPTO SPECS TEEKA 8T (P) (Leopard)
 PRAIRIE HILL REBA 154F (Speckled)



IDENT GNK 5X

CODIAK ACRES NIOME GNK5X

Information

Colour	White
Horn	-
Poll	-
Coat	-
MSTN	-
Leptin	-

HWY. 4 SPECKLE PARK 3H (Speckled)
 HWY. 4 SPECKLE PARK 20L (Speckled)
 HWY. 4 SPECKLE PARK 3D
CODIAK TRUMP GNK 20T (P) (Speckled)
 SPOTS 'N SPROUTS BULLET 107E
 EL RANCHO NO GOTTO SHANS 02J (Speckled)
 SPOTS 'N SPROUTS 2G (Speckled)
 SPRUCE LANE VENTURE 3J (Speckled)
 RAVEN MEADOWS MAGNUM 10N (Speckled)
 PARKLAND SPECKLE PARK 10J (Speckled)
CODIAK URE OKAY GNK 10U (P) (Speckled)
 CODIAK MR. BLACK RKW 13M (Black)
 CODIAK UNIQUE GNK 8R (P) (Speckled)
 CODIAK RKW 07J (Speckled)



IDENT KRS P19

KEIROSS ATTITUDENOUS P19

Information

Colour	Speckled
Horn	Polled
Poll	PcPc
Coat	ED/e
MSTN	Non Carrier (Free)
Leptin	-

LEGACY SCOUT 10S (P) (Speckled)
 LEGACY UPPERCUT 74U (P) (Speckled)
 CURTIS CORNER MISS ELLI 1J (Speckled)
CALAMASUE 9Y (Speckled)
 SPOTS 'N SPROUTS GUNSMOKE 106G (Black)
 SPOT 'N SPROUTS 15K (Speckled)
 SPOTS 'N SPROUTS 1F (Speckled)
 HWY. 4 SPECKLE PARK 20L (Speckled)
 CODIAK TRUMP GNK 20T (P) (Speckled)
 EL RANCHO NO GOTTO SHANS 02J (Speckled)
CODIAK ACRES ATTITUDENOUS (Speckled)
 RAVEN MEADOWS MAGNUM 10N (Speckled)
 CODIAK GOOD GOLLY GNK 11U (P) (Speckled)
 SPOTS 'N SPROUTS 3K (Speckled)



IDENT KRS P9

KEIROSS KATIE P9

Information

Colour	White
Horn	Polled
Poll	PcPc
Coat	ED/ED
MSTN	Non Carrier (Free)
Leptin	-

BELMORAL'S SPECIAL 99H (Speckled)
 A & W 15R (P) (Leopard)
 TRIPLE A GEM 15G (Speckled)
HS UNTAPPED 3A (Speckled)
 P.A.R. RILLEY 2R (P) (Speckled)
 NOTTA 2R PRETENDER 4T (P) (Speckled)
 NOTTA PRETENDER 64P (ET) (Speckled)
 CODIAK OSCAR GNK 8S (P) (Leopard)
 CODIAK PUTNAM GNK 61Y (P) (Leopard)
 NORTHERN LIGHTS 14N (White)
WHITE ACRES KATIE (AI) (ET) (P) (White)
 HWY. 4 SPECKLE PARK 2H (Speckled)
 WATTLE GROVE SPARKLE E31 (ET) (Speckled)
 CODIAK PRAIRIE FIRE RKW 01J (Speckled)



IDENT NGL M27

THREE WAY GRACELANDS M27

Information

Colour	Leopard
Horn	Polled
Poll	PcPc
Coat	ED/ED
MSTN	Non Carrier (Free)
Leptin	C/T

P.A.R. KING PIN 1K (Speckled)
 P.A.R. SHARP SHOOTER 60S (P) (Speckled)
 LUCKY ANGEL OF P.A.R. 6L (Speckled)
HEARTRIDGE ARIES 01W (P) (Speckled)
 P.A.R. NAPOLEON 10N (Speckled)
 PONDEROSA TIFFANY 06T (P) (Speckled)
 ASPEN ACRES LUCKY LADY 05L (Speckled)
 RIVER HILL TRAFFIC JAM 26T (P) (Speckled)
 RIVER HILL 26T WALKER 60W (P) (Speckled)
 RIVER HILL SHOW ME OFF 60S (P) (Speckled)
THREE WAY GRACELANDS (AI) (ET) (P) (Speckled)
 CODIAK MR. BLACK RKW 13M (Black)
 CODIAK UNIQUE GNK 8R (P) (Speckled)
 CODIAK RKW 07J (Speckled)



IDENT WHT K11

WHITE ACRES KATIE

Information

Colour	White
Horn	Polled
Poll	PcPc
Coat	ED/ED
MSTN	Non Carrier (Free)
Leptin	-

CODIAK PHLEP GNK 3P (Speckled)
 CODIAK OSCAR GNK 8S (P) (Leopard)
 CODIAK MATEUSA RKW 63M (White)
CODIAK PUTNAM GNK 61Y (P) (Leopard)
 FLATLAKE BUZZ 60K (Speckled)
 NORTHERN LIGHTS 14N (White)
 CODIAK KLIPSO RKW 31K (Leopard)
 PARKLAND SPECKLE PARKS 5B
 HWY. 4 SPECKLE PARK 2H (Speckled)
 LEIGH-AL-ANN PRINCESS 1B
WATTLE GROVE SPARKLE E31 (ET) (Speckled)
 PRAIRIE HILL AFTER SHOCK 75G (Speckled)
 CODIAK PRAIRIE FIRE RKW 01J (Speckled)
 LIGHTNING LADY 5B



IDENT KRS P6

KEIROSS AMANDA P6

Information

Colour	Leopard
Horn	Polled
Poll	PcPc
Coat	ED/ED
MSTN	Non Carrier (Free)
Leptin	-

PARKLAND SPECKLE PARKS 5B
 HWY. 4 SPECKLE PARK 2H (Speckled)
 LEIGH-AL-ANN PRINCESS 1B
MAINSTREAM ELDORADO E11 (ET) (P) (White)
 ASPEN ACRES FREEDOM 31F (Speckled)
 SPOTS 'N SPROUTS 3K (Speckled)
 SPOTS 'N SPROUTS 6F (Black)
 RAVEN MEADOWS MAGNUM 10N (Speckled)
 CODIAK CRIKEY GNK 13U (P) (Speckled)
 CODIAK RKW 07J (Speckled)
CODIAK AMANDA GNK 42Y (P) (Speckled)
 CODIAK MR. BLACK RKW 13M (Black)
 CODIAK UNIQUE GNK 8R (P) (Speckled)
 CODIAK RKW 07J (Speckled)



IDENT SOS M61

MT ECCLES SAHARA

Information

Colour	Speckled
Horn	Polled
Poll	PcPc
Coat	ED/ED
MSTN	Carrier
Leptin	-

REDNECK WILD WILLY 2W (AI) (P) (Speckled)
 SEMEX ALLIANCE YOGI GOES REDNECK (Speckled)
 ASPEN ACRES LINDA LOU 10L (Speckled)
JOHNER STOCK FARM TRADE SECRET (White)
 RIVER HILL SHOW BIZ 93S (P) (Leopard)
 MONNERY RIVER 7W (P) (Speckled)
 MONNERY RIVER 7P (White)
 SPOTS 'N SPROUTS JUNO 103J (Speckled)
 STAR BANK LACERTA 68L (Speckled)
 STAR BANK 55H (Speckled)
MT ECCLES YASI (AI) (ET) (P) (Black)
 CODIAK CRIKEY GNK 13U (P) (Speckled)
 WARATAH MELISA G34 (ET) (Speckled)
 CODIAK MELISA RKW 64M (Speckled)



IDENT SSP 1E

STEELE SATIN 1E

Information

Colour	White
Horn	Polled
Poll	PP
Coat	ED/ED
MSTN	Non Carrier (Free)
Leptin	-

SPRUCE LANE VENTURE 3J (Speckled)
 RAVEN MEADOWS MAGNUM 10N (Speckled)
 PARKLAND SPECKLE PARK 10J (Speckled)
UPTO SPECS ULYSSES 25U (P) (Speckled)
 THUNDER 1C (Speckled)
 PRAIRIE HILL REBA 154F (Speckled)
 SPOTS 'N SPROUTS 1D (White)
 LEGACY SCOUT 10S (P) (Speckled)
 LEGACY UNRIVALED 12U (P) (Speckled)
 STAR BANK 34R (P) (Speckled)
CODIAK KATIE GO ON 7Y (P) (Speckled)
 ASPEN ACRES T.N.T. 4Y (Speckled)
 CODIAK HILLARY 81H (White)
 MISS ATIM 10F



Bulls

Lots 1 - 31



Lot 1

IDENT KRS S11 DOB 12/2/2021

Keiross *Romeo* S11

Keiross Romeo S11 is a standout white bull to get started with plenty of pedigree behind him. Son of Whites Acres Katie, and grandson of Putnam and Lacerta, have infused great attributes of size, depth, and a fantastic, quiet disposition. This bull will be whatever you want him to be, he ticks all the boxes. S11 has one of the highest EMAs among our bulls. Don't let him go!

SPOTS 'N SPROUTS JUNO 103J (Speckled)
 STAR BANK LACERTA 68L (Speckled)
 STAR BANK 55H (Speckled)
NOTTA ROMEO 64R (P) (Speckled)
 NORALTA 9E
 STAR BANK 64L (Speckled)
 JANETTE OF P.A.R. 44H (Speckled)
 CODIAK OSCAR GNK 8S (P) (Leopard)
 CODIAK PUTNAM GNK 61Y (P) (Leopard)
 NORTHERN LIGHTS 14N (White)
WHITE ACRES KATIE (AI) (ET) (P) (White)
 HWY. 4 SPECKLE PARK 2H (Speckled)
 WATTLE GROVE SPARKLE E31 (ET) (Speckled)
 CODIAK PRAIRIE FIRE RKW 01J (Speckled)

Information

Colour	Horn	Poll	Coat	MSTN	Leptin
White	Polled	PcPc	ED/ED	Carrier	T/T

Raw Data

Weight	BW	Scrotal	P8	Rib	EMA	IMF
680	38	37	5	4	86	3.1

January 2023 Breedplan Data

	BW	MILK	GL	200	400	600	MCW	CWT	SS	RUMP	EMA	RIB	IMF	RBV
EBV	0.8	5	0.3	10	23	24	22	17	-0.1	-0.3	0.1	-0.2	-0.2	0
ACC	75	41	51	70	68	68	57	58	67	54	46	54	46	52

February 2023 Speckle Park BREEDPLAN





IDENT KRS S55 DOB 22/4/2021

S

Keiross *El Guapo* S55

Keiross El Guapo has been a favourite among the 2021 bulls since his 200-day weigh in. He is son of Mt Eccles Sahara and MX El Guapo which is one of our favourite combinations that really packs a punch. He has style, class and great depth. S55 is one of the heavier bulls in the sale who also ranks highly for scrotal circumference and EMA. S55 has an unrestrictive breeding profile.

- PAR ACE IN A HOLE 66A (Speckled)
- P.A.R. CASANOVA 55C (P) (Speckled)
- POPPY OF P.A.R. 55P (Leopard)
- MX EL GUAPO 103E (P) (Speckled)**
- P.A.R. THROTTLE 66T (P) (Speckled)
- P.A.R. HIGH MAINTENANCE OF MX 103Z (P) (Speckled)
- SPECIAL DESIGN OF P.A.R. 20S (P) (Speckled)
- SEMEX ALLIANCE YOGI GOES REDNECK (Speckled)
- JOHNER STOCK FARM TRADE SECRET (White)
- MONNERY RIVER 7W (P) (Speckled)
- MT ECCLES SAHARA (AI) (ET) (P) (Speckled)**
- STAR BANK LACERTA 68L (Speckled)
- MT ECCLES YASI (AI) (ET) (P) (Black)
- WARATAH MELISA G34 (ET) (Speckled)

Information

Colour	Horn	Poll	Coat	MSTN	Leptin
Speckled	Polled	PcPc	ED/ED	Non Carrier (Free)	C/T

Raw Data

Weight	BW	Scrotal	P8	Rib	EMA	IMF
681	44	40	3	2	91	1.5

January 2023 Breedplan Data

	BW	MILK	GL	200	400	600	MCW	CWT	SS	RUMP	EMA	RIB	IMF	RBV
EBV	2.6	4	-0.9	24	34	43	42	30	0.9	0	2.4	0	-0.4	1.2
ACC	76	26	48	71	69	70	57	59	71	55	45	55	45	52

February 2023 Speckle Park BREEDPLAN



IDENT KRS S8 DOB 8/2/2021

Keiross *Romeo* S8

Keiross Romeo S8 is a full brother to Lot 1 and a bull we rate highly. He has been a standout since he was weaned and has always had impressive growth rates. He has a good set of testies and the highest IMF of bulls in this sale. This bull will be an asset to any cattle breeding operation.

- SPOTS 'N SPROUTS JUNO 103J (Speckled)
- STAR BANK LACERTA 68L (Speckled)
- STAR BANK 55H (Speckled)
- NOTTA ROMEO 64R (P) (Speckled)**
- NORALTA 9E
- STAR BANK 64L (Speckled)
- JANETTE OF P.A.R. 44H (Speckled)
- CODIAK OSCAR GNK 8S (P) (Leopard)
- CODIAK PUTNAM GNK 61Y (P) (Leopard)
- NORTHERN LIGHTS 14N (White)
- WHITE ACRES KATIE (AI) (ET) (P) (White)**
- HWY. 4 SPECKLE PARK 2H (Speckled)
- WATTLE GROVE SPARKLE E31 (ET) (Speckled)
- CODIAK PRAIRIE FIRE RKW 01J (Speckled)

Information

Colour	Horn	Poll	Coat	MSTN	Leptin
Speckled	Polled	PcPc	ED/ED	Non Carrier (Free)	C/T

Raw Data

Weight	BW	Scrotal	P8	Rib	EMA	IMF
688	41	41	7	5	85	6.1

January 2023 Breedplan Data

	BW	MILK	GL	200	400	600	MCW	CWT	SS	RUMP	EMA	RIB	IMF	RBV
EBV	1.5	5	0.5	14	33	32	34	22	0.8	0.1	-0.1	0.1	0.2	-0.5
ACC	75	41	51	70	68	68	57	58	67	54	46	54	46	52

February 2023 Speckle Park BREEDPLAN



IDENT KRS S39 DOB 18/3/2021

S

Keiross *Ulysses* S39

Keiross Ulysses S39 stands out in the paddock, he really is a ripper! He has depth, volume, power and style. He has been the heaviest of our bulls at each weigh in, and he has one of the largest scrotal circumferences measured. He will be highly fertile and he will put depth into anything he touches. Very proven paternal line and a wonderful quiet disposition. S39 ranks in the top 15% 600-day WT and top 5% scrotal size among the 2021 born calves.

- SPRUCE LANE VENTURE 3J (Speckled)
- RAVEN MEADOWS MAGNUM 10N (Speckled)
- PARKLAND SPECKLE PARK 10J (Speckled)
- UPTO SPECS ULYSSES 25U (P) (Speckled)**
- THUNDER 1C (Speckled)
- PRAIRIE HILL REBA 154F (Speckled)
- SPOTS 'N SPROUTS 1D (White)
- CODIAK OSCAR GNK 8S (P) (Leopard)
- CODIAK MONUMENT GNK 107D (P) (White)
- CODIAK UNIQUE GNK 8R (P) (Speckled)
- KEIROSS BIRDIE Q39 (AI) (ET) (Speckled)**
- CODIAK TRUMP GNK 20T (P) (Speckled)
- CODIAK BIRDIE GNK 36B (Speckled)
- CODIAK WAITIN ON YOU 55W (P) (White)

Information

Colour	Horn	Poll	Coat	MSTN	Leptin
Speckled	Polled	HPc	ED/ED	Non Carrier (Free)	C/C

Raw Data

Weight	BW	Scrotal	P8	Rib	EMA	IMF
752	40	41	5	4	76	4.4

January 2023 Breedplan Data

	BW	MILK	GL	200	400	600	MCW	CWT	SS	RUMP	EMA	RIB	IMF	RBY
EBV	3.6	0	0.3	27	33	45	51	21	1.1	0.2	-0.5	0.1	0.1	-0.5
ACC	76	40	52	73	71	72	61	62	74	59	51	59	50	56

February 2023 Speckle Park BREEDPLAN



IDENT KRS S38 DOB 16/3/2021

Keiross *Ulysses* S38

KRS S38 is a full brother to Lot 4 and they are like pees in a pod. He is a powerhouse! This fella has the largest scrotal circumference of bulls in this sale. His mother is Keiross Birdie who we rate highly, she looks good, and she is highly fertile. After seeing this progeny, we will definitely be combing Birdie and Ulysses more in the future! Keiross Ulysses S38 ranks in the top 1% scrotal size of 2021 born calves.

- SPRUCE LANE VENTURE 3J (Speckled)
- RAVEN MEADOWS MAGNUM 10N (Speckled)
- PARKLAND SPECKLE PARK 10J (Speckled)
- UPTO SPECS ULYSSES 25U (P) (Speckled)**
- THUNDER 1C (Speckled)
- PRAIRIE HILL REBA 154F (Speckled)
- SPOTS 'N SPROUTS 1D (White)
- CODIAK OSCAR GNK 8S (P) (Leopard)
- CODIAK MONUMENT GNK 107D (P) (White)
- CODIAK UNIQUE GNK 8R (P) (Speckled)
- KEIROSS BIRDIE Q39 (AI) (ET) (Speckled)**
- CODIAK TRUMP GNK 20T (P) (Speckled)
- CODIAK BIRDIE GNK 36B (Speckled)
- CODIAK WAITIN ON YOU 55W (P) (White)

Information

Colour	Horn	Poll	Coat	MSTN	Leptin
Speckled	Polled	PcPc	ED/ED	Non Carrier (Free)	C/C

Raw Data

Weight	BW	Scrotal	P8	Rib	EMA	IMF
736	45	43	3	2	79	3.2

January 2023 Breedplan Data

	BW	MILK	GL	200	400	600	MCW	CWT	SS	RUMP	EMA	RIB	IMF	RBY
EBV	4.3	0	0.7	28	32	45	51	20	1.6	-0.2	-0.2	-0.1	-0.2	0
ACC	77	40	52	73	71	72	61	62	74	59	51	59	50	56

February 2023 Speckle Park BREEDPLAN



IDENT KRS S24 DOB 8/3/2021

S

Keiross *Ulysses* S24

Keiross Ulysses S24 is a full brother to Lot 4 and 5 and is a bull that will be hard to part with, hence why we have collected his semen. He has depth and volume and has tipped the scales with his impressive weight gains. This bull is a real gem, he has an unrestrictive breeding profile and is packed full goodness.

SPRUCE LANE VENTURE 3J (Speckled)
 RAVEN MEADOWS MAGNUM 10N (Speckled)
 PARKLAND SPECKLE PARK 10J (Speckled)
UPTO SPECS ULYSSES 25U (P) (Speckled)
 THUNDER 1C (Speckled)
 PRAIRIE HILL REBA 154F (Speckled)
 SPOTS 'N SPROUTS 1D (White)
 CODIAK OSCAR GNK 8S (P) (Leopard)
 CODIAK MONUMENT GNK 107D (P) (White)
 CODIAK UNIQUE GNK 8R (P) (Speckled)
KEIROSS BIRDIE Q39 (AI) (ET) (Speckled)
 CODIAK TRUMP GNK 20T (P) (Speckled)
 CODIAK BIRDIE GNK 36B (Speckled)
 CODIAK WAITIN ON YOU 55W (P) (White)

Information

Colour	Horn	Poll	Coat	MSTN	Leptin
White	Polled	PcPc	ED/ED	Non Carrier (Free)	C/T

Raw Data

Weight	BW	Scrotal	P8	Rib	EMA	IMF
714	45	40	5	4	78	5.1

January 2023 Breedplan Data

	BW	MILK	GL	200	400	600	MCW	CWT	SS	RUMP	EMA	RIB	IMF	RBV
EBV	4	0	1	24	29	40	44	16	1.1	0.6	-0.3	0.5	0.2	-0.7
ACC	77	40	52	73	71	72	61	62	74	59	51	59	50	56

February 2023 Speckle Park BREEDPLAN



IDENT KRS S25 DOB 8/3/2021

S

Keiross *Monument* S25

Keiross Monument S25 stands proud and is a really solid bull. His pedigree is packed with goodness and his sire is a proven bull in the Speckle Park world. S25 brings length, depth and class to the table and is homozygous polled, myostatin and red genes free, giving you choice. This bull would make an exceptional stud or commercial sire. He ranks in the top 15% rump fat of 2021 born calves.

CODIAK PHLEP GNK 3P (Speckled)
 CODIAK OSCAR GNK 8S (P) (Leopard)
 CODIAK MATEUSA RKW 63M (White)
CODIAK MONUMENT GNK 107D (P) (White)
 CODIAK MR. BLACK RKW 13M (Black)
 CODIAK UNIQUE GNK 8R (P) (Speckled)
 CODIAK RKW 07J (Speckled)
 A & W 15R (P) (Leopard)
 HS UNTAPPED 3A (Speckled)
 NOTTA 2R PRETENDER 4T (P) (Speckled)
KEIROSS KATIE P9 (AI) (ET) (P) (White)
 CODIAK PUTNAM GNK 61Y (P) (Leopard)
 WHITE ACRES KATIE (AI) (ET) (P) (White)
 WATTLE GROVE SPARKLE E31 (ET) (Speckled)

Information

Colour	Horn	Poll	Coat	MSTN	Leptin
Leopard	Polled	PcPc	ED/ED	Non Carrier (Free)	C/T

Raw Data

Weight	BW	Scrotal	P8	Rib	EMA	IMF
674	45	37	4	3	78	5.3

January 2023 Breedplan Data

	BW	MILK	GL	200	400	600	MCW	CWT	SS	RUMP	EMA	RIB	IMF	RBV
EBV	3	0	1.2	16	22	34	39	14	-0.5	1.2	-0.7	0.9	0.7	-1.3
ACC	77	42	52	73	71	72	61	62	73	60	51	60	51	57

February 2023 Speckle Park BREEDPLAN



IDENT KRS S1 DOB 16/1/2021

Keiross *Kings Ransom* S1

Keiross Kings Ransom S1 is a natural bull calf out of two of our favourites, Keiross Attitudenous and our exceptional stud sire Three Way Kings Ransom. S1 is a Lacerta grandson and is a powerful unit. He is free moving, has smooth shoulders and is an all-round great bull.

- WATTLE GROVE 54P MOO FASA E34 (ET) (Speckled)
- ALMARLEA E6 KINGSLEY (Speckled)
- ALMARLEA 68L AMYS GIRL E6 (ET) (Speckled)
- THREE WAY KINGS RANSOM (AI) (ET) (P) (Speckled)**
- STAR BANK LACERTA 68L (Speckled)
- ALMARLEA 68L MELISSA (ET) (White)
- CODIAK MELISA RKW 64M (Speckled)
- LEGACY UPPERCUT 74U (P) (Speckled)
- CALAMASUE 9Y (Speckled)
- SPOT'N SPROUTS 15K (Speckled)
- KEIROSS ATTITUDENOUS P19 (AI) (ET) (P) (Speckled)**
- CODIAK TRUMP GNK 20T (P) (Speckled)
- CODIAK ACRES ATTITUDENOUS (Speckled)
- CODIAK GOOD GOLLY GNK 11U (P) (Speckled)

Information

Colour	Horn	Poll	Coat	MSTN	Leptin
Speckled	Polled	PcPc	ED/ED	Non Carrier (Free)	C/T

Raw Data

Weight	BW	Scrotal	P8	Rib	EMA	IMF
646	38	39	4	3	78	3.9

January 2023 Breedplan Data

	BW	MILK	GL	200	400	600	MCW	CWT	SS	RUMP	EMA	RIB	IMF	RBV
EBV	1.3	8	-0.2	14	20	25	22	18	0.6	-0.4	-	-0.3	-0.3	0.6
ACC	65	27	36	52	47	48	38	33	31	29	-	29	25	27

February 2023 Speckle Park BREEDPLAN



IDENT KRS S48 DOB 19/4/2021

Keiross *Abracadabra* S48

If you like them big here's your man! Keiross Abracadabra S48 is a Wattle Grove Abracadabra son and a powerhouse. He has length, absolute depth and weight behind him. This bull continues to surprise us on the scales and in the paddock. If you're after a black bull look no further, he is flawless. Suitable for stud or commercial operations, this bull ranks in the top 5% 600 day weight and mature cow weight.

- CODIAK CRIKEY GNK 13U (P) (Speckled)
- CODIAK EAGLE GNK 46Y (P) (Leopard)
- CODIAK NICE LADY RKW 25N (Leopard)
- WATTLE GROVE ABRACADABRA L245 (P) (Speckled)**
- SIX STAR 68L DILIGENT D14 (ET) (Speckled)
- WATTLE GROVE D14 MISS WATTLE G59 (P) (Black)
- WATTLE GROVE MISS WATTLE E3 (ET) (Speckled)
- CODIAK OSCAR GNK 8S (P) (Leopard)
- CODIAK MONUMENT GNK 107D (P) (White)
- CODIAK UNIQUE GNK 8R (P) (Speckled)
- KEIROSS Q42 (AI) (ET) (P) (Speckled)**
- CODIAK TRUMP GNK 20T (P) (Speckled)
- CODIAK BIRDIE GNK 36B (Speckled)
- CODIAK WAITIN ON YOU 55W (P) (White)

Information

Colour	Horn	Poll	Coat	MSTN	Leptin
Black	Polled	PcPc	ED/ED	Non Carrier (Free)	C/C

Raw Data

Weight	BW	Scrotal	P8	Rib	EMA	IMF
694	45	39	3	3	68	1.5

January 2023 Breedplan Data

	BW	MILK	GL	200	400	600	MCW	CWT	SS	RUMP	EMA	RIB	IMF	RBV
EBV	3.8	1	0.4	26	36	56	68	28	0.7	-1.1	-0.4	-0.8	-0.4	0.4
ACC	71	35	44	66	64	64	52	53	66	49	42	49	39	47

February 2023 Speckle Park BREEDPLAN



IDENT KRS S10 DOB 11/2/2021

S

Keiross *A'Man* S10

Now here is a smooth but very solid bull! Keiross A'Man S10 is the man! When we bred his mother Keiross Amanda P6, we knew she would throw a good bull and here he is! Carcass, carcass, carcass! Nothing better than a nice big bull that's quiet as a mouse. He rates highly for IMF, 600-day growth and is ranked in the top 15% rump fat. Get around him.

CODIAK TRUMP GNK 20T (P) (Speckled)
 RIVER HILL GNK 12X (Speckled)
 CODIAK SALLY SUE GNK 17U (P) (White)
RIVER HILL 12X A'MAN 94A (Speckled)
 PRAIRIE HILL MASTERPLAN II 87L (Speckled)
 PRAIRIE HILL PASSION 94P (Speckled)
 PRAIRIE HILL FANCY PANTS 93J (Speckled)
 HWY. 4 SPECKLE PARK 2H (Speckled)
 MAINSTREAM ELDORADO E11 (ET) (P) (White)
 SPOTS 'N SPROUTS 3K (Speckled)
KEIROSS AMANDA P6 (AI) (ET) (P) (Leopard)
 CODIAK CRIKEY GNK 13U (P) (Speckled)
 CODIAK AMANDA GNK 42Y (P) (Speckled)
 CODIAK UNIQUE GNK 8R (P) (Speckled)

Information

Colour	Horn	Poll	Coat	MSTN	Leptin
Speckled	Polled	PcPc	ED/e	Non Carrier (Free)	C/C

Raw Data

Weight	BW	Scrotal	P8	Rib	EMA	IMF
636	42	38	4	3	88	3.8

January 2023 Breedplan Data

	BW	MILK	GL	200	400	600	MCW	CWT	SS	RUMP	EMA	RIB	IMF	RBV
EBV	1.9	3	0.4	11	16	25	28	13	-0.3	1.2	0.8	0.9	0.2	-0.4
ACC	73	33	46	68	66	66	54	55	68	52	44	52	42	49

February 2023 Speckle Park BREEDPLAN



IDENT KRS S72 DOB 31/5/2021

Keiross *Romeo* S72

A younger bull on offer, Keiross Romeo S72 has surprised us in the past months as he has matured. This is another cross we like with size and fertility in one. He is hitting his straps well and has plenty more room to grow.

SPOTS 'N SPROUTS JUNO 103J (Speckled)
 STAR BANK LACERTA 68L (Speckled)
 STAR BANK 55H (Speckled)
NOTTA ROMEO 64R (P) (Speckled)
 NORALTA 9E
 STAR BANK 64L (Speckled)
 JANETTE OF P.A.R. 44H (Speckled)
 CODIAK OSCAR GNK 8S (P) (Leopard)
 CODIAK MONUMENT GNK 107D (P) (White)
 CODIAK UNIQUE GNK 8R (P) (Speckled)
KEIROSS BIRDIE Q39 (AI) (ET) (Speckled)
 CODIAK TRUMP GNK 20T (P) (Speckled)
 CODIAK BIRDIE GNK 36B (Speckled)
 CODIAK WAITIN ON YOU 55W (P) (White)

Information

Colour	Horn	Poll	Coat	MSTN	Leptin
Speckled	Polled	HPc	ED/ED	Carrier	C/T

Raw Data

Weight	BW	Scrotal	P8	Rib	EMA	IMF
600	41	38	2	2	73	2.7

January 2023 Breedplan Data

	BW	MILK	GL	200	400	600	MCW	CWT	SS	RUMP	EMA	RIB	IMF	RBV
EBV	2.3	4	0.4	19	30	34	37	19	1	-0.5	-0.6	-0.4	-0.2	-0.2
ACC	70	37	46	67	65	65	54	55	65	51	43	51	43	48

February 2023 Speckle Park BREEDPLAN





IDENT KRS S82 DOB 26/6/2021



IDENT KRS S63 DOB 29/4/2021

Keiross *M27 Kings Ransom* S82

The youngest bull in the sale who stands up beside the older bulls. Keiross Kings Ransom S82 is a natural born calf by Three Way Graceland's and Three Way Kings Ransom. His half-brother Keiross Sugar Man Q49 topped the Southern Success bull sale in 2021. This bull is very structurally sound and ranks in the top 5% mature cow weight.

- WATTLE GROVE 54P MOO FASA E34 (ET) (Speckled)
- ALMARLEA E6 KINGSLEY (Speckled)
- ALMARLEA 68L AMYS GIRL E6 (ET) (Speckled)
- THREE WAY KINGS RANSOM (AI) (ET) (P) (Speckled)**
- STAR BANK LACERTA 68L (Speckled)
- ALMARLEA 68L MELISSA (ET) (White)
- CODIAK MELISA RKW 64M (Speckled)
- P.A.R. SHARP SHOOTER 60S (P) (Speckled)
- HEARTRIDGE ARIES 01W (P) (Speckled)
- PONDEROSA TIFFANY 06T (P) (Speckled)
- THREE WAY GRACELANDS M27 (AI) (ET) (P) (Leopard)**
- RIVER HILL 26T WALKER 60W (P) (Speckled)
- THREE WAY GRACELANDS (AI) (ET) (P) (Speckled)
- CODIAK UNIQUE GNK 8R (P) (Speckled)

Keiross *Kidmans Cove* S63

Keiross Kidmans Cove S63 is an appealing bull with great presence. This pedigree is one to get on – the Codiak Birdie line blended with popular bull Maungahina Kidmans Cove. This bull is very structurally sound and is in the top 5% for IMF.

- A & W 15R (P) (Leopard)
- SPKNZ FALCON (AI) (ET) (P) (Speckled)
- CODIAK TERESSA GNK 12T (P) (Speckled)
- MAUNGAHINA KIDMANS COVE (P) (Leopard)**
- HWY. 4 SPECKLE PARK 2H (Speckled)
- MAINSTREAM E12 (ET) (P) (Speckled)
- NOTTA PHO-FINISH 54P (Speckled)
- CODIAK OSCAR GNK 8S (P) (Leopard)
- CODIAK MONUMENT GNK 107D (P) (White)
- CODIAK UNIQUE GNK 8R (P) (Speckled)
- KEIROSS BIRDIE Q39 (AI) (ET) (Speckled)**
- CODIAK TRUMP GNK 20T (P) (Speckled)
- CODIAK BIRDIE GNK 36B (Speckled)
- CODIAK WAITIN ON YOU 55W (P) (White)

Information

Colour	Horn	Poll	Coat	MSTN	Leptin
Speckled	Polled	PcPc	ED/ED	Non Carrier (Free)	C/C

Raw Data

Weight	BW	Scrotal	P8	Rib	EMA	IMF
574	40	36	3	3	64	2.5

January 2023 Breedplan Data

	BW	MILK	GL	200	400	600	MCW	CWT	SS	RUMP	EMA	RIB	IMF	RBV
EBV	3	7	-0.6	27	37	54	57	31	0.2	-1.2	0.3	-0.9	-0.1	0.5
ACC	67	28	39	63	60	61	48	48	62	44	37	44	33	41

February 2023 Speckle Park BREEDPLAN

Information

Colour	Horn	Poll	Coat	MSTN	Leptin
Speckled	Polled	HPc	ED/ED	Non Carrier (Free)	C/C

Raw Data

Weight	BW	Scrotal	P8	Rib	EMA	IMF
624	38	40	3	3	79	4.4

January 2023 Breedplan Data

	BW	MILK	GL	200	400	600	MCW	CWT	SS	RUMP	EMA	RIB	IMF	RBV
EBV	1.8	2	1.2	13	17	28	36	13	0.7	1.5	-0.9	1.1	1	-1.5
ACC	75	44	53	71	66	65	54	55	56	49	42	49	44	48

February 2023 Speckle Park BREEDPLAN



IDENT KRS S41 DOB 9/4/2021

Keiross *Kings Ransom* S41

Now here is a very sound black bull that stems back to Three Way Speckle Park Stud. A natural bred bull by Three Way Kings Ransom and Three Way Angels Secret. He is smooth and free moving and has the numbers to go with it. He ranks in the top 10% gestation length, top 15% 600-day weight and top 10% retail beef yield.

- WATTLE GROVE 54P MOO FASA E34 (ET) (Speckled)
- ALMARLEA E6 KINGSLEY (Speckled)
- ALMARLEA 68L AMYS GIRL E6 (ET) (Speckled)
- THREE WAY KINGS RANSOM (AI) (ET) (P) (Speckled)**
- STAR BANK LACERTA 68L (Speckled)
- ALMARLEA 68L MELISSA (ET) (White)
- CODIAK MELISA RKW 64M (Speckled)
- SEMEX ALLIANCE YOGI GOES REDNECK (Speckled)
- JOHNER STOCK FARM TRADE SECRET (White)
- MONNERY RIVER 7W (P) (Speckled)
- THREE WAY ANGEL'S SECRET M23 (AI) (ET) (P) (Leopard)**
- BUNDERRA 26T CROSS OVER F11 (ET) (Speckled)
- THREE WAY ANGEL OF DARKNESS (P) (Black)
- BUNDERRA 68L STAR BANK E20 (ET) (Speckled)

Information

Colour	Horn	Poll	Coat	MSTN	Leptin
Black	Polled	PcPc	ED/ED	Non Carrier (Free)	C/T

Raw Data

Weight	BW	Scrotal	P8	Rib	EMA	IMF
600	43	40	3	3	80	2.1

January 2023 Breedplan Data

	BW	MILK	GL	200	400	600	MCW	CWT	SS	RUMP	EMA	RIB	IMF	RBV
EBV	2.8	7	-1.1	27	37	45	41	28	0.8	-0.8	1.1	-0.6	-0.4	0.8
ACC	67	30	41	55	50	52	42	38	32	33	27	33	30	32

February 2023 Speckle Park BREEDPLAN



IDENT KRS S19 DOB 6/3/2021

Keiross *Monument* S19

A strong white Monument son, Keiross Monument S19 is a great all-rounder. He is smooth and has tonnes of volume. S19 brings pedigree and fertility to the table. This bull has endless opportunities. Tap into the Unique 8R line right here.

- CODIAK PHLEP GNK 3P (Speckled)
- CODIAK OSCAR GNK 8S (P) (Leopard)
- CODIAK MATEUSA RKW 63M (White)
- CODIAK MONUMENT GNK 107D (P) (White)**
- CODIAK MR. BLACK RKW 13M (Black)
- CODIAK UNIQUE GNK 8R (P) (Speckled)
- CODIAK RKW 07J (Speckled)
- A & W 15R (P) (Leopard)
- HS UNTAPPED 3A (Speckled)
- NOTTA 2R PRETENDER 4T (P) (Speckled)
- KEIROSS KATIE P9 (AI) (ET) (P) (White)**
- CODIAK PUTNAM GNK 61Y (P) (Leopard)
- WHITE ACRES KATIE (AI) (ET) (P) (White)
- WATTLE GROVE SPARKLE E31 (ET) (Speckled)

Information

Colour	Horn	Poll	Coat	MSTN	Leptin
White	Polled	PcPc	ED/ED	Non Carrier (Free)	C/T

Raw Data

Weight	BW	Scrotal	P8	Rib	EMA	IMF
646	40	38	5	4	74	3.6

January 2023 Breedplan Data

	BW	MILK	GL	200	400	600	MCW	CWT	SS	RUMP	EMA	RIB	IMF	RBV
EBV	1.5	0	1.2	7	13	18	19	5	0	1.9	-0.9	1.4	0.5	-1.7
ACC	77	42	52	73	71	72	61	62	73	60	51	60	51	57

February 2023 Speckle Park BREEDPLAN



IDENT KRS S28 DOB 9/3/2021

Keiross *A' Man* S28

Keiross A'Man S28 is a cracking white bull with striking presence. He is genetically clean and could be used across a broad range of contexts. He is built to move and will cover some country. He ranks in the top 5% rump fat. A very versatile bull!

- CODIAK TRUMP GNK 20T (P) (Speckled)
- RIVER HILL GNK 12X (Speckled)
- CODIAK SALLY SUE GNK 17U (P) (White)
- RIVER HILL 12X A'MAN 94A (Speckled)**
- PRAIRIE HILL MASTERPLAN II 87L (Speckled)
- PRAIRIE HILL PASSION 94P (Speckled)
- PRAIRIE HILL FANCY PANTS 93J (Speckled)
- A & W 15R (P) (Leopard)
- HS UNTAPPED 3A (Speckled)
- NOTTA 2R PRETENDER 4T (P) (Speckled)
- KEIROSS KATIE P9 (AI) (ET) (P) (White)**
- CODIAK PUTNAM GNK 61Y (P) (Leopard)
- WHITE ACRES KATIE (AI) (ET) (P) (White)
- WATTLE GROVE SPARKLE E31 (ET) (Speckled)

Information

Colour	Horn	Poll	Coat	MSTN	Leptin
White	Polled	PcPc	ED/ED	Non Carrier (Free)	C/T

Raw Data

Weight	BW	Scrotal	P8	Rib	EMA	IMF
650	40	39	4	4	77	3.2

January 2023 Breedplan Data

	BW	MILK	GL	200	400	600	MCW	CWT	SS	RUMP	EMA	RIB	IMF	RBV
EBV	1.4	2	1.6	3	10	13	10	4	0.3	1.6	0.5	1.2	0.2	-0.9
ACC	74	27	45	70	68	69	55	57	70	54	45	54	42	50

February 2023 Speckle Park BREEDPLAN



IDENT KRS S32 DOB 11/3/2021

Keiross *Smoke and Mirrors* S32

We love this bull and will continue to cross Wattle Grove Smoke and Mirrors with our Mt Eccles Sahara. The offspring are consistent and really look the part! S32 has the second largest scrotal circumference among our bulls and ranks in the top 5% EMA and top 15% gestation length. Don't miss this goodie.

- CODIAK OSCAR GNK 8S (P) (Leopard)
- CODIAK PUTNAM GNK 61Y (P) (Leopard)
- NORTHERN LIGHTS 14N (White)
- WATTLE GROVE SMOKE AND MIRRORS L275 (P) (Leopard)**
- RAVEN MEADOWS MAGNUM 10N (Speckled)
- CODIAK GOOD GOLLY GNK 11U (P) (Speckled)
- SPOTS 'N SPROUTS 3K (Speckled)
- SEMEX ALLIANCE YOGI GOES REDNECK (Speckled)
- JOHNER STOCK FARM TRADE SECRET (White)
- MONNERY RIVER 7W (P) (Speckled)
- MT ECCLES SAHARA (AI) (ET) (P) (Speckled)**
- STAR BANK LACERTA 68L (Speckled)
- MT ECCLES YASI (AI) (ET) (P) (Black)
- WARATAH MELISA G34 (ET) (Speckled)

Information

Colour	Horn	Poll	Coat	MSTN	Leptin
Leopard	Polled	PcPc	ED/ED	Carrier	C/T

Raw Data

Weight	BW	Scrotal	P8	Rib	EMA	IMF
648	46	42	3	2	80	3.1

January 2023 Breedplan Data

	BW	MILK	GL	200	400	600	MCW	CWT	SS	RUMP	EMA	RIB	IMF	RBV
EBV	1.7	8	-0.7	15	22	28	26	19	1.1	-0.1	2	-0.1	-0.8	1.3
ACC	76	40	53	72	70	71	59	60	71	57	49	57	48	54

February 2023 Speckle Park BREEDPLAN



IDENT KRS S15 DOB 4/3/2021

Keiross *A' Man* S15

Keiross A'man S15 shows softness and capacity. His genetics are exciting – son of River Hill A'Man and grandson of the great Putnam. S15 is a real all rounder and ranks in the top 15% EMA and top 5% birth weight.

- CODIAK TRUMP GNK 20T (P) (Speckled)
- RIVER HILL GNK 12X (Speckled)
- CODIAK SALLY SUE GNK 17U (P) (White)
- RIVER HILL 12X A'MAN 94A (Speckled)**
- PRAIRIE HILL MASTERPLAN II 87L (Speckled)
- PRAIRIE HILL PASSION 94P (Speckled)
- PRAIRIE HILL FANCY PANTS 93J (Speckled)
- CODIAK OSCAR GNK 8S (P) (Leopard)
- CODIAK PUTNAM GNK 61Y (P) (Leopard)
- NORTHERN LIGHTS 14N (White)
- KEIROSS P5 (AI) (ET) (P) (Leopard)**
- NOTTA FRONTLINE 303X (Speckled)
- CODIAK ACRES ZAHRAH 50Z (White)
- CODIAK GOOD GOLLY GNK 11U (P) (Speckled)

Information

Colour	Horn	Poll	Coat	MSTN	Leptin
White	Polled	PcPc	ED/e	Non Carrier (Free)	C/T

Raw Data

Weight	BW	Scrotal	P8	Rib	EMA	IMF
605	34	35	3	2	82	4.5

January 2023 Breedplan Data

	BW	MILK	GL	200	400	600	MCW	CWT	SS	RUMP	EMA	RIB	IMF	RBV
EBV	-1	6	-0.2	-2	7	8	8	10	-1	1	1.2	0.8	0.1	-0.2
ACC	73	31	45	69	67	68	55	57	71	54	46	54	43	51

February 2023 Speckle Park BREEDPLAN



IDENT KRS S46 DOB 19/4/2021

Keiross *Wall Street* S46

Keiross Wall Street S46 is a black bull that exhibits depth and style. If you're looking for a highly sound heifer bull, here he is. S46 ranks in the top 5% for gestation length and birth weight amongst the 2021 born calves. A stud black bull or commercial bull to infuse some hybrid vigour, here's your bull!

- SPOTS AND SPROUTS DYNAMITE 23T
- ASPEN ACRES T.N.T. 4Y (Speckled)
- ASPEN ACRES 4U
- JSF WALL STREET 36E (P) (Speckled)**
- REDNECK RANCH'S TEDDY 5T (P) (Speckled)
- REDNECK WHISKEY 7W (P) (White)
- REDNECK RANCH'S SCARLET 1S (P) (Speckled)
- SEMEX ALLIANCE YOGI GOES REDNECK (Speckled)
- JOHNER STOCK FARM TRADE SECRET (White)
- MONNERY RIVER 7W (P) (Speckled)
- ROSE HILL HUSH (ET) (P) (Speckled)**
- P.A.R. MOO FASSA 03M (Speckled)
- SIX STAR 3M RENDEZVOUS D27 (ET) (Black)
- NOTTA RENDEZVOUS 65R (P) (Speckled)

Information

Colour	Horn	Poll	Coat	MSTN	Leptin
Black	Polled	PcPc	ED/ED	Non Carrier (Free)	C/C

Raw Data

Weight	BW	Scrotal	P8	Rib	EMA	IMF
568	35	35	3	3	80	2.2

January 2023 Breedplan Data

	BW	MILK	GL	200	400	600	MCW	CWT	SS	RUMP	EMA	RIB	IMF	RBV
EBV	-1.1	2	-2	7	17	16	8	16	-0.9	0.8	1.1	0.6	-0.1	-0.1
ACC	75	29	50	71	69	70	57	58	71	56	47	56	46	53

February 2023 Speckle Park BREEDPLAN



IDENT KRS S52 DOB 20/4/2021

Keiross *Eldorado* S52

Keiross Eldorado S52 has a pedigree loaded with treats and proven genetics from Codiak Belinda and Mainstream Eldorado! This bull looks good and is smooth in his shoulders! He ranks in the top 10% for milk, top 5% for IMF and had one of the highest measured IMFs among our KRS bulls. A great genetic opportunity here.

- PARKLAND SPECKLE PARKS 5B
- HWY. 4 SPECKLE PARK 2H (Speckled)
- LEIGH-AL-ANN PRINCESS 1B
- MAINSTREAM ELDORADO E11 (ET) (P) (White)**
- ASPEN ACRES FREEDOM 31F (Speckled)
- SPOTS 'N SPROUTS 3K (Speckled)
- SPOTS 'N SPROUTS 6F (Black)
- CODIAK PHLEP GNK 3P (Speckled)
- CODIAK OSCAR GNK 8S (P) (Leopard)
- CODIAK MATEUSA RKW 63M (White)
- CODIAK ACRES BELINDA 66A (Speckled)**
- RAVEN MEADOWS MAGNUM 10N (Speckled)
- UPTO SPECS TORI 10T (P) (Leopard)
- UPTO SPECS MILLIE 74M (White)

Information

Colour	Horn	Poll	Coat	MSTN	Leptin
Leopard	Polled	PcPc	ED/ED	Non Carrier (Free)	C/T

Raw Data

Weight	BW	Scrotal	P8	Rib	EMA	IMF
600	40	38	6	5	74	4.9

January 2023 Breedplan Data

	BW	MILK	GL	200	400	600	MCW	CWT	SS	RUMP	EMA	RIB	IMF	RBV
EBV	1.2	6	0.2	7	13	19	23	8	-0.2	2.8	0.2	2.1	0.9	-1.8
ACC	78	56	59	75	73	74	64	66	75	63	56	63	55	61

February 2023 Speckle Park BREEDPLAN



IDENT KRS S69 DOB 24/5/2021

Keiross *Ulysses* S69

This bull is a solid boy who has recently started to hit his straps! He is a son of the highly regarded Upto Specs Ulysses and one of our home favourites Keiross Katie P9 who has proven herself as a great dam. This bull is a highly functional type, that would tick the boxes in the stud or commercial market. S69 had one of the largest scrotal circumferences of all our bulls.

- SPRUCE LANE VENTURE 3J (Speckled)
- RAVEN MEADOWS MAGNUM 10N (Speckled)
- PARKLAND SPECKLE PARK 10J (Speckled)
- UPTO SPECS ULYSSES 25U (P) (Speckled)**
- THUNDER 1C (Speckled)
- PRAIRIE HILL REBA 154F (Speckled)
- SPOTS 'N SPROUTS 1D (White)
- A & W 15R (P) (Leopard)
- HS UNTAPPED 3A (Speckled)
- NOTTA 2R PRETENDER 4T (P) (Speckled)
- KEIROSS KATIE P9 (AI) (ET) (P) (White)**
- CODIAK PUTNAM GNK 61Y (P) (Leopard)
- WHITE ACRES KATIE (AI) (ET) (P) (White)
- WATTLE GROVE SPARKLE E31 (ET) (Speckled)

Information

Colour	Horn	Poll	Coat	MSTN	Leptin
White	Polled	PcPc	ED/ED	Non Carrier (Free)	C/T

Raw Data

Weight	BW	Scrotal	P8	Rib	EMA	IMF
614	38	40	3	3	75	4

January 2023 Breedplan Data

	BW	MILK	GL	200	400	600	MCW	CWT	SS	RUMP	EMA	RIB	IMF	RBV
EBV	2.9	0	2	12	19	26	25	10	0.7	1.2	0.6	0.9	0.5	-0.8
ACC	64	41	48	61	60	60	52	53	56	51	43	51	47	49

February 2023 Speckle Park BREEDPLAN



IDENT KRS S18 DOB 6/3/2021



IDENT KRS S14 DOB 4/3/2021

Keiross *Smoke and Mirrors* S18

Keiross Smoke and Mirrors S18 is a bull we really like with so much capacity. His sire and dam have been a proven combination for us that produce size and growth into their progeny. S18 ranked in the top 4 for EMA amongst our bulls and is in the top 1% of 2021 born calves.

CODIAK OSCAR GNK 8S (P) (Leopard)
 CODIAK PUTNAM GNK 61Y (P) (Leopard)
 NORTHERN LIGHTS 14N (White)
WATTLE GROVE SMOKE AND MIRRORS L275 (P) (Leopard)
 RAVEN MEADOWS MAGNUM 10N (Speckled)
 CODIAK GOOD GOLLY GNK 11U (P) (Speckled)
 SPOTS 'N SPROUTS 3K (Speckled)
 SEMEX ALLIANCE YOGI GOES REDNECK (Speckled)
 JOHNER STOCK FARM TRADE SECRET (White)
 MONNERY RIVER 7W (P) (Speckled)
MT ECCLES SAHARA (AI) (ET) (P) (Speckled)
 STAR BANK LACERTA 68L (Speckled)
 MT ECCLES YASI (AI) (ET) (P) (Black)
 WARATAH MELISA G34 (ET) (Speckled)

Keiross *Smoke and Mirrors* S14

Keiross Smoke and Mirrors S14 is another exciting bull and a full brother to Lot 22. He is sound and has data behind him. He measured the second highest EMA of all KRS bulls and sits in the top 1% band EMA of 2021 born calves. If you're looking for a heifer bull this might be your boy. Top 10% gestation length and top 5% birth weight.

CODIAK OSCAR GNK 8S (P) (Leopard)
 CODIAK PUTNAM GNK 61Y (P) (Leopard)
 NORTHERN LIGHTS 14N (White)
WATTLE GROVE SMOKE AND MIRRORS L275 (P) (Leopard)
 RAVEN MEADOWS MAGNUM 10N (Speckled)
 CODIAK GOOD GOLLY GNK 11U (P) (Speckled)
 SPOTS 'N SPROUTS 3K (Speckled)
 SEMEX ALLIANCE YOGI GOES REDNECK (Speckled)
 JOHNER STOCK FARM TRADE SECRET (White)
 MONNERY RIVER 7W (P) (Speckled)
MT ECCLES SAHARA (AI) (ET) (P) (Speckled)
 STAR BANK LACERTA 68L (Speckled)
 MT ECCLES YASI (AI) (ET) (P) (Black)
 WARATAH MELISA G34 (ET) (Speckled)

Information

Colour	Horn	Poll	Coat	MSTN	Leptin
Leopard	Polled	PcPc	ED/ED	Carrier	C/T

Raw Data

Weight	BW	Scrotal	P8	Rib	EMA	IMF
562	40	37	4	2	90	1.5

January 2023 Breedplan Data

	BW	MILK	GL	200	400	600	MCW	CWT	SS	RUMP	EMA	RIB	IMF	RBV
EBV	0.4	8	-1.3	11	22	25	21	22	0.4	-0.2	2.2	-0.1	-0.7	1.3
ACC	63	40	49	59	58	58	49	50	52	48	40	48	44	46

February 2023 Speckle Park BREEDPLAN

Information

Colour	Horn	Poll	Coat	MSTN	Leptin
Speckled	Polled	PcPc	ED/ED	Non Carrier (Free)	C/C

Raw Data

Weight	BW	Scrotal	P8	Rib	EMA	IMF
590	30	38	3	3	94	3.5

January 2023 Breedplan Data

	BW	MILK	GL	200	400	600	MCW	CWT	SS	RUMP	EMA	RIB	IMF	RBV
EBV	-0.5	8	-1.2	4	15	15	6	18	0.2	0.1	3.2	0.1	-0.8	1.6
ACC	68	40	48	71	69	69	58	60	71	57	49	57	48	54

February 2023 Speckle Park BREEDPLAN



IDENT KRS S22 DOB 8/3/2021

Keiross *A' Man* S22

Keiross A'Man S22 is a real catch! He is very structurally sound and is a solid bull. He is a full brother to Lot 18 which makes him a Putnam grandson. He is soft, well balanced and he is genetically clean making him a very versatile bull. Endless opportunities here! Ranks top 5% for birthweight, top 5% rump fat and top 1% rump fat.

- CODIAK TRUMP GNK 20T (P) (Speckled)
- RIVER HILL GNK 12X (Speckled)
- CODIAK SALLY SUE GNK 17U (P) (White)
- RIVER HILL 12X A'MAN 94A (Speckled)**
- PRAIRIE HILL MASTERPLAN II 87L (Speckled)
- PRAIRIE HILL PASSION 94P (Speckled)
- PRAIRIE HILL FANCY PANTS 93J (Speckled)
- CODIAK OSCAR GNK 8S (P) (Leopard)
- CODIAK PUTNAM GNK 61Y (P) (Leopard)
- NORTHERN LIGHTS 14N (White)
- KEIROSS P5 (AI) (ET) (P) (Leopard)**
- NOTTA FRONTLINE 303X (Speckled)
- CODIAK ACRES ZAHRAH 50Z (White)
- CODIAK GOOD GOLLY GNK 11U (P) (Speckled)

Information

Colour	Horn	Poll	Coat	MSTN	Leptin
White	Polled	PcPc	ED/ED	Non Carrier (Free)	C/T

Raw Data

Weight	BW	Scrotal	P8	Rib	EMA	IMF
642	38	37	7	5	78	5.6

January 2023 Breedplan Data

	BW	MILK	GL	200	400	600	MCW	CWT	SS	RUMP	EMA	RIB	IMF	RBV
EBV	-0.2	6	0.2	1	11	12	14	9	-0.6	2.3	0.6	1.7	0.5	-1.2
ACC	73	31	45	69	67	68	55	57	71	54	46	54	43	51

February 2023 Speckle Park BREEDPLAN



IDENT KRS S20 DOB 6/3/2021

Keiross *Smoke and Mirrors* S20

Keiross Smoke and Mirrors S20 is another bull we rank highly. He is proof of the power of the Smoke and Mirrors and Sahara combination. This bull has volume and is very functional. If you are looking for a heifer bull look no further. He ranks in the top 5% gestation length and birthweight of 2021 born calves. Highest measured EMA of our bulls.

- CODIAK OSCAR GNK 8S (P) (Leopard)
- CODIAK PUTNAM GNK 61Y (P) (Leopard)
- NORTHERN LIGHTS 14N (White)
- WATTLE GROVE SMOKE AND MIRRORS L275 (P) (Leopard)**
- RAVEN MEADOWS MAGNUM 10N (Speckled)
- CODIAK GOOD GOLLY GNK 11U (P) (Speckled)
- SPOTS 'N SPROUTS 3K (Speckled)
- SEMEX ALLIANCE YOGI GOES REDNECK (Speckled)
- JOHNER STOCK FARM TRADE SECRET (White)
- MONNERY RIVER 7W (P) (Speckled)
- MT ECCLES SAHARA (AI) (ET) (P) (Speckled)**
- STAR BANK LACERTA 68L (Speckled)
- MT ECCLES YASI (AI) (ET) (P) (Black)
- WARATAH MELISA G34 (ET) (Speckled)

Information

Colour	Horn	Poll	Coat	MSTN	Leptin
Speckled	Polled	PcPc	ED/ED	Carrier	C/T

Raw Data

Weight	BW	Scrotal	P8	Rib	EMA	IMF
640	40	38	2	2	102	2

January 2023 Breedplan Data

	BW	MILK	GL	200	400	600	MCW	CWT	SS	RUMP	EMA	RIB	IMF	RBV
EBV	-0.2	8	-1.5	9	19	20	12	20	0.1	-0.6	2.2	-0.4	-1	1.6
ACC	76	40	53	72	70	71	59	59	71	57	41	57	48	52

February 2023 Speckle Park BREEDPLAN



IDENT KRS S73 DOB 31/5/2021

Keiross *Romeo* S73

Keiross Romeo S73 is like his name, he's a handsome bull. This cross packs size, growth, and fertility all in one. A younger bull of the group, but he is really going for gold. This bull will continue to grow and impress.

- SPOTS 'N SPROUTS JUNO 103J (Speckled)
- STAR BANK LACERTA 68L (Speckled)
- STAR BANK 55H (Speckled)
- NOTTA ROMEO 64R (P) (Speckled)**
- NORALTA 9E
- STAR BANK 64L (Speckled)
- JANETTE OF P.A.R. 44H (Speckled)
- CODIAK OSCAR GNK 8S (P) (Leopard)
- CODIAK MONUMENT GNK 107D (P) (White)
- CODIAK UNIQUE GNK 8R (P) (Speckled)
- KEIROSS BIRDIE Q39 (AI) (ET) (Speckled)**
- CODIAK TRUMP GNK 20T (P) (Speckled)
- CODIAK BIRDIE GNK 36B (Speckled)
- CODIAK WAITIN ON YOU 55W (P) (White)

Information

Colour	Horn	Poll	Coat	MSTN	Leptin
Speckled	Polled	PcPc	ED/ED	Carrier	C/T

Raw Data

Weight	BW	Scrotal	P8	Rib	EMA	IMF
580	41	34	3	2	77	1.5

January 2023 Breedplan Data

	BW	MILK	GL	200	400	600	MCW	CWT	SS	RUMP	EMA	RIB	IMF	RBV
EBV	2.1	4	0.4	18	26	29	30	17	0.2	-0.1	-0.3	-0.1	-0.4	-0.1
ACC	70	37	46	67	65	65	54	55	65	51	43	51	43	48

February 2023 Speckle Park BREEDPLAN



IDENT KRS S62 DOB 29/4/2021

Keiross *Putnam* S62

One very powerful combination here, Putnam and Niome 5X. Keiross Putnam S62 is a smooth and stylish young bull who is from very proven paternal and maternal lines. He has a lot going for him and has measured one of the largest scrotal circumferences of our KRS bulls. A genetic opportunity awaits here.

- CODIAK PHLEP GNK 3P (Speckled)
- CODIAK OSCAR GNK 8S (P) (Leopard)
- CODIAK MATEUSA RKW 63M (White)
- CODIAK PUTNAM GNK 61Y (P) (Leopard)**
- FLATLAKE BUZZ 60K (Speckled)
- NORTHERN LIGHTS 14N (White)
- CODIAK KLIPSO RKW 31K (Leopard)
- HWY. 4 SPECKLE PARK 20L (Speckled)
- CODIAK TRUMP GNK 20T (P) (Speckled)
- EL RANCHO NO GOTTO SHANS 02J (Speckled)
- CODIAK ACRES NIOME GNK5X (White)**
- RAVEN MEADOWS MAGNUM 10N (Speckled)
- CODIAK URE OKAY GNK 10U (P) (Speckled)
- CODIAK UNIQUE GNK 8R (P) (Speckled)

Information

Colour	Horn	Poll	Coat	MSTN	Leptin
Leopard	Polled	PcPc	ED/ED	Carrier	C/C

Raw Data

Weight	BW	Scrotal	P8	Rib	EMA	IMF
574	38	40	3	3	75	1.5

January 2023 Breedplan Data

	BW	MILK	GL	200	400	600	MCW	CWT	SS	RUMP	EMA	RIB	IMF	RBV
EBV	0.3	6	-0.1	7	12	17	15	10	0.4	-0.2	0.1	-0.2	-0.6	0.3
ACC	78	54	58	75	74	74	65	66	75	64	56	64	57	62

February 2023 Speckle Park BREEDPLAN





IDENT KRS S54 DOB 20/4/2021

Keiross *Kidmans Cove* S54

Keiross Kidmans Cove S54 is a sound and free moving bull. He combines the highly regarded Maungahina Kidmans Cove and a favourite cow of ours Keiross Katie P9. S54 ranks in the top value for IMF for 2021 born calves.

- A & W 15R (P) (Leopard)
- SPKNZ FALCON (AI) (ET) (P) (Speckled)
- CODIAK TERESSA GNK 12T (P) (Speckled)
- MAUNGAHINA KIDMANS COVE (P) (Leopard)**
- HWY. 4 SPECKLE PARK 2H (Speckled)
- MAINSTREAM E12 (ET) (P) (Speckled)
- NOTTA PHO-FINISH 54P (Speckled)
- A & W 15R (P) (Leopard)
- HS UNTAPPED 3A (Speckled)
- NOTTA 2R PRETENDER 4T (P) (Speckled)
- KEIROSS KATIE P9 (AI) (ET) (P) (White)**
- CODIAK PUTNAM GNK 61Y (P) (Leopard)
- WHITE ACRES KATIE (AI) (ET) (P) (White)
- WATTLE GROVE SPARKLE E31 (ET) (Speckled)

Information

Colour	Horn	Poll	Coat	MSTN	Leptin
Speckled	Polled	HPc	ED/ED	Non Carrier (Free)	C/T

Raw Data

Weight	BW	Scrotal	P8	Rib	EMA	IMF
564	45	38	5	4	75	4.2

January 2023 Breedplan Data

	BW	MILK	GL	200	400	600	MCW	CWT	SS	RUMP	EMA	RIB	IMF	RBV
EBV	2.3	2	3.4	2	8	17	23	4	0.4	2.9	-0.2	2.2	1.7	-2.3
ACC	77	46	55	73	72	72	61	63	74	59	51	60	51	57

February 2023 Speckle Park BREEDPLAN



IDENT KRS S51 DOB 20/4/2021

Keiross *Monument* S51

A hot to go pedigree here! Keiross Monument S51 is a cracking bull by the popular Codiak Monument and Codiak Marusa. He is well put together and very easy on the eyes. S51 has an unrestrictive breeding profile and sits in the top 5% for IMF among 2021 born calves. Yes, we have saved one of the best for last amongst the registered Speckle Park bulls in this sale.

- CODIAK PHLEP GNK 3P (Speckled)
- CODIAK OSCAR GNK 8S (P) (Leopard)
- CODIAK MATEUSA RKW 63M (White)
- CODIAK MONUMENT GNK 107D (P) (White)**
- CODIAK MR. BLACK RKW 13M (Black)
- CODIAK UNIQUE GNK 8R (P) (Speckled)
- CODIAK RKW 07J (Speckled)
- NOTTA FRONTLINE 303X (Speckled)
- CODIAK SUMMIT SUPREME GNK 10Z (P) (White)
- CODIAK GNK 15X (Speckled) (TW)
- CODIAK MARUSA GNK 30B (P) (Speckled)**
- UPTO SPECS SANTO 2S (P) (Speckled)
- CODIAK BLACK MAJIC GNK 40W (P) (Black)
- UPTO SPECS TEEKA 8T (P) (Leopard)

Information

Colour	Horn	Poll	Coat	MSTN	Leptin
Speckled	Polled	PcPc	ED/ED	Non Carrier (Free)	C/C

Raw Data

Weight	BW	Scrotal	P8	Rib	EMA	IMF
588	40	40	3	3	71	3.4

January 2023 Breedplan Data

	BW	MILK	GL	200	400	600	MCW	CWT	SS	RUMP	EMA	RIB	IMF	RBV
EBV	1.7	1	-0.2	16	20	30	37	14	0.4	0.7	-1.1	0.5	0.7	-1.2
ACC	75	38	49	71	69	70	58	60	72	57	49	57	48	55

February 2023 Speckle Park BREEDPLAN



IDENT - DOB 16/03/2021

COMMERCIAL *Leopard F2*

This bull was just too impressive not to include in the sale, and one of the heaviest bulls here. He is a leopard F2 Speckle Park x Angus bull with lots of potential. This bull will do a job!

Information						Raw Data						
Colour	Horn	Poll	Coat	MSTN	Leptin	Weight	BW	Scrotal	P8	Rib	EMA	IMF
-	-	-	-	-	-	694	-	-	-	-	-	-

January 2023 Breedplan Data														
	BW	MILK	GL	200	400	600	MCW	CWT	SS	RUMP	EMA	RIB	IMF	RBV
EBV	-	-	-	-	-	-	-	-	-	-	-	-	-	-
ACC	-	-	-	-	-	-	-	-	-	-	-	-	-	-



IDENT - DOB 29/04/2021

COMMERCIAL *White F2*

Another well fleshed out F2 Speckle Park x Angus bull on offer. He is a very sound bull. Give him a go, don't miss out!

Information						Raw Data						
Colour	Horn	Poll	Coat	MSTN	Leptin	Weight	BW	Scrotal	P8	Rib	EMA	IMF
-	-	-	-	-	-	590	-	-	-	-	-	-

January 2023 Breedplan Data														
	BW	MILK	GL	200	400	600	MCW	CWT	SS	RUMP	EMA	RIB	IMF	RBV
EBV	-	-	-	-	-	-	-	-	-	-	-	-	-	-
ACC	-	-	-	-	-	-	-	-	-	-	-	-	-	-



Females

Lots 32 - 61



IDENT KRS S2 DOB 1/2/2021

F

Keiross *Katie* S2

Keiross Katie S2 is an absolute favourite, and it will be heartfelt to see her leave KRS. She is soft, sweet and a total powerhouse. She has personality, depth and is great in the legs. Her pedigree is full of appeal and includes the proven White Acres Katie and Underhill All Out. She is the half-sister of record-breaking Speckle Park heifer. Keiross Katie S2 was AI'ed to PB Notta 444E Chasin Fame 327G on the 4th of September 2022 and has been backed up to Three Way Kings Ransom NGL L12. She has been PTIC.

RIVER HILL 68L STRIKER 50U (P) (Speckled)
 RIVER HILL 50U ALL IN 60A (White)
 RIVER HILL SHOW ME OFF 60S (P) (Speckled)
UNDERHILL ALL OUT 1D (P) (Speckled)
 CDS FARMS PAUL 2M (Speckled)
 SPOTS 'N SPROUTS 10S (P) (Speckled)
 JANE OF P.A.R. 12J (Speckled)
 CODIAK OSCAR GNK 8S (P) (Leopard)
 CODIAK PUTNAM GNK 61Y (P) (Leopard)
 NORTHERN LIGHTS 14N (White)
WHITE ACRES KATIE (AI) (ET) (P) (White)
 HWY. 4 SPECKLE PARK 2H (Speckled)
 WATTLE GROVE SPARKLE E31 (ET) (Speckled)
 CODIAK PRAIRIE FIRE RKW 01J (Speckled)

Information

Colour	Horn	Poll	Coat	MSTN	Leptin
White	Polled	PcPc	ED/ED	Carrier	C/C

Raw Data

Weight	BW	Scrotal	P8	Rib	EMA	IMF
548	42	-	12	7	71	5.9

January 2023 Breedplan Data

	BW	MILK	GL	200	400	600	MCW	CWT	SS	RUMP	EMA	RIB	IMF	RBV
EBV	2.1	3	0.6	12	28	38	39	23	0.3	-0.3	1.5	-0.3	-0.4	0.8
ACC	76	33	51	69	67	68	56	55	48	46	37	46	42	44

February 2023 Speckle Park BREEDPLAN





IDENT KRS S4 DOB 2/2/2021

F

Keiross *Amanda* S4

Keiross Amanda S4 is a soft heifer that exhibits great depth and hind quarter. She is one of the heavier heifers being offered and measured the highest IMF of our females. This heifer is well on the way to growing into something special. S4 has been PTIC to Three Way Kings Ransom NGL L12 on 23/01/2023.

- CODIAK TRUMP GNK 20T (P) (Speckled)
- RIVER HILL GNK 12X (Speckled)
- CODIAK SALLY SUE GNK 17U (P) (White)
- RIVER HILL 12X A'MAN 94A (Speckled)**
- PRAIRIE HILL MASTERPLAN II 87L (Speckled)
- PRAIRIE HILL PASSION 94P (Speckled)
- PRAIRIE HILL FANCY PANTS 93J (Speckled)
- HWY. 4 SPECKLE PARK 2H (Speckled)
- MAINSTREAM ELDORADO E11 (ET) (P) (White)
- SPOTS 'N SPROUTS 3K (Speckled)
- KEIROSS AMANDA P6 (AI) (ET) (P) (Leopard)**
- CODIAK CRIKEY GNK 13U (P) (Speckled)
- CODIAK AMANDA GNK 42Y (P) (Speckled)
- CODIAK UNIQUE GNK 8R (P) (Speckled)

Information

Colour	Horn	Poll	Coat	MSTN	Leptin
White	Polled	PcPc	ED/ED	Non Carrier (Free)	C/T

Raw Data

Weight	BW	Scrotal	P8	Rib	EMA	IMF
512	34	-	7	5	69	6.5

January 2023 Breedplan Data

	BW	MILK	GL	200	400	600	MCW	CWT	SS	RUMP	EMA	RIB	IMF	RBV
EBV	1.8	3	0.8	9	16	21	24	11	-0.2	1.9	0.8	1.4	0.5	-0.9
ACC	68	33	44	64	62	63	52	53	49	55	41	55	46	51

February 2023 Speckle Park BREEDPLAN



IDENT KRS S9 DOB 11/2/2021

F

Keiross *Zahrah* S9

Keiross Zahrah S9 combines the Codiak Zahrah cow line with River Hill A'Man. This heifer is a package! She is eye catching, has shorter gestation length, lower birthweight and she has an unrestricted breeding profile. If you're wanting a little more frame, S9 will give you just that!! KRS S9 was AI'ed to Underhill All Out 1D 31st July and PTIC on 28th September 2022.

- CODIAK TRUMP GNK 20T (P) (Speckled)
- RIVER HILL GNK 12X (Speckled)
- CODIAK SALLY SUE GNK 17U (P) (White)
- RIVER HILL 12X A'MAN 94A (Speckled)**
- PRAIRIE HILL MASTERPLAN II 87L (Speckled)
- PRAIRIE HILL PASSION 94P (Speckled)
- PRAIRIE HILL FANCY PANTS 93J (Speckled)
- CODIAK OSCAR GNK 8S (P) (Leopard)
- CODIAK PUTNAM GNK 61Y (P) (Leopard)
- NORTHERN LIGHTS 14N (White)
- KEIROSS P5 (AI) (ET) (P) (Leopard)**
- NOTTA FRONTLINE 303X (Speckled)
- CODIAK ACRES ZAHRAH 50Z (White)
- CODIAK GOOD GOLLY GNK 11U (P) (Speckled)

Information

Colour	Horn	Poll	Coat	MSTN	Leptin
Leopard	Polled	PcPc	ED/ED	Non Carrier (Free)	C/T

Raw Data

Weight	BW	Scrotal	P8	Rib	EMA	IMF
510	42	-	5	5	62	4.1

January 2023 Breedplan Data

	BW	MILK	GL	200	400	600	MCW	CWT	SS	RUMP	EMA	RIB	IMF	RBV
EBV	0.5	6	0.2	6	14	18	20	12	-0.6	1.4	0.7	1	0.1	-0.6
ACC	57	31	39	54	53	52	44	45	49	43	36	43	38	41

February 2023 Speckle Park BREEDPLAN



IDENT KRS S16 DOB 4/3/2021

Keiross *Katie* S16

Here is a pedigree not to miss. A foundational and very fertile cow of ours, S16 is a product of Keiross Katie P9, combined with the powerful Codiak Monument. This heifer is a non-carrier of myostatin, and red gene and is homozygous polled. Here is your chance to tap into the Unique 8R line. KRS S16 was PTIC on 28/11/22 after running with Three Way Kings Ransom NGL L12.

- CODIAK PHLEP GNK 3P (Speckled)
- CODIAK OSCAR GNK 8S (P) (Leopard)
- CODIAK MATEUSA RKW 63M (White)
- CODIAK MONUMENT GNK 107D (P) (White)**
- CODIAK MR. BLACK RKW 13M (Black)
- CODIAK UNIQUE GNK 8R (P) (Speckled)
- CODIAK RKW 07J (Speckled)
- A & W 15R (P) (Leopard)
- HS UNTAPPED 3A (Speckled)
- NOTTA 2R PRETENDER 4T (P) (Speckled)
- KEIROSS KATIE P9 (AI) (ET) (P) (White)**
- CODIAK PUTNAM GNK 61Y (P) (Leopard)
- WHITE ACRES KATIE (AI) (ET) (P) (White)
- WATTLE GROVE SPARKLE E31 (ET) (Speckled)

Information

Colour	Horn	Poll	Coat	MSTN	Leptin
Leopard	Polled	PcPc	ED/ED	Non Carrier (Free)	C/T

Raw Data

Weight	BW	Scrotal	P8	Rib	EMA	IMF
468	40	-	5	4	64	3.8

January 2023 Breedplan Data

	BW	MILK	GL	200	400	600	MCW	CWT	SS	RUMP	EMA	RIB	IMF	RBV
EBV	1.8	0	1.1	9	14	23	26	8	0	1.6	-0.8	1.2	0.6	-1.5
ACC	76	42	51	68	68	67	56	57	55	50	43	50	47	49

February 2023 Speckle Park BREEDPLAN



IDENT KRS S17 DOB 5/3/2021

Keiross *Sahara* S17

This heifer is one reason we love the combination of Wattle Grove Smoke and Mirrors paired with our Mt Eccles Sahara SOS M61. She is very structurally sound; she has depth and she comes with lots of class. This heifer has impressed us with weight gains and has proven to be highly fertile, harvesting over 10 embryos in one flush as a young heifer. We have done the experimenting, now you know what you are getting. Keiross Sahara S17 was PTIC on the 23/1/2023 after running with Three Way Kings Ransom NGL L12.

- CODIAK OSCAR GNK 8S (P) (Leopard)
- CODIAK PUTNAM GNK 61Y (P) (Leopard)
- NORTHERN LIGHTS 14N (White)
- WATTLE GROVE SMOKE AND MIRRORS L275 (P) (Leopard)**
- RAVEN MEADOWS MAGNUM 10N (Speckled)
- CODIAK GOOD GOLLY GNK 11U (P) (Speckled)
- SPOTS 'N SPROUTS 3K (Speckled)
- SEMEX ALLIANCE YOGI GOES REDNECK (Speckled)
- JOHNER STOCK FARM TRADE SECRET (White)
- MONNERY RIVER 7W (P) (Speckled)
- MT ECCLES SAHARA (AI) (ET) (P) (Speckled)**
- STAR BANK LACERTA 68L (Speckled)
- MT ECCLES YASI (AI) (ET) (P) (Black)
- WARATAH MELISA G34 (ET) (Speckled)

Information

Colour	Horn	Poll	Coat	MSTN	Leptin
Speckled	Polled	PcPc	ED/ED	Carrier	C/C

Raw Data

Weight	BW	Scrotal	P8	Rib	EMA	IMF
548	37	-	8	4	67	5.4

January 2023 Breedplan Data

	BW	MILK	GL	200	400	600	MCW	CWT	SS	RUMP	EMA	RIB	IMF	RBV
EBV	0.2	8	-1.7	14	23	28	26	25	0.4	-0.1	2.1	-0.1	-0.5	1.3
ACC	76	40	53	72	70	71	59	60	52	63	47	63	55	59

February 2023 Speckle Park BREEDPLAN



IDENT KRS S21 DOB 8/3/2021

F

Keiross *Belinda* S21

Another female we think highly of is Keiross Belinda S21. Her pedigree says it all - Mainstream Eldorado and Codiak Acres Belinda 66A. This heifer is very appealing and well put together with depth of flank. A showring heifer here!! She ranks in the top 10% for milk, EMA and top 5% for IMF. She also has the second highest EMA of our sale heifers. KRS S21 was AI'ed to Wattle Grove Mr Business E11 on the 4th September and backed up by Three Way Kings Ransom NGL L12. She has been PTIC.

PARKLAND SPECKLE PARKS 5B
 HWY. 4 SPECKLE PARK 2H (Speckled)
 LEIGH-AL-ANN PRINCESS 1B
MAINSTREAM ELDORADO E11 (ET) (P) (White)
 ASPEN ACRES FREEDOM 31F (Speckled)
 SPOTS 'N SPROUTS 3K (Speckled)
 SPOTS 'N SPROUTS 6F (Black)
 CODIAK PHLEP GNK 3P (Speckled)
 CODIAK OSCAR GNK 8S (P) (Leopard)
 CODIAK MATEUSA RKW 63M (White)
CODIAK ACRES BELINDA 66A (Speckled)
 RAVEN MEADOWS MAGNUM 10N (Speckled)
 UPTO SPECS TORI 10T (P) (Leopard)
 UPTO SPECS MILLIE 74M (White)

Information

Colour	Horn	Poll	Coat	MSTN	Leptin
Leopard	Polled	HPc	ED/ED	Non Carrier (Free)	C/T

Raw Data

Weight	BW	Scrotal	P8	Rib	EMA	IMF
538	37	-	10	6	75	5.8

January 2023 Breedplan Data

	BW	MILK	GL	200	400	600	MCW	CWT	SS	RUMP	EMA	RIB	IMF	RBV
EBV	1.2	6	-0.4	11	22	29	33	19	-0.1	2.2	1.3	1.7	0.7	-0.8
ACC	78	56	59	75	74	74	65	66	62	68	54	68	60	64

February 2023 Speckle Park BREEDPLAN



IDENT KRS S23 DOB 8/3/2021

Keiross *Gracelands* S23

Here is an exciting heifer – Keiross Gracelands S23, who combines our very special cow Three Way Gracelands M27 with the legend MX El Guapo. If you're interested in more frame, here is your opportunity. S23 ranks in the top 15% for 600-day weight and mature cow weight. This is a chance to delve into the Gracelands/Unique 8R female line. S23 was PTIC on 28/11/22 and said to be approximately 6 months after running with Three Way Kings Ransom NGL L12.

PAR ACE IN A HOLE 66A (Speckled)
 P.A.R. CASANOVA 55C (P) (Speckled)
 POPPY OF P.A.R. 55P (Leopard)
MX EL GUAPO 103E (P) (Speckled)
 P.A.R. THROTTLE 66T (P) (Speckled)
 P.A.R. HIGH MAINTENANCE OF MX 103Z (P) (Speckled)
 SPECIAL DESIGN OF P.A.R. 20S (P) (Speckled)
 P.A.R. SHARP SHOOTER 60S (P) (Speckled)
 HEARTRIDGE ARIES 01W (P) (Speckled)
 PONDEROSA TIFFANY 06T (P) (Speckled)
THREE WAY GRACELANDS M27 (AI) (ET) (P) (Leopard)
 RIVER HILL 26T WALKER 60W (P) (Speckled)
 THREE WAY GRACELANDS (AI) (ET) (P) (Speckled)
 CODIAK UNIQUE GNK 8R (P) (Speckled)

Information

Colour	Horn	Poll	Coat	MSTN	Leptin
White	Polled	PcPc	ED/ED	Non Carrier (Free)	C/T

Raw Data

Weight	BW	Scrotal	P8	Rib	EMA	IMF
520	45	-	4	3	57	6.1

January 2023 Breedplan Data

	BW	MILK	GL	200	400	600	MCW	CWT	SS	RUMP	EMA	RIB	IMF	RBV
EBV	3.3	-	0.1	23	29	44	49	20	0.4	-0.6	-0.4	-0.3	0.5	-0.3
ACC	74	-	43	69	67	68	54	55	40	58	38	58	48	53

February 2023 Speckle Park BREEDPLAN





IDENT KRS S26 DOB 8/3/2021

F

IDENT KRS S27 DOB 9/3/2021

Keiross *Satin* S26

Keiross Satin S26 has a special pedigree, combining her proven sire Codiak Monument and grand dam Codiak Unique 8R with dam Steele Satin and grand sire Ulysses. This heifer speaks for herself! She has structure, she has style and she can be yours. If you want calves on the ground, this heifer produced over 14 embryos in one flush! We tried, now you buy!! KRS S26 was PTIC on the 28/11/22 after running with Three Way Kings Ransom NGL L12.

- CODIAK PHLEP GNK 3P (Speckled)
- CODIAK OSCAR GNK 8S (P) (Leopard)
- CODIAK MATEUSA RKW 63M (White)
- CODIAK MONUMENT GNK 107D (P) (White)**
- CODIAK MR. BLACK RKW 13M (Black)
- CODIAK UNIQUE GNK 8R (P) (Speckled)
- CODIAK RKW 07J (Speckled)
- RAVEN MEADOWS MAGNUM 10N (Speckled)
- UPTO SPECS ULYSSES 25U (P) (Speckled)
- PRAIRIE HILL REBA 154F (Speckled)
- STEELE SATIN 1E (P) (White)**
- LEGACY UNRIVALED 12U (P) (Speckled)
- CODIAK KATIE GO ON 7Y (P) (Speckled)
- CODIAK HILLARY 81H (White)

Keiross *Zahrah* S27

Keiross Zahrah S27 is a standout heifer that has really hit her straps as she has matured. Her pedigree combines River Hill A'man with Keiross Zahrah and is full sister to Lot 34. In February, this was our heaviest heifer who also measured the largest EMA amongst the KRS females. KRS S27 was PTIC on 28/11/22 after running with our stud sire Three Way Kings Ransom NGL L12.

- CODIAK TRUMP GNK 20T (P) (Speckled)
- RIVER HILL GNK 12X (Speckled)
- CODIAK SALLY SUE GNK 17U (P) (White)
- RIVER HILL 12X A'MAN 94A (Speckled)**
- PRAIRIE HILL MASTERPLAN II 87L (Speckled)
- PRAIRIE HILL PASSION 94P (Speckled)
- PRAIRIE HILL FANCY PANTS 93J (Speckled)
- CODIAK OSCAR GNK 8S (P) (Leopard)
- CODIAK PUTNAM GNK 61Y (P) (Leopard)
- NORTHERN LIGHTS 14N (White)
- KEIROSS P5 (AI) (ET) (P) (Leopard)**
- NOTTA FRONTLINE 303X (Speckled)
- CODIAK ACRES ZAHRAH 50Z (White)
- CODIAK GOOD GOLLY GNK 11U (P) (Speckled)

Information

Colour	Horn	Poll	Coat	MSTN	Leptin
White	Polled	PcPc	ED/ED	Non Carrier (Free)	C/C

Raw Data

Weight	BW	Scrotal	P8	Rib	EMA	IMF
487	40	-	8	5	64	4.7

January 2023 Breedplan Data

	BW	MILK	GL	200	400	600	MCW	CWT	SS	RUMP	EMA	RIB	IMF	RBV
EBV	2.5	1	0.5	17	22	28	31	12	0.4	1.3	-0.6	1	0.3	-1.1
ACC	75	38	49	71	69	70	58	60	50	63	47	63	55	59

February 2023 Speckle Park BREEDPLAN

Information

Colour	Horn	Poll	Coat	MSTN	Leptin
White	Polled	PcPc	ED/e	Non Carrier (Free)	C/C

Raw Data

Weight	BW	Scrotal	P8	Rib	EMA	IMF
562	43	-	10	8	82	5.8

January 2023 Breedplan Data

	BW	MILK	GL	200	400	600	MCW	CWT	SS	RUMP	EMA	RIB	IMF	RBV
EBV	1.9	6	0.7	11	23	31	35	17	-0.5	1.9	0.9	1.4	0.4	-1
ACC	74	31	45	69	68	68	56	56	49	60	37	61	50	52

February 2023 Speckle Park BREEDPLAN





IDENT KRS S29 DOB 10/3/2021

F

Keiross *Angel's Secret* S29

Keiross Angle's Secret S29 combines Three Way Angel's Secret M23 and the powerhouse MX El Guapo. She is an eye-catching heifer that has proven to be very fertile. We have experimented with her and she flushes the house down. In one flush she produced 19 embryos. If you want numbers, here she is!! This heifer sells with 2 x Grade 1 embryos sired by Maungahina Kidmans Cove MAU K247. KRS S29 was PTIC on 28/11/22 after running with Three Way Kings Ransom NGL L12.

- PAR ACE IN A HOLE 66A (Speckled)
- P.A.R. CASANOVA 55C (P) (Speckled)
- POPPY OF P.A.R. 55P (Leopard)
- MX EL GUAPO 103E (P) (Speckled)**
- P.A.R. THROTTLE 66T (P) (Speckled)
- P.A.R. HIGH MAINTENANCE OF MX 103Z (P) (Speckled)
- SPECIAL DESIGN OF P.A.R. 20S (P) (Speckled)
- SEMEX ALLIANCE YOGI GOES REDNECK (Speckled)
- JOHNER STOCK FARM TRADE SECRET (White)
- MONNERY RIVER 7W (P) (Speckled)
- THREE WAY ANGEL'S SECRET M23 (AI) (ET) (P) (Leopard)**
- BUNDERRA 26T CROSS OVER F11 (ET) (Speckled)
- THREE WAY ANGEL OF DARKNESS (P) (Black)
- BUNDERRA 68L STAR BANK E20 (ET) (Speckled)

Information

Colour	Horn	Poll	Coat	MSTN	Leptin
Leopard	Polled	PcPc	ED/ED	Non Carrier (Free)	C/T

Raw Data

Weight	BW	Scrotal	P8	Rib	EMA	IMF
473	40	-	8	7	65	4.9

January 2023 Breedplan Data

	BW	MILK	GL	200	400	600	MCW	CWT	SS	RUMP	EMA	RIB	IMF	RBV
EBV	1.9	-	-1.3	21	31	38	35	21	0.7	0.7	0.7	0.5	0.1	-0.4
ACC	75	-	47	70	69	69	56	57	43	59	40	59	50	54

February 2023 Speckle Park BREEDPLAN



IDENT KRS S30 DOB 11/3/2021

Keiross *Katie* S30

Keiross Katie S30 is a powerful female sired by the well-known Codiak Monument. She comes with an unrestrictive breeding profile and has shown impressive growth performance in recent times. If you're wanting to tap into a White Acres Katie, Putnam or Unique 8R line, here you go! KRS S30 was AI'd to JSF Trade Secret on the 31st July and was confirmed pregnant on 28th September 2022.

- CODIAK PHLEP GNK 3P (Speckled)
- CODIAK OSCAR GNK 8S (P) (Leopard)
- CODIAK MATEUSA RKW 63M (White)
- CODIAK MONUMENT GNK 107D (P) (White)**
- CODIAK MR. BLACK RKW 13M (Black)
- CODIAK UNIQUE GNK 8R (P) (Speckled)
- CODIAK RKW 07J (Speckled)
- A & W 15R (P) (Leopard)
- HS UNTAPPED 3A (Speckled)
- NOTTA 2R PRETENDER 4T (P) (Speckled)
- KEIROSS KATIE P9 (AI) (ET) (P) (White)**
- CODIAK PUTNAM GNK 61Y (P) (Leopard)
- WHITE ACRES KATIE (AI) (ET) (P) (White)
- WATTLE GROVE SPARKLE E31 (ET) (Speckled)

Information

Colour	Horn	Poll	Coat	MSTN	Leptin
White	Polled	PcPc	ED/ED	Non Carrier (Free)	C/T

Raw Data

Weight	BW	Scrotal	P8	Rib	EMA	IMF
500	46	-	6	5	48	3.4

January 2023 Breedplan Data

	BW	MILK	GL	200	400	600	MCW	CWT	SS	RUMP	EMA	RIB	IMF	RBV
EBV	3.2	0	1.8	13	18	26	26	6	0	1.3	-0.9	0.9	0.2	-1.3
ACC	77	42	52	72	71	72	61	61	55	64	43	65	56	57

February 2023 Speckle Park BREEDPLAN



IDENT KRS S31 DOB 11/3/2021

F

Keiross *Birdie* S31

Keiross Birdie S31 is the only black heifer on offer and combines two exciting lines – Maungahina Kidmans Cove and Keiross Birdie Q42, a very fertile cow line. She is a sweet heifer that has matured into a very sound female. KRS S31 was PTIC on 23/01/2023 after running with Three Way Kings Ransom NGL L12.

- A & W 15R (P) (Leopard)
- SPKNZ FALCON (AI) (ET) (P) (Speckled)
- CODIAK TERESSA GNK 12T (P) (Speckled)
- MAUNGAHINA KIDMANS COVE (P) (Leopard)**
- HWY. 4 SPECKLE PARK 2H (Speckled)
- MAINSTREAM E12 (ET) (P) (Speckled)
- NOTTA PHO-FINISH 54P (Speckled)
- CODIAK OSCAR GNK 8S (P) (Leopard)
- CODIAK MONUMENT GNK 107D (P) (White)
- CODIAK UNIQUE GNK 8R (P) (Speckled)
- KEIROSS Q42 (AI) (ET) (P) (Speckled)**
- CODIAK TRUMP GNK 20T (P) (Speckled)
- CODIAK BIRDIE GNK 36B (Speckled)
- CODIAK WAITIN ON YOU 55W (P) (White)

Information

Colour	Horn	Poll	Coat	MSTN	Leptin
Black	Polled	HPc	ED/e	Non Carrier (Free)	C/C

Raw Data

Weight	BW	Scrotal	P8	Rib	EMA	IMF
500	40	-	7	4	61	4.8

January 2023 Breedplan Data

	BW	MILK	GL	200	400	600	MCW	CWT	SS	RUMP	EMA	RIB	IMF	RBV
EBV	2	2	1.3	13	15	27	35	11	0.6	1.1	-1	0.8	0.8	-1.3
ACC	75	43	52	71	70	71	59	60	54	63	47	63	55	59

February 2023 Speckle Park BREEDPLAN



IDENT KRS S33 DOB 11/3/2021

Keiross *Katie* S33

Here is a very eye-catching heifer! Keiross Katie S33 is progeny of River Hill A'man and Keiross Katie P9, a foundational cow of ours that screams fertility plus. Endless opportunities await here! KRS S33 was Al'ed to Black Wolf Thermal Optics (sexed female semen) on 4th September 2022 and backed up by Three Way Kings Ransom NGL L12. She has been PTIC.

- CODIAK TRUMP GNK 20T (P) (Speckled)
- RIVER HILL GNK 12X (Speckled)
- CODIAK SALLY SUE GNK 17U (P) (White)
- RIVER HILL 12X A'MAN 94A (Speckled)**
- PRAIRIE HILL MASTERPLAN II 87L (Speckled)
- PRAIRIE HILL PASSION 94P (Speckled)
- PRAIRIE HILL FANCY PANTS 93J (Speckled)
- A & W 15R (P) (Leopard)
- HS UNTAPPED 3A (Speckled)
- NOTTA 2R PRETENDER 4T (P) (Speckled)
- KEIROSS KATIE P9 (AI) (ET) (P) (White)**
- CODIAK PUTNAM GNK 61Y (P) (Leopard)
- WHITE ACRES KATIE (AI) (ET) (P) (White)
- WATTLE GROVE SPARKLE E31 (ET) (Speckled)

Information

Colour	Horn	Poll	Coat	MSTN	Leptin
Leopard	Polled	PcPc	ED/e	Non Carrier (Free)	C/T

Raw Data

Weight	BW	Scrotal	P8	Rib	EMA	IMF
510	40	-	8	6	67	4.2

January 2023 Breedplan Data

	BW	MILK	GL	200	400	600	MCW	CWT	SS	RUMP	EMA	RIB	IMF	RBV
EBV	1.2	2	1.6	2	9	13	11	5	0.1	1.6	0.9	1.2	0.2	-0.7
ACC	74	27	45	69	68	69	55	57	49	60	42	60	49	55

February 2023 Speckle Park BREEDPLAN



IDENT KRS S37 DOB 15/3/2021

Keiross *Katie* S37

Keiross Katie S37 is a sweet white heifer with a strong pedigree. Here is your chance to tap into some quality genetics - Codiak Monument, Codiak Unique 8R, Keiross Katie P9 and White Acres Katie. She ranks in the Top 5% IMF of 2021 born calves. KRS S37 was AI'ed to Riverina Sonar RIV J301 on 31st July and PTIC on 28th September 2022.

- CODIAK PHLEP GNK 3P (Speckled)
- CODIAK OSCAR GNK 8S (P) (Leopard)
- CODIAK MATEUSA RKW 63M (White)
- CODIAK MONUMENT GNK 107D (P) (White)**
- CODIAK MR. BLACK RKW 13M (Black)
- CODIAK UNIQUE GNK 8R (P) (Speckled)
- CODIAK RKW 07J (Speckled)
- A & W 15R (P) (Leopard)
- HS UNTAPPED 3A (Speckled)
- NOTTA 2R PRETENDER 4T (P) (Speckled)
- KEIROSS KATIE P9 (AI) (ET) (P) (White)**
- CODIAK PUTNAM GNK 61Y (P) (Leopard)
- WHITE ACRES KATIE (AI) (ET) (P) (White)
- WATTLE GROVE SPARKLE E31 (ET) (Speckled)

Information

Colour	Horn	Poll	Coat	MSTN	Leptin
White	Polled	PcPc	ED/ED	Non Carrier (Free)	C/T

Raw Data

Weight	BW	Scrotal	P8	Rib	EMA	IMF
465	45	-	7	5	64	5.8

January 2023 Breedplan Data

	BW	MILK	GL	200	400	600	MCW	CWT	SS	RUMP	EMA	RIB	IMF	RBV
EBV	2.6	0	2	7	12	21	24	4	0	1.8	-0.6	1.3	0.7	-1.6
ACC	77	42	52	72	71	72	61	62	55	64	49	65	56	60

February 2023 Speckle Park BREEDPLAN



IDENT KRS S43 DOB 14/4/2021

Keiross *Birdie* S43

This heifer is one of our home favourites who has a solid pedigree on both sides – Codiak Putnam and Codiak Monument. We love her dam line and love her sire line, so it makes sense why we really love this heifer. She is deep, classy and could step straight into the show ring. She has a nice front end and extension. KRS S43 was flushed twice and produced over 30 embryos. If you want a heifer that loves flushing, here she is. KRS S43 has been running with Three Way Kings Ransom NGL L12 and was PTIC on 28/11/22. Her full sister sells in Lot 50.

- CODIAK OSCAR GNK 8S (P) (Leopard)
- CODIAK PUTNAM GNK 61Y (P) (Leopard)
- NORTHERN LIGHTS 14N (White)
- WATTLE GROVE SMOKE AND MIRRORS L275 (P) (Leopard)**
- RAVEN MEADOWS MAGNUM 10N (Speckled)
- CODIAK GOOD GOLLY GNK 11U (P) (Speckled)
- SPOTS 'N SPROUTS 3K (Speckled)
- CODIAK OSCAR GNK 8S (P) (Leopard)
- CODIAK MONUMENT GNK 107D (P) (White)
- CODIAK UNIQUE GNK 8R (P) (Speckled)
- KEIROSS Q44 (AI) (ET) (P) (Speckled)**
- CODIAK TRUMP GNK 20T (P) (Speckled)
- CODIAK BIRDIE GNK 36B (Speckled)
- CODIAK WAITIN ON YOU 55W (P) (White)

Information

Colour	Horn	Poll	Coat	MSTN	Leptin
Speckled	Polled	PcPc	ED/ED	Non Carrier (Free)	C/T

Raw Data

Weight	BW	Scrotal	P8	Rib	EMA	IMF
482	35	-	8	7	70	4.2

January 2023 Breedplan Data

	BW	MILK	GL	200	400	600	MCW	CWT	SS	RUMP	EMA	RIB	IMF	RBV
EBV	1.3	5	-0.1	12	17	24	24	13	0.3	0.1	0.4	0.1	-0.5	0.3
ACC	61	37	46	57	56	56	48	49	47	47	39	47	43	45

February 2023 Speckle Park BREEDPLAN



IDENT KRS S44 DOB 17/4/2021

Keiross *Birdie* S44

A full sister to Lot 46 is Keiross Birdie S44, who has so much appeal. She is unique and she is a very free moving heifer. This heifer is homozygous polled, red gene and myostatin free making her a very versatile choice of female. KRS S44 has been running with Three Way Kings Ransom NGL L12 and was PTIC on 28/11/22.

- CODIAK OSCAR GNK 8S (P) (Leopard)
- CODIAK PUTNAM GNK 61Y (P) (Leopard)
- NORTHERN LIGHTS 14N (White)
- WATTLE GROVE SMOKE AND MIRRORS L275 (P) (Leopard)**
- RAVEN MEADOWS MAGNUM 10N (Speckled)
- CODIAK GOOD GOLLY GNK 11U (P) (Speckled)
- SPOTS 'N SPROUTS 3K (Speckled)
- CODIAK OSCAR GNK 8S (P) (Leopard)
- CODIAK MONUMENT GNK 107D (P) (White)
- CODIAK UNIQUE GNK 8R (P) (Speckled)
- KEIROSS Q44 (AI) (ET) (P) (Speckled)**
- CODIAK TRUMP GNK 20T (P) (Speckled)
- CODIAK BIRDIE GNK 36B (Speckled)
- CODIAK WAITIN ON YOU 55W (P) (White)

Information

Colour	Horn	Poll	Coat	MSTN	Leptin
Speckled	Polled	PcPc	ED/ED	Non Carrier (Free)	C/C

Raw Data

Weight	BW	Scrotal	P8	Rib	EMA	IMF
480	38	-	3	3	60	3.2

January 2023 Breedplan Data

	BW	MILK	GL	200	400	600	MCW	CWT	SS	RUMP	EMA	RIB	IMF	RBV
EBV	1.3	5	0.1	10	17	24	26	13	0.3	-0.5	0.2	-0.4	-0.7	0.5
ACC	75	37	51	71	69	70	58	59	48	62	46	62	54	58

February 2023 Speckle Park BREEDPLAN



IDENT KRS S47 DOB 19/4/2021

Keiross *Hush* S47

Our first Wall Street heifer! Keiross Hush combines the very eye-catching bull JSF 36E with Rose Hill Hush, daughter of the popular Trade Secret. This heifer is homozygous polled and free from myostatin and red gene. She ranks in the top 5% for gestation length and birth weight. Keiross Hush S47 has been running with our stud sire Three Way Kings Ransom NGL L12 and was PTIC on 28/11/22. Her personality is quite shy.

- SPOTS AND SPROUTS DYNAMITE 23T
- ASPEN ACRES T.N.T. 4Y (Speckled)
- ASPEN ACRES 4U
- JSF WALL STREET 36E (P) (Speckled)**
- REDNECK RANCH'S TEDDY 5T (P) (Speckled)
- REDNECK WHISKEY 7W (P) (White)
- REDNECK RANCH'S SCARLET 1S (P) (Speckled)
- SEMEX ALLIANCE YOGI GOES REDNECK (Speckled)
- JOHNER STOCK FARM TRADE SECRET (White)
- MONNERY RIVER 7W (P) (Speckled)
- ROSE HILL HUSH (ET) (P) (Speckled)**
- P.A.R. MOO FASSA 03M (Speckled)
- SIX STAR 3M RENDEZVOUS D27 (ET) (Black)
- NOTTA RENDEZVOUS 65R (P) (Speckled)

Information

Colour	Horn	Poll	Coat	MSTN	Leptin
Leopard	Polled	PcPc	ED/ED	Non Carrier (Free)	C/C

Raw Data

Weight	BW	Scrotal	P8	Rib	EMA	IMF
460	35	-	7	6	68	4.7

January 2023 Breedplan Data

	BW	MILK	GL	200	400	600	MCW	CWT	SS	RUMP	EMA	RIB	IMF	RBV
EBV	-0.3	2	-1.7	10	19	21	15	15	-0.3	1.5	1.1	1.1	0.2	-0.6
ACC	76	29	50	71	69	70	58	58	48	62	44	62	53	58

February 2023 Speckle Park BREEDPLAN



IDENT KRS S49 DOB 19/4/2021

Keiross *Birdie* S49

A unique pedigree and the only one in this sale. Keiross Birdie S49 is progeny of A & W 15R a bull that exhibits length and consistency with Codiak Birdie, a favourite cow of ours. This heifer is structurally sound and has an unrestrictive breeding profile. KRS S49 was AI'ed to Riverina Sonar on the 31st July and PTIC on the 28th September 2022.

- THUNDER 168D
- BELMORAL'S SPECIAL 99H (Speckled)
- LIGHTNING LADY 2Y (Leopard)
- A & W 15R (P) (Leopard)**
- ASPEN ACRES T.N.T. 4Y (Speckled)
- TRIPLE A GEM 15G (Speckled)
- SPOTS AND SPROUTS 15Y (Speckled)
- HWY. 4 SPECKLE PARK 20L (Speckled)
- CODIAK TRUMP GNK 20T (P) (Speckled)
- EL RANCHO NO GOTTO SHANS 02J (Speckled)
- CODIAK BIRDIE GNK 36B (Speckled)**
- RAVEN MEADOWS MAGNUM 10N (Speckled)
- CODIAK WAITIN ON YOU 55W (P) (White)
- CODIAK RAYLEANE GNK 52R (P) (Speckled)

Information

Colour	Horn	Poll	Coat	MSTN	Leptin
Leopard	Polled	PcPc	ED/ED	Non Carrier (Free)	C/C

Raw Data

Weight	BW	Scrotal	P8	Rib	EMA	IMF
440	40	-	4	3	60	3.2

January 2023 Breedplan Data

	BW	MILK	GL	200	400	600	MCW	CWT	SS	RUMP	EMA	RIB	IMF	RBV
EBV	1.9	1	2.2	3	4	13	14	1	1	0.2	0.2	0.2	-0.2	0
ACC	77	43	54	72	71	72	61	62	53	63	48	64	55	60

February 2023 Speckle Park BREEDPLAN



IDENT KRS S50 DOB 20/4/2021



Keiross *Birdie* S50

This is a very stylish heifer, a Smoke and Mirrors daughter and full sister to Lot 46, a favourite heifer of ours! This heifer combines a maternal and correct line with a quality Australian sire! Her cow family are renowned for fertility, which we have seen over and over. Keiross Birdie S50 was PTIC on 23/01/2023 after running with Three Way Kings Ransom NGL L12.

- CODIAK OSCAR GNK 8S (P) (Leopard)
- CODIAK PUTNAM GNK 61Y (P) (Leopard)
- NORTHERN LIGHTS 14N (White)
- WATTLE GROVE SMOKE AND MIRRORS L275 (P) (Leopard)**
- RAVEN MEADOWS MAGNUM 10N (Speckled)
- CODIAK GOOD GOLLY GNK 11U (P) (Speckled)
- SPOTS 'N SPROUTS 3K (Speckled)
- CODIAK OSCAR GNK 8S (P) (Leopard)
- CODIAK MONUMENT GNK 107D (P) (White)
- CODIAK UNIQUE GNK 8R (P) (Speckled)
- KEIROSS Q44 (AI) (ET) (P) (Speckled)**
- CODIAK TRUMP GNK 20T (P) (Speckled)
- CODIAK BIRDIE GNK 36B (Speckled)
- CODIAK WAITIN ON YOU 55W (P) (White)

Information

Colour	Horn	Poll	Coat	MSTN	Leptin
Leopard	Polled	HPc	ED/ED	Non Carrier (Free)	C/C

Raw Data

Weight	BW	Scrotal	P8	Rib	EMA	IMF
470	40	-	4	4	68	3.2

January 2023 Breedplan Data

	BW	MILK	GL	200	400	600	MCW	CWT	SS	RUMP	EMA	RIB	IMF	RBV
EBV	1.8	5	0.3	13	20	26	24	14	0.3	-0.1	0.7	-0.1	-0.7	0.5
ACC	75	37	51	71	69	70	58	59	48	62	46	62	54	58

February 2023 Speckle Park BREEDPLAN



IDENT KRS S53 DOB 20/4/2021

Keiross *Satin* S53

An opportunity not to miss is Keiross Satin S53 who has proven genetics on both sides! Monument, Unique 8R, Codiak Katie Go On and Upto Specs Ulysses. This leopard heifer presents many breeding opportunities and would be an asset to any stud. KRS S53 was Al'ed to JSF Trade Secret on the 31st July and PTIC on the 28th September 2022.

- CODIAK PHLEP GNK 3P (Speckled)
- CODIAK OSCAR GNK 8S (P) (Leopard)
- CODIAK MATEUSA RKW 63M (White)
- CODIAK MONUMENT GNK 107D (P) (White)**
- CODIAK MR. BLACK RKW 13M (Black)
- CODIAK UNIQUE GNK 8R (P) (Speckled)
- CODIAK RKW 07J (Speckled)
- RAVEN MEADOWS MAGNUM 10N (Speckled)
- UPTO SPECS ULYSSES 25U (P) (Speckled)
- PRAIRIE HILL REBA 154F (Speckled)
- STEELE SATIN 1E (P) (White)**
- LEGACY UNRIVALED 12U (P) (Speckled)
- CODIAK KATIE GO ON 7Y (P) (Speckled)
- CODIAK HILLARY 81H (White)

Information

Colour	Horn	Poll	Coat	MSTN	Leptin
Leopard	Polled	PcPc	ED/ED	Non Carrier (Free)	C/C

Raw Data

Weight	BW	Scrotal	P8	Rib	EMA	IMF
465	40	-	3	3	59	3.9

January 2023 Breedplan Data

	BW	MILK	GL	200	400	600	MCW	CWT	SS	RUMP	EMA	RIB	IMF	RBV
EBV	3.1	1	0.8	19	24	32	34	13	0.5	0.4	-0.9	0.3	0.1	-0.8
ACC	75	38	49	70	69	70	58	59	50	63	47	63	55	59

February 2023 Speckle Park BREEDPLAN



IDENT KRS S57 DOB 23/4/2021

Keiross *Niome* S57

We believe Keiross Niome S57 has some of the strongest genetic lines in the Speckle Park breed. Codiak Putnam and Codiak Acres Niome who are both in the Top 5 SPI Recorded Dams and Sires. Here is your chance to go straight to the top and grab some Codiak Acres! KRS S57 was Al'ed to Oakey Creek Ulysses on the 31st July and PTIC on the 28th September 2022. We are very happy with the progeny we are seeing from Oakey Creek Ulysses!!

- CODIAK PHLEP GNK 3P (Speckled)
- CODIAK OSCAR GNK 8S (P) (Leopard)
- CODIAK MATEUSA RKW 63M (White)
- CODIAK PUTNAM GNK 61Y (P) (Leopard)**
- FLATLAKE BUZZ 60K (Speckled)
- NORTHERN LIGHTS 14N (White)
- CODIAK KLIPSO RKW 31K (Leopard)
- HWY. 4 SPECKLE PARK 20L (Speckled)
- CODIAK TRUMP GNK 20T (P) (Speckled)
- EL RANCHO NO GOTTO SHANS 02J (Speckled)
- CODIAK ACRES NIOME GNK5X (White)**
- RAVEN MEADOWS MAGNUM 10N (Speckled)
- CODIAK URE OKAY GNK 10U (P) (Speckled)
- CODIAK UNIQUE GNK 8R (P) (Speckled)

Information

Colour	Horn	Poll	Coat	MSTN	Leptin
Leopard	Polled	PcPc	ED/ED	Carrier	C/C

Raw Data

Weight	BW	Scrotal	P8	Rib	EMA	IMF
460	37	-	7	5	63	3.6

January 2023 Breedplan Data

	BW	MILK	GL	200	400	600	MCW	CWT	SS	RUMP	EMA	RIB	IMF	RBV
EBV	0.7	6	0.3	7	9	13	10	7	0	0.9	0.2	0.7	-0.3	-0.3
ACC	79	54	58	75	74	75	65	66	62	68	55	68	61	65

February 2023 Speckle Park BREEDPLAN





IDENT KRS S58 DOB 23/4/2021

Keiross *Marusa* S58

Another cracking heifer is Keiross Marusa S58! A Unique 8R granddaughter that we have been very tempted to keep at KRS. This white heifer is stylish and is filling out nicely as she matures. There is not a lot of Codiak Marusa around and we believe she is one of the most complete cows in the breed. KRS S58 was Al'ed to Wattle Grove Mr Business E11 on the 31st July and PTIC on the 28th of September 2022.

- CODIAK PHLEP GNK 3P (Speckled)
- CODIAK OSCAR GNK 8S (P) (Leopard)
- CODIAK MATEUSA RKW 63M (White)
- CODIAK MONUMENT GNK 107D (P) (White)**
- CODIAK MR. BLACK RKW 13M (Black)
- CODIAK UNIQUE GNK 8R (P) (Speckled)
- CODIAK RKW 07J (Speckled)
- NOTTA FRONTLINE 303X (Speckled)
- CODIAK SUMMIT SUPREME GNK 10Z (P) (White)
- CODIAK GNK 15X (Speckled) (TW)
- CODIAK MARUSA GNK 30B (P) (Speckled)**
- UPTO SPECS SANTO 2S (P) (Speckled)
- CODIAK BLACK MAJIC GNK 40W (P) (Black)
- UPTO SPECS TEEKA 8T (P) (Leopard)

Information

Colour	Horn	Poll	Coat	MSTN	Leptin
White	Polled	HPc	ED/ED	Non Carrier (Free)	C/C

Raw Data

Weight	BW	Scrotal	P8	Rib	EMA	IMF
500	38	-	5	4	61	4.2

January 2023 Breedplan Data

	BW	MILK	GL	200	400	600	MCW	CWT	SS	RUMP	EMA	RIB	IMF	RBV
EBV	2	1	-0.2	17	24	36	46	18	0.2	0.5	-1	0.4	0.6	-1
ACC	76	38	48	71	70	70	58	60	52	63	47	63	55	59

February 2023 Speckle Park BREEDPLAN



IDENT KRS S59 DOB 23/4/2021

Keiross *Marusa* S59

Keiross Marusa S59 is a half-sister to Lot 53. This heifer presents greater genetic opportunity to attain Codiak Marusa, combined with one of the most influential bulls in the breed, Mainstream Eldorado! This heifer exhibits softness and as she has matured, thickness. She is ranked in the top 15% for birth weight, top 20% for milk and top 1% for IMF among 2021 born calves. KRS S59 has been running with KRS stud sire Three Way Kings Ransom NGL L12 and was PTIC on 28/11/22.

- PARKLAND SPECKLE PARKS 5B
- HWY. 4 SPECKLE PARK 2H (Speckled)
- LEIGH-AL-ANN PRINCESS 1B
- MAINSTREAM ELDORADO E11 (ET) (P) (White)**
- ASPEN ACRES FREEDOM 31F (Speckled)
- SPOTS 'N SPROUTS 3K (Speckled)
- SPOTS 'N SPROUTS 6F (Black)
- NOTTA FRONTLINE 303X (Speckled)
- CODIAK SUMMIT SUPREME GNK 10Z (P) (White)
- CODIAK GNK 15X (Speckled) (TW)
- CODIAK MARUSA GNK 30B (P) (Speckled)**
- UPTO SPECS SANTO 2S (P) (Speckled)
- CODIAK BLACK MAJIC GNK 40W (P) (Black)
- UPTO SPECS TEEKA 8T (P) (Leopard)

Information

Colour	Horn	Poll	Coat	MSTN	Leptin
Leopard	Polled	HPc	ED/e	Non Carrier (Free)	C/C

Raw Data

Weight	BW	Scrotal	P8	Rib	EMA	IMF
440	35	-	8	5	69	5.8

January 2023 Breedplan Data

	BW	MILK	GL	200	400	600	MCW	CWT	SS	RUMP	EMA	RIB	IMF	RBV
EBV	0.6	5	-0.5	10	20	24	29	19	-0.2	1.8	1	1.4	1.2	-0.9
ACC	76	48	53	72	71	71	60	61	55	64	49	64	56	60

February 2023 Speckle Park BREEDPLAN





IDENT KRS S61 DOB 24/4/2021

Keiross *Sahara* S61

Now here is a classy heifer and one that could walk straight into the show ring. An exciting combination we have trialed, which we really like! Mt Eccles Sahara one of our proven donors and MX El Guapo! This heifer had one of the highest measured eye muscle areas of our heifers and is ranked in the top 5% EMA for 2021 born calves. KRS S61 has been running with Three Way Kings Ransom, however, was not detected pregnant on 23/01/2023. See supplementary sheet for update.

- PAR ACE IN A HOLE 66A (Speckled)
- P.A.R. CASANOVA 55C (P) (Speckled)
- POPPY OF P.A.R. 55P (Leopard)
- MX EL GUAPO 103E (P) (Speckled)**
- P.A.R. THROTTLE 66T (P) (Speckled)
- P.A.R. HIGH MAINTENANCE OF MX 103Z (P) (Speckled)
- SPECIAL DESIGN OF P.A.R. 20S (P) (Speckled)
- SEMEX ALLIANCE YOGI GOES REDNECK (Speckled)
- JOHNER STOCK FARM TRADE SECRET (White)
- MONNERY RIVER 7W (P) (Speckled)
- MT ECCLES SAHARA (AI) (ET) (P) (Speckled)**
- STAR BANK LACERTA 68L (Speckled)
- MT ECCLES YASI (AI) (ET) (P) (Black)
- WARATAH MELISA G34 (ET) (Speckled)

Information

Colour	Horn	Poll	Coat	MSTN	Leptin
Speckled	Polled	PcPc	ED/ED	Non Carrier (Free)	C/T

Raw Data

Weight	BW	Scrotal	P8	Rib	EMA	IMF
530	40	-	5	4	69	4.6

January 2023 Breedplan Data

	BW	MILK	GL	200	400	600	MCW	CWT	SS	RUMP	EMA	RIB	IMF	RBV
EBV	2.1	4	-0.8	19	28	37	37	24	0.8	0.3	1.9	0.2	-0.1	0.7
ACC	76	26	48	71	70	71	57	59	49	61	43	61	52	57

February 2023 Speckle Park BREEDPLAN



IDENT KRS S66 DOB 19/5/2021

Keiross *Birdie* S66

An exciting heifer with a great deal of style, Keiross Birdie S66 is well suited to the show ring. She has a very sound structure with volume and femininity. This heifer combines an influential cow family with fantastic growth performance from Notta Romeo. Don't miss this absolute sweetheart! KRS S66 has been running with KRS stud sire Three Way Kings Ransom NGL L12 and was PTIC on 28/11/22.

- SPOTS 'N SPROUTS JUNO 103J (Speckled)
- STAR BANK LACERTA 68L (Speckled)
- STAR BANK 55H (Speckled)
- NOTTA ROMEO 64R (P) (Speckled)**
- NORALTA 9E
- STAR BANK 64L (Speckled)
- JANETTE OF P.A.R. 44H (Speckled)
- CODIAK OSCAR GNK 8S (P) (Leopard)
- CODIAK MONUMENT GNK 107D (P) (White)
- CODIAK UNIQUE GNK 8R (P) (Speckled)
- KEIROSS BIRDIE Q39 (AI) (ET) (Speckled)**
- CODIAK TRUMP GNK 20T (P) (Speckled)
- CODIAK BIRDIE GNK 36B (Speckled)
- CODIAK WAITIN ON YOU 55W (P) (White)

Information

Colour	Horn	Poll	Coat	MSTN	Leptin
Speckled	Polled	PcPc	ED/ED	Carrier	T/T

Raw Data

Weight	BW	Scrotal	P8	Rib	EMA	IMF
478	35	-	5	5	57	3.5

January 2023 Breedplan Data

	BW	MILK	GL	200	400	600	MCW	CWT	SS	RUMP	EMA	RIB	IMF	RBV
EBV	1.9	4	0.3	17	27	31	33	17	0.6	-0.2	-0.6	-0.2	-0.3	-0.3
ACC	74	37	48	68	67	68	56	56	47	59	43	59	50	54

February 2023 Speckle Park BREEDPLAN



IDENT KRS S67 DOB 20/5/2021

Keiross *Sahara* S67

Keiross Sahara S67 is a half-sister to Lot 56 and combines the structural power from Notta Romeo, mixed with the doing ability of Mt Eccles Sahara. This heifer stands proud and has a lovely front and tail end. She is ranked in the top 15% for gestation length, and top 1% for EMA and retail beef yield. KRS S67 has been running with Three Way Kings Ransom, however, was not detected pregnant on 28/11/2022. See supplementary sheet for update.

- SPOTS 'N SPROUTS JUNO 103J (Speckled)
- STAR BANK LACERTA 68L (Speckled)
- STAR BANK 55H (Speckled)
- NOTTA ROMEO 64R (P) (Speckled)**
- NORALTA 9E
- STAR BANK 64L (Speckled)
- JANETTE OF P.A.R. 44H (Speckled)
- SEMEX ALLIANCE YOGI GOES REDNECK (Speckled)
- JOHNER STOCK FARM TRADE SECRET (White)
- MONNERY RIVER 7W (P) (Speckled)
- MT ECCLES SAHARA (AI) (ET) (P) (Speckled)**
- STAR BANK LACERTA 68L (Speckled)
- MT ECCLES YASI (AI) (ET) (P) (Black)
- WARATAH MELISA G34 (ET) (Speckled)

Information

Colour	Horn	Poll	Coat	MSTN	Leptin
Speckled	Polled	PcPc	ED/ED	Carrier	T/T

Raw Data

Weight	BW	Scrotal	P8	Rib	EMA	IMF
464	32	-	4	3	65	3.4

January 2023 Breedplan Data

	BW	MILK	GL	200	400	600	MCW	CWT	SS	RUMP	EMA	RIB	IMF	RBV
EBV	0	5	-0.9	10	26	24	18	25	0.5	-0.9	2.1	-0.7	-0.7	1.5
ACC	76	40	50	70	68	69	58	58	50	61	44	61	52	56

February 2023 Speckle Park BREEDPLAN



IDENT KRS S71 DOB 25/5/2021

Keiross *Katie* S71

One of our youngest heifers on offer is Keiross Katie S71, who is daughter of proven sire Upto Specs Ulysses 25U and a foundational cow at KRS, Keiross Katie P9. Here is your chance to take home a young white heifer that is homozygous polled and red gene and myostatin free. After calving, this heifer will give you many sire choices. KRS S71 has been running with KRS stud sire Three Way Kings Ransom NGL L12 and was PTIC on 28/11/22.

- SPRUCE LANE VENTURE 3J (Speckled)
- RAVEN MEADOWS MAGNUM 10N (Speckled)
- PARKLAND SPECKLE PARK 10J (Speckled)
- UPTO SPECS ULYSSES 25U (P) (Speckled)**
- THUNDER 1C (Speckled)
- PRAIRIE HILL REBA 154F (Speckled)
- SPOTS 'N SPROUTS 1D (White)
- A & W 15R (P) (Leopard)
- HS UNTAPPED 3A (Speckled)
- NOTTA 2R PRETENDER 4T (P) (Speckled)
- KEIROSS KATIE P9 (AI) (ET) (P) (White)**
- CODIAK PUTNAM GNK 61Y (P) (Leopard)
- WHITE ACRES KATIE (AI) (ET) (P) (White)
- WATTLE GROVE SPARKLE E31 (ET) (Speckled)

Information

Colour	Horn	Poll	Coat	MSTN	Leptin
White	Polled	PcPc	ED/ED	Non Carrier (Free)	C/T

Raw Data

Weight	BW	Scrotal	P8	Rib	EMA	IMF
393	36	-	7	6	61	5.9

January 2023 Breedplan Data

	BW	MILK	GL	200	400	600	MCW	CWT	SS	RUMP	EMA	RIB	IMF	RBV
EBV	2.3	0	1.9	7	9	19	20	5	0.6	2	0.7	1.6	1	-1.3
ACC	77	41	52	72	70	71	60	61	56	63	48	63	55	59

February 2023 Speckle Park BREEDPLAN



IDENT KRS S75 DOB 31/5/2021

F

Keiross *Birdie* S75

Keiross Birdie S75 is our second youngest heifer on offer and she is soft, elegant and desirable. This heifer combines structural integrity and fertility with fast growth from Notta Romeo and grand sire Lacerta. KRS S75 has been running with Three Way Kings Ransom, however, was not detected pregnant on 28/11/2022. See supplementary sheet for update.

- SPOTS 'N SPROUTS JUNO 103J (Speckled)
- STAR BANK LACERTA 68L (Speckled)
- STAR BANK 55H (Speckled)
- NOTTA ROMEO 64R (P) (Speckled)**
- NORALTA 9E
- STAR BANK 64L (Speckled)
- JANETTE OF P.A.R. 44H (Speckled)
- CODIAK OSCAR GNK 8S (P) (Leopard)
- CODIAK MONUMENT GNK 107D (P) (White)
- CODIAK UNIQUE GNK 8R (P) (Speckled)
- KEIROSS BIRDIE Q39 (AI) (ET) (Speckled)**
- CODIAK TRUMP GNK 20T (P) (Speckled)
- CODIAK BIRDIE GNK 36B (Speckled)
- CODIAK WAITIN ON YOU 55W (P) (White)

Information

Colour	Horn	Poll	Coat	MSTN	Leptin
Speckled	Polled	HPc	ED/ED	Carrier	C/T

Raw Data

Weight	BW	Scrotal	P8	Rib	EMA	IMF
460	35	-	3	3	53	2.4

January 2023 Breedplan Data

	BW	MILK	GL	200	400	600	MCW	CWT	SS	RUMP	EMA	RIB	IMF	RBV
EBV	1.8	4	0.1	19	30	30	29	19	0.6	-0.9	-0.8	-0.7	-0.6	0.1
ACC	74	37	48	68	67	68	56	56	47	59	43	59	50	54

February 2023 Speckle Park BREEDPLAN



IDENT KRS S80 DOB 26/6/2021

Keiross *Amanda* S80

Keiross Amanda S80 is our youngest heifer on offer and isn't she a tidy las! Her breeding taps into Mainstream Eldorado, Codiak Amanda and our exceptional stud sire Three Way Kings Ransom. Here is an opportunity to use any sire of your choice. This heifer is white, homozygous polled, red gene and myostatin free. This heifer sells empty as we deemed her too immature when we were AI'ing in 2022.

- WATTLE GROVE 54P MOO FASA E34 (ET) (Speckled)
- ALMARLEA E6 KINGSLEY (Speckled)
- ALMARLEA 68L AMYS GIRL E6 (ET) (Speckled)
- THREE WAY KINGS RANSOM (AI) (ET) (P) (Speckled)**
- STAR BANK LACERTA 68L (Speckled)
- ALMARLEA 68L MELISSA (ET) (White)
- CODIAK MELISA RKW 64M (Speckled)
- HWY. 4 SPECKLE PARK 2H (Speckled)
- MAINSTREAM ELDORADO E11 (ET) (P) (White)
- SPOTS 'N SPROUTS 3K (Speckled)
- KEIROSS AMANDA P2 (AI) (ET) (P) (White)**
- CODIAK CRIKEY GNK 13U (P) (Speckled)
- CODIAK AMANDA GNK 42Y (P) (Speckled)
- CODIAK UNIQUE GNK 8R (P) (Speckled)

Information

Colour	Horn	Poll	Coat	MSTN	Leptin
White	Polled	PcPc	ED/ED	Non Carrier (Free)	C/T

Raw Data

Weight	BW	Scrotal	P8	Rib	EMA	IMF
400	35	-	4	3	46	2.9

January 2023 Breedplan Data

	BW	MILK	GL	200	400	600	MCW	CWT	SS	RUMP	EMA	RIB	IMF	RBV
EBV	1.9	7	-0.1	17	28	34	35	22	0.2	0.6	0.7	0.5	0.1	-0.2
ACC	66	38	43	60	59	60	49	48	39	37	32	37	34	36

February 2023 Speckle Park BREEDPLAN



IDENT KRS Q59 DOB 28/12/2019

F

Keiross *Sahara* Q59

Keiross Sahara Q59 sells as our only older female in the sale. Her pedigree is unique and stems from Mt Eccles Speckle Park on both sides. This heifer has personality, is cheeky and she has thickness and depth. Sahara Q59 has an unrestrictive breeding profile and is in the top 10% for gestation length and top 5% birth weight. KRS Q59 was AI'ed to Black Diamond Poster Boy on the 4th September 2022 and backed up with Three Way Kings Ransom NGL L12. She was PTIC on 28/11/2022.

CODIAK CRIKEY GNK 13U (P) (Speckled)
 ALMARLEA 21K CRIKEY F114 (ET) (Black)
 PRAIRIE HILL AMY'S GIRL 21K (Speckled)
MT ECCLES LIGHTNING BOLT L57 (Speckled)
 CODIAK CRIKEY GNK 13U (P) (Speckled)
 WARATAH MELISA G34 (ET) (Speckled)
 CODIAK MELISA RKW 64M (Speckled)
 SEMEX ALLIANCE YOGI GOES REDNECK (Speckled)
 JOHNER STOCK FARM TRADE SECRET (White)
 MONNERY RIVER 7W (P) (Speckled)
MT ECCLES SAHARA (AI) (ET) (P) (Speckled)
 STAR BANK LACERTA 68L (Speckled)
 MT ECCLES YASI (AI) (ET) (P) (Black)
 WARATAH MELISA G34 (ET) (Speckled)

Information

Colour	Horn	Poll	Coat	MSTN	Leptin
Speckled	Polled	PcPc	ED/ED	Non Carrier (Free)	C/C

Raw Data

Weight	BW	Scrotal	P8	Rib	EMA	IMF
654	34	-	20	11	83	8

January 2023 Breedplan Data

	BW	MILK	GL	200	400	600	MCW	CWT	SS	RUMP	EMA	RIB	IMF	RBV
EBV	-0.3	6	-1.2	8	16	16	13	16	0.6	0.4	1.4	0.3	-0.5	0.6
ACC	54	35	39	49	47	48	41	41	42	38	32	38	34	37

February 2023 Speckle Park BREEDPLAN



- Synchronisation Programs • Artificial Insemination • Semen & Embryo Storage
- Red River Cattle Yards & Accessories • Freeze Branding
- Semen Available – All Breeds, All Companies
- Liquid Nitrogen On Farm Delivery



NORTHERN VICTORIA

Cohuna 03 5456 2366 info@nationalherd.com.au

WESTERN VICTORIA

Terang 03 5592 1177 terang@nationalherd.com.au

SOUTH AUSTRALIA

Murray Bridge 08 8532 1392 murraybridge@nationalherd.com.au

www.nationalherd.com.au | CONNECT WITH US



Recips

Lots 62 - 67



Lot 62



RECIPIENT COW Angus

KRS S43 x MAU K247

Keiross *Birdie* S43 x Maungahina *Kidmans Cove* S43

A great combination here. KRS S43 is a powerful female with a strong pedigree on both sides – her grand sires include Codiak Putnam and Codiak Monument. She is feminine and has a great front end and tail set. We believe her combined with the popular Kidmans Cove is sure to create something special!

Embryo transfer date – 6th August 2022.
Calf due date – 8th May 2023





RECIPIENT COW Angus

KRS S5 x SPC Q100

Keiross *Zahrah* S5 x Six Star SPC *Bojangles* Q100

We are offering a recipient cow PTIC to the only S heifer we have not included in this sale. S5 was too special to us, and she will stay at KRS. Zahrah S5 has been an eye-catching heifer since birth and she has matured into an exceptional female. Her genetics are rare, and she has thickness, great top line and elegance.

Her AI sire Bojangles is new and exciting and is progeny of Notta 1B Hawkeye and Six Star 300X Unique. Bojangles displays thickness, soundness with incredible foot and leg structure. Q100 was shown once at Beef Australia 2021, Rockhampton and was awarded first in class. He is grandson of the great Stands Alone.

We are very excited to see what Bojangles will do. New genetics right here!!

Embryo transfer date – 10th September 2022
Calf due date – 12th June 2023



RECIPIENT COW Angus x Murray Grey

KRS S29 x SPC Q100

Keiross *Angel's Secret* S29 x Six Star SPC *Bojangles* Q100

Keiross Angel's Secret S29, a Three Way Speckle Park daughter, who is an eye catching young heifer and has proven to be very fertile combined with the new exciting genetics of Six Star SPC Bojangles Q100.

Her AI sire Bojangles is progeny of Notta 1B Hawkeye and Six Star 300X Unique. Bojangles displays thickness, soundness with incredible foot and leg structure.

Embryo transfer date – 10th September 2022
Calf due date – 12th June 2023





RECIPIENT COW Angus

KRS Q53 x S23 P35

RECIPIENT COW Angus

KRS P19 x JMG 444E

Keiross *Gracelands* Q53 x Oakey Creek *Ulysses*

Keiross Gracelands Q53 is daughter of Three Way Gracelands NGL L12 that we purchased in 2017, who at the time was the most expensive Speckle Park heifer purchased. She is sired by Wattle Grove Smoke and Mirrors, and she is a heifer we soon decided we couldn't part with. She is a classy female, with great foot structure, legs and milking ability. We have used her in a number of embryo transfer programs and she consistently performs well.

Her AI sire is Oakey Creek Ulysses, a very sound bull that we will continue to use. He is son of Upto Specs Ulysses and Codiak Amanda 42Y and we are very impressed with his calves that have hit the ground so far.

Embryo transfer date – 10th September 2022
Calf due date – 12th June 2023

Keiross *Attitudenous* P19 x Notta 1B *Hawkeye* 444E

An exciting genetic combination here blends a home favourite of ours, Keiross Attitudenous P19 (daughter of Codiak Attitudenous and Calamasue 9Y) with Notta 1B Hawkeye 444E. Keiross Attitudenous is a foundational female at Keiross Speckle Park and since weaning age, she has been a standout heifer with exceptional fertility and a great udder.

Hawkeye is a highly regarded sire, and we are so glad we have purchased his semen! He is son of Caja Zeppelin who we are seeing exceptional progeny from at KRS. Hawkeye has so much appeal, great carcass and structural soundness and he has the ribbons to show. Hawkeye has been voted overall Champion Speckle Park Bull in the Champions of the World Competition.

Embryo transfer date – 20th October 2023
Calf due date – 23rd July 2023.



RECIPIENT COW Angus

KRS Q57 x JAD N31

Keiross *Gracelands* Q57 x JAD *Napoleon* N31

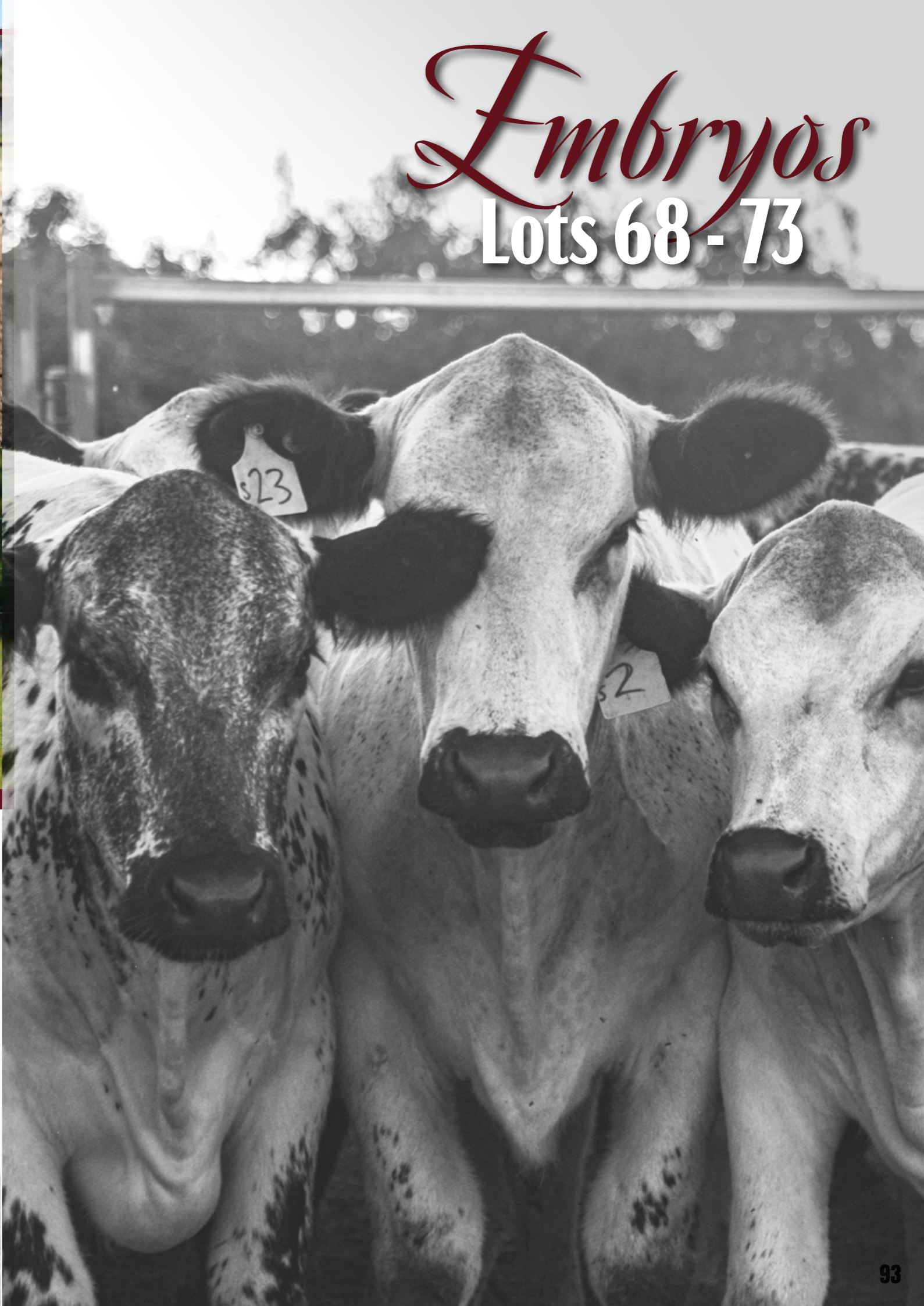
Here is an exciting recipient cow PTIC to a KRS donor we think highly of and JAD Napoleon. Keiross Gracelands Q57 is daughter of Three Way Gracelands NGL L12 that we purchased in 2018, who at the time was the most expensive Speckle Park heifer purchased in Scone for \$32 000 sired by Wattle Grove Abracadabra, a long-bodied bull with frame and carcass. JAD Napoleon is a very sound bull, sired by River Hill 60W Line Drive 54Z and Codiak Acres Belinda 66A. If you are looking for a female with pedigree, look no further.

Note = sexed female semen has been used at the time of artificial insemination, however, this does not guarantee 100% a female calf

Embryo transfer date – 20th October 2022
Calf due date – 23rd July 2023.



Embryos
Lots 68 - 73





IDENT SOS M61

MT ECCLES *Sahara* M61

One of our earliest purchases is this powerhouse donor Mt Eccles Sahara. When we purchased her at the Scone Speckle Park Sale in 2018, we believed she was one of the best heifers on offer with a solid genetic foundation of Mt Eccles Yasi and JSF Trade Secret.

Look at this cow's type, she has depth, length and so much volume. We are very impressed with the offspring she has produced, and she will continue to be a matriarch at KRS. She is now a 7-year-old cow who maintains fertility, an extremely sound structure, feet and legs and her doing ability is exceptional.



Lot 68a

IDENT RMS 103E 3 Embryos

MX *El Guapo* 103E

We really like El Guapo and have offered a number of lots in our sale that combine SOS M61 and RMS 103E. The calves are big and their growth performance has been stand out.



Lot 68b

IDENT WGS L275 3 Embryos

Wattle Grove *Smoke and Mirrors*

This cow really works and we are overwhelmed by the Sahara and Wattle Grove Smoke and Mirrors combination. The calves have been long bodied, thick, and very consistent.



Lot 68c

IDENT MTRS 22D 4 Embryos

Dangit *Matters*

A very sound bull that is an outcross pedigree amongst many Australian Speckle Park genetics. This bull is structurally sound, with a great top line. We have found him to produce lower birthweight calves.





IDENT KRS P9

KEIROSS *Katie* P9

As you can see, we love our Katie's and that stemmed from the interest we had in White Acres Katie, mother of our KRS monarch Keiross Katie P9.

Katie is one of our first pure bred Speckle Park born at KRS and is sired by HS Untapped 3A a powerful and productive bull who won Grand Champion Bull at the Canadian Western Agribition in 2014 and 2015.

Katie has a beautiful quiet nature which we are seeing in her offspring, she has good milk, and she is extremely fertile. In one flush she will consistently produce over 20 embryos. We won't let Katie go anywhere!



Lot 69a

IDENT MBG 25U 4 Embryos

UPTO SPECS *Ulysses*

Here is an opportunity to attain 4 embryos by the highly regarded Upto Specs Ulysses, one of the strongest Speckle Park bulls in the breed, combined with our Katie. Carcass, temperament, and fertility in one.



Lot 69b

IDENT CAJA 1B 4 Embryos

CAJA *Zeppelin* 1B

Zeppelin needs no introduction, he has depth, volume and great growth performance. He was the 2016 Farm Fair International Grand Champion Bull and Stockade Roundup Grand Champion Bull. Here is another truly great genetic combination at your fingertips.

Watch his calves grow and grow and grow.





IDENT KRS Q39

KEIROSS *Birdie* Q39

Keiross Birdie Q39 is a cow that every Speckle Park breeder would like in their front paddock. She has a highly regarded pedigree, she has structure, she is deep, she is so correct, and to top that, her temperament is brilliant.

Keiross Birdie Q39 is also one of our first embryo calves that we couldn't let go. She is daughter of Codiak Monument 107D and Codiak Birdie GNK 36B. As previously mentioned, we have found this line to be so fertile!

Lot 70a

IDENT ACM 23E 4 Embryos

Andchris *Extreme* 23E

Embryos that combine the Birdie line with the Andchris Extreme 23E line (son of Upto Specs Ulysses). Anchris Extreme has length and added lower quarter which we think will really work with Birdie.



Lot 70b

IDENT JKH 300X 4 Embryos

Spots n Sprouts *Stands Alone*

Stands Alone, everyone wants some of him!! Grand Champion Bull at the Canadian Western Agribition show in 2012. Best all-round Speckle Park bull in the breed. Well known for his lower birthweights, structural correctness, milk and the exceptional sons and daughters he produces. Everyone needs some Stands Alone!! Here's your chance.





IDENT NGL M27

THREE WAY *Gracelands* M27

One of the first females we purchased in 2018 was Three Way Gracelands M27, daughter of the highly regarded Three Way Gracelands and Heartridge Aries 01W.

M27 was a stand out heifer at the Scone Speckle Park Sale and we threw our hands in our pockets and decided we were not going home without her. She sold for \$32 000 and was the highest priced Speckle Park heifer at the time.

Lot 71a

IDENT WGS E11 3 Embryos

WATTLE GROVE *Mr Business*

3 embryos that combine our dear Gracelands M27 with Wattle Grove Mr Business. Mr Business is an older bull now that has stood the test of time. Son of Lacerta, he has smoothness and volume and still stands up well!



Lot 71b

IDENT RIV J301 4 Embryos

RIVERINA *Sonar* J301

A bull that is very well put together is Riverina Sonar, son of the great Stands Alone. What a bull! Proven calving ease sire, top 1% for milk and retail beef yield, top 5% 400- and 600-day growth weights.



Lot 71c

IDENT MAU K247 4 Embryos

MAUNGAHINA *Kidmans Cove*

A sire that has been used extensively and grabbed our attention in the early development of KRS. Kidmans Cove is a solid bull that is known for his lower birthweight calves.





IDENT KRS S5

KEIROSS *Zahrah* S5

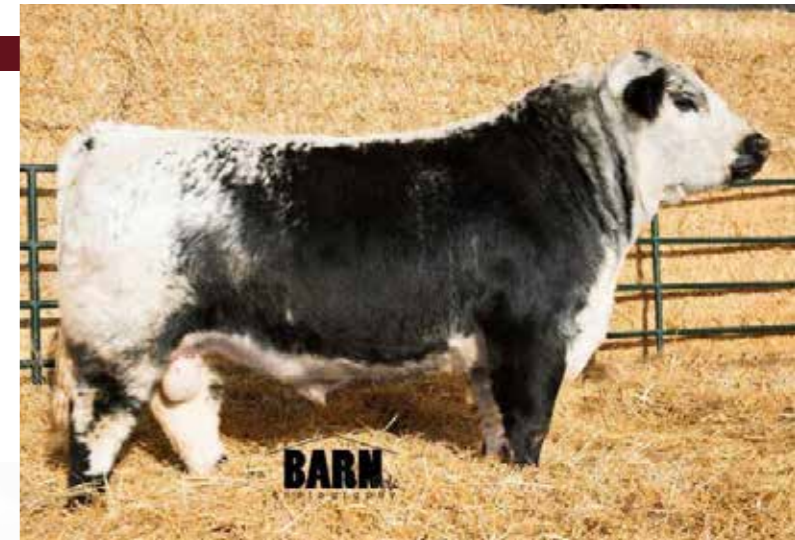
KRS S5 is the only S heifer not included in the sale today, she is a keeper. Zahrah S5 has been an eye-catching heifer since birth, and she has matured into a very sound female. Her genetics are rare, and she has thickness, great top line and elegance.

Lot 72a

IDENT US 1D 3 Embryos

UNDERHILL *All Out*

A sire we really like and will continue to use. Underhill All Out puts size into his progeny and has recently sired the highest priced Speckle Park female.



Lot 72b

IDENT SOC L14 4 Embryos

SIX STAR *Premier*

A bull we have more recently invested in. Six Star Premier is son of Six Star Rare Commodity and Six Star Pho-finish G250. Six Star Premier was Grand Champion Bull and Supreme Champion in 2016 at Adelaide Royal and Champion Speckle Park bull Interbred Champion at the 2017 Royal Canberra Show. Some ripping embryos here!!



Lot 72c

IDENT SPC Q100 4 Embryos

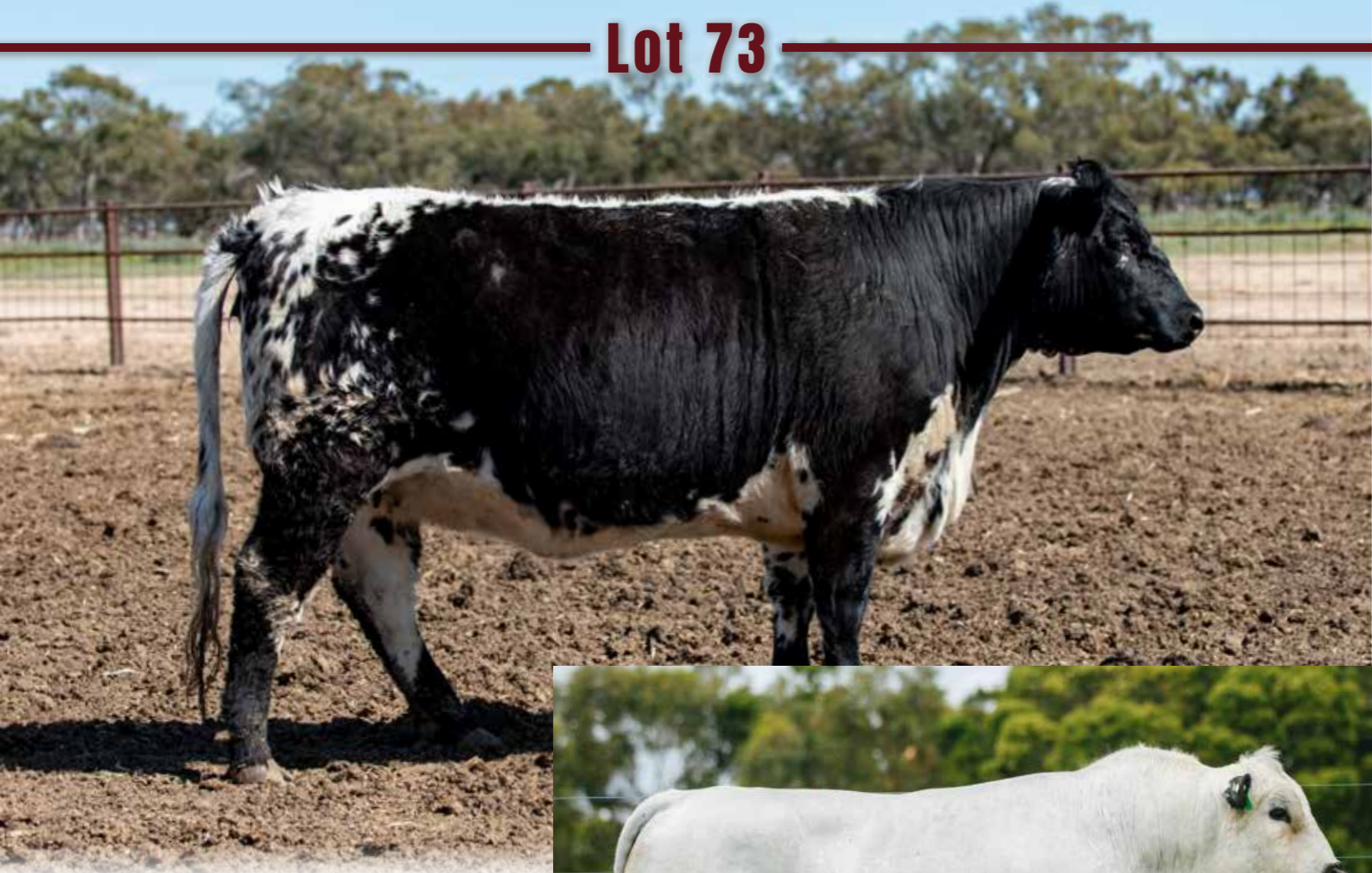
SIX STAR SPC *Bojangles* Q100

The last lot of embryos by our special heifer KRS S5.

Her AI sire Bojangles is new and exciting and is progeny of Notta 1B Hawkeye and Six Star 300X Unique. Bojangles displays thickness, soundness with incredible foot and leg structure. Q100 was shown once at Beef Australia 2021, Rockhampton and was awarded first in class. He is grandson of the great Stands Alone.

We are very excited to see what Bojangles will do. Exclusive genetic opportunity here!





4 Embryos

KRS Q57 x JAD N31

Keiross *Gracelands* Q57 x JAD *Napoleon* N31

Our last lot of embryos that combines Keiross Gracelands Q57, a very sound and feminine female with JAD Napoleon. This female was AI'ed with female sexed semen so it is highly likely all embryos will produce female progeny.

Note = sexed female semen has been used at the time of artificial insemination, however, this does not guarantee 100% a female calf



Don't let pestivirus rob you blind

Pestivirus is an insidious cattle disease. It can take from you before you know it.

It causes significant reproductive and performance issues, and weakens immune systems - leading to other costly cattle health problems like respiratory disease. In fact it costs the industry over \$114m every year.^[1]

To protect your herd from pestivirus and optimise your returns, it pays to be on Pestigard.

Find out how easy it is at your local rural reseller or cattle vet.

Zoetis Australia Pty Ltd. ABN 14 156 479 425, Level 6, 5 Dider Boulevard, Rhodes NSW 2138. ©2022 Zoetis Inc. All rights reserved. www.zoetis.com.au/21544-03/22

Reference: [1] Lane, J., et al. Find report priority list of endemic diseases for the red meat industries. 2015. Meat & Livestock Australia Limited, North Sydney.



zoetis

Always on guard

BEEF FINISHER
STUD MIX
CUSTOM RATION

KEIROSS SPECKLE PARK
PROUDLY FED BY
REX JAMES STOCKFEED



TRUST
REX JAMES
STOCKFEED
TO FEED
YOUR CATTLE

Contact Us :

info@jamesstockfeed.com.au
Phone: (03) 5866 2771
1 Murray Valley Hwy
(PO Box 150) Nathalia VIC 3638





Thank You

Keiross Speckle Park would like to extend a big thank you to all buyers and bidders at the Speckle Park on the Plains Sale. We appreciate the trust you have put into our bulls, females and genetic packages.

We would also like to sincerely thank all people and representatives involved in making our sale happen.
Many hands make light work.

It was Dads dream to have our very own Speckle Park Sale.

This one's for him.

If people are staying in Hay the night, we invite you to South Hay Hotel (south of the bridge) to catch up following the sale, and if your interested, the Hay Pro Rodeo begins after 6 pm at the Hay Show Grounds.



KEIROSS
KRS
SPECKLE PARK

