

# ***Building The Future Genetics Sale “Garrett Youth Scholarship Fund”***

***Genetics donated by the family of Jeff Noller***



**All proceeds have been donated by the Noller Family to the investment account for the Garrett Youth Scholarship.**

**Online Auctionsplus: Simultaneous Auction  
Wednesday 29th March & Thursday 30th March.  
Timer commences at 4.30pm 30th March**



The Charolais Society of Australia extend their appreciation to Auctionsplus for the use of their auction network to facilitate this auction and to Lynn, Brendan and Mark Noller for the donation of these genetics to support Charolais youth.



The late **Jeff Noller** was well respected in the Charolais and rural industry. Starting in the family Gunnadoo partnership before establishing his highly successful Noller herd, Jeff has been synonymous with quality cattle his entire life. A respected judge and renowned breeder Jeff has made a lasting contribution to the Charolais breed. The industry lost Jeff too young, and his family, Lynn, Brendan and Mark have donated the contents of the Noller Semen Tank to the Society. All proceeds as per the families wishes will be invested in the Garrett Youth Scholarship investment account. The earnings from the investment directly funds scholarships for Charolais youth in tertiary study.

The Charolais Society extends their sincere appreciation to the Lynn, Brendan and Mark Noller for the support of the Garrett Youth Scholarships. Charolais also extend their appreciation to Auctionsplus for hosting this sale.

## The Details

### **AUCTION:**

The sale will be hosted on Auctionsplus commencing at 12 noon Wednesday 29th March and the timer commences at 4.30pm (EDST) on Thursday 30th March. The lots will be offered simultaneously and potential purchasers should make themselves aware of the terms and conditions of bidding on Auctionsplus.

**The sale is unreserved and all lots are on the market from the opening bid price.**

### **DELIVERY:**

**All delivery and handling fees are the purchasers responsibility.**

A semen/embryo release authority will be provided once payment is received.

All lots are stored at United Cattle Breeding Services, 108 Mount Lookout Road, DEUCHER Qld 4362.  
Telephone 0448 292 707 or 0405 558 454  
Email: ucbsone@gmail.com

The Charolais Society will pay storage to the 30th April 2023. After this date the purchaser becomes responsible for storage fees and subsequent costs.

### **SALE NOTES:**

All lots have been packaged from information provided by UCBS. Semen and embryos will be offered and sold on a per straw or per embryo basis. If, when delivery occurs there is a variance in lot contents, the per straw or per embryo sale price will be applied to the number of straws/embryos available for delivery.

### **GUARANTEE:**

All lots are sold as is, and no guarantees are available. All lots have been stored under normal industry standards.

### **TERMS:**

Purchasers will be invoiced by the Charolais Society of Australia Ltd. Terms are 14 days.

### **Agents:**

Bartholomew & Co  
Garth Weatherall 0438 793 100  
BEAUDESERT QUEENSLAND

### **All Enquiries**

Charolais Society of Australia Ltd  
Telephone: 02 6771 1666  
Colin Rex 0408 661 255  
Email: manager@charolais.com.au

**1****LT BLUEGRASS 4017P (P) - 10 Straws**

Born: 21/02/2004

Herd Ident: OAU Z4017E

**Comments:** LT Bluegrass 4017P (P). 10 Straws stored at United Cattle Breeding Services, Allora Qld. A sire that needs no introduction within the Charolais breed, a trait leader for Birthweight and top percentiles for Rib, Rump and IMF%.



	CE DIR	CE DTR	GL	BW	200	400	600	MAT	MILK	SS
EBV	+17.8	+9.1	-6.6	-3.4	+9	+10	-2	-19	+9	+1.9
Acc	96%	94%	98%	98%	98%	98%	98%	97%	98%	97%

	EMA	RIB	RUMP	RBV	IMF	SELECTION INDEX VALUES	
EBV	+1.6	+2.6	+3.6	-1.9	+1.4	DTI (\$)	NMI (\$)
Acc	92%	95%	95%	93%	92%	+\$20	+\$47

EATONS ASSERT 9171 (PED U9171F)  
**Sire: LT ASSERTION 1277 (PED W1277F) (P)**  
 LT ALLIS CLASS 9140 (PED U9140F)  
 LT WYOMING WIND 4020 PLD (OAU P4020E) (P)  
**Dam: LT PEARLS BREEZE 2236 (PED X2236F) (P)**  
 LT UNLIMITED PEARL (PED S7053F)

Purchaser:.....Price \$:.....

**2****LT BLUEGRASS 4017P (P) - 10 Straws**

Born: 21/02/2004

Herd Ident: OAU Z4017E

**Comments:** LT Bluegrass 4017P (P). 10 Straws stored at United Cattle Breeding Services, Allora Qld. A sire that needs no introduction within the Charolais breed, a trait leader for Birthweight and top percentiles for Rib, Rump and IMF%.

Purchaser:.....

Price \$:.....

**3****LT BLUEGRASS 4017P (P) - 10 Straws**

Born: 21/02/2004

Herd Ident: OAU Z4017E

**Comments:** LT Bluegrass 4017P (P). 10 Straws stored at United Cattle Breeding Services, Allora Qld. A sire that needs no introduction within the Charolais breed, a trait leader for Birthweight and top percentiles for Rib, Rump and IMF%.

Purchaser:.....

Price \$:.....

**4****LT EASY BLEND 5125 PLD (P) - 10 Straws**

Born: 01/03/2005

Herd Ident: OAU A5113E

**Comments:** LT Easy Blend 5125 PLD (P). 10 Straws stored at United Cattle Breeding Services, Allora Qld. Trait leader for 400 Day Weight.



	CE DIR	CE DTR	GL	BW	200	400	600	MAT	MILK	SS
EBV	+6.9	-5.8	-4.5	-1.8	+18	+42	+49	+45	+4	+0.8
Acc	91%	88%	97%	97%	96%	96%	95%	94%	95%	94%

	EMA	RIB	RUMP	RBV	IMF	SELECTION INDEX VALUES	
EBV	-1.4	+1.7	+2.5	-2.7	+0.6	DTI (\$)	NMI (\$)
Acc	89%	92%	93%	88%	90%	+\$37	+\$63

BCR POLLED UNLIMITED 003 (OAU R3E) (P)  
**Sire: LT UNLIMITED EASE 9108 (OAU J9108E)**  
 PP MISS SHANDY 214 R194 (OAU -214E)  
 WCR PRIME CUT 764 PLD (OAC S764E) (P)  
**Dam: LT BRENDA 1014 PLD (PED -4572E)**  
 LT BRENDA'S BREEZE 9207P (PED -2629E)

Purchaser:.....Price \$:.....

**5****LT WIND STAR 6101 PLD (P) - 4 Straws**

Born: 14/03/1996

Herd Ident: OAC R6101E

**Comments:** LT Wind Star 6101 PLD, 4 Straws stored at United Cattle Breeding Services, Allora Qld.

	CE DIR	CE DTR	GL	BW	200	400	600	MAT	MILK	SS
EBV	+0.9	-0.7	-2.6	-0.4	+14	+22	+25	+12	+5	+1.8
Acc	55%	54%	66%	60%	62%	59%	60%	58%	61%	56%

	EMA	RIB	RUMP	RBY	IMF	SELECTION INDEX VALUES	
EBV	+1.0	+2.7	+3.4	-1.5	+0.5	DTI (\$)	NMI (\$)
Acc	50%	51%	51%	50%	50%	+\$19	+\$61

SCHURRTOP 5627 (PED -5627E)  
**Sire: LT WYOMING WIND 4020 PLD (OAU P4020E) (P)**  
 LT CHAP'S LADY 217 OP (PED -2170E)  
 SMOOTH DEAL RC 699 (PED -699E)  
**Dam: LT UNLIMITED GRACE 8100 (PED -8100E)**  
 BR ALICE R24 (PED -6036E)

Purchaser:.....Price \$:.....

**6****NOLLER BONANZA B22E (P) (R/F) - 21 Straws**

Born: 02/02/2006

Herd Ident: JLN B22E

**Comments:** Noller Bonanza B22E (P)(R/F) 21 Straws stored at UCBS, Allora Qld.

	CE DIR	CE DTR	GL	BW	200	400	600	MAT	MILK	SS
EBV	-5.9	-13.6	+1.7	+1.9	+10	+17	+32	+41	+6	+0.1
Acc	46%	43%	59%	69%	70%	68%	67%	62%	58%	54%

	EMA	RIB	RUMP	RBY	IMF	SELECTION INDEX VALUES	
EBV	+2.4	+0.1	+0.0	+0.3	+0.7	DTI (\$)	NMI (\$)
Acc	42%	46%	45%	44%	40%	+\$13	+\$5

CARABINIER 71357 C33 (IAF C6041F)  
**Sire: SEDALIA YEMON (DEG Y12F)**  
 SEDALIA QUEEN ANNE (DEG Q3F)  
 GUNNADOO QUARTER MASTER Q95E R/F (GN1 Q95E)  
**Dam: GUNNADOO LAONIE T29E (GN1 T29E) (P)**  
 GUNNADOO LAONIE Q69E (GN1 Q69E) (P)

Purchaser:.....Price \$:.....

**7****NOLLER BONANZA B22E (P) (R/F) - 21 Straws**

Born: 02/02/2006

Herd Ident: JLN B22E

**Comments:** Noller Bonanza B22E (P)(R/F) 21 Straws stored at UCBS, Allora Qld.

Purchaser:.....Price \$:.....

**8**

## NOLLER BONZER B16E (AI) - 26 Straws

Born: 24/01/2006

Herd Ident: JLN B16E

Comments: Noller Bonzer B16E (AI) 26 Straws stored at UCBS, Allora Qld.



	CE DIR	CE DTR	GL	BW	200	400	600	MAT	MILK	SS
EBV	-5.5	+0.8	-0.9	+0.3	+14	+19	+33	+45	+9	+0.4
Acc	63%	55%	68%	80%	70%	70%	70%	66%	72%	58%

	EMA	RIB	RUMP	RBY	IMF	SELECTION INDEX VALUES	
EBV	+2.2	-0.8	-1.1	+1.1	+0.3	DTI (\$)	NMI (\$)
Acc	41%	44%	44%	43%	39%	+\$21	+\$17

BERLIN (PED -3636F)  
**Sire: LUNAPARC (OAF Q7474F)**  
 BRUYERE (PED -3417F)  
 WCR SIR FA MAC 2244 (OAU B2244E) (P)  
**Dam: GUNNADOO IRENE N146E (GN1 N146E) (P)**  
 GUNNADOO IRENE J35D (GN1 J35D)

Purchaser:.....Price \$:.....

**9**

## NOLLER CAPRICE C30E (AI) (P) - 19 Straws

Born: 08/04/2007

Herd Ident: JLN C30E

Comments: Noller Caprice (AI)(P). 19 Straws stored at United Cattle Breeding Services, Allora Qld

	CE DIR	CE DTR	GL	BW	200	400	600	MAT	MILK	SS
EBV	+3.4	+7.1	-6.5	+0.3	+13	+26	+38	+50	+9	+0.5
Acc	54%	52%	74%	60%	64%	60%	60%	58%	58%	56%

	EMA	RIB	RUMP	RBY	IMF	SELECTION INDEX VALUES	
EBV	+3.2	-1.3	-2.1	+1.8	+0.0	DTI (\$)	NMI (\$)
Acc	49%	50%	50%	49%	48%	+\$34	+\$27

IMPAIR (OAF N189F)  
**Sire: PINAY (OAF U4134F)**  
 MARY (OAF R8596F)  
 MOONGOOL SIMON (DP2 S73E)  
**Dam: NOLLER Y MOON Y58E (JLN Y58E) (P)**  
 MOONGOOL SPORTS GIRL (DP2 S29E) (P)

Purchaser:.....Price \$:.....

**10****IMPAIR - 4 Straws**

Born: 26/01/1993

Herd Ident: OAF N189F

**Comments:** Impair. 4 Straws stored at United Cattle Breeding Services, Allora Qld. Trait leader 400 Day, 600 Day weight and Milk.

	CE DIR	CE DTR	GL	BW	200	400	600	MAT	MILK	SS
EBV	+0.2	+8.9	-2.7	+2.0	+19	+44	+70	+104	+18	-1.6
Acc	93%	92%	97%	97%	96%	96%	96%	95%	97%	95%

	EMA	RIB	RUMP	RBV	IMF	SELECTION INDEX VALUES	
EBV	+3.4	-1.9	-3.2	+2.0	-0.3	DTI (\$)	NMI (\$)
Acc	87%	90%	89%	88%	83%	+\$45	+\$12

JISCAR (PED X711F)  
**Sire: BLASON (PED X286F)**  
 REGENCE (PED X4280F)  
 INTERLUDE (PED -166F)  
**Dam: OFFICINE (PED -945F)**  
 JAKARTA (PED -421F)

Purchaser:.....Price \$:.....

**11****SEDALIA ZOOLoo (AI) - 40 Straws**

Born: 02/09/2004

Herd Ident: DEG Z20F

**Comments:** Sedalia Zooloo (AI). 40 Straws stored at United Cattle Breeding Services, Allora Qld

	CE DIR	CE DTR	GL	BW	200	400	600	MAT	MILK	SS
EBV	-13.1	-3.8	-2.2	+2.5	+16	+30	+40	+61	+1	+0.2
Acc	57%	53%	60%	71%	72%	82%	74%	67%	62%	61%

	EMA	RIB	RUMP	RBV	IMF	SELECTION INDEX VALUES	
EBV	+2.4	-1.1	-1.8	+1.6	-0.3	DTI (\$)	NMI (\$)
Acc	44%	47%	47%	45%	41%	+\$20	-\$3

INDICE (PED -3049F)  
**Sire: NELSON (OAF S8304F)**  
 ETOILE (PED -9544F)  
 EXCLUSIF (OAF J858F)  
**Dam: SEDALIA ULTIMATE FT27 (DEG U3F)**  
 SEDALIA QUEEN ANNE (DEG Q3F)

Purchaser:.....Price \$:.....

**12****SEDALIA ZOOLoo (AI) - 37 Straws**

Born: 02/09/2004

Herd Ident: DEG Z20F

**Comments:** Sedalia Zooloo (AI (P)). 37 Straws stored at United Cattle Breeding Services, Allora Qld

Purchaser:.....Price \$:.....

**13****EC NO DOUBT 2022 P (P) - 9 Straws**

Born: 10/03/2004

Herd Ident: OAU Z2022E

**Comments:** EC No Doubt 2022 (P). 9 Straws stored at United Cattle Breeding Services, Allora Qld. Trait leader 600 day weight and Milk.

	CE DIR	CE DTR	GL	BW	200	400	600	MAT	MILK	SS
EBV	+4.9	+1.4	-6.8	-1.4	+16	+34	+54	+44	+15	+0.6
Acc	92%	90%	98%	97%	96%	95%	95%	93%	95%	93%

	EMA	RIB	RUMP	RBY	IMF	SELECTION INDEX VALUES	
EBV	+2.9	+1.4	+1.5	-0.1	+0.3	DTI (\$)	NMI (\$)
Acc	79%	86%	85%	81%	79%	+\$39	+\$71

WCR SIR TRADITION 066 (PED -66E)  
**Sire: M6 GRID MAKER 104 PET (OAU W3377E) (P)**  
 VCR MISS MAC IV 317 (PED -317E)  
 VCR SIR DUKE 914 PLD (PED -914E)  
**Dam: EC LADY DUKE 2022 P (PED -2022E) (P)**  
 JES MS ADVANTAGE C74 (PED -74E) (P)

Purchaser:.....Price \$:.....

**14****DSK WE JAMMER RAMMER J117E (AI) (ET) (P) (R/F) - 50 Straws**

Born: 08/12/2013

Herd Ident: DSK J117E

**Comments:** DSK WE Jammer Rammer J117E (AI)(ET)(P)(R/F) (P). 50 Straws stored at United Cattle Breeding Services, Allora Qld

	CE DIR	CE DTR	GL	BW	200	400	600	MAT	MILK	SS
EBV	+1.7	+5.7	-4.9	-1.6	+8	+22	+30	+21	+17	+1.1
Acc	53%	50%	60%	71%	65%	66%	66%	62%	59%	70%

	EMA	RIB	RUMP	RBY	IMF	SELECTION INDEX VALUES	
EBV	-0.9	+1.4	+1.7	-1.5	+0.1	DTI (\$)	NMI (\$)
Acc	53%	55%	55%	54%	52%	+\$19	+\$47

LT WESTERN SPUR 2061 PLD (OAU X2061E) (P)  
**Sire: LT WESTERN EDGE 4057 PLD (OAU Z6616E) (P)**  
 LT DUCHESS OF MAC 7076 P (PED -2993E)  
 WATERFORD UNCLE SAM (WET U30E) (P)  
**Dam: NANDILLYAN A57E (F A57E) (P)**  
 NANDILLYAN ZIG 8 (F W3E)

Purchaser:.....Price \$:.....

**15****DSK WE JAMMER RAMMER J117E (AI) (ET) (P) (R/F) - 50 Straws****Comments:** DSK WE Jammer Rammer J117E (AI)(ET)(P)(R/F) (P). 50 Straws stored at United Cattle Breeding Services, Allora Qld

Purchaser:.....

Price \$:.....

**16****DSK WE JAMMER RAMMER J117E (AI) (ET) (P) (R/F) - 50 Straws****Comments:** DSK WE Jammer Rammer J117E (AI)(ET)(P)(R/F) (P). 50 Straws stored at United Cattle Breeding Services, Allora Qld

Purchaser:.....

Price \$:.....

**17****DSK WE JAMMER RAMMER J117E (AI) (ET) (P) (R/F) - 45 Straws****Comments:** DSK WE Jammer Rammer J117E (AI)(ET)(P)(R/F) (P). 45 Straws stored at United Cattle Breeding Services, Allora Qld

Purchaser:.....

Price \$:.....

**18****GLENLEA HILTON (AI) (P) - 9 Straws**

Born: 31/08/2012

Herd Ident: GLE H30E

**Comments:** Glenlea Hilton (AI)(P), 9 Straws stored at United Cattle Breeding Services, Allora Qld.

	CE DIR	CE DTR	GL	BW	200	400	600	MAT	MILK	SS
EBV	-4.3	-4.5	-0.1	+1.7	+19	+40	+63	+69	+12	+1.3
Acc	64%	59%	76%	84%	70%	71%	74%	69%	64%	75%

	EMA	RIB	RUMP	RBY	IMF	SELECTION INDEX VALUES	
EBV	+1.2	-0.9	-1.4	+0.8	+0.0	DTI (\$)	NMI (\$)
Acc	56%	61%	60%	59%	52%	+\$36	+\$53

HARVIE REDEMPTION 36P (OAC Z6641E) (P)  
**Sire: RANGAN PARK REDEMPTION E42 (RAN E42E) (P)**  
 RANGAN PARK SHOWGIRL C7 (RAN C7E)  
 GLENLEA PERFECTION (GLE P41E)  
**Dam: GLENLEA CAAROL X11E (GLE X11E)**  
 GLENLEA CAAROL V9E (GLE V9E)

Purchaser:.....Price \$:.....

**19****NOLLER ABDUCTION A34E - 46 Straws**

Born: 18/02/2005

Herd Ident: JLN A34E

**Comments:** Noller Abduction A34E, 46 Straws stored at United Cattle Breeding Services, Allora Qld.

	CE DIR	CE DTR	GL	BW	200	400	600	MAT	MILK	SS
EBV	-18.4	-11.4	-0.2	+2.4	+11	+25	+48	+51	+14	+0.7
Acc	53%	49%	48%	61%	68%	66%	67%	61%	61%	52%

	EMA	RIB	RUMP	RBY	IMF	SELECTION INDEX VALUES	
EBV	+0.8	+0.2	+0.3	-0.1	+0.6	DTI (\$)	NMI (\$)
Acc	39%	41%	40%	40%	38%	+\$6	-\$1

WCR SIR FA MAC 2244 (OAU B2244E) (P)  
**Sire: PALGROVE STAND OUT (PK S229E)**  
 PALGROVE ESTELLA 34 (PK P54E) (P)  
 TEMANA MUSCLE MAN (TJ M10E)  
**Dam: GUNNADOO LAONIE Q69E (GN1 Q69E) (P)**  
 GUNNADOO LAONIE (GN1 F126E) (P)

Purchaser:.....Price \$:.....



**20****BURRADON TALISMAN - 37 Straws**

Born: 06/01/2002

Herd Ident: IAE X4745F

**Comments:** Burradon Talisman 37 Straws stored at United Cattle Breeding Services, Allora Qld.

	CE DIR	CE DTR	GL	BW	200	400	600	MAT	MILK	SS
EBV	-31.6	-16.7	+4.2	+5.9	+20	+31	+47	+81	+0	-0.9
Acc	67%	57%	86%	86%	80%	78%	80%	71%	70%	74%

	EMA	RIB	RUMP	RBY	IMF	SELECTION INDEX VALUES	
EBV	+0.7	-0.7	-1.0	+0.8	-0.3	DTI (\$)	NMI (\$)
Acc	49%	59%	59%	54%	46%	-\$13	-\$67

BALTHAYOCK LOMBARDO (PED -5360F)  
**Sire: BLELACK PRINCE (PED -1323F)**  
 BLELACK CLEO (PED -7191F)  
 MAERDY VICTORIOUS (PED -3965F)  
**Dam: BURRADON JUICEY (PED -6494F)**  
 BURRADON FIONA (PED -5116F)

Purchaser:.....Price \$:.....

**21****THW DEE V8 (AI) (ET) (P/S) - 30 Straws**

Born: 22/09/2008

Herd Ident: THW D19E

**Comments:** THW Dee V8 (AI)(ET)(P/S),30 Straws stored at United Cattle Breeding Services, Allora Qld.

	CE DIR	CE DTR	GL	BW	200	400	600	MAT	MILK	SS
EBV	+4.0	+11.6	-6.4	+0.8	+17	+35	+51	+66	+11	-0.7
Acc	67%	61%	80%	84%	77%	77%	77%	71%	64%	74%

	EMA	RIB	RUMP	RBY	IMF	SELECTION INDEX VALUES	
EBV	+2.7	-1.1	-1.8	+1.5	-0.2	DTI (\$)	NMI (\$)
Acc	57%	60%	59%	58%	53%	+\$40	+\$29

BLASON (PED X286F)  
**Sire: IMPAIR 1893102983 (OAF N189F)**  
 OFFICINE (PED -945F)  
 TALIS UNCLE VINCE (TAL U220E)  
**Dam: ADVANCE FRIESIA Z56 (ADV Z56E) (P)**  
 MIXHILL T216E (MIX T216E) (P)

Purchaser:.....Price \$:.....

**22****THW DEE V8 (AI) (ET) (P/S) - 30 Straws**

Born: 22/09/2008

Herd Ident: THW D19E

**Comments:** THW Dee V8 (AI)(ET)(P/S), 30 Straws stored at United Cattle Breeding Services, Allora Qld.

Purchaser:.....Price \$:.....

**23**

## HUELVA - 1 Straw

Born: 01/01/1992

Herd Ident: OAF M501F

**Comments:** Huelva, 1 Straw stored at United Cattle Breeding Services, Allora Qld.

	CE DIR	CE DTR	GL	BW	200	400	600	MAT	MILK	SS
EBV	-15.1	+16.1	-0.4	+2.5	+9	+20	+23	+41	-6	+0.5
Acc	80%	75%	92%	91%	89%	89%	90%	85%	88%	85%

	EMA	RIB	RUMP	RBY	IMF
EBV	+1.4	-1.0	-1.5	+1.0	-0.2
Acc	67%	70%	69%	67%	57%

**SELECTION INDEX VALUES**

DTI (\$)	NMI (\$)
+\$5	-\$11

TILL (OAF B816F)

**Sire: ABOUKIR (OAF E662F)**

ROTONDE 71 80 (PED R943F)

SERDOU (OAF S320F)

**Dam: URANE (OAF C287F)**

MADONE (OAF M248F)

Purchaser:.....Price \$:.....

**24**

## GERRARD MONTEZUMA 6T (P) - 10 Straws

Born: 02/01/2007

Herd Ident: OAC C3106E

**Comments:** Gerrard Montezuma 6T (P), 10 Straws stored at United Cattle Breeding Services, Allora Qld. Homozygous poll. Trait leader Scrotal Size

	CE DIR	CE DTR	GL	BW	200	400	600	MAT	MILK	SS
EBV	-15.5	-1.7	-7.2	+2.3	+11	+21	+28	+48	+3	+3.0
Acc	83%	78%	95%	95%	91%	90%	92%	86%	87%	86%

	EMA	RIB	RUMP	RBY	IMF
EBV	+2.4	+2.5	+2.8	-0.7	+0.4
Acc	75%	79%	79%	75%	81%

**SELECTION INDEX VALUES**

DTI (\$)	NMI (\$)
+\$4	+\$24

HFCC PLD EVOLUTION 5L (PED -6316E)

**Sire: SVY FREEDOM PLD 307N (OAC Y2808E) (P)**

SVY PURRFECT 184L (PED -3051E)

RPJ IMPRESSED 121L (PED -1923E)

**Dam: GERRARD ROXANNE 18P (PED -4620E)**

GERRARD ROXANNE 27M (PED -2435E)

Purchaser:.....Price \$:.....

**25****PALGROVE CHAMPAGNE (AI) - 3 Straws**

Born: 21/04/2007

Herd Ident: PK C100F

**Comments:** Palgrove Champagne, 3 Straws stored at United Cattle Breeding Services, Allora Qld. Sold as a select yearling in the 2008 Palgrove sale



	CE DIR	CE DTR	GL	BW	200	400	600	MAT	MILK	SS
EBV	-11.1	+0.0	-0.3	+3.5	+9	+16	+14	+37	-4	-0.3
Acc	68%	69%	89%	84%	88%	84%	88%	80%	88%	88%

	EMA	RIB	RUMP	RBY	IMF	SELECTION INDEX VALUES	
EBV	+0.9	-1.6	-2.5	+1.6	-1.1	DTI (\$)	NMI (\$)
Acc	69%	75%	75%	72%	66%	+\$4	-\$34

ORIENTAL (PED -6514F)

**Sire: BOVA SYLVAIN (OAF W1092F)**

JACOBINE 9870 (PED -9870F)

IJOUFFLU (OAF N6327F)

**Dam: PALGROVE DESIRE 69 (PK X465F)**

PALGROVE DESIRE 32 (PK T254F)

Purchaser:.....Price \$:.....

**26****Embryo Package: 7 Embryos****Big Snow Gold Bullion x Glenlea Janet S7E R/F**

**Comments:** Embryo Package (7 embryos) Big Snow Gold Bullion (R/F) (TW) x Glenlea Janet S7E R/F (AI)(P). Gold Bullion bred exceptionally well for the Advance Charolais herd. Dam is from the well established Glenlea Janet family.

AYR SNOW CHIEFTAIN (AYR L198F)

**Sire: BIG SNOW GOLD BULLION R/F (KRL V80F)**

PINNAROO RED DREAM GIRL (BAA N86F)

WCR SIR FA MAC 2244 (OAU B2244E) (P)

**Dam: GLENLEA JANET S7E R/F (GLE S7E) (P)**

GLENLEA JANET N36E (GLE N36E) (P)



Purchaser:.....Price \$:.....

27

## Embryo Package: 5 Embryos WCR Sir Mac 2244 (P) x Airlie Noisette Q303E

WCR SIR FAB MAC 809 (OAU -57E) (P)  
**Sire: WCR SIR FA MAC 2244 (OAU B2244E) (P)**  
WCR MISS CENTURY 920 TWN (OAU -58) (P)  
AIRLIE FAZIO (A1S F44E)  
**Dam: AIRLIE NOISETTE Q303E (A1S Q303E)**  
AIRLIE DELL (A1S D95E)



**Comments:** WCR Sir Mac 2244 (P) is a Trait Leader for 400 & 600 day weight and Milk. Well known in the breed this joining has potential to produce something special.

**Comments:** Embryo Package 5 Emb: WCR Sir Mac 2244 (P) x Airlie Noisette Q303E.

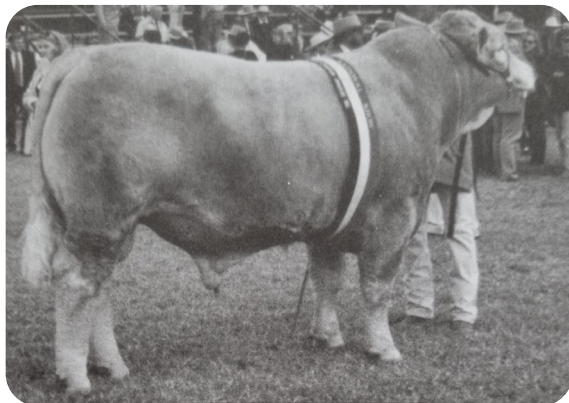


**Comments:** Airlie Noisette Q303E dominated the show ring in her day, Supreme Charolais Exhibit Melbourne Feature show 1999, Canberra Royal 2000 and Sydney Royal 2000. Interbreed Champion Female Melbourne Royal 1999 and Horden Trophy Team member Sydney Royal 2000. Forty five ET progeny and six natural calves including T1, Champion Female and top price Charolais National sale 2000. A powerful cow.

Purchaser:.....Price \$:.....

28

## Embryo Package: 4 Embryos Palgrove Murdock (R/F) x Gunnadoo Eighteen Karat Gold



**Comments:** Palgrove Murdock R/F

WCR SIR FA MAC 2244 (OAU B2244E) (P)  
**Sire: PALGROVE MURDOCK R/F (PK M109E)**  
PALGROVE FANCY 3 (PK B9D)  
PALGROVE FUTURA (PK F36E)  
**Dam: GUNNADOO EIGHTEEN KARAT GOLD (GN1 K26E)**  
PALGROVE BRIDGETTE 2 (PK B2D)

**Comments:** Embryo Package: 4 Embryos Palgrove Murdock (R/F) x Gunnadoo Eighteen Karat Gold. Two well known animals in the breed.

Purchaser:.....Price \$:.....

29

## GK Red Blockbuster B5 - 10 Straws (Red Angus)

Herd Ident: GK B05

**Comments:** Red Angus: GK Red Blockbuster: 10 Straws

**Sire: Red Blaze V415 (OSF) CANM878073**  
**Dam: Red Brylor Tinsel 7C CANF765418**

Purchaser:.....Price \$:.....

