



ALBANY MULTI-BREED BULL SALE

TUESDAY, MARCH 28, 2023

24 BULLS

Sale commences 1pm

Mount Barker Regional Saleyards

Mount Barker, WA

Ponderosa Angus, Albany	5 Angus Bulls
Ballawinna Angus, Albany	4 Angus Bulls
Zakanaka Angus, Youngs Siding	2 Angus Bulls
Stirling End Black Simmental, Gnowellen	6 Black Simmental Bulls
Naracoopa Simmental, Denmark	4 Simmental Bulls
Shannalea Limousin, Youngs Siding	3 Limousin Bulls

Contact Jai Newman 0427 920 929
(Ballawinna, Zakanaka, Naracoopa,
Shannalea)

Dean Wallinger 0428 818 400
(Ponderosa)

Nigel Hawke 0429 479 467
(Stirling End)

All sale bulls polled, semen tested, paddock prepared and ready to work



FOR STUD STOCK EXCELLENCE

CONTACT YOUR ELDERS STUD STOCK SPECIALIST

Tim Spicer 0427 812 194

Nathan King 0488 582 455

Michael Carroll 0427 975 620

Deane Allen 0427 421 306

Wayne Mitchell 0429 447 144

Pearce Watling 0437 844 528

James Culleton 0429 844 528

Graeme Curry 0419 911 053

Lauren Rayner 0447 900 161



for Australian agriculture

Scan here
to view
upcoming
sales



UNDERSTANDING ESTIMATED BREEDING VALUES (EBVs)

An Estimated Breeding Value EBV is an estimate of the genetic value of that particular animal for each trait measured.

Accuracy

An accuracy is presented with every EBV and gives an indication of the amount of information that has been used in the calculation of that EBV. The higher the accuracy the lower the likelihood of change in the animal's EBV as more information is analysed for that animal or its relatives. Accuracy below 75% should be considered low.

Birth

GL: Gestation Length EBV (days) is based on AI records. Lower (negative) GL EBVs indicate short-gestation which is associated with lower birth weights and easier calving.

BWT: Birth Weight EBV (kg) is based on the measured birth weight of animals, adjusted for dam age. The lower the value the lighter the calf at birth and the lower the likelihood of a difficult birth. This is particularly important when selecting sires for use over heifers.

Fertility

SS: Scrotal Size EBV (cm) is an indicator of male fertility in regards to semen quality and quantity. Higher (positive) EBVs indicate larger scrotal size. SS is also positively associated with female fertility.

Growth

Milk: 200-Day Milk EBV (kg) is an estimate of an animal's milking ability. For sires, this EBV is indicative of their daughter's milking ability as it affects the 200 and 400 day weight of their calves.

200: 200-Day Growth EBV (kg) is calculated from the weight of animals taken between 80 and 300 days of age. Values are adjusted to 200 days and for age of dam. This EBV is the best single estimate of an animal's genetic merit for growth to early ages.

400: 400-Day Weight EBV (kg) is calculated from the weight of progeny taken between 301 and 500 days of age, adjusted to 400 days and for age of dam. This EBV is the best single estimate of an animal's genetic merit for yearling weight.

600: 600-Day Weight EBV (kg) is calculated from the weight of progeny taken between 501 and 900 days of age, adjusted to 600 days and for age of dam. This EBV is the best single estimate of an animal's genetic merit for growth beyond yearling age.

MWT: Mature Cow Weight EBV (kg) is an estimate of the genetic difference in cow weight at 5 years of age. Moderate EBVs are generally more favourable.

Carcase

CWT: Carcase Weight EBV (kg) estimates the genetic difference in carcase weight at a standard age of 650 days.

EMA: Eye Muscle Area EBV (cm²) estimates genetic differences in eye muscle area at the 12/13th rib site of a 300kg dressed carcase. More positive EBVs indicate larger eye muscle area and therefore higher retail beef yields.

RIB: Rib Fat EBV (mm) estimates the genetic differences in fat depth at the 12/13th rib in a 300kg dressed carcase. More positive EBVs indicate more subcutaneous fat and earlier maturity.

RUMP: Rump Fat EBV (mm) estimates the genetic differences in fat depth at the P8 site of a 300kg dressed carcase. More positive EBVs indicate more subcutaneous fat and earlier maturity.

RBV%: Retail Beef Yield Percent EBV (%) represents total (boned out) meat yield as a percentage of a 300kg dressed carcase. A more positive EBV indicates higher percentage yield for the 300kg carcase weight.

IMF%: Intra-muscular Fat Percent EBV (%) is an estimate of the genetic difference in the percentage of intra-muscular fat at the 12/13th rib site in a 300kg carcase. For some markets, larger more positive values are more favourable.

For further information on BREEDPLAN <http://breedplan.une.edu.au>

Lot 1 PONDEROSA GENESIS S1

Ident: WHZ21S1

VTMY437 TE MANIA YORKSHIRE Y437^{PV}
 VTMB1 TE MANIA BERKLEY B1^{PV}
 VTMZ53 TE MANIA LOWAN Z53[#]
Sire: SMPG357 PATHFINDER GENESIS G357^{PV}
 NAQW109 ARDROSSAN DIRECTION W109^{PV}
 SMPD245 PATHFINDER DIRECTION D245^{SV}
 SMPA433 PATHFINDER ADAVALE A433[#]

USA14761330 ONEILLS EXPEDITION[#]
 QRFE266 RAFF EGO E266^{PV}
 USA15141036 HOFF BLACKBIRD 594 5217[#]
Dam: WHZN4 PONDEROSA TREMBLE N4^{PV}
 USA15719841 A A R TEN X 7008 S A^{SV}
 WHZL24 PONDEROSA TREMBLE L24^{PV}
 WJYH94 STRATHTAY TREMBLE H94[#]



Mid February 2023 TransTasman Angus Cattle Evaluation													
TACE	Calving Ease				Growth					Fertility		Temp	
	Calving Ease Dir	Calving Ease Dtrs	Gest. Length	Birth Wt	200 Day Growth	400 Day Weight	600 Day Weight	Mat. Cow Weight	Milk	Days to Calving	Scrotal Size	Docility	
EBV	+4.4	+6.0	-11.0	+5.7	+57	+99	+146	+156	+20	-4.3	+4.1	+21	
Acc	62%	54%	83%	74%	74%	72%	73%	71%	67%	48%	70%	53%	
Perc	36	20	1	83	19	25	7	2	29	59	4	46	
	Carcase						Feed Efficiency		Structural			Selection Index	
	Carcase Weight	EMA	Rib Fat	Rump Fat	RBV	IMF	NFI-F	Claw Set	Foot Angle	Leg Angle	\$A	\$A-L	
EBV	+82	+7.0	+0.7	-2.3	+0.3	+1.6	+0.59	+1.18	+1.16	+0.82	\$173	\$363	
Acc	66%	66%	67%	67%	62%	69%	59%	69%	69%	66%	-	-	
Perc	12	40	31	83	60	64	91	96	87	4	77	36	

Traits Observed: GL,BWT,200WT,400WT,600WT,SC,Scan(EMA,Rib,Rump,IMF),Genomics
 Statistics: Number of Herds: 0 Prog Analysed: 0

PRICE: _____

BUYER: _____

Lot 2 PONDEROSA GENESIS S11

Ident: WHZ21S11

VTMY437 TE MANIA YORKSHIRE Y437^{PV}
 VTMB1 TE MANIA BERKLEY B1^{PV}
 VTMZ53 TE MANIA LOWAN Z53[#]
Sire: SMPG357 PATHFINDER GENESIS G357^{PV}
 NAQW109 ARDROSSAN DIRECTION W109^{PV}
 SMPD245 PATHFINDER DIRECTION D245^{SV}
 SMPA433 PATHFINDER ADAVALE A433[#]

USA13058662 HYLINE RIGHT TIME 338[#]
 USA14885809 K C F BENNETT PERFORMER[#]
 USA13852823 K C F MISS 589 L182[#]
Dam: WHZH6 PONDEROSA ESTELLE H6^{SV}
 USA2164 TC STOCKMAN 2164[#]
 WHZY5 PONDEROSA ESTELLA Y5[#]
 VMGQ145+95 MERRIGRANGE ESTELLA



Mid February 2023 TransTasman Angus Cattle Evaluation													
TACE	Calving Ease				Growth					Fertility		Temp	
	Calving Ease Dir	Calving Ease Dtrs	Gest. Length	Birth Wt	200 Day Growth	400 Day Weight	600 Day Weight	Mat. Cow Weight	Milk	Days to Calving	Scrotal Size	Docility	
EBV	-7.0	+4.3	-4.1	+6.9	+53	+87	+118	+112	+21	-5.2	+3.0	+20	
Acc	65%	58%	83%	75%	75%	73%	76%	72%	69%	52%	75%	56%	
Perc	96	37	61	95	38	61	48	31	22	33	18	52	
	Carcase						Feed Efficiency		Structural			Selection Index	
	Carcase Weight	EMA	Rib Fat	Rump Fat	RBV	IMF	NFI-F	Claw Set	Foot Angle	Leg Angle	\$A	\$A-L	
EBV	+77	+11.8	+2.7	+1.9	+1.0	+0.5	+0.59	+0.78	+1.02	+0.96	\$183	\$315	
Acc	68%	67%	68%	68%	64%	70%	61%	75%	75%	68%	-	-	
Perc	20	6	6	14	18	90	91	34	61	25	69	72	

Traits Observed: GL,BWT,200WT,400WT,600WT,SC,Scan(EMA,Rib,Rump,IMF),Structure(Claw Set x 1, Foot Angle x 1),Genomics
 Statistics: Number of Herds: 0 Prog Analysed: 0

PRICE: _____

BUYER: _____

Lot 3 PONDEROSA GENESIS S15

Ident: WHZ21S15

VTMY437 TE MANIA YORKSHIRE Y437^{PV}
 VTMB1 TE MANIA BERKLEY B1^{PV}
 VTMZ53 TE MANIA LOWAN Z53[#]
Sire: SMPG357 PATHFINDER GENESIS G357^{PV}
 NAQW109 ARDROSSAN DIRECTION W109^{PV}
 SMPD245 PATHFINDER DIRECTION D245^{SV}
 SMPA433 PATHFINDER ADAVALE A433[#]

USA13058662 HYLINE RIGHT TIME 338[#]
 USA14885809 K C F BENNETT PERFORMER[#]
 USA13852823 K C F MISS 589 L182[#]
Dam: WHZH10 PONDEROSA ESTELLA H10^{PV}
 USA65D BT DIRECTION 65D[#]
 WHZD15 PONDEROSA ESTELLA D15^{SV}
 WHZY5 PONDEROSA ESTELLA Y5[#]



Mid February 2023 TransTasman Angus Cattle Evaluation													
TACE	Calving Ease				Growth				Fertility			Temp	
	Calving Ease Dir	Calving Ease Dtrs	Gest. Length	Birth Wt	200 Day Growth	400 Day Weight	600 Day Weight	Mat. Cow Weight	Milk	Days to Calving	Scrotal Size	Docility	
EBV	-5.2	+0.0	-6.2	+8.0	+59	+101	+148	+143	+24	-5.0	+4.0	+19	
Acc	65%	58%	82%	75%	74%	73%	75%	72%	69%	51%	75%	56%	
Perc	93	78	27	99	13	21	5	5	8	38	4	57	
	Carcase						Feed Efficiency		Structural			Selection Index	
	Carcase Weight	EMA	Rib Fat	Rump Fat	RBV	IMF	NFI-F	Claw Set	Foot Angle	Leg Angle	\$A	\$A-L	
EBV	+85	+6.7	+0.3	+0.1	+0.2	+1.0	+0.11	+0.90	+1.02	+0.64	\$171	\$328	
Acc	67%	66%	68%	68%	63%	69%	60%	76%	76%	73%	-	-	
Perc	8	44	40	41	66	80	40	61	61	1	79	64	

Traits Observed: GL,BWT,200WT,400WT,600WT,SC,Scan(EMA,Rib,Rump,IMF),Structure(Claw Set x 1, Foot Angle x 1),Genomics
 Statistics: Number of Herds: 0 Prog Analysed: 0

PRICE: _____

BUYER: _____

Lot 4 PONDEROSA HANS S34

Ident: WHZ21S34

NORE11 RENNYLEA EDMUND E11^{PV}
 SWFH37 WILLOW FIELDS HANS H37^{PV}
 SWFF13 WILLOW FIELDS BARA F13^{PV}
Sire: SJQM63 BLACK ANGUS HANS M63^{SV}
 NAQA241 ARDROSSAN EQUATOR A241^{PV}
 SJQK197 BLACK ANGUS CLEO K197[#]
 SJQE97 BLACK ANGUS CLEO E97[#]

USA15033687 LEACHMAN RIGHT TIME 338-
 USA16226527 WMR TIMELESS 458[#]
 USA15183571 WMR BLACKCAP 521[#]
Dam: WJYJ44 STRATHTAY TREMBLE J44^{SV}
 WHHZ45 BANGADANG DIRECTION Z45^{PV}
 WJYC123 STRATHTAY TREMBLE C123[#]
 WJYX137 STRATHTAY TREMBLE X137[#]



Mid February 2023 TransTasman Angus Cattle Evaluation													
TACE	Calving Ease				Growth				Fertility			Temp	
	Calving Ease Dir	Calving Ease Dtrs	Gest. Length	Birth Wt	200 Day Growth	400 Day Weight	600 Day Weight	Mat. Cow Weight	Milk	Days to Calving	Scrotal Size	Docility	
EBV	-2.5	-0.6	-4.5	+5.3	+52	+92	+114	+104	+16	-6.5	+2.8	+25	
Acc	54%	43%	69%	72%	71%	70%	73%	67%	60%	35%	71%	40%	
Perc	85	82	54	76	39	46	58	45	57	9	23	28	
	Carcase						Feed Efficiency		Structural			Selection Index	
	Carcase Weight	EMA	Rib Fat	Rump Fat	RBV	IMF	NFI-F	Claw Set	Foot Angle	Leg Angle	\$A	\$A-L	
EBV	+71	+1.6	+0.1	-0.5	+0.1	+1.4	-0.04	+0.70	+0.92	+0.76	\$180	\$318	
Acc	59%	58%	60%	60%	54%	62%	48%	71%	71%	66%	-	-	
Perc	37	94	45	53	72	70	22	20	36	1	72	70	

Traits Observed: BWT,200WT,400WT,600WT,SC,Scan(EMA,Rib,Rump,IMF),Structure(Claw Set x 1, Foot Angle x 1),Genomics
 Statistics: Number of Herds: 0 Prog Analysed: 0

PRICE: _____

BUYER: _____

USA14543651 SCHURRTOP REALITY X723#
 NZE14647008839 MATAURI REALITY 839#
 NZE14647106663 MATAURI 06663#
Sire: QLLM602 GLENOCH-JK MAKAHU M602^{SV}
 QBGH221 GLENOCH HINMAN H221^{SV}
 QLLK615 GLENOCH-JK ANN K615^{SV}
 QLLF606 GLENOCH-JK ANN F606^{SV}
 VTMC46 TE MANIA CALAMUS C46^{SV}
 VTMF734 TE MANIA FOE F734^{SV}
 VTMD700 TE MANIA DANDLOO D700#
Dam: WHZK25 PONDEROSA FLORAL K25^{PV}
 WWLA2 WHITE LAKES ARABIAN A2^{PV}
 WJYD196 STRATHTAY FLORAL D196#
 WJYY11 STRATHTAY FLORAL Y11#



Mid February 2023 TransTasman Angus Cattle Evaluation													
TACE	Calving Ease				Growth				Fertility			Temp	
	Calving Ease Dir	Calving Ease Dtrs	Gest. Length	Birth Wt	200 Day Growth	400 Day Weight	600 Day Weight	Mat. Cow Weight	Milk	Days to Calving	Scrotal Size	Docility	
EBV	-10.5	-10.7	+0.4	+7.8	+60	+99	+129	+106	+21	-5.7	+2.5	+30	
Acc	60%	49%	82%	75%	74%	73%	75%	69%	64%	40%	75%	55%	
Perc	99	99	98	98	11	25	26	41	19	22	33	14	
	Carcase						Feed Efficiency		Structural			Selection Index	
	Carcase Weight	EMA	Rib Fat	Rump Fat	RBV	IMF	NFI-F	Claw Set	Foot Angle	Leg Angle	\$A	\$A-L	
EBV	+75	+12.9	-0.7	-2.0	+1.5	+2.2	+0.40	+0.84	+0.96	+1.12	\$216	\$328	
Acc	63%	62%	63%	64%	58%	66%	52%	72%	73%	69%	-	-	
Perc	24	3	64	79	5	47	77	48	46	75	32	64	

Traits Observed: GL,BWT,200WT,400WT,600WT,SC,Scan(EMA,Rib,Rump,IMF),Structure(Claw Set x 1, Foot Angle x 1),Genomics

PRICE: _____

BUYER: _____



DECTOMAX POUR-ON BEEFMAKER ACTION PACK

Purchase 1 x Beefmaker Action Pack and 4 x 2.5L (30L Dectomax Pour-On) and receive two BONUS Dectomax V YETI 3.7L Jugs PLUS a BONUS applicator. Collect bonus items from your local Elders branch.



DECTOMAX INJECTABLE PROFESSIONAL PACK

Purchase 2 x Dectomax Professional Packs (10 x 500mL) and receive two BONUS Dectomax V YETI 3.7L Jugs. Collect bonus items from your local Elders branch.



DECTOMAX V VICTORY PACK 3L

Purchase 4 x Dectomax V Victory Packs 3L (12L Dectomax V in total) and receive a BONUS Hand-crafted Dectomax V Steel Firepit. Collect bonus items from your local Elders branch.



DECTOMAX POUR-ON 5L

Purchase 8 x Dectomax Pour-On 5L (40L Dectomax Pour-On) and receive a BONUS Dectomax V YETI Tundra 45 Hard Cooler PLUS Two BONUS applicators. Collect bonus items from your local Elders branch.

Lot 6 BALLAWINNA BARTEL S19

Ident: WSI21S19

USA7127 B/R NEW DIMENSION 7127^{SV}
 VTMB219 TE MANIA BARTEL B219^{SV}
 VTMW85 TE MANIA JEDDA W85^F
Sire: HIOE7 AYRVALE BARTEL E7^{FV}
 USA13880818 MYTTY IN FOCUS^F
 BVVB32 EAGLEHAWK JEDDA B32^{SV}
 BVVZ48 EAGLEHAWK JEDDA Z48^F
 CAN1526335 DMM CREED 75W^{FV}
 WSIK15 BALLAWINNA CREED K15^{SV}
 WSIF18 BALLAWINNA MISS AMERICAN F18^F
Dam: WSIM20 BALLAWINNA JULITHA M20^{SV}
 WSHF3 MASON VALLEY ROLLING THUNDER
 WSIK41 BALLAWINNA JULITHA K41^F
 WSID20 BALLAWINNA JULITHA D20^F



February 2023 TransTasman Angus Cattle Evaluation												
TACE	Calving Ease				Growth					Fertility		Temp
	Calving Ease Dir	Calving Ease Dtrs	Gest. Length	Birth Wt	200 Day Growth	400 Day Weight	600 Day Weight	Mat. Cow Weight	Milk	Days to Calving	Scrotal Size	Docility
EBV	-1.2	+1.6	-0.1	+5.8	+44	+77	+99	+81	+18	-5.4	+1.7	+11
Acc	63%	57%	82%	73%	73%	71%	71%	70%	64%	51%	68%	51%
Perc	79	65	97	84	79	86	85	81	40	28	65	90
	Carcase						Feed Efficiency		Structural		Selection Index	
	Carcase Weight	EMA	Rib Fat	Rump Fat	RBV	IMF	NFI-F	Claw Set	Foot Angle	Leg Angle	\$A	\$A-L
EBV	+58	+2.2	-0.9	-0.1	+1.1	+1.8	+0.24	+0.82	+0.74	+1.12	\$184	\$299
Acc	65%	64%	66%	66%	61%	68%	59%	66%	66%	65%	-	-
Perc	75	92	69	45	14	59	58	43	7	75	68	80

Traits Observed: GL,BWT,Genomics
 Statistics: Number of Herds: 0 Prog Analysed: 0

PRICE: _____

BUYER: _____

Lot 7 BALLAWINNA PATRIOT S13

Ident: WSI21S13

USA0035 S A V FINAL ANSWER 0035^F
 USA16752262 CONNEALY CAPITALIST 028^F
 USA16204878 PRIDES PITA OF CONANGA 8821^F
Sire: USA17577916 DEER VALLEY PATRIOT 3222^{SV}
 USA14963730 SITZ UPWARD 307R^{SV}
 USA16859290 DEER VALLEY RITA 0274^F
 USA15129485 G A R OBJECTIVE 2345^F
 USA170 WOODHILL VALOR^F
 WTEQ1+95 TERANGA VANQUISH Q1+95^F
 WTEJ35+89 TERANGA JESSICA J35+89^F
Dam: WSIM4 BALLAWINNA TAWNY ELLE RED M4 (RED)^F
 WKTE102 TULLIBARDINE ET E102^{SV}
 WSIH30 BALLAWINNA TAWNY ELLE H30^F
 WSIK73 BALLAWINNA TAWNY ELLE X73^F



February 2023 TransTasman Angus Cattle Evaluation												
TACE	Calving Ease				Growth					Fertility		Temp
	Calving Ease Dir	Calving Ease Dtrs	Gest. Length	Birth Wt	200 Day Growth	400 Day Weight	600 Day Weight	Mat. Cow Weight	Milk	Days to Calving	Scrotal Size	Docility
EBV	+7.7	+3.8	-3.3	+2.4	+50	+92	+112	+95	+16	-1.8	+1.1	+16
Acc	58%	47%	82%	73%	72%	70%	71%	68%	63%	38%	67%	48%
Perc	11	42	73	17	49	45	63	61	57	97	85	73
	Carcase						Feed Efficiency		Structural		Selection Index	
	Carcase Weight	EMA	Rib Fat	Rump Fat	RBV	IMF	NFI-F	Claw Set	Foot Angle	Leg Angle	\$A	\$A-L
EBV	+73	+2.2	+0.5	-0.2	+0.0	+1.6	+0.10	+0.64	+0.80	+1.16	\$169	\$311
Acc	62%	61%	63%	62%	56%	65%	51%	67%	68%	60%	-	-
Perc	29	92	35	47	77	64	39	12	13	84	80	74

Traits Observed: GL,BWT,Genomics
 Statistics: Number of Herds: 0 Prog Analysed: 0

PRICE: _____

BUYER: _____

Lot 8 BALLAWINNA PATRIOT S61

Ident: WSI21S61

USA16752262 CONNEALY CAPITALIST 028*
 USA17577916 DEER VALLEY PATRIOT 3222^{SV}
 USA16659290 DEER VALLEY RITA 0274*
Sire: WSIQ14 BALLAWINNA PATRIOT Q14^{SV}
 WSIH13 BALLAWINNA DANNY'S HERO H13^{SV}
 WSL26 BALLAWINNA MIMI DH L26*
 WSA23 BALLAWINNA MIMI A23*



NJWG279 MILWILLAH GATSBY G279^{PV}
 WKHL42 KOOJAN HILLS GATSBY L42^{SV}
 WKHF193 KOOJAN HILLS F193*
Dam: WSIQ50 BALLAWINNA JULITHA Q50^{SV}
 WSHF3 MASON VALLEY ROLLING THUNDER
 WSIK41 BALLAWINNA JULITHA K41*
 WSID20 BALLAWINNA JULITHA D20*

February 2023 TransTasman Angus Cattle Evaluation

TACE	Calving Ease				Growth					Fertility			Temp
	Calving Ease Dir	Calving Ease Dtrs	Gest. Length	Birth Wt	200 Day Growth	400 Day Weight	600 Day Weight	Mat. Cow Weight	Milk	Days to Calving	Scrotal Size	Docility	
EBV	+8.4	+5.9	-6.8	-0.7	+37	+70	+92	+58	+19	-3.3	+0.2	+15	
Acc	50%	39%	68%	68%	68%	65%	66%	63%	55%	30%	61%	32%	
Perc	8	20	19	1	94	94	92	97	36	84	97	75	
	Carcase						Feed Efficiency		Structural			Selection Index	
	Carcase Weight	EMA	Rib Fat	Rump Fat	RBV	IMF	NFI-F	Claw Set	Foot Angle	Leg Angle	\$A	\$A-L	
EBV	+65	+4.0	-0.6	-1.2	+0.4	+2.1	+0.32	+1.16	+0.88	+1.08	\$169	\$283	
Acc	55%	55%	57%	57%	49%	60%	46%	60%	60%	56%	-	-	
Perc	54	78	62	66	54	50	68	95	27	64	80	86	

Traits Observed: BWT,Genomics
 Statistics: Number of Herds: 0 Prog Analysed: 0

PRICE: _____

BUYER: _____

Lot 9 BALLAWINNA PATRIOT S47

Ident: WSI21S147

USA14851313 SCR PROMISE 4042*
 USA15354674 SYDGEN TRUST 6228*
 USA14682938 SYDGEN FOREVER LADY 4413*
Sire: USA17236055 SYDGEN BLACK PEARL 2006^{PV}
 USA15491633 CONNEALY FORWARD*
 USA16214508 SYDGEN ANITA 8611*
 USA14966290 THREE TREES ANITA 5133*



NJWG279 MILWILLAH GATSBY G279^{PV}
 WKHL42 KOOJAN HILLS GATSBY L42^{SV}
 WKHF193 KOOJAN HILLS F193*
Dam: WSIQ50 BALLAWINNA JULITHA Q50^{SV}
 WSHF3 MASON VALLEY ROLLING THUNDER
 WSIK41 BALLAWINNA JULITHA K41*
 WSID20 BALLAWINNA JULITHA D20*

February 2023 TransTasman Angus Cattle Evaluation

TACE	Calving Ease				Growth					Fertility			Temp
	Calving Ease Dir	Calving Ease Dtrs	Gest. Length	Birth Wt	200 Day Growth	400 Day Weight	600 Day Weight	Mat. Cow Weight	Milk	Days to Calving	Scrotal Size	Docility	
EBV	+5.1	+5.4	-3.9	+2.7	+40	+69	+96	+74	+13	-2.1	+0.8	+14	
Acc	62%	55%	82%	73%	73%	71%	71%	70%	65%	48%	68%	51%	
Perc	30	25	64	21	89	95	89	89	82	95	91	78	
	Carcase						Feed Efficiency		Structural			Selection Index	
	Carcase Weight	EMA	Rib Fat	Rump Fat	RBV	IMF	NFI-F	Claw Set	Foot Angle	Leg Angle	\$A	\$A-L	
EBV	+58	+8.6	+1.6	+2.9	+1.1	-0.4	+0.19	+0.96	+1.20	+1.12	\$161	\$276	
Acc	65%	64%	65%	65%	60%	67%	57%	67%	67%	64%	-	-	
Perc	74	23	15	7	14	98	51	72	91	75	85	89	

Traits Observed: GL,BWT,Genomics
 Statistics: Number of Herds: 0 Prog Analysed: 0

PRICE: _____

BUYER: _____

Lot 10 ZAKANAKA S23

Ident: WMR21S23

NAQA241 ARDROSSAN EQUATOR A241^{PV}
 WDCK314 COONAMBLE KEVIN K314^{PV}
 WDCD94 COONAMBLE D94^{SV}
Sire: WDCN351 COONAMBLE KEVIN N351^{SV}
 WDCE11 COONAMBLE ELEVATOR E11^{PV}
 WDCH209 COONAMBLE H209[#]
 WDCD135 COONAMBLE D135[#]

USA14844711 TC TOTAL 410[#]
 USA15885405 POSS TOTAL IMPACT 745[#]
 USA15093408 POSS BLACKCAP 5116[#]
Dam: WJYJ23 STRATHTAY SATURN J23[#]
 WJYD130 STRATHTAY DRYSDALE D130^{SV}
 WJYG24 STRATHTAY SATURN G24^E
 WJYE62 STRATHTAY SATURN E62[#]



Mid February 2023 TransTasman Angus Cattle Evaluation													
TACE	Calving Ease				Growth					Fertility		Temp	
	Calving Ease Dir	Calving Ease Dtrs	Gest. Length	Birth Wt	200 Day Growth	400 Day Weight	600 Day Weight	Mat. Cow Weight	Milk	Days to Calving	Scrotal Size	Docility	
EBV	+3.2	+6.2	-6.2	+3.4	+55	+103	+137	+151	+14	-3.3	+0.3	+29	
Acc	52%	42%	69%	68%	70%	67%	68%	65%	58%	35%	63%	39%	
Perc	47	18	27	34	29	17	13	3	79	84	97	17	
	Carcase						Feed Efficiency		Structural			Selection Index	
	Carcase Weight	EMA	Rib Fat	Rump Fat	RBV	IMF	NFI-F	Claw Set	Foot Angle	Leg Angle	\$A	\$A-L	
EBV	+84	+4.5	+0.3	+1.1	+0.4	-0.2	-0.50	+0.72	+1.16	+1.06	\$166	\$349	
Acc	59%	58%	60%	60%	53%	62%	49%	60%	60%	56%	-	-	
Perc	9	72	40	24	54	97	2	23	87	58	82	48	

Traits Observed: BWT,400WT,600WT,SC,Genomics

PRICE: _____

BUYER: _____

Lot 11 ZAKANAKA S99

Ident: WMR21S99

NAQA241 ARDROSSAN EQUATOR A241^{PV}
 WDCK314 COONAMBLE KEVIN K314^{PV}
 WDCD94 COONAMBLE D94^{SV}
Sire: WDCN351 COONAMBLE KEVIN N351^{SV}
 WDCE11 COONAMBLE ELEVATOR E11^{PV}
 WDCH209 COONAMBLE H209[#]
 WDCD135 COONAMBLE D135[#]

NHZA10 HAZELDEAN C10^{PV}
 WJYF174 STRATHTAY FAIRGROUND F174^{SV}
 WJYB22 STRATHTAY TANGO B22[#]
Dam: WJYJ99 STRATHTAY LYDIA J99[#]
 USA14954578 R/M IRONSTONE 4047[#]
 WJYG47 STRATHTAY LYDIA G47[#]
 WJYA50 STRATHTAY LYDIA A50[#]



Mid February 2023 TransTasman Angus Cattle Evaluation													
TACE	Calving Ease				Growth					Fertility		Temp	
	Calving Ease Dir	Calving Ease Dtrs	Gest. Length	Birth Wt	200 Day Growth	400 Day Weight	600 Day Weight	Mat. Cow Weight	Milk	Days to Calving	Scrotal Size	Docility	
EBV	+3.8	+4.4	-4.0	+3.8	+53	+95	+127	+140	+14	-4.1	+1.7	+12	
Acc	50%	39%	65%	68%	68%	66%	67%	64%	56%	32%	61%	37%	
Perc	42	36	62	43	38	35	30	5	75	65	65	88	
	Carcase						Feed Efficiency		Structural			Selection Index	
	Carcase Weight	EMA	Rib Fat	Rump Fat	RBV	IMF	NFI-F	Claw Set	Foot Angle	Leg Angle	\$A	\$A-L	
EBV	+70	+5.4	-1.1	-0.8	+1.4	-1.5	-0.25	+0.74	+1.14	+1.08	\$159	\$331	
Acc	56%	55%	58%	58%	51%	60%	46%	60%	60%	56%	-	-	
Perc	40	61	73	59	6	99	7	26	84	64	86	62	

Traits Observed: BWT,400WT,600WT,SC,Genomics

PRICE: _____

BUYER: _____

Lot 12 STIRLING END AUGUSTUS S14

Ident: 1SEPS014

- ESNK31 (P)
- RCR AUGUSTUS R54 (P, B)
- RCR NICOLE N32 (B)
- **Sire: BONNYDALE AUGUSTUS L84 (P) (AI) (B)**
- KAPPE'S TRAILBLAZER S516 (P)
- BONNYDALE JOSSIE G204 (P, I) (ET) (AI) (B)
- GLS S82 (P)
- **Animal: STIRLING END AUGUSTUS S014 (PP) (ET) (AI) (B)**
- TRIPLE C BETTIS S724 (P, I) (B)
- LANCASTER HENRY V111 H408 (P, I) (ET) (AI) (B)
- LANCASTER C370 (P, I) (B)
- **Dam: LANCASTER ELIZA L351 (PP) (B)**
- LANCASTER RED BARON (P, I) (ET) (AI) (B)
- LANCASTER ELIZA E157 (P, I) (AI) (B)
- LANCASTER ELIZA A364 (P, I) (ET) (AI) (B)



SELECTION INDEX VALUES		
Market Target	Index Value	Breed Average
Domestic Maternal Index (\$)	+\$ 45	+\$ 40
Export Maternal Index (\$)	+\$ 49	+\$ 49
Northern Terminal Index (\$)	+\$ 30	+\$ 25
Vealer Terminal Index (\$)	+\$ 48	+\$ 35

February 2023 SIMMENTAL TRANS TASMAN BREEDPLAN																		
	Calving Ease DIR (%)	Calving Ease DTRS (%)	Gestation Length (days)	Birth Wt. (kg)	200 Day Wt. (kg)	400 Day Wt. (kg)	600 Day Wt. (kg)	Mat Cow Wt. (kg)	Milk (kg)	Scrotal Size (cm)	Days to Calving (days)	Carcase Wt. (kg)	Eye Muscle Area (sq cm)	Rib Fat (mm)	Rump Fat (mm)	Retail Beef Yield (%)	IMF (%)	Docility
EBV	-0.4	-4.7	+0.5	+1.4	+37	+64	+71	+70	+5	+1.0	+1.0	+46	+2.5	-1.7	-3.7	+1.1	0.0	-
Accuracy	48%	48%	57%	72%	67%	69%	72%	63%	50%	72%	28%	59%	53%	56%	55%	55%	49%	-
Breed Avg. EBVs for 2021 Born Calves Click for Percentiles																		
EBV	+2.7	+1.6	-1.6	+0.6	+21	+37	+46	+47	+8	+0.5	-1.5	+25	+2.5	+0.5	+0.2	+0.5	+0.3	+9

Traits Analysed: BWT,200WT,400WT,600WT,SS,FAT,EMA,IMF

PRICE: _____

BUYER: _____

Lot 13 STIRLING END BIG TIMBER S25

Ident: 1SE3S025

- HOOK'S YELLOWSTONE 97Y (P, I) (B)
- KOCH BIG TIMBER 680D (P, I) (B)
- KOCH MS HOOKS BOY (P, I) (B)
- **Sire: BONNYDALE BIG TIMBER Q101 (PP) (ET) (AI) (B)**
- WIC WIDE TRACK 694Y (P, I) (B)
- ASR FINE ART A3205 (P, I) (B)
- ASR FINE ART U838 (P, I) (B)
- **Animal: STIRLING END BIG TIMBER S025 (PP) (B)**
- TRIPLE C BETTIS S724 (P, I) (B)
- LANCASTER HENRY V111 H408 (P, I) (ET) (AI) (B)
- LANCASTER C370 (P, I) (B)
- **Dam: LANCASTER ELIZA L351 (PP) (B)**
- LANCASTER RED BARON (P, I) (ET) (AI) (B)
- LANCASTER ELIZA E157 (P, I) (AI) (B)
- LANCASTER ELIZA A364 (P, I) (ET) (AI) (B)



SELECTION INDEX VALUES		
Market Target	Index Value	Breed Average
Domestic Maternal Index (\$)	+\$ 47	+\$ 40
Export Maternal Index (\$)	+\$ 60	+\$ 49
Northern Terminal Index (\$)	+\$ 32	+\$ 25
Vealer Terminal Index (\$)	+\$ 50	+\$ 35

February 2023 SIMMENTAL TRANS TASMAN BREEDPLAN																		
	Calving Ease DIR (%)	Calving Ease DTRS (%)	Gestation Length (days)	Birth Wt. (kg)	200 Day Wt. (kg)	400 Day Wt. (kg)	600 Day Wt. (kg)	Mat Cow Wt. (kg)	Milk (kg)	Scrotal Size (cm)	Days to Calving (days)	Carcase Wt. (kg)	Eye Muscle Area (sq cm)	Rib Fat (mm)	Rump Fat (mm)	Retail Beef Yield (%)	IMF (%)	Docility
EBV	+0.9	-1.0	-0.8	+1.6	+33	+52	+61	+63	+5	+1.4	-	+34	+3.5	+0.2	-1.2	+0.6	+0.4	-
Accuracy	35%	37%	44%	64%	59%	56%	54%	45%	37%	48%	-	44%	36%	41%	39%	37%	36%	-
Breed Avg. EBVs for 2021 Born Calves Click for Percentiles																		
EBV	+2.7	+1.6	-1.6	+0.6	+21	+37	+46	+47	+8	+0.5	-1.5	+25	+2.5	+0.5	+0.2	+0.5	+0.3	+9

Traits Analysed: BWT,200WT,400WT,600WT,SS,FAT,EMA,IMF

PRICE: _____

BUYER: _____

Lot 14 STIRLING END BIG TIMBER S20

Ident: 1SE3S020

- HOOK'S YELLOWSTONE 97Y (P)(B)
- KOCH BIG TIMBER 685D (P)(B)
- KOCH MS HOOKS BOY (P)(B)
- **Sire: BONNYDALE BIG TIMBER Q101 (PP)(ET)(AI)(B)**
- W/C WIDE TRACK 694Y (P)(B)
- ASR FINE ART A3205 (P)(B)
- ASR FINE ART U838 (P)(B)
- **Animal: STIRLING END ROOSEVELT S020 (PP)(B)**
- LANCASTER FIXIT F307 (P)(ET)(AI)(B)
- LANCASTER HIGH PROFILE H338 (P)(B)
- LANCASTER ERICA A329 (P)(ET)(AI)(B)
- **Dam: STIRLING END POPPY N001 (PP)(AI)(B)**
- LANCASTER HELL RAISER H407 (P)(ET)(AI)(B)
- LANCASTER POPPY L286 (PP)(B)
- LANCASTER POPPY G342 (P)(B)



SELECTION INDEX VALUES		
Market Target	Index Value	Breed Average
Domestic Maternal Index (\$)	+\$ 52	+\$ 40
Export Maternal Index (\$)	+\$ 76	+\$ 49
Northern Terminal Index (\$)	+\$ 28	+\$ 25
Vealer Terminal Index (\$)	+\$ 39	+\$ 35

February 2023 SIMMENTAL TRANS TASMAN BREEDPLAN																		
	Calving Ease DIR (%)	Calving Ease DTRS (%)	Gestation Length (days)	Birth Wt. (kg)	200 Day Wt (kg)	400 Day Wt (kg)	600 Day Wt (kg)	Mat Cow Wt (kg)	Milk (kg)	Scrotal Size (cm)	Days to Calving (days)	Carcase Wt (kg)	Eye Muscle Area (sq cm)	Rib Fat (mm)	Rump Fat (mm)	Retail Beef Yield (%)	IMF (%)	Docility
EBV	+8.0	+5.4	-3.0	-2.4	+18	+33	+40	+39	+7	+0.8	-	+22	+1.9	+0.7	-0.6	-0.7	+1.0	-
Accuracy	33%	31%	41%	53%	54%	54%	58%	49%	38%	60%	-	47%	42%	41%	40%	41%	35%	-
Breed Avg. EBVs for 2021 Born Calves Click for Percentiles																		
EBV	+2.7	+1.6	-1.6	+0.6	+21	+37	+46	+47	+8	+0.5	-1.5	+25	+2.5	+0.5	+0.2	+0.5	+0.3	+9
Traits Analysed: 200WT,600WT,SS,FAT,EMA,IMF																		

PRICE: _____

BUYER: _____

Lot 15 STIRLING END AUGUSTUS S13

Ident: 1SEPS013

- ESNK31 (P)
- RCR AUGUSTUS R54 (P)(B)
- RCR NICOLE N32 (B)
- **Sire: BONNYDALE AUGUSTUS L84 (P)(AI)(B)**
- KAPPES TRAILBLAZER S516 (P)
- BONNYDALE JOSSIE G204 (P)(ET)(AI)(B)
- GLS S82 (P)
- **Animal: STIRLING END AUGUSTUS S013 (PP)(ET)(AI)(B)**
- TRIPLE C BETTIS S72J (P)(B)
- LANCASTER HENRY V111 H408 (P)(ET)(AI)(B)
- LANCASTER C370 (P)(B)
- **Dam: LANCASTER ELIZA L351 (PP)(B)**
- LANCASTER RED BARON L (P)(ET)(AI)(B)
- LANCASTER ELIZA E157 (P)(AI)(B)
- LANCASTER ELIZA A364 (P)(ET)(AI)(B)



SELECTION INDEX VALUES		
Market Target	Index Value	Breed Average
Domestic Maternal Index (\$)	+\$ 42	+\$ 40
Export Maternal Index (\$)	+\$ 48	+\$ 49
Northern Terminal Index (\$)	+\$ 30	+\$ 25
Vealer Terminal Index (\$)	+\$ 47	+\$ 35

February 2023 SIMMENTAL TRANS TASMAN BREEDPLAN																		
	Calving Ease DIR (%)	Calving Ease DTRS (%)	Gestation Length (days)	Birth Wt. (kg)	200 Day Wt (kg)	400 Day Wt (kg)	600 Day Wt (kg)	Mat Cow Wt (kg)	Milk (kg)	Scrotal Size (cm)	Days to Calving (days)	Carcase Wt (kg)	Eye Muscle Area (sq cm)	Rib Fat (mm)	Rump Fat (mm)	Retail Beef Yield (%)	IMF (%)	Docility
EBV	-1.0	-4.8	+0.7	+1.5	+36	+60	+70	+71	+4	+0.7	+1.1	+45	+3.1	-1.7	-3.7	+1.4	0.0	-
Accuracy	48%	48%	57%	72%	67%	69%	72%	63%	50%	72%	28%	59%	53%	56%	55%	55%	49%	-
Breed Avg. EBVs for 2021 Born Calves Click for Percentiles																		
EBV	+2.7	+1.6	-1.6	+0.6	+21	+37	+46	+47	+8	+0.5	-1.5	+25	+2.5	+0.5	+0.2	+0.5	+0.3	+9
Traits Analysed: BWT,200WT,400WT,600WT,SS,FAT,EMA,IMF																		

PRICE: _____

BUYER: _____

Lot 16 STIRLING END AUGUSTUS S21

Ident: 1SEPS021

- ESNK31 (P)
- RCR AUGUSTUS R54 (P)(B)
- RCR NICOLE N32 (B)
- **Sire: BONNYDALE AUGUSTUS L84 (P)(AI)(B)**
 - KAPPES TRAILBLAZER S516 (P)
 - BONNYDALE JOSSIE G204 (P)(ET)(AI)(B)
 - GLS S82 (P)
- Animal: STIRLING END AUGUSTUS S021 (PP)(ET)(AI)(B)**
 - TRIPLE C BETTIS S72J (P)(B)
 - LANCASTER HENRY V111 H408 (P)(ET)(AI)(B)
 - LANCASTER C370 (P)(B)
- **Dam: LANCASTER ELIZA L351 (PP)(B)**
 - LANCASTER RED BARON (P)(ET)(AI)(B)
 - LANCASTER ELIZA E157 (P)(AI)(B)
 - LANCASTER ELIZA A364 (P)(ET)(AI)(B)



SELECTION INDEX VALUES		
Market Target	Index Value	Breed Average
Domestic Maternal Index (\$)	+\$ 46	+\$ 40
Export Maternal Index (\$)	+\$ 64	+\$ 49
Northern Terminal Index (\$)	+\$ 37	+\$ 25
Vealer Terminal Index (\$)	+\$ 49	+\$ 35

February 2023 SIMMENTAL TRANS TASMAN BREEDPLAN																			
	Calving Ease DIR (%)	Calving Ease DTRS (%)	Gestation Length (days)	Birth Wt. (kg)	200 Day Wt (kg)	400 Day Wt (kg)	600 Day Wt (kg)	Mat Cow Wt (kg)	Milk (kg)	Scrotal Size (cm)	Days to Calving (days)	Carcase Wt (kg)	Eye Muscle Area (sq cm)	Rib Fat (mm)	Rump Fat (mm)	Retail Beef Yield (%)	IMF (%)	Docility	
EBV	+0.1	-4.7	+0.6	+1.5	+35	+63	+84	+87	+5	+1.2	+1.2	+49	+2.9	-1.8	-3.8	+1.4	0.0	-	
Accuracy	48%	48%	57%	72%	67%	69%	72%	63%	50%	72%	28%	59%	53%	56%	55%	55%	49%	-	
Breed Avg. EBVs for 2021 Born Calves Click for Percentiles																			
EBV	+2.7	+1.6	-1.6	+0.6	+21	+37	+46	+47	+8	+0.5	-1.5	+25	+2.5	+0.5	+0.2	+0.5	+0.3	+9	

Traits Analysed: BWT,200WT,400WT,600WT,SS,FAT,EMA,IMF

PRICE: _____

BUYER: _____

Lot 17 STIRLING END AUGUSTUS S23

Ident: 1SEPS023

- ESNK31 (P)
- RCR AUGUSTUS R54 (P)(B)
- RCR NICOLE N32 (B)
- **Sire: BONNYDALE AUGUSTUS L84 (P)(AI)(B)**
 - KAPPES TRAILBLAZER S516 (P)
 - BONNYDALE JOSSIE G204 (P)(ET)(AI)(B)
 - GLS S82 (P)
- Animal: STIRLING END AUGUSTUS S023 (PP)(ET)(AI)(B)**
 - TRIPLE C BETTIS S72J (P)(B)
 - LANCASTER HENRY V111 H408 (P)(ET)(AI)(B)
 - LANCASTER C370 (P)(B)
- **Dam: LANCASTER ELIZA L351 (PP)(B)**
 - LANCASTER RED BARON (P)(ET)(AI)(B)
 - LANCASTER ELIZA E157 (P)(AI)(B)
 - LANCASTER ELIZA A364 (P)(ET)(AI)(B)



SELECTION INDEX VALUES		
Market Target	Index Value	Breed Average
Domestic Maternal Index (\$)	+\$ 47	+\$ 40
Export Maternal Index (\$)	+\$ 64	+\$ 49
Northern Terminal Index (\$)	+\$ 38	+\$ 25
Vealer Terminal Index (\$)	+\$ 53	+\$ 35

February 2023 SIMMENTAL TRANS TASMAN BREEDPLAN																			
	Calving Ease DIR (%)	Calving Ease DTRS (%)	Gestation Length (days)	Birth Wt. (kg)	200 Day Wt (kg)	400 Day Wt (kg)	600 Day Wt (kg)	Mat Cow Wt (kg)	Milk (kg)	Scrotal Size (cm)	Days to Calving (days)	Carcase Wt (kg)	Eye Muscle Area (sq cm)	Rib Fat (mm)	Rump Fat (mm)	Retail Beef Yield (%)	IMF (%)	Docility	
EBV	-2.9	-5.0	+0.9	+2.5	+42	+69	+90	+94	+4	+1.1	+1.2	+53	+3.4	-1.5	-3.5	+1.4	+0.1	-	
Accuracy	48%	48%	57%	72%	67%	69%	72%	63%	50%	72%	28%	59%	53%	56%	55%	55%	49%	-	
Breed Avg. EBVs for 2021 Born Calves Click for Percentiles																			
EBV	+2.7	+1.6	-1.6	+0.6	+21	+37	+46	+47	+8	+0.5	-1.5	+25	+2.5	+0.5	+0.2	+0.5	+0.3	+9	

Traits Analysed: BWT,200WT,400WT,600WT,SS,FAT,EMA,IMF

PRICE: _____

BUYER: _____

Lot 18 NARACOOPA TRAVIS T27

Ident: KJHPT027

MR NLC UPGRADE U8676 (P)(B)
 WEBB UPPER CUT H0613 (P)(ET)(AI)(B)
 CO-OP PB 615 F PEAR C249 (P)(ET)(AI)(B)
Sire: WOONALLEE MOONSHINE (PP)(B)
 LEE BS LEWIS 322U (P)(B)
 WOONALLEE KIRBIE K211 (P)(ET)(AI)(B)
 LEE KIRBIE 217N (P)
Animal: NARACOOPA TRAVIS (P)(B)
 TNT TANKER U263 (P)(B)
 WEBB TANK K090 (PP)(AI)(B)
 WEBB PEAR E059 (PP)(B)
Dam: NARACOOPA OLIVIA P010 (P)(ET)(AI)(B)
 WHEATLAND ULTIMATE CHOICE (P)(B)
 WOONALLEE OLIVIA K170 (P)(ET)(AI)(B)
 PERT LUCKY ONE 13 (P)(ET)(AI)(B)



SELECTION INDEX VALUES		
Market Target	Index Value	Breed Average
Domestic Maternal Index (\$)	+\$ 33	+\$ 40
Export Maternal Index (\$)	+\$ 37	+\$ 49
Northern Terminal Index (\$)	+\$ 18	+\$ 25
Vealer Terminal Index (\$)	+\$ 31	+\$ 35

February 2023 SIMMENTAL TRANS TASMAN BREEDPLAN																		
	Calving Ease DIR (%)	Calving Ease DTRS (%)	Gestation Length (days)	Birth Wt. (kg)	200 Day Wt (kg)	400 Day Wt (kg)	600 Day Wt (kg)	Mat Cow Wt (kg)	Milk (kg)	Scrotal Size (cm)	Days to Calving (days)	Carcase Wt (kg)	Eye Muscle Area (sq cm)	Rib Fat (mm)	Rump Fat (mm)	Retail Beef Yield (%)	IMF (%)	Docility
EBV	+0.6	+5.5	-1.8	0.0	+20	+32	+32	+37	-1	-0.1	-	+19	+3.9	+0.3	-1.0	+0.4	+0.4	-
Accuracy	38%	36%	42%	66%	61%	56%	54%	47%	43%	42%	-	44%	32%	34%	33%	33%	30%	-
Breed Avg. EBVs for 2021 Born Calves Click for Percentiles																		
EBV	+2.7	+1.6	-1.6	+0.6	+21	+37	+46	+47	+8	+0.5	-1.5	+25	+2.5	+0.5	+0.2	+0.5	+0.3	+9

Traits Analysed: CE,BWT,200WT

PRICE: _____

BUYER: _____

Lot 19 NARACOOPA TOW T22

Ident: KJHPT022

MR NLC UPGRADE U8676 (P)(B)
 WEBB UPPER CUT H0613 (P)(ET)(AI)(B)
 CO-OP PB 615 F PEAR C249 (P)(ET)(AI)(B)
Sire: WOONALLEE MOONSHINE (PP)(B)
 LEE BS LEWIS 322U (P)(B)
 WOONALLEE KIRBIE K211 (P)(ET)(AI)(B)
 LEE KIRBIE 217N (P)
Animal: NARACOOPA TOW (P)(B)
 TNT TANKER U263 (P)(B)
 WEBB TANK K090 (PP)(AI)(B)
 WEBB PEAR E059 (PP)(B)
Dam: NARACOOPA OLIVIA P003 (P)(ET)(AI)(B)
 WHEATLAND ULTIMATE CHOICE (P)(B)
 WOONALLEE OLIVIA K166 (P)(ET)(AI)(B)
 PERT LUCKY ONE 13 (P)(ET)(AI)(B)



SELECTION INDEX VALUES		
Market Target	Index Value	Breed Average
Domestic Maternal Index (\$)	+\$ 40	+\$ 40
Export Maternal Index (\$)	+\$ 49	+\$ 49
Northern Terminal Index (\$)	+\$ 20	+\$ 25
Vealer Terminal Index (\$)	+\$ 34	+\$ 35

February 2023 SIMMENTAL TRANS TASMAN BREEDPLAN																		
	Calving Ease DIR (%)	Calving Ease DTRS (%)	Gestation Length (days)	Birth Wt. (kg)	200 Day Wt (kg)	400 Day Wt (kg)	600 Day Wt (kg)	Mat Cow Wt (kg)	Milk (kg)	Scrotal Size (cm)	Days to Calving (days)	Carcase Wt (kg)	Eye Muscle Area (sq cm)	Rib Fat (mm)	Rump Fat (mm)	Retail Beef Yield (%)	IMF (%)	Docility
EBV	+4.1	+7.6	-2.5	-1.2	+17	+30	+30	+34	+1	0.0	-	+19	+4.0	+0.2	-1.2	+0.5	+0.4	-
Accuracy	38%	37%	43%	67%	62%	58%	57%	49%	43%	43%	-	46%	33%	34%	33%	33%	30%	-
Breed Avg. EBVs for 2021 Born Calves Click for Percentiles																		
EBV	+2.7	+1.6	-1.6	+0.6	+21	+37	+46	+47	+8	+0.5	-1.5	+25	+2.5	+0.5	+0.2	+0.5	+0.3	+9

Traits Analysed: CE,BWT,200WT

PRICE: _____

BUYER: _____

Lot 20 NARACOOPA TI T23

Ident: KJHPT023

MR NLC UPGRADE U8676 (P),(B)
 WEBB UPPER CUT H0613 (P),(ET),(AI),(B)
 CO-OP PB 615 F PEAR C249 (P),(ET),(AI),(B)
Sire: WOONALLEE MOONSHINE (PP),(B)
 LFE BS LEWIS 322U (P),(B)
 WOONALLEE KIRBIE K211 (P),(ET),(AI),(B)
 LFE KIRBIE 217N (P)

Animal: NARACOOPA TI (P),(B)

WHEATLAND PREDATOR 922W (P),(B)
 WHEATLAND ULTIMATE CHOICE (P),(B)
 WHEATLAND LADY 351N

Dam: WOONALLEE OLIVIA K170 (P),(ET),(AI),(B)

GW LUCKY ONE 686K (P)
 PERT LUCKY ONE 13 (P),(ET),(AI),(B)
 GW MISS LUCKY BUCK 983J



SELECTION INDEX VALUES		
Market Target	Index Value	Breed Average
Domestic Maternal Index (\$)	+\$ 21	+\$ 40
Export Maternal Index (\$)	+\$ 16	+\$ 49
Northern Terminal Index (\$)	+\$ 13	+\$ 25
Vealer Terminal Index (\$)	+\$ 23	+\$ 35

February 2023 SIMMENTAL TRANS TASMAN BREEDPLAN																		
	Calving Ease DIR (%)	Calving Ease DTRS (%)	Gestation Length (days)	Birth Wt. (kg)	200 Day Wt. (kg)	400 Day Wt. (kg)	600 Day Wt. (kg)	Mat Cow Wt (kg)	Milk (kg)	Scrotal Size (cm)	Days to Calving (days)	Carcass Wt (kg)	Eye Muscle Area (sq cm)	Rib Fat (mm)	Rump Fat (mm)	Retail Beef Yield (%)	IMF (%)	Docility
EBV	-2.9	+1.2	-0.8	+0.5	+17	+28	+27	+30	-2	-0.5	-	+15	+4.5	+0.4	-0.9	+0.7	+0.4	-
Accuracy	41%	43%	44%	68%	63%	60%	58%	51%	48%	45%	-	48%	36%	39%	38%	37%	34%	-
Breed Avg. EBVs for 2021 Born Calves Click for Percentiles																		
EBV	+2.7	+1.6	-1.6	+0.6	+21	+37	+46	+47	+8	+0.5	-1.5	+25	+2.5	+0.5	+0.2	+0.5	+0.3	+9

Traits Analysed: CE,BWT,200WT

PRICE: _____

BUYER: _____

Lot 21 NARACOOPA TYLER T20

Ident: KJHPT020

GIBBY'S REAL DEAL 25T (P)
 MUBARN NAPOLEON (PP),(AI)
 WOONALLEE KATHIE K181 (Pa)
Sire: MUBARN QUANTUM (PP)
 WOONALLEE HOWZAT (P)
 MUBARN FIORENZA N13 (PP)
 WOONALLEE FIORENZA K129 (Fr),(TW)

Animal: NARACOOPA TYLER (P)

BAR 5 FF HEXAGON 412Y (H)
 BAR 5 HEXTOR 1223 (P)
 DORALEE'S DANIELLA FF8W

Dam: NARACOOPA QUEEN (P),(AI),(TW)

NU-PLAINS FIGURE HEAD (P),(AI)
 BONNYDALE K06B (P)
 BONNYDALE KETONE (P),(TW)



SELECTION INDEX VALUES		
Market Target	Index Value	Breed Average
Domestic Maternal Index (\$)	+\$ 35	+\$ 40
Export Maternal Index (\$)	+\$ 35	+\$ 49
Northern Terminal Index (\$)	+\$ 22	+\$ 25
Vealer Terminal Index (\$)	+\$ 35	+\$ 35

February 2023 SIMMENTAL TRANS TASMAN BREEDPLAN																		
	Calving Ease DIR (%)	Calving Ease DTRS (%)	Gestation Length (days)	Birth Wt. (kg)	200 Day Wt. (kg)	400 Day Wt. (kg)	600 Day Wt. (kg)	Mat Cow Wt (kg)	Milk (kg)	Scrotal Size (cm)	Days to Calving (days)	Carcass Wt (kg)	Eye Muscle Area (sq cm)	Rib Fat (mm)	Rump Fat (mm)	Retail Beef Yield (%)	IMF (%)	Docility
EBV	+2.2	-3.6	-1.5	+0.6	+17	+27	+31	+30	+15	+0.4	-	+16	+2.4	+0.3	+0.7	+0.6	+0.1	-
Accuracy	30%	28%	38%	64%	58%	53%	51%	42%	34%	37%	-	40%	27%	30%	29%	28%	26%	-
Breed Avg. EBVs for 2021 Born Calves Click for Percentiles																		
EBV	+2.7	+1.6	-1.6	+0.6	+21	+37	+46	+47	+8	+0.5	-1.5	+25	+2.5	+0.5	+0.2	+0.5	+0.3	+9

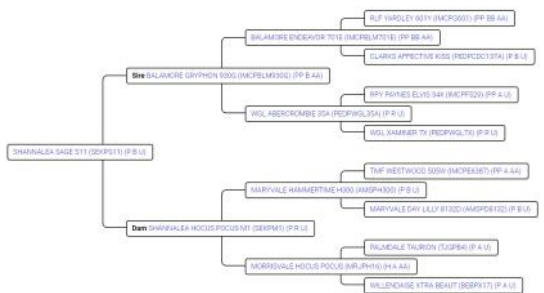
Traits Analysed: CE,BWT,200WT

PRICE: _____

BUYER: _____

Lot 22 SHANNALEA SAGE S11

Ident: SEKPS11



Market	Index	Breed Avg
Domestic Maternal (\$)	+60	+40
Export Maternal (\$)	+86	+65
Northern Export (\$)	+98	+81
Yearling Prime (\$)	+54	+45

January 2023 Southern Limousin BREEDPLAN

	Calving Ease DIR (%)	Calving Ease DTRS (%)	Gestation Length (days)	Birth Wt. (kg)	200 Day Wt. (kg)	400 Day Wt. (kg)	600 Day Wt. (kg)	Mat Cow Wt (kg)	Milk (kg)	Scrotal Size (cm)	Carcase Wt (kg)	Eye Muscle Area (sq cm)	Rib Fat (mm)	Rump Fat (mm)	Retail Beef Yield (%)	IMF (%)	Docility
EBV	+2.8	+0.7	-5.1	+0.5	+24	+44	+60	+64	+7	+1.1	+43	+3.2	+0.1	+0.3	+1.0	0.0	+54
Accuracy	32%	26%	51%	55%	54%	56%	53%	40%	31%	58%	42%	34%	43%	42%	37%	31%	52%
Breed Avg. EBVs for 2021 Born Calves Click for Percentiles																	
EBV	+0.5	+0.7	-2.1	+1.7	+21	+35	+49	+49	+7	+1.1	+31	+1.8	+0.0	-0.1	+0.8	+0.0	+43

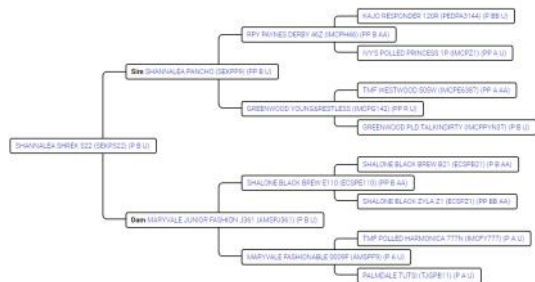
Traits Analysed: CE,400WT,SS,FAT,EMA,IMF,DOC

PRICE: _____

BUYER: _____

Lot 23 SHANNALEA SHREK S22

Ident: SEKPS22



Market	Index	Breed Avg
Domestic Maternal (\$)	+41	+40
Export Maternal (\$)	+62	+65
Northern Export (\$)	+78	+81
Yearling Prime (\$)	+47	+45

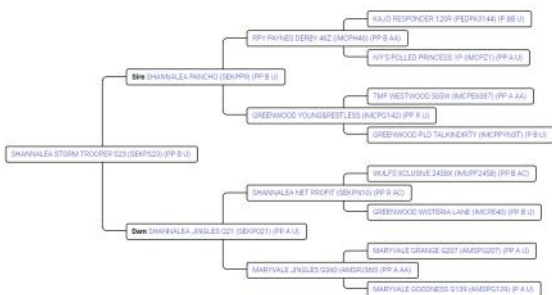
January 2023 Southern Limousin BREEDPLAN

	Calving Ease DIR (%)	Calving Ease DTRS (%)	Gestation Length (days)	Birth Wt. (kg)	200 Day Wt. (kg)	400 Day Wt. (kg)	600 Day Wt. (kg)	Mat Cow Wt (kg)	Milk (kg)	Scrotal Size (cm)	Carcase Wt (kg)	Eye Muscle Area (sq cm)	Rib Fat (mm)	Rump Fat (mm)	Retail Beef Yield (%)	IMF (%)	Docility
EBV	-0.8	+1.1	-2.4	+1.6	+24	+42	+55	+58	+9	+1.8	+36	+2.5	0.0	0.0	+1.0	0.0	+54
Accuracy	34%	31%	43%	51%	51%	55%	50%	39%	40%	59%	42%	34%	40%	40%	34%	29%	51%
Breed Avg. EBVs for 2021 Born Calves Click for Percentiles																	
EBV	+0.5	+0.7	-2.1	+1.7	+21	+35	+49	+49	+7	+1.1	+31	+1.8	+0.0	-0.1	+0.8	+0.0	+43

Traits Analysed: 400WT,SS,FAT,EMA,IMF,DOC

PRICE: _____

BUYER: _____



Market	Index	Breed Avg
Domestic Maternal (\$)	+60	+40
Export Maternal (\$)	+87	+65
Northern Export (\$)	+95	+81
Yearling Prime (\$)	+57	+45

January 2023 Southern Limousin BREEDPLAN																	
	Calving Ease DIR (%)	Calving Ease DTRS (%)	Gestation Length (days)	Birth Wt. (kg)	200 Day Wt (kg)	400 Day Wt (kg)	600 Day Wt (kg)	Mat Cow Wt (kg)	Milk (kg)	Scrotal Size (cm)	Carcase Wt (kg)	Eye Muscle Area (sq cm)	Rib Fat (mm)	Rump Fat (mm)	Retail Beef Yield (%)	IMF (%)	Docility
EBV	-1.4	+0.5	-2.5	+2.0	+27	+49	+65	+64	+9	+1.2	+43	+4.1	+0.1	+0.2	+1.4	+0.1	+50
Accuracy	30%	26%	37%	46%	48%	52%	46%	36%	31%	58%	39%	34%	41%	40%	35%	30%	47%
Breed Avg. EBVs for 2021 Born Calves Click for Percentiles																	
EBV	+0.5	+0.7	-2.1	+1.7	+21	+35	+49	+49	+7	+1.1	+31	+1.8	+0.0	-0.1	+0.8	+0.0	+43

Traits Analysed: 400WT,SS,FAT,EMA,IMF,DOC

PRICE: _____

BUYER: _____

BONUS
92 PIECE KINCROME
SOCKET AND TOOL SET
VALUED AT \$515!



WARATAH FENCING RANGE

Spend \$8,500 on the Waratah Fencing Range at Elders and receive a BONUS 92 piece Kinchrome socket and tool set valued at \$515. Promotion excludes Waratah black posts and made to order range. Collect bonus item at your local Elders branch.

Buyers Instruction Slip

Please complete and hand to Office staff to verify prior to livestock being moved.

Trading Name:

Address:

Property Address:

1st Contact Name & Number:

.....

2nd Contact Name & Number:

.....

Lots Purchased:

Delivery Instructions

Returning to Vendors property: Yes / No

If Not:

Carrier: Contacted: Yes / No

When: Expected pick-up time:

(please draw a map on back of this page if necessary – will be handed to the carrier)

Insurance Required – Yes / No

Period to be insured: 3months / 6 months / 12 months / other

Company: Contacted: Yes / No

Signature:

PLEASE NOTE FOLLOWING DISCLAIMER

Insurance risk of any stud animal sold at auction transfers to the purchaser at the fall of the hammer. Any animal remaining on the vendor's property is at the risk of the purchaser, it is advised as a minimum that a full loss of use insurance policy is taken at time of sale. Stud animals are not covered by commercial livestock transit insurance at any point.

PRODUCT INFORMATION SHEET

MULTIMIN[®] EVOLUTION INJECTION FOR CATTLE

- ✔ Promotes cattle fertility and immunity
- ✔ Treats 100 head of cattle (500 kg)
- ✔ Contains 90 mg/mL of trace minerals
- ✔ Trace mineral top up for high demand periods (calving, joining, weaning)

ACTIVE CONSTITUENTS

- ✔ 60 g/L ZINC (as disodium zinc EDTA)
- ✔ 15 g/L COPPER (as disodium copper EDTA)
- ✔ 10 g/L MANGANESE (as disodium manganese EDTA)
- ✔ 5 g/L SELENIUM (as sodium selenite)

PRESENTATION

500 mL pillow pack

WHEN TO USE MULTIMIN[®] EVOLUTION

Subcutaneous
injection in middle of
side of neck.



ANIMAL AGE: UP TO 1 YEAR (1 mL per 50 kg)

Liveweight (kg)	Injection Dose Rate (mL)
25	0.5
50	1.0
75	1.5
100	2.0
125	2.5
150	3.0
175	3.5
200	4.0
225	4.5
250	5.0

ANIMAL AGE: FROM 1 TO 2 YEARS (1 mL per 75 kg rounded down to the nearest 0.5 mL)

Liveweight (kg)	Injection Dose Rate (mL)
190	2.5
225	3.0
265	3.5
300	4.0
340	4.5
375	5.0
415	5.5

ANIMAL AGE: OVER 2 YEARS (1 mL per 100 kg)

Liveweight (kg)	Injection Dose Rate (mL)
400	4.0
500	5.0
600	6.0
700	7.0
800	8.0
900	9.0
1000	10.0



Elders

ALBANY OFFICE

PHONE: 9842 7900

INSURANCE

PHONE: 9842 7902

REAL ESTATE

PHONE: 9842 7932

MERCHANDISE

PHONE: 9842 7904

MT BARKER OFFICE

PHONE: 9851 3200

LIVESTOCK

Dean Wallinger : 0428 818 400

Jai Newman : 0427 920 929

David Lindberg : 0439 443 497

Nigel Hawke : 0429 479 467

Tristan King : 0455 151 783

Wayne Mitchell : 0429 447 144

Zac Mostert : 0487 254 861

Clark Skinner : 0409 820 263

- Farm Supplies - Livestock - Insurance -

- Banking - Wool - Agronomy -

For Australian Agriculture

189 Chester Pass Rd, Albany

Elders Rural Services Australia Limited