

**47<sup>th</sup>**  
**ANNUAL**

★ WALCHA SHOW SOCIETY ★

*British Breed*

BREEDERS ASSOCIATION

# RAM SALE

**WED 8 FEB 2023**

Inspection from 11am, Auction 1pm at Walcha Showgrounds.  
Auction will be interfaced with AuctionsPlus.

**MARYLAND  
WHITE SUFFOLKS**

**50** White Suffolk  
flock rams



**NORTH SOUTH  
BORDER LEICESTERS**

**50** Border Leicester  
flock rams



**AMELIE  
POLL DORSETS**

**36** Poll Dorset  
flock rams



*Elders*

# MARYLAND WHITE SUFFOLKS



Lot 11 White Suffolk ram.  
Tag number 210194.

## ABOUT US

Maryland White Suffolks was founded in 2007 on Tandara and Farrer ewes with a sire being purchased from Farrer. We have continued to purchase our sires from Farrer as they consistently produce high indexing well grown sheep which flows into what we are trying to produce with our breeding objectives.

We are looking to produce structurally sound sheep with a large frame, with good figures that will produce a commercially viable progeny. We are aiming for low birth weight sheep with high growth rates that are consistent and well finishing lambs.

We believe that White Suffolks are well suited to the first cross lamb market with their ease of birth, high fertility and quick finishing lambs. With naturally good LEQ (lamb Easting Quality) and the current price of lamb they make for a profitable enterprise.

The rams on offer represent the top of the drop for 2021 and 2022 with well grown full bodied rams with Lambplan figures available in January.

Online catalogue can be found on [Sheepgenetics.org.au/catalogue/sales](http://Sheepgenetics.org.au/catalogue/sales)

If you have any quires please contact Angus on 0427 787 332.

## REFERENCE SIRES

	BWT	WWT	PWT	PFat	PEMD	TCP
<u>Farrer 190211</u>	0.12	10.60	16.66	1.62	3.09	134.98
<u>Farrer 200239</u>	0.09	11.36	18.46	0.10	3.27	162.77

Angus Burnell: 0427 787 332

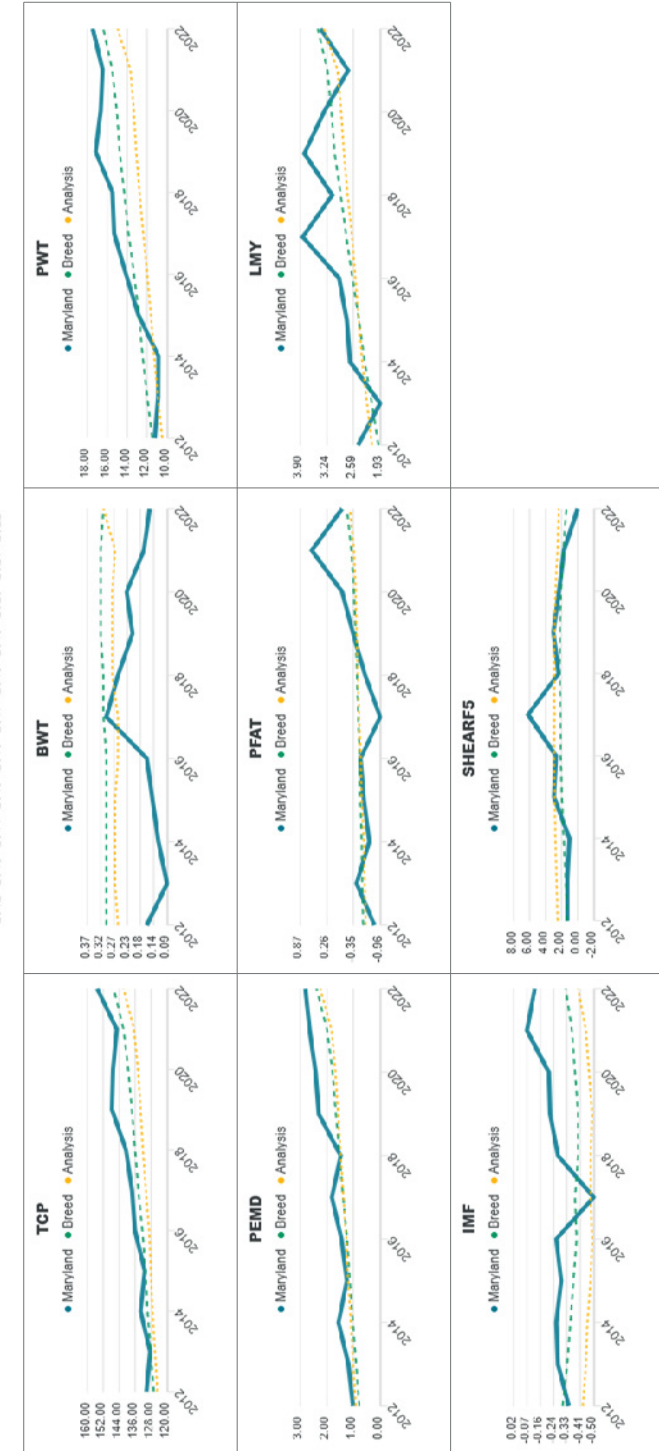
Email: [maryland2354@outlook.com](mailto:maryland2354@outlook.com)

Facebook: Maryland White Suffolks



Report: Genetic Trends  
Analysis: TERMINAL  
Analysis date: 15/12/2022  
Flock code: 230695  
Flock name: MARYLAND

# MARYLAND WHITE SUFFOLKS



Reports are prepared using data supplied by breeders and/or accredited operators. We cannot guarantee the accuracy of this data. ASBVs are designed to estimate genetic merit of animals from the data supplied. The reports are provided to assist breeders but no liability is accepted for the outcome resulting from the use of this information.



## Understanding LAMBPLAN ASBVs

Rams with lower ASBVs for birth weight (BWT) produce lambs with lower birth weight. Both low (lamb survival) and high (lambing difficulties) birth weights should be avoided.

Rams with more positive ASBVs for post weaning weight (PWT) produce lambs that grow quicker and reach target weights in a shorter time. This ram will produce lambs that are, on average, 3kg heavier at post weaning age (7.5 months) than a ram with an ASBV of 0.

Worm egg count (WEC) ASBVs estimate an animal's genetic potential for worm burdens. Lower WEC ASBVs are desirable. This ram will, on average, sire progeny that will have 5% fewer eggs/gram than a ram with an ASBV of 0.

Rams with a more positive ASBV for weaning weight (WWT) will, on average, produce lambs that grow quicker to weaning. This ram will produce lambs that are 2kg heavier than a ram with a 0 ASBV for WWT.

Rams with a more negative ASBV for post weaning fat (PFAT) will produce lambs that are leaner, at the same weight. This ram will produce lambs that are, on average, 0.75mm leaner at the GR site when compared to a ram with a FAT ASBV of 0.

Rams with more positive ASBVs for post weaning eye muscle depth (PEMD) produce lambs that have more muscle, independent of weight, and a higher lean meat yield. This ram will produce lambs that have, on average, a 0.5mm deeper eye muscle than a ram with a 0 EMD ASBV.

An index is a guide to the value of a ram for a particular market. Rams with higher indexes will produce lambs that are more suited to that particular market target. It is important to understand what market the index applies to before using an index.

Trait	BWT (kg)	WWT (kg)	PWT (kg)	PFAT (mm)	PEMD (mm)	WEC (%)	INDEX
ASBV	0.3	4	6.0	-1.5	1.0	-10	150
Acc	43	63	71	59	69	37	

• An ASBV of 0 is the average of the 1990 drop. It is important to compare ASBVs against current industry average.

• Note: A useful rule of thumb for converting ram ASBVs into lamb production differences is to simply halve the ASBV (as rams contribute half the genetics of the lamb).

• Accuracy - published as a percentage, is a reflection of the amount of effective information that is available to calculate the ASBV. All ASBVs are now published with accuracies. The higher the percentage, the closer the ASBV is to the true breeding value of the animal. Breeding values without accuracies are Flock Breeding Values (FBVs) and can only be compared within the flock.

• MLA acknowledges the contributions of the Australian Government and AWI in the development of this publication.

For more information contact Sheep Genetics  
Ph: 02 8055 1818 Fax: 02 8055 1850  
info@sheepgenetics.org.au www.sheepgenetics.org.au

Sheep Genetics is a program of Meat & Livestock Australia Limited ABN 39 081 678 364



## MARYLAND WHITE SUFFOLKS

50 specially selected White Suffolk rams

1	Tag 2306952021210073			Sire 2301392019190211				
	BWT	WWT	PWT	PFAT	PEMD	TCP	LEQ	LMY
ASBV	0.14	10.95	16.82	0.50	3.00	150.36	148.73	3.23
Accuracy	65%	68%	66%	65%	64%	56%	52%	60%

BUYER

PRICE

2	Tag 2306952021210074			Sire 2301392019190211				
	BWT	WWT	PWT	PFAT	PEMD	TCP	LEQ	LMY
ASBV	0.18	11.66	17.43	0.29	2.12	140.73	137.68	3.08
Accuracy	65%	67%	65%	64%	64%	55%	52%	60%

BUYER

PRICE

3	Tag 2306952021210075			Sire 2301392019190211				
	BWT	WWT	PWT	PFAT	PEMD	TCP	LEQ	LMY
ASBV	0.16	11.40	17.13	0.32	2.14	140.21	137.34	2.98
Accuracy	65%	67%	65%	64%	64%	55%	52%	60%

BUYER

PRICE

4	Tag 2306952021210087			Sire 2301392019190211				
	BWT	WWT	PWT	PFAT	PEMD	TCP	LEQ	LMY
ASBV	0.21	11.37	17.34	0.22	2.46	148.16	146.16	3.35
Accuracy	64%	67%	65%	64%	63%	54%	51%	58%

BUYER

PRICE

5	Tag 2306952021210091			Sire 2301392019190211				
	BWT	WWT	PWT	PFAT	PEMD	TCP	LEQ	LMY
ASBV	0.25	11.21	17.22	0.13	2.44	148.93	145.93	3.35
Accuracy	61%	64%	62%	60%	60%	50%	46%	54%

BUYER

PRICE

6	Tag 2306952021210092			Sire 2301392019190211				
	BWT	WWT	PWT	PFAT	PEMD	TCP	LEQ	LMY
ASBV	0.20	9.79	15.58	0.30	2.53	146.14	144.20	2.78
Accuracy	61%	64%	62%	60%	60%	50%	46%	54%

BUYER

PRICE

7	Tag 2306952021210142			Sire 2301392019190211				
	BWT	WWT	PWT	PFAT	PEMD	TCP	LEQ	LMY
ASBV	0.19	11.53	17.68	0.61	2.67	149.61	148.17	3.08
Accuracy	63%	66%	63%	62%	62%	52%	49%	57%

BUYER

PRICE

# MARYLAND WHITE SUFFOLKS

50 specially selected White Suffolk rams

<b>8</b>	<b>Tag</b> 2306952021210155	<b>Sire</b> 2301392019190211						
	<b>BWT</b>	<b>WWT</b>	<b>PWT</b>	<b>PFAT</b>	<b>PEMD</b>	<b>TCP</b>	<b>LEQ</b>	<b>LMY</b>
<b>ASBV</b>	0.15	9.94	15.39	0.21	2.74	143.68	140.21	3.11
<b>Accuracy</b>	66%	68%	66%	66%	65%	56%	52%	61%

BUYER

PRICE

<b>9</b>	<b>Tag</b> 2306952021210187	<b>Sire</b> 2301392019190211						
	<b>BWT</b>	<b>WWT</b>	<b>PWT</b>	<b>PFAT</b>	<b>PEMD</b>	<b>TCP</b>	<b>LEQ</b>	<b>LMY</b>
<b>ASBV</b>	0.31	11.26	17.81	0.55	2.50	148.28	146.18	2.91
<b>Accuracy</b>	63%	65%	63%	62%	62%	52%	48%	56%

BUYER

PRICE

<b>10</b>	<b>Tag</b> 2306952021210122	<b>Sire</b> 2301392019190211						
	<b>BWT</b>	<b>WWT</b>	<b>PWT</b>	<b>PFAT</b>	<b>PEMD</b>	<b>TCP</b>	<b>LEQ</b>	<b>LMY</b>
<b>ASBV</b>	0.19	11.16	17.82	0.37	2.32	148.89	147.04	2.99
<b>Accuracy</b>	63%	66%	63%	62%	62%	52%	48%	57%

BUYER

PRICE

<b>11</b>	<b>Tag</b> 2306952021210194	<b>Sire</b> 2301392019190211						
	<b>BWT</b>	<b>WWT</b>	<b>PWT</b>	<b>PFAT</b>	<b>PEMD</b>	<b>TCP</b>	<b>LEQ</b>	<b>LMY</b>
<b>ASBV</b>	0.21	11.60	18.01	0.44	2.70	149.26	146.37	3.17
<b>Accuracy</b>	62%	65%	63%	62%	62%	52%	48%	56%

BUYER

PRICE

<b>12</b>	<b>Tag</b> 2306952021210140	<b>Sire</b> 2301392019190211						
	<b>BWT</b>	<b>WWT</b>	<b>PWT</b>	<b>PFAT</b>	<b>PEMD</b>	<b>TCP</b>	<b>LEQ</b>	<b>LMY</b>
<b>ASBV</b>	0.32	11.00	17.48	0.31	2.78	152.03	149.15	3.29
<b>Accuracy</b>	62%	64%	62%	61%	60%	50%	46%	55%

BUYER

PRICE

<b>13</b>	<b>Tag</b> 2306952021210094	<b>Sire</b> 2301392019190211						
	<b>BWT</b>	<b>WWT</b>	<b>PWT</b>	<b>PFAT</b>	<b>PEMD</b>	<b>TCP</b>	<b>LEQ</b>	<b>LMY</b>
<b>ASBV</b>	0.19	10.73	16.05	0.80	2.50	142.22	140.71	2.30
<b>Accuracy</b>	61%	64%	62%	61%	61%	51%	48%	55%

BUYER

PRICE

<b>14</b>	<b>Tag</b> 2306952021210095	<b>Sire</b> 2301392019190211						
	<b>BWT</b>	<b>WWT</b>	<b>PWT</b>	<b>PFAT</b>	<b>PEMD</b>	<b>TCP</b>	<b>LEQ</b>	<b>LMY</b>
<b>ASBV</b>	0.01	8.64	13.19	0.59	1.97	134.72	133.95	1.96
<b>Accuracy</b>	51%	55%	51%	47%	46%	39%	36%	43%

BUYER

PRICE

# MARYLAND WHITE SUFFOLKS

50 specially selected White Suffolk rams

<b>15</b>	<b>Tag</b> 2306952021210096	<b>Sire</b> 2301392019190211						
	<b>BWT</b>	<b>WWT</b>	<b>PWT</b>	<b>PFAT</b>	<b>PEMD</b>	<b>TCP</b>	<b>LEQ</b>	<b>LMY</b>
<b>ASBV</b>	0.07	7.59	12.02	0.70	1.96	132.86	132.85	1.51
<b>Accuracy</b>	51%	55%	51%	47%	46%	39%	36%	43%

BUYER

PRICE

<b>16</b>	<b>Tag</b> 2306952021210097	<b>Sire</b> 2301392019190211						
	<b>BWT</b>	<b>WWT</b>	<b>PWT</b>	<b>PFAT</b>	<b>PEMD</b>	<b>TCP</b>	<b>LEQ</b>	<b>LMY</b>
<b>ASBV</b>	0.19	11.14	17.38	0.11	1.98	145.92	143.63	3.01
<b>Accuracy</b>	62%	65%	63%	62%	61%	52%	48%	56%

BUYER

PRICE

<b>17</b>	<b>Tag</b> 2306952021210112	<b>Sire</b> 2301392019190211						
	<b>BWT</b>	<b>WWT</b>	<b>PWT</b>	<b>PFAT</b>	<b>PEMD</b>	<b>TCP</b>	<b>LEQ</b>	<b>LMY</b>
<b>ASBV</b>	-0.05	7.90	12.33	0.69	2.05	133.19	132.99	1.68
<b>Accuracy</b>	53%	56%	52%	47%	46%	40%	37%	43%

BUYER

PRICE

<b>18</b>	<b>Tag</b> 2306952021210113	<b>Sire</b> 2301392019190211						
	<b>BWT</b>	<b>WWT</b>	<b>PWT</b>	<b>PFAT</b>	<b>PEMD</b>	<b>TCP</b>	<b>LEQ</b>	<b>LMY</b>
<b>ASBV</b>	0.17	11.10	16.96	0.35	2.58	145.71	143.76	3.10
<b>Accuracy</b>	64%	67%	65%	64%	64%	55%	51%	59%

BUYER

PRICE

<b>19</b>	<b>Tag</b> 2306952021210116	<b>Sire</b> 2301392019190211						
	<b>BWT</b>	<b>WWT</b>	<b>PWT</b>	<b>PFAT</b>	<b>PEMD</b>	<b>TCP</b>	<b>LEQ</b>	<b>LMY</b>
<b>ASBV</b>	0.17	9.58	15.17	0.26	2.22	144.01	143.43	2.59
<b>Accuracy</b>	64%	66%	64%	63%	63%	53%	49%	58%

BUYER

PRICE

<b>20</b>	<b>Tag</b> 2306952021210120	<b>Sire</b> 2301392019190211						
	<b>BWT</b>	<b>WWT</b>	<b>PWT</b>	<b>PFAT</b>	<b>PEMD</b>	<b>TCP</b>	<b>LEQ</b>	<b>LMY</b>
<b>ASBV</b>	0.28	11.28	17.05	0.97	2.42	144.71	143.82	2.17
<b>Accuracy</b>	63%	65%	63%	62%	62%	52%	49%	56%

BUYER

PRICE

<b>21</b>	<b>Tag</b> 2306952021210124	<b>Sire</b> 2301392019190211						
	<b>BWT</b>	<b>WWT</b>	<b>PWT</b>	<b>PFAT</b>	<b>PEMD</b>	<b>TCP</b>	<b>LEQ</b>	<b>LMY</b>
<b>ASBV</b>	0.14	11.39	17.27	0.74	2.82	146.99	145.63	2.96
<b>Accuracy</b>	64%	67%	64%	64%	63%	54%	50%	58%

BUYER

PRICE

# MARYLAND WHITE SUFFOLKS

50 specially selected White Suffolk rams

<b>22</b>	<b>Tag</b> 2306952021210132	<b>Sire</b> 2301392019190211						
	<b>BWT</b>	<b>WWT</b>	<b>PWT</b>	<b>PFAT</b>	<b>PEMD</b>	<b>TCP</b>	<b>LEQ</b>	<b>LMY</b>
<b>ASBV</b>	0.17	11.99	18.39	0.88	2.95	150.64	148.27	2.89
<b>Accuracy</b>	62%	65%	62%	62%	61%	51%	48%	56%

BUYER

PRICE

<b>23</b>	<b>Tag</b> 2306952021210134	<b>Sire</b> 2301392019190211						
	<b>BWT</b>	<b>WWT</b>	<b>PWT</b>	<b>PFAT</b>	<b>PEMD</b>	<b>TCP</b>	<b>LEQ</b>	<b>LMY</b>
<b>ASBV</b>	0.03	9.39	15.21	0.88	2.54	139.46	138.22	2.14
<b>Accuracy</b>	65%	67%	66%	65%	65%	55%	51%	60%

BUYER

PRICE

<b>24</b>	<b>Tag</b> 2306952021210136	<b>Sire</b> 2301392019190211						
	<b>BWT</b>	<b>WWT</b>	<b>PWT</b>	<b>PFAT</b>	<b>PEMD</b>	<b>TCP</b>	<b>LEQ</b>	<b>LMY</b>
<b>ASBV</b>	0.12	10.21	16.18	0.77	2.44	141.21	139.34	2.45
<b>Accuracy</b>	65%	67%	66%	65%	65%	55%	51%	60%

BUYER

PRICE

<b>25</b>	<b>Tag</b> 2306952021210138	<b>Sire</b> 2301392019190211						
	<b>BWT</b>	<b>WWT</b>	<b>PWT</b>	<b>PFAT</b>	<b>PEMD</b>	<b>TCP</b>	<b>LEQ</b>	<b>LMY</b>
<b>ASBV</b>	0.23	10.43	16.10	0.28	2.65	144.35	141.33	3.07
<b>Accuracy</b>	64%	67%	65%	64%	64%	54%	51%	59%

BUYER

PRICE

<b>26</b>	<b>Tag</b> 2306952021210145	<b>Sire</b> 2301392019190211						
	<b>BWT</b>	<b>WWT</b>	<b>PWT</b>	<b>PFAT</b>	<b>PEMD</b>	<b>TCP</b>	<b>LEQ</b>	<b>LMY</b>
<b>ASBV</b>	0.20	10.16	15.31	0.19	2.73	143.72	140.75	3.14
<b>Accuracy</b>	64%	67%	64%	64%	63%	54%	51%	59%

BUYER

PRICE

<b>27</b>	<b>Tag</b> 2306952021210146	<b>Sire</b> 2301392019190211						
	<b>BWT</b>	<b>WWT</b>	<b>PWT</b>	<b>PFAT</b>	<b>PEMD</b>	<b>TCP</b>	<b>LEQ</b>	<b>LMY</b>
<b>ASBV</b>	0.18	9.98	15.48	0.52	2.30	143.31	143.25	2.45
<b>Accuracy</b>	65%	67%	65%	65%	64%	55%	51%	60%

BUYER

PRICE

<b>28</b>	<b>Tag</b> 2306952021210147	<b>Sire</b> 2301392019190211						
	<b>BWT</b>	<b>WWT</b>	<b>PWT</b>	<b>PFAT</b>	<b>PEMD</b>	<b>TCP</b>	<b>LEQ</b>	<b>LMY</b>
<b>ASBV</b>	0.22	10.29	15.85	0.47	2.25	144.01	143.70	2.56
<b>Accuracy</b>	65%	67%	65%	65%	64%	55%	51%	60%

BUYER

PRICE

# MARYLAND WHITE SUFFOLKS

50 specially selected White Suffolk rams

<b>29</b>	<b>Tag</b> 2306952021210151	<b>Sire</b> 2301392019190211						
	<b>BWT</b>	<b>WWT</b>	<b>PWT</b>	<b>PFAT</b>	<b>PEMD</b>	<b>TCP</b>	<b>LEQ</b>	<b>LMY</b>
<b>ASBV</b>	0.11	9.67	15.67	1.01	2.61	143.80	144.57	2.05
<b>Accuracy</b>	65%	67%	65%	64%	63%	55%	51%	59%

BUYER

PRICE

<b>30</b>	<b>Tag</b> 2306952021210156	<b>Sire</b> 2301392019190211						
	<b>BWT</b>	<b>WWT</b>	<b>PWT</b>	<b>PFAT</b>	<b>PEMD</b>	<b>TCP</b>	<b>LEQ</b>	<b>LMY</b>
<b>ASBV</b>	0.17	9.60	15.01	0.24	2.73	143.08	139.87	2.96
<b>Accuracy</b>	66%	68%	66%	66%	65%	56%	52%	61%

BUYER

PRICE

<b>31</b>	<b>Tag</b> 2306952021210158	<b>Sire</b> 2301392019190211						
	<b>BWT</b>	<b>WWT</b>	<b>PWT</b>	<b>PFAT</b>	<b>PEMD</b>	<b>TCP</b>	<b>LEQ</b>	<b>LMY</b>
<b>ASBV</b>	0.17	10.77	16.63	0.85	3.06	148.28	146.35	2.58
<b>Accuracy</b>	62%	65%	62%	62%	61%	51%	48%	56%

BUYER

PRICE

<b>32</b>	<b>Tag</b> 2306952021210160	<b>Sire</b> 2301392019190211						
	<b>BWT</b>	<b>WWT</b>	<b>PWT</b>	<b>PFAT</b>	<b>PEMD</b>	<b>TCP</b>	<b>LEQ</b>	<b>LMY</b>
<b>ASBV</b>	0.28	10.49	17.23	1.05	2.36	145.51	145.14	1.98
<b>Accuracy</b>	64%	66%	64%	63%	62%	53%	49%	58%

BUYER

PRICE

<b>33</b>	<b>Tag</b> 2306952021210161	<b>Sire</b> 2301392019190211						
	<b>BWT</b>	<b>WWT</b>	<b>PWT</b>	<b>PFAT</b>	<b>PEMD</b>	<b>TCP</b>	<b>LEQ</b>	<b>LMY</b>
<b>ASBV</b>	0.15	11.53	17.73	0.47	2.54	144.98	142.04	3.08
<b>Accuracy</b>	66%	68%	66%	66%	66%	57%	54%	61%

BUYER

PRICE

<b>34</b>	<b>Tag</b> 2306952021210172	<b>Sire</b> 2301392019190211						
	<b>BWT</b>	<b>WWT</b>	<b>PWT</b>	<b>PFAT</b>	<b>PEMD</b>	<b>TCP</b>	<b>LEQ</b>	<b>LMY</b>
<b>ASBV</b>	0.11	9.81	15.19	0.94	3.06	143.23	141.86	2.18
<b>Accuracy</b>	63%	66%	63%	63%	62%	53%	50%	57%

BUYER

PRICE

<b>35</b>	<b>Tag</b> 2306952021210173	<b>Sire</b> 2301392019190211						
	<b>BWT</b>	<b>WWT</b>	<b>PWT</b>	<b>PFAT</b>	<b>PEMD</b>	<b>TCP</b>	<b>LEQ</b>	<b>LMY</b>
<b>ASBV</b>	0.10	9.80	15.17	0.95	3.06	143.19	141.83	2.17
<b>Accuracy</b>	63%	66%	63%	63%	62%	53%	50%	57%

BUYER

PRICE

# MARYLAND WHITE SUFFOLKS

50 specially selected White Suffolk rams

<b>36</b>	<b>Tag</b> 2306952021210175	<b>Sire</b> 2301392019190211						
	<b>BWT</b>	<b>WWT</b>	<b>PWT</b>	<b>PFAT</b>	<b>PEMD</b>	<b>TCP</b>	<b>LEQ</b>	<b>LMY</b>
<b>ASBV</b>	0.29	11.14	17.42	0.32	2.23	147.73	145.65	2.93
<b>Accuracy</b>	63%	65%	63%	62%	61%	52%	48%	56%

BUYER

PRICE

<b>37</b>	<b>Tag</b> 2306952021210179	<b>Sire</b> 2301392019190211						
	<b>BWT</b>	<b>WWT</b>	<b>PWT</b>	<b>PFAT</b>	<b>PEMD</b>	<b>TCP</b>	<b>LEQ</b>	<b>LMY</b>
<b>ASBV</b>	0.19	10.34	16.36	0.65	3.25	147.76	145.08	3.02
<b>Accuracy</b>	65%	67%	65%	64%	64%	55%	52%	59%

BUYER

PRICE

<b>38</b>	<b>Tag</b> 2306952021210186	<b>Sire</b> 2301392019190211						
	<b>BWT</b>	<b>WWT</b>	<b>PWT</b>	<b>PFAT</b>	<b>PEMD</b>	<b>TCP</b>	<b>LEQ</b>	<b>LMY</b>
<b>ASBV</b>	0.21	10.97	17.44	0.60	2.60	147.53	145.65	2.83
<b>Accuracy</b>	63%	65%	63%	62%	62%	52%	48%	56%

BUYER

PRICE

<b>39</b>	<b>Tag</b> 2306952021210193	<b>Sire</b> 2301392019190211						
	<b>BWT</b>	<b>WWT</b>	<b>PWT</b>	<b>PFAT</b>	<b>PEMD</b>	<b>TCP</b>	<b>LEQ</b>	<b>LMY</b>
<b>ASBV</b>	0.23	11.20	17.55	0.48	2.70	148.52	145.93	3.00
<b>Accuracy</b>	62%	65%	63%	62%	62%	52%	48%	56%

BUYER

PRICE

<b>40</b>	<b>Tag</b> 2306952021210197	<b>Sire</b> 2301392019190211						
	<b>BWT</b>	<b>WWT</b>	<b>PWT</b>	<b>PFAT</b>	<b>PEMD</b>	<b>TCP</b>	<b>LEQ</b>	<b>LMY</b>
<b>ASBV</b>	0.12	9.83	15.55	0.69	2.31	140.91	140.21	2.17
<b>Accuracy</b>	63%	65%	63%	61%	61%	51%	47%	56%

BUYER

PRICE

<b>41</b>	<b>Tag</b> 2306952022220001	<b>Sire</b> 2301392020200239						
	<b>BWT</b>	<b>WWT</b>	<b>PWT</b>	<b>PFAT</b>	<b>PEMD</b>	<b>TCP</b>	<b>LEQ</b>	<b>LMY</b>
<b>ASBV</b>	0.12	12.05	19.20	-0.20	2.72	159.64	157.52	3.82
<b>Accuracy</b>	65%	69%	69%	70%	72%	56%	51%	61%

BUYER

PRICE

<b>42</b>	<b>Tag</b> 2306952022220038	<b>Sire</b> 2301392020200239						
	<b>BWT</b>	<b>WWT</b>	<b>PWT</b>	<b>PFAT</b>	<b>PEMD</b>	<b>TCP</b>	<b>LEQ</b>	<b>LMY</b>
<b>ASBV</b>	0.28	13.41	21.15	-0.29	2.99	164.75	160.83	4.56
<b>Accuracy</b>	65%	69%	69%	70%	72%	56%	52%	61%

BUYER

PRICE

# MARYLAND WHITE SUFFOLKS

50 specially selected White Suffolk rams

<b>43</b>	<b>Tag</b> 2306952022220041	<b>Sire</b> 2301392020200239						
	<b>BWT</b>	<b>WWT</b>	<b>PWT</b>	<b>PFAT</b>	<b>PEMD</b>	<b>TCP</b>	<b>LEQ</b>	<b>LMY</b>
<b>ASBV</b>	0.22	11.92	19.27	0.17	2.92	160.34	158.75	3.50
<b>Accuracy</b>	64%	68%	69%	69%	71%	55%	50%	60%

BUYER

PRICE

<b>44</b>	<b>Tag</b> 2306952022220064	<b>Sire</b> 2301392020200239						
	<b>BWT</b>	<b>WWT</b>	<b>PWT</b>	<b>PFAT</b>	<b>PEMD</b>	<b>TCP</b>	<b>LEQ</b>	<b>LMY</b>
<b>ASBV</b>	0.14	11.24	17.45	-0.17	3.47	159.19	155.83	4.00
<b>Accuracy</b>	66%	70%	70%	71%	73%	57%	52%	62%

BUYER

PRICE

<b>45</b>	<b>Tag</b> 2306952022220066	<b>Sire</b> 2301392020200239						
	<b>BWT</b>	<b>WWT</b>	<b>PWT</b>	<b>PFAT</b>	<b>PEMD</b>	<b>TCP</b>	<b>LEQ</b>	<b>LMY</b>
<b>ASBV</b>	0.21	12.48	19.80	0.28	2.77	157.80	155.76	3.50
<b>Accuracy</b>	66%	70%	70%	71%	73%	57%	52%	62%

BUYER

PRICE

<b>46</b>	<b>Tag</b> 2306952022220069	<b>Sire</b> 2301392020200239						
	<b>BWT</b>	<b>WWT</b>	<b>PWT</b>	<b>PFAT</b>	<b>PEMD</b>	<b>TCP</b>	<b>LEQ</b>	<b>LMY</b>
<b>ASBV</b>	0.20	12.31	19.54	-0.77	2.80	162.48	158.19	4.65
<b>Accuracy</b>	66%	70%	70%	71%	73%	57%	52%	62%

BUYER

PRICE

<b>47</b>	<b>Tag</b> 2306952022220070	<b>Sire</b> 2301392020200239						
	<b>BWT</b>	<b>WWT</b>	<b>PWT</b>	<b>PFAT</b>	<b>PEMD</b>	<b>TCP</b>	<b>LEQ</b>	<b>LMY</b>
<b>ASBV</b>	0.21	12.24	19.62	-0.83	2.61	161.89	157.75	4.59
<b>Accuracy</b>	66%	70%	70%	71%	73%	57%	52%	62%

BUYER

PRICE

<b>48</b>	<b>Tag</b> 2306952022220084	<b>Sire</b> 2301392020200239						
	<b>BWT</b>	<b>WWT</b>	<b>PWT</b>	<b>PFAT</b>	<b>PEMD</b>	<b>TCP</b>	<b>LEQ</b>	<b>LMY</b>
<b>ASBV</b>	0.13	11.74	18.89	0.49	3.97	164.76	162.61	3.72
<b>Accuracy</b>	65%	69%	70%	71%	72%	57%	51%	61%

BUYER

PRICE

<b>49</b>	<b>Tag</b> 2306952022220091	<b>Sire</b> 2301392020200239						
	<b>BWT</b>	<b>WWT</b>	<b>PWT</b>	<b>PFAT</b>	<b>PEMD</b>	<b>TCP</b>	<b>LEQ</b>	<b>LMY</b>
<b>ASBV</b>	0.19	12.97	20.57	-0.32	3.40	167.83	163.86	4.68
<b>Accuracy</b>	65%	69%	69%	70%	72%	56%	51%	61%

BUYER

PRICE

# MARYLAND WHITE SUFFOLKS

50 specially selected White Suffolk rams

<b>50</b>	<b>Tag</b> 2306952022220094		<b>Sire</b> 2301392020200239					
	<b>BWT</b>	<b>WWT</b>	<b>PWT</b>	<b>PFAT</b>	<b>PEMD</b>	<b>TCP</b>	<b>LEQ</b>	<b>LMY</b>
<b>ASBV</b>	0.18	12.14	19.60	-0.10	3.59	165.04	161.45	4.33
<b>Accuracy</b>	64%	69%	69%	70%	72%	56%	52%	61%
BUYER				PRICE				

## NOTES

---

---

---

---

---

---

---

---

---

---

---

---

---

---

---

---

---

---

---

---

---

---

---

---

---

# NORTH SOUTH BORDER LEICESTERS



### ABOUT US

It is with great pleasure that we continue to sell as part of the Walcha British Breed Association multi vendor sale and we are pleased to present the 2023 lineup of sale rams from North South Borders. Thank you for supporting our Stud.

North South aims to produce a flock sire exhibiting true to type breed characteristics especially in wool and structure. We select on maternal traits placing greater emphasis on the mothering ability of our ewes. Our selection process has adopted several visually observed traits ensuring only the best mothers are joined each season. We believe that the combination of measured and observed traits we select for have made marked improvement to production levels and we are confident the improvement will be passed on by our rams.

All our rams are offered with Lambplan ASBVs and to help take the work out of your selection process we have listed our sale team on RamSelect. This information is available now and on sale day via the RamSelect website.

The 2023 sale team is an impressive line of flock rams with some being of Stud sire standard.

Please speak with us prior to or on sale day regarding your selection. We look forward to seeing you at the sale.

### The Makeham Family



Michael Makeham 0428 101 515  
 Simon Makeham 0439 959 848  
 Jeff Makeham 0412 328 375  
[www.northsouthstud.com.au](http://www.northsouthstud.com.au)

## NORTH SOUTH BORDER LEICESTERS

**FLOCK 4773** Selecting for total sheep profitability. Wool - Carcase - Fertility

50 selected maternal sires being offered at the 47th Annual British Breeds Ram Sale to be held Wednesday February 8 2023 at the Walch Showgrounds. Inspection 11am, start 1pm.

All rams performance recorded using Lambplan ASBV's and sired by high indexing maternal Stud Sires. MN3 V, Brucellosis Accredited footrot free flock.

It is with great pleasure that North - South continue to sell as part of the Walcha Show Society multi-vendor sale. Please find our sale catalogue on Lamplan. To help with the selection process we have listed the sale team on Ram Select refer to website.



### Sydney Royal Easter Show

- R P Harper Perpetual Prize
- Junior Champion Ram
- Junior Champion Ewe
- Peter Taylor Memorial Group
- Reserve Champion Ram
- North South won every class for sheep showing milk teeth only

### NSW State Sheep Show

- Most Successful Exhibitor
- Supreme Long Wool Exhibit of the Show
- Supreme Border Leicester Exhibit
- Grand Champion & Champion Ewe
- Reserve Grand Champion Ram



## NORTH SOUTH BORDER LEICESTERS

### HISTORY

The Makeham Family began breeding Border Leicester Sheep in 1957 when Jeffery Makeham purchased 4 ewes from Yarrison Stud and a New Zealand bred ram from Harakeke Stud. The Stud was registered under the prefix of Taringa Downs. Additional stud ewes were purchased from Terreppee and a stud ram "Crymelon Roman" was purchased from Crymelon. Taringa Downs was located on the family property at Walcha in Northern NSW and the stud recorded a successful Show and Sale record until a near complete dispersal to Chandivan stud due to drought conditions in the 1980's.

The Stud was re-registered as North-South in 2006 and is now located on the family properties in the NORTH at "Abberley Park" Walcha NSW and in the SOUTH at "Rothesay" in the Young/Wallendbeen district of NSW.

North-South continues to record good sales of both stud and flock rams to local and interstate buyers. The Stud continues a keen interest in showing locally and at Major Sheep shows enjoying their share of ribbons while promoting a quality true-to-type modern Border Leicester sheep.

### HEALTH STATUS

North-South is dedicated to maintaining rigorous health requirements to ensure the sheep we deliver to our clients have a second to none health assurance. We are OJD MN3 vaccinated with all sheep on the property vaccinated. North-South is Brucellosis Accredited and Footrot Free.





## Understanding LAMBPLAN Maternal ASBVs

Rams with a more positive weaning weight (WWT) will, on average, produce lambs that grow quicker to weaning. This ram will produce lambs that are, on average, 0.4kg heavier than a ram with a 0 ASBV for WWT.

Rams with more positive ASBVs for post weaning weight (PWT) produce lambs that grow quicker and reach target weights in a shorter time. This ram will produce lambs that are, on average, 1.25kg heavier than a ram with a 0 ASBV for PWT.

Rams with more positive ASBVs for eye muscle depth (EMD) produce lambs that have a higher lean meat yield. This ram will produce lambs that have a 0.2mm deeper eye muscle than a ram with a 0 EMD ASBV.

Rams with a higher clean fleece weight (CFW) ASBV will produce progeny that cut more wool. This ram will produce progeny that, on average, cut 2.5% more wool than a ram with an ASBV of 0.

Worm egg count (WEC) ASBVs estimate an animal's genetic potential for resisting worm burdens. Lower WEC ASBVs are desirable. This ram will, on average, sire progeny that have 10% fewer eggs/gram than a ram with an ASBV of 0.

Trait	WWT (kg)	MWT (kg)	PWT (kg)	FAT (mm)	EMD (mm)	NLW (%)	CFW (%)	SC (cm)	WEC (%)	INDEX
ASBV	0.8	1.0	2.5	-0.4	0.4	4	5	0.6	-10	105.6
Acc	51	53	61	45	38	33	37	44	37	

Rams with more positive ASBVs for maternal weaning weight (MWT) will produce daughters which will wean heavier lambs. This ASBV reflects a combination of the daughter's ability to milk and provide a better maternal environment.

Rams with a more negative ASBV for fat will produce lambs that are leaner, at the same weight. This ram will produce lambs that are, on average, 0.2mm leaner at the GR site when compared to a ram with a FAT ASBV of 0.

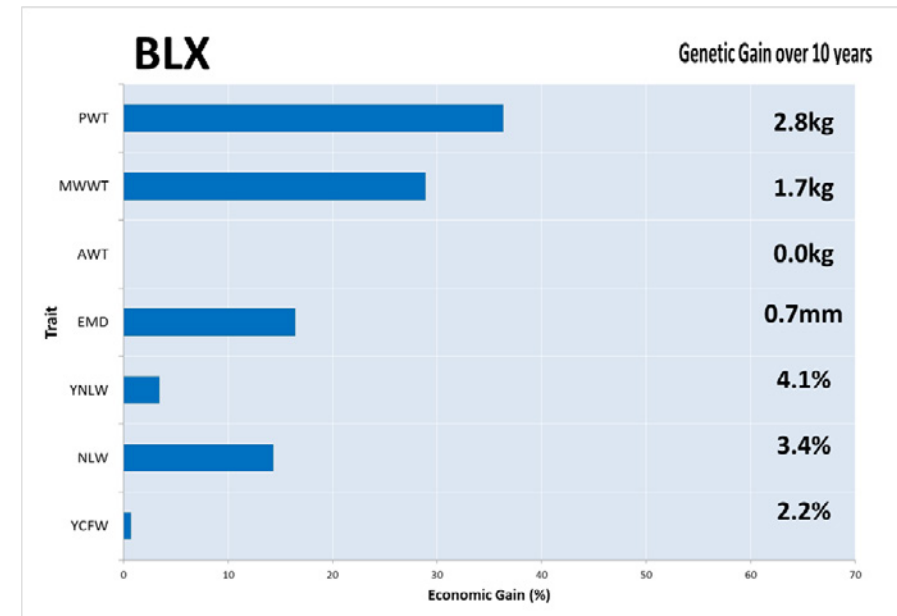
Rams with a more positive number of lambs weaned (NLW) ASBV will sire daughters that wean a higher percentage of lambs. This ram with an ASBV of 4 will sire daughters which, on average, will wean 2% more lambs.

Rams with higher scrotal circumference (SC) ASBVs will sire daughters that are, on average, more fertile.

An index is a guide to the value of a ram for a particular market. Rams with higher indexes will produce lambs that are more suited to that particular breeding objective. In many cases the indexes used for maternal breeds are in \$ terms.

- An ASBV of 0 is the average of the 1990 drop.
- Note: A useful rule of thumb for converting ram ASBVs into lamb production differences is to simply halve the ASBV (as rams contribute half the genetics of the lamb).
- Accuracy - published as a percentage, is a reflection of the amount of effective information that is available to calculate the ASBV. All ASBVs are now published with accuracies. The higher the percentage, the closer the ASBV is to the true breeding value of the animal. Breeding values without accuracies are Flock Breeding Values (FBVs) and can only be compared within the flock.

The Border Leicester Cross Index is modelled on a production system using sires crossed to Merino dams producing first cross progeny. The index identifies high early growth animals with a significant response in post weaning weight and maternal ability. It also aims for an improvement in carcase eye muscle depth and number of lambs weaned. There is a small improvement in fleece weights. The index also recognises the importance of maintaining adult weight over time. The contribution of each trait to economic gain is expressed in the graph along with predicted genetic gain over 10 years.



For more information contact Sheep Genetics  
Ph: 02 6773 2948 Fax: 02 6773 2707  
[info@sheepgenetics.org.au](mailto:info@sheepgenetics.org.au) [www.sheepgenetics.org.au](http://www.sheepgenetics.org.au)

Sheep Genetics is a joint program of Meat & Livestock Australia Limited ABN 39 081 678 364 and Australian Wool Innovation Limited ABN 12 095 165 558

For more information contact Sheep Genetics

Ph: 02 8055 1818 Fax: 02 8055 1850

[info@sheepgenetics.org.au](mailto:info@sheepgenetics.org.au) [www.sheepgenetics.org.au](http://www.sheepgenetics.org.au)

Sheep Genetics is a joint program of Meat & Livestock Australia Limited ABN 39 081 678 364 and Australian Wool Innovation Limited ABN 12 095 165 558

# NORTH SOUTH BORDER LEICESTERS

50 specially selected Border Leicester rams

<b>51</b>	<b>Tag</b> 0247732021210249 <b>Sire</b> 0247732018180009 <b>Dam</b> 0247732016160222							
	<b>BLX</b>	<b>BWT</b>	<b>PWT</b>	<b>AWT</b>	<b>MWWT</b>	<b>PEMD</b>	<b>PFAT</b>	<b>WR</b>
<b>ASBV</b>	107.89	0.19	4.80	7.81	-0.39	-0.44	-0.45	0.07
<b>Accuracy</b>	39%	59%	61%	61%	42%	59%	61%	37%

BUYER

PRICE

<b>52</b>	<b>Tag</b> 0247732021210262 <b>Sire</b> 0247732018180009 <b>Dam</b> 0247732019190020							
	<b>BLX</b>	<b>BWT</b>	<b>PWT</b>	<b>AWT</b>	<b>MWWT</b>	<b>PEMD</b>	<b>PFAT</b>	<b>WR</b>
<b>ASBV</b>	105.18	0.23	5.73	9.08	-	-0.02	-0.23	-0.01
<b>Accuracy</b>	30%	57%	59%	59%	-	57%	59%	26%

BUYER

PRICE

<b>53</b>	<b>Tag</b> 0247732021210248 <b>Sire</b> 0247732018180009 <b>Dam</b> 0247732016160222							
	<b>BLX</b>	<b>BWT</b>	<b>PWT</b>	<b>AWT</b>	<b>MWWT</b>	<b>PEMD</b>	<b>PFAT</b>	<b>WR</b>
<b>ASBV</b>	108.22	0.22	6.01	10.18	-0.39	-0.50	-0.32	0.08
<b>Accuracy</b>	39%	59%	61%	61%	42%	59%	61%	37%

BUYER

PRICE

<b>54</b>	<b>Tag</b> 0247732021210284 <b>Sire</b> 0247732018180009 <b>Dam</b> 0247732019190207							
	<b>BLX</b>	<b>BWT</b>	<b>PWT</b>	<b>AWT</b>	<b>MWWT</b>	<b>PEMD</b>	<b>PFAT</b>	<b>WR</b>
<b>ASBV</b>	106.81	0.29	3.93	4.61	-	-0.28	-0.74	0.00
<b>Accuracy</b>	32%	57%	60%	60%	-	57%	59%	28%

BUYER

PRICE

<b>55</b>	<b>Tag</b> 0247732021210221 <b>Sire</b> 0247732018180009 <b>Dam</b> 0247732018180003							
	<b>BLX</b>	<b>BWT</b>	<b>PWT</b>	<b>AWT</b>	<b>MWWT</b>	<b>PEMD</b>	<b>PFAT</b>	<b>WR</b>
<b>ASBV</b>	103.41	0.11	3.96	7.44	0.66	-0.43	-0.27	0.02
<b>Accuracy</b>	38%	59%	61%	60%	40%	58%	60%	36%

BUYER

PRICE

<b>56</b>	<b>Tag</b> 0247732021210217 <b>Sire</b> 0247732018180009 <b>Dam</b> 0247732019190335							
	<b>BLX</b>	<b>BWT</b>	<b>PWT</b>	<b>AWT</b>	<b>MWWT</b>	<b>PEMD</b>	<b>PFAT</b>	<b>WR</b>
<b>ASBV</b>	104.56	0.11	3.92	6.72	-	-0.40	-0.04	0.04
<b>Accuracy</b>	31%	58%	61%	60%	-	58%	60%	26%

BUYER

PRICE

<b>57</b>	<b>Tag</b> 0247732021210541 <b>Sire</b> 0247732018180058 <b>Dam</b> 0247732018180322							
	<b>BLX</b>	<b>BWT</b>	<b>PWT</b>	<b>AWT</b>	<b>MWWT</b>	<b>PEMD</b>	<b>PFAT</b>	<b>WR</b>
<b>ASBV</b>	99.91	-0.01	4.49	8.09	-	-0.32	-0.52	-0.02
<b>Accuracy</b>	28%	55%	57%	57%	-	55%	56%	23%

BUYER

PRICE

# NORTH SOUTH BORDER LEICESTERS

50 specially selected Border Leicester rams

<b>58</b>	<b>Tag</b> 0247732021210562 <b>Sire</b> 0247732018180058 <b>Dam</b> 02477320180NOTAG							
	<b>BLX</b>	<b>BWT</b>	<b>PWT</b>	<b>AWT</b>	<b>MWWT</b>	<b>PEMD</b>	<b>PFAT</b>	<b>WR</b>
<b>ASBV</b>	96.32	0.03	4.56	8.30	-	-0.48	-0.77	-0.05
<b>Accuracy</b>	26%	51%	55%	55%	-	53%	55%	20%

BUYER

PRICE

<b>59</b>	<b>Tag</b> 0247732021210545 <b>Sire</b> 0247732018180058 <b>Dam</b> 0247732018180249							
	<b>BLX</b>	<b>BWT</b>	<b>PWT</b>	<b>AWT</b>	<b>MWWT</b>	<b>PEMD</b>	<b>PFAT</b>	<b>WR</b>
<b>ASBV</b>	107.60	0.24	7.35	12.53	0.03	-0.09	0.39	0.04
<b>Accuracy</b>	37%	60%	61%	60%	40%	59%	60%	35%

BUYER

PRICE

<b>60</b>	<b>Tag</b> 0247732021210544 <b>Sire</b> 0247732018180058 <b>Dam</b> 0247732016160308							
	<b>BLX</b>	<b>BWT</b>	<b>PWT</b>	<b>AWT</b>	<b>MWWT</b>	<b>PEMD</b>	<b>PFAT</b>	<b>WR</b>
<b>ASBV</b>	99.75	0.16	4.62	7.26	0.44	-0.44	-0.02	-0.03
<b>Accuracy</b>	37%	60%	61%	61%	41%	59%	60%	33%

BUYER

PRICE

<b>61</b>	<b>Tag</b> 0247732021210152 <b>Sire</b> 0247732018180112 <b>Dam</b> 0247732016160008							
	<b>BLX</b>	<b>BWT</b>	<b>PWT</b>	<b>AWT</b>	<b>MWWT</b>	<b>PEMD</b>	<b>PFAT</b>	<b>WR</b>
<b>ASBV</b>	109.72	0.18	4.22	5.22	1.24	-0.31	-0.16	-0.01
<b>Accuracy</b>	39%	62%	63%	62%	43%	61%	62%	35%

BUYER

PRICE

<b>62</b>	<b>Tag</b> 0247732021210086 <b>Sire</b> 0247732018180112 <b>Dam</b> 0247732018180284							
	<b>BLX</b>	<b>BWT</b>	<b>PWT</b>	<b>AWT</b>	<b>MWWT</b>	<b>PEMD</b>	<b>PFAT</b>	<b>WR</b>
<b>ASBV</b>	107.35	0.26	5.27	7.33	-	-0.64	-0.65	-0.01
<b>Accuracy</b>	30%	56%	59%	58%	-	56%	58%	24%

BUYER

PRICE

<b>63</b>	<b>Tag</b> 0247732021210212 <b>Sire</b> 0247732018180023 <b>Dam</b> 0247732019190005							
	<b>BLX</b>	<b>BWT</b>	<b>PWT</b>	<b>AWT</b>	<b>MWWT</b>	<b>PEMD</b>	<b>PFAT</b>	<b>WR</b>
<b>ASBV</b>	105.39	0.11	6.13	10.10	-	-0.28	-0.49	0.02
<b>Accuracy</b>	32%	59%	61%	61%	-	59%	61%	27%

BUYER

PRICE

<b>64</b>	<b>Tag</b> 0247732021210113 <b>Sire</b> 0247732018180023 <b>Dam</b> 0247732019190197							
	<b>BLX</b>	<b>BWT</b>	<b>PWT</b>	<b>AWT</b>	<b>MWWT</b>	<b>PEMD</b>	<b>PFAT</b>	<b>WR</b>
<b>ASBV</b>	108.07	0.19	6.99	11.95	0.45	-0.10	-0.52	0.03
<b>Accuracy</b>	35%	61%	63%	63%	36%	61%	62%	31%

BUYER

PRICE

# NORTH SOUTH BORDER LEICESTERS

50 specially selected Border Leicester rams

<b>65</b>	<b>Tag</b> 0247732021210259 <b>Sire</b> 0247732018180023 <b>Dam</b> 0247732019190185							
	<b>BLX</b>	<b>BWT</b>	<b>PWT</b>	<b>AWT</b>	<b>MWWT</b>	<b>PEMD</b>	<b>PFAT</b>	<b>WR</b>
<b>ASBV</b>	105.77	0.19	5.28	9.76	-	-0.23	0.27	0.02
<b>Accuracy</b>	33%	60%	62%	62%	-	60%	61%	27%

BUYER

PRICE

<b>66</b>	<b>Tag</b> 0247732021210127 <b>Sire</b> 0247732018180023 <b>Dam</b> 0247732018180272							
	<b>BLX</b>	<b>BWT</b>	<b>PWT</b>	<b>AWT</b>	<b>MWWT</b>	<b>PEMD</b>	<b>PFAT</b>	<b>WR</b>
<b>ASBV</b>	111.49	0.26	4.93	6.54	0.51	0.52	-0.17	0.01
<b>Accuracy</b>	38%	60%	62%	62%	39%	60%	61%	36%

BUYER

PRICE

<b>67</b>	<b>Tag</b> 0247732021210115 <b>Sire</b> 0247732018180023 <b>Dam</b> 0247732019190151							
	<b>BLX</b>	<b>BWT</b>	<b>PWT</b>	<b>AWT</b>	<b>MWWT</b>	<b>PEMD</b>	<b>PFAT</b>	<b>WR</b>
<b>ASBV</b>	105.08	0.12	4.64	7.63	-	0.40	0.04	-0.02
<b>Accuracy</b>	32%	59%	62%	62%	-	60%	61%	27%

BUYER

PRICE

<b>68</b>	<b>Tag</b> 0247732021210128 <b>Sire</b> 0247732018180023 <b>Dam</b> 0247732018180272							
	<b>BLX</b>	<b>BWT</b>	<b>PWT</b>	<b>AWT</b>	<b>MWWT</b>	<b>PEMD</b>	<b>PFAT</b>	<b>WR</b>
<b>ASBV</b>	110.56	0.24	5.29	7.77	0.51	0.51	0.25	0.01
<b>Accuracy</b>	38%	60%	62%	62%	39%	60%	61%	36%

BUYER

PRICE

<b>69</b>	<b>Tag</b> 0247732021210092 <b>Sire</b> 0247732018180023 <b>Dam</b> 0247732019190216							
	<b>BLX</b>	<b>BWT</b>	<b>PWT</b>	<b>AWT</b>	<b>MWWT</b>	<b>PEMD</b>	<b>PFAT</b>	<b>WR</b>
<b>ASBV</b>	105.24	0.02	4.79	8.00	0.18	0.59	0.12	-0.01
<b>Accuracy</b>	35%	60%	62%	62%	35%	61%	62%	31%

BUYER

PRICE

<b>70</b>	<b>Tag</b> 0247732021210004 <b>Sire</b> 0241662013130234 <b>Dam</b> 0247732018180113							
	<b>BLX</b>	<b>BWT</b>	<b>PWT</b>	<b>AWT</b>	<b>MWWT</b>	<b>PEMD</b>	<b>PFAT</b>	<b>WR</b>
<b>ASBV</b>	111.15	0.27	7.53	9.92	0.03	0.22	-0.96	0.01
<b>Accuracy</b>	39%	58%	65%	63%	45%	63%	65%	34%

BUYER

PRICE

<b>71</b>	<b>Tag</b> 0247732021210037 <b>Sire</b> 0241662013130234 <b>Dam</b> 0247732016160065							
	<b>BLX</b>	<b>BWT</b>	<b>PWT</b>	<b>AWT</b>	<b>MWWT</b>	<b>PEMD</b>	<b>PFAT</b>	<b>WR</b>
<b>ASBV</b>	104.40	0.59	7.34	10.89	0.41	-0.46	-0.29	-0.02
<b>Accuracy</b>	43%	59%	63%	57%	50%	60%	61%	41%

BUYER

PRICE

# NORTH SOUTH BORDER LEICESTERS

50 specially selected Border Leicester rams

<b>72</b>	<b>Tag</b> 0247732021210533 <b>Sire</b> 0219292018180156 <b>Dam</b> 0247732016160030							
	<b>BLX</b>	<b>BWT</b>	<b>PWT</b>	<b>AWT</b>	<b>MWWT</b>	<b>PEMD</b>	<b>PFAT</b>	<b>WR</b>
<b>ASBV</b>	116.77	0.02	7.61	11.01	2.10	0.65	-0.61	-0.01
<b>Accuracy</b>	39%	60%	62%	61%	44%	59%	61%	37%

BUYER

PRICE

<b>73</b>	<b>Tag</b> 0247732021210502 <b>Sire</b> 0219292018180156 <b>Dam</b> 0247732014140226							
	<b>BLX</b>	<b>BWT</b>	<b>PWT</b>	<b>AWT</b>	<b>MWWT</b>	<b>PEMD</b>	<b>PFAT</b>	<b>WR</b>
<b>ASBV</b>	101.11	-0.11	4.79	7.03	1.06	0.91	0.08	-0.11
<b>Accuracy</b>	34%	58%	62%	62%	38%	59%	61%	29%

BUYER

PRICE

<b>74</b>	<b>Tag</b> 0247732021210550 <b>Sire</b> 0219292018180156 <b>Dam</b> 0247732015150043							
	<b>BLX</b>	<b>BWT</b>	<b>PWT</b>	<b>AWT</b>	<b>MWWT</b>	<b>PEMD</b>	<b>PFAT</b>	<b>WR</b>
<b>ASBV</b>	116.77	0.15	8.07	11.61	2.34	0.66	-0.39	-0.04
<b>Accuracy</b>	37%	59%	62%	61%	41%	60%	61%	34%

BUYER

PRICE

<b>75</b>	<b>Tag</b> 0247732021210508 <b>Sire</b> 0219292018180156 <b>Dam</b> 0247732014140258							
	<b>BLX</b>	<b>BWT</b>	<b>PWT</b>	<b>AWT</b>	<b>MWWT</b>	<b>PEMD</b>	<b>PFAT</b>	<b>WR</b>
<b>ASBV</b>	99.59	-0.08	4.07	6.40	1.32	0.25	-0.64	-0.10
<b>Accuracy</b>	34%	60%	62%	61%	38%	59%	61%	29%

BUYER

PRICE

<b>76</b>	<b>Tag</b> 0247732021210505 <b>Sire</b> 0219292018180156 <b>Dam</b> 0247732016160104							
	<b>BLX</b>	<b>BWT</b>	<b>PWT</b>	<b>AWT</b>	<b>MWWT</b>	<b>PEMD</b>	<b>PFAT</b>	<b>WR</b>
<b>ASBV</b>	118.00	0.13	6.40	8.36	1.27	0.43	-0.06	0.02
<b>Accuracy</b>	40%	61%	62%	61%	45%	60%	61%	39%

BUYER

PRICE

<b>77</b>	<b>Tag</b> 0247732021210061 <b>Sire</b> 0247732015150273 <b>Dam</b> 0247732016160072							
	<b>BLX</b>	<b>BWT</b>	<b>PWT</b>	<b>AWT</b>	<b>MWWT</b>	<b>PEMD</b>	<b>PFAT</b>	<b>WR</b>
<b>ASBV</b>	93.09	0.51	2.96	3.74	-0.02	-1.10	-1.12	-0.06
<b>Accuracy</b>	41%	61%	62%	62%	50%	60%	61%	38%

BUYER

PRICE

<b>78</b>	<b>Tag</b> 0247732021210056 <b>Sire</b> 0247732015150273 <b>Dam</b> 0247732016160140							
	<b>BLX</b>	<b>BWT</b>	<b>PWT</b>	<b>AWT</b>	<b>MWWT</b>	<b>PEMD</b>	<b>PFAT</b>	<b>WR</b>
<b>ASBV</b>	101.99	0.41	5.61	7.68	-0.08	-0.22	-0.09	-0.03
<b>Accuracy</b>	42%	61%	62%	61%	50%	59%	61%	41%

BUYER

PRICE

# NORTH SOUTH BORDER LEICESTERS

50 specially selected Border Leicester rams

<b>79</b>	<b>Tag</b> 0247732021210057 <b>Sire</b> 0247732015150273 <b>Dam</b> 0247732016160140							
	<b>BLX</b>	<b>BWT</b>	<b>PWT</b>	<b>AWT</b>	<b>MWWT</b>	<b>PEMD</b>	<b>PFAT</b>	<b>WR</b>
<b>ASBV</b>	98.93	0.45	6.27	9.29	-0.08	-0.86	-0.76	-0.03
<b>Accuracy</b>	42%	61%	62%	61%	50%	59%	61%	41%

BUYER

PRICE

<b>80</b>	<b>Tag</b> 0247732021210074 <b>Sire</b> 0247732020200213 <b>Dam</b> 0247732016160215							
	<b>BLX</b>	<b>BWT</b>	<b>PWT</b>	<b>AWT</b>	<b>MWWT</b>	<b>PEMD</b>	<b>PFAT</b>	<b>WR</b>
<b>ASBV</b>	103.17	0.01	2.84	5.36	-0.78	-0.26	-0.85	0.06
<b>Accuracy</b>	38%	58%	61%	59%	40%	58%	60%	37%

BUYER

PRICE

<b>81</b>	<b>Tag</b> 0247732021210266 <b>Sire</b> 0247732020200213 <b>Dam</b> 0247732017170211							
	<b>BLX</b>	<b>BWT</b>	<b>PWT</b>	<b>AWT</b>	<b>MWWT</b>	<b>PEMD</b>	<b>PFAT</b>	<b>WR</b>
<b>ASBV</b>	106.29	0.21	3.72	5.41	-0.61	-0.52	-0.97	0.06
<b>Accuracy</b>	39%	59%	62%	60%	40%	59%	61%	38%

BUYER

PRICE

<b>82</b>	<b>Tag</b> 0247732021210278 <b>Sire</b> 0247732020200166 <b>Dam</b> 0247732018180701							
	<b>BLX</b>	<b>BWT</b>	<b>PWT</b>	<b>AWT</b>	<b>MWWT</b>	<b>PEMD</b>	<b>PFAT</b>	<b>WR</b>
<b>ASBV</b>	99.50	0.25	5.79	10.32		-0.59	-0.57	-0.03
<b>Accuracy</b>	27%	53%	57%	55%	%	53%	56%	22%

BUYER

PRICE

<b>83</b>	<b>Tag</b> 0247732021210214 <b>Sire</b> 0247732020200166 <b>Dam</b> 0247732016160024							
	<b>BLX</b>	<b>BWT</b>	<b>PWT</b>	<b>AWT</b>	<b>MWWT</b>	<b>PEMD</b>	<b>PFAT</b>	<b>WR</b>
<b>ASBV</b>	103.69	0.43	4.45	5.04	0.73	-0.75	-1.25	-0.03
<b>Accuracy</b>	37%	58%	61%	59%	39%	58%	60%	35%

BUYER

PRICE

<b>84</b>	<b>Tag</b> 0247732021210178 <b>Sire</b> 0247732020200166 <b>Dam</b> 0247732018180034							
	<b>BLX</b>	<b>BWT</b>	<b>PWT</b>	<b>AWT</b>	<b>MWWT</b>	<b>PEMD</b>	<b>PFAT</b>	<b>WR</b>
<b>ASBV</b>	109.44	0.30	5.43	8.57	1.47	0.34	0.59	-0.02
<b>Accuracy</b>	37%	58%	61%	60%	39%	58%	60%	35%

BUYER

PRICE

<b>85</b>	<b>Tag</b> 0247732021210239 <b>Sire</b> 0219292018180102 <b>Dam</b> 0247732019190270							
	<b>BLX</b>	<b>BWT</b>	<b>PWT</b>	<b>AWT</b>	<b>MWWT</b>	<b>PEMD</b>	<b>PFAT</b>	<b>WR</b>
<b>ASBV</b>	117.31	0.33	5.83	7.98	0.87	-0.13	-0.32	0.07
<b>Accuracy</b>	34%	58%	62%	62%	37%	60%	61%	28%

BUYER

PRICE

# NORTH SOUTH BORDER LEICESTERS

50 specially selected Border Leicester rams

<b>86</b>	<b>Tag</b> 0247732021210241 <b>Sire</b> 0219292018180102 <b>Dam</b> 0247732019190201							
	<b>BLX</b>	<b>BWT</b>	<b>PWT</b>	<b>AWT</b>	<b>MWWT</b>	<b>PEMD</b>	<b>PFAT</b>	<b>WR</b>
<b>ASBV</b>	107.04	0.54	7.26	10.76	1.15	-1.20	-1.47	0.00
<b>Accuracy</b>	35%	58%	62%	61%	40%	59%	61%	30%

BUYER

PRICE

<b>87</b>	<b>Tag</b> 0247732021210030 <b>Sire</b> 0244112010100159 <b>Dam</b> 0247732017170319							
	<b>BLX</b>	<b>BWT</b>	<b>PWT</b>	<b>AWT</b>	<b>MWWT</b>	<b>PEMD</b>	<b>PFAT</b>	<b>WR</b>
<b>ASBV</b>	106.08	0.46	7.63	11.50	0.44	-0.85	-0.32	0.00
<b>Accuracy</b>	45%	63%	66%	64%	56%	63%	65%	43%

BUYER

PRICE

<b>88</b>	<b>Tag</b> 0247732021210410 <b>Sire</b> 0247732020200213 <b>Dam</b> 0247732017170016							
	<b>BLX</b>	<b>BWT</b>	<b>PWT</b>	<b>AWT</b>	<b>MWWT</b>	<b>PEMD</b>	<b>PFAT</b>	<b>WR</b>
<b>ASBV</b>	103.57	0.19	5.60	9.55	0.60	-0.34	-0.33	0.00
<b>Accuracy</b>	39%	59%	64%	52%	38%	61%	64%	36%

BUYER

PRICE

<b>89</b>	<b>Tag</b> 0247732021210431 <b>Sire</b> 0247732020200213 <b>Dam</b> 0247732018180282							
	<b>BLX</b>	<b>BWT</b>	<b>PWT</b>	<b>AWT</b>	<b>MWWT</b>	<b>PEMD</b>	<b>PFAT</b>	<b>WR</b>
<b>ASBV</b>	110.71	0.23	4.69	8.63	0.42	-0.15	-0.11	0.08
<b>Accuracy</b>	41%	59%	65%	55%	40%	63%	65%	38%

BUYER

PRICE

<b>90</b>	<b>Tag</b> 0247732021210417 <b>Sire</b> 0247732020200166 <b>Dam</b> 0247732017170194							
	<b>BLX</b>	<b>BWT</b>	<b>PWT</b>	<b>AWT</b>	<b>MWWT</b>	<b>PEMD</b>	<b>PFAT</b>	<b>WR</b>
<b>ASBV</b>	111.06	0.26	6.98	8.13	0.95	-0.01	-0.80	-0.03
<b>Accuracy</b>	39%	59%	64%	54%	38%	62%	65%	35%

BUYER

PRICE

<b>91</b>	<b>Tag</b> 0247732021210425 <b>Sire</b> 0247732020200213 <b>Dam</b> 0247732016160256							
	<b>BLX</b>	<b>BWT</b>	<b>PWT</b>	<b>AWT</b>	<b>MWWT</b>	<b>PEMD</b>	<b>PFAT</b>	<b>WR</b>
<b>ASBV</b>	101.63	0.23	5.29	8.92	-0.38	-0.10	-0.48	0.00
<b>Accuracy</b>	40%	60%	65%	55%	40%	62%	65%	36%

BUYER

PRICE

<b>92</b>	<b>Tag</b> 0247732021210418 <b>Sire</b> 0247732020200166 <b>Dam</b> 0247732018180114							
	<b>BLX</b>	<b>BWT</b>	<b>PWT</b>	<b>AWT</b>	<b>MWWT</b>	<b>PEMD</b>	<b>PFAT</b>	<b>WR</b>
<b>ASBV</b>	108.92	0.17	6.57	9.69		0.13	-0.55	0.00
<b>Accuracy</b>	34%	58%	64%	53%	%	61%	64%	27%

BUYER

PRICE



# AMELIE POLL DORSETS

## WELCOME

Dear Prime Lamb Producer,

Welcome to the 2023 Walcha British Breed Ram Sale. Amelie Poll Dorsets is pleased to present a very even line of 2021 Spring-drop rams and 2022 Autumn-drop ram lambs. We are happy with the way the rams and ram lambs are presented considering the very trying conditions that they have been reared under, which is testament to our breeding strategy in selecting animals and sourcing genetics that are true to traditional dorset characteristics.

Amelie Poll Dorsets, located at Kentucky, was founded in 2010 and we have since carefully introduced genetics from leading Australian Poll Dorset studs. We are aiming to produce useable sires for northern enterprises and we see the ideal animal as being one that is typical of the Dorset breed: structurally sound, of moderate frame score, adequately muscled, demonstrates tightness of skin and correct downs fleece and one that has wool on all points – these Dorset characteristics result in an early maturing, easy finishing and high yielding lamb.

We use Australian Sheep Breeding Values and genomic testing as part of our breeding program and values are reported for each ram herein (Terminal Index). However, structural and phenotypic traits in relation to breed type will continue to be of paramount importance in selecting our stud breeding and sale animals.

Amelie Poll Dorsets has a comprehensive animal health program, providing you the buyer with a low risk and high guarantee purchase. The flock is Ovine Brucellosis accredited free and all rams and ram lambs offered are OJD approved vaccinates (Gudair vaccinated at weaning prior to 16-weeks of age). All sheep have current vaccination status for Barbers pole worm (Barbervax) and all rams and ram lambs were given a preventative lousicide at shearing (Viper, December 2022).

We wish all purchasers well and welcome feedback on our genetics at any time.

**Grahame, Brendan and James Sharpe**

James Sharpe 0409 272 490

[www.ameliepolldorsets.com](http://www.ameliepolldorsets.com)



# AMELIE POLL DORSETS

## ANIMAL HEALTH

Condition	Status
<u>Brucellosis</u>	Accredited-free, NSW 13/24, Exp 30/04/2024
<u>OJD</u>	Approved vaccinates (vaccinated prior to 16 weeks of age)
<u>6-in-1</u>	September 2022
<u>Scabigard</u>	Lamb marking
<u>Barbervax</u>	Current, last treatment 07/01/2023
<u>Lousicide</u>	Viper, off-shears December 2022
<u>Anthelmintic</u>	Tridectin, January 2023

Our most recent investment, Gooramma 21-0524, purchased for \$18,000. A game changer in terms of where our stud is headed, this ram has a unique blend of traits for growth, muscle and ability to lay down fat, the combination of which result in an early finishing lamb with superior eating quality.



## SIRE DIRECTORY

**G190041:** Gooramma 19-41 was purchased by Amelie Poll Dorsets for \$13,000 at the 2020 Gooramma ram sale. Gooramma genetics are renowned for producing the first suckers to hit the market annually on the southern Tablelands of NSW and their early maturing and high yielding traits are unrivalled on the New England. Semen from 19-41 has been used by numerous leading Poll Dorset studs in Australia.

**T180809:** Tattykeel 18-809 was purchased by Amelie Poll Dorsets at the 2019 Tattykeel ram sale. Tattykeel are renowned for producing Poll Dorsets that are true-to-type and that consistently pass these traits onto progeny through carcass characteristics.

**A200087:** Amelie 20-87 was the top priced Poll Dorset ram at the 2022 Walcha British Breeds sale, sold to Black Springs Partnership, Barraba. A son of T18-0809, with strong growth and carcass characteristics and of a superior phenotype.

**A200084:** a sound and correct son of Amelie 180050 (Supreme Interbreed Exhibit Walcha Show 2020)".

# AMELIE POLL DORSETS

# AMELIE POLL DORSETS

36 specially selected Poll Dorset rams

TOP 20%

TOP 10%

TOP 5%

Report: Percentile Bands  
Analysis: **TERMINAL**  
Analysis date: 01/11/2022



Band	TCP	BWT	PWT	PEMD	PFAT	IMF	WWT
1	158.34	-0.5	19.46	4.11	1.1	0.33	12.65
5	153.49	-0.31	18.05	3.45	0.58	0.05	11.74
10	150.66	-0.02	17.32	3.1	0.33	-0.06	11.27
20	146.88	0.16	16.43	2.67	0.07	-0.2	10.7
30	143.83	0.23	15.74	2.35	-0.11	-0.3	10.27
40	141.01	0.29	15.11	2.08	-0.26	-0.38	9.87
50	138.28	0.33	14.46	1.83	-0.4	-0.46	9.46
60	135.49	0.38	13.7	1.59	-0.53	-0.54	8.98
70	132.43	0.42	12.72	1.33	-0.67	-0.62	8.4
80	128.71	0.47	11.42	1.04	-0.82	-0.71	7.61
90	123.72	0.54	9.64	0.65	-1.04	-0.85	6.44



2021 Spring Drop rams in as yearlings for genomic testing. Demonstrating outstanding carcass traits and consistency of type

<b>101</b>	Tag 210080	Sire T180809						
	<b>BWT</b>	<b>WWT</b>	<b>PWT</b>	<b>PEMD</b>	<b>PFAT</b>	<b>IMF</b>	<b>TCP</b>	<b>LEQ</b>
<b>ASBV</b>	0.55	8.94	12.41	0.64	-0.92	-0.15	126.70	124.68
<b>Accuracy</b>	61%	63%	63%	66%	63%	35%	44%	35%

BUYER PRICE

<b>102</b>	Tag 210155	Sire G190041						
	<b>BWT</b>	<b>WWT</b>	<b>PWT</b>	<b>PEMD</b>	<b>PFAT</b>	<b>IMF</b>	<b>TCP</b>	<b>LEQ</b>
<b>ASBV</b>	0.33	7.55	9.73	0.86	-1.22	-0.08	127.02	125.72
<b>Accuracy</b>	55%	57%	58%	62%	59%	39%	43%	37%

BUYER PRICE

<b>103</b>	Tag 210062	Sire T180809						
	<b>BWT</b>	<b>WWT</b>	<b>PWT</b>	<b>PEMD</b>	<b>PFAT</b>	<b>IMF</b>	<b>TCP</b>	<b>LEQ</b>
<b>ASBV</b>	0.53	9.37	13.13	0.78	-0.89	-0.20	128.64	126.07
<b>Accuracy</b>	60%	63%	63%	66%	63%	38%	44%	36%

BUYER PRICE

<b>104</b>	Tag 210171	Sire T180809						
	<b>BWT</b>	<b>WWT</b>	<b>PWT</b>	<b>PEMD</b>	<b>PFAT</b>	<b>IMF</b>	<b>TCP</b>	<b>LEQ</b>
<b>ASBV</b>	0.42	9.31	12.88	1.06	-0.18	0.00	126.55	126.01
<b>Accuracy</b>	60%	63%	64%	66%	63%	38%	46%	37%

BUYER PRICE

<b>105</b>	Tag 210129	Sire T180809						
	<b>BWT</b>	<b>WWT</b>	<b>PWT</b>	<b>PEMD</b>	<b>PFAT</b>	<b>IMF</b>	<b>TCP</b>	<b>LEQ</b>
<b>ASBV</b>	0.54	8.52	11.32	0.95	-0.82	-0.10	123.59	122.02
<b>Accuracy</b>	59%	62%	63%	66%	63%	37%	45%	37%

BUYER PRICE

<b>106</b>	Tag 210098	Sire T180809						
	<b>BWT</b>	<b>WWT</b>	<b>PWT</b>	<b>PEMD</b>	<b>PFAT</b>	<b>IMF</b>	<b>TCP</b>	<b>LEQ</b>
<b>ASBV</b>	0.44	7.72	11.00	0.53	-0.91	-0.11	123.19	121.67
<b>Accuracy</b>	50%	43%	42%	41%	41%	29%	31%	26%

BUYER PRICE

<b>107</b>	Tag 210173	Sire G190041						
	<b>BWT</b>	<b>WWT</b>	<b>PWT</b>	<b>PEMD</b>	<b>PFAT</b>	<b>IMF</b>	<b>TCP</b>	<b>LEQ</b>
<b>ASBV</b>	0.43	7.60	9.55	0.31	-1.17	0.04	122.55	122.60
<b>Accuracy</b>	61%	65%	65%	68%	65%	44%	49%	42%

BUYER PRICE

# AMELIE POLL DORSETS

36 specially selected Poll Dorset rams

TOP 20%

TOP 10%

TOP 5%

<b>108</b>	<b>Tag</b> 210082	<b>Sire</b> G190041						
	<b>BWT</b>	<b>WWT</b>	<b>PWT</b>	<b>PEMD</b>	<b>PFAT</b>	<b>IMF</b>	<b>TCP</b>	<b>LEQ</b>
<b>ASBV</b>	0.54	8.08	11.53	0.95	-0.72	-0.03	129.00	128.15
<b>Accuracy</b>	64%	65%	66%	68%	66%	47%	50%	44%

BUYER

PRICE

<b>109</b>	<b>Tag</b> 210067	<b>Sire</b> G190041						
	<b>BWT</b>	<b>WWT</b>	<b>PWT</b>	<b>PEMD</b>	<b>PFAT</b>	<b>IMF</b>	<b>TCP</b>	<b>LEQ</b>
<b>ASBV</b>	0.40	9.12	12.62	0.92	-0.70	-0.01	130.69	130.07
<b>Accuracy</b>	62%	64%	65%	68%	65%	46%	49%	43%

BUYER

PRICE

<b>110</b>	<b>Tag</b> 210093	<b>Sire</b> G190041						
	<b>BWT</b>	<b>WWT</b>	<b>PWT</b>	<b>PEMD</b>	<b>PFAT</b>	<b>IMF</b>	<b>TCP</b>	<b>LEQ</b>
<b>ASBV</b>	0.32	7.67	10.93	1.20	-1.23	-0.14	132.81	130.86
<b>Accuracy</b>	55%	58%	58%	62%	59%	39%	42%	37%

BUYER

PRICE

<b>111</b>	<b>Tag</b> 210160	<b>Sire</b> T180809						
	<b>BWT</b>	<b>WWT</b>	<b>PWT</b>	<b>PEMD</b>	<b>PFAT</b>	<b>IMF</b>	<b>TCP</b>	<b>LEQ</b>
<b>ASBV</b>	0.61	9.73	13.32	0.58	-1.17	-0.22	130.19	127.40
<b>Accuracy</b>	60%	63%	64%	67%	64%	38%	46%	37%

BUYER

PRICE

<b>112</b>	<b>Tag</b> 210133	<b>Sire</b> T180809						
	<b>BWT</b>	<b>WWT</b>	<b>PWT</b>	<b>PEMD</b>	<b>PFAT</b>	<b>IMF</b>	<b>TCP</b>	<b>LEQ</b>
<b>ASBV</b>	0.28	7.03	10.01	2.67	-0.11	-0.08	131.96	130.57
<b>Accuracy</b>	59%	62%	63%	66%	63%	37%	45%	37%

BUYER

PRICE

<b>113</b>	<b>Tag</b> 210072	<b>Sire</b> T180809						
	<b>BWT</b>	<b>WWT</b>	<b>PWT</b>	<b>PEMD</b>	<b>PFAT</b>	<b>IMF</b>	<b>TCP</b>	<b>LEQ</b>
<b>ASBV</b>	0.38	8.58	11.94	0.89	-1.07	-0.16	128.49	126.45
<b>Accuracy</b>	60%	63%	64%	66%	64%	38%	45%	37%

BUYER

PRICE

<b>114</b>	<b>Tag</b> 210087	<b>Sire</b> G190041						
	<b>BWT</b>	<b>WWT</b>	<b>PWT</b>	<b>PEMD</b>	<b>PFAT</b>	<b>IMF</b>	<b>TCP</b>	<b>LEQ</b>
<b>ASBV</b>	0.33	6.13	8.02	0.34	-0.95	0.11	118.63	119.51
<b>Accuracy</b>	55%	58%	58%	62%	59%	39%	42%	37%

BUYER

PRICE

# AMELIE POLL DORSETS

36 specially selected Poll Dorset rams

TOP 20%

TOP 10%

TOP 5%

<b>115</b>	<b>Tag</b> 210089	<b>Sire</b> G190041						
	<b>BWT</b>	<b>WWT</b>	<b>PWT</b>	<b>PEMD</b>	<b>PFAT</b>	<b>IMF</b>	<b>TCP</b>	<b>LEQ</b>
<b>ASBV</b>	0.54	8.08	11.53	0.95	-0.72	-0.03	129.00	128.15
<b>Accuracy</b>	64%	65%	66%	68%	66%	47%	50%	44%

BUYER

PRICE

<b>116</b>	<b>Tag</b> 210134	<b>Sire</b> T180809						
	<b>BWT</b>	<b>WWT</b>	<b>PWT</b>	<b>PEMD</b>	<b>PFAT</b>	<b>IMF</b>	<b>TCP</b>	<b>LEQ</b>
<b>ASBV</b>	0.40	9.12	12.62	0.92	-0.70	-0.01	130.69	130.07
<b>Accuracy</b>	62%	64%	65%	68%	65%	46%	49%	43%

BUYER

PRICE

<b>117</b>	<b>Tag</b> 210121	<b>Sire</b> G190041						
	<b>BWT</b>	<b>WWT</b>	<b>PWT</b>	<b>PEMD</b>	<b>PFAT</b>	<b>IMF</b>	<b>TCP</b>	<b>LEQ</b>
<b>ASBV</b>	0.32	7.67	10.93	1.20	-1.23	-0.14	132.81	130.86
<b>Accuracy</b>	55%	58%	58%	62%	59%	39%	42%	37%

BUYER

PRICE

<b>118</b>	<b>Tag</b> 210083	<b>Sire</b> G190041						
	<b>BWT</b>	<b>WWT</b>	<b>PWT</b>	<b>PEMD</b>	<b>PFAT</b>	<b>IMF</b>	<b>TCP</b>	<b>LEQ</b>
<b>ASBV</b>	0.61	9.73	13.32	0.58	-1.17	-0.22	130.19	127.40
<b>Accuracy</b>	60%	63%	64%	67%	64%	38%	46%	37%

BUYER

PRICE

<b>119</b>	<b>Tag</b> 210115	<b>Sire</b> G190041						
	<b>BWT</b>	<b>WWT</b>	<b>PWT</b>	<b>PEMD</b>	<b>PFAT</b>	<b>IMF</b>	<b>TCP</b>	<b>LEQ</b>
<b>ASBV</b>	0.28	7.03	10.01	2.67	-0.11	-0.08	131.96	130.57
<b>Accuracy</b>	59%	62%	63%	66%	63%	37%	45%	37%

BUYER

PRICE

<b>120</b>	<b>Tag</b> 210139	<b>Sire</b> G190041						
	<b>BWT</b>	<b>WWT</b>	<b>PWT</b>	<b>PEMD</b>	<b>PFAT</b>	<b>IMF</b>	<b>TCP</b>	<b>LEQ</b>
<b>ASBV</b>	0.38	8.58	11.94	0.89	-1.07	-0.16	128.49	126.45
<b>Accuracy</b>	60%	63%	64%	66%	64%	38%	45%	37%

BUYER

PRICE

<b>121</b>	<b>Tag</b> 210144	<b>Sire</b> G190041						
	<b>BWT</b>	<b>WWT</b>	<b>PWT</b>	<b>PEMD</b>	<b>PFAT</b>	<b>IMF</b>	<b>TCP</b>	<b>LEQ</b>
<b>ASBV</b>	0.33	6.13	8.02	0.34	-0.95	0.11	118.63	119.51
<b>Accuracy</b>	55%	58%	58%	62%	59%	39%	42%	37%

BUYER

PRICE



# AMELIE POLL DORSETS

36 specially selected Poll Dorset rams

TOP 20%

TOP 10%

TOP 5%

<b>122</b>	Replacement tag 193		Tag 210078		Sire G190041			
	<b>BWT</b>	<b>WWT</b>	<b>PWT</b>	<b>PEMD</b>	<b>PFAT</b>	<b>IMF</b>	<b>TCP</b>	<b>LEQ</b>
<b>ASBV</b>	0.24	5.86	8.00	0.62	-0.75	0.13	120.95	122.08
<b>Accuracy</b>	55%	58%	58%	62%	59%	39%	42%	37%

BUYER

PRICE

<b>123</b>	Tag 210153		Sire T180809					
	<b>BWT</b>	<b>WWT</b>	<b>PWT</b>	<b>PEMD</b>	<b>PFAT</b>	<b>IMF</b>	<b>TCP</b>	<b>LEQ</b>
<b>ASBV</b>	0.67	10.03	13.69	0.07	-1.25	-0.21	123.53	120.78
<b>Accuracy</b>	61%	64%	64%	67%	64%	37%	45%	36%

BUYER

PRICE

<b>124</b>	Tag 210143		Sire T180809					
	<b>BWT</b>	<b>WWT</b>	<b>PWT</b>	<b>PEMD</b>	<b>PFAT</b>	<b>IMF</b>	<b>TCP</b>	<b>LEQ</b>
<b>ASBV</b>	0.64	8.59	11.61	0.40	-0.86	-0.07	117.53	116.36
<b>Accuracy</b>	59%	63%	63%	66%	63%	37%	45%	36%

BUYER

PRICE

<b>125</b>	Tag 210096		Sire G190041					
	<b>BWT</b>	<b>WWT</b>	<b>PWT</b>	<b>PEMD</b>	<b>PFAT</b>	<b>IMF</b>	<b>TCP</b>	<b>LEQ</b>
<b>ASBV</b>	-	-	-	-	-	-	-	-
<b>Accuracy</b>	-	-	-	-	-	-	-	-

BUYER

PRICE

<b>126</b>	Replacement tag 195		Tag 210130		Sire T180809			
	<b>BWT</b>	<b>WWT</b>	<b>PWT</b>	<b>PEMD</b>	<b>PFAT</b>	<b>IMF</b>	<b>TCP</b>	<b>LEQ</b>
<b>ASBV</b>	0.54	8.91	11.73	0.62	-1.31	-0.27	126.88	123.56
<b>Accuracy</b>	61%	63%	64%	66%	64%	37%	45%	36%

BUYER

PRICE

<b>127</b>	Tag 210157		Sire T180809					
	<b>BWT</b>	<b>WWT</b>	<b>PWT</b>	<b>PEMD</b>	<b>PFAT</b>	<b>IMF</b>	<b>TCP</b>	<b>LEQ</b>
<b>ASBV</b>	0.54	8.35	11.60	0.09	-1.07	-0.04	121.41	120.69
<b>Accuracy</b>	60%	63%	64%	66%	64%	38%	45%	37%

BUYER

PRICE

<b>128</b>	Tag 210137		Sire T180809					
	<b>BWT</b>	<b>WWT</b>	<b>PWT</b>	<b>PEMD</b>	<b>PFAT</b>	<b>IMF</b>	<b>TCP</b>	<b>LEQ</b>
<b>ASBV</b>	0.43	9.48	12.85	1.00	-1.23	-0.22	131.57	128.81
<b>Accuracy</b>	61%	63%	64%	67%	64%	38%	46%	37%

BUYER

PRICE

# AMELIE POLL DORSETS

36 specially selected Poll Dorset rams

TOP 20%

TOP 10%

TOP 5%

<b>129</b>	Replacement Tag 194		Tag 210112		Sire T180809			
	<b>BWT</b>	<b>WWT</b>	<b>PWT</b>	<b>PEMD</b>	<b>PFAT</b>	<b>IMF</b>	<b>TCP</b>	<b>LEQ</b>
<b>ASBV</b>	0.49	9.07	13.23	0.81	-0.46	-0.11	129.45	127.82
<b>Accuracy</b>	55%	58%	59%	62%	59%	31%	40%	31%

BUYER

PRICE

<b>130</b>	Tag 210127		Sire G190041					
	<b>BWT</b>	<b>WWT</b>	<b>PWT</b>	<b>PEMD</b>	<b>PFAT</b>	<b>IMF</b>	<b>TCP</b>	<b>LEQ</b>
<b>ASBV</b>	0.28	7.98	11.31	1.47	-0.64	-0.05	132.79	131.76
<b>Accuracy</b>	55%	58%	58%	62%	59%	39%	42%	37%

BUYER

PRICE

<b>131</b>	Tag 220077		Sire G190041					
	<b>BWT</b>	<b>WWT</b>	<b>PWT</b>	<b>PEMD</b>	<b>PFAT</b>	<b>IMF</b>	<b>TCP</b>	<b>LEQ</b>
<b>ASBV</b>	0.51	8.62	11.48	0.82	-0.52	0.07	125.64	125.90
<b>Accuracy</b>	62%	61%	61%	61%	60%	47%	49%	43%

BUYER

PRICE

<b>132</b>	Tag 220049		Sire A200087					
	<b>BWT</b>	<b>WWT</b>	<b>PWT</b>	<b>PEMD</b>	<b>PFAT</b>	<b>IMF</b>	<b>TCP</b>	<b>LEQ</b>
<b>ASBV</b>	0.25	8.23	11.60	1.50	-0.55	-0.39	130.32	125.53
<b>Accuracy</b>	57%	53%	52%	51%	51%	38%	40%	35%

BUYER

PRICE

<b>133</b>	Tag 220001		Sire A200087					
	<b>BWT</b>	<b>WWT</b>	<b>PWT</b>	<b>PEMD</b>	<b>PFAT</b>	<b>IMF</b>	<b>TCP</b>	<b>LEQ</b>
<b>ASBV</b>	0.25	7.73	10.74	1.27	-0.87	-0.06	132.80	131.78
<b>Accuracy</b>	58%	57%	57%	57%	56%	43%	44%	39

BUYER

PRICE

<b>134</b>	Tag 220046		Sire G190041					
	<b>BWT</b>	<b>WWT</b>	<b>PWT</b>	<b>PEMD</b>	<b>PFAT</b>	<b>IMF</b>	<b>TCP</b>	<b>LEQ</b>
<b>ASBV</b>	0.49	9.11	12.49	1.19	-0.71	-0.06	131.95	130.75
<b>Accuracy</b>	59%	58%	57%	57%	57%	43%	45%	39%

BUYER

PRICE

<b>135</b>	Tag 220051		Sire 200084					
	<b>BWT</b>	<b>WWT</b>	<b>PWT</b>	<b>PEMD</b>	<b>PFAT</b>	<b>IMF</b>	<b>TCP</b>	<b>LEQ</b>
<b>ASBV</b>	0.62	10.03	13.88	0.96	-0.50	-0.29	122.59	118.81
<b>Accuracy</b>	58%	57%	57%	57%	57%	45%	46%	41%

BUYER

PRICE





# ELDERS WALCHA

## Livestock, Farm Supplies, Agronomy, Wool, Real Estate, Insurance & Banking

Elders Walcha have a dedicated local team committed to our clients and our community. Our team live your business like you do. Experience the difference and contact the Elders Branch today about all your agribusiness needs.

<b>Thomas Henry</b>	Branch Manager/Wool Manager	0409 659 877
<b>Allan Laurie</b>	Territory Sales Manager	0455 821 394
<b>James Sharpe</b>	Territory Sales Manager	0409 272 490
<b>Joel Henry</b>	Rural Products Sales Manager	0400 488 304
<b>Kayla Partridge</b>	Support Officer Rural Products	0267 742 600
<b>Katrina Campbell</b>	Rural Products Sales Rep	0417 222 109
<b>Cassandra Sutton</b>	Sales Support Officer	0267 742 600

### Elders Walcha

110 Fitzroy Street, Walcha NSW 2354

Phone: 02 6774 2600

Email: [dg\\_walcha@elders.com.au](mailto:dg_walcha@elders.com.au)

