

Nampara Pastoral Co

Bull Sale Tuesday 14th February, 2023

3.30pm (SA time)

(Inspection from 1pm)

- OFFERING 105 BULLS -



www.namparaangus.com.au

Stuart & Natalie Hann

Mobile 0427 696 084 & 0428 799 592 | Email hannsn@bigpond.com | RSD 310 Kingston SE SA 5275



3% Rebate to outside agents

Selling Agents:

Ben Gregory - Elders Mt Gambier 0418 498 587

Laryn Gogel - Elders Keith 0436 020 245

Ross Milne - Elders Stud Stock 0408 057 558



AuctionsPlus

THE FIRST POWERSHIFT SONS TO SELL AT NAMPARA



LOT 1 NAMPARA SILVERADO S27



LOT 3 NAMPARA SILVERADO S221



LOT 5 NAMPARA POWERSHIFT S112



LOT 6 NAMPARA POWERSHIFT S42



LOT 8 NAMPARA POWERSHIFT S126



LOT 14 NAMPARA POWERSHIFT S96

Welcome

Welcome to our fifteenth annual bull sale. We have 105 bulls catalogued for sale on Tuesday February 14th (3:30pm SA time). We are always trying to remain consistent and true to our type - big, free moving, proud bulls who cover some ground and carry some muscle. When we introduce a new sire, he has to tick all of these boxes to maintain our commitment to weight for age, doability, bone and muscling.

This year's offering includes the first sons of Texas Powershift P632, full brother to the record-breaking Texas Powerplay and sire of our Interbreed Champion bull at Adelaide and Melbourne Royal shows in 2022, Nampara Silverado S221. In 2020 Texas Angus sold Texas Powerplay for an on-property record of \$108,000. They kept his full brother, Texas Powershift P632. We were lucky enough to secure the southern Australian rights on Powershift and we have used him heavily in our program. This bull is everything we are on about -carcase weight and 600 day weight in the top 3% of the breed, EMA in the top 10%, combined with calving ease and a low birth weight. A bull that is so flexible, sound and eye appealing. Our Interbreed Champion, Silverado is a reflection of his sire's ability to put some punch in his calves and this is seen through the draft with the Powershift bulls. We like the figures on these bulls but we like the look of the Powershift bulls even more – bulls that can walk, carry themselves with ease and will keep on going when others have stopped.

Similarly, the Nighthood bulls are also very consistent and have bred true to type. They are strong-headed bulls with muscle, shape and bone. Nampara Sky's the Limit S146, a Nighthood daughter, had a great year winning Reserve Junior Champion at Adelaide Royal and Senior Champion at the Angus Round Up amongst her many accolades. The Nighthoods are producing sound, functional cattle that suit a variety of options.

Once again, a line of heifer bulls used earlier in the year to join 500 PTIC females destined for the Naracoorte, Mortlake and Mt Gambier feature female sales in January will be included in the sale. These low birth weight, high growth bulls specifically selected for heifer joining are not a typical heifer bull option and have proved very popular.

All Nampara bulls are structurally assessed and fertility tested and are well known for their quiet temperament. By assessing structure, temperament and calving-ease and by using a limited number of sire lines over large mobs, Nampara can more accurately appraise the impact a sire is having within the herd. The joined heifer program also means that we are aiming to breed the type of heifer bulls that can be confidently used to mate heifers whilst at the same time not compromising on shape or frame.

Buyers who cannot attend the sale in person will be able to operate through AuctionsPlus. We also have independent people available to assess bulls on your behalf. We welcome any enquiries before the sale to ensure your selection of bulls suits your breeding program. All sale bulls are guaranteed into their first working season and Nampara has a JBAS 6 Status. The bulls have been vaccinated for Vibrio, Pestiguard, and a 7 in 1 needle including their follow up vaccinations.

We are very proud to present a quiet draft of bulls with sire lines that are true to their type. This allows buyers to select from a number of bulls within each sire grouping. We are also proud of the fact that our cattle are working and making a difference in the commercial world, the true driver of profit which is, and should be, why we do what we do.

If we can be of assistance to you prior to, or after the sale, please do not hesitate to contact us.

Stuart and Natalie Hann

Inspection of Bulls On the property from 1pm on the afternoon of the sale. Bulls will be on display on Thursday 2nd February and Friday 3rd February as part of the Victorian Beef Week at Mortlake and Casterton respectively as well as our on property open day on Monday 6th February as part of the SA Beef Week or for inspection on property any time by arrangement.

Delivery To be co-ordinated immediately after the sale, either to be trucked directly from the property or arrangements made with the vendor to paddock animal/s until trucking available. Bulls will be delivered free within 150km of Nampara and all bulls sold will be freight assisted.

Fertility The bulls are guaranteed fertile and have been tested on the 9th January 2023 by Drew Pickford of Nationwide AB. Notice of infertility in all cases of such, to be in writing and in the hands of the vendor not later than six calendar months from date of sale.

The purchase price of any bull proved to be infertile shall be refunded in full (less the salvage value) without interest expense, cost or damages in the form of a credit at a future bull sale. A vet's certificate shall be produced by the purchaser when required.

Rebate 3% to outside agents introducing buyers in writing to the selling agents 24 hours prior to the sale and settling within seven days. Does not apply to affiliates of selling agents.

GST All lots are sold exclusive of GST.

Insurance Nampara recommends insuring all purchases at the fall of the hammer. An Elders insurance representative will be available on sale day to help with this.

Guarantee In the event of a bull proving to be infertile or incapable of natural service into their first working season, the vendor will credit the purchase price, less the salvage value of the bull, provided the problem is not caused by injury or disease incurred since taking delivery. Any claim must be accompanied by a relevant veterinary certificate. The vendor retains the right to obtain an independent veterinary confirmation of any claim. In the unlikely event that a credit is issued, it may only be claimed on one bull at a future bull sale.

Disclaimer Whilst all due care and attention has been paid to the accuracy in the compilation of this catalogue and the information neither the vendors, selling agents or representatives thereof assume any responsibility what so ever for the correctness, use or interpretation in the information of animals included herein



AuctionsPlus

How to Register and Bid on AuctionsPlus

- 1 Go to www.auctionsplus.com.au to register at least 48 hours before the sale.
- 2 Select “**Sign Up**” in the top right hand corner.
- 3 Fill out your name, mobile number, email address and create a password.
- 4 Go to your emails and confirm the account.
- 5 Return to AuctionsPlus and log in.
- 6 Select “**Dashboard**” and then select “**Request Approval to Buy**”.
- 7 Fill in buyer details and once completed go back to Dashboard.
- 8 Complete buyer induction module (approx. 30 minutes).
- 9 AuctionsPlus will email you to let you know that your account has been approved.
- 10 Log in on sale day and connect to auction.
- 11 Bid using the two-step process – unlock the bid button and bid at that price.
- 12 If you are successful, the selling agent will contact you post sale to organise delivery and payment.

For more information please contact us on:

Phone: (02) 9262 4222

Email: info@auctionsplus.com.au

NAMPARA ANGUS - REFERENCE SIRES 2023

SIRE	CE DIR (%)	CE DTR (%)	GL (days)	BW (Kg)	200 (Kg)	400 (Kg)	600 (Kg)	MCW (Kg)	Milk (Kg)	SS (cm)	DTC (days)	CW (Kg)	EMA (sq. cm)	Rib (mm)	Rump (mm)	RBY (%)	IMF
Granite Ridge Nighthood N61	3.4	5.4	-1.5	4.4	55	92	140	103	22	3.0	-5.4	83	6.4	0.4	1.5	0.6	0.4
Texas Powershift P632	6.2	10.2	-4.9	2.8	59	105	153	135	13	2.2	-4.0	92	10.9	0.3	0.3	1.1	1.4
Stern 15815	-9.6	-1.1	-2.3	8.3	47	94	128	132	17	2.7	-4.5	59	2.5	1.8	2.0	-0.1	0.3
Nampara Liberty L21	-4.8	-1.3	-6.5	8.8	67	112	152	161	19	3.1	-1.8	84	7.4	-2.2	-0.9	1.7	-2.6
Kaharau Class Man 17-444	1.5	-0.2	-6.3	6.5	50	91	125	127	7	2.2	-2.2	55	-1.5	-1.1	-2.5	-0.1	1.3
LD Capitalist 316	11.3	11.3	-4.0	2.2	51	91	111	91	11	1.1	-3.4	73	8.8	1.1	0.6	0.4	2.0
Nampara P26	-6.7	-6.5	-2.7	4.6	53	100	133	109	24	3.4	-3.5	80	8.9	-2.7	-2.8	0.8	1.7
Te Mania Nehill N377	6.5	6.9	-8.3	3.7	66	121	165	135	33	-0.3	-4.8	106	1.5	-2.9	-2.9	-0.1	3.2
Baldrige Compass C041	7.4	4.3	-3.6	3.0	59	106	135	91	30	1.6	-4.1	69	8.2	0.3	0.2	0.3	3.0
Texas Horse Power N229	3.7	-0.5	-5.4	4.8	58	97	134	126	14	1.9	-1.7	73	8.1	3.2	4.3	-0.5	1.3
Coonamble Investment P58	2.4	0.9	-7.8	4.4	47	92	125	106	20	1.5	-3.9	72	8.4	0.0	-0.3	1.1	1.2
Nampara Q129	-10.3	1.3	2.5	6.8	43	88	118	117	19	4.5	-3.5	53	6.6	-1.2	-1.3	0.9	0.2
Nampara Capitalist Q13	8.8	9.9	-6.5	2.9	54	93	123	110	15	3.3	-4.4	74	12.2	-0.5	-1.4	1.0	2.1
Ben Nevis Nation N120	3.5	-4.6	-2.7	3.5	43	83	114	87	23	1.8	-3.9	67	5.0	-2.2	-3.1	1.2	1.3
Texas Tour of Duty L608	3.5	-0.8	-5.0	4.4	51	89	123	114	19	1.9	-4.3	70	7.4	-1.1	-1.6	1.1	1.6



Brief Description of TransTasman Angus Cattle Evaluation

Calving Ease DIR (%) Estimates of the genetic differences between animals in the ability of their calves from 2yr old heifers to calve without assistance. Positive values are desirable.

Calving Ease DTRS (%) Estimates of the genetic differences between animals in the ability of their 2yr old daughters to calve without assistance. Positive values are desirable.

Gestation Length (days) Estimation of the genetic differences between animals in the number of days from conception to the birth of a calf. A negative value is desirable.

Birth Weight (KG) Estimates of the genetic differences between animals in calf birth weight.

200-day Weight (KG) Estimates of the genetic differences between animals in liveweight at 200 days of age.

400-day Weight (KG) Estimates of the genetic differences between animals in liveweight at 400 days of age.

600-day Weight (KG) Estimates of the genetic differences between animals in liveweight at 600 days of age.

Mature Cow Weight Estimates of the genetic difference between animals in cow weight at 5yrs of age.

Milk Estimates of the genetic differences between animals in milk production, expressed as variation in 200-day weight of daughter's calves.

Scrotal Size Estimates of the genetic differences between animals in scrotal circumference at 400 days of age.

Days to Calving Estimates of the genetic differences in female fertility, expressed as the number of days from the start of the joining period until subsequent calving.

Carcase Weight Estimates the genetic differences among animals in hot standard carcass weight at 650 days of age.

Eye Muscle Area (EMA) – cm² Estimates of the genetic differences between animals in eye muscle area at the 12/13th rib site, in a 300kg carcass.

Rib Fat Estimates of the genetic differences between animals in fat depth at the 12/13th rib site, in a 300kg carcass.

Rump Fat Estimates of genetic differences among animals in fat depth at the P8 rump site on a standard 300kg carcass.

Retail Beef Yield Estimates of genetic differences among animals in percentage retail beef yield in a 300kg carcass with 2-3mm fat trim, adjusted to 85% chemical lean.

Intra-Muscular Fat % (IMF%) Estimates of the genetic differences between animals in percentage intra-muscular fat (marbling) at the 12/13th rib site, in a 300kg carcass.

Net Feed Intake Estimates of genetic differences between animals in feed intake at a standard weight and rate of weight when in a feedlot finishing phase.

TACE Breed Average – January 2023

	Calving Ease Dir (%)	Calving Ease Dtrs (%)	Gest. Length (days)	Birth Wt. (Kg)	200 Day Wt. (Kg)	400 Day Wt. (Kg)	600 Day Wt. (Kg)	Mat. Cow Wt. (Kg)	Milk (Kg)	Scrotal Size (cm)	Days to Calving (days)	Carcass Wt. (Kg)	Eye Muscle Area (sq. cm)	Rib Fat (mm)	Rump Fat (mm)	Retail Beef Yield (%)	IMF
EBV	2.2	2.7	-4.8	4.1	50	90	117	101	17	2.1	-4.7	66	6.4	-0.1	-0.3	0.5	2.2

NAMPARA ANGUS - STRUCTURAL SCORES 2023

Lot No.	Bull No.	Front Claw Set	Rear Claw Set	Feet Angle Front	Feet Angle Rear	Rear Leg Side	Rear Leg Hind	Sheath/ Navel
1	S27	6	5	5	6	5	6	4
2	S56	6	5	6	6	5	5	5
3	S221	6	4	5	6	5	5	4
4	S91	6	6	6	6	5	5	5
5	S112	6	6	5	6	5	5	3
6	S42	6+	6	5	6	5	5	4
7	S242	6	4	5	6	5	5	3
8	S126	6	5	6	6	5	5	4
9	S19	4	5	5	6	4	5	5
10	S44	6	5	5	5	5	5	4
11	S14	6	5	6	6	5	5	4
12	S114	6	5	5	6	4	5	4
13	S41	6	5	6	6	4	6	4
14	S96	6	6	5	6	5	4	5
15	S136	6	5	5	6	5	5	4
16	S271	6	4	6	6	5	5	5
17	S175	7	5	5	5	5	5	3
18	S172	6+	5	6	6	5	5	3
19	S74	5	4	5	6	5	5	3
20	S43	5	4	5	6	4	5	4
21	S75	6	5	6	6	5	5	4
22	S230	5	5	6	6	5	6	4
23	S62	6	6	6	6	5	5	3
24	S107	6	5	5	6	5	6	3
25	S181	6	4	6	6	5	5	5
26	S118	6	5	6	6	6	5	4
27	S161	6	5	5	6	5	5	4
28	S68	6	6	5	6	6	5	4
29	S99	6	4	6	5	5	5	4
30	S179	6	5	6	6	6	5	5
31	S186	6	4	5	6	6	5	3
32	S234	5	4	4	5	5	5	4
33	S105	6	5	5	6	5	6	4
34	S188	6	5	5	6	5	5	4
35	S50	5	5	5	6	6	5	4
36	S48	5	4	5	6	5	5	3
37	S132	6	5	5	6	5	5	4
38	S171	6	4	5	6	5	5	4
39	S297	6	5	6	6	5	5	3
40	S257	5	5	5	6	5	5	4
41	S259	5	5	5	6	5	5	4
42	S226	6	4	5	6	5	5	4
43	S138	4	4	5	6	5	5	4
44	S182	6	4	5	6	4	5	4
45	S241	5	4	5	6	5	6	3
46	S315	6	6	5	6	5	5	4
47	S195	6	5	4	5	5	5	4
48	S193	4	4	5	6	5	5	3
49	S155	5	4	5	6	5	6	3
50	S129	6	5	5	5	5	5	4
51	S187	5	5	5	6	5	6	4
52	S139	5	5	5	6	5	6	3

Lot No.	Bull No.	Front Claw Set	Rear Claw Set	Feet Angle Front	Feet Angle Rear	Rear Leg Side	Rear Leg Hind	Sheath/ Navel
53	S128	6	4	6	6	5	6	3
54	S261	5	4	6	6	5	5	3
55	S251	6	4	5	6	5	5	4
56	S293	4	4	5	6	5	6	4
57	S123	5	4	6	6	5	5	4
58	S158	6	6	5	6	4	6	4
59	S61	6	5	5	6	5	5	3
60	S32	5	4	5	6	5	5	4
61	S64	5	5	5	6	5	5	4
62	S29	6	5	5	6	5	5	4
63	S12	6	6	6	6	5	5	4
64	S40	6	4	6	6	4	5	4
65	S183	5	5	5	6	5	5	4
66	S8	6	6	5	6	5	5	4
67	S57	6	4	6	6	5	5	4
68	S24	6	4	6	6	5	5	4
69	S98	6	4	6	6	5	5	4
70	S135	6	5	5	6	6	5	3
71	S196	6	5	5	6	4	5	4
72	S127	6	5	5	6	4	5	4
73	S120	6+	6	5	6	5	5	4
74	S238	6	4	6	6	4	5	4
75	S121	6	6	5	6	4	5	5
76	S233	6	4	6	6	5	5	3
77	S108	6	6	5	6	5	5	4
78	S209	6	6	5	6	5	5	4
79	S167	6	6	6	6	5	5	5
80	S162	6	5	5	6	5	5	4
81	S207	6	6	6	6	5	5	4
82	S77	5	4	6	6	5	5	3
83	S215	6	4	6	6	5	5	4
84	S253	6	6	5	6	5	5	3
85	S169	6	4	6	6	5	5	4
86	S67	5	4	5	6	5	5	4
87	S198	4	4	6	5	4	6	3
88	S298	6	6	6	7	5	5	4
89	S173	4	4	5	6	5	5	3
90	S278	6	5	5	6	5	5	4
91	S240	6	5	6	7	4	5	4
92	S176	4	5	5	6	5	5	4
93	S174	5	4	6	6	6	5	3
94	S163	5	5	5	6	5	5	4
95	S283	4	4	6	6	4	4	4
96	S92	4	5	5	6	5	5	3
97	S275	5	5	5	6	5	5	4
98	S247	5	5	5	6	5	6	4
99	S212	5	5	5	6	5	5	4
100	S87	6	6	4	5	6	4	4
101	S93	5	4	5	6	4	6	3
102	S137	6	4	5	6	5	5	3
103	S268	6	5	5	6	6	5	4
104	S218	5	4	5	6	5	5	4
105	S160	5	5	5	6	6	5	3

Explanation of Raw Data Information

Actual Eye Muscle Area – cm² The actual eye muscle area recorded for Breedplan data.

Actual Intra-Muscular Fat % The actual recorded percentage of intra-muscular fat for Breedplan data.

Scrotal Circumference The actual scrotal circumference measurement recorded.

P8 (mm) The actual measurement of fat at the P8 site for Breedplan data.

Rib Fat (mm) The actual measurement of fat depth at the 12/13th rib site.

An Explanation of the Beef Class Structural Assessment System

The Beef Class Structural Assessment System uses a 1-9 scoring system for feet and leg structure. :

A score of 5 is ideal

A score of 4 or 6 shows a slight variation, but this includes most sound animals.

An animal scoring 4 or 6 would be acceptable in any breeding program

A score of 3 or 7 shows greater variation but would be acceptable in most commercial programs

A score of 2 or 8 are low scoring animals and should be looked at cautiously and inspected very closely before purchasing

A score of 1 or 9 should not be catalogued and are considered immediate culls

Beef Class Structural Assessment to be conducted by Accredited Assessor:

Max Bowman (#1026) prior to sale.



NAMPARA ANGUS - SALE BULLS 2023

Lot 1: Nampara Powershift S27

AMFU, NHFU, CAFU, DDFU

Born: 4.03.21
HBR: SFN21S27

Sire: Texas Powershift P632

Dam: Nampara Q181

Mid December 2022 TransTasman Angus Cattle Evaluation

TACE	Calving Ease Dir (%)	Calving Ease Dtrs (%)	Gestation Length (days)	Birth Wt. (kg)	200 Day Wt. (kg)	400 Day Wt. (kg)	600 Day Wt. (kg)	Mat. Cow Wt. (kg)	Milk (kg)	Scrotal Size (cm)	Days to Calving (days)	Carcase Wt. (kg)	Eye Muscle Area (sq.cm)	Rib Fat (mm)	Rump Fat (mm)	Retail Beef Yield (%)	IMF (%)
	3.7	5.7	-4.1	2.4	45	86	106	72	16	2.6	-5.4	58	7.5	4.3	5.9	0.1	1.2
	55%	43%	82%	73%	71%	69%	69%	66%	58%	67%	35%	60%	59%	60%	61%	54%	63%

Heifer's first calf

Total outcross heifer bull breeding package. You always need to start with a good one and this bull is no exception. With a number of Powershifts in the catalogue this may well be the early one to grab. Part of our 2022 show team, S27, combines all the traits of his sire – calving ease, low birth weight, muscle and length. He carries his weight with ease and stands proudly in the pen. A ripper to start!

Purchaser.....

Price.....

Lot 2: Nampara Liberty S56

AMFU, NHF, CAFU, DDFU

Born: 21.03.21
HBR: SFN21S56

Sire: Nampara Liberty L21

Dam: Nampara H19

Mid December 2022 TransTasman Angus Cattle Evaluation

TACE	Calving Ease Dir (%)	Calving Ease Dtrs (%)	Gestation Length (days)	Birth Wt. (kg)	200 Day Wt. (kg)	400 Day Wt. (kg)	600 Day Wt. (kg)	Mat. Cow Wt. (kg)	Milk (kg)	Scrotal Size (cm)	Days to Calving (days)	Carcase Wt. (kg)	Eye Muscle Area (sq.cm)	Rib Fat (mm)	Rump Fat (mm)	Retail Beef Yield (%)	IMF (%)
	-5.0	-0.1	-5.9	6.8	60	103	136	149	17	2.9	-3.5	79	6.0	-2.3	-1.9	1.5	-1.5
	56%	46%	69%	74%	68%	66%	66%	64%	61%	62%	36%	61%	58%	58%	60%	55%	61%

This bull has been a true standout from birth. He has so much style and presence – a real cow maker. He has the attributes of his sire, the \$85,000 Nampara Liberty, and will one of the last offerings of this bull who has had such an impact on our herd. Full brother to Nampara Princess P86 whose first calf was the top-priced spring bull at our 2022 sale, we love the muscle pattern to this bull, the way he carries his weight and pulls up square every time as though he owns the place. Nampara will sell full possession and half share of semen and marketing rights.

Purchaser.....

Price.....

Lot 3: Nampara Silverado S221

AMFU, NHFU, CAFU, DDFU

Born: 15.04.21
HBR: SFN21S221

Sire: Texas Powershift P632

Dam: Nampara Poppy P171

Mid December 2022 TransTasman Angus Cattle Evaluation

TACE	Calving Ease Dir (%)	Calving Ease Dtrs (%)	Gestation Length (days)	Birth Wt. (kg)	200 Day Wt. (kg)	400 Day Wt. (kg)	600 Day Wt. (kg)	Mat. Cow Wt. (kg)	Milk (kg)	Scrotal Size (cm)	Days to Calving (days)	Carcase Wt. (kg)	Eye Muscle Area (sq.cm)	Rib Fat (mm)	Rump Fat (mm)	Retail Beef Yield (%)	IMF (%)
	-1.1	3.1	-4.9	6.6	67	115	160	152	17	2.9	-3.5	97	9.2	-2.0	-1.7	1.2	0.4
	52%	41%	67%	74%	69%	67%	70%	64%	53%	67%	34%	58%	54%	55%	55%	51%	56%

Where do we start with Silverado. First of all take a look at the bull himself - everything we are on about. Muscle, length, frame, mobility, temperament. Then take a look at his TACE figures – 200, 400, 600 day and carcass weight all in the top 3% of the breed combined with big scrotal and EMA. Silverado was part of the Junior Interbreed Champion Pair at Adelaide Royal before heading over to Melbourne Royal to win Junior Interbreed Champion there as well. We know that winning at shows isn't everything and might even be a distraction for some but if nothing else this bull has proven that good bulls with carcass, length and shape can be pretty boys as well!!! He has impressed everyone who has seen him, has an outstanding temperament and is going to produce calves with some serious thump. His dam is part of our donor program and we know she will keep producing like this! Nampara will sell full possession and half share of semen and marketing rights.

Purchaser.....

Price.....

NAMPARA ANGUS - SALE BULLS 2023

Lot 4: Nampara Classman S91

AMFU, NHFU, CAFU, DDFU

Born: 24.03.21
HBR: SFN21S91

Sire: Kaharau Classman 17-444

Dam: Nampara Penny P74



Mid December 2021 TransTasman Angus Cattle Evaluation

	Calving Ease Dir (%)	Calving Ease Dtrs (%)	Gestation Length (days)	Birth Wt. (kg)	200 Day Wt. (kg)	400 Day Wt. (kg)	600 Day Wt. (kg)	Mat. Cow Wt. (kg)	Milk (kg)	Scrotal Size (cm)	Days to Calving (days)	Carcase Wt. (kg)	Eye Muscle Area (sq.cm)	Rib Fat (mm)	Rump Fat (mm)	Retail Beef Yield (%)	IMF (%)
EBV	1.4	-0.7	-6.1	7.3	53	90	123	119	18	2.4	-3.6	64	2.2	-0.3	0.1	0.4	0.0
Acc	54%	42%	83%	73%	71%	69%	70%	66%	57%	65%	33%	60%	57%	59%	59%	53%	62%

The first of the New Zealand sired, Classman bulls and what a thumper! Possibly the heaviest bull in the sale. He is very deep, long and wide – a real heavy, soggy bullock -producing bull.

Purchaser.....

Price.....

Lot 5: Nampara Powershift S112

AMFU, NHFU, CAFU, DDC

Born: 26.03.21
HBR: SFN21S112

Sire: Texas Powershift P632

Dam: Nampara Mildred L18



Mid December 2022 TransTasman Angus Cattle Evaluation

	Calving Ease Dir (%)	Calving Ease Dtrs (%)	Gestation Length (days)	Birth Wt. (kg)	200 Day Wt. (kg)	400 Day Wt. (kg)	600 Day Wt. (kg)	Mat. Cow Wt. (kg)	Milk (kg)	Scrotal Size (cm)	Days to Calving (days)	Carcase Wt. (kg)	Eye Muscle Area (sq.cm)	Rib Fat (mm)	Rump Fat (mm)	Retail Beef Yield (%)	IMF (%)
EBV	7.9	8.2	-8.1	1.6	45	81	115	101	19	1.9	-4.7	73	6.6	1.4	1.6	0.6	0.6
Acc	56%	45%	84%	75%	72%	70%	71%	67%	60%	68%	37%	61%	60%	61%	61%	55%	63%

Pretty handy figures on this bull – Lot 5. Going to really suit the top-end commercial man. We really like the style and eye appeal of this bull. He is so balanced as he struts around the pen and has that front paddock kind of look about him. Then when you look at his figures again the Powershift impact becomes obvious – outstanding calving ease in the top 10% of the breed and a super low birth weight of +1.6. His dam is already part of our donor group and S112 shows us why. Beautifully balanced bull.

Purchaser.....

Price.....

Lot 6: Nampara Powershift S42

AMFU, NHFU, CAFU, DDFU

Born: 9.03.21
HBR: SFN21S42

Sire: Texas Powershift P632

Dam: Nampara Q78



Mid December 2022 TransTasman Angus Cattle Evaluation

	Calving Ease Dir (%)	Calving Ease Dtrs (%)	Gestation Length (days)	Birth Wt. (kg)	200 Day Wt. (kg)	400 Day Wt. (kg)	600 Day Wt. (kg)	Mat. Cow Wt. (kg)	Milk (kg)	Scrotal Size (cm)	Days to Calving (days)	Carcase Wt. (kg)	Eye Muscle Area (sq.cm)	Rib Fat (mm)	Rump Fat (mm)	Retail Beef Yield (%)	IMF (%)
EBV	-0.2	3.0	-1.7	6.3	62	116	164	147	20	4.2	-3.0	86	10.1	-2.2	-1.8	1.4	0.3
Acc	58%	47%	83%	74%	72%	70%	70%	66%	59%	67%	37%	61%	60%	61%	61%	55%	64%

Heifer's first calf

Out of one of our favourite heifers, S42 has been a strapping calf from the start. Such a proud, well-shaped mobile bull with a huge rear end. Massive 600 day weight at +164 and carcass weight at +86 puts him in the top 10% of the breed. Big nuts with a big butt! A quiet bull, very easy to look at.

Purchaser.....

Price.....

Lot 7: Nampara Capitalist S242

AMFU, NHFU, CAFU, DDFU

Born: 19.04.21
HBR: SFN21S242

Sire: Nampara Capitalist Q13

Dam: Nampara Jewel Q131



Mid December 2022 TransTasman Angus Cattle Evaluation

	Calving Ease Dir (%)	Calving Ease Dtrs (%)	Gestation Length (days)	Birth Wt. (kg)	200 Day Wt. (kg)	400 Day Wt. (kg)	600 Day Wt. (kg)	Mat. Cow Wt. (kg)	Milk (kg)	Scrotal Size (cm)	Days to Calving (days)	Carcase Wt. (kg)	Eye Muscle Area (sq.cm)	Rib Fat (mm)	Rump Fat (mm)	Retail Beef Yield (%)	IMF (%)
EBV	1.7	5.4	-4.2	4.9	50	90	120	113	16	2.0	-4.1	67	8.6	0.8	0.9	0.7	0.9
Acc	48%	38%	64%	67%	63%	63%	65%	59%	49%	63%	32%	53%	47%	50%	50%	45%	51%

Heifer's first calf

This bull's sire was our second top-priced bull in 2020 and with the combination of calving-ease king LD Capitalist and the punch of Atahua Freedom in the pedigree, the final product is a bull who combines muscle and softness. Beautiful skin on this bull with a soggy skin that suits a variety of options. A heifer's first calf nonetheless!

Purchaser.....

Price.....

NAMPARA ANGUS - SALE BULLS 2023

Lot 8: Nampara Powershift S126

AMFU, NHFU, CAFU, DDFU

Born: 27.03.21
HBR: SFN21S126

Sire: Texas Powershift P632

Dam: Nampara M112



Mid December 2022 TransTasman Angus Cattle Evaluation

	Calving Ease Dir (%)	Calving Ease Dtrs (%)	Gestation Length (days)	Birth Wt. (kg)	200 Day Wt. (kg)	400 Day Wt. (kg)	600 Day Wt. (kg)	Mat. Cow Wt. (kg)	Milk (kg)	Scrotal Size (cm)	Days to Calving (days)	Carcase Wt. (kg)	Eye Muscle Area (sq.cm)	Rib Fat (mm)	Rump Fat (mm)	Retail Beef Yield (%)	IMF (%)
EBV	6.3	7.0	-5.9	2.8	49	91	121	94	17	3.0	-4.5	68	7.7	1.0	1.6	0.9	0.0
Acc	55%	43%	83%	74%	72%	70%	70%	66%	60%	68%	36%	60%	59%	61%	61%	55%	63%

A really impressive thick, stylish beautifully made bull. Again, by Powershift, the figures are excellent – calving ease, low birth weight, big scrotal and EMA. This bull is wide across the top line, clean through the front and we keep saying it but he's pretty thick!

Purchaser.....

Price.....

Lot 9 : Nampara Shidot S19

AMFU, NHFU, CAFU, DDFU

Born: 2.03.21
HBR: SFN21S19

Sire: LD Capitalist 316

Dam: Nampara Big Edition Q85



Mid December 2022 TransTasman Angus Cattle Evaluation

	Calving Ease Dir (%)	Calving Ease Dtrs (%)	Gestation Length (days)	Birth Wt. (kg)	200 Day Wt. (kg)	400 Day Wt. (kg)	600 Day Wt. (kg)	Mat. Cow Wt. (kg)	Milk (kg)	Scrotal Size (cm)	Days to Calving (days)	Carcase Wt. (kg)	Eye Muscle Area (sq.cm)	Rib Fat (mm)	Rump Fat (mm)	Retail Beef Yield (%)	IMF (%)
EBV	7.6	7.8	-5.7	4.5	57	98	127	115	14	2.1	-3.2	77	7.9	-0.5	-0.7	0.7	0.8
Acc	62%	53%	83%	73%	69%	66%	65%	64%	61%	62%	43%	61%	59%	60%	61%	57%	61%

Heifer's first calf, Used over stud heifers

What a favourite! This bull is the quietest bull in the sale and when we say quiet we mean quiet!! Again, the combination of calving -ease bull LD Capitalist and Freedom in the pedigree have produced a bull with frame and length but also shape. So many options for this bull – he is really going to go on and do a job for someone.

Purchaser.....

Price.....

Lot 10 : Nampara Smokey S44

AMFU, NHFU, CAFU, DDFU

Born: 9.03.21
HBR: SFN21S44

Sire: Texas Powershift P632

Dam: Nampara Queen B Q20



Mid December 2022 TransTasman Angus Cattle Evaluation

	Calving Ease Dir (%)	Calving Ease Dtrs (%)	Gestation Length (days)	Birth Wt. (kg)	200 Day Wt. (kg)	400 Day Wt. (kg)	600 Day Wt. (kg)	Mat. Cow Wt. (kg)	Milk (kg)	Scrotal Size (cm)	Days to Calving (days)	Carcase Wt. (kg)	Eye Muscle Area (sq.cm)	Rib Fat (mm)	Rump Fat (mm)	Retail Beef Yield (%)	IMF (%)
EBV	3.7	7.7	-2.0	4.4	56	99	136	122	13	2.2	-4.0	83	9.4	-0.3	-0.2	1.0	1.4
Acc	54%	43%	83%	73%	64%	63%	62%	59%	52%	60%	36%	55%	54%	56%	55%	51%	56%

Heifer's first calf, Used over stud heifers

Another impressive Powershift bull out of a stylish young female who has since joined the donor group. This bull is like a train – long and wide. LD Capitalist and Powershift have kept the calving ease in the pedigree but also thrown the carcass weight and EMA up a gear being in the top 10% of the breed. Again so so quiet and proud.

Nampara will sell full possession and half share of semen and marketing rights.

Purchaser.....

Price.....

Lot 11 : Nampara Spartacus S14

AMFU, NHF, CAFU, DDFU

Born: 2.03.21
AHBR: SFN21S14

Sire: Texas Powershift P632

Dam: Nampara Moongarra Q10



Mid December 2022 TransTasman Angus Cattle Evaluation

	Calving Ease Dir (%)	Calving Ease Dtrs (%)	Gestation Length (days)	Birth Wt. (kg)	200 Day Wt. (kg)	400 Day Wt. (kg)	600 Day Wt. (kg)	Mat. Cow Wt. (kg)	Milk (kg)	Scrotal Size (cm)	Days to Calving (days)	Carcase Wt. (kg)	Eye Muscle Area (sq.cm)	Rib Fat (mm)	Rump Fat (mm)	Retail Beef Yield (%)	IMF (%)
EBV	6.2	10.7	-6.2	3.6	51	87	128	107	13	1.5	-3.6	76	8.5	0.0	-0.1	0.2	2.7
Acc	56%	46%	83%	73%	72%	70%	70%	67%	59%	67%	38%	61%	60%	62%	62%	56%	64%

Heifer's first calf, Used over heifers

You might have seen this guy at the beach over summer – he's the one who's always the first to get his shirt off! He struts around the pen with that "look at me" kind of presence. Then take a look at his set of figures! An excellent spread of low birth and high growth with calving ease and IMF in the mix. Very similar to the previous bull but it has to be said again – long, heavy, easy doing and depth through the flank.

Nampara will sell full possession and half share of semen and marketing rights.

Purchaser.....

Price.....

NAMPARA ANGUS - SALE BULLS 2023

Lot 12: Nampara S114

AMFU, NHFU, CAFU, DDFU

Born: 26.03.21
APR: SFN21S114

Sire: Texas Powershift P632

Dam: Nampara L136



Mid December 2022 TransTasman Angus Cattle Evaluation

	Calving Ease Dir (%)	Calving Ease Dtrs (%)	Gestation Length (days)	Birth Wt. (kg)	200 Day Wt. (kg)	400 Day Wt. (kg)	600 Day Wt. (kg)	Mat. Cow Wt. (kg)	Milk (kg)	Scrotal Size (cm)	Days to Calving (days)	Carcase Wt. (kg)	Eye Muscle Area (sq.cm)	Rib Fat (mm)	Rump Fat (mm)	Retail Beef Yield (%)	IMF (%)
EBV	2.9	5.7	-4.8	5.0	59	106	153	135	13	3.2	-2.9	90	8.7	0.3	0.7	0.8	0.7
Acc	52%	40%	83%	74%	69%	68%	72%	64%	53%	72%	33%	58%	51%	55%	55%	50%	53%

Used over heifers

This bull is everything to expect from a Powershift – moderate birth weight, huge 600 day and carcass weight yet with calving ease. This is a big but refined long bull to lead off this pen.

Purchaser.....

Price.....

Lot 13: Nampara Powershift S41

AMFU, NHFU, CAFU, DDFU

Born: 9.03.21
HBR: SFN21S41

Sire: Texas Powershift P632

Dam: Nampara Q209



Mid December 2022 TransTasman Angus Cattle Evaluation

	Calving Ease Dir (%)	Calving Ease Dtrs (%)	Gestation Length (days)	Birth Wt. (kg)	200 Day Wt. (kg)	400 Day Wt. (kg)	600 Day Wt. (kg)	Mat. Cow Wt. (kg)	Milk (kg)	Scrotal Size (cm)	Days to Calving (days)	Carcase Wt. (kg)	Eye Muscle Area (sq.cm)	Rib Fat (mm)	Rump Fat (mm)	Retail Beef Yield (%)	IMF (%)
EBV	1.7	6.0	-1.2	4.4	53	97	139	131	15	1.7	-2.5	80	8.3	-0.9	-0.4	1.3	0.2
Acc	54%	41%	82%	74%	68%	66%	69%	63%	51%	67%	33%	57%	53%	54%	55%	50%	56%

Heifer's first calf, Used over heifers

Here's another one! Another Powershift and again that combination of calving ease with growth and grunt. A wide, squarely-made bull who moves freely. A heifer bull with shape suitable for heifer and cow joinings.

Purchaser.....

Price.....

Lot 14: Nampara S96

AMF, NHF, CAF, DDF

Born: 25.03.21
APR: SFN21S96

Sire: Texas Powershift P632

Dam: Nampara M606



Mid December 2022 TransTasman Angus Cattle Evaluation

	Calving Ease Dir (%)	Calving Ease Dtrs (%)	Gestation Length (days)	Birth Wt. (kg)	200 Day Wt. (kg)	400 Day Wt. (kg)	600 Day Wt. (kg)	Mat. Cow Wt. (kg)	Milk (kg)	Scrotal Size (cm)	Days to Calving (days)	Carcase Wt. (kg)	Eye Muscle Area (sq.cm)	Rib Fat (mm)	Rump Fat (mm)	Retail Beef Yield (%)	IMF (%)
EBV	4.0	8.9	-4.7	4.1	57	104	140	154	9.0	3.1	-1.6	74	6.8	-1.8	-2.7	1.2	0.2
Acc	51%	39%	82%	73%	70%	67%	71%	64%	55%	71%	32%	57%	56%	58%	58%	51%	61%

Used over heifers

The third of three Powershifts in a row and this one could be one of the picks of the catalogue. Beautiful depth of flank, huge rear end, strong head and very quiet. Powershift has consistently done it again – low birth, high growth, calving ease and carcass. S96 is a really stylish bull with great structure who strides out like he owns the paddock. Heifer bull / cow bull – take your pick.

Purchaser.....

Price.....

Lot 15: Nampara S136

AMFU, NHFU, CAFU, DDFU

Born: 27.03.21
HBR: SFN21S136

Sire: Texas Powershift P632

Dam: Nampara M103



Mid December 2022 TransTasman Angus Cattle Evaluation

	Calving Ease Dir (%)	Calving Ease Dtrs (%)	Gestation Length (days)	Birth Wt. (kg)	200 Day Wt. (kg)	400 Day Wt. (kg)	600 Day Wt. (kg)	Mat. Cow Wt. (kg)	Milk (kg)	Scrotal Size (cm)	Days to Calving (days)	Carcase Wt. (kg)	Eye Muscle Area (sq.cm)	Rib Fat (mm)	Rump Fat (mm)	Retail Beef Yield (%)	IMF (%)
EBV	2.7	6.5	-5.1	5.3	59	103	146	145	12	1.8	-4.6	88	6.8	-1.1	-2.1	0.9	1.2
Acc	53%	41%	83%	74%	70%	69%	73%	65%	53%	72%	36%	59%	53%	56%	56%	52%	54%

Used over heifers

It's worth getting behind this bull and taking a look over his top line to appreciate the red meat Powershift puts in his calves. S136 is an impressive, powerful bull who screams carcass and growth. We get paid on weight – lots of weight! Another very quiet bull.

Purchaser.....

Price.....

NAMPARA ANGUS - SALE BULLS 2023

Lot 16: Nampara S271

AMFU, NHFU, CAFU, DDFU

Born: 7.05.21

APR: SFN21S271

Sire: Nampara P26

Dam: Nampara L5514



Mid December 2022 TransTasman Angus Cattle Evaluation

	Calving Ease Dir (%)	Calving Ease Dtrs (%)	Gestation Length (days)	Birth Wt. (kg)	200 Day Wt. (kg)	400 Day Wt. (kg)	600 Day Wt. (kg)	Mat. Cow Wt. (kg)	Milk (kg)	Scrotal Size (cm)	Days to Calving (days)	Carcase Wt. (kg)	Eye Muscle Area (sq.cm)	Rib Fat (mm)	Rump Fat (mm)	Retail Beef Yield (%)	IMF (%)
EBV	-2.2	1.4	-0.9	3.4	44	83	102	84	21	3.3	-1.5	56	7.3	-0.6	-0.3	0.7	1.1
Acc	44%	32%	61%	70%	65%	63%	69%	61%	48%	69%	26%	53%	46%	50%	50%	44%	51%

Used over heifers

One of only a couple Nampara P26's bulls in the sale – our pick heifer joining sire in 2020. A younger, softer, deep bull ideal for heifer joining.

Purchaser.....

Price.....

Lot 17: Nampara S175

AMFU, NHFU, CAFU, DDFU

Born: 1.04.21

APR: SFN21S175

Sire: Texas Powershift P632

Dam: Nampara Q66



Mid December 2022 TransTasman Angus Cattle Evaluation

	Calving Ease Dir (%)	Calving Ease Dtrs (%)	Gestation Length (days)	Birth Wt. (kg)	200 Day Wt. (kg)	400 Day Wt. (kg)	600 Day Wt. (kg)	Mat. Cow Wt. (kg)	Milk (kg)	Scrotal Size (cm)	Days to Calving (days)	Carcase Wt. (kg)	Eye Muscle Area (sq.cm)	Rib Fat (mm)	Rump Fat (mm)	Retail Beef Yield (%)	IMF (%)
EBV	1.1	6.3	-1.4	4.6	57	100	138	125	14	4.3	-2.9	77	8.1	-0.1	0.6	0.8	0.8
Acc	52%	40%	82%	73%	66%	66%	71%	64%	48%	72%	33%	57%	52%	55%	55%	51%	54%

Heifer's first calf, Used over heifers

Another Powershift that oozes style and presence. S175 is an extremely well-balanced bull with a smooth front who is going to grow into a big bull with Nampara Liberty on the dam's side. A really stylish package and out of a heifer.

Purchaser.....

Price.....

Lot 18: Nampara Powershift S172

AMFU, NHFU, CAFU, DDFU

Born: 31.3.21

HBR: SFN21S172

Sire: Texas Powershift P632

Dam: Nampara J131



Mid December 2022 TransTasman Angus Cattle Evaluation

	Calving Ease Dir (%)	Calving Ease Dtrs (%)	Gestation Length (days)	Birth Wt. (kg)	200 Day Wt. (kg)	400 Day Wt. (kg)	600 Day Wt. (kg)	Mat. Cow Wt. (kg)	Milk (kg)	Scrotal Size (cm)	Days to Calving (days)	Carcase Wt. (kg)	Eye Muscle Area (sq.cm)	Rib Fat (mm)	Rump Fat (mm)	Retail Beef Yield (%)	IMF (%)
EBV	-4.6	0.0	2.1	6.0	59	103	148	137	17	2.8	-3.7	90	10.1	-2.5	-2.3	1.4	1.5
Acc	56%	45%	83%	75%	70%	69%	73%	66%	56%	72%	37%	60%	54%	57%	57%	53%	56%

A bigger boned, long Powershift son here with big nuts, big 600 day and even bigger carcass weight in the top 4% of the breed.

Purchaser.....

Price.....

Lot 19: Nampara Kirk S74

AMFU, NHFU, CAFU, DDFU

Born: 23.03.21

HBR: SFN21S74

Sire: Te Mania Nhill N377

Dam: Nampara Valmai M134



Mid December 2022 TransTasman Angus Cattle Evaluation

	Calving Ease Dir (%)	Calving Ease Dtrs (%)	Gestation Length (days)	Birth Wt. (kg)	200 Day Wt. (kg)	400 Day Wt. (kg)	600 Day Wt. (kg)	Mat. Cow Wt. (kg)	Milk (kg)	Scrotal Size (cm)	Days to Calving (days)	Carcase Wt. (kg)	Eye Muscle Area (sq.cm)	Rib Fat (mm)	Rump Fat (mm)	Retail Beef Yield (%)	IMF (%)
EBV	-4.3	-0.4	-2.9	5.4	58	104	138	119	28	1.8	-3.6	79	5.0	-2.7	-2.2	0.4	2.2
Acc	53%	44%	68%	72%	66%	65%	65%	62%	56%	61%	35%	57%	54%	57%	57%	51%	58%

Quiet as a kitten, S74 is by the Te Mania Nhill sire whose sons sold very well last year. A big, deep soggy bull with carcass weight and IMF.

Purchaser.....

Price.....

NAMPARA ANGUS - SALE BULLS 2023

Lot 20: Nampara S43

AMFU, NHFU, CAFU, DDFU

Born: 9.03.21
HBR: SFN21S43

Sire: Baldrige Compass C041

Dam: Nampara Q22



Mid December 2022 Trans Tasman Angus Cattle Evaluation

	Calving Ease Dir (%)	Calving Ease Dtrs (%)	Gestation Length (days)	Birth Wt. (kg)	200 Day Wt. (kg)	400 Day Wt. (kg)	600 Day Wt. (kg)	Mat. Cow Wt. (kg)	Milk (kg)	Scrotal Size (cm)	Days to Calving (days)	Carcase Wt. (kg)	Eye Muscle Area (sq.cm)	Rib Fat (mm)	Rump Fat (mm)	Retail Beef Yield (%)	IMF (%)
EBV	4.6	4.9	-1.0	4.2	55	100	135	109	22	1.9	-2.4	73	6.2	-0.7	-1.0	0.6	2.1
Acc	54%	43%	82%	72%	65%	65%	72%	65%	52%	72%	34%	58%	53%	56%	55%	51%	52%

Heifer's first calf, Used over heifers

Really nice balance of figures on this bull – low birth weight suitable for heifer joining but not your typical heifer bull style. Lots of carcass and growth that reflects his sire, Baldrige Compass with added IMF. A meat machine.

Purchaser.....

Price.....

Lot 21: Nampara S75

AM3%, NHF, CAF, DDF

Born: 23.03.21
APR: SFN21S75

Sire: Coonamble Investment P58

Dam: Nampara P43



Mid December 2022 Trans Tasman Angus Cattle Evaluation

	Calving Ease Dir (%)	Calving Ease Dtrs (%)	Gestation Length (days)	Birth Wt. (kg)	200 Day Wt. (kg)	400 Day Wt. (kg)	600 Day Wt. (kg)	Mat. Cow Wt. (kg)	Milk (kg)	Scrotal Size (cm)	Days to Calving (days)	Carcase Wt. (kg)	Eye Muscle Area (sq.cm)	Rib Fat (mm)	Rump Fat (mm)	Retail Beef Yield (%)	IMF (%)
EBV	2.7	4.0	-6.3	4.3	48	93	126	109	17	2.8	-1.5	72	6.3	0.0	-0.3	0.6	1.6
Acc	47%	34%	81%	71%	64%	64%	70%	62%	44%	71%	29%	55%	49%	53%	53%	47%	50%

Used over heifers

The first son of Western Australian bull, Coonamble Investment in the draft and what a well-shaped, muscular fella he is! Again, breeding true to type, S75 has an appealing set of figures suitable for heifer or cow joinings.

Purchaser.....

Price.....

Lot 22: Nampara Powershift S230

AMFU, NHFU, CAFU, DDFU

Born: 17.04.21
HBR: SFN21S230

Sire: Texas Powershift P632

Dam: Nampara P82



Mid December 2022 Trans Tasman Angus Cattle Evaluation

	Calving Ease Dir (%)	Calving Ease Dtrs (%)	Gestation Length (days)	Birth Wt. (kg)	200 Day Wt. (kg)	400 Day Wt. (kg)	600 Day Wt. (kg)	Mat. Cow Wt. (kg)	Milk (kg)	Scrotal Size (cm)	Days to Calving (days)	Carcase Wt. (kg)	Eye Muscle Area (sq.cm)	Rib Fat (mm)	Rump Fat (mm)	Retail Beef Yield (%)	IMF (%)
EBV	3.0	5.8	-4.5	3.6	49	90	130	118	16	1.9	-4.4	69	7.6	0.6	1.1	0.8	0.7
Acc	55%	44%	83%	74%	69%	69%	74%	66%	54%	73%	39%	60%	55%	58%	58%	54%	57%

Used over heifers

It's sounding repetitive but same again – another Powershift. The consistency and type in these bulls is hard to go past. Check out his low birth weight, big 600 day weight and calving ease to top it off. Wide across the top, long and with shape. This time out of a Millah Murrah Kingdom daughter.

Purchaser.....

Price.....

Lot 23: Nampara Kirk S62

AMFU, NHFU, CAFU, DDFU

Born: 22.03.21
HBR: SFN21S62

Sire: Te Mania Nehill N377

Dam: Nampara Valmai M134



Mid December 2022 Trans Tasman Angus Cattle Evaluation

	Calving Ease Dir (%)	Calving Ease Dtrs (%)	Gestation Length (days)	Birth Wt. (kg)	200 Day Wt. (kg)	400 Day Wt. (kg)	600 Day Wt. (kg)	Mat. Cow Wt. (kg)	Milk (kg)	Scrotal Size (cm)	Days to Calving (days)	Carcase Wt. (kg)	Eye Muscle Area (sq.cm)	Rib Fat (mm)	Rump Fat (mm)	Retail Beef Yield (%)	IMF (%)
EBV	-2.0	0.6	-3.2	4.3	54	100	132	110	28	1.7	-3.6	75	4.9	-2.4	-1.8	0.3	2.4
Acc	54%	45%	68%	72%	67%	64%	65%	62%	56%	61%	35%	57%	54%	57%	57%	51%	58%

Used over heifers

Another Nehill son – they sold very well last year and this bull looks the goods as well. A very quiet, proud bull with added IMF.

Purchaser.....

Price.....

NAMPARA ANGUS - SALE BULLS 2023

Lot 24: Nampara S107 AMFU, NHFU, CAFU, DDFU Born: 26.03.21
APR: SFN21S107

Sire: Texas Powershift P632

Dam: Nampara L5509



Mid December 2022 TransTasman Angus Cattle Evaluation

	Calving Ease Dir (%)	Calving Ease Dtrs (%)	Gestation Length (days)	Birth Wt. (kg)	200 Day Wt. (kg)	400 Day Wt. (kg)	600 Day Wt. (kg)	Mat. Cow Wt. (kg)	Milk (kg)	Scrotal Size (cm)	Days to Calving (days)	Carcase Wt. (kg)	Eye Muscle Area (sq.cm)	Rib Fat (mm)	Rump Fat (mm)	Retail Beef Yield (%)	IMF (%)
EBV	3.4	8.8	-3.5	5.0	49	89	122	113	12	1.6	-1.6	71	8.2	-0.2	-0.2	1.6	-0.9
Acc	50%	38%	82%	72%	65%	63%	62%	60%	51%	59%	31%	53%	52%	55%	54%	49%	56%

Used over heifers

Long, clean bull by Texas Powershift. An appealing heifer or cow bull prospect.

Purchaser.....

Price.....

Lot 25: Nampara S181 AMFU, NHFU, CAFU, DDFU Born: 2.04.21
APR: SFN21S181

Sire: LD Capitalist 316

Dam: Nampara Q67



Mid December 2022 TransTasman Angus Cattle Evaluation

	Calving Ease Dir (%)	Calving Ease Dtrs (%)	Gestation Length (days)	Birth Wt. (kg)	200 Day Wt. (kg)	400 Day Wt. (kg)	600 Day Wt. (kg)	Mat. Cow Wt. (kg)	Milk (kg)	Scrotal Size (cm)	Days to Calving (days)	Carcase Wt. (kg)	Eye Muscle Area (sq.cm)	Rib Fat (mm)	Rump Fat (mm)	Retail Beef Yield (%)	IMF (%)
EBV	3.3	5.2	-2.3	5.4	50	88	111	103	11	1.7	-3.9	63	6.1	1.4	1.2	0.4	0.8
Acc	61%	52%	83%	75%	69%	70%	74%	68%	60%	74%	44%	63%	59%	61%	61%	58%	60%

Used over heifers

Heifer's first calf. Similar to the last bull in description – long and lean. This time by the calving ease specialist, LD Capitalist and out of a heifer.

Purchaser.....

Price.....

Lot 26: Nampara S118 AM3%, NH3%, CAF, DDFU Born: 27.03.21
APR: SFN21S118

Sire: Coonamble Investment P58

Dam: Nampara P65



Mid December 2022 TransTasman Angus Cattle Evaluation

	Calving Ease Dir (%)	Calving Ease Dtrs (%)	Gestation Length (days)	Birth Wt. (kg)	200 Day Wt. (kg)	400 Day Wt. (kg)	600 Day Wt. (kg)	Mat. Cow Wt. (kg)	Milk (kg)	Scrotal Size (cm)	Days to Calving (days)	Carcase Wt. (kg)	Eye Muscle Area (sq.cm)	Rib Fat (mm)	Rump Fat (mm)	Retail Beef Yield (%)	IMF (%)
EBV	0.3	0.9	-4.6	5.0	45	85	114	100	16	1.9	-2.6	64	6.2	0.0	0.3	0.9	0.6
Acc	49%	35%	82%	71%	64%	64%	70%	62%	44%	71%	30%	55%	49%	53%	53%	48%	49%

Used over heifers

Clean fronted, long bull by the West-Australian sire in Coonamble Investment P58.

Purchaser.....

Price.....

Lot 27: Nampara S161 AMFU, NHFU, CAFU, DDFU Born: 30.3.21
APR: SFN21S161

Sire: LD Capitalist 316

Dam: Nampara Q176



Mid December 2022 TransTasman Angus Cattle Evaluation

	Calving Ease Dir (%)	Calving Ease Dtrs (%)	Gestation Length (days)	Birth Wt. (kg)	200 Day Wt. (kg)	400 Day Wt. (kg)	600 Day Wt. (kg)	Mat. Cow Wt. (kg)	Milk (kg)	Scrotal Size (cm)	Days to Calving (days)	Carcase Wt. (kg)	Eye Muscle Area (sq.cm)	Rib Fat (mm)	Rump Fat (mm)	Retail Beef Yield (%)	IMF (%)
EBV	6.8	6.6	-4.3	3.3	48	87	108	98	11	1.5	-3.4	65	7.4	0.2	0.0	0.6	2.0
Acc	62%	53%	83%	74%	69%	69%	74%	68%	61%	74%	45%	63%	59%	62%	61%	59%	60%

Heifer's first calf, Used over heifers

Another Capitalist son with a really sound set of data. Low birth weight, calving ease and some IMF. Long, neat-fronted bull who moves around on sound feet and legs.

Purchaser.....

Price.....

NAMPARA ANGUS - SALE BULLS 2023

Lot 28: Nampara Investment S68

AMFU, NHFU, CAFU, DDFU

Born: 22.03.21
HBR: SFN21S68

Sire: Coonamble Investment P58

Dam: Nampara Panda P56



Mid December 2022 TransTasman Angus Cattle Evaluation

	Calving Ease Dir (%)	Calving Ease Dtrs (%)	Gestation Length (days)	Birth Wt. (kg)	200 Day Wt. (kg)	400 Day Wt. (kg)	600 Day Wt. (kg)	Mat. Cow Wt. (kg)	Milk (kg)	Scrotal Size (cm)	Days to Calving (days)	Carcase Wt. (kg)	Eye Muscle Area (sq.cm)	Rib Fat (mm)	Rump Fat (mm)	Retail Beef Yield (%)	IMF (%)
EBV	4.4	1.9	-9.5	3.8	42	83	111	98	16	2.0	-4.1	58	5.7	0.6	0.9	0.6	1.4
Acc	53%	41%	83%	72%	66%	63%	63%	59%	52%	59%	34%	55%	53%	55%	55%	50%	55%

Used over heifers

Another nicely shaped, smooth fronted Coonamble Investment son with a handy set of figures. A safe heifer bull option.

Purchaser.....

Price.....

Lot 29: Nampara S99

AMFU, NHFU, CAFU, DDFU

Born: 25.03.21
APR: SFN21S99

Sire: Texas Powershift P632

Dam: Nampara Q180



Mid December 2022 TransTasman Angus Cattle Evaluation

	Calving Ease Dir (%)	Calving Ease Dtrs (%)	Gestation Length (days)	Birth Wt. (kg)	200 Day Wt. (kg)	400 Day Wt. (kg)	600 Day Wt. (kg)	Mat. Cow Wt. (kg)	Milk (kg)	Scrotal Size (cm)	Days to Calving (days)	Carcase Wt. (kg)	Eye Muscle Area (sq.cm)	Rib Fat (mm)	Rump Fat (mm)	Retail Beef Yield (%)	IMF (%)
EBV	4.1	6.6	-4.6	3.3	48	85	112	92	15	1.3	-2.0	66	9.6	-0.9	-1.5	1.2	1.2
Acc	53%	42%	82%	73%	66%	66%	71%	64%	50%	72%	35%	57%	53%	56%	56%	52%	55%

Heifer's first calf, Used over heifers

A proud bull who is really easy to look at. This Powershift son pulls up square every time and has shape and constitution. Well rounded set of figures that we have come to expect – that calving ease, low birth weight and EMA. A striking bull.

Purchaser.....

Price.....

Lot 30: Nampara Outlander S179

AMFU, NHFU, CAFU, DDFU

Born: 1.04.21
HBR: SFN21S179

Sire: Stern 15815

Dam: Nampara Moonlight M151



Mid December 2022 TransTasman Angus Cattle Evaluation

	Calving Ease Dir (%)	Calving Ease Dtrs (%)	Gestation Length (days)	Birth Wt. (kg)	200 Day Wt. (kg)	400 Day Wt. (kg)	600 Day Wt. (kg)	Mat. Cow Wt. (kg)	Milk (kg)	Scrotal Size (cm)	Days to Calving (days)	Carcase Wt. (kg)	Eye Muscle Area (sq.cm)	Rib Fat (mm)	Rump Fat (mm)	Retail Beef Yield (%)	IMF (%)
EBV	-14.4	-3.2	0.2	9.8	59	106	154	158	16	2.9	-3.5	82	4.3	-2.1	-2.5	0.9	0.4
Acc	56%	44%	83%	75%	71%	72%	75%	68%	57%	73%	38%	61%	56%	59%	58%	54%	56%

This bull is a crowd favourite! A bull that is hard to miss for his overall power, capacity, strength of spine and soft rolling skin. By the Kiwi bull in Stern 15815, this bull is very quiet and out of one of our favourite females. A real cow bull.

Purchaser.....

Price.....

Lot 31: Nampara Outlander S186

AMFU, NHFU, CAFU, DDFU

Born: 31.03.20
HBR: SFN21S186

Sire: Stern 15815

Dam: Nampara Eclipta M12



Mid December 2022 TransTasman Angus Cattle Evaluation

	Calving Ease Dir (%)	Calving Ease Dtrs (%)	Gestation Length (days)	Birth Wt. (kg)	200 Day Wt. (kg)	400 Day Wt. (kg)	600 Day Wt. (kg)	Mat. Cow Wt. (kg)	Milk (kg)	Scrotal Size (cm)	Days to Calving (days)	Carcase Wt. (kg)	Eye Muscle Area (sq.cm)	Rib Fat (mm)	Rump Fat (mm)	Retail Beef Yield (%)	IMF (%)
EBV	-7.9	-0.3	-1.4	8.4	56	102	142	149	17	1.8	-4.1	75	5.2	0.2	-0.4	0.7	0.1
Acc	54%	42%	83%	74%	70%	71%	69%	63%	56%	73%	36%	59%	54%	57%	56%	53%	54%

The temperament on these Stern bulls is excellent and S186 is no exception. Another big volume bull with bone and yet he moves so freely. Being in the top 10% for 600 day this guy is going to produce heavy bullocks and beautiful females with Atahua Freedom and Te Mania Berkley on the dam's side.

Purchaser.....

Price.....

NAMPARA ANGUS - SALE BULLS 2023

Lot 32: Nampara S234

AMFU, NHFU, CAFU, DDFU

Born: 17.04.21

APR: SFN21S234

Sire: Texas Horsepower N229

Dam: Nampara L5508



Mid December 2022 TransTasman Angus Cattle Evaluation

	Calving Ease Dir (%)	Calving Ease Dtrs (%)	Gestation Length (days)	Birth Wt. (kg)	200 Day Wt. (kg)	400 Day Wt. (kg)	600 Day Wt. (kg)	Mat. Cow Wt. (kg)	Milk (kg)	Scrotal Size (cm)	Days to Calving (days)	Carcase Wt. (kg)	Eye Muscle Area (sq.cm)	Rib Fat (mm)	Rump Fat (mm)	Retail Beef Yield (%)	IMF (%)
EBV	-0.7	0.0	-3.2	7.1	57	102	141	146	10	0.7	1.1	77	5.1	-0.1	-0.1	0.4	0.5
Acc	48%	34%	82%	72%	65%	67%	70%	62%	48%	69%	29%	55%	49%	52%	52%	46%	53%

This bull is not done yet and is going to grow into a big bull. He is nicely shaped, free-moving and a definite cow bull option.

Purchaser.....

Price.....

Lot 33: Nampara Classman S105

AMFU, NHFU, CAFU, DDFU

Born: 26.03.21

HBR: SFN21S105

Sire: Kaharau Class Man 17-444

Dam: Nampara Dawning N22



Mid December 2022 TransTasman Angus Cattle Evaluation

	Calving Ease Dir (%)	Calving Ease Dtrs (%)	Gestation Length (days)	Birth Wt. (kg)	200 Day Wt. (kg)	400 Day Wt. (kg)	600 Day Wt. (kg)	Mat. Cow Wt. (kg)	Milk (kg)	Scrotal Size (cm)	Days to Calving (days)	Carcase Wt. (kg)	Eye Muscle Area (sq.cm)	Rib Fat (mm)	Rump Fat (mm)	Retail Beef Yield (%)	IMF (%)
EBV	-0.3	0.1	-4.9	6.6	56	97	136	131	12	2.0	-2.5	72	3.9	-1.8	-3.2	0.7	1.5
Acc	53%	41%	83%	74%	70%	71%	74%	66%	52%	73%	34%	60%	53%	56%	56%	52%	53%

A real Kiwi-style of bull - thick set, mobile, deep bodied and long. A bull to pack some punch into his calves.

Purchaser.....

Price.....

Lot 34: Nampara Investment S188

AMFU, NHFU, CAFU, DDFU

Born: 3.04.21

HBR: SFN21S188

Sire: Coonamble Investment P58

Dam: Nampara Valmai K88



Mid December 2022 TransTasman Angus Cattle Evaluation

	Calving Ease Dir (%)	Calving Ease Dtrs (%)	Gestation Length (days)	Birth Wt. (kg)	200 Day Wt. (kg)	400 Day Wt. (kg)	600 Day Wt. (kg)	Mat. Cow Wt. (kg)	Milk (kg)	Scrotal Size (cm)	Days to Calving (days)	Carcase Wt. (kg)	Eye Muscle Area (sq.cm)	Rib Fat (mm)	Rump Fat (mm)	Retail Beef Yield (%)	IMF (%)
EBV	-5.2	-2.0	-1.5	7.0	50	94	133	119	18	4.0	-3.4	70	9.7	-1.7	-2.4	1.5	0.5
Acc	52%	41%	68%	73%	69%	69%	71%	65%	56%	70%	35%	60%	55%	57%	57%	52%	58%

This could be one of the picks of the pen. An embryo calf out of a reliable donor who goes back to the great Atahua Freedom. A quiet, free-moving bull with bone and a handy spread of figures.

Purchaser.....

Price.....

Lot 35: Nampara S50

AMFU, NHFU, CAFU, DDFU

Born: 14.04.20

HBR: SFN21S50

Sire: Kaharau Class Man 17-444

Dam: Nampara N194



Mid December 2022 TransTasman Angus Cattle Evaluation

	Calving Ease Dir (%)	Calving Ease Dtrs (%)	Gestation Length (days)	Birth Wt. (kg)	200 Day Wt. (kg)	400 Day Wt. (kg)	600 Day Wt. (kg)	Mat. Cow Wt. (kg)	Milk (kg)	Scrotal Size (cm)	Days to Calving (days)	Carcase Wt. (kg)	Eye Muscle Area (sq.cm)	Rib Fat (mm)	Rump Fat (mm)	Retail Beef Yield (%)	IMF (%)
EBV	4.2	4.3	-6.2	4.4	41	77	102	95	9	2.1	-0.1	47	1.5	-0.6	-1.4	0.3	1.3
Acc	45%	31%	81%	70%	62%	64%	68%	59%	39%	67%	27%	52%	45%	48%	48%	43%	44%

Another strong-headed New Zealand Class Man son. A bull that is going to keep on going and grow into a big, proud bull with a smooth front and bone. A bull for heifers here with calving ease and moderate birth weight.

Purchaser.....

Price.....

NAMPARA ANGUS - SALE BULLS 2023

Lot 36: Nampara S48

AM 6%, NH 6%, CA 6%, DD 6%

Born: 18.03.21
COM: SFN21S48

Sire: Unknown

Dam: Nampara M6024

A commercial bull who was simply too good to leave out of the sale. This bull is round, soft, nicely shaped and moves easily around the pen. Good commercial bull. No data but a ripping little bull.

Purchaser.....

Price.....

Lot 37: Nampara Investment S132

AMFU, NHFU, CAFU, DDFU

Born: 27.03.21
HBR: SFN21S132

Sire: Coonamble Investment P58

Dam: Nampara Valmai K88



Mid December 2022 TransTasman Angus Cattle Evaluation

	Calving Ease Dir (%)	Calving Ease Dtrs (%)	Gestation Length (days)	Birth Wt. (kg)	200 Day Wt. (kg)	400 Day Wt. (kg)	600 Day Wt. (kg)	Mat. Cow Wt. (kg)	Milk (kg)	Scrotal Size (cm)	Days to Calving (days)	Carcase Wt. (kg)	Eye Muscle Area (sq.cm)	Rib Fat (mm)	Rump Fat (mm)	Retail Beef Yield (%)	IMF (%)
EBV	-1.8	-0.4	-2.3	5.0	43	81	107	93	18	2.9	-3.9	57	8.4	-0.4	-0.6	1.2	0.7
Acc	53%	41%	68%	73%	69%	69%	71%	65%	56%	70%	35%	60%	55%	57%	57%	57%	52%

Another bull from an Atahua Freedom daughter in our donor group. Big rear end, big nuts and a long bull who carries himself proudly. Retail beef Yield in the top 10% of the breed.

Purchaser.....

Price.....

Lot 38: Nampara Investment S171

AMFU, NHFU, CAFU, DDFU

Born: 30.03.21
HBR: SFN21S171

Sire: Coonamble Investment P58

Dam: Nampara Valmai K88



Mid December 2022 TransTasman Angus Cattle Evaluation

	Calving Ease Dir (%)	Calving Ease Dtrs (%)	Gestation Length (days)	Birth Wt. (kg)	200 Day Wt. (kg)	400 Day Wt. (kg)	600 Day Wt. (kg)	Mat. Cow Wt. (kg)	Milk (kg)	Scrotal Size (cm)	Days to Calving (days)	Carcase Wt. (kg)	Eye Muscle Area (sq.cm)	Rib Fat (mm)	Rump Fat (mm)	Retail Beef Yield (%)	IMF (%)
EBV	-0.7	0.1	-2.4	4.6	39	76	101	89	19	2.0	-3.5	54	8.4	-0.5	-0.9	1.3	0.7
Acc	53%	41%	68%	73%	69%	69%	71%	65%	56%	70%	35%	60%	55%	57%	57%	52%	58%

Full brother to the last bull and again we wrote down the same comments! Clean fronted, free moving, upstanding bull with bone, length and plenty of style. A safe option with a good female on the dam's side.

Purchaser.....

Price.....

Lot 39: Nampara Outlander S297

AMFU, NHFU, CAFU, DDFU

Born: 15.05.21
HBR: SFN21S297

Sire: Nampara Q129

Dam: Nampara Valmai N189



Mid December 2021 TransTasman Angus Cattle Evaluation

	Calving Ease Dir (%)	Calving Ease Dtrs (%)	Gestation Length (days)	Birth Wt. (kg)	200 Day Wt. (kg)	400 Day Wt. (kg)	600 Day Wt. (kg)	Mat. Cow Wt. (kg)	Milk (kg)	Scrotal Size (cm)	Days to Calving (days)	Carcase Wt. (kg)	Eye Muscle Area (sq.cm)	Rib Fat (mm)	Rump Fat (mm)	Retail Beef Yield (%)	IMF (%)
EBV	-5.2	0.7	1.2	6.0	45	87	120	117	19	5.3	-4.4	56	8.3	-1.2	-2.2	1.1	0.9
Acc	48%	37%	59%	73%	69%	70%	73%	65%	52%	72%	33%	59%	51%	55%	54%	49%	52%

One of the younger bulls in the draft at only a May calf. Really mobile, strong headed, clean fronted bull with those Kiwi attributes that we like.

Purchaser.....

Price.....

NAMPARA ANGUS - SALE BULLS 2023

Lot 40: Nampara S257 AMF, NHF, CAF, DDF Born: 2.05.21
APR: SFN21S257

Sire: Texas Horse Power N229

Dam: Nampara M202

Mid December 2022 TransTasman Angus Cattle Evaluation



	Calving Ease Dir (%)	Calving Ease Dtrs (%)	Gestation Length (days)	Birth Wt. (kg)	200 Day Wt. (kg)	400 Day Wt. (kg)	600 Day Wt. (kg)	Mat. Cow Wt. (kg)	Milk (kg)	Scrotal Size (cm)	Days to Calving (days)	Carcase Wt. (kg)	Eye Muscle Area (sq.cm)	Rib Fat (mm)	Rump Fat (mm)	Retail Beef Yield (%)	IMF (%)
EBV	7.8	6.6	-3.8	1.9	37	71	85	49	11	2.8	-0.8	43	7.7	3.7	5.9	-0.1	1.1
Acc	48%	36%	65%	70%	67%	64%	68%	61%	52%	67%	29%	54%	53%	55%	55%	48%	58%

Very low birth weight option here with big EMA, excellent calving ease and rib and rump fat in the top 3% of the breed. Deep, mobile bull with a laid in shoulder and soft skin.

Purchaser.....

Price.....

Lot 41: Nampara S259 AMFU, NHFU, CAFU, DDFU Born: 2.05.21
APR: SFN21S259

Sire: Nampara Q129

Dam: Nampara N12

Mid December 2022 TransTasman Angus Cattle Evaluation



	Calving Ease Dir (%)	Calving Ease Dtrs (%)	Gestation Length (days)	Birth Wt. (kg)	200 Day Wt. (kg)	400 Day Wt. (kg)	600 Day Wt. (kg)	Mat. Cow Wt. (kg)	Milk (kg)	Scrotal Size (cm)	Days to Calving (days)	Carcase Wt. (kg)	Eye Muscle Area (sq.cm)	Rib Fat (mm)	Rump Fat (mm)	Retail Beef Yield (%)	IMF (%)
EBV	-6.9	1.7	-0.7	6.8	47	87	119	113	15	3.7	-3.7	57	6.9	-0.4	-0.7	1.0	0.2
Acc	49%	38%	62%	73%	69%	69%	72%	65%	51%	71%	32%	58%	51%	54%	54%	49%	51%

Strong Kiwi influence in this bull with Atahua Freedom on both sides and Stern 15815 in the sire's pedigree. We really like the width in this bull, his strong head and muscle.

Purchaser.....

Price.....

Lot 42: Nampara Investment S226 AMFU, NHFU, CAFU, DDFU Born: 16.04.21
HBR: SFN21S226

Sire: Coonamble Investment P58

Dam: Nampara Jemma L43

Mid December 2022 TransTasman Angus Cattle Evaluation



	Calving Ease Dir (%)	Calving Ease Dtrs (%)	Gestation Length (days)	Birth Wt. (kg)	200 Day Wt. (kg)	400 Day Wt. (kg)	600 Day Wt. (kg)	Mat. Cow Wt. (kg)	Milk (kg)	Scrotal Size (cm)	Days to Calving (days)	Carcase Wt. (kg)	Eye Muscle Area (sq.cm)	Rib Fat (mm)	Rump Fat (mm)	Retail Beef Yield (%)	IMF (%)
EBV	2.5	1.2	-5.9	4.4	41	82	113	98	17	1.8	-3.9	59	6.5	0.9	1.0	0.8	0.9
Acc	54%	42%	82%	74%	70%	71%	73%	66%	54%	73%	36%	61%	55%	58%	58%	53%	56%

Consistency again comes to mind with these Investment sons. This time out of a reliable female with Freedom and Te Mania Emperor on the dam's side. A structurally sound bull with length and figures that suggest a heifer bull option.

Purchaser.....

Price.....

Lot 43: Nampara Investment S138 AMFU, NHFU, CAFU, DDFU Born: 27.03.21
HBR: SFN21S138

Sire: Coonamble Investment P58

Dam: Nampara Valmai K88

Mid December 2022 TransTasman Angus Cattle Evaluation



	Calving Ease Dir (%)	Calving Ease Dtrs (%)	Gestation Length (days)	Birth Wt. (kg)	200 Day Wt. (kg)	400 Day Wt. (kg)	600 Day Wt. (kg)	Mat. Cow Wt. (kg)	Milk (kg)	Scrotal Size (cm)	Days to Calving (days)	Carcase Wt. (kg)	Eye Muscle Area (sq.cm)	Rib Fat (mm)	Rump Fat (mm)	Retail Beef Yield (%)	IMF (%)
EBV	-1.0	-0.1	-2.2	5.6	47	87	118	104	18	3.1	-3.6	64	8.9	-1.0	-1.5	1.3	0.7
Acc	53%	41%	68%	72%	67%	65%	65%	62%	56%	61%	34%	57%	55%	57%	57%	52%	58%

Long bull, plenty of expression. Retail beef yield in top 10% of the breed and EMA top 20%.

Purchaser.....

Price.....

NAMPARA ANGUS - SALE BULLS 2023

Lot 44: Nampara Nighthood S182

AMFU, NHFU, CAFU, DDFU

Born: 2.04.21

HBR: SFN21S182

Sire: Granite Ridge Nighthood N61

Dam: Nampara Maid K55

Mid December 2022 TransTasman Angus Cattle Evaluation



	Calving Ease Dir (%)	Calving Ease Dtrs (%)	Gestation Length (days)	Birth Wt. (kg)	200 Day Wt. (kg)	400 Day Wt. (kg)	600 Day Wt. (kg)	Mat. Cow Wt. (kg)	Milk (kg)	Scrotal Size (cm)	Days to Calving (days)	Carcase Wt. (kg)	Eye Muscle Area (sq.cm)	Rib Fat (mm)	Rump Fat (mm)	Retail Beef Yield (%)	IMF (%)
EBV	0.5	2.2	-1.1	6.0	52	89	131	109	15	3.2	-4.2	73	6.4	-0.2	0.2	0.9	0.1
Acc	54%	42%	83%	74%	70%	71%	73%	66%	53%	72%	35%	60%	52%	56%	55%	51%	53%

The Nighthood bulls are so consistent and S182 is no exception. Out of another Atahua Freedom daughter, this bull is so wide and deep with strength through his spine and smoothness through his front. A really well put together bull.

Purchaser.....

Price.....

Lot 45: Nampara Outlander S241

AMFU, NHFU, CAFU, DDFU

Born: 19.04.21

HBR: SFN21S241

Sire: Stern 15815

Dam: Nampara Jewel L45

Mid December 2022 TransTasman Angus Cattle Evaluation



	Calving Ease Dir (%)	Calving Ease Dtrs (%)	Gestation Length (days)	Birth Wt. (kg)	200 Day Wt. (kg)	400 Day Wt. (kg)	600 Day Wt. (kg)	Mat. Cow Wt. (kg)	Milk (kg)	Scrotal Size (cm)	Days to Calving (days)	Carcase Wt. (kg)	Eye Muscle Area (sq.cm)	Rib Fat (mm)	Rump Fat (mm)	Retail Beef Yield (%)	IMF (%)
EBV	-10.4	-1.8	-3.2	8.3	51	97	129	131	17	2.0	-3.5	66	6.2	-0.2	0.1	0.9	-0.4
Acc	56%	44%	84%	75%	72%	73%	75%	68%	59%	74%	38%	62%	56%	59%	59%	55%	56%

Another double-dose of Kiwi in S241. His dam is an Atahua Freedom daughter going back to an old Wittalocka female. These Stern sons are so quiet and S241 is the same way. We also like his depth of thigh, strong head and hind quarter.

Purchaser.....

Price.....

Lot 46: Nampara S315

AMFU, NHFU, CAFU, DDF

Born: 2.6.21

COM: SFN21S315

Sire: Texas Horse Power N229

Dam: Unknown

A really young commercial bull – only a June drop. He will grow into a big bull given his sire, Horse Power N229, who spring born sons sold so well in 2021.

Purchaser.....

Price.....

NAMPARA ANGUS - SALE BULLS 2023

Lot 47: Nampara S195

AMFU, NHFU, CAFU, DDFU

Born: 9.04.21

APR: SFN21S195

Sire: Texas Horse Power N229

Dam: Nampara N32



Mid December 2022 TransTasman Angus Cattle Evaluation

	Calving Ease Dir (%)	Calving Ease Dtrs (%)	Gestation Length (days)	Birth Wt. (kg)	200 Day Wt. (kg)	400 Day Wt. (kg)	600 Day Wt. (kg)	Mat. Cow Wt. (kg)	Milk (kg)	Scrotal Size (cm)	Days to Calving (days)	Carcase Wt. (kg)	Eye Muscle Area (sq.cm)	Rib Fat (mm)	Rump Fat (mm)	Retail Beef Yield (%)	IMF (%)
EBV	4.8	3.2	-7.1	4.7	56	100	134	118	16	3.9	-0.1	72	6.4	0.7	0.9	0.0	1.2
Acc	46%	31%	81%	71%	62%	65%	69%	60%	42%	69%	28%	52%	46%	50%	49%	44%	45%

Another Horse Power N229 here with a really balanced set of figures. Calving ease, good birth to growth spread, big scrotal and carcass weight.

Purchaser.....

Price.....

Lot 48: Nampara Horse Power S193

AMFU, NHFU, CAFU, DDFU

Born: 5.04.21

HBR: SFN21S193

Sire: Texas Horse Power N229

Dam: Nampara Jewel K42



Mid December 2022 TransTasman Angus Cattle Evaluation

	Calving Ease Dir (%)	Calving Ease Dtrs (%)	Gestation Length (days)	Birth Wt. (kg)	200 Day Wt. (kg)	400 Day Wt. (kg)	600 Day Wt. (kg)	Mat. Cow Wt. (kg)	Milk (kg)	Scrotal Size (cm)	Days to Calving (days)	Carcase Wt. (kg)	Eye Muscle Area (sq.cm)	Rib Fat (mm)	Rump Fat (mm)	Retail Beef Yield (%)	IMF (%)
EBV	0.2	0.1	-4.1	4.9	53	90	126	119	16	2.6	-2.7	65	5.5	2.5	3.8	-0.1	0.3
Acc	51%	40%	67%	75%	70%	71%	73%	66%	54%	72%	34%	60%	53%	56%	56%	51%	53%

Same way again- this time a Horse Power out of a Freedom daughter. This deep-sided bull stands like he wants to be in the pen. Very quiet.

Purchaser.....

Price.....

Lot 49: Nampara S155

AMFU, NHFU, CAFU, DDFU

Born: 29.03.21

APR: SFN21S155

Sire: Granite Ridge Nighthood N61

Dam: Nampara L5101



Mid December 2022 TransTasman Angus Cattle Evaluation

	Calving Ease Dir (%)	Calving Ease Dtrs (%)	Gestation Length (days)	Birth Wt. (kg)	200 Day Wt. (kg)	400 Day Wt. (kg)	600 Day Wt. (kg)	Mat. Cow Wt. (kg)	Milk (kg)	Scrotal Size (cm)	Days to Calving (days)	Carcase Wt. (kg)	Eye Muscle Area (sq.cm)	Rib Fat (mm)	Rump Fat (mm)	Retail Beef Yield (%)	IMF (%)
EBV	-4.2	3.1	-0.8	6.7	52	88	131	114	14	2.5	-1.3	72	6.2	-0.1	0.6	0.8	0.0
Acc	50%	36%	83%	73%	67%	69%	71%	63%	49%	71%	29%	56%	49%	53%	52%	47%	53%

Nighthood has left his stamp again on this bull. Thick, bigger framed bull but smooth and long.

Purchaser.....

Price.....

Lot 50: Nampara Nighthood S129

AMFU, NHFU, CAFU, DDFU

Born: 27.03.21

HBR: SFN21S129

Sire: Granite Ridge Nighthood N61

Dam: Nampara Graduate L56



Mid December 2022 TransTasman Angus Cattle Evaluation

	Calving Ease Dir (%)	Calving Ease Dtrs (%)	Gestation Length (days)	Birth Wt. (kg)	200 Day Wt. (kg)	400 Day Wt. (kg)	600 Day Wt. (kg)	Mat. Cow Wt. (kg)	Milk (kg)	Scrotal Size (cm)	Days to Calving (days)	Carcase Wt. (kg)	Eye Muscle Area (sq.cm)	Rib Fat (mm)	Rump Fat (mm)	Retail Beef Yield (%)	IMF (%)
EBV	2.0	0.2	-3.9	4.7	53	88	132	107	18	1.9	-3.3	79	4.7	-0.4	-0.1	0.5	1.0
Acc	54%	43%	83%	74%	70%	71%	74%	66%	53%	72%	35%	60%	52%	56%	55%	51%	52%

This guy looks and struts like a superstar! Another Nighthood son with a little less birth weight. His dam is a very reliable Te Mania Gaskin daughter. This bull begged us to take his photo with a strut and presence that reflected his balance and structure. A very nice bull.

Purchaser.....

Price.....



Every Step.

With you every step of the way

With Elders, you can be confident that you'll have a local expert supporting your business every step of the way, providing access to domestic and international markets, specialist knowledge, relevant local advice and products tailored to your needs.

elders.com.au

Mount Gambier

Ben Gregory
Laryn Gogel
Ross Milne

Territory Sales Manager
Territory Sales Manager
Elders Stud Stock

0418 498 587
0436 030 245
0408 057 558





LOT 2 NAMPARA LIBERTY S56



LOT 4 NAMPARA CLASSMAN S91



LOT 7 NAMPARA CAPITALIST S242



LOT 9 NAMPARA SHIDOT S19



LOT 34 NAMPARA INVESTMENT S188



LOT 50 NAMPARA NIGHHOOD S129



LOT 51 NAMPARA HORSE POWER S187



LOT 63 NAMPARA S12



LOT 100 NAMPARA S87

NAMPARA ANGUS - SALE BULLS 2023

Lot 51: Nampara Horse Power S187

AMFU, NHFU, CAFU, DDFU

Born: 3.04.21

HBR: SFN21S187

Sire: Texas Horse Power N229

Dam: Nampara Jemma N04



Mid December 2022 TransTasman Angus Cattle Evaluation

	Calving Ease Dir (%)	Calving Ease Dtrs (%)	Gestation Length (days)	Birth Wt. (kg)	200 Day Wt. (kg)	400 Day Wt. (kg)	600 Day Wt. (kg)	Mat. Cow Wt. (kg)	Milk (kg)	Scrotal Size (cm)	Days to Calving (days)	Carcase Wt. (kg)	Eye Muscle Area (sq.cm)	Rib Fat (mm)	Rump Fat (mm)	Retail Beef Yield (%)	IMF (%)
EBV	3.7	3.0	-6.6	4.3	52	89	124	109	16	2.1	-3.3	67	7.3	2.0	2.2	0.1	1.3
Acc	51%	39%	66%	74%	69%	70%	73%	66%	52%	72%	34%	59%	52%	55%	55%	51%	53%

We really like the eye appeal of this bull. His consistent dam is set to become part of the donor group and you can see why with S187. Really honest set of data – calving ease, scrotal, rib and rump fat. A balanced, free moving bull with muscle and a strong spine. Nampara will sell full possession and half share of semen and marketing rights.

Purchaser.....

Price.....

Lot 52: Nampara Classman S139

AMFU, NHFU, CAFU, DDFU

Born: 28.03.21

HBR: SFN21S139

Sire: Kaharau Classman 17-444

Dam: Nampara N13



Mid December 2022 TransTasman Angus Cattle Evaluation

	Calving Ease Dir (%)	Calving Ease Dtrs (%)	Gestation Length (days)	Birth Wt. (kg)	200 Day Wt. (kg)	400 Day Wt. (kg)	600 Day Wt. (kg)	Mat. Cow Wt. (kg)	Milk (kg)	Scrotal Size (cm)	Days to Calving (days)	Carcase Wt. (kg)	Eye Muscle Area (sq.cm)	Rib Fat (mm)	Rump Fat (mm)	Retail Beef Yield (%)	IMF (%)
EBV	-1.2	1.5	-4.6	6.2	51	89	122	120	11	2.8	-3.2	58	3.6	-1.0	-2.4	0.6	1.1
Acc	52%	40%	83%	75%	70%	71%	74%	66%	52%	72%	34%	60%	53%	56%	56%	51%	54%

Another bull out of a donor female who has MAR Innovation and Atahua Freedom in her background. A really robust cow bull, super quiet with a strong head and plenty of bone.

Purchaser.....

Price.....

Lot 53: Nampara Outlander S128

AMFU, NHFU, CAFU, DDFU

Born: 27.03.21

HBR: SFN21S128

Sire: Stern 15815

Dam: Nampara M110



Mid December 2022 TransTasman Angus Cattle Evaluation

	Calving Ease Dir (%)	Calving Ease Dtrs (%)	Gestation Length (days)	Birth Wt. (kg)	200 Day Wt. (kg)	400 Day Wt. (kg)	600 Day Wt. (kg)	Mat. Cow Wt. (kg)	Milk (kg)	Scrotal Size (cm)	Days to Calving (days)	Carcase Wt. (kg)	Eye Muscle Area (sq.cm)	Rib Fat (mm)	Rump Fat (mm)	Retail Beef Yield (%)	IMF (%)
EBV	-3.1	1.7	-4.1	6.7	41	82	110	117	14	1.7	-4.6	53	2.6	0.3	-0.3	0.5	0.9
Acc	54%	42%	83%	74%	70%	71%	74%	66%	56%	73%	36%	60%	54%	57%	56%	52%	53%

New Zealand genetics again helping keep that bone and constitution in our calves.

Purchaser.....

Price.....

Lot 54: Nampara S261

AMFU, NHFU, CAFU, DDFU

Born: 3.05.21

APR: SFN21S261

Sire: Nampara P26

Dam: Nampara K98



Mid December 2022 TransTasman Angus Cattle Evaluation

	Calving Ease Dir (%)	Calving Ease Dtrs (%)	Gestation Length (days)	Birth Wt. (kg)	200 Day Wt. (kg)	400 Day Wt. (kg)	600 Day Wt. (kg)	Mat. Cow Wt. (kg)	Milk (kg)	Scrotal Size (cm)	Days to Calving (days)	Carcase Wt. (kg)	Eye Muscle Area (sq.cm)	Rib Fat (mm)	Rump Fat (mm)	Retail Beef Yield (%)	IMF (%)
EBV	-0.6	-0.2	-3.8	3.6	47	86	119	96	18	3.0	-3.3	65	6.7	0.1	0.8	0.5	1.1
Acc	49%	38%	64%	73%	68%	69%	72%	64%	52%	71%	32%	58%	49%	53%	53%	48%	50%

Out of another Freedom daughter this bull has moderate birth weight and a big scrotal. He moves freely and is smooth fronted. Suitable for heifers or cows.

Purchaser.....

Price.....

NAMPARA ANGUS - SALE BULLS 2023

Lot 55: Nampara Horse Power S251

AMFU, NHFU, CAFU, DDFU

Born: 25.04.21
HBR: SFN21S251

Sire: Texas Horse Power N229

Dam: Nampara L41



Mid December 2022 TransTasman Angus Cattle Evaluation

	Calving Ease Dir (%)	Calving Ease Dtrs (%)	Gestation Length (days)	Birth Wt. (kg)	200 Day Wt. (kg)	400 Day Wt. (kg)	600 Day Wt. (kg)	Mat. Cow Wt. (kg)	Milk (kg)	Scrotal Size (cm)	Days to Calving (days)	Carcase Wt. (kg)	Eye Muscle Area (sq.cm)	Rib Fat (mm)	Rump Fat (mm)	Retail Beef Yield (%)	IMF (%)
EBV	1.7	-1.4	-4.8	4.6	48	87	107	96	13	2.1	-2.9	61	7.4	1.7	2.7	0.1	1.2
Acc	50%	36%	63%	73%	69%	70%	73%	65%	52%	72%	32%	58%	52%	55%	55%	50%	52%

Similar to the last bull – possible heifer bull option with some width. With moderate birth weight and by Horse Power, this bull could suit a number of options.

Purchaser.....

Price.....

Lot 56: Nampara Horse Power S293

AMFU, NHFU, CAFU, DDFU

Born: 15.05.21
HBR: SFN21S293

Sire: Texas Horse Power N229

Dam: Nampara Nanny M139



Mid December 2022 TransTasman Angus Cattle Evaluation

	Calving Ease Dir (%)	Calving Ease Dtrs (%)	Gestation Length (days)	Birth Wt. (kg)	200 Day Wt. (kg)	400 Day Wt. (kg)	600 Day Wt. (kg)	Mat. Cow Wt. (kg)	Milk (kg)	Scrotal Size (cm)	Days to Calving (days)	Carcase Wt. (kg)	Eye Muscle Area (sq.cm)	Rib Fat (mm)	Rump Fat (mm)	Retail Beef Yield (%)	IMF (%)
EBV	-5.6	-7.7	-1.7	6.5	57	96	127	120	16	3.1	-2.7	68	6.7	0.7	1.8	0.0	1.1
Acc	52%	41%	66%	74%	69%	70%	74%	66%	53%	72%	36%	60%	53%	56%	56%	51%	54%

Youngest bull in the pen. A bull that is going to keep on going – smooth and long.

Purchaser.....

Price.....

Lot 57: Nampara S123

AMFU, NHFU, CAFU, DDFU

Born: 27.03.21
APR: SFN21S123

Sire: Kaharau Class Man 17-444

Dam: Nampara N65



Mid December 2022 TransTasman Angus Cattle Evaluation

	Calving Ease Dir (%)	Calving Ease Dtrs (%)	Gestation Length (days)	Birth Wt. (kg)	200 Day Wt. (kg)	400 Day Wt. (kg)	600 Day Wt. (kg)	Mat. Cow Wt. (kg)	Milk (kg)	Scrotal Size (cm)	Days to Calving (days)	Carcase Wt. (kg)	Eye Muscle Area (sq.cm)	Rib Fat (mm)	Rump Fat (mm)	Retail Beef Yield (%)	IMF (%)
EBV	-1.9	1.7	-2.9	6.6	50	93	123	119	13	2.7	0.0	61	2.0	-2.4	-3.4	0.6	0.6
Acc	48%	34%	83%	73%	69%	70%	73%	65%	50%	30%	72%	57%	51%	55%	54%	49%	54%

Attractive cow bull in Lot 57. Big scrotal and more than adequate 600 day weight. Deep bodied, big boned bull.

Purchaser.....

Price.....

Lot 58: Nampara S158

AMFU, NHFU, CAFU, DDFU

Born: 29.03.21
APR: SFN21S158

Sire: Granite Ridge Nighthood N61

Dam: Nampara L5510



Mid December 2022 TransTasman Angus Cattle Evaluation

	Calving Ease Dir (%)	Calving Ease Dtrs (%)	Gestation Length (days)	Birth Wt. (kg)	200 Day Wt. (kg)	400 Day Wt. (kg)	600 Day Wt. (kg)	Mat. Cow Wt. (kg)	Milk (kg)	Scrotal Size (cm)	Days to Calving (days)	Carcase Wt. (kg)	Eye Muscle Area (sq.cm)	Rib Fat (mm)	Rump Fat (mm)	Retail Beef Yield (%)	IMF (%)
EBV	-0.8	3.5	-0.8	5.5	47	79	111	98	16	1.6	-1.5	62	1.5	0.8	1.1	0.2	0.6
Acc	48%	34%	82%	72%	66%	68%	71%	63%	48%	70%	29%	56%	49%	53%	52%	47%	53%

Another Nighthood son with a long, strong topline, big nuts and moderate birth weight.

Purchaser.....

Price.....

NAMPARA ANGUS - SALE BULLS 2023

Lot 59: Nampara S61

AMFU, NHFU, CAFU, DDFU

Born: 22.3.21
APR: SFN21S61

Sire: Coonamble Investment P58

Dam: Nampara K138

Mid December 2022 TransTasman Angus Cattle Evaluation



	Calving Ease Dir (%)	Calving Ease Dtrs (%)	Gestation Length (days)	Birth Wt. (kg)	200 Day Wt. (kg)	400 Day Wt. (kg)	600 Day Wt. (kg)	Mat. Cow Wt. (kg)	Milk (kg)	Scrotal Size (cm)	Days to Calving (days)	Carcase Wt. (kg)	Eye Muscle Area (sq.cm)	Rib Fat (mm)	Rump Fat (mm)	Retail Beef Yield (%)	IMF (%)
EBV	0.9	-2.0	-7.7	5.9	48	87	119	112	14	0.4	-3.2	68	6.6	-0.6	-1.4	1.0	0.6
Acc	54%	42%	83%	74%	70%	68%	72%	65%	54%	70%	35%	60%	53%	56%	56%	52%	55%

Three very stout bulls in this pen. This bull is just so easy to look at and struts around like a superstar. A very versatile bull with big nuts, plenty of scope and thickness.

Purchaser.....

Price.....

Lot 60: Nampara S32

AMFU, NHFU, CAFU, DDFU

Born: 6.3.21
APR: SFN21S32

Sire: LD Capitalist 316

Dam: Nampara Q115

Mid December 2022 TransTasman Angus Cattle Evaluation



	Calving Ease Dir (%)	Calving Ease Dtrs (%)	Gestation Length (days)	Birth Wt. (kg)	200 Day Wt. (kg)	400 Day Wt. (kg)	600 Day Wt. (kg)	Mat. Cow Wt. (kg)	Milk (kg)	Scrotal Size (cm)	Days to Calving (days)	Carcase Wt. (kg)	Eye Muscle Area (sq.cm)	Rib Fat (mm)	Rump Fat (mm)	Retail Beef Yield (%)	IMF (%)
EBV	4.6	7.3	-2.0	5.8	59	101	137	129	11	2.3	-1.4	82	4.7	-0.8	-0.7	0.7	-0.1
Acc	59%	50%	82%	73%	68%	67%	71%	67%	60%	71%	44%	62%	59%	60%	60%	57%	62%

Heifer's first calf

What a ripper!! We've had our eye on this bull for a while – so round, so stylish. Really like his growth, calving ease (Thankyou Capitalist) and check out his carcass weight figure at +82. Worth taking a second look at him.

Purchaser.....

Price.....

Lot 61: Nampara Capitalist S64

AMFU, NHFU, CAFU, DDFU

Born: 22.3.21
HBR: SFN21S64

Sire: LD Capitalist 316

Dam: Nampara N03

Mid December 2022 TransTasman Angus Cattle Evaluation



	Calving Ease Dir (%)	Calving Ease Dtrs (%)	Gestation Length (days)	Birth Wt. (kg)	200 Day Wt. (kg)	400 Day Wt. (kg)	600 Day Wt. (kg)	Mat. Cow Wt. (kg)	Milk (kg)	Scrotal Size (cm)	Days to Calving (days)	Carcase Wt. (kg)	Eye Muscle Area (sq.cm)	Rib Fat (mm)	Rump Fat (mm)	Retail Beef Yield (%)	IMF (%)
EBV	8.6	10.1	-7.3	2.7	50	89	118	99	16	2.6	-4.0	68	7.9	0.8	0.0	0.5	1.5
Acc	61%	52%	83%	75%	71%	70%	74%	69%	62%	72%	45%	64%	58%	61%	60%	58%	60%

If you missed out on the last one – here's another stonker! What a ball of muscle. Again, Capitalist in the mix and out of a donor in N03. This has really worked – calving ease in top 10% and birth weight at only +2.7. Lot 60 is full brother to the second top priced bull two years ago so we know this combination works.

Purchaser.....

Price.....

Lot 62: Nampara Powershift S29

AMFU, NHFU, CAFU, DDFU

Born: 5.3.21
HBR: SFN21S29

Sire: Texas Powershift P632

Dam: Nampara Jedda Q31

Mid December 2022 TransTasman Angus Cattle Evaluation



	Calving Ease Dir (%)	Calving Ease Dtrs (%)	Gestation Length (days)	Birth Wt. (kg)	200 Day Wt. (kg)	400 Day Wt. (kg)	600 Day Wt. (kg)	Mat. Cow Wt. (kg)	Milk (kg)	Scrotal Size (cm)	Days to Calving (days)	Carcase Wt. (kg)	Eye Muscle Area (sq.cm)	Rib Fat (mm)	Rump Fat (mm)	Retail Beef Yield (%)	IMF (%)
EBV	6.6	9.5	-3.9	2.6	54	93	128	109	13	1.5	-3.9	78	9.1	0.5	0.4	1.0	1.3
Acc	54%	43%	83%	74%	69%	68%	71%	65%	53%	71%	37%	59%	54%	57%	56%	53%	56%

Heifer's first calf, Used over heifers

Back on to the used bulls and another beautiful Powershift bull out of a Capitalist female to begin the pen. He moves like a cat this bull, carries himself proudly and has an outstanding spread of figures. This is the type of bull we are trying to produce more and more of – plenty of shape, softness, carcass, EMA and low birth weight without compromising on growth and temperament. Nampara will sell full possession and half share of semen and marketing rights.

Purchaser.....

Price.....

NAMPARA ANGUS - SALE BULLS 2023

Lot 63: Nampara S12

AMFU, NHFU, CAFU, DDFU

Born: 28.09.20
APR: SFN21S12

Sire: Baldrige Compass C041

Dam: Nampara Q24



Mid December 2022 TransTasman Angus Cattle Evaluation

	Calving Ease Dir (%)	Calving Ease Dtrs (%)	Gestation Length (days)	Birth Wt. (kg)	200 Day Wt. (kg)	400 Day Wt. (kg)	600 Day Wt. (kg)	Mat. Cow Wt. (kg)	Milk (kg)	Scrotal Size (cm)	Days to Calving (days)	Carcase Wt. (kg)	Eye Muscle Area (sq.cm)	Rib Fat (mm)	Rump Fat (mm)	Retail Beef Yield (%)	IMF (%)
EBV	3.8	1.7	-4.9	3.9	55	98	126	94	22	2.2	-4.3	71	6.0	0.2	0.3	0.2	2.4
Acc	59%	48%	83%	73%	69%	67%	70%	65%	56%	67%	36%	59%	54%	56%	56%	52%	56%

Heifer's first calf, Used over heifers

A Baldrige Compass son this time but a similar story to the last bull. Low birth weight, high 600 day, carcass and IMF. This bull is so long and with plenty of shape yet maintains his softness and mobility.

Purchaser.....

Price.....

Lot 64: Nampara S40

AMF, NH3%, CAF, DD3%

Born: 8.03.21
APR: SFN21S40

Sire: Texas Powershift P632

Dam: Nampara Q228



Mid December 2022 TransTasman Angus Cattle Evaluation

	Calving Ease Dir (%)	Calving Ease Dtrs (%)	Gestation Length (days)	Birth Wt. (kg)	200 Day Wt. (kg)	400 Day Wt. (kg)	600 Day Wt. (kg)	Mat. Cow Wt. (kg)	Milk (kg)	Scrotal Size (cm)	Days to Calving (days)	Carcase Wt. (kg)	Eye Muscle Area (sq.cm)	Rib Fat (mm)	Rump Fat (mm)	Retail Beef Yield (%)	IMF (%)
EBV	-0.5	3.8	-2.1	5.4	50	89	127	114	13	0.9	-3.2	79	10.0	-0.1	-0.6	1.4	1.1
Acc	50%	38%	82%	72%	65%	65%	71%	63%	46%	72%	33%	55%	50%	54%	54%	50%	51%

Heifer's first calf, Used over heifers

Could possibly be the best bull in the pen. Impressive carcass attributes on the TACE analysis – carcass weight, EMA and Retail Beef Yield. An appealing, long bull with shape.

Purchaser.....

Price.....

Lot 65: Nampara S183

AMFU, NHFU, CAFU, DD50%

Born: 2.04.21
APR: SFN21S183

Sire: Coonamble Investment P58

Dam: Nampara L5516



Mid December 2022 TransTasman Angus Cattle Evaluation

	Calving Ease Dir (%)	Calving Ease Dtrs (%)	Gestation Length (days)	Birth Wt. (kg)	200 Day Wt. (kg)	400 Day Wt. (kg)	600 Day Wt. (kg)	Mat. Cow Wt. (kg)	Milk (kg)	Scrotal Size (cm)	Days to Calving (days)	Carcase Wt. (kg)	Eye Muscle Area (sq.cm)	Rib Fat (mm)	Rump Fat (mm)	Retail Beef Yield (%)	IMF (%)
EBV	-1.6	0.9	-1.0	4.8	41	79	99	85	14	0.6	-1.2	58	7.6	0.8	1.1	1.0	0.9
Acc	47%	33%	82%	71%	65%	64%	69%	61%	47%	69%	28%	54%	47%	51%	51%	46%	46%

Used over heifers

Another good heifer bull option in Lot 65. Clean fronted, long bull by Investment.

Purchaser.....

Price.....

Lot 66: Nampara S8

AM3%, NH3%, CA3%, DD3%

Born: 1.03.21
APR: SFN21S8

Sire: Texas Powershift P632

Dam: Nampara Q200



Mid December 2022 TransTasman Angus Cattle Evaluation

	Calving Ease Dir (%)	Calving Ease Dtrs (%)	Gestation Length (days)	Birth Wt. (kg)	200 Day Wt. (kg)	400 Day Wt. (kg)	600 Day Wt. (kg)	Mat. Cow Wt. (kg)	Milk (kg)	Scrotal Size (cm)	Days to Calving (days)	Carcase Wt. (kg)	Eye Muscle Area (sq.cm)	Rib Fat (mm)	Rump Fat (mm)	Retail Beef Yield (%)	IMF (%)
EBV	6.1	7.2	-5.2	3.0	49	88	129	109	15	0.2	-2.3	78	4.0	2.1	1.9	-0.1	1.7
Acc	53%	42%	82%	72%	66%	66%	71%	64%	50%	72%	35%	57%	53%	56%	56%	52%	55%

Heifer's first calf, Used over heifers

These Powershifts keep blowing us away with their tremendous length, bone and shape. They are so easy on the eye and this bull is another excellent option for heifer or cow joining. Low birth weight, high 600 day, excellent carcass weight at +78, Rib and Rump fat and IMF. The complete package!

Purchaser.....

Price.....

NAMPARA ANGUS - SALE BULLS 2023

Lot 67: Nampara S57

AMFU, NHF, CAFU, DDF

Born: 22.03.21
APR: SFN21S57

Sire: Coonamble Investment P58

Dam: Nampara Glowing P166



Mid December 2022 TransTasman Angus Cattle Evaluation

	Calving Ease Dir (%)	Calving Ease Dtrs (%)	Gestation Length (days)	Birth Wt. (kg)	200 Day Wt. (kg)	400 Day Wt. (kg)	600 Day Wt. (kg)	Mat. Cow Wt. (kg)	Milk (kg)	Scrotal Size (cm)	Days to Calving (days)	Carcase Wt. (kg)	Eye Muscle Area (sq.cm)	Rib Fat (mm)	Rump Fat (mm)	Retail Beef Yield (%)	IMF (%)
EBV	-2.5	-2.1	-4.4	5.9	48	88	119	104	16	1.5	-2.1	66	9.0	-0.7	-0.6	1.3	0.8
Acc	46%	36%	58%	63%	63%	65%	71%	62%	45%	71%	31%	57%	49%	53%	53%	48%	49%

Used over cows

Easy on the eye Coonamble Investment son with plenty of EMA and Retail Beef Yield in the top 10% of the breed.

Purchaser.....

Price.....

Lot 68: Nampara Capitalist S24

AMFU, NHFU, CAFU, DDFU

Born: 4.03.21
HBR: SFN21S24

Sire: LD Capitalist 316

Dam: Nampara Graduate Q267



Mid December 2022 TransTasman Angus Cattle Evaluation

	Calving Ease Dir (%)	Calving Ease Dtrs (%)	Gestation Length (days)	Birth Wt. (kg)	200 Day Wt. (kg)	400 Day Wt. (kg)	600 Day Wt. (kg)	Mat. Cow Wt. (kg)	Milk (kg)	Scrotal Size (cm)	Days to Calving (days)	Carcase Wt. (kg)	Eye Muscle Area (sq.cm)	Rib Fat (mm)	Rump Fat (mm)	Retail Beef Yield (%)	IMF (%)
EBV	6.4	7.8	-3.5	4.0	48	85	106	95	16	2.0	-3.8	63	7.8	0.0	-0.2	1.0	0.5
Acc	59%	50%	82%	74%	70%	69%	72%	67%	59%	71%	44%	62%	57%	59%	59%	56%	58%

Heifer's first calf, Used over heifers

Balanced spread of figures and by the reliable calving ease king in LD Capitalist. Length from hip to pin – nice option.

Purchaser.....

Price.....

Lot 69: Nampara S98

AMFU, NHFU, CAFU, DDFU

Born: 25.03.21
APR: SFN21S98

Sire: Texas Powershift P632

Dam: Nampara J3317



Mid December 2022 TransTasman Angus Cattle Evaluation

	Calving Ease Dir (%)	Calving Ease Dtrs (%)	Gestation Length (days)	Birth Wt. (kg)	200 Day Wt. (kg)	400 Day Wt. (kg)	600 Day Wt. (kg)	Mat. Cow Wt. (kg)	Milk (kg)	Scrotal Size (cm)	Days to Calving (days)	Carcase Wt. (kg)	Eye Muscle Area (sq.cm)	Rib Fat (mm)	Rump Fat (mm)	Retail Beef Yield (%)	IMF (%)
EBV	5.7	8.9	-4.3	2.9	47	87	122	107	12	1.8	-1.1	71	6.4	0.5	0.5	0.5	1.6
Acc	48%	35%	82%	71%	63%	63%	69%	61%	42%	70%	30%	53%	47%	51%	51%	46%	47%

Used over heifers

Long and deep Powershift son. Suitable for heifers at +2.9 for birth weight and yet excellent growth. Not you're typical heifer bull option. Good bull.

Purchaser.....

Price.....

Lot 70: Nampara Investment S135

AMFU, NHFU, CAFU, DDFU

Born: 27.03.21
HBR: SFN21S135

Sire: Coonamble Investment P58

Dam: Nampara Valmai K88



Mid December 2022 TransTasman Angus Cattle Evaluation

	Calving Ease Dir (%)	Calving Ease Dtrs (%)	Gestation Length (days)	Birth Wt. (kg)	200 Day Wt. (kg)	400 Day Wt. (kg)	600 Day Wt. (kg)	Mat. Cow Wt. (kg)	Milk (kg)	Scrotal Size (cm)	Days to Calving (days)	Carcase Wt. (kg)	Eye Muscle Area (sq.cm)	Rib Fat (mm)	Rump Fat (mm)	Retail Beef Yield (%)	IMF (%)
EBV	-1.4	-0.3	-2.2	5.3	44	84	113	99	19	3.0	-3.6	60	8.8	-0.8	-1.3	1.3	0.7
Acc	53%	41%	68%	68%	67%	65%	65%	62%	56%	62%	34%	58%	55%	57%	57%	52%	58%

This is the start of our last mob of bulls, No real difference – just another mob. Lots of top line in this bull – a well shaped carcass bull with big scrotal at +3.0 and Retail Beef Yield at +1.3 – both in the top 10% of the breed.

Purchaser.....

Price.....

NAMPARA ANGUS - SALE BULLS 2023

Lot 71: Nampara S196

AMFU, NHFU, CAFU, DD5%

Born: 9.04.21
APR: SFN21S196

Sire: Texas Powershift P632

Dam: Nampara P12



Mid December 2022 TransTasman Angus Cattle Evaluation

	Calving Ease Dir (%)	Calving Ease Dtrs (%)	Gestation Length (days)	Birth Wt. (kg)	200 Day Wt. (kg)	400 Day Wt. (kg)	600 Day Wt. (kg)	Mat. Cow Wt. (kg)	Milk (kg)	Scrotal Size (cm)	Days to Calving (days)	Carcase Wt. (kg)	Eye Muscle Area (sq.cm)	Rib Fat (mm)	Rump Fat (mm)	Retail Beef Yield (%)	IMF (%)
EBV	5.1	5.6	-5.1	3.0	53	96	134	120	15	1.6	-4.2	82	9.0	-0.5	-0.9	1.1	1.8
Acc	50%	39%	62%	64%	63%	62%	62%	58%	49%	57%	33%	53%	50%	52%	52%	48%	52%

Take a good look at the spread of numbers on this Powershift bull – low birth weight, excellent 600 day, carcass at +82, retail beef yield and IMF coupled with calving ease. Just so easy to look at.

Purchaser.....

Price.....

Lot 72: Nampara S127

AMFU, NHFU, CAFU, DDFU

Born: 27.03.21
APR: SFN21S127

Sire: Stern 15815

Dam: Nampara M6023



Mid December 2022 TransTasman Angus Cattle Evaluation

	Calving Ease Dir (%)	Calving Ease Dtrs (%)	Gestation Length (days)	Birth Wt. (kg)	200 Day Wt. (kg)	400 Day Wt. (kg)	600 Day Wt. (kg)	Mat. Cow Wt. (kg)	Milk (kg)	Scrotal Size (cm)	Days to Calving (days)	Carcase Wt. (kg)	Eye Muscle Area (sq.cm)	Rib Fat (mm)	Rump Fat (mm)	Retail Beef Yield (%)	IMF (%)
EBV	-7.8	0.8	-2.5	7.8	46	91	119	126	14	2.3	-1.7	60	-0.1	0.6	0.9	0.0	-0.2
Acc	51%	38%	82%	72%	68%	68%	65%	61%	54%	60%	32%	55%	53%	55%	55%	49%	56%

Possibly one of the best looking bulls in the pen. Long, plenty of flank. A cow bull option.

Purchaser.....

Price.....

Lot 73: Nampara Powershift S38

AMFU, NHF, CAFU, DDFU

Born: 7.03.21
HBR: SFN21S38

Sire: Texas Powershift P632

Dam: Nampara Heaven Q205



Mid December 2022 TransTasman Angus Cattle Evaluation

	Calving Ease Dir (%)	Calving Ease Dtrs (%)	Gestation Length (days)	Birth Wt. (kg)	200 Day Wt. (kg)	400 Day Wt. (kg)	600 Day Wt. (kg)	Mat. Cow Wt. (kg)	Milk (kg)	Scrotal Size (cm)	Days to Calving (days)	Carcase Wt. (kg)	Eye Muscle Area (sq.cm)	Rib Fat (mm)	Rump Fat (mm)	Retail Beef Yield (%)	IMF (%)
EBV	-0.9	3.7	-3.3	5.4	54	97	136	129	12	1.9	-4.2	77	9.0	-0.4	-0.1	1.2	0.5
Acc	55%	43%	83%	73%	67%	64%	63%	59%	53%	60%	37%	55%	54%	56%	56%	52%	57%

Heifer's first calf

Out of a Millah Murrah Kingdom daughter, the carcass attributes of Powershift are evident in Lot 73. High 600 day, carcass weight and Retail Beef Yield, all in the top 20% of the breed.

Purchaser.....

Price.....

Lot 74: Nampara S238

AMFU, NHFU, CAFU, DDF

Born: 18.04.21
APR: SFN21S238

Sire: Texas Powershift P632

Dam: Nampara P132



Mid December 2022 TransTasman Angus Cattle Evaluation

	Calving Ease Dir (%)	Calving Ease Dtrs (%)	Gestation Length (days)	Birth Wt. (kg)	200 Day Wt. (kg)	400 Day Wt. (kg)	600 Day Wt. (kg)	Mat. Cow Wt. (kg)	Milk (kg)	Scrotal Size (cm)	Days to Calving (days)	Carcase Wt. (kg)	Eye Muscle Area (sq.cm)	Rib Fat (mm)	Rump Fat (mm)	Retail Beef Yield (%)	IMF (%)
EBV	-0.3	2.0	-3.7	6.0	63	111	158	163	7	2.5	-3.3	90	8.5	-2.0	-2.4	1.4	0.3
Acc	54%	42%	84%	75%	69%	71%	73%	66%	53%	72%	36%	60%	55%	57%	57%	53%	56%

Take a look at the 600 day weight on this guy! He's top 10% for 200, 400 and 600 day weight as well as carcass weight and retail beef yield. Big, long bull with plenty of expression.

Purchaser.....

Price.....

NAMPARA ANGUS - SALE BULLS 2023

Lot 75: Nampara Investment S121 AMFU, NHFU, CAFU, DDFU Born: 27.03.21
APR: SFNS121

Sire: Coonamble Investment P58

Dam: Nampara Daisy P243



Mid December 2022 TransTasman Angus Cattle Evaluation

	Calving Ease Dir (%)	Calving Ease Dtrs (%)	Gestation Length (days)	Birth Wt. (kg)	200 Day Wt. (kg)	400 Day Wt. (kg)	600 Day Wt. (kg)	Mat. Cow Wt. (kg)	Milk (kg)	Scrotal Size (cm)	Days to Calving (days)	Carcase Wt. (kg)	Eye Muscle Area (sq.cm)	Rib Fat (mm)	Rump Fat (mm)	Retail Beef Yield (%)	IMF (%)
EBV	-0.7	-0.4	-4.9	4.7	43	81	106	89	20	1.4	-4.2	63	8.6	0.0	0.2	1.1	1.1
Acc	51%	39%	83%	74%	69%	70%	72%	65%	51%	71%	33%	59%	52%	55%	55%	50%	52%

Another long, clean fronted bull going back to an old Wittalcoka female.

Purchaser.....

Price.....

Lot 76: Nampara S233 AMFU, NHFU, CAFU, DDFU Born: 16.04.21
APR: SFN21S233

Sire: Texas Horse Power N229

Dam: Nampara M6022



Mid December 2022 TransTasman Angus Cattle Evaluation

	Calving Ease Dir (%)	Calving Ease Dtrs (%)	Gestation Length (days)	Birth Wt. (kg)	200 Day Wt. (kg)	400 Day Wt. (kg)	600 Day Wt. (kg)	Mat. Cow Wt. (kg)	Milk (kg)	Scrotal Size (cm)	Days to Calving (days)	Carcase Wt. (kg)	Eye Muscle Area (sq.cm)	Rib Fat (mm)	Rump Fat (mm)	Retail Beef Yield (%)	IMF (%)
EBV	4.2	2.5	-1.5	4.6	53	92	124	116	11	1.9	0.6	71	7.5	1.8	2.5	0.1	1.1
Acc	46%	34%	63%	63%	63%	63%	69%	61%	48%	69%	28%	54%	49%	52%	52%	46%	54%

Excellent balance of figures again, this time by Horse Power. Birth weight low enough for heifers but with growth, EMA and carcass weight in addition to calving ease. A big, free moving bull with length.

Purchaser.....

Price.....

Lot 77: Nampara S108 AMFU, NHFU, CAFU, DDFU Born: 26.03.21
APR: SFN21S108

Sire: Kaharau Class Man 17-444

Dam: Nampara N41



Mid December 2022 TransTasman Angus Cattle Evaluation

	Calving Ease Dir (%)	Calving Ease Dtrs (%)	Gestation Length (days)	Birth Wt. (kg)	200 Day Wt. (kg)	400 Day Wt. (kg)	600 Day Wt. (kg)	Mat. Cow Wt. (kg)	Milk (kg)	Scrotal Size (cm)	Days to Calving (days)	Carcase Wt. (kg)	Eye Muscle Area (sq.cm)	Rib Fat (mm)	Rump Fat (mm)	Retail Beef Yield (%)	IMF (%)
EBV	2.5	-0.6	-7.2	5.6	47	88	117	116	7	1.5	-2.9	55	0.6	0.0	-0.5	0.2	1.1
Acc	52%	40%	83%	74%	68%	68%	73%	65%	52%	71%	34%	58%	52%	55%	55%	51%	53%

New Zealand genetics again in Class Man. Very quiet bull with length, bone and depth.

Purchaser.....

Price.....

Lot 78: Nampara Powershift S209 AMFU, NHFU, CAFU, DDFU Born: 13.04.21
HBR: SFN21S209

Sire: Texas Powershift P632

Dam: Nampara P131



Mid December 2022 TransTasman Angus Cattle Evaluation

	Calving Ease Dir (%)	Calving Ease Dtrs (%)	Gestation Length (days)	Birth Wt. (kg)	200 Day Wt. (kg)	400 Day Wt. (kg)	600 Day Wt. (kg)	Mat. Cow Wt. (kg)	Milk (kg)	Scrotal Size (cm)	Days to Calving (days)	Carcase Wt. (kg)	Eye Muscle Area (sq.cm)	Rib Fat (mm)	Rump Fat (mm)	Retail Beef Yield (%)	IMF (%)
EBV	3.2	6.0	-6.0	3.6	50	89	124	106	15	1.3	-3.9	70	7.9	1.5	2.4	0.7	0.4
Acc	54%	43%	83%	74%	70%	70%	73%	66%	53%	72%	37%	60%	54%	57%	57%	53%	56%

Easy bull to look at - roundness, length, shape. Out of an Atahua Freedom daughter combined with calving ease, low birth weight and carcass that Powershift brings to the table. This combination works.

Purchaser.....

Price.....

NAMPARA ANGUS - SALE BULLS 2023

Lot 79: Nampara Nighthood S167 AMFU, NHFU, CAFU, DDFU Born: 30.03.21
HBR: SFN21S167

Sire: Granite Ridge Nighthood N61

Dam: Nampara P01



Mid December 2022 TransTasman Angus Cattle Evaluation

	Calving Ease Dir (%)	Calving Ease Dtrs (%)	Gestation Length (days)	Birth Wt. (kg)	200 Day Wt. (kg)	400 Day Wt. (kg)	600 Day Wt. (kg)	Mat. Cow Wt. (kg)	Milk (kg)	Scrotal Size (cm)	Days to Calving (days)	Carcase Wt. (kg)	Eye Muscle Area (sq.cm)	Rib Fat (mm)	Rump Fat (mm)	Retail Beef Yield (%)	IMF (%)
EBV	0.7	3.1	-2.8	5.6	52	90	130	110	15	3.4	-5.0	71	5.9	0.4	1.0	0.7	0.3
Acc	53%	41%	83%	74%	68%	70%	73%	65%	50%	71%	33%	59%	51%	54%	54%	49%	51%

Consistency again with Nighthood and Freedom in the pedigree – shape and softness. Excellent 600 day weight and big scrotal.

Purchaser.....

Price.....

Lot 80: Nampara S162 AMFU, NHFU, CAFU, DDFU Born: 30.03.21
APR: SFN21S162

Sire: Granite Ridge Nighthood N61

Dam: Nampara P201



Mid December 2022 TransTasman Angus Cattle Evaluation

	Calving Ease Dir (%)	Calving Ease Dtrs (%)	Gestation Length (days)	Birth Wt. (kg)	200 Day Wt. (kg)	400 Day Wt. (kg)	600 Day Wt. (kg)	Mat. Cow Wt. (kg)	Milk (kg)	Scrotal Size (cm)	Days to Calving (days)	Carcase Wt. (kg)	Eye Muscle Area (sq.cm)	Rib Fat (mm)	Rump Fat (mm)	Retail Beef Yield (%)	IMF (%)
EBV	0.4	1.8	0.7	5.1	45	88	123	112	15	0.0	-1.3	76	0.1	0.6	1.1	0.4	0.2
Acc	49%	35%	82%	72%	67%	69%	72%	63%	48%	71%	28%	56%	49%	53%	52%	47%	53%

Half brother to the previous bull and not surprisingly we wrote the same description – shape and softness.

Purchaser.....

Price.....

Lot 81: Nampara Horse Power S207 AMFU, NHFU, CAFU, DDFU Born: 13.04.21
HBR: SFN21S207

Sire: Texas Horse Power N229

Dam: Nampara Heaven K08



Mid December 2022 TransTasman Angus Cattle Evaluation

	Calving Ease Dir (%)	Calving Ease Dtrs (%)	Gestation Length (days)	Birth Wt. (kg)	200 Day Wt. (kg)	400 Day Wt. (kg)	600 Day Wt. (kg)	Mat. Cow Wt. (kg)	Milk (kg)	Scrotal Size (cm)	Days to Calving (days)	Carcase Wt. (kg)	Eye Muscle Area (sq.cm)	Rib Fat (mm)	Rump Fat (mm)	Retail Beef Yield (%)	IMF (%)
EBV	1.3	-2.4	-4.9	5.3	53	93	124	119	15	2.4	-2.1	71	7.2	0.0	0.8	0.5	0.6
Acc	51%	40%	67%	74%	69%	70%	72%	64%	53%	69%	33%	59%	52%	55%	54%	49%	54%

Longer bull in S207 out of the reliable Heaven family.

Purchaser.....

Price.....

Lot 82: Nampara Class Man S77 AMFU, NHFU, CAFU, DDFU Born: 24.03.21
HBR: SFN21S77

Sire: Kaharau Class Man 17-444

Dam: Nampara Poppy P283



Mid December 2022 TransTasman Angus Cattle Evaluation

	Calving Ease Dir (%)	Calving Ease Dtrs (%)	Gestation Length (days)	Birth Wt. (kg)	200 Day Wt. (kg)	400 Day Wt. (kg)	600 Day Wt. (kg)	Mat. Cow Wt. (kg)	Milk (kg)	Scrotal Size (cm)	Days to Calving (days)	Carcase Wt. (kg)	Eye Muscle Area (sq.cm)	Rib Fat (mm)	Rump Fat (mm)	Retail Beef Yield (%)	IMF (%)
EBV	1.8	-0.5	-5.9	5.6	47	85	112	112	12	1.5	-2.5	56	1.1	-1.2	-2.1	0.2	1.6
Acc	46%	35%	82%	65%	67%	68%	71%	62%	48%	70%	31%	57%	50%	54%	53%	49%	50%

New Zealand influenced power bull at Lot 82. Bone and constitution with thickness.

Purchaser.....

Price.....

NAMPARA ANGUS - SALE BULLS 2023

Lot 83: Nampara Horse Power S215 AMFU, NHFU, CAFU, DDFU Born: 15.04.21
HBR: SFN21S215

Sire: Texas Horse Power N229

Dam: Wittalocka Paganini G103

Mid December 2022 TransTasman Angus Cattle Evaluation



	Calving Ease Dir (%)	Calving Ease Dtrs (%)	Gestation Length (days)	Birth Wt. (kg)	200 Day Wt. (kg)	400 Day Wt. (kg)	600 Day Wt. (kg)	Mat. Cow Wt. (kg)	Milk (kg)	Scrotal Size (cm)	Days to Calving (days)	Carcase Wt. (kg)	Eye Muscle Area (sq.cm)	Rib Fat (mm)	Rump Fat (mm)	Retail Beef Yield (%)	IMF (%)
EBV	1.6	-2.2	-1.4	5.3	50	84	109	106	11	1.7	-2.6	59	6.1	2.7	3.8	0.3	0.1
Acc	50%	38%	64%	74%	68%	68%	71%	64%	54%	67%	33%	58%	50%	54%	54%	49%	52%

Nice, neat, proud bull with extra frame and cover across the rib and rump. Going back to an old Wittalocka female.

Purchaser.....

Price.....

Lot 84: Nampara S253 AMFU, NHFU, CAFU, DDFU Born: 25.04.21
APR: SFN21S253

Sire: Nampara Capitalist Q13

Dam: Nampara Q140

Mid December 2022 TransTasman Angus Cattle Evaluation



	Calving Ease Dir (%)	Calving Ease Dtrs (%)	Gestation Length (days)	Birth Wt. (kg)	200 Day Wt. (kg)	400 Day Wt. (kg)	600 Day Wt. (kg)	Mat. Cow Wt. (kg)	Milk (kg)	Scrotal Size (cm)	Days to Calving (days)	Carcase Wt. (kg)	Eye Muscle Area (sq.cm)	Rib Fat (mm)	Rump Fat (mm)	Retail Beef Yield (%)	IMF (%)
EBV	6.3	5.8	-5.1	3.6	51	95	131	127	13	3.3	-2.2	75	5.8	-1.3	-2.3	0.8	1.5
Acc	45%	36%	56%	66%	62%	65%	69%	61%	46%	69%	31%	54%	48%	52%	51%	46%	48%

Heifer's first calf

Very quiet bull out of a heifer and with a really tidy set of figures. Birth to growth rate is excellent as is carcass weight and retail beef yield. Slick skin, smooth and long bodied.

Purchaser.....

Price.....

Lot 85: Nampara Nighthood S169 AMFU, NHFU, CAFU, DDFU Born: 31.03.21
HBR: SFN21S169

Sire: Granite Ridge Nighthood N61

Dam: Nampara Sally N254

Mid December 2022 TransTasman Angus Cattle Evaluation



	Calving Ease Dir (%)	Calving Ease Dtrs (%)	Gestation Length (days)	Birth Wt. (kg)	200 Day Wt. (kg)	400 Day Wt. (kg)	600 Day Wt. (kg)	Mat. Cow Wt. (kg)	Milk (kg)	Scrotal Size (cm)	Days to Calving (days)	Carcase Wt. (kg)	Eye Muscle Area (sq.cm)	Rib Fat (mm)	Rump Fat (mm)	Retail Beef Yield (%)	IMF (%)
EBV	-0.7	2.9	-2.1	6.1	54	91	131	118	18	2.4	-4.8	75	5.6	-0.4	-0.6	0.8	0.8
Acc	51%	39%	82%	73%	68%	69%	66%	60%	50%	56%	30%	56%	47%	50%	50%	46%	50%

Another very quiet Nighthood bull - Carcass and growth with shape. Out of a dam going back to the great Te Mania Berkley. An eye catching bull.

Purchaser.....

Price.....

Lot 86: Nampara Investment S67 AMFU, NHFU, CAFU, DDFU Born: 22.03.21
HBR: SFN21S67

Sire: Coonamble Investment P58

Dam: Nampara P183

Mid December 2022 TransTasman Angus Cattle Evaluation



	Calving Ease Dir (%)	Calving Ease Dtrs (%)	Gestation Length (days)	Birth Wt. (kg)	200 Day Wt. (kg)	400 Day Wt. (kg)	600 Day Wt. (kg)	Mat. Cow Wt. (kg)	Milk (kg)	Scrotal Size (cm)	Days to Calving (days)	Carcase Wt. (kg)	Eye Muscle Area (sq.cm)	Rib Fat (mm)	Rump Fat (mm)	Retail Beef Yield (%)	IMF (%)
EBV	-2.3	-2.2	-7.3	6.2	53	96	131	122	16	2.2	-4.6	70	8.7	-0.9	-1.3	1.3	0.3
Acc	54%	43%	83%	74%	69%	70%	72%	65%	53%	71%	37%	60%	54%	57%	57%	52%	56%

Ditto again on this bull. Very quiet Investment son whose Retail Beef Yield is in the top 10% for the breed.

Purchaser.....

Price.....

NAMPARA ANGUS - SALE BULLS 2023

Lot 87: Nampara S198 AMFU, NHFU, CAFU, DDFU Born: 11.04.21
APR: SFN21S198

Sire: Texas Horse Power N229

Dam: Nampara L5513



Mid December 2022 TransTasman Angus Cattle Evaluation

	Calving Ease Dir (%)	Calving Ease Dtrs (%)	Gestation Length (days)	Birth Wt. (kg)	200 Day Wt. (kg)	400 Day Wt. (kg)	600 Day Wt. (kg)	Mat. Cow Wt. (kg)	Milk (kg)	Scrotal Size (cm)	Days to Calving (days)	Carcase Wt. (kg)	Eye Muscle Area (sq.cm)	Rib Fat (mm)	Rump Fat (mm)	Retail Beef Yield (%)	IMF (%)
EBV	-0.1	2.1	-2.1	5.8	50	85	118	117	9	1.2	0.4	66	2.4	0.1	0.4	0.2	-0.1
Acc	48%	35%	63%	72%	65%	64%	70%	63%	48%	69%	29%	54%	49%	52%	52%	46%	53%

Long clean bull by Horse Power. Feed efficiency in the top 14% of the breed.

Purchaser.....

Price.....

Lot 88: Nampara S298 AMFU, NHFU, CAFU, DDFU Born: 16.05.21
HBR: SFN21S298

Sire: Texas Tour of Duty L608

Dam: Nampara Valmai M18



Mid December 2022 TransTasman Angus Cattle Evaluation

	Calving Ease Dir (%)	Calving Ease Dtrs (%)	Gestation Length (days)	Birth Wt. (kg)	200 Day Wt. (kg)	400 Day Wt. (kg)	600 Day Wt. (kg)	Mat. Cow Wt. (kg)	Milk (kg)	Scrotal Size (cm)	Days to Calving (days)	Carcase Wt. (kg)	Eye Muscle Area (sq.cm)	Rib Fat (mm)	Rump Fat (mm)	Retail Beef Yield (%)	IMF (%)
EBV	2.7	1.7	-5.6	4.4	47	84	118	110	17	2.4	-4.1	65	5.4	-1.1	-1.4	0.8	1.6
Acc	48%	38%	60%	60%	58%	57%	59%	55%	50%	54%	33%	51%	48%	50%	50%	46%	50%

Younger bull, May calf, but still with frame and a clean front. Could be a heifer bull option with moderate birth and calving ease.

Purchaser.....

Price.....

Lot 89: Nampara Investment S173 AMFU, NHFU, CAFU, DDFU Born: 31.03.21
HBR: SFN21S173

Sire: Coonamble Investment P58

Dam: Nampara Valmai K88



Mid December 2022 TransTasman Angus Cattle Evaluation

	Calving Ease Dir (%)	Calving Ease Dtrs (%)	Gestation Length (days)	Birth Wt. (kg)	200 Day Wt. (kg)	400 Day Wt. (kg)	600 Day Wt. (kg)	Mat. Cow Wt. (kg)	Milk (kg)	Scrotal Size (cm)	Days to Calving (days)	Carcase Wt. (kg)	Eye Muscle Area (sq.cm)	Rib Fat (mm)	Rump Fat (mm)	Retail Beef Yield (%)	IMF (%)
EBV	-4.4	-1.5	-1.8	6.4	46	86	118	106	18	3.0	-3.6	62	8.9	-1.0	-1.5	1.4	0.5
Acc	53%	41%	68%	72%	67%	65%	65%	62%	56%	62%	34%	58%	55%	57%	57%	52%	58%

Roundness and length in this Investment son who is again out of a Atahua Freedom daughter. Big scrotal, good EMA and excellent Retail Beef Yield in the top 6% of the breed.

Purchaser.....

Price.....

Lot 90: Nampara S278 AMFU, NHFU, CAFU, DDFU Born: 9.05.21
APR: SFN21S278

Sire: Nampara P26

Dam: Nampara L155



Mid December 2022 TransTasman Angus Cattle Evaluation

	Calving Ease Dir (%)	Calving Ease Dtrs (%)	Gestation Length (days)	Birth Wt. (kg)	200 Day Wt. (kg)	400 Day Wt. (kg)	600 Day Wt. (kg)	Mat. Cow Wt. (kg)	Milk (kg)	Scrotal Size (cm)	Days to Calving (days)	Carcase Wt. (kg)	Eye Muscle Area (sq.cm)	Rib Fat (mm)	Rump Fat (mm)	Retail Beef Yield (%)	IMF (%)
EBV	-6.3	-12.5	-1.7	4.9	48	85	113	99	16	2.2	-3.8	67	7.0	-1.3	-1.4	0.8	1.8
Acc	49%	40%	64%	72%	66%	65%	70%	63%	52%	69%	34%	57%	49%	53%	53%	48%	52%

Plenty of power and grunt in this bull but still with a moderate birth weight.

Purchaser.....

Price.....

NAMPARA ANGUS - SALE BULLS 2023

Lot 91: Nampara Nation S240 AMFU, NHFU, CAFU, DDFU Born: 18.04.21
HBR: SFN21S240

Sire: Ben Nevis Nation N120

Dam: Nampara Panda Q137

Mid December 2022 TransTasman Angus Cattle Evaluation



	Calving Ease Dir (%)	Calving Ease Dtrs (%)	Gestation Length (days)	Birth Wt. (kg)	200 Day Wt. (kg)	400 Day Wt. (kg)	600 Day Wt. (kg)	Mat. Cow Wt. (kg)	Milk (kg)	Scrotal Size (cm)	Days to Calving (days)	Carcase Wt. (kg)	Eye Muscle Area (sq.cm)	Rib Fat (mm)	Rump Fat (mm)	Retail Beef Yield (%)	IMF (%)
EBV	-1.2	-2.4	-1.8	5.2	43	83	110	96	18	2.0	-4.1	58	5.4	-0.5	-0.6	1.0	0.8
Acc	48%	36%	60%	70%	66%	68%	71%	63%	48%	70%	31%	57%	50%	53%	53%	48%	51%

Heifer's first calf

Big, long bull with a little more frame out of a heifer.

Purchaser.....

Price.....

Lot 92: Nampara Capitalist S176 AMFU, NHFU, CAFU, DDFU Born: 1.04.21
HBR: SFN21S176

Sire: LD Capitalist 316

Dam: Nampara Arrogance Q194

Mid December 2022 TransTasman Angus Cattle Evaluation



	Calving Ease Dir (%)	Calving Ease Dtrs (%)	Gestation Length (days)	Birth Wt. (kg)	200 Day Wt. (kg)	400 Day Wt. (kg)	600 Day Wt. (kg)	Mat. Cow Wt. (kg)	Milk (kg)	Scrotal Size (cm)	Days to Calving (days)	Carcase Wt. (kg)	Eye Muscle Area (sq.cm)	Rib Fat (mm)	Rump Fat (mm)	Retail Beef Yield (%)	IMF (%)
EBV	5.1	5.8	-2.3	5.5	56	98	129	125	14	1.4	-2.6	78	7.7	-1.1	-1.6	0.9	0.8
Acc	61%	52%	83%	74%	70%	71%	72%	67%	61%	71%	45%	63%	59%	61%	61%	58%	62%

Heifer's first calf

A Capitalist late in the catalogue and once again he has put some punch in them with plenty of shape and barrel to this bull. Added punch on the dam's side as he's out of a Nampara Liberty daughter. Consistent and reliable pedigree – high growth and carcase.

Purchaser.....

Price.....

Lot 93: Nampara S174 AM3%, NHF, CA28%, DDF Born: 1.04.21
APR: SFN21S174

Sire: Granite Ridge Nighthood N61

Dam: Nampara P66

Mid December 2022 TransTasman Angus Cattle Evaluation



	Calving Ease Dir (%)	Calving Ease Dtrs (%)	Gestation Length (days)	Birth Wt. (kg)	200 Day Wt. (kg)	400 Day Wt. (kg)	600 Day Wt. (kg)	Mat. Cow Wt. (kg)	Milk (kg)	Scrotal Size (cm)	Days to Calving (days)	Carcase Wt. (kg)	Eye Muscle Area (sq.cm)	Rib Fat (mm)	Rump Fat (mm)	Retail Beef Yield (%)	IMF (%)
EBV	1.4	3.5	-0.6	4.8	47	82	120	99	16	2.0	-3.0	69	5.9	-0.1	0.7	0.8	0.3
Acc	48%	34%	81%	71%	65%	67%	70%	62%	43%	70%	29%	55%	47%	51%	50%	45%	46%

Another Nighthood out of a Freedom and it's worked again here. Longer bull with muscle expression. Moderate birth, good growth.

Purchaser.....

Price.....

Lot 94: Nampara S163 AMFU, NHFU, CAFU, DD50% Born: 30.03.21
APR: SFN21S163

Sire: Granite Ridge Nighthood N61

Dam: Nampara P38

Mid December 2022 TransTasman Angus Cattle Evaluation



	Calving Ease Dir (%)	Calving Ease Dtrs (%)	Gestation Length (days)	Birth Wt. (kg)	200 Day Wt. (kg)	400 Day Wt. (kg)	600 Day Wt. (kg)	Mat. Cow Wt. (kg)	Milk (kg)	Scrotal Size (cm)	Days to Calving (days)	Carcase Wt. (kg)	Eye Muscle Area (sq.cm)	Rib Fat (mm)	Rump Fat (mm)	Retail Beef Yield (%)	IMF (%)
EBV	2.9	5.2	-0.5	3.4	45	79	111	81	16	3.3	-2.3	61	5.5	1.2	2.0	0.3	1.2
Acc	46%	32%	81%	70%	63%	66%	69%	60%	40%	69%	27%	53%	44%	48%	48%	43%	44%

Long bull with plenty of shape. Low birthweight and calving ease– could be heifer bull option.

Purchaser.....

Price.....

NAMPARA ANGUS - SALE BULLS 2023

Lot 95: Nampara S283 AM6%, NH6%, CA6%, DD6% **Born: 10.05.21**
COM: SFN21S283

Sire: Texas Tour of Duty L608

Dam: Nampara J3322

Commercial bull who is only a May born calf. A bull with plenty of thickness and a deep rear end.

Purchaser.....

Price.....

Lot 96: Nampara S92 AM6%, NH6%, CAF, DDC **Born: 24.03.21**
APR: SFN21S92

Sire: Kaharau Class Man 17-444

Dam: Nampara P47



Mid December 2022 TransTasman Angus Cattle Evaluation

	Calving Ease Dir (%)	Calving Ease Dtrs (%)	Gestation Length (days)	Birth Wt. (kg)	200 Day Wt. (kg)	400 Day Wt. (kg)	600 Day Wt. (kg)	Mat. Cow Wt. (kg)	Milk (kg)	Scrotal Size (cm)	Days to Calving (days)	Carcase Wt. (kg)	Eye Muscle Area (sq.cm)	Rib Fat (mm)	Rump Fat (mm)	Retail Beef Yield (%)	IMF (%)
EBV	2.9	3.2	-4.6	4.3	41	77	99	90	9	1.5	-0.7	48	1.5	1.4	1.3	-0.2	1.5
Acc	45%	31%	82%	70%	63%	66%	70%	61%	39%	70%	28%	53%	46%	50%	49%	45%	45%

Thickness and grunt combined with softness. Lower birth weight and calving ease on this Class Man bull. There's some grunt in him.

Purchaser.....

Price.....

Lot 97: Nampara S275 AMFU, NHFU, CAFU, DDFU **Born: 9.05.21**
APR: SFN21S275

Sire: Ben Nevis Nation N120

Dam: Nampara P13



Mid December 2022 TransTasman Angus Cattle Evaluation

	Calving Ease Dir (%)	Calving Ease Dtrs (%)	Gestation Length (days)	Birth Wt. (kg)	200 Day Wt. (kg)	400 Day Wt. (kg)	600 Day Wt. (kg)	Mat. Cow Wt. (kg)	Milk (kg)	Scrotal Size (cm)	Days to Calving (days)	Carcase Wt. (kg)	Eye Muscle Area (sq.cm)	Rib Fat (mm)	Rump Fat (mm)	Retail Beef Yield (%)	IMF (%)
EBV	2.0	-4.1	-3.7	3.9	48	92	119	98	20	2.7	-4.0	73	4.2	-2.6	-2.8	0.8	1.6
Acc	47%	36%	59%	70%	67%	68%	71%	63%	48%	70%	30%	57%	48%	52%	52%	47%	48%

Beautifully free-moving bull with spring of rib and soft skin. Tight sheath and clean through the front. Could be a heifer bull option.

Purchaser.....

Price.....

Lot 98: Nampara Nation S247 AMFU, NHFU, CAFU, DDFU **Born: 23.04.21**
HBR: SFN21S247

Sire: Ben Nevis Nation N120

Dam: Nampara Jedda P20



Mid December 2022 TransTasman Angus Cattle Evaluation

	Calving Ease Dir (%)	Calving Ease Dtrs (%)	Gestation Length (days)	Birth Wt. (kg)	200 Day Wt. (kg)	400 Day Wt. (kg)	600 Day Wt. (kg)	Mat. Cow Wt. (kg)	Milk (kg)	Scrotal Size (cm)	Days to Calving (days)	Carcase Wt. (kg)	Eye Muscle Area (sq.cm)	Rib Fat (mm)	Rump Fat (mm)	Retail Beef Yield (%)	IMF (%)
EBV	-0.3	-1.6	-2.5	5.0	43	78	113	95	16	2.4	-4.0	59	5.1	-0.8	-0.7	1.1	0.6
Acc	50%	39%	60%	72%	66%	68%	69%	62%	49%	65%	31%	57%	49%	52%	51%	47%	52%

Out of a young female who has an outstanding calf at foot this year. This is a nicely put together bull again with a clean front end.

Purchaser.....

Price.....

NAMPARA ANGUS - SALE BULLS 2023

Lot 99: Nampara S212 AMFU, NHFU, CAFU, DDFU Born: 14.04.21
HAPR: SFN21S212

Sire: Texas Powershift P632

Dam: Nampara M108



Mid December 2022 TransTasman Angus Cattle Evaluation

	Calving Ease Dir (%)	Calving Ease Dtrs (%)	Gestation Length (days)	Birth Wt. (kg)	200 Day Wt. (kg)	400 Day Wt. (kg)	600 Day Wt. (kg)	Mat. Cow Wt. (kg)	Milk (kg)	Scrotal Size (cm)	Days to Calving (days)	Carcase Wt. (kg)	Eye Muscle Area (sq.cm)	Rib Fat (mm)	Rump Fat (mm)	Retail Beef Yield (%)	IMF (%)
EBV	5.5	8.4	-6.6	2.9	50	86	120	109	14	1.2	-5.0	70	5.8	2.3	2.5	0.3	1.4
Acc	53%	41%	83%	75%	70%	71%	73%	66%	53%	73%	35%	60%	53%	56%	56%	51%	53%

Not too many Powershifts left in the sale but here's another one so true to type – low birth weight, calving ease and rib and rump fat. A ball of muscle with some length. Very easy bull to look at.

Purchaser.....

Price.....

Lot 100: Nampara S87 AMFU, NHFU, CAFU, DDFU Born: 24.03.21
APR: SFN21S87

Sire: Coonamble Investment P58

Dam: Nampara P229



Mid December 2022 TransTasman Angus Cattle Evaluation

	Calving Ease Dir (%)	Calving Ease Dtrs (%)	Gestation Length (days)	Birth Wt. (kg)	200 Day Wt. (kg)	400 Day Wt. (kg)	600 Day Wt. (kg)	Mat. Cow Wt. (kg)	Milk (kg)	Scrotal Size (cm)	Days to Calving (days)	Carcase Wt. (kg)	Eye Muscle Area (sq.cm)	Rib Fat (mm)	Rump Fat (mm)	Retail Beef Yield (%)	IMF (%)
EBV	2.1	1.0	-6.4	3.8	41	82	103	90	19	1.7	-5.3	63	7.3	-1.0	-1.0	1.4	0.5
Acc	56%	44%	82%	72%	68%	68%	66%	60%	51%	59%	34%	57%	53%	54%	54%	49%	55%

Despite being one of the last lots in the sale, this is an impressive thick, round and deep bull with low birth weight and retail beef yield in the top 6% of the breed.

Purchaser.....

Price.....

Lot 101: Nampara S93 AMFU, NHFU, CAFU, DDFU Born: 25.03.21
APR: SFN21S93

Sire: Kaharau Class Man 17-444

Dam: Nampara N163



Mid December 2022 TransTasman Angus Cattle Evaluation

	Calving Ease Dir (%)	Calving Ease Dtrs (%)	Gestation Length (days)	Birth Wt. (kg)	200 Day Wt. (kg)	400 Day Wt. (kg)	600 Day Wt. (kg)	Mat. Cow Wt. (kg)	Milk (kg)	Scrotal Size (cm)	Days to Calving (days)	Carcase Wt. (kg)	Eye Muscle Area (sq.cm)	Rib Fat (mm)	Rump Fat (mm)	Retail Beef Yield (%)	IMF (%)
EBV	1.4	-1.9	-6.4	5.3	46	83	112	102	13	1.7	-3.6	61	5.0	0.3	-0.2	0.3	1.7
Acc	51%	39%	82%	74%	68%	70%	72%	65%	48%	71%	33%	58%	51%	54%	54%	49%	51%

Well rounded Kiwi bull with length out of a dam who goes back to Te Mania Gaskin.

Purchaser.....

Price.....

Lot 102: Nampara S137 AMF, NHF, CAF, DDF Born: 27.03.21
APR: SFN21S137

Sire: Coonamble Investment P58

Dam: Nampara L5519



Mid December 2022 TransTasman Angus Cattle Evaluation

	Calving Ease Dir (%)	Calving Ease Dtrs (%)	Gestation Length (days)	Birth Wt. (kg)	200 Day Wt. (kg)	400 Day Wt. (kg)	600 Day Wt. (kg)	Mat. Cow Wt. (kg)	Milk (kg)	Scrotal Size (cm)	Days to Calving (days)	Carcase Wt. (kg)	Eye Muscle Area (sq.cm)	Rib Fat (mm)	Rump Fat (mm)	Retail Beef Yield (%)	IMF (%)
EBV	1.7	1.3	-2.6	3.6	38	73	100	64	17	0.0	-0.4	56	7.1	1.3	2.6	0.6	1.0
Acc	50%	38%	82%	71%	69%	67%	70%	63%	56%	70%	30%	56%	55%	57%	57%	49%	60%

Only two Coonamble Investment bulls left in the sale. Really balanced set of figures including rib and rump fat. Long bull with a smooth front and plenty of muscle.

Purchaser.....

Price.....

NAMPARA ANGUS - SALE BULLS 2023

Lot 103: Nampara S268 AMF, NHF, CAC, DDF Born: 7.05.21
APR: SFN21S268

Sire: Nampara P26

Dam: Nampara L5505



Mid December 2022 TransTasman Angus Cattle Evaluation

	Calving Ease Dir (%)	Calving Ease Dtrs (%)	Gestation Length (days)	Birth Wt. (kg)	200 Day Wt. (kg)	400 Day Wt. (kg)	600 Day Wt. (kg)	Mat. Cow Wt. (kg)	Milk (kg)	Scrotal Size (cm)	Days to Calving (days)	Carcase Wt. (kg)	Eye Muscle Area (sq.cm)	Rib Fat (mm)	Rump Fat (mm)	Retail Beef Yield (%)	IMF (%)
EBV	-1.2	0.6	-2.7	3.4	41	78	96	77	16	1.8	-1.3	56	6.1	-0.1	0.3	0.4	1.7
Acc	41%	28%	54%	69%	63%	64%	69%	59%	44%	69%	25%	51%	43%	47%	47%	41%	42%

A low birth weight option late in the day. Calving ease bull who is free moving and again very quiet.

Purchaser.....

Price.....

Lot 104: Nampara S218 AMFU, NHFU, CAFU, DDFU Born: 15.04.21
APR: SFN21S218

Sire: Coonamble Investment P58

Dam: Nampara J3303



Mid December 2022 TransTasman Angus Cattle Evaluation

	Calving Ease Dir (%)	Calving Ease Dtrs (%)	Gestation Length (days)	Birth Wt. (kg)	200 Day Wt. (kg)	400 Day Wt. (kg)	600 Day Wt. (kg)	Mat. Cow Wt. (kg)	Milk (kg)	Scrotal Size (cm)	Days to Calving (days)	Carcase Wt. (kg)	Eye Muscle Area (sq.cm)	Rib Fat (mm)	Rump Fat (mm)	Retail Beef Yield (%)	IMF (%)
EBV	1.8	3.2	-4.7	4.4	38	70	98	91	12	0.7	-0.7	51	4.9	-0.6	-1.5	1.2	0.5
Acc	48%	35%	82%	72%	65%	67%	64%	59%	50%	71%	29%	54%	51%	54%	54%	48%	55%

Calving ease, low birth weight. Long, smooth bull with retail beef yield in the top 10% of the breed.

Purchaser.....

Price.....

Lot 105: Nampara S160 AMFU, NHFU, CAFU, DDFU Born: 29.03.21
APR: SFN21S160

Sire: Kaharau Class Man 17-444

Dam: Nampara N117



Mid December 2022 TransTasman Angus Cattle Evaluation

	Calving Ease Dir (%)	Calving Ease Dtrs (%)	Gestation Length (days)	Birth Wt. (kg)	200 Day Wt. (kg)	400 Day Wt. (kg)	600 Day Wt. (kg)	Mat. Cow Wt. (kg)	Milk (kg)	Scrotal Size (cm)	Days to Calving (days)	Carcase Wt. (kg)	Eye Muscle Area (sq.cm)	Rib Fat (mm)	Rump Fat (mm)	Retail Beef Yield (%)	IMF (%)
EBV	-3.0	-3.0	-3.9	6.9	49	89	122	125	10	1.8	-4.0	57	1.9	-0.2	-0.6	0.3	0.6
Acc	52%	40%	83%	74%	70%	71%	74%	66%	53%	72%	35%	60%	53%	56%	56%	52%	54%

A round, long bull to finish off the sale out of a Millah Murrah Kingdom female.

Purchaser.....

Price.....

A Note on Semen Testing

As with any species, fertility can be a problem. This is why Nampara semen test ALL sale bulls.

Bulls are examined by Nationwide Artificial Breeders for abnormalities including warts, penile fraenum and erection issues, as they undergo a physical examination of external genitalia and conformation.

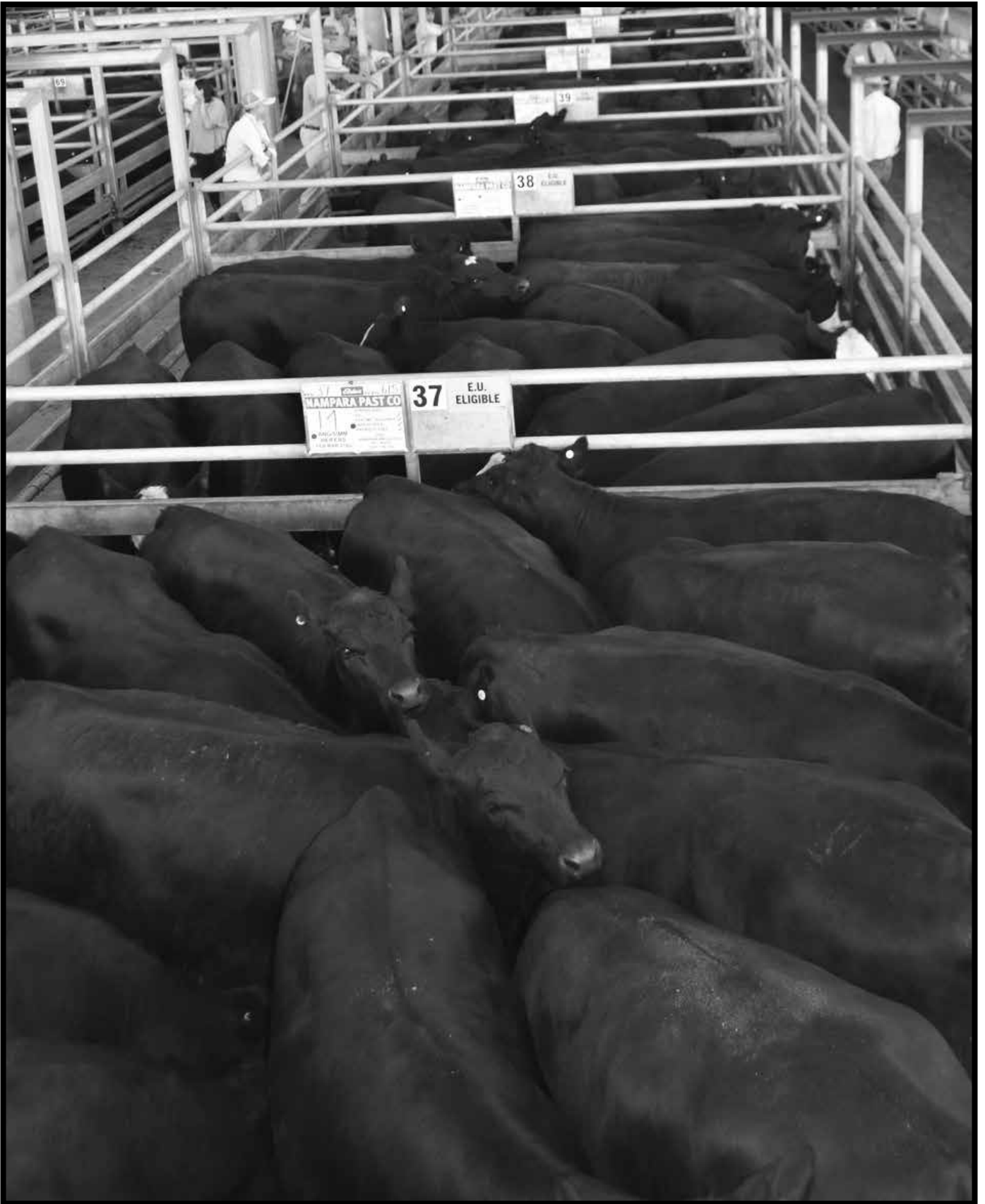
The crush side test involves analysis of spermatozoa for motility, concentration, morphology and semen infections. This information provides testicular and epididymal function which helps predict the potential fertility of the bull. Only bulls that pass are certified and made available for sale.

A satisfactory result gives a high chance of fertility HOWEVER, please observe your new bull in action when first in service, complete with a thrust!! Stress of an animal can also affect fertility. Look after your bull! The most conscious producer will semen test all herd bulls, every year, before joining.

For any questions contact Drew Pickford, Nationwide Artificial Breeders Pty Ltd.

Ph: 0428 925 255





Nampara PTIC vendor-bred heifers topped the Feature Female sale at Naracoorte to sell to \$3540 per head. At the Western Victoria Livestock Exchange Female Sale Nampara-blood PTIC heifers topped at \$4000.

A total of 460 heifers joined to Nampara bulls averaged \$3320 in January 2023.

NAMPARA ANGUS - BUYER'S INSTRUCTION SLIP

This slip must be completed by the purchaser and handed to the selling agent prior to leaving the sale.
No verbal instructions will be accepted.

Name:

Telephone Number:

Mobile Number:

Fax Number:

Address:

State:

Postcode:

Lot/s Purchased:

Do you wish to have the Angus Society of Australia registration of your bull/s transferred into your name?

Yes

No

Society ID No:

Delivery Instructions (including directions & roadside number):

Please include mud map for delivery

Date:

Signature:





Nampara Freightliner R11 sold to Camp Creek Partnership for \$32,000 at our 2022 sale.



Nampara Liberty R185 sold to the Smith family, "Shady Grove" for \$32,000 at our 2022 sale.

NAMPARA PAST CO
13
HEIFERS
PTIC
ANGUS
To Nampara Past Co
Angus B
14
NAMPARA PAST CO
15
HEIFERS
PTIC
ANGUS
Rising 2 yr old.
Bulls in 20/5/15.
Bulls out 22/7/15.
To Nampara Past Co
Angus B

74