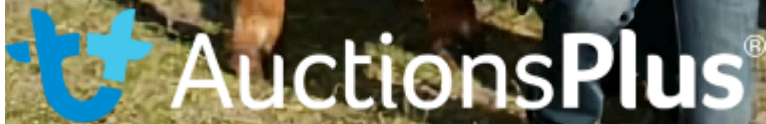




2023 SALE CATALOGUE
FRIDAY 3RD MARCH
1PM (AWST)
AUCTIONS PLUS



James and Casey Morris
Morrisvale Limousin Stud
507 The Pass Rd - Narrikup - WA - 6326



James – 0404 030 137
Casey – 0439 108 606
E – morrisvale@westnet.com.au

Welcome to the **INAUGURAL MORRISVALE LIMOUSIN BULL SALE 2023**. Its with great pride and passion whilst entering our 25th year of breeding, that we offer this outstanding line up of quality bulls. As you look through the catalogue, you will see sires that have been selected for you the commercial or stud producer. The bulls vary in ages from 2 year olds down too 13 month old sires and have different breeding objectives.

Morrisvale last year sold 3 yearlings at the Elders Inaugural Mt Barker Bull Sale and had great results with 100% clearance and stong avg of \$7500. After the sale more yearlings where snapped up quickly. We got thinking, and with the help of Tony Douglass from AWN we have put together this strong catalogue of bulls as an AUCTION Plus only sale. **We will be having a field day on property at 507 The Pass Rd Narrikup, Thursday the 23rd February between 1-4pm (after the Mt Barker Trade Sale)** so people can view and inspect the bulls before sale day.

Morrisvale consists of roughly 50 stud breeding females, and 30-50 embryos are being implanted each year to give us a good selection. We source genetics from mainly Canada and America whilst purchasing walking sires and embryos from Australia . Our herd is prodominatley polled with more each year becoming Homo Polled. We have a few black cows and are slowly devoloping the m as well, however we don't want to loose the limousin characteristics so are very selective in what we keep and use. This catalouge we have 2 black bulls full of power and softness including 1 that has been DNA tested Homo Black.

Morrisvale pride themselves on having sound quality stock that are DOCILE, plenty of power and grunt, softness for finishing, structal correctness, deep bodied and clean fronted. The commerical calves are well suited and sourced buy buyers for the WA feedlot market.

The Morrisvale herd are run under commerical conditions so we know that they will perform when you purchase them. The weaner bulls and heifers are placed on a silage and grain ration diet from when they are weaned for 2-3mths each season to set their rumen up for the future. The herd is well cared for with annaul vaccinations, Multimin Evolution, Long acting selenium and worm drenching. All calves are DNA tested in a package that consists of parent verifaction, polled stauts, colour, muscle genes, meat tenderness , protoporhyria, and are BVDV free.

In 2023 we are super excited for the calving season with 90% of the gentics going to be embryos or AI as the season dicated great results.

Please enjoy the bulls and feel free to contact us at anytime to discuss your needs, where more then happy to have a yarn. If you cant make the field day please contact us and we can show you through at another time. All the bulls will be semen tested and ready for work in the 2023 breeding season. **All bulls come with a 500km travel rebate and we will deliver after the sale.**

LOT 1

MORRISVALE SNEAKY

D.O.B: 06/02/2021

IDENT: MRJPS5


Homo Polled bull that is ideally suited to heifers but with high 200-day growth for WA conditions. Sound footed and stands over a lot of ground. Deep girthed and soft as butter. He was used over heifers at Morrisvale in 2022, by the imported Canadian sire RPY Payne’s Cracker, whose semen is now unavailable. Weighed 815kg on 2/2/2023. Scrotal 43cm



Sire: [RPY PAYNES CRACKER 17E \(PP, R, AA\)](#)

Animal: [MORRISVALE SNEAKY \(PP, R, AC\)](#)

Dam: [MORRISVALE QUAKER LADY \(PP, A, AC\)](#)

January 2023 Southern Limousin BREEDPLAN																	
	Calving Ease DIR (%)	Calving Ease DTRS (%)	Gestation Length (days)	Birth Wt. (kg)	200 Day Wt (kg)	400 Day Wt (kg)	600 Day Wt (kg)	Mat Cow Wt (kg)	Milk (kg)	Scrotal Size (cm)	Carcase Wt (kg)	Eye Muscle Area (sq cm)	Rib Fat (mm)	Rump Fat (mm)	Retail Beef Yield (%)	IMF (%)	Docility
EBV	+6.6	-0.2	-3.9	-0.1	+24	+37	+52	+48	+10	+1.5	+39	+3.3	+0.5	+1.0	+0.6	+0.2	+54
Accuracy	37%	29%	73%	66%	63%	60%	60%	49%	31%	43%	43%	25%	33%	32%	28%	27%	54%
Breed Avg. EBVs for 2021 Born Calves Click for Percentiles																	
EBV	+0.5	+0.7	-2.1	+1.7	+21	+35	+49	+49	+7	+1.1	+31	+1.8	+0.0	-0.1	+0.8	+0.0	+43

LOT 2

MORRISVALE SCEPTICAL

D.O.B: 25/03/2021

IDENT: MRJPS38


Homo Polled bull that was too young to sell as a yearling in 2022, has grown into a well-muscled, stretchy bull that would suit baby beef production. Out of a Kept secret daughter and his growth EBVs are in top 5% Australia. Weighed 760kg on 2/2/2023. Scrotal 38cm.

Sire: [GARREN PARK NIGHTRIDER \(P, A, AA\)](#)

Animal: [MORRISVALE SCEPTICAL \(PP, A, AA\)](#)

Dam: [MORRISVALE N16 \(PP, A, AA\)](#)



January 2023 Southern Limousin BREEDPLAN																	
	Calving Ease DIR (%)	Calving Ease DTRS (%)	Gestation Length (days)	Birth Wt. (kg)	200 Day Wt (kg)	400 Day Wt (kg)	600 Day Wt (kg)	Mat Cow Wt (kg)	Milk (kg)	Scrotal Size (cm)	Carcase Wt (kg)	Eye Muscle Area (sq cm)	Rib Fat (mm)	Rump Fat (mm)	Retail Beef Yield (%)	IMF (%)	Docility
EBV	-5.1	+0.3	-0.8	+3.6	+26	+52	+77	+86	+12	+1.7	+38	+1.6	+0.3	+0.5	+0.2	+0.2	+47
Accuracy	38%	33%	50%	66%	62%	59%	59%	49%	43%	43%	43%	29%	36%	35%	31%	29%	54%
Breed Avg. EBVs for 2021 Born Calves Click for Percentiles																	
EBV	+0.5	+0.7	-2.1	+1.7	+21	+35	+49	+49	+7	+1.1	+31	+1.8	+0.0	-0.1	+0.8	+0.0	+43

LOT 3

MORRISVALE SPIT FIRE

D.O.B: 12/05/2021

IDENT: MRJPS54

A bull that ticks boxes, if you're wanting a bull to add punch to your calves don't miss out, he oozes muscle but carries the softness European bulls need as well. Deep bodied, long and sound footed. Sired by Garren Park Nightrider who we purchased in 2019 at the National sale. All growth rates in the top 10% in Australia. Weighed 750kg on 2/2/2023. Scrotal 40cm



Sire: [GARREN PARK NIGHTRIDER \(P, A, AA\)](#)

Animal: [MORRISVALE SPIT FIRE \(P, A, AA\)](#)

Dam: [MORRISVALE NIGELLA \(P, A, AA\)](#)

January 2023 Southern Limousin BREEDPLAN

	Calving Ease DIR (%)	Calving Ease DTRS (%)	Gestation Length (days)	Birth Wt. (kg)	200 Day Wt (kg)	400 Day Wt (kg)	600 Day Wt (kg)	Mat Cow Wt (kg)	Milk (kg)	Scrotal Size (cm)	Carcase Wt (kg)	Eye Muscle Area (sq cm)	Rib Fat (mm)	Rump Fat (mm)	Retail Beef Yield (%)	IMF (%)	Docility
EBV	-6.0	+0.8	-0.6	+4.3	+29	+57	+86	+94	+13	+1.8	+41	+1.7	+0.4	+0.5	+0.2	+0.3	+52
Accuracy	38%	33%	50%	66%	62%	58%	59%	49%	43%	43%	43%	29%	35%	34%	31%	29%	54%
Breed Avg. EBVs for 2021 Born Calves Click for Percentiles																	
EBV	+0.5	+0.7	-2.1	+1.7	+21	+35	+49	+49	+7	+1.1	+31	+1.8	+0.0	-0.1	+0.8	+0.0	+43

LOT 4

MORRISVALE TRAILBLAZER

D.O.B: 17/02/2022

IDENT: MRJPT4

From a first calver but don't let that fool you. A taller bull that has the thickness and softness that we strive for. Extremely docile, dark red and polled. He has growth rates in the top 5% of Australia. Weighed 505kg 2/2/2023. Scanned P8 6mm, Rib 4mm, EMA 105cm, IMF 3.3, Scrotal 35cm

Sire: [MORRISVALE ROCKY \(PP, R, AA\)](#)


Animal: [MORRISVALE TRAILBLAZER \(P, A, AA\)](#)

Dam: [MORRISVALE CASSIES ROSE \(P, A, AA\)](#)



Lot 4 - T4

January 2023 Southern Limousin BREEDPLAN

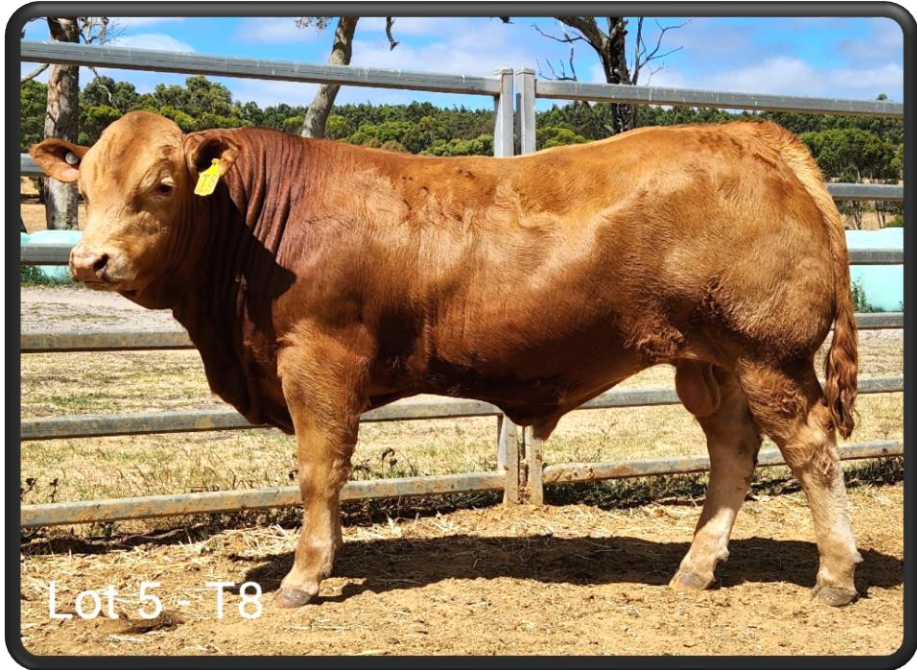
	Calving Ease DIR (%)	Calving Ease DTRS (%)	Gestation Length (days)	Birth Wt. (kg)	200 Day Wt (kg)	400 Day Wt (kg)	600 Day Wt (kg)	Mat Cow Wt (kg)	Milk (kg)	Scrotal Size (cm)	Carcase Wt (kg)	Eye Muscle Area (sq cm)	Rib Fat (mm)	Rump Fat (mm)	Retail Beef Yield (%)	IMF (%)	Docility
	EBV	+2.9	+2.3	-3.9	+3.0	+37	+64	+83	+78	+9	+2.2	+51	+2.6	-0.5	-0.8	+1.4	-0.1
Accuracy	42%	35%	73%	68%	65%	60%	60%	47%	40%	42%	43%	30%	34%	34%	31%	30%	53%
Breed Avg. EBVs for 2021 Born Calves Click for Percentiles																	
EBV	+0.5	+0.7	-2.1	+1.7	+21	+35	+49	+49	+7	+1.1	+31	+1.8	+0.0	-0.1	+0.8	+0.0	+43

LOT 5

MORRISVALE THOR

D.O.B: 20/02/2022 IDENT: MRJPT8


A result of our embryo program, a Lumberjack son that is bred for heifers but goes back to our E13 cow line that is the maternal strength of our herd. Known by Richard Hall as one of the best Limo cows he has seen. T8 has stretch, muscle and power to burn. Add some punch to your 2024 calf drop, growth rates in the top 10% of Australia. His EMA scan equal biggest in our sale bulls. Weighed 540kg 2/2/2023. Scanned P8 9mm, Rib 5mm, EMA 113cm, IMF 3.5, Scrotal 36cm



Sire: [MORRISVALE LUMBERJACK \(PP, A, AA\)](#)

Animal: [MORRISVALE THOR \(P, A, AA\)](#)

Dam: [MORRISVALE ETERNAL FLAME \(P, A, AA\)](#)

January 2023 Southern Limousin BREEDPLAN																	
	Calving Ease DIR (%)	Calving Ease DTRS (%)	Gestation Length (days)	Birth Wt. (kg)	200 Day Wt (kg)	400 Day Wt (kg)	600 Day Wt (kg)	Mat Cow Wt (kg)	Milk (kg)	Scrotal Size (cm)	Carcase Wt (kg)	Eye Muscle Area (sq cm)	Rib Fat (mm)	Rump Fat (mm)	Retail Beef Yield (%)	IMF (%)	Docility
EBV	+6.4	+3.0	-4.2	+1.1	+25	+45	+62	+59	+7	+1.2	+45	+3.2	-0.1	-0.1	+1.3	-0.2	+50
Accuracy	47%	42%	58%	69%	66%	64%	64%	54%	53%	48%	49%	32%	38%	37%	33%	32%	63%
Breed Avg. EBVs for 2021 Born Calves Click for Percentiles																	
EBV	+0.5	+0.7	-2.1	+1.7	+21	+35	+49	+49	+7	+1.1	+31	+1.8	+0.0	-0.1	+0.8	+0.0	+43

LOT 6

MORRISVALE TOP NOTCH

D.O.B: 21/02/2022

IDENT: MRJPT9

Homo Polled. Last natural calf of Lumberjacks dam. A son that is by the National Show and Sale winner Birubi Kaiser. T9 has been a quiet achiever, he has tremendous thickness in his hind quarter whilst being that lovely wedge shape up front. Suited to heifers with top 5% growth for 400 days. Weighed 515kg 2/2/2023. Scanned P8 4mm, Rib 3mm, EMA 106cm, IMF 3.4, Scrotal 33cm




Sire: [BIRUBI KAISER K140 \(PP, R, AC\)](#)

Animal: [MORRISVALE TOP NOTCH \(PP, A, AA\)](#)

Dam: [MARYVALE JOSEPHINE J302 \(P, A, U\)](#)

January 2023 Southern Limousin BREEDPLAN

	Calving Ease DIR (%)	Calving Ease DTRS (%)	Gestation Length (days)	Birth Wt. (kg)	200 Day Wt (kg)	400 Day Wt (kg)	600 Day Wt (kg)	Mat Cow Wt (kg)	Milk (kg)	Scrotal Size (cm)	Carcase Wt (kg)	Eye Muscle Area (sq cm)	Rib Fat (mm)	Rump Fat (mm)	Retail Beef Yield (%)	IMF (%)	Docility
EBV	+2.7	+1.4	-5.5	+1.3	+26	+51	+62	+69	+10	+0.9	+44	+2.3	-0.8	-1.3	+1.6	-0.2	+58
Accuracy	48%	44%	72%	71%	68%	64%	64%	54%	52%	54%	50%	40%	47%	46%	42%	41%	60%
Breed Avg. EBVs for 2021 Born Calves Click for Percentiles																	
EBV	+0.5	+0.7	-2.1	+1.7	+21	+35	+49	+49	+7	+1.1	+31	+1.8	+0.0	-0.1	+0.8	+0.0	+43

LOT 7

MORRISVALE TREND SETTER

D.O.B: 27/02/2022

IDENT: MRJPT21

Homo Polled. An Embryo Lumberjack son that goes back to the old French bull lonesco to add some extra punch and growth. Deep bodied, thick set, sound footed and soft as butter. His full brother currently stands at stud at Limek Limousins in SA, we also just recently purchased a black son back with his genetics, a predictable pedigree. He could easily find himself at stud like his full brother Morrisvale Nullabor. Weighed 480kg 2/2/2023. Scanned P8 6mm, Rib 4mm, EMA 105cm, IMF 3.1, Scrotal 35cm




Sire: [MORRISVALE LUMBERJACK \(PP, A, AA\)](#)

Animal: [MORRISVALE TREND STETTER \(PP, R, AA\)](#)

Dam: [MORRISVALE KRYSTAL MIST \(PP, R, AA\)](#)

January 2023 Southern Limousin BREEDPLAN

	Calving Ease DIR (%)	Calving Ease DTRS (%)	Gestation Length (days)	Birth Wt. (kg)	200 Day Wt (kg)	400 Day Wt (kg)	600 Day Wt (kg)	Mat Cow Wt (kg)	Milk (kg)	Scrotal Size (cm)	Carcase Wt (kg)	Eye Muscle Area (sq cm)	Rib Fat (mm)	Rump Fat (mm)	Retail Beef Yield (%)	IMF (%)	Docility
EBV	+1.3	+0.8	-3.8	+2.5	+32	+51	+69	+54	+12	+1.0	+45	+3.7	-0.2	-0.4	+1.7	-0.2	+59
Accuracy	46%	39%	59%	69%	66%	63%	64%	53%	50%	52%	49%	33%	39%	38%	34%	34%	60%
Breed Avg. EBVs for 2021 Born Calves Click for Percentiles																	
EBV	+0.5	+0.7	-2.1	+1.7	+21	+35	+49	+49	+7	+1.1	+31	+1.8	+0.0	-0.1	+0.8	+0.0	+43

LOT 8

MORRISVALE THE GENERAL

D.O.B: 28/02/2022

IDENT: MRJPT22

This AI (Greenwood Gods Country) calf has been sourced from Canada and his growth for age hasn't gone unnoticed, always the heaviest bull in our drop. His hind quarter is that of the French type, but then carries softness that he will add to his calves. You only have to see him once to admire how much power he has. One of the 1st calves to sell by this sire in Australia. Weighed 580kg 2/2/2023. Scanned P8 6mm, Rib 4mm, EMA 103cm, IMF 3.3, Scrotal 36cm.




Sire: [GREENWOOD GOD'S COUNTRY 706G ET \(PP, R, AA\)](#)

Animal: [MORRISVALE THE GENERAL \(P, A, AA\)](#)

Dam: [MORRISVALE QUININE \(P, A, AA\)](#)

January 2023 Southern Limousin BREEDPLAN

	Calving Ease DIR (%)	Calving Ease DTRS (%)	Gestation Length (days)	Birth Wt. (kg)	200 Day Wt (kg)	400 Day Wt (kg)	600 Day Wt (kg)	Mat Cow Wt (kg)	Milk (kg)	Scrotal Size (cm)	Carcase Wt (kg)	Eye Muscle Area (sq cm)	Rib Fat (mm)	Rump Fat (mm)	Retail Beef Yield (%)	IMF (%)	Docility
EBV	-0.8	+0.2	-1.1	+3.3	+35	+56	+82	+76	+15	+1.8	+47	-	-	-	-	-	+53
Accuracy	35%	27%	71%	66%	61%	58%	57%	45%	32%	33%	38%	-	-	-	-	-	51%
Breed Avg. EBVs for 2021 Born Calves Click for Percentiles																	
EBV	+0.5	+0.7	-2.1	+1.7	+21	+35	+49	+49	+7	+1.1	+31	+1.8	+0.0	-0.1	+0.8	+0.0	+43

LOT 9

MORRISVALE TOP GUN

D.O.B: 01/03/2022

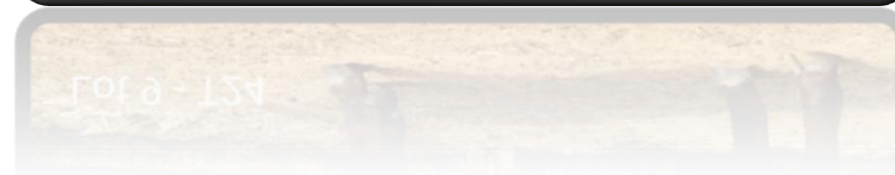
IDENT: MRJPT24

Homo Polled. An embryo calf that has some wow factor sired by RPY Panes Cracker (semen sold out). His dam entered the program after a standout 1st calf and pedigree that goes back to E13. The cherry red bull is wedge fronted, deep girthed, sound footed, has a great strong top line with added length and thickness from behind. He could easily find himself in a stud herd across Australia. His full sister sells at the Limousin nationals in 2023. Weighed 535kg 2/2/23. Scanned P8 7mm, Rib 4mm, EMA 109cm, IMF 3.2, Scrotal 36cm

Sire: [RPY PAYNES CRACKER 17E \(PP, R, AA\)](#)

Animal: [MORRISVALE TOP GUN \(PP, R, AA\)](#)

Dam: [MORRISVALE PANDORA'S FLAME \(PP, A, AA\)](#)



January 2023 Southern Limousin BREEDPLAN

	Calving Ease DIR (%)	Calving Ease DTRS (%)	Gestation Length (days)	Birth Wt. (kg)	200 Day Wt (kg)	400 Day Wt (kg)	600 Day Wt (kg)	Mat Cow Wt (kg)	Milk (kg)	Scrotal Size (cm)	Carcase Wt (kg)	Eye Muscle Area (sq cm)	Rib Fat (mm)	Rump Fat (mm)	Retail Beef Yield (%)	IMF (%)	Docility
EBV	-1.9	-0.8	-0.8	+2.9	+30	+49	+83	+88	+8	+1.8	+44	-	+0.5	+1.0	+0.6	+0.2	+43
Accuracy	37%	29%	56%	66%	60%	58%	60%	43%	30%	41%	41%	-	32%	31%	27%	26%	55%
Breed Avg. EBVs for 2021 Born Calves Click for Percentiles																	
EBV	+0.5	+0.7	-2.1	+1.7	+21	+35	+49	+49	+7	+1.1	+31	+1.8	+0.0	-0.1	+0.8	+0.0	+43

LOT10

MORRISVALE TOMAHAWK

D.O.B: 01/03/2022

IDENT: MRJPT25

A **Homo Black** and **Homo Polled** calf from our AI program by the Ballamore Endeavour sire (HB). He might be the lightest bulls we have in the sale but don't let that fool you, he is as thick as 2 bricks. A heifers 1st calf. You have to admire the all-round power of this young fella, whilst guaranteeing black calves as well (HB). Will mature into a smaller moderate framed bull, suited for heifers. Weighed 435kg 2/2/2023. Scanned P8 6mm, Rib 4mm, EMA 105cm, IMF 3.3, Scrotal 34cm.

Sire: [BALAMORE ENDEAVOR 701E \(PP, BB, AA\)](#)

Animal: [MORRISVALE TOMAHAWK \(PP, BB, AA\)](#)

Dam: [MORRISVALE QUIET OF DAWN \(P, B, AA\)](#)



Lot 10 - T25

Lot 10 - T25

January 2023 Southern Limousin BREEDPLAN

	Calving Ease DIR (%)	Calving Ease DTRS (%)	Gestation Length (days)	Birth Wt. (kg)	200 Day Wt (kg)	400 Day Wt (kg)	600 Day Wt (kg)	Mat Cow Wt (kg)	Milk (kg)	Scrotal Size (cm)	Carcase Wt (kg)	Eye Muscle Area (sq cm)	Rib Fat (mm)	Rump Fat (mm)	Retail Beef Yield (%)	IMF (%)	Docility
EBV	+7.6	+1.1	-6.3	-1.2	+18	+27	+34	+44	+7	+0.7	+33	+3.2	0.0	0.0	+1.0	-	+64
Accuracy	36%	28%	73%	68%	65%	60%	60%	48%	35%	43%	42%	26%	30%	30%	27%	-	53%
Breed Avg. EBVs for 2021 Born Calves Click for Percentiles																	
EBV	+0.5	+0.7	-2.1	+1.7	+21	+35	+49	+49	+7	+1.1	+31	+1.8	+0.0	-0.1	+0.8	+0.0	+43

LOT 11

MORRISVALE TEXAS RANGER

D.O.B: 07/03/2022

IDENT: MRJPT29


This AI (Greenwood Gods Country) calf has been sourced from Canada and will add some extra height and power to your calf drop. He goes back to the E13 female line as well. A bull that stands over a lot of ground with that extra stretch and height but without losing the muscle or softness we strive for. His EMA scan equal biggest in our sale bulls. Weighed 545kg 2/2/23. Scanned P8 4mm, Rib 3mm, EMA 113cm, IMF 3.3, Scrotal 37cm



Sire: [GREENWOOD GOD'S COUNTRY 706G ET \(PP, R, AA\)](#)

Animal: [MORRISVALE TEXAS RANGER \(P, A, AA\)](#)

Dam: [MORRISVALE KALLISTO FLAME \(P, A, AA\)](#)

January 2023 Southern Limousin BREEDPLAN																	
	Calving Ease DIR (%)	Calving Ease DTRS (%)	Gestation Length (days)	Birth Wt. (kg)	200 Day Wt (kg)	400 Day Wt (kg)	600 Day Wt (kg)	Mat Cow Wt (kg)	Milk (kg)	Scrotal Size (cm)	Carcase Wt (kg)	Eye Muscle Area (sq cm)	Rib Fat (mm)	Rump Fat (mm)	Retail Beef Yield (%)	IMF (%)	Docility
EBV	-3.6	-0.7	+1.9	+3.0	+25	+41	+64	+67	+9	+1.3	+38	-	-	-	-	-	+55
Accuracy	33%	27%	71%	67%	62%	58%	57%	39%	35%	32%	37%	-	-	-	-	-	53%
Breed Avg. EBVs for 2021 Born Calves Click for Percentiles																	
EBV	+0.5	+0.7	-2.1	+1.7	+21	+35	+49	+49	+7	+1.1	+31	+1.8	+0.0	-0.1	+0.8	+0.0	+43

LOT 12

MORRISVALE TITAN

D.O.B: 20/03/2022

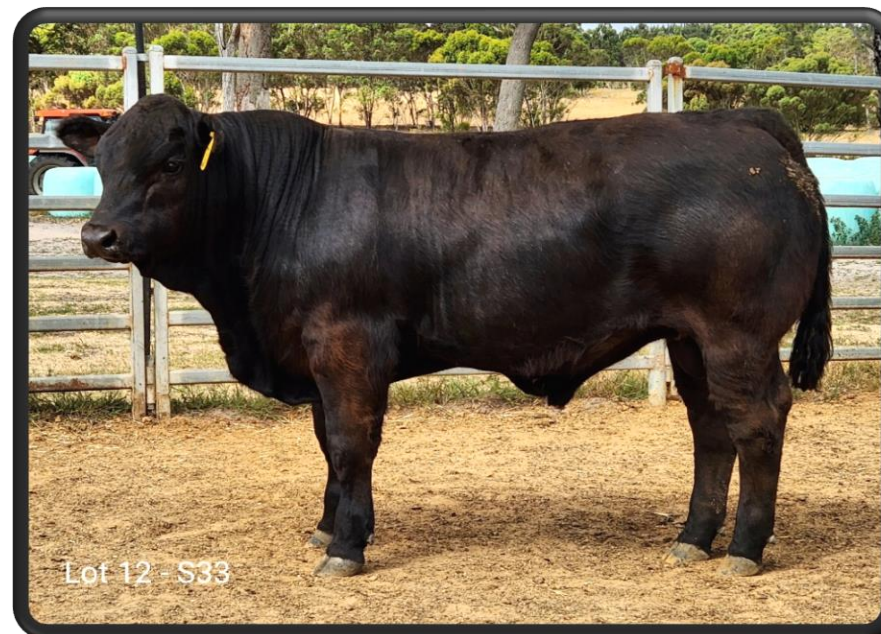
IDENT: MRJPT33

A natural calf by Garren Park Nightrider, the youngest bull listed but we finish with BLACK and powerful. T33 is admired for his overall thickness and hind quarter, he is deep bodied and set up on good feet and legs. The commercial man's dream in a black package, don't miss this opportunity. Weighed 465kg 2/2/2023. Scanned P8 7mm, Rib 4mm, EMA 102cm, IMF 3.4, Scrotal 35cm

Sire: [GARREN PARK NIGHTRIDER \(P, A, AA\)](#)

Animal: [MORRISVALE TITAN \(P, B, U\)](#)

Dam: [MORRISVALE CASSIE'S PROMISE \(P, B, U\)](#)



Lot 12 - S33

January 2023 Southern Limousin BREEDPLAN

	Calving Ease DIR (%)	Calving Ease DTRS (%)	Gestation Length (days)	Birth Wt. (kg)	200 Day Wt (kg)	400 Day Wt (kg)	600 Day Wt (kg)	Mat Cow Wt (kg)	Milk (kg)	Scrotal Size (cm)	Carcase Wt (kg)	Eye Muscle Area (sq cm)	Rib Fat (mm)	Rump Fat (mm)	Retail Beef Yield (%)	IMF (%)	Docility
EBV	+0.3	+2.0	-1.6	+2.5	+25	+44	+63	+67	+11	+1.5	+37	+2.1	0.0	0.0	+0.6	0.0	+27
<u>Accuracy</u>	37%	33%	50%	66%	63%	58%	60%	47%	40%	42%	43%	29%	33%	32%	30%	27%	55%
Breed Avg. EBVs for 2021 Born Calves Click for Percentiles																	
EBV	+0.5	+0.7	-2.1	+1.7	+21	+35	+49	+49	+7	+1.1	+31	+1.8	+0.0	-0.1	+0.8	+0.0	+43

